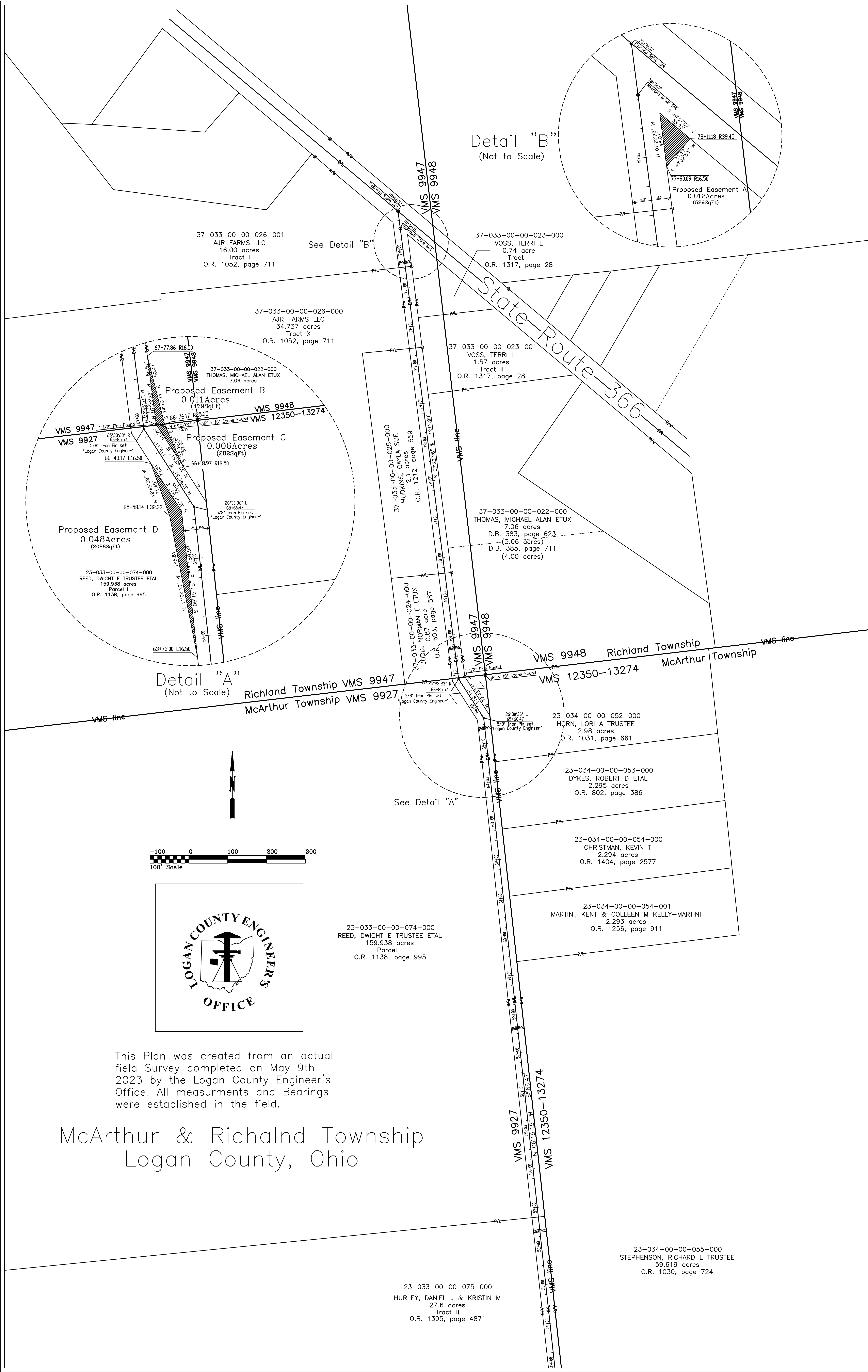
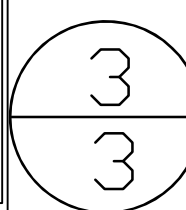
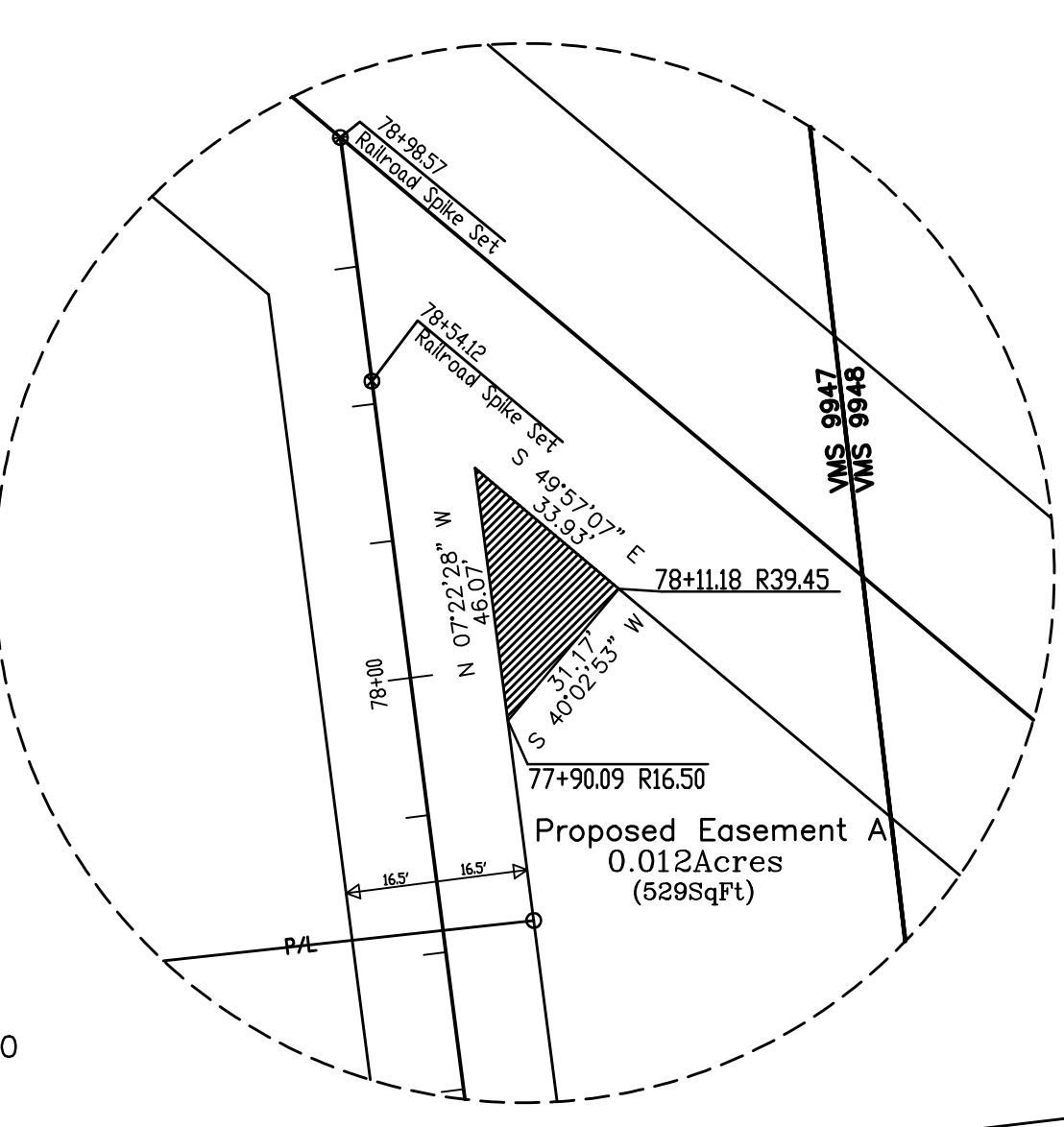


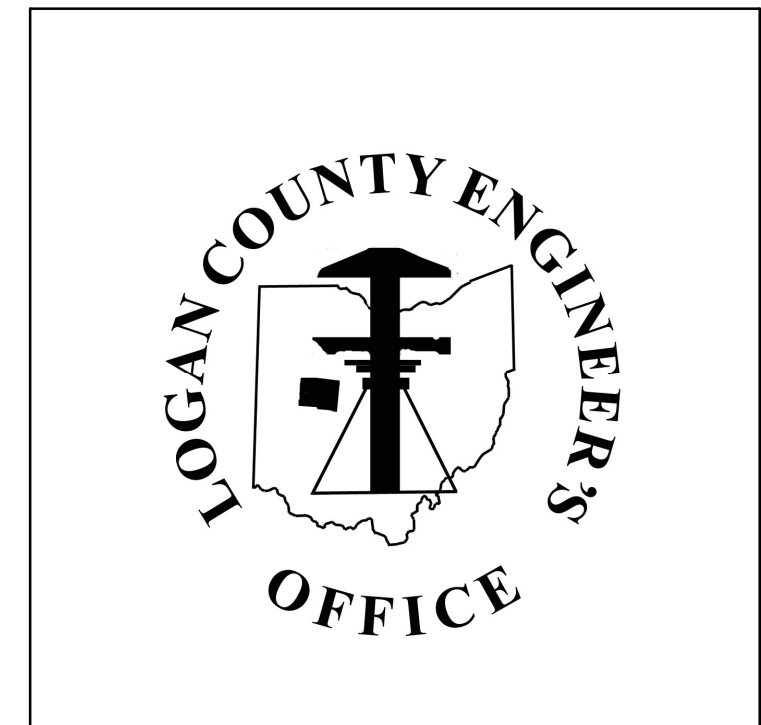
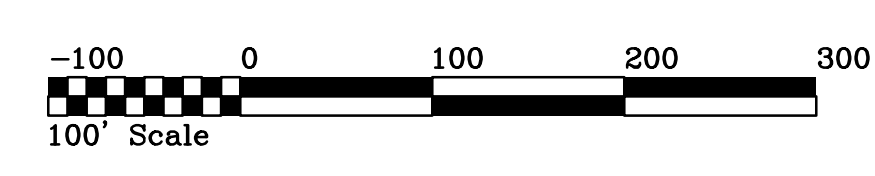
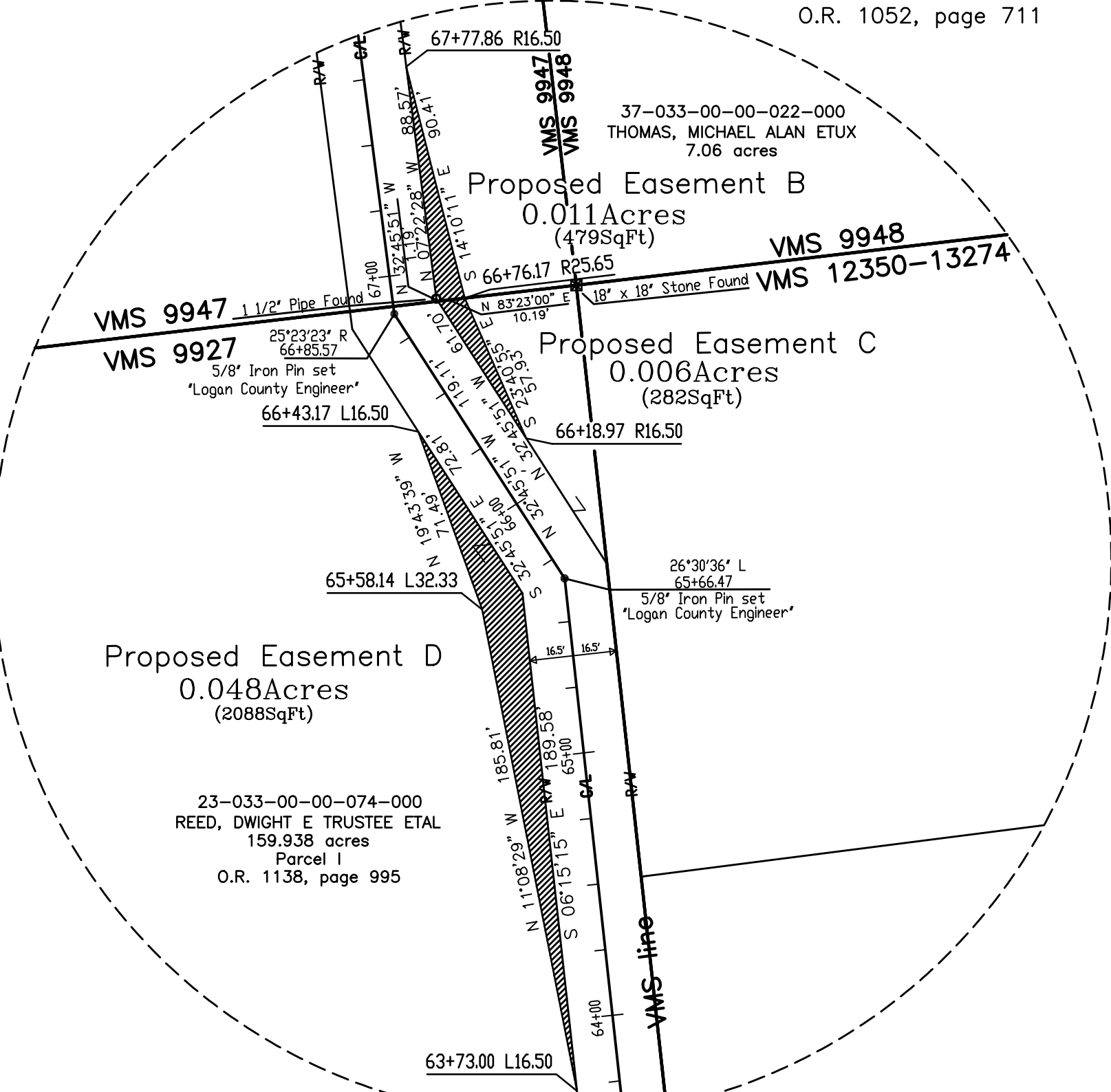
# TOWNSHIP ROAD 99 (33') ROAD PLAN



Detail "B"  
(Not to Scale)



Detail "A"  
(Not to Scale)



This Plan was created from an actual field Survey completed on May 9th, 2023 by the Logan County Engineer's Office. All measurements and Bearings were established in the field.

## McArthur & Richland Township Logan County, Ohio

23-034-00-00-055-000  
STEPHENSON, RICHARD L TRUSTEE  
59.619 acres  
O.R. 1030, page 724

23-033-00-00-075-000  
HURLEY, DANIEL J & KRISTIN M  
27.6 acres  
Tract II  
O.R. 1395, page 4871