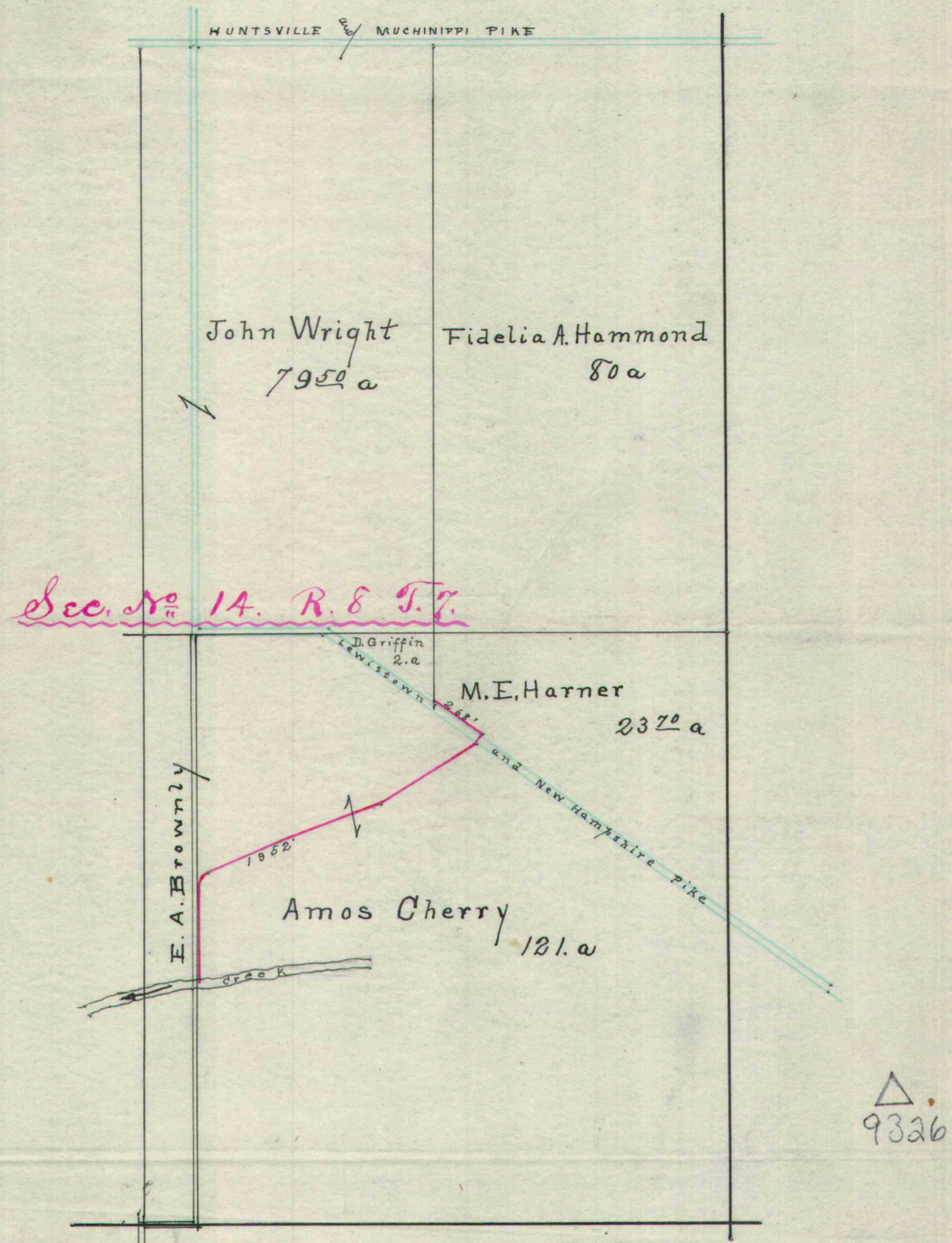


Plat of Griffin Ditch Washington Township.



John Wright
792 a

Fidelia A. Hammond
80 a

Sec. No. 14. R. 8 T. 7.

Griffin
Ditch

M.E. Harner
232 a

E.A. BROWNLY

Amos Cherry
121 a

RAILROAD TRACK

△.
9326

S.A. Buchanan
Eng. April 1888