

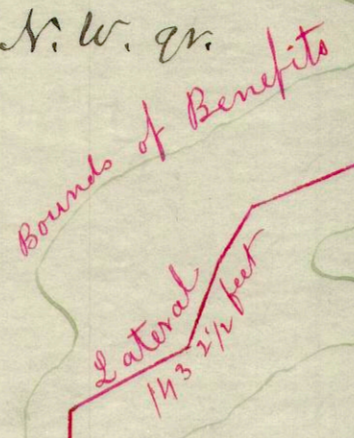
Revised
 the
 21st Sept 1880

2.
 Wm A. Brunson
 79 a
 W 1/2 N.W. qr.

E. Pt. 3.
 E. Pt.
 E. 1/2 N.W. qr.

W. Pt.
 E. 1/2 N. W. qr.
 Peter Shade
 28 a

Jephtha Moore
 52 a



Line.
 Section

Mc Cally

Bridge Pike

Rathmell Ditch

John Kemper
 S. 12; T. 2; R. 14

Bank on Rathmell.

Pt. 9
 Thomas Shanks 118.50 a

W 1/2 + N. E 1/4
 S.W. qr.

Saml Shanks

Distances on each tract	
Peter Shade	167 1/2 feet
Wm A Brunson	1432 1/2 "
In Pike gutter	359 "
Crossing Pike	82 "
Thos Shanks	89 "
Main Crossing Pike	1947 ft
Thos Shanks to	46 "
Rathmell Ditch	705 "
	2500.

Map and Plat
 of the
 Shanks Ditch
 Washington Township
 H. B. Moore, Eng.
 May 1880

2-350