

Map and Plat of the Korn's Joint Ditch in

Gardin and Logan Counties

By J. B. C. Moore, C.E.

Aug 12th 1887

18,000
26,000
44,000
795.0

Gardin Co.

Logan Co.

County Line

O.V.M.S. 12280

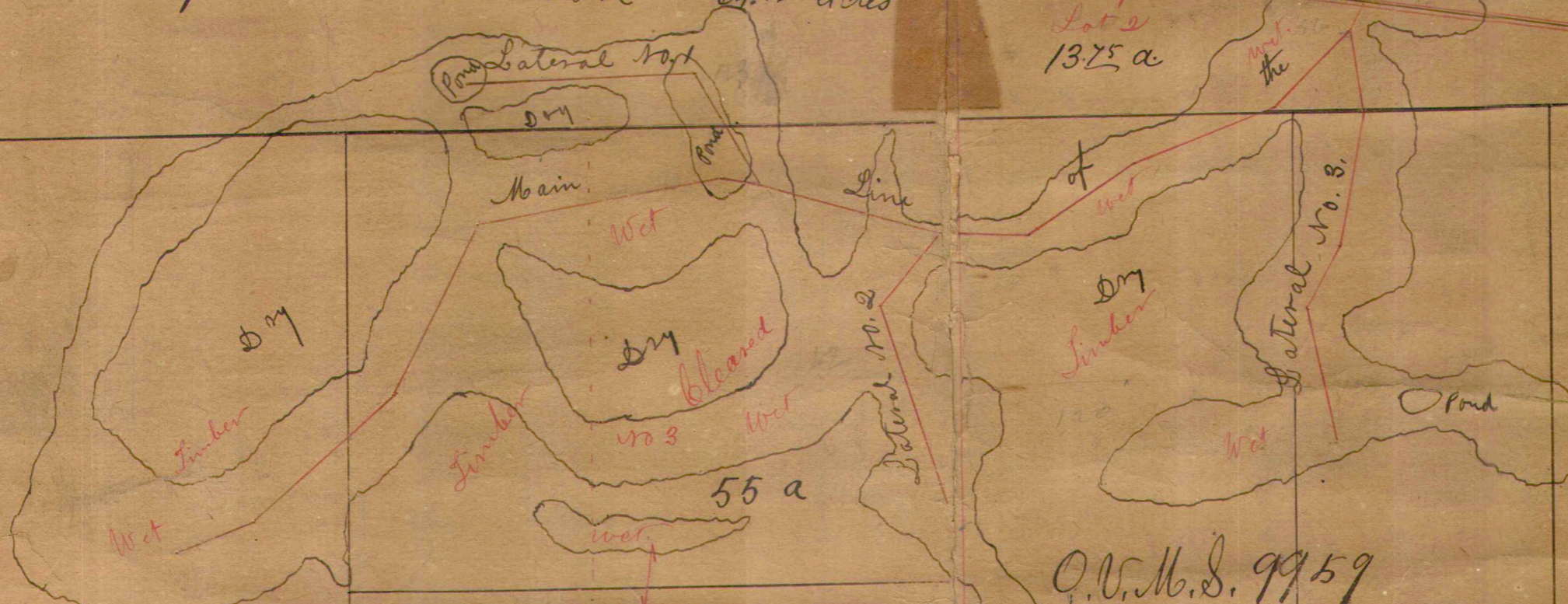
Wilkinson

Korn's Ditch

Elliott 250.54 a.

Thompson Dickinson 64.16 acres

Lot 2 1375 a



River
25 a

O.V.M.S. 9959

W. J. Witecraft
93 acres

Salas W. Korn

95 acres

R + Sarah E.
Williams
90 a

Williams
39 a

Lot 7

Henry
Perry

135.72 a

Rush Creek

Branch Viewed
By FFW
3-26-36

11-482