

**LAKE  
TOWNSHIP  
1951**

INDEX

SECTION	TOWN	RANGE	PAGE	VIRGINIA MILITARY SURVEY	PAGE
27	4	14	1	4498	6
33	4	14	1	5045	6
				9572	6
				4478	7
28	4	14	2	10086	7
				10198	7
34	4	14	2	5345	8
				3683	9
34	4	14	3	4398	9
				4399	9
				2873	10
36	4	14	4	3317	11
				3442	11
31	3	15	5	3324	12
				9883	12
				12485	12
				3322 + 9884	13
				9988	13

ALLOTMENT

PAGE

IRON CITY ADDITION ----- 14

BELLEVILLE ADDITION ----- 14

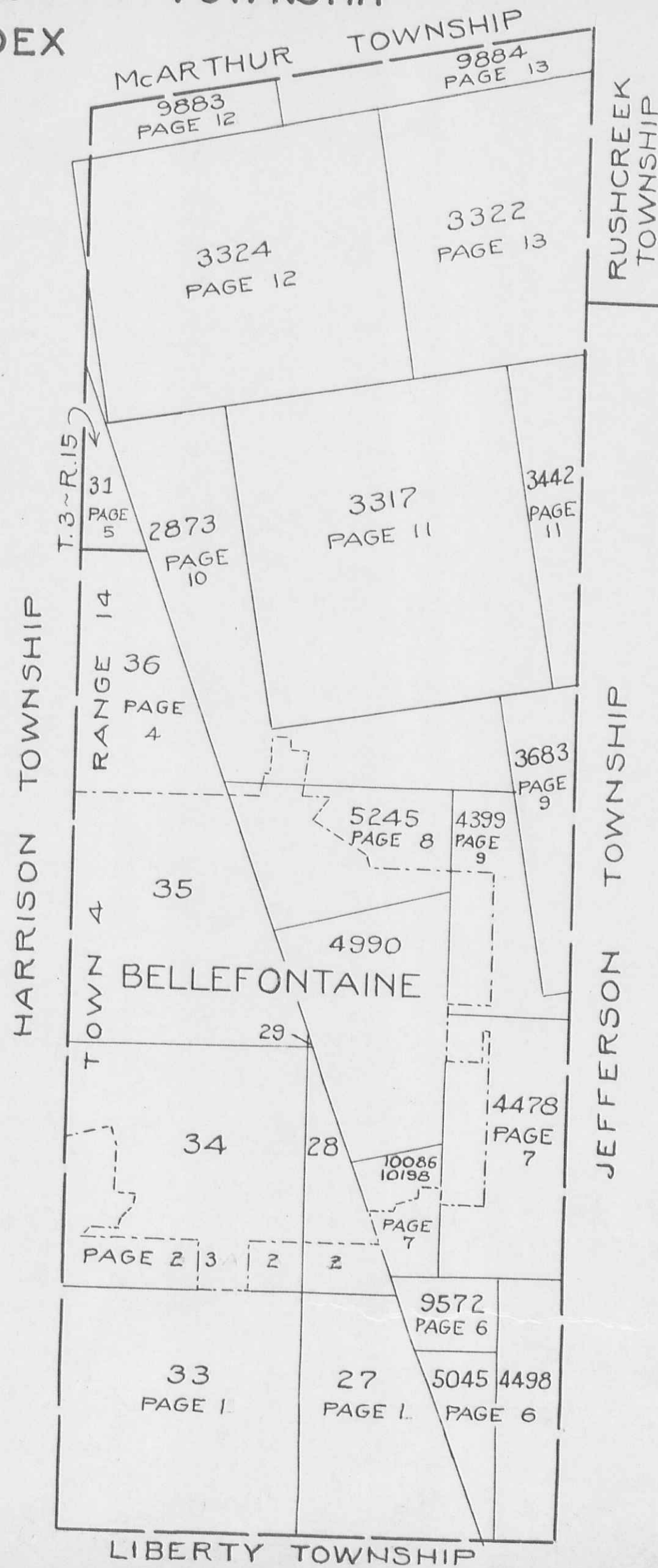
CLARK'S PARK ADDITION N-PART ----- 14

CLARK'S PARK ADDITION S-PART ----- 14

LAKE TOWNSHIP  
INDEX

MAP

Corrected To.  
January 1, 1955  
Jan. 1, 1956  
January 1, 1957  
January 1, 1958



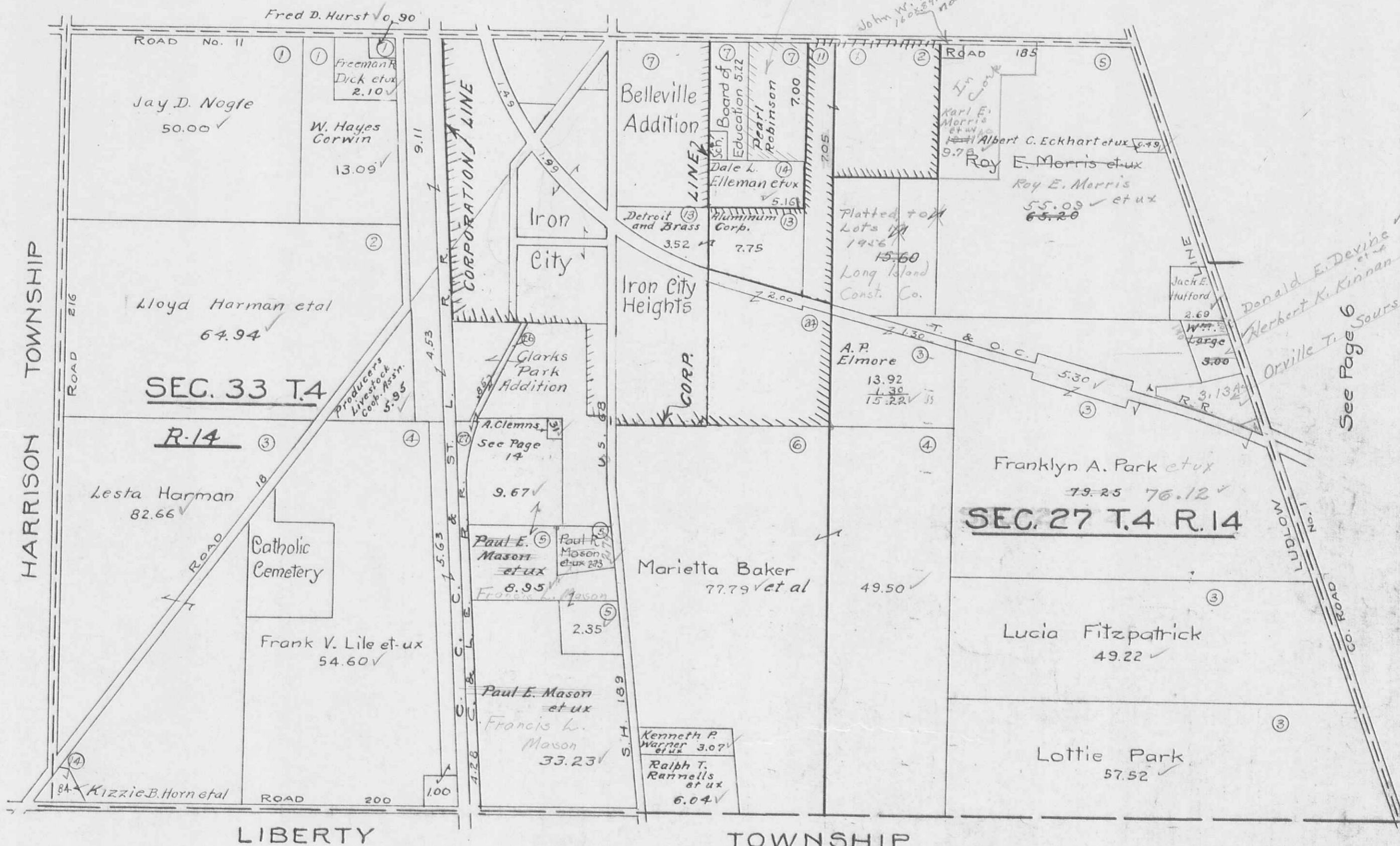
LAKE TOWNSHIP

SECTION 27 TOWN 4 RANGE 14  
SECTION 33 TOWN 4 RANGE 14

SCALE 10 CHAINS TO THE INCH

64.20  
10.11  
55.09  
10.11  
3.33  
9.78

See Page 2



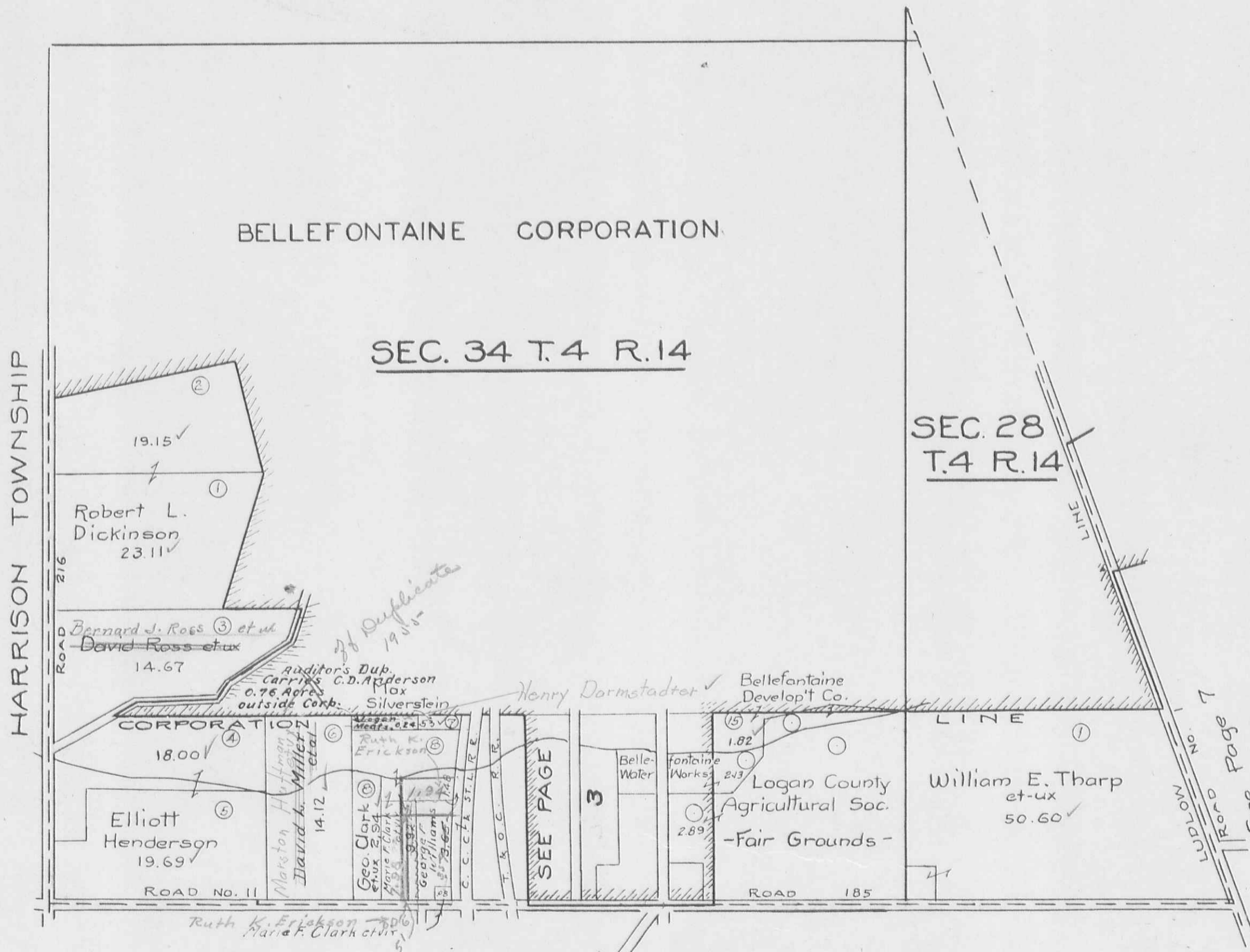
See Page 6

Donald E. Devine et ux 0.87 A.  
Herbert K. Kinnan et ux - 2.16 A.  
Orville T. Sours et ux

To Bellefontaine Cop.  
John W. Prall et ux  
160x59.9 - 0.33 Ac  
now numbered Lot

SECTION 28 TOWN 4 RANGE 14  
SECTION 34 TOWN 4 RANGE 14

SCALE 10 CHAINS TO THE INCH



BELLEFONTAINE CORPORATION

SEC. 34 T.4 R.14

SEC. 28 T.4 R.14

HARRISON TOWNSHIP

19.15 ✓  
 1  
 Robert L. Dickinson  
 23.11 ✓  
 2

3  
 Bernard J. Ross et ux  
 David Ross et ux  
 14.67  
 Auditor's Dup. Carries C.D. Anderson 10x 0.76 Acres outside Corp. Silverstein

4  
 18.00 ✓  
 CORPORATION  
 5  
 Elliott Henderson  
 19.69 ✓  
 ROAD No. 11

6  
 14.12 ✓  
 Markston Huffman  
 David K. Miller et ux  
 Geo. Clark et ux  
 Marie F. Clark et ux  
 George Williams et ux  
 19.67 ✓  
 C.C.C.F.A. ST. L. R. E.

7  
 SEE PAGE 1  
 3  
 Bellefontaine Water Works  
 2.89 ✓  
 Henry Darmstadter ✓  
 Bellefontaine Develop't Co.

8  
 1.82 ✓  
 Logan County Agricultural Soc.  
 -Fair Grounds-  
 ROAD 185

9  
 50.60 ✓  
 William E. Tharp et ux  
 ROAD 185

5-11-2  
589.2  
899.6

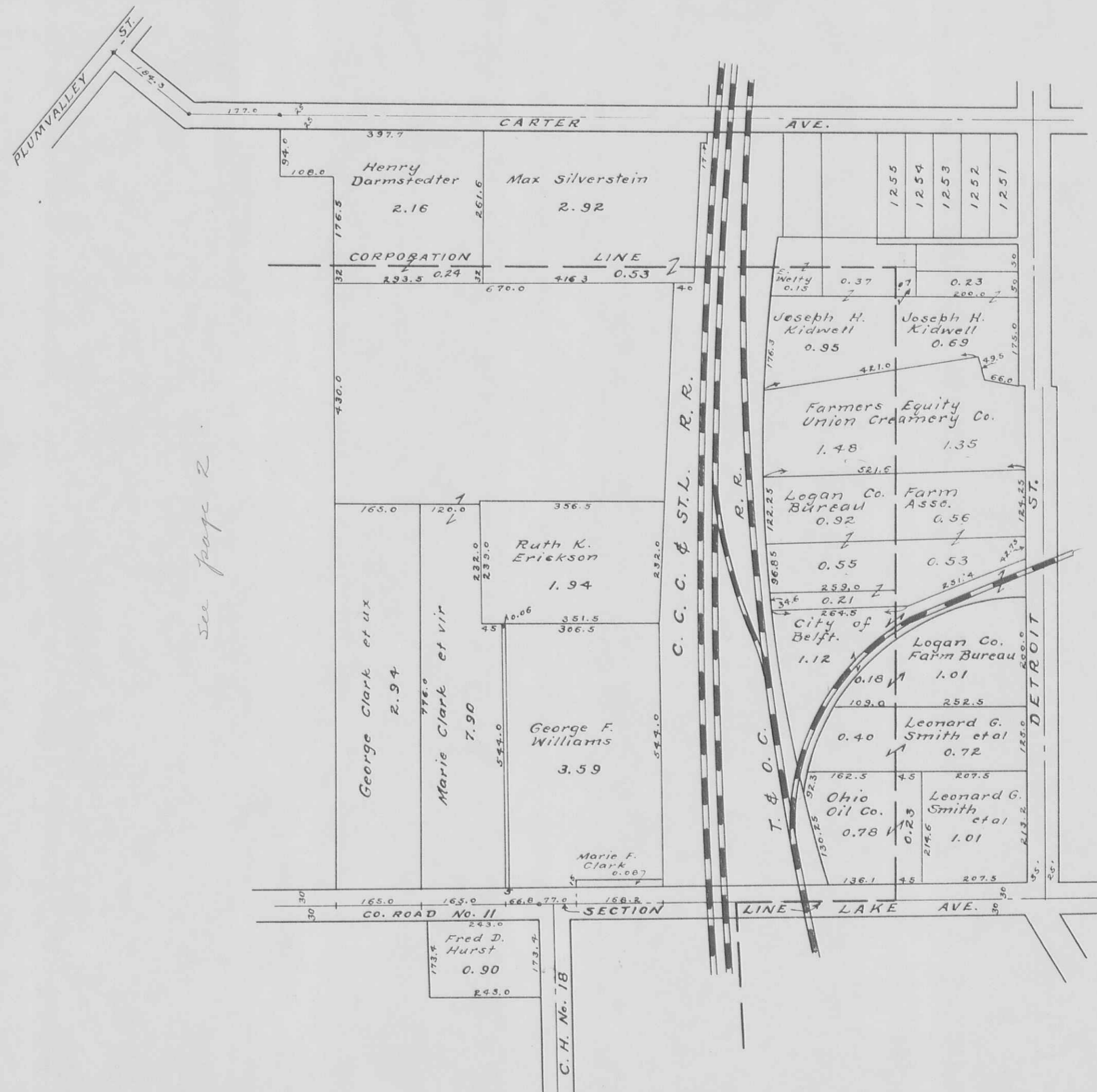
See Page 1

9.92  
1.94  
7.98

LUDLOW ROAD  
SEE PAGE 1

LAKE TOWNSHIP  
SECTION 34 TOWN 4 RANGE 14 (PART)

SCALE 200 FEET TO THE INCH

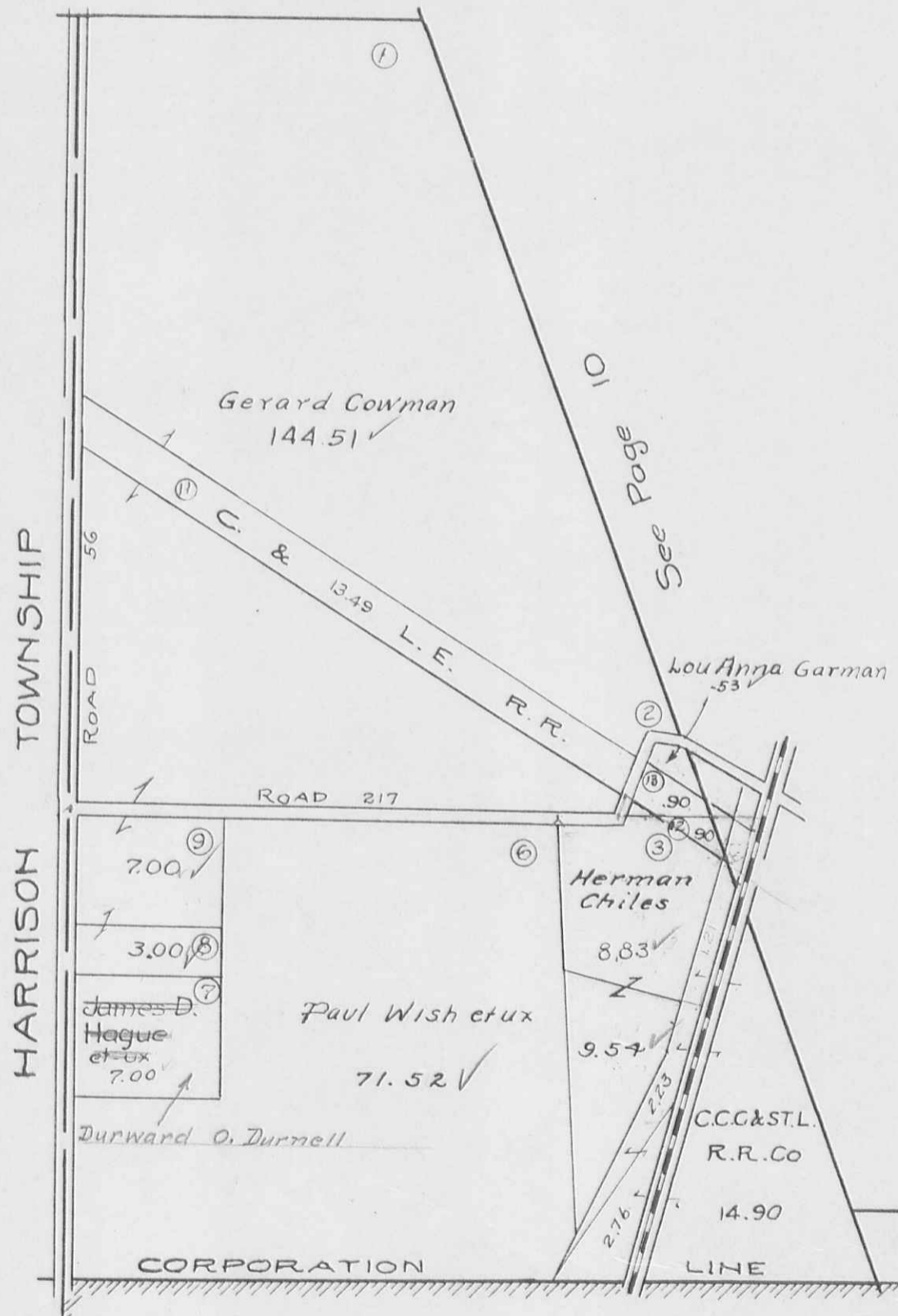


See page 2

LAKE TOWNSHIP  
SECTION 36 TOWN 4 RANGE 14

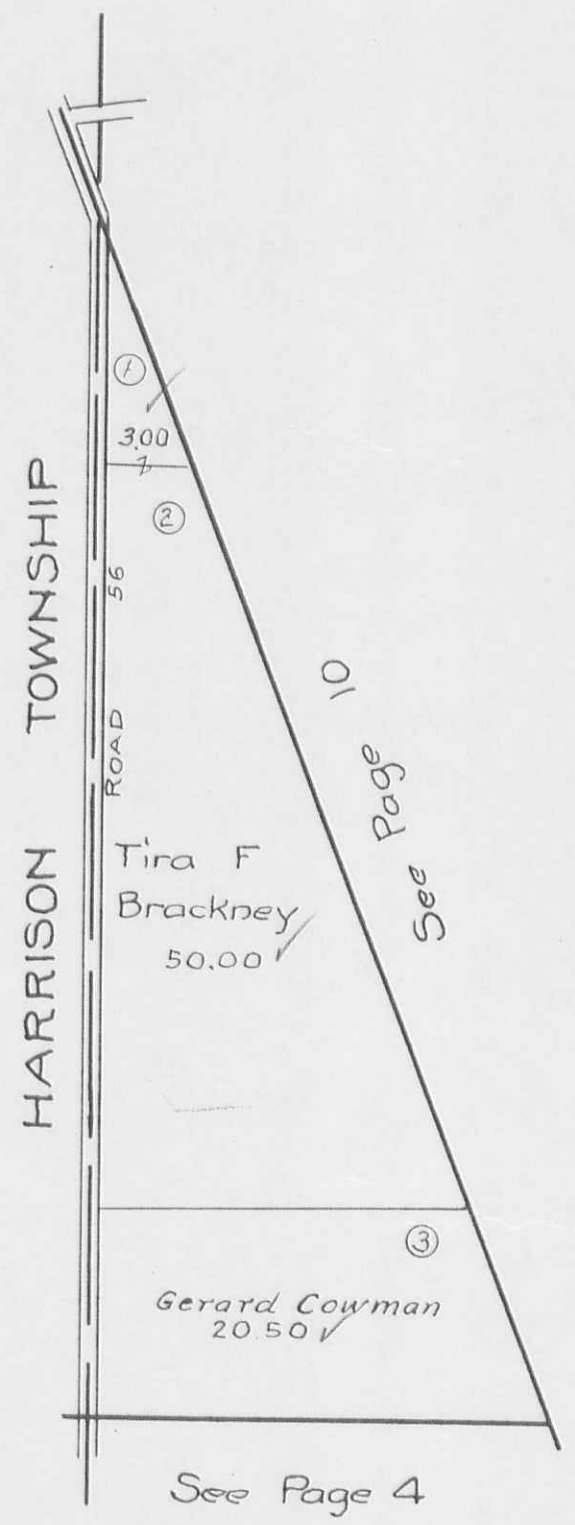
SCALE 10 CHAINS TO THE INCH

See Page 5



8.53  
1.50  
70.63

LAKE TOWNSHIP  
SECTION 31 TOWN 3 RANGE 15  
SCALE 10 CHAINS TO THE INCH



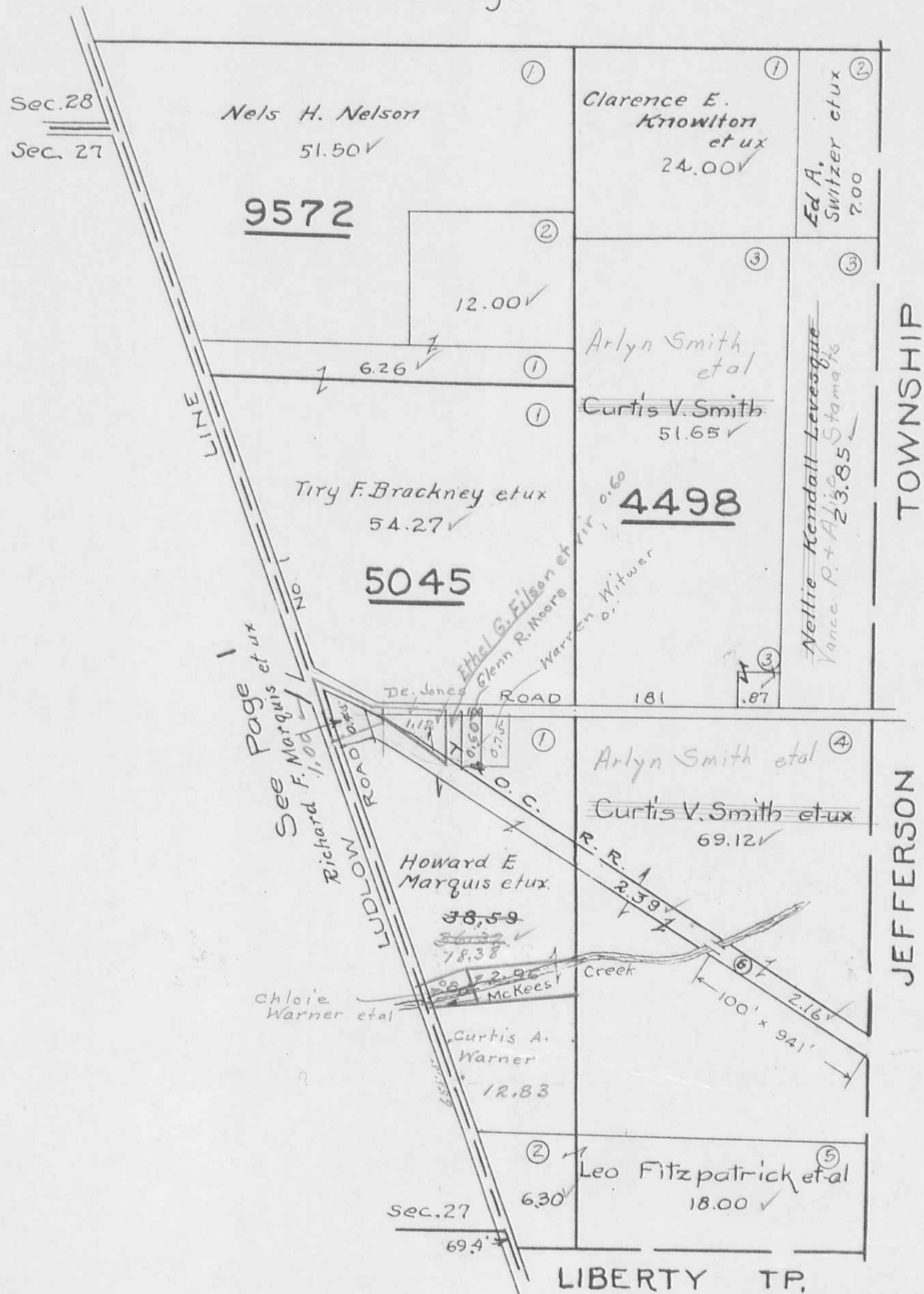


LAKE TOWNSHIP  
VIRGINIA MILITARY SURVEYS

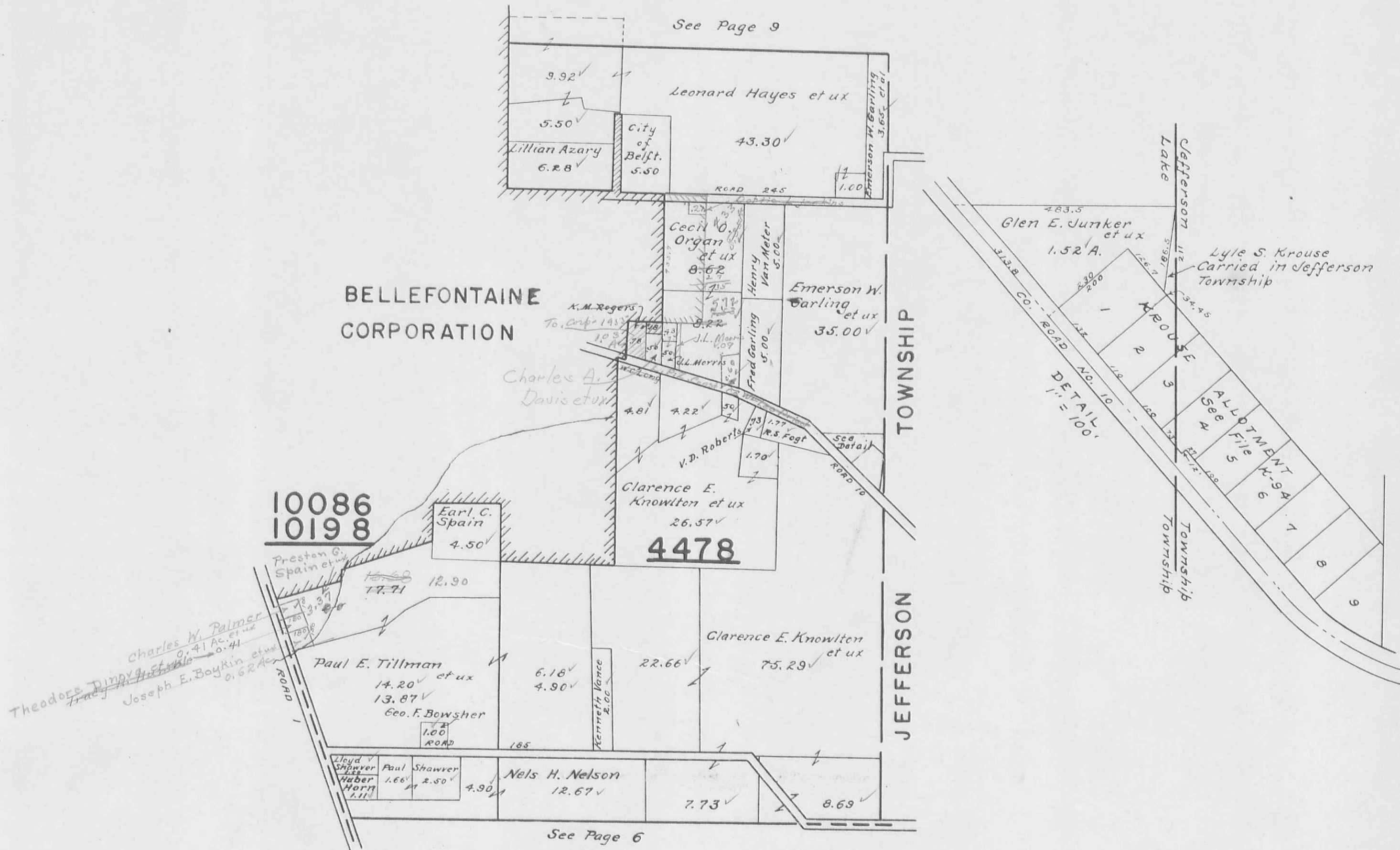
4498  
5045  
9572

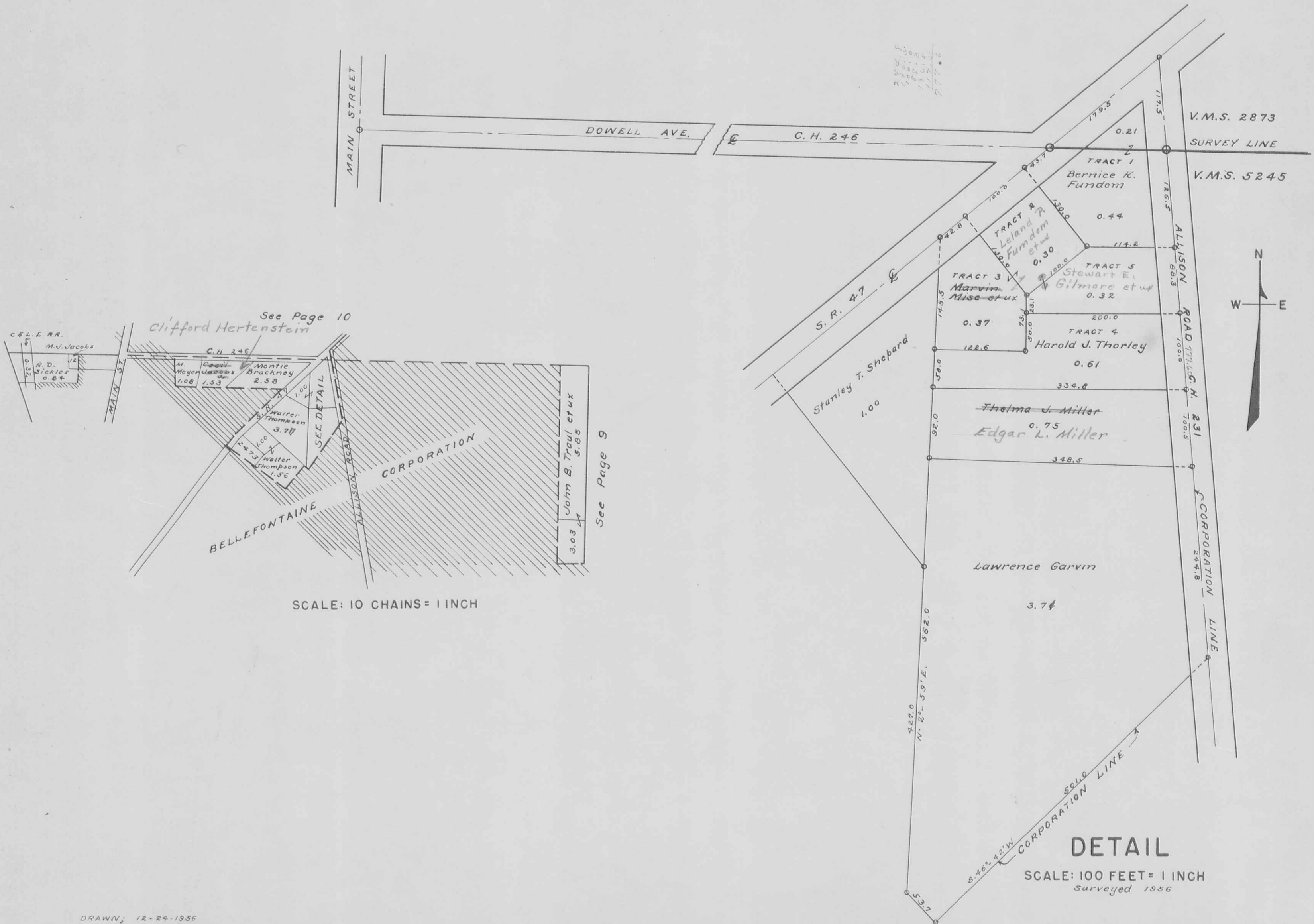
SCALE 10 CHAINS TO THE INCH

See Page 7



4478  
10086  
10198





SCALE 10 CHAINS TO THE INCH

See Page 11



See Page 8

See Page 10

4399

3683

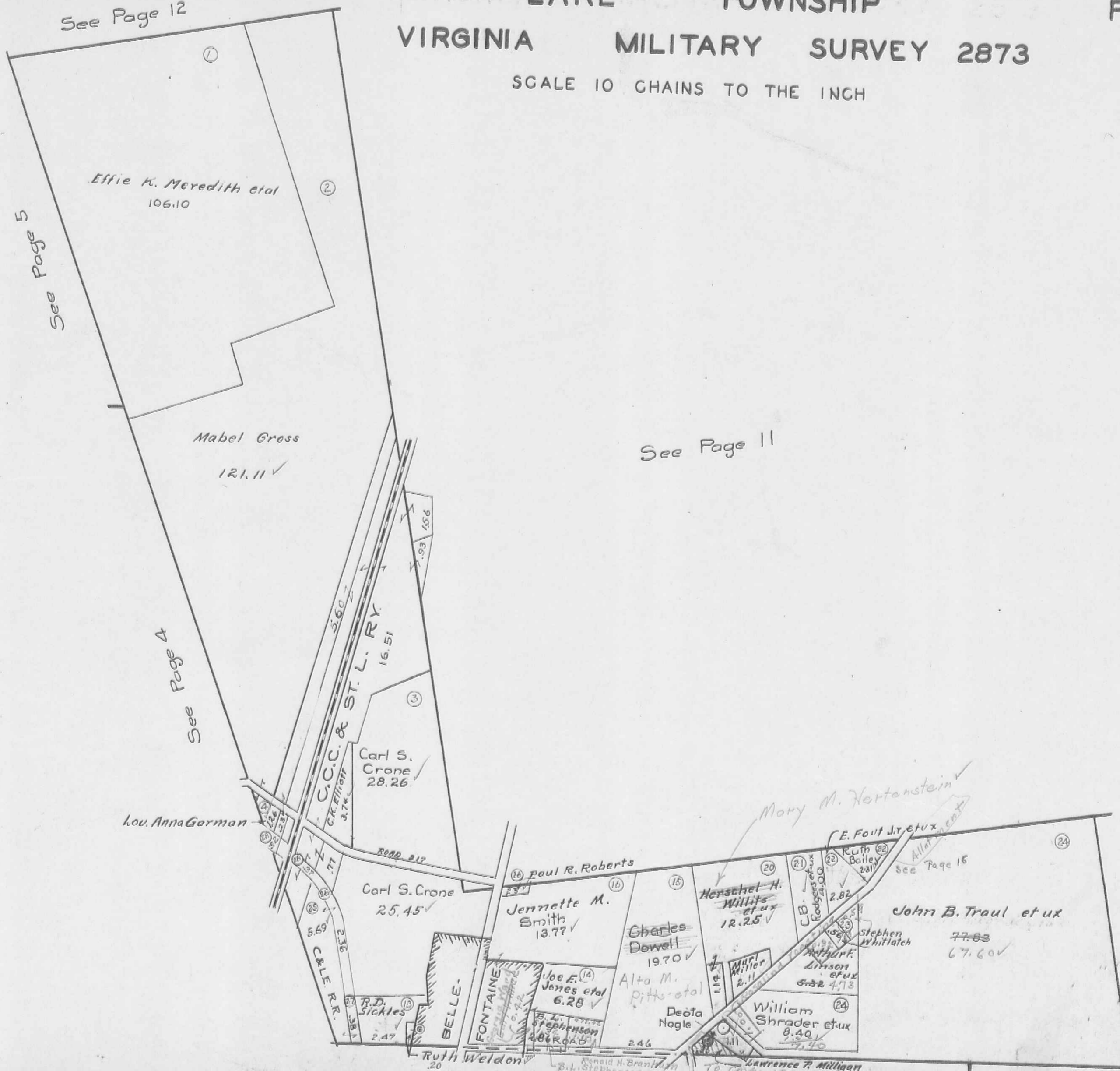
TOWNSHIP

JEFFERSON

See Page 7 See Campbell Allotment now in Road

VIRGINIA LAKE MILITARY TOWNSHIP  
VIRGINIA MILITARY SURVEY 2873

SCALE 10 CHAINS TO THE INCH



See Page 12

See Page 5

See Page 4

See Page 11

See Page 9

See Page 8

See Page 9

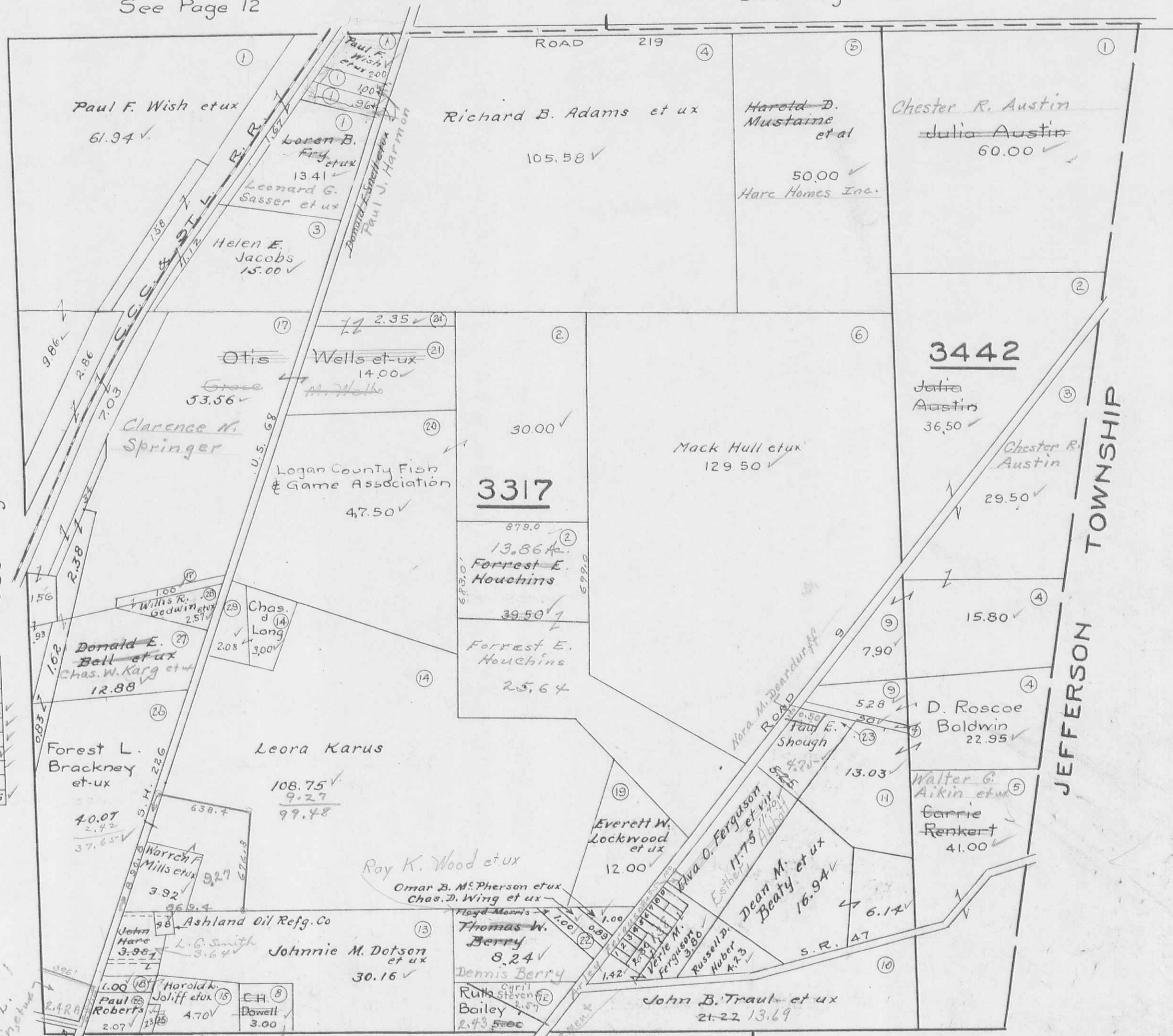
VIRGINIA MILITARY SURVEYS

3317  
3442

SCALE 10 CHAINS TO THE INCH

See Page 12

See Page 13



See Page 10

JEFFERSON TOWNSHIP

Houghton Survey on Co. road 9

No	Name	Acre
1		
2		
3	John W. Easton	0.46
4	" " "	0.46
5	Richard D. Van Buskirk	0.46
6	James Andrews	0.46
7	Joseph M. Weishaupt Jr.	0.46
8		
9	Cletus Gratz et ux	0.46

See Page 10

See Page 9

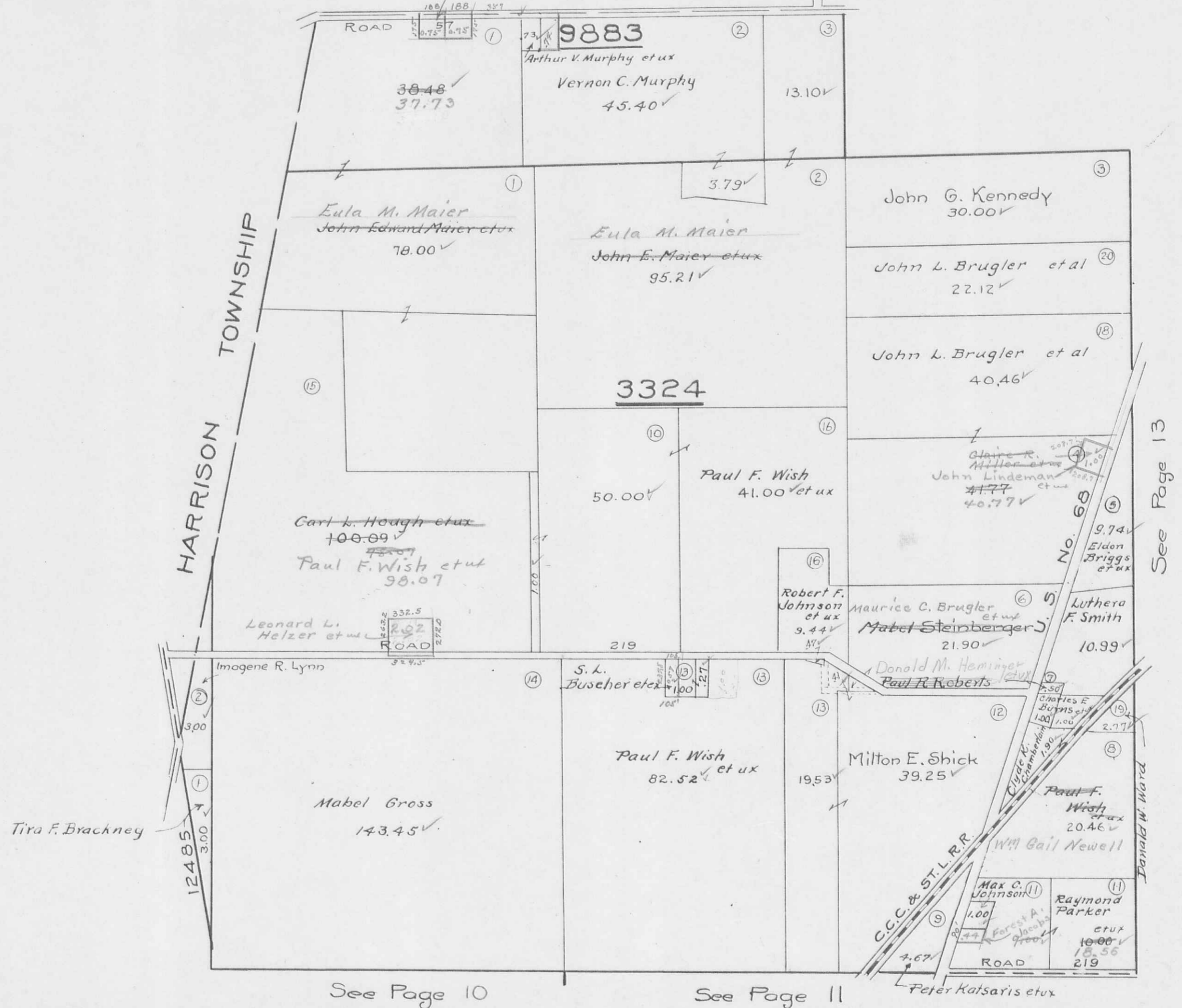
Alta M. Pitts et al

VIRGINIA MILITARY SURVEYS

3324  
9883  
12485

SCALE 10 CHAINS TO THE INCH

James E. Rosner et al  
McARTHUR TOWNSHIP



See Page 13

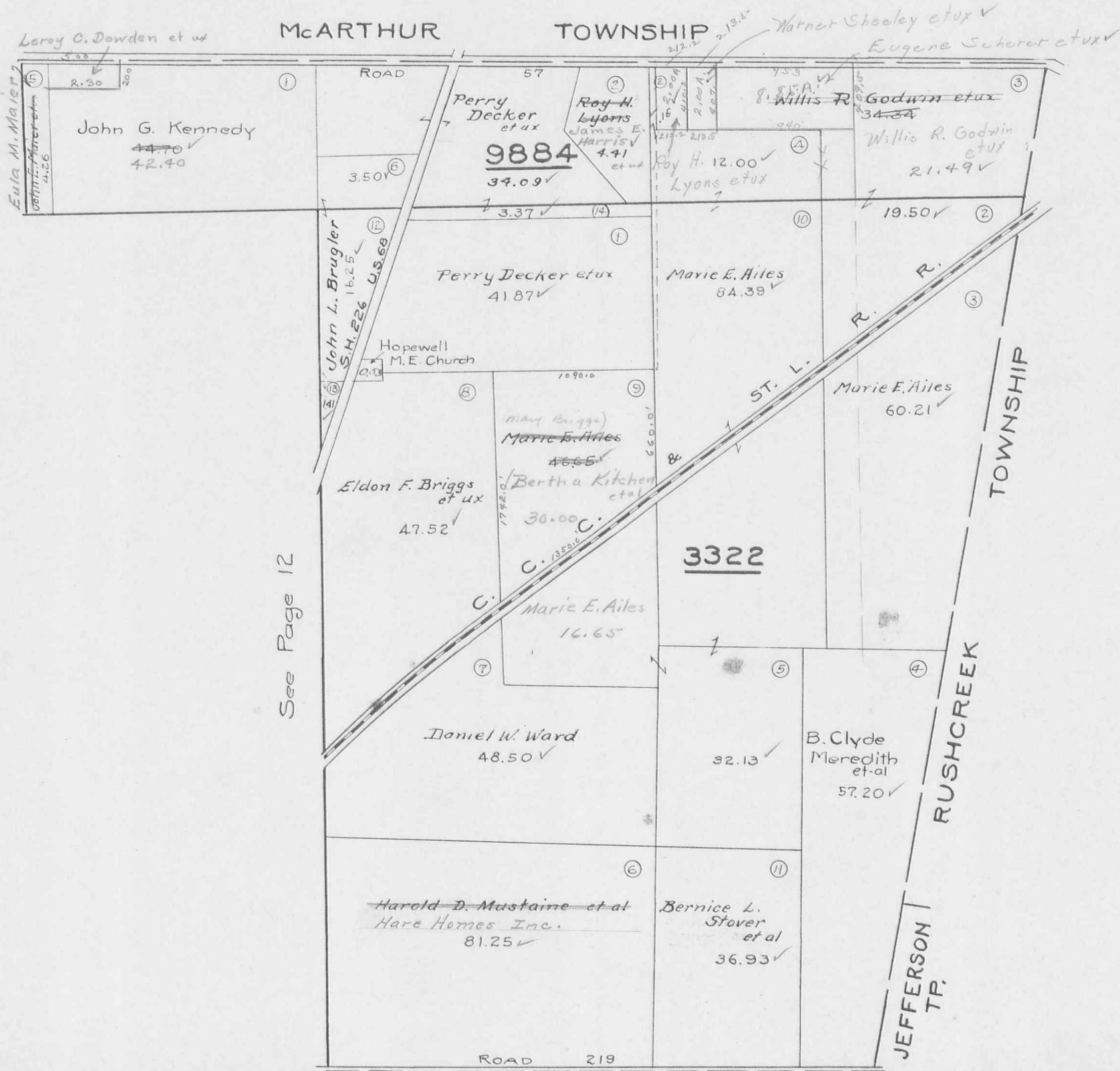
See Page 10

See Page 11

VIRGINIA MILITARY SURVEYS

3322  
9884

SCALE 10 CHAINS TO THE INCH



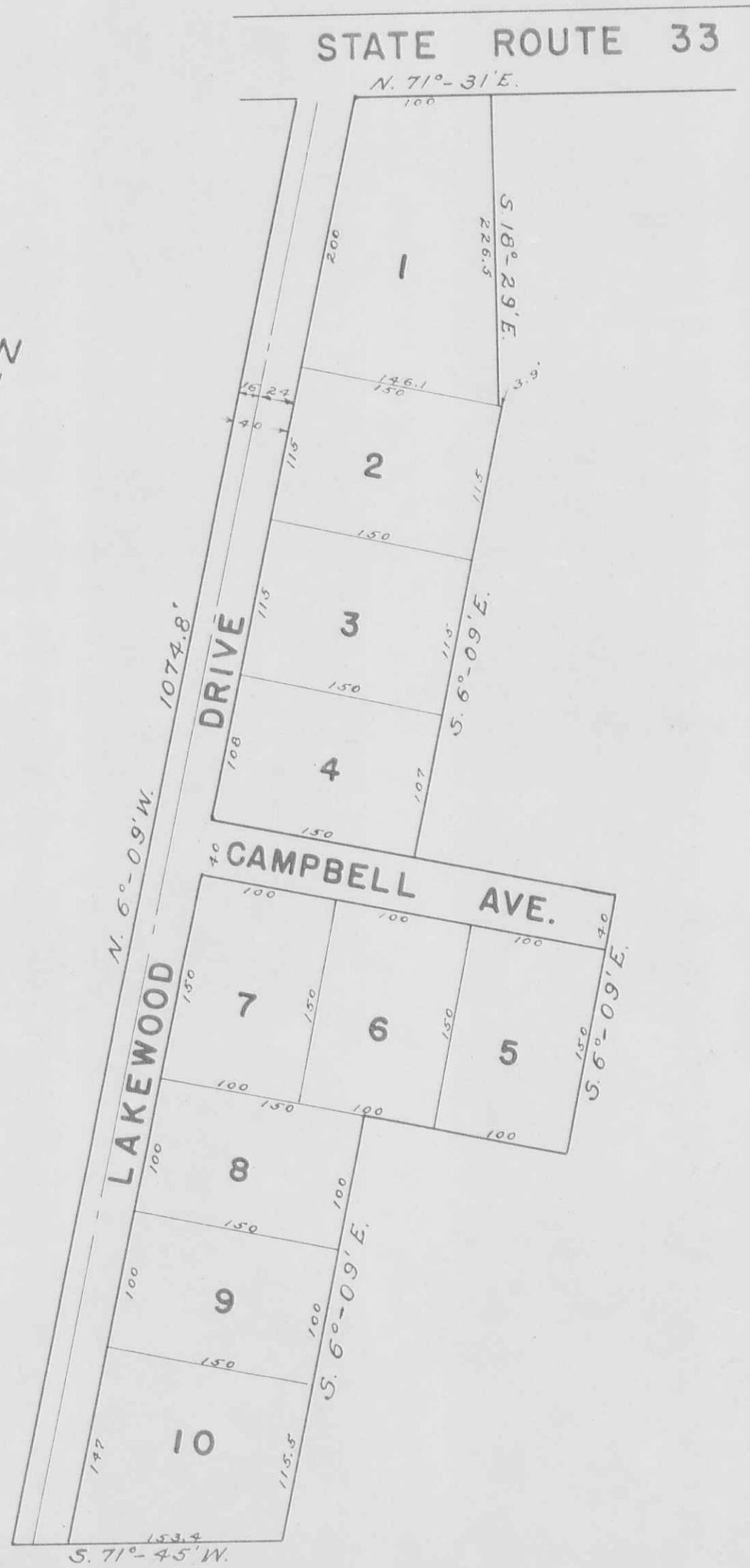
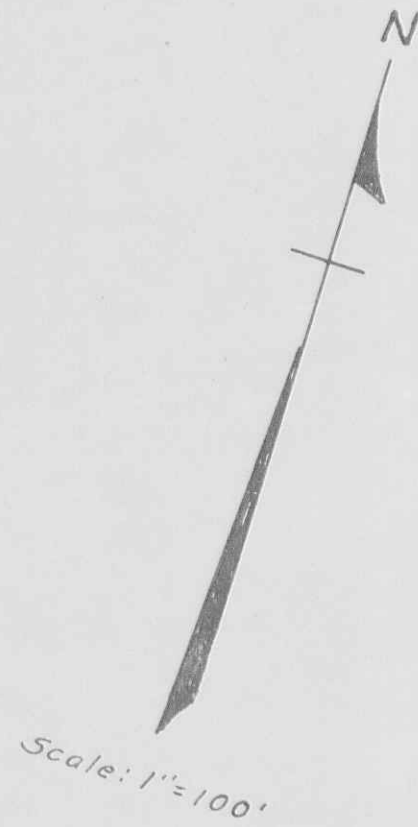
See Page 12

See Page 11

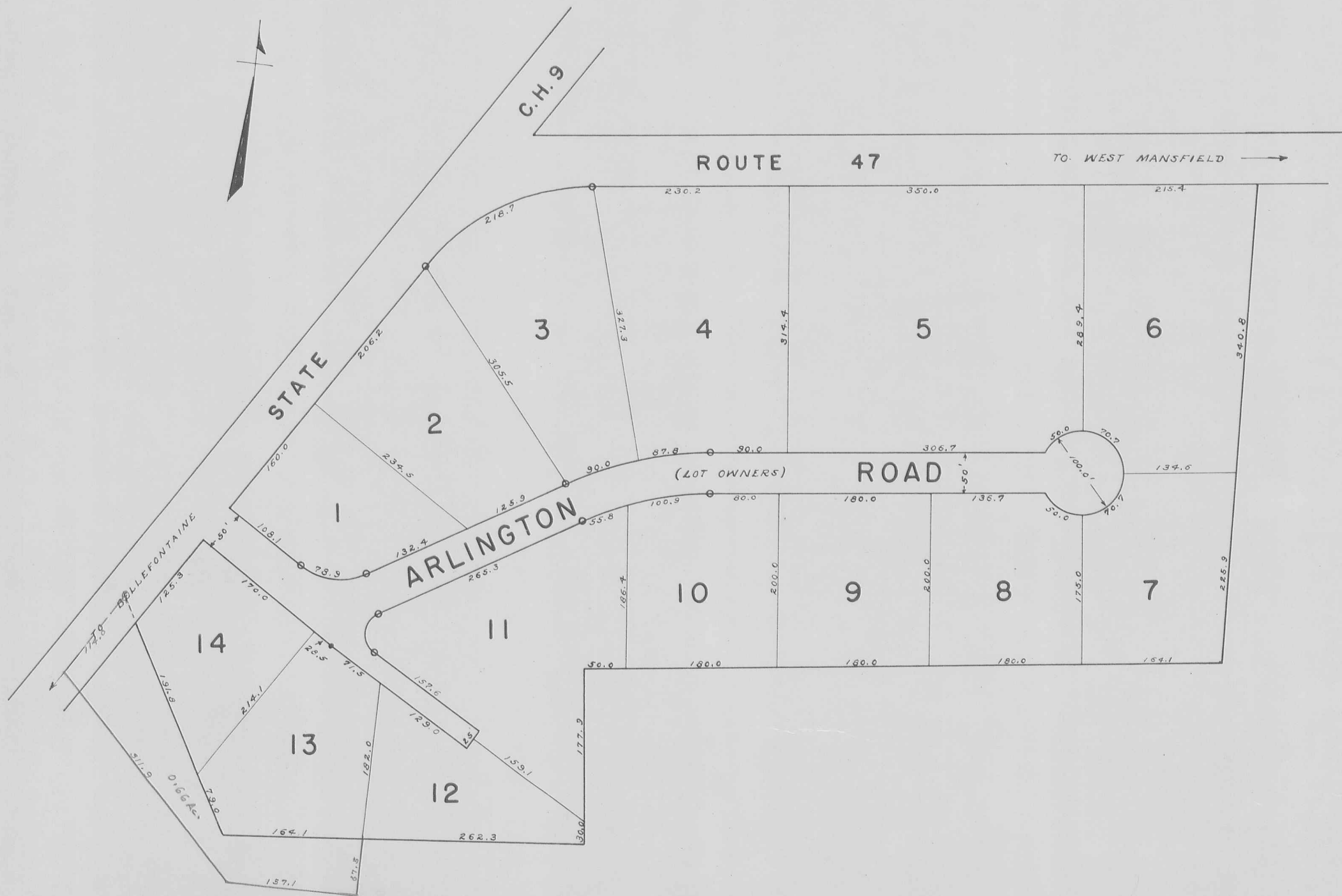




CAMPBELL ALLOTMENT  
LAKE TOWNSHIP  
V.M.S. 3683



LAKE TOWNSHIP  
WOODLAND SUBDIVISION  
VIRGINIA MILITARY SURVEYS 3317 & 2873  
SCALE: 1" = 100'



August 23, 1956