

**LIBERTY  
TOWNSHIP  
1951**

INDEX

SECTION	TOWN	RANGE	PAGE
2	3	14	1
32	4	14	1
26	4	14	2
25	4	14	3
31	4	14	4
1	3	14	4
6	4	13	5
36	5	13	5
30	5	13	6
29	5	13	7
35	5	13	8
5	4	13	8
4	4	13	9
34	5	13	9
28	5	13	10
27	5	13	11
33	5	13	12
VMS 5864			2
WEST LIBERTY CORPORATION-13-14-15-16			

# LIBERTY TOWNSHIP INDEX MAP

CORRECTED TO  
*January 1, 1955*  
*January 1, 1956*  
*January 1, 1957*  
*January 1, 1958*

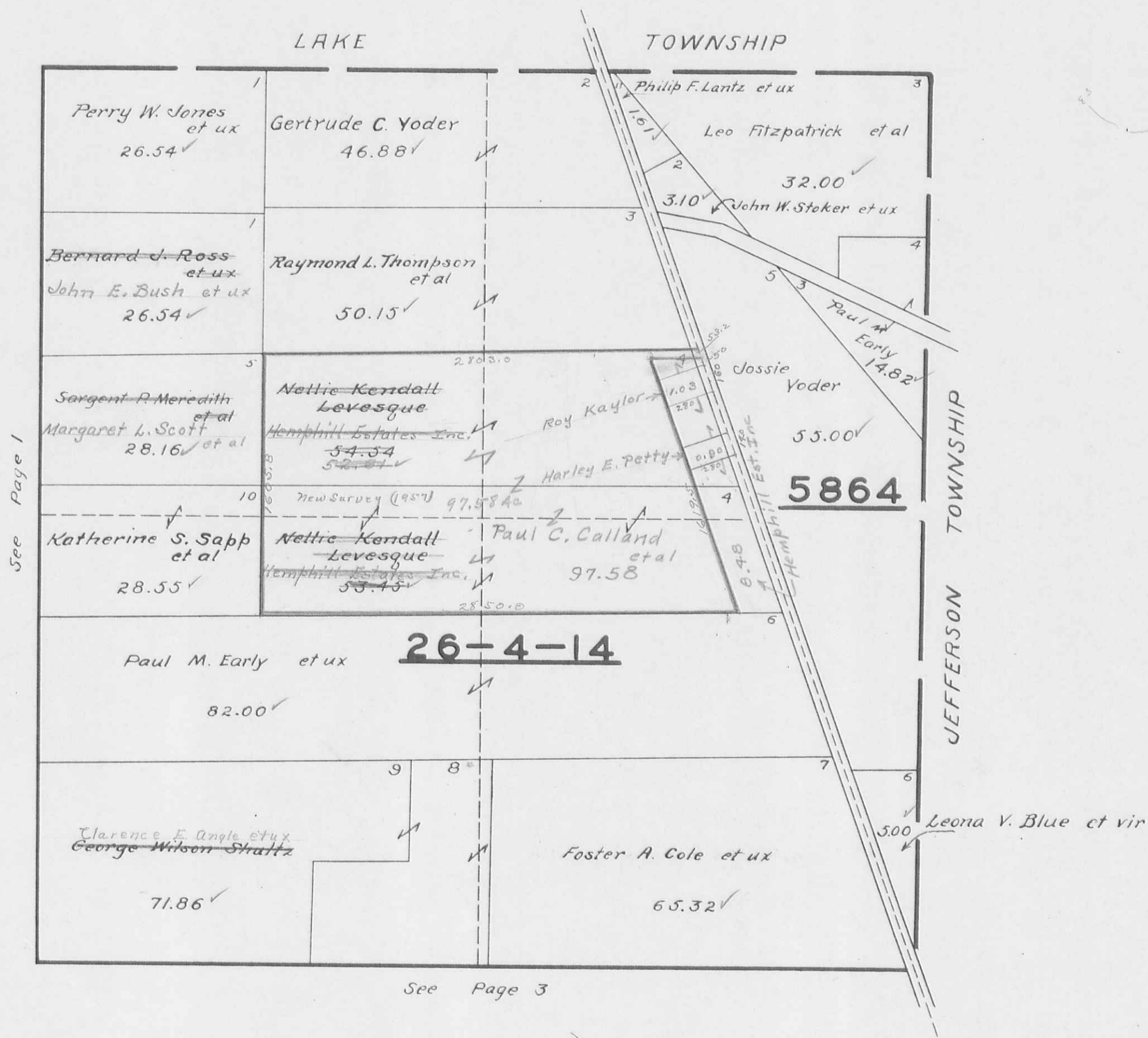
	HARRISON TWP.	LAKE TOWNSHIP	TOWNSHIP	
	2-3-14 PAGE 1	32-4-14 PAGE 1	26-4-14 PAGE 2	VMS 5864 PAGE 2 JEFFERSON TOWNSHIP
TOWNSHIP	1-3-14 PAGE 4	31-4-14 PAGE 4	25-4-14 PAGE 3	
	6-4-13 PAGE 5	36-5-13 PAGE 5	30-5-13 PAGE 6	TOWNSHIP
UNION	5-4-13 PAGE 8	35-5-13 PAGE 8	29-5-13 PAGE 7	
	4-4-13 PAGE 9	34-5-13 PAGE 9	28-5-13 PAGE 10	MONROE
CHAMPAIGN COUNTY	33-5-13 PAGE 12	WEST LIBERTY CORPORATION PAGES-13-14-15-16 27-5-13 PAGE 11		CHAMPAIGN COUNTY





SECTION 26 TOWN 4 RANGE 14  
VIRGINIA MILITARY SURVEY 5864

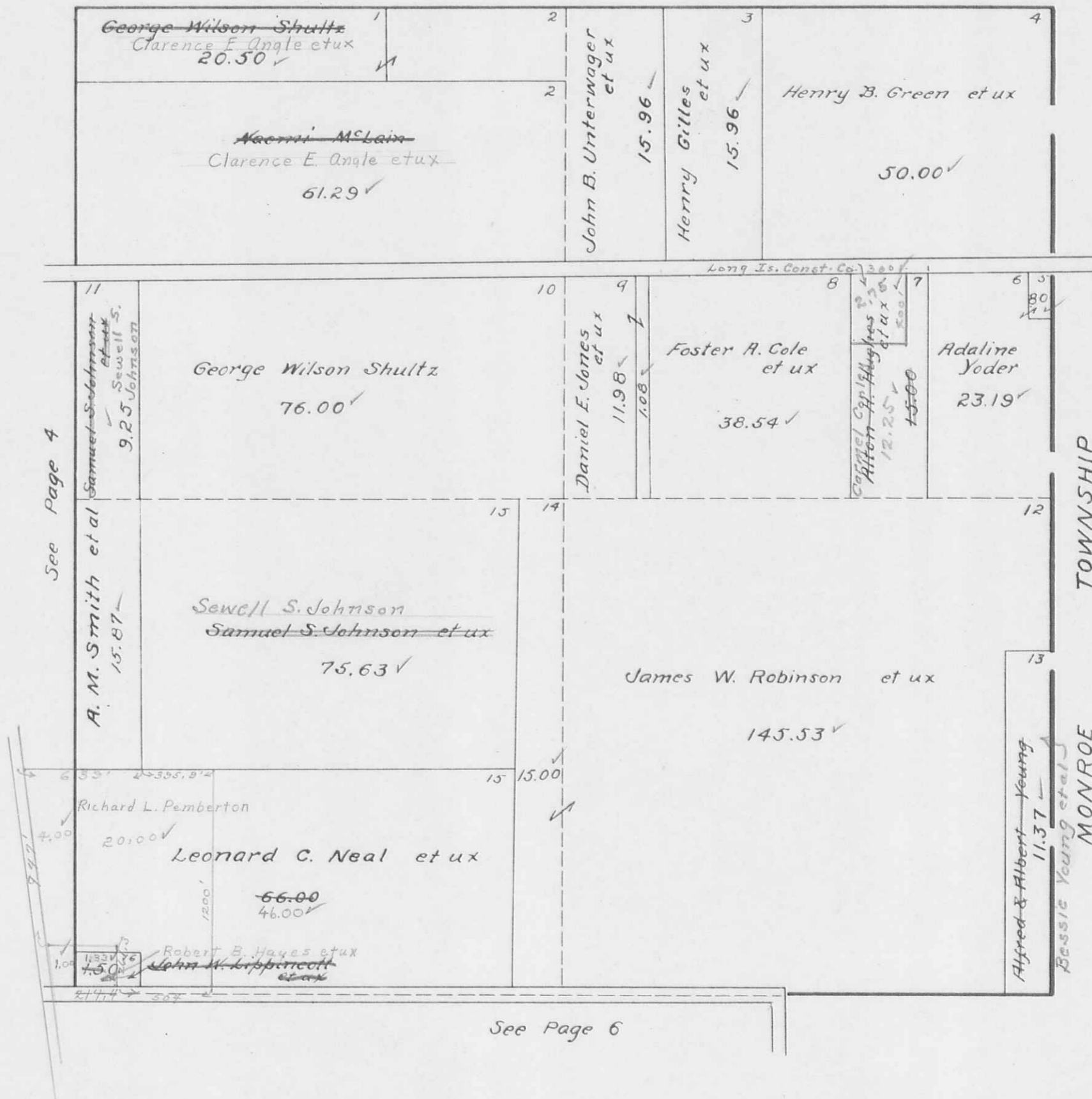
SCALE 10 CHAINS TO THE INCH



SECTION 25 TOWN 4 RANGE 14

SCALE 10 CHAINS TO THE INCH

See Page 2

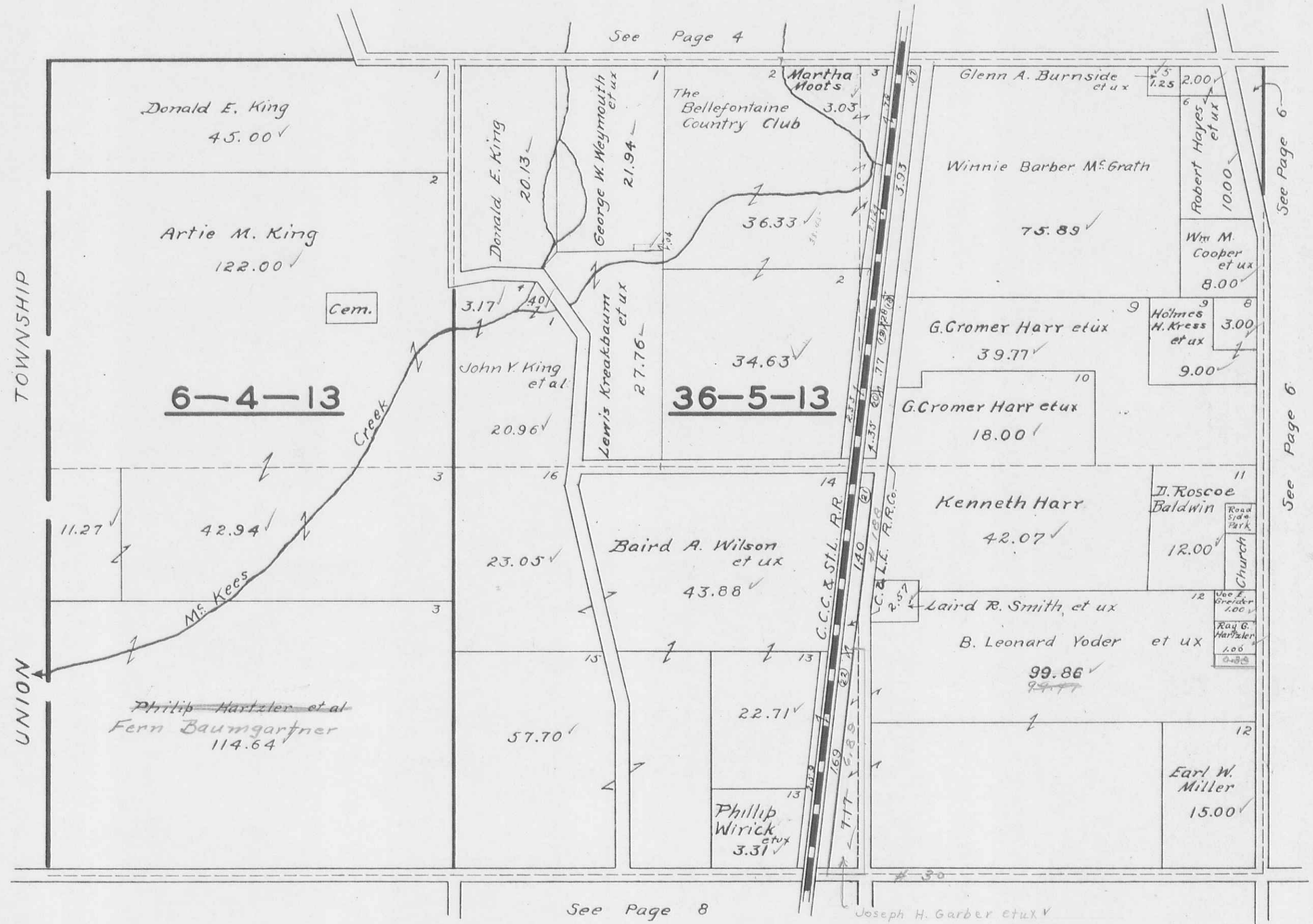




SECTION 6 TOWN 4 RANGE 13

SECTION 36 TOWN 5 RANGE 13

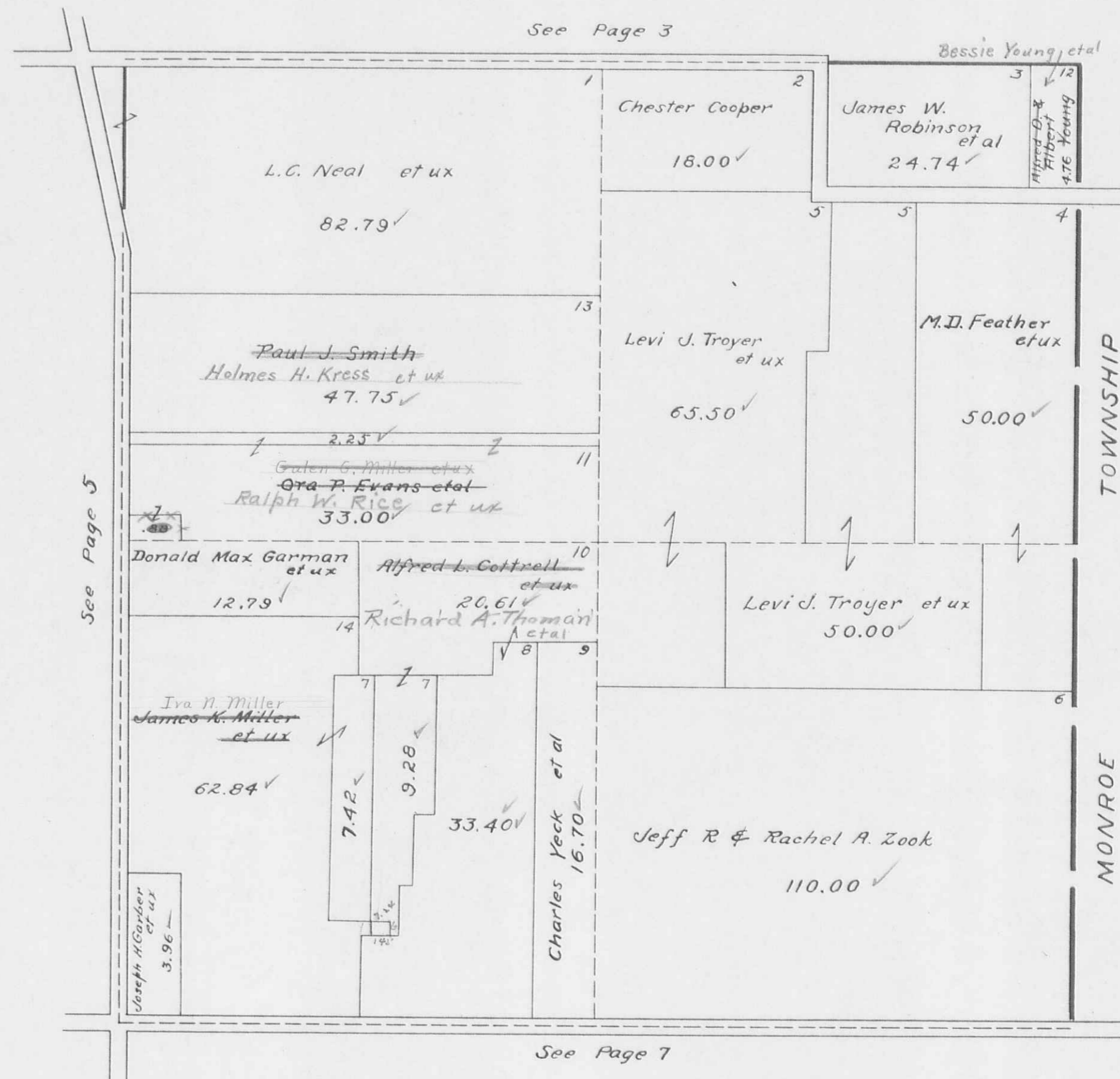
SCALE 10 CHAINS TO THE INCH





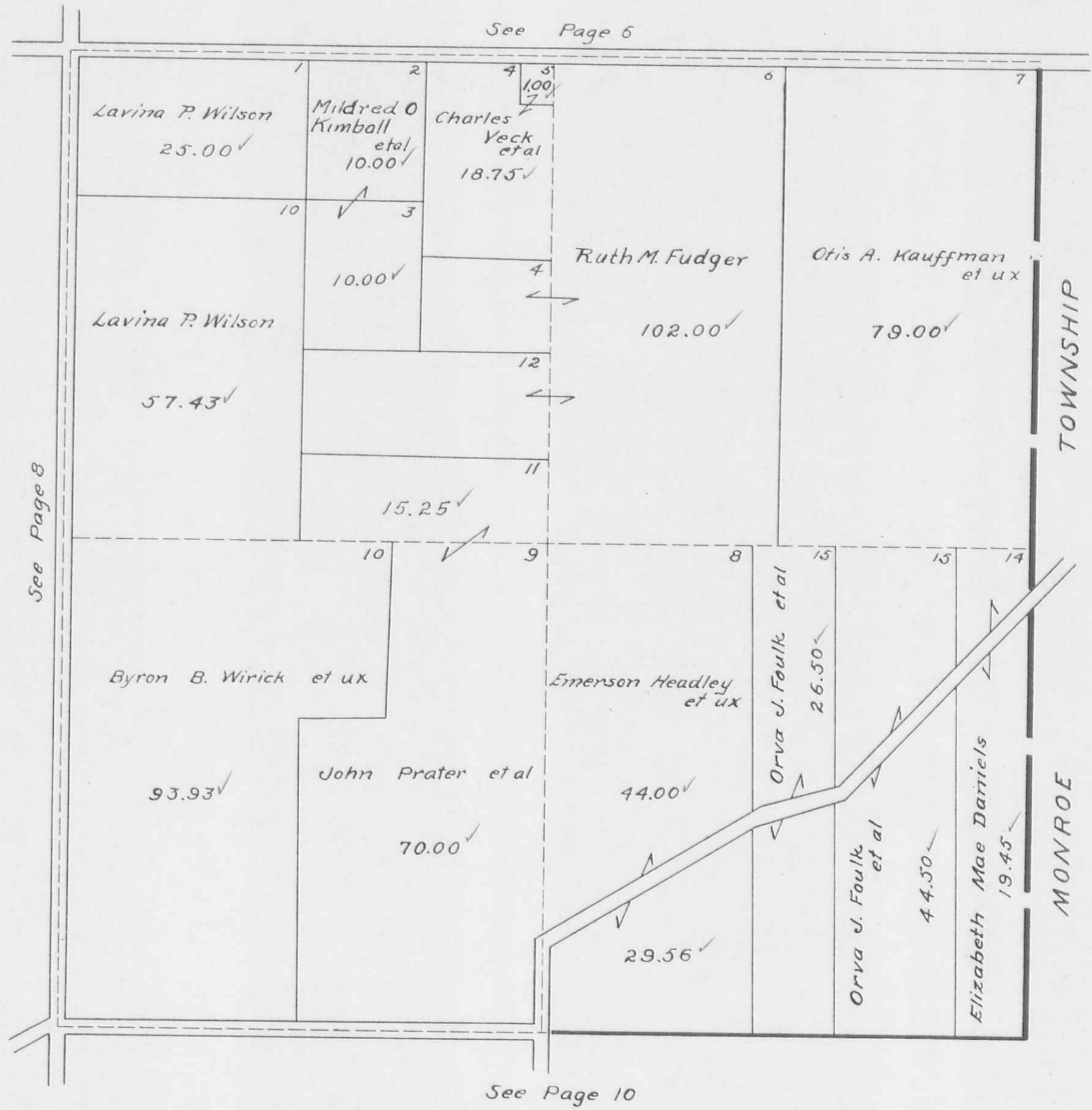
SECTION 30 TOWN 5 RANGE 13

SCALE 10 CHAINS TO THE INCH



SECTION 29 TOWN 5 RANGE 13

SCALE 10 CHAINS TO THE INCH

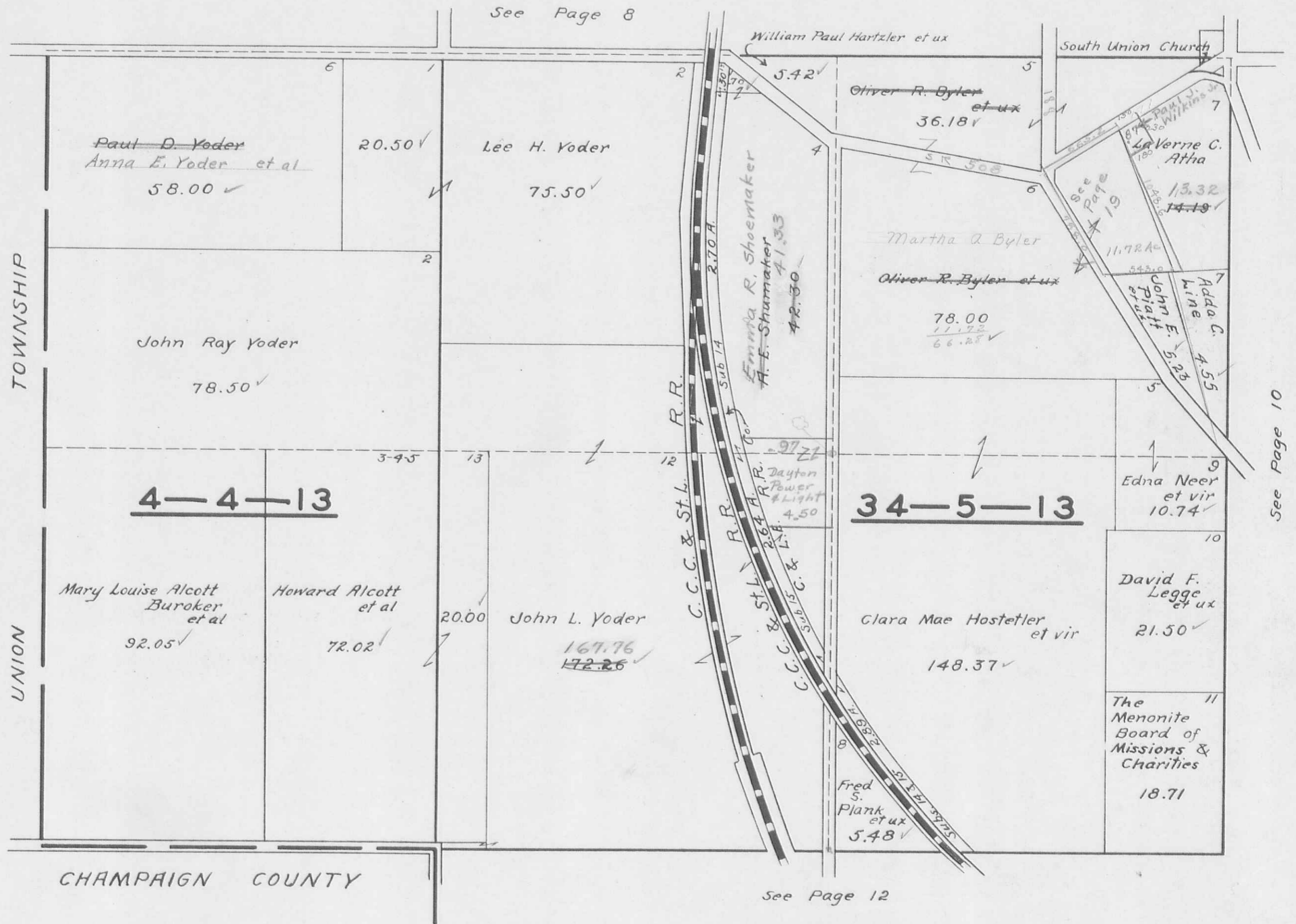




SECTION 4 TOWN 4 RANGE 13

SECTION 34 TOWN 5 RANGE 13

SCALE 10 CHAINS TO THE INCH



SECTION 28 TOWN 5 RANGE 13

SCALE 10 CHAINS TO THE INCH

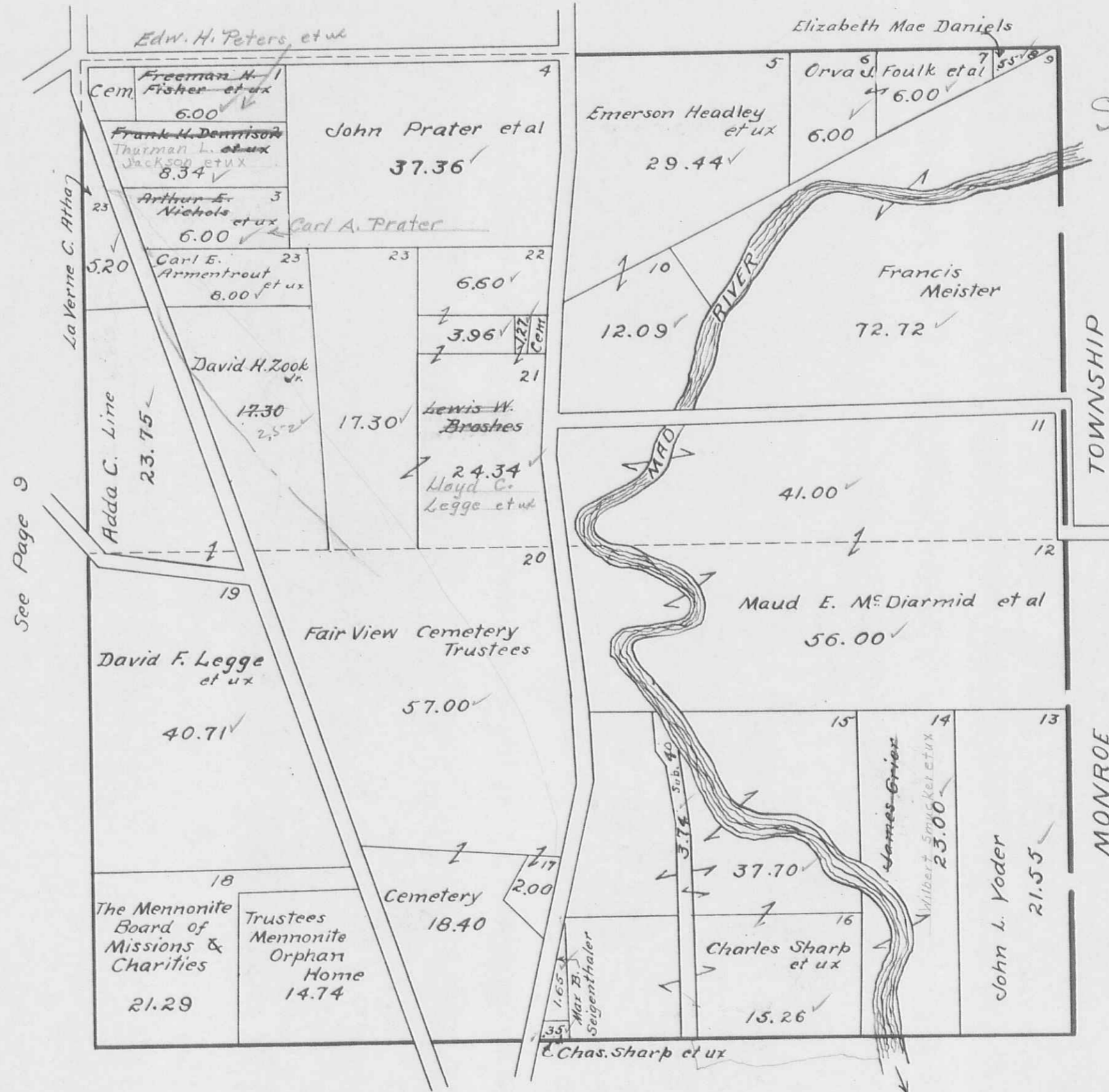
$$\begin{array}{r} \text{Hare - } 12.92 \text{ Ac} \\ \text{Smith} \quad \frac{5.30}{17.62} \text{ Ac} \\ \hline \end{array}$$

$$\begin{array}{r} 2.84 \\ 3.12 \\ \hline 5.96 \end{array}$$

$$\begin{array}{r} 2.87 \text{ in P/W} \\ 2.68 \text{ in P/W} \\ \hline \end{array}$$

$$\begin{array}{r} 17.62 \\ 17.30 \\ \hline 1.32 \end{array}$$

See Page 7



See Page 9

See Page 11

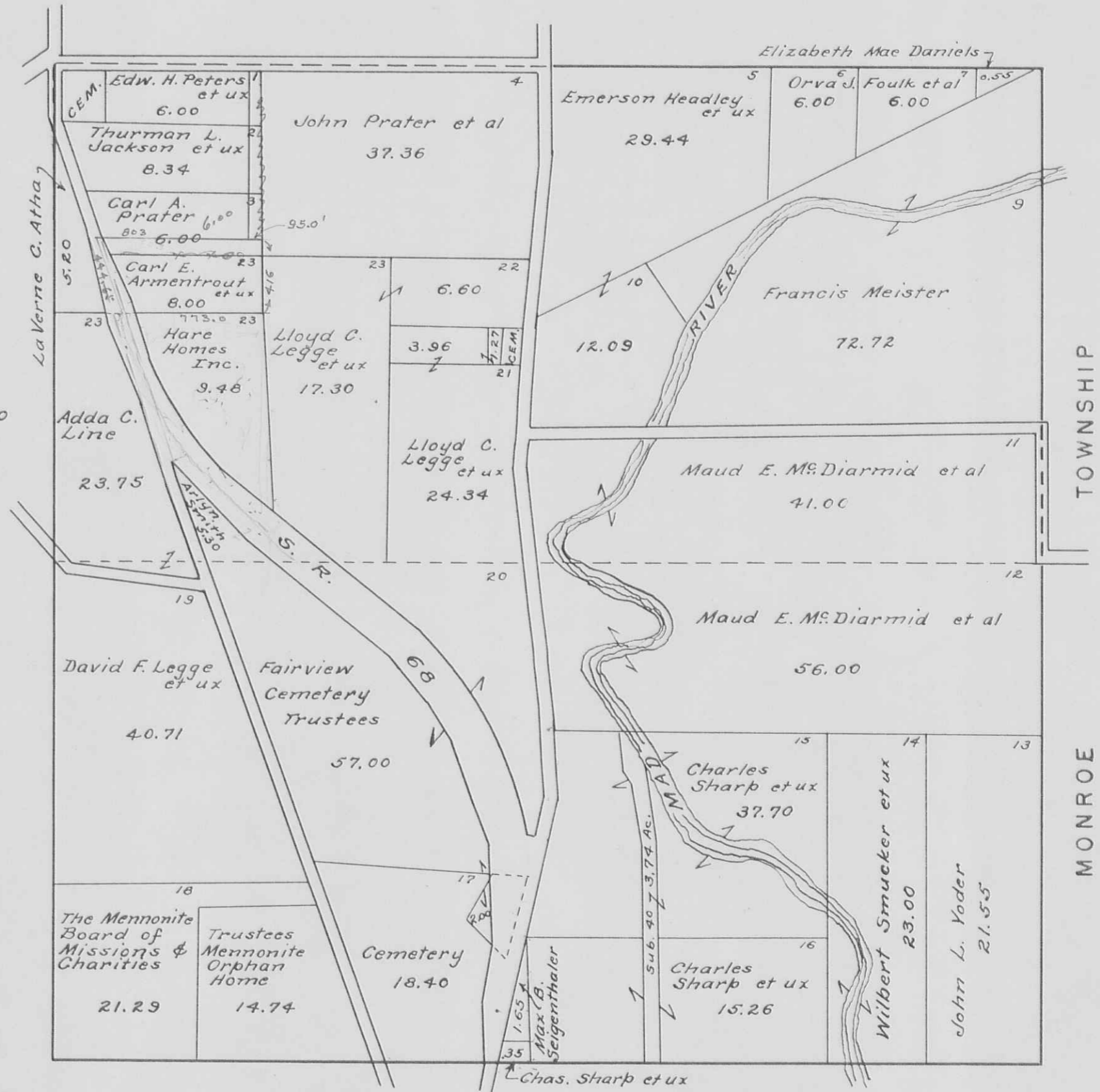
See New page 10  
 Revised Jan-1-1957

SECTION 28 TOWN 5 RANGE 13

SCALE 10 CHAINS TO THE INCH

9.48  
2.52  
1200

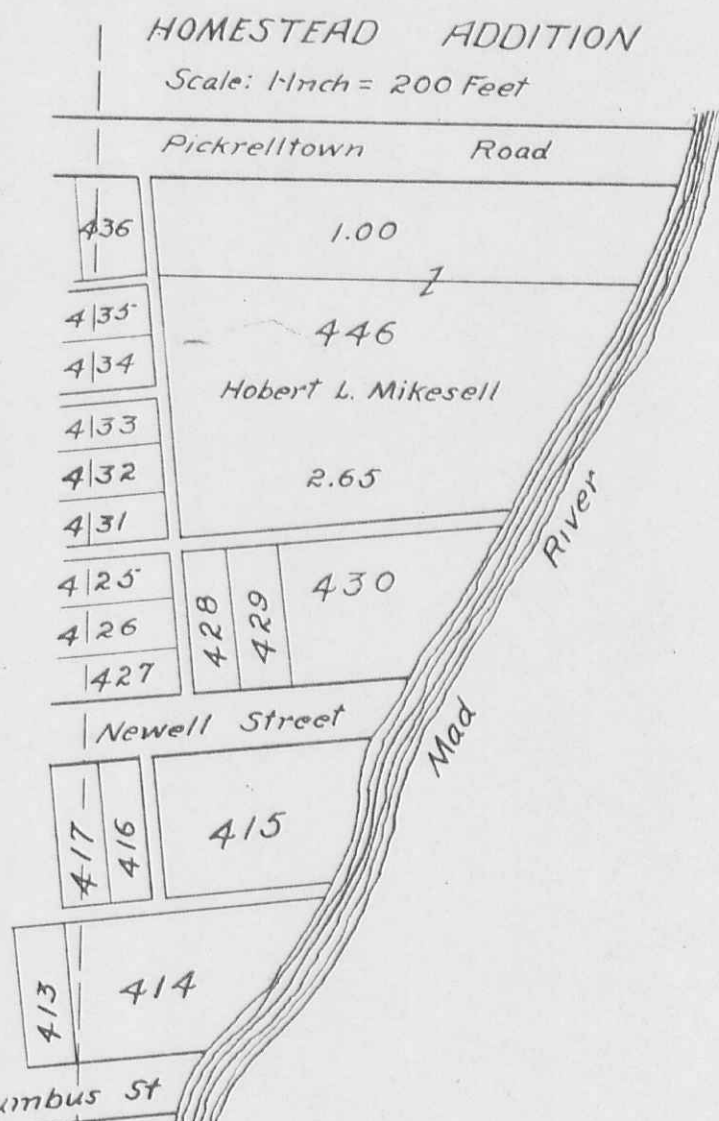
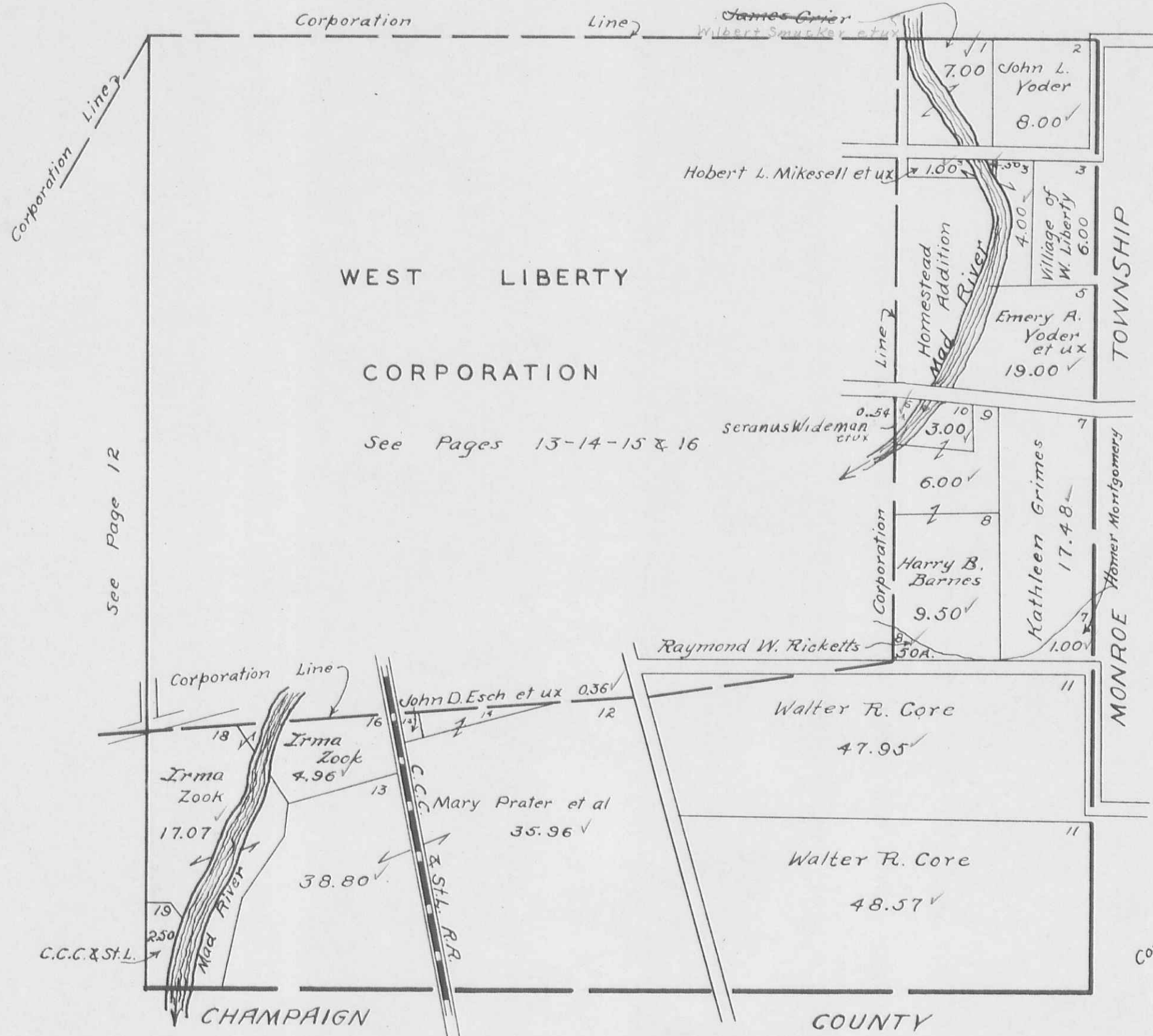
Note:  
Auditor Carries David H. Zook Jr.  
Jan. 1, 1957 with 2.52 Acres.  
This is within the R/W of U. S. Route  
68. See Deed "Zook To Hare Homes  
Inc. Recorders Volume 236 page 340



SECTION 27 TOWN 5 RANGE 13

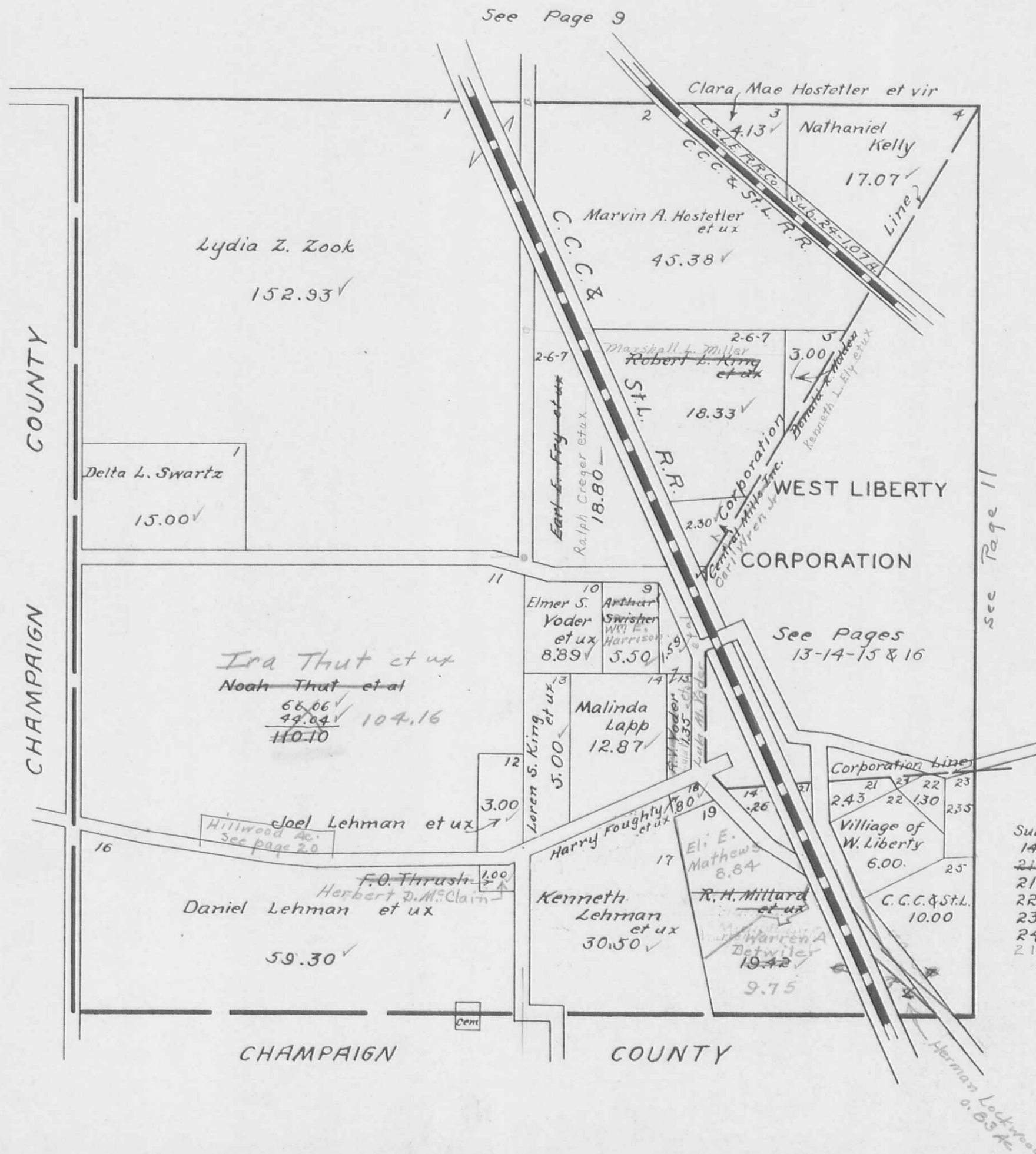
SCALE 10 CHAINS TO THE INCH

See Page 10



LIBERTY TOWNSHIP  
SECTION 33 TOWN 5 RANGE 13

SCALE 10 CHAINS TO THE INCH



Sub	Name	Acres
14	Loren S. King et ux	0.26
21	Joseph White Jr. et ux	0.75
21	Joseph L. Mast Jr. Trustee	2.73
22	Joseph L. Mast Jr. Trustee	1.30
23	Joseph O. Cretcher et ux	2.35
24	Sherman M. Ricketts	0.20
21	John Smith et ux	0.75

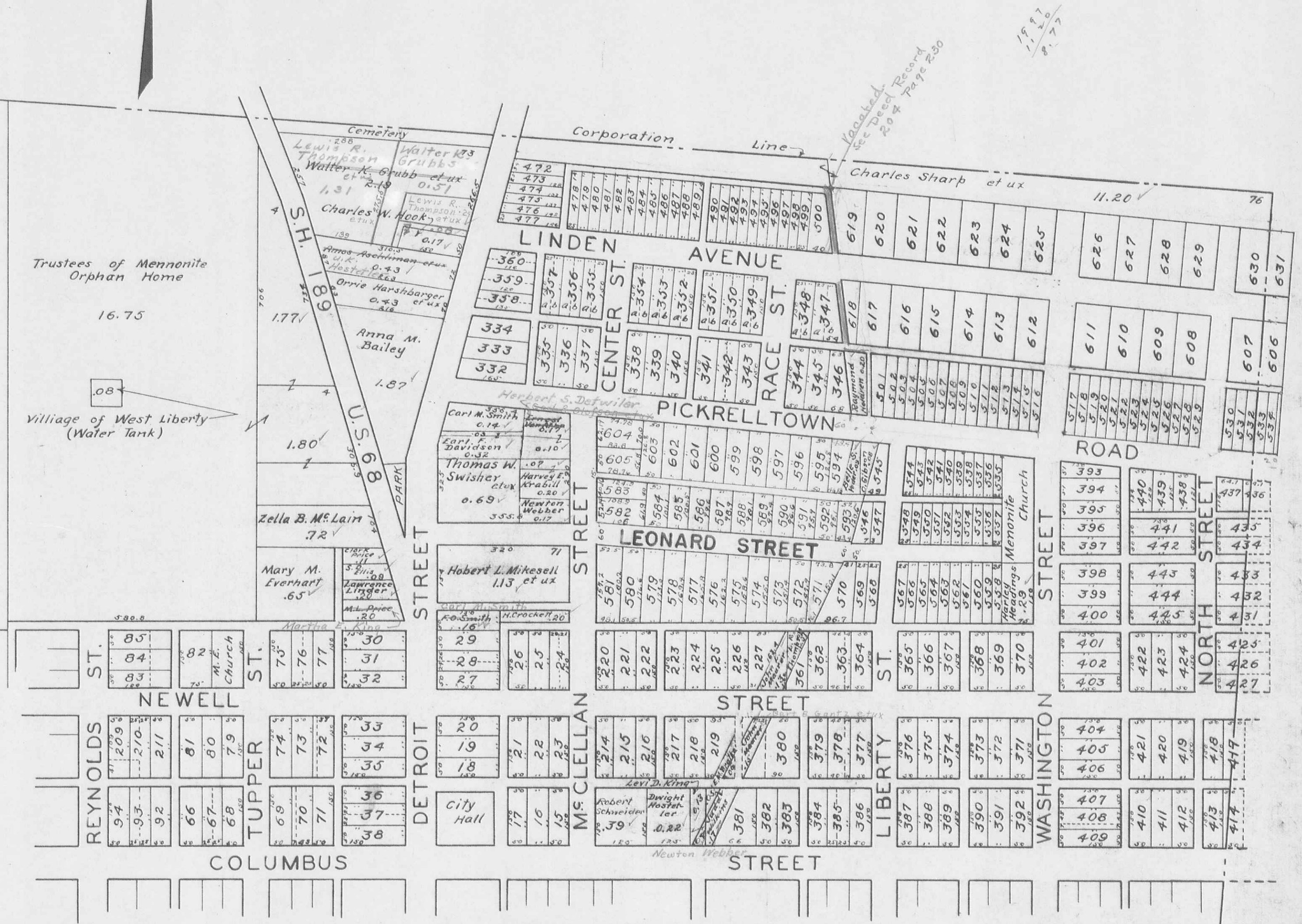




WEST LIBERTY CORPORATION

SCALE 200 FEET TO THE INCH

See Page 13

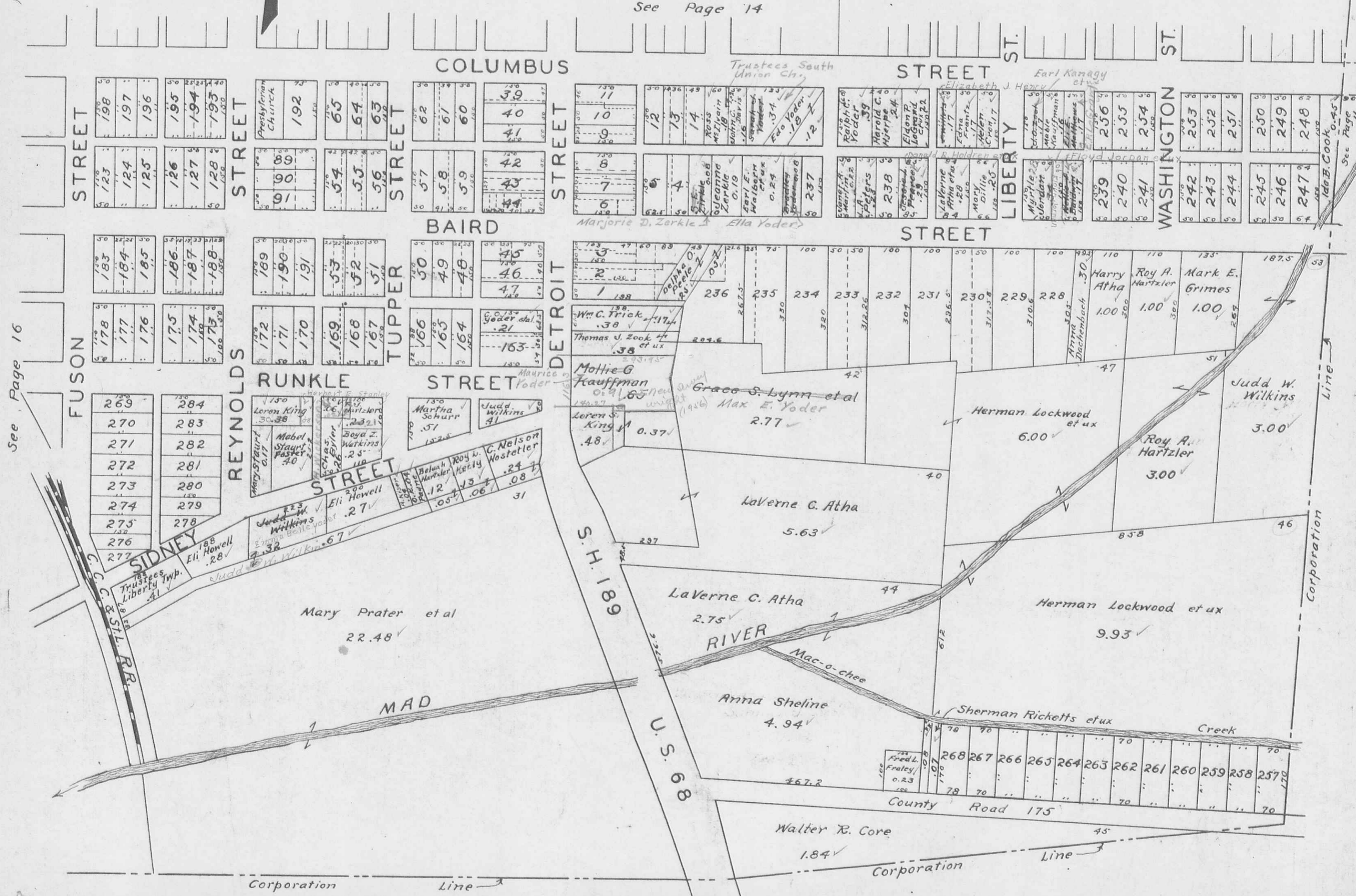


See Page 15

WEST LIBERTY CORPORATION

SCALE 200 FEET TO THE INCH

See Page 14



See Page 16

See Page 11

H.E. Dysert

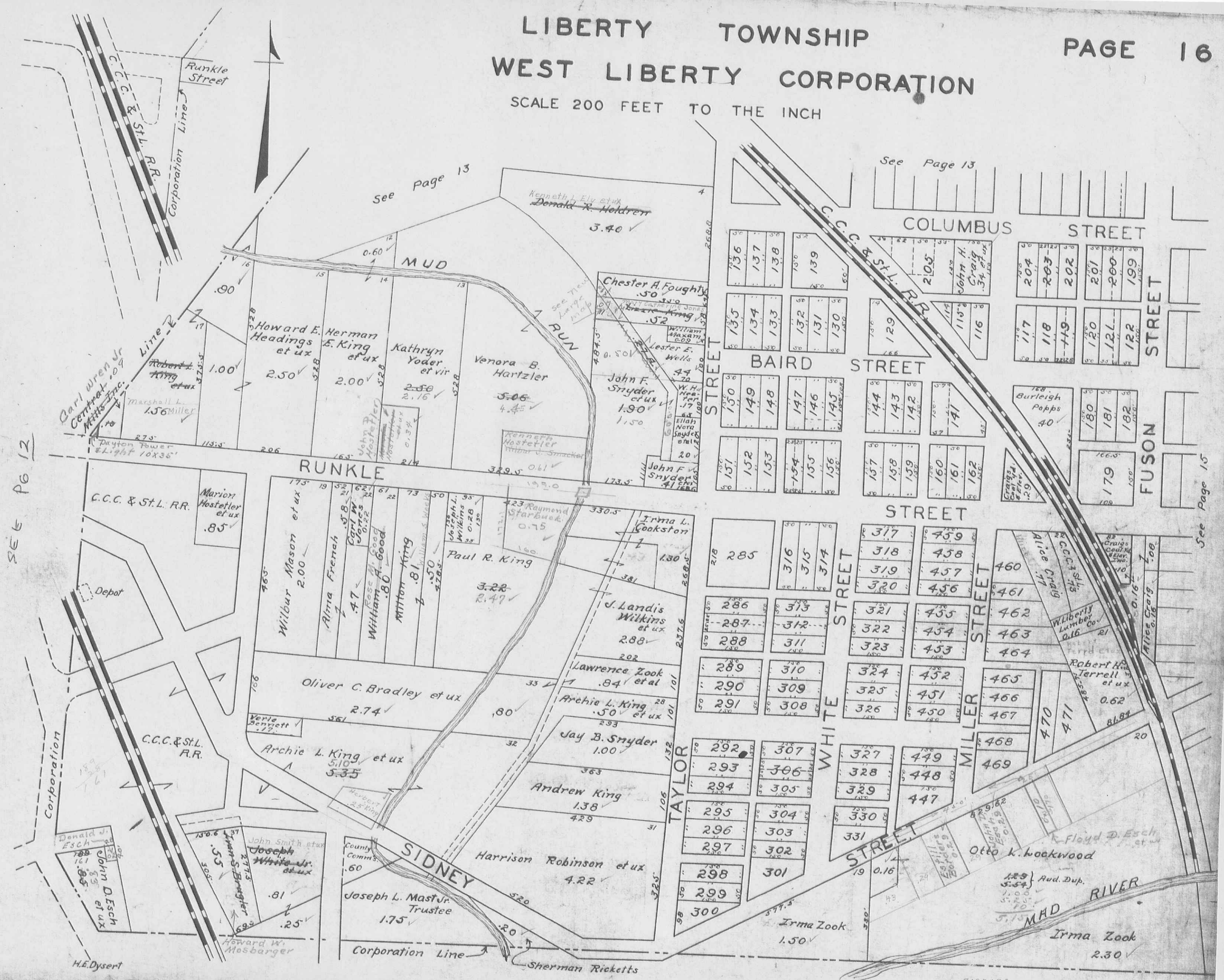
Corporation Line

Corporation Line

Corporation Line

LIBERTY TOWNSHIP  
WEST LIBERTY CORPORATION

SCALE 200 FEET TO THE INCH



See Page 13

See Page 13

See Page 15

SEE Pg 12

Donald W. Esch  
John Esch  
et ux

John Smith et ux  
Joseph White Jr.  
et ux

County Comm.  
.60  
Joseph L. Mast Jr.  
Trustee  
1.75

Harrison Robinson et ux  
4.22

Taylor Street  
292 307  
293 306  
294 305  
295 304  
296 303  
297 302  
298 301  
300

White Street  
327 449  
328 448  
329 447  
330  
331

Miller Street  
468  
469  
470  
471

Robert H. Terrell et ux  
0.62  
86.84

Floyd D. Esch et ux

Otto K. Lockwood  
Irma Zook  
2.30

Marion Hostetler et ux  
.85

Wilbur Mason et ux  
2.00  
Alma French  
.47  
Carl W. Jones  
0.22  
Rose  
William A. Good  
.80  
Milton King  
0.81  
Joseph L. Wilkins  
0.28  
0.130

Paul R. King  
3.22  
2.49

Irma L. Cookston  
1.30

J. Landis Wilkins et ux  
2.88

Lawrence Zook et al  
.84  
Archie L. King et ux  
.50

Jay B. Snyder  
1.00  
Andrew King  
1.38  
4.29

Irma Zook  
1.50

Howard E. Headings et ux  
2.50  
Herman E. King et ux  
2.00  
Kathryn Yoder et vir  
2.50  
2.16

Venora B. Hartzler  
5.05  
4.45

Chester A. Fought  
.50  
John F. Snyder et ux  
1.90  
1.50

John F. Snyder  
4.1

John F. Snyder  
4.1

John F. Snyder  
4.1

John F. Snyder  
4.1

John F. Snyder  
4.1

John F. Snyder  
4.1

Howard E. Headings et ux  
2.50  
Herman E. King et ux  
2.00  
Kathryn Yoder et vir  
2.50  
2.16

Venora B. Hartzler  
5.05  
4.45

Chester A. Fought  
.50  
John F. Snyder et ux  
1.90  
1.50

John F. Snyder  
4.1

John F. Snyder  
4.1

John F. Snyder  
4.1

John F. Snyder  
4.1

John F. Snyder  
4.1

John F. Snyder  
4.1

Howard E. Headings et ux  
2.50  
Herman E. King et ux  
2.00  
Kathryn Yoder et vir  
2.50  
2.16

Venora B. Hartzler  
5.05  
4.45

Chester A. Fought  
.50  
John F. Snyder et ux  
1.90  
1.50

John F. Snyder  
4.1

John F. Snyder  
4.1

John F. Snyder  
4.1

John F. Snyder  
4.1

John F. Snyder  
4.1

John F. Snyder  
4.1

Howard E. Headings et ux  
2.50  
Herman E. King et ux  
2.00  
Kathryn Yoder et vir  
2.50  
2.16

Venora B. Hartzler  
5.05  
4.45

Chester A. Fought  
.50  
John F. Snyder et ux  
1.90  
1.50

John F. Snyder  
4.1

John F. Snyder  
4.1

John F. Snyder  
4.1

John F. Snyder  
4.1

John F. Snyder  
4.1

John F. Snyder  
4.1

Howard E. Headings et ux  
2.50  
Herman E. King et ux  
2.00  
Kathryn Yoder et vir  
2.50  
2.16

Venora B. Hartzler  
5.05  
4.45

Chester A. Fought  
.50  
John F. Snyder et ux  
1.90  
1.50

John F. Snyder  
4.1

John F. Snyder  
4.1

John F. Snyder  
4.1

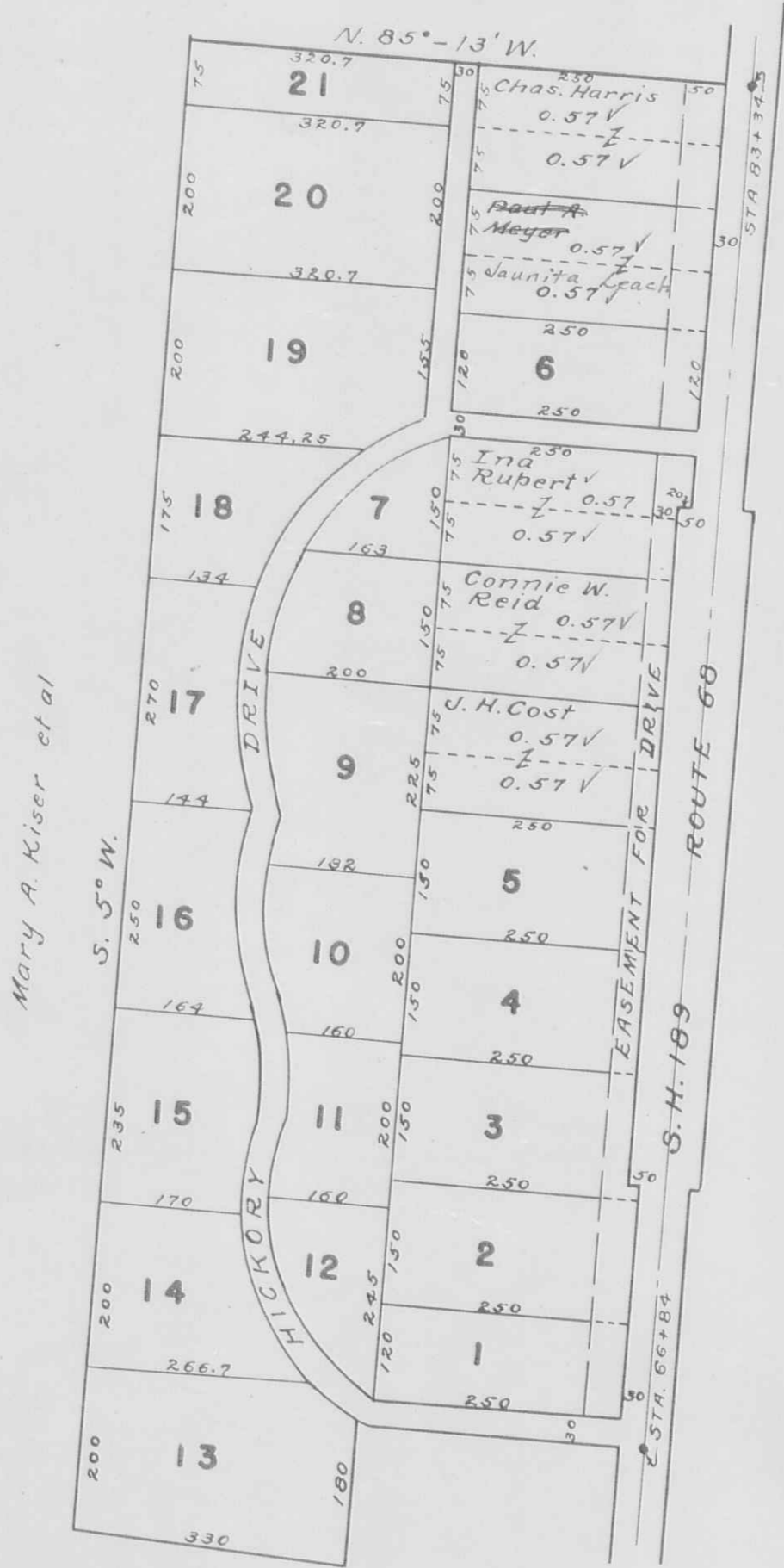
John F. Snyder  
4.1

John F. Snyder  
4.1

John F. Snyder  
4.1

CRESTWOOD ALLOTMENT  
LIBERTY TOWNSHIP

SEC. 35 - T. 5 - R. 13



SCALE: 1" = 200'

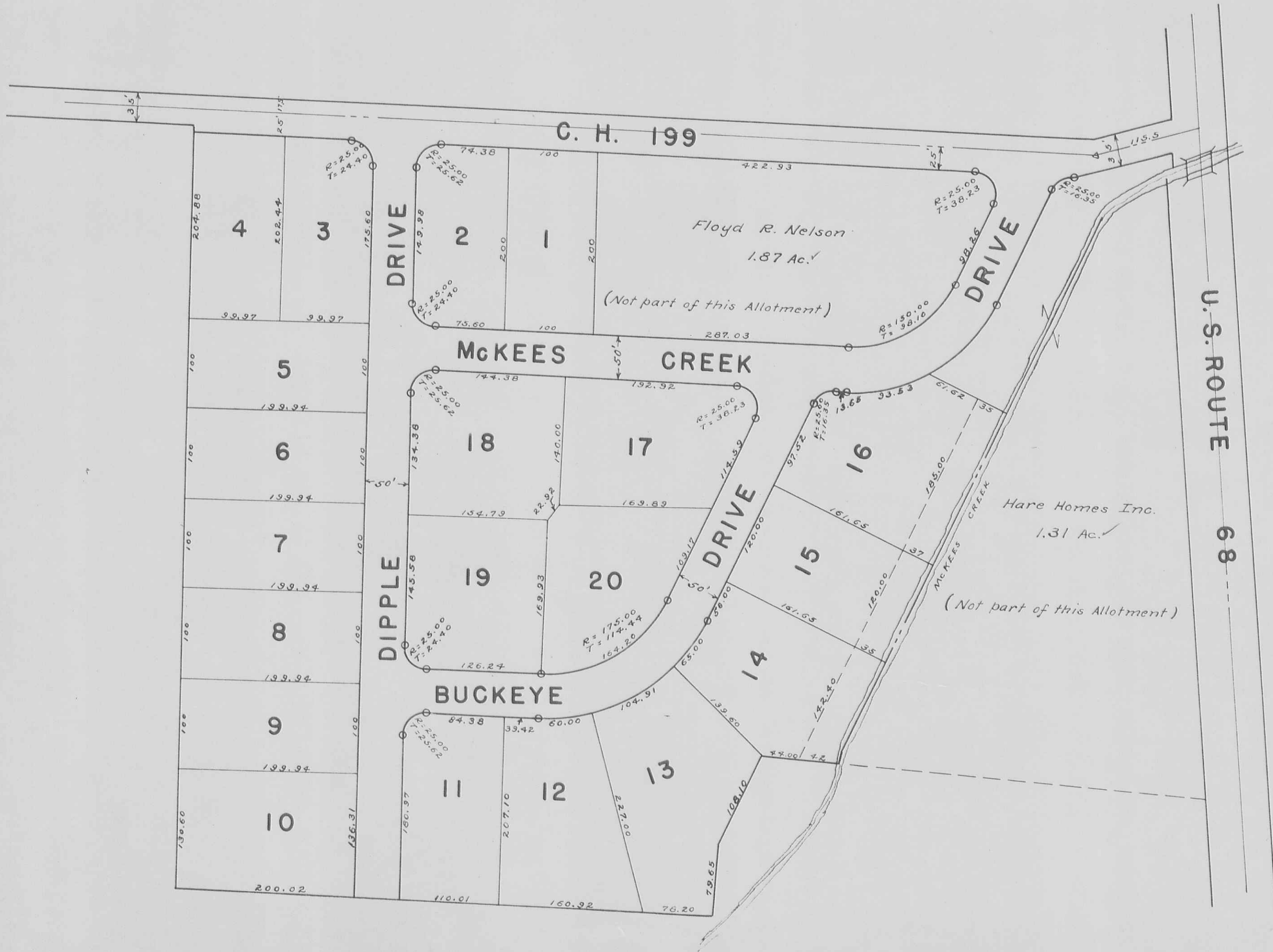
Note;  
See Plat Book 4D, Page 8  
Logan Co. Records Office

Mary A. Kiser et al

LIBERTY TOWNSHIP  
SECTION 31 TOWN 4 RANGE 14

SOUTH GATE ACRES

SCALE: 1 INCH = 100 FEET





LIBERTY TOWNSHIP

SECTION 33 TOWN 5 RANGE 13

SCALE 1 INCH = 100 FEET

HILLWOOD ACRES ALLOTMENT



Ira Thut et ux

