

**LAKE**

**TOWNSHIP**

**1966**

INDEX

SECTION	TOWN	RANGE	PAGE	VIRGINIA MILITARY SURVEY	PAGE
27	4	14	1	2873	9
27	4	14	PART 16	3317	10
28	4	14	2	3322	11
33	4	14	1	3324	12
34	4	14	2	3442	10
34	4	14	PART 3	3683	8
36	4	14	4	4399	8
31	3	15	5	4478	7
				4498	6
				5045	6
				5045 PART	16
				5245	8
				9572	6
				9883	12
				9884	11
				{ 10086	7
				{ 10198	
				12485	12

ALLOTMENTS & SUBDIVISIONS	PAGE
CAMPBELL ALLOTMENT	14
CLARKS PARK ADDITION (NORTH PART)	13
HEIDI ROAD ALLOTMENT	18
HOLLY HILL SUBDIVISION (VACATED - 1965)	17
KROUSE ALLOTMENT	7
LAKE HEIGHTS ALLOTMENT NO. 3	19
WOODLAND SUBDIVISION	15

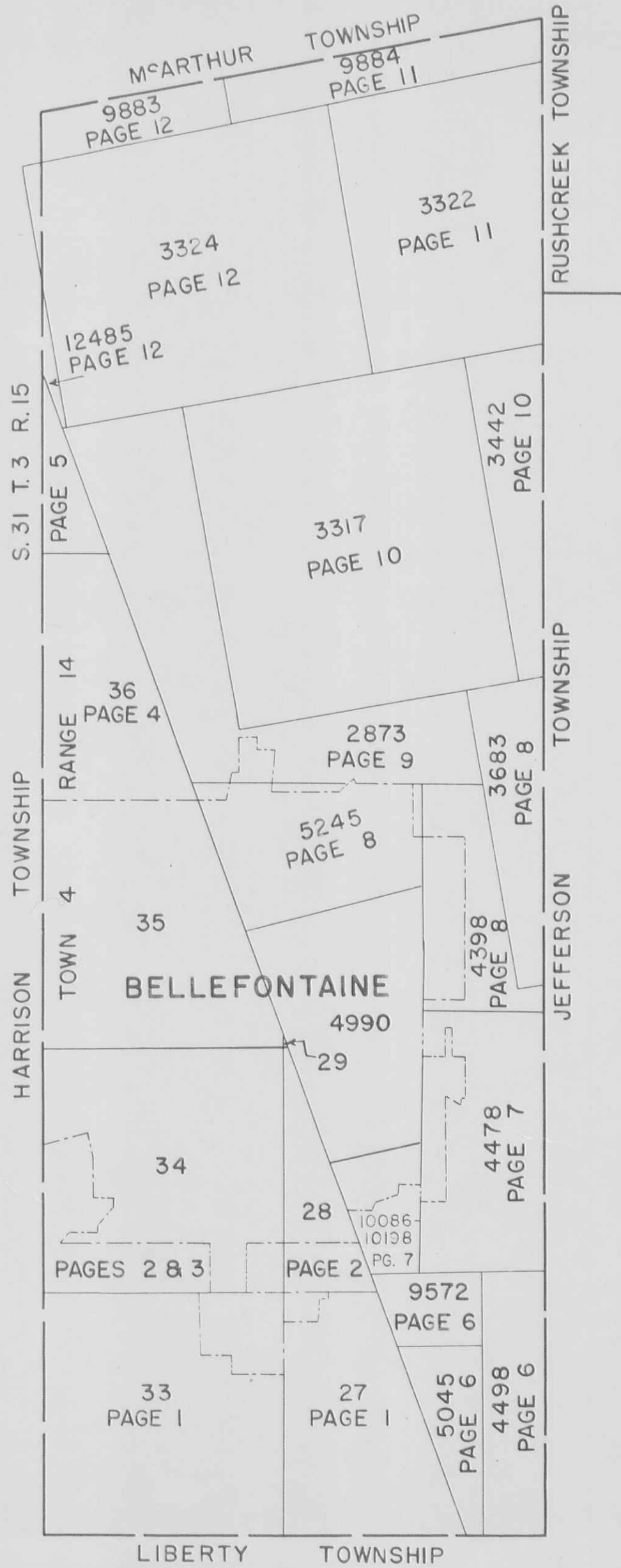
CORRECTED TO:

*January 1, 1966*

~~JANUARY 1, 1967~~

~~JANUARY 1, 1968~~

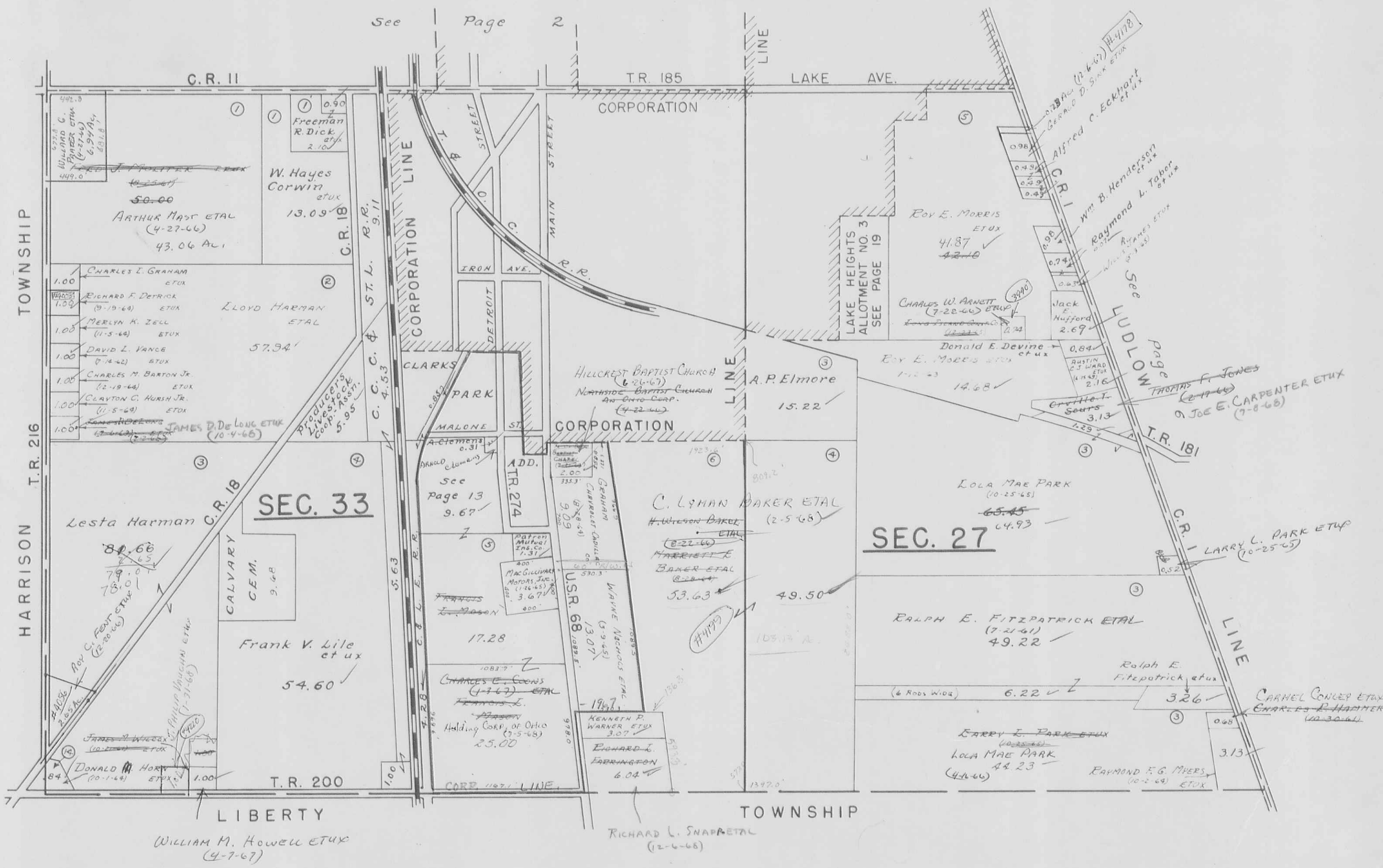
JANUARY 1, 1969



LAKE TOWNSHIP

SECTION 27    TOWN 4    RANGE 14  
 SECTION 33    TOWN 4    RANGE 14

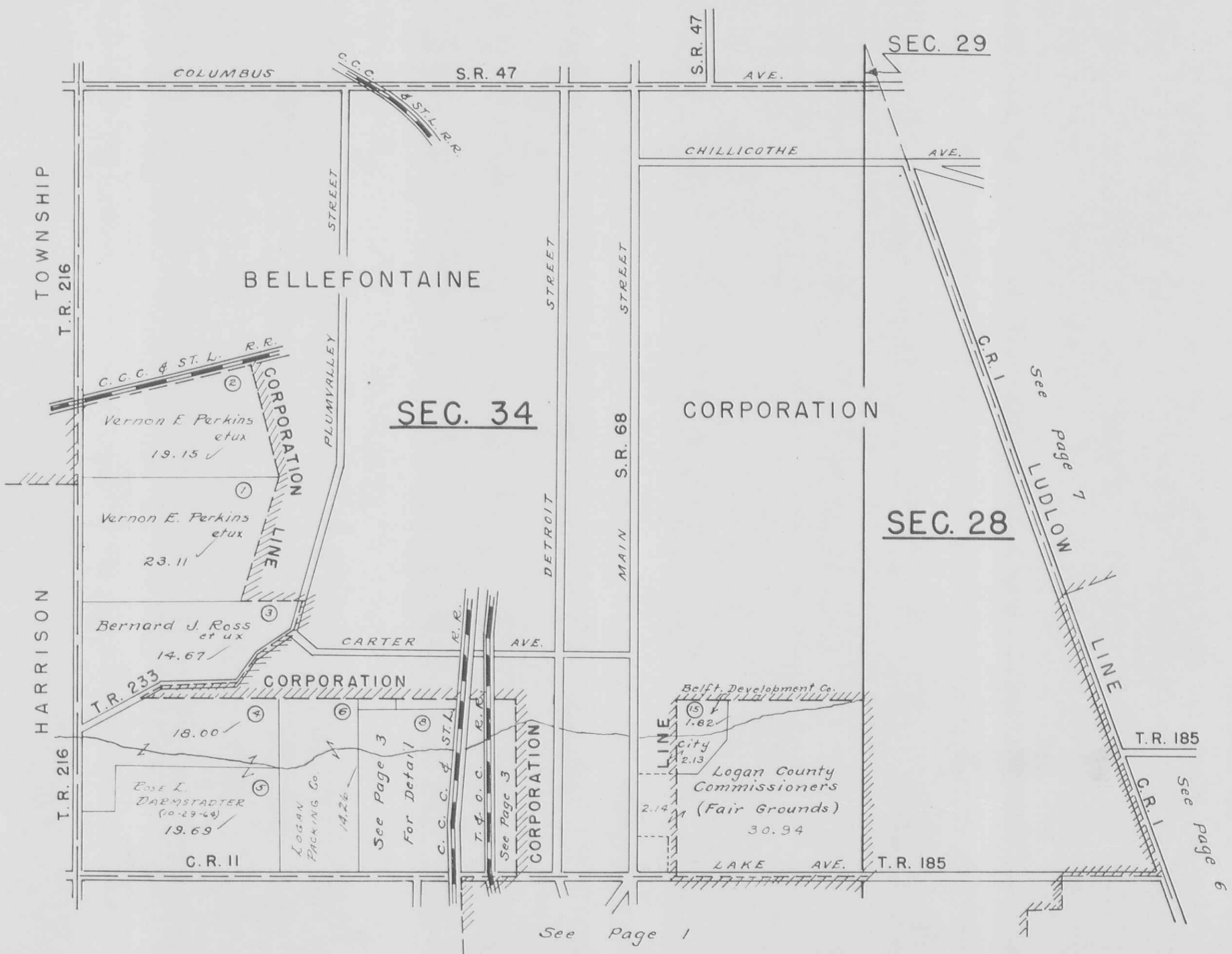
SCALE 10 CHAINS = 1 INCH



OCT. 5, 1960  
H.E.D.

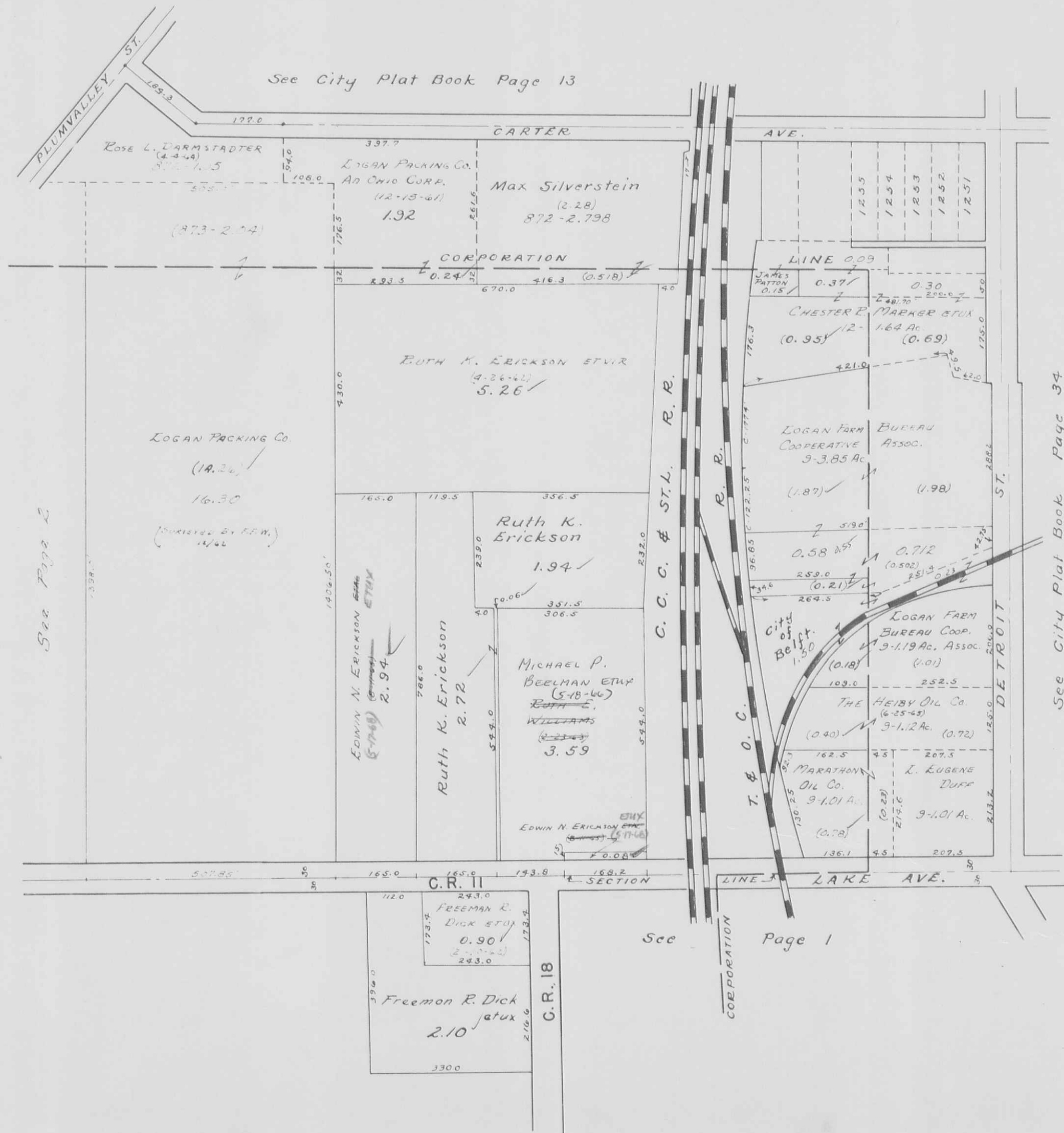
SECTION 28	TOWN 4	RANGE 14
SECTION 29	TOWN 4	RANGE 14
SECTION 34	TOWN 4	RANGE 14

SCALE 10 CHAINS = 1 INCH



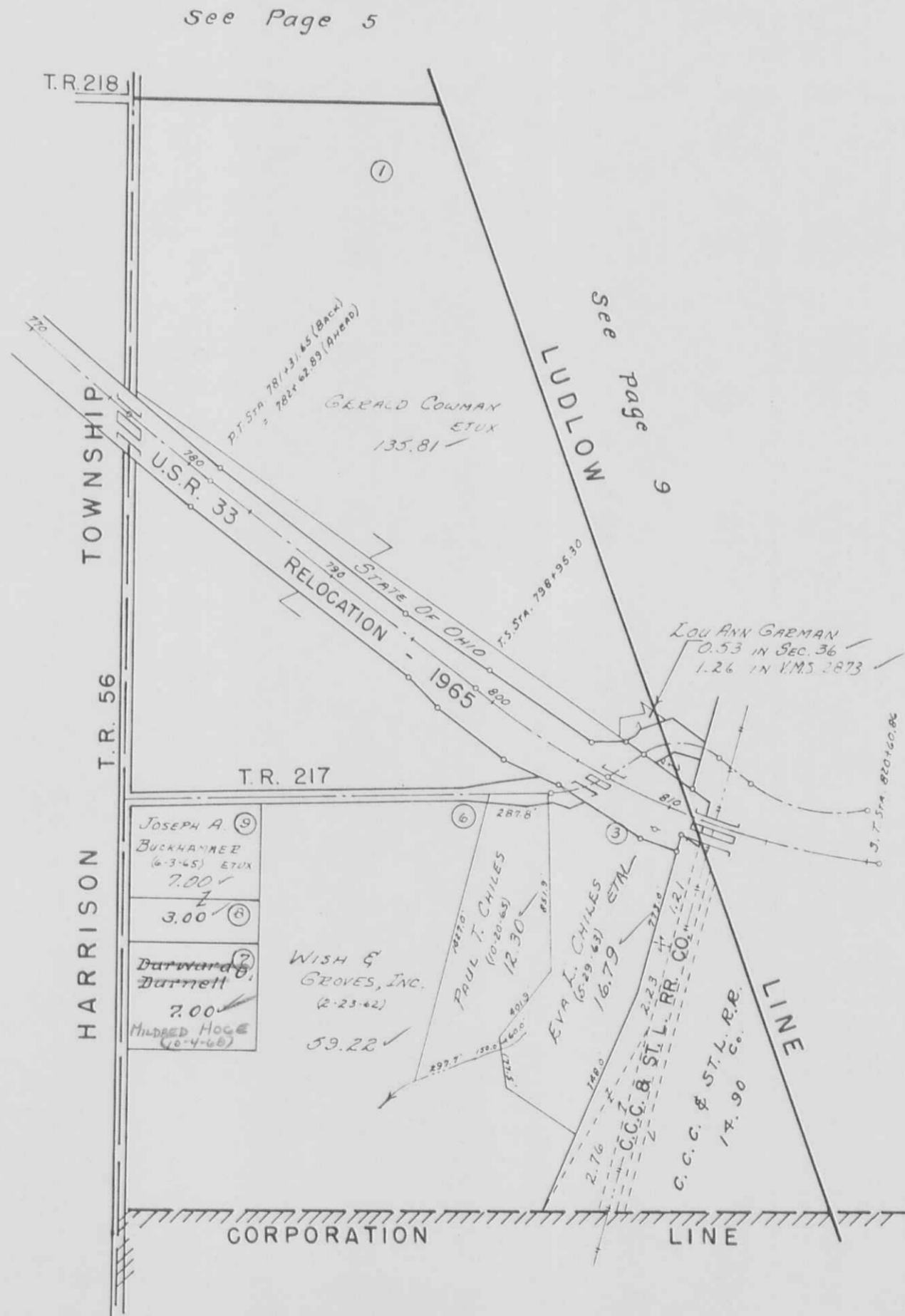
LAKE TOWNSHIP  
SECTION 34 TOWN 4 RANGE 14 (PART)

SCALE : 1 INCH = 200 FEET



LAKE TOWNSHIP  
SECTION 36 TOWN 4 RANGE 14

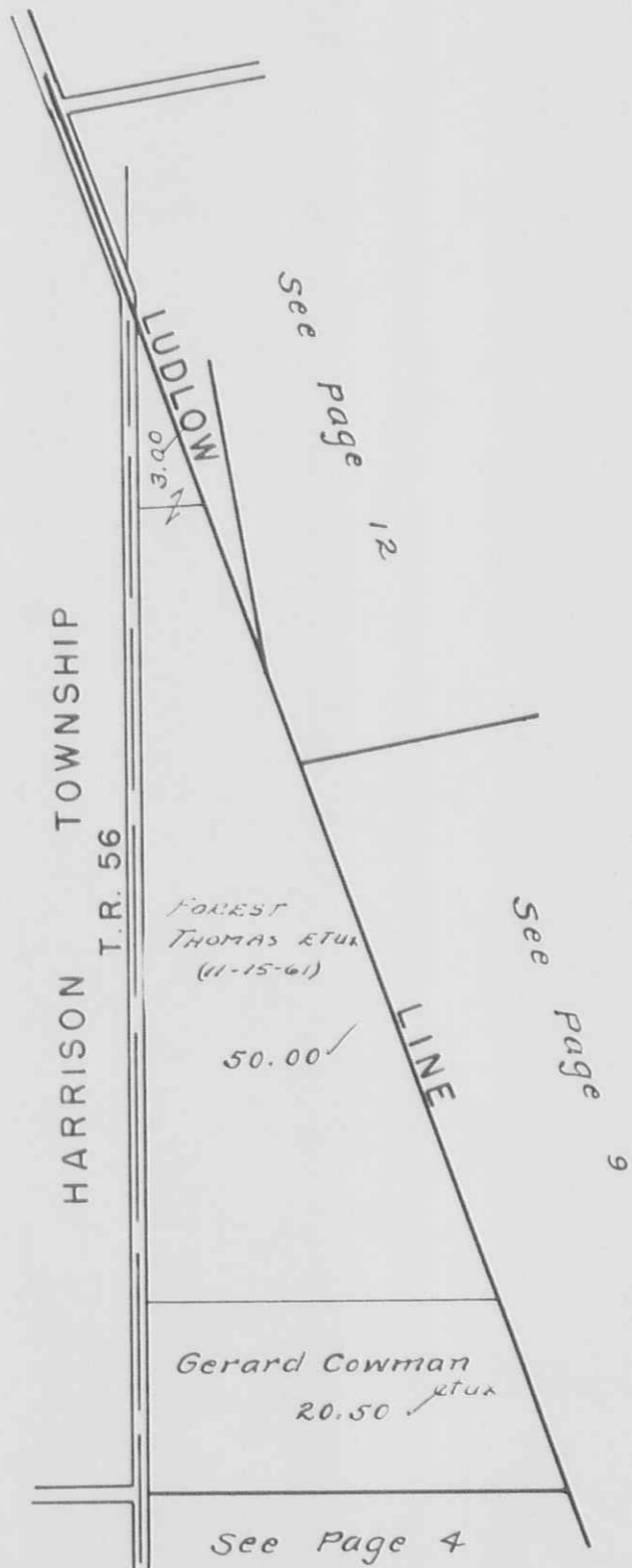
SCALE 10 CHAINS = 1 INCH



Oct. 10, 1960  
H.E.D.

SECTION 31 TOWN 3 RANGE 15

SCALE 10 CHAINS = 1 INCH



HARRISON TOWNSHIP  
T.R. 56

See page 12

See page 9

See Page 4



LAKE TOWNSHIP  
 VIRGINIA MILITARY SURVEYS

4498  
 5045  
 9572

SCALE 10 CHAINS = 1 INCH

69.12  
 74.23  
 2.51  
 76.57

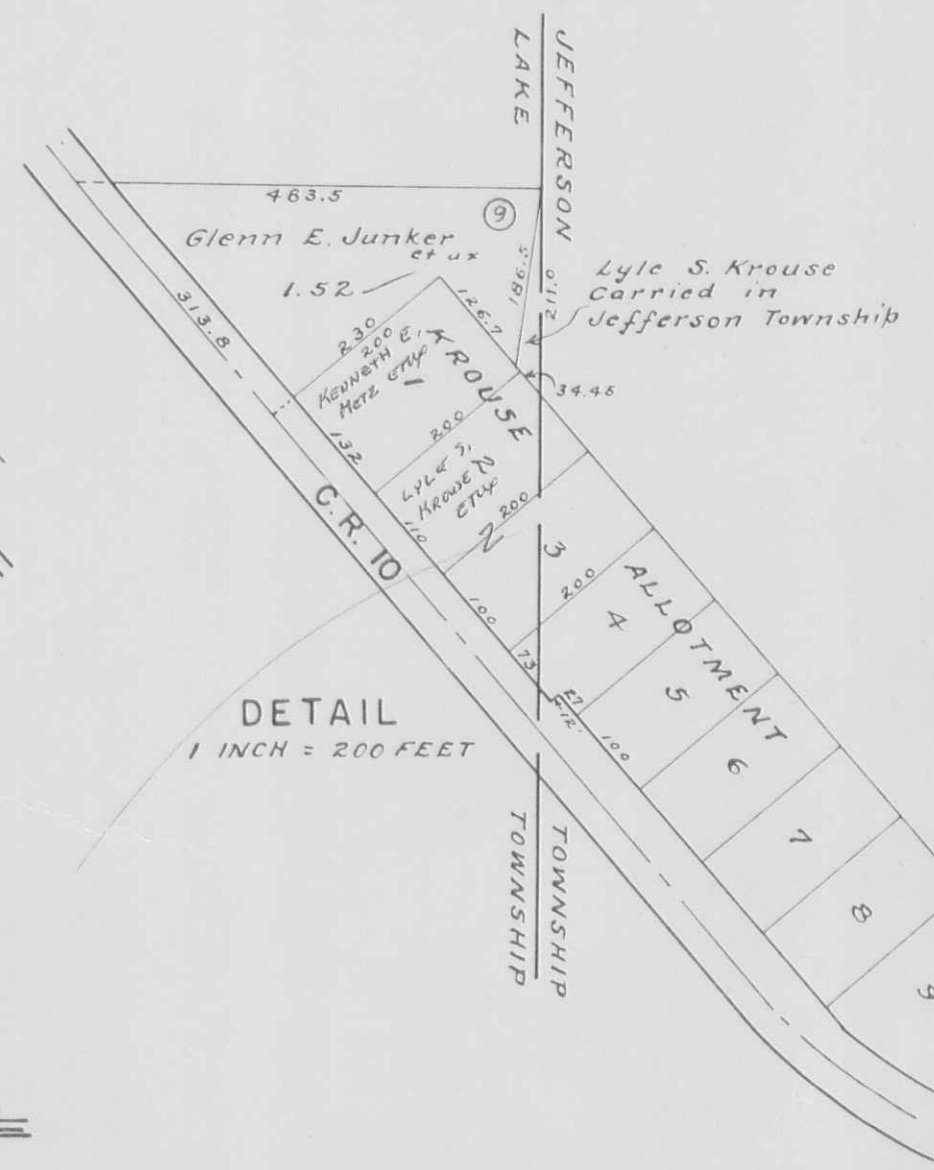
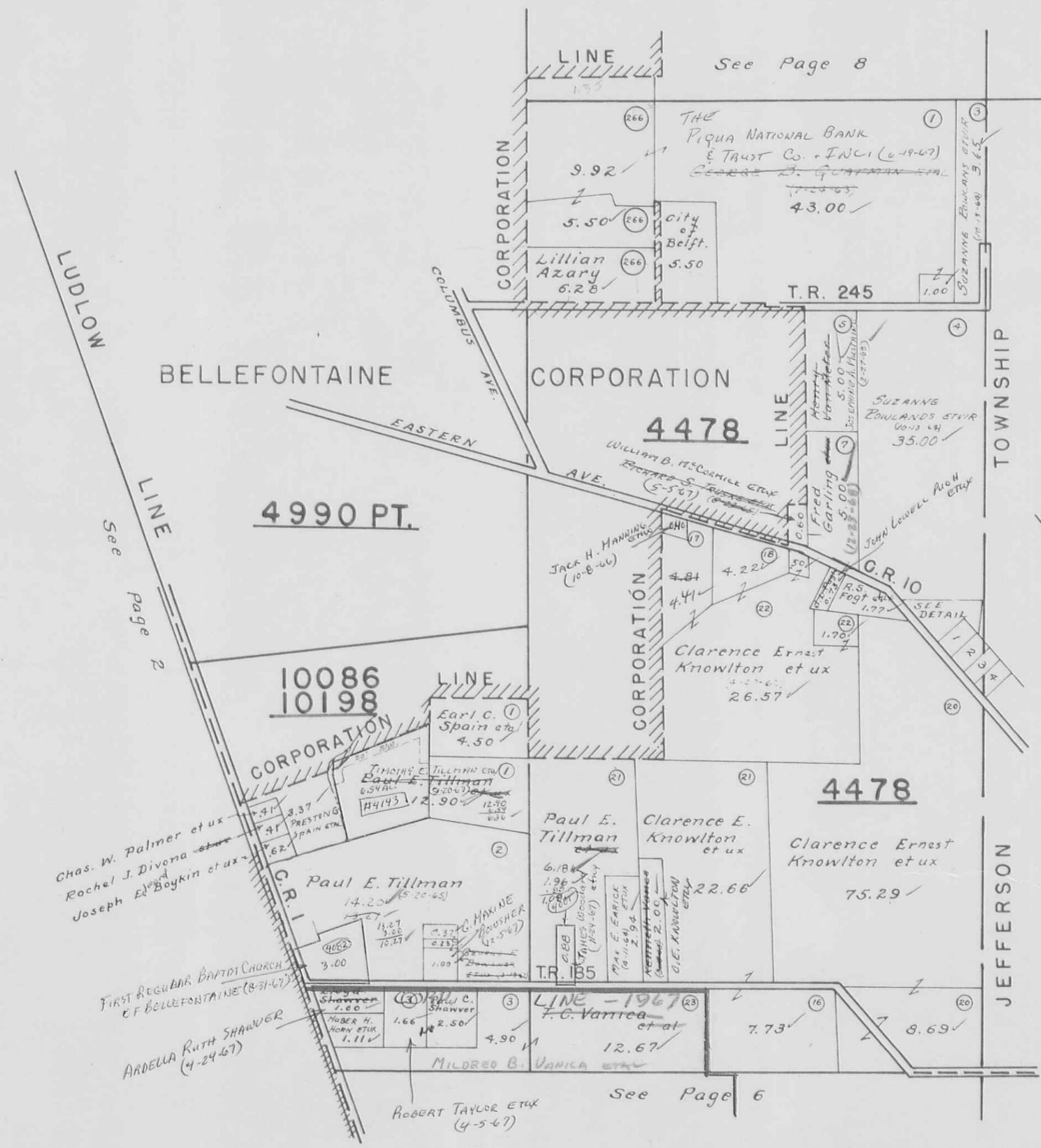


1200  
 6.26  
 54.27

LAKE TOWNSHIP  
 VIRGINIA MILITARY SURVEYS

4478  
 4490 PT.  
 10086  
 10198

SCALE 10 CHAINS = 1 INCH



LAKE TOWNSHIP  
 VIRGINIA MILITARY SURVEYS

3683  
 4399  
 4990 PT.  
 5245

SCALE 10 CHAINS = 1 INCH



- V.M.S. 5245
- A. -0.81 PT. -
  - B. -0.84 - *Jessie M. Sickles (11-23-62)*
  - C. -0.12 - *Mary J. Jacobs*
  - D. -1.08 - *Bellefontaine Corp. (10-29-61)*
  - E. -1.53 - *Clifford H. Hertenstein (4-23-57)*
  - F. -1.13 - *Robert L. Brackney (10-11-63)*
- V.M.S. 3683
- A. -0.90 - *John M. Elliott et al (10-20-67)*
  - B. -1.20 - *Paul T. Chilesy*
  - C. -0.88 - *Lee C. Hammond et ux*
  - D. -1.32 - *James G. Kennedy et ux*

Nov. 3, 1960  
 H.E.D.

See Page 7

See Page 10

See Page 9

See Detail Jefferson Township

# LAKE TOWNSHIP

## V.M.S. 2873

SCALE: 1" = 10 CHAINS = 660'

SEE PAGE 5

EMERY A. MEREDITH  
106.10

LUDLOW

2873

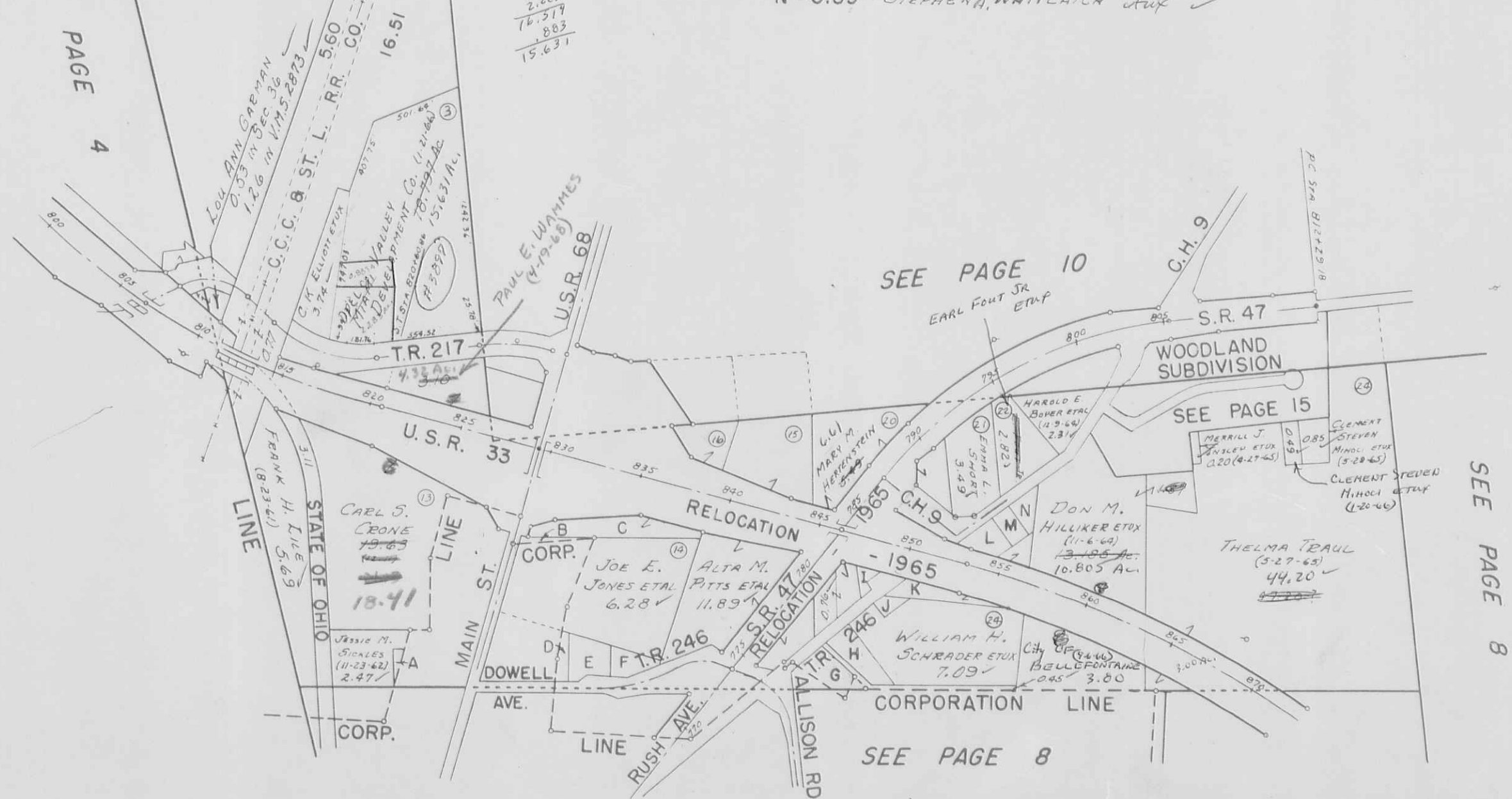
FRED E. BRACKNEY  
(4-9-65)  
121.11

SEE PAGE 4

SEE PAGE 10

18.797  
2.283  
16.514  
883  
15.631

TRACT	NAME
A - 0.20	BETH V. WELDON ✓
B - 0.16	RICHARD A. SMITH ✓
C - 3.51	JEANETTA M. SMITH ETAL ✓
D - 0.42	GEORGIA WARD ✓ GENE J. WARD (4-26-68)
E - 1.33	BERNICE LUCILLE PUTLEDGE (12-19-63) ✓
F - 1.10	RONALD HARLEY BRANHAM ✓
G - 1.11	DEOTA NOGLE ✓
H - 1.00	ROSALIND S. YOESTING (12-26-57) ✓
I - 0.53	MARIE MILLER ETUX ✓ 1917 MARY M. HERTENSTEIN (3-20-66)
J - 0.29	JEANNE L. MINLEY (10-11-63) ✓
K -	STATE OF OHIO
L - 0.75	RAYMOND M. ADAMS ETUX (8-26-64) ✓
M - 0.56	STEPHENA WHITLATCH etux ✓
N - 0.59	STEPHENA WHITLATCH etux ✓



SEE PAGE 10

SEE PAGE 15

SEE PAGE 8

VIRGINIA MILITARY SURVEYS

3317  
3442

SCALE 10 CHAINS = 1 INCH



NOV. 2, 1960  
H.S.D.

T.R. 217  
John & Corbin  
(7-24-64)

U.S.R.  
33

See Page 9

See Page 8  
ARLYN E. DRAKE  
(8-26-68) ETUX

LARRY DILL et ux  
(10-13-67)  
(10-29-68)

LAKE TOWNSHIP  
 VIRGINIA MILITARY SURVEYS

3322  
 9884  
 9885

SCALE 10 CHAINS = 1 INCH



Ronald H. Heath et ux  
 (6-3-66)

37.681  
 11.50  
 26.181

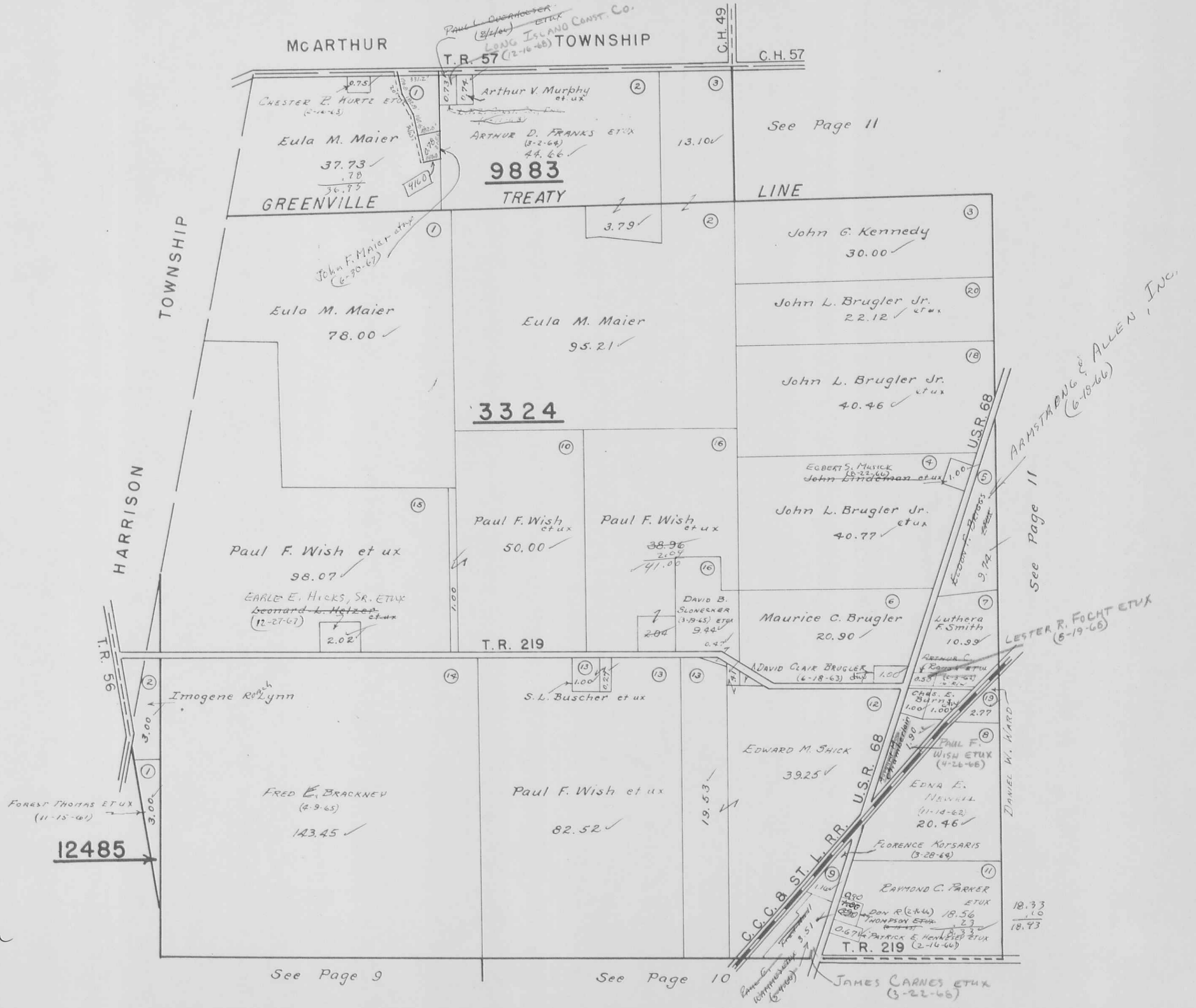
See Page 12

See Page 10

VIRGINIA MILITARY SURVEYS

3324  
9883  
12485

SCALE 10 CHAINS = 1 INCH



See Page 9

See Page 10

See Page 11

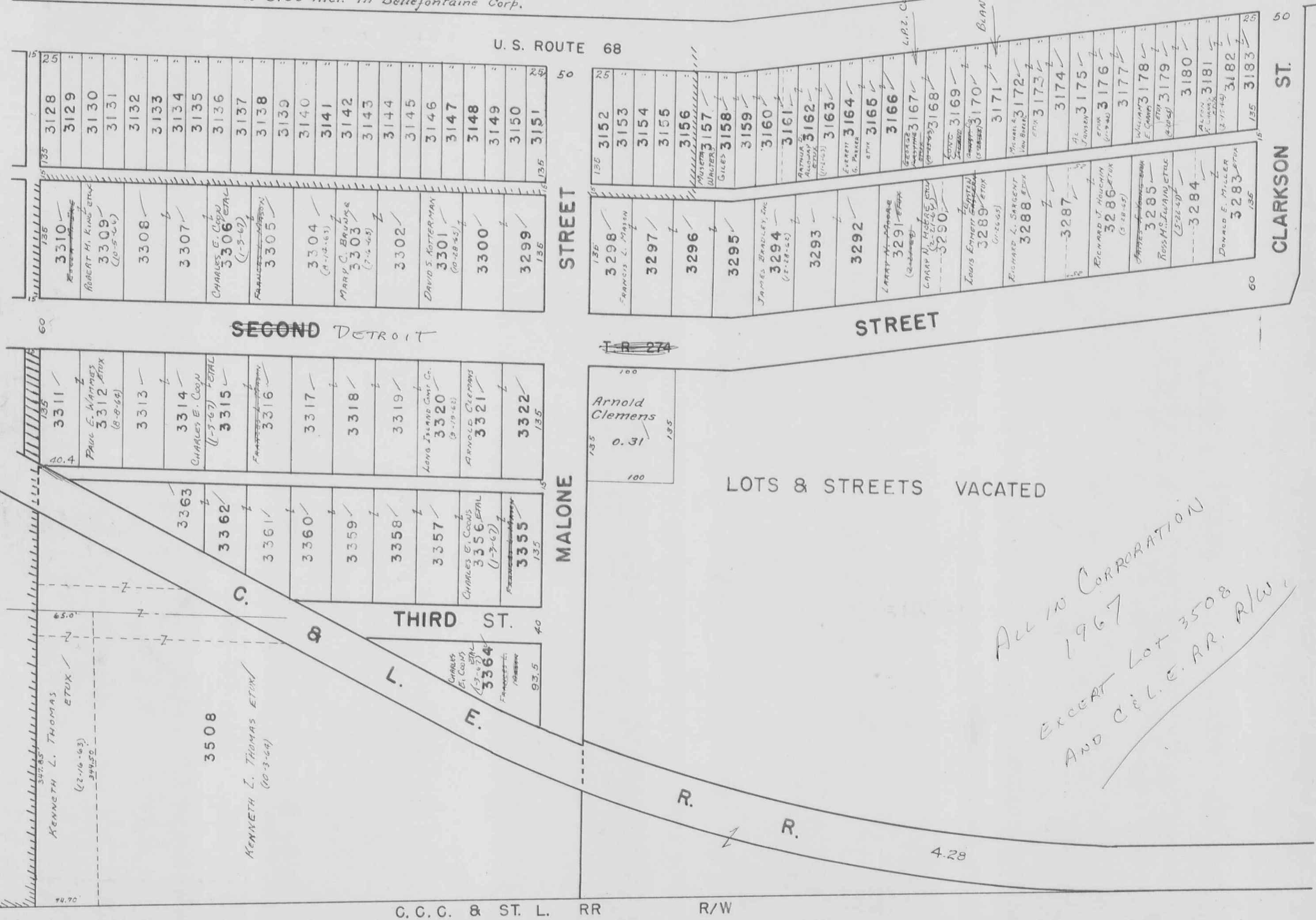
ARMSTRONG & ALLEN, INC.  
(6-18-66)

LESTER R. FOCHT ETUX  
(6-19-66)

LAKE TOWNSHIP — SECTION 33 TOWN 4 RANGE 14 PAGE 13  
CLARK'S PARK ADDITION N-PART

SCALE 100 FEET TO THE INCH

Note:  
Lots 3128 To 3156 incl. in Bellefontaine Corp.



L.P.R. CLARK'S PARK, INC.  
(4-11-67)  
BLANCHE E. STIEG  
(6-7-66)

ALL IN CORPORATION  
1967  
EXCEPT LOT 3508  
AND C & L. E. R. R/W

3310	3128
ROBERT M. KING ETUX (10-5-64)	3129
3309	3130
3308	3131
3307	3132
CHARLES E. COON ETUX (1-3-67)	3133
3306	3134
3305	3135
3304	3136
MARY C. BROOKS (7-4-65)	3137
3303	3138
3302	3139
3301	3140
3300	3141
3299	3142
	3143
	3144
	3145
	3146
	3147
	3148
	3149
	3150
	3151

3298	3152
FRANCIS L. MASON	3153
3297	3154
3296	3155
3295	3156
JAMES BRADLEY, INC. (12-28-63)	3157
3294	3158
3293	3159
3292	3160
LARRY N. MOORE (3-27-65)	3161
3291	3162
LARRY N. MOORE (3-27-65)	3163
3290	3164
LOUIS ERNEST (11-20-65)	3165
3289	3166
RICHARD L. SARGENT ETUX	3167
3288	3168
3287	3169
RICHARD J. HOUCHIN ETUX (3-28-65)	3170
3286	3171
JAMES H. LANNING ETUX (4-20-64)	3172
3285	3173
ROSS H. LANNING ETUX (5-22-67)	3174
3284	3175
DONALD E. MILLER ETUX (2-15-64)	3176
3283	3177
	3178
	3179
	3180
	3181
	3182
	3183

3311	3363
PAUL E. WANNIES ETUX (8-8-64)	3362
3313	3361
3314	3360
CHARLES E. COON (1-3-67) ETUX	3359
3315	3358
3316	3357
3317	3356
3318	3355
3319	3354
LONG ISLAND CMT. CO. (9-19-63)	3353
3320	3352
ARNOLD CLEMENS (1-3-67)	3351
3321	3350
3322	3349

3508	3364
KENNETH L. THOMAS ETUX (12-16-63) 3445.0	3363
3507	3362
3506	3361
3505	3360
3504	3359
3503	3358
3502	3357
3501	3356
3500	3355
3499	3354
3498	3353
3497	3352
3496	3351
3495	3350
3494	3349
3493	3348
3492	3347
3491	3346
3490	3345
3489	3344
3488	3343
3487	3342
3486	3341
3485	3340
3484	3339
3483	3338
3482	3337
3481	3336
3480	3335
3479	3334
3478	3333
3477	3332
3476	3331
3475	3330
3474	3329
3473	3328
3472	3327
3471	3326
3470	3325
3469	3324
3468	3323
3467	3322

ARNOLD CLEMENS  
0.31

LOTS & STREETS VACATED

C.C.C. & ST. L. RR R/W



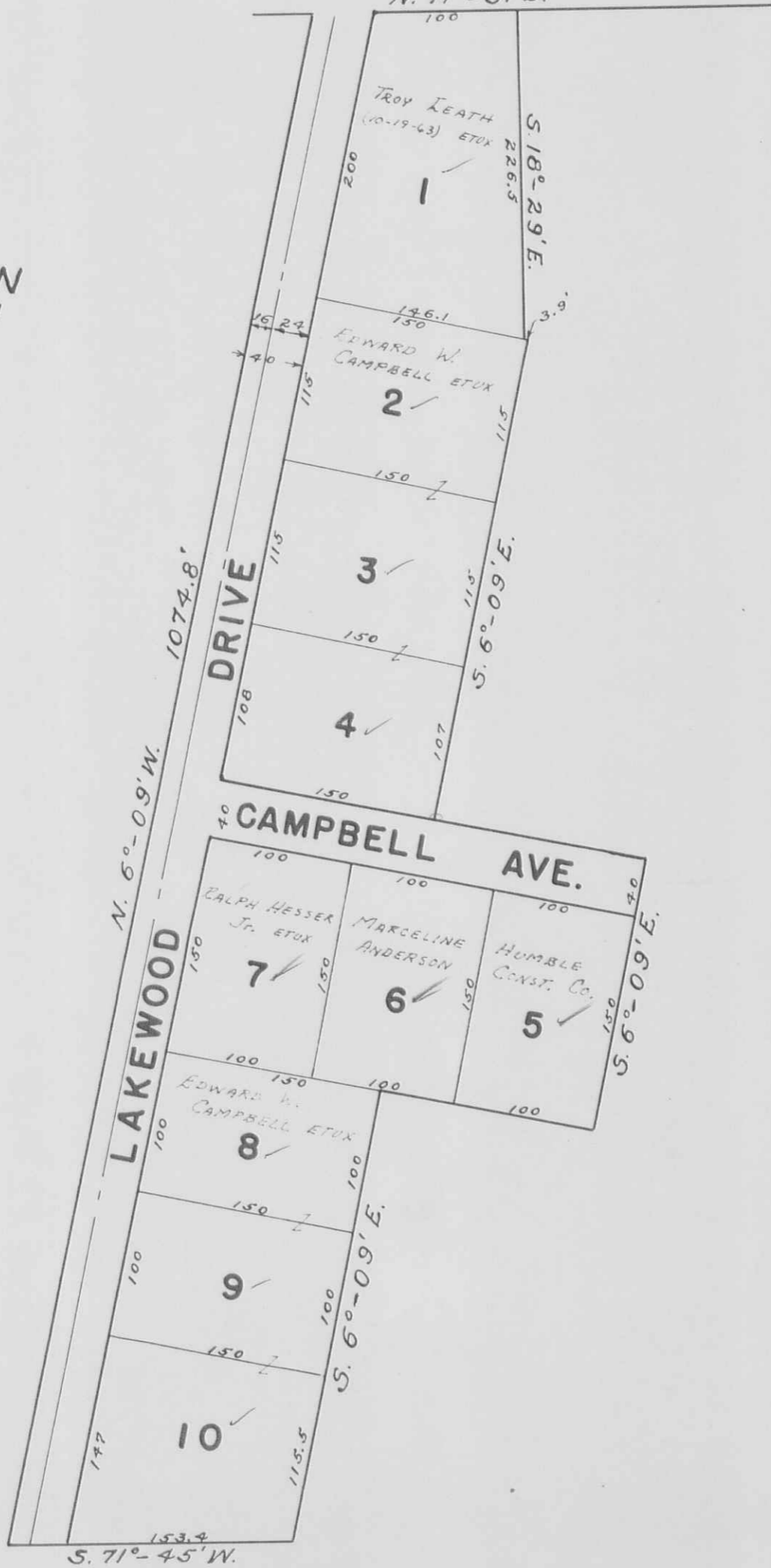
CAMPBELL ALLOTMENT  
LAKE TOWNSHIP  
V.M.S. 3683

STATE ROUTE 33

N. 71°-31'E.

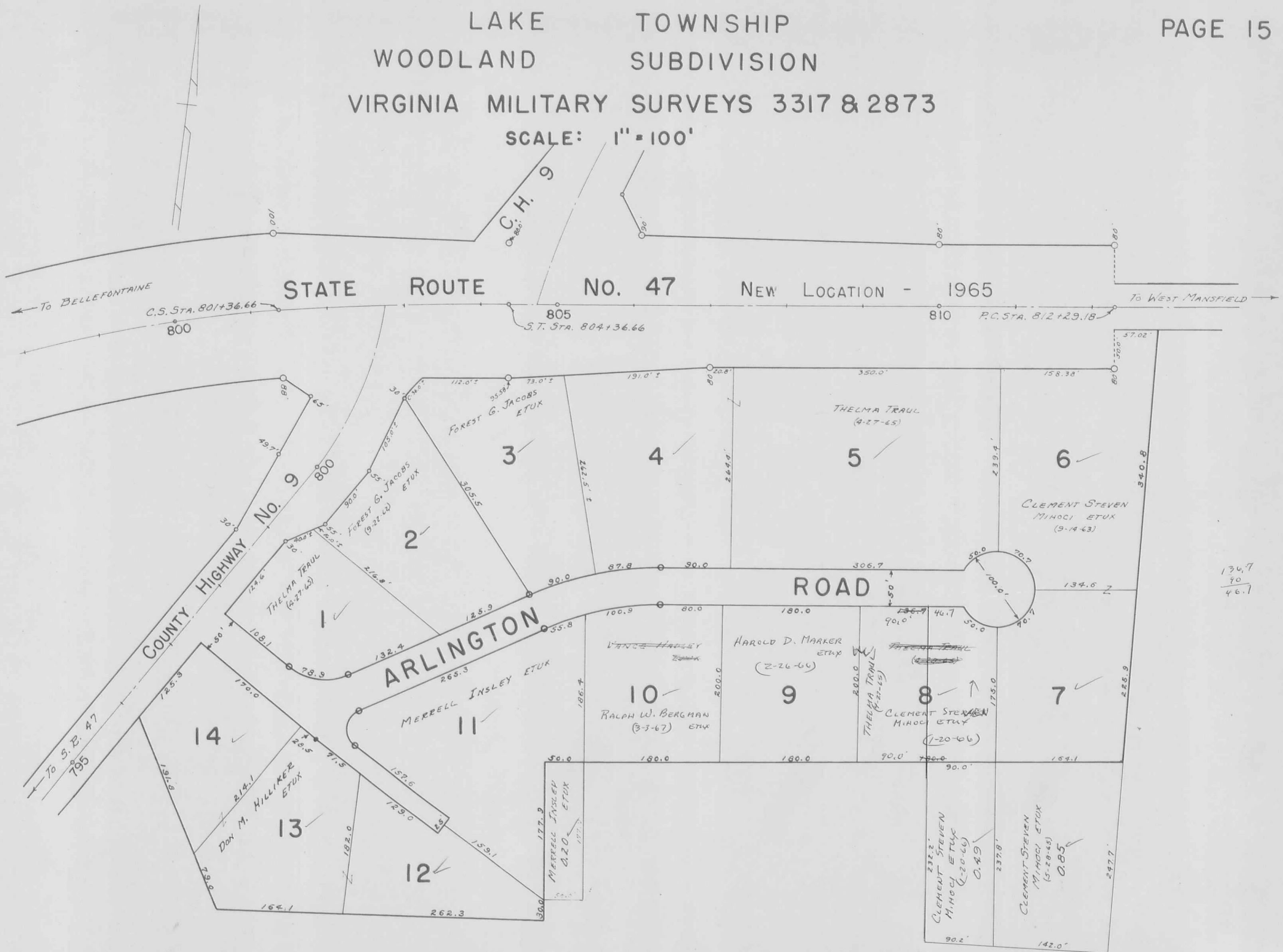


Scale: 1"=100'



LAKE TOWNSHIP  
WOODLAND SUBDIVISION  
VIRGINIA MILITARY SURVEYS 3317 & 2873

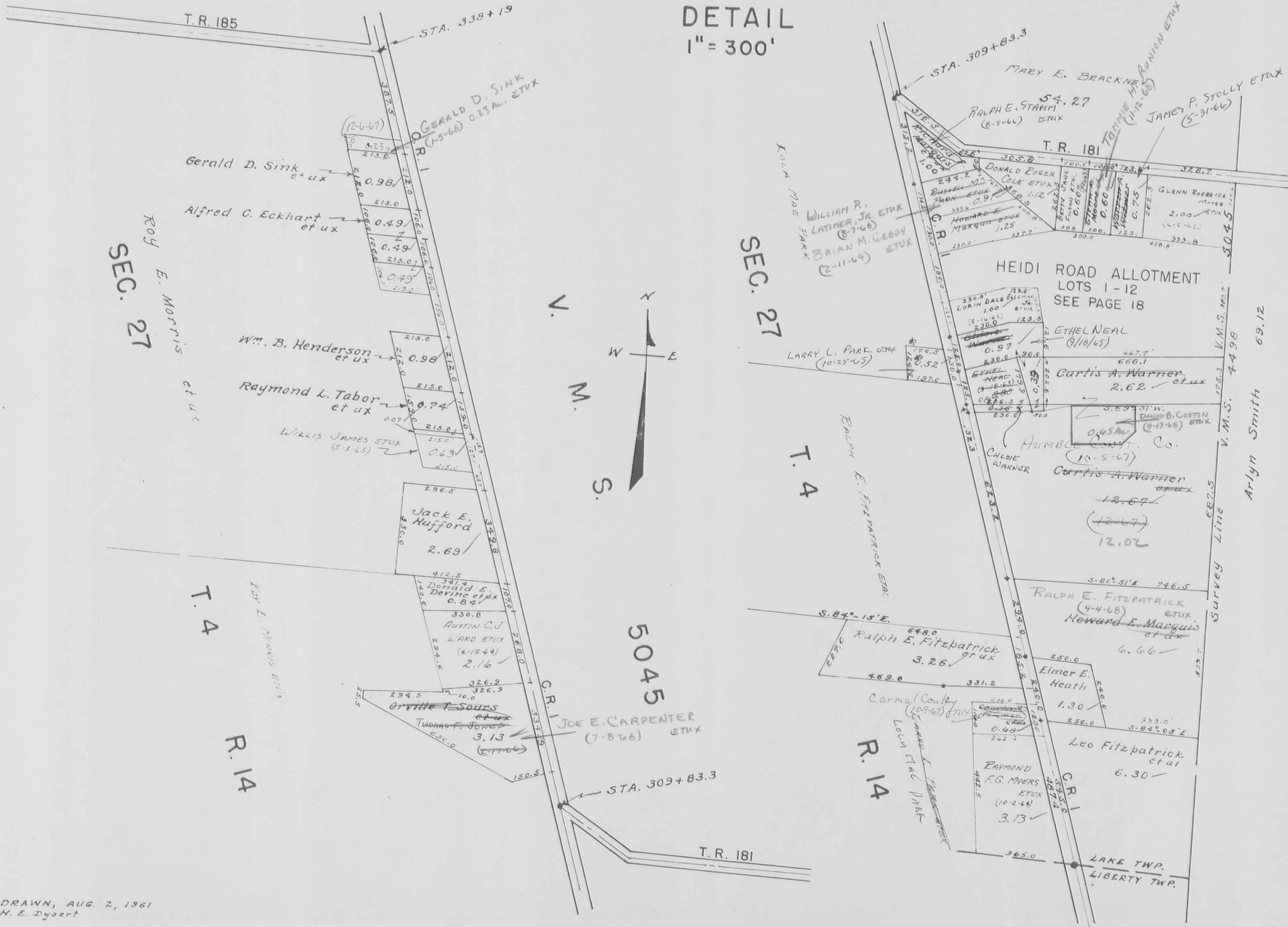
SCALE: 1" = 100'



136.7  
90  
46.1

LAKE TOWNSHIP  
SECTION 27 TOWN 4 RANGE 14 PART  
VIRGINIA MILITARY SURVEY 5045

DETAIL  
1" = 300'



ROY E. MORRIS  
SEC. 27

SEC. 27

T. 4

T. 4

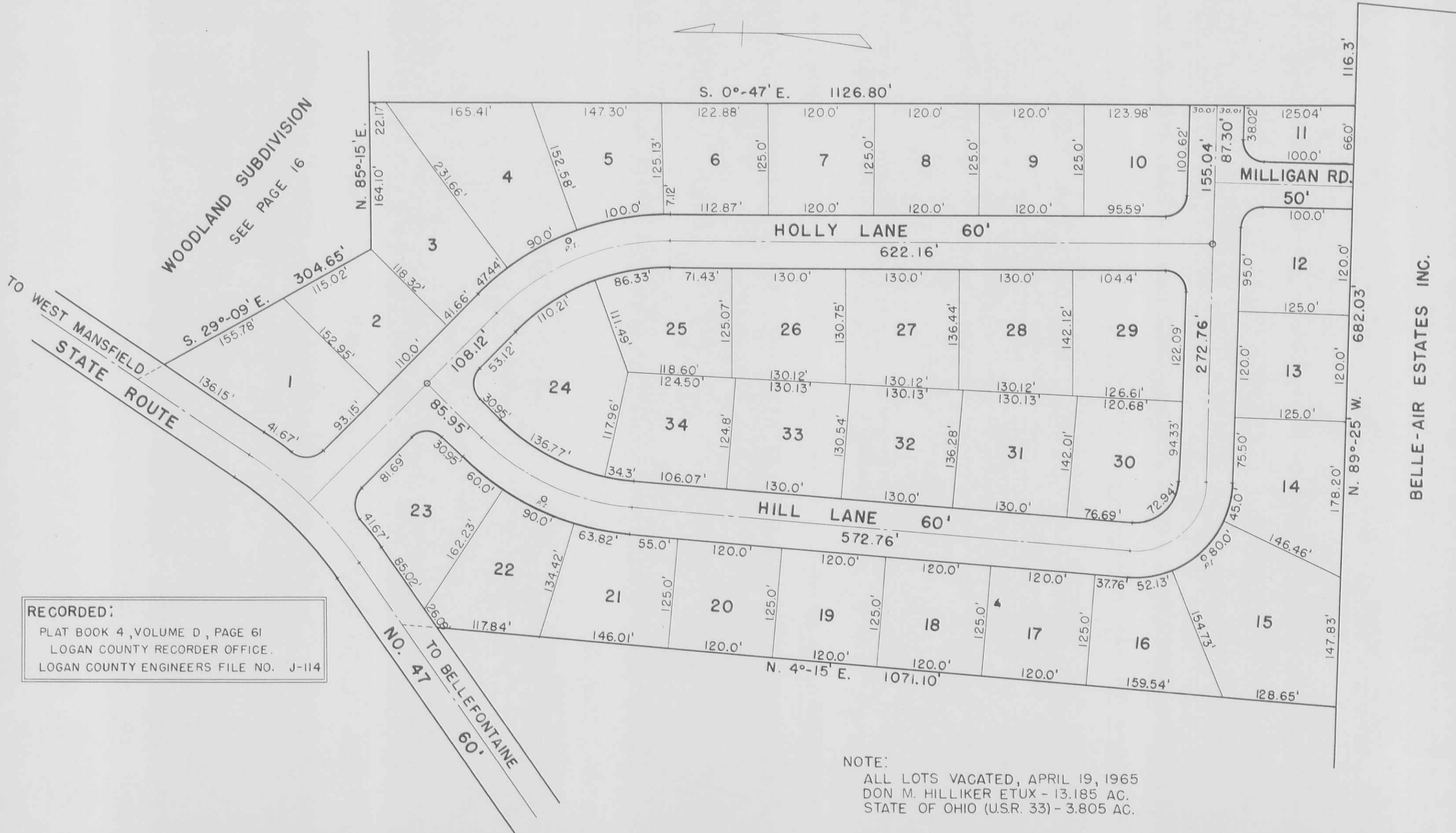
R. 14

5045

LAKE TOWNSHIP  
 HOLLY HILL SUBDIVISION

V.M.S. 2873

SCALE: 1"=100'



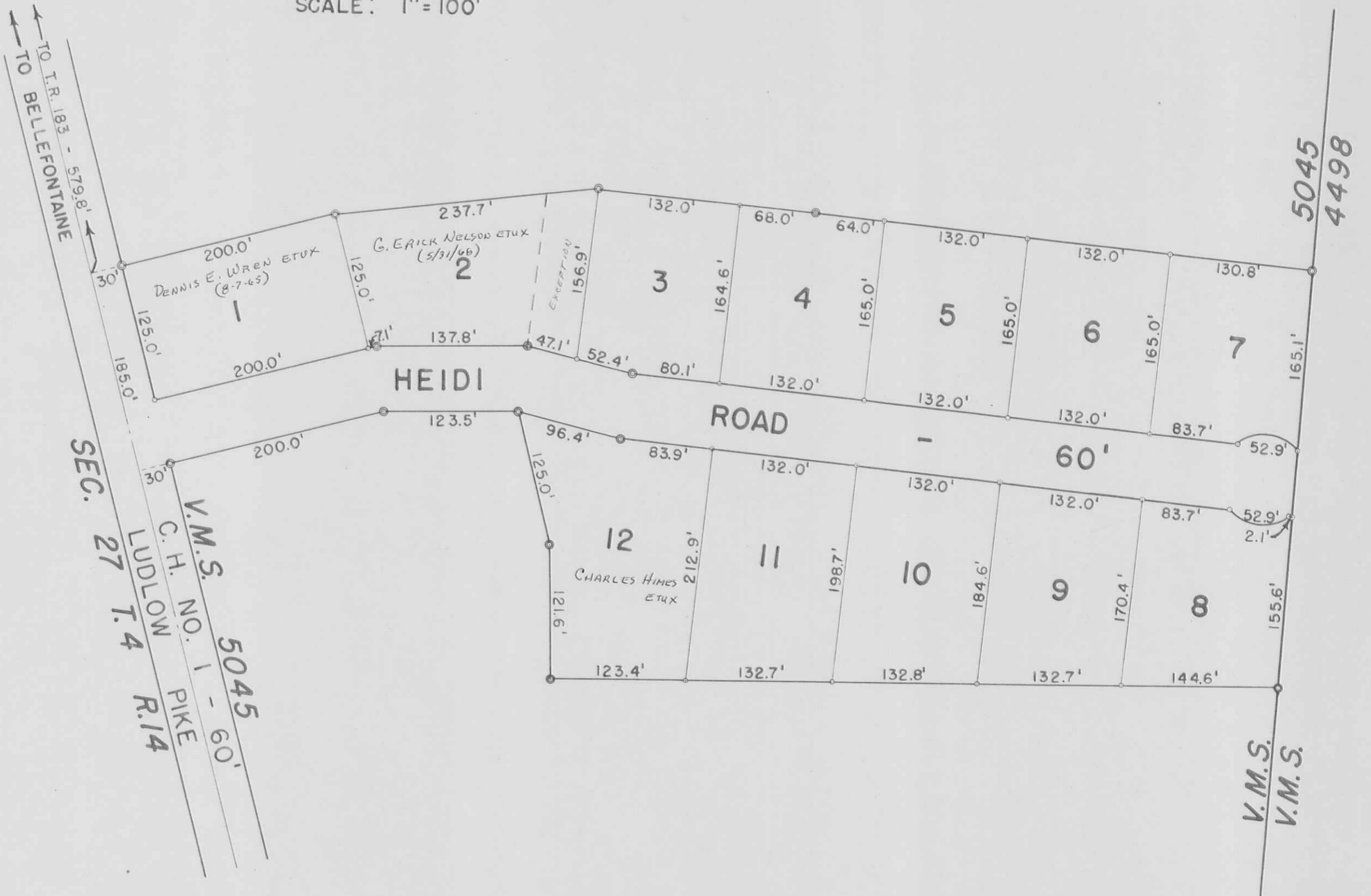
NOTE:  
 ALL LOTS VACATED, APRIL 19, 1965  
 DON M. HILLIKER ETUX - 13.185 AC.  
 STATE OF OHIO (U.S.R. 33) - 3.805 AC.

D. E. Gilbert  
 Dec. 8, 1959

LAKE TOWNSHIP  
HEIDI ROAD ALLOTMENT

V.M.S. 5045

SCALE: 1" = 100'



LOT	NAME	DATE
1	DENNIS E. WREN ET UX	8-7-65
2	G. ERICK NELSON ET UX (EXCEPT 47.1' OFF) HARABLE CONSTRUCTION - 5.3.66	5/31/66
3	"	
4	"	
5	"	
6	"	
7	"	
8	"	
9	"	
10	"	
11	"	
12	CHARLES HIMES ET UX	

DRAWN BY DANIEL E. GILBERT.  
APRIL 30, 1965

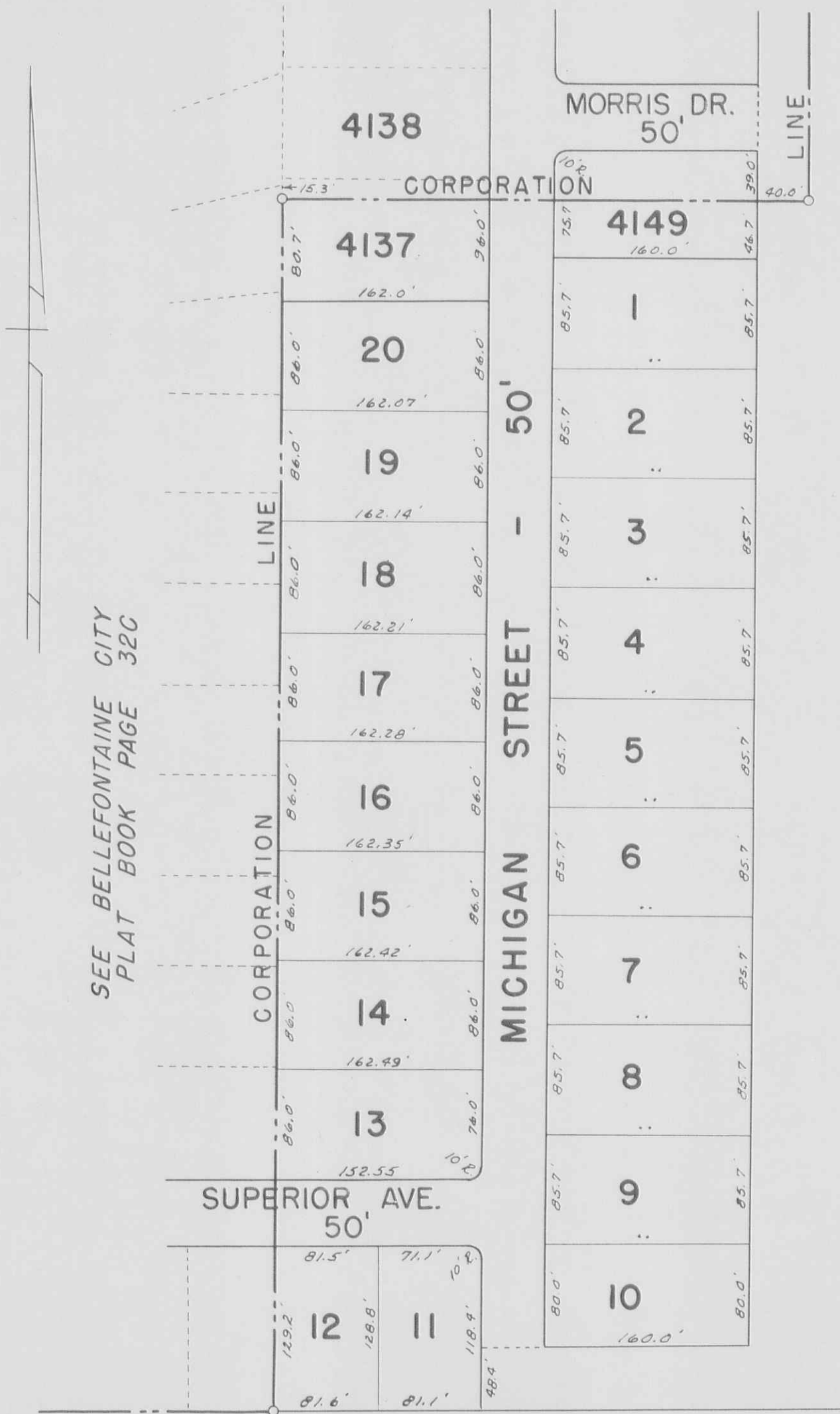
ALLOTMENT  
... - 8.31 AC.  
BOOK 4 VOL. D PAGE 114.  
J-176, APRIL 1965.

LAKE HEIGHTS ALLOTMENT NO. 3

SEC. 27, T-4, R-14

SCALE: 1" = 100'

SEE BELLEFONTAINE CITY  
PLAT BOOK PAGE 32D



SEE LAKE TOWNSHIP PAGE 1

LOT	NAME	DATE
1	LONG IS. CONST. CO	
2	"	
3	"	
4	"	
5	"	
6	"	
7	DONALD E. KNEFF ETUX	3-29-68
8	Vinton L. Detrick ETUX	8-24-67
9	RUSSELL E. GROSS ETUX	4-23-68
10	"	
11	"	
12	JAMES R. FRANTZ ETUX	1-2-65
13	CHARLES P. RICE ETUX	8-28-65
14	EVERETT W. ALEXANDER ETUX	2-21-67
15	DAVID M. DICKERHAM LONG IS. CONST. CO.	7-7-67
16	RUSSELL E. ROWY ETUX	1-16-68
17	DAVID L. McCREIGHT ETUX	9-12-67
18	JACK M. HADLEY ETUX	8-25-66
19	CARL A. MUMFLEY ETUX	7-7-66
20	ROBERT E. HAWLEY JR. ETUX	8-8-66

4137 Pt. LONG IS. CONST. CO. LEON EDWARD TAPP (12-4-66) ETUX  
4149 Pt. LONG IS. CONST. CO.

LAKE HEIGHTS ALLOTMENT NO. 3.  
LOTS 1 TO 20 INCL.  
RECORDERS PLAT BOOK 4, VOL. D, PAGE 109.  
ENGINEERS FILE A-125, JANUARY 25, 1966.