

SURVEYORS CERTIFICATE

This Plat Correctly shows NORTHEAST HEIGHTS ALLOTMENT in V.M.S. 4990 Bellefontaine, Lake Township, Logan County Ohio. All measurements are in feet and tenths. The area of the Lots is 10.05 acres. The area in street and alley is 2.42 acres making a total of 12.47 acres.

Foster F. Wright
Registered Surveyor No. 1673

DEDICATION

Know all men by these presents that Lowell E. LeVan, James D. Peters and Lavern F. Zell proprietors of the land indicated on the accompanying plat have authorized the laying out of the same, Woodland Drive and 13.5 feet East of the present 16.5 foot alleys dedicated to the Public use forever.

Witness: F. F. Wright, Lowell E. LeVan, James D. Peters, Lavern F. Zell



STATE OF OHIO
COUNTY OF LOGAN SS:

Be it remembered that on this day of in the year One Thousand Nine Hundred and fifty six Lowell E. LeVan, James D. Peters and Lavern F. Zell grantors in the foregoing dedication and acknowledged the signing to be their voluntary act

Notary Public
Logan County Ohio

ACCEPTANCE

The annexed plat was adopted by Ordinance Number 2402 at the regular meeting of Council on the day of July 1956

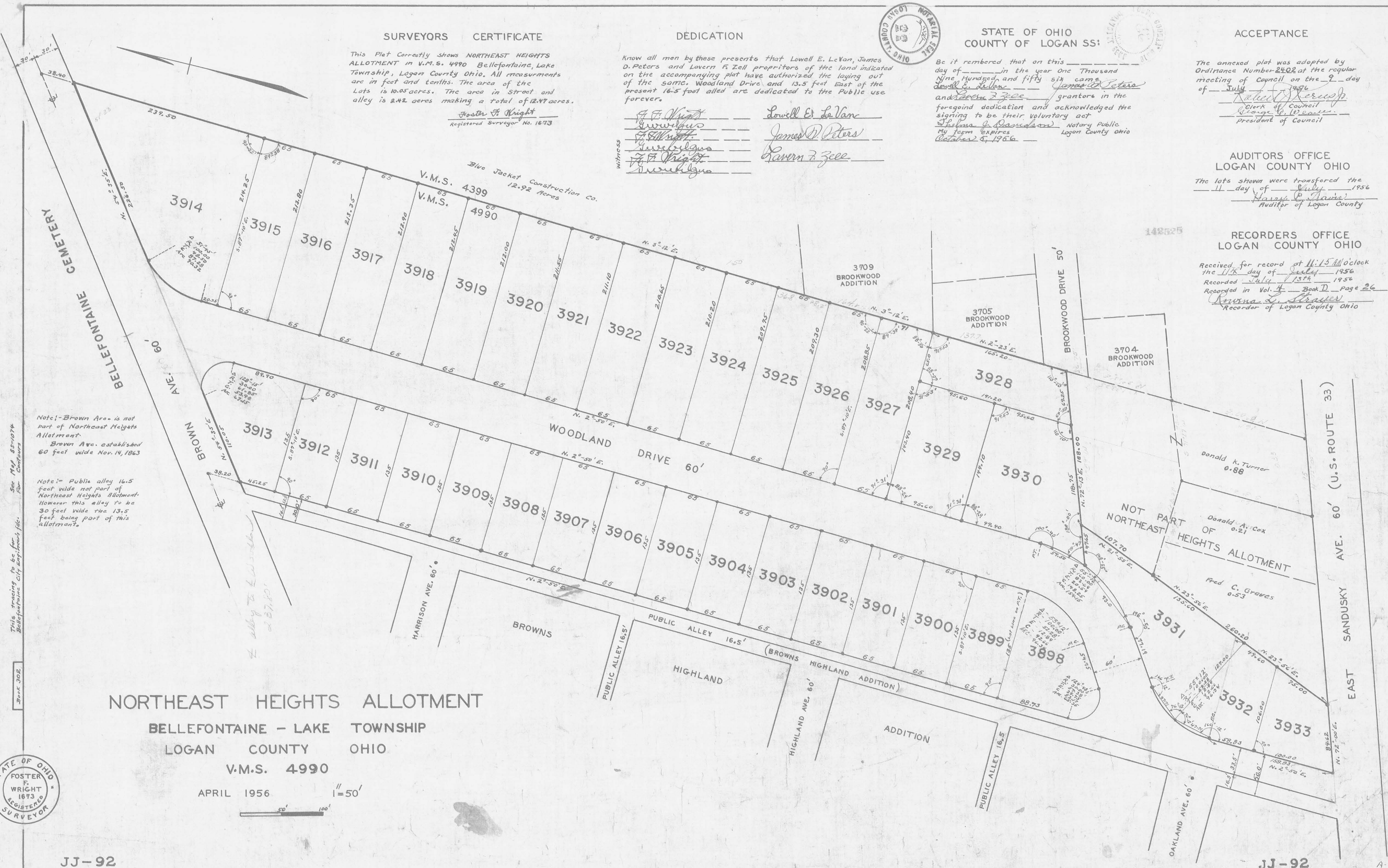
Robert A. Kersch
Mayor of Council
Chicago P. LeBeau
President of Council

AUDITORS OFFICE
LOGAN COUNTY OHIO

The lots shown were transferred the day of July 1956
Harry P. Gause
Auditor of Logan County

RECORDERS OFFICE
LOGAN COUNTY OHIO

Received for record at 11:15 AM o'clock the day of July 1956
Recorded July 1956
Recorded in Vol. 4 Book D page 26
Arvina S. Strayer
Recorder of Logan County Ohio



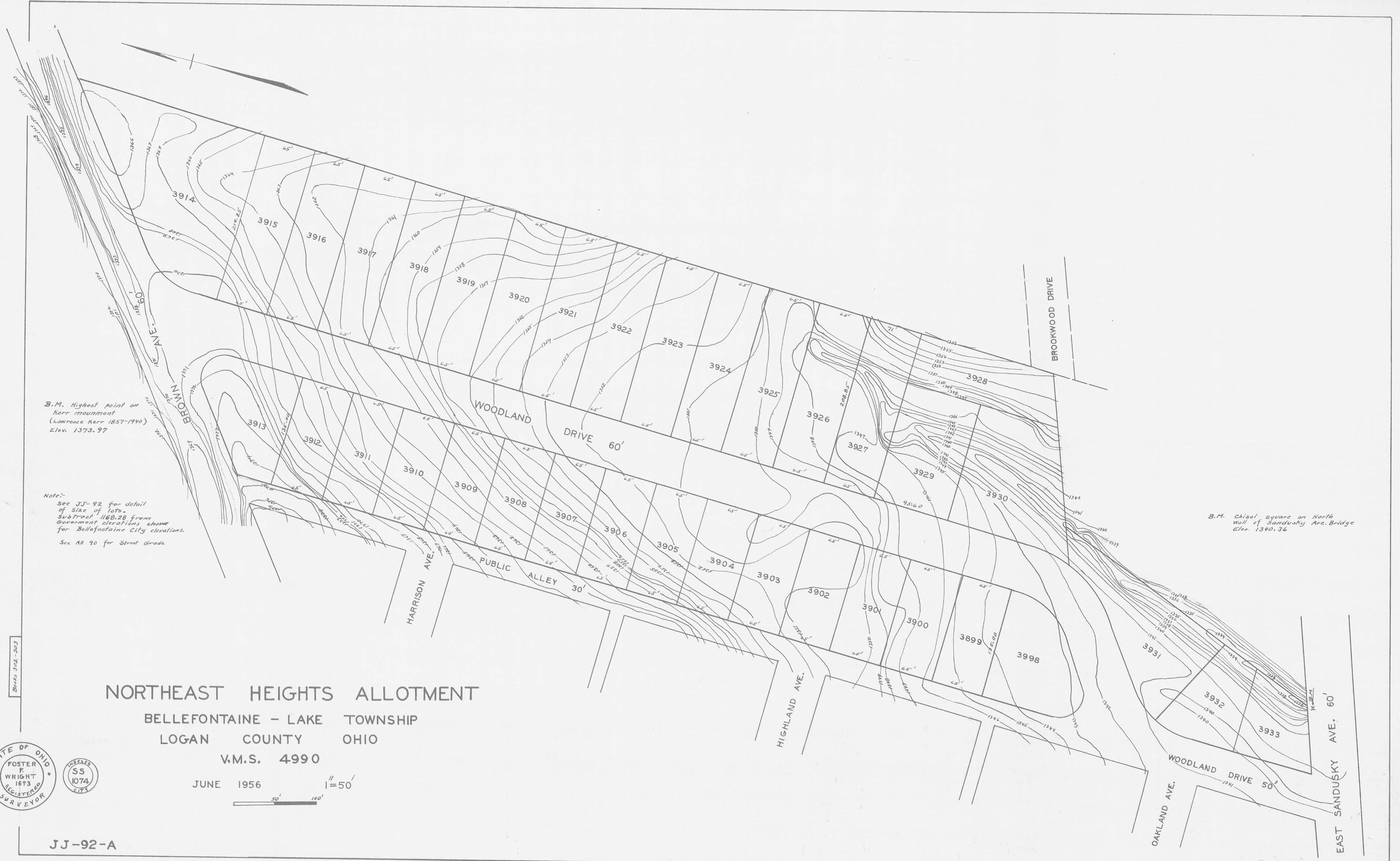
NORTHEAST HEIGHTS ALLOTMENT
BELLEFONTAINE - LAKE TOWNSHIP
LOGAN COUNTY OHIO
V.M.S. 4990

APRIL 1956
1" = 50'

This tracing to be for Bellefontaine City Engineers file. See Map 55-1074 Book 302

Note: - Brown Ave. is not part of Northeast Heights Allotment. Brown Ave. established 60 feet wide Nov. 14, 1863
Note: - Public alley 16.5 feet wide not part of Northeast Heights Allotment. However this alley to be 30 feet wide the 13.5 feet being part of this allotment.





B.M. Highest point on
Kerr monument
(Lawrence Kerr 1857-1940)
Elev. 1373.97

Note:-
See JJ-92 for detail
of size of lots.
Subtract 1168.28 from
Government elevations shown
for Bellefontaine City elevations.
See AA 90 for Street Grade.

B.M. Chisel square on North
Wall of Sandusky Ave. Bridge
Elev. 1340.36

NORTHEAST HEIGHTS ALLOTMENT

BELLEFONTAINE - LAKE TOWNSHIP
LOGAN COUNTY OHIO

V.M.S. 4990

JUNE 1956 1"=50'
50' 100'



JJ-92-A

JJ-92-A

A-116 A