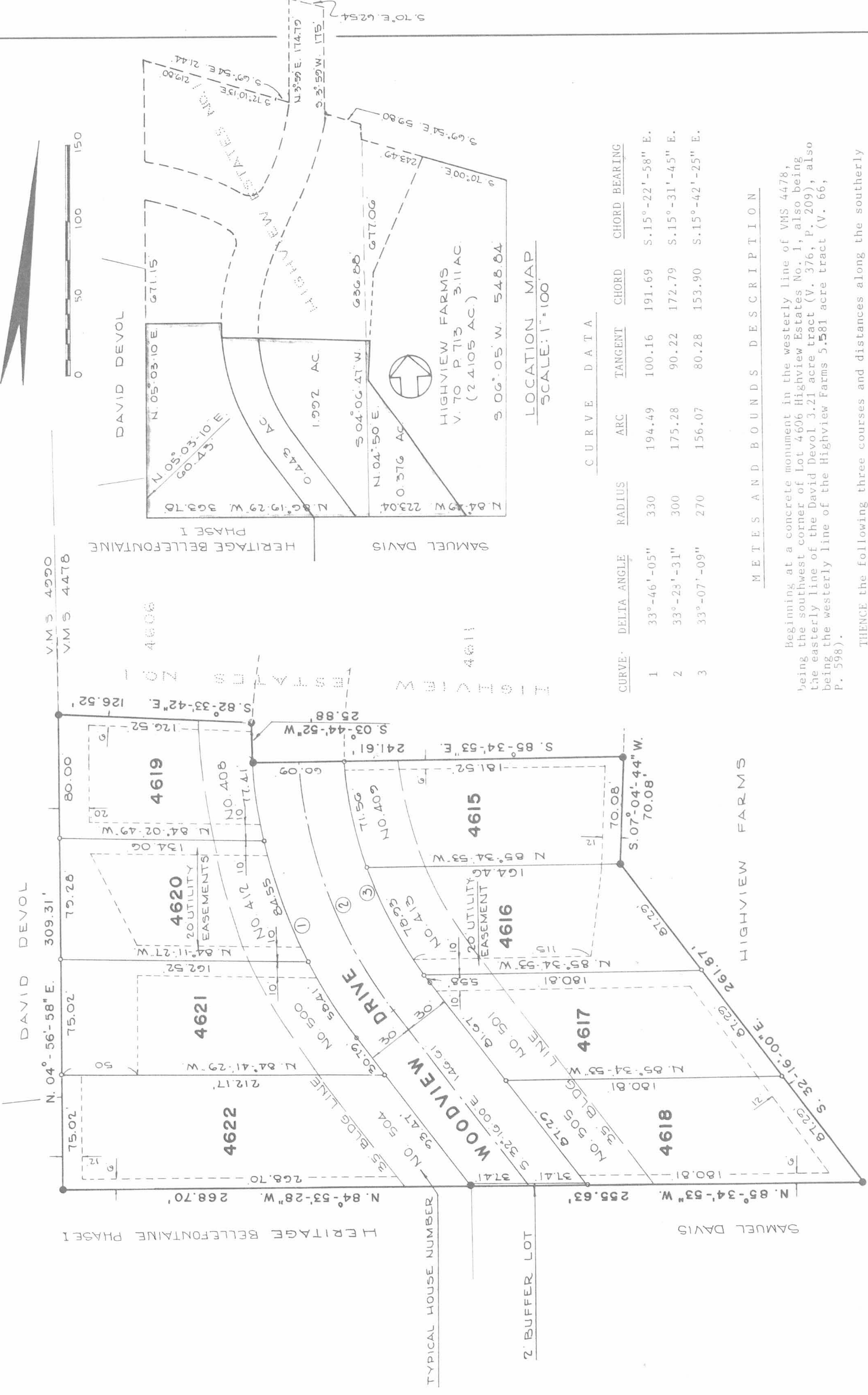


# HIGHVIEW ESTATES NO. 2

BEING A PART OF VMS 4478, LAKE TOWNSHIP, CITY OF BELLEFONTAINE, LOGAN COUNTY, OHIO



CURVE	DELTA ANGLE	RADIUS	ARC	TANGENT	CHORD	CHORD BEARING
1	33°-46'-05"	330	194.49	100.16	191.69	S. 15°-22'-58" E.
2	33°-23'-31"	300	175.28	90.22	172.79	S. 15°-31'-45" E.
3	33°-07'-09"	270	156.07	80.28	153.90	S. 15°-42'-25" E.

### METES AND BOUNDS DESCRIPTION

Beginning at a concrete monument in the westerly line of VMS 4478, being the southwest corner of Lot 4606 Highview Estates No. 1, also being the easterly line of the David Devol 3.21 acre tract (V. 376, P. 209), also being the westerly line of the Highview Farms 5.581 acre tract (V. 66, P. 598).

THENCE the following three courses and distances along the southerly line of Highview Estates No. 1:

S. 82°-33'-42" E. a distance of 126.52 feet to a concrete monument, S. 03°-44'-52" W. a distance of 25.88 feet along a chord of a curve to the left, having a radius of 330 feet, and an arc distance of 25.88 feet to a concrete monument,

S. 85°-34'-53" E. a distance of 241.61 feet to a concrete monument, being the southeast corner of Lot 4611 Highview Estates No. 1.

THENCE S. 37°-04'-44" W. a distance of 70.08 feet to a concrete monument that is to be set.

THENCE S. 32°-16'-00" E. a distance of 261.87 feet to a concrete monument that is to be set in the south line of the 3.11 acre Highview Farms tract (V. 70, P. 713), also being the north line of the Samuel Davis tract (V. 408, P. 580).

THENCE N. 85°-34'-53" W. a distance of 255.63 feet along the south line of the Highview Farms tracts (V. 70, P. 713 and V. 66, P. 598) to a concrete monument that is to be set, said point also being the northeast corner of the 5.03 acre Heritage Bellefontaine Phase I tract (V. 336, P. 184).

THENCE N. 84°-53'-28" W. a distance of 268.70 feet along the north line of the Heritage Bellefontaine Phase I tract and the south line of the Highview Farms 5.581 acre tract (V. 66, P. 598) to a concrete monument that is to be set in the westerly line of VMS 4478.

THENCE N. 04°-56'-58" E. a distance of 309.31 feet along the easterly line of the David Devol tract, the westerly line of VMS 4478, the westerly line of the 5.581 acre Highview Farms tract to the point of beginning. Containing 2.811 acres, 0.51% ac from V. 170, P. 115 Tract & 2.495 ac from V. 66, P. 598 tract.

This description prepared from an actual survey dated Oct. 21, 1988.

### DEDICATION

KNOW ALL MEN BY THESE PRESENTS, that Highview Farms, a General Partnership by Adolph Flannery, a partner in the General Partnership, proprietor of the land indicated on the accompanying plat, has authorized the platting thereof and does hereby dedicate the streets to the public use forever.

The buffer lot at the south end of Woodview Drive is dedicated conditionally until such time as the adjacent land is subdivided and a part thereof is dedicated for the purpose of extending the public right-of-way hereon shown.

*Adolph Flannery*  
*Adolph Flannery*  
 Witnesses

STATE OF OHIO  
 LOGAN COUNTY

Before me, a Notary Public in and for said County, personally came Adolph Flannery, a partner of Highview Farms, a General Partnership, who acknowledges the signing of the foregoing instrument to be his voluntary act and deed for the uses and purposes therein expressed.

IN WITNESS WHEREOF, I have hereunto set my hand and affixed my official seal this 5<sup>th</sup> day of February, 1989.

*Jeffrey I. Lee*  
 Notary Public  
 My Commission Expires 1/1/91

### SURVEYOR'S CERTIFICATION

The accompanying plat represents a subdivision of land in V.M.S. No. 4478, Lake Township, City of Bellefontaine, Logan County, Ohio.

All measurements are in feet and decimals of a foot. All measurements on curves are arc distances.

The tract has an area of 0.443 acres in streets and 2.368 acres in lots, making a total of 2.811 acres.

I hereby certify that the accompanying plat is a correct representation of Highview Estates No. 2 as surveyed and that all monuments and iron bars as shown hereon have been set or will be set as a part of work that surety is posted for.

5/8" iron bars are set at points shown thus: ○  
 Concrete monuments are set at points shown thus: ●



Lee Surveying and Mapping Co.  
 855 E. Sandusky Avenue  
 Bellefontaine, OH 43311

SUBDIVIDERS OF PLAT:  
 Highview Farms, a General Partnership  
 1536 County Road 10  
 Bellefontaine, OH 43311

### RESTRICTION

No structures, plantings, etc., are to be located within the limits of any easement delineated on this plat

### APPROVALS

Description checked J.C.H. 7-14-89  
 Approved this 7<sup>th</sup> day of July, 1989.

*Timothy Lee*  
 Bellefontaine City Engineer

The within streets and easements are hereby approved and accepted for public maintenance by ordinance No. 88-29 recorded in City Council's record book 89 on this 27<sup>th</sup> day of March, 1989.

*Richard J. Hays*  
 Mayor

*Howard Susskeeps* 7-5-89  
 President, Bellefontaine City Council

*Johnnie P. ...*  
 Clerk of Council

Approved this 7 day of June, 1989.

*Joseph J. ...*  
 Chairman, City Planning Commission

Transferred this 9<sup>th</sup> day of August, 1989.

*Jean ...*  
 Logan County Auditor

31895-4  
 Filed for record this 9<sup>th</sup> day of August, 1989, at 4:48 pm.

Recorded this 9<sup>th</sup> day of August, 1989, in Plat Cabinet A, Slide 683.

*Carolyn Collins*  
 Logan County Recorder

LOT	PARCEL NO.
4615	17-092-14-09-030.014
4616	17-092-14-09-030.015
4617	17-092-14-09-030.016
4618	17-092-14-09-030.017
4619	17-092-14-09-030.018
4620	17-092-14-09-030.019
4621	17-092-14-09-030.020
4622	17-092-14-09-030.021