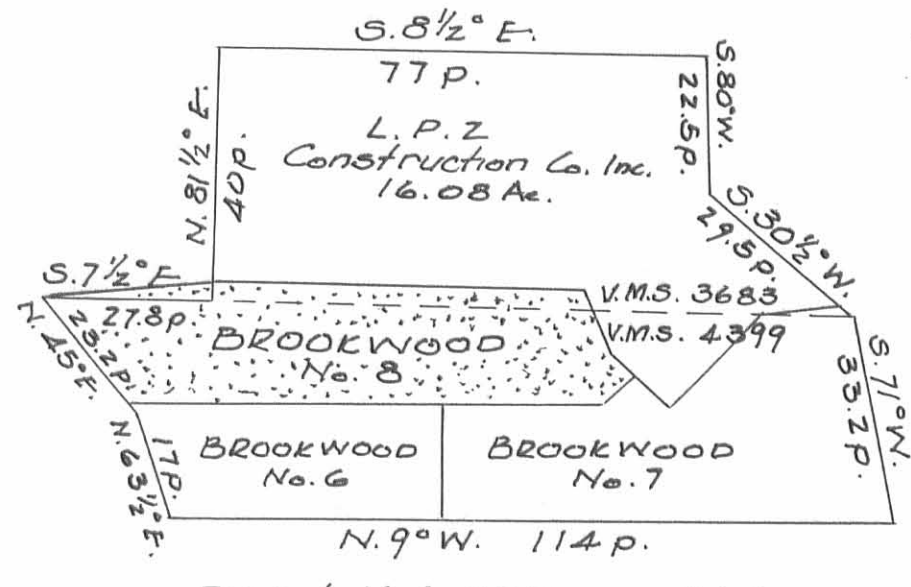


OWNER - DEVELOPER  
 L.P.Z. Construction Co. Inc.  
 500 S. Main St.  
 Bellefontaine, Ohio 43311

SURVEYOR  
 Dan L. Dodson  
 228 N. Park St.  
 Bellefontaine, Ohio 43311



Deed Vol. 332, pg. 862  
 Sec. 711.06 O.R.C.

Brown Avenue  
 Curve Data  
 Δ = 18°10.5'  
 R = 400.00'  
 T = 63.98'  
 L = 126.88'

The accompanying plat represents a Subdivision of land in V.M.S. 4399 and V.M.S. 3683, City of Bellefontaine, Lake Township, Logan County, Ohio. The tract has an area of 6.78 acres in lots and 2.56 acres in streets making a total of 9.34 acres of which 1.12 acres are in V.M.S. 3683 and 8.22 acres are in V.M.S. 4399. All measurements are in feet and decimals of a foot. All measurements on curves are chord distances.

• Indicates Iron Bar.  
 • Indicates Conc. R/W Monument  
 I hereby certify that the accompanying plat is a correct representation of BROOKWOOD ADDITION No. 8 as surveyed by me in July 1978

Dan L. Dodson  
 Reg. Surveyor 1270  
 Bellefontaine, Ohio

Numbers shown thus on lots (620) are City of Bellefontaine house numbers.

Easements for construction and maintenance of Public and Private utilities, unless otherwise shown, are ten feet (10') in width adjacent to all rear lot lines. No permanent structure, planting, etc., shall be permitted within the easement area.

Lot No	CURVE DATA	Chord Bearing
	Radius Delta Arc	
4437	550.52 8°52.7' 85.31	N.41°05.4'E
4438	430.00 3°44.5' 28.33	N.29°42.6'W
"	25.00 84°51.0' 36.88	N.10°39.4'E
"	550.52 7°23.3' 70.79	N.49°18.4'E
4439	430.00 12°00.8' 90.16	N.21°49.0'W
4440	430.00 7°27.7' 56.00	N.12°04.7'W
4449	456.51 18°43.1' 149.14	N.17°42.5'W
"	450.00 7°18.2' 55.15	N.56°06.7'E
4450	516.51 10°42.6' 96.55	S.22°35.2'E
4451	516.51 8°53.0' 80.08	S.12°47.4'E
4455	25.00 88°25.8' 38.58	S.52°35.6'E
4454	25.00 91°34.5' 39.96	S.37°26.5'W
4459	370.00 15°32.0' 100.31	S.16°06.9'E
4460	370.00 7°43.0' 49.83	S.27°44.4'E
"	25.00 90°00' 39.27	S.76°35.9'E

KNOW ALL MEN BY THESE PRESENTS that L.P.Z. Construction Co. Inc., proprietors of the land indicated on the accompanying plat have authorized the platting thereof and do hereby dedicate the Streets to the public use forever, including that part of Brown Ave. owned by the grantors not heretofore dedicated, and do hereby dedicate the utility easements to the City of Bellefontaine.

Eileen Daring  
Judy E. Blome  
 Witness

Carolyn Zell  
 Secy. Treasurer  
 L.P.Z. Construction Company Inc.

STATE OF OHIO  
 COUNTY OF LOGAN

Be it remembered that on this the 17 day of March in the year of our Lord One Thousand Nine Hundred and Eighty One, before me a notary public in and for said County, personally came Gordon L. Zell, President and Caroline P. Zell, Secy. Treas., officers of L.P.Z. Construction Company Inc., grantors in the foregoing dedication, who acknowledged the signing thereof to be their free and voluntary act and deed as such officers and the free and voluntary act and deed of said Corporation.

Eileen Daring  
 Notary Public  
 JUNE 3, 1987  
 My Commission Expires

Approved by the Planning Commission this 10 day of November 1982.  
Charles DePony  
 Chairman  
 Bellefontaine Planning Commission

The accompanying plat was adopted by Ordinance No. 82-54 as an addition to the City of Bellefontaine at a regular meeting of the City Council on the 14 day of December 1982.  
Don Jantz  
 Mayor

Richard J. Vicario  
 President of Council

Approved this 16 day of NOVEMBER 1982.  
Dwight S. Wynn  
 Acting City Engineer  
 Bellefontaine, Ohio

The within lots transferred this 17 day of December 1982.  
Mary G. Slater  
 Auditor, Logan County

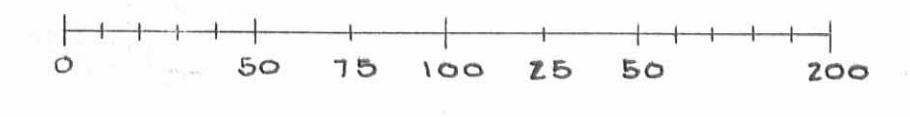
Received for record at 11:01 O'clock A.M. on the 17 day of DECEMBER 1982.  
 Recorded in Plat Cabinet A, Slide No. 619+621  
Carolyn Collins  
 Recorder of Logan County

BROOKWOOD ADDITION No. 8

BELLEFONTAINE, OHIO

V.M.S. 4399 V.M.S. 3683  
 LAKE TOWNSHIP LOGAN COUNTY

SCALE 1" = 50'





RESTRICTIONS AND COVENANTS

1. No stable, poultry house or yard shall be constructed or maintained on any lot; no domestic animals or fowls or poultry shall be raised, kept or permitted, except that dogs and cats may be kept provided that they are not kept, bred or raised thereon for commercial purposes.
2. Garages or carports must be attached to a house or attached to a breezeway which is attached to a house, and shall be erected and maintained for the use of the owner or occupants of the lot upon which the garage is located.
3. Off street parking is restricted to licensed motor vehicles; recreation vehicles, snow mobiles, boats, motor cycles and similar equipment shall be stored within the garage.
4. No residence shall be constructed with less than 1,000 square feet of living area, exclusive of any porches, garages and basements.
5. No wall or fence whatsoever shall be erected or maintained within the set-back area of any lot as to any street except that a fence may be attached to a house or a garage provided it does not extend more than ten (10) feet in the direction of the street upon which the house fronts with a maximum height of three (3) feet.
6. No hedge within the setback area of any dwelling house as to any street shall have a height greater than three (3) feet above the finished graded surface of the ground upon which the hedge is located.

Reviewed this 23<sup>rd</sup> day of NOVEMBER 1982.

James J. Kennedy  
Chairman  
Lake Township  
Board of Trustees

The within streets are hereby approved and accepted for public maintenance by Ordinance No. 82-54 recorded in City Council record book 1982 on this 14<sup>th</sup> day of December 1982.

Michael J. Kennedy  
W. Richard Horn  
Chester M. Lee  
Bellefontaine  
City Council

Approved this 19<sup>th</sup> day of November 1982.

Chester R. Kuritz, P.E., P.S.  
Logan County  
Engineer

The accompanying plat is hereby approved and accepted by the Board of Logan County Commissioners at a regular meeting this 19<sup>th</sup> day of November 1982.

Donald E. Lawrence  
John A. Jeffrey  
Warren W. Smith  
Logan County  
Commissioners

Approved this 23 day of November 1982.

William R. Verbeke, D.V.M.  
Logan County  
Health Dept.

That part of Brown Avenue dedicated to the public on the accompanying plat is hereby approved and accepted for public maintenance by Resolution No. 440-82 recorded in Commissioners Journal page \_\_\_\_\_ on this 19<sup>th</sup> day of November 1982.

Approved this 23 day of November 1982.

Willis Bayless  
Logan Soil and Water  
Conservation Dist.

Donald E. Lawrence  
John A. Jeffrey  
Warren W. Smith  
Logan County  
Commissioners

The accompanying plat contains 9.34 acres, of which 8.87 acres are in the City of Bellefontaine and 0.47 acres are in Lake Township.

BROOKWOOD ADDITION No. 8  
BELLEFONTAINE, OHIO

SHEET TWO OF TWO SHEETS