

AUTUMN WOODS CONDOMINIUMS

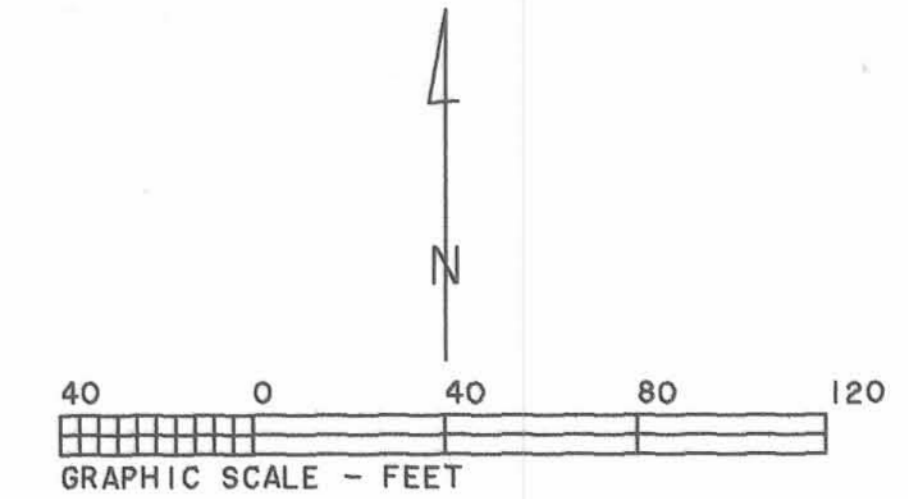
Sec. 27 & 33, T4, R14, Lake Township
Jado Ville II
Bellefontaine, Ohio

Assisted Living Concepts, Inc.
2.48 ac.
O.R. Volume 289, Page 979
(Part Lots 4701 & 4887)

Jado Ville
Plat Cabinet A, Slides 713A8B, 715A

Part Lot 4701

Part Lot 4887



CURVE	RADIUS	LENGTH	DELTA	CHORD	CH. BEARING
C-1	225.00'	92.64'	23°35'26"	91.99'	S 78°19'06"W
C-2	70.00'	151.67'	124°08'37"	123.69'	N 51°24'19"W
C-3	200.00'	168.84'	48°22'10"	163.87'	N 13°31'05"W
C-4	100.00'	292.57'	167°37'47"	196.94'	N 46°06'44"E
C-5	150.00'	183.48'	70°05'03"	172.25'	S 85°06'55"E
C-6	95.00'	252.64'	152°22'07"	184.50'	S 43°58'23"E
C-7	175.00'	192.07'	62°53'10"	182.58'	S 00°46'06"W
C-8	85.00'	221.44'	149°15'55"	163.92'	S 43°57'28"W
C-9	225.00'	111.83'	28°28'38"	110.68'	N 75°38'53"W
C-10	112.00'	41.64'	21°18'00"	41.40'	S 71°39'00"W
C-11	112.00'	50.24'	25°42'00"	49.82'	N 86°51'00"W
C-12	107.00'	60.05'	32°09'26"	59.27'	S 75°55'17"W
C-13	107.00'	44.82'	24°00'00"	44.49'	N 15°00'00"E
C-14	163.00'	58.82'	20°40'29"	58.50'	N 20°20'14"W
C-15	97.00'	44.33'	26°11'00"	43.94'	N 12°45'30"E
C-16	97.00'	37.90'	22°23'12"	37.66'	N 37°02'36"E
C-17	97.00'	38.66'	22°50'00"	38.40'	N 80°55'00"E
C-18	97.00'	44.45'	26°15'26"	44.06'	S 74°32'17"E
C-19	213.00'	7.64'	2°03'22"	7.64'	S 68°26'23"E
C-20	82.00'	50.83'	35°31'00"	50.02'	N 88°40'18"E
C-21	82.00'	37.75'	26°22'48"	37.42'	S 60°22'48"E
C-22	82.00'	44.68'	31°13'03"	44.13'	S 31°34'53"E
C-23	58.00'	110.41'	109°04'19"	94.48'	N 58°56'28"W
C-24	237.00'	36.44'	8°48'37"	36.41'	S 70°55'41"W
C-25	73.00'	176.58'	138°35'25"	136.57'	S 49°17'44"W

John J. Ziessler & Doris A. Ziessler
103.130 ac.
D.B. Volume 386, Page 705

Transferred this 30th day of July, 2003.

Michael E. Yoder
Auditor, Logan County, Ohio

Recorded in Plat Cabinet B, Slide 84B-85A
Received for record at 3:54 o'clock P.M.
this 30th day of July, 2003.

Linda Hanson
Recorder, Logan County, Ohio

DESCRIPTION CHECKED
LOGAN CO. ENGINEER
BY Jan C. H. 7-30-03

I do hereby certify that this plat of
Autumn Woods Condominiums show all
existing buildings and improvements
as constructed.

Charles R. Follrod
Charles R. Follrod
P.S. #7145
R & A Engineers Inc.

Charles R. Follrod
Charles R. Follrod
P.E. #51318
R & A Engineers Inc.



- Limited Common Area
- All areas & improvements not labeled with a Unit Designation or as Limited Common Area are Common Areas
- Found #5 Rebar
- 487 - Indicates Unit Designation

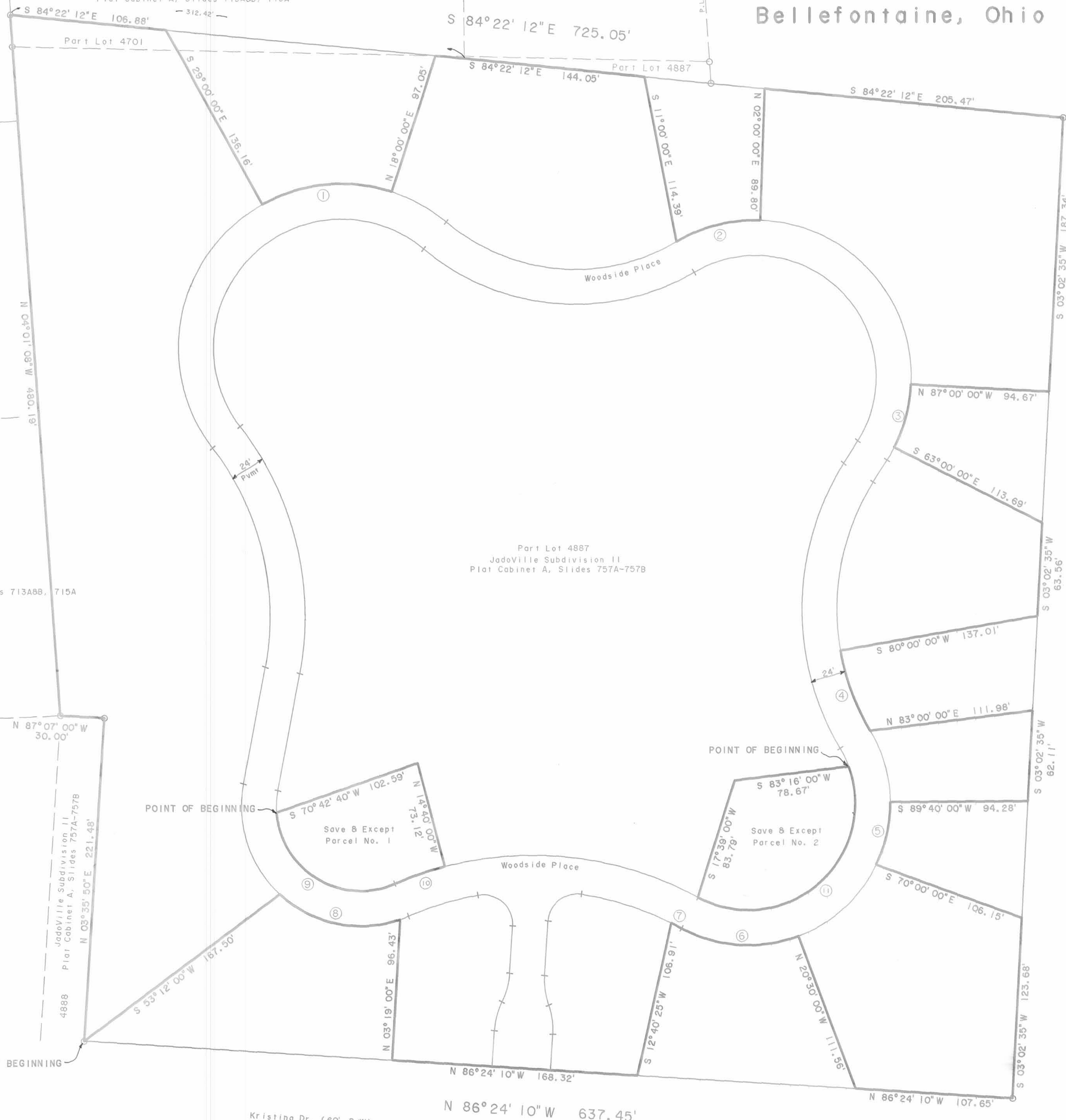
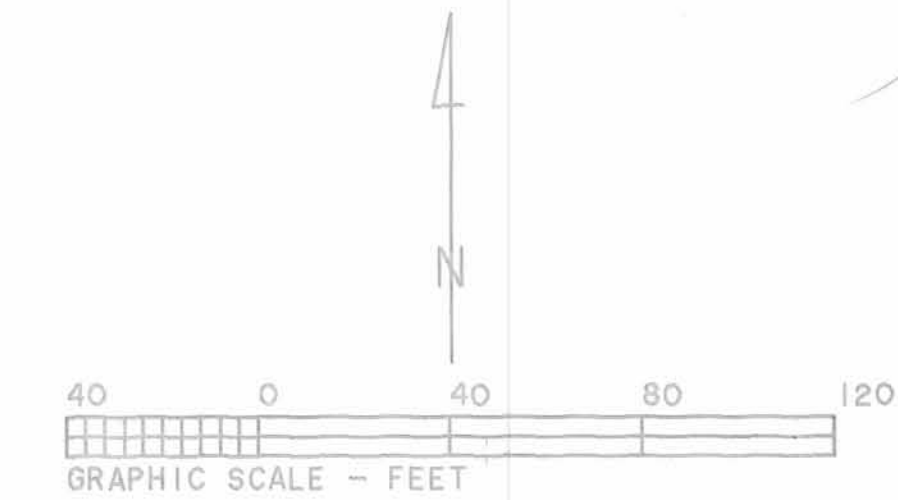
AUTUMN WOODS CONDOMINIUMS

Sec. 27 & 33, T4, R14, Lake Township
 Jado Ville II
 Bellefontaine, Ohio

Assisted Living Concepts, Inc.
 2.48 ac.
 O.R. Volume 289, Page 979
 (Part Lots 4701 & 4887)

Jado Ville
 Plat Cabinet A, Slides 713A88, 715A

Part Lot 4701



CURVE	RADIUS	LENGTH	DELTA	CHORD	CH. BEARING
C-1	112.00'	91.87'	47°00'00"	89.32'	N 84°30'00"E
C-2	107.00'	60.05'	32°09'26"	59.27'	N 75°55'17"E
C-3	107.00'	44.82'	24°00'00"	44.49'	S 15°00'00"W
C-4	163.00'	58.82'	20°40'29"	58.50'	S 20°20'14"E
C-5	97.00'	44.33'	26°11'00"	43.94'	S 12°45'30"W
C-6	97.00'	85.11'	49°05'26"	80.59'	N 85°57'17"W
C-7	213.00'	7.64'	2°03'22"	7.64'	N 62°26'23"W
C-8	82.00'	88.58'	61°53'45"	84.34'	N 78°08'18"W
C-9	237.00'	36.44'	8°48'37"	36.41'	S 70°55'41"W
C-10	58.00'	110.41'	109°04'19"	94.48'	N 58°56'28"W
C-11	73.00'	176.58'	138°35'25"	136.57'	S 49°17'44"W

John J. Ziessler & Doris A. Ziessler
 103.130 ac.
 D.B. Volume 386, Page 705

Transferred this 30th day of July, 2003.

Michael E. Kodw
 Auditor, Logan County, Ohio

Recorded in Plat Cabinet 3, Slide 84B-85A
 Received for record at 3:57 o'clock P.M.
 this 30th day of July, 2003

Linda Hanson
 Recorder, Logan County, Ohio

DESCRIPTION CHECKED
 LOGAN CO. ENGINEER
 By Dr. C. H. 7-30-03

I do hereby certify that this plat of Autumn Woods Condominiums show all existing building property lines.

CR Follrod
 Charles R. Follrod
 P.S. H7145
 R & A Engineers Inc.

CR Follrod
 Charles R. Follrod
 P.E. H51318
 R & A Engineers Inc.



○ - Found H5 Rebar