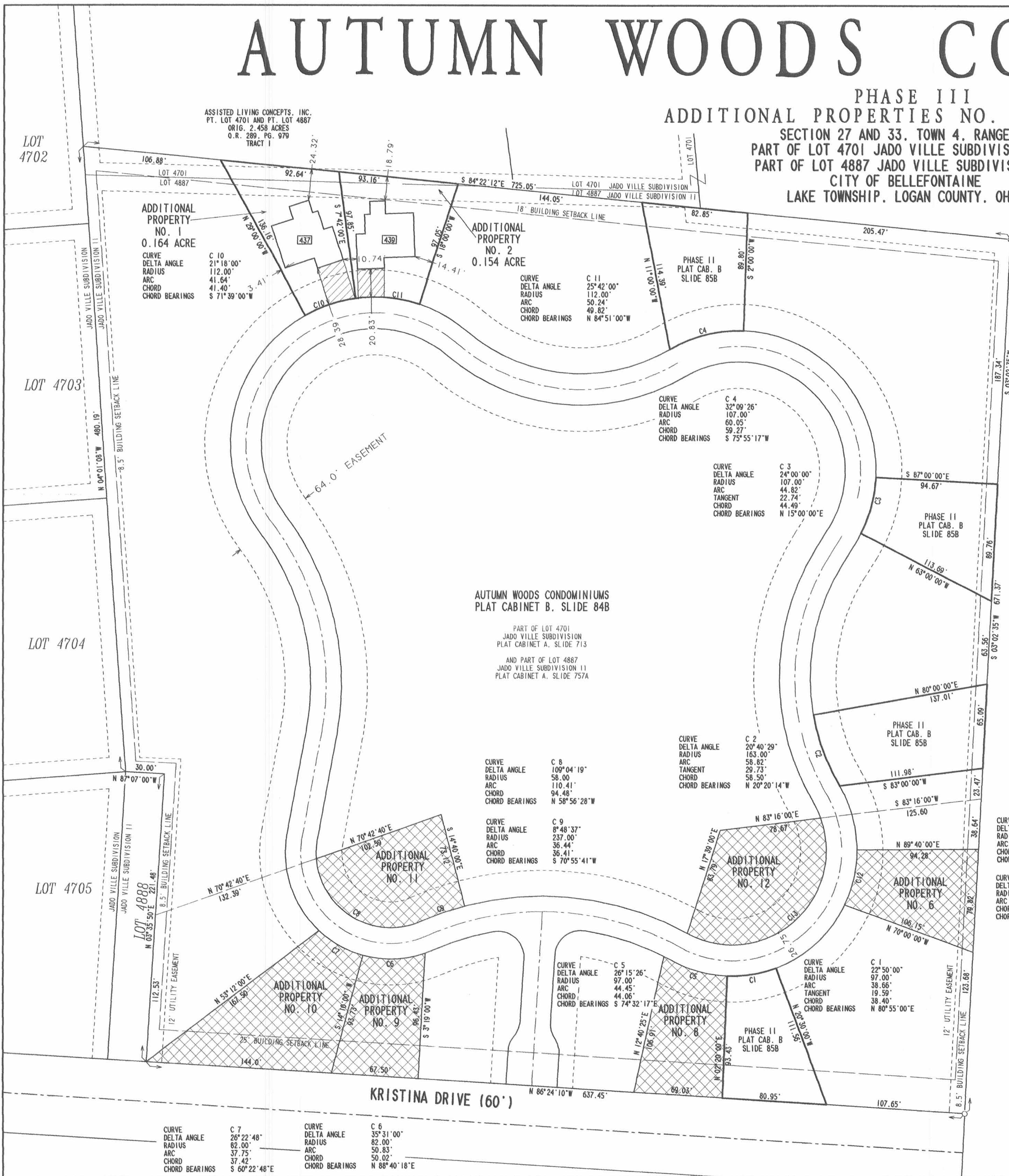


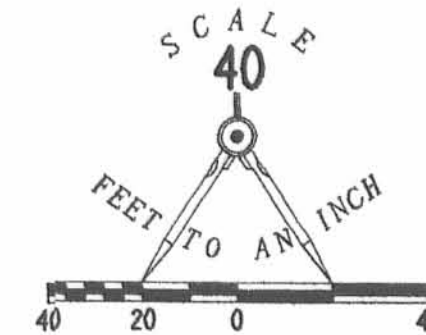
# AUTUMN WOODS CONDOMINIUMS

PHASE III  
 ADDITIONAL PROPERTIES NO. 1 AND NO. 2  
 SECTION 27 AND 33, TOWN 4, RANGE 14  
 PART OF LOT 4701 JADO VILLE SUBDIVISION AND  
 PART OF LOT 4887 JADO VILLE SUBDIVISION II  
 CITY OF BELLEFONTAINE  
 LAKE TOWNSHIP, LOGAN COUNTY, OHIO

ASSISTED LIVING CONCEPTS, INC.  
 PT. LOT 4701 AND PT. LOT 4887  
 ORIG. 2.458 ACRES  
 O.R. 289, PG. 979  
 TRACT I



JOHN J. ZIESSLER  
 AND DORIS A. ZIESSLER  
 ORIG. 103.13 ACRES  
 VOL. 386, PG. 705



- LEGEND
- 5/8 INCH IRON ROD FOUND
  - ▨ UNIT NUMBERS
  - ▧ LIMITED COMMON AREA
  - ▩ REMAINING ADDITIONAL AREA

AUTUMN WOODS CONDOMINIUMS  
 PLAT CABINET B, SLIDE 84B

PART OF LOT 4701  
 JADO VILLE SUBDIVISION  
 PLAT CABINET A, SLIDE 713  
 AND PART OF LOT 4887  
 JADO VILLE SUBDIVISION II  
 PLAT CABINET A, SLIDE 757A

WE DO HEREBY STATE THAT THESE DRAWINGS OF AUTUMN WOODS CONDOMINIUMS  
 PHASE III SHOW ALL BUILDINGS AS CONSTRUCTED.

*Michael W. Bow*  
 MICHAEL W. BOW  
 PROFESSIONAL ENGINEER 38860  
 DECEMBER 29, 2003

THE M & K ENGINEERING CO.  
 322 EAST MAIN STREET  
 RUSSELLS POINT, OH 43348  
 (937) 842-2698



*Jeffrey I. Lee*  
 JEFFREY I. LEE  
 PROFESSIONAL SURVEYOR 6359  
 DECEMBER 29, 2003

LEE SURVEYING AND MAPPING CO., INC.  
 117 NORTH MADRIVER STREET  
 BELLEFONTAINE, OHIO 43311  
 (937) 842-1450



APPROVED BY THE BELLEFONTAINE PLANNING COMMISSION  
 THIS 20<sup>TH</sup> DAY OF April, 2004.

*Fabry L. Romo*  
 CLERK, PLANNING COMMISSION

PLAT CHECKED *Jon C. His* 4-19-04

DESCRIPTION CHECKED *Jon C. His* 4-22-04

TRANSFERRED THIS 22<sup>ND</sup> DAY OF April, 2004.

*Michael E. Hodu*  
 AUDITOR, LOGAN COUNTY, OHIO

RECORDED IN PLAT CABINET B, SLIDE 87B

RECEIVED FOR RECORD AT 9:11:47 O'CLOCK A.M.

THIS 23 DAY OF April, 2004

*Kendra Hanson*  
 RECORDER, LOGAN COUNTY, OHIO

COPYRIGHT 2003 BY:  
 LEE SURVEYING & MAPPING CO., INC.  
 117 North Madriver Street  
 Bellefontaine, Ohio 43311  
 (937) 593-7335

KSR/JIL D412 ANC-3 L-3639-1

A-153E