

PLAT CABINET B SLIDE 125A

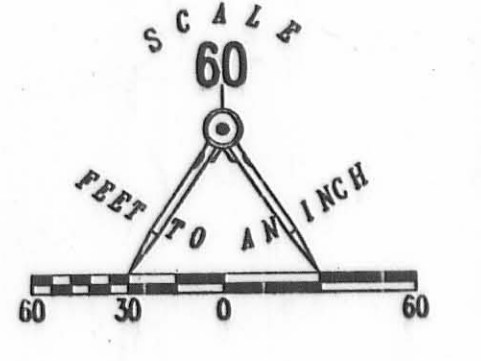
EXHIBIT B TO DECLARATION AND BYLAWS OF

LUDLOW BRIDGE CONDOMINIUMS - PHASE XVIII

6.04 ACRE TRACT, 1.00 ACRE TRACT, 8.05 ACRE TRACT OFFICIAL RECORD 710, PAGE 550, TRACTS I, II AND III

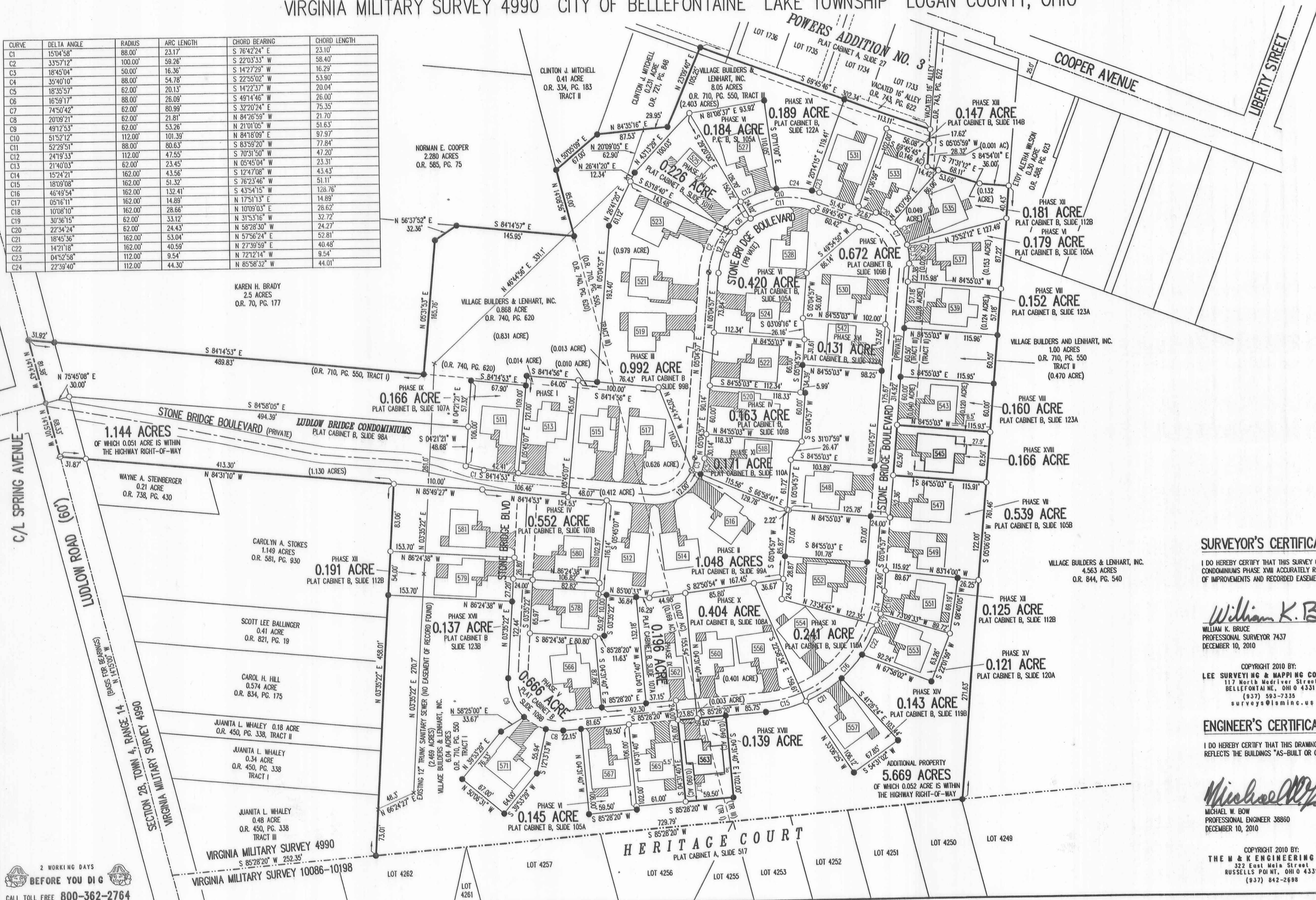
0.868 ACRE TRACT OFFICIAL RECORD 740, PAGE 620

VIRGINIA MILITARY SURVEY 4990 CITY OF BELLEFONTAINE LAKE TOWNSHIP LOGAN COUNTY, OHIO



CURVE	DELTA ANGLE	RADIUS	ARC LENGTH	CHORD BEARING	CHORD LENGTH
C1	15°04'38"	88.00'	23.17'	S 76°42'24" E	23.10'
C2	33°57'12"	100.00'	59.26'	S 22°03'33" W	58.40'
C3	18°45'04"	50.00'	16.36'	S 14°27'29" W	16.29'
C4	35°40'10"	88.00'	54.78'	S 22°55'02" W	53.90'
C5	18°35'57"	62.00'	20.13'	S 14°22'37" W	20.04'
C6	16°59'17"	88.00'	26.09'	S 49°14'46" W	26.00'
C7	74°50'42"	62.00'	80.99'	S 32°20'24" E	75.35'
C8	20°09'21"	62.00'	21.81'	N 84°26'59" W	21.70'
C9	49°12'53"	62.00'	53.26'	N 21°01'05" E	51.63'
C10	51°52'12"	112.00'	101.39'	N 84°18'09" E	97.97'
C11	52°29'51"	62.00'	80.63'	S 83°59'20" W	77.84'
C12	24°19'33"	112.00'	47.55'	S 70°31'50" W	47.20'
C13	21°40'03"	62.00'	23.45'	N 05°45'04" W	23.31'
C14	15°24'21"	162.00'	43.56'	S 12°47'08" W	43.43'
C15	18°09'08"	162.00'	51.32'	S 76°23'46" W	51.11'
C16	46°49'54"	162.00'	132.41'	S 43°54'15" W	128.76'
C17	05°16'11"	162.00'	14.89'	N 17°51'13" E	14.89'
C18	10°08'10"	162.00'	28.66'	N 10°09'03" E	28.62'
C19	30°36'15"	62.00'	33.12'	N 31°53'16" W	32.72'
C20	22°34'24"	62.00'	24.43'	N 58°28'30" W	24.27'
C21	18°45'36"	162.00'	53.04'	N 57°56'24" E	52.81'
C22	14°21'18"	162.00'	40.59'	N 27°30'59" E	40.48'
C23	04°52'58"	112.00'	9.54'	N 72°21'4" W	9.54'
C24	22°39'40"	112.00'	44.30'	N 85°38'32" W	44.01'

- LEGEND:
- 1-1/4 INCH IRON PIPE FOUND
 - 5/8 INCH IRON ROD SET
 - 5/8 INCH IRON ROD FOUND
 - MAG NAIL SET
 - MAG NAIL FOUND
 - RAILROAD SPIKE SET
 - RAILROAD SPIKE FOUND
 - ▨ LIMITED COMMON AREA
 - ▭ UNIT NUMBER



KAREN H. BRADY
2.5 ACRES
O.R. 70, PG. 177

WAYNE A. STEINBERGER
0.21 ACRE
O.R. 738, PG. 430

CAROLYN A. STOKES
1.149 ACRES
O.R. 581, PG. 930

SCOTT LEE BALLINGER
0.41 ACRE
O.R. 821, PG. 19

CAROL H. HILL
0.574 ACRE
O.R. 834, PG. 175

JUANITA L. WHALEY
0.18 ACRE
O.R. 450, PG. 338, TRACT II

JUANITA L. WHALEY
0.34 ACRE
O.R. 450, PG. 338
TRACT I

JUANITA L. WHALEY
0.48 ACRE
O.R. 450, PG. 338
TRACT III

- NOTES:
- EASEMENTS IF SHOWN ARE AS PROVIDED BY DEVELOPER. THE SURVEYOR DID NOT SEARCH FOR ADDITIONAL EASEMENTS.
 - THE WORD "CERTIFY" IS INTENDED TO BE AS DEFINED IN OHIO ADMINISTRATIVE CODE 4733-35-04(C).
 - BUILDING HEIGHT FROM PEAK OF ROOF TO GROUND:
UNIT 545 IS 20.0'
UNIT 563 IS 20.35'

SURVEYOR'S CERTIFICATION:

I DO HEREBY CERTIFY THAT THIS SURVEY OF LUDLOW BRIDGE CONDOMINIUMS PHASE XVIII ACCURATELY REFLECTS THE LOCATION OF IMPROVEMENTS AND RECORDED EASEMENTS.

William K. Bruce
WILLIAM K. BRUCE
PROFESSIONAL SURVEYOR 7437
DECEMBER 10, 2010

COPYRIGHT 2010 BY:
LEE SURVEYING & MAPPING CO., INC.
117 North Medriver Street
BELLEFONTAINE, OHIO 43311
(937) 593-7335
surveys@lsmcinc.us

ENGINEER'S CERTIFICATION:

I DO HEREBY CERTIFY THAT THIS DRAWING ACCURATELY REFLECTS THE BUILDINGS "AS-BUILT OR CONSTRUCTED".

Michael W. Bow
MICHAEL W. BOW
PROFESSIONAL ENGINEER 38860
DECEMBER 10, 2010

COPYRIGHT 2010 BY:
THE M & K ENGINEERING CO.
322 East Main Street
RUSSELLS POINT, OHIO 43311
(937) 842-2688

PRE-APPROVAL *Joseph M. Varty*
PLAT CHECKED *Joseph M. Varty* 12-14-10
TRANSFERRED THIS 15th DAY OF DECEMBER, 2010
AUDITOR, LOGAN COUNTY, OHIO
RECORDED IN PLAT CABINET B, SLIDE 125A
RECEIVED FOR RECORD AT 1:35 O'CLOCK P.M.
THIS 15th DAY OF December, 2010
Linda L. Hanson
RECORDER, LOGAN COUNTY, OHIO

2 WORKING DAYS
BEFORE YOU DIG
CALL TOLL FREE 800-362-2764
OHIO UTILITIES PROTECTION SERVICE