

CURVE TABLE					
CURVE	RADIUS	LENGTH	DELTA	CH DIST	CH BEARING
C1	51.50'	53.99'	60°04'12"	51.55'	N01°46'44"W
C2	51.50'	26.83'	29°50'47"	26.53'	N43°10'46"E
C3	51.50'	26.25'	29°12'06"	25.96'	N75°16'21"E
C4	51.50'	28.56'	31°46'15"	28.19'	S73°59'17"W
C5	51.50'	35.41'	39°23'56"	34.72'	S40°25'27"E
C6	51.50'	29.30'	32°35'43"	28.90'	S04°25'38"E
C7	47.50'	24.23'	29°13'44"	23.97'	N02°44'38"W
C8	51.50'	201.06'	223°41'04"	95.61'	N80°01'42"E

BEARINGS BASED ON S83°40'00"E FOR THE SOUTH LINE OF WESTERMAN ALLOTMENTS 5, PLAT CAB. A, SLIDE 653

SCALE: 1"=30'  
0 15 30

**ALLEN WOODS  
CONDOMINIUM PHASE 3**  
CITY OF BELLEFONTAINE, LAKE TOWNSHIP,  
VMS 4478, LOGAN COUNTY, OHIO

**APPROVALS**

APPROVED THIS 14 DAY OF October 2022

BELLEFONTAINE CITY ENGINEER

PREAPPROVAL BY: *Suzanne M. Cochran*  
PLAT CHECKED BY: *Suzanne M. Cochran 10-18-2022*

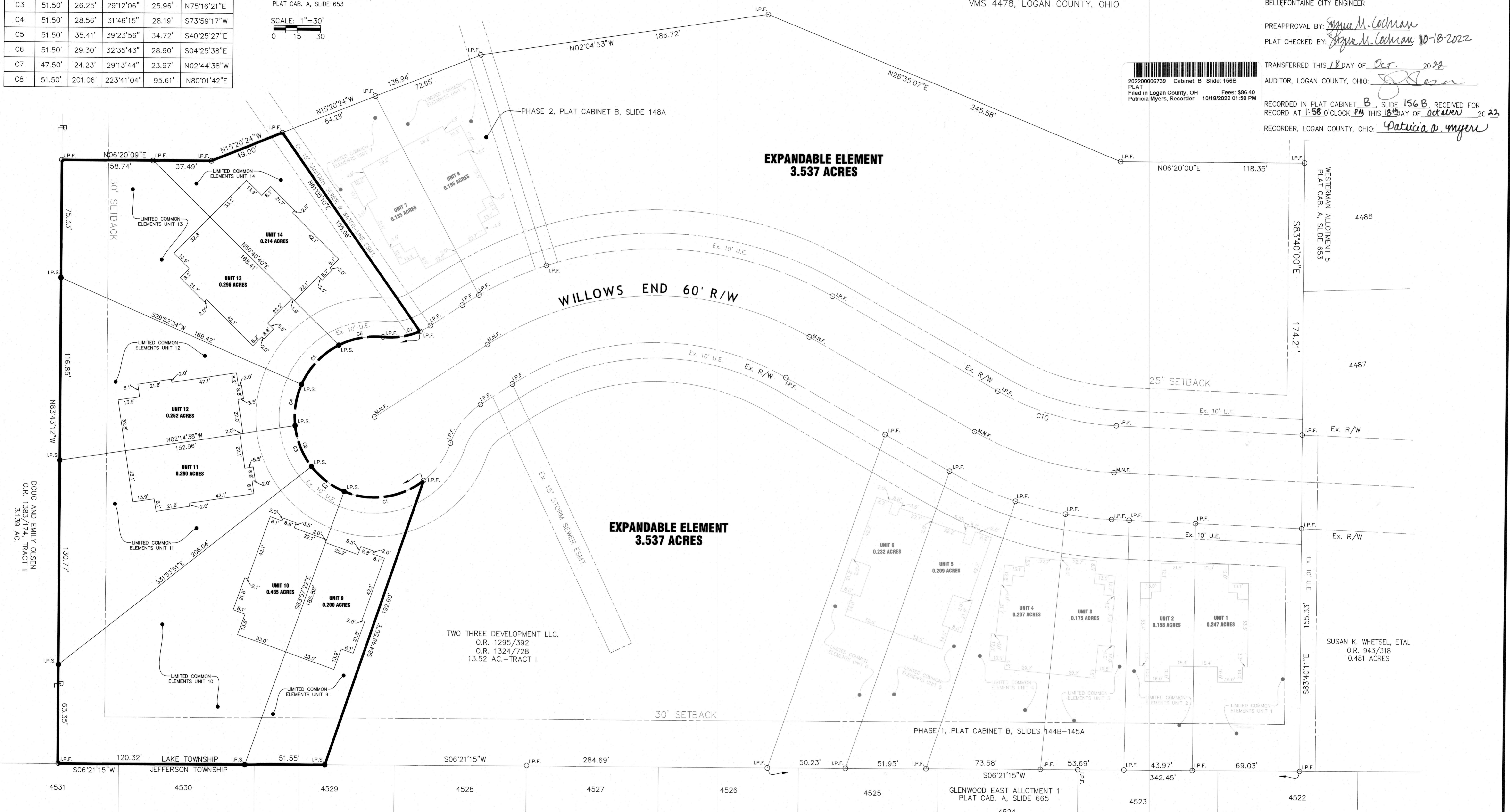
TRANSFERRED THIS 18 DAY OF Oct. 2022

AUDITOR, LOGAN COUNTY, OHIO: *[Signature]*

RECORDED IN PLAT CABINET B, SLIDE 156B, RECEIVED FOR RECORD AT 1:58 O'CLOCK PM THIS 18 DAY OF October 2022

RECORDER, LOGAN COUNTY, OHIO: *Patricia v. Myer*

20220006739 Cabinet B Slide: 156B  
PLAT Filed in Logan County, OH Fees: \$86.40  
Patricia Myers, Recorder 10/18/2022 01:58 PM



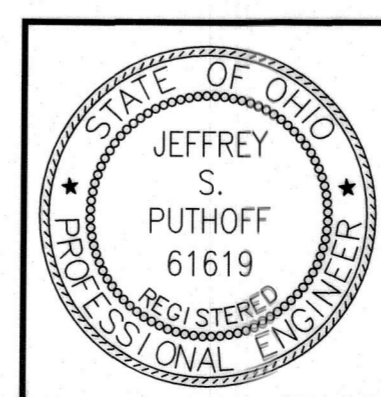
DOUG AND EMILY OLSEN  
O.R. 1383/174, TRACT II  
3.139 AC.

**LEGEND**

- I.P.S. 5/8" X 30" REBAR W/CAP SET
- I.P.F. 5/8" IRON PIN FOUND
- M.N.F. MAG NAIL FOUND

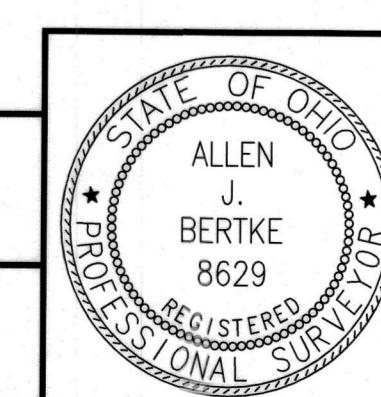
This Plat Plan of Allen Woods Condominium, Phase 3, and the attached drawings of the declaration, consisting of page 3 through 14, of the floor plans and elevation views of the buildings shown hereon, show insofar as graphically possible (1) the particulars of the buildings in the condominium, including but not limited to the layout, location designation and dimensions of each of the units therein, and (2) the layout, location and dimensions of the common elements and facilities, the limited common elements and facilities.

We the undersigned, being a Professional Engineer and a Professional Surveyor, hereby state that said drawings show the buildings as constructed, as graphically as possible and accurately reflect the location of improvements and recorded easements.



*[Signature]*  
JEFFREY S. PUTHOFF, P.E. #61619  
*[Signature]*  
ALLEN J. BERTKE, P.S. #8629

10-12-2022  
DATE  
10-12-2022  
DATE



**ChoiceOne**  
Engineering

SIDNEY, OHIO 937.497.0200  
LOVELAND, OHIO 513.239.8954  
PORTLAND, INDIANA 260.766.2500  
www.CHOICEONEENGINEERING.com

DATE:  
09-27-2021  
DRAWN BY:  
AJB  
JOB NUMBER:  
LOGBEL1903  
SHEET NUMBER  
1 OF 1