

Monuments at corner continued =

G. =	Rock stone & 2 brick bats	H. =	Small flat stone, 2 brick-bats
H. =	Long Rock stone & some brick bats, in a stone bridge, with a cast-iron Tea Kettle on the N. side of Stone.		& a large cow-bell = ,
S. =	Rock stone, W. Oak 20 In. Dia. N. 44 W. 12 links, Original, the other not found.		a Cherry Stump N. 57 W. 14 links,
f. =	Hickory 12 In. Dia. The Original corner tree.		W. Oak Stump N. 84 E. 10 links,
			(These as the stumps of the Original Witness trees)
			2 Small Elms, from one root, N. 38 E. 13 links.

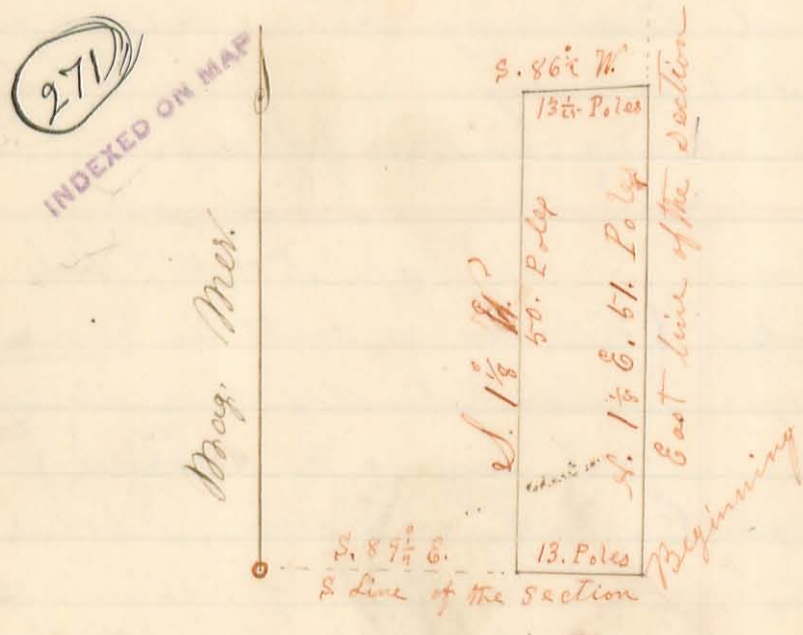
The length & bearing of each line is represented on the Plat in Red ink. The length of the lines being in Chains & hundredths (or links). — The area is also represented on the Plat for each tract; which is as follows:

The S. E. Quarter (Yoder)	contains	157. <sup>22</sup> / <sub>100</sub> Acres
N. E. Do. (Culper)	"	160. <sup>80</sup> / <sub>100</sub> Acres
S. W. Do. (Miller)	"	162. <sup>40</sup> / <sub>100</sub> A.
N. W. Do.	"	163. <sup>20</sup> / <sub>100</sub> A.
The E 1/4 of the N. W. quarter (Hess)	"	81. <sup>54</sup> / <sub>100</sub>
W. 1/4 " " N. W. Do. (Miller)	"	81. <sup>60</sup> / <sub>100</sub>

The entire section contains 643. <sup>80</sup>/<sub>100</sub> Acres  
 Done in presence of Henry Miller, Christ. Yoder, Joseph Hess, David Culper, Wm. Moore, Thomas Moore, Burkheart, Ephraim Binkle and the Chain carriers — Josiah Norton?  
 Peter Wolf } Chain carriers first survey  
 Isaac W. Moore }  
 Moses Lowe } Chain carriers on the resurvey —

I do hereby certify that I caused all the forenamed corner stones to be planted, except the stone at the South West corner of the section, (see Plat) which I find to be at the proper place, and that the foregoing Plat, and Report of Survey, are correct.  
 Henry C. Moore, County Surveyor, of Logan Co. Ohio

Survey No. 821 ✓  
 John M. Glover



Surveyor's Office Bellefontaine Ohio September 29<sup>th</sup> A. D. 1859

The annexed Plat is a representation of four Acres & 16 1/2 Poles of land in the S. E. corner of the S. E. quarter of Section No. 33, of Town No. 5, & Range No. 13, E. G. M. R. & in Liberty Township of Logan

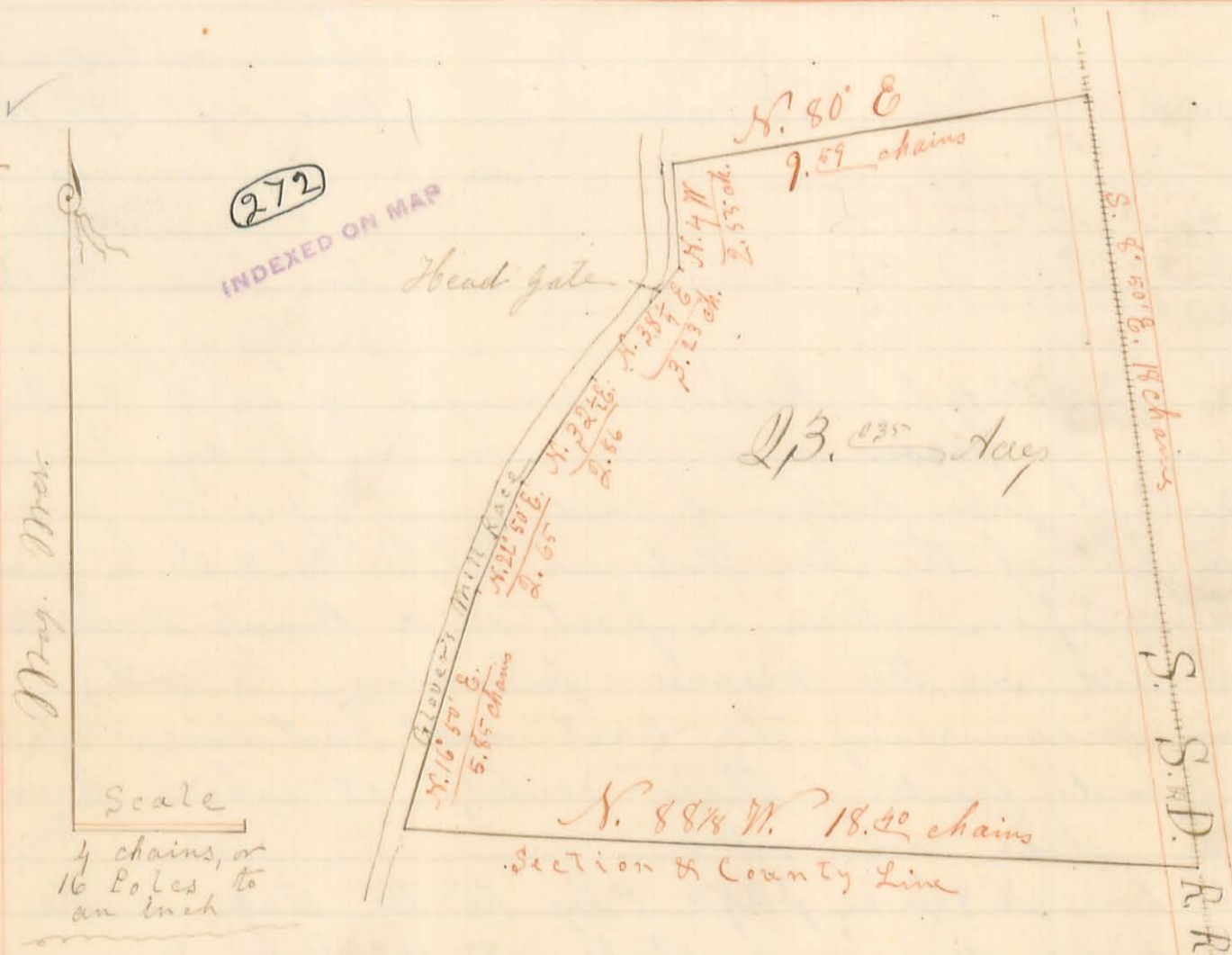
County Ohio as surveyed by me Henry C. Moore, County Surveyor in and for said County; on the 8 day of September A. D. 1859, at the request of John M. Glover, of West Liberty Co. for the purpose of establishing the line &

Beginning at the S.E. corner of said section, which is in a pond, & corner to sections Nos. 26, 27, 32 & 33 of said town & range where <sup>I planted</sup> a long lime stone with nine small rock stone around it; Run thence N. 1 1/2 E. 51 Poles, with the East line of said section No. 33; crossing Brad River at 38.6 Poles, & again at 46.6 Poles; to a small lime stone & 8 brick bats in said line; Thence S. 86 1/2 W. 13 Poles, & one link to a small rock stone, & 2 brick bats, Thence S. 1 1/8 W. 50 Poles to a large rock stone in the Pim Mill Road, & in the south line of said section No. 33, from which a white Thorn 6 inches in diameter bears N. 23 1/2 W. 115 links distant, & a Plum tree 6 in. dia. bears S. 89 1/4 W. 59 links; Thence with the south line of said section S. 89 1/4 E. 13 Poles to the place of beginning, containing 4 acres & 16 1/2 poles.

Newton Prater  
 Henry Stauber } Chain carriers  
 Elias V. Fuson } Flag bearer

I hereby certify that the foregoing Plat, and report of survey are correct - Henry C. Moore, County Surveyor of Logan County Ohio

Survey No. 822  
 in W. Glover

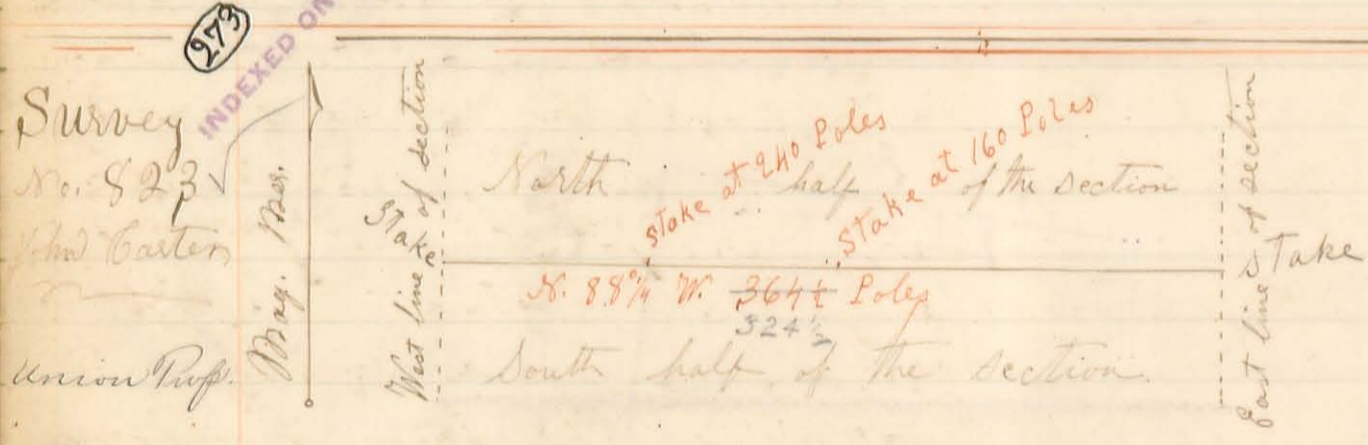


Surveyor's Office Bellefontaine Ohio Sept. 29<sup>th</sup> A.D. 1859  
 The above Plat is a representation of twenty three acres, and thirty five thousandths of an acre of land in Section No. 27, of Town No. 5, & Range No. 17 E. G. M. R. in Liberty Township of Logan County Ohio, as surveyed by me, Henry C. Moore, County Surveyor of said County, on the 8<sup>th</sup> day of Sept. A.D. 1859, at the request of John M. Glover, of West Liberty Ohio for the purpose of establishing the lines & corners thereof, and ascertaining the number of acres contained therein; to wit:  
 Beginning at Stake in the south line of said section No. 27, being also the line between the Counties of Logan

Champaign, at the point where said line is intersected by the centre of the S. S. & D. Rail Road track; Thence with the said section & County line N. 88 1/4 W. 18.30 chains to a stake in the East bank of John M. Glover's Mill Race, Thence with the East bank of said Race N. 16° 50' E. 5.85 chains to a stake, Thence N. 22° 50' E. 2.65 chains to a stake, Thence N. 32 1/2 E. 2.86 chains to a stake; Thence N. 38 1/2 E. 3.23 chains to a stake; passing the "Head Gate" of said race at 2.5 chains, & leaving the bank of said race at 2 chains. Thence N. 4 1/2 W. 2.55 chains to a stake in the prairie, Thence S. 80° E. 9.52 chains to a stake in the centre of the S. S. & D. Rail Road track, Thence with the centre of said Rail Road track S. 8° 50' E. 18 chains to the place of beginning. And I find the same to contain 23.035 Acre.

Newman Prater }  
Henry Stautz } Chain carriers  
Elias V. Fuson } Flag man

I hereby certify that the foregoing Plat and Report of Survey are correct. Henry C. Moore, County Surveyor of Logan County, Ohio

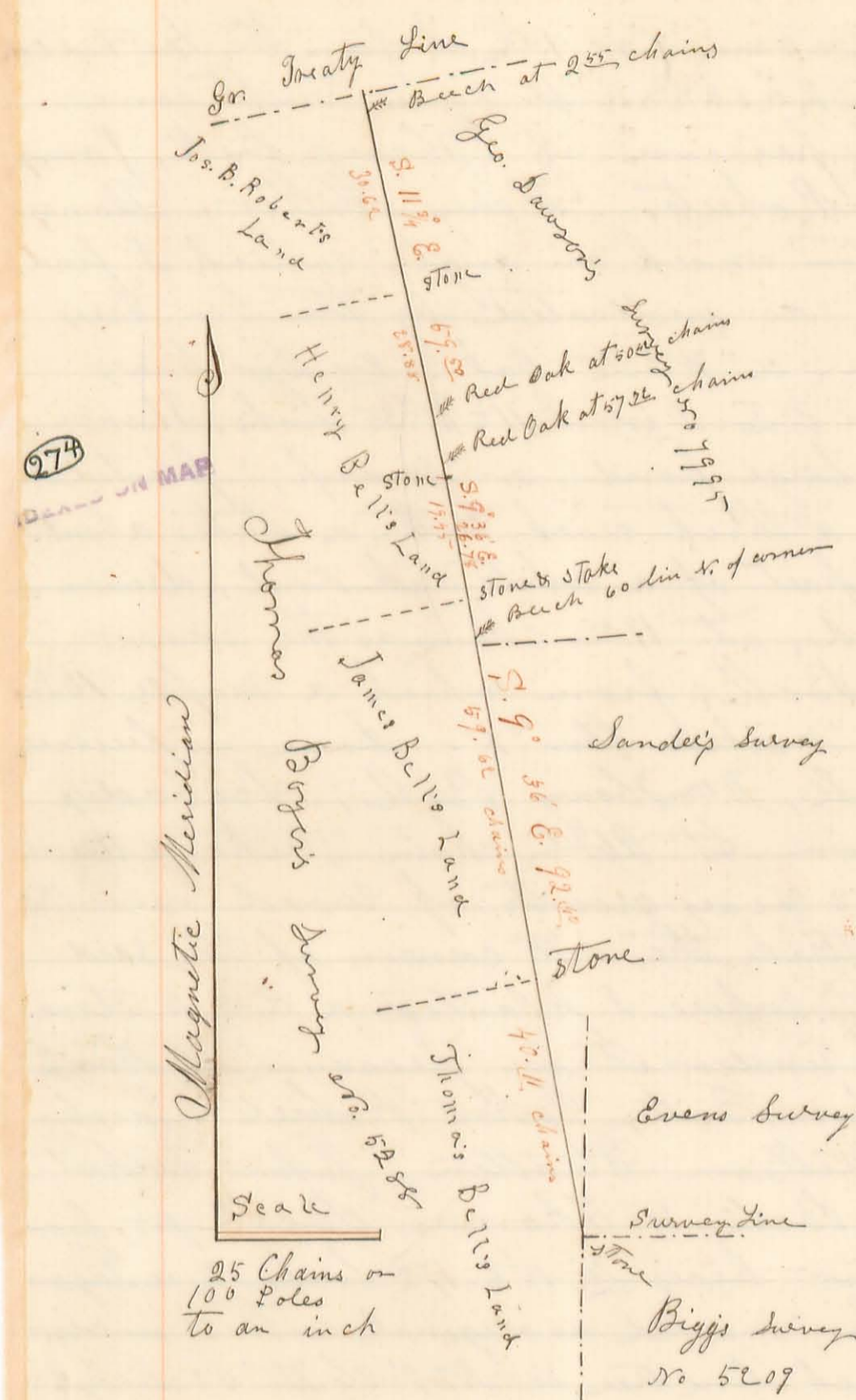


Surveyor's Office Bellefontaine Ohio Sept. 29th A.D. 1859. The annexed Plat is a representation of the line between the North & South halves of section No. 2, of

Town No. 5, & Range No. 14 E. G. M. R.; as surveyed by me H. C. Moore, County Surveyor in and for Logan County Ohio, on the 23rd day of Sept. A.D. 1859 at the request of John Carter of said County; for the purpose of locating a part of the line between the N. W. & S. W. quarters of said section, upon which a part of a County Road is located, which I did in the manner following; to wit;

After measuring the East and West lines of the section, and finding their centres, at which points I drove a stake each, I ran from the stake in the centre of the East line N. 88 1/4 W. 324 1/2 Poles to the stake in the centre of the West line, driving a stake at 160 Poles, & one at 240 poles. Done in presence of Peter Detrick, David Detrick, John Detrick, John Carter and the Chain carriers Solomon Mader }  
Simon Daily } Chain carriers

I hereby certify that the foregoing Plat & Report truly represent the things therein set forth, Henry C. Moore, County Surveyor of Logan County, Ohio



Surveyor's Office Bellefontaine O.  
November 11<sup>th</sup> 1859.

The annexed Plat is a representation of the line between the Original Virginia Military Surveys No. 5288 in the name of Thomas Boyer, (on the west) and No. 7995 in the name of George Dawson & Co. 13068 in the name of Samuel H. Sander (on the east) in Bokes Creek Township, of Logan County, Ohio; as surveyed on the 9<sup>th</sup>, 10<sup>th</sup>, 20<sup>th</sup> & 21<sup>st</sup> days of September, A.D. 1859, by me, Henry C. Moore, County Surveyor in and for said county, at the request of Henry Bell, of said Township & County, for the purpose of ascertaining and establishing said Original line, which is as follows: viz;

Beginning in the Greenville Treaty line at the S.E. corner of said Boyer's Survey No. 5288, and the N.W. corner of said Dawson's Survey No. 7995 where I planted a Rock stone about three feet square, with some crockery ware under it, in the presence of Henry Bell, Moses Bell, John Bell,

James Bell, Joseph B. Roberts, John Roberts, Samuel Roberts, Thomas Roberts, Wm Roberts, Benj. R. West, & John Rine; from which a Buckey Stump bears S. 64° W. 14 links, & a Beech Stump N. 82° E. 5 links, (each of which were said to be stumps of the Original corner trees, by persons present.) Run thence with the line between said Boyer & Dawson's Surveys S. 11 1/2 E., Strike a beech line tree at 2.55 chains, a block of which is preserved in my office marked "R. No's 5288 & 7995, cut Sept. 20<sup>th</sup> 1859. By H.C. Moore"; At 30.62 chains I planted a Rock Stone about 2 x 2 x 3 feet square, with 4 pieces of stove-plate under it; in presence of Henry Bell, James Bell, John Bell, John Bell Jr., Moses Bell, Thomas Bell, Joseph B. Roberts, John Roberts, Samuel Roberts, Thomas Roberts, William Roberts, and Benj. R. West, as the corner between said Joseph B. Roberts & Henry Bell, near a sugar stump; Pass a few feet East of a Spring-well at 33 chains, Pass two links west of a Red oak line tree at 50.22 chains, a block of which is preserved in my office marked "No. 2. No's 5288 & 7995, cut Sept. 20<sup>th</sup> 1859"; Strike the centre of a Red Oak line tree 30 lin Dir. at 57.22 chains, a block of which is also preserved in my office marked "No. 1. No's 5288 & 7995, cut,

Angle } 3

Sept. 9<sup>th</sup> 1859<sup>th</sup>. At 59.50 chains (or 1.28 ch. from the last Red Oak) I planted a Rock Stone 2 1/2 x 2 1/2 x 1 1/2 ft. square, with some crockery ware under it, in presence of Henry Bell, James Bell, John Bell, John Roberts, Henry Miller, Thomas Bell, & Thomas Bell Jr., to mark an angle which I find in said Original line, as indicated by the line trees thereof, from which stone a White Oak 30 Ln. Dir. bears N. 75° E. 18 1/2 links, a sugar & Ln. Dir. S. 71 1/2° W. 35 links; Thence Run S. 9° 36' E. crossing a large pond, or "swamp", planted a Rock Stone, & a piece of a thick crock, with a stake about 4 feet long, made of a part of a white oak rail, driven under them, in said pond, at 19.45 chains as the corner between Henry & James Bell, from which a maple 16 Ln. Dir. bears N. 70° W. 53 links, marked thus "X". Done in presence of Henry Bell, James Bell, Wm. Henry Bell, Scibadies Bell & John Swihart; — At 26.18 chains strike a Beech line tree, which counts 53 years growth of wood over the hacks; At 26.18 chains strike the S.W. corner of the said

Dawson & Sanders corner }

Dawson's Survey No. 7995, where I planted a Rock Stone with a piece of crock under it in presence of Henry Bell, James Bell, John Bell, John Roberts, Jacob M'Gee, Benj. R. West, William Stratten, John Swihart, Henry Miller, Thomas Bell, & Thomas Bell Jr., from which a Beech 18 Ln. Dir. bears N. 15° E. 17 1/2 links, & a Sugar 30 Ln. Dir. S. 37 1/2° W. 28 links, marked as original witness or corner trees. The last named Beech line tree is N. 9° 36' W. 60 links.

Continued the same bearing; viz: S. 9° 36' E. on the line between said Boyce's survey No. 5288, & S. H. Sanders Survey No. 13068; Set a Small Rock Stone & some pieces of "stone crock" at 52.27 chains in presence of Thomas Bell, James Bell, Henry Bell & John Swihart as the corner between James Bell & Thomas Bell, from which a Yellow Willow 10 Ln. Dir. bears S. 8 1/2° W. 70 links, a swamp Ash 8 Ln. Dir. N. 20° E. 15 links & a Swamp Ash 6 Ln. Dir. S. 56° E. 10 links distant.

Biggs corner }

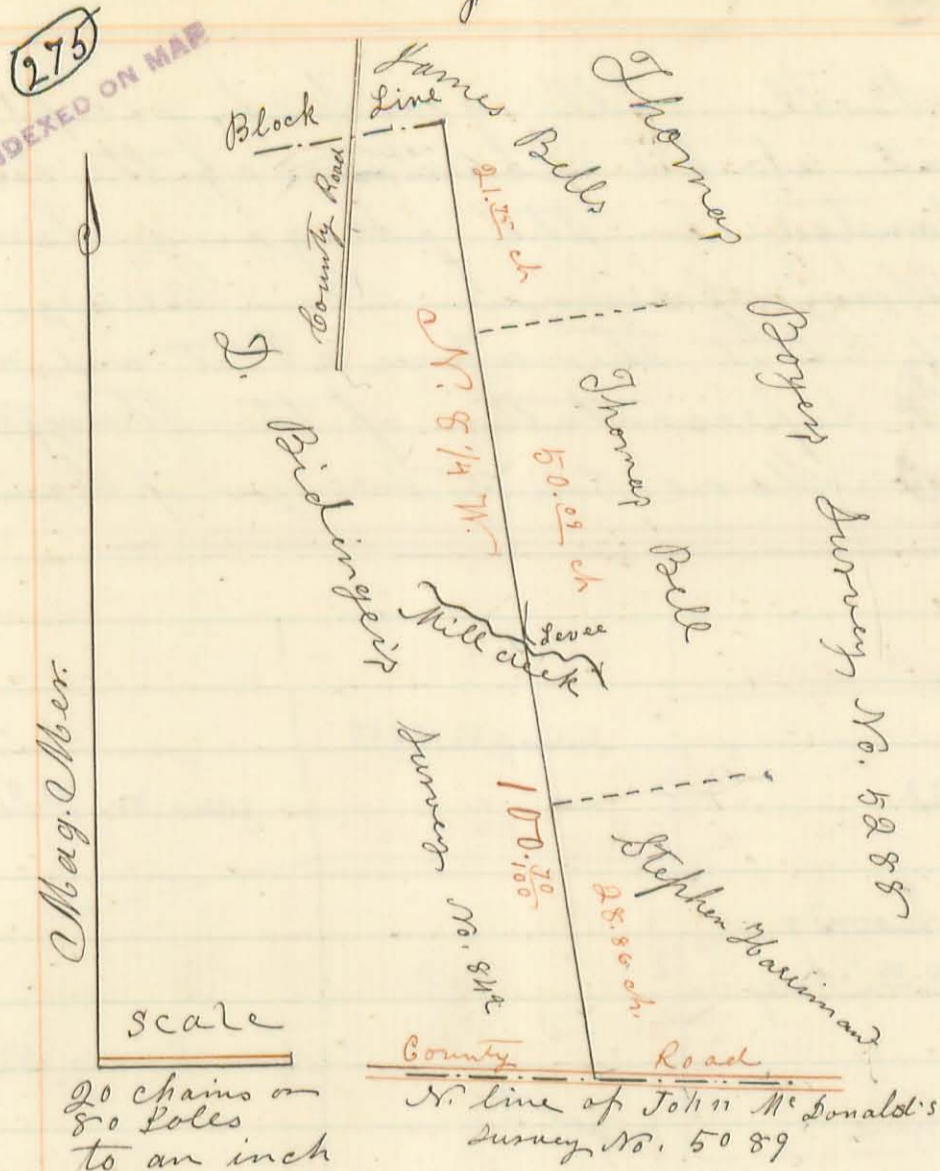
At 92.42 chains strike the S.W. corner of B. Bigg's survey No. 5209, where I planted a Rock Stone, one brick & a half, a part of a white tea-cup, & part of a white dish, in presence of Joseph Heisler, Joseph P. Heisler, Wm. Hatcher, Wm. Hatcher Jr., Wm. Stratten, John W. Southwood, Moses Bell, Wm. Allen Bell, John Bell, Thomas Bell, & James Bell, from which an Ash stump 30 Ln. Dir. bears S. 48° E. 36 links, a Beech stump 20 Ln. Dir. N. 10° E. 25 links, a Sugar Stump S. 32° W. 15 links, and a Sugar Stump N. 82 1/2° E. 4 1/2 links, all of which were said to be the stumps of the original corner or witness trees by persons presence at the planting of said stone & John Bell, Samuel M. Roberts, & Wm. Sutton, C. C.

I hereby certify that the foregoing Plat & Report of Survey are a correct representation of the things therein set forth.  
Henry C. Moore Surveyor General

Survey No. 825

Bell & Harriman.

INDEXED ON MAP



Surveyors Office Bellefontaine  
 Ohio November 11<sup>th</sup> 1859.  
 The annexed Plat is a representation of the line between Original Virginia Military Survey No. 5288 in the name of Thomas Boyer, (on the east), and No. 842 in the name of S. Bidingers (on the west), in Bokes Creek Township of Logan County Ohio; as Surveyed on the 22 day of September A. D. 1859, by me, Henry C. Moore, County Surveyor in and for said county, at the request of Thomas Bell & Stephen Harriman of said Township & County, for the purpose of ascertaining and establishing said line, which is as follows: to wit:

Beginning in the North line of John M. Donald's survey No. 5089, at the S. E. corner of said Bidingers Survey & the S. W. corner of said Boyers Survey; where I planted a small rock stone with some stone-crock & china ware under it, in presence of Stephen Harriman, Wm Henry Harriman, Henry Bell, Moses Bell, Thomas Bell, James Bell, Henry Carson, & David M. Barnes, from which a Hickory Stump 22 In. Dir bears N. 33 1/2 W. 16 links, (this is a stump of one of the original witness, or corner trees; the other two are now gone, but said by Moses Bell & Stephen Harriman, to have stood a little S. E. of said stone,) I marked an Ash 8 In. Dir N. 26 1/4 W. 80 links, & a Hickory 8 In. Dir S. 1 1/2 W. 70 links, on the North bank of a small branch; Run thence N. 8 1/4 W.; at 28.86 chains set a small rock stone & 3 brick-bats as the corner between Stephen Harriman & Thomas Bell (in survey 5288) from which a Bur Oak 18 In Dir bears N. 8 1/4 W. 22 links an Elm 18 In Dir N. 30 E. 20 links, & a Bur Oak 36 In Dir S. 22 E. 55 links; (all corner marked); Cross Mill Creek at 45.35 chains; Run on the westerly angle of a levee at 46 chains; set a small lime stone & 3 brick-bats at 78.25 chains, as the corner between Thomas Bell, & James Bell, (in survey 5288); — At 100.70 chains set a rock stone & brick-bat as a monument to mark the North East corner of the said Bidingers Survey No. 842, from which a large Ash stump (now rotten) bears S. 3 E. 57 links, supposed to be one of the original witness or corner trees, I also marked an Ash 8 In. Dir S. 36 1/2 E. 44 links distant; The last named stone was planted in presence of Henry Bell, Thomas Bell, James Bell, Stephen Harriman, Wm Henry Harriman, Lewis

Moon

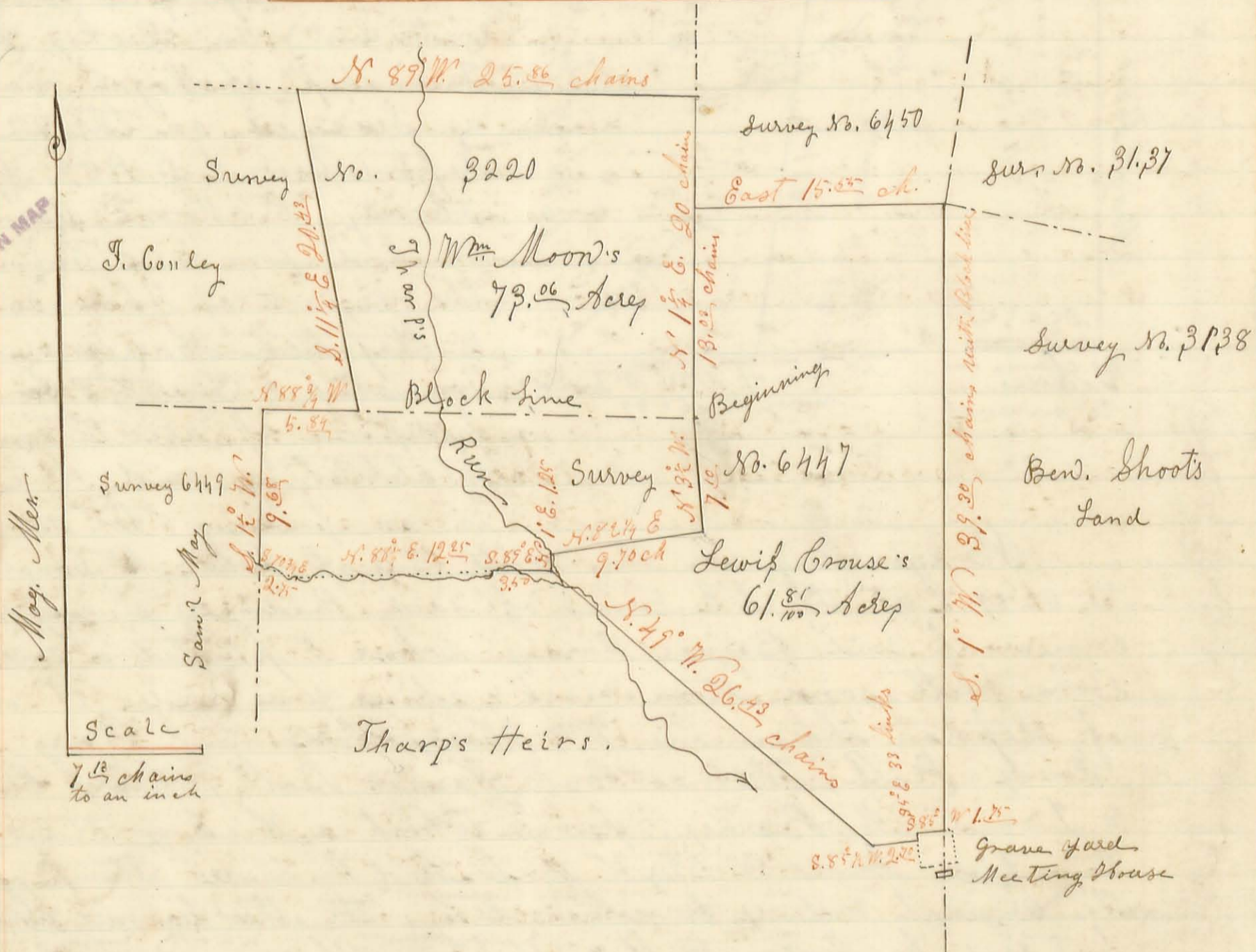
Hamilton, & Moses Bell; all of which, except the last two, were present at the planting of the two stones which were planted in the foregoing line.

Moses Bell & Wm Henry Harriman Chain Carriers, I hereby certify that the above Plat and notes of survey are a correct representation of the things therein set forth. — Henry C. Moore, County Surveyor of Logan Co. O.

Survey No. 826

276

INDEXED ON MAP



Surveyor's Office Bellefontaine Ohio Nov 11<sup>th</sup> 1859

The above plat is a representation of two tracts of land in Jefferson Township of Logan County & State of Ohio, being a part of Original Virginia Military Survey No. 6447 in the name of William Thoen, and a part of O. V. M. Sur. No. 3220 in the name of Alexander Dandridge as surveyed by me, Henry C. Moore, County Surveyor in and for said County, on the 18<sup>th</sup> & 19 days of Oct. A.D. 1859, at the request of William Moon and Lewis Crouse (on the premises) for the purpose of establishing the lines and corners thereof and ascertaining the number of acres contained therein, to wit;

Wm Moon's 73.06 Acres

Beginning at a Blue Rock stone with 2 brick bats under it which I planted at the S.E. corner of the said Dandridge survey No. 3220, and one of the corners to the said Survey No. 6447 from which the roots of a large Black Walnut bear S. 37 1/2 E. 5 links distant, and a sugar stump 22 In. Dir. N 37 1/2 W 5 links, Two of the original corners to the said Survey No. 6447

Crouse

Thence Run with the line between said surveys 6447 & 3220 N.  $1\frac{1}{4}$  E. 20 chains to a blue rock stone which I planted in said line from which a Beech 12 Ln. Dir. bears N.  $67^{\circ}$  E. 13 links, a Beech 10 Ln. Dir. N  $7\frac{1}{2}$  E 14 links, & a Beech 8 Ln. Dir. S. 12 W. 14 links, (The original call for this line was North; Variation of bearing is  $1\frac{1}{4}$  East.) Thence Run with the line between the lands of said Moon & George Henry N.  $89^{\circ}$  W. 25.<sup>56</sup> chains to a stone which I found in digging to plant another, I set a rock stone on top of the old one found here, as the N. W. corner to said Moon's land, Thence with the line between said Moon & Frank Conley, S.  $11\frac{1}{4}$  E 20.<sup>43</sup> chains to a small stone & brick 6 links south of a large Rock Stone, & from which an Ironwood 4 Ln. Dir. bears N.  $10^{\circ}$  E. 28 links, & an Ash 15 Ln. Dir. N.  $45^{\circ}$  W. 40 links, (each corner marked) Thence N.  $88\frac{3}{4}$  W. 5.<sup>84</sup> chains to a Rock Stone & 3 brick-bats which I planted at the N. westerly corner of said Thorns survey, 6447 & N. E. corner to survey No. 6449, from which a Black Walnut 30 Ln. Dir. is N.  $66^{\circ}$  E. 6 links, & a Poplar 20 Ln. Dir. S.  $66^{\circ}$  W. 6 links. Thence with the line between said survey Nos 6447 & 6449, S.  $1\frac{1}{2}$  W. 9.<sup>68</sup> chains to a Sugar tree 19 Ln. Dir., with a Rock Stone & 3 brick-bats at the N. W. side. Thence Down a Dcean or branch, the general course being S.  $70\frac{3}{4}$  E. 2.<sup>75</sup> chains, Thence N.  $88^{\circ}$  E. 12.<sup>25</sup> chains to a stone in said branch, Thence S.  $89^{\circ}$  E. 3.<sup>50</sup> chains to a large rock stone & 3 brick-bats, near the west bank of Thaepp Run, Thence N.  $1^{\circ}$  E. 1.<sup>25</sup> chains to a large Rock Stone & brick-bat in said Run; Thence N.  $82\frac{1}{4}$  E. 9.<sup>20</sup> chains to the N. side of a sugar tree 21 Ln. Dir. marked "M.C. 1859" & the point of a rock stone with a  $\frac{1}{2}$  brick under it. Thence N.  $3\frac{1}{2}$  W. 7.<sup>10</sup> chains to the place of beginning, And I find the same to contain Seventy three Acres, & six hundredths of an acre.

Lewis  
Crouse's  
61<sup>st</sup> Acres

Beginning at the same place hereinbefore designated as the beginning of Moon's 73.<sup>06</sup> Acres, viz. the S. E. corner of Alex. Dandridge's survey No. 3220; Run Thence with the East line thereof N.  $1\frac{1}{4}$  E. 13.<sup>03</sup> chains to a long-course sand-stone which I planted at the N. W. corner of said Survey No. 6447 & S. W. corner to survey No. 6450 from which a Sugar tree 12 Ln. Dir. bears S.  $46^{\circ}$  E. 20 links distant, marked "M L"; a sugar 10 Ln. Dir. N.  $86\frac{3}{4}$  E. 21 $\frac{1}{2}$  links, marked, W. M.; (original corner trees) and Ironwood 4 Ln. Dir. S.  $5\frac{1}{4}$  W. 10 links marked "X". The Original call for this line is North 48 Poles, Variation of bearing  $1\frac{1}{4}$  E.; distance 4 Poles & 3 links greater, Thence with the line between said surveys Nos 6447 & 6450, East 15.<sup>55</sup> chains to a Rock Stone at the corner between surveys Nos 6447, 6450, 3137, & 3138, from which a Beech 20 Ln. Dir. marked  $\frac{1}{2}$  brick & bears S. W. 54 links; a Beech



11 Ln. Dir. S. 25° W. 93 links marked {T.C.}. The Original call for this line was West 62 Poles, No variation of bearing, distance 5 links greater; Thence South 1° West 39.30 chains with the line between original surveys Nos 6447 & 3138 to a Rock stone with 3 brick-bats under it, in the North line of a Grave yard, from which a Walnut 20 Ln. Dir. bears N. 23½ E. 20 links, & a B. Walnut 18 Ln. Dir. N. 58½ W. 31 links; The Original call for this line was North; Variation of bearing is one degree East; Thence with the North line of said Grave yard, S. 85° W. 1.25 chains, (or 7 Poles) to the fence post at the N. W. corner of said Grave yard. Thence with the west line of said Grave yard S. 5° E. 33 links to a Rock stone & 2 brick bats, Thence S. 85½ W. 2.20 chains to a Rock stone with 3 brick bats under it, on the south side of a small sugar egg, (corner marked.) Thence N. 49° W. with an old marked line for about 8 chains, then bearing a little E of said line, 26.43 chains to a large Rock stone & 3 brick-bats, corner to Mr Morris land near the west bank of Sharp's Run, Thence N. 1° E. 1.25 chains to a large Rock stone with a brick-bat under it in "Sharp's Run" Thence with the line between the lands of said Brouse & Moon, N. 82¼ E. 9.20 chains to the North side of a Sugar tree 21 Ln. Dir. marked "M. C. 1859" & the point of a Rock stone with ¼ of a brick under it, Thence N. 3½ W. 7.00 chains to the place of beginning, And I find the same to contain 61 Acres & eighty one hundredths of an acre of land.

Done in Presence of William Moon, Able Reader John S. Stoops, Joshua Reams, Lewis Bouse, Dr. Jas. Crew Lewis C. Smith, George Bouse Jr, & Geo. Therman, — — — Able Reader, John S. Stoops & Joshua Reams, Chain carriers. —

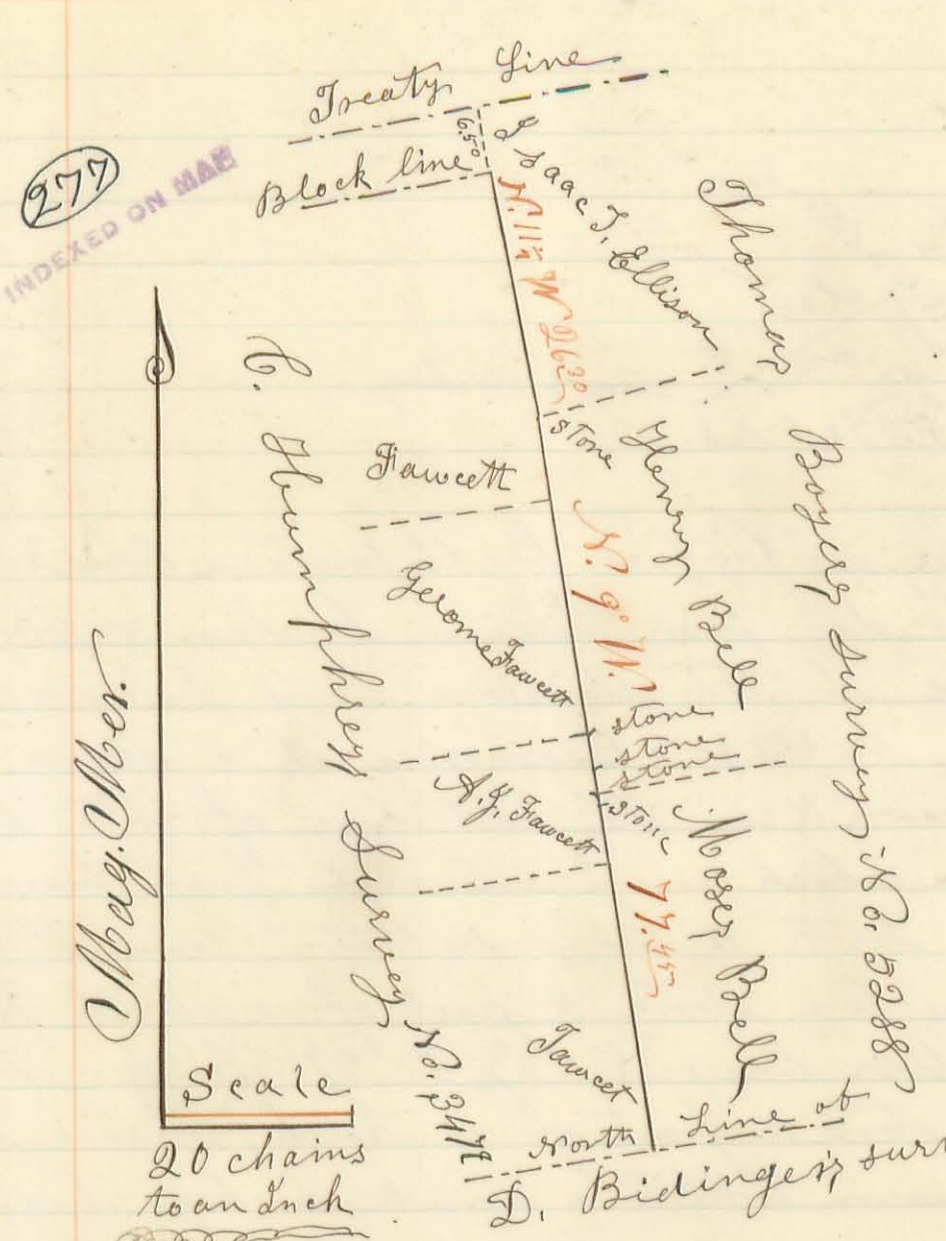
I hereby certify that the foregoing Plat and Report of survey are a correct Representation of the things therein set forth.

Henry C. Moore, County Surveyor of Logan Co. O.

Survey No. 827 Mosey Bell Line

The Plat on the next or opposite page is a Representation of the line between the Original Virginia Military Surveys Nos 5288 in the name of Thomas Boyer, (on the east) and No. 3472 in the name of Charles Humphreys (on the west.) in Bobes Creek Township of Logan County Ohio; as Surveyed on the 2nd day of November A.D. 1859, by me, Henry C. Moore, County surveyor in and for said County, at the Request of Mosey Bell, & others, of said Township & County, for the purpose of ascertaining and establishing said original line; to wit: — Beginning at a large Rock Stone & two brick, some pieces of crock & dish, which I planted at the S.E. corner of said Humphreys survey No. 3472, & one of the westerly corners to the said Boyer's Survey, No 5288: in the North line of F. B. ...

Bell's



Survey No 342, from which a forked Sycamore (each fork 3 In. Dir.) bears S 49° E. 28 links. Planted said stone &c. in presence of Isaac J. Ellison Henry Bell, Moses Bell, John Bell, & William A. Bell.

Run thence N. 9° W. at 37.36 chains set a small rock stone & some pieces of sugar crock on top of a large rock. (lying in its natural bed) as the corner between Moses and Henry Bell. (in survey 5288) from which an Ironwood 6 In. Dir. bears N. 72° E. 8 1/2 links; a beech 8 In. Dir. S. 71° W. 5 links; —

Set another stone and some crock S. 9° E. 34 links, as corner between Moses

Bell's Watering lot & A. J. Fawcett's land, from which an Elm 8 In. Dir. is East two links; At 40.23 chains set another small stone & some sugar crock as corner between Moses & Henry Bell's watering lots in survey No. 3472. — At 43.72 chains set a small stone & some sugar crock as corner between Henry Bell's watering lot, & Gerome Fawcett's land in survey 3472, from which a Beech 10 In. Dir. bears S. 62° E. 12 links. — At 77.45 chains set a small rock stone & some "Delphi ware" as the corner between Henry Bell & Isaac J. Ellison's lands in survey No. 5288. — I find a plainly & well marked line this far which was marked 55 years ago, but find no marks of a line any farther northward.

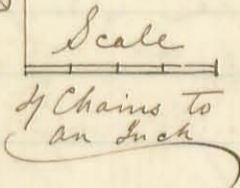
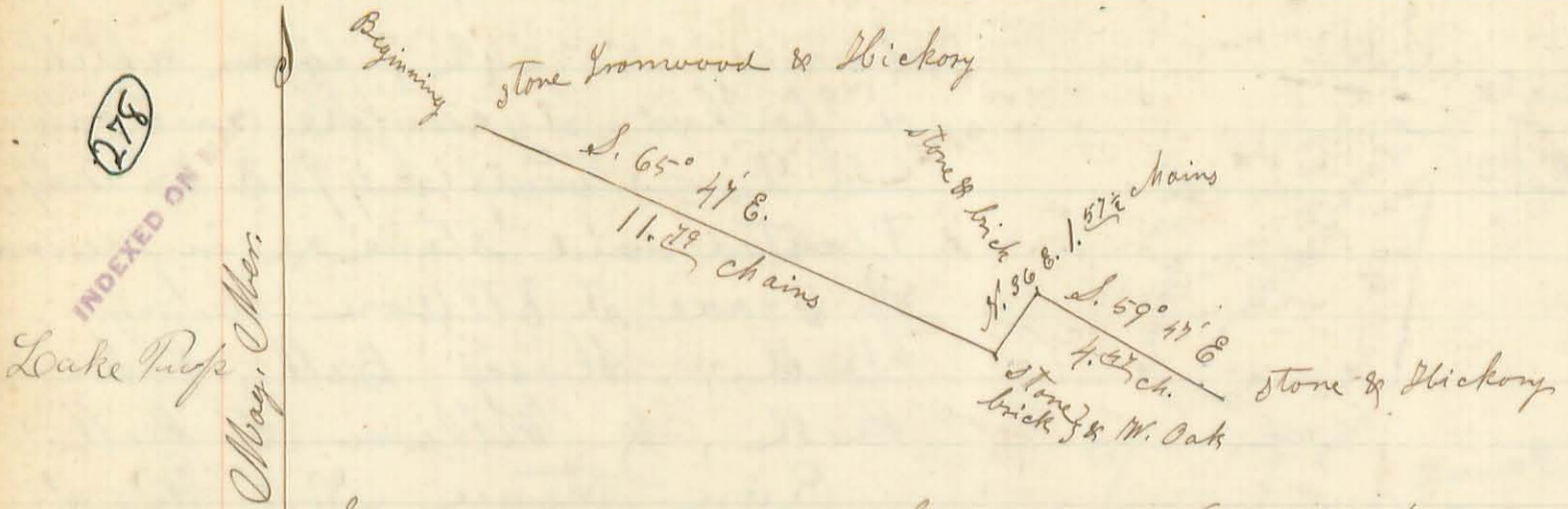
Thence (from last stone) N. 10 1/4° W. 26.30/100 chains to a green Hickory & 2 sugars at the N. E. corner of said Humphrey survey, and N. W. corner to said Boyer's survey, (one of the sugars is now down, and the other dealt with the top broken off) —

Thus making an angle at the last named stone, of one & one fourth degree, in order to follow the line as traced by said line trees. — The last named stone was planted in presence of Henry Bell & Isaac J. Ellison, all the others in presence of Henry Bell, Isaac J. Ellison, Moses Bell, John Bell, & A. J. Fawcett.

Thomas Bell & Lewis Hamilton, Chain carriers.

I hereby certify that the foregoing plat & report of survey, are a correct representation of the thing therein set forth.  
Henry C. Moore, County Surveyor of Lo. Co. O.

Survey No. 828, Duchain & Nelson -



(278)  
INDEXED ON MAP  
Lake Puffs  
May, 1860

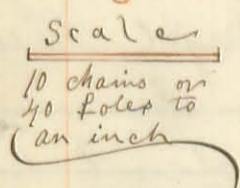
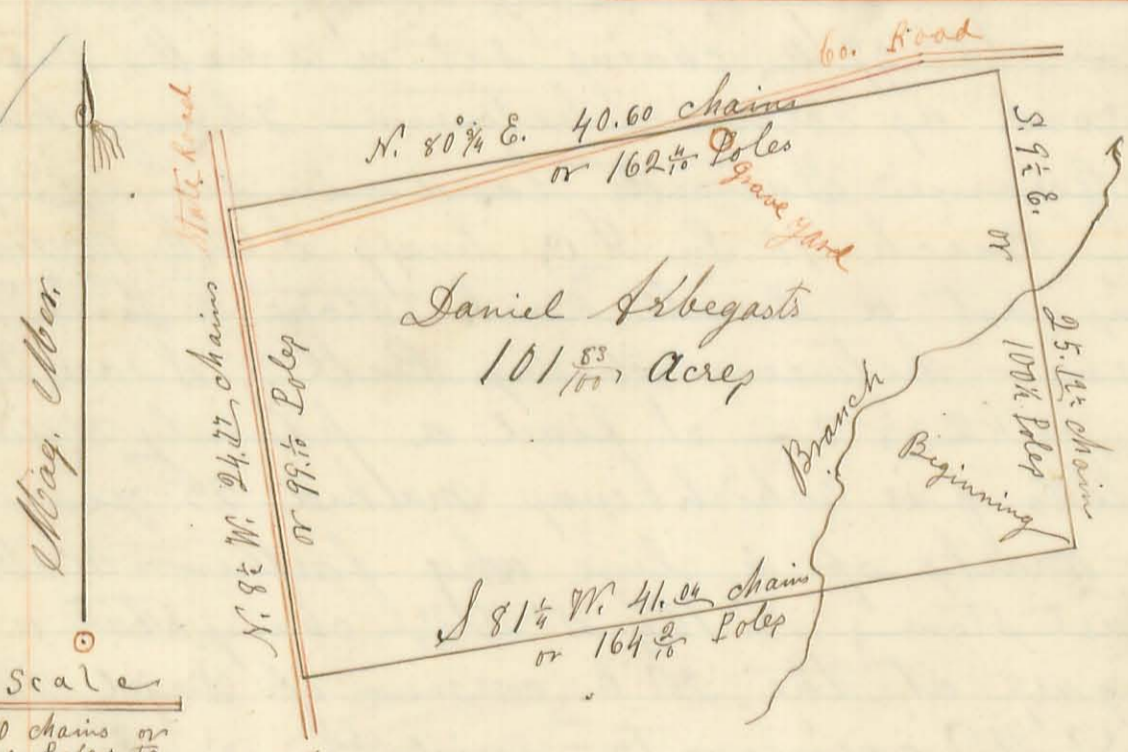
Surveyor's Office Bellefontaine Ohio Feb. 4<sup>th</sup> 1860  
 Surveyed this day for William Duchain & John M. Nelson, three of the division lines between their farms, in O. W. No. survey No. 5245; Beginning at a stone at said Nelson's N. W. corner, & in the East line of Wm and John Hennis land, from which an Ironwood bush bears N. 34° E. 8 links; & a Hickory bush South 11 links distant; Run thence South 65° 47' East. 11.22 chains to a stone & part of a brick from which a W. Oak 20 inches dia. bears N. 56° 3/4 E. 5 1/2 links; Thence N. 36° E. 1.57 1/2 chains to a stone & part of a brick; Thence S. 59° 47' E. 4.42 chains to a stone from which a small hickory bears N. 72° E. 5 links.

William Duchain & John Nelson chain barriers, by agreement of the parties -  
 H. C. Moore, Co. Sur. Logan Co. O.

Survey No. 829

Daniel Arbogast

(279)  
INDEXED ON MAP  
May, 1859



The annexed Plat is a Representation of 101 <sup>5</sup>/<sub>10</sub> acres of land in Jefferson Township of Logan County Ohio, being a part of Original Virginia Military Survey No. 3326 in the name of William Miller; as Surveyed by me, Henry C. Moore, County Surveyor in

and for said County, on the 28<sup>th</sup> day of June A.D. 1859. by the request of Daniel Arbogast, for the purpose of establishing the lines & corners thereof, & ascertaining the number of acres contained therein; to wit:

Beginning at a stone & brick at the South West corner of Ensch No. Scott's land, & in the south line of said original Survey, from which a sugar 15 Inches in Diameter bears S. 17° E. 12 links. Run thence with said south line of original survey S. 81 1/2 W. 41.04 chains to a stone & brick in the Sanduskey Road; (Original call S. 80 W.; call in deeds S. 80 1/2 W. 163.3 Poles; Variation of bearing 1/4 East; length of this part of the Survey line 21 links longer) Thence with said Road N. 8 1/2 W. 24.22 chains to a Stone & a brick; Lynn 22 In. Dia. N. 89 E. 31 links; Thence N. 80 3/4 E. 40.60 chains to a stone & a brick at

Said Enoch M. Scott's N. W. corner; Thence with his west line S 9 1/2 E. 25 1/2 chains to the place of beginning; & find the same to contain 101.53 Acres of land;

Done in the presence of John Fuson, Daniel Arbegast, Enoch M. Scott, Adam Arbegast, Samuel Leymaster, & the chain men (below)

INDEXED ON MAP



Also on the same day, for the same Daniel Arbegast, & for the same purpose as that aforesaid, Surveyed 3.01 Acres of land in Original Virginia Military Survey No. 3437 as represented by the annexed Plat, Beginning at a stone & brick in the Sandusky Road, at a corner between two of the Wickershams; Run thence N. 9 1/2 W. 27 poles to a stone & brick; Thence S. 8 1/2 W.

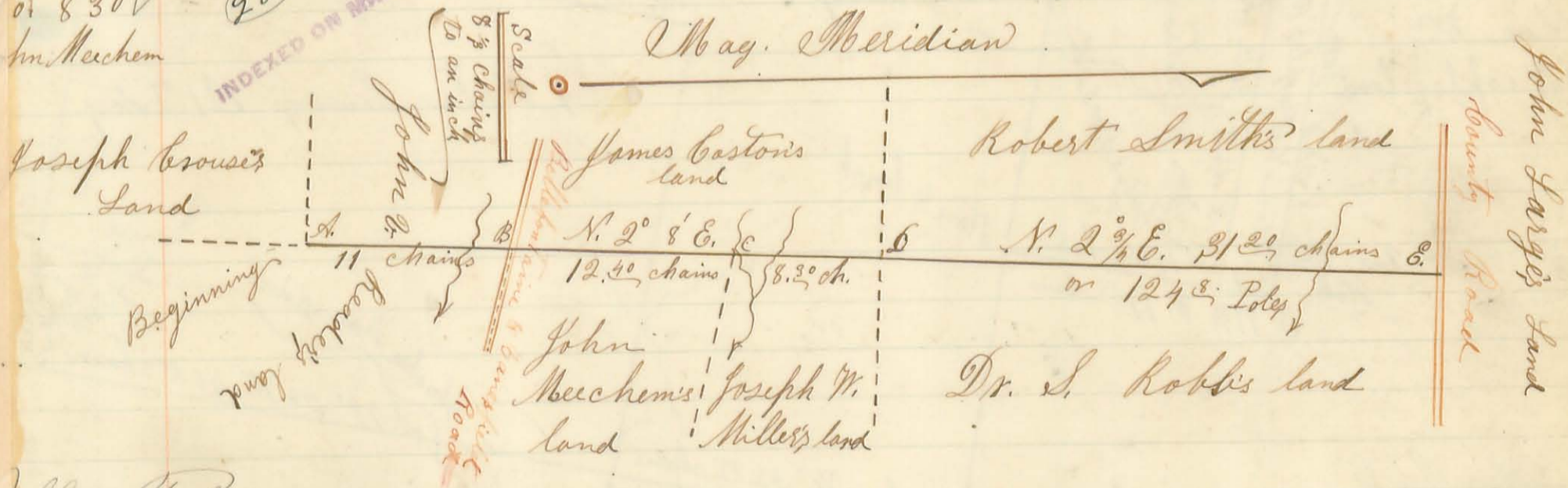
17 1/2 poles to a stone & brick & brick; Thence S. 9 1/2 E. 27 3/4 poles to a stone & brick; Thence N. 8 1/2 E. 17 1/2 poles to the place of beginning, & find the same to contain three acres & one hundredth of an acre. - Done in presence of John Fuson, Daniel Arbegast, Adam Arbegast, Thomas Wickersham, John Prater & John Sencal.

John Prater & John Sencal } Chain Men

I do hereby certify that the foregoing Plats & Reports of survey are correct, and that each of the Stones and brick aforesaid were planted to my direction.  
Henry C. Morse, Co. Sur. Logan Co. Ohio

Survey of 830 ✓  
Meechem

INDEXED ON MAP



Jefferson Prop

Surveyor's Office Bellefontaine Ohio June 2<sup>nd</sup> A.D. 1860.  
Surveyed for John Meechem Esq. & Dr. S. Robb., on the 3<sup>rd</sup> day of April A.D. 1860; a land line as represented by the annexed Plat, being in Original Virginia Military Survey No. 3220, in the name of Alex. Dandridge; Beginning at a Stake, Ash, Two Lynns, & an Elm at Joseph Brouse's N. E. corner (see 'A' on Plat) Run North 2 1/4 East, cross a branch at 9 chains; Plant a line Stone & some cinders from a Smith Shop in the Bellefontaine and Bancroft Road at 11 chains as John Meechem's S. W. corner.

Watson, Crawford, & Irwing

(See "B." on Plat); Plant a Small lime stone & some cinders from a Smith Shop at 23.40 chains as John Beechem's N. W. corner from which a small Hickory & Ln. Dirr, bears S. 65° E 10 links (see "C" on Plat) Cross a Small branch at 25.00 chains; at 31.00 chains strike the corner between Robert Smith, Dr. S. Robb, James Boston & Joseph W. Miller (see "D" on Plat); here set a flat stone & 3 brick; Thence on the line between Dr. S. Robb. & Robert Smith; N. 2 1/4° E. crossing a branch at 24.50 chains; at 31.00 chains strike the corner between Dr. Robb. & R. Smith in John Large's South line, & in a County Road; Here set a Stone & brick, from which a Poplar stump bears N. 31° E. 4 links, & a Poplar stump S. 61° W. 4 links (These are the stumps of the original witness trees) see "E" on Plat)

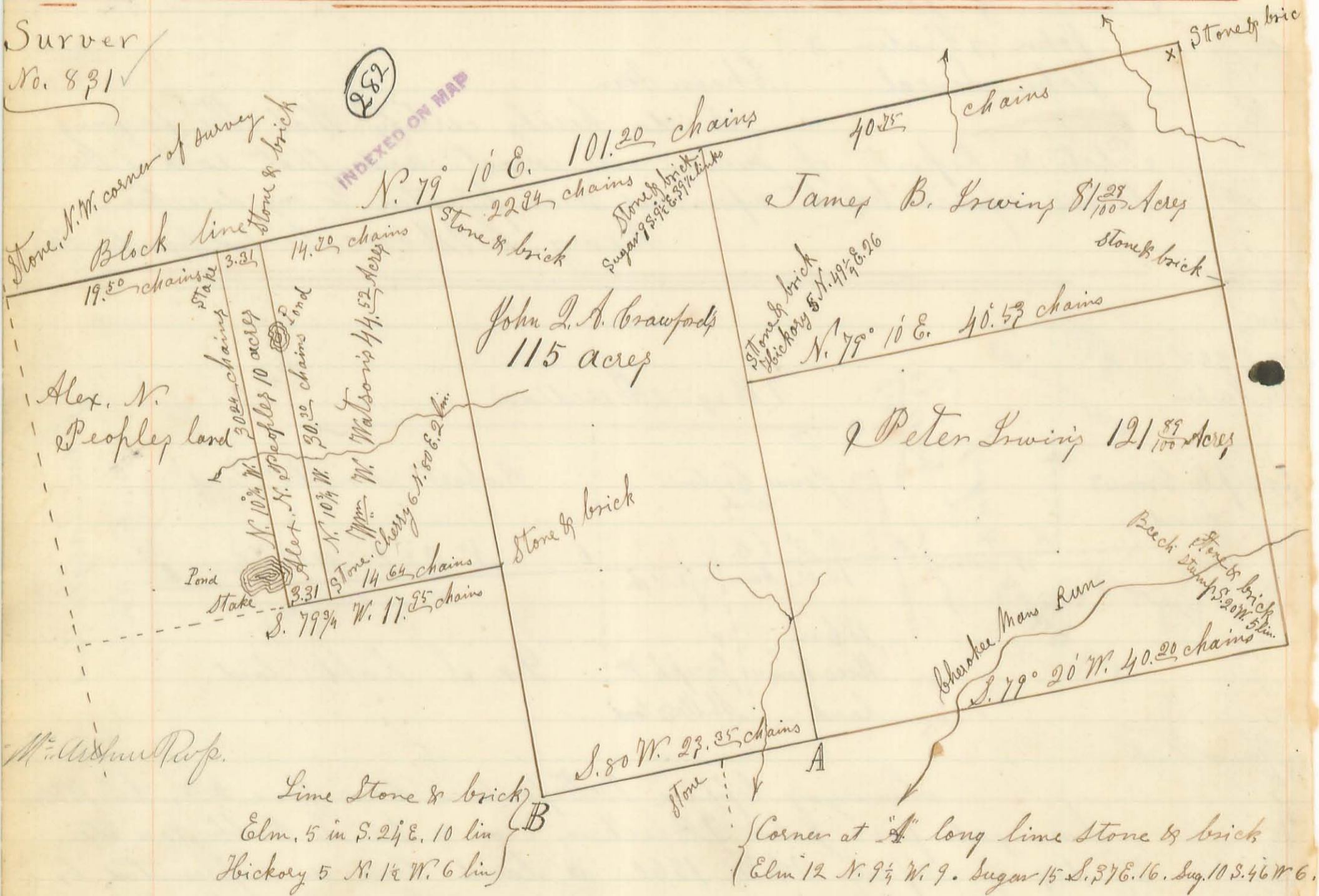
Done in presence of Dr. S. Robb, John Beechem, Samuel J. Miller, Levi Moon & others,

Samuel J. Miller }  
Levi Moon } Chain men

I do hereby certify that the foregoing Plat, & Report of survey, are correct,

Henry C. Moore, Co. Sur. Lo. Co. O.

Surveyer No. 831



Surveyor's Office Office Bellefontaine Ohio June 22<sup>d</sup> A.D. 1860  
 Surveyed as represented by the above Plat a part of Original Virginia Military Survey No. 9883, for ~~Wm~~ W. Watson, John L. A. Crawford & James B. Irwing, on the 5<sup>th</sup> & 6<sup>th</sup> days of April A.D. 1860.

Benj. Wilson

The length and bearing of the lines, the monuments at the corners, the owner of the different tracts, with the areas thereof &c, are represented on the foregoing plat,

The stone & brick at ("x") the N. East corner of the survey, were planted where a large white oak stump stood, the stump of the original corner tree,

Done in presence of, Wm. W. Watson, John D. A. Crawford, Alex. N. Peoples, J. P. Able, Edward Hull, Jas. B. Swin, Peter Irwin, Samuel Hoover, Joseph W. Hess & W. V. Gordon, J. P. Able }

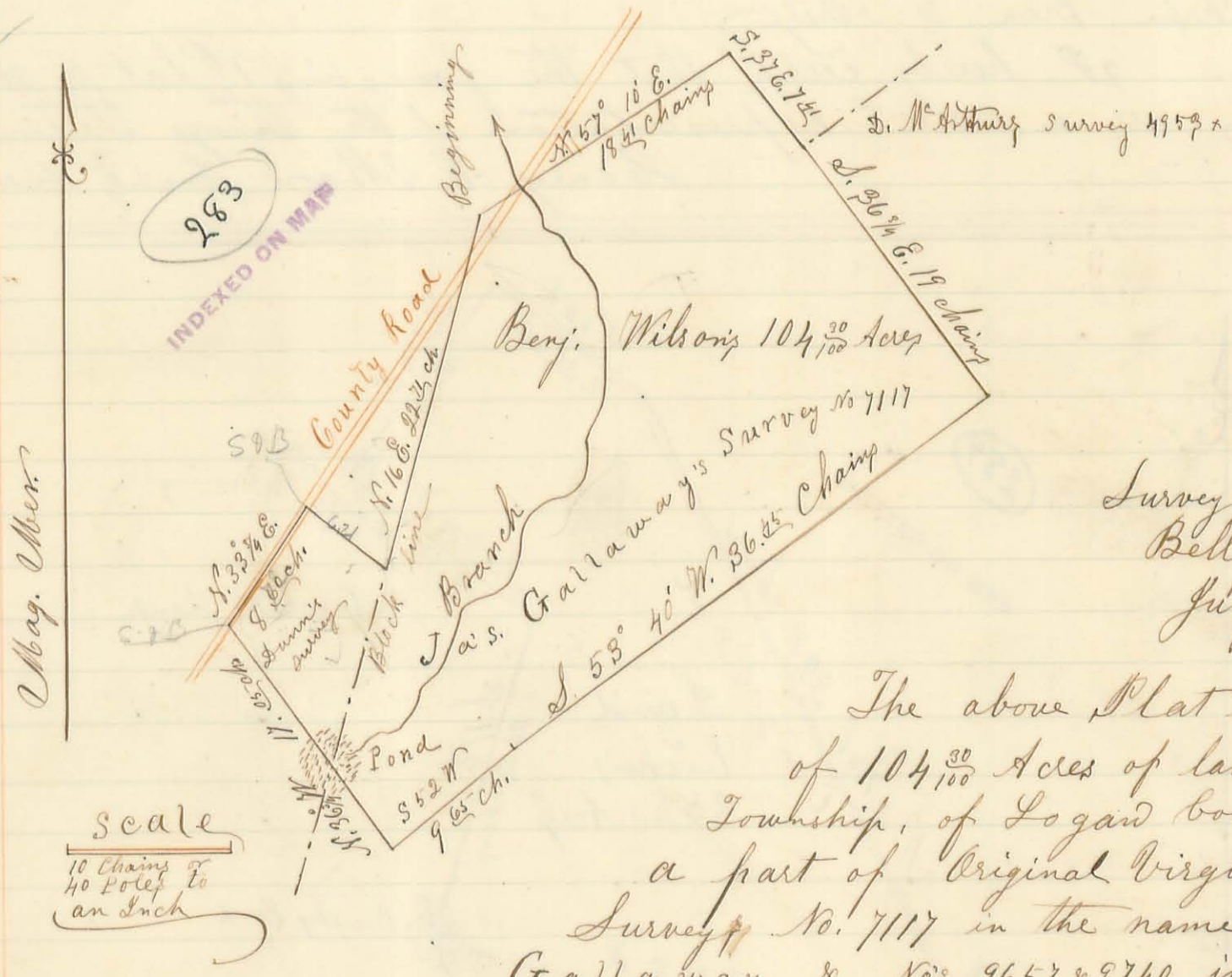
Edward Hull } chain men first day

Samuel Hoover }

Joseph W. Hess } chain men second day

I hereby certify that the foregoing Plat & Report are correct; Henry C. Moore County Surveyor So. Co. O.

Survey No. 832  
Benjamin Wilson



Surveyors Office  
Bellevue Ohio  
July 21<sup>st</sup> A.D. 1860

The above Plat is a representation of 104 <sup>30</sup>/<sub>100</sub> Acres of land in Van Township, of Logan County Ohio, being a part of Original Virginia Military Survey No. 7117 in the name of James Callaway, & Nos. 9657 & 9740 in the name of Walter Dunn; as Surveyed by me, H. C. Moore, County Surveyor in and for said County, on the 2<sup>nd</sup> day of March A.D. 1860, by the Request of Benjamin Wilson, for the purpose of establishing the lines and corners thereof, & ascertaining the number of acres contained therein; To wit:

Beginning at a Sugar Tree 20 Inches in Diameter at one of the Original corners to said Gallaways Survey No 7117; Thence with the North line of said Survey N. 57° 10' E. 18.45 chains; crossing Urbana Road at 6 poles; a Branch at 3.25 chains, Alexander's corner at 7.30 chains, to a three cornered Rock Stone & a brick, another of said Alexander's corner, Thence S. 37° E. 7.44 chains to a Rock Stone at the N.W. corner of D. M. Arthur's Survey No. 4953.

David Eicher

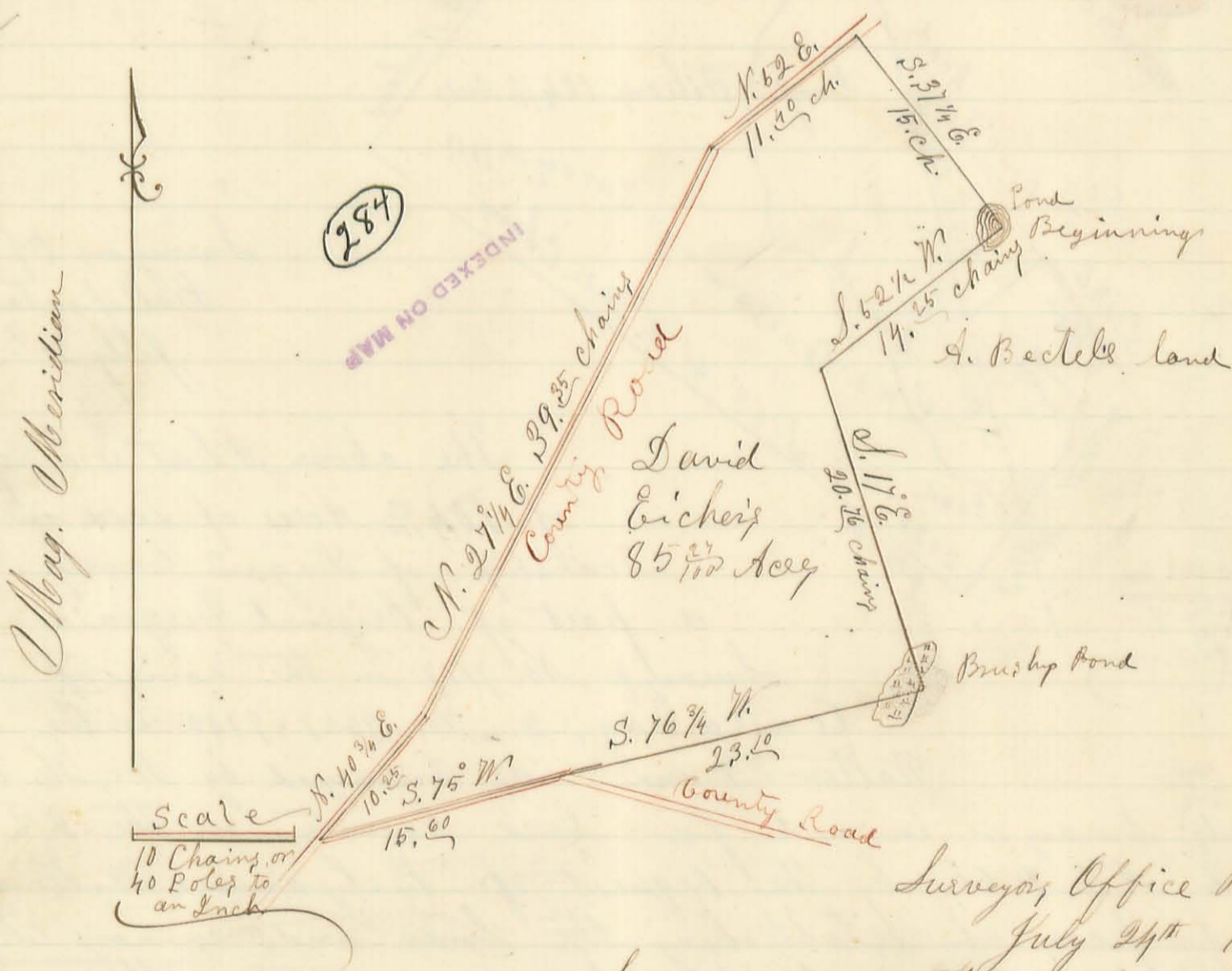
Thence with the west line of Mc Arthur's Survey S.  $36\frac{3}{4}$  E. 19.22 chains to a three cornered Stone & a brick at Arthur Dennison's N.E. corner, Thence S.  $53^{\circ}40'$  W.  $36\frac{45}{100}$  chains to a small flint stone & a brick from which a sugar 20 In. Dir. bears S.  $42^{\circ}$  E. 24 links, a sugar S of East 16 link; Do. N. of W. 16 link; Thence S.  $52^{\circ}$  W.  $9\frac{65}{100}$  chains to a white oak 12 Inches Dir.; Thence with the east line of Christley Andrix's land N.  $36\frac{3}{4}$  W.  $17\frac{25}{100}$  chains to a Rock Stone & brick, 12 links N.E. of the middle of a Culvert; Thence with said road N.  $33\frac{1}{4}$  E.  $8\frac{12}{100}$  chains to a stone & brick; Thence S.  $50^{\circ}$  E.  $6\frac{21}{100}$  chains to a rock stone &  $\frac{1}{2}$  brick, Sugar tree 22 In. Dir. N  $65^{\circ}$  W. 9 links & a sugar 22 In. Dir. S.  $65^{\circ}$  E. 13 links distant, Thence N.  $16^{\circ}$  E.  $22\frac{1}{4}$  chains; with the original Block line between said surveys, to the place of Beginning; Containing One Hundred & four acres &  $\frac{30}{100}$  of an acre - (104 $\frac{30}{100}$  a.)

Edward L. Campbell }  
 Robert Campbell } Chain Men

Done in presence of Benj. Wilson, Wm. Alexander, Richie Dennison, Arthur Dennison, Christley Anrix, the chain men, & others

I hereby certify that the foregoing Plat & notes of Survey are a correct representation of the things therein set forth.  
 Henry C. Moore, County Surveyor S.C.

Survey No. 8331  
 David Eicher



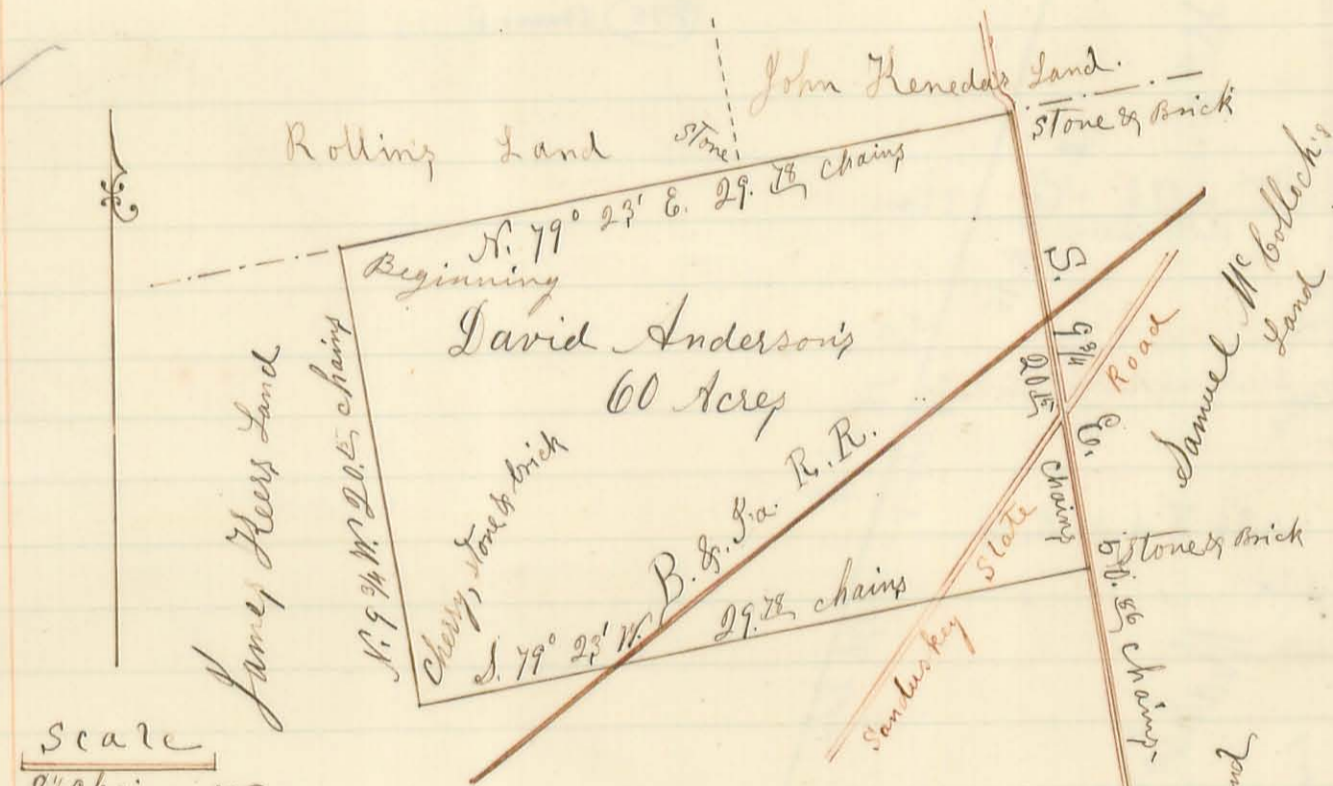
Surveyor's Office Bellefontaine O.  
 July 24<sup>th</sup> 1860

Surveyed on the 3<sup>rd</sup> day of March A.D. 1860 for David Eicher, 85 $\frac{30}{100}$  Acres of land, in Lane Township Logan County Ohio, being part of Original Virginia Military Survey Nos. 9679 in the name of J. & B. Ladd, and 9657 & 9740 in the name of W. Dunn, Beginning at a stone in a pond, in Andrew Beckett's N. line thence S.  $52\frac{1}{2}$  W.  $14\frac{25}{100}$  chains to a large Rock Stone & a part of a sugar Brock, by a large Red oak Stump & a rotten Hickory Stump; Thence S.  $17^{\circ}$  E.  $20\frac{25}{100}$

David Anderson & James Heers

chains to a rock stone & part of a sugar crock, near a Black Walnut tree (corner marked) & two Cotton Ash stumps; Thence S.  $76\frac{1}{4}$  W. 23.<sup>00</sup> chains to a stone in a County Road; Thence with said Road S.  $75^{\circ}$  W. 15.<sup>00</sup> chains to a stone and part of a crock in the Urbana Road, & in Samuel Alexander's S. E. line Thence with said Urbana Road N.  $40\frac{1}{4}$  E. 11.<sup>25</sup> chains to a rock stone & some pieces of crock; Thence N.  $27\frac{1}{4}$  E. 39.<sup>35</sup> chains to a flat lime stone & some brick in the N. W. side of the Road, & at the South corner of a board fence, about a farm house; Thence N.  $52^{\circ}$  E. 11.<sup>40</sup> chains to a stone & brick in the middle of said Road, being a corner to Wm Griffey's land; Thence S.  $37\frac{1}{4}$  E. 15.<sup>00</sup> chains to the place of beginning; Edward D. Campbell & Robert Campbell, Chain men  
Henry C. Moore, Co. Sur. So. Co. O.

urvey  
o. 834  
David  
Anderson  
&  
James  
Heers



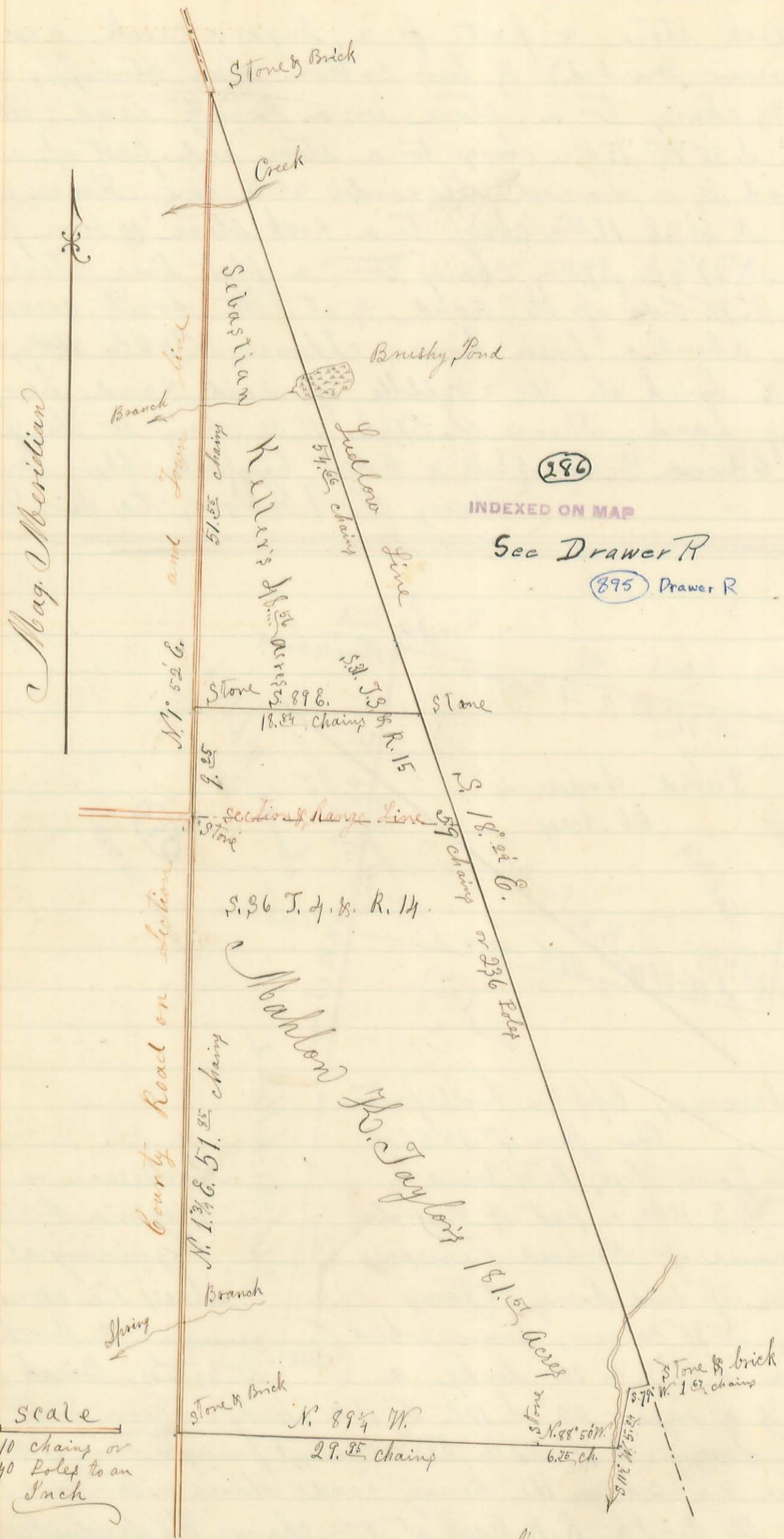
Scale  
8 1/2 Chains or  
33 1/2 Poles to  
an Inch

Surveyor's Office Bellefontaine  
Ohio June 4<sup>th</sup> 1860 -

*efferson Prop.* Rushcreek Twp  
Surveyed for James Heers Jr. & David Anderson, on the 12<sup>th</sup> day of April A. D. 1860, a part of original No. 10041 in the name of Richard Hennon in the north line of said Survey at James David Anderson's N. W. corner, from which in Diameter bears S.  $65\frac{1}{4}$  E. 12 links, a Stake: 2 bushes & a Cherry stump each 23 links Beech 10 Sn. Dis Anderson, on the 12<sup>th</sup> Virginia Military Survey Beginning at a stone Heers N. E. corner & a Beech 12 Sn.  
N.  $5^{\circ}$  W. 23 links, & a sugar 22 S.  $13\frac{1}{2}$  W. 15 1/2 links; Thence with the north line of said Survey N.  $79^{\circ}$  23' E. 29.<sup>75</sup> chains, (passing a stone at 17.<sup>25</sup> chains) to a large Stone & a brick in the County Road; Thence with said Road S.  $9\frac{1}{4}$  E. crossing the B. & O. R.R. track at 9.<sup>40</sup> chains; the Sanduskey State Road at 13.<sup>40</sup> chains; 20.<sup>45</sup> chains to a stone & brick, Thence S.  $77^{\circ}$  23' W. crossing the Sanduskey State Road at 6.<sup>25</sup> chains; the B. & O. R.R. track at 20.<sup>25</sup> chains; 29.<sup>75</sup> chains to a cherry tree & Sn. Dis. with a stone & brick on the west side of it; Thence N.  $9\frac{1}{4}$  W. 20.<sup>45</sup> chains to the place of beginning, containing Sixty acres of Land, Done in presence of James Heers Jr., David Anderson, Bonner, Rolling, the chain men & others, Ashley Rolling & John Keneda Chain men  
I hereby certify that the foregoing Plat & notes are correct,  
Henry C. Moore, Sur. So. Co. O.

INDEXED ON MAP





Surveyor's Office, Bellefontaine Ohio  
September 12<sup>th</sup> A.D. 1860

The above Plat represents fractional Section No. 31 of Town No. 3 & Range No. 15; & the north part of section No 36, Town No. 4, & Range No. 14, E. G. N. R. in Lake Township of Logan County and State of Ohio, as Surveyed by me, G. C. Moore, County Surveyor in and for said County of Logan, on the 28<sup>th</sup> day of April A. D. 1860, at the request of Mahlon R. Taylor & Sebastian Keller; for the purpose of establishing the lines & corners thereof, and ascertaining the number of acres contained therein. To wit:

Keller's  
and

Beginning at a square Lime Stone, and a brick, in the Ludlow line, at the north corner of said fractional section No. 31, from which a Buckeye stump, (stump of the original witness) bears N. 63 3/4 W. 15 links distant; a blue ash 9 Ln. Dir. N. 41 W. 14 links; Thence with the Ludlow line S. 18° 22' E. 54.66 chains, crossing a creek at 9.25 chains, to a stone at Mahlon R. Taylor's N. E. corner, from which a Hickory 14 Ln. Dir. bears N. 57 1/2 W. 36 1/2 links; & a Hickory 12 Ln. Dir. S. 31 W. 14 1/2 links distant; Thence with said Taylor's N. line N. 89 W. 18.24 chains, to a stone & brick in a county Road & in the west line of said fractional section, at said Taylor's N. W. corner; & N. 1° 52' E. 9.25 chains from a stone at the S. W. corner of said section; Thence with said Road & west line ~~line~~ of said section, N. 1° 52' E. 51.65 chains, crossing a branch at 25.25 chains, a creek at 42.25 chains, to the place of beginning, and find the same to contain 48.56 acres of land.

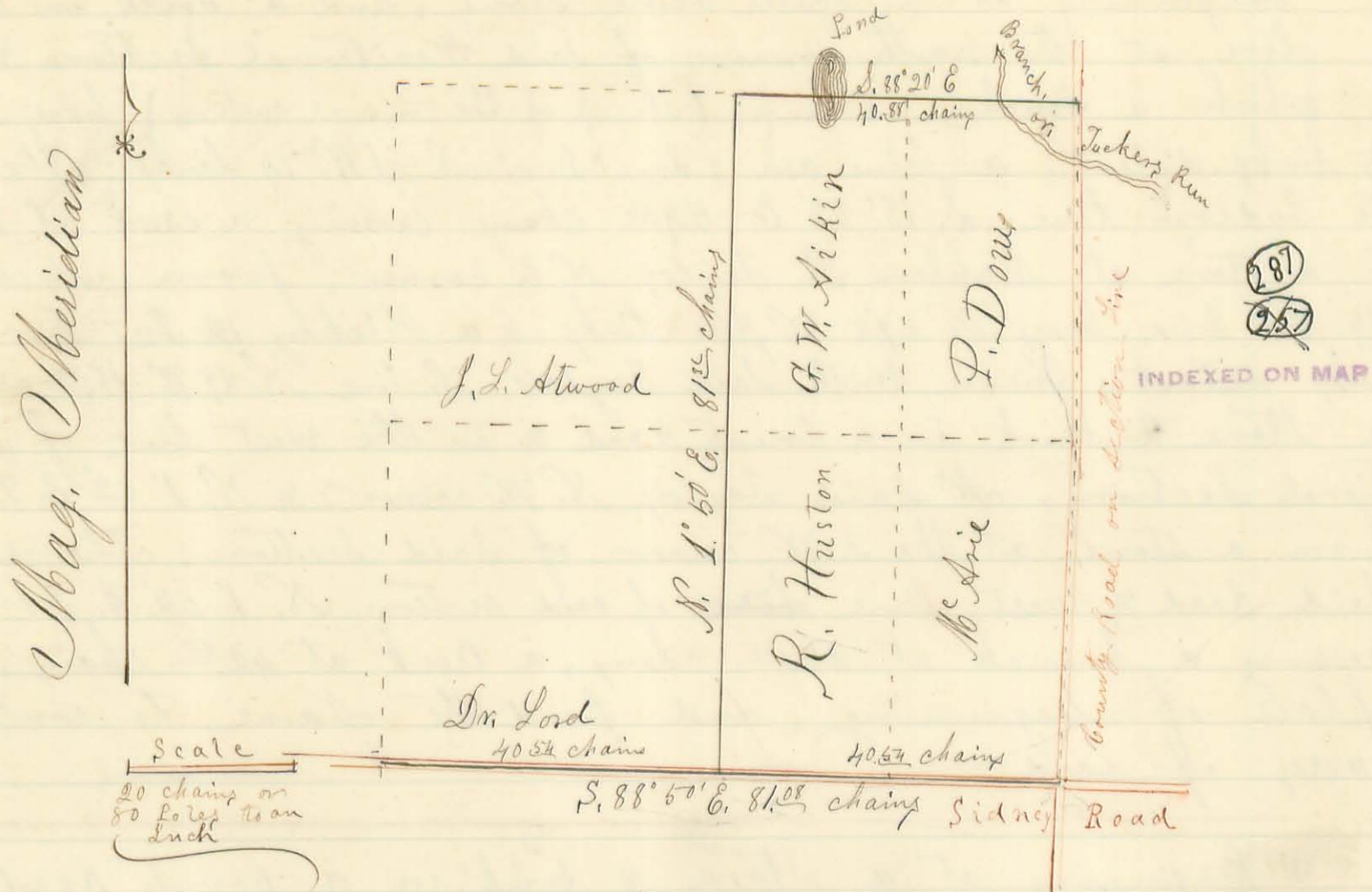
Taylor's  
Land

Beginning at a stone & brick, in a county Road, at the N. W. corner of said section No. 36; and the S. W. corner of said section No. 31, from which the stump of a Hickory tree (the original witness) bears N. 63 3/4 W. 16 links distant; Thence with the west line of said section No. 31, N. 1° 52' E. 9.25 chains (or 37 poles) to a stone & brick, at Sebastian Keller's S. W. corner; Thence S. 89 E. with said Keller's south line 18.24 chains to a stone, at said Keller's S. E. corner, in the Ludlow line, a Hickory 14 Ln. Dir. N. 57 1/2 W. 36 1/2 links, Do. 12 Ln. Dir. S. 31 W. 14 1/2 links; Thence with the Ludlow line S. 18° 22' E. 59 chains passing the easterly corner between said sections at about 9.25 chains; crossing Tucker's Run at 53.25 chains, the centre of an old Mill Race at 58.20 chains, to a stone & brick on the south side of said Race & 7 links therefrom; Thence S. 79° W. 1.67 chains to a large stone, a Pidgeon Oak 20 Ln. Dir. S. 8° W. 8 links; Thence S. 11 1/2 W. 5.24 chains to a stone & brick, a Lynn 22 Ln. Dir. S. 38 E. 6 links; a Sugar 12 N. 45 W. 7 links; Thence N. 88° 50' W. 6.25 chains, crossing Tucker's Run at 60 links, to a stone; Thence N. 89 1/4 W. 29.25 chains to a stone and brick at Wm Shicks N. W. corner, in the west line of said section No. 36, in a county Road; Thence with said line & county Road N. 1 1/4 E. (crossing Taylor's Spring branch at 9.35 chains) 51.85 chains to the place of beginning, and find the same to contain 181.51 acres of land.

Done in presence of Mahlon R. Taylor, Sebastian Keller, David Goodin & John Morris.

David Goodin & John Morris } Chainmen

Henry C. Moore County Surveyor  
of Logan County Ohio



Surveyor's Office, Bellefontaine, Ohio  
September 13<sup>th</sup> A. D. 1860

The above Plat Represents some of the lines of section No. 11 of Town No. 3, and Range No. 14, E. of M. R., being in Harrison Township of Logan County and State of Ohio, as Surveyed by me, H. C. Moore, County Surveyor in and for said County, on the 25<sup>th</sup> day of May 1860, at the Request of George W. Aikin, for the purpose of Locating & establishing the line between the East half & West half of said section, the original half mile corner in the north line of said sect. & the east half of said north line - to wit - Beginning in the Sidney Road, at the south West corner of said section, from which a hickory stump (original witness) now rotten, bears S. 9° E. 24 links distant; Thence with the Sidney Road and South line of said section S. 88° 50' E. 81.08 chains to the south East corner of said section, at the crossing of two County Roads; passing a blue stone at 40.87 chains, or in the centre of said south line; Then beginning at said blue stone, in the centre of the south line of said section, & Run N. 1° 50' E. 81.25 chains to the original half mile corner in the North line of said section from which a W. Oak stump 24 In. Dia. bears S. 46° E. 27 1/2 links, & N. 26° W. 20 links dug down & found the main, or centre root of a W. Oak stump or tree; Planted a stone at the said corner, & marked a W. Oak 24 In. Dia. N. 74 1/4° E. 52 1/2 links, & a W. Oak 22 In. Dia. N. 5° W. 71 links; Thence with the North line of said section S. 88° 20' E. 40.87 chains, entering a pond at 9.15 chains; leave pond at 13.15 chains, cross Tuckers Run at 31.15 chains, to a stake at the N. E. corner of said section from which a W. Oak stump 22 In. Dia. bears N. 26° W. 14 links distant;

Done in presence James Johnson, Robert Huston, Geo. W. Aikin  
J. L. Atwood & Thomas Atwood.

James Johnson }  
Robert Huston } C. C.

Henry C. Moore, County Surveyor of Logan

Survey No. 837 = Depositions for D. & J. Garwood

statement

Surveyor's Office Bellefontaine Ohio Aug. 30<sup>th</sup> A.D. 1860  
 In pursuance of the following notice hereunto attached, and by virtue of, and agreeably to, the Statute of Ohio entitled "An act to enable the holders of lands within this state to perpetuate testimony relative to their lands", and by the request of Daniel Garwood & Jonathan Garwood, of Bane Township of Logan County and State of Ohio; I, Henry C. Moose, the County Surveyor of said County of Logan; proceeded on Thursday the 16<sup>th</sup> day of Aug. A. D. 1860, to the South East & North East corners of Levi Bollingsworth's Original Virginia Military Survey No. 3160, on the waters of Darby, being in the said Township of Bane, and I then and there took the depositions of Samuel Warner, Jessie Warner, Abisha Warner, Isaac Warner, and Isaac Sparks, for the purpose of establishing the Original location of said corners, according to said act, whose depositions I then and there reduced to writing, which were signed by the respective deponents then and there before me -

Henry C. Moose, County Surveyor of Logan Co. Ohio,

Office

Daniel Garwood  
v. s.

Elisha Cowgill, et al

Before H. C. Moose, County Surveyor  
in and for Logan County State of Ohio.

Elisha Cowgill, John Cowgill, Sally Bewlings, Samuel Warner, and John W. Davis, will take notice that on the 16<sup>th</sup> day of August A. D. 1860; Between the hours of seven o'clock A. M. & seven o'clock P. M. before H. C. Moose, County Surveyor of Logan County Ohio, Depositions will be taken by me, on the premises; to be used in evidence for the purpose of establishing the South East and North East corners of Levi Bollingsworth's Original Virginia Military Survey No. 3160, on the waters of Darby, and also the line joining said corners, being the East line of said Survey, when and where you may attend, have such witnesses as you may choose to summon, and put interrogations to witnesses, if you see proper so to do; To be done under the Act of January 2<sup>nd</sup> A. D. 1824, entitled "An Act to enable the holders of Lands within this state to perpetuate testimony relative to their lands"

Signed Daniel Garwood  
Jonathan Garwood

INDEXED ON MAP

notice of office

State of Ohio  
Logan County

v. s. Personally appeared before me, the subscriber, County Surveyor in and for said County of Logan, Jose G. Snodgrass, a man of lawful age and sound mind, and made solemn oath that more than twenty days ago he served the foregoing notice upon the within named persons, by reading the same to them. - Done in Bane Township of said County and state on this the 16<sup>th</sup> day of Aug. A. D. 1860  
 Henry C. Moose, County Surveyor of Logan County Ohio.

State of Ohio

Logan County { S.S. - I Personally appeared before me, the subscriber  
the County Surveyor in and for said County of  
Logan, Samuel Warner, Jessie Warner, Abisha Warner, Isaac Warner,  
and Isaac Sparks; Men of lawful age & sound mind, and made  
solemn oath that they would testify to the truth the whole truth and  
nothing but the truth, so far as they know, in reference to the  
Original location of the South East, and North East corners of Levi  
Hollingsworth's Original Virginia Military Survey No. 3160, in Zane  
Township of said County;

Done in Zane Township of said County & State, on this the 16<sup>th</sup> day of Aug. A.D. 1860.  
H. C. Moore, County Surveyor for said County of Logan,

Testimony

Samuel Warner's Testimony, at the S.E. corner -

1<sup>st</sup> Question Have you the means of knowing where the S.E. corner of Levi Hollingsworth's  
Original Virginia Military Survey No. 3160 was originally located?

Ans. Yes -

2<sup>nd</sup> Ques. How long have you known this corner? Ans. - Thirty Years -

3<sup>rd</sup> Ques. What did you then see to mark the corner, or as monuments for that corner

Ans. I saw three beech trees, each marked as corner trees -

4<sup>th</sup> Ques. How were these trees marked?

Ans. By hacks on three sides, I would suppose them to be tomahawk  
marks, they were small at any rate -

5<sup>th</sup> Ques. Were the adjoining lands at the time you first knew this corner  
cleared, or wild lands?

Ans. - The corner was then in the woods, or unimproved lands.

6<sup>th</sup> Question Have you seen this corner often, & been familiar with it ever since  
you first knew it, or have you not?

Ans. I have lived less than one mile from this corner ever since I  
knew it, and some longer, and have been familiar with this corner  
ever since I first saw it; have seen it often, & could come to  
it in the night.

7<sup>th</sup> Ques. Can you now point out the place where these three beech  
trees stood, of which you speak as having been corner marked?

Ans. I can point out the place where two of them stood, but the  
other I cannot. - There is where one of the trees stood, & here  
is where another stood, (placing his heel each time upon the  
roots of a beech tree, the stump, or tree, having rotted away to  
the surface of the ground) Signed Samuel Warner -

Jessie Warner's Testimony - at the S.E. corner

1<sup>st</sup> Ques. Have you the means of knowing where the South East corner of Levi  
Hollingsworth's Original Virginia Military Survey No. 3160 was  
originally located? Ans. Yes -

2<sup>nd</sup> Ques. How long have you known this corner?

Ans. Sixteen years certain, and probably twenty.

3<sup>rd</sup> Ques. What did you see at this place as evidence of a corner at the time  
you first knew it as such?

Ans. - Three beech trees marked with three hacks on three sides each that

is the North, South and west sides, I think the backs were made with a Tomahawk.

4<sup>th</sup> Ques. Have you known this corner ever since you first knew it?

Ans. Yes, I have lived within two miles of it ever since that time, & saw it frequently —

5<sup>th</sup> Ques. Can you now point out, or show me the place where these three beech trees stood, of which you speak as having been corner marked?

Ans. — Two I can certain, the third I cannot with certainty; Right here one of them stood, and the other stood here, (putting his heel on the same roots that Samuel Warner did) The third stood about 12 or 15 feet N. East of this one, (the second one pointed out, being the most Southern of the three) signed, Jesse Warner —

Abishai Warner's Testimony, at the S.E. corner —

1<sup>st</sup> Question Have you the means of knowing where the South East corner of Levi Bollingsworth's Original Virginia Military Survey No. 3160, was originally located? — Ans. Yes —

2<sup>nd</sup> Ques. How long have you known this corner?

Ans. Fifteen years, and probably twenty, All this time I have lived within four miles of this corner, & until the last eight years I lived within three fourths of a mile of it from the time I was born; I have seen this corner every few weeks from the time I was big enough to notice such things, to the present.

3<sup>rd</sup> Ques. What did you see here as evidence of a corner, at the time you first knew it as such?

Ans. Three beech trees, two larger were red beech, and the smaller one was a white beech, they were all marked alike, that is with backs on four sides each; as if each was a corner tree, as well as I now recollect;

4<sup>th</sup> Ques. Can you now show me the place where these three beech trees stood of which you speak as corner trees?

Ans. I can show you plum where two of them stood, & the other stood over the road, on the east side, but I cannot show you exactly where it stood now, — here is the place where one of them stood, and here is the place where another stood, (putting his heel on the same roots that Samuel & Jessie Warner did.) and the other stood somewhere about here, as near as I can recollect, & not more than three or four feet either way, (putting his heel on the ground about 12 $\frac{1}{2}$  feet, nearly North of the second place pointed out,

signed — A. Warner.

Testimony at the North East corner —

Isaac Spark's Testimony —

1<sup>st</sup> Ques. Have you the means of knowing where the North East corner of Levi Bollingsworth's Original Virginia Military Survey No. 3160, was originally located? — Ans. I have —

2<sup>nd</sup> Ques. How long have you known this corner?

Ans. Something like thirty years I think -  
 3<sup>rd</sup> Ques. What did you see here as evidence of a corner at the time you first knew it as such? Ans.

Ans. I saw an Elm & two sugar trees, all three were marked as corner trees, that is, marked with three hacks, some on two sides, & some on three, I think; & I think the hacks were made with a tomahawk.

4<sup>th</sup> Ques. Have you been familiar with this corner ever since you first knew it?

Ans. I have, I have lived within  $\frac{1}{4}$  of a mile of this corner ever since I first knew it, until the last six years, since which I have lived about three miles off. While I lived here, I saw it every few days, sometimes every day in the week; but since I moved where I now live, I have seen it but three or four times.

5<sup>th</sup> Ques. Can you now point out or show me the place where these three trees stood of which you speak as corner trees?

Ans. Yes, I think I can. I can show you exactly where one stood, & within a very few inches of the other two; one stood right here (putting his cane on the ground by the root of an Elm) this was an Elm, and one stood about here (sticking a marking pin in the ground,) and another stood about here, (sticking another marking pin in the ground at another place,) these last two were sugars. Signed - Isaac Sparks,

Jessie Warner's Testimony, at N.E. corner -

1<sup>st</sup> Ques. Have you the means of knowing where the North East corner of Levi Hollingsworth's Original Virginia Military Survey, No. 3160, was originally located?

Ans. Yes, because it is George McCreedie's corner. -

2<sup>nd</sup> Ques. How long have you known this corner? Ans. Since September 4<sup>th</sup>, 1823.  
 3<sup>rd</sup> Ques. What did you see here as evidence of a corner when you first knew it?

Ans. I saw two two sugar trees and an elm, all standing, and had corner marks on them. They were recognized by Jas. W. Marrison in 1823, he being county surveyor at that time, as the corner of Thomas Sear's Survey, Geo. McCreedie's Survey, and Levi Hollingsworth's Survey.

4<sup>th</sup> Ques. Have you been familiar with this corner ever since you first knew it as such?

Ans. Yes Sir, I have <sup>been here frequently with surveyors, have</sup> lived within one mile of it for over twenty years, & have seen it often.

5<sup>th</sup> Ques. Can you now point out the place where those three trees stood, of which you speak, as corner trees.

Ans. I can show exactly where the Elm stood, and nearly the place where the two sugars stood. The Elm stood right here, (pointing out the same place shown me, or pointed out by Isaac Sparks for the Elm) one of the sugars stood here & another there, sticking wooden stakes in the ground, each about 4 or 5 feet from the places pointed out by Isaac Sparks, but in the same circle.   
 Jessie Warner

Isaac Warner Testimony (at the N. E. corner)

1<sup>st</sup> Question - Have you the means of knowing ~~knowing~~ where the North East corner of Levi Bollingsworths Original Virginia Military Survey No. 3160 was originally located? - Ans. - I have.

2<sup>nd</sup> Ques. How long have you known this corner?

Ans. Ever since the year 1823, John Sharp and myself were here with Marmen at that time.

3<sup>rd</sup> Ques. What did you then find or see here as evidence of said corner?

Ans. An Elm & two Sugartrees, with Tomahawk hacks on them, marked as corner trees are usually marked.

4<sup>th</sup> Ques. Have you been familiar with this corner ever since the year A. D. 1823?

Ans. I have. I have rode over it, have wagoned over it, & walked over it, I have lived in sight of it, about a mile off, for 36 years.

5<sup>th</sup> Ques. Can you now point out the place where these three trees stood of which you speak as corner trees?

Ans. I can. The Elm stood here, (sticking a wooden stake at the same place where Isaac Sparks & Jessie Warner pointed out for the Elm,) One of the sugars stood about here, and the other about there, (sticking marking pins in the ground near the same places that Jessie Warner pointed out as the location of the sugars, & nearly in the same circle)

Signed Isaac Warner

Statement

S. corner

S. corner

At the close of each of the foregoing depositions, I gave opportunity to any person present to ask any further questions, but none were proposed by any one; I thereupon planted a large blue Rock stone at the South East corner, under which were planted some pieces of broken glass, & broken dishes, from which the roots of the first tree pointed out by the deponents who testify at this corner, bears S. 87 1/2 W. 16 links distant; the roots of the second S. 46 E. 10 links; and the place pointed out by Abishai Warner as the location of the third tree N. 51 E 16 links; - I also planted a large rock stone at the N. E. corner, under which were placed some pieces of broken glass, & broken dishes, from which the roots of the Elm pointed out by the three deponents who testify at this corner, bears N. 44 E. 11 links distant; the places which were pointed out for the location of the two sugar trees were from 10 to 12 links distant, and bearing from N. 42 W. to the left to S. 17 W. no two being exactly the same bearing or distance, An Elm tree (deadened) 22 Inches in diameter S. 64 E. 15 links; another Rock stone S. 81 E. 8 links, (since locating the said N. E. corner, I have been informed that the last named stone is the same, & was there planted by A. A. Harbison Dec. 28<sup>th</sup> 1846, See Book "B" page 46, Surveyors Record Logan Co. O.)

Line,

I then ran a line from the stone which I planted at the said S. E. corner N. 36 W. 46.00 chains (or 184.3 poles) to the stone which I planted at the said N. E. corner, driving a stake at 60, 100, 140, & 160

INDEXED BY MISS 1393

46.20  
15 1/4



poles respectively, All of which I did in the presence of Daniel Garwood, Jonathan Garwood, Jose H. Garwood, Lemuel Garwood, Samuel Warner, Jessie Warner, Abisha Warner, John Sharp, Isaac Sparks, Isaac Warner, Charley Morse, Elisha Cowgill, John Foster, John Cowgill, John W. Davis and about 8 others

Wm Brown }  
Jose G. Inskeep } Chain carriers

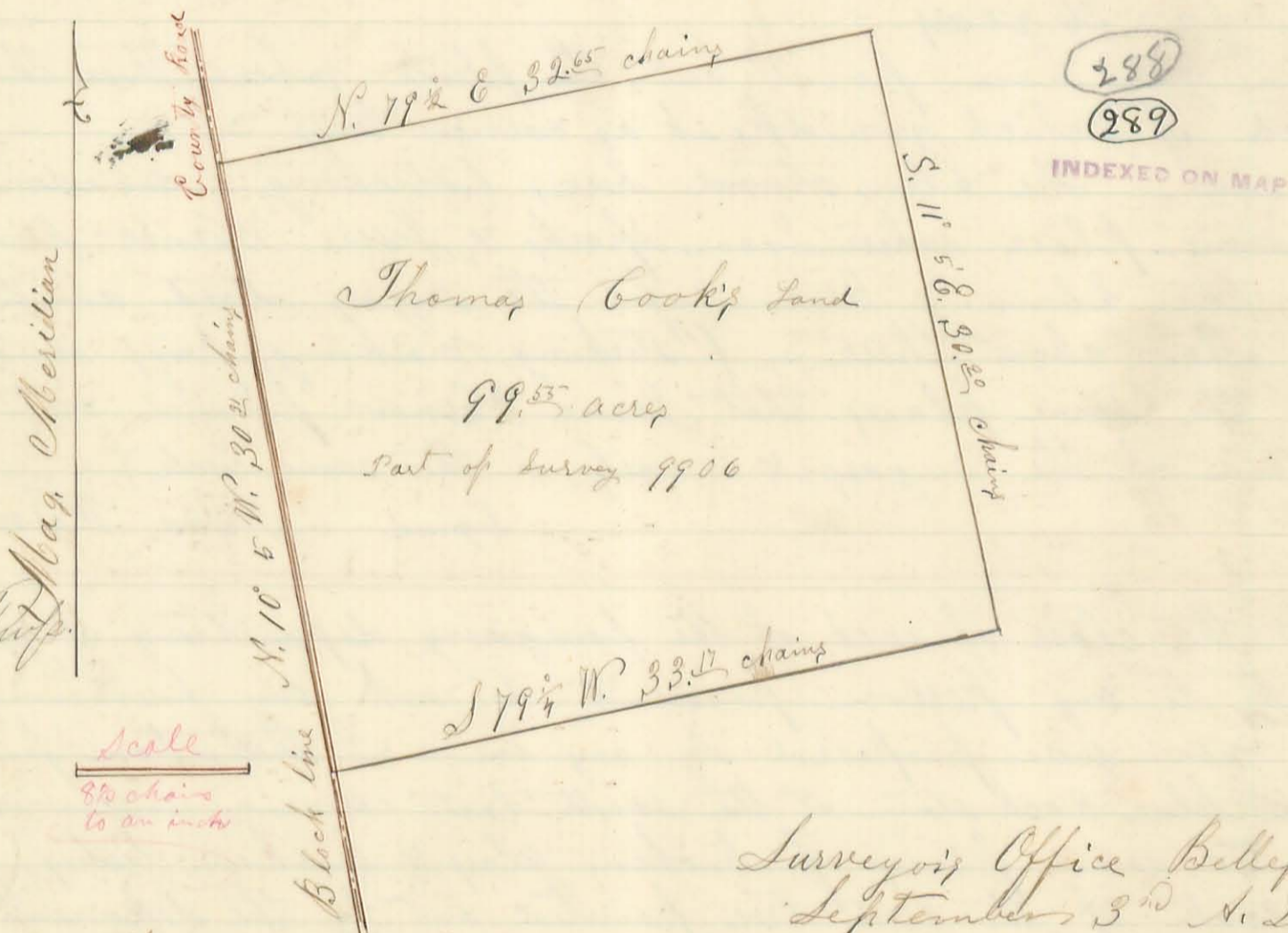
The foregoing statements are a correct representation of the things therein set forth -

Henry C. Moore, County Surveyor  
of Logan County Ohio

Survey No 838 ✓

Thomas Cook

W. Arthur Puff



Surveyor's Office Bellefontaine Ohio  
September 3<sup>rd</sup> A. D. 1860

The above Plat is a representation of 99.53 acres of land in McArthur Township of Logan County Ohio, a part of Original Virginia Military Survey No. 9906, in the name of Thomas Pierson as surveyed by me, Henry C. Moore, County Surveyor in and for said County, on the 12<sup>th</sup> day of June A. D. 1860, by the request of Thomas Cook, for the purpose of establishing the lines and corners thereof, and ascertaining the number of acres contained therein. - To wit - Beginning at a lime stone in the west line of said survey, at the S.W. corner of Wm Collins' land, from which a W. Oak stump 24 inches in diameter bears S. 4 1/4 W. 9 links, a Hickory stump 10 In. Dir. N. 82 3/4 E. 16 links; an Ash stump (now Cotton) N. 3 1/4 W. 17 links. Thence with said Collins' south line N. 79 1/2 E. 32.65 chains to a stone & a brick at the S.E. corner of Collins' land, & in the east line of said Pierson's survey; Thence with the said east line S. 11 5/8 E. 30.22 chains to a stone and brick at John N. Richards' N.E. corner, a Beech 20 In. Dir. S. 85 W. one link, a Sugar 30 In. Dir. N. 72 1/2 E. 16 links; Thence S. 79 1/4 W. 33.12 chains