

The original of this page is blank or missing.

INDEXED ON FILE  
489

LEWISTOWN RESERVOIR

Surveys 12278 and 12311.

J. H. Eldet and  
Arthur Renick

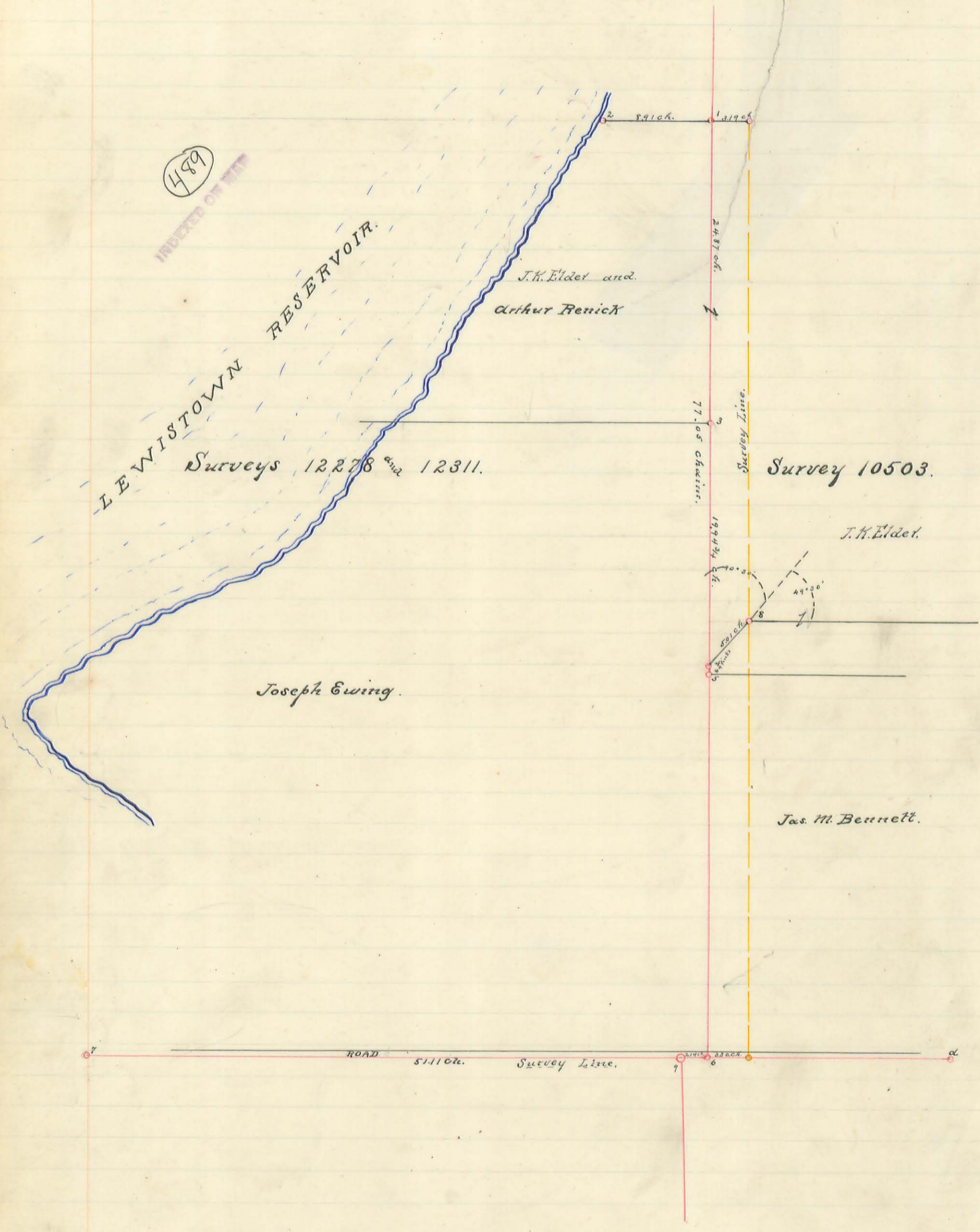
Joseph Ewing

Survey 10503.

J. H. Eldet

Jas. M. Bennett

ROAD 5110 ft. Survey Line.



Surveys 12278, 12311 + 10503.

Survey made for Joseph Ewing, J.K. Elder, James M. Bennett, & Arthur Renick establishing the Survey Line between lands owned thereby.

Survey made, January 24, 1900.

- 1 Sugar tree 20" diameter
2. Stone planted at high water mark and boundary of land line.
3. Stone " near west side of tree and in north line of Jos. Ewing's Land. and on Survey Line.
4. Stone planted in Survey Line and being point on the north west side of a <sup>5a.</sup> strip near Arthur Renick's House.
5. Stone planted in Survey Line and in south line of 5 acre tract.
6. Stone " " " " intersection of line between Surveys {12278} & {12311} + 10503, with south line of said Surveys: said point 6 is 51.11 chains from Stone No. 7.
- 7- Granite boulder.

Distance - 1 to 2, -	8.91 chains.
" 1 " 3,	24.87 " "
" 3 " 4,	19.94 <sup>3</sup> / <sub>4</sub> " "
" 4 " 5,	.64 links.
" 1 " 6,	77.05 chains.
" 6 " 7,	51.11 " "
" 4 " 8,	5.01 " "
9- Stone - Distance 6-9 -	2.14 chains.

Jess Bennett }  
 A.M. Renick } Chainmen

Wilbur A. Ginn, County Surveyor.



The original of this page is blank or missing.

The original of this page is blank or missing.

Part of Survey No 12276.

Surveyed for Dennis Denny

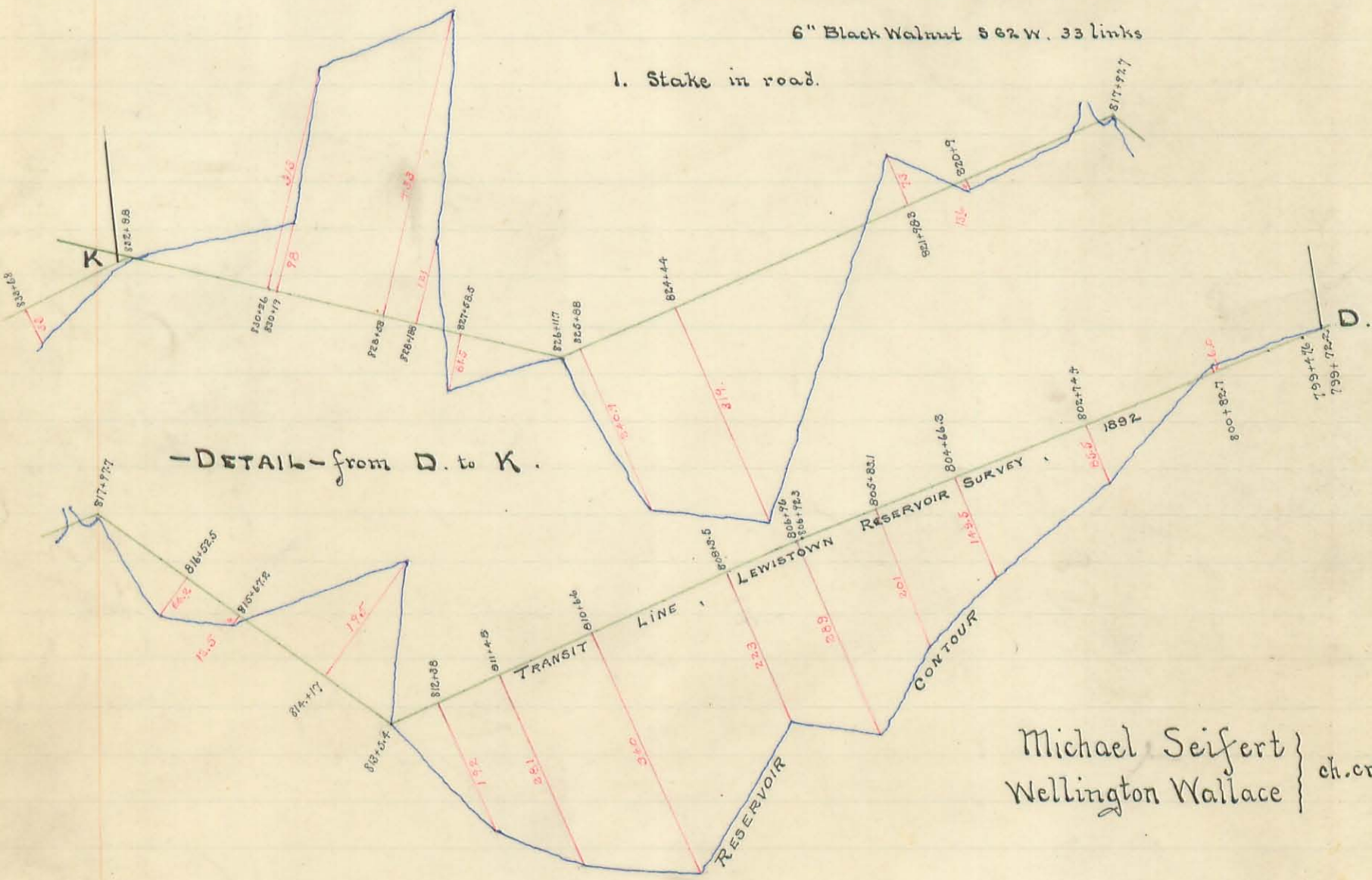
Jan. 17, 1901

490  
INDEXED ON MAP



Description of Corners.

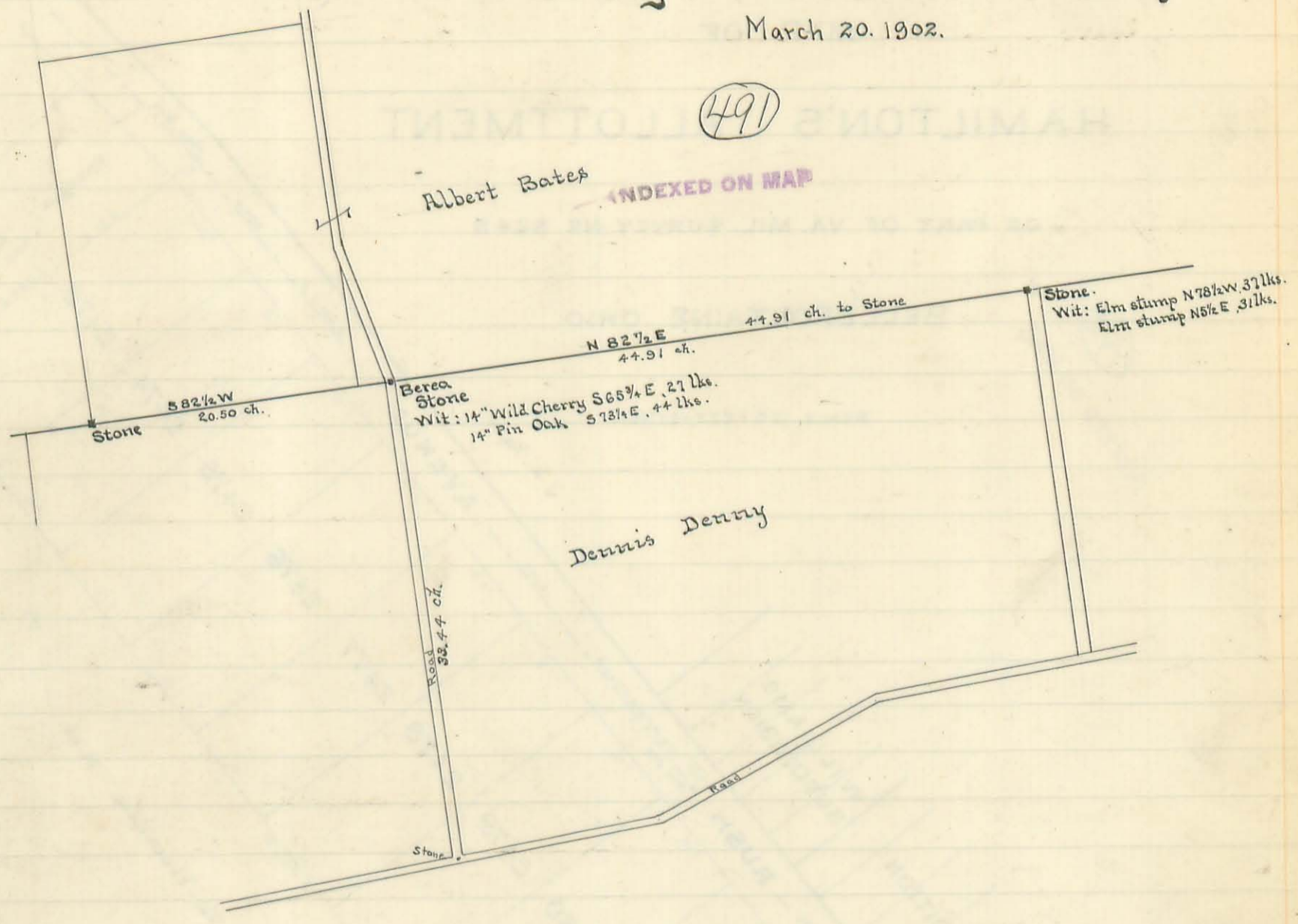
- A. Stake Wit: Elm N 51 3/4 W, 8 links
- B. Stake. Wit: 8" Dogwood S 89 1/4 E 8 links  
8" Walnut S 25 W 5 1/2 links
- C. Stone. Wit: 14" Ash S 88 1/4 W 37 links  
8" Buckeye S 39 1/2 E 3 links
- D. Stake at Sta. 799+72.2 ft. Lewistown Reservoir Survey 1892
- E. Stake. Wit: 6" Hickory N 50 E 9 links  
8" White Oak S 22 1/4 E 25 links.
- F. Stake in center of road at N.W. corner of Graveyard
- G. Stake. Wit: 18" Hickory S 7 1/2 E 80 links
- H. Stake. Wit: 10" White Walnut S 68 1/4 E, 14 links  
6" Black Walnut S 62 W, 33 links
- I. Stake in road.



Michael Seifert }  
Wellington Wallace } ch. cr.

James C. Woudens  
County Surveyor

20 lines 75 words 409  
Survey of Line for Dennis Denny and A. Bates, located  
in Survey 12276. Stokes Township  
March 20, 1902.



M. Sefert }  
Walter Bates } ch. ers.

Dennis Denny }  
Milo May } mkrs.

James C. Woudrus  
County Surveyor

45 lines \$2.95 100 lines 3.07

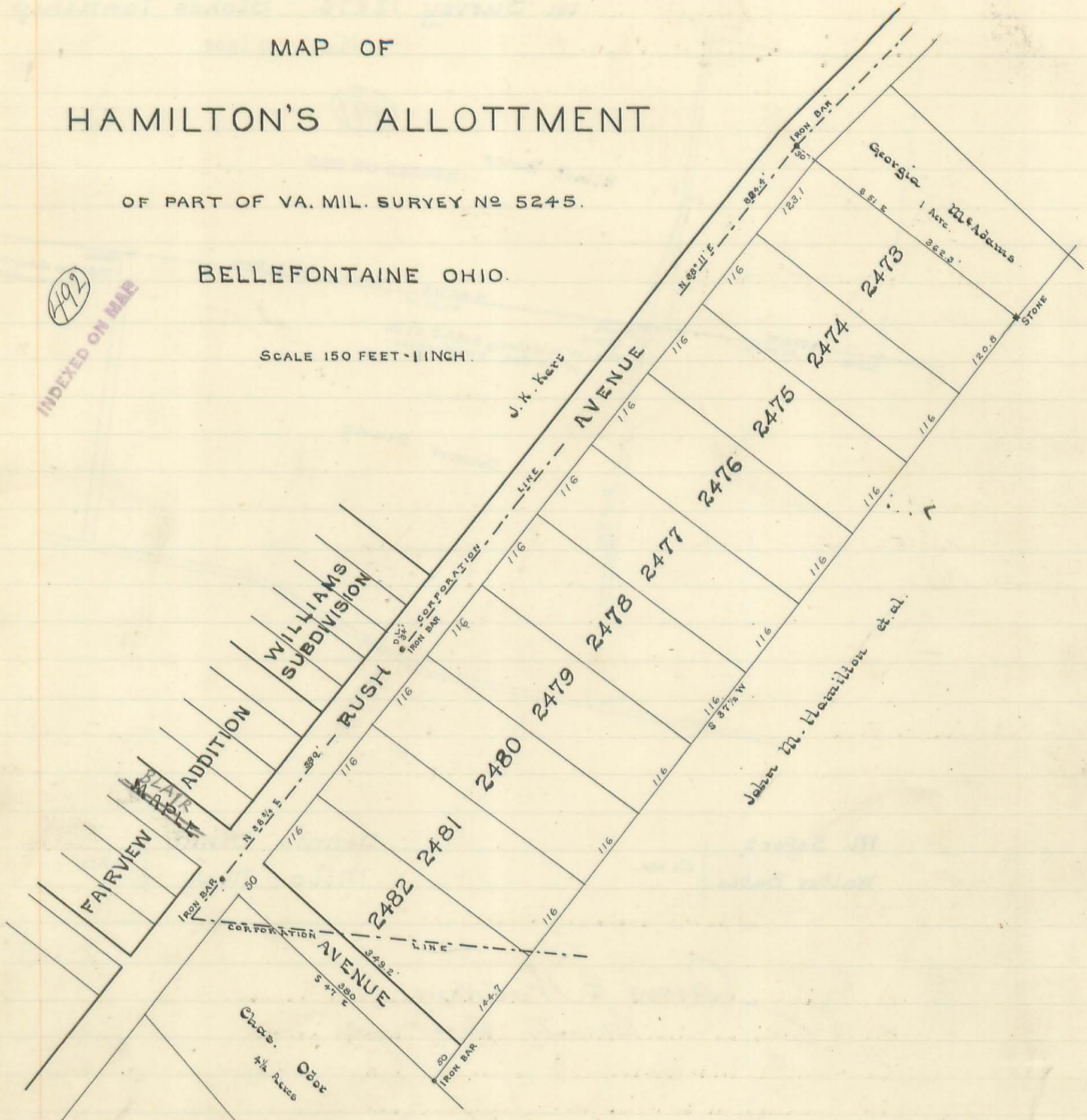
# MAP OF HAMILTON'S ALLOTTMENT

OF PART OF VA. MIL. SURVEY NO 5245.

BELLEFONTAINE OHIO.

SCALE 150 FEET = 1 INCH.

INDEXED ON MAP



*James C. Handus  
County Surveyor*

March 22 1902

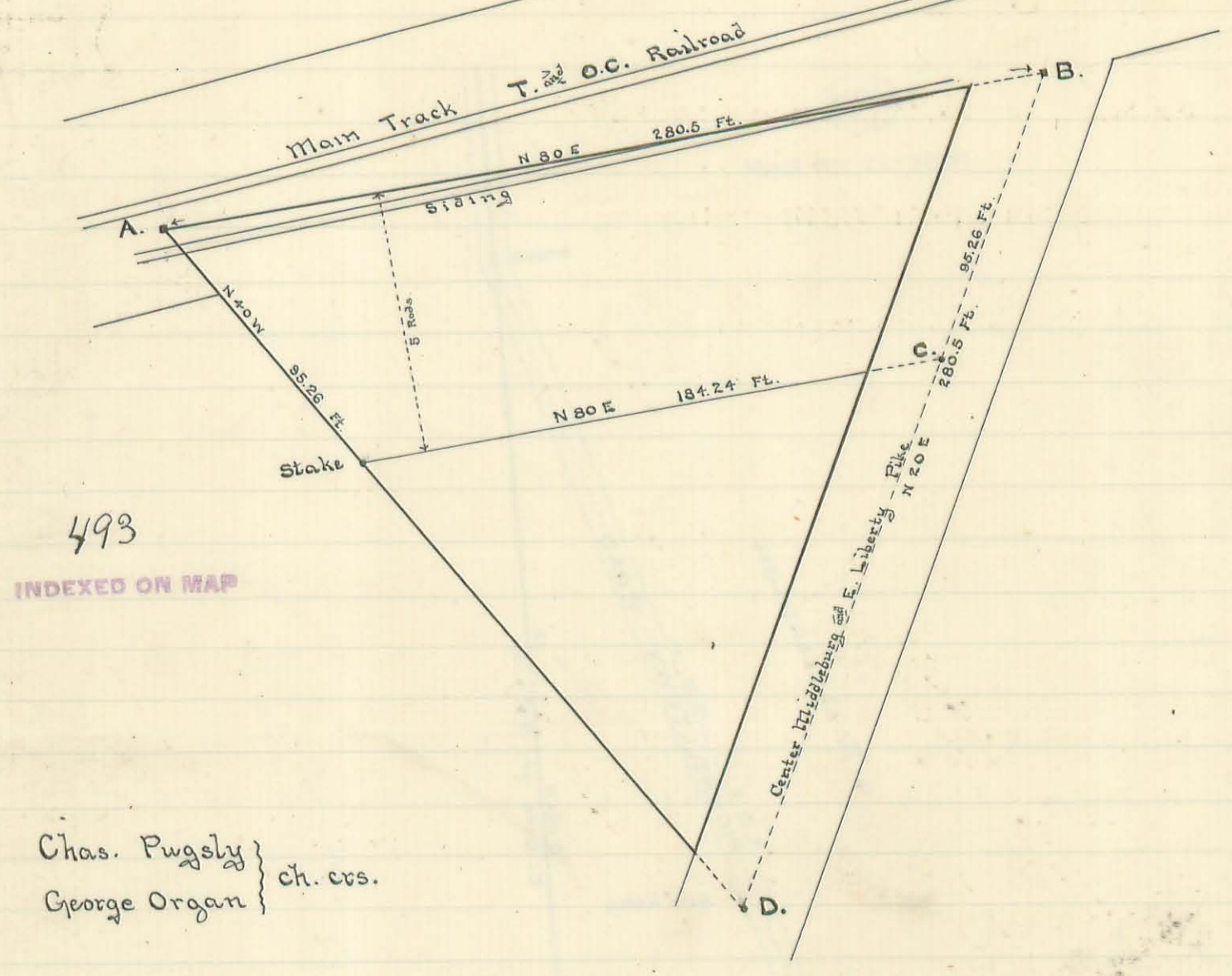


14 lines 75 words 3/1/44

# Part of Survey No. 4689 in Perry Township

Surveyed for Greely & Palmer

Dec. 5. 1900



493  
INDEXED ON MAP

Chas. Pugsly }  
George Organ } ch. crs.

## Description of Corners.

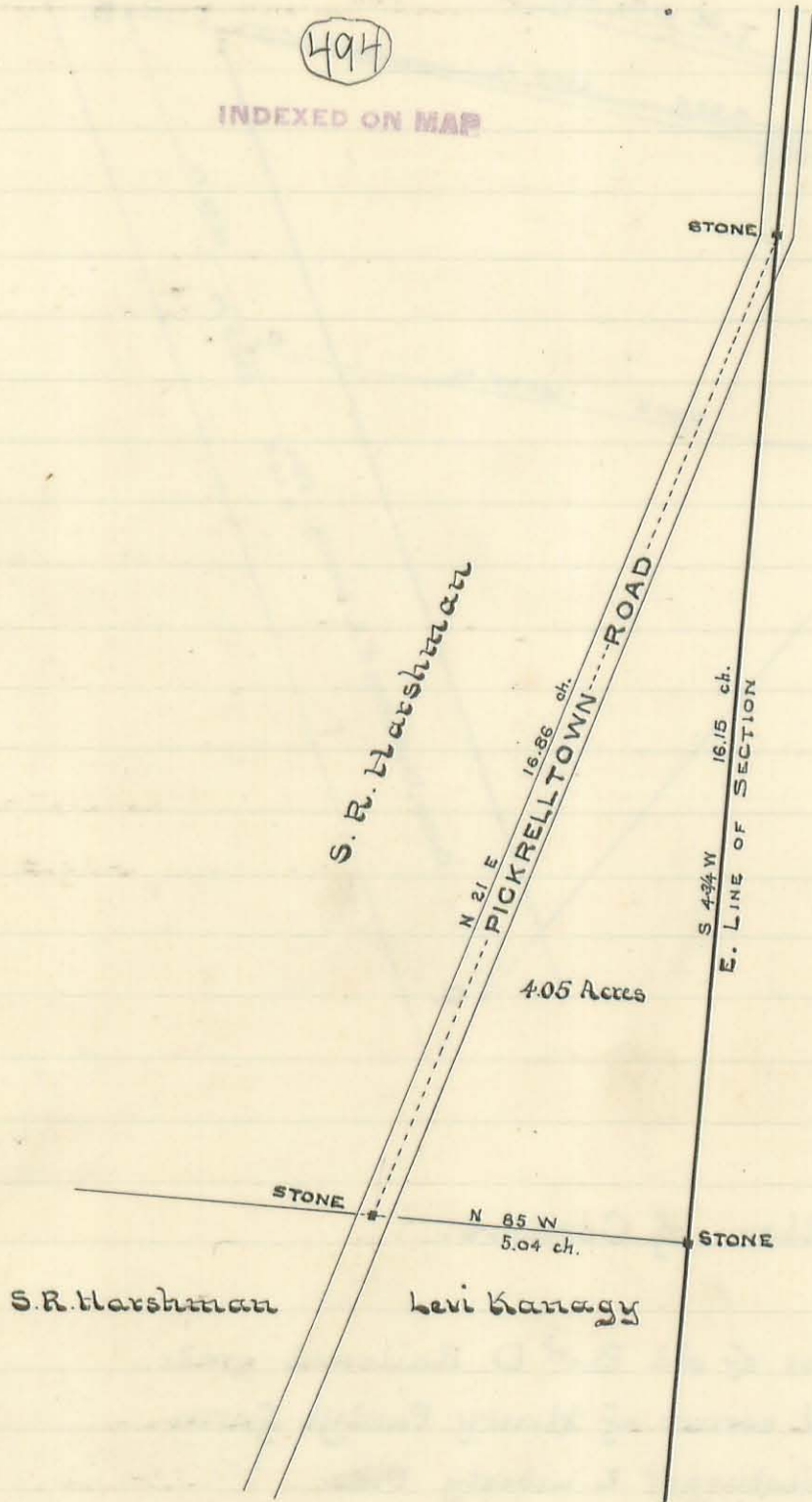
- A. - Stake in center of old B. and D. Railroad grade.
- B. - Stone in N.W. corner of Henry Parady's farm.
- C. - Stake in Middleburg and E. Liberty Pike.
- D. - Stone in Middleburg and E. Liberty Pike.

*James C. Woudin*  
County Surveyor

7 lines 50 words \$1.11

Surveyed for Samuel R. Harshman and Levi Kanagy  
Part of Section 22, Town 5, Range 13.  
Liberty Township

Monroe Nov. 16. 1900.



Levi Kanagy }  
Lynn Dewese } Ch. Cr.

James C. Wouders  
County Surveyor

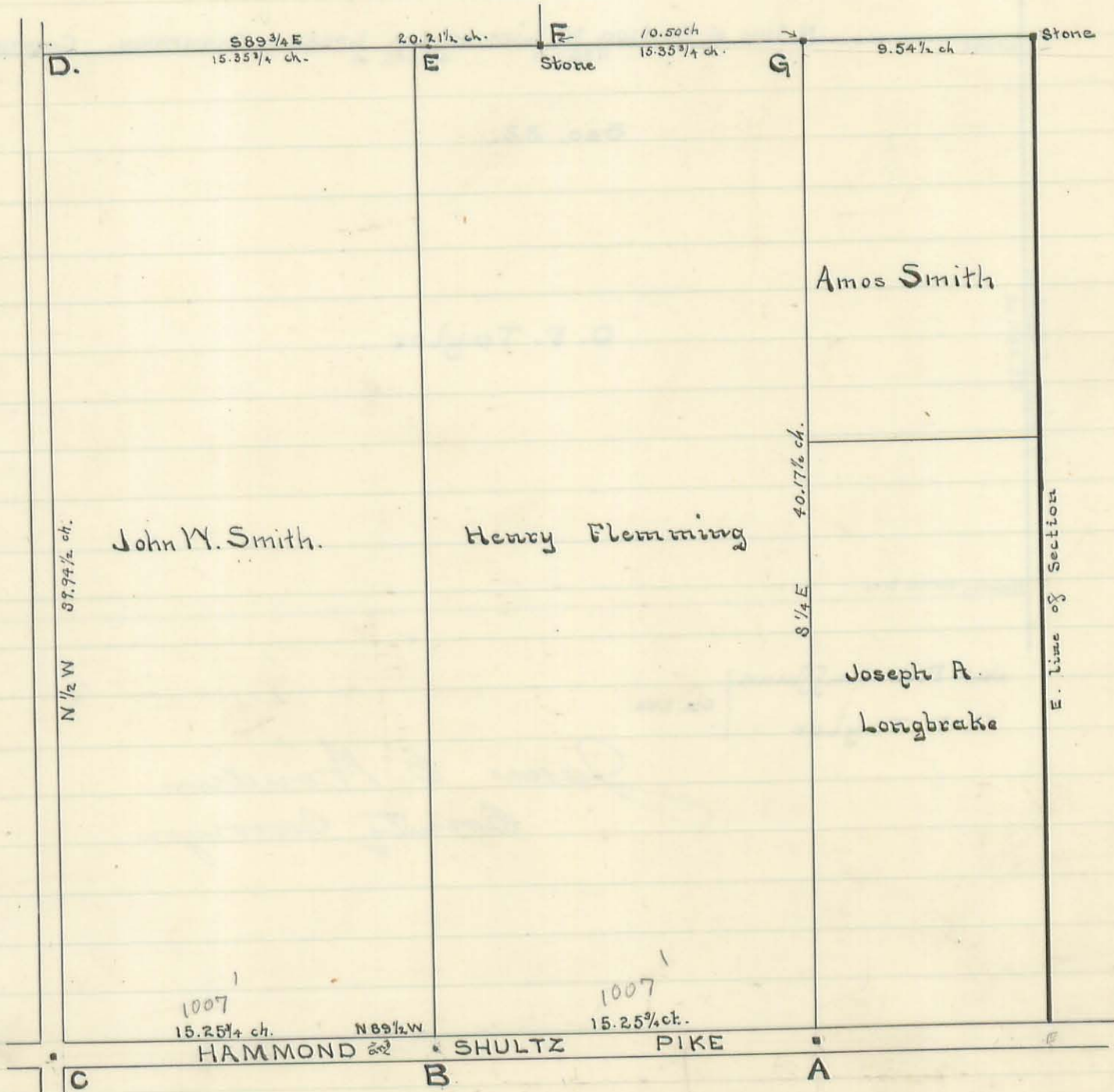
14 links 150 words 4/33

Surveyed for Henry Flemming  
Part of Section 27, Town 2, Range 8.  
Bloomfield Township

(495)

INDEXED ON MAP

April 24, 1902



Henry Flemming - Mkr.

Sol. Cox  
John W. Smith } ch. cr.  
Stanley Mitchell }

Description of Corners

- A. - Stone in pike
- B. - Iron bar in pike
- C. - Stone in cross roads, middle of S. line of Section
- D. - Stone planted on top of 1 1/4" gas pipe driven into the ground. This corner was located by reference to the remains of a red-oak stump N 28 W 13 links distant, and the remains of an old stake was found by digging. See Surveyor's Record Vol. A., page 214.  
Witness - 14" Sugar S 14 1/2 W, 119 1/2 links  
8" Walnut N 39 1/2 E, 89 links
- E. - Stake. Wit: - 12" locust N 61 1/4 E, 50 1/2 links, 14" Buckeye S 48 1/2 E, 43 links.
- G. - Stone planted on top of 1 1/2" gas pipe driven into the ground  
Wit: - 36" Double Sycamore N 72 3/4 W, 48 links  
24" Sycamore N 39 E 127 links

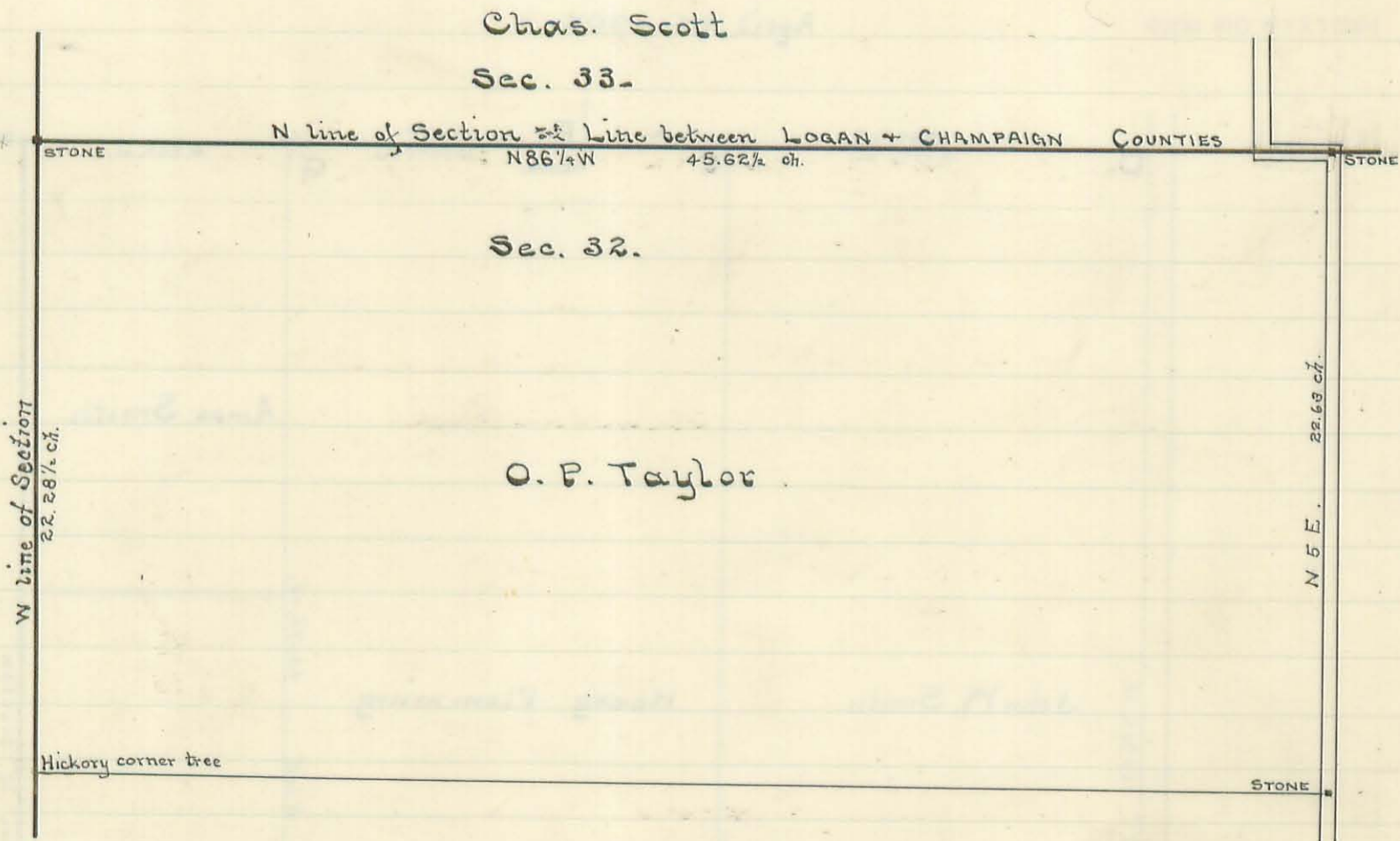
Field notes Book 265  
Pages 20-23

James C. Woudur  
County Surveyor

Surveyed for O. P. Taylor April 2, 1902

N. line of said Taylor's farm being part of Section line between Sections Nos. 32 & 33. Town 5. Range 13, and the line between Logan & Champaign Counties.

496  
INDEXED ON MAP



Jas. Polk Huffman }  
O. P. Taylor } ch. crs.

James C. Wender  
County Surveyor

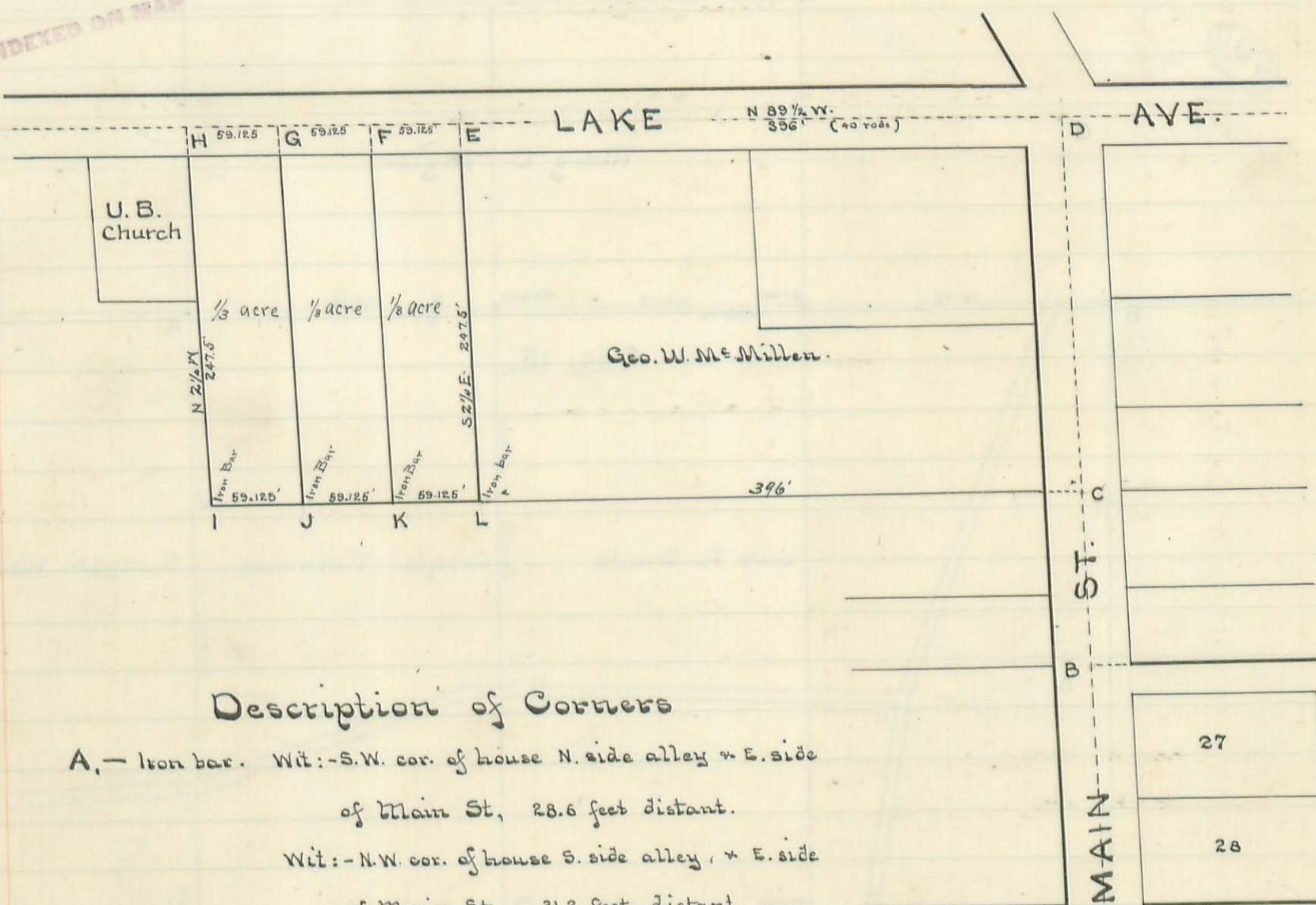
Surveyed for Board of Education of Lake View

Sec. 34. T. 6. R. 8.

June 2, 1902.

(498)

INDEXED ON MAP



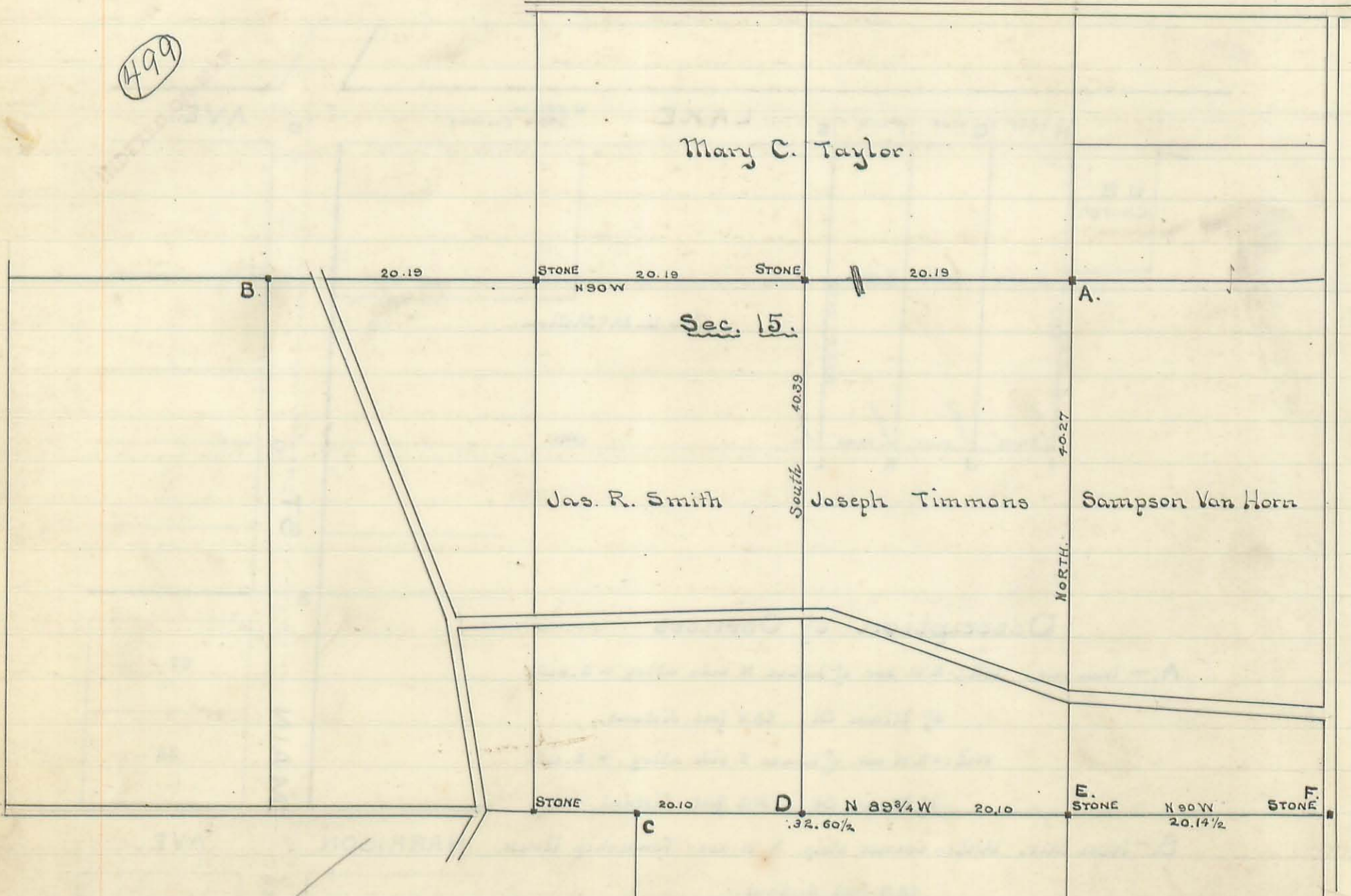
Description of Corners

- A. - Iron bar. Wit: - S.W. cor. of house N. side alley + E. side of Main St, 28.6 feet distant.  
Wit: - N.W. cor. of house S. side alley + E. side of Main St, 31.2 feet distant.
- B. - Iron bar. Wit: - Corner strip N.W. cor. Township House, 48.8 feet distant.  
Wit: - S.W. cor. of foundation to John Keilley's house, 49.5 feet distant.
- C. - Stake in center of Main St.
- D. - Stake in center of Main St. and Lake Ave.
- E. - Iron bar. Wit: - 6" Maple, S.W. 62.8' distant  
5" Maple S.W. East of School House, 74.6 ft. dist.
- F. - Iron bar. Wit: - 6" Maple, South, 27.7 feet distant.  
4" Maple, North, 22.1 feet distant.
- G. - Iron bar. Wit: - Ash tree in A.B. Lorton's lot, North 48.8 feet distant.  
6" Maple, S.E. near street line, 67.4 feet distant.
- H. - Iron bar. Wit: - Corner strip N.E. cor. of tower to U.B. Church, 34.1 feet distant.  
Ash tree in A.B. Lorton's lot, N.E. 72.3 feet distant.

James C. Wender  
County Surveyor

200  
150  
Surveyed for Wm. McCormick, Joseph Timmons, + Jas. R. Smith  
April 4, 1902, being part of Sections 15 + 22 Town. 6, Range 8,  
Stokes Township.

499



R. E. Cummins }  
W. H. Van Horn } ch. crs.

Description of Corners

- A - Stone set by H. E. Moore in 1858.  
Wit: 18" Sycamore S 75 1/4 W, 23 links.  
See County Surveyor's Record, Vol. B. p. 302
- B - Stone on brick. (M. H. McCormick)
- C - Stone - Wit: 6" Cherry S 3 1/4 E 82 links  
4" Lynn S 78 3/4 E 48 links
- D - Stone - Wit: 6" Walnut S 46 E 30 links
- E & F - Stones. See County Surveyor's Record "B" p. 302

Wm. McCormick

Sec. 22.

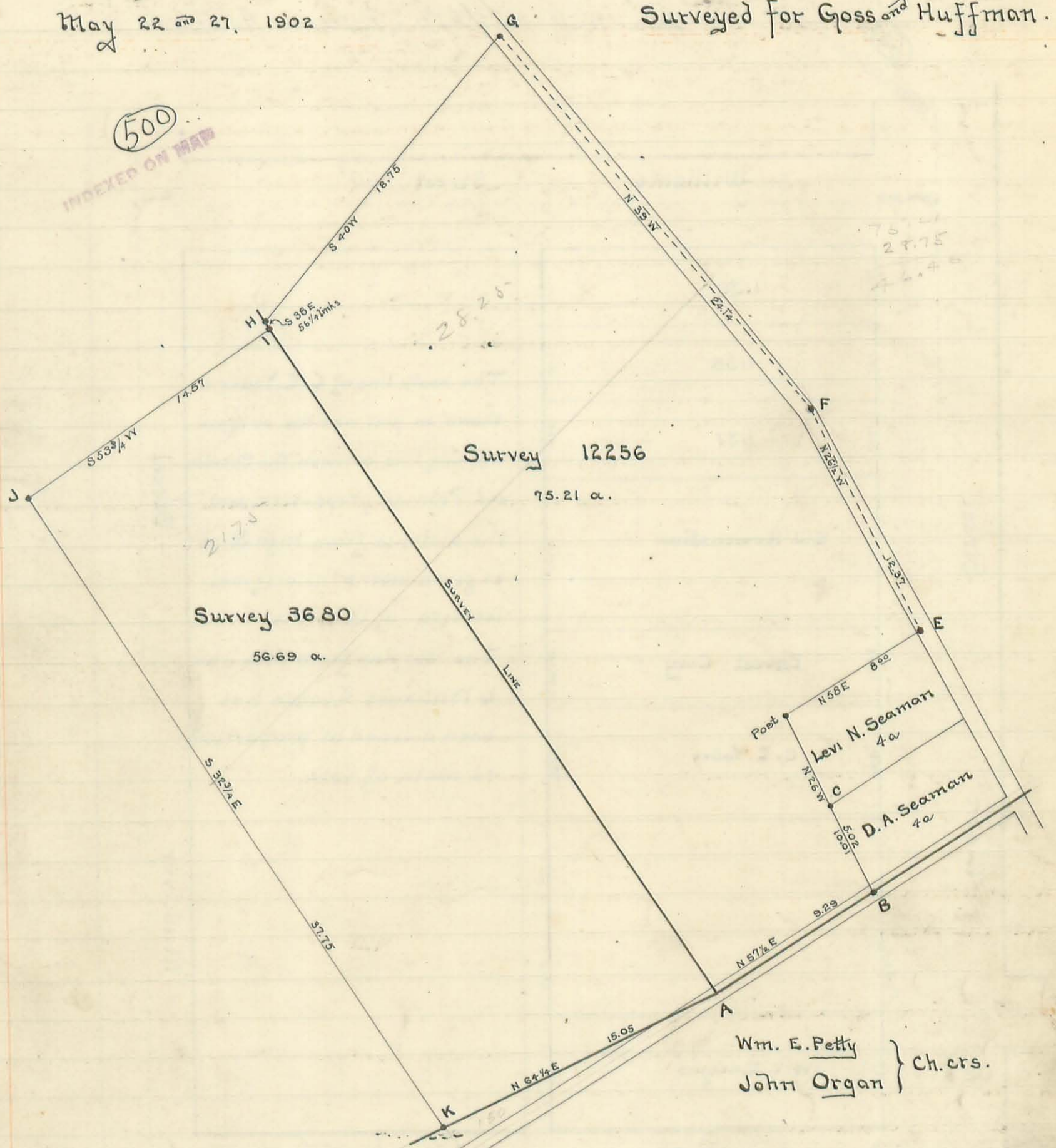
April 4, 1902

Jas. C. Woudrus  
County Surveyor

Part of Surveys 3680 and 12256. Lane Township.

May 22 and 27, 1902

Surveyed for Goss and Huffman.



Description of Corners

- A. Stone in Pike — Wit: 3" Wild Cherry N71<sup>3</sup>/<sub>4</sub>W, 62<sup>1</sup>/<sub>2</sub> links, Also Walnut one inch diam. N68<sup>1</sup>/<sub>4</sub>W, 62 links
- B. Stone in Pike —
- C. Stone N.W cor D.A. Seaman Lot.
- E. Stone in W. side Lanesfield and Columbus Pike.
- F. Stone in E. side Z. and C. Pike
- G. Stone in Z. & C. Pike — Wit: 6" Sycamore S43W, 196<sup>1</sup>/<sub>2</sub> lks. Also 30" Sycamore N53<sup>3</sup>/<sub>4</sub>W, 199<sup>1</sup>/<sub>2</sub> lks.
- H. Stone in Survey Line — Wit: 24" Black Walnut S40W, 14 links
- I. Stone in Survey Line — Wit: 24" Black Walnut N55W, 55 links
- J. Stone .
- K. Stone in Survey Line.

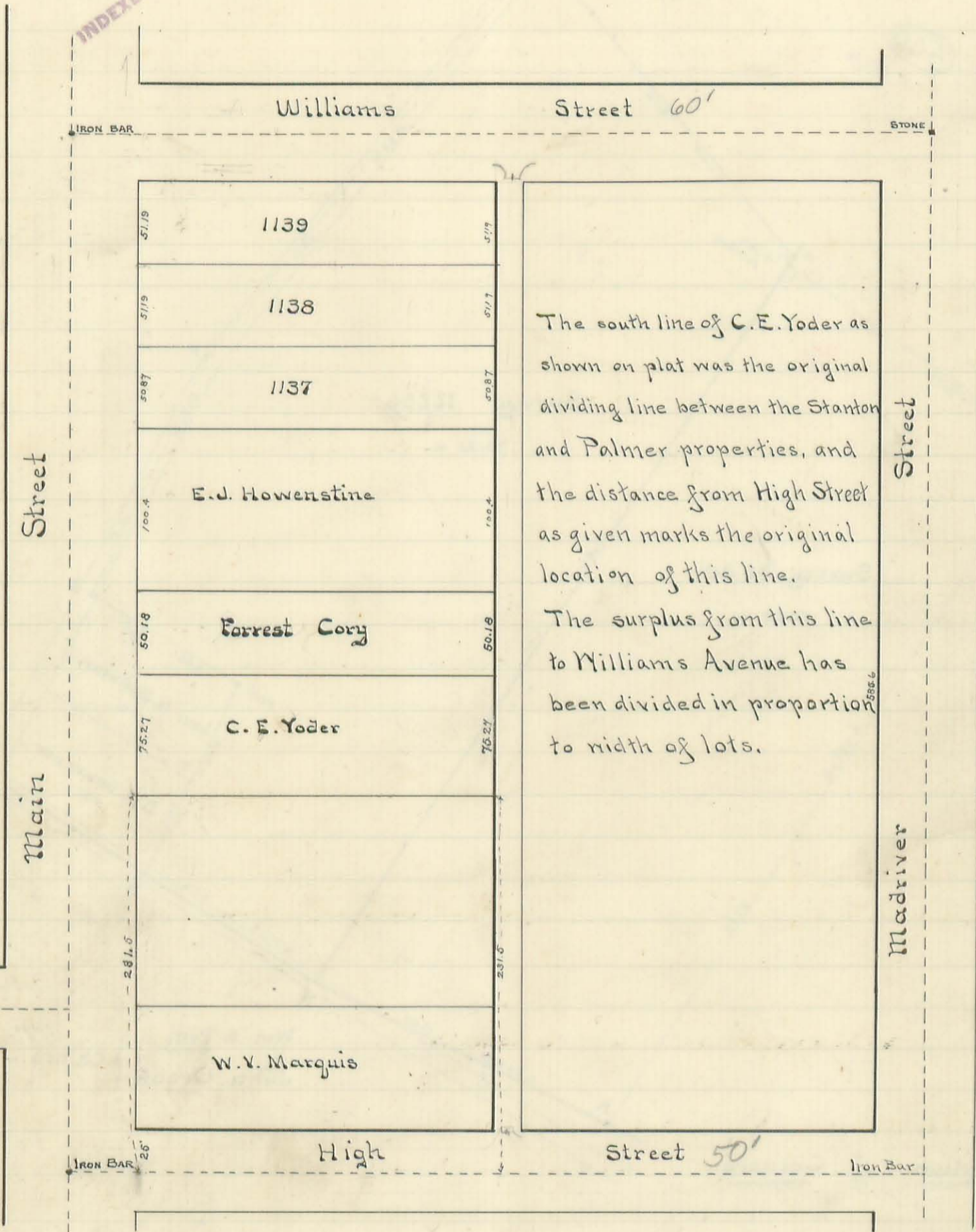
Jas. C. Wondrus  
County Surveyor

Surveyed for Forrest Cory June 7, 1902  
 Located in Bellefontaine, Ohio.

Lot. 1139-1138-1137 Palmer Addition

502

INDEXED ON MAP



Description of Corners

Main and High, Iron bar. Wit: S.E. cor. Lawrence's stone wall 39.8'

Lamp Post S.E. 35.1'

Main and Williams, Iron bar. Wit: Hydrant N.E. 32.2' N.E. cor. coping, Arch Culvert 46.33'

N.W. cor. W. coping, Arch Culvert. 48.25'

Madriver and Williams, Stone. Wit: Hydrant N.W. 53.2' Elm, E. 20.9'

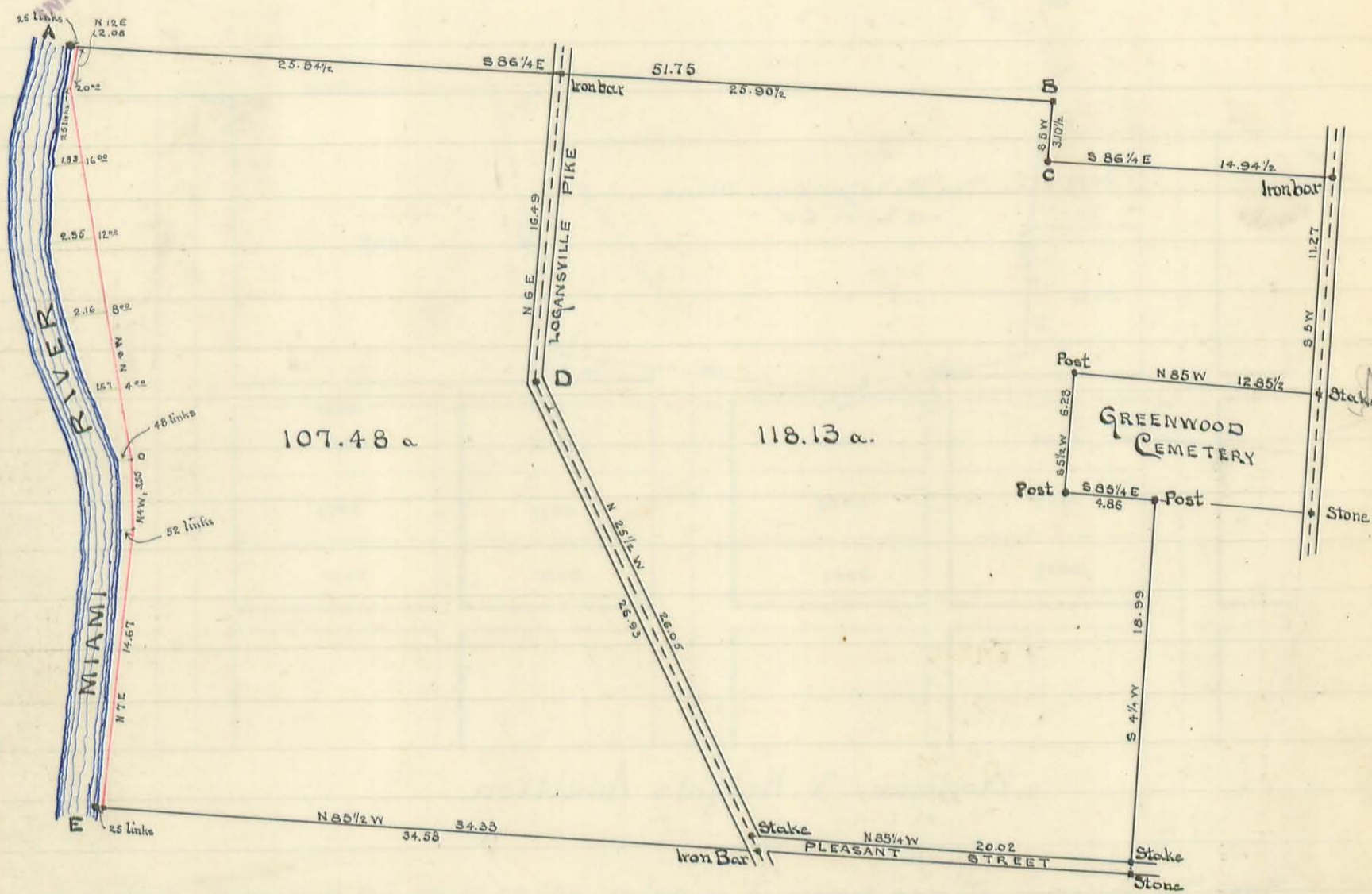
Madriver and High, Iron bar. Wit: Lamp post N.W. 29.5' Hydrant S.W. 27.0'

Jas. C. Wendus  
 County Surveyor



Surveyed for Heirs of Nancy and Harriet Murphy.  
 Part of Section 7. Town. 2, Range 14, Pleasant Twp.  
 Surveyed May 3 & 9, 1902

(501)



Jas. Murphy } Ch. ers.  
 John Murphy }

Oscar Murphy - Mkr.

Description of Corners.

Field Notes  
 BOOK 265  
 Page 30-36

- A. Stake. Wit: 6" Ash S 25 1/2 E 18 links  
 18" Double Buckeye N 46 1/2 E 45 1/2 links
- B. Stone. Wit: 10" Cottonwood N 88 W 88 1/2 links  
 12" Wild Cherry S 5 1/4 W 55 links
- C. Stake. Wit: 28" White Oak N 19 W 2 links
- D. Iron bar. Wit: 16" Ash S 59 3/4 W 28 1/2 links
- E. North Stem. Double Sycamore

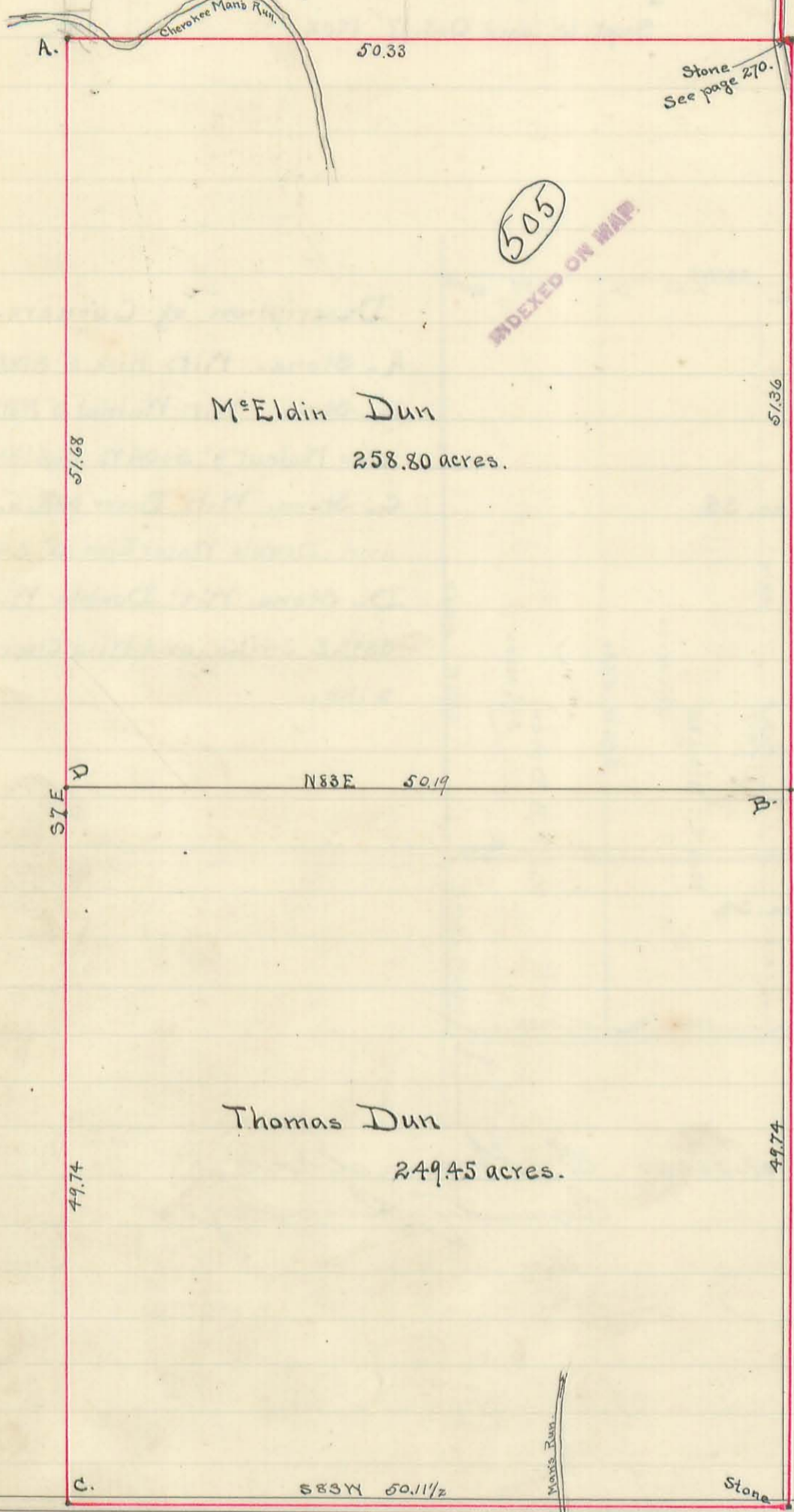
Jas. C. Koudin  
 County Surveyor





Surveyed for Thomas and M<sup>c</sup>Eldin Dun, Va. Mil. Survey 9927.  
M<sup>c</sup>Arthur Township.

Oct. 15, 1902.



David Hews	} ch. cr.
Byrl Hornberger	
Thos. Dun	} Mkrs.
Lew Meigs	

Description of Corners.

A- In bottom of hole 8ft. deep drove iron bar 7/8" x 20", marked on side near top "N.Y. 9927" on top of this placed dressed limestone 18" x 23" x 13" deep, marked on top:  
N.Y. COR  
S.R. 9927  
X

Built on top of this with quarry limestone to surface of ground, finished with limestone 30" high, about 10" square, marked with + on top. Wit: Sugar 18" S77 1/2 E 15 lks., and black walnut 21" N22 W. 13.8 lks.

B. Stone. Wit: Black walnut 4" N78 3/4 W 62 1/2 lks. and gray ash 2" S84 1/2 W. 59 1/2 lks.

C. Stone with bar driven under it. Wit: Maple 32" N17 1/2 W. 38 lks.

D. Stone. Wit: Red elm 6" N11 1/2 E 29 1/2 lks. and black walnut 6" S44 E 52 lks.

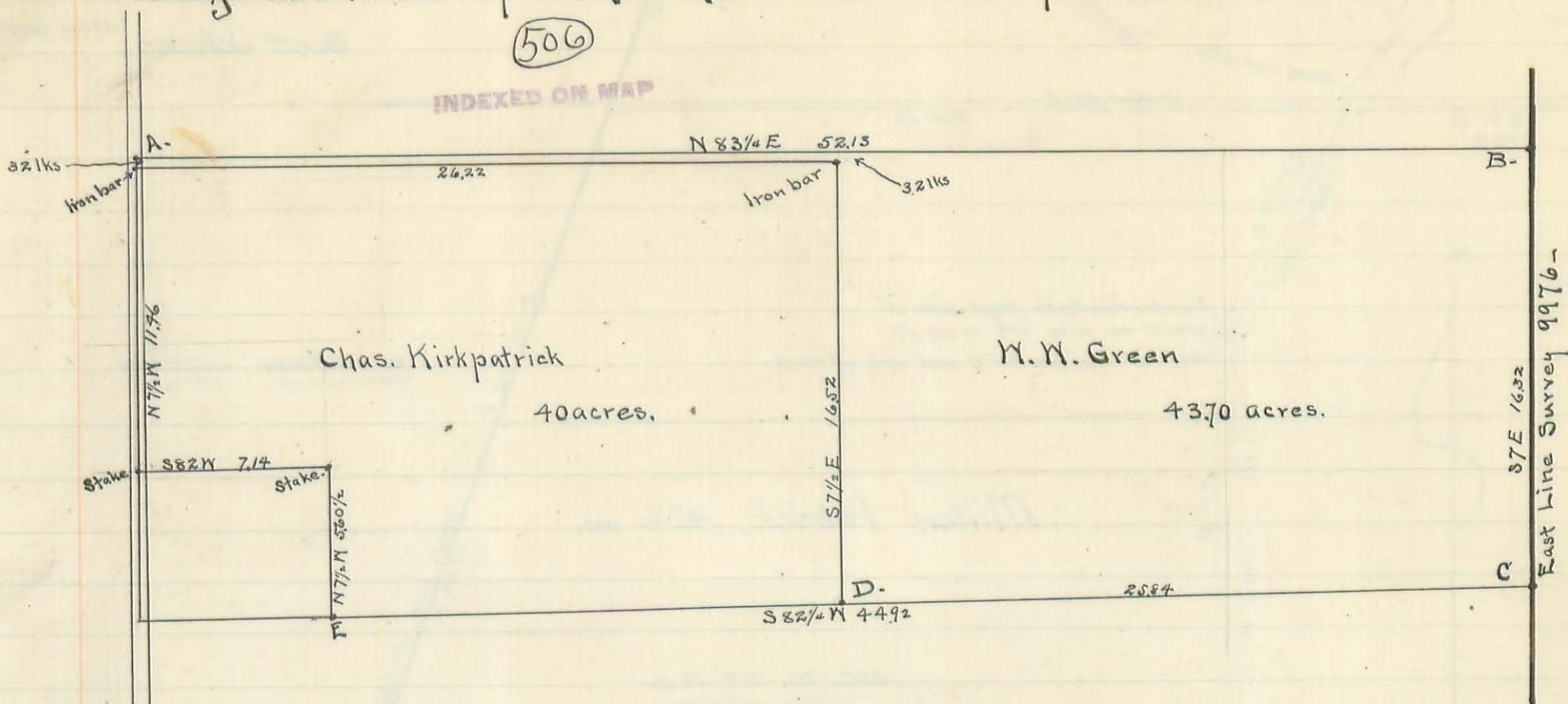
For further description of corners for this Survey see page 270. Corners "A" and "C" were planted Sept. 16, 1902. in presence of Thos. Dun, Frank McClure, Samuel Jenkins, David Hews and Edward Short.

Gas. C. Ronder  
County Surveyor

10 lines 100 words -  
 Surveyed for W. W. Green and Chas. Kirkpatrick -  
 Part of Va. Mil. Survey 9976. Rushcreek Township. Dec. 19, 1902. Jan. 3, 1903.

(506)

INDEXED ON MAP



Description of Corners.

- A. Iron bar. Wit: White oak 18" S16 3/4 E 1931ks.
- B. Stake. Wit: Burr oak 2" N16 1/4 E 131ks.
- C. Stake. Wit: Hickory 12" N 1/2 W 171ks.
- D. Iron bar. Wit: Water elm 10" N56 1/4 E 3 1/4 lks; burr oak 4" N73 E 131ks; black walnut 6" S77 1/2 W 231ks.
- E. Stake. Wit: Double burr oak 18" N80 1/4 E 43 1/2 lks.

Chas. Kirkpatrick }  
 Chase Titus } ch. cr.  
 W. W. Green Mkr.

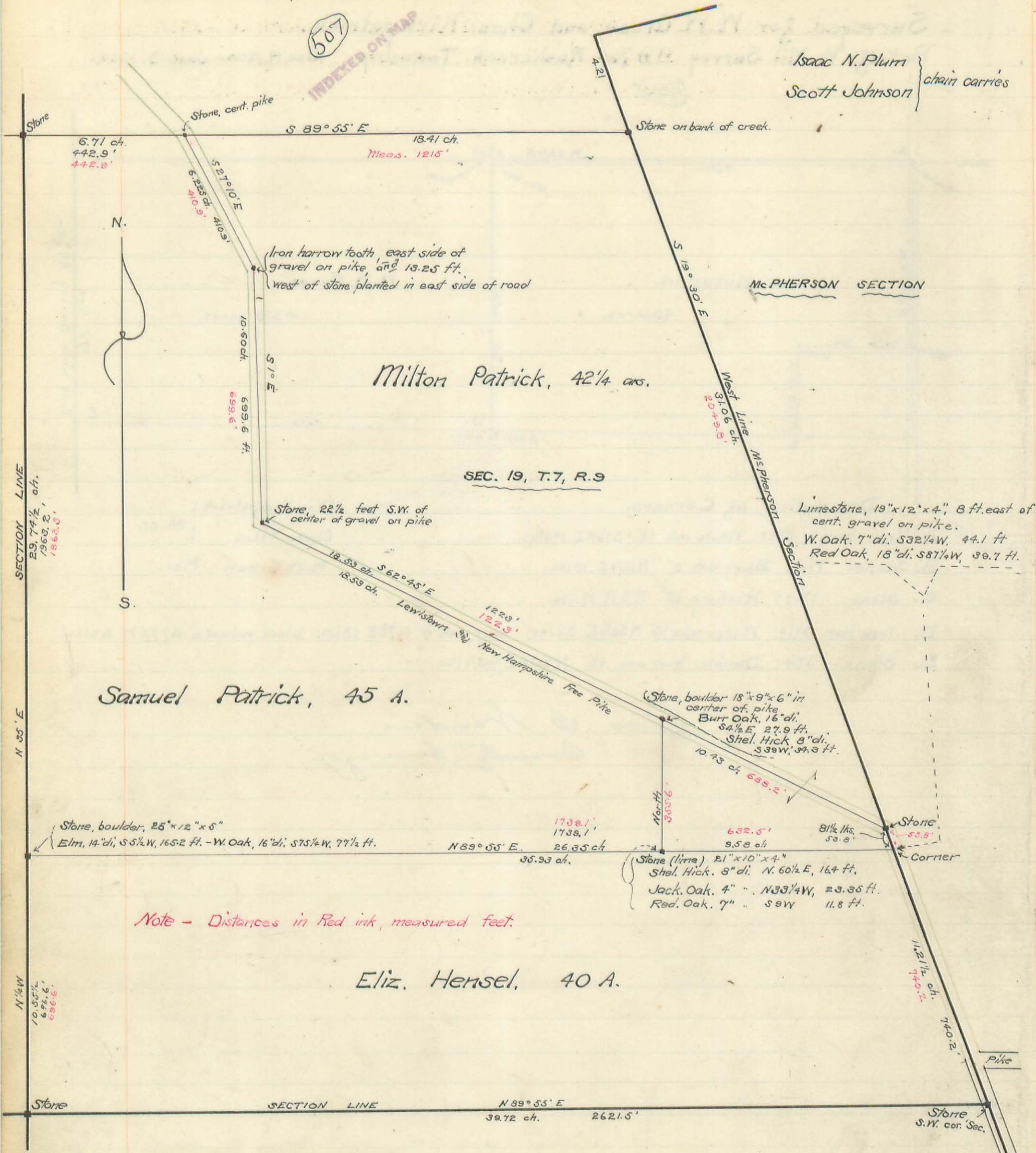
Geo. B. Wondrus  
 County Surveyor

Surveyed by S.A. Buchanan, Oct. 28<sup>th</sup> & 29, 1902 for the heirs of Alex. Patrick, decd.

507

INDEXED ON MAP

Isaac N. Plum }  
Scott Johnson } chain carries



Note - Distances in Red ink, measured feet.

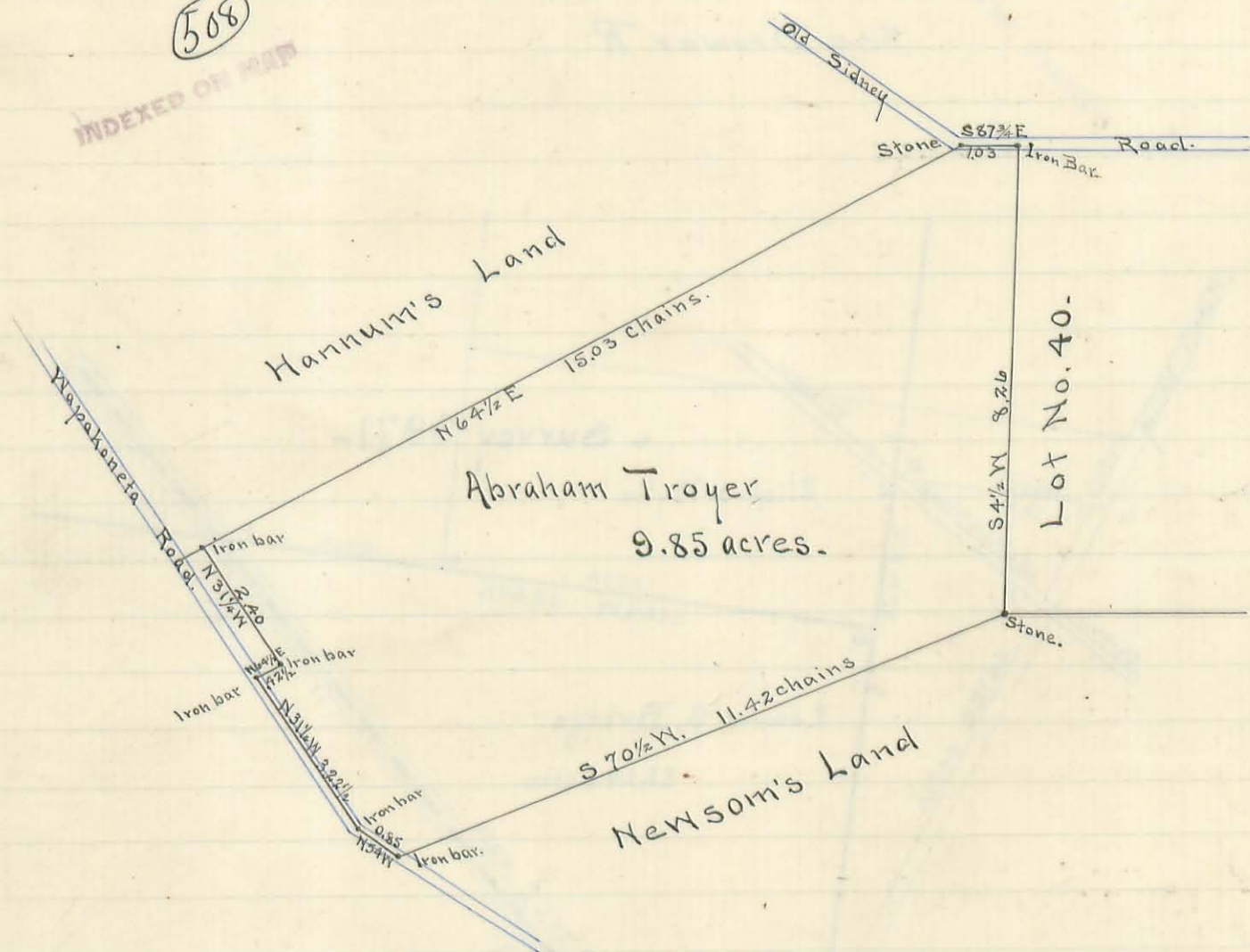
I hereby certify above plat to be correct.

S. A. Buchanan, Surveyor

Geo. C. Wouders  
les. Surveyor

Surveyed for Abraham Troyer and J. L. Mast, part of Lots 41 and 42, Runkle and Young's Subdivision of the S.E. quarter of Section 33, T. 5, R. 13, Liberty Township. December, 2, 1903.

(508)  
INDEXED ON MAP



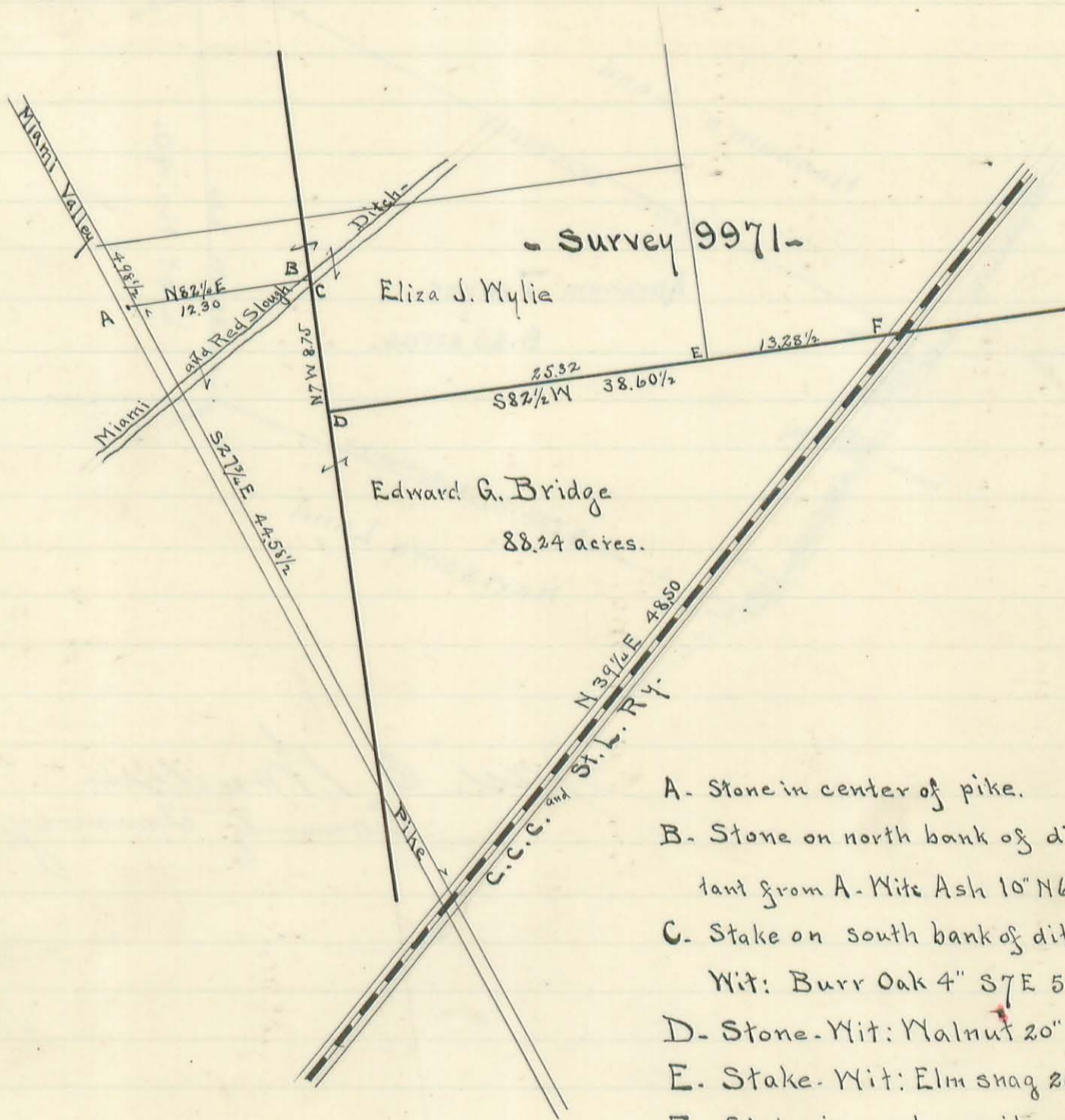
Jas. C. Wender  
County Surveyor

Surveyed for Mylie and Bridge, part of Military  
 Survey No. 9971 - Richland Township  
 March 18 - 1904

509

INDEXED ON MAP

See Drawer R



- A. Stone in center of pike.
- B. Stone on north bank of ditch. 11 chains distant from A. Wit: Ash 10" N68 1/2 W 110 1/2 links.
- C. Stake on south bank of ditch. 840 ch. dist. from D. Wit: Burr Oak 4" S7 E 54 lks
- D. Stone. Wit: Walnut 20" N11 1/4 W 267 chains.
- E. Stake. Wit: Elm snag 20" S7 W 7 lks.
- F. Stake in center railroad. Wit: Water Elm 15" S86 3/4 W 94 lks.

Jas. C. Wondrus  
 County Surveyor



