

The original of this page is blank or missing.



To H.S. Dailey:

By the authority vested in me by the Statutes of Ohio, I hereby, as County Surveyor of Logan County, Ohio, appoint you, H.S. Dailey, my Deputy, to do and perform all works, acts, and things pertaining to the office, as required of you by me, as such County Surveyor, and the Laws of Ohio. Such appointment to begin on the 5<sup>th</sup> day of September, 1910 and end on the 4<sup>th</sup> day of September, 1911.

Charles M. Richey  
County Surveyor of Logan County, Ohio.

State of Ohio, Logan County SS.

H.S. Dailey, being first duly sworn, deposes and says that he will support the Constitution of the United States of America, and of the State of Ohio, and that he will faithfully, honestly and impartially do and perform all the duties required of him by the said County Surveyor of Logan County, Ohio, or the laws of said State of Ohio.

Sworn to before me September 5<sup>th</sup> 1910. Subscribed in my presence this 16<sup>th</sup> day of November 1910.  
Harry D. Dailey  
Charles M. Richey, County Surveyor of Logan County, Ohio.

To E.H. Bushong:

By the authority vested in me by the Statutes of Ohio, I hereby, as County Surveyor of Logan County, Ohio, appoint you, E.H. Bushong, my Deputy, to do and perform all works, acts, and things pertaining to the office, as required of you by me, as such County Surveyor, and the Laws of Ohio. Such appointment to begin on the 5<sup>th</sup> day of September, 1910 and end on the 4<sup>th</sup> day of September 1911.

Charles M. Richey, County Surveyor of Logan County, Ohio.  
State of Ohio, Logan County SS.

E.H. Bushong, being first duly sworn, deposes and says that he will support the Constitution of the United States of America, and of the State of Ohio, and that he will faithfully, honestly and impartially do and perform all the duties required of him by the said County Surveyor of Logan County, Ohio, or the laws of said State of Ohio.

Sworn to before me September 5<sup>th</sup> 1910. Subscribed in my presence this 16<sup>th</sup> day of November 1910.  
E.H. Bushong  
Charles M. Richey, County Surveyor of Logan County, Ohio.

To F.W. McKinnon:

By the authority vested in me by the Statutes of Ohio, I hereby, as County Surveyor of Logan County, Ohio, appoint you, F.W. McKinnon, my Deputy, to do and perform all works, acts, and things pertaining to the office, as required of you by me, as such County Surveyor, and the Laws of Ohio. Such appointment to begin on the 5<sup>th</sup> day of September, 1910 and end on the 4<sup>th</sup> day of September 1911.

Charles M. Richey, County Surveyor of Logan County, Ohio.  
State of Ohio, Logan County SS.

F.W. McKinnon, being first duly sworn, deposes and says that he will support the Constitution of the United States of America, and of the State of Ohio, and that he will faithfully, honestly and impartially do and perform all the duties required of him by the said County Surveyor of Logan County, Ohio, or the laws of said State of Ohio.

Sworn to before me September 5<sup>th</sup> 1910. Subscribed in my presence this 16<sup>th</sup> day of November 1910.  
F.W. McKinnon  
Charles M. Richey, County Surveyor of Logan County, Ohio.



The original of this page is blank or missing.

The original of this page is blank or missing.



# LOGAN AND UNION COUNTY LINE SURVEY

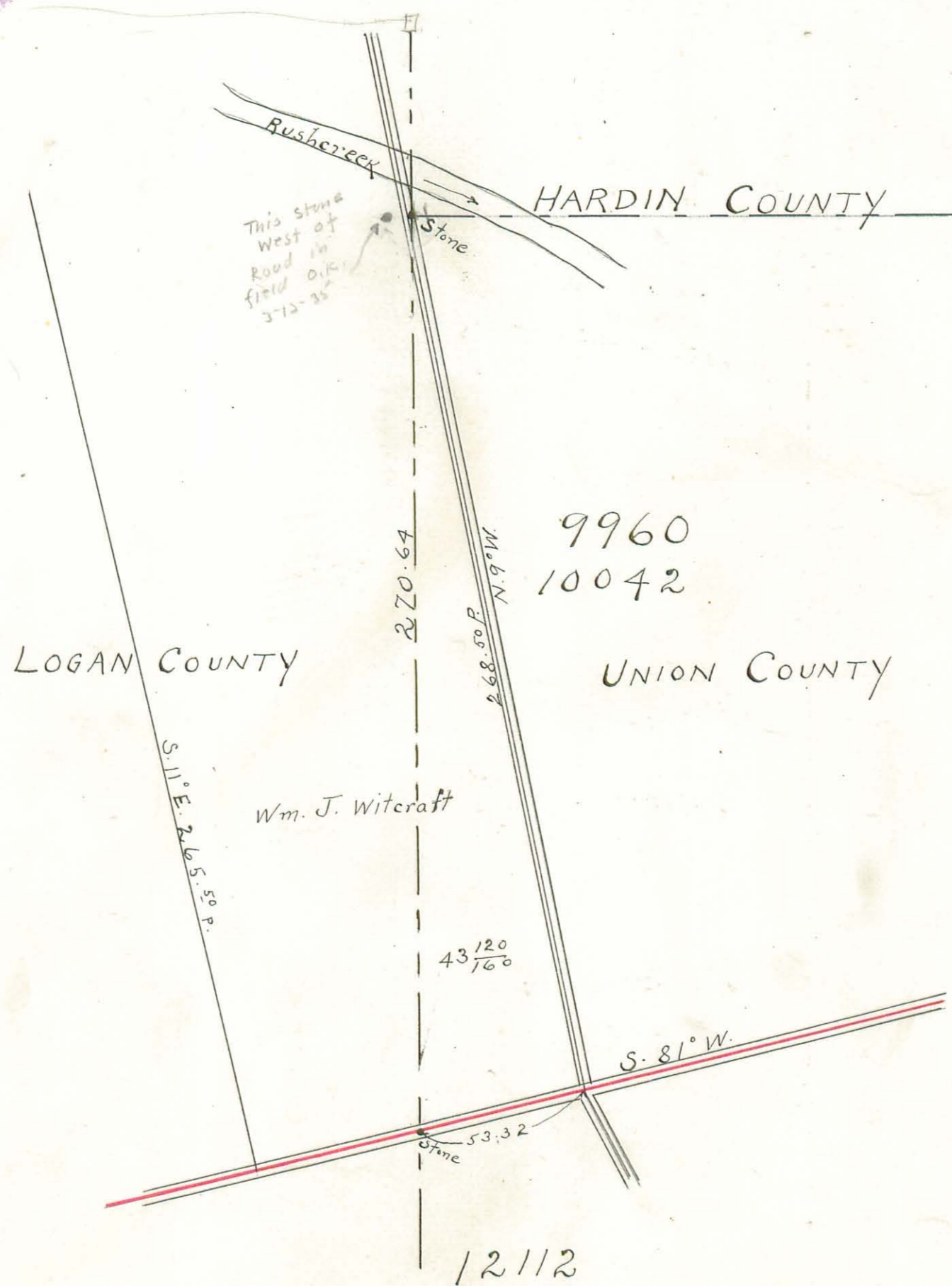
(Pages 30 to 46 inclusive)

Surveyed by F. J. Sager in November 1876.

(Copied from Union County Surveyor's Record in August 1911.)

Charles M. Richey  
Surveyor of Logan County.

(179)  
INDEXED ON MAP

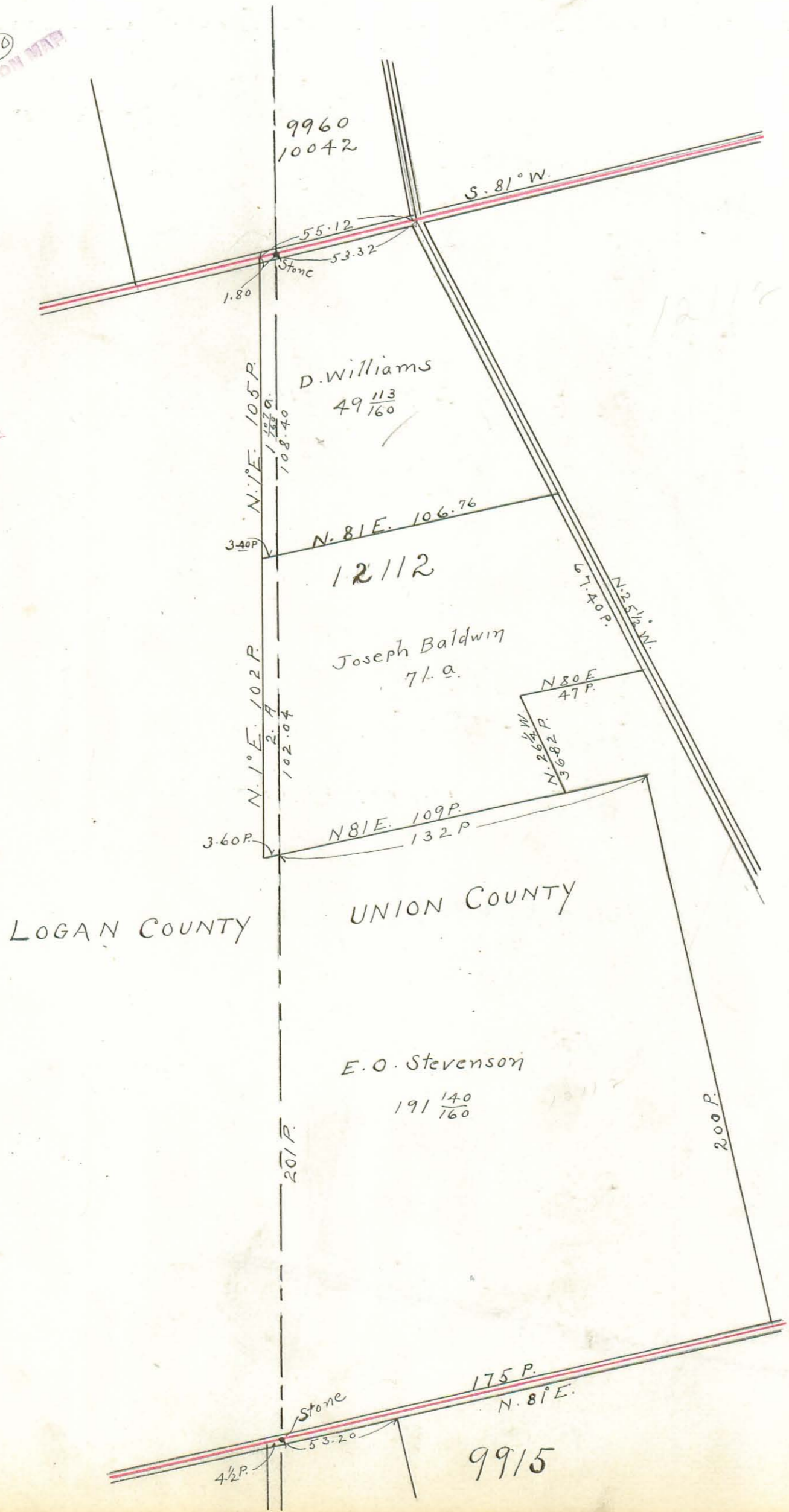




COUNTY LINE SURVEY

1876 By F.J. Sager.

(140)  
INDEXED ON MAP



165
180
13200
165
297 00

165
4.5
825
860
4925

LOGAN COUNTY

UNION COUNTY

D. Williams  
49 <sup>113</sup>/<sub>160</sub>

Joseph Baldwin  
71 a.

E.O. Stevenson  
191 <sup>140</sup>/<sub>160</sub>

9960  
10042

12112

9915

N. 1° E. 105 P.  
108.40  
3.40 P.

N. 1° E. 102 P.  
102.04  
3.60 P.

N. 81° E. 106.76

N. 81° E. 109 P.  
132 P.

N. 80° E. 47 P.

N. 26 1/2° W. 36.82 P.

N. 25 1/2° W. 67.40 P.

4 1/2 P.

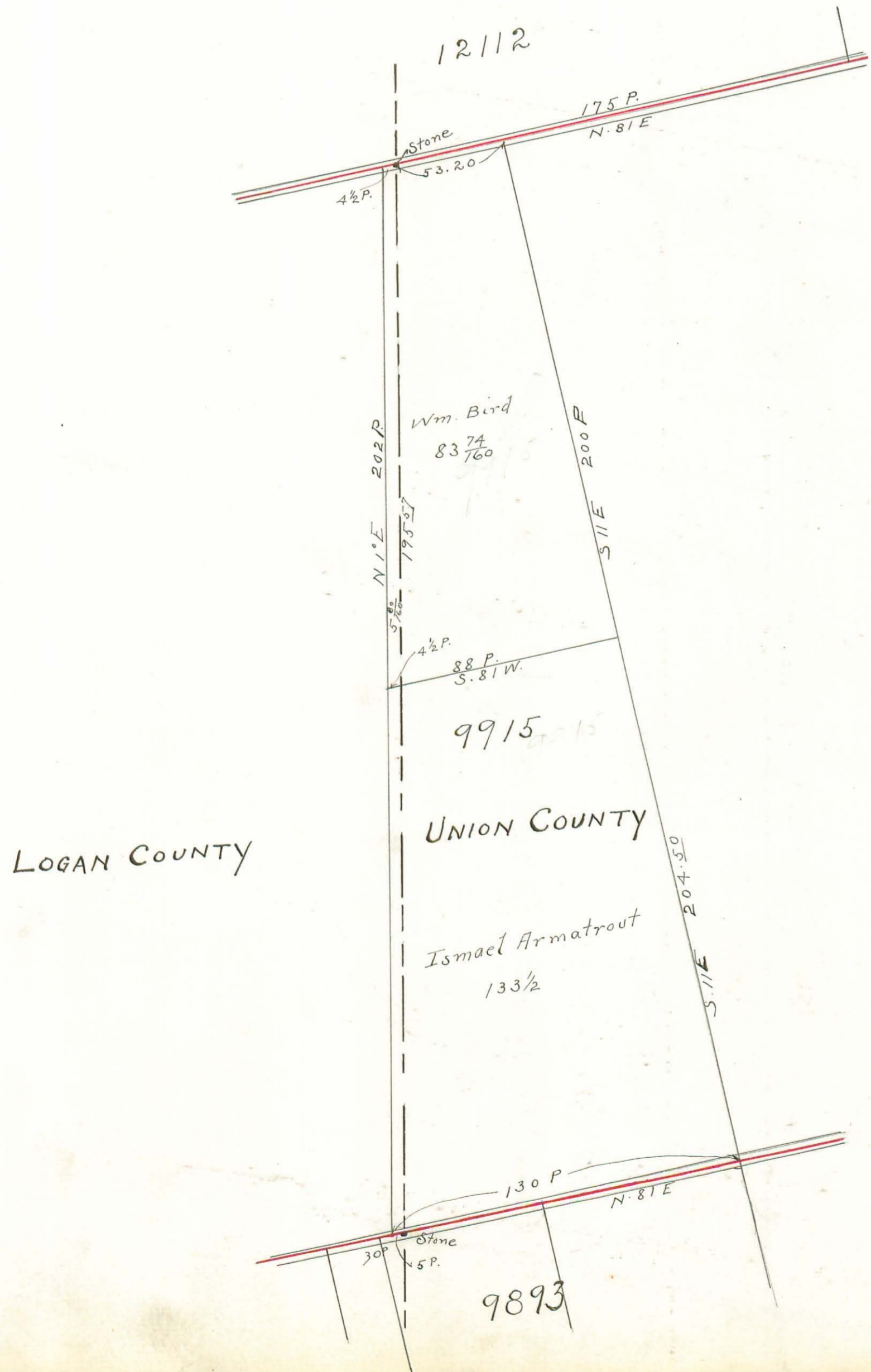
200 P.



COUNTY LINE SURVEY.

1876 By F.J. Sager.

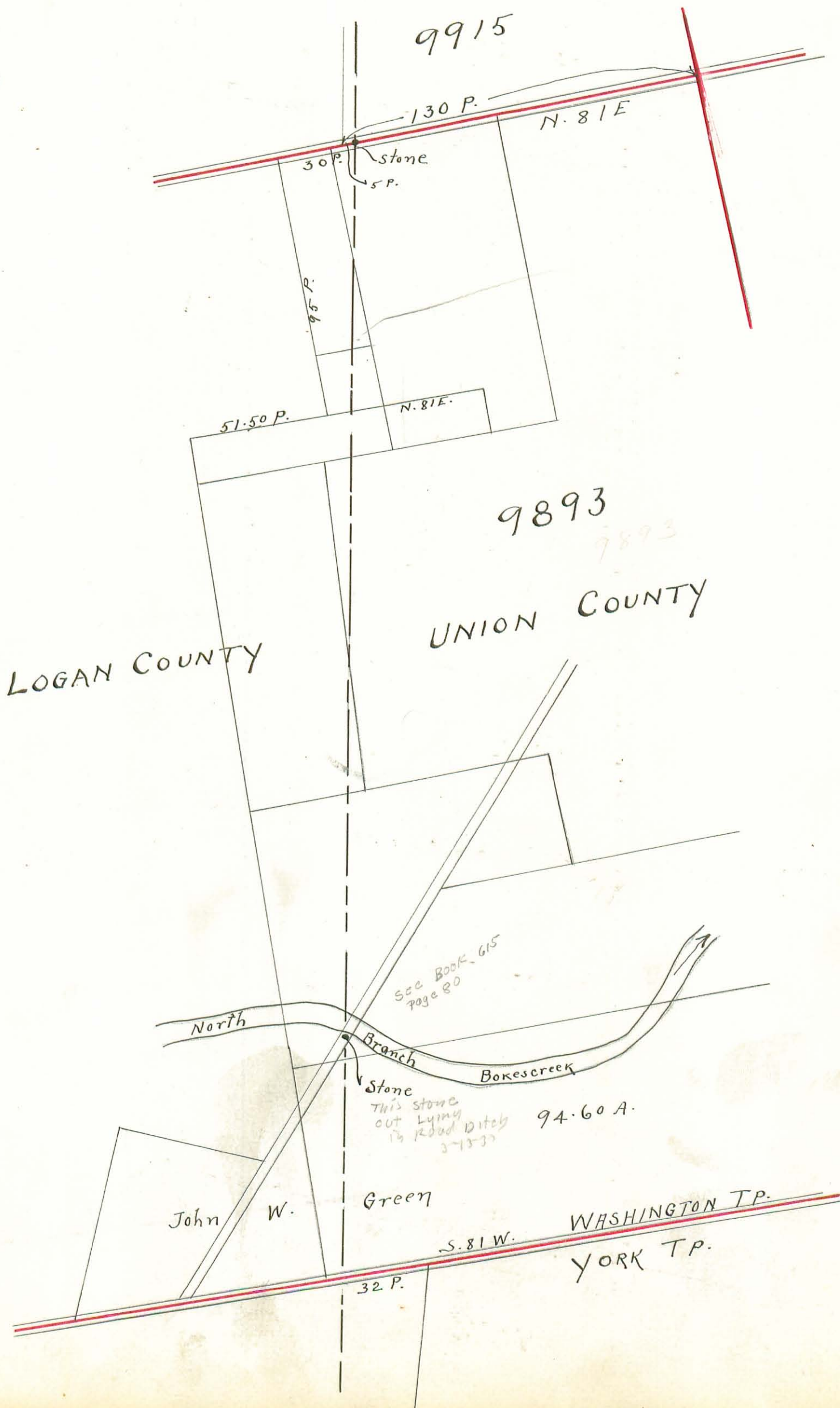
INDEXED ON MAP



COUNTY LINE SURVEY

1876 By F. J. Sager.

(17)  
INDEXED ON MAP





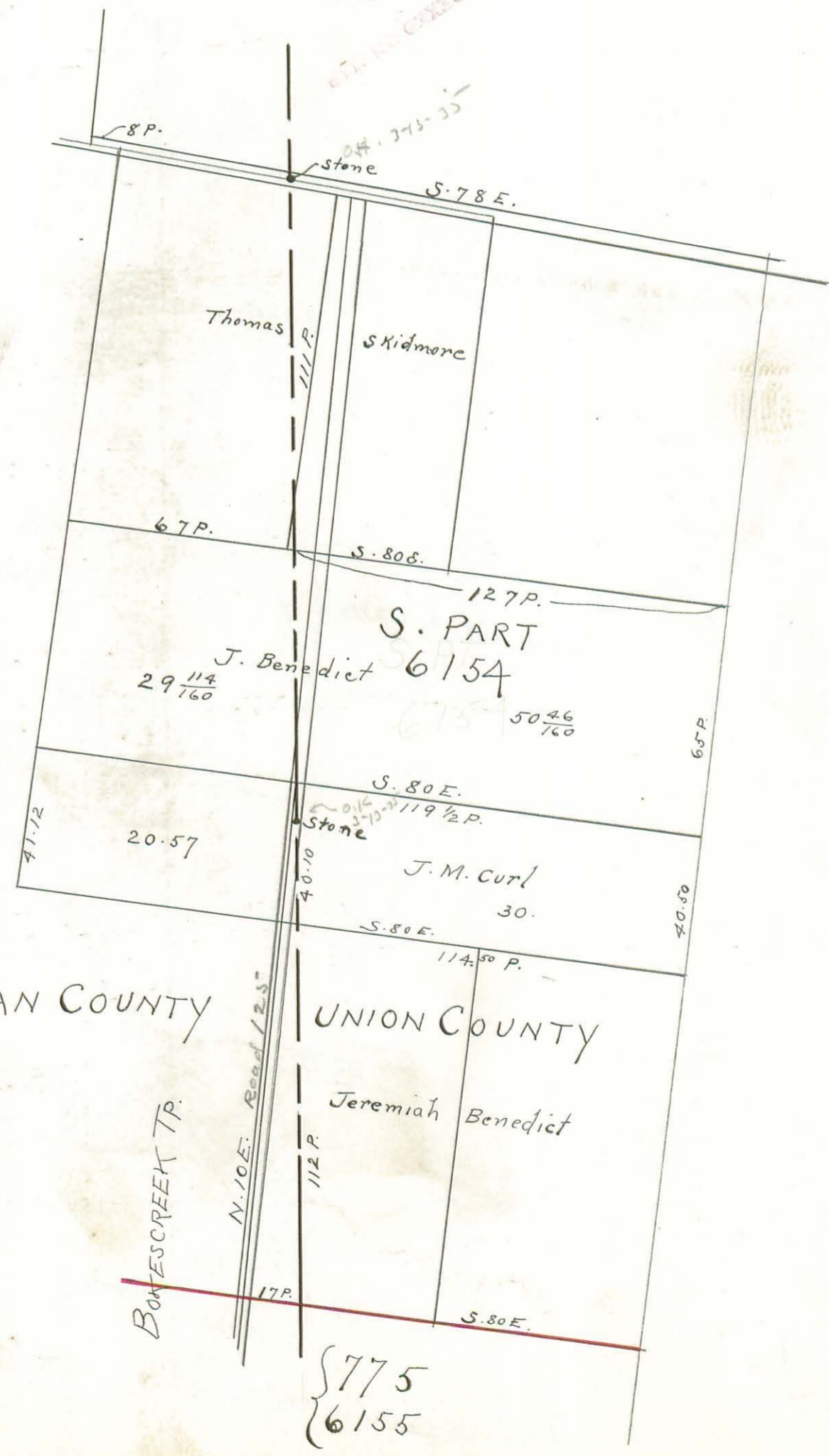
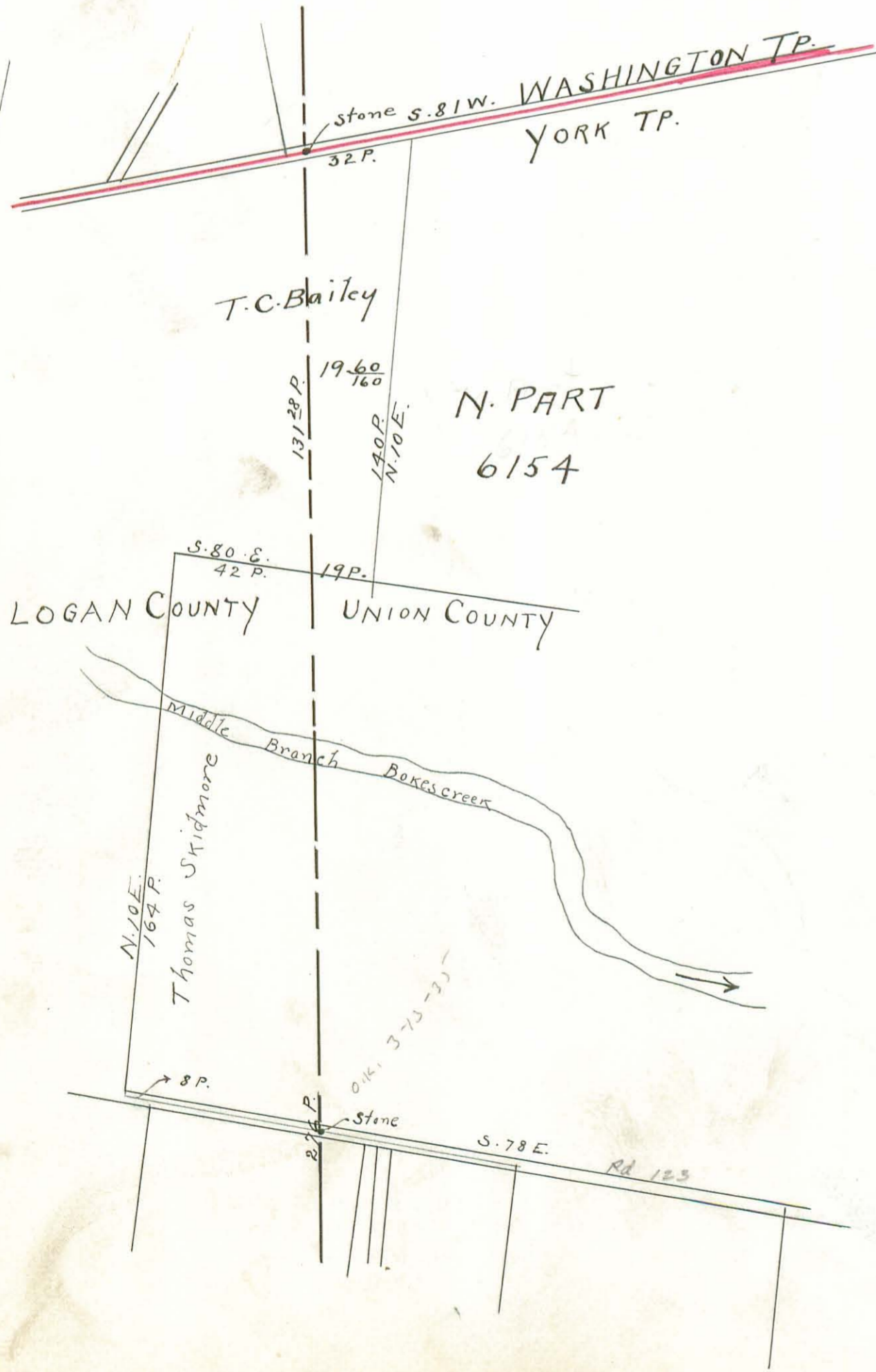
COUNTY LINE SURVEY

1876. By F.J. Sager

183

9893

184

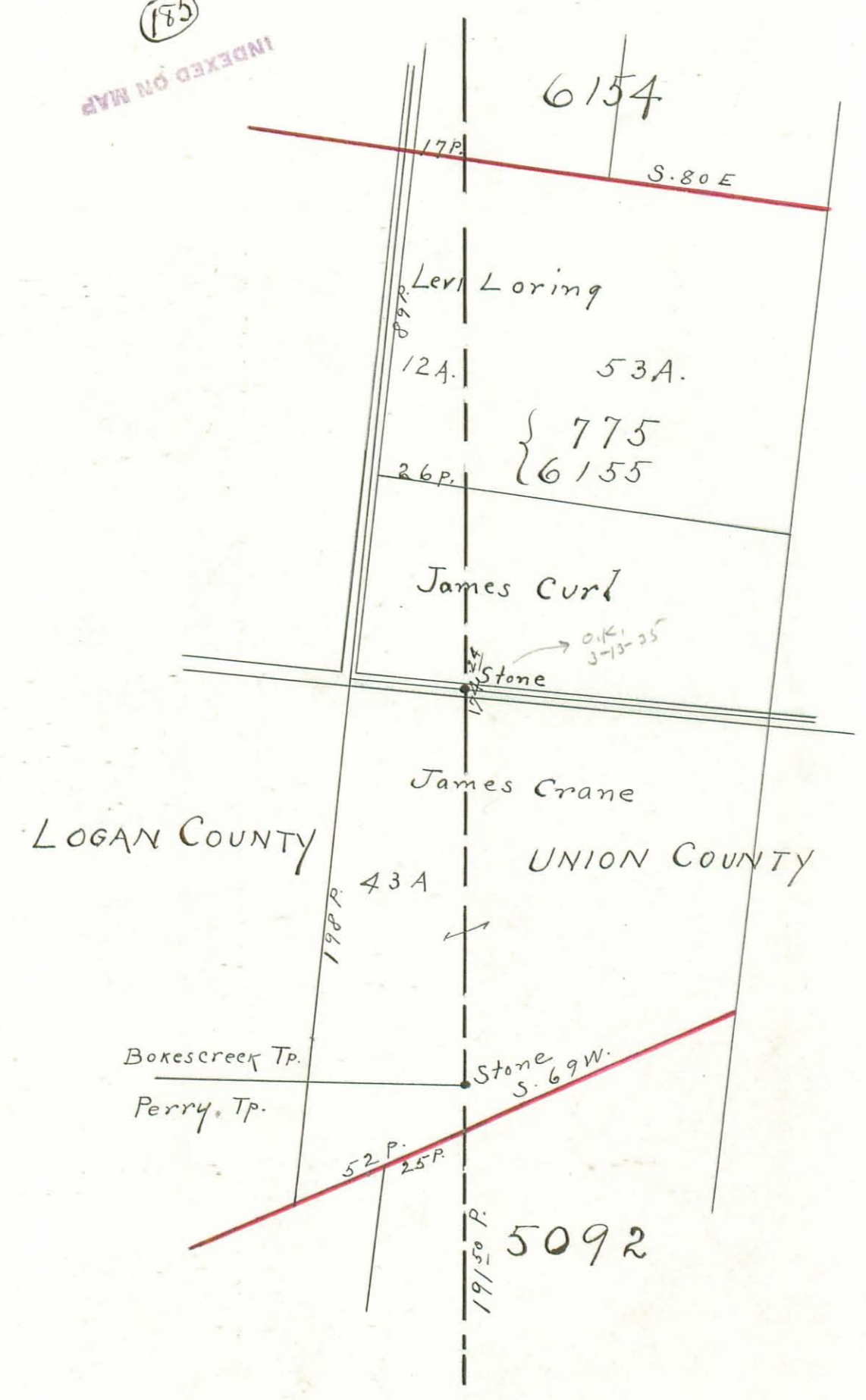




COUNTY LINE SURVEY

1876 By F. J. Sager

(175)  
INDEXED ON MAP



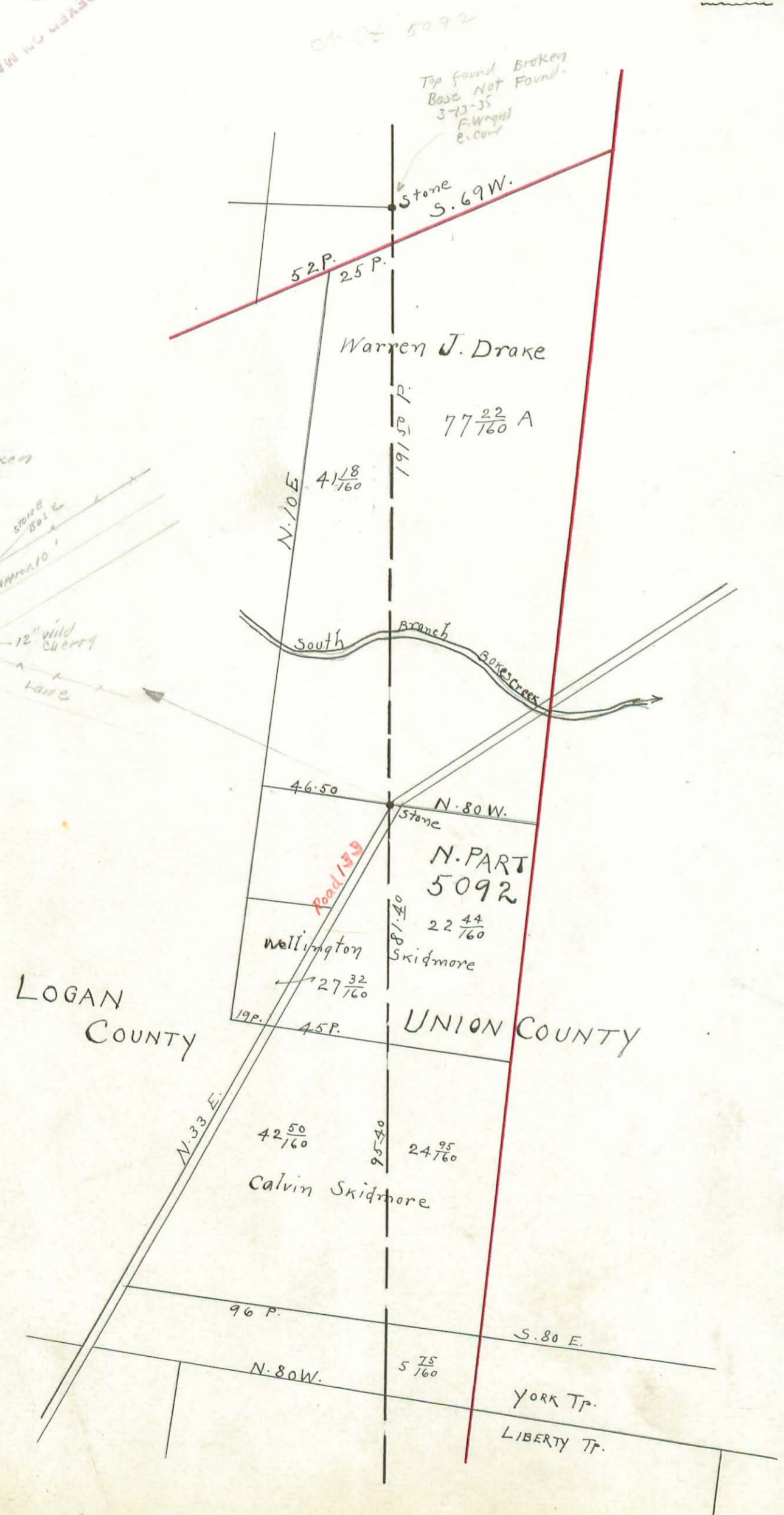


COUNTY LINE SURVEY

1876 By F. J. Sager

186  
INDEXED ON MAP

This stone top Broken  
Base found as shown  
3-10-35  
F. J. Sager  
E. Co. W.



187  
INDEXED ON MAP

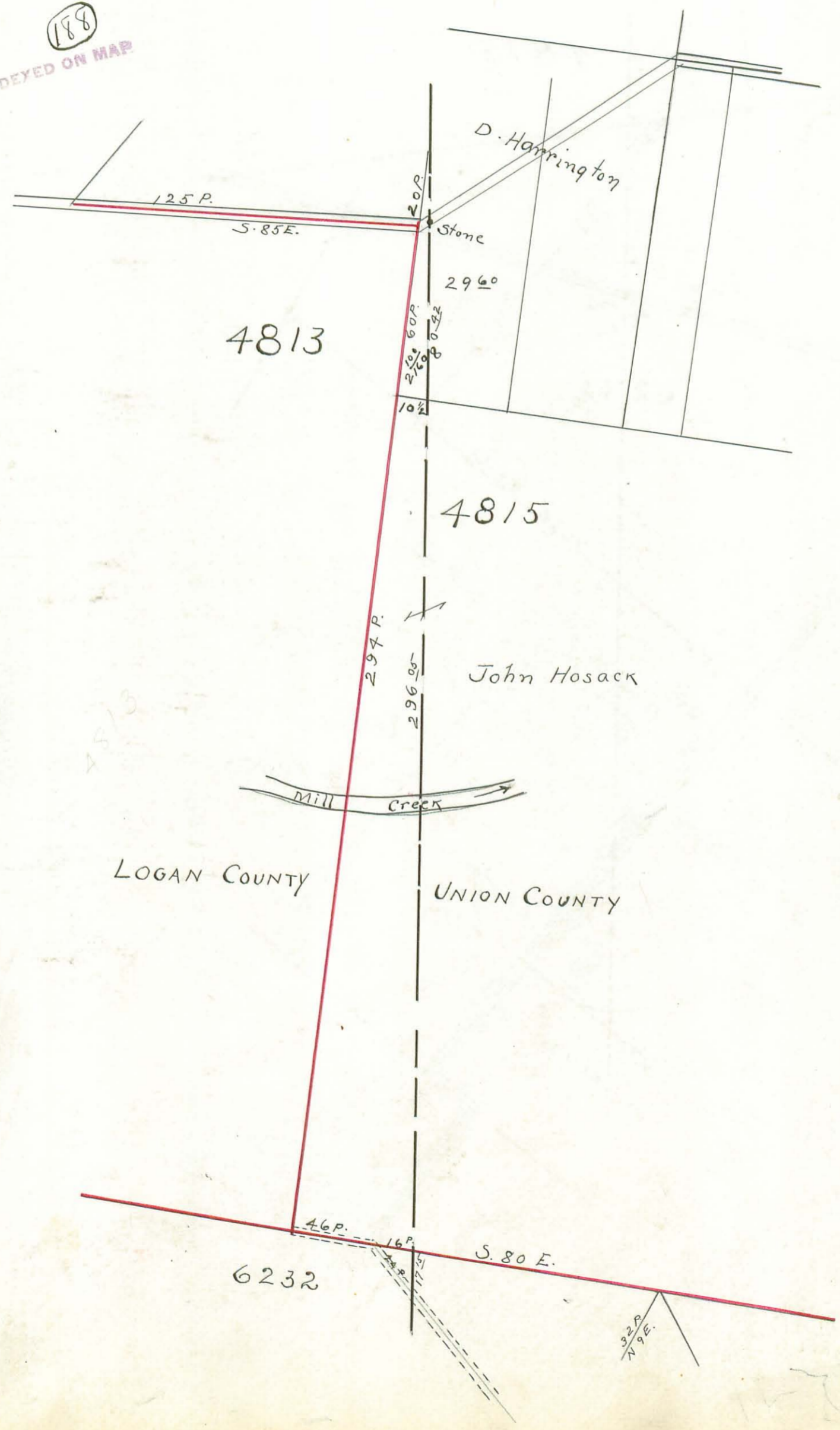




COUNTY LINE SURVEY

1876 By F.J. Sager

INDEXED ON MAP



4813

4815

LOGAN COUNTY

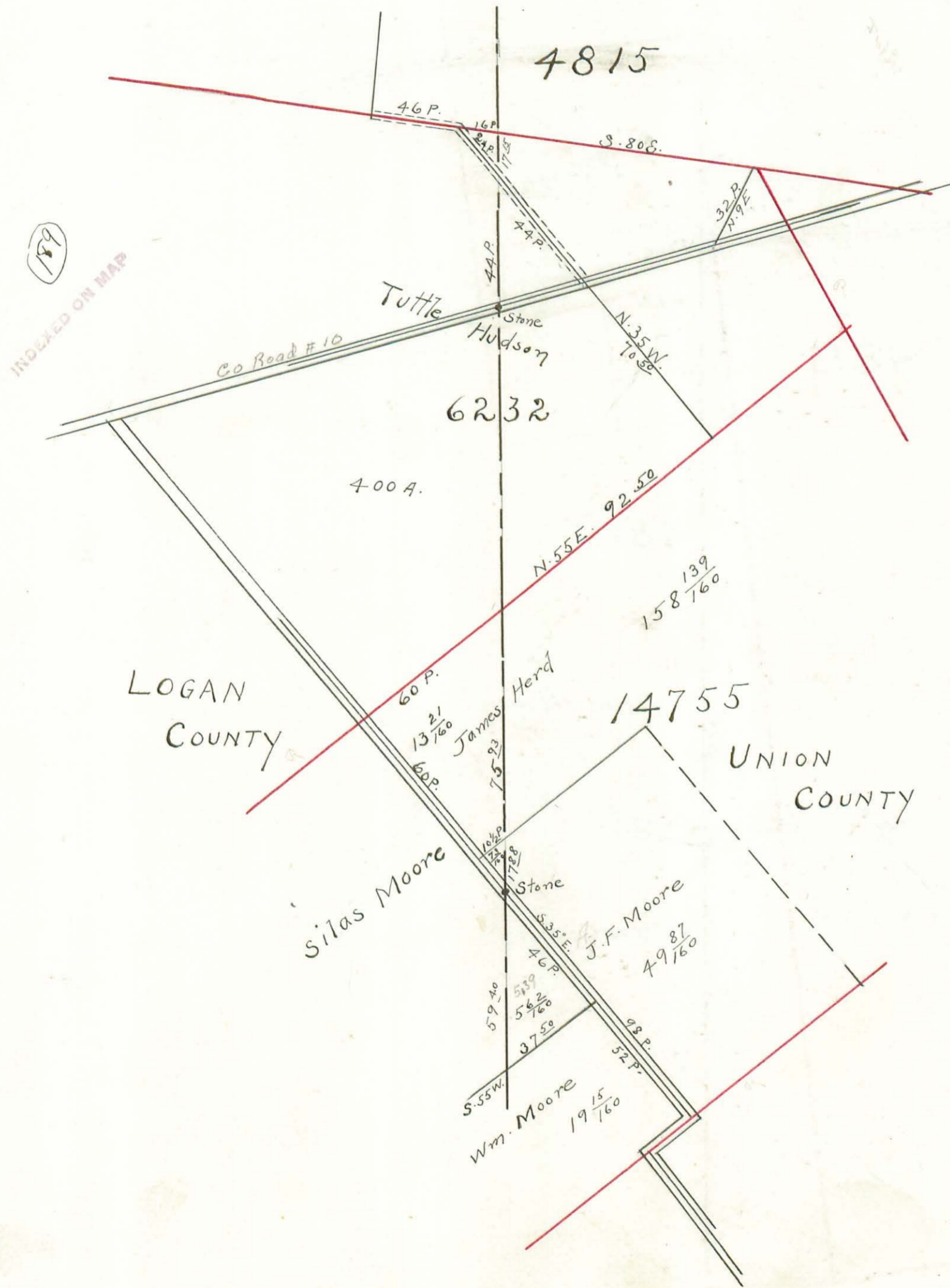
UNION COUNTY

4118  
 77 22  
 179 40  
 2 15



COUNTY LINE SURVEY

1876 By F.J. Sager

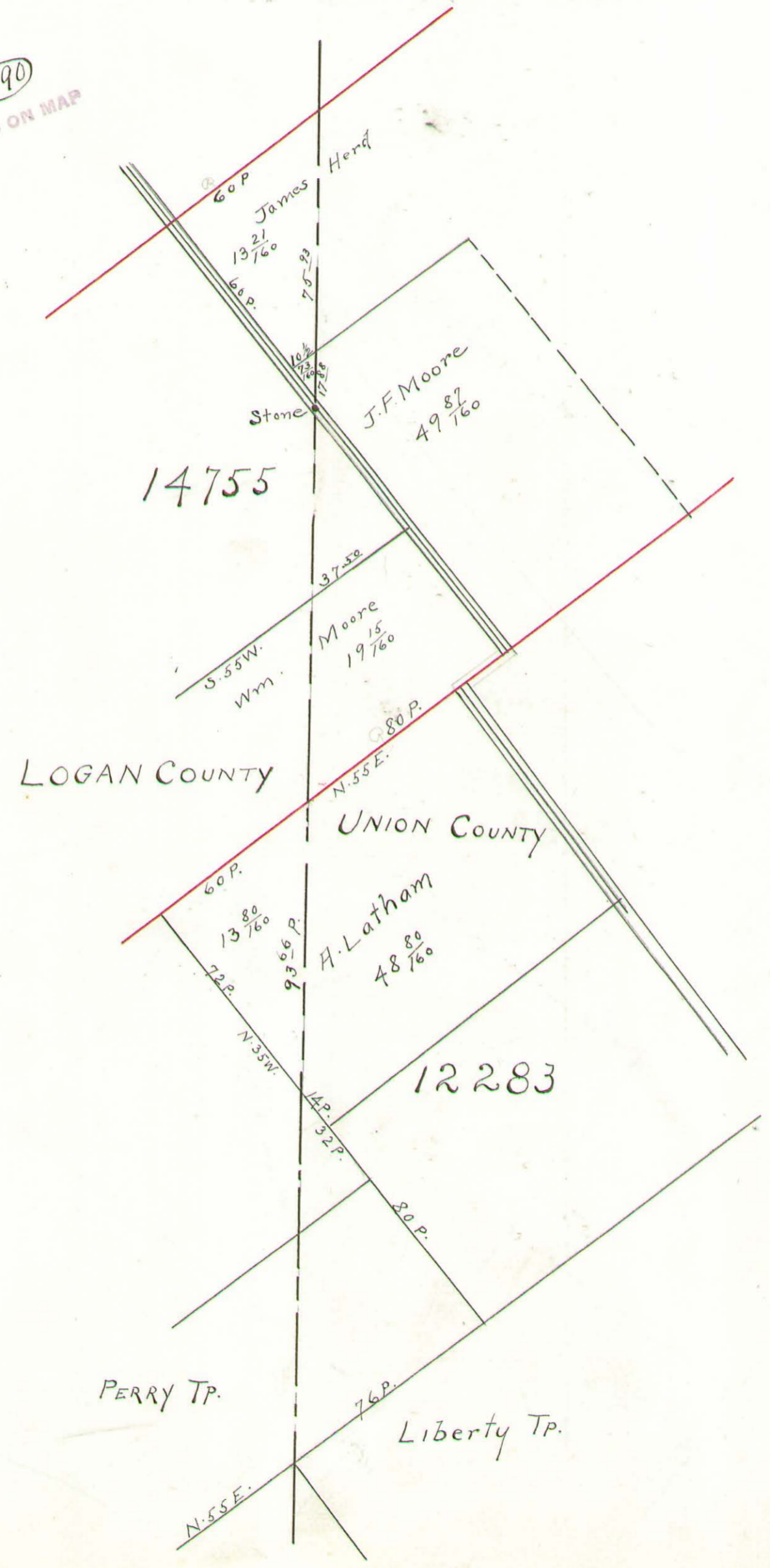




COUNTY LINE SURVEY

1876 By F.J. Sager

(190)  
INDEXED ON MAP

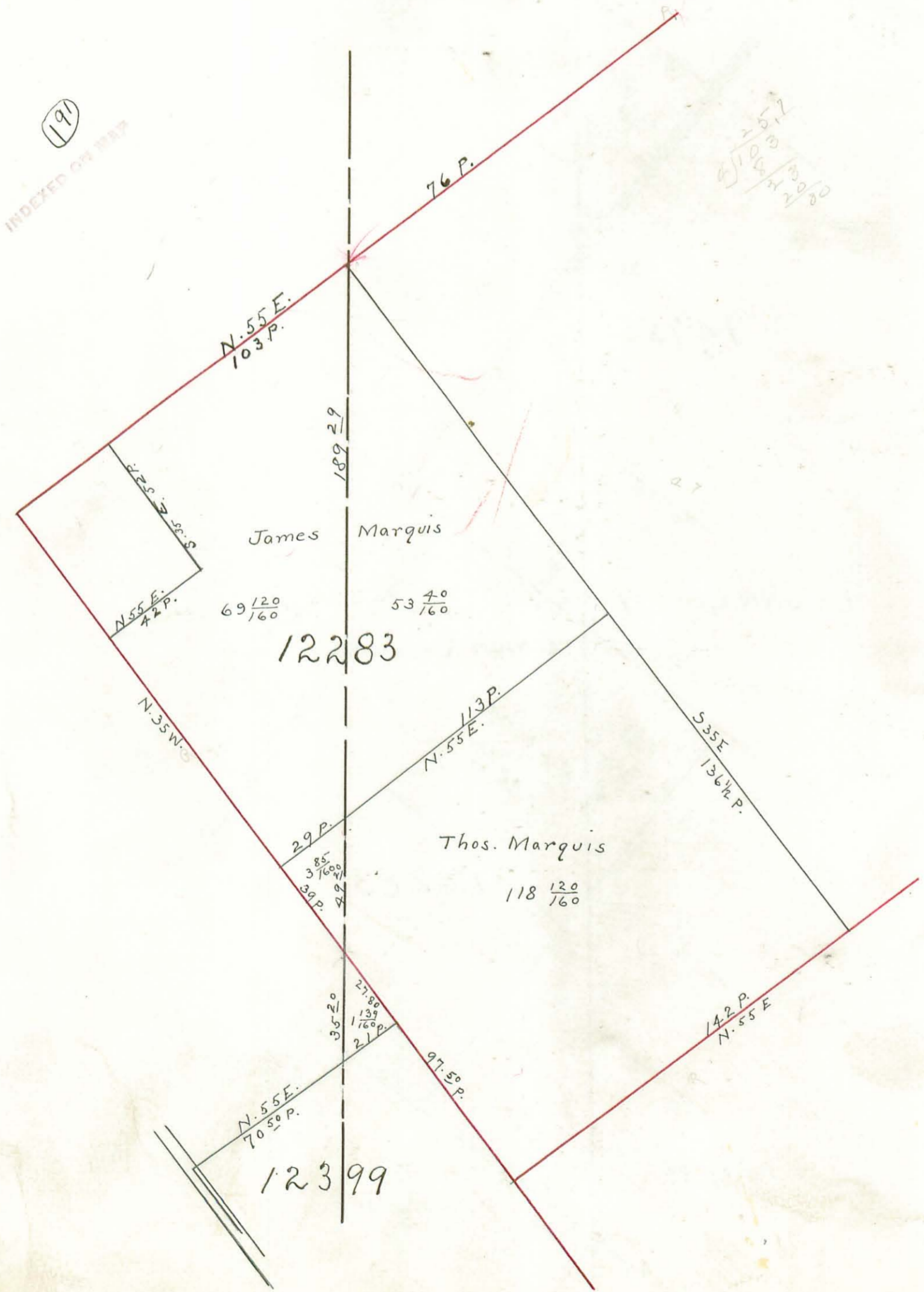




COUNTY LINE SURVEY

1876

By F. J. Sager.



(191)  
INDEXED ON MAP

1512  
2000  
6/1000  
2000

17  
1/20  
1/20



COUNTY LINE SURVEY

1876. By F.J. Sager.

(192)  
INDEXED ON MAP

12283

Thomas Marquis

118 <sup>120</sup>/<sub>160</sub>

Michael Cline

N. 55 E  
70 <sup>82</sup>/<sub>160</sub> P.

19 <sup>97</sup>/<sub>160</sub>

PERRY TP.

ZANE TP.

J. Whitcraft

Stone

12399

Stone

(193)  
INDEXED ON MAP

N. 77 E  
96 <sup>50</sup>/<sub>160</sub> P.

Rd. 179

Seth B. Norviel

84°

40 <sup>30</sup>/<sub>160</sub>

Zane Tp.

Liberty Tp.

200 P. 33000

543

Aylerre

S. P. Sharp

37 <sup>80</sup>/<sub>160</sub>

200 P.

43.86  
214.30  
260.16  
713.40

41  
500  
300

97.50  
34  
413.50  
344

244  
477.60  
8  
17  
16



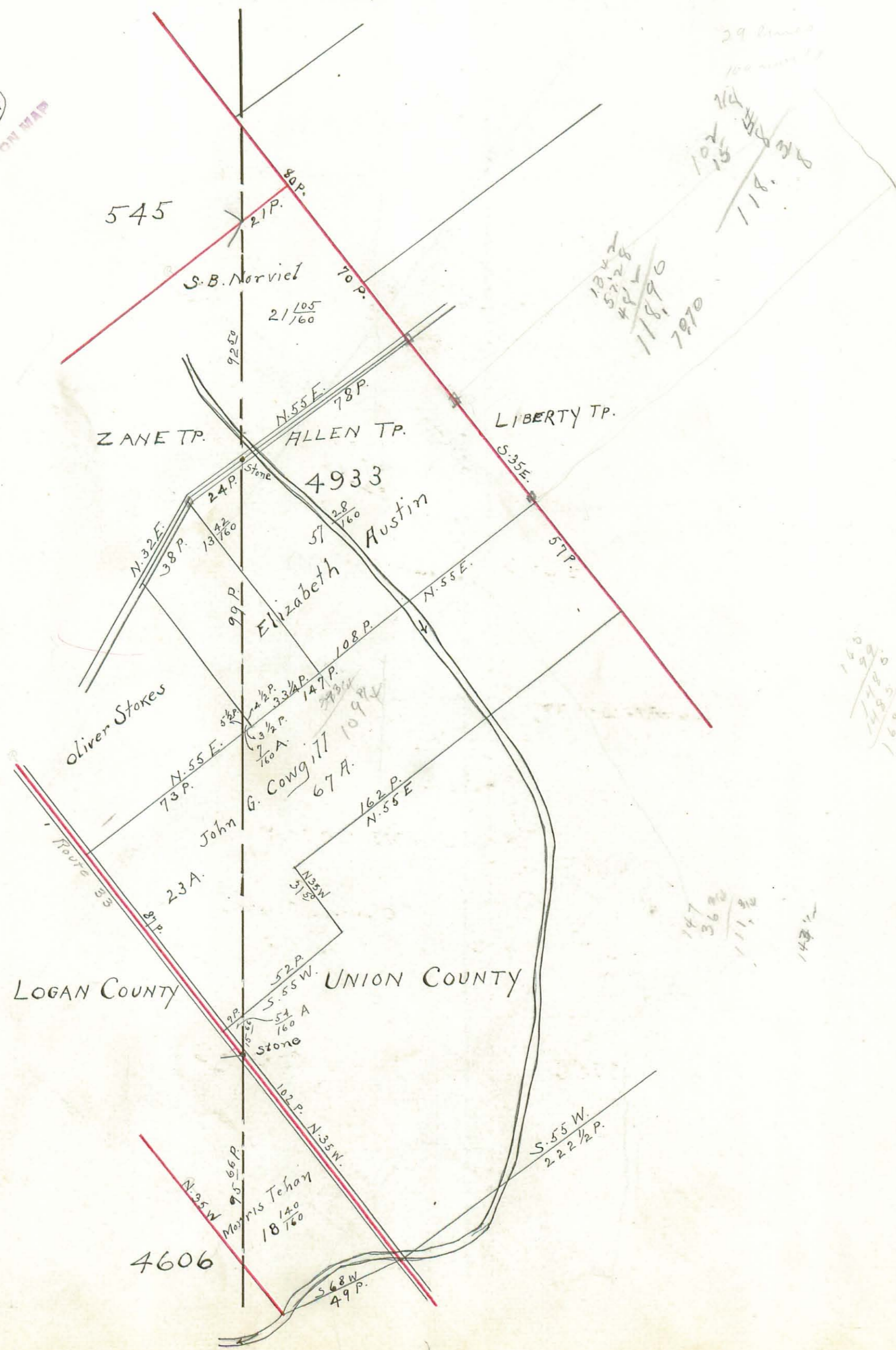
19  
408  
1876

4933

COUNTY LINE SURVEY

1876 By F.J. Sager

194  
INDEXED ON MAP



545

S.B. Norvick  
70 P.  
21 105/100

ZANE TP.

ALLEN TP.

LIBERTY TP.

4933

Elizabeth Austin  
57 28/100

Oliver Stokes

John G. Cowgill  
67 A.  
109 1/2

LOGAN COUNTY

UNION COUNTY

4606

Morris Tahan  
18 1/200

29 Acres  
100  
102 1/2  
118  
118 90  
7970

140  
117 1/2  
165 1/2

147  
36 1/2  
111 1/2  
147 1/2

S. 55 W.  
22 1/2 P.

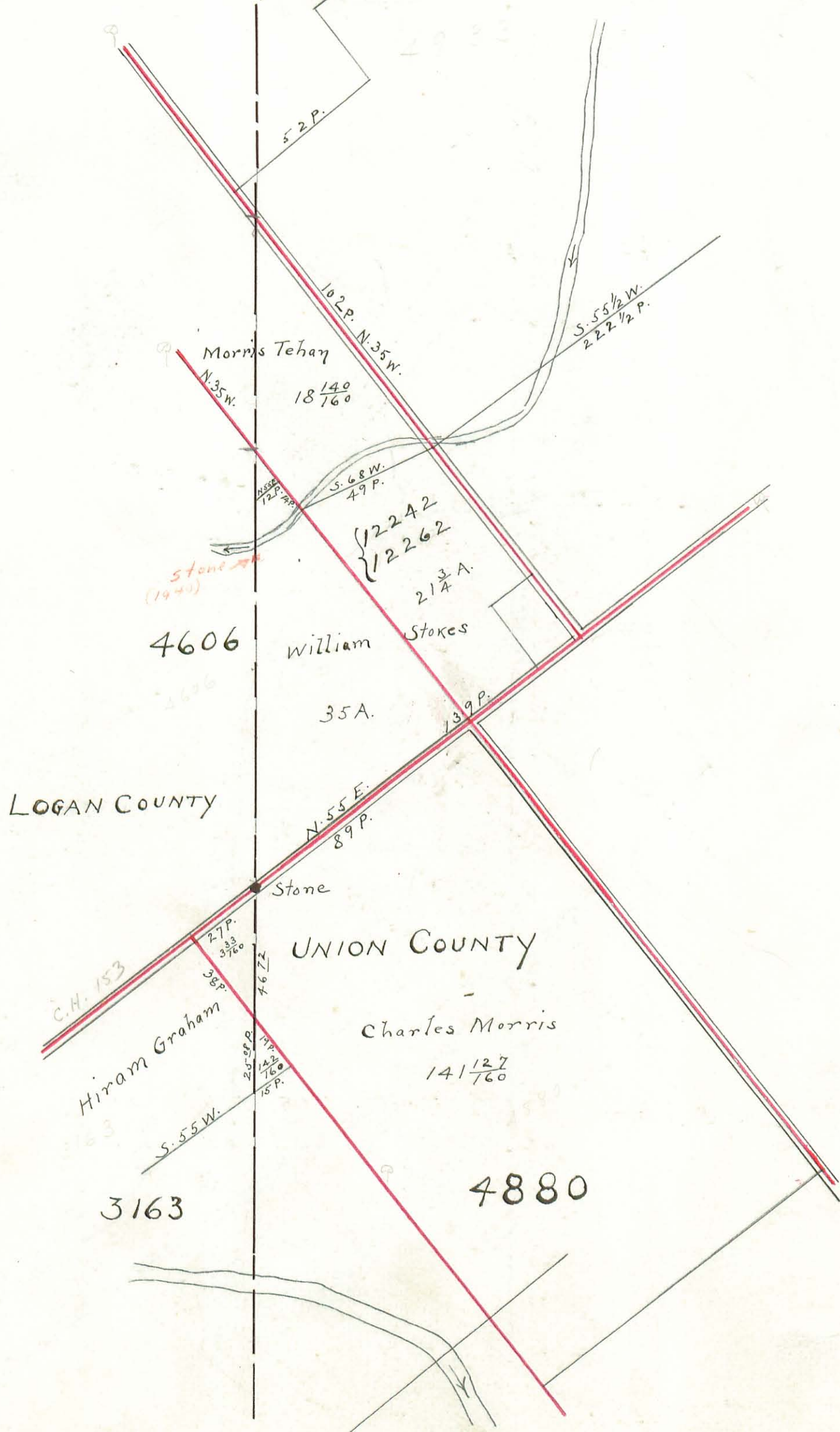


COUNTY LINE SURVEY

1876 By F.J. Sager

195  
INDEXED ON MAP

32  
100  
18 14  
27 33  
48 71



4606

William Stokes

35A.

LOGAN COUNTY

UNION COUNTY

Charles Morris

141 127  
140 760

3163

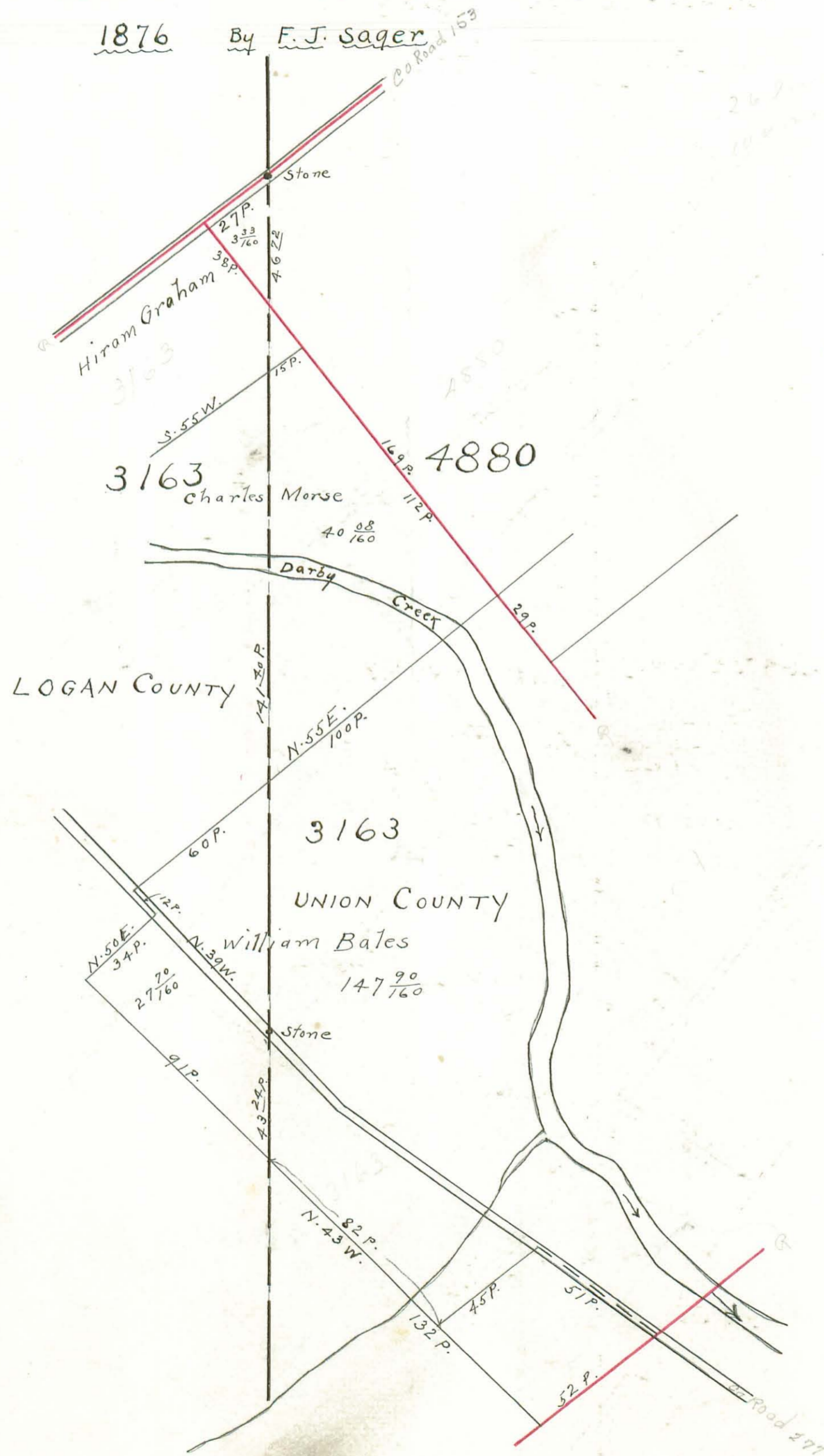
4880



COUNTY LINE SURVEY

1876 By F. J. Sager

196  
INDEXED ON MAP



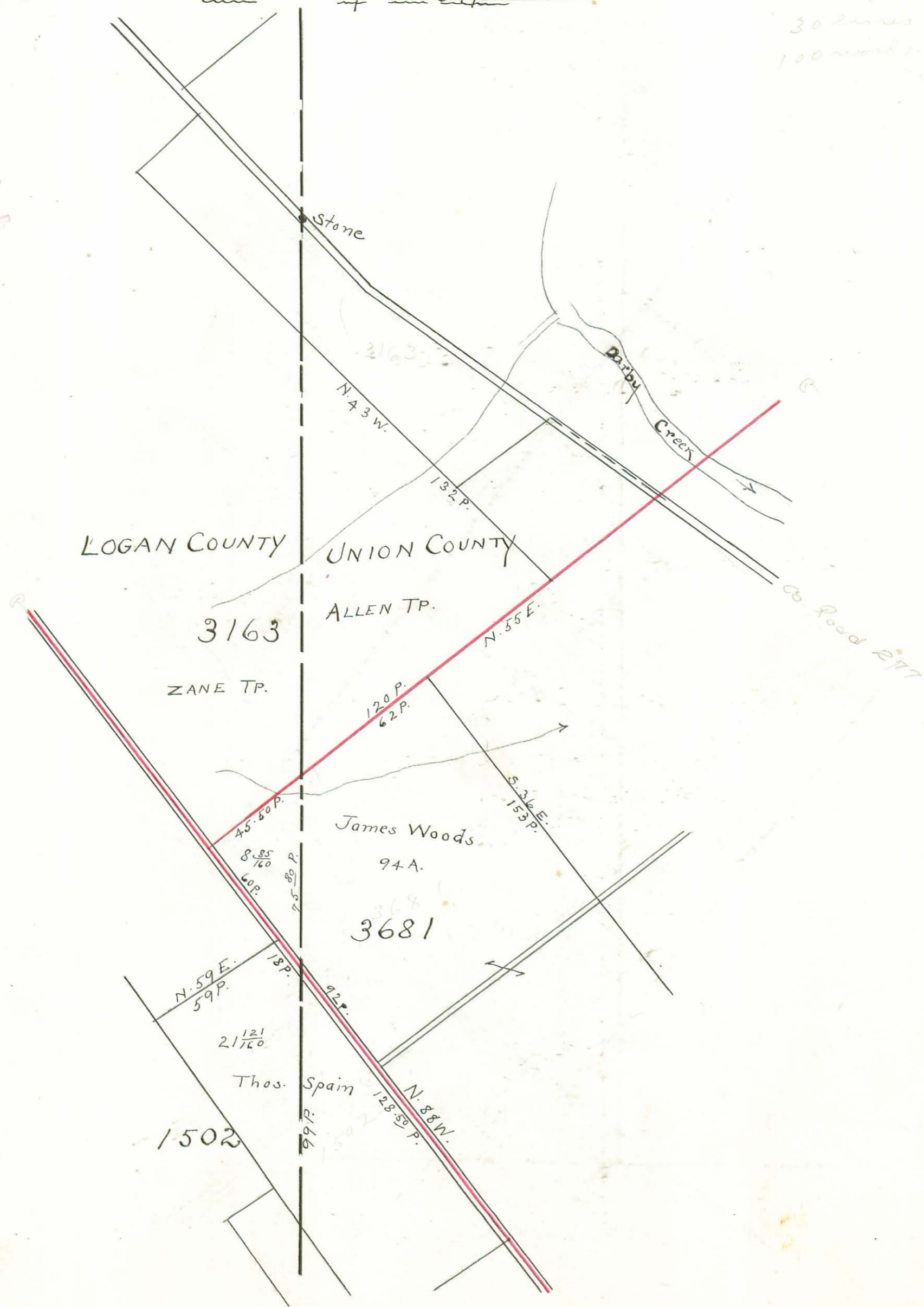


COUNTY LINE SURVEY

1876 By F.J. Sager

197  
INDEXED ON MAP

30 2 1/2 miles  
100 rods





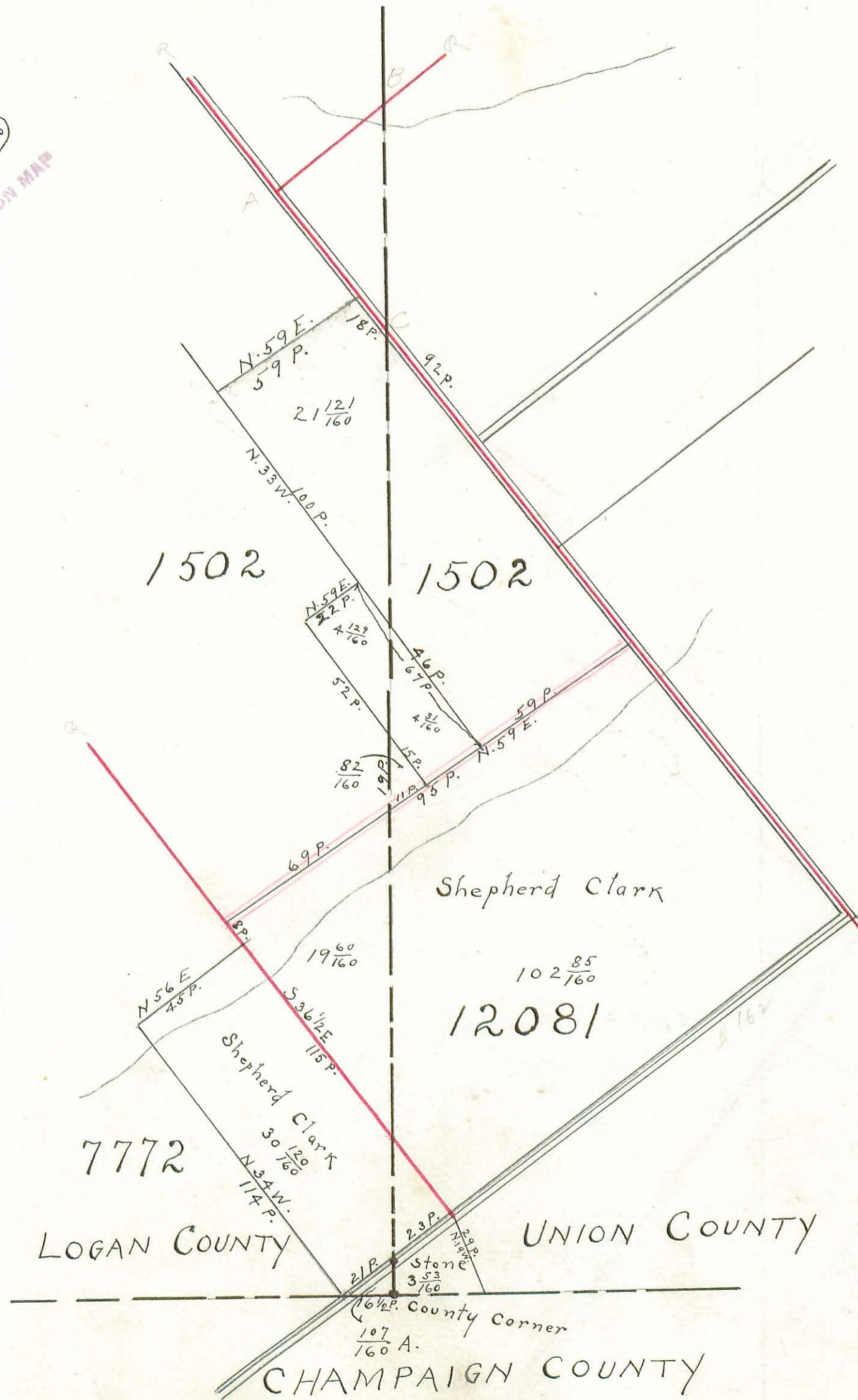
1" = 10 f.

COUNTY LINE SURVEY

1876 By F.J. Sager

24 lines  
100 rods

(148)  
INDEXED ON MAP



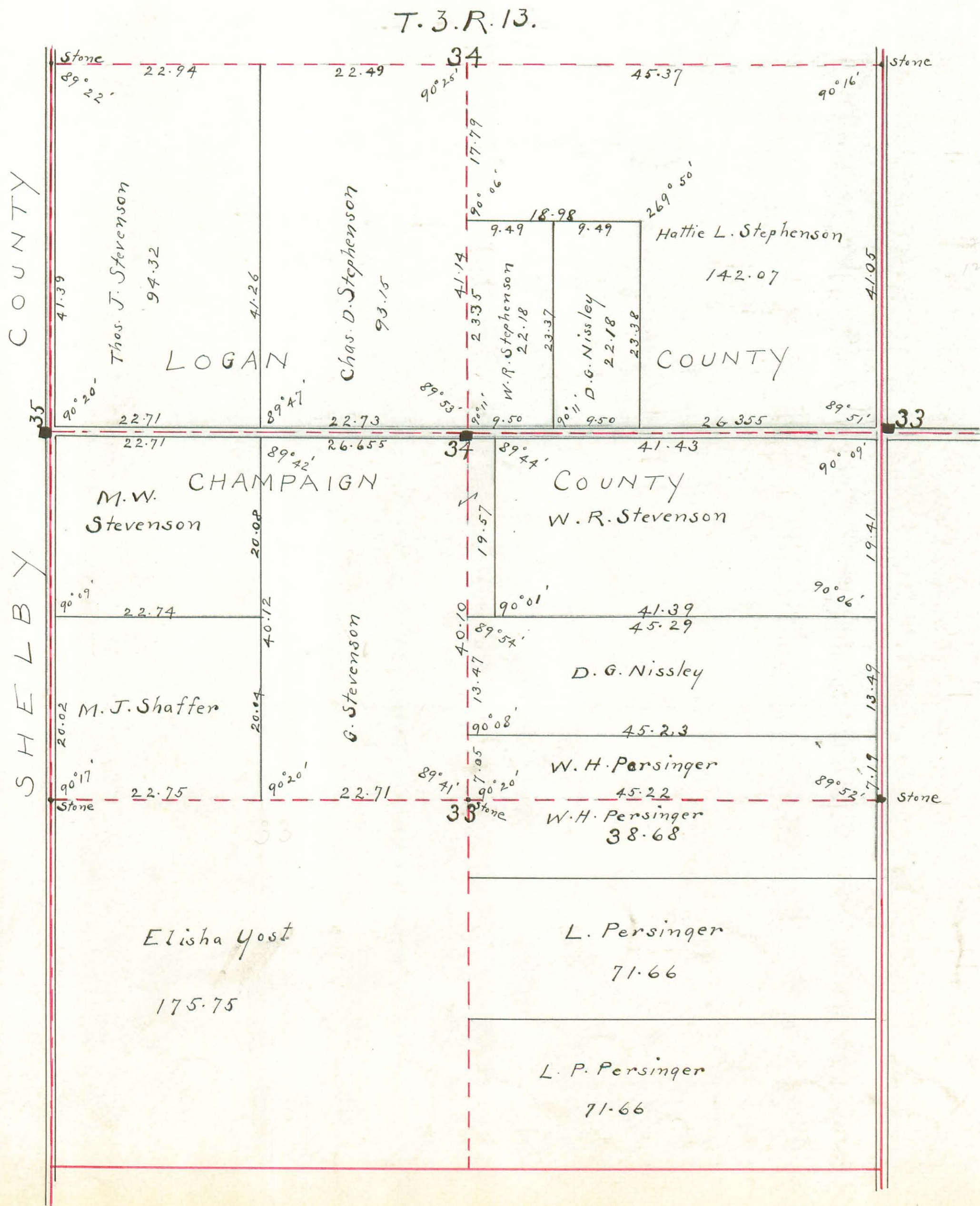


The original of this page is blank or missing.



INDEXED ON MAP  
199

Monuments:  
 No. 33 ~ Stone ~ 20 feet east and 20 feet north of Section Corner.  
 No. 34 ~ Stone ~ On 9th Sec. Line and 20 feet south of Co. Line.  
 No. 35 ~ Stone ~ 20 feet west on County Line produced.



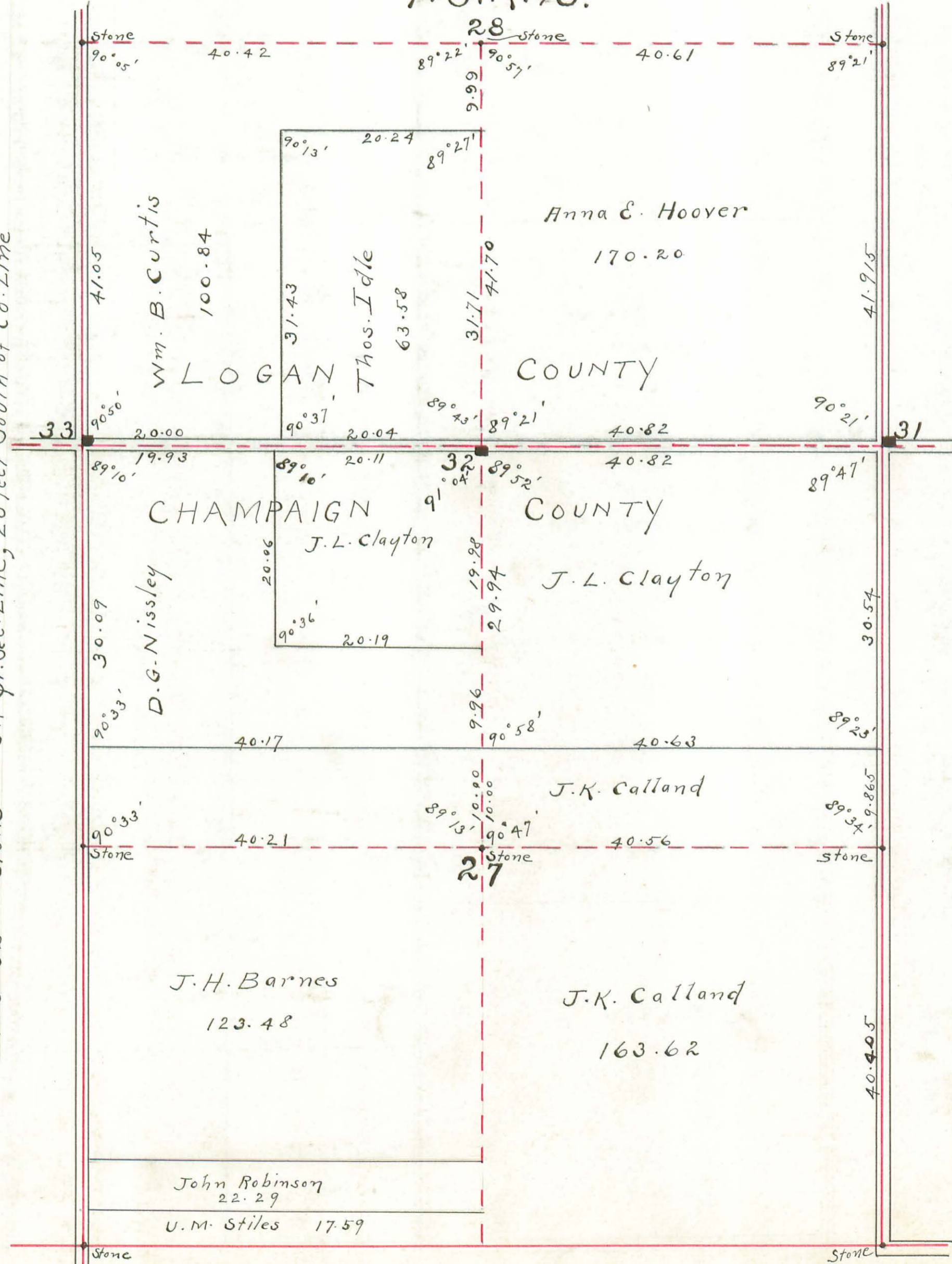
22 lines  
12 woods



200  
INDEXED ON MAP

T. 3. R. 13.

MONUMENTS:  
No. 31 ~ Stone ~ 20 feet east and 20 feet north of Sec. Corner.  
No. 32 ~ Stone ~ On Qr. Sec. Line, 20 feet South of Co. Line

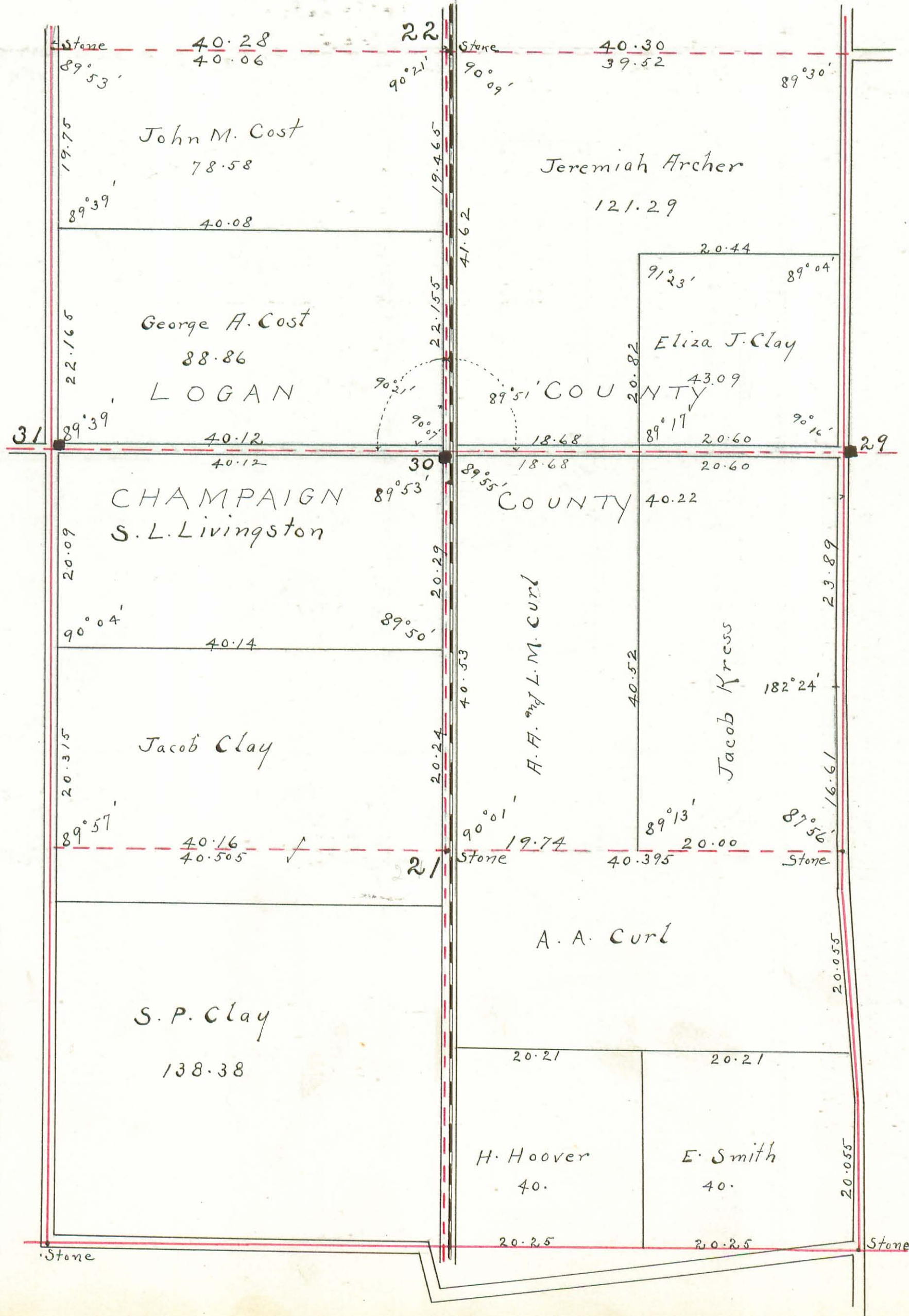




T.3. R. 13

INDEXED ON MAP

Monuments:  
No. 29 --- Stone --- On line 20 feet east of corner.  
No. 30 --- Stone --- On pr. Sec. Line 20 feet South of County Line.



41 lines  
100 words O.K.