

From
Logan County Agriculture Society
To
County Commissioners, Logan County, Ohio

Date
December 14, 1935

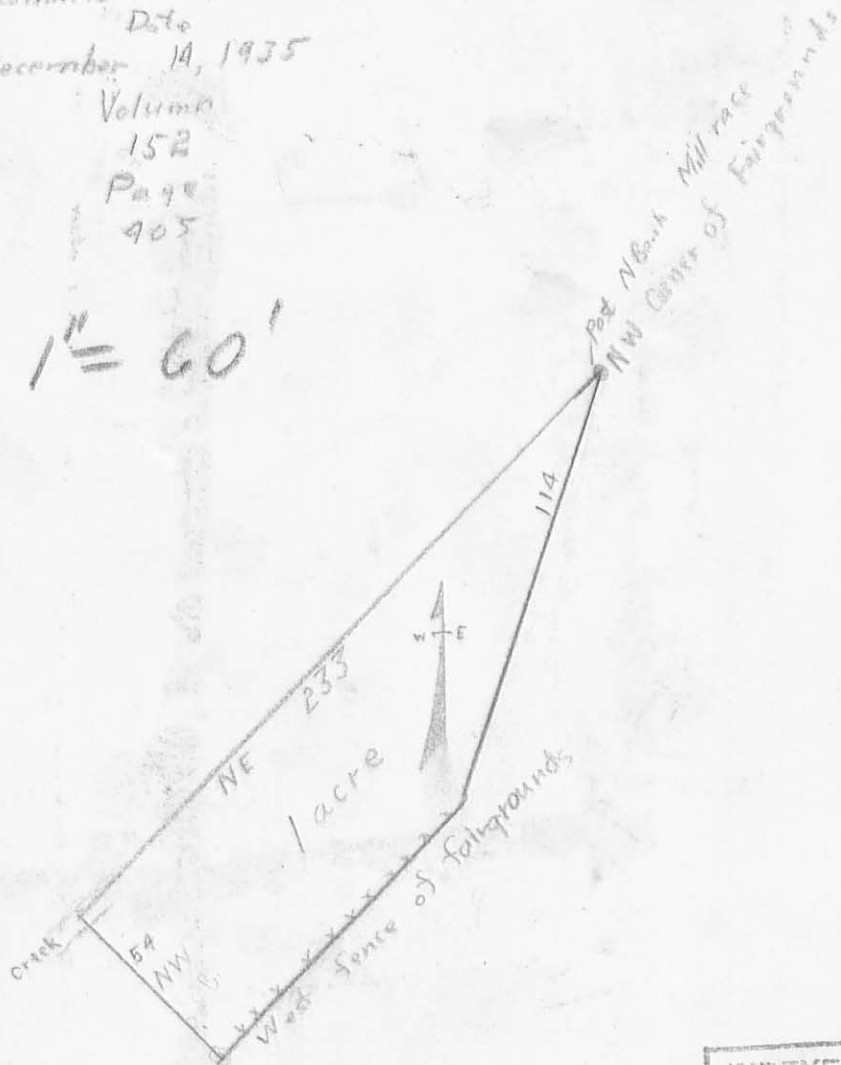
Volume

152

Page

405

1" = 60'

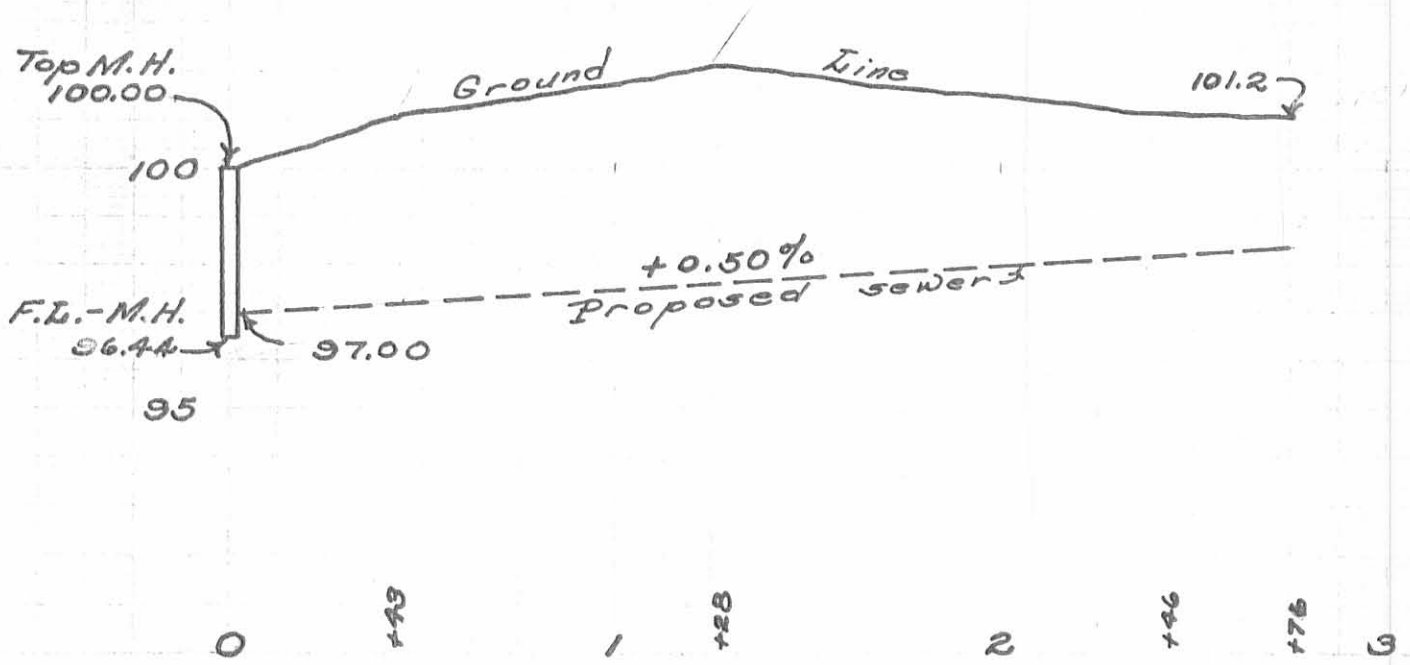
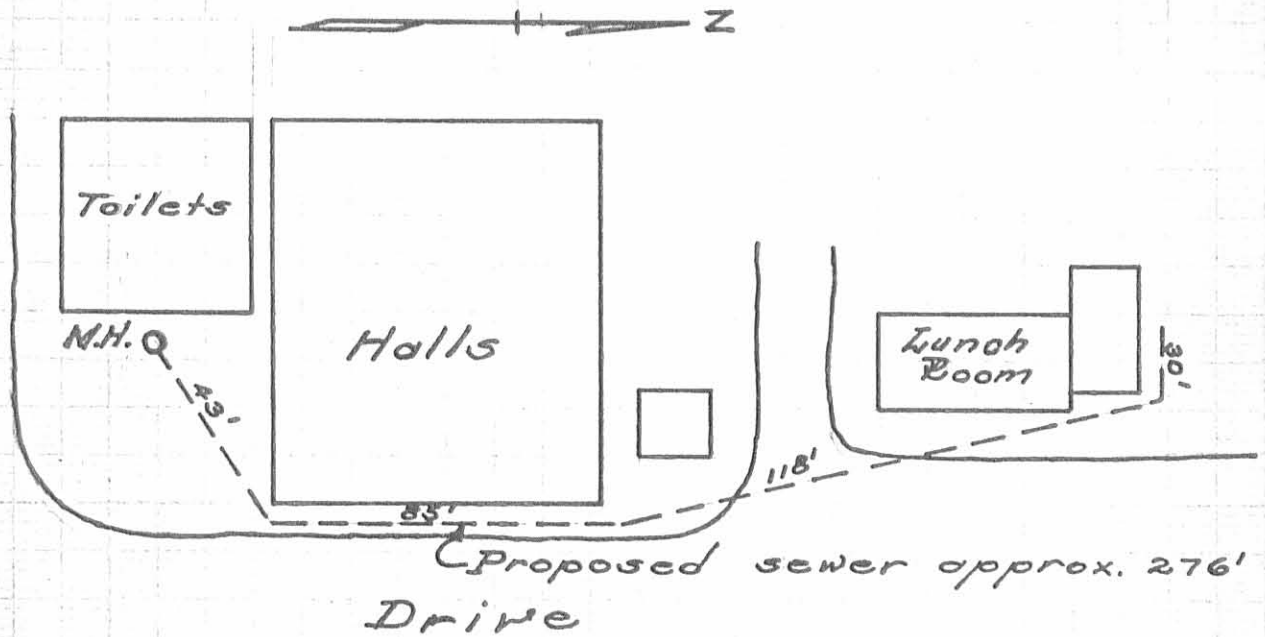


INDEXED ON MAP
1788 1P

Description of a lot of land to be added to Logan County Agricultural Society grounds.

" Situate in Logan County Ohio, part of S. E. $\frac{1}{4}$ sec. 34, T. 4, R. 14, and bounded as follows: Beginning at a monumental stone in the west line of L. B. McLaughlin's land south of Blue Locket creek 24 $\frac{1}{2}$ feet: Thence N $1\frac{1}{2}$ E $5\frac{4}{10}$ poles: Thence N 45 E $3\frac{4}{10}$ poles: Thence N $3\frac{3}{4}$ E $8\frac{6}{10}$ poles: Thence S $80\frac{1}{2}$ W 4 poles: Thence S $54\frac{1}{2}$ W 11 poles to a post on the north bank of a mill race at the water's edge: Thence westward with said race on the north side as the same meanders to a post from which a
 : Thence ~~S $1\frac{1}{2}$ W~~ S $1\frac{1}{2}$ W $34\frac{6}{10}$ poles to a post: in the north line of (said) fair grounds as heretofore held and occupied: Thence S $88\frac{1}{2}$ E $32\frac{6}{10}$ poles to a post 100 feet short of said ^{stone} McLaughlin's land: Thence N $1\frac{3}{4}$ E 35 poles to a ~~post~~ on the south side of said race: Thence S $62\frac{1}{2}$ E $4\frac{3}{10}$ poles to a stone: Thence S $22\frac{1}{2}$ E $5\frac{3}{10}$ poles crossing said creek to the beginning containing eight acres more or less. (Accepting and reserving the right to ~~use~~ said ^{mill} race as such, subject to the conditions shown in a deed from L. B. McLaughlin to John Davis conveying certain water rights, recorded in Book No 41 page 240.

Proposed Sewer at
Fairgrounds
for
Lunch Room
1954

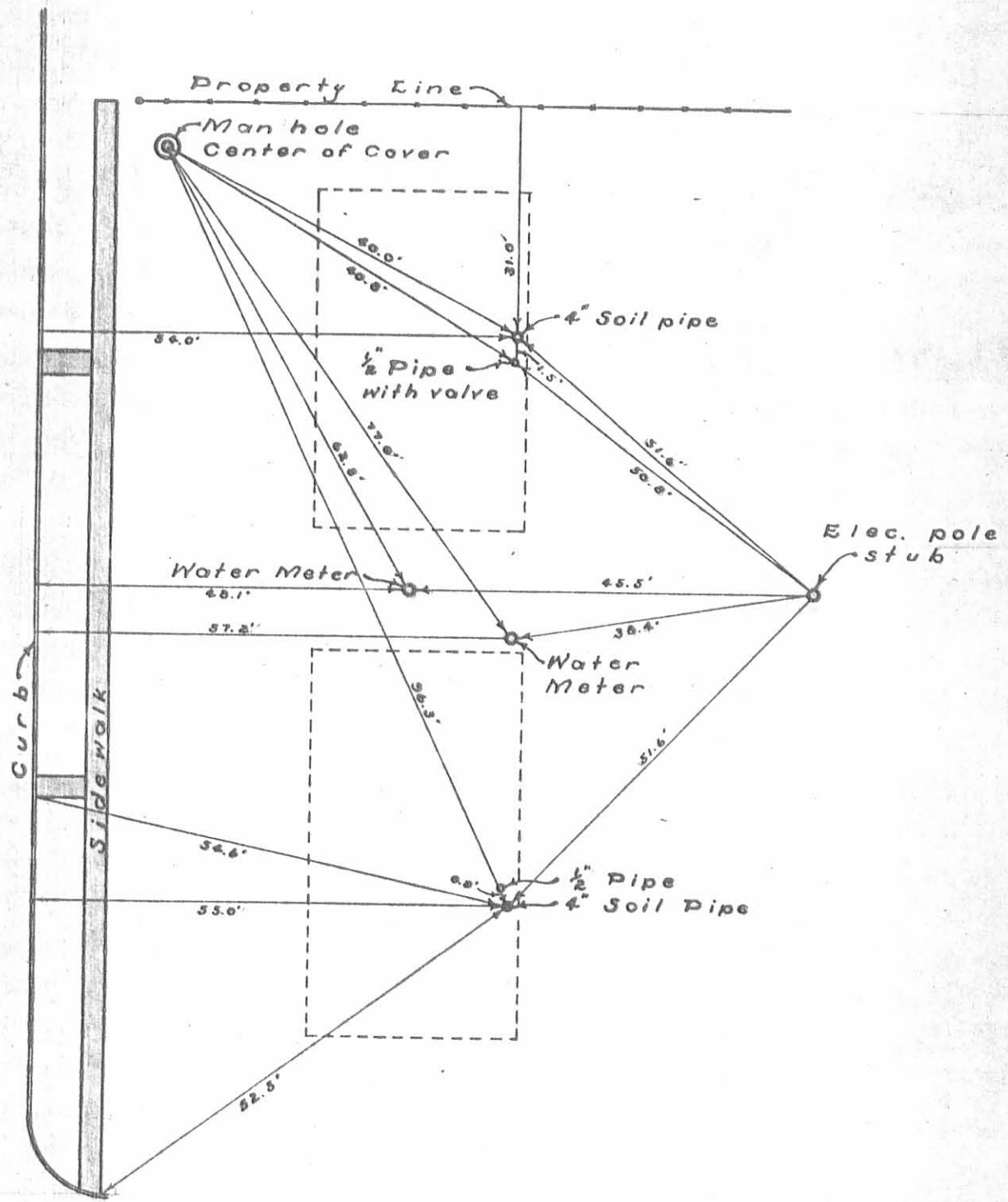


Scale: 1" = 50'

INDEXED ON MAP
1788 3P



South Main Street



WITNESSES to
UTILITY OUTLETS
G.I. Houses - N.W. cor. of Fairgrounds
Bellefontaine, Ohio

Drawing not to scale

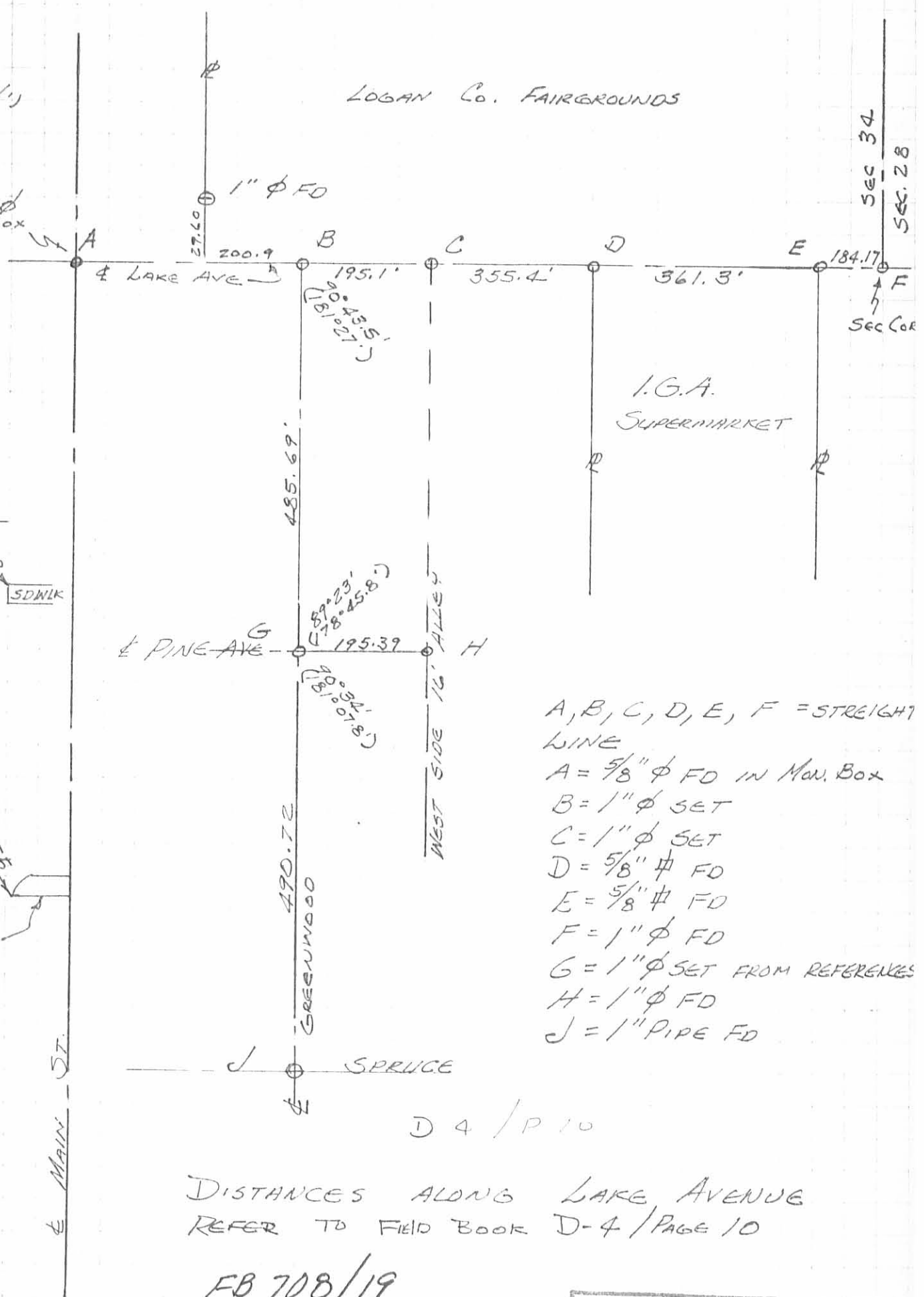
INDEXED ON MAP
1708 4P

Witnesses taken
July 7, 1953
Witnesses & sketch by
D.E. Dodson

1/14/71
1/15/71

I.G., C.N.,
B., J.Z.

LOGAN Co. FAIRGROUNDS



- A, B, C, D, E, F = STRAIGHT LINE
- A = 5/8" ϕ FD IN Man. Box
- B = 1" ϕ SET
- C = 1" ϕ SET
- D = 5/8" ϕ FD
- E = 5/8" ϕ FD
- F = 1" ϕ FD
- G = 1" ϕ SET FROM REFERENCES
- H = 1" ϕ FD
- J = 1" PIPE FD

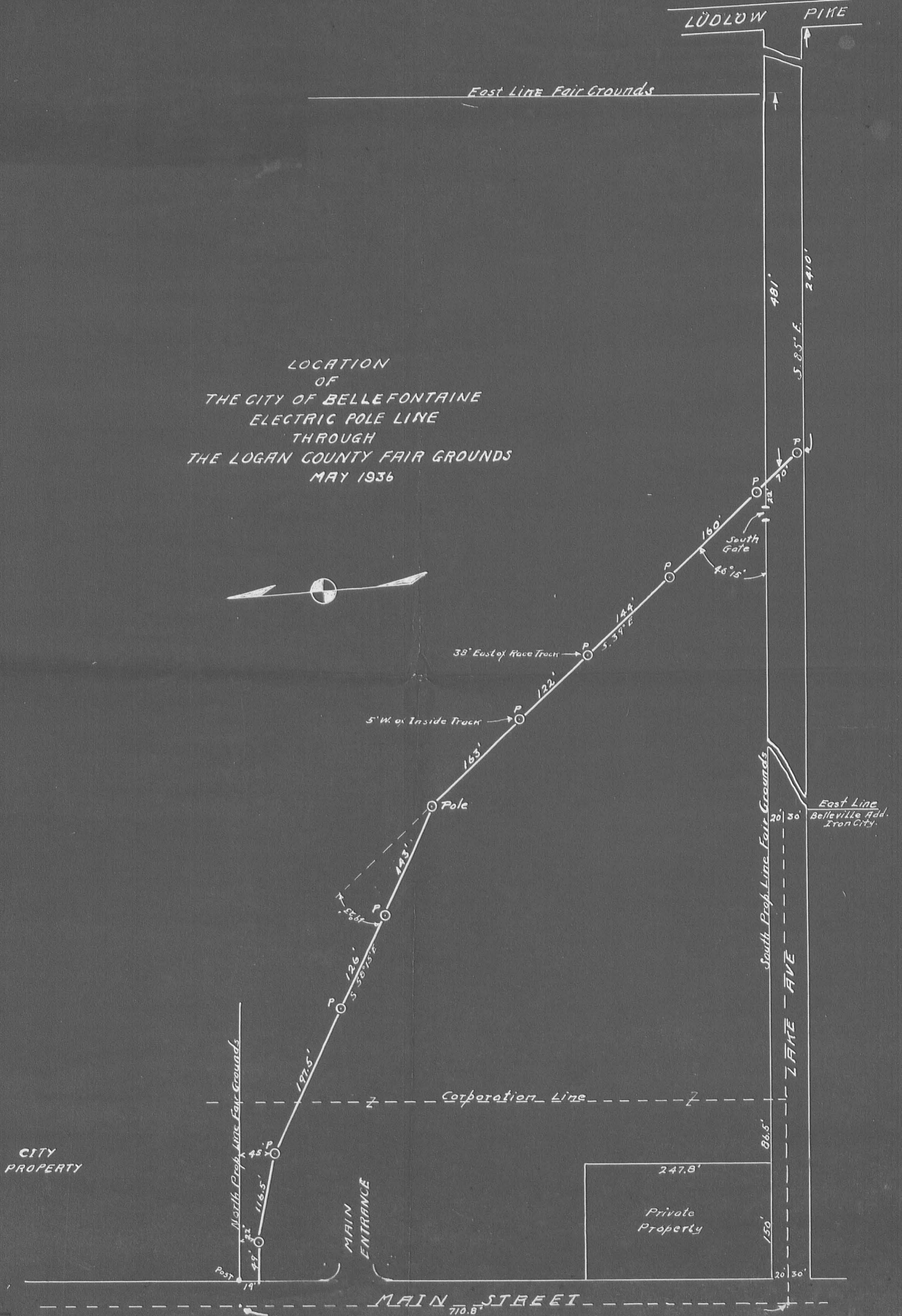
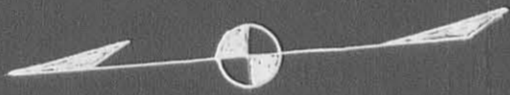
D 4 / P 10

DISTANCES ALONG LAKE AVENUE
REFER TO FIELD BOOK D-4 / PAGE 10

FB 708/19

INDEXED ON MAP
1708 5P

LOCATION
OF
THE CITY OF BELLEFONTAINE
ELECTRIC POLE LINE
THROUGH
THE LOGAN COUNTY FAIR GROUNDS
MAY 1936



W. SEDON & CO.
1722 6P

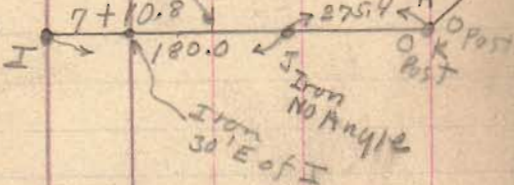
Fair Grounds (Survey)
 sec 34-4-14 (Lake Trail)

Carter
 A.M.

14+95.3 Mon (stone)

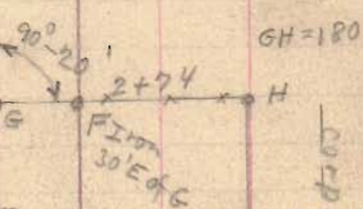
12+38.8 Lead & Brass
 old Corporation line

Lead Plug
 & Brass



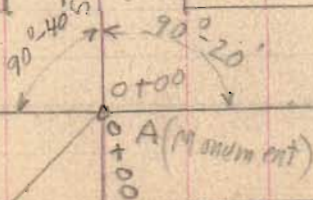
AG = 274'
 BH = 274'
 AB = 180'
 GH = 180'

Route 68
 S.H. 189 (S. Main St)

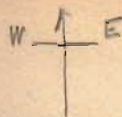


Corporation Line
 2+66.5

Road 11



AB = 180.0



July 16-1937

F. Wright
 G. Nilgus
 G. Pusey

46

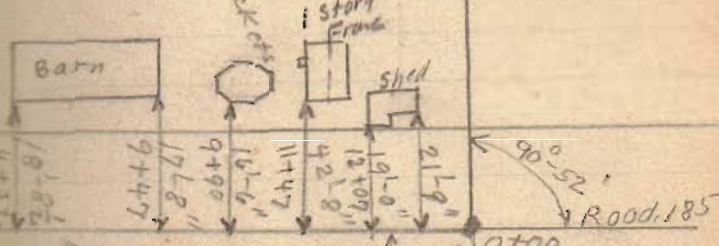
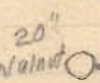
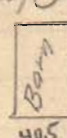
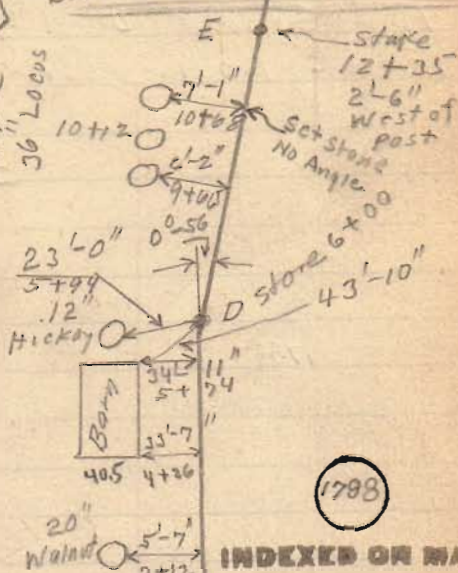
July 17-1937

(Same Party)

See Page 47
 See Page 49
 For This Line

Blue Jacket

Three
 36" Loops



AC = 1536.7

1798

INDEXED ON MAP

(see Plan F-45) (over)

Fair Grounds (Surrey)

See Book C Page 288
 see City Record C Page 63
 Fair Ground Deed 152 Page 405
 Frank Koons surrey Vol. 134 Pg

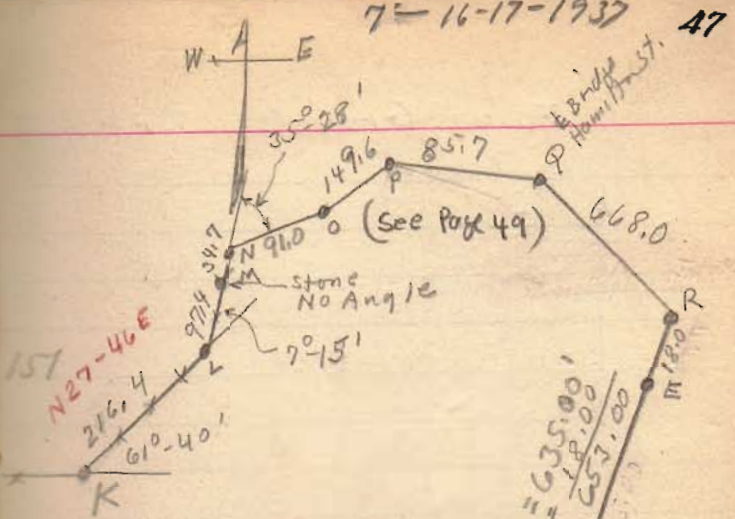
1788

INDEXED ON MAP

76x20 Chans
 5029.20 Feet
 S. Line
 Original see,

North
 710.8'

I — N-89-26E — K
 455.4

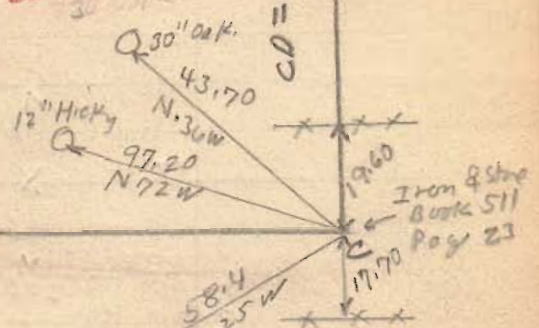


- LN = N 20-31 E 132.1
- NO = N 55-59 E 91.0
- OP = N 39-39 E 149.6
- PQ = N 63-0 E 85.7
- QR = N 86-54 E 668.0
- RD = S 0-36 E 653.0
- DC = S 1-32 E 600.0
- CA = S 89-20 W 1536.7

DE = 635.00'
 DR = 657.00'

D (stone)

CD = 600.00'



cross
 on
 rock

(over)

Fair Grounds Survey

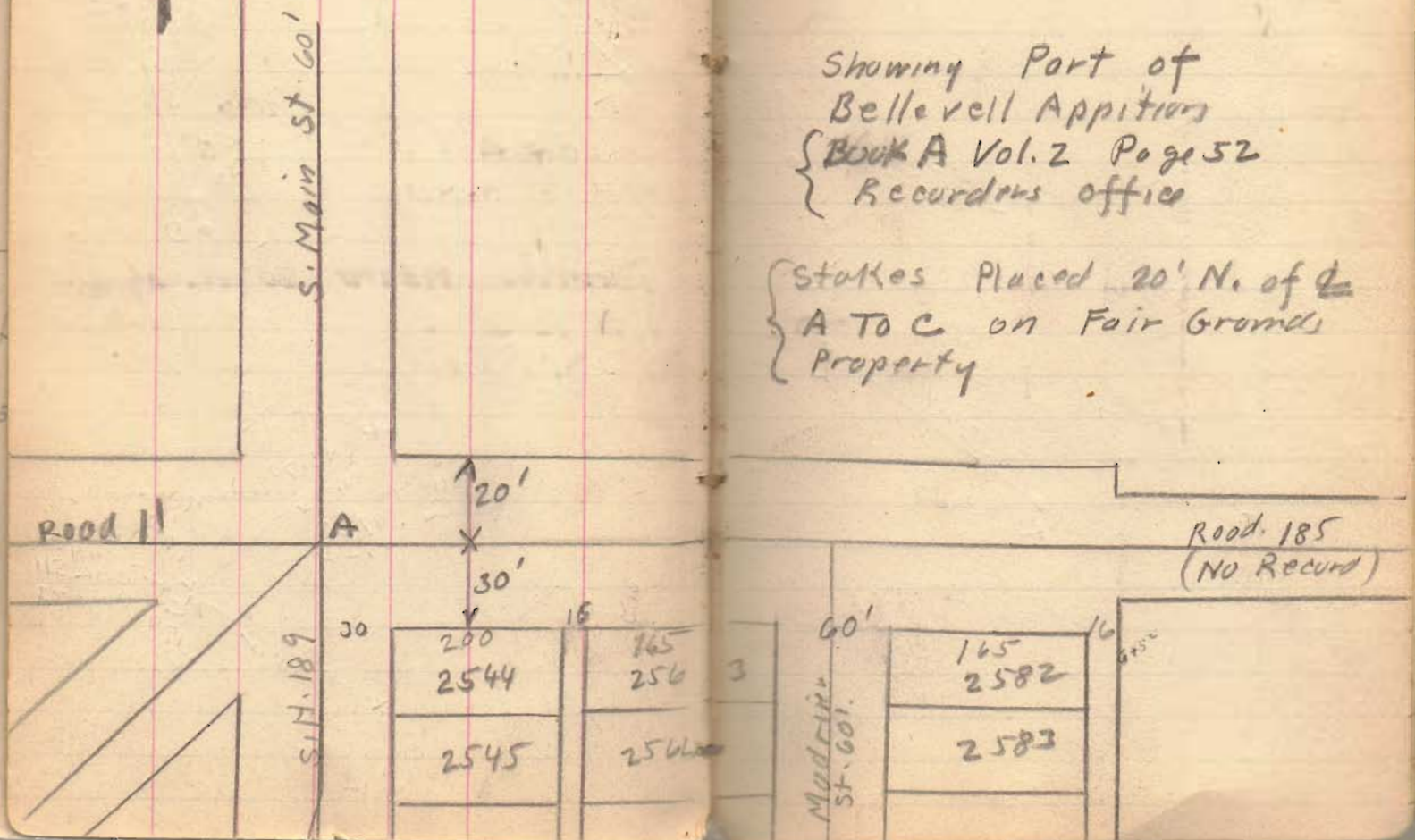


1788

INDEXED ON MAP

Showing Part of
Belleveil Appitions
{ Book A Vol. 2 Page 52
} Recorder's office

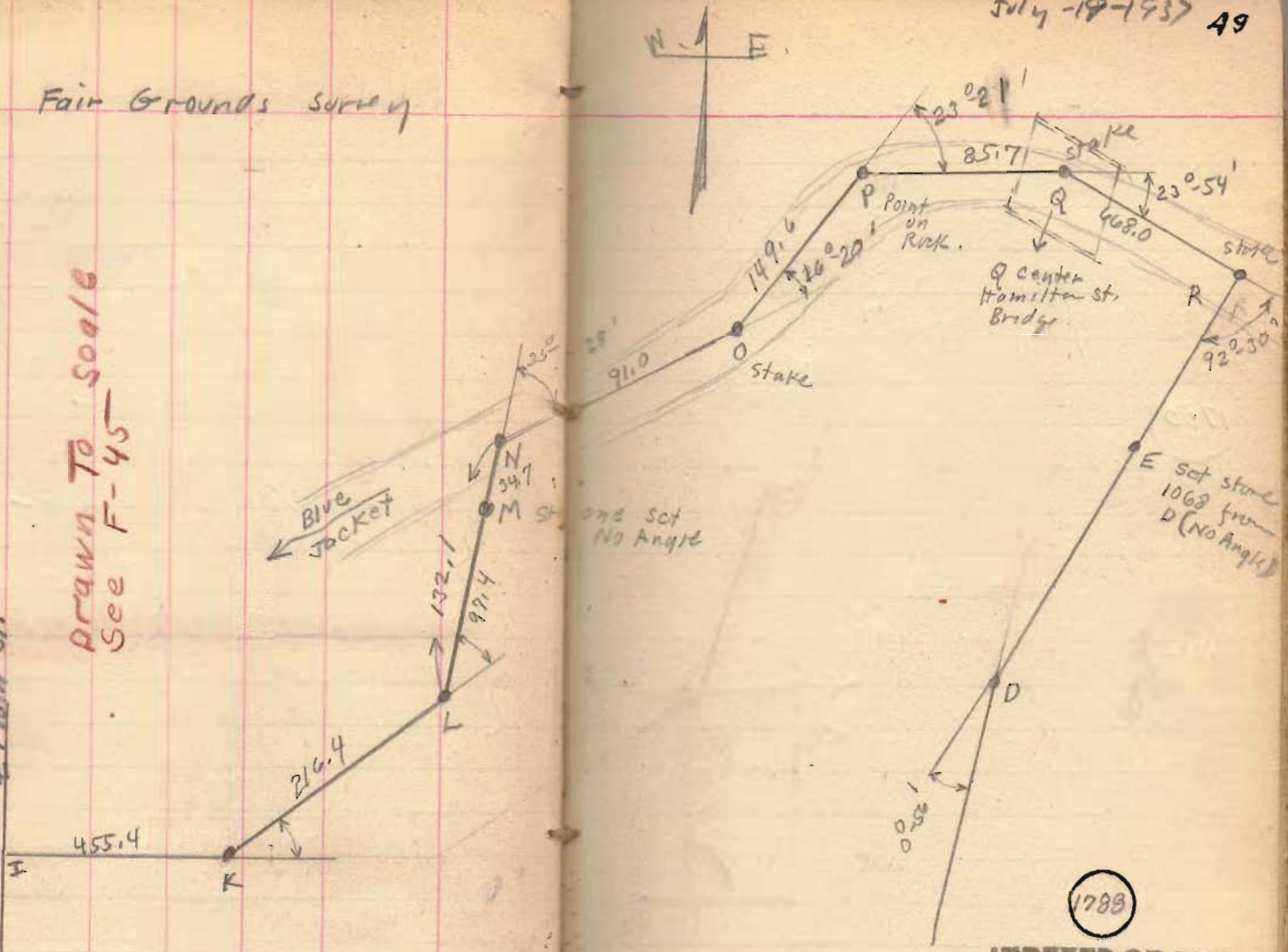
{ stakes Placed 20' N. of ~~the~~
A TO C on Fair Grounds
Property



Fair Grounds survey

4 Main St.

Drawn To Scale
See F-45

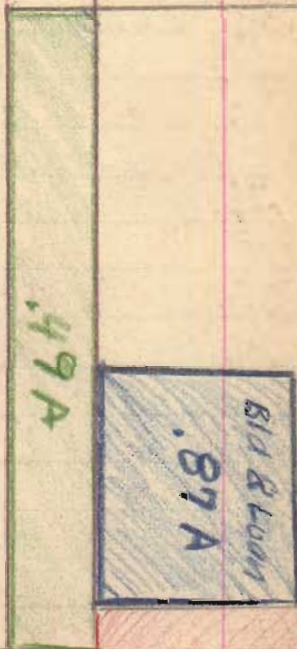


1789

INDEXED ON MAP

Fair Grounds Survey

E Main St



1788

INDEXED ON MAP

INDEXED ON MAP

corporation

35.87 Grand Total
 - .87 Bld & Loan
 35.00 Total Fair Grounds with sts
 - 1.18 Lake & Main Sts.
 33.82

30.94 Lake Tap
 2.88 Bellefontaine Corp
 33.82 Fair Grounds Without
 sts.

.69 A

20'

E Road
185

12+35
 12+00
 11+00
 10+60 Sts
 10+00

See page 51
 Sts. for Lake

Road

Road

Road

Jan. 13 1938

cold

F. Wright

G. Milgus

Bob Conard

51

Fair Grounds N.E. Cor

+s. H. 1. -s. E. 1. 1.

B.M.

90.00

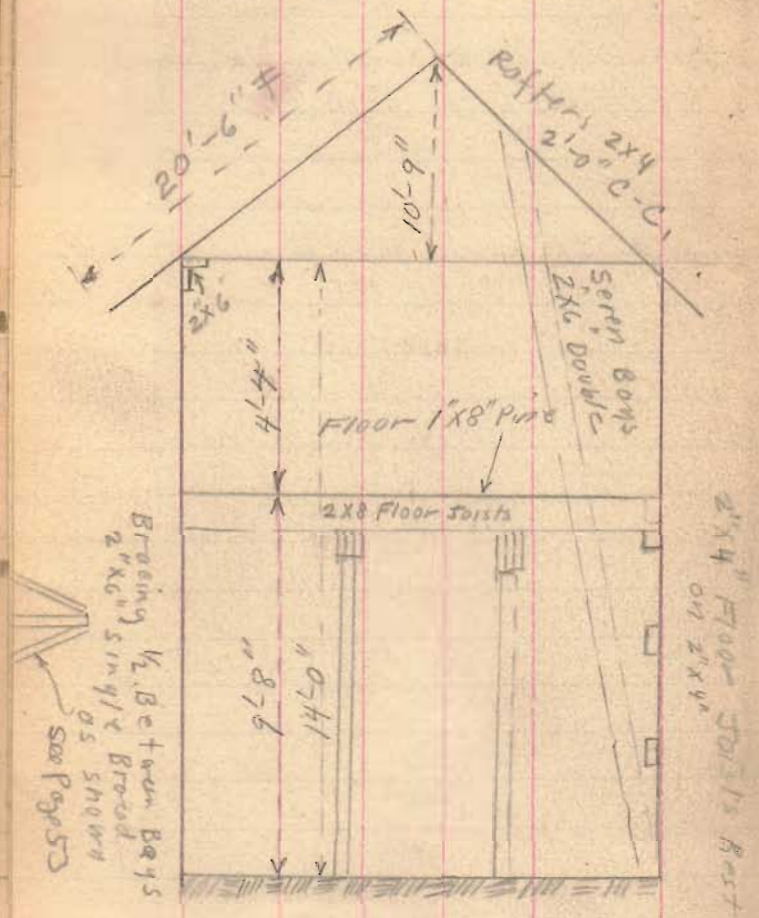
B.M. Nails Root S. side 10" sugar

Near drive see Book 2 Page 42

Jan. 26, 1938
 Cold - Yes Sir
 F. Wright
 C. Inst. Insp.
 W. R. Wright

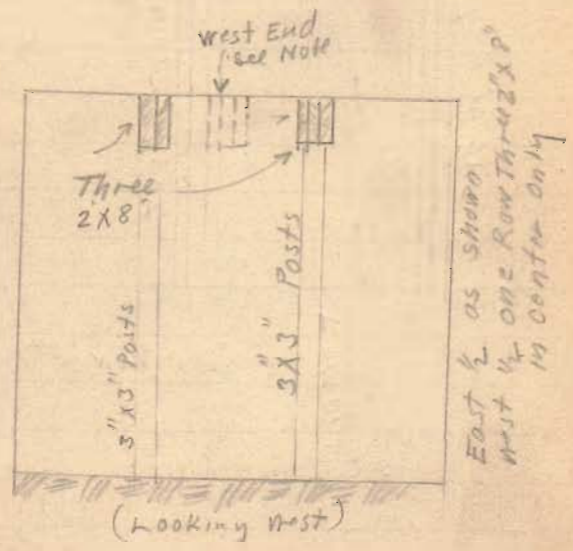
Fair Grounds

Switzer Barn 32' X 109'
 N. Main St.

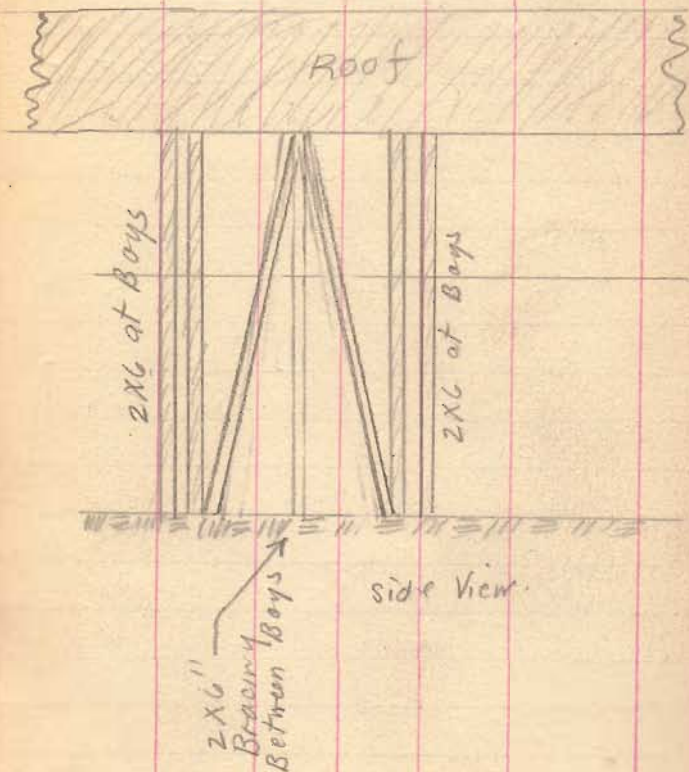


Rafters 2"X4" - 2'-0" spacing
 Floor Joists 2"X8" - 2'-0" spacing
 Sheeting under Roof.
 1"X4" Tongue & Groove
 Approx 1" opening between Boards
 Tar Paper Roof, 4551 Sq. Feet.

Stalls 5'-0" wide



Fair Grounds
Switzer Barn



Sides (South & North)
1" x 8" Sheeting - Vertical

Ends (East) Siding Trough &
Ground. Horizontal

8/16/38

C.A. Inskip
G. Wilgus
M. Jones
R. J. Kinard.

54

Far Ground

Inside Race Track

See sketch Book 2 Page 41

Set stakes on Φ at each
100' station and 100' E & W
and 150' E and W.