

## Shawver Survey

Lake To  
Chalfont & Inokeep

Searching records	2 hrs
Survey	1 day
Calculation	2 hrs
Survey + Calc	3 1/2 hrs

## Expenses

Ed Shawver	1 da.	2.00
Harry Shawver	1 da	2.00
Benton Rose	1 da	2.00
Livery		1.25
Dinner & feed		1.50
Ed Shawver		.25
car fare		.10

6476

## SHAWVER SURVEY

## LINE A

Found stone at E. side post at S. E.

12.17. Also at S.W. 1/2 A

Offset 10' N.

Produced this line West to Ludlow

Ch. A + 12.00 at stone S.W. 1/2 A

Set stake on offset at 26.00 end also at  
near W. side road

N. 86 1/2° W      N. 86 1/2° W

Set stake at 27.30 in Ludlow Line

Produced line 24.63 N. of this stone

Angle at 12.00 ch. Total northing = 9.65

O.K. Dist = N. 86° 45' W. O.K. Dist = 16.30

## LINE B

E. Line      see page 13

Offset 15 ft. E. of L. Stone at S. E. 1/2 A

Random S. 3° W.      S 3° W

Set stake on both sides of road on random

26.53 N. Side road

26.96 S.      ✓

37.66 N.      "      R.R.      See page 13

38.93 S      "      "      "

58.09 to stone at W. side of post

at S. side of Lane

Random came out 39.65 E. of

L. Stone at 58.09.

59.70 to fence N. line of Lane

## LAKE TP.

## LINE C

N. Line Fitzpatrick 6.48 A

Ch. W.

At 5.53 ch. Old Walnut Stump 20"

Set stake at 8.67 by dead

## LINE D

Along N. side 20 Lane

Set stake at 8.00 ch.

"      near W. side road (Ludlow)

N. 85° W      N. 85° 10' W

O.K. Dist = 8.67 + .09 = 8.76 (calc.)

## LINE E

N. from N. side of 20 Lane

Random N. 1/2 W

33.47 S. E.      at way      ?

34.39 N. L.      "      "

N. 14 1/2° W?      N. 14 3/4° W

6476



Found a stone with  $\pm$  double  
cross on top corner Huston and  
Nixon in @ Line road to West  
W.H.

Telephone pole 90 lks 2' East  
D. E. Corner post 4.6 lks S.W.

Lined in between this stone and  
stone at West of Line C

Iron corner post of Nixon and Park  
is in this line Post set in cement.  
Set stake in line in fence line (produced)  
at N. line of 6 1/2 A. tract or S. line of  
D. E. Shawver

3.3243 to S. Line Road  
Road 50 lks wide

60.44 to fence line (produced)  
at S. N. side 6 1/2 A.

Correction LINE B = E

Total Easting 16 1/2 lks

Correction 12.843

5' 8" 16.5 12.843

11.6 12.843

2.90 26.6

3.6 14.16

2.50 17.058

1.50 3.686

7.5 33.93

15' + 7 1/2 lks = 30 lks

2.6 lks to old fence accepted and occupied  
to for 25 yrs (D. E. Shawver)  
Angle at @ line road.

Connect corner bearing

O.K. dist. to a road = 21.74

O.K. csc to a road =  $53^{\circ}5'W$

Total Easting = 3 1/2 lks

O.K. dist. from road to N. side 20' Lane = 31.04

O.K. csc " " " " " " " =  $53^{\circ}15'W$

Total Easting = 1.3 lks

LINE F

With @ Line road

N  $55^{\circ}4'N$

15.98 to iron bolt  $\frac{1}{2}$  in line

of rt of way

LINE H = LINE F produced

2.88 ch from iron bolt to Leg/way

N  $85^{\circ}4'W$

2.00 ch in S Line Rt. of way

6476

## LINE G

Along Rt. of Way

N. 55 1/2 W. N. 55 1/2 W.

4.07 ch. to iron post corner

Set up at W. end of N. Line  
of 16.48 ch. in Ludlow Line

N. 14 3/4 W.

Set stone at N.W. = 20'

to E. of road

W. of road

Through track S. of Road  
By Rt. of Way = 66' N. 55 1/2 W.O. W. Track = 20.18 ch. from Line  
B to S. Line Road = 2'

64768

3/12, 1915

O. C. R. ch.

C. M. R. ch.

Chimed E. from fence line at  
S. side Wallace farm

Deed Call = 28.63

Bushman's Survey = 28.63

Measured 28.71 to stone <sup>in a road</sup> in E.  
fence line at Wallace or  
line Wallace and Parks

Hemp Hill found 1 stone marked

M. H. on bottom 6 feet W. of  
fence line at his S.W. corner.From this stone to E. Line  
Hemp Hill = 28.80 Deed call =

29.00 ch.

Ed Shawver declares the rail fence  
North was set by the Survey  
made by McCormick about 30 yrs ago.  
Take fence line for N. LineWallace and E. Line Shawver  
farm, S. of road.



## ROHRER SURVEY

1915

Daniel Rohrer Flag.

Sherman Rohrer ch. cr.

Elmer Stahler ch. cr.

John Stahler axe

Searching records 5 hrs

Survey 1 day

Livery 2.00

310

ROHRER SURVEY

LINE A  
W. LINE FRAC. SEC. 12

Found a stone at S.W. L Sec 12  
Wit: 22" W. Oak stump N34W 4 lks  
Random line N 1/2 E N 1/2 E.

37.20 ch. to L stone S.W. L  
Sidell 6.97A and S.W. L 100 Acres

Random line came out 27 lks E of  
L stone S.W. L 6.97A O.K. CSE N 5'E  
45.03 ch to center gravel of Sidney  
Pike.

0.

3/4, 1915.

LINE B

With center of pike

8.00 ch.

N. 69 3/4 E. N. 69 3/4 E.

LINE C

WITH W. LINE DANL ROHRERS

19 ACRES

S. 1/4 W. With fence S 1/4 W.  
10.62 to post S.W. corner 19 A.

310



LINE D

S. LINE 6.97 ACRES

N.  $89\frac{3}{4}$  WN.  $89\frac{3}{4}$  W

7.56 ch From post to L stone

LINE E

WITH S. LINE Danl Roberts 19 A.

17.36 ch to post S.E. L 19 A.

and S.W. Cor. H. E. Loffer

Offset 10' S. of stone at S.W.  
 L 6.97 Acres and 10' S. of post at  
 Loffers S.W. cor.

Marked into line between these points  
 and found S.W. Cor. of D. Roberts  
 19 A. in this line

Produced this line east.

S.  $89\frac{3}{4}$  ES.  $89\frac{3}{4}$  E

38.91 ch. Set stake for corner

No stone or wit: trees left.  
 as called for by H. C. Moores  
 Survey Record.

Channel changed and deposited on  
 West side.

40.28 to waters edge.

O. K. Dist: = 38.91

310

LINE F  
WITH water edge of river  
5.17  
S. 27  $\frac{3}{4}$  E

LINE G  
S. 41 E  
6.15

LINE H  
S 14  $\frac{1}{4}$  E      S 14  $\frac{1}{4}$  E  
8.82 ch

LINE I  
4.52  
S. 28  $\frac{1}{2}$  E      S 28  $\frac{1}{2}$  E

LINE J  
4.83  
S. 18  $\frac{1}{2}$  E      S. 18  $\frac{1}{2}$  E

LINE L  
S. 28  $\frac{1}{4}$  E.      S. 28  $\frac{1}{4}$  E  
4.57

LINE M  
S. 36  $\frac{1}{2}$  E.      S. 36  $\frac{1}{2}$  E  
2.63

LINE N.  
S. 30 E.      S. 30 E  
5.42

Thorn tree gone

Located S. Line farm by  
fence posts.

D. Rohrer says fence was built  
by Mat. Wolf on South assisted by  
Martin Rohrer.  
Drove stake on S. Line 13 lxs  
W. of waters edge.  
Wit: to stake  
old 30" Burr Oak Stump  
N 51 W 14 lxs

310



LINE 0  
Random Line

Offset 7' N. of stake at river  
commenced chaining from water edge  
Random N. 89 $\frac{1}{2}$ ° W N. 89 $\frac{1}{2}$ ° W  
N. 89 $\frac{1}{2}$ ° W N. 89 $\frac{1}{2}$ ° W

Set stake at 50.00

offset 3" S.

O.K. Dist 65.15

Random came out 22 feet  
N. of stake at S.W. Sec. 12

O.K. Cse. N. 89° 45' W.  
Total Northing = 15 feet  
Correction at 50 = 11.5' + 7' = 18.5'  
Move stake south 18.5'

Total Acreage = 214.67

214.66  
150.00

64.66 to be cut off west  
side.

64.66 - 696 = 57.70

57.70 = 577 sq ch

37.20 | 577.00 | 115.510 ch. from  
3720 west line  
20500 and parallel with  
18600 west line.  
19000  
18600  
4000  
3720  
2800

see next page

310

Ran Dividing Line cutting  
off 150 acres on E. side.  
Chained 15.51 ch E. from Stone  
S. W. - Sec. 12

Chained 15.51 ch E. from  
stone in W. Line Sec. 12 and  
37.20 ch N. of S.W. L of Sec. 12

Ran dividing line between  
these points.

At South end set stone <sup>boulder</sup> for  
corner about 12" N. of wire fence.

At N. end set boulder 4" x 12"  
x 24" pointed, with pieces  
broken tile in fence line.

O.K. csc N 5' E

O.K. Dist: = 37.20 ch

310



Wm. Shields Survey <sup>31</sup>  
Sec. 19 T 7 R 9  
Wash. Tp  
E. of Lewistown

INDEX ON MAP

507

## Wm. Shields Survey.

Found  $\square$  cement post at S.W.  $\perp$  Sec

19

Offset 12 ft North

Random Line

S.  $89\frac{1}{4}^{\circ}$  E      S.  $89\frac{1}{4}^{\circ}$  E

Set stakes on Random Line

At  
12.00 ch.      Corrections.  
12' + 21.7"      South = 13'-9.7"

20.00 ch      12' + 36"      South = 15'

At 20.01 fence to South, Line  
Miller (Noah) and B. Miller

30.00 ch      12' + 54.4"      South = 16'-6.4"

39.00 ch      12' + 70.7"      South = 17'-10.7"

Dug for corner

Found stone see page 33

Dist. = 39.81

Random came out 18' N.  
of corner.

Total Northing = 6' = 72"

3/16, 1915.

Found stone in center pike N.W.

Corner Wm. March 3 Acre tract.

Chained E with  $\odot$  Line pike 10.43 ch  
dead call = 10.52  
to stone in W. Line McPherson  
section, and near foot of E. slope ofPIKE grade at turn of road.  
Chained S with W. Line McPherson  
section and 8 1/2 lks. to  $\perp$  stone  
at N.E. corner Shields

Produced Line of these stones

South  $19^{\circ}45'E$  to S.E. corner  
S.  $19^{\circ}45'E$   
DIST: = 11.23 ch.Found  $\perp$  stone at Shields S.E.  $\perp$   
Stone is 26 lks E. of Shields  
and post

507



## correction Calculations

$$\begin{array}{r}
 72'' \quad \times 12 \\
 144 \\
 39.72 \overline{) 864.00} \quad | 21.7'' \\
 \underline{7944} \\
 6960 \\
 \underline{3972} \\
 29880
 \end{array}$$

$$\begin{array}{r}
 72'' \\
 39.72 \overline{) 1440.00} \quad | 36.2 \\
 \underline{11916} \\
 24840 \\
 \underline{23832} \\
 10080
 \end{array}$$

$$\begin{array}{r}
 72'' \\
 39.72 \overline{) 2160.00} \quad | 54.4'' \\
 \underline{19860} \\
 17400 \\
 \underline{15888} \\
 15120
 \end{array}$$

$$\begin{array}{r}
 72'' \\
 39 \\
 648 \\
 216 \\
 39.72 \overline{) 2808.00} \quad | 70.7 \\
 \underline{27804} \\
 2760.0
 \end{array}$$

## HOGES ADDITION SURVEY

STREET INTERSECTION MON.

Center and Nelson

Iron Bar - 1/4" x 24" 1904 S.A.B.

WIT:

N.W. - stone foundation 1/2 story frame

Res. S.E. 43.3'

S.W. - stone foundation 1/2 " "

Res. N.E. 73.95'

CENTER and GRANT

Iron Pin - old 1903 S.A.B.

WIT:

Glec. Lt. pole S.W. 31.33'

Top screw hyd. sloping meas. S.W. 389.0

N.W. cor. stone founda. 2 sto. frame

res. S.E. 38.6'

Maple shade tree 18" di. N.E. 43.6'

S.E. Cor 1/2 sto. frame res. N.W. 49.0'

NELSON and North

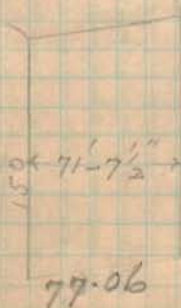
Iron Bar 1/4" x 24" set 1904 S.A.B.

N.E. - stone founda. 1/2 sto. frame

res. S.W. 59.08

N.W. - L strip 1/2 sto. frame res.

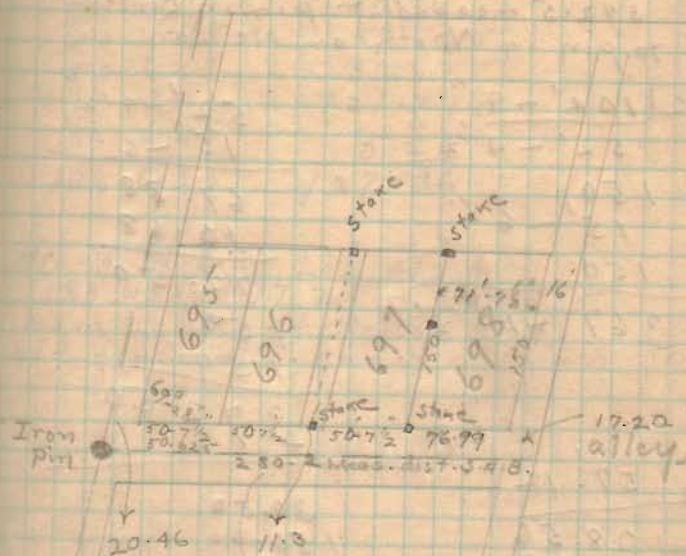
S.E. 37.10



629

Emma Kneiss Miller's Lot April

Iron Pin



20.46

50.625

50.625

11.3

50.625

76.99

17.20

282.0 to old fence  
1915 O.P.R. C.M.R.

50.625

5.65

56.275

277.825 = plot dist.

56.275' = Emma Miller's Lot width.  
Stones set as shown above



392.5 meas. dist. pin in center  
to pin in North on Nelson

$\begin{array}{r} 2 \overline{) 102' - 9''} \\ \underline{52' - 4\frac{1}{2}''} \\ 150 \\ \underline{15' - 6''} \\ 150 \\ \hline 367 - 10\frac{1}{2}'' \end{array}$	$\begin{array}{r} 52' - 4\frac{1}{2}'' \\ \underline{15' - 6''} \\ 67.88 \\ \underline{10.68} \\ 72.50 \\ \underline{150} \\ 150 \\ \hline 372.50 \end{array}$
---	--

$\begin{array}{r} 2 \overline{) 57.12} \\ \underline{28.56} \\ 1068 \\ 2 \overline{) 2848} \\ \underline{17136} \\ 2856 \\ \hline 3050208 \end{array}$	$\begin{array}{r} 30.50 \\ \underline{150.00} \\ 180.50 \end{array}$
--	--

meas. 180.50 and 183.50 N.W. 1/4  
center line Nelson from pin  
in Center St.

$\begin{array}{r} 20.46 \\ \underline{50.625} \\ 50.625 \\ \underline{11.30} \\ 50.625 \\ \hline 183.635 \end{array}$	$\begin{array}{r} 20.46 \\ \underline{50.625} \\ 50.625 \\ \underline{121.710} \\ 15.65 \\ \hline 127.36 \end{array}$
---	---

Along N Line Lot 41-42  
183.635 + 97.2 = 280.835  
from center of Nelson St to  
old fence at E. side of addition

629

W. E. SMITH SURVEY  
SURVEY 3220 JEFF. TP.

ch. cr { w. e. Smith. Flag.  
          { Emmet Smith  
          { Clarence Lowe

5764











McKinnon Survey

4/8 1915

John McKinnon } ch. cr.  
Milt. McKinnon }

7889

## MCKINNON SURVEY

LINE A

Along pike  
 Begin ch. at S.E. school lot.  
 E. LINE Farm N. 5 E  
 2.24 ch. to W. Line School Lot.  
 N. 85 W with center PIKE

20.70 to E. LINE Griffiths cor. stone

20.45 to E. LINE of rt. of way  
 Griffiths E. LINE N. 4 1/4 E. N 4 1/4 E

Dep. for 45' in 13.00 ch = .17

Cut off 27 acres along road.

20.45	
20.62	
2   41.07	
20.535	275.000
20.535	113.39
69.650	
61605	
80450	
61605	
188450	
184815	

calculated 27 acres + 1/2 A. to E.  
 Line of 1 rod rt. of way

WASHINGTON TP APRIL 8, 1915.

LINE B

Along W. side of Land  
 ch 13.39 N. for W. side 27 A.  
 Trial distance 13.39 drove stake  
 N. 4 1/4 E } O.K.

LINE C

Along E. side 27 Acres  
 set stake at 13.39

LINE D

Along N side 27 A.  
 N 85 W 20.535 ] 27.50  
 20.87

20.45	
20.62	
2   41.07	
20.535	184815
13.39	61605
184815	61605
61605	61605
20535	20535
27.496365	Acres

7889



LINE E

N. from stake at N end of

LINE B.

N.  $4\frac{1}{4}$  E

3.86 ch to Griffiths N.E. cor (post)

$$\begin{array}{r} .0131 \\ 3.86 \\ \hline 786 \\ 1048 \\ 393 \\ \hline .050566 \end{array}$$

$$\begin{array}{r} 20.87 \\ 20.92 \\ \hline 41.79 \\ 1.93 \\ \hline 12537 \\ 37611 \\ 4179 \\ \hline 806547 \end{array}$$

A to

N. A of Griffiths and N. of  
27 acres.

LINE F

Along N side Griffiths

N 185W

20-29 ch.

LINE G

Along Devings E. Line and with  
center of public road

N 5E.

23.44 ch to McKinnon N.W. A

$$\begin{array}{r} 23.44 \\ 13.39 \\ 3.86 \\ \hline 40.69 \end{array}$$

10009

## LINE H

Along N Line McKinnon and S. Line }  
 S. 84 1/2 E (Moore Bros)

Set stake at

10.00  
 20.00  
 30.00

41.06 to N.E. corner and  
 N.W. cor. Licklider

## LINE I

Along Lickliders and John McKinnons  
 W. Line

20.48 ch to S.W. L Licklider

27.02 ch to stake at N.E. cor

27 acre tract

73829



$$\begin{array}{r}
 20.87 \\
 20.70 \\
 \hline
 41.57 \\
 13.39 \\
 \hline
 37413 \\
 12471 \\
 12471 \\
 4157 \\
 \hline
 25566223 \\
 27.83A
 \end{array}$$

$$\begin{array}{r}
 41.06 \\
 41.21 \\
 \hline
 82.27 \\
 23.30 \\
 \hline
 246810 \\
 24681 \\
 \hline
 16454 \\
 2 \overline{) 19168910} \\
 95.84 \\
 8.06 \\
 \hline
 103.90 \\
 27.83 \\
 \hline
 131.73 \\
 .83 \\
 \hline
 130.90
 \end{array}$$

$$\begin{array}{r}
 20.87 \\
 20.92 \\
 \hline
 41.79 \\
 1.93 \\
 \hline
 12537 \\
 37611 \\
 4179 \\
 \hline
 806547
 \end{array}$$

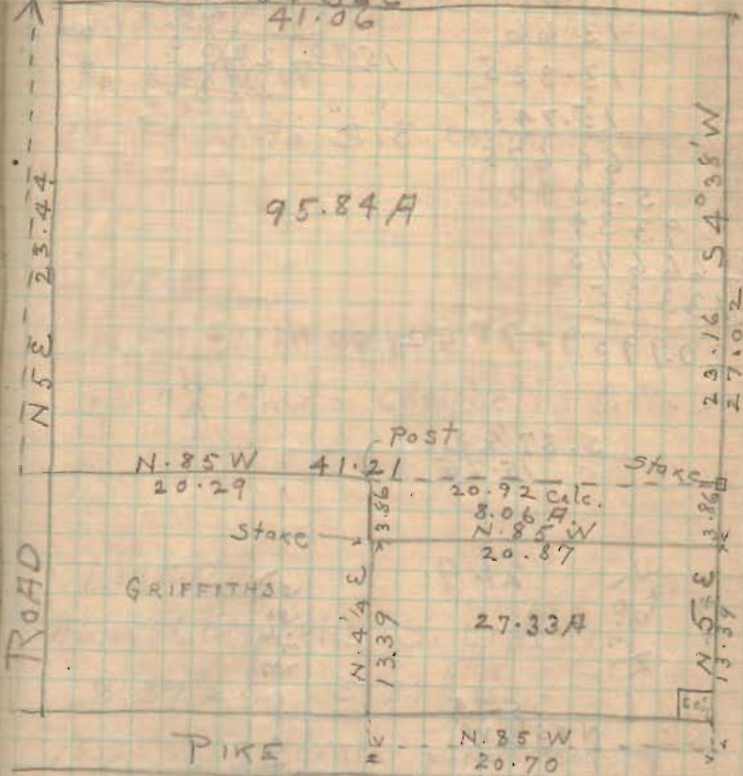
$$\begin{array}{r}
 23.44 \\
 23.16 \\
 \hline
 246.60 \\
 23.30 \\
 \hline
 95.84 \\
 8.06 \\
 \hline
 21.00 \\
 124.90 \\
 10.50 \\
 \hline
 114.40 \\
 7.00 \\
 \hline
 107.40
 \end{array}$$

$$\begin{array}{r}
 23.16 \\
 33 \\
 \hline
 22.83
 \end{array}$$

$$\begin{array}{r}
 68.90 \\
 26.25 \\
 \hline
 95.15 \\
 69 \\
 \hline
 95.84
 \end{array}$$

$$\begin{array}{r}
 95.84 \\
 8.06 \\
 \hline
 27.33 \\
 131.23 \\
 27.33 \\
 \hline
 103.90 \\
 8.75 \\
 \hline
 95.15 \\
 26.25 \\
 \hline
 68.90
 \end{array}$$

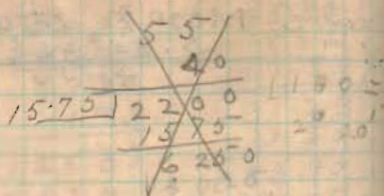
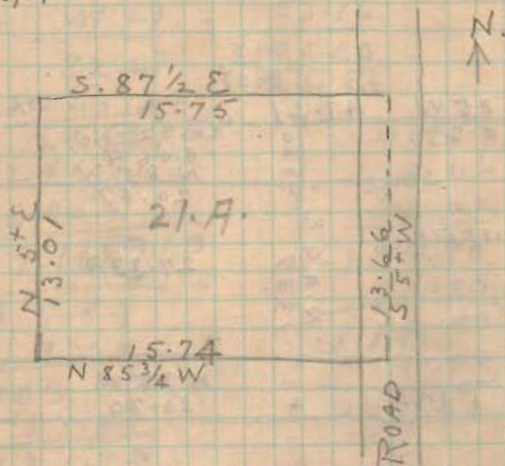
Mary E MOORE et al.  
S. 84° 36' E  
41.06



## Tract W. of road

13.01  
13.66  
 13.335  
15.745  
 66.675  
 53.340  
 93.345  
 66.675  
133.35

20.9959575 = 21.00 Acres



## TRACT W. OF ROAD

Begin at corner X P. 59  
 17' center public Road.

LINE A

N. 85 <sup>3</sup>/<sub>4</sub> W

15.74 ch to S.E. corner Herring.

LINE B

N 5+ E N 5+ E.

13.01 ch to Campbells S.W. ✓

LINE C

Along Campbells S. Line

S. 87 <sup>1</sup>/<sub>2</sub> E. S. 87 <sup>1</sup>/<sub>2</sub> E.

15.75 ch to center public Road. and  
 Campbells S. E. Cor.

LINE D

With center road

S. 5+ W

13.66 to X

1889



$$.69 \times 10 = 6.90$$

$$\begin{array}{r} 20.92 \overline{) 6.900} \\ \underline{6 \ 276} \\ 6240 \\ \underline{6276} \end{array}$$

$$\begin{array}{r} 20.92 \\ \underline{.33} \\ 6276 \\ \underline{6276} \\ .69036 \end{array}$$

$$\begin{array}{r} 22.87 \overline{) 262.50} \\ \underline{2287} \\ 3380 \\ \underline{2287} \\ 10930 \\ \underline{9148} \\ 17820 \end{array}$$

$$\begin{array}{r} 11.48 \\ \underline{28} \end{array}$$

$$\begin{array}{r} 9184 \\ \underline{2296} \end{array}$$

$$41 \overline{) 32144} \quad 18$$

$$\underline{328}$$

$$13.39$$

$$\underline{4.19}$$

$$17.58$$

$$27.02$$

$$\underline{4.19}$$

$$22.83$$

$$22.87$$

$$\underline{11.48}$$

$$18296$$

$$\underline{9148}$$

$$2287$$

$$\underline{2287}$$

$$26254764$$

$$20.92$$

$$\underline{20.87}$$

$$20.895$$

$$\underline{4.19}$$

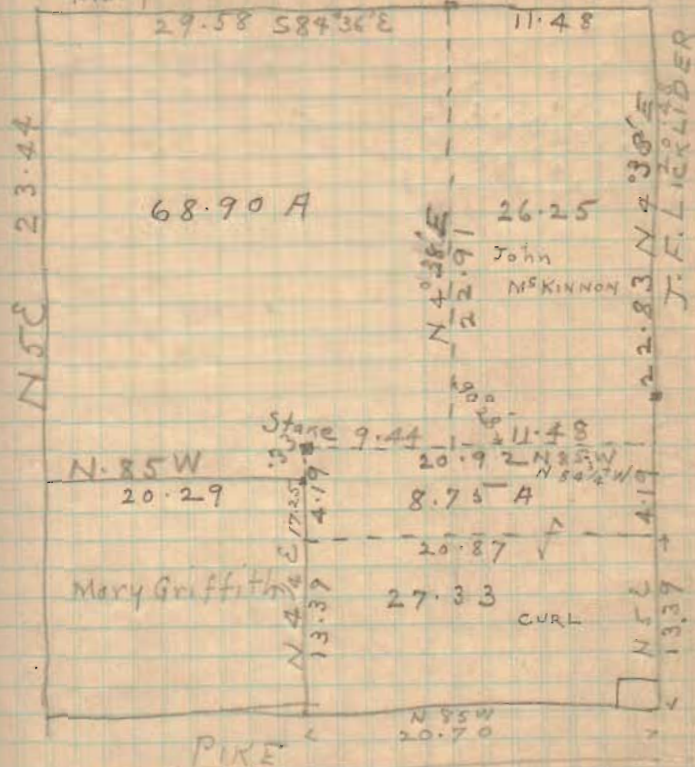
$$188055$$

$$\underline{20895}$$

$$83580$$

$$\underline{8755005}$$

Mary E. Moore et al stake



CHALEANT SURVEY 4/16, 1975<sup>69</sup>

OUTLAND LAND

W. E. Smith	} ch cr.
Oak Newell	
Ray Young	

Harry Jacobs Flag

Time	
Records	4 hrs
Survey	1 day
Calc. & description	1 1/2 hrs
Calculation	1 1/2 hrs

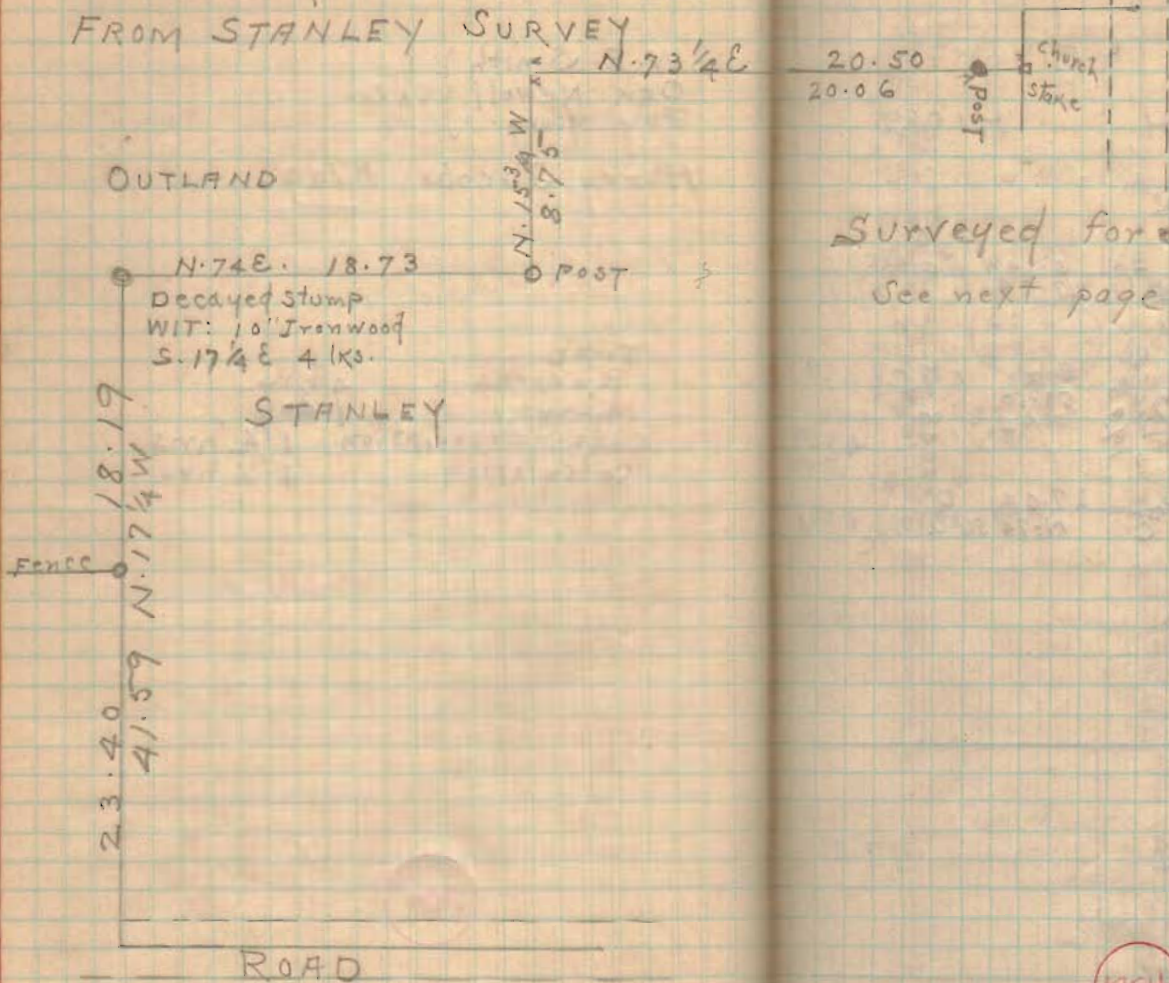
1254



70 SURVEY IN MONROE TP. FOR CHALFANT ET AL  
(Henry<sup>nd</sup> Rachel Outland Land)

4/16 1916

FROM STANLEY SURVEY

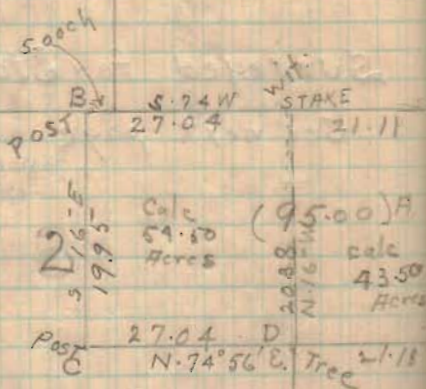


Surveyed for Stanley.  
See next page

1254

NEVIN SMITH

HICKS



C.K. HARTZLER

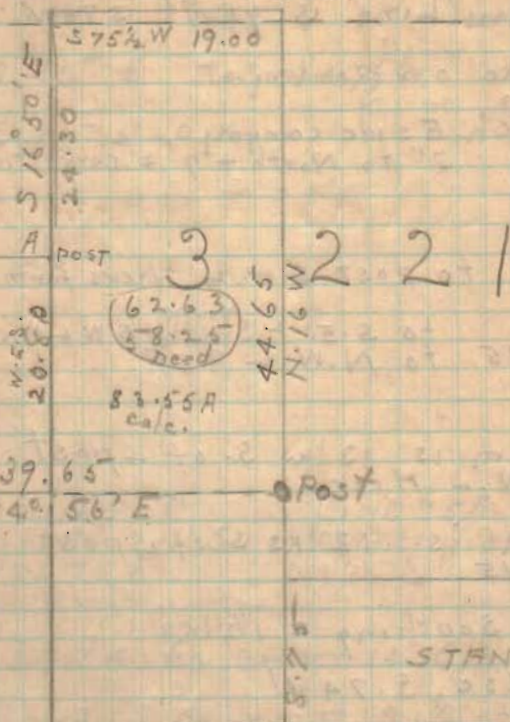
3 2 2 4

SHORT

77<sup>00</sup>

W.G.W. J.A.W.

W.F.J.



STANLEY

1254

STANLEY

3 2 2 3



74 LINE A. N. Line 95A  
Corner post, at N.E. L 95A.  
Set pole 7' S. of center post.  
Random line S. 74W 574W

Set stake on Random at

12.00 ch. E side canyon  
22.00 5" to North + 7' = correction

43.15 to post S.W. L Hicks farm

48.15 to S.E. L <sup>Nevis</sup> Smith + S.W. L Hicks  
to N.W. L 95A

Random is 13 lks S. of L post  
at S.W. L Hicks

Random is 12 lks S. of L post  
at 48.15

Total Southing = 1 1/2 lks

O.K. Csc S. 74W

Set stake at 21.11 for N.E. L  
of tract 15" soft wire fence  
wit: Double thorn tree  
S. 23E 17 lks

75 LINE B 4/16 1913

19.95 ch. to corner post at  
S.W. L 95A

S. 16° E S. 15 3/4° E

S 16° E O.K.

LINE C S. LINE 95A.  
offset 20' S. of corner post  
(N. 75° E N. 75° E  
Random

27.04 to corner 14" E/m tree

Random came out 21 1/2 ft. S. of

corner tree N.E. L Hartzler Land  
Total Southing 1 1/2 feet.

1254



## LINE D

Dividing Line from L tree  
end of Line C

N. 16° W

20.38 to N. Line to Stone

Set for corner.

Wit: double thorn tree S. 23° E 17 Lks.

## LINE E

From end Line C  
offset 10' south of L tree  
Random

N. 76 1/2° E. N. 76 1/2° E.

21.18 ch to S. E. L 95 acres

No sugar trees

Random came out 73 lks S. of

↳ post at 21.18

Total southing 58 lks

O.K. cse = N. 74° 56' E

Extended Line E by needle  
N. 75° E

39.65 to W Line GREEN (Joint)

Set stake 3 links N.

Correct bearing for slks

Took DIVISION POST for corner.  
O.K. cse = N 74° 56' E

## LINE F

Offset 10' W  
11.30 ch to fence S. Line  
original 6.3 acre tract

Bearing of fence to West  
S. 80 3/4° W.

Random N. 16 1/4° W N. 16 1/4° W

31.48 to N.W. L GREEN Y.  
S.W. L Walker at old  
Walnut stump

44.65 ch to center pike  
Random came out 35 1/2 lks W. of  
post

Total Westing 20 lks.

O.K. cse N 16 W

1254



LINE G.

With center Pike

S.  $75\frac{1}{2}$ ° W

19.00 ch

LINE H

W. LINE OF original 62 A. tract

Offset 20' W

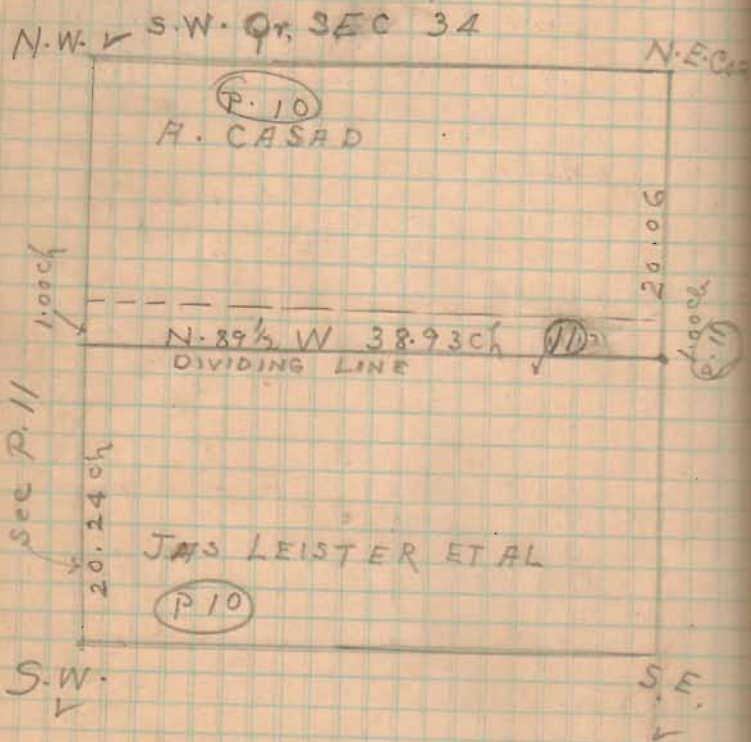
Random S.  $16\frac{3}{4}$ ° E S.  $16\frac{3}{4}$ ° E.Came out  $21\frac{1}{2}$  W. of L post  
at N.E. L 95° 17'.Total Westing  $1\frac{1}{2}$ '

24-30 ch. O.K. DIST.

O.K. cse: S.  $16^{\circ}50'$  E

1254

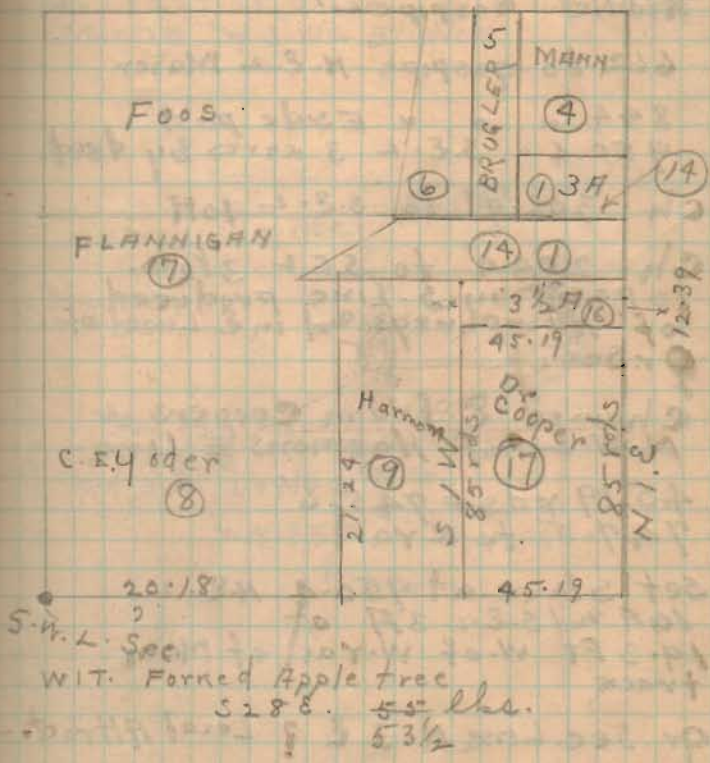
JOHN MAIER  
PT. S.W. Qr SEC 34



2096

SURVEY  
T 4 R 14

S.W. Qr Sec 34

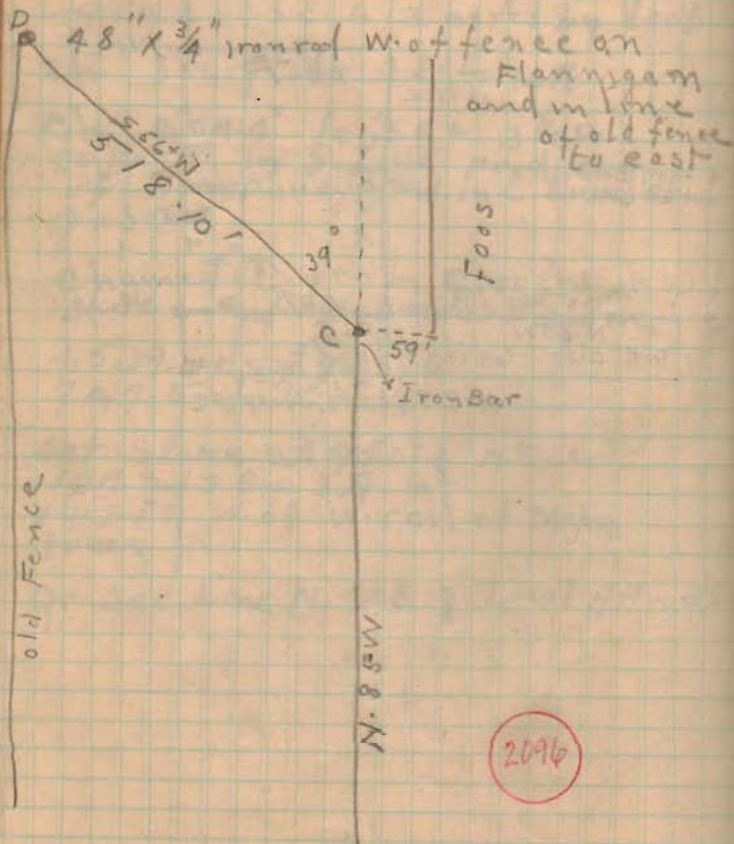






MAIER

2112-122-2211-211



SURVEY

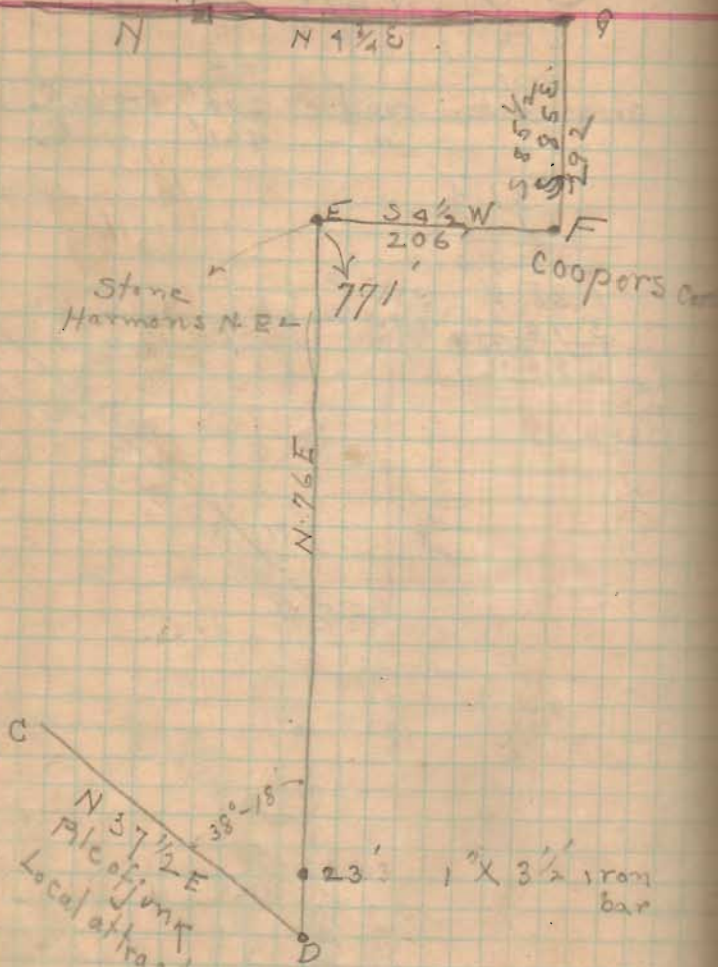
S 56° W

Cross center road at 200' from C  
 " " " " 461' " C

$$\begin{array}{r}
 31.4 \\
 \underline{16.6} \\
 15.70 \\
 \underline{1884} \\
 314 \\
 \hline
 518.10
 \end{array}$$



H = N.W. = Humphreys



2096

MAIER SURVEY

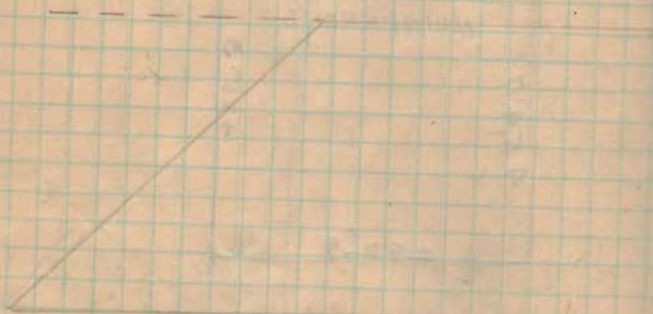
G = Humphreys S.W.L

Humphreys S. Line from

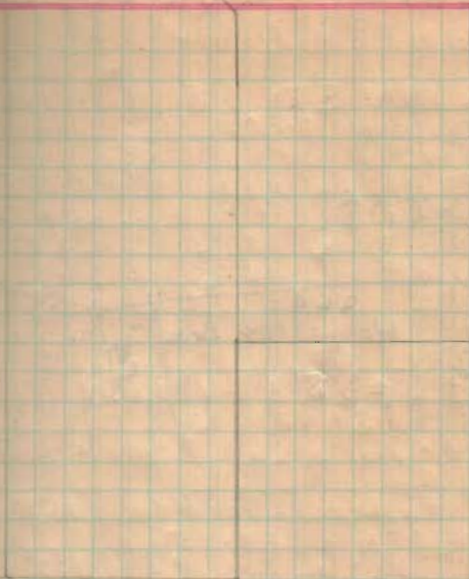
Q to W Rt. of Way Line = 425.3

w. Rt. of Way Line of R.R.





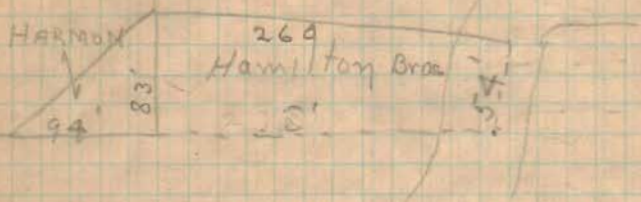
2096





## MAIER SURVEY 4/30 1915

south ↑



$$\begin{array}{r} 137 \\ \hline \end{array}$$

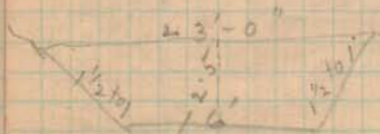
2

$$\begin{array}{r} 327 \\ \hline \end{array}$$

$$\begin{array}{r} 654 \\ \hline \end{array}$$

CUT IN ROAD

100' in length

CUT = 0 at both ends  
0+40 = summit.

25.0 A x C.S.A

37

175

75

92.5 cu yds cut.

av. haul 150 ft

39.0

125

$$\begin{array}{r} 49.0 \text{ FT at } 0+40 \\ \hline \end{array}$$

grove =

10' x 8" =

25 cu yds.

2096

## JACKSON LOT SURVEY HOGES ADD.

4/24/1915

LOT 666

NELSON ST. 38'-1" wide

MONUMENTS

NELSON and SANDUSKY

Iron Bar 1 1/4" X 24" 1904 S.A.B.  
 S.E. L strip 1 1/2 story Res. N.W. 52  
 Elm shade tree 18" S.E. 24.8'  
 Elm shade tree 14" S.W. 31.2'  
 Tel. pole N.E. 43.9'

See page 38

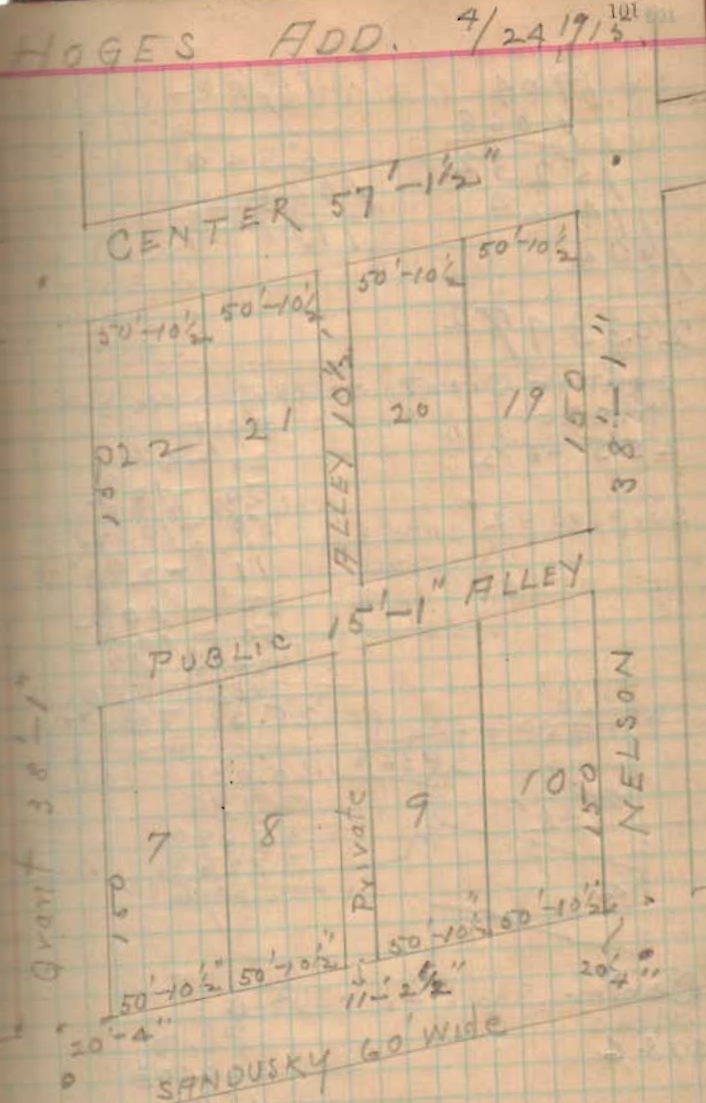
GRANT ST 38'-1" wide

GRANT and SANDUSKY

Iron Bar 1 1/4" X 24" 1904 S.A.B.

Hyd (Body, Level sidewalk) N.W. 29.9'  
 Tel. pole N.E. 38.15'  
 Wh. Elm 12" Dia. S.E. 23.2'

Distances	PLAT	Meas.
ON Grant		
SANDUSKY to Center	378	
ON Nelson		
SANDUSKY to Center		
ON Center		
Grant to Nelson		
ON Nelson		
SANDUSKY to Center		
SANDUSKY	60' wide	



4240



$$\begin{array}{r} 19.04 \\ 1.068 \\ \hline 15232 \\ 1424 \\ \hline 1904 \end{array}$$

$$\begin{array}{r} 1.068 \\ 18.5 \\ \hline 6340 \\ 1068 \\ \hline 112148 \end{array}$$

$$2033472$$

center Grant to center Nelson  
Meas.

255'-6 1/2"

surplus = 2"

Plat

20' - 4"

50' - 10 1/2"

50' - 10 1/2"

11' - 2 1/2"

50' - 10 1/2"

50' - 10 1/2"

20' - 4"

255' - 4 1/2"

$$\begin{array}{r} 6928 \\ \hline 9366 \\ 60.000 \\ 56196 \\ \hline 38040 \\ 37464 \\ \hline 57680 \end{array} \quad \begin{array}{r} 4406 \\ 4406 \\ \hline 32.03 \end{array}$$

Center San. to Center

Meas  
378.5

Plat

32.03

150.

16.

150.

30.50

378.53

$$\begin{array}{r} 15.080 \\ 9.366 \\ \hline 56140 \\ 56196 \end{array}$$

On Grant

32.03

150.00

182.03

Set nail at 190 not on Grant.

On Center

Grant to Nelson

Plat

255' - 4 1/2"

Meas.

255' - 4 1/2"

On Nelson  
Sandusky to Nelson

378' - 6" meas.

Plat = 378' - 6"

sum

110° 31'  
Sandusky  
Nelson

4240

## STEEN-ADAMS

W. BROWN STREET

MON.

Detroit and High Stone  
 Detroit and Brown Stone  
 Elm and Brown " (Box)  
 Elm and High " (Box)

HIGH ST = 40 FT wide  
 Detroit " = 60 " "  
 Brown " = 30 " "  
 Elm " = 50 " " but MON.  
 are 15' from E. Line of st.

ELM TO DETROIT on Brown  
 Original town. N. side Brown

15	15
220	36
16.5	36
220	39
30	10
	40
	5.5
	16.5
	220
	30
	<u>497.5</u>

## SURVEY

4/23/1915<sup>105</sup>

Elm to Detroit on High  
 West to East

15'  
 35'-2"  
 35'-2"

3 Pa  
 Land

16'-6"  
 220'  
30'

Elm to Detroit on S. Line  
 Alley on N. Line Lots 1327<sup>2</sup> 446

15'-0"  
 71'-3"

Land

16'-6"  
 220-0"  
30'-0"

5514



Brown to High on Elm.

15  
 120  
 10  
 45  
 45  
 16  
 45  
 45  
 10  
 120  
 30  


---

 501

Brown to High on Detroit

15  
 55  
 55  
 55  
 55  
 16'-6"  
 55  
 55  
 60  
 60  
 20  

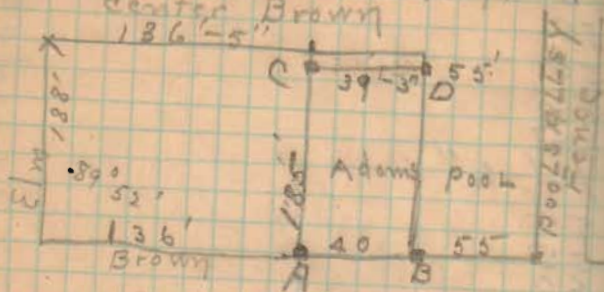

---

 501-6"

5514

## STEEN-Adams Survey

Ch. N. from + Elm St. Brown

set pin in line at 188' N. from  
center BrownMeasured north  $15' + 120 + 10 + 43$   
 $= 188'$ Meas. east from this point  $15 +$   
 $71' - 5'' + 40 + 10 = 136' - 5''$ Meas. on front <sup>prop line</sup> east from center  
Elm  $15' + 36 + 36 + 39 + 10 = 136$   
for Adams S.W.L. Proved stake  
15' N. of center line Brown.  
Meas. N. from N. Line Brown  
at stakeStake A is about 8" east of  
Pools fence

D is about 5" east of Pools fence

Meas. plat dist. from Detroit  
unsettles all of lines to Elm St.  
3 or 4 feet to west.old improvements along  
Alley Lines indicate the  
shortage to be east of alley  
Pools testifies alley fence was  
built where old alley fence  
was for long term of years.

5514



Piatt Survey 4/26, 27/15

Ben Weaver	1 $\frac{3}{4}$	1.20
McKinley Sullivan	1 $\frac{1}{2}$	2.65
Wally Weaver	1 $\frac{1}{2}$	2.25
Henschel Piatt	1 $\frac{3}{4}$	2.65
Wm. Piatt	1 $\frac{3}{4}$	2.65

4091

## Piatt

Found Burr Oak Tree 18 lks  
(5.7 lks in dia.

in circumference, said to be

Witness tree given in Record of

Harbisons Survey of 1845

Ludlow Line in Shower Survey

S  $14\frac{3}{4}$  E.  $5\frac{1}{4}$ ° var. from call

of Ludlow line as given by  
Harbisons Survey

S 20 E S  $14\frac{3}{4}$  E

set stake at 1.29 N.  $68\frac{1}{4}$  E from

Burr Oak allowing  $5\frac{3}{4}$  var

See page 117

4091

## Survey 4/26 1915 113

Inskip & Ludlow bearing S  $14\frac{1}{2}$  E  
76.23 ch.

Found + cut on top of stone box  
culvert across Ludlow road at W. &  
N. side Maca chack pike. This  
mark Wm Piatt says was put there  
in 1892 when culvert was built  
and niggerhead & stone was removed  
corner of 11 Acre tract in Sec. 16

Found stone + at S.C. +  
Piatt Land in Ludlow and Enoch  
Road

Ran Random Line from above  
stone to stone in Ludlow N.W.  
Denmead

Random N.  $14\frac{1}{4}$  W N  $14\frac{1}{4}$  W.  
N.  $14\frac{1}{4}$  W

70.20 to stake at Jack Oak  
corner

at 70.20  $4\frac{1}{2}$  lks N of stake

" 75.82 c. pike

" 76.20 at + on culvert

" 76.20  $5\frac{3}{4}$  lks E. of +

" 104.62 16 lks E of big L  
Stone at N.W. Denmead

O.K. Cse. = N  $14^{\circ} 20'$  Var =  $5^{\circ} 40'$  W

Corrections:

10.73 lks W. at 70.20 Jack Oak

11.66 " W " 76.20 Culvert +

Marked on culvert at 11.66 lks

set stake at 10.73 S. of stake at  
Jack Oak corner.

See next page

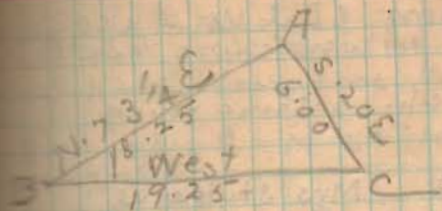


Wm. Plat says culvert corner  
is reliable.

Random Line from Enoch  
stone runs  $5\frac{3}{4}$  krs east of  
culvert +  
correction at  $70.20 =$

$$\begin{array}{r}
 70.2 \\
 57.5 \\
 \hline
 35.10 \\
 49.14 \\
 \hline
 35.10 \\
 76.3403.658 \quad 15.31 \\
 3800 \\
 \hline
 365 \\
 2286 \\
 \hline
 790
 \end{array}$$

Line from Enoch Road  
stone to stone S.W.  $\angle$   
65.16 taken as Ludlow  
Line Var.  $5^{\circ}40'$  Westerly



$$\angle C = 70^{\circ}$$

$$\angle B = 16\frac{3}{4}^{\circ}$$

$$\angle A = 93\frac{1}{4}^{\circ} W$$

$\angle 70^{\circ}$  throws section line too  
far north east

$\angle 93\frac{1}{4}^{\circ}$  from + in culvert throws  
line AB too far North.

Bearing = S.  $76\frac{1}{2}$  W

4091

Found nothing at S.W.  $\angle$  Sec 21  
started ch. in fence line to South

At 40.00 ch. nothing found

At 62.43 Mrs Stultzus'  
S.W.  $\angle$  stone in  $\angle$  road to mill

At 73.76 Fence post at S.E.  $\angle$   
Stultzus

At 74.00 ch Set stake

At 80.67  $\times$  in line  $\angle$  of fence to  
north  $\angle$  line of Sect. 22

Went North

N. corner of  $\triangle$  piece of Renkert  
is  $\angle$  post, 20' Wild cherry stump  
31 lbs S.W. S. 31 W

ch. N. 15.68 ch to large Limestone  
 $\angle$  of Kanagy in  $\angle$  line of section  
marked with  $\times$

Wild cherry with at N end  $\triangle$  N. 31 E to  
center of  $\angle$  post

G. Line Sec 22 N.  $3\frac{1}{2}^{\circ}$  E N  $3\frac{1}{2}^{\circ}$  E

set stake for Sec. 22 at 80.63

80.63 + 16.50 too far east = 97.13

386 rds - 252 = 134 = 33.50 ch  
from  $\angle$  road to N.E.  $\angle$  Lot 1.

97.13	62.43
62.43	33.50
<u>34.70</u>	<u>95.93</u>

Set at Burr Oak Tree  
Allowed  $5^{\circ}40'$  Variation. Set stake  
at 1.28 ch from tree N.  $67^{\circ}40'$  W

Ch. 30.25 N  $69^{\circ}10'$  E Cold case  
N  $63\frac{1}{2}^{\circ}$  E

3

96.50	62.43	80.63
63.00	<u>33.50</u>	<u>62.43</u>
<u>33.50</u>	95.93	18.20
		<u>16.50</u>
		34.70

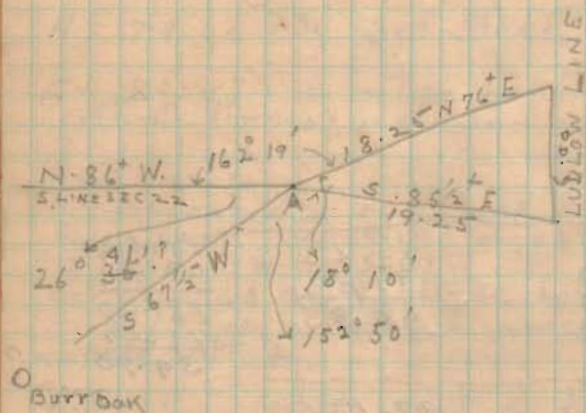
80.63	97.13
	<u>62.43</u>
	34.70

96.50
<u>62.43</u>
34.07

$\angle$  road to corner Lot 1 by  
Harbison Survey  
 $96.50 - 80.63 = 15.87$

4091



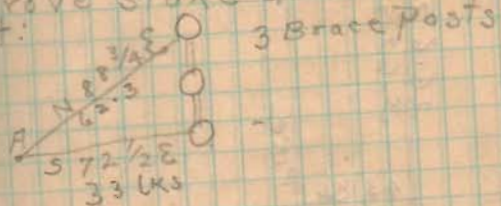


162 - 19  
 18 - 10  
 152 - 50  
 26 - 30  
 358 - 14

A is 43 lks from E pine

Angle in road at 2.57 ch N. 76° E  
 from A, 30 lks from line to  
 E pine

Drive stake at A  
 WIT:



= 1516.31 ch from S. E. - Sec. 21

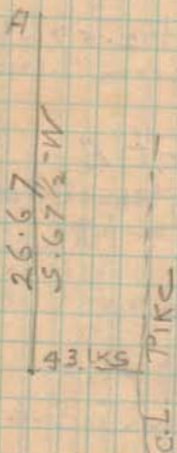
4091

## PLATT SURVEY

3-68

26-67

26-67



4091



Kaylor Survey  
Clyde Kaylor } ch.  
Ed. H. Jones }  
O. C. Harmon Flag

To cut off 50 acres  
from W. End N.  $\frac{1}{2}$  Qr.

6130

## KAYLOR SURVEY

Dug for a stone N.W. 1/4 Section

Found stone about 15' deep, with pointed stone on top

WIT: 24" Apple tree stump  
S. 27 E 53 1/2 lbs.

ch. south

40.25 to a stone at E side of road to S.W. 1/4 N.W. 1/4 Sec

Set by Henry Moore 1857  
WIT: Found 22" Black Hickory  
S.W. also brick bats  
Apple tree gone.

Set stone in Line at 20.12 1/2 ch

S.W. 1/4 Kaylors N 1/2 N.W. 1/4 Gr.  
and also S.W. 1/4 Ed Jones  
(S.W. 1/4 of 50 Acres sold to Jones  
by Kaylor)

O.K. csc N 5 E

50 X 10 =  
20.12 | 500.00 | 25.34 ch  
40 24  
10760  
100 60  
7 000  
60 36  
9 640

4/29, 1915

LINE B. East from Stone set  
Ch. East 39.38 ch to Rt. of way  
fence.

No stone at 40.00 ch  
40.00 ch 40.5 ft E of track.

Ollie Harmon says Elm Tree at  
or near 20.00 is on Line. also  
things fence about 25.00 ch is on  
Line

Offset 11' N. of Stone

S. 84 1/4 E S 84 1/4 E

O.K. csc. to center of 24" Elm  
tree, and center of pig Hickory to  
stone at 24.67 ch set at S. E - 50 ft.  
Set stone (Temp) at 25.00 ch.

21.82 ch to 28" Pig Hickory (Line tree)

20.49 " " 28" Red Elm Line tree

Set stone at 24.67

WIT: 12" Red Oak N. 34 W. 43 lbs  
8" W. Oak N. 32 E. 28 lbs

Present

O. C. Harmon  
Clyde Kaylor  
Ed. H. Jones

(6130)



LINE C

Ch E. with  $\emptyset$  PIKE  
 Set temp nail at 25.00  
 O.K. DIST 20.41 to iron bar set

LINE D

Ch. South from nail set to point  
 in S. Line 2nd in Harman's fence

20.42 to N-Line Harman

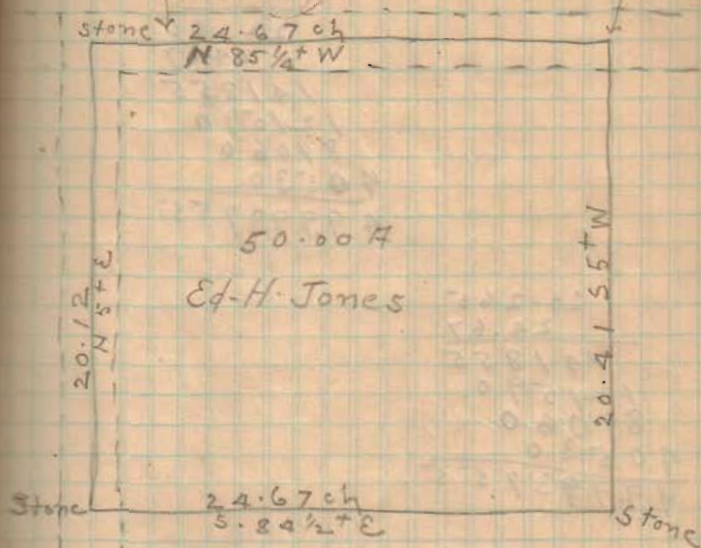
N. 5° E.

O.K. Use N 5° E. O.K. DIST. 20.41

Drove  $\emptyset$  iron bar in  $\emptyset$  Silver  
 Lake pike  
 Set  
 Stakes on Line

SILVER LAKE PIKE

$\frac{3}{4}$ "  
 $\emptyset$  iron bar  $\sqrt{8}$ "



20.12	20.27	500.00	24.66
20.42		405.4	
20.27		94.60	
		81.08	
		1352.0	
		1216.2	
		1358.0	
		1216.2	

see next page

6130

## MURPHY SURVEY

Jesse Murphy } ch. Cr.  
 Oscar Murphy }  
 Wm. Speece ch. Cr.

3124



## MURPHY SURVEY

A Found L stone at S. E. L  
Murphy Land at 19 S. Line of  
Pleasant St.

Also 1"  $\square$  iron bar at N. side of  
pointed stone, in S. Line  
Pleasant St. and in DeGratt  
and Logansville PIKE.

WIT:

8" Apple tree 73'  
N.W. L Michaels house 69'-9"

S. Line Pleasant Street S 85 $\frac{1}{4}$  E

Began meas. at W. side Koke St  
at L post of Garver place N.E. L  
Lot No 8. Gilchrist's Add.

0 + 68 $\frac{1}{2}$  W. side Speece fence

\* This post 12" N. of Line ran  
above

2 + 22 $\frac{1}{2}$  at N. <sup>E</sup> L Kinsinger  
piece to post which Mr Oscar  
Murphy says used to be corner of  
Kinsinger.

May 1 1915

B Ch. S. from Garvers L post  
340'

336' to line of fence to E.  
S. side Speece

C Ch E. <sup>192'</sup> from 336' point to L post  
L of Galer piece of Barber lot

3124

D ch. N. from the Galer - post  
 223  $\frac{1}{2}$ ' to L post N.E. - Kmsinger  
 Lot  
 \* This corner post identifies  
 by Oscar Murphy as orig. cor. of  
 Kmsinger

H. ch. E. along Jesse Murphys  
 S. Line 91 feet. set nail.  
 86 feet to L post W. side alley  
 set iron bar at 91 FT

G ch. along N. side Speece tract.  
 61.5 ft from post N.E. -  
 Kmsinger tract to Murphys N.W. -

H) Along Murphys N. Line  
 meas.  $94.5 + 61.5 = 156$  Ft from  
 Speeces N.E. Cor. for Murphys  
 N.E. corner.

{ Along S. side of Speece tract  
 { E 54  $\frac{1}{2}$  ft to L post S.W. -  
 Murphy

F. N. along W. side Murphys  
 194 ft to L post in S. Line  
 Pleasant St. Murphys N.W. -

# MURPHY SURVEY

{ Along E. side Murphys  
 150' to Fence Line on  
 S. side Pleasant St.

Set iron bar 0 at N.E. Cor.  
 of Murphys 2'-8" E. of L post

3124



## Survey for A. H. Smith

A. H. Smith	{ Flag & ch.
Lowell Smith	{ " "
Harry Smith	{ " "
Sam Miller	Axe & flag
Wm. C. Taylor	Axe & flag

9270

Dugger stone at S.E. & Shultz  
and S.W. Miller

A. Found stone and brick

B Found stone S.W. Miller

Ch. W.  $40 \frac{33}{12}$  to sect. cor. stone

Went N. to N.W. Miller S.W. on  
ch. south 40.22 as per H.S.D. survey  
" " 40.14 to stone

Stone at S.W. Miller is a trifle  
south of line produced east  
from stone S.W. Miller of S.E. corner  
stone at S.W. cor. Sec. 21

Line east from B to A =  $5.89 \frac{1}{4} E$

ch. East from B 10.078 to  
stone at A.

ch. east from A 10.00 ch set stone

- 10.078
- 10.078
- 20.156
- 40.312
- 20.078
- 20.234

9270

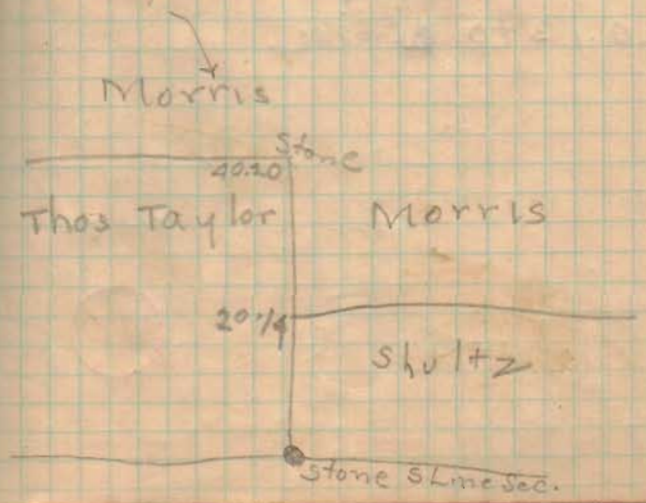
66 | 2654.5 | 140.22  
269  
145  
132  
130

39.82

LINE B  
W. LINE S.E. Qr. Sec. 21

20.1A at N.W. Miller  
40.20 to Morris wire fence  
to West.

stone at N. side of end post  
This stone is center of sect.  
21  
of





## LINE C

Ch. East from center Section.

Set stake at 20.00

old end post at 20.12

30. K. cse S. 89 1/4 E

40.30 to End post at N.E

← A. M. Smith and N. W. & Morris

40.26 to L tree (see p. 143)

No stone

Half Dist: 20.13

Drove stake for corner 2' N.

of old post

Present: A. M. Smith, Harry Smith

Lowell Smith, Sam Miller, Wm. C.

Taylor same at Walnut tree ←

## LINE D

ch N. from N.E. ← Smith from tree

Set stake at 40.00

40.13 to E pine

## LINE E

ch. W. from Sloans W. Line  
20.13 to Taylors W. Line.

ch. E. from Sloans W. Line

19.97 to

## LINE F

ch. N. from S.E. ← Sec 2-1

40.15 to tree

This tree taken as L tree

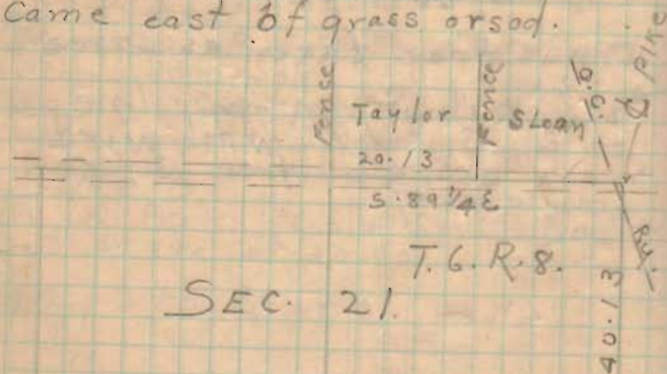
← 12" Walnut in fence line  
to E, S, and W. with wire  
mark around tree 3 feet  
from ground

## LINE F

Along W. Side Smith  
Offset 10' E.

Random Line S  $\frac{3}{4}$  W O.K. Ge. S. 51/2  
came out 22 lks E of Stone  
Total casting 7 lks  
Correction at Millers N.E.  $\perp$  =  
15 lks + 3  $\frac{1}{2}$  lks = 18  $\frac{1}{2}$  lks

set stake in Millers E. Line  
but not at his corner.  
Came east of grass or sod.



Stone + post 20-13 40 Stone 26 20-13 COR. T.G.R.

12" Walnut with wire mark 3' from ground



Stone S.W. Sec 21

40.33  
S. 89  $\frac{1}{2}$  E.

9270

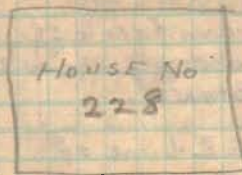
S.E. Sec 21

Gerald Herndon



## LESOURD SURVEY.

↑ South



2nd House FROM  
BROWN

H =  
1  
0 =

LINE

7113





54.50	102
54.00	<u>97.50</u>
52.00	
<u>51</u>	199.50
212.00	

97.50 ; 199.50 ; X : 212.

97.5
<u>212</u>
1950
975
<u>1750</u>
199.5   20670.0
<u>1995</u>
7200
<u>5985</u>
12150
<u>11970</u>
1800

102 ; 199.5 ; X : 212

212
<u>102</u>
424
<u>212</u>
199.5   2162.4
<u>1995</u>
16740
<u>15960</u>
7700
<u>5985</u>
17150

# CHURCH OF CHRIST

5/11, 1915

Wm. LOCKHART, Ch. Cr.  
 REV. HARRISON FLAG  
 Flemmg, Ch. Cr.

6905







On Mad River  
ch. from Man Brown

Set pin at  $2 + 51\frac{1}{2} =$  S. Line  
Alley by plat.

Meas 503.0 Plat = 501.50

Surplus  $1.5 \div 2 = .75$

$220 + .75 = 220.75$

$30 + 220.75 =$  S. Line alley

30 Set nail at 260.75 from

220 Man Sandusky 10' N.

16.5 of S. Line Alley 117' N.

220.0 of kid of Manhole lid.

15.0

501.5

On Sandusky

W. Line Lot 210 =  $30 + 109.28 =$

139.28

E. Line 210 =  $139.28 + 54.64 = 193.92$

E. Line 211 =  $193.92 + 54.64 = 248.56$

On Alley 6' E. of E Line 211

45 Surplus on Park  
1.50 " " Mad River  
 $1.50 - .52 = .98$  surplus on Alley line  
 $501.5 + .98 = 502.48$

$503.0 + 501.95 = 502.48$   
2

Surplus = .49 per lot

$30 + 220 + .49 = 250.49 =$   
S. Line Alley

Set nail at 260.49

" pin at 250.49

" nail at  $250.49 - 85.0 = 165.49$

6905



On Alley N.  
 On Sandusky 498.6  
 " Brown 499.50  
 998.40  
 On 1/2 dist: 499.20

Shortage  $501.50 - 499.20 =$   
 $2.30$   
 $8 | 2.30$   
 .287 per Lot (Shortage)

From MAD River  
 $30 + 54.713 + 54.713 =$

139.426      140.  
                     .574  
 139.426 to

W. Line Lot 210

139.426  
 54.713  
 194.139 = E. Line Lot 210  
 54.713  
 248.852 = Alley Line (West)

60.713 to 6' offset line in  
 alley.

Set stakes on W. Line Lot 210  
 by 8" offset line  
 N.W. L Lot 15 14" N. of Violet's  
 Barn and 8" W. of E. face of barn  
 and 6" W. of N.E. L of foundation

AT N.E. Lot 211  
 scratched on E. end of cement walk.  
 Scratch is  $4\frac{3}{4}$ " W. of E. Line  
 and is  $13\frac{1}{4}$ " N. of S. side of walk.  
 Mrs. Clark's Walk.

Lot width on Sandusky = 54.69  
 " " " Alley = 54.71

.07  
 85

260  
 Lot width at S. side Clark =  
 $54.69 = 54.8\frac{1}{4}$ "

Stake set at 54.75

Set stake N.E. L 210.

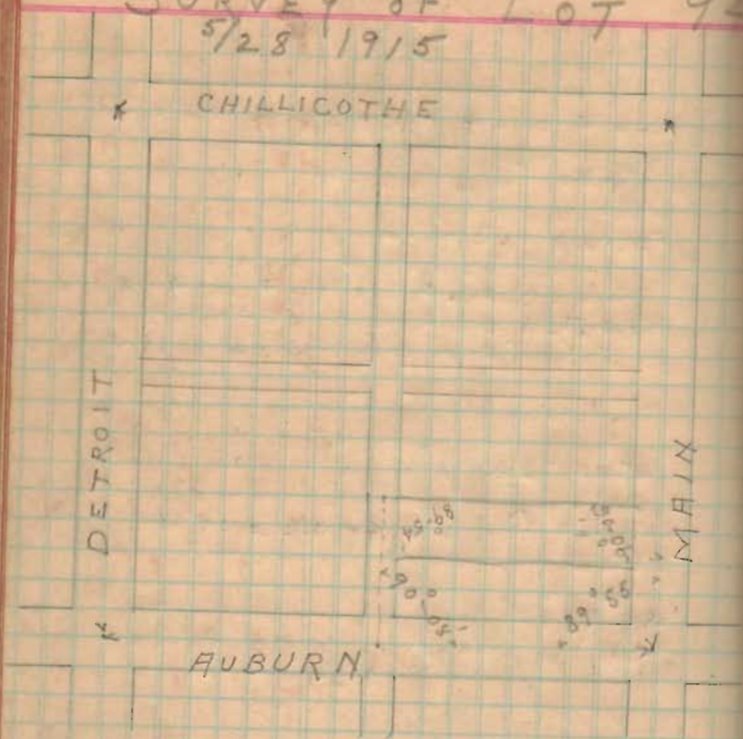
also  $\square$  at Clark's S.W. L

69105



# SURVEY OF LOT 9 - FOR D.W. HASKREN.

5/28 1915



AUBURN

1240

MAIN 80 FT.  
 CHILLICOTHE 60 FT.  
 AUBURN 60 FT.  
 DETROIT 60 FT.

(527.77)

DISTANCES	PLAT	MEAS.
ON MAIN	516.50	516.14
" CHILLICOTHE	526.50	528.16
" AUBURN	526.50	527.35
" DETROIT	516.50	516.48

ON MAIN dist meas. by C.F.I. as given

Shortage on Main =  $.36 \div 8 = .045$   
 $30 + 54.95 \frac{1}{2} = 84.95 \frac{1}{2} + 54.95 \frac{1}{2} = 139.91$

On auburn set nail at 200. from Main  
 " " marked at 36 " "

On chillicothe surplus = 1.66  
 $1.66 \div 2 = .83 + 40. + 220. = 260.83$   
 $260.83 + 5.0 = 265.83$  to mark set on  
 line 5.0 ft. w. of E. line of alley

$528.16 -$   
 $265.83$

$262.33$  from Mon. at Detroit  
 on chillicothe

## ASKREN

On Auburn Surplus = .85

$$.85 \div 2 = .42\frac{1}{2} + .40' + 220 = 260.42$$

On Alley between Main and  
Detroit  $\frac{1}{2}$  sft. W. of E. line of Alley  
Distance from E. of Auburn to  
E. Chilliote = 516.31 (calc.)

$$\text{Shortage} = .19 \div 8 = .02\frac{3}{8}$$

$$30 + 54.97\frac{5}{8} = \text{S. Line Lot.} = 84.97\frac{5}{8}$$

$$84.97\frac{5}{8} + 54.97\frac{5}{8} = \text{N. Line Lot.}$$

$$54.97\frac{5}{8}$$

$$139.95\frac{1}{4}$$

On 36' offset line  $\frac{1}{2}$  street  
Lot width  
=  $84.95\frac{1}{2} + .023 = 84.98$  84.97

$$84.98 + 54.98 = 139.96$$
 139.94

Cut + in Berca walk at 84.97 and  
at 139.94 from E. Auburn and 36' offset  
from E. Main

On Line 8' N. of N. Line of Lot  
94 set pin at 112.35 from 5' offset  
in Alley

Set stake on N.E. corner to grade.

$$\text{Elev.} = 62.55$$

also stake at S.E. " Elev. = 62.55

" " N.W. " Elev. = 62.55

Drove nail in W. side Tel. pole near  
S.W. + Elev. = 62.55

## LOT No 94

$$.34$$

$$\frac{.34}{209}$$

$$209$$

$$102$$

$$527 \overline{) 12.24}$$

$$23$$

$$1700$$

(1023)

1244