

LOTS 876-877-878-879

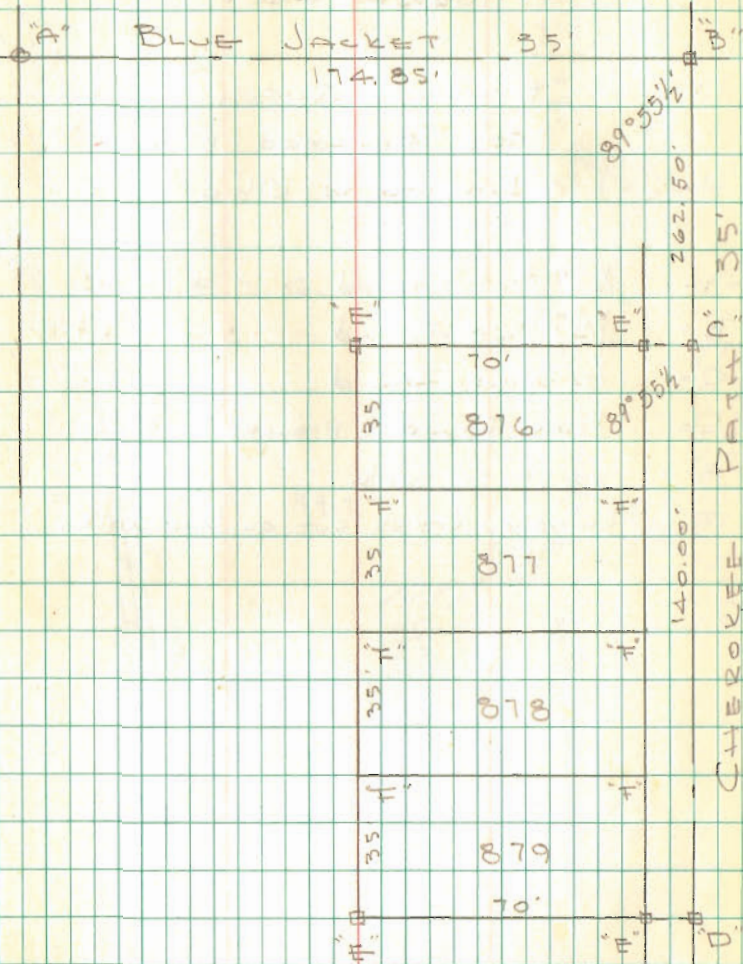
CHIPPEWA No. 1

- A = 1/2" pipe Found
- B = 1" Bar Found
- C = tkd Hub Set
- D = " " " flush with pavement
- E = 1/2" Bar Set (Dug for old hubs
no luck)
- F = hub set

4-17/65
550

Dodson
Line

1



INDEXED ON MAP
3839

QUEEN SURVEY

TURKEY HOOT

Edwin S. Queen
415 Richmond Ave
Dayton 6, Ohio

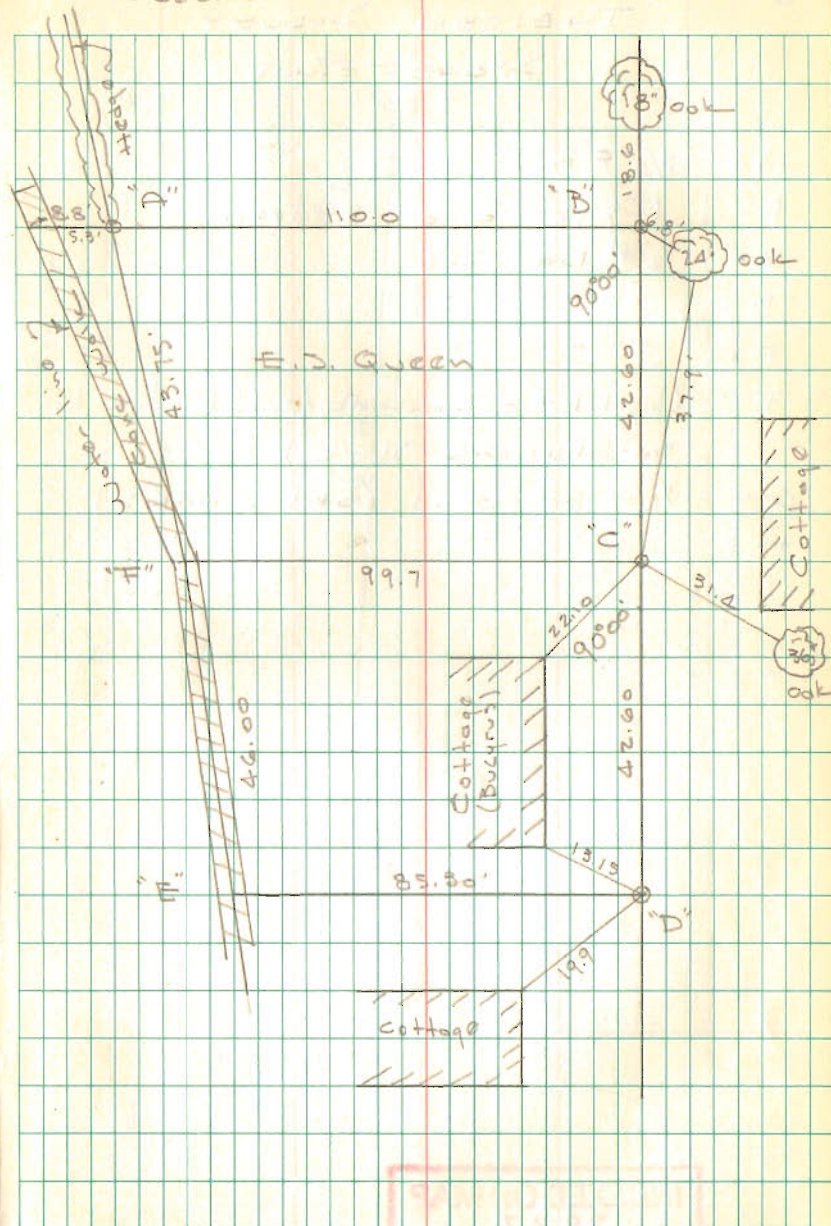
- A = 1/2" ϕ Bar Found
- B = 3/4" Pipe Found
- C = 1/2" pipe Found
- D = Iron Found (pronged) 6" deep
- E = point on walk
- F = Chiseled cross cut on conc. walk

INDEXED ON MAP
4011

Dodson
Geosilik

4/22/65

2



INDEXED ON MAP
4011

THEISEN SURVEY
STOKES TWP.

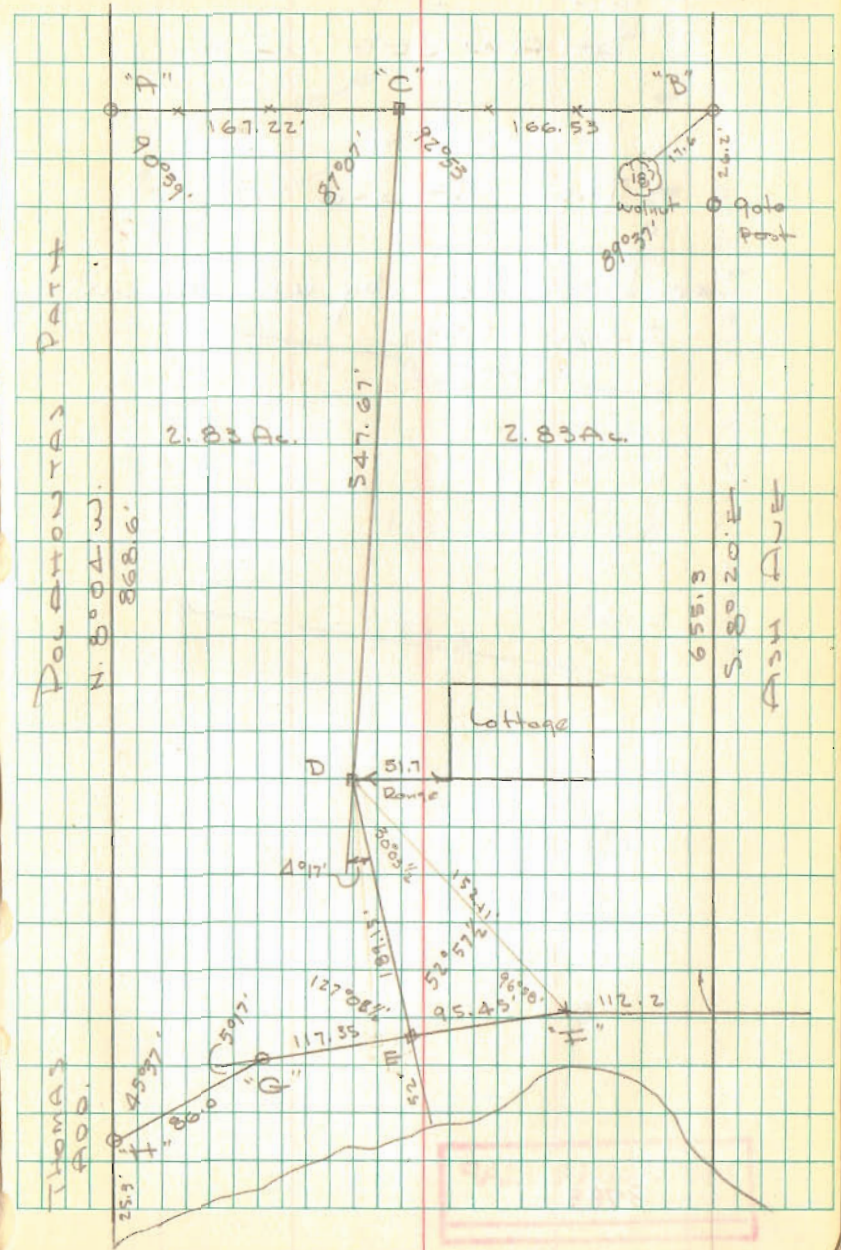
- A = 3/4" ϕ Bar found
- B = 1" Pipe Found 8" deep
- C = 1/2" ϕ Bar Set
- D = " " "
- E = " " "
- F = Chiseled " on lower walk found (State Line set by O.K. Shirk)
- G = 1/2" pipe found (st. line O.K.S.)
- H = " " " " "

INDEXED ON MAP
3837

Dodson
Geeslin

May 4, 1965

3



LOT 111
SHAWNEE ISL.

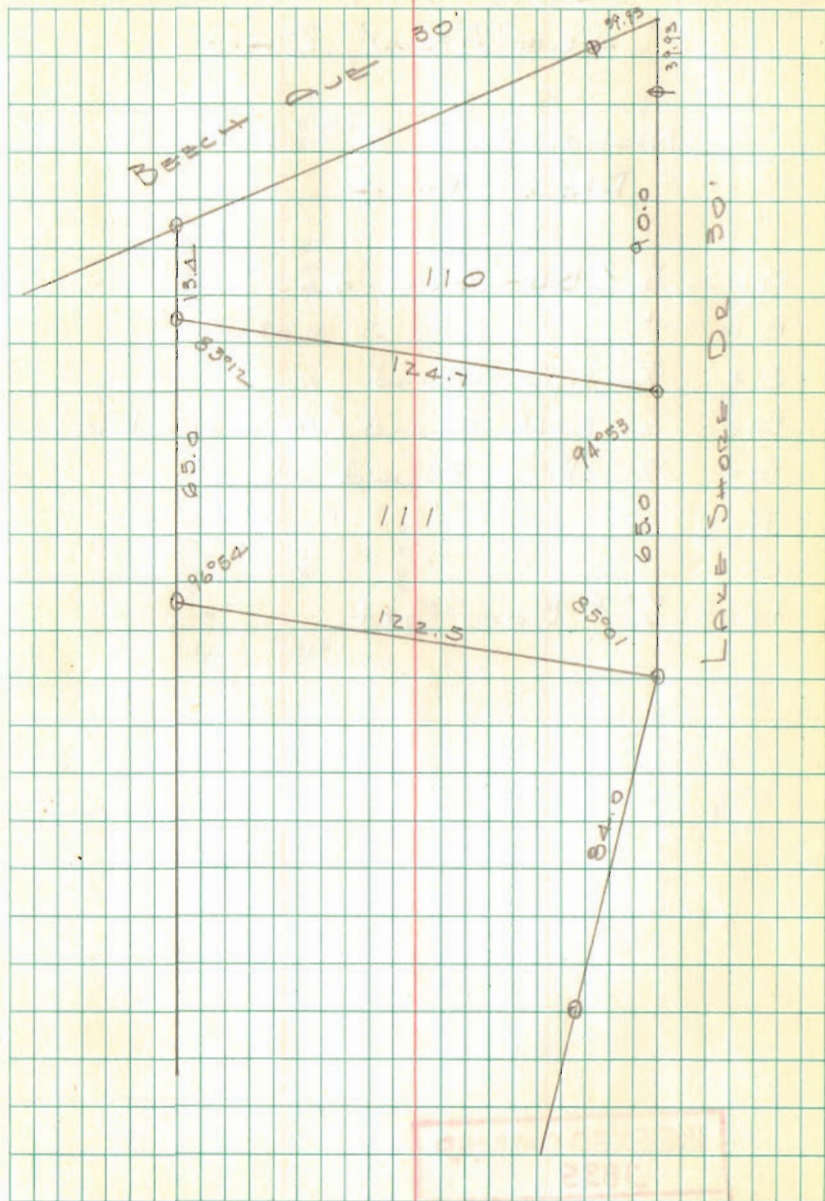
o = Pipe Found

See Resurvey by Wm. Lewis
Index # 2592

INDEXED ON MAP
3783

Dodson
Geolin

May 22, 1965 4



LOT 537
LAKEVIEW, Ohio

Nicholson's 5th Add
Plan J-14

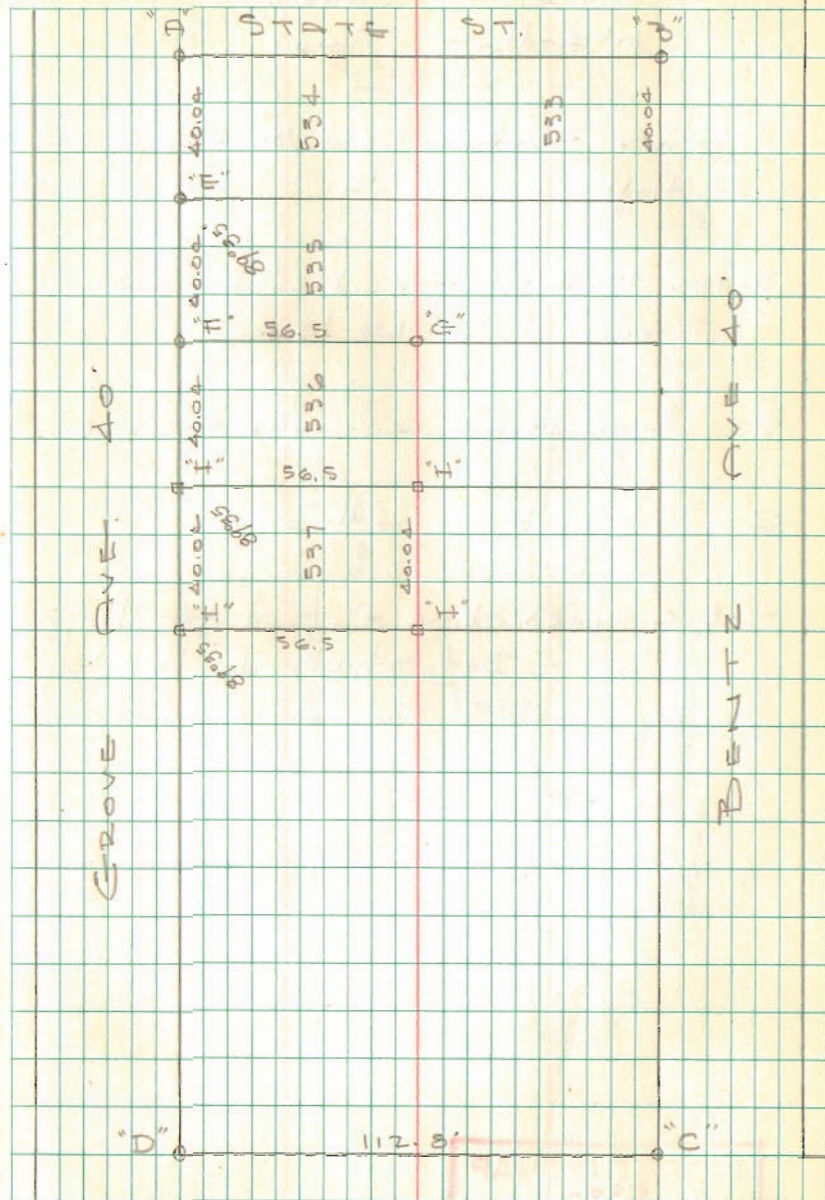
- A = 1/2" ϕ Bar Found
 B = " " "
 C = 3/4" Pipe found
 D = 1/2" Bolt Found (used for line)
 E = 3/4" Pipe Found
 F = " " "
 G = " " "
 H = 1/2" ϕ Bar Set

INDEXED ON MAP
3835

Dodson
Gremlin

May 25, 1965

5



HARE JUREVY
McArthur Twp

Hare Homes Dead Vol. 233 pg 349

G. Hall " " 205 pg 378

meas Hall frontage 722' Dug for
stone at "A" No luck

B = large stump with wire through it

C = stump & tree with wire

A-B-C. good line - used for Property
line - Set stakes on this line

INDEXED ON MAP
5330

Dodson
Circ

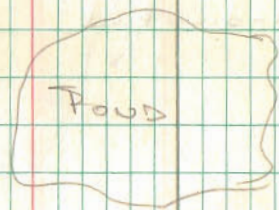
5/29/65 G

Ed. L. L.



GRASSY HAY
15.50 AC.

No Fence
N 6 3/4 S.W.
1000'



HARE HOMES

Old fence



(Dead)
722' meas

"A"



WOLF SURVEY
LAKE RIDGE

SEE LO. G. ENG. PLAN L-28
FOR S.R. 368 R/W.

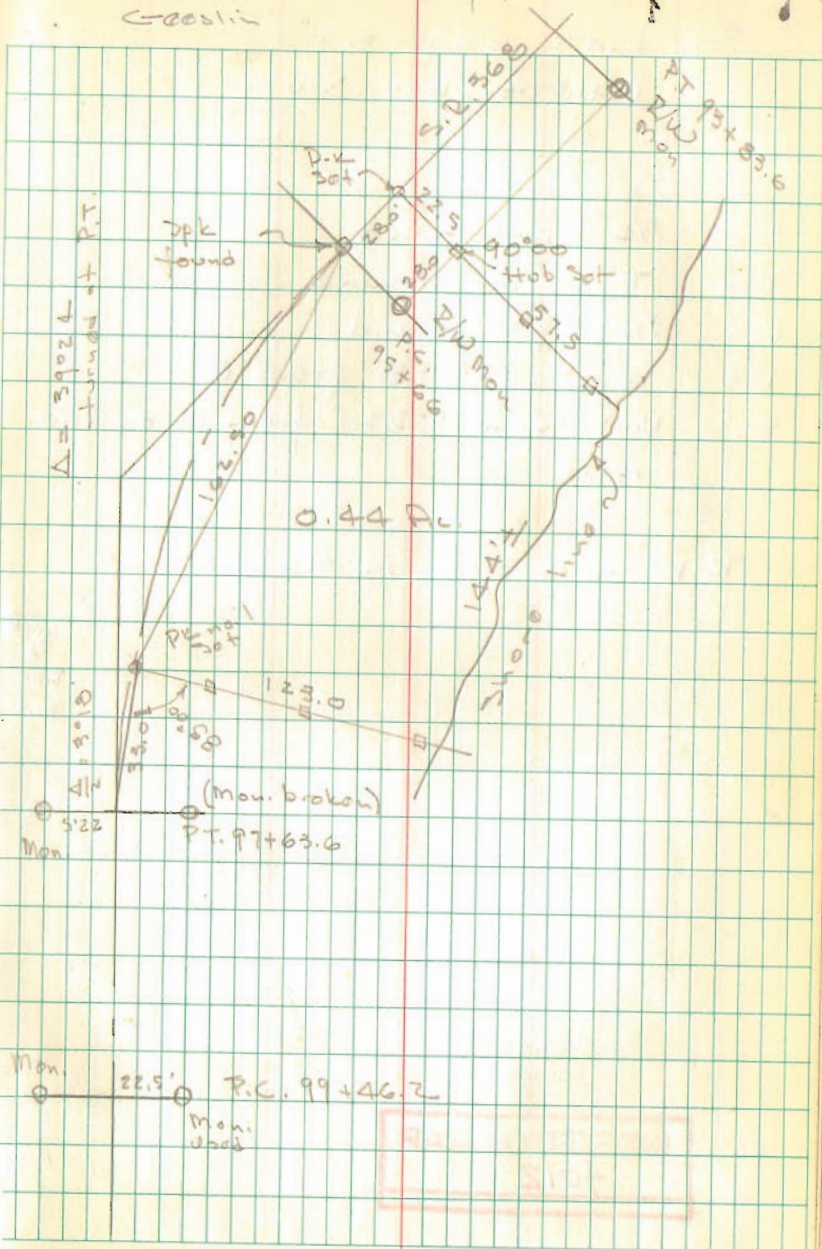
Set 2x2x18" hubs on
property line

Used R/W Monuments as
indicated

INDEXED ON MAP
7695

Dodson
Coastline

June 8, 1965



Lot 649-650

(HIPPEWA No. 1

- A = 3/4" Pipe Found
- B = "T" Iron Found
- C = 1/2" pipe Found
- D = Point 175.18 from C
- E = Nail found 192.30' from A on line A-D

P-K nails set on E

3/4"
Pipe
Found

69.96
17.50

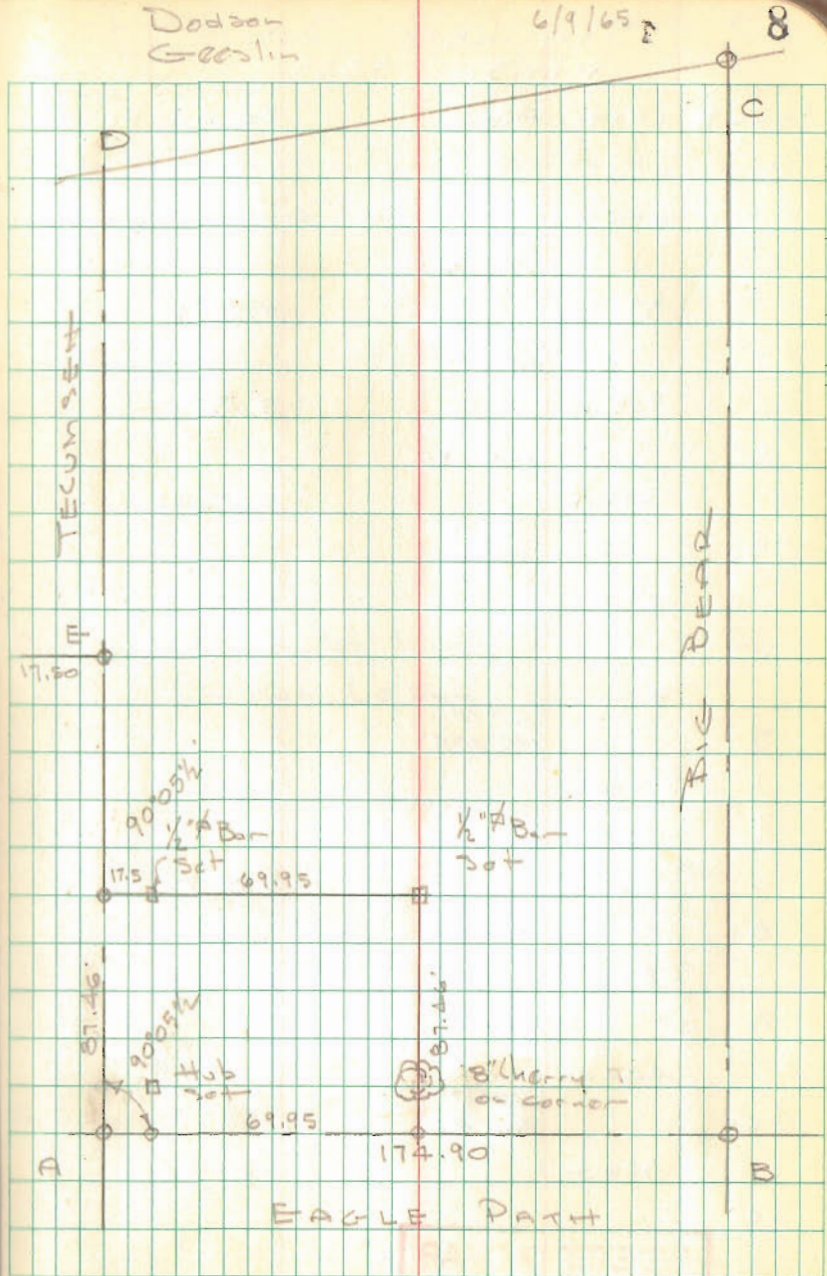
87.46

INDEXED ON MAP
4012

Dodson
Geeslin

6/9/65

8



STANLEY SURVEY
V.M.S. 3325

Sta - X	DIST	ANGLE	MAG BEARING	CALC. BEARING
1	619.0	111° 21'	N 86° E	
2	371.3	222° 42'	517.5° W	
3	909.1	151° 43.5' 303° 27'	511° 15' E	
4	478.1	172° 36.5' 345° 13.5'	503° 45' E	
5	698.1	92° 24' 184° 48'	N 88° 45' E	
6	698.1	89° 10' 178° 20.5'	N 01° 45' W 502° 15' E	
7	903.9	151° 10.5' " 302° 21.5' "	N 31° W 530° 30' E	
8	866.6	167° 45' 335° 30'	543° 15' E	
9	819.7	149° 53.5' 299° 47'	573° 15' E	
10	444.0	143° 19' 286° 38.5'	N 36° 45' W 536° 15' E	
11	526.4			

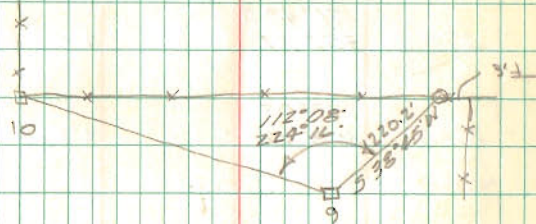
INDEXED ON MAP
5421

Dodson
Gremlin

June 12, 1965 9
80°

Bag of post 3. side S. 2. 47 at N.W. cor
LeVau's 75 Ac Tract

Sta 6 = 1" Bar Set, S. side of cor. post at
S.W. Cor. LeVau



Sta 10 = 1" Bar Set, N.E. Cor.

LOTS 936-937
CHIPPEWA Park No. 1

- A = 1/2" pipe Found
B = 1/2" pipe Found
C = 1" ϕ Bar Found
D = 3/4" ϕ Bar Set
E = 3/8" ϕ Bar Set

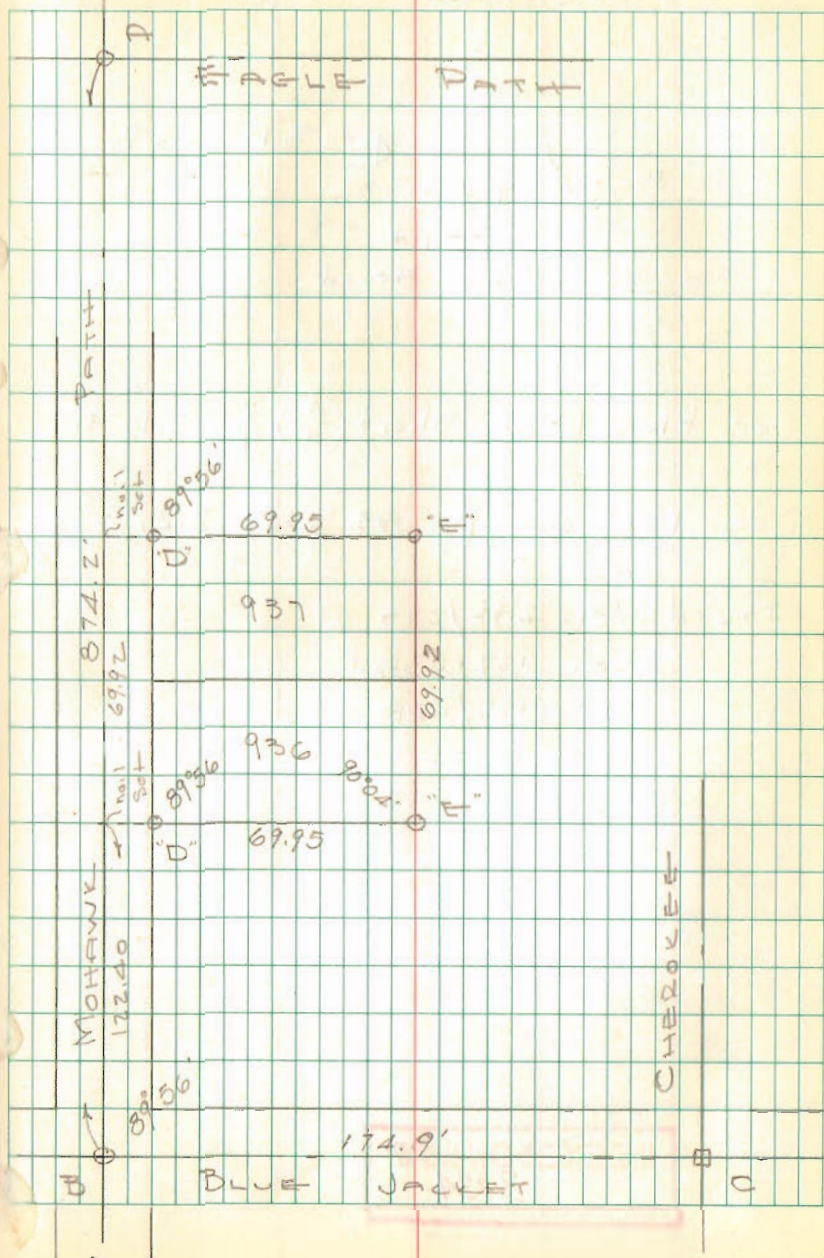
P-K nails on E

Thomas Geer
1690 N. Limestone
Springfield, Ohio

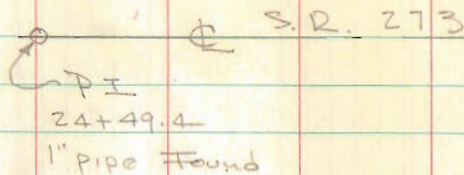
INDEXED ON MAP
3833

Dodson
Geerlin

June 25, 1965 13



Williams Survey
Richland Twp



See Plan L-21 Sheet $\frac{4}{4}$ for S.R. 117

See F.B. 607, pg. 54 for S.R. 273

Deco Vol. 238/273

Vol. 127/233

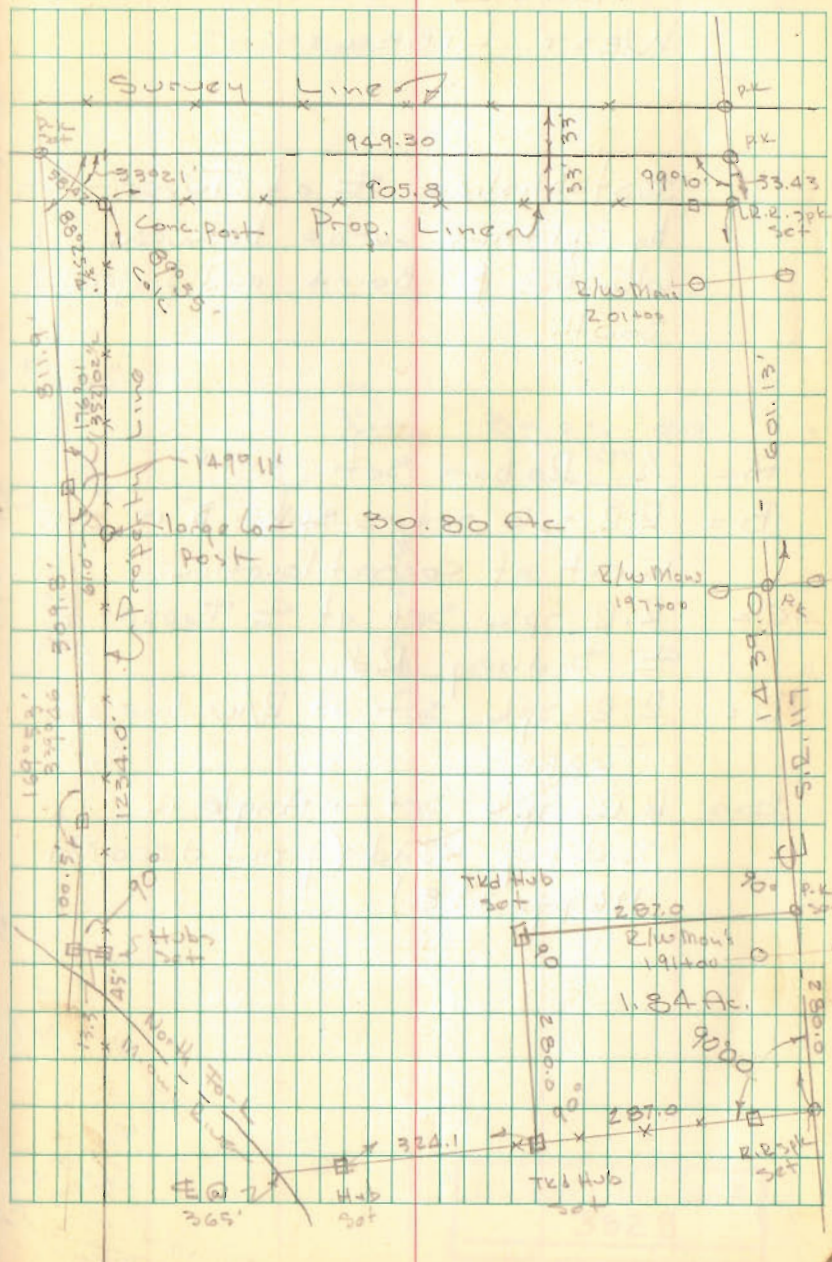
Vol. 155/428

Vol. 69/216

INDEXED ON MAP
3934

Dodson
J. Whitlow

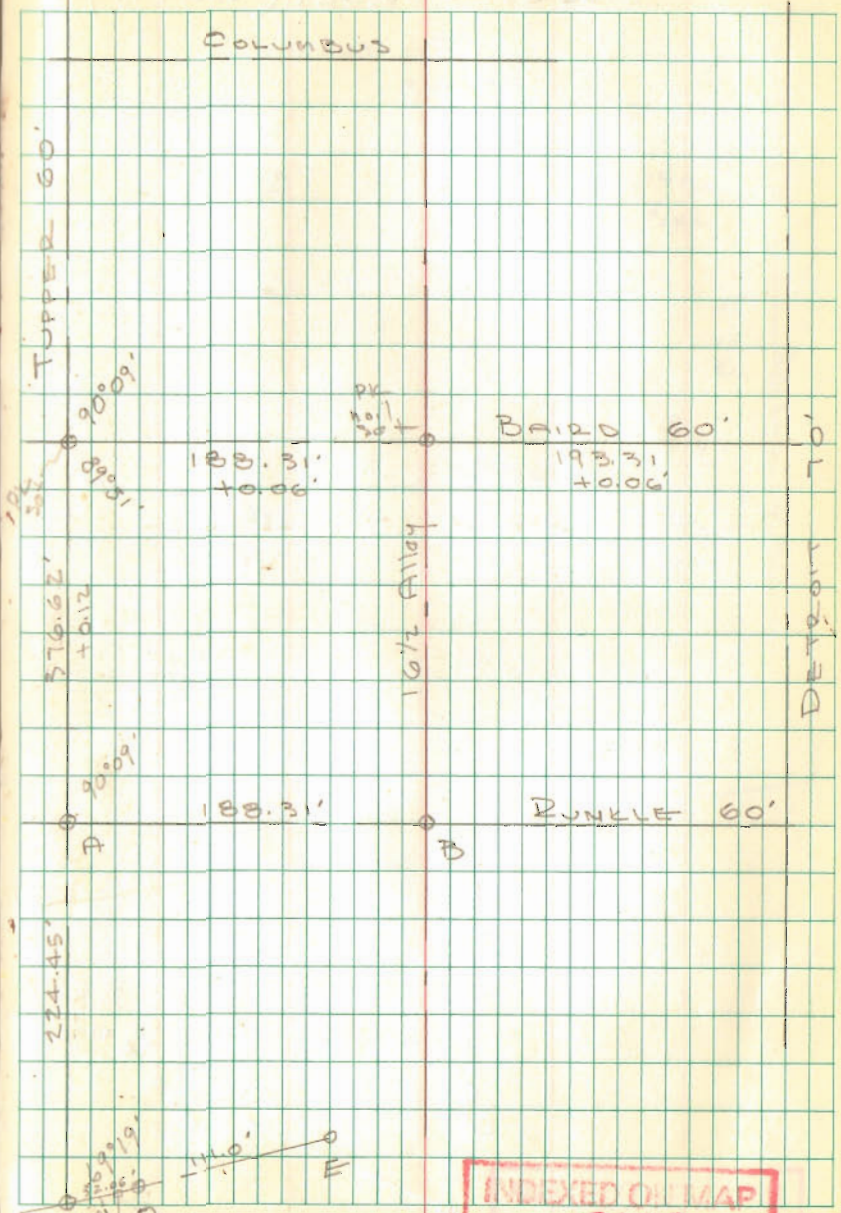
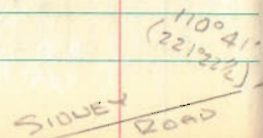
June 26, 1965 14
80°



BUCK SURVEY WEST LIBERTY

Established \pm of Tupper St.
by splitting curbs between
Columbus & Baird and projecting
south

- A = $\frac{1}{2}$ " ϕ Rebar Set
- B = R.R. spike set - spike "B" is 0.15' west of correct location
- C = R.R. spike set at \pm Tupper & \pm Sidney Rd.
- D = R.R. spike set at R/W line of Tupper
- E = R.R. spike set - Angle in Sidney Road (from deed Vol 196 pg. 238)



INDEXED ON MAP
3828

BUCK SURVEY (CONT'D)

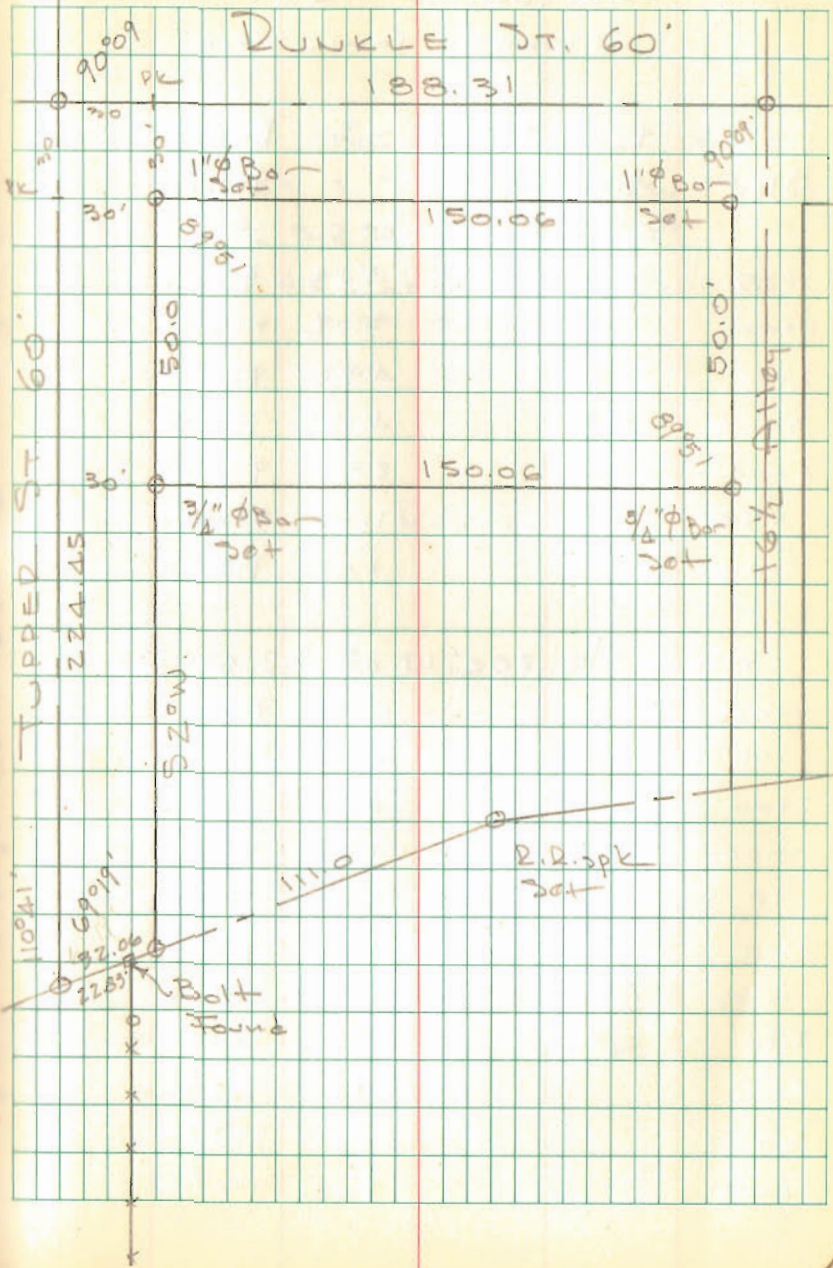
Reynolds St.

SIDNEY RD.
30'

Bolt
found

INDEXED ON MAP

3828



PLANK SURVEY

QUINCY, OHIO

A = Stone found - See F.B. 699 / 36

B = Stone found " " 699 / 35

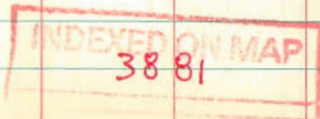
C = R.R. spike found 15.5' north of B

A to C med. 319.90 plot = 319.5
 $.40 \div 246.5 = 0.0017$ per ft.

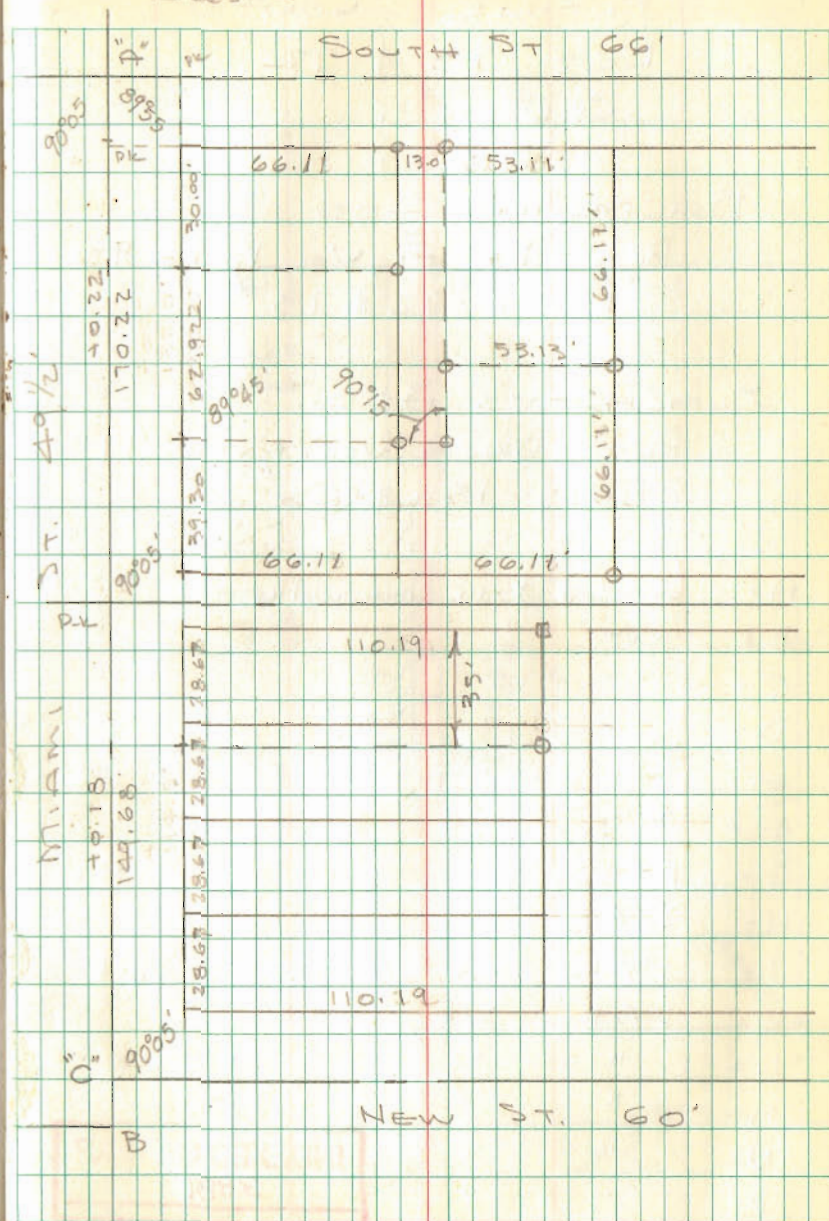
$$28.625 \times 0.00173 = 0.05$$

$$28.625 + 0.05 = 28.67'$$

$$110 \times 0.00203 = 0.22 = 110.22'$$

Dodson
Gremlin

July 15, 1965 19



PLANK CONT'D

LOT 73 & 72

QUINCY

BALDWIN'S ADD

PLAT BK A, Vol. 1, Pg 98

LOTS 72 & 73

BLANCHLEY'S ADD.

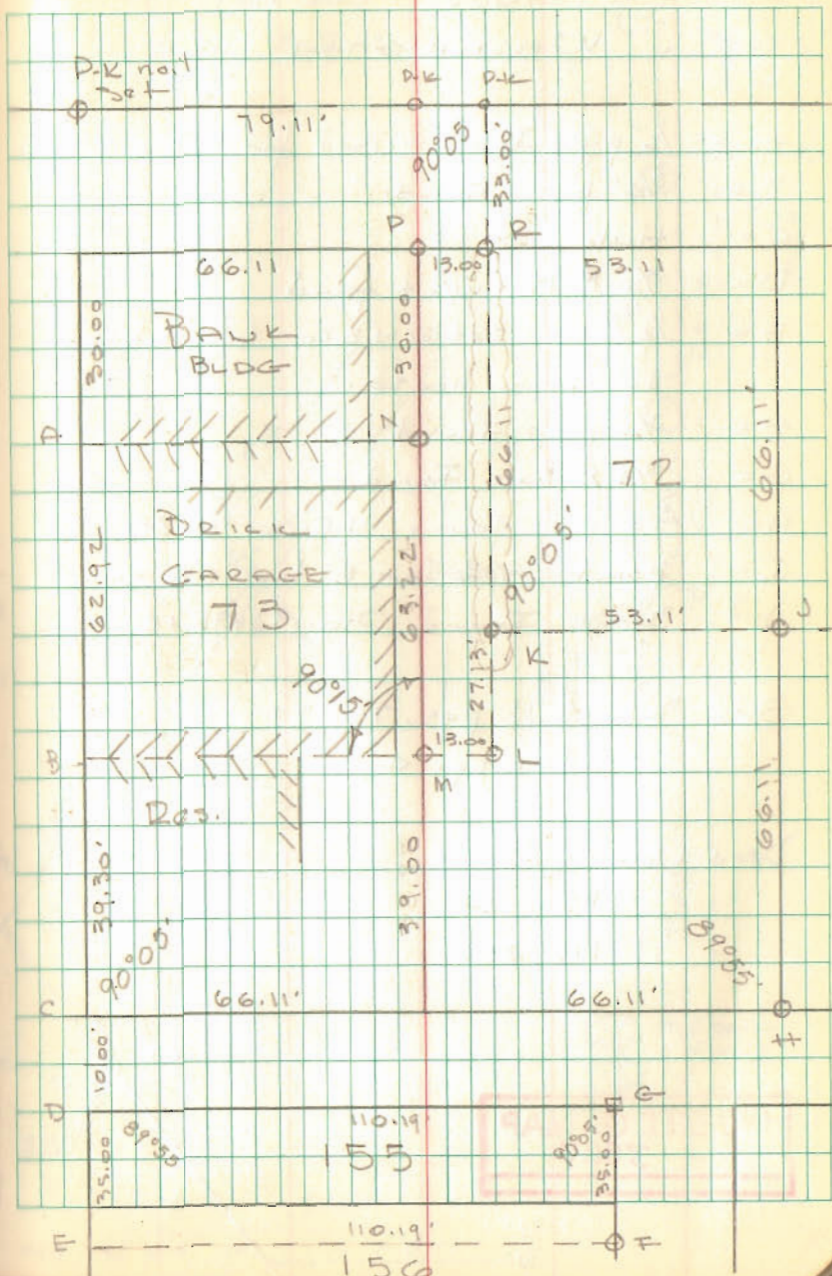
PLAT BK. A, Vol. 1, Pg. 99

LOTS 155 & 156

- A = Chiseled + in conc. walk
- B = " " "
- C = " " "
- D = " " "
- E = " " "
- F = 3/4" pipe Set
- G = 1" ϕ Bar Set
- H = 5/8" ϕ Bar Set
- J = 1" ϕ Bar Set - 0.6 N. of cor post
- K = 1" ϕ Bar Set
- L = " "
- M = " "
- N = " "
- P = " "
- R = 3/4" ϕ Bar Set

INDEXED ON MAP
3801

July 15, 1965 20



STEINER SURVEY

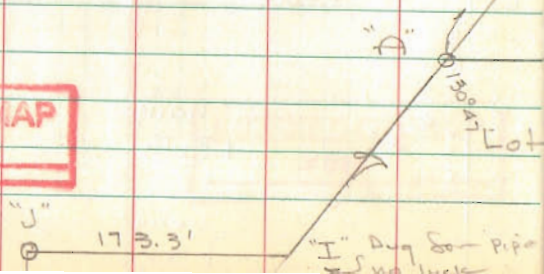
WASHINGTON TWP.

- A = 1/2" pipe Found - used for E. line C.H. 94
- B = 3/4" pipe Found
- C = Hub Set
- D = 3/4" ϕ Bolt w/nut found
- E = 1/2" ϕ Bar Set @ N.E. cor conc. slab floor of spring house
- F = 3/4" pipe Found
- G = 3/4" ϕ Bar Found
- H = 3/4" pipe Found N.E. cor lot 25
- I = point used for E. line C.H. 94
- J = Stone Found Sta. 92+91 FB. 571/76

See FB. 571 pgs. 76-77
" 417 pg. 4

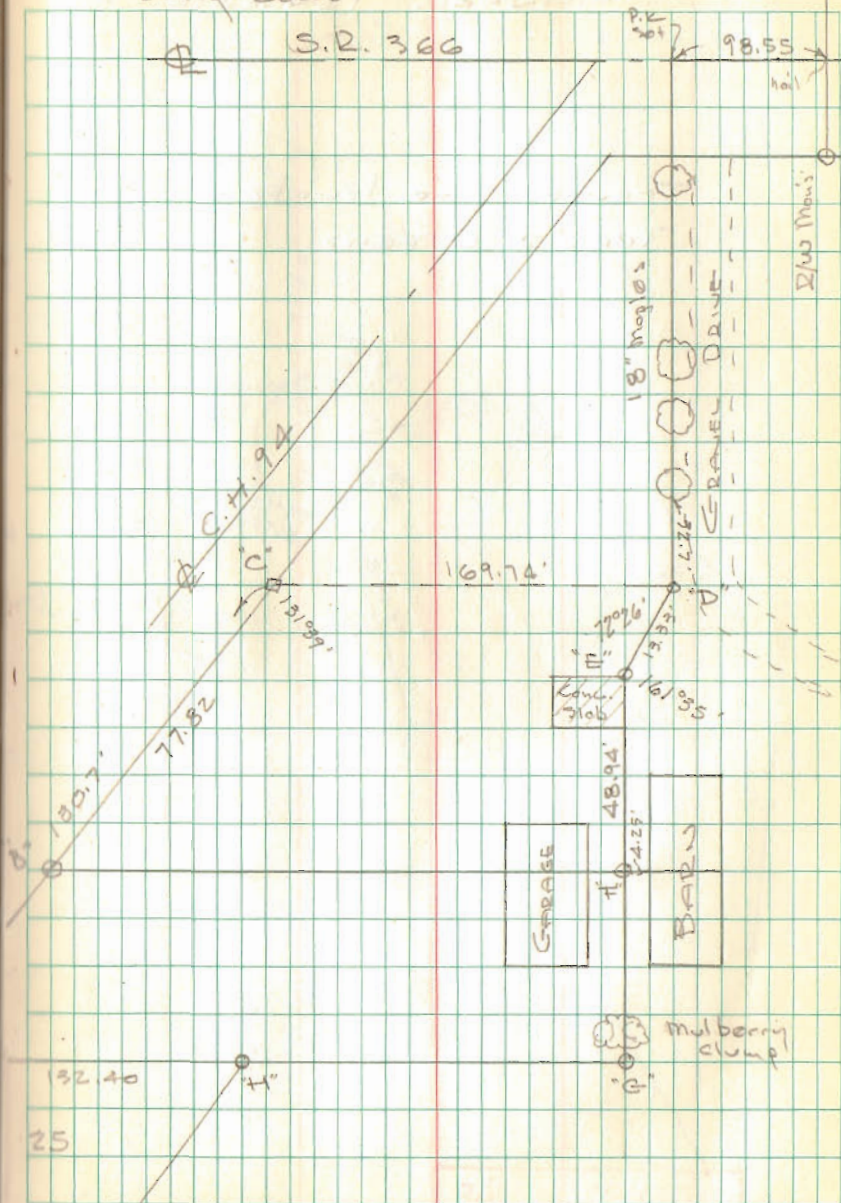
Deed Vol. 112 / 526
113 / 324
178 / 288

INDEXED ON MAP
3882



Dodson
Geoslin
Danny Dodson

July 24, 1965 210
98°



5182

BELLEFONTAINE COUNTRY CLUB
RANDOM TRAVERSE

Traverse to locate
Teas & Greens

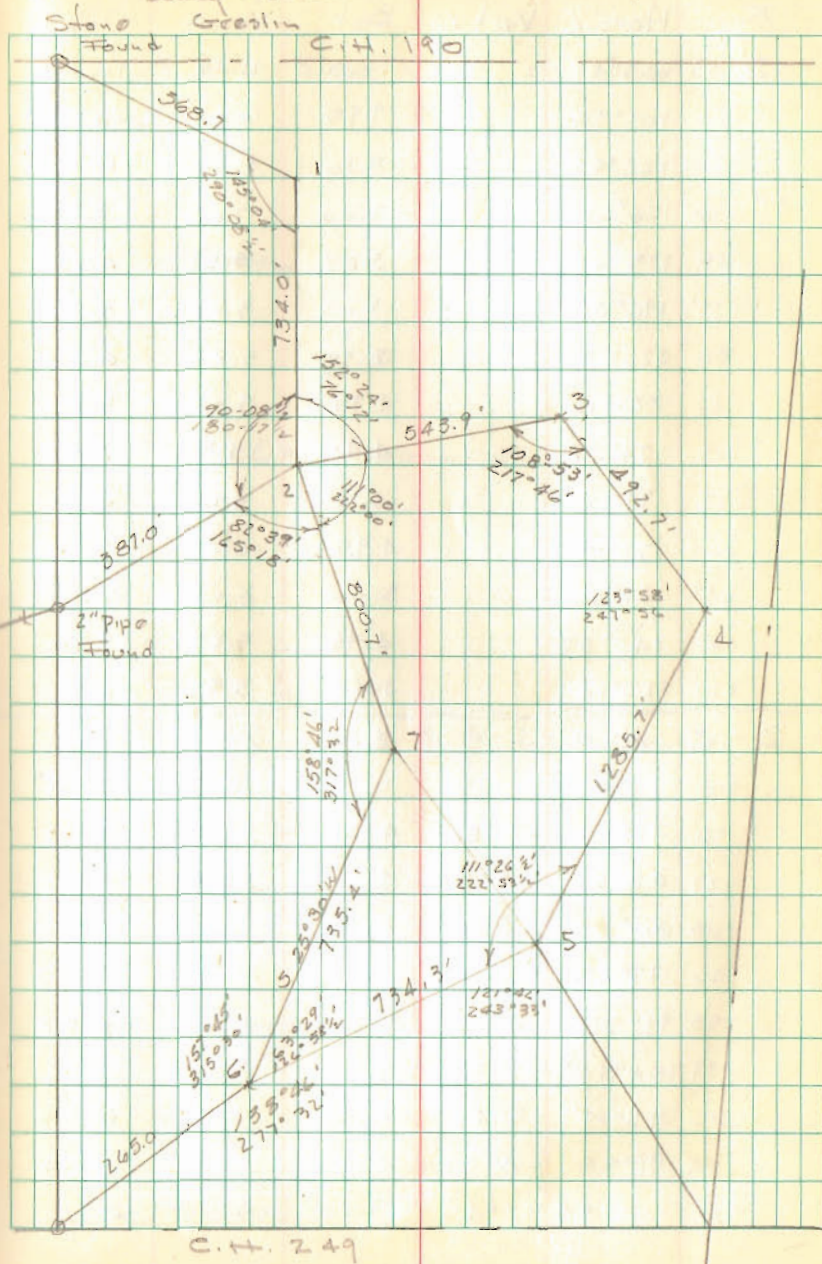
193
72
265

INDEXED ON MAP
381 2

Dodson
Denny Dodson

Aug 3, 1965

22



HENNESSY SURVEY
 V.M.S. 3324
 LAKE TOWNSHIP

Original Survey by W. Scott.

Deeds call for lots to be
 94° off Road; this is
 error, should be 90°

Staked as 90° from
 Road

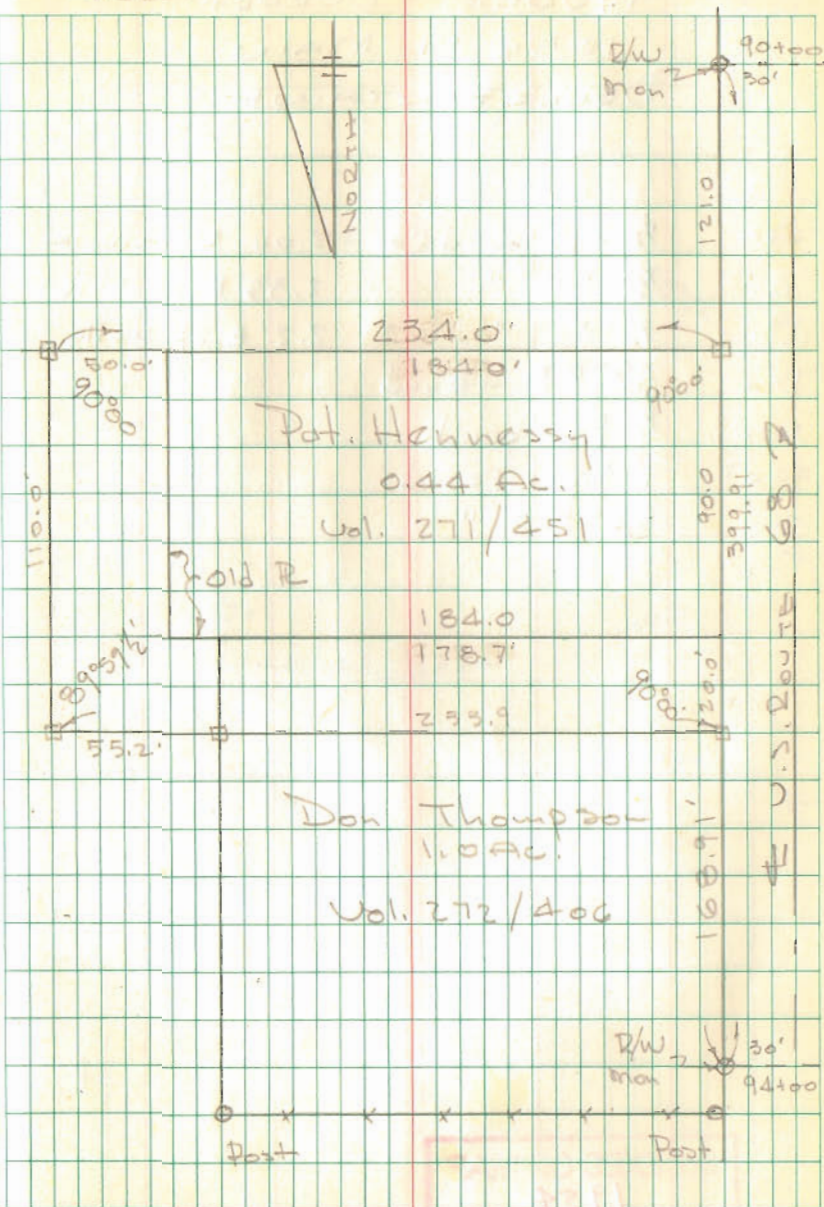
□ = 1/2" Bar Jet

INDEXED ON MAP
 3885

Deed
 L. Geeslin

Aug. 31, 1965

30

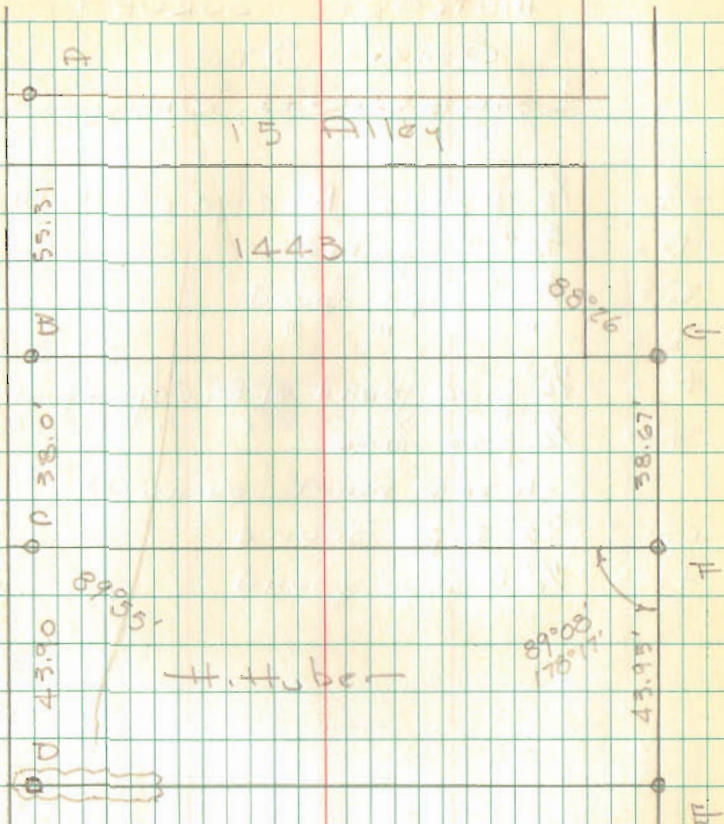


HUBER SURVEY
1036 N. MAIN
BELLEFONTAINE

- A = 1/2" Pipe found. 2.00 E. of walk
 B = 1/2 " " 2.35 E. of walk
 C = 1/2 " " 2.2' E. of walk
 D = 3/4" ϕ Bar found
 E = 1/2" Pipe found
 F = 1" Pipe found
 G = 3/4" " "

Sept 4, 1965

31



INDEXED ON MAP
1954

METCALF SURVEY

OAK ST.

LAKEVIEW, OHIO

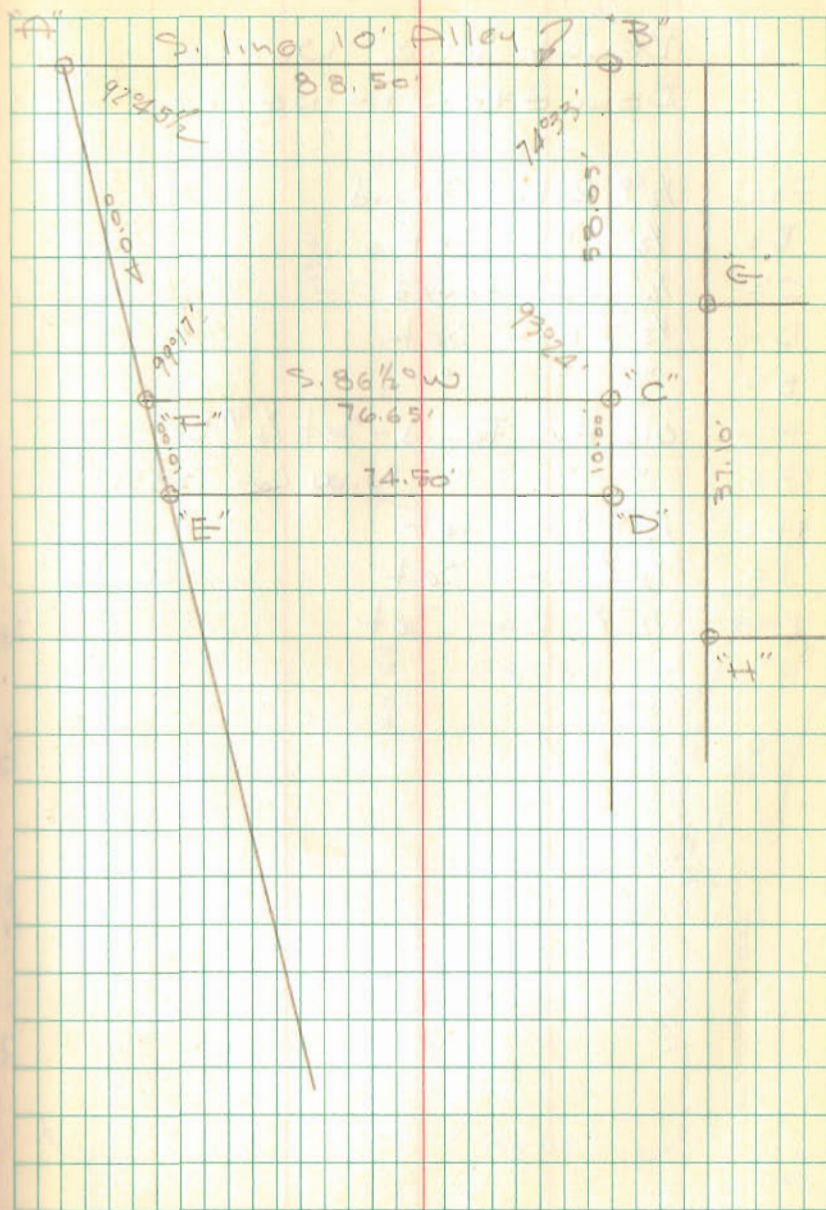
- A = 1/2" pipe at E. edge of walk found
- B = 3/4" " found
- C = 1/2" pipe found
- D = " " "
- E = 1/2" pipe found at E. edge of walk
- F = 1/2" pipe found " " "
- G = chisels mark on walk
- H = 3/4" pipe found
- I = 1/2" pipe found

INDEXED ON MAP
3886

Dodson
Geeslin

Sept. 8, 1965

32



METCALF SURVEY
 OAK ST.
 LAKEVIEW, OHIO

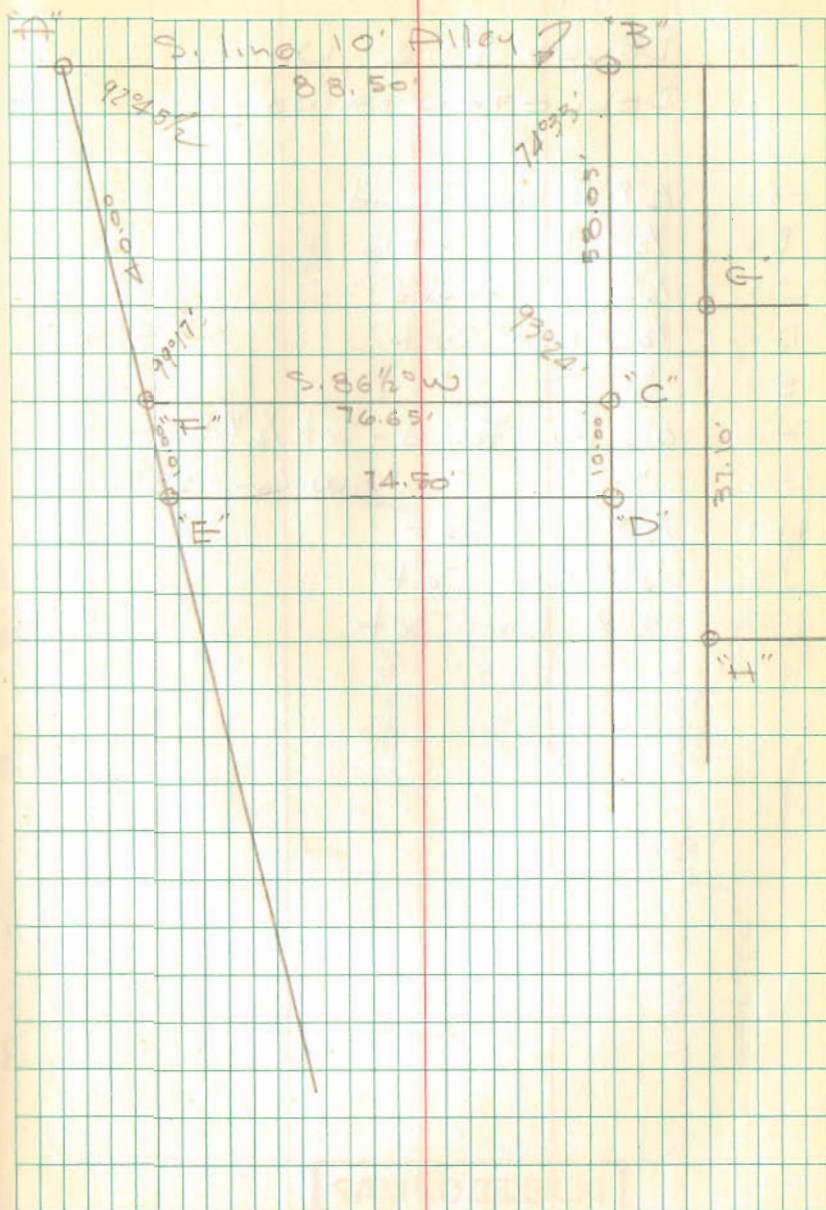
- A = 1/2" pipe at E. edge of walk found
- B = 3/4" " found
- C = 1/2" pipe found
- D = " " "
- E = 1/2" pipe found at E. edge of walk
- F = 1/2" pipe found " " "
- chiseled mark on walk
- G = 3/4" pipe found
- H = 1/2" pipe found

INDEXED ON MAP
 3886

Dodson
 Geeslin

Sept. 8, 1965

32



LOT 3858

BELLE AIR No. 2
BELLEFONTAINE, O.

- A = 1/2" ϕ Rebar Found
- B = 1/2" ϕ Bar Set
- C = 1/2" pipe Found
- D = 1/2" ϕ Bar Set
- E = " " "
- F = Old Hub Found - Set 1/2" ϕ Bar
- G = " " " N.W. Cor 3856
- H = 1/2" ϕ Bar Set
- J = 1/2" ϕ Bar Set
- K = 1/2" ϕ Bar Set

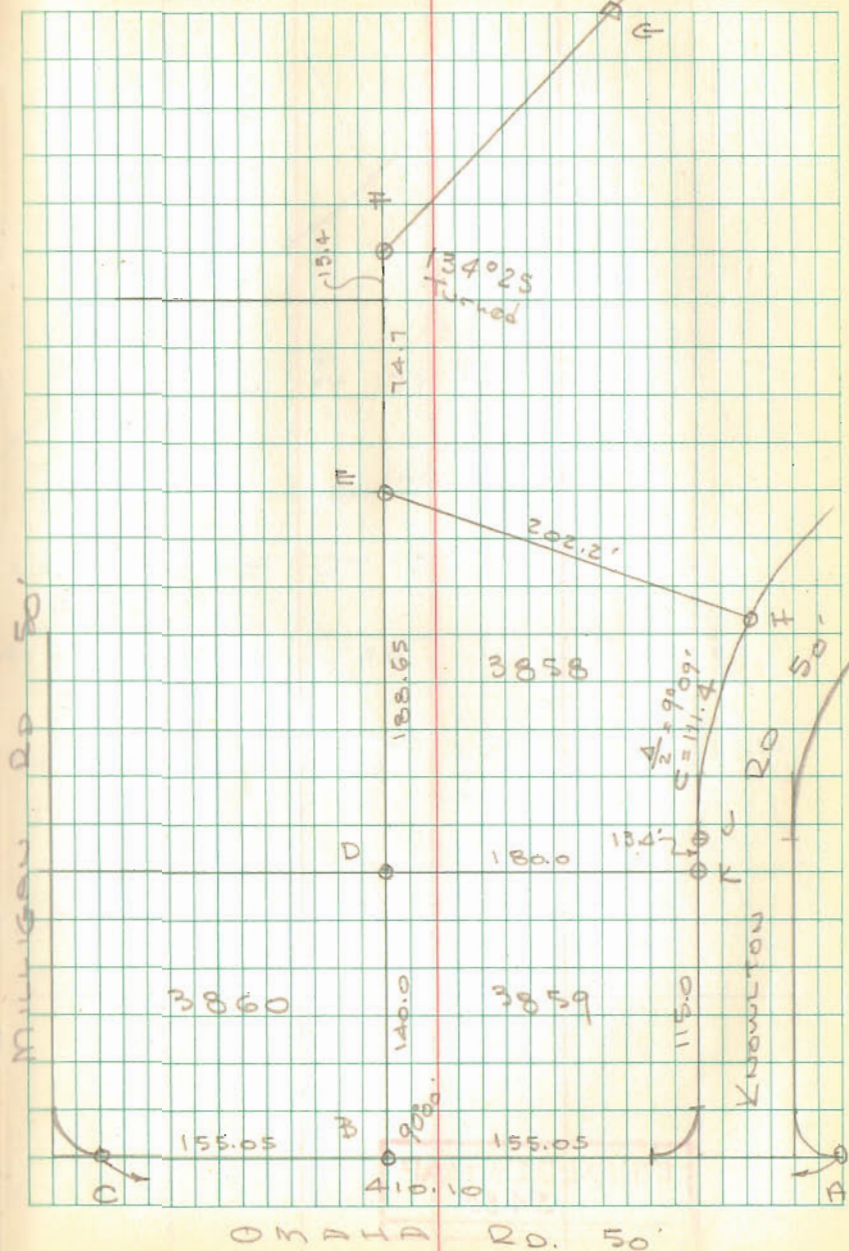
INDEXED ON MAP

4004

Dodson
Geoslin

Sept. 13, 1965

33

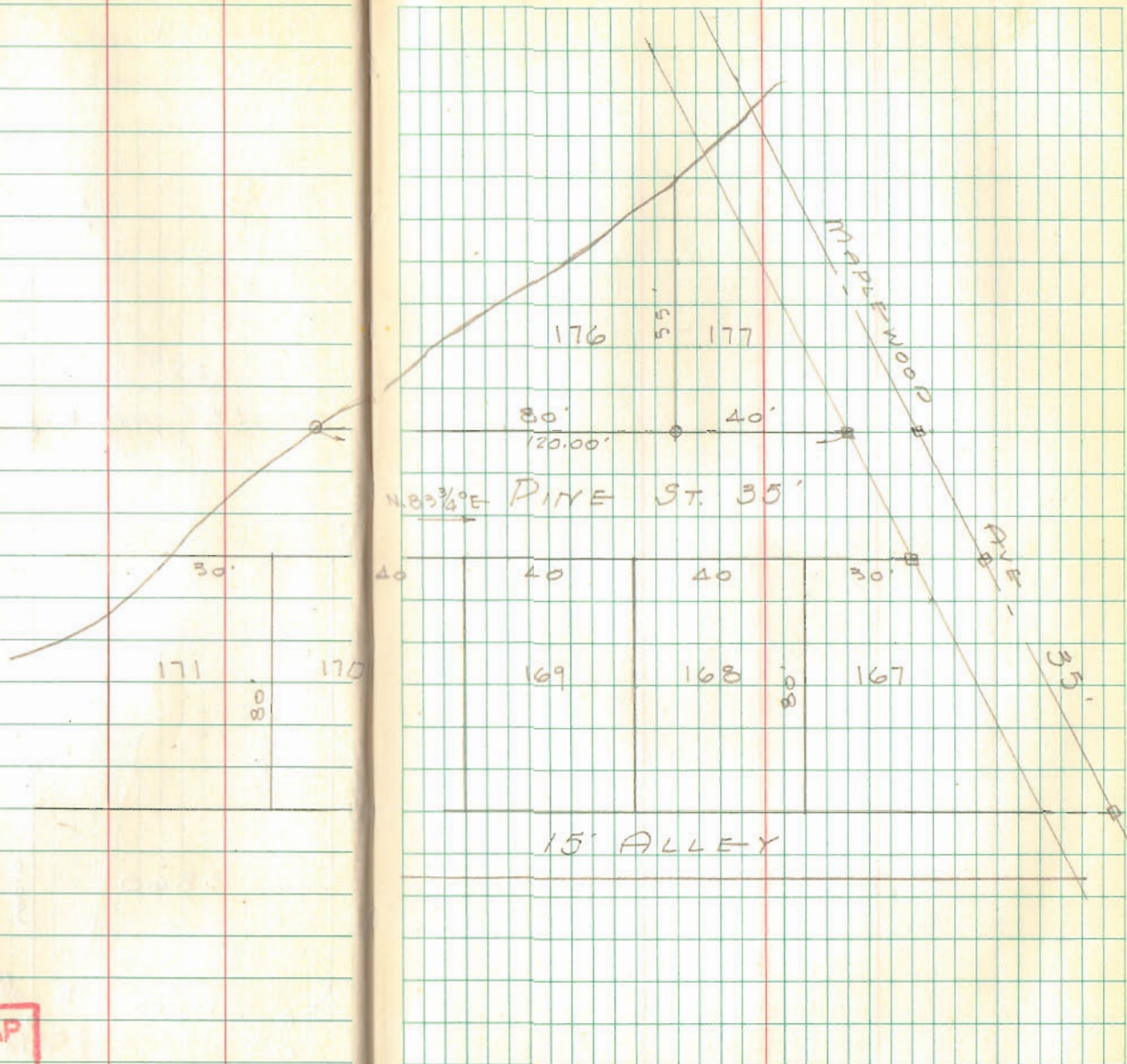


Dodson
Circ. *

Oct. 2, 1965

60°±

34



INDEXED ON MAP
5480

36

PART LOT 457
 BELLEFONTAINE, Ohio
 Plot Bk A Vol. 1 Pg. 6.

- A = Mon. found @ E Auburn & Park
- B = 2' x Iron found @ Auburn & Madriver
- C = Mon found @ E Park & Patterson

on	From	To	Plot	meas	
Auburn	Park	Madriver	501.50	503.45	+1.95
Park	Auburn	Patterson	426.50	426.50	OK

Used Procrated distances as shown
 in City Eng. Bk # W-2

125.24
 118.49
 243.73

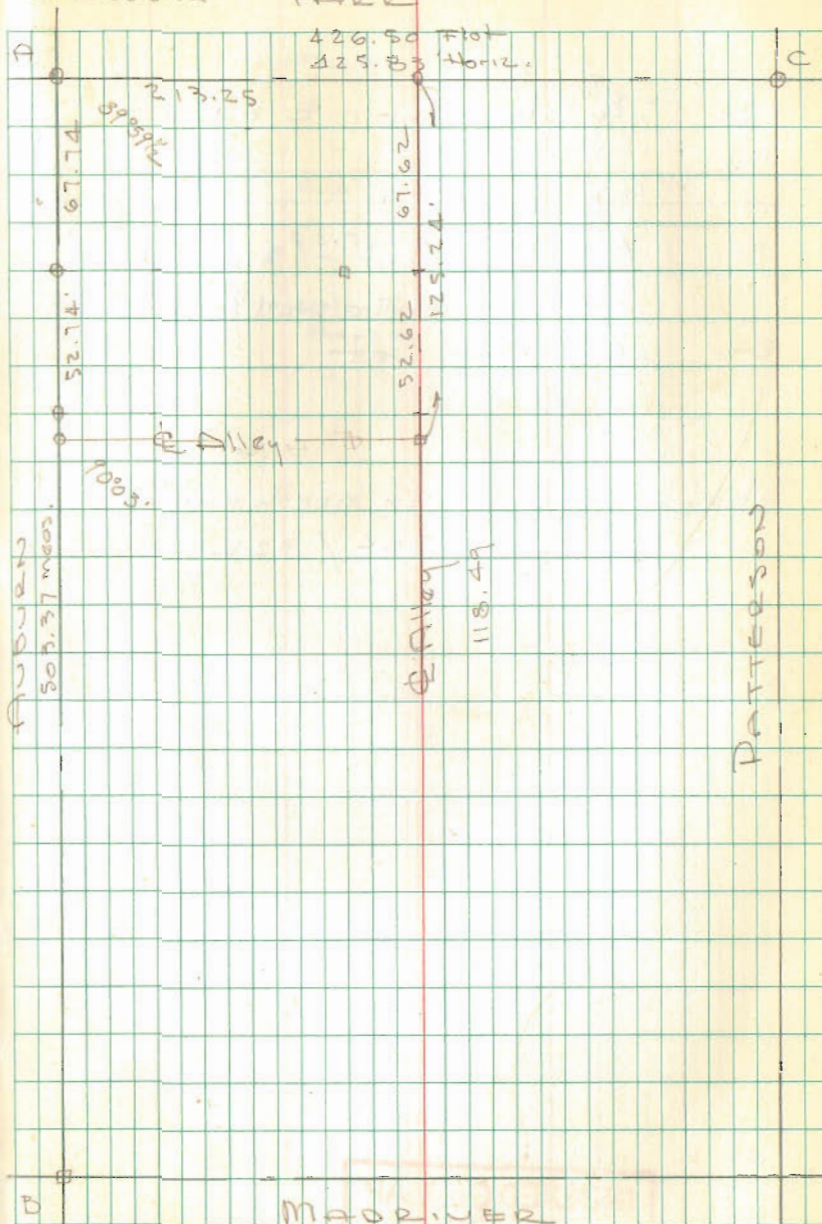
52.62
 8.25
 60.87
 43.73
 17.14

INDEXED ON MAP
 6328

10-12-65

36

Dodson
 L. Geeslin
 Park



MADRIVER

Pt. Lot 457 Cont'd.

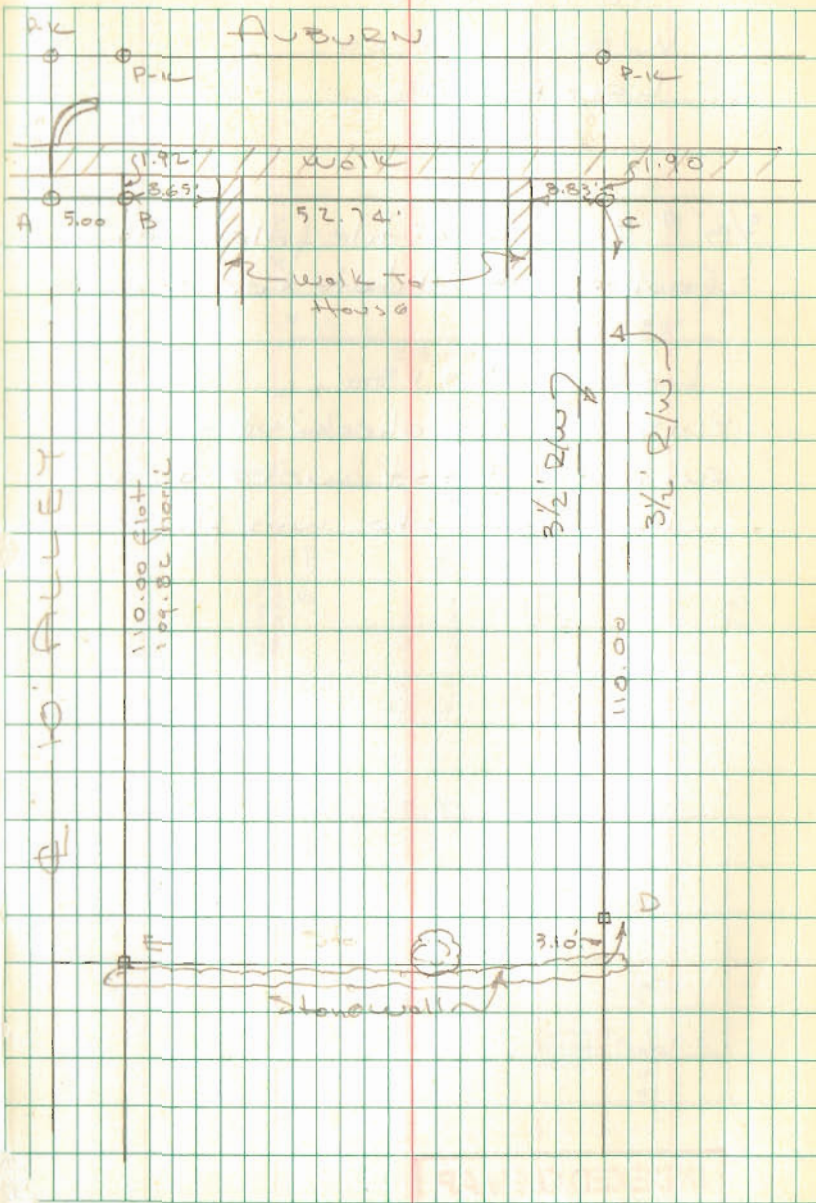
- A = $\frac{1}{2}$ " ϕ Bar Set - E Alley
B = " " "
C = " " "
D = $\frac{1}{2}$ " ϕ Bar Set - 3.10' Not
cor. - Stone wall @ cor.
E = $\frac{1}{2}$ " ϕ Bar Set

Shofer - 110' off north end
Vol. 284 / 322

INDEXED ON MAP
6328

Dodson
Geolin

10-12-65 37



Lot 616
WEST ACRES
LAKE VIEW

5/8" # Bar in 4" tile filled with conc
found at all lot corners.

Lot = 75 x 150'

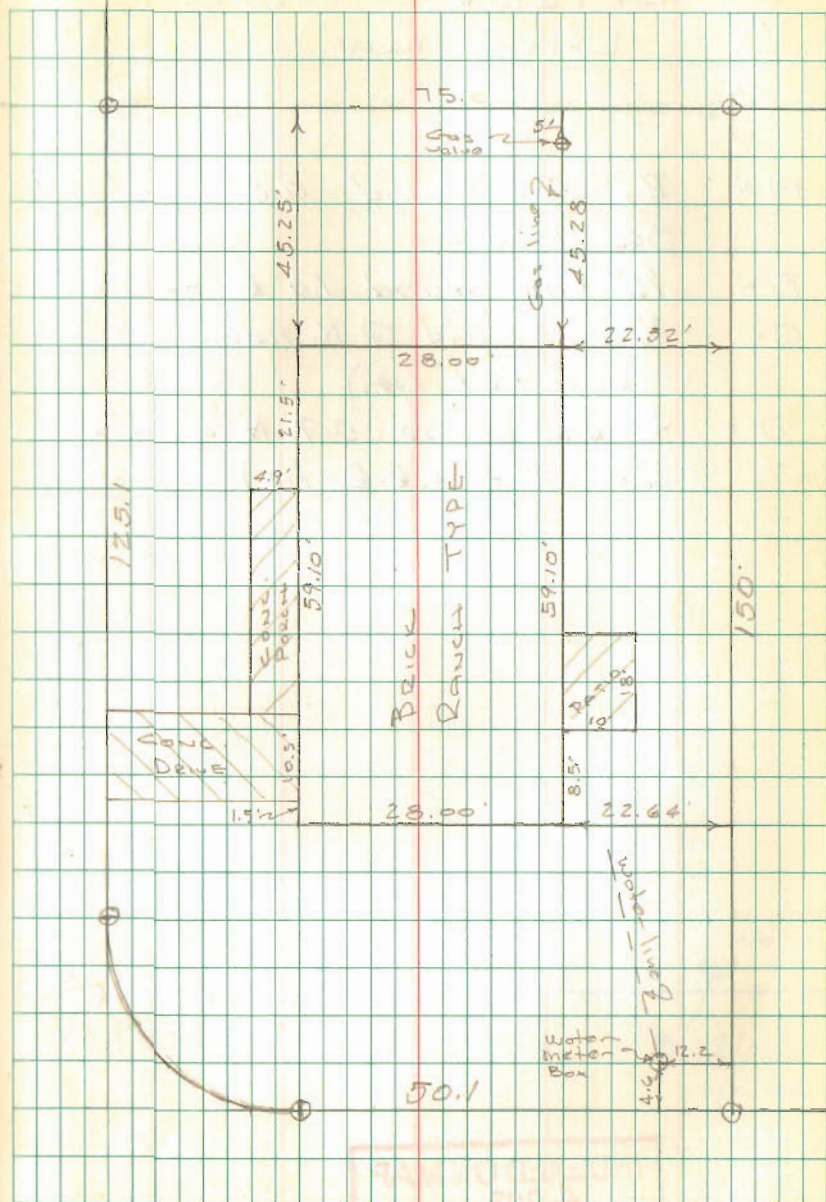
Pins do not check very close,
evidently most were disturbed
when concrete was placed.

INDEXED ON MAP
4013

Dodson
Geoslin

11-2-65

38



DETRICK SURVEY
LAKE TWP

- A = R.R. spike found 0.8' E. of
Sec. line
- B = 1/2" pipe found 1.0' E. of Sec. line
- C = 3/4" pipe found @ N. side wood cor.
post (R.R. tie.)
- D = 3/4" pipe found 0.7' N. of wood
cor. post (R.R. tie.)

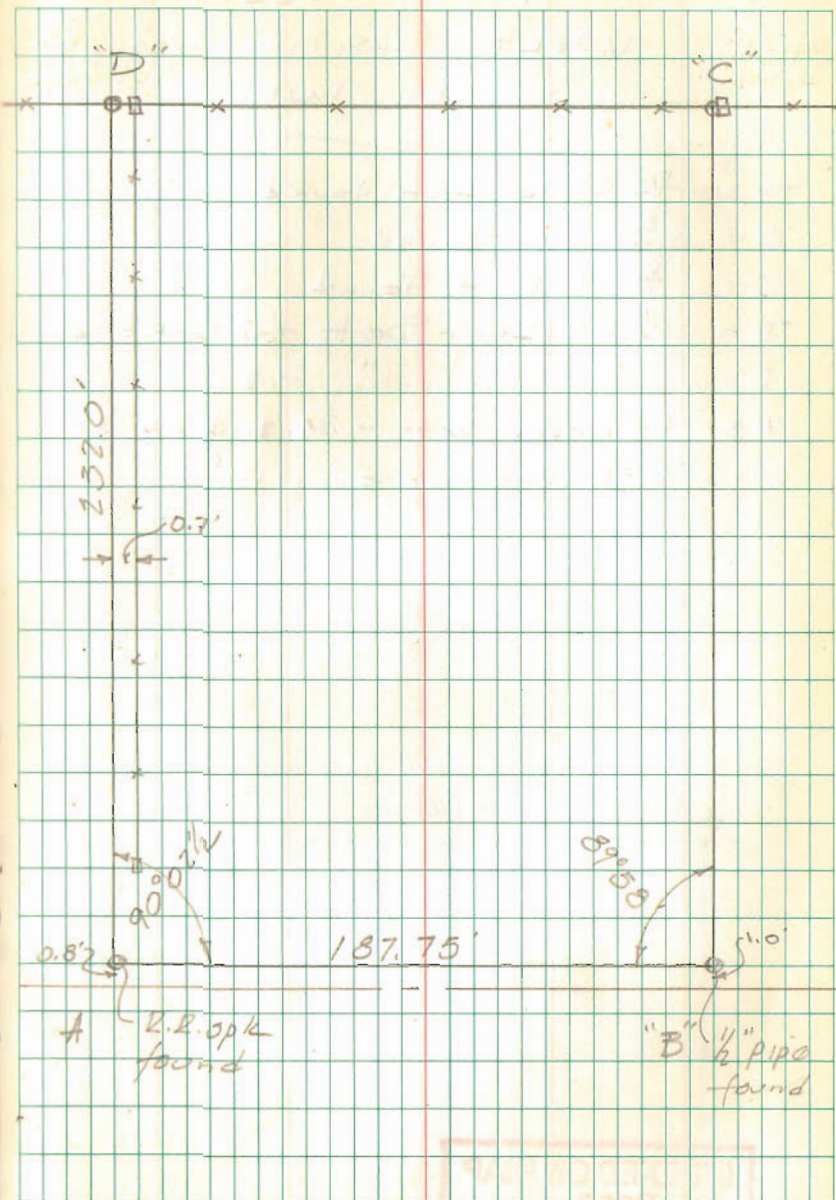
- T.R. 216

INDEXED ON MAP
4003

Dodson
Geolin

10-28-65

39



INDEXED ON MAP
4003

CLAYPOOL SURVEY

WOLF ISLAND

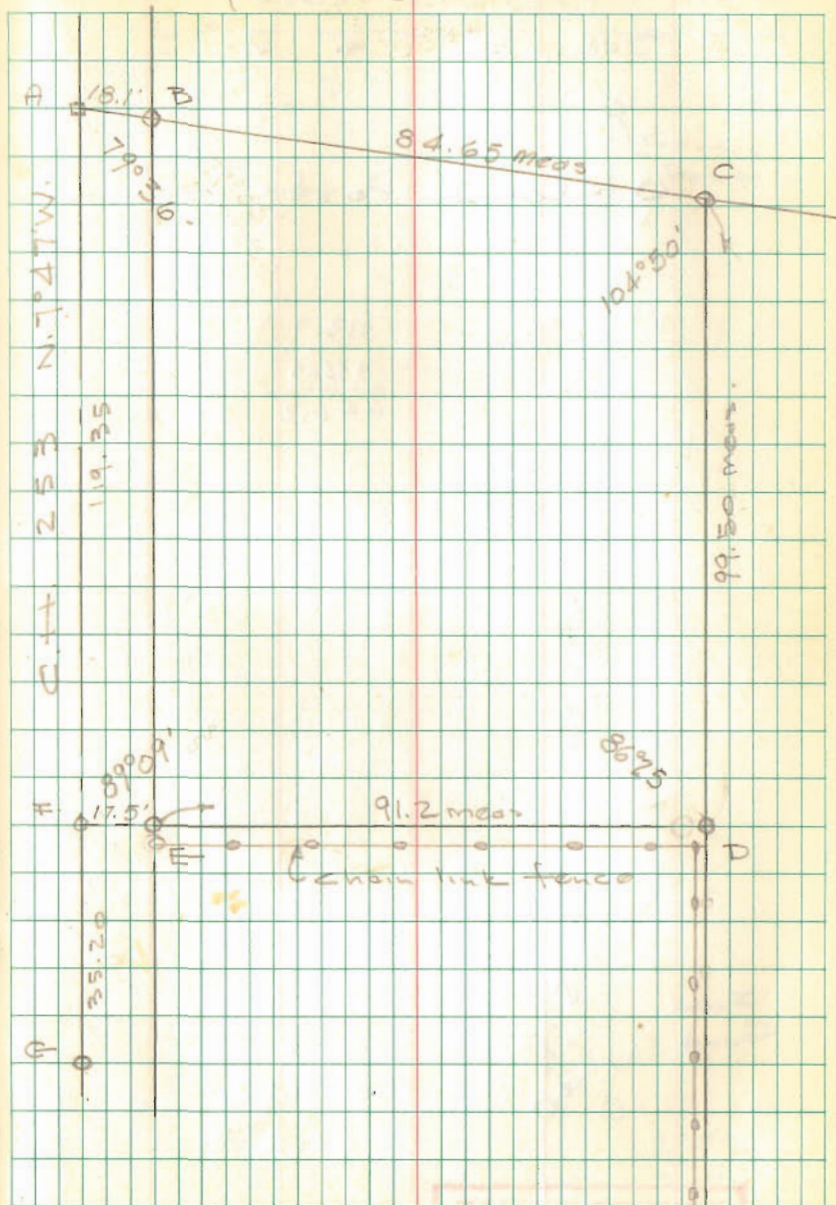
STOKES TWP

- A = "□" Head bolt Found
- B = 3/4" pipe Found
- C = 5/8" φ Bar Found
- D = 5/8" φ Bar Set - 7' N. of St. 6. bar post
- E = " " " - 5 " " " "
- F = P-K nail Set - 35.20 from "G"
- G = Iron found

Dodson
Donny Dodson

11/20/65
60°

40



INDEXED ON MAP
3888

STANLER SURVEY
 UNION TWP.
 Sec. 28 T-4 R-13

O = Conc. Post

913.9
 932.3
 646.2

From
 Bend

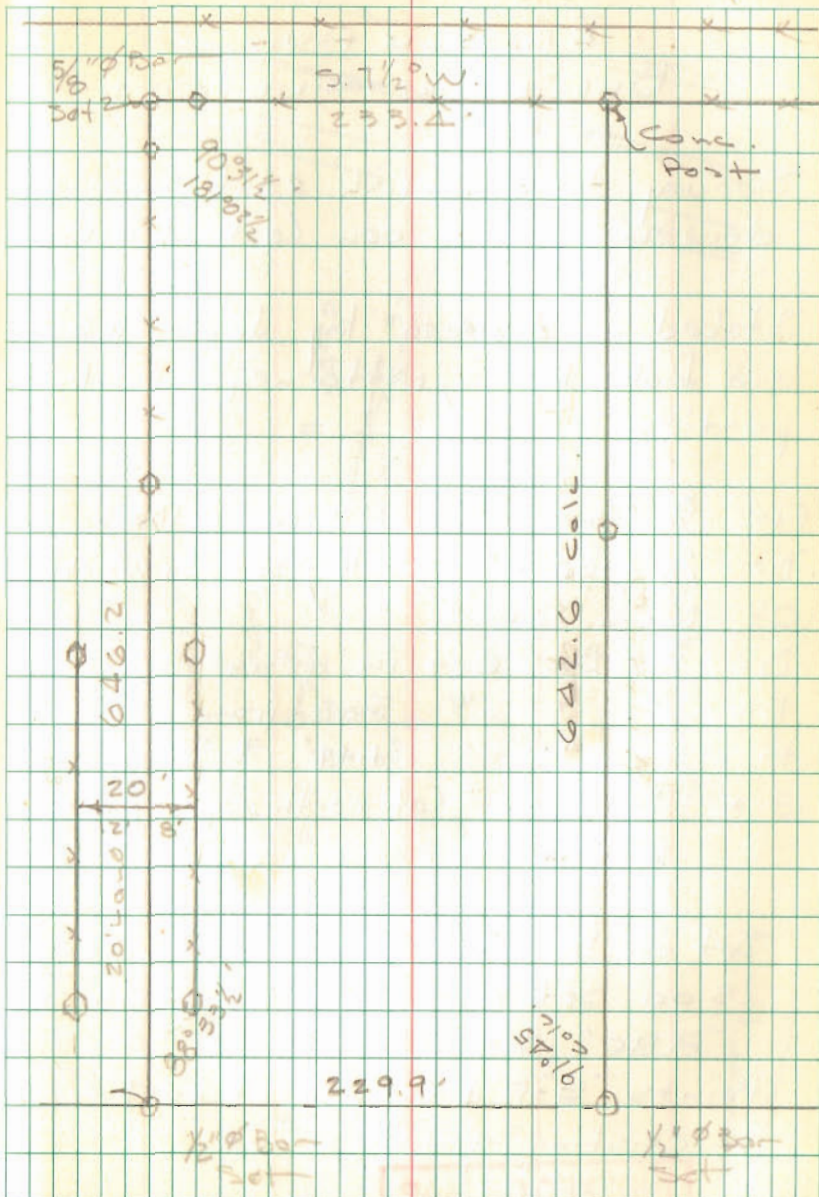
S.R. 500

914.6'
 C.P. 91

INDEXED ON MAP
 4015

Dodson
 J. Whitlow

1/27/65 41
 35° Windy



COSTIN - GILBERT LINE

EASTERN AVE
BELLEFONTAINE, OHIO

Survey to establish east line of
driveway between Costin & Gilbert

Staked as ordered by James West
and Robt. Kerns, Attorneys for both
parties

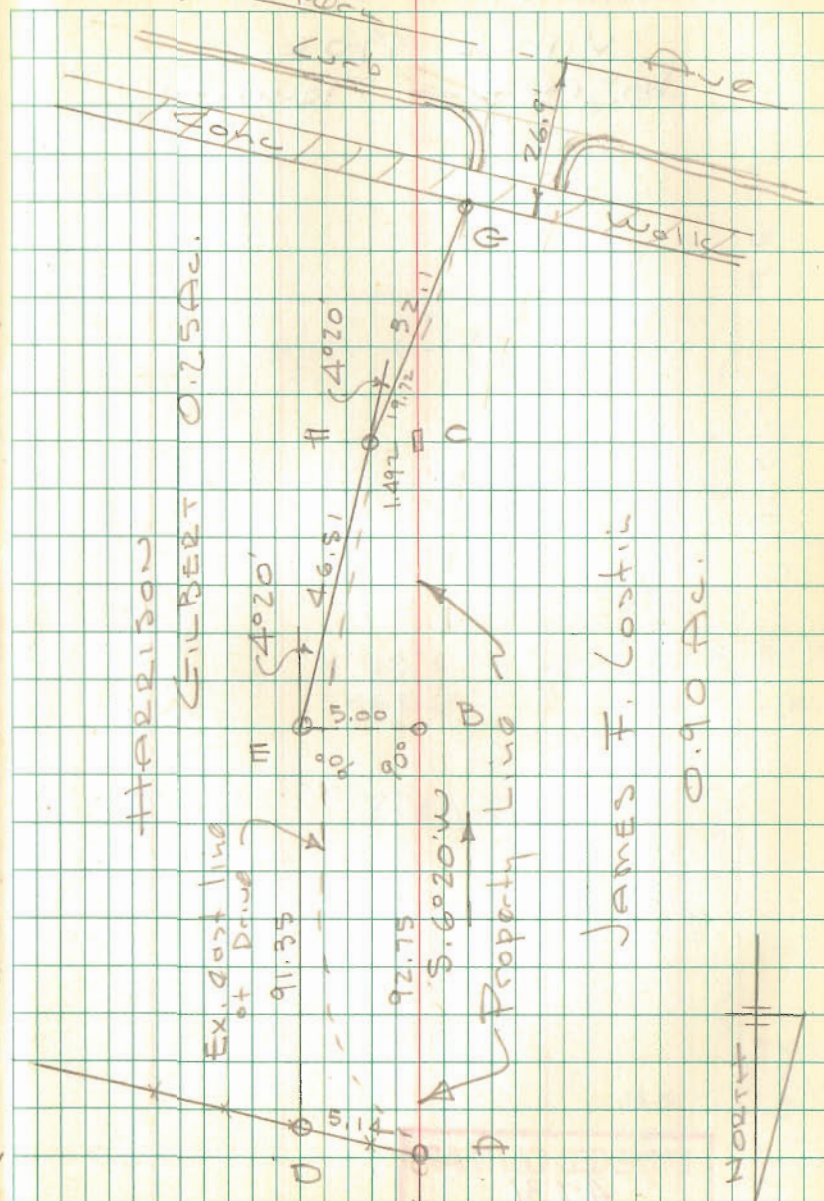
- A = $\frac{3}{4}$ " ϕ Bar Found N.W. cor Gilbert
- B = $\frac{1}{2}$ " pipe " on R, set by Wright
- C = Wood Stake " " " "
- D = $\frac{5}{8}$ " ϕ Bar set in fence
- E = " " " 5.00' from "B"
- F = " " " 1.49' " "C"
- G = " " " at north edge of conc.
sidewalk.

Set on "B" sight A turn 90° , measure
5.00 set E. ~ made "ED" parallel to
"ABC" set "D" in fence
Points "E-F" & "G" are at east edge
of existing gravel drive.

INDEXED ON MAP
8531

Dodson 11/25/65
Darryl Dodson

42



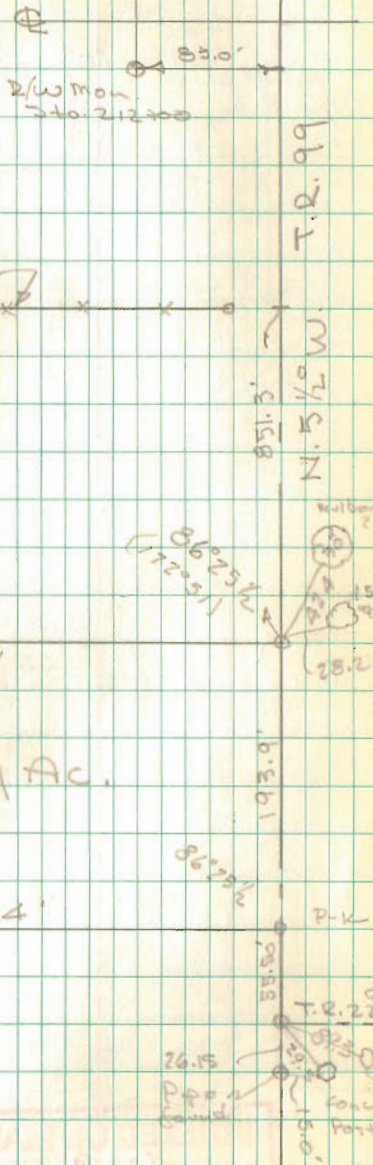
ELLIOTT SURVEY
 V.M.S 9902
 McArthur Township

INDEXED ON MAP
 4731

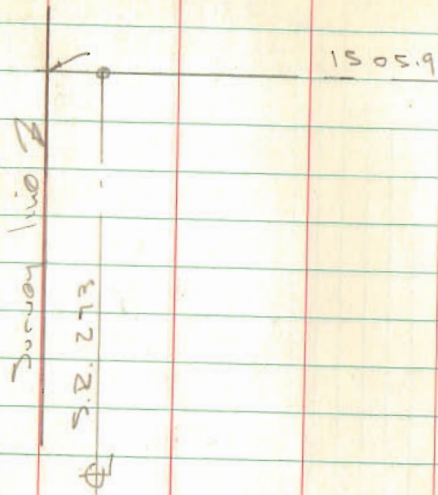
Dodson
 Whitlow

12/22/65 43
 500

S.R. 274



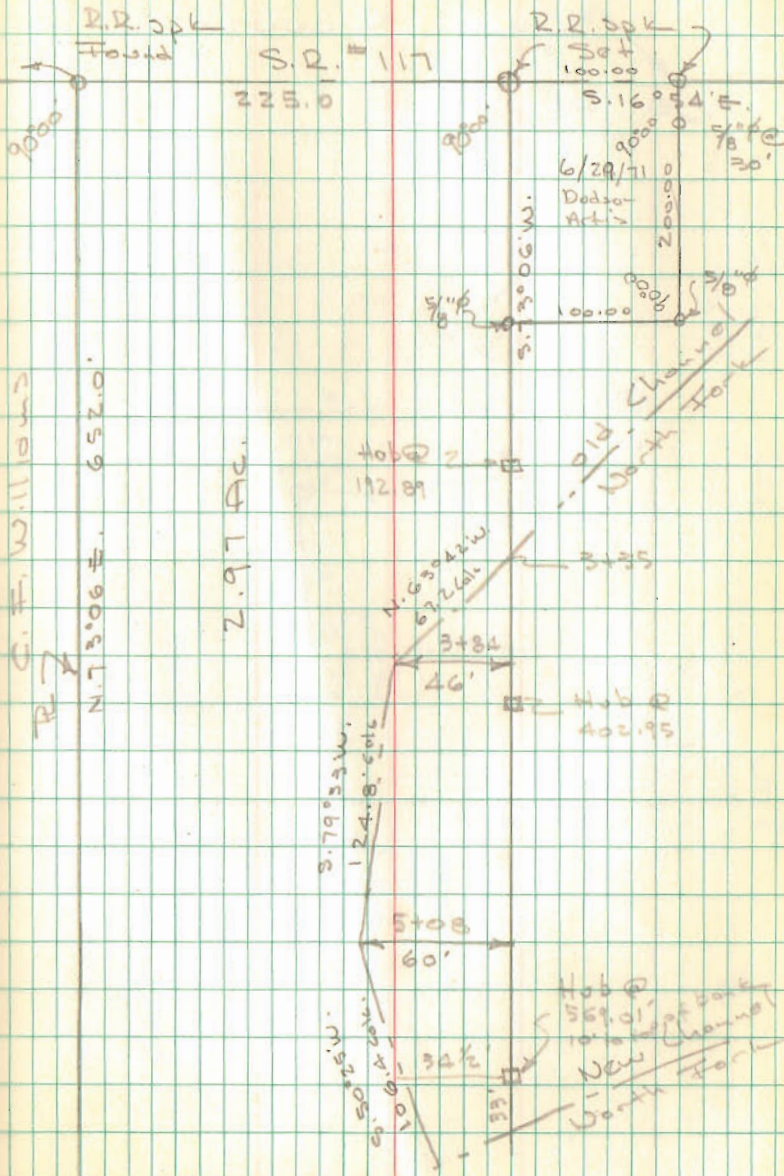
CARTER SURVEY
 RICHLAND TWP



INDEXED ON MAP
 4009

Dodson
 Whitlow

12/27/65 44



C. F. Williams
 R.R. # 1
 N. 73° 06' E. 652.0'

2.97 Ac.

211.7
 N. 29° 26' W.

Hobbs
 559.01
 10' 0\"/>

FAIR SURVEY
RICHMOND TWP

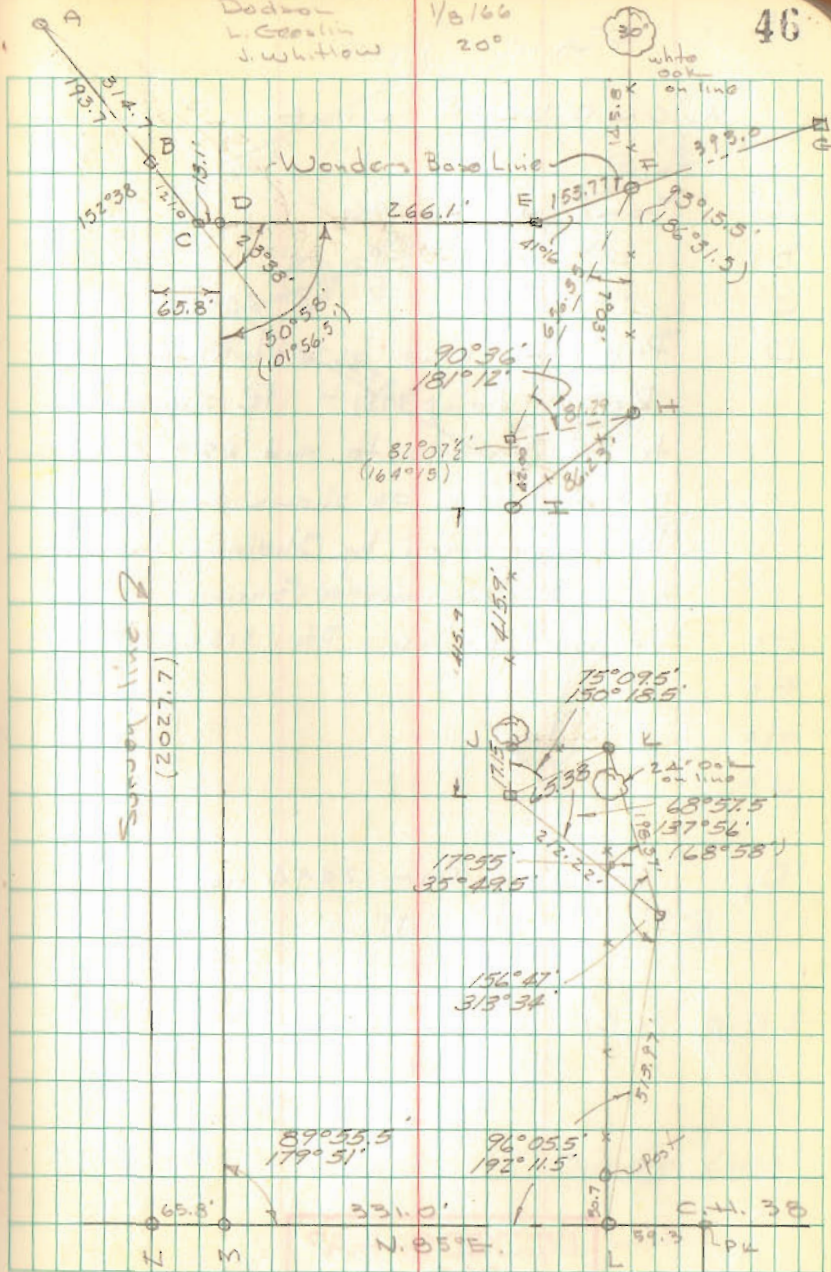
- A 5/8" ϕ Bar Found - Sta 309+71.2
- B Hub Found @ Survey line
- C Hub Set
- D 5/8" ϕ Bar Set
- E Hub Set
- F 1/2" ϕ Bar Set on Base line @ R
- G Wouders Mon. # 14 Found - 4" \square limestone (top broken)
- H 1/2" ϕ Bar Set - S. side of Cor. post
- I " " " N. " " "
- J " " " S. side of toll stump
- K " " "
- L R.R. spike Set
- B R.R. spike Set - 65.8 E. of N
- Z 1/2" ϕ Bar Found

INDEXED ON MAP
3870

Dodson
L. Goslin
J. Whitlow

1/8/66
20°

46

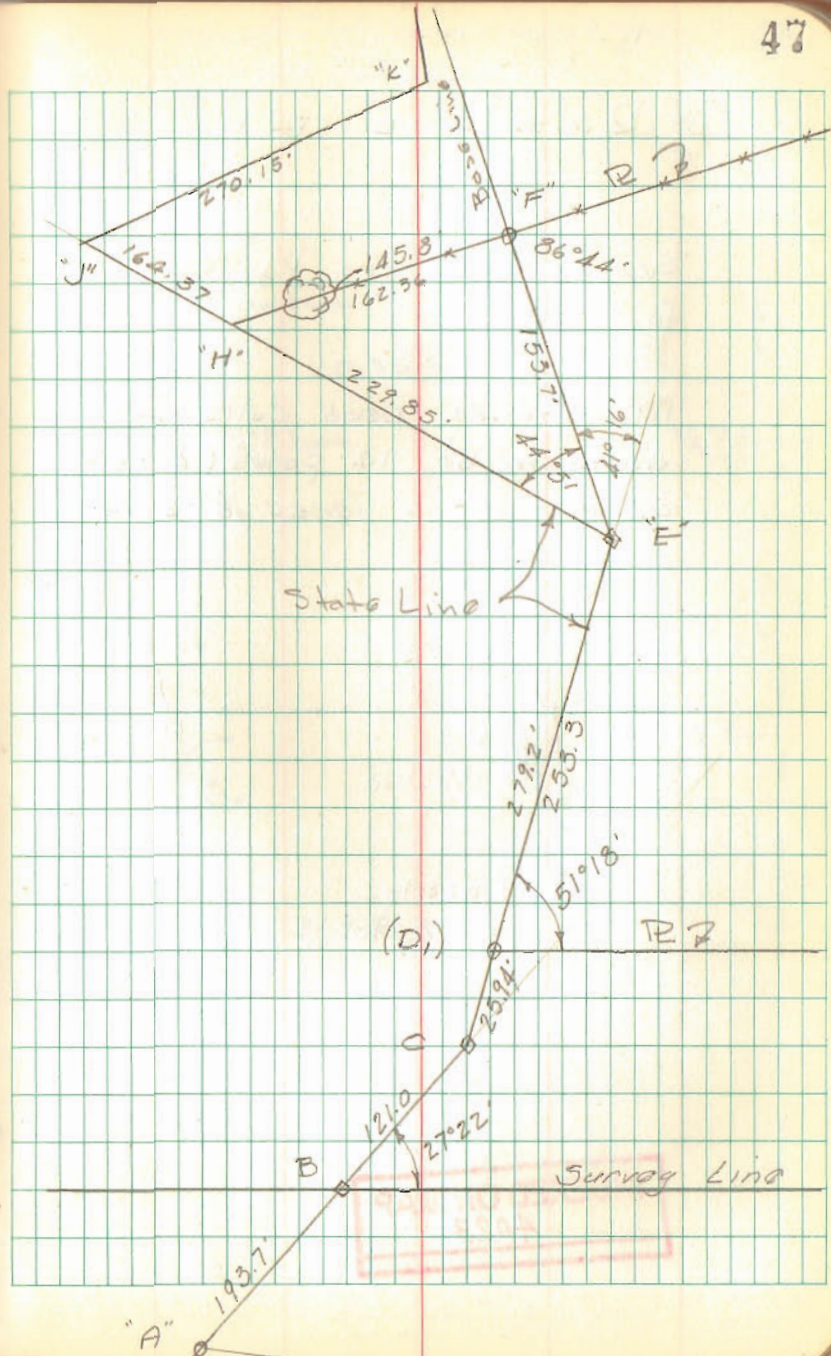


FAIR COND'T
WONDERS LINE

- A = Same as pg. 46
 B = " " " "
 C = " " " " $\angle 23^{\circ}38' \text{ Lt.}$
 D₁ Property Line as established by R. Sheldon, 1951 - R supposed to be parallel to and 65.8' east of Survey line as shown on pg. 46, R as surveyed by Sheldon diverges from Survey line as shown
 E = Same as pg. 46 Sta. 315+52.5
 F =
 H =
 J =
 D₁ Set $5/8" \phi$ Bar 24.94 from "C"

Line A, B, C, D₁, E, H, J, K = State Line

INDEXED ON MAP
3870

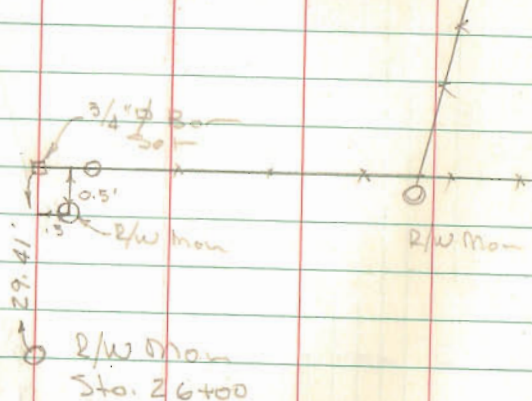


McARTHUR SURVEY
V.M.S. 9949

RICHLAND TWP.

See L.O. Engr's Plan L-21
for S.R. 117

McArthur's Deed calls for
depth to be 14 poles (231.0)
used existing fence for E. line



INDEXED ON MAP
4023

10'63

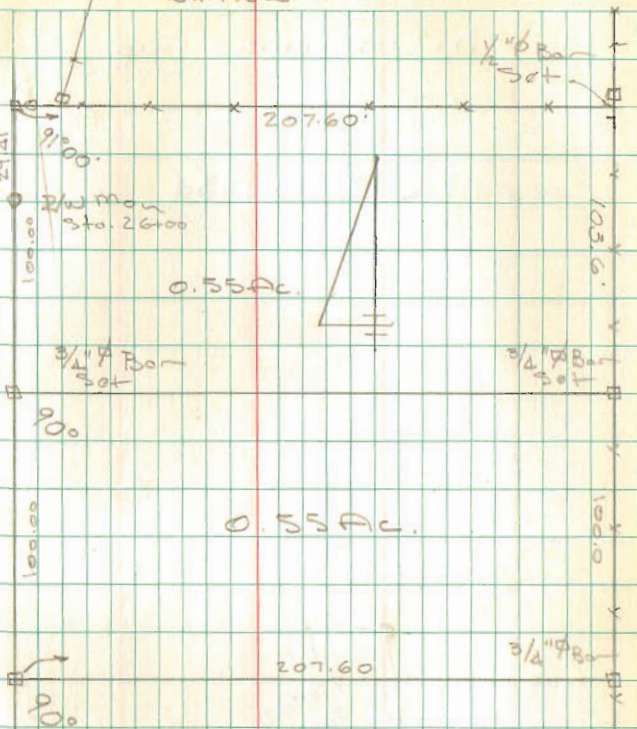
Dodge
Geoslin
Whitlow

1/5/66
30°

48

N. 70° 34' W.

S. R. 117



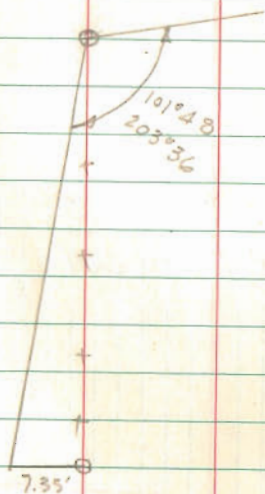
$\square = 3/4" \phi$ Bar Set

30' ϕ R/W Mon
16+00

INDEXED ON MAP
3802

KAUCKER SURVEY
 V.M. 2. 9905
 McArthur Twp

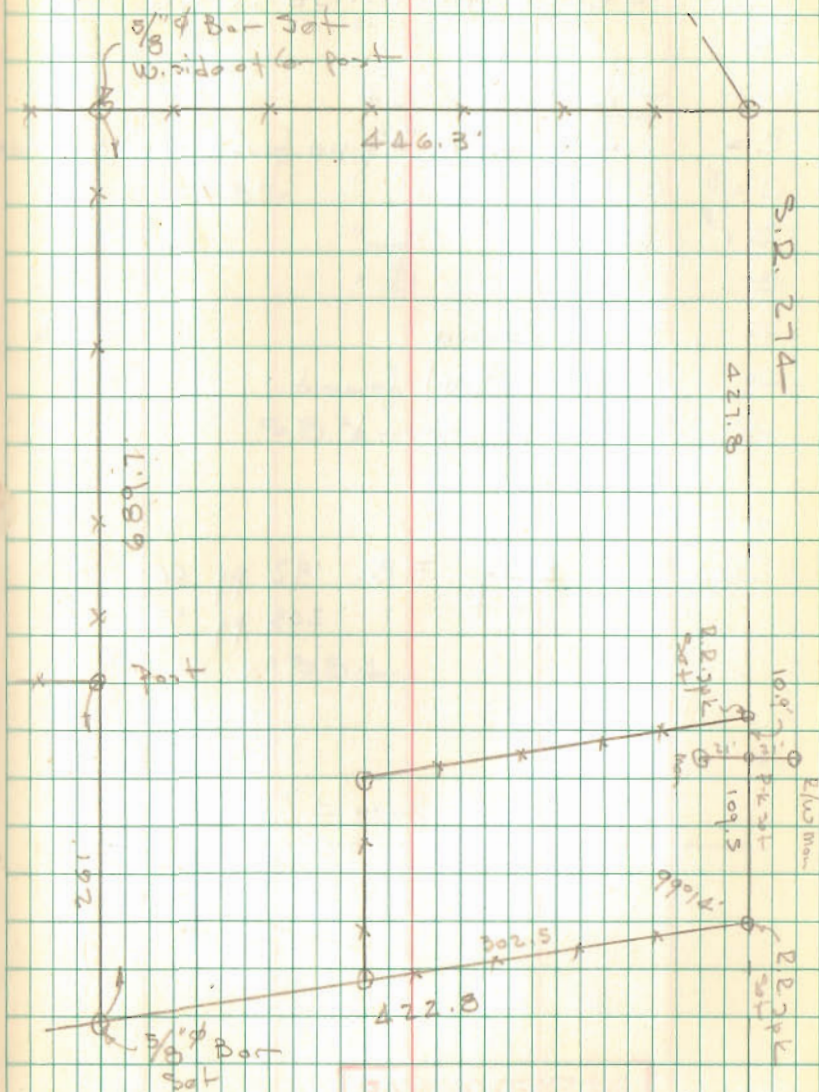
See Bk 3, pg. 34



INDEXED ON MAP
 3062

2/12/66

49



Lot 1582

BELLEFONTAINE, OHIO

- A = + in walk found
- B = 1 in walk & 1/4" pipe found 0.4' W. of walk
- C = " " "
- D = " " "
- E = " " "
- F = Iron Found
- G = X Head Bolt found
- H = 1/4" pipe found

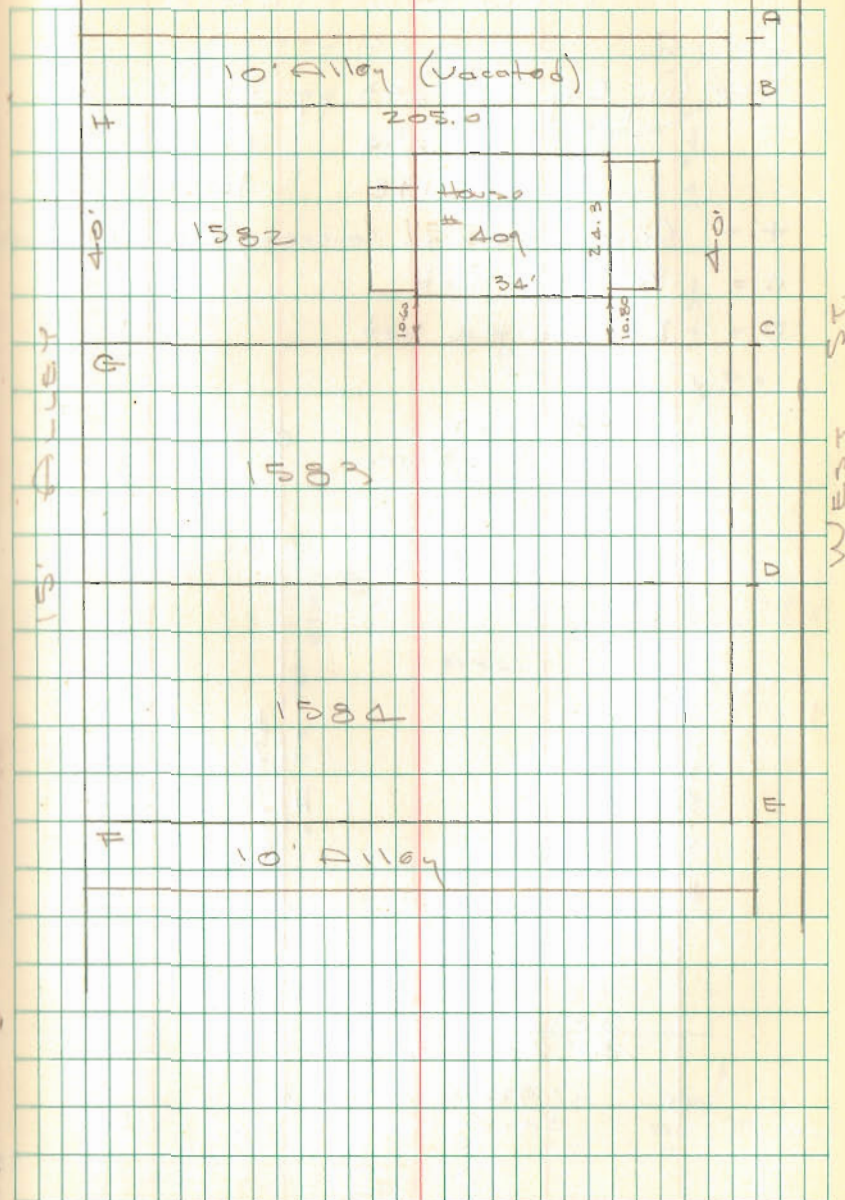
See City Eng. F.B. 192 pg 66
 " " " 243 pg 57

INDEXED ON MAP
 9622

Dodson
 Danny Dodson

2/19/66
 150

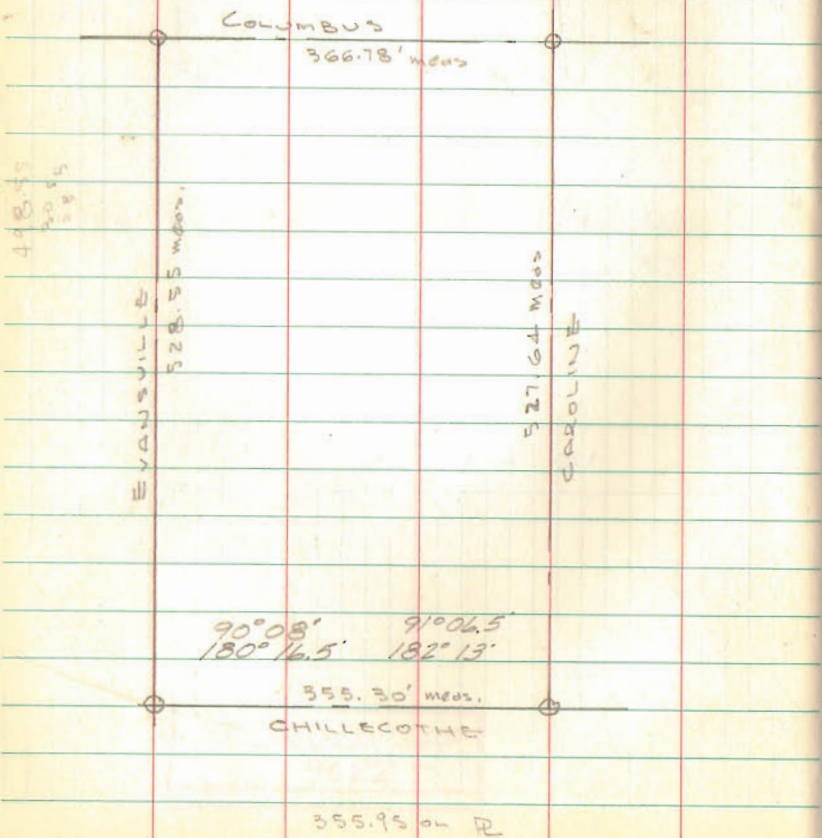
50



SURVEY OF LOTS 1289 & 2394
BELLEFONTAINE, O

See City Eng F.B 243 pg 65
 " " " 234 69
 " " " 198 96

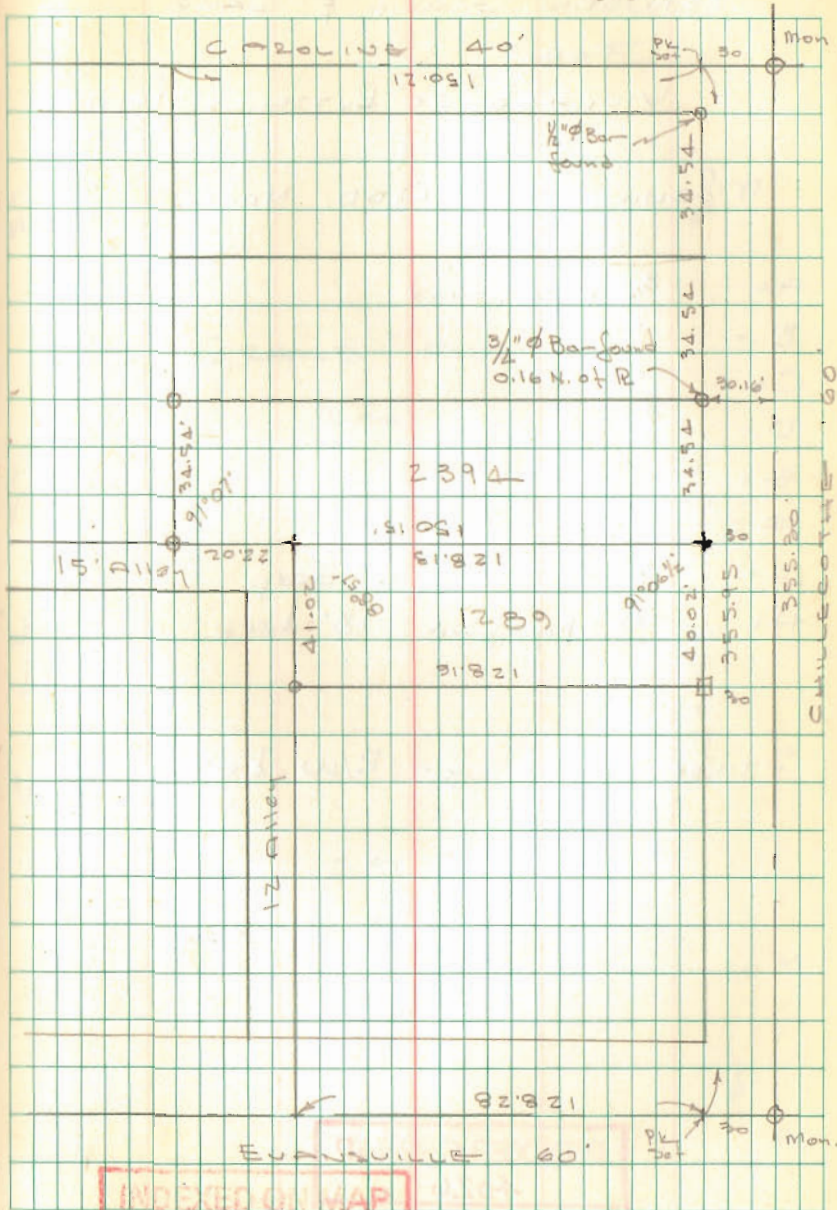
+ = Chiseled cross in Concrete, cut. 2.0' N. of wall
 O = $\frac{3}{8}$ " Rebar set
 □ = 2x2x12" Hub set



DOBSON
WHITLOW

2-5-66
30°
Snow

51



INDEXED ON MAP
4020

SURVEY OF KRESS ST.
BETWEEN GRAND & LAKE

FOR
VILLAGE OF RUSSELLS POINT

MORNING SITE ADD. No. 2

- A = 3/4" pipe found
 B = " " "
 C = " " "
 D = 1/2" " "
 E = 3/4" " "
 F = 1" pipe "
 G = 1/2" " " 12" deep
 H = 3/4" pipe found 18" deep

Stakes set for R/W Kress St.

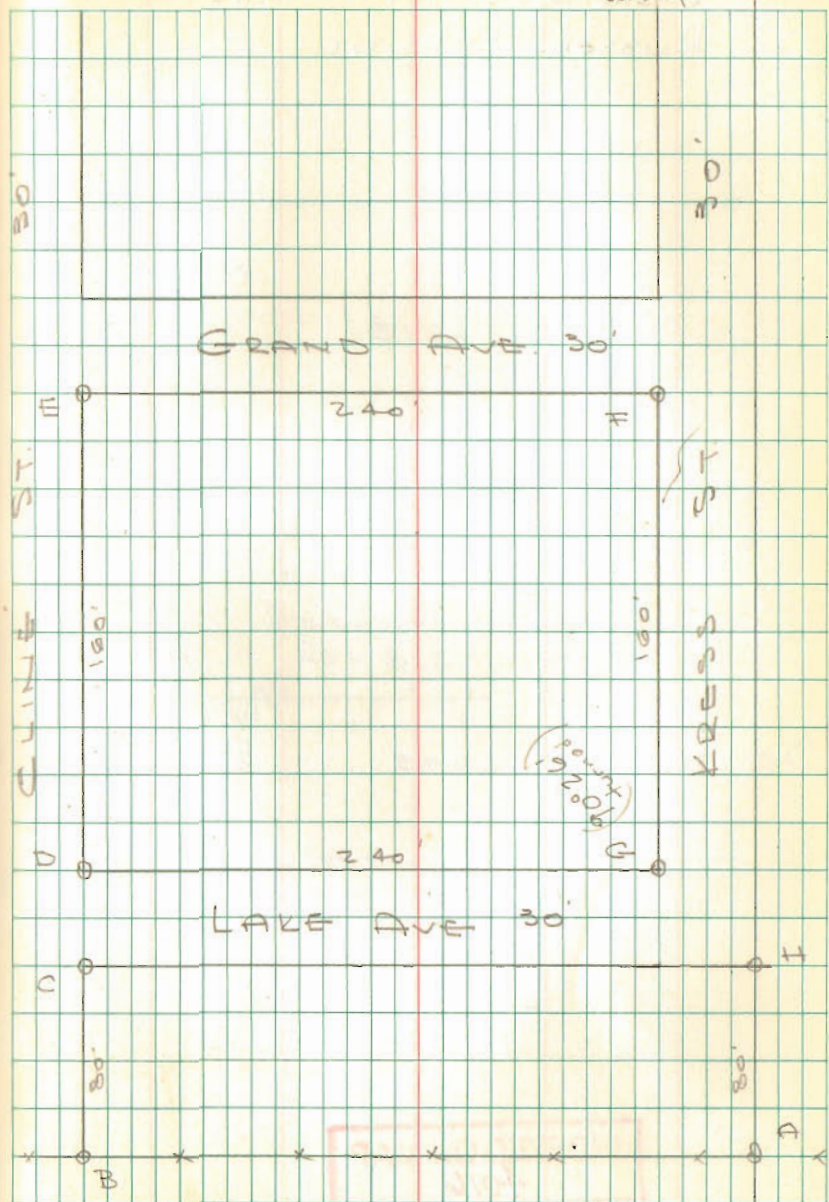
INDEXED ON MAP

4026

Dodson
C. Rickotts

3/19/66
400
windy

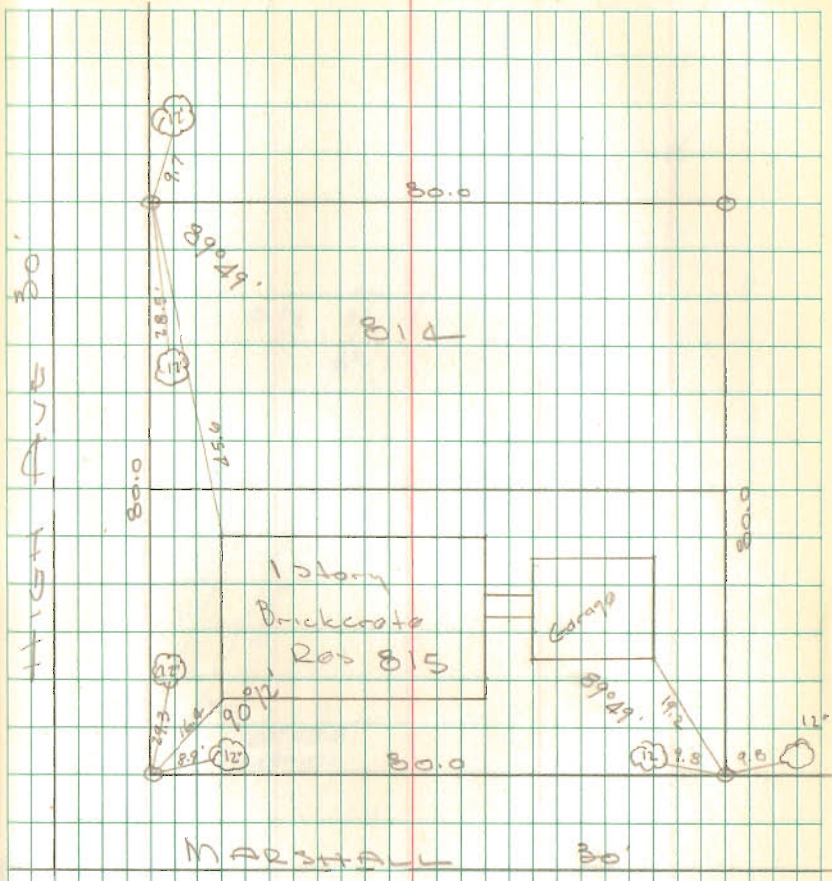
52



Lots 814-815
 Nicholsons 1st Add
 Russell's Point

Dodson
 C. Ricketts

3/19/66
 350
 53



○ = $\frac{3}{4}$ " pipe found

INDEXED ON MAP
 4016

SURVEY OF LOTS 1581-1582-1503
CHIPPEWA No. 3

Dodson
Whitlow

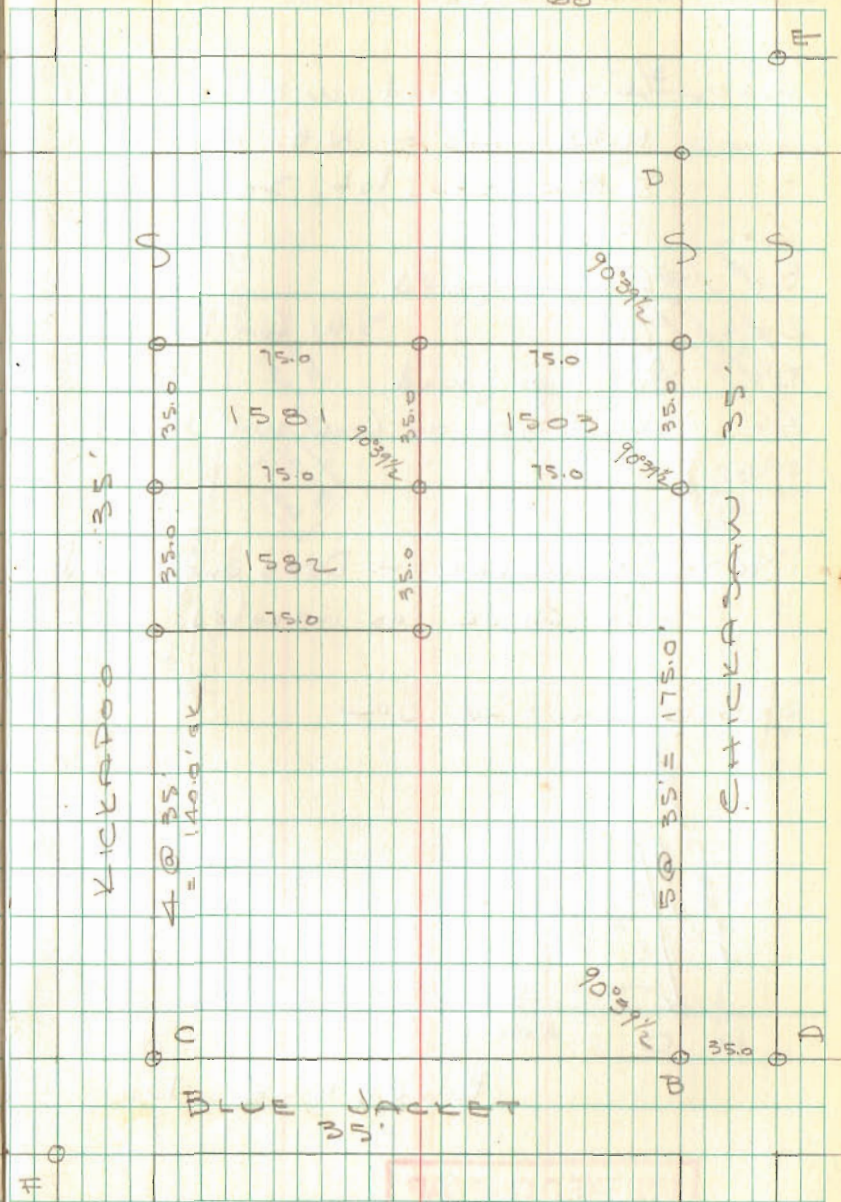
4/30/66
rain
60°

55

- A = 3/4" pipe found
- B = 5/8" ϕ Bar set on line A-C
- C = 3/4" pipe found
- D = " " "
- E = " " "
- F = " " "

Set B on line A-C, 35.0 from A
turned $\angle DBC = 90^\circ 39' 1/2$ (Plot = $90^\circ 37'$)

meas from B on W line Chickasaw
5 lots @ 35 = 175.0, set 5/8" Bar on
line B-D, turned $90^\circ 39' 1/2$ and
set lot corner (all 5/8" ϕ bars)



INDEXED ON MAP
4025

2025

38

Pt Lot 30
SHAWNEE ISLAND

A = $\frac{3}{4}$ " pipe found with fda cottage
N.W. 21.15 - N.E. 14.90
S.E. Cor. lot 30

B = $\frac{1}{2}$ " pipe found

C = $\frac{3}{4}$ " " " S.W. Cor lot 30

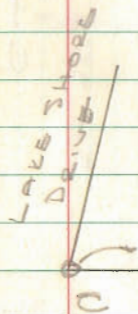
D = $\frac{3}{4}$ " pipe found

E = Chiseled + on Conc. wall found

F " " " " " "

NOTE ANGLES - Dead angles did not check as indicated

A-B-C on line OK



187.0 OK

BUCKEYE DR.

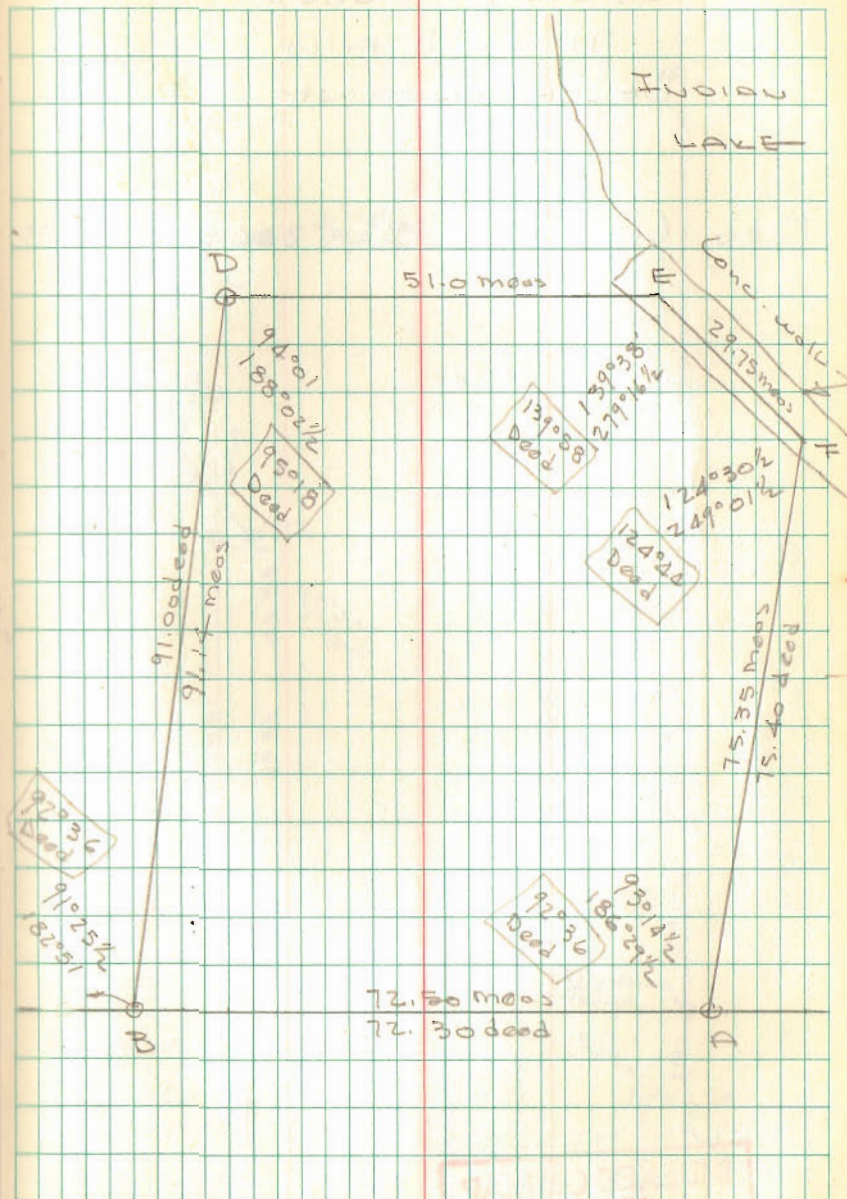
INDEXED ON MAP

4024

Dodson
Whitlow

4/30/66
60°

56



LEVAN SURVEY
 711 N. MAIN
 BELLEFONTAINE

SEE CITY ENG BK 266 pg 21-22 & 59

DEPOIT
 ST

Mon.

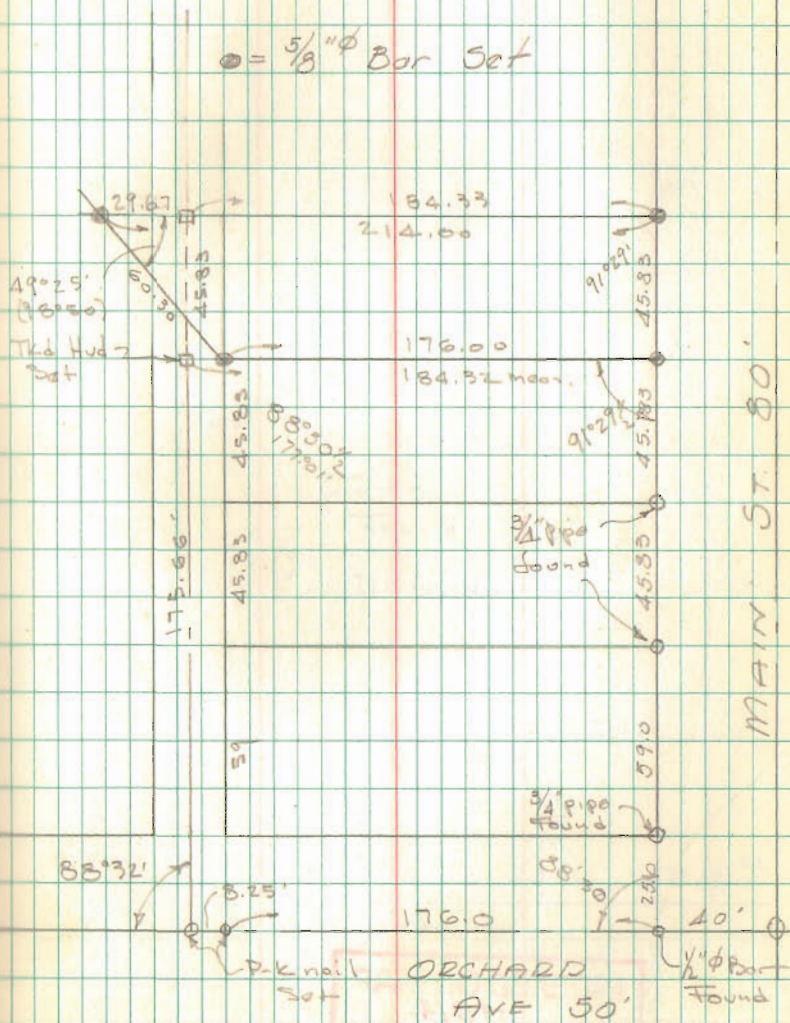
INDEXED ON MAP
 7514

Dodson
 C. Nichols

5 May 66
 65°

57

● = 5/8" φ Bar Set

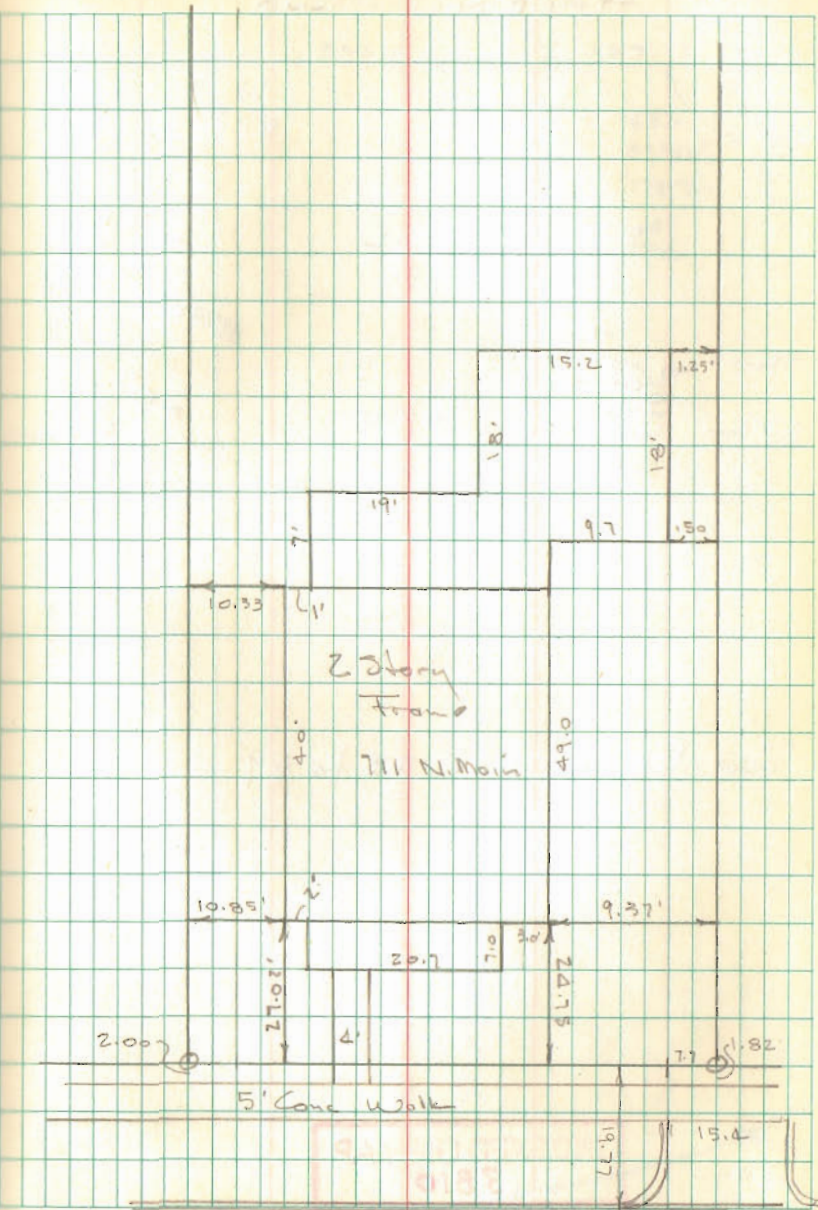


LEVAN SURVEY CONTO

Dodson
Wh. flow

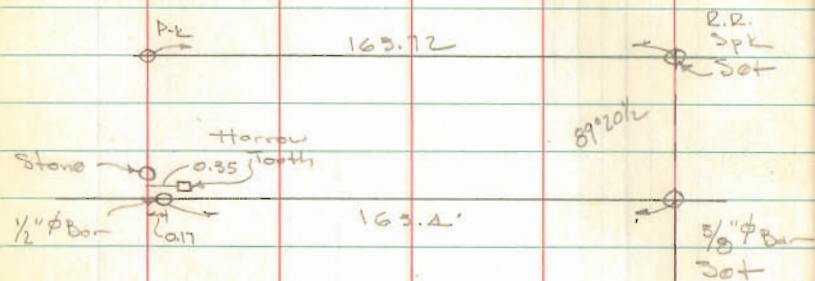
7 May 66

58



INDEXED ON MAP
7514

LOGAN G. Ind. Growth Corp.
HARRISON Twp.



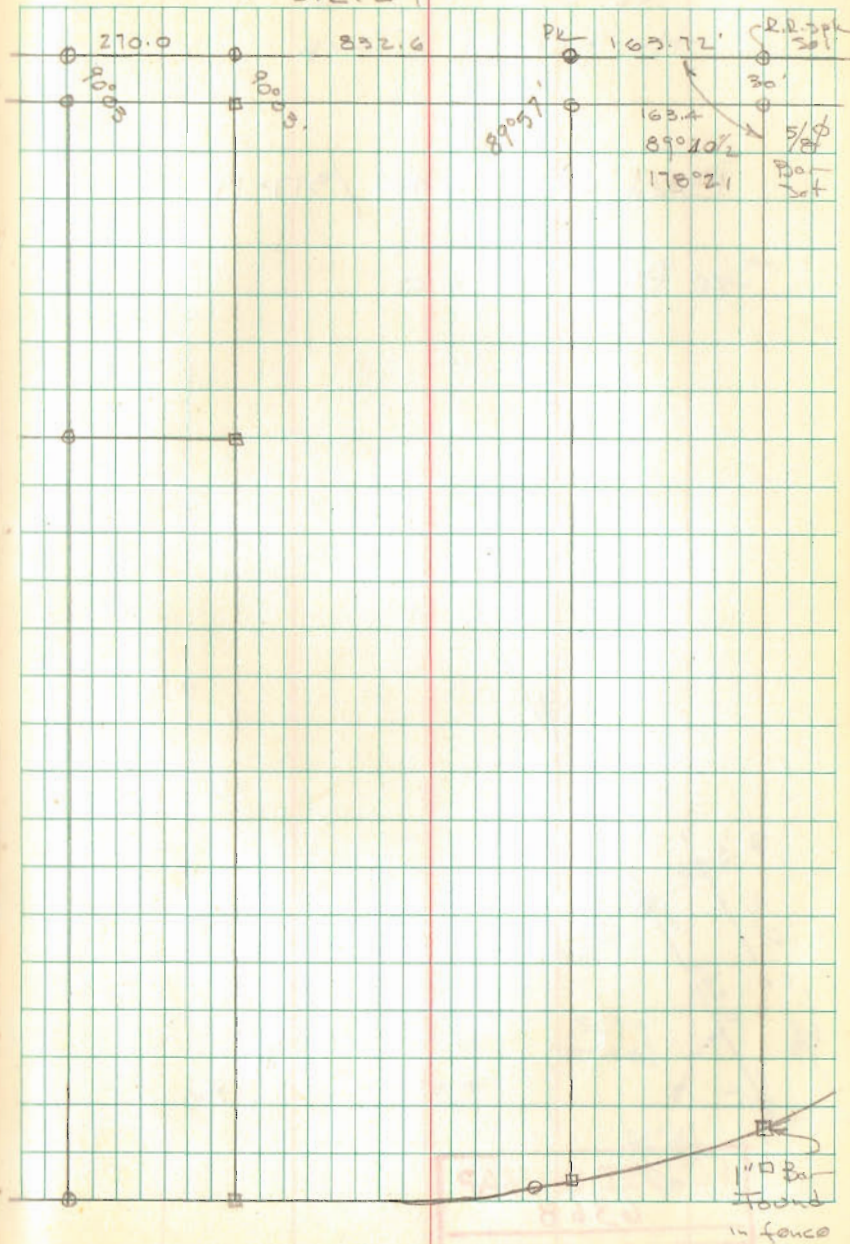
See Bk 6 pgs 58 to 69

INDEXED ON MAP
3810

5/8/66

59

S.R. 47



Boone Survey
Sec. 28 T-3 R-14
Harrison Twp

Deed Vol 244 / 517-19

See Plan L-20

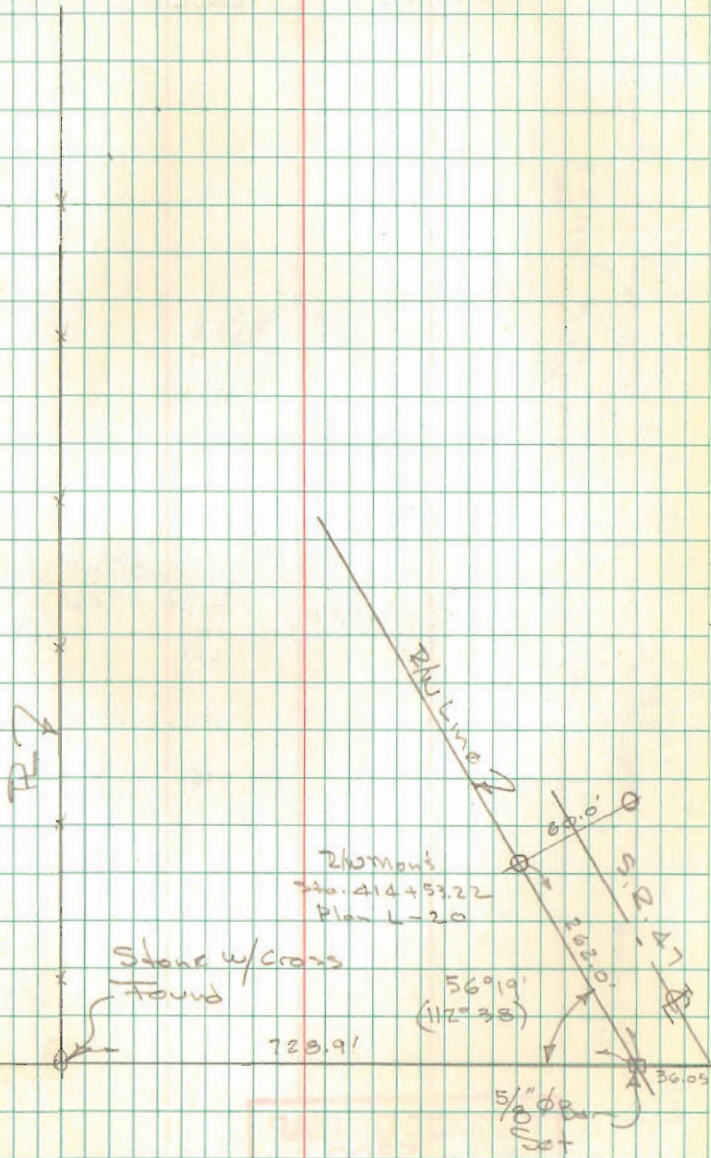
R 7

INDEXED ON MAP

6368

Dodson
C. Nichols

June 2, 1966 60
70°



08

KRESS SURVEY

LIBERTY TOWNSHIP

415.5
 71.7
 87.2

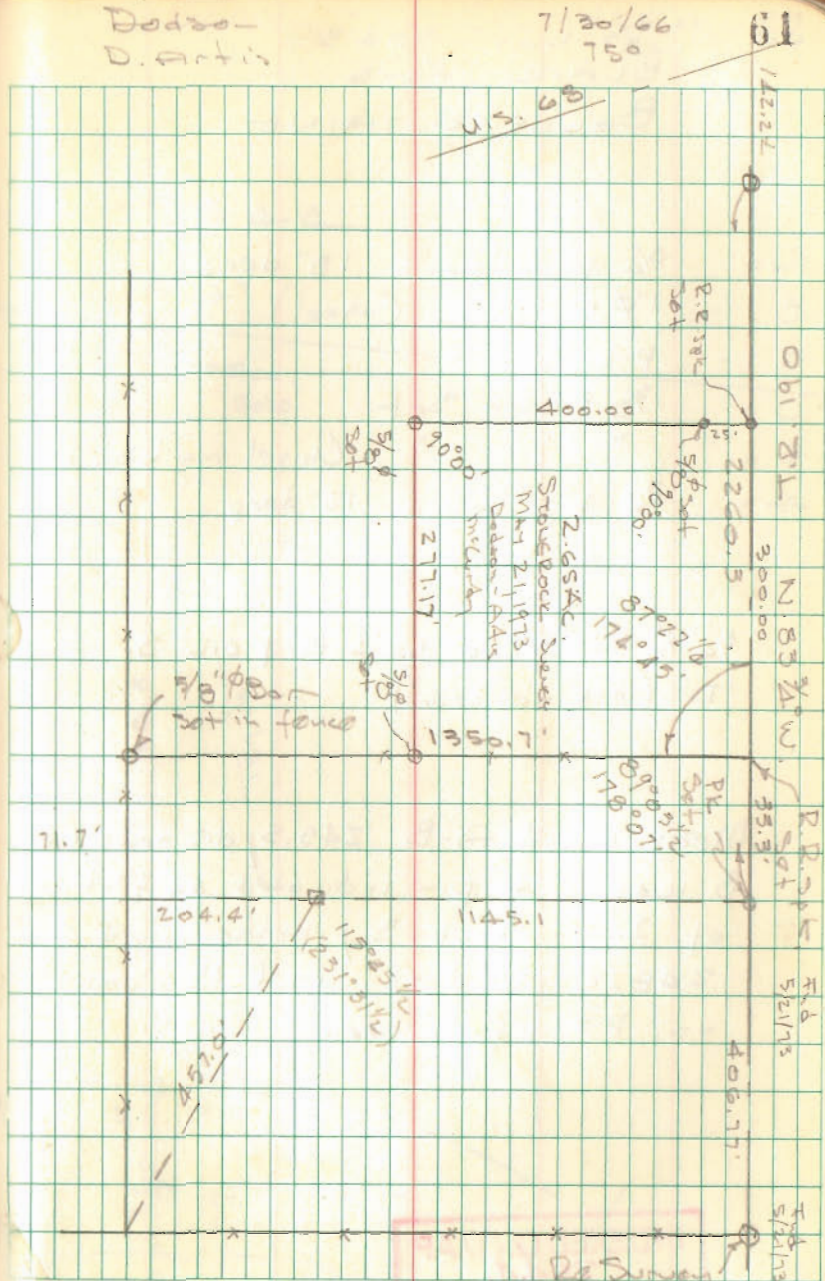
465.3
 2) 1330.7
 12
 13
 12
 10
 10

686.4
 665.3
 21.1

INDEXED ON MAP
 5300

Dodson-
 D. Artis

7/30/66
 750



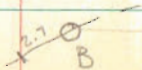
PT. LOT 3543
BLAIR AVE
BELLEFONTAINE

- A = 3/4" pipe found 18" deep
- B = 1" ϕ Bar found (Axel)
- C = P.K. Set
- D = 3/8" ϕ Bar Set
- E = " " " Chisel mark on curb
- F = 3/4" ϕ pipe found 12" deep

3/4" ϕ Bar found 1.0' \pm E. & 0.2' S. of
"D" (did not use)

Meas chord A-B 245.5, decided that
B was not pin indicated on plot
of Indian Park 3, meas chord
248.2 (plot dist) used this point
as PT of curve.

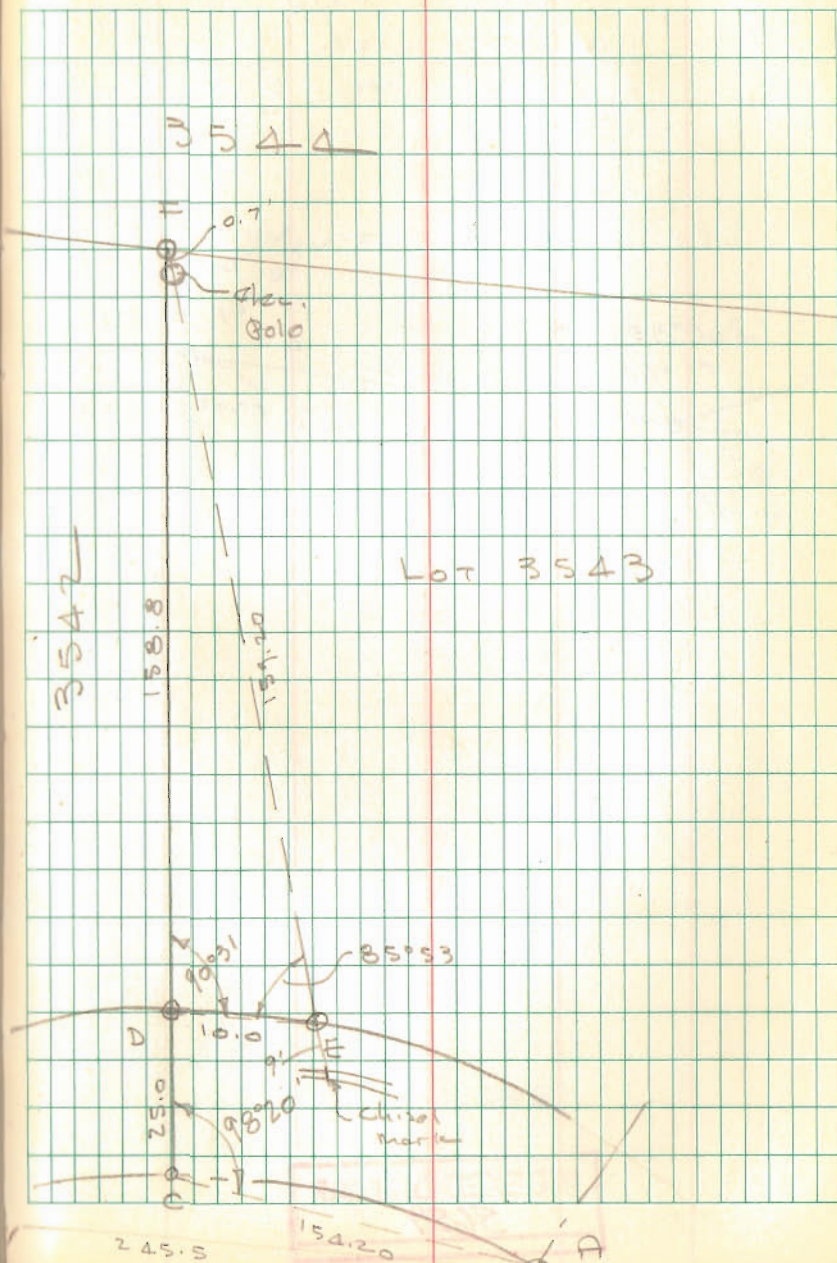
INDEXED ON MAP
2544



Dodson
Nichols

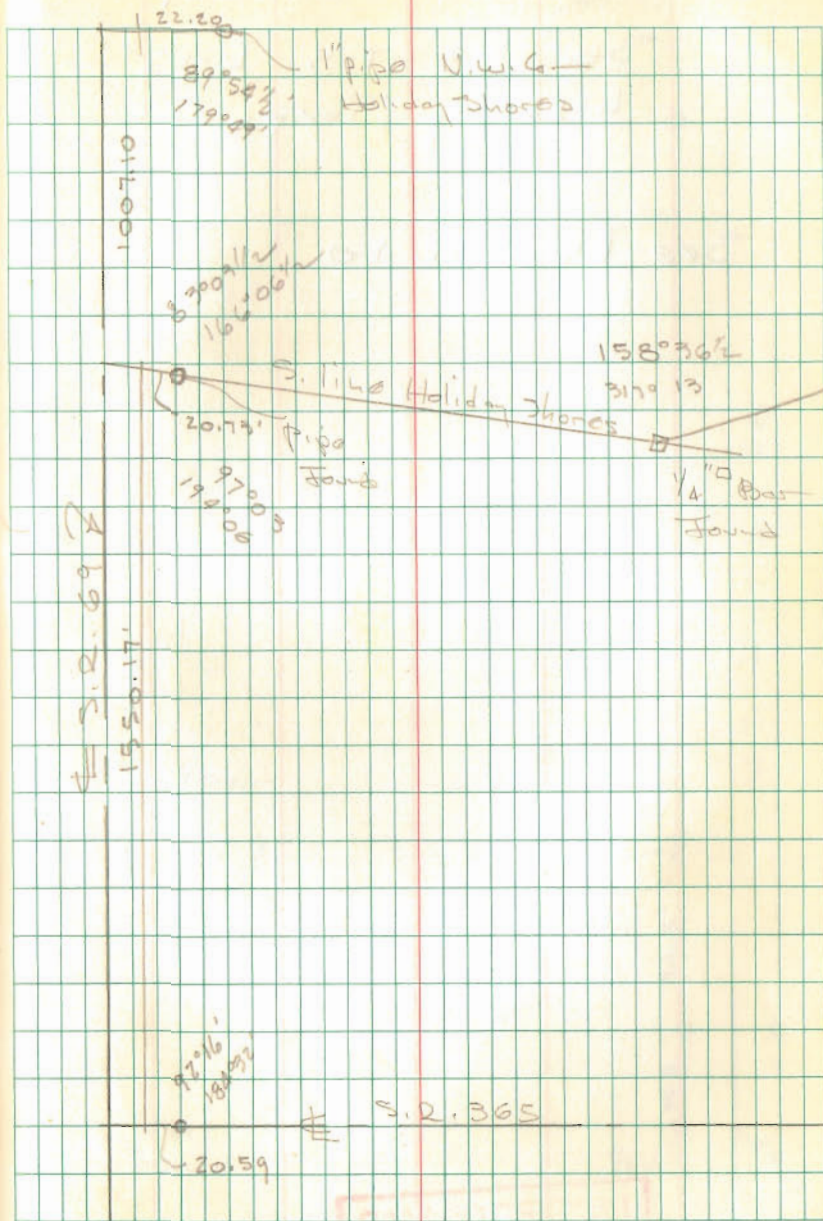
6/23/66
880

62



Byers Estate
Stokes Twp

INDEXED ON MAP
5659



TIPS

BRADLEY Survey
 Sec. 35 T-5 R-13
 Liberty Twp.

See Plan M-40

120
 95.4
 215.4

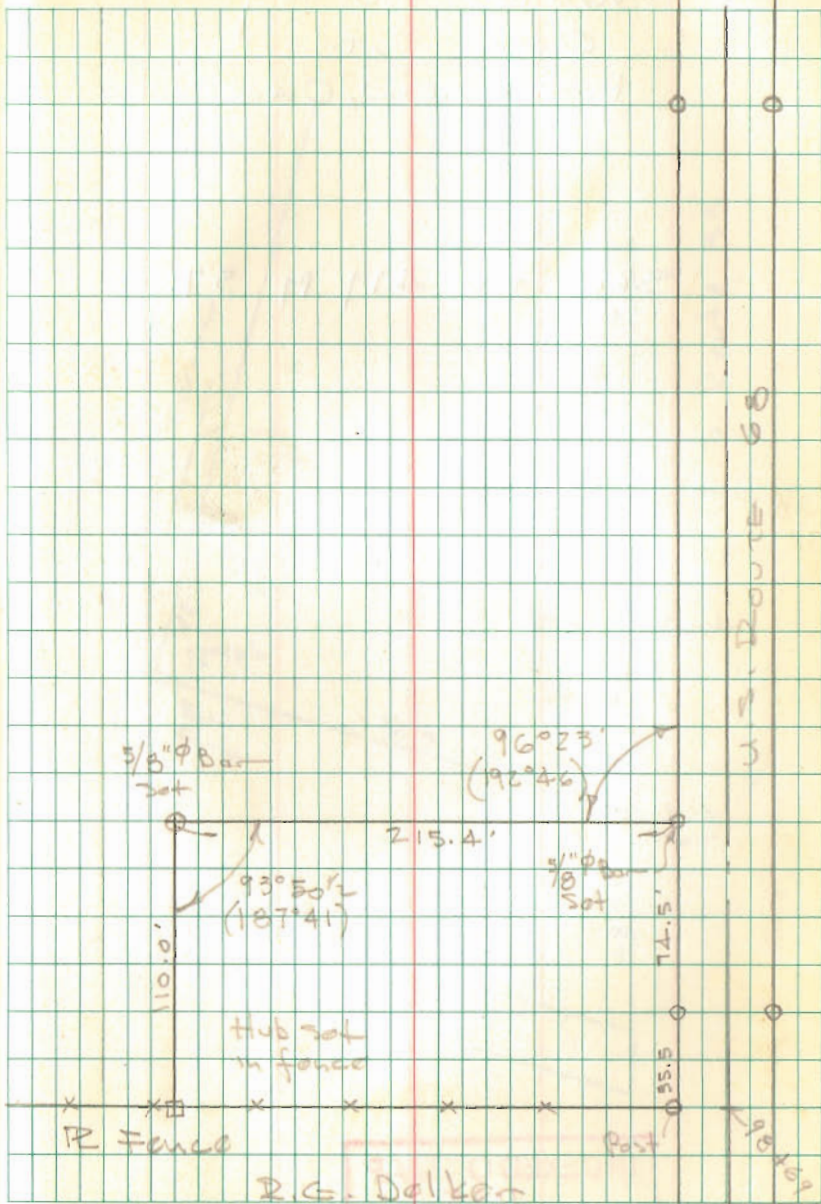
110.0
 35.3
 74.5

INDEXED ON MAP
 2927

Dodson-
 Uichole

July 5, 1966
~~80~~ 90°

64



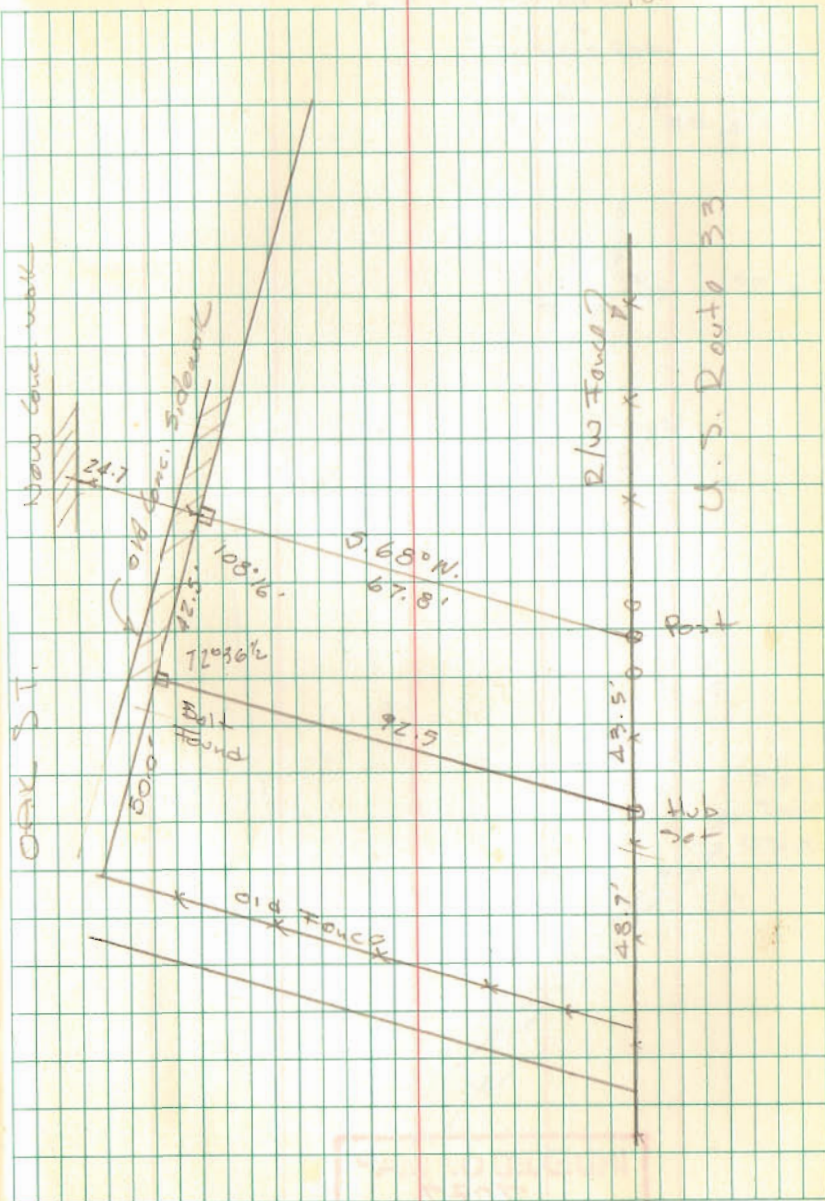
Wade Survey
 OAK ST.
 LAKEVIEW, OHIO

SEE FB 479 pg 57

INDEXED ON MAP
 1125

Dodson
 Nichols

7/12/66 65
 Rain
 780

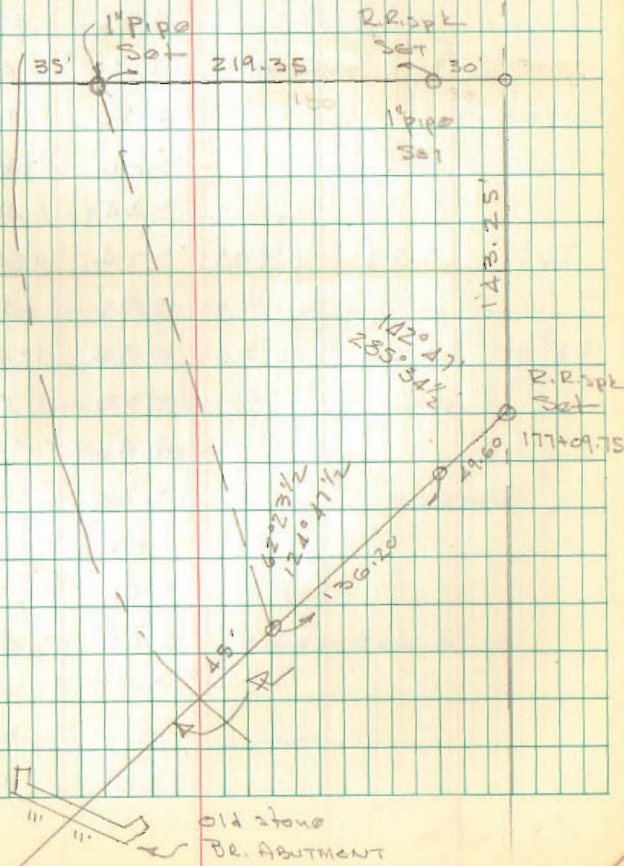
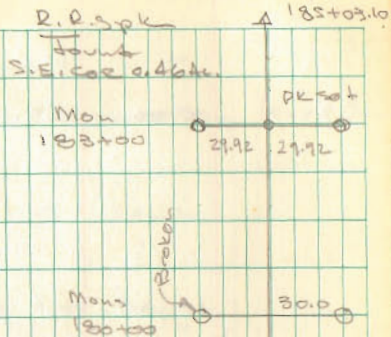


WILLIAMS SURVEY
RICHLAND TWP

INDEXED ON MAP
7087

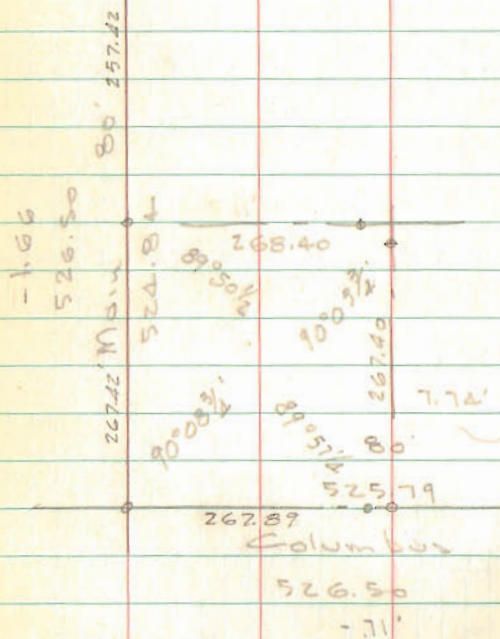
DODSON
DATA

MAY 6, 1972 66
75°



BELLEFONTAINE NAT. BANK

SANDUSKY
60'

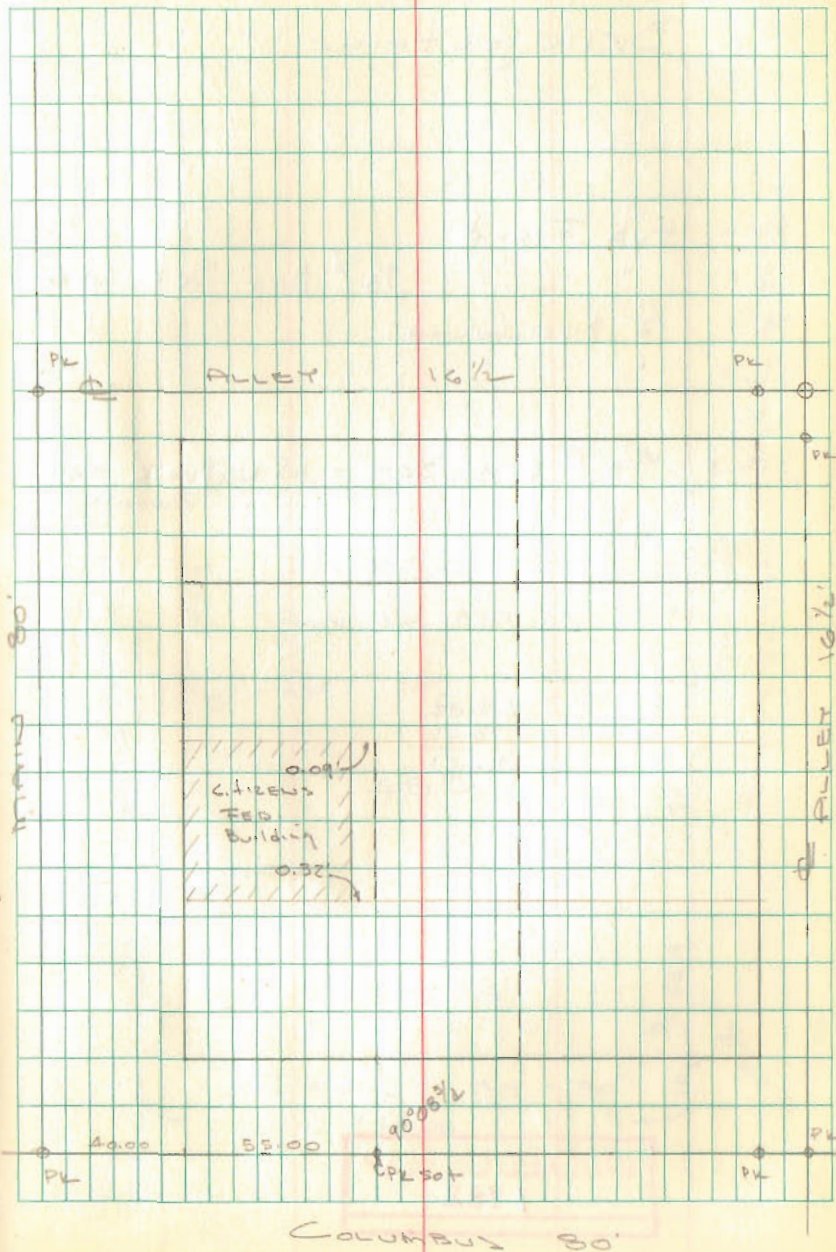


INDEXED ON MAP
1123

DODDON
Whitlow

1/23/66
80°

70



Lot 486
E. Patterson St
Bellefontaine

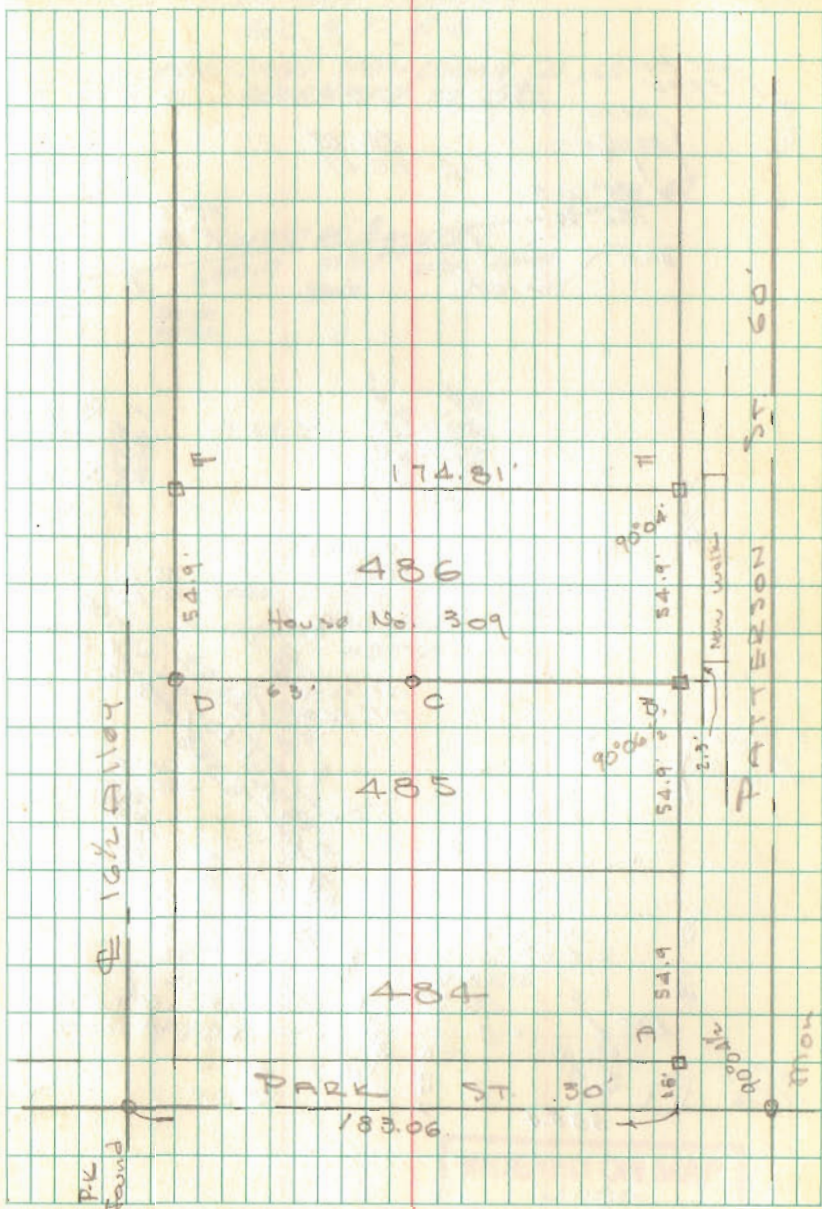
- A = Hub Found
- B = " " $\frac{5}{8}$ " ϕ Bar Set - 2.15' West
- C = $\frac{1}{2}$ " pipe found
- D = " "
- E =
- F = $\frac{5}{8}$ " ϕ Bar Set - 1.9' N of walk - 0.8' W of joint in new walk

183.06
8.25
174.81

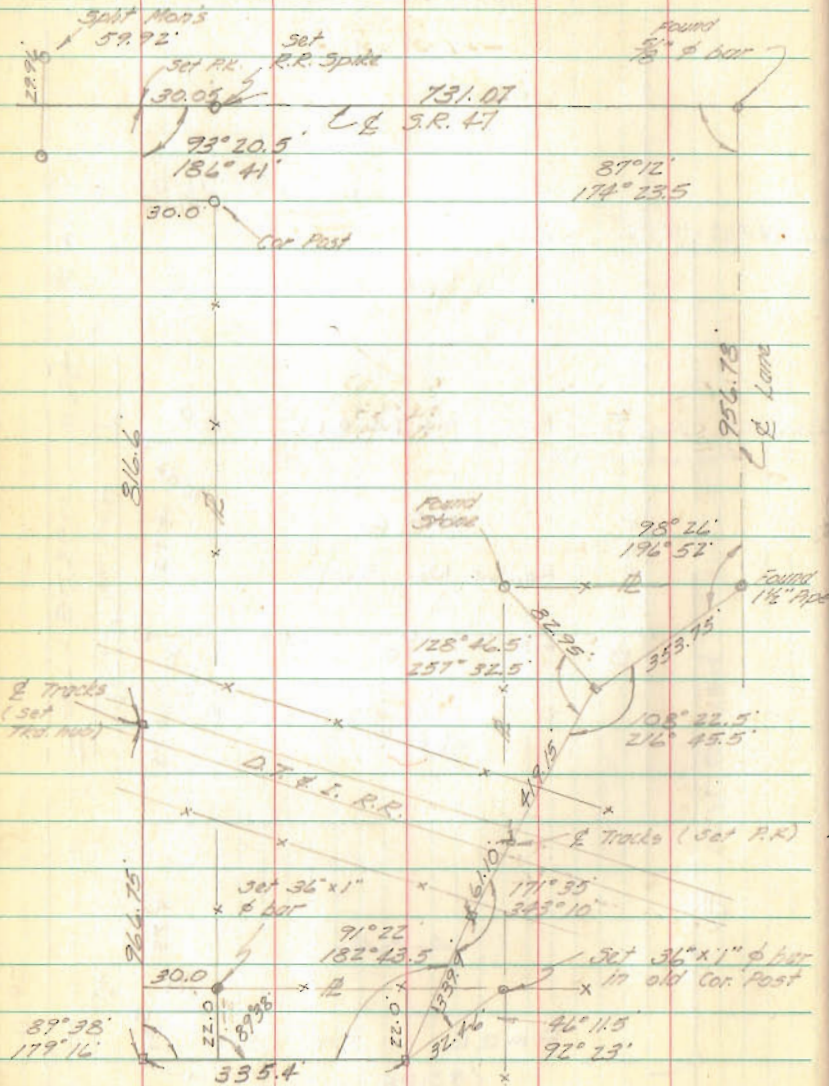
INDEXED ON MAP
1982

Dodson
Nichols

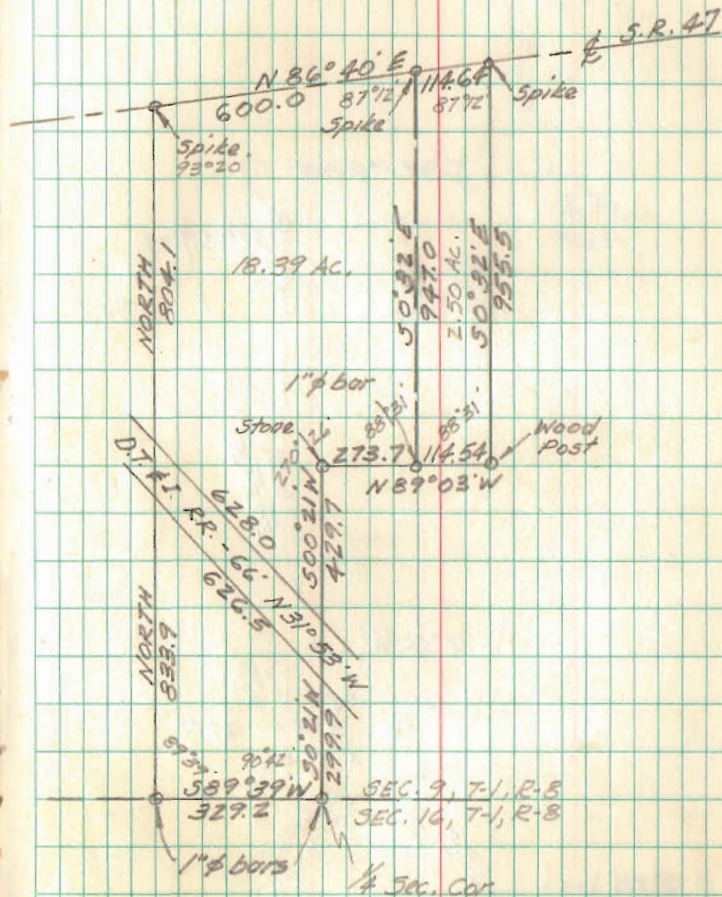
Oct 8, 1966 71
70°



ESHMAN SURVEY
SEC. 9, T-1, R-8

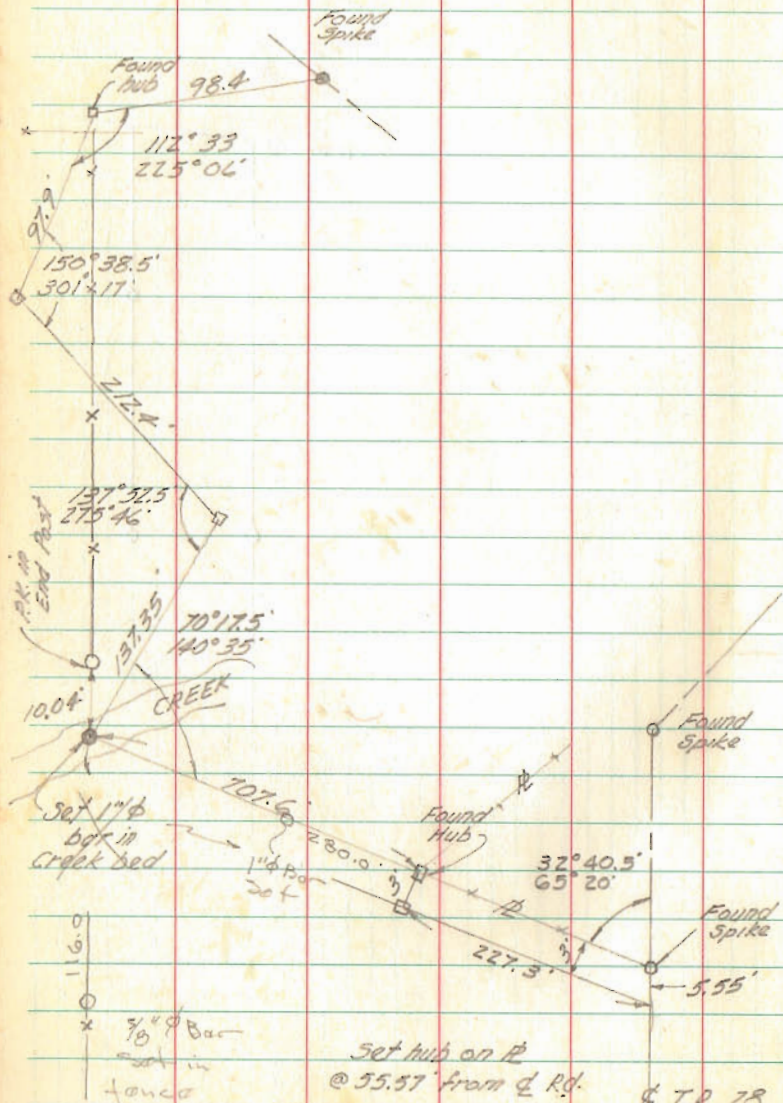


ESHMAN SURVEY
SEC. 9, T-1, R-8
PLEASANT TWP. LOGAN CO., O.
NOVEMBER 27, 1966



INDEXED ON MAP
4000

Schlumbohm Survey
 Jefferson Twp
 Lockscrew Hill



Whitlow
 Antis

2/2/67 75

279.90
 129.54
 302.15
 707.59

INDEXED ON MAP
 3513

WELL SITE SURVEY
FOR

E. & S. DRILLING CO.
LAKEVIEW, OHIO

STOKES TOWNSHIP

INDEXED ON MAP
2556

Dodson
Whitlow

1/28/67 76
20°

L. P. RICHARDSON ETAL
152.34 AC.

S.E. 1/4 SEC. 31 T-6S. R-8E.

N. 295,770
E. 1,589,420
240'
ELEV. 1007
1.0 1/2° E.

N. 88 1/2° W
C.H. No. 52



N. 295,200
E. 1,589,400
298.7'
ELEV. 1008
285.5'

W. E. ROSE 80.00 AC.
N.E. 1/4 SEC. 6 T-7S. R-8E.

