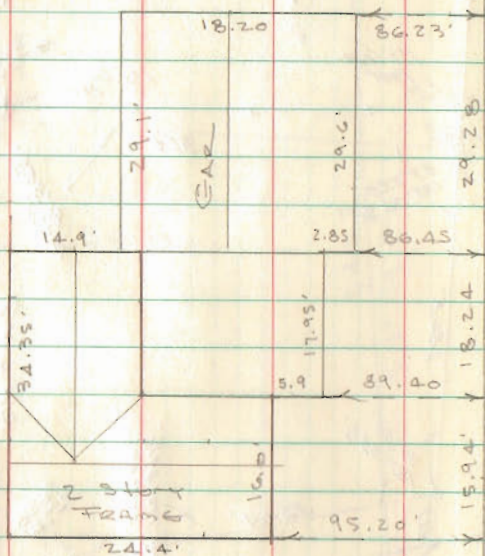






TAYLOR SURVEY  
 SEC. 7, T-65, R. 8 E  
 STOKES TOWNSHIP

Building Located 5-6-73  
 Dodson - Artis - McKurdy

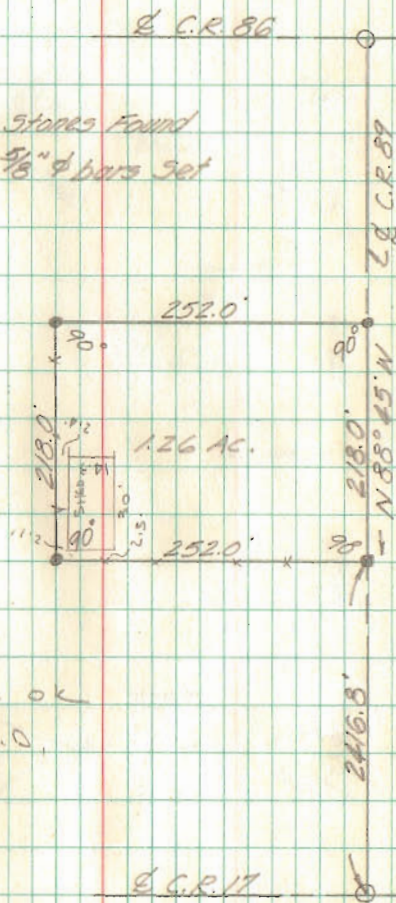


101.05  
 15.94  
 18.24  
 29.28  
 87.42  
 251.93

INDEXED ON MAP  
 5442

7-10-67  
 Whitlow  
 Artis

- Denotes Stones Found
- Denotes 5/8"  $\phi$  bars Set



All bars found ok  
 5-6-73 D.L.O.

C.R. 17

INDEXED ON MAP  
 5442



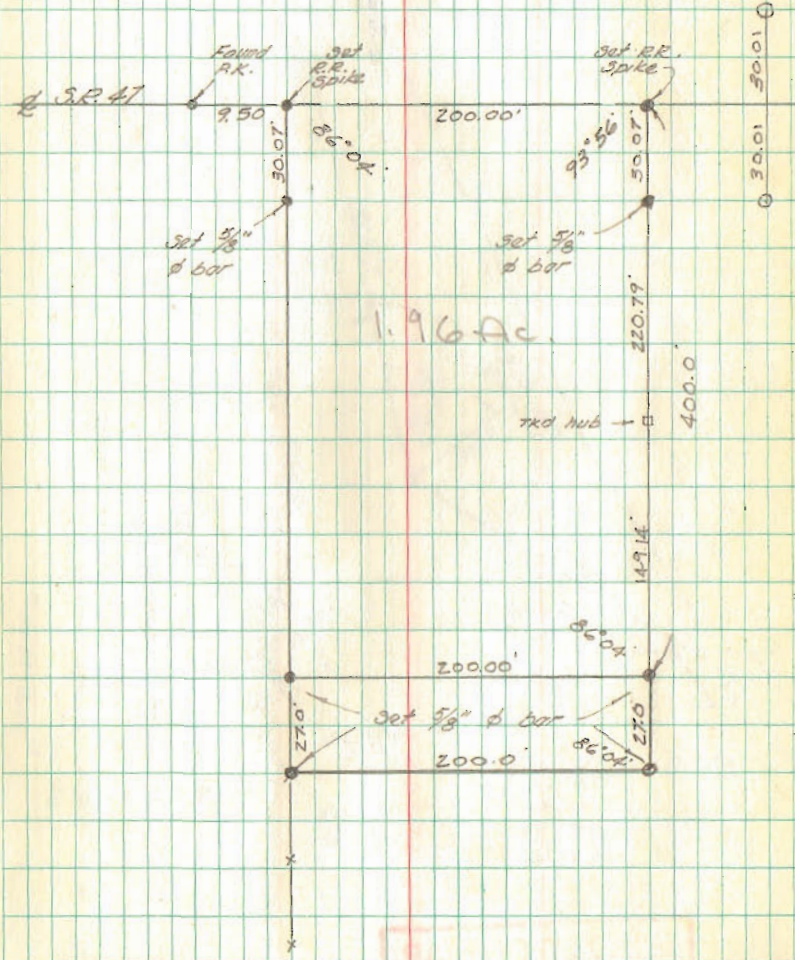
Storm Survey  
 V.M.S. 3441  
 JEFFERSON TWP.

Ac 27' on South end

INDEXED ON MAP  
 4720

7-22-67  
 W. D. Brown  
 Ar 15  
 80°

Map @  
 928700





Mc Kinnon Survey  
S. 7 T-2 R-15

HARRISON TWP.

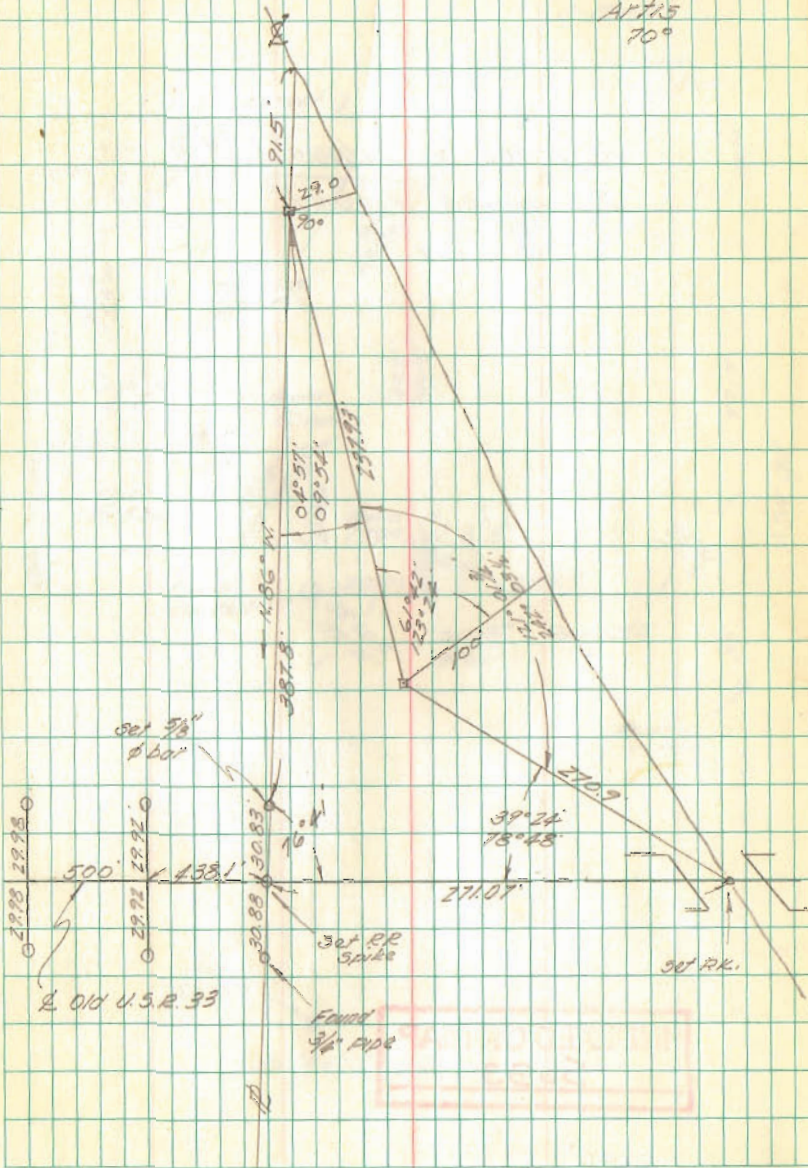
$76^{\circ} 41'$   
 $39^{\circ} 24'$   
 $4^{\circ} 57'$   
 $238^{\circ} 58'$   
 $35T 180$

INDEXED ON MAP

6931

3

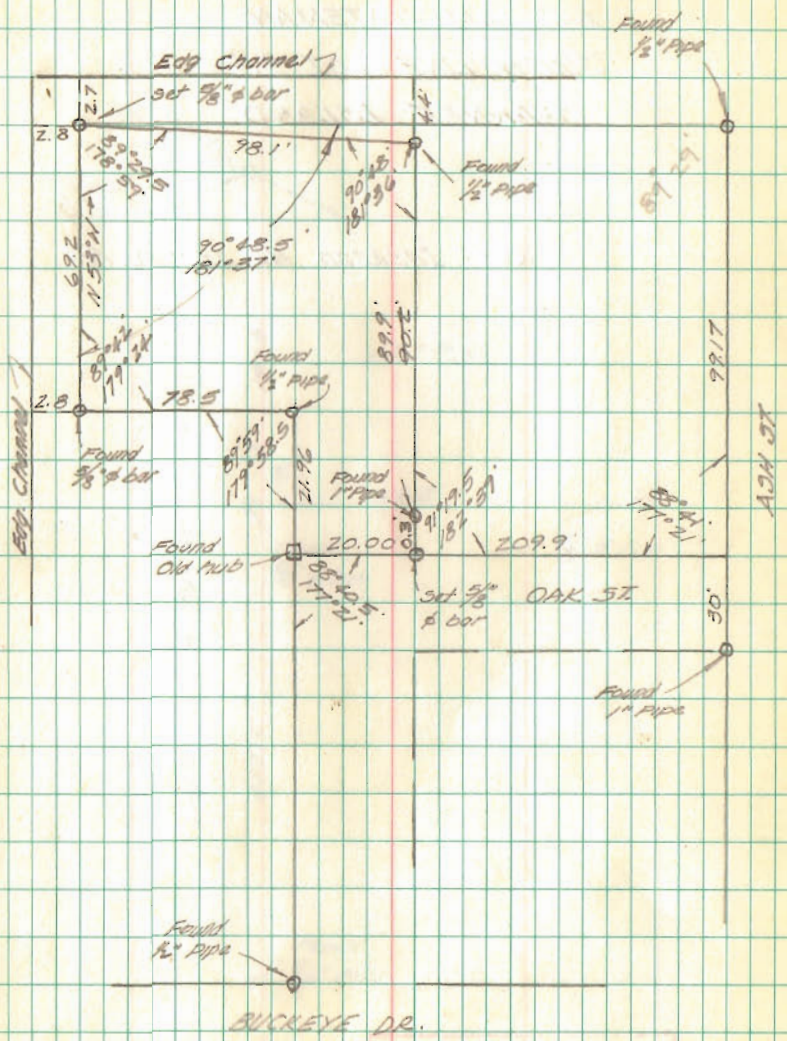
8-5-67  
McKinnon  
Artes  
70°





LOT 56  
 Midlake Subdivision #3  
 Tecumseh Island

4  
 Window  
 N 715  
 8-12-67



INDEXED ON MAP  
 S033

0.46'  
 5.32'



WILLIAM TATEMAN  
SOUTH LINE LOT #3  
SHAWNEE ISLAND

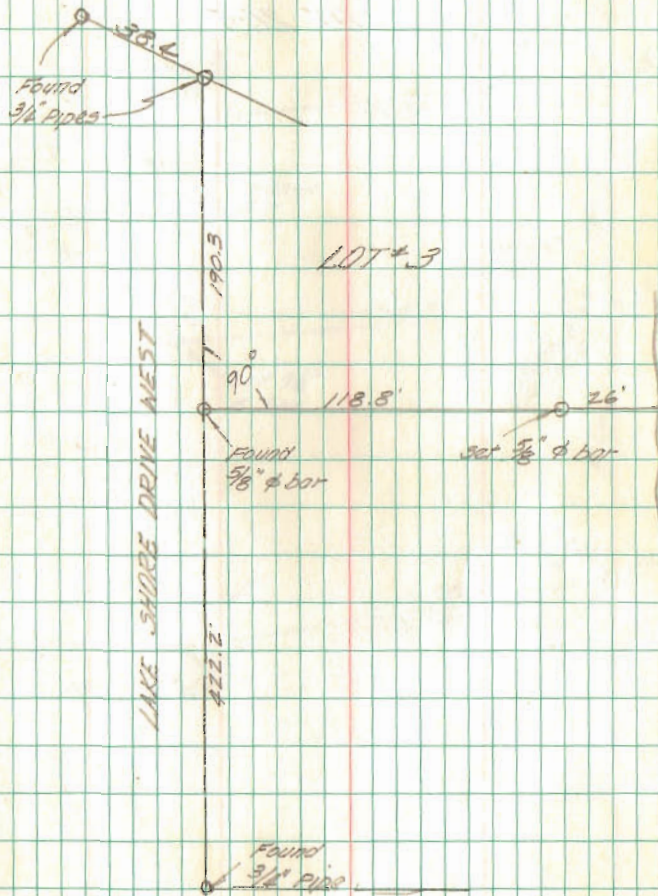
Ref: Inskip Sk. 13 - Pg. 85

INDEXED ON MAP

8868

5

8-19-67  
Whitlow  
ARTIS

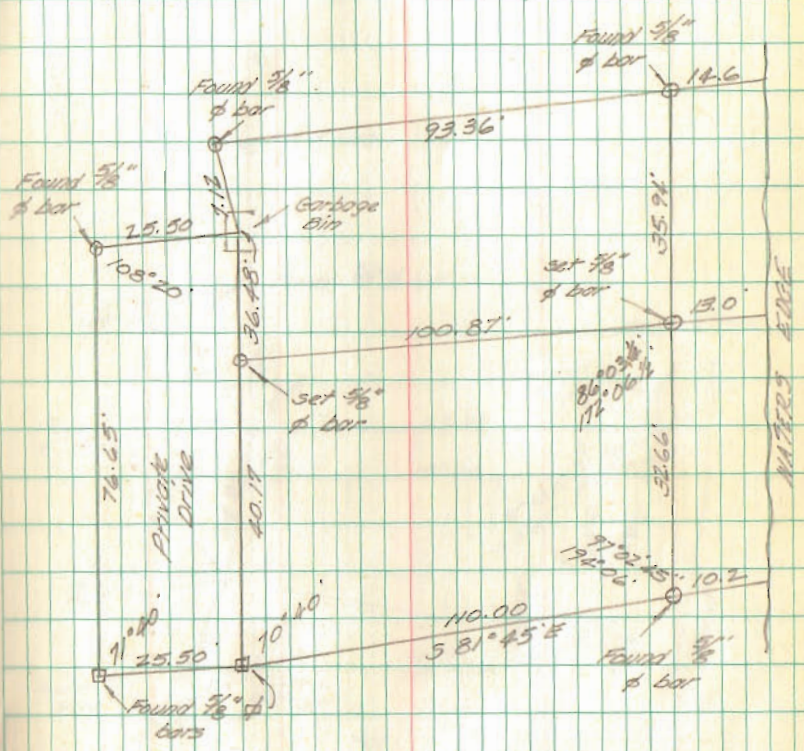


8872



MINNEWAUKEN ISLAND  
LOT 205

8-19-67  
WILLOW  
ARLIS



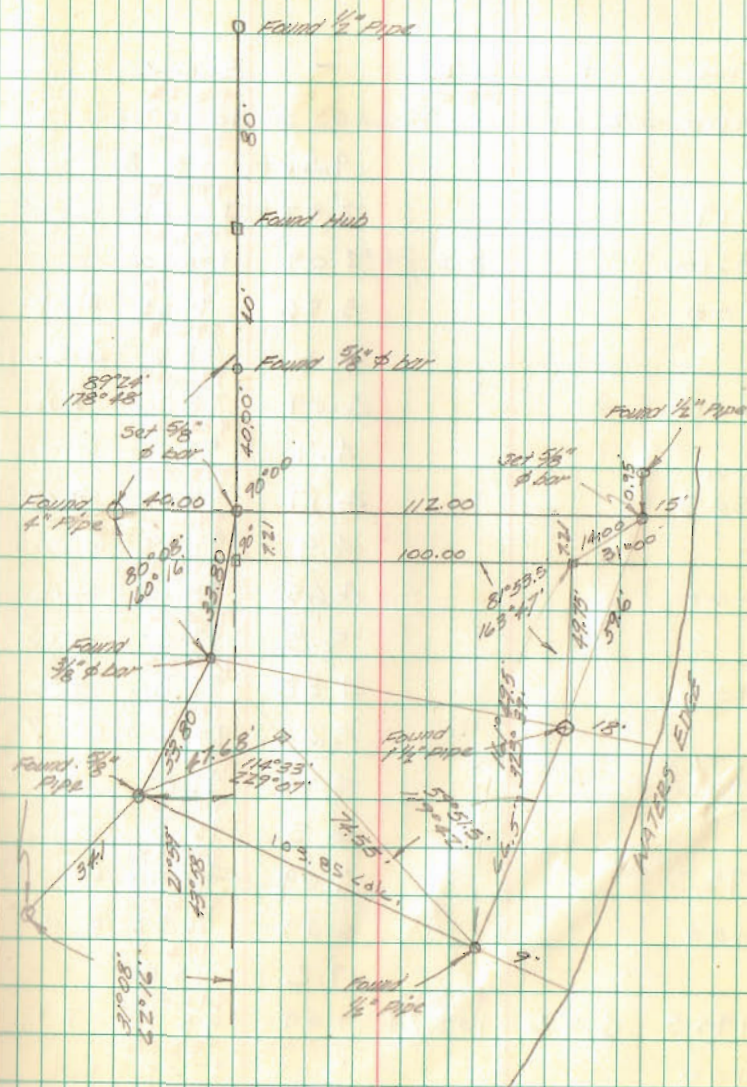
5188 MAP



SEMINOLE ISLAND

LOTS 139 & 140

8-19-67  
Whitlow  
Arts



INDEXED ON MAP

4223



Fisher Survey  
Delle Center, Ohio

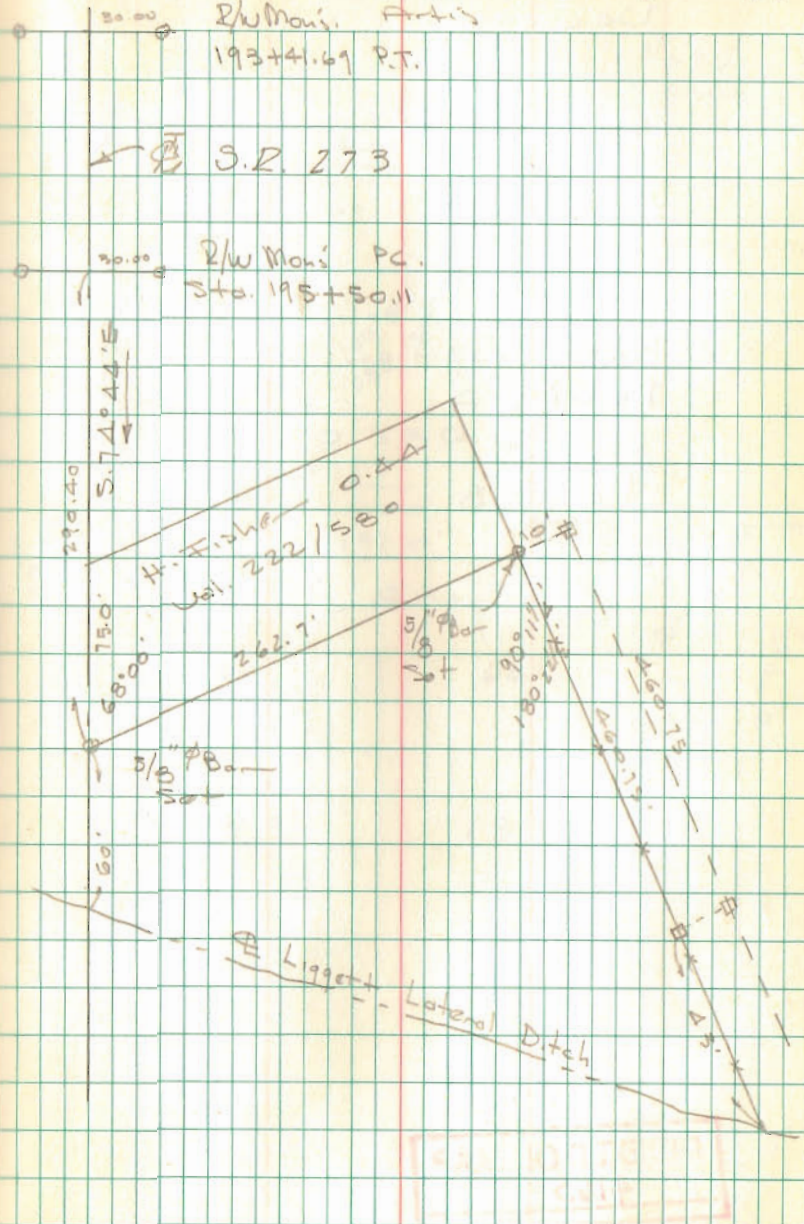
See Plan L-13

INDEXED ON MAP  
9623

Dodson  
Whitlow  
Archie

9/2/67

10





Snow Survey,  
De Graff Ohio

Near Addition

Plot Bk A

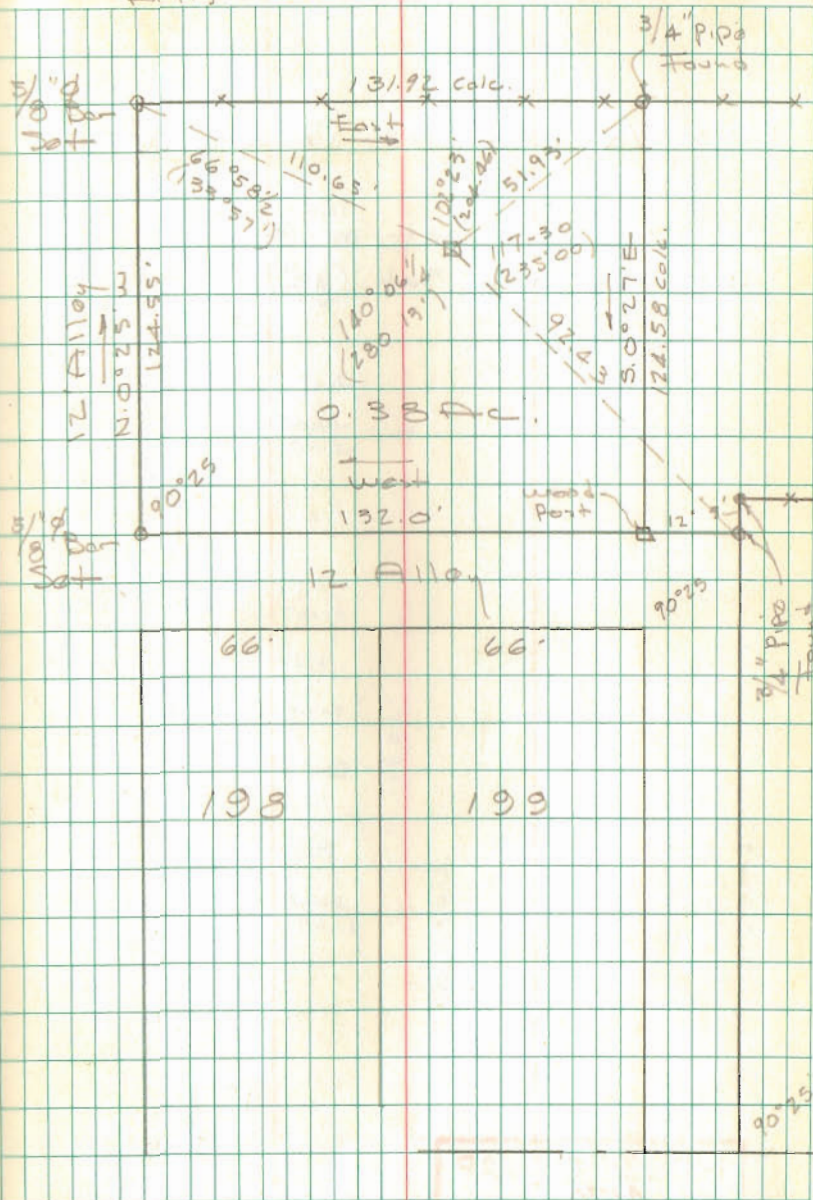
Vol. 1

Pg. 88

INDEXED ON MAP  
4165

Dadson  
Whitlow  
Part 3

9/2/67 11



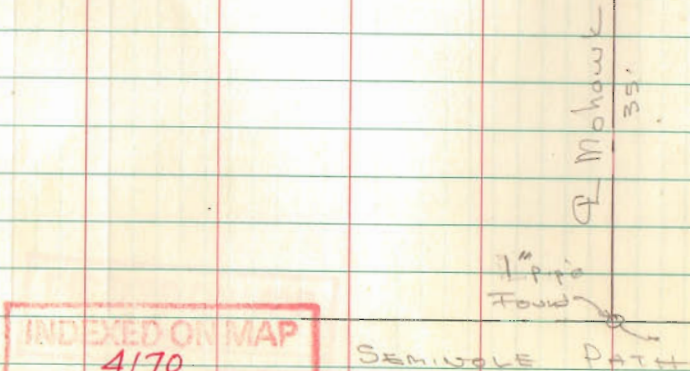


SURVEY OF Lots 755-749  
CHIPPEWA PARK

○ = 5/8"  $\phi$  Bar set @ lot corner.

○ = P-K nail set on  $\phi$

□ = Tkd Hub set (18")

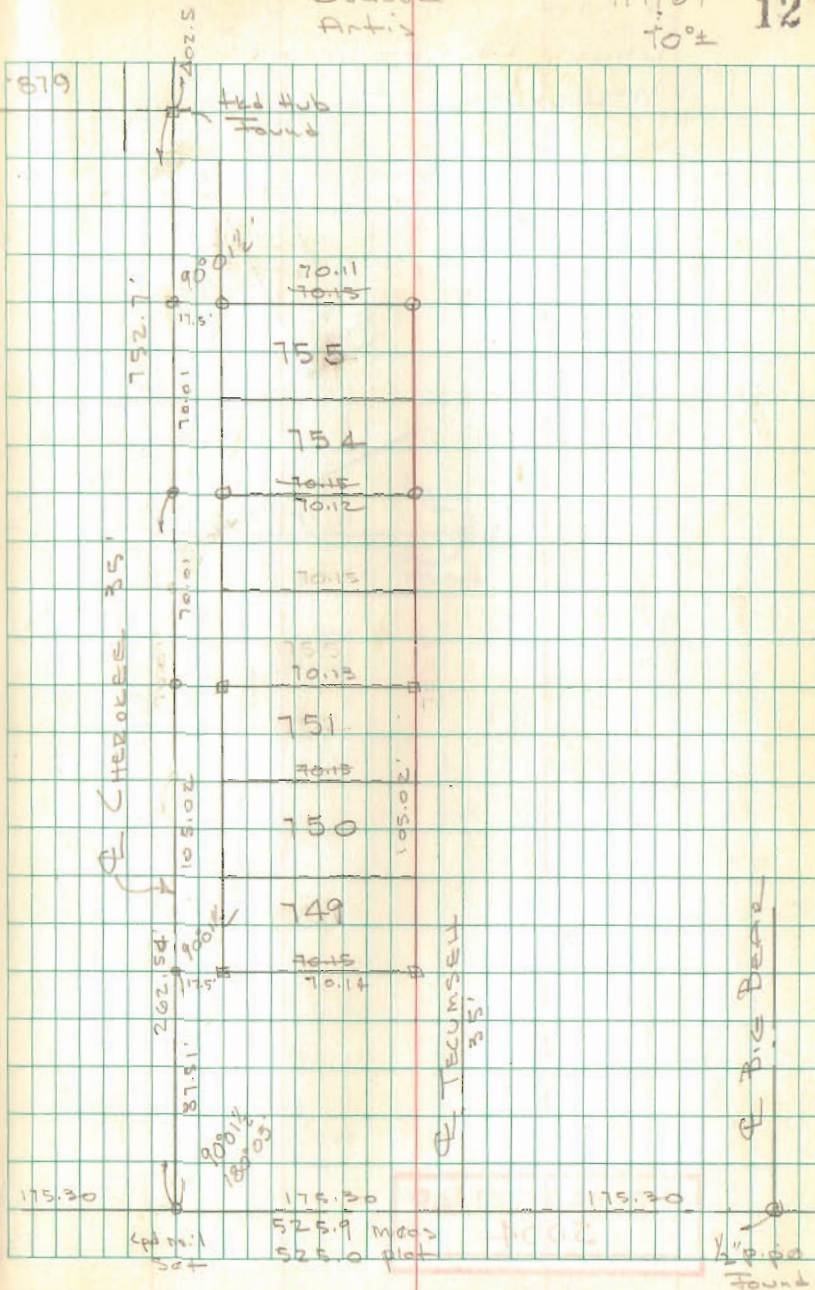


INDEXED ON MAP  
4170

Dodge -  
Antis

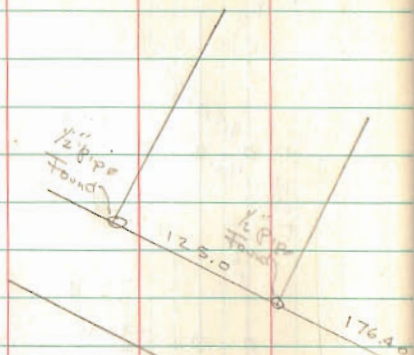
9/17/67  
70±

12





NEEDLES SURVEY  
DELL ALLOTMENT  
McARTHUR TOWNSHIP

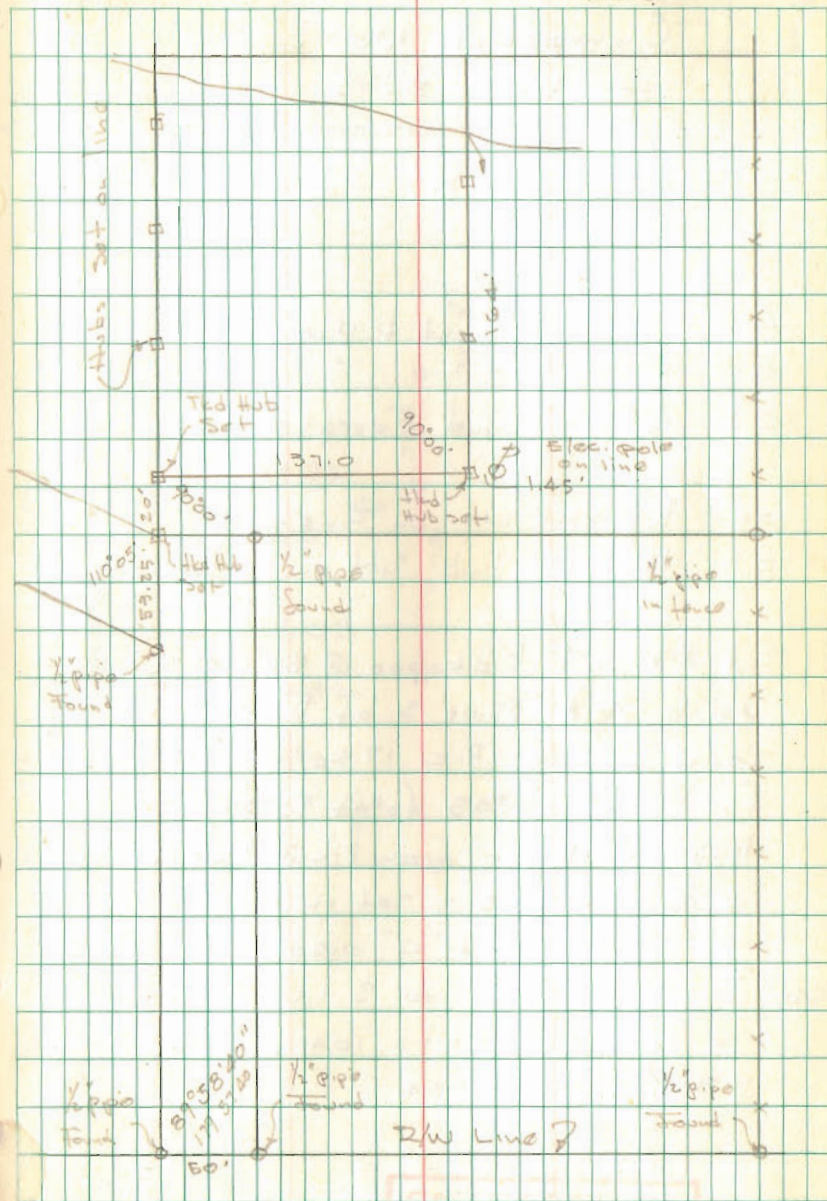


INDEXED ON MAP  
5004

Dodson  
Nichols

9/9/67  
70°  
Rail

13



1/2" pipe found  
50'  
2/w Line?  
1/2" pipe found

C.H. 57



SURVEY OF  
 LOTS 1607-1608  
 Chippawa No. 3  
 For Harry Bard  
 Morral, Ohio

1040.31    719.01  
 - 0.50  
 1039.81

- A = 1/4" pipe found & used
- B = " " " "
- C = 1/2" pipe found 8" deep & used
- o = P-K nail set on  $\Phi$  of 3'
- = hkd 18" hub set on lot corner

Set P-K out Kickapoo @ S. line Blue Jkt.  
 using A & 35.00' S. of B. as line -  
 found "C", set P-K 17.50' W. for foresight  
 turned  $\angle 90^{\circ}38'$  (plot  $90^{\circ}37'$ ) -  
 Meas Kickapoo from P-K @ Blue Jkt to P-K  
 @ "C" = 1040.3 - set on P-K @ "C" turned  
 $89^{\circ}22'$  missed "C" 0.50' -  
 Meas. Dist from "C" to S. line Blue Jacket  
 = 1039.8 (Plot = 1041.0) = 1.2 short  
 $1039.8 / 1041.0 = 0.99884$

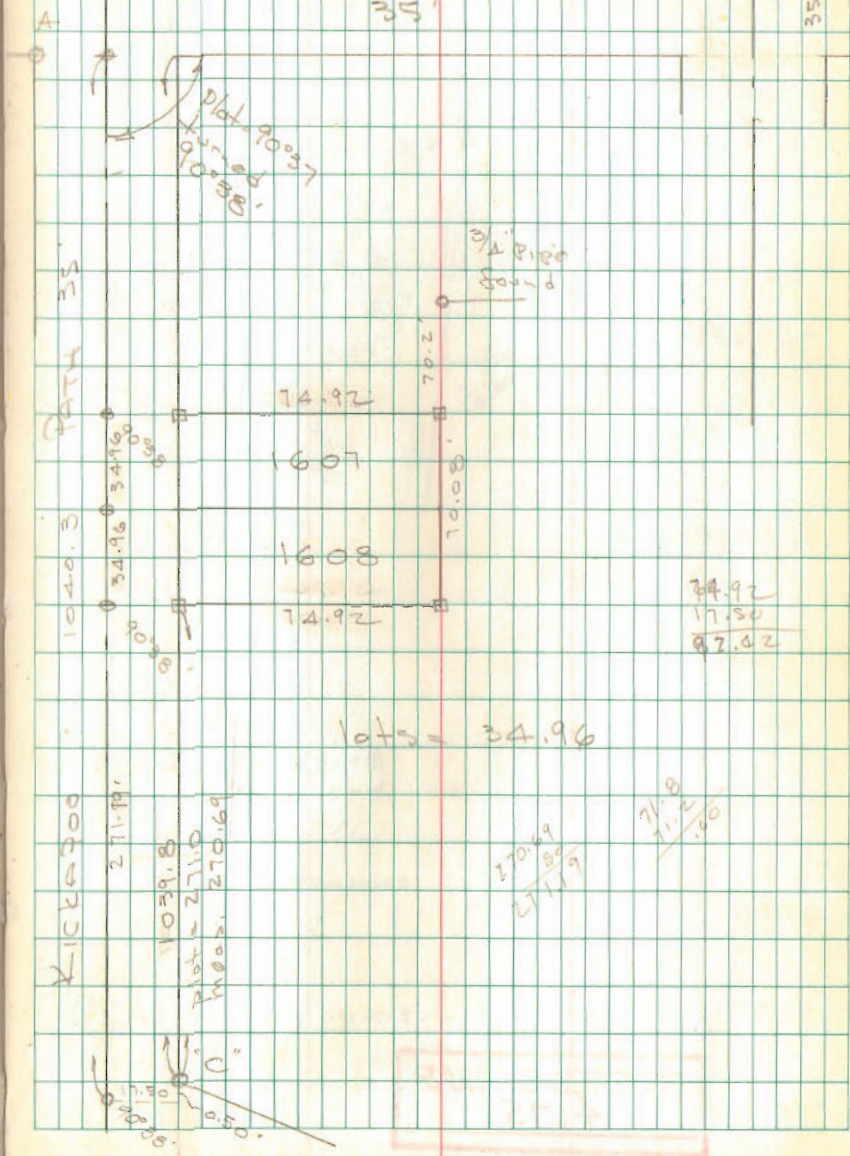
INDEXED ON MAP  
 4169

Dodson  
 Nichols

9/19/67  
 Rain  
 70°

14  
 B  
 35.00'

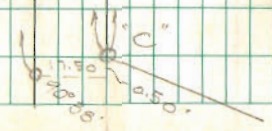
BLUE JACKET PATH  
 35'



KICKAPOO  
 271.19'  
 1039.8  
 Plot = 271.0  
 Meas. 270.69

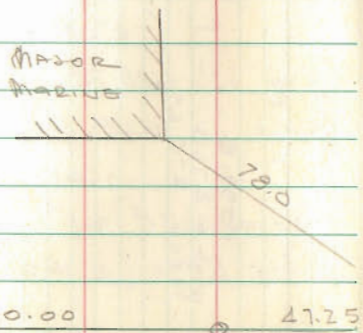
$\frac{270.69}{271.19}$

$\frac{71.8}{71.2}$   
 .00





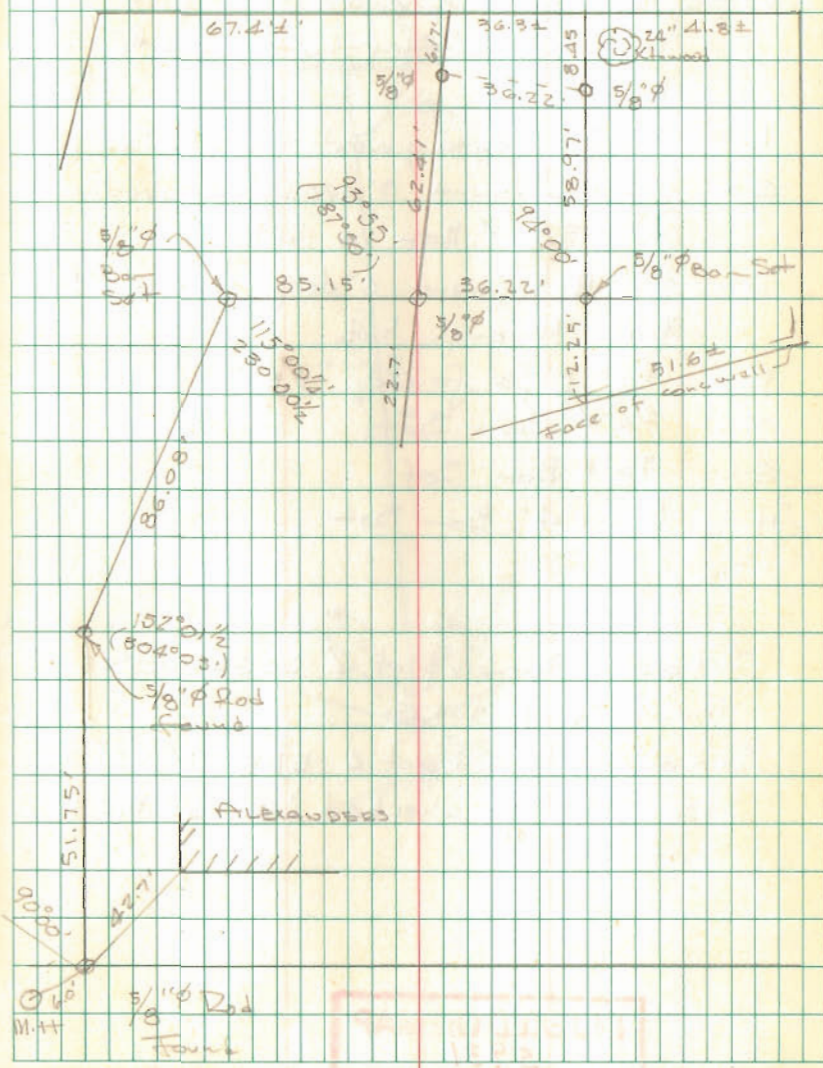
ALEXANDER SURVEY  
 RUSSELLS POINT  
 S.R. 366



INDEXED ON MAP  
 4175

Dodson  
 #175

9/13/67  
 75°      15



INDEXED ON MAP  
 4175







LOT A 31  
ORCHARD ISLAND

Dodson  
Nichols

Irons found @ intersections as  
indicated in F.B. 652

519.80	143.69
	119.95
143.69	<u>23.74</u>

A = 5/8"  $\phi$  Bar Set - found 1" pipe  
6" deep 0.1' north & 0.05' west of  
bar set.

B = 5/8"  $\phi$  Bar Set 0.18' south of corner  
- 3/4" pipe found 0.3' west & 0.1' north

C = 5/8"  $\phi$  Bar Set - found 3/4" pipe  
0.5' north & 0.1' west

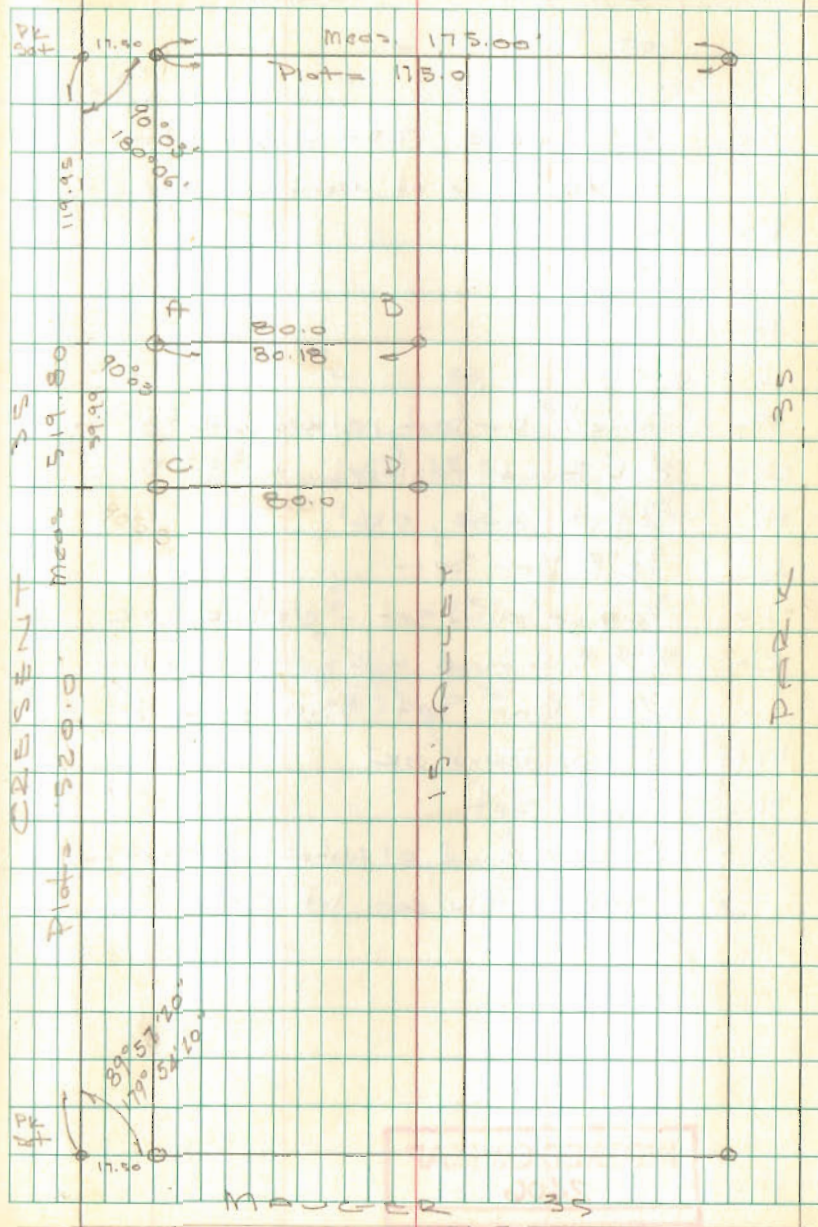
D = 5/8"  $\phi$  Bar Set - power pole on  
line - Meas. 80.0 from C &  
39.99 from B

INDEXED ON MAP  
4176

WOODLAWN 35'

9/29/67

17





Wicker Survey  
ORCHARD ISLAND

LOT 155-156

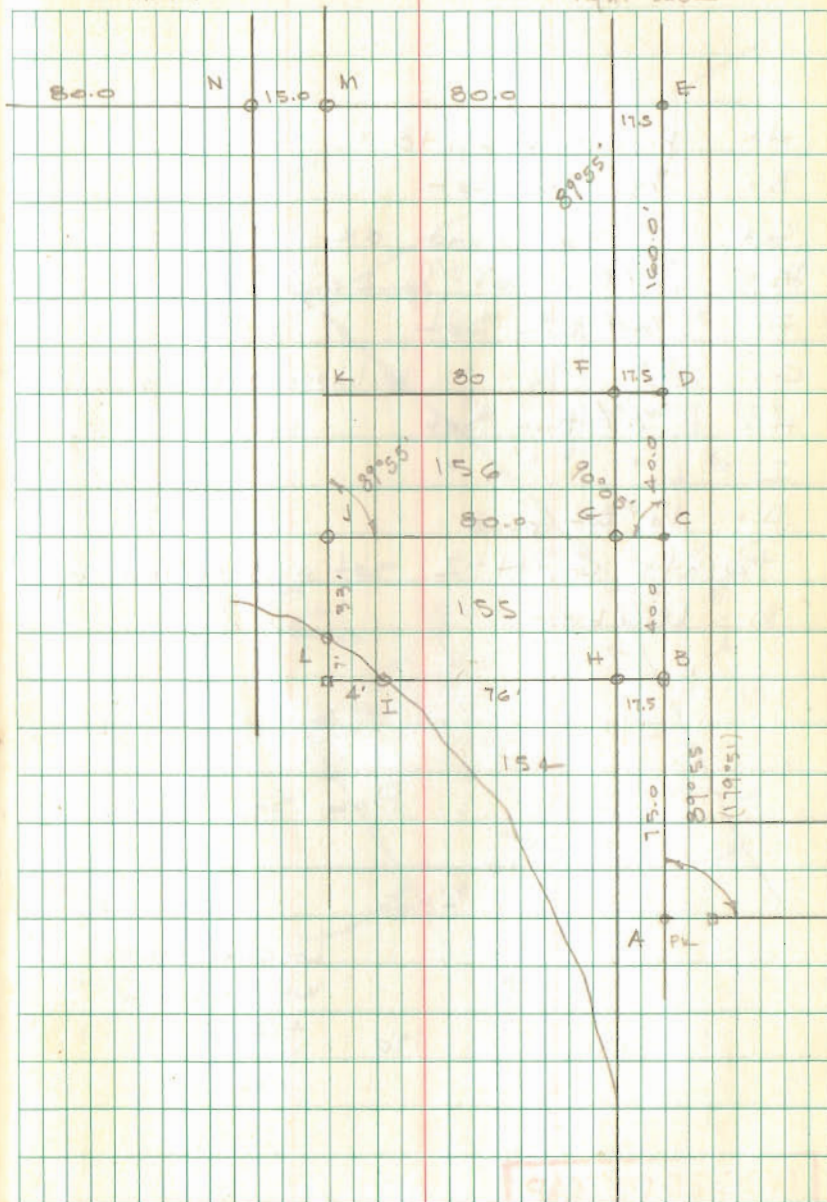
- "0"
- A = P-K found, 17.50 from East Iron line, on West line of Woodlawn Ave
  - B = P-K Set
  - C = " "
  - D = " "
  - E = " "
  - F = Found  $\frac{1}{2}$ "  $\phi$  Bar bent, replaced with  $\frac{5}{8}$ "  $\phi$  Bar
  - G = Hub Found, replaced with  $\frac{5}{8}$ "  $\phi$  Bar
  - H  $\frac{3}{4}$ " pipe found, OK
  - I  $\frac{5}{8}$ "  $\phi$  Bar Set
  - J =  $\frac{3}{4}$ " pipe found set in old hub, OK
  - K =  $\frac{1}{2}$ "  $\phi$  Bar found with pipe top OK
  - L  $\frac{5}{8}$ "  $\phi$  Bar Set 33.0' from "J"
  - M = 2" pipe Found "OK"
  - N = 1" pipe set
  - O =  $\frac{3}{4}$ " pipe found, 0.1 east of line, reset on line  
E-W-N. (N.W. cor. lot 170)

INDEXED ON MAP  
2406

Dodson  
Whitlow  
Arts

10/28/67  
3:50  
light snow

18



911  
1004C







Wicker Survey  
Orchard Island

Lot 154 & 155 Extended

- A = 3/4" pipe - "J" pg. 18
- B = Tkd Hub set
- C = 1" pipe found OK
- D = 5/8" p Bar set
- E = " " " on W. line of lot 155 produced
- F = 3/8" p Bar - "I" pg. 18
- G = " " - "L" pg. 18

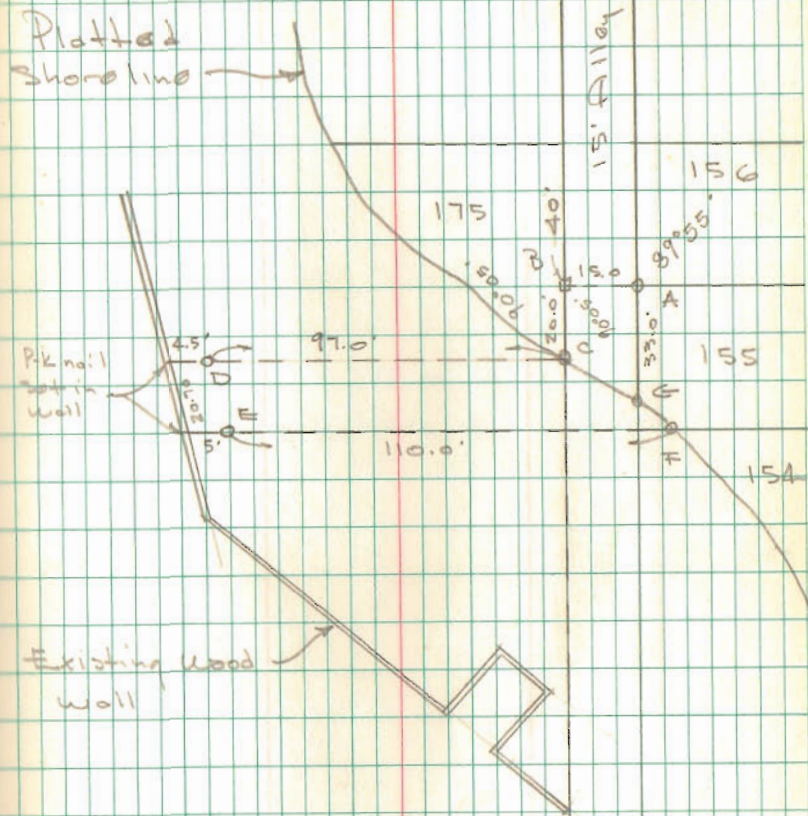
Points "D" & "E" set as directed by  
Mrs. Wicker.

INDEXED ON MAP  
2704

Dodson  
Whitlow  
Arts

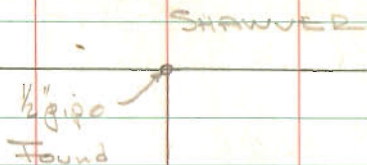
Nov. 4, 1967  
30°  
snow & windy

20





SHAWVER SURVEY  
 1 Sec. 6 T-3 R-12  
 T42R.30N TWP.



Set  $\frac{5}{8}$ " Bars @ lot corners along  
 South line of Cheryl St., beginning  
 at  $\frac{1}{2}$ " pipe found on the west line  
 of Shawver Road, produced.



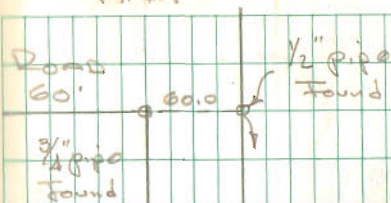
INDEXED ON MAP  
 2801

Thomas St. 60'

Dodson  
 whitlow  
 Artis

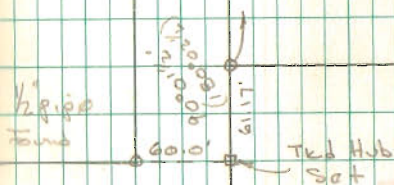
10/28/67  
 359,  
 light snow

22



SHADY KNOLLS TWP. No. 3

CHERYL ST. 60'  
 10 lots @ 120.0'



Trk Hub  
 Set







DELLEFONTAINE DEV. CO. SURVEY  
 DELLEFONTAINE

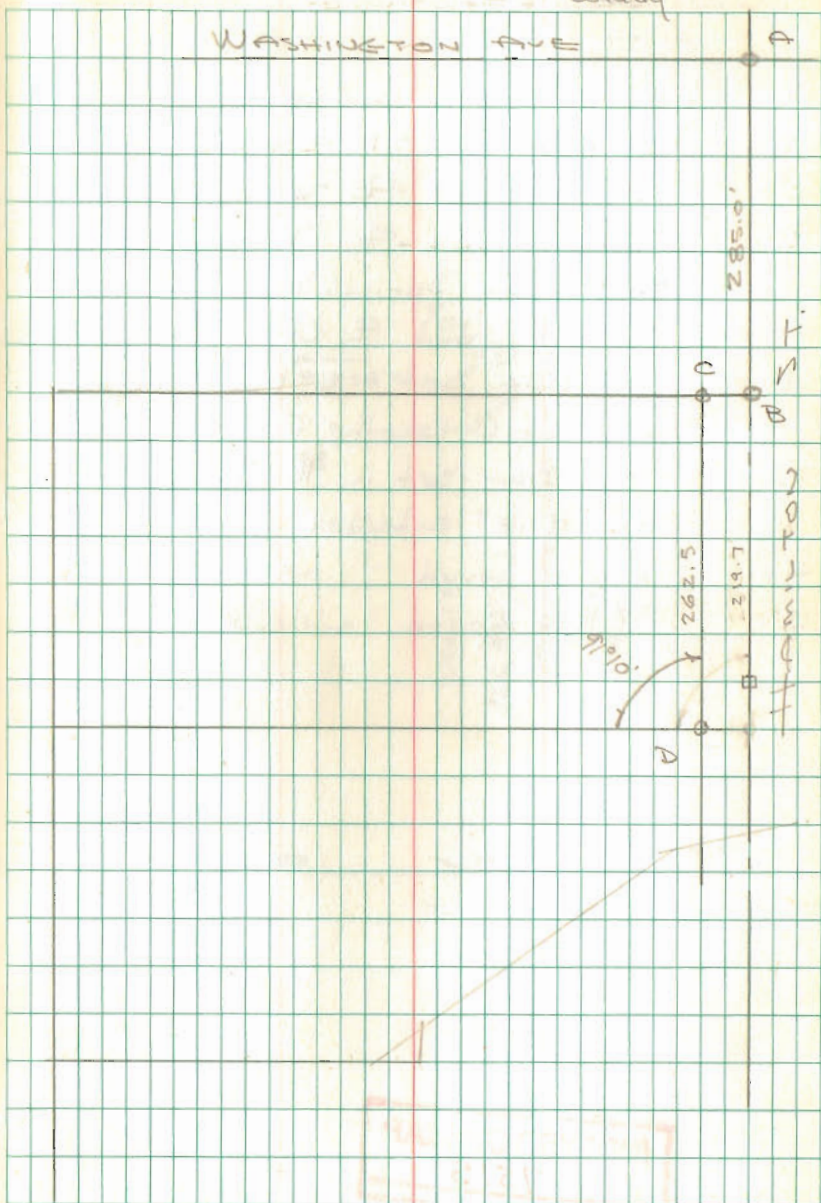
- A = Non. E. Hamilton & Washington
- B = 1" pipe found N.E. Cor. Dev. Co.
- C = 3/4"  $\phi$  Bar found
- D = 5/8"  $\phi$  Bar Set

INDEXED ON MAP  
 6634

Dodson  
 Artie

11/18/67  
 35°  
 Windy

24





19

THOMAS SURVEY  
BELLEFONTAINE

- A = Mon E Springhills & Columbus  
 B =  $\frac{5}{8}$ "  $\phi$  Bar Set 0.15 E. of  $\frac{1}{2}$ " pipe  
 C =  $\frac{5}{8}$ "  $\phi$  Bar Set E Springhills  
 D =  $\frac{3}{4}$ " pipe found E Chillicothe @  
 E. line of Springhills  
 F = "0" bolt found E Chillicothe & St. Paris  
 F =  $\frac{5}{8}$ "  $\phi$  Bar Set - W. line Springhills  
 on E of Chillicothe Ave produced  
 G =  $\frac{5}{8}$ "  $\phi$  Bar Set in R fence on  
 line "D-E" extended  
 H =  $\frac{1}{2}$ " pipe found  
 I = 1"  $\phi$  Bar found

INDEXED ON MAP  
7515

Dodson  
Artis

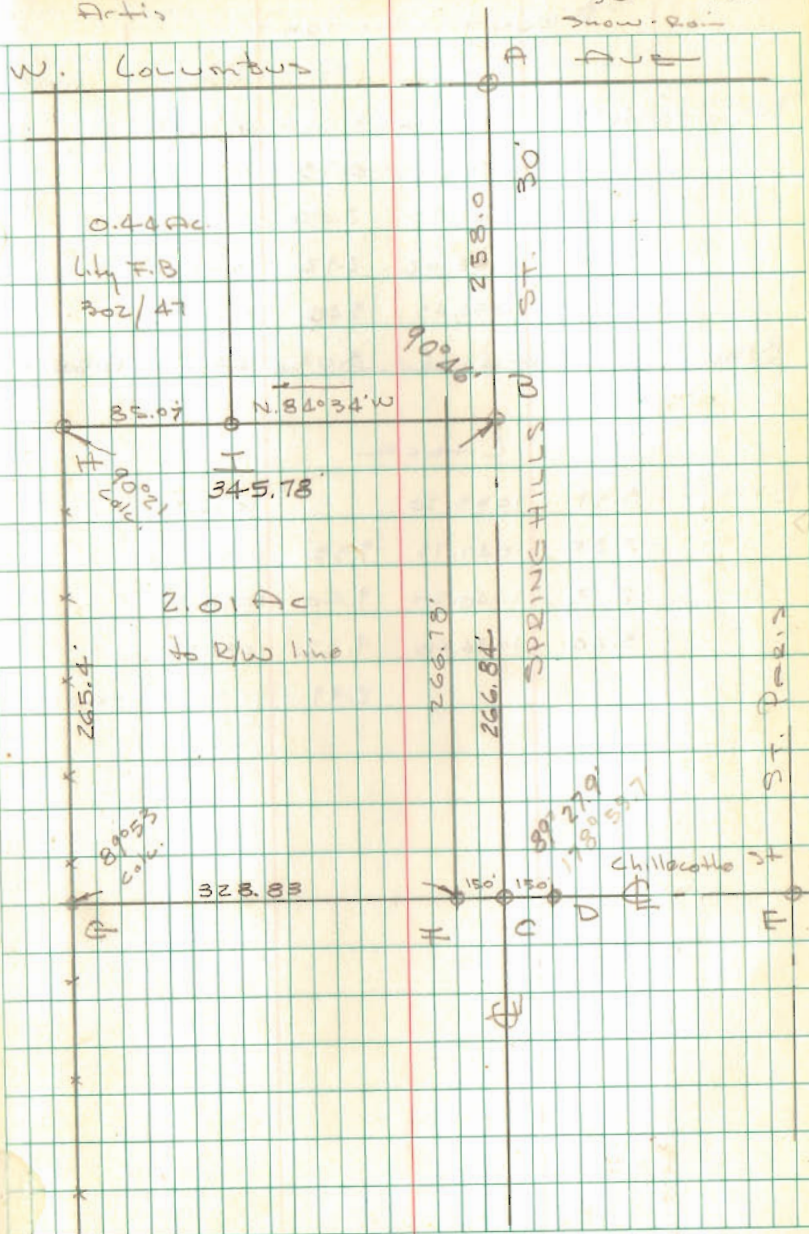
11/18/67

30°

25

Snow - Rain

W. Columbus





Bonetzky Survey

LAKE ST.  
LAKEVIEW, O

- A = 1/2" pipe found
- B = 1" pipe found
- C = 1/2" pipe found
- D = " " "
- E = " " "
- F = 3/4" pipe found
- G = " " "
- H = 3/4" Bar set on line "A-I"
- I = 1" pipe found

"H-G-F-E" is straight line

See F.B. 419 pg. 9

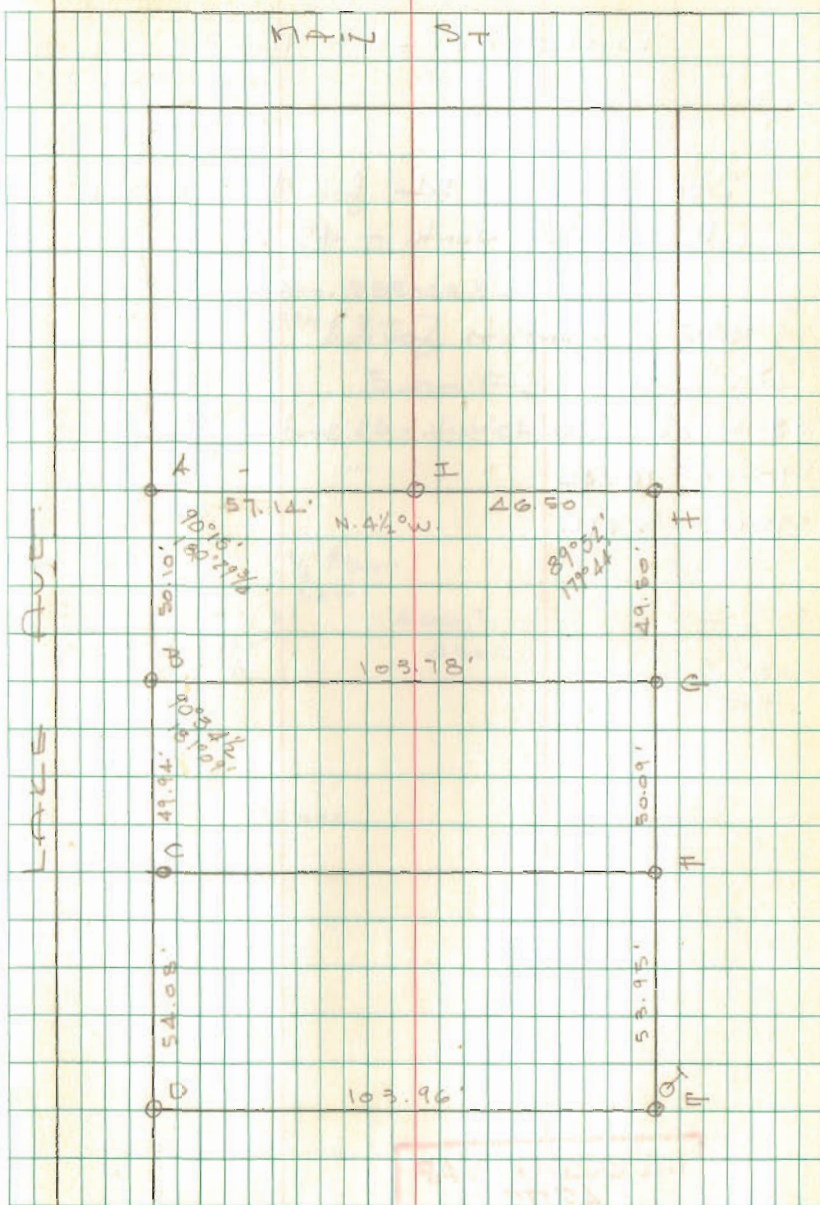
See Inskeep BK 8 pg 18

Dodson  
Whitlow  
Andis

1/20/68  
35°

29

MAIN ST



INDEXED ON MAP  
4225



BAYLESS SURVEY  
S.R. 47

BOKESCREEK TWP.

See Plan L-34 for S.R. 47

R/W = 40' North - 45' South

R/W movements found

St.

585+04.82 16' R&L 40' North - 45' South

590+00 16' R&L " "

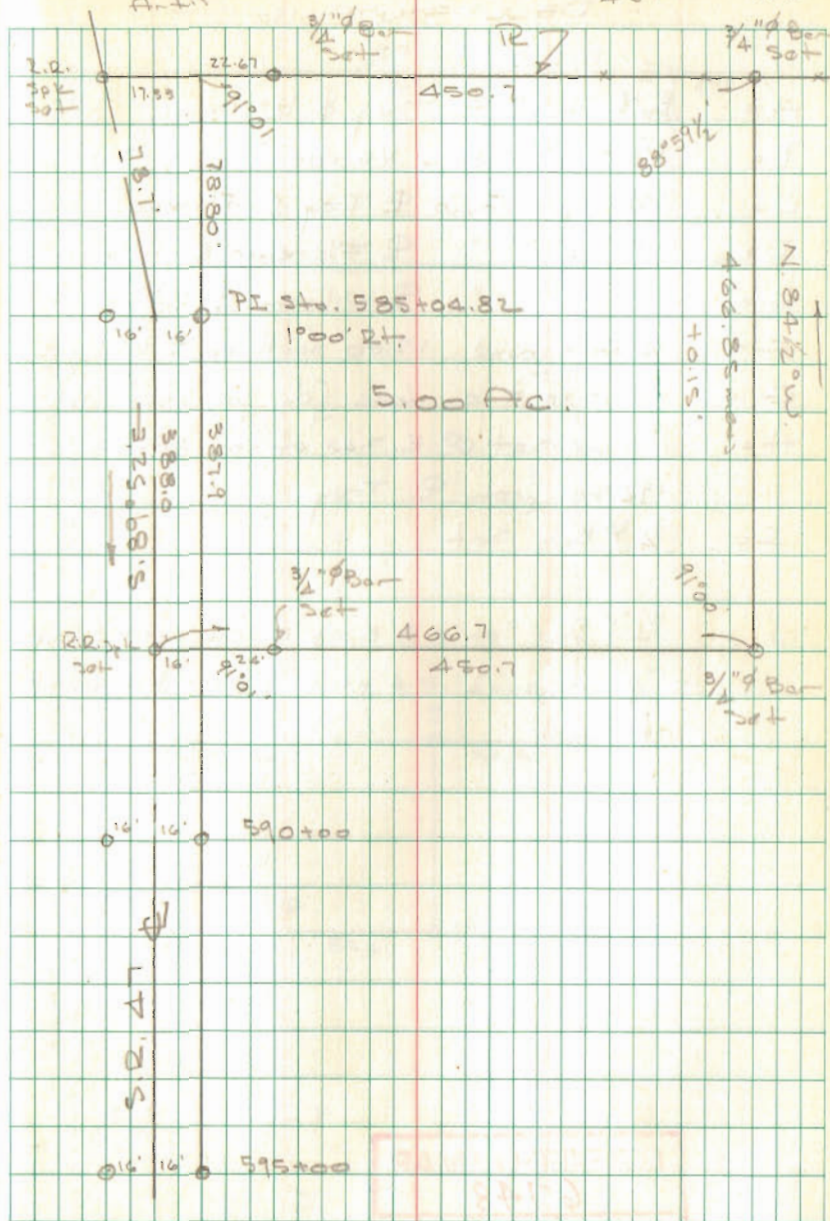
595+00 16' R&L

INDEXED ON MAP  
4272

Dodson  
Whitlow  
Anti

1/27/68  
45°

30

















LOT 38  
LAKEVIEW, OHIO  
FOR

LAKEVIEW LUMBER Co.

A = 1/2" pipe found @ E. edge of low. walk

B = " " " " "

C = " " " " "

D = " " " " "

E Found 1/2" pipe - 1/2" pipe & Hub - Set 5/8" Bar

F = Found Hub

G = Found 1/4" pipe

H = " " " " "

I = " " " " "

J = Set 5/8" Bar

K = " " " " "

Projected line F-G-H to E

"E" w/ chisel mark on low. walk

INDEXED ON MAP  
4226

Dodson  
C. Nichols R

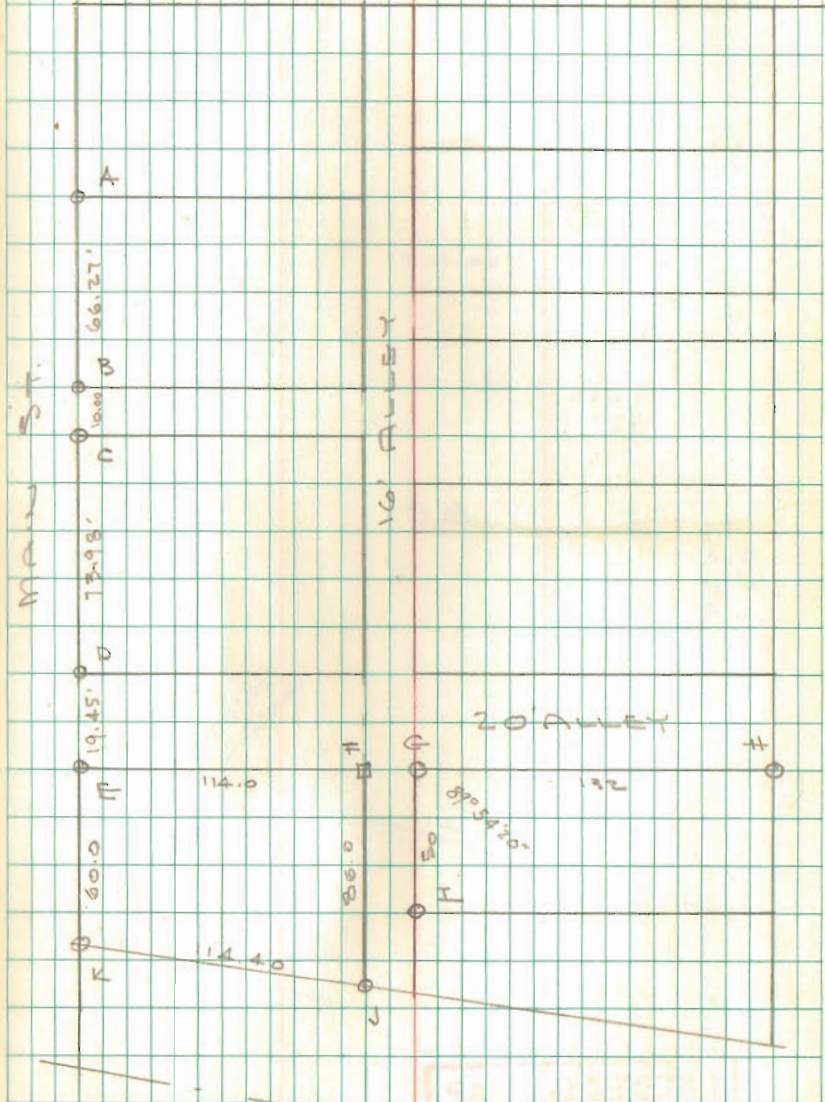
3/30/68

700

34

Uice Day

HARRISON ST



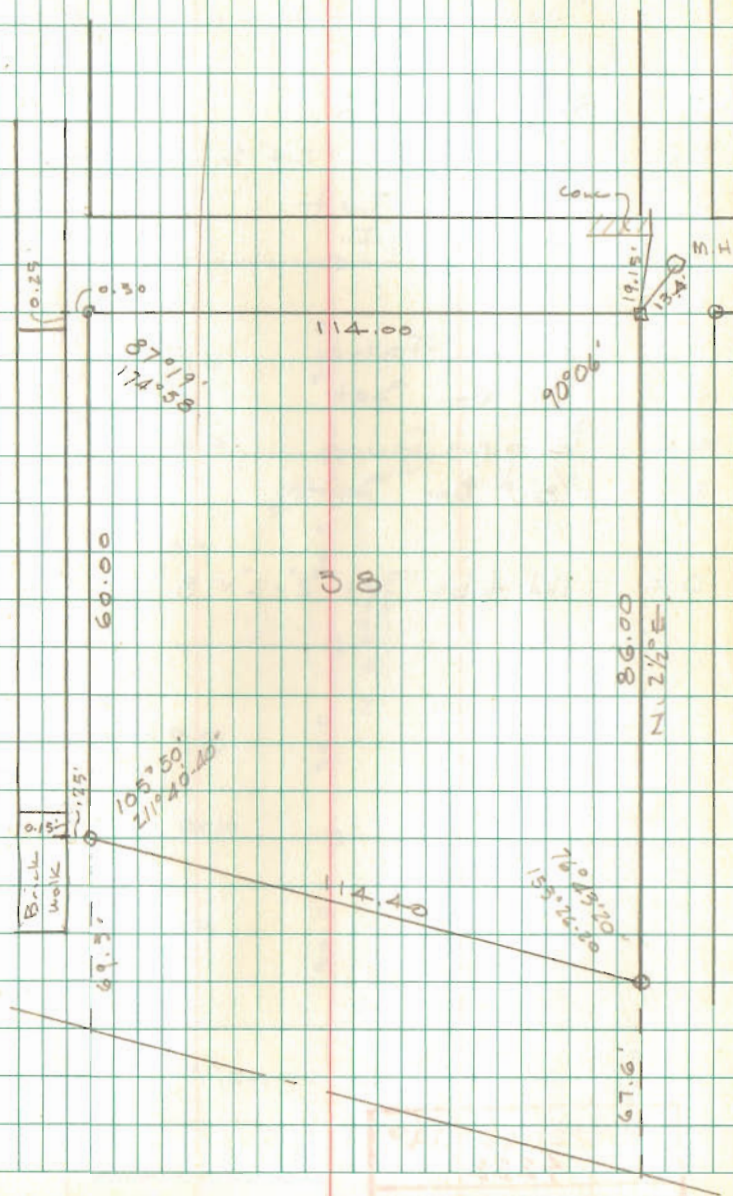


Lot 38 Cont'd.

87° 11'  
 90 06  
 10550  
 7623  
 ---  
 358-118

INDEXED ON MAP  
 4226

35





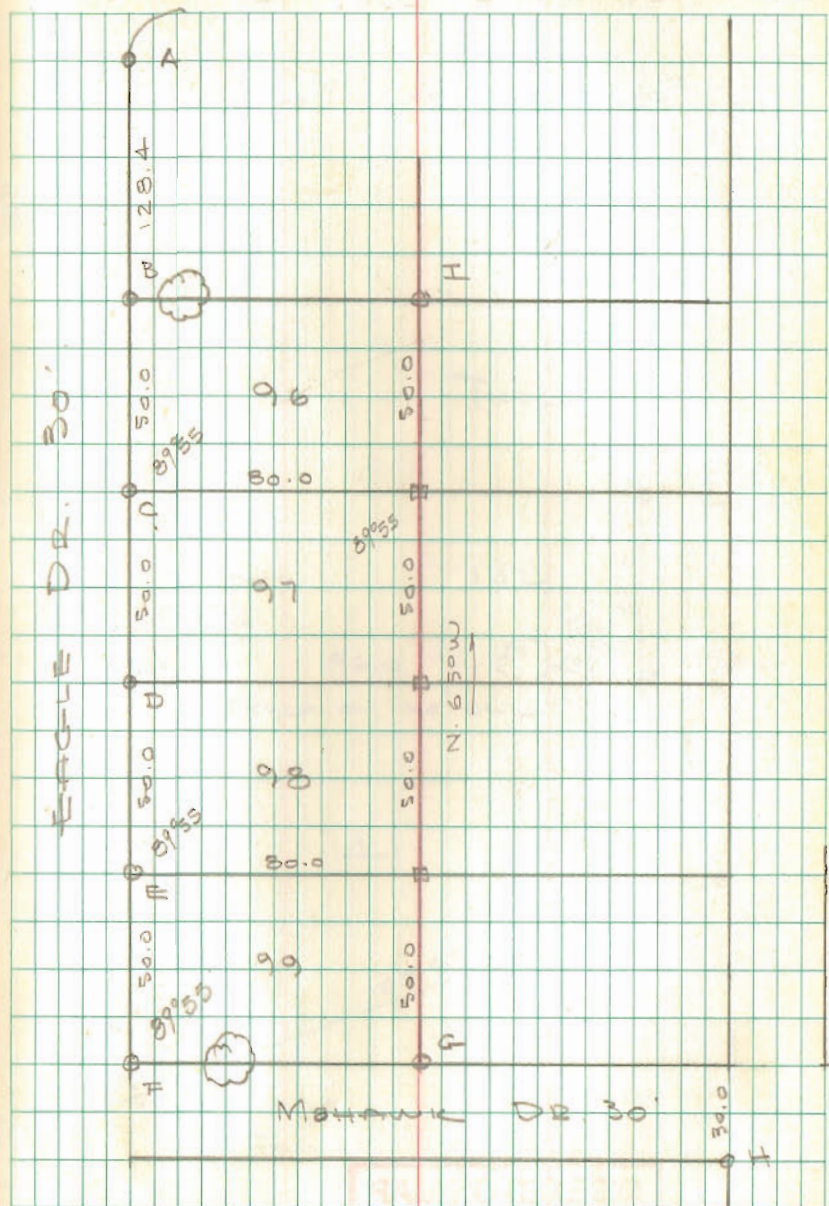
LOTS 96-97-98-99  
SEMINOLE SUBD A  
SEMINOLE ISL.

- A =  $\frac{3}{4}$ " pipe found  
 B =  $\frac{1}{2}$ " " " 2.4' S. of 18" Ash  
 C =  $\frac{5}{8}$ "  $\phi$  Bar Set  
 D = " " "  
 E = " " "  
 F =  $\frac{3}{4}$ " pipe Found  
 G =  $\frac{5}{8}$ "  $\phi$  Bar Set  
 H =  $\frac{3}{4}$ " pipe found  
 I =  $\frac{5}{8}$ "  $\phi$  Bar Set  
 J = Tkd Tube Set 2'x2'x18"

Dodson  
Nichols

March 30, 1968  
70°

36



INDEXED ON MAP  
4222



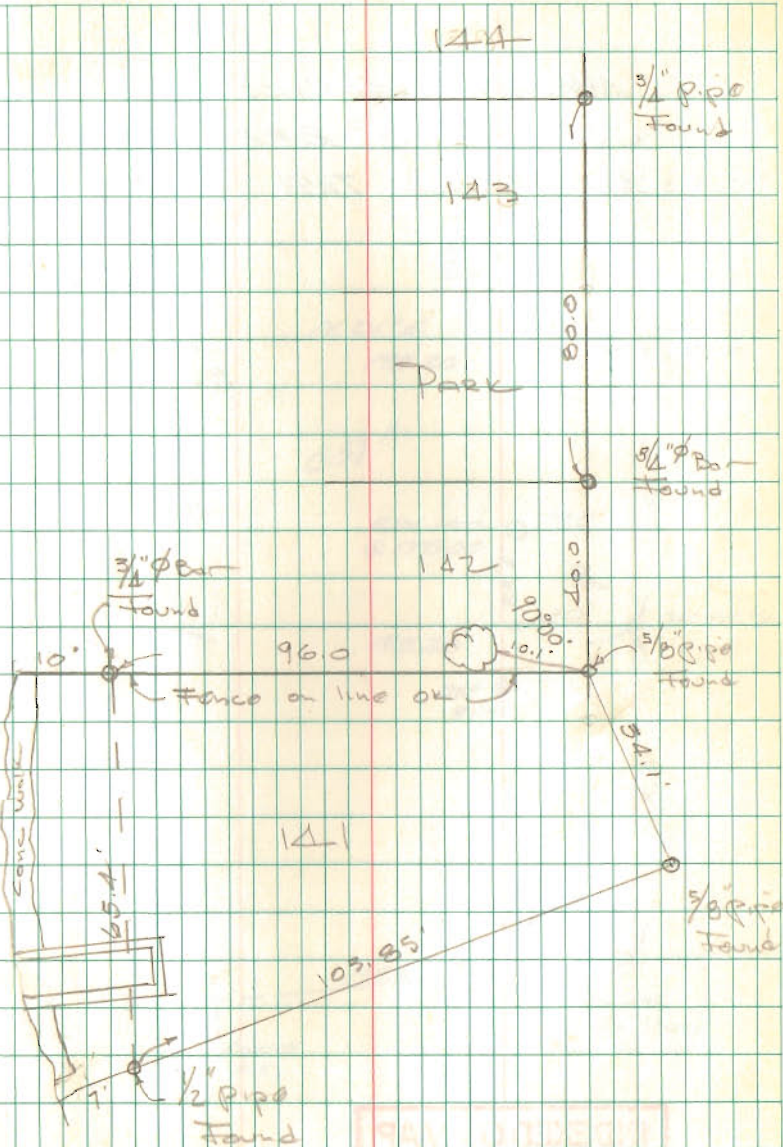
Lot 141  
SEMINOLE SUBD "A"

See Pg 7 this Book

Dodson  
Nichols

March 30, 1968

37



INDEXED ON MAP

4223

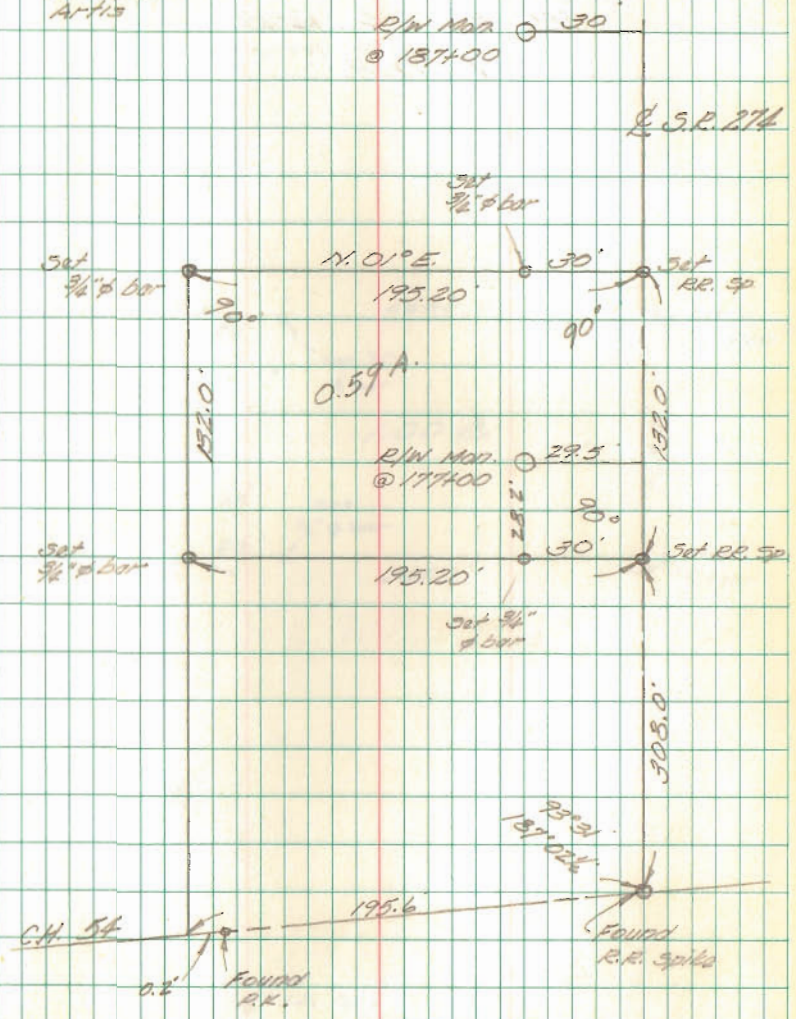
941 11 11 11 11 11

315M



MINNICH SURVEY  
SEC. 9, T-75, R-3E  
BLOOMFIELD TWP.

13 Apr 68  
70°  
Whitlow  
A-119



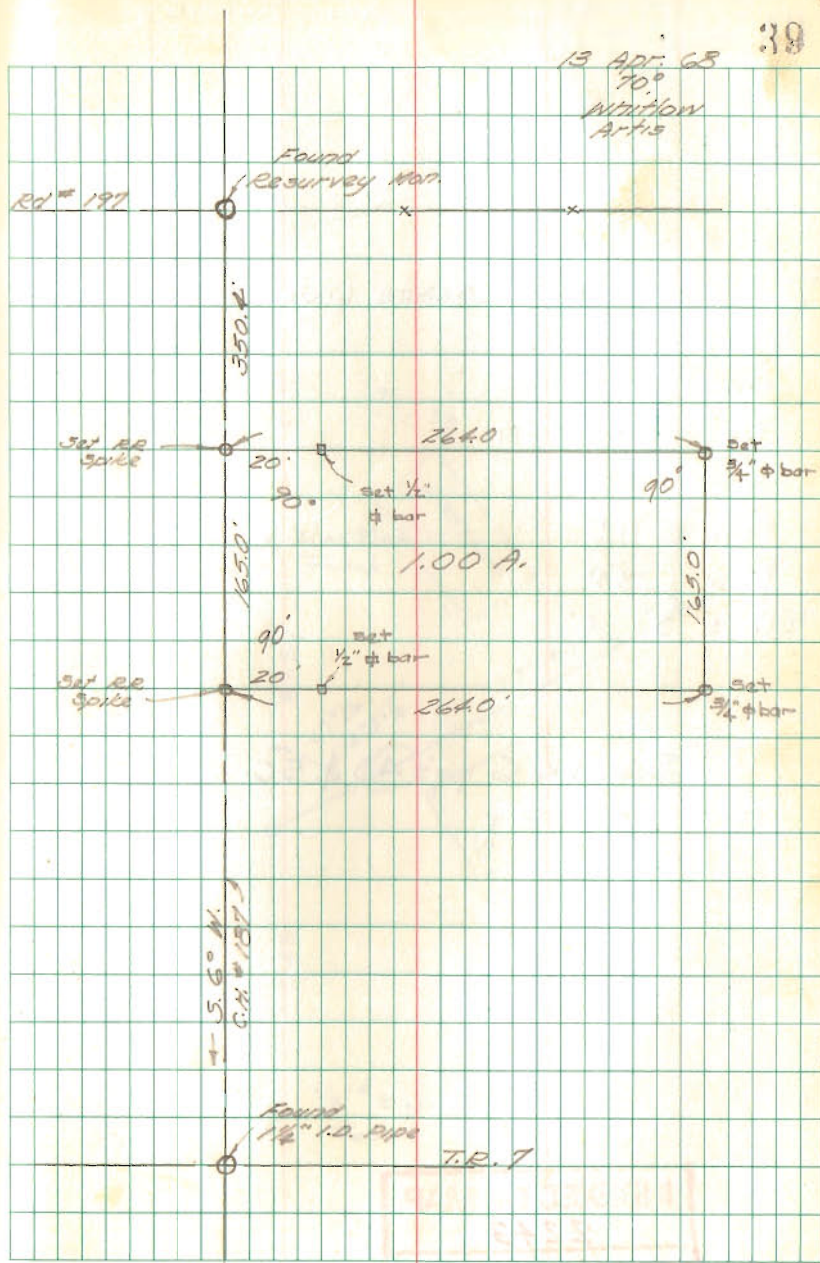
INDEXED ON MAP  
4218

PAID FOR BY  
STATE OF MISSOURI

KING SURVEY  
SEC 4, T-4, R-13  
UNION TWP.

INDEXED ON MAP  
4227

39





HOSSELMAN SURVEY  
WOLF ISLAND

OFFSET TO SHORE LINE FROM "A-B"

DIST OFFSET

A +

9.4 17'-67'-81'

20.0 30'

72.0 119'

94.0 83'

217.55 "B" 4'

See BK 6 pg's 45 & 56

INDEXED ON MAP

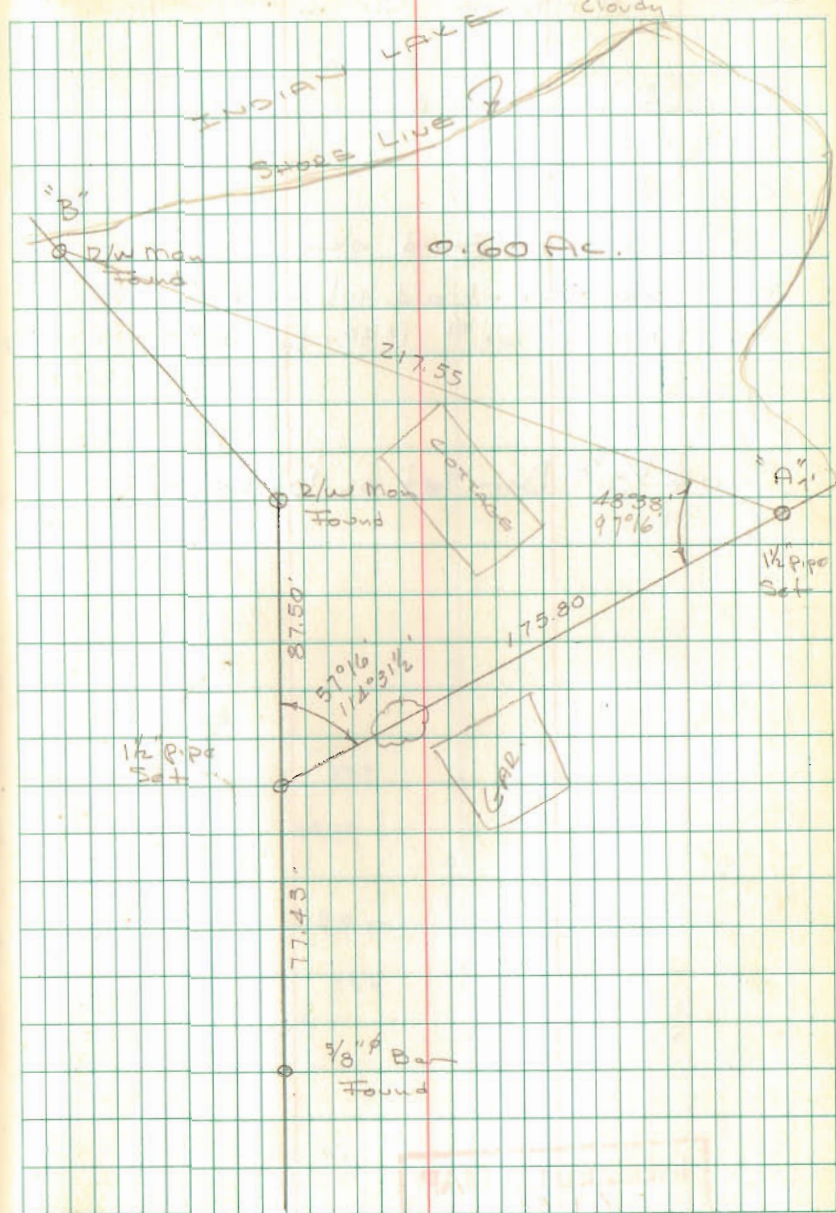
2243

Dodson  
Nichols

4/18/68

60°  
Cloudy

40



SURVEY OF LOTS 1979-1980

CHIPPEWA No. 3

- A =  $\frac{3}{4}$ " pipe Found
- B = " " "
- C =  $\frac{1}{2}$ " " "
- D =  $\frac{1}{4}$ " pipe Found OK
- E = Remains of old hub found 8" deep  
N.W. cor lot # 1989 - Set  $\frac{5}{8}$ " Bar 6" deep

o =  $\frac{5}{8}$ "  $\phi$  Bar set on lot corner

INDEXED ON MAP  
6166

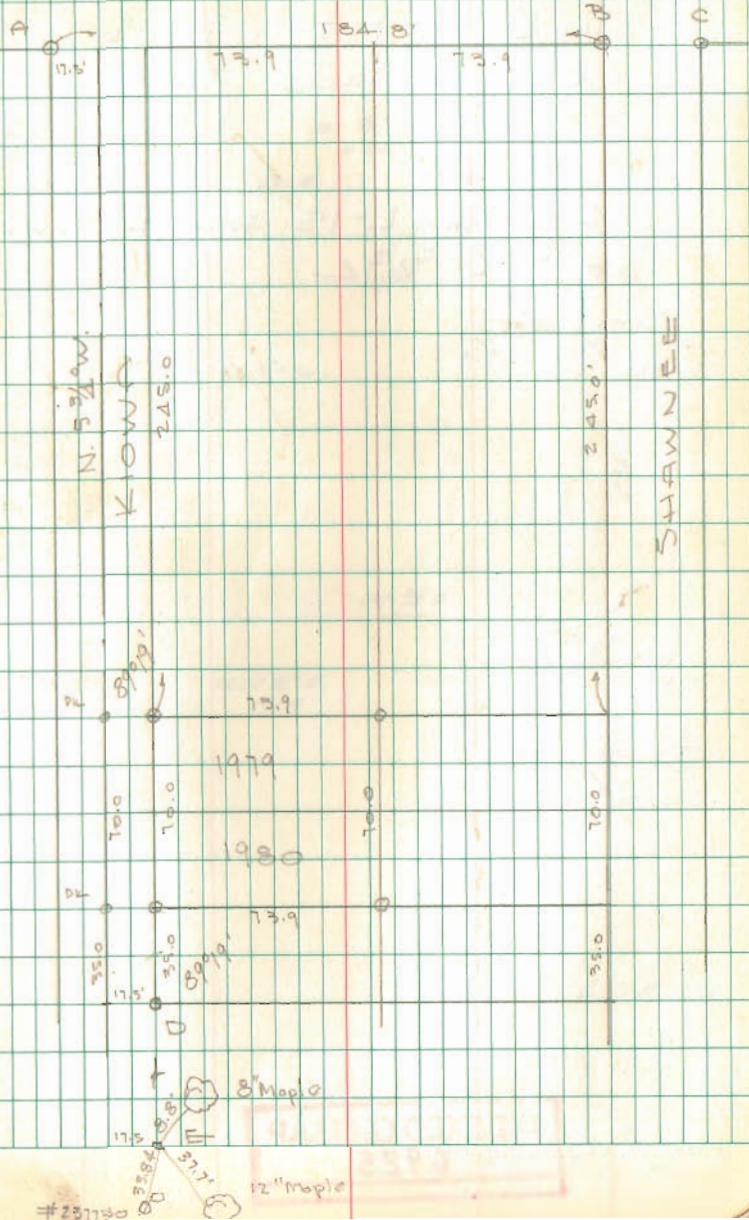
Dodson  
Nichols

4/20/68

70°

4

Blue Jacket





BARNES SURVEY

S.W. 1/4 Sec. 9 - T-75 R-8E

Bloomfield Twp.

SEE PLAN L-15 FOR A SURVEY  
OF S.R. 274

INDEXED ON MAP

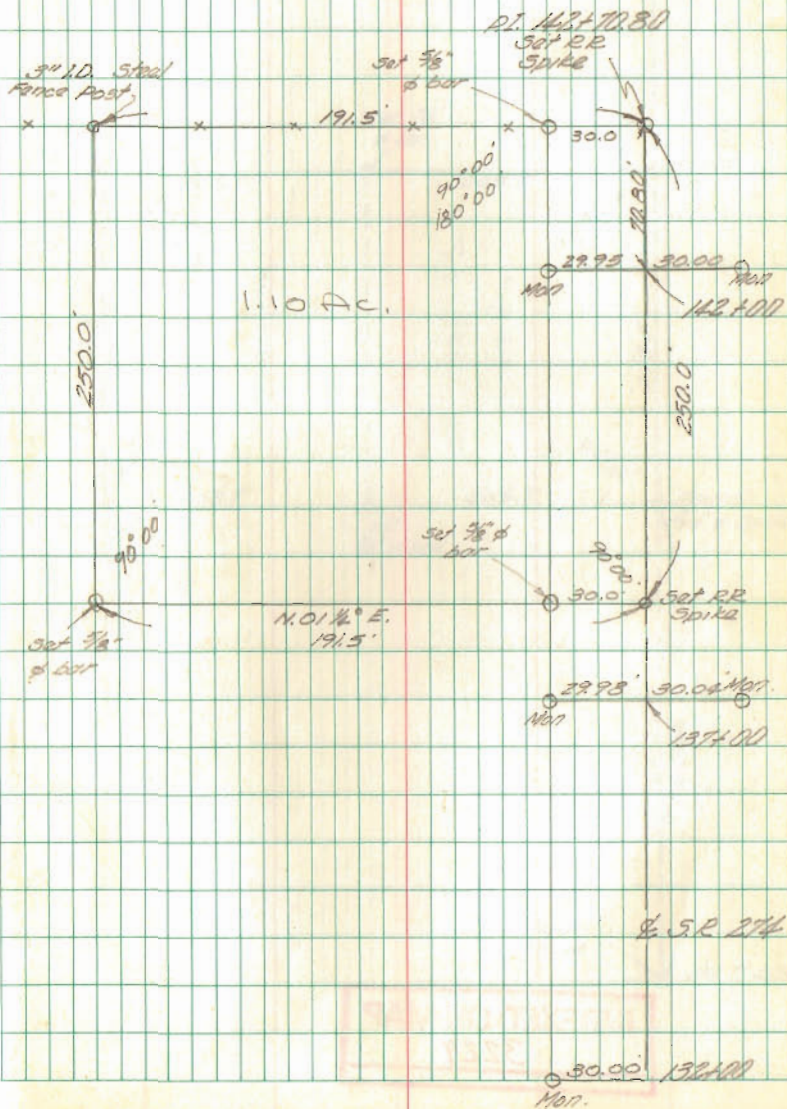
6925

4-27-68

60"

Walter  
Artis

42

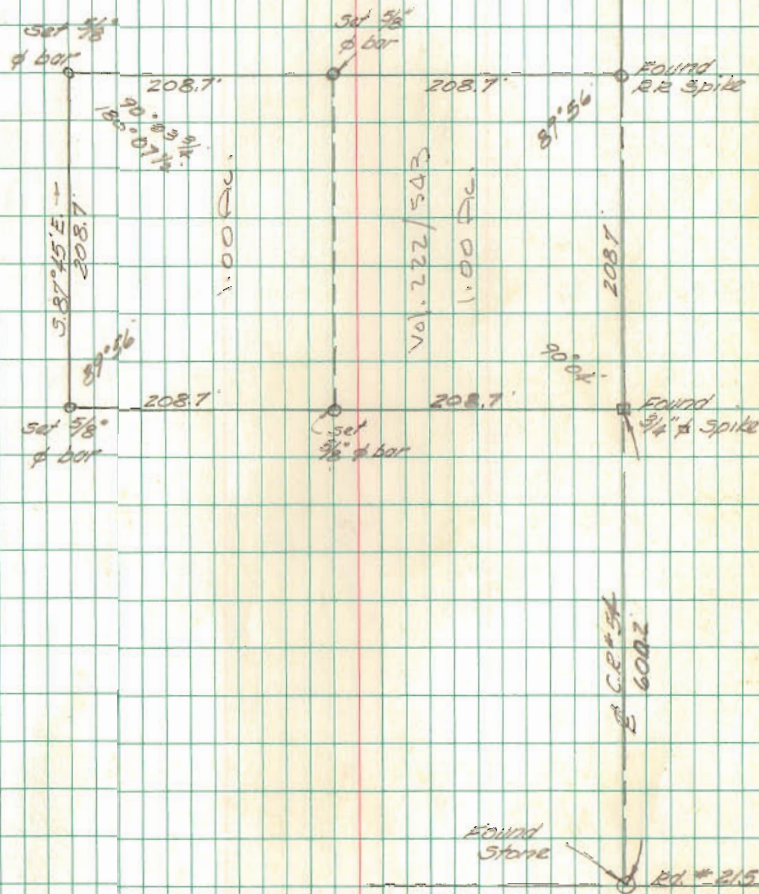


PRICE SURVEY  
SEC. 24-T-75 R. 8E  
WASHINGTON TWP.

43

1-27-68  
60°

Whitlow  
A1713



INDEXED ON MAP

3229

FILED



BAYLESS SURVEY  
 Sec. 22 T-3 R-14  
 Harrison Township

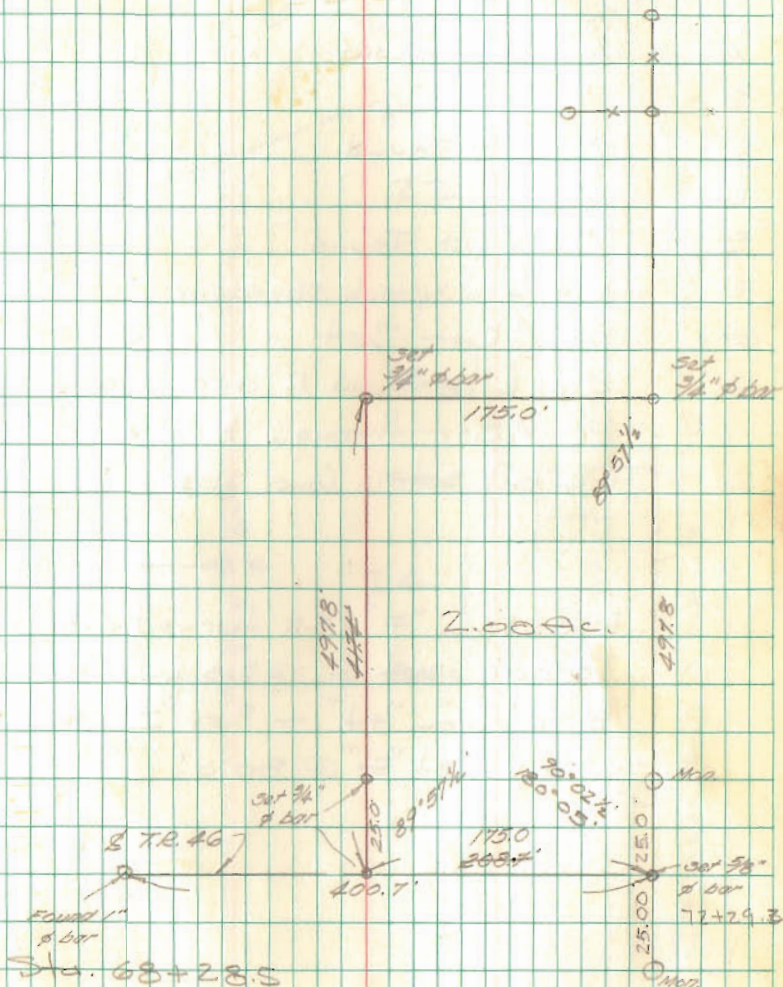
See Co. Co. Eng. F.B. 889 pg. 72  
 for E.T.R. 46

INDEXED ON MAP  
 5250

7-13-68

Whitton  
 Arts

Q. C.R. 31



89 51



Lot 24  
WEST SIDE SUBD No. 1

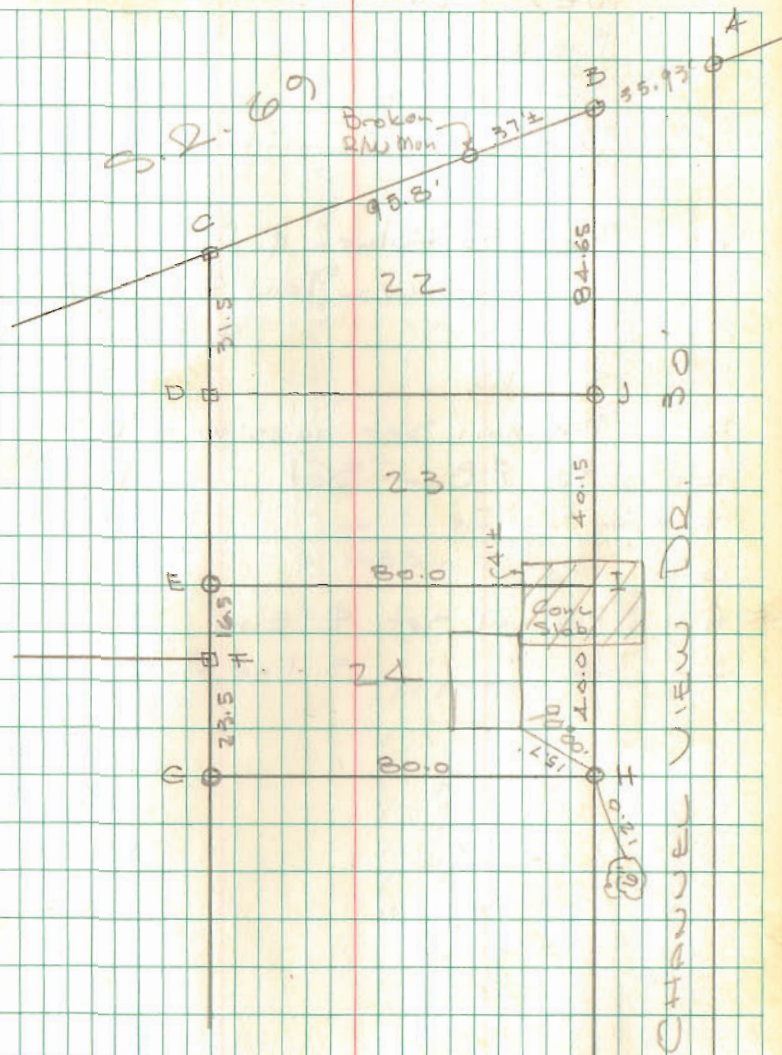
- A = 1/2" Pipe Found
- B = " " "
- C = old Hub Found
- D = " " "
- E = 3/4" Pipe Found
- F = old Hub w/lock Found
- G = 5/8"  $\phi$  Bar Set
- H = old Hub Found 12" deep set  
5/8"  $\phi$  Bar through hub to surface
- I = P-K nail set in conc. slab

Meds. from "F" 23.5 turned  $\angle$  BHG =  
90°00' set G. 23.5 from "F"  
80.0' from "H" ~ set "I" turned  
90°00' set "E" @ 80.0'

INDEXED ON MAP  
6650

Dodson  
nichols

6/22/68  
80° 46'





SURVEY OF LOTS  
983-984-985

BELLEFONTAINE, O.

For

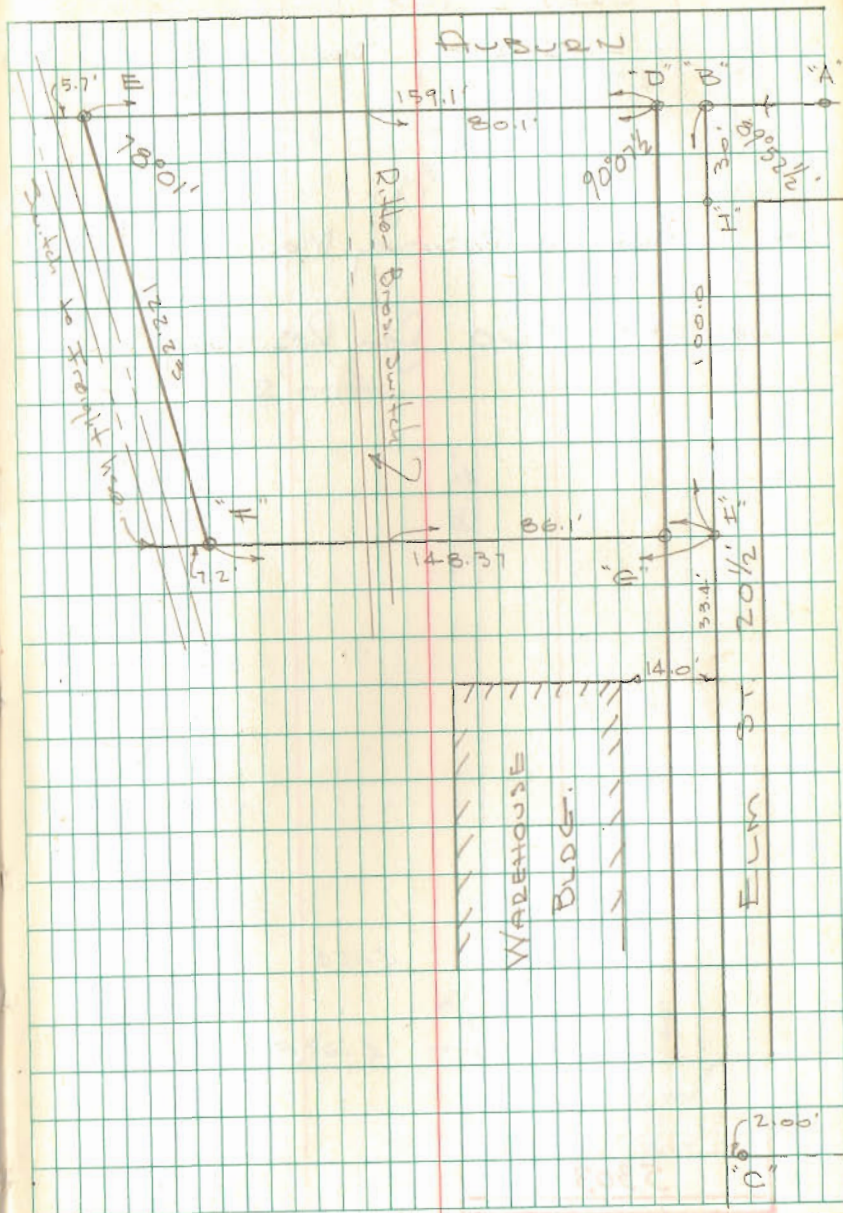
DITTER BROTHERS

- A = Mon.  $\ominus$  Auburn & Detroit  
B = Copper screw in lead  $\ominus$  Auburn & Elm  
C = " " " "  $\ominus$  Buckingham &  
S. Elm  
D = P.K. nail set 10.25' W. of 'B'  
E = 5/8"  $\phi$  Bar Set  
F = " " "  
G = " " "  
H = P.K. nail set  $\ominus$  Elm  
I = " " " S. line Auburn

INDEXED ON MAP  
4273

Dodson  
Nichols

May 4, 1968 47



SHORT SURVEY  
 SEC. 2 T-3 R-14  
 LIBERTY TOWNSHIP

A = Hub over Resurvey Mon.

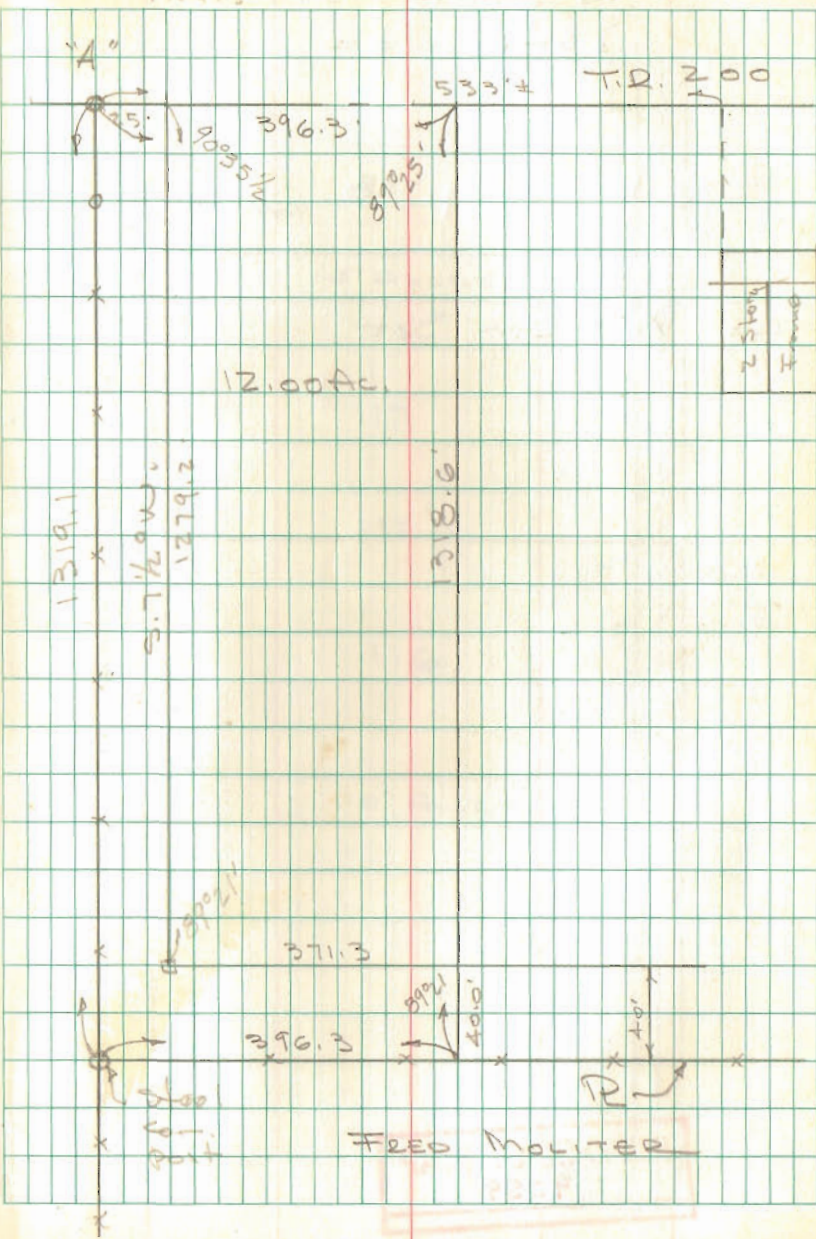
See F.B. 660 for Resurvey Mon's.

INDEXED ON MAP  
 5303

Dodson  
 Whitlow  
 Aches

6/29/68

48





LOT 116-117  
N. KORE ST  
DEGRAFF

See BK 5 pg. 18

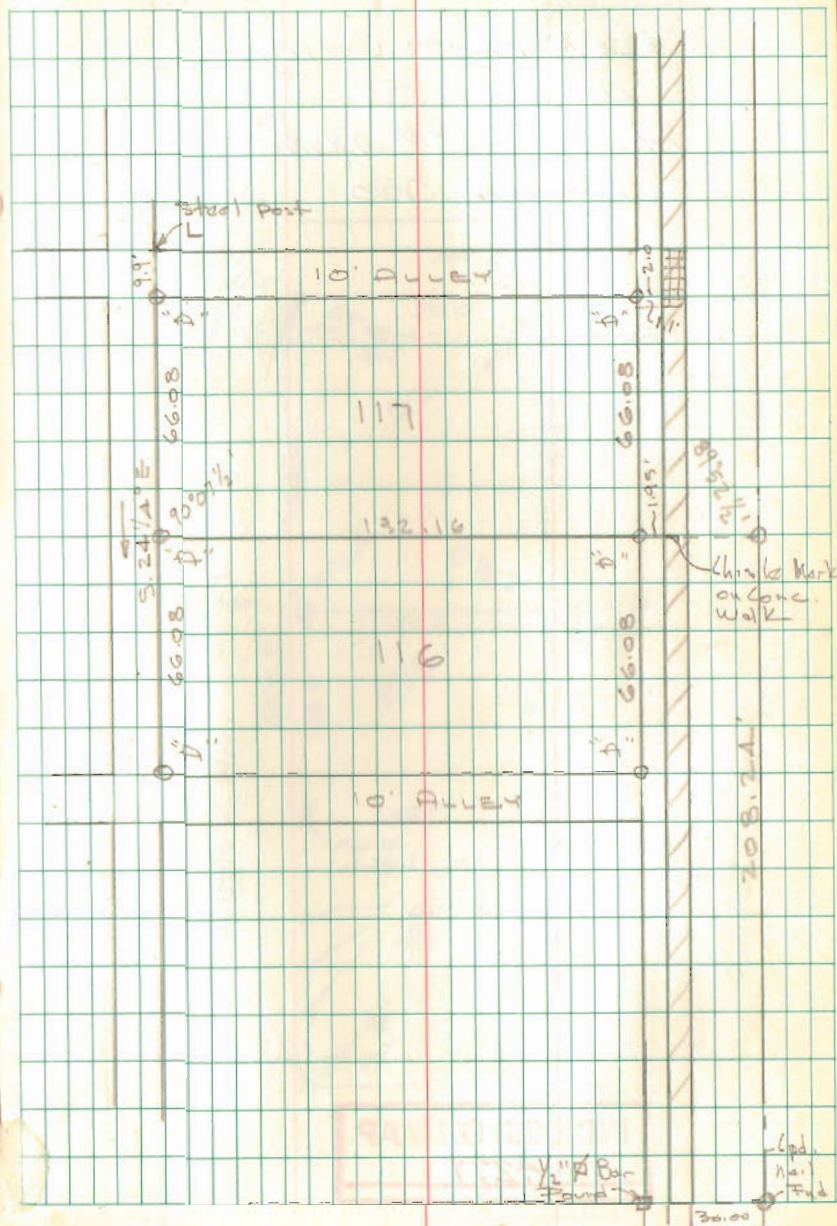
A = 1/2" Bar Set

INDEXED ON MAP  
9059

Dobson  
Nichols

July 19, 1968

49









Hurley Survey  
 Sec. 14 T-1 R-8  
 Pleasant Township

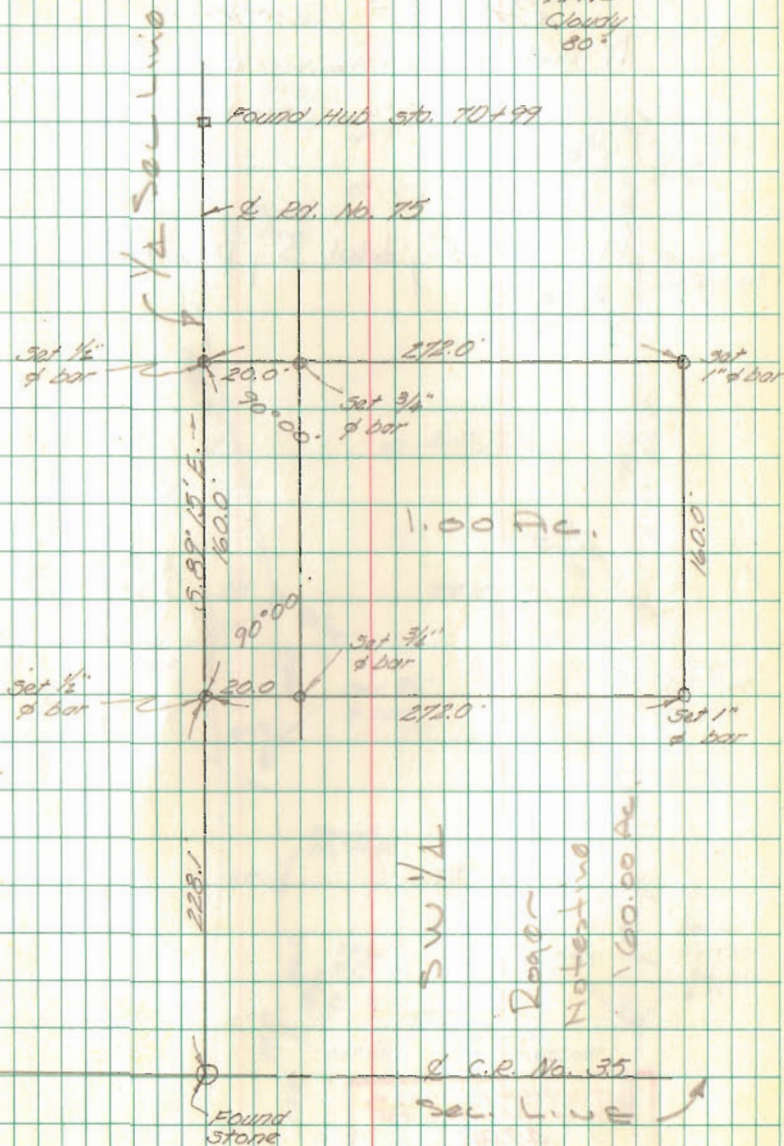
See La. Co. F.B. 589, pg 49  
 for Survey of T.R. 75

INDEXED ON MAP  
 5391

8-3-68

52

Whitlow  
 Art 75  
 Cloudy  
 80°





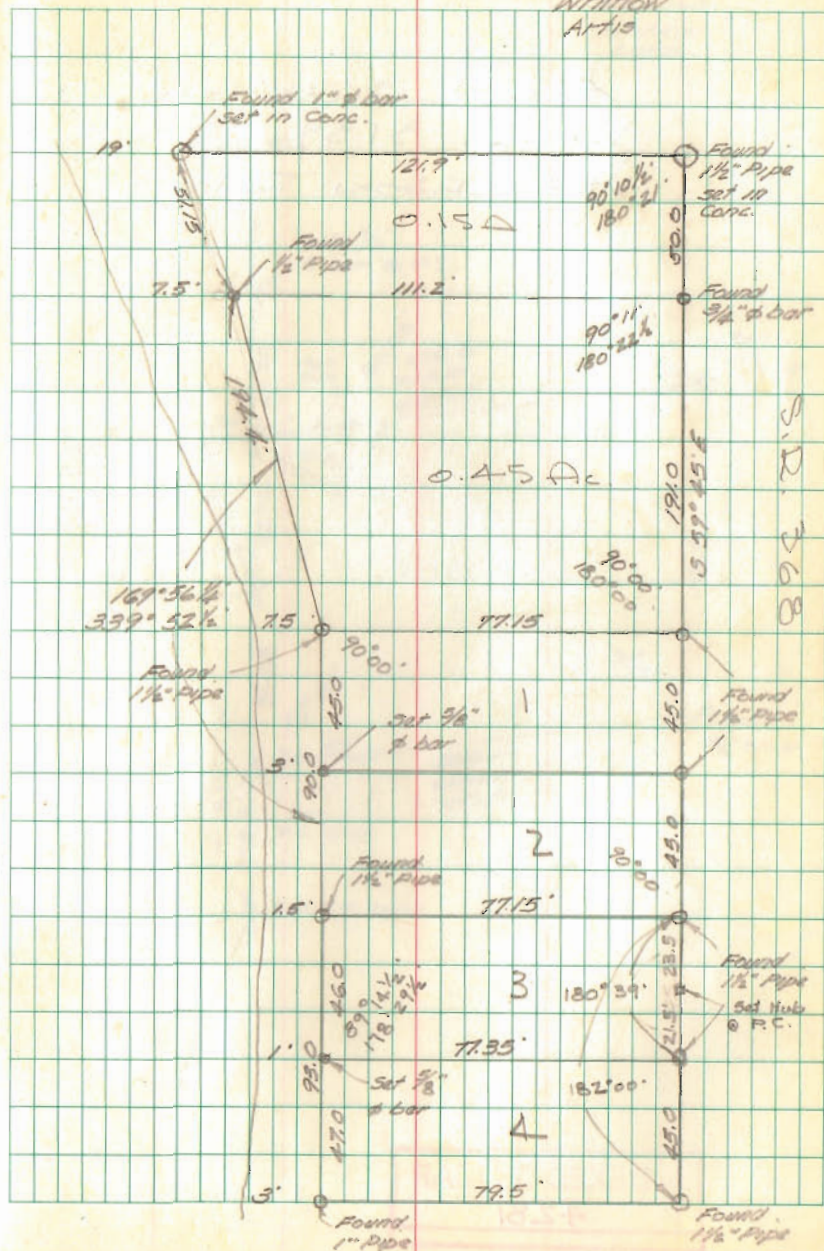
RHODES SURVEY  
 MAHAN ALLOTMENT  
 STOKES TOWNSHIP

Plot B & C, Vol. 3, pg. 63

8-10-68

53

Whitlow  
 Artis



INDEXED ON MAP  
 4280







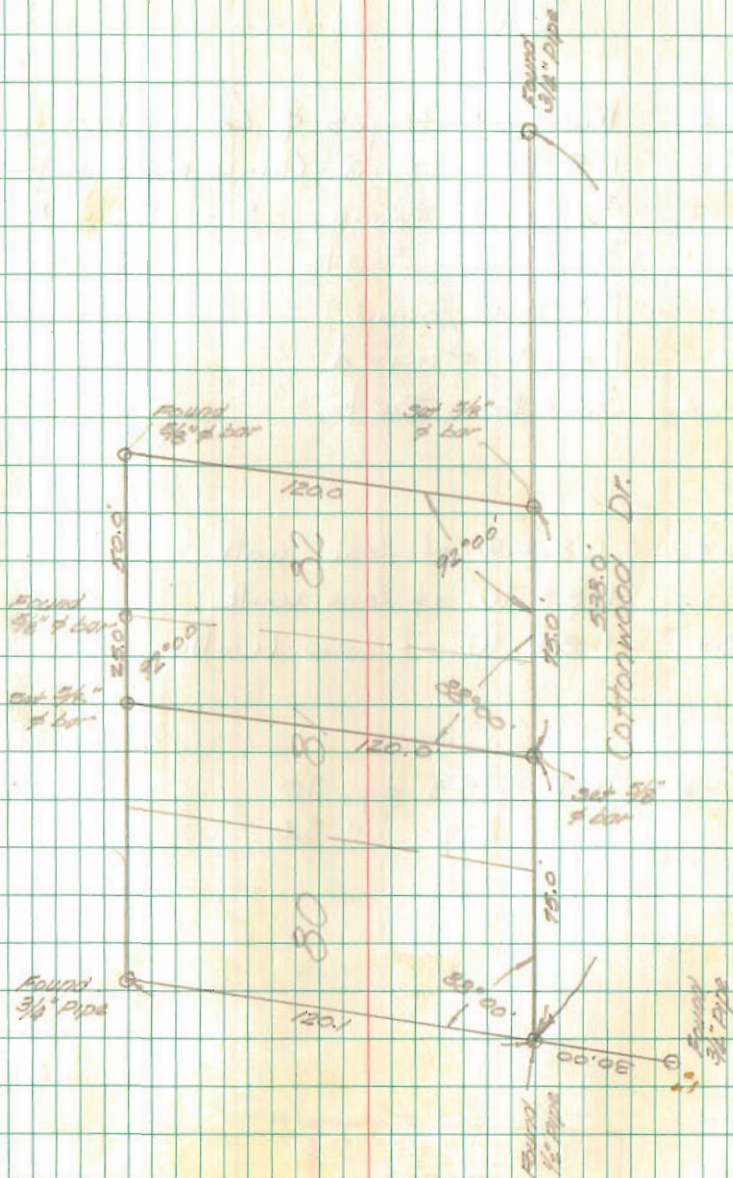
Curtis Survey  
 of Lot 81 & Lot 82  
 SHAWNEE ISLAND

INDEXED ON MAP  
 2304

Whitlow  
 Artis

8/17/68

55





FISHER SURVEY  
 HAYES @ COLUMBUS  
 BELLEFONTAINE

- A = Mon E Hayes & Columbus
- B = 1"  $\phi$  Bar Found - Chisel mark on walk
- C =  $\frac{3}{4}$ " pipe Found " " "
- D =  $\frac{3}{8}$ "  $\phi$  Bar Set
- E = 1"  $\phi$  Bar found
- F = 1" pipe Found
- G =  $\frac{3}{8}$ "  $\phi$  Bar Set

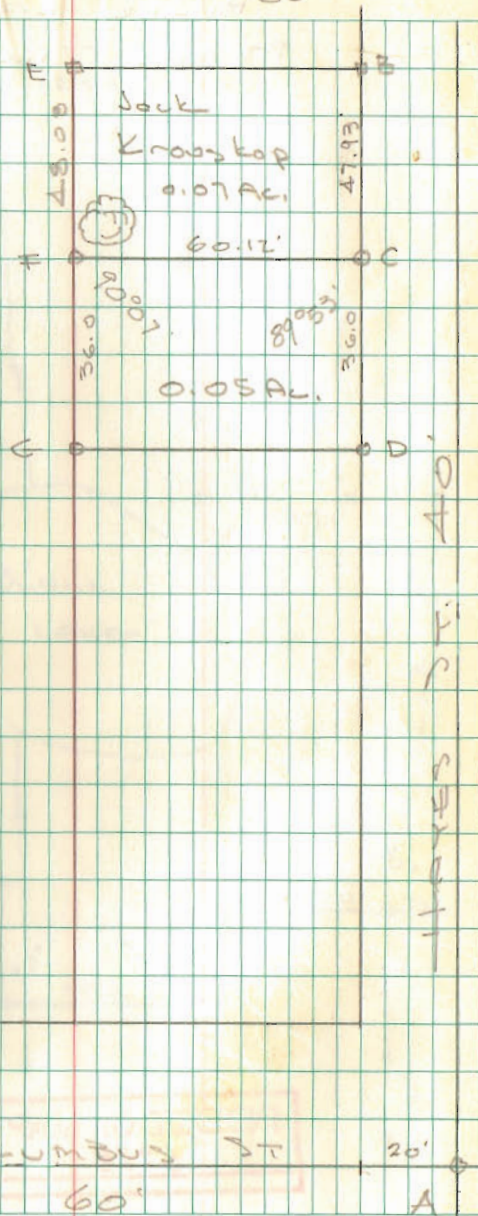
- B = 1.80 W. of low. walk
- C = 1.83 W. of low. walk
- D = 1.84 W. of low. walk

See F.B. 493 pg. 70  
 479 " 54

INDEXED ON MAP  
 7150

Dodson  
 Mike Thompson

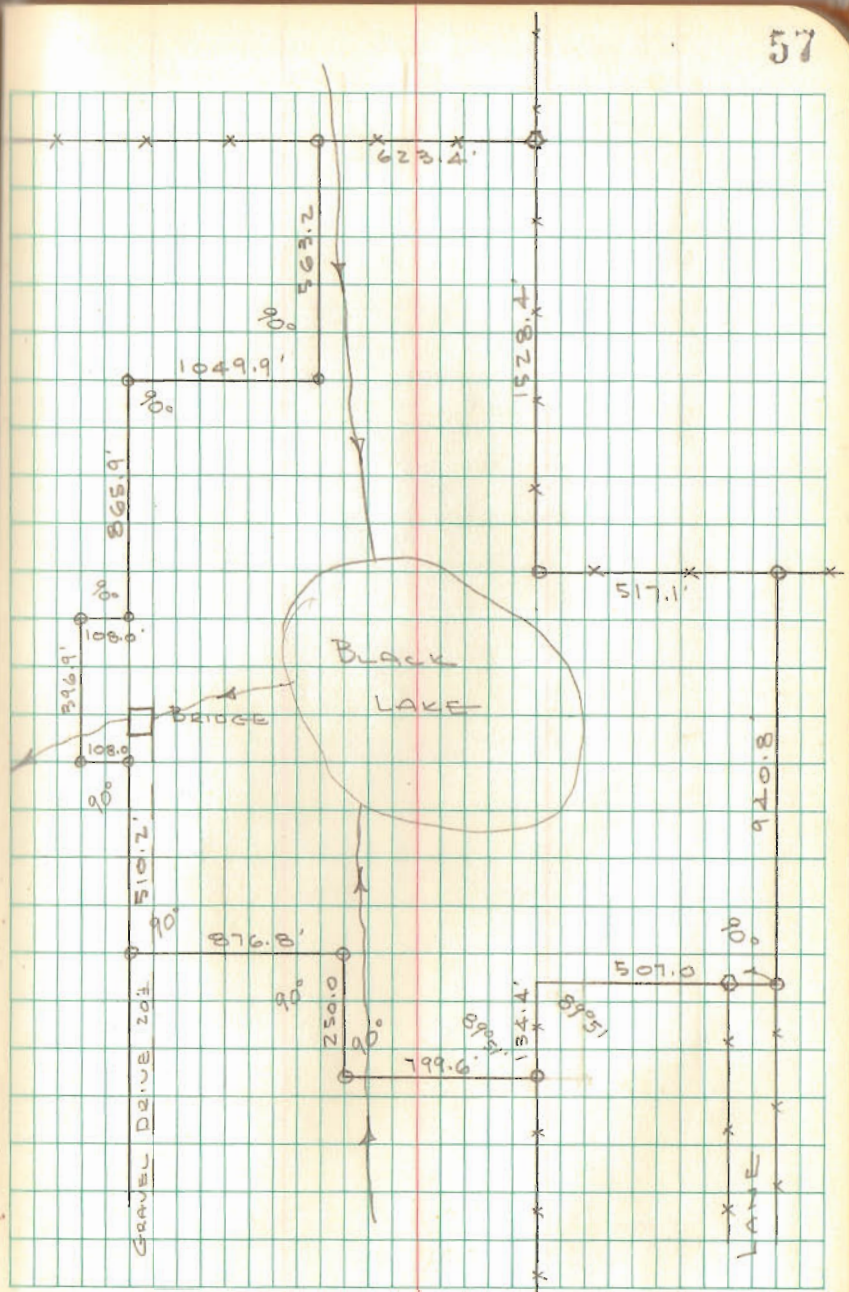
8/19/68 56  
 80°





FROMAN SURVEY  
 BLACK LAKE  
 MIAMI TWP.

INDEXED ON MAP  
 6998



117

DOT+HAR SURVEY  
 Sec. 14 T-7S R-8E  
 Washington Township

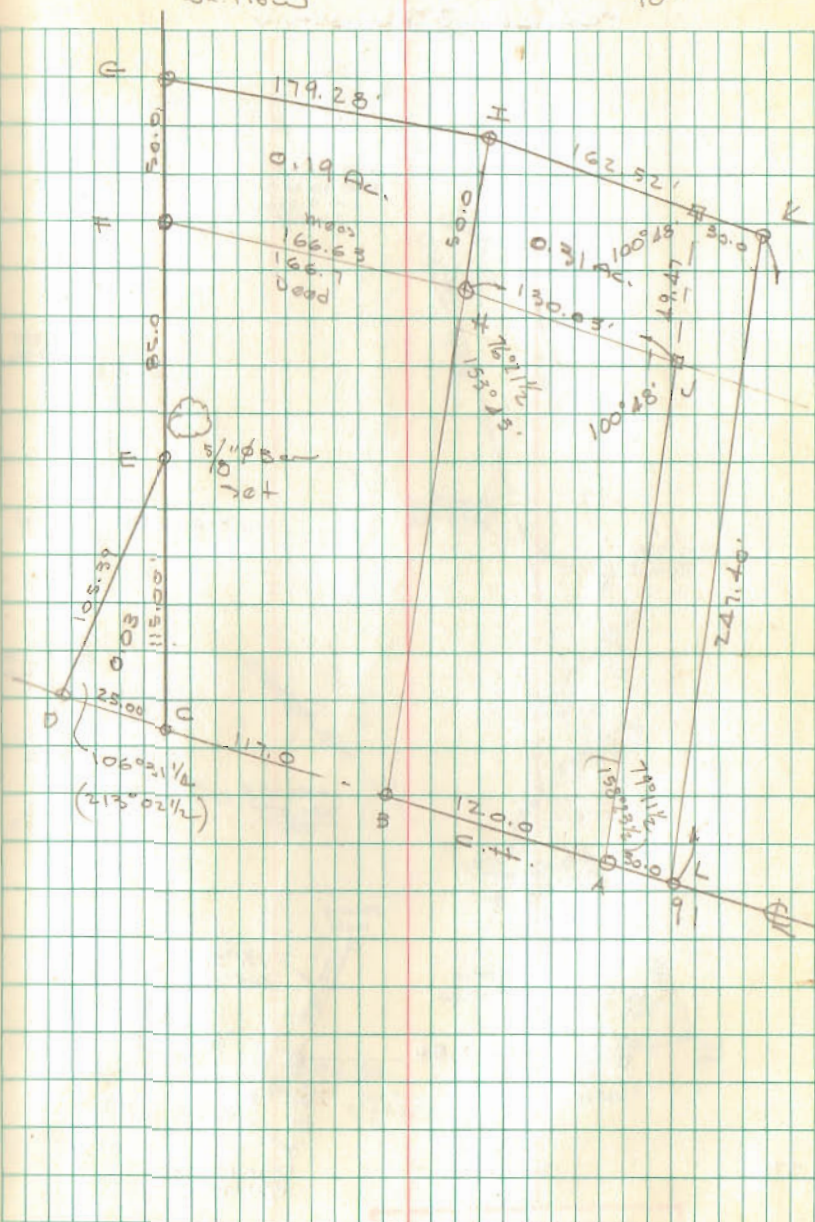
- A. R.R. Spk Found  
 B. " " "  
 C. " " "  
 D. R.R. Spk Set  
 E.  $\frac{5}{8}$ "  $\phi$  Bar Set  
 F. 1"  $\phi$  Bar Found  
 G.  $\frac{5}{8}$ "  $\phi$  Bar Set  
 H. 1"  $\phi$  Bar Found  
 I.  $\frac{5}{8}$ "  $\phi$  Bar Set  
 J.  $\frac{1}{2}$ "  $\phi$  Bar Found  
 K.  $\frac{5}{8}$ "  $\phi$  Bar Set  
 L. R.R. Spk. Set

See F.B. 11 pg. 50

INDEXED ON MAP  
 4174

Dodson  
 wh flow

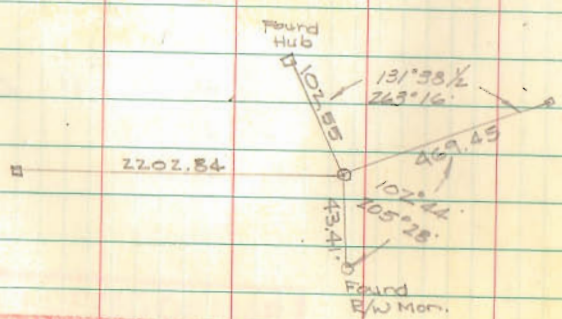
14 Sept. 68 59  
 70°





COWMAN SURVEY  
LAKE TOWNSHIP

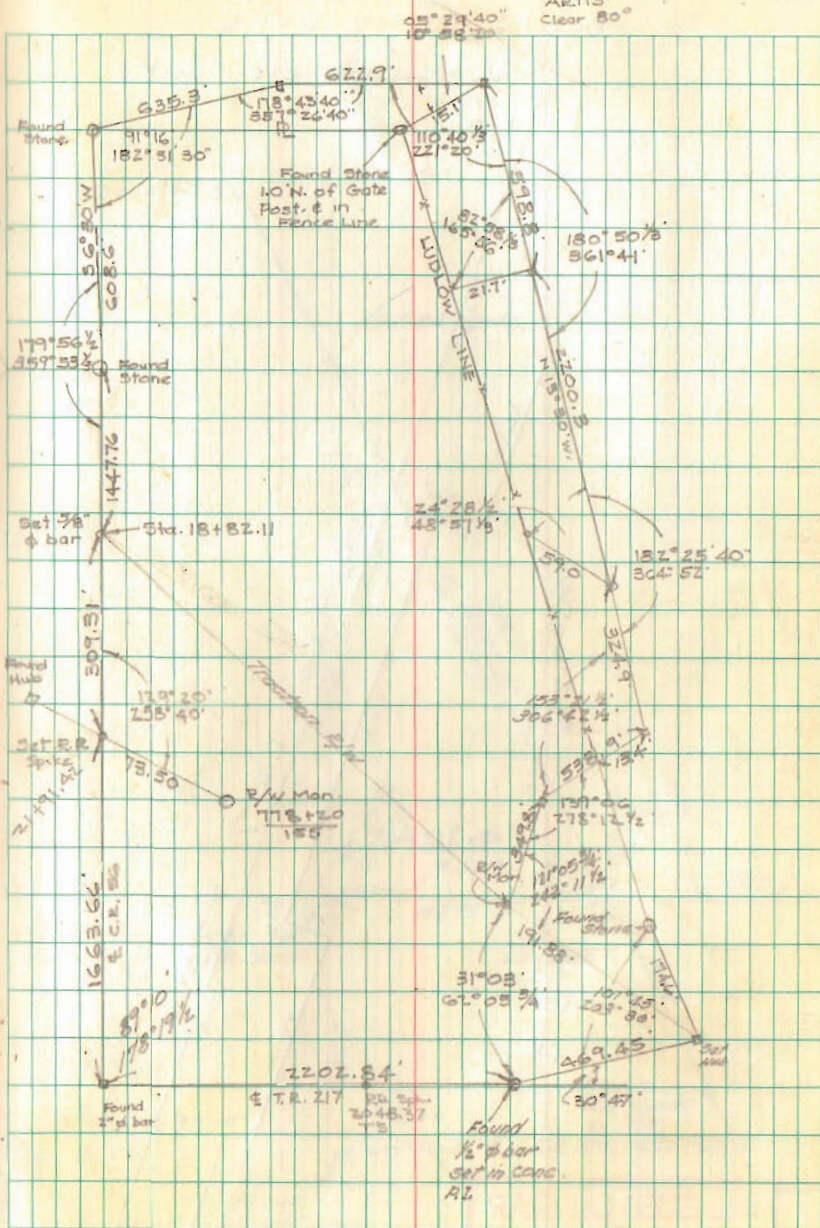
17.76



INDEXED ON MAP  
3479

9-21-68  
WHITLOW  
ARTIS  
Clear 80°

60









STICKLER JURVEY

WEST LIBERTY

A = Wood Post which Mrs. Stickler says  
is S.E. Cor. lot 232

B =  $\frac{5}{8}$ "  $\phi$  Bar Set in Fence

C = Cor. Post

D =  $\frac{5}{8}$ "  $\phi$  Bar Set at Cor. post

E =  $\frac{5}{8}$ "  $\phi$  Bar Set in line with  
fence west from "D"

See F.B. 419 pg. 26

INDEXED ON MAP  
6995

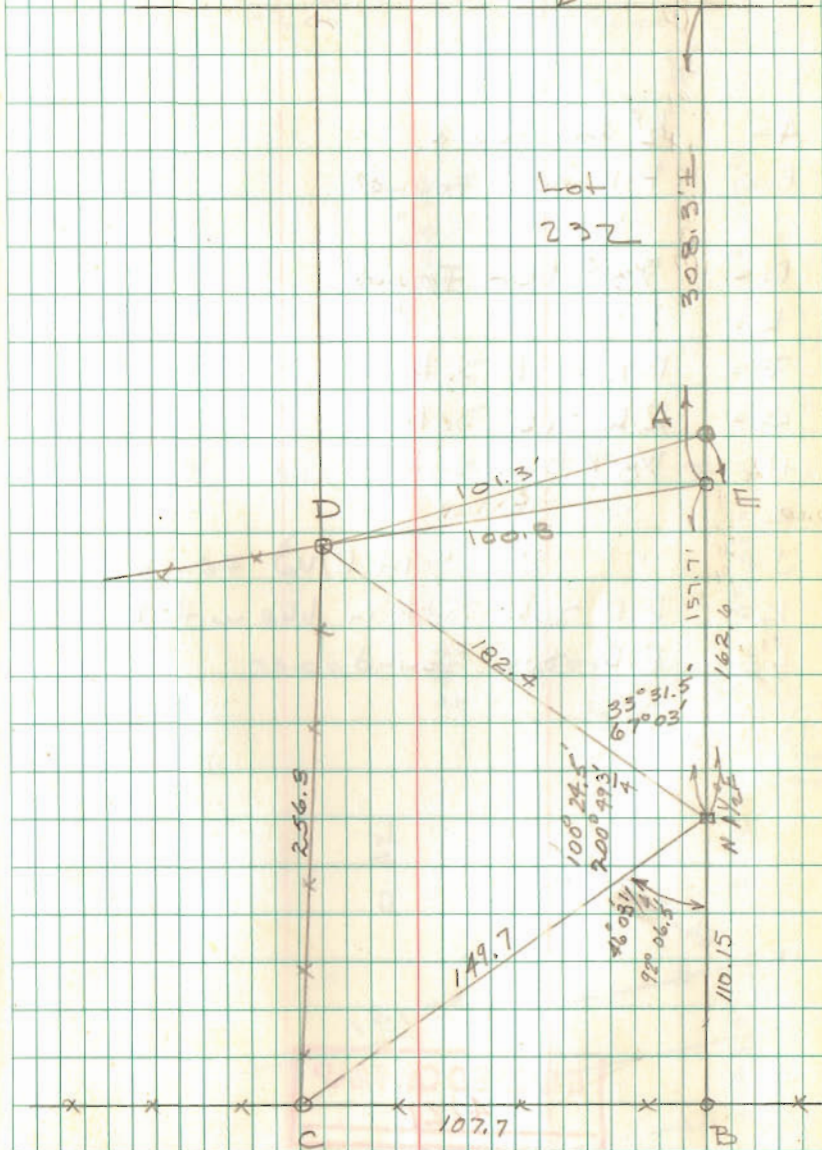
Dodson  
Whitlow  
Archie

10/5/68

50°

62

F Bairo St. D



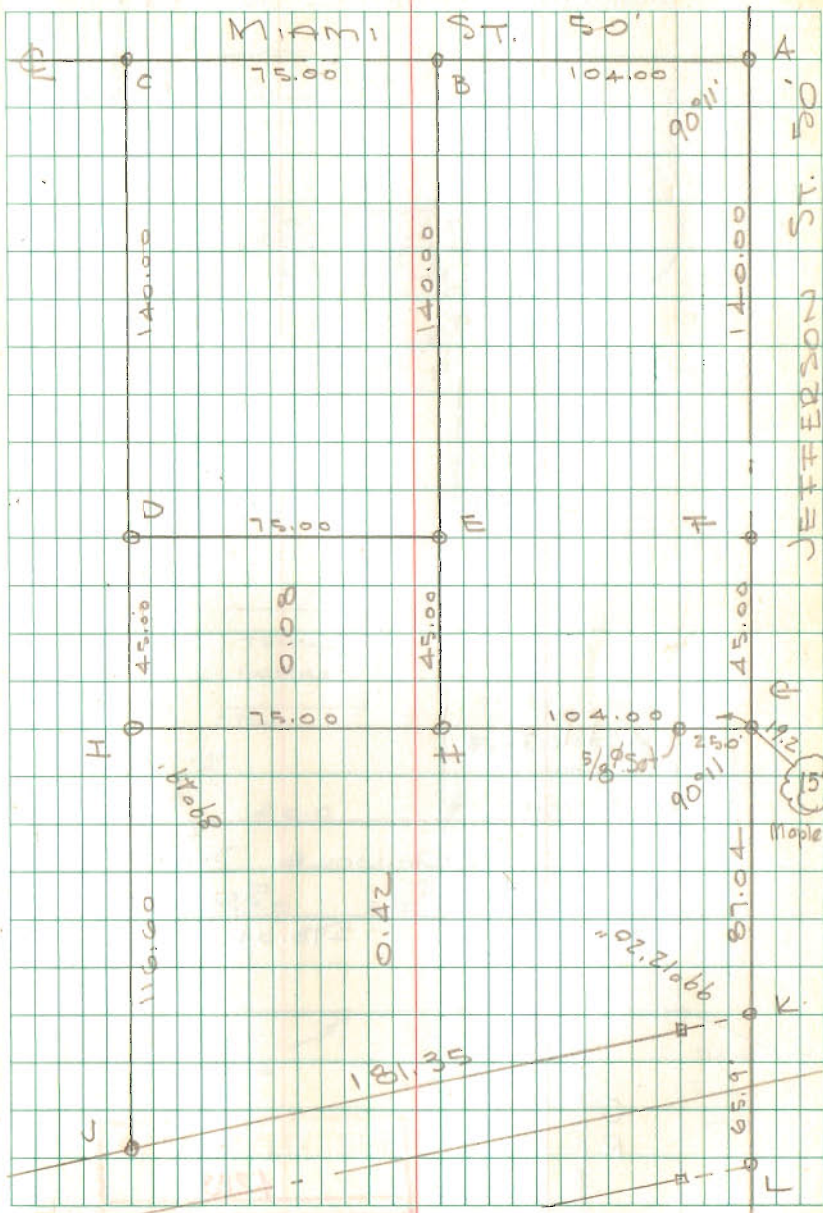
BYRD SURVEY  
QUINCY, OHIO

- A = 1/2" Bar Found
- B = P-K nail Found
- C = " " "
- D = 5/8" Bar Found
- E = " " "
- F = P-K nail Set
- G = R.R. jpk. Set
- H = 5/8" Bar Set
- I = " " "
- J = " " " in R/W Fence
- K = R.R. jpk Set in line with R/W Fence
- L = R.R. jpk Found

INDEXED ON MAP  
4221

Dodson  
Nichols

10/5/68 63  
60°





Lot 6  
SEMINOLE SHORES SUB'D No. 1

1/2" pipe  
Found

4" tile filled  
w/conc.  
Found

SEMINOLE SHORE Dr  
254.9'  
50'  
290.04'

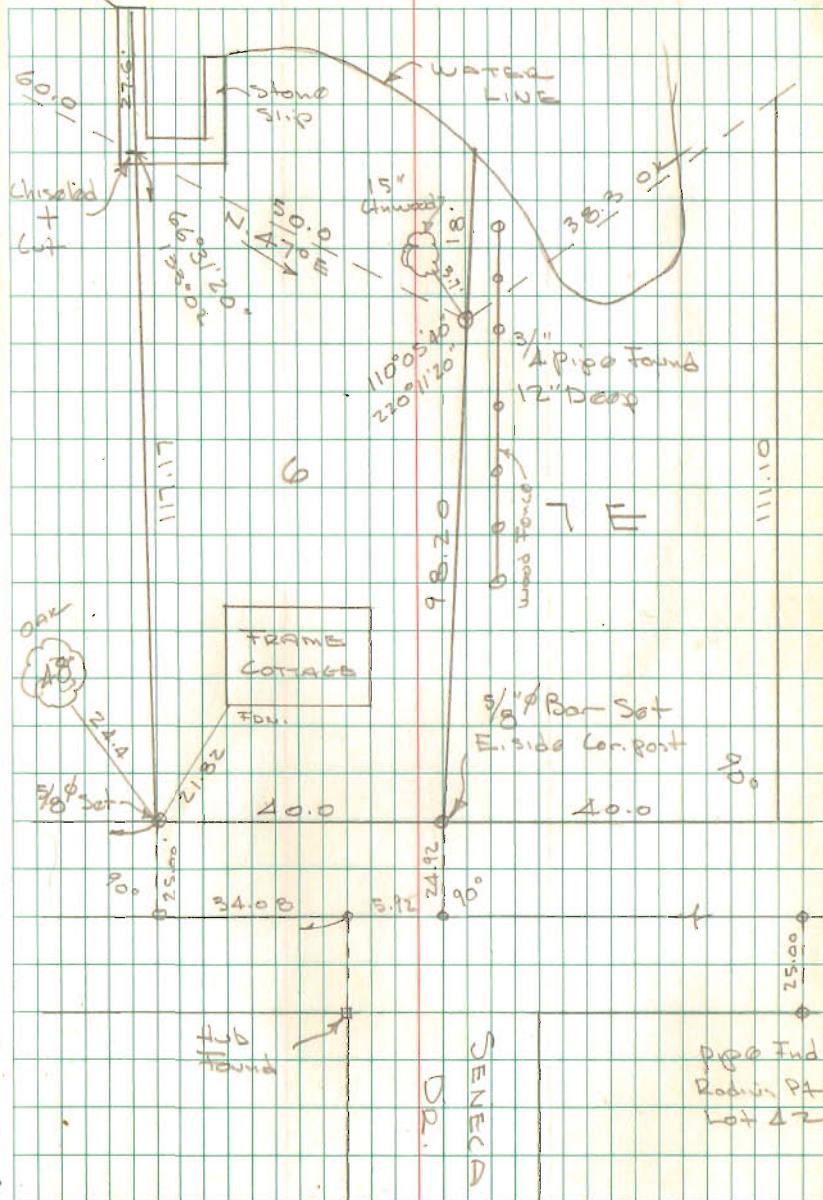
Drilled  
Hole

INDEXED ON MAP

4283

Dodson  
Nichols

9/28/68 10/5/68  
65° 50°



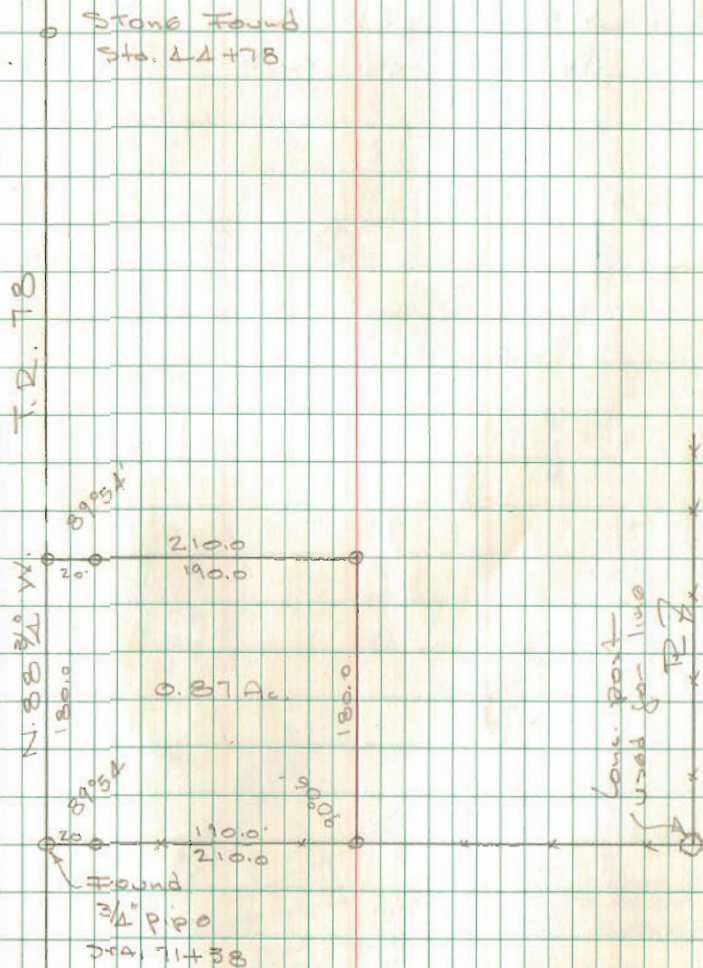
PULTER SURVEY  
 PLEASANT TWP.  
 SEC. 3 T-1 R-8

o =  $\frac{5}{8}$ "  $\phi$  Bar Set

INDEXED ON MAP  
 4593

Whitlow  
 Antis

Oct 12, 1968  
 75° 66





DILLON SURVEY

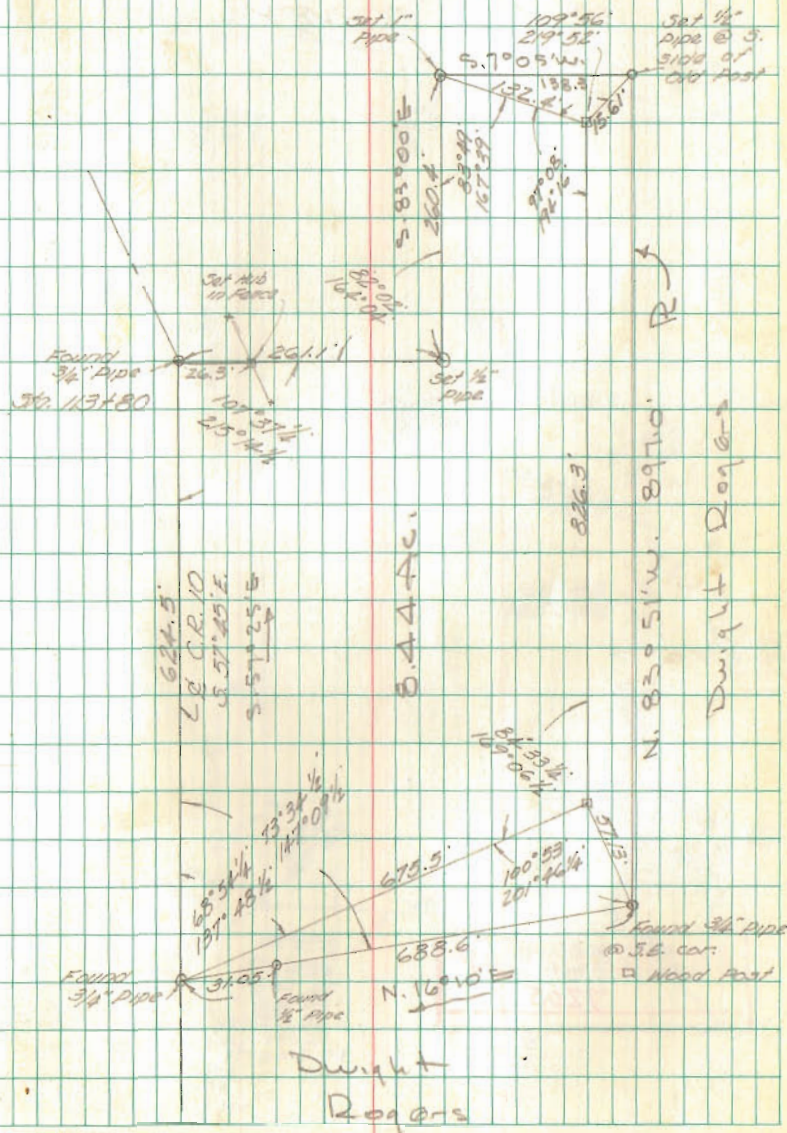
V.M.S. 3220

JEFFERSON TWO

INDEXED ON MAP  
7206

2 Nov. 65  
NORTHON  
ARMS  
CORR 60°

67









DAUM SURVEY  
V.M.S. 3321  
RUSHCREEK TWP

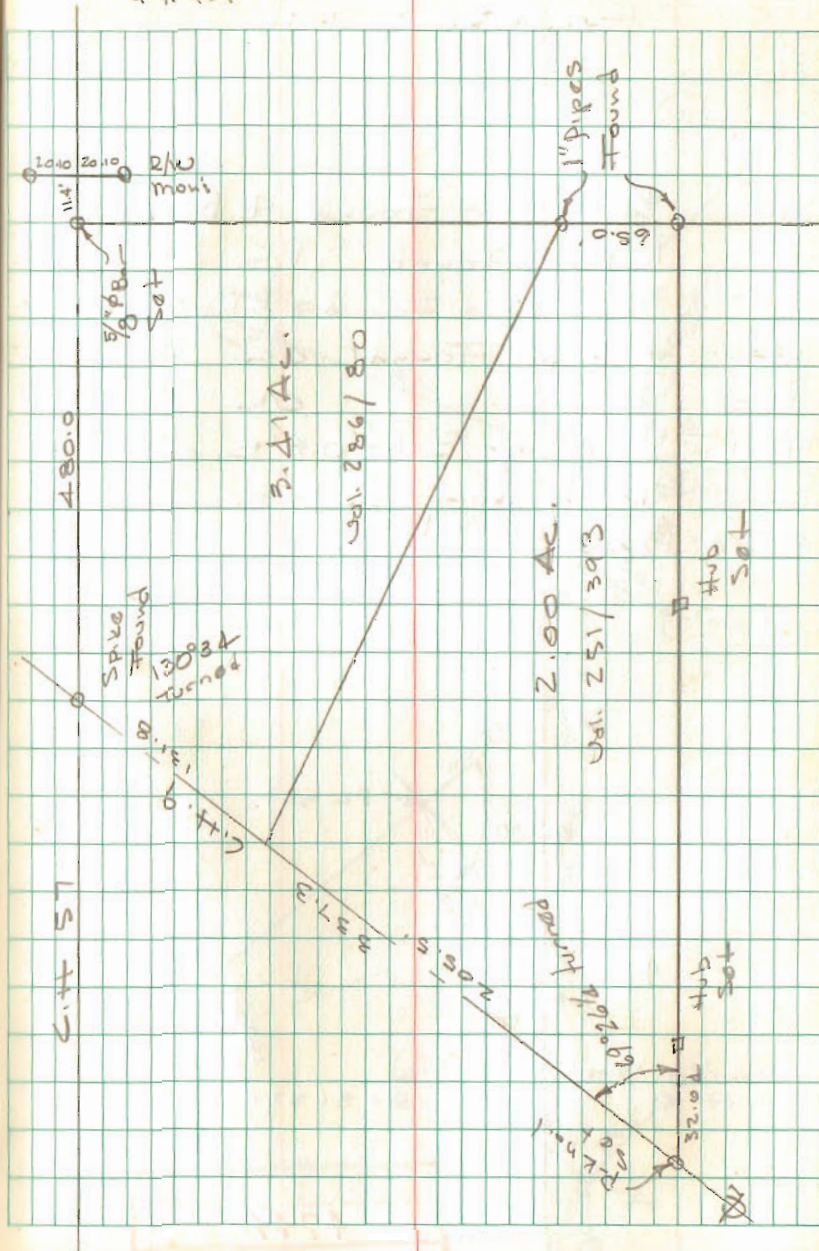
Survey to locate South line

Could not find any points on  
C.H. 9 — turned  $120^{\circ}34'$  as  
shown on deed set P.K.  
X turned =  $69^{\circ}26'$  should be  
 $69^{\circ}25'$

INDEXED ON MAP  
3379

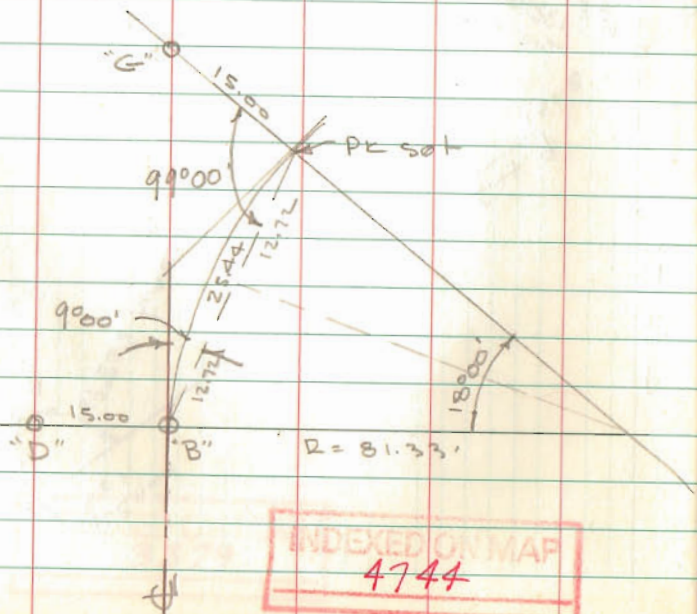
Whitlow  
Artis

Dec. 10, 1968 69



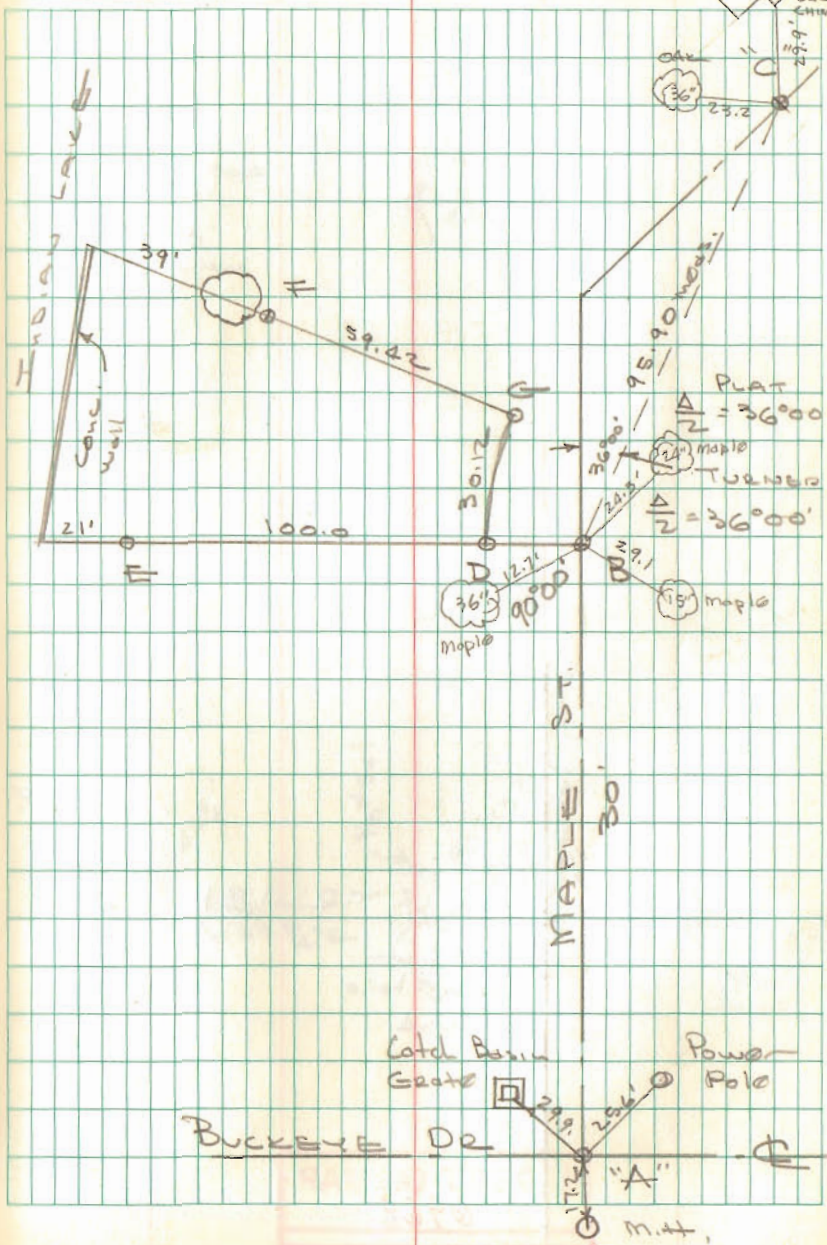
LOT 48  
TECUMSEH TOWNSHIP

- A = 3/4"  $\phi$  Bar Found @ Buckeye
- B = 1" pipe Found P.C.
- C = 3/2" pipe Found P.T.
- D = 1" pipe Found OK
- E = 1" " " OK
- F = 5/8"  $\phi$  Bar Set - 0.8' E. of 10" Hickory, on line.
- G = 5/8"  $\phi$  Bar Set



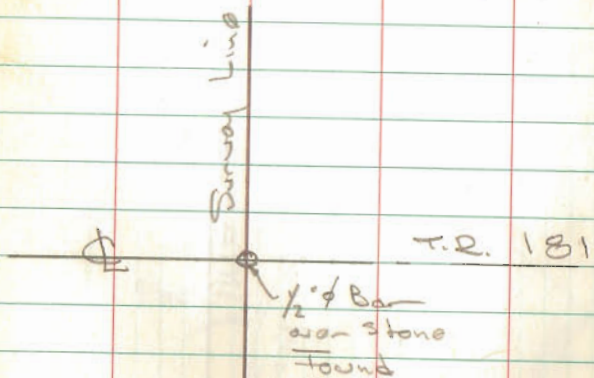
Dodson  
Nichols

12/14/68 70





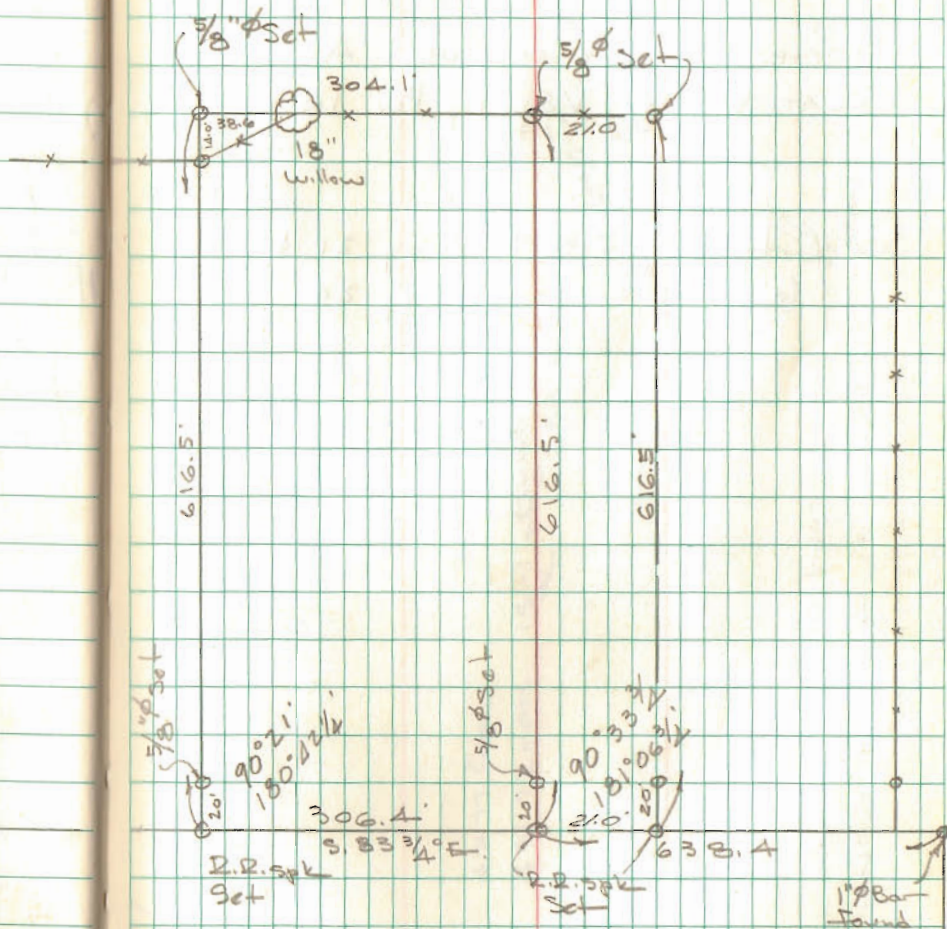
# STAMATO Survey



INDEXED ON MAP  
6968

Whitlow  
Artis

Jan. 25, 1969 71  
15°



LOT 657

BELLEFONTAINE

HOGES EAST GROVE ADD.  
PLAT BK A, Vol. 1, Pg. 10

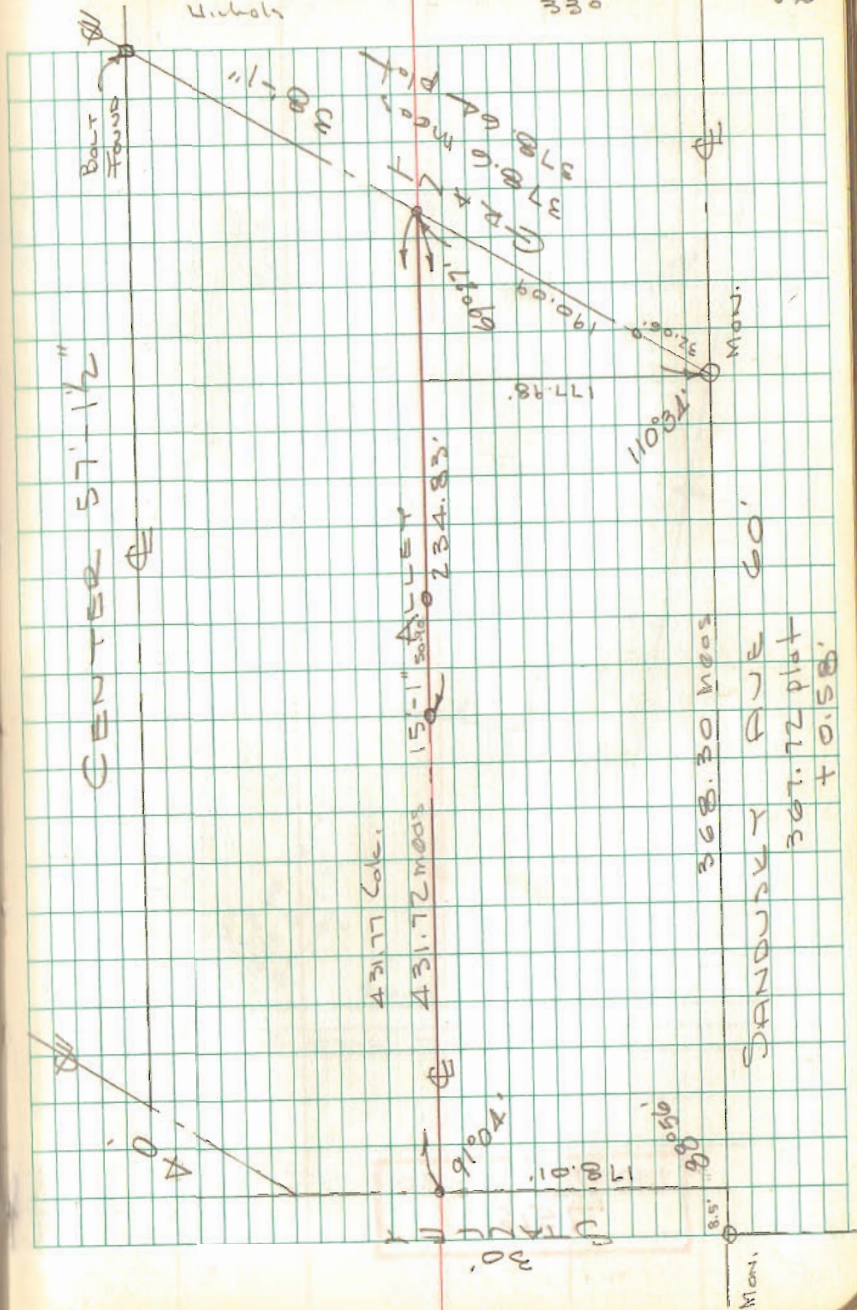
See City Eng. F.B. 188 pg. 21 & 57  
" " " " 302 pg. 24

INDEXED ON MAP  
7516

Dodson  
Nichols

Feb. 15, 1969  
330

72

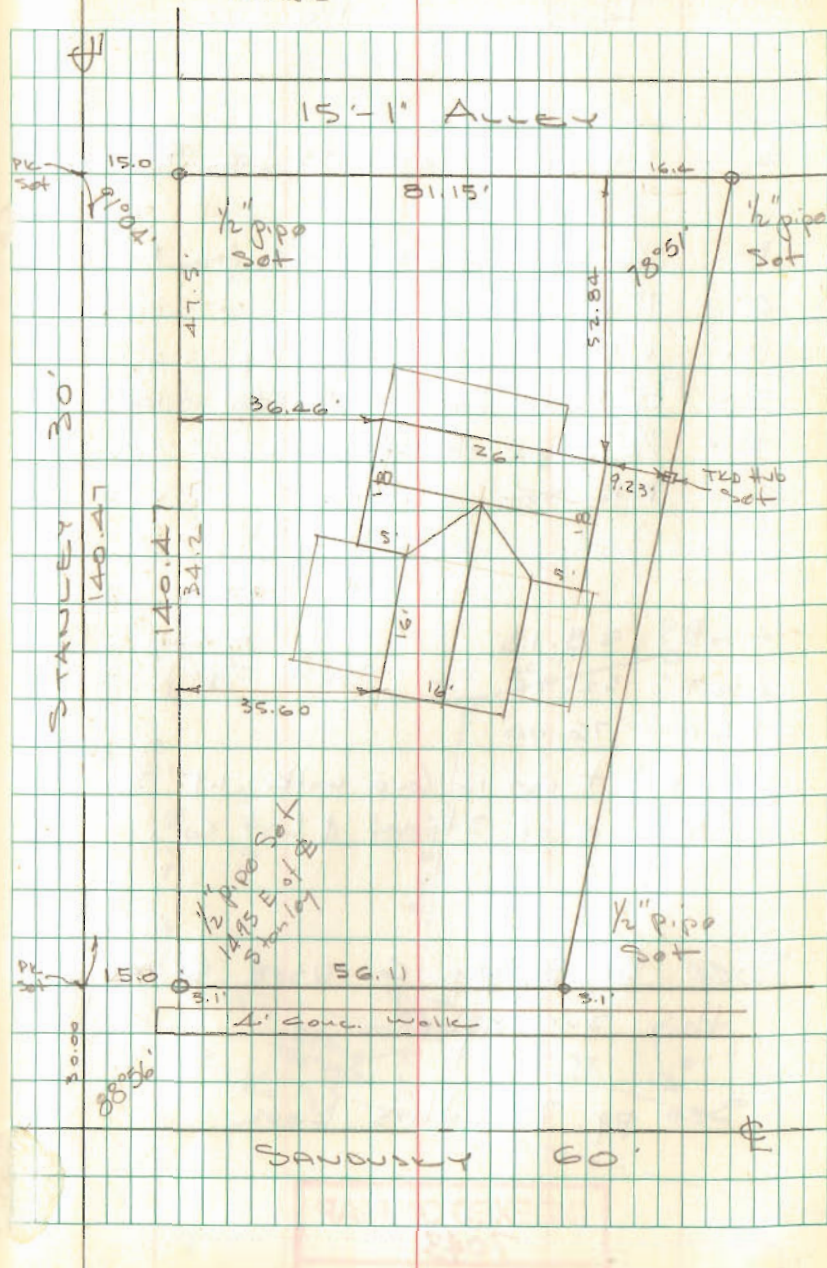




Lot 657 Cont'd.

Dodson  
Nichols

2/22/69 73



INDEXED ON MAP  
7516

PT. LOT 30  
RUSSELL POINT

- A 1" pipe found - 12.53 from E
- B = 1 1/4" pipe found 12.65 from P.K. on E
- C = 1" pipe found
- D = 1" pipe found E Alley
- E = "D" head Bolt @ N. edge of walk
- F = 1/2" pipe found @ " " "
- G = P.K. set in walk

A to B = 58.13

E to F = 52.32

B to G = 76.00

Chiseled + cut in conc. walk 1.97' S. of F =  
N. line of Street & Lot Cor.

See Bk 5, pg 6 used & from  
this survey

See pg 78 this book

INDEXED ON MAP

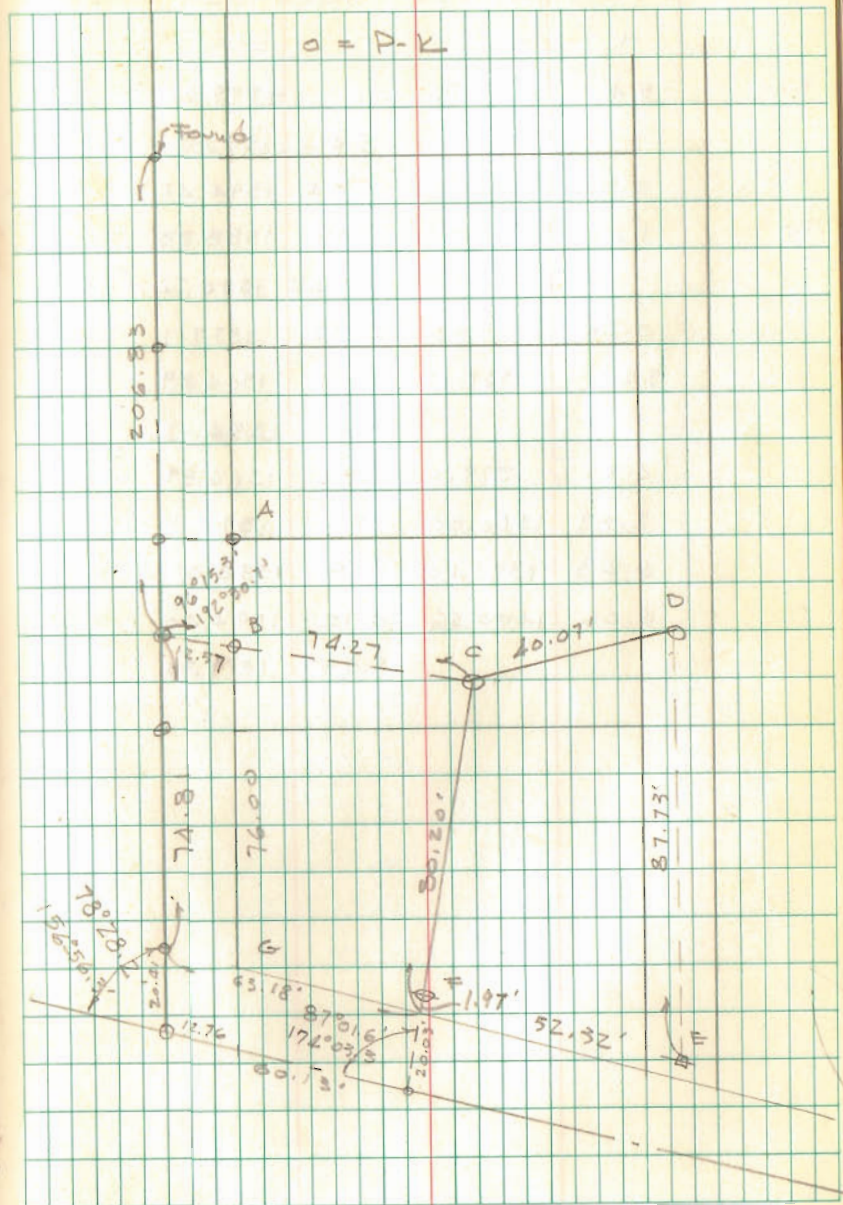
7043

Dodson  
Nichols

4/11/69  
650

74

a = P-K





STONEROCK SURVEY  
516-518 E CHILLICOTHE  
BELLEFONTAINE

- A = "0" Head bolt Found
- B = "0" Head bolt Found
- C = 3/4" pipe Found
- D = 1"  $\phi$  Bar Found 6" deep
- E = 1 1/2"  $\phi$  Bar Found
- F = 1/2" Pipe Found
- G = Chiseled + on Conc. Dr. Found
- H = 1/2" Pipe Found
- I = 1/2" Pipe Found

E to D = 51.55'  
E to F = 46.00  
F to G = 218.03  
E to H = 206.11

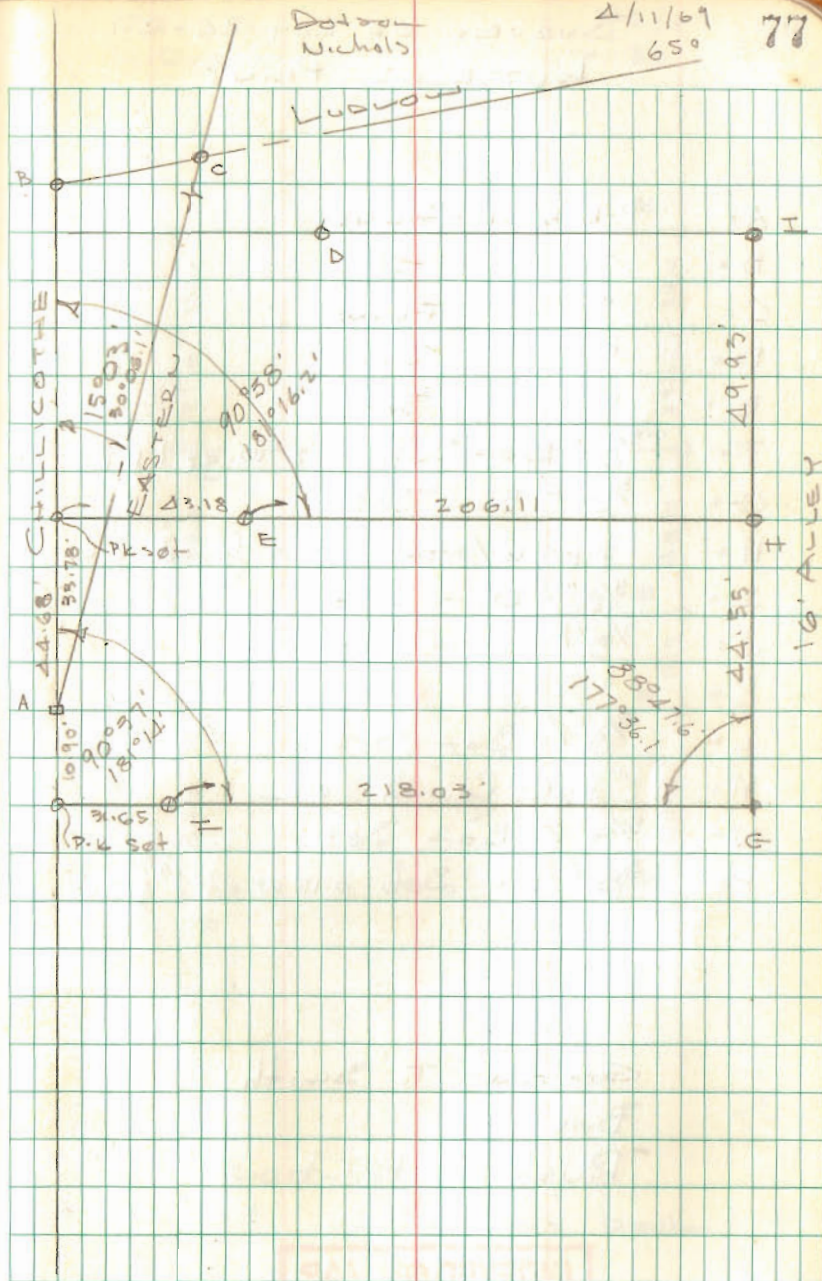
See City Eng F.B. 101 pg. 83

INDEXED ON MAP  
2240

Datum  
Nichols

4/11/69  
65°

77



INDEXED ON MAP  
1147



SURVEY OF LOT 26-27  
RUSSELL'S POINT

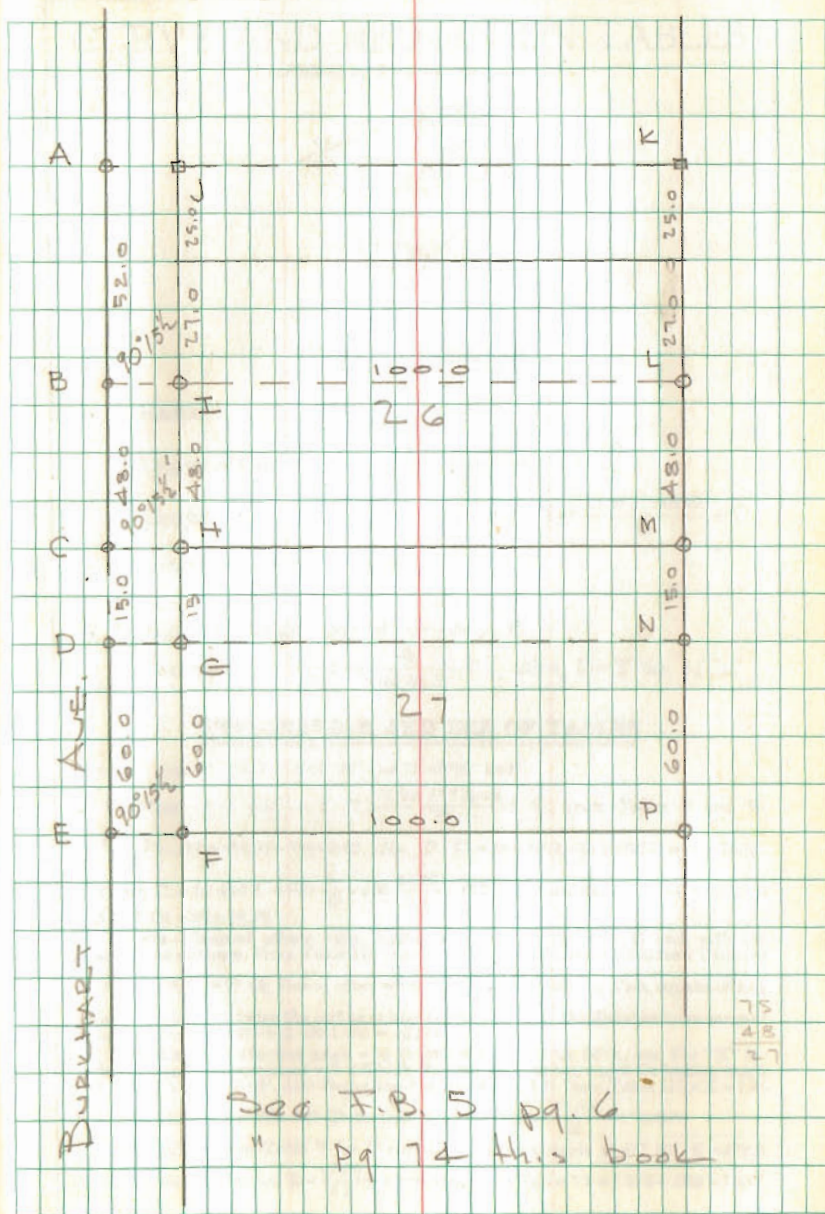
- A = P-K Nail Found
- B = " " Set
- C = " " Found
- D = " " Set
- E = " " Set
- F =  $\frac{5}{8}$ "  $\phi$  Bar Set - 0.2' w. of 1" pipe
- G =  $\frac{5}{8}$ "  $\phi$  Bar Set
- H = 1" Pipe w/ Iron inside found OK
- I =  $\frac{5}{8}$ "  $\phi$  Bar Set
- J =  $\frac{5}{8}$ "  $\phi$  Bar found
- K = " " "
- L =  $\frac{5}{8}$ "  $\phi$  Bar Set
- M = 1" Pipe found OK
- N =  $\frac{5}{8}$ "  $\phi$  Bar Set
- P =  $\frac{5}{8}$ "  $\phi$  Bar Set 0.15 w. of 1" pipe

Gertrude T. Smith  
Box 83  
Russells Point

INDEXED ON MAP  
7491

DOORON  
D. DOORON

7/2/69 78  
80



See F.B. 5 pg. 6  
" pg 74 This book