

LOT 56 & 57
DUNN'S POND ALLOT.
WASHINGTON TWP

- A = $\frac{3}{4}$ " pipe Found in point.
 B = $\frac{1}{2}$ " PIPE SET
 C = $\frac{1}{2}$ " PIPE SET
 D = $\frac{1}{2}$ " PIPE FOUND IN PUMPT 4" DEEP
 E = " " " " "
 F = " " " " "
 G = " " "
 H = $\frac{1}{2}$ " PIPE FOUND
 I = $\frac{1}{2}$ " PIPE SET
 J = $\frac{1}{2}$ " PIPE SET N.E. SIDE OF POWER POLE

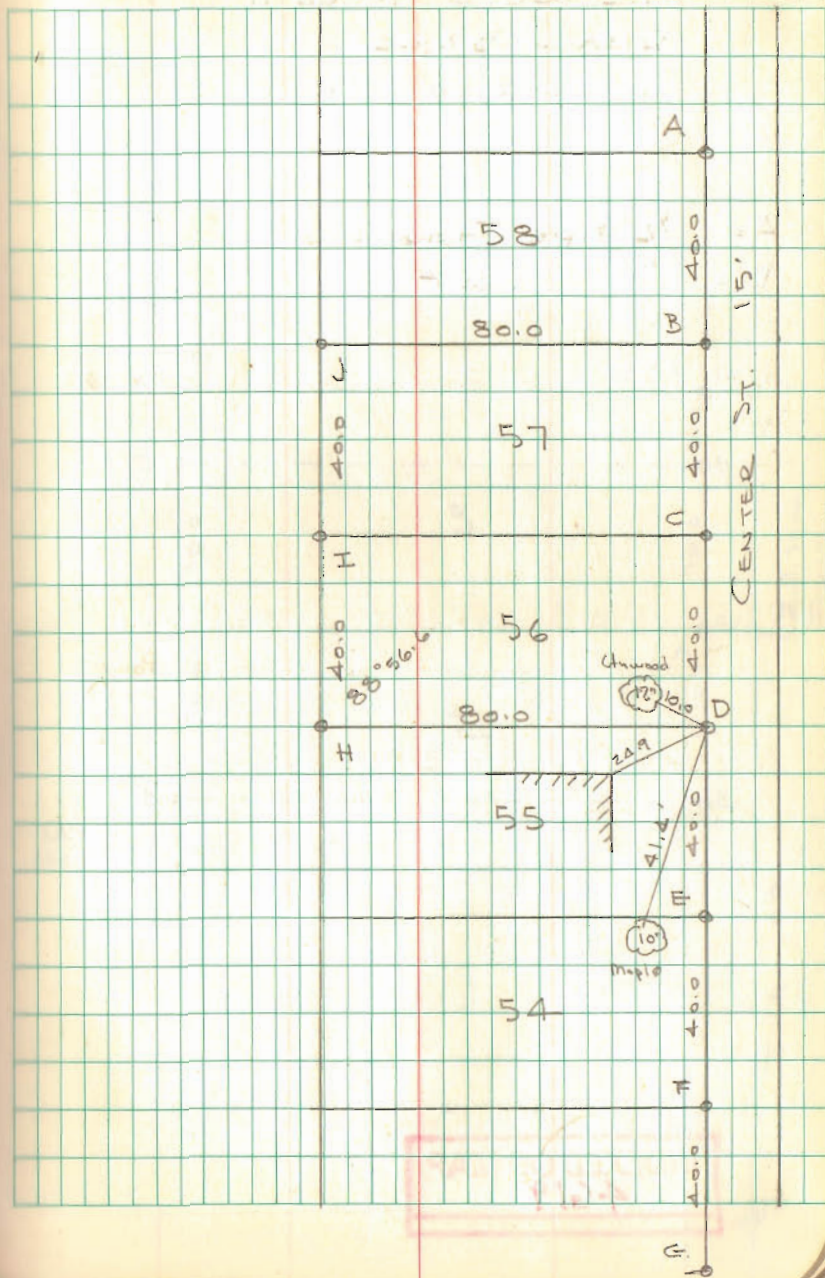
ANGLE G-D-H = $88^{\circ}56.6'$

PLAT $\angle = 88^{\circ}55'$

INDEXED ON MAP
7447

Dodson
Nichols

4/26/69 01
70°



10

SURVEY OF Pt. Lot 2 & 3
HILLWOOD ALLOT.

v.m.s. 3220

JEFFERSON TWP

A = 1/2" pipe Found

B = " " Set

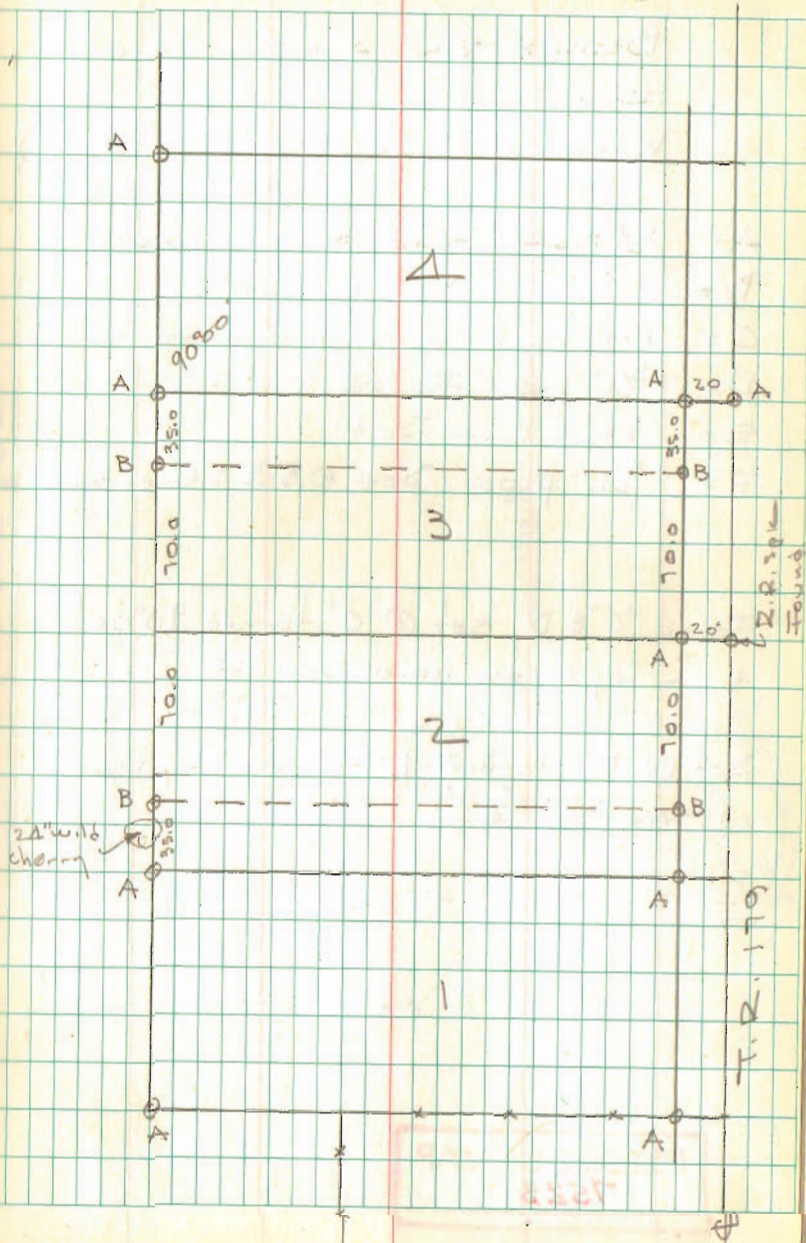
INDEXED ON MAP
4619

Dodson
Nichols

5/3/69

02

70°



LOT 3707

BELLEFONTAINE, OHIO

FOR

WAYNE WOLFORD

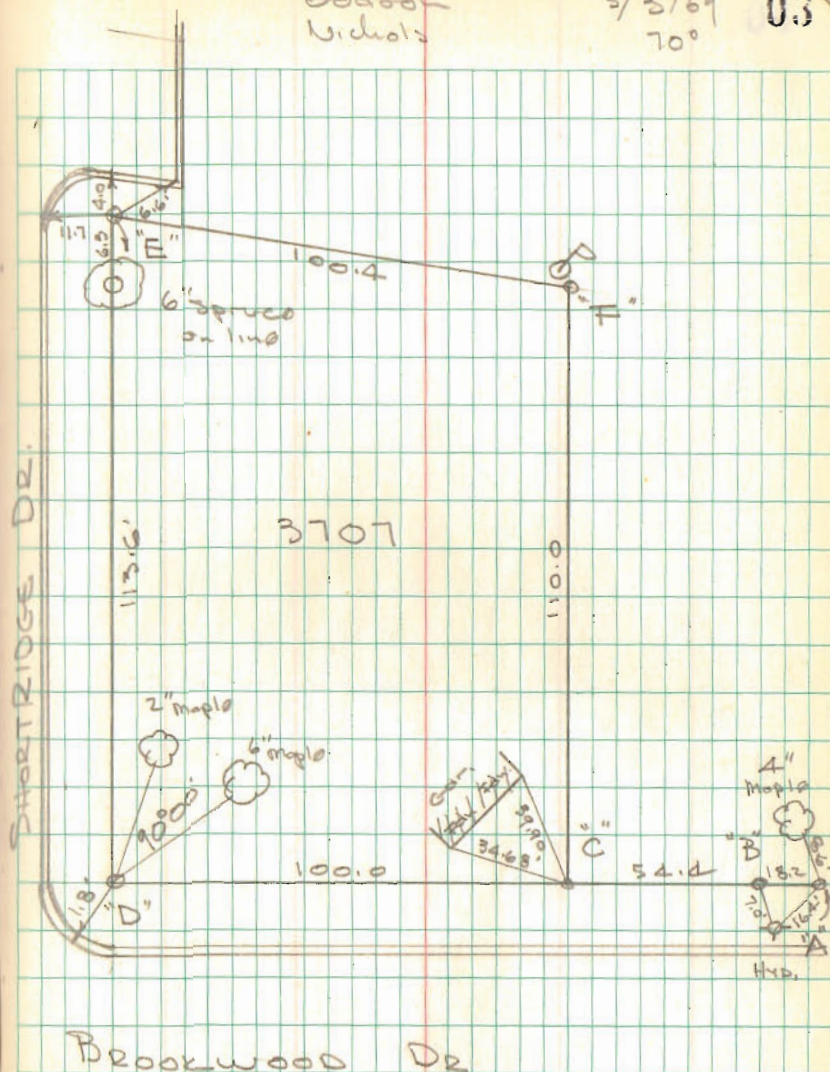
- A = $\frac{1}{2}$ " Bar Found @ Gr. surface
 B = " " " 6" deck
 C = P-K nail in Asphalt drive Found
 D = $\frac{3}{4}$ " pipe Found @ P.I.
 E = $\frac{5}{8}$ " Bar Set
 F = $\frac{3}{4}$ " pipe Set - 3' ± S.E. of Power pole

Found "C" & D, set @ "C" turned $90^{\circ}00'$
 from D, meas 110.0 set F

Set @ "D" turned $90^{\circ}00'$ from "C", meas
 113.6 set E

Dobson
Nichols5/2/69
70°

03

INDEXED ON MAP
7523

LOT 140
RIDGEWAY, OHIO
FOR
ALLEN HALE

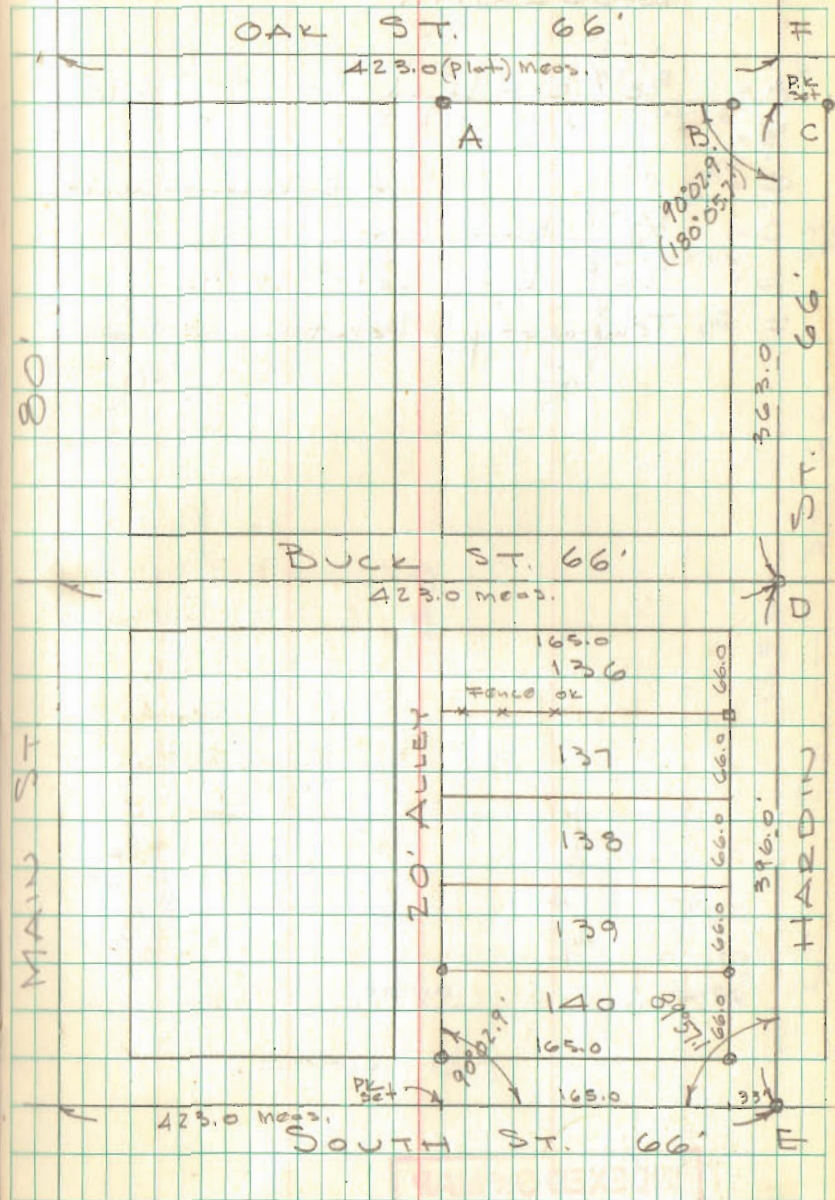
Split curbs on Main St. @ OAK ST.,
Buck St, and South St. - meas.
East on each plat dist 423.0 for
E of Hardin - fit old fences on
alley very good. Found A-B-C. $\frac{5}{8}$ " ϕ
Bars - meas South on Hardin from
line A-B-C - fit lines of occupation
on Hardin St. very good.
Inter-sected line A-B-C & F-D-E, set
P-K - turned \angle from E to A = $90^{\circ}02.9$ -
Meas. P-K to B = 29.25' - PK to C = 36.75'
Meas from P.K South on Hardin on
line F-D-E, set $\frac{5}{8}$ " ϕ Bar @ 363.0 (D)
for E Buck St. - Meas. from D, 396.0
set $\frac{3}{4}$ " ϕ Bar for E South St. (E)

Points A-B-C used for S. line of
Oak St. - did not use them for
E Hardin (they don't fit alley occupation.)
A to B = 167.25
B to C = 66.00'

INDEXED ON MAP
7488

Dadson
Nichols

May 10, 1969 05
50°
Rain



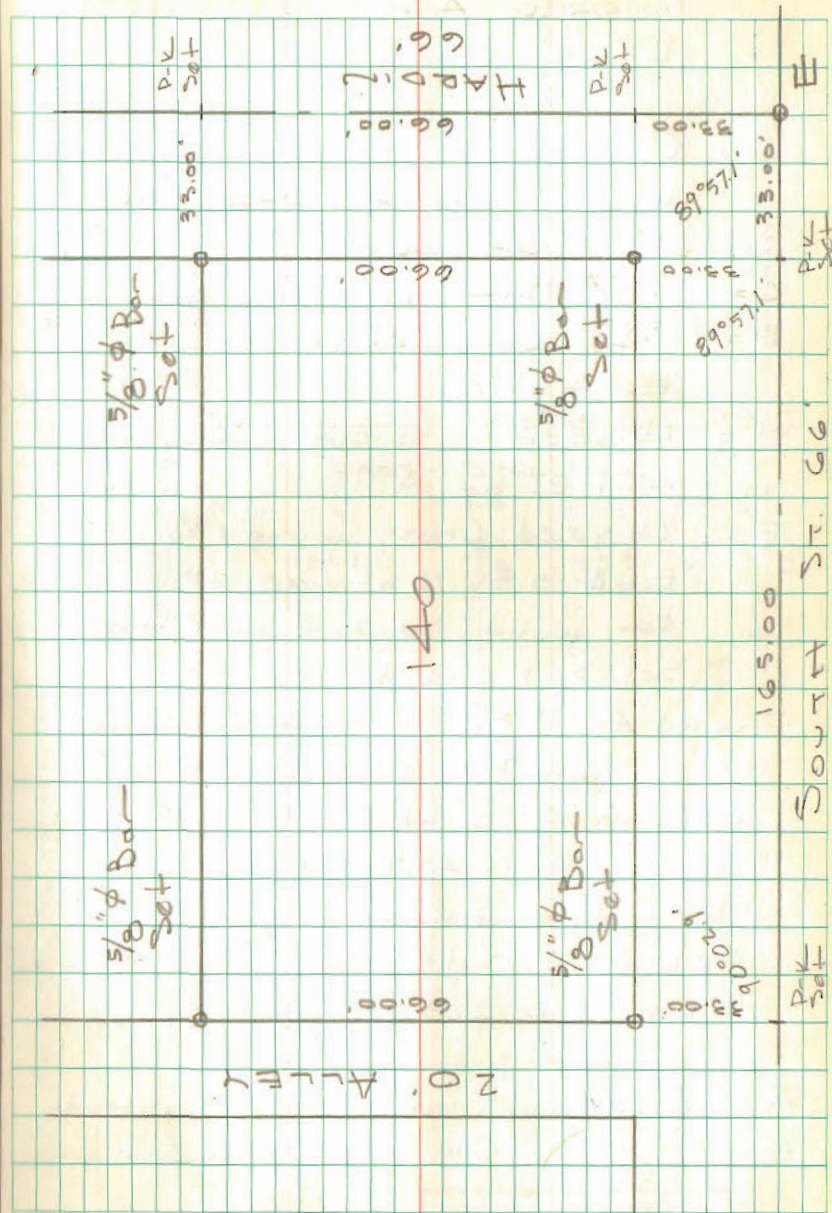
Lot 140 (Cont'd)
RIDGWAY

- A = 5/8" ϕ Bar found 1.0' \pm S. of walk
- B = " " " " "
- C = " " " @ E. edge of walk
- D = 5/8" ϕ Bar Set
- E = 3/4" ϕ Bar Set
- F = Temporary Point

INDEXED ON MAP

7488

May 10, 1969 06



STEENROD SURVEY
LAKE AVE.
LAKEVIEW, O

- A = Chiseled Cross found on conc.
walk - N.W. cor. Steenrod
- B = 1" ϕ Bar found
- C = $\frac{5}{8}$ " ϕ Bar found - 0.2' E. of bar-pert
- D = $\frac{5}{8}$ " ϕ Bar Set in fence 45.0'
East of C
- E = Chiseled Cross cut in conc. walk
47.7' E. of "A"
- F = Chiseled Cross found 36.1' E. of
"E" & 0.35 N. of line also $\frac{5}{8}$ " ϕ
Bar found 1.0' South of Cross
Set By D. Gilbert

Found "A" - "B" - "C", meas A-B 135.1, deed =
135.0 - Meas. "B" - "C" 87.3 deed = 87.3

Set on "A", sight "C", "B" on line, turn
90°00' meas 47.7 set E.

Meas East from "C" 45.0 feet set "D"

Set on "E" sight D turn to "A" 89°20' or

Meas "E" - "D" 223.8

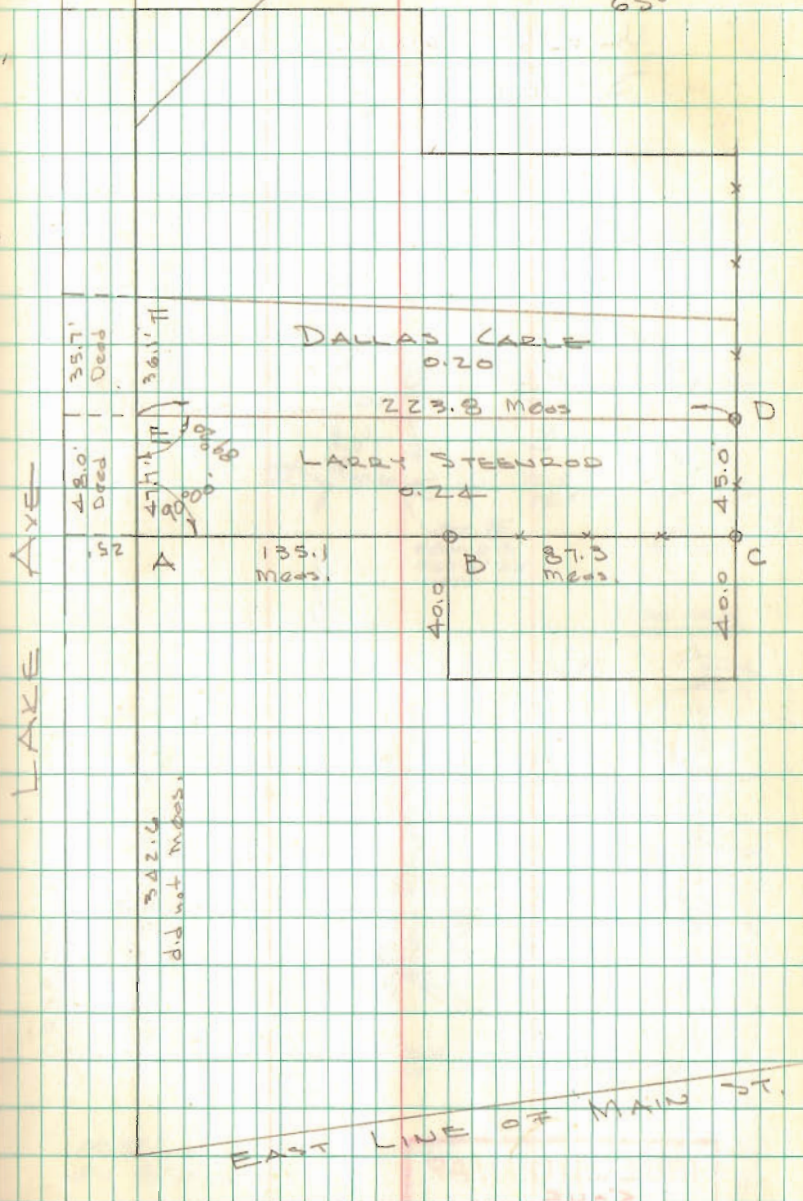
"A" = 0.55 N. of Crack - 2.8' West of Crack

E = 0.52' N. of edge of walk - 2.64' E. of Crack

INDEXED ON MAP
6566

Dodson
Nichols

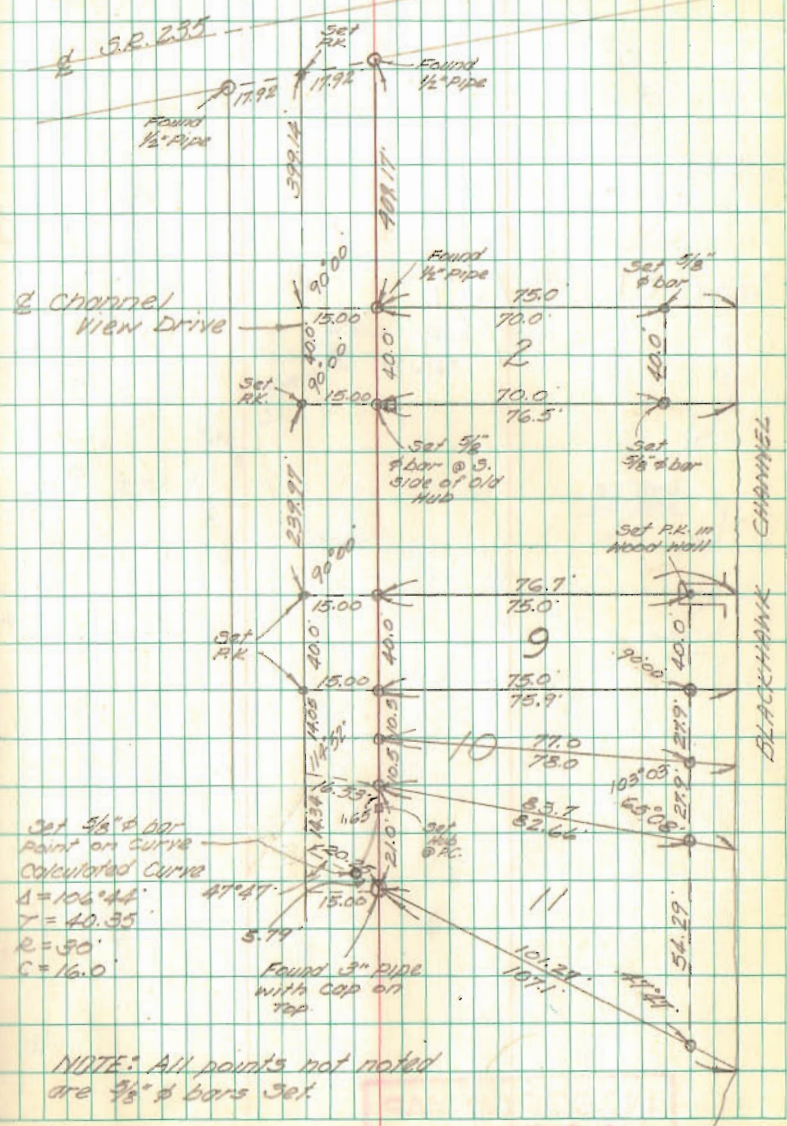
6/2/69 07
Rain
65°



Lot 2-9-10-11

WEST SIDE SUBD
STOKES TWP.

JUNE 14, 1969
Wardlaw
Artis



Channel View Drive

BLACKHAWK CHANNEL

Set 3/8" ϕ bar
Point on Curve
Calculated Curve
 $\Delta = 106^\circ 44'$
 $T = 40.35'$
 $R = 30'$
 $C = 16.0'$

Found 3" pipe
with cap on
top

NOTE: All points not noted
are 3/8" ϕ bars Set.

INDEXED ON MAP
5045

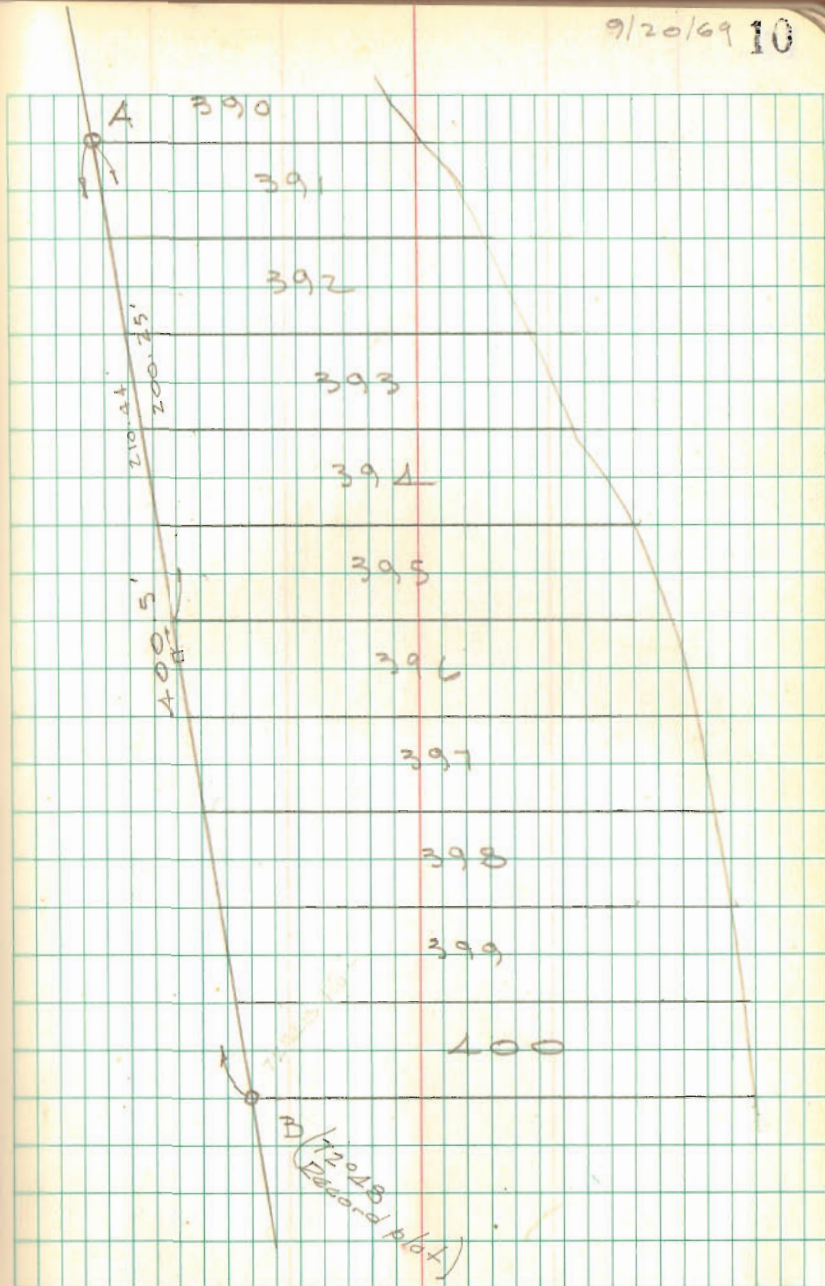
210.42	179.60
200.25	12.48
10.19	107.12

74°30

1°14 1/2 2°29 3/4

INDEXED ON MAP
2137

9/20/69 10



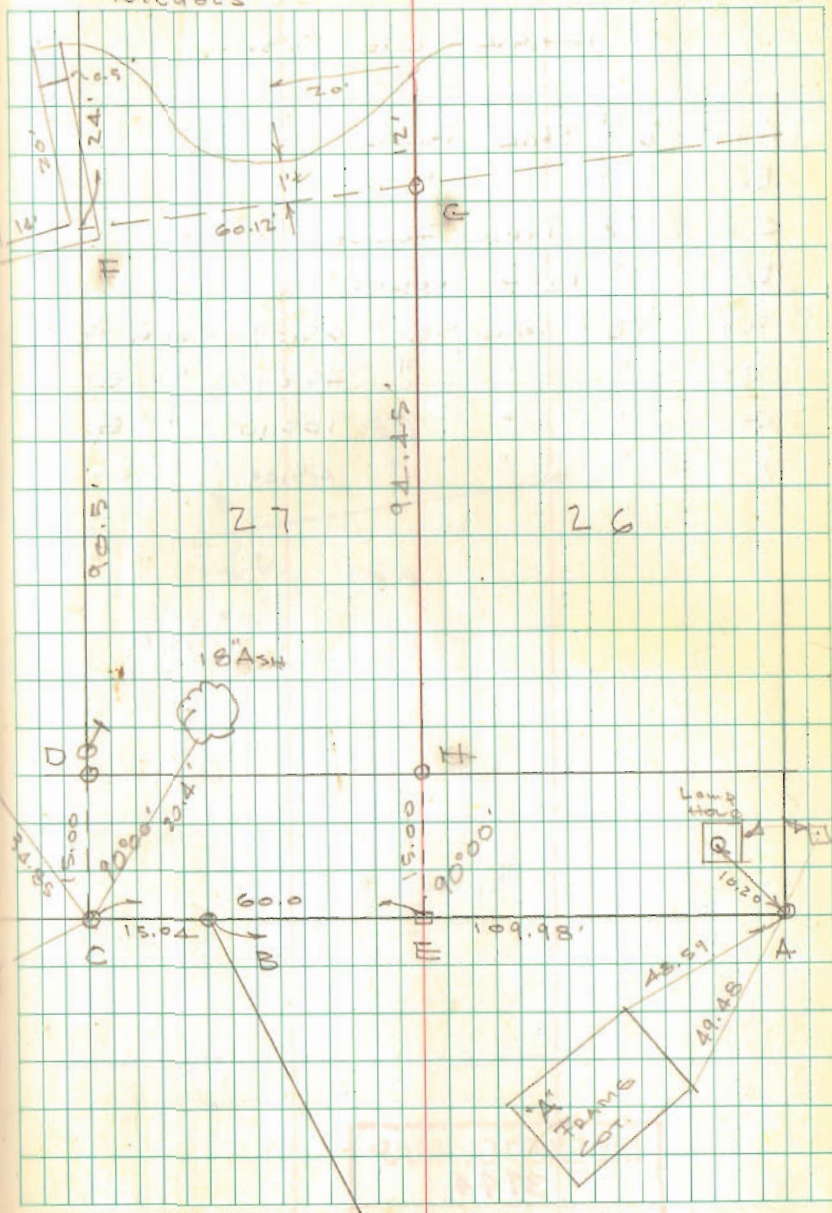
LOT 27
TECUMSETH ISL.
MIDLAKE SUBD. No. 2

- A = 1/2" ϕ BAR FOUND
- B = " " " 0.25' E S. OF A-C
- C = 1/2" ϕ BAR FOUND
- D = 1" PIPE FOUND OK
- E = TRD HUB SET 60.0' FROM "C"
- F CHISELED CROSS CUT IN LONG. BOAT WELL
- G OLD HUB FOUND - 1/2" ϕ BAR FOUND - 3/4" PIPE FOUND
- H SET 5/8" BAR
- I REMAINS OF HUB FOUND - SET 5/8" ϕ



No. 9194
FRAMG
COTTAGE

INDEXED ON MAP
4253



LOT A1

SHAWNEE ISL.

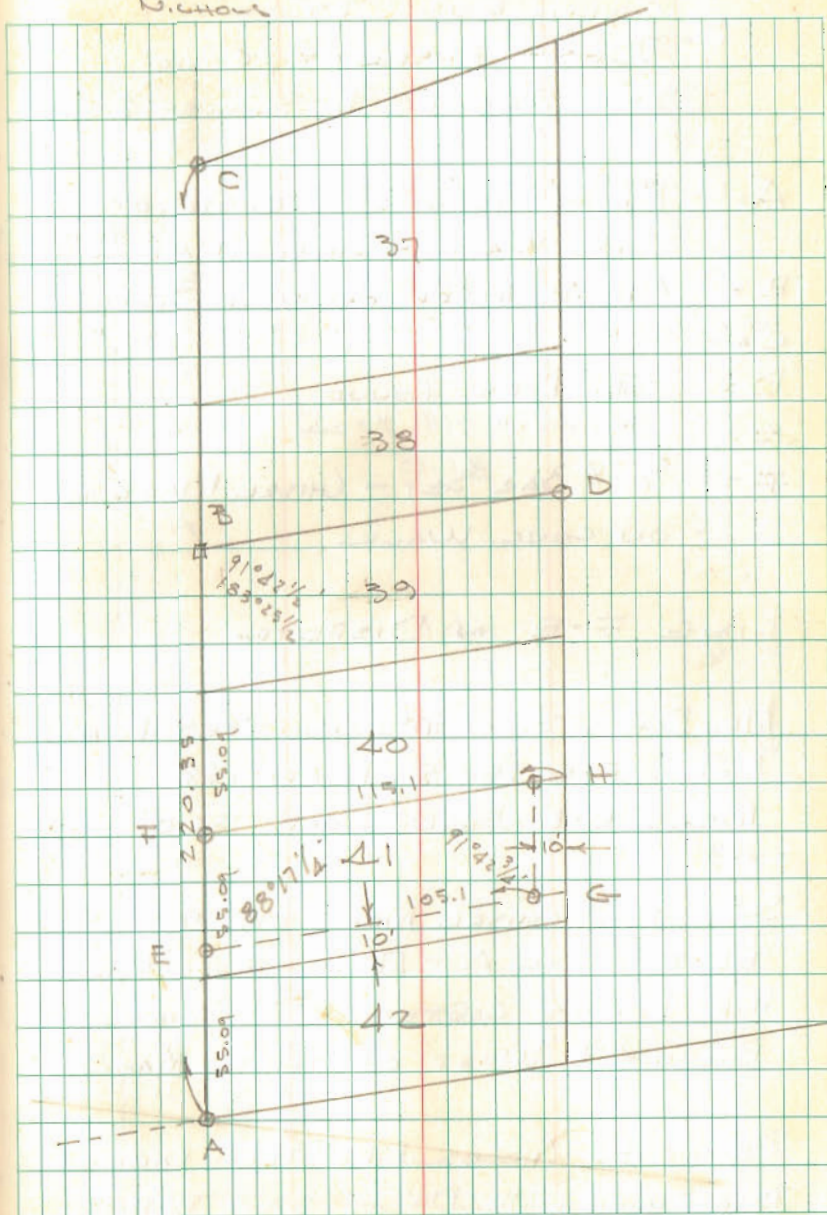
- A = $\frac{3}{4}$ " ϕ BAR FOUND
- B = $\frac{1}{2}$ " ϕ " "
- C = $\frac{3}{2}$ " PIPE FOUND
- D = 1" PIPE FOUND
- E = $\frac{5}{8}$ " ϕ BAR SET 65.09 FROM A
- F = " " " 45.09 " E
- G = " " " 105.10 " E
- H = " " " 45.09 " G

179.60
 $\frac{91.02 \frac{3}{4}}{88.17 \frac{1}{4}}$

INDEXED ON MAP
 3744

DOONAN
 WHITLOW
 NICHOL

10/4/69 14



M'ILVAIN SURVEY
COLUMBUS ST.
WEST LIBERTY, OHIO
SEE DRAWER "R" SURVEY 2380

- A = 1" PIPE FOUND @ S. EDGE OF
CONC. WALK - CHISEL (MARK ON WALK)^{FOUND}
- B = CHISEL MARK ON WALK FOUND
- C = " " " " "
- D = 3/4" PIPE FOUND
- E = " " "
- F = 5/8" BAR SET - CHISEL MARK FOUND
ON CONC. WALK

LINE F-E IN DISPUTE

MR. DAVIS SAYS M'ILVAIN SET POINT "E"
MEAS. F-E 154.5, DEED 150'
MEAS. D-E 56.0 DEED 56.0'

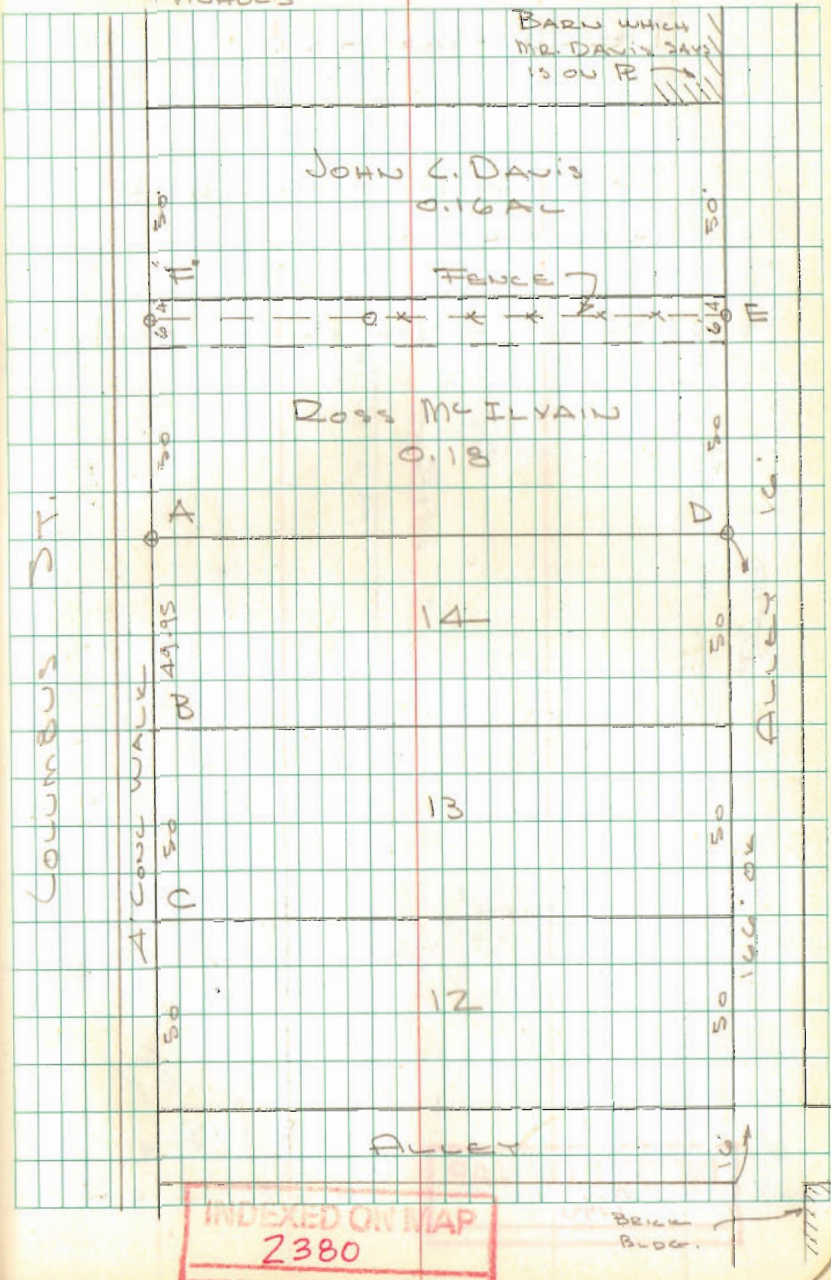
SET "F" @ CHISEL MARK ON WALK
55.90 FROM A - RECUT CHISEL MARK
MR. DAVIS CONTENDS "F" SHOULD
BE 0.4'± WEST OF CHISEL MARK

POINT "E" CHECKS 54.0' FROM COR. OF
BARN, WHICH MR. DAVIS SAYS IS HIS
CORNER.

DOORSON
WHITLOW
NICHOLS

10/4/69

15



ck

PART LOT 230

BELLEFONTAINE

5/8" ϕ Bars set on corners
indicated = 0

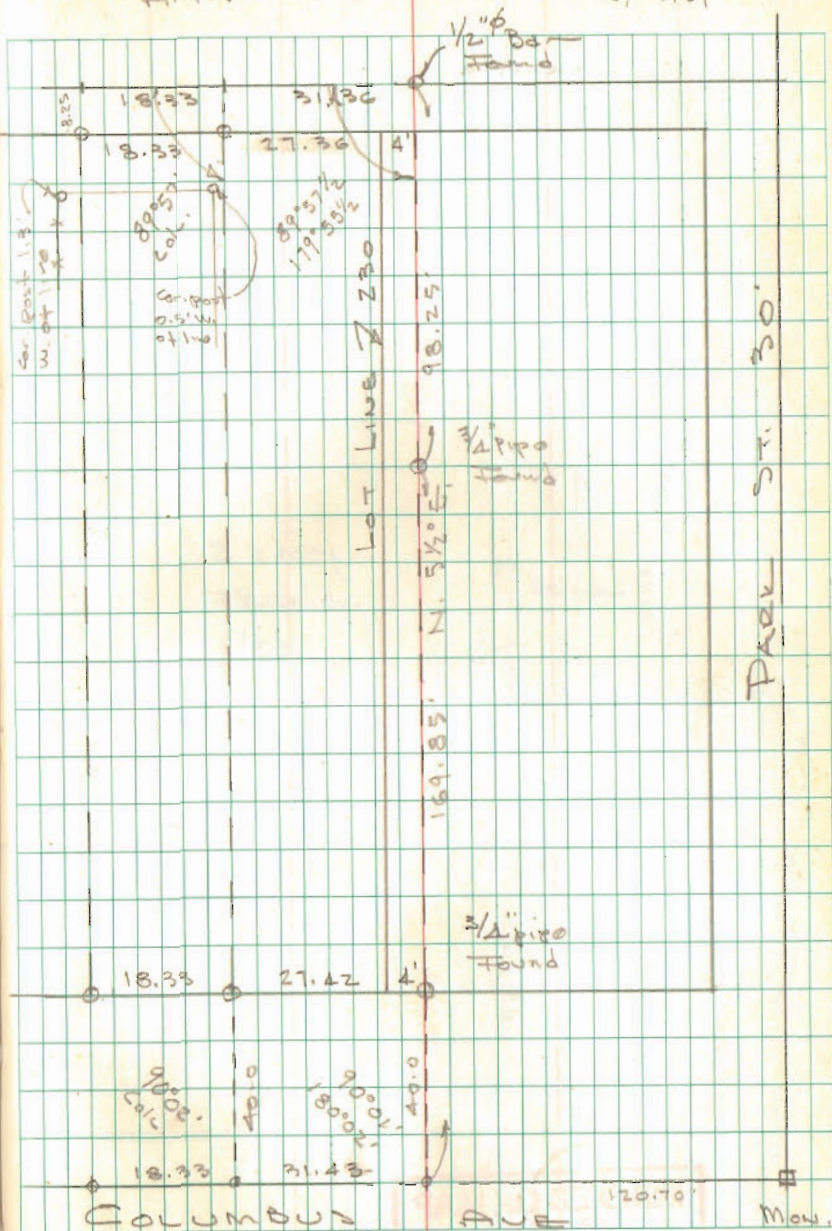
P-K Nails set on Columbus

INDEXED ON MAP
9040

Dodson
Anti

10/14/69
10/25/69

16



PT. LOT 230

Cont'd

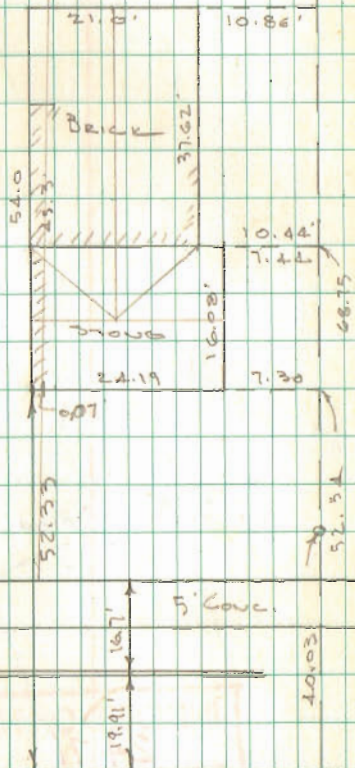
17

RE Z

RE Z

2 story
FRAME
RES

0.2' ±



INDEXED ON MAP
9040

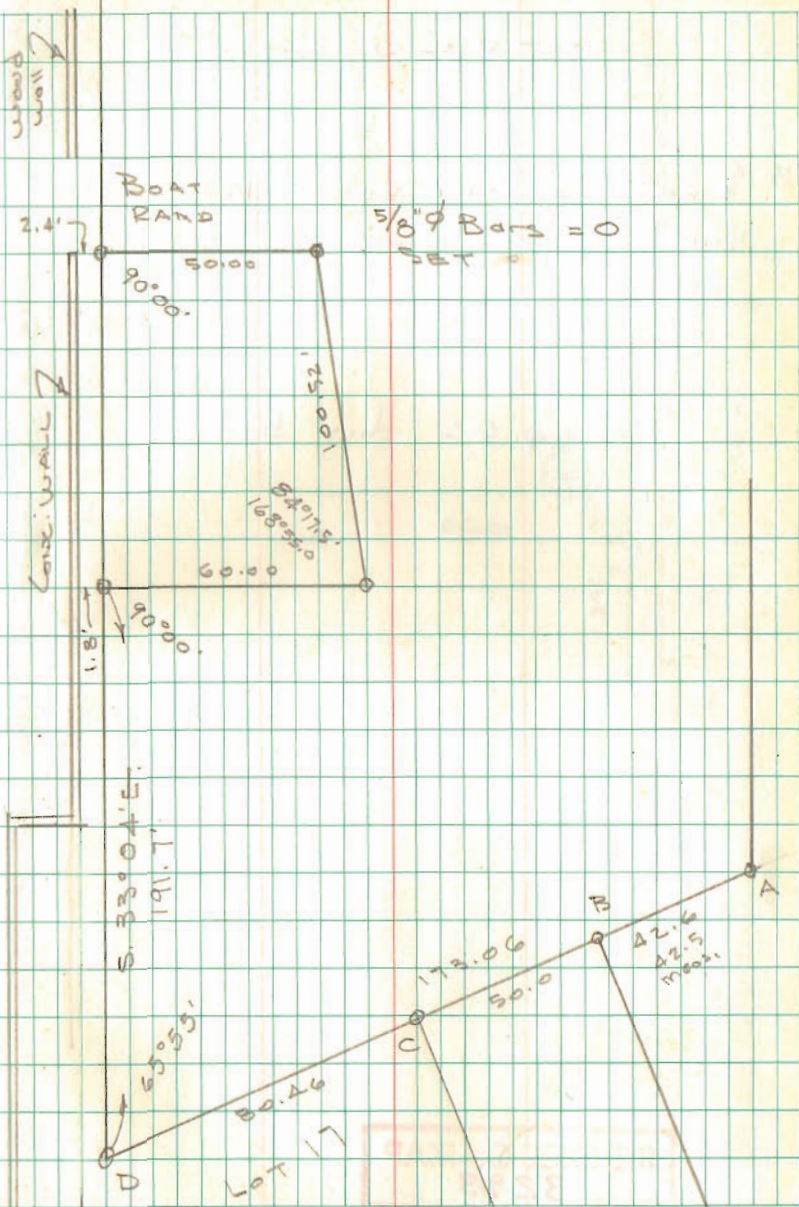
MARK SURVEY

CHEROKEE ALLOT
STOKES TWO

- A = 1" pipe Found
- B = " " "
- C = Bolt in Conc. Found
- D = " " " " - Set 5/8" ϕ Bolt
173.00 from A - Bolt 0.3' E.

Cherokee Landing
% Ralph Mark
D.R.1
Lake View

INDEXED ON MAP
2471



S. 1/2 Lot 131

LAKE VIEW, OHIO

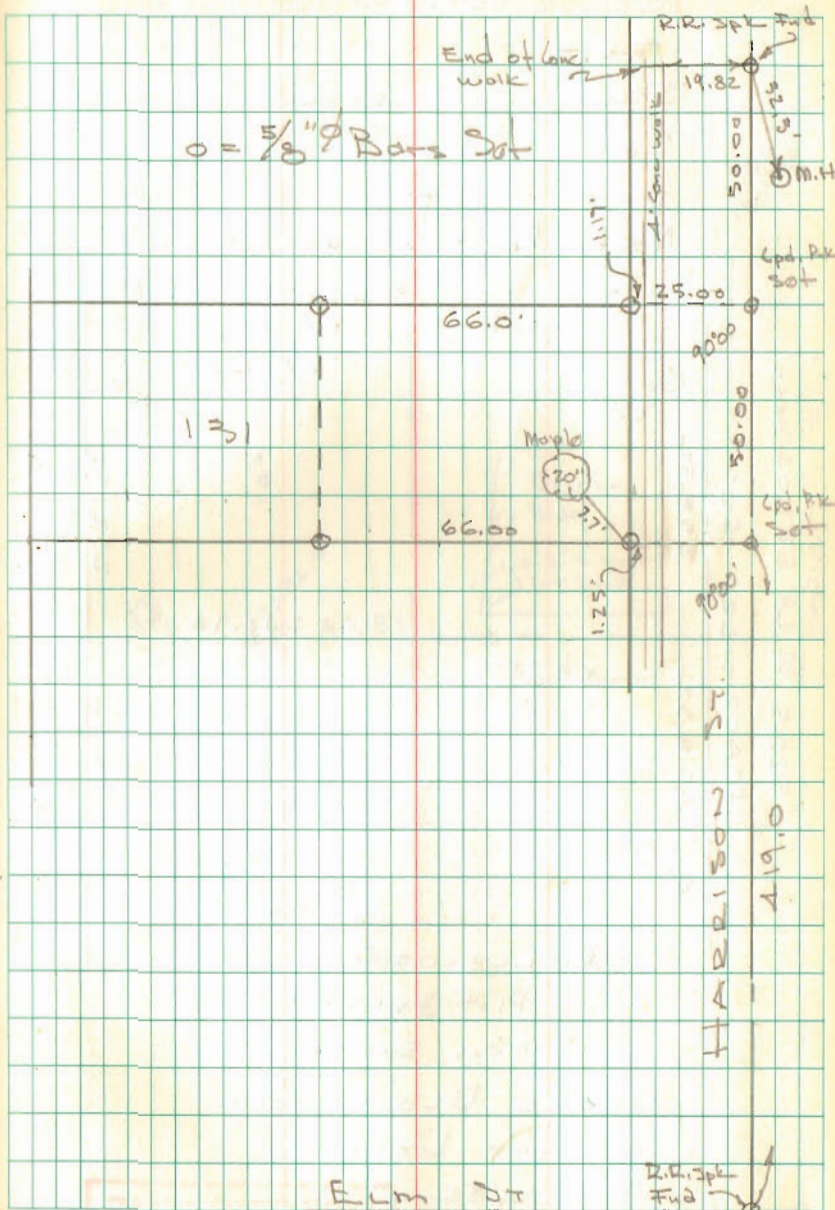
See F.B. 699 pgs. 13-14
for Survey of Harrison St.

See pg. 62 this book

INDEXED ON MAP
3293

Dodson
Nichols

10/18/69 19
60°



F.B. 699

50

R.R. 2nd St

Pt LOT 238
 BELLE FONTAINE, OHIO

FOR

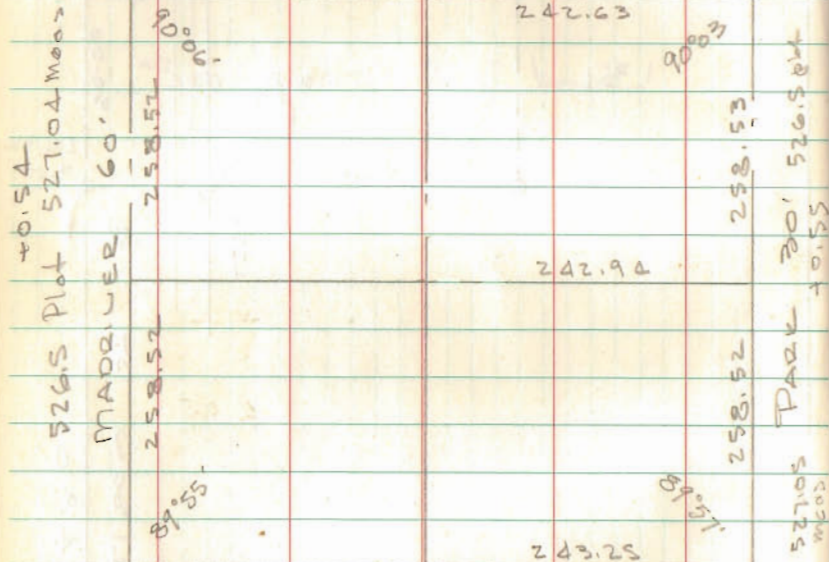
STANDARD OVERALL SERVICE

LOT TO BE SURFACED FOR
 PARKING LOT.

North 1/2 + 33' OFF S. 1/2

501.50 Plot 500.26 Meas -1.24'

COLUMBUS 80



CHILLECOTHE 60'

Plot 501.50

Meas 501.50'

Above Block From

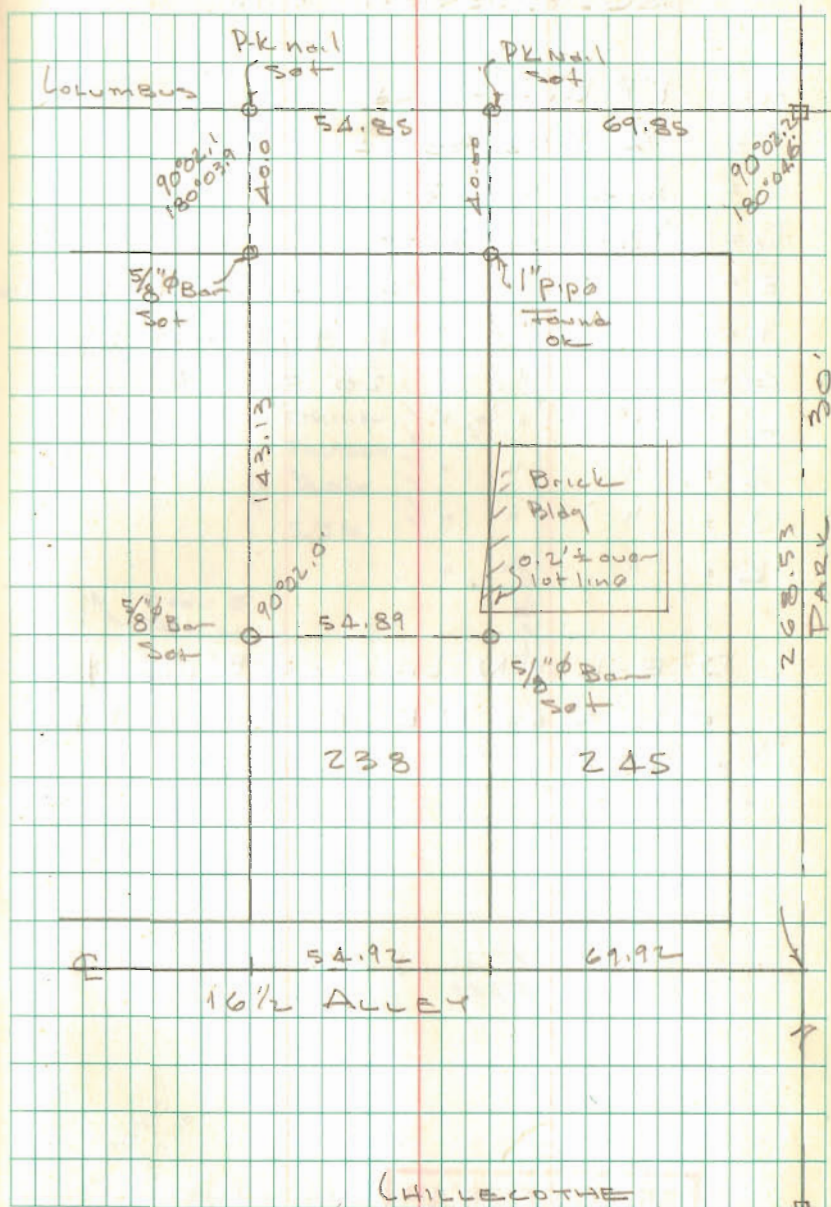
Inskeep Records

F.B. 5/52

INDEXED ON MAP
 2212

DOOBAN
 NICHOLS

10/25/69 20
 65°



CHILLECOTHE

2212

SURVEY FOR KNOWLTON
CONSTRUCTION CO.

- A = 1" ϕ Bar Found
 B = 3/4" Pipe Found
 C = R.R. Spk Found
 D = 5/8" ϕ Bar Set
 E = " " " 45.0' from D - 1.0' W. of F
 F = " " " 20' & 25' from ϕ
 G = " " " 20' from ϕ
 H = " " "
 I = " " "
 J = " " "
 K = " " "

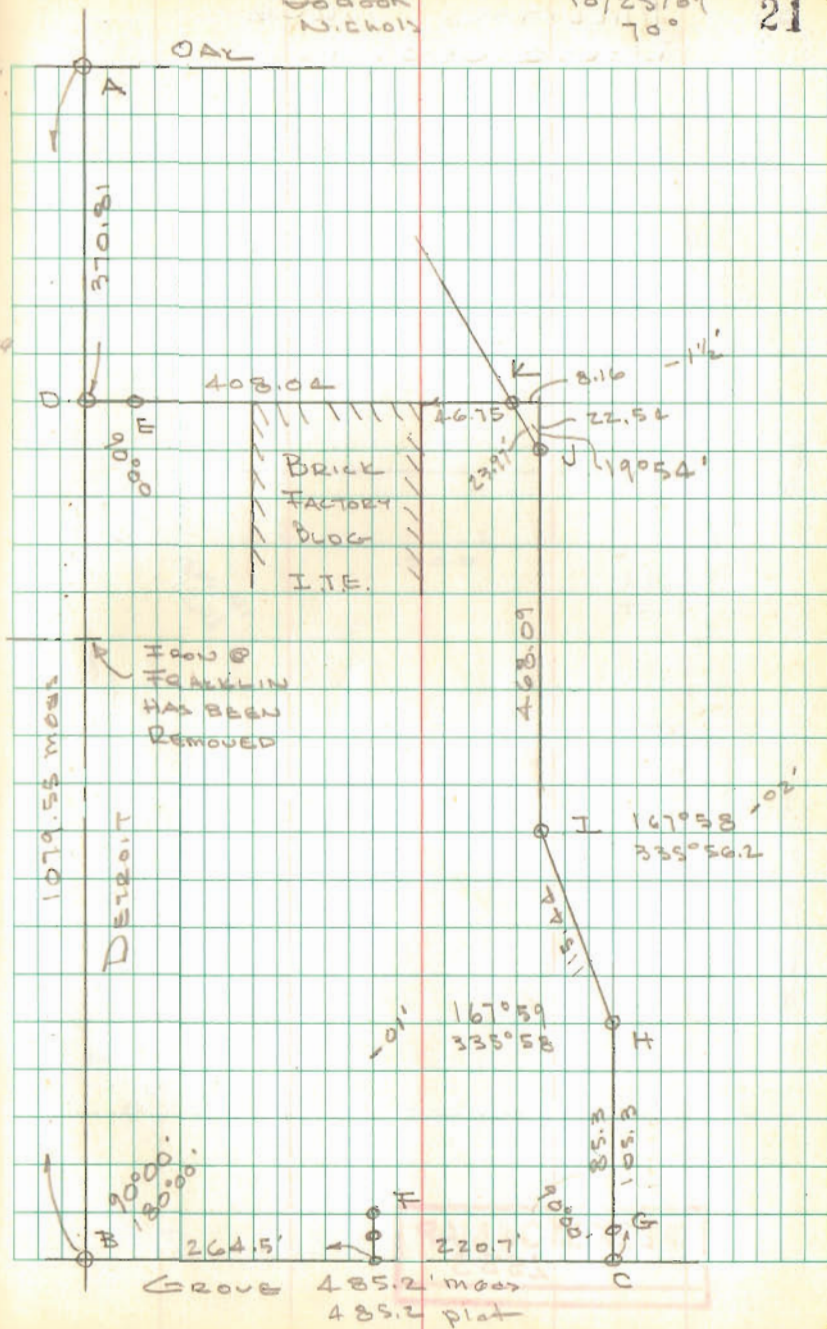
D-E-K = N. LINE OF BLOG. ϕ
 0.96' S. of N. LINE LOT. 2849 ϕ
 2881

INDEXED ON MAP
4573

Dodson
Nichols

10/25/69
70°

21

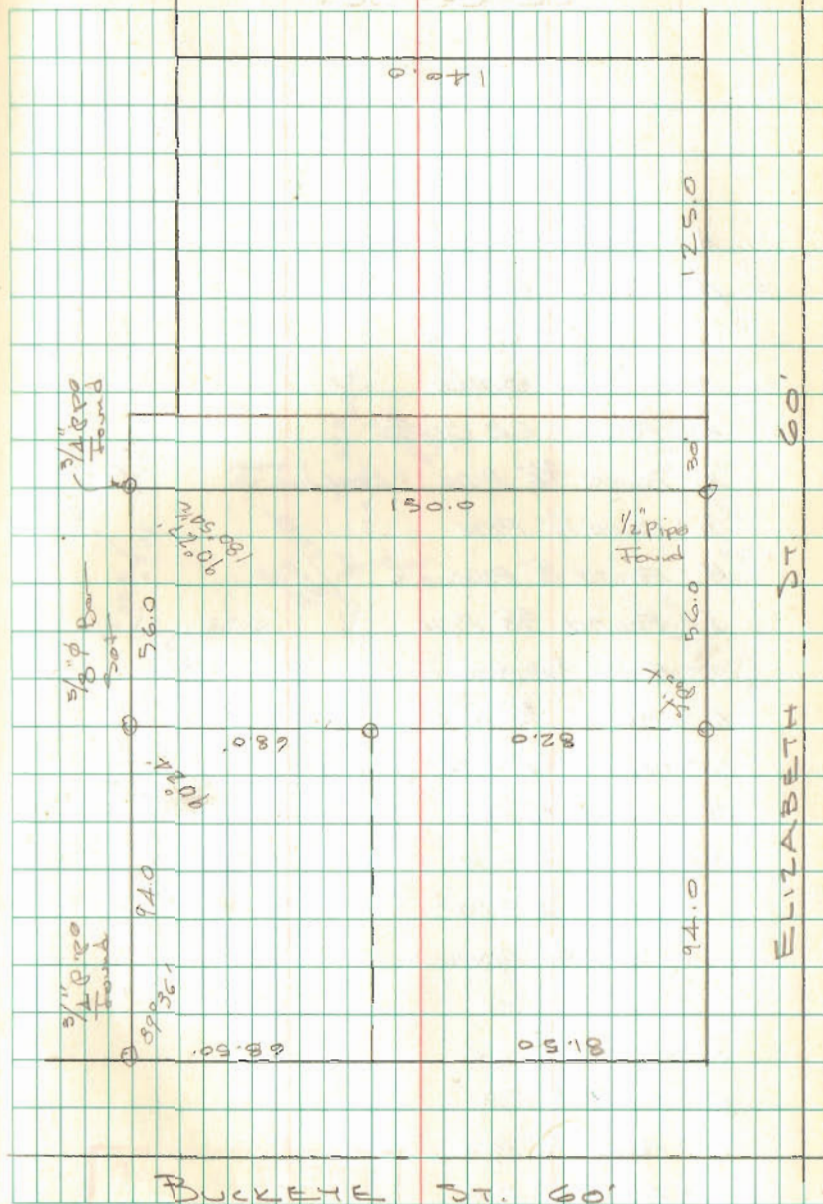


MILL 200 SURVEY
 BELLE CENTER

Dodson
 Nichols

10/28/69

22



INDEXED ON MAP
 2533

NEWLAND SURVEY
TURKEY FOOT

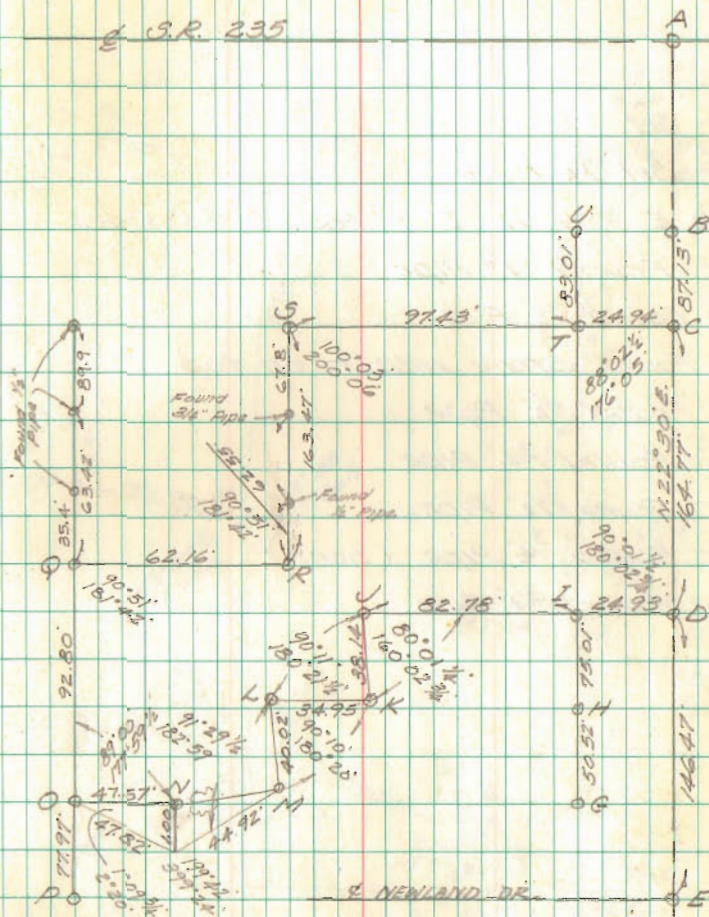
12/69

Whitlow
Arts

23

- A - Found RR Spike
- B - Found RR Spike
- C - Set RR Spike
- D - Set RR Spike
- E - Found RR Spike
- F - Found $\frac{3}{4}$ " Pipe (bent)
- G - Found $\frac{1}{2}$ " Pipe
- H - Found $\frac{1}{2}$ " Pipe
- I - Found $\frac{5}{8}$ " Pipe
- J - Found $\frac{3}{4}$ " Pipe
- K - Found $\frac{3}{4}$ " Pipe
- L - Found $\frac{3}{4}$ " Pipe
- M - Found $\frac{1}{2}$ " Pipe
- N - Found $\frac{1}{2}$ " Pipe
- O - Found $\frac{5}{8}$ " ϕ bar
- P - Found $\frac{3}{4}$ " Pipe
- Q - Found 1" Pipe
- R - Found $\frac{3}{4}$ " Pipe
- S - Found $\frac{1}{2}$ " Pipe
- T - Found $\frac{1}{2}$ " Pipe
- U - Found $\frac{1}{2}$ " Pipe

INDEXED ON MAP
5862



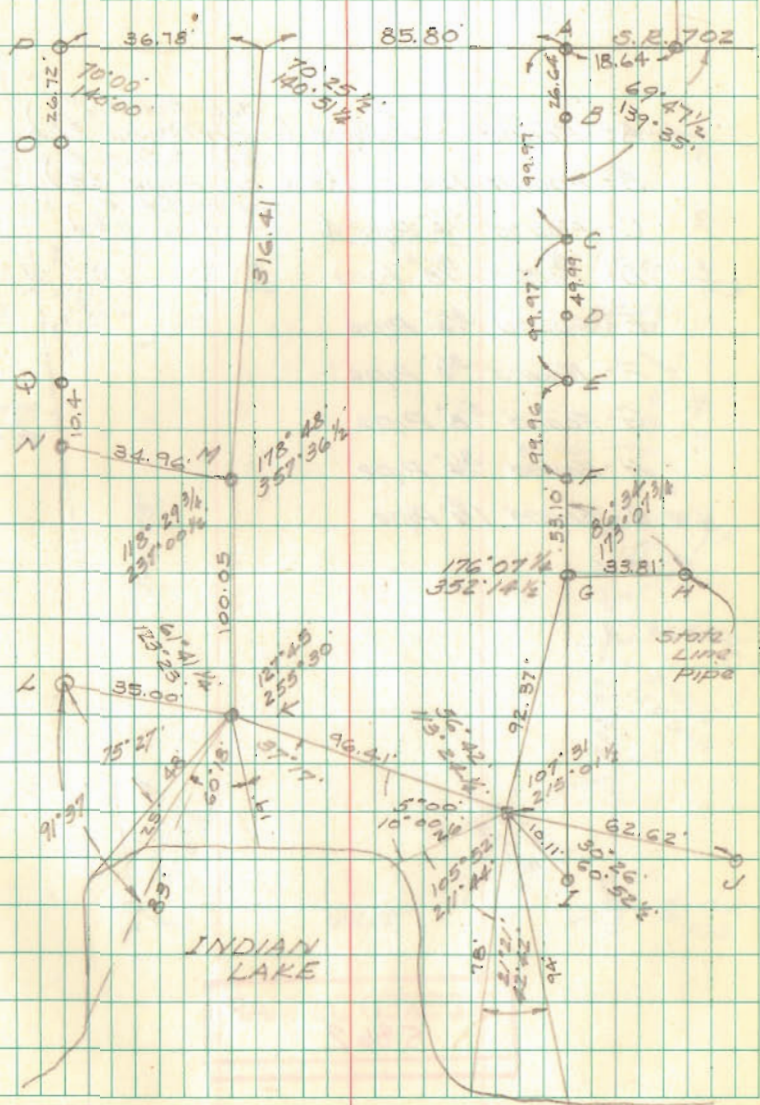
OF
S.R. 235

NEULAND SURVEY
TURKEY FOOT

- A - Set RR Spike
- B - Set $\frac{3}{8}$ " ϕ bar
- C, D, E, F, G, H, I - Found $\frac{3}{4}$ " Pipes
- J - Found 1" Pipe
- K - Found $\frac{1}{2}$ " Pipe
- L - Found Stone with + on top
- M - Found $\frac{1}{2}$ " Pipe
- N - Found $\frac{3}{4}$ " Pipe
- O - Found $\frac{1}{2}$ " Pipe
- P - Found $\frac{3}{4}$ " Pipe (bent)
- Q - Found $\frac{3}{4}$ " Pipe

INDEXED ON MAP
586Z

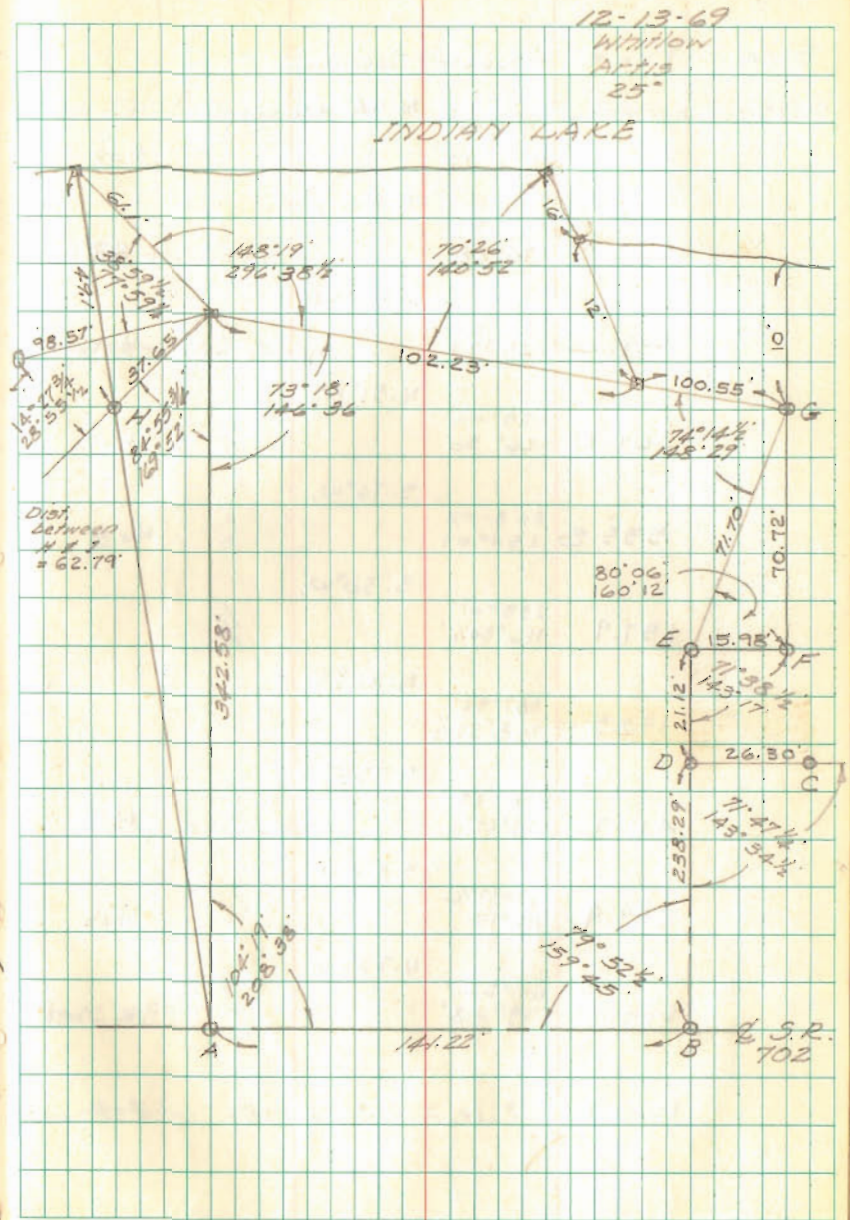
12.6.69 24
30°
WILSON
ARTS



NEWLAND SURVEY
TURKEY FOOT

- A- Found $3/4$ " Pipe (See Point P)
- B- Found RR Spike (See Point E)
- C- Found $3/4$ " Pipe (See Point P)
- D- Found $5/8$ " Pipe
- E- Found $3/4$ " Pipe
- F- Found $3/4$ " Pipe
- G- Found $5/8$ " Pipe
- H- Found $3/4$ " Pipe
- I- Found $1 1/2$ " Pipe

INDEXED ON MAP
5862



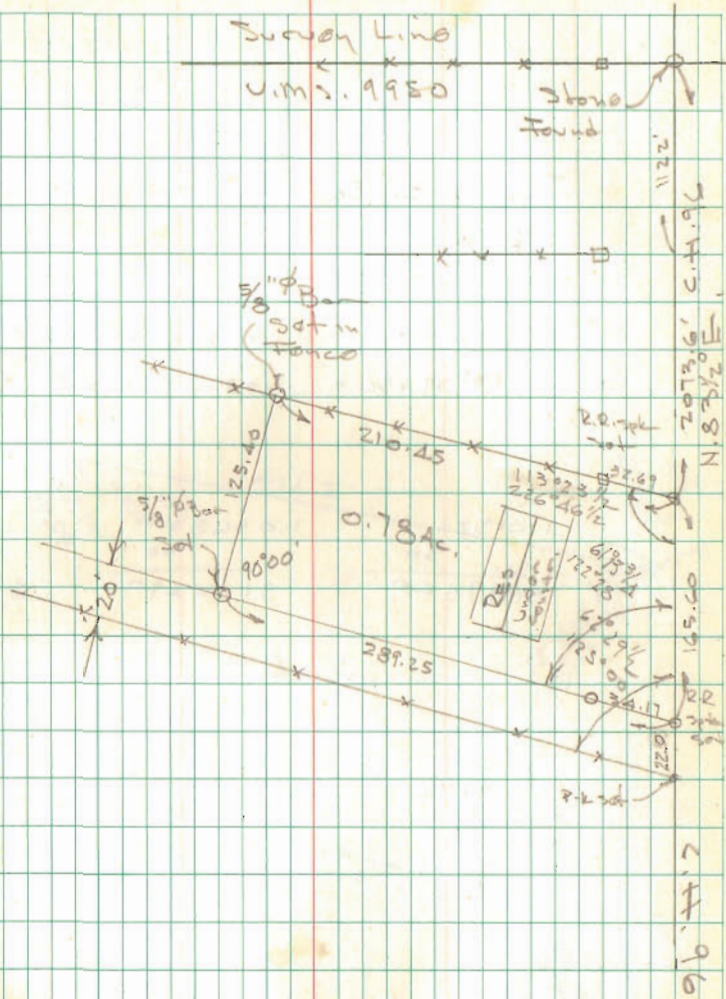
GILLEN SURVEY
 V.M.S. 9950
 Richland Township

Richard Gillen
 R.R. 2
 Belle Center, Ohio

INDEXED ON MAP
 5219

Dodson
 Whitlow

1/31/70 27
 250



CRONKELTON SURVEY

See F.B. 560 pg. 70 for Survey of C.H.B.

Sec. 9° 16' x 30 = 1.01322 x 30 = 30.40

Sec. 15° 19' x 30 = 1.03683 x 30 = 31.10

$$\begin{array}{r} 1.01322 \\ \times 30 \\ \hline 3039660 \end{array}$$

$$\begin{array}{r} 1.03683 \\ \times 30 \\ \hline 3110490 \end{array}$$

$$\begin{array}{r} 80^{\circ} 24' \\ 72\ 51\ 1/2 \\ 105\ 19' \\ 101\ 06' \\ \hline 358\ 120\ 1/2 \end{array}$$

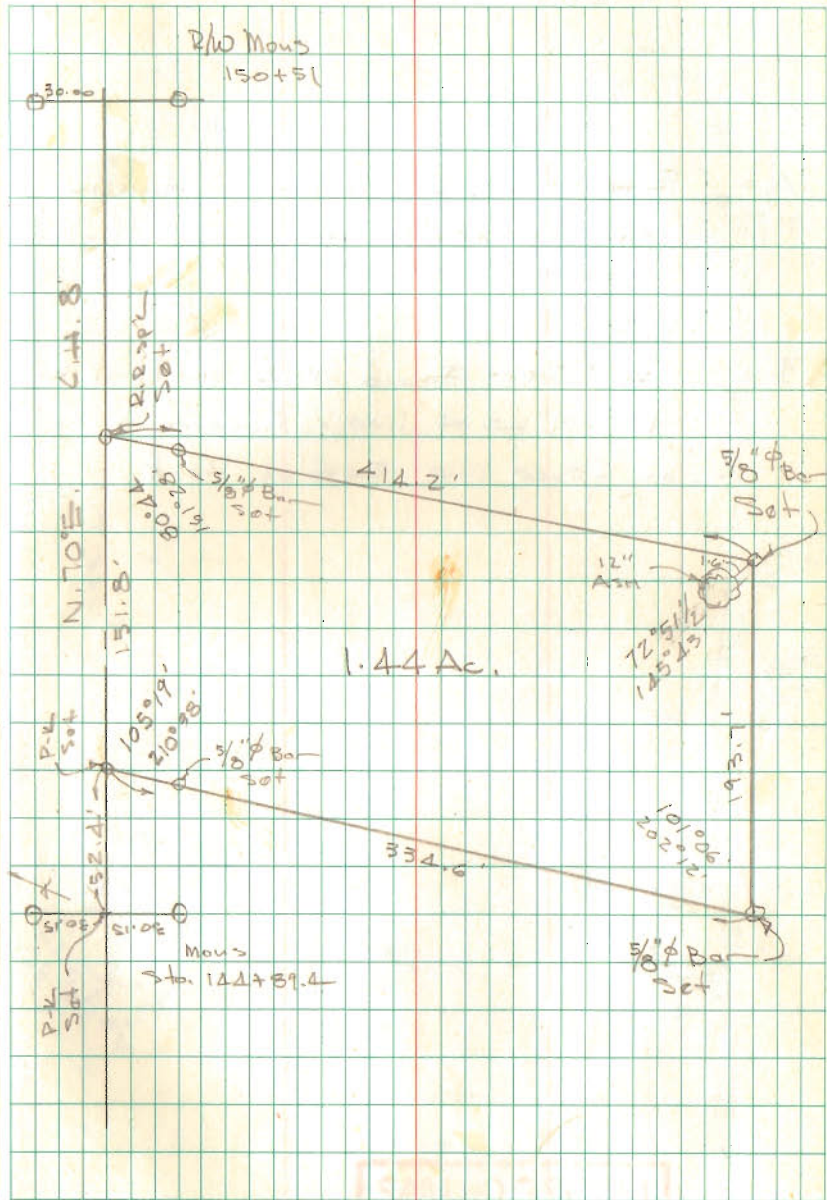
George Cronkleton
R.R. 2
West Mansfield

INDEXED ON MAP
4534

Dodge
Nichols

2/7/70
Foggy

28



INDEXED ON MAP
4534

WARTHMAN SURVEY
DOKES CREEK TWP.

A = Stone with brick under, found in
fence line E & W and in line with fence
south

B = $\frac{3}{4}$ " ϕ Bar found 15.27' north of PK
& 0.09' W. of line - Appears to be
on fence line East of Road

INDEXED ON MAP

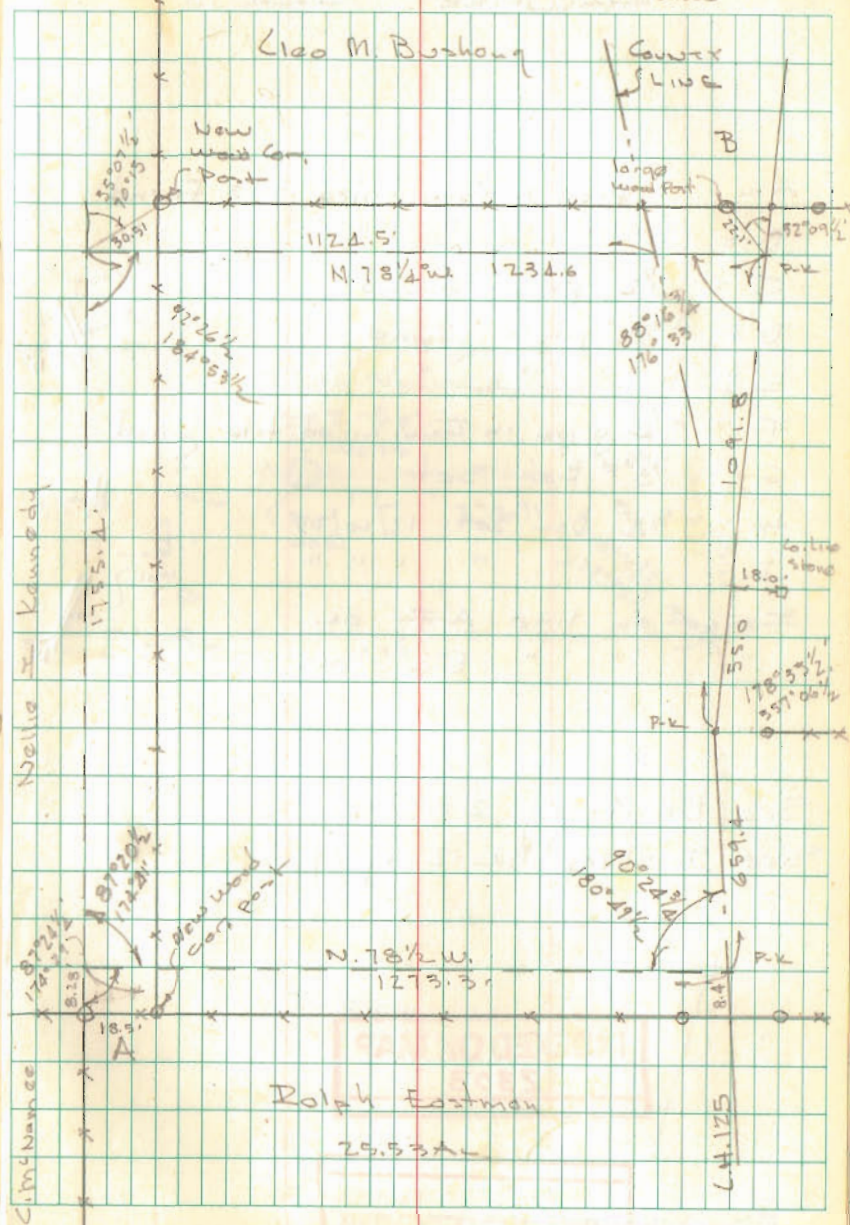
5231

Dadson
Acres

Feb. 14, 1970

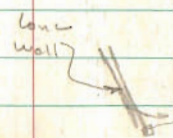
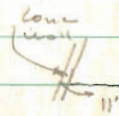
20

15°
Snow



Lot 12
SHAUNEE ISLAND

- A = 1" pipe in conc. filled tile found
 B = " " " " " "
 C = 1/2" pipe found
 D = 3/4" pipe found
 E = " " " "
 F = 1/2" pipe in conc. filled tile found
 G = 5/8" Bar Set
 H = 5/8" Bar Set 12/10/13
 I = " " " " " "
- Fence on line A-I OK
 " " " B-G OK



See Bk 4 pg 28

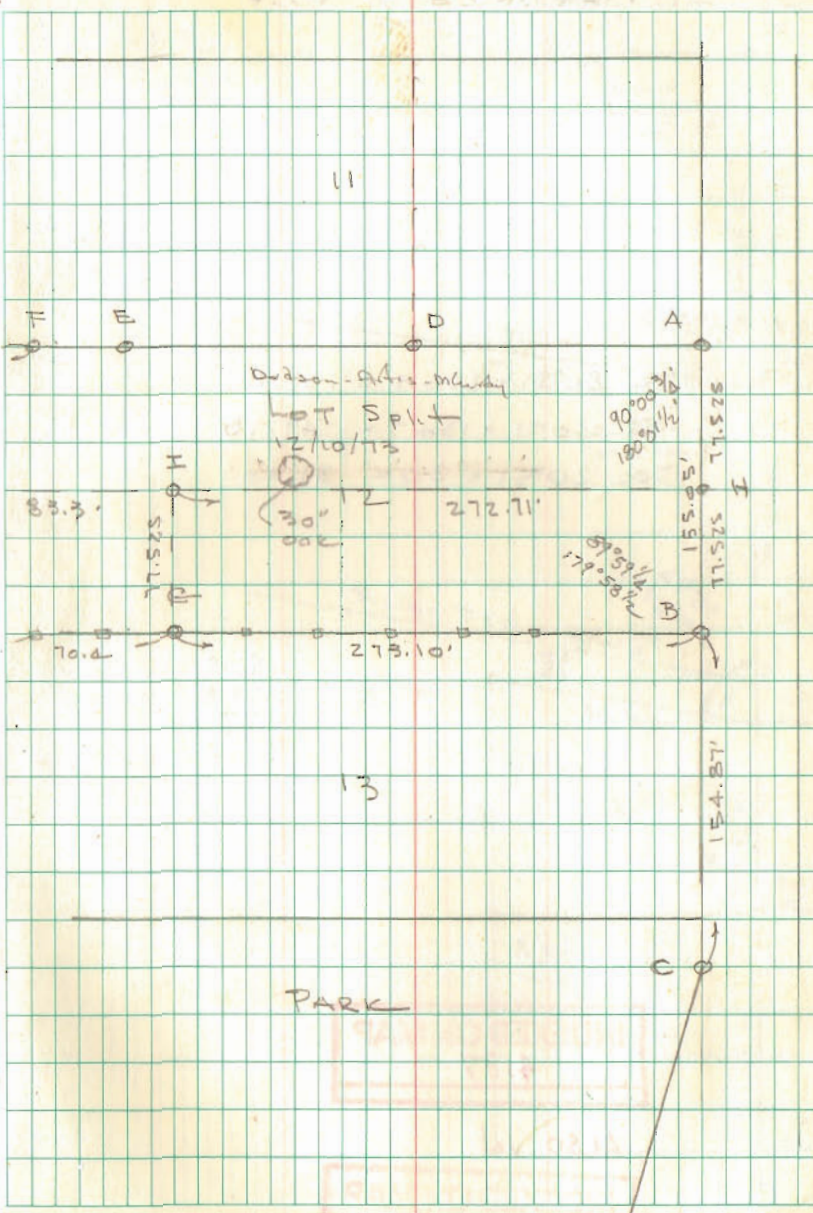
See Inskoop Bk 12 pg 39

INDEXED ON MAP
2303

Dodson
Art's

2/21/70
15°

30



HENRY SURVER
JEFFERSON TWP

$$\text{Sol. } 20^{\circ} 51' \times 130.7 = 139.86$$

$$\text{Tan } 20^{\circ} 51' \times 130.7 = 49.78$$

$$\text{Sol. } 20^{\circ} 51' \times 20 = 21.40'$$

$$\begin{array}{r} 96.9 \\ 49.8 \\ \hline 146.7 \end{array}$$

INDEXED ON MAP
4187

ALSO IN

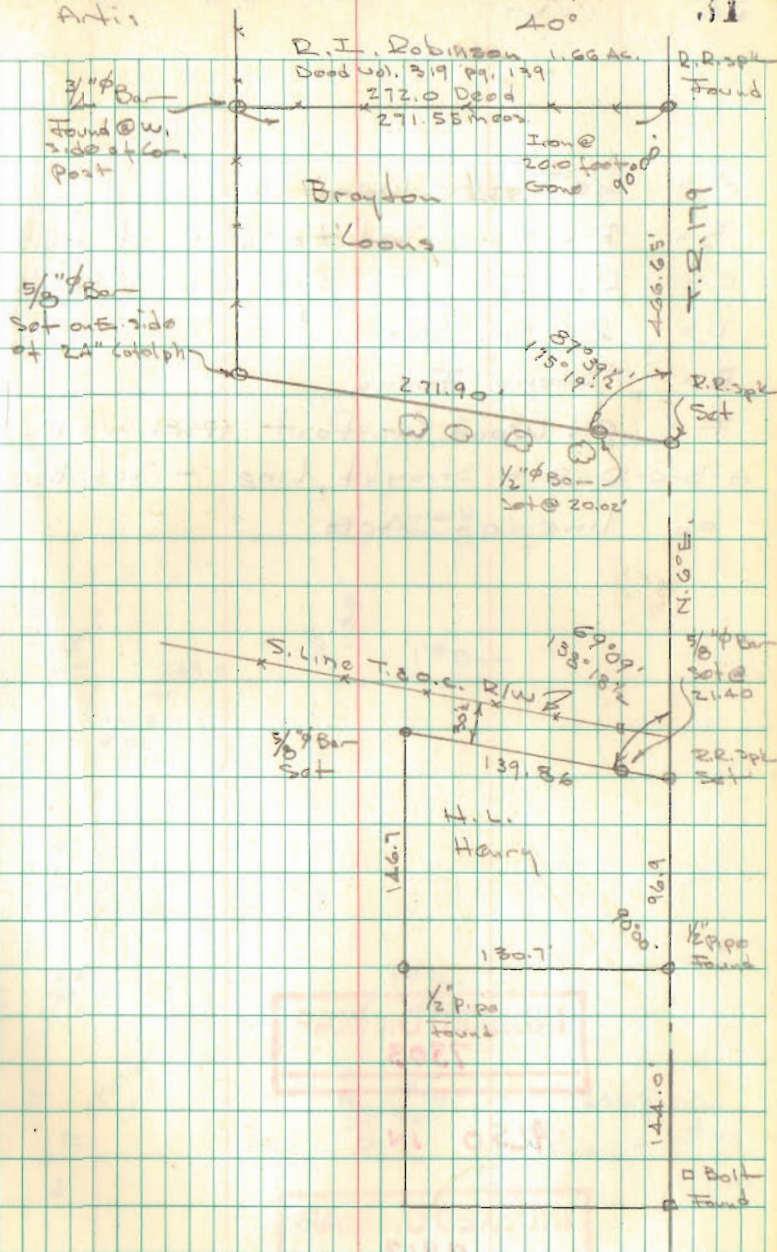
INDEXED ON MAP
2876

Dodson
Anti

Feb 28, 1970

31

40°



WATT SURVEY

- A = 2^d Survey Man. Found
 - B = P-k Nail Set - 0.96' w. of R.R. spike
 - C = R.R. spike " 1.09' w. of 1/2" Bar found
 - D = R.R. spike Set
 - E = Stone Found
 - F = Old Wood Cor. Post used for line
- A-B-C-D-E = Straight Line - Set B-C-D on line of A-E

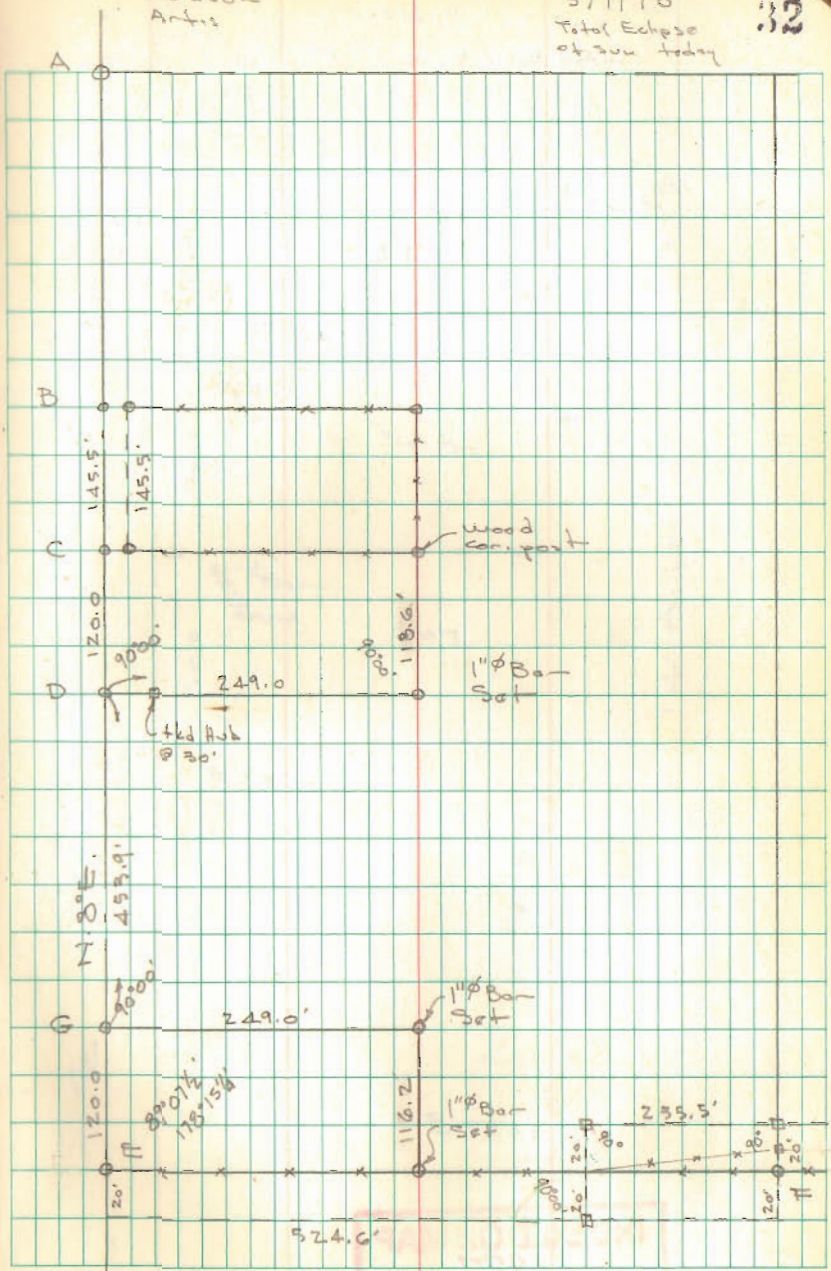
INDEXED ON MAP
7303

ALSO IN

INDEXED ON MAP
2912

Dodson
Antis

3/7/70
Total Eclipse
of sun today



LOT 309
LAKEVIEW, OHIO

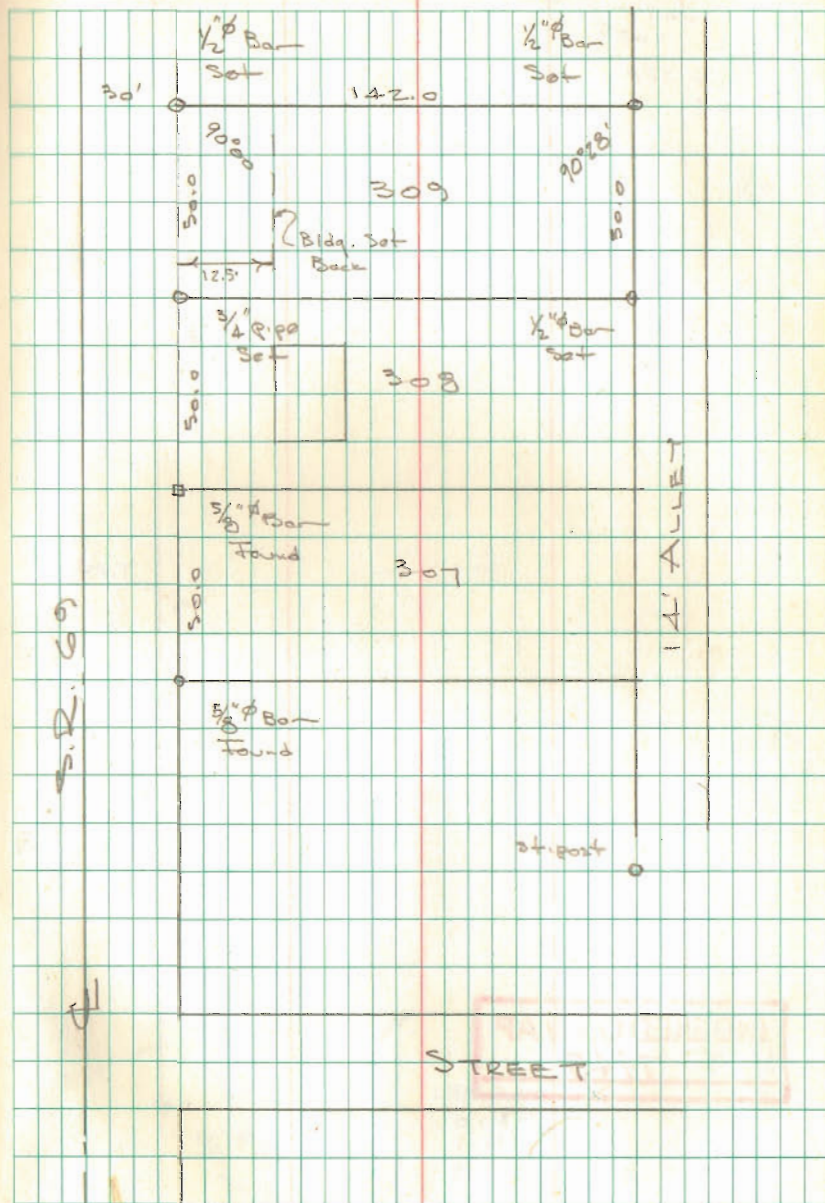
See BK 7, page 57 for
Survey of 307 & 308

INDEXED ON MAP
1927

Dodson
Art's

3/12/70
25°

309
308



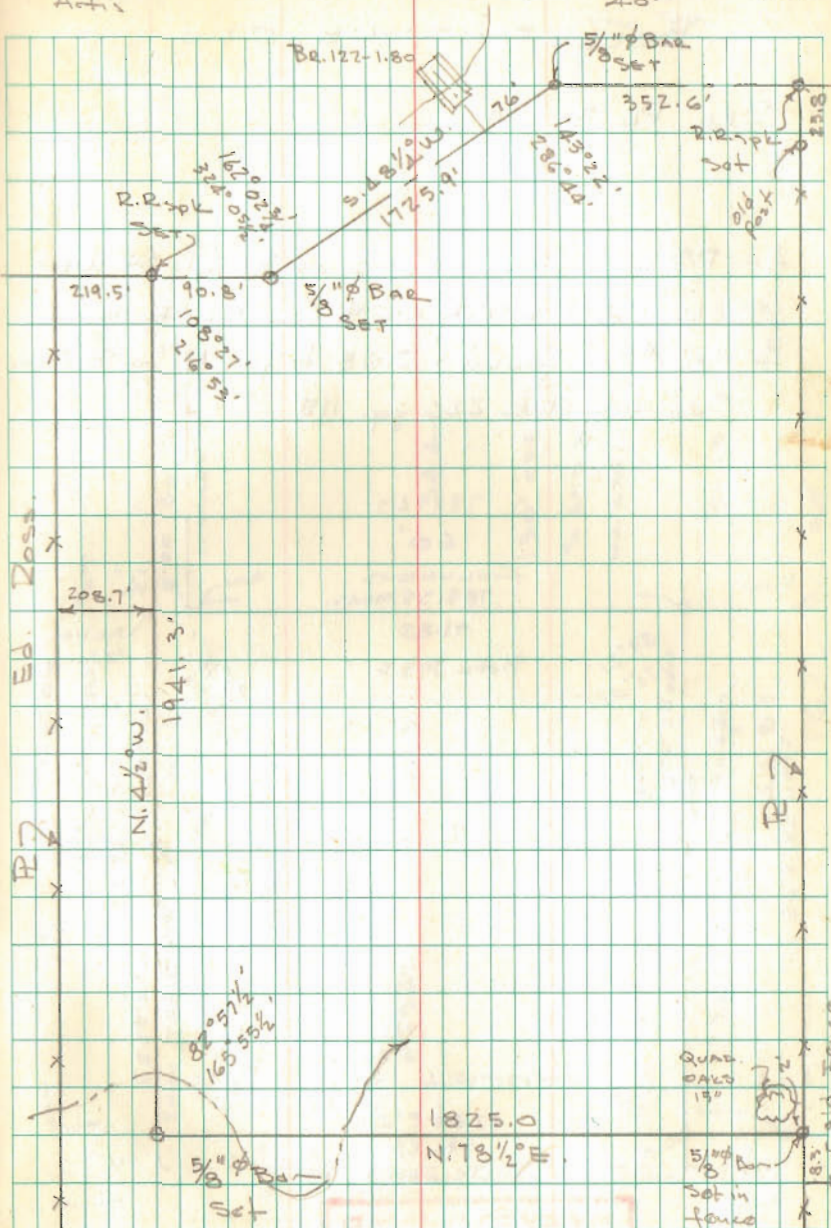
TURNER SURVEY

Dodson
Act's

3/28/70

3/21/70
A.O.

114



INDEXED ON MAP
7445

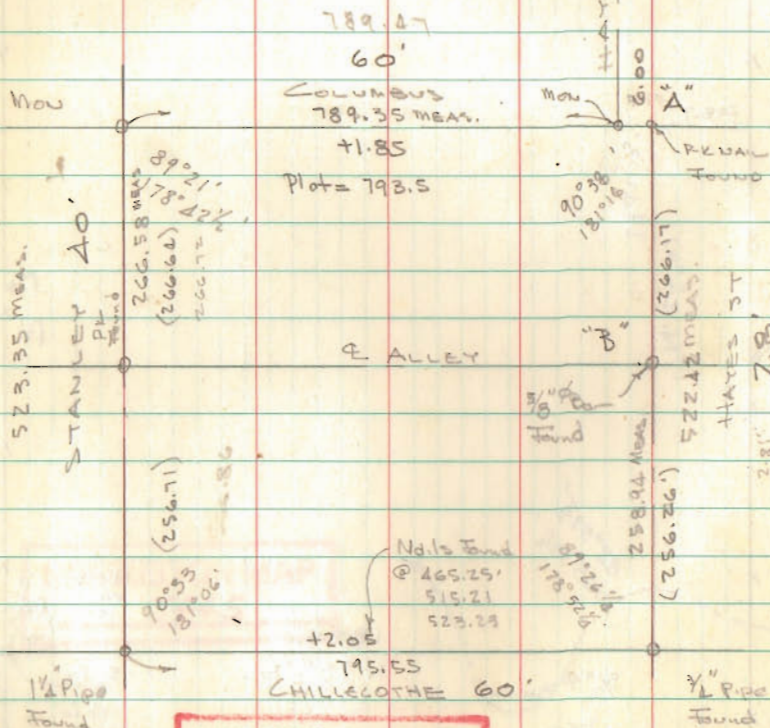
1777.3
81.0
26.7
1825.0

1825

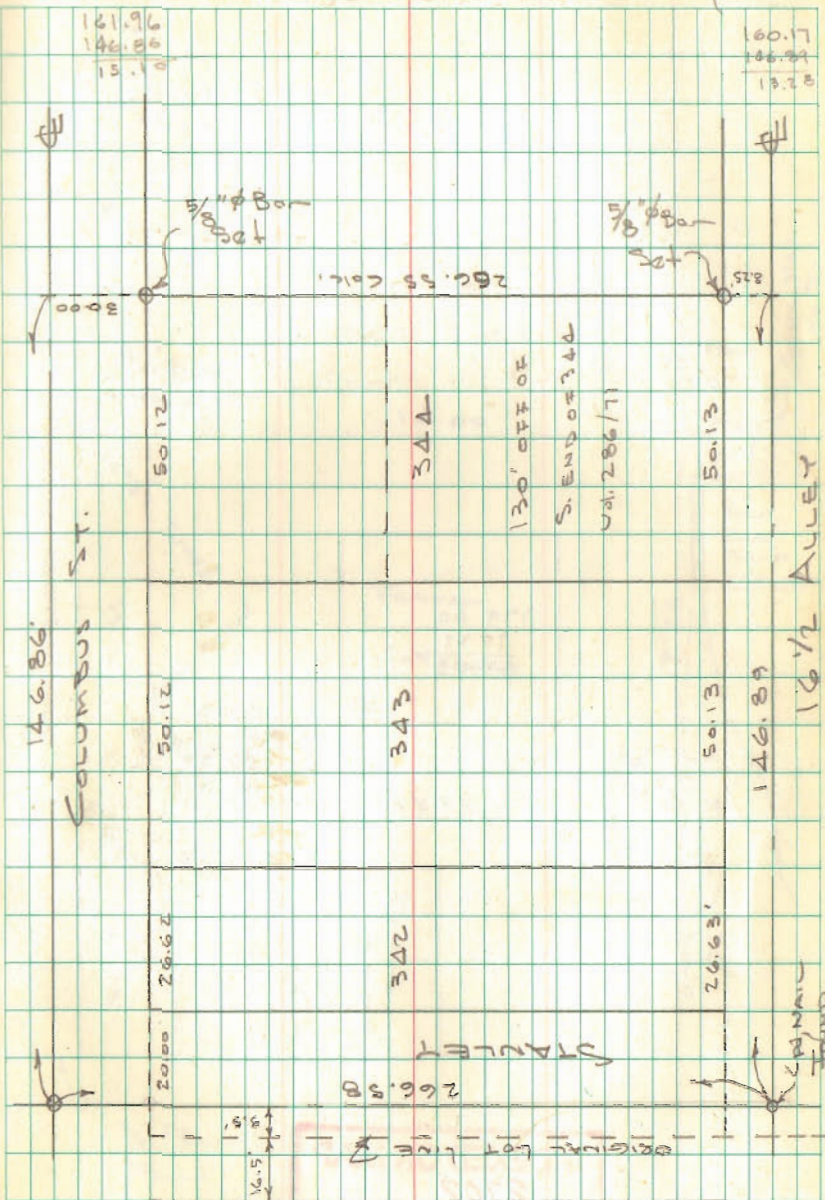
LOT 342-343-344
BELLEFONTAINE, OHIO

SEE PL 5/49

A = P-K Nail found 0.27' S. of E. Col. St. West
Nail set by City on E. Col. E. of Hayes
B = 5/8" P Bar found - 2.68' to far N. for E Alley
See City Bk 226 pg. 115



INDEXED ON MAP
7518



INDEXED ON MAP
7518

Lot 58
ORCHARD ISLAND

A = 2"x2" C.I. Mon. FOUND

B = 2"x2" C.I. Mon FOUND LEAVING

RESET MON ON LINE "A-C" - 35.00
Feet from "A"

C = 3/2" ϕ BAR FOUND

E = 2"x2" C.I. Mon. FOUND.

F = 5/8" ϕ Bar Set 278.0 from "B"

G = 5/8" ϕ Bar Set

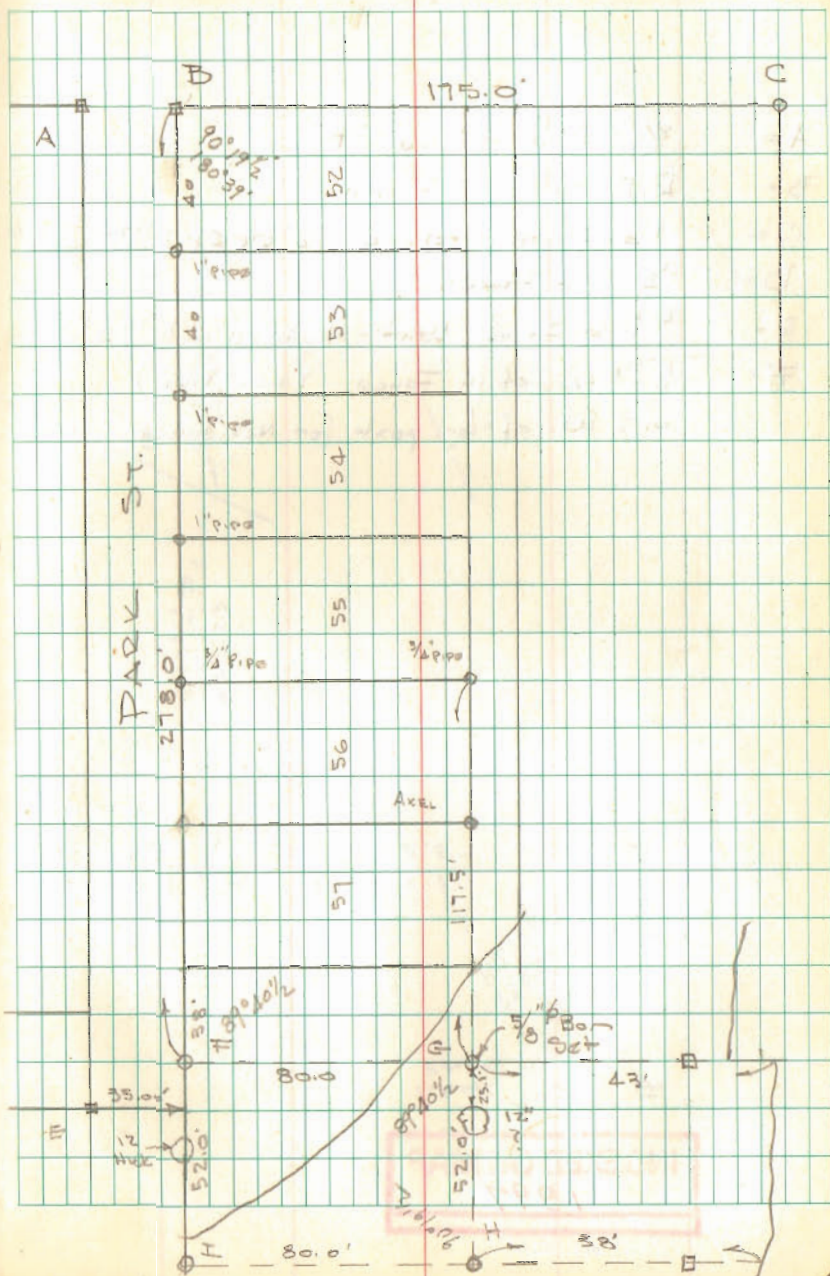
H = " " "

I = 1" ϕ Bar FOUND OK

INDEXED ON MAP
705

Dutton
Antis

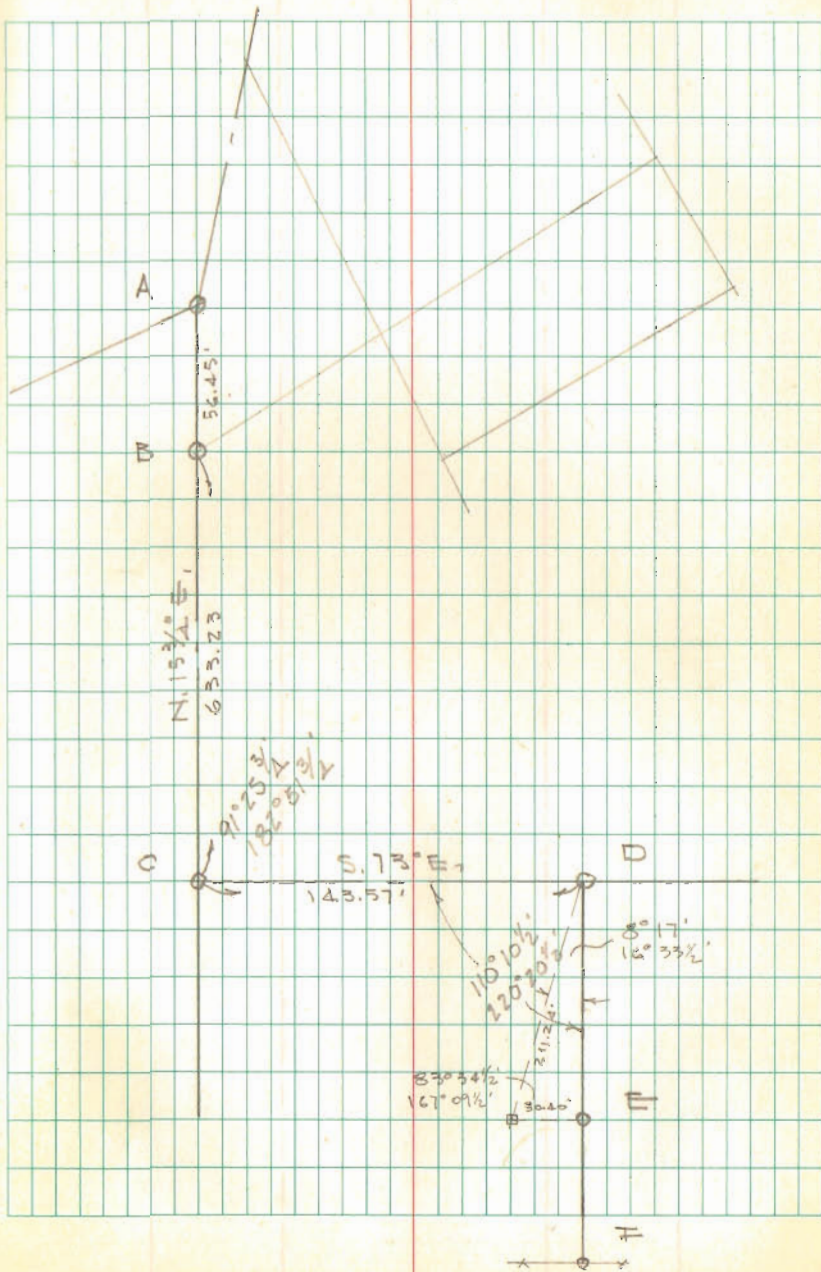
4/4/70
50° 136



ZANESFIELD Rod & Gun Club

- A = 3/4" ϕ Bar Found Bent
- B = R.D. ϕ Found
- C = 1 1/2" pipe Found 12" deep
- D = 1/2" Pipe Found 6" deep
- E = 1/2" Pipe Found bent - Replaced with 5/8" ϕ Bar
- F = 1/2" ϕ Bar Set in Fence (T.A.O.C. P/W)
0.5' W. of br. post for Nfs. fence

INDEXED ON MAP
1897



LANDIS SURVEY
LAKEVIEW, OHIO



- A = old steel post Found @ edge of low slab
- B " " " "
- C = $\frac{3}{8}$ " Bar Set
- D = $\frac{3}{4}$ " Pipe Found
- E = $\frac{1}{2}$ " " "
- F = $\frac{1}{2}$ " " "
- G $\frac{1}{2}$ " Pipe & Hub Found
- H $\frac{1}{4}$ " Pipe Found
- I $\frac{1}{4}$ " Pipe Found

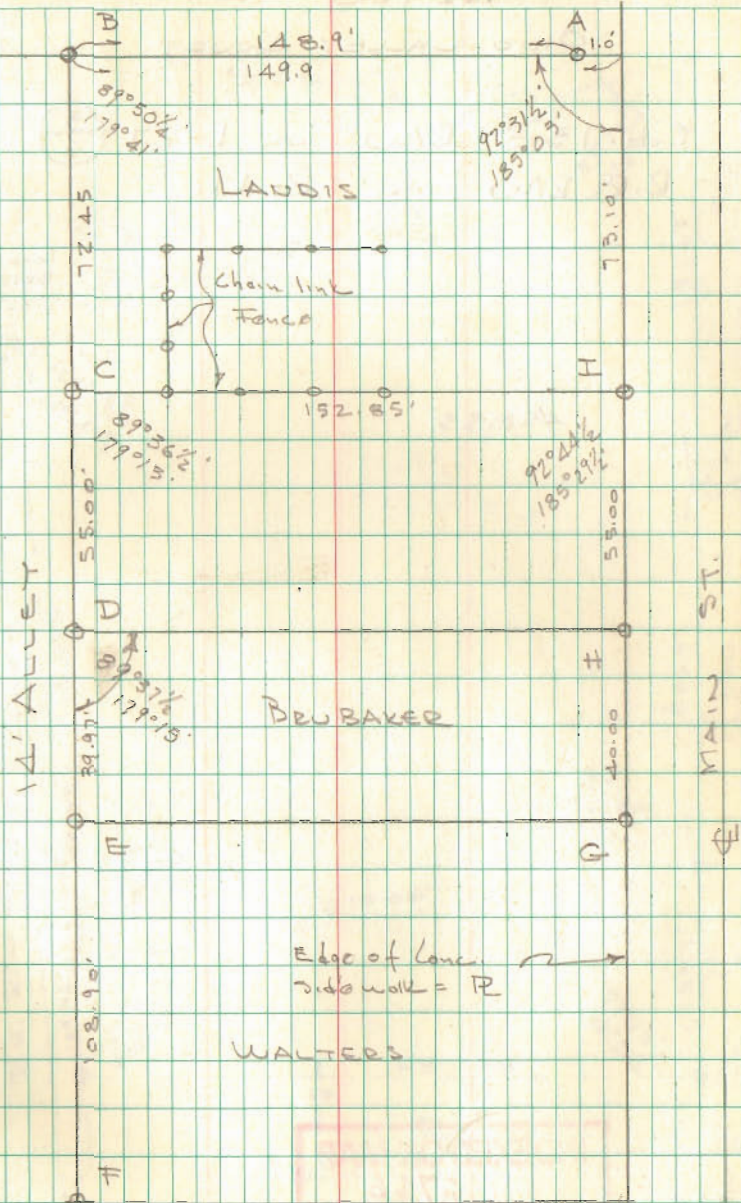
See Bk 3 pg. 6
Inskip Bk 8 pg 46
F.B. 390 pg 51

INDEXED ON MAP
3186


Dodson
Antis

4/13/70
70°

41



BELL SUBDIVISION
 HARRISON TWP
 OHIO VALLEY COURT

C.H. 130 R/W Plan L-27 
 R.R. R/W Plan R-47

458.53

Long.
 Belbow
 "1927"

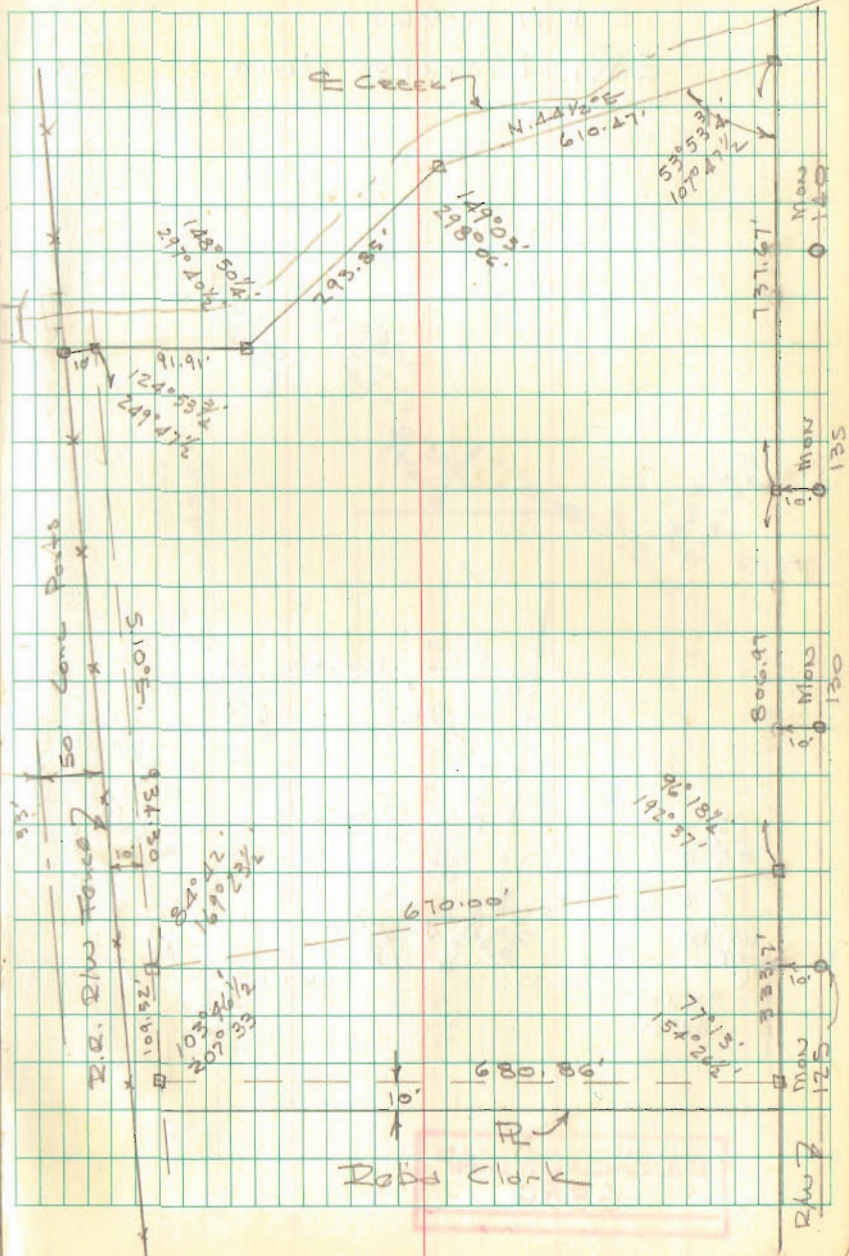


INDEXED ON MAP
 6766

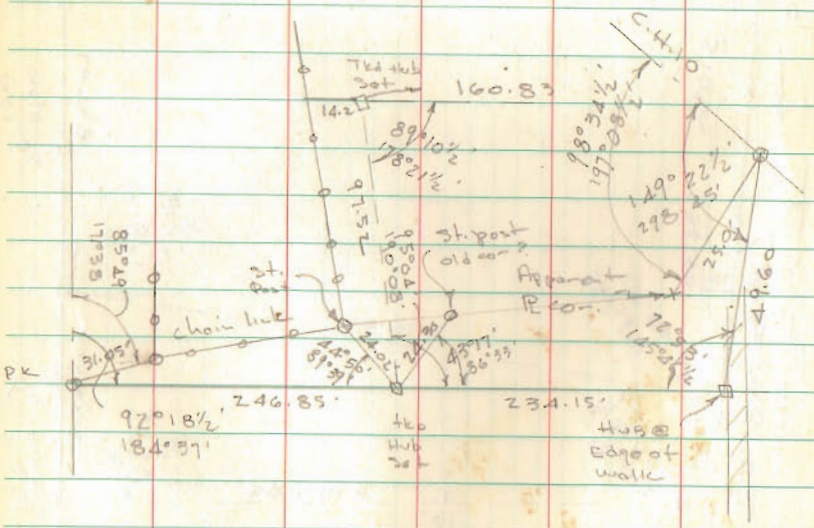
Dodson
 Aris

4/18/70
 70°

42

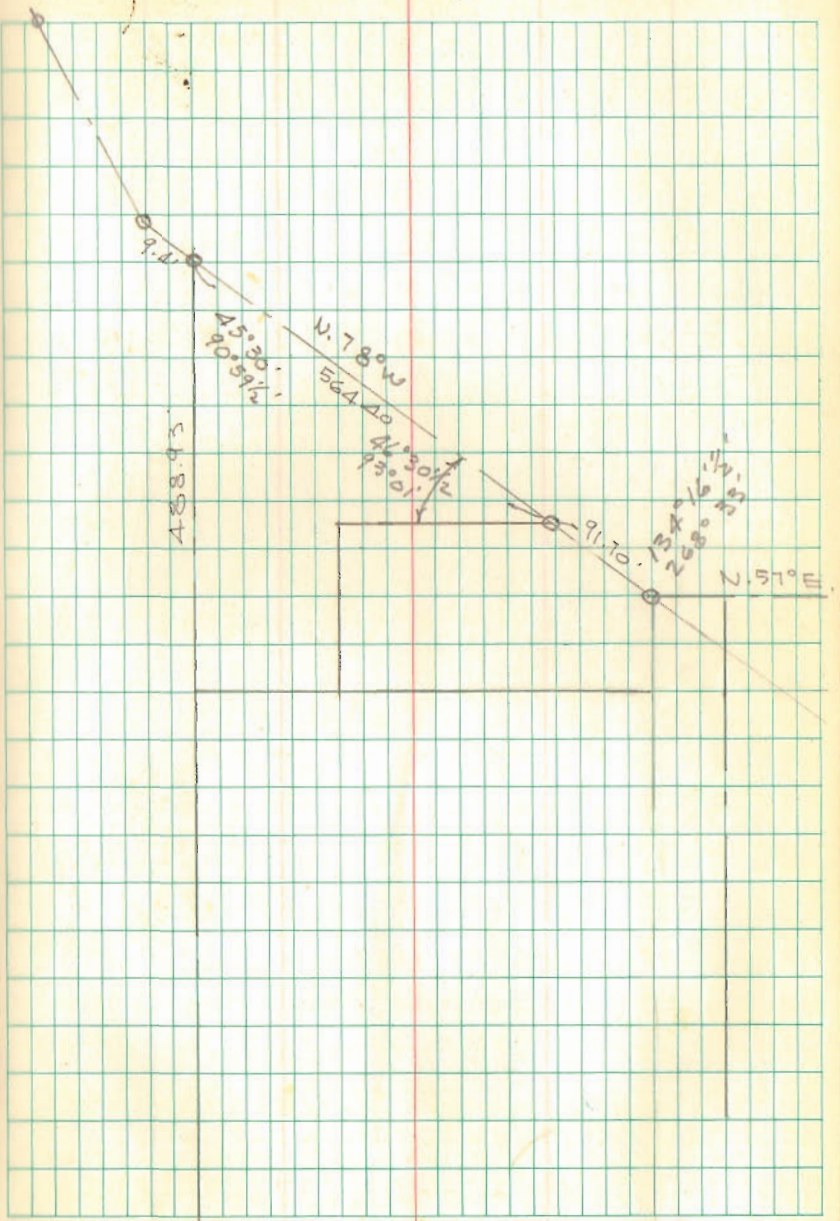


BLACKBURN SURVEY
 V.M.S. 4689
 EAST LIBERTY, OHIO



INDEXED ON MAP
 6880

5-16-1970 43



HATCHER SURVEY

2

$78^{\circ}36'$
 $101^{\circ}24'$
 $141^{\circ}46\frac{1}{2}'$
 $111^{\circ}31\frac{1}{2}'$
 106.41

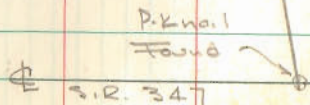
 $537.180.0$
 OK

179.60
 78.36

 101.24

299.50
 248.39

 51.11

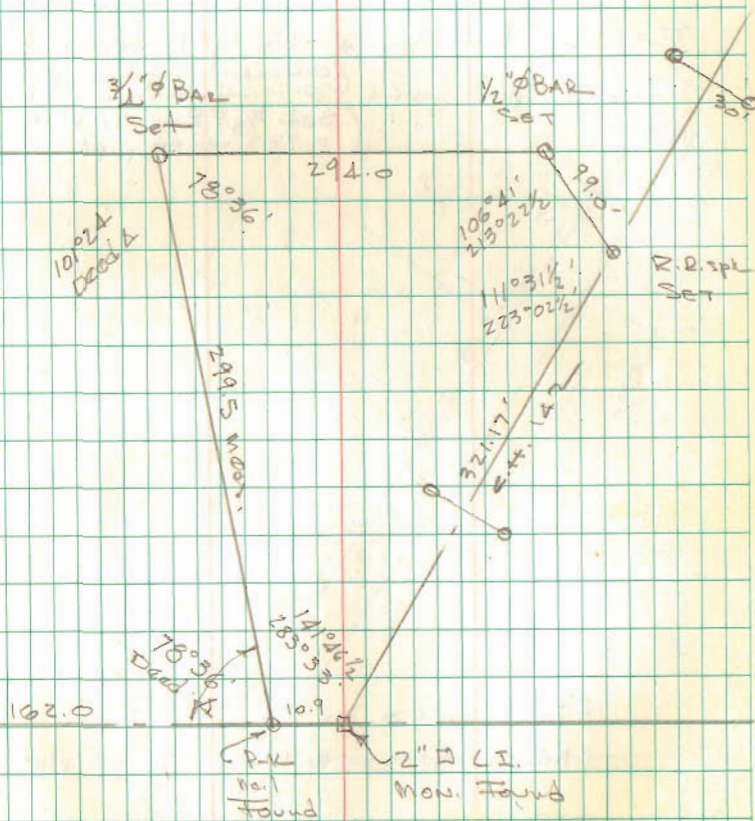


INDEXED ON MAP
7632

Dodson
Acres

6/13/70

45



Lot 7 & 8 #6
West Side No. 2

See Co. Eng. F.B. 707 pp. 1 & 2

A = 1 1/4" pipe found

B = 3/4" " "

C = " " "

D = 1/2" " " (Reset 7/13/70 placed 5/8" Bar
0.7' s.w. of pipe)

E = 3/4" " " (NOT in correct location)

F = 3/4" Bar Found - Set by L. Geeslin (Reset
7/13/70)

G = 3/4" pipe found (owner says pipe is
original - has owned lot since 1949)

H = " " " (Set 5/8" Bar 7/13/70
0.7' s.w. of pipe)

I = " " "

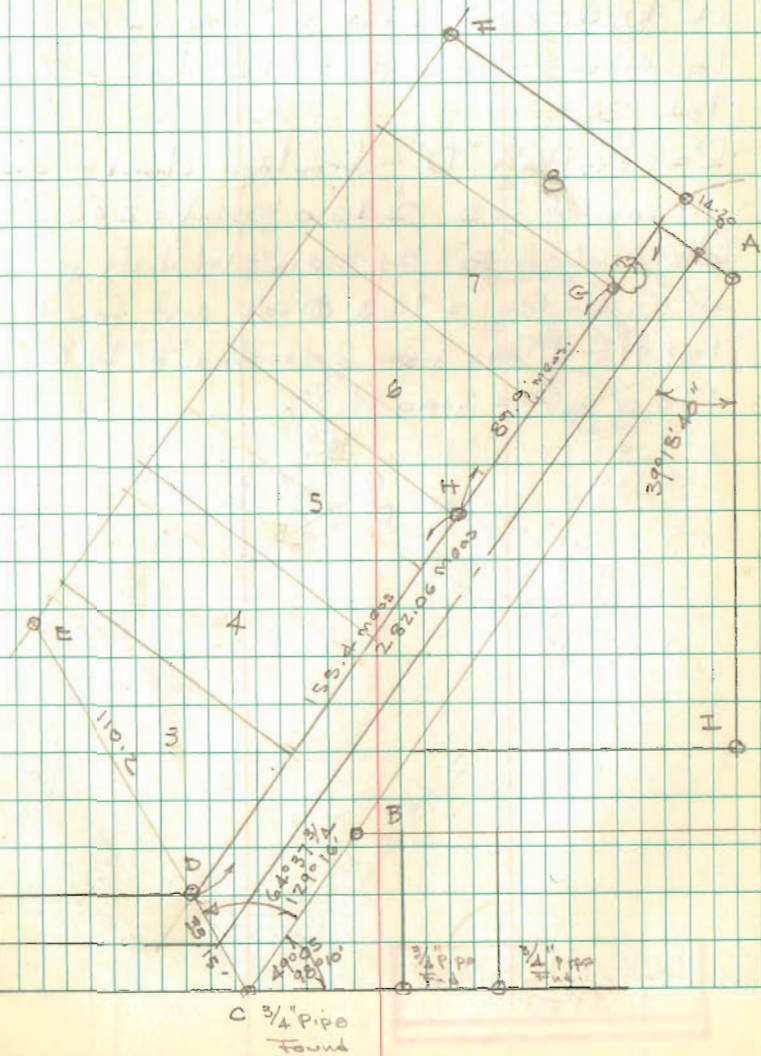
296.23 meas on E 296.5 plot

282.06 meas on W. R/W. 284.06 plot

INDEXED ON MAP
5460

Dedson
Arts

6/27/70 46



RANDOM LINE

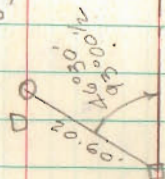
WEST SIDE No. 2

Calculation of traverse & Subd.

indicate that points A-C-G-I & 1/2" pipe at N.W. cor. lot No. 1 are in correct location - Also that shortage is in lot 8

Reset Point "D" - frontage checks ok
 mass G to D 246.0' plot = 246.0'

Relocated "E" by mass. plot dist from
 N. W. Cor. lot 1 = 94.3' & calc. dist from D =
 109.91' - Mass from Relocated "F" to "E" =
 240.0' plot = 240.0'

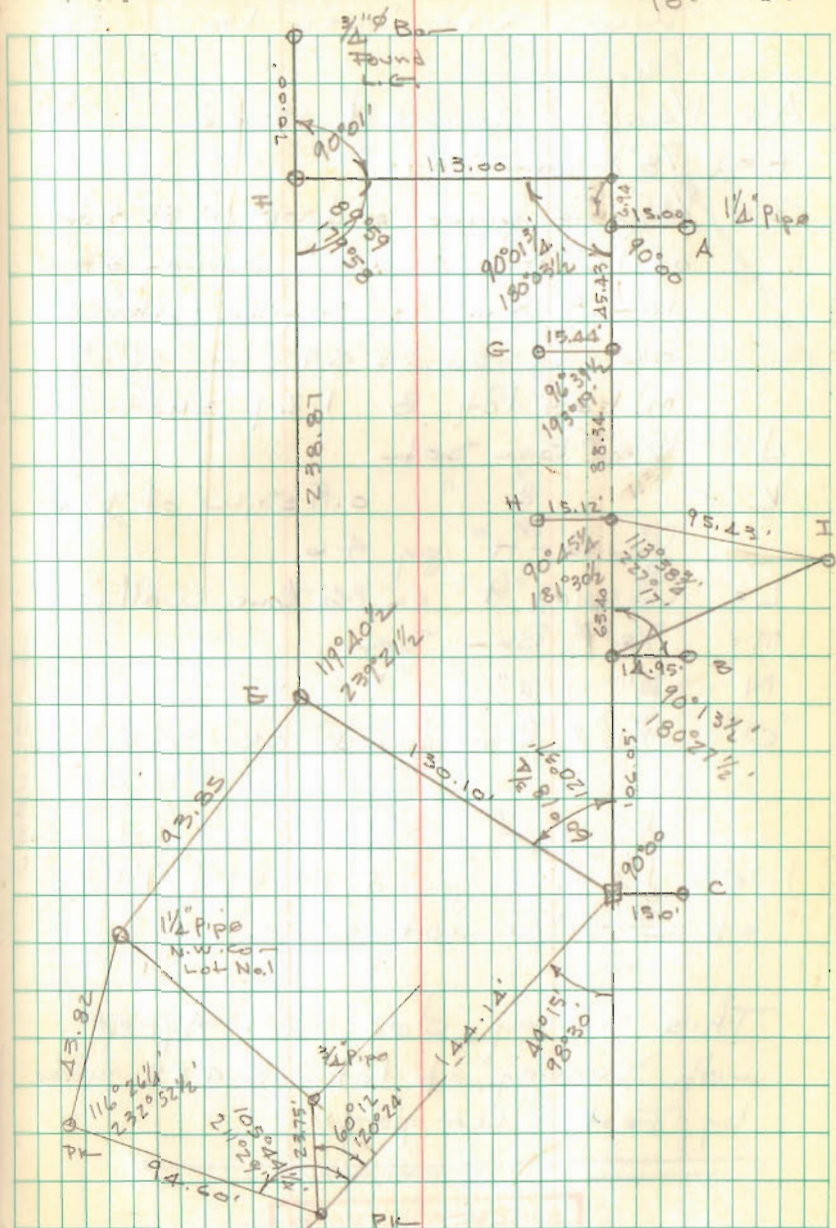


45.03
88.34
63.20
106.05
303.22
6.94
296.28

INDEXED ON MAP
5460

Dodson
Artis

6/27/70 47
70°



SURVEY OF LOT 6-7-8
 WEST SIDE SUBD No. 2

A = 1/2" pipe found & used

F = 5/8" ϕ Bar Set

G = 3/4" pipe found 6" deep @ S. side
 of 12" Maple, which owner of
 lot 8 says is original - checked
 ok - used as S.E. cor. of 8
 makes lot 8 - 1.29 shot

J = 5/8" ϕ Bar Set

K = " " " 0.7 \pm S.W. of pipe
 found "H" pg 46

L = Chiseled "t" on 6" conc wall

M = 5/8" ϕ Bar Set

N = " " " " "

O = 3/4" ϕ Bar found ok - set by L.H.G.

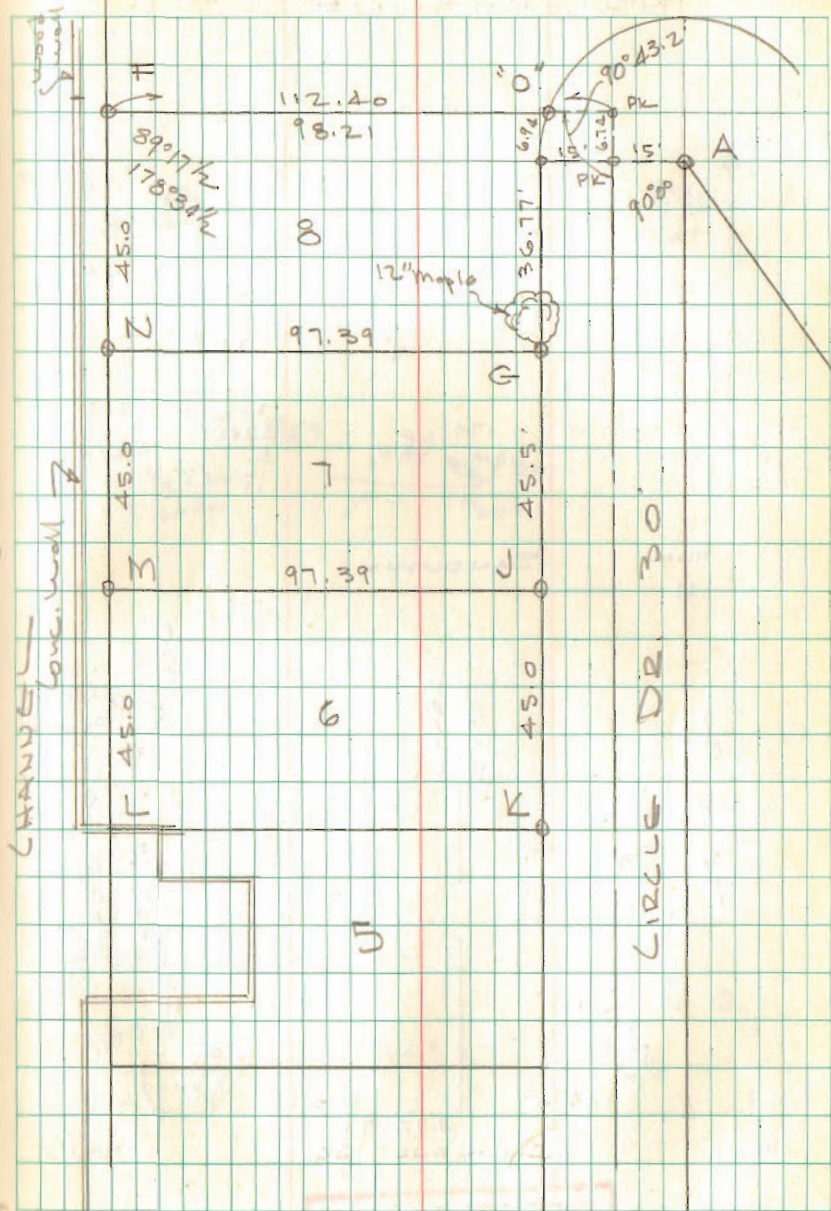
Note 1/2" pipe found 1' \pm W & 1' \pm S.
 of "G" - did not use.

This survey does not Agree
 with survey of lots 3-4 & 5 made
 by Foster Wright.

INDEXED ON MAP
 54 68

Dodson
 L. Goodlin

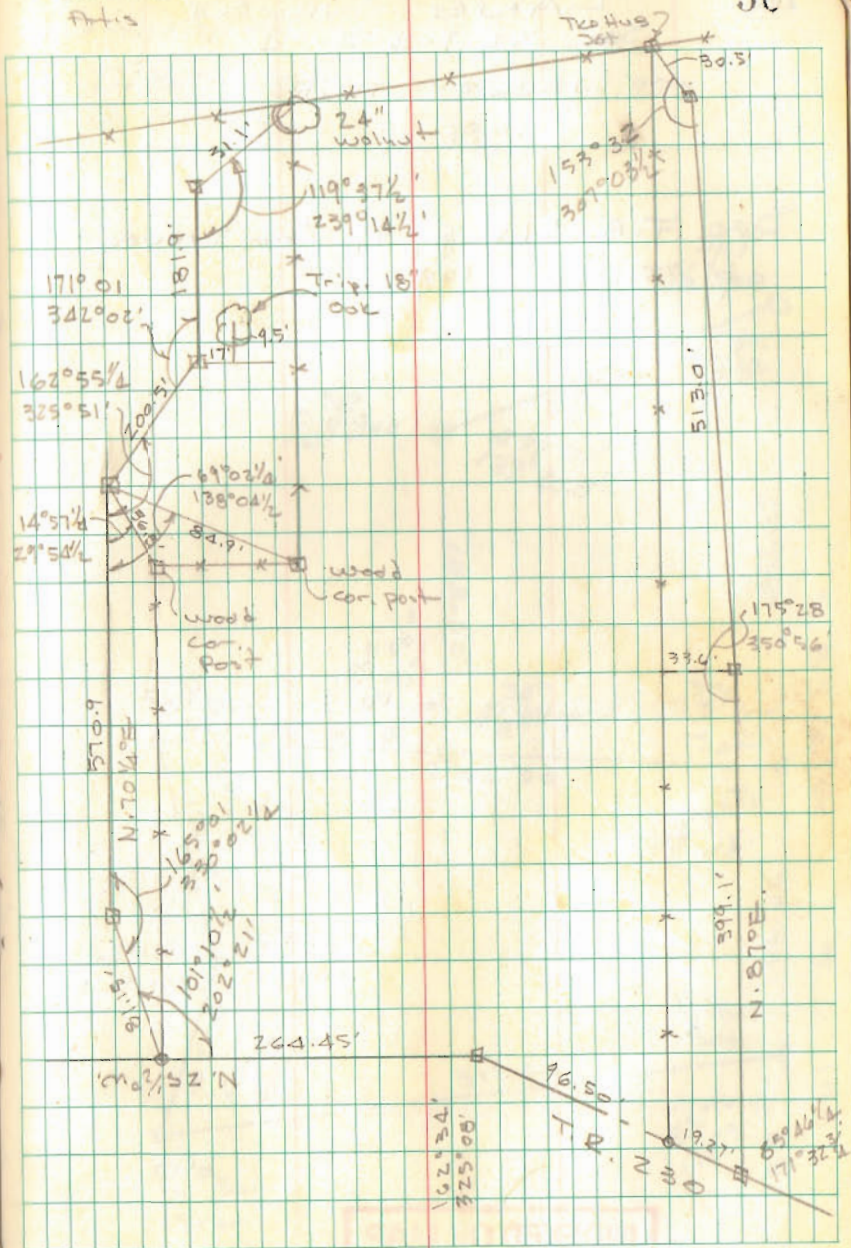
July 13, 1970 48
 80°



Dodge
Aris

7/25/70

50



INDEXED ON MAP
4683

LANE SURVEY
 SEC. 31 T-4 R-14
 LIBERTY TWP.

See F.B. 513 pg 49 for survey
 of T.R. 199. 199

INDEXED ON MAP
 5119

D. Artis
 DAUNY Dodson

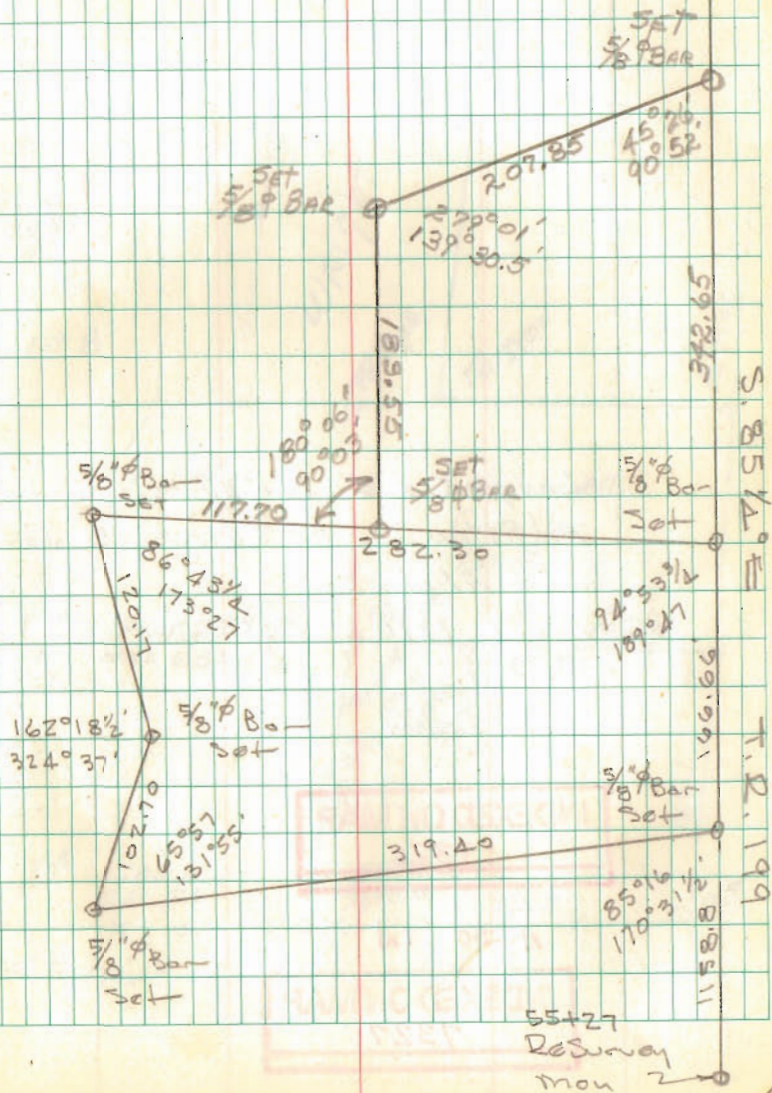
Aug. 8, 1970

51

D. Artis shas
 D. Brooks

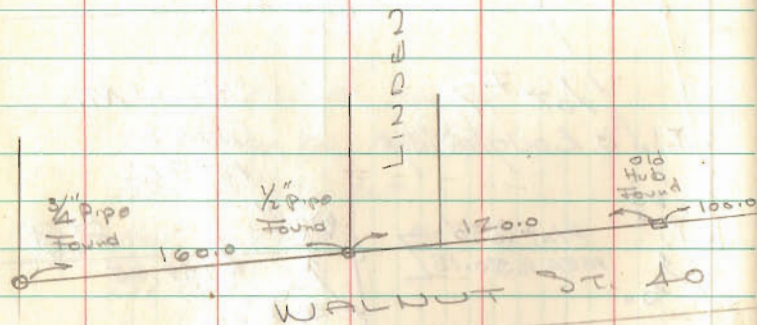
Aug 15, 1970

33+55



LOT 193-194-195
AVONDALE 4

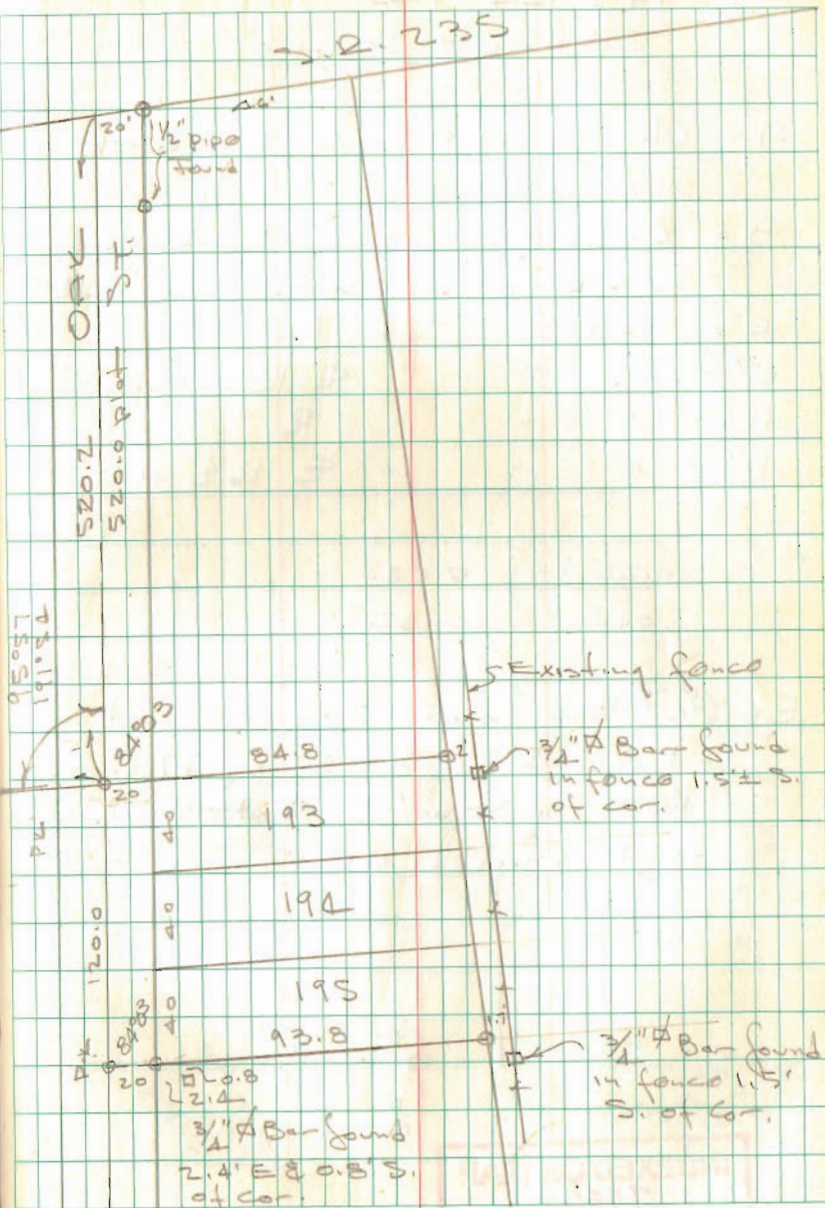
0 = 5/8" ϕ Bar Set



INDEXED ON MAP
6483

Dodson
Artix

9/12/20 53



60 SURVEY OF LOTS
143-144-145
QUINCY OHIO

- A = Chiseled Cross cut in conc. walk
1.25 from w. edge of walk
- B = Chisel Mark cut in edge of conc.
walk - back of walk 24.75 from E
- C = $\frac{5}{8}$ " ϕ Bar Set R
- C' = " " " E 16 1/2' Alley
- D = " " " R
- D' = " " " E 16 1/2' Alley

$$0.22 \div 5 = 0.044$$

$$0.044 \times 3 = 0.132'$$

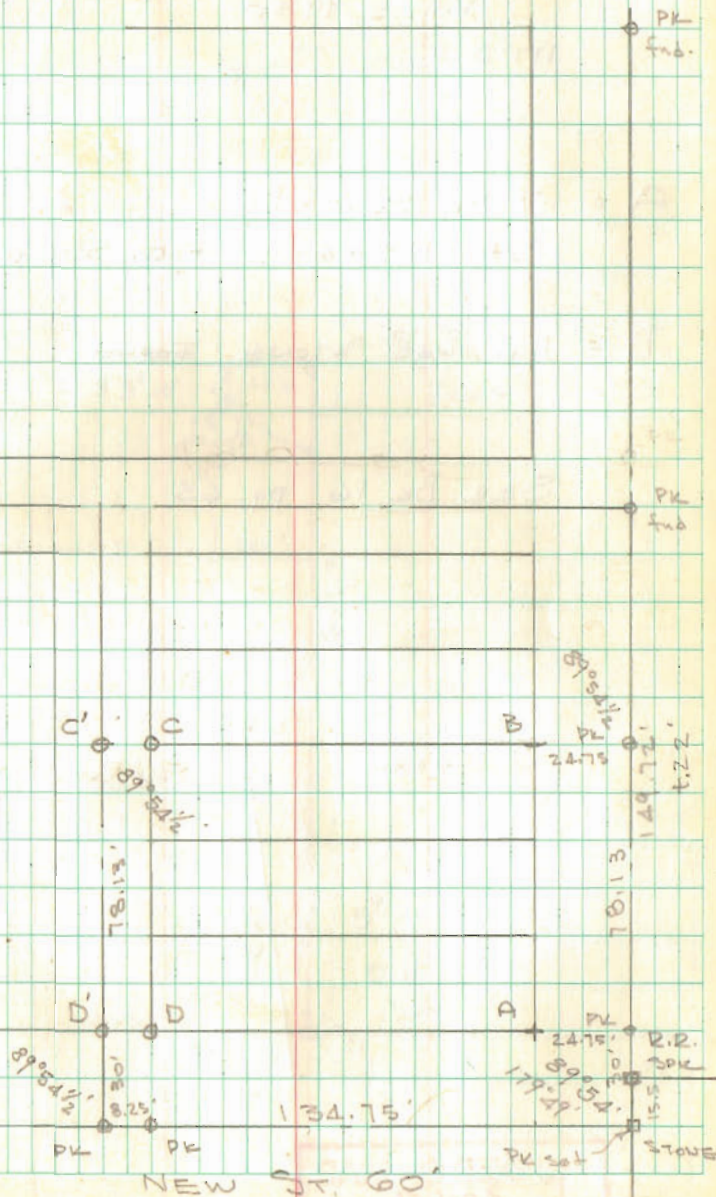
- E = $\frac{1}{2}$ " ϕ Bar found S.W. cor lot
No. 135 F.B. 682 pg. 77
meas. S. 30.00' for E New St.
Angle checked OK



INDEXED ON MAP
7486

Dodson
Artis

Oct 3, 1970 54



26

SNAPP SURVEY

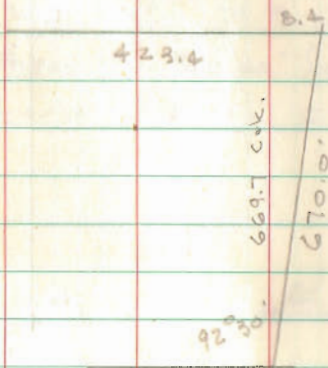
V.M.S 9930

McArthur Trp

A = 7" sq Sandstone found 7" deep
Sto. 113+69.2 F.B. 559 pg. 73

B = P-K over Stone Found

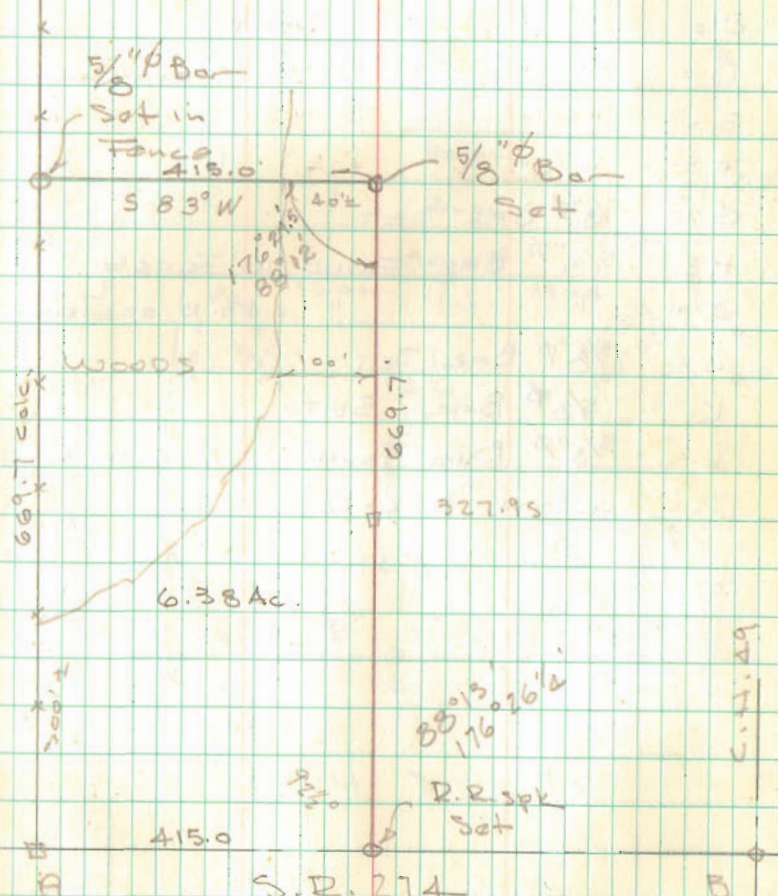
SEE Bk 16. pg. 63



INDEXED ON MAP
4947

Dodson
Artis

Oct. 3, 1970 55
windy 65%



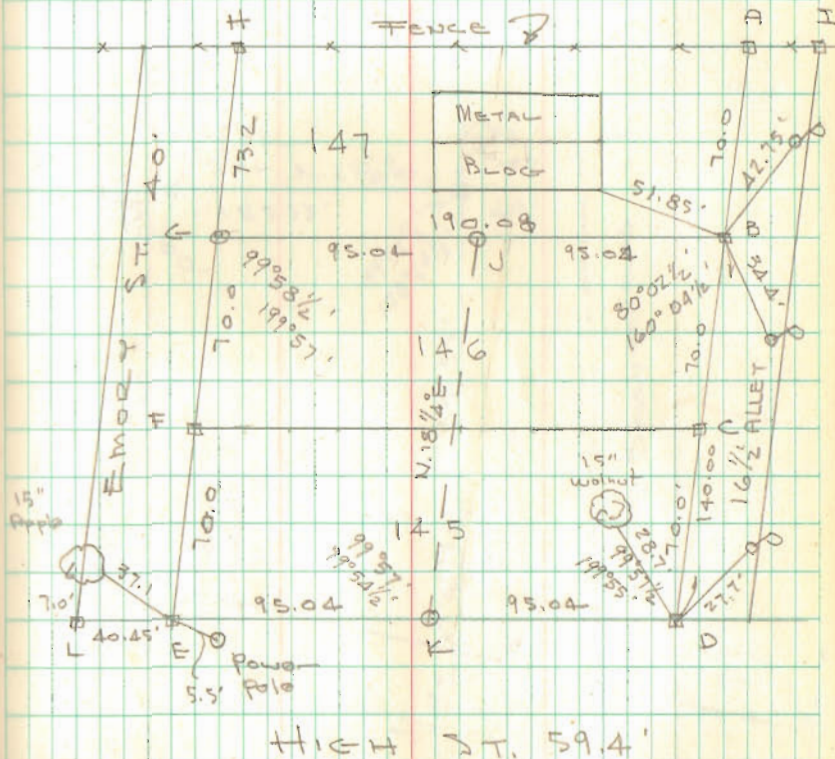
INDEXED ON MAP
558

Lot 146-145
 Brooks Allot
 HUITSVILLE, O.

- A = $\frac{5}{8}$ " ϕ BAR FOUND 0.4' N. OF FENCE
 B = " " "
 C = " " " BENT
 D = " " " " (STRAIGHTENED)
 E = " " " "
 F = " " "
 G = $\frac{5}{8}$ " ϕ BAR SET
 H = $\frac{5}{8}$ " ϕ BAR FOUND IN FENCE
 I = " " " 0.4' N. OF FENCE
 J = $\frac{5}{8}$ " ϕ BAR SET
 K = $\frac{5}{8}$ " ϕ BAR SET
 L = $\frac{5}{8}$ " ϕ BAR FOUND NOT IN LINE
 WITH "E-K-D"

Dutton
 Artin

10/17/70 56
 50°



INDEXED ON MAP
 2467

FISHER SURVEY

See Plan L-13 for S.R. 273
 See F.B. 655 pg 73
 See F.B. 15 pg. 10 for Fisher Survey

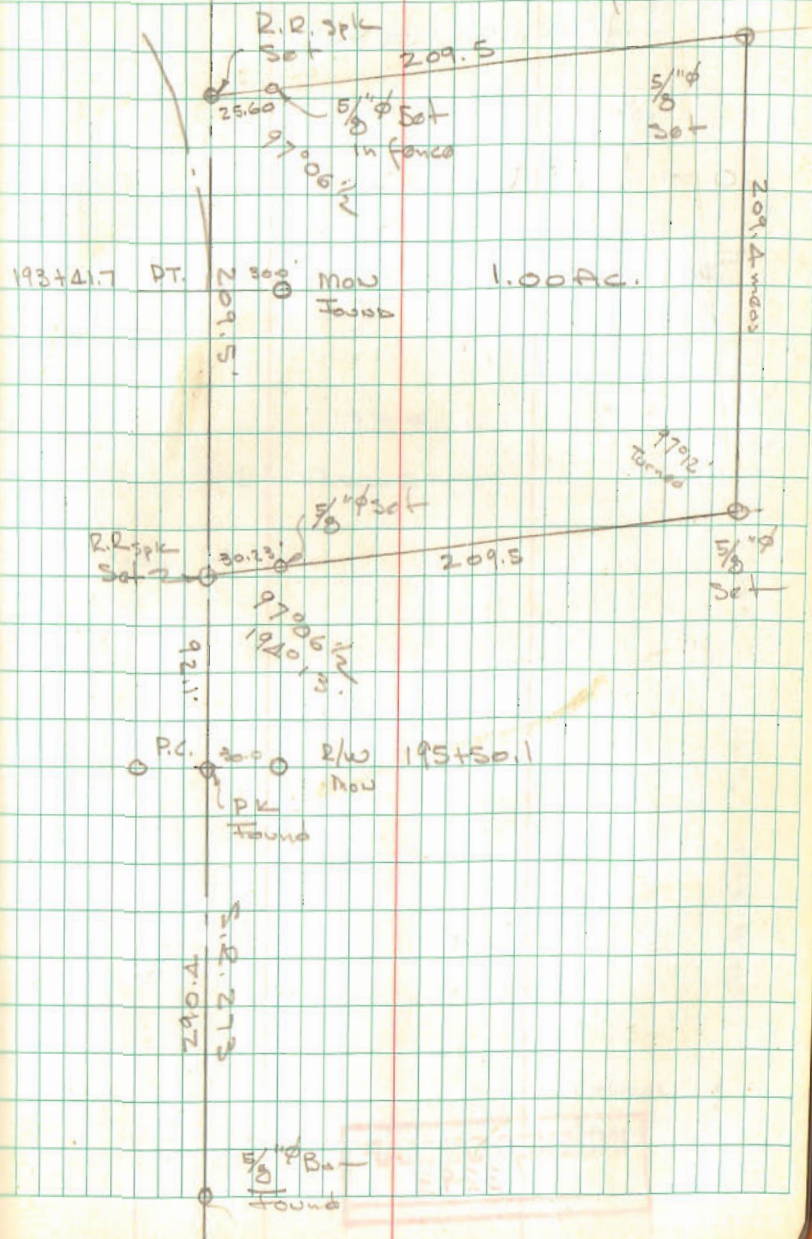
$$\begin{array}{r} 212.26 \\ 209.50 \\ \hline 2.76 \end{array}$$

$$\begin{array}{r} 251.43 \\ 209.50 \\ \hline 41.93 \end{array}$$

INDEXED ON MAP
2110

Dadson
Arts2/27/71
350
windy

61



Lot 127

LAKVIEW

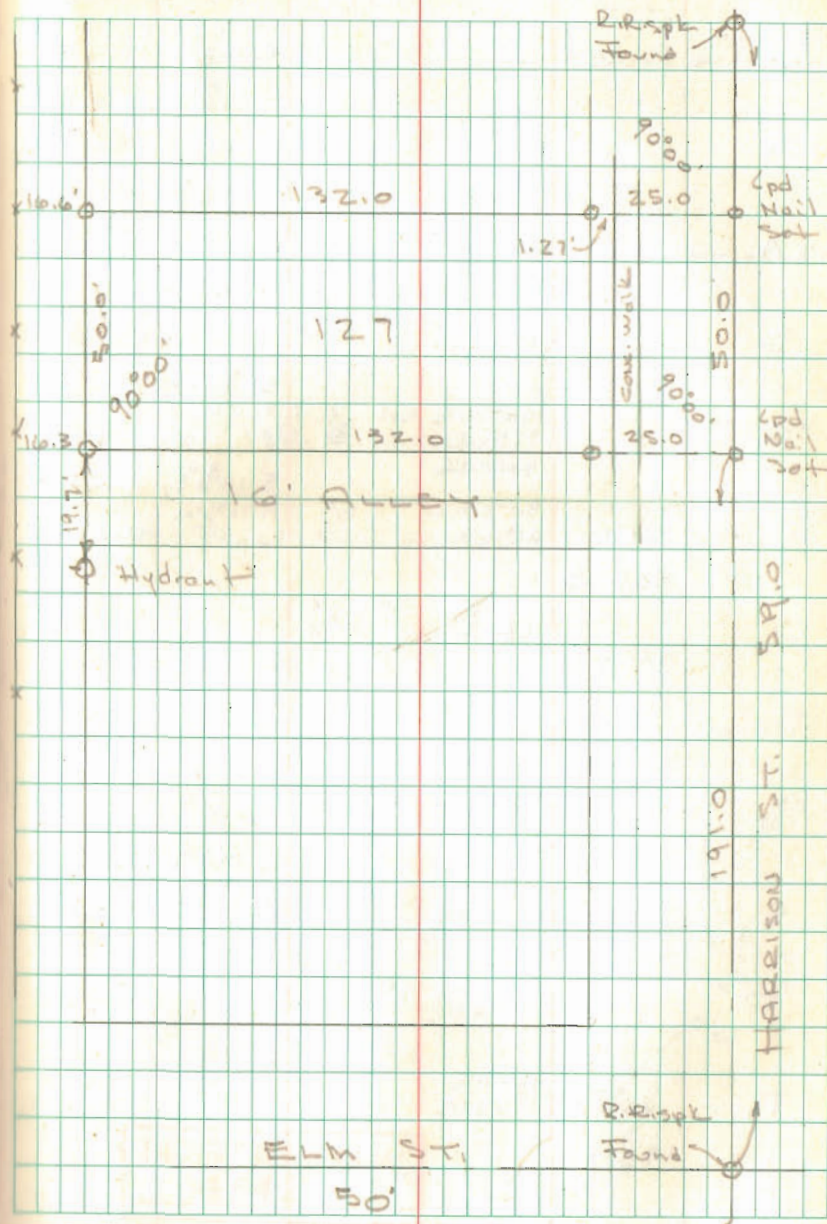
0 = $\frac{5}{8}$ " ϕ Bar Set

See pg. 19 this Book

INDEXED ON MAP
3293

Dodson
Anti

4/3/71
300 windy 62



Wenger Survey Monroe Twp.			
RANDOM LINE STA.	DIST	∠	mag BEARING
A		97° 19 3/4' 194° 39 1/2'	interior S. 79 3/4° W
A ₁	15.29	37° 36 1/2' 75° 13'	S. 17 1/2° E.
	957.30'		S. 42° W.
B		160° 29' 320° 58'	interior N. 18 1/2° W.
	249.15		S. 3 1/4° W.
C		164° 20 1/2' 328° 41' 30° 38 1/4'	Ext. N. 1° E.
C ₁	40.70'	30° 38 1/2' 61° 16 1/2'	S. 14 3/4° E. N. 14 3/8° W.
	365.63		N. 29 1/2° W.
D		91° 42 1/2' 183° 25 1/2'	int. S. 73 3/4° W
	340.10 Hub		N. 73 1/2° E
D ₁	24.15'	38° 25 1/2' 76° 51'	N. 63° W.
	827.94		
E		89° 04 1/2' 178° 09'	int. N. 15 1/2° W.
	426.65 Hub		S. 15 1/4° E.
E ₁	27.80	53° 59 1/4' 107° 58 1/2'	N. 19 1/2° E.
	518.95		
F		86° 54' 173° 48'	Ext. S. 71 1/2° W.
F ₁	26.58'	145° 11 1/2' 290° 22 1/2'	N. 71 3/8° E
	133.38		N. 19 1/2° E.
G		83° 31 1/2' 177° 02 1/2'	int. N. 17° W

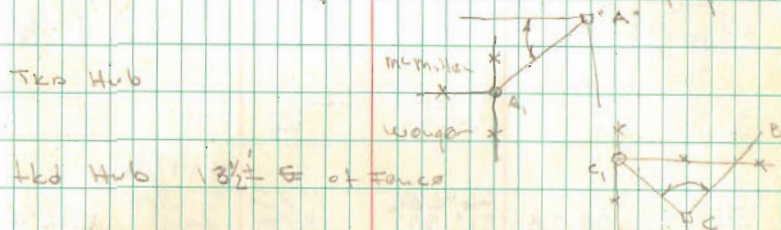
Dodson
Antis X

4/8/71
45°
windy

63

Begin @ Hub "A" NE cor. Wenger tract

5/8" Bar Set - Prop. Cor. - Intersection of fences.



Hub Hub 13 1/2' E of fence

Cor post - Fence running East

Hub Hub

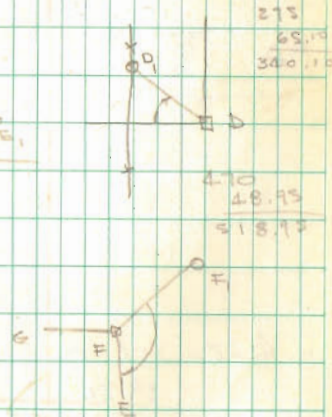
5/8" Bar set in fence - R. J. E. cor woods

Hub Hub S.W. cor woods.

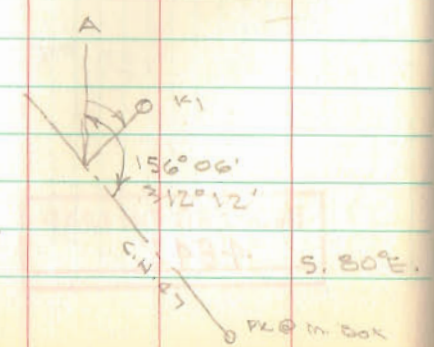
5/8" Bar Set R S.W. cor

Hub Hub

INDEXED ON MAP
4842



	Dist	\angle	Mag Bearing	
G ₁	20.10	43°16' 36°32'	S.17½°E	N.26½°E
	451.92			
H		79°31½' 159°03'		Ext
H ₁	30.42	155°47½' 311°35½'	S.62½°W N.62½°E.	N.38°E.
	485.48			
I		79°28½' 159°37'		Int
I ₁	33.78	46°28½' 92°57'	N.17½°W S.16½°E.	N.16°E.
	819.25			
J		83°48' 167°36'		Int
J ₁	23.50	28°56¾' 57°54'	N.79¾°E	S.71½°E.
	1505.45			



G₁ 5/8" ϕ Bar Set R.

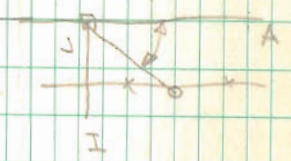
Hkd Hub

5/8" ϕ Bar Set R @ S. side 48" ool

Hkd Hub

5/8" ϕ Bar Set R

J₁ 5/8" ϕ Bar Set in fence S. line of McM'illin

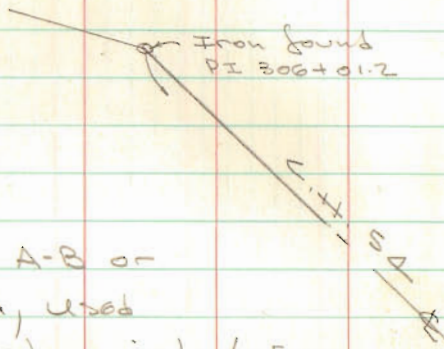


PK set opposite to C.H. 47 A-J-K = st. line

Cor part

INDEXED ON MAP
4842

BOOCHER SURVEY
 SEC. 4 T-7S R-8E
 STOKES Township



No fence on line A-B or
 R east from A, used

Sta. 298+85 as shown in L. G. Eng.

F.B. 693, pg. 14 for location of R
 at \pm of C.H. S.A. - found remains of old
 fence post, used post & Sta. 298+85 for
 location of line A-B.

Meas south, from apparent R east from A,
 173.25 in two places, intersected north,
 south R @ B & C.

Meas north from "B" 173.25 & set A

INDEXED ON MAP
 7448

Dodson
 Arlin K

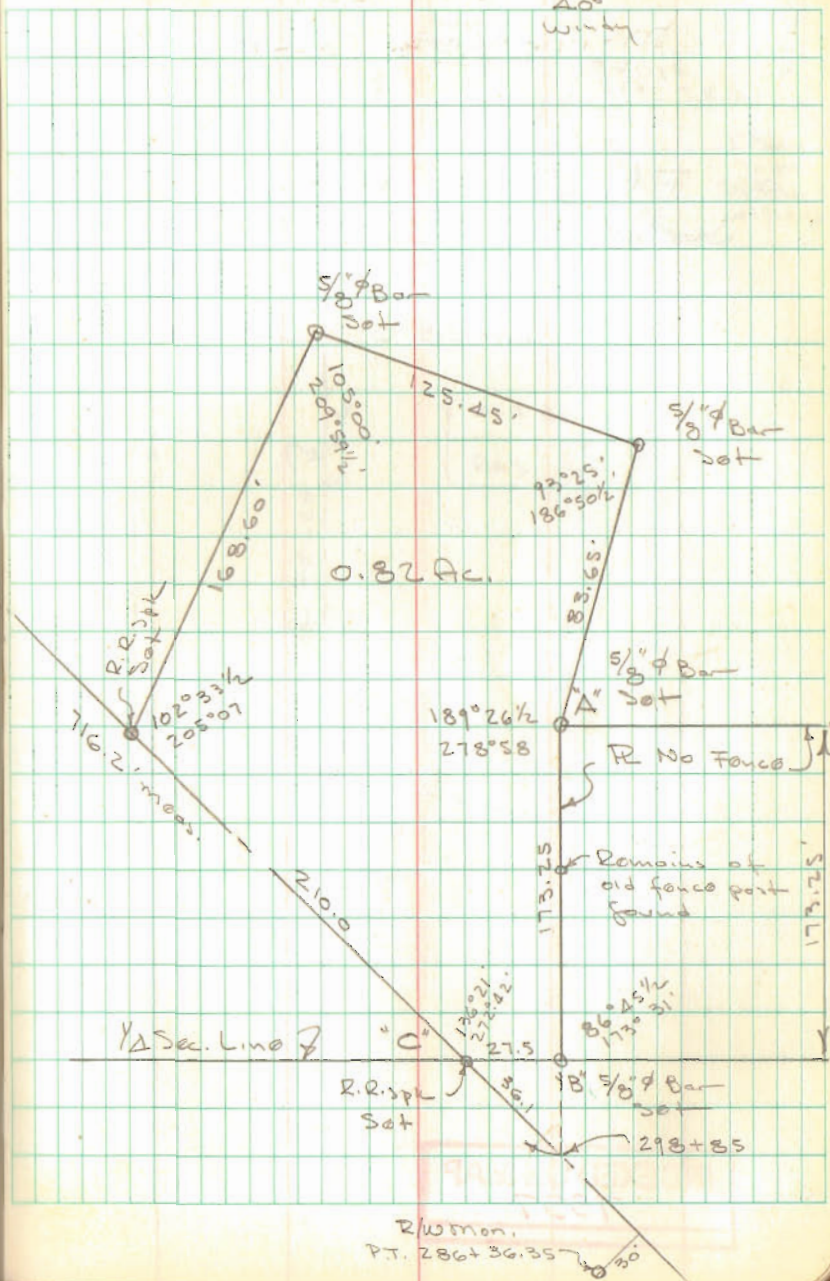
4/2/71

4/3/71

40°

Windy

66



R/W Mon.
 PT. 286+36.35

OUTLAND SURVEY
V.M.S. 10307

McARTHUR TWP.

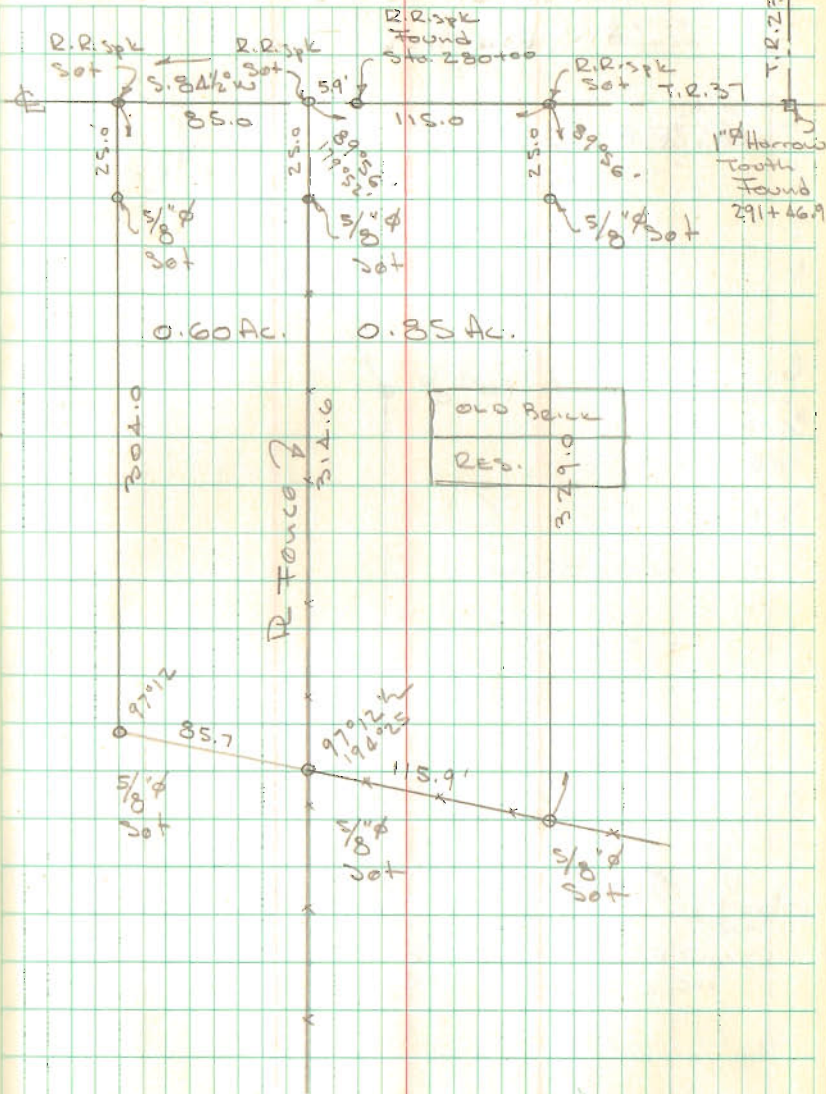
See F.B. 687 pg 23 for
Survey of T.R. 37

INDEXED ON MAP
7337

Dodson
Artis

3/13/71
Foggy

T.R. 37
6.7



TURNER SURVEY
V.M.S. 1883

McArthur Twp.

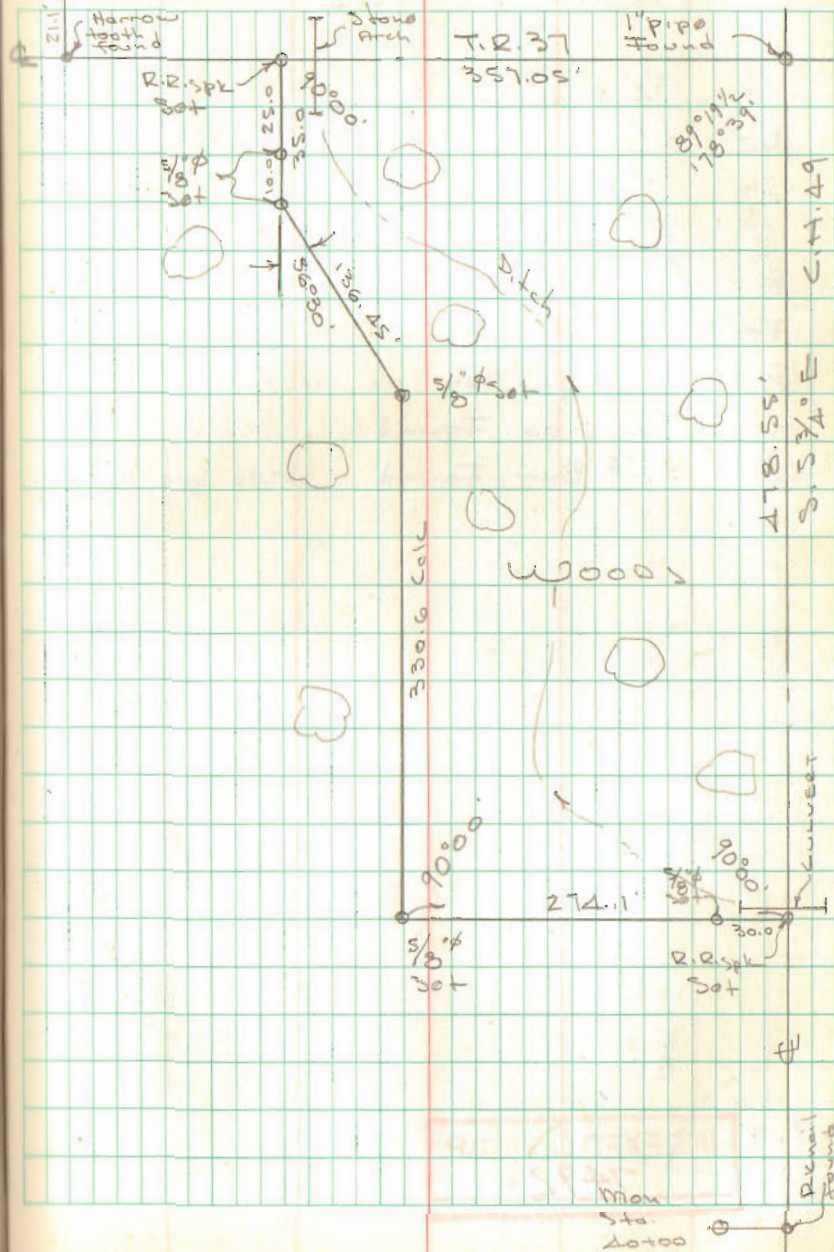
Doc F.B. 687, pg. 24

INDEXED ON MAP
7338

Dodson
Archie

3/13/71
60°

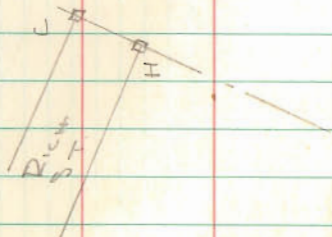
68



60

Town House Subd.
RUSSELLS POINT

- A = 3/4" Pipe Found
 B = " " "
 C = 1" " "
 D = R.R. Spk Set
 E = 3/4" Pipe Found
 F = " " "
 G = R.R. Spk Set on line A-H
 H = 3/4" pipe Found
 I = 3/4" Bar Found - Used for line
 J = " " "

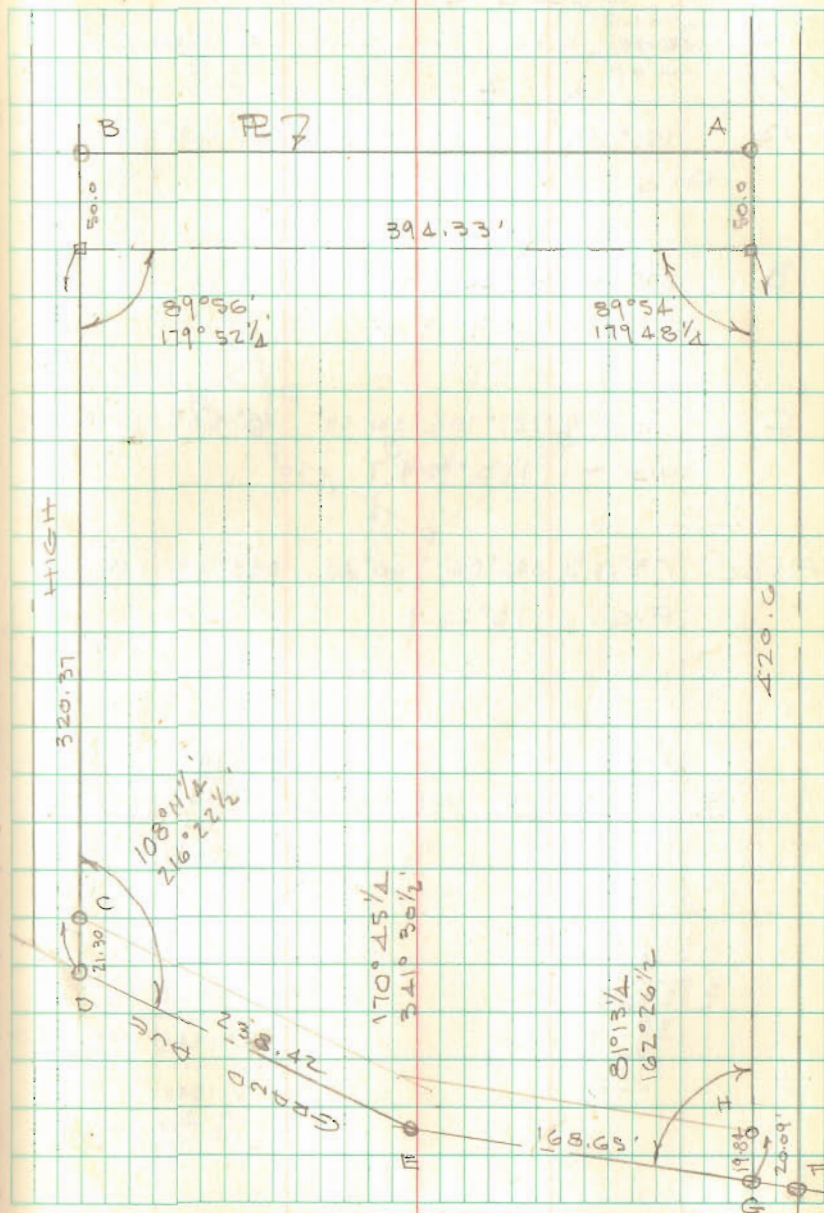


INDEXED ON MAP
7492

Dodson
Artis

4/7/71
60°

63



Buckenroth Survey
McArthur Twp.

INDEXED ON MAP
7339

Dutton
Arts

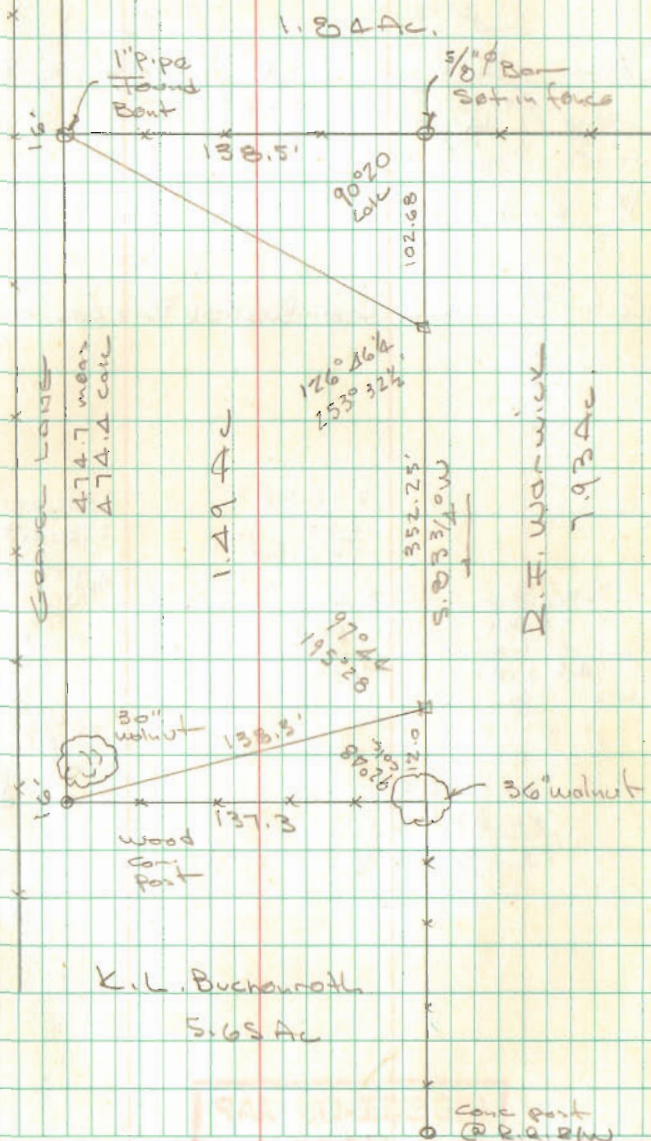
2116171

70°

71

CLIFTON LAMBERT

1.84 Ac.



92
OCT 11

COOPER SURVEY
V.M.S 9950

A = Bolt found (Bent) 1000 ± South of B
used for line - See F.B. 512/32-33

B = Hub Set - Meas. 1332' from "C"

C = Wood Cor. Post (Broken off)

278.88	750.00
468	278.88
<u>746.88</u>	
	<u>471.12</u>

332.06	584.7	
<u>77.39</u>	463.25	745.00
463.25	<u>121.25</u>	<u>278.88</u>
		<u>266.12</u>

179.60
<u>90.07 1/2</u>
89.52 1/2

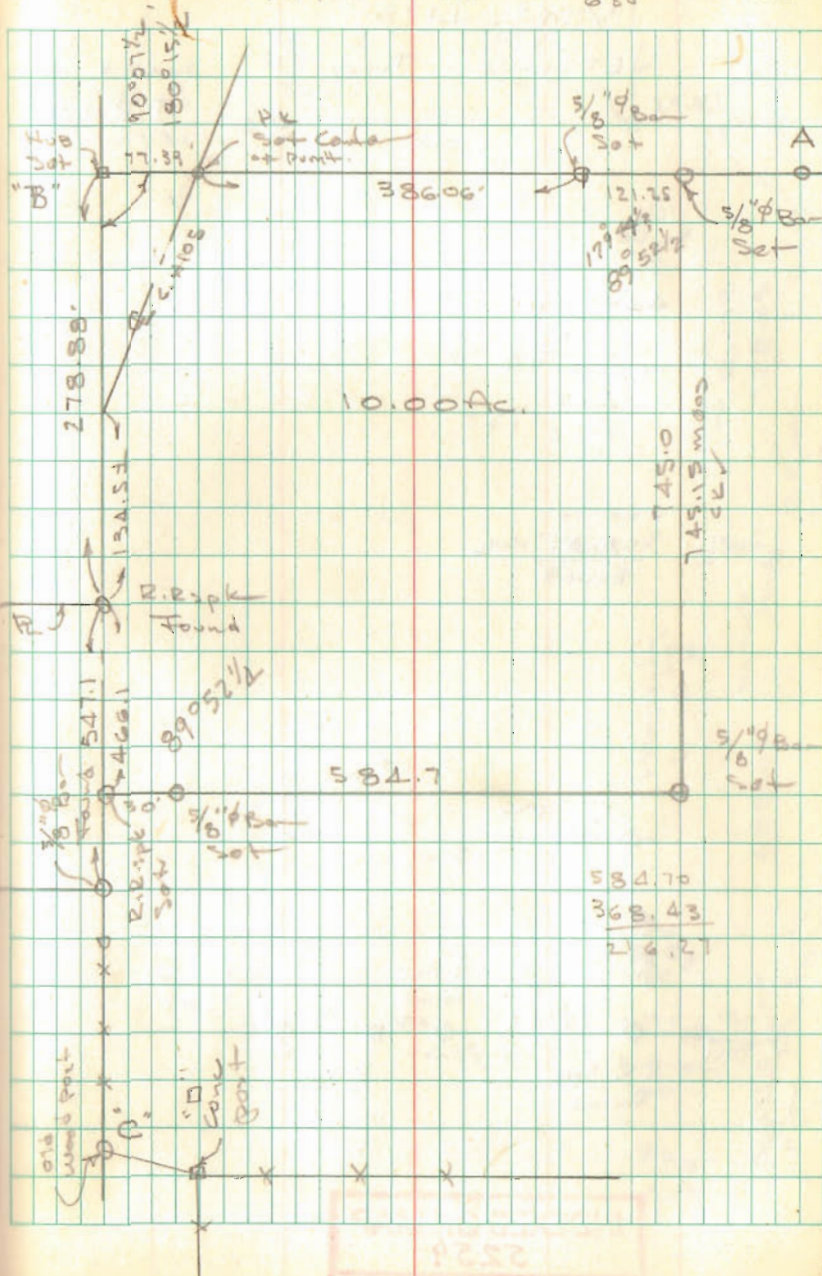
INDEXED ON MAP
7438

Dodro
Artis

4/24/71
800

4/19/71
650

72



SOURS SURVEY

V.M.S. 4498

JEFFERSON Twp

T.R. 181

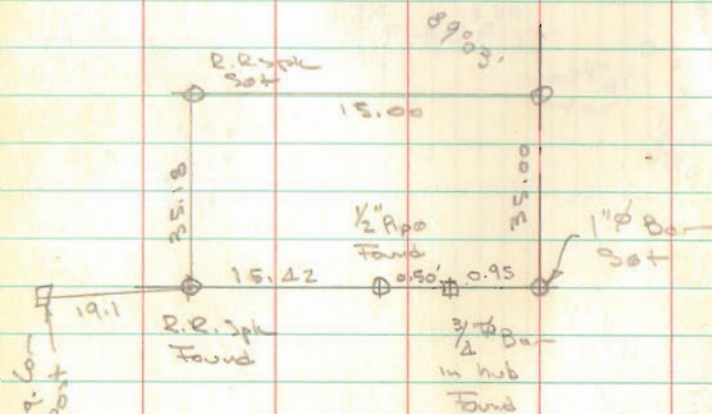
44+32.10
 29.89

 44 61.99
 4.15

 4046.99

400.00
 308.87 Hub

 91.13



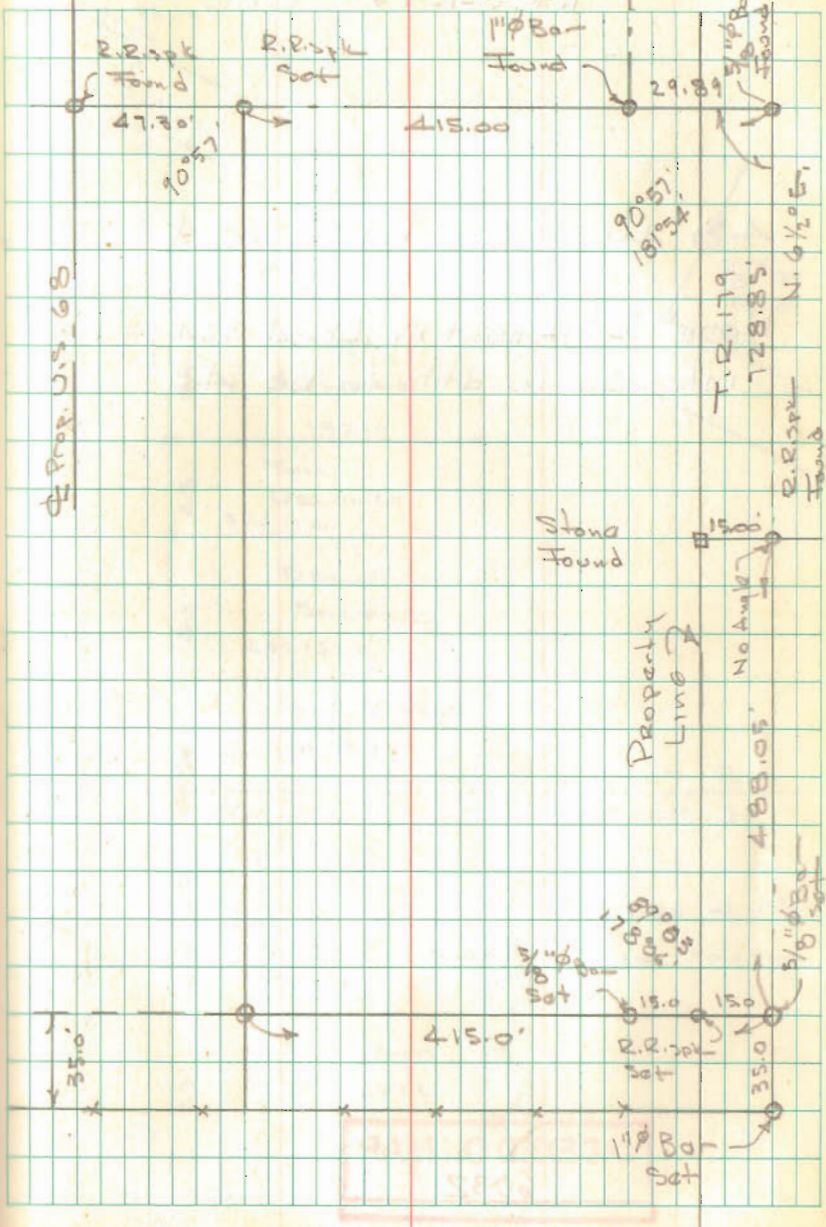
INDEXED ON MAP
5259

Dobson
 Artis

4/24/77

50°

44+32.10



INDEXED ON MAP
5259

DELONG SURVEY
DEGRAFF, OHIO

48' width fits occupation OK

NOTE Statement in Deed 324 pg 141
intended width to be 40'

2.00 N
1.95 S.

D-K @ 647.90'

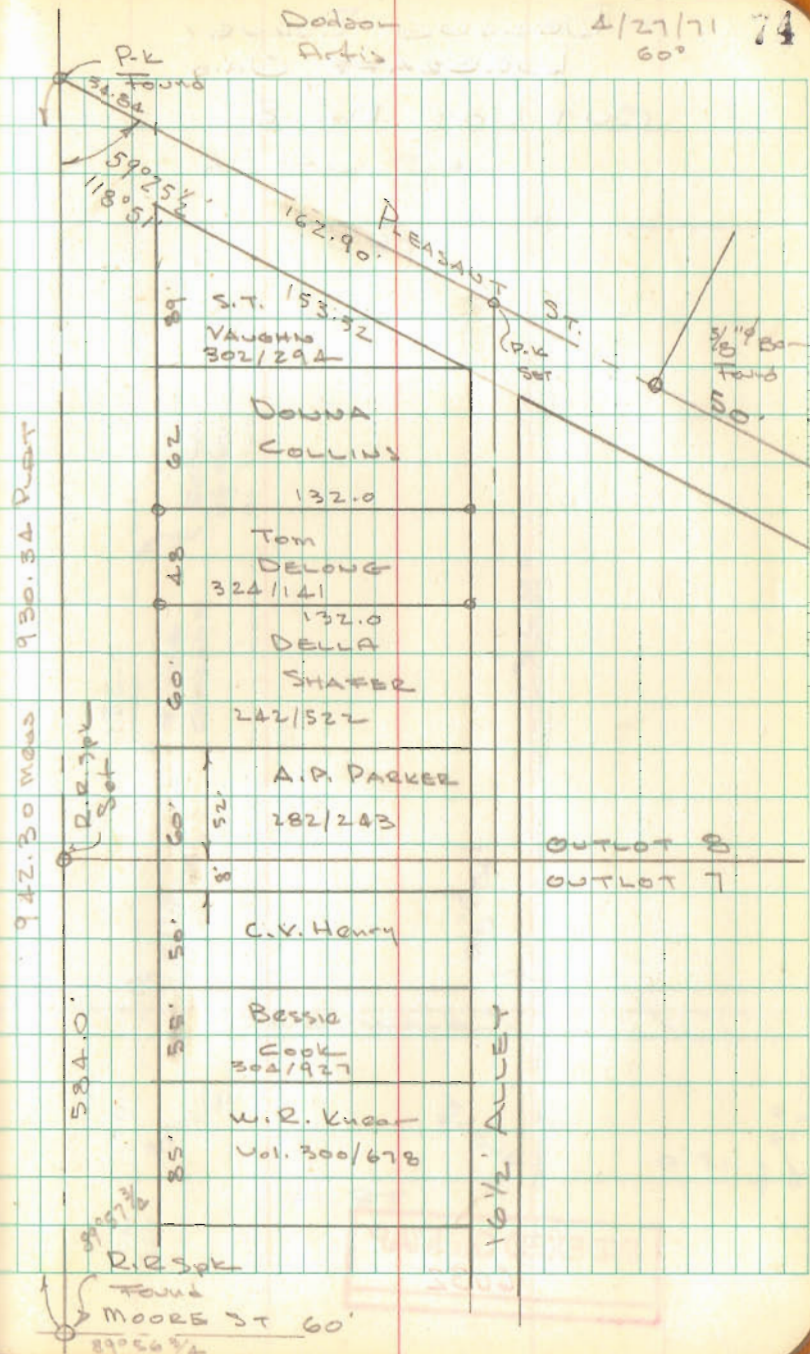
OUTLOT LINE @ 584.0

647.9	52
584.0	60
63.9	112
	63.9
	48.1

INDEXED ON MAP
6032

Dolson
Artis

4/27/71 74
60°

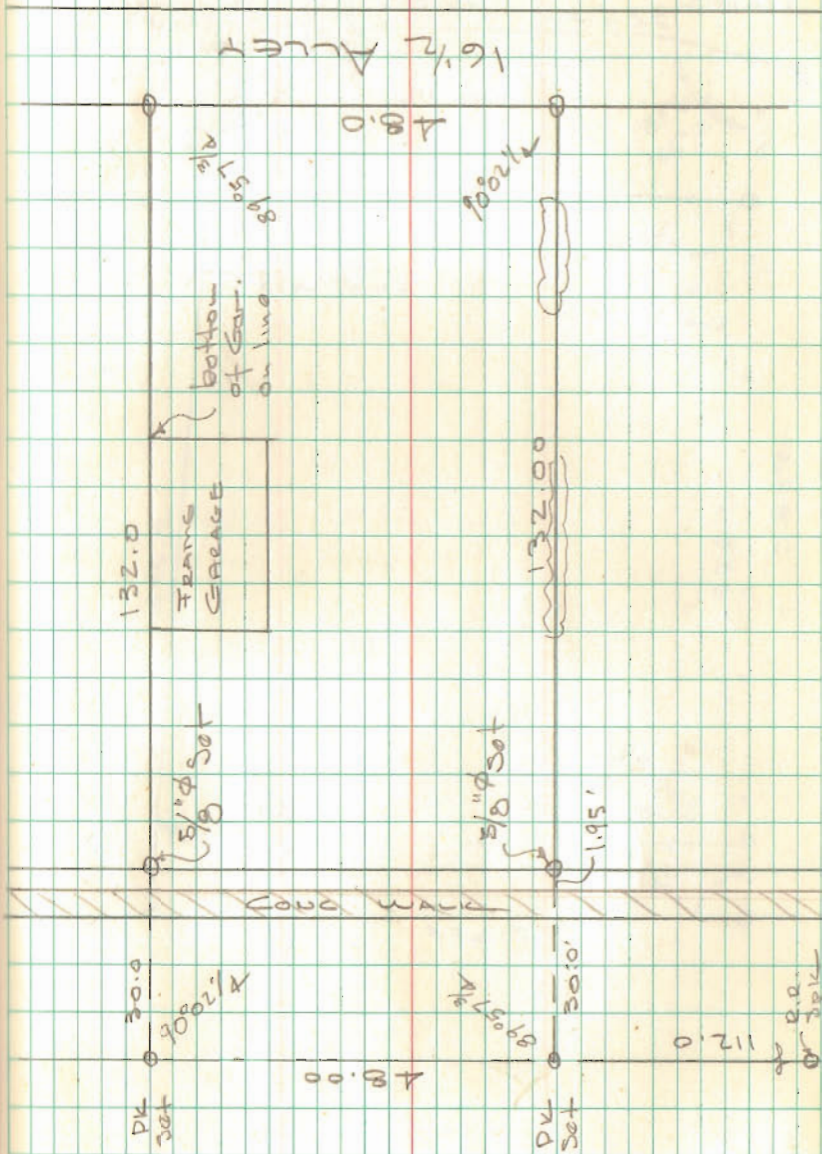


DELONG SURVEY
DEGRAFF, OHIO
OUT LOT No. 8

INDEXED ON MAP
6032

4/27/71

75



Lot 806-807
BELLEFONTAINE

- A = 1" pipe Found 4" deep
- B = Bolt Found
- C = 3/4" pipe Found
- D = 1 1/2" pipe Found @ W. line Springhills
- E = 1/2" Bar Found 266.40 from B
- F = 5/8" Bar Found - Bent

See City F.B. 262 pg 51-77

± Chillicothe = $234.30 \div 5 = 46.86$ per lot
 ± Auburn = $239.60 \div 5 = 47.92$ per lot
 ± Alley = 47.89 per lot

90.88	179.60
93.71	90.17 1/2
25 1.06 628	89.42 1/2
8	
26	72.25
90.80	8.25
26	64.00
90.54	

INDEXED ON MAP
9625

Dodson
Antis

4/29/71
60°

