

16

STANDARD OIL Co. SURVEY
PT. LOTS 268-269-270-271

BELLEFONTAINE

- A = Mon. Stone FOUND
 B = Mon. 1" Ø BAR FOUND
 C = Mon. Box ONLY - Stone GONE
 D = Mon. Stone OK
 E = Mon. Stone OK
 F = Cop. Nail SET E OF ALLEY
 G = " " " " " "

ON	FROM	TO	MEAS	CORR. DIST.	TEMP. CORR.
AUBURN	DETROIT	MAIN	527.42	527.52	+0.10
DETROIT	AUBURN	BUCKINGHAM	737.56	737.67	+0.11
MAIN	AUBURN	PATTERSON	426.87	426.92	+0.05
BUCKINGHAM	DETROIT	MAIN	CITY RECORD = 525.5'		
E ALLEY	MAIN	DETROIT	526.83	526.90	+0.07
E ALLEY	AUBURN	E ALLEY	258.44	258.47	+0.03

90° 02'
 180° 04'
 270° 05 1/2'
 360° 07 1/4'

63.30

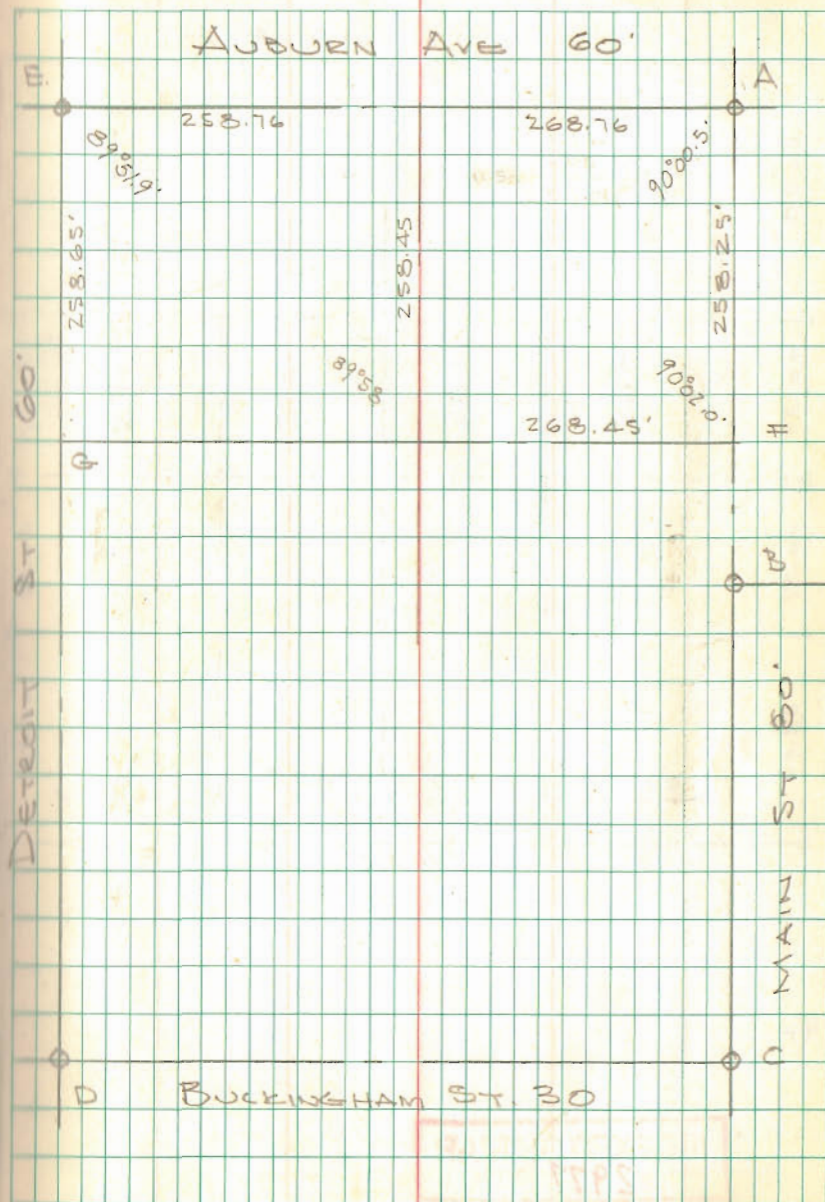
55.06
55.0589° 58'
179° 56'

INDEXED ON MAP
2977

DOBSON
ART'S

5/22/72

01



STANDARD OIL CO. Count

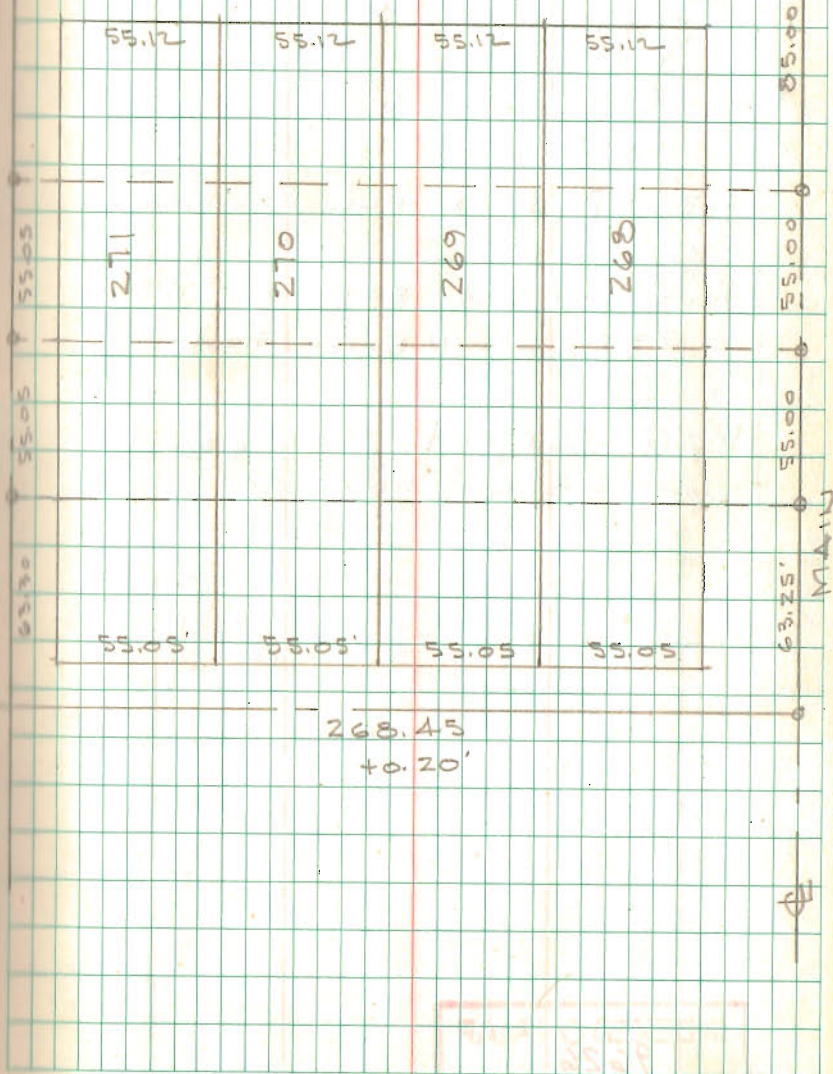
Deddon
Artis

5/23/12
81°

02

AUBURN AVE.

268.76'
+0.51'



INDEXED ON MAP
2977

KLOETZLY SURVEY BELLE CENTER

A = $\frac{3}{4}$ " pipe found S.W. cor Plum St
& Elizabeths

B = $\frac{1}{2}$ " pipe found

C = $\frac{3}{4}$ " " "

SET 1" pipe ON ALL CORNERS

Meas. plot dist. 547.0 from A +
23.5 for N.E. Cor tract

Meas. dead dist 230.0 from B
for S.E. Cor. tract

$$\begin{array}{r} 271.67 \\ 230 \\ \hline 41.67 \end{array}$$

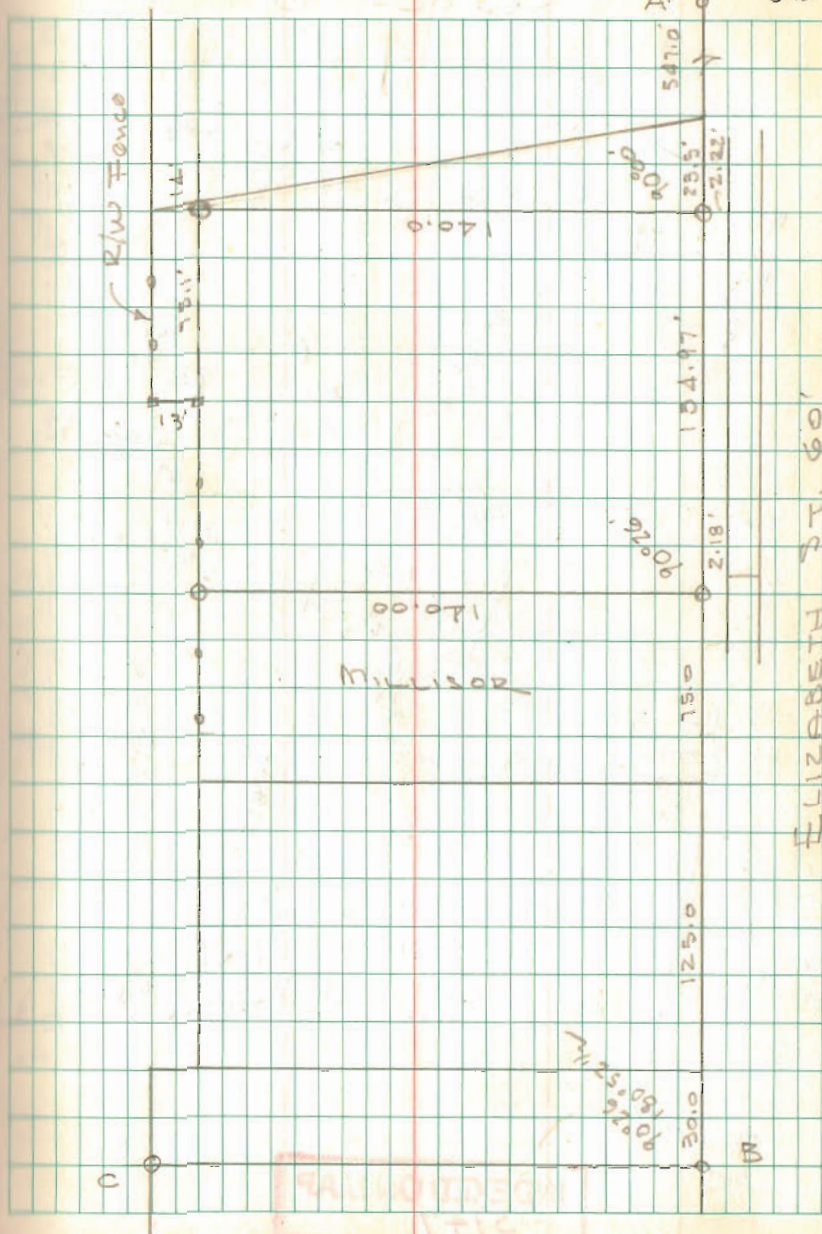
$$\begin{array}{r} 668.80 \\ 570.5 \\ \hline 93.30 \\ 41.67 \\ \hline 132.97 \end{array}$$

INDEXED ON MAP
9626

Dodson
Artis

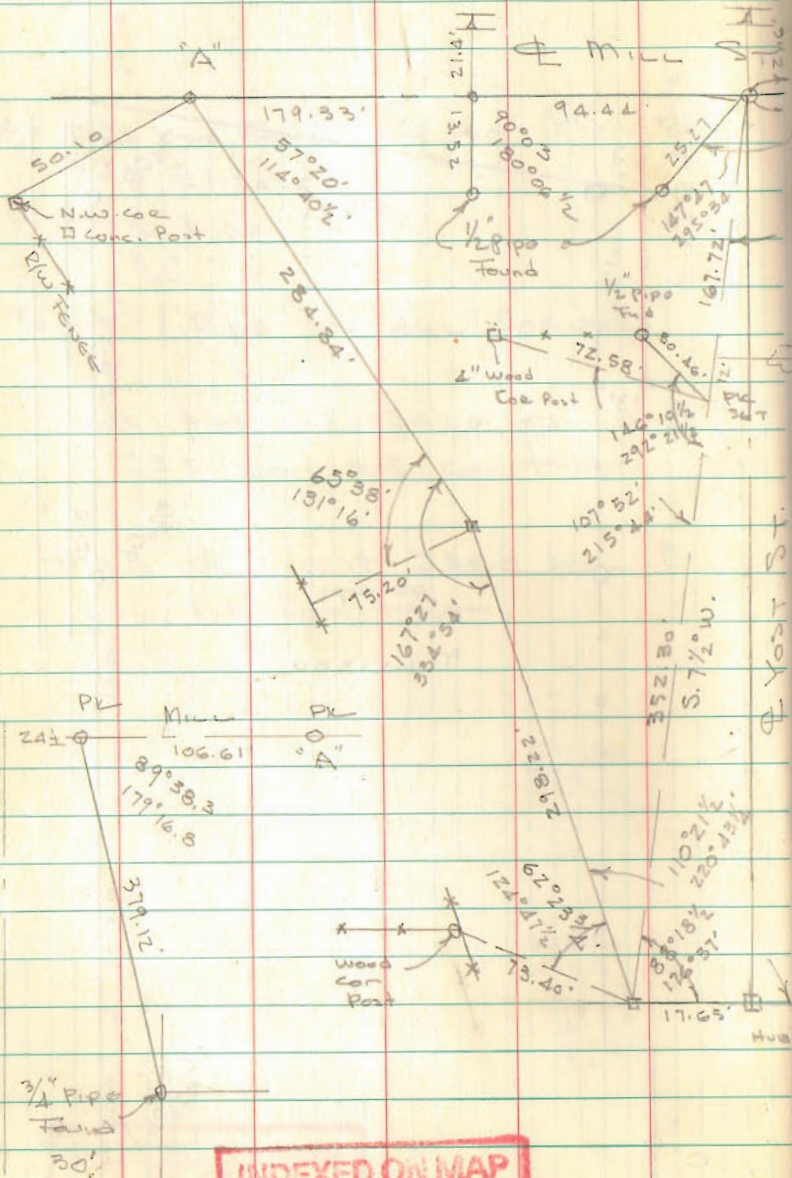
May 3, 1972
70°

03



INDEXED ON MAP
9626

QUINCY LUMBER CO
QUINCY, O.

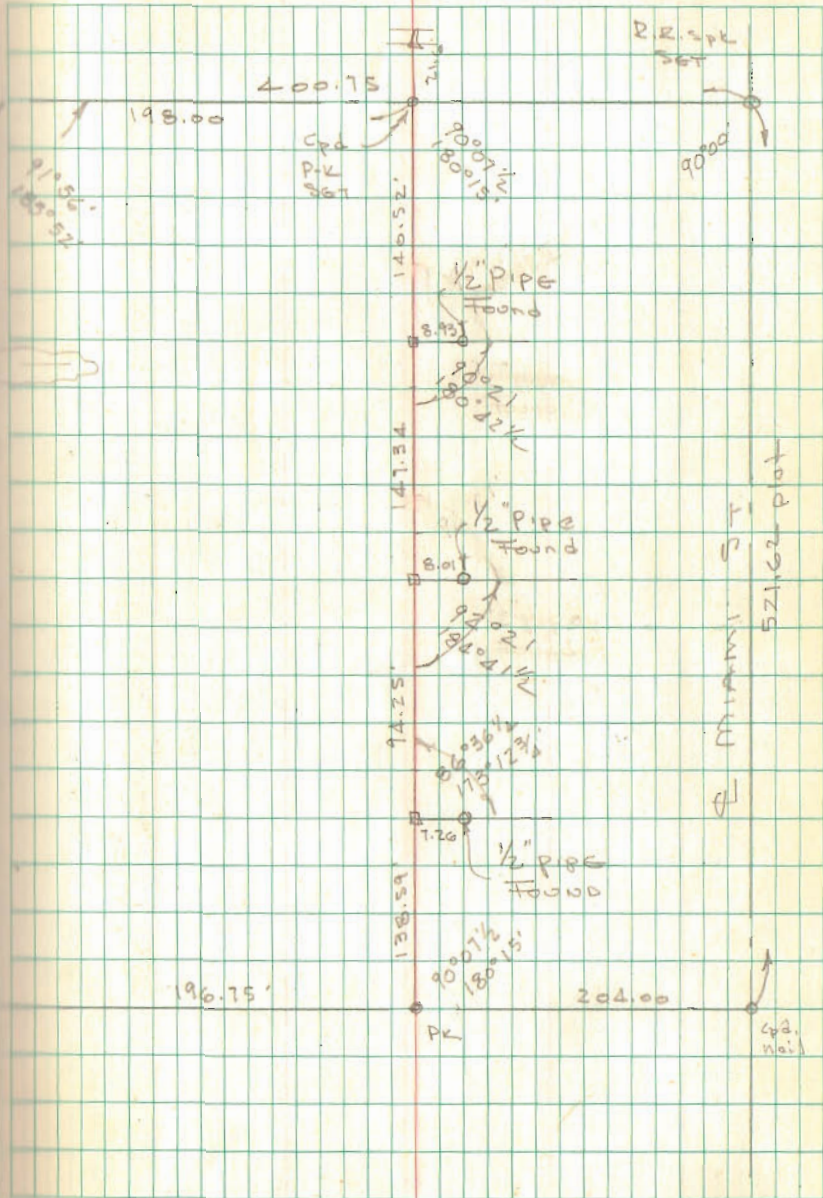


INDEXED ON MAP
5147

DOBSON
ARTIS

6/24/72
7/9/72

04



STEWART SURVEY
QUINCY

- A = Stone Found @ S.E. 235
& Jefferson St. (By O.D.O.T.)
- B = 3/4" Pipe Found
- C = 5/8" Bar Set
- D = " " "
- E = " " "
- F = " " " 0.2' N. of D long post
- G = " " "
- H = 6" long Post
- I = Area Found in R/W Fence

Used point 30' Rt of "A" &
Pipe @ "B" to establish E. R/W
line of S.E. 235

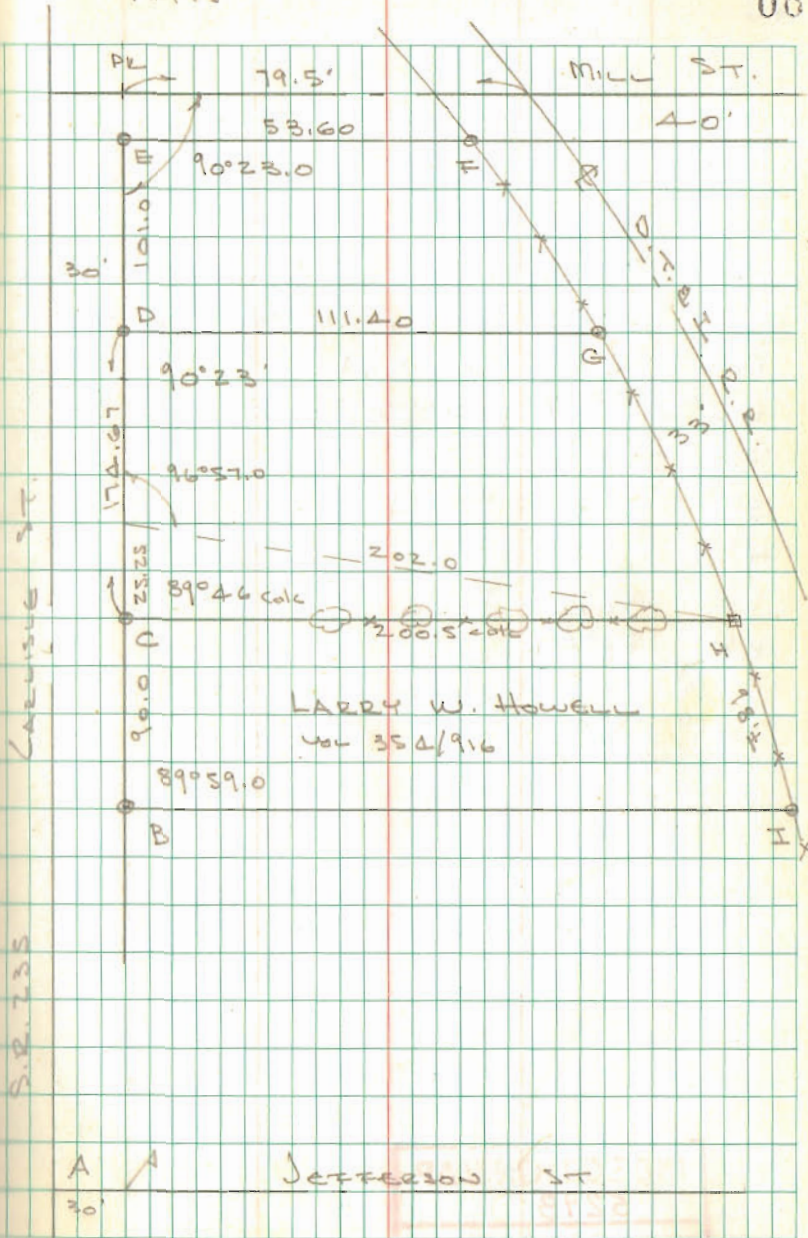
INDEXED ON MAP

7487

Doosan
Antis

11/19/77

06



SOWER SURVEY
 Sec. 29 T-5 R-13
 LIBERTY TWP

- A = W/L over Stone @ Twp Line
- B = $\frac{3}{8}$ " ϕ BAR FOUND 0.10 N. of
 ϕ T.R. 30
- C = R.R. spk Found P.O.T. 26+17.00 S.H.W.
 used "C" & "K" as ϕ T.R. 30
- D = R.R. spk Set
- E = $\frac{5}{8}$ " ϕ Bar Set 25.00 from D
- F = " " "
- G = " " Found
- H = " " "
- J = Power Pole
- K = $\frac{5}{8}$ " ϕ BAR FOUND

INDEXED ON MAP
 529B

Dodson
 Antis

JUNE 26, 1972
 75°

07

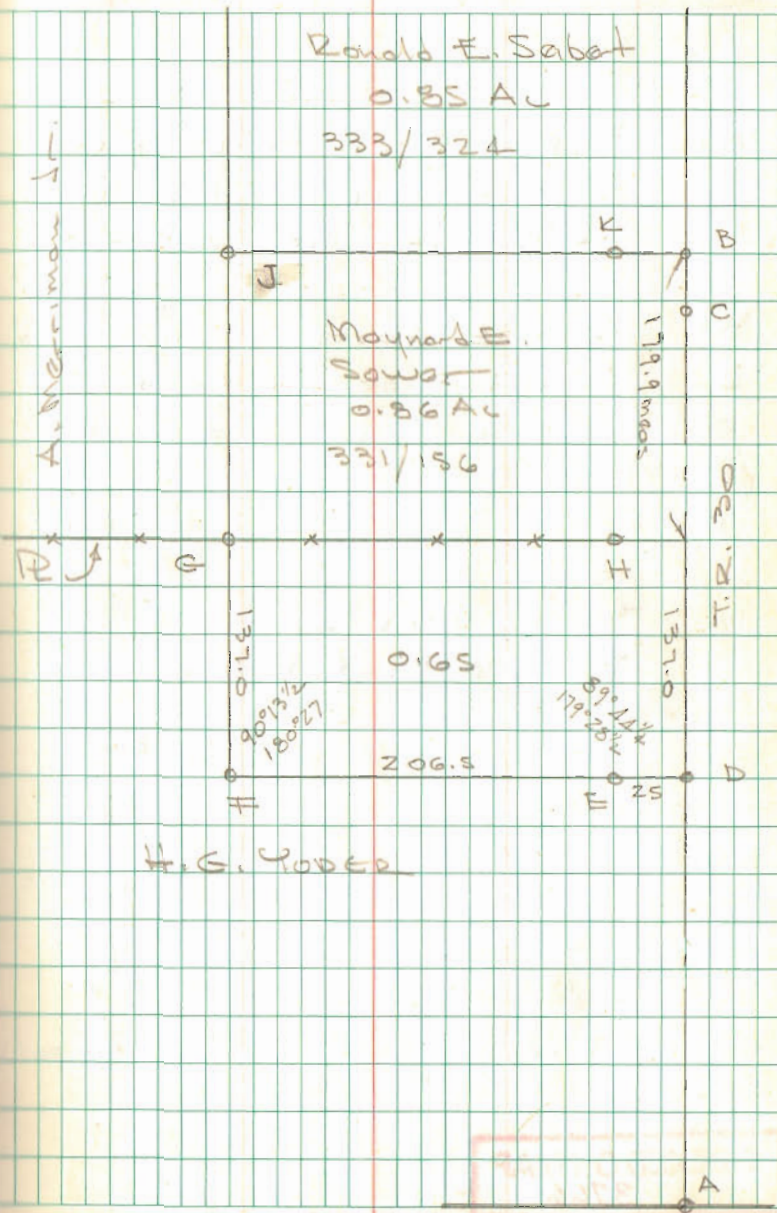
Ronald E. Sabat
 0.85 AC
 333/324

Moynard E.
 SOWER
 0.86 AC
 331/156

0.65

206.5

H.G. COVER



DEARING SURVEY
BELLE FONTAINE

A = 1/2" pipe FOUND 1.6' W. OF WALK
3/4" pipe FOUND 0.3' N. & 0.15' W.
OF 1/2" PIPE - Used 1/2" PIPE

B = 1/2" PIPE FOUND 1.6' W. OF WALK
1.0' N OF FENCE

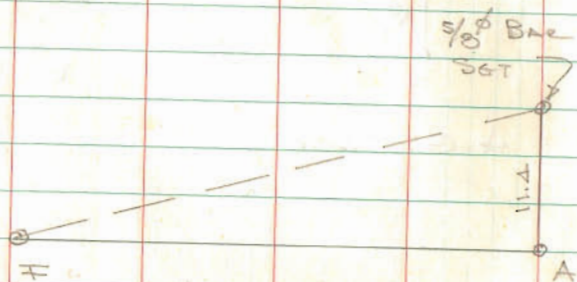
C = Chiseled + on walk FOUND

D = 1/2" PIPE FOUND - 3/4" PIPE FID. 0.4' E.

E " " " "

F " " " "

STELLA LAMBERT Vol 301 / 413
SURVEYED BY F. F. W.



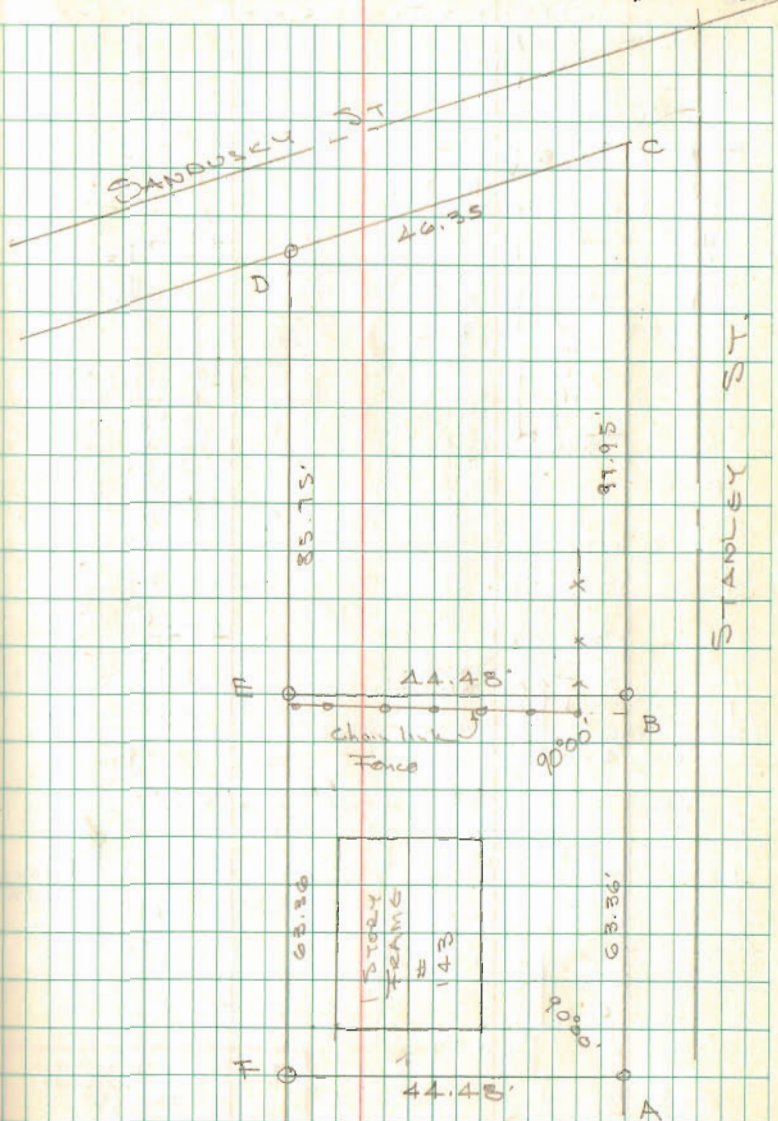
EXCEPTION IN DEED Vol 301 PG 413

INDEXED ON MAP
3766

DORSON
ARTIS

7/1/72

08



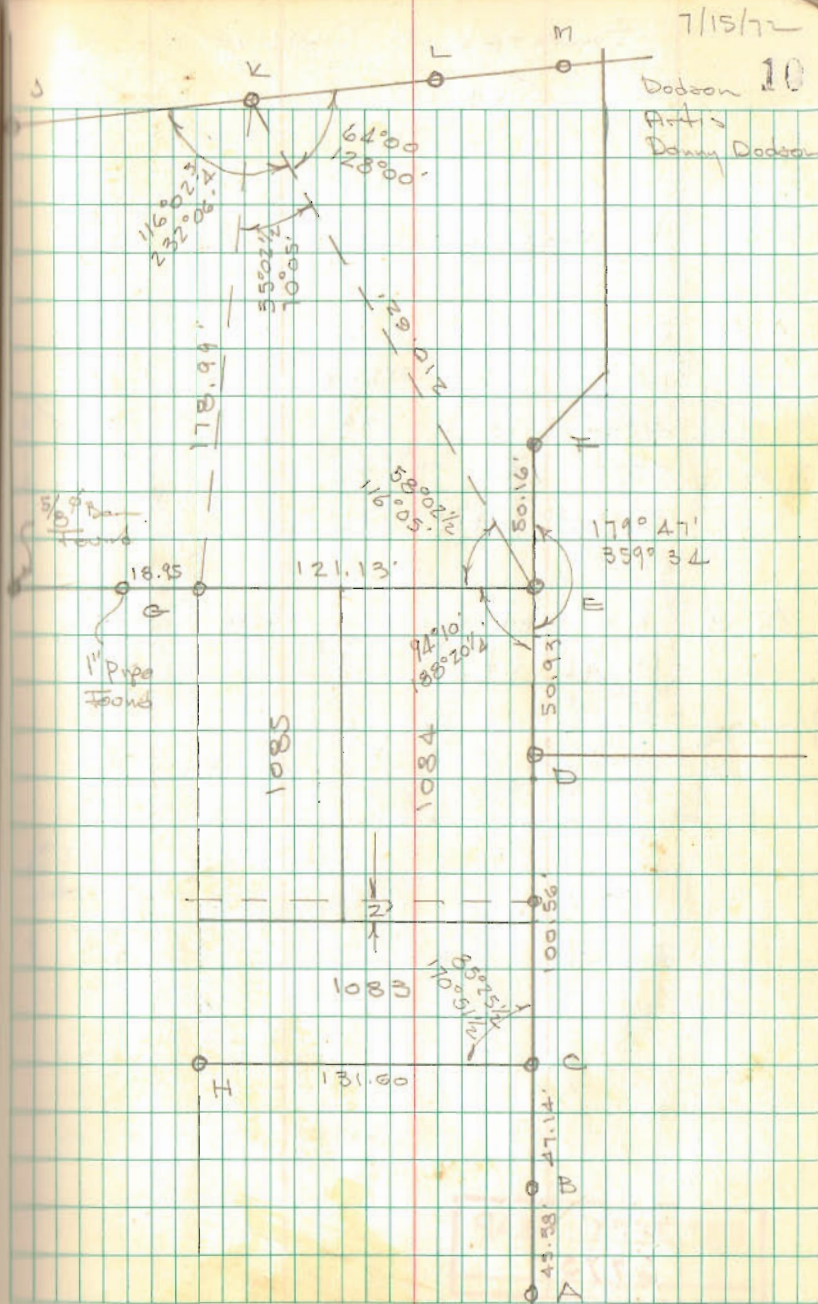
SLATER SURVEY
HARBOR VIEW ALLOT.

RUSSELLS POINT

- A = $3/4"$ Pipe Found
- B = " " "
- C = " " "
- E = " " " 2" Deep
- F = $3/8"$ Bar Found
- G = $5/8"$ Bar Found
- H = 1" Bar Found
- J = $5/8"$ Bar Found
- K = " " "
- L = 1" Pipe Found
- M = $1/2"$ " "
- N = Found Linc. Mon. 2.8' Deep w/ $5/8"$ Bar
in center - placed 1" pipe 30" long
over iron bar.

M-N-L-J ON LINE - "K" 0.10' ± W.
OF LINE

INDEXED ON MAP
6995



SLATER SURVEY
CONT'D

LOCATION OF SEWER LINE

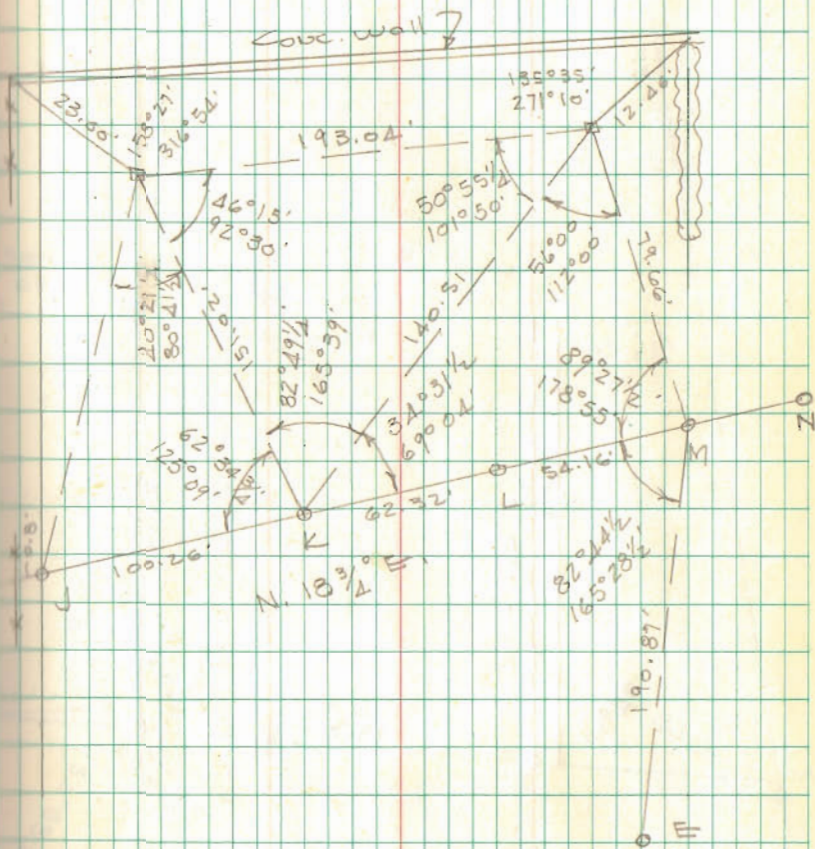
	⊙ E Sight 0°00 "K"	∠	L & R	Dist
M.H	40°44	Lt.	139'	
M.H	55°26	Lt.	22'	
	34°52'	Rt.	192'	

	⊙ K Sight 0°00 tk Hub		
	13°29	Lt.	31

7/15/12

11

INDIAN LAKE

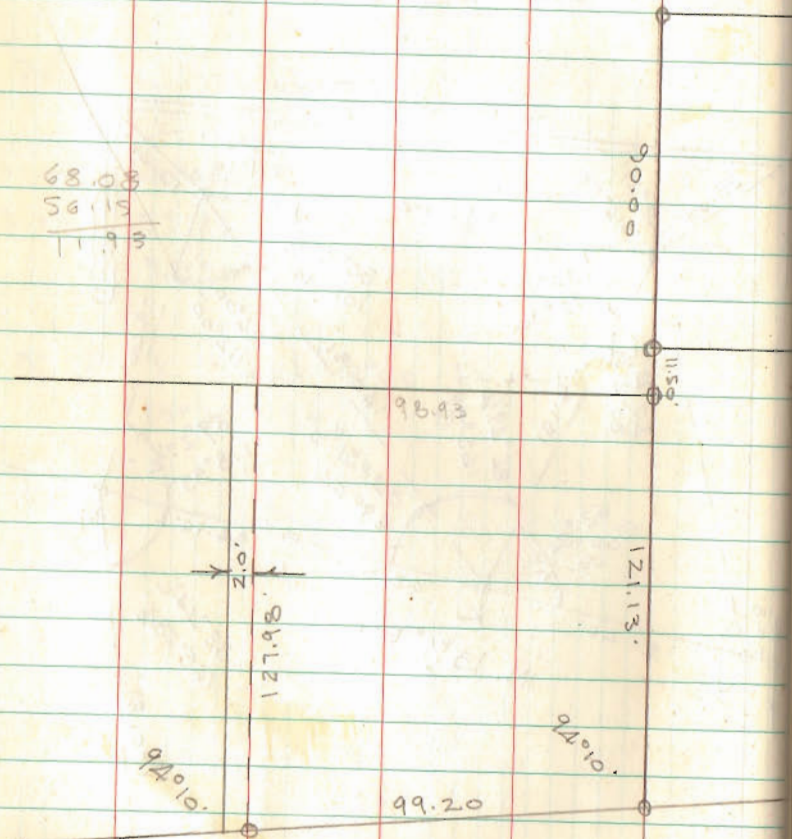


INDEXED ON MAP
6995

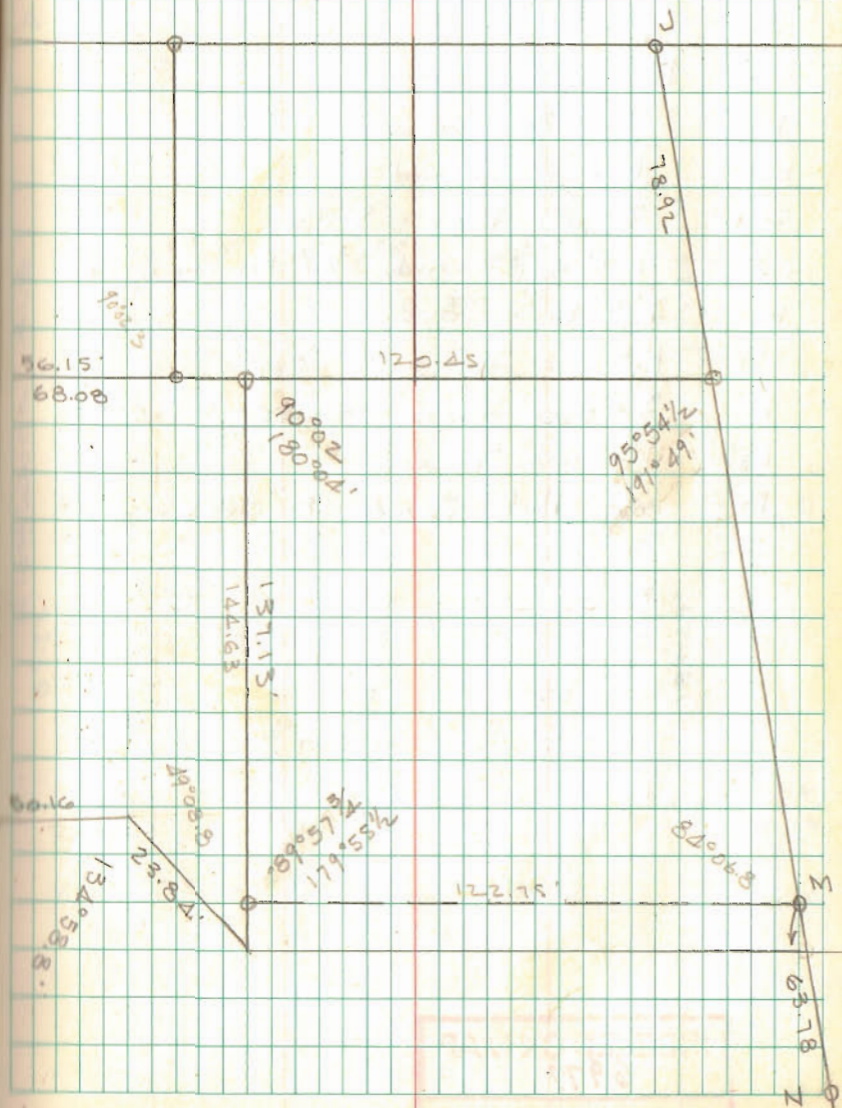
SLATER SURVEY
 HARBOUR VIEW ALLOT
 RUSSELLS POINT

68.03
 56.15

 11.88



INDEXED ON MAP
 6995



INDEXED ON MAP
 6995

Island View Survey

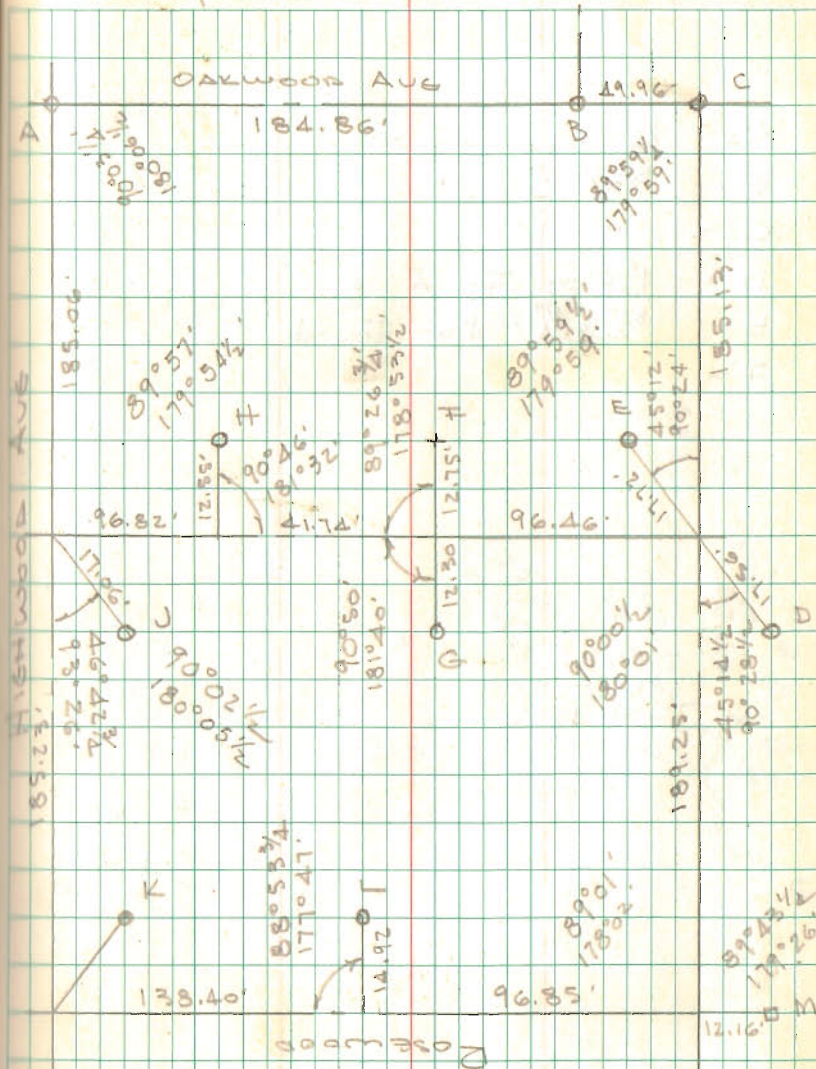
- A = 1" ϕ Bar Found
- B = " " "
- C = R.R. Spk. Set
- D = $\frac{3}{4}$ " Pipe Found
- E = 1" Pipe Found
- F = Fence Post 3" deep
- G = 1" Pipe Found $\frac{3}{4}$ " ϕ Bar in center
- H = 1" ϕ Bar Found
- J = 1" ϕ Bar Found 6" deep
- K = $\frac{3}{4}$ " Pipe Found 4" deep
- L = 1" Pipe Found
- M = old Hub Found - 8" deep

9002 $\frac{1}{2}$	9003 $\frac{1}{2}$
9000 $\frac{1}{2}$	8959 $\frac{1}{2}$
8901	8959 $\frac{1}{2}$
9055 $\frac{1}{2}$	8957
359-59 $\frac{1}{2}$	357-179 $\frac{1}{2}$

INDEXED ON MAP
6977

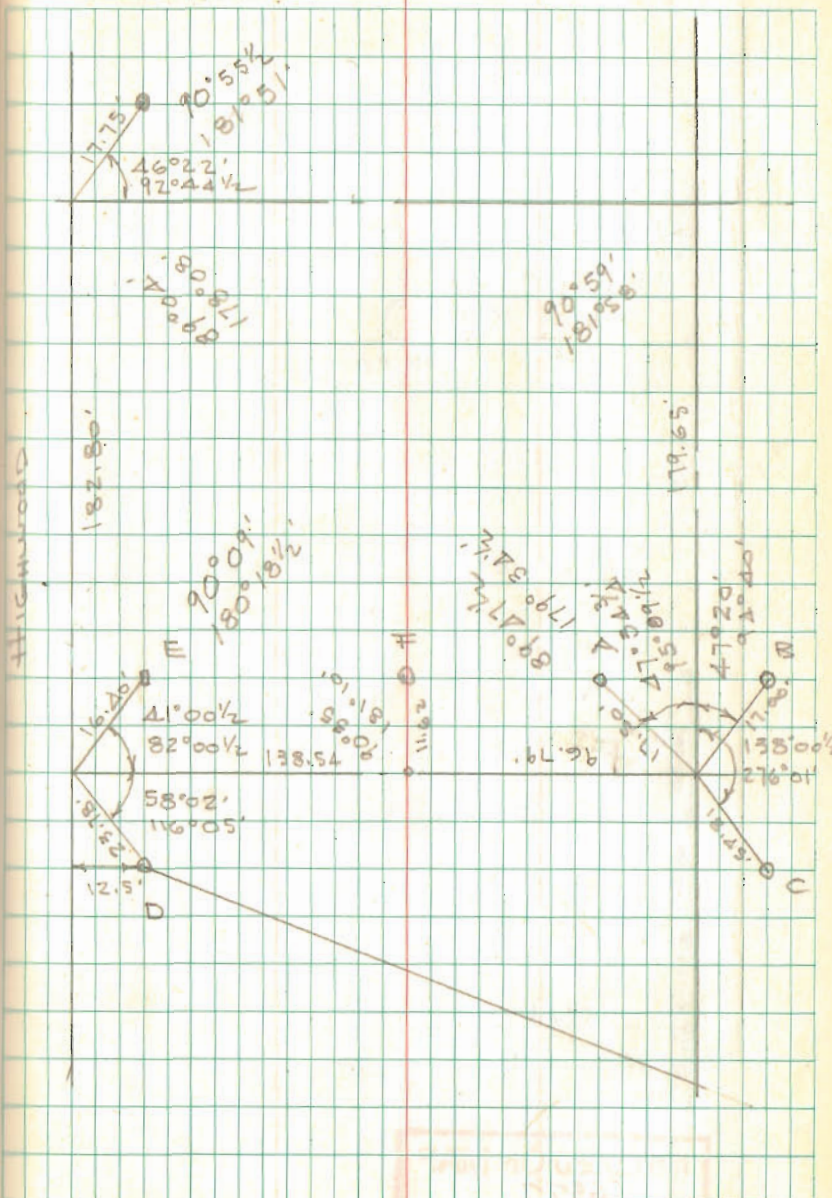
Dodson
Arts
Danny Dodson

13



- A = 1/2" Pipe Found
 B = 5/8" Bar "
 C = " " "
 D = 1" Pipe Found 6"
 E = 3/4" x 1 1/4" Bar Found
 F =

8904
 9059
 8987 1/2
 9009
 358-119



84.00

09

83.91

12.50

96.4

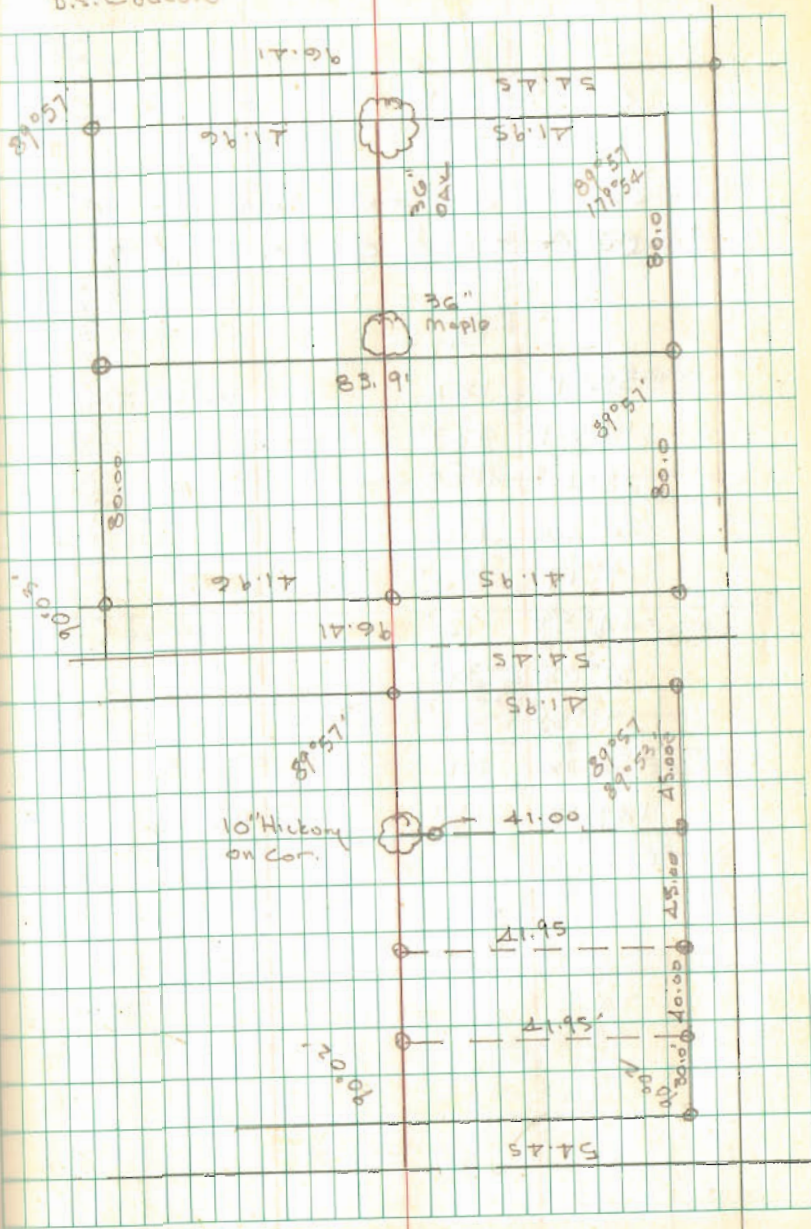
INDEXED ON MAP

6977

Dodson
Antti
D.S. Dodson

8/5/72

15



PART LOT 32
 RUSSELLS POINT

Point Super-Market
 Russells Point

100.00

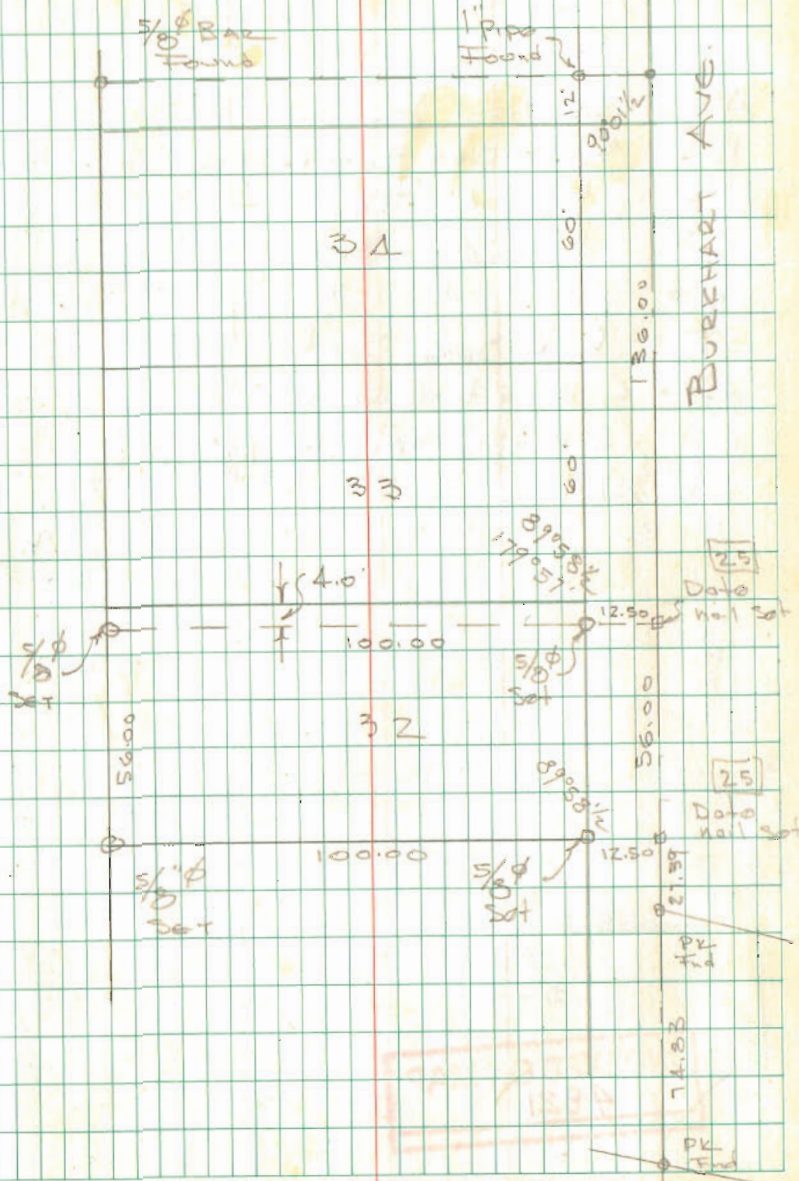
INDEXED ON MAP
 7043

Dodson
 Artis
 Don S. Dodson

8/19/72

Rain

17



INDEXED ON MAP
 7043

LINE SURVEY
JEFFERSON TWP

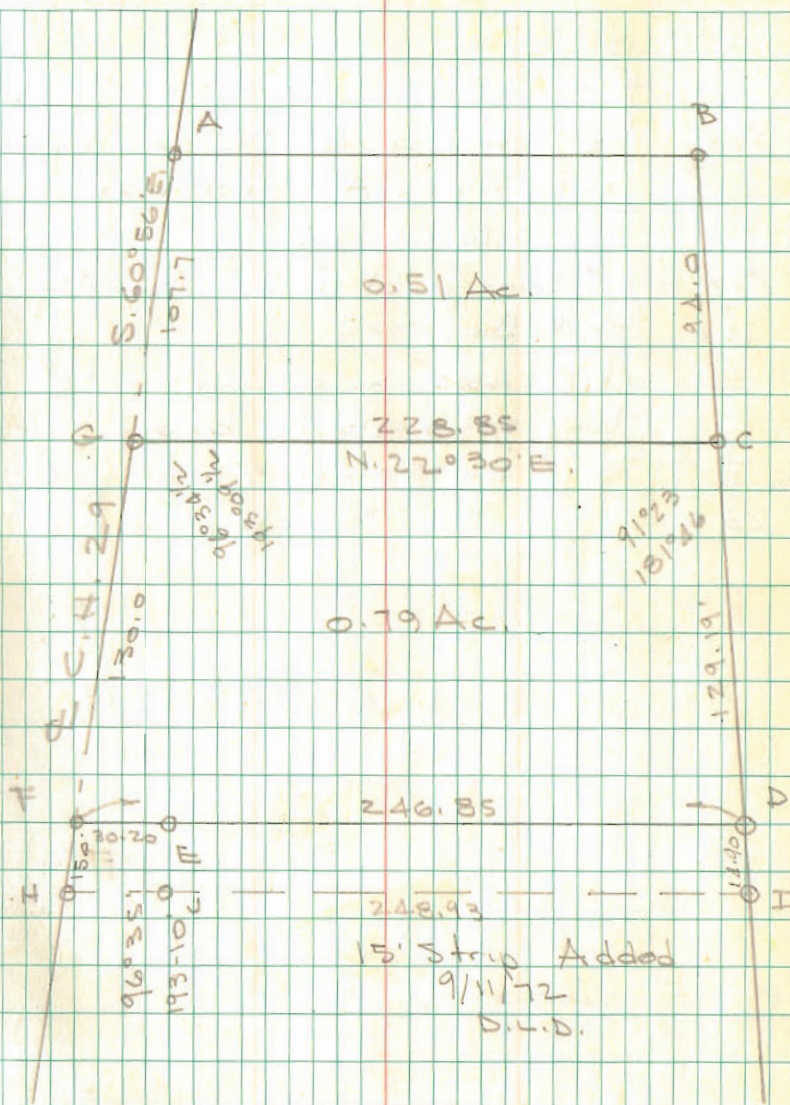
- A = Cpd. Nail found (OKS)
- B = 5/8" d Bar Set in old hole
- C = " " Found
- D = " " Set
- E = " " "
- F = R.R. Spk Set
- G = Cpd nail found (OKS)
- H = R.R. Spk Set 10/6/72
- I = 1" Pipe Set "
- J = " " " 30.20 from F

INDEXED ON MAP
4821

Dodson
D. Dodson jr.

9/7/72

18



INDEXED ON MAP
3821

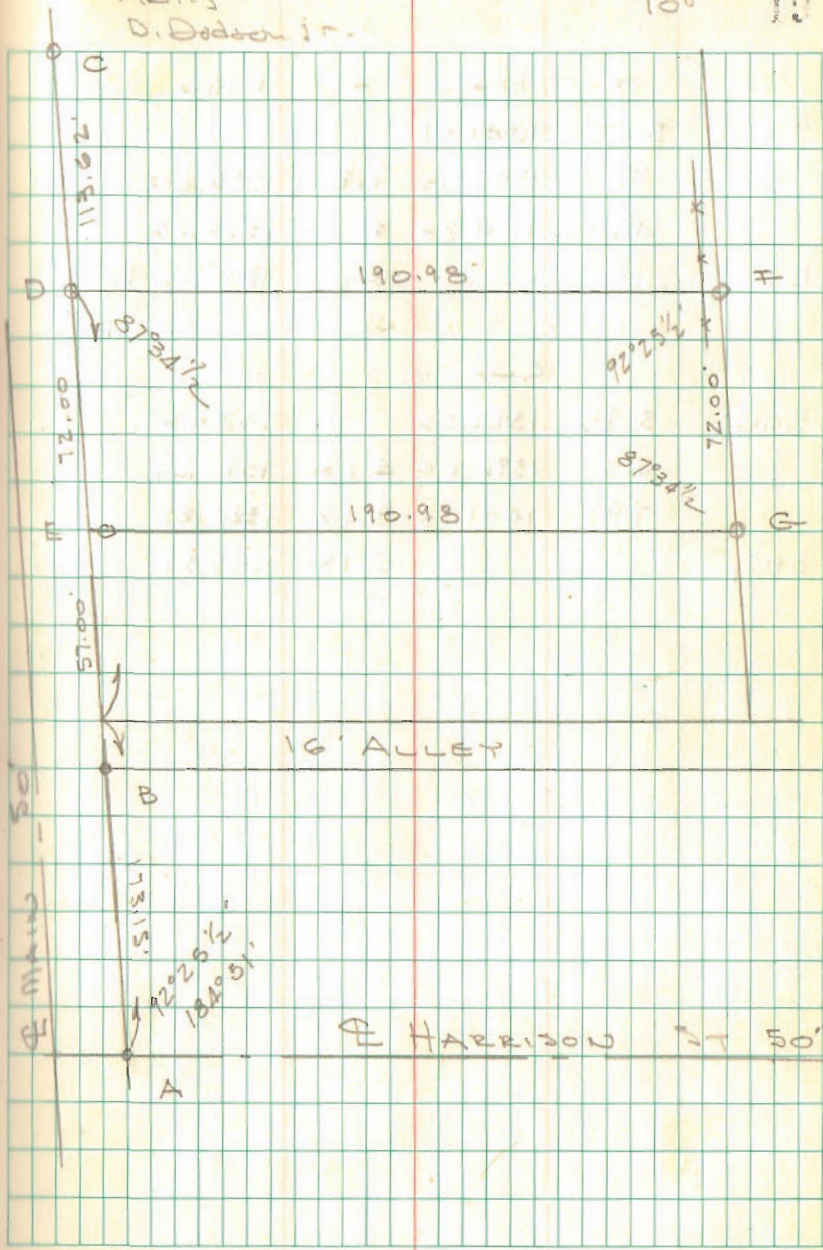
GAWN SURVEY
LAKEVIEW

- A = 2.0. spk Found E. line Mon @ Harrison
- B = $\frac{5}{8}$ " ϕ Bar found S. line alley 157.50 from A - should be @ 157.14
- C = 1" ϕ Bar found @ S. line of alley
- D = $\frac{5}{8}$ " ϕ Bar set
- E = Chisel mark on conc. walk - $\frac{5}{8}$ " ϕ bar set 0.5' E. of corner
- F = $\frac{5}{8}$ " ϕ Bar set - 0.5' E. of fence
- G = " " " in asphalt parking

INDEXED ON MAP
6566

Dodson
Actis
D. Dodson Jr.

919172
700 10

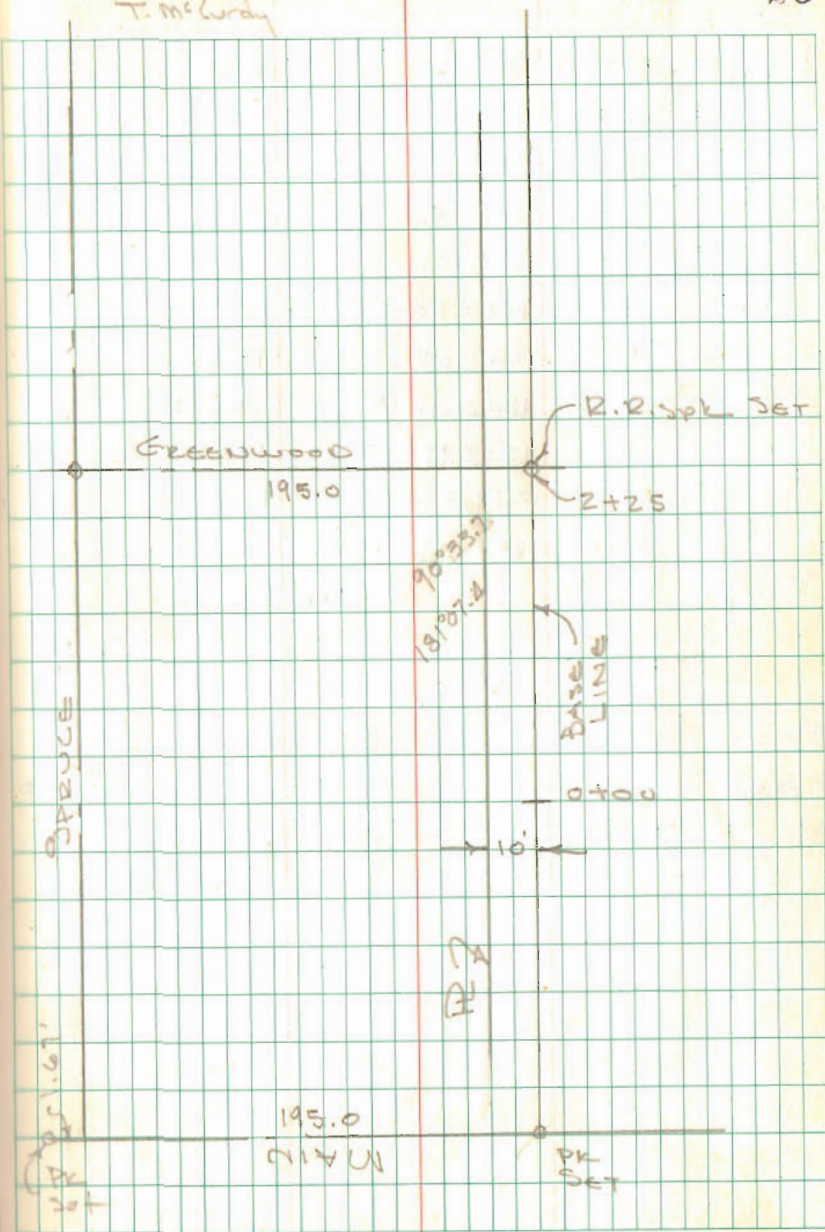


D.A.B. TOPO
BELLEFONTAINE

Dodson
Ardis
T. McLurdy

9/16/72

25



INDEXED ON MAP
8870

Pt. Lot 4187 & 4188

BELLE FOUNTAIN

MAPLE HILL No. 2

A = 1" ϕ BAR END @ E OMAHA & ALLISON

B = D BOLT END

C = P.K. NAIL SET

D = R.R. SPK. SET

E = $\frac{5}{8}$ " ϕ BAR SET - CHISEL MARK ON WALL

F = " " " " " "

G = R.R. SPK SET

H = $\frac{5}{8}$ " ϕ BAR SET 1'S. of power pole

I = $\frac{5}{8}$ " ϕ BAR SET

F = 2.35 E. of conc. walk

DR. MUNN

Vol. 319 pg 106 4187 EX. 5' OFF N.

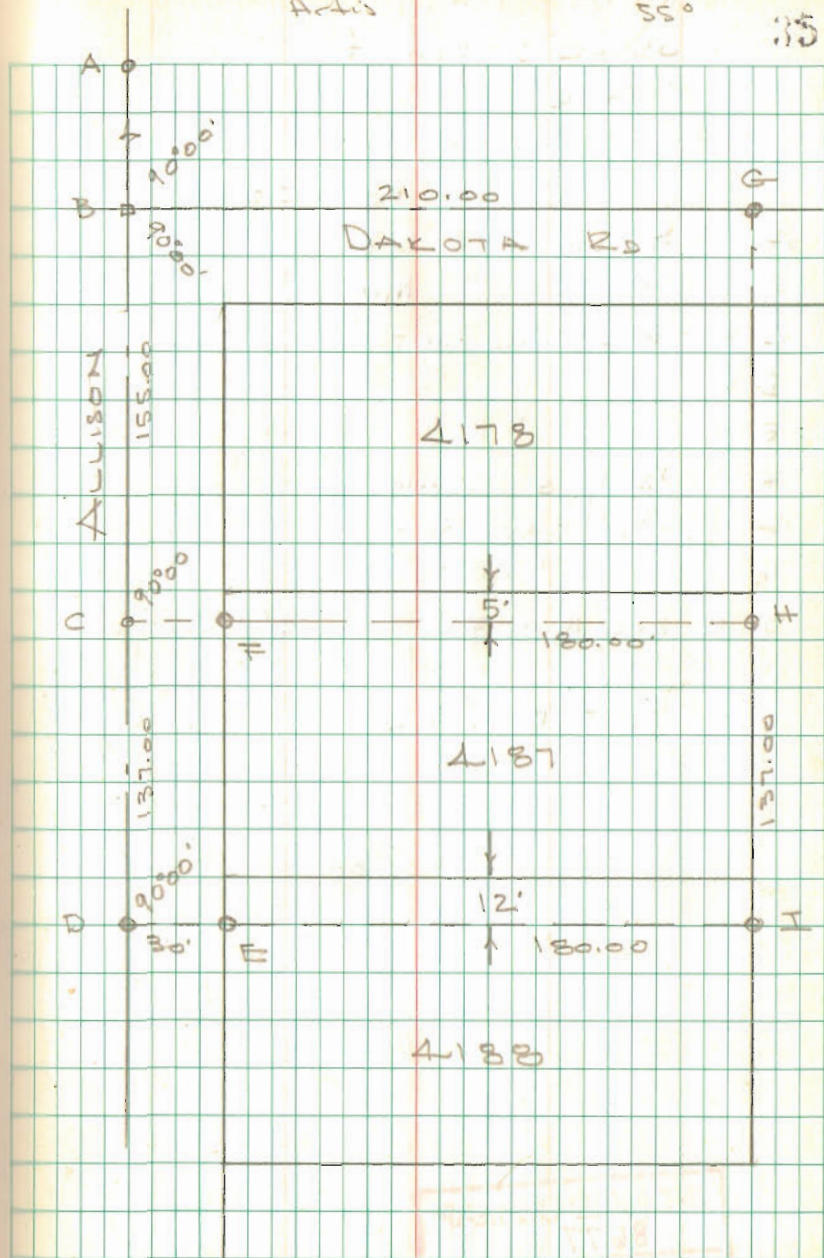
Vol 383 pg 564 12' OFF N. 3106 4188

INDEXED ON MAP
5757

Dodson
Archie

10/28/72
55°

35



Pt. Lot 1097
Russell's Point

For
Bud Slater

Deed Vol. 317 PG. 623

A = 3/4" pipe End S.E. Cor 1094

B = " " " N.W. Cor 1097

C = P-K Nail Set

D = " " "

E = " " "

F = 1/2" Pipe Found

G = 5/8" Bar Set

H = " " "

I = 2x2 Hub End set 5/8" S.S. Peg

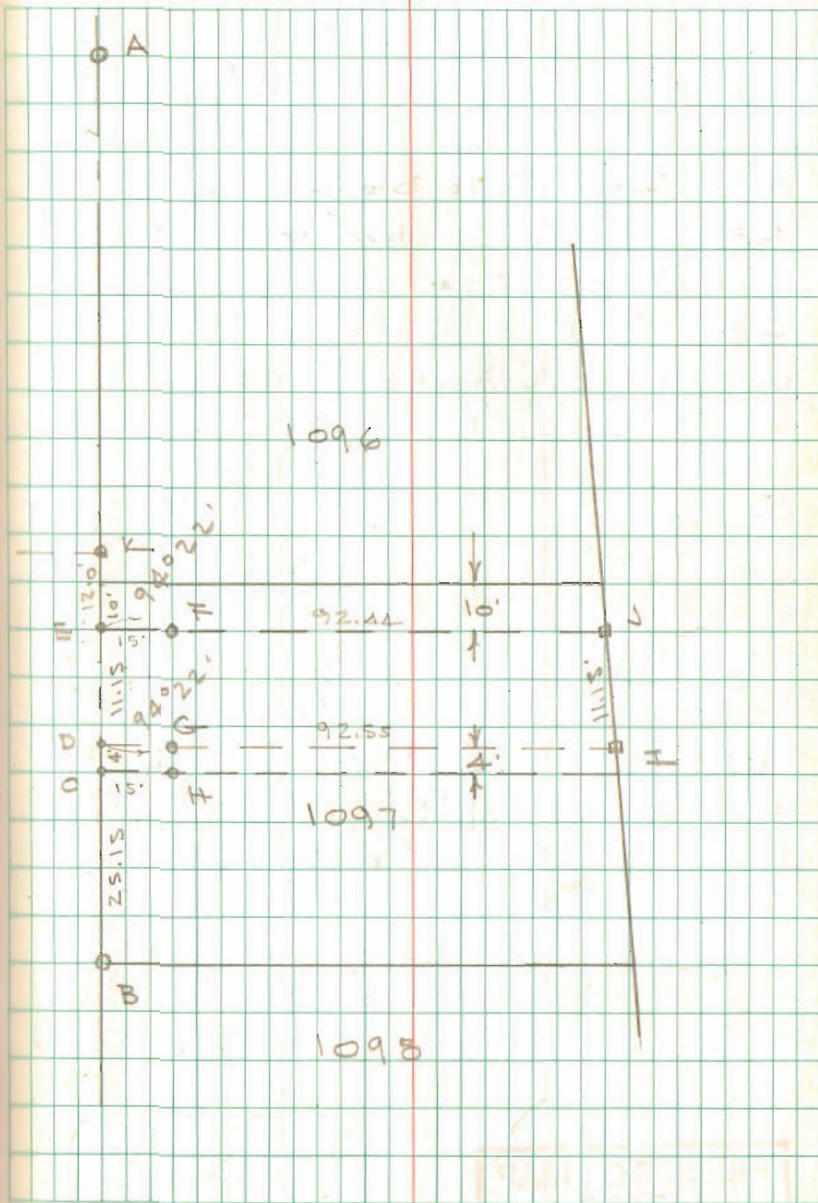
J = " " " " " N. "

K = 5/8" Bar End

Dodson
Aetis

10/28/72
SSO

36



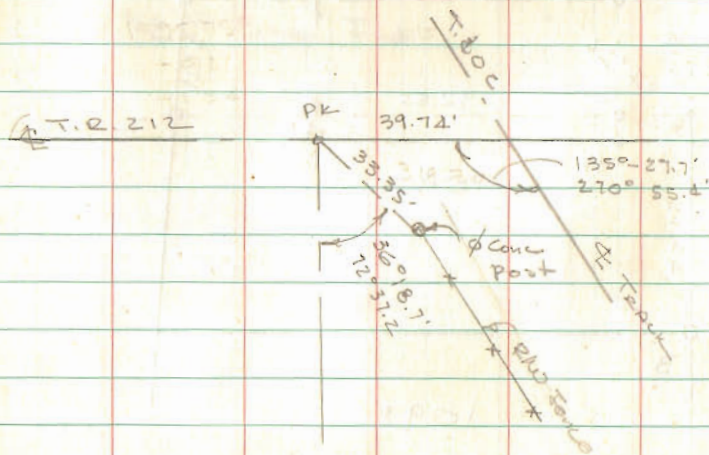
INDEXED ON MAP
8677

DETRIK SURVEY
HARRISON TWP

B

- A = Iron Found Sto. 42+35
 B = Remains of Hse Found Sto. 20+90
 Set 1" pipe 6" deep
 C = 3/4" Pipe Found Sto. 200+80
 D = R.R. JPK Found Sto. 227+60

- 0.015/100'

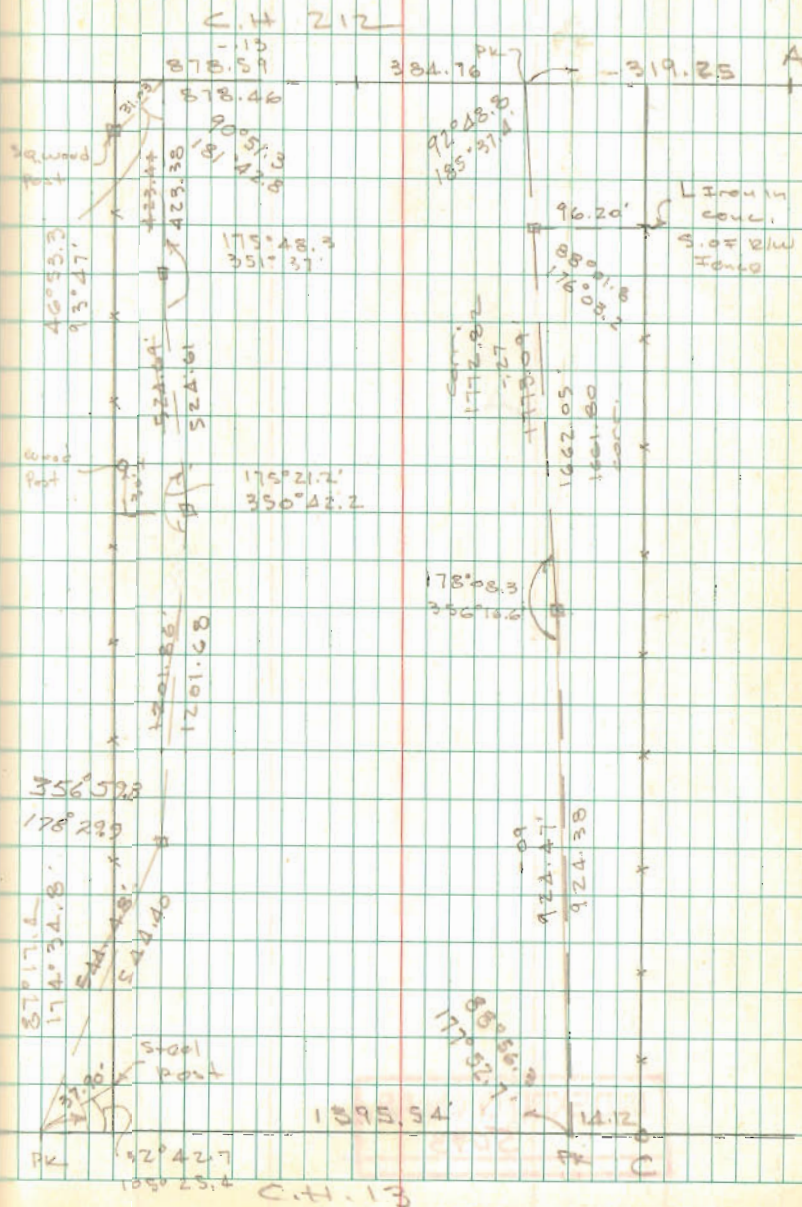


D

INDEXED ON MAP
5093

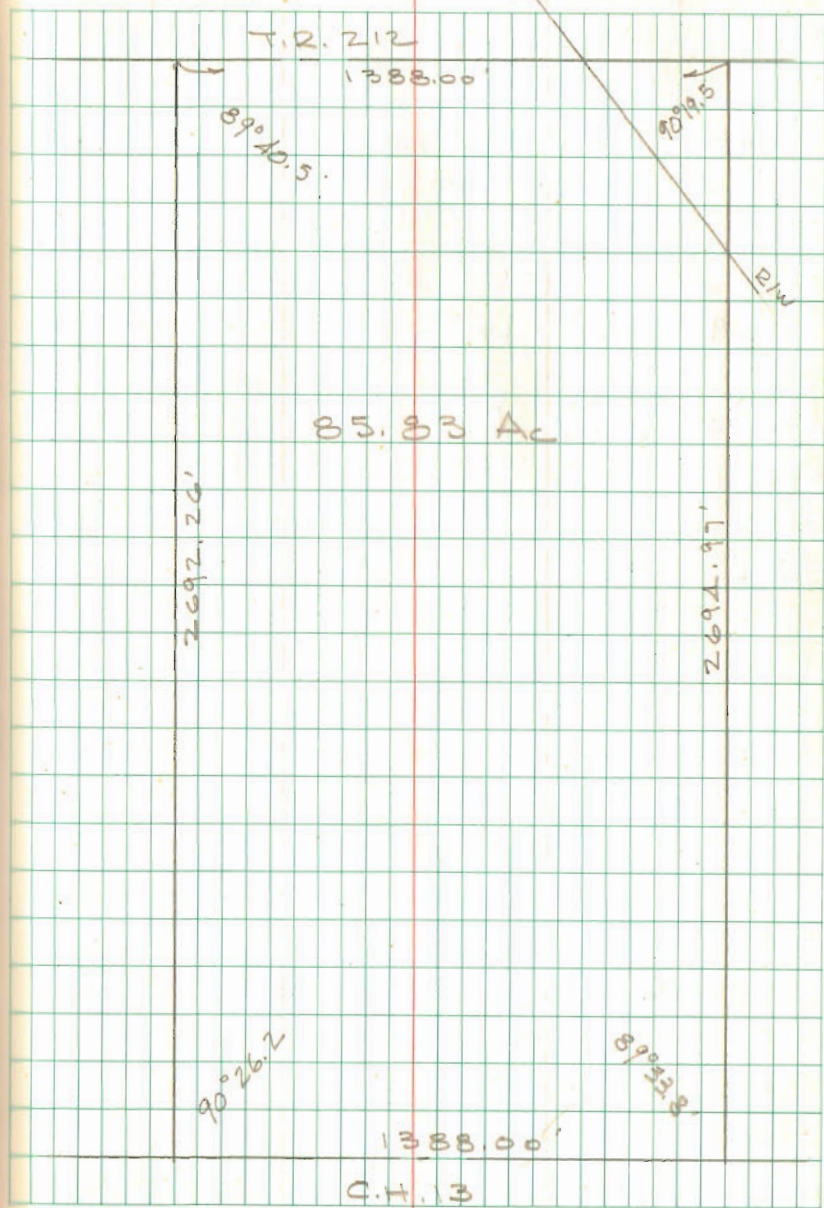
Dodson 11/11/72
 Artie 11/4/72
 25

37



DETRICK CONT'D
SEC. 30 T-3 R-14
HARRISON TWP.

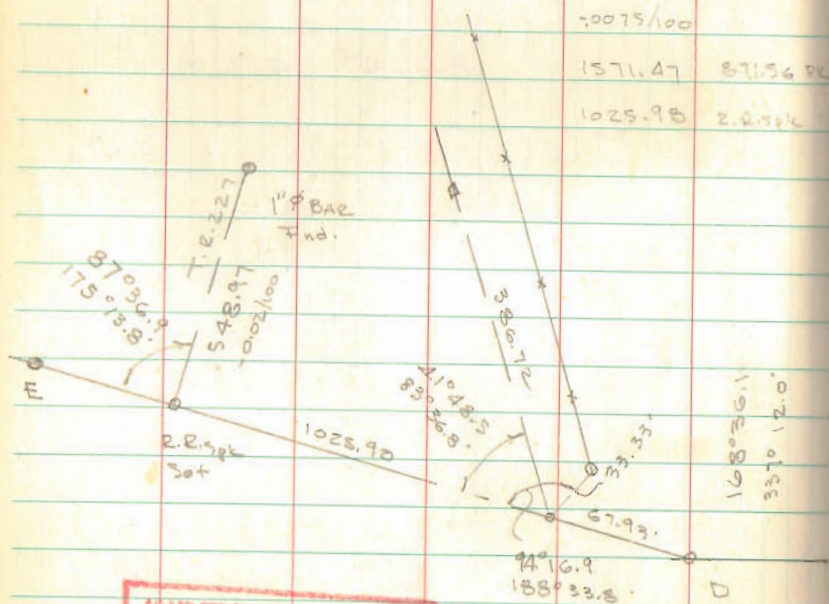
38



INDEXED ON MAP
5093

SHIRK SURVEY
ZANE TOWNSHIP

- A = R/W Mon 1' ± S. of Fence post
- B = 1/2 Post Man to S. Face of Post
- C = Cor Post
- D = 1/8" BAR FOUND STA 547+21
- E = " HEAD BOLT FOUND STA 522+48

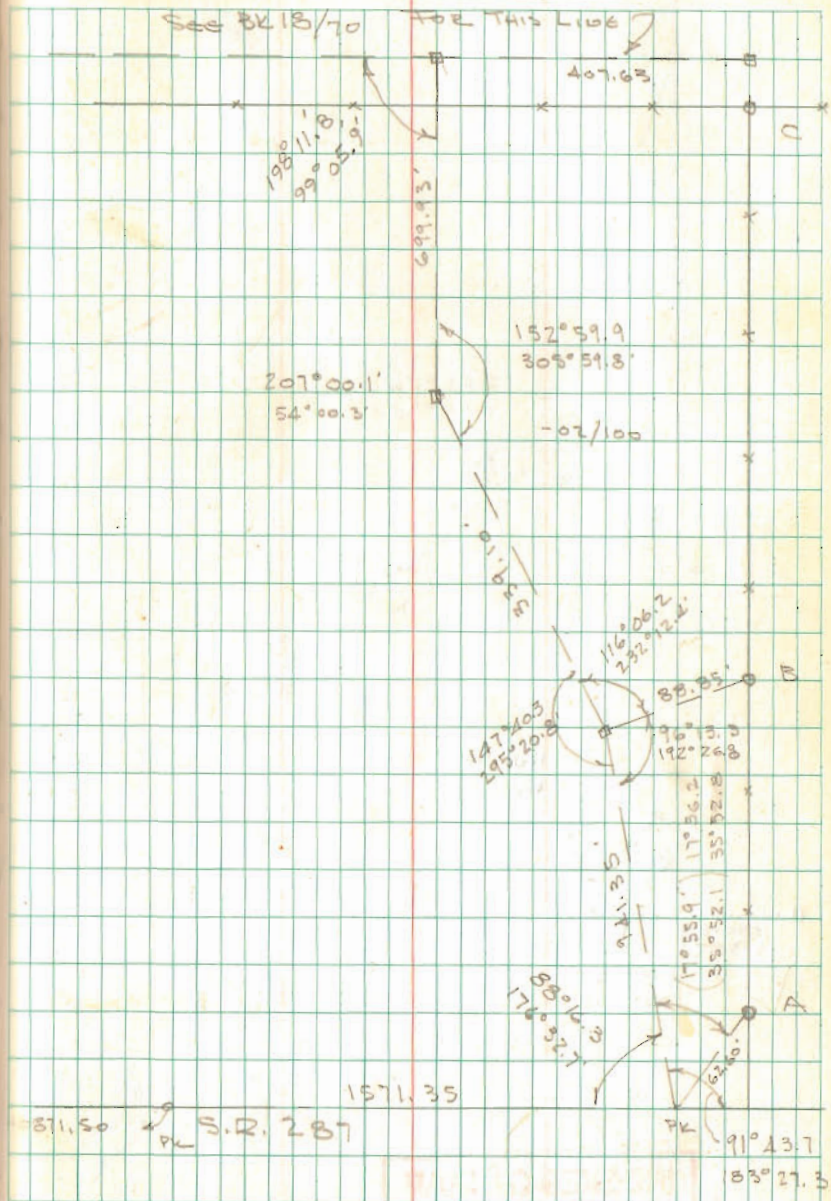


INDEXED ON MAP
5217

DOOSON
ARTIS

12/2/72

50

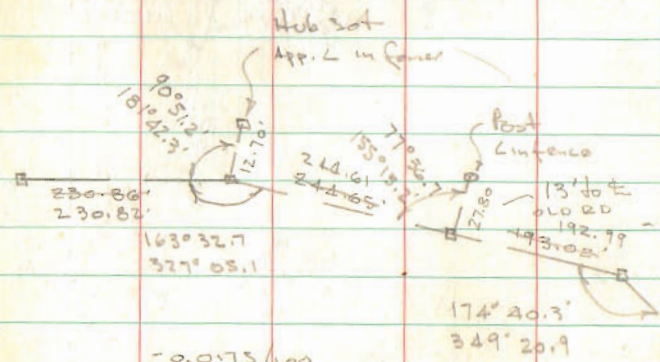


SHARK SURVEY CONT'D.

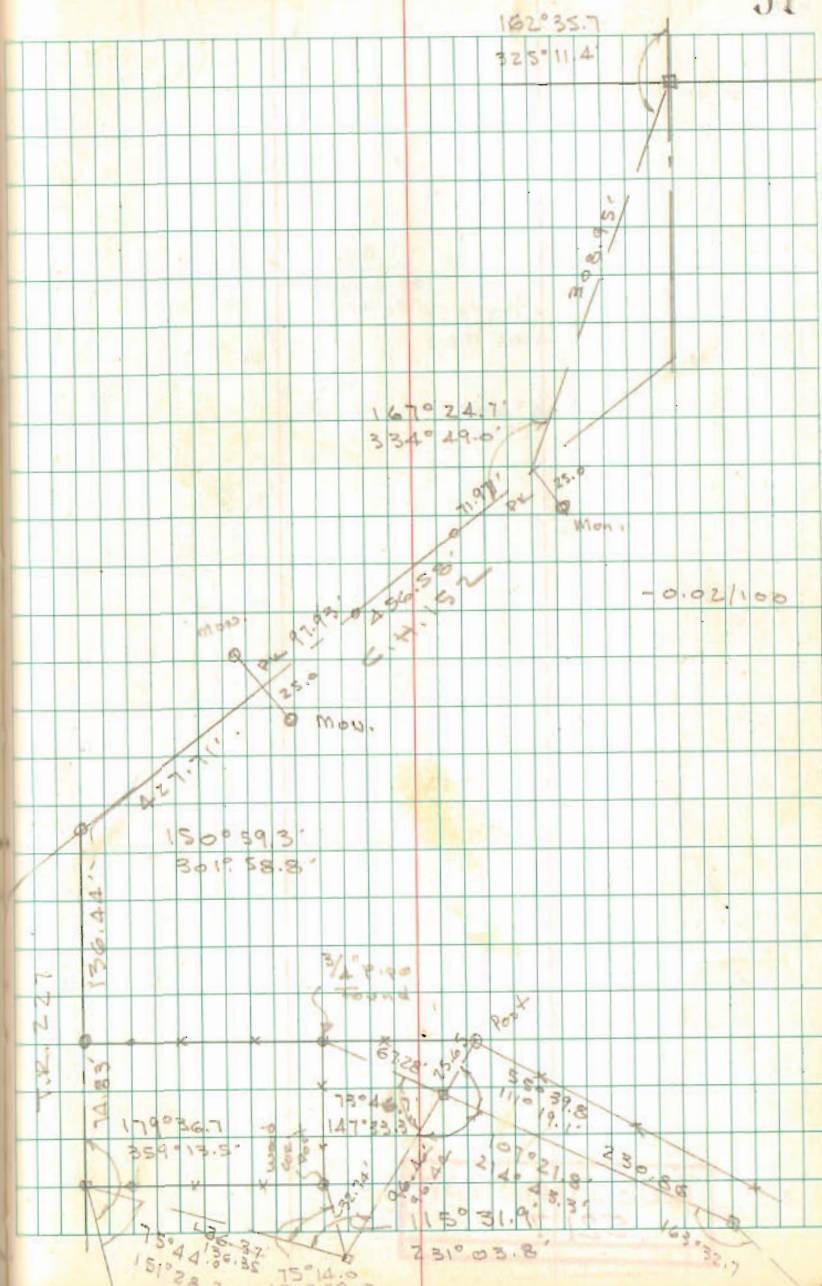
Dodson
Antis

12/19/72

51



INDEXED ON MAP
5217

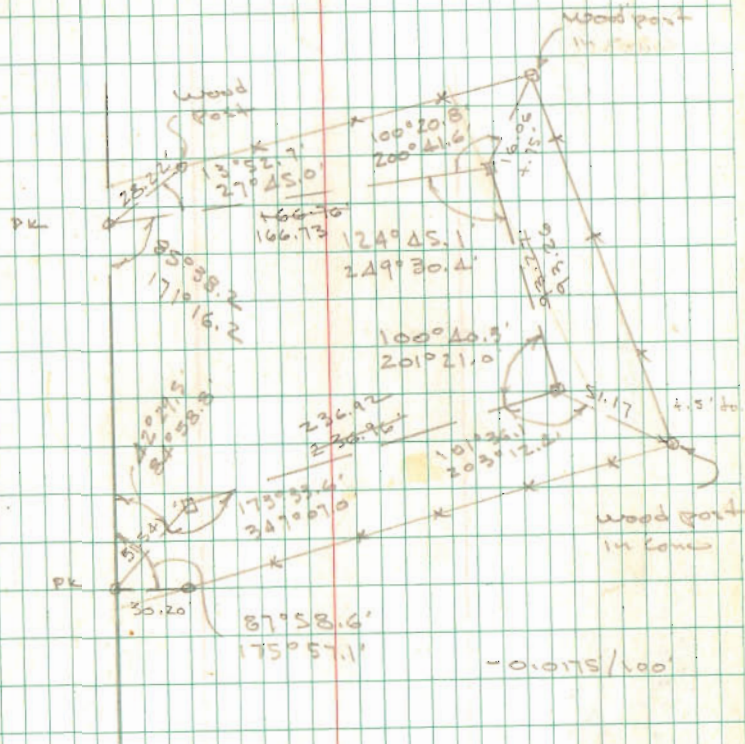


SHIRK SURVEY
TEVIS TRACT

Dodson
Antis

12/23/72

52

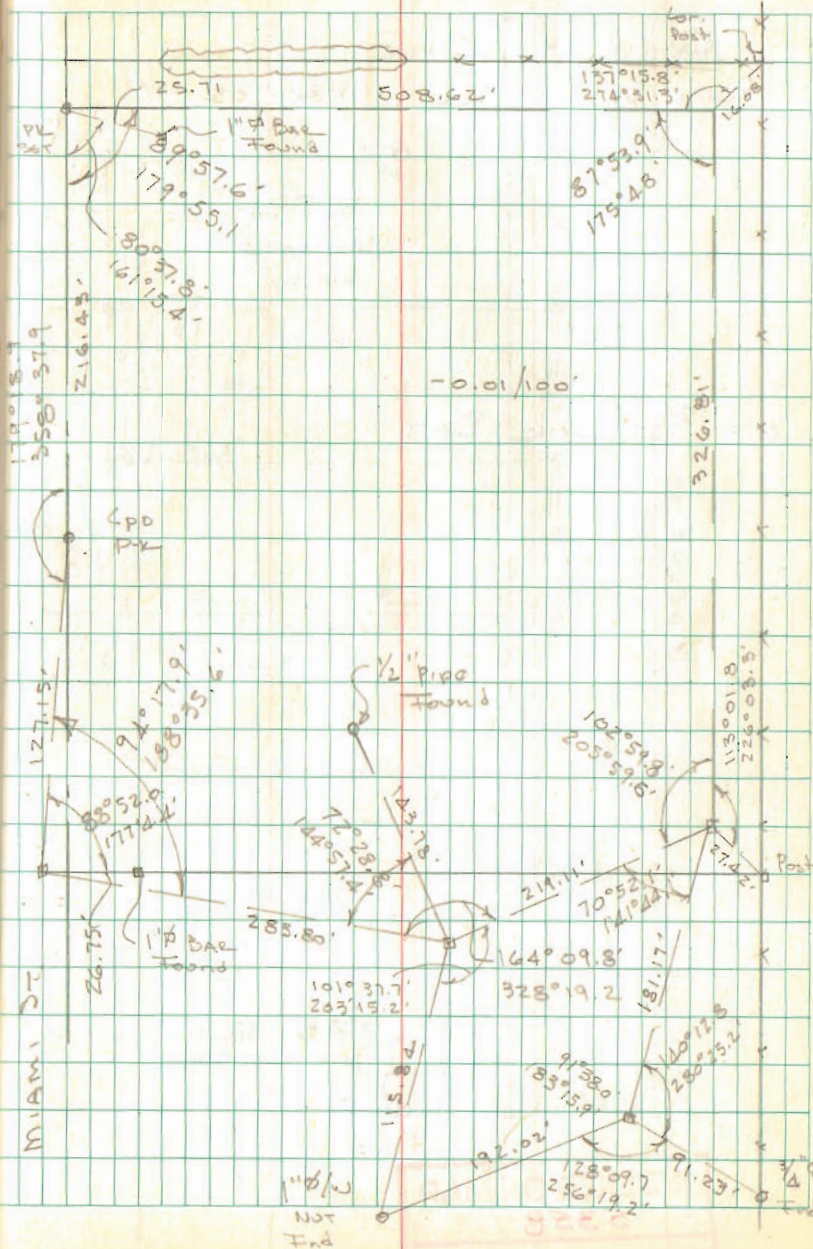


INDEXED ON MAP
5217

Lot 250-251
Quincy Ohio

12/23/72
12/29/72

53



INDEXED ON MAP
5358

LOTS 250-251
 LOTTERS ADD.
 QUINCY, OHIO
 PLAT BL A VOL. 1 PG. 105

O = 5/8" ϕ BAR SET

5/8" ϕ SET
 N.G. COR
 SUB'D.

1" Pipe Set
 225.73'
 1" Pipe Set
 75.00'
 5/8" Set
 75.00'

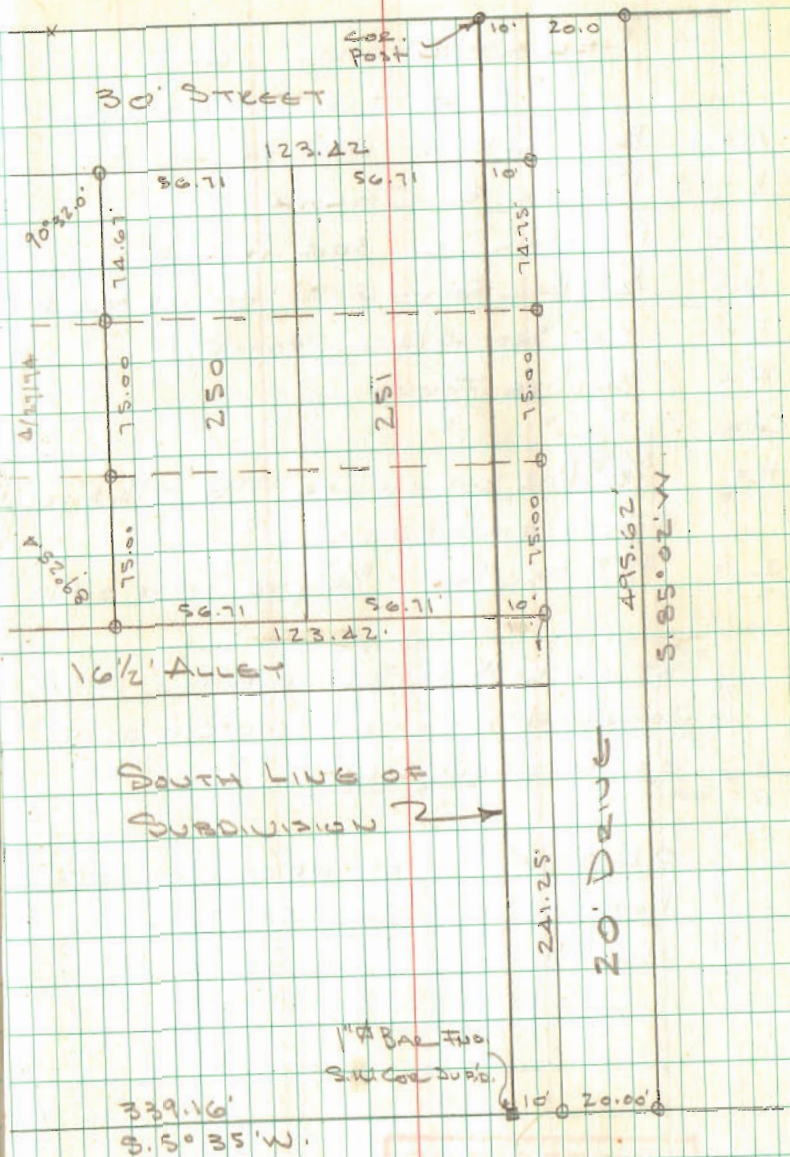
1" Bar Found
 N.W. COR SUB.

INDEXED ON MAP
 5358

Dodson
 Antis

1/6173

54



LOTS 3830 - 3831
BELLE-ARRE SUBD.

BELLEFONTAINE, OHIO

- A = BOLT @ ϕ OF DAKOTA RD
- B = 1" ϕ BAR ϕ OMAHA
- C = P-K MARK SET 30.4 FROM B
- D = 1/2" ϕ BAR FOUND @ N. LINE OF PARK RD.
- E = P-K SET 474.6' FROM C
- F = 3/4" PIPE FOUND
- G = " " "
- H = 5/8" ϕ BAR SET ON LINE F-G - 3/4" PIPE FOUND 0.14'S. & 0.2'E
- I = 5/8" ϕ BAR SET - 3/4" PIPE FOUND 0.4'W.

SET "C" ON A-B, TURNED PLAT $\angle 179^{\circ}35'$
IRON @ D ON LINE, USED C-D AS ϕ
OF ALLISON RD.

O.K. SHIRK NOTES INDICATE N.W. COR.
LOT. 3832 TO BE 114.6 FROM C.
USED THIS DIST. CHECKS OK

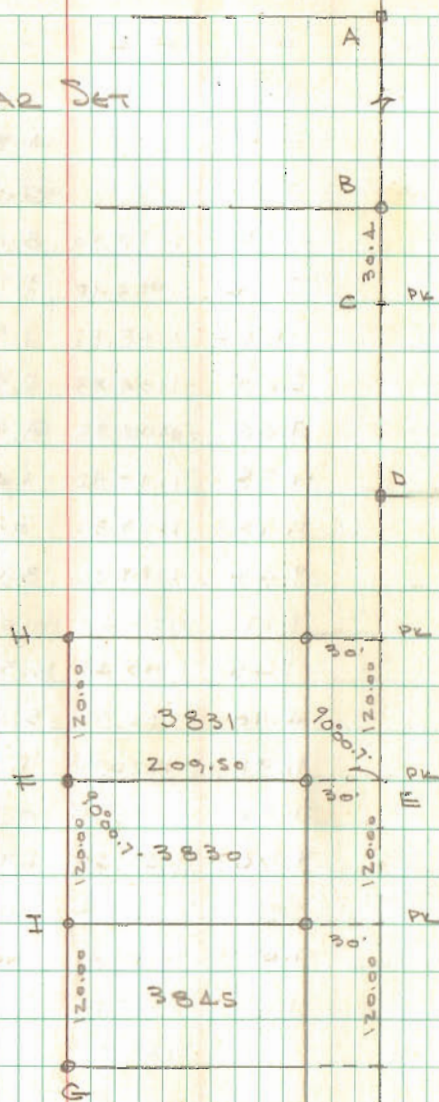
INDEXED ON MAP
3419

DODSON
ARTIS

1/20/73

55

O = 5/8" ϕ BAR SET



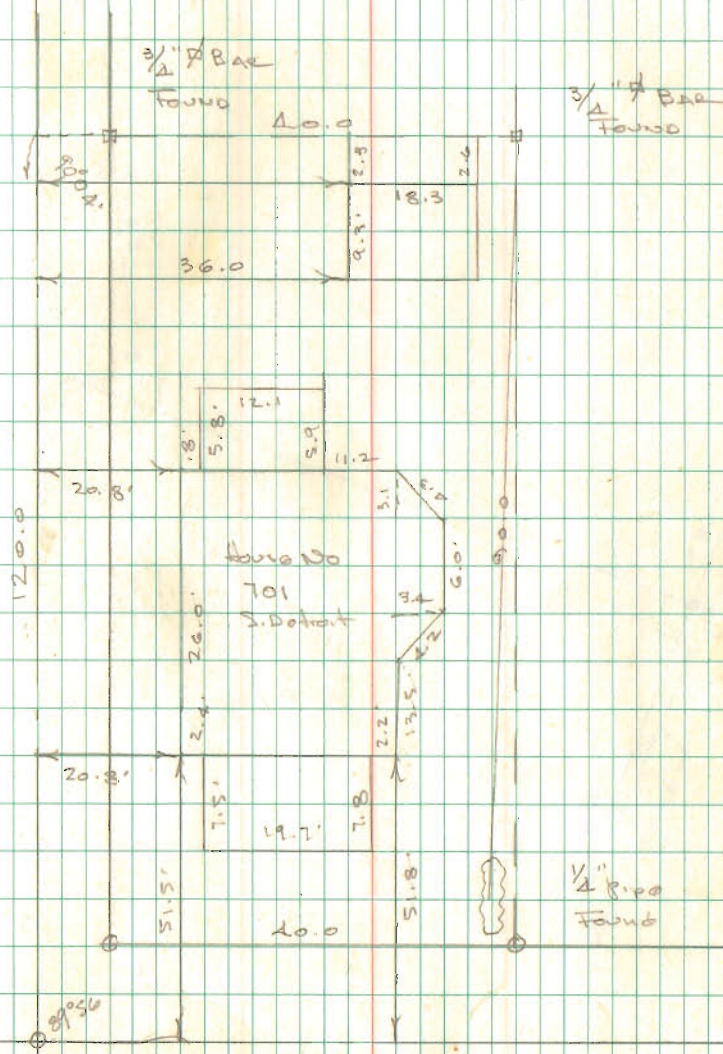
28

Dadson-
Artis

2/17/73

50

61



INDEXED ON MAP
6492

CURRENT SURVEY

V.M.S. 3680

Zona Township

Dodson
Arts

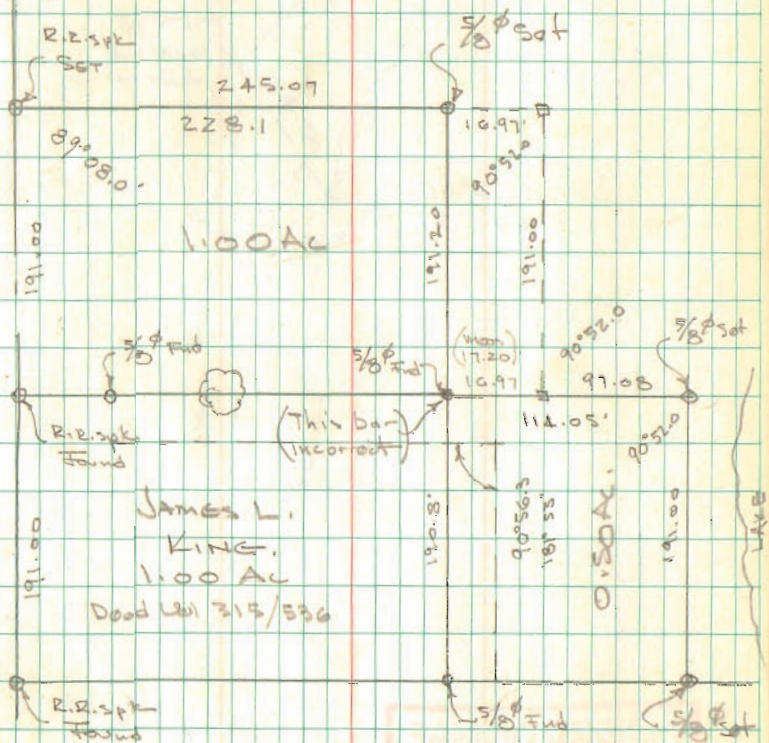
3/24/73

67

245.09
228.10

16.99

S.R. 287



INDEXED ON MAP

4627

CURRENT SURVEY
 U.M.S. 3753
 ZANG TOWNSHIP

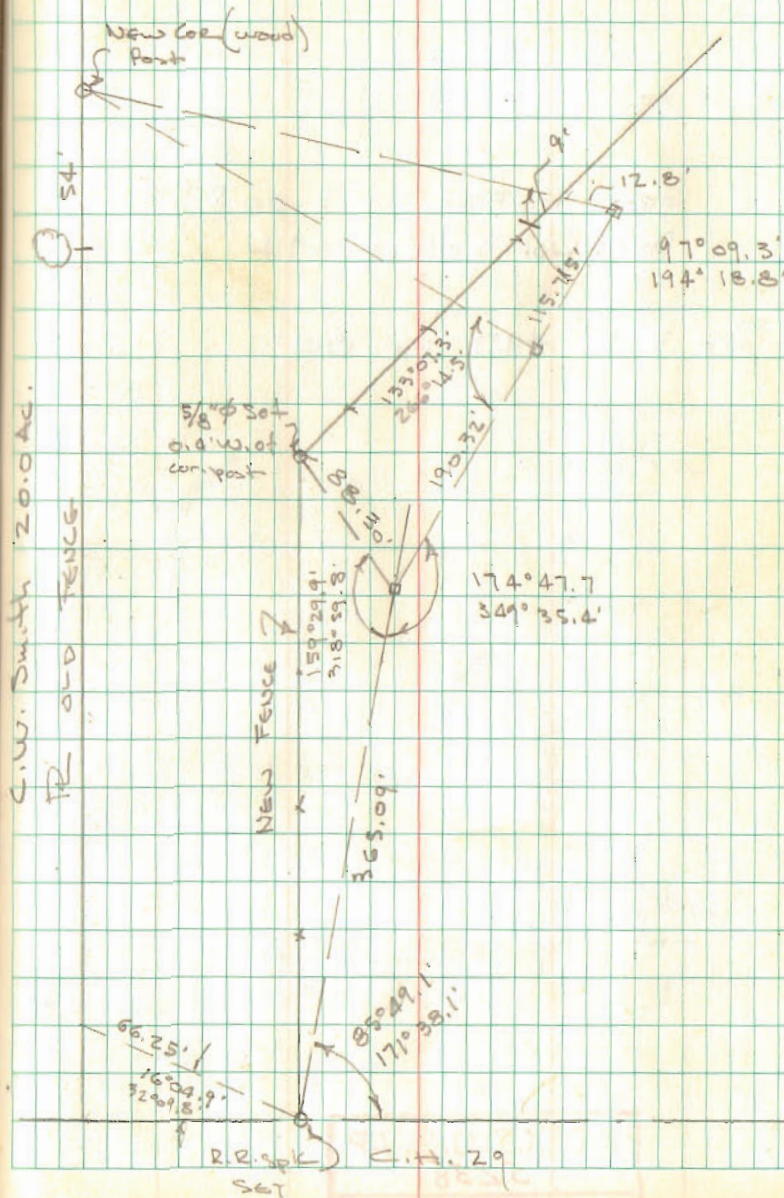
R.R. 1
 E. L. baby

INDEXED ON MAP
 5500

Dodson
 Antis

3/24/73

58



Fox Survey
Boxers Creek Twp

0°00.0 180°00.0

① 81°07.0 261°07.0

Geo. F. Fox 5.00 Ac.

Deed Vol 329 pg. 49 &

Sec F.B. 497 pg. 80

INDEXED ON MAP

5238

Deed
Anti

47173

60

