

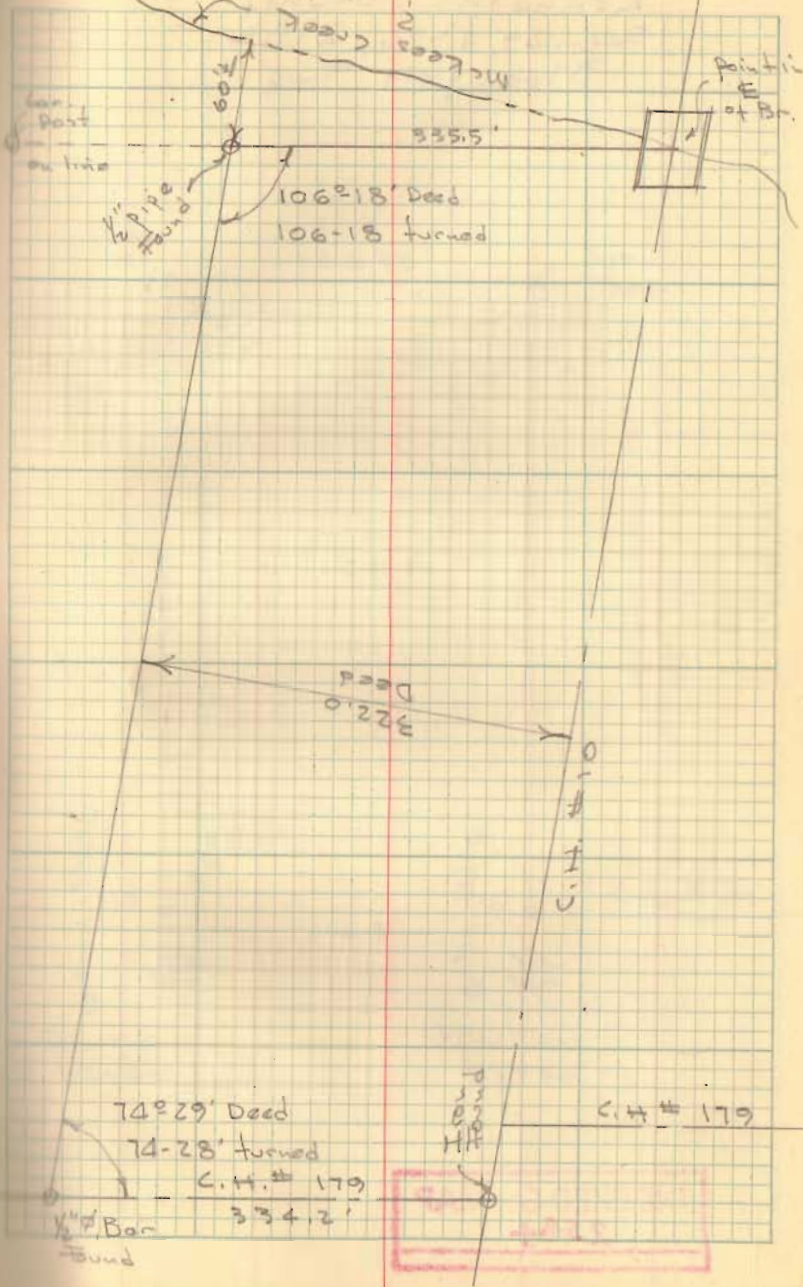
DeFibough Survey  
Jefferson Township

Stakes set on North & East  
lines for fence

INDEXED ON MAP  
2585

Dodson  
Gilbert

3-8-61

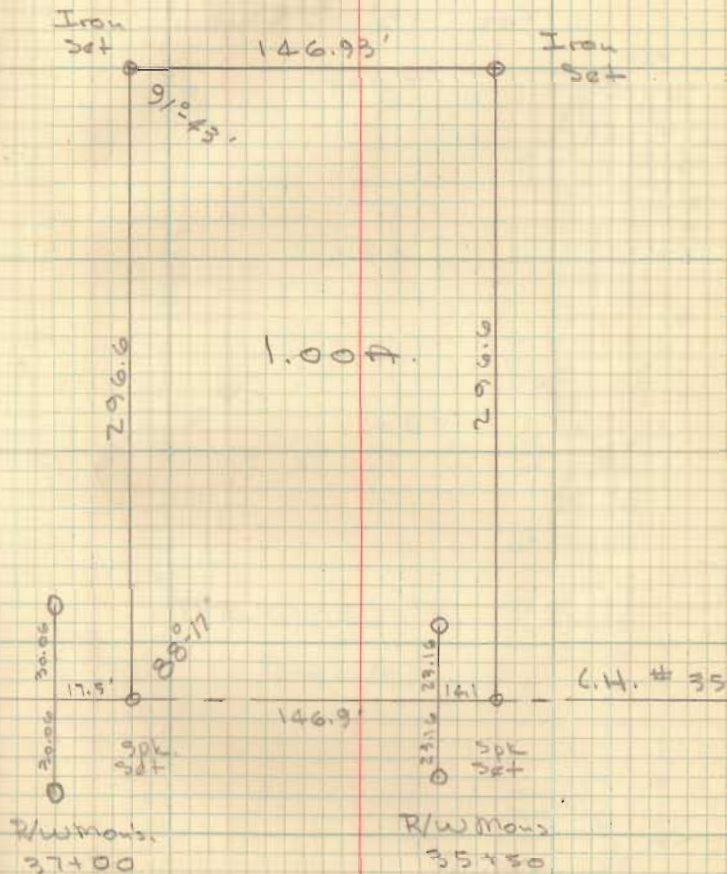


Kenneth Stump  
Sec. 29, T-7S, R-8E.  
Bloomfield Twp

Dodson  
Geolia

3-25-61

2



INDEXED ON MAP  
2584

2584









BATES SURVEY  
 C.H. # 26  
 BOKESCREEK TWP.  
 V.M.S. 9892

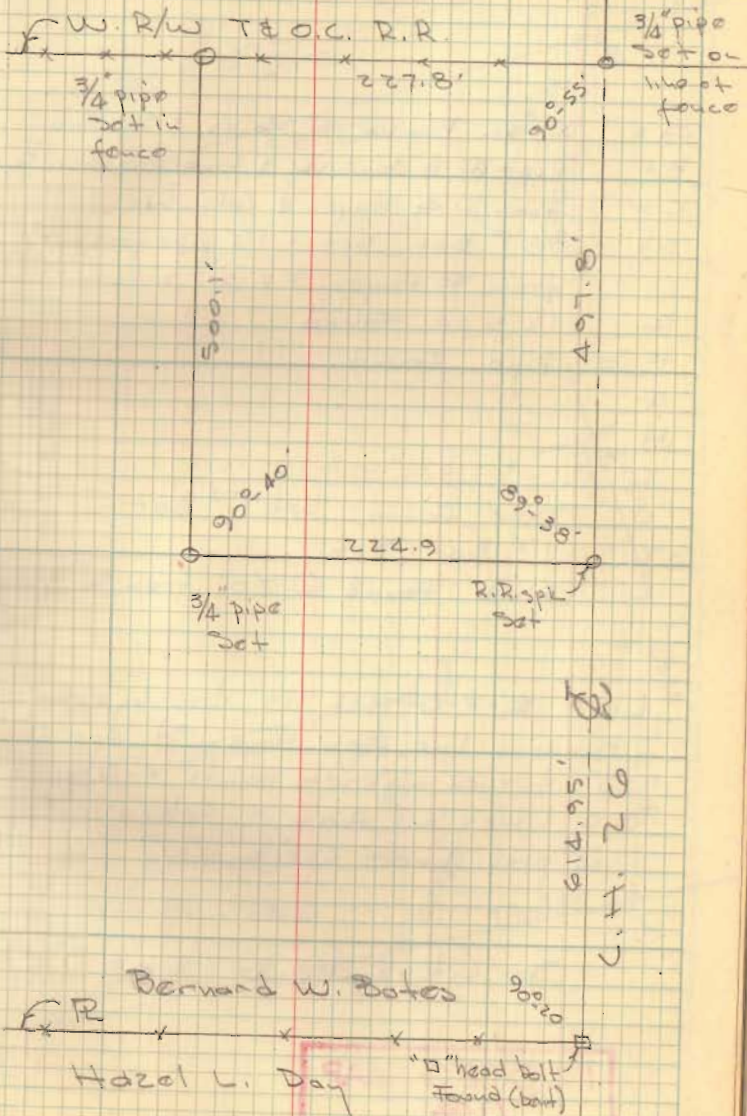
⊕ C.H. No. 26  
 Used iron bolt at Bates & Day  
 and iron @ C.H. 142

INDEXED ON MAP  
 2599

Dodson  
 D. Lewis

May 13, 1961

5





STANDARD OIL Co. SURVEY  
 V.M.S. 4990  
 BELLEFONTAINE, OHIO

- A = Iron Pin @ E Hayes & Sandusky - Mon. Cover
- B = Pipe @ E Sandusky & Linden - Mon. Cover
- C = Iron @ E Hayes & Columbus - Mon. Cover
- D = 5/8" Bar Set - 1/2" pipe found @ 21.38' from E Hayes. F.F.W. Survey (608)
- E 1/2" pipe found
- F Pipe Found
- G " "
- H " "
- I " "
- J Pipe Found Set 1" Bar
- K 1" Bar Set
- L Hub Found @ 20' from E Hayes

Line E-F-G-H-I is brushy - ran random line from Hayes St. opp. "D" to "J" turned angles to points F-G-H-I 6 times and Angl. - Calc. all dist. & angles on prop. line - check OK

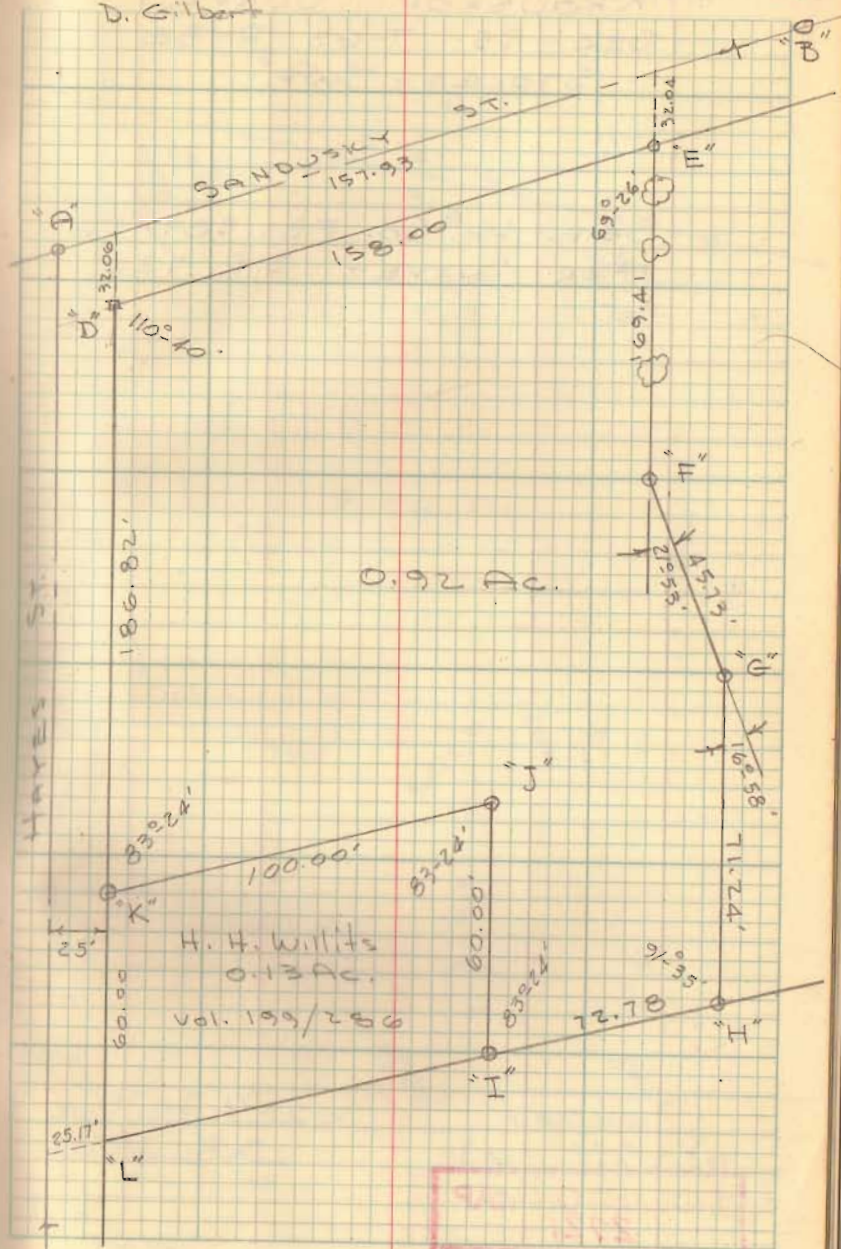
See City Index No. 608

INDEXED ON MAP  
 7104

Dodson  
 G. Geeslin  
 D. Gilbert

6-17-01  
 75°

6



INDEXED ON MAP  
 7104



KROUSKOP SURVEY  
 SEC. 35 T-6S R-8E.  
 STOKES TWP.

SEE LO. CO. FB. 589/36  
 FOR SURVEY S.R. 720

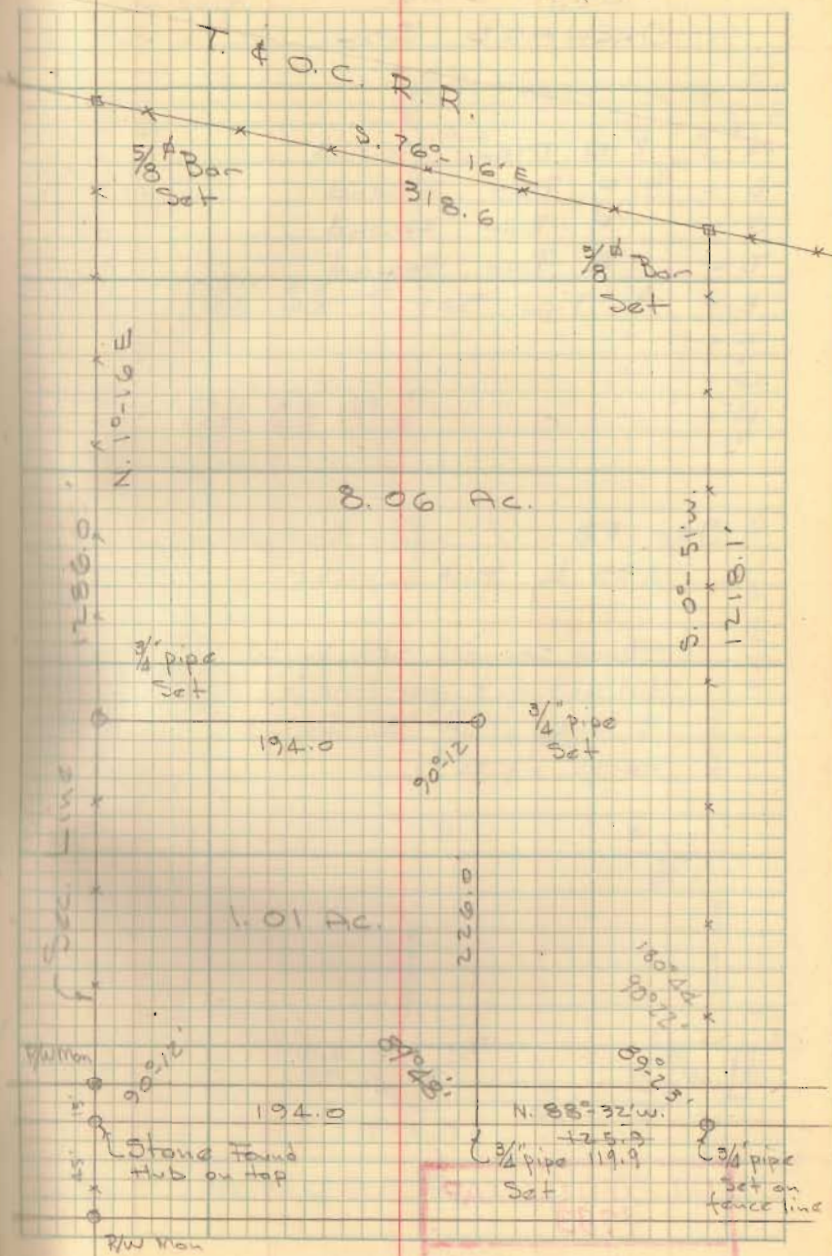
1/4 Sec. Line 7  
 S.R. 720

INDEXED ON MAP  
 2721

Dodson  
 G. Geeslin

July 15, 1961  
 July 22, 1961

7





LOT 236  
ORCHARD ISL.

- A = 2" □ Man. Found  
 B = 1" ∅ Bar Found  
 C = 1" ∅ Bar Found  
 D = 1" ∅ Bar Found  
 E = 3/4" Pipe Set fdn. N.E. 18.30 #236  
           "          "          N.E. 25.80 #235  
 F = "          "          "  
 G = "          "          "  
 H = "          "          " fdn. N.E. 17.77 - Tupper  
           "          "          N.W. 19.25 #236

See FB / for Survey of lot  
235 by F.F. Wright.

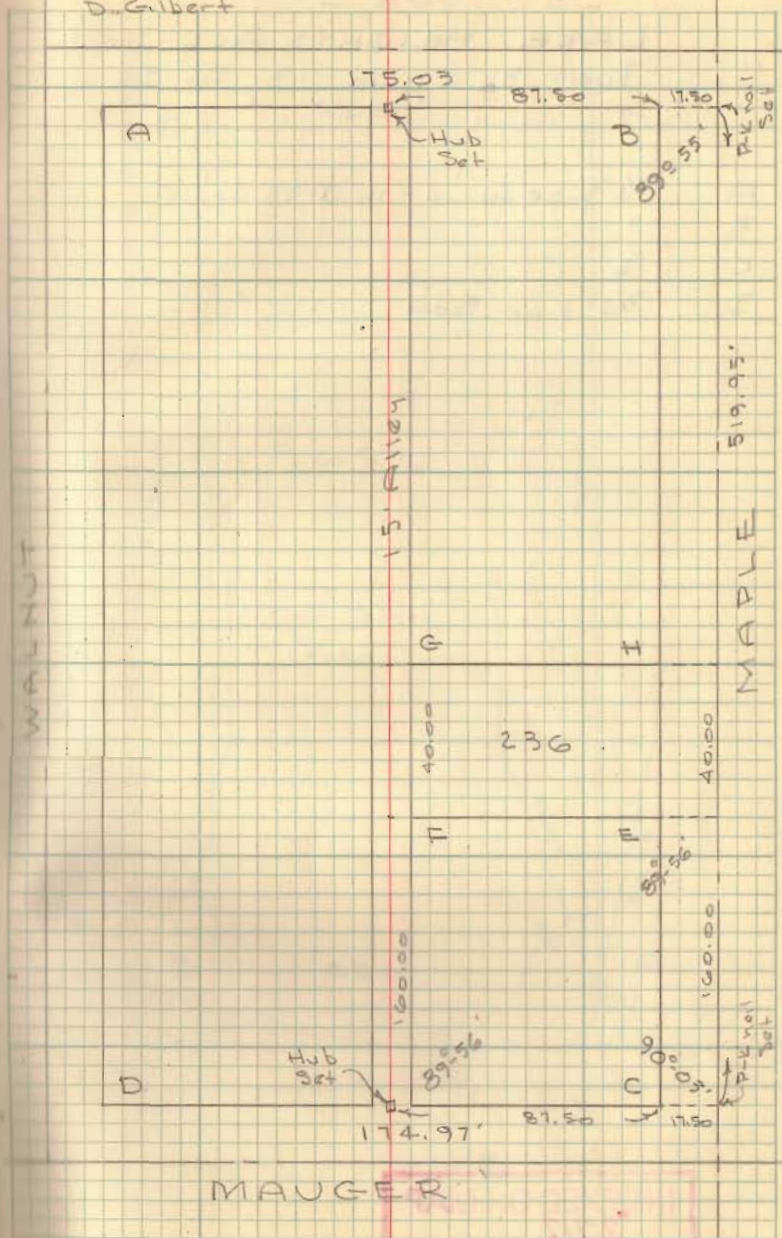
Found corners set by Wright, they  
did not fit for line of Mauger St.  
& alley, @ "E" found 1/2" pipe 3.5'  
north of E.

INDEXED ON MAP  
1783

Dodson  
G. Geaslin  
D. Gilbert

7-22-61  
80°

8





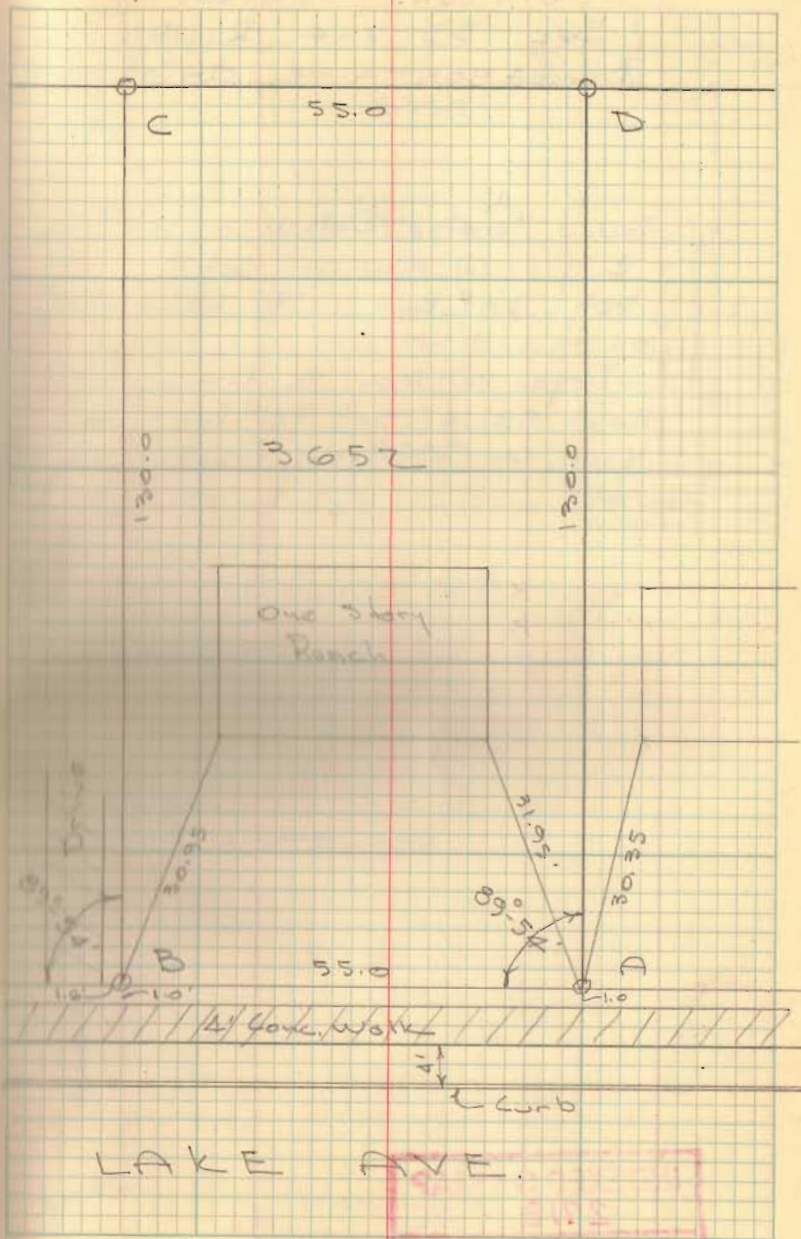
LOT 3652  
 LAKE HEIGHTS ALL. No. 1  
 PLAT Bk C, Vol. 3, Pg. 75

- A 3/4" pipe found - in T-35 drive
- B " " "
- C 1/2 " "
- D 3/4" pipe set

Dobson  
 G. Geeslin

8-5-61

9



INDEXED ON MAP  
 2717

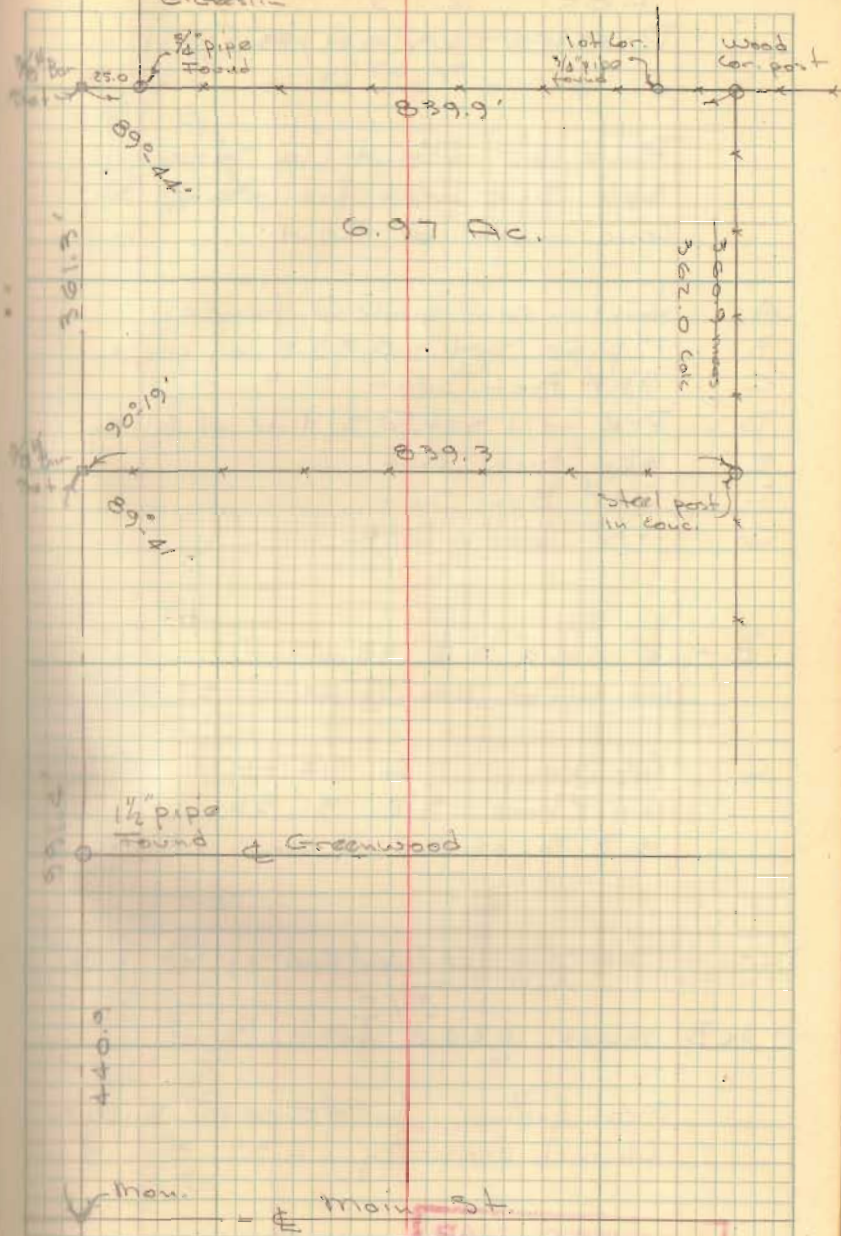
ROBINSON SURVEY  
 Sec. 33 T-4 R-14  
 BELLEFONTAINE, OHIO

Found  $\frac{3}{4}$ " pipe @ N.W. cor. lot #  
 # pipe @ N.W. cor. lot #  
 set  $\frac{3}{8}$ " Bar in E Lake Ave.  
 on this line -  
 Deqn @ Mon. & Main, meas.  
 East 991.4' set  $\frac{3}{8}$ " Bar for  
 N.W. cor. Robinson tract

INDEXED ON MAP  
 2718

Dodson  
 Gilbert  
 G. Gessler

8-11-61 10



INDEXED ON MAP  
 2718



Lot 215  
RUSHESYLVANIA, OHIO

Pins on front (@ street)  
Set 31.0 feet from E of St.  
Conc. walk @ 30.1'

- A Joint in conc. walk @ fence
- B 1" pipe set - 0.85 E. of walk
- C  $\frac{5}{8}$ " Bar Set - " " " "
- D P-K nail set @ S. line of alley
- E t&d hub set
- F  $\frac{5}{8}$ " Bar Set
- G  $\frac{5}{8}$ " Bar Set

B - 6" maple N.E. 14.0'  
Gr. House S.E. @ porch 33.80'

C Cor. House N.E. 24.00'  
Cor. Church S.E. 31.35'  
0.8' S. of end of conc. walk

Deed - 150' off the West end of lot 215

A to B meas 224.0 feet

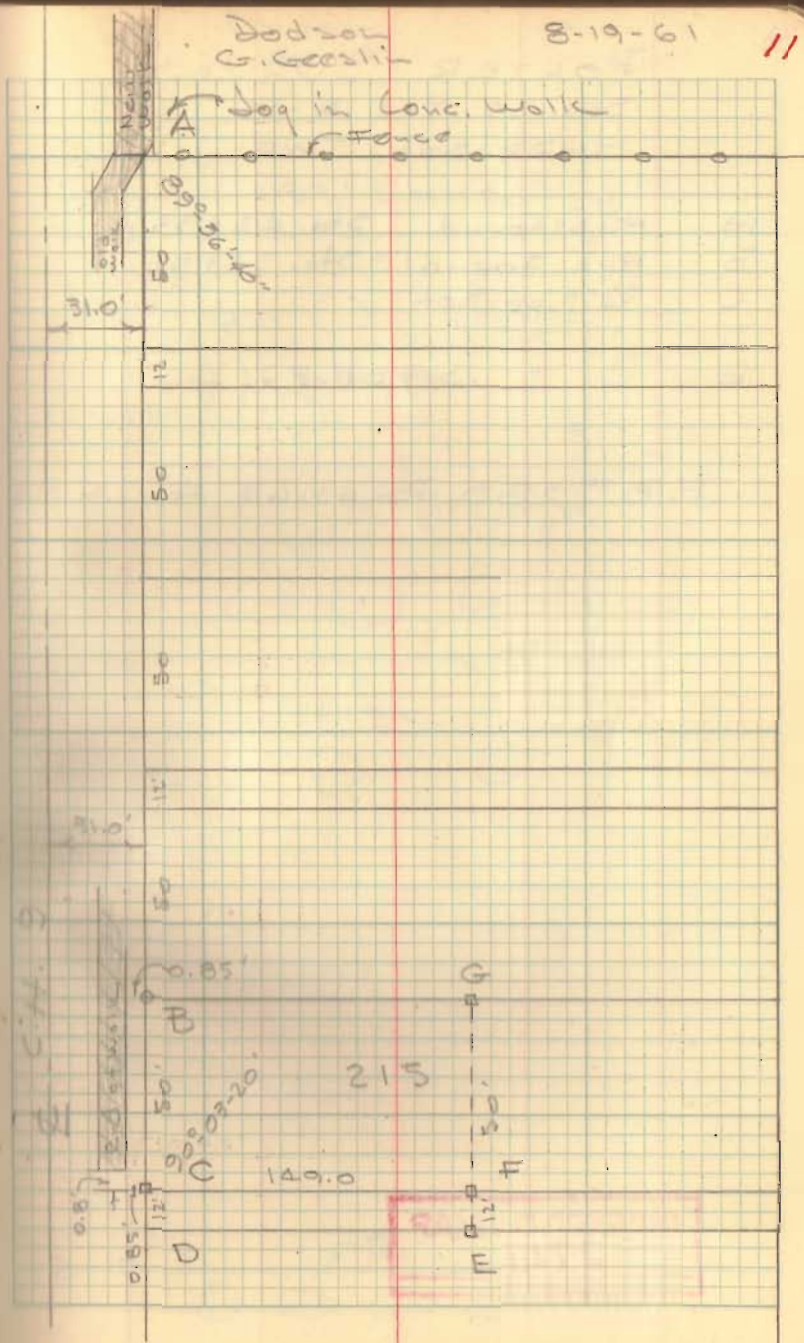
Meas from C to fence @ S.W. cor.  
Church property 232.3'

INDEXED ON MAP  
9613

Dodson  
G. Geeslin

8-19-61

11



PORTER SURVEY

SEC. 25 T-2 R-15

HARRISON TWP.

- A Hub Found Sta. 42+35
- B Hub Found Sta. 56+51
- C 3/4" pipe Set
- D " " "
- E " " " in line of fence

F. B # 588, Pg. 63-64 For C.H. 212

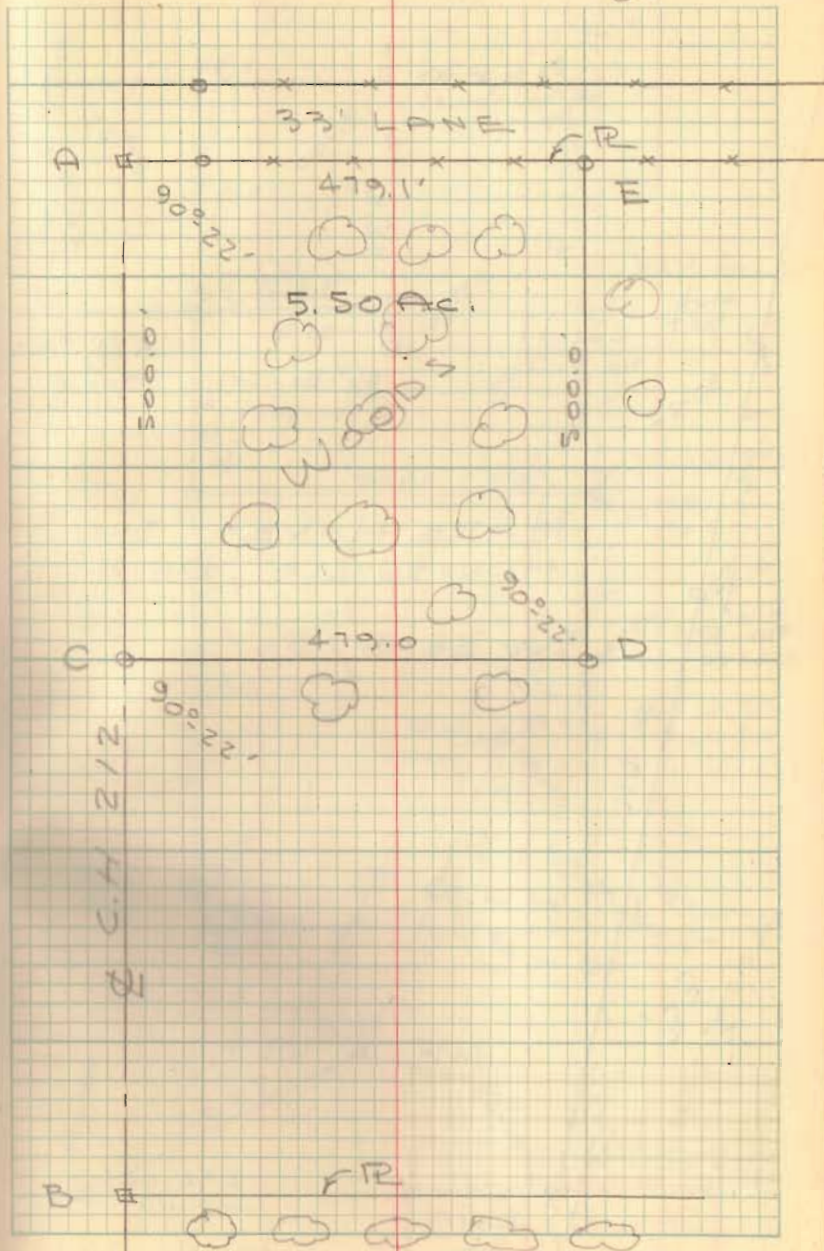
INDEXED ON MAP

2711

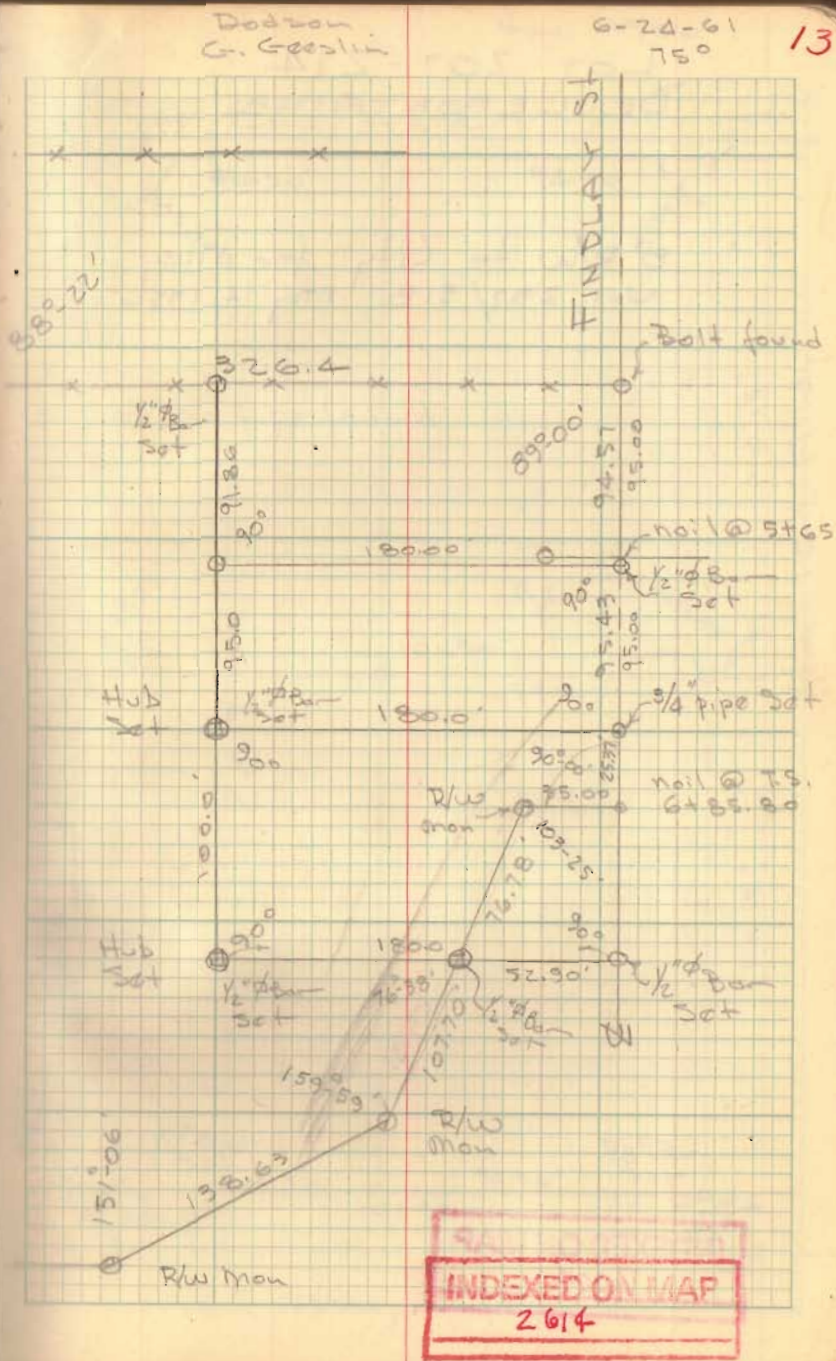
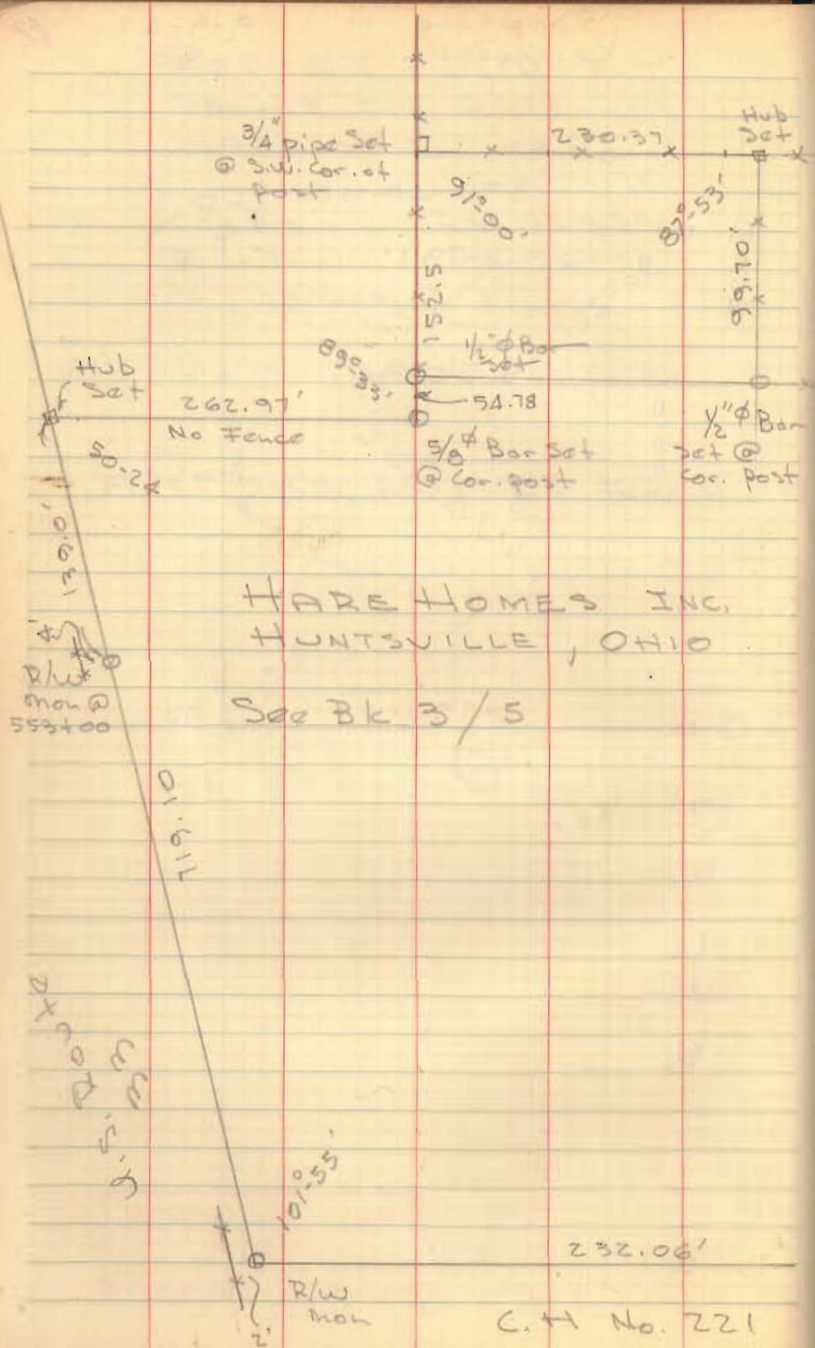
Dodson  
G. Geeslin

9-9-61  
80°

12







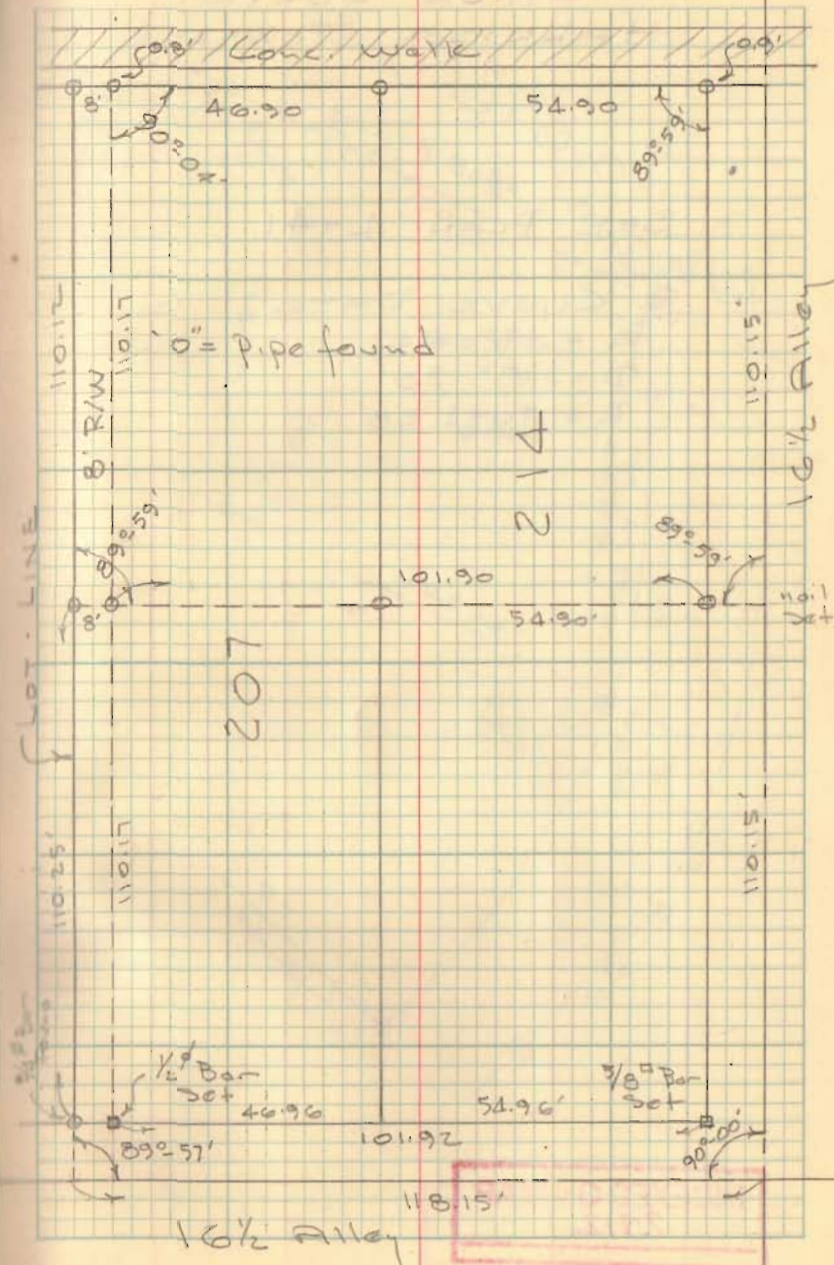


LOT 207-214  
BELLEFONTAINE

8' R/W to City for alley  
Vol. 237/518 May 14, 1956

Nov. 1960

14





SHICK SURVEY  
HARRISON TOWNSHIP

SEE PLAN L-41

E CURVE DATA

$$\Delta = 120.41$$

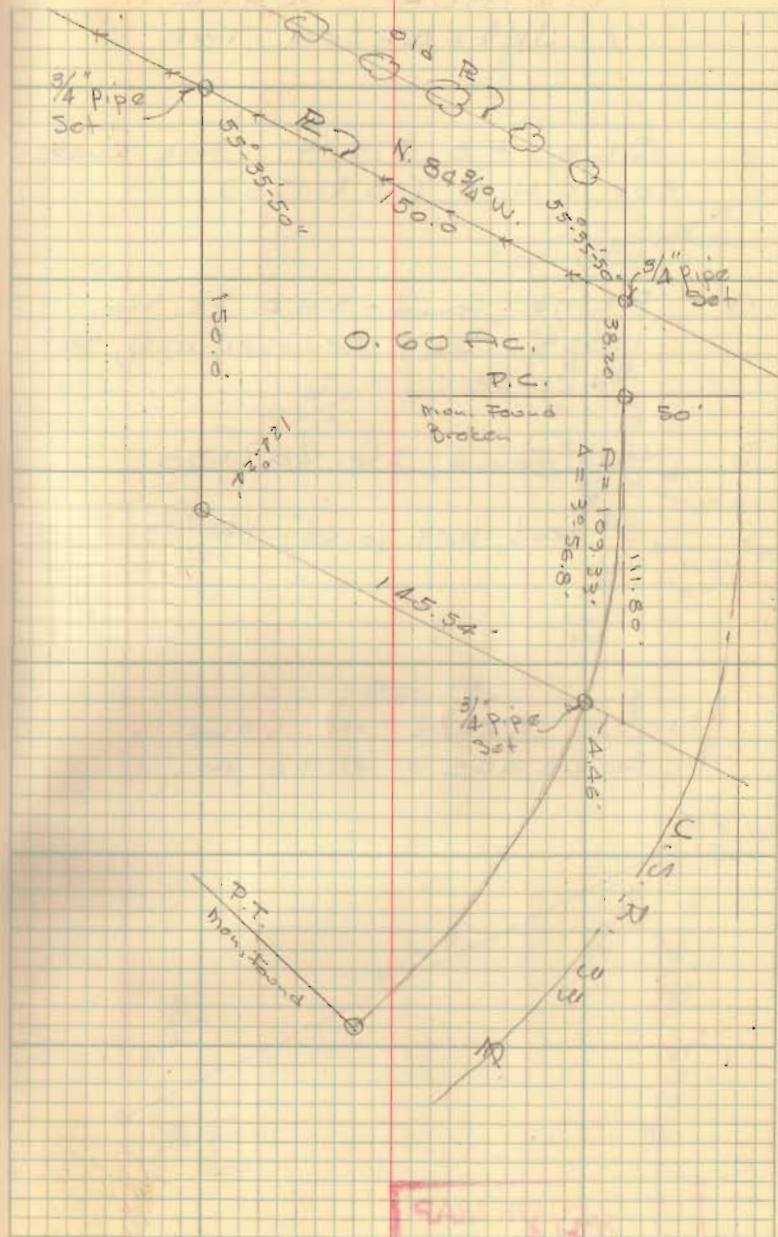
$$D = 30.30'$$

$$R = 1637.28'$$

Dodson  
G. Geaslin

Sept 16, 1961  
70°

15



INDEXED ON MAP  
2712

2712

ARTHUR SURVEY  
JEFFERSON TWP.

SEE FB 579/47 FOR SURVEY  
OF C.H. 5 (S.R. 533)

- A R-K nail found - S.H.D. PI Sta.  
1055+01.62 - Removed nail, set  
3/4" pipe
- B Hub found, Sta. 200+90
- C 0" head bolt found, Sta. 194+00

NOTE ERROR IN CALC.  
ACREAGE = 0.96 AC.

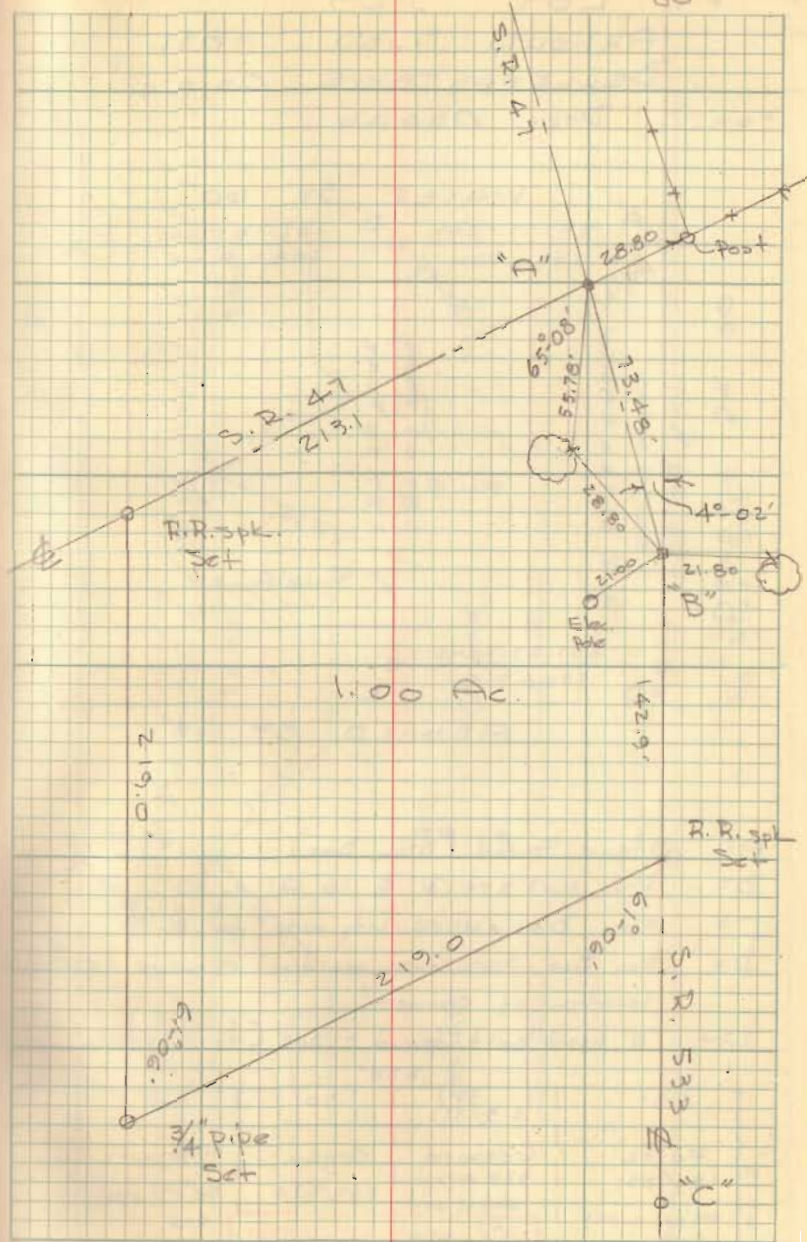
INDEXED ON MAP  
2714

Dodson  
G. Geeslin

Sept. 23, 1961

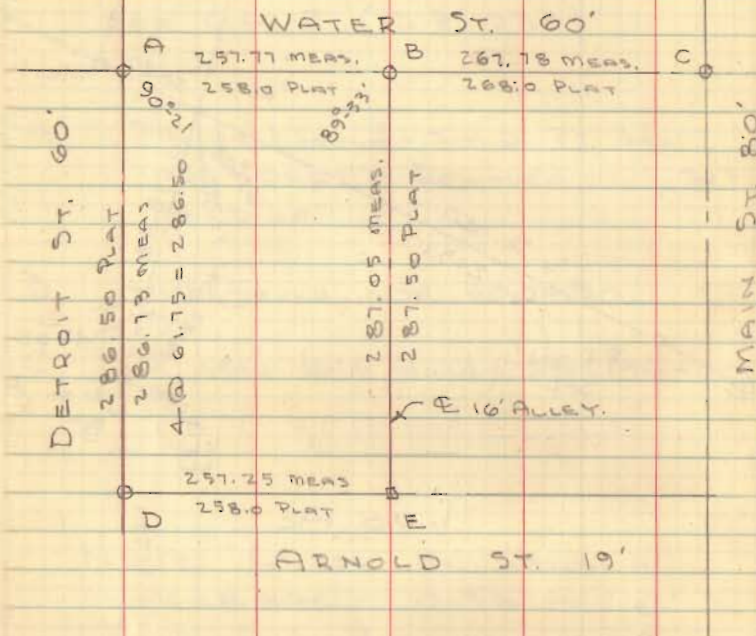
80°

16





PT. LOT 329  
 ARNOLD SUBD. 1891  
 BELLEFONTAINE, OHIO  
 FOR: DICK ORGAN



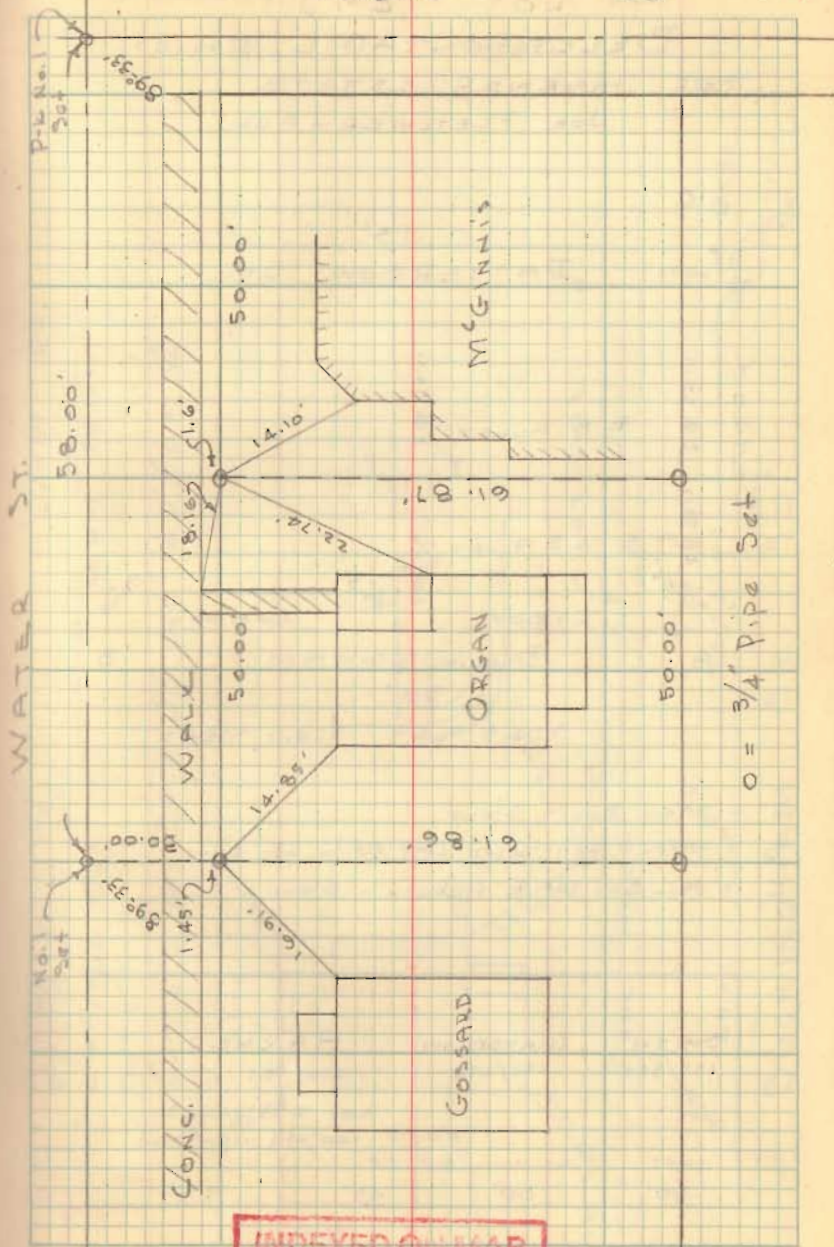
- A = Stone Found (Man. Box)
- B = P-K Nail set @ E 10' Alley
- C = Man. Box - used City utility for point
- D = Man. Box - Grate Cover, could not remove - estimated location of corner
- E = 1/4" head bolt found - see City records

69'	219 <sup>(51)</sup> / <sub>311</sub>	50'	50'
Fultz 189/33	Gossard	Organ	McGinnis
69' off west end	329 except 100' off east 69" west	263/514	50' off east end 204/120

D. Dodson  
 D. Lewis

11/13/61  
 40°

17



INDEXED ON MAP  
 2723

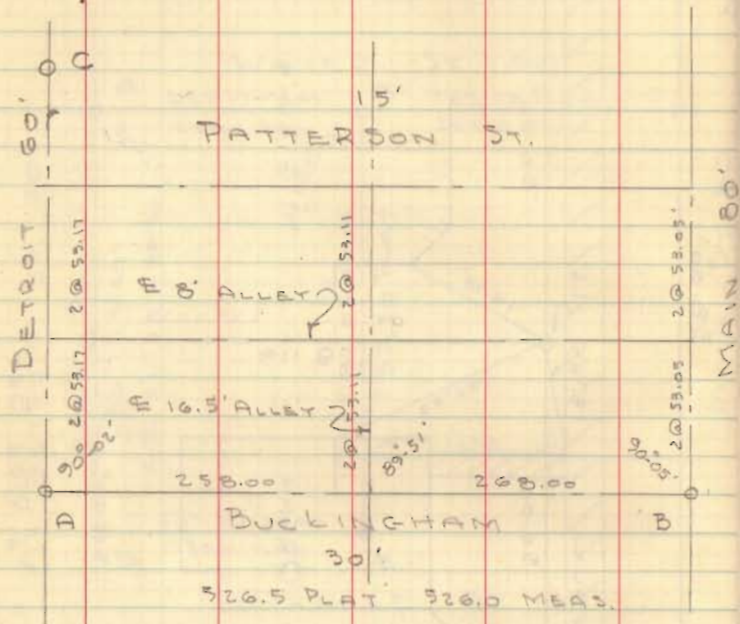


PT LOT 295

BELLEFONTAINE, OHIO

FOR HARNER ESTATE.

Joe FLETCHER - ADM.



A = Man Box - stone

B = Man Box - used city with for point

C = Man Box @ E Auburn - stone

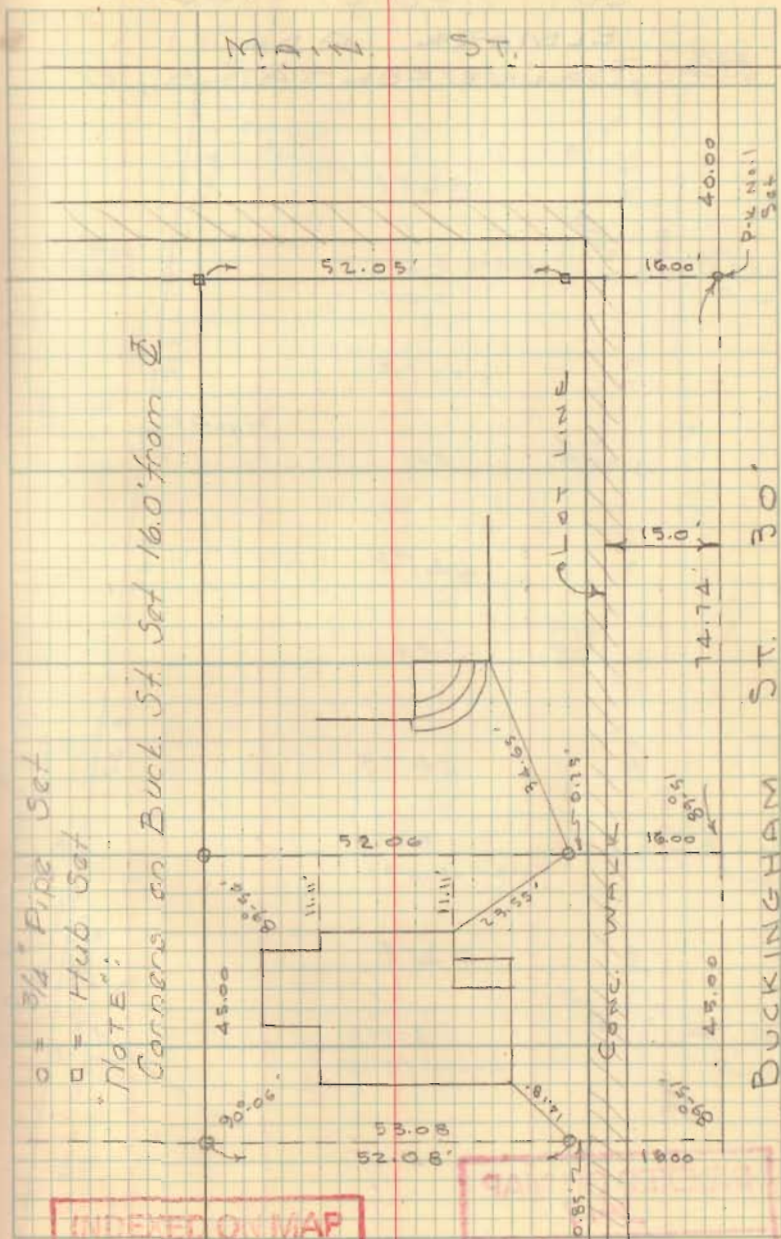
SMITH 199/580	CHAMBERLAIN 132/276	HARNER 210/511
50'	50'	45' 75'

Lot 295 except  
100' off west end

Dodson  
G. Geeslin

12/16/61  
30°

18



o = 3/4" Pipe Set

□ = Hub Set

NOTE:

Corrers on Buck. St. Set 16.0' from E

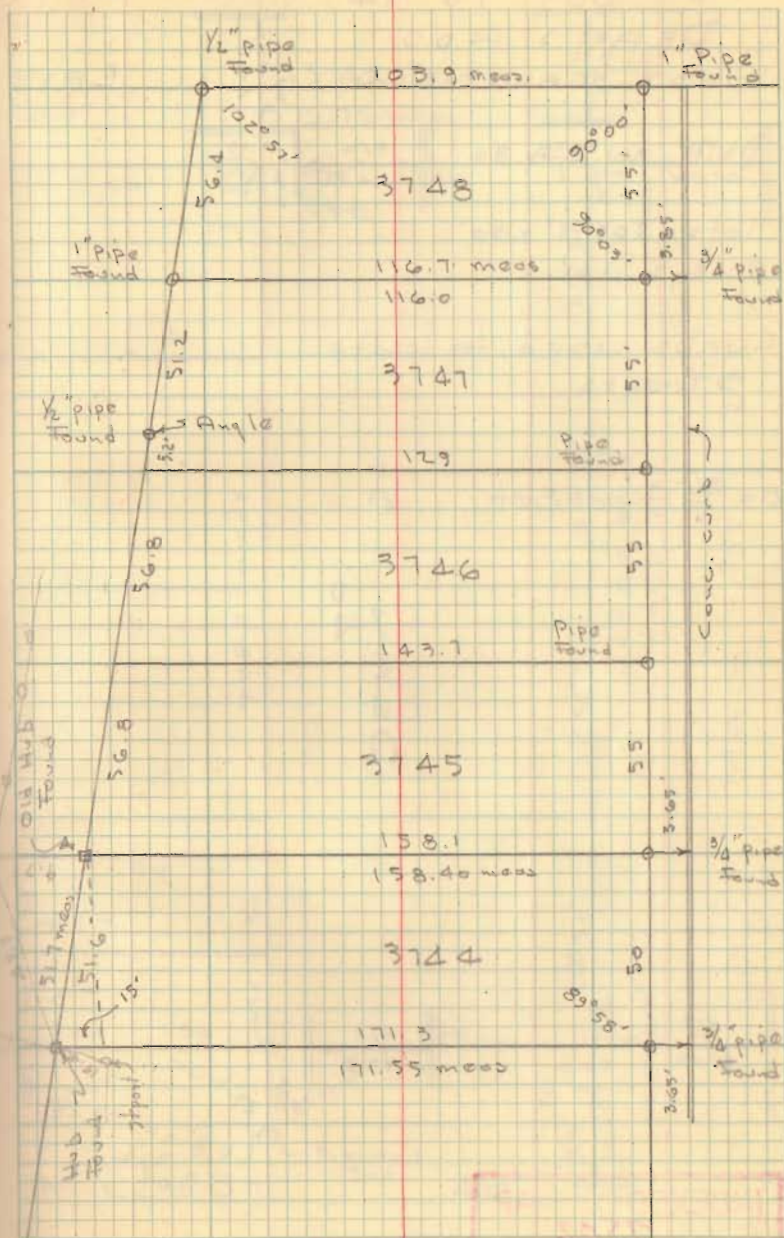
INDEXED ON MAP  
2069



LOT 3748 & 3744  
ELMORE ADD.  
BELLE FONTAINE, O

Dodson Rail-sket 12/9/61  
G. Geeslin 32°

19



INDEXED ON MAP  
3417

3403

Pt LOT 73-74

DEAN'S ADD

WEST MANSFIELD

EAST

BLB, Vol. 2, Pa. 84

lots = 209.5' x 50'

Alleys 16'

Curbs used to locate streets.

0 = 3/4" Pipe Set

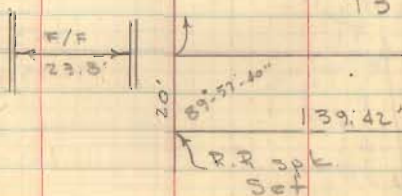
ST.

DEAN ST.  
40'

448.0 meas

74

73



INDEXED ON MAP  
7502

Dodson  
G. Goesslin

1/13/62  
350 20

ST.

375.42 Plot

375.75 meas

60'

209.50'

150'

16.07

F/F

49.90

39.87

11.05

2 @ 50'

2 @ 50'

2 @ 50'

2 @ 50'

2 @ 50'

2 @ 50'

2 @ 50'

2 @ 50'

2 @ 50'

2 @ 50'

2 @ 50'

2 @ 50'

2 @ 50'

2 @ 50'

2 @ 50'

2 @ 50'

2 @ 50'

2 @ 50'

2 @ 50'

2 @ 50'

2 @ 50'

2 @ 50'

2 @ 50'

2 @ 50'

2 @ 50'

2 @ 50'

2 @ 50'

2 @ 50'

2 @ 50'

2 @ 50'

2 @ 50'

2 @ 50'

2 @ 50'

2 @ 50'

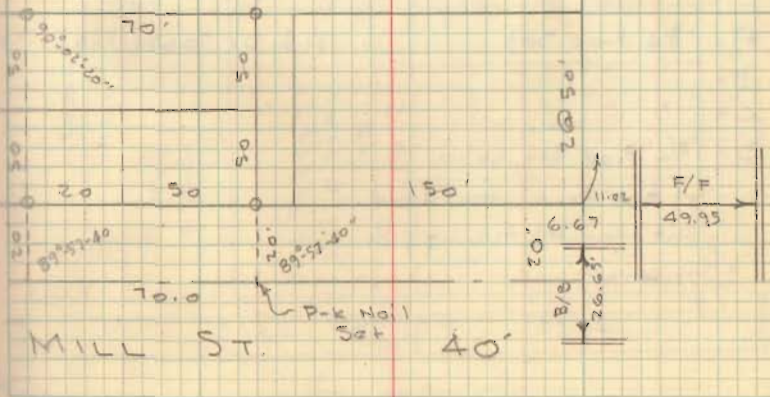
2 @ 50'

2 @ 50'

2 @ 50'

448.0 meas.  
448.0 plot

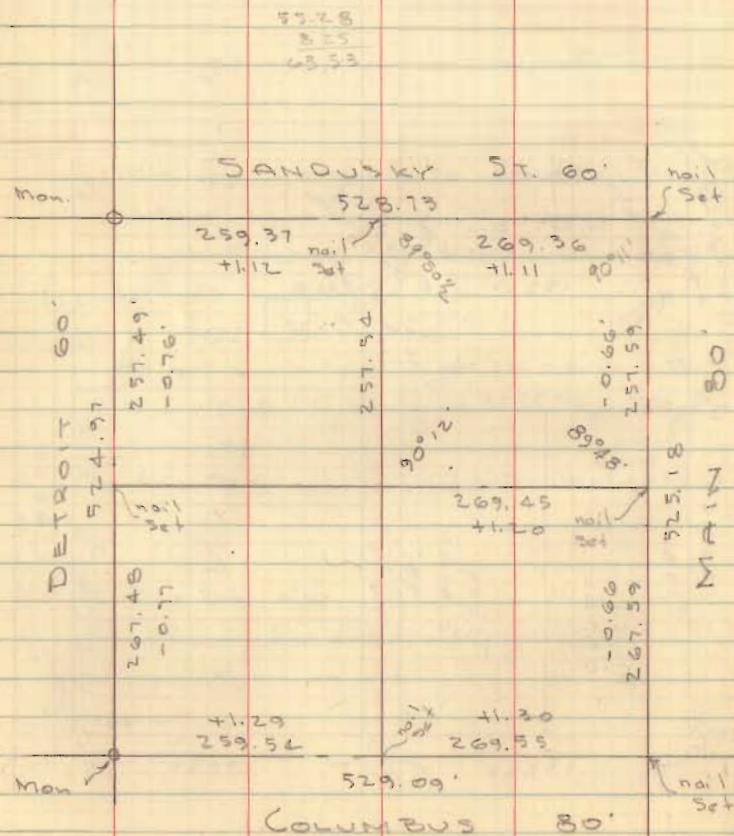
MAIN ST. 72'





UNITED TELEPHONE CO. SURVEY  
 LOT 113  
 BELLEFONTAINE, OHIO

o = P-K Nail Set, unless otherwise indicated

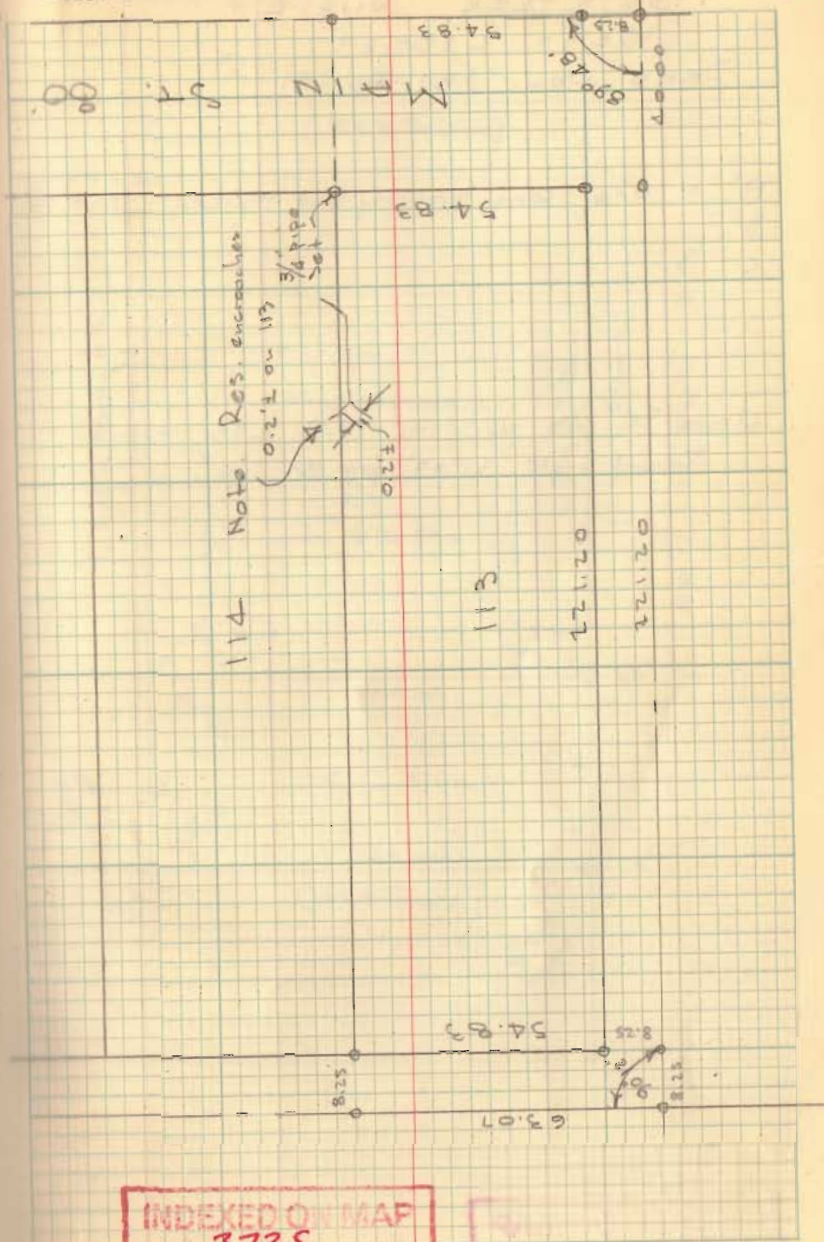


53.28  
 8.55  
 64.73

Dodson Geo. Lewis  
 Geo. Lewis

Feb. 12, 1962

22



INDEXED ON MAP  
 3725



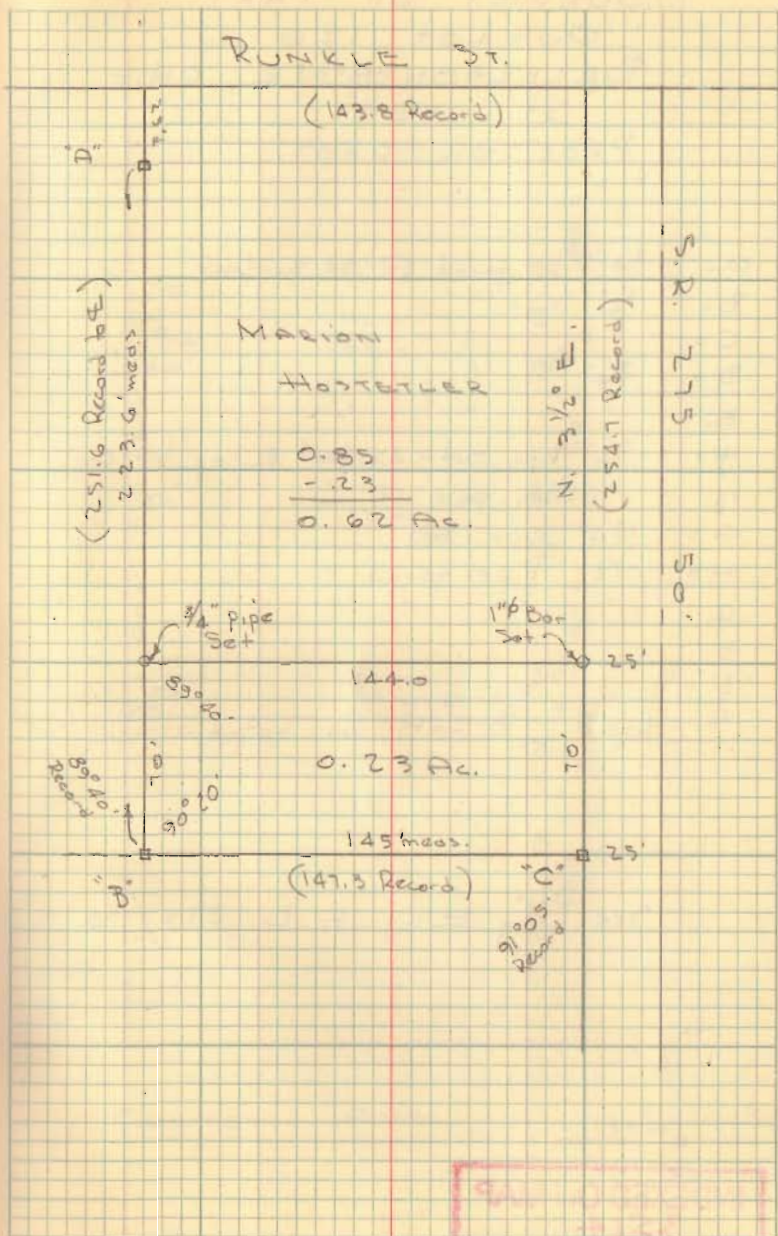
HOSTETLER SURVEY  
WEST LIBERTY  
DEED VOL. 187 PG. 81

"A" = 6x6" Conc. property line marker - 36" High  
B " " " " " "  
C " " " " " "

Used "C" as W. line S.R. 275, turned  
Record angle 91°05' for W. line!

Dodson  
Bob Hostetler

Feb. 15, 1962  
35° 23



INDEXED ON MAP  
2944



SURVEY OF PART  
 OUT LOT 126  
 BELLEFONTAINE, OHIO  
 FOR  
 PROCTOR BROS.

- A = 3/4" Pipe found @ st. surface
- B = 1/2" " "
- C = " " "
- D = 3/4" " "
- E = " " "
- F = 3/4" Pipe Set - 4.0 feet E. of lot cor.,  
 utility pole @ cor.
- G = 3/4" Pipe Set
- H = 1/2" Pipe found
- I = " " "

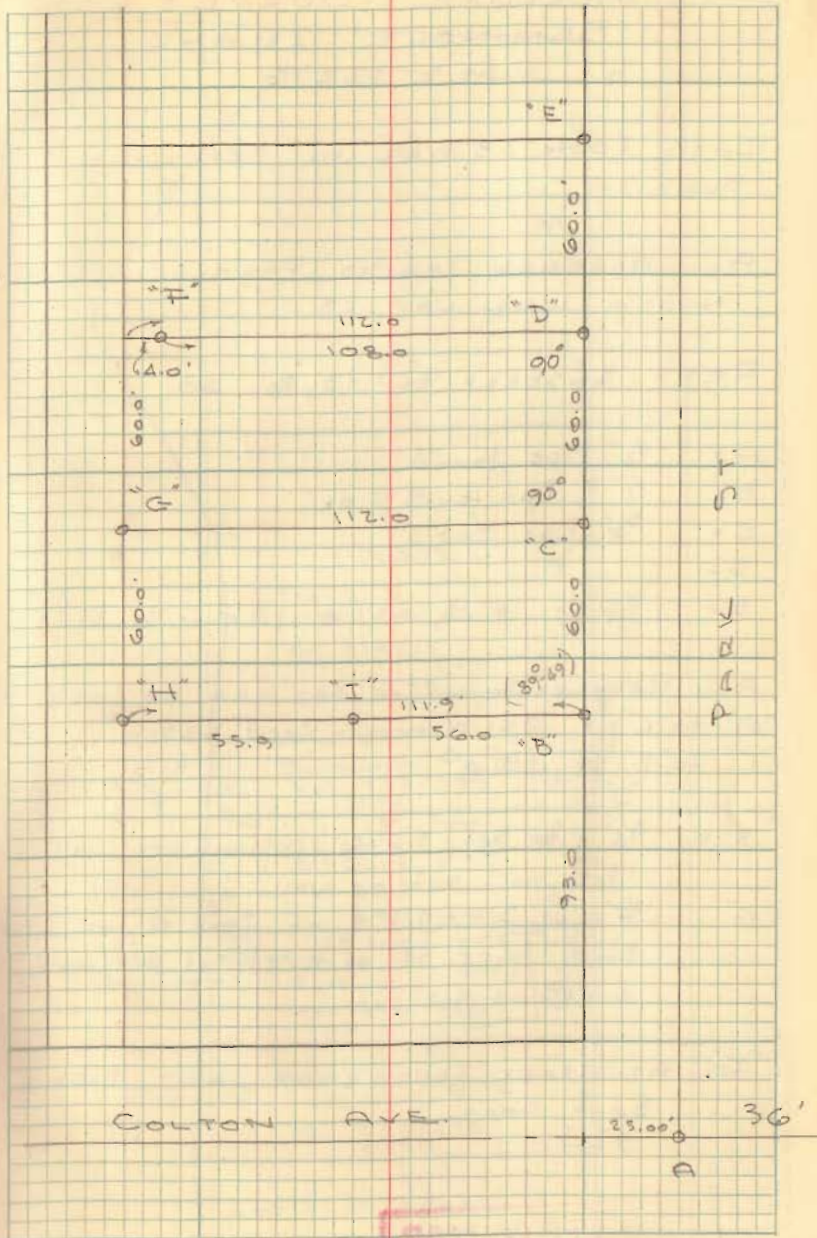
Line B-I-H was not a straight line

See City Eng F.D. 270/70

Dodson  
 G. Geeslin

3/3/02  
 350

24



INDEXED ON MAP  
 3514



M<sup>c</sup>CLURE SURVEY  
SEMINOLE ISLAND  
V.M.S. 12276

LOTS 20 to 23 ARE IN SEMINOLE ISL.  
SUB'D. A

ALL ACREAGE TRACTS PARALLEL TO  
NORTH LINE LOT 23

REF: INSKEED. Bk. 13, Pg. 60

A =  $\frac{1}{2}$ " Pipe found

B =  $\frac{1}{2}$ "  $\phi$  Bar found "OK"

C =  $\frac{3}{4}$ " Pipe Set

D = " " "

E = 1" Pipe found, 0.5' E. of N.W. Cor. (see black shed)

ALL CORNERS FOUND or SET ARE ON LINE "A-E"

"A" to "C" = 251.0' meas. - Deed = 251.0'

"C" to "B" = 91.0' " - " = 91.0'

"F" =  $\frac{3}{4}$ " Pipe Set - 3.6' E. of wood ret. wall,  
P-K nail set on wall

"G" =  $\frac{3}{4}$ " pipe Set - 4.6 E. of wood ret. wall (Boat  
Dock) - pipe Set at E. edge of Cove walk,  
0.4' E.S. of N.E. Cor.

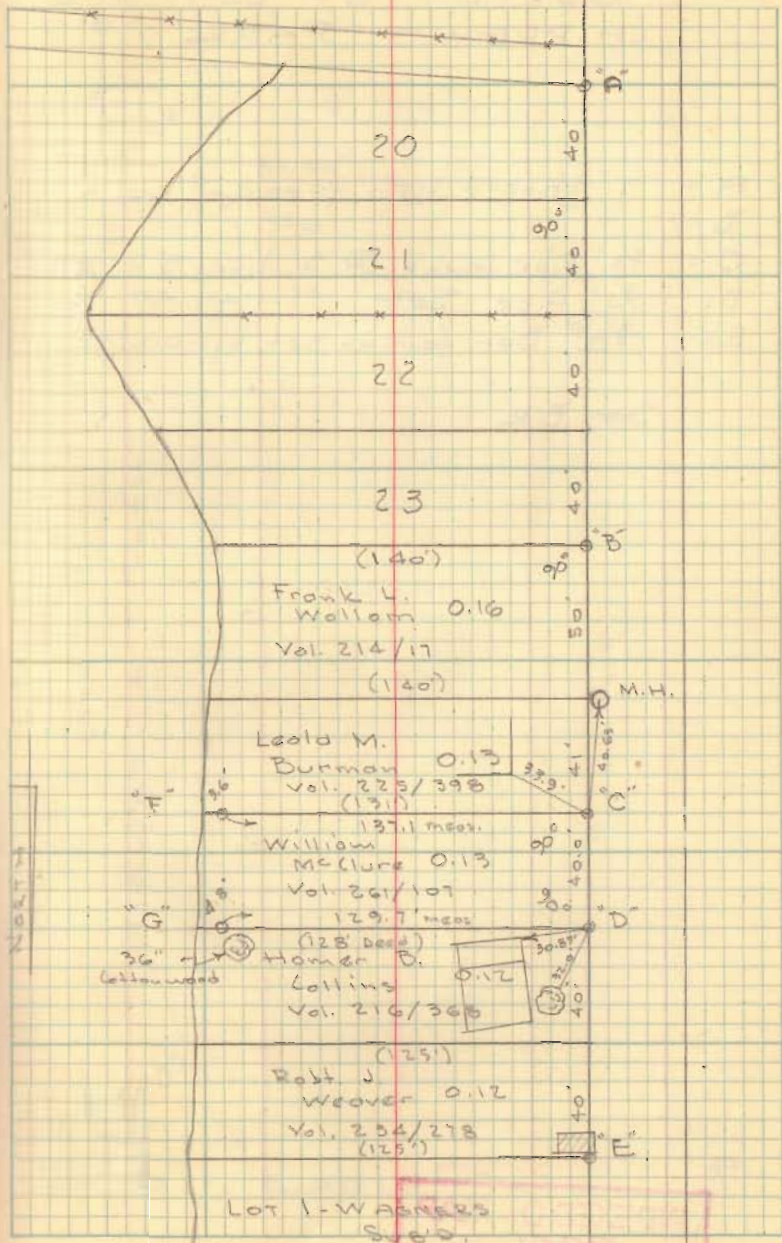
"G" AT APPRX. CENTER OF JOINT DOUBLE  
BOAT DOCK

INDEXED ON MAP  
2333

Dodson,  
G. Geeslin

March 10, 1962  
35°

25





SURVEY OF LOT 346  
CHIPPEWA PARK

- A = "T" shaped iron found
- B = " " " " "
- C = 3/4" Pipe found @ S. line S.R. 69
- D = 3/4" Pipe Set
- E = 3/8" Bar found - set by D.L.D.

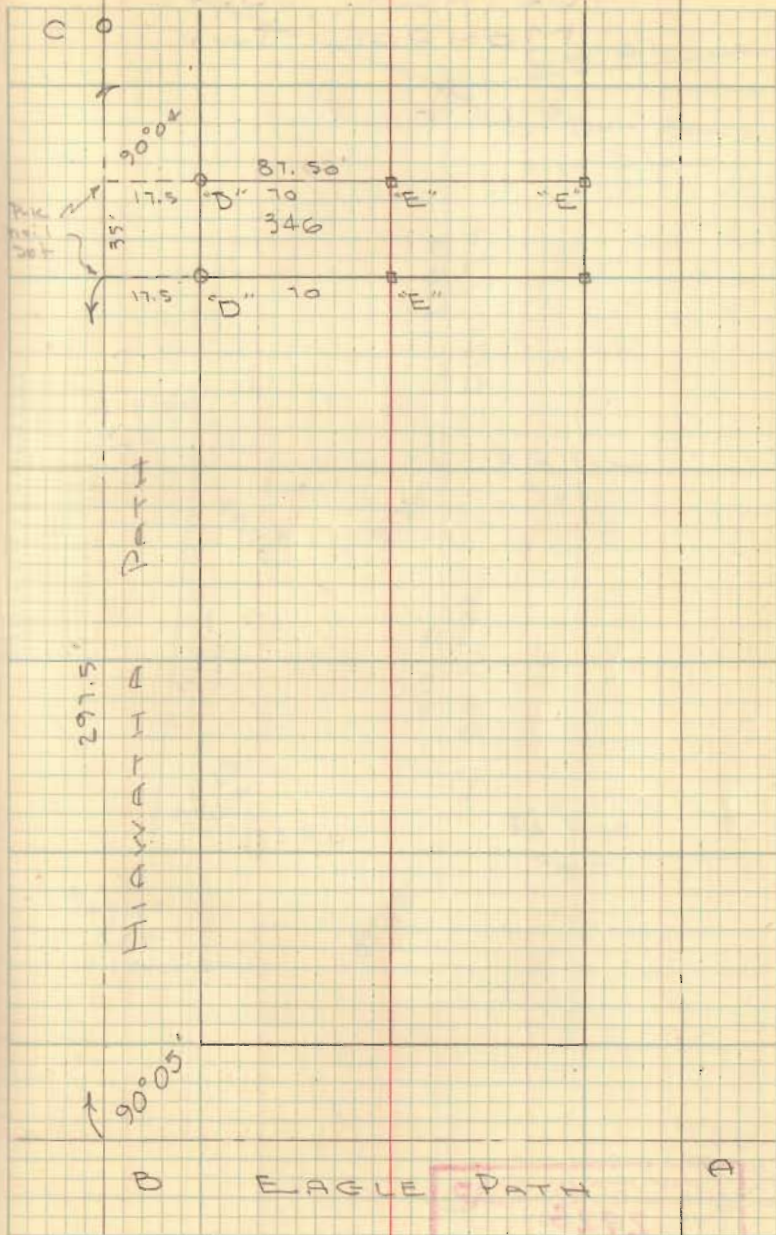
See BK

INDEXED ON MAP  
7751

Dodson  
L. Geeslin

3-24-62  
50°

26

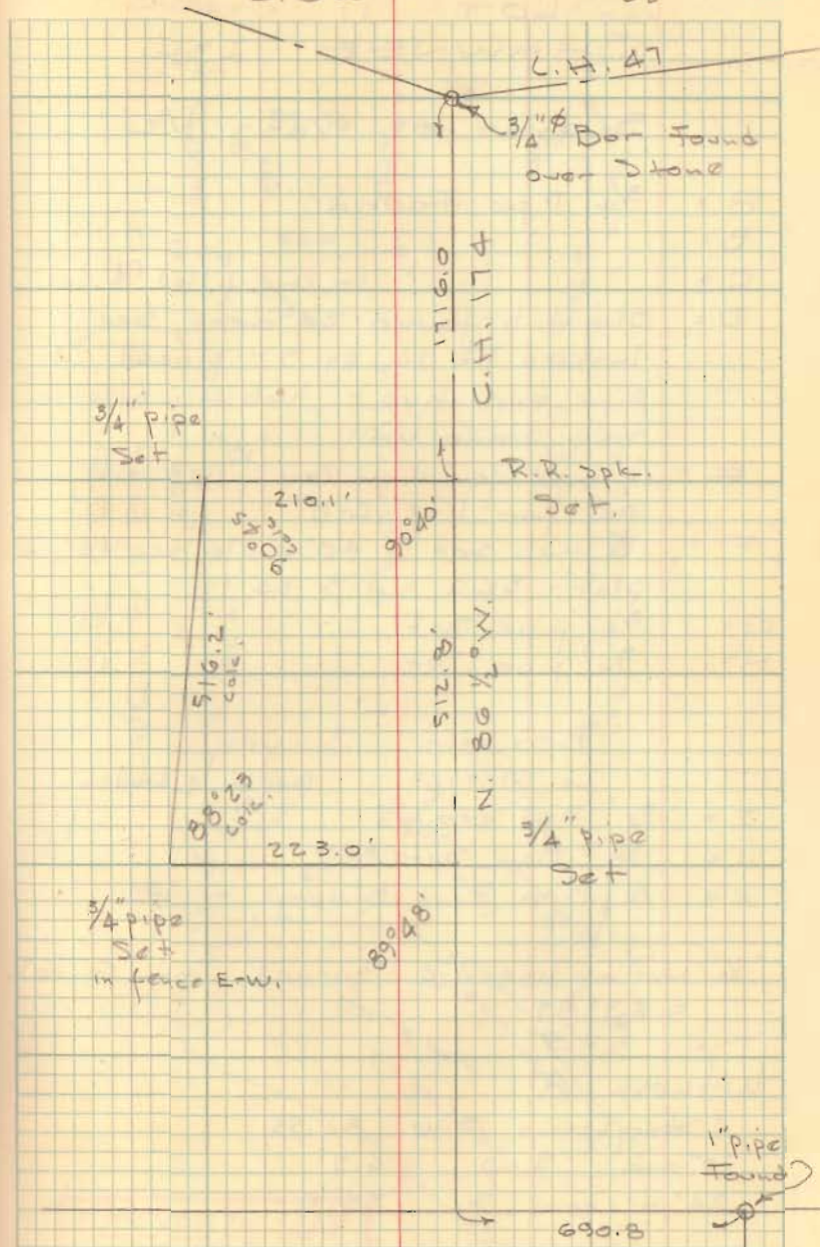


FORTNEY SURVEY  
MONROE TWP.

Dodson  
L. Geeslin

3-24-62  
580

27



INDEXED ON MAP  
2728



LOT 11  
SHAWNEE ISL.

SURVEY OF WEST 1/2

- A = 3/4" Pipe Found  
 B = " " "  
 C = " " " in conc. filled tile  
 D = Old Hub found 24" deep, See  
 Inskop Bk 12, pg 9 - placed 3/4"  
 pipe over hub - hub found @ N.  
 side stone wall.  
 E = 1/2" pipe found in conc filled tile,  
 ok for line "C-D"  
 F = 18" Hub set - 40° angle scaled from  
 plot - B&C Vol. 3 pg 12.  
 G = 3/4" pipe set  
 H = 3/4" pipe set

Beavers Survey

7/9/69

Dodson & Dodson

- I = 3/4" Pipe Found  
 J = 3/8" Bon Set  
 K = 1/2" Pipe found 8" deep

"K" not on line A-C - turned from G to K  
 = 87° 57'

Witness A

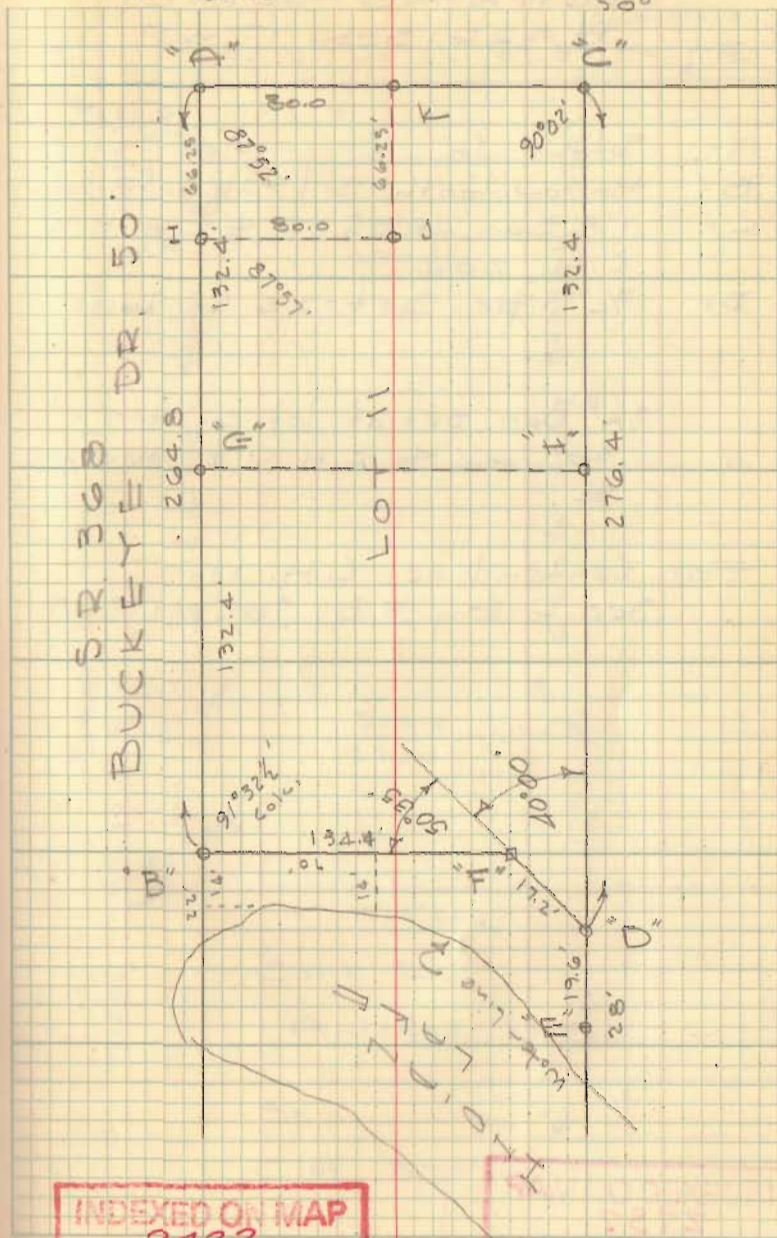
- 1 Norway Spruce S.W. 34.55  
 10" oak S.W. 6.7'  
 24" Hickory S. 34.8

Huntsville R.D. 1

D. Dodson  
D. Dodson

4-5-62  
D. Dodson  
50'

28





DOWNING SURVEY  
HARRISON TWP.

- A = Stone found  
 B = Harrow tooth set - S.W. Cr. Arledge  
 C = 1" Pipe found @ C.H. 11 & C.H. 204  
 D = 3/4" pipe set - S.E. Cr. Dolph.

5/8" Pipe set at lot corners -  
 30' from C.H. 11 & 300' from E.

For Center line C.H. 11  
 See G. Eng. F.B. 702 pgs. 12-15

INDEXED ON MAP  
2737

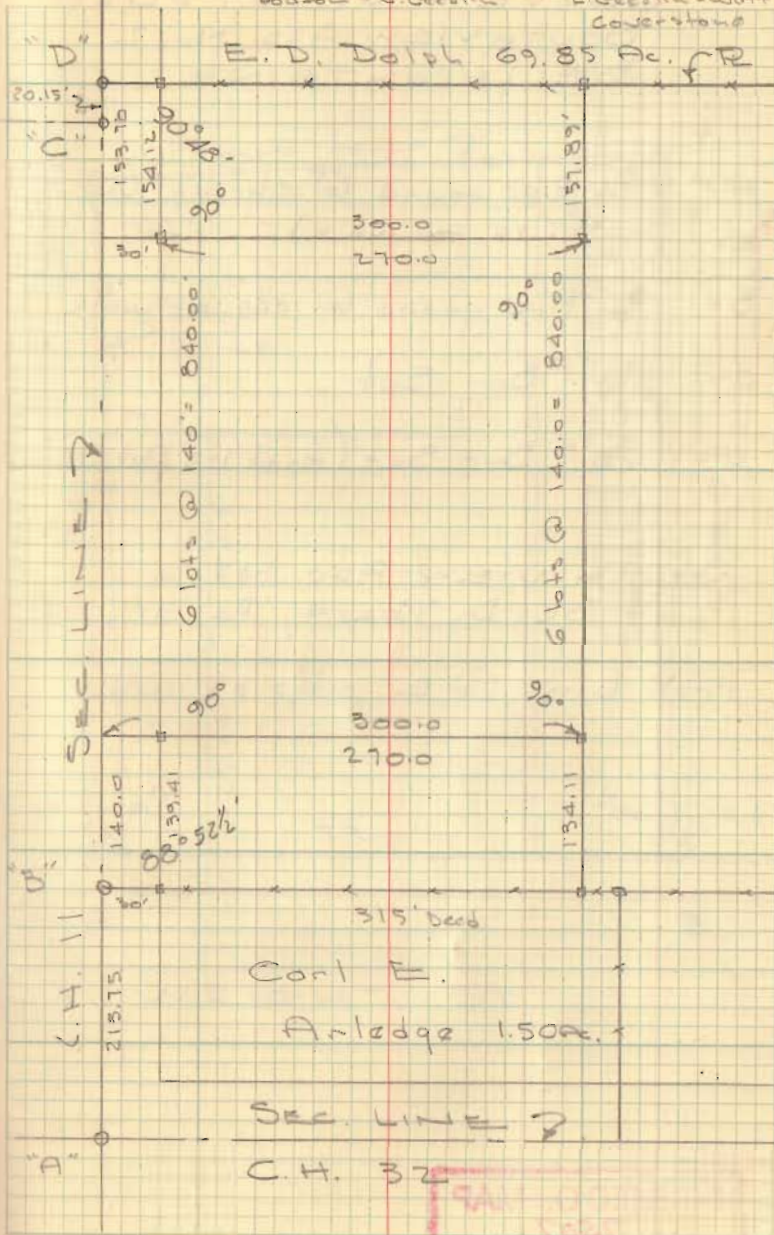
2-22-62

53°  
 Dodson - G. Geeslin

4-7-62

55°  
 L. Geeslin - woff  
 Coverstone

29



INDEXED ON MAP  
2737



SURVEY OF LOT 3828  
SOUTHVIEW ADD. No. 2  
BELLEFONTAINE

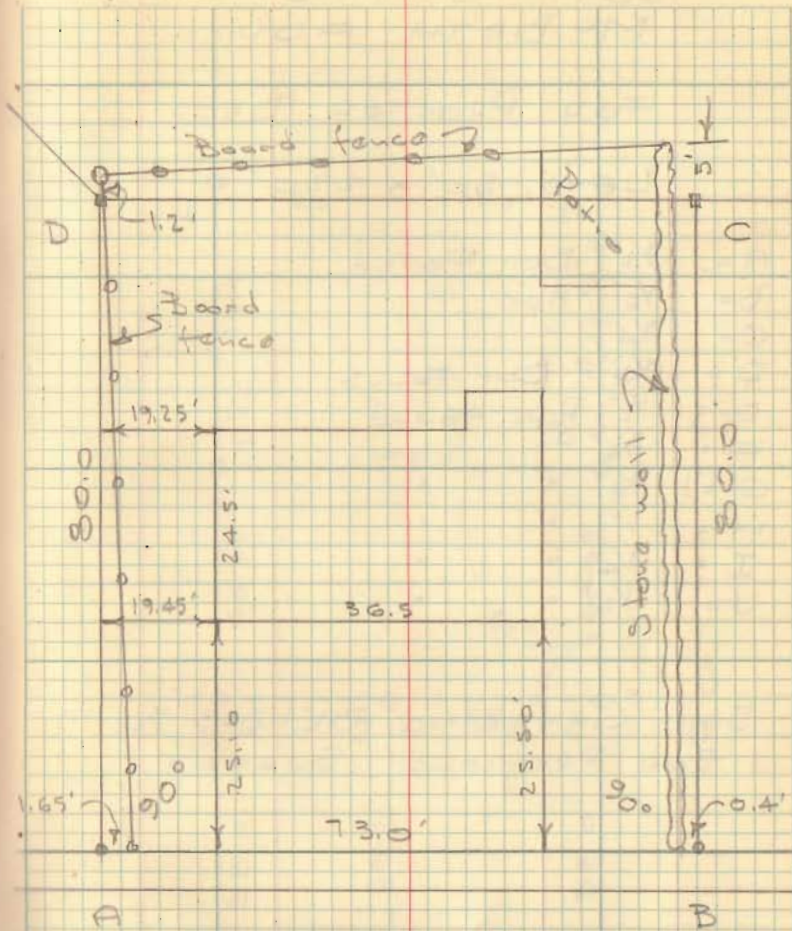
- A =  $\frac{3}{4}$ " Pipe found @ edge of conc.  
walk (in conc. walk)  
B =  $\frac{3}{4}$ " Pipe found @ edge of walk  
C =  $\frac{3}{8}$ " Bar Set  
D =  $\frac{5}{8}$ " Bar Set (found  $1\frac{1}{2}$  feet 18" deep)

SOUTH VIEW ADD. No. 2  
PLAT Bk. D, Vol. 4, Pg. 3

Prop. Line @ E. edge of walk

Dodson  
Touis

4-10-62  
60° 30



WRIGHT ST

INDEXED ON MAP  
7507



LOT 783-784

MC BETH ADD.

FOR PROCTOR BROS.

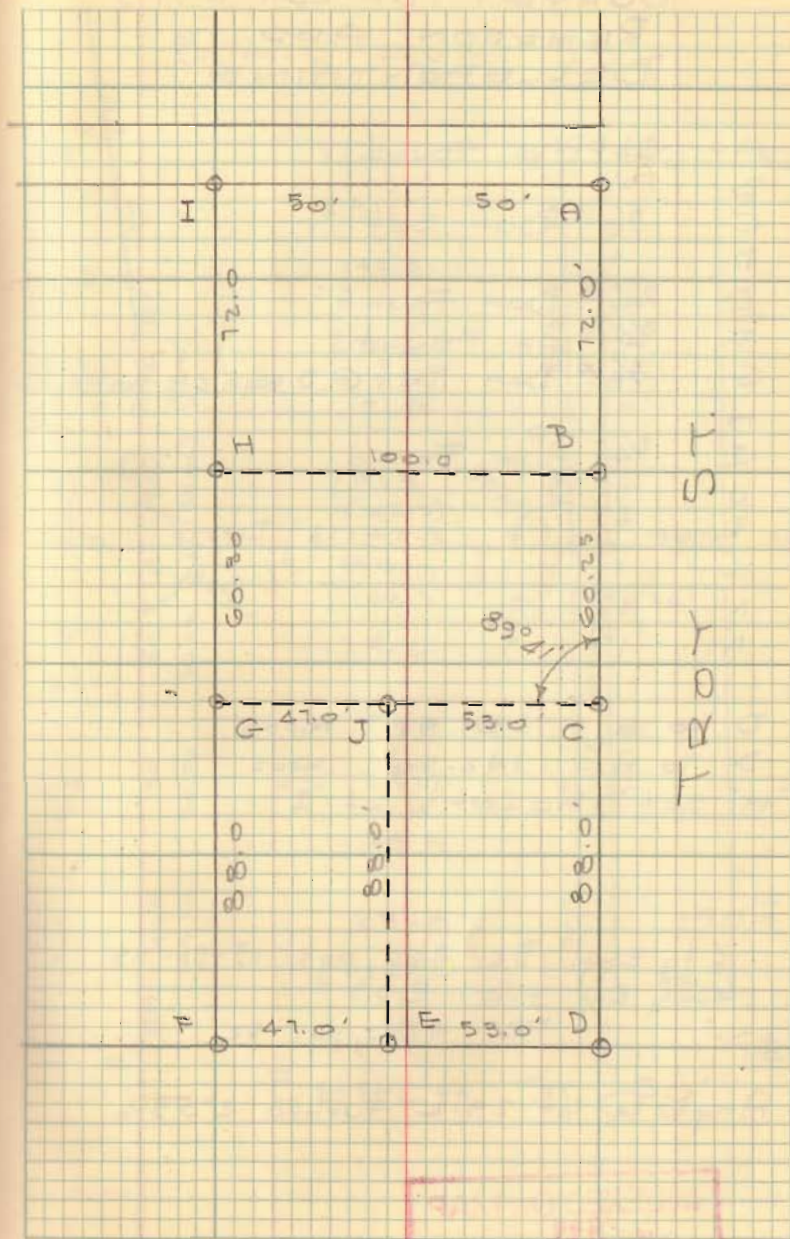
LOTS 50' x 220'

- A =  $\frac{3}{4}$ "  $\phi$  Dor Found
- B =  $\frac{1}{2}$ " Pipe "
- C =  $\frac{3}{4}$ " " "
- D =  $\frac{3}{4}$ "  $\phi$  Dor Found
- E =  $\frac{1}{2}$ " Pipe Found
- F =  $\frac{3}{4}$ " " "
- G =  $\frac{3}{4}$ " " "
- H = 1" " "
- I =  $\frac{3}{4}$ " " "
- J =  $\frac{1}{2}$ " " "

SEE CITY ENG. BK. 243 PG. 19  
FOR PREVIOUS SURVEY.

D. Dodson  
G. Geeslin

4-14-62  
40° 31



INDEXED ON MAP  
9611





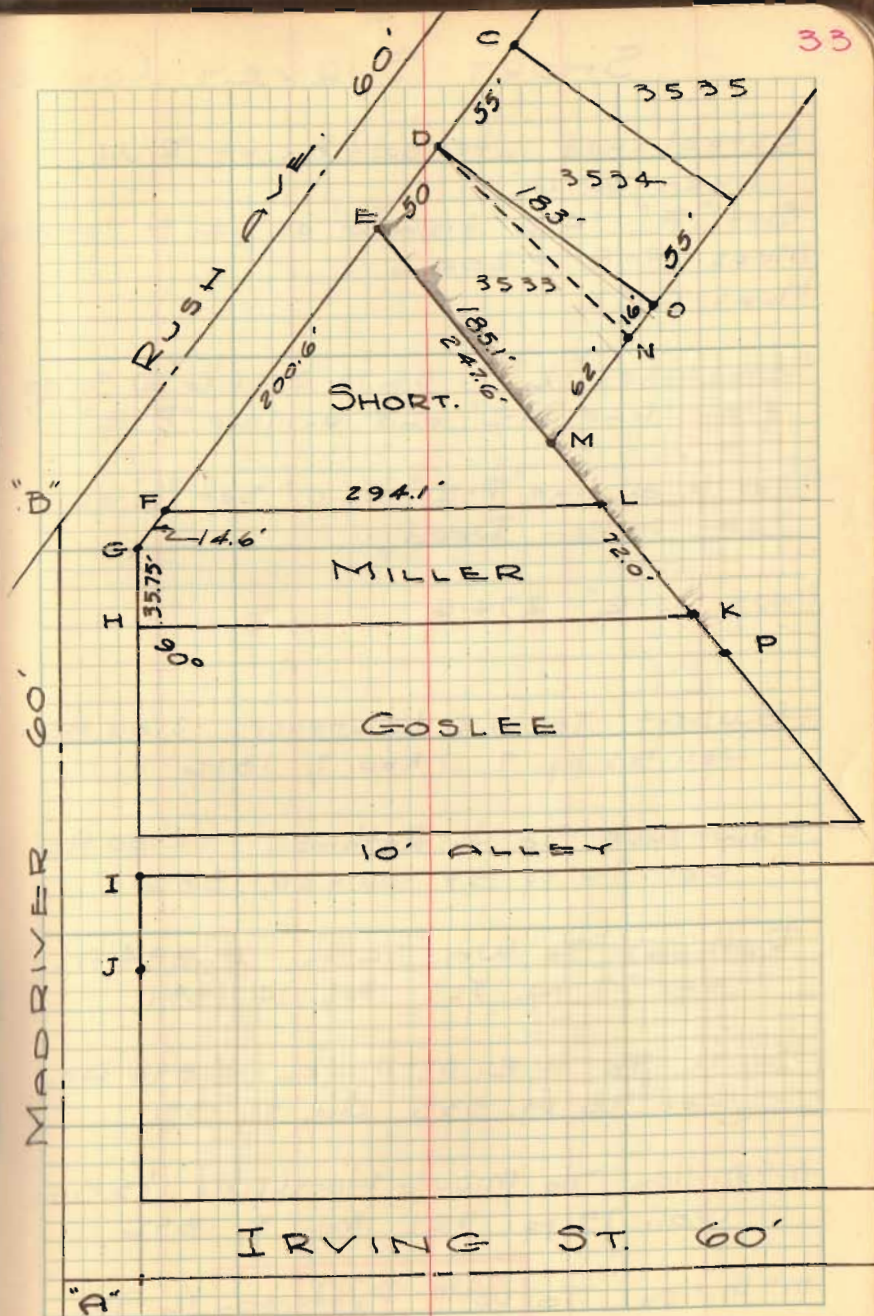


SHORT SURVEY  
V.M.S. 5245  
BELLEFONTAINE, O.

- A = Stone @ Madriver & Irving
- B = 3/4" Pipe @ & Madriver & Rush
- C = 1" Pipe Found
- D = 1/2" Pipe Set
- E = 3/4" Pipe Found
- F = 3/4" Pipe Set
- G = 3/4" Pipe Set
- H = Point @ N.W. Cor. Goslee
- I = 1" Pipe Found
- J = 3/4" Pipe Found
- K = Hub Set - S.E. Cor. Miller
- L = 5/8" Bar Set
- M = 3/4" Pipe Found
- N = 1" pipe Set
- O = 3/4" Pipe Found
- P = 1" Pipe Found

LINE	Meas. Dist.	Good Dist.
E-F	200.6	198'
F-G	14.6	14.6
G-H	35.75	35 3/4'
H-I		
P-K		
K-L		
L-M		
L-E	247.6	243 3/4'
F-L	Calc. 294.1	290'

INDEXED ON MAP  
2739





# SHORT SURVEY CONT'D

Established intersection of R/W  
lines @ "G"

Set "F" 14.6' from "G" as per Miller-Deed

Meas F-E = 200.6

Meas G-I

Established "K" - 35.75 S. of "G" @ 90°00  
from line "G-I" and on line "P-E"

Meas N. on line "P-E" 72.0' Set "L" as  
per Miller-Deed

Meas "L-E" 274.6

Howbert To W.E. Lawrence 2.00 Ac.  
Vol. 55 pg. 7 Nov. 7, 1876

Lawrence To J. Rathmall 2.00 Ac.  
Vol. 70 pg. 99 July 26, 1886

Rathmall To Wm. Smith 0.894 Ac.  
Vol. 77 pg. 527 Feb. 14, 1891

Smith To W.E. McMillen 0.894 Ac.  
Vol. 78 pg. 535 Oct. 31, 1891

McMillen To Minnie Hershfield  $\frac{1}{3}$  Ac.  
Vol. 79 pg. 521 May 5, 1892

McMillen To W.T. Patterson  $\frac{1}{2}$  Ac.  
Vol. 80 pg. 229 Sept. 3, 1892

INDEXED ON MAP

2739



LOTS 113-114-115-116  
 SEMINOLE SHORES SUBD. 2  
 PLAT BK. C, Vol. 3, Pg. 34

- A = 3/4" Pipe Found  
 B = Old Hub Found Set 5/8" Bar  
 C = 3/4" Pipe Found  
 D = " " "  
 E = 1" Pipe Set  
 F = 3/4" Pipe Found  
 G = 5/8" Bar Set  
 H = " " "  
 I = " " "  
 J = Old Hub Found - Set 5/8" Bar  
 K = " " " " " "  
 L = " " " " " "  
 M = " " " " " "  
 N = " " " " " "

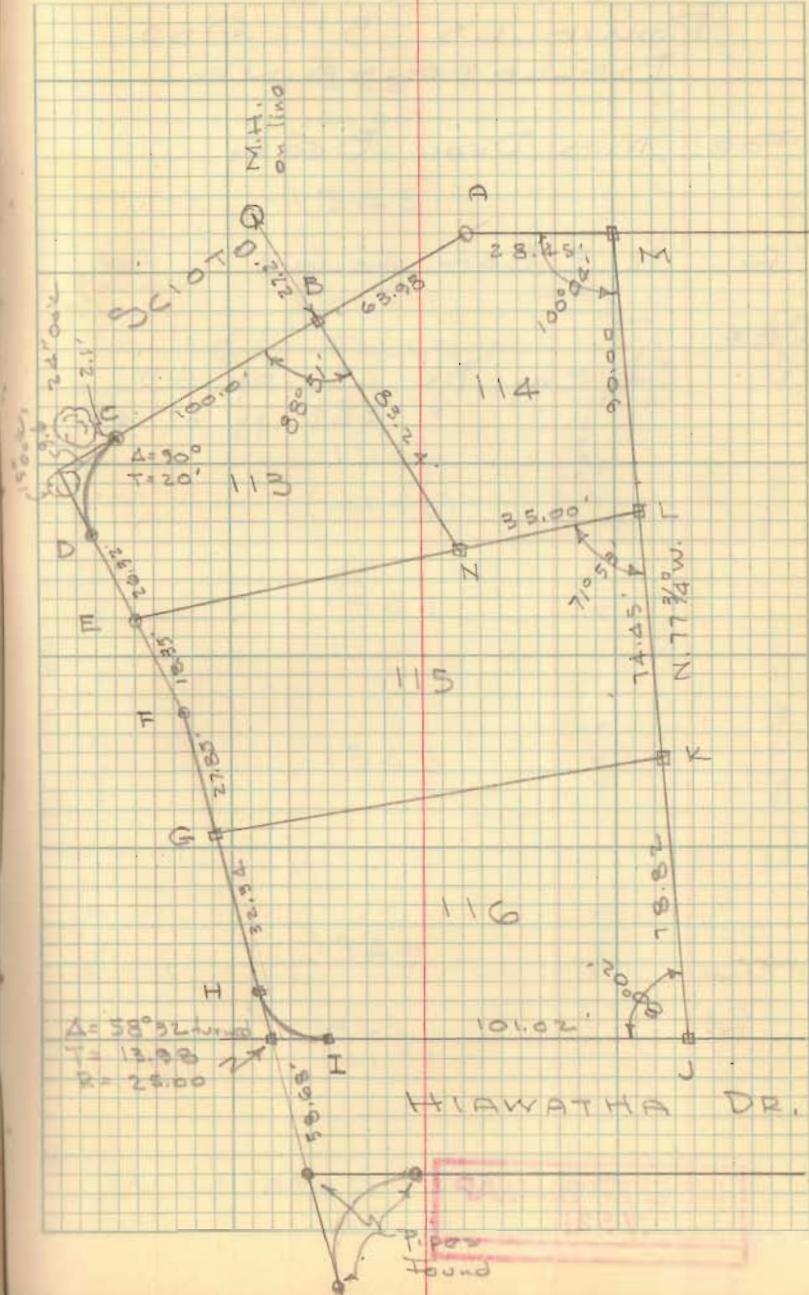
NOTE.

Old Hub at "J" evidently 0.18' East  
 of correct location - 5/8" Bar  
 set at location of old Hub.

D. Dodson  
 D. Lewis

4-24-62

70° 35



INDEXED ON MAP  
 2746



LOT 1546  
POWELLS 5th ADD  
BELLEFONTAINE

FOR: Mrs Dean Beatty

"A" 1/2"  $\phi$  Bar Found

REF:

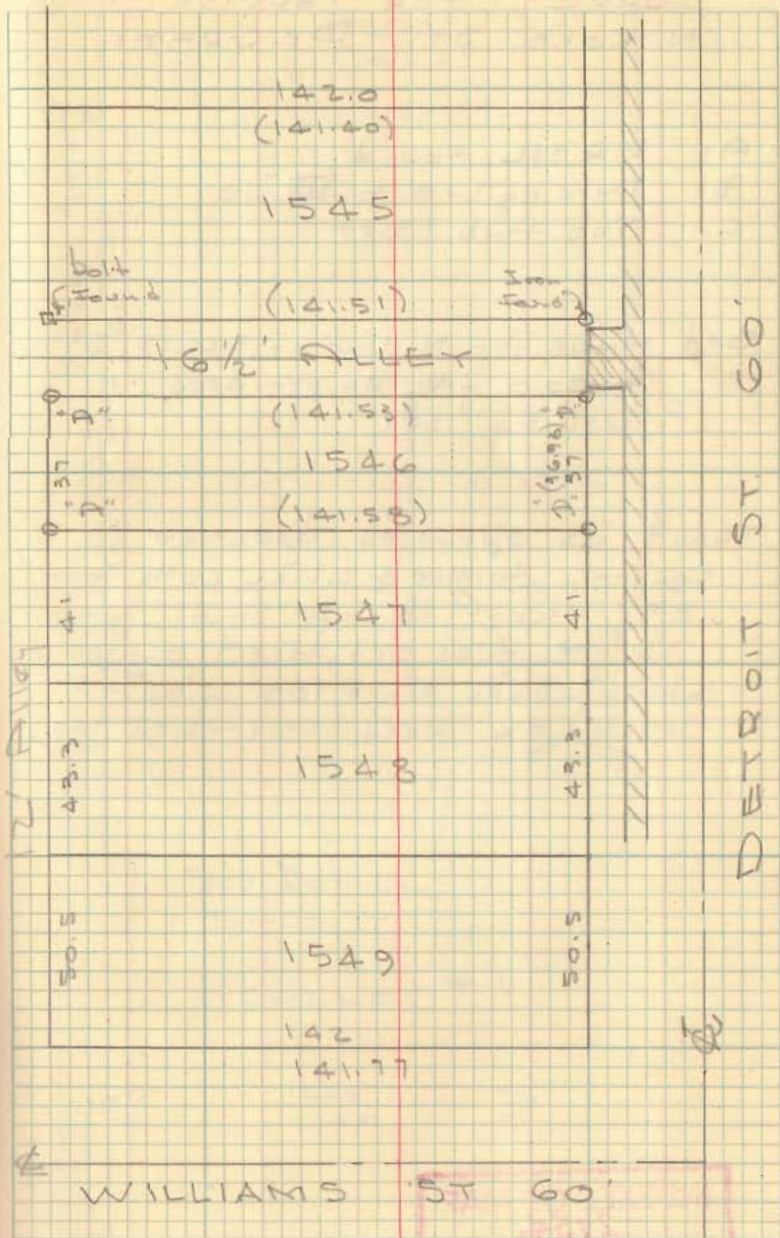
City Engr. Bk 226 pg. 49  
" " " 262 pg. 62-63

INDEXED ON MAP  
7521

D. Dodson  
D. Lewis

5-10-62  
50°

36



WILLIAMS ST 60'



SURVEY FOR PROCTOR BROS.  
N. KOKO ST. - DE GRATE

- A = R.R. Spk. Found
- B = Date nail set "139"
- C = Twp. Hub Set

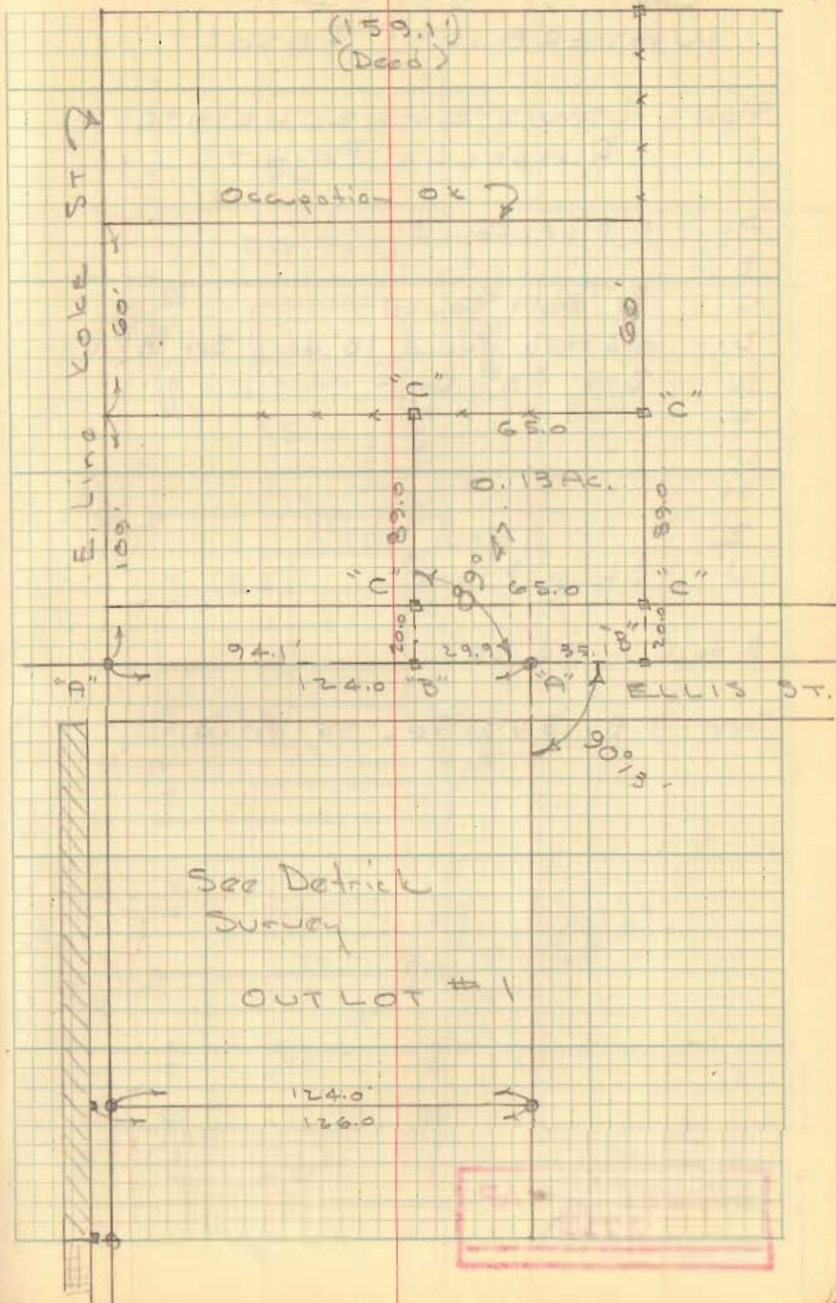
Set Hubs for N. line of ELLIS ST  
@ 20.0 feet ds per deed  
Vol. pg.

TRACT ds surveyed does not  
conform to deed which calls for  
89' except 20' off south for  
ST. - Hubs set to fit occupation  
which makes tract 109' wide -  
length OK - Deed 159.1 - now 159.1

INDEXED ON MAP  
2754

Dodson  
G. Geeslin

5-12-62  
150 37









LOT 27 - 28 PT  
WEST LIBERTY, O

LOT 27 & 28 OFF S. SIDE OF 28

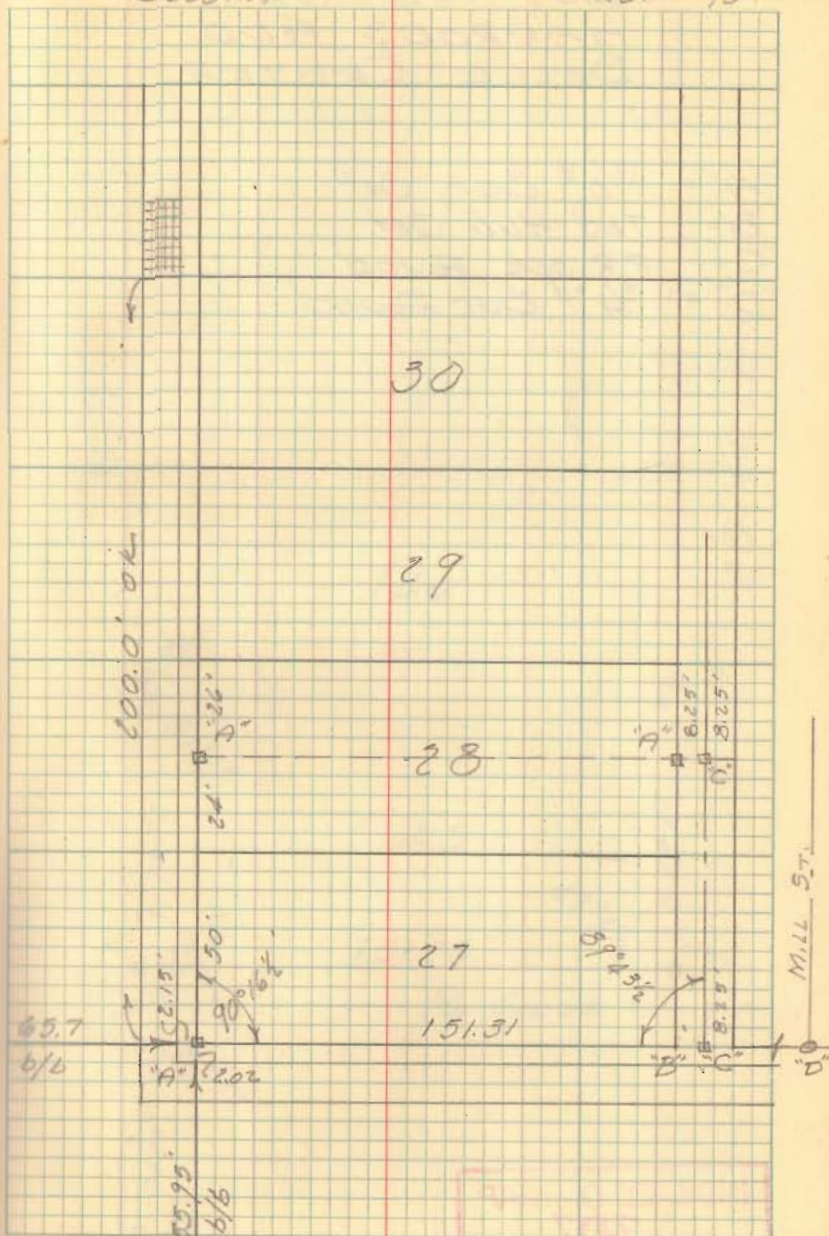
- "A" =  $5/8"$  Bar Set
- "B" = No pin Set - large rock pile
- "C" = Tkd Hub Set &  $16\frac{1}{2}'$  alley
- "D" =  $3/4"$  Bar Found @ Mill St.

A-D = 349.12'

INDEXED ON MAP  
2753

Dodson  
Gooslin

5-26-62  
Rain 70° 39'



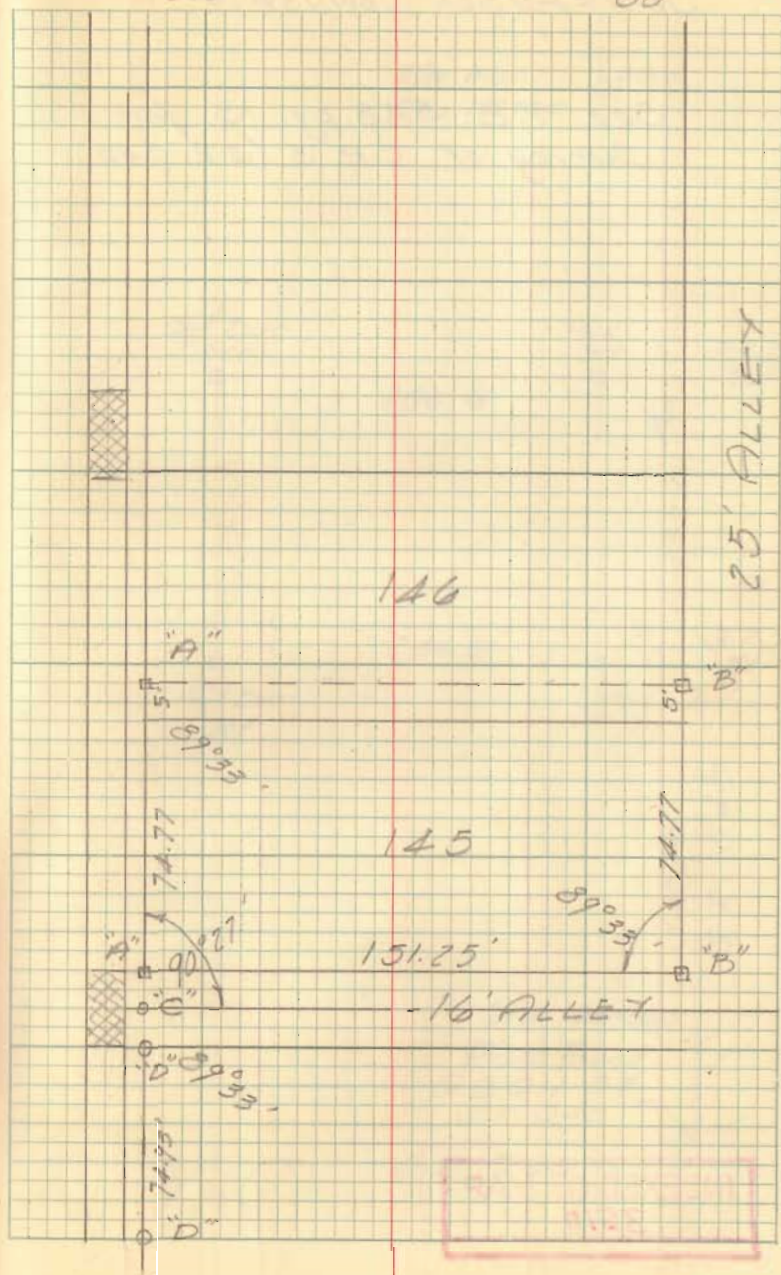


LOT 145 - 146 PT.  
HARROD'S ADD.  
BELLE CENTER

- "A" =  $\frac{5}{8}$ " Bar Set  
"B" = Tkd Hub Set  
"C" = R.R. Spk Found  
"D" =  $\frac{3}{4}$ " Bar Found

Dodson  
C. Coeslin

6-30-62 AO  
80°



INDEXED ON MAP  
7397



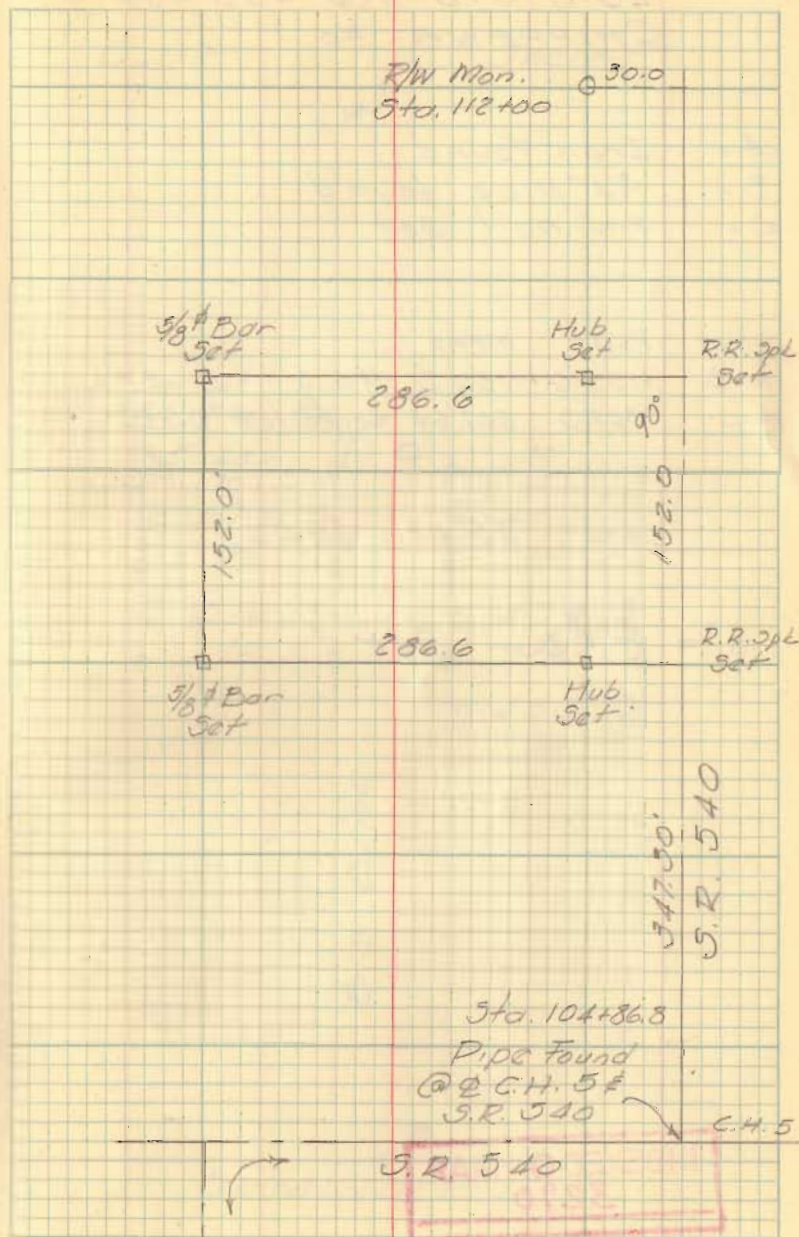
POWELL SURVEY  
JEFFERSON TOWNSHIP

See F.B. 588 pg. 13 for  
Survey of C.H. 8 (S.R. 540)

Dodson  
Casslin

7-23-62  
75°

41



INDEXED ON MAP  
3510



LOTS 575-576-453-454-455  
CHIPPEWA No. 1

A = Iron Found  
B = 3/4" pipe found  
C = P.K. nail set

LINE	PLAT	MEAS
A-B	1155.0	1155.3 +0.3
A-C	507.5	507.64 Corrected Dist

LOTS = 35.01 x 70.00

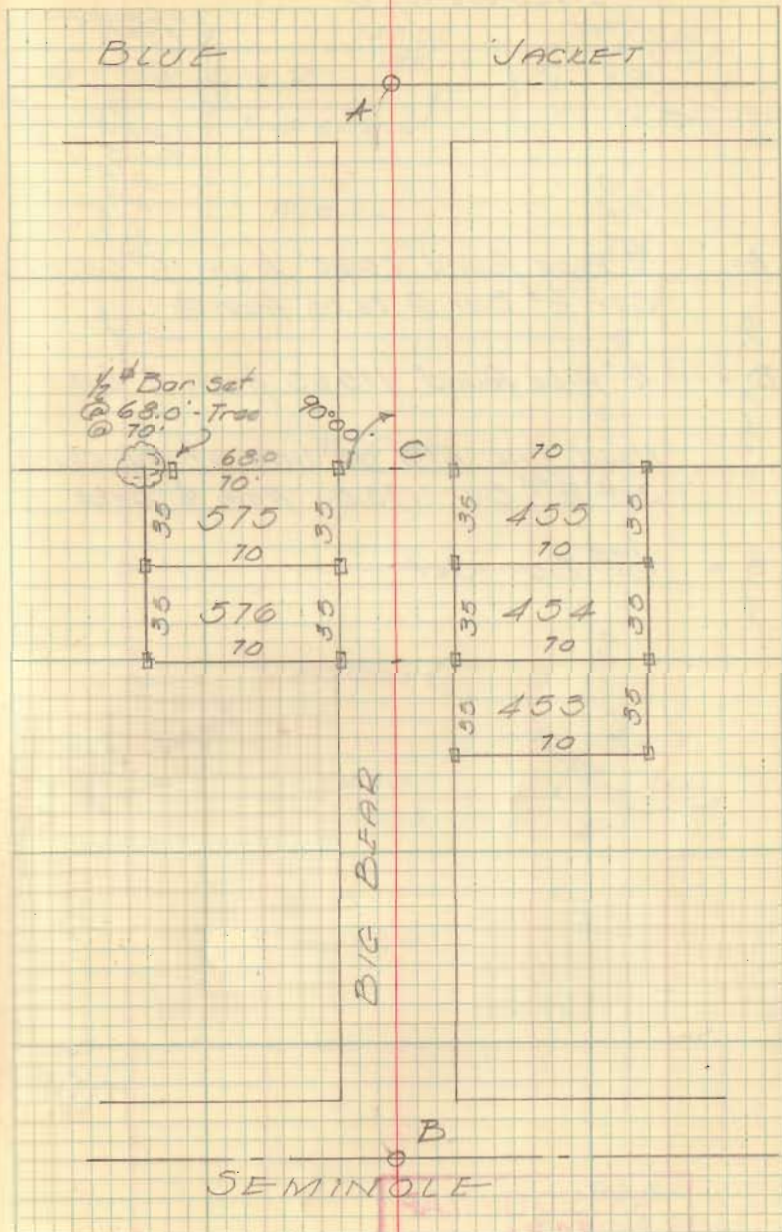
□ = 1/2" Bar Set

INDEXED ON MAP  
3290

Dodson  
Geealin

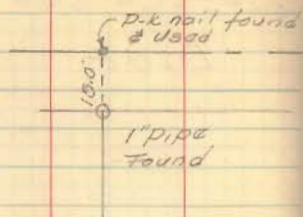
8-15-62

42





WIRICK - MCGEE SURVEY  
LAKEVIEW, O



A = 1/2" Pipe found 25.60' from E Lake Ave  
Set 1/2" Bar @ 26.00' from E

B = 1/2" pipe found 175.65 from E Lake

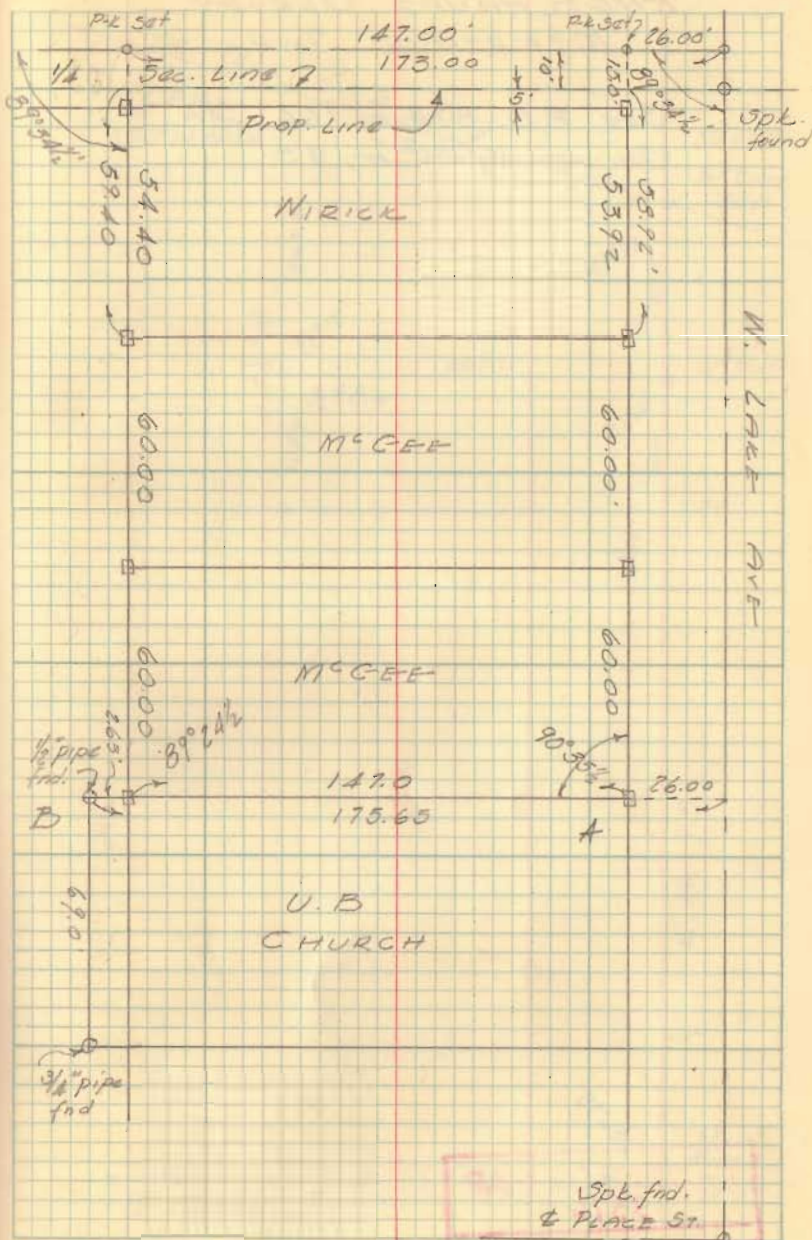
Used line A-B as line of U.B. church  
Set 1/2" Bar 173.00' from E Lake

□ = 1/2" Bar Set

Dodson  
Gealin

8-25-62

43



INDEXED ON MAP  
3291

Spl. find.  
& PLACE ST.

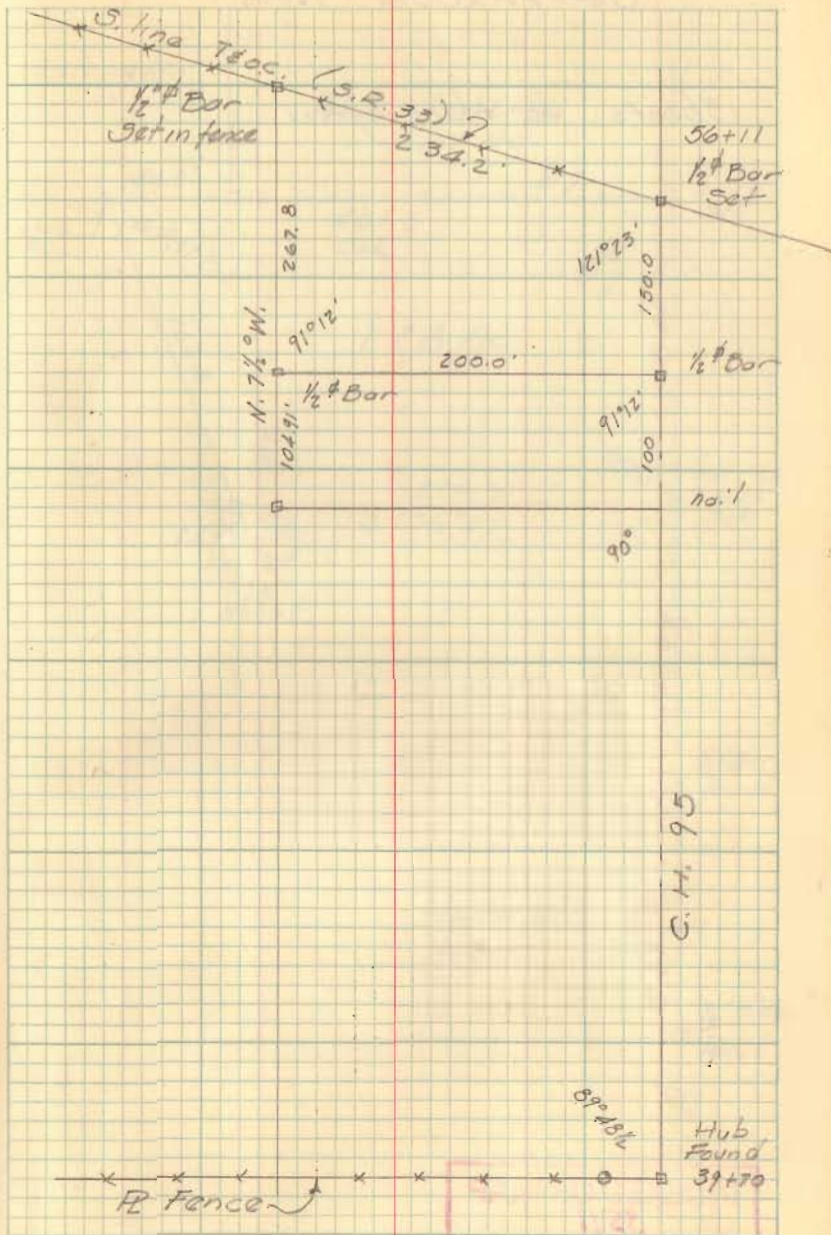


ENGELHAUPT SURVEY  
M<sup>c</sup>ARTHUR TWP.

See F.B. 574 pg. 66 for  
Survey of C.H. 95

Dodson  
Goodlin

9-13-62  
80° 44'



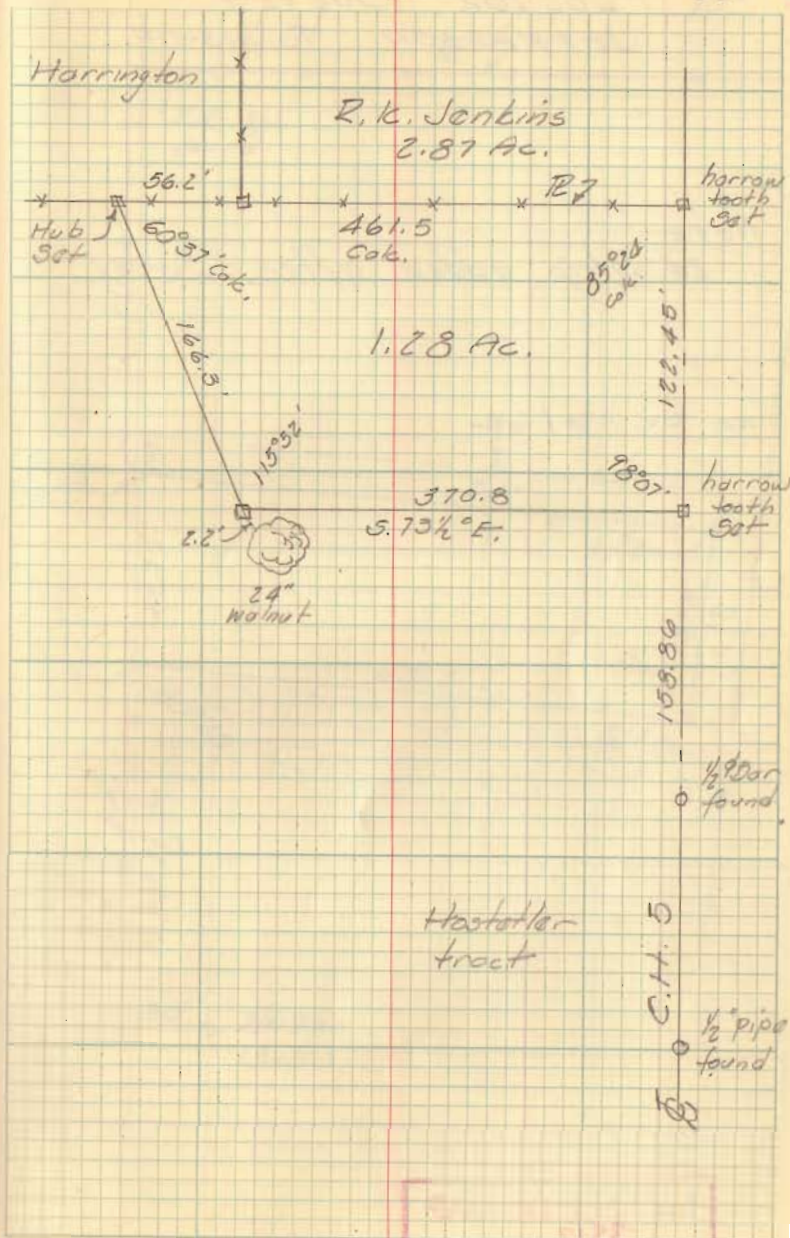
INDEXED ON MAP  
3516



HARRINGTON SURVEY  
JEFFERSON TWP.

Shoots to Harrington

9-22-62  
60° 45



INDEXED ON MAP  
3511

INDEXED ON MAP  
3511

PROCTOR SURVEY  
JEFFERSON TOWNSHIP

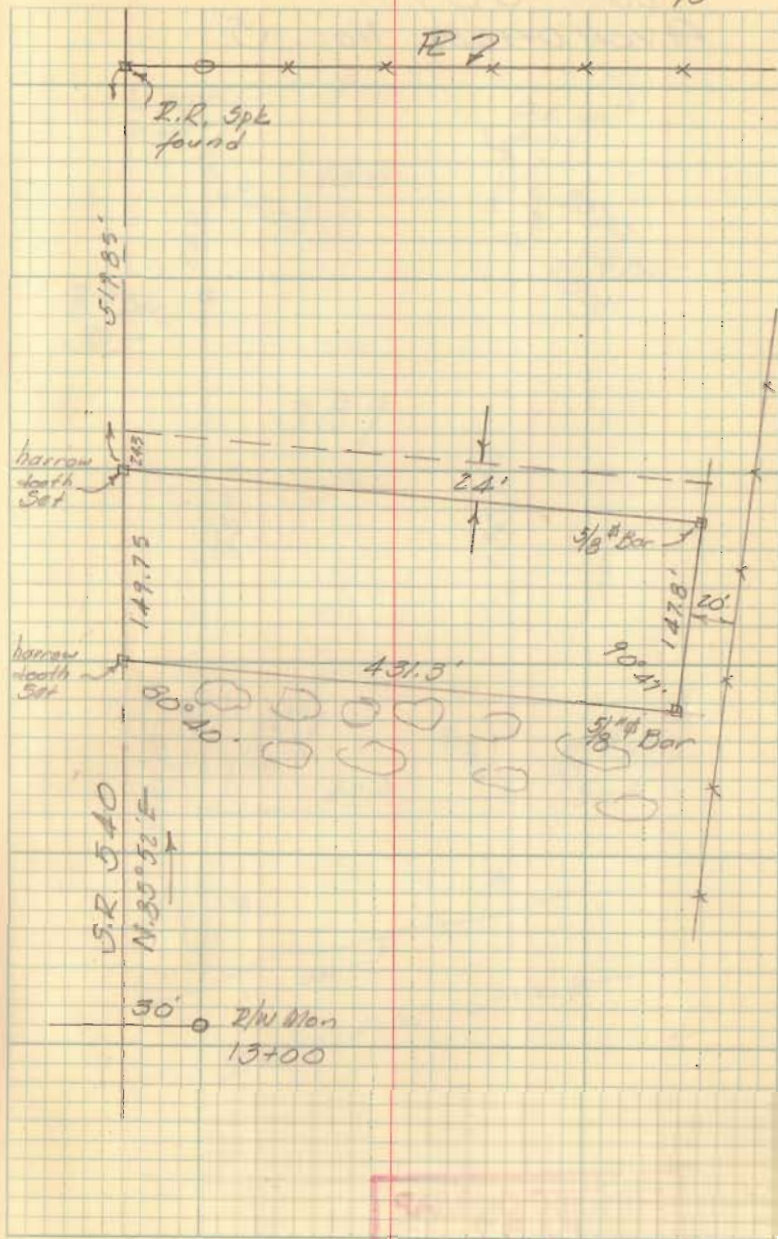
NOTE:  
24' strip added after survey

SEE BL 16/64

INDEXED ON MAP  
3512

Dedson  
Croslin

9-22-62  
70° 46'



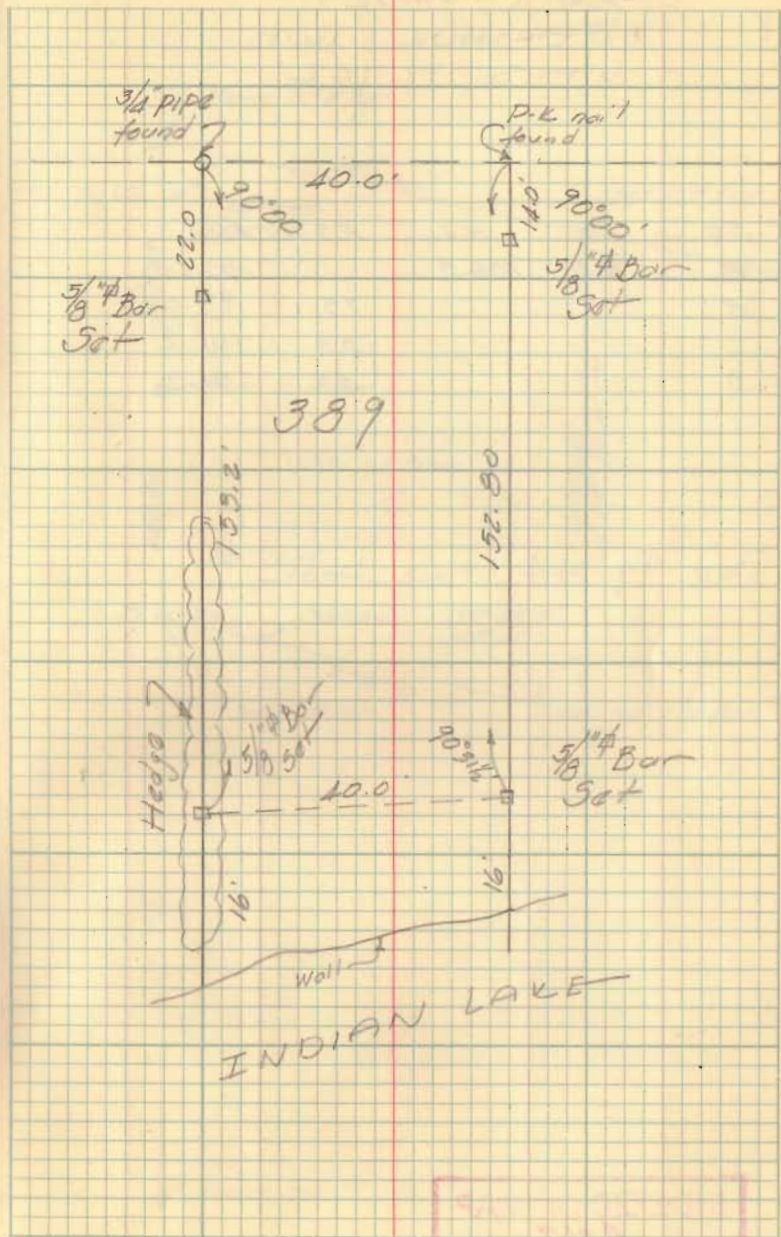
INDEXED ON MAP  
3512



LOT 389  
AVONDALE No. 5

Dodson  
Gaslin

9-29-62 47



INDEXED ON MAP

2137

LEE SURVEY  
 McARTHUR TWP.  
 V.M.S. 12742

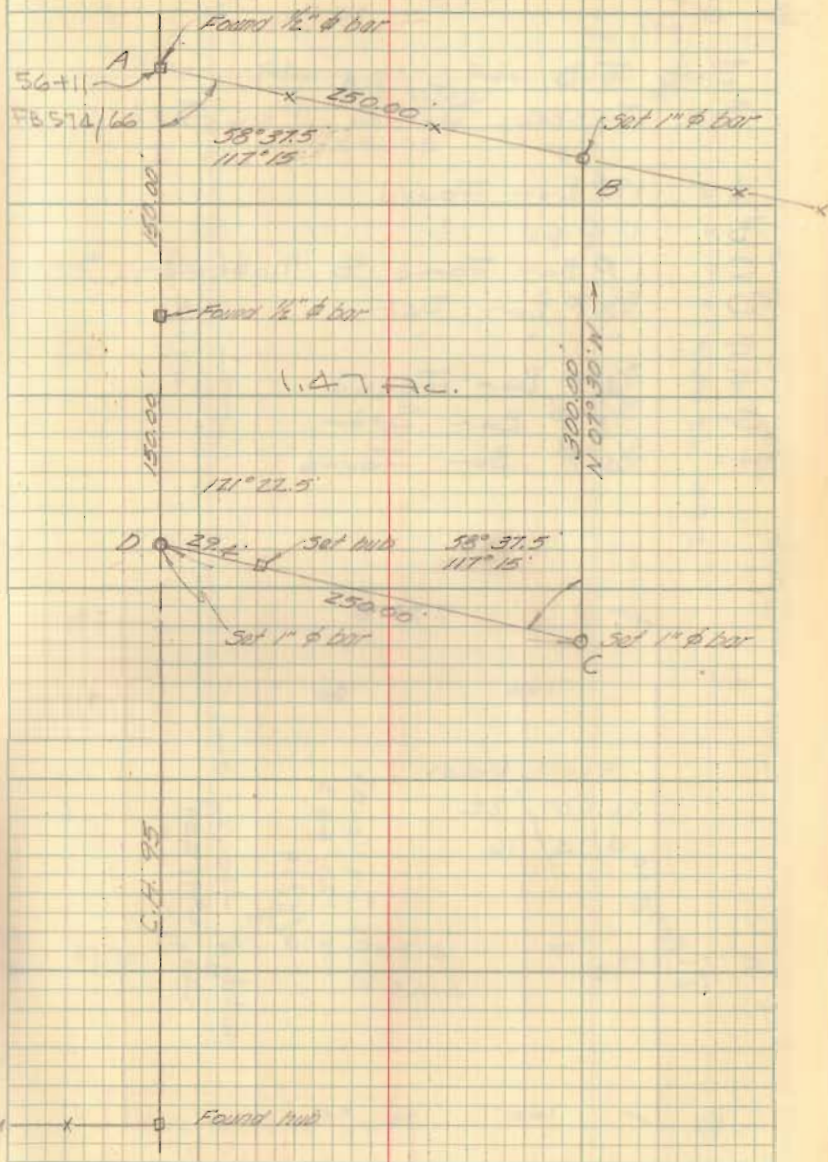
Sta	B.S.	I.I.	F.S.	ENV.
A	6.5	106.5		100.00
B			75	99.0
C			53	101.2
D			53	101.2

See Pg 44 this book

INDEXED ON MAP  
 4067

48

11-Feb-67  
 30°



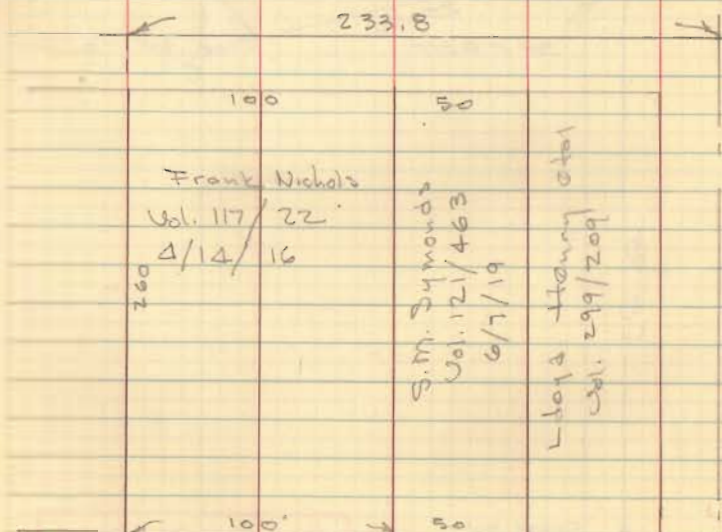


HENRY SURVEY  
DELLAFONTAINE, OHIO

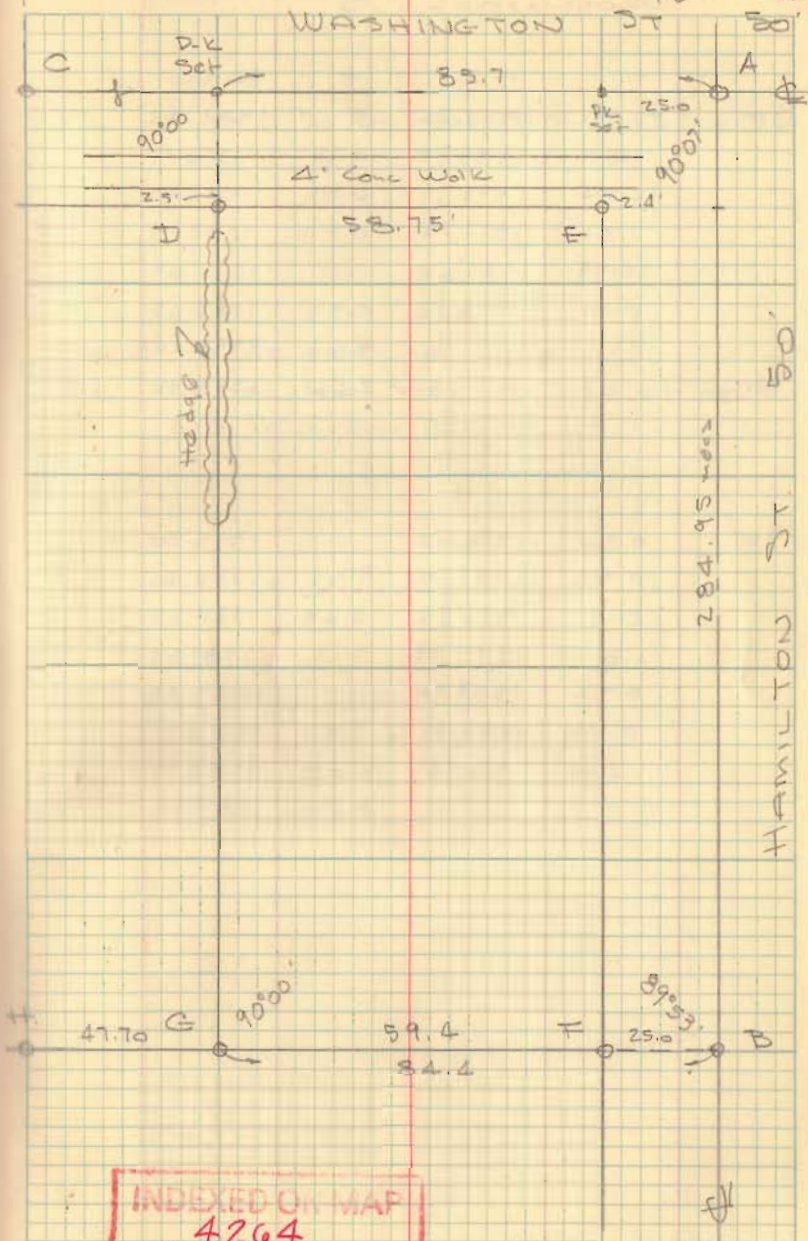
SEE F.B. 492, pg. 49

SEE Inskip Survey Plan S-1

- A = 1"  $\phi$  Bar Found
- B = 1" Pipe "
- C = 1"  $\phi$  Bar Found @ Madriver. St.
- D = 5/8"  $\phi$  Bar Set
- E = " " "
- F = 3/4"  $\phi$  Bar Found
- G = 5/8"  $\phi$  Bar Set
- H = 3/4"  $\phi$  Bar Found



March 20, 1967  
75° 49'



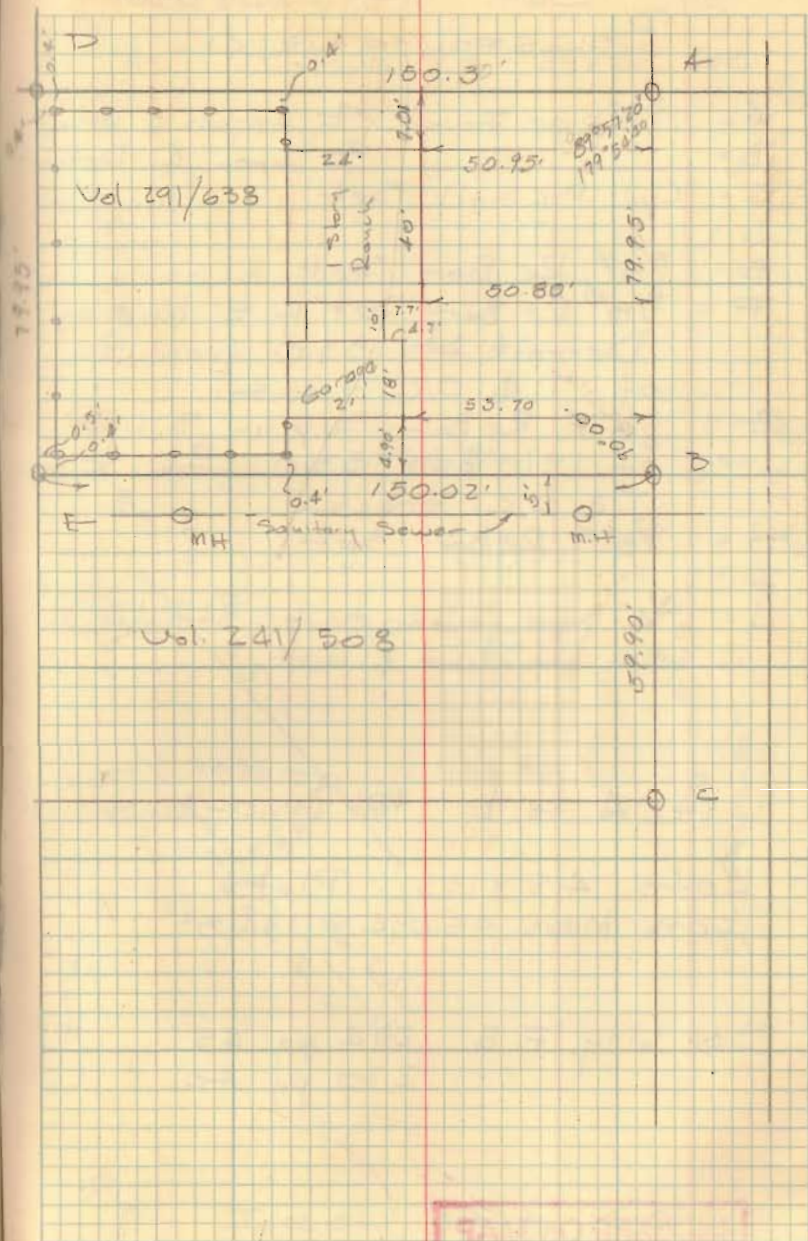
EDGE SURVEY  
BELLEFONTAINE, O.

807 E. Sandusky Ave.

- A - 3/4"  $\phi$  Bar Found But placed 5/8"  $\phi$  Bar
- B - " " "
- C - 1/2" Pipe Found
- D - 3/4"  $\phi$  Bar Found
- E - " " "

W. S. Nichols

May 29, 1967 51



INDEXED ON MAP  
7269



Lot 1911  
BELLEFONTAINE, O

- A = 3/4" pipe found  $\neq$  Ingalls & Detroit
- B = " " "  $\neq$  Iron & Detroit
- C = Cpd. P-K nail Set
- D = " " " "
- E = 5/8" Re Bar Set
- F = 3/8" Re Bar Set in E. line of Detroit St. 33.0' from  $\neq$  of T. & O.C. track
- G = 5/8" Re Bar Set in S. line of 1911 and 33.0' from  $\neq$  of T. & O.C. track
- H = 5/8" Re Bar Set
- I = " " "
- J = 3/4" pipe found, bent, straightened or for line & dist.

Dist A to B Plot 615.0 - Meas. 616.13'

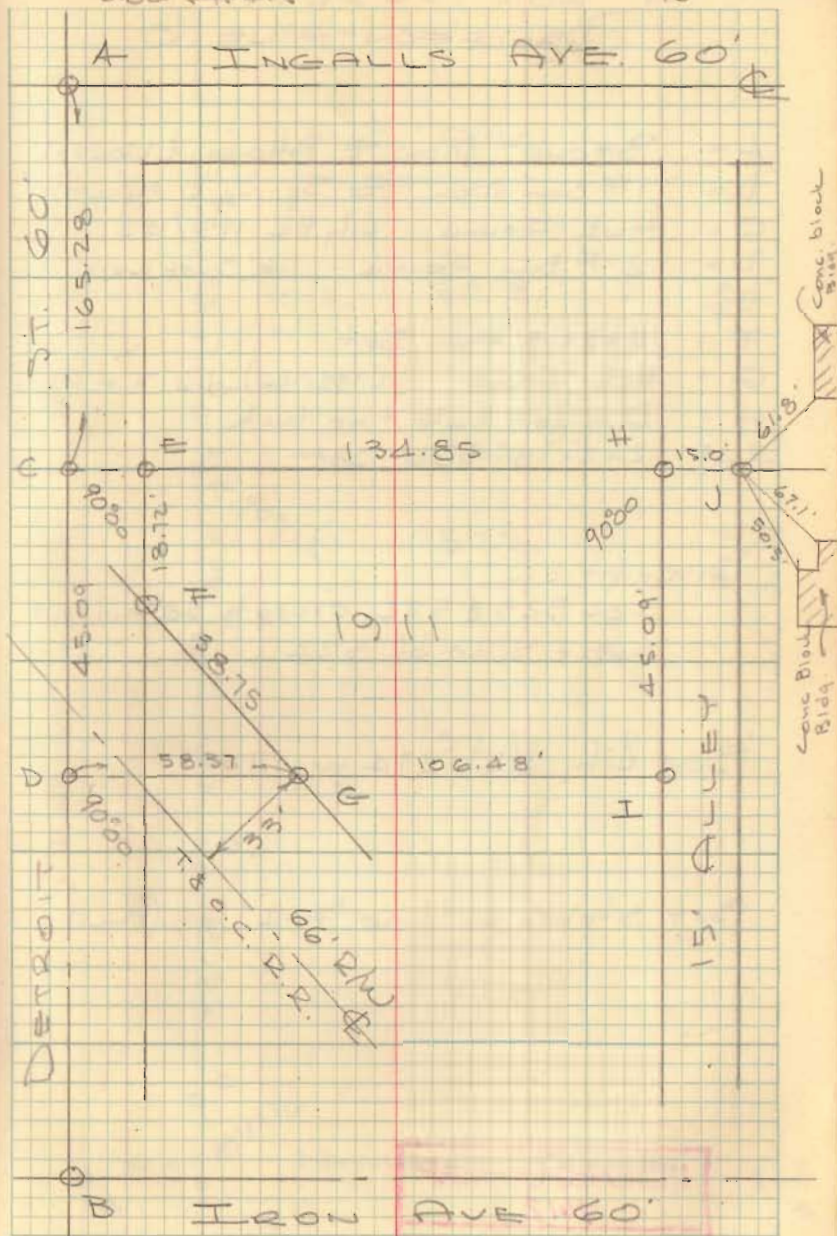
Lots 45 x 135 Plot  
Lots Meas 45.094 x 134.85'

See City F.B. 274 pg 65  
" " " 270 pg 40

INDEXED ON MAP  
4270

Dodson  
Duk Art's

May 23, 1967  
700 52









PT. LOT 30  
SHAWNEE ISLAND

- A = 1" pipe found  
B = 5/8" pipe set  
C = 3/4" pipe found

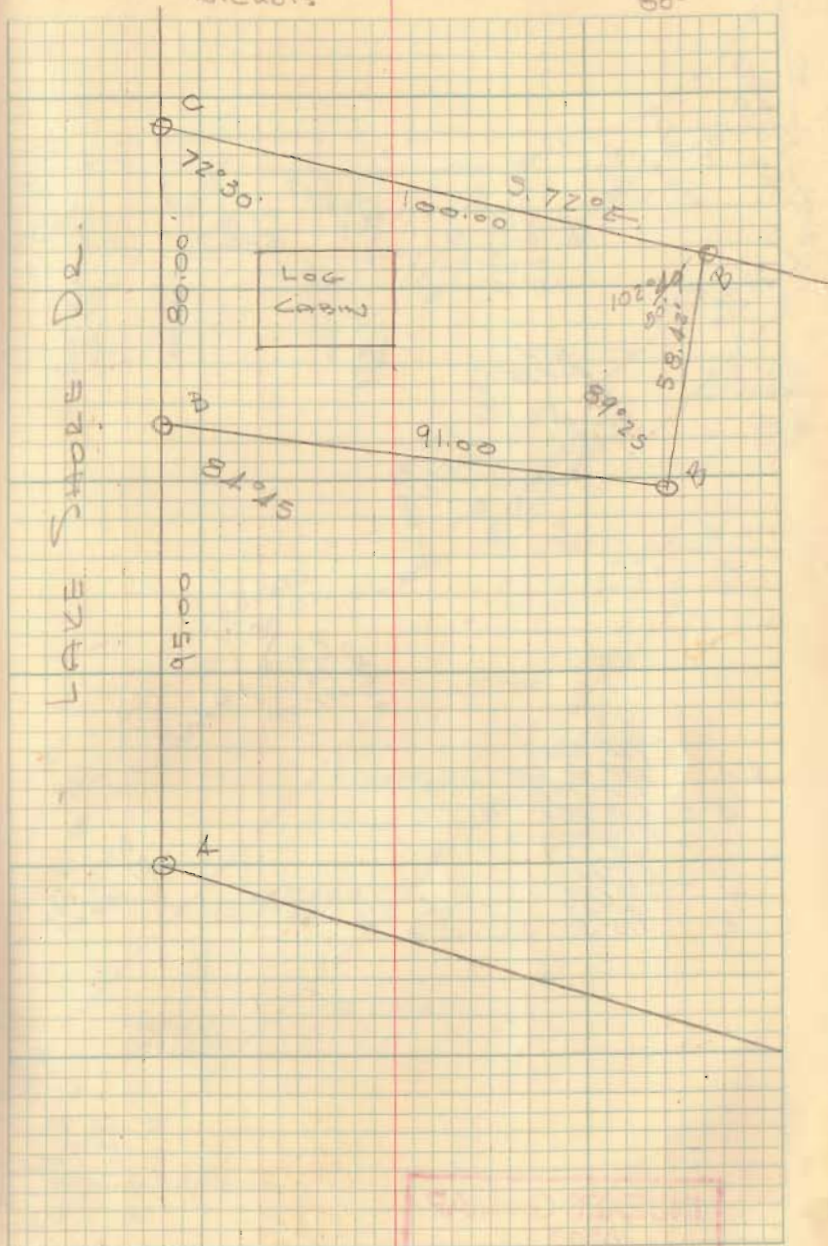
John V Walker  
9292 N. Main St  
Dayton 45415

	139.60	
	80.00	179.60
89.25	92.15	107.50
102.47		72.50
92.50		
93.15		
338.19	95.15	359.60
	72.50	428.10
	90.32	101.25
	258.19	
	49.15	
	72.50	
	34.20	
	17.25	

ADDED ON MAP  
4261

Dodson  
Nichols

May 27, 1967 54  
80°









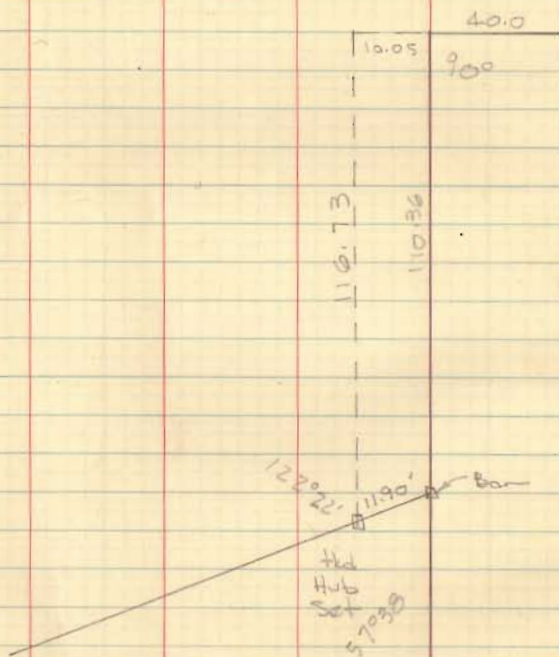






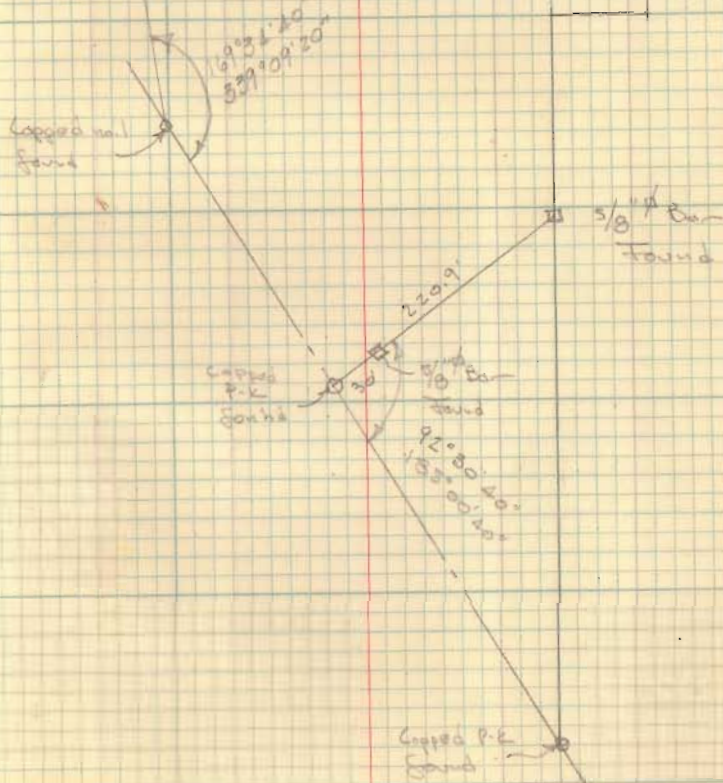


13  
STILES  
N. MAIN  
LAKEVIEW



INDEXED ON MAP  
3197

70





Pt. Lot 9

PENNSYLVANIA, OHIO  
FOR

THE UNITED TELEPHONE CO.

- A = Chiseled + on Conc. Walk
- B = 1"  $\phi$  Bar Found
- C =  $\frac{5}{8}$ "  $\phi$  Bar Set
- D = Chiseled + on Conc. Walk

INDEXED ON MAP  
4167

Dodson  
Arch

July 7, 1967

73

