

for R. C. Hallerton  
Spencer Surv 9948 = 80 ac. J. Hellinga Hunterville  
Mrs. A. E. McClure Bellefontaine

	No. Surv.
Rachael Shelby Surv.	✓ 12742
Dimms & Tammey "	✓ 9948
L. L. Kerr Surv.	✓ 3245
Moore Porters " Sec 24, R 14, 24,	✓
J. D. McLaughlin (Taylors) Surv. 9909	✓
Angel-Gore Surv., Sec 5-R 14 T. 3	✓
Scarff-Taylor "	✓
Brandon Palmer Surv. Sec 35, R. 14 24.	✓
Thos. Wishart Surv. School lot, Surv. 9904	✓
Bennetts Surv. Surv 4990 + ft. C. land. It	
Joseph Stevenson Surv. 3317 1.900 a	✓
McClure & Mc. Kinnon Surv 9950 = 103 + 70 a	
Joseph Clark Surv. Sec 1, R 14 2, 2	✓
DeGraff & Logansville Jords	✓
Simpleton Surv. 6 a in Surv 9971	✓
Emerys Survey	✓
Bennets lot in Bellefontaine	
Marmors Survey	✓
Dr. Watsons Survey	✓
Lawrences Survey of wood-land in Hardin Co.	
Kaupfmans Survey of woodland	
Fair Grounds Survey	
Samuel Miller Survey	
Nancy Green Survey	
C. C. O. J. R. R. Survey	
Gardners Survey	

2

INDEXED ON MAP

(184)

# Shelby Surv. (12742)

g = N.O. 24 (old Mt) N 65 E 9 1/2  
N.O. 14" S 42 1/4 E 49 1/2 links

## Line A. g.

Start N of stake at < 2.5 links  
N 79 3/4 E

Set south 13

Bank at 56, 31 rods (cut creek)

Strike N of Walnut stump S 2 E 4 1/2 links

Cut creek at 61 + 80 links

Dist to Wal. stump 4-7-37 = 75 1/2

Cor. = 3/4" Cor. line = N 50 1/2 E

Line A = 887 corrected dis

From Walnut stump S 80 W 6 poles to a

Hit a = dug 10" N 31 1/2 W 9 1/2 links

Shel Hick 7 S 73 1/2 E 16 1/2 "

cut in S 40 1/2 E 35 "

3

INDEXED ON MAP

(184)

# Shelby Surv.

B. - a

Start ~~and~~ West of 2 4 1 links

S 9 1/4 E

Stake 1 on line avoid this stake N 65 E 41 links

" 2 "

after set 3 set more N 70 links

at 48, N.O. N 80 E 50 links

Stake 3 on line

" 4 "

after set 4 set East 50 i.e. N 80 E

at 81 poles dead hick 10" struck line N 65 E

Stake 5 on line

" 6 "

" 7 "

at 144.5

Strike tree <

Find tree old road N 65 E 110 links

Shelby set < N 50 1/2 E from it

Line length line B 146 rods to

tree < at 7

Hit F = B.O. 14" N 8 7/4 W 43 links

cut in 9" S 65 E 14 "

Line course B = S 9 1/4 E 146 poles

# Shelby Surv.

Line C - 2

start  $\leftarrow$  ~~S~~ S 80 1/2 W

Stake 1 not in line

Marked W.O. at 21', 24" di

~~48'~~ Stake 2 in line

48' rods Marked R.O. on line

Stake 3 in line Inside old marked Shel-Hick  
Find remains of old Wal tree stump being tree?

Drive stake at  $\leftarrow$  (line C strikes S of  $\leftarrow$  5 links)

Line length Line C = 4 - 4 - 18 = 88.72

same being  $\leftarrow$  h

Mid h = W.O. 30' S 78 3/4 E = 29.6

" " = W.O. 30' 6" X 6 1/4 W = 54.6

True base C = S 80 1/4 W = 88.7

Line D - h. Stake  $\leftarrow$

at 9 1/4 W

Old marked W.O. 24" at 12 rod

W.O. 1 not in line

W.O. 2 in line Moved this stake east 2.

at 48 rod set W 40 links

Stake 3 in line moved this stake <sup>removed 3, east 3 links</sup> east 40 l set in fence corner

" 4 " " removed 4, east 4. " 40 " " " " "

" 5 " " removed 5, east 5. " 40 " " " " "

at 118 set East 40 links

True base D = N 9 1/4 W = 145.6

# Shelby Surv.

Line D - continued

Stake 6 in line Moved this stake east 6.

" 7 not in line

Length to  $\leftarrow$  stake 7 - 2 - 40 - 145.60 poles

strike west of  $\leftarrow$  stake 4 links

from  $\leftarrow$  stake at g, S 80 1/2 W 94 links to  
point j at 7 links N 10 W from stone  
point in by Dixon

Meas from stone supposed  $\leftarrow$  at g to  
21.4 poles to sug tree at f. This note belongs to 1844

Rachael Shelby surv. made May 28, 1879

# Rachael Shelby

- Mid a = Aug. 10" N 2 1/2 W 9 1/2 + Shul. Hick 7" S 7 1/2 E 16 1/2 + Aug. 3 1/2 E 25
- " b = Red. O. 14" N 8 7/4 W 43 + Swamp Ash 9" S 6 5/2 E 14
- " h = W. O. 30" S 7 8/4 E 29 + W. O. 30" N 6 1/4 W 54.
- " g = W. O. 24" (old wit) N 5 5/6 P 1/2 + W. O. 14" S 4 2/4 E 4 9/2
- " j = g. N 80 1/2 E 94 + stone S 9 1/4 E 7
- " N = Wal. B. on bank creek + a = S 80 W 6 poles. + see below Heff. Surv.

All courses + dis in Red ink taken from Heff. Surv.

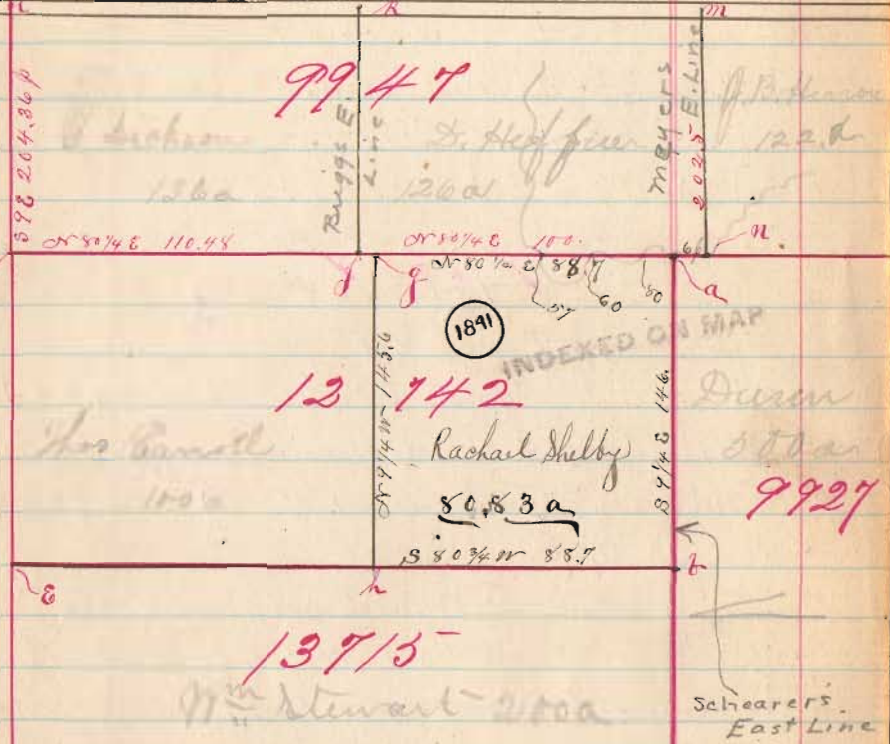
- Mid f = Stone at Buckeye.
- " n = Buckeye S 2 8 E 82

(1841)

INDEXED ON MAP

# Surv.

Huntsville + Res. Pick



Surveyed as above for  
 Rachael Shelby  
 May 28<sup>th</sup> 1879

# Simms & Lacey Durr

## Line A

Start ~~at~~ old line Sims & Beck  
at 43' W of line  
or 10' W

to cut Buck stump 1-9-40 = 39.60 poles  
" " like 2-1-14 = 42.56

Set 3 on cut like 43'

From Bench stump to flag as set 43', E = N 3 1/2 W  
set staff <sup>on cut like</sup> 10' 4" take bearing from staff as last set  
to old Buck stump. S 8 1/4 W 75 links (75 lbs)

Point B

altho' the true cor of Bench was S 10 1/2 E N 10 <sup>on line to</sup> first above cor  
2 = ~~50~~ 8' N 70 W 49 1/2 links (should have been 49 W)

Traverse 1° for 43 = 74 = 12.21 feet -; 12.21 - 10.33

= 1.88, 75 lbs = 49 1/2 feet, var 1.88 in 49 1/2 = 2 1/4°

Now take above cor S 8 1/4 W add 2 1/4° = S 10 1/2 W which  
is Bk bearing from Bench stump to -

B. 2 - cut like

N 81 E

(Strike a N 9 W from marked elm at 5-4-33  
= 107.82 rods (long ones on below))

Strike a small stake cut like N 9 W from marked  
elm in Skill line at 4-9-33 = 99.32

base S W to McColloch at 81.36 poles

# D & L Durr (99/8)

Strike <sup>N 8 E Skill</sup> at 8-8-8 = 176.32 poles

" N W ch lot at 13-3-18 = 266.72

" Old stone < at D & L Durr 14-1-47 = 283.88

## Line C. of old stone < at stump

S 9 E with Durr line

set at stake at 2-5-0 = 50 poles = (true line of)

cut Miami Rn at 5-3-18 = 106.72 poles

" like off. < stone S E to Skillman 5-9-40 = 118.4

to point x put stake in line (cut like) at 13 1/2 lbs  
east from marked < stone.

10  
77 30  
3.78

124

1.72  
4  
5.72

76  
28.70

# Simons & Lorraine Dunn

Line D - x S 81 W

Set N 75 links

at 30 poles Mr. Ellers fence South 39 1/2 feet

Set S. ~~48~~ links 28 lks

Set ~~stake~~ <sup>stake</sup> E at 77, 80 poles

Set stake in line at 108 being 27 N of true

line S 81 W from x being C.K. dis E + W 1

in C.K. line N + S as shown by Mr. Ellers fence

cut lane W of skill 9-2-43 stake 185.72 = W

fence " " 9-2-31 185.24 = W

Line E - W - stake cut lane

Start stake,

S 9 E

3-1-25 - 68 poles

Strike old marked arch & tree - W

INDEXED ON MAP (1842)

108  
77 .24

11

# S & L Dunn

Calculated course from u to a N 8 3/4 W

Line F - u N 8 3/4 W

Strike marked Buckeye at about 41 poles

set W 10 1/2 links at 41

- Stake 1 in line true line
- " 2 not in line
- " 3 in line, removed this stake east 10 1/2 true line
- " 4 at W 1 link east of line
- " 4 in line read this stake 10 1/2 E
- " 5 " " " " " "
- " 6 " " " " " "
- " 7 " " " " " "
- " 8 " " " " " "

Marked line at 8-7-20 = 174.80 poles 10 1/2 W of cut lane

cut pike at 9-0-0 = 180 poles

set stone in line at 10 1/2 links east line

Round stone 16 in. x 7 x 3

True course F = N 8 3/4 W 180 p.

(1842)

INDEXED ON MAP

68.14  
4886

68  
47

# Simms & Lanning Survey

Line G. set at stake at 108 of 5  
N 81 E 30.70 strike 13 links N of stone at  
E being N W < to M<sup>o</sup> Ell.

Variation 1 degree.

## Line H. - d

Start stake at 108 poles on line d.

N 9 W

at 65 poles W of marked O. 24° 7/8 L<sub>n</sub>

" 3 d strike marked oak

Strike cut pipe 5-8-25 = 117 poles

" " 2 links west of stake at <

put stone at < at stake as set on line B at 176.32

Variation = 2 1/2 - 3 = 4 1/2 links on 5-2

117  
65  
5-2

Set stake 5 in line next this stake 4 1/2 L east.

" " 4 " " " 6 " "

1842

INDEXED ON MAP

47.32  
49.68

47.32  
7

INDEXED ON MAP

1842

Line I. start at stake on H at 68.16  
mon stake east 9 L S 9 E strikes marked  
N. O. 24° cent. take 27 links from old  
mitress bush to intersect line from above  
stake in line with 24° N. O. put stake  
at said intersection find that is at 3-  
3-33 = 47.32 from start H. = c'  
being S 9 E, 49.68 poles from I. is c cent pipe

## Line J = c'

N 81 E, start stake c'

at 8.24 poles pass 3 links S of marked bush  
take 1 in line set this stake south 3 1/2 links

" 3 " " " " " 5 "

at 40.20 pass 11 L N of McKeimick N 9 E stake  
take 3 in line set this stake south 7 1/2 links

" 4 " " " " " 10 "

" 5 " " " " " 12 links

cent pipe at 5-3-42 = 107.68

set stake at 100 poles

Strike N of stake at 50 poles on line C.

div of 13 links

Remasure from stake X N 9 W 68.40 to < to being at  
stake on line C at 50. poles, as before set - make 13 links

Line as line J = N 81 1/4 E 107.68

# Simms & Lowrey Surv.

Line R. Take line from stone & at  
 N 86° E & Surv. to peg at 118.40 line C.  
 find cent line for < at T.  
 Distance from stone at 118.40 line B.  
 3-4-10 l to line < at T = 68.40 poles

sep 13 1/2 INDEXED ON MAP  
 (1842)

S = 12

INDEXED ON MAP

from stake c' south 9 2 42 links to post  
 S 81° W 8 links from M'Carricks <  
 stake c' in line <

Wit o' - Birch 18" N 49 1/2° W 9 links  
 Hick 4" N 4° W 3 3/2 links  
 Birch 14" (old mil) N 38 3/4° W 27 "  
 Ash 7" S 69° E 30 1/2 "  
 B.O. 28" (old line tree) S 9° E 46 lks  
 put on stone at c' will stone 16" long  
 6" thick

Simms & Lowrey Surv. Made June 5 & 6  
 1879

# Paul White Surv. Mar 20<sup>th</sup> 1882

Course of N line White & N 86 3/4° W  
 Start at S W & Paul Whites 3 a, then with his S line  
 eastward 9-13 = 18.52 poles to his 2 line fence & mark  
 in center of 30' St, then eastward 3-19 = 6.76 poles to  
 S 2 < post - Shea in fence (board) put in stake, then  
 eastward corner from S 2 < post - Shea to S W & turn Murphy  
 - N 3° E, then on S 2 < post - Shea 3-4 = 6.76 poles to S E <  
 Paul White (Pulley) stake at old fence corner.  
 Hence 0-26 = 13.04 poles to S 2 < Kelly's 2 are  
 Start S 2 < to 2 a Kelly's fence N 1-2-24 = 24.96 poles  
 to top of <

Start of side Border alley then southward 1-3-10 = 26.4  
 poles to line of fence at corner line of Fogarty (by N 1/2 C  
 fence) (Border alley between fences 30 links = 120)  
 then a fence N 2° 44' Fogarty Set back S line fence of  
 White on N side 30' at 1-2-20 = 24.80 poles  
 (30' Street = 46 lks wide)



mit = 2 = old remains of bush stump old mit S 1/2 W 75 links from cent  
of Miami Tal. pike. for full particulars see line A this day

" a = Berea Stone 16" x 7" x 3" in cent pike

" b = stone

" c = line

1842

INDEXED ON MAP



36  
54

# Kerr's Surv.

Kerr's N 2 line runs S 47 3/4 E

Course of Pike road S 36 W

" S line Stevenson S 53 3/4 E

front line S 43 1/2 W

Length " " Sp. 12 1/2 L = 8.5 poles

Line S E line Stevenson N 42 1/4 E

Stone on line of the Kerr + Wm P Kerr bears

S 47 3/4 E 49 1/2 links

Stone on line Jas K Stevenson + J S Kerr

bears S 53 3/4 E 40 1/2 links

N E line to Stevenson S 47 3/4 E 21.84 f

S W " " 21.96

1843

INDEXED ON MAP

# Kerr's Surv.



D.L. Kerr.  
Farm

Surv. 3-245

Wm P. Kerr

W. L. Dushaw

## Mow Porters Sum.

Course like J. M. Porters farm S 87 $\frac{3}{4}$  E  
 " S line road N 2 $\frac{3}{4}$  E  
 set stake S W. Hartley, W. O., N 47 E 53 L

Line A of S W. Hartley

Start 10 L East of stake

S 2 $\frac{1}{2}$  W

Strike old stake S E Porter at 1-9-25-

= 39 poles. strike stake cent

Set S 87 $\frac{1}{2}$  E from 2 auto = 6 $\frac{1}{2}$  L = 12.24

Check at 136 p.

A 8-1-40 = 163.60 set W

N 17 W. 5 $\frac{1}{2}$  f. 34 = 11.36 p. to S of line  
 shown by marked trees

Run 3 $\frac{1}{2}$  W 20 L = 80 164.40 = 164.40

Cor. S 2 W.

INDEXED ON MAP

1844

Line B of S W. Hartley  
 start 18 E of stake <

cut fence bet Hartley & Linn at  
 81.08

N 3 E

N W. to Linn in line at 8-1-30  
 = 163.20 poles

line true at 8-6-15 = 172.60

Strike met of line true 6 L

Corrected cor =  $\frac{1}{4}$  N 3 $\frac{1}{4}$  E

Go to S W. Hartley Run N 3 $\frac{1}{4}$  E 281 $\frac{1}{2}$   
 < stake as set

163.20  
 28.10  
 135.10

INDEXED ON MAP

1844

## Moor Porters Survey

Line C - k N E L to Porter  
 N 87 1/2 W  
 Sta 5 Elm, N 83 1/2 links

Strike stone NW L to Porter at 8-1-27  
 = 163.08 poles stone ang road +  
 Shaker. Line dis 163.

Line D. Start at stone  
 NW L Porter N 3 E  
 dis 6-7-38 = 135.52  
 to NW L Shaker.

INDEXED ON MAP

1844

Line E start stone NW L Porter  
 S 2 W

cut pipe at 30.80 p = 1-5-20

Strike east of L as determined by cut line  
 trees south of L, dis of 4 links three course  
 would be S 2 + W

Length of line 3-4 p = 68 poles.  
 set L at length 68.

Wit L m = B. Prob. 10" N 74 1/4 E 9 1/2 links  
 also B.O. 48" S 19 3/4 E 29 1/2 links  
 " B.O. 30 N 64 3/4 W 53 "

Line F, f, N 3 1/4 E 1-4-2 = 28.14  
 to stake as set for k - O k L  
 set stone line stone 4" sq on top 18" long as k

Line G = k N 87 1/2 W

K-1-17 = 82.68 p

to S W L John Sisson S E L J. G. Harris

INDEXED ON MAP

1844

# Moore Porters Surv.

Mid-f = S W  $\frac{1}{4}$  NW  $\frac{1}{4}$  Sec 18  
 S 2  $\frac{1}{2}$  of face + wing walls of west  
 about Bar over Bakenghalas  
 Dis 1-1-18 = 22,72 poles  
 Bears S  $86^{\circ}14'$  E  
 - also Jack O. 14" S  $10^{\circ}7'$  E 82  
 " O.T.O. 24" N  $47^{\circ}$  E 83 links Old pit  
 Tent like N  $3^{\circ}4'$  E 8 links

### Witnesses +

- f = post in line of fence near west side road running north, Suabon for
- h = line stone 4" sq. Top 4" x 12" bot. 18" long.
- l = old stake in fence < in prairie
- i = niggerhead stone 13" di
- n = cut-pike
- M = Bk Mal 10" N  $74^{\circ}4'$  E  $9^{\circ}12'$  + B.O. 45" S  $19^{\circ}4'$  E  $29^{\circ}12'$  L
- " also B.O. 20" N  $64^{\circ}34'$  W  $\frac{1}{2}$  52 links

1844

INDEXED ON MAP

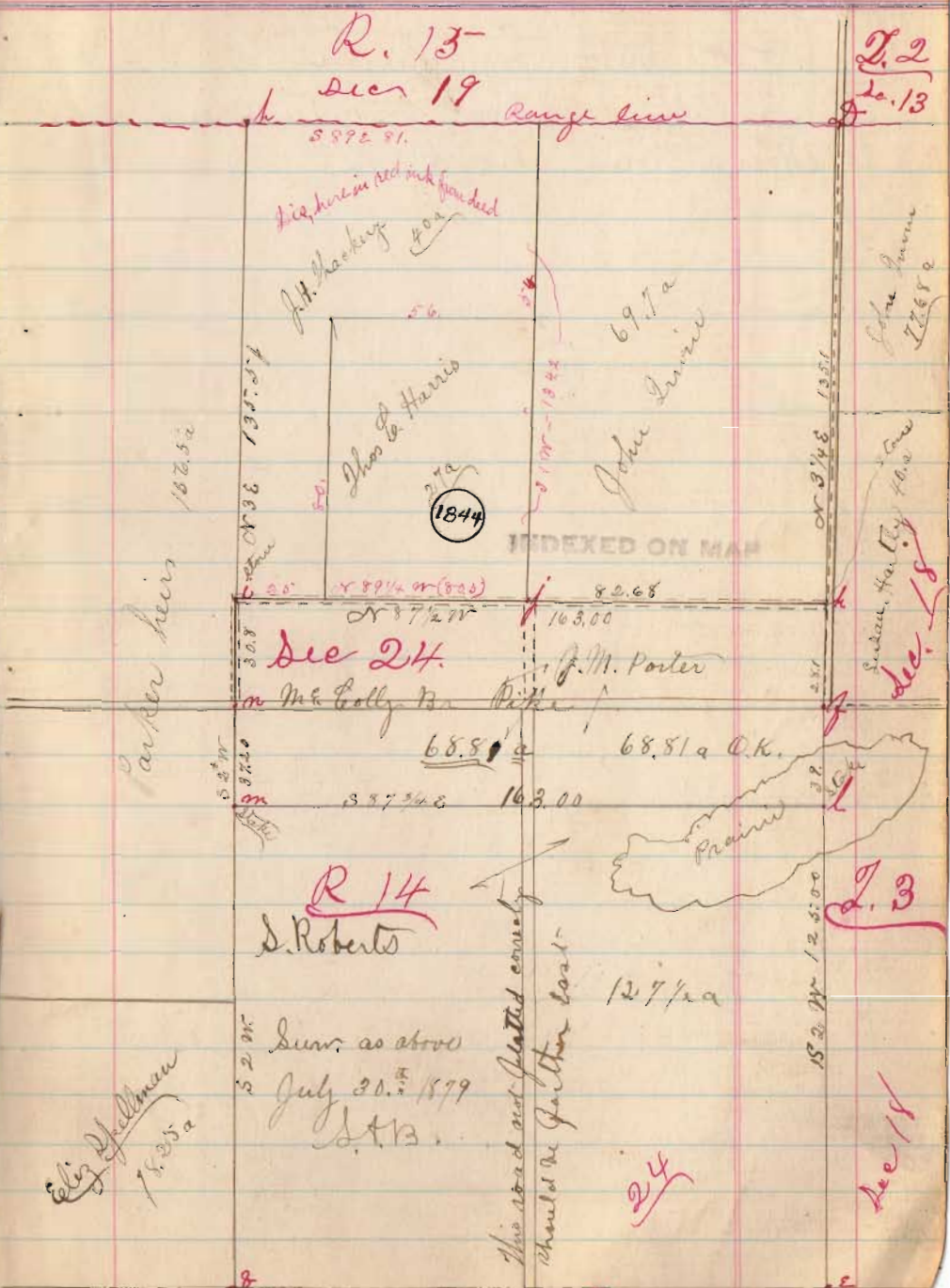
# Plat- Porter Surv.

R. 15

Sec 19

Range line

L. 2  
L. 13



1844

See 24

R 14

S. Roberts

Surv. as above  
July 20. 1879  
S.T.B.

This road not plotted correctly  
should be further east

L. 3

Dec 18

J. D. M. Laughlin (Taylors)

J. D. M. Durr Gas Taylor  
For full notes this sum. see county  
plating notes Book 17

1846

Surr 9909

~~Handwritten notes and signatures, including "B. & R. L. Piper", "Jas Taylor", and "J. D. M. Durr".~~

1846

Angel - Gore Survey

INDEXED ON MAP (1849)

A

Stake at N or < Taylor 11a  
 N 52 E 18 lks to elm 2 from post 13" di  
 Start - 13 links West from stake  
 N 2 E  
 Pass < to Taylor & Dorr at grass < at  
 22.32

Pass 14 1/2 lks west of Dorr & Taylor <  
 cont of RR at 12-0-40 = 41.6 poles  
 Set east - 19 links  
 Line A = 3 out 2 p. 27 = 65.08  
 Strike near of < 10 links i.e. 8.  
 mil 8 = at N end of A & N or < Angel  
 N.O. 10" S 73 1/4 E 50 1/2 lks. & B. Val. 12" S 5 1/4 E 64 l.  
 Connection line a = 3/4" ccc N 35  
 Line A a & b = 65. N 35

B - 3

Start south of < 6 links  
 S 87 3/4 E  
 Set N 23 links  
 at pike find < stone S or to John Eaton at cont pike  
 set at stone run N 87 3/4 or 57 links to < fence

INDEXED ON MAP (1849)

Line strikes out pike 12 links N of tree 2  
 Line B = 3 out 18 p + 49 l = this line rough  
 = 77.8 poles true length  
 B = S 87 3/4 E 77.8

Line C = c. center pike

Thence with cont pike  
 S 32 1/4 E ang lat - 12.32 poles  
 cont stone box cul at - 14.60 " , thence  
 S 19 1/4 E ; <sup>above</sup> ang east of pike center 12 lks  
 center 2<sup>nd</sup> stone box cul at 3 out 5-44  
 = 71.76 poles  
 strike < d S E < to Sarah Brown at 3-6-4 = 72.16  
 ang at d, < d with old fence, thence  
 S 19 E , strike E' at 5-5-30 = 111.20  
 c' = end of line C. e = cont pike < Hall. A & M  
 E bears from E' N 18 E 64 lks  
 C. c.o. = S 32 1/4 E 12.32 o.d. = S 19 1/4 E 57.8 d.o. = S 19 E 27.

# Angel-Gore Surv

D - start at 'e'

S 15 W with line Hall & M + Ellen Smith  
out of R.R. at 3-18 = 6.72 poles

↳ to Ellen Smith at 4-44 = 9.76 p

Strike of - S E ← Ellen Smith at 2-2-45 L  
= 45.80

line length D = 45.5

D = E' f = S 15 W 45.4

9.5  
35.9

E Start 4 links N of L at J  
line is very rough true length 9.30 poles

Strike Cantwells L at 4 p 37 L = 9.4  
Cantwells L pile of stone. Elm 4" dia 80 E 2 1/2 lks

Line F start N of J Smith + Cantwell

31 links

S 57 W

Pass at 48.32 poles

Pass N of L i & E L Taylors 11a dia 28 lks

Strike j at 3-9-32 = 98.88 p

set south 8 lks

Strike 33 links north of j. S or L to 11a  
Taylors. strike j' at distance of

D-out = 100 poles from L Smith + Cantwell  
dis south line 11a = 21.12 poles to j on east-  
line of Taylors lane, dis to j in old east-  
line to Taylor + W line to Angel at 3 outs  
+ 33 links = 100.92 poles to true old  
line Angel + Taylor

True course line F = N 87 1/2 W

E + F = N 87 1/2 W 110.4

Line G start 12 1/2 East of j

j = old S W ← to Angel farm

S 2 1/4 E

Strike j = Apple tree 15" dia 14 lks N 20 W

Strike west of Taylors N W ← 11a dia 17 1/2 lks

Strike L at 4 outs = 80 True course G = N 80 E

G = N 36 E

Line H start at K = cent R.R. +

Course of taken on R.R. = N 5 E

K is on curve of R.R.

With R.R. to first out - S 40 1/2 E from K

East line Taylors 11a produced strike R.R. at 3 1/2

Reverse reading from 1 to 2 taken at 3 = S 47 E

from 2 to 3 taken at 2 = S 51 1/2 E

Strike L to base Angel at 3-2-28 = 65.4



# Angel-Gow Surv.

INDEXED ON MAP

1844

Line H continued

Reading 3 to 4 taken at 4 = S49 1/2 E

" 4 to 5 " " 4 = S52 1/2 E

" 5 " end of line " 5 = S39 E

East line Cantwell strikes RR at 124.80

" Allen Smith 7-3-35 = 147.40

Aug 7<sup>th</sup> 1888 + RR at intersection

N 19 = RR Pike

N 57 1/4 = RR 57.34

Course of line bet Sam Angel + old Angel farm from pike at S 2 < old farm = N 87 1/2 W

Course d E Z = S 19 1/2 E + RR = N 58 W

distance 3 to 7 = 10.48 poles

g = crossing RR + west line Hall A + M

Z = d E produced to cent RR

dist - g - Z on RR = 6.52 poles

E' of = 6.72 poles

M = intersection Cantwells East line + RR

g m = 22.22

Course of R R taken on R, R at m = S 55 3/4 E

" " Cantwells E line " " = S 5 W

Line 9 - m S 3 W

pass RR Allen Smith at 86 links = 3.44 poles

" m stone of B < Cantwell 6-36 = 13.44

or g = 48.20

Course of cantwells E. line N 3 E

Aug 7<sup>th</sup> 1888

Start at g (Angel Gow plat - measure along the R R

82.28 poles to <sup>point</sup> corner to Sam Angel E. 19 a pike

Start again N 2 1/2 E 18 feet from d (put in stone today)

run course N 87 1/2 W to cent of Rail road +

stake 43 1/2 feet from p measured northerly on R R

but establish p at 82.28 poles from g as above

Aug between d and Rail Road - to cent

Rail Road = S 52 E and = S 87 1/2 E = 32 1/2

INDEXED ON MAP

1844

# Angel-Gore Surv

INDEXED ON MAP (1844)

Line A = a to b Line F = g to j  
 " B = b to c " G = j to a  
 " C = c to e " H = k to y  
 " D = e to f " I = n to g  
 " E = f to g

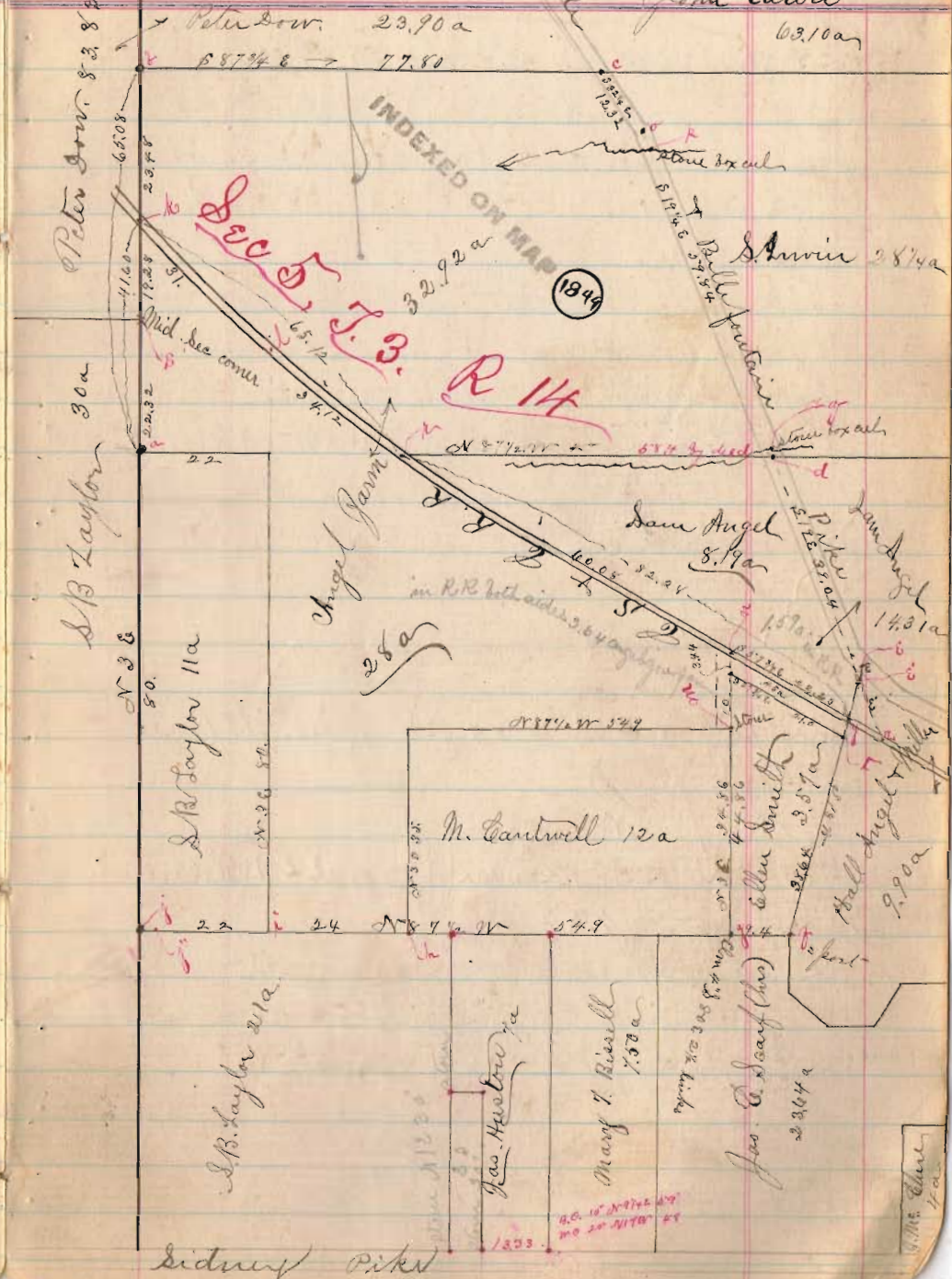
- a = Elm (2 from 1 root) 13" N 52 E 18 links
- b = W.O. 10" S 73 1/4 E 30 1/2 + B. Wal. 12" S 57 1/4 E 64
- c = stone corner S.W. to John Caton ~~N 87 3/4 E~~ 57 links
- d = S.W. Sarah Swin in Dam Angel line, cut pike, cut cut (stone box) bears N 17 1/4 W 10 links
- e = post cut pike S.W. Hall Angel & Miller
- f = Elm 4" S 80 E 27 1/2 links
- g = Apple tree 18" N 20 W 14 links
- h = middle sec. bet S.B. Taylor + Peter Dow
- k = cut R.R.
- l = post cut pike <sup>bears</sup> S 60 W 12 <sup>cross cut</sup> S 19 1/4 E 2.28 poles
- e to g = N 18 E 67 links, e to h = S 19 E 10.48, z. y = S 87 1/4 W 6.52
- e. y = S 18 W 6.72 y. t = 2.04

Surveyed for Amos Gore as shown  
 by annexed plat Aug 26<sup>th</sup> 1879  
 S.B. Taylor an an Surv.

In the foregoing notes the red pink courses & distances are as per calculations

# Line Plat-A-G Surv

INDEXED ON MAP (1844)



Sidney Piker

Scarff Layton Surv.

Course of Sidney Road N 87 1/2 W

Line A start 20 fks East of stone at S 22<sup><</sup> to Layton 21a on Sid road, 38' south of stone N 3 1/4 E

strike 18 links East of p. def = 2 links to much point

strike <sup>gravel</sup> at 37p 47l = cut pike from stone bears S 3 1/4 W 33 feet

from cut pike to <sup><</sup> N 3 1/4 E 60 p.

Line B Start at S W < Ellen Smith (see one Angel Surv.) start at p. 326 N 87 1/2 W

strike N W < Scarff + N E < Bisell at 2 pin 21 l = 4.54 p.

N W < Mary Bisell N E < Jas Houston at 24.84 p.

N W < Jas Houston + N E < B. B. Taylor at 43.32

N line Jas Houston 9 p. 17 l = 18.68 p

24.84  
18.68  

---

43.52  
24.68  

---

18.84

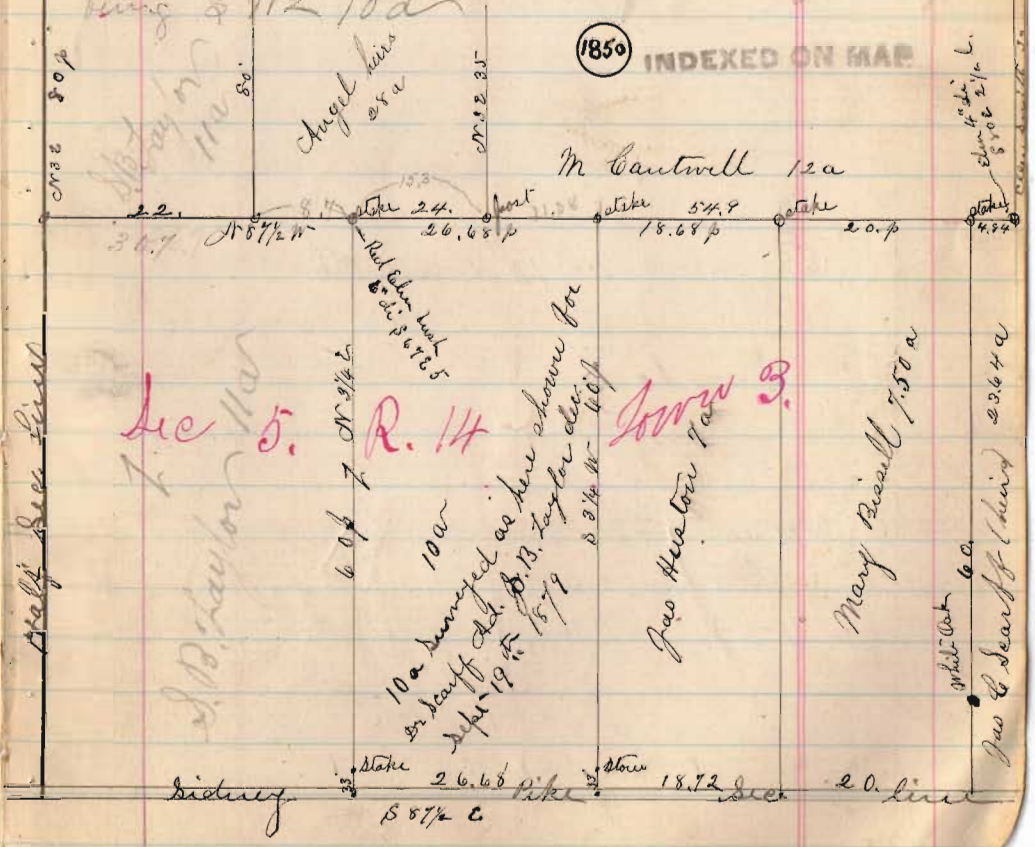
Plot Scarff Layton Surv of 10a

ret < for 10 at 28 links south + dis of 1 out 3 p. 17 l = 26.68 p.

Plot or 10 = Red elm bush 6" di S 67 E 5 links

Line C, start at stone 33 feet N 3 1/4 E from cut pike at S 22 < Taylor N 87 1/2 W 1-3-17 = 26.68 p.

at stake at N 3 1/4 E 33 feet from cut pike of 10a  
N 87 1/2 W 10a



Ac 5. R. 14 Town 3.

10a surveyed as here shown for Scarff Oct. 19<sup>th</sup> 1879  
B. B. Taylor cler.  
S 3 1/4 W 40 p

Jas Houston 7a  
Mary Bisell 7.50 a

Sidney 33 Stake 26.68 pike Stone 18.72 Sec 20 line  
S 87 1/2 W

## Brandon Palmer Survey

Line A = a in Sudlow line 10 poles to out  
 N 87 3/4 W 2-0-18 the N side Mad. River at 20.72  
 E-2-8 = S side Mad R It = 24.32 poles  
 Strike c at 3-3-43 = 37.72 p.  
 " d " 3-4-21 = 38.84  
 " E " 4-0-17 = 40.68 1.14  
 " S side at 5-1-2 = 52.08

Surr. Sept 16<sup>th</sup> 1880 1.14

Line B = b

Strike d at 2-4-14 = 28.56  
 the above dist should be 1-4-14 = 18.56 poles  
 = 300.24 feet

Line C = c

N 2 3/4 W  
 Cent stone at 4.40 poles  
 g = 4-2-12 = 44.48 poles

## Brandon Palmer Survey

Line D = meas from NW 3 lots to f = 4.96 poles

Line E = g

S 89 1/2 E Ok = S 89 1/4 E  
 2-3-48 = 27.92 to line at S side Mad River  
 Street at h

Line F = h 0-4-4 = 8.10 poles to i  
 S 2 3/4 W

Line G = i N 81 1/4 E f at 0-0-32 = 11.28

Line H = S 15 3/4 E line j to a

Strike d line English lot produced at 29.08 poles  
 Course of line English = S 89 3/4 E  
 Strike a at 4-0-25 = 41. poles  
 From NW 15 3/4 W 39 lks = 1.56 to S W 1/4  
 the above 4 1/8 a piece

Remeasure line A = a

N side Mad R It at 2-0-15 = 20.60

From f to i = 33 lks = amt given Gov land off South side  
 Palmer from a to f

South side Mad River at 2-2-6 = 24.24

Strike c at 3-3-41 = 37.64 } d to E = 29 lks - 1.14

E. 4-0-15 = 40.60

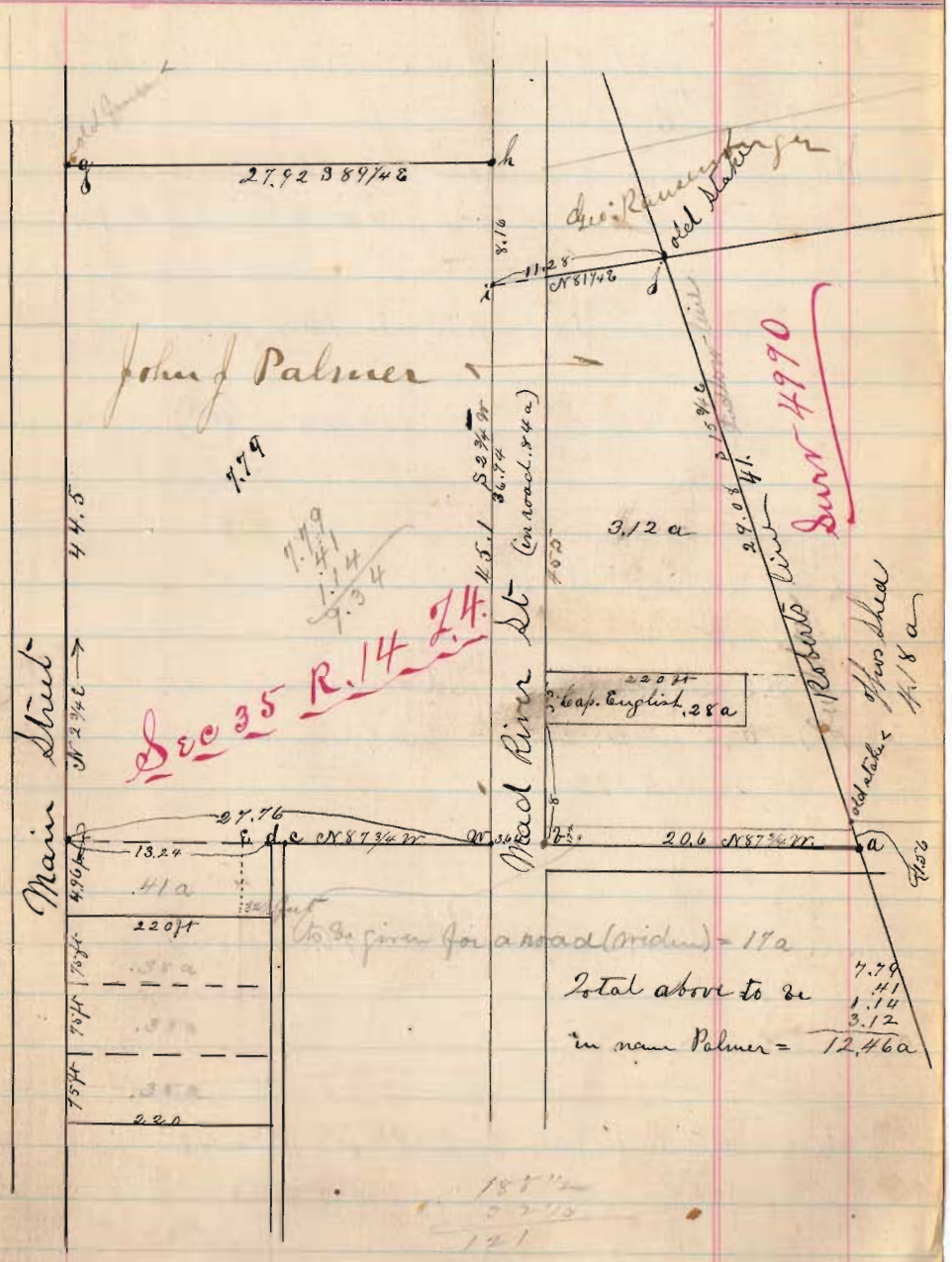
Brandon Palmer Surv.

Line g. 7 = N 3 E 8 poles to S W 2 English  
 English at front =  $84\frac{1}{2}$  lbs = 3.38  
 " " 55 x 2.20 feet

Line f. Meas along S side Mad. Riv. et  
 from h to or = 4-2-28 = 45.12

- Line A = a to f.
- " B = h " g.
- " C = f " g.
- " D = N W 2 lots to f.
- " E = g to h
- " F = h to i
- " G = i " j
- " H = j " a
- " I = h " or

Plat Brandon Palmer Surv.



Total above to or  
 in name Palmer = 12.46 a

188 1/2  
 23 1/3  
 121

# Wishart Surr

20 poles to an acre

Start East R.R. & cut Nap. St in Huntsville  
S 9 3/4 E

Strike East corp < McKinnons at 52 1/2 poles  
Dr. E. & School lot at 3-9-44 = 49.76  
52.50  
27.26

N. line School lot = S 13 1/4 E 10 1/3 poles

INDEXED ON MAP

1857

Start N.E. < 24 lot on file

S 16 3/4 W

Strike S.E. & H lot cut old fence row at  
1-1-6 = 22.24 = East line 24 lot  
22.2

S line of 24 lot S 84 1/2 E 10.56 poles

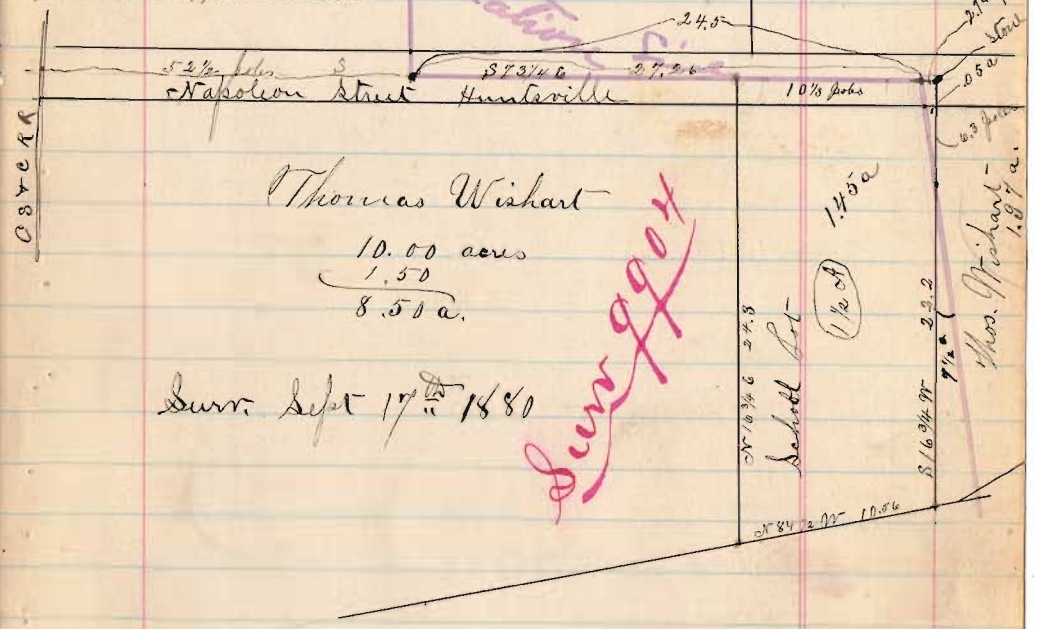
Dr line lot N 16 3/4 E 2-2-10 1/2 24.41  
24.0

# Plat Wishart Surr

Shelby heirs  
Leoprotating Surr

Mrs P. A. McKinnon

Reeds. heirs



Surr Sept 17<sup>th</sup> 1880

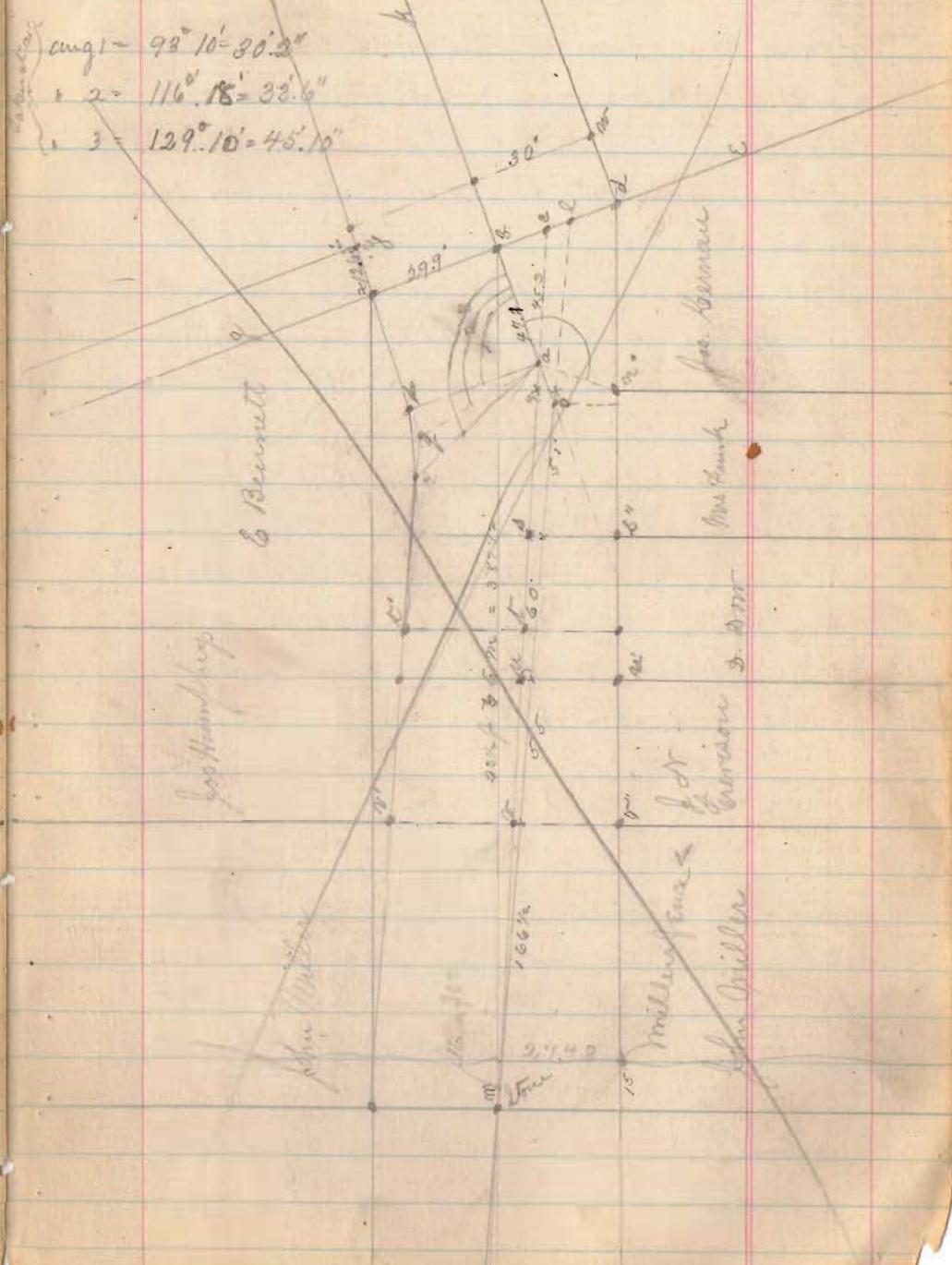
INDEXED ON MAP

1857

Oct 1850  
Bennetts Surv.

Angle from stone at 30' at end of B  
 that is Hunters line and Hopkins line =  
 $1^{\circ} 16'$   
 Hunters line strikes Dudley at 26 4' south  
 of iron pin at end that is 31' from stone and  
 Hopkins line strikes 17' south said pin  
 Went at stone & meas on line m.c. to front  
 W. Miller & line at  $18\frac{1}{2}$  feet =  $18\frac{1}{2}$  181 1/2  
 W = Cousins " " 236 1/2 " = 55 55  
 L = Bennetts W " 242 1/2 " = 6  
 Y = point on line at 285 " 42 1/2  
 D = Dross & line at 296 1/2 " 11 1/2 60  
 A = ang at 348 " 46 1/2  
 R = E line to Frank at 347 1/2 " 4 1/2 51  
 C = Dudley line at 392.80 45.30 = OK  
 Dist 27 to Hunters line at right ang = 6.25  
 Went at & meas line from 38 1/2 feet =  $23.48 \times 8p = 23 1/2$  feet  
 W W' = 22.95 W' in line Bennetts from W W' = 26.5  
 U U' = 20.4 U' = < Cousins + Dross  
 T T' = 24.8 T' = < Bennetts + H  
 B B' = 18' B' = < D + S  
 N N' = 15.8 N' = < F + R  
 X X' = 29.9 X' = < Bennetts from  
 S S' = 46.9 S' = 67.5 from S to Frank's from = 9.95  
 P = point of intersection Bennetts from

Sandusky St.



Bennetts Survey

q-ang Ben fence to line mc = 2.3'  
 a- to Ben fence again to line ab = 30  
 angle from line ab<sup>a</sup> toward to south west & back  
 in B's house = 84° 8' + dist at to our house  
 on line = 46.35'  
 from Bennetts < of to east gate post = 21.7"  
 " " " " line from east gate post  
 to point 30' north of stone on = 10 feet + 10' 2"  
 from Bennetts on line of alley - Ludlow line to  
 face line of Bennetts house = 15.7"  
 from fence - further down to S.W. house = 3.5'  
 in face B's house from S.E. to side of  
 porch 14.8', + on side porch = 25.8', + S.W. house  
 at 42', From S.W. house a line on side of  
 house = 16.1'

45.4  
 21.6  
 2.8

Start in Ludlow line 26' north of post at intersection  
 of Hunter line produced, thence N 69 E 30 feet  
 to cent. Marion road, thence N 31 E 0.92 "  
 to fence B's side of a lot = 2 feet 33 in = 2.92 "  
 Meas. from point of crossing fence with same to  
 S.W. of S a lot = 10 feet + 43/100 = 11.7 poles

Sandusky St - Bellf.

Meas on Ludlow line from east of to our house at  
 to north west corner Boreland = 332 ft = 30 poles  
 + 2 feet. same time S.W. to Bushman at 1/4 cent  
 of iron pin at cent Sandusky street = 586 feet  
 length Bushman's lot on Ludlow line = 15.4  
 poles  
 Mather white to Geo Eugg Vol 9 - page 629 gives length from  
 cent of Columbus at the cent of state road leading from  
 east end of Sandusky at 33.9 poles = 31 5/8 poles

Bennetts Survey March 17<sup>th</sup> 1882  
 Set instrument on cent of Main & Sandusky St  
 get cent Main St by taking 40' west of Judge Brewster  
 stone base of fence at N side Jordan St. Also measure  
 40 feet east from W<sup>m</sup> Pools front fence same way set  
 by city eng for west line main St. also measure  
 40' east from Peoples Bank building. Get cent of  
 Sandusky St from end of Iron Pier over R.R. to  
 stone at E Jordan St. Course of main St  
 = N 3 1/4 E. Run instrument from Southern  
 St to east on Sandusky St and get ang = 89° 50'  
 and course Sand/ St = N 86 1/2 E = by the A  
 then by B's lot = 89° 50' =  
 Ang from cent Main to E Jordan St with more 89° 55'  
 " " " " " " " " " " " " " " 89° 50' strikes 1.40 ft S with of  
 turn an ang of 9 E from Main St strikes 1.55 ft S of  
 Continued Page 73



Jos Stevenson Surv.

Reg. a = iron pin at N 7 1/2 to Jos Stevenson farm in cut belly & N pike from which the middle of East Stone wall to cut at top Bears N 13 E & links thence with cut pike S 13 W 9-25 = 19 poles

S 13 W 19.

Grantors are J. Do. 2d George Kerr consideration

Line B - f cut pike S 80 3/4 E 6p - 30l = 13.2 poles to stake 8" end of cut of fence post

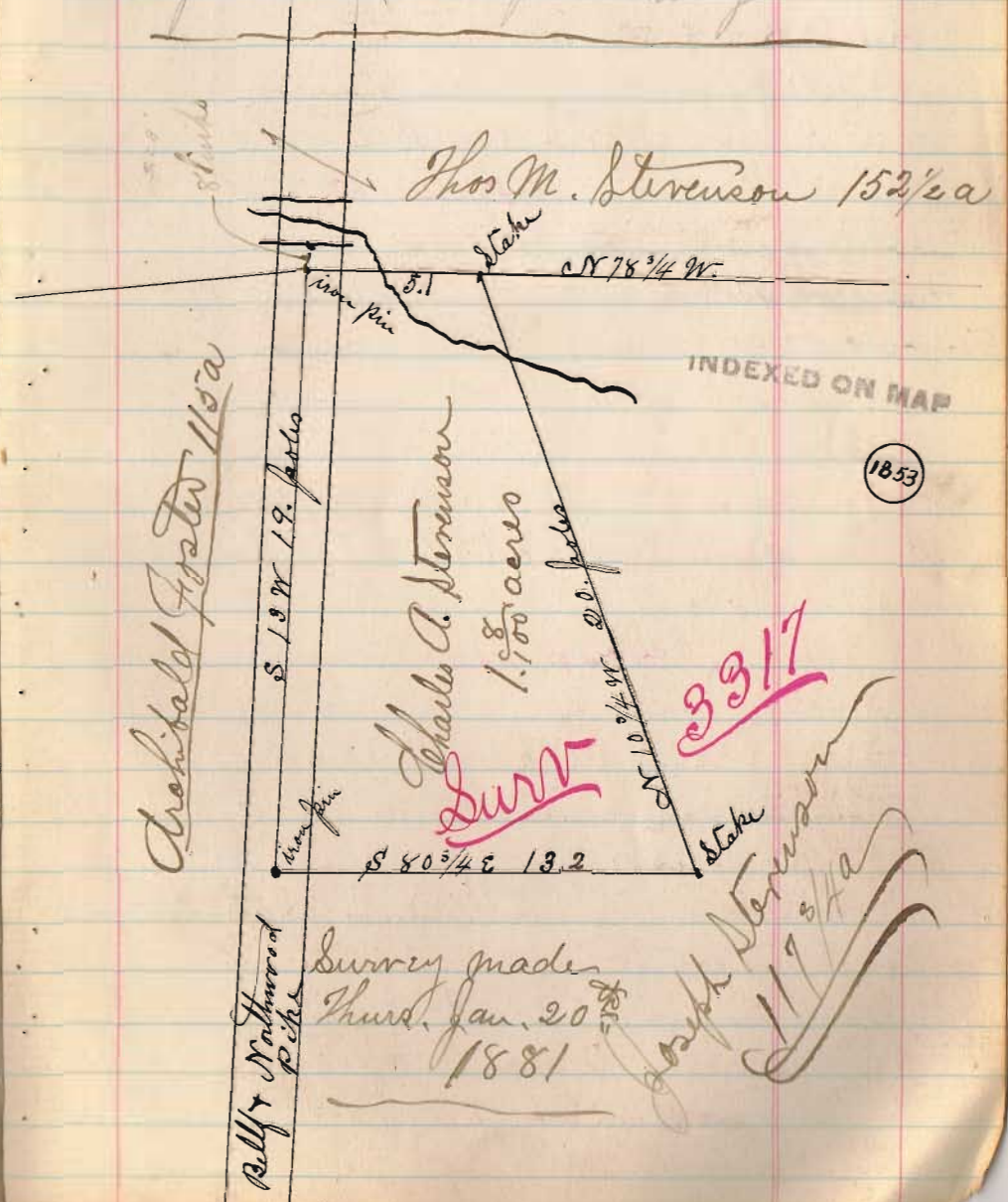
S 80 3/4 E 13.2

Line C N 10 3/4 W cross creek at 15 poles 10p - 2 = 20.05 to post stake on line post & J M Stevenson.

N 10 3/4 W 20.

Plat Jos. Stevenson Surv.

S. d. to a N 78 3/4 W 2p - 30 - 3.2 poles to big



INDEXED ON MAP

1853

Survey made Thurs. Jan. 20 1881

Joseph Stevenson 117 3/4 a

McClure & McKinnon

Henry McKinnon ch or Error  
 Tom McClure " " "  
 Geo Hunter maker "  
 Samuel Bayliss " "  
 N 80 E

Start 15 links north of stone at S E L 9950  
 after set stake 1 move S 2 lks to line  
 Stake 2 in line

Bunch at 48 poles

Stake 3 in line  
 " 5 " "

INDEXED ON MAP

1854

Strike 15 links N of stone at L to Hunter  
 & Patterson in south line Surrey 9950

Strike said stone at 6-1-7 = 132.28

Stake 6 in line

7

8

After set 8 more more N 10 lks

Strike cent fence running N from K at 8-6-20  
 = 172.80 poles

Set stake at fence in line is 25 lks N of line  
 from first stone

Strike stone at 11-9-0 = 338 poles being 835  
 to Kings 35a, line strikes 34 links N of stone  
 set in fence on south, + 29 lks from 2nd  
 stone on the line

172.80  
 144.40

Surr

to S 2 L King 15-8-30 = 317.20  
 that is at L between Hick stump & west oak  
 being L to As per Wiley

to L measured from Hick stump to east oak  
 and on line of marked trees on east of King  
 = 15-9-10 = 318.40

Line strikes north of L 46 links

to line marked trees 58 links

Set stake L & E to McKinnon & Surr to King as follows  
 set staff at 10 links north of sta 8 then run to stake at  
 cent N + south fence mds from stake in fence  
 west 7 links to post thence S 10 E 25 links to  
 stake at for corner at K.

Wit. K White @ 10" N 37 1/4 W 24 links

also W. O. 30" N 17 1/2 E 45 links + stone mds from

Exact dist from S 2 L to Surr to K = 8-6-13  
 = 172.52 poles

1854

INDEXED ON MAP

## McClure Aug

Line B, start 11 links west of  $\angle$  stake  
at K

N 10 W

at 35 poles marked stick 20" east 11 lks

Sta 1 not on

" 2 in line

Set stake at  $\angle$  thus find marked W.O.

20" 3 poles south from  $\angle$  run from said

W.O.  $S 9 \frac{1}{2} W$ , also from marked W.O.

20" 4 poles west of  $\angle$  run  $N 80 E$  to

cross lines & set 2 stake

Strike west of  $\angle$  stake 25 links, run 14 links  
to next west

Stake 4 in line

True length = 4-3-33 lks = 87.32 poles

set stake at  $\angle$

Sta 2 = R = 17.44

" 3 = " = 20.66

" 4 = " = 23.88 west - 24 E

Mid-d =  $N 2 \angle$  to McKinnon Stone

W.O. 20 (old line mark)  $S 9 \frac{1}{2} E$  67 links

also Red Oak 10"  $N 16 \frac{1}{4} W$  16  $\frac{1}{2}$  links

Exact variation = 56 = 22' O.K. course  $N 9 \frac{1}{2} W$

## McKinnon's Surv.

Line C starts 14 lks S of  $\angle$  stake at d  
meas 14 lks S from stone at  $\angle$  take course  
=  $S 81 W$  Dist = 5 pins 0 = 10 poles  
from S to E  $S 81 W$

Line D start 12 lks south of  $\angle$  stake at e

at  $\angle$  find marked  $\angle$  + W.O.  $\angle$  trees

take center between trees set stake

meas 12 links south from stake & take

course to pile 12 links south stone

set stakes in true line that is 12 links

north  $S 79 \frac{1}{2} W$  = true cse  $S 78 \frac{1}{2} W$

O.K. Dist - S to F = 2-1-2 = 42.08 poles

Mit G = dug  $30^\circ S 81 \frac{1}{2} E$  14 lks

also W.O.  $30^\circ N 81 \frac{1}{2} W$  14 "

at g find W.O.  $30^\circ$  + stump W.O.  $30^\circ$  take

center & drive stake for  $\angle$

stone put in at J - nigger head 10" x 6"

64.6  
173.2

# McClure Ind.

Line E start 10 lks east of stake of J  
 find < between W.O. + stump set stake  
 meas East - 10 links take course  
 = S 10 1/2 E Dist = 1 out - 0.43 lks  
 31.72 poles  
 g = bit W.O. 30" S 31 1/2 W 7 links

Line F start 25 links south of g  
 S 80 W at 50 poles line runs about 12 links  
 south from now  
 set stake in line east side pike from  
 at 4-8-4 97.60  
 cut 99.60 poles to east of pike  
 set stake in Black line in line then meas  
 20 10 W 25 lks then S 80 W to < at  
 120 poles set stake for < at h  
 more stake as cut above S 8 1/4 E 6 links = 24 poles +  
 then S 80 W 2 1/2 links = 10 poles all comp. line  
 set stake in true line at 97.60 poles by meas  
 from stake as above cut S 20 W links  
 put in stone line stone 3" x 20" x 10"  
 g to h = 120.1

# McKinnon Surv.

62.72 8.5 = 7 5- 7 11 5 12  
173 35 - 7 55

Line G start 12 links west of stone  
 at a meas 12 links west of < stake at  
 h take course S 8 3/4 W  
 cut pike at 20 poles  
 set stake in line at 24 poles  
 strike stake h at 3-2-21 = 64.84  
 Stake 6 in line diff 4.8 west to line  
 " 7 " " " " "  
 " 8 " " " " " taken out  
 set stake in line in cut ditch at 8-6-30  
 = 173.20 = ok dist a to i  
 strike stone S E to Gibbys 10 a (found old pit)  
 bears S 7 1/2 E 3 1/4 links at 6-2-25 = lks  
 = 125 poles line passes 7 links west of stone  
 gain too much east 5 links  
 stake at h to more west 2 1/2 links 9 1/2 west  
 " 6 " " " 5 " " 8 " "  
 " 7 " " " 5 3/4 " 6 1/2 " "  
 " 8 " " " 7 " 8 " "  
 Total var line G = 7 links too much east  
 put in stone at < i S W to McClure stone  
 line stone 3" thick 9" wide 2 ft long  
 Put in stone at h S W to McKinnon in frame  
 line stone 3" x 20" x 11"

## McClure Reg

reset stake at h i.e. S W McClure as follows  
 Begin at stake as set on line of fork thence  
 S 80° W 2 1/2 links thence S 83 1/2° E 6 links to  
 CK < as reset stake makes CK dist from  
 a to h = 64.6 poles & dist from h to i  
 = 108.6 poles <sup>set by run</sup> at true < h

next-

Measure from i to R.R. spike set in the ancient R.R.  
 N 83 1/2° W from true < at i = 3 pins & 33 lks = 7.32  
 true line of strikes R.R. spike ant. R.R. at 16 links  
 east of cent of wooden bent end on R.R.

a to h = 64.60 poles

h to i = 108.60

INDEXED ON MAP

1854

## Mackinnon Surv.

True N = start - 20 links south of true <  
 at i N 80° 1/4 E

Set stake <sup>x</sup> in line at 24 poles = 19 1/2 reset  
 Branch at 35.60 poles

Stake 2 in line 18 3/4  
 N 80° E

cont of pike at 3-4-37 = 75.48 poles

Stake 4 in line = 17 1/2

" 6 " " = 16

(set S 3 links but <sup>or</sup> 3 lks to old line)

Stake 8 in line - that is first line 20 links south of i  
 set < stake for < j thus start at sta 8 line H

run N 9 1/2° W 10 links to true line, thence from  
 line i at 86 poles meas S 80° W 9 1/2 lks to post  
 & cross lines to <

Variation line H = 5 links to south south

true length line H = 8-0-8 = 160.32 f

Post < j N E to McClure

N. O. 7" S 53° W 46 links

also N. O. 28" N 55 1/2° E 32 1/2

" N. O. 28" S 9 1/2° E 29 lks

INDEXED ON MAP

1854

# McClure Ind

Line i Start 13 links East of stone at E  
 N 9 1/2 W  
 at 3 poles marked W.O. 30" = 6 links east of line  
 " 17 " " " W.O. 10" = 13 " " " "  
 " 26 " " " <sup>meet</sup> side line Hick 24" = 8 links east to water  
 " 32 " " " <sup>mark</sup> Hick " East side line = 15 " " " "  
 Line i = O.K. N 9 1/2 W

- Stake 1 in line
- " 2 " "
- " 3 " "

After set stake move meet 3 1/2 links

Sta 4 in line is 3 1/2 meet

" at 86 poles in line

Strike <sup>stone</sup> at Lat 5-4-42 = 10968

line strikes 10 1/2 links east of stone

this stone not certain right

run from stake 80 poles to stone at E

= 1-1-42 = 23.68 poles

True length from E to J = 4-2-46 = 85.74

# McKinous Surv.

From cent pike to stone at a = S 8 1/2 W 9950  
 = 4 poles 33.60 - 9.32 poles course = N 80 E  
 Also from said stone N 8 1/2 W 20 poles to  
 cent pike at crossing West-south line to  
 run 9950, then

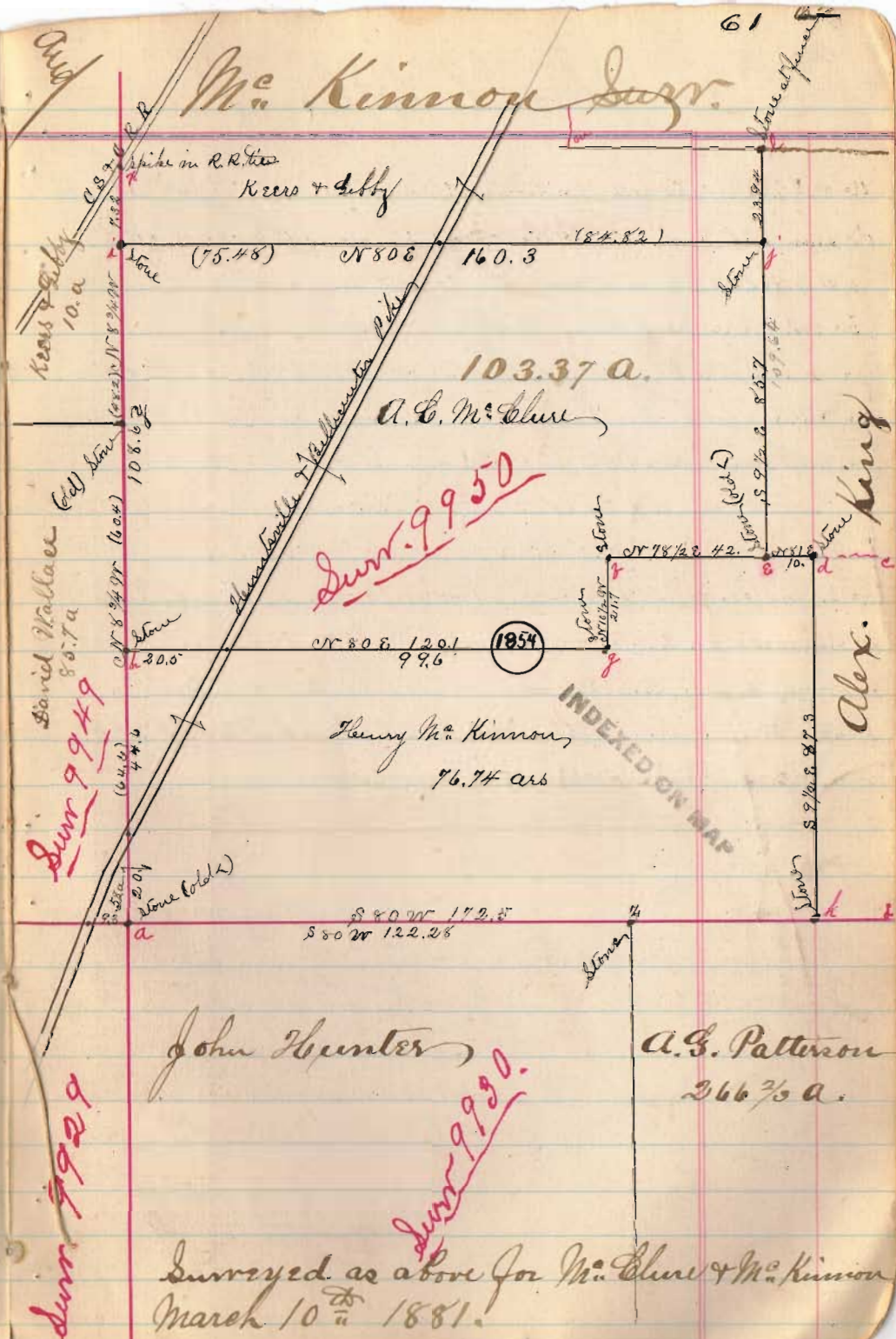
# Correct Plat M<sup>r</sup>. Chure

- a = old stone  $\angle$  to Surv, nigghead  $1\frac{1}{4}$ " di.
- d = small stone by self. Wit d = W.O. 28" (old line marked tree) S  $9\frac{1}{2}$  E 67 links also Red Oak 10" N  $16\frac{1}{2}$  W 16  $\frac{1}{2}$  links = see line B.
- e = old stone nig head about  $1\frac{1}{4}$ " di. = see line C.
- f = nig head stone self 10" x 6" + W.O. 30" N  $8\frac{1}{2}$  W 14 + Aug 30" S  $8\frac{1}{2}$  E  $1\frac{1}{4}$ , see line D
- g = Lime stone self. + W.O. S  $31\frac{1}{2}$  W 7 links = line C.
- h = Lime stone self = 3" x 20" x 11" (put in right)
- i = " " = 3" x 9" x 2 1/2 + R stake, at east edge of ditch
- j = small nig head = + W.O. 7" S  $58\frac{1}{2}$  W 46 + W.O. 28" N  $55\frac{1}{2}$  E 32  $\frac{1}{2}$  + W.O. 28" S  $9\frac{1}{2}$  E 29  $\frac{1}{2}$  see line K
- k = nig head 12" x 8" self. W.O. 30" N  $17\frac{1}{2}$  E 45 + W.O. 10" N  $37\frac{3}{4}$  W 24 = Line A
- l = stone small nig. at fence + N  $9\frac{1}{2}$  W 23.94 poles from j
- x = spike in R.R. tied 18 links eastward on cent R.R. from cent old wooden Kent cut.
- y = old stone east margin ditch. Locust stump N  $74$  E 57 lbs. see line G.
- z = old stone in surv line  $\angle$  to Hunter + Patterson
- e of marked line trees

INDEXED ON MAP

1854

# M<sup>r</sup>. Kinnon Surv.



Aug

Kress & Sibby 10.0

Surv 9949

Surv 9929

Stone (75.48)

Stone (108.62)

Stone (20.0)

Stone (20.0)

a

Spike in R.R. tied  
Kress + Sibby

David Wallace  
85.7a

Stone (old)

John Hunter

Surveyed as above for M<sup>r</sup>. Chure & M<sup>r</sup>. Kinnon  
March 10<sup>th</sup> 1881.

Surv. 9950

1854

Henry M<sup>r</sup>. Kinnon  
76.74 acs

S 80 W 172.5  
S 50 W 122.28

Surv. 9990

103.37 a.  
A. C. M<sup>r</sup>. Chure

INDEXED ON MAP

A. G. Patterson  
366  $\frac{2}{3}$  a.

Stone (107.54)

Stone (10.0)

Stone (10.0)

Stone (10.0)

Stone (10.0)

Stone (10.0)

Stone (10.0)

Stone (10.0)

Stone (10.0)

Stone (10.0)

Stone (10.0)

Stone (10.0)

Stone (10.0)

Stone (10.0)

Stone (10.0)

Stone (10.0)

Stone (10.0)

Stone (10.0)

Stone (10.0)

Stone (10.0)

Stone (10.0)

Stone (10.0)

Stone (10.0)

Stone (10.0)

Stone (10.0)

Stone (10.0)

Stone (10.0)

Stone (10.0)

Stone (10.0)

Stone (10.0)

Force of fence

Stone

Stone

Stone

Stone

Stone

Stone

Stone

Stone

Stone

Stone

Stone

Stone

Stone

Stone

Stone

Stone

Stone

Stone

Stone

Stone

Stone

Stone

Stone

Stone

Stone

Stone

Stone

Stone

Stone

Stone

Stone

Stone

Stone

Stone

Stone

Stone

Stone

Stone

Stone

Stone

Stone

Stone

Stone

Alex King

Alex.

# Joseph Plank

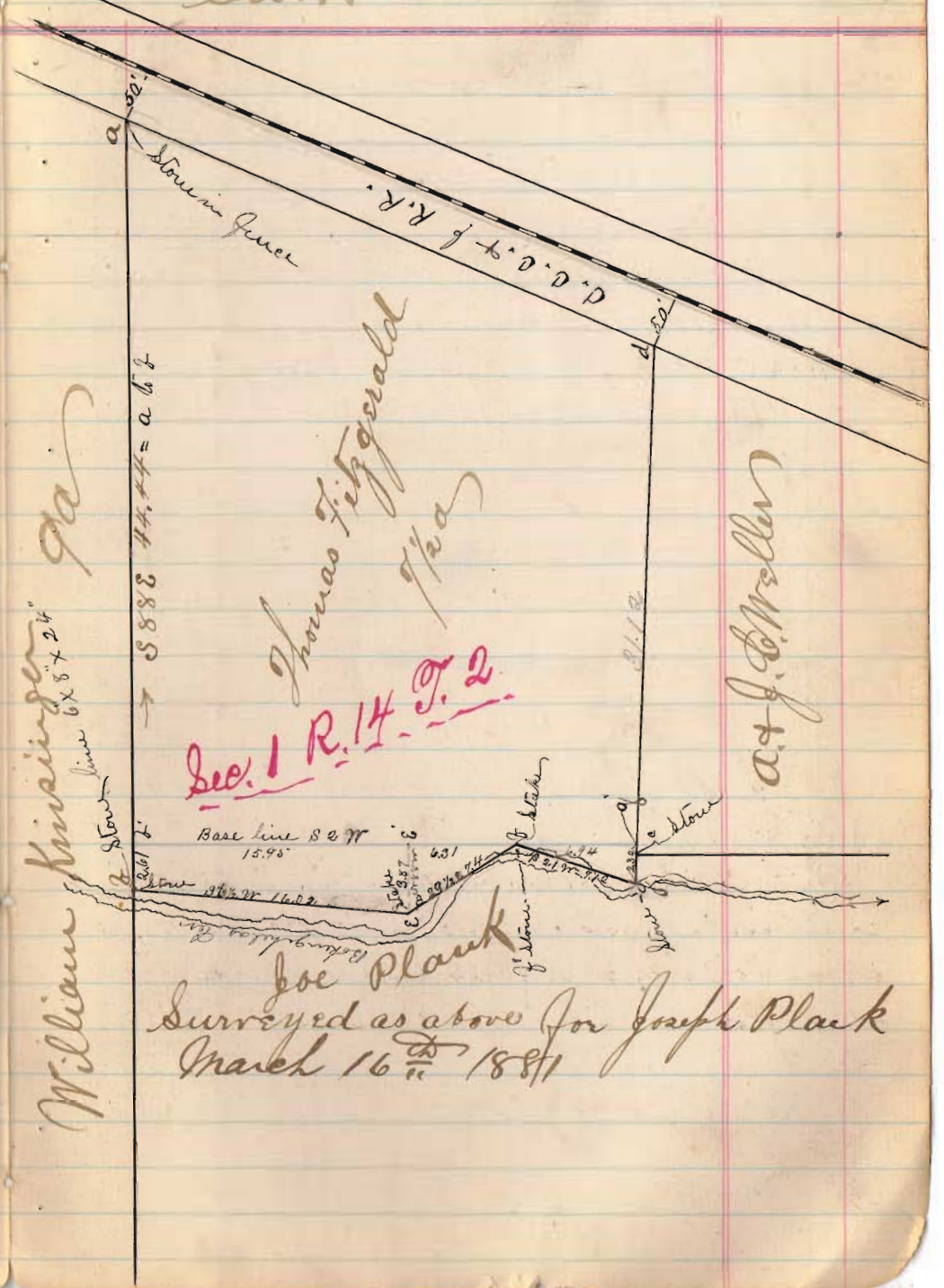
2.60

Start at stone 50 ft from cent RR at or near N & E to Fitzgerald, thence N 88° W 43 links to stone in and rail fence & as claimed by Fitzgerald.  
 From Stone 50 from RR N 88° W 2-2-0 = 4 poles to stake at back east 2.16 to point 2.61 East of Meas from line 50 E 10 links out stone on east margin of creek at 2-2-11 = 44.44 poles

Set back east from b 2.61 + east from g 2.31 take course = N 2° E. set stake at 1895  
 stake e at 22.26  
 Meas from 50 to south line of Fitz =  $1.4.30 = 29.20$   
 Meas from stake 50 to RR

Meas from e to d = 29.32 poles to 60' west of RR  
 f to g' = 2 links set stake by stone at f'. f' = true <  
 c = old stone in fence < = < to Wellers lot 5.47 acres  
 g to c = 45 links, g = stone on cr bank at fence <  
 g to g' = 2.32 poles, f' to g' = 29.20 poles

# Surv.





Logansville & De Graff fords

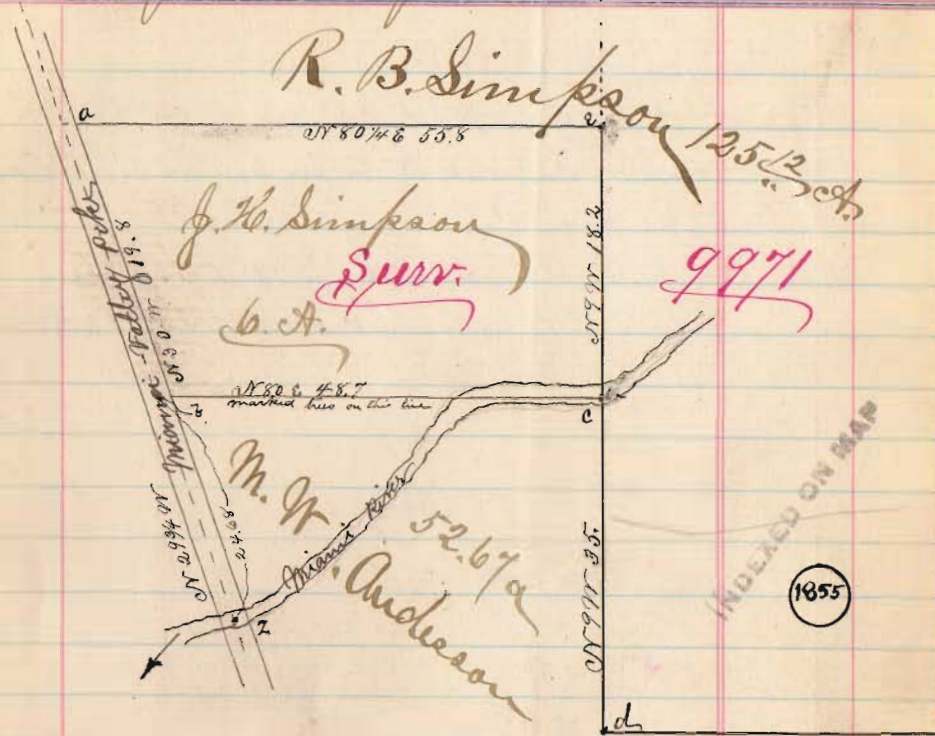
cut pipe post east side county road  
 fence with east side road S 46 E = 38 ft.

fence with cut pipe N 57 1/4 E from above  
 post, cut top face west stone about at  
 19 poles, low water mark at 24 poles +  
 west east end of right of way  
 middle of our right of way about  
 = 41 feet



De Graff ford post in cut pipe, 32 (from  
 post) pole off by bears S 4 3/4 W 50 links, fence  
 with link N 88 W, pass cut top face  
 stone about on east Br. at 9.08 poles, west  
 about top face at 19.34 poles + post cut pipe at  
 at N W 2 to the Rogers & in line with his west  
 line at 21.24 poles, fence with west line  
 to Rogers S 1 1/2 W 196 poles to fence post

Correct plat Simpson Surv.



- a = Stake in cut M. W. pipe also stake N 80 1/4 E 25 feet
- b = " " " " " N 29 1/4 W 24.68 from 2 = cut Br. over the River
- c = " in chan River with c = 30.30 S 77 W 53 ft = 80% lbs, also ash 572 from post S 10 W 14 lbs  
 with d = N 25 1/4 E 32 ft = 70% lbs
- d = " old Surv. B. O. Stump (old mt) S 86 1/2 E 38 lbs + B. O. Stump (old mt) S 17 1/2 W 62 lbs + B. O. Stump (old mt) 30' dia
- e = Stake { 37 ft + 10 inches = 57 1/2 links

Surveyed as above  
 for R. B. Simpson  
 April 25<sup>th</sup> 1881  
 S A B

66  $20 \frac{11}{2} = 19$   $76 = \frac{71}{1852}$

# Simpson Surv

A = Start at S = SW  $\angle$  Surv  
 run from d to g = NE  $\angle$  50 ans = N 9 W  
 run 1-7-25 = 35 poles  $\angle$  in south side Cr  
 put in stake =  $\angle$  d  
 pit C = B.O. old pit 30" S 17 W 53 feet =  
 " " = ash 8" 2 from 1st old pit = S 10 W 4 links

1853

INDEXED ON MAP

## S line to 6a

B Start at C = 7 links south  $\angle$  stake  
 Run from marked line trees + get true line  
 true course C to B = S 80 W = 2-4-17 = 48.68 poles  
 S 80 W 48.7 poles

Run from cent line Miami on pipe: N 29 1/2 W  
 dist 24 poles 17 links = 24.68 poles to true  $\angle$  at B

67  $20 \frac{11}{2} = 19$   $76 = \frac{71}{1852}$

# Simpson Surv

C = B = with cut pipe  
 N 29 1/2 W = 9-44 = 19.76  
 9-44 - 19.76 Stake in cent  $\angle$  25 east  
 in line  $\angle$  1/2  
 N 30 W 19.8 poles with cent. Miami pipe

INDEXED ON MAP 1853

## N line to 6a

Start at C = 6a on pipe = a  $\angle$  E  
 N 80 E = 2-7-45 = 55.80  
 N 80 1/2 E 55.8  $\angle$  1/2

## East line 6a

Start d = N 9 W 9 links 5 links = 18.20  $\angle$  E  
 N 9 W 18.2

## Containing 6a

Consideration \$360.  
 R. B. Simpson  $\angle$  wife to J. H. Simpson  
 Manaster and

Emerys Surr.

20 poles to an acre

Emerys Surr

A = 26 S & L James Emery find old stone put in by one

Start 10 links N of stone

James Emery & Leo Kikew ch. on

chan dry creek at 4 poles

N 87 3/4 W

Stake in line at 48 poles = a w 8 8 1/2

" " " " 80 " " 8.00 "

" " " " 99 " - c set south 7 1/2 "

Set off "on point" at 108 " = S set south 6.6 links

at 136 poles set more N 3 links = 13 after set stake

Find stone at end of fence running south being true as contained by old witnesses.

Strike south of stone 9 links, departure 4 links

with dist from a to stone = N 87 3/4 W 8-1-40

= 163.60 = Ok N 87 1/2 true course

Departure 4 links too much south

Emerys Surr.

Line B - c S W L Emery

Start West (N 87 3/4 W) 28 links from stone

N 2 E

Stake in line at 40 reset east

" " " " 80 " " 28 links

Chan cr at 96.8 poles

Stake in line at 120 " " 28 links

" " " " 160 poles

cut of Milldy B. pole at 160.25 poles

Creek at 260 poles

Strike 27 1/2 links west of stone in old fences supposed to stone true

Dist from c to k = 16 out 2 pins + 16 links

= 324.64 poles

Set at g thus take line from a to i

N 87 1/2 W then measure 28 links S 87 1/2 E from

above stake in line at 160 poles then N 2 E

7 links.

True course line B = N 2 E and dist

8-0-7 = 160.28 poles = c to g.

W to g = N. O. 16' N 57 1/2 E 94 links

160.35 = O K

#  
90
$$\begin{array}{r} 2.25 \\ 163.60 \\ \hline 165.85 \end{array}$$

$$\frac{85}{11} = 3$$

$$\frac{163.60}{60}$$

## Emerys Surv.

line C = to = OK Dec 12 at stone  
 take course from l to a = S 2 1/4 W  
 N 87 W course OK from l to k  
 dist l to stone at k = 8-2-24 = 164.96  
 Stone at k = OK < East + West but perhaps  
 1/2 rod too much N

line D = a; true course a to k = N 87 1/2 W  
 dist = 8-2-5 = 164.30 poles to stake in  
 cut of pipe true < at g  
 cut creek at 89 poles  
 set 2 stakes N 22 + S 22 W 25 ft from cut  
 164.2 = OK

#  
71

## Emerys Surv.

line E a = S 2 1/4 W = OK across course  
 cut of RR at 5-3-45 = 107.80  
 dist a to b = 8-0-4 = 160.16  
 cross cut of RR at 1/4 links south of south  
 side with guard  
 160.1 = OK

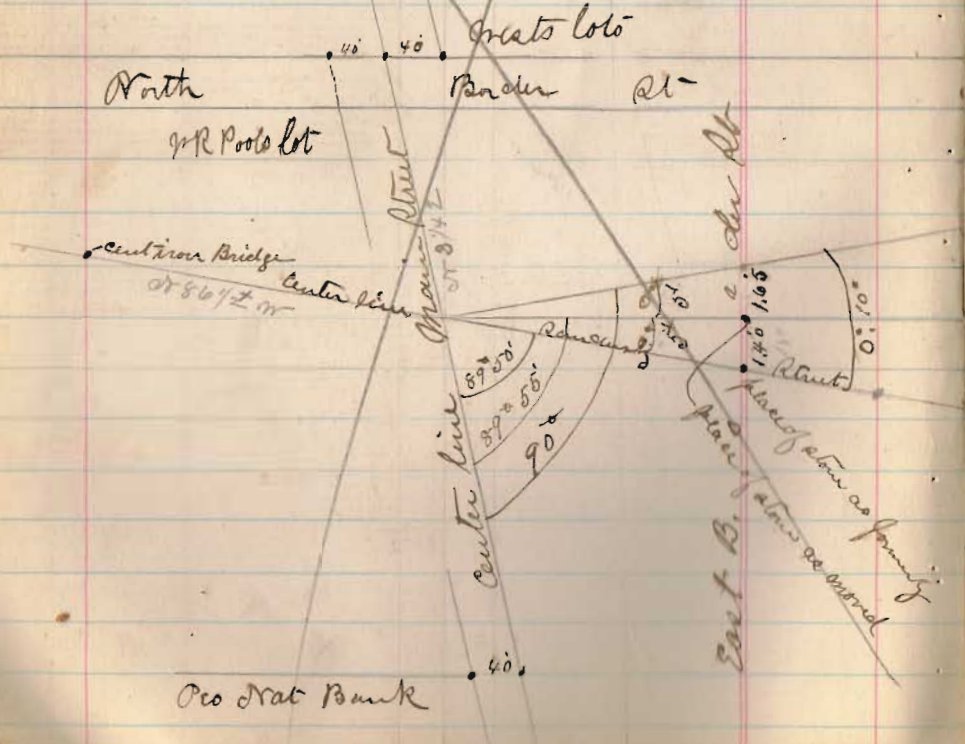
164.20

$$\frac{163.60}{60}$$

30

With Young transit  
Bellevue Ohio March 16<sup>th</sup> 1882

The following is field notes of survey made for Bennett  
Set on center of Main + Sandusky Streets as follows  
Measured from Judge Wests stone base for fence at north  
side St. Border Street, west 40' feet to <sup>point</sup> cent Main st. also  
measure from front fence of W. R. Pool East 40' to same  
point named above. then measure from front of Prop.  
Nat Bank building East 40' to point to cent Main st  
then took cent iron bridge over R.R. on Sandusky  
and point on the box as formerly discovered to be in line  
of cent Sandusky at being most easterly tree in front of  
Kernans lot west of hollow line.



March 18<sup>th</sup> 1882

~~Take course Sandusky St from stone boundary line N 86 1/2 E  
Measure from stone as per south to line of W. R. Pool fence 30.40 feet  
" " " " " " " " W. R. Pool fence 29.75  
" " line of stone + R.R. to Joe Kernans fence = 28.7  
" " middle street at Joe Kernans = 52.3 feet  
Bearing Sandusky line = N 67 1/2 E or N 67 W  
at W. R. Pool Dempseys lot which is N 77 1/2 E of lot 25 of Pubdir  
N 25 Durst N 4999 find variation of angle as above 2 1/2  
that is former line of Sandusky 18 1/2 or 16.5 from corner  
high is 45 1/2 W 7 1/2 links to fence post at W. R. Pool  
from W. R. Pool Dempseys  
fence parallel to Sandusky line 10 feet east of it S 16 E  
1-5-37 1/2 = 31.5 poles to center of Sandusky st at N 67 1/2 E  
10' from iron pin, thence on Sandusky street from iron pin  
N 67 1/2 E 50.8 poles to S E C of Pubdir lot 25 on actual lot.~~

## Marmouss Surv.

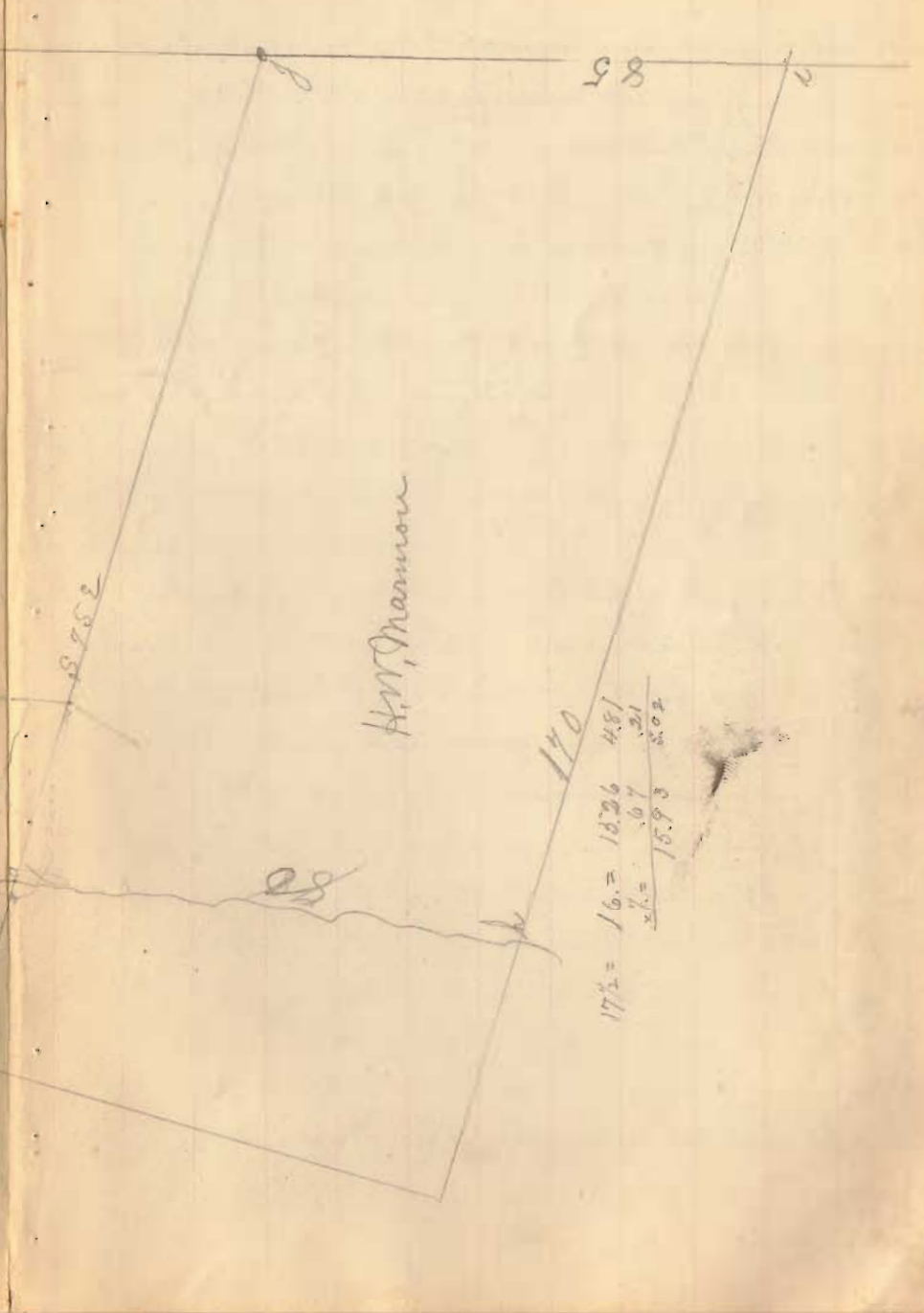
Surv for Marmouss & Vanhyning  
 S. P. Strong } ch or  
 Charles E. Scott }  
 Mortimer Vanhyning } mks  
 J. E. Marmouss }

Line a. Start  $N 88^{\circ} W$  50 lks from stone  
 at a  $S 2^{\circ} W$  80 poles = 4-0-0  
 set  $S 88^{\circ} E$  50 links to  $\leftarrow$  in fence row.  
 True line a =  $S 2^{\circ} W$  80 poles  
 a' =  $S 2^{\circ} W$  81

Line B = a Start  $S 17^{\circ} W$  21 links from stone  
 $N 73^{\circ} 1/2^{\circ} W$   
 Stake in line at 80 poles  
 at 132 poles set south 16 links  
 set stake at 8-4-0 = 168 poles  
 at 168 poles go  $N 16^{\circ} 1/2^{\circ} E$  32 links to  $\leftarrow$  stake  
 Variation too much south 5 lks = 20 poles  
 Meas from above stake  $S 73^{\circ} 1/2^{\circ} E$  14 links = 56 poles  
 True line B =  $N 73^{\circ} 1/2^{\circ} W$  167.44 poles to true  $\leftarrow$   
 Pit  $\leftarrow$  B = Red Elm 16"  $S 52^{\circ} 1/2^{\circ} E$  18 1/2 links  
 " " also Pigeon Oak 20"  $N 13^{\circ} E$  56 lks  
 True B =  $N 73^{\circ} 1/2^{\circ} W$  167.4 poles

287394

28173



$17\frac{1}{2} = 16. = 18.26 \quad 4.81$   
 $\frac{1}{2} = .07 \quad .21$   
 $\frac{1}{2} = 18.93 \quad 5.02$

Dr Watsons Survey Aug 5<sup>th</sup> 1892

Start at cent W.L. & Bell pike. Take course of S line of alley fence = N 86 1/2 W line strikes 3' south of alley fence bridge meets fence.

Start 33' = 50 links S of N E < met lot. Then on N 86 3/4 W. Strike west rail of RR at 3-1-11 = 62.44 poles. Strike fence on west line of old met property 3-4-29 = 69.16 poles.

Strike Dr RR to Cranston at 4-8-25 = 94 poles. Strike west line Bibell lot at 5-5-2 = 110.8

At N line Bibell set N 48 feet. At 309<sup>2</sup> poles strike 33' north of Oak & tree.

Run from Oak & tree east 6-4-31 = 129.24

Line B. start at N RR < Cranston, then 50 links on thence S 37 W. set stake in line at 40 poles.

Strike N line Cranston 10a at 2-8-32 = 57.28. Strike 16 links west of E line Bibell lot. run on E line = S 37 1/4 W

Line C. start at N RR < Cranston, then 50 links on thence S 37 W. set stake in line at 40 poles.

Strike N line Cranston 10a at 2-8-32 = 57.28. Strike 16 links west of E line Bibell lot. run on E line = S 37 1/4 W

Line D. start at N RR < Cranston, then 50 links on thence S 37 W. set stake in line at 40 poles.

Strike N line Cranston 10a at 2-8-32 = 57.28. Strike 16 links west of E line Bibell lot. run on E line = S 37 1/4 W

Line E. start at N RR < Cranston, then 50 links on thence S 37 W. set stake in line at 40 poles.

Strike N line Cranston 10a at 2-8-32 = 57.28. Strike 16 links west of E line Bibell lot. run on E line = S 37 1/4 W

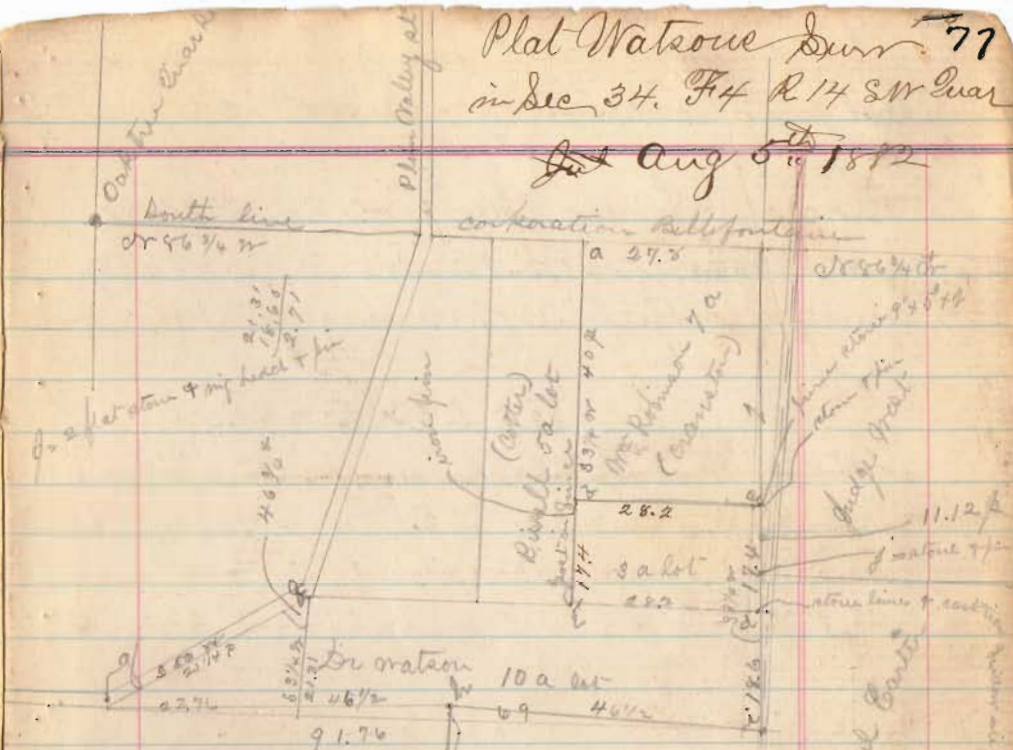
Line F. start at N RR < Cranston, then 50 links on thence S 37 W. set stake in line at 40 poles.

Strike N line Cranston 10a at 2-8-32 = 57.28. Strike 16 links west of E line Bibell lot. run on E line = S 37 1/4 W

Line G. start at N RR < Cranston, then 50 links on thence S 37 W. set stake in line at 40 poles.

Plat Watsons Surv 77 in Dec 34. F4 R14 SW Quar

Set Aug 5<sup>th</sup> 1892



see page 93, For plat Watsons Surv see page 94, this book

Line 6. start at south E < Watsons 3a, thence S 87 E 39 links = 156 poles to center of C.S. & C.R.R. = Dr E < Watsons 10a.

Strike S RR < 3a at 1-4-45 = 29.80. at < 3a set South 10 links.

Line 7. start at cent R.R. < 10a. Thence on N 87 W, strike S RR < 3a at 1-4-45 = 29.80 poles.

Strike N RR < 10a Watsons at 3-5-14 = 70.56

Line 8. start at N RR < 10a, S 50 W at 12.72 poles set N 87 W 3.20 poles, set S 87 E 3.20 poles strike N RR to Watsons 10a at 21.25 poles.

< on RR at 4' east of west side & 5' from south Watsons surv cont on page 93

Line 9. start at N RR < 10a, S 50 W at 12.72 poles set N 87 W 3.20 poles, set S 87 E 3.20 poles strike N RR to Watsons 10a at 21.25 poles.

< on RR at 4' east of west side & 5' from south Watsons surv cont on page 93

Line 10. start at N RR < 10a, S 50 W at 12.72 poles set N 87 W 3.20 poles, set S 87 E 3.20 poles strike N RR to Watsons 10a at 21.25 poles.



# Judge Lawrence Surr of

Course of new fence from SE  $\angle$  <sup>clearing</sup> = N  $9\frac{3}{4}$  W = OK  
 approx cor of fence on south side clearing = S  $59\frac{1}{2}$  W  
 Course of north line of clearing = S  $81$  W

Line a Start SE  $\angle$  clearing  
 N  $9\frac{3}{4}$  W with fence on west side of  
 new fence 6-5-25 lks = 131 poles  
 out fence = S  $81$  W 37 links

B = NE  $\angle$  clearing start 3' 6" south of  
 S  $81$  W = dist 56.2 poles  
 2-8-5 = 56.20 poles to NW  $\angle$  of 50 ans  
 marks meet ridge Bush 14' at 12' Start 50 ans  
 from NW  $\angle$  50 ans run S  $81$  W 16 poles to  $\angle$  of  
 land as run off =  $\angle$  d

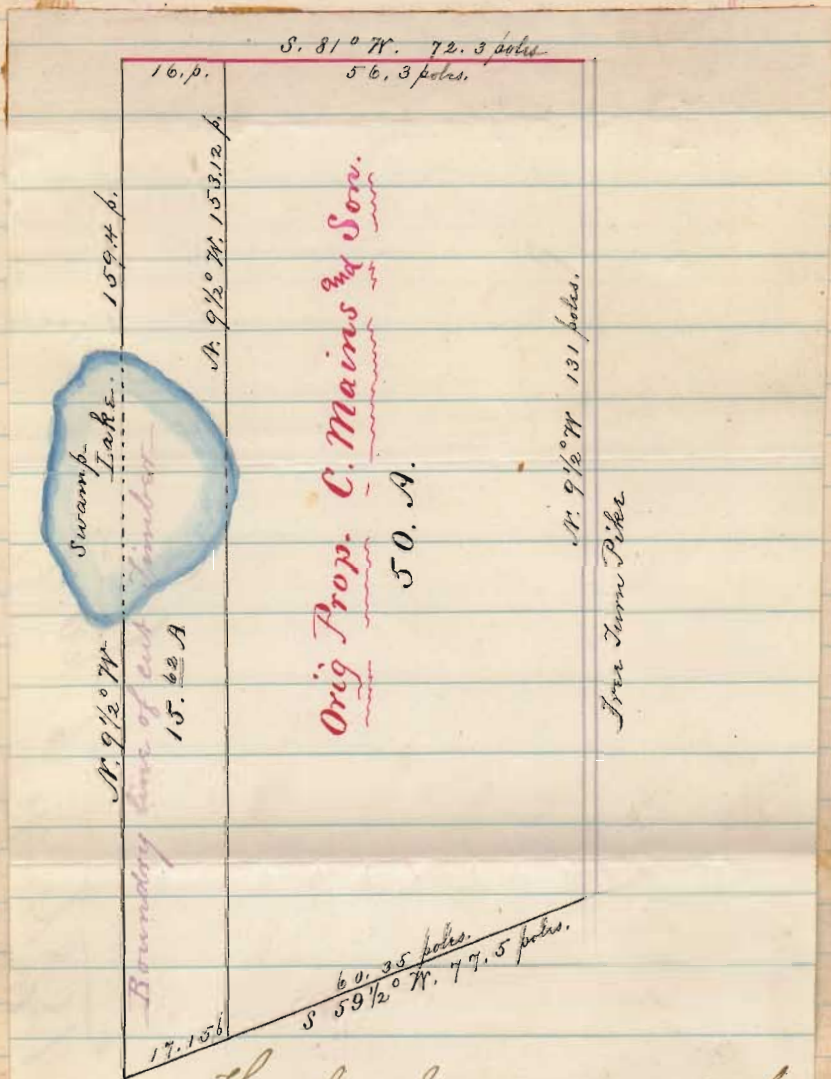
C = S as above

S  $9\frac{1}{2}$  E  
 7-9-12  $\frac{1}{2}$  = 158  $\frac{1}{2}$  poles to post + stake  
 in fence on east side wood land fence  
 S  $9\frac{1}{2}$  or 45 lks from west fence on wood land  
 = E

Woodland in Hardin Co.

Line 5 = E

N 59 1/2° W 8-29 = 14.16 to stake at  
 west side fence = J  
 thence inside with fence from J to a  
 = 2-9-41 = 59.64



The above survey as made by  
 Saml A. Buchanan.

May 9<sup>th</sup> 1881.

# Kauffman's Survey of

Line - Stake 1 N 59 1/2 E  
Dist Stake 1 to Stake 2 = 1-5-3 = 30.12

Line 2 - Stake 2 at d. side fence  
S 88 E, Stake 2 to Stake 3 = 3-8-11 = 76.44

Line 3 = Stake 3 - at 1/4 cor line on d. side  
with fence  
S 13 1/4 W, at 40.10 poles pass over stone  
3 to 4 = 3-6-0 = 42.00 strike east of <  
20 1/2 links var = 82 in 72. = S 2 1/2 W

Line 4 = Stake 4 - with fence  
N 79 1/4 W  
Dist 1-3-7 = 26.28 poles 4 to 5

Line 5 - Stake 5  
at 4 cor line  
N 56 1/2 W 5 to 6 = 1-2-32 = 25.28

May 10<sup>th</sup> 1881 Surveyors

# Wood Land

Line 6 = Stake 6  
S 22 1/4 W  
6 to 7 = 8-46 = 17.84 poles

Line 7 = Stake 7 from 7 to 8  
S 18 1/2 E = 1-5-18 = 30.72 poles

Line 8 = Stake 7 & from 7 to 9  
line of timber to run from 7 to 8 then to 9  
S 22 1/4 W = 1-1-38 = 23.52 poles

Line 9 = Stake 9 to Stake 10  
N 22 1/4 E = 2-45 = 5.80 poles  
7 to 10 = S 22 1/4 W <sup>23.52</sup>/<sub>3.52</sub> = 17.72

Line 10 - Stake 10 to 11  
N 41 1/4 W = 2-1-25 = 43 poles

## Kauffmans Surv. Good Land

Line 11 = Stake 11 = rough line 11 to 12  
 $N 39 \frac{1}{4}^{\circ} W = 1-7-5 = 34.20$

Line 12 with fence 12 to 13  
 $N 89 \frac{3}{4}^{\circ} E = 16-21 = 12.84$

Line 13 = Stake 13 to Stake 1  
 $N 9 \frac{1}{4}^{\circ} E = 6-12 \frac{1}{2} = 12.50$  poles

Total  $N \frac{1}{2}$  Acres in Young  
 Survey = 49.2 A.

## Fair Ground Survey

- 1 =  $S 86 \frac{1}{4}^{\circ} E$  14.55 ch to cor. at stables
  - 2 =  $N 3^{\circ} E$  8.86 ch to NW cor Fair Grounds
  - 3 =  $N 45^{\circ} W$  1.02 ch to post on N. Side of race
  - 4 = Along N. Side of race with meansing to a stake
  - 5 =  $S 31^{\circ} W$  9.44 ch to beginning
- No. Acres 11

Surveyed Aug 5 - 1881

- \* Samuel Miller Survey Aug 9th 1881
- E pt S E gr Sec 28 T3 R14 Mrs = 111.74 a.  
 N. E. pt N. E. gr Sec 27 " " " = 58.56 a.  
 N. W. cor. N. W. gr. Sec 21 " " " = 670 a.
- 1 = Beginning at the S.W. cor. Sec 28. in Cent. of road: thence  $N 3 \frac{1}{4}^{\circ} E$  40.01 ch passing lane leading to the house at 11.58 ch to a stone N E cor. to said S E gr.
  - 2 = With Cent. of road  $N 86 \frac{1}{4}^{\circ} W$  27.78 ch to a stone & rock at end of board fence.
  - 3 = With N. side of road  $S 3 \frac{1}{2}^{\circ} W$  67.43 ch crossing road at about 9 ch to a stake near and west of a large gate post 69 feet from Cent. of main track of the C & O R R

(over)

## Fair Grounds Survey

A = post in N line fair grounds from which a post in center of Bell & W L of Free Pike bears N 86 $\frac{3}{4}$  W 27.60 p. being the south west corner to a tract formerly of 16 a. belonging to Lindsey & Walker  
 post A is 4 feet south of present Fairg. fence

Line A. Start at post a  
 N 31 E = 1-9-0 38 poles  
 to a post in north line of Lindsey & Walker 16 a tract at the north side of Mill Race

Line B start at post a  
 thence with line between fair grounds & Walker N 86 $\frac{3}{4}$  W  
 = 1-3-40 = 27.60 poles to fence on cut  
 pike SW to Walker

Line C start at joint B on cut pike was  
 with pike N 3 E = 0-8-15 = 16.60 to cut stone  
 culvert

## \* Saml Miller Survey Continued

- 4 = Parallel with RR N 68 $\frac{1}{2}$  E 12 $\frac{3}{4}$  ch to a fence post -  
 5 = S 2 E 37 links to a fence post 44 feet from cent. RR  
 6 = N 68 $\frac{1}{2}$  E 24 $\frac{09}{10}$  ch crossing road, into Sec 21 at 18 $\frac{47}{100}$  to a stone 44 feet from cent. of RR  
 7 = N 8 $\frac{1}{4}$  E 12 $\frac{25}{100}$  ch. to a stone, W oak 18 S 3 $\frac{1}{4}$  W 31  
 8 = N 2 $\frac{1}{2}$  W. 5 ch to beginning -  
 = 177 acres

Nancy Green Survey Aug 15 - 1881  
 Entry No. 9951

- 1 - Beginning at a stone E of a school house  
 4 in a County road 70 l. S. of a Hawthorn 8 in  
 N 1 $\frac{1}{2}$  E 9 $\frac{1}{2}$  ch. to a stone  
 2 - Co. 75 l. to a reddish stone.  
 3 - N 9 $\frac{1}{2}$  W 17.95 ch to a stone  
 4 - N 83 $\frac{1}{4}$  W 4.60 ch to a stone 5 l. from ash stump  
 5 - S 6 $\frac{1}{2}$  W 24.9 $\frac{5}{100}$  to a stone in said road, a sugar tree N 80 l.  
 6 - With road N 77 $\frac{06}{100}$  W 8.11 to a stone  
 7 - S 89 $\frac{1}{4}$  W 17.29 ch. Creek at 13 ch. to a stone at intersection of another road near grave yard  
 8 - S 8 $\frac{1}{2}$  E 13.14 ch to a stone  
 9 = N 62 E 25 $\frac{85}{100}$  ch - Creek at 10 ch to a stone  
 (over)

## Nancy Green Survey Continued

- 10 = N2W 12<sup>17</sup> to a stone in road a double  
walnut tree S31E 44 l. & a Log in 15 in  
N36W 40 l.
- 11 = S77° 20' E 7 ch passing S. house to beginning  
62<sup>06</sup> Acres

6664 RR Co. Surv. Aug 16 - 1887

N & V Sec 12 T3 R13 DeGraff

- 1 = Stake in E. Side Koke St. 253' from Cent RR  
& 60' from S & V lot 12 N63 1/2 E 327' to a  
Stake in Sec. line
- 2 = With Sec. line N38 3/4 E 351' to S. Side of pike
- 3 = N83 1/2 W 79' to a stake
- 4 = W. Side Hays St. S62 1/2 W 235' to N & V  
to Mrs. Heston's lot
- 5 S78 1/2 E 82'
- 6 S63 1/2 W 132'
- 7 With E. Side Koke St S78 1/2 E 263' to  
the beginning  
27<sup>98</sup> acres