

OWNER'S NAME	Township	R.	T.	S.	S.
Baileys	Stokes	9	7	6	
"	"	{ 90126 9976 9925 }			
Ed Patterson		8	7	2	
Mrs Clurg - Stottmeyer					
Emery - Bennett					
Oliver D. Corwin	Jefferson	{ 3326 3327 }			

course of line at N 89 E
 Laylor to S 23 1/4 W
 at Hannum's 30 x on Taylor at
 50 each then alley 16 then 3 lots
 street 60 then 3 lots then alley 16
 lots, alley 16 - 2 lots 50 - 1 lot 25
 of plots 930 40

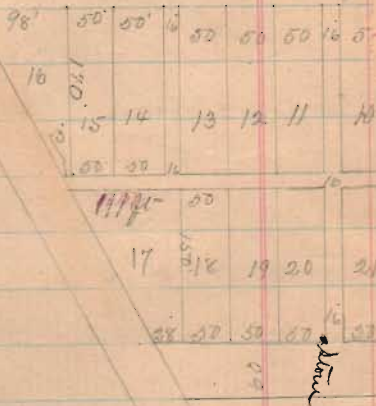
Paid to Hannum
 34
 65
 375
 1565

73.5
 39
 73.5
 1370
 650

73.5
 375
 0.8
 420
 22
 10
 144
 261
 236
 23.5
 150.6
 74.5
 170
 150.6

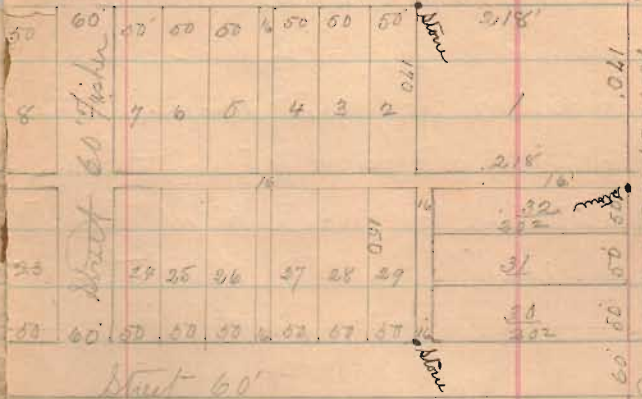
Plat of Lots
Taylor Fisher &

Joy



out for
West Side
Ohio

Street 60' 8 23/4 27'



Surrendered March 6th 1882

land in streets & alleys 321 ac

lots 681

Total 1002 ac

Bridge No 29

Course of Br = $S 41 \frac{3}{4} E 2$ - Right

" " Abut = $S 38 \frac{1}{4} W$

Surface of ground at N abut = 6'
above bottom of mud sill or one foot
above surface of water in river and
ground on S abut 7 feet above bottom
of mud sill, stake set at right bank
in edge of river at water level & 10 ft
of mud sill 5' below top of stake

Baileys Surv.

Baileys Surv. Line A.

Start at stone in Roberts line - \angle d
and \angle 2 \angle Sim Horns land

thence with Roberts line

Course Roberts line = \angle 2 $1\frac{1}{4}$ \angle W 5
2 $1\frac{1}{4}$ \angle WS $21\frac{1}{4}$ \angle = 3-5-25 = 71 poles to
old \angle White Oak6-7-1-3- \angle W \angle Putterbaugh = noted on
west post of \angle White Oak alsoBack ash 24" \angle 74 W 45 linksLine cee + dist line a = S $21\frac{1}{4}$ \angle 71 poles
= d to e

1845

INDEXED ON MAP

Baileys Surv.

7

Line B. Start at sent
pike \angle W \angle Dickson = \angle ncourse of pike S $80\frac{3}{4}$ Wthence \angle W $8\frac{1}{2}$ W 6 poles to S E
 \angle Bailey + \angle 2 \angle Dunn = \angle fNit-ash 24" S 22 W $11\frac{3}{4}$ linksalso N.O. 18 " \angle 89 W 39 "and a B.W. Stake at the \angle Line c start at stone \angle f thence
with \angle line Wright + Kuhns \angle line DunnS $56\frac{1}{2}$ W or $56\frac{1}{4}$

Red stake in line at 16 poles

Being S $56\frac{1}{2}$ W 35 links from center
of pikePass fence S W \angle 32 at 61 poles

1845

INDEXED ON MAP

1845

Line C. INDEXED ON MAP

Line C. remeasure from
 < j - S 56 1/2 W, pass center
 of pipe at 14.6 poles

Set stake in line at < to Durr &
 Wagner at 65.60 poles being 87 poles
 from crossing Durr's line & pipe
 Set stake < to Durr & Bailey at
 96.10 poles

Set stake in line at 258 poles
 then set N 15 links

more N 35 "

Strike 27 links north of < tree
 on Roberts line, Variation 2, 3
 links too much north.

Dist to < tree = 16-0-24 = 330.90

At about 200 poles pass 8 x 5 to 0
 di 2 1/2 links north

At about 250 poles pass 19 links
 and line to the Oak

Set - S E < to a Putterbaugh
 + S W < to Benj Bailey = < j
 then find old marked line above
 meet it 2 S 56 W 24 links then
 N 33 1/2 W 17 links, from first
 line run these directions from first
 line at Putterbaugh < N 17 links
 N 1 - S E < Putterbaugh = < j =
 Burr Oak ^{20" di} N 87 1/4 W 118 links
 also Elm ^{8" di} N 89 W 31 1/2 links
 also B.O. ^{20" di} N 9 W 85 links

INDEXED ON MAP

1845

Line D Start at stake 32
 Putterbaugh + S W < Bailey = < j
 then set N 9 1/4 W

Set stake in line at 100 poles
 also stake in line at 101.4 "

Strike east of < 12 links on line H
 then set to the pipe = N 9 1/2 W 101.40 poles
 on line H.

Baileys Surr

Line E, Start 26 links
 South $9\frac{1}{4}$ 2 from stake at 10.14
 thence $36\frac{1}{4}$ W
 set stake in line at 38 poles
this line not used

Find stake \leftarrow to Horn 25 links from
 marked ash 8.

1845

INDEXED ON MAP

Baileys Surr.

Line F. Start at stone at 2 \leftarrow
 to Horn in Rote line, thence
 in line of Horn on west
 at $64\frac{1}{2}$ E 12 poles to \leftarrow Putterbaugh

1845

INDEXED ON MAP

Line G

thence from east of line F
 at $20\frac{3}{4}$ E 52 poles to \leftarrow to
 Putterbaugh pass center of pole at
 51.08 poles put in stake for
 end - line passes 1/2 of Putterbaugh's west
 gate post, at it above \leftarrow at 2 line F
 with testimony of \leftarrow in \leftarrow 2 marks
 may) at 15 E $64\frac{1}{2}$ links }
 also Dugan 16 at $41\frac{1}{2}$ E 174 links }
 Line G = at $20\frac{3}{4}$ E 52 poles

Baileys Surv.

Line H.

Start at stake NW \angle Putturbay
 at NW \angle line G, thence on line
 from NW \angle to stake in line G
 at 101.4 poles from SE \angle Bailey
 & NW $65\frac{3}{4}$ E 35 poles & put
 in stake \angle to Bailey & Putturbay
 Ring 12 links west of stake at NW
 line G i.e. at 101.4 poles

(Mit at E \angle line H = \angle Bailey & Putt)

9) Box Elder 18" NW $23\frac{3}{4}$ E 35 $\frac{1}{2}$ poles

(also Cottonwood 16" NW $80\frac{1}{2}$ or 131 links

1843

INDEXED ON MAP

Baileys Surv.

Line J; Start at stake at SW \angle 15

Dere 5a + SE \angle to Bailey at 96.1 poles
 of line E.

Mit above stake

W.O. 24" NW $48\frac{1}{2}$ E 23 $\frac{1}{2}$ links } = 1
 also W.O. 14" S $12\frac{1}{4}$ W 19 links }

Thence on line H of Dere + E \angle Bailey

NW $9\frac{1}{4}$ W = 1-6-110 = 33.60 poles

to stone set in center of pike & \angle

1845

1845

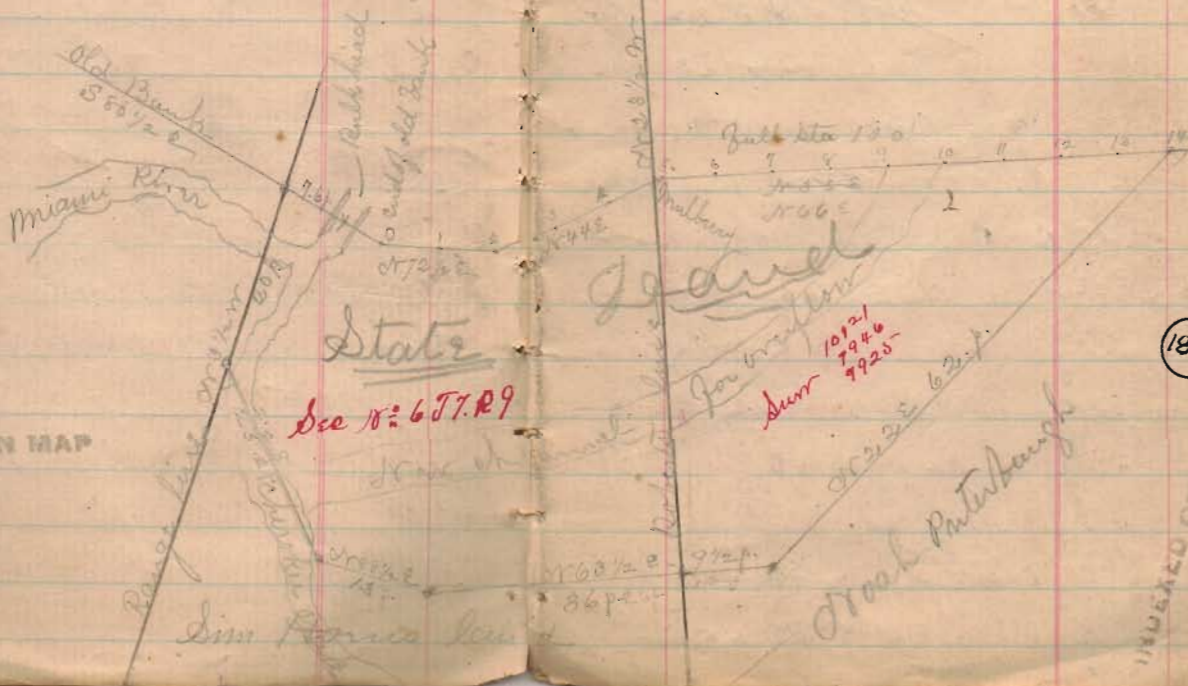
INDEXED ON MAP

Baileys Durr

Line G.
 Start S 8 links S 9 1/4 E from
 NW 2 < Putterbaugh at C. E. line H
 Thence north center of pipe
 $N 80 3/4 E = 7-4-25 = 149$ poles
 to < in pipe at NW 2 to Durr
 & return and to <
 Line K. Start at stone cut pipe NW 2 Durr. Thence
 $N 80 3/4 E = 1-3-45 = 27.50$ poles to the SW 1/4 of Oregon

1845

INDEXED ON MAP

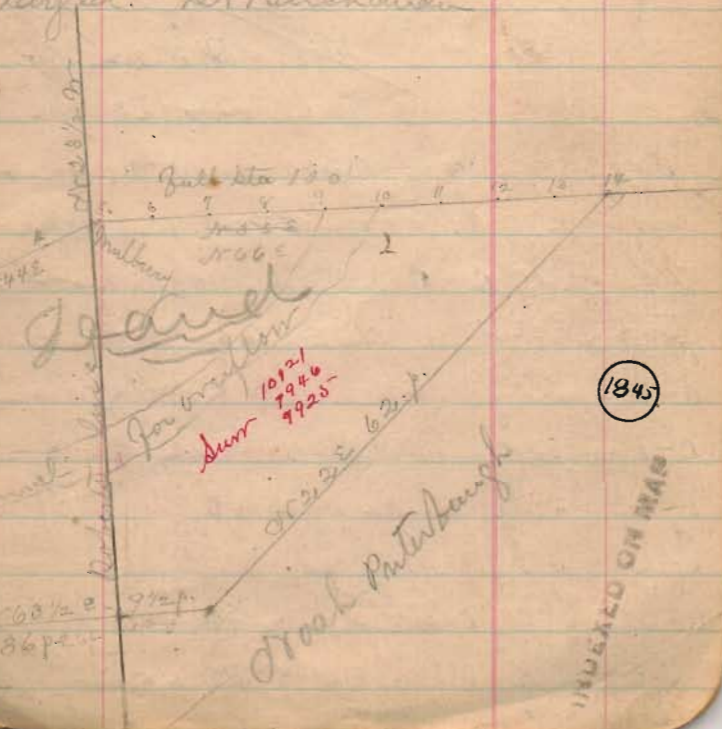


1845

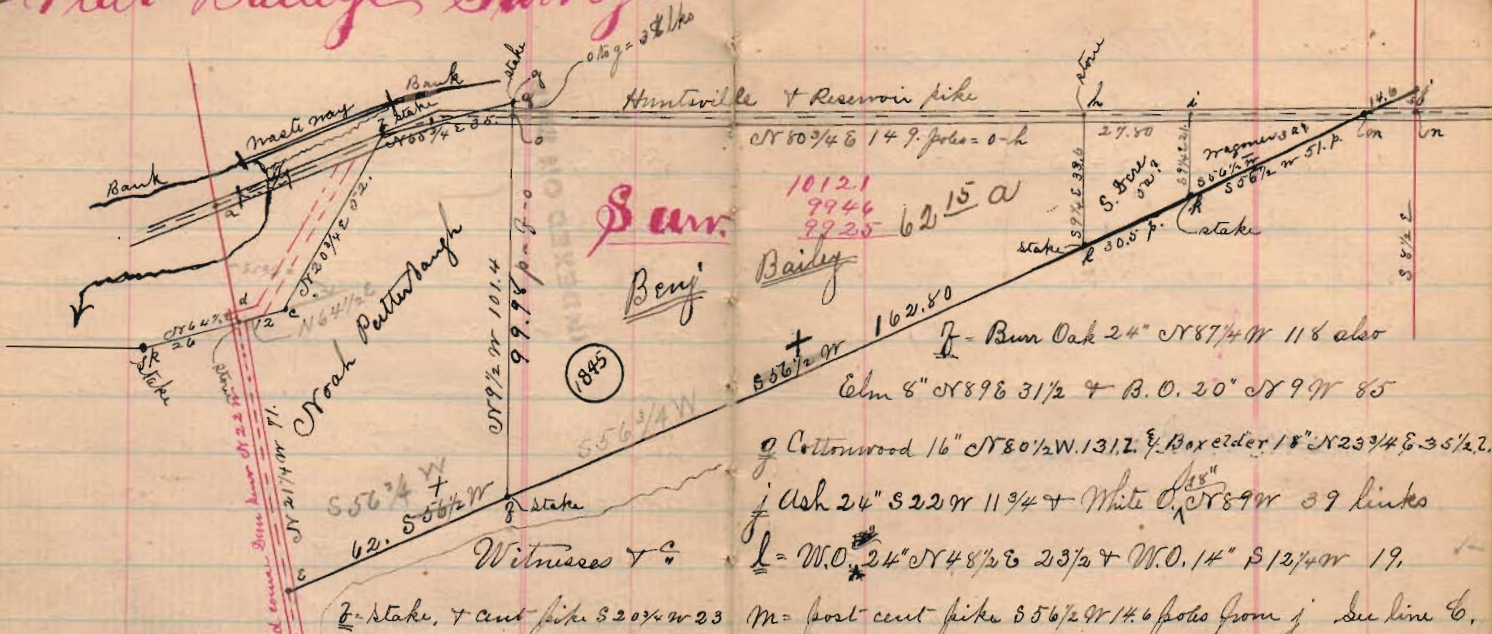
INDEXED ON MAP

Baileys Durr

Line G.
 Start cut pipe < to Wagner + Durr
 S 9 1/4 E 1-0-26 links = 21.04
 to stake set at 65.6 poles of line G.
 Below is given a true copy of plat made
 by J. B. M. Deaughlin 1846 from his field
 notes taken in survey of lands about the Bull
 head at town Leovictoria, Bessonia was en-
 larged. At Buchanan



16 Plat Bailey Survey.



Surr.
Benj Bailey

(885)

Witnesses & c

- d-e = Line a. also Cottonwood 16" N 15 E 64 1/2
- n-j = " B. & also aug. 16" N 81 1/2 E 17 1/4,
- j-e = " C C = post N 64 1/2 E 12 poles from d
- f-g = " d d = stone in Robt's line, Mt from Surr
- d-e = " f Ave. W.O. 14" N 57 3/4 W 43. + B. Mal
- c-d = " g 16" N 9 1/4 W 27 + Mulberry 9' 55 1/2
- f-g = " h course post = N 64 1/2 E 26 poles
- h-i = " i p = Ash 6" S 5 W 24 links
- o-h = " j o = notch on east root of old L W.O. also
- h-i = " k Blk Oak 24" N 74 1/4 W 45 links
- i-k = " l.

N 60 1/2 E 149.6 poles = 0-h
 10121
 9946
 9925 62 15 a
 27.50
 S. 56 1/2 W
 20.5 p.
 Stake
 59 1/2 E 38.0
 55 1/2 W
 55 1/2 W 51.4
 14.0
 S 8 1/2 E
 162.80
 f - Burr Oak 24" N 87 1/4 W 118 also
 Elm 8" N 89 E 31 1/2 + B.O. 20" N 9 W 85
 Cottonwood 16" N 80 1/2 W 131.2 & Box elder 18" N 23 3/4 E 35 1/2.
 Ash 24" S 22 W 11 3/4 + White Oak N 89 W 39 links
 l = W.O. 24" N 48 1/2 E 23 1/2 + W.O. 14" S 12 1/4 W 19,
 m = post-cent spike 55 1/2 W 14.6 poles from j see line c.
 n = " " " 58 1/2 E 6 " " j " " B.
 h = stone center pike - to Bailey & Son,
 o = post-cent spike 59 1/2 E 38 links from g.

The above plat shows line & corners as run and located in survey made for Benj Bailey April 4th & 5th 1882
 S A Buchanan

(885)

INDEXED ON MAP

Ed Patterson Linn,

Start at X Roads at Massou
course of Road = S 3 1/2 W

Line A.

X roads = i - N 3 1/2 E. let E 17
pass ² ³ ³ 1/2 which dd pick up p. & at <

Line B. Start X roads i

course pick N 70 3/4 W

let stake at 2-1-18 = 42 1/2 = < h

let " " 4-0-30 = g = 81.20 poles

B.D. 20" = S 64 3/4 W 43

hence N 70 3/4 W 1-1-4 = 23.6 poles

to < B. + +

Start at F House N 70 3/4 W = 3-7-12 1/2

= 7 1/2 poles to corner marked X S 5 1/2 W 40 1/2

Strike old L. mit or real S 22 W 6 3/4

+ dk real 67 at 14 back of 10 1/2 poles

Line C

Start at Juice Run at F

then S 3 1/2 W. Start 10 links off <
at V line at 20 poles.

set E 10 lbs. (20 poles per sta
3 in line 4 in line 5 in line

Strike east of < S 3 1/2 links = 134
= 1/2

Mit end in C hick 18"

N 76 3/4 E 35 links + +

Line D = S 4 W = 144.8 poles

Mit S 7 C = < Hick 18" N 76 3/4 E 35

and dug 20" S 21 1/2 W 23 links

Line D = m = p E L Patterson

S 88 1/2 E pass ^{cm} at 22.8 poles

old mit = 4 pronged Logun N 88 1/2 W 31

hick on

then cr from m S 88 1/2 E

37 poles to li strike 13 1/2 links N

of < = .54 poles or in 37 poles

let stake 18 1/2 links south to < L

20

Leim I continued
Part I - Aug 14th or 25 or 26 lbs

21

3



McClurg & Stottemeyer Surv
Sec 4 1/2 1882

Jake Bogart ch 14 = 1 day

Peter Keenoken " 14 = 1 "

Henry Shaffer surk 141 = 2 "

O. Gallagher " 14 = 1/2 "

Daniel Stottemeyer 1/2 + 1 = 1 1/2 "

T. B. Shaffer " 14, 1 2 "

Start at stake at S or < Sec 2

thence or 1 1/4 W

at 734.20 poles pole 1 foot south
of < stone in cent pike at S or < 20 are

Melissa Shaffer

Strike stone at S or < section at 16-0-32

321.28 poles

Set stake in cent pike at S or < McClurg

at 100.64 poles from S or < Sec 2 and
center of culot or 1 1/4 or 62 links

Henry Shaffer ch on in above time

John Shaffer ch 1 day

Start at stake S or < Mc. Clay
2587 3/4⁺ 2, lat or 2 links

at 160 poles strike 3 links north

of < stake set by Mc. C. for S or < McClurg
set south 12 links

at 241.24 poles strike line W. Band road
and strike 42 links north of < stake

True variation of 57 links

Set south 30 feet = 57 links

at 321.74 poles strike east line of road
2 links north of < total variation 2 1/2 = 99

hit at S or < road elm 20' S or < 141 or 4

links N or < for gate foot to organ gate

Variation 246 ^{Jun 24} ^{flat} N or < 3 1/2 W or < = or 88 1/2⁺

Start at S or < Sec 2 at Stake, ^{old} Turner

528 or S 88 1/2 W

Set stake at 162 poles in line near old <

marked double about 1/2 north and 2 1/2 east

True variation or < Sec 2

Set stake in line and in line of ditch
at 160.24 poles = O.K. & E. < Bogart
Start at stake at 162 poles,

Set south 5 links, set north 3 links
to stone at N < Bogart + line 2 at
162 + 159.40 = 321.40

Set stake as above N < Bogart being
N 88 1/2 E 161.16 poles from stone at N <
direction: Willow 18" S 29 3/4 E 30 1/2 links
Willow ^{14"} (3 from road) N 19 1/2 E 53 1/2 "
also Elm 12" N 87 1/4 W 40 links

Start 13 links east of stake at N < Bogart
thence S 1 1/4 E, set S < McEwing stone
Go to stake set by McE & Co. S < to McEwing
and Run S 1 1/4 E 45 links to half a line
thence N 88 1/2 E 29 links to O.K. <
S < of McEwing, strike 13 links east
of lat 160.64 poles

Set S < to McEwing Red Oak 10"
N 82 1/2 W 18 1/4 links also ash 24"
S 29 1/4 W 19 links

Set south east < to Bogart at 80.32
poles from N < Bogart

Witness to S < to Bogart + N < to
Maple 12" N 58 E 29 1/2 links

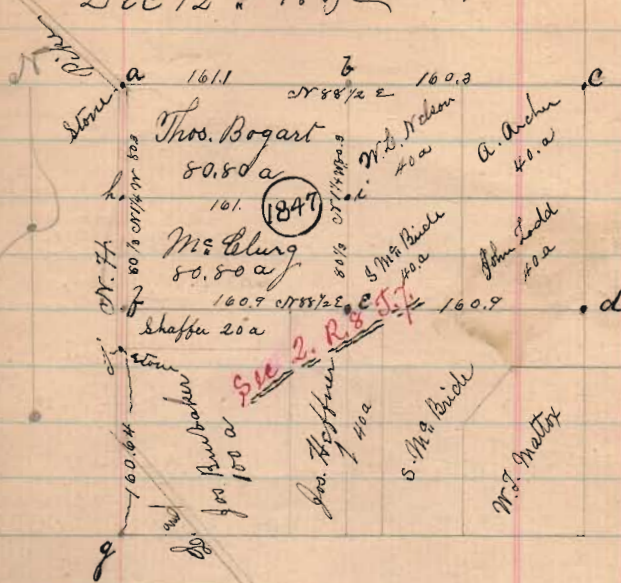
also Ash 10" (3 from road) McEwing with
North line S 77 W 37 1/2 feet = 57 links

Also stake set by McE & Co. S < S 87 1/2 W
23 - link, also center stake of
Big Blough ditch Sta 106 north 13 1/2 links

McClurg Survey

- A = Flat limestone NW corner Sec 3. T. 7 R. 8.
- F = Stake in line center of Big Slough ditch and Willow 18" S 29 3/4 E 30 1/2 links of Willow 14" (2 from 1 root) or 19 3/4 E 52 1/2 links of Elm 12" N 87 1/4 W 40 lbs
- C = Stake in swamp, old stake corner section
- d Elm 24" S 38 1/4 W 171 links also gate post S W 4 links
- e Red Oak 10" or 8 2/2 W 18 1/4 links of Ash 24" S 29 1/4 W 19 links
- f Stake in center Cornistown E of or H pike and cent culvert or 1/4 W 62 links
- g Stake near large oak
- h post 2 ft north of old stake put in Mc Cormick
- i stake and maple 12" or 58 E 29 1/2 links and Ash 10" (2 from 1 root) north tree S 77 W 37 1/2 feet = 57 links. And stake set by Mc Cormick for S 87 3/4 W 23 links and center stake Big Slough Ditch Sta 100 north 13 1/2 links
- Stone in center pike 1 foot ^{east} north of decliner

Plat. McClurg Survey finished Dec 12th 1847 27



Emery of Bennett

Emery Burr

Copies of map of checkerboard
of A Bennett

Line A

Start at T old & H.C. Moore corner

3 8 3/4 3-7-11 = 74.44 poles to

stake & to Emery at of survey

set stake at 1 = 8 8 3/4 or 74 poles

put in stone at of = & Surk

Line B = g. Start 13 links of stone
or 8 1 3/4 3.

Set stake in line at 3-3-0 = 6.6 poles
same being 12 links or 4 links 2 of old
link under for & Emery Burr

-9-7-20 = 194.6 poles to old stake
strike 9 links north of old & stake = & p
true cor & dist line B = or 8 1 3/4 3 194.6

Surrey

Mid & p = block line & Wiley & McChas
out in Emery line on or

Survey with 9" or 88 3/4 or 46 1/2 links
also Elm 36" S 5 1/4 or = 89 feet = 59 links

Line C = p. Start 15 links E of stake
or 8 3/4 or 3-7-0 = 74 poles strike 15 links
E of old & stake

Measure E line of stake land. Be from 1/2
line distance with an Mallock survey

or or else soil = 37' 4" dist = 38'
74' or of old road cut Dist from
r = 6 - 6 - 38 = 133.40 poles

Set & at r or 8 3/4 or 74 poles from p
set stone for & find old stake 11 1/2 links
south of true & for r, set stone at p

Emery and Bennett Durr.

Line E start at stone \angle

S $81\frac{3}{4}$ W, set stake in line

at 60 poles, stake on line 104 poles

set stake at, 6 - 4 - 44 = 129.76

= length from \angle to Emery. Stone

was from \angle to N $81\frac{3}{4}$ E 64.84

poles to above \angle . strike 135 links

north of line \angle = N \angle Bennett + Emery

run = 60 poles to point N in 129.76 poles

Meas from \angle of N $81\frac{3}{4}$ E 64.84 poles

to stone set for \angle to Emery + Bennett

being S $81\frac{3}{4}$ W 23 links from old kick

E. of line true, and above \angle being

S $81\frac{3}{4}$ W 129.76 poles from \angle of

Line E start - S \angle Bennett +

S W \angle to Emery + 28 links east of \angle

N $8\frac{3}{4}$ W, set W 28 links strike \angle

oil \angle on below = set stone of 30 = N $65\frac{3}{4}$

W 17 $\frac{1}{2}$ links also back 15' N $41\frac{3}{4}$ E

43 $\frac{1}{4}$ feet

stone my head = 2' x 1 x 8"

INDEXED ON MAP

64.84

a

129.76

1848

9987

64.84

b

129.76

N $81\frac{3}{4}$ E 194.60 poles

Oliver D Corwin

O D Corwin Jun-Nov 27-82

Surrey made Nov 27+28th 1882

- Dick Kitchencher
 - Dank Arbyast
 - Walter Jancher Maker
 - O D Corwin (owner)
- } known

Line A Start at ^{15 links east left of} ~~line~~ in lane at NW corner

Stake Arbyast 4 or NW to house 33 2.6
House S 9 1/2 E. at 72 poles ^{15 links east of cut}

Large nitrogen head at an old ~~well~~ ^{well}
at 120 poles ^{1/2} ~~line~~ with 20 links ^{diff 7 links}

east of ~~line~~ to NW Arbyast 24 2 are

At 151 poles find 18 links east of ~~line~~

Sugar 50"

Set west 10 links

At 180 poles set stake in line that is
stake 5 links east of Ok line

At 185 poles 7 links east of stake

Mann, Jr 5 or 6 poles Arbyast

At 214 rods + distance

Surrey

At 255 poles stake in line is 5 1/2 east
then set east 10 links - old line

At 294 stake line = 15 east

At 16-2-15- 324.6 poles to Ok
of O.D. Corwin ^{stick} 21 links east of ~~line~~

Variation 6 links in 324.6 too much
east, find line through stake 150 p. West 8 links

Stake 234 met 2 1/2 links, stake 255 met 10 links

stake 294 met 2 1/2 links, } Ok corner line 189 1/2

Line B. start at stake 5 or 6 Corwin

at 542 1/2 poles center pole - 5-3-8-10 1/2

Ok in line of fence, line B = 1890.78 105.9 p

Start at ~~line~~ east pole S 2 1/2 to O.D. corner

then with east pole 5 or 6 or 7

pass center road east at 6 poles

Lat 4620 poles at 2 1/2 links west of

center of parcel,

At 214 rods + distance

At 214 rods + distance

Oliver D. Corwin

at 4-5-40 = 91.6 poles

more than \leq N $\frac{3}{4}$ W 5 more links

= 4-5-45 = 91.80 poles at dist

line = N 77 W 46.2 f

Line D was established Quince lot
65 $\frac{1}{4}$ rods

line 2

Start at stone \leq to Quince & Rudy & in
at line's base due east.

S 52 $\frac{1}{2}$ W at 51 poles set stake

in line, also stake at 3, 4, 5 in line

each at ends, also stake in line at 4 cuts

at 8-6-6 $\frac{1}{2}$ = 142.26 strike west line

at Quince at 48 $\frac{1}{2}$ feet south of corner &

(S or \leq to fake Arbizuel) as set by man

line, start at stone S 2 \leq Quince lot

thence N 82 $\frac{1}{2}$ E, set North 7 links

at 93 poles pass 33 links (variation 26 links) north

to stone at S or \leq Quince 10 a lot

to south 7 links.

at 228.2 poles stone at road at east line

over 3326 line strikes 47 feet north of

stone being variation too much N 77 ft

pass 5 $\frac{1}{2}$ links north of stone set by man at 1000

rod to corner.

Variation of line 2 - too much north $\frac{3}{4}$ of course

at 23 $\frac{1}{2}$ E

line 3

Start at stone at S or \leq Quince 2 $\frac{1}{2}$ a

thence S 80 $\frac{1}{2}$ E 57 $\frac{1}{4}$ links

thence S 32 $\frac{1}{2}$ W

at 50.80 poles put in stake at 2 \leq O D Corwin at

36 links west of center gravel on pile, and 19 links

north of line 2, stake in line at 60 poles + 23 links

and line 2. at 80 poles north of line + 29 links north of 2

poles stone at center line, set north

10 links

36

Oliver & Corwin

at 140 poles out stake on line at mouth of line E,
 at 8-6-16 = 172.64 poles to the

south west corner of Lake Arbigast
 or corner O D Corwin at stake
 on line of stake set by Mann 1/2 link
 1/2 links west of Mann's stake

Wit to ^{stone} at SW \angle Lake Arbigast
 Elm 36' S 50 3/4 W 57 1/2 links

Buck 18' S 7 1/2 W 58 1/2
 Oak 30' N 1/4 W 79 "

Planted a piggyhead 2 1/2 x 16" x 10" at 2 W
 \angle Lake Arbigast and north west corner
 O D Corwin same being 89 1/2 E
 185.6 poles from NW \angle Deer 332.6

Wit \angle stone marked & planted at SW \angle
 to O D Corwin being 15 links N 9 1/2 W
 from NE \angle Geo. A. Keeney

Red Elm 9' N 28 1/2 W 42 links also
 pique 10' S 34 3/4 E 35 ft piques at

Keeney 4/36

Buck 12' N 88 1/4 W 45 1/2 links

Planted stone in center N to L & R
 pike N 83 1/4 E 35 1/2 links from stake
 at NE \angle to O D Corwin

Oliver D. Cornin Survey

O. D. Cornin survey
for 27th & 28th 1892

Surv 3327

Stone at W corner Surv 3326.
Large mounded stone, cut stone
with pipe
catch catch stump & corner by the R. S. Kitchen
1/2 stone & 2 links
Long head 21" x 18" x 10" also
Run 36" S 88 3/4 W 57 1/2 also
Run 19" S 77 1/2 W 55 1/2 & Run 20" N 1/4 W 79 links
Stone & Kitchen & Arbigant planted by self.
Long (18") migh head stone on slope of south bank of
small stream and Red Elm 9" N 2 1/2 E 42 links
Run 12" N 88 1/4 W 45 1/2 links also Sugar 30"
3 3/4 x 2 1/2 (35" 3") = 53 1/2 links
Stone in cut N to E of R pipe at W pole
end of road running East



O.D.

Plat Cornin Surv. 39

INDEXED
over
18 Ave

Surv 3326

to R = N 79° 46.2 pole
cut 20 links out of center of gravel on pipe
& E corner of Cornin tract part at side
toward center of pipe & stone planted there
3 1/4 E 35 1/2 links
59 1/2 E 15 links
Run of Hick 20" S 88 1/2 E 57 1/2 links old stone marked

