

J. A. Sponseller  
 O. C. Richey } Ch. Cr

N.

seat

R.

Dum Surrey 3/15, '07

Line A

Found L stone at N. E. L  
of 10 Acres.

Measured South  $291\frac{1}{2}$  feet to  
O of L post on N. line of Survey  
L post of wire fence  
Set stone on stone at 290.07  
feet N. of

Line B.

Along N. side 10 Acres.  
Measured W. from L stone  
 $1596\frac{1}{2}$  feet to O L post in  
Spenseller's E. fence line.  
Set Temp. stone at  $1596\frac{1}{2}$  feet.  
Set this corner at 290.07 N.  
of S. W. L of 10 Acres.  
Produce this line W. to intersect  
with W. line 9927 produced.  
S.  $83\frac{1}{4}$  W. 109 feet

see map Praver R.

1389

INDEX BOOKS



M. E. Eldin Don Survey 9/15/97

Line C

S. side 10 Acres.

Offset 62 feet north from L. Stone

N.W. 1/4 9927

Chained W. on offset line

S. 83° W.

Set Temp. stake <sup>on offset line</sup> at 15.96 1/2

in 0' old rail fence

Set Temp. Stake on W. Line

10 A. and 27 feet S. of Temp.

Stake above. This is 25 feet

N. of N. Line of 9927

Set stone on top stake at 15.96 1/2 feet  
wit: 15" Walnut S 69 1/4 E 20 ft.

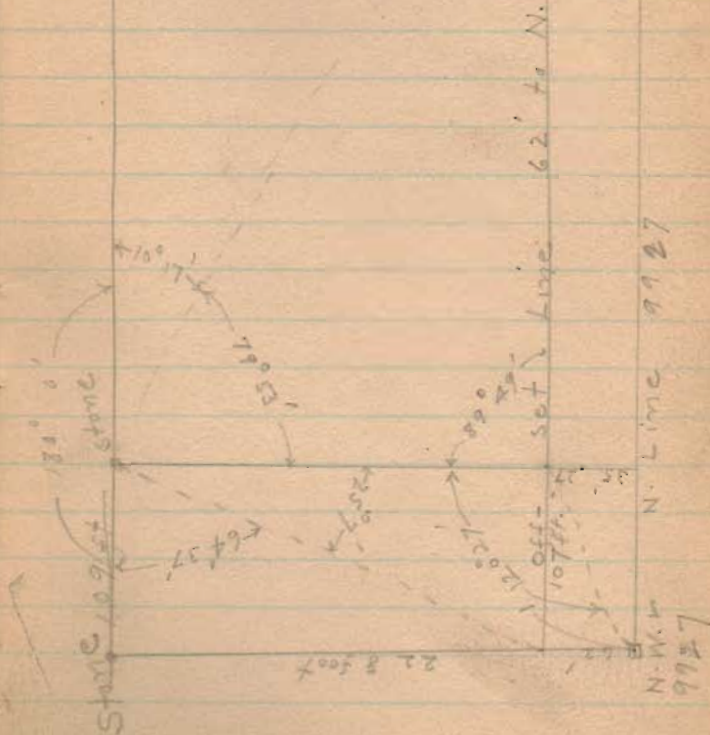
This stone is 9' N. of top of bank  
of Cheronce Man's Run

4 boulders on top oak stake

L. Stone

1389  
INDEXED ON MAP

Cor.  
Post. 3



Line D

N.  $6\frac{3}{4}$  W.

248 ft. to 2 post of wire fence

Set 2 stone on top stake  
at 290 feet

Line E

W. Line 9927 produced N.

N. 7 W.

$228 + 62 = 290$  feet

1389

INDEXED ON MAP



Eber Hodge Surv.  
27-2-8 - Bloomfield Tp.

Start stone in X road. S. line  
Sec. 27

With road N  $\frac{1}{2}$  W  
at 39.985 gas pipe stone  
 $\frac{2}{79.970}$  No stone to be found

Run line through from NW  $\frac{1}{4}$  to NE  $\frac{1}{4}$  Sec. 27  
at 79.91 set iron bar in  
pile, Forked Cottonwood 51 W, 51 ks  
Oak apple N 43 W 74 ks

N. line of Sec. 27 - S 89  $\frac{3}{4}$  W  
at 20.23 iron pipe across road  
" 20.40 fence to South  
" 40.50 stone 4' below surface  
in pipe Set new stone

above it, with pc. rails between  
Gas pipe at 20.25

W. line - Sec. line. 39.82  
at 39.82, big stone in Sec. line  
at NW  $\frac{1}{4}$  J. W. Wright

See Book D Page 6

Eber Hodge Surv. 5/4/07

Oliver Pichey } ch. Cr  
J. W. (Dick) Wright }  
Eber Hodge  
RFD, No. 1, Deleriff

S. line.

Commence stone NW  $\frac{1}{4}$  W right  
Set N, 12 links + 6  $\frac{1}{2}$  pc = 20  $\frac{1}{4}$  ch.  
Random N 89  $\frac{1}{4}$  E  
at 40.43  $\frac{1}{2}$  came out 43 ks  
N. of iron pipe at road

43  
20  $\frac{1}{4}$

Working 2 | 22  $\frac{3}{4}$

11.5

20  $\frac{1}{4}$

31  $\frac{3}{4}$

43  
11.5  
31.5

2 | 40.43  $\frac{1}{2}$

at 20.21  $\frac{3}{4}$  set iron pipes  
in ditch. wit, 12" Shel. Hick N  $\frac{1}{2}$  W 50 ks  
18", 18" Spt Maple N 42  $\frac{1}{2}$  W, 22  $\frac{1}{4}$  ks

= over =

(158)  
INDEXED ON MAP

5-15-08

Wright - Hodge line continued

As to stone at NW  $\angle$  J.W.  
Wrights 80 a

Daniel Hill states that  
he has known this stone  
for 65 years & has always  
been recognized as corner  
& on Sec. line, &  
will testify to the same in  
any court.

Miss Sarah Howell could  
not state positively that this  
is a corner stone but  
stated that all fences for  
many years back had been  
built to this stone.

W. Wright states he had  
owned this piece for 28 yrs,  
& this stone had always  
been there & considered as  
corner.

Marion Hill / Chico  
David Kebrin

The purpose of this survey  
is merely to get a straight  
line along Wrights N. side  
for building fence.

Set stake 10.11

or 20. 20 1/4 iron bar -  
use Sherer & Hodge

20.29  
10.105

30.395 set stake

40.40 iron bar in steel

checked old survey ok

See Book D Page 6

(158)  
INDEXED ON MAP



May 14/07

Lewis Plummer's S. Line

Line # 1  
Cal. W. line Kauffman N.O.E.  
" by deed N 3 W

Present bearing is 3° left

Hick N 42 E

+

5

N 45 E

Meas. from Hick witness  
1/18" chain found remain  
of old stake. Set stone  
with 18" Shell Hick N 45 E, 6 lbs

Random S 89 1/4 W

at 15.70 set stake in E. side  
of gravel on road, 14 1/2 lbs N of  
line is run up in fence line

at 15.82 set stone cent  
gravel in road

Sandstone & several pieces  
limestone

Oliver Pickett } Ch. Cr.  
Fred Jackson }

Line # 2

North (Random) Set W. 25 lbs  
at 4.49, set stake at west  
side of gravel <sup>and</sup> in fence  
line to west

Corrected line - with cent  
road. at 4.52 set stone  
in cent road, 10 lbs E. of  
stake N 3 E

Map Book D Page 8

102  
INDEXED ON MAP

Line # 3

Random N 84 W  
at 34.00 stake at E bank river

34.73 W. bank of river  
bearing river S 16 1/2 W

" 45.37 Came out 15 links

South of stake set for corner from  
Maple W. side

Large Double Maple N 2 1/2 W, 38 3/4 lks

White Ash 7", N 38 1/2 E, 6 1/2 lks

add 10 lks at E end

Bearing W. line, N 1/4 - E

Map Book D Page 8

(102)  
INDEXED ON MAP



5/28  
1907  
Dr. Henning - Aleatt

Co. Co. Line - S 86 1/4 E

Mess. E from SW  $\angle$  Liberty Tp.

Set stake for disc at 11.00

" " " " 20.00

at 22.77 fence to N.

" 30.65 " " " E, side driveway

" 40.59 stone at  $\angle$  Sec

at 22.79 1/2 set stone for  $\angle$  Aleatt

at 11.39, E. Line Henning,

Set S from old w.r. stump  
Set stake

at 11.39 Random N 4 E

at 17.66 stake for disc

at 30.00 " " "

at 40.00 " " "

" 40.13 fence to S

at 40.70 set stone in line

form old w.r., 63 lbs E. of  
Random. casting 63 lbs, size 4070

4-4-13 Liberty Tp.

Co. E. line Sec, S 4 1/2 W

Cre Line Felt by Henning N 4 1/2 E

found old stone at cent E.  
line of Sec, at S  $\angle$  E  $\angle$  under

Set N. 20', random N 85 1/4 W  
at 17.66. stake

" 20.00

" 40.00

40.13 fence to S

at 29.00 set stone NW  $\angle$  Henning

at 31.11 came out 32' N of

stone in road, NW  $\angle$  Felt

32 - 20 = 12 northing

wit stone NW  $\angle$  Felt

Red oak 12" S 54 3/4 E 101 lbs

Hick 10", N 50 E, 120 lbs

2/81/1 at 40.56 set stone

40.56 NW  $\angle$  Felt

Corrected line comes 12' N. of N.  
side of Felt's anchor post

161  
INDEXED ON MAP

Map Book D 1-37

Fetts E. line 40.86

$\frac{1}{2} \frac{40.86}{20.43}$

Jance line 40.55

$\frac{1}{2} \frac{40.55}{20.28}$

at SE  $\angle$  Sec 4.

Commence at Co. line Mon

5 84 1/2 E with fence line

at 5<sup>00</sup> set stone, SE  $\angle$  Alcott

at 13.71 fence N. side Godens garden patch

at 19.99 Amos Y's fence

at 40.51 set stone for dist. & line

at fence at S. side of path

at 40.81 cent road and (about)

in N. line Sec; came over 11 links

W. of Tp. line

INDEXED ON MAP  
161

Book D Dist

Commence stone NE  $\angle$  Sec 4.

Meas. W. along path

at 40.20 cent tel. pole

Stone stone in X road NW  $\angle$  Sec 4

Meas. E. at 40.73 cent tel pole

$40.20 + 40.73 = 80.93 \div 2 = 40.46 \frac{1}{2}$

Set stone for Tp line at 40.46 1/2

Set stone at Fetts  $\angle$ , E 1/2 Sec 4

Moved Alcott Stone 2 1/2 cts E



Hamilton Bros and Berry

Commence at stone & crockery  
in line Henry and Antrom in S  
line Surv. 3327.

Set South 80 lbs

at 25<sup>th</sup> Meas. W.

at 25<sup>th</sup> set 80 lbs S. of fence

line S 84-W

at 30.96 big stone supposed to  
be SW & Henry, pass 80 lbs S.

at 53<sup>00</sup> set stake in line  
on S bank ditch, 2 in line  
with ditch to N. at SW &  
Surv. with 5" apple N 32<sup>1</sup>/<sub>2</sub> E, 30 lbs

Set E. 30'

- with ditch N 7<sup>1</sup>/<sub>4</sub> W.

at 16<sup>25</sup> apple big elm on E bank

at 16<sup>50</sup> ditch leads to west

at 32<sup>15</sup> - 2 ashes & remain of another

Set large boulder with

Shotts Secury July 1907  
Surv. 3441 Jefferson Top.

pass 8" tile drives in ground  
underneath -

Wit. - Swamp ash NW. 3 lbs  
" " NE 3 lbs

N. line Set N from ash &  
1<sup>00</sup> ch - Condit. Coe 58 1/2 W.  
Meas. W. at

28.36 cent road (dec 28.20)  
excess 1.16 lbs.

(Meas S. from Rush Pike.  
Decd = 119.6 + 14.2 rods = 309.5 ch  
give 15 lbs excess = 31.10  
Set stone in road

Set stone in road 28.36 from 2 ashes  
Stone & pass broken tile  
Wit. 12" Elm N 7<sup>1</sup>/<sub>4</sub> E 38 lbs  
Apple N 32<sup>1</sup>/<sub>2</sub> W 63 lbs  
12" Walnut N 60<sup>1</sup>/<sub>2</sub> E 4 + 1/2 lbs

1506

See note  
Page 16

N. line

2.00

Set 3.00 ch. N. of stone on  
line Whitehall x Hamilton

N 85 1/4 - E

at run 2 1/2 ch N. of stone  
at SE < 20 a pe

at road, SE < Miller, pass  
1.70 N of fence.

at Corner set  
at 2 aches - 172 ch N

350

Cse - Hedge fence line  
Wm (S) for Ecton N 5 1/2 + W  
Antonia's W. line N 5 1/4 + W

Living Rubeys / chcr  
bes Whitehall

Note: -

Made map. Oct 7 1933  
see survey (1506)  
Jefferson Twp.  
F.F. Wright

(1506)



Hadley 7-12-89  
 in Cent. pike S57E, 47 1/2 lbs  
 Start 36" Walnut, orig wit  
 tree ^ S 54-E (S53 3/4+E)  
 at 25.81 Cent. Mad. River  
 at 45.77 stone

- with pike S51W  
 at 22.56 Cent. pike at  
 beginning

- N 54 E 10.44 line Tallman  
 to Right  
 at 16.20 line Mackinac R.  
 at 39.52 anchor post  
 in line Daugherty &

Wit:-  
 Stone planted in pike at  
 beginning -

Quarry stone & 3 bricks  
 Wit:-  
 26" Walnut (line tree) S57E, 45 1/2 lbs  
 28" Walnut S86 1/2 E 119 lbs

- N 71 W  
 at 20.80 Cent. Mad. River  
 (Cen. land N 70 1/2 W  
 at N. side river the line seems  
 to run about 60 feet N. of S.  
 side of land  
 at 54.11 \* Cent. pike

Oliver Pichey  
 Wilson Drummond / Chen

See Book D Page 3

154

INDEXED ON MAP

Hadley (Lee Stoner Form)  
Montrose Twp.

19

Random -

Set 27 rods S of X in road  
which X is 7' N. of S.  
line of lane.

- parallel to S. line S 53 1/2° E  
at 28.80 Cent River  
at 46.42, E line  
19 lbs N. of Wainion line.

E. line of Stoner's tract N 53 1/2° E

E. 9th division line at line  
Wainion

W. line - 20" oak N 57° W. 40  
15" oak N 36° E 83

Set sandstone & 3 bricks in  
cut pile 63 poles N 51° E  
from stone set at SW c  
NO wit available

Division line run parallel to  
South line (S 53 1/2° E) starting  
63 rods N. of stone in road  
at SE c of tract & running  
to line Wainion at 16.20 of  
second line run.

154  
INDEXED ON MAP



Hadley. Description  
of pt. off south side road  
to Lee Stone.

Pt. Surv. 4957, Jeff. <sup>and</sup>  
Mason 7ps.

4 3 bricks

Commence at Stone in cent.  
pike from James - to W. Lib  
at SW of Hadley's land  
from which a 36" Walnut line  
then bears S54E 45 1/2 lbs

- with S. line of Hadley tract 2d  
north line of Ritts tract  
<sup>crossing over mill dam at 2.581 chains</sup>  
S54E 45.77 chains to a  
stone in E. line of said  
Survey.

- with survey line N53 1/2 E  
16.20 chains to a post at  
the west corner of Watkins 2d  
Mason's land. Wit:

24" beech N57W, 40 lbs  
15" ash N36E, 83 lbs

Adelaide H. Hadley

crossing cent river at 17.62 d  
- N57W 46.42 chains to  
sandstone & 3 bricks in  
center of said pike

- with center said pike, S51W,  
15.75 ch to place beginning  
70.67 acres

By scale leaves  
approx 66.6 a in  
Mrs Hadley's land  
north of Stone's tract

154  
INDEXED ON MAP

Survey 3317  
Chas. Stephenson 1/2

Coe pile, between pin at  
Stephenson's  $\leftarrow$  S 14  $\frac{3}{4}$  W  
(Seed = (S 13 W)  
Variation  $1\frac{1}{2}^{\circ}$  Left

Coe S. line S 79 E  
(Seed (S 80  $\frac{1}{2}$  E,))  $1\frac{1}{2}$

Random

produced line S - 290.

run N to S. line

S. line (random) 4.565

E. line ( " ) 3.08 N 9  $\frac{1}{2}$  W

57  
INDEXED ON MAP

Lake T.P. H.S. Daiter 22  
July 18-07

Commence iron bar in pile  
at SW  $\leftarrow$  Stephenson's 108 a pc.

- with cent pile S 13 W, 2.60  
to iron bar in pile

- S 79 E, 4.44 due to iron bar

- N 9  $\frac{1}{2}$  W, 2.77 to stake at  
NE  $\leftarrow$  said 105 a pc

- with S. line said 109 pc -  
N 79 W, 3.80 to begin = 1 acre

with beginning 12" Sugar N 74  $\frac{1}{2}$  E, 6.6  $\frac{1}{2}$  lbs

10" Sugar S 79  $\frac{1}{2}$  E 88

note: this bar is in line with row  
of Sugars, S 79  $\frac{1}{2}$  E

Map Book D Page 5  
see Book 549 Page 25  
for 3 acres added to  
East side



Size 34 T4 1:4  
Fair Ground Sewer

Found iron bar <sup>and stone</sup> and  
coal at SE of Fair Ground  
Mass. W. with road  
at 1095.9 iron bar, curv  
St. to S. (Bellemeir add.)  
at 10.53 (82 poles) Korus  
fence to N. (dead calls for  
82.16 poles)  
at 1536.9, 7 in cent Main  
St.  
at 1537.4 iron bar in  
Main St.

24  
Aug 6-07

Start bar at X roads  
Mass N on Main St.  
at 272.2 N. line Korus  
bar

Main St 54 1/2 W

Wit iron bar 511' W. of  
Cent Main on Fair Ave

Apple Sew 29.3'

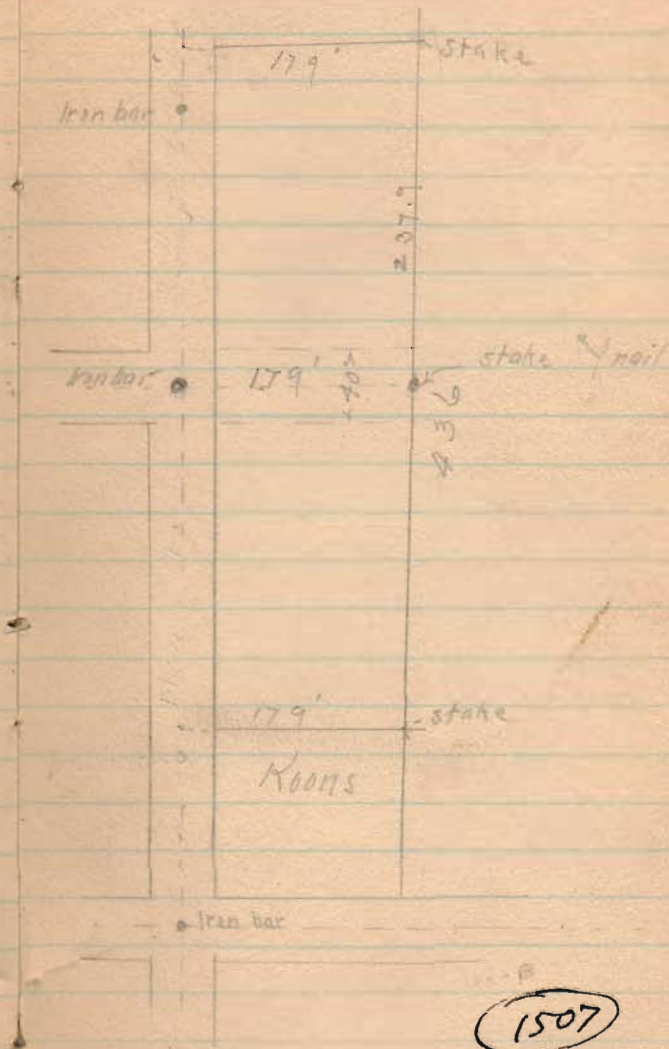
1507

INDEXED ON MAP

Fair Ground

Sewer

25



INDEXED ON MAP



H.S. Dailey  
Frank Dickman Surv.

Andrew J. Culp's deed calls  
for 36 acres in the form  
of square out of NE 1/4 Sec  
15-3-14

$$10 \times 36 = 360 \text{ sq. ch}$$

$$\sqrt{360} = 18.97$$

Meas. S. 18.97 from  
stone on Sec. line at S. side  
Silver Lake Pike

Sec. Line as run from stone  
in Silver Lake Pike to stake set  
by H.C. Moore on bank Blue jacket  
S 5 1/2 W

Meas. S. - at 17.97 - from  
N. line to W.

This makes the 36 ac. 1  
chain short

Sec 16  
T.3 R.14

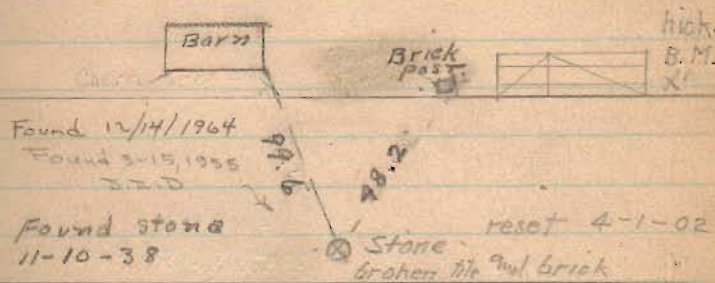
28  
Sec. 10  
T.3 R.14

Sec ← → stone (See below)

Sec 15  
T.3 R.14

Sec 9  
T.3 R.14

W ↑ E



From field book, Silver Lake Pike

Mr Dailey says stone at  
Road 189 1/2 Mile East of this  
stone is at N edge of road

1508

INDEXED ON MAP

Sec 21-3-14

Sec 15-3-14

Culp

Alexander

stone fence  
Piled Iron

Rd 11

Elect.  
pole25.  
concrete  
Post

Rd 201



Oct 15-07

Commence meas. at N. line

T & O.C. (wire fence)

- N 1/2 E along E. line

at 1.00 N. line Rt. of way

at 6.60 (1/2 way anchor post)

N. line of ground as occupied

at 13.16 S. bank State Ditch

(S. bank of ditch irregular. look as  
as best as could)

Commence again at S.E. L

- W- with N. line T. &

O.C. rt. of way fence 5.00

Set mark + on brace post

W. line -

Commence "+" at N. line T & O.C.

- N-

at 6.45 N. line as occupied

(S. side plowed ground)

at 13.12 S. bank ditch

S.W. Lyon meas.

Lake View 35-6-8

31  
Stakes  
up.

Geo. Skoffer

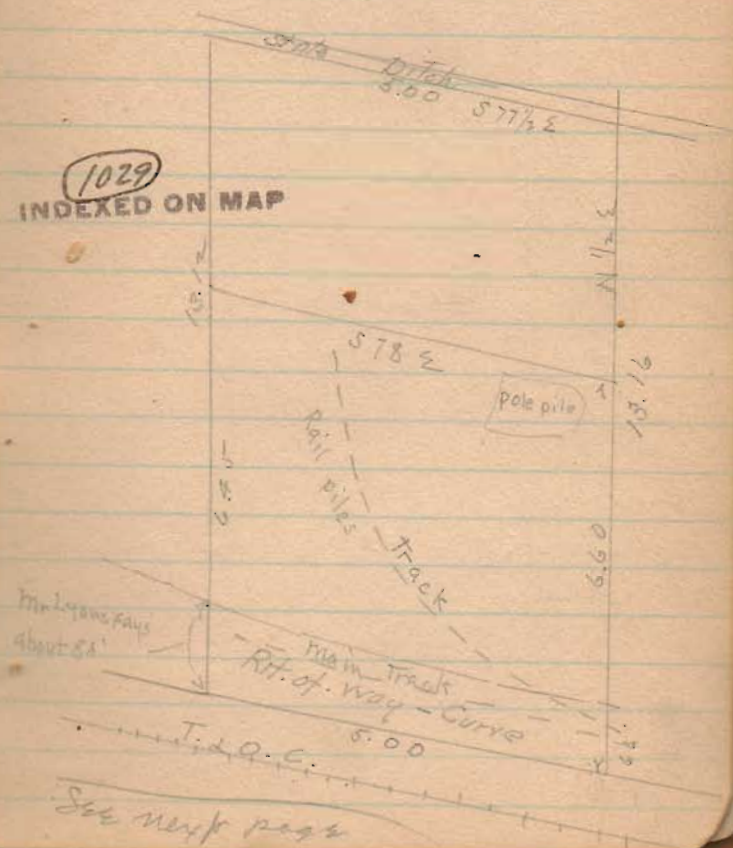
Robt Baubien

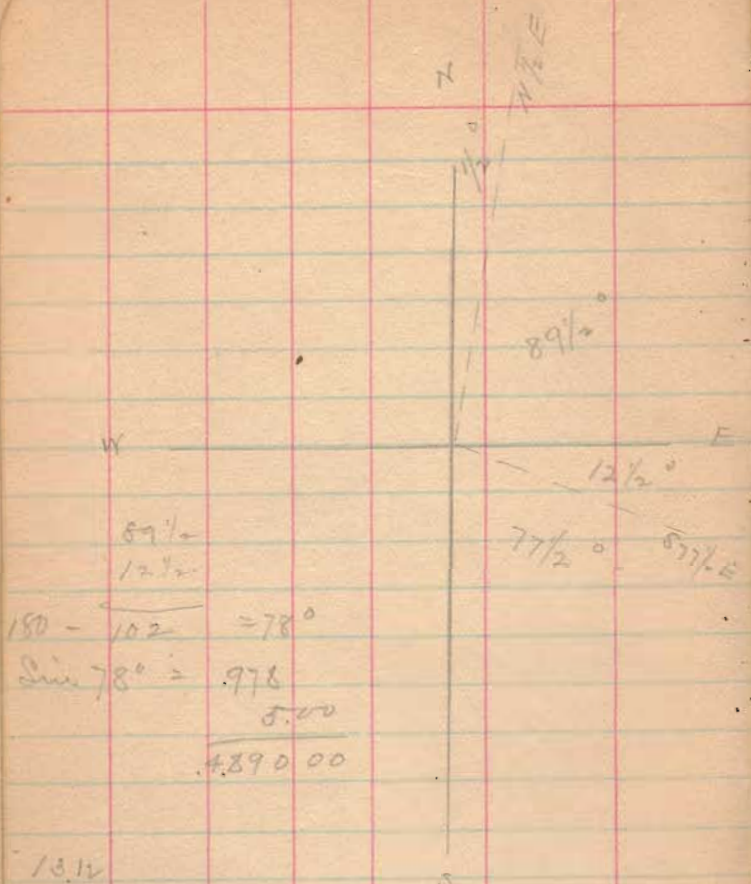
ch. or.

(H.S. Dailey)

N. line, along S. bank ditch  
being 20 rods, E & W, S 77 1/2 E

(1029)  
INDEXED ON MAP





$89\frac{1}{2}$   
 $12\frac{1}{2}$   


---

 $150 - 102 = 78^\circ$   
 $\text{Sin } 78^\circ = .978$   
 $\quad\quad\quad 5.00$   

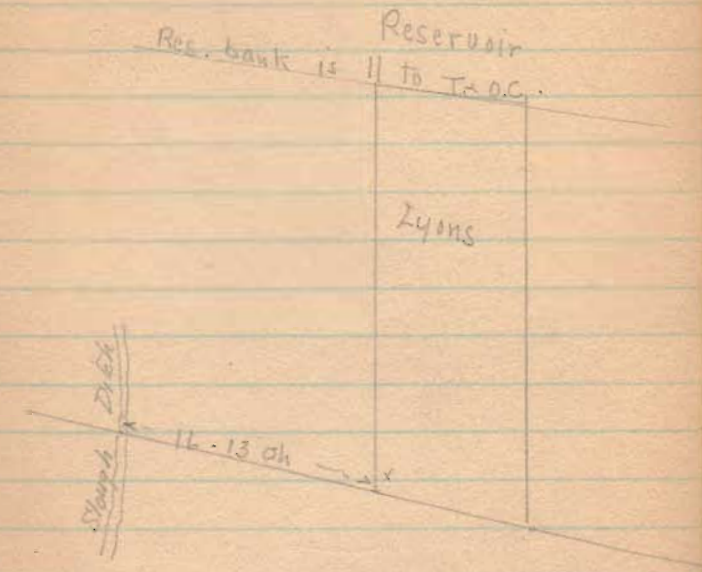

---

 $.489000$

$13.14$   
 $13.16$   


---

 $13.14 \times 489 = 6.43 \text{ acres}$   
 $6.43 \div 2 = 3.215 \text{ acres including}$   
 H.-f.-way



S.W.  $\angle$  of Lyons piece  
 is  $16\frac{1}{3}$  ch. from cent.  
 Shooft ditch, meas. along  
 T.O.C. H.-f.-way -

(1029)  
 INDEXED ON MAP



U. M. Stiles

N. W.

Part of Quincy  
Sec. 30 T. 3 R. 13

36

Start on Sec. Line (stone)  
in W. line Quincy Corp.  
Random N 3 1/2 E  
(producing wire fence line N.)

at 15.84 (1012') set  
stake in random line,  
being near NW  $\angle$  of Corp.

Could not find old  $\angle$  stake

- Random S 86 1/2 E

at 12.20 E. line Rte. 100 way

at 30.59 old fence in Sec line

at 86.00 ~~in~~ about 25' N. of

old Sign. stump at outlet

Sweet Root Creek at S. bank

Miami

Start at random stake on Sec  
Line -  
- with Sec line  
at 14.15 fence to W

- S. line - S 89 1/4 W

at 14.10 Cent R.R.

18.57 NE  $\angle$  196 track

28.18 NE  $\angle$  500 at Roseway

30.86 Stone at beginning

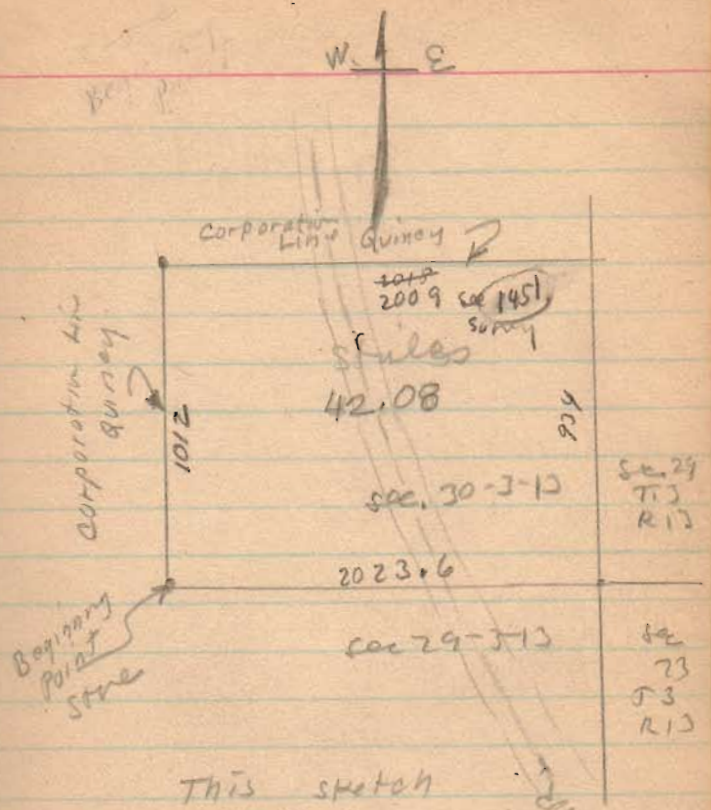
1509

INDEXED ON MAP

19a track  
 Commence at NE  $\swarrow$  - (beginning  
 1857 of S. line previous page)  
 S.  $3\frac{1}{2}$  W  
 or 18.31 Cent. pike  
 18.72 N. fence R.R.  
 19.11 Cent. Proj. 4

with Cent. RR 585 W  
 or 9.16  $SE \swarrow$  5a (Barrow)  
 12.23 W. Corp. line.

W. Corp. line N  $3\frac{1}{2}$  E  
 21.35 to begin



This sketch  
 Made by  
 Wm H. Oct 1933.  
 To show location.

1509

INDEXED ON MAP



Watters - Mannon

Found stone at NE of  
Surv. 2242 and at SE of  
Walkins - Mannon tract.

Set new stone - pointed  
boulder - with pos sandstone  
4" blk. high N10 3/4 E, 8 lbs  
10" Wild cherry - N65 E. 24 lbs

Line N21 = E. line of tract  
Random N 21 3/4 W, offset 10' E  
at 10.59, 24" W. Oak supported to  
be line trace  
at 15.49 fence to W.  
at 25.45 set stake in line (random)  
at 25.10 2 big W.O. Stumps  
at 15.49 set 2 big stakes in line.

Survey - Aug 7 - 1908

F. E. Scotty } ch. cr.  
A. J. Walkins }  
E. H. Watters jr. - ax  
Omer Beams - boy.

N 78 1/4 W

Compute dividing line, and  
when ready telephone to  
F. E. Scotty  
A 14 Jamesfield.  
P.O. R.F.D. #1 Jamesfield

957

INDEXED ON MAP

Line #6.

(1.)

Commence stone as set at  
NE  $\angle$  of Surv. 3242.

Random, with Surv. line

S 72 $\frac{3}{4}$  W Set 5.10' offset

at 17.09 fence to S. - several  
boulders near, but  $\angle$  stone  
not identified

at 17.05 deflect to left  $\angle$  at  
7 $^{\circ}$  20' (S 65 $\frac{1}{4}$  W)

at 19.88 D. R. 10 $^{\circ}$  12' S 75 $\frac{1}{2}$  W

at 23.67 pole 10' S. of another  
post at SW  $\angle$  of track.

Platting above makes this line

S 72 $\frac{1}{4}$  W, 23.62

40

Line No 5

Offset 10' left

Random N 39 $^{\circ}$  + W

at 10.00 set 50' R (70' R.

of line)

Set E 40' = 80' E of line

Set W. 30' = line

at 34 $^{\circ}$  = (136 rods) came  
out 7 ft. W. of  $\angle$  post  
Westing 7' = 34.00 ch

See Halling for W.M.

at 21.94 fence, this fence extends  
to pt. marked 15.49 of line #1

Wells eastward along this fence,  
at 3 $^{\circ}$  watering places, both sides  
of fence. Dividing line to pass  
through this point.

957

INDEXED ON MAP



Line # 4-

Along Hadley -  
N 57 E

at 23.50 (94 p) NE  $\angle$  of  
tract at SE  $\angle$  at Big Elm  
on line Daugherty

S 71 7 E - with new  
wire fence

Line N<sup>o</sup> 3

Start at Elm in Daugherty line  
which elm is 7' S. of Hadley  
fence - & 4' E of Hadley  $\angle$   
Everyone claims that all  
old fences run to this elm  
at 22.25 (89 rods) S 71 E.

- S 71 E  
Start at SE  $\angle$  of Daugherty &  
meas. westward 62 1/2 p.

these pt are 1.63 apart.

Divide this  $2 \overline{) 1.63}$   
                  .81 1/2

22.25  
  .815  
-----  
23.065

957

INDEXED ON MAP

Line No 2

S  $72\frac{3}{4}$  W

at 6.55 came out at 25.26

of line No 1.

• Set 2 big stakes.

Apr. 29-08

Total acreage = 104.4

Dividing equally = 52.4.

Division point in East line  
(line No 1) is N  $21\frac{3}{4}$  W,  
19.00 ch from S.E.  $\angle$   
of tract or  $6\frac{2}{6}$  ch  
from N. end of line.

Thence S  $74\frac{1}{2}$  W - 30.10  
(about) to W. line, 21.35  
ch. N. of S.W.  $\angle$

(think this case is about S  $74\frac{3}{8}$  W)

See line # 5

Temporary stake set at 21.94

21.94

21.35

.59

Meas. S.E. along this line 59  
links to division point.

957

INDEXED ON MAP



Jan. 21. 09  
Waltham - Wainou

19.00  
15.49  
3.51  
N 2 1/4 W - ok

Start in E. line, 19.00 from  
S.E. or 3.51 N. R.

2 stakes as previously set.

- Nit. 36" W. Oak - N 51 E - 80 lbs
- 13" Red Oak - S 49 1/4 E - 73 lbs
- 18" Swamp Ash - N 70 1/4 W - 69 lbs

Random 57 1/2 - W

- 4+00 stake in random line
- 7.00 " " " "
- 9.00 " " " at big maple
- 10.00 " " " 3'
- 10.00 stake in random
- 15.00 " " " at big sugar
- 19.00 " " " "
- 22.00 " " " "

at 30.22 - came out in W.  
line, folks S. of stake set  
in fence line to E.  
(See line # 5.)

21.94      .59  
21.35      .20  
                .79 = nothing

By setting S. 59 lbs from  
Cent of old E x W fence (21.94 -  
21.35 = 59) it will shorten  
random line as run 7 lbs,  
making length of line 30.22 - .07 =  
30.15 or .05 longer than  
calculated length. Corner  
as set (stake no with as  
and no post will be placed at  
one) is 2 ft + lbs S. of  
random or 1 lb + per  
chain.

Corrected line by set S. at  
each stake as many links  
as no. of stakes.

## Hamer road Surv.

Found a stone with x at  
SE  $\angle$  school lot.

Found stone at SEW  $\angle$  Frank  
Hamer. This stone is 20' E  
of Kauffman fence & about  
cent of road to east.

Could not find stone at NW  $\angle$   
Hamer.

Cse bet. these stones as found  
S  $4\frac{1}{2}$  W. = OK.

[S  $20\frac{1}{4}$  W. 34 yrs ago = S  $4\frac{1}{2}$  W today]

Found stone set by Richy  
at Delmuff pike.

also locate old stone from  
old wit. This came about 5' S.  
& 10" E. of Richy stone. Old  
stone said to be 5 feet under  
pike. J. S. Makinson over both  
sides of road for 1<sup>st</sup>  $\frac{1}{2}$  mile N  
of pike. My agreement  
w/ Makinson accepts

Feb 23 / 18

wit: as corner, to save digging  
for old stone.

N  $4\frac{1}{2}$  E.

[Wallace Makinson refuses to accept  
this stone set by CWA.]

at Corner Makinson & Hines

found stone lying on side.

J. S. Makinson says this stone  
is incorrect, used to stand  
straight up ~~up~~ ~~down~~. Took  
cent of this stone as line.

N  $4\frac{1}{2}$  E

Found stone at NW  $\angle$  Hines

Dr Baker says this stone is not  
where it used to be. [1<sup>st</sup> line  
produced would strike about 5' W.  
of this stone.]

Run between stones at SW  $\angle$  & SE  $\angle$   
Hines, N  $4\frac{1}{2}$  E.

at SE  $\angle$  Dr Baker, cent line  
can 57' W. of stone which Baker  
supposed to be on line.

see note  
page 47

1505  
INDEXED ON MAP



Road 33

Mich 24-110

Run bet. stone at NW  $\times$  Hines  
stone in Sil. Lake Pike at School  
House. N 5 3/4° E

[Note! this stone at school house  
which is generally disputed,  
meas. 131.5' from fence  
at W. line school bet. Sil. Lake  
Pike snow shows 131 feet.  
this meas. made by H.S. without  
any assistance]

1505  
INDEXED ON MAP

46

Start at stone at School  
House.

R.S. on Stone SW  $\times$  Frank Hamer

R. 1° 04' S 5 1/2° W

Meas. S. 100' chain

I. E. Swonger ch. at.

- 0+00 - stone stake 20' E
- 0+21.7 - stake " " W
- 3+20.5 " " 20' E  $\times$  W
- 6+51 " " " "
- 7+93 Tide W, pipe line, just  
N. of Rt-of-way fence
- 8+48 Cent Track Big 4
- 9+04 " line Rt-of-way, stake, v. 20' E  $\times$  W  
A.R. Detrick E = E.M. Kiblinger W
- 12+31 stake, State 20' E = W
- 14+36 Entrance to R.S. E
- 14+27 stake 20' E  $\times$  W
- 17+27 stake 20' E  $\times$  W
- 19+64 " " "
- 22+88 " " "

see note Page 47

# Road D

47

- 26+48S Stone, & Hines<sup>(an)</sup> & Galer.  
 Stakes 20' E x W  
 L. 1° 0" SA 1/2' W
- 50+68 Galer<sup>(an)</sup> & Wilson Weyand W.  
 Stake 0 x 20' E x W
- 55+54 At N. line Hines' yard  
 Stake 0 x 20' E x W
- 38+59 Weyand & Makemson W.  
 Stake 0 x 20' E x W
- 47+86 Stakes 20' E x W
- 53+~~22~~ Stone & Hines<sup>(an)</sup> & Makemson  
 Stakes 20' W x E  
 L. 0° 06'
- 61+29 Stake 0 x 20' E x W
- 65+98 " " "
- 70+57 { " " "  
 at N. side Makemson Orchard
- 76+21 Stake 0 x 20' E x W
- 79+79 Stone set by CMP at DeG-pite
- 79+88 Location of old stone as per  
 old writ: -

Z. E. Swonger de cr 1 1/2 da  
 Walter Nangle 1/2 da

Map made Oct-1933  
 By Wright.  
 Using 1910 Plat  
 Book for names  
 see map drawer  
 R (1505)  
 Pleasant Tap.

(1505)  
 INDEXED ON MAP



