

TABLE for reducing PERCHES to FEET.

Per	Per	Per	Per	Per	Per	Per	Per	Per	Per
1	16.5	21	34.5	41	67.5	61	100.5	81	133.5
2	33.0	22	69.0	42	135.0	62	168.0	82	133.5
3	49.5	23	70.5	43	70.5	63	103.5	83	133.5
4	66.0	24	72.0	44	72.0	64	105.0	84	133.5
5	82.5	25	4.125	45	72.5	65	107.5	85	142.5
6	99.0	26	4.200	46	75.0	66	108.0	86	141.0
7	115.5	27	4.455	47	77.5	67	110.5	87	143.5
8	132.0	28	4.620	48	79.20	68	112.20	88	145.20
9	148.5	29	4.785	49	80.85	69	113.85	89	146.85
10	165.0	30	4.950	50	82.50	70	115.50	90	148.50
11	181.5	31	5.115	51	84.15	71	117.15	91	150.15
12	198.0	32	5.280	52	85.80	72	118.80	92	151.80
13	214.5	33	5.445	53	87.45	73	120.45	93	153.45
14	231.0	34	5.610	54	89.10	74	122.10	94	155.10
15	247.5	35	5.775	55	90.75	75	123.75	95	156.75
16	264.0	36	5.940	56	92.40	76	125.40	96	158.40
17	280.5	37	6.105	57	94.05	77	127.05	97	160.05
18	297.0	38	6.270	58	95.70	78	128.70	98	161.70
19	313.5	39	6.435	59	97.35	79	130.35	99	163.35
20	330.0	40	6.600	60	99.00	80	132.00	100	165.00

Entered according to Act of Congress, in the year 1866, by James W. Queen & Co., in the Clerk's Office of the District Court of the United States, for the Eastern District of Pennsylvania.

TABLE of Decimal Parts of a FOOT for each Inch and Sixteenth of an Inch.

In	0	1	2	3	4	5	6	7	8	9	10	11
0	0000	083	167	250	333	417	500	583	667	750	833	917
1	005	089	172	256	339	422	506	589	672	756	839	922
2	010	094	177	260	344	427	510	594	677	760	844	927
3	016	099	182	268	349	432	516	600	682	766	849	932
4	021	104	187	271	354	437	521	604	687	771	854	937
5	026	109	193	276	359	443	526	609	693	776	859	943
6	031	115	198	281	365	448	531	615	698	781	865	948
7	036	120	203	286	370	453	536	620	703	786	870	953
8	042	125	208	292	375	458	542	625	708	792	875	958
9	047	130	214	297	380	464	547	630	714	797	880	964
10	052	135	219	302	385	469	552	635	719	802	885	969
11	057	141	224	307	391	474	557	641	724	807	891	974
12	062	146	229	312	396	479	562	646	729	812	896	979
13	068	151	234	318	401	484	568	651	734	818	901	984
14	073	156	240	323	406	490	573	656	740	823	906	990
15	078	161	245	328	411	495	578	661	745	828	911	995

Entered according to Act of Congress, in the year 1866, by James W. Queen & Co., in the Clerk's Office of the District Court of the United States, for the Eastern District of Pennsylvania.

- ✓ Brills Center Cemetery { 9973 Survey
- ✓ Doe Youngs lot - 34-4-14-14
- Johnson Survey No data
- ✓ Buchwalter lots 35-4-14
- ✓ Duckworth Survey - Dec 16 1792
- ✓ Anson Center's lot
- ✓ Stephenson & Katon { 9942 acre 12350-Richd.
- ✓ Dim
- ✓ Barger - Richmond Tp. 9949
- ✓ Tappin - Fish
- ✓ Hoorn - Whitney
- ✓ Mahinson - Hines - Sec 26 - T3 R14
- ✓ D. D. Williamson Survey Union Sec 7 - T3 R14
- ✓ Street Intersections Bellefontaine 35-4-14
- ✓ Goe Property 34-4-14
- ✓ Mad River - Stanton Monuments
- ✓ Campbell Survey (Barger Farm)
- ✓ Campbell Survey (87.50 acre " ) Survey 9949 Rich

Unm. Tp Sec 7-T3R14

D.D Williamson Surv.

of 15 a. mch 2.05

Line N21.

Commence at stone, wit:

Hick. stump (old wit) N32W, 48 lks.

Old bearing N35W.

New Wit: Bull Nut N35E. 6 lks.

Set, E, 8', on R & L to line

S 4° 20' W

at 12.17 set stake near fence at

Sec. line, 10' 5" c. of old fence line

Set stake in fence line 2 lbs further S.

12.17 02. 12.19

Started at stone, S of Duke Lake,

Meas. S. 24.57 to old fence.

Set N. 50' N84 1/2 W

at 19.95 fence, line N21, 50'

N. of old fence on Sec. line

15a sold to Benj Roth

Line #2. Set 8' S. of old fence  
on Sec. line N84 1/2 W

at 13.80, E. line over Rock, 5' N. of  
old Sec. line fence

5+8=13 (N85 1/4 W)

Meas. 3.75 further West found nothing

fence N. 3.19, to S & W ch. set

" N 2.80 to stone

" N 1.17 " " set by H. Emmons

Start at long stone, N & E ch. set.

Meas. S. at 3.86, fence, S & S. ch. set.

Start Meas. at this cor. at

3.20, old Sec. line fence

Line # 3.

Along E side Ruth 1/8 a x  
E line Ch Lot N. 4 1/2 E  
at 7.02 long stone NE <  
Ch Lot

with 12" R. oak 3 1/2 E, 48 lbs

Line # 4

Set 8' N. of stone at NE < Ch Lot  
N 85 W at 3.73 came out 8' N. of  
of stone Set Brightstone

with Red Oak 20, N 55 E, 46 lbs

This stone & brick were set for  
< Weissen Wilhemisen & Co 7.16  
Ch N of old fence at S line  
~~line~~ See.

Line # 5

Meas S. 4 1/4 W, 15 lbs for  
15 W < Ch Lot.

Bearing of line # 5 = N 4 1/4 E, 15 lbs

Line # 6. N 78 1/2 E 18.23 to begin

with Weissen  
Benedict } Ch Lot

Bearing line N 2 4 as corrected  
(15 lbs S. dist 3.73) = N 87 1/4 W

# Street Intersections

Col & Main -  
 Northwest - + cut in top stone water table  
 S.E.  $\angle$  Watson Bldg. 55.95  
 Northeast -  
 Roundhead brass sensor in pavement 43.50  
 Tile mark face iron inlet, curb 40.20  
 Southeast -  
 Roundhead brass sensor in pavement 43.73  
 Tile mark face iron inlet, curb 39.80  
 Southwest -  
 + cut in top stone water table Peoples  
 Bank 50.23

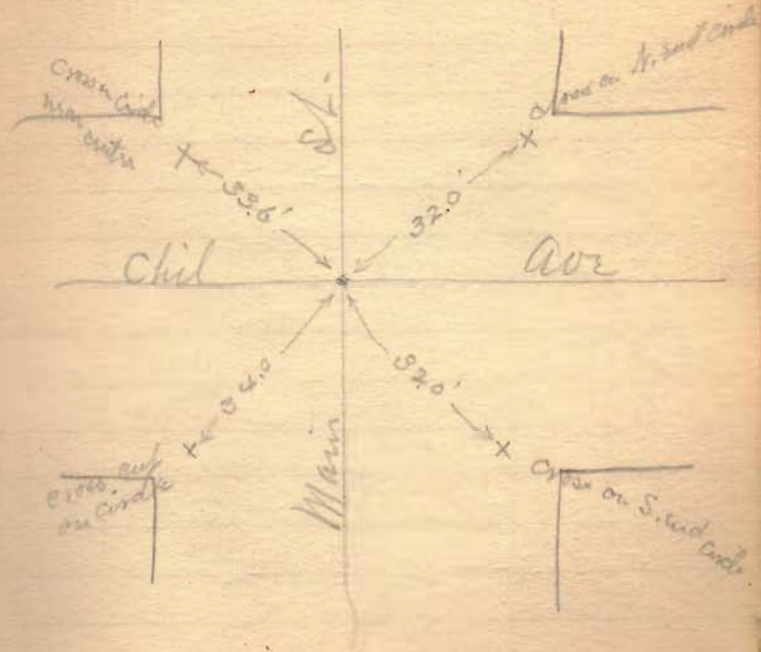
## Distances

Detroit - Col to Chil	527.27
Columbus Det. to Main	—
Main Col to Chil	527.27
Chil Det to main	527.27

# Bellfontaine

Detroit & Chillicothe  
 Mon -  
 Top snow hyd. 37.4'  
 Iron Lamp post NW 28.2  
 East end iron inlet N.E. 26.6'  
 " " " " S.E. 26.8'

# Main & Chillicothe



Survey of lines for 20 E Property -

March 11 - 1905

19' off of N. side lot No 106

Found + Main + Chil from records (City Eng.)

Same Det. + Chil (etom mon)

Center Det south side Col - center between curbs.

Measured on Chil. from Det. + east set marks at 260' to center Main 527.90

On Col. Ave. measured from S. curb Det St 18' from center 242' to get parallel to front Det at 260 on Chil.

On alley between Main and Detroit from center Chil to S. curb Col. 502.34  
 $502.34 + 25 = 527.34$

Angle Chil + Detroit  
N.W. included  $90^{\circ}6'$

527.34	30
<u>526.58</u>	220
8).52	16 1/2
.105	<u>110</u>
6	376 1/2
<u>63</u>	63
	<u>377.13</u>

19	21	
<u>55</u>	<u>19</u>	
11	21	19
	<u>19</u>	
	31	
	<u>399</u>	
	036	

N. line of 50' from curb Chil	377.13
S. " " " " "	358.094

On Main St from S. E. Lawrence block to + mark for S. line Goz 91.10  
 129.246  
220.346

set stakes for Goz's lot -  
 at alley 11' east from alley and at west end of wooden shed "Syndicate" - this stake is about 4" south of Marquis wall - cut cross on face of stone foundation west end Marquis for line.  
 set stake in Goz's south line west of old privy -  
 Goz's lot 19.036 wide

30		
19		
11.		
16 1/2		
527.90	27 1/2	248.20
<u>526.50</u>		<u>220.346</u>
2   1.40		468.546
.70		27.5
		<u>441.046</u>
		440.54
260		
6.5		
<u>266.5</u>		91.10
7		<u>19.036</u>
<u>267.2</u>		110.136

Balls Center Cemetery

Sold by David Alexander June  
found stake in center Whitetown  
pike and center dirt road

from south NW<sup>2</sup> to Fairview  
Cemetery and also at SW<sup>2</sup>  
Said Cemetery in dirt road  
and east line Alexander's

Line A. with west line of  
Cemetery and center road  
S 7 1/2 E 4 ch

Line "B"  
with center pike from NW<sup>2</sup>  
Cemetery S 8 1/2 W 2.50

Measured from Stake west 2.50  
" " NW < south 4.00  
set iron bars at each

Sex-ton's Lot - March 9 - 1905

Doc. Youngs lot corners

Chil & Det.

March 27 - 1905 -

Chil to Col on Detroit 527.32

Measured from north (S. curst  
col St) 251.91 for S. side alley  
at 302.41 S. line Jo Hantgen -  
" 326.41 " Moore  
" 350.41 " Barton

Youngs depth on Detroit  
121.91

527.32	40
426.5	30
	16 1/2
<u>2) 82</u>	40
.41	<u>426.5</u>

40	220.41
220.41	
16.5	
<u>276.91</u>	
25.	251.91
<u>251.91</u>	220.41
50.5	<u>472.32</u>
<u>302.41</u>	

472.32	527.32
350.41	472.32
<u>121.91</u>	<u>55.</u>

50.5
24
24
<u>98.5</u>
121.91
<u>220.41</u>



Campbell Survey 2-5-1910

Region O Valley Pike N.E.

Line A Corner 60 acres of J. B. Herring's

Chained N. 83° E. 41.75'

Set temporary pin at 25' ch.

Line B Chained S. 7 1/2° E. 35.13'

Line C Chained S. 83° W. 41.75'

Set temporary pin at 16 ch.

Set stone at S.E. c. of 87 1/2 acres  
from which a water claim  
29" bears N 81° E 62 chs

Line D Chained N 7 1/2° W. 35.10'

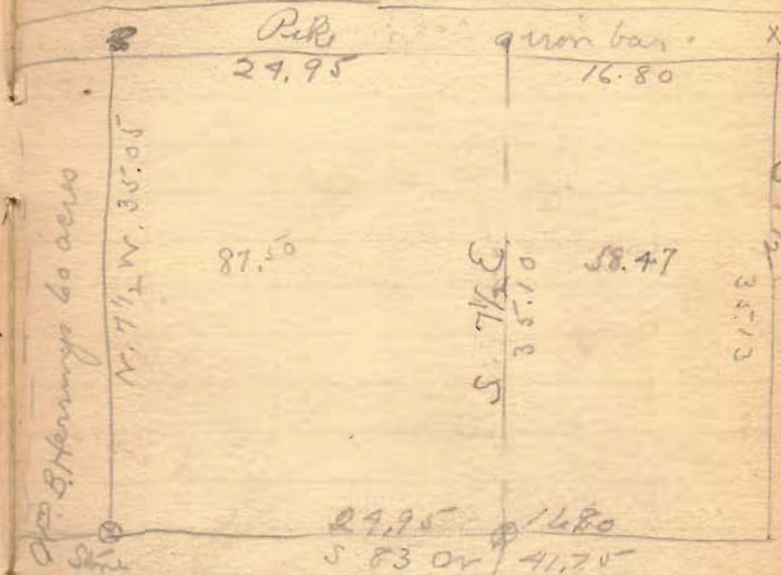
drove iron pin on pillar  
from which a 29" white oak  
bears S 11 1/2° W 99 1/2' tends

Richland Tp. survey 9749

O.C.R. John Campbell

Ch. carried J. H. Herring

N 83° E 41.75'



A. W. Fulcrson's  
land

Johnson Survey.

79, 85.

0			S. 72 1/4 W. Stake
20.245	CH	19.22 1/4	340° 51' W. 31° 53' L. "
2.74 1/4	"	2.72	S. 72 3/4 W. "
20.31	"	20.30 1/2	S. 15° E. "
20.98	"	20.98	N. 74° E. "
41.85	"	41.70	N. 15 3/4 W. S. 14 3/4 W. "
23.50	"	23.46 1/2	

Gen. Road at N.E. cor.  
tract, and with Gen.  
Road.

Angle in Road.

Int. two roads, and  
with Gen. Road,  
S.W. cor.

S.E. cor.

at beginning, N.E. cor.

Sale 35-4-14

Buckwalter Lot lines

Detroit St. & Orchard

N. line lots 1534 and 1550 -  
stake with tack -

Top screw Hyd. S.E. 22'8"  
Sugar 3" SW 23'4"

Powell & Detroit

Lead points are set in the  
circular curb at  $\angle$  +  
and 14' from center line

Iron pin. Valve box E of N. 6.9' - same S of 6.85'  
same S of N. 2.6'

Main & Orchard Iron bar

Elec. Ry pole N.E. 35.3'

" " " NW 35.3'

Maple 6' S.E. 28.6'

N. edge E. rail E. 27.9'

Zelph. pole S.E. 24.4'

Orchard & Elm

Stone +

Dist. on Detroit  
Orchard to Powell 795' 10"

" " N. line lots 1534  
and 1550 284' 0"

Henry St & Powell Ave Iron bar  
Elec. Light Stub N.E. 48'6"

" " Pole S.E. 31.3'  
Ash tree south 28.1'

Main & Powell Iron bar  
Hyd East 27.75' Ash 3" SW 38.2'  
Sugar 3" NW 39.4'

Buckwalter Survey

Found iron bar + Orchard  
ave. v. Detroit St.

Had S.E. top corner 26  
Value box S.E. 22.75'

ran line of Det St from  
Orchard to Powell

ran line Orchard Ave from  
Detroit to Elm

staked lot SW of Orchard  
v. Detroit 52' x 142'

Found line Buckwalter  
and Powell in Detroit  
by measurements  
recorded by Cy. Eng.

ran line Buckwalter and  
Powell from Detroit  
to stave of Buckwalter and  
Powell and in E. line  
Sunnyside Add.

March 25 - 1905

staked off Sam M. Blain  
lot adjoining Powell line  
5 1/2' wide -

On west line Detroit  
from M<sup>c</sup>Blaine N. line  
to S. line of cor. 52' lot  
155'

On west lot line 142'  
west from west line of  
Detroit St. from M<sup>c</sup>Blaine  
N. line to S. line 52' lot  
153 1/2'

496 1/2

18  
440  
16 1/2

478 1/2

20  
-----  
494 1/2

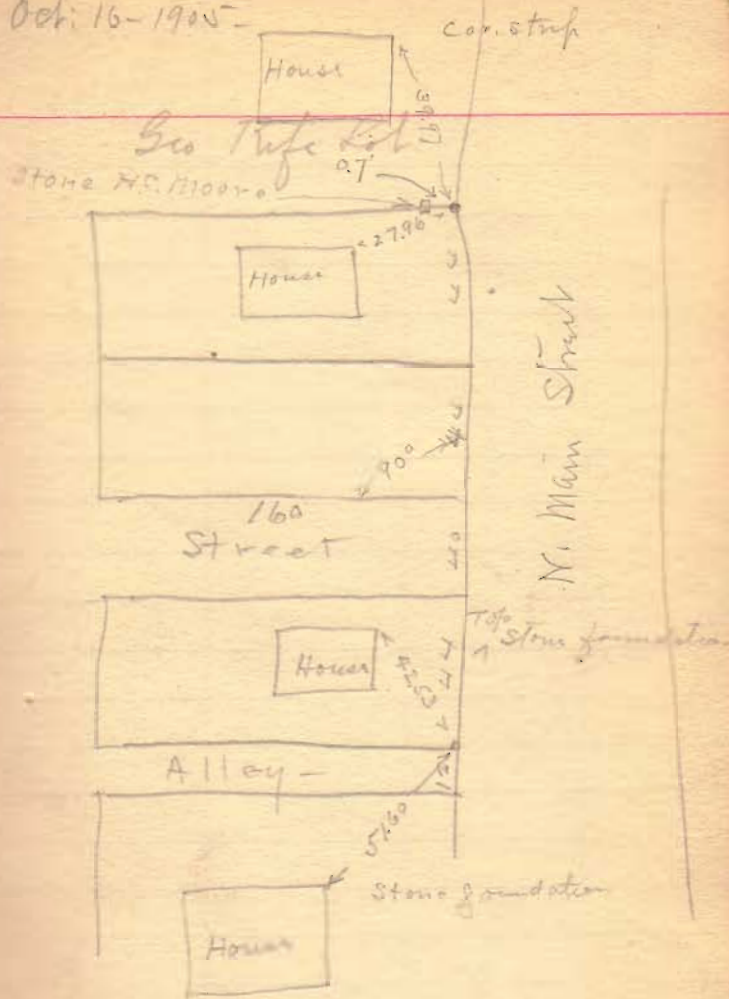
18  
440  
16 1/2  
2

476 1/2

440'  
Lots 40-40. 51' to sidewalk

35-4-14  
Lake

Oct. 16-1905



Elam Buchwalter

John Duckworth } ch. Cr.  
Presley Wright }

Duckworth Survey. Mch. 31, 05. C.M.R.

Sec 16 - T7 R18 - Bloomfield

Found stone N.E. Sec. in o  
pine

Line A.

Run Random Line along E. side  
Section  $3\frac{1}{4}$  W O.K. cse.  $5\frac{1}{2}$  W  
20.10 ch pass Duckworth's L

Set temporary stake at  
40.20 at  $\frac{1}{4}$  in road

Set iron bar at  $40.37\frac{1}{2} + 18\frac{2}{3}$  lks. W. of Random  
off set 1 ch. E. at 45.00 ch.  
" " 1.40 ch W. at 56.08 ch.

At John Duckworth's S.E. L  
found Ash 31 inches in diameter.

Found Iron Wood 16"

Set iron bar \* for L at 60.46 ch

Came out 12 lks. W. of L

Total Easting 28 lks.

Wit: 14" W. Elm 14 lks  $5.14\frac{1}{2}$  E

Line B. along E. side S.E. Qn.  
Set 8' W. L at end line A.

Random S. 1 W

Set stake at 70.00 ch

Found stone S.E. Sec. 16  
80.29 ch

Old Beech stump S.W. of stone  
30" - 30 lks distant. (S. 26 W bearing)

Came out 12' 6" W. of L

Total Westing 4' 6" O.K. cse.  $50^{\circ} 55' W$

$80.29 - 60.46 = 19.83 \div 2 = 9.91\frac{1}{2}$  ch

for line between Griffin & Wright.

Set stake at  $70.37\frac{1}{2}$  on Random line

Set L stake E. 10' 3"



Line C along S. side Sec. 16.

Random S.  $89\frac{1}{4}^{\circ}$  W

40 ch to E. pine ditch

offset 6' to N.

at 40.00 ch. offset 5' to north.

Found L stone at S.W.  $\perp$  of Griffin's

26 Acres.

Came out  $18\frac{1}{2}$  ft. N of L stone

Total Northing  $7\frac{1}{2}$  ft. O.K. case S.  $89^{\circ}$  W.

Distance 60.42 ch

So 40.20 ch to S.W.  $\perp$  Qr. Sec.

Set ~~-----~~ Harrow tooth for  $\perp$   
with 3 bricks on top — 16' S. of Random  
Line.

Line D along W. side Qr. Sec.  
with pine

Set temporary stake at 10.00 ch

"  $\perp$  at 10.03 (iron bar)

" temporary stake 20.00 ch

"  $\perp$  at 20.06 (iron bar)

" temporary stake 40.00 ch.

"  $\perp$  at 40.12 (iron bar)  
at 60.18 ch  $\perp$  to stone S.W.  $\perp$

of N.  $\frac{1}{2}$  N.E. Qr.

Found ash stump  $7\frac{1}{2}$  hrs S.E.

Total Distance 60.18

Line E along S. side N.E.  $\frac{1}{4}$

40.49

Line F.

along S. line N.  $\frac{1}{2}$  S.E. Qr.

40.41  $\frac{2}{3}$  ch

Mad River & Stanton

Mon -

N. end iron inlet S. side Stanton

SE 32.65

S. end iron inlet E. side Mad River

NE 29.70

Iron camp post SW 31.30'

SE foundation house NW 57.25

Mad River & High - south -  
iron bar

Camp post NW 29.5 Hyd SW 27'

Mad River & High - north -

Maple 6" SW 20'7"

" 7" NW 25'8"

" 8" SE 33'4"

High & Park

SE of Bullo House NW 67.2'

NE of Williamson " 44.9'

"M" hyd sloping measure 15'

Maple 8' SW 29.40 Cut St

Eldo. Light pole NW 20.1

Park & Stanton

"M"

Oak 36" NE 32.60

Lynn 10" SW 25.80

Maple 8" SW 55.85

Note. This mon. is placed 5.30' east of old iron pit to make dist 506.5'

Distances

On Park

Stanton to High 5

Park - Mad River 494.5

On Mad River

Stanton to High 4

4527.2 442.13

On Stanton

Mad River to Park

5017

On High

Mad River to Park 501 1/2

Survey Lot for Anson

Measured dist from  
Stanton to High (North)  
482.65' on Mad River

Measured distance from  
Stanton to High on Park  
484.90

Carter - April - 4 - 1905

Old Lot No. 14. Stanton's  
2d Add.

484.90	8)1.10
482.50	.0121
<hr/>	
2)2.40	
8)1.20	
.15	
<hr/>	
.30	
<hr/>	
.15	
<hr/>	
.45	

9948 } Rich Tp.  
12350 }

Stephenson 9<sup>th</sup> Katon Survey 4<sup>th</sup> of C.M.R.

Found Stone + N.E.  $\perp$  9927 +  
N.W.  $\perp$  9 acre tract of Katon's.

Set pole 12' W. of  $\perp$

" " 12' W. of N.E. - DUN'S

S.W.  $\perp$  in E line 9927

Searched for  $\perp$ s on s. line 9 acres.

Stephenson (Geo.) says none were set

Found stone S.E.  $\perp$  27 Acres

Line A

S. 7 E.

11.25 ch Set stake for  $\perp$

Line B

# N. 82  $\frac{1}{4}$  E. (O.K.)

N. 81  $\frac{1}{4}$  E wire fence close

8.75 ch Set stake for  $\perp$  9 Acres

1.00  
8.75  
1.07

35

8.75  
80  $\frac{1}{2}$   
9.55  $\frac{1}{2}$

7.9 } 54.87 } 6085  
39 }  
9.75 } 47.52  
0.7 } 648.0  
9.52

Line C. along s. side Katon's 10 Acres

Found iron pipe driven by Ginn

S.W.  $\perp$  Katon's 10 A presumed to

be on Tp. Line and Survey Line.

About  $\odot$  between Elm  $\frac{1}{2}$  Oak (Burr)

Oak tree gone but location pointed out

by Stephenson (Geo.)

at 0.80  $\frac{1}{2}$  ch. passed stone + N.E.  $\perp$

Survey

N. 80  $\frac{3}{4}$  W

Set stake at 9.55  $\frac{1}{2}$  80<sup>r</sup> N.E.  $\perp$  9 Acres

" " " 9.52 " S.E.  $\perp$  10 " "

Line D

S. 8  $\frac{1}{4}$  E.

Found spike  $\frac{1}{2}$  iron bar in  $\odot$  pipe

chained south 7.41 ch for  $\perp$  to 10 Acres

Line E. E. side 9 Acres.

S. 7 E.

$$\begin{array}{r} 3.75 \\ \underline{2.3} \\ 1.45 \\ \underline{1.10} \\ 3.11 \end{array}$$

Dunn's Survey 4/5, 05 Survey 9927 McArthur Tp.  
 C.M.R.

Line A

Commenced chaining at N.E. L 9927

0.80 1/2 ch. to Katon's S.E. L

1.30 1/2 ch. set stake for W. side road.

Random Line S. 83 3/4 W

Offset 6' N. from N.E. L 9927

24.54 ch line Dunn by alloway

at 36 ch offset 4' N.

Came out 72 lks N. of L at N.W.

Cor. of Survey

Total Northing 57 lks.

Correction for 10 ch.	$11 \frac{3}{5}$ lks + 6'	= 20 3/5
"	" 20 ch. $22 \frac{4}{5}$ lks + 6'	= 31 4/5
"	" 30 ch. $34 \frac{1}{5}$ lks + 6'	= 42 1/5
"	" 40 ch. $45 \frac{2}{5}$ + 10'	= 60 2/5

Line Alloway by Dunn 4.30 ch

$24.54 - 1.30 = 23.24 + 4.30 = 27.54$

$27.54 \div 2 = 13.77 + 1.30 = 15.07$

Windham No 2 Repairs

40' - 12" tile

2 - 15" X 8"  $\frac{1}{2}$ "

43' - 8" tile

10' of 15" tile to Sta. 1

9949 Richland

Barger Survey (Dolan Farm)

Line A.

Found Stone at S.W.  $\swarrow$  Dolan farm.

N. 83 E.

10.36 ch.

Line B.

Randomly N 6  $\frac{1}{2}$  W. O.K. case N 7  $\frac{1}{2}$  W

49.32 to edge grade

49.42 to  $\odot$  pine

Dug for  $\swarrow$  but found nothing

at 14.25 set stake Herring's  $\swarrow$   
came out 16 lks W of stake in  
line old fence.

$$49.42 - 14.25 = 35.17$$

Line C

along pine

set stake at 40.4 poles

5.83  $\frac{1}{4}$  W

set stake at 40.40 rds  $\approx$  10.10 ch

$$10.10 + 2\frac{2}{5} = 10.12\frac{2}{5}$$

.02  $\frac{2}{5}$  surplus

Set stake for  $\swarrow$  in  $\odot$  pine

<sup>57</sup>  
<sup>21.10</sup>  
~~Richland~~ <sup>50</sup>  $\frac{1}{2}$ , 05. C.M.R.  
~~49.32~~  
~~49.42~~

Found stone at Lightles N.W.

$\swarrow$  1.06 ch from N.E.  $\swarrow$  of  
Church foundation 17 lks. W of  $\odot$   
gravel on H. + R. - pine  
chained E. 110 rds  $\swarrow$

Found ~~lightles~~ 40" Elm Stump

Measured  $\swarrow$  1.23  $\frac{1}{2}$  lks.  $\swarrow$

Measured E. 57  $\frac{1}{2}$  rds. surplus 12 lks

Set stake for  $\swarrow$  at 4  $\frac{3}{5}$  lks E of 57  $\frac{1}{2}$  rds

Line D

Along E side 50 Acre tract  
offset 16 lks to W. 35.17 to  $\odot$  pine

40.124

Line

$\frac{35}{5} = 7$

Line E. offset 8' E.  
 along W. Line Random  
 at 14.25 set stake on Random  
 N.  $6\frac{1}{2}$  W. O.K. Cse. N. 7 W  
 at 19.00 ch. 8' E. Elm tree (E. side)  
 at 25 offset 7'  
 49.53 ch to Opice. Dug for but found nothing.  
 came out 18' E. of  $\swarrow$   
 Total Easting 3'  
 $49.53 - 14.25 = 35.28$

Line F  
 Herring's N. Line  
 Ch. W. 10.25 to Random Line  
 $10.25 + .33155 = 10.383$

10.383	35.28
10.124	35.17
2(20.507)	2(70.45)
10.25	35.23
	10.25
	176.15
	70.46
3523	3611075
	Acres

23  
 66) 875 4.33  
 21  
 125  
 170

Corrections

40 ch	17' 5" W
30 ch	16' 9 1/2" W
14.25 ch	8' 9"



Survey 9949

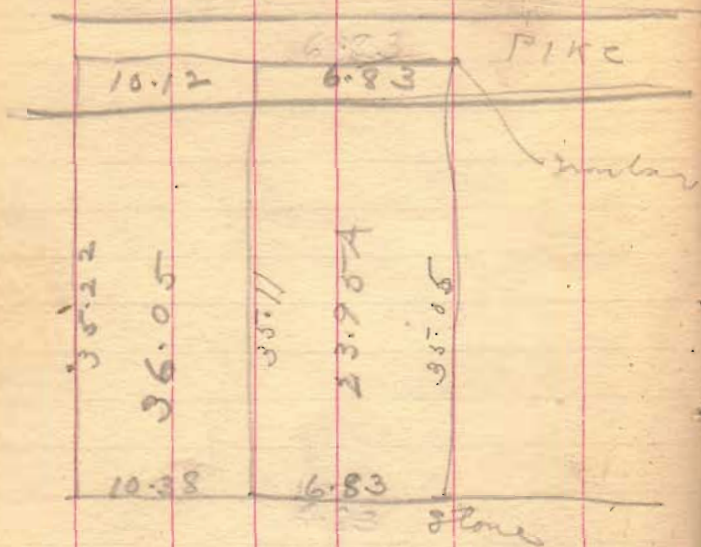
# Campbell Survey

2/20, 09

Richland Tp.

Bearing of PIKE N. 83 E.

Lat temp. fix at 6.70 in pipe  
 " " " " 6.70 on back  
 line 6.83 o.k. dist.



See Harney description  
for 36.05 acres.

20.24

6.7

Barger farm, or Dalan farm.

35.11

35.15

36.04

6

61.00

36.05

23.95

35.08

239.50

16.83 ch

210.48

29.020

28.064

9560

35.08

6.83

105.24

280.64

210.48

239.5964 acres

# Tapp - Fish Survey

April 24 - 1905

Survey of line between John  
Tapp and Fish  
in survey 9937 - Potomac  
off.

Set at SW2 Tapp in  
picks SB of Fish and found  
stone with bricks.

$$\begin{array}{r} 4) 56.36 \\ \hline 14.09 \end{array}$$

set small iron bar at 14.09  
and set another bar for line as  
run with stakes.

At 11/2 E. with Valley Pike

at 26.75 1/2 stone in survey line

$$\begin{array}{r} 4) 51.04 \\ \hline 12.76 \\ 14.09 \\ \hline 26.85 \end{array}$$

$$\begin{array}{r} 26.85 \\ 26.75 \frac{1}{2} \\ \hline 9 \frac{1}{2} \end{array}$$

$$\begin{array}{r} 14.09 \times 9.5 \\ \hline 26.85 \end{array}$$

$$\begin{array}{r} 14.09 \\ 9.5 \\ \hline 70.45 \\ 127.81 \\ \hline 2685 \overline{) 133855} \overline{) 5} \\ \underline{13425} \end{array}$$

This line fell short 9 1/2 lbs  
across south end of Tapp and  
Fish. I divided the shortage  
taking 5 links off of Tapp and  
4 1/2 off of Fish.

$$\begin{array}{r} \text{Tapp's south line } 14.09 - 5 = 14.04 \\ \text{Fish } " " 12.76 - 4 \frac{1}{2} = 12.71 \frac{1}{2} \\ \hline 26.75 \frac{1}{2} \end{array}$$

set limestone < 26" long about 6" x 6"

John LaVally } ch.

Line "B" on line between Tapp  
and Fish -

set west 3' (random line)

N 7 1/2 W

set stakes every 10 ch.

at 44.59 1/2 stone N 8 W Tapp  
came out 4' 4" west of stone  
waiting 1' 4"

changed this to 4" west making  
total west 4 feet

correct for 10° waiting

$$\begin{array}{r} 44.59 \overline{) 1.000000227} \\ \underline{8918} \\ 11820 \\ \underline{8918} \\ 29020 \end{array}$$

Moss stake at 10° east	3.227
" " " 20° "	3.454
" " " 30° "	3.681
" " " 40° "	3.908

44.59 1/2

178.37

On south line Mary Tapp  
from her 500 stone  
at 5.71 stone in line and  
N 8 W John Tapp.

at 18.87 stone MR John Tapp.  
mond stone MR John Tapp. 4" west

$$\begin{array}{r} 18.87 \\ \underline{5.71} \\ 13.16 \\ \underline{4} \\ 52.64 \end{array}$$

$$4 \overline{) 29.84}$$

7.46

5.71

1.75

$$4 \overline{) 52.62} \\ 13.15 \frac{1}{2}$$

$$\begin{array}{r} 7536 \\ \underline{5262} \\ 4 \overline{) 2274} \\ 5.68 \frac{1}{2} \end{array}$$

$$\begin{array}{r} 18.87 \\ \underline{75.42} \end{array}$$

2/4459

22.29 1/2

.18 1/2

22.48

add for 1/2 of ditch  
road.

Set center stake for division of  
fence at 22.48

The line strikes N end of barn

1' 7 1/2" east from NNR

The line strikes S. end of barn

1' 8 1/2" east from SNR

Make article for changing line  
to be continuation of west line  
of barn to a point 3 rods south  
of barn and 1/2 rods north of  
barn, and this agreement  
to be in force as long as  
present barn stands.

Also that Zapp builds the  
North 1/2 of the fence  
and that the S. 1/2 -

Survey of line for Jas. Hoover and Ashford Whitney

Randolph Vt.  
Dug out stone at S.E. of N 8 1/2  
Stk. 17 - measured corner on  
1/2 line

N 89 3/4 W  
at 20.06 1/2 stone < to corner  
" 40.16 1/2 " < to center  
S.E. 17

set instrument at center < stone  
and plumb telescope to produce  
line

at 60.17 1/2 set stakes for this  
distance and set another  
for line as run

at S.E. 17 1/2 center ground with  
& Hoover pipe set stake for  
distance and set narrow tooth  
in line as run

April 28 - 1905  
N 1/2 - Sec. 17 - T. 7 R. 8. Bloomfield Vt.

E. O. Hoover } ah cr  
Perrin Moore }  
Jas. Hoover - Marker

- April - 29 - 1905 - 7/2 x 2 = 16 1/2  
at 60.17 1/2 - set pole 16 1/2 links north of  
and at 60.17 for dist.

Stk. 80.12 1/2 set pole 22 links north of  
line

Set stone for center < S.E. 17.  
pointed boulder some pieces of  
rock and a beer bottle &  
planted with stone - 11 1/2 links  
north of old stone run to yesterday  
set Walnut 3" N 57 8/10 W 42  
3" N 35 1/2 W 52

Hoover - Whitney

Line "B"

Found stone at SWR 28 1/4 = 17.  
 General stamp 3 1/2" diam.  
 west 64 lks. dug out stone  
 and found 2 - Fabrics - which  
 corresponds with H.C. Moore  
 record.

N 1/2 E      South      N 1/4 E

Set instrument at stone SWR 28 1/4

Set pole at stone NW 28 1/4

produced line to stone NW 28 1/4

at 20.12 from to west (Briggs)

" 20.17 " " East (Ed. Horn)

" 25.19 " " " (Maxwell)

stone, 20.23 " " "

30.31 " " west (Briggs 20")

40.25% stone center sec.

50.65 " " pole to line sec.

Same out 7" west of stone

Hoon - Whitney

Line "C."

with pipe & north line sec  
from stone NW 2 NE 1/4  
at 89 3/4 ft  
set stake on south end of pipe  
at 20.0

40.10 ft set <sup>orange</sup> ~~stake~~ in center  
Jackson center pipe and  
Smith & Hoon pipe

At 40.25 ft from NW 2 Sec. 17  
set iron bar in center pipe, line  
Hoon and Whitney

At 12.57 - south from this corner  
set gas pipe in pipe for corner  
Ash and Jerry Whitney

set gas pipe in pipe SW 2 Sec 17  
at 80.51

Line D

with center gravel Smith & H.  
pipe -  
from stake set in junction of  
S. & H. with Jackson Center  
pipe

50° E or 50° 7 1/2° E

at 22.50 set stake in center  
pipe at 22.62 set gas pipe for  
Hunter & Hoon

at 40.34 ft wooden stake set  
for dist

at 40.45 ft harrow tooth set  
for line random "A"

at 52.50 set stake in road  
" 80.45 ft " " " S line

See in fence

80.45 ft + 5 1/2 = 85.6!

40.00

40.25

20.62 Moon's dist

set pipe at 40.23 1/2

40.45 ft

+ 0.25 ft

22

Line "E"

On South line sec. 17.  
Measured 50 links north from  
stone s.e.  $SW\frac{1}{4}$  (begin line B)  
and set pole -

Set instrument 50 links north of  
stone  $\leftarrow$  to Garding and Whitney  
in S. line sec.

flunged telescope and produced  
line back to pike  
1891/11

at 19.98 stone  $\leftarrow$  Garding & Whitney  
" 39.90 center ground 15.27 ft.

came out 44 1/2 links north of  
stake set at end line "D"  
set this stake 5 1/2 links south  
for sec. 17.

April 29 -

on east line Whitney from  $\leftarrow$  stone  
from S. line sec. 40.32  
18 1/2 E

40.27 1/2

40.26 1/2

39.90

19.98

19.92 S. line Whitney

20.00 ft.

-.08% diff.

39.92%

19.94

40.36 1/2

40.27 1/2

40.32

18 1/2 E

24 1/2

26.26 1/2

26.27 1/2

40.32

16) 80 478 7 1/2

50.05

57.9

35.15

50.33

$17 \times \frac{1}{10} = 1.7$

$19.92 + \frac{1}{2} = 19.97$

$27 \times \frac{1}{10} = 2.7$

$20.00 - \frac{1}{2} = 19.99$

12.44

25 1/2

12.58 1/2

19.90

12.58

5 1/2

27.73

39.95

40.31

1 1/2

99 1/2

182.50

~~12.30~~  
~~18.65~~  
~~14.65~~  
~~139.5~~  
68.50

see over 2 pages -



set stone for  $\angle$  to Hoover.  
 And Ash Whitney and in Binggs  
 west line 2 stone placed  
 built up with pieces of tile  
 Mt: Burr oak 15"  $\times$  6"  $\times$  12" 25%  $\times$  1/2

at 12 5/8" S 1/2 R from stone above  
 set stake (to be replaced by stone  
 by Binggs and Ash Whitney)

for  $\angle$  Ash & Jerry Whitney  
 Mt: Walnut 10"  $\times$  14"  $\times$  25"  $\times$  1/2  
 Red Elm 10"  $\times$  6"  $\times$  12" 18%  $\times$  1/2

On line between Hoover & Binggs  
 measured from Stone S&R Hoover  
 17.62

measured from and line S&C 2002 1/2  
 at intersection of their distances set  
 stone on east bank County ditch  
 wit: Blk Walnut 15"  $\times$  22"  $\times$  10 2/3"  $\times$  1/2

	2) 40.10 1/2	40.20	
	<u>20.05 1/2</u>	20.03	
	20.05 1/2	12.07 1/2	
diff	.04 1/2	62.4260	
		16) 60.60072	
Army - 20.03	5.0875	57.575	
Home	35.2625	45.3375	
Heater	45.34		
	80.60		

$4\% \times \frac{3}{16} = 2$        $20.01 1/2$  )  $35.2625$  (17.62

$4\% \times \frac{1}{4} = 2\% 1/4$

	20.04) 45.34 (22.62		
	<u>40.08</u>	12.3780	17.62
	5.260	12.0090	22.62
	40.04	<u>3.6100</u>	40.22
	12.520		
	12.000		
	44.520		

Calculation Ash & Irony History

$$\begin{array}{r}
 40.32 \\
 40.27\% \\
 \hline
 40.30 \\
 19.96 \\
 \hline
 201.80 \\
 36270 \\
 36270 \\
 4030 \\
 \hline
 16 \overline{) 50.43880} \\
 \underline{5.0274} \\
 1.55 \\
 \hline
 25.1370
 \end{array}$$

$$\begin{array}{r}
 50274 \\
 \underline{50274} \\
 503014 \\
 2014 \\
 \hline
 80.44
 \end{array}$$

$$\begin{array}{r}
 1919 \overline{) 2574} \quad 12.57 \\
 \underline{1999} \\
 11520 \\
 \underline{9996} \\
 15250 \\
 \underline{13993} \\
 1257
 \end{array}$$

— See 26 Union Tps T&R4

Maxemson - Hines Survey  
 Ch. Crs. (John Maxemson  
 Hines  
 Flagman (Sam'l Swank)

$$\begin{array}{r}
 1995 \overline{) 5520} \quad 27.72 \\
 \underline{3990} \\
 15200 \\
 \underline{13965} \\
 14350 \\
 \underline{12965} \\
 3850
 \end{array}$$

$$\begin{array}{r}
 27.73\% \\
 \underline{27.72} \\
 1\frac{1}{2}
 \end{array}$$

$$\begin{array}{r}
 27.72 \\
 \underline{1\frac{1}{2}} \\
 27.70\frac{1}{2}
 \end{array}$$

Maxemson-Hines Survey 9/19, 05

Line A

Found Sec. 4 in road N.E. 4 Sec 26

Random N.  $84\frac{3}{4}$  W.

Offset 10' South.

Set stake at 40.65 distance

called for by Swanns deed

offset 14' to North

Set stake at 60.00 ch.

Came out 13' N. Sec. 4

Total Distance 81.07 ch.

$$\frac{81.07}{2} = 40.53\frac{1}{2}$$

$$\frac{40.53\frac{1}{2}}{2} = 20.26\frac{3}{4} + 40.53\frac{1}{2} = 60.80\frac{1}{4}$$

Total Northing 9' O.K. Cse.

Corrections

$$40.53\frac{1}{2} \quad 4.5' S - 10.0' = 5.5' \text{ North}$$

$$60.80\frac{1}{4} \quad 6.75' S + 4.0' = 10.75' \text{ South}$$

Line B

Found stone at S.W. N.W. Qr.

Random S  $85\frac{1}{2}$  E.

Set stake at 20.00 ch.

at 40.38 ch to stone (No corner)

Large stone lying flat. in road.

Set stake at 40.00 ch.

Elam Buckwalter

Survey

Oct - 16 - 1905

On Orchard Ave

from bar + Orchard x Det.  
set pole 12' south

300  
228.29  
131.31

48.29  
43.3  
91.32

90.00  
48.29

