

TABLE for reducing PERCHES to FEET.

Per	Feet	Per	Feet	Per	Feet	Per	Feet
1	16.5	21	346.5	41	676.5	61	1006.5
						81	1336.5

TABLE of Decimal Parts of a FOOT for
each Inch and Sixteenth of an Inch.

1/16	1/8	1/4	3/8	1/2	5/8	3/4	7/8	1
0.0625	0.125	0.25	0.375	0.5	0.625	0.75	0.875	1.0

- 1
- ✓ Buckeye Port. Cem. Co. Rush 9887
 - ✓ Carter - Heffner
 - ✓ Eliz. Lowry - Lake View.
 - ✓ Chas. V. Waldman
 - ✓ John H. Hornberger, Bellef.
 - ✓ Isaac Alloway
 - ✓ Strayer - Finkle
 - ✓ Dr. Hamer S. of Delcuff
 - ✓ M. A. Detrick.

Buckeye Port. Cem. Co.
Aug 28-08

670

2

Cse - westward along N. side
to road - from office $S82\frac{3}{4}W$
 $S7\frac{1}{4}E$

Commence pt. - gas pipe in
W. line orig. B-P. Cem. Co. at
S. line county road.

Dir: 30° Hackberry, $N9W$, $48\frac{1}{2}'$

Ext. S.E. corner porch, office bldg
 $N33\frac{3}{4}E$, $67'$

- $S7\frac{1}{4}E$, with orig line,
at. $469'$ gas pipe.

- $N65W$. $47'$ to gas pipe.

- $N7\frac{3}{4}W$ $443'$ to the
S. side of County road

- with road $N82\frac{3}{4}E$, $412'$
to begin.

New West Life Ins Co
to B-P-Cum Co

Commence at pt. railroad rail
near 20" backbrng.

present case $\approx 7\frac{1}{2}W$
old case $\approx 8-55W$.

(set off variation to read to
old case $\approx 8-55W$.)

at 9.05 stone at NW \angle of
Huffelinger \square strip.

Miss S. $76\frac{1}{2}$ lbs \rightarrow came
to old fence post, at NW \angle
of orig B-P-Cum Co land.
offset S. - 1.73 to pt in
road to E.

- ~~$\approx 81-50E$ (orig case)~~
- eastward with road at
22.79 old fence row

4.28
1.29
3.89

3

- set W. 12.

S $7\frac{1}{2}E$ with old fence row
at 6.5-cent creek.

iron pipe

WT: $\approx 53W$, 17" dia, 24 lbs

Double Lynn, 15", $\approx 11\frac{3}{4}W$, 26 lbs

- up stream 55 $4\frac{1}{2}W$
4.28.

- upstream, 59 $\frac{1}{2}W$,
at 13.00 \angle in stream
at 13.30 end of case as per deed.

- S $10W$, with creek.

(Creek crooked, these courses
only approximate)

at 3.89 set iron pipe (temporary)
set in bank about where line angles
to W. being 16 lbs from Sun. line
to cent creek

Continuing this last case, at 2.00 by chain
in W. bank creek

Pugle tract

Commence at Big Elm on L bank

- with creek $S 7 \frac{1}{2} E$,
(present case)
variation at 0°

Cse. creek $S 6 \frac{1}{2} E$

at 24.22 line McAdams

- with N. line of McAdams
meas from cent. creek $N 81 \frac{1}{2} E$,
at 3.00 set gas pipe
(re-set 5 lbs hr)

- $N 9 W$, at 6.76 - writing
11 feet

at 6.71 set iron bar
grow with tree -
Walnut, 14", $N 81 \frac{1}{2} E$, 26 lbs

6.71 ch \div 11 ft = writing
on this case.

Corrected case = $N 8 \frac{1}{4} W$

- offset $N. 12^\circ$
 $N 81 \frac{1}{2} E$,
at 3.96 iron pipe

Sept. 16-08 Dow Wonders ch

Cse. creek ($S 6 \frac{1}{4} E$) (needs)
old case ($N 7 \frac{1}{4} W$) ($1^\circ L$)
Start at big elm on W.
bank of Rust Creek

- $N 8 \frac{1}{2} E$ with bank
at 1.32 iron pipe on bank
old syc. with gum

- $N 83 \frac{3}{4} E$,
at 6.57 pc gas pipe

- S 6 1/4 E
 offset E 20'
 at 18.77 1/2 came out
 20' E and 4 lks S. of
 iron pipe.
 Set this pipe 4 lks S,

17.16 a p.c.

Commence at iron pipe at S.
end of 19.77 1/2 cre on previous
page.

- N 6 1/4 W ~ (present case)
case in deed = N 10 1/2 W.
Set variation to N 10 1/2 W
& run by st. using orig. course
at 223 set iron bar
at 223 + 504.5 set iron bar

Start at last mentioned bar &
run by orig. bearings

- N 79° 39' E
at 300.5 iron pipe
(re-set 10' north)
- N 4° 21' W
at 769.5 old line fence row
(set iron bar 10' W)

- 6
- S 87° 31' E
found this bog. would
run too far N.
present case of fence S 82 1/4 E
at 429.5, W. side st.-of-way
of Alta track, 20' from
E. st.-of-way fence

- S 6 1/2 E (present case)
at 1155' old fence post
20' from E. line st.-of-way

- S 83 W (present case)
at 809 beginning
(20' short of end)

Carter-Heffner Surv
Sec 30-5-13 Liberty Twp

Found stake in Sec. line
at S.E. \angle York \times S.W. \angle York
at S.E. \angle S.W. of Sec. 30

- westward with road
at 351.78 line York & Ida Carter N.
at 5.33 stake set by C.M.R. at
at 981.44 cor. York & York S. South

1360.92
at 20.62 stake set by C.M.R.
at N.E. \angle of Kauffman -
This stake is about 6' S. of
center of road.

Meas. westward along S. line toward
at 1405.80 cent. pipe
at 207.1 opp. 15" link, 5' N.
1306.20

Oct 1-08

84-3-10
N2+3

E. S. Hawker } de cr.
Chas York

N line Rose Howell's 2204.40
from stake in road - 534.0 = $584\frac{3}{4}$ E
 2748.90
 41.68

E. line Mrs Howell, $54\frac{3}{4}$ W, 608.52
Set $\frac{3}{4}$ " gas pipe at S.E. Howell,
with 32" elm N 75 E, 5.94 9 lbs

Howell's S. line

at 354.02
at 5.67 NW \angle York
at 620.40 \angle in line set $\frac{3}{8}$ " iron pipe

- southward 132.00
2' to $\frac{3}{8}$ " iron pipe
at intersection of James row
6" SW, 19"

- N $84\frac{3}{4}$ W (offset 36' N)
at 728.64 located \angle from rd
with 18 W.O. stump 559 , 2376
at $(1104 + 2.325) = 1336.5$ set
stake in James \angle or NW \angle
of 16' a. trace.

Meas. $584\frac{3}{4}$ E, from this post
223.20
3.89 set iron pipe.
also Meas N $5\frac{1}{2}$ W, 5' set stake
(temporary) for \angle toward.

NW 2 8E - 2 3/4
NE 2 3W + 2 3/4

- Set M. 28' 5 + 3/4 W

at ^{1435.50} 21.75 (87 ft) small stakes
run 8' E of line at this pt.

28 + 8 = 36' easting

True line S 5 1/2 - W

at ^{1443.75} 21.875 set stake

meas S 84 3/4 E, ^{223.74} 339 set
in line

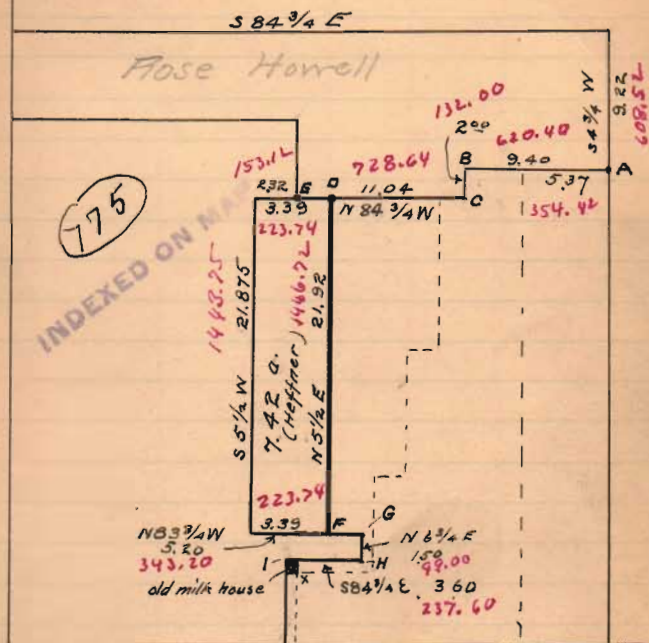
stair at row & milk house

S 84 3/4 E
at ^{227.60} 3.60 stake

- N 6 3/4 E. ^{99.00} 150

- N 82 3/4 W, ^{343.20} 5.20 to S. end
of ^{1443.75} 21.875 line on opp. page.

Carter - Heffner



- A. 3/4" Gas pipe, 32" elm N 75 E 9.1ks 5.94
B, C. 3/4" gas pipe in old fence corners.
D, F. " " , each end of dividing line
E. gas pipe, located from old wit. - 18" W.O. stump, decayed, S 58 W, 36
G, H. gas pipe
I. gas pipe, N.W. of old milk house

The 16' rt.-of-way correctly located, Deed incorrectly locates milk house at S.E. of angle in lane (shown by x)

Found stone in pike NW 1/4
Sec 4, from old wit.

Present trees to old wit trees!

Walnut 30" N 25 E, 12.1

Walnut 19", N 46 W, 10.4

Found stake SW 1/4 Sec. 33

from old wit now standing

Planted stone over stake, &

surrounded it with logs soft coal.

NEW big. to old wit!

Walnut, 19" N 7 1/4 W, 7 3/4

Leaving water elm about 20" S 20 1/2 E, 9.6,

stone, NW 1/4 Sec 4, East, 66 + lks.

Start at new stone as set at
SW 1/4 Sec. 33.

— Eastward, S 89 3/4 E, along road

0+66+ stone NW 1/4 Sec 4

3+10 cur pike N 2 S

20+30 stone in road, SE 1/4 Smith

22+0+ stone on N. edge grade (what
is it?)

40+71 stone SE 1/4 Lowry, this stone
in question

Think this stone O.K.

Eliz. Lowery Surv.

Sec. 33-6-8 Stakes Tps.

1/2 mi SW Lake View

Nov. 19, 1908

warm - about 50° F

John Archer } ch. or

Hoseo Chiles }

40.71

20.30

20.41

81.64 = rods

ch.
= rods

16
60+00 in bridge floor, where
T.P. ditch crosses from N to S.
64+51 new wire fence to N.
74+70 open ditch from NE

81+16 stone set by line NE Sec 4

81+22 fence to N., Mr. Shivelin
says Sec 4 N. is about 5 or 6
feet E of this fence.

Nothing found to determine
the exact location of corner.

If Mr. Shivelin is correct,
this would make the Sec. cor
about 81+30

Start at stone, cent. N. line
 Sec. 33 & meas. Southwest
 offset W. 15'
 Random 5 1/4 - E

20+07 line Archer ^{and} Carpenter E.
 Rupert ^{and} Smith W.
 No stone found

30+09 pass 15' W. of stone NW \angle ditch

40+11 1/2 pass 13 1/2' W. of stone in pit

56+615 (66 rods from stone to
 cent. pit) stake temporary
 Set stake in corrected line

76+33 pass 17' W. of stone in fence

87+65 stone at SE \angle Lowery
 pass 11' West
 Stone & post with
 stone on top decayed stump

at 40+11.5 Easting 1 1/2' fr.

$$\frac{87.65}{40.115} \times 1 1/2 =$$

$$\begin{array}{r} 87.65 \\ \hline 1.4 \end{array}$$

$$35060$$

$$8765$$

$$40 \overline{) 122.710} \quad | 3.1$$

$$\underline{120}$$

$$27$$

$$11 + 3.1 = 14.1$$

\(\therefore\) Easting across sec = 1 1/2'

$$87.65$$

$$\frac{40.11}{47.54} \text{ ch}$$

$$\frac{4}{190.16} \text{ rods}$$

$$= 190.16 \text{ rods}$$

Survey for Chas. V. Wellman
on Huntsville pike

found iron bar in pike from
24' thick. cut, N 5 1/4 E, 40'

also iron bar & stone
at McCauley Bros pike &
Huntsville pike.

Cse. Huntsville pike
bar. these 2 bars S 35 3/4 E, 7.84 1/2
(old cse S 36 1/4 E
needle = $\frac{15}{7}$ 1/2° since
J.C. Warden surv. about 12 yrs ago.

Commence - bar 40' from lude
N 4 E
at 7.19 found iron bar 12"
under ground.

- S 86 E at 5.57 old
iron bar at w. side lane

N 4 E
- northward with fence
at W side lane -
at 29.85 found old
rotten stake in Grimes road
and being 1909 from
stone at N E & 1/2 Sec.
(and 1/2 1/2 eastward from stone
in road at SW < old juv.
Grimes tract a SE < Gemma
Horn. Planted large
boulder over old stake

7.19	7.19
5.57	5.57
29.85	
<u>42.61</u>	12.76
2 42.61	
21.305	
12.76	
<u>8.545</u>	

Wellman Δ pc. Wf
Huntsville pike

Commence at iron bar in Hunts-
& Mc C. Br pike

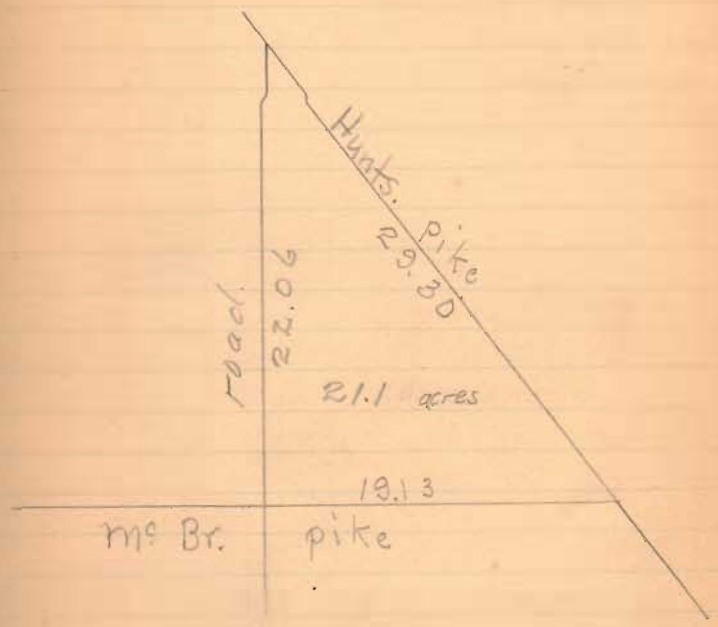
— meas W with Mc Br. Pike
at 19.13 slope at X roads

— meas. 1 N. with cent road
at 22.06 Cent. Hunts. pike

— meas SE with Hunts. pike
at 29.30 begin

No instrument used -
Measurements only to get approx
average

C. V. Wellman / chert
A. J. Debnick



J. H. Hornberger Surv.

Start meas. at S. line Index bldg.
Call this 36.0'

54.7	S. line Hornberger brick
64.8	N. line Tom Boyd back shop
104.6	S. " " "
129.6 (near)	fence N. line Huffer
236.3	Quib. N. side chib.

Set S. line Hornberger 7045 N. of N. line
chib. @ 9445 S. of S. line Index bldg.
Meas E = 90° - Bar 52 - SE < Hornb -
at 110.2 - found old fence on line
at 1/2 way point, dividing lot 173 in
N x S halves.

Depth Hornberger brick -
from front to rear S. side = 51'

Mid Examines Bldg S. side 54 1/2'
Dist E. side Opera to E. side Lot 173 - 109.0' along N
side of Tom Boyd's old shop.
Width Opera St. from front Hornberger
brick to Opera Block 36.5'
Opera St. - Index bldg to Opera block = 36.5'
" " found. Huffer re - to SE corner stone 36.5'

Relief - Feb. 3-09

an Chib. = W. side Mad R (15' from
curb) to SE < Cooper bldg =

255.2
36.5
4) 218.7
54.675
2
109.350

Set stakes on lot 173 thus:



an side side Court St.
from curb. W. side Mad R. to
< Opera Block 270.2
36.5
15
51.5
51.5
218.7

Meas W. from NE < Lot 158
50.5 = line Index x Exam
109.0 = Exam. x Miller

Isaac Alloway Surv.
9947 - Richland Tp.

Begin, bur oak & elm, 20" SE & Surv.

- N 9 1/2 W, 18.6 ch. to stone in cent.
- Hunts - a res. pike,
- with pike, N 5 3/4 W, 11.92 to stone
- S 82 W, 16 ch. to Heron E. line
- S 9 1/2 E, 26.75 to S. line Surv.
- N 82 E, 23.85 to begin = 60 a

Except
5 a. out of SE & belonging to
Isaac Alloway.

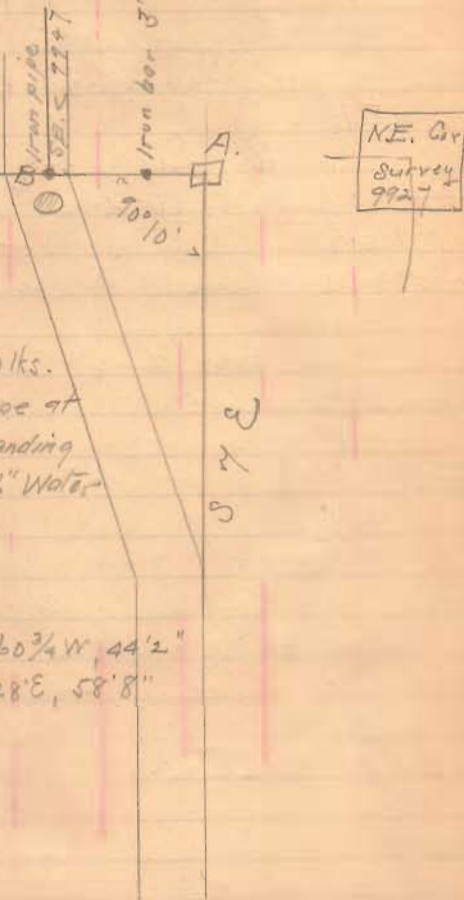
Surv. C. Haver to } 166 - 480
Isaac Alloway } Aug 16 - 08

Susan Latson } 83 - 478
Noah Richland } Sept 1894 PR 9947

Begin. stone. cent Hunts & Res - pike or
corner Alloway - with 14" shell burk S 79 W, 46 1/4
- with N. line Alloway, S 82 W, 25 7/100 p.
- N 7 1/2 W, 26 16/100 p to stone. cent pike
- with cent pike, S 52 1/4 W, 36 5/100 p. to begin
= 2 1/10 acres

think should be S 52 1/4 E

Record C. p. 270
W. A. Gunn
Nov 1895



A-B.
S 83°10' W 80 lks.
passing iron pipe at
16 1/2 foot. ending
2' 7" N. of 36" Water
Elm.

WT: at A.
36" W. Elm, S 60 3/4 W, 44' 2"
40" W. Elm, S 1° 28' E, 58' 8"

Isaac Alloway Surv.
Feb. 23 - 1909.

Commence, iron pipe, SE \angle Surv
9947 - see Surveyor's record C.
p. 270

= S. Line =
— S 82 $\frac{3}{4}$ W. with Top. Line
(Auckland \odot M = A -) and
N. line Dur = S. line Alloway

(this pipe is at E. side of
road to north)

0+27 - Cent road to north.

28+78 Anchor post set by Dur
at SW \angle Alloway

Obs. = 32' offset N. gives us
S 83 W.

West - Perry Alloway) Ch. as
New - Jas Alloway)
(Chairman ok. no dispute)

= W. Line =

— N 7 $\frac{1}{2}$ W - offset N. 25'
10+00 stake set for dist in fence line

at 26.74 stone NW \angle Alloway and
SW \angle Arch Richens.

Obs. line = N 7 $\frac{1}{4}$ W

N. line

Start stone as found across
Beckham =

Offset S. 19' (Red oak
line W. line for B.S.)

— with rail-fence
N 83 1/2 E

8+80 - another part SW 2 1/2

Deal gives this line as	
582 W	
W 079 W	46 1/4 lbs
<hr/>	
30	

Pin 30 =	0.50
	46.00
	<hr/>
	46.50
	200
	<hr/>
	200.00

this line with stump
to 2 1/2 lks S. of line

at 15.25 set iron base
in pipe

Set per 1 1/4 pipe 20" long

This pipe cut by mess 46 1/2
lbs from decayed with
stump and ~~line~~ in line
with stone at NE 2 1/2

a pe. of oak Beckham
(and stone in pipe to S)

W 11, old hick stump, 46 1/2
stone in pipe N 4 1/2 W, 9.14 1/2

Along Hunter's Reservoir

549 E

at 11.91 stone in pile

B. Pine

5 874 2

18.04

Transcribed notes

= N. line =

Start at stone as found at
SW \angle Noah Beckham

Offset S. 19' (This comes
to small red oak - blazed for
back-sight.

— with Beckham line -
N 83 $\frac{1}{2}$ E

at 8+80 - anchor post at
SW \angle Beckham 2 a lot.

at 15+75 set iron bar ^{and}
peg. tile in cent. pike.

This corner set by run-
ning line straight bar. stone
at N corner Beckham 2 a
tract ^{and} stone in pike at NE
 \angle Alloway. ^{and} meas 46 $\frac{1}{2}$
lks. Joint edges decayed
stump of thick withering tree -
Wit. stone, cent pike.

N. corner to Beckham 2 a
N 51 W, 9.14 $\frac{1}{2}$ lks dist.
(This makes N. line about
3 $\frac{1}{2}$ lks N. of wit. stump.

N.E. line - along pike.

Commence iron bar as set
in cent. Hunts. & rev. pike
— with cent pike S 51 E.

at 11.91 stone in pike,
pointed out by Alloway's as
his recognized E. side but
Beckham's pike to N. is a few
feet further East.

East. line

Start at stone in pike,
S 8 $\frac{1}{4}$ E
at 1.8.04 place of beginning.

Acres = 59.32

Divided as follows -

Spr	30.66
W spr	<u>28.66</u>
	59.32 ✓

Run dividing line - as follows.

Commence iron pipe at SE corner
with E. line N 8 1/4 W -
at 12.84 =

12.96 set pipe
buggy axle in E side
of road

— division line parallel to
south line -
S 83 W

Division line S 83 W = 28.56

W. line = S 7 1/4 E, 12.83
to SW corner of tract. 12.95
iron pipe

12.95
<u>12.80</u>
.15

Survey 1 da	5.00
Carfare records	.50
2- descriptions	1.00
	<u>6.50</u>

Def. Alloway or by check	3.25
Def. Alloway in cash	3.25
	<u>6.50</u>

Alloway Surv. Richland Tp. Surv. 9947

	N	S	E	W	Sub	N	S
N 83 1/2 E, 152.5	1.75		15.15		15.15	26.51	
S 57 E, 119.1		7.50	9.25		39.55		296.63
S 8 1/4 E, 18.04		17.85	2.59		51.39		917.83
S 83 W, 23.78		2.91		2.860	30.38		88.40
N 7 1/4 W, 26.74	26.52 26.53			3.39	3.39	89.90	
	<u>95.72</u>	48.45	16.99	16.98		116.41	1302.86
	28.27	27.27					116.41
						2	1186.45
							57,822

Strayer Survey

Pleasant Tp.

July 2 - 1909

Ed. Lockhart ch. cr.
Geo Hoy

Commence stone in road, N. line

Sec. 2-1-8 - at SE \angle Ed. Lockhart

= Line N21 -

— with N. line Sec 589 $\frac{3}{4}$ W.

at 14.00 set stake (temporary)

at 40.26 - stone at NW \angle Sec. 2.

at 37.00 - stake in line

=	=	.4% excess	36.98	40.96
			33.1	40.24
			40.29	

Excess \rightarrow .17

at 40.46 big stone with
boulder & gas tile & bricks on top

at 37.06 set stone & gas tile, at
corner Shultz & Hinkle

40.46

37.06

3.40

give Hinkle .09 excess

Excess on all lines = $\frac{1}{2}$ % (mean)

Line N22 = W. line Sec. 2.
with cent road

S $\frac{1}{4}$ E

at 40.22 found stone in X roads
at \angle Hinkle, Kraglow, Hannah
& Hannah

New unit: 18' Walnut, 55 $\frac{3}{4}$ E, 46 $\frac{1}{2}$ W

Excess .22

Line N21 continued

at 14.00 set long stone & gas
tile at NE \angle Shultz & 1500 \angle
Wilson corner

Line No 3

with road,

N 90 + E

S 89 3/4 + E

or

at 20.12

Stone in road

at SE \angle Hinkle \textcircled{NW} SW \angle Moon

\perp NE \angle Hannah.

This stone is in N wagon track

20.12 - 20.06 = .06 excess

Line No 4.

E. line Hinkle

Set W. 10

N 1/2 + W (N 3/4 W)

at 22.54 Stone in S. line
Shultz (Strayer)

20.54 - 20.50 = .04 excess

Line No 5

N. line Moor.

Sat 10 10'

S 70³/₄ E,

at 6.97 set stone in fence
line at SE \angle Shultz & SW \angle
Wilson Moor

check 2 2/4 lbs from old
maple (S) oak with NW,

also with 12" burr oak at
 \angle in Wilson Moor, S 70³/₄ E
58 lbs diet (S) NW \angle of
Weidenyer x 1/4 way, S 70³/₄ E.
55 lbs.

6.97 - 6.99 = 0.02 excess

Line No 6

Commence N. end of line No 4
(S) W. end of line No 5.

N 68¹/₄ W

at 6.74, found old stone
in fence row. - stone
leaning - re-set same
& surrounded with pes.
8" dia

6.74 - 6.71 = 0.3 excess

Line No 7

along line Hinkle & Shultz
N 34 - W -

at 18+36 Set Stone & pos. tile
in road at 37.06 of line No 1

H. H. Hinkle,
Dr. Gruff, R. F. D. -
Send description & acreage
Make record for Strayer

Line No 8

Along line Shultz & Wilson Moore
from E. end of line No 5
14+00 of line No 1

N 1/2 + W

at 2008 set long stone &
pos. tile for N.E. & Shultz &
N.W. & Wilson Moore

Survey for Dr W.W. Hauer
 (Henderson farm, S. of DeSchoff)
 Apr. 26-09

Frank Hannah } ch. cr.
 Harry Carpenter }

Set on iron bar, in cent pike
 862 Dr Hinkle 20a, B.S. on
 iron bar in pike at NE & same place
 - with cent pike producing
 S 4 1/2 W

at 20.63 intersect S. line
 Dr Hinkle will drive
 iron bar at once

- with s. line of above 20a
 N 86 1/4 W

at 20.12 stone by anchor
 post at SW of Hinkle 20a

— with W. line Henderson
producing W. line 20 a — (200)
with wire fence

54 1/2 W

at 9.95 Stake set for dist.

at N. bank Stony creek

at 20.63 Stake in line set.

for sec. of 4 1/2 a, conveyed
to Dr. Hinkle - which less 4 a

leaves 3 1/2 a, conveyed,

at 21.04 fence to W, on or
near 1/2 sec. line.

(anchor post 27' 4" S. of stake, for
B.S.)

Dr. Hinkle will set iron pipe

— eastward 20.11 to
Cent. pipe, to point where
Dr. Hinkle will drive iron bar

20.11

20.12

2 | 40.23

20.115

20.63 =

41.499 acres

Revels for Dr. Hamer

4.32 Surf. wet place, Hamer's field,
just S. of 31 $\frac{1}{2}$ as surveyed to
Dr. Hamer.

6.00 Top bank at creek

9.10 Water surf. at creek

6.00	9.10	9.10
4.32	6.00	4.32
<hr/>	<hr/>	<hr/>
1.68	3.10	4.78

Dr. Hamer Sew.
- Continued -

May 19-09

43

Survey of 80 a -

O.C. Richey | ch. com
A.R. Richey

Start at stake (Dr Hamer will
set iron bar at once) at SW \angle of
above 4 1/2 acre tract as subwyer
in W. line of Section.

— producing W. line as run
S. 4 1/2 W
(Set W. 10 ft.)

at 0+41, Qr Sec \angle .

Cse. fence to W, N 8 1/2 W

at 8+16 N line of 21 a. po. This
pt. is 6.19 to fence at NW \angle or
6.33 to Walnut

at 2.324 pass 19 1/2 W. of cent of big
boulder on hill

at 41.71 will fence.

~~Ground pt. to be Walnut stump
near where my cut ought to be.~~

~~Iron stump, set S 50 1/2 E,
23 lbs (old wire) & came to fence
line 19 feet^E of random.~~

~~19-10 = 9' westing.~~

at 41.55, came out 12 ft. W
of stone with ⊗ on top, which
Fred Nielsen says was set
for Sec. 4.

This stone is 16 lbs N. of
wire fence
12-10 = 2 ft westing.

— set N 30' S 85 1/2 E
at 40.31 fence, Eline Newman

at 20.15 drove stake in pike
about 4' E. of cent. gravel, at
SE of Hamer.

Dr Hamer will drive iron
bar at stake

19.85
.13
19.98

44

Set with stake E 5 ft.
also stake in line at W. side
roadway

— with pike N 4 1/2 E
at 41.97 SE of
Dr Nielsen 37 1/2
at 15.15 Dr. Hamer's bridge

Descriptions of pc. as

Surveyd. Pt. Sec. 5-T.3. R. 13.
Miami Tp.

Commencing stone with X mark at the
SE^W of Sec. 5, T.3. R. 13,
Miami Tp. L.C.

— with S. line of Sec. N 85 1/4 E
20.15 to iron bar in Delcraft
& Antioch pike

— with said pike N 4 1/2 E,
41.97 d. to iron bar at
SE^W of a tract of 87 1/2 acres
recently conveyed by Dr. Hauer
to Dr. Hinckley

— with south line of said tract
N 86 1/4 W, 20.11 ch to an iron
bar at SW^W of said tract,
(and in W. line of said Sec. 5.

— with said Sec. line S 4 1/2 W
41.55 5 begin =

Buckeye Post Cem. Co.

B.S. on line FE as formerly
set from wit. at each end
- N $5\frac{1}{2}$ W
orig = N $6\frac{1}{2}$ W. Var 1° L.
since 1888 = 21 yrs.
set variations, plate so as read
N $6\frac{1}{2}$ W, & then follow my use.

- S $83\frac{1}{2}$ W, 5.58 $\frac{1}{2}$ set stake
Set iron pipe $1\frac{1}{2}$ lbs N. for L

- N $6\frac{1}{2}$ W set stake N. ditch bank
N. side road
Set iron pipe 2' lbs N. for L

- N $84\frac{1}{2}$ E set stake
Set iron pipe 2' lbs N. for L

July 1, 1909

O.C. Rechy east

- N $6\frac{1}{2}$ W - at 3.62 set
stake from old wit., at L D
This dist should be 3.59 $\frac{1}{2}$
 \therefore run s. $2\frac{1}{2}$ lbs
Set iron pipe

- N $83\frac{1}{2}$ E, set stake by R.R. track
Set iron pipe

- N $6\frac{1}{2}$ W, 8.76 - set stake at C.
See 2 pages further on. Set iron
pipe, splitting digg.

Start at O = railroad rail. wit. OK.

- N 30 E 1.83 stake

— 586 1/4 W. 0.377 slake

— 530 W, 2.64 slake

— 576 1/2 E 5.41 slake

— 56 1/2 E 15.03 slake at B

— 588 1/2 W. 2.47 slake
(at 2.52 iron volt supposed
to be at <.)

— 56 1/2 E, 7.05 slake

— 583 W, 1.75, slake

— 56 1/2 E, 12.59 1/2 slake

— N 83½ E, 5.16½ at C.
Came out 2 lbs N.E. of
stake set at C. previous page.
Split diff. & set iron pipe
midway bet. these 2. pts.

Liberty
~~Harmon~~ June 9 '10

M.A. Detrick Survey.
 Pt NE 1/4 Sec. 2 T. 3 R. 14.

Commencing at a stone at N.E. corner
 of Section.

- S. with Sec. line 40.305 ch. to a
 stone at S.E. corner of said 1/4 Sec.
 Passing S.E. corner of Roth's 2 acre
 tract at 5.514 ch.
- West with S. line of said 1/4 Sec.
 13.41 1/2 ch. (53 3/8 P.) Crossing old line
 at 13.26 ch.
- N. with line between Detrick &
 Harmon. 25.00 ch. to center Car-
 liste Pike as near as could locate.
- N.E. with Carlisle Pike 12.25 Ch.
 To S.W. cor. of Dan'l. Roth's 2nd Tract.
- E. with S. line of Roth's 2 acre tract
 5.614 ch. to Roth's S.E. corner at Sec
 line, and being 5.514 ch. S. of the
 beginning.

49

Earl Löffler }
 Ed. Burkhardt } Chain

