

0.5  
8X

W. of Lake Co  
New Haven  
Conn

Westn Add to Bellf  
Pag 78 this Book.

39.561	230
21.44	
5.44	
8.44	
6.33	
37.86	
10.55	
27.31	
27.07	
37.72	
37.72	
37.72	

$$\begin{array}{r}
 195 \overline{) 300} \quad | \quad 2.86 \\
 \underline{350} \\
 1500 \\
 \underline{1400} \\
 1000 \\
 \underline{1005} \\
 \hline
 \end{array}$$

Morse Smith page 36.

144

$$\begin{array}{r}
 35 \\
 \underline{17} \\
 61
 \end{array}$$

Inverse table dip per 100:

$1/4^\circ = 100 \cdot .44 - 500 =$	$39.2$
$1/2^\circ = \quad \quad .87 \quad \quad =$	$19.6$
$3/4^\circ = \quad \quad 1.31$	
$1^\circ = \quad \quad 1.75$	
$1 1/4^\circ = \quad \quad 2.18$	
$1 1/2^\circ = \quad \quad 2.62$	
$1 3/4^\circ = \quad \quad 3.06$	
$2^\circ = \quad \quad 3.49$	

Samuel Stewart Survey April 8<sup>th</sup> 1884  
 James Miller Survey } checker  
 William Whitney }  
 Joe Reed Flag  
 Thomas Morris axe

Line A.

Begin at Survey corner 40" diam  
 hollow and dead at top old con tree  
 pit above - tree *Dycomia* 30" diam  
 S 89 1/4 E 69 1/2 links also Block  
 of 16' diam N 74 1/4 E <sup>65 links</sup> and chain  
 of *Chusquea* creek crest  
 N 5 1/2 W at 10 ch at 1 line then more  
 crest to center of #4 pipe at 23.70 ch  
 set stake on line at 23.56 ch  
 then west of #3 (near east of) at dist 23.57 ch  
 to - at Block in c. pit and gravel on pipe  
 N 5 1/2 W 10 links and end S 89 1/4 E R.R. N 81 3/4 E  
 230 links

McArthur Tap  
 V.M.S. 9881.

Course of survey line S 81 3/4 W  
 Line B start at cross corner 4  
 then S 81 3/4 W  
 at 19.40 ch center of S 89 1/4 E R.R.  
 at 21.75 ch line stake or *Stipa* at  
 5' or apart, Ch dist 21.71 chains  
 from 2 down to - Stewart & Morris

Line C. Start at - stake - Stewart  
 and Morris at pipe. Then on with  
 Survey line at S 57 3/4 W or 26.40 ch to  
 west bank of *Chusquea* Man's Run.  
 Line D

Thence with the proceedings of acid Run  
 and on the west bank thereof S 63 1/4 E  
 - 4.20 - chains to stake 2 1/2 feet east  
 of foot of *Juniper*, thence S 57 1/2 E  
 - 2.29 - chains, to post in old head  
 of *Juniper*, thence with old *Juniper*

Line D continued

Thence S  $52\frac{3}{4}$  E bearing back of  
stream - 5.35 - chains to stake  
at west end of old mill dam.

Dist. back 16' N  $10$  E,  $24\frac{3}{4}$  links

then in following top of banks of old  
channel at west side old mill dam at

S  $81\frac{1}{4}$  E 2.42 chains Thence S  $61\frac{1}{4}$  E

1.03 chains Thence S  $1\frac{1}{4}$  W 1.03 ch

Thence S  $31\frac{1}{2}$  E 1.38 ch Thence

N  $86\frac{1}{2}$  E  $3\frac{9}{10}$  ch Thence N  $48\frac{1}{4}$  E

1.20 - ch <sup>100 white</sup> Oak 20' dia, Thence

N  $67\frac{1}{4}$  E  $\frac{55}{100}$  ch Thence S  $5\frac{1}{2}$  E

3.02 ch Thence S  $45\frac{1}{2}$  E  $7\frac{35}{100}$  ch

to white Oak tree 30' diam

Thence S  $4\frac{1}{4}$  E 2.11 - ch Thence

S  $55$  E 3.95 - ch passing N  $12$  E

to James Miller lot <sup>and to Halliday</sup> at 44 ch, and then

to yellow birch line, to Miller's <sup>mine</sup> stream

and McComick

Dist  $\angle$  S I line D

yellow willow stub 9' dia, S  $71\frac{3}{4}$  E  $5\frac{3}{4}$  ch

Line E start at  $\angle$  to Stewart & north  
end of line D. Thence with line

between McComick and Stewart

N  $79\frac{1}{4}$  E 3.13 chains

Set stake at which stone is set  
planted at height of water privilege at  
line of McComick and Stewart said  
stone to be a fragment of an old  
raccoon burr, said stake is N  $5\frac{1}{2}$  W  
10 feet from corner to Morris and  
McComick at old Henry's court

Setting stake at NE  $\angle$  McComick = 13 feet

Set stake at 45 rods N 8°  
and stake at 80 " east 8 1/2°

July 15<sup>th</sup> 1886  
Judge Lawrence's Survey

Course of Pike & line Survey = N 81 3/4° E.

Start at fence or side pike and S 80°  
timber.

Thence S 80° or with N side timber  
65.32 ch S 82° E Walker 100 a.

Thence N 82° E 12 ch to 2 Bushes

Thence S 82°

At 40 ch strike N line solitary

Run or cut 40 rods to point

at 4 1/2 ch N line wheat field

at 5 1/4 ch N line wheat field <sup>18 line</sup> <sub>to pole</sub>

at 6 1/2 ch N line road

Thence S 82° or 12 ch to bog,

8  
 Traverse table for distance of 100. by  $\frac{1}{4}$  &  
 43560 = 1 ma

$\phi$	L	D	$\phi$	L	D	$\phi$	L	D	$\phi$	L	D
$\frac{1}{4}$	1.00	.44	$5\frac{1}{4}$	99.58	9.15	12	97.51	20.39			
$\frac{1}{2}$	1.00	.87	$5\frac{1}{2}$	99.57	9.58	15	97.44	22.50			
$\frac{3}{4}$	99.	1.31	$5\frac{3}{4}$	99.50	10.02	14	97.02	24.19			
1	99.99	1.75	6	99.45	10.45	15	96.59	25.88			
$1\frac{1}{4}$	99.99	2.18	$6\frac{1}{4}$	99.41	10.89	16	96.13	27.56			
$1\frac{1}{2}$	99.99	2.62	$6\frac{1}{2}$	99.36	11.32	17	95.63	29.24			
$1\frac{3}{4}$	99.99	3.05	$6\frac{3}{4}$	99.31	11.75	18	95.11	30.90			
2	99.99	3.49	7	99.25	12.19	19	94.55	32.56			
$2\frac{1}{4}$	99.99	3.93	$7\frac{1}{4}$	99.20	12.62	20	94.07	34.20			
$2\frac{1}{2}$	99.99	4.36	$7\frac{1}{2}$	99.14	13.05	21	93.56	35.84			
$2\frac{3}{4}$	99.99	4.80	$7\frac{3}{4}$	99.07	13.49	22	93.02	37.46			
3	99.86	5.23	8	99.03	13.92	23	92.05	39.07			
$3\frac{1}{4}$	99.84	5.67	$8\frac{1}{4}$	98.97	14.35	24	91.35	40.67			
$3\frac{1}{2}$	99.81	6.10	$8\frac{1}{2}$	98.90	14.78	25	90.63	42.26			
$3\frac{3}{4}$	99.77	6.54	$8\frac{3}{4}$	98.84	15.21	26	89.88	43.84			
4	99.76	6.98	9	98.77	15.64	27	89.10	45.40			
$4\frac{1}{4}$	99.73	7.41	$9\frac{1}{4}$	98.70	16.08	28	88.29	46.95			
$4\frac{1}{2}$	99.69	7.85	$9\frac{1}{2}$	98.63	16.50	29	87.46	48.48			
$4\frac{3}{4}$	99.66	8.28	$9\frac{3}{4}$	98.56	16.94	30	86.60	50.00			
5	99.62	8.72	10	98.48	17.36	31	85.72	51.50			

Catholic Corn Survey

West line S 3 1/4 W

N line N 86 1/4 W 9.30 chains

N 1/2 S E ← stake Maple 24" diam

N 3 3/4 E 118 3/4 links = ← d

East line S 3 1/4 W 10 chains

West " S 3 1/4 W 10 "

West end 24 links S of corner fence

Ort S W ← stake Oak 18"

N 40 3/4 W 117 5/4 links = ← f

at E ← is 54 links south of corner fence

B to F N 9 1/4 W 3.35 1/2 chains to water pipe

d to g N 86 3/4 W 2 chains

F to h on water pipe S 98 1/2 W 3.51 ch

a to g S 3 1/4 W 4 1/4 chains  
NSSun April 10<sup>th</sup> 1884

Sun &amp; Desc \$4.00

Oct 13. 15/6 1/4 stakes 16.00

\$20.00

Grand-Fry 3 1/2 days = \$4.38

Ed M. L. " " 4.38

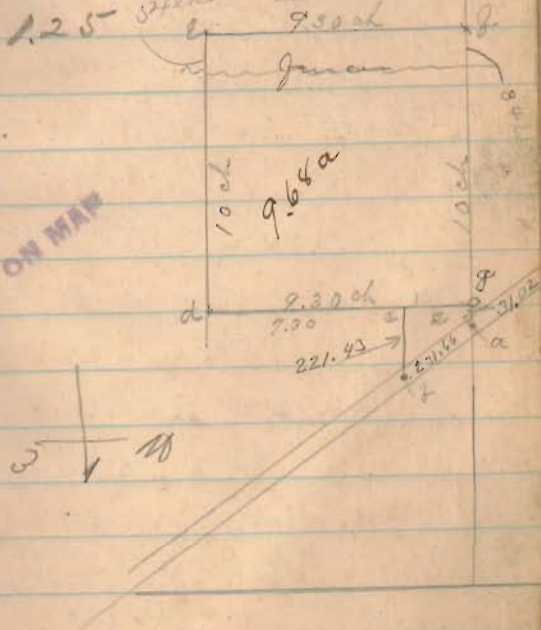
Dennis Shugart 4 5.00

" Kernan 1 1.25

Patsy " 1.25 <sup>settling</sup> 9.50 ch

753

INDEXED ON MAP



Wilson Cline & E. Patterson

Apr 16 - 52

Cline & line N 81° 1/4 E

Run from stone Sore Cline N 9° W  
to stone N 81° E & Patterson, pass  
cross & cline at 29.80 poles



NONROC TWP  
5044  
K.M.S. 5042  
4492

William Scott Survey

E. V. Jordan  
Wilson Pitts  
ch. or arrow

Start at stone S E ← home farm in  
road S 78 1/2 W with road

34.90 ch. stone S W ← home farm  
S. E David Algire

Line B

Thence S 17 3/4 W with line Scott & Algire

23.09 stone ← Scott & Algire

Line C

Thence S 11 1/2 E

21.37 stone ← Scott end of order Jacob K  
pass Oak 3' at 21.056 Pine trees

Levan end Champ. co.

Line E

Thence S 7 3/4 E

19.05 planted stone at or side road  
← next Ed Yoder

cut Black oak 10" S 34 1/4 E 6 1/4 links

April 5<sup>th</sup> 2<sup>nd</sup> / 6<sup>th</sup> 1886

Line F. Thence with road  
S 16 1/4 W

25.40 stone cut × road

cut W Oak 30" S 9 3/4 E 75 links

do Red Oak 14" S 48 1/4 W 75 "

Line G Thence with road

S 73 3/4 E

5.25 stone in cut road S 81<sup>st</sup> Cookston

cut W O. 30" S 6 E 17 1/2 links

Line H. with line Scott & Algire

at<sup>th</sup> Cookston line marked

S 16 E 21.33 set stake ← Scott & Cookston

cut Black oak 2 1/2" S 1 E 67 1/3 links

Use Black Oak 2 1/2" S 70 1/2 W 89 links

Line I S 7 1/4 E

5.00 stone ← next end of line

thence line of

S 18 1/2 E, 4.00 set stakes Cookston and

Charles Scott

10.22 stake ← Charles Scott

390

INDEXED WITH MAP

Line K. Then  $cc = S 66 \frac{1}{2} W$   
 $S 66 \frac{1}{4} W$ , 852 stake out  
 road  $\leftarrow$  Chapcott,

Line L, with road Def  
 line Chapcott

$S 17 \frac{1}{2} E$

3035 Stake at Big Spr  $\leftarrow$  C. S.,  
 Line M.

Start at Stake Spr  $\leftarrow$  Mr. Cookston  
 $S 73 \frac{3}{4} E$

1077 stake at east of Hickey 20"  
 $\leftarrow$  Hunt & Paul Spr

Line N

Then on line Hunt  $\frac{1}{2}$  to Scott

$S 21 \frac{1}{4} E$  C.C. =  $S 22 E$

2553 Fall 11 links: west of stone  
 Spr & Daniel Hunt - set stake in  
 line at 19.07

Line O.

Start at stone  $\frac{1}{2}$  high Spr & Hunt  
 $S 22 E$  8.93 set stake Spr  $\leftarrow$  C. S.  
 and  $S E \leftarrow$  to Look 10 a

with Blk Oak 6"  $S 12 \frac{1}{2} E$  11 links

Line P

Then  $S 75 \frac{1}{4} W$

19.92 to stake on road Spr  $\leftarrow$  to  
 to Scott  $\frac{1}{2}$  to Spr & old farm  
 planted stone 14 x 10 x 5" line

with stake  $S E \leftarrow$  Mr. Cookston  $\frac{1}{2}$  to  
 old Scott farm

Red Oak 30'  $S 54 \frac{1}{4} E$  71 links

Then N.O. 30'  $S 71 \frac{3}{4} E$  120 links  
 planted stone line 4 x 6 x 16"

See Book C. Page 161

(390)

INDEXED ON MAP

Hoover Dam April 14<sup>th</sup> 86

D. S. Thompson }  
J. R. Bridge } Chumarrow

Line A. Start at Sta 250

20 links north.  $\alpha 80^{\circ} 1/4 E$

8.85 pass 20 links of station Sta 250

19.16 from Sta 250  $\alpha 80^{\circ} 1/4 E$

Dimpson's line

37.17 fall 20 links north of station

E line Dam on E line Sta 250

with stone B, Oak 4'  $\alpha 47^{\circ} 1/2 E$  31 lks

Also Black Oak 2.4'  $S 35^{\circ} 1/2 E$  12.8 lks

See Scott Survey 990

DRAWER TR

Rickland Twp

K.M.S. 9971

Line B. Start at station Sta 250

with E line Sta 250  $\alpha 80^{\circ} 1/4 E$

57.5  $\alpha 80^{\circ} 1/4 E$  6.50 cross the River

7.75 set stake for  $\alpha 10^{\circ} S$  of station

with

Line C Start at Sta 250

$\alpha 80^{\circ} 1/4 W$

10.32 ch set stake on west of  
Luggeth Hitch

Line D Start at Sta 250

$\alpha 7^{\circ} 1/4 W$

7.75 ch from Sta 250

Line E  $\alpha 80^{\circ} 1/4 E$  10.31 to Sta 250

Line 2, with E line from

E of Elm Horn 25a

25 8 1/4 W

7.12 Stone SE of Scott

of Horn 25a

Line 2 start at Stone SE of Scott

and of Horn 25a

3.80 W 21.00

thence to 8 1/4 W 15 links to cut

of old fence and line Scott of

Horn, thence with line

Scott of Horn

16.12 Stone N.W. Horn of Horn

Dimpleton 5a

Line 2 start at Stone of Horn 25a

3.73 E 8.08 Stone SW of Horn

North line 5a = 6.18

E of 5a = 8.08

Smith of Lorington Survey  
May 27 56

VMS 14032

INDEXED ON MAP RICHLAND TWP  
(1385)

Start at old stake & Smith of Lorington  
with line 1, 3/4

507 3/4 E <sup>5.80</sup> cut Belle pike & S.T.S.

and 90.24' or 27 3/4 E 180 links

Line B. Start at  $\frac{1}{2}$  of  $\frac{1}{2}$  in pike  
with pike S 32 3/4 W

450 pass on end of Lorington pike cut

6.15 " or < Joe Lorington lat. distance 3' thick

80 links west of end pike

29.63 cut at X road in Lorington

Line C. Start at + road

with line 1

9.84 1/2 E 10.35 + to Lorington in cut

Line D.

See Book C Page 166

Line D. Start at S & Smith at X road  
with Penn line or 8 1/2 or 24.95 to cut  
rail road. < Smith of Jno Hunter

Line E Start cut Rail Road of pike at  
with line 1 with cut R.R.  
or 87 3/4 E

20.82 < Deceler of Smith as agreed by  
all parties in Lorington

Smith, Penn Oak 18' N 56 E 86 links

Line F. Start - 20 links E of line C R.R.

then with line Deceler of Smith

9.84 1/2 E. Fall 20 links E of stone

13.82 then & Deceler of Smith

cut Hill High 10 or 15 1/2 or 16 5/2 links

Line G. Oct 14' S 23 1/2 E 120 1/2 links

Line H. 2' x 14' E

Line C. Start at cut RR

and on line Durr.

S 8 1/2 E 10.87 to Smith's <sup>quarry</sup>

Planted limestone 5' x 5' x 14" at cut John

Line H. Started stone & back  
quarry.

N 8 1/2 W 2.35 to Smith's <sup>quarry</sup>

planted Berea stone 4' x 6' x 15"

cut Red D. 28" N 74 E 5 1/2 links

cut Red high ground 28" N 74 E 5 1/2 links

John W. Baylor. covr.

Mary Effie Petty

John W. <sup>III</sup> Anna Baylor

INDEXED ON MAP.

1385

Baylor Run from 1886

Jefferson Knipp Affirm 2 days

C.R. Vannester } 1 day  
                              } affirmDaniel Dour } 1 day  
                              } affirm

Leg. C. Fishbough from 2 days

Line A Start at Stone corral = Fossiliferous

9.2 8 Stone on head of line = line 34

12.00 or Oak 40"

19.15 at 7 corral = Baylor

with see page 31

10.22 planted stone = Fishbough &amp; Baylor

see page 32

Line B Start at 8 corral = Baylor

d. 3' 10' W with pub. road <sup>by</sup> g. d. line

see BURK C Page 172

1397  
INDEXED ON MAP

Line C Start at 10 corral = Baylor in

see 33 = Geo. Kissers 6 a lot and in S  
<sup>8" x 12" x 14" ang. lot</sup>

Line John Prater. Planted stone, etc

with Mild cherry 2' S 74 1/2° 37 links

Also daisy field for S 10 E 9 1/4 "

Also Elm 3' S 77 1/4 or 16 1/4 "

S 10 or

4.45 pass stone for monument Petty

2.5.30 d. Baylor S E L in W line of

J.K. Mc Donald

with or. Cherry old 24" S 60 1/2 E 19 1/2 links

all cherry at stake

Line D, Start at 33 = Baylor

or S 6 3/4 W, 12.85 cont. of public

stake = set stake by Jones

Line E Start cent pike ← Baylor  
 and Mr. Donald  
 With W. L. & Kelly pike  
 N 14 1/2 W 21.93 old cent pike  
 Old pit W. O. stump 24" East 122 links

Line F with cent W. L. & B Pike  
 from last cor above N 14 1/2 W  
 5.45 ch set stake 2 links S of unit gravel  
 ← Baylor and Jeff Kanipe

Line G Start at last above ←  
 with line Baylor and Jeff Kanipe  
 S 84 1/4 E Random S 87 1/2 E 0.2  
 at 7 1/2 links past stone & stump of Baylor  
 at 7 ch fall 23 links S of found from line  
 at 7 ch set or 25 links  
 12.17 pass line Kanipe & John Porter

20.41 ch stone as set for ← see link c  
 page 27  
 Fall 15 links north of stone  
 ran too much south 10 links

Line H. Sugar pike at N 1/2 Sec 34  
 at misc head 12" x 8" x 8" on top of stone  
 find old stone - one head long stone  
 near East  
 old stone Mary Keasill tombstone S 85 1/2 E 113 links  
 N. O. 36" old pit N 43 1/2 W 60 1/2 links  
 N 1/2 found. J. Minnich church N 80 1/4 W 24 1/2 links  
 Start at above Sec ← stone  
 S 3 1/2 W = S 3 1/2 W CC S 3 W  
 stone on head 10" x 10" x 5" at  
 4 ch set ← in or line of yard  
 pit or. in line 30 link line S 8 1/2 W 8 1/2 links  
 N. O. S 86 5/8 W or 85 1/2 links  
 set gravel on pike east 23 links  
 Line I. Start at stone 4.14 line H.  
 S 1 1/2 W  
 see more cent pike

1387

INDEXED ON MAP



12x0.3 old stone line 3x.6x6"  
 mit stake top of line 7 or 8 1/2 or 5 1/4 links  
 cut gravel 11 1/2 or 5 1/2 links  
 500 frame stable 5 8 1/2 or 13 1/4 links

Line J. Start at stone NE 1/4 Dec 34

53 1/2 or Pond. S 3 1/2 or  
 6.29 or O. S. line tree  
 6.11 int. east 24 links  
 48.80 cut fence v. @ Basin pass  
 81.12 old fence post on S. side of old road  
 81.39 present line of fence S. <sup>line</sup> of Basin  
 full 14 links west of fence running S.  
 29 1/2 links on 7 1/2 1/2

Line K. start on fence south of Dec 34  
 Area road along S. line Dec

13.87 line (stone) of Bushy  
 31 1/2 int. of 10 3/4 or RR on curve  
 48 1/2 cut road at 900 Bushy 450 = P.S. fence

Cut on small long T on east road line fence East.

Line L. Start at stone S or Bushy  
 Area northward along road  
 14.67 cut RR on curve

49.80 + fence running west  
 at about 490 ft. in line T

52.00 cut T in line

Thence N 3° 10' E or N 3° 10' E

72.00 cut T in line

71.46 + T " S of road fence  
 det E 27 links

81.62 full 37 links E. of old stone wall on S.

89.90 " 29 " " " " " RR = Fayette

93.73 cut v. SW Baylon on top small cut

cut line 100 S 33 1/4 W 8 1/2 links

Planted rig head 27 x 15 x 10 in line with same fence

on S. side pike 3 60 3/4 E 54 links

cut gravel on pike N 3° 10' E 50 links

49.65 planted rig head 33 x 22 x 15" fence

Fishberg (own Daniel Jodan) & Bayler  
 Out W. O. 28" S 65 1/4 W 6 1/2 links  
 also Or O 63" or 15 1/2 or 59 "  
 planted poles 32 links or off x

Line M. Start at v on cut <sup>grade out</sup> Bayler  
 S 82 1/2 E with south side pole  
 to 16.00 pass cut pole thence on  
 south side pole

22.76 Stone < Foray the <sup>of</sup> Bayler  
 one line or for one

Line N. Start at Stone N.E. < Dec 34  
 S 63 1/4 W with road. 0 17 98

0.51.50 pass cut road pass North  
 213.29 planted stone < Foray the <sup>of</sup> Bayler  
 Out Elk <sup>to</sup> cut 14" or 73 1/2 E 4 1/2 links  
 also Elk <sup>to</sup> cut 14" or 63 1/2 E 7 1/2 "  
 11 cut grass on pole S 3 W 37 links

(1387)  
 INDEXED ON MAP

Line O. Start at Stone N.E. < Dec 34.  
 S 44 1/4 W with line S 3 W. C.C.  
 35.00 & dist.

40.58 & cut pole in one line  
 51.19 & old Mr. Beth one stone found  
 Out Wild cherry 10" or 1/2 E 2 1/2 3/4 links

Line P. Start at v Old Mr. Beth <  
 or 86 1/4 W  
 748 cut pole planted my hand 20 x 15 x 9  
 note thick 18" or 20 E 2.06 links  
 also Or O. 32" S 9 E 15 1/2 links

43.07 Stone S.E. < Bayler S.E. < Fishberg  
 one line S.W.

Line Q. Start at stone cut pole 7 1/2 x 9  
 S 3 1/2 W with pole cut  
 12.05 one line &

1371. Start at top of pike post

Line P. with pike sent

S 79 E

11.86. post sent to top of pike

Line J. with sent to top of pike

N 16 W

2.14 7 in sent pike to Baylor & Pitty

with sent 2 1/2" stone box end in sent pike

N 14 1/2 W 12 1/2 links

July 24-87

Line J. Start at east pike  
and see line N 3 E

13.88. post to Baylor & Pitty in  
see line

with wild cherry 10 1/2

N 10 W 4 5 30 W 10

40.58  
26.70  
13.88  
9.74  
4.14

Line H.

Start at stake 2 in see line J line L.

S 26 3/4 W

10 in line at 13.00

1387  
INDEXED ON MAP

Line V

Start at stone box 2 in 2 in Dec 34

S 63 1/4 W

13.29. post to Baylor & Pitty

2 1/2 in 30" S 2 3/4 W 80 links

10 W. Oak 2 1/2 S 50 E 11 1/2 links

Line M. Start at stake 2 in line J.

13.29. post

23.15. Stake for 2 in see line J

4 1/2 in 10 W

23 / 4.00 1.7

2.3  
1.70  
7.00 3.4

1.66  
2.670

Aug 31 - 86

INDEXED C. MAN

Sec 5 - 7-8  
Sec 32 - 6-8

Moses Smith Surv.  
John M. Laughlin } ch or  
Joseph Loshonan }

planted stake track over cut  
Blk Oak 9' or 1 1/2 or 1 3/4 links  
also Blk Oak 2 1/4' or 8 1/2 or 9 1/2 lks

Course of road or line due = or 89° E

Plant stake in road at or 2' due S

Old Oak 28" big cut dead S 39 3/4° E

73 links track over cut

Oak Blk 16" or 4 1/4 or 10 1/4 links

also Blk Oak or 2 1/4 E 121 "

Stake < due S 2 3/35 S 89° W 66 1/2 "

Set stake out to line of due = 21.07 &lt; Smith &amp; Miller

Line A, Start of due &lt; due

S/C Road.

2.75 stump old Oak called line tree 35°

10.74 ch chan March creek

20.00 set stake in line

40.14 fall 31 West of qd due &lt; find old T

Blk oak stump 14" old cut or 7 Apr 5 lks

Old Oak stump 15" S 75° E 2 1/2 lks

Section corners  
see Book 559  
Page 23

Line B start 8 lks S of qd due <  
S 59° W Road.

Set 33 links

20.00 set stake in line = 11 S.

at or 7 links

at or 10 cut half up split pipe

at or 4 links and part in 7 cut pipe

at 19' north of line of school house

Line to start at SW  $\frac{1}{2}$  sec in a. pike  
 N 1 W with pike  
 40.06 NW grass  $\frac{1}{2}$  sec  
 Set stake. Out Red Oak 16" N 8  $\frac{1}{4}$  E 28  $\frac{1}{2}$  links  
 Stake center pike. Both ways S  $\frac{3}{4}$  W

Line to start at SW grass  
 N 89 E with Sec line road  
 33.42 cut in area March or  
 39.98 NW  $\frac{1}{2}$  grass stake

Set stake in cut Sec line grass at  
 20.07 from SW  $\frac{1}{2}$  sec. Line to  
 Andrew M. Smith & H. P. Miller  
 Out Red Oak 2.4" S 78 E 29 links

Line to start at stake SW  $\frac{1}{2}$  Miller  
 S 89 W on line Miller & Smith  
 at 20.02 planted stake SW  $\frac{1}{2}$  Miller  
 40.05 cut pike put in stake  
 Set stake SW  $\frac{1}{2}$  Miller  
 Out Hick 10" S  $\frac{3}{4}$  W 65  $\frac{1}{2}$  links  
 Line to start SW  $\frac{1}{2}$  Miller  
 S 1 E 40.05 Set stake out Sec line grass  
 at SW  $\frac{1}{2}$  Miller  
 Out W. Elm 12" N 50 W 39 links  
 Also elm 5" N 3 E 44 links

M<sup>rs</sup> Arthur Burr

Sept 6-86 (Paid for Feb 19-87)

M<sup>r</sup> E. Powers } ch in survey  
Harley Powers }

Collins Powers

100' = 100% line 2' long

Line A

Start at SW  $\angle$  Nat. Harrington  
in E line Burr.

With Burr line

or  $3\frac{1}{2}$  E  $\frac{394}{59}$  fut = 5.96 ch

to cut-pike north  $\angle$  and Burr line

With M. O. 20' SW or 43 fut = 64 - lbs

Line B.

Start cut-pike SW  $\angle$  Burr

S  $57\frac{1}{2}$  E with pike  $\frac{226}{59}$  fut = 3.42 ch  $\angle$  Gro Patten  $\frac{2}{3}$  of 100' line

700 - 11.60. Aug in pike thence

S  $57\frac{1}{2}$  E with cut-pike

$\frac{1632\frac{3}{4}}{59}$  fut = 34.74 ch  $\angle$  R. Dickinson

and Atwood Quicke

thence with cut pike line to

S  $57\frac{1}{4}$  E

$\frac{492\frac{3}{4}}{59}$  fut = 7.47 ch

$\angle$  Quicke  $\frac{2}{3}$  of Harrington  $\nabla$

thence Line D

S  $57\frac{1}{4}$  E with cut pike

$\frac{270}{59}$  fut = 4.09 = ch

to aug in pike  $\angle$  Harrington

cut B. O. 45' or 18 W of  $\frac{2}{3}$  = 8.6  $\frac{1}{2}$  lbs

thence with pike Line E

S  $52\frac{3}{4}$  E

$\frac{1061\frac{1}{2}}{59}$  fut = 16.08 ch

SW  $\angle$  Harrington  $\nabla$  SW  $\angle$  Burr  $\nabla$

Line F

thence with E line Harrington  $\frac{2}{3}$  of Burr line

S 11 W 20 pike to post  $\angle$  M. A. Land

Line 8.

Start cent pike Grubbs & Harr.  
with E line Grubbs & W line Harr.  
S  $10\frac{1}{2}$  W 21 poles (see aster)  
to Mc A. line

Grubbs House front 16 x 30 ride  
Start at W line house with line on side  
house S  $32\frac{1}{4}$  W  $79\frac{3}{4}$  = 1.30 ch  
to cent pike

Start at L Dickinson & Grubbs  
with W line Grubbs house  
S  $12\frac{3}{4}$  E  $73\frac{11}{16}$  feet = 172 links  
thence with line Dick & Grubbs  
S  $32\frac{1}{4}$  W  
S  $48\frac{1}{2}$  feet = 986 ch  
to Stone S & Dick

N. B. Smith Dur.

Oct 15<sup>th</sup> 1886.

Oronan S. Parrin ch. snow <sup>1 day</sup> off.  
 Ira P. Ryan }  
 Renford Armstrong } ch. or snow  
 6 days }  
 6 days }

John E. Southard 1 day

John S. Bridges 2.

David H. Harriman 2. mit snow

Elmer W. Elliott 1.

Shepherd S. Fisher 5.

William W. Fisher 5.

N. B. Smith Oronan 6 days

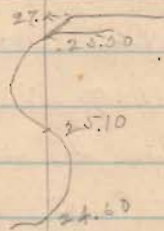
Elliott Dickinson Flag man, 3 days

Stephen Harriman 2 days mit

Course of pike south line S 85 1/2 E

mit = S 86 1/4 W.

Line A. Start <sup>18</sup> links or  
 of  $\nabla$  cut for  $\angle$  at S W = Fisher  
 N 82 1/2 E Random, or S 74 E J.C.  
 24.46 cent above creek



let old stake at 2.5 ch.

at S. S. 80 ch cut road or W = Harriman  
 2.575 stake at by Lankens for 114 p and  
 or W = old line S Bridges tract.

33.22 part of old stone unproved  $\angle$  by John

Southard & John S. Bridges

all 14 links or. of  $\nabla$

Line B. start at  $\nabla$  N = line A  
 called old or W = Bridges 100 a  
 S 80 1/4 E

11.07 cent from well road



at 24.00 pass 119 links N of post  
in old Orchard called line of old  
Orlows tract by Mrs Fisher, Geo E  
Southard E of Geo S Orlows

38.28 ch fall 109 links N of  
stake 655 in line S. which are

at 24.00 pass 76 = links south of 20 ch +  
54 feet = on line S

Line 6, marked stone in S line  
Rd SE < David Fisher.

To 2 1/4 E. on old E line duplex

hit stake at 26 ch S of fence 2 1/2 lbs

stone on line at 216.16 ch dup for 22

cut fence at 216.43 ch

cut chain at 216 1/2 ch

25.50 ch set stake on E duplex in pasture

set stake at 217.25 old SE < Mrs Fisher  
57.03 pass corner to Smith E of Fisher

" " " 56

Stone NW < N B Smith Bushong 5648

84.72 stone SE < Stephen Gene Holt 2nd

are old Mrs Fisher No 2

113.75 cut pipe for Ex. of N line

course of pipe N 87 W = N 86 1/4 W

hit stake in line at 55.75. line in W

line old Bushong tract.

Line 2 start at above stake in line C

at 55.75

at 86 3/4 W.

6.55 set stake.

Start cut pipe < N B Smith & N Fisher

283 is at 218.25 at N B Smith, sup. 52

39.66 stake in this line at 6.55 in above

1.50 hit stake for are < old Orlows 1002

D 86 3/4 or

- Start at stake 9.50 thence S 3 W  
 93 to 7 cut for S 2 E land sold by J. P. 180 E  
 Southward to W. W. Fisher  
 at 210. ch cut stake in line in place above  
 " 33.21 cut road cut stake  
 " 37 1/4 ch cross old mill dam  
 " 44.84 cut 7 in or line Fisher tract  
 400' dug 22' or 24' E 53 3/4 links  
 460' dug 11' S 85 1/4 E 52  
 same E, start at stone in fisher  
 D 87 W - Stephen G. tract  
 S 3 1/2 W  
 219.00 S 87 E - Stephen G. tract  
 48.44 cut road - John S. Wilgus of Dar. Hariman  
 56.60 Stone near dug stump call - Deather  
 57.84 Stake 44.84 line S. - Wilgus  
 58.00 pit stake dist  
 59.22 Stake 218.00 of line a  
 87.22 " " " " " "  
 87.22 true SW - Wilgus. Stone  
 116.21 SW - Duplex on line

- Line A. Stone S 87 E land duplex in  
 S line dist.  
 100' Elm 34' or 8 E 104' links  
 also aug 22' or 7 S 1/2 E. 32 "  
 part of stone  
 20 1/4 E. Road or S E c c  
 4.11 pass - John Elliott by John Kennedy or via  
 at stake in line at 10. 20. Ed 30  
 at 25. 35 stake start line a. pass 7 in. 100 ft  
 cut 25 cut W 25 links  
 100' 7 links S of 7 cut by man NE - Elliott  
 then area with 100' corner  
 10 S. 35 Stake old D 87 - John B. Wilgus

58.30 Stake 58.00 ~~James~~ at  
at 28.98 pass - 8 - links east of stone  
planted on NW Duplex

Line G. Start at old stone 13' di  
at 26.16 on line G.

OR 61E on line of old road  
in cut fence corner  
13.20 ch to S of B. Smith & Duplex

Dug above stone up and found artificial  
widener that had been planted

Line H. Start at old stone OR E & Hand  
Duplex at 26.16 line G

Mil dug 30° S 75° 40' on 13 links  
also on the stone 10' Stake & Smith NW  
Smith & Dup 3.2 OR 61E 132/16  
also pipe on low wall SAI/AVR 12.0/13 the  
OR 57 9E OR 86 1/2 9E

OR 86 1/2 9E

~~OR 57~~ on ~~the~~ Duplex line

657 ch out stake & Smith & Duplex

276 E line grass yard detached lot

72 22 W line label lot old 2 line g. yd.

15 11 pass 5' South of SW & Paine base stone

19' x 34' man Jacob H. Hinchings ch. d.

551 W line g. yd E line from Route.

1703 pass 5.9' just S of barn on Route boundary  
of Leo Adams. near

1771 Stake cut grass road SW of Paine base stone

2505 stem planted NW Duplex at 28.98 ch

from stone SW Duplex

out stone NW Duplex

Dug 2' di S 68 1/4 W 7 links

also dug 4' OR 1 1/2 E 7 9 1/2 "

On Blk road 10' S 70° 10' E 2.32 1/2 links

on west square pipe S. 50° 46 "

Line I. Start at stone SW of Duplex  
East with survey line

37.55 cent road.

46.17 stone old S 22° E same Duplex

47.54 cut stake < NB Smith & Duplex

cut Blue Oak 15° N 73 3/4° W 79 1/2 links

also Pigeon Oak 14° N 10 1/4° E 48 1/4

### Miscellaneous measures

Lower end pike at < Smith and Fisher

South 9 links to N line Duplex and

stone < Smith & Fisher

Aug in pike at 1366 or from Duplex

with bears S 89 1/2° E of. ST 83 1/2° W

Start at old < gr. yd.

S 2 1/4° W 82 < old school lot

2.07 Duplex line, 2.54 cent pike

Line J. Start at V SW of Iron Route

cent pike S 21 1/4° E 45 1/2 links

N 21 1/4° W with Route W line

2.00 to - V cent road Route SW <

Line K. with N line Route, g. yd. <sup>school</sup> & <sup>school</sup> lot

S 88 1/2° E

5.17 < Route <sup>of</sup> grave yard

{ S 1 1/4° W on line Route & g. yd }

{ 2.00 Duplex line & 2.50 cent grav. pike }

7.07 old < gr. yd. & <sup>school</sup> lot

7.50 post fence made < Smith

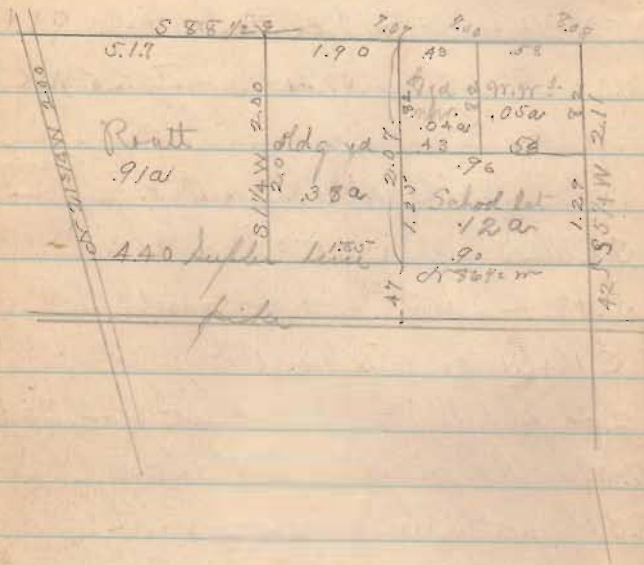
8.38 SW < old school lot.

Line L. Start E end line at 8.08

S 5 1/4° W 52 < old school lot

2.11 old Duplex line

2.53 cent-pike



Line M.

Start at stake old Orr & Balgus  
 S 89 1/4 W with W line Balgus lot  
 at stake at 89 links Fisher offers this as  
 a corner & straight line on north this  
 stake stands 6' N of north of Balgus &  
 3 1/2' past S & 1/2' Balgus fr. in chain  
 with willow 9' N 18 W 52 links  
 the alk. coal 3' N 6 3/4 E 69 1/2'

Line N.

Start at T 1000 & Balgus  
 S 89 1/4 E with old Balgus line  
 573 at stake east of old mill dam

Line O. Start at stake V. 8.00

56000. #

475000 &amp;

Line P. Start at 4.75 line N=7

S 7 3/4 W

4.19  $\angle$  at W line Milgus in  
Cham creek 3.875 line M.

Line Q. Start at  $\nabla$  in road and  
Milgus line, with road

S 2 1/4 E 52 links to  $\times$  W<sup>o</sup>  $\nabla$   $\nabla$   $\nabla$

Oct 29 - 86

Pressure Surv.

course Milgus to line S 86 1/2 E

at 4, 8A @ S 86 1/2 E from Milgus 2000  
run at 3 1/2 E 1.18 to Milgus line 05<sup>o</sup> 2

at Sta 200.00 of Milgus line 05<sup>o</sup> 1 at 3 1/2 E 90 1/2 links  
at Sta in Milgus line 05<sup>o</sup> 2

Line R. start at stake 2000  $\leftarrow$  put down hill  
05 1/4 W with line of old mill dam

3.23 pass Milgus line 05<sup>o</sup> 1 at from W  
2.975 at stake called  $\times$  duct to  $\nabla$  on sides  
4.51 stake in Milgus line 05<sup>o</sup> 2 at 37.29 line S, which is

Line S. Start at Stone 2000  $\times$  N B beneath  
1512 track in Great-line Old Building 3050

200 links N of east  $\nabla$  line S  
at 3.500 on Milgus line 05<sup>o</sup> 2

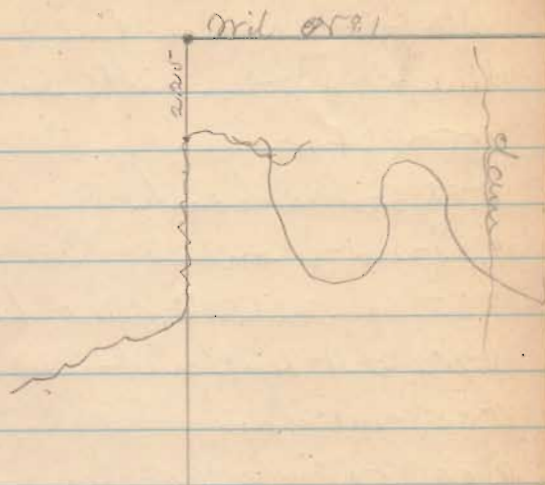
2000 pass 90 1/2 links north of  $\nabla$

in orchard 20.00 ch of Milline No 1  
 28.00 cut state near road fence 2 links  
 south of gate in chan E of 2 links or of cut  
 of chan at most northerly point  
 33.73 center Gamwood road.  
 37.29  $\nabla$  N 7 line R at No 2 of old dam  
 40.00 post  $\nabla$  at 118 or of 22.00 on Milline No 1  
 44.84 State E of line  $\leftarrow$  Southard  $\nabla$  Milgus

Remarks Milgus line No 1 crosses mill  
 dam at center of old tumbler and crosses  
 line R at 7.79 from No 2 old milgus No 1

Have a stake in line R at 11 feet north from  
 south end.

Hay-cut Road on line No 1



Start at old Milgus  $\leftarrow$  No 2 line No 1  
 with milgus on line  
 21.05 north bank creek  
 22.25 Chan leaves east  
 23.50 to 25.00 in chan creek  
 24.50 appearance of old chan pier No 1

Start at 2.000 on Line A - Milgus  
line 55<sup>1</sup> then with said line  
55 36<sup>3</sup>/<sub>4</sub> or.

6.38 east bank creek

7.15 cut chan

7.75 pass 13 links S. of cut chan

8.22 east bank creek

8.35 cut chan

9.00 50 links N of chan cut

10.25 N bank creek on

10.25 to 11.25 in chan, same thence to R

Oct 29, course of road south of  
Route lot 55 2 1/2 W. change on 2 1/2

Let into the road S 23 E on road to connect  
to bearing dead Milgus to Pennides

with first cut as above run line Mill lot

Start at stake set for 55 2 1/2 mill lot  
4 P's Milgus.

or 11 or with dam E of line R

1075 stake 30 - links east of 55 2 line R to line 55 2

This for 55 2 - 2.2 Mill lot  
thence East

3.56 cut Jammed road &

thence with road

S 23 E

2.75 center Bridge over creek

5.50 cut & S E - Mill lot

thence

S 70<sup>3</sup>/<sub>4</sub> or.

6.125 S E - Mill lot.

thence

or 150<sup>1</sup>/<sub>4</sub> E or line Mill lot

5.21 to place of 70

~~5.97~~



Patrick Dunn Oct 29<sup>th</sup> 1907J. W. Plum } chain carriers  
Scott Johnson }

Start at Stone in Sec line

SRR  $\leftarrow$  SRR  $\rightarrow$  E 44 $^{\circ}$  29'

to cent pike.

Thence north pike S 22 $^{\circ}$  10' W410.85 to iron barbed teeth on east  
edge of gravel on pike and 1325' on  
stone planted on east side pike

Thence S 1 E north pike 699.6

to stone SRR of angle in pike

and 22 1/2' SRR cut gravel at

turn in road.

Thence S with cent pike

1223' to post, stake 9' each side

1900' cut  $\nabla$  for dist

See Book C Page 322

1390

INDEXED ON MAP

Start at stone N: Pac line S 22 $^{\circ}$  Sec 19N 19 $^{\circ}$  30' W 800' cut  $\nabla$  for distStart at stone SRR  $\leftarrow$  Secor 44 $^{\circ}$  W with Sec line675.2' to stone  $\leftarrow$  Handed  $\nabla$  from Patrick

Dunn from above Stone with Sec line

or 44 $^{\circ}$  W 1984.7' to SRR  $\leftarrow$  gravel at

Stone Pat Martin stone

1984.7 - 21.4 = 1963.3 W from Patrick

Start at stone in Sec line  $\leftarrow$  Handed  $\nabla$ 

from Patrick thence with Sec line

Handed or 89 $^{\circ}$  3/4 E. 2000' S 22 $^{\circ}$  1/2 E.2300' cut  $\nabla$  Fall south of stone 2300'Pike north of Handed  $\leftarrow$  28.6'Set  $\nabla$  at N E  $\leftarrow$  Handed 87 1/2' links =2000' S 22 $^{\circ}$  1/2 E of stone 400' pike

740.2' or 30' or

Start at SRR  $\leftarrow$  Sec 19

Oct-30-1902

Planted boulder stone 2.1' x 1'  
x 4' at 21.4' N of place where  
line cut stone for NW  $\angle$  Hensel  
40 a. being 696.6' = 10.55 1/2 ch

N. from S or E Dec 19-7-9

Present E. N. Plum. Dam Patrick  
E/ N. S. Johnson

Wit to above stone  $\angle$  in or line Dec 19

Elm 14" S 54 1/2 or 165.3

W Oak 16 S 75 1/4 or 77.12'

Start at above stone as next

thence S 89 1/2 E

Shell 5.9' south of  $\angle$  at pike on M & P line  
at 1579.6 stake in line moved N 39 to cor-  
rect line.

at 1739.1  $\angle$  in line more N 4.31 to N line

at 2371.6 stake N  $\angle$  Hensel

Planted flat line stone 1.9" x 10" x 4"  
in north line Hensel at 1739.1 E  
of stone NW  $\angle$  Hensel, same being

Patrick Durr.

$\angle$  between Dam E/ Milt Patrick  
with Shel Hick 8" at 60 1/2 E 16.4 ft  
" Jack Oak 4" at 33 1/4 or 23.35 ft  
" Red Oak 7" S 9 or 11.8' ft

Start at stone S or of angle in pike  
thence with pike E/ line to stone at M & P  
Dec. S 63 1/4 E. 122.3' planted stone  
boulder 18" x 9" x 6" in cent pike  
with Burr Oak 16" S 4 1/2 E 27.9'  
" Shel Hick 8" S 39 or 34.3'

Start at above stone in pike

S 74 or 355.6 to stone in N line Hensel  
and  $\angle$  to Dam E/ Milt Patrick

Wise from above stone in pike S 63 1/4 E

688.2 to stone angle in pike at M & P line  
(whole dist 1911.2' = 122.3' + 688.2')

above stone at angle in pike 116.5' N. E. of  
cut ground on pike

Patrick Durr con. Oct 30-02

Planted lime stone 19" x 12" x 4"  
at NE  $\angle$  Hensel land on M line

M & P line cut gravel on pike road. 8800'

at it. Stone angle pike N 2.0 W 54'

" W. Oak 7" S 32 1/4 W 44.1'

" Red Oak 18" S 87 1/4 W 39.7'

meas along M & P line from S  $\angle$

Dec 19 N 2.0 W 440.2' to NE  $\angle$  Hensel  
and 784' to stone at angle pike on M & P

meas from stone in angle of pike

and M & P line N 2.0 W 2049.8'

to NE  $\angle$  M. Patrick stone on bank  
of creek.

meas from above stone NE  $\angle$  M.

Pat meat on his N line 1215' to

cut pike

1390

INDEXED ON MAP

See plot page 185.

Hoover (Dand) Estate

Surrey #9905. Robt Hoover }  
Geo Hoover } Chain  
meas

Course of south line Durr 9905 N 82 1/4 E

" M line Hoover land N 7 3/4 W

at 750'  $\angle$  Horn farm in Durr line

Oak 15" di N 15 W 46.2'

Black W 5" N 39 1/2 E 36.8'

" Start at 750'  $\angle$  Hoover land on Durr

line. With S line Durr 9905 N 82 1/4 E

at 1000' cut D in line

2000 " F.

" 3268.5' cut Patterson pike

S  $\angle$  Durr 9905

" Start at S  $\angle$  Durr 9905 N with

meas line and cut Patt. pike N 63 1/4 W

1461.5' N  $\angle$  Hoover E S  $\angle$  J. & M. Cherry

Geo Hoover = 35. a

Robt Hoover = 48 2/3 a

Lavin Bros = 41 2/3 a

105 1/3 a

"2" Start at T same Hoover Land

or 7<sup>30</sup>/400 with N. line Hoover & line Peoples  
1683 to T at X mile 12' post end of mile fence  
E of Hoover & Hoover E of J. A. Peoples.

"3" Start at T <sup>30' 00"</sup> Hoover & Hoover Land  
On N line Hoover 911' to E line of Robt Hoover  
at 911' drove T 30' N of line as seen E  
in N line David Hoover farm

East line Geo Hoover set. 1676.

" " Robt " " 1667.

With above &

Beech 20" S 70<sup>3</sup>/4 W 31.9'

N. Elm 20" S 65<sup>2</sup> W 52'

at 2180. set T & line of Robt Hoover

at 6" S of end post of mile fence

with B. Tal 15" N 82<sup>2</sup> E 18.6'

N line Robert Hoover 1269

at 3270. set T & David Hoover land

in cut Patterson pipe

Start at T & Robt Hoover's farm

Beech S 7<sup>30</sup>/4 W

900' out T

fall 24' E of T on Survey line

Start at T 2000 on line a

East 150' to T Robt Hoover E of Jimin Bros

With Beech 24" N 49<sup>2</sup> W 27.7'

Shel Hick 6" N 49<sup>1</sup>/<sub>2</sub> W 37.7'

S line Robt Hoover 1269

E " " " 1668.

Start at T 1000 on line a

Run west 89' to T Geo E of Robt Hoover

With Elm 15" N 47<sup>1</sup>/<sub>2</sub> E 36.8'

" Shel Hick 8" N 74<sup>2</sup> W 53.3'

S line Geo Hoover 911'

E " " " 1676.

S line Jimin Bros 1088.5'

or " " " 1090.

D. B. Smith Surv.

Evidence. One day.

T. B. Wilgus, owner. testified viz  
How long have you been acquainted  
with this mill dam & surrounding land  
since I was a boy 11 years old am now  
102 years old.

What do you know in reference to the  
old one Wilgus north line and this  
mill dam.

Well I know within a few feet of where  
the line was claimed to by both parties  
at the dam.

Can you locate that line at the dam.  
Think I can. come close to it, the line  
was just about that stake. (stake in or  
near line R and in line X<sup>22</sup>) in making  
this excavation to get mill dam we went  
a little beyond the line. (Excavation made  
at end of stake), Was there a fence from  
north end of dam west to Wilgus line

yes, and was supposed to be on line  
At what time was this work of excavation  
about 40 years ago.

Was there more than one timber built  
on this dam. Yes there was.

How many? There was one here  
(at dip, on line X<sup>22</sup>) and think that  
was one here (at dip. 40 ft. line R)  
this last was built after I left a good  
mark on the mill.

Can you locate 1000s of old mill. Can  
crawl over it. This sill of mill  
is the north line of mill and there was  
a stake 7 1/2 feet to of a set by D. H. H. and  
were you ever present at any time of  
excavation. No was not.

When was mill built. do not know but  
mill & timber dam was built previous to  
1850.

When was temporary dam rebuilt do it  
was between 1855 & 1860.

What changes have been made in this dam since 1840. Both the tumbles at north end of dam was put in since 1840. What do you know of chan of creek at Wilgus cr. line.

Chan. has moved north about 1/2 mile at this time since dam went down do not know when chan was before dam was made.

What do you know about chan of creek at this point (2 S. S. line 2) creek here has changed north about 3/4 mile.

John S. Wilgus says

Can you locate course of old saw mill. Can not position. But best of my judgment it is about that sill at stable out by T. R. Wilgus.

How long have you known this dam, since 1835 am 65 years old. Can you tell the changes made in this dam since 1840.

Both the Tumbles have been made at north end of dam since 1840. Can you locate the original bank of creek at <sup>near</sup> S. S. of dam.

The creek bank ran parallel to dam from 1/2 mile nearly to mill say within 200' S side of mill, this bank was the bank of creek before dam was built, and the dam was built on bank of creek and east side of channel.

Can you locate the north end of

the dam as constructed by Jell  
 the 22 dam as made by the Jell  
 was here (9 links South of 22 line R  
 and line 22-2.) the Jell was intended  
 to be on a level to meet this fault  
 Can you locate the old Jell B. Wilgus  
 line at the dam.

Not exactly. this line was originally  
 made to run straight through  
 from the east line of Survey to  
 west line of Harrison and line  
 run parallel to the north line of  
 Smith 1st a (old Bishop's line)  
 from Smith's 22000 would be three  
 Wilgus lines but run when it will  
 do not know where it crossed the  
 dam. When was this line from the  
 east line of survey to Harrison's  
 augmented. By Mr. Arthur when  
 he blocked out the dam.

those three fence west from 22  
 dam. Yes and this was called the line  
 or line Wilgus

What do you know of the channel of  
 creek at Wilgus W. line  
 chan has changed to north about 1 1/2 rods  
 at this north turn. since dam and do  
 not know when chan was before dam  
 was made

What do you know of chan at this  
 point (2800 line 2)  
 do not know much about it; it has changed  
 east to west much, but has changed  
 about 1 rods north

#  
David Hairman

What knowledge have you of  
chain at or near oridge.

chain has not changed much since  
I knew it has changed <sup>not more than</sup> 1/2 foot  
north at this time. have known  
it for 20 years, am 43 years old

what do you know of chain <sup>point</sup> at this  
point (28.00 line 2.)

Don't know much, but has changed  
north about 10 feet.

Era Corym

What do you know of creek at the  
point (28.00 line 2)

creek in my recollection has changed  
its chain north 8 or 10 feet



Western Add to Bellefontaine

Vol. O. page 330 &amp; 331. L. to Rec.

14 lots in NE &amp; NW 1/4 Sec 34.

Beg at post S 2 1/2 or 30 feet & N 87 1/2 or 11 feet  
from NE & said or Sec 34 & lot 1  
Lots 1 to 7 front on Bellefontaine & Port Jeff  
Five Pike each 55' wide and extend  
south 237' to an alley 20' wide

Lots 8 to 14 front on a space 60  
wide being an extension of Bellefontaine  
and are 55' x 220'. Alleys 11' except  
1 alley 20' wide at rear of lots.

A stone is placed S 87 1/2 S from the  
NE & lot 7 and a stone S 87 1/2 S 11 feet  
from S 2 & lot 14.

A. A. Harrison, May 2<sup>nd</sup> 1845.

Vol. O. page 330. Logan Co. Records

The annexed diagram represents 14 lots laid  
out in the NE corner of the NW 1/4 Sec 34  
T 4 R. 14 M. R. S. called "Western Bellefontaine".  
as follows. Beginning S. 2 1/2 or 30 feet and  
N 87 1/2 or 11 feet from the north east corner  
of said quarter section. In the NE corner  
of lot N=1. Lots N=1 to 7 inclusive are laid  
off fronting on the Bellefontaine & Port Jefferson  
Five Pikes, and running north with its course  
N 87 1/2 or 55 feet each and extending back  
at right angles 237 feet to an alley 20 feet  
wide. Lots 8 to 14 inclusive front on a space  
60 feet wide being an extension of Bellefontaine  
street westward and are 55 feet front by 220  
feet each. The alleys are each 11 feet wide  
excepting the one at rear of lots which is  
20 feet wide.

Saul Workman Surv.

Nov 1 - 1886.

J. E. Travis }  
 Samuel Bayles } get co. sworn.

Find large mig bed stone 15' x  
 High 18' old stone or 17 3/4 or 14 1/4 links  
 Aug 30" down old stone S 25 1/2 E 14 1/4  
 Aug 9" S 88 1/2 E 60 1/2 links

Line A

Start at above stone

with down line about N 82 E. or 82 1/2

Set stake at 30.00

51.04 Stone N E &lt; Saul Workman

Little oak, N. O. 24" S 16 1/4 W 17 links

Red Oak 25" S 77 3/4 E 41 1/2

at 29.87 set stone < Milroy & Workman in  
 center fence "a" / N line Surv.

with Red oak 24" or 78 E 21 links

Aug 10" S 51 1/2 E 41 3/4 links

Line B. Start at < Milroy & Workman  
 S 9 E Raul.

10.00 set stake in line .0426 set wood to line

20.00 " " " .084 " " "

30.00 " " " .126 " " "

40.00 " " " .168 " " "

50.00 " " " .210 " " "

25.61 center pike on over line

25.80 planted stone on S side road

orig bed 10 1/2 x 13 1/2 x 9"

16.70 Pige side N. O. 20" di

18.85 Red oak 20 line fence

Line C. Start in N line Surv.

27.81 E

51.25 E line Saul Workman

Set stake  $\angle$  Daul  $\frac{2}{3}$  Jms Workman in  
 E line J.E.  $\frac{2}{3}$  W  $\frac{1}{2}$  Milroy  
 Pit alk 18" S 60 E 4  $\frac{1}{2}$  links

Set stake  $\angle$  stone  $\angle$  SE J.E.  $\frac{1}{2}$  W  $\frac{1}{2}$  Milroy and  
 $\angle$  Jms Workman  
 Pit Blk oval 5" or 8  $\frac{1}{2}$  E 5  $\frac{3}{4}$  links  
 also Blk oval 20" or 5  $\frac{3}{4}$  E 11  $\frac{1}{2}$  "

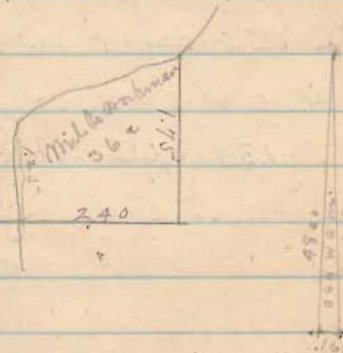
Line D. Start at above SE  $\angle$  Milroy  
 or 8  $\frac{3}{4}$  W with line Milroy  $\frac{2}{3}$  Jms Workman  
 8.71 above  $\angle$  Daul & Daul Workman in  
 E line Milroy  
 12.50 set  $\angle$  Milroy  $\frac{2}{3}$  W Workman on  
 South Bank Sulphur <sup>along</sup> branch

Line E.

Start at stake 12.50.  
 5.71  $\frac{3}{4}$  or on main line Milroy  $\frac{2}{3}$  W Workman  
 2.40 cent checker creek chan

3.16 post made old  $\angle$  Milroy & workman  
 2.80 pass 48.00 on line B.

24  
 1.5  
 12.0  
 24  
 36.0



3.00 set line stone 30" x 12" x 3" for corner  
 $\angle$  Milroy and workman at 48.00 from  
 N line corner and 2.0 links W of line  
 B.

Pit Black oval 20" on N Bank creek  
 3.5  $\frac{3}{4}$  E 6 links

also 20.00 set on S Bank creek S 71  $\frac{1}{2}$  E 13  $\frac{1}{2}$  links  
 also South Red Oak 24" S 62  $\frac{1}{4}$  or 23  $\frac{1}{2}$  links

corner of main line milroy  $\frac{2}{3}$  W Workman 3.8  $\frac{3}{4}$  E

H S Branch durr Nov 12-86

Line A. Start on cut of RR  
 on South Bent of cut span  
 with Elm 12' or 4.00 6 6 1/2 links  
 S 85 1/4 W with end near S side of  
 stream, 1.91 stone planted 2 2 x 10 x 4  
 with cut stream N

Elm 12 (same as above) or 5 1/4 E 10 1 1/2 links

Line B. with S side chain

S 86 00

9.78 Blk oval tree 2 1/2", 18 links S of cut  
 old chain stream

Line C.

S 91 1/4 W

9.42 cut grade old RR

old RR trace S 32 00

with oak 6' or 2 1/2" 16 6 1/2 links  
 planted stone 2 3' x 10' x 9'

(1391)

Michael Leppincott } ch or  
 Saml Horner }

J. E. Edgington marker

H S Branch

Line D

S 86 1/4 W

2.90 + V angle stone 2 2" x 9" x 6"

with Blk oval 2 1/2" or 7 1/2 W 6 3 links

Line E

S 4 00

5.56 + ang

with bent Blk oval 3 d S 52 1/4 W 1 4 1/2 links

stone 2 1/2 x 9 x 5"

(1291)

Line F

OR 41 1/2 OR

5.05  $\nabla$  end of planted stem 2 1/2 x 9 x 1/2  
 with Blk oak 5' OR 71 OR <sup>131</sup> ~~127~~ links

Line G. Near trail on creek

OR 56 OR

9.71 = other on S bank above creek

with Blk oak 16' S 179 191 links

Yes Blk oak 12' on E bank creek S 107 x 179

Blk oak 18 on OR. OR 55 1/2 OR 55

9.95 cut creek and on

at 9.71 planted pine 2 1/2 x 9 x 7/8

Line H. with open Cherokee creek

OR 6 1/2 OR

8.43

post at head of creek

(1291)

INDEXED ON MAP

Line OR 30 1/2 OR

3.60 post head of creek

Then in OR 19 1/2 OR

6.09 post in dam at head of creek

Then less creek runs west.

OR 21 1/2 OR

2.40

4 x 4 limestone log in slide glass window

with White Oak 2.4 OR 56 1/4 OR 2.14 links

Line I

OR 51 1/2 OR

at about 300 cuts used then with

42.55 aug in road &amp; cut T

Line J

576 E with line of road post across for

2.00 cut of RR on cut road crossing

(1391)

Line K with cent R.R.  
and line produced

\$16 1/4 or

8.00 70000000 on RR

10.00 cent R.R left 16 pike

15.00 " " " " 13 "

20.00 " " " " 120 "

25.00 " " " " 213 "

Line L. Start 25.00 pike K

\$15 1/2 &

2.43 Make p.31 line a.

Start on cent R.R at road crossing  
at O of line K. measure path cent  
of R.R 26.50 to O of line a

H. J. Miller Surv.

Feb. 21 - 87. Inspection

Book C

Start cent-pike, 1877. Page 179

3 3/4 branch

23.25 ch on line 30 a east line

321.00 spring mit to 26.00

58.00 Miller creek

77.00 NE  $\angle$  Sec 26.Start at SE  $\angle$  Miller stone to well

45.00 on chain 400 mouth

57.50 ang of creek turns south

60 1/4 " " " " " " " " " "

37.35 cent of to #3 pike 500  $\angle$  lineat NE  $\angle$  Sec 26 found of. O. 42' dia

old pit S 49' N 21 links, also dug in old

Del R.R. found remains of old M.O.

old pit N 21' 99' 32 links took new mit

M.O. 2.4' N 8 1/2' W 53 1/2 links

Stone marked at  $\angle$ 

Sec 26-32 T4 R14

404

band 6 ply

Leas Mr. Williams } ch on

band Mr. Williams flag

Richard Milburn ax

D.

Start 15 links S of stone NE  $\angle$  Sec 26  
N 86 1/2' W Round to  $\angle$  = N 86 1/2'45.69 pass 13 Mrs. S of old  $\angle$  call Park  $\angle$ set south 10 links = total 25 after  $\angle$  av.Notes 1, 2, 3, 4, 5, 6 on line. 9 10 S  $\angle$  N

43 1/4 ch measuring branch from 52

77.09 set date cent W. to pike = 20.5

Gall 96 links S of  $\angle$  at pike ran N 15' W78.60 post near great  $\angle$  Sec 22, 23 + joined

Gall 8 links S of cent trans road

Variation: 2 link per chain = 2 links per 100

at pike cent divide  $\angle$  for  $\angle$  on line of fence

at 9.6 links N of line being 15.4 south of pin

from NE  $\angle$  26.

## Line A continued

Moved stake 7 N. 11 links to sea line

1 . . . 6 N 3 . . . . .

INDEXED ON MAP

404

Book C page 179

Gr. S. r. & Miller E of 100' & 100' in cut pipe

N. 0.30" S 67 1/2° E 110 links

Gr. N. 10' 36" S 33° E 175 links

also Black Oak 21' N 20° E 190 1/2 links

## Line B

Start at stone in Landlow line NRE < Dec 216

S 16 1/4° E or S 16 1/2° E

57.26 stone line 6" x 8" x 3 1/4", < Muisen Co.

Brit. Black Wal 18" S 19° N 177 links

also Gr. O. 30" dead at top. N 48 1/4° W 102 1/2 links

INDEXED ON MAP

404

Line C. Start 20 links S of stone < Muisen  
N 86 3/4° W Rand.

1, 2, 3, 4, 5 in line, then set of 2 chains  
6 on chain each most land.

Stake 7 in line Found put in

87.69 cent pipe fall 13 links north of  
center fence line Goder & Miller E of 100'

links N of & Miller & Goder, put in at 100'

70.28 pass 15 links N of stone in line of

Miller and < Muisen E of Goder



Line S. Start at stake cent pike.

S or < Miller

or 4 1/2 or with cent pike

49.28 stake cent pike or Miller

49.28 = or line Miller

Ort stone < Mussen & Gorden in Millers

South line, line stone 8" x 3" x about 18"

and or. 0.30" 3 1/4 or 10 links

and or. 24" 8 7/8 or 29 1/2 links

More stake 5 on line to or 3 1/4 or 9

links to line Miller & Mussen pass cent

fence at 12 links. = 3 links of line

Start old stake 5 line to or 5 3/4 or

3.31 to post Mussen or 3 1/4 or 9 1/2 links

to line Miller put 7 for 5 in line

Line E. Start 7 cent pike or Miller

5 1/2<sup>+</sup> or with cent pike

121.32 put 7 in cent pike lot < S.S. 12' E.

Ort

24.64 put 7 in cent pike lot < S.S. 12' E.

Ort

Book C

Page 179

INDEXED ON MAP

404

36.96 put 7 in cent pike lot < S.S. 12' E.

49.28 fall 10" or of 7 or < Miller

Make the far east 10" correct bearing.

and distances to Ort lines to now ok <

Move stake 4 of line a. (or line Miller)  
 N 7 links to line Miller and Park  
 thence S 86 1/2° E 2.93 ch to

lots 1<sup>st</sup> & 8 in Park line

move stake 3 N 9 links

to C S 86 1/2° E

Stake 1<sup>st</sup> of 8 is 40.00 East of pike  
 and 37.07 W of NE 1/4 Sec 26.

INDEXED ON MAP

(404)

Line A, start at 1<sup>st</sup> & 8 in line Park  
 S 4 1/2° E

10.00 cut T line

12.32 " " " " 1, 2, 7, 8 lots

Spring at 12.95 to top

15.50 cross spring branch

24.10 cross spring branch near

24.64 cut V < 2 3 6 7 lots

36.96 " " " " 3 4 5 6

44 1/2 ch. on line a shown

48.97 fall 10 1/2 the west of 2 in line  
 Miller <sup>2nd</sup> of 9 acres

Book C

Page 179

Plot to last corner

Line 4<sup>th</sup> of 5 in Mussen line

Pr. O. 24" N 79 3/4° E 111 1/2 links

Pr. O. 26" N 37° W 82 "

Pr. O. 24" N 70 3/4° W 57 1/2 "

Planted

INDEXED ON MAP

(404)

Plot < 3.4.5.6

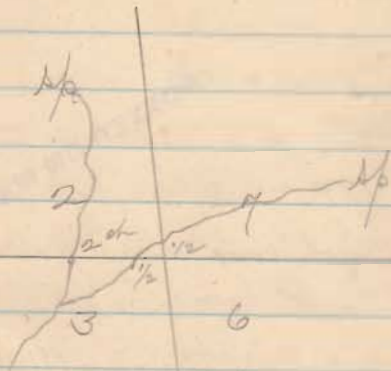
Pr. O. 38" N 54 1/2° W 21 1/2 links

Pr. O. 27" N 33 3/4° W 101 1/2 links

Pr. Oak 32" S 58 1/4° E 203 links

Sit comus

Locs 2, 3, 6, 7. on this near



From  $\angle$  2, 3, 6, 7 Spring house  
 beam  $N 51\frac{1}{2}^{\circ} W$  or about from  
 $\angle$  1, 2, 7, 8 same beam  $S 73\frac{3}{4}^{\circ} W$

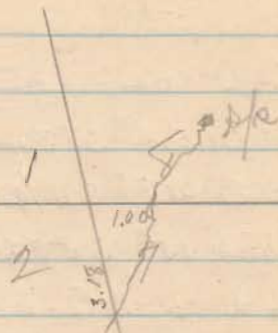
Misreading of line A. (or line hills)  
 $N 11$  links to line

INDEXED ON MAP

(404)

Sit com

1, 2, 7, 8 on this near



From com 1, 2, 7, 8  $N 53^{\circ} E$  3.00  
 to large spring

Book C

Page 179

INDEXED ON MAP

(404)

Book C

Page 176 to 179

Line 9. Start at stone, N.E. Sec 26  
with landless

12.98 ch cor lots 7<sup>th</sup> & 8<sup>th</sup> set V

crit. Cr. 0. 24" S 83 $\frac{1}{4}$  or 96-links

and Cr. 0 28" S 11 $\frac{1}{2}$  or 172 $\frac{1}{2}$  "

" Phil Hick 15" S 58 $\frac{3}{4}$  E 184 "

Q. 2.5.96 ch cor lots 6<sup>th</sup> & 7<sup>th</sup> set V

crit. Hick 20" S 58 $\frac{1}{4}$  or 66-links

End Elm 222" S 40 or 158 $\frac{1}{2}$  lks

Phil Hick 222" S 12 $\frac{1}{2}$  or 182 "

3.3.94 cor lots 5<sup>th</sup> & 6<sup>th</sup> set V

crit. Cr. 0. 26" S 80 $\frac{1}{2}$  or 90 $\frac{1}{2}$  lks

End Cr. 0 26" S 40 or 169 links

5.1.2.6 stone S or = miller

Book C Page 179

(404)

5.1.11 Spring 2 ch west

March 4. complete lines

Line up cor on landless = S 16 $\frac{1}{2}$  E

Cor 7 & 8. planted stone rig head

18" x 7" x 10" at foot of bank north edge  
of road at turn east. put oak stake below stone

cor lots 6<sup>th</sup> & 7<sup>th</sup> planted gray orig head stone  
20" x 10" x 7"

cor lots 5<sup>th</sup> & 6<sup>th</sup> planted orig head 20" x 10" x 9"

cor lots 1, 2, 7<sup>th</sup> & 8<sup>th</sup> planted orig head

stone in aramp. put oak & below stone  
stone 21" x 9" x 8" no trees near

cor lots 1 & 8 in Park line planted orig  
head stone 15" x 15" x 10"

cor lots 1<sup>st</sup> & 2<sup>nd</sup> cement pipe rig head 24" x 9" x 9"

cor lots 1<sup>st</sup> & 2<sup>nd</sup> planted stone rig 27" x 14" x 6"

crit. Cr. 0 12" S 39 or 115 $\frac{1}{2}$  links

End Cr. 0 30" S 15 $\frac{1}{2}$  or 132 "

End 2<sup>nd</sup> cor frame fence or 74 $\frac{1}{2}$  E 75 $\frac{1}{2}$  links

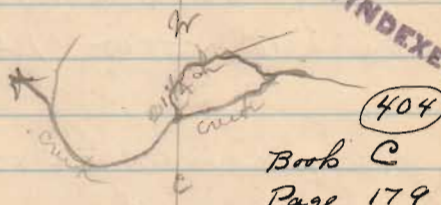
Leine H. start at stone cor lots  
 19 of T Landlow

1886/2. or c. c.

or. 0

lime tree coated shks

21 1/4 ch



Book C  
 Page 179

33.00 in pond T

36.20 spoutly ground 4 same 52

39.82 cross Spring Branch

39.82 cor 1. 2. 7 1/2. planted stone on p. 165

50 1/2 ch cross



53.00 old house 2 1/4 ch south

59.85 ch pass 10 hrs S of 30" or. 0

62.00 Spring 2 ch south

66.00 " " " same 2000

Line H. cont.

79.94 ch cont pike on lots 142  
planted stone on page 108-

cut Br. O. 12" x 7 3/4 or 127 links

3/4 of Red Hick 10" x 38 or 143 "

Line I planted orig bed 24" x 9" x 12"  
at < lots 2 & 3 on pike

cut Burr Oak 16" x 37 3/4 or 250 links

3/4 of Red Hick 20" x 9 3/4 or 147

Start at stone

57 1/2 ch - line lots 3, 2, 147

34.35 ch pass 1 1/2" x of 24" Br. O.

37 1/4 ch cross spring branch

40.0 ch cor 2, 3, 6 &amp; 7 lots planted

orig stone 27" x 7" x 10"

39 1/2 ch cross spring branch

Chris Culp. June Apr 13-87

Henry Herzog 7th error  
 1/2" / Lanthicum

Line A

Course 3 line Dec 10 =  $N 85 \frac{1}{2} W$

Start at stone SE  $\angle$  Dec 10  $\frac{3}{4}$  of Run online

To stone at SW  $\angle$  Dec.  $N 85 \frac{1}{2} W$

41.45 set  $\frac{1}{2}$  on line  $\frac{3}{4}$

planted stone Bowl.  $33" \times 18" \times 10"$

see Book C Page 182

Line B

Start  $\frac{1}{4}$  link East  
 $\frac{1}{4}$  SE  $\angle$  Chris Culp.  
 $N 4 E$

39.95 cent RR  $\frac{3}{4}$  on ice C. Culp.

at 91 links from Remains of old RR D. Dist

fall 37 links E of  $\frac{1}{2}$  or made put in  $\frac{3}{4}$  belt  $\frac{1}{2}$

(1392)

Line E

Start at stake SE  $\angle$  Culp.

with Blk. Hick  $10" N 3 E 52$  lbs

$\frac{3}{4}$  Blk oval  $2" N 19 \frac{1}{2} E 17$

Blk oval  $8" N 81 W 43$  lbs

$N 85 \frac{1}{2} W$

20.03 set  $\frac{1}{2}$   $\angle$  SE Culp.

planted stone at cor Boulder

$18" \times 10" \times 7"$

Line F

This must mean SW  $\angle$  Culp  
 Start at  $\frac{1}{2}$  line Culp.

$N 4 E$

39.84 fall 13 links west of  $\angle$  planted  
 planted stone at 39.84 Run line  $\frac{1}{2}$

Leine J. go to NE  $\angle$  C. Culp in  
cut RR track run S 4 $\frac{1}{2}$ W 5 feet  
and drove an angle iron (fish plate)  
at RR right of way. and took out  
No. O. 22" S 66 $\frac{1}{2}$ W 48 $\frac{1}{2}$  links  
3/4 Hick 16" S 13 $\frac{1}{2}$ W 115 $\frac{1}{2}$  "

Start at cut RR  $\angle$  Culp  
to 75 $\frac{1}{2}$ W with cut RR produced  
400 yards cut RR

20.09 planted stone  $\angle$  Culp  $\frac{3}{4}$  Ring  
rig. head 22' x 12' x 10'  
cut RR to 4E 114 links  
~~Full 13 links on~~



Geo. Locher. } chain carriers  
Milton Moore }

Started <sup>at 8.</sup> stone dry cor D. Moore  
Dec. <. Mit Buckeye's 3" or or 1/4 lbs  
588 <sup>+</sup>/<sub>400</sub>

12.73 cent pike.

3995 Gall's's. gotone in road  
quercor

Joe James. Warehouse Run.  
 Bigger <sup>well</sup> corner of Rt. - or 2700

Start at 16 1/2 feet west of the SW cor  
 Sect 54 at SW side of Alley.

Thence or 2700 with west side of alley  
 84 feet out + 89 feet to fence SE to  
 Gary lot

thence with fence 179 feet

to cor at 12 feet from edge west in race

thence or 63 E 156 feet to peg

also start same as above thence

327 E with SW side alley 132 feet

to post 100 feet from SW 33 + 4 Ry

main track.

thence parallel to main track and 10 feet

W of cor thence <sup>to post 16 1/2 E of west in race</sup> S 63 W 158 feet

thence with SW bank of race and 12 feet

from edge of water 132 feet

thence or 63 E 156 feet to peg

Degroff Ohio.

planted a hollow casting 21.9" long  
 outside diam 6" at SW side alley off  
 SW cor - lot 54. at start point of curr.

see Book C Page 183

408  
 INDEXED ON MAP

June 9-87

Marble Muchimppi Creek  
at Duckworth Bridge

Start cent barrym Comb. Dist. Pa  
we crossed <sup>to</sup> road S.E. of Duckworth  
high school house

0826 1/2 W

3.50 cross creek chan pure NW.

7.00 chan 5 ch west

11.00 cross chan pure SW

14 chan and bank 2.50 E

16 1/4 cross chan pure NW 2 ch turns <sup>52 1/4</sup> SW

18.00 chan 2.00 west

20.00 " 2 1/2 "

22.00 cross chan pass S and flow into it

22 1/2 five to S. Duckworth <sup>2 1/2</sup> E of school

25.00 chan 3.00 east

27 3/4 cross old chan at entrance of new chan

28.00 over chan east 1/2 cha

30.00 " " east 1 "

32.00 " " 1 "

34.00 over chan east 1 1/2 at intersection  
of chan <sup>2</sup> of line and from pike

35.00 crest of old chan runs on 10 ch

36.00. N 75° 40' 1.97 ch to Sta 9 of B. Chan

39.25 cross chan runs E 2 1/2 ch

42.00 chan on 2.00

45.00 " on 2.00

48.00 " on 2.00

44 3/4 crest B. Chan pike at east end at 10 00 of

face east crest about 1/2 ch east of chan  
run on bridge start at stake cent pike

ridge chan at 6 1/2 links W. of Wipple Willow tree

Two crest with cent pike 4.32 crest old B. Chan

45.00 ang at W. side B. Chan

51 1/4 W

52.00 chan 4.00 east

53.00 " 3/4 ch east

54.00 ang chan east 1/2 ch

55.00 ang chan east 1/4 ch

58 20 1/2 ch along on edge of water

57.00 mouth of the new ditch at Weirshen  
 57.00 aug  $\frac{3}{4}$  ch left of chan  
 57  $\frac{1}{2}$  E with or. bank of creek  
 68.50 line Mary Pinner & Mr. Wright  
 creek can not go south of this point  
 64.00 aug. Yellow creek Bank  
 57 68 E  
 65.77 aug. cut pike east  $\frac{3}{4}$  ch  
 or 12  $\frac{3}{4}$  or  
 66  $\frac{1}{2}$  chan east  $\frac{1}{4}$  chan  
 67.22 aug. chan or or  $\frac{1}{2}$  and  
 or 56 or  
 69.00 on S bank of creek  
 69.31 cross line Mr. Wright & Mary Pinner  
 70  $\frac{9}{9}$  in chan creek  
 72.46 aug  $\frac{1}{2}$  ch or of chan  
 or  $\frac{1}{4}$  or  
 74 in chan creek (Run from here to aug 64)  
 77.54 aug. chan runs aug from here or 30 E 5 ch  
 and then bears from

or 2  $\frac{1}{4}$  E  
 73.00 chan east 4 ch  
 82.00 " " 3. e  
 78.00 in chan creek runs E W  
 85.00 aug in chan creek  
 or  $\frac{1}{4}$  E  
 89.00 chan west  $\frac{1}{2}$  ch  
 90.00 " " 1 "  
 93.00 on east bank creek of Yellow Bank  
 95.00 mouth of Rogers Ditch on  
 east side chan at pike  
 chan bears from here or 2.8 or 6.00 ch  
 then or

$\frac{3}{4}$   
 $\frac{7}{8}$   
 $8\frac{3}{4}$ 

Var = 15/20

Sharon Tawert School lot  
 corner of pike at  $S 7\frac{1}{4}$  or

 $S 7\frac{1}{4}$  E

Planted <sup>line</sup> stone in pike at SW & S lot  
 line stone  $5 \times 5 \times 14$ , Blk. wall  $18$ " O.B.T.

at  $S 6\frac{1}{4}$  E  $83\frac{1}{2}$  S  $2$  E from house N  $38\frac{1}{2}$  W  $135$  ft

L. N. Evans  $\frac{1}{2}$  and cut quar south  
 J. S. Nichols  $\frac{1}{2}$  chain carriers

Dan. Shawver. Leevi Chick. Stewart  
 Watson. W. Hogue. Lake Tp. Bd of  
 Education

Line a start at stone some S cut  
 at  $S 3\frac{1}{4}$  E with line Kouskop & Evans  
 2.60 to 4 in line K  $\frac{1}{2}$  E

Line B

$S 86\frac{3}{4}$  E 1.75 to cor.

Line C

$S 9\frac{1}{4}$  or 3.10 to cut pike

Lake Twp. # 4478

planted boulder  $18 \times 5 \times 5$ , cut stone. Box  
 under pike  $S 7\frac{1}{4}$  E 2.5 links  
 line 4.

at  $S 7\frac{1}{4}$  or with cut pike 1.82 to big.

Place of Big at ore cor Christina &  
 Nichols  $15\frac{1}{2}$  a lot E of SE cor Eli-  
 abeth Evans lot in Pr. line W  
 Kouskop  $22\frac{1}{2}$  a lot.  
 in book 18: 4478, p. A. S. Dan-  
 dridge Q 2 500a.

see Book C. Page 186

411  
 INDEXED ON MAP

June 13-87

Edwood Big S. lots

Big at  $\frac{1}{2}$  a lot cent pike  
 or  $8\frac{1}{2}$  or with a line Bush lot of  
 line lots.

25 feet  $\rightarrow$  SW  $\angle$  lot 1.132 "  $\rightarrow$  NW  $\angle$  " 1 alley 16 $\frac{1}{2}$  feet16 $\frac{1}{2}$  " alley180 $\frac{3}{4}$  links =  $\rightarrow$  N Rail R.R.

Big at  $\frac{20}{8}$  SW  $\angle$  lot 1. cent pike then on  
 with cent pike  $58$   $87\frac{1}{2}$   $\angle$

6.6  $5\frac{2}{5}$   $\angle$  lot 2166'  $5\frac{2}{5}$   $\angle$  "5.0. street  
~~125~~ SW  $\angle$  66' lot

52'4" stone aug cor Bar King

Start at SW  $\angle$  lot 3,

122', 16 $\frac{1}{2}$ ', 66', 66', NW  $\angle$  17'  $\rightarrow$  49.3" to NE  
 of Rail Road.

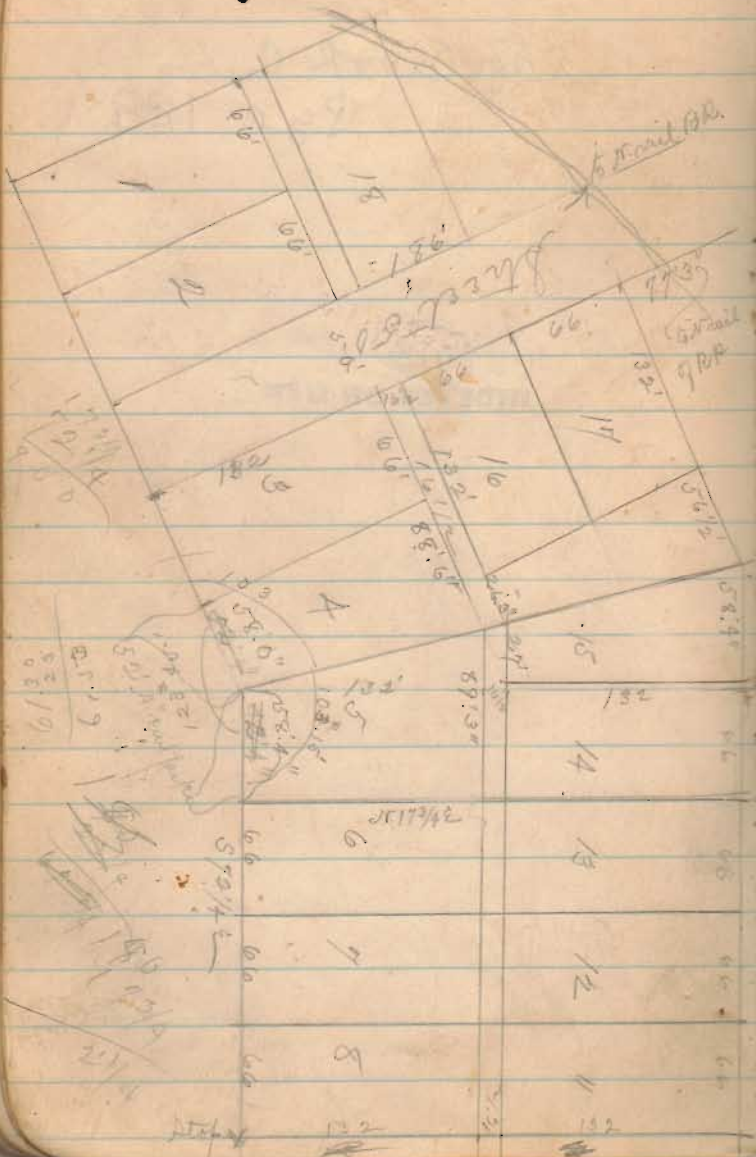
See Book C

Page 188

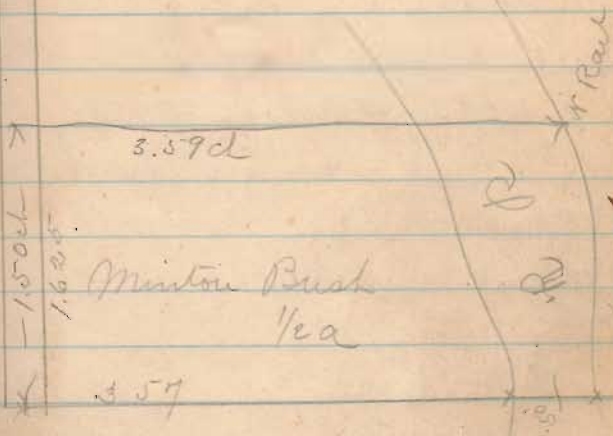
419

INDEXED ON MAP

18270  
8240



(413)  
INDEXED ON MAP



Smith <sup>9</sup>/<sub>16</sub> Thompson Surv.

Nov 17-87

Wit &amp; SE &lt; Dec 32

Blk oval 16' (wit & < Dec 5) or  $3\frac{3}{4}$  W  $7\frac{1}{2}$  S<sup>9</sup>/<sub>16</sub> of Elm 24" S  $21\frac{1}{4}$  E 9  $\frac{1}{2}$  linksJesse Levine } <sup>B. D. Bogart at cr. swamp</sup>  
                  } <sup>1 1/2</sup> ch or error.Arnold Arthur } <sup>2 1/2</sup> Shuly 1/2 day

Frank Thompson Apr 18 2 1/2

Austin Smith Apr 2 1/2

<sup>9</sup>/<sub>16</sub> Bogart 1/2 day Andrew Smith 1/2 day

Line A, start at above &amp; 39 &lt; Dec 32

S 89 W

5.86 cut Much Br.

20.00 cut &amp; in line

30.00 " " "

39.99 &amp; cut pike S 47 W. hit in Smith Surv.

40.00 hit &amp; cut pike 59 NW cut fence

79.83 cut pike fall 9 links south of point

indicated by old beach stump or 16 W supposed

old wit but found no other evidence

Line A continued

cut stake east pike at 79.83

Wit Hick 2' or  $5\frac{1}{2}$  E 29  $\frac{3}{4}$  linksHick 10" S  $60\frac{1}{2}$  E 70 " "Cottonwood 5' or  $3\frac{1}{2}$  E 73  $\frac{1}{4}$  "

Fence Trans. N 21 W

  
INDEXED ON MAP

Line B.

hit stake < Thompson <sup>9</sup>/<sub>16</sub> of McGregoron cut S line Dec 32 =  $\frac{79.84}{2} = 39.92$  ch

from S W &lt; Dec 32 = 5 89 W

Wit B. Oak 12' or  $3\frac{1}{2}$  E 106 linksRed Oak 16" (old wit) or  $6\frac{1}{2}$  E 73 "

start at above &lt;

or  $1\frac{1}{2}$  or

26.00 cut &amp; in line

20.00 " " "

47.52 " " "

21 1/2 ch. Chan Much creek

57 1/4 " cut Much pike

57.00 &amp; dist. line &amp; new fence

see Book C  
Page 190



## Line B cont.

87.62 a. dist

87.7 fall 32 links W of cor or being  
40.00 line S. correct this dist  
to 87.62

(415)

INDEXED ON MAP

## Line C.

Start at v 5 c l sec 32

S 81 W

47.35 cent of road west end.

47.57 pass 27 links East of <sup>See line 5-</sup> ~~quadrant~~

48.1 out W 30 links

89.47 pass 23 East of stone put by <sup>see</sup> ~~man~~

find old ash down so take point on ramp for

L and find remains of log on old B.E.

Make above point true p.c. and put  
down oak stake 2' x 2 1/2" x 2' 1/4" then planted9.4  
57  
57

big head stone 7 x 9 x 5 on top of flat and  
big head v 8 x 10 x 14 on top of first stone  
Brit W. Ash down old B.E. or 5 c 36  
Leyon remains on old log on S 23 W 23  
elm 24" or 8 1/2 W 2 6 1/2 links  
elm 15" or 8 4 W 12 4 1/2 links

87.57 sec 2 at stone as above. fall 14 links  
east of L variation east 49 links = 1 1/4'

line C. Start 35 links south  
of 25 c l sec 32 as above

S 89 W

40.00 fall 35 links S of end fence <  
near south 3 links S E - S 89 W

(415)

INDEXED ON MAP

Line E. Start at grass  $\perp$  mid N  
line Dec 32, southward  
40.00 to N line Thompson grass  $\perp$   
Start at stake 47.52 of line B.  
Thence East 16 links and south 10 links  
to quar area  $\perp$  con Thompson.  
Wingrove.  $\frac{9}{16}$  of Sherman Roads west  
 $\frac{9}{16}$  of Nelson Roads east.

With Hick 6" S 88 E 71 Links  
" Birch 14" S 88 E 56 "  
" Jug 7" S 9 1/2 E 20 "  
" Hick 7" S 88 1/2 W 67 "

Line F Start 10 links south of above grass  
S 89 E. CC S 89 E

10.00 set N 10 links + put  $\nabla$  line  
17.70 cut much pipes, to 1/2 much cr.  
20.00 set  $\nabla$   
40.00 grass  $\nabla$  at 27 links west of  
line G at 47.57 of line D.

Set  $\nabla$  grass  $\perp$  at 40.00  
With ash 22 S 46 E 104 links  
" ash 22 S 67 3/4 E 53 1/2 "  
at 20.00 made  $\perp$  Thompson  $\frac{9}{16}$  Smith  
With ash 6" S 73 1/2 W 35 1/2 links  
Black Oak 16" S 8 E 11 "  
Elm 5" S 11 W 48 1/2 "  
Planted stone line 5' x 6" x 14 on top of  
each stake driven 1 foot below ground.

Line G start 20 links W of above stone  
S 11 1/4 E

20.00 set  $\nabla$  in line

30.00 " " " " " " Var W 10 links

At 57 of all 30 links, W of  $\perp$  Thompson  
 $\frac{9}{16}$  Smith in road are line.

Set  $\nabla$   $\perp$  at S 89 W 19.96 from S E  $\perp$  line

With Red Oak 18" S 47 1/4 E 72 1/2 links

" Hick 5" S 10 1/2 W 53 "

Planted limestone at  $\perp$  2' x 6" x 2"

Line H. Start 10 links south of  
Thompson, Maguire & Roads  
S 89° W

Set or 10 links  
2,000 feet in line

40.19 Fall 15 links or of ground

Find Rem of old eye 60° and take point  
from dig in by ground trace

Orit Red Oak 36° S 2 1/4° W 54 1/2 links

• Pigeon Oak 36° or 81° 1/4° E 130 "

• Oak 9° or 40 1/2° E 122 "

Line I Start cut like S or L see 32  
meas north 47.43 ch to get

Line K, Start at 7 ga or L in mid  
or line see 32

or 1 1/4° W

2,000 feet in or more Maguire 40 a

Line K cont

or 1 1/4° W < 40 a

Red Oak 16° S 50 3/4° W 32 3/2 links

4 ch 21° S 16° E 38 1/2 "

(415)

INDEXED ON MAP

Line J, Start at 7 above < 40 a

or 89° E

30.10 NE < 40 a,

Orit Pigeon Oak 14 S 49° W 130 links

• Or. Hick 16° S 43 1/4° W 90 1/2 "

Oak 4 ch almost in line

Oak 15° S 3° E 94 links

Line M, Start at 7 NE < 40 a

E 1 1/4° E

19.97 < SE < 40 a

Orit Jack Oak 5 in or 54 1/2° W 25 links

• or oak 14° S 4 1/4° W 46 "

Scarf Taylor Durr Mar 2-88

Frank Whitehill

A. J. Millikin } ch. or. worn

G. A. Pash. flag

Ed Houty axl

422

INDEXED ON MAP

Line a. Start at stone NE of G.P. hills

S 89° 4' W with hills on E line &amp; W line Pool 100

15.00 cut pike  $\nabla$  < Dillon  $\frac{1}{2}$  Pash

Line B. Start cut pike &lt; D. P.

N 86° 1/2' W with cut pike

4.67 S W < Dillon 7 a  $\frac{1}{2}$  of SE < Taylor  $\nabla$ 14.89 cut temp  $\nabla$  cut fence & Taylor  $\frac{1}{2}$  PashMeasure from temp  $\nabla$  fence  $\frac{1}{2}$  P.12.65 ch to tree < Pash  $\frac{1}{2}$  KaylerFind old mal. <sup>24"</sup> with remains stump in place

S 82° 26' to 6 links

Take run out 24" or, flick S 81° 1/4' W 44 links

Line C. Start cut pike &lt; Pash and Kayler

S 84° 1/4' E Rand.

cut about 10 links

40.70 ch fall 10 links W of  $\nabla$ 

W of &lt; Black Mal-9" S 6 1/2° E 15 1/2 links

422

INDEXED ON MAP

See Book C Page 198

Line D.

Start at <sup>16 L N of</sup> stone cut road SW of Peter DurrS 86° 1/4' E to post 16 link SW of D. P.  $\frac{1}{2}$  S

Line E. Start 16 links N of &lt; Pash &amp; Kayler

S 86° 1/4' E

12.30 ch cut  $\nabla$  for < 16 links south of  $\nabla$ 

19.53 fall 16 links N of N. O. stump

old  $\nabla$  < tree 24" ch

Line  $\frac{1}{2}$  Start at T SW  $\angle$  Pash

S 86 $\frac{1}{2}$ ° E with pike

12.30 at T  $\angle$  Pash & Taylor

22.57 SW  $\angle$  Dillon 7 a

27.54 SW  $\angle$  Pool 10 a

Met SW Taylor & SE  $\angle$  Pash

Black Wall 18"  $\times$  4 $\frac{1}{4}$ "  $\times$  4 $\frac{1}{2}$  links

Planted Boulder stone 18"  $\times$  10"  $\times$  9" at  $\angle$

Stone stands 33 links W. of east old fence

Planted Boulder stone SW  $\angle$  Dillon 9 a

SE  $\angle$  Taylor stone 18"  $\times$  9"  $\times$  5", in line road fence

Met NW  $\angle$  Taylor NW  $\angle$  Pash

Black Wall 20"  $\times$  3 $\frac{1}{4}$ "  $\times$  11 $\frac{1}{2}$  links

Black Wall 30" (double)  $\times$  5 $\frac{1}{2}$ "  $\times$  13 $\frac{1}{2}$  links

Corner 47 links west of east old fence

Planted Boulder stone 18 $\frac{1}{2}$ "  $\times$  7"

Per measure from NW  $\angle$  Taylor in Stone  
P. 200 S 86 $\frac{1}{2}$ ° E 72.3 ch to W. D. of Sec  $\angle$   
at 1079 $\frac{1}{2}$  feet put in stake  $\angle$  to

422

INDEXED ON MAP

Baylors Linn Nov 4-88

Course line from S.H.  $\angle$  to  $\angle$  on road  
 being  $\angle$  Baylon & Petty div. or 63' 4"

Line A. Start at T in put road  $\angle$  R & P.  
 thence on dir line S 19' 4" E Ranch  
 15.87 ch Fall 9 links R = West of  $\angle$  T  
 to B S 19' 2" E

Line B. Start at T S 2 line A.  
 with dir line or 89' 2" W 8.23 ch to  $\angle$   
 with  $\angle$  cent W. To E of pike  
 W. O. 30" S 7' 6" E 39 links  
 E of W. O. 36" or 16' 2" W 156 "  
 some 38d nails in pike at  $\angle$

Line C start  $\angle$  cent pike E of line B  
 with pike S 30 E 12.34 ch  
 stone in center W. To E of pike at N.E.  
 $\angle$  Fishbaugh & S.E.  $\angle$  Petty land

Liberty Twp.

1387

401

INDEXED ON MAP

Garnwood Survey Nov 13-88

Joseph Starbuck } ch or  
 David Swoney }  
 John Titus } flag man

Line A. Start at 12 links  
 south of stone planted for NW  $\frac{1}{4}$   $\frac{1}{2}$  Sec  
 N 81° E Band

8.05 Run Oak 24" pass 21 N of cent  
 blocked tree and counts 60 to 65 years  
 old live tree

Set south 6 links is 41 S of cent live tree

19.54 pass 4 links S of cent of 24"  
 pigson Oak - to Mrs Stevenson  $\frac{1}{2}$   $\frac{1}{4}$   
 Thos Jones

30.14 set stake 4 links north that is in

O K. Survey line <sup>at</sup> ~~line~~ - Mrs  $\frac{1}{2}$  of level

<sup>set 1 1/2 link</sup>  
 42.07 Strike cent oval stump disputed

tree Garnwood  $\frac{1}{2}$  of level. set T

N 3 1/2 links to Oak line, Live Garnwood

46.00 set T on W Bank Rush creek on  
 Ok Survey line  
 Write

Set N 3 1/2 links to Oak line

50.58 set dist stake on W Bank creek

50.80 cent Rush creek NE  $\frac{1}{4}$  - Garnwood

77.00 in Jeffs lane and 42 links N  
 of cent - fence called Survey line

100.07 Fall 42 links N of supposed  
 NE  $\frac{1}{4}$  - Survey

Dickinson Run June 10-89

Course of pipe N 21 1/4 E

Line A start at stone S W < Dick, with put road

N 81 3/4 E

4.06 ch cut pipe

33.64  $\nabla$  < Dick & McAdams at S. I of

fence in put road.

Line B Start 22 east of  $\nabla$  S E < Dick

N 7 3/4 W

44.97 cut pipe fall 25 links

E of line < var 3 E in 44.97

Line C Start cut pipe E of S. line Run

with cut gravel on pipe N 21 1/4 E

29.00 N E < Homestead

Line D Start  $\nabla$  in W line Dick

N W < Homestead

N 81 3/4 E

17.22 ch N E < Homestead cut pipe

Wit N E < Homestead Elm 20'

S 58 W 49 links

Line E Start cut pipe N E < Homestead

S 21 1/4 W 8.56 ch to S E < Homestead

Line F Start N W < Homestead.

S 8 E 7.45 ch to S W < Homestead in

or line Dick of W line Run

Line G Start at stone in road S W

< Dick of S W < Run.

N 8 W 17.50 — chains to S W <

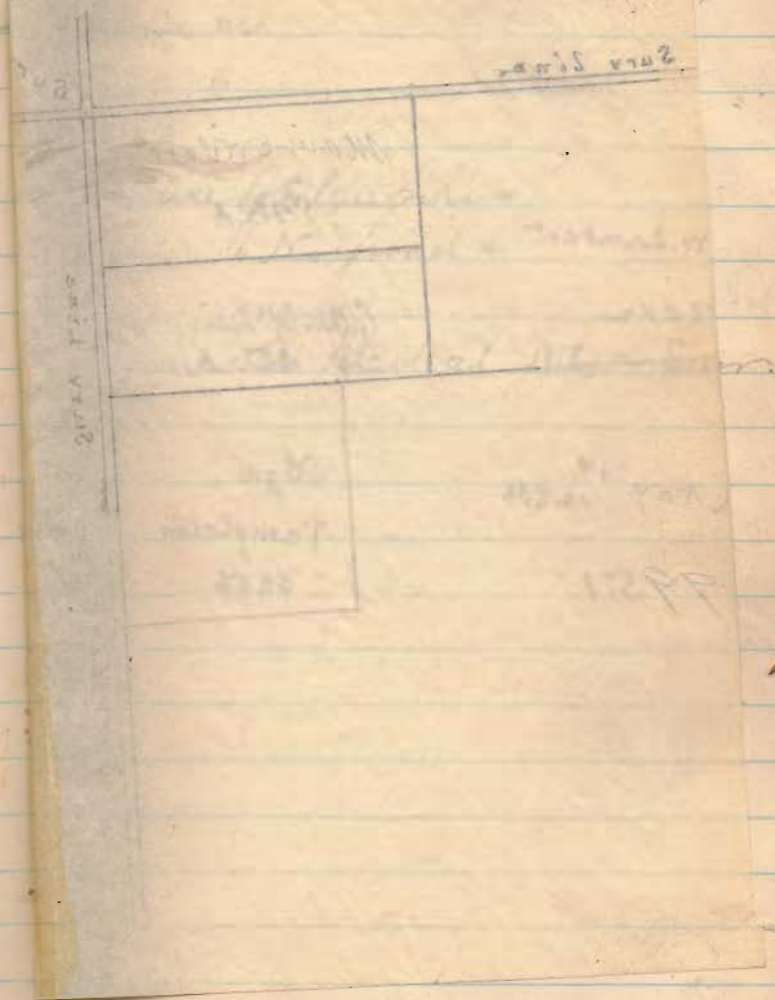
Homestead

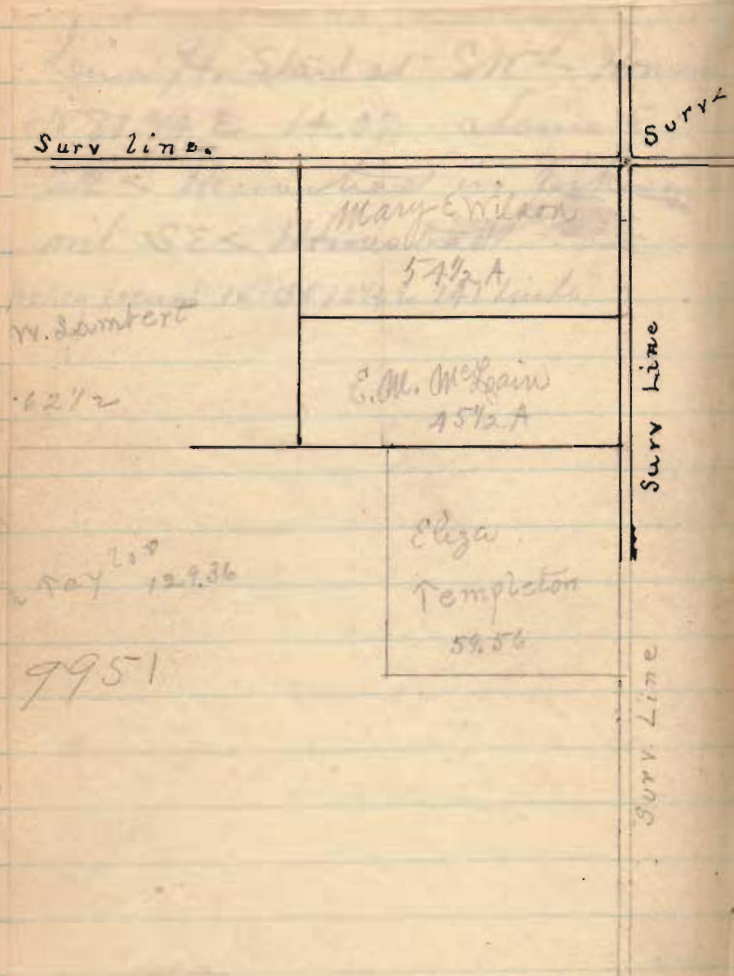


Leine H. Start at SW<sup>2</sup> Home  
 N 81 <sup>3</sup>/<sub>4</sub> E 14.07 chains to  
 SE<sup>2</sup> Homestead in pike  
 mit SE<sup>2</sup> Homestead  
 Honey locust 15" or 10 <sup>1</sup>/<sub>4</sub> E 141 links

Plot

89





McLean Surv Sept 2 - 89.

Chain or

Course of Chain pike =

" " N. road =

Line A. Start at NE - Surv.



0	10.03			10.00
1	9.47	.56		10.56
1+71	8.63	.84		11.40
2	8.30	.33		11.73
2+34	7.90	.60		12.33
2+66	7.55	.35		12.68
3	6.83	.82		13.20
4	5.93	2.90		16.10
5	1.80	2.13		18.23
5+52	1.47	.33		18.56
6	3.07		1.60	16.96
7	8.03		4.96	12.00
8	5.19	1.095	2.72	9.08
		10.25	2.50	9.45
		12.53	5.02	
		15.2	7.2	

From Sta 0 to point of 1st shot 1012.500'

course of pike N 56 1/2 W

Sta each 100'

Sta 0 cent pike N, side Park house - 1011'

Sta 55 cent stone Box

and also point where fence was at 1st shot

1+71 point Park crossed fence N side pike,

1+93 cent lane (16') line Park 3/4 Kaylor

2+34 line of first (east) apple trees Kaylor (across

2+66 " " 2<sup>nd</sup> row " " " "Sta 3+2 line 3<sup>rd</sup> " " " "

Sta 3+87 point above by S. M. Kaylor as point Park was

standing at 2<sup>nd</sup> shot, op. 1<sup>st</sup> row apple trees east Kaylor

garden fence. Sta 4+15 Kaylor garden fence N.

Sta 5+40 cent Kaylor house 60' S point of house

lane 30' wide - 12' deep about - N side pike

Sta 5+52 top 1<sup>st</sup> knoll off S. M. Kaylor's gate S. E.

Sta 5 to Miller's house 117 + 9 1/2 = 111 1/2 =

Pikes have to differ 60 pikes.

	5.17			9.08
9	6.70		1.53	7.55
10	8.30		1.60	5.95
1/2	7.72	.58		6.53
11	5.75	1.97		3.50
1/2	4.30	1.45		2.95
12	3.62	.68		10.63
1/2	3.52	.10		10.73
13	3.92		.40	10.33
1/2	4.27		.35	2.98
14	7.87	4.33		.06
1/2	7.60	.27		10.19
15	6.40	1.20		11.39
15+38	4.78	1.67		13.06
16	3.72	1.01		14.07
16+45	3.30	.42		14.49
17	4.20		.90	13.59
17 1/2	5.30		1.10	12.49
18	5.90		.60	11.89

Sta 10+30 point where man in buggy can just be seen from point of 2<sup>nd</sup> shot on pike

Sta 11+15 point shown by S. M. Taylor as place where John Dean was in buggy at 2<sup>nd</sup> shot by Park

Sta 12+30 cut S. H. South 67' - 22 feet x 30'

Sta 13+37 cut Orange hall 5-62' 32 feet x 40'

Sta 15 1/2 phone South 36' - 18' + 22' <sup>feet</sup>

Sta 15+38 cut X Roads

Sta 16+45 top 2<sup>nd</sup> knoll

1898

Couple's Run July 27.

Oscar Clayton } ch. own  
Jason Powell }

E. Dow Couple's Marks

Distance from center Elm st =  $815'5''$  to place of Reg. <sup>E. side</sup>

Start at corner Geo Pugh &amp; Fisher &amp; Walters in E line

Dow Couple's, at intersection  
of N line of Harrison Ave produced  
Eastward. Stake

With S. corner 10" S 24 E 9'5"

" " " 13" N 80 E 26'8"

With line Pugh & Fisher & Walters  
East 397 feet to center of  
slough ditch.Thence with center of ditch  
S 3 3/4 W

580 feet to begin of curve

then with curve to 710 feet at  
33 x of center S. L. of N Ry.  
being at N side right of wayand with ditch 744 feet  
to center of Ry.an tang from corner to center Ry  
S. 3 3/4 W 746 feetWith center Ry N 77 1/4 W 35 1/2 ft  
to center of ditch under Ry  
and intersect line of Couple's  
at 405 feet.Near line parallel to Ry from  
center ditch N 77 1/4 W 377 1/2 to S E L  
Fisher & WaltersThence from S E cor of V W with north  
line Couple's N 48 62 3' 5 1/4  
(Right of way on couple's line = 33 1/2  
George Pugh and place of Reg.

With S E L Fisher &amp; Walters

E. Elm 12" N 86 1/4 E 13'2"

S. Oak 12" S 82 3/4 E 61 feet

Couplet Run  
July 27-98

Plot 29 Section 34. T. 7. R. 8.

8

Geo Pugh

104 ave

E 377'

8

Couplet

N 42 3/4 W 100'

604 000

Shirk & Spalding

S. 394 N

580'

5200 ft. Shirk

center of S. 394 N

(See map on the next page of this notebook for  
 location of this and other plots.)

83'

Right of way 36' wide

Col. N. W. Ry

St. 27 1/4 98

83'

Aug 23-98.

## At Fawcett Surv.

Wit Stone (red sandstone) planted  
in or. line 3137 and center of Bell <sup>4<sup>th</sup> St. of</sup> E  
Francisfield pike & St. Henry E of O.H.  
Fawcett.

W. Cherry 4 1/2" <sup>St 46 3/4 W</sup> ~~St 44 3/4 W~~ 2.9 3/10 feet.

Sugar 5" <sup>St 60 3/4 E</sup> ~~St 62 3/4 E~~ 6.7 3/10 feet

Wit stone or or < O.H. Fawcett E

Str < E. O. Wickham in or. line Surv <sup>3137</sup>

Bush (old mit) <sup>St 72 3/4 E</sup> 57 2 3/4 E 75.8 ft

Stake < E. J. Fawcett & Jas. Brown

<sup>St 12 W</sup> 57 4 W 19.5 ft. Old cherry mit down

also over mit B. Wal 20" <sup>St 26 1/4 W</sup> ~~St 24 1/4 W~~ 14.2 ft

Thence with line O.H. Fawcett & E. O. Wickham

<sup>St 72 3/4 E</sup> 57 0 3/4 E 107.2 feet. <sup>30"</sup> Old aug. line true

(Variation in bearing 2.0°)

Thence with line Fawcett & Wickham

Set B. 18 feet 1<sup>st</sup> Reading 569 1/4 E. <sup>St 71 1/4 E</sup> change to same

at 105.6 feet pass < to former purchase of

O.H. Fawcett. < one marked

at 1674.6 ft N 2 E to O.H. Fawcett

or or < to E. J. Fawcett in S. line of  
E. O. Wickham. On stone also to <sup>line</sup> west  
mit B. Wal 7" N 70 3/4 W 106.8 feet

Thence with line of O.H. Fawcett  
E of E. J. Fawcett.

6 19 1/4 W

at 1080 ft put in <sup>754</sup> ~~at~~ 5 W < E. J. Fawcett  
and or or < O.H. Fawcett lot. in E line O.H.

at 1305 feet 5 W < O.H. Fawcett <sup>lot</sup> in pike  
crossed top culvert in pike belly. & to

note produced line from < stone in  
or. line Surv. 3137 and in Bell T. Z.

pike. first & noted in this survey  
to or side of frame drug store in  
Francisfield course S 71 3/4 E

Wit str < O.H. Fawcett lot on culv.

or or < foundation put school brick building

3000 S. 36 1/4 E 90.7 feet



## Farratt Surv con.

Start at SW  $\angle$  OH Farratts lot  
 on road cul. thence with pike  
 S  $71\frac{3}{4}^{\circ}$  E, 242.2 feet to SE  $\angle$  OH  $\frac{3}{4}$   
 lot center of alley, stone at  $\angle$   
 Thence with cent of alley and E  
 line OH  $\frac{3}{4}$  lot N  $77\frac{1}{4}^{\circ}$  E 219.9 feet  
 to NE  $\angle$  OH  $\frac{3}{4}$  lot. at S. side alley run E. W.  
 Thence with N line OH  $\frac{3}{4}$  lot and  
 S line E of Farratt tract. (iron nail in)  
 N  $70\frac{1}{2}^{\circ}$  W 236.6 feet to NE  $\angle$  OH  $\frac{3}{4}$  W.  
 Start at stake in north line OH  $\frac{3}{4}$  lot  
 and  $7\frac{1}{2}$  feet west of N  $\angle$  cor lot - and at  
 cor. side of alley running N. & S.

Thence N  $18\frac{1}{2}^{\circ}$  E

1082 to NE  $\angle$  E of Farratt tract in  
 S line E. of Mickushan.

Thence with N line E. of  $\frac{3}{4}$  & S line  
 E. of W. N  $71\frac{1}{4}^{\circ}$  W. 217.7 feet to NE  $\angle$   
 E. of  $\frac{3}{4}$  and NE  $\angle$  to OH  $\frac{3}{4}$

Aug 23 - 1898

Start - at SE  $\angle$  OH  $\frac{3}{4}$  lot on culv.  
 Thence with pike N  $71\frac{3}{4}^{\circ}$  W  
 at 1310  $\frac{1}{2}$  feet angle in pike  
 east cor to John Browns  $5\frac{7}{16}$  a  
 tract

N 217 211 ft W  $\angle$  J. Brown and  
 SW  $\angle$  OH Farratt land in  
 Bullf &  $\frac{1}{2}$  pike and 4 feet  
 north of cent gravel on pike  
 Same being place of log.

OH Farratt original purchase  
 for his acre for 532 acs. This  
 includes lot and E of Farratt  
 tract

754  
 INDEXED ON MAP

162 Remear. Fawcett Surv.  
Aug 27-98

Start Stone in Bell  $\frac{1}{2}$  pike

S. 90° < OH Fawcett and N 2° < Henry

N 18  $\frac{1}{2}$ ° E 1307.7 feet = 1308 ft.

to N E < OH Fawcett  $\frac{1}{2}$  SE < G

E. O. Nickisham at stone

Start at Stone N E < Fawcett

S 72  $\frac{3}{4}$ ° E.

at 1072' sugar line tree 28"

course then S 71  $\frac{1}{4}$ ° E

2746.6 line OH  $\frac{1}{2}$  E J. Fawcett

2965 " E J. Fawcett

Start at SE < OH Fawcett on  
culv in pike with pike west  
2717  $\frac{1}{2}$  feet

754

INDEXED ON MAP

163

Fawcett Surv. Notes. See plat page 165-

a = stone. Beech (old nit)  $30^{\circ}$  S  $72^{\circ}$  34' E 69 links (45'.8")  
 stake < E.J. Fawcett & Jas. Davine S 18 W  $19\frac{1}{2}$  feet (129'.2)

B. Wal. 20" N 46' 14 W 14.2 feet. (21.52.) Old Cherry down.

b = B. Wal. 4" N  $70^{\circ}$  3' 14 W 106.8 feet (162.2.) b = < wire fence

c = stake in wire fence. b to c = 1080 feet = 16.363 ch.

d = post on wood top & 2 vent. N.W. cor. stone foundation  
 brick pub. school building 336' 14 c 90.7 feet = 137 1/2 links.

e = angle in Bellf. & Z. Pike = N  $71^{\circ}$  1/4 W 1310.5 feet = 19.855 ch

f = stone, red sand, 4 feet N. of cent gravel on pike. also

Wild Cherry 4 1/2" N 46 3/4 W 29.2 feet = 44 1/2 l., also

Sugar 5" N 60 3/4 E 67.3 feet = 102. l.

Line f-e-d-g produced east strikes west side of frame  
 house (drug store room) on east side alley in Lanest.

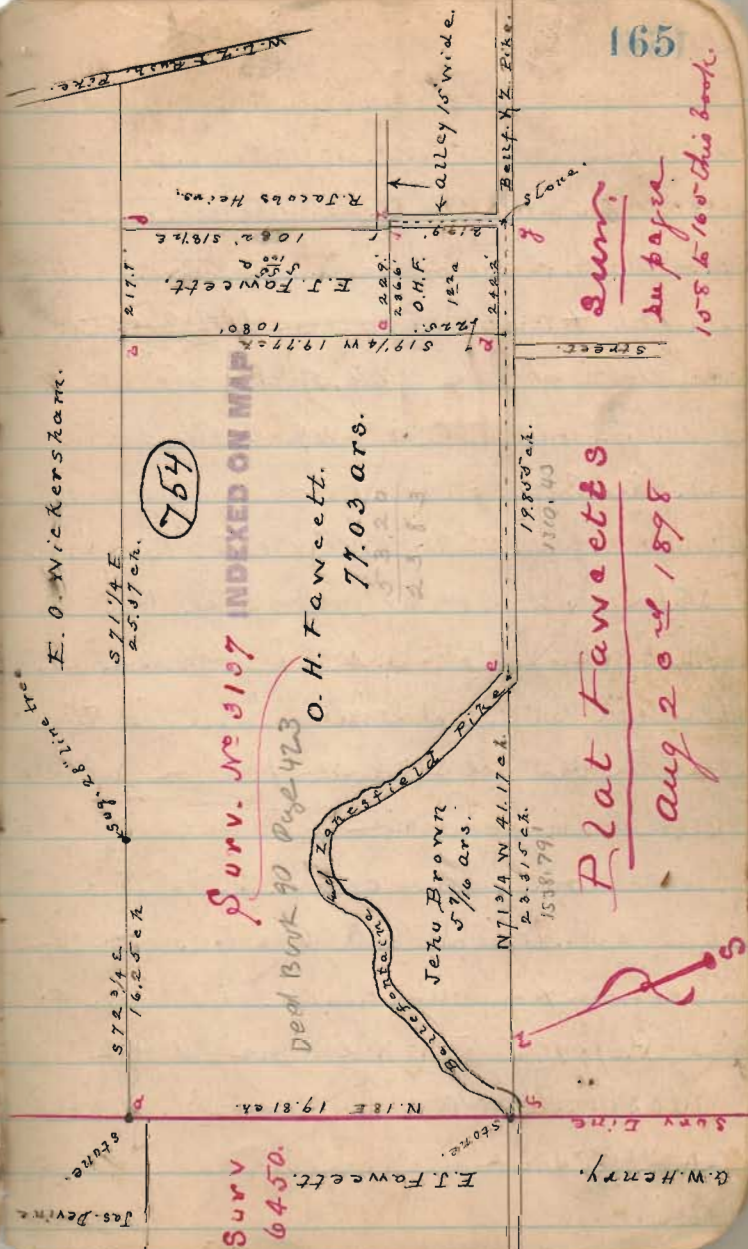
g = Stone, center alley running N. Alley 15' wide.

h = post cent. alley, on S. side of alley running east.

i = post in line e-h & 7 1/2 W. of h.

j = corner of fence, on S. bank of ditch.

Note all bearings, given above & on plat page  
 165 are 2<sup>d</sup> degrees N.W. of present magnetic  
 bearing.



Earl Carr. lot Surv.  
Sept - Oct 1898.

Meas from N. side Chil. St. - Katang e. side Elm  
760 ft to S. side Col. St. line old scarp house is  
at 4' 5 1/2" S. of + mark on Bena stone E. side  
Start at + mark thence W. with Col. St.

Set stake 4/1/2 = Stake a on alley  
and 4' 1 1/2" N. Carr. lot

Meas S. from Stake a 229' to stake 7 in  
S. line Carr. and 4' 1 1/2" W. of his S. W. L.

Meas E. from stake 7 11 1/2' 1 1/2" to S. line Carr  
Stake c, at 4' 8 1/2" S. of Carr. S. E. L.

Meas W. from stake c. 4' 8 1/2" to Carr. L. C.

The Col. St. find lime house is 8"  
north on Col. St. and 1' 8" on alley  
west of lime house

Meas from S. line Carr. 65 1/2' to S. line  
line a. B. straight 2' of 96 1/2' to E. side Elm  
Meas from X on stone found. hide house 2. on

Col. St. 19 1/2' to N. W. Carr. lot #2

Meas from N. W. Carr. Hide house S. on Col. St.  
243' to Carr. L.

Columbus St.



Chillicothe St.

See page 168. Surveyor's Certificate

Note N. Carr. is 2' east of east with  
north on office 3/8 1/2" S. of front of office.

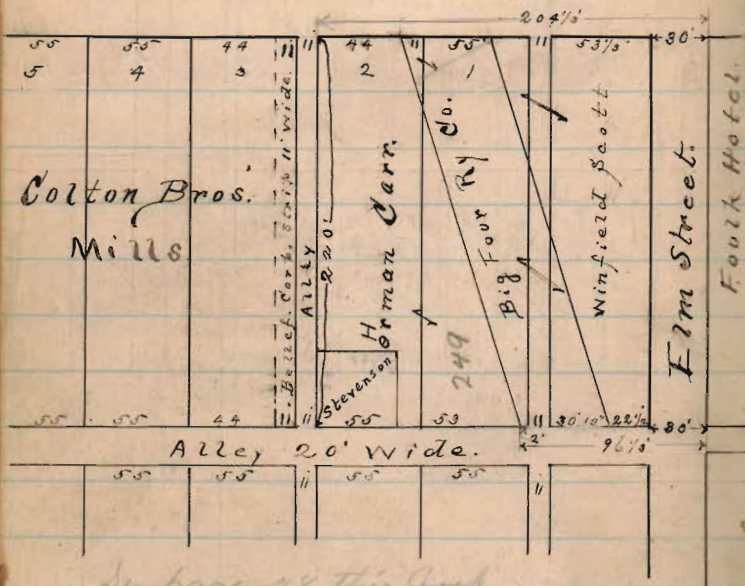
See page 168 for plat.

Sept 5<sup>th</sup> 1898.

Garf. Ave.

Erm St.

Columbus Ave.



See page 18 this book

Oct 20<sup>th</sup> 1908 find old stake set by Mrs. J. K. K. Carr  
 Sept 1898 at 2 feet from side of office building 405 S.  
 of N. side said building  
 Measure from S.E. corner building west along corner  
 col. on 44' to meet fence cor. House set by  
 or at present occupied. = 46' on Col. Ave.

Lane Surv. Sept 9<sup>th</sup> 1898

Start in cent. Auburn St. line of N. side  
 Mad River St. Thence S. along N. side M.R. St.  
 at cor. of center. (Stakes 15' 3" W of c.)  
 at 219.3' gr V # 95 + 2 1/4

14 1/4' front Lane pr. W of cent - 36.9"  
 " 53 1/2 = gr V # 96 + 1 1/2  
 74 1/4' 5 cent Lane pr. W of cent - 27'  
 102 1/2' gr V # 97 + 1/2  
 117.2' S.E. corner house porch = W of cent 33.2"  
 150.9' S.E. corner house = " " 34.0"  
 152' gr V = 98  
 171' = N.S. corner house porch = W of cent 33.5"  
 185' = S.E. corner house = W of cent 33.5"  
 199' = S.E. corner house = " " 34.4"  
 202' = S.W. stands 17.3' W of cent St.

Leaves Run Sept 9<sup>th</sup> 98

Hub Ave

11.50

GP Lane

97+48

95+28

Mad River St.

alley

Pat. Ave

Leaves Run Sept 9-98

Col.

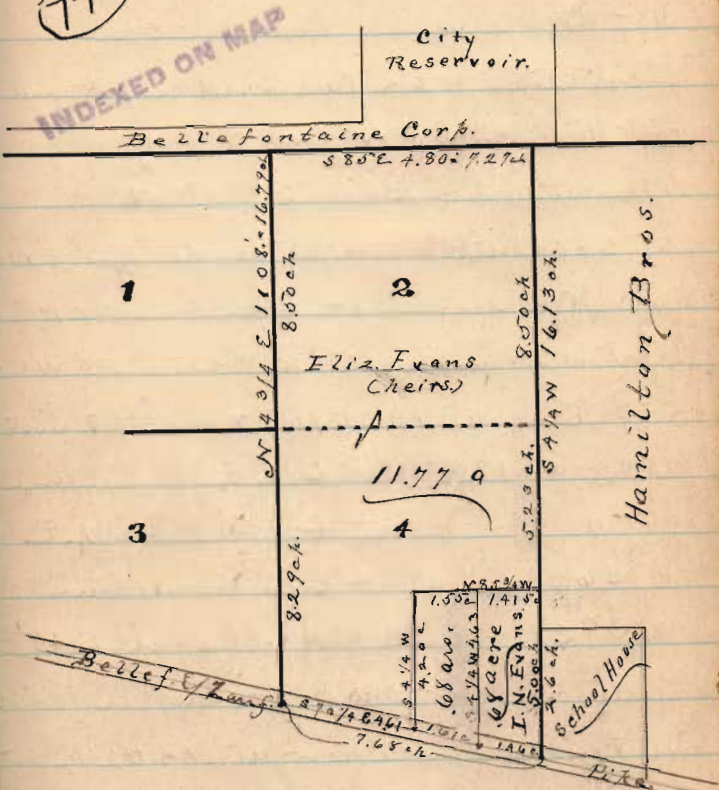
Top Hyd. Pat. of M. R. St	2.57		56.80
Bot & strip S.E. & always home	87	1.70	58.50
Top & always porch floor	.22	.65	59.15
Top stone grade light-97+48	FS .40		58.97
SM 202 from outside	7.18	.48	59.45
gr V # 98	3.57	3.61	63.06
Bot & strip S.E. & always home	1.18	3.39	65.45
Top floor rec " " porch	43	.75	66.20
Top gr V # 97+1/2	11	.32	66.52
Top hyd. Pat. of M. R. St.	9.84	9.73	56.79
Top gr V # 97+1/2	FS: 11	9.73	66.52
Bot & strip S.E. & leaves rec	1.30	5.29	71.79
Top gr V # 96+1/2	3.59	1.79	70.00
" V # 95+27/4	2.37	1.22	71.22
Top. pick 12' or. of electric line x small off # 95+27/4	2.42	.05	71.17
" " " " # 96+1/2	3.51	1.09	70.08
" " " " 97+1/2	6.92	3.71	66.67
" " " " # 98	10.65	3.73	62.94
gr V # 98	10.52	.13	63.07
Stone entrance M R St. and curb 2'	1.88	2.64	71.71

Sept. 29<sup>th</sup> 1898.

Cassidy-Evans Surv.

Mid SE <sup>I<sup>N</sup></sup> Evans. cont B&W pike S. 2  
 SW < frame school house N 33 3/4° E 70.9 <sup>105.2 ch</sup>  
 SE < 2 story frame dwell N 36 3/4° W 92 1/4 <sup>139 3/4 ch</sup>  
 Old Mt Gal 22" or 21 1/2" E 56.1 ft = 80 fks  
 (to cont of town 57') Chillicothe st N 85° W  
 Start SE < Ev. with line Ev. of Hamilton Bros  
 or 4 1/4 E . . at 100 7 1/2' pass cont Chil  
 produced eastward  
 at 1236 N < or 1/4 NW < Ham. Bros in  
 E line of Bellf. Corp land. Res. lot  
 Start NE < Evans. with S line " " Bellf.  
 at 480. = 7.27 ch  
 at 480 1/2 feet NW < Evans NE < to  
 the center. course N 85° W  
 then on S 43 1/4 W with W. line Evans  
 (flag & IA) at 1108 1/4 feet R.R. pike  
 in B&W pike at 5 1/4' of cont of ground  
 there with pike S 70 1/4 E  
 at 304 pass SW < lot. at 410.6 SW < E lot  
 at 507 SE < E lot SE < Evans West.

776



For dit to S.W. I. N. Evans. 68 a lot on top page  
 172 this book. also pages 186 & 207 of Co. Surv.  
 Records Vol. 6.

(cloudy) Oct 22<sup>nd</sup> 1898William Shaffer found ch  
Mr & Paris Bk.Start stone N.E. & Ken land in post road  
mit Hick 12" S 3 W 20.8"

Thence with road S 83 3/4 W

at 260.2 ft planted stone sig head 8" x 10"  
fall N of stone 17" Var to for N 17"Start at stone planted N.W. & Ken, 10' W of &  
S 5 1/2 E at 1400 set v line E/V dist

at about 1800 set E 20' } Reting line

" " 2200 " E 12' S 5 1/2 E

" 3634' pass 34' E of line stone

" 3931' &lt; fence S W &amp; Ken fall 2.49'

Went back to &amp; made for Shaffer then

set v in cut fence row at 1400 1/2 ft

cran fall on set of v 7' 7" cran 2' 5"

start at v S W &amp; Shaffer in fence

S 81 1/4 E at 1528' make &lt; in pike

255.9' E of end gravel = S 9 &lt; Shaffer

257

INDEXED ON MAP

(Rain p.m.)

Start at S E Shaffer with pike  
or 34 1/4 E, at 1736' made < S E < Shaffer  
in line old fence (take 17' east way)

Start S E &lt; Shaffer

N 4 1/2 W with old Ken line

at 471' set N E & Ken stone in  
road place of top.

Oct 24-98

Planted new stone N.E. & Saul McEoy  
& N.W. & L.J. Shaffer. present LawrenceKerr, & Mr Robt. come agreed to by  
all parties as true corner. sig head

stone 20" x 9" x 6". Pick out as follows

White hick 9" S 7 1/2 E = 48.2 feet

White ash 2.2" S 68 3/4 E = 45.9 feet

Measure from Shaffer S W &amp; S S E 526 ft

Planted sig head 18" x 10" x 10" at SW &amp; Shaffer

in fence row. order by S. McEoy

mit Oak or Oak 20" N 77 1/4 E 34'

" Shell Hick 18" N 4 1/2 W 92 1/2'





## Commons Survey

Mar. 21<sup>st</sup> 1902

Start at stone E line Survey 9968

and S E  $\angle$  T E of Commons NE  $\angle$ Tray. With Biggs road N 7 $\frac{1}{4}$  WStart at stone planted S E  $\angle$  Tray

Bros of Common Bros.

N 7 $\frac{1}{4}$  W. with Survey line112 $\frac{1}{2}$  paces N W  $\angle$  John Emeryand S W  $\angle$  Mary S. Wimer

1855.5 to stone corner surveys

9968, 13393, 9969 E 12278

12311

Thence N 7 $\frac{1}{4}$  W 210.7' (1278 p.)

to stake in fence row at water line

Reservoir and line Ewing and

Common Bros in Survey, like

Start at S line Res. in Survey line

as above noted S 7 $\frac{1}{4}$  E 825' (50 p.)

set stone corner to

Start 5' S of stone S E  $\angle$  13393Thence S 82 $\frac{3}{4}$  W.

at 2000 set N, S'

Start at T W W  $\angle$  Tray and lineSurvey 13393. N 8 $\frac{1}{2}$  W. 660' W

and placed Lyon tree about 60 N.

Set stake in E. line Tray Bros. at 78645

= 113 p. N 8 $\frac{1}{2}$  W from stone S W  $\angle$  toTray Bros. being N 8 $\frac{1}{2}$  W 7.25' fromstake set for W W  $\angle$  Tray Bros.1395  
INDEXED ON MAP

Oct 27<sup>e</sup> 1902

Henry McKinnon Sr.

Shick farm.

Ang. 1st Lendlow of Ry. =  $34\frac{3}{4}^{\circ}$ Lendlow Line  $S14\frac{3}{4}E$ Railroad line  $S19\frac{1}{4}W$ 

47.70 or of road - rail to fence railway

Start at T on Lendlow line and

fence on west side Right of way of  
Big Iron Ry.

Thence with Lendlow line

 $S14\frac{3}{4}W$  288.5' to <sup>stone in fence</sup>  $S19\frac{1}{4}W$  Shick of  
corner lands of inMil. R. O. 12"  $S21\frac{1}{2}W$  61 feetAlso Apple 26"  $S13\frac{1}{2}E$  29.3'Thence  $S19\frac{1}{4}W$  with  $S19\frac{1}{4}W$  line Shick  
fence pass down stream 32.5'643.5' = 0 to  $S$  iron pin  $1\frac{1}{2}$ " di in  
center of road. Mil. R. Shick 10" $S55\frac{1}{2}E$  437.2' Also <sup>10"</sup>  $S64\frac{1}{2}E$  32.5'Thence  $S4\frac{1}{4}W$  627' to T in

Close field.

Thence  $S72\frac{1}{4}E$ 

cross spring branch at 140'

612.5' to post in or line of

Right-way Big Iron Ry. of 50'

or of east - main track

with  $S19\frac{1}{4}W$  Right of way 516.5' to T

Pass east of 48 iron pipe cul at 52'

 $S19\frac{1}{4}E$  516.5'

Sam'l & Milt. Patrick surv.  
Oct 29<sup>th</sup> & 30<sup>th</sup> 1902, see pages  
62 to 66 this book for field notes.

2  
1906.  
1904 m.

## Field Notes.

Me Arthur Tup.  
Sam'l Hover farm SURV.

NOV 21<sup>st</sup> 1902.

East line Hover farm. Path. pike N 7 3/4 W

166 1/2 feet = 25.17 ch.

West line, same, N 7 3/4 W 1683 ft = 25.50 ch.

N. line " N 82 3/4 E 3270 ft. = 49.54 ch.

S. " " S 82 1/4 W 3268 1/2 ft. = 49.52 ch.

North line run by transit from a. to d. straight

south " " center stakes proposed pike "

"a." stake corner to Jas. A. Peoples & Geo  
Hover. at 1 foot N. of north end post in line

"b." stake corner Geo & Robt. Hover mit.

" Beech 20" S 80 3/4 W 31.9 feet.

" W. Elm 20" S 65 E, 5.2 feet.

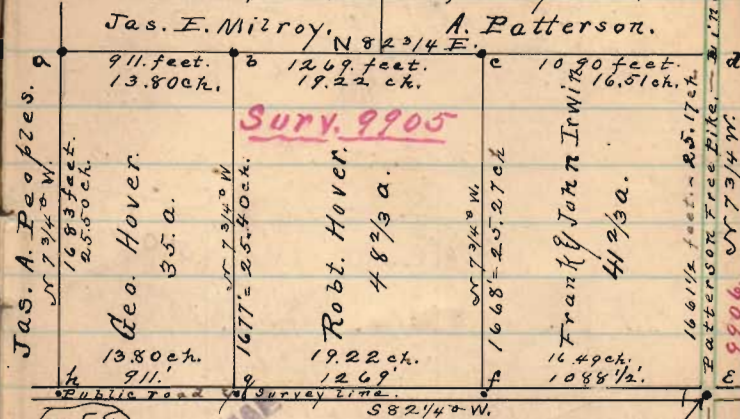
"c" stake corner Robt. Hover & Lavin Bros

" mit. Black Mal. 12" N 82 E 18.6 feet.

"d." post. center Patterson free pike north  
east corner Sam'l Hover farm.

e. stone in X roads south east cor. Surv.  
9905. and S.E. cor. Sam'l Hover farm.

Sub divided, Nov. 21<sup>st</sup> 1902. by S. A. B.



Surv. 9883.

- f. Stake. corner Lavin Bros &  
" Robt. Hover. mit. Beech 24" N 4 W  
" 27.7 feet. of Shel Hick 6" N 49 1/2 W. 37.7 feet.  
"g" stake corner Robt. & Geo. Hover. mit. Elm  
" 15" N 47 1/2 E 36.8 feet. of Shel Hick 8" N 74 W 53.3 feet.  
"h" stake in line in line. S.W. corner  
Sam'l Hover farm. mit. Ash 18" N. 15 W.  
46.2 feet Black Mal. 5" N 39 1/2 E 36.8 feet.  
For Survey notes see page  
67 to 69 of this Book.

INDEXED ON M