

✓ South Survey ✓ 26-4-11 Bluffs
✓ John Wright " ✓ 14-7-8 Bluffs
Brook " "
R. W. Green " "
✓ P. D. Swan " "
Insel " "
✓ Shoemaker " "
✓ H. Harrod " "
✓ Dr. Graff Corp. - Miami Tp. ✓
A. C. McClure
Ohio Portland Cement Co.

264

April 3d / 1889

Smith Survey

Jos Smith }
Vernon Smith } chor

Measured for wal. tree
314 chains in line for
M^cC. of farm in Ludlow
line I set stake in Ludlow
Shower South line
S 86° E 288 1/2

South line of Kauffman
farm by stake set by M^cC.
S 85 1/2° E

stone set by M^cC. for Kauffman
384 1/2' = 125 lbs south
from old elm line (stump)

36.07 1/2
8.68 1/2
27.86

Stake at 27.90

See 26 - Liberty
T & R 14

Line B. with Continues west
line found line from
big Elm stump to stake
at M^cC. to Continues stone set
by M^cC. is 5 lbs west of this
line

S 33 1/2° W 17.12 1/2 (old. cor. S 33 1/2° W
to stake (old) R 29 E 26 lbs

S. K. cor. S 84 1/2° E.
Line C. S 55° E 679
correct for 3' to match north
as by agreement by Smith
we set 3' south of line
Made this < 63 lbs west from
east side of old Cherry road -
for 6 x 25 = 150 + 150 - 87 = 63.

Line D. (random) S 10 1/2° W
16.70 1/2 set stake in south
side of grade on Park Hill town
road (16.70 1/2 + 3ft = 16.75 = 67 rods
subtract 16.70 1/2 - 1 1/2 = 16.59

436

INDEXED ON MAP

Line E

With Pickersilltown road - random

S 62 1/2° E 21.93

This line ran 5 1/2' south of where Stauffman said house was set by M^r Laughlin -

Set stake in west line of Watson tract as fenced (random stake)

Line F. (random)

S 3° W at 14.54 phase 10' 2" east of stake set by fence line at S of Grubb & Watson tract at 3364 stake (random) < to Smith & Bishop in Grubb's line

Witness to stake

N 0, 10' N 54° W 27 lks

Ash 32' with a big F marked on side next to stake N 29 1/2° W 37 1/2"

Subtract 4 1/2 lks from distances on above line, Add 3 lks for south end

Line G

Thence with Bishop's N line -

N 88 1/2° W 24.11 (ran 1' 9" south)

Set stake with bur oak 20"

^SN 87 1/2° W 106 lks.

Line H.

(N 77° W 7 links from Elm stump for stake & to org Bishop land -)

N 2° E 1.66 to stake as here described.

(436)

INDEXED ON MAP

N 87° W 13.64

OR. CUT N 87 1/2° W

Line I. N 88 1/2° W 17.64

crossing fence

to stake (random)

57 1/2' W from Hick 15' (old wit) 24 1/2 lks. (N 85)

Came out 25 links south of proper place for stake as shown by witness trees

Witness to SMC in Ludlow
High 15" N 157° E 22 1/2
N.O. 20" S 66 3/4° E 25
N.O. 20" N 10° E 58 1/2

from this stake to stone
x to Messer + Miller
track N 16 1/2° W 11.00

Chance N 76° W
pacing stone Miller track at 32.30

at 49.32 P. Junction road
" 62.50 set stake by oak
tree in road
at 70.65 came out 11"
west of stake set for
start in morning

45 1/2
April 9th 1889

Line J. ran from stake.
S 61 1/2° W between N.O.
& R.O. stump with south
line of Survey
from Burd. O. stump south side
of R.R. S 61 1/2° E 12 lks.
5.00 N 85° W
at S 76 1/2° set stake 990.6

6

Line K. with Ludlow line
start from Begin of line A
+ 11" to west. S 16 1/2°
9.50 to SMC 5075.
with N.O. 40" N 20 1/2° W 1.07 1/2 lks
(old wit trace to SMC)

(436)

INDEXED ON MAP

Line "L" with R.R.
O.K. cor $S 38 \frac{1}{4} E$
 $S 87 \frac{1}{2} E$ at 18.70
set stake in Pickertown
road and in center of R.R.
came out 17 lks west
of stakes as set.

Line "M" with P. road
at 27.49 stake set by
self for SMC Jubber, Langman
also set stake at 27.92
at 38.71 stake set by W.B.
for \leftarrow to Downing
 $S 62 E$
at 125.7^{1/2} set stake off
malstump 9 lks south of
stump
at 49.56 stake set for \leftarrow
at Frank farm and in
E. line 5884
4 1/2 lks south of stake set by self.

Line N. on R.R. south
of P. road.
at 19.00 set stake
 $S 37 \frac{1}{2} E$
at 27.81 1/2 set stake for
south \leftarrow to 28 acres!

Line O — set south 10'
 $S 87 \frac{1}{2} E$ (O.K. S 88 E)
at 18.14 SMC Bag Downing
lot
came out 16 1/2' south of Bag
Downing SMC. (O.K. S 88 3/4 E)
at 26.06 set stake for \leftarrow to
Bag Downing (35' west of
 \leftarrow to Smith)
Bag Downing line on road
7.36

Line P. with east line
along Embles line from
Bishop's ~~to~~ $N 2 \frac{1}{2} E$
10.60 set stake

Line Q.
from stake at ¹⁰ E of timber
 $N 80 \frac{1}{2} W$
27.97 set stake

Line R. to stake set at
19.00 on N
 $N 10 \frac{1}{2} W$
20.80

516 ft from Elm Solkes for
to Shawver 11a
N 61 W from stake in RR.
and Pickwiltown road 4.60 to
said stake

Change to 49.00 of Sudlow
line
 $N 79 \frac{1}{2} W$ 4.97

(436)
INDEXED ON MAP

Apr. 26, 1889

From SW¹/₄ Costrin to Little
Oak tree 13.24

on Pick-road - measure from
SW²/₄ Kauffman land set
stake at 2.15 N 62 W
at 20.41 set stake at E of
Mill Smiths orchard for his
SW¹/₄ north of road.
ditto: Elm 20" N 81 1/2 W 59 1/2 ft.

Line B. N 6 1/4 E 8.60
set stake at 8.00 & 9.00

84 3/4
288 3/4 E 12.49
to stake SW¹/₄ to Costrin

(436)
INDEXED ON MAP

Smith Survey

Line A from stake SW to
Coastline S $6\frac{1}{2}$ W 4.48
set stake with: No. 23"
S $5\frac{1}{2}$ W 3.20 $\frac{1}{2}$ L

Line B —
N $84\frac{1}{2}$ W 13.70
set stake with Sugar 18"
S $29\frac{3}{4}$ E 1.48 ohl

Line C. S $6\frac{1}{4}$ W
4.19 to stake in road
SW to Mills Orchard.

Dec. 23, 1889

On R.R. set from stake
at 17.00
1.55 N 39 W — set stake
in center of R.R., no witness
line D. S $10\frac{1}{2}$ E
2.350 set stake with: Prod Oak
20" N $3\frac{1}{2}$ E 1.16

Line E S $55\frac{1}{2}$ E
at 12.91 center of R.R.
at 27.52 stake in line

S $3\frac{1}{2}$ W from stake set at 12.98
in east line

436

INDEXED ON MAP

Smith Survey Jan 2, 1890

dit: to Vernon < on Pick
road - Hick 12" S13E 37'6"
White oak 30" S71 $\frac{3}{4}$ W 60'10"

Thence S28W 17.31

to < in R.R. to Hatch Track -
stake gone - measured from
stake 1900 on R.R. bearing OK
S37 $\frac{3}{4}$ E at 8.76 stake at end
of road on between Mill & Vernon
set stake for < at 8.81 $\frac{1}{2}$
corrd for 5 $\frac{1}{2}$ lks - O.K. S27 $\frac{3}{4}$ W

dit: Black oak 21" N48 $\frac{3}{4}$ E 62'4"
also " " 18" N26 $\frac{1}{2}$ E 66'9"

on south line of well R.R. at 1/4 $\frac{1}{2}$

Wells south line 27.24

dit Mills SE< Black oak 8" N75 $\frac{1}{2}$ W
25' Hick 1 $\frac{1}{2}$ " S41W 27'10"

dist from Mills old SE< to new
143

dit: S to Bank from
Big Burr oak 30" N33 $\frac{1}{2}$ W
17'2"

436

INDEXED ON MAP

Sec 14 - Bloomfield
John Wright Survey

} ch cr.

Line A Start from Stone in
private road S & E to NW 1/4
Sec 14.

set north 20'

" " 20 in pipe at x road -
S 89 W

set stake in line at 4000 20 mm

" " " " 5000

set south 20' to line
at 6000

9
Tp - Sec 14 T 7 R 8

see Book C Page 213

433
INDEXED ON MAP

21
Zinn Brooks Survey -

S. L. Horner Mks 1 day -
A. L. Jaffis ch on 1 "
Chas Griffin . . . 1 "

Brooks Survey

see BOOK C Page 213

Ran from center of Harlan Mill road down pike 9.12 1/2 (360)

$$\begin{array}{r} \text{fence is at } \frac{9.12\frac{1}{2}}{8.73} \\ \hline .39\frac{1}{2} \end{array}$$

Ran from center of Harlan Mill road to Pike

N 76° W 9.92 1/2 + 1
center of R.R. old track

Thence with R.R. from Harlan Mill road at 8.33 fence set stake at 870° = 33.80

$$\begin{array}{r} 8.33 \\ \hline .14 \end{array}$$

May 15, 1889

South line of Shefer place by Deed S 76° E

13.64 1/2 to center of pike

nit stake in pike set to Shefer 10 a

N. O. 28° south of ^{big} gate 86' 6" S 50° W

N. O. 28° S 77 1/2° W 80' 0"

Line A on Pike from above S 73 1/2° E

36.85 to intersection of Pike set iron bolt.

Line of Board fence north side of cemetery at $\frac{35.88}{7.91}$ set iron pike 25.97

with Francis north side of cam S 83 1/2° W 7.85 to stone

(434)

INDEXED ON MAP

With Board Fence west side of Cmn

S 81 1/2 E 7.69 to center of Pikes (7 x 4) from spike

from + road to center of pikes at west side of graveyard
S 82 1/4 W 7.79

From west side graveyard to center of Pikes at RR
S 83 W 19.38 1/2
7.79
11.59 1/2

With RR
cut 50' from track
angle every 5 ch

- 0 - 5 - N 9 1/2 W
- 5 - 10 - N 6 1/2 W
- 10 - 15 - N 4 1/4 W
- 15 - 20 - N 1 W
- 20 - 25 - N 2 1/2 E
- 25 - 30 - N 6 1/4 E
- 30 - 35 - N 9 + E
- 35 - 41.75 - N 12 1/2 E

with stake NW on RR
80.25' ⁵ N 66 1/2 W 53' dist.

434

INDEXED ON MAP

Samuel Siffis	rd-
W. Conkman	ch
Frank Ditty	ch

(434)
 INDEXED ON MAP

De Graff Corp.

Set stake for N&E of
Cam as described in
old desc. De Graff Corp
19' west from center of
Marquis & Swingers Pike -
with Red Elm 14"
N 27 1/2 W 15' 1"

Line N 86 1/2 W with fence
N. line Cam - set south 5'
at 772 NW corner -
set north 5' to line
set stake for N&E of sea
at 1252
at 90.69 center of Loganville
& Memphis P.D. -
set stakes at each side of
road grade

with W. Oaks 10" S 86 3/4 E
60 feet

May ^{2.77}_{4.50}
12.02 29 - 1889 17

Line B.
with center of Pike
S 4 W 2.60
to stake
with oak 6" S 65 1/2 W 19 1/2

Line C, with center of
Pike S 26 1/2 E 26.00
to iron pin in of line
26.88

Robert W. Green

L. H. Bell } oh con
V. L. Bell }

Line A. start center E. side
+ N. E. Pike at line east fence
of Samuel Lane lot,
S 85 1/2 E 600 1/2 set stake with
fence.

set stone witness
black wal 2' S 65 1/2 W 14 lbs

4' 103 3/4 W 53 1/2"

Line B. north of Heath +
Embrey N 54 3/4 E 9.29
set stake.

set stone with cherry tree
4' S 24 1/4 E 25 lbs

Survey — June 5, 1889

Line C. A. B. Heath's east line
S 33 3/4 E 9.24

V.M.S. 4689

V.M.S. 4810

Perry Twp.

see Book C Page 214

Line D. on Pike from
Heath's S 8 X as old fence
100 1/2 E

at 21.55 face marks of old fence
row on Survey line —

41.71 1/2 to center of ditch
on Bridge over sugar run

Line E with center of Ditch
N 43 3/4 W 18.17

435

INDEXED ON MAP

Line F. with center of ditch
147+11
10.22

Line G. with center of Ditch
109 1/2 ft 5.09 to stake at
water gap

Line H.
From stake at water gap
to NW of Emerson lot.
556+11
at 46.98 E. of N.W. S. 1/4
Bearing of pipe S 26 1/2 E
at 62.88 stake NW to Emerson
set by Buchanan

Line I. with E line of
Emerson lot S 24 1/2 E
16.92

~~Chained on Emerson
10 - 17 - 89.~~

Measured from center of
+ road NW of M E Church
at 337 stake set for end of
Line J. (distance by deed
337 1/2)

Line J. with road N 54 1/2 E
7.52

435
INDEXED ON MAP

12.06
 684

 0.22

with line on south plans
 lot, line of Embury lot
 at 884 line of Lane
 lot, 1099 .. Embury
 lot 1203

1099
 729

 2028
 1203

 622

E line Embury lot
 9.20

Ran N line 16 acre lot
 N 05 1/2 E 17.10

E line 16 a 800% E
 9.00% + 1% = 9.02

South side 16 a with fence
 17.13

West line with Heath

Compute amt east of line
 drawn with x south with
 east line of 16 acres -

(435)
 INDEXED ON MAP

23
On south line of
from old Sugar Line
Trees south
at 11.77 stake in ditch.
Mit to stake in ditch
Flack's south line
Ash 20" x 3 7/8" 11' 9"
and lime stone each bank
10 feet from stake—

435

INDEXED ON MAP

P. D. Doan Survey
Dec 14, 2. 1. R. E.

Romanus Meke } ch co
P. D. Doan

Measure from SW sec 14 in line
of fence and center of pole -

Line A stake at stone
in fence SW to SW 1/4
1896 at 1000 set
stake in south line of 1/4
set stone at 1494

Line B, from stone SW 1/4
to line of fence and
center of road NW of sec
40.10 S 1 E
set stake 33.33 1/2 + 135 = 33.41 1/2

Nov. 14, 1899

Line "C" south line of Kearney
1000 north line Meke 1894
1898

With Meke 1898 Red oak
24" N 48 3/4 W 125'
Also Big Stone buried level
with surface of ground 1898
180'

With stone SW of Meke
1898
Birch 18" S 41 1/2 W 109' the
Hick 15" S 73 E 120'

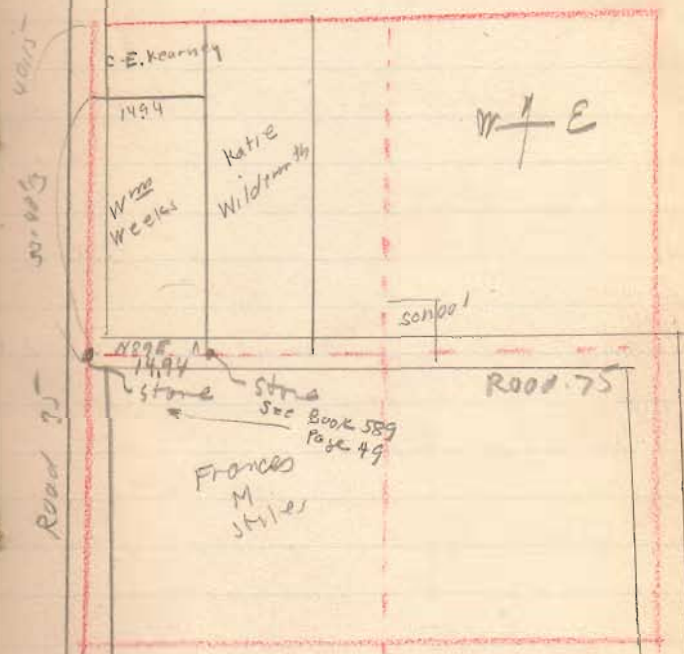
1510

INDEXED ON MAP

(OHR)

Down Survey

26
sec. 14 T. 1 R. 8
Pleasant Twp.



1570

INDEXED ON MAP

This sketch by Wright
1933 To go with
notes Page 25
Names from 1890
Plat Book

Terral Survey

Chas Rosebrook } ch en-
 John Titus }
 John Rosebrook } Mch

Began line by producing line
 of oak blocked out by S.A.B.
 and figon oak S&S to Stephens
 N 81 1/2 E set south 3'
 set stake in road for line
 dist to oak blocked out
 8.56 1/2
 to figon oak 19.56
 stake S&S < line 30.17 1/2 set north
 at 34.70 passed supposed
 corner to Survey ^{10 51 7}/_{10 55 5}
 between 2 berden
 South 30 lbs
 passed stone eye track &
 water brack at 36.62
 south 12 9"

at 42.11 passed Nat stamp
 (law with town)
 set 2' north to line

at 50.32 passed center
 Pusherink

at 55.82 pass north on any line
 line from big white wall -
 claimed by Terral for
 line trac on Mrs Melton
 52 lbs

at 70.00 east side of
 Mrs Hillhouse good dr
 - 36 1/2' north -

at 75.52 1/2 line of Melton
 supposed < 46' 1/2 south of
 this line

439

S & R Mark Collier
 Part 82.12
 south of line 45'

at 23.40 stone on line
 40' 2" south of line

9467 stake said by
 Chas Zafki - to be part
 Mirron Melklow land
 50' 4" south

100.50
 Suffolk Survey line
 50' 10"

Dec 27 - 1889

Ran from S corner of Yeagly
12.50 set stake by corner of
Then run for corner of
Milklow Bar oak stump
at S of fence at 20.15

at 25.15 2 elms < to
1st Barwood track

stake set at 12.50 20.53
south of our line -

On east line 200 ft 1000 ft
11.50 to our line
Should be 1000

At east line 9937 and
east line of Milklow
1545 across

Measured from S of
same found remains of
Pigeon oak measured 902
lbs. and 10.20 came
out S of the south of our
line at N of 9937 -

Ran from end of line as
run the 2nd producing same
to Muddock at 2876

10000

2876

12926

439

INDEXED ON MAP

Measured from stake in
Murdock Mill Race by
Pignon oak stump (to A.D.)
17.29 to our line

4	2000
	1729
	1729
	1.21

Data for \leftarrow at River

Sub south from our line
.37 this makes south
part of Willow right -
as $534.37 = 16$ and
 $20.10 + 16 = 20.31 = 81.24$ rds

And makes Gas Sawwoods
 $20.10 + 16 = 20.31 = 101.24$ rds
 $101.24 - 99.75 = 1.49$ overplus
on Sawwood -

as to overplus Sawwoods
north line $50.62 = 203.28$ rds
by deed 200.50
 $203.28 - 200.50 = 2.78$ -
amount of overplus in
proportion for line 100 rds
long = 1.39

This makes a practically straight
line from Murdock \leftarrow Collins \leftarrow
and White wal tree -

439
INDEXED ON MAP

Dec 28 - 1889

with Garwood so ad
stake at Stone in Big Springs
Pike M^r to Stevenson
at 50.50 set stake for
Stromsons S^r -
at 68.52

at 96.00 Bushenck -

at 105.28 Stone S^r
to Garwood by deed 100.10/2

Measured back to stake & to
Stephenson 54.56 1/2
50.62

105.21 1/2

54.56 1/2
54.51 1/2

5/8 over plus

Make Stephenson 50.67

(439)
INDEXED ON MAP

Set S^r to Stephenson
at 00.57 from his M^r
and at 19.50 from figron
oak -
set work from ^{old} stone
& l^lce (old stone)

Witness to new
Bar oak 20" 2538 166 d^l
buckeye 10" 1125 134
water clin - 4 20/1124

Braving from stone to
oak (4/6/84) 11838

In measuring back to
figron ⁽²⁰⁾ oak 19.09
11818

at 30.20 stake at Lince S^r
" 35.67 passed stone &
Willow -

11th = water brch 6" 1157.6 12 l^l
Brch 18" 275 1/4 W 10 1/2
Lyc. 36" 518 1/2 E 8 1/2

(old marked trees)

Hit to stone S & E to Lense
 Mulberry 8" S 25 1/2 W 32 1/2 W
 Buckeye 20' N 83 E 37
 N 83 3/4 E

Set stone at 50.02 to be
 1/2 chain from center of
 creek

Hit 1 Blk well 2" S 11 1/2 W 9 3/4 W
 Lynn 10' N 22 1/2 W 17 3/4

505 2
 505 2
 1 1/2
 79.56

439

INDEXED ON MAP

Shoemaker Survey

at Dr Graff Jan 9, 1887

South side of Shoemaker building 2' north of south line of lot 30 - = 118' 1"

Set stake in alley at line of 30 middle line.

North line of Shoemaker building is at 148' 8" south line Bulls Office is at - 149' 8"

Wm J. H. Hoaglin
Dr Graff -

North line of Detroit building is at - 181' 6"

Land conveyed by -
Mat Wolfe }
to } 39 acres
Fred Mohr }

North line lot 102 -

	66
	4

	264
	50

	314

66
2

528
16
50

594

South line of Hayes 596 1/2

am	7	20.00
lms	7.40	27.40
stone	7.20	20.20
change	3.66	23.77
lms	6.28	30.05
lot in Detrick	6.20	23.85
back door	8.73	21.32

am		20.00
lms	1.35	21.35
change	2.67	18.68
lms	11.01	30.19

Sidewalk in between Bull office
& Shoemaker
at line of building west line St.
in top return lid

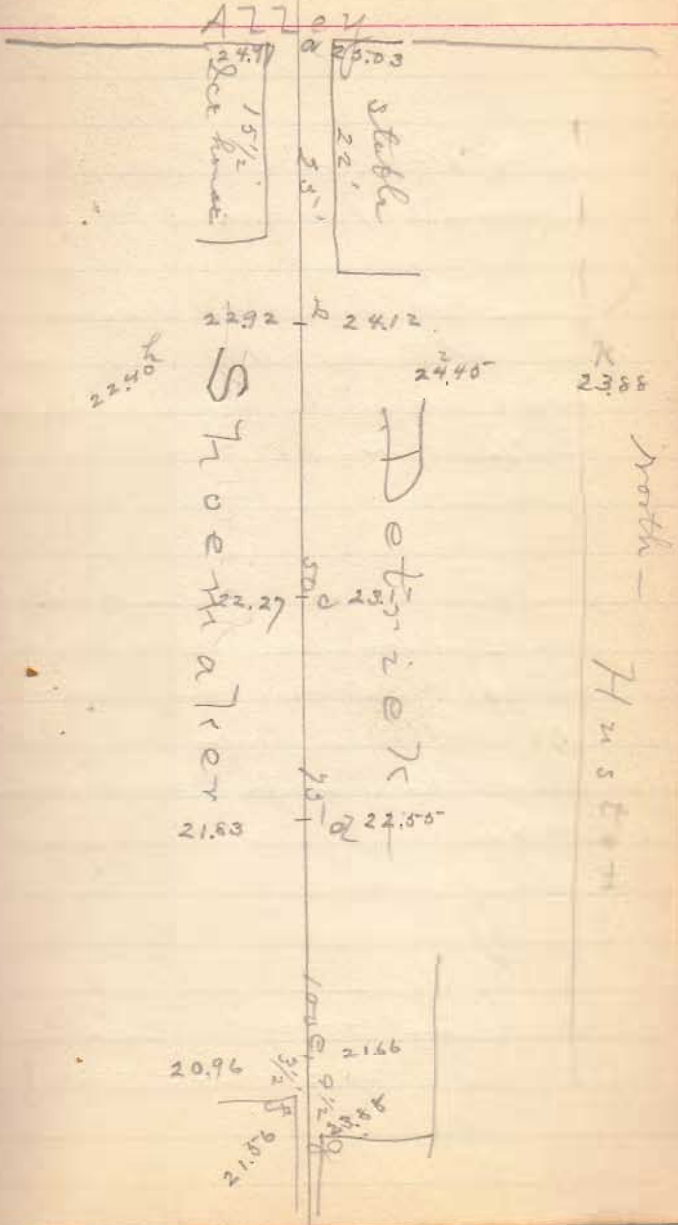
back end Detrick lot
at Bulls Back door

See other page

Line		2079
a	Detrick 5.16	25.03
"	Shorndor 5.22	24.97
x	5.10	25.19
b	D. 6.07	24.12
b	S. 7.27	22.92
c	D. 7.00	23.11
"	S. 7.92	22.27
d	D. 7.64	22.08
"	S. 8.36	21.83
e	D. 8.53	21.66
"	S. 9.23	20.96
f	8.63	21.56
g	8.78	21.41
g	change 7.79	22.40
h	7.37	29.77
i	5.32	24.43
k	5.89	23.88

4' from line
 4' " "
 in alley
 old on slip/line

rest x 25.09



H. Harrod Survey

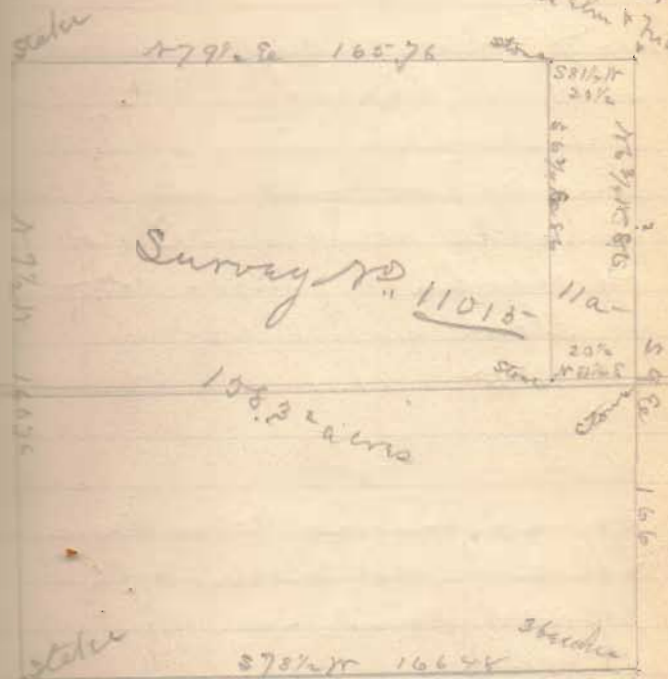
G. L. Miller
Emanuel Hague } ch or

Line A. start from stone in road
in east line of 11015 - deduct
road 20' wide along this line -
S 6 1/2 E 20.05

Line B. on north line S 82 3/4 W
at 29.11 set stake set north 6'
" 41.00 stone came out
18' north of stone 11-0 = 15'
set stake 3 south of where stone
out -

West line 20.00 to stakes
S 7 1/4 E 20.31 + 24 = 20.05

Jan 10, 1890



See Map Book C Page 441

1511
INDEXED ON MAP

Line D, on road clay at stone
line A. 2828.11

set stake by fence at 10.30
line D, on road start from
stake in west line set
by Hardin Co. Surveyor
to stone at "A"
N 88° E 41.21

On south line from Buckeye
tree to old stone SW
Harrod land -
N 81° E

measure 9.50 from corner
S 85° 20' across
at 11.89
9.50
2.39

$$\begin{array}{r} 20.55 \\ \underline{1.15} \\ 20.40 \end{array} \quad \begin{array}{r} 4.30 \\ \underline{1.5} \\ 2.80 \end{array}$$

$$\begin{array}{r} 20.85 \\ \underline{2.60} \\ 20.25 \end{array}$$

$$\begin{array}{r} 20.40 \quad 20.00 \quad 9.80 \quad 2 \\ \underline{183.60} \\ 1640.0 \\ \underline{1632.0} \\ 800 \end{array}$$

$$\begin{array}{r} 1237 \\ \underline{1209} \\ 10.24 \end{array}$$

$$20.25$$

$$20.18$$

$$25.55$$

$$\underline{10}$$

$$20.18$$

$$\underline{4}$$

$$20.14$$

$$25.25$$

$$\underline{20.20}$$

$$\begin{array}{r} 20.00 \quad 12.37 \\ \underline{5000} \\ 4000 \\ \underline{4000} \\ 7000 \\ \underline{6000} \\ 15200 \end{array}$$

1541

INDEXED ON MAP

S82 3/4 W 10.24 from buckeye
 < trees set stake -

Then on forecast line of
 20 a - S87 1/2 W
 set out 2'
 set stake in road at
 20.00 + = 20.09 set stake

(1511)
 INDEXED ON MAP

North line of 20 acres on
 road - 9.80
 set stake in north side of grade

North line of 20 acres on
 road - 12.80
 set stake

Make all < to 25 acres
 from fine

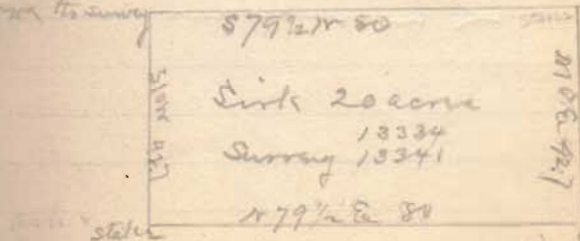


S 87 1/2 E 99

At Birch S 64 3/4 W 19 poles -

(1512)
 INDEXED ON MAP
 Dec. 1900

2 buckeye rods etc
 xxx to survey



Stake

Stake
 Birch
 S 87 1/2 E 99

Harrod Survey

Line A. with line of south
side of 10' lane. 26.11
7.15 to stake in Bondham
line

Line B. with Bondham
line - 117.50 8.20 stake
old Co line 3000 -

Line C. with south line of
Zimmerman & south line
of Sirk 1182.3
at 2.01 1/2 stake at Mills
12 acres -

at 9.23 ash stump
in Zimmerman line -

Jan 11 - 1890

Line D. with east line

Mills 12 acres

112.58

to swamp ash 3" 1182.3

Mills 12 acres -

10.42

Line E -

with south line Sirk land

1181.58 7.17

to 15.50 of Sirk 200 -

Lynne stump & ground 2"

Line F with west line of

Zimmerman & Sirk -

812.71 - facing ash &

to Sirk (20) at 10.46

17.29 to stake at "a"

(1512)

INDEXED ON MAP

45
Right-of-way 15' wide extending
from S.E. of Mills land and
extending to Richland road
length of lane
at 2.90 N.E. Zimmerman
tract
21.71 met line Richland
road

(1572)
INDEXED ON MAP

De Graff Corp

Dug for Iron from NW 2
Lippincott but could
not find it -

set in line of walnut tree
witness to corp & and
stone SW to Knief -

S 86 1/4 E
at 1

N 3 3/4 E 76 lks for inside
of 50 ft. St.

at 5.50 1/2 met line
Koker St.

at 6.49 east side of Koker
St -

at 19.58 stone S & E -
Microphy

N 3 3/4 E set stake at 76 lks

(1513)

INDEXED ON MAP

March 4, 1890

Made east line of Little St -
40' from fence (east)
60 3/8 lks!

(Thatcher ^{40'} Ave) (Pleasant St)
Began at stake in Ellis St.
N 26 3/4 W.

at 4.00 set stake in line

Produced ^{North} line of Pleasant
St ^{50'} with east line Thatcher
Ave -

right ang across Thatcher
Ave S 63 1/4 W

South line of Pleasant St
on line of 307
South line Pleasant St
to Knief 275

45

Dist from center of filer ^{2.48} in Sec line
to east side of Thatcher
Ave on north side Ellis
St.

East line of Koke St
on Kinsinger 526' E
4.54

(1513)

INDEXED ON MAP

A. C. McClure

J. L. Ferguson
Hiram Conklin } ch cr

Measured from \angle to McClure
in west line 9900 -
at 2000 set stake -

at 3575 set stake in line of
J. L. Wright fence

On line between Spencer
and McClure 5638
(random line)

At 578 set stake \angle for
McClure and R.R.

at 1713 C. & V.B.R.R.
" 1900 set stake.
" 30.12

Came out 65 south of \angle
set 42' 2" north at 19 -
" 12' 6" " " 578 set stake

Survey April 29, 1890

Line B. — with J. L. Wright
west line $88\frac{1}{2}$ W
from stone to old fence line -
at 2.00 set stake for \angle
to McClure & Spencer -
set stone at this \angle -

Correct line between Spencer
& McClure

65	
19	
585	
65	
30) 1235	
41 - 16	

5.78	
15	
2890	
3468	
30) 37570	12.5
50	

1713	
578	
1135	
50	
1085	

75	
60	
157	

see map
Hamer
R.

987

INDEXED ON MAP

Ohio Portland Cement

& Mfg Co. May 12, 1890

Line A
Start at stake in Job, J.
Pugh's north line -
(east line of his land)
S 38° 9.87 to stake.

Line B. S 72° W 93 lks to
Maple tree 12"

Line C. S 6 1/2° E 17.26
to stake in line of Pugh &
M^{rs} Adams -

With said line -

Line D. N 83 3/4° E 1.00

Line E on M^{rs} Adams
S 15° W 23.31 1/2

Line F on M^{rs} Adams -
S 70 1/4° W 32.6 to stake -

Line G - on M^{rs} Adams -
S 16 1/2° W 15.43

Line H. S 2° W 2.87 + 2.25
to line of M^{rs} Adams &
Corwin -

Witness Ash 15" N 51° W 37' 10"

Line I. on Corwin (M^{rs})
S 6 1/2° W 26.00 - 2 = 26.48

See Book C
Page 218
note dates
and different

(458)

INDEXED ON MAP

Line J. — on Corwin road —
S 84° E 2.00 stake.

Line K. on Oliver Corwin
S 2 1/2° E 10.59

Line L. S 3° E 6.06
3.24
9.50
stake

Line M. S 81 1/2° E 6.56
to stake —

Line N. S 5 3/4° E 4.36
to line Corwin & Arbergast

Line O. in ditch on south side
of Corwin S 83 1/2° E 7.70 to
stake in old Cham Bushcroft
(at 1660' now chain this is
the dist to use in computing)

Line P. — with ^{new} chain of
Bushcroft S 82 1/2° E 4.39
old chain runs into new at
this point.

Line Q. — with ^{new} chain of
Bushcroft — S 83 1/4° E 3.17

Line R. with ^{new} chain of Bush
S 84 1/2° E 2.48

Line S. — with chain of Bushcroft
S 81 1/4° E 3.28

Line L - with Rush -
North - = 52

Line U - with Rush -
N 2 1/2 W 2.98

Line V - with Rush -
to Coorwin road -
N 1/4 W 573

Line H - from center of
Bridge on Coorwin road
to stake at end of line J.
N 83 3/4 E 8.53

Line X -
Set on center of Bridge
(look out for attraction)
N 2 1/2 E
26.53 line of corner

Line Z - on line of corner
N M Adams at 1st corner
line of old stan -
N 83 3/4 E 12.00 to east line
corner land - (line H)

Line 27 - with line of
M Adams & Pugh from
end of line C. -
S 82 W 1934 to line of
M Adams 70 acres

(439)

INDEXED ON MAP

Line east part of B.P.C. on
Pugh

S 7 E



Line 28 - from stake as
set by our ~~map~~ ~~to~~
B.P.C. land as set by our
1833 4.19 set stake -

52
Line 29 - to line of
Job 7. & Dilas Pugh -
N 6 1/2 E 394
Hit Blue Ash 6" S 14 1/2 W 15 lbs

Line 20 - on line
Sills & Job 7. 514 S
8.12 to begin -

Line 31 - from center of
ditch at bridge of
Buckley Cement Co.
N 10 W 7.20 1/2 ch

Line 32 from trough of
Buckley Cement Co
S 29 W 49.52 1/2 ch

438

INDEXED ON MAP

Portland Cement Co -
1893 - April 4 -

Line A -

start at stake in line McAdams

& Pugh -

with black sapling 2" S 88 1/2° W 5 links

S 1 1/2° E 14.00 to stake in line

Pranch McAdams - set stake

with Hick elm 4" S 82 1/2° W 31 links

Line B - with Pranch's line

S 84 3/4° W set to right 11'

to stake on north bank of small
ditch and on east bank of

Bushcreek 27.54

with Crooked Ash 12" S 5 3/4° E 83 links

Line "C" N 85 3/4° W 23.73

to SW 1/2 of McAdams

52
See McAdams } ch co -
Lucius Bennett

Line D. from SW 1/4 McAdams

N 2° E 69 links to stake

with Bur oak 30" N 77 1/2° W 6 links -

Line "E" to NW 1/4 Sutherland
old stake N 25 1/4° E 1.02 1/2

Line "F" on McAdams west line

N 29 1/2° E 47.32 set stake

east of pool

Line G. with track of B.P.C.

S 10 3/4° E 6.25 to center of

Bushcreek at bridge

438

INDEXED ON

Line "H" 55 1/2 & 25.07
with center of Bushonk -
to line of McAdams & Pugh

Line "J" 182 3/4 & 23.36 to begin

April 26 - 1893 -

Ran from center of Bridge at
Bushonk, on Corwin Road -
184 & ^{11.33}~~7.33~~ set stake in
road with clin 30" 516 3/4 &
48' 9"

Line "B" on Oliver Corwin
57 & at 8.15 set stake -
15.40 set stake with
swamp ash 14" 125 & 4' 9"

Line C. 545 & 11.68
to center of ditch line of
Corwin & Arbogast - set stake 4'
north of center with clin 15"
140 3/4 & 21' 3"

Line D. measured with
ditch to end of old line at -

518
16.65
21.83

J. W. Corwin

191 & 26.13 to line Road
McAdams with bearing
Snag 18" 141 & 11.12
and 237 east of old point
at this line

2.37
12.40
14.77

A 28th E to NMEA
31.24 to stake set at
end of line "A" April 4.93

INDICATED ON MAP
438