

TABLE for reducing PERCHES to FEET.

Per	Foot.	Per	Foot.	Per	Foot.	Per	Foot.	Per	Foot.
1	105.5	21	3,465.5	41	6,765.5	61	10,065.5	81	13,365.5
2	331.0	22	3,693.0	42	6,930.0	62	10,230.0	82	13,530.0
3	495.5	23	3,792.5	43	7,095.5	63	10,395.5	83	13,695.5
4	660.0	24	3,993.0	44	7,260.0	64	10,560.0	84	13,860.0
5	824.5	25	4,125.5	45	7,425.5	65	10,725.5	85	14,025.5
6	990.0	26	4,290.0	46	7,590.0	66	10,890.0	86	14,190.0
7	1,155.5	27	4,455.5	47	7,755.5	67	11,055.5	87	14,355.5
8	1,320.0	28	4,620.0	48	7,920.0	68	11,220.0	88	14,520.0
9	1,485.5	29	4,785.5	49	8,085.5	69	11,385.5	89	14,685.5
10	1,650.0	30	4,950.0	50	8,250.0	70	11,550.0	90	14,850.0
11	1,815.5	31	5,115.5	51	8,415.5	71	11,715.5	91	15,015.5
12	1,980.0	32	5,280.0	52	8,580.0	72	11,880.0	92	15,180.0
13	2,145.5	33	5,445.5	53	8,745.5	73	12,045.5	93	15,345.5
14	2,310.0	34	5,610.0	54	8,910.0	74	12,210.0	94	15,510.0
15	2,475.5	35	5,775.5	55	9,075.5	75	12,375.5	95	15,675.5
16	2,640.0	36	5,940.0	56	9,240.0	76	12,540.0	96	15,840.0
17	2,805.5	37	6,105.5	57	9,405.5	77	12,705.5	97	16,005.5
18	2,970.0	38	6,270.0	58	9,570.0	78	12,870.0	98	16,170.0
19	3,135.5	39	6,435.5	59	9,735.5	79	13,035.5	99	16,335.5
20	3,300.0	40	6,600.0	60	9,900.0	80	13,200.0	100	16,500.0

Entered according to Act of Congress, in the year 1866, by James W. Quinn & Co.  
in the District Court of the United States, for the Eastern  
District of Pennsylvania.

TABLE of Decimal parts of a FOOT for each Inch and Sixteenth of an Inch.

IN.	0	1	2	3	4	5	6	7	8	9	10	11
0	009	083	167	250	333	417	500	583	667	750	833	917
1	005	089	172	255	339	422	505	589	672	755	839	922
2	010	094	177	260	344	427	510	594	677	760	844	927
3	016	099	182	266	349	432	516	599	682	766	849	932
4	021	104	187	271	354	437	521	604	687	771	854	937
5	026	109	193	276	359	443	526	609	693	776	859	943
6	031	115	198	281	365	448	531	615	698	781	865	948
7	036	120	203	286	370	453	536	620	703	786	870	953
8	042	125	208	292	375	458	542	625	708	792	875	958
9	047	130	214	297	380	464	547	630	714	797	880	964
10	052	135	219	302	385	469	552	635	719	802	885	969
11	057	141	224	307	391	474	557	641	724	807	891	974
12	062	146	229	312	396	479	562	646	729	812	896	979
13	068	151	234	318	401	484	568	651	734	818	901	984
14	073	156	240	323	406	490	573	656	740	823	906	990
15	078	164	245	328	411	495	578	661	745	828	911	995

Entered according to Act of Congress, in the year 1866, by James W. Quinn & Co.  
in the Clerk's Office of the District Court of the United States, for the Eastern  
District of Pennsylvania.

Smith-Lowry Runway  
Gross  
Brighton  
Sp. road at Northwood Cem.  
Hammond Runway  
Callahan-Doan

# Smith & Lowrey Survey

Broke handle off of chain ran with chain 99.00 ft  
 Line A. Start at stifer  
 SW sec cor set by Bushong  
 thence with road on south  
 line of sec. set stakes at  
 200 ft. 1894 1/2 E

at 81.03 found remains of old  
 stake from Elm stump & oak  
 stump SW sec 33 see  
 field notes for bearings  
 set Red oak stake 36" long  
 in grade of road -

our line ran 6.6 south of  
 corner

witness to sec 4 -

bur oak 6" 56 1/2 ft 60 lbs

double maple 10" 189 1/2 71

set stake < to Smith & Arthur

at 20.25 3/4 in corrected line

Wit: Elm 12" 52 1/2 ft 86 lbs

Ash 6" 185 1/2 ft 77 lbs

March 7, 1893

Line B.

Random 1 1/2 ft set east 5'

for east line

but 17 ft by oak tree

set west 1/2'

set stakes (30.45) 30.16 ch

set stake in road (47.98)

47.51 ch

Line C. ran from stone

line of SW 1/4 sec 33

189 1/2 E at (20.33) 20.13

stake set in end of line B -

(40.85) = 20.46 at corner stone

N.E. corner to SW 1/4 sec 33 -

20.13

- 20.22 1/2

20.13

stone

set stake for corner Smith & Lowrey at  
 20.22 1/2

$$\begin{array}{r} 9.5 \\ 66 \\ \hline 570 \\ 57 \\ \hline 6.27 \end{array}$$

$$\begin{array}{r} 7.00 \\ 6.27 \\ \hline .73 \end{array}$$

.73 run too far east

$$\begin{array}{r} 30.45 \\ 47.51 \\ \hline \end{array} \times .73$$

$$\begin{array}{r} 30.45 \\ 73 \\ \hline 9135 \\ 21315 \\ \hline \end{array}$$

$$\begin{array}{r} 47.51 \overline{) 22.2285647} \\ \underline{19.004} \\ 3.2245 \end{array}$$

set west at stake on line 13 -  
at 30.45' - .47 ft = 5"  
run line by that 7' to west  
and set back in line

47.51

33.67 1/2

23

23.44

Set stake for S112 to Lowry  
in West line of Taylor road  
at 2408 chains from the site  
to track.

Gross Survey -

Line "A" start at point for  
S & K sec. 9 - in field set  
by fence - set stake 10' south  
and 10' north

Zachary X road - 13.68 ✓  
Mississippi Bridge center  
19.21

made notch on bridge floor at 20.00

set stake each side of road at 40.00

" " " " " " " " 60.00

at 80.97 came out at stone

S & K to SAC 9

$$80.97 - 2\frac{1}{2} = 80.94\frac{1}{2}$$

March 31, 1893

Line "B" on west line sec. 9 -  
set east 20' at 15.00

at 40.00 set stake in line 20' west -  
continued by bearing

set stake at 60.00 set west 20' to line  
set west 10'

set stake in line at 80.00

face old fence line at 80.34

~~17.74  
34  
52.08~~

set stake in line at 80.34 line of  
an old road could find no  
marker for true sec.

Random line to on north line

Sec. 1 & 8 1/2 &

set south 3'

" " 3'

" " 4'

" " 3'

at 20.00 set stake in line

as run 15' south

set north 10'

set south 10'

" " 6

stake 39.98

corner stone face

8' 4" north of stone

Total Northing of line to have

27' 4"

N 88° E

May 11 - 1893

char. *Machiniffe* 47 to 50'

set south 12' at creek

set stake at 51.00

set south 10' at east side of  
pike -

center pike at 58.41

set stake as running at 61 -

ran 37 1/2' north of oak stump (line 11a)

at 77.42

set stake at 80.63

total Northing 54' in each set stake

in line at this dist -

$37\frac{1}{2} + 3 = 40\frac{1}{2}$

Total Northing entire line 81' 4"

Line D" east sec. line -

ran from random stake N 86 sec -

South -

set stake in line at 20.00

set each 1 ft to axis tree

came out 3' west of stake

set by myself from Lyon

tree 742 ft 30 lbs blocked

this tree out and found old

engraves - (total wading 4')

at 40.09

set east 16' N 87 1/4 E 30 lbs

Plumberry 8' N 70 1/2 E 30 lbs

set east from this stake 16' east

and from begin of line "A"

running south this makes

line between Rogers & Wright 0.11

at 60.29's center pike

Bill Duckworth came after

Dinner and dug out < stone

2 1/2 lbs west end point for starting

On line "A"

589/211

at 20.23 1/2 mid line of quarter

" 40.47 " " " " "

set stakes on each side of pipe at  
this point 15 links from center

Line "E"

on Mid line sec

North - start in center of pipe  
on S. line sec.

at 40.16 set stake - Band  
for mid of Sec (corner 10th north  
and 19 1/2th west) Brass sec

at 60.24 set stake

set east 24'

came out at 80.02 this is  
corner by North on north  
line -

80.02 - 20.26 - 20.39

Came out 63' east total easting  
39' east (O.K. Sec)

set west at 60.39 - 29 1/2' of Sec

" " " 40.26 - 19 1/2'

(at Brass stake set north 15 links  
and west 29 1/2')

Tit: Grove SW<sup>2</sup> Maple 4"  
N 13 1/2° E 24 1/2' lke  
Elev 8" N 17 1/4° 33 1/2' lke

Tit: Grove NW<sup>2</sup>  
Elev 10" N 36 1/4° 59 1/2' lke  
Red Oak 8" N 19 1/2° W 78' lke

Random line N. line of Grove -

↳ Billy Wright

N 21 1/2° E

set north 6' just east of fence.

set stake at 20.26 - 8' north

came out 7 1/2' north of  
stake set for middle of east  
line of NE 1/4 at 20.04 1/2 from  
NW<sup>2</sup> sec. Northing 1 1/2'

on same random line set  
pole 8' north of stake in east  
line of sec -  
and set stake 8' north of  
west end of this line worked  
into line at middle -  
N 89 1/2° E center measured  
at 20.26

Random line between Billy Wright  
& Lewis Brown.

S 1 E 20.09 set stake this

24 lke to far east. & corner on edge  
of park on Mucknuff's fence

Measured to it & cor. of 25 1/2'  
of sec. 20.26

Tit: Red Oak 24' S 86 1/2° W 72' lke

... Burn Oak 24' N 72 1/2° W 83' lke

Craigton Survey June 8, 93.

Milligan Craigton } chbr.  
W. Craigton }  
J. L. Craigton W. H.

Line A. Start from old corner  
stone at SWK to Craigton  
in Huntsworth place -  
set east 9 ft.

A 8 1/4 W

Came out 6' 4" east total  
easting 2' 8"

Came to stake set by H. C. Moore  
at 38.07-

Line "B" on North line -

A 8 2 3/4 E

O.K. Car A 8 1 3/4 E

Set south 9'

at 24.85

Came out 27' south from  
said by Craigton to be where  
Walnut tree stood -

total southing 18'

Marked place on stone with  
an ax -

Line C.

S 39 1/2 E 11.06

Came out 4' west of Legum  
Tree (double) O.K. Car S 39 1/4 E

Line D.

A 66 1/2 E

0.35 oh came out in  
bed of creek could not set  
stake on acct of stone -



Line E -

536 1/2 E from end of Line D -  
4.20 to center of pike -

June 15. 1893 -

Measured from line of Main  
St. in Northwood for  
South line of Northwood  
- center of Walnut St.  
Thence measured from  
this point to line to run  
by drainage end of line  
"E" 874

Line F. N 41 1/2 E

3.73 to SW  $\angle$  to Brooke -

Line G. N 85 E from

Brooke SW  $\angle$  14.60 1/2 to  
center Bellefontaine pike -  
Set 5" drain tile in center of pike  
SW  $\angle$  to Brooke

Line H -  
with center of Bellefontaine  
Pike 591.5  
13.47 set stake and  
5" tile

Line "I" set south 9' from  
line 582.11 32.45  
came out 118" south of line  
as marked for new road.

Line J. Begin at stone line A -  
run with pipe N 46° E 1800

Line K. 144.0  
at (12.0) 3.07 1/2 ch set stone in  
road to H.A. Coughlin

set another stone at  
4.97 for south line J. L.  
Coughlin -

at 23.13 came out  
at end of line S.

Line 5.

Ran from  $\angle$  to H.A. Brighton  
at 8 $\frac{1}{4}$  W for Div line -  
Set stake at 9 $\frac{30}{100}$

set stake at 2537

" " in line at 2544

Came out 7.57 from H.A.  $\angle$   
at Brook

Township Road -

at Northwood Cemetery  
in ME Arthur Township -  
Thomas Cook

D. S. Brooks - } Viewers  
S. S. Rogers }

Milligan Crighton } Char.  
William Crighton }

Commence in center of Northwood  
& Huntsville Pike and 25'  
south of J. S. Crighton's land  
thence N 82 1/2° E parallel  
to said Crighton's line  
8.15 1/2 chains to the west line  
of the Mt Genera Cemetery -  
and end of this road

Send report to D. S. Brooks  
Huntsville -

# Hammond Survey

Feb 21 - 1894

Start at corner to Hammond  
160 acres -  
bearing of road N. of H. -  
East

Line A"  $S\frac{3}{4}E$   
Set east 8'

" " 5'  
Set stakes in this line at 40.00

at 80.64 corner post to steam  
Mustangs field S & W to farm -  
At 80.95 center of dirt road -  
" 81.00 opp place Jacob Longbrake  
said corner stone should be - [Mallock  
did not find stone on account of breaking  
came out 30' east -

80  
13  
17

Line B. Start from stone S & W  
to Lockhart - N 3/4 W  
Set west 2'  
Set stakes at 80 & 81 -  
also stake in line as run near  
at corner Lockhart N E -

Center gravel in H & S - P. Co  
80.68  
Set stake south side gravel  
at 80.55 -  
Set stake north side of road  
at 80.80

Oct 11 - 1894

At S.W. 2 to Hammond 40.50 corners in  
ditch about 5' south of center of  
old rail fence

Set north on this line 15'

At S.W. 2 to Hammond old  
stone at 40.22 -

set at 40.34 and set north  
15' and ran through on that  
line measured to fence at  
each "out" -

			South
0	17		2
10	13' 5" + 5" =	14' 1" - 11"	
20	8' 9" + 10" =	8' 7" - 6' 5"	
30	12' 7" + 15" =	13' 10" - 1' 2"	
40	5' 7" + 20" =	7' 3" - 7' 9"	

~~50~~  
~~60~~  
~~75~~

At Kansas fence 40.22

Found Stone S.W. 2 Mustain  
31 links south from corner fence  
post - correct length of west  
line  $8064 + 31 = 8095$   
 $\frac{1}{2}$  dist  $40.47\frac{1}{2}$

The  $\frac{1}{2}$  dist on west line  
comes south of the end of rails  
of remaining corner of old fence  
and in the bottom of the  
ditch Lockhart has cut along  
his north line & Hammonds  
south line -

on line between Hammond  
and Lockhart 80 rails at standard  
61 rods wire & 19 rods rail -

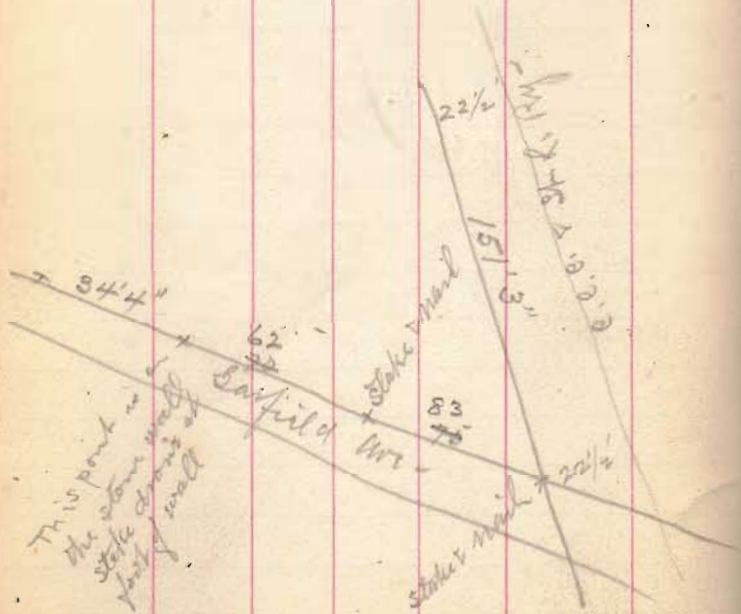
Found Stone in N. x S. Pike-  
at Hammonds N.E. in center of  
pile at 80.68-

My old line came out  
4" west of stone -

This Stone is in line  
with Hammonds east fence  
and 16" below top of gravel -  
set 2" tile on top of stone -

J.R. Gardner's Add-

Garfield Ave front of E lot  
75'  
Middle lot 70'



9' 8 1/2"

March 3 & 5 - 1894

22 6  
9 - 8 1/2  
-----  
12 9 1/2

Back end of lots -  
West lot 59 - middle  
lot 62 -  
east lot 14' 3"

line between east lot and  
mid lot 120' 7"

line between mid lot &  
West lot 121' 2 1/2"



Iron Survey

Line "A" start at stake set for  
Survey  $\angle$  at X road  
stake at west side of Lima Pike  
as shown by Hallard Elder  
S 82  $\frac{1}{2}$  W

set stake at 25.00 for  $\angle$  to field  
on south.

Came out 14' 5" north of stone  
in road - at  $\frac{46.72}{5.71}$  S.K. Cor - S 82  $\frac{1}{2}$  W

Corner at "A" found stone 2  $\frac{1}{2}$  lbs  
north and one link east of stake  
as set.

Line "B" with west line set  
16' west from  $\angle$  Stone  
N 7  $\frac{1}{2}$  W 24.58 set stakes.  
set 2 - 3 inch tile

March 13 - 1894 -

Line "C" on north line of farm  
ran by line stakes to  
set north 14'

set stake for N 7  $\frac{1}{2}$  W to Chick  
N 82  $\frac{1}{2}$  E

~~set north 6'~~

at 17.81 elm tree marked  
for line.

Line "D" on same line -  
as "C" N 82  $\frac{1}{2}$  E

set stake at 46.00

at 46.64 set stake for  $\angle$   
in east side of fence grade

28.19
.64
<hr style="width: 50%; margin: 0;"/> 28.83

Line "E" on East line - line  
runs on east side of fence  
N 7 $\frac{1}{2}$ ° W from stone S & E  
Survey at 24.73 stake at  
end of line "D"

Line "F" on 37 acre tract  
start from stone Survey  
at Brownell road -  
S 7 $\frac{1}{4}$ ° E in line with stone  
at Fullertons <  
11.10 set stake

(bearing of fence line S 6 $\frac{1}{4}$ ° E)

Line "G" -  
start at stake on east side  
of fence - east fence fence at  
18 $\frac{1}{2}$  lbs center of fence  
at 18 feet from fence  
set north & pt -  
S 82 $\frac{1}{2}$ ° W  
at 25.15 stone set by  
H. C. Moore -

25.15  
19  

---

24.96

Line H. produced Moors  
line for west line of 37 a -  
At 6 1/2 W 11.04 to stake set  
in line - set drain tile  
for corner  
Set south 7' 8" from stake  
set in line "A" for 25' ch -

North side of 37 acres  
25.03

Callahan - Doan Survey May 11 - 1894 -

Chas. Griffin }  
Robert Early } ch. or.  
Joseph Early } Mr.

Line a begin at stake set by  
Mr. Moore in channel of Rutherford  
East of New Bridge D. & O. C. R. R.

580 1/2 ft  
set south 16' at 18.02 1/2

at 39.97 ran 26' 10" south  
of square limestone with + on  
top of SWR to Doans track on  
north

at 52.08 came out 26' 4" south  
of stone set by H. C. Moore for  
SWR to Doans  
centering 10' 4"

Line B. 57 1/4 E  
from stone set for SWR by Moore  
to East side of thick tree. (big  
old line tree)

at 18.96 found stone at "C"  
on Moore's plot -  
found stone in line by bearing

at 31.80 big thick tree set  
east 8'  
came out 6' 8" east -

at 37.84 1/2 stake set for SWR by  
H. C. Moore

Line "C" on south side 200 acres

set 16' south of SW<sup>1</sup>/<sub>4</sub> stake -  
N 81<sup>3</sup>/<sub>4</sub>° E 52.21 to 16'  
south of stake set by Moore  
for S & C

Line "D" set west 66' from  
stake S & C and set west  
66' from stone set for cent east  
line N 19.28° -

at 19.83 fence claimed by Callahan  
set stake 66' west of east line

on this line took bearing about  
N 8<sup>1</sup>/<sub>2</sub>° W (corrected N 7<sup>1</sup>/<sub>2</sub>° W)  
set east 40' and produced  
line to N 8<sup>1</sup>/<sub>2</sub>° W

at 38.61 came out 26' west  
of starting stake course O.K.

Line E  
with fence claimed as line  
by Callahan 19.83 from  
S E R

set north 8'

S 80 $\frac{1}{2}$ ° W 28.99 set stake  
came out 8' north

O.K. CSE.

Line F,

with fence S 2 $\frac{3}{4}$ ° W

2.56 to stake 23 $\frac{1}{2}$ ' north  
from flank fence on north  
side of road - fence runs  
from this point west - on  
south side -

and fences on both sides  
of road east from this point  
up to east side of house  
same width -

Line G, run from thin  
stake east to locate buildings

S 89 $\frac{1}{2}$ ° E

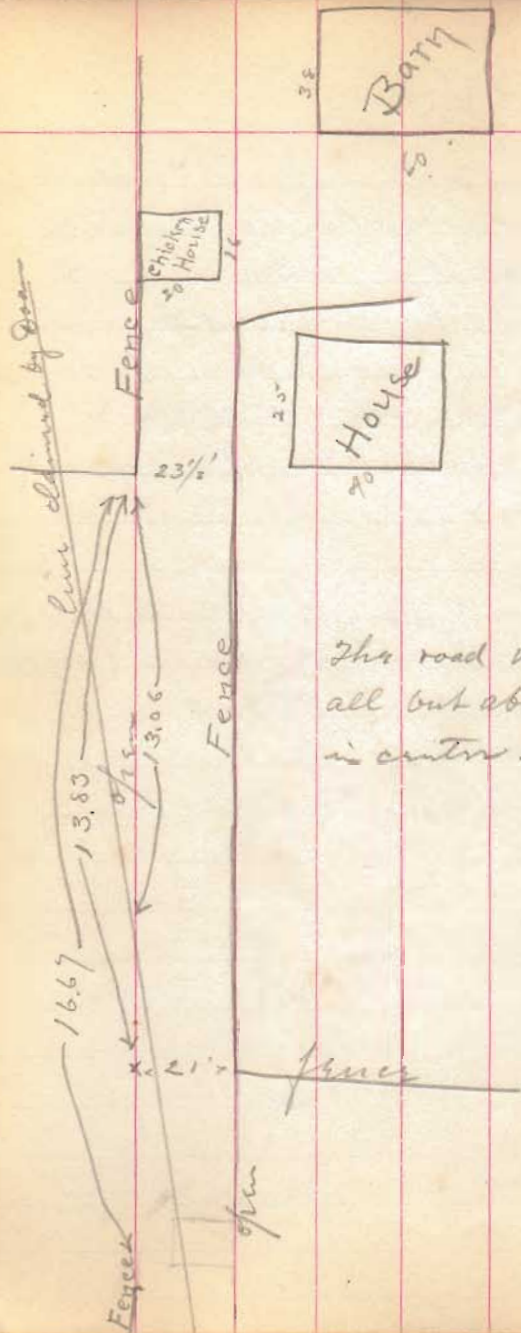
at 2.95 off house - dist 10° south

" 4.72 " chicken house 16' x 20'

distant .27 the south

at 5.95 off barn dist 1.48 south  
barn 38' x 60'

The long way of barn & House &  
Chicken house via north & south  
House about 25 x 40



The road was plowed  
all out about 4'  
in center -

Line 71 - from end of line F.  
N 89 1/2 W  
at 13.83 end of fence on south  
of road 21 ft. dist from this  
north link  
at 13.06 cross line claimed by  
Doan -  
at 16.67 fence on north side  
of road -

Bearing of fence from this  
point to end - N 89 1/4 W  
at 27.20 1/2 end of fence at  
turn of lane to north  
produced west to west  
line of farm 27.60 1/2

at N 7 1/4 W 2.48 from  
center of west line as  
set by Moors -

Line J -

with fence on east side of  
road and west side of  
Doan's field - from point

at  $27.2\frac{1}{2}$

at  $7\frac{1}{4}$  W at  $1654\frac{1}{2}$  north  
line of farm at  $43\frac{1}{2}$  lbs -  
east from NW2 stone  
set by Moore -