

TABLE for reducing PERCHES to FEET.

Per Foot.	Per Foot.	Per Foot.	Per Foot.	Per Foot.	Per Foot.				
1	16.5	21	3,46.5	41	6,70.5	61	10,06.5	81	13,36.5
2	33.0	22	3,63.0	42	6,93.0	62	10,23.0	82	13,53.0
3	49.5	23	3,79.5	43	7,09.5	63	10,39.5	83	13,69.5
4	66.0	24	3,96.0	44	7,26.0	64	10,56.0	84	13,86.0
5	82.5	25	4,12.5	45	7,42.5	65	10,72.5	85	14,02.5
6	99.0	26	4,29.0	46	7,59.0	66	10,89.0	86	14,19.0
7	115.5	27	4,45.5	47	7,75.5	67	11,05.5	87	14,35.5
8	132.0	28	4,62.0	48	7,92.0	68	11,22.0	88	14,52.0
9	148.5	29	4,78.5	49	8,08.5	69	11,38.5	89	14,68.5
10	165.0	30	4,95.0	50	8,25.0	70	11,55.0	90	14,85.0
11	181.5	31	5,11.5	51	8,41.5	71	11,71.5	91	15,01.5
12	198.0	32	5,28.0	52	8,58.0	72	11,88.0	92	15,18.0
13	214.5	33	5,44.5	53	8,74.5	73	12,04.5	93	15,34.5
14	231.0	34	5,61.0	54	8,91.0	74	12,21.0	94	15,51.0
15	247.5	35	5,77.5	55	9,07.5	75	12,37.5	95	15,67.5
16	264.0	36	5,94.0	56	9,24.0	76	12,54.0	96	15,84.0
17	280.5	37	6,10.5	57	9,40.5	77	12,70.5	97	16,00.5
18	297.0	38	6,27.0	58	9,57.0	78	12,87.0	98	16,17.0
19	313.5	39	6,43.5	59	9,73.5	79	13,03.5	99	16,33.5
20	330.0	40	6,60.0	60	9,90.0	80	13,20.0	100	16,50.0

Entered according to Act of Congress, in the year 1866, by James W. Queen & Co., in the Clerk's Office of the District Court of the United States, for the Eastern District of Pennsylvania.

TABLE of Decimal parts of a FOOT for each Inch and Sixteenth of an Inch.

IN.	0	1	2	3	4	5	6	7	8	9	10	11
0	000	083	167	250	333	417	500	583	667	750	833	917
1	005	089	172	255	339	422	505	589	672	755	839	922
2	010	094	177	260	344	427	510	594	677	760	844	927
3	016	099	182	266	349	432	516	599	682	766	849	932
4	021	104	187	271	354	437	521	604	687	771	854	937
5	026	109	193	276	359	443	526	609	693	776	859	943
6	031	115	198	281	365	448	531	615	698	781	865	948
7	036	120	203	286	370	453	536	620	703	786	870	953
8	042	125	208	292	375	458	542	625	708	792	875	958
9	047	130	214	297	380	464	547	630	714	797	880	964
10	052	135	219	302	385	469	552	635	719	802	885	969
11	057	141	224	307	391	474	557	641	724	807	891	974
12	062	146	229	312	396	479	562	646	729	812	896	979
13	068	151	234	318	401	484	568	651	734	818	901	984
14	073	156	240	323	406	490	573	656	740	823	906	990
15	078	161	245	328	411	495	578	661	745	828	911	995

Entered according to Act of Congress, in the year 1866, by James W. Queen & Co., in the Clerk's Office of the District Court of the United States, for the Eastern District of Pennsylvania.

273

James C. Wondrus
Bellfontaine O.

TABLE for reducing PERCHES to FEET.

Per	Feet.	Per	Feet.	Per	Feet.	Per	Feet.
1	10.5	21	3.465	41	6.765	61	10.065
2	21.0	22	3.630	42	6.930	62	10.230
3	31.5	23	3.795	43	7.195	63	10.400
4	42.0	24	3.960	44	7.460	64	10.570
5	52.5	25	4.125	45	7.725	65	10.740
6	63.0	26	4.290	46	7.990	66	10.910
7	73.5	27	4.455	47	8.255	67	11.080
8	84.0	28	4.620	48	8.520	68	11.250
9	94.5	29	4.785	49	8.785	69	11.420
10	105.0	30	4.950	50	9.050	70	11.590
11	115.5	31	5.115	51	9.315	71	11.760
12	126.0	32	5.280	52	9.580	72	11.930
13	136.5	33	5.445	53	9.845	73	12.100
14	147.0	34	5.610	54	10.110	74	12.270
15	157.5	35	5.775	55	10.375	75	12.440
16	168.0	36	5.940	56	10.640	76	12.610
17	178.5	37	6.105	57	10.905	77	12.780
18	189.0	38	6.270	58	11.170	78	12.950
19	199.5	39	6.435	59	11.435	79	13.120
20	210.0	40	6.600	60	11.700	80	13.290
21	220.5	41	6.765	61	11.965	81	13.460
22	231.0	42	6.930	62	12.230	82	13.630
23	241.5	43	7.095	63	12.495	83	13.800
24	252.0	44	7.260	64	12.760	84	13.970
25	262.5	45	7.425	65	13.025	85	14.140
26	273.0	46	7.590	66	13.290	86	14.310
27	283.5	47	7.755	67	13.555	87	14.480
28	294.0	48	7.920	68	13.820	88	14.650
29	304.5	49	8.085	69	14.085	89	14.820
30	315.0	50	8.250	70	14.350	90	14.990
31	325.5	51	8.415	71	14.615	91	15.160
32	336.0	52	8.580	72	14.880	92	15.330
33	346.5	53	8.745	73	15.145	93	15.500
34	357.0	54	8.910	74	15.410	94	15.670
35	367.5	55	9.075	75	15.675	95	15.840
36	378.0	56	9.240	76	15.940	96	16.010
37	388.5	57	9.405	77	16.205	97	16.180
38	399.0	58	9.570	78	16.470	98	16.350
39	409.5	59	9.735	79	16.735	99	16.520
40	420.0	60	9.900	80	17.000	100	16.690

TABLE of Decimal parts of a FOOT for each Inch and Sixteenth of an Inch.

IN.	0	1	2	3	4	5	6	7	8	9	10	11

✓ Alexander Smry
 ✓ Brownell
 ✓ Patterson - Robb
 ✓ Alf Miller
 ✓ Eino Anshy
 ✓ J. D. Inskip lot 395 Bell St.
 ✓ Howenstein (Pheasant Pt)
 ✓ Jas. H. Morgan
 ✓ Tom Helling
 ✓ Profles
 ✓ Kimpfer
 ✓ Bowtrsock
 ✓ Provia
 ✓ Tehavis Add

5

Alexander Survey
Harrison Twp.

Bearing of lane S 4 1/2° E

Line "A"

Began at stone SWR NW 1/4 Sec. 15

T. 3. R. 14

with south line and road -

at 18.52 1/2 west line of lane

" 40.51 east line of 1/4 sec. as found

S 85 1/2° E

Line "B"

On east line of farm

Set west 4' V 1/4 1/2 E

at 27.29 set west 6'

" 40.71 1/2 came out 4' west from stone

N 56° 1/4 Sec -

total easting 6'

at 27.29 set west 4' which makes
stone at set west of line.

7

July 30 - 1898 -

40.51
18.52 1/2

21.985

600.000 (27.29
43.970

160.300
153.895

21.985
27.29

197.865
43.970

153.895
43.970

59.797.065

640.50
43.970

2008.00

27.29

27.29

27.29
40.71 1/2

68.005

68.005
15.284

152.84

953

INDEXED ON MAP

Line "C"

With north line 60 acres

855/11

at 8.4 set stake - (set south 2')

" 12.25 " " set this stake 2'

north to line

at 14.25 Blue Jacket share

" 21.90 1/2 set stake for 2 60 a.

Line D

with line 60 acres

54 1/2 A

at 6.18 fence

at 27.29 stake in south line
of quarter SW 60 acres.

853

INDEXED ON MAP

TABLE for reducing PERCHES to FEET. TABLE of Decimal parts of a FOOT for

Richland 9949

Brownell Survey

Cranny S. line Henning track by
fence $N 73^{\circ} 30' E$ (N 79 $^{\circ}$ 40' E)

at Mr A.C. Henning 55.20A -
from remains of Mulberry stump
N 84 $^{\circ}$ 40' E 63 kls

Line "A"

from stone in east side Huntersville
pike - and center Brownell road
to stake set at Mr 55.20

N 77 $^{\circ}$ 40' E

(over)

Aug 3 - 1898

52) 450	18.65	
	416		8.65
	<hr/>		52
	340		1730
	312		<hr/>
			4325
	280		
	<hr/>		
	260		44980

1590

INDEXED ON MAP

TABLE for reducing PERCHES to FEET. TABLE of Decimal parts of a FOOT for

Line "A"

Wk to SW^{1/4} Standard - S. A stake
 Pin oak 6' N 28 1/2° E 42 1/2' lks
 Hick 8' " " 79 1/2' lks
 This \angle was set 110° from stone
 in Brownell road
 N 7 1/2° E
 at 865 set ^{stone} stake M² Standard

Line "B"

N line Standard from stake above
 N 82 1/2° E (O.K. Cor N 82 1/2° E)
 at 1895 1/2 set stake in line (more this point north 19 lks)
 " 5200 2/2 " " " " 3285'
 " 76.36 center of Ry. 1895 1/2
 * By mistake Walter Standard set this
 stake at 50. This line intersects
 East line of Fleming tract at - 51.71
 and 8.12 from SW^{1/4} Standard
 450
 (O.K.)

865
 53
 812

Line "C"

S. line 450 - N 82 1/2° E
 set north from stake set for SW^{1/4}
 2'
 at 516 1/2 set stake at 2'
 south of line as shown

Line "D"

East end of 450 - from end of "C"
 to stone N 82 1/2° E distance 22420
 at 565 set stake
 N 65° E

this point north 19 lks)
 3285'
 1895 1/2
 5181

1590

INDEXED ON MAP

Line "B"

from stake set at 5.60 and

of line "D"

produce "B" parallel to "C"

N 82 1/2° E 4.32 to center

Brownell Ditch

set stone in this line 12' east

of center of ditch

Line "E"

with Brownell Ditch

from end of "B" —

N 36 3/4° E 5' 00

Line "F"

S 65° E 14.95 1/2

to center of

1590

INDEXED ON MAP

Line "B"
with Ry. 530 1/2 ft. 4.38%

Line "H"
with Ry. 527 1/2 ft.
4.44

Line "K"
with Ry. 525 1/2 ft.
4.68

Line "M"
with Ry. 520 1/2 ft. 5.85 1/2
to center Brownell road.

Line "N" with Brownell
road. 553 ft.
10.17

Line "O" 1001 feet 5.52%
at 6 1/2 ft. 11.83

1590
INDEXED ON MAP

TABLE for reducing PERCHES to FEET.

Aug 4 Brownell

From end of line "E"
N 35 1/2 E } 4.65

With Ry
S 33 1/2 W } 4.78

Line "R"
for A line 62° 0
S 65 E } 4.75
at 50' from center of Ry on
this line set stake for line
and corner at 12' from bank
of ditch

1590
INDEXED ON MAP

TABLE FOR REDUCING PERCHES TO FEET. TABLE OF DECIMAL PARTS OF A FOOT FOR

Ed Patturo - Joe Robb

Line "A" Start with Buck
corner tree in east line 5738
with line tree, set north 6
N 87 1/2 W

at 1122' set stake for corner

N 1/2 Buck 16" 5709 1/2 E 37 1/2'

12

Survey Aug 20 - 1898

Line "B"
5543 1/4 ft cornered survey.

set stake at 200	set north 4
" " " 210	" " " 6.7
" " " 427 1/2	" " " 9.5
" " " 620	by long 13.8
" " " 663	" " " 14.7
" " " 743	" " " 16.4
" " " 887 1/2	" " " 19.7
" " " 1183	" " " "

came out 26.3' too far north
from stakes set as below

from stake between Cherry &
White Walnut NW 1/4 to Joe Campbell
N 54 1/2 E 9 rods 148 1/2'

Stake SW 1/4 Robb 11.3' from pond
of Big Stone Mat.

Line "C"

47 1/2

at 1270' center Big Stone
corner in N. line of Survey
29' west of said

at 1051	set east	24
" 899	"	20 1/2
" 741	"	16 1/2
" 563	"	12 1/2
" 179	"	4

$$\begin{array}{r}
 731 \\
 \underline{6} \\
 1270 \quad 44 \\
 219 \\
 \hline
 1051
 \end{array}
 \qquad
 \begin{array}{r}
 219 \\
 \underline{29} \\
 1971 \\
 \underline{438} \\
 1270 \quad 635118 \\
 \underline{6380} \\
 71
 \end{array}
 \qquad
 \begin{array}{r}
 29 \\
 \underline{24} \\
 5
 \end{array}$$

$$\begin{array}{r}
 371 \\
 \underline{29} \\
 3339 \\
 \underline{742} \\
 1270 \quad 10759 \quad 18.47 \\
 \underline{10160} \\
 5990 \\
 \underline{5020} \\
 9100
 \end{array}
 \qquad
 \begin{array}{r}
 1270 \\
 \underline{371} \quad 29 \\
 899 \quad 6 1/2 \\
 \hline
 20 1/2
 \end{array}$$

$$\begin{array}{r}
 1270 \\
 \underline{624} \\
 741 \\
 \hline
 1270 \quad 741 \\
 \underline{6669} \\
 1482 \\
 1270 \quad 21489 \quad 116.8 \\
 \underline{1270} \\
 8789 \\
 \underline{7620} \\
 1169
 \end{array}$$

$$\begin{array}{r} 1270 \\ 707 \\ \hline 563 \\ 29 \\ \hline 5067 \\ 1126 \\ \hline 1270 \end{array}$$

$$\begin{array}{r} 1270 \\ 1591 \\ \hline 179 \\ 29 \\ \hline 1511 \end{array}$$

$$\begin{array}{r} 1270 \overline{) 16327} \\ 1270 \\ \hline 3627 \\ 2540 \\ \hline 10870 \end{array}$$

$$\begin{array}{r} 1511 \\ 858 \\ \hline 150915 \\ 5080 \end{array}$$

$$\begin{array}{r} 3627 \\ 2540 \\ \hline 10870 \end{array}$$

1183

$$\begin{array}{r} 888 \\ 263 \\ \hline 2664 \end{array}$$

$$\begin{array}{r} 5328 \\ 1776 \end{array}$$

$$1183 \overline{) 233544} \quad 197$$

$$\begin{array}{r} 1183 \\ 11524 \\ 10647 \\ \hline 8770 \end{array}$$

$$\begin{array}{r} 743 \\ 263 \\ \hline 2229 \end{array}$$

$$\begin{array}{r} 663 \\ 263 \\ \hline 1989 \end{array}$$

$$\begin{array}{r} 4458 \\ 1486 \end{array}$$

$$\begin{array}{r} 3978 \\ 1326 \end{array}$$

1183

$$1183 \overline{) 195409} \quad 164$$

$$\begin{array}{r} 1183 \\ 7710 \\ 7098 \\ \hline 6120 \\ 263 \\ \hline 620 \end{array}$$

$$1183 \overline{) 174360} \quad 147$$

$$\begin{array}{r} 1183 \\ 5206 \\ 4732 \\ \hline 8740 \end{array}$$

$$\begin{array}{r} 5260 \\ 1578 \end{array}$$

$$\begin{array}{r} 424 \\ 263 \\ \hline 1284 \end{array}$$

$$1183 \overline{) 63060} \quad 53$$

$$\begin{array}{r} 1183 \\ 4470 \\ 3549 \\ \hline 9219 \end{array}$$

$$1183 \overline{) 112564} \quad 95$$

$$\begin{array}{r} 10647 \\ 6094 \end{array}$$

$$\begin{array}{r} 263 \\ 300 \end{array}$$

$$\begin{array}{r} 263 \\ 200 \end{array}$$

$$1183 \overline{) 78900} \quad 67$$

$$\begin{array}{r} 7098 \\ 7920 \end{array}$$

$$1183 \overline{) 52500} \quad 44$$

$$\begin{array}{r} 4752 \\ 5080 \end{array}$$

Alf Millers Survey

Part of lot No 3 - in West Liberty

Measured from Mr Garwoods Drug Store east on Baird St. 150' for Garwoods east line -

Thence 70' for land sold by Miller -

On south line of Lot 3. Measured east from building line on Detroit Street 150 to Garwoods east line 70' for land sold by Miller 57' to water edge

on north line from east line of 70' lot to water edge } 87'

Feb. 2 - 1899 -

150	150
70	70
57	87
<hr/>	<hr/>
277	307

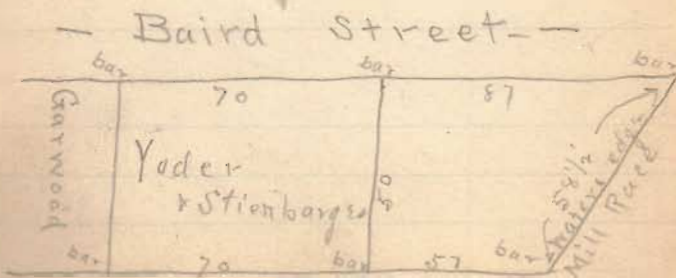
290 1/2

11 1/2

150
140 - 8"
<hr/>
290 - 8"
16 - 6
<hr/>
207 - 2"

(1591)
INDEXED ON MAP

Set iron barrow teeth at each corner as below -



Eros Anselmy Survey

Rushcreek Top
V.M.S. 9908

Line A. Start in fence north
line 576 E ~~7.14~~ to stone
 $7.14 - 6 = 7.08$
Set iron bar in pit

Line B -
East of road 517 N
20.86 to stone

Line C. ~~576 1/4 E~~^{713/4}
16.78 to stone

Line D -
512 1/4 E 9.04

Feb. 14 - 1899 -

Line E -
583 1/4 N
30.40

Line F -
~~111 1/4 N~~ 111 1/4 N
13.19
to point 8' from end of log
retaining wall. ~~111 1/4 N~~ bridge
and 5 1/2' from end of log.
retaining wall ~~111 1/4 N~~ bridge
Eros Anselmy to set iron bar

583 1/4 N
3.50 to iron bar
in pit

1003

INDEXED ON MAP

Line H.

with fence

N 24 3/4 E

8.35 to iron spike

21 Chadiatank from 1st bridge floor

25 1/2 " " " " " "

Line J.

with fence

N 32 1/4 E

24.35 to begin of line A.

~~Line K from end line J.~~

~~with fence N 38 1/2 E .500~~

~~set iron spike~~

Line M-

S 78 N

Line H'

S. 82 3/4 N

South side of farm west of fence

21.23 to fence

Post at <

set south 8' came out 4' south

total northing 4'

OS. Cor. S 8 1/2 N

Line J
Set east 8'
87 1/4 E
Came out 9 1/2 east
10.07

Line K
Set south 8'
5.82 3/4 N
1849
Came out 11' south

Line M
x. 1850 N
10.51
to center Ry

Line A
with Ry.
A 47 1/2 S

at 2800 fms from west

George Fleming } ch or
Roy Ausley }
Enos Ausley }
2 days each
Board Enos Ausley 500

Feb 16 - 1899

Line K'

with spike from end of
line A. to iron spike
set in survey line -
N 38° E 5.89 1/2

Line M' - with survey line
S 81° W 6.65 to iron bar
in line of fence

Line A' with picket & wire
fence
N 51° W 11.32 to center Ry

(1003)

INDEXED ON MAP

Line "O" with Ry -
S 42° W 5.47 W

5.51 1/2 set spike center of track

Line "P"

N 5 1/4° W 5.92 to fence
set iron bar

Line "R"

with fence N 69 1/2° W
18.01 to corner of fence (post)

Line S. with fence

N 5° W 28.75 to stone W.P. with
set west 16'
corner out 11 1/2' west total casting 4 1/2'
O.K. see N 6° W

Line "T"

North line of farm
set south 45' from stone
S 82 1/4 W

Set iron bar at 20⁰⁰
45 1/2' north of line at line of
wire fence. O.K. Course & line S 82 1/2 W

44.84 to fence corner (rail
fence). NW 2 farm

came out 84 1/2' south of corner
of fence - total southing
of 136 1/2'

O.K. Course from 20⁰⁰ to end
West part of line. S 83 1/2 W

1003

INDEXED ON MAP

Line "U"

west line of farm
set east 16'

S 7 E

set east 24'

came out 18' east

total westing 22'

62.24

O.K. Course S 7 1/4 E

Line "V"

N. line Isaiah Dickson.

N 81 1/4 E

set north 16'

136.2

came out 39' north

total north 23'

O.K. Course N 83 1/4 E

Line "N"
North line "Bill" Atkinson
N 77 1/2° E
22.30

26.97 from end of line N
with center of Ry to end of
line M.

(1003)

INDEXED ON MAP

On North line from
spike set 2000 from NE
N 63 1/4° E 6 1/2" lts
S 6° E
48.16

to iron bar in survey line
N 67° E 4" 567 E 6 lts

Line "A"
from bar as above to end
of line H in fence
S 65° E
at 17.68 center Ry at 2000
from end of line N
at 41.51 end of line H in
fence

Survey for J. D. Dusterup

Lot No. 395 Bellefontaine

Dist. between center of
Columbus St & center of
Sandusky St.
by Moulton & Knight Add.
Survey. 523.8'

Lot facing Col. St.

On orig. plat Moulton Add.
width of Col. St. is not given
depth of lots by plat 220' -

Width of Center (Sandusky)
St. 60'

Lots 727 & 728. Rambo. Add
are 228' deep.

24
March 6 - 1899 -

Make Lot 395. 227.3' deep

Survey to Elwood Knox 177.3'
and Branch 50' from
north end

220

16 1/2

220

30

30

516 1/2

523.8

516.5

7.3

1592

INDEXED ON MAP

Howenstein Survey

Part 1) Sec 11 - T. R. 6 -

Pleasant Tp - M. Rohrer marked
Lewis Grove } ch or
Grove

Line "A" with east side of
fence set west 8' from Delphi
part in line of fence and at
south side of Sidney Place
dred calls for stake -

5/4/11

set east 2'

$$23.7 + 6 = 29.2$$

in this line set stake at 37.0

set east 2'

$$25 + 4 = 29'$$

in this line set stake at 39.74

at 44.57 came out at stone S. Sec

Sec 11 -

Came out 32' west total

writing 28'

O.K. case 5/4/11

1593

INDEXED ON MAP

March 13 - 1899

Line "B"

with S. line Sec.

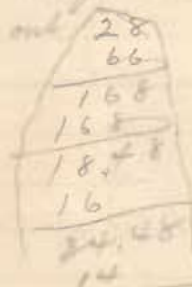
set south 8'

5.39 1/2 ft

at 10.25 set north 28' then -

set north 16'

Ran through to 7/25 Sec. & stone -
came out 6' north



4) 20.45 total southing

Set stone 5.12
for SW 1/4 of track
sold to Rohrer at 10.25 and
5.12 north of line as run

O.K. case - 1/8 9 3/4/11

Line "C"
with lim of track

A 7/4 H

at 41.45 - set stake by wire
fence south side Sidney pole

Line "D"
with south side Sidney pole
with a wire fence

A 73/4 E

10.73

to stake set for beginning.

1593
INDEXED ON MAP.

Surveyed for Widow of

William Morgan }
Austin Artin } ch or -
Oscar Morgan } wh.

Line "A"

Set narrow tooth in center of fence
in line of fence for distance
line of land
with fike 543 ft 15.5 ft set stake

Line B. with fike -

373 1/2 ft 1.50 to stone corner to
fence.

James H. Morgan April 19. 1899.

Line "C"

with west line fence
set east 6'
55 1/2 ft 16.60 to stone
corner out 5' east.

Line D.

519 1/2 ft 25 lbs
set stake in center of dirt road.

Line E.

with dirt road south side of
fence N 72 E 21.25 1/2 ft
set iron bar

1st Sugar 18" (gods post) N 4 1/2 E 48 lbs

" Sugar 18" N 4 E 79 lbs

Line 7

116 1/2

2298

to iron gear in pits beginning

Tom Hallings Survey

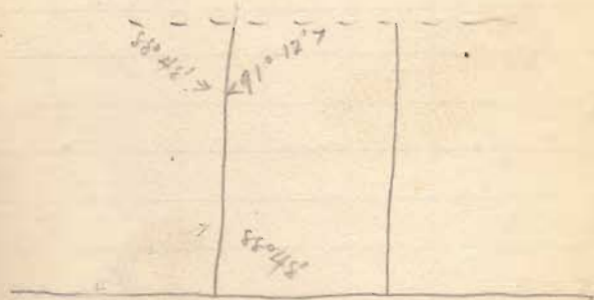
Measured east with north side
 of Brown St. from sidewalk line
 on east side mark 177+1 - 178'
 for Ludlow line set pole 2'
 east -
 set east 2' from iron bar
 in Sandusky & Ludlow -
 set pin in line -

Measured east on inside line of
 sidewalk 218' for Hallings SNE
 and 268' for Hallings SW

Measured 218' on alley line
 for Hallings NE
 and 268' for his SW this
 corner runs east of west line
 of barn -

Part of Truman Brown Prop-
 E. Sandusky Av. April 29 1894

Iron pin Ludlow & Sandusky -
 Bottom east end bottom step corner
 William 37'
 West end Wood corner lower step 31.6'
 Hyd north 20.8'



Sandusky Av

Levels Tom Hillings house -

Sidewalk	1.65	20.00	1st block from line	
Ins		21.65		
No stake	7.53	14.12	22.00	7.88
W "	8.27	13.38	22.00	8.62

set level peg by stake

Peoples Survey

Walter Merrill } ch
 William Middleton } co
 John C. Peoples } mkr

Line A, set stake in north side
 of gravel on fence for SW^{1/4} of
 farm

set west 24'

A 7 1/2 set OK. cor 47 W

at Mr Peoples Ironwood 12'
 supposed to be old witness

21° ang from west line makes true
 bearing from tree (S 10 1/2° W) now S 13 1/2° W
 set stake as witness N 13 1/2° E 23 1/2' the

at 25.00

came out 46' too far west

total writing 22'

(Blocked out ironwood and found
 indications of our old line marks)

May 10-1899-

Line B, with north line of
 55 acres tract.

set north 18'

A 85 E OK cor N 74 1/2 E

set stake for dist 11.12 1/2 N & S corner
 and set large stake in line at
 corner

came out 12.2 north of stourie
 Survey line A & S 55 acres tract
 22.26

Total southing 5.8'

set A & S tank 15.1 south from
 line at corner at 11.12 1/2 (set stone)

dist. each 4" S 70 1/2 E 25 1/2 the

" Sugar 4 S 67 1/2 E 25 the

18	18
12.2	2.9
<hr/>	<hr/>
2/5.8	15.1
2.9	

1594

Line C.

with Survey line -

set west 6'

N 7 1/2 W OK. Csk N 7 1/4 W

came out 9' west from stake

set by Ginn for \angle Peoples

14.56

Line D.

N. line 86 a. West

set north from Ginn's stake 12'

~~set stake for dist at 15'~~

N 82 1/2 E

Set north 1'

set stake in this effort line at 15'

cut north 99'

at 22. ⁶⁰/₅₉ old stake N 86 \angle

Came out 112.86 north total

nothing 86

Set new stake for \angle

set Susanna Minnie's N 72 \angle 15. ⁵⁶/₅₆

13' south of line as run

4) 86.3

22.07 1/2

7.25

14.82 1/2

60

~~22.07~~

7.25

15.35

36

Nth. stake Mrs Minnie

Bunch 20" S 35 3/4 E 35 1/2 W

Mild Cherry 16" S 65 E 54 1/2 "

1594

Line E.

Set east 6'

5.6 7/8

Set out 2'

39.31 to center of pipe -

Came out 5 1/2' west from line

of fence in pipe -

Set stake in north edge of
pipe grade.

Total working 2 1/2'

$$\begin{array}{r} 89 \\ 58.3 \\ + 177.3 \\ \hline 44.32\frac{1}{2} \end{array}$$

$$\begin{array}{r} 24.60\frac{1}{2} \\ 44.32\frac{1}{2} \\ \hline 33 \end{array}$$

3)

Line F. with pipe on south
start with fence line on east and
center of pipe -

512 1/8

22.07 1/2 set stake for Survey <

at 7.24 set stake for Sore Minerals

Thence with pipe -

512 3/8

41.32.07 1/2 set stake

.. 22.66 1/2 came out at stake

set for begin -

1594

INDEXED ON MAP

Peoples Survey

Measure on file from N.E. Kirk
as located by Ginn.
Stake set in road at 2207 1/2
from S.W. Peoples at 19.69 from
N.E. Kirk!

From this stake to Adams N.W. &
as shown by John G. Peoples 1890

Blazed elm sapling 14 1/2' west from
Stake in Survey line N.E. to Peoples
55a

1596

INDEXED ON MAP

May 16 - 1899 -

Start from Stone in E line 9952

N.W. Motion

Set west 18'

57 1/2' E

Set stake at N. line Peoples 86a.

at 29.87 stake set by Ginn
our line 24 1/2' the west = 16.2'

came out 13.7 west from corner
stone N.E. 55a

$\begin{array}{r} 18 \\ \underline{13.7} \\ 3 \overline{) 4.3} \\ \underline{2} \\ 3 \overline{) 8.6} \\ \underline{2.9} \end{array}$	$\begin{array}{r} 18 \\ \underline{2.9} \\ 66 \overline{) 10.10} \quad (23 \text{ line}) \\ \underline{132} \\ 190 \\ \underline{198} \end{array}$
---	--

Set N.W. Peoples 86a 23' the east
from line as our line 1.1' west
from Ginn stake!
Nb: Walnut 6" 579 1/2' N 4 1/2' the

$$\begin{array}{r} 29.87 \\ 59.35 \\ \hline 157.20 \end{array}$$

$$\begin{array}{r} 69.17 \\ 44.40 \\ \hline 24.77 \\ 79.58 \end{array}$$

at 44.40 Stone 18' 55" -
 ran 13.7' west of this stone
 at 69.17 center of ground on Reed
 file

$$\begin{array}{r} 18 \\ 13.7 \\ \hline 43 \end{array}$$

$$\begin{array}{r} 69.17 \\ 44.40 \end{array} \times 4.3$$

$$\begin{array}{r} 69.17 \\ 43 \\ \hline 29751 \\ 27668 \\ \hline 44.40 \times 1207.43 = 116.7 \\ 2664 \\ \hline 3108 \\ 3108 \end{array}$$

Total easting on line as run 6.7'
 set east from line as run 18 - 6.7 = 11.3
 set stake
 this was 28 links west from stake
 set at 22.07 1/2 on line 18'

$22.07 \frac{1}{2} + 28 = 22.35 \frac{1}{2}$

$$\begin{array}{r} 44.65 \frac{1}{2} \\ 22.35 \frac{1}{2} \\ \hline 22.30 \\ 4 \\ \hline 89.2 \end{array}$$

Set iron hammer tooth in center of
 file at survey corner
 wit: orange orange 6" N 11 3/4 W 88 the
 Run oak 22' S 21 E 42 the

22.30 actual length line 55 a
 22.20 dist " " " "
 $.05$

$40 \times 5 = 2 \frac{1}{2}$ the

$$\begin{array}{r} 22.07 \frac{1}{2} \\ .28 \\ \hline 10.00 \\ .02 \frac{1}{2} \\ \hline 52.37 \frac{3}{4} \end{array}$$

1598
 INDEXED ON MAP

Set Naomi S.B. \angle in center of
pile 10.02 1/4 from Survey corner
and 32.37 3/4 from east line of fence

Set narrow tooth in center of pile

Set: Pear Tree in front yard N 55 1/4 W 101 1/4

- N 7 1/2 W - 4.48

Set east 9' to see post buildings

Set back to line at 4.48

Set stone, wit: apple tree 14" S 36 3/4 W 33 1/2

S 82 3/4 W 1.12 1/2

Set stone wit: apple tree 12" N 85 1/2 E

5 lbs

N 7 1/2 W 20.72 to stone set
for N.E. \angle Naomi see articles
in notes for line "B"

1594

INDEXED ON MAP

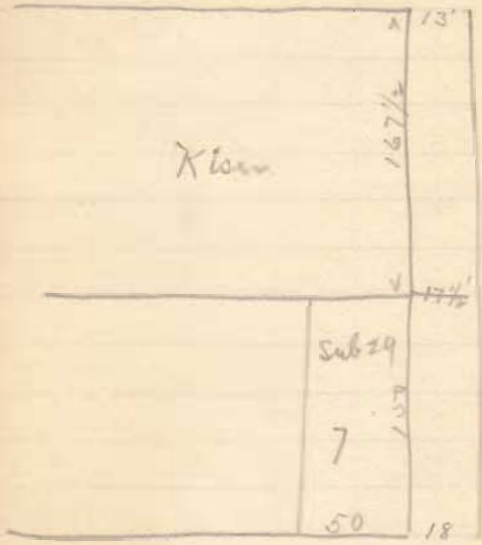
West Liberty - Howenstein

Plot

May - 11 - 1899

On S. line Columbus St.
 Measured from east line of lot
 No 1 - Howenstein & Caldwell S. add.
 as said lot is fenced -
 at 30' set pin for west line 24'
 St.
 then 240' to west line Alley.
 Alley 16 1/2'
 2. west line Mustain Lincoln St -
 150'

On south side of track N. line
 Baird St. -
 Considered High bound fence east
 line Maxwell corner.
 Measured 30' for St - 240' to alley
 Alley 16 1/2' - east line Smith at
 132' -



Mustain corner

Kemper Survey

Line "A" Start from stone
 SWR Kemper
 set east 16'
 N 8 1/2° E
 27.24 stone NWR Kemper
 came out 11' ft. south
 westing 5'
 075. E or N 8 1/2° E

May. 25 - 1899 -

Line "B"
 North line Kemper from stone
 to stone 2 Bownbox

N 8 1/2° E

~~12.05 1/2 at corner with~~

13.07 1/2 set stake

set stake in line at 14.26

$$\begin{array}{r}
 2) 299 \\
 \underline{145} \\
 2734 \\
 \hline
 25.69 \times 139 = 39.992
 \end{array}$$

13.94 at right angles to N 8 1/2° E
 = 14.25 at N 8 1/2° E

→ rd: N. Oak - 30° N 26° E 230m

Line 'C'

S 3 1/2 N

Line Station east side of section 500

$$29.52 + 21 = 50.03$$

~~At Walnut 14" N 33 1/2 W 145 1/2' the
set this corner 1 ch. farther east
on line~~

At 4 walnut saplings from
one root - S 87 E 76' 1/2

11.74

11.79

Line 'D'

set south 8'

N 86 W

+1.52 to stone began 12.52

came out 6 1/2' south

Kempner Survey -

Ora Kinney }
W.H. Bradley } ch. or

Line "A."

Start from stone in pond
in Greenville tract line
← Wallace & Powersox -
with Tract line
set south 5'

S 82 1/2 W

Came out 7' north total
northing 12

O.K. Cor. S 81 3/4 W

at 15.00 ch ← stone NW 1/2 Kempner

Line "B." with west line Kempner

set east from stone NW 1/2 16

S 4 W O.K. Cor.

at ^{16.62}~~16.50~~ set stake for line of road

at 27.27 wire fence Kempner S. line

Came out 16' east

set stone in line at 16.62

Mit: Wild Cherry 16" N 44 1/2 W 74 1/2' also

set 12" N 12 1/4 W 83

Blk. hickory

May 24 - 1904 -

Line C. from stake set at 16.62
in west line N 74 1/2 E

Came out 7' north of stake set
for ← of track at 15.00

O.K. Cor. N 74 1/2 E

Mit: ash 3" S 73 1/2 E 6' also

Maple 30" N 84 W 42"

Line D on east line of road
from stake set to stone
origin. N 6 3/4 E 14.81

Bowersook Survey

Henry Austin }
Walter Small }

Line "A"

Start from stone in Small's
Tract - Line, < to Overton
Odor & J. M. Waller
15 1/2 ft set stake at 12.35
and 180

$$\begin{array}{r} 72 \\ 22.6 \\ \hline \end{array}$$

$$49.4$$

set stake 49.4'

$$\begin{array}{r} 4 \ 49.4 \\ \hline 12.35 \end{array}$$

Moved this < 36' wide
worked into line at road from
< stone SW corner to stake set for
ATR tract sold by Bennett to
Waller
Wk: to < stone in N. side road
Walnut 3' 1598 36 like
Wild cherry 4' 574 1/2 W 17 1/2 Dec.

June 15 - 1899

Line "B"

Measured from stone to
Shuck - 200 poles 18 1/2 ft
+ 200

7.20
set stake at extreme 700
and 180 from Odor & TR

Made < 4' 4" west of line as run
from south -

$$\begin{array}{r} 12.35 \times 52'' \\ 180 \quad 1 \end{array} \quad \begin{array}{r} 4' 4'' \\ 12 \\ 48 \\ \hline 52 \end{array}$$

$$\begin{array}{r} 12.35 \\ 52 \\ \hline 2470 \\ 6175 \\ \hline 642.20 \end{array} \quad \begin{array}{r} 18 \) \\ 54 \\ \hline 102 \\ 108 \\ \hline \end{array} \quad \begin{array}{r} 36'' \end{array}$$

July 22 - 1899

Surveyed for J. M. Williamson
on East Columbus ave -

North end of lot 59.8' wide
between fences -

Make line between Williamson
& Marker at north line of
lot ave at line as occupied
and shown by their sidewalk
being by agreement between
Williamson & Marker,
in presence of George Woodard
Mill Chandler, George Short
and Enoch Ferrill -

This line is not by the
description in deed as
there is a discrepancy of $\frac{27}{100}$
of a rod $3.63'$ which would
be 11 inches west of this line
or 2.9' east according to which
line is used -

Measurements at

Peoria

Aug 8 - 1899

47

From Center of Marysville
Pike to center T & O. C. Tr.
at Depot by way of new
gravel road 1710'

at 1753 + Eric T & O. C. Ry.

at 1710 + 828' = 2538'
switch where S & T intersect
T & O. C.

$$\begin{array}{r} 2538' \\ \underline{1753} \\ 785' \end{array}$$

W.E. Harris Survey Aug

1899-

John
W.E. Harris M/R
Line A. set stake in west side of
fence grade in line of fence
supposed to be south line of
M/R of M/R Sec. 5-

Line B.

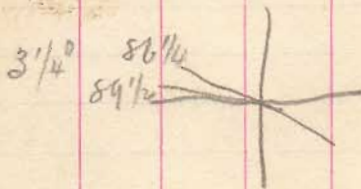
set east 18' from stake
set stake at 10°

set 15' north of stake -
measured from center of fence -
N 86 1/4 W
at 20.11 1/2 set stake

N 6 E
at 20.32 sic. < ran 43' east -
at sic corner M/R Sec 5 -
found old N.O. stump with
3 notches in bark set stake
for < at N 85 1/4 E 21 lbs dist.

25.52
20.32

5.20



S 82 W
S 85 1/4 W

at 25.52 Elm tree 1' west of
corner Harris location -
came out S-S East

391.257, 25.52, 20.32

Line C.
with north line 50a -
set north from Elm tree 6'
S 86 1/4° E

at 20.15 center of fence
came out 2 1/8' north of
line of fence

Line D.
with fence -
S 47 1/4° W
at 25.50 stake set for starting
fence.

On pipe from stake set
 in Henderson's line
 at 9.93 set stake in west
 side of pipe for N&K 20 acres

Thence with north line 20 acres
 N 86 $\frac{1}{4}$ W
 20.75 ch set stake.

12 $\frac{1}{2}$ ' west from fence.

Pat Trhans Addition

Iron bar + Main St >
border Alley -
End of Straight carb west side
Main Street 20'
Long dist telephone stat N.W. 59.3

Iron bar Border Alley >
Hamilton St
Lamp post N.E. 20'
Hyd. W. 40.4'

Border Alley 16 1/2

Sept 23 - 1899 -

South lot on Main 55.3
" " 170' east of Main 55.8

Lot - area	58
	45
	12
	20
	45
	12
	45
	45
	12
	45
	55.3 x 55.8