

Jan. B. Kivan. Lot 5 Main

	Net	Meas
Main - Aub. to Buck	736.5	736.5
Detroit - " "	736.5	737.45
Auburn - Detroit to Main	526.5	527.23
Buck - " "	526.5	—

Buck & Main - Stone 7" x 9" x 18", iron cap, 4/17/02  
 Top screw, hyd, N.W. 58.55'  
 N.E. < ground, 1 story frame house SW, 51.55'  
 NW < stone found frame 1/2 stone S.E. 60.3

Buck & Detroit - Iron bar (note - this bar is 1' S. cent. Buck)  
 Hyd. N.E. 26.3, Lampport S.E. 26.3

Aub. & Detroit - Stone 1867  
 Lampport NW - 28'10", Maple SW, 16"  
 29'10", Hyd. S.E. 28'8 1/4"

Aub. & Main - Stone 1884  
 Top screw hyd, S.W. 36.95'  
 Iron lampport N.W. 35.4  
 Ele. ht. pale N.E. 36.0  
 Iron lampport S.E. 44.55  
 S.E. < Mittenberger res 49.6

52579

525.87

av 525.83

70

455.83

227.92

40

267.92 Buck, Dist to Main  
Alley, Buck to Aub = 737.00

Main to Detroit on Auburn  
Dist meas = 527.25

527.25

70

21457.25

228.675

40

268.625 to cent alley

May 12/05

Survey of Lot for Jas. Nixon,  
S. Main St. Bellefontaine  
found corners it etc. as per  
first page of this book

Auburn - Main to Detroit, 527.23'

from Main, meas. W. 38.0' (2.0'  
outside Lot. line) set nail  
= Meas. W. 268.62 cent Alley.

Buckingham -

Meas W. from Main - 38'00

Main to Detroit Meas

1<sup>st</sup> time 525.79

2<sup>d</sup> " 525.87

av 525.83

Meas. W. 267.92 to cent alley



Given Lot. 5/12/05

On alley bet Main & Detroit  
Meas. N. from Buck to Aub,  
737.00 ft.

(Dist on Detroit, Buck to Aub = 737.45	
" " Main " " 736.50	
av. approx	736.98

$737. - 736.50 = .50$  surplus  
divided between 12 lots =  $\frac{1}{2}$ " per lot.

On Alley meas. S from  
Aub, 30 ft, 55  $\frac{1}{2}$ ", 55  $\frac{1}{2}$ "  
55  $\frac{1}{2}$ ", set stake at S. side  
of stake set by Cushing

On Main St. - Meas S. from  
Aub, 30', 55", 55', 50"  
set stake & table in line  
came out same as Cushing

Dan & Lewis Huber Survey

May 19- 1905-

Measured from Stone No 1  
Dan Huber and in same  
Miller line. in st. line Sec 27  
T. 2. R. 14

Set stake at 12.50 near stone  
< Dan & Lewis Huber  
at 32.42 came out at Stone  
of Mr Lewis Huber should be  
32.50

short 8 lks.

Divide in proportion of 8 and 5  
set center at

$$12.50 - \frac{7}{13} \text{ of } 8 = 12.47$$

at 12.47 which is the correct  
distance for the < at west  
side of 4" iron corner post  
set in concrete.

Edward Miller }  
Oliver Williams } ch

On line between Dan  
and Lewis Hater set pole  
east 6' from west side & post  
at north end.

At 16.17 1/2 set stake for line  
between Dan & Lewis.  
correct this to 16.20 set gas pipe in line  
at 30 1/2 stake center Silver Lake  
picks

Set inst. 6' east of stone Mc  
E 1/4 Sec. A 565

Set pole in center Silver Lake picks  
and measured west 6' for line.

At SW corner Dan Hater set 1" gas pipe  
at east and west sides lower over road,  
under.

$$\begin{array}{r} 4 \overline{) 56.8} \\ \underline{14.20} \end{array}$$

$$\begin{array}{r} 30 \overline{) 42} \\ \underline{30.37 1/2} \end{array}$$

$$\begin{array}{r} 4 \overline{) 16} \\ \underline{4} \\ 12 \end{array}$$

$$\begin{array}{r} 30 \overline{) 72} \\ \underline{2} \end{array}$$

$$\begin{array}{r} 4 \overline{) 26.7} \\ \underline{6.67 1/2} \\ 9.5 \end{array}$$

$$\begin{array}{r} 16.17 1/2 \\ \underline{14.20} \end{array}$$

$$\begin{array}{r} 14.20 \\ \underline{30.37 1/2} \end{array}$$

$$\begin{array}{r} 30.37 1/2 \end{array}$$



Stephenson Survey

Wm. W. Windham } ch. en.  
W. M. Patterson }  
Smith Brooks } Flagmen.  
J. D. Stephenson }

Stephenson Survey 7/29, 05.

Line A

Found stone at N.W.  $\angle$  50 Acres  
Random N  $83^{\circ}$  E      Offset 10' N.

Offset 20' S.

19.74 Ch to  $\angle$  stone N.E.  $\angle$  50

Came out 9' 2" S. of  $\angle$  stone

Total Northing 10"

O.K. Csc. N.  $83^{\circ}$  E.

2.80  $\frac{1}{2}$   $\frac{1}{2}$  288  
0.02  $\frac{1}{2}$  22.17  
22.12 23.10

C.M.R.

Line B.

along N. side 60 A.

20.94 ch to  $\angle$  stone at N.E.  $\angle$

N.  $82^{\circ}$  E.

N.  $82^{\circ}$  E

Line C

S.  $7^{\circ}$  E

2.80  $\frac{1}{2}$  Ch to Limestone

Line D

N.  $84^{\circ}$  E.

87  $\frac{1}{2}$  Ch to old stone in swamp.

Sot new boulder with pieces of limestone  
around it.

old Limestone had small flat stone on  
top.

Line E.

Random S.  $7\frac{1}{2}$  E.

Offset 7' W. of  $\leftarrow$

Came out 12' 9" W. of point in line  
with fence, in  $\odot$  pine

Set stake at 22 ch.

22.22 ch to  $\odot$  pine (grave)

Total

(Measured N. from stone at  
S.E.  $\leftarrow$  of Stephenson's 48A.  
Set stake in road at 25.37 $\frac{1}{2}$  ch.)

set stake Harrow tooth at  
22.17 ch. in Line with fence.

Total Westing 5' 9"

O.K. Cce. S.  $7\frac{3}{4}$  E.

2.80 $\frac{1}{2}$   
- .02 $\frac{1}{2}$   
1.83  
22.17  
25.00

88.88  
99.88

Line F.

Along W. side 50A

Random S.  $6\frac{3}{4}$  E.

Offset 13' W.

24.82 ch to  $\odot$  gravel

Set temporary stake at 25 ch. in line  
with ~~stone~~ <sup>fence</sup> see below.

Found stone at  $\leftarrow$  Fulton  $\frac{3}{4}$  Brown  
in  $\odot$  mud road.  
Measured E. 30.70 ch set stake.

Found stone at S.E.  $\leftarrow$  48A. of Browns  
Run W. Line by these two stones.

Set temporary stake at 25 ch. in line

these two stones

Set king bolt at 24.87 $\frac{1}{2}$  ch.

S  $6\frac{3}{4}$  E

This  $\leftarrow$  is 30.71 $\frac{3}{4}$  ch E. of Fulton's  
 $\leftarrow$  stone



Line G

From Fulton stone E.

Random N. 83° E.

Ran 7' 5" N. of 25 ch. stake at  
end line F

Ran 18' 10" N. of stake  
25 ch. S. of N. E. 4 of 50 A.

Measured 27.25 ch N. from  
Dickinsons S. E. 4 100 acres.  
Total Distance 51.64

" " in Deeds 52.25

Shortage .61 1/2 lks

Set Harrow tooth for S. E. 4 50 A.  
at 24.68 1/4 ch from N. E. 4

Random 18" S. of 4

Total Southing 18" O.K. cse N 83° E

Correction at S. W. 4 50 A. 11" N.

Set ring bolt 8' 4" N. of temporary  
stake at end Line F. 24.87 1/2 ch from  
N. W. 4 50 A.

Distance Line G 19.67

Total Easting 6" from ring bolt

25782-1062 100

25  
27.25  
52.25  
.61 1/2  
51.64

Line H. along pine

N. 83 1/4° E

22.25 ch

From S. E. 4 50 A. to S. E. 4 60 A.  
tract.

Street in Lake View 5/25/05

Found old rotten oak stake,  
Cent Stephenson <sup>2nd</sup> Oak St.  
(no stone)

Found pointed pipe (used  
in driving wells) at Elm & Oak  
Found old decayed black  
ash stake at NW  $\angle$  Lot 64.  
& meas 25' to Cent Oak St.  
These 3 points were in line.

Meas. S. from NW  $\angle$  Lot 64 -  
50ft & 75ft for SW  $\angle$  Lot 63

found no stone at SE  $\angle$  Lot 63  
found no corners anywhere  
along w. side Oak St. but  
found stake (not original stake)  
at SE  $\angle$  Lot 62. Set new stake  
in w. line Oak St. about 6" W  
of this stake

Meas. S. at NW  $\angle$  10' for S. side  
alley. found bearing alley N72 $\frac{1}{2}$ E



Set iron bar at NE  $\angle$  Lot 4, over  
tile ditch, checking E line Lot 4  
& checking with fences.

Meas E. 20' for Cent proposed St.

Bearing of new St,  $N 1\frac{1}{2} E$ .

Meas 60' further E to W. line Lot  
No. 8, as fenced.

Meas. E. 20' from S.E.  $\angle$  Lot 62;  
for line of cent. new St.

Street as located extends  
from N.E.  $\angle$  Lot 4, toward  
S.E.  $\angle$  Lot 62, intersecting S.  
side of 10 ft' alley.

(Think it would have been better  
to carry W. line oak south to S.  
side alley, & then angle, but  
Mr. Wake declared his intention  
was to run to S.E.  $\angle$  Lot 62).

40 feet wide.

Dist on Center = 457' (rt  $\angle$ )

## New Street in Lake View

Bearing  $N 1\frac{1}{2} E$

Begin NE  $\angle$  Lot 4.

$N 1\frac{1}{2} E$  - S side alley

-  $N 72\frac{1}{2} E$ , along S side alley to  
pt - making st 40' wide at  
pt  $\angle$ . (compute dist)

-  $S 1\frac{1}{2} W$ , to NW  $\angle$  Lot 8 - (

-  $S 73 W$ , along Staley Dch.  
to begin = 41.2 ft.

Except the following:

Hurley  $\Delta$  pt.

Begin NE  $\angle$  Lot 4

-  $N 1\frac{1}{2} E$  21 ft.

-  $S 26 E$  to chate, SE  $\angle$   $\frac{1}{2}$  ac. pt.

-  $S 73 W$  10' to begin.

(Raining all day. compass box fogged  
up so difficult to read bearing)



= Sandusky <sup>9th</sup> Main. =

Cent. Brass screw 1 1/4" #12, set in brick pavement with lead. Wit: 4 screws in curb, each corner.

{ Dist. to NW screw, 28.92' To NE screw 28.85'  
 " " SW " 28.50' " SE. " 28.79'  
 Dist. bet. screws - North 40.61', East 40.51'  
 South 40.75' West 40.88'

= Brown <sup>9th</sup> Main = = "M" =

S. end iron inlet, E. side Main St, face curb, N.E. 22.95

" " " " W. " " " " N.W. 24.85

Stone fence post, Judge West. fence, N.E. 42.80

Top screw hyd, N.W. sloping meas. 29.90

Elec. light pole, S.W. 29.90

= Brown <sup>9th</sup> Mad River =

S. end iron inlet W. side Mad River St, face of curb, N.W. 21.10

S. " " " E. " " " " " " N.E. 31.60

Top screw Hyd. S.E. sloping meas. 23.25

(This mon. in cent Mad R. x Brown, W. of Mad R.)

= Mad R. <sup>9th</sup> Sandusky = Stone, 1884

Edwards house N.E. 46.4. Hyd. S.E. 29.2

Mad R. = Brown to Sandusky = <sup>plat</sup> 501.5 <sup>meas</sup> 503 ✓

Brown - Main to Mad R. 526.5 (528.00)

Main - Brown to Sandusky 501.5 (501.10)

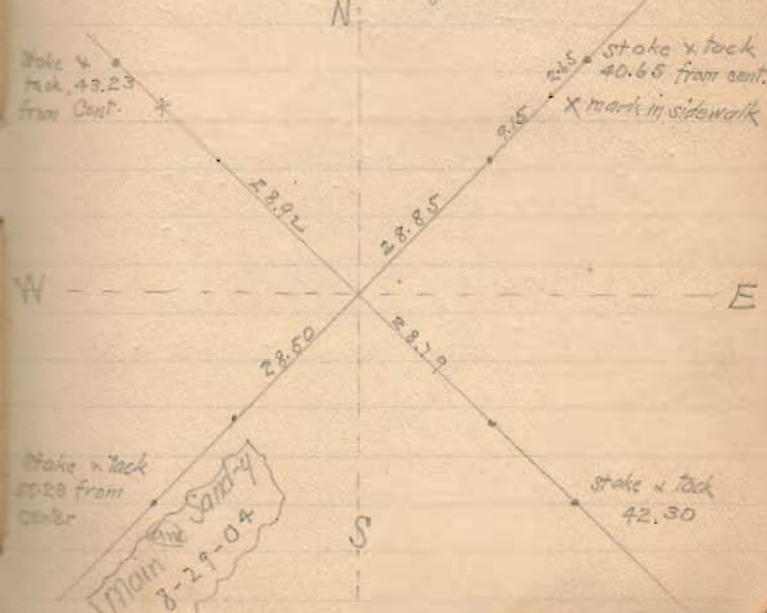
Sandusky - Main to Mad R. 526.5 527.8 ✓

Main St. 80' wide  
 Mad R. 60' wide  
 Brown St. 30' wide (Mad R. to Elm)  
 Sandusky St. 60' wide

← N. B. This witnesses screws are out

Survey to locate N. line of lot 125 for E. Scarff

found mon. at Main x Mad R.  
 Meas. S. 14 ft ~ 1 ft outside lot line.



Levels for El Scaff 5/31/05

Exp. found  
offered  $1.97 + 6" = 2.47$  (rod reading)

Set several stakes 6" lower  
than top foundation of M<sup>r</sup>  
Kinnon home

Sandusky, Main to Mad R 527.8

Main	40	527.8				
Mad R	30	<u>70.</u>		<u>55</u>		
		70		226		
		<u>16.5</u>		<u>440</u>		
40.	30	441.3				
220.	220	<u>446</u>				
.65	.65					
8.25	8.25					
<u>268.90</u>	258.90	8 ) 1.80				
	268.90	<u>8</u>				
	527.80					

from Main to Cut alley = 268.90.

El Scaff (and) Best Stew Lots

1.97  
50  
2.47

Brown - Main to Mad R = 528.00

40	-526.5			
<u>30</u>	+528.0		41.0	
70			<u>.575</u>	
<u>16.5</u>				
86.5	8 ) +1.5		21.5	
<u>440</u>			<u>.75</u>	
526.5				

.19 over plus for 55'

$30 + 8.25 + .75 + 220 = 259$  2 alley

Angle at Brown & Mad R =  $90^{\circ}00'$

Angle at Brown & Main =  $90^{\circ}01'$

Main - Brown to Sand = 502.2

30	502.2			
<u>15</u>	<u>61.5</u>			
16.5				
<u>61.5</u>	440.7			
	440.6			
	<u>81.7</u>			

1 (mean) per br

Mean 55.1 for Scaff Lot



Mad R - Brown & Sandy - 500.  
 501.5  
 surplus - 1.5

8 | 1.5  
 .19 +

surplus on Main = 0.1 per lot  
 " " Mad R = .19  
 " " alley = 1.29  
 .15 per lot

In alley set nail, cent alley, 5.

Side Brown -

Set nail (55.15 + 4) = 59.15 s.

" " 59 + 15 + 21 = 80.15, cent alley

Set 6ft. S. of lot line in Cent  
 Mad R. Set 2ft farther S.  
 in cent. alley

Set stakes in line at SW & SE  
 corners Bell Stem Lot.



Judge Dimeen Dow Survey  
 Lot on Col. & Mad River Sts

Col. & Mad. R. Stone -  
 Baptist Church - 64' 8 1/2"  
 Ives Livery Stable 49' 8"

Col & Main Dist from center +  
 N.E. (Sewer in walk 43.5 - File Mad. lot 40.2  
 S.E. ( " " " 43.73 " " " 39.8  
 SW " " " 36.57 " " " "  
 + cut in water table Profile Bank 5623  
 Mt + " " " " Nelson Block 55.75

485  
 25  
 ---  
 510

215  
 220  
 16.5  
 ---  
 416.5  
 .78  
 ---  
 415.72

485.6  
 70  
 ---  
 415.6

415.6  
 12  
 ---  
 415.72

415.72 dist from Main St, curb  
 to line Dow & Shurr.

June 24 - 1905

Distances -  
 On Col.

Main to Mad River <sup>Plot</sup> 526.5 525.57<sup>2</sup>

On Sandusky

Main to Mad R. 526.5 527.8

526.6

525.6 measured dist on Col.

8 ) .90 Main to Mad R.  
 .11 each lot short -

On Alley Main to Mad R.

526.7

526.5

8 ) .20

.025 each lot long on alley

25  
 220  
 165  
 ---  
 16.5  
 ---  
 426.5  
 15  
 ---  
 441.5

15  
 15  
 ---  
 55  
 ---  
 85

Jos. J. Hartgen Survey - Lot on Chilliwater Ave

Mad River x Chil. Mon.

Hyd S.E. 28.85'  
Lamp post SW 29.85'  
Maple 10" NW 28.00'

Chil x Park - Stone (1867)

Hyd. N.E. 24'9"  
Lamp post 22'8"

Auburn x Mad River - Stone 1867

Hyd S.E. 36'10" Fence NW 41'10"  
Lamp post SW 29'1"

Auburn x Park - Iron bar

Fence post NW 33'9" Hyd. SW 24'11"  
" " SE 33'4 1/2"

Distances -

On Chil -  
Mad R. to Park - mean. 501.5' Plat. 501.5'

On Auburn  
Mad R. to Park - 503.27 501.5'

On Mad R.  
Chil. to Auburn 515.45 - 516.5

On Park  
Chil to Auburn 516.5

On Chil from center Mad R. to  
west curb Park 492.65. Dist between  
curbs Park St. 18' -  $\frac{18}{2} = 9$

$$492.65 + 9 = 501.65$$

The mon. at Chil and Park has been  
removed and I used the curb line  
at Park as correct this makes the  
square overrun 15'



Joe Jo Hantzen

To find the line of lot No. 216  
add 31.6" off of lot 205 (east side)

Measured east from center Mad R.  
The surplus for each  
lot on Chil is .02

30  
110  
23.5  
    .05  
163.55

to Jo Hantzen's west line -

Measured east from center Mad R.

30  
220  
    .08  
250.08

Jo Hantzen's east line

Mad R. to Park on Chil -

501.65

Same on Auburn 503.27  
As this day measured -

501.65  
503.27  
2)1004.92  
502.46  
501.5

Dist at alley - .96 surplus

5) .96  
    .12 to each lot.

On alley from center Mad R.

30  
110  
23.5  
    .24  
    .05

47  
63  
110 110 75.6  
    7

163.79 Jo Hantzen west line at alley -

30  
220  
    .48

250.48 Jo Hantzen east line at alley  
163.79  
86.69



Ken - Elliott Survey

Line "A"  
on South line Elliott with  
line of wire fence  
set south 13'

S 62 1/4 E      S 62 E  
at 6.85 set stake

Line "B" from stake end "A"

S 6 3/4 E      S 6 E  
set west 3'  
15.66 set stake  
came out 1' west.  
set stake

Aug 9 - 1905

Survey of sugar grove  
adjoining Elliott farm on  
Threshing Machine place  
Surveyed at request of Ken  
to ascertain acreage by fence

Line C. on south side of driveway  
from Aikini farm

588 1/2 ft 0.10

at 2103 20.99

Set set square bar in center of pit  
1" square

with elm 6" 1786 1/2 ft 65.00

Line "D"  
with Bullf. & Puscheykwanina  
pike.

1358

23.45

23.43 1/2



Logan & Hardin Co. Line.

$$\begin{array}{r}
 9.268065; 9.836209 \\
 2.423901 = 265.4 \\
 \hline
 12.260110 \\
 9.268065 \\
 \hline
 2.992045 = 981.85
 \end{array}$$

$$\begin{array}{r}
 8.662230; 9.241101 \\
 2.423901 = 265.4 \\
 \hline
 11.665002 \\
 8.662230 \\
 \hline
 3.002772 \\
 2598 = 1006.40
 \end{array}$$

$$\begin{array}{r}
 9.244839 \\
 370 \\
 \hline
 9.245209
 \end{array}$$

$$\begin{array}{r}
 432 \overline{) 174.0} \text{ (4)} \\
 \underline{1728} \\
 120
 \end{array}$$

$$\begin{array}{r}
 12.34 \\
 30 \\
 \hline
 37020
 \end{array}$$

$$\begin{array}{r}
 180- \\
 160-03 \\
 \hline
 2719-59 \\
 T. of 9-58\% =
 \end{array}$$

$$\begin{array}{r}
 1006.40 \\
 981.8 \\
 \hline
 271988.20 \\
 24.60
 \end{array}$$

$$\begin{array}{r}
 219 \\
 12 \\
 \hline
 457
 \end{array}$$

1988.2 : 24.6" : T. 9°58'1/2" : X

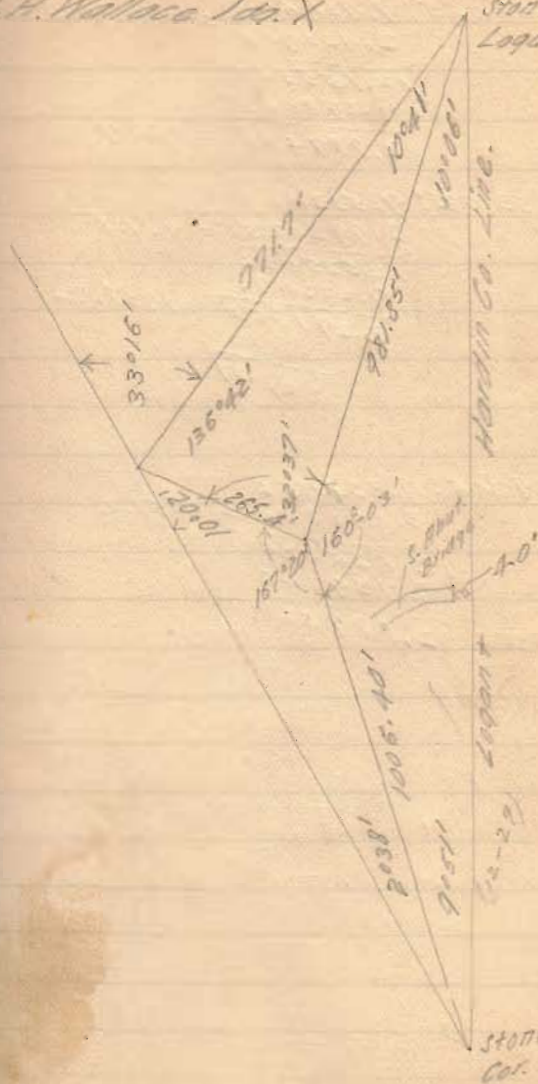
$$\begin{array}{r}
 3.298416 \\
 44 \\
 \hline
 3.298460
 \end{array}$$

$$\begin{array}{r}
 3.298460; 1.390935 \\
 9.245209 = T. 9°58'1/2" \\
 \hline
 10.636144 \\
 3.298460 \\
 \hline
 7.337684 \\
 7.308825 = T. 10°07'30" \\
 \hline
 28859
 \end{array}$$

Aug. 22, '05.

J. H. Wallace 100. X

Stone N. E. Cor. Logan Co.



Stone N. W. Cor. Union Co.

$$9.268065: 9.731603 = 265.4$$

$$\underline{2.423901}$$

$$12.155503$$

$$\underline{9.268065}$$

$$2.887438 = 771.7$$

$$9.233172: 9.533009$$

$$\underline{2.992023} = 981.8$$

$$12.525032$$

$$\underline{9.233172}$$

$$3.291860 = 1958.2$$

$$\underline{13}$$

$$222) 47$$

$$9.739206: 9.334766$$

$$\underline{3.291860} = 1958.2$$

$$12.625626$$

$$\underline{9.739206}$$

$$2.887420$$



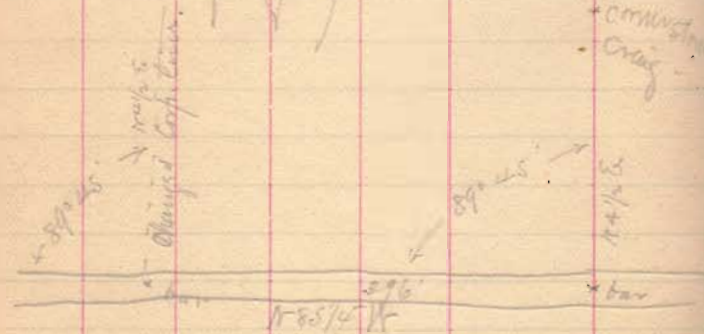
DeGrass Corp line east

of Ry & north of fence  
Sept. 19 - 1905

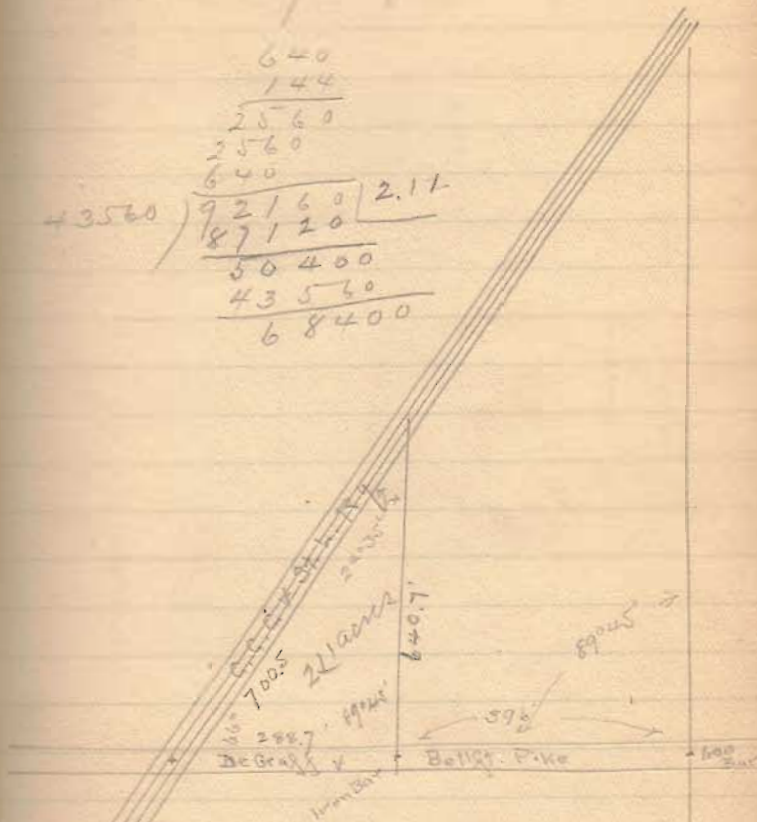
Found iron bar described as  
east line of Corp. and center  
fence in Sec. line -

Set transit over this and located  
line of fence as marked and  
set iron bar in fence 396'  
(24 rods west)

bearing of fence -  $N 85 \frac{1}{4}^{\circ} W$



	640	
	144	
	2560	
	2560	
	640	
43560	92160	2.11
	87120	
	50400	
	43560	
	68400	









Makemson-Hines Survey

ch Cr. { John Makemson  
          { C. T. Hines

} 9/19, 05

Flag. Saml Swank

ch Cr. { Wallace Makemson  
          { C. T. Hines

} Nov.

Flag. { Chas Shultz  
          { John Shultz

} 3, 05



Maxemson-Hines Survey 7/19, 05

Line A.

Found Sec.  $\angle$  in road N.E.  $\angle$  <sup>Sec.</sup> 26

Random N.  $84\frac{3}{4}$  W.

Offset 10' South.

Set stake at 40.65 (by Swanks deed).

Offset 14' to N.

Set stake at 60.00 ch.

Came out 13' N. Sec.  $\angle$

Total Dist. 81.07 ch

$$\frac{81.07}{2} = 40.53\frac{1}{2}$$

$$\frac{40.53\frac{1}{2}}{2} = 20.26\frac{3}{4} + 40.53\frac{1}{2} = 60.80\frac{1}{4}$$

Total northing 9' O.K. Cse. N  $84\frac{3}{4}$  W.

Corrections

40.53 $\frac{1}{2}$  ch. 4.5' S - 10 = 5.5' North

60.80 $\frac{1}{4}$  ch 6.75' S + 4' = 10.75 South

Set stone at 40.53 $\frac{1}{2}$  8 1/2 E. of

old fence to N.

Set stone at 60.80 $\frac{1}{4}$  1 1/2 S. fence.

+ 4' X 12' X 30'

10.75  
5.37  
5.38

5.5  
2.8  
2.3

11/3, 05.

Line B.

Found  $\angle$  stone at S.W.  $\angle$  N.W. Qr.

Random S.  $85\frac{1}{2}$  E.

Set stake at 20.00 ch

at 40.38 ch to stone (No  $\angle$ )

Large stone lying flat in road

Set stake at 40.00 ch.

Set stake at 20.25 ch. for

line between E  $\frac{1}{2}$   $\frac{3}{4}$  W  $\frac{1}{2}$  N.W. Qr.

## Line C

Offset 12' to E.

Random S.  $5\frac{1}{4}$  W.

Set stake at 12.00 ch.

Set stake at 41.00 ch.

at 60.00 ch offset 13' E.

Came out 6' 8" W. of fence at  
S.W.  $\angle$  of fence

Dug for  $\angle$ . Found nothing

81.44 ch to  $\odot$  pipe

78.70 " to N.W.  $\angle$  ch. Lot

Total Westing 31' 8" O.K. Cse S 5 W.

Corrections:

at 12.00 ch.  $4' 8''$   $\frac{12.00''}{4.8''}$   $7' 4''$  W.

at 41.00 ch.  $15' 10''$   $\frac{15.10''}{12}$   $\frac{3}{10}''$  E.

Set stake on this Line at 40.50  
ch. E. of S.W.  $\angle$  N.W. Qr.

Set stake at 12.33 $\frac{1}{2}$  ch S. E. 25 A.

Wit: 8" Hickory N.  $46\frac{3}{4}$  W. 37 lbs.

10" Elm S. 59 W. 15 lbs

13.76 ch to ~~pin~~ line fence on

S. Side of 25A.

## Line D

Along line between E  $\frac{1}{2}$   $\frac{1}{4}$  W  $\frac{1}{2}$

N.W. Qr. S 5 W

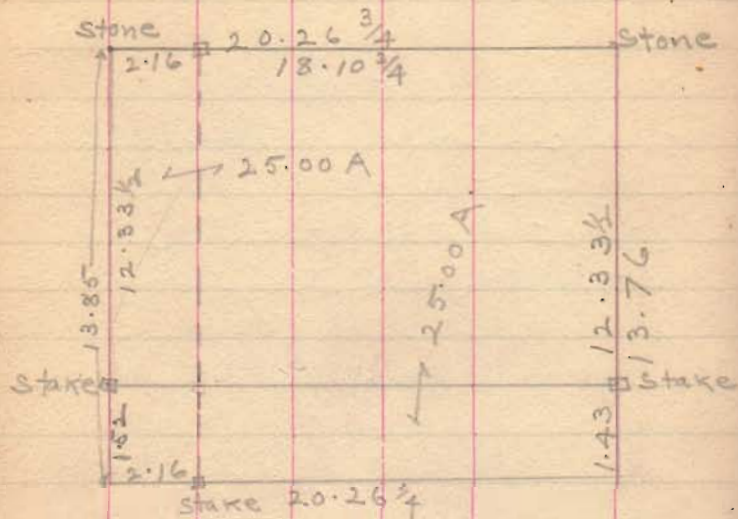
at 12.33 $\frac{1}{2}$  ch. Set stake for  
S.W.  $\angle$  25 Acres

13.85 to point in Line  
with <sup>fence</sup> south line of woods tract (25A)

Line E. Along S. side 25A  
S.  $85\frac{1}{4}$  E. in line with S. side  
of 25 acre tract as fenced

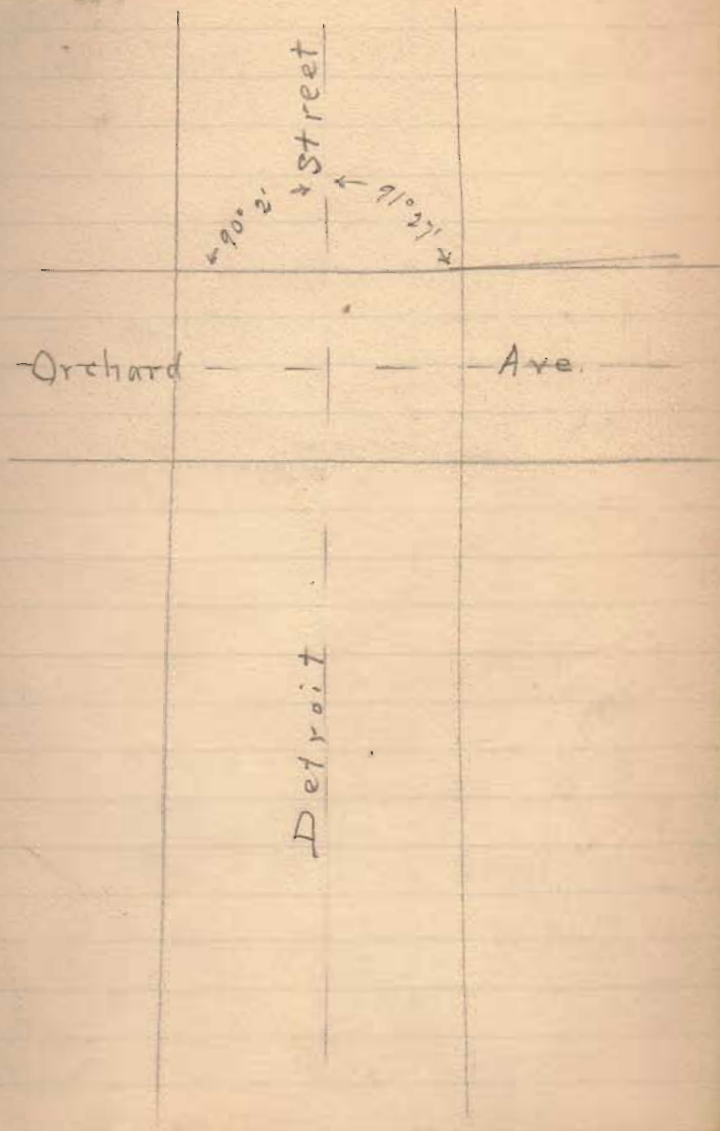
See next page





Elam Buchwalter Dec. 9-1955

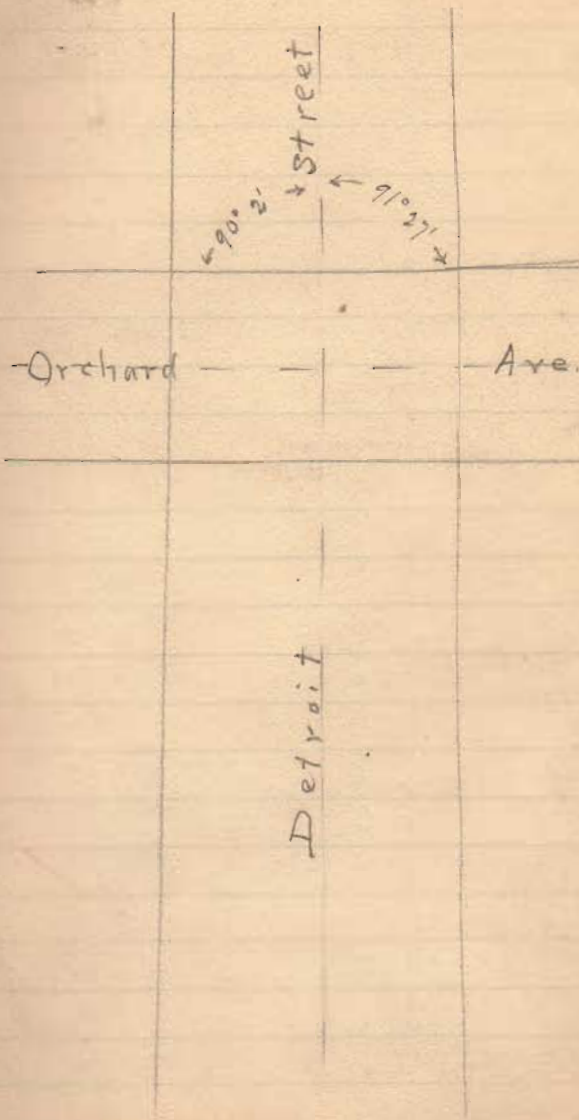
T Detroit & Orchard Ave.





Elam Buchwalter Dec. 9-1955

at Detroit & Orchard Ave.



Elan Buckwald Dec 9-  
1905

