

Louisa Jones Loring  
 Joseph C. Marmou " "  
 Rich - Little " "  
 Samuel DeWick " "  
 Allen ~~Anderson~~ " "  
 Hamilton Ind. Office " "  
 Lawrence ~~Wright~~ " "  
 Foster " "  
 Forman " "  
 Harry Mc Kinnon " "  
 John Crumley " "  
 Hubbard - Gus Bond " "  
 Ed Stelzig " "  
 J. S. Emerson " "  
 Adams works on State files  
 Casad property  
 Southard Loring  
 Dr. Chaffin

Louisa Jones Perry

Oct 17 - 1895

J. P. Stanley } ch. or.  
Jas. F. Edwards }  
Morris Sharp } subin.

Grading of Middletown & Urbana  
Pike  $\nabla$   $N 42\frac{3}{4} E$

Line "A" with west line  
Jones Farm  $N 18\frac{3}{4} W$

set east 8'

.. west 2'

came out  $3\frac{1}{2}$ ' west of birch  
corner tree —

$40.27\frac{1}{2}$

Total westing  $9\frac{1}{2}'$  (O.K. cor.  $N 12\frac{1}{2} W$ )

Line "B"

with north line of farm  
set south 8' of

$N 73\frac{3}{4} E$

Set stake in this offset line  
at 10''

came out 21' south of line

of fence at center of Tom Johnson  
pike 199/54

Total southing 13' (O.K. cor.  $N 73\frac{3}{4} E$ )

Line "C"

with Tom Johnson pike

from line fence to line

Jones Farm to + of Middletown  
& Urbana Pike.

$221\frac{3}{4} E$  17.69

At stake set at 10<sup>00</sup>  
in line "B"  
set north  $8 + \frac{1}{4} = 11\frac{1}{4}$   
and made A-B  $\pm$  40 acres  
at ~~10.67~~ Make this 10.77  
N 73 $\frac{1}{2}$  E set corner stake

With: Sugar 16" N 48 $\frac{1}{2}$  E 12 $\frac{1}{2}$  lbs  
& Sugar 14" S 38 E 27 lbs

With: Sugar 14" S 17 E 25 lbs  
& Sugar 16" N 1 E 5 lbs

Line "D"  
East line 40 acres -

S 18 $\frac{1}{2}$  E

set stake at fence at 12.52  
at 34.10 center of fence.

With fence Middleburg &  
Urbana -

S 43 $\frac{1}{2}$  W 12.13/2

Make this dist 12.25 -  
set harrow tooth in fence



Joseph E. Marmou Survey

Dec 30. 1895-

Line "A"

set 24' east from center  
of Mad River - with  
river channel -

S 2 1/4° E

21.22 1/2 to Daugherty's  
line - set stake of east  
bank of river -

Line "B" with Daugherty's  
line - S 70 1/2° E 12°  
to center Peter's ditch -

Line "C"

with Peter's ditch -

N 70 1/2° E 2.12

Line "D"

with Peter's ditch

N 50 1/4° E 7.48

Line "E"  
with Peters ditch  
N 28 1/4° E 12.29  
to Vanhymys line

Line "F"  
with Vanhymys line  
from center Peter ditch  
to center Mad River  
N 7 1/2° W 16.51

# Rice-Little Survey

Jan 22-1896-

Line "A"

Start from stake set in  
center of East Liberty  
Marysville pike for SW  
to farm -  
N 34° W 6.60

Bearing of fence S. side of  
farm N 56½° E  
6.44 to iron bar

Line "B" N 56½° E  
produced north line of 2<sup>nd</sup>  
acres to 644 ch -

set ¾" iron bar 3' long

Line "C" S 33½° E  
6.60 to ¾" iron bar 3' long  
N 10.18" S 44½° E 44 chs  
and thence 12" S 60° W 110 chs -



Samuel Detrick

Gardner Williamson } ch. or -  
H. C. Braden }

Line "A" ran from stake  
set at + roads N & S  
17 - with center barbed  
fence - 53 1/2 ft  
at 8.35 ch. set iron pin for  
N & S to 8 1/2 acres -  
at 18.47 set iron pin for S & E  
to 8 1/2 acres -  
at 21.06 ch to center of  
2<sup>d</sup> ditch -

Survey March 16 - 1896 -

Line "B"  
with center of 2<sup>d</sup> ditch -  
172 ft  
5.86 set stake in center  
of ditch -

Line "C" with 2<sup>d</sup> ditch.  
143 3/4 ft - 4.96  
set stake in west fence  
line and center of ditch.

Line "D" with road to  
side sec.  
N 8 1/2 W  
8.26

set iron bar in center of  
road for corner of Moor  
& Dietrich

Line "E"

with west line of Dietrich  
set east 8' ~~54 1/2 W~~ 54 1/4 W  
at 8.67 set stake for NW 2  
8 1/2 acres  
at 18.79 stake SW 2 8 1/2 acres  
came out at south side of  
1/4 - 2' west of fence  
claimed for line -  
41 ch. by deed -  
at 27.64 center of 2 1/2' ditch

set west at 2 1/2' ditch  
from line as run  
47' for true line -

set west at south line  
of 8 1/2 acres 3.4' for  
true line -

set west at north line  
8 1/2 acres 5.9'  
at line of 8 1/2 acres 8.36 -

Line "F" south line 8 1/2 acres  
S 84 E 8.51



Alex Burnside (Duncan Dow) Survey May 14 1896

Line A Start from stone  
N 73 E Burnside farm  
at 1.51 big red oak tree  
line from short dead-  
fence just south of base of said  
red oak.

N 73 E with road

at 20.92 stake east of creek  
set south 3'

at 29.73 set south 20'

set stake range for 2. Allmons  
N 72 at 39.38

at 41.40 set stake at 582 to  
Allmons 4 acres.

Measured Allmons east line from  
center of ditch N 82 20 ch. came  
out by big stone set stake.

Fred Hunt } ch. ex.  
Don Buehler }

~~on line A, came out 15' south  
of stake set for Allmons~~

~~Total northing 8'~~

$$\begin{array}{r} 3 \\ 20 \\ \hline 23 \\ 70 \\ \hline 8' \end{array}$$

Total northing 29'

O.K., case. N 73 1/2 E

Line "B"

with Burnside's East line  
Start from stake set for  
S 57° E Allmon  
at the rear stump 4' north  
of gate post NW to Fabin's  
Green.

set west from stake 16'  
came out west  
from black oak stump S 82°  
Burnside.

S 17° E 44.15

set west 3'

Came out 22' west from stake

set for corner  
Nit blk wal stump S 55° E

5' (7 1/2 lbs)

sugar tree 20" N 64° W 37.6" (57 lbs)

total westing 3'

Line "C"

South side farm -  
set south 8' from stake set  
for S 82° farm.

S 76° W

set south 1-

at 21.88 set stake in this line  
" 23.21 " (set south 39.1')  
" 31.15 " (set south 43.28)

30' north of fence

at 39.36 set stake in this line  
in line west fence line F. Green -  
fence jog south line - 1.18  
(set south 59.3')

at 41.56 west fence line  
Burnside came out 6 1/2' north  
Ash tree Nit marked on 3 sides with  
tomahawk set stake for corner  
between Ash & Hickory -  
fence jog south line 78 lbs  
Total westing 70 1/2'



Line "D"  
Bumside's west line —

Start from stake set for  
end of line E. — set east 8'  
at 17116 (set west 5.1)

set stake at 16.70 from whetfield fence  
set east 8' (set west 5.1)

set stake 25.10 north of gate —  
(set west 11.6)

after passing gate in lower part  
below house set east 8' —

at 40 ch pass stone claimed  
for corner Henry & Abraham  
Short —  
pass 17' east of stone —

at 43.21 Stone NWK  
Bumside  
came out 21 east of stone

$$\begin{array}{r} 3.21 \\ \underline{\phantom{0}4} \\ 12.84 \end{array}$$

Total writing at N.E.  
Abraham Short —

$$\begin{array}{r} 24 \\ \underline{17} \\ 7 \end{array}$$

$$\begin{array}{r} 16.70 \times 7 \\ \underline{40} \phantom{00} \\ 167 \\ \underline{\phantom{0}7} \\ 40 \overline{) 1169} \underline{2.9} \\ \phantom{00} 80 \\ \underline{\phantom{00}00} \\ \phantom{00} 369 \\ \underline{\phantom{00}00} \\ \phantom{00} 360 \end{array}$$

$$\begin{array}{r} 25.10 \\ \underline{\phantom{0}7} \\ 40 \overline{) 1757} \underline{4.4} \\ \phantom{00} 160 \\ \underline{\phantom{00}00} \\ \phantom{00} 157 \end{array}$$



May 15.

Reran south line

set south from old line  
stake opp J Greens NW2

57.3

N 74 1/2° (OK cor N 74 1/2° E)  
at stake 31.15 cam out 42.25

" " 23.21 " " 27.2'

cam 7' 2" too far north at  
east end.

at J Greens NW2 fence is  
9' too far north

set south 1.8

set south 3.2 27.2 + 3.2 = 30.4

28 1/2' south of fence  
18' " " "

Measured from Red oak  
 N E Survey 3224 -  
 and came out 4 lks south  
 of stake set for Burnside's N E  
 yesterday -

This makes the east line of  
 Burnside as measured

$$44.15 - 4 = 44.11$$

$$\begin{array}{r} 44.11 \\ 40. \\ \hline 84.11 \end{array}$$

Burnside east line by deed 42.50  
 Williams & Outland " " 40

$$\begin{array}{r} 40 \\ \hline 82.50 \end{array}$$

$$\begin{array}{r} 84.11 \\ 82.50 \\ \hline 1.61 \end{array}$$

$$\begin{array}{r} 44.15 \\ .32 \\ \hline 43.83 \end{array}$$

Made Burnside's N E  
 32 lks south of corner as  
 set yesterday & making  
 disk from Big red oak N E  
 Survey 40.28 and making  
 Burnside's east line 43.83  
 This was placed by agreement  
 with Jeffrey Williams. He  
 stated that the line was  
~~was~~ always claimed at this  
 point and he had definite  
 recollection of the location  
 of the corner trees -  
 set stake with:

Beech 20" N 45 E 4 1/2 lks

Sugar 20" N 12 1/2 E 1 1/2 "

This makes our offset lines  
 4" come out 4' 9" too far north.



Hamilton Bros. lot  
on Columbus St. front

$$\begin{array}{r}
 84.92 \\
 84.86 \\
 \hline
 3.9 \\
 3 \\
 2 \\
 \hline
 6 \\
 84.86 \\
 \hline
 84.92 \\
 84.50 \\
 \hline
 .42
 \end{array}$$

$$\begin{array}{r}
 46 \\
 385 \\
 \hline
 5250
 \end{array}$$

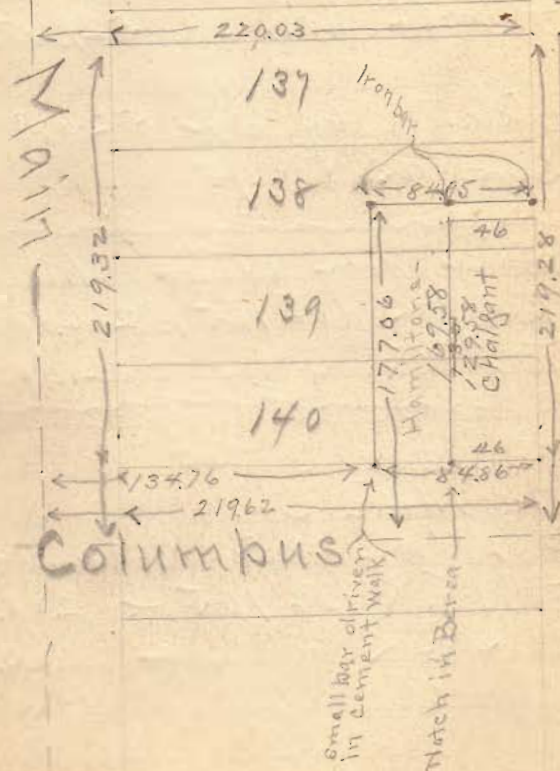
from 5' offset line the N. end of  
Logan House fence is distant 33.3  
from 5' offset line the point in  
Logan House fence on line north  
of where privy is moved is 33.6'

$$\begin{array}{r}
 33.92 \\
 33.3 \\
 \hline
 .62
 \end{array}$$

$$\begin{array}{r}
 33.89 \\
 33.6 \\
 \hline
 .29
 \end{array}$$

Main to Mad River 525.73

where Office is situated  
lots 138, 139, 140 -  
May 18 - 1896 -





Lines for Lawrence's

On Main St - Col to Chil - 527.23  
" Detroit " " " 527.27

At alley between Main and  
Detroit average 527.25

Distance by flat 526.57  
Surplus - .75

Dist from center Chil St -  
to SW lot 105 - 266.87'  
to NW " " 321.96

On Main St -  
Dist from center Columbus St  
to NW lot 105 - 205.27'  
" SE " " - 260.36'

Building Main St. at alley -  
May 22 - 1896

surplus .73  
" .77

The bottom of iron column  
south side door, south room  
from building is 40.50' from  
center line of Main St -

The water table at  
Melodrom Hall is 40.26  
from center Main St -

Foster Survey -

~~Line "A" set south from stone  
N.E. & S.W. corners to John  
Huffman 24~~

~~on offset line - S 83 1/2 W  
would run within 2'  
of fence at west end -  
Buy it again~~

~~set north of line - from  
stone NW to Huffman and  
from stone SE to Foster  
face 48 links north of stone  
N.E. to Huffman~~

S 83 1/2 W

This came out too far south  
at west end -

Janur 19-1896

Line South side of 2 acres  
set north from fence  
north side of Horns 2'  
S 84 1/2 W 535'  
set iron bar in center of fence  
at S.W. 2 acres -

Line "B" with fence N 15 1/2 E

Foraman Survey.

July 17-1896-

Line "A"

Set stake with center of fence  
for AMK to 20 acres -  
with fence North side of  
farm - N 89 1/2° E -

Set Harrow tooth at 20 ch  
- fence -

Set Iron bar at 40 ch  
- fence -

at 60.43 set stake in center of  
fence from south and west for  
NE of Foraman and 42 1/2 ch <sup>each</sup> from  
face of east abut of bridge over  
Bradley river -

Line "B"

with center fence east side  
Foraman south -

at 13.62 North line Cemetery  
set stake -

at 21.81 set stake in  
line and at 22.24 set stake

South line of cemetery - and  
correct length of line "B" 21.91

21.91  
13.62  

---

8.29



Line "C"

on N. line Nancy Stewart Sec  
set south from fence  $< 31'$   
east line Sec 28 with N. line  
Nancy Stewart Sec.

From Frank Rogers N & R set south  
 $31'$   $S 86\frac{1}{2} W$   
at fence  $S 86\frac{1}{2} W$  Cemetery set in  
this line set south  $31'$  make  $88\frac{1}{2}$   
to cemetery at  $21.91\frac{1}{2}$  line "B"

South line Cemetery 1.87

At  $20.29\frac{1}{2}$  corner to J. J. Smith  
 $.1.87$   

---

 $18.42\frac{1}{2}$

Line "R"  
west line old front cemetery -  
North -  
476 to post.

Line "S"  
from end of line "R"  
S 86 1/2 W 166 to post.

Line "X" N. line Cemetery  
North to post -  
358 1/2

Line Z - N line Cemetery  
N 86 1/2 E to stake - post  
N 92 to Cemetery -  
353 1/2

187  
166  

---

353

576  
358 1/2  

---

934 1/2

Line "D"  
J. J. Smith east line

NW 2.94 to  
corner stone S 8° to  
Forman in east line Acc  
28 -

Line "E"  
set north 15' - set north 15'  
at west end -  
S 90° W  
at 20.03 set stake for  
SW 2 Forman 40 acres.

Line F.

with Smith east line  
N 7/2° W 9.24  
set stake N 8° to Smith

Line G -  
with Smith north line  
S 89° 1/2° W  
to center pole 20.01 -



Line 7<sup>th</sup> west line Forman  
on file - N<sup>1</sup>/<sub>2</sub> E  
10 ch. measured  $\frac{1}{2}$  mile  
and found it held out exact.

On Line "A" for N<sup>82</sup> 50 acres  
from Iron bar set at 20 ch -  
N<sup>89</sup>  $\frac{1}{2}$  E 15 ch.  
set iron bar for N<sup>82</sup> to  
Forman

On Forman's east line  
South. 20.06 came out  
20 lbs too far west for S<sup>82</sup>  
50a -  
O.K. Cor S<sup>1</sup>/<sub>2</sub> E

From stone N<sup>82</sup> to Smith  
in east line Sec 28 - measured  
S<sup>90</sup> N 5.03 for S<sup>82</sup> 50 acres  
set in line Smith set stake

Henry McKeeney Survey

July 25-1896

Line "A"  
west line track from stake set  
for center of road N 31° E 7.42  
to post at NW.

Line "B"  
north line of track  
S 82 1/2° E  
set stake at 5 =  
set NW stake at 7.92 1/2

Line C.

east line track  
S 1/2° E 8.30  
set stake in center road  
for S 82

Line "D"  
with south line of track  
and center of road.  
to stake set for begin  
S 89° E 7.45

For 5 acres measure from  
west line 5.60 on both  
north and south lines  
at Harrow in road at  
south end.  
set wooden stake in  
line at northwest corner  
to 5 acres



Godwin Cemetery Survey

Oct-7-1896-

Measured from Stone No 2 to  
Alexandra with fuke  
17.58 1/2 to stone  
set for MR to old cemetery

North line of old cemetery 2 00  
Make line 6 lbs east from  
line of old cemetery

East line old cemetery 1 27  
to point 10' south - 1.42

from old stone MR to cemetery to  
Harrow tooth MR new cemetery 1.49

On next line cemetery  
set Harrow tooth in fuke at  
MR  
54 1/2 ft 1.42  
to stone set for  
SME

Cemetery 1.42 x 3.55  
Stones 1 at south <  
Harrow tooth at north <

Hubbard - Ivo Berndt Survey Jan 2 - 1897 -

West line  
N 4 E 440 feet  
set stake at North line

East line  
S 4 1/2 N 480.8 feet.

North line 224.8 feet  
N 84 1/2 E

South line  
S 84 3/4 N 217.1 feet.

SWC of A Berndt lot between  
SE corner of old Rott Braun  
house 12' dist and sugar tree  
south 9' dist -

set line for Hubbards in front  
on Columbus St. 105' making it 275'  
set from SWC of Hubbards fence  
West N.O. tree <sup>20</sup> 9.5' NW  
" R.O. " <sup>23</sup> 11.1' West.

Set stake NW<sub>2</sub> to Hubbard -

Hubbard N. line 111 feet -

Wit: apple tree 3" NW. 12'

Wild cherry 16" on Hubbard corner  
then north line 36'



# Ed Stelzig Survey

New land May 3 - 1897 -

## Line "A"

Start from stone S<sub>82</sub> to  
Rausenburger N<sub>82</sub>½E  
set north 6'  
at 5.30 set iron bar in line  
old fence -  
Mit: Maple 20" N<sub>83</sub>½E 29 lbs  
Red oak S 7 W 32 lbs

Line "B" with line fence  
N<sub>46</sub>½E 120  
Set iron bar -

## Line "C"

set 4' north from iron bar end  
of line "B" and 4' north of  
small blue ash (see Stanton's  
deed) N<sub>80</sub>½E  
produced this line to center  
of Cemetery fence 8.77  
set south 4' and set iron bar  
for <  
at 7.61 pass blue ash tree  
came out 2' 4" too far north -  
Mit: to bar. S E east coping  
arch culvert - N<sub>54</sub>E 27 lbs  
S W west coping arch culvert -  
S 73 W 26 lbs

Line "D" from iron bar  
N 6 1/2 W with center of piles  
5 ch set iron bar  
Hit Red oak 18" S 85 W 4 6 1/2 hrs

Line "E" north line of track -  
~~S 8 1/2 W 15.50 ft~~ to Rausenbergen  
plank fence S 75 1/4 W 18.25  
Set iron bar

Line "F" with Rausenbergen fence  
to begin - S 52  
S 42 1/2 E 6.65

J. D. Emmonson Survey

Line "A" start from stone sec  
sec 24 - with road -  
N 85 1/4 W

at 3992 center fence line between  
1/4 Secs.

set stake at 40 for distance and  
center in line as running - south by  
fence -

at 79.70 set stake in road  
in line as run

at 79.73 1/2 in line of fence  
from south -

May 4 - 1897

Line B. on west Sec line  
start from point at 79.73 1/2  
N 4 1/4 E

at 38.15 1/2 found  
stone in road N 2 E to 1/4 Sec.

Hit: wild cherry 18" 536 3/4 E 26 1/2 W



Line "C"

on Mid. line Sec.

Set north 6'

$8\frac{3}{2}$   
~~8837~~ E

At fence between Emerson & Strawn  
set stake in line as running -  
and set stake at 40.00

Came out  $18\frac{1}{2}$ ' north of stone N&L  
to Emersons

At 79.69 stone -

Found stump of old R.O. witness tree,  
(had been recently cut down) and found  
distance to stone to be correct 180 lks -  
large stone with point out of ground  
in plain

2) 79.69  

---

39.84 1/2

Line "D"

on east side S&H

from stone N&L to stone S&H

$8\frac{1}{2}$   
36.09

At NE of Shawn and at  
NW of Emmon set stone with  
stake under it for corner  
at  $39.84\frac{1}{2}$  from corner stone  
in section line —  
and in line exact as on —  
setting south  $12\frac{1}{2}'$  for line  
from random line

set stake in line between  
Emmon & Shawn  
 $84\frac{1}{2}'$       26.99

# Levels for Adams on

Top Bridge floor	40.10	
Dura	2.32	42.33
ditch	5.10	37.23
100' north	4.80	37.53
100' "	6.00	36.33
200' "	9.00	33.33
324' outlet from pipe	10.00	31.73

## South

Levee west	2.65	39.68
Field "	4.90	37.43
100' surface	4.30	35.03
" bot. ditch	6.00	36.33
" Levee	3.30	39.03
" Field	5.60	36.73
200' surface	4.90	37.43
" bot. ditch	6.20	36.13
" Levee	3.10	39.23
" Field	4.60	37.73

at bridge  
 surface ground W. side.

" " " " " "  
 " " " " " "  
 bot ditch at fence line

of bridge

surface west side of road

# Stuts Pike -

May 12 - 1897 -

from disjuncted ditch at bridge  
 when it crosses pipe to bridge  
 north 324 feet.

South 409' " to end of 8" tile  
 under approach to Adams property  
 at angle in road.

at 569' ditch leaves pipe on Adams.  
 " 1243 strike Sains creek  
 down Sains creek to point where  
 outlet probably was originally on  
 Sains creek 2000' from begin.

689 to bridge on pipe from point  
 2000' from bridge by route water  
 now runs



— South —

		42.33	
300' surface	5.30	37.03	
" Ditch	6.50	35.58	
" Levee	—		
" Field	4.00	38.33	
400 surface	6.10	36.23	
" Ditch	7.10	35.23	
" Levee	—		
" Field	4.30	38.03	
489-8" Tile	7.60	34.73	bet tiles -
outlet 569'	11.10	31.23	

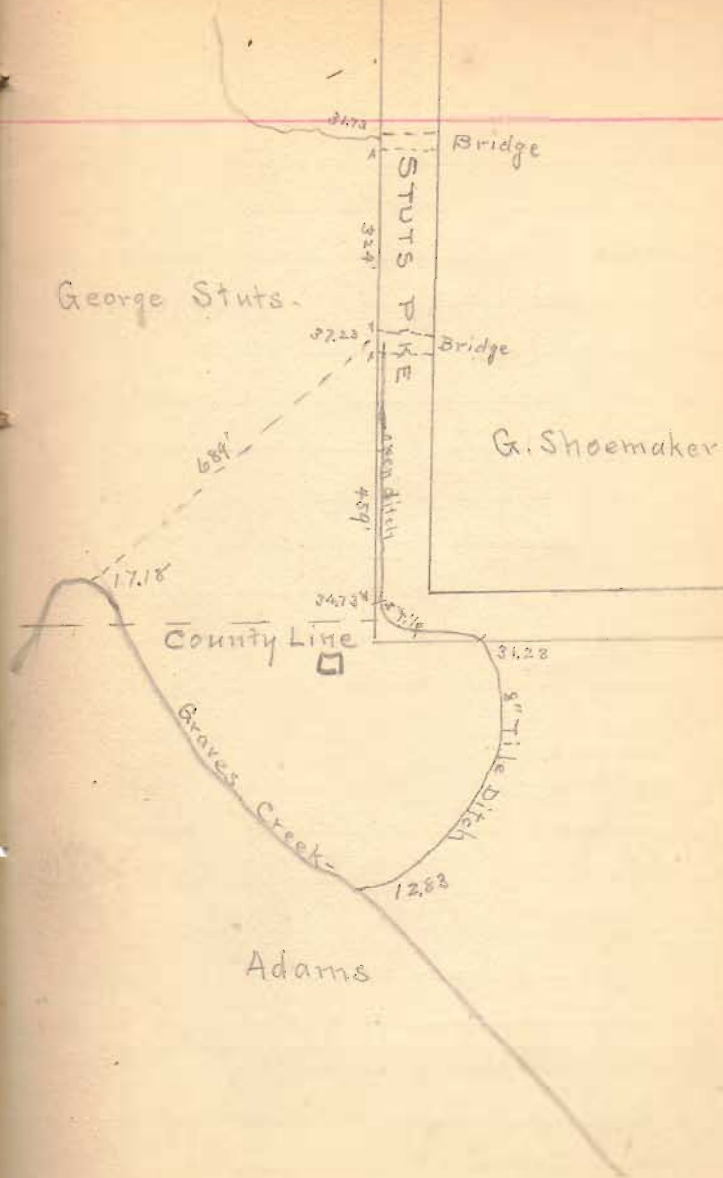
— West —

— Across field to Graves Creek —

89'	6.50	35.83	
189	9.35	32.98	
289-	10.70	31.63	
T.P.	10.79	31.54	
Ins -	1.66	33.20	
389	7.80	25.40	
489	10.70	22.80	

— West —

		<u>3320</u>
589	12.20	21.00
T.P.	12.64	20.52
Line	4.76	25.28
- 689 -		
Graves Creek	8.19	17.18



# Casad Property Survey

Measured on Main from center  
Columbus 149.66' to S. line lot  
No 138.

153.66 line Rausenberg + Casad -  
259.32 N. line <sup>No</sup> 137 -

4)  $\overline{219.32}$   
54.83 width of each lot

fronting on Main -

2)  $\overline{54.83}$   
27.41  
149.66

$\overline{177.07}$  set line for N. line 1st tract

153.66  
 $\overline{23.41}$

259.32

$\overline{141.25}$

218.07 set line for N. line

177.07 2d tract -

$\overline{41.00}$

for G. D. Shrift  
June 5, 1899.

220.03  
 $\overline{219.62}$   
.41  
 $\overline{.41}$   
.15

220.03  
 $\overline{219.13}$   
219.88  
 $\overline{109.}$   
110.88

Set stake in N. line lot 137 -  
at 109' from NW

Set + mark on stone foundation  
to barn at NW lot 137 -

measured south from stake set  
at 109' - 41.25' and east 109'

from stake set for NW 2d  
tract for NW 2d tract set  
stake

measured south from this stake  
41' and west from iron bar

set for NW Chalfant or  
Hamilton driveway 110.88'



Set stake in alley S&E < Casad.  
40.97 north from iron bar <  
& Hamilton driveway —  
Making Casad strip 41.25

Measured west from S&E of  
2d track as set 50.25  
in in line from iron bar  
< & Hamilton driveway —

Measured south from above  
23.41 and east from S&E <sup>58.71</sup>  
1st track for S&E 1st track

$$\begin{array}{r} 220.00 \\ 219.62 \\ \hline 2) 439.65 \\ 219.83 \\ \hline \end{array} \quad \begin{array}{r} 220 \\ 219.83 \\ \hline 4) .17 \\ \hline 4 \end{array}$$

$$\begin{array}{r} 58.75 \\ 4 \\ \hline 58.71 \end{array}$$

Southard Livery Stable

Measured 60' from south end  
of Shaw lot

from + Mad River + Sandusky  
measured south 219.75  
 $30 + 219.75 + 3 = 252.75$  for 3' south  
of north line of alley.

And measured north  $13\frac{1}{2}$ ' north  
from Casads N&S for 3' south  
of alley line and measured  
north from this line at  
east and west lines of Shaw  
lot 63' from this line for  
60' from south end of said  
lot.

March 25, 1900

Dr Chaffant line

June 25-1902

Set line in alley 2' east of  
west line of alley -  
Measured from this line  
40' west to front of privy -

$\frac{2}{38}$

46

$\frac{38}{8}$

8' from Chaffant's  
west line -

Hamilton brick building is  
5 3/4" west of Chaffant's line -