

Paid M & K 3.25
1.50

3.25
= 3.00
1.75

Shelby Co.

Low Cliff 2.85
H₂O one 1.75

July 15th 1884 Present SW Pamphel and Buchanan Surveyors, E. Cantwell, Derrick Jones and Kellis Jackson and James Stewart (last 2 men colored) helpers set stone of Berea at 25' N 1/2 W from edge of ^{average} water ^{in the river} being 15 feet N 1/2 W from stone planted for corner of lands of Pool and Freeman. Monument marked as follows.

W side = { S. 20. T. 1
R. 8 S side 1884

E side = Logan W side Shelby

Set stone to wit line between Dec 20 & 17 as follows. From B = stone N 2 corner to Dec 20 run S 87 1/2 or 20. chains to corner Pool and Freeman. Thence N 1 3/4 or 25 feet to monument, marked as follows

W side { S. 17. T. 1
R. 8 S side { S. 20
1884

E side Logan W side Shelby

Dec 20 T. 1 R. 8 Shelby Co

Line A start at stone N 2^o E Dec 20 in pond
 Wit White elm 40" S 25 1/2^o E 29 1/2 links also
 a sugar crooked S 79^o E 104 links
 Apparent course of road N 1 1/2^o W
 Start 10 links west of stone S 1 1/2^o E Posts land
 each side from B to River, but at stake in line at 12.95 ch
 at 32.14 ch cut Miami, from the N cross
 at 41.87 ch stake on north Bank River - A
 strike 19 links west of - variation 9 links
 Wit A = W. Hick 20" N 57 1/2^o E 80 3/4 links + as 18" N 36 1/2^o W 11 1/2
 at 44.63 ch ang 7 20' W of S Bank of River.
 at 45.32 chain Elm 20" on line E Dec 20 + on
 south Bank of River

Line B start at ang 7 44 63 of line A, thence with
 chain of 800 N 49 1/4^o W. at 27 chains chain forks
 on in chain on line Branch river 23 chains at 600
 at 126 holes at 7 on island N 40 3/4^o E 60 feet
 at 37 chains chain white, Main chain bears N 30 1/2^o W
 at 44 chains chain branch point, at 48 chains dam on
 at 53 chains set on island S bank line S bank main line N 10
 at 53 chains Johnsons house N 6^o E, Mill on
 120 chains West end of island. Chain 300 on side, 200 on
 123 1/2 chains front on center line N from iron bridge
 and 14 7/8^o E of center of cut for river

Dec 20 T. 1 R. 8



Line C start at B. S 87 1/2^o W
 at 30 ch cut in line at road B
 30.66 ch stone N 77^o E from and in 2 line
 38 chains Johnsons house 36 feet north
 40 chains west line Johnsons.
 43.10 ch cut like course N 74 1/2^o W
 46.46 ch cut N about iron pin at River 11 Mar 12 1/2 N 2 1/2^o E
 from with cut for S 25 1/4^o W 1.09 chains to intersect line B
 at line B is S 3 1/2^o W and runs to cut S end iron 12
 14 ch to 31 7/8^o. From end of line B is N 25 1/2^o E 1.53 ch
 to intersect line B on N
 Line D. start at stone N 2^o E Dec 15 N 2 1/2^o W 8 1/2 links also reach
 18 S 49^o E 11 links, thence S 1 1/2^o E 3.54 chains to intersect line B on
 River chain at 26.50 chains from east end line B.
 Course of county line South of Miami River
 is S 2 1/2^o W
 (Stone N 2 1/2^o E 19.95 ch from B)
 For record of setting Monuments see page 5 this book

Shelby Co Sec No 17 T. 1 R. 8.

Line A. Start at stone 10 for on the line of Sec 20
 then on with road N 1 3/4 W
 at 40.20 ch line for a fence Post + 2 1/2 ell
 " 50.27 ch line Post and Lambert
 " 80.44 ch N E < Sec 17 at S side line fence running
 west, set side stake west 25 links, Variation west
 3 links

Line B Start cut road at E - N E < Sec 17
 S 87 1/4 W (Trial line) at 40.04 1/2 ch stone + a
 1 half sec 17 stake, south of + stone 38 links
 Variation too much south 38 lks = 1/2. Ok case S 88 1/4 W
 set stake for Co line N W < P. H. Lambert at
 20.02 ch from + E. Wit Beech 18" N 4 1/4 W 24 1/2 ch
 also R.O. 8" S 48 1/2 E 3 1/2 links

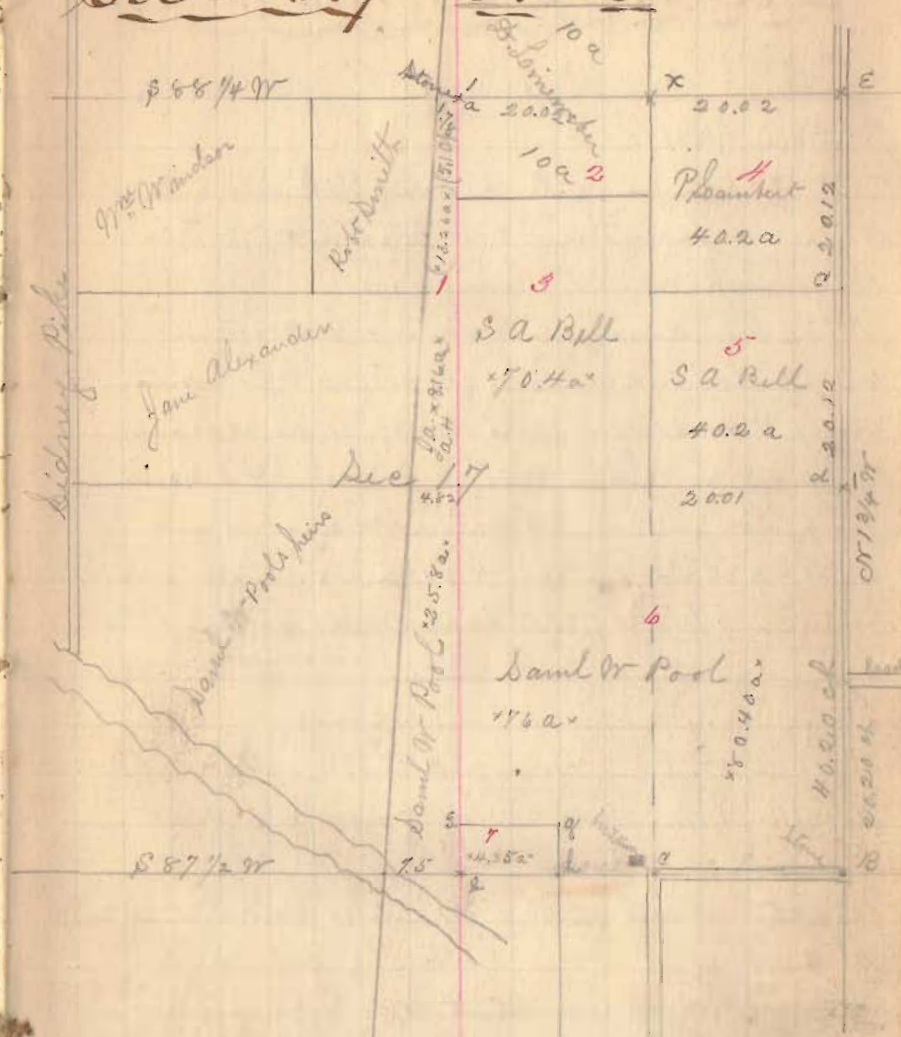
Robt. Smith has 30a.

Set monument for Co line at corner X King
 from E S 88 1/4 W 20.02 ch for wit reference
 bench + R.O. Monument marked as follows

N side = S. S. T. 1. R. 8. S. side { S. 17.
 E side Logan N side Shelby { 1854

Sec No 17

T. 1. R. 8



340

INDEXED ON MAP

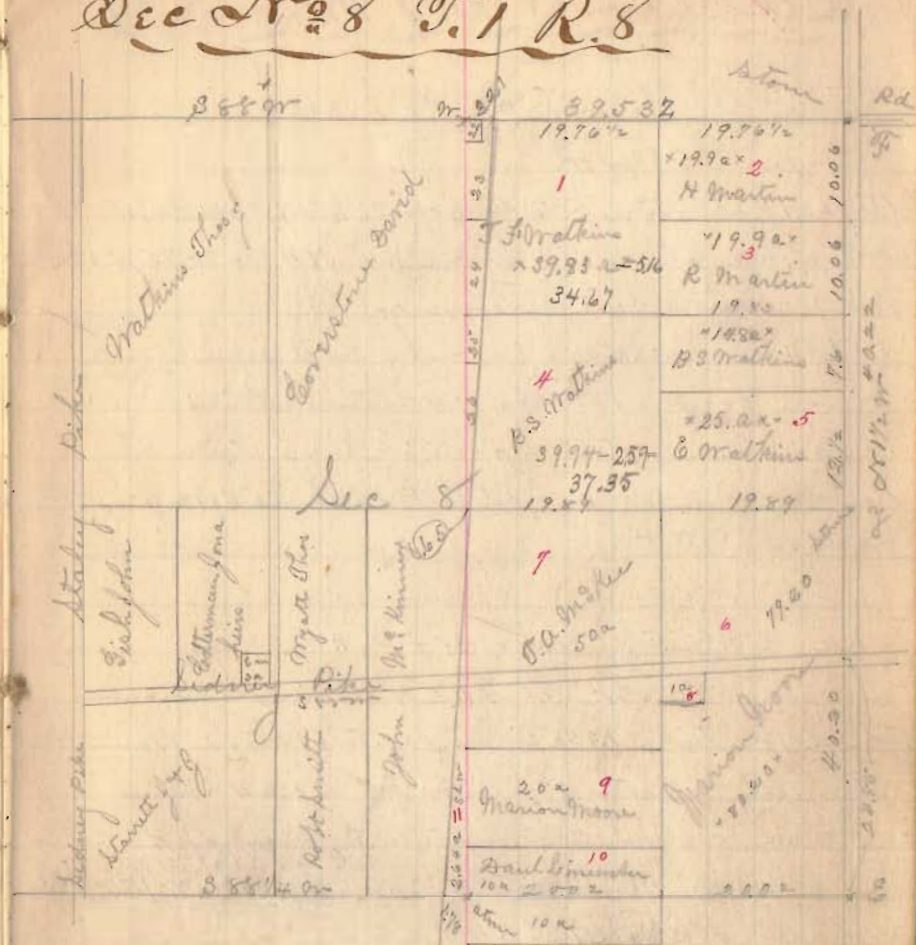
Sec No 8 T.1 R.8 Shelby Co.

Line a. Start at E corner with
 Road N 1/2 W
 at 24.85 chains center kidney spike pins S 85 W
 40.20 chains stone = 4 = known & Watkins
 Pass 2 links west of stone
 A line set between E corner & A Watkins
 60.30 chains < stone B S Watkins = R Martin
 Pass 1 link W of < stone W 5 M at 60.31 chains
 at 70.43 ch fence between R Martin & N Martin
 fence not on line R Martin H has 20 acres
 at 80.42 chains < stone N 2 x Sec 8. kidney spike
 < stone 3 links, at Road corner

Line B.

S 7 1/2 W true course = 38 1/2 W
 at 19.79 ch stone 20 links south of < stone
 at 39.53 ch stone 41 links south of stone
 at < W
 Set stake for E line at W W < J F Watkins
 at 19.76 1/2 ch from N 2 x Sec 8 and 2 1/2 links East
 < stone planted by H B Moore 1/2 acre = 1/2
 W 1/2 & 2/3 brown ash 10' S 3 3/4 W 40 links
 also say 10' N 3 1/2 W 48 1/2 links
 Set monument at corner 7 as outlined above
 N side S. S. T. 1. R. 8 S side S. 8. 1854, E side top W side Shelby

Sec No 8 T.1 R.8



- N 7 22 = Avenue Jesse .50 a (Buildings on Watkins land 15 a)
- " 23 = Pampel SW 5.00 "
- " 24 = Groves S.E. 3.50 "
- " 25 = Honnell E.R. 1.00 "
- " 26 Pampel SW 4.00 "
- " 11 Winget S.L. 2.64 "

34

Sec No 5 T.1 R.8 Shelby Co

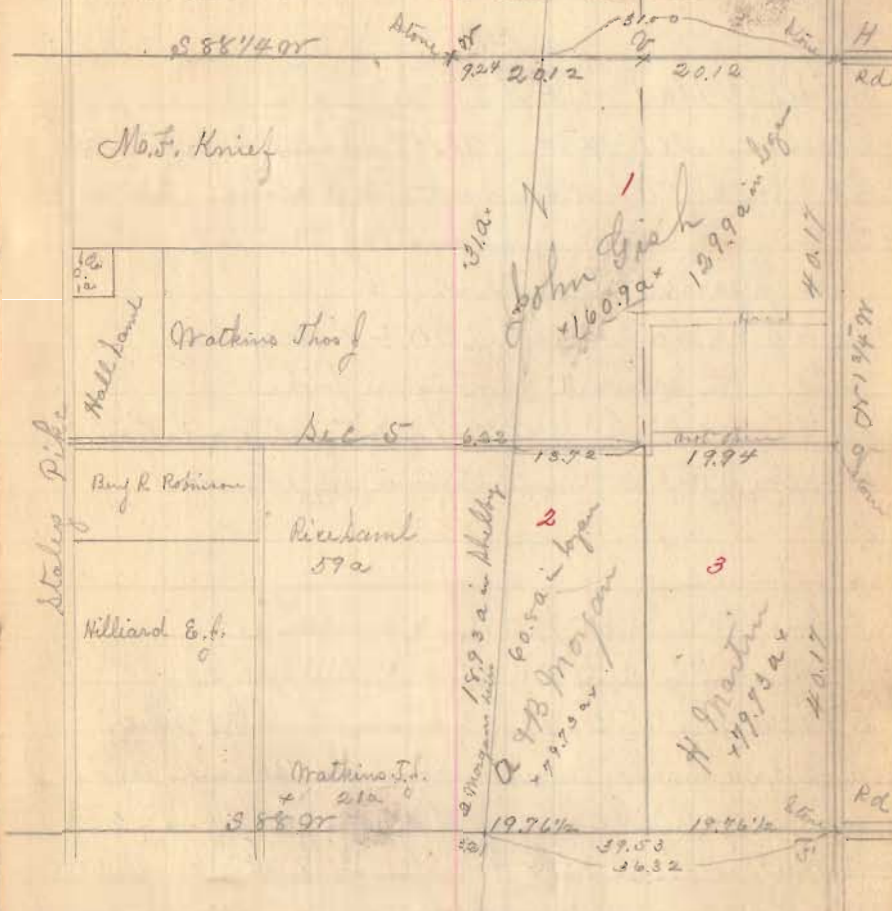
Line A, Start at S.E. < Sec 5
 Then on N 1 3/4 W
 At 40.17 ch stone S.E. < John Bish on S side road
 Wit above stone g = S 47° 1/4 W 75 1/4 lbs
 Pass 1 1/2 links east of stone g
 at 54 1/2 chains road west, and John Bish
 house west 15 ch & south of line
 at 80.34 chains stone S.H. = N 2° E sec 5 stone 3 links
 west of < stone at H, Wit H Red Oak 26" S 8 1/4 W 6 3/4 lbs
 Road east at H

Line B Start 15 links N of < H
 Then on S 88 1/4 W at 40.24 chains < stone
 at < or strike 13 1/2 links N of stone variation
 to much south 1 1/2 links in 40.24 chains
 Set stake for county line at 20.12 west of H = < W
 Round Red Elm stand Wit W ash 20" S 68 1/4 W 15 6 1/4 lbs
 also Jack Oak 12" S 45 1/2 E 42 3/4 links

Set monument at corner W = see above for out
 N side { S. 32. 5. 2. R. 8 } S side { Sec 5, T. 1, R. 8. 1 }
 1884

East Boyan West Shelby

Sec No 5 T.1 R.8



Road on Bish runs above as marked not on the lower line

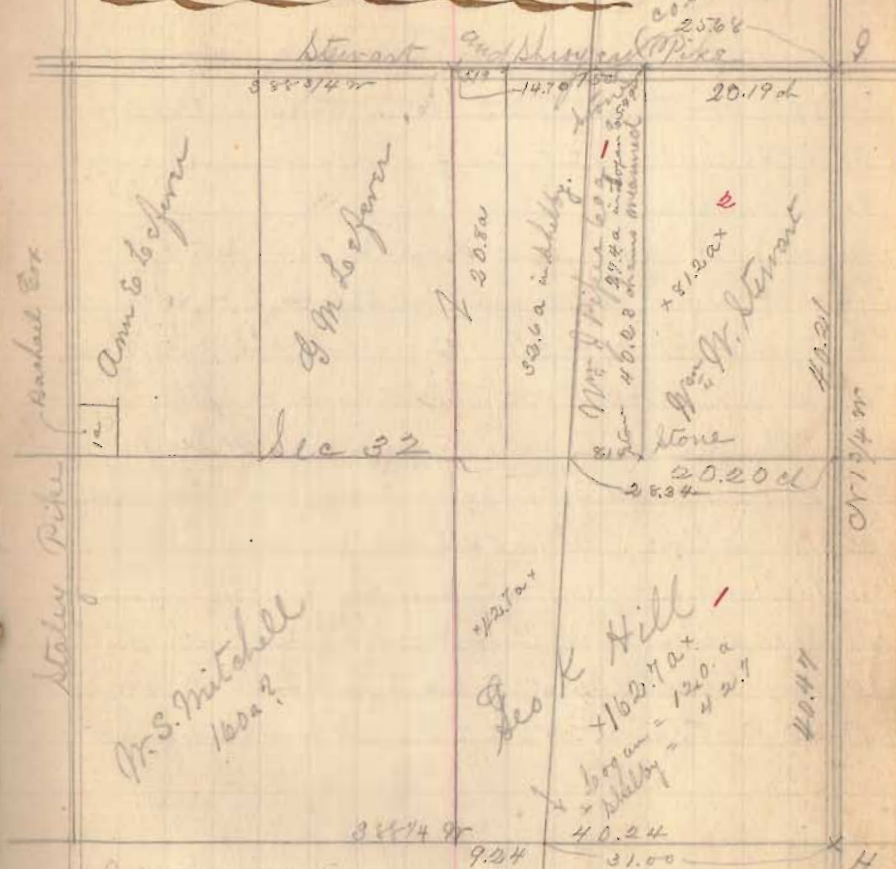
342

Shelby Co.
Dec. No. 32 T. 2 R. 8

Line A start at H.S.E. < Sec 32
Thence N 1 3/4 W 40.47 chains < between
Go K Hill & N.W. Stewart mo. stone but < at
center fence now as shown by Mrs Hill who
was present at survey
at 80.68 chains < stone N.E. < Sec 32
in center Stewart & Shroyer pike
strike 19 links west of < stone variation
19 links west, True course N 1 3/4 W

Line B start at stone N.E. < Sec 32
Thence with cut fence and line Sec 32
S 88 3/4 W, at 20.19 ch < stone Stewart & Piper
at 25.36 chains point suspended old Co line end of
Stewart & S pike a gap of 2 rods not picked, 25.36 ch
to east end old pike in Shelby Co
at 35.33 chains cut fence between Piper & Logan
Piper claims 20 rods wide
at 40.35 chains = < b = < peak
Corner stone Piper & Stewart made des five
Mr. St. Beech 16" N 28 3/4 E 240 1/2 links also
34 < log house N 49 1/2 W 98 links
N.W. < N.E. < Sec 32 ching land 8' S 53 1/2 W 60 1/2 links
Also Elm 24" N 30 3/4 W 175 1/2 links

Dec. No. 32 T. 2 R. 8



July 16 - 84
Set monument for Co line at north line Sec 32 at
20.19 ch S 88 3/4 W from N.E. Sec 32 and N 2 W 25 feet
from Dec line being cut Stewart & Shroyer pike
monument marked as follows
N side { S. 27. T. 2
R 8 } S side = { S. 32
T. 2 R 8 }
to side Logan or side Shelby

343

Sec. 29 T. 2 R. 8 Shelby Co.

Line A start at

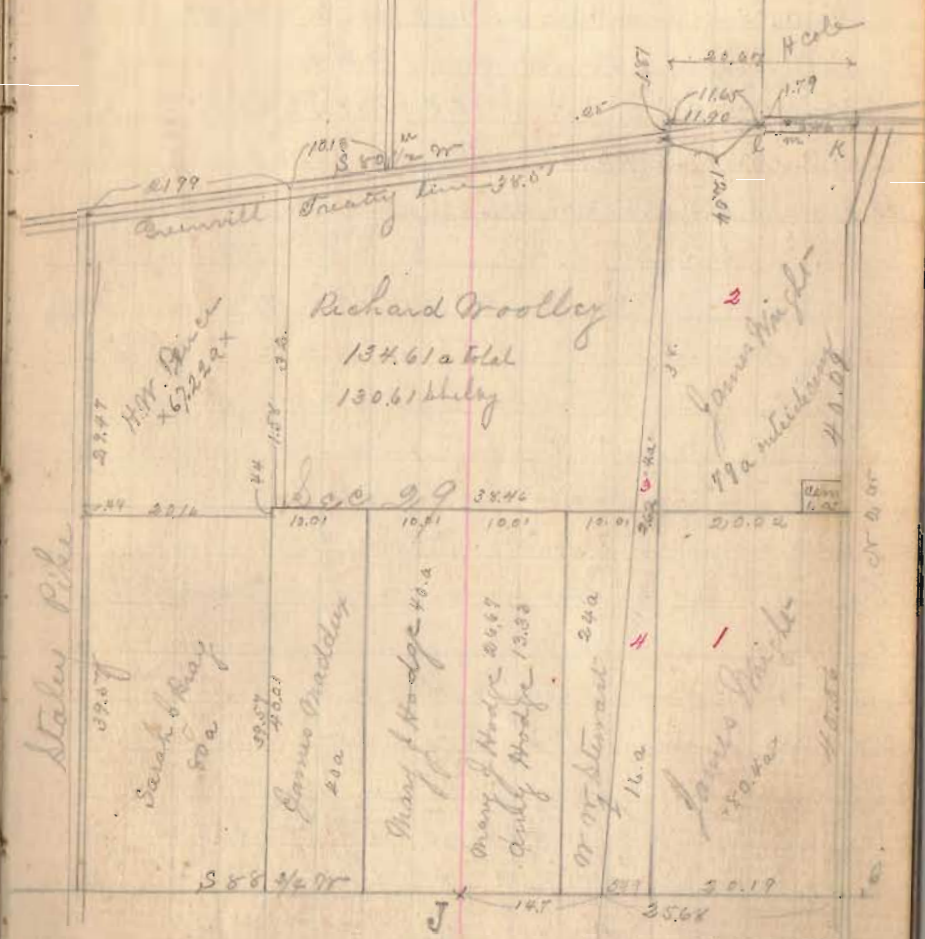
N 81 1/2 W True course true course N 81 3/4 W
at 40.06 chains SE < grass yard supposed cut the
line on east

at 80.15 chains cut around pike at 86.5 chains
from or end of sec 20. Marker 26 feet = 39 1/2 links east of
stone NE < sec 29. True course N 2 W

Line B, start at NW < straight land on pike Treaty
line, thence with Treaty line and N line sec 29
N 80 1/2 W, at 3.29 chains west end boundary
at old line. at 12.59 ch west line Harmon Cole at
1.79 chains west of or end of sec 20

at 14.32 chains or end sec 20, thence with
N line sec 28 and S line sec 20 N 87 3/4 E 6.46
chains to stone at NE < to sec 28 and SE < to sec 20.

Sec. 29 T. 2 R. 8



344

Shelby Co.

Sept 14. Course treaty line from stone at E. corner N 80 1/2 E
 to stone at E. Hogan land in E line center N line sec 36
 to h. 10.55 ch. N. post 1 pole south bank Run to N. N. & H. Cole at 5 links
 north of ash 2 1/2 di, h. 5 L = 16.10 ch to stone cent. Round pit
 to N. = N 1/2 W 32.78 ch. N. to E = N 89 1/2 E 40.25 ch
 E to A = N 87 1/2 E 36.78
 from S to A 25.58 ch.

July 16th 54 try course treaty line find it N 80 1/2 E

Set Monument to mark eastern angle of county
 line on Greenville treaty line at corner L. then
 to corner stone original corner to Harmon Cole and
 N. Hogan. Set monument from L N 1/2 W 25 feet
 from L to A = or east angle on county line on treaty line
 = S 80 1/2 W 12.04 chains

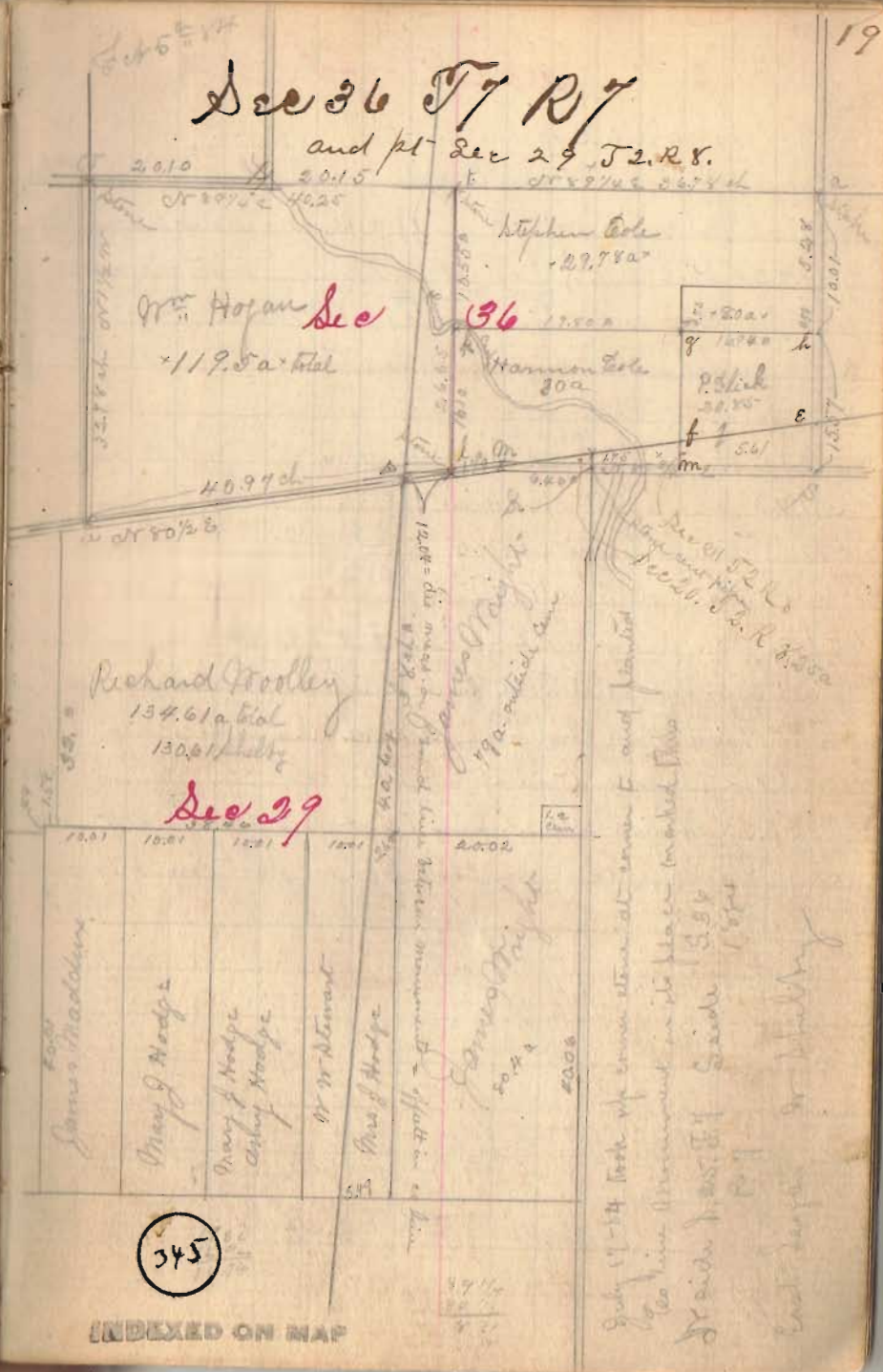
Set monument to mark ang at A = or east ang. E line
 from treaty line S 22 2/5 feet N side (S 27 1/2 E 7.7) (S 27 1/2 E 7.7) (S 27 1/2 E 7.7)
 R 7. side (R 5 1/4 W 4)

Set Monument to mark ang L = east ang. E line
 from Treaty line N 1 1/2 W 25 feet from

N side = S 36 57 R 7 S side = S 29 52 R 8
 1684 E. Long, Phil

Sec 36 T7 R7

and pt Sec 29 T2 R8.



345

INDEXED ON MAP

July 17-14 took up corner stone at corner E and planted
 the line monument in its place marked this
 N side West of S side 1684
 East corner or boundary

Shelby Co.

Net or mine 10 more west than S of treaty line
 Feb 5 22, L = stone on line H Cole
 L M on treaty line N 50 1/2 E 1.79 ch. M = on road sec 20
 K = on sec 29, start at K then with north
 line sec 28 and S line sec 21 N 87 1/4 E
 at chain on road south
 " 3 ch cut Run
 " 6 " H Cole stake left & pole
 " 11.40 ch point on line H Cole & P Glick
 " 16 ch Glick house, at 28.31 ch point on
 line & start at S N 1 1/2 W
 at 15.57 ch find N E & P Glick & sec 21 H Cole
 find stumps of old Vit trees Glick & set stakes 11 links
 from hick & 28 lbs from bush, line passes 3/4 links
 west of stake out for 4 & 6.
 at 25.54 chains N E & sec 36. & to 6 link in east
 and post stream on east and on part line Stephen
 Cole land
 Line D.

Stephen Cole



345

INDEXED ON MAP

Dec. 25, T7. R7. Shelby Co.

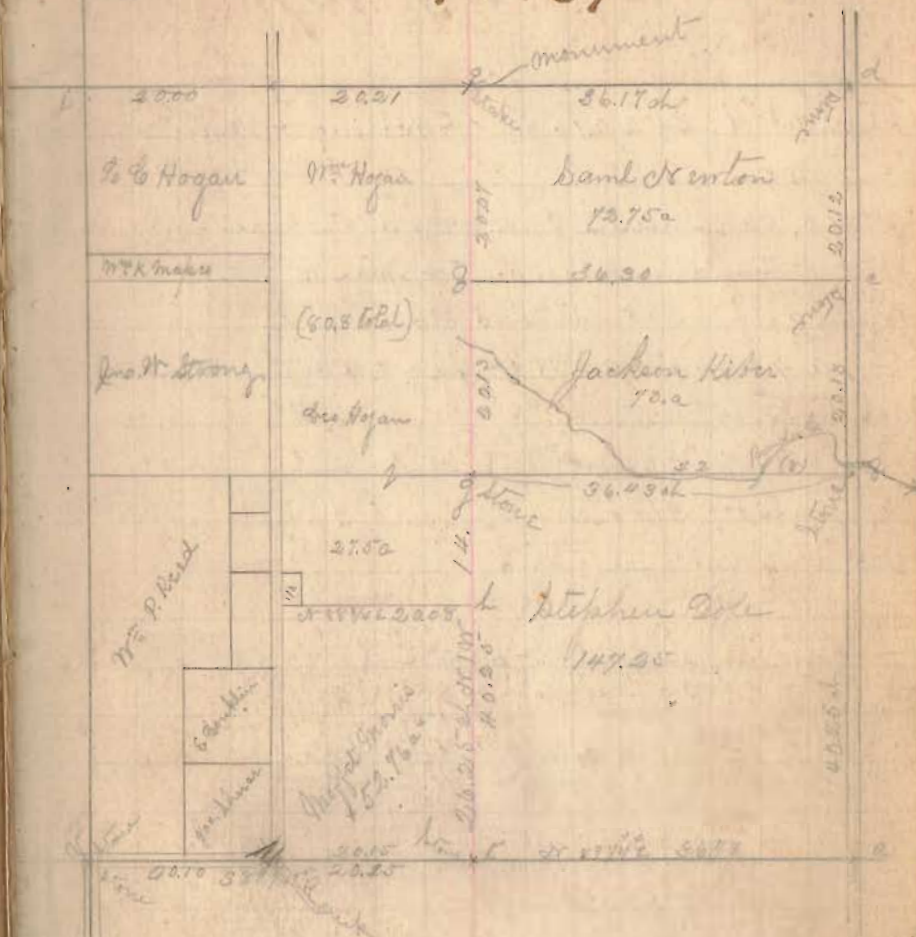
h = 2 x 2 1/2 Moffat Morris old state
grit h = Ash 16' x 6 1/4' x 4 1/2' also Moffat 14' x 6 3/4' w 19 3/4' h

h to g = 26.25 ch
h to f = 40.25 chains
From a to f = 40.25

at 42.50 ch best bar on Brandywine Co
at 60.34 ch = Kiber & Newton Stone = 20.13 ch
+ 80.52 ch stone on E = Dec 25 at N E x S Newton
d to e = 36.17 ch d = stone

July 17-84 planted monument at E north line
Dec 25 at front other state once set monument marked
or side { 824 87 } side { 825 } E Hogan or Shelby
R7 { 1884 }

Dec 25, T7. R7.



Government survey field notes grit L = Bush 22' x 5 1/2' w 1
and White Bush 5' x 20 w 10'
Dime coin to Bush 15 Dec 25 17' w 10' x 12'
Dime coin to 35.70 8 w 4'

346

INDEXED ON MAP

Shelby Co.
Sec 24 T7R7

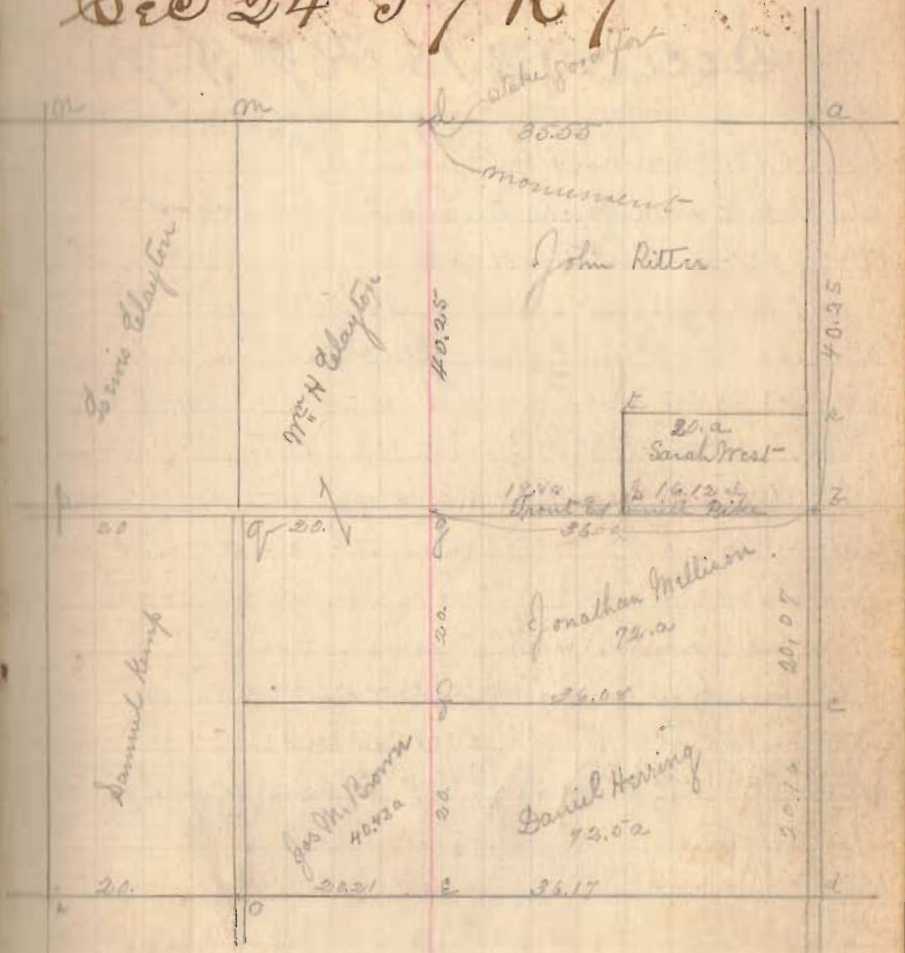
Start at d. at 20.16 ch to Herring + Mellison
 = d to c = 20.16 ch
 at 40.23 ch center Trout + Smith pike
 Start at sand monument on T + spike at 33.00 chains
 West end of pike at supposed old co line
 To a 40.25 ch a = d to c see 24 at 5 links South of
 ash tree 24" diam
 Start at point a run toward h from supposed
 co line at 31 ch
 Start at sand monument

Planted monument at stake l

1857 side { 13 57 } said { 3 24 } Coburn or Shelby
1854

July 17-54

Sec 24 T7R7



Old field in Sec 24 - Elm 10° N 15° W 207 Blk ash 14' 33" 11-24

347

INDEXED ON MAP

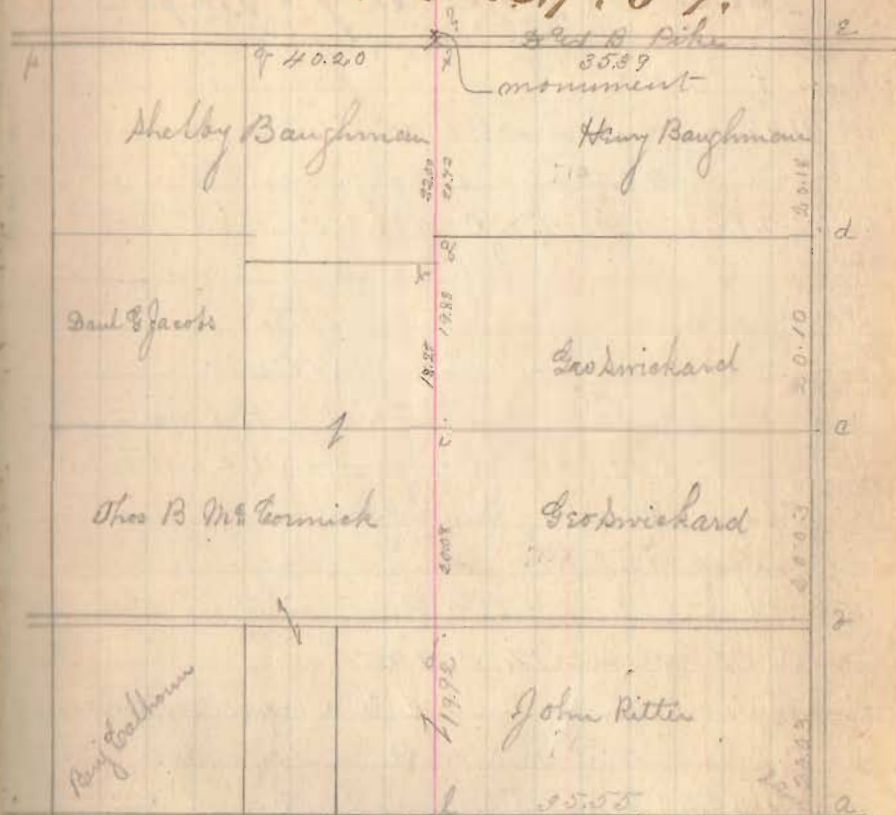
Shelby Co.
Sec No 13 R 7 T 7

at 50.174 Lumber & Baughman
 Mark at land on eas toward ?
 at 1002 of cent road
 51.00 point is supposed
 at 50.225 of line (John) Mc Cormick
 50.23 of fence & p. at 50.23
 50.25 same point ? center pike, Stevenson
 find like which set at 8.0' E of center of pike stake
 set by Baughman and another stake 3.25' E of cent pike

Planted monument to mark point J as
 yellow iron 1/2" or 3/8" 25 feet
 monument - marked as follows

W side { S 12 1/2 W
 R 7 } E side { S 12
 1854 } E Logan W Shelby

Sec No 13 R. 7. T 7



Old field notes or at 15° S 47° W 32 + B Ebb 12° N 65° W 20

348

INDEXED ON MAP

Shelby Co.

Sec No 12 T7 R7.

11.37

11.37 ch from stone at a east end
toward C; at 40.28 ch stone supposed & not known

at 75.66 ch stake set by Pampel on transit line for
N line Sec 12

at 75.78 ch center Frank² of Pence pike

Course N line Sec 12, S 89 W

Find stake set for N line at C to be used for north line
Sec 12. Run from stone at A on line to stake at C
N 89 E 40.32 to post true corner in E line being
N 1/2 or 18" from old land corner stone, put this stone
to true E is N 18" + E 4 inches

Set monument to mark B at N 1/2 or 20 feet from
corner stone at B, monument marked this

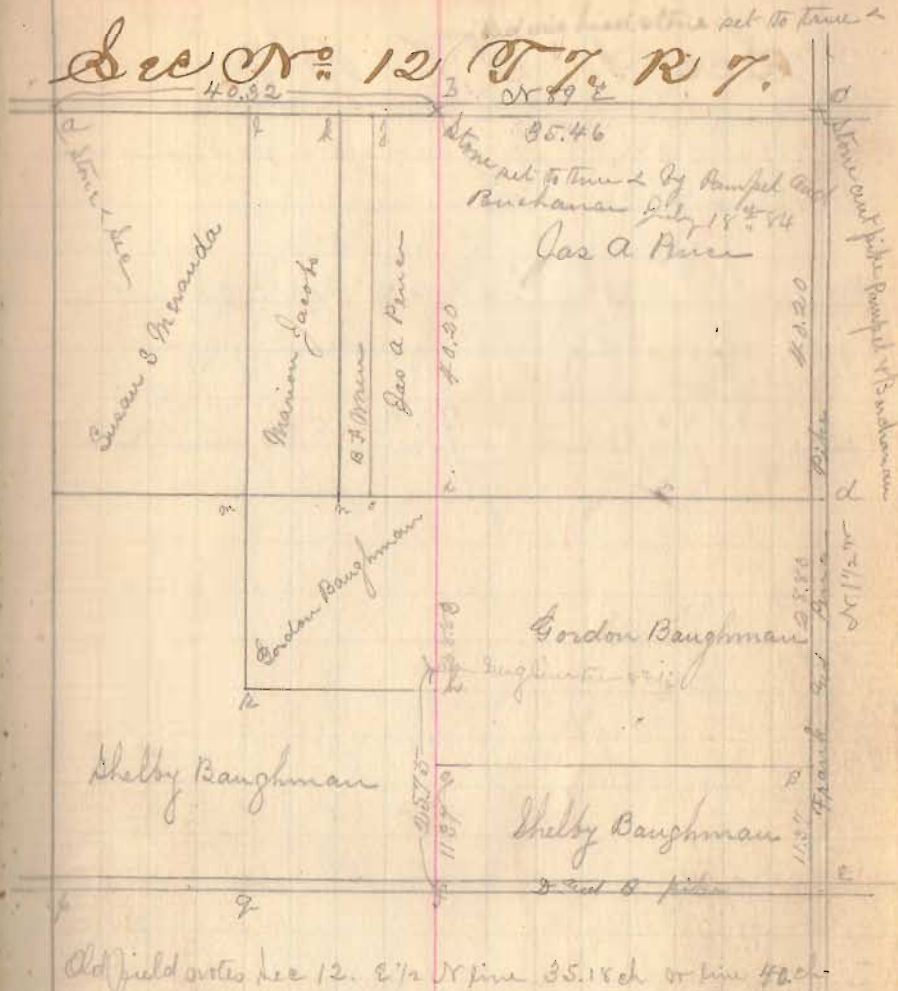
Course N line Sec 12, S 89 W

Find stake set for N line at C to be used for north line
Sec 12. Run from stone at A on line to stake at C
N 89 E 40.32 to post true corner in E line being
N 1/2 or 18" from old land corner stone, put this stone
to true E is N 18" + E 4 inches

Set monument to mark B at N 1/2 or 20 feet from
corner stone at B, monument marked this

N side S1 T7 R7 S. side S12 E Logan or Shelby

Sec No 12 T7 R7.



349

INDEXED ON MAP

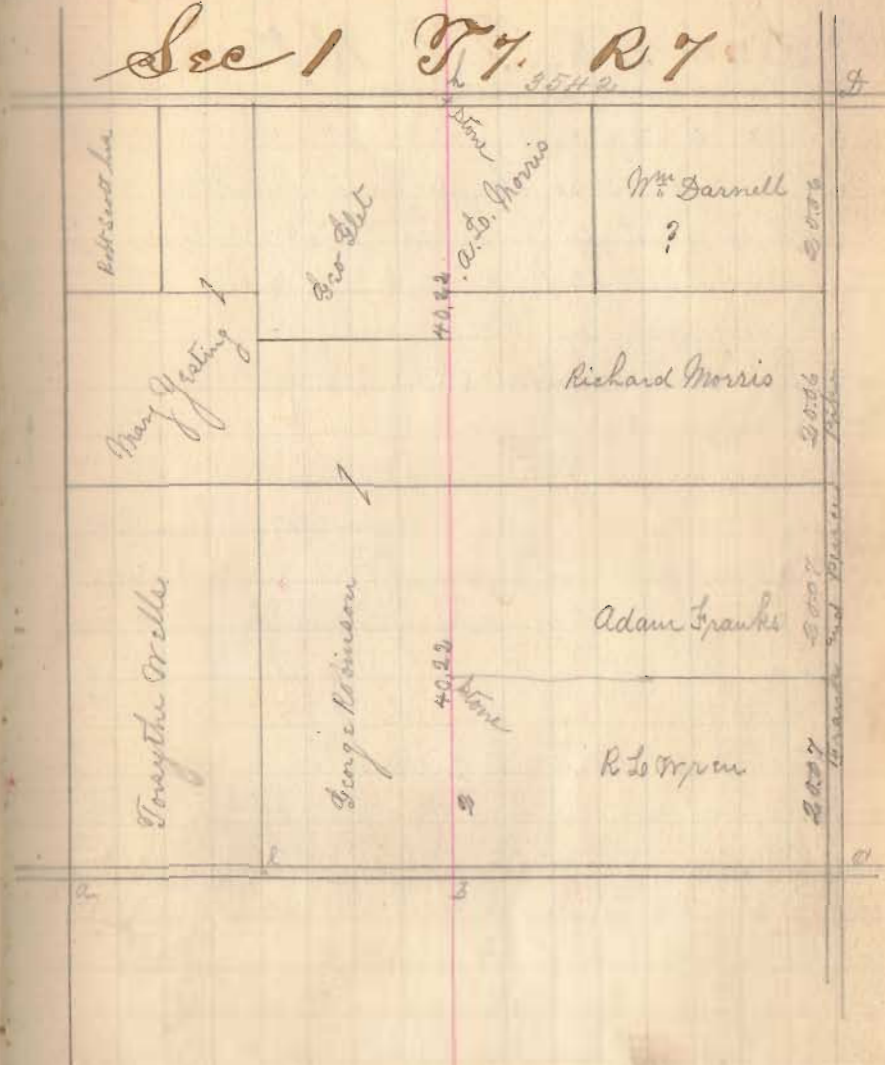
Shelby Co.
Sec 1 T7 R7

Measure from 2 north, at 3-9-45 = 19.95 ch =
to Wain & Franks at stone

Set monument to mark \angle h $5\frac{1}{2}$ E 20 feet
from stone at \angle h monument marked

W side { S 34 To R7 } W side { S. 1. 57. R7 } E Logan W. Shelby
1884

Sec 1 T7. R7



(35)

INDEXED ON MAP

Shelby Co.

Sec 36 T6 R7

Start at a = 7 m out pick line a
 S 81° 20' W at 55.66 ft from 20 links south of 7 sec
 from g of Mid g = benchmark 22° 0' 20" 18 links
 also swamp ash 13 S 13 W = 212 links
 at a of more stake at a 35.72 east 2 links and north
 16 1/2 links to make right line a d g
 with to d (as at stake) water bench 7 2000 44 links
 also swamp ash 11° 20' 00" 40 links
 From a west 14.52 to stake d d line
 but not set to ok line a d of more north 2 links
 August 25th 1884. By agreement B. W. Pampfel
 Samuel Craig Kinross appointed for Aug.
 Geo. & S. B. Buchanan met middle of
 N. line Sec 36 T6 R7 and on examining
 the ground in reference to stakes by James Bagge
 and remains of top post of Oak orig. set from 267 =
 16 link set stake for c also from stake 3332 26 links
 and find remains of swamp ash orig. and then
 dig at stake and find points of old stakes and the hole
 in which original bee line stake stood. Last stake en-
 tirely rotted and gone. Both stake points and hole of
 orig. stake in space 1 foot square. The above stake
 more 41 links east of a. that is from a 55.25
 chains

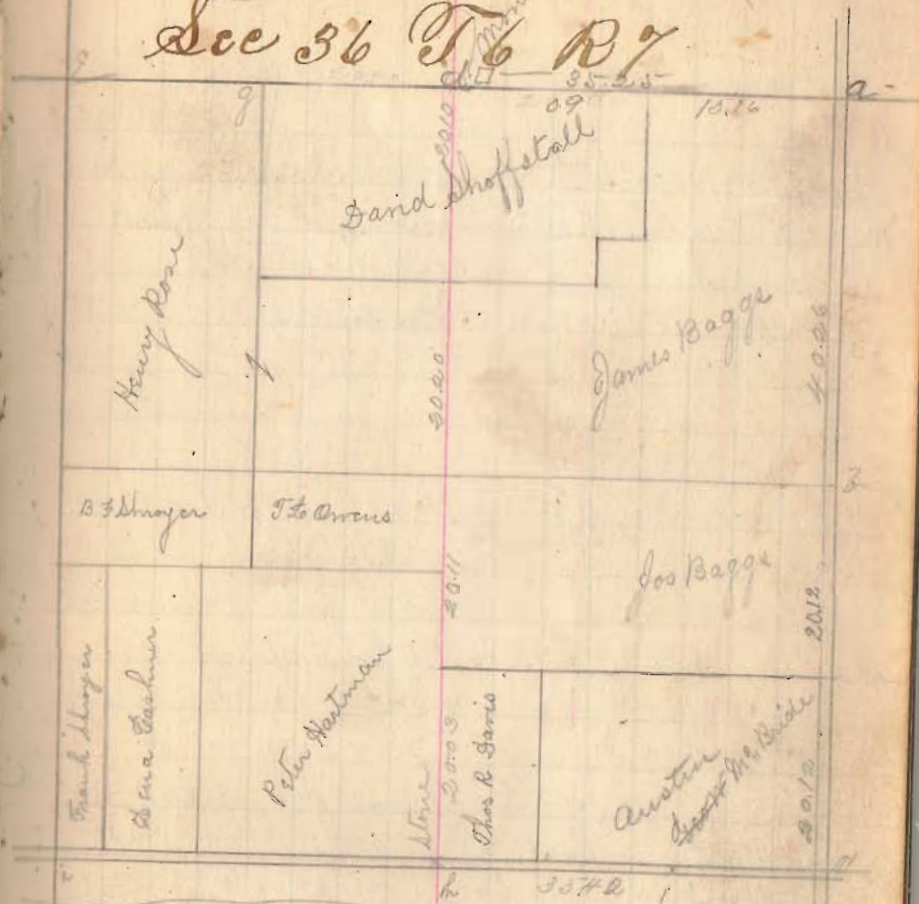
352

INDEXED ON MAP

35.72
 35.66
 41

26

Sec 36 T6 R7



Old gov. field notes Sec 36 as follows
 a = Red Oak 24' x 28" N 100' + chimney 11" 664 or 55
 f = Birch 20' x 28" x 36' 7" thick 11 524 or 34
 c = Dye 32' S 10 W 11 4' wash 25' S 82 E 51
 h = Oak 12' corner tree 7 Red Oak 12' S 45 W 31
 j = wash 12' di. i to j = 60 72' i to e = 78.75' x h = 40.00
 h e = 35.05 d a = 35.04 j h 4 ed = 40.00
 d = Pigeon Oak 169 or 15' lks 7 d Oak 8' S 35 E 26

Auglaize Co.

Auglaize Co line cont

- chains N 2° 17' E
- 166.28 pass 76 links west of 9' high marked
3 hacks C & South find several trees
marked variously hacks & blazes not good
cross pits
- 197.92
- 225 pass 1.20 ch west of stump on west
of road, claimed by Mad. Copeland
to be old co line
- 240.34 Sec line between Sec 13 & 12
pass 37 links west of Sec
- 247.62 center of road and supposed Sec
line in Range line at Sec line
running east put small stake at this
point - could not find a stone
- 254.47 point 127 links west of 50' high
2 hacks N & South old co line
127 East at 204.50 then
N 2° 17' E
- 362.90 Elm 15' old co line mark

Continued

Wednesday 4 March '85.

- N 2° 15' E
- 266.94 Maple 18 in - hacked - old -
4 links west.
- 279.45 B. Oak 30 in - 2 hacks - old -
5 links east.
- 287.90 E & W $\frac{1}{4}$ line Sec. 7, T 6, R 8.
352 ch west to corner.
- 328.10 Line bet. Sec 7 & 6.
5.63 ch west to corner.
- 331.47 Transit Line at 1999.31

Transit Line.

- 1924.67 Sec. line, 7 & 8 - thence S.
16.03 to $\frac{1}{4}$ $\frac{1}{4}$ Cor. ^{and}
36.10 to $\frac{1}{4}$ Cor.
- 1844.04 Sec. line 8 & 9 - thence South
28.58 to $\frac{1}{4}$ Cor.
- 1763.53 Sec. line 9 & 10 - thence S.
20.33 to $\frac{1}{4}$ Cor.
- 1683.04 Sec. line 10 & 11 - thence S.
12.93 to $\frac{1}{4}$ Cor.

Auglaize Co.

Continued.

Thursday 5 Mch. 1885.

- Transit line $N 86^{\circ} 10' W$ at 8:30 A.M.,
 1650.87 Robert's Line - thence $N 21^{\circ} W$.
 23.79 to SW cor Widow Black's 66 Acs.
 32.07 center of road on Sec. line
 west.
 42.82 NW cor of Black's land.
 From Transit line $S 21^{\circ} E$ 10.74 to $\frac{1}{4}$
 Sec. line.
 47.26 Black's S.W. Cor.
 53.19 Sec. line west.
 72.81 SW cor. Survey No. 12274
 (Walnut Corner).
 1582.20 Black Road - thence $N 9^{\circ} W$
 8.41 to stone in west line of Bates',
 59.28 to NW cor. Bates' land. (3 Becks)
 From Transit line $S 9^{\circ} E$
 19.18 Compass line & old Co. line.
 30.85 Stone. SE cor. of Dixon.
 55.43 SW cor. Bates' land.

Continued.

- 1523.81 Auglaize & Hardin Co. line bearing
 $N 1^{\circ} 25' W$ (200.95) - thence North
 on Co. line 71.72 to N line of Bates'
 From Transit line South along Co. line
 19.00 to old Logan Co. line.

5 o'clock P.M.

In the following plate distances ^{having true course. 98} in red ink or
 marked \odot are taken from records of former surveys
 all not so marked are obtained from actual survey
 and measure taken in connection location of line.
 All distances given on chains & links

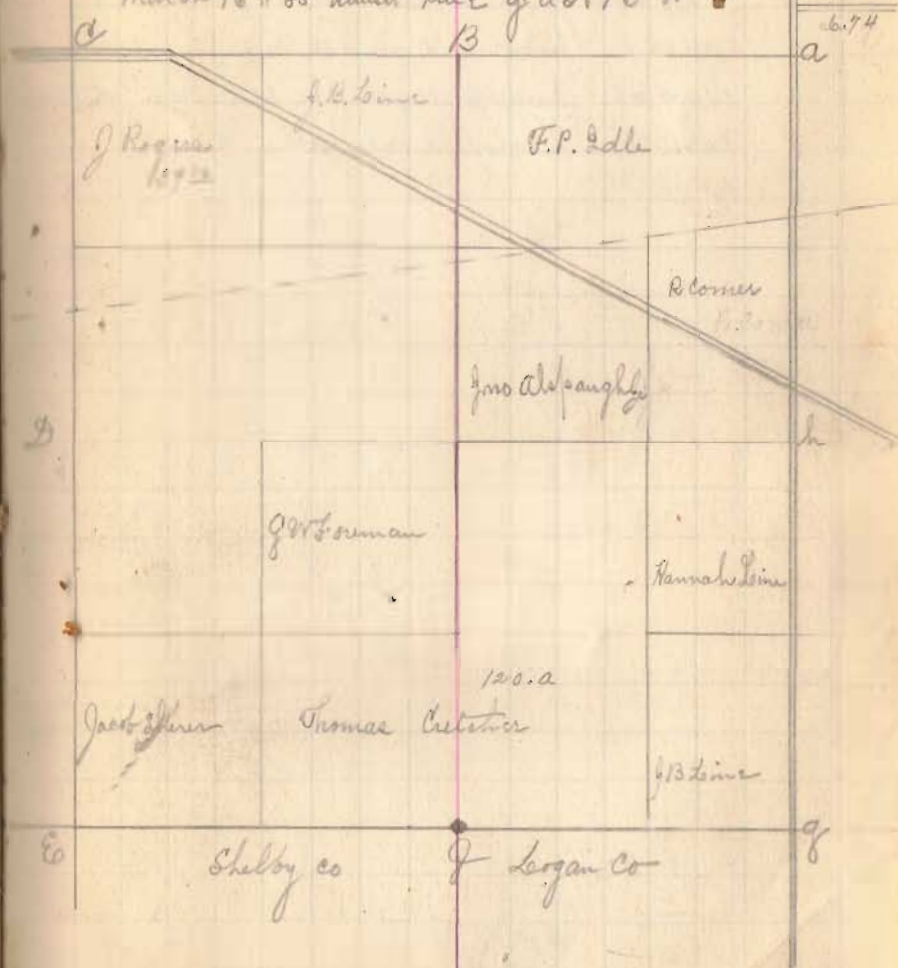
Auglaize Co.

Sec 25 T6, R7.

- J = stone in cent. pike pce - patented by Daniel Craig March 16th 1885. Lime stone 12" x 4" x 16"
- N 1° 5' 67" O. stone q., S & corner Sec 25, T6 R7
- " 40.22 fence on grass line
- " 40.05 cent. pike run S 86 1/2° W
- " 63.87 North line to unstoned Reservation, and to S.P. Lidle on North West corner south
- " 80.325 cor Sec 24 & 25
- " 87.065 point in road east
- " 45.28 point on side of Mississippi pike
- " 11.47 center of bridge over much. creek

Sec 25, T6, R7.

March 16th 85 transit line gas 15' W



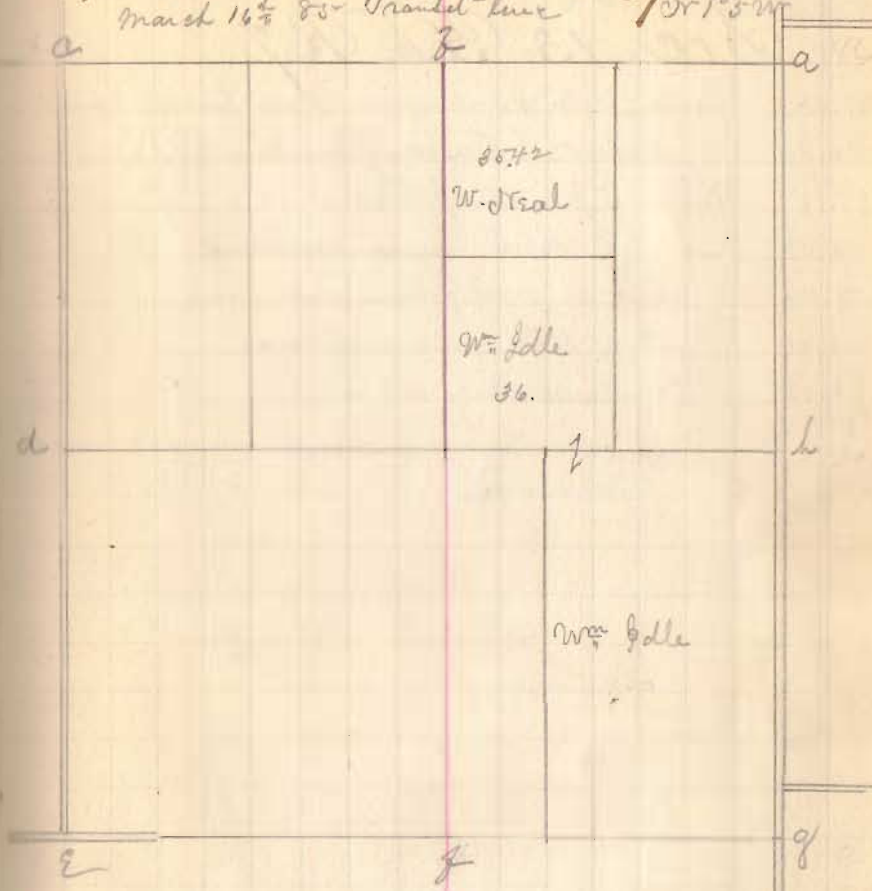
Anglize Co., Sec. 24 T6. R7.

- 81.517 80.325 q. South line Sec. since west
- " 87.065 point and road on Sec. line east
- " 120.425 fence west quarter line Idlle ^{and} Neal
- " 126.28 point S of out over q. line east
- " 16

534

Sec. 24 T6. R7.

March 16th 85 Transit line



534

~~534~~
INDEXED ON MAP

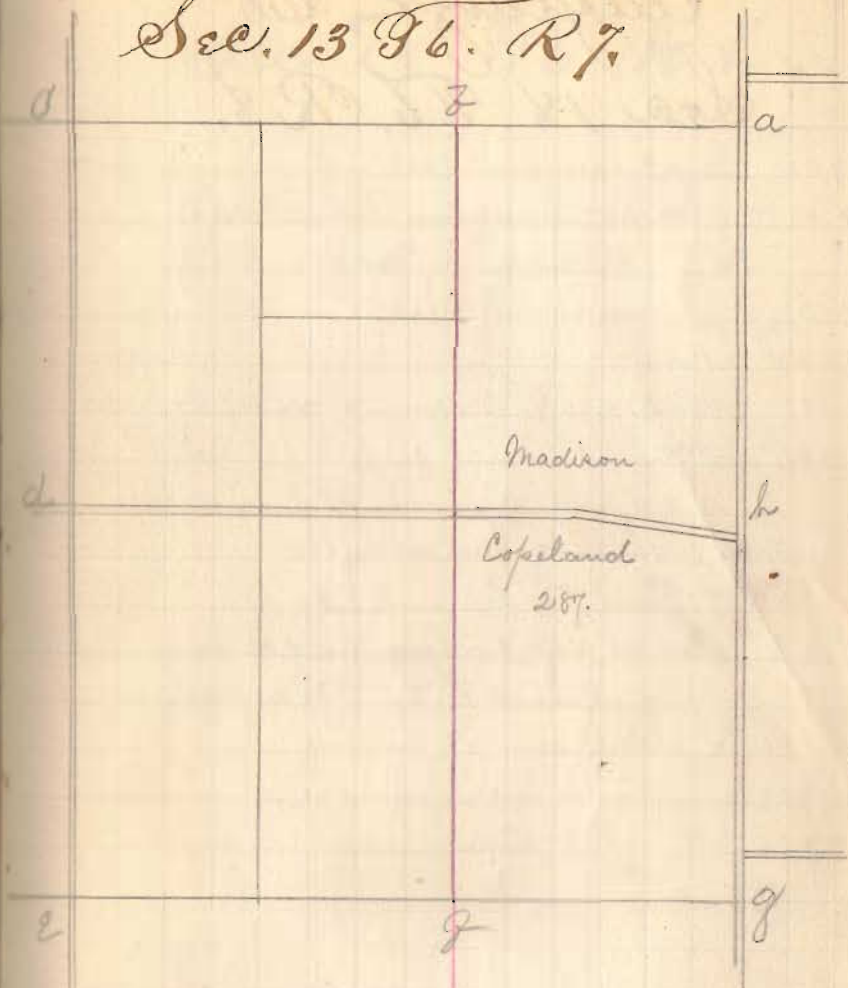
Auglaize Co

N 15° W

Sec. 13 T6. R7.

- 167.36 Center Castle of Huber pike see line east
 176.14 point, (Tuesday March 17-1885)
 197.18 Center 5 points pike
 198.57 " of ditch runs eastward
 200.46 point in west fence side road
 228.64 Center of Ditch runs eastward
 240.03 Point near see corner

Sec. 13 T6. R7.



Traverse line N 15° W 9.60'

535

INDEXED ON MAP

Auglaize Co

N 71° 5' W

Sec. 18 T6. R8.

- 247.32 Road end sec line east
- 257.45 point 1.57 ch west from high 22" old Co. line tree
Wednesday March 18th 1845
- 287.50 quar sec corner west
- 289.845 Point
- 302.775 Point, 4.62 from corner of corner east
- 331.645 N. Transit line at 2005.233 point
10' 4 1/2" west of point on N Transit line
Thurs. 200. Thursday March 19-1845
Transit Line N 71° 5'
- S 87 1/2° E Start at NW Cor Sec. Co. 4.62 ch east of
point Transit Line N 71° 5', 302.775
- 7.775 point west of fence
- 25.20 point
- 44.835 " W side timber

536

INDEXED ON MAP

Sec 18 T6 R8.

c		7		a
Madison Copeland 120.0a	1	Richard Morris 50.0a	2	Elihu Vandross 40 4
			3	5 Alex Cummins 40
			4	6 Hiram H. Cummins 40
10	7	9 Sampson Buffsanger 40a	8	7 Mary J. Mitchell 40
40 M. Co.		Geo W Rhodes 120		
		7		g

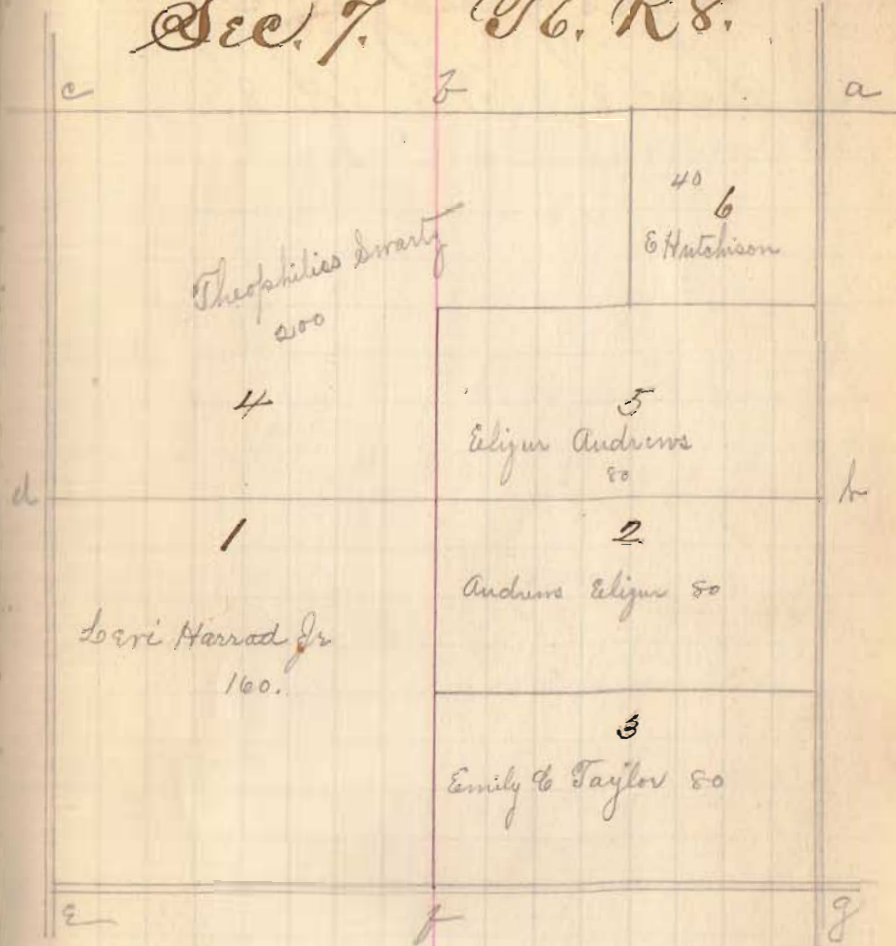
2 bound correct & 0100

For field notes to be 1/2 to 1/4 in yellow
 1000 = sec = C = Hick 12" N 45 W 1/4 End 13 Oak 10 5652 0
 1000 = sec = E = Sugar 16" N 21 E 18 End Hick 8" 562 28
 1000 = sec = a = Birch 16 N 52 1/2 W 14 End Birch 12 N 48 E 10
 1000 = n = g = Hick 12" N 40 W 42 End Logum 15" N 55 W 42
 1000 = d = Maple 9 N 10 E 37 End Maple 6 N 74 W 8 - mid N line
 1000 = W. Oak 17 N 17 W 13 1/4 End 13 Oak 9" S 15 E 15 - mid N line
 1000 = not given

Anglaize Co.
Sec 7. T6. R8.

537
INDEXED ON MAP

Sec 7. T6. R8.

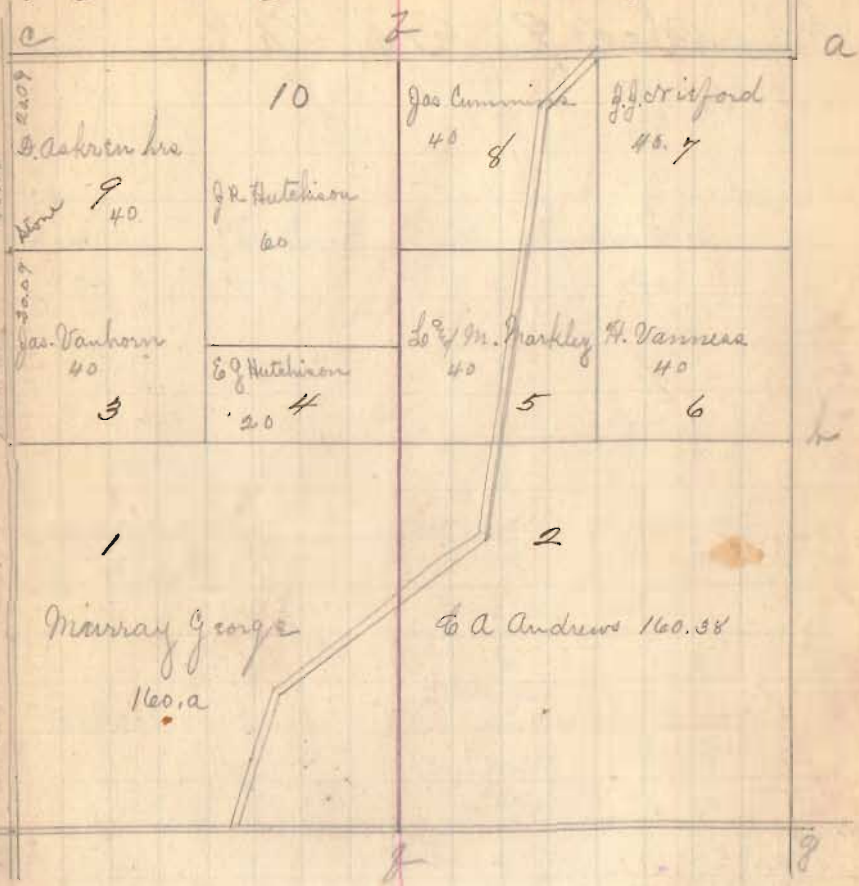


Auglaize Co.
Sec 8. T6. R8.

538
INDEXED ON MAP

Sec 8 T6. R8.

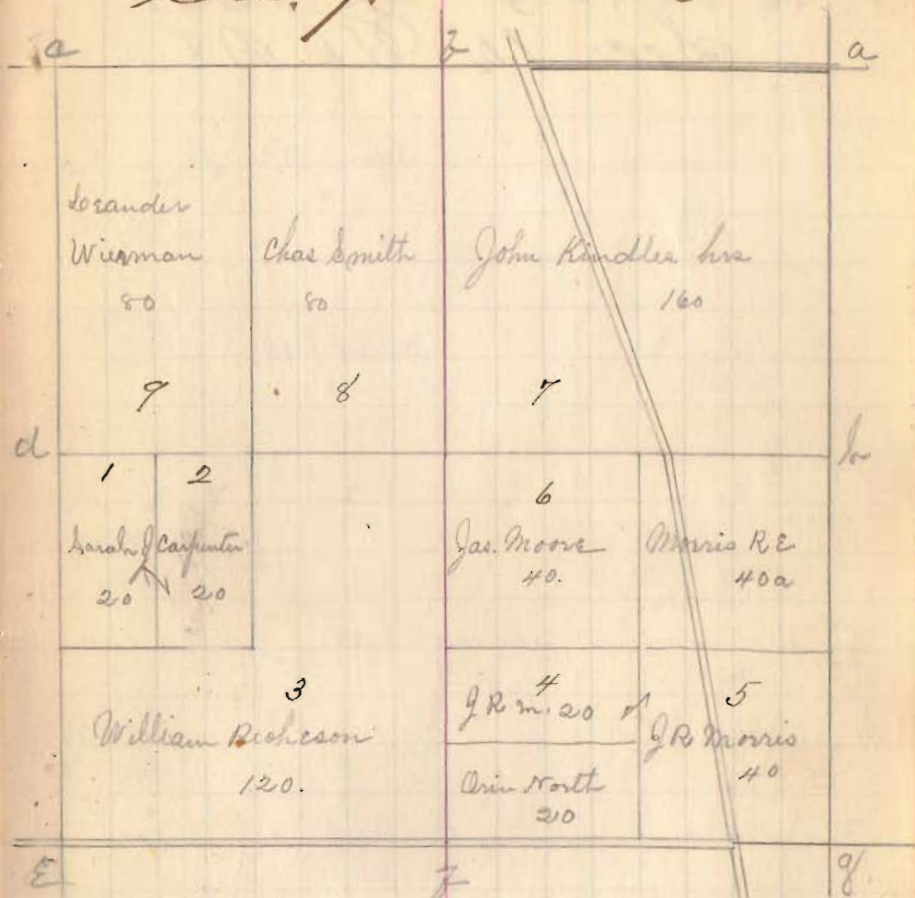
Mark 3 8 1/2
Final taken and given for crops - 21 1/2



Auglaize Co
Sec 9 T6. R8.

539
INDEXED ON MAP

Sec 9 T6. R8.



E Stake No. C Old Budistimo S 57 1/2 W 2 do 1850 - 2 46

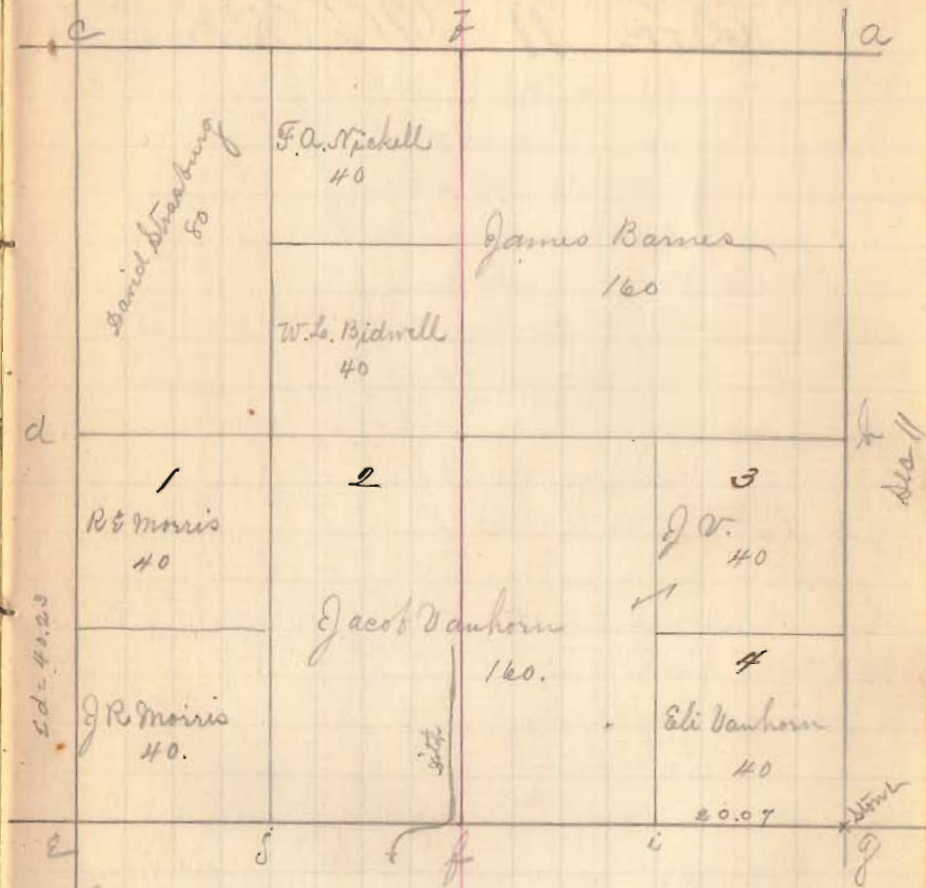
[Faint, illegible handwritten notes]

Auglaize Co.

Sec 10 T6 R8

540
INDEXED ON MAP

Sec. 10 T6, R8.

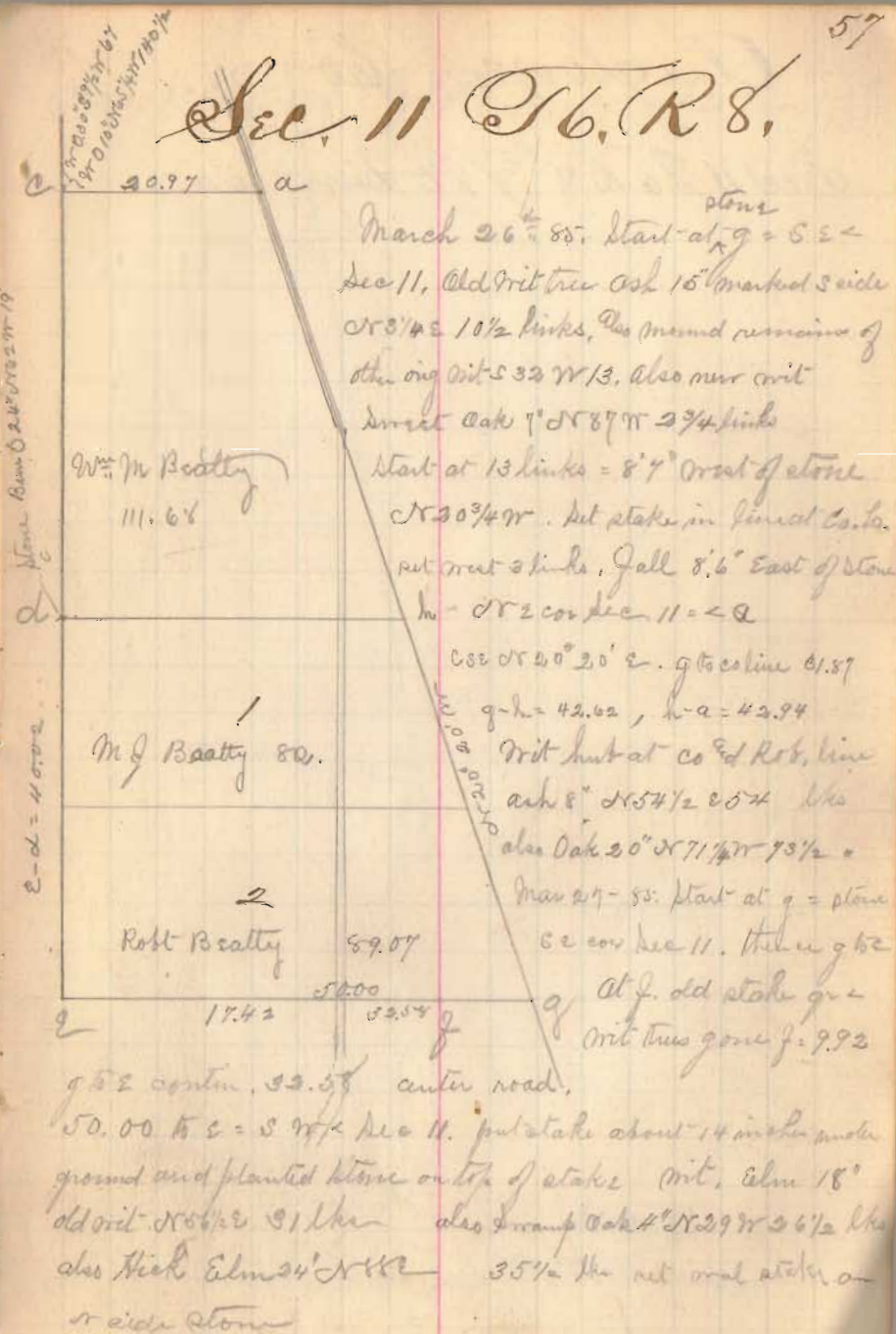


Mar. 27-85. Start at stone at c g
 20.07 enter fence north from c i ,
 60.40 = j cut fence N. No stone set, to be recorded.
 80.57 to e = ang. $9^{\circ} 57' 51''$ = r 212' and r back to S to r 40'
 also large stone in fence by old brick house $16^{\circ} 05' 50''$ = r 29'

Auglaize Co
Sec. 11 T6, R8,

(540)
INDEXED ON MAP

Sec. 11 T6, R8,

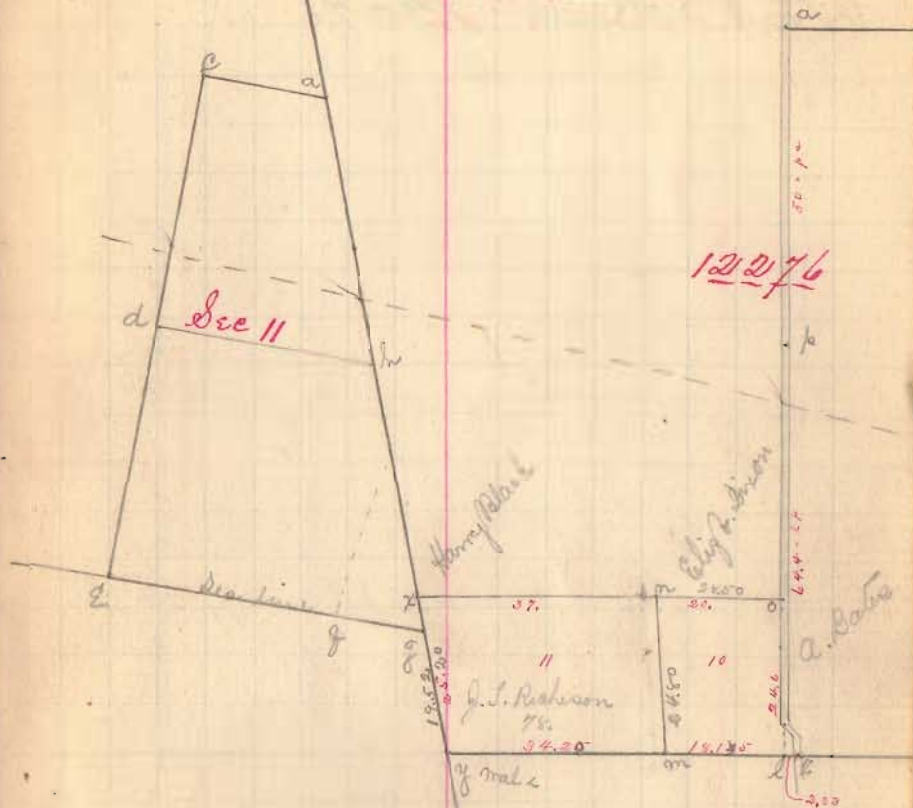


March 26th 88. Start at ^{stone} g = S.E. <
Sec 11, Old Brit tree ash 15' marked S side
N 8 1/4 E 10 1/2 links, also marked remains of
other old Brit S 32 W 13, also new Brit
direct oak 7' N 87 W 2 3/4 links
Start at 13 links = 8' 7" west of stone
N 30 3/4 W. put stake in final Co. Co.
put out 2 links, fall 8.6" East of stone
h = N 2 cor Sec 11 = a
Cor N 20° 20' E. g to coline 61.87
g-h = 42.62, h-a = 42.94
Brit hut at Co^d Robt, line
ash 8' N 54 1/2 E 20 1/2 lks
also Oak 20" N 71 1/4 W 7 1/2 =
Mar 27-88. Start at g = stone
S.E. cor Sec 11. then g to
at f. old stake g =
Brit tree gone f = 9.92
g to E contin. 32.54 center road.
50.00 to c = S 77 E Sec 11. put stake about 14 inches under
ground and planted stone on top of stake Brit, Elm 18"
old Brit N 56 1/2 E 1 lks also Swamp Oak 4' N 29 W 2 6 1/2 lks
also Hick Elm 24' N 42 E 35 1/2 lks put out stake on
S side stone

Ouclaize Co.

Sec 11 T6 R8 Aug Pt Durr 12/2/76

Sec 11 T6 R8 Aug Pt Durr 12/2/76
30 chains per inch



a. Sec 11 = Red Oak 2 1/2" 387 1/2 or 120° stone in crest side road ditch

541

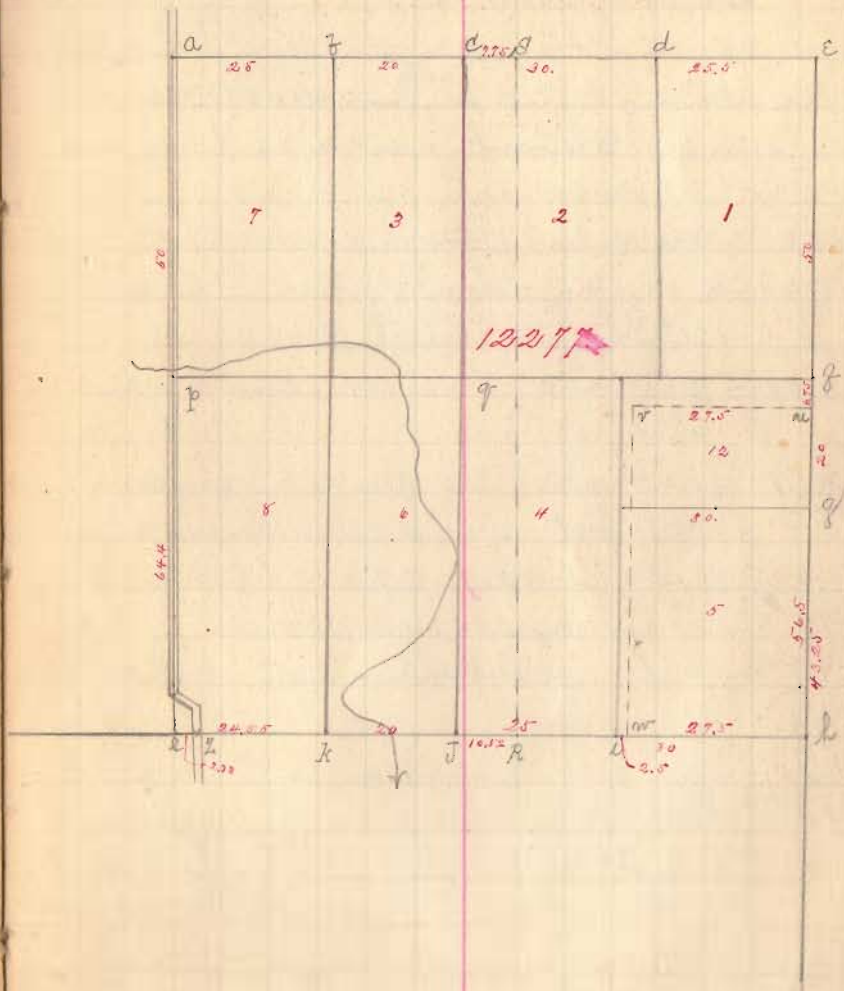
INDEXED ON MAP

542

INDEXED ON MAP

Auglaize Co.
S 86.45' E Transit line on co line
Part. Surv 12276

Part Surv. No. 12276.
30 chains per inch



(542)
INDEXED ON MAP

Auglaize, Co

Surr 12276

March 25-85, Start at \angle d in S line Surr
 Nit trees standing $\frac{1}{2}$ way from $\frac{1}{2}$ way ^{20" di} S 112 19, 2 of 1808
 S 130r 25 links, Westward from \angle d on Surr line
 S 81 1/2 r S line Surr 12276

4.88 pass stake \angle to farm lands North8.74 to line Auglaize of Hardin Co at
129.25 from Scioto River30.07 stone \angle c. Trees down. Surr decayed 20 ft
Buck stump 3450.21 pass orig stake and stone \angle 2. ash down and
out of root. Surr out down stump 4975.42 Surr \angle in road N 09° N 25° E 87 1/2 links
also ash 10 S 45 3/4 W 105 lbs.

with road at line Bates from

S 9 1/4 E Surr \angle

43.76 stake 100 y. & Craig from South

49.14 center bridge over hog creek

50.00 opposite hog house on east line Auglaize
along S line SurrWestward Start at \angle l. stake and stone. Buckeye
standing but dead. Cherry down2.79 pass joint on Surr line = \angle I old stake still standing
R.O. 12" - 2 1/2 ft bar, Surr 12" - 6" r18.15 \angle on Ash. Surr & Elm standing, Elm damaged
and dying, Ash 25, Surr 20 lbs.

Surr. No 12276.

Start at \angle on then to \angle m (see page 59) with marked line
 at 17.51 cross ditch. At 24.80 \angle on orig stake and stone
 all Nit trees cut down but stumps and sprouts standing
 at each. Meas Westward from \angle m along line Dixon and
 Robinson 8 1/2 ch find no corner. At 8 1/2 ch center of
 line S line Dixon and Black. Returned to \angle m and go
 Westward from there. Start at \angle m. N to y 34.20 ch
 at y old oak stumps in good condition

Start at y. southward along Roberts line. 4.54 ch to
stone \angle 2

Start at y. S 20 1/2 W with Roberts line

pass stake 100 y. & Craig Mar 5-85 at 2.62 ch

19.02 ch stone in Roberts SE \angle to see 11-6-6

32.72 like S 20 1/2 W, & Craig Mar 5-85.

35.24 ch to elm corner to get 9 = x. stands ^{old line} W of fence

42.77 stake 3 & Craig Mar 5-85

51.39 Co line bet stakes

62.14 grass line W of Beatty S line

72.54 old Transit line

105.08 S 20 1/2 W Rec 11

March 27 1885 set stake in Roberts line at \angle x

at 4 links west from old elm 12" di cor. tree Bates Surr.

Durr 12 2 76.

Old bearings for corners.

From Durr by J. W. Buchanan Dec 20th 1876.

- A = Hick 9" N33 1/4 W 57 " of Swamp Oak 10" S33 E 76
 B = Logum 7" S5W 49 " " " 8" N64 1/2 W 35
 C = Beech 12" S39 1/2 W 84 " Lion Wood 5" N58 1/4 E 20
 D = Logum (3 from 1 root) N112 19 " Burr Oak 5" S13 W 35
 E = Oak 30" S65 1/2 E of Hick 12" S53 W 8 (Oak & Hick old mark) of Beech 16" N27 1/2 E 15
 F = Swamp Oak 14" (2 from 1 root) N59 1/2 E 15 " of Swamp Oak 5" S10 W 33
 G = White Oak 20" N88 W 34 " of White Oak 10" S8 1/2 W 17
 H = Red Elm stake 2 1/2" square, in open prairie
 I = Swamp Oak 9" N17 W 23 " of Swamp Oak 12" S42 E 7
 J = Beech 20" N43 W 17 " White Oak 10" N61 E 53
 K = Beech 18 (old line mark) N2 W 7 " Beech 20" S11 W 19
 L = Cut Branch 350 1/4 W 22 1/2 of W Cherry 8" N11 W 43 " of Buckeye 6" N76 E 43
 M = Elm 5" N56 1/4 W 24 " of Oak 10" N11 W 25 " of Logum 15" S75 1/2 E 20
 N = "cornus tin" Oak 7" S14 E 3 " of Oak 15" N55 E 15 " of Hick 4" S18 N 10
 O = oval stake in road SE corner lot N29
 P = Oye 14" N16 1/53 " of Elm 10" N57 3/4 E 157 " of Cut Hog oak N29 3/4 E 157
 Q = Logum 9" N75 1/2 W 33 " of Hick 12" S60 W 28 1/2 " of Logum 8" S20 E 33 " of Oak 13" N12 1/2 E 44
 R = Elm 8" N41 E 19 1/2 " of Swamp oak 10" N31 1/2 W 27 1/2
 S = Hick 10" S52 E 9 1/2 " of Burr Oak 12" N6 E 34 1/2
 X = old marked elm corner tree and stake SW corner to lot N29
 Y = old walnut stump Durr corner in Roberts Line
 A to C S9 3/4 E, A to E N8 W, A to G N51 E, A to H N50 1/2 E
 A to Craig - Stone N110 1/2 W 21 3/4 E 87 1/2 Dec, Oak 7" N40 W 105
 Z = Red O 8" N33 E 24 " of Logum 2 from 1 root N44 1/2 E 10

Durr No 12 2 76

Section corners from Records
Dec 13 '56 R 7

a = Hick 12" N 45 W 4' End B. Oak 6" S 65 E 6'

f

c

d

e = c of Dec 24 see below

g

h = Sugar 15" N 21 E 18' End Hick 18" S 66 28'

i = Maple 9" N 10 E 37' End Maple 6" N 17 W 8'

Dec 24 '56 R 7.

a = q in Dec 13 see above

f

c = Elm 16" N 21 E 35' End Leym 14" S 45 W 23'

d = White 14" N 65 W 13' End Elm 15" S 31 E 31'

e

g

h = Hick 18" S 54 W 17' End B. Oak 12" N 41 E 21'

i = Elm 30" N 9 W 13' End Ash 12" S 14 W 16'

e to e = 14.61 Bunch 14. 59.56 Hick 22" .

Section corners from Records
Dec 25 '56 R 7

a = q in Dec 24 which on page 66

f

c

d

d = Maple 21" N 86 E 30' End Elm 25" N 60 W 21'

e = Maple 12" N 88 1/2 E 48' End Or Ash 23 S 74 1/2 W 68'

g

h = Red Oak 24" N 28 1/2 W 150' End Cherry 11 S 64 W 35'

i = Bunch 24" S 40 E 1' End Ironwood 6 S 46 W 9'

a to g, 16.50 N line Res, 37.50 R.O. 16", 78.50 W.O. 55"

c to e, 54.35 N line Res; c to g 11.07 R.O. 20", 25.57 Res line

Dec 11 - 6 - 8.

c to a = 20.64 e to g = 49.98

g = Blk Ash 16" S 33 W 13' End Or Ash 10" N 2 W 11'

f = gum 2' E to f 40. f W. Ash 6" N 55 W 4' End Or Ash 14" N 21 W 14'

d = Hick 6" S 4 1/2 W 13' End Or Ash 16" N 76 W 20'

e = Elm 12" N 55 E 31' End Bunch 14" N 55 1/2 W 22'

c to e, 38.92 elm 14" = 66.28 Bunch 16" .

e to a 10.00 Bunch 14"

f to g 25.33 W Ash 16"

Dec 10 - 6-6. Old Rec.

E = Bush 16" $0850\frac{1}{2}$ 29, 2nd Bush 15" S/W 214