

Road 241 and 61 Wash Tap

For Notes as to line see
M^s Kinnans field book #2 pp 58
#1 pp 1 -

1305
INDEXED ON MAP

Road 241, 61

Minnie L
Marhadale

Minnie L Marhadale



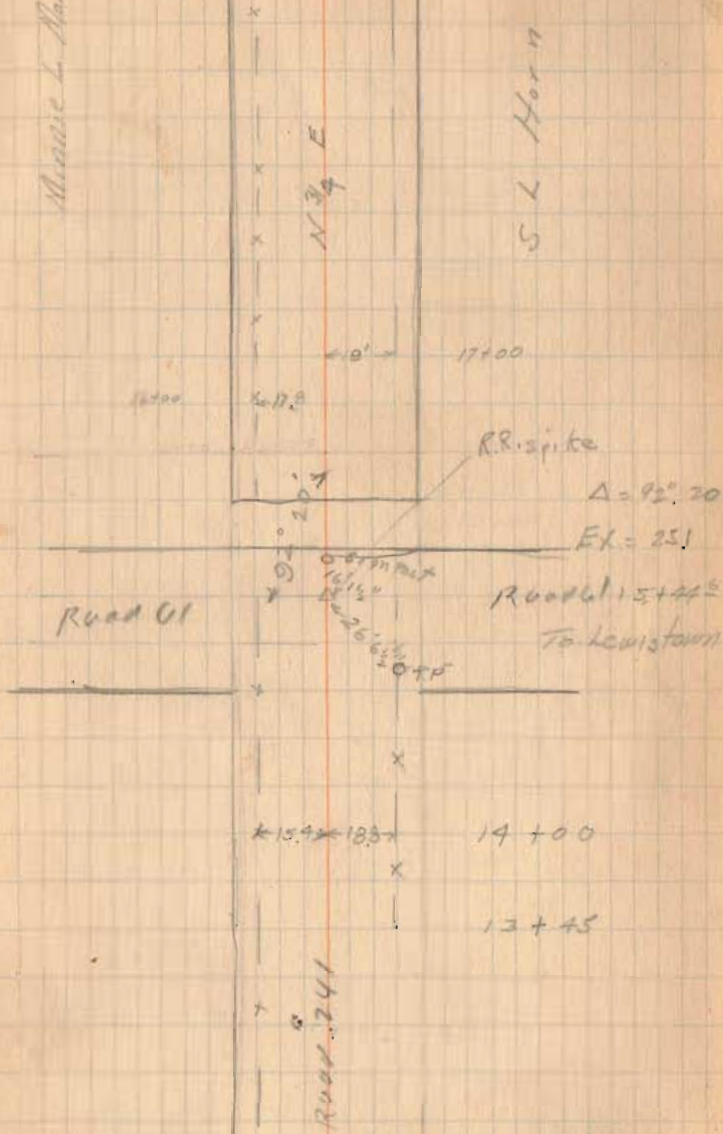
0+00

1 CH 24 TO De Groot

Provel 247 and 61

Monie L. Archdale

4



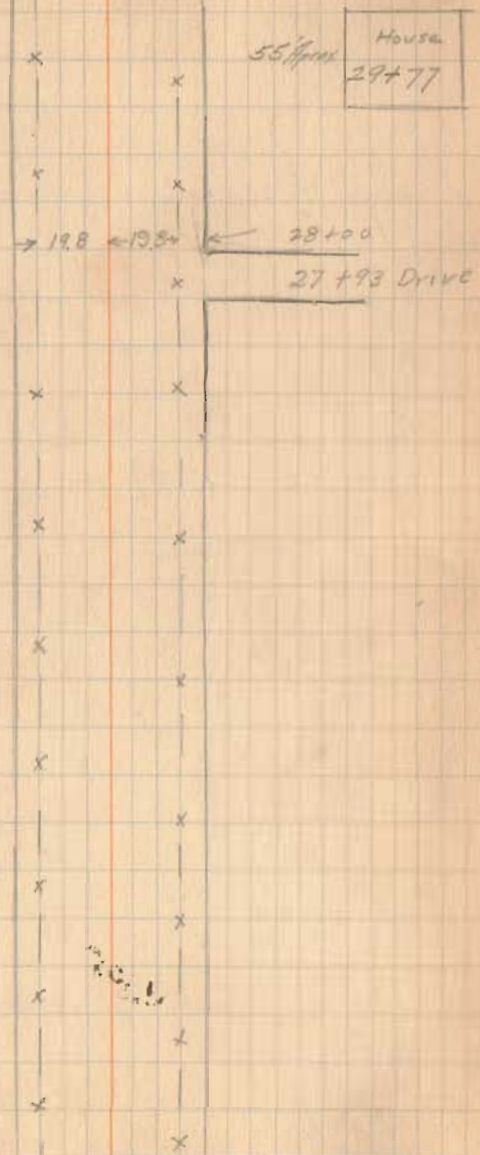
1305

INDEXED ON MAP

Road 61

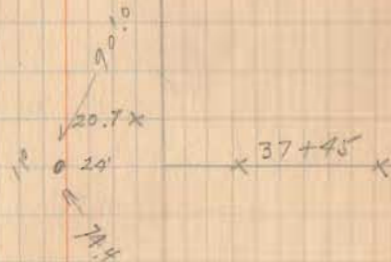
1305
INDEXED ON MAP

5



o Double Walnut

38+24 Drive

1
37+45 Highway

19.5 x

34+0.0

1905
INDEXED ON MAP

92
 40 + 00

 52 + 00
 33

Bridge

1500 County + Imp

92
 74 + 00

 18.00
 29.00
 15 -

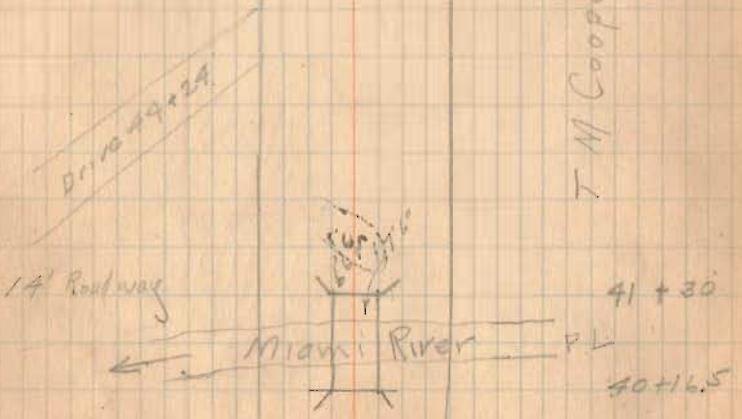
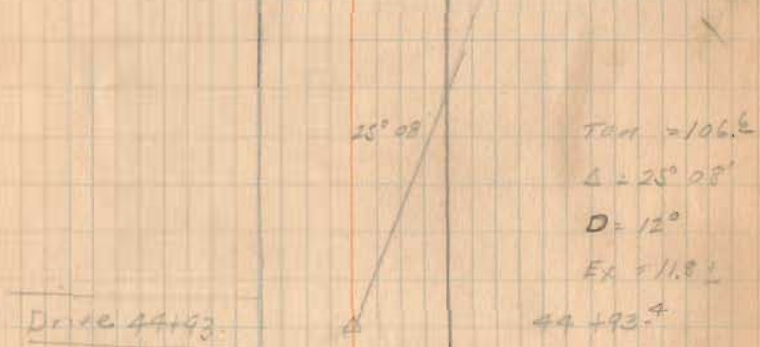
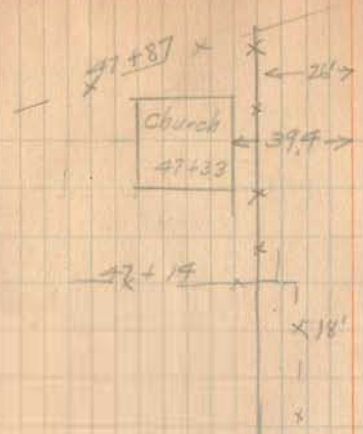
 52

Town
 County
 Town + County

41 70
 41 + 30

 6.40

1305
 INDEXED ON MAP

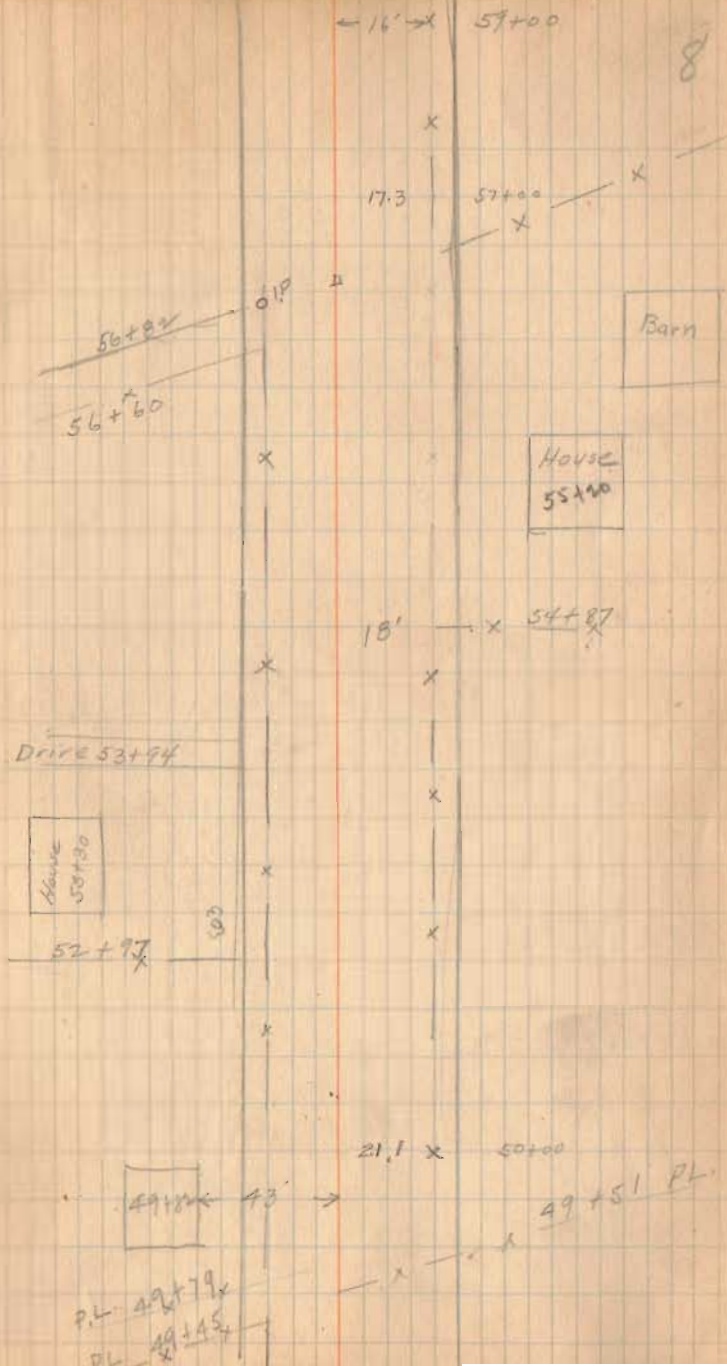


T M Cooper

$$\begin{array}{r} 54.87 \\ 49.51 \\ \hline 5.36 \end{array}$$

$$\begin{array}{r} 49.51 \\ 41.30 \\ \hline 8.21 \end{array}$$

1705
INDEXED ON MAP



9

15' 66+74

66+75
HOUSE

15' x 66+77 x
66+60

65+77

64+65

Barn

15' x 63+00

street

62+38

HOUSE
62+70

Building
57+
61+98

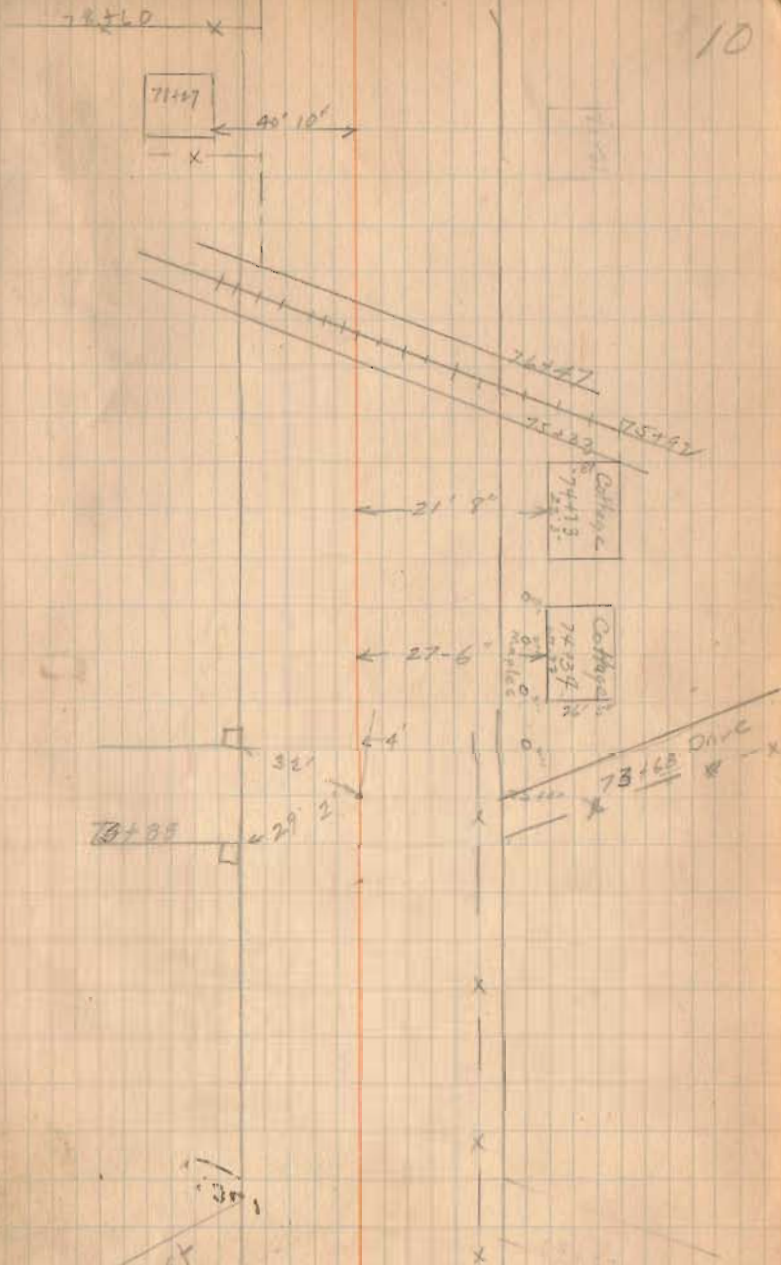
57+90 PL
DRIVE 57+80

57+89

57

1205
INDEXED ON MAR

1205



1705
INDEXED ON MAP

30'
R.K. ST
8+67

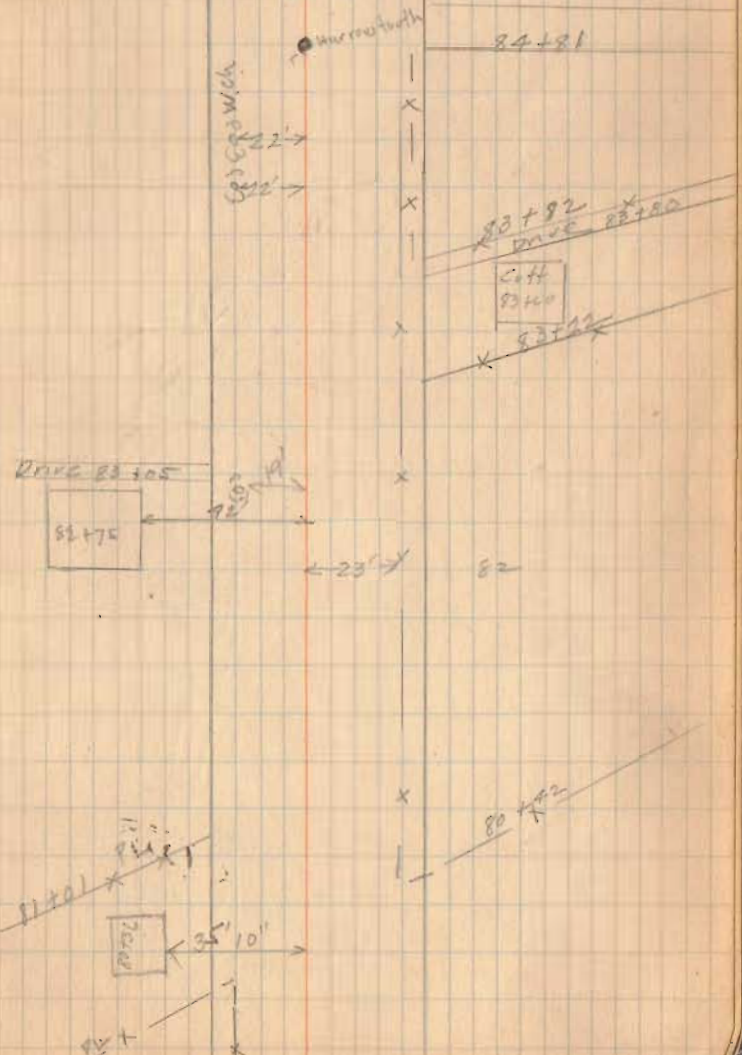
155 68+00

see line
Taylor Road

1.8

85 + 98.1

98.5
113
58

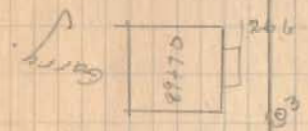


1305
INDEXED ON MAP

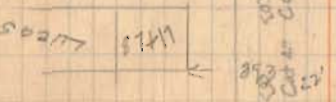
IP 90+91 x x

Chip Electric 90+70

Harrow tooth 99+902 x



266
 28+88
 03
 13
 10 20 4



INDEXED BY MAN (504)

Fulton Cemetery

1877-1924
H.P.M.

July 4-1880
Morton Merrill

8 Blocky
shel Post

Gay Hill

Stone
see below
July 20-1829

Iron & Stone
found and
reinterred
Dec. 2, 1933
F.F.W. 1901

30"
E.M.

SH. 222

Shed
A.C. place
Spot

ROAD 228

54.5

50'

1503

INDEXED ON MAP

R/R Post
1905-1910
L-18 Pop 500

