

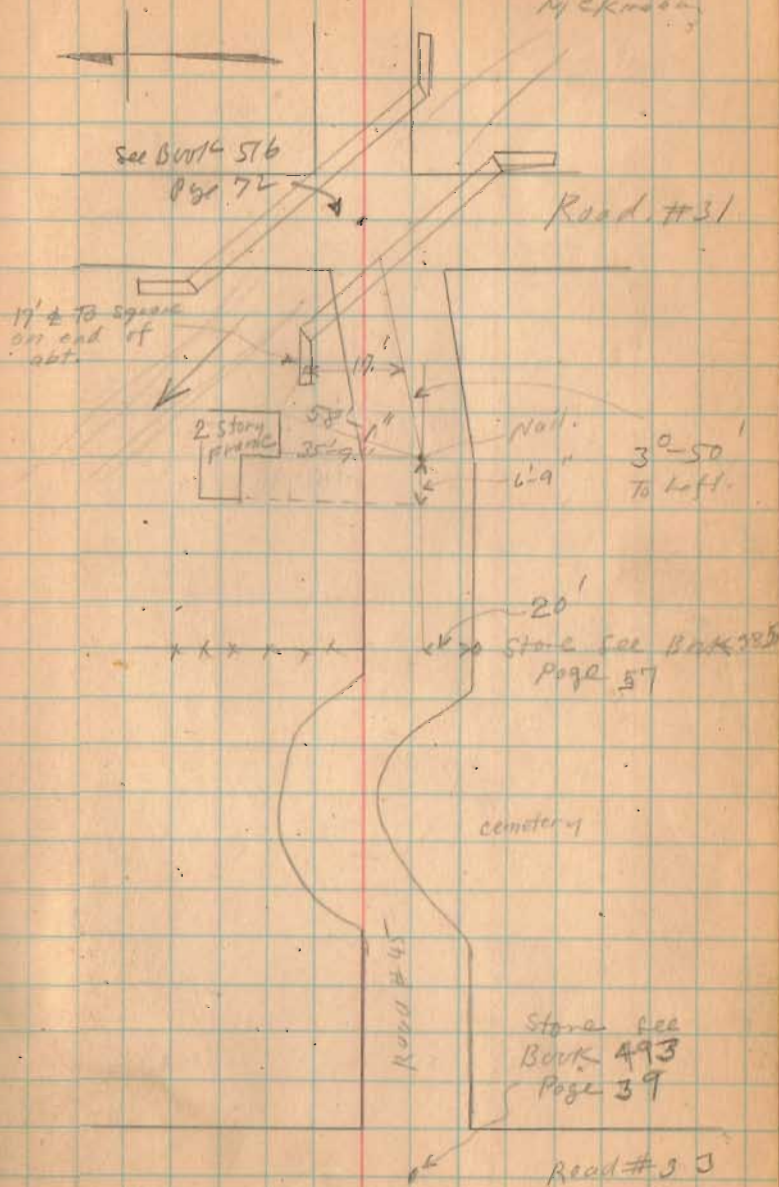
Road # 95
Union Twp.

This Road is 40' (see Index)

Stakes were set 20' from ϕ
on S. side of road. No Measurements
taken.

1346
INDEXED ON MAP

Aug 15 - 1924
Aug - 17 - 1923 17
Wright
McKracken



ROAD # 185
LAKE TOWNSHIP

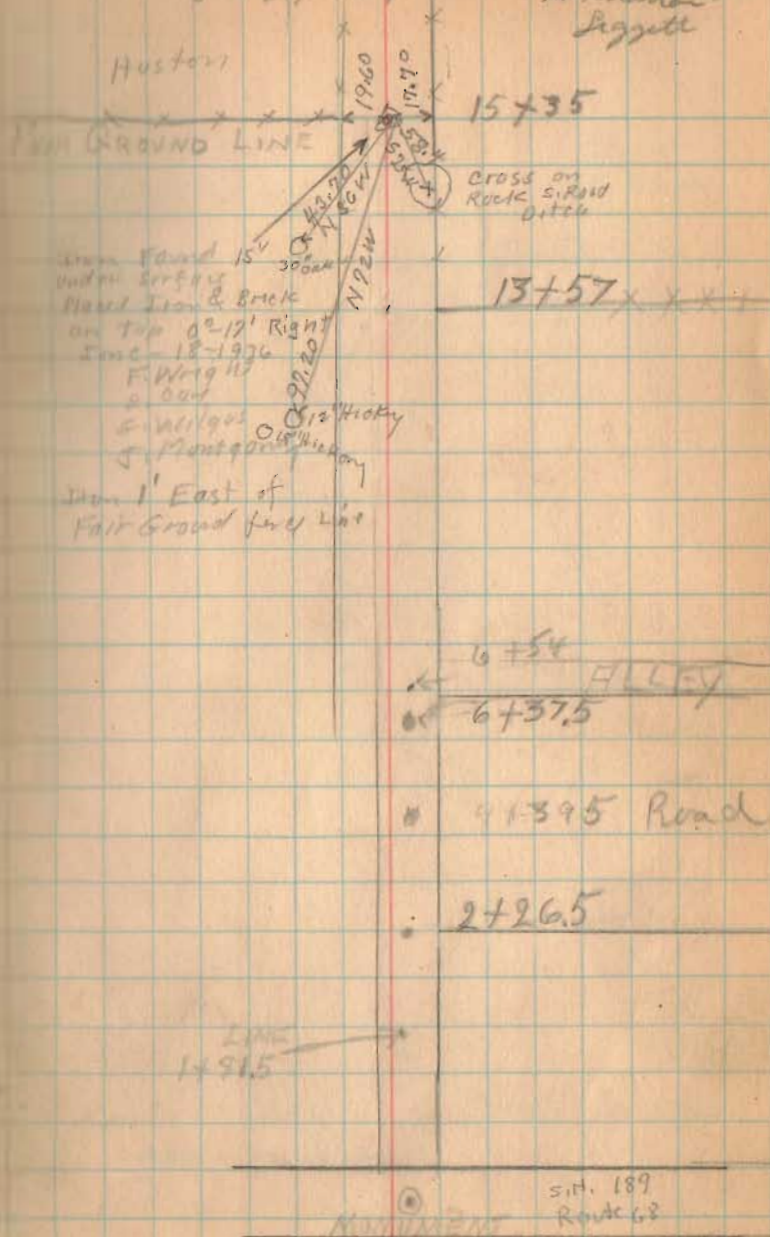
PRESENT FENCES ARE 35'
APART AT W. END 33 AT E. END

STAKES WERE NOT SET
MEASUREMENTS WERE TAKEN
ALSO LAND LINES MARKED

1348
INDEXED ON MAP

8-27-29

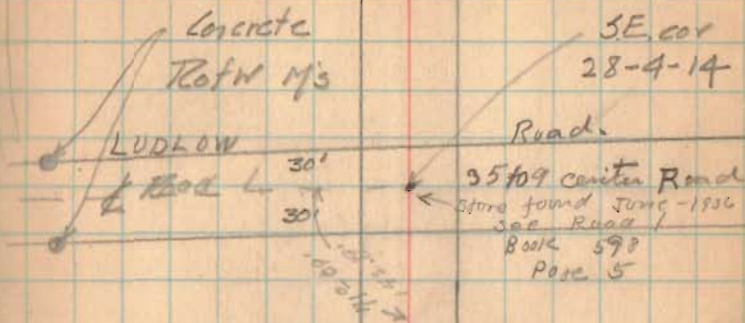
McKunahan 23
Liggitt



8-27-29

G. Wilgus
M. Jones

24



Road 18'

12471 LAND LINE

Store (found)
corner to 27,
28, 33, 39 - 4-14

INDEXED ON MAP

STA 15436.09
SEE ANNOTATION
3260

Road # 47 MONROE Tp

Road Width 45'

See INDEX to ROADS #1 PAGE 26

STAKES WERE SET 200' APART
NUMBERED 0-2-4-6 ETC

1347
INDEXED ON MAP

Time filed for dinners Sept 18, 1924

8-28-29

CLEAR

McKerahan 28
Hntwin
WICKERSHAM
LIGGETT

18" cor 9" $\frac{16FT}{114.25}$

C.H. KING

64101
XXXXXX →

John F. Smith

N 53 E

BEN F. Stolfzous

Rd on W side of VMS # 10524

Road 166

8-28-29

29

Dmc
70+65

L.W. SHORT
XXXXXX

E.L. WIRICK (Eta)

G.H. KING

90+26
XXXX

XX 19+00

← XXX 15+34

J.A. Stolfzous

N 53 1/2 E

1349
INDEXED ON MAP

Road #47

30+56
DRIVE →

20

LY

28+179
XXXXXXXXXX →

SAMUEL G Shull

← DRIVE
28+98

28+100
XXXXXXXXXX →

John Milton Standley

20+170
XXXXXXXXXX →

1349

INDEXED ON MAP

20+110
XXXXXX ←

9728+29

31

Road 47

R.H. WILLETS

~~Subst~~
~~243215~~

29480

29440

Road
right

R.H. WILLETS

~~28845~~

29430

Road
LEFT

~~28812~~

~~3685~~

N 51° 45' E

361+195

L.W. SHORT

TURN 10° 45'
LEFT

32+00

L.W. SHORT

N 53° 45' E

1349
INDEXED ON MAP

8728+29

32

Road 77

Bridge 47+20
16 FT

LINE HIT Bridge
within 4 FT of N END

N 43.40

8 deg 5m

Turn
LEFT

44+20.5

1349

INDEXED ON MAP

Road # 47

John P. HIKEM

CHRISTIAN K HARTZLER

N 11° 0' 40"

62+92
~~Road~~
LEFT

62+22 LAND LINE

Road Right
~~62+7~~

62+22
LAND LINE

Wild Line something
lose the 62+22
accident in about
61+92.

LAND LINE

5754

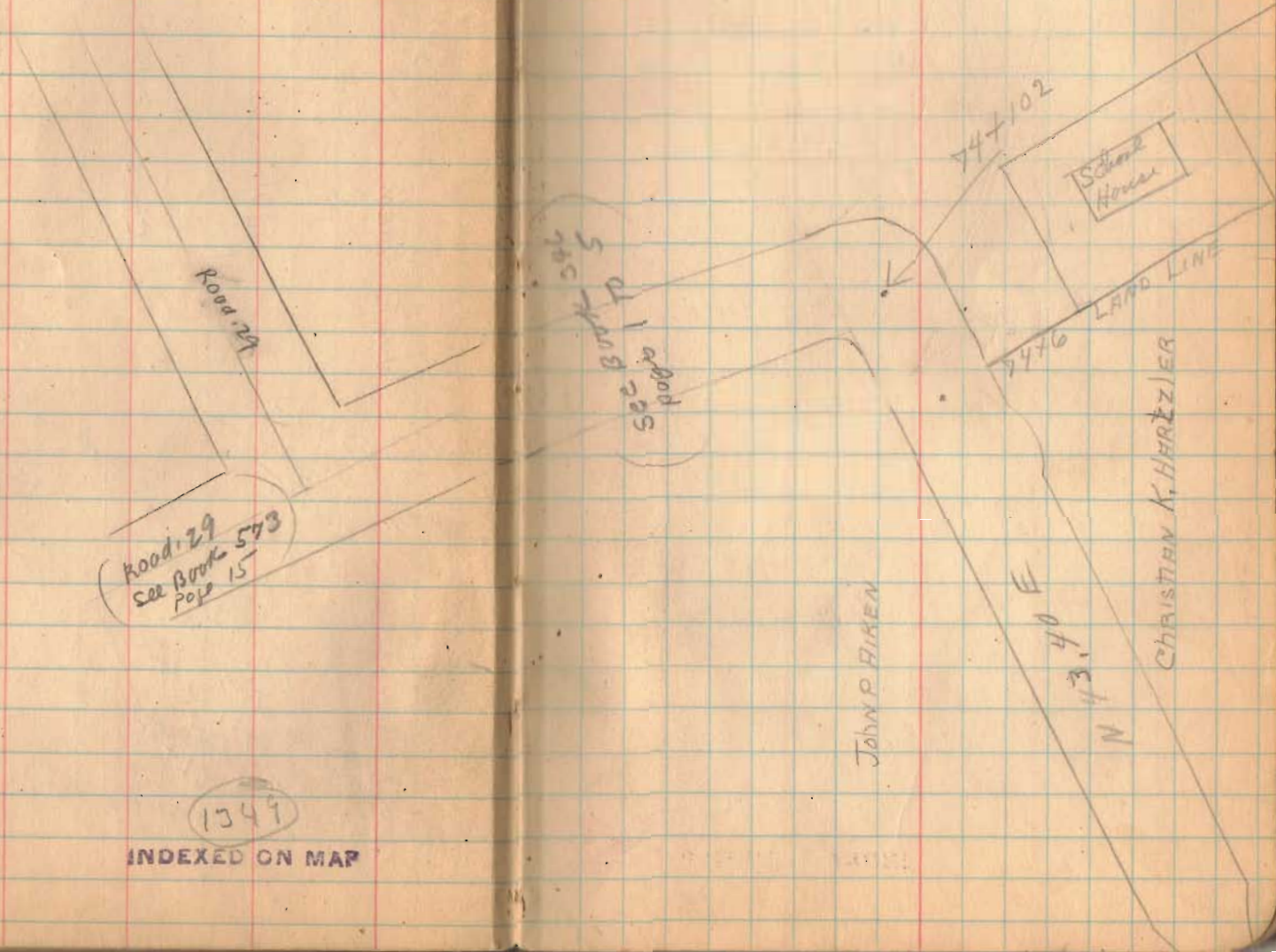
1349

INDEXED ON MAP

8-28-29

34

Road # 47



Road # 29
See Book 573
Page 15

1349

INDEXED ON MAP

See Book 573
Page 17

74+102

School House

LAND LINE

2476

JOHN P. FIKEN

N 13.40 E

CHRISTIAN K. HERRZLER

Road # 69
Miami Twp.

See Survey # 948 Miami Twp.
See Book B Page 16 for
old distances. Note I
could not check with
old distances.

See Road Record # 2 Page 137
Sept 1874

stakes placed 20' from &

1350
INDEXED ON MAP

Sept. 4, 1929
char - Hut
nlr - 7/17
Liggett.

40

C. LINET.

Road # 69

J.C. MOELLER

J.M. FORSYTHE

Road # 69

J. H. FETT

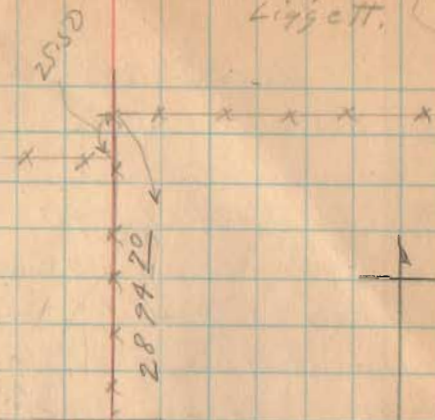
Road # 65
2387.0

Colin's
Ston's



Logan Co.
Champaign Co.

Locs
Click



Road #69

Road Staked 40' Wide

Stakes placed every
even station on both
sides of Road 20' from \perp

1350
INDEXED ON MAP

5" Apple 5+34 \circ 23.1 \rightarrow \leftarrow 16 \rightarrow Tot. Pole

41
9-7-29

X X X X X
6" Elm 5+15 \circ 21.9 \rightarrow
X \leftarrow 17.2 \rightarrow 5+00

X
8" Elm 4+55 \circ 21.2 \rightarrow
X

5" Apple 4+17 \circ 23.0 \rightarrow
1

14.5 \rightarrow 0 Tot. Pole
 \leftarrow 18.1 \rightarrow 4+00 4+55

3" Apple 3+56 \leftarrow 23.9

10" Elm 3+67 \circ 23.2 \rightarrow

5" Apple 3+57 \circ 26.6 \rightarrow

8" Apple 3+20 \circ 25.1 \rightarrow

8" Elm 1+70 \circ 24.2 \rightarrow

X X X 1+38 X X 19.7 15.4 \circ Tot. Pole 1+38

J. M. FORSYTHE

J. H. FELT



13.6 \rightarrow 0 Tot. Pole
8" Elm

5+12 \circ Road #65

Iron Placed By May 1928

X X X X X X X X

Road # 69

130
INDEXED ON MAP

4' 1/2" 195 → 12+07
15' 2" 19.1 → 12+00
11+97 ○ 175 →
x
x 146 → 11+00
x
x 142 → 10+00
x
x 152 → 9+00
x
x 175 → 8' 0" 8+05
x
x 156 → 8+00
x
x 7+46
x 190 →

9-4-2542

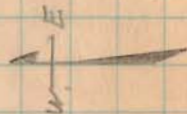
8+70 12' of
10' 0" 8+05

Gravel
Lane

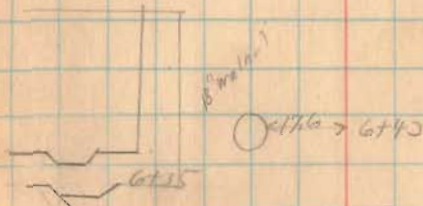
J. M. Forsythe

8' 0" 196
7+43 ○ 196

J. H. Fett.



6' 0" 196
6+70 ○ 192 → 191 → 191 191
6+89



x x x
x 196 → 6+00
x
x
5+79 x x 190

Road # 69

1350
INDEXED ON MAP

9-4-25

20+41 Drive 43
TO Box

Abt. 20+04

1/2 Story
Frame

← 30.5 →

← 15.8 →

18+96
Rail Fence

← 11.7 → 17.2 → 18+10

← 11.8 → 19.0

17+00 = Land Cont.
17+04

← 12.4 → 18.0 → 16+00

FIELD
15+20 ← 16.5 →

← 12.3 → 17.5 → 15+00

← 13.3 → 16.2 → 14+00

← 13.5 → 15.3 → 12+00

wood
creek

corn

← 14.8 → 12+14

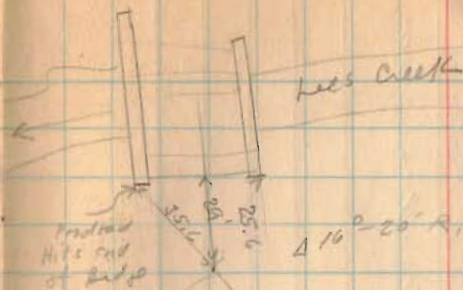
J.F.F.F.T.

Road #69

1350
INDEXED ON MAP

9-4-25

44



PI. 26+88

Iron placed
by night

12" ballnet



P.C. 23+85
1+19
P.T. 25+04

P.S. = 24+50
Δ = 47-50' left

E = 13.7

T = 65

L = 119

← 18' → AC

← 20' → 22+00

20+00 Δ 1°-30' left

J.H.F.E.T.

to Richmond
Paved # 39

Road # 105 - Richland Tap.



Stakes placed 25' from E

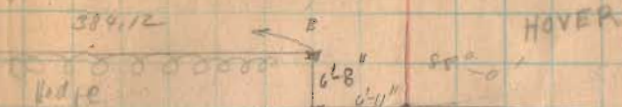
- A Hooper Teeth found
- B " " "
- C " " "
- D 1" Iron Placed.

Anna Hoover Deed Vol. 106 Page 330
 Hoover Vol. 106 Page 331
 Hoover Vol. 96 Page 404
 Roster Vol. 123 Page 13

U-1

SPAT. 12 1927
 Cloudy
 Weight
 M^s Kirschner
 Antrim
 Wickerman

46



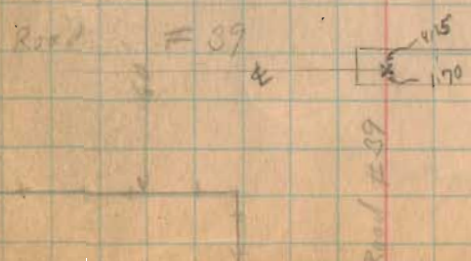
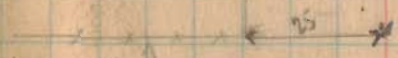
PI = 1 + 71.6.
 D = 50°
 T =
 R =
 E =
 L =
 AC =
 AT =

See Book 579
 Page 24

SCHOOL LOT

1357

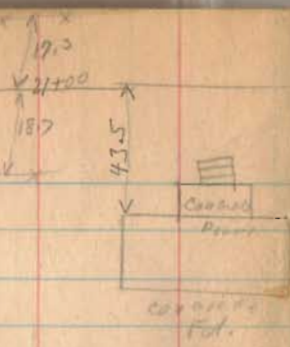
INDEXED ON MAP



See map at Richmond

2274613

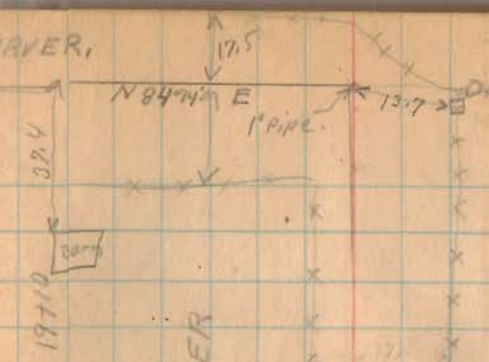
Rocky



11790²⁵ Stone
found
see Survey 977
Richland Top
Drewer R.

1357
INDEXED ON MAP

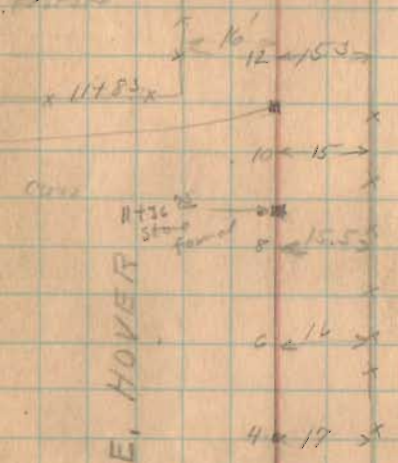
GRAVER,



S. E. HOVER

Little Miami River.

Pasture



9-11-47
 $\Delta = 88^\circ - 0' 37''$
~~XXXXXX~~
 P.S. 16144
 $D = 30$
 $R = 191.71$
 $E = 75.4$
 $T = 189.6$
 $L = 193.35$
 $M.C. 191.59$
 $P.T. 17+53 L$

C. H. ROSTOFER

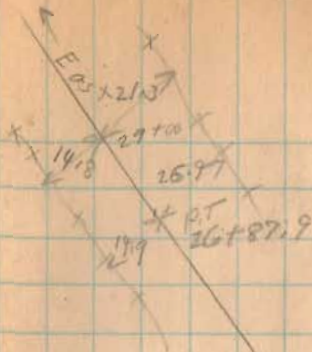
3492 x x x x
 School Lot.

#105

1351
INDEXED ON MAP

9-12-28

48



$$P.I = 25 + 88.6$$

$$P.C = 25 + 88.8$$

$$P.T = 26 + 87.9$$

$$\Delta = 21^{\circ} - 30'$$

$$D = 12^{\circ}$$

$$E = 8.54$$

$$R = 428.40$$

$$T = 908$$

$$L = 77.1$$

GARVER, L. D. POWERS

$$P.C = 21 + 47.6$$

$$P.T = 23 + 40.6$$

$$T = R. T. \Delta = 98.71$$

$$D = 15^{\circ}$$

$$R = 383.06$$

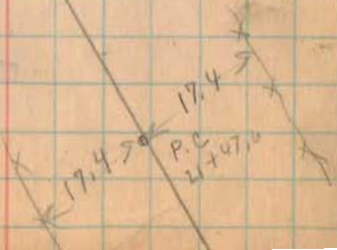
$$\Delta = 18^{\circ} - 55'$$

$$P.I = 22 + 46.3$$

$$L = 1.92$$

$$E = 12.55$$

S. E. HOVER.



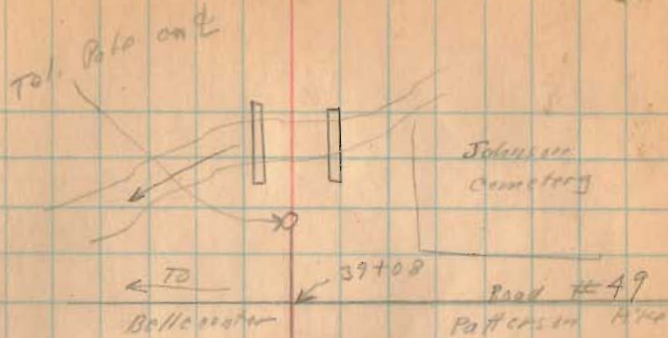
#105

INDEXED ON MAP

1351

9-12-29

411



S.E. HOVER

L. D. POWERS.

RI 30400
Δ 1°-25' R.

Road # 183 Lake Tapp.
V.M.S. 4399 and 3683

Stakes Placed 20' for ϕ

0+00 near corporation line
of Bellefontaine.

(See Book 608 Page 53)

1352

INDEXED ON MAP

Sept. 13, 1929
cloudy P. 7:15
W. 10:00
M. 10:00
A. 10:00
W. 10:00



Δ 20°-10'

P.I. = 4+52

D = 15'

E = 6.021

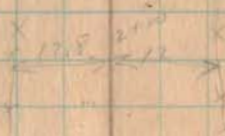
T = 74.8

L = 136.86

P.O. = 3+77.4

P.T. = 5+11.62

P.I. = 4+52



P.O. = 0+00

P.I. = 3+11.62

P.T. = 1+75

Δ 20° R = 15.07

D = 6'

Δ 10°-30'

T = 59.77

E = 4.03

L = 123

1730
x x x

14 25'

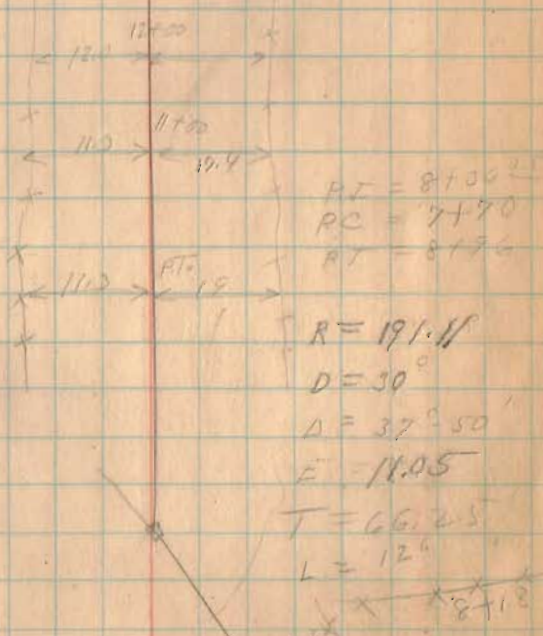
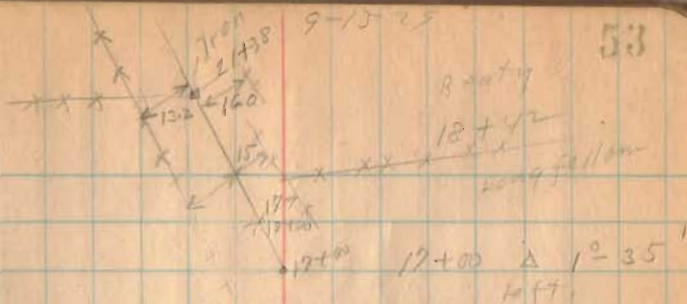
Road # 185

217-00
217-20
142-40

300
217-20
142-40

1352
INDEXED ON MAP

Land to Right of P.I.



40'

8' metal

Road #138 Bookers Creek,

No stakes placed.

1833' from \pm Road #121 TO
crushed
old stone on road #138

40' Road, 117 North to
Hardin Co. Line

Vol. 10 - Page 61

Vol. 10 Page 122

1852

(353)
INDEXED ON MAP

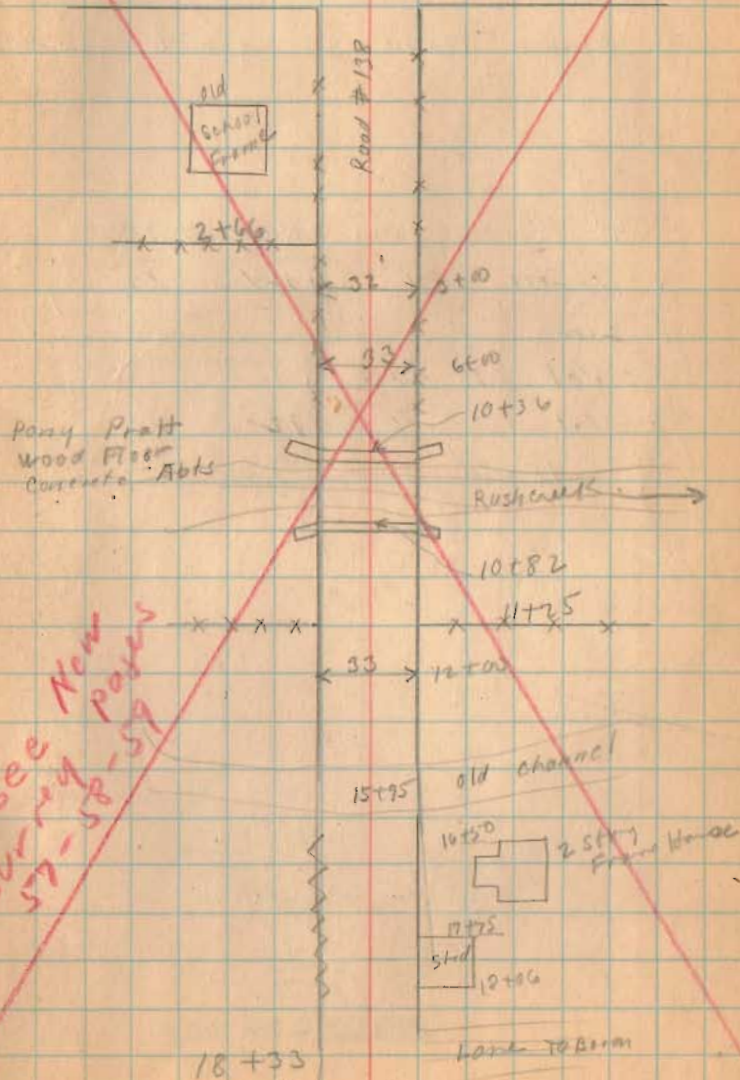
Sept. 15-1925
Cloudy
Wright
Anderson
Wickensham.

56

Road #121

Road #138

0+00 Road #121



Road 138 Bakescreek Twp
V.M.S. 9959

Stakes Placed 20' from Φ for 40' Road

40' Road from Road #117
North to Hardin County
line
Vol. 10 Page 61
Vol. 10 Page 122
1852

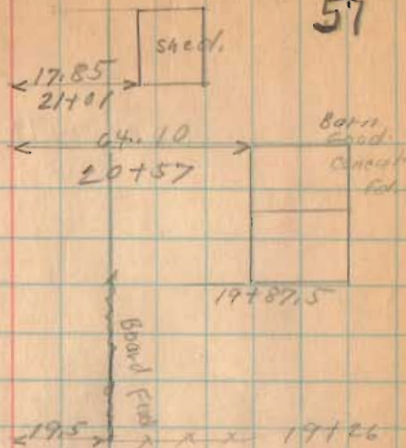


1353

INDEXED ON MAP

May - 2 - 1933
showers
Virginia
V. O. Detrick

57

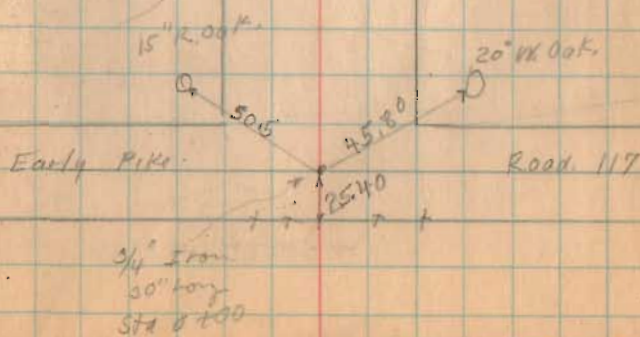


PI
Note: STA 19+24.5 RESET
BY PROJECTING TAN FROM
THE NORTH USING IRON @
STA. 38+99 AND 64.10' FROM
COR. OF BARN FOR LINE AND
MEAS. 1924.5 FROM IRON @
STA. 0+00.

19.5
3/4" Iron 30" long
19+24.5
0" 10' Right
SEE NOTE
 $\Delta = 0' 10.3'' RT$
(0' 20.9'')

Joseph Wallace

C.K. Elliott et al.

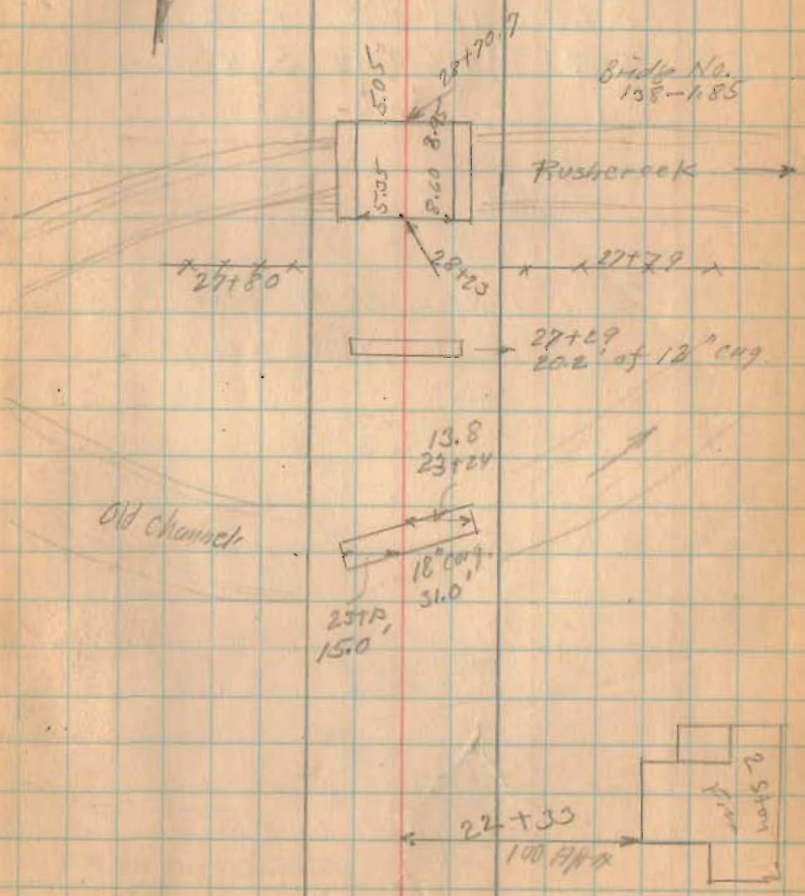


Road 138



BRIDGE HAS BEEN
CHANGED, NOT GOOD
FOR LINE. INC.
3/15/73

Bridge No.
138-185



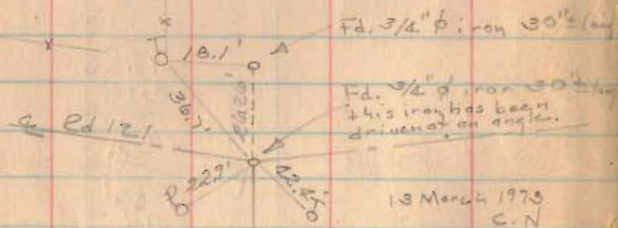
1353

INDEXED ON MAP

Road. 138

Road No. 138 North of
Road 121 see Book
555 Page 44 & 45

Length 3899 Feet
Length .7384 Miles



13 March 1973
C.N

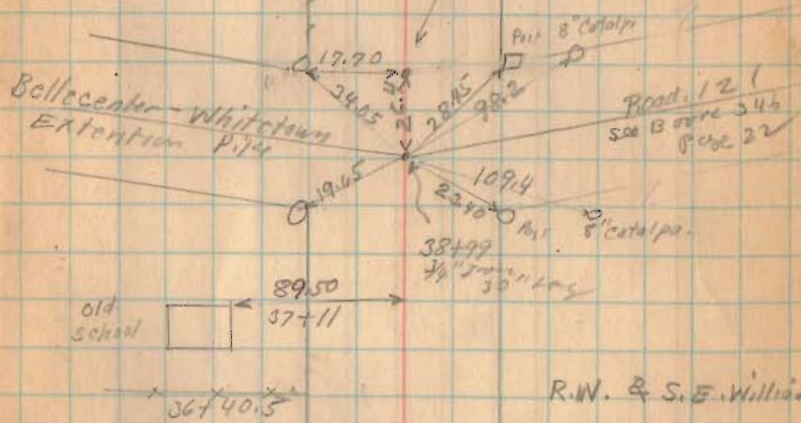
1353
INDEXED ON MAP



E129
Limes

Spike Nail by curve
Placed by Road 30" long
Stake 20" high
20' Right
See Book 555
Page 44

R.W. & S.E. Williams



Old
School

89.50
57+11

36740.5

R.W. & S.E. Williams

E129 Limes

Road #135

16 Metat
staked to
60' R of way
Jefferson Twp.

Hubs 20' from $\frac{1}{2}$

1354
INDEXED ON MAP

Sept. 14 - 1918
East side of
Wingfoot
McJannet
Antoine
Wickerson.

61

8+00

1-Story Frame

7+60 Lane

TO Barn

11.9
1+00

*
*
*
*

Road # 8

Road # 135

9-14-29

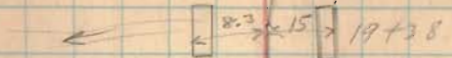
62

12+00 Δ 1^o-0" left

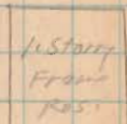
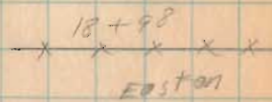
1354
INDEXED ON MAP

\leftarrow 20.0 \times 0 8+5⁰
8" Walnut

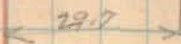
Road # 135



Rogers



18+37



18+11



Easton



Smith

1354

INDEXED ON MAP

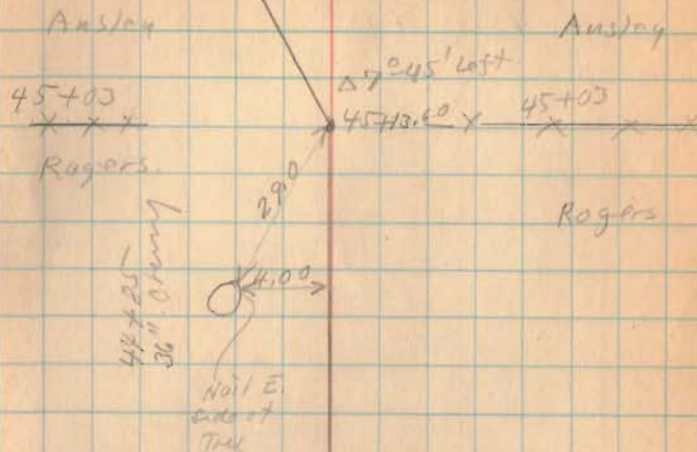
Road # 135

3369.50
2928.50
441.00

1354
INDEXED ON MAP

9-14-29

65



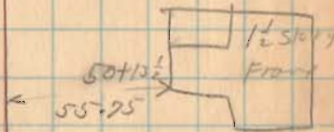
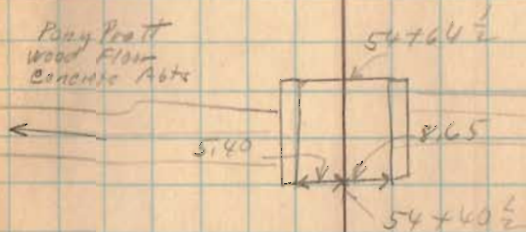
Road #135

Sept 16-1919

66

Wright
McClintock
Austin
McKenham

Pony Post
Wood Floor
Concrete Acts



1354
INDEXED ON MAP

Road # 135

9-16-79

67

Spike

32.9

18" Sugar
66+50

2° ± 0' Left
66+50

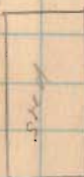
1/2 story

Frame

60.9

66+75

65+15



E.M. Collins

60+63 1/2
X X X X

Ansley

E.M. Collins

60+63 1/2
X X X X

Ansley

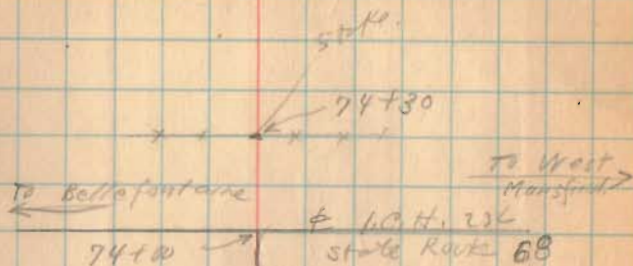
60+54 Left
6° 0'

1354
INDEXED ON MAP

ROAD # 135

9-16-29

68



1354
INDEXED ON MAP

of metal 40'

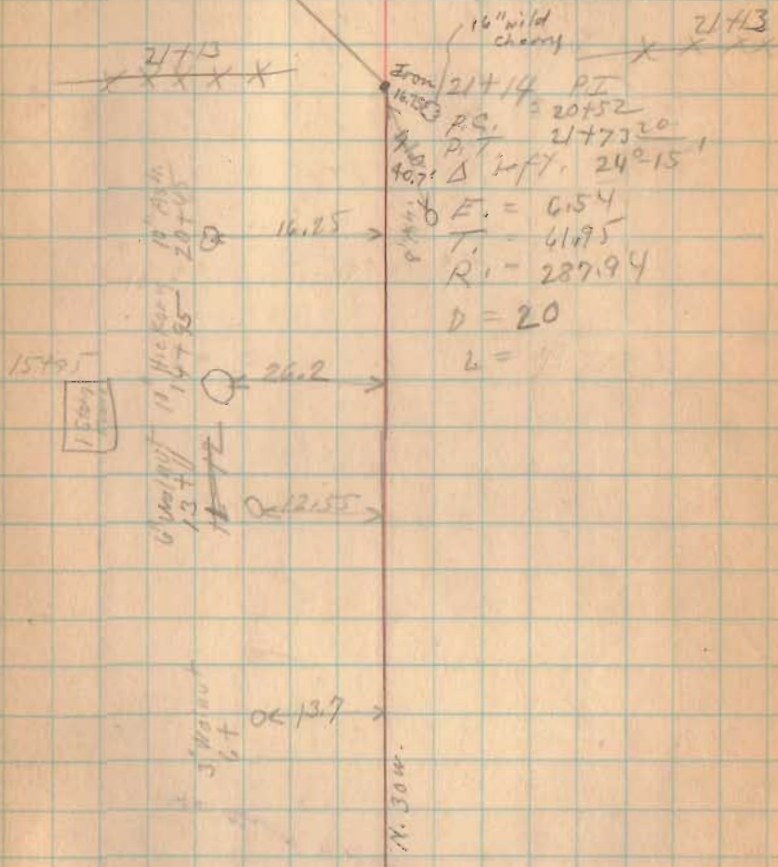
Road 93 Stokes Twp.
V.M.S. 12276

Stakes Passed 20' from E
Stakes 1-3-5-7 etc.

1355
INDEXED ON MAP

Sept. 10, 1929
Clear Fine Day 71

Wing Mt.
H. J. Jordan.
Antonia
Wickham



4 1/2 H.
State Route # 69

old post

Record # 93 Stokes Trap.

9-16-29

72

STAKE

$$PI = 25 + 04$$

$$\Delta = 25^{\circ} 00'$$

$$E = 6.98$$

$$D = 20$$

$$T = 60.75$$

O = 24.4

$$PC = 28 + 15.25$$

23+97

$$PT = 26 + 29$$

24' white oak.

$$R = 287.94$$

1355
INDEXED ON MAP

Road #93

INDEXED ON MAP

1355



9-16-29

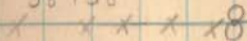
73

42+77

Low 75
House

42+6
Low 75
Dirt

38+38



Stone Between
Two Posts

2 Storey

Front

35+28

← 20.2

34+87 15"
Red Oak

33+83

X X X X X
Lane (?)

X

X

X

X

Δ 0'-50' left

31+44

50

P.I. 31+44 50



20.5

Stake

20.1

31+31 50
15" Oak

63+06
62+53

53

Road # 90

41+00 Last stake.

1355
INDEXED ON MAP


9-16-29

74



62+06 Lane to house

containing
stone

← 25'  → FD 9/1/69

62+53 L.G.

6" ABOVE SURFACE

1' WEST OF FENCE

58+05
Road.

48+53

45+06
X X X X X