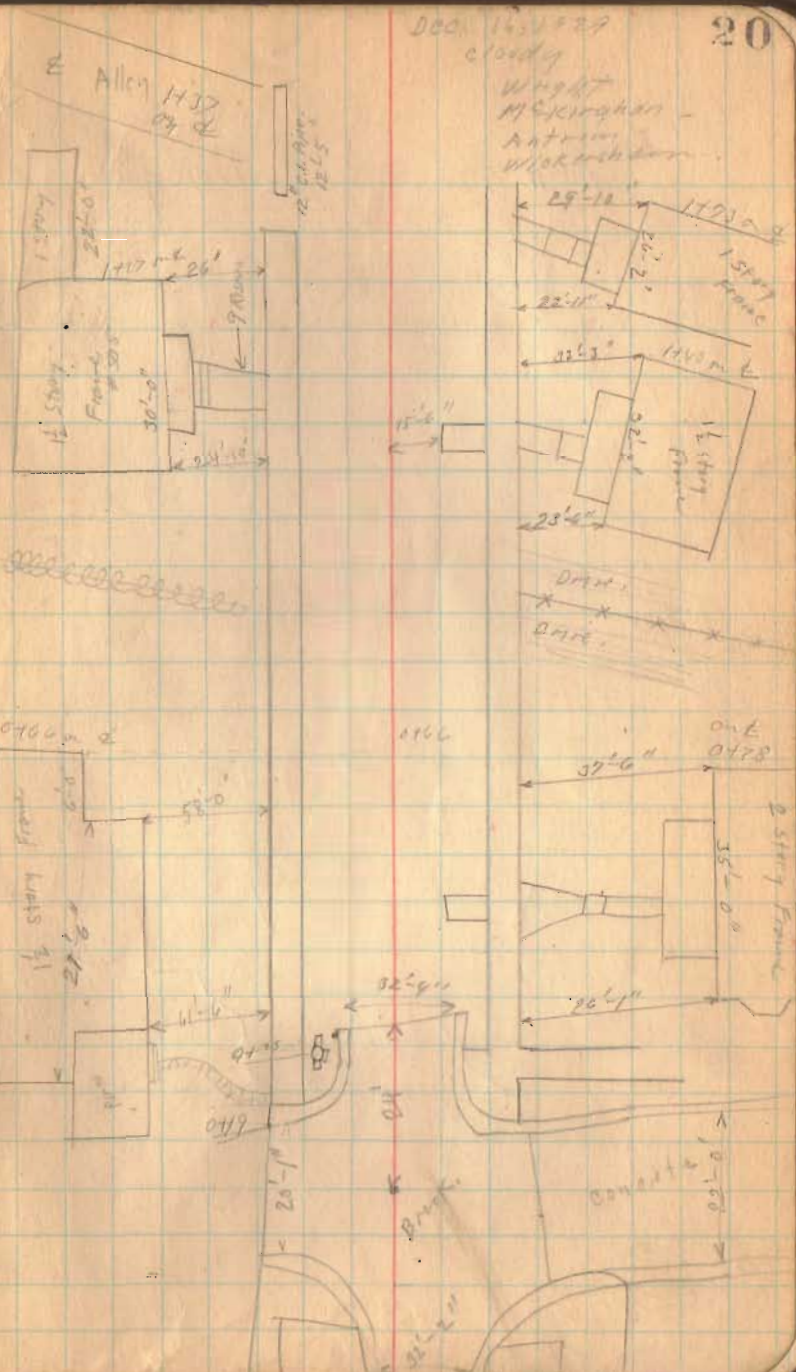


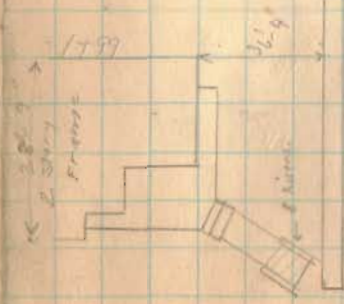
10H 225 Sandusky Ave

INDEXED ON MAP

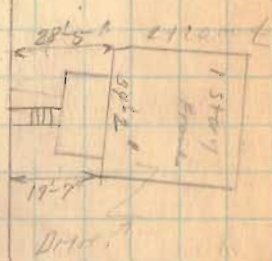
4430



10th St E. Sandway

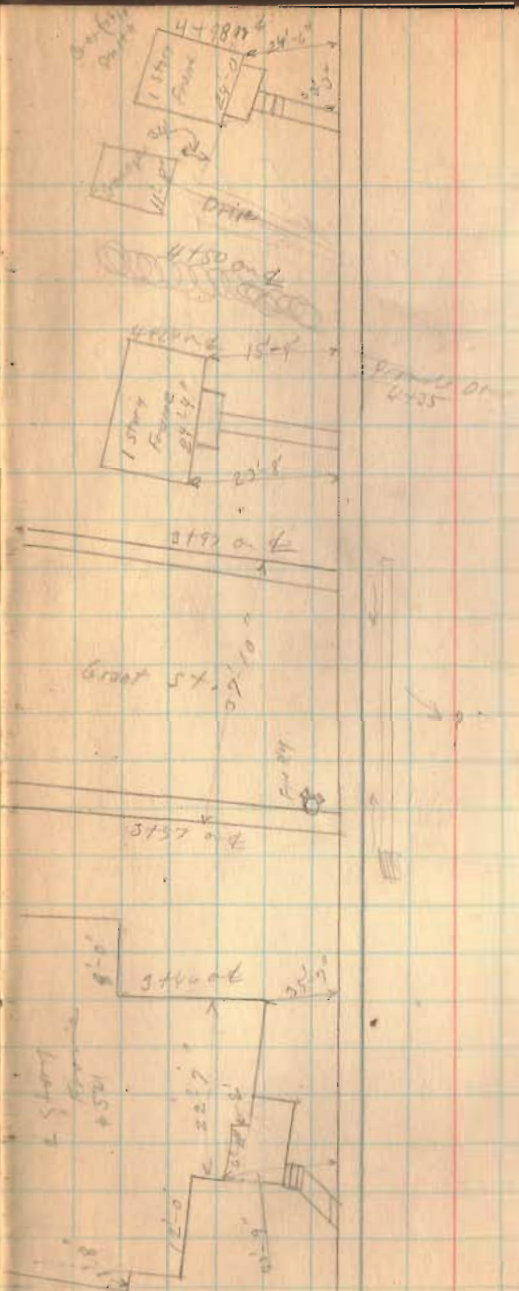


Grades
2114



10. H. 735. El. Sandusky

22

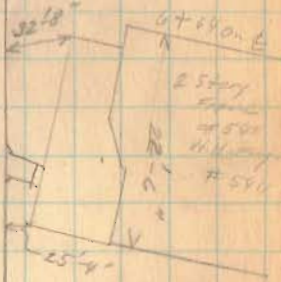
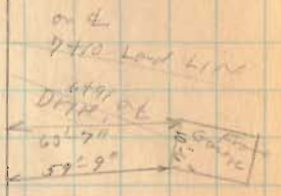
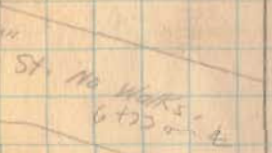


5-1870 de
Driveway 250'
South

(Vacant lot)

4-1877

1244. 175 E. Sandusky



14.6" x 12" Wx

28" x 28" 8.1.1.1.1

1074-235 E Sandusky



old
9707
Ally. p

9707
84912
0°-02'14"ft
Measure
with
center

8456

8413 on E

Concrete

Drain

9707-1

22'-0"

21'-10"

5'-0"

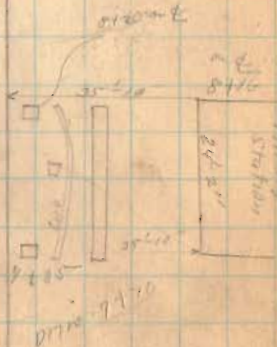
Wall

9750

Drain



8476
E Hayes St.



Drain 9770

104. 235 E. Sandusky



12120 @ L

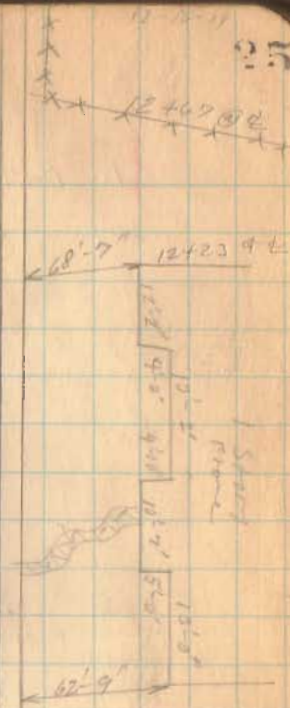
Land Lot
11723 @ E



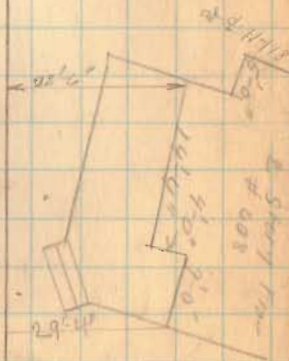
240
11747 @ L

11747 @ L

11747 @ L



11747 @ L

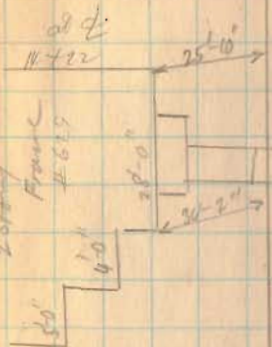


110 N. 735 E. sandy

Dec-17-1925
Warm Yes
Fog Yes
Wind
H. K. Krohn
Ant
Microsc

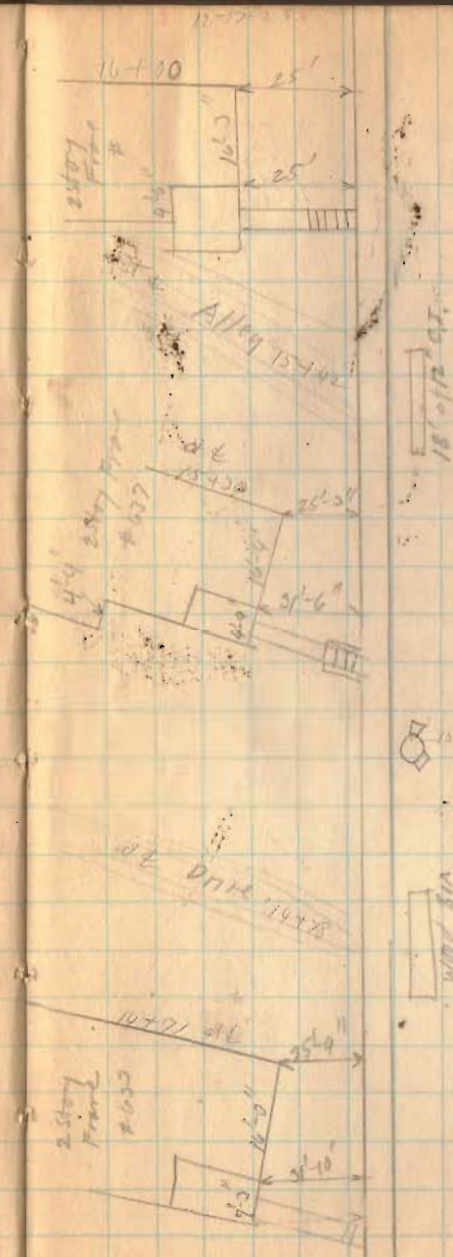
11-17-25

26



Area available

1-C.H. 235 E Sandvick



11-37
11-37

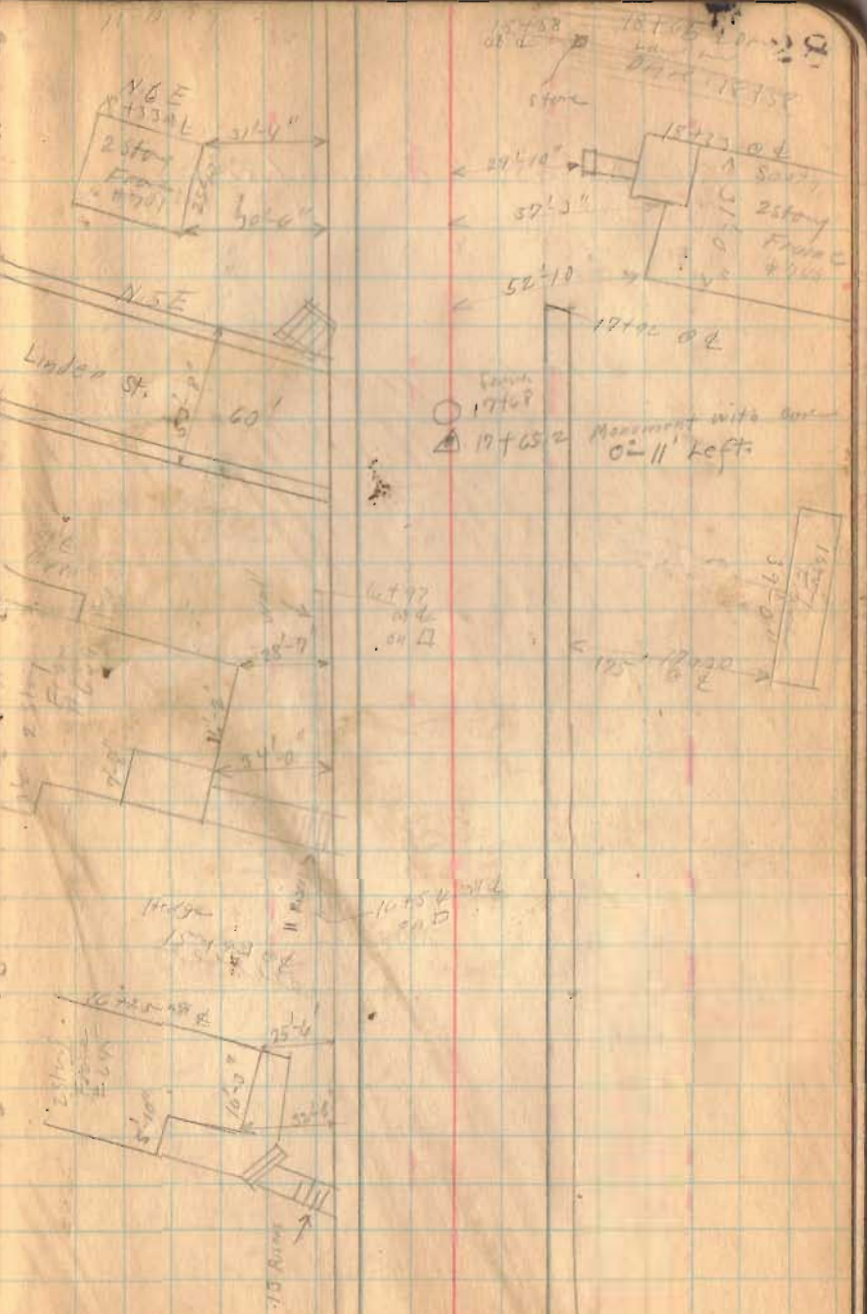
11-17
16+30
16+30
16+30

27



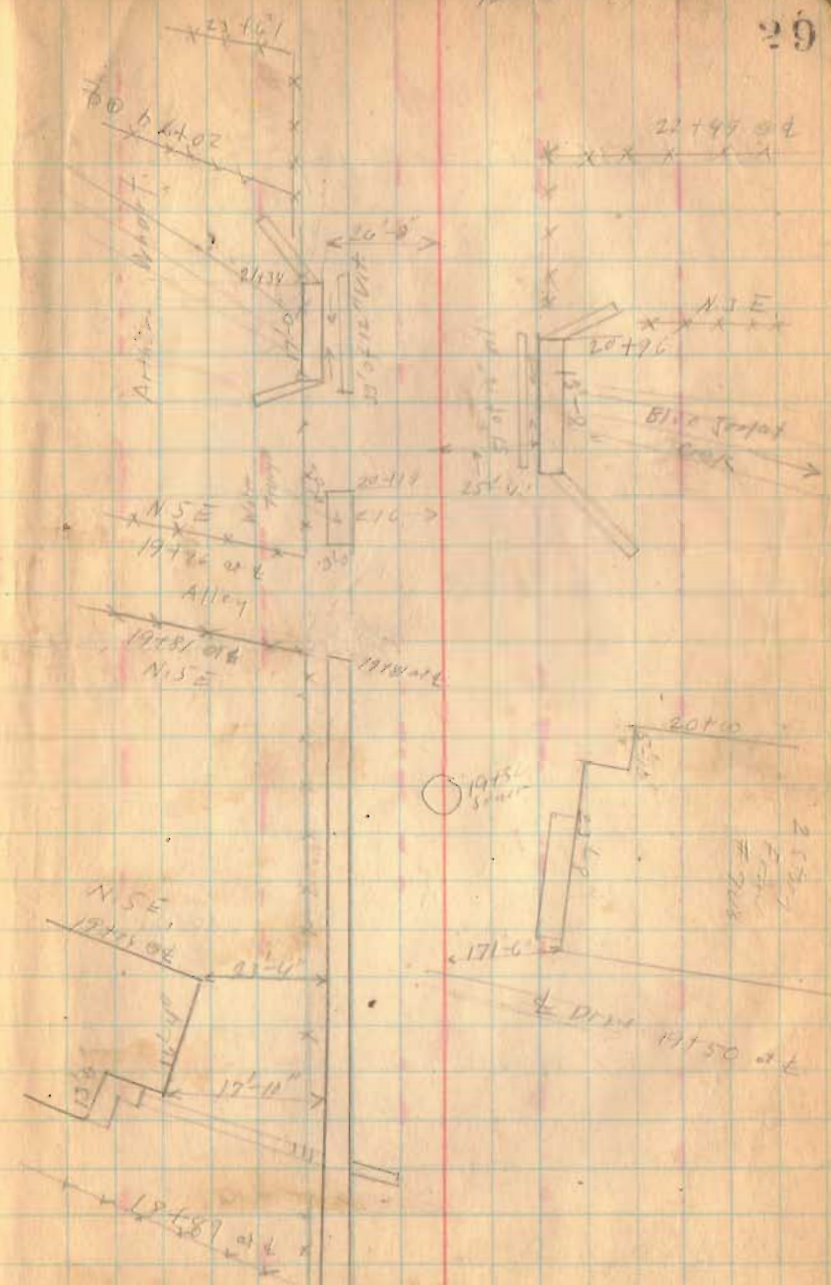
1st May 235 E. ...

0.001

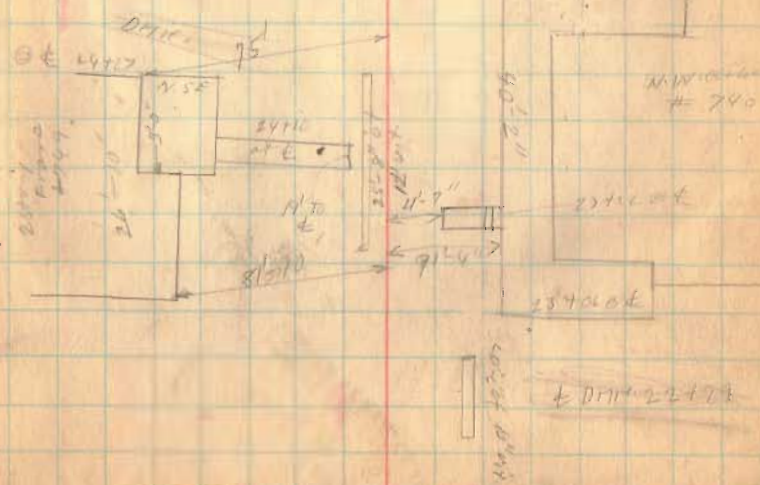
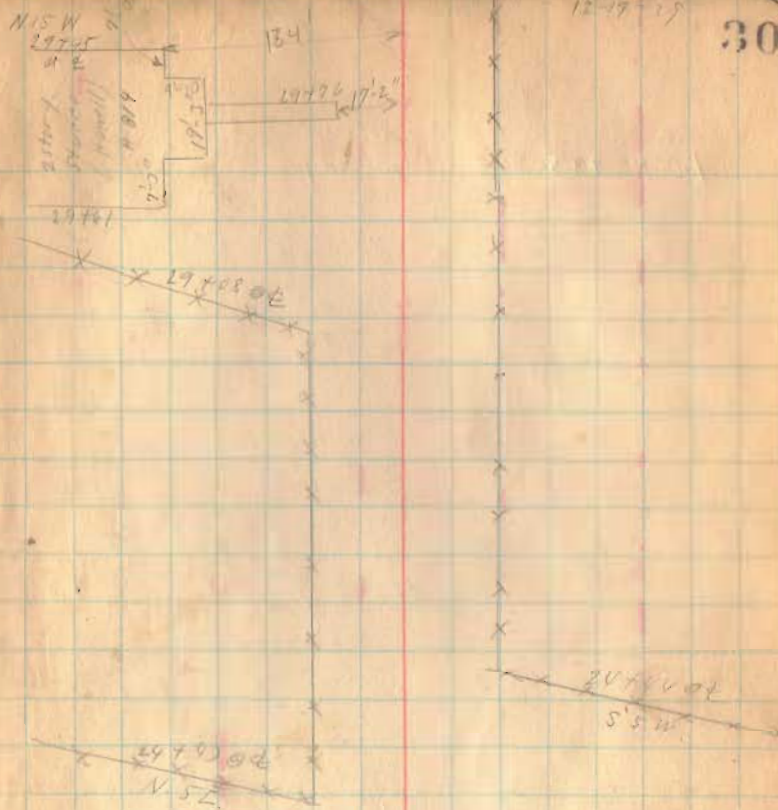


12-17-25

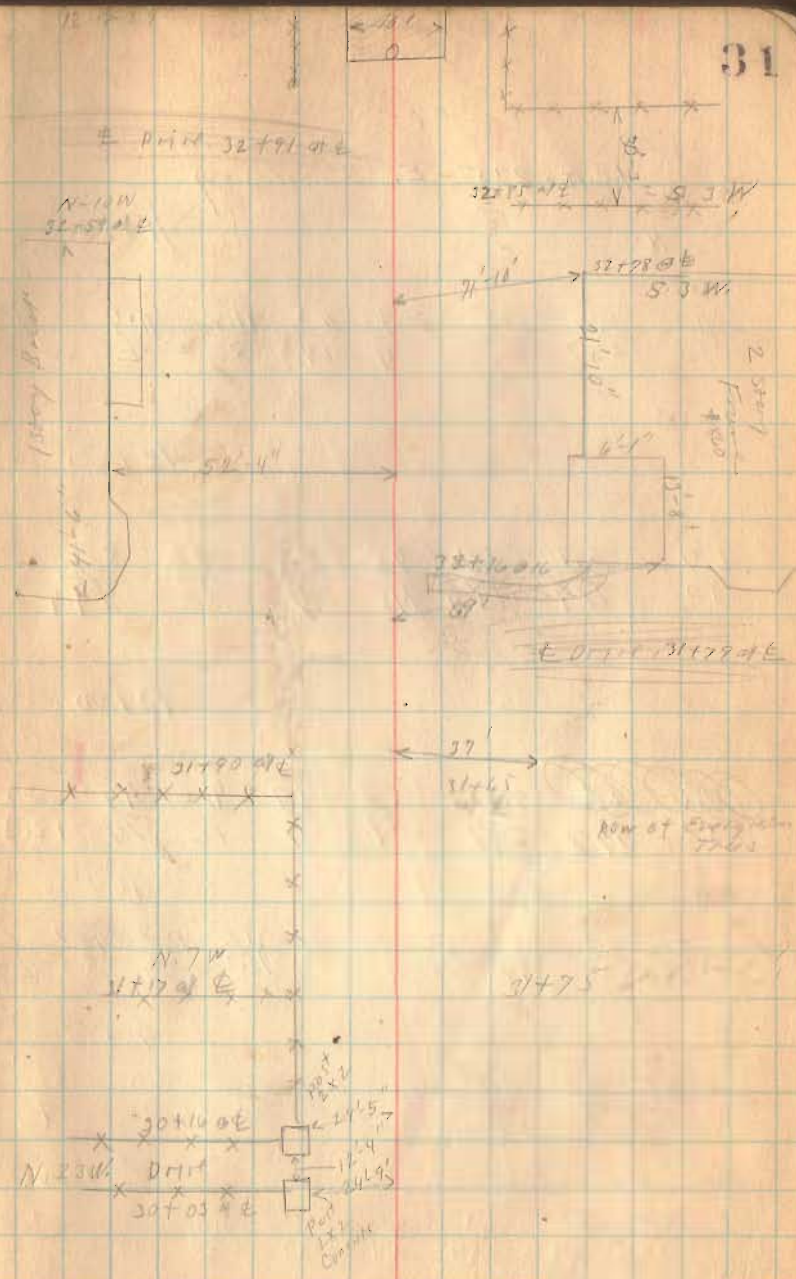
110 N. 1st St. E. boundary



1/10 8 235 E. Sandusky



HC. N. 225 E. Sandberg



I.C.N. 1310 Garfield Ave

C.L. Rogers
Woods Box

2+40
Stone Culvert
29' Long
No Good.

120°44'
Right

2+26

Jan-6-1935
Cloudy
Windy

W-1937
M-1938
Bottom
Wickham

60

PC 0+43.28
PI 2+26
PT 4+07.02
R=1632.28
T=1821.72
E=1016
D=3°30'
L=363.81

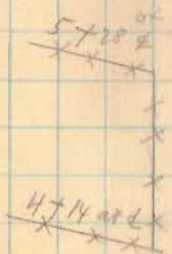
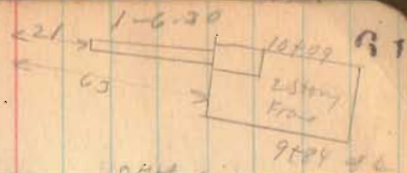
4431

INDEXED ON MAP

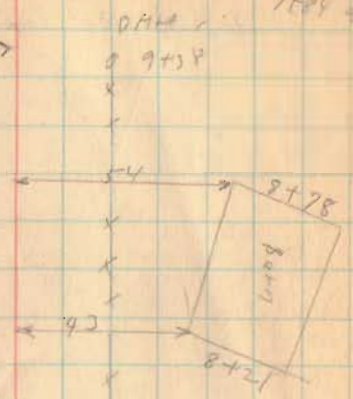
R.P. SPIKE

Present
Structure
1961

1.c.N.130 Garfield Ave.



← DMH 3+57

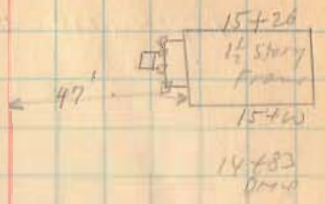


△ 5+00
at 30'
R4974

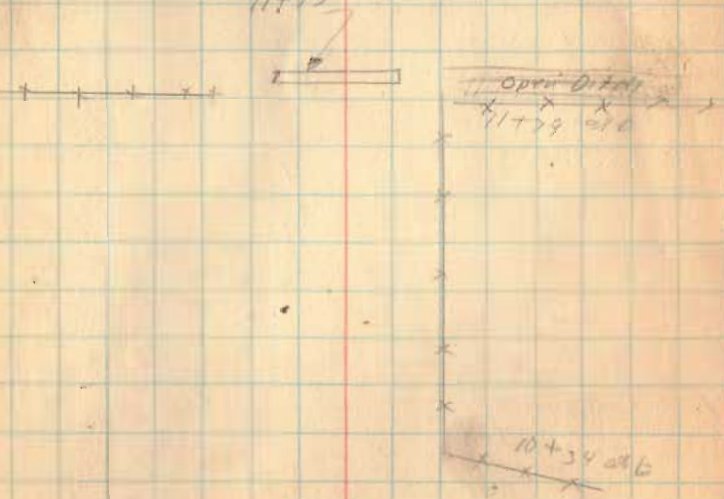
4 to 5
Long
Station
187.09

- x
- x
- x
- x
- x
- x
- x

I.C.H. 130 Garfield Ave.



N. end stone box 18' x 6' 3" High
S. end 6' 0" x 30' V.P.
11+43



V.C. 17, 120 Garfield Ave

1-6-30

63

17+67

old
Grading

P.T. 20+85.26

25°40'

P.I. 19+45.26

P.C. 18+30.26
 P.I. 19+45.26
 P.T. 20+85.26
 $\Delta = 25^\circ 40'$
 $L = 258.18$
 $D = 9^\circ 01'$
 $E = 16.33$
 $R = 637.27$
 $T = 145.18$

18+25
 Drive
 to old
 stone
 fence
 from
 17+00

About
 9'

18+50

9.5'

11°45'

P.I. 16+02.40

P.C. = 15+43.42
 P.I. = 16+02.42
 P.T. = 18+00.55
 $\Delta = 11^\circ 54'$
 $L = 257.55$
 $D = 4^\circ 37'$
 $E = 6.72$
 $R = 1241.59$
 $T = 129.4$

P.C. 15+43

16+00

20-8-9

17+30

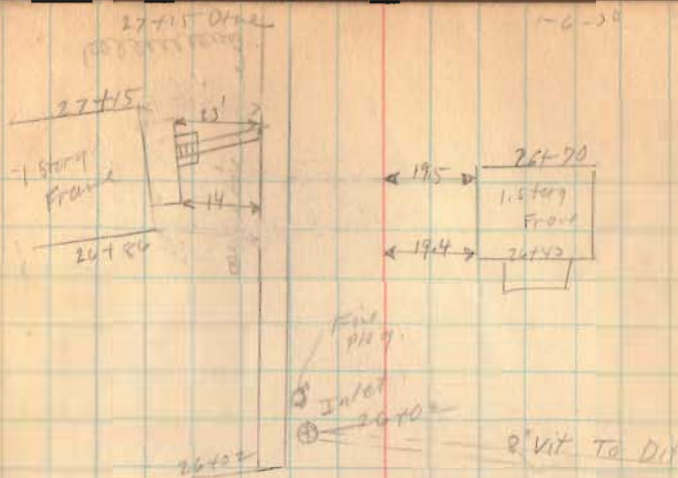
17+60

145

37'

17+95

10. N. 130 Garfield Ave.



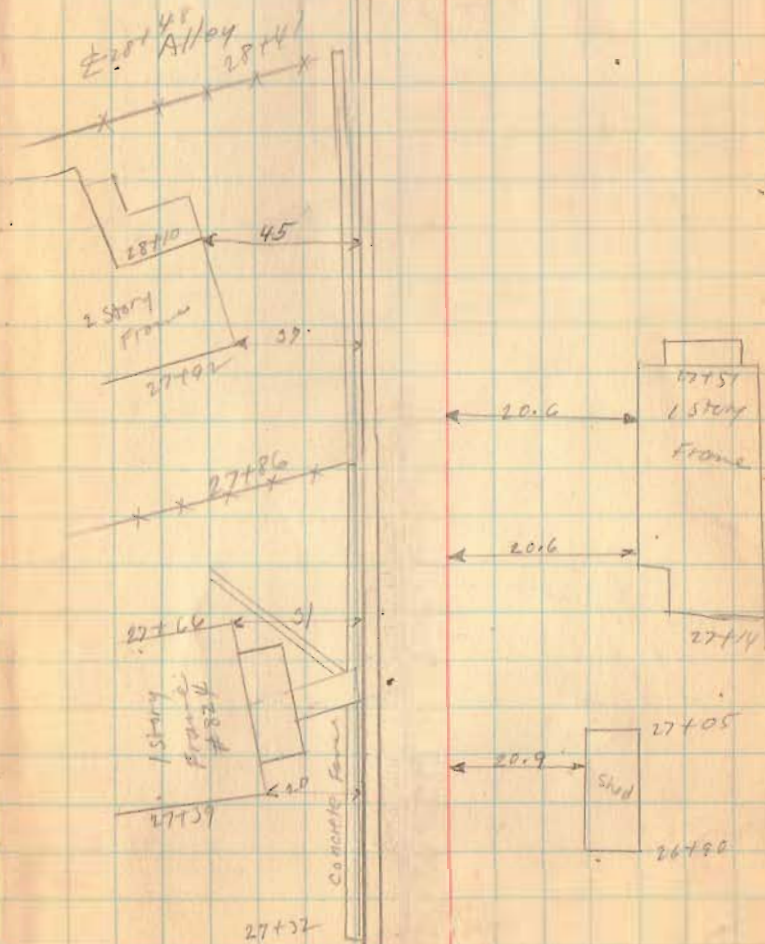
← Trough → \triangle 26-20 80
12 30' LATT
I.P.M.

30' of
24-42
5" C.I. PIPE

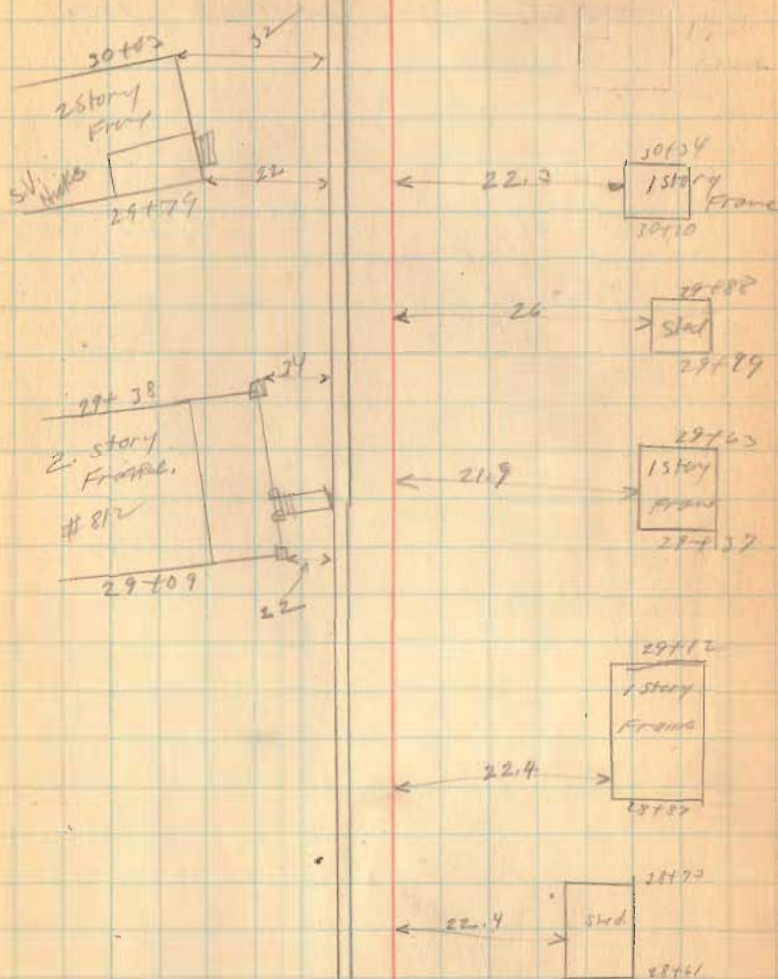
DIT 27-15 at

• 22-13 $\frac{10}{10}$ E Limestone
Iron No Angle.

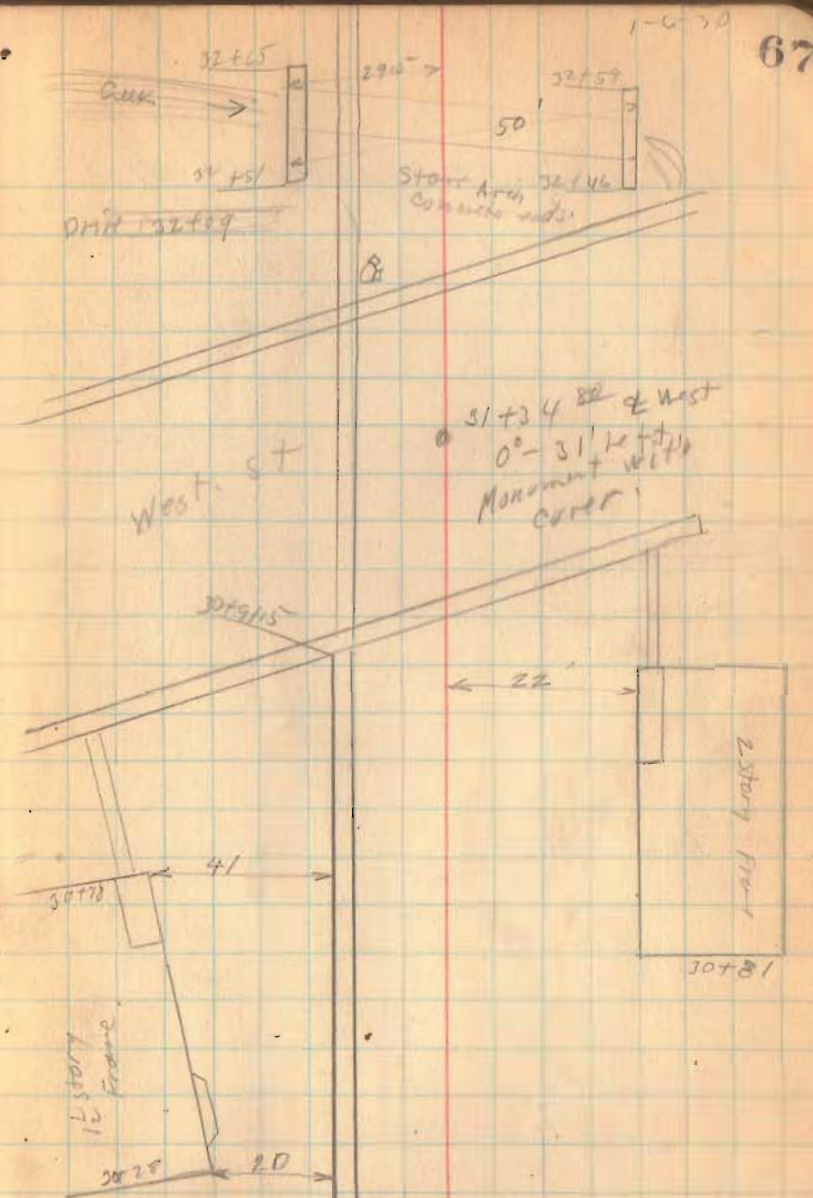
11 C. H. 130. Garfield Ave.



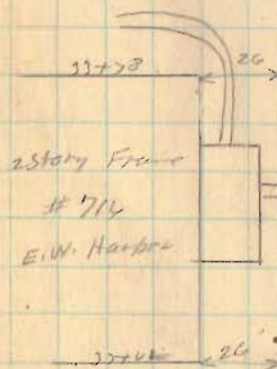
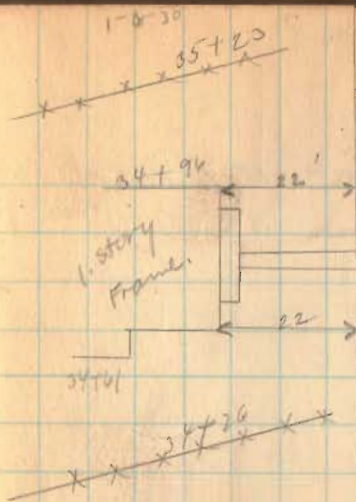
I.C.H. 130 Garfield Ave.



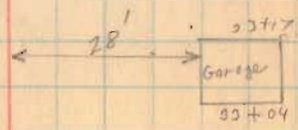
1011-130 Garfield Ave



J.C.H. 130 Garfield Ave.

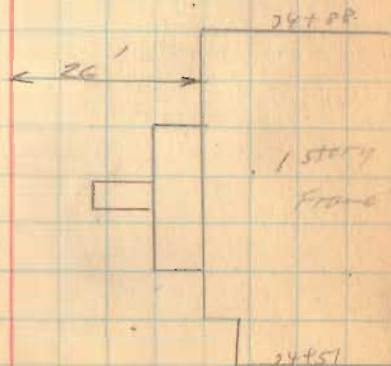
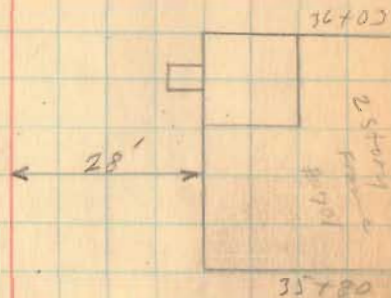
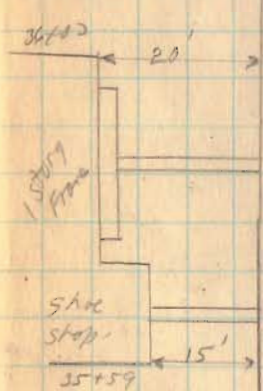
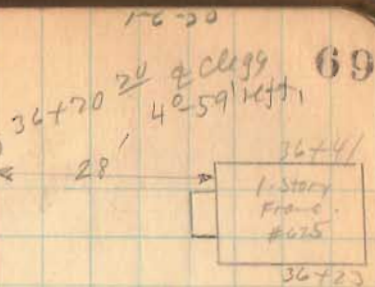


99



1.C.H. 130 Garfield Ave.

36+75
Clegg St.



L.C.H. 130 Garfield Arr.

40+02

39+55 History Frame

39+57

39+50

39+02 History Frame
38+82

38+98

38+59 1/2 Story Frame
38+27 #616

38+06

37+87 1/2 Story Frame
37+68

1-14-30
39+35 70

9' 39+10 2 Story Frame

8' 39+00

10 38+82 1 Story Frame

10 38+57

38+49 1 Story Frame
38+24

39+02 1 Story Frame
37+81

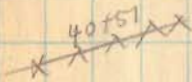
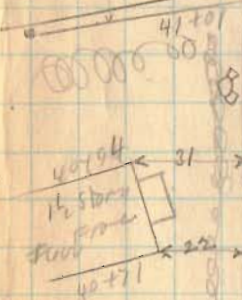
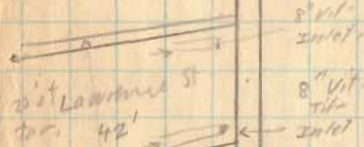
5' 37+37 #617 1 Story Frame
37+16 Bank Shop

36+35

5.6 36+81 History Frame
Meat Market #624
36+59

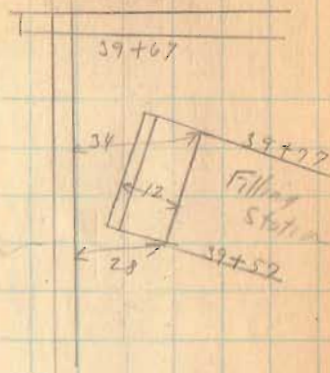
S. 64 E.

1.C.H. 130 Garfield Ave.



1-14-30

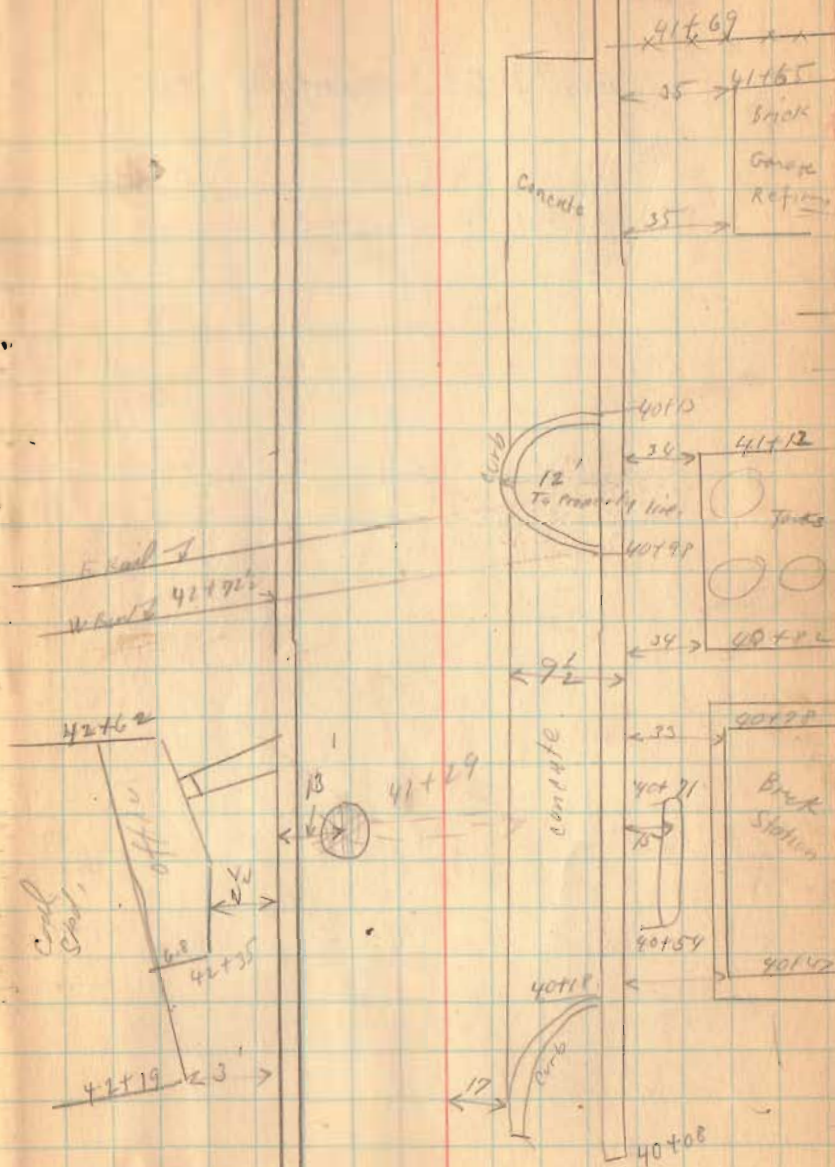
712
Elerett St.



110. H. 130. Garfield Ave.

1-14-30

72



1.C.M. 130 Garfield Ave

1-14-30

73

