

S.H. 579
(Old county Road No. 6)

10+00 Monument.

5+00 Monument.

1465

INDEXED ON MAP

Sec 12 T7 N8

Logan County

Stolby county

Large Spool Stone

25'-0" →

Jackson Center - New Bremen Road S.H. 579
Old Co. Road No. 6

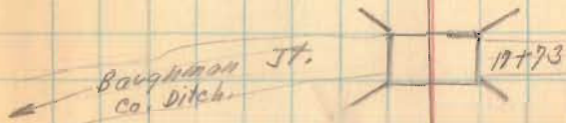
Sec 13 T7 N8

March 31-1903
Clear - cold
Windy
McKrahn
Shute
Baier
Gussard
Bridg

S.N. 579

3-31-30

9



1465

INDEXED ON MAP

15 + 00 Monument.

S.H. 579,

29+00 Monument.

24+00 Monument.

Δ 23+40.4 0°-22' left.

21+00 Monument.

1465

INDEX MAP

3-7-30

10

old 1 Story Frame



Sec 7 T.7 R.8

1 1/2 story frame

30' x 50'

X X X X X 30' x 100'

8' cur

72.6
N. 22° E.

Co. Road # 23

← To Santa Fe

Stone 23+40.4

Co Road # 23

88.3
S. 15° W.

98.3
S. 10° W.



S.N. 579

44+00 Monument

38+00 Monument

Δ 36+62 0°-00' Right

36+00 Monument

1465

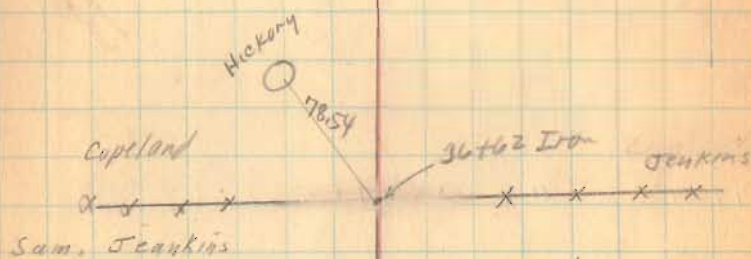
INDEXED ON MAP

3-31-20

11



Barn



S.M. 579

56+00 Monument.

51+00 Monument.

49+84.8 0°-03' left.

49+00 Monument.

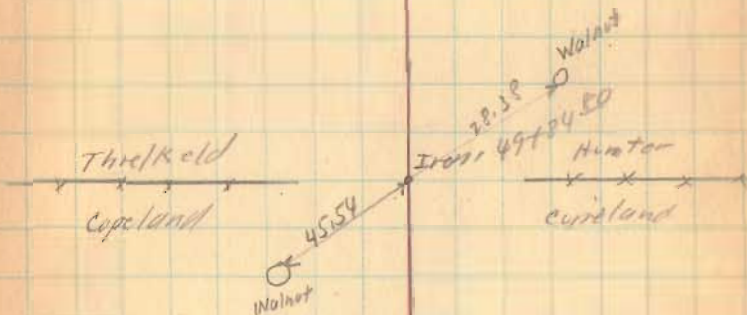
(1465)

INDEXED ON MAP

3-31-30

12

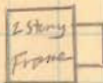
1 story
Frame.



S.H. 579

9/1/00

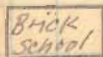
Monument



2 Story
Frame

6/1/00

Monument



Brick
School

6/1/00

Monument



Shed

1465

3-31-30

14

S.H. 579

83+00 Monument

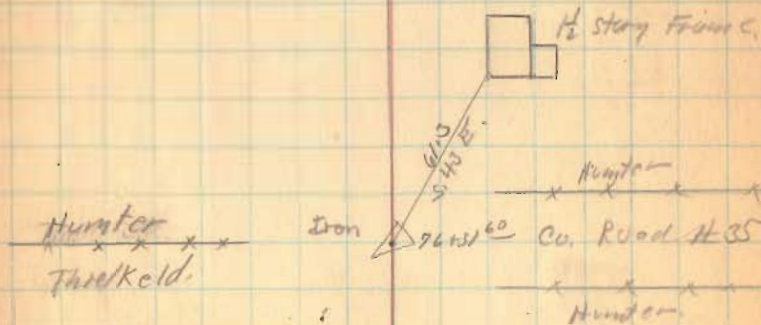
78+00 Monument

76+31⁶⁰ 0°-14' Right

75+00 Monument

(1865)

INDEXED ON MAP



S.H. 579

3-31-20

15

Haver Co. Ditch

Hunter
x x x x 89160
Hunter

Briggs

H 89160

Hunter

89160 Monument

(1965)

INDEXED ON MAP

S.H. 579

114+00 Monument.

108+00 Monument

102+80²² No Angle.

102+00 Monument

97+00 Monument.

1465
INDEXED ON MAP

3-31-50

16

Wright

Co. Road # 53

Hunter

Wright



S.H. 599

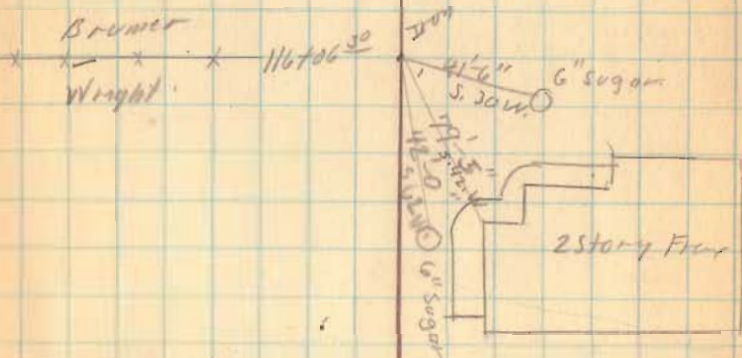
124+00 Movement.

119+00 Movement.

116+06³⁰ No Angle.

April-1-1930
Cloudy Windy
Wing at
M^E Kink
Bair
Sht to
Dredg.

17



1465
INDEXED ON MAP

S.M. 579.

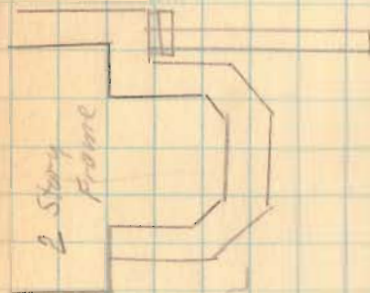
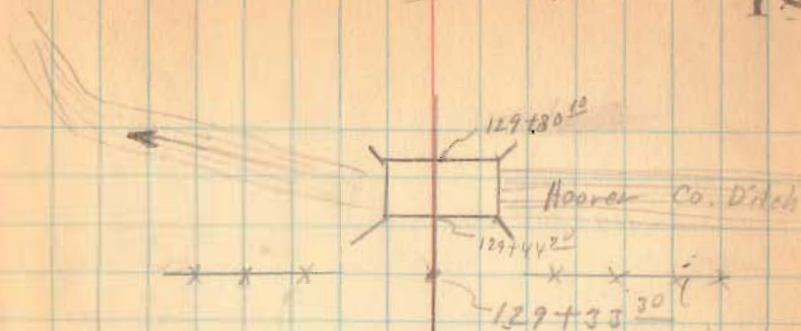
129+33³⁰ 0°-18' left.

127+00 Measurement.

(1465)
INDEX MAP

4-1-30

18



Measure

End

S.H. 579.

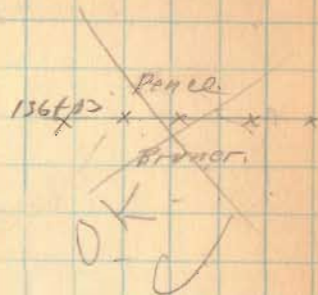
137+00 Monument.

132+00 Monument.

1465
INDEXED ON MAP

4-30

19



S.H. 579

149+00 Monument.

144+00 Monument.

142+70⁶⁰ 0°-05' Left

142+00 Monument.

146J

INDEXED ON MAP

4-1-30

20

shed

Pence

x x x x

Brucer

1 story
Frame

pena

Woods

~~pena~~

142+70⁶⁰ 0°-05' Left

x x x x

Stone

Penel

S.H. 579

165+00 Monument

159+00 Monument

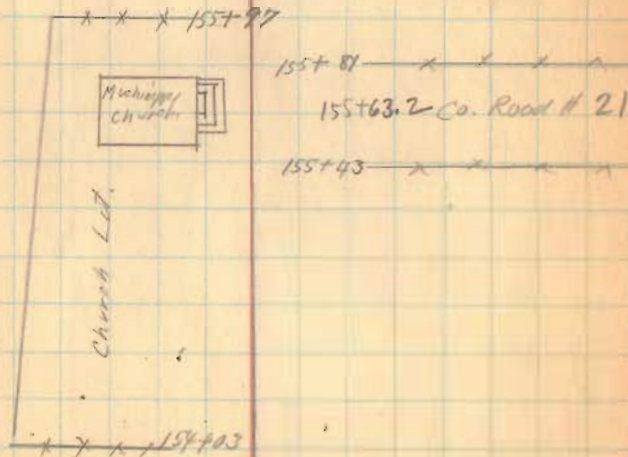
152+00 Monument

1465

INDEXED ON MAP

4-1-30

21

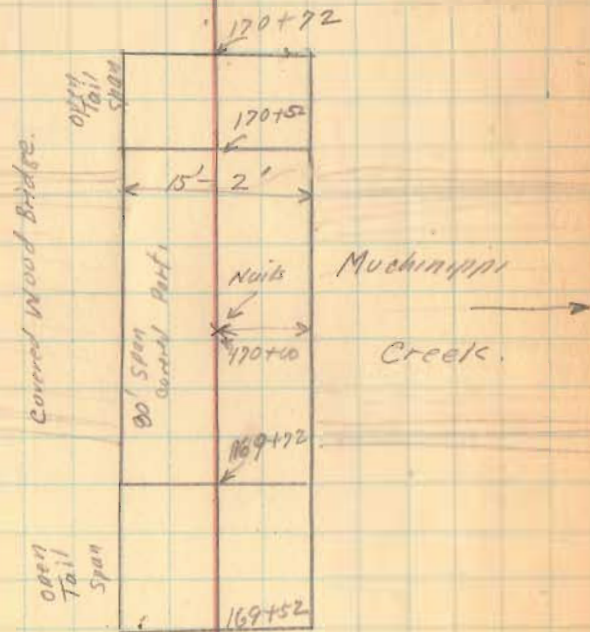


S.H. 579

192+00 Monument.

4-1-30

22



1465

INDEXED BY MAP

price

S.H. 579

April-2-1930

Fine Day

Wright

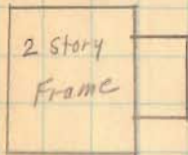
1930

Bridg.

Baird

Gussard

Shultz



X X X
Co. Road. # 54

X X X

X X X
173764 & Co. Road. # 54

X X X

1974 Co. Monument

1465

INDEXED ON MAP

S.H. 579

187+00 Monument

182+79²⁰ No Angle

182+00 Monument

4-2-30

24

40.49 CH

1 1/2 story
Frame

Lancaster.

X X X X

Wright.

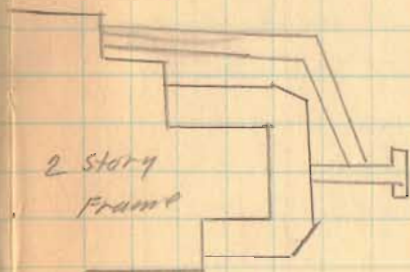
182+79²⁰
LeSourd
Stone Pile
1/2" west
of present Pond
Line

1805

INDEXED ON MAP

S. H. 579.

203+00 Monument.



197+00 Monument

(curric)

Ins Co.

x x x x x
Lancaster

sta 195+94 No Angle
state

192+00 Monument.

1465

S.H. 579

218 + W Monument

213 + W Monument

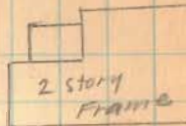
1465

INDEXED ON MAP

208 + W Monument

4-2-30

26



Mallon.

x x x x x

Wright.

Wright.

x x x

Ins. Co.

Wright.

x x x

209 + 52 Le. Sauter.
No Angle

S.H. 579

4-2-30

97

228+00 Monument.



223+00 Monument

222+62³⁰ 0°-19' Right.

222+62³⁰
Old Stake
Woods
Wright

222+00 Monument

1465
INDEXED ON MAP

S.H. 579

243+00 Monument

237+00 Monument

225+90⁵⁰ 0°-05' Left.

235+00 Monument.

1465

INDEXED ON MAP

4-2-30

22

2 story
Frame

2d/c.

X X X X X

Mullon

235+90⁵⁰

section line

S.H. 579

248+00 Monument.

247+00 Monument

1465

INDEXED ON MAP

4-2-30

29

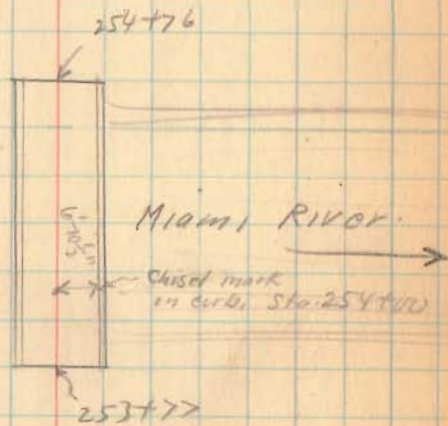
• 247+50 Road 3/4" Iron
0-24' Left

1 story
Frame

S.H. 529

253+00 Monument.

1465
INDEXED ON MAP



S.H. 579

266 T10

260 T10

(146)

INDEXED ON MAP

4-2-30

31

267 T07

267 T07
State Route 69

Miles
 $26707' = 51.05814$

~~X X X X 262 T03~~

Ed/c

Nov. 26, 1929
Cool - cloudy
E. Wind
E. Cove
Widge

Road 163 Maurice Tap.

60' Commissioners Journal 2 Page 54

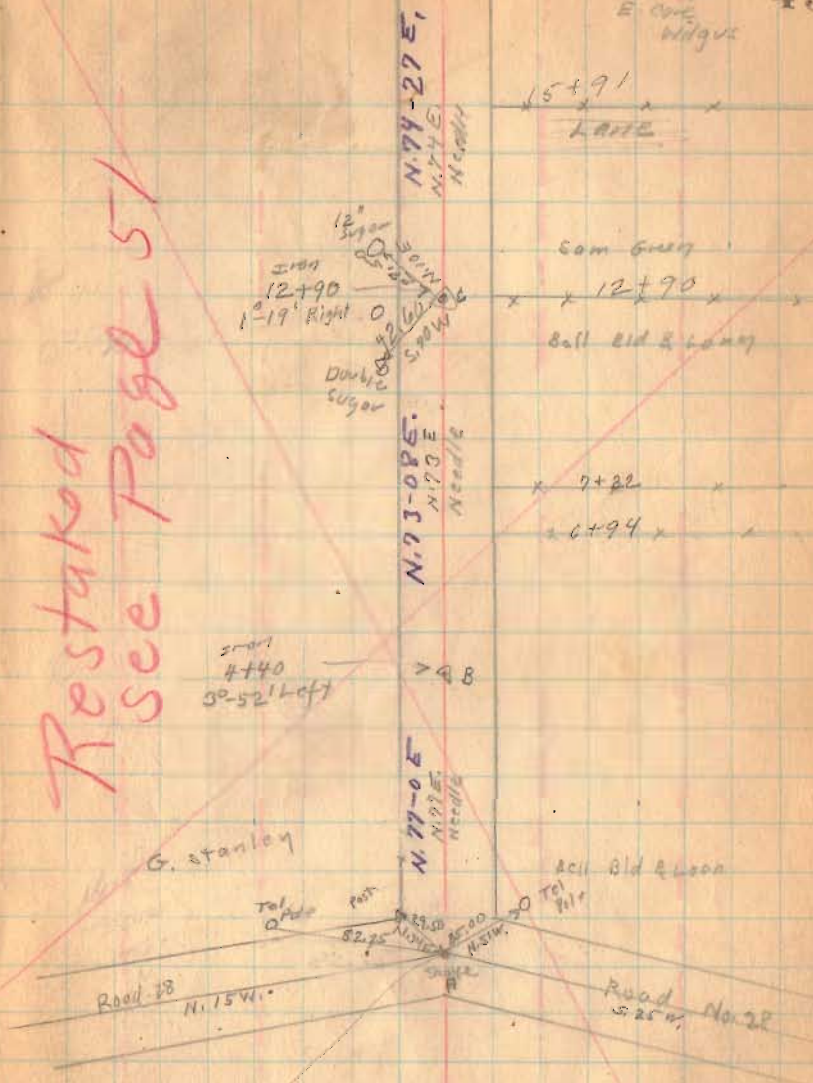
" " 2 " 69

Dec. 1828

stakes 1-3-5-7-9 etc

25' from ϕ

Restaked
see Page 51

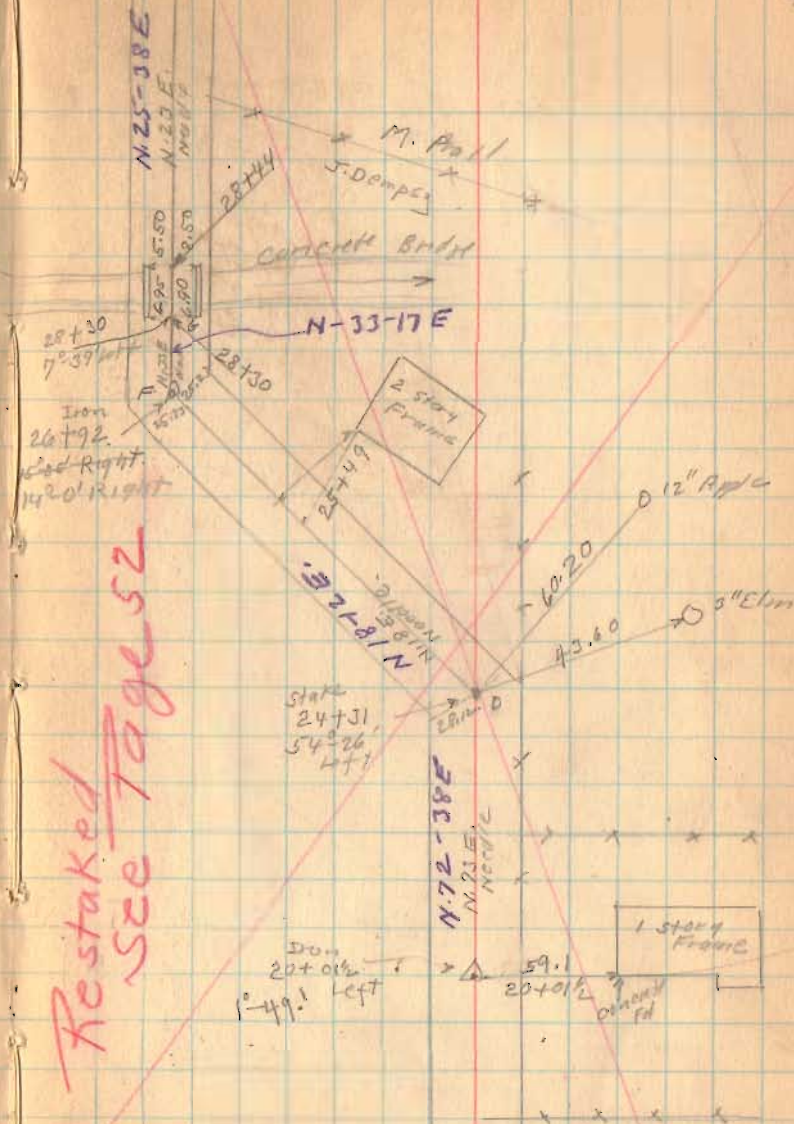


1623

INDEXED ON MAP

Iron Pipe
found Aug 1951
O.K. Shirk

Road 163

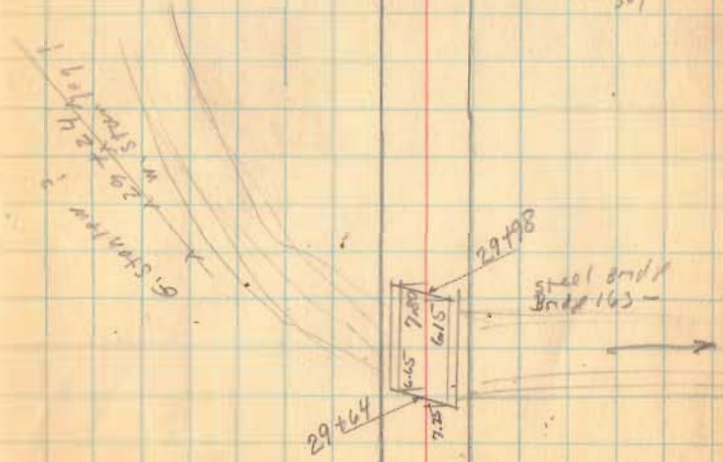
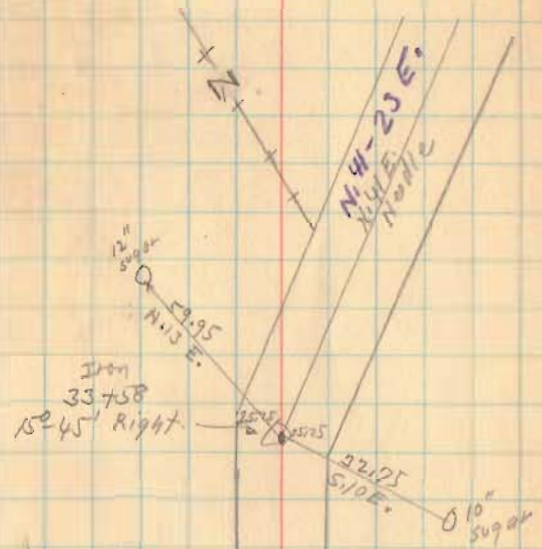


Restaked
 See Page 52

1623

INDEXED ON MAP

Rood-163



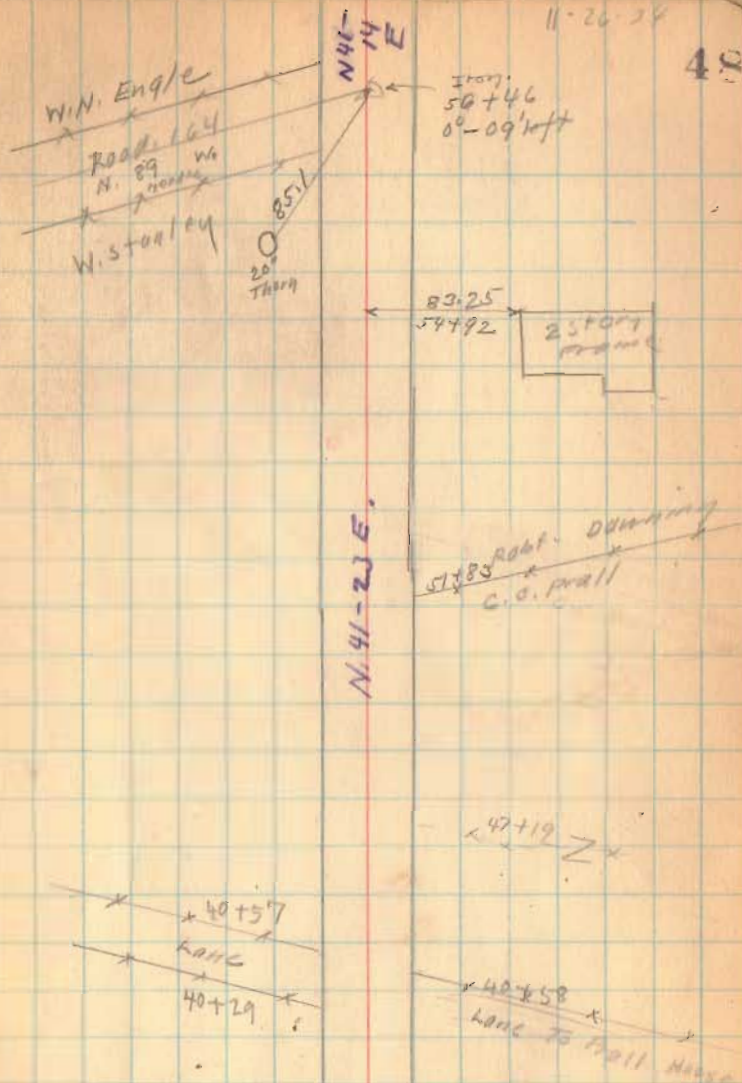
1623

INDEXED ON MAP

Road 163

11-26-34

48

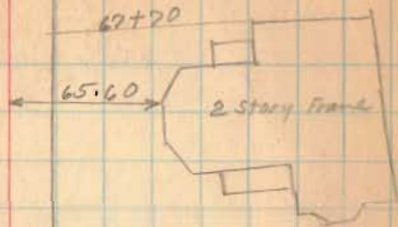


1623
INDIANA AN 1111

Road 163

Nov. 27 - 1934
New Day
F. Wright
E. Cole
G. W. 1945

49



Geo. Esplan
P. B. Stanley

X X 63+40
W. M. Engle

N. 41-14 E.

X X 60+63
C. C. Hall
Rout. Danning



1623

INDEXED ON MAP

Road 163

Length 8739 Feet

" 1.6551 Miles

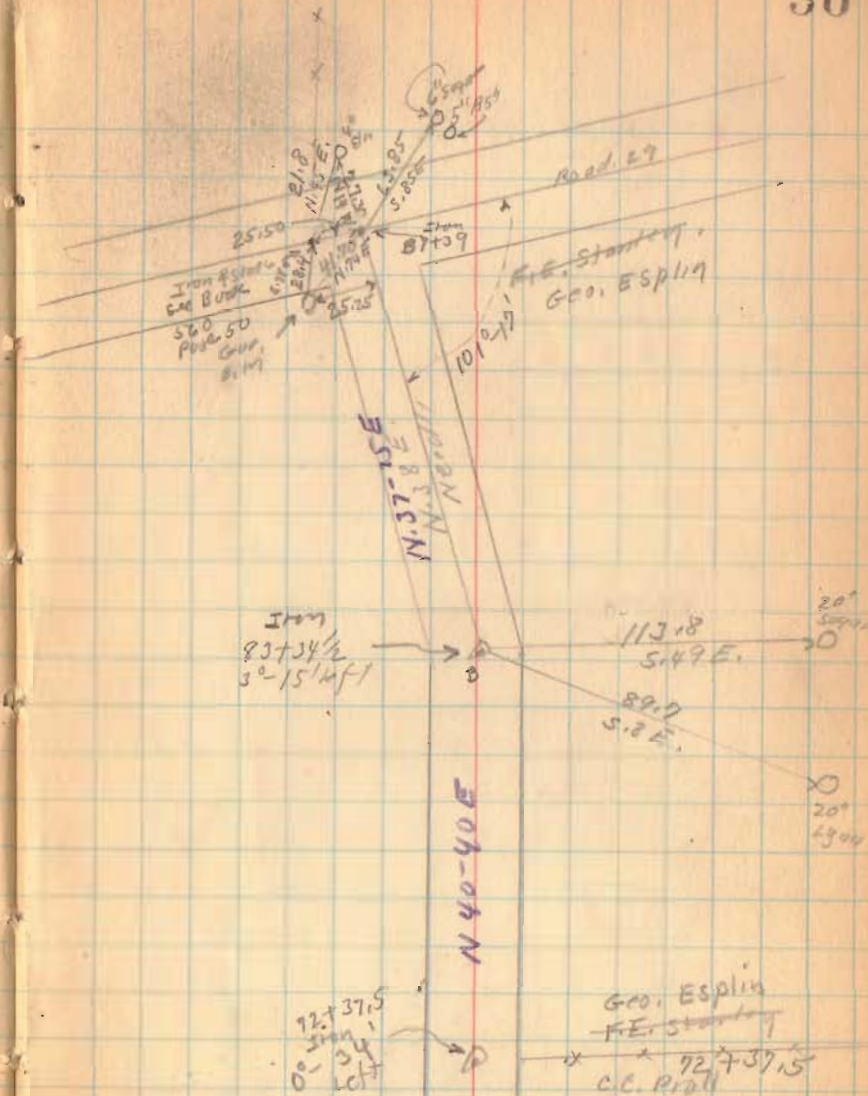
" 1.66 "

1623

INDEXED ON MAP

11-27-34

50



Road 163

Iron C same as C Page 45

Iron B same as B Page 45

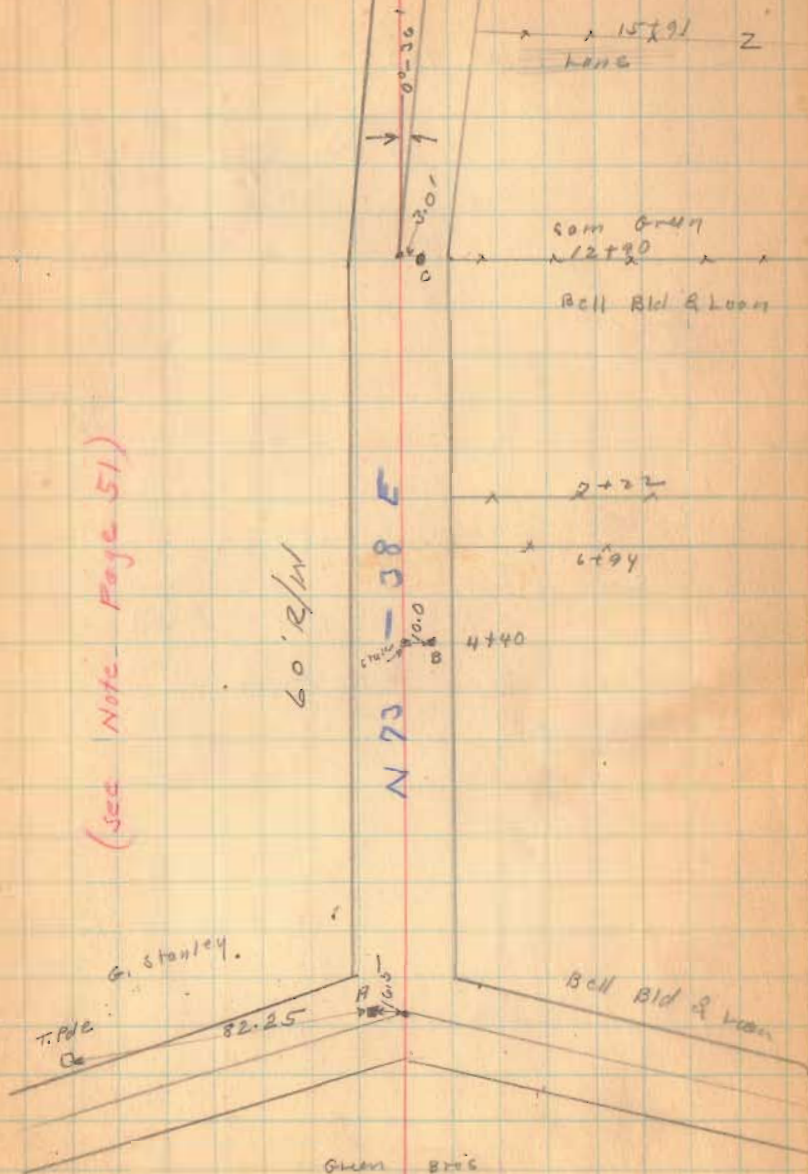
Stake A same as A Page 45

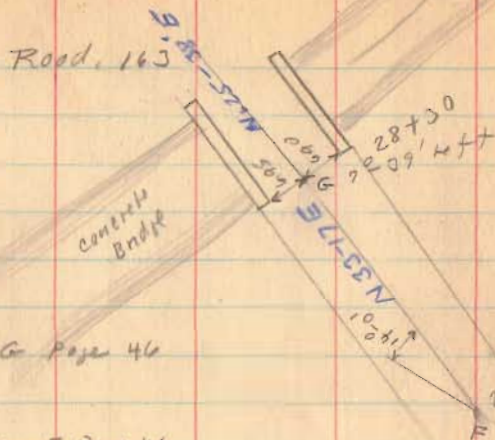
1623

INDEXED ON MAP

Feb. 13, 1935
Cold Wind
F. Wright
E. Cole

51





G same as G Page 46

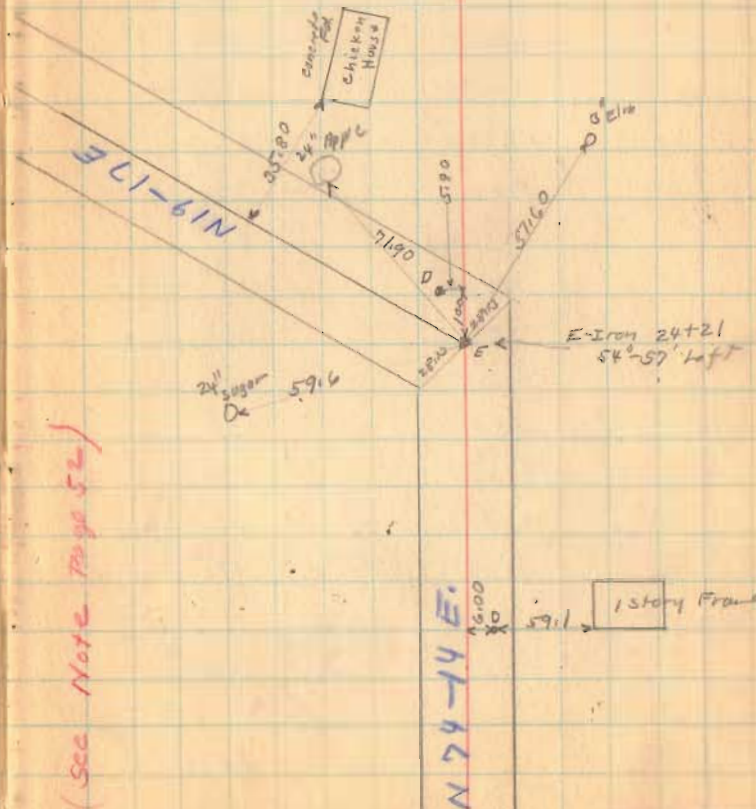
F same as F Page 46

E - P.I. Iron

D - same as D Page 46 (No Angle)

1023

INDEXED ON MAP



(See Note Page 52)

Food. 163

Fence Distance N. of E	station	Fence Distance S. of E
	24+21	2
23 1/2	23+00	8
15	21+00	18
10	20+01 1/2	20 1/2
11	19+00	21
12	17+00	22
14	15+00	23
	12+90	25
18	12+00	24 1/2
12	10+00	22
7	7+00	27
6	5+00	25
7	4+40	23
17	3+00	17
	1+50 ±	11
30	0+50 ±	7 1/2

Use E Page 51 & 52

Use E Page 51 & 52

1623

Road 53

Bloomfield and Stokes Twp.

40' - Hall and Whitney Pike

Free Turn Pike Record No. 4 Page 349

Sept - 1876

Stakes 20' from \pm on West for Fence.

104+00 20' E

98+00 20' E

92+00 20' E

86+00 20' E

81+00 20' E

For River Posts.

1713
INDEXED ON MAP

May - 15 - 1936
Clear - cool
F. Wright
E. Core.

54

1 story
Frame

Approx 150'
101+44

Sept. 10 - 1936
Clear - Warm
F. Wright
W. Wilson
G. Wilson
Max James
Joe Roberts

Re staked To set
R/W. Posts

2 story
Frame

Approx 200'
96+28

(New steel posts No wire)

V. Branch

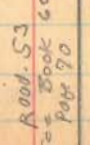
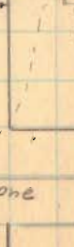
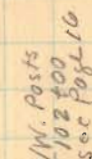
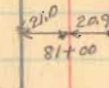
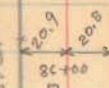
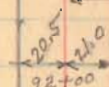
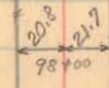
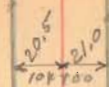
Geo. M. Wright

Sta. 79+52 (E.B. 601 R. 70)
Dec. 4-5-25

S.H. 579
Route 274

R. F. Briggs

E. Barlow



Road 53

May-16-1936
Clear
F. Wright
E. Cox
9-10-36

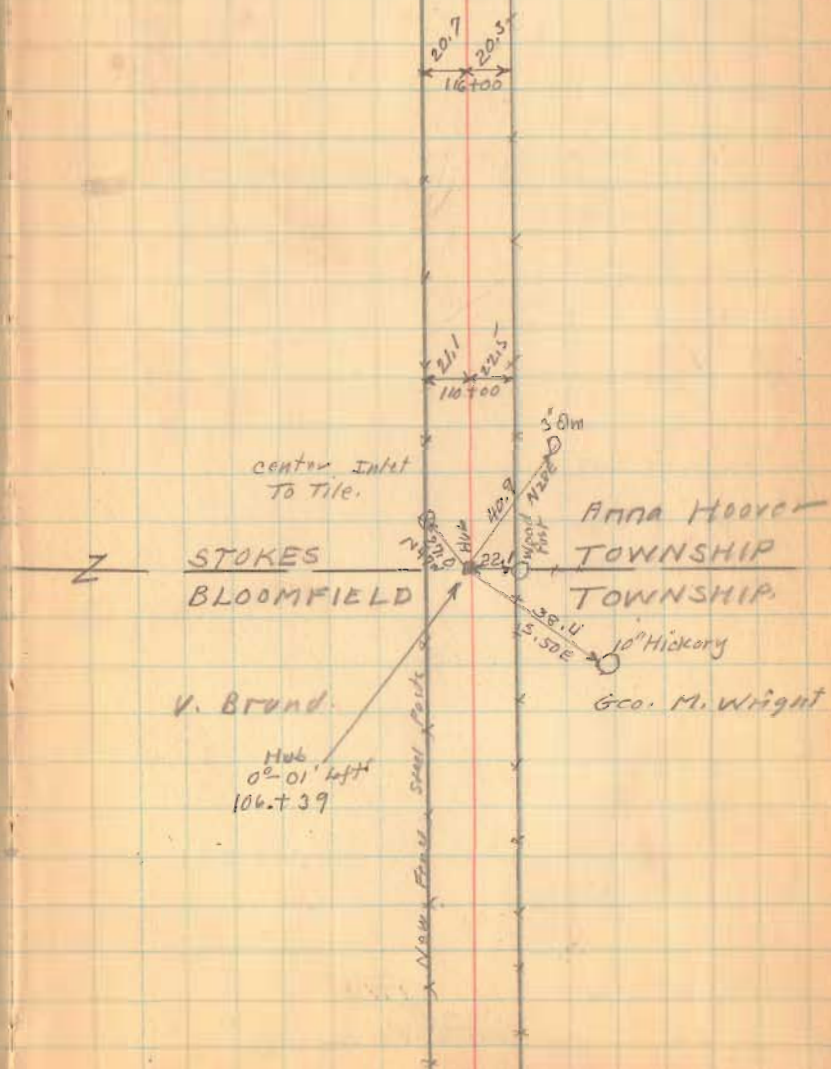
55

116700 20' ±

110700 20' ±

1713

INDEXED ON MAP



Rood. 53

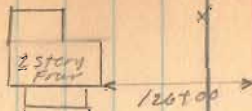
123700 20' E

1713

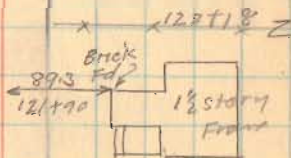
INDEXED ON MAP

5-16-36

36



± Lane 125759



121712

The N.W. Ins. Co.

119766

Anna Hoover

Road. 53

159+00 20' d

153+00 20' d

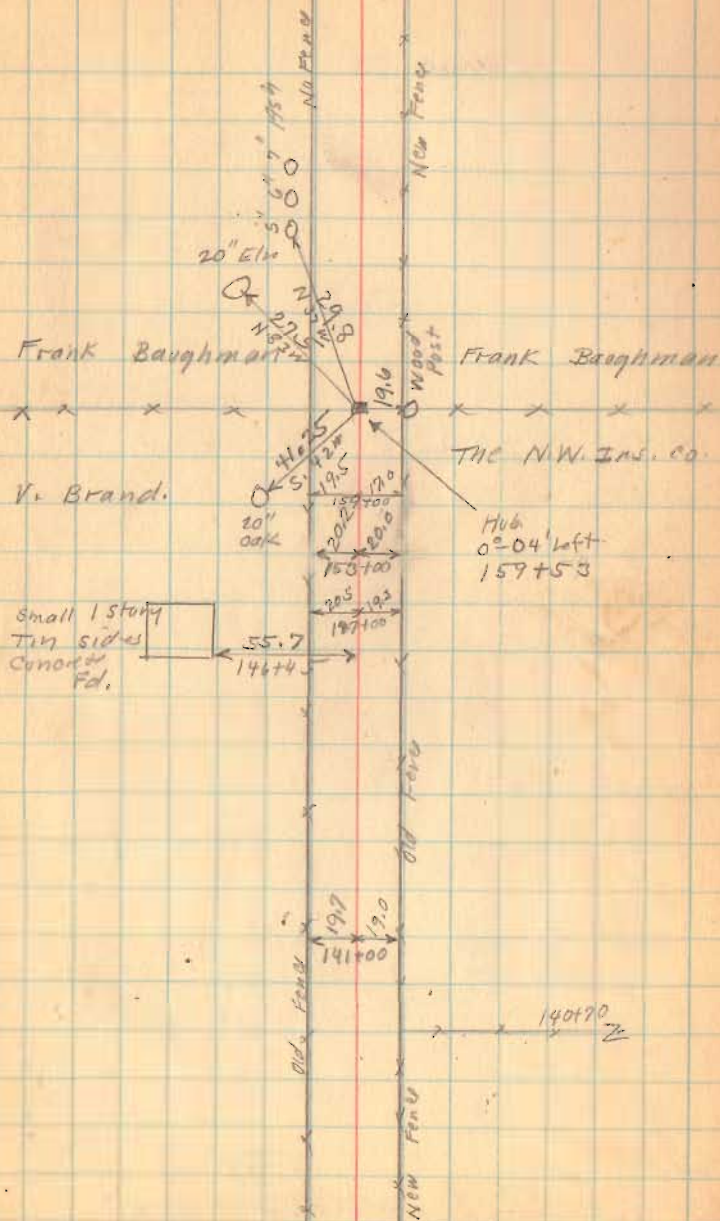
147+00 20' d

141+00 20' d

1713
INDEXED ON MAP

5-16-36

38



Road 53

178+00 20' ±

172+00 20' ±

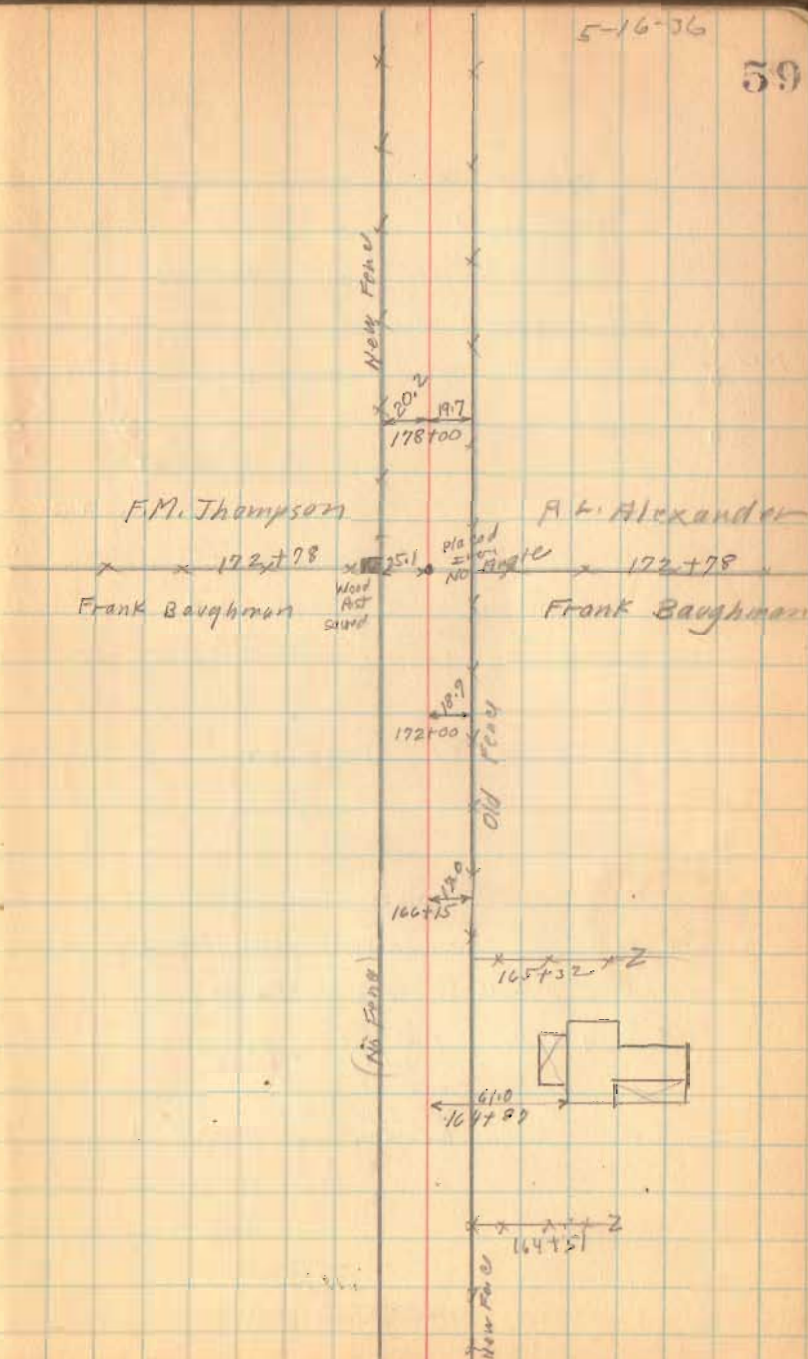
166+15 20' ±

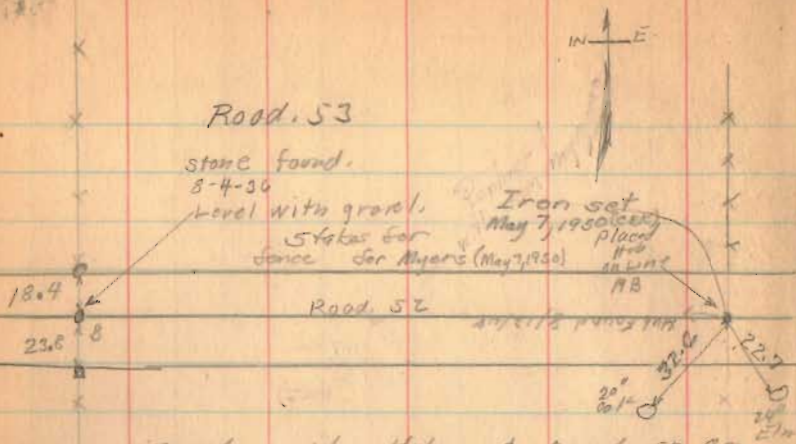
1713

INDEXED ON MAP

5-16-36

59





Found old Hub. & Road. 52 & S3

Did not check to see if this
is same & of Road. 52 as
used by Crane Book 516 Page 54

see Book 516 Page 54

45' - Road. 52 Road Record No. 1 Page 370

set fence stakes for Huttman

Aug. 4-1926

F.M. Hutt
J. Montgomery
G. Wilgus
Max James
Joe Roberts

185100 104

1713

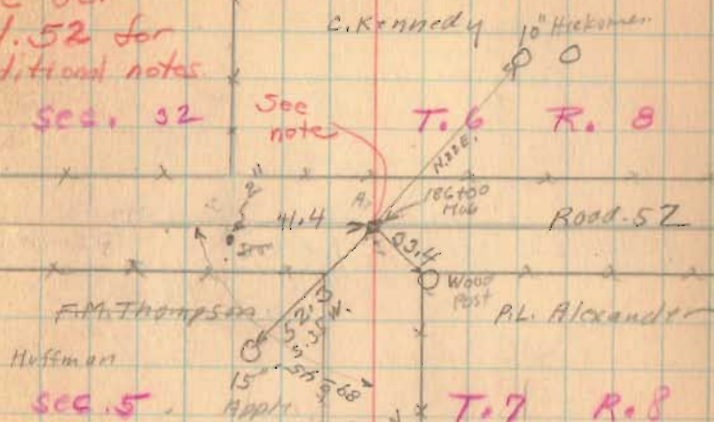
INDEXED ON MAP

Note: See
File for
Rd. 52 for
additional notes

Sec. 32

See
note

T. 6 R. 8



Sec. 5

Appl.

T. 7 R. 8

Length 18600 Feet.

Length Miles

Length Miles

Note

Detail

May 1950



Road 133
Perry Township

Staked 25' from E for 50' Road
Restaked 30' from E for 60' Road 0+00 to 49+50
Sept. 2 - 1937

Wagon
E. Wright
E. Wilgus
F. Prosser
F. Prosser

Sta. 0+00 To 12+96 No Record.

60' sta. 12+96 To 49+50

(1833) Commissioner's Journal Vol. 4 Page 57

see sketch in file Road No. 133

Co. List Book D Page 36

13+00

12+00

11+00

10+00

9+18.44 P.C.

5+00

1+00 for r/w posts

1744

INDEXED ON MAP

61

Sept. 9 - 1936
O'Connor
F. Wright
Grover Wilgus
Max James
Joe Roberts

Δ 66-42 R-573.69

P.C. 9+18.44

P.L. 12+96

AT 15+26.29

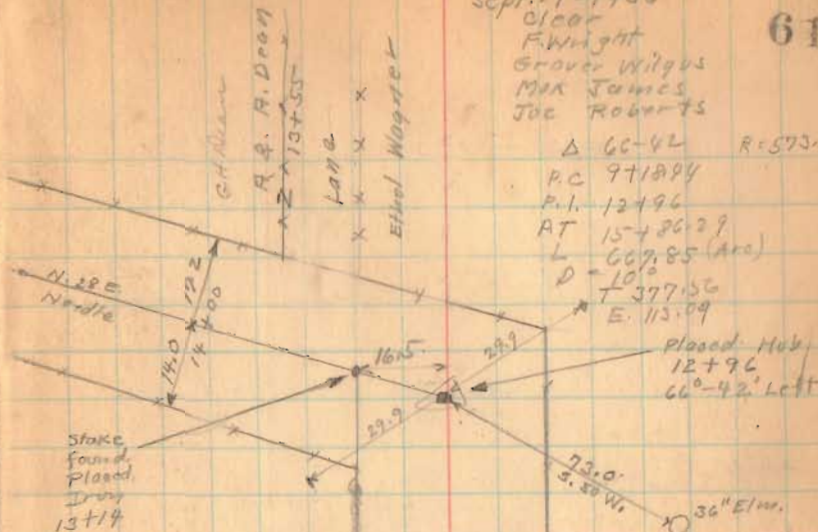
L 66° 42' (Arc)

D 10.2

E 377.56

E 113.09

Placed Hub
12+96
66°-42' Left



H.J. Skidmore

J.F. Cummings
Ethel Wagner

Road 142
see Book 615 Page 41

J.C. Mann

Flood 133

17+52

15+86.29

P.T.

15+00

14+00

1744

INDEXED ON MAP

9-9-36

62

17.4 14.5
33+00

14.7 14.5
31+00

14.7 15.0
29+00

15.3 16.2
27+00

15.8 18.7
25+00

15.6 19.6
23+00

15.2 17.5
21+00

15.6 16.0
19+00

17+52
Found Hub
0°-48' left



15.4 16.4
17+00

Road 133

43+00

42+00

38+00

34+57

30+00

25+00

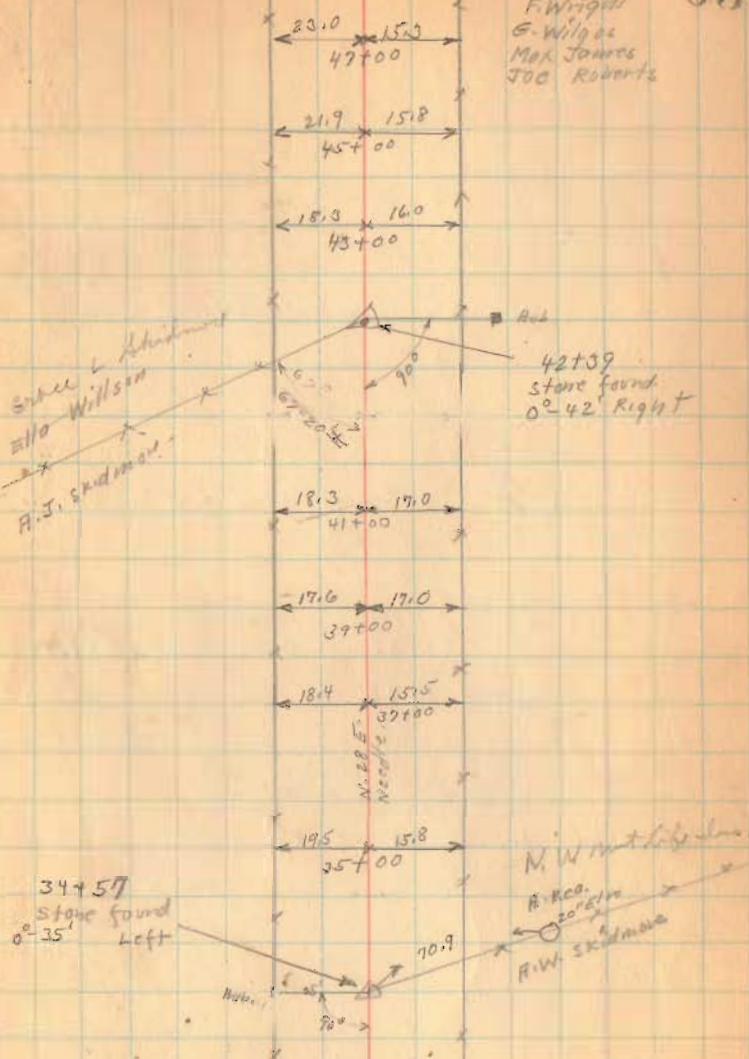
21+00

1744

INDEXED ON MAP

Sept. - 11 - 1936
Clear
F. Wright
G. Wilgus
Max James
JOC Roberts

63



9-11-36

64

Road 133

A - Old Union - Logan County Line Stone
Top Broken

B. Iron Placed

C. Hub. $\frac{30}{30}$ at RT/S from \downarrow Road.

D " $\frac{30}{30}$ " " " " "

DB = $\frac{16}{32.67}$ 39.30 Sec. 40-15' 1.310

CB = 32.67 39.30 $\frac{30}{39.3000}$

AB = 13.85

sighted from A TO E (offset 3' West)
and set D and C as shown

(49+50) Co. Line Posts

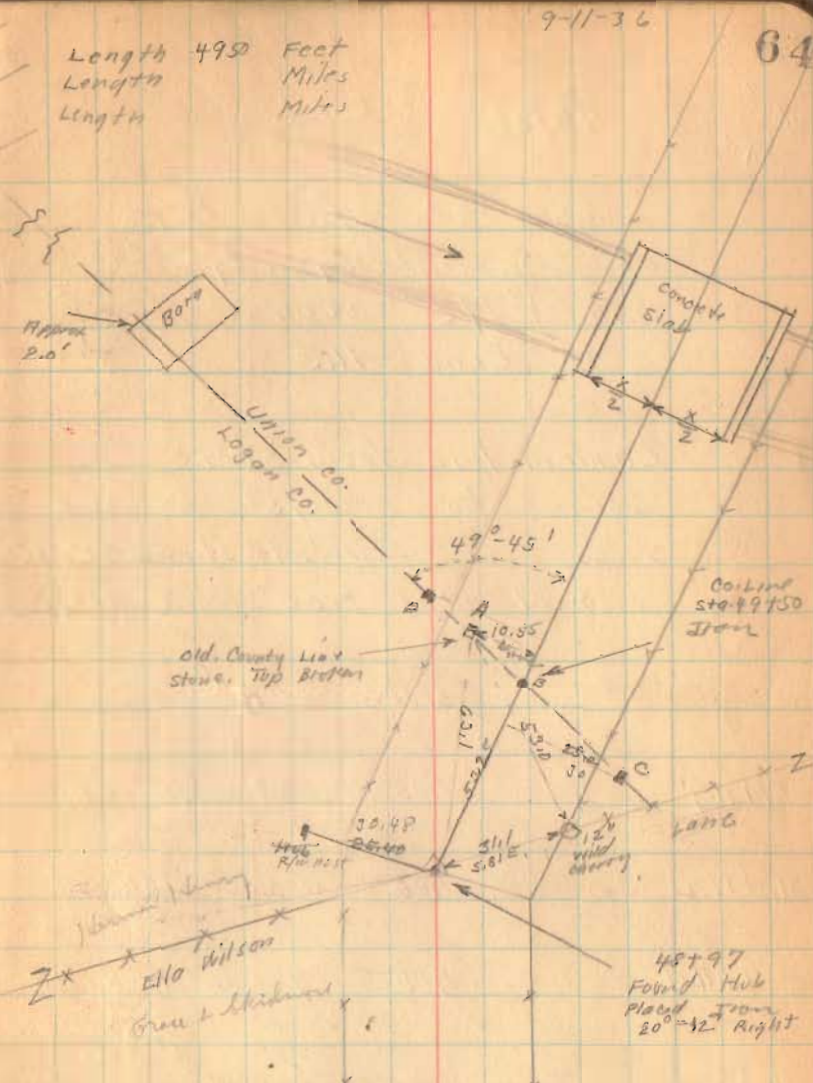
(48+97) Left Only

(48+75) Right Only

(46+00)

(1744)

INDEXED ON MAP



$\frac{1650.6}{16.5}$
 $\frac{1034.2}{16.5}$

7/13/38

C.A. Miskep

M. Jones

8/15/38

R. L. Kirriard
G. Wilgus

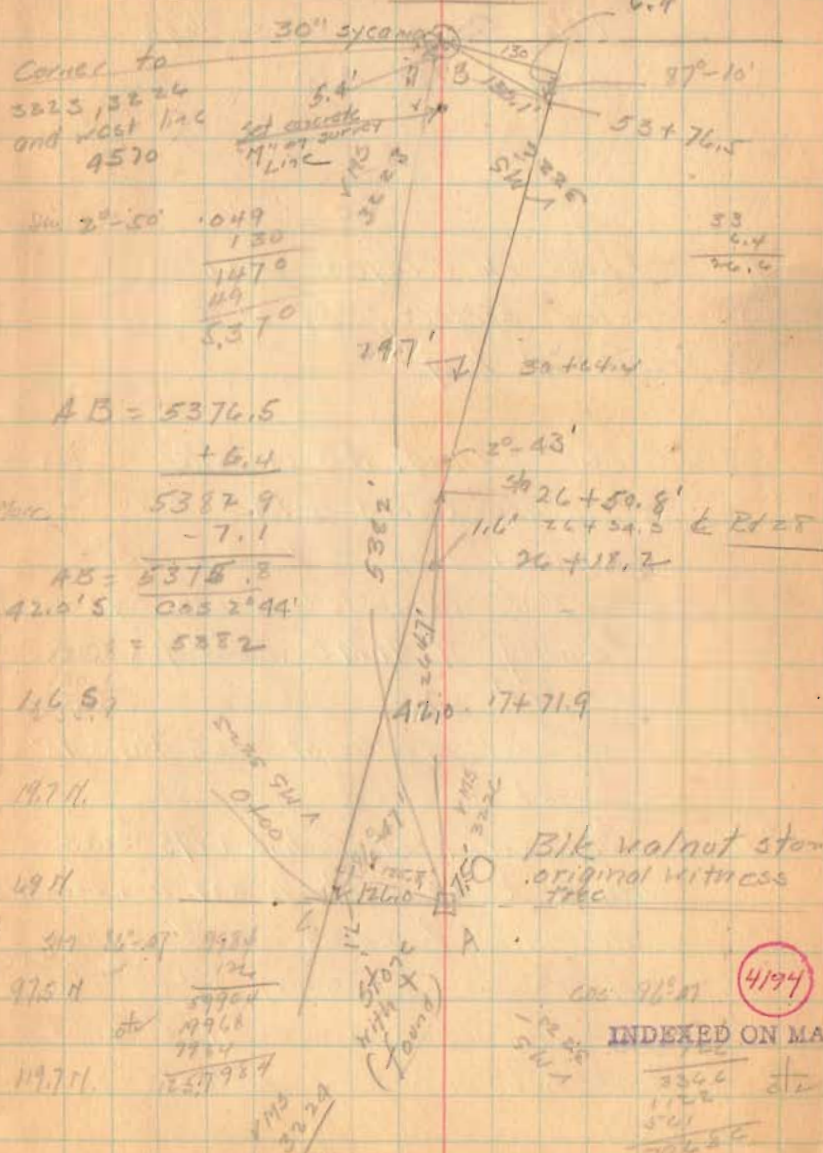
Road 28 Maroo Twp.
 at Line between VMS 3223
 and VMS 3224
 at Road 143

Random line from store
 corner to Surreys 3223, 3229,
 3225, 3226 - wahot stamp SW. 7.5'
 original witness tree Needle # 798

0+00	stake "C"
17+71.9	hub east edge corn field
26+19.2	hub W side road 28
30+64.4	hub N side road 143
41+06	hub S side road 143
47+00	hub
51+66	hub
53+74	hub

53-25	130-33	10-35-50	
53-29	130-00	10-41-23	332m 2.40
53-37	129-26	10-42-05	130.00

Momic Profit
 VMS 4570
 128.4



Corner to
 3223, 3224
 and west line
 4570

29°-50' 0.49
 $\frac{130}{147.0}$
 4.9
 $\frac{5.370}{5.370}$

AB = 5376.5
 + 6.4
 5382.9
 - 7.1
 AB = 5375.8
 420'S 005 2' 44"
 = 5382

Blk walnut store
 original witness
 tree

4194

INDEXED ON MAP

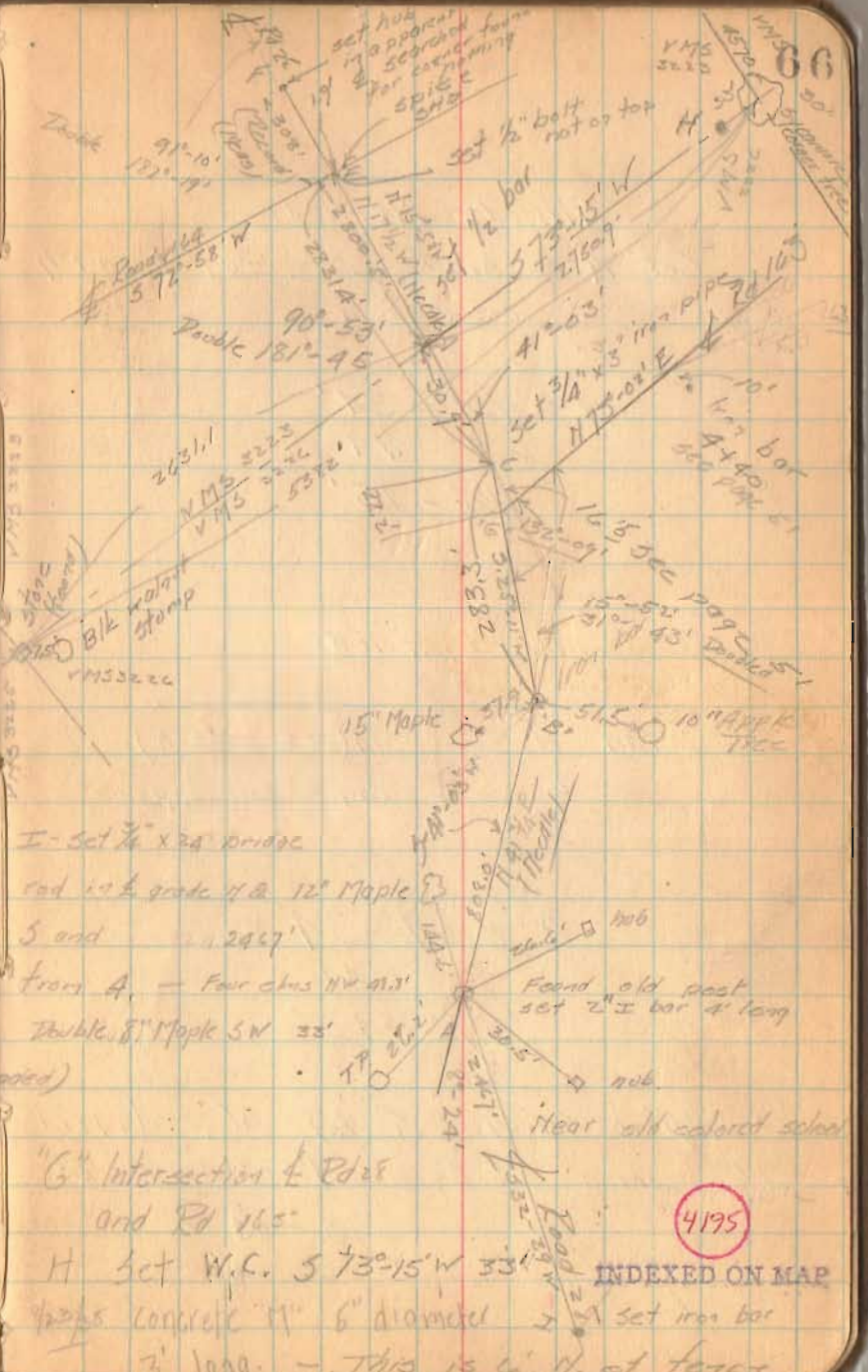
$\frac{3360}{1728}$ etc
 $\frac{500}{70650}$

2/1/35
8/8/36

L. A. Huskcep
6.4.1908
R. J. Knorr
Morroy Jones

Pike Record Vals Page 158
Surveyed Dec. 1880

- "A" Found old decayed post 2' below surface, set 2" I bar 4' long.
- "B" Found nothing, AB in center of grade. Record N. 39 E 208' Declination 1880 1'-40' E, 1937 1°-20' W. Computed bearing 41.42° E Bearing N. 41 3/4 E. Set 5/8" x 30" Eye at 208'
- "C" Hub set by Wright see Page 45 (found)
- "D" Intersection at S. line VMS 5223 with Rd 28. Set 1/2" x 29" iron bar (threaded)
- "E" Intersection of Rd 28 with Rd 169 (by 3.40) set 1/2" bolt - not on top 19" W of spike
- "F" 308' N intersection Rd 169 (Record) set hub in apparent center (Dug here, found nothing)



4195

INDEXED ON MAP

H set W.C. S 73-15 W 33' 1/2" concrete 11" 6" diameter 3' long. - This is C. H. of force

Altitude Method.

$$\cos A = \frac{\sin \delta}{\cos \phi \cos h}$$

$$A = \frac{64^{\circ} - 34' - 1^{\circ} - 41'}{73^{\circ} - 15'}$$

$$\tan \frac{A}{2} = \sqrt{\frac{\sin(s-\delta) \sin(s-h)}{\sin s \sin(s-p)}}$$

$$A = \frac{64^{\circ} - 34' - 8 - 41}{73^{\circ} - 15'}$$

Original Survey S 69° W. (1798)
 Declination 1800 E 4°-03' 0565
 73°-03'

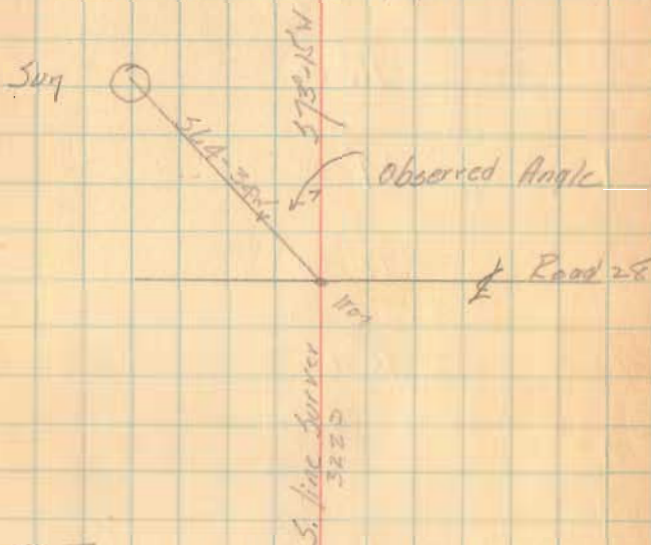
8/18/38

C. A. Hoskeep Observer
 G. Wilgus Recorder
 R. J. Kinnard Timekeeper
 M. Jones Card Holder

Sun observation for Azimuth

Berger transit case

LT = +95 Adjustment Time signal noon



EST Time	Hor Angle	Vert angle
3-17-52	92° 56'	46° 0'
3-19-09	92° 27'	45° 39'
3-20-20	92° 09'	45° 27'
3-22-45	82° 31'	45° 0'
3-24-10	82° 09'	44° 45'
3-26-51	72° 02'	44° 18'
6/30-11-57	6/32-05	6/271-09
3-21-57 1/2	8-40.5	45°-11 1/2
	Needle bearing	S. 74 W.
		45°-10.7'