

S.H. 607 Monroe<sup>9th</sup> zone Twp.  
State Route 287

Moorechee Pike

Free Turnpike Record No. 5 Page 479

60' From { Ludlow To { George Smith Corner  
          { Road No. 1        { Road No. 28

West Middleburg Pike

Free Turnpike Record No. 5 Page 393<sup>9th</sup> 394

60' Page 394

50' Johnson Pike Road 28 To  
Church Corner  
Road Record 5 Page 452

← Old County Road No. 15 from  
West Liberty To Union Chapel Church.

Union Chapel church To Middleburg  
old Co. Road No. 41

↙ Middleburg To S.H. 235 old  
County Road No. 119

(1467)  
INDEXED ON MAP

S.H. 607

stakes Placed 30' from & for 60' Road.  
Numbered stakes Placed 2-4-6-8-10 etc.  
Distances to Buildings for Map purposes  
only, Not intended for actual distances  
to hold &. Measurements placed as  
shown turned 90° with transit and  
measured accurate,

1467  
INDEXED ON MAP.

Monument 1700 (All monuments  
both sides unless noted)  
30' from &

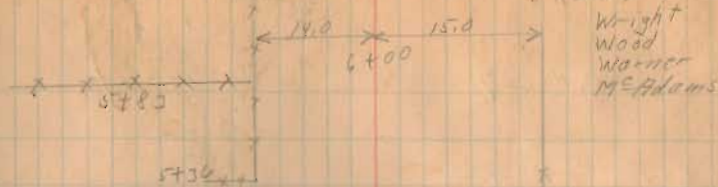
See Plan L-25 for S.H. 607

See Plan L-14 for S.H. 595  
S. 15-22 E.

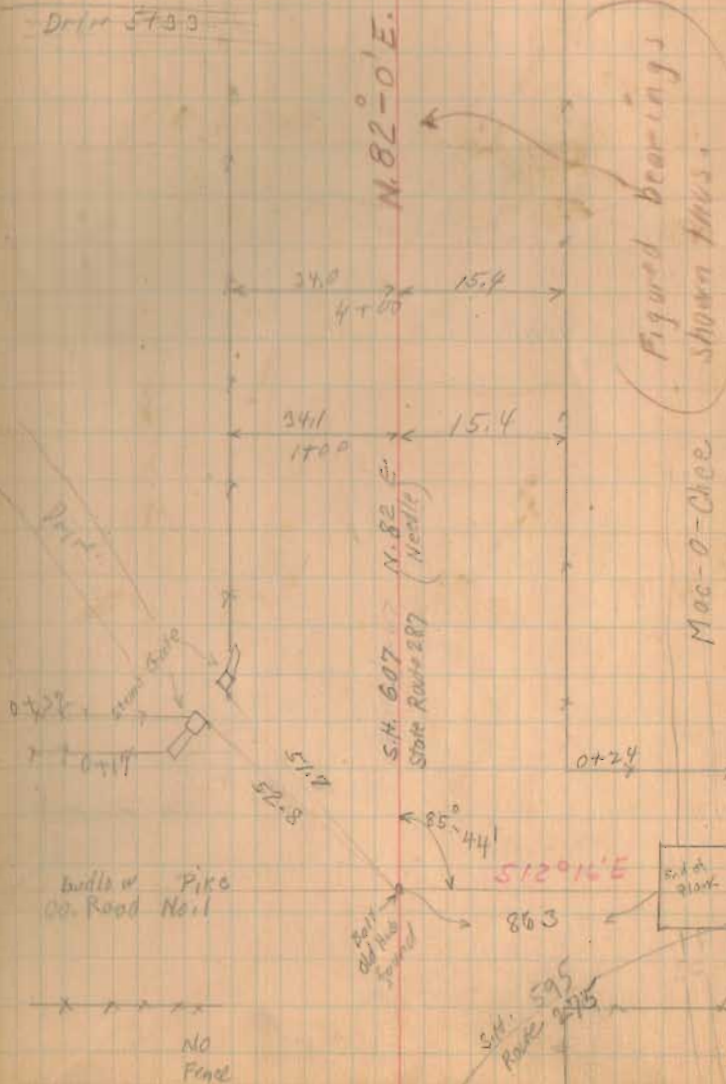
N. 75-11 E  
D 89-27  
(Plan L-14)

Dec. 11-1931  
Rainy

13



Drill 5733



S.H. 607

22+00 Mon.

17+00 Mon.

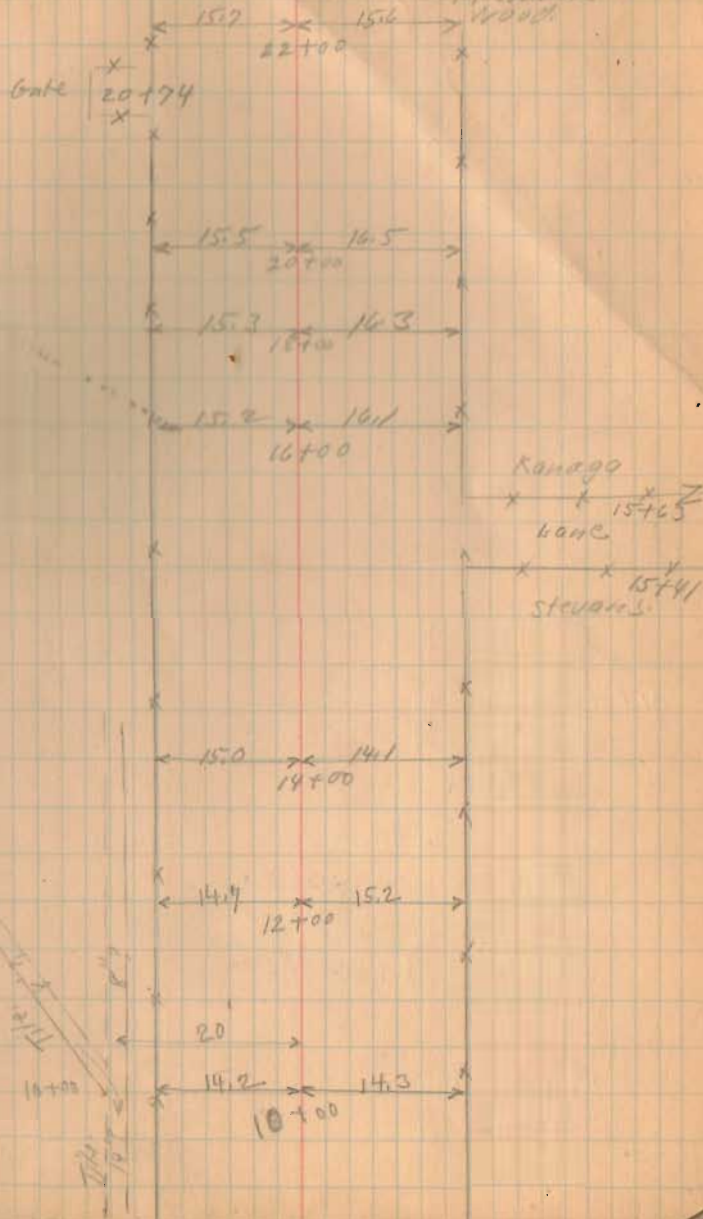
12+00 Mon.

7+00 Movement

1467  
INDEXED ON MAP

DEC-12-1931  
Clear - (Fog AM)  
Wright  
McKinley  
Warr  
McAdams  
Wood

14



S.H. 607

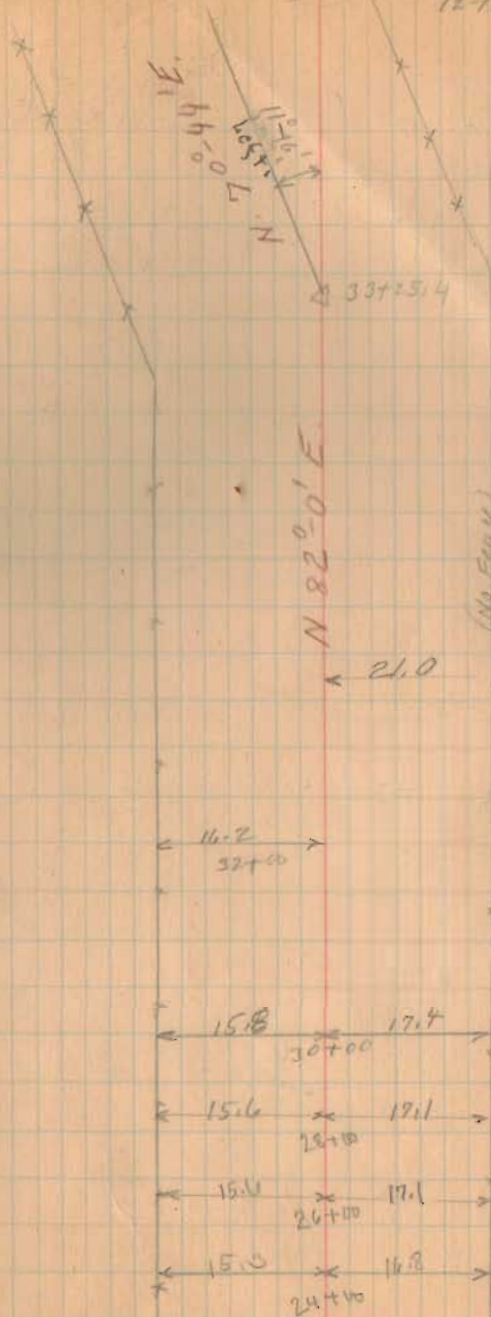
31+00 Mon.

1867  
INDEXED ON MAP

27+00 Mon.

12-12-51

15



$\Delta 11^{\circ} - 16'$  Left.  
 P.L. 33+25.4  
 R. - 954.93  
 D. -  $6^{\circ}$   
 T. - 94.19  
 E. - 4.63  
 L. - 187.79 (Hrc.)  
 P.C. - 32+31.21  
 P.T. 34+19



ETWIN

No. Fence

(Lane)

Heater

31+52  
Kanaga

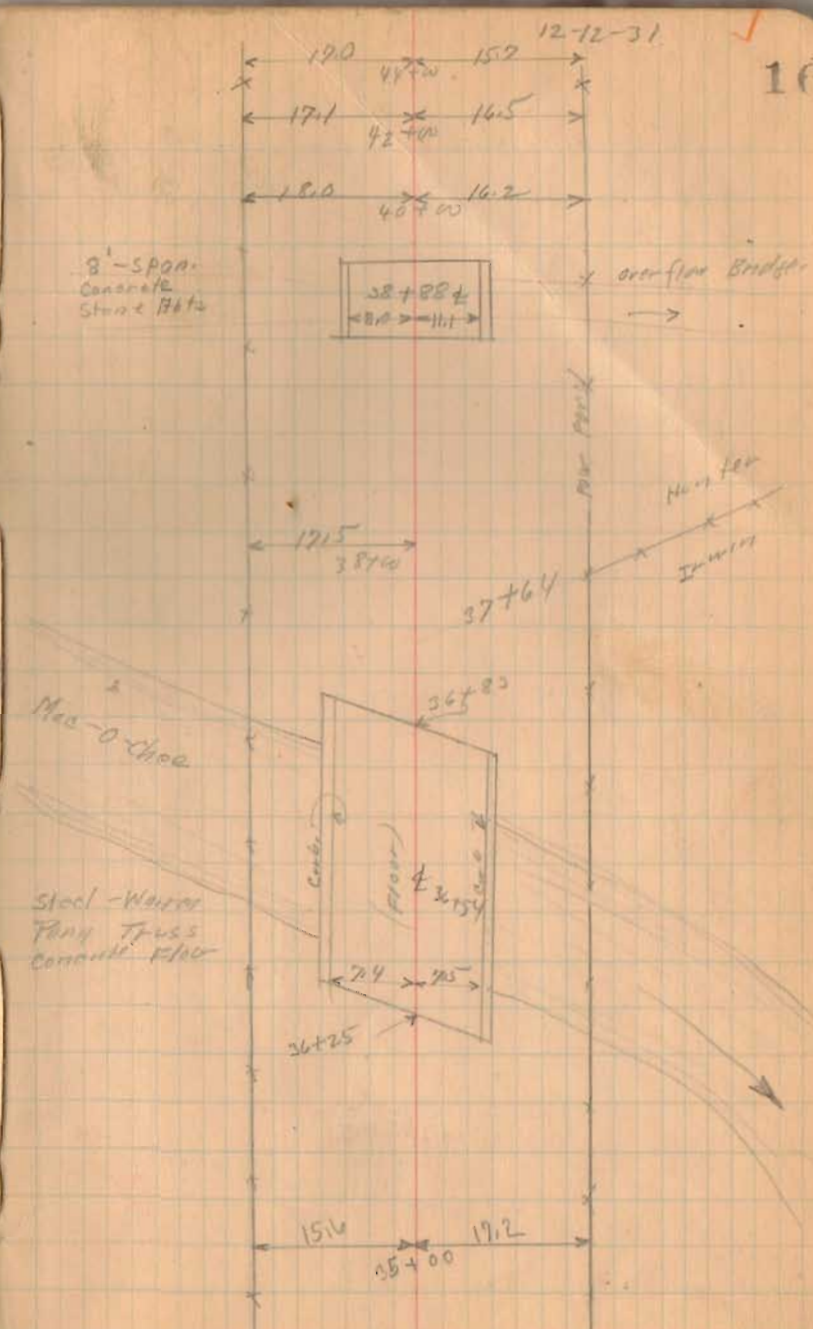
S.H. 607  
45+00 Mon.

40+00 Mon.

1467  
INDEXED ON MAP

35+00 Mon.

16





S.H. 607

65+00 Mon

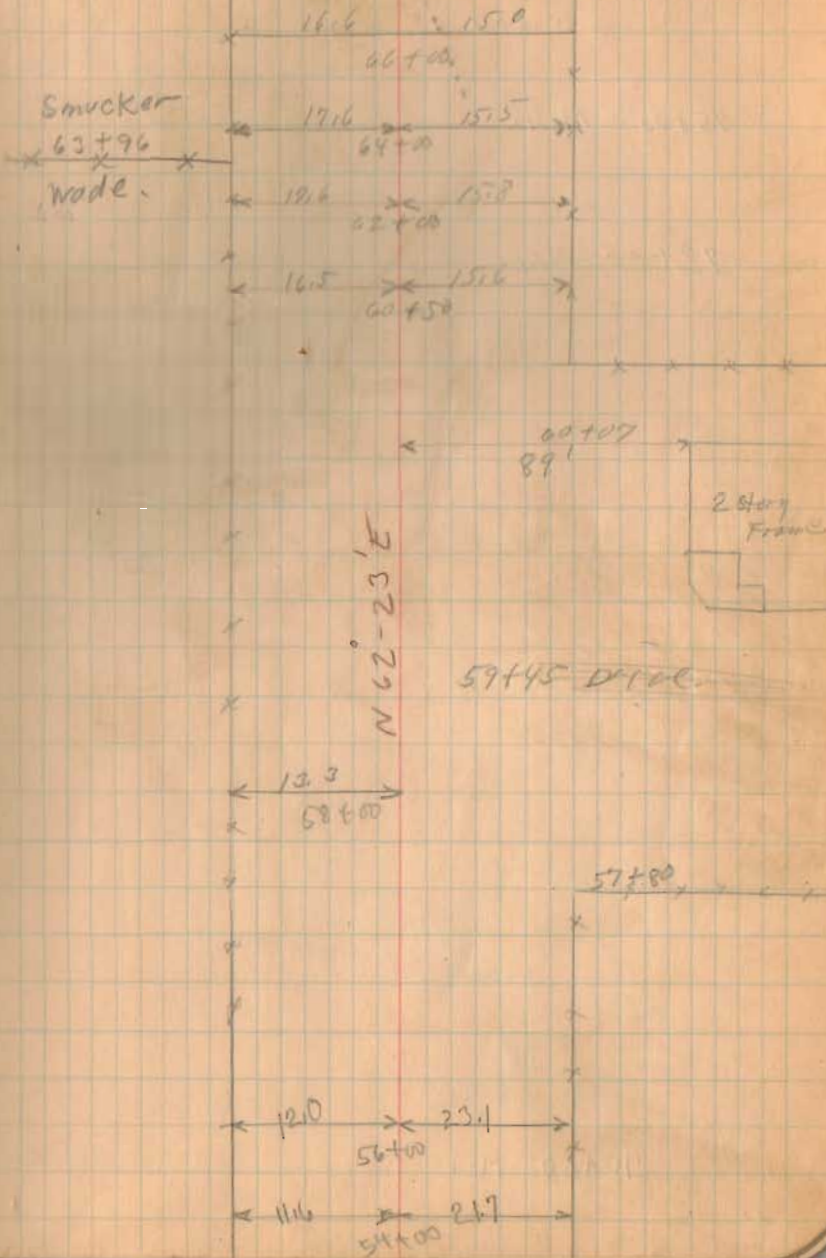
60+50 Mon

1467  
INDEXED ON MAP

56+00 Mon

12-14-31

18



C.H. 400

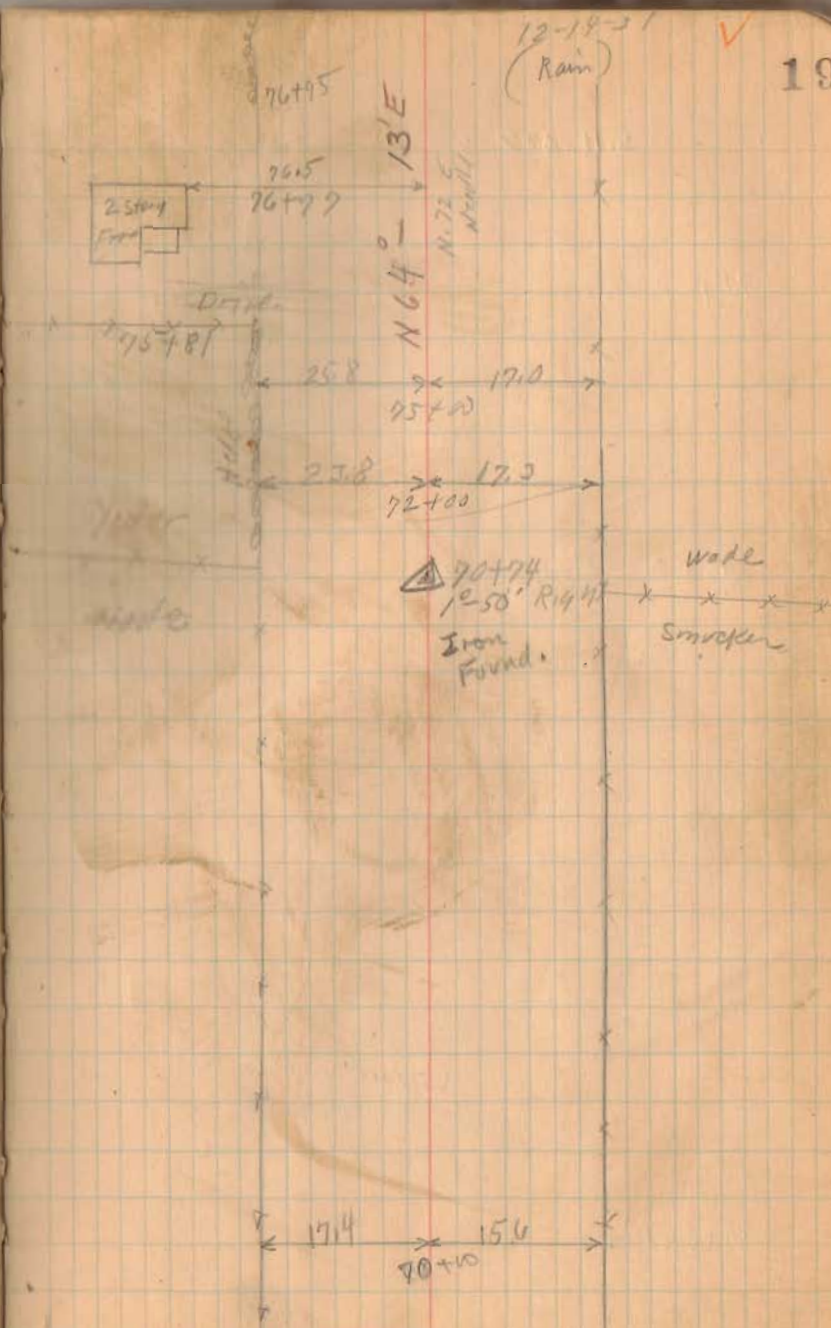
75+00 Mon.

72+00 Mon.

6467  
INDEXED ON MAP

70+00 Mon.

19





S.H. 617

90+00 Mon.

85+00 Mon.

1467  
INDEXED ON MAP

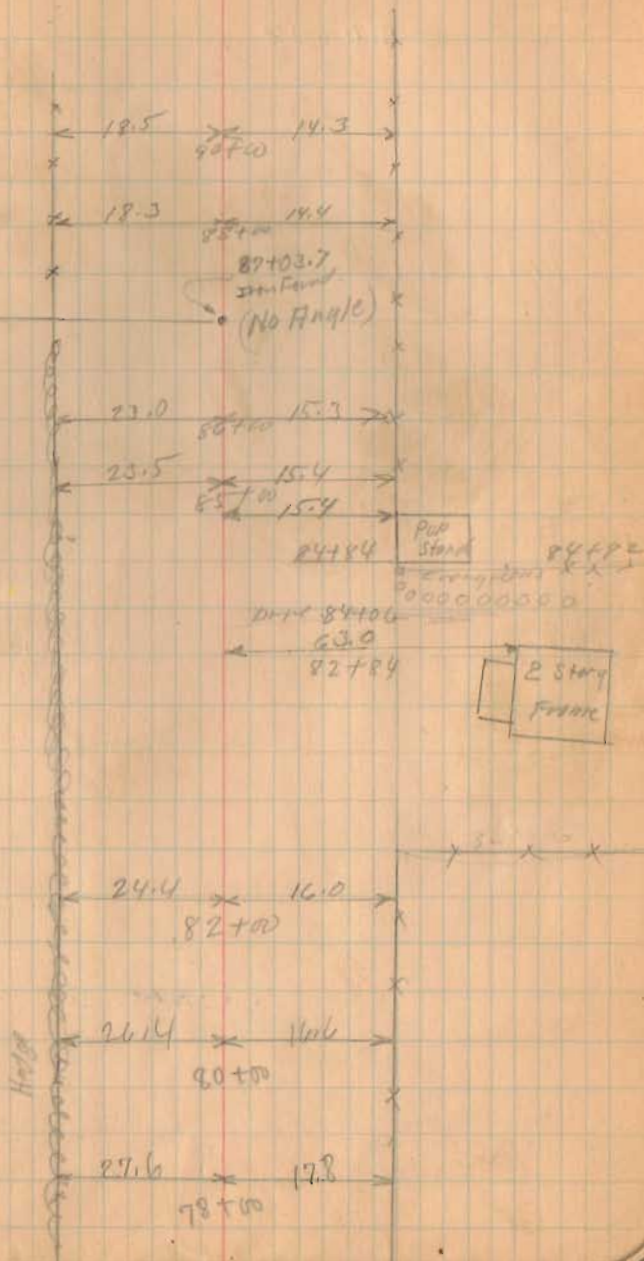
80+00 Mon.

12-14-31

20

Davis

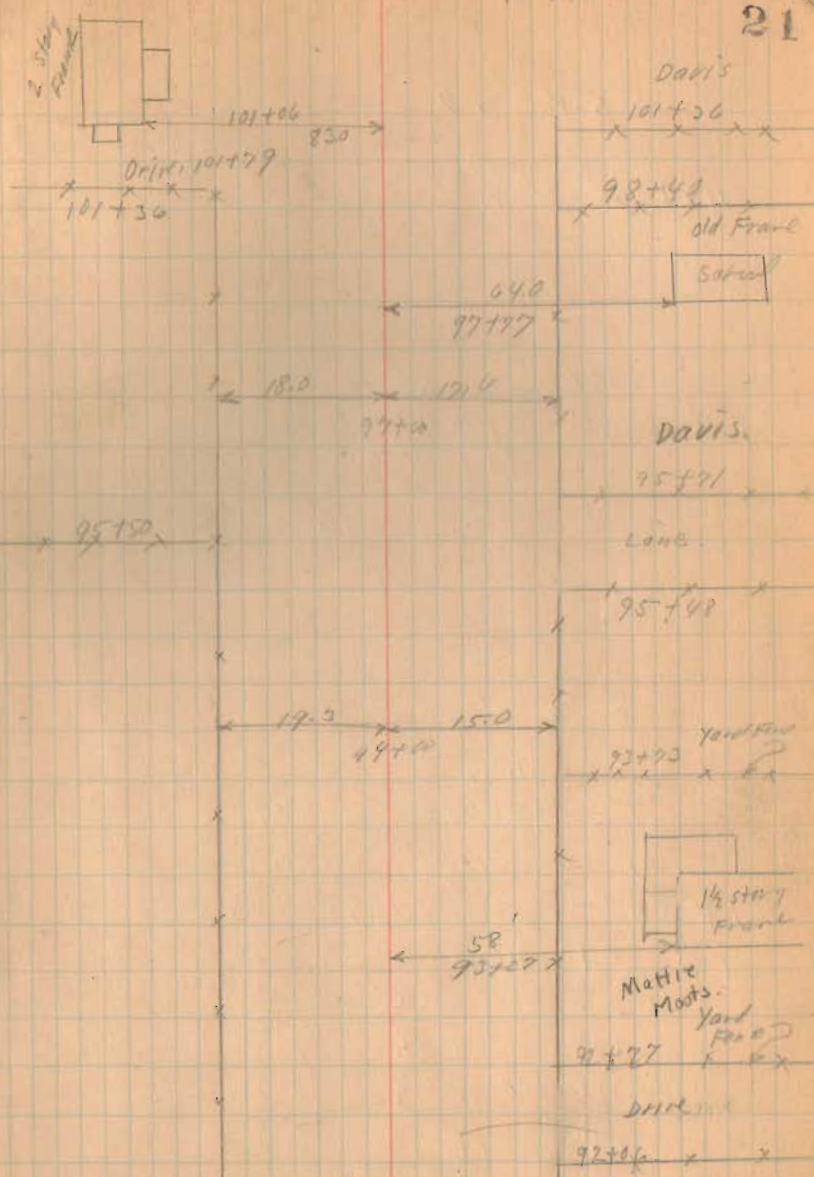
Yoder



S. H. 607

97+00 Man.

1467  
INDEXED ON MAP



S.H. 607

113+00 Mon.

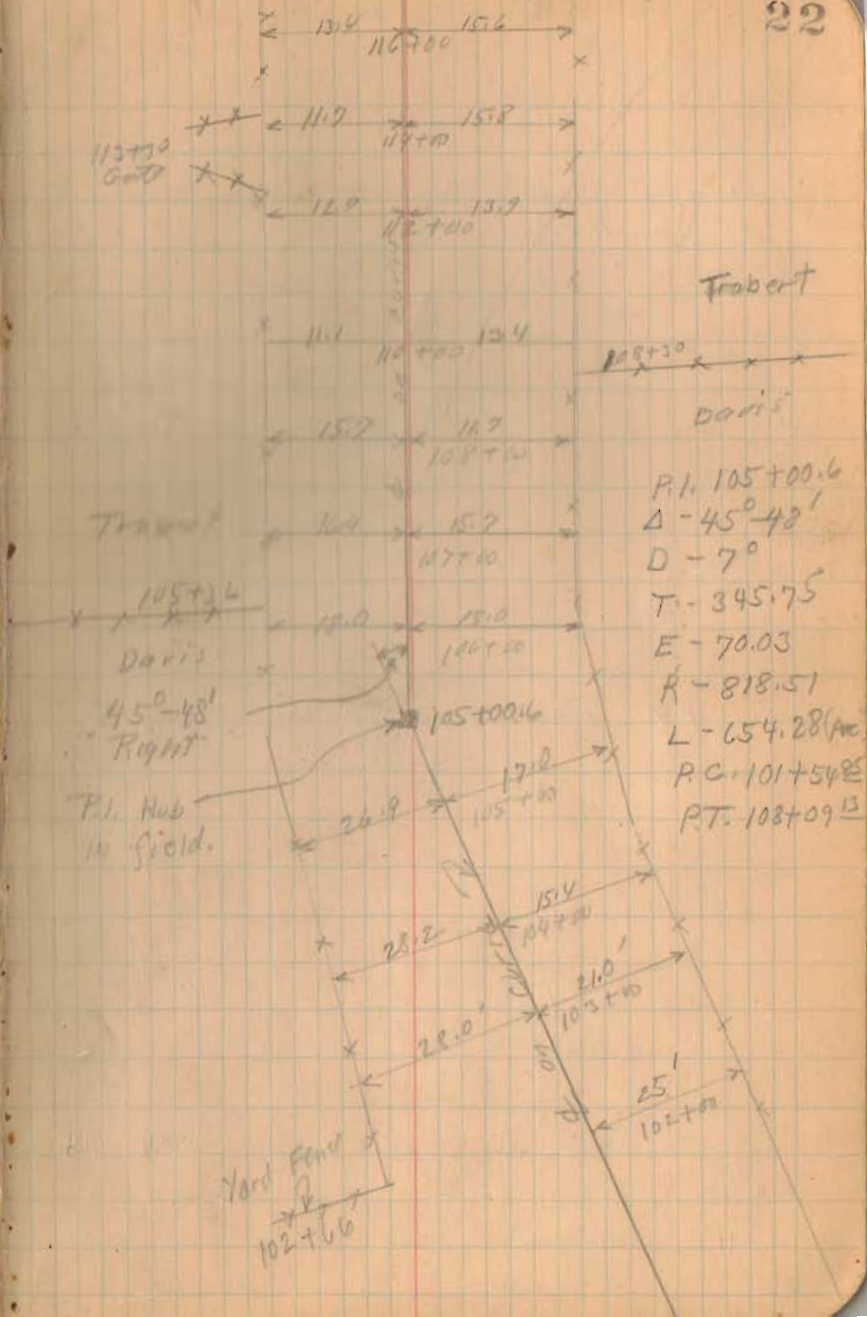
108+09<sup>13</sup> (P.T.) Mon.

101+54<sup>25</sup> (P.C.) Mon.

1467  
INDEXED ON MAP

12-14-31

22



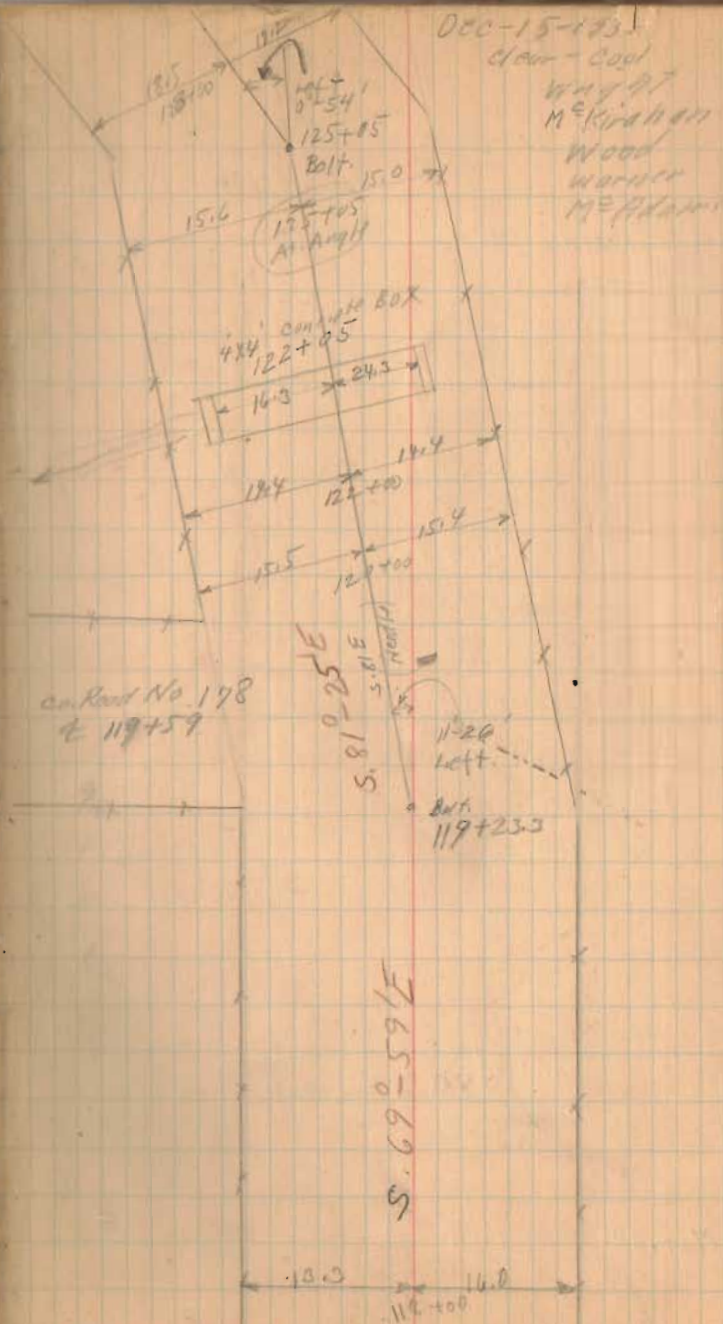
S.H. 607

125+05 Mon.  
(90° from Back side)

120+00 Mon.

1467  
INDEXED ON MAP

118 Mon.



S.H. 607

145+00 Mon.

140+00 Mon.

134+00 Mon.

1467

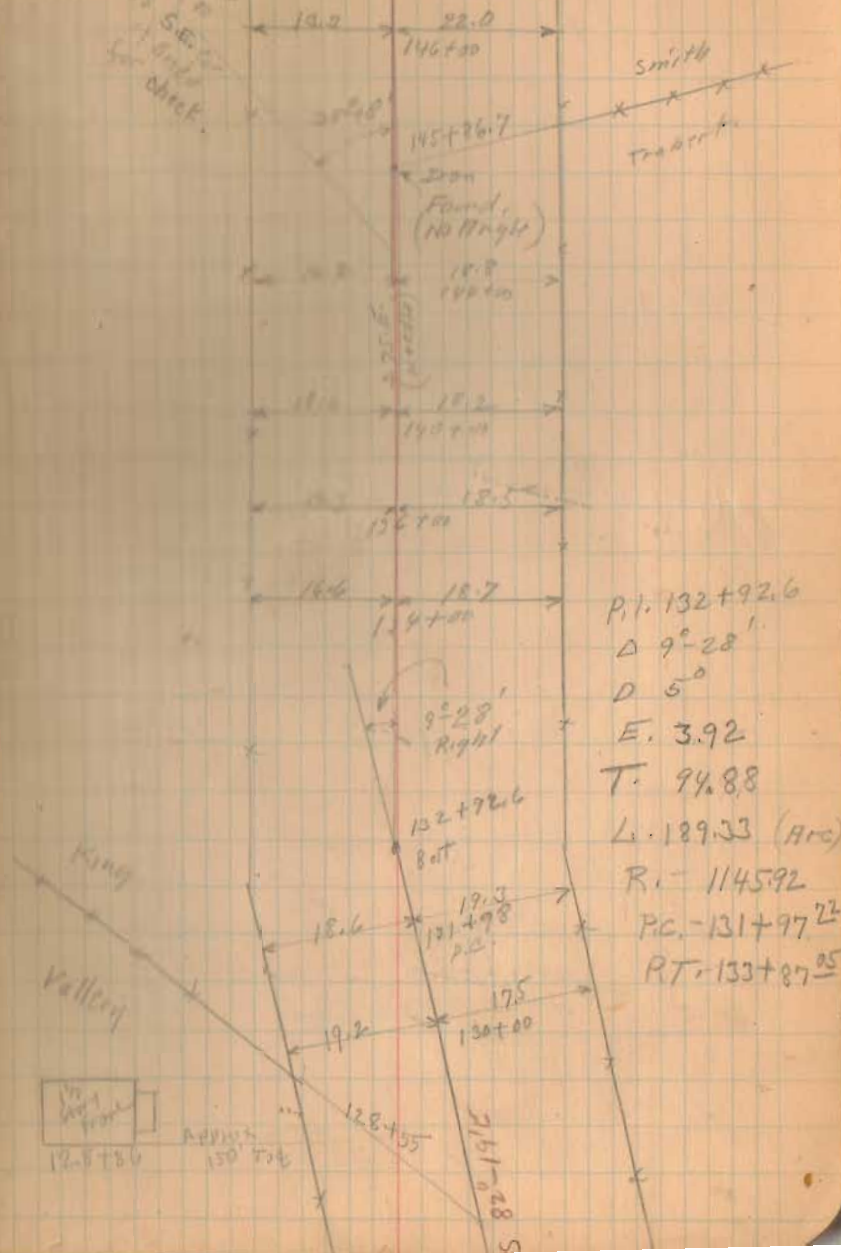
INDEXED ON MAP

131+00 Mon. 131+00 Mon.

12-15-51

24

Angle Noded  
140+00  
To Sta. 145+00  
+ 1/2 mile  
for check.



S.H. 607

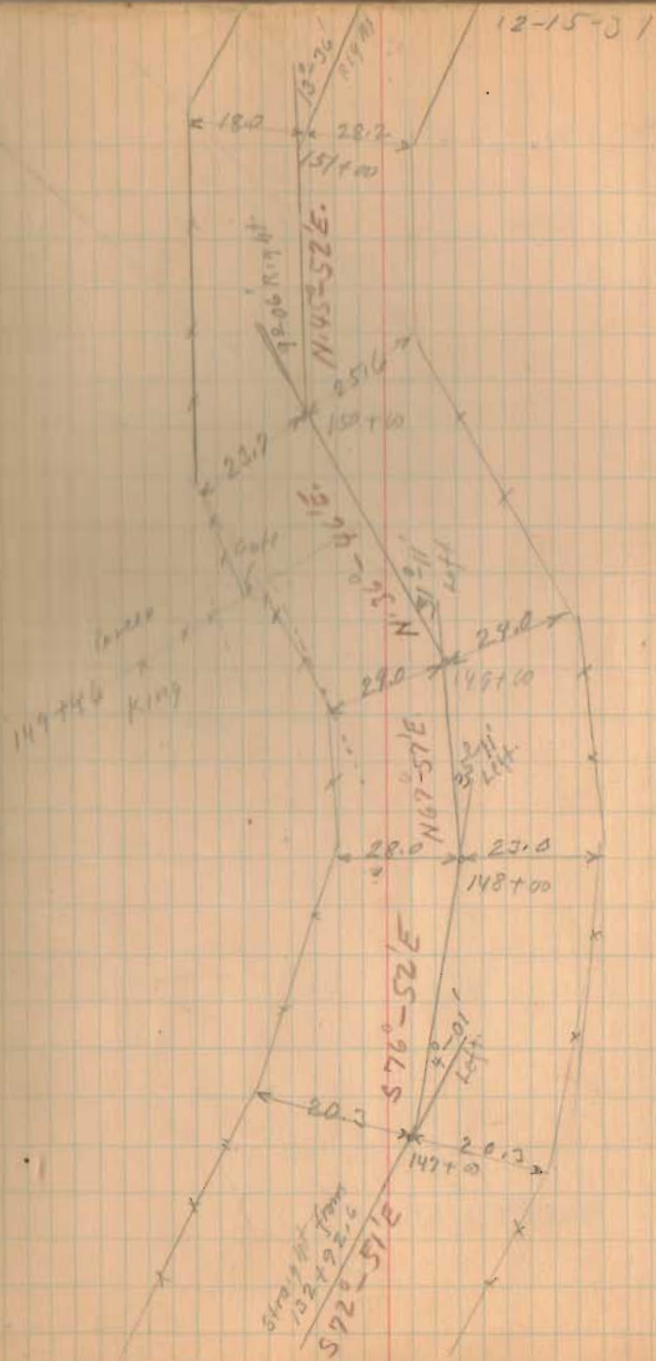
Note:-

(Snake Bend Run as shown.  
E of Road taken and angle  
Noted. No monuments from  
145+00 To 154+00)

1467

INDEXED ON MAP

25

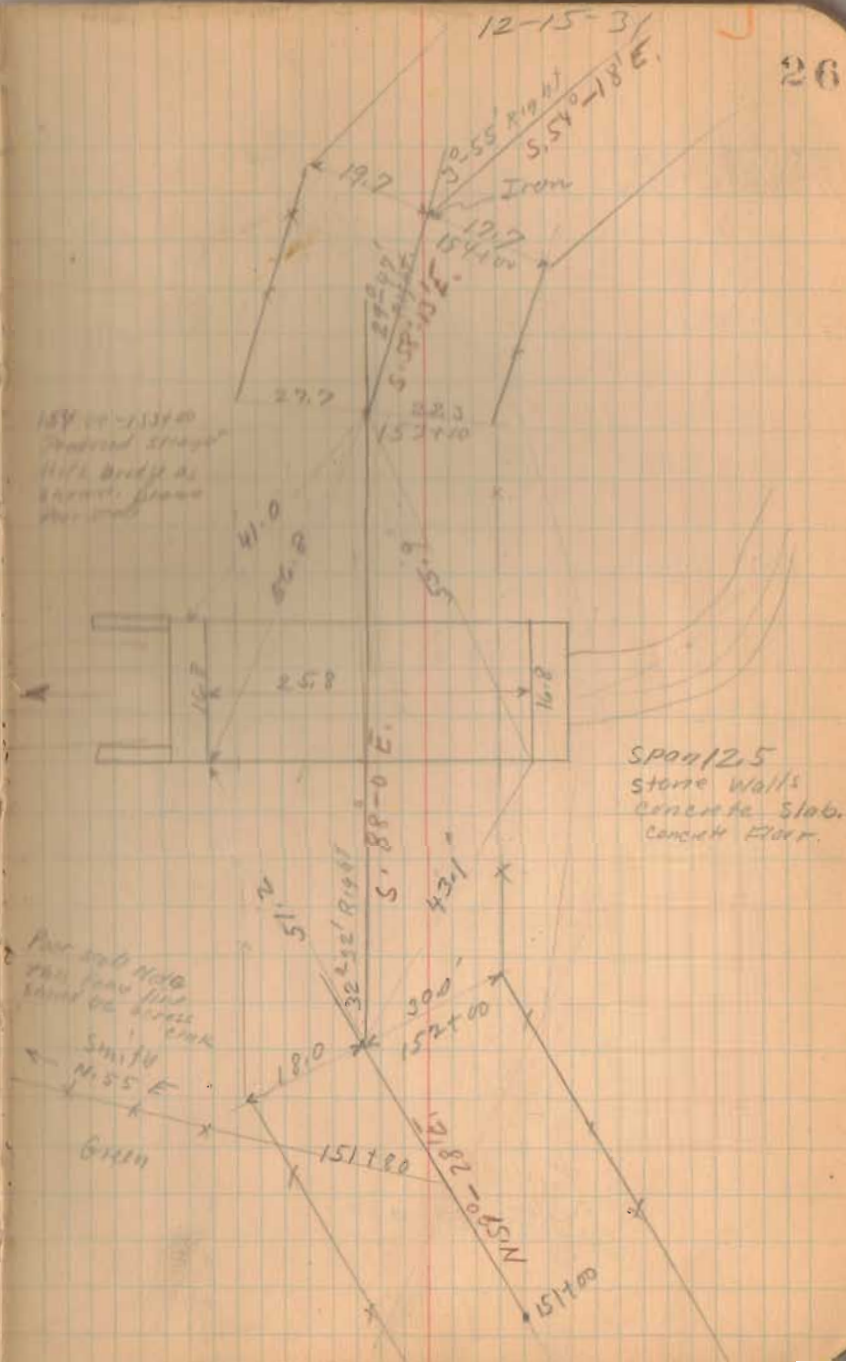


S. H. 607

154+00 Man.  
(90° from Fore sight.)

(1467)  
INDEXED ON MAP

26

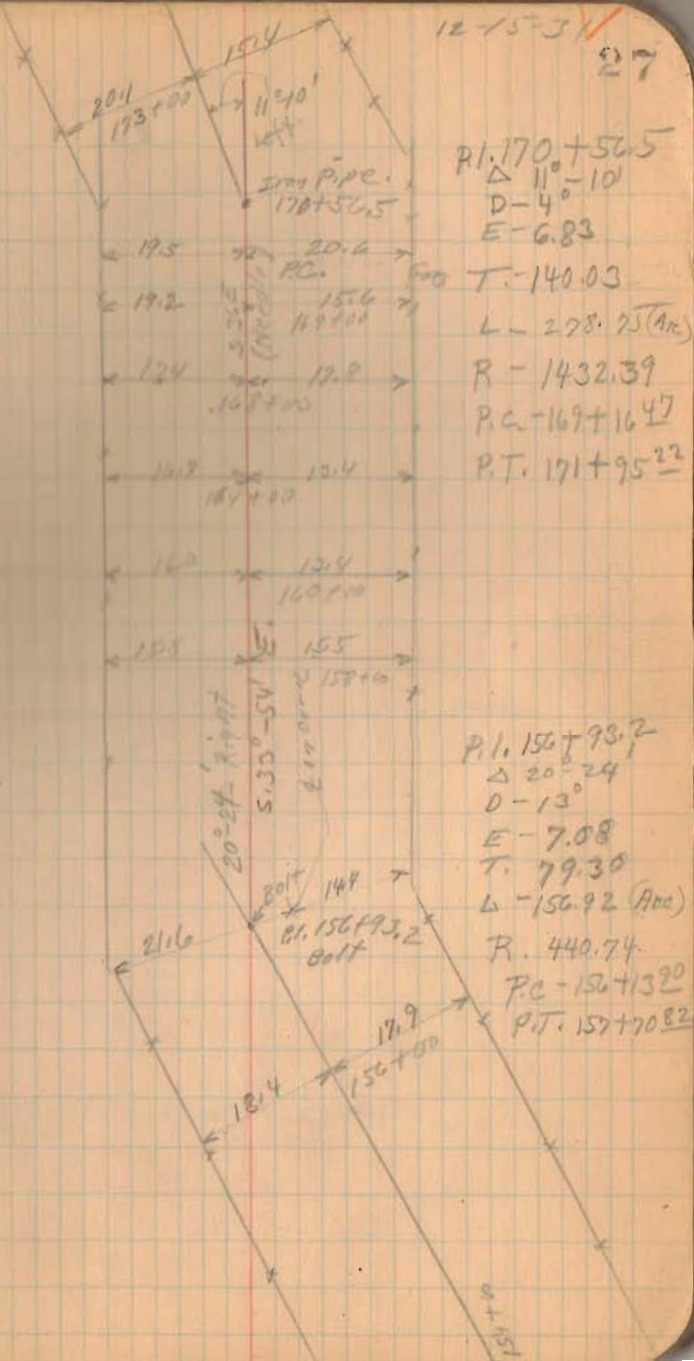


173+00 Mon. S.H. 607  
169+00 Mon.  
166+00 Mon.

161+00 Mon.

158+00 Mon.

(1467)  
INDEXED ON MAP





s. N. 607

179+09 RT. Mar,

179+01

1467

INDEXED ON MAP

Pl. 177+71  
D-10-42  
O-6  
E-10.23  
T-140.16

L-278.33 (A10)

R-954.93

P.C. 176+30.84

RT. 179+09.17

Wagon  
King

Dec. 16, 1931

clear fine  
winter day

25

Wright  
McKenna  
Wood  
Warner  
McAdams

16°42'

Left

177+71

177+14

Strattan

176+90

Co. Road No. 169

176+24.7

Co. Road No. 28

Iron  
7-31-35

175+00  
175+00

S. 45° 04' E



175+00.73

174+80

174+60

176+06

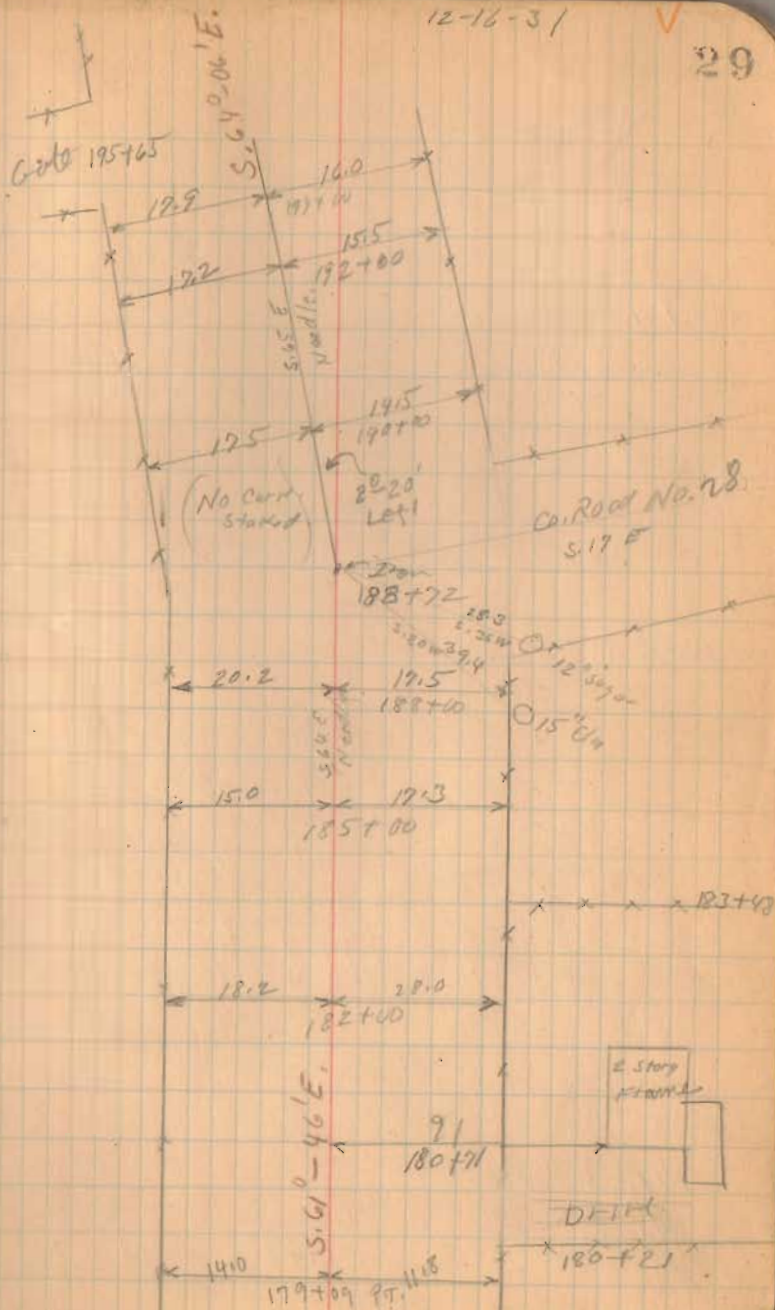
S.H. 607

190+00 Mon.

187+00 Mon.

185+00 Mon.

(1467)  
INDEXED ON MAP



S.H. 607

211+00 Mon

210+00 Mon

206+00 Mon

202+00 Mon

197+00 Mon

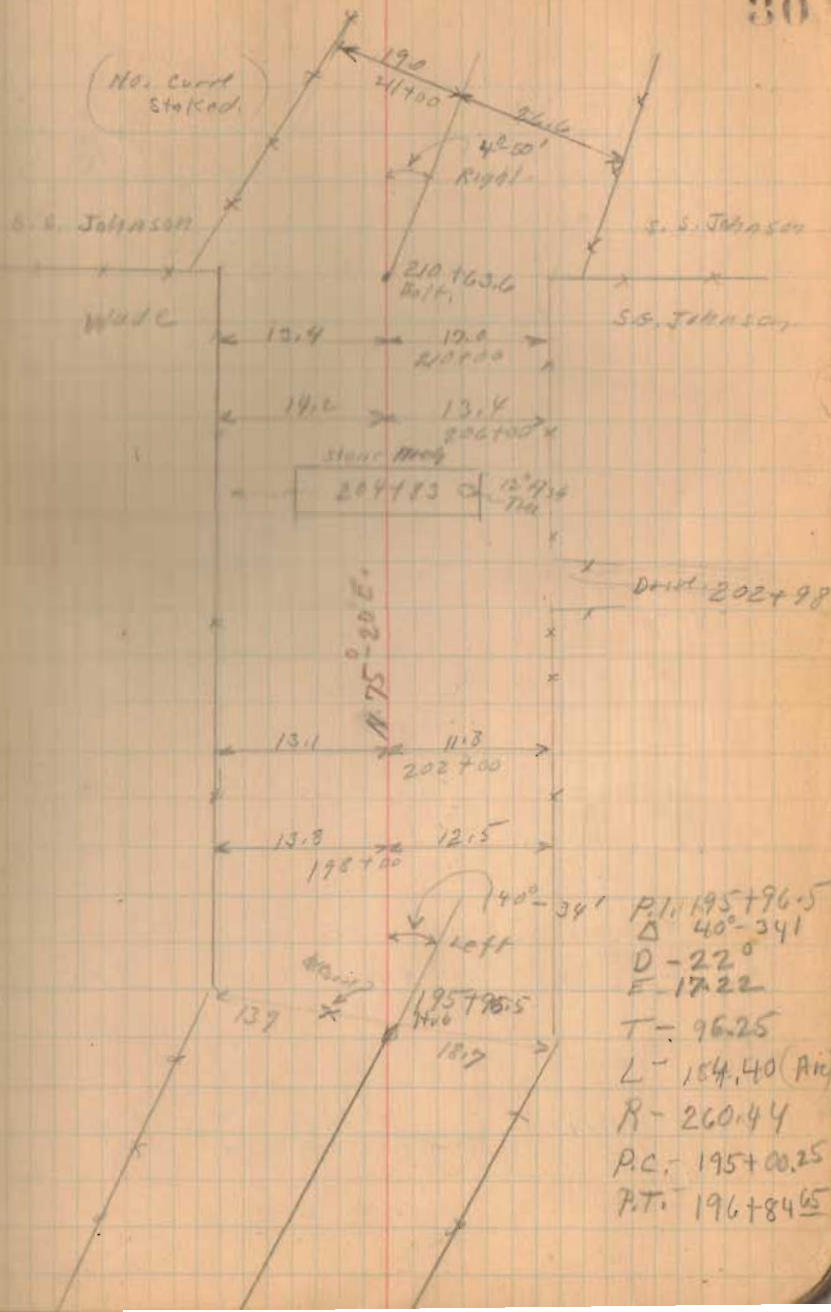
194+00 Mon

1467

INDEXED ON MAP

12-14-31

30



S.H. 607

224+00 Mon ✓

220+00 Mon.

215+00 Mon.

1867

INDEXED ON MAP

M. 222+35

A 16-44'

D-7°

E-8.80

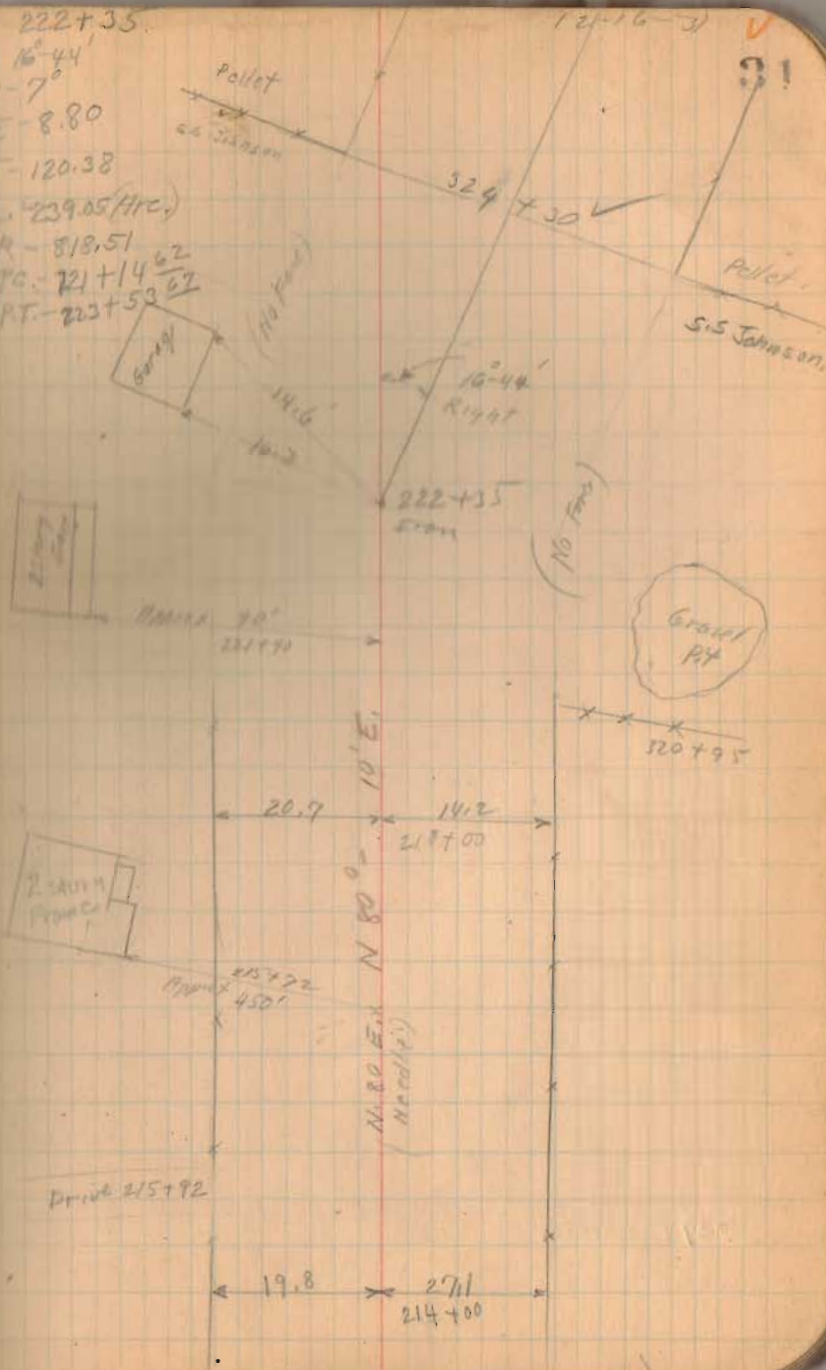
T-120.38

L-239.05 (H.C.)

R-813.51

TC-221+14.62

PT-223+52.62



S.H. 607

245+00 Mon.  
240+00 Mon.

234+00 Mon.

229+00 Mon.

1467  
INDEXED ON MAP

Dec-17-1931

Clear

32

P.L. 243+56.5

$\Delta - 30^{\circ} 36'$

T = 104.50

E = 14.04

L = 204.00 (Arc)

D =  $15^{\circ}$

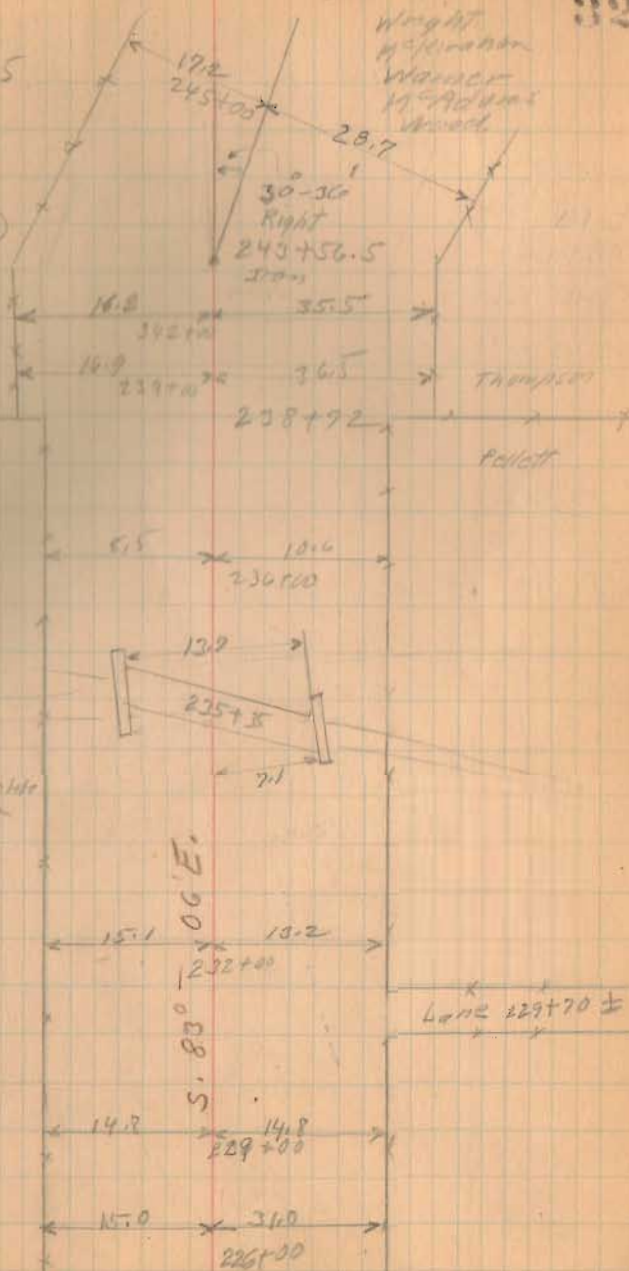
R = 381.97

P.C. 242+52

P.T. 244+90

Thompson

Wright  
McIntosh  
Wagner  
17-Adams  
Wood



S.H. 607

256+00 Mon.

254+50 Mon.

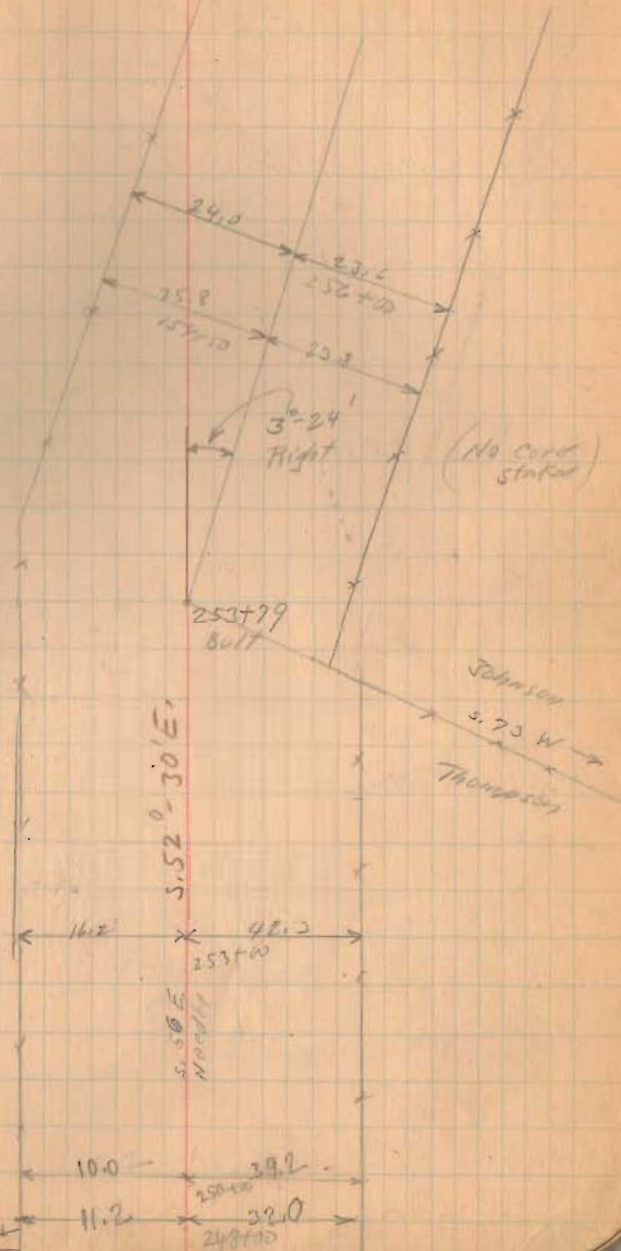
253+00 Mon.

1467  
INDEXED ON MAP

250+00 Mon.

12-17-31

33



S.M. 607

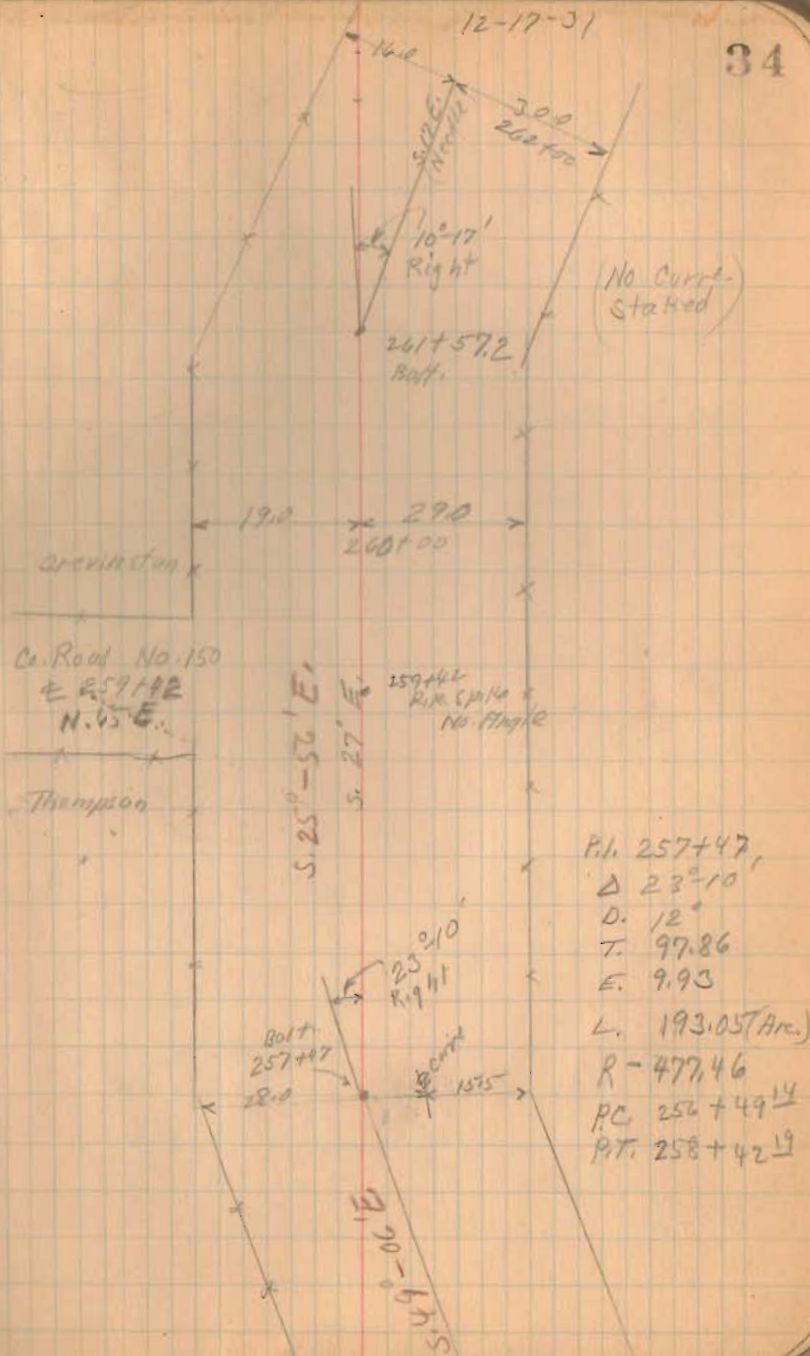
262+00 Mon

261+00 Mon.

259+00 Mon.

1467  
INDEXED ON MAP

34



S.H. 607

2917+00 Mon.

286+00 Mon.

281+00 Mon.

276+00 Mon.

271+00 Mon.

267+00 Mon.

1467  
INDEXED ON MAP

12-17-31

35

16.3 x 281.7 x  
290+00  
288+01 x  
Gardner  
287+65 x

Corrensia  
Notostima

2 story  
Frame

60.3  
286+75  
286+124  
Dist 286+16

15.6 x 271.8 x  
282+00

280+10

Mud Flat  
Pond

17.0 x 251.9 x  
278+10

278+25

18.2 x 23.3 x  
274+00

Notostima

271+62

Johnson

S. 15°-39'E.

Pond

280+00

282+00

17.6 x 23.9 x  
270+00

16.7 x 24.6 x  
266+00



S.H. 607



320+00 Mon.

317+00 Mon.

313+00 Mon.

309+00 Mon.

302+00 Mon.

296+00 Mon.

P.I. 318+56  
 $\Delta 109^{\circ} 58'$   
 $D = 7^{\circ}$   
 $T = 100.03$   
 $E = 6.10$   
 $L = 199.52$  (Hic)  
 $R = 818.51$   
P.C. 317+55<sup>97</sup>  
P.T. 319+55<sup>49</sup>

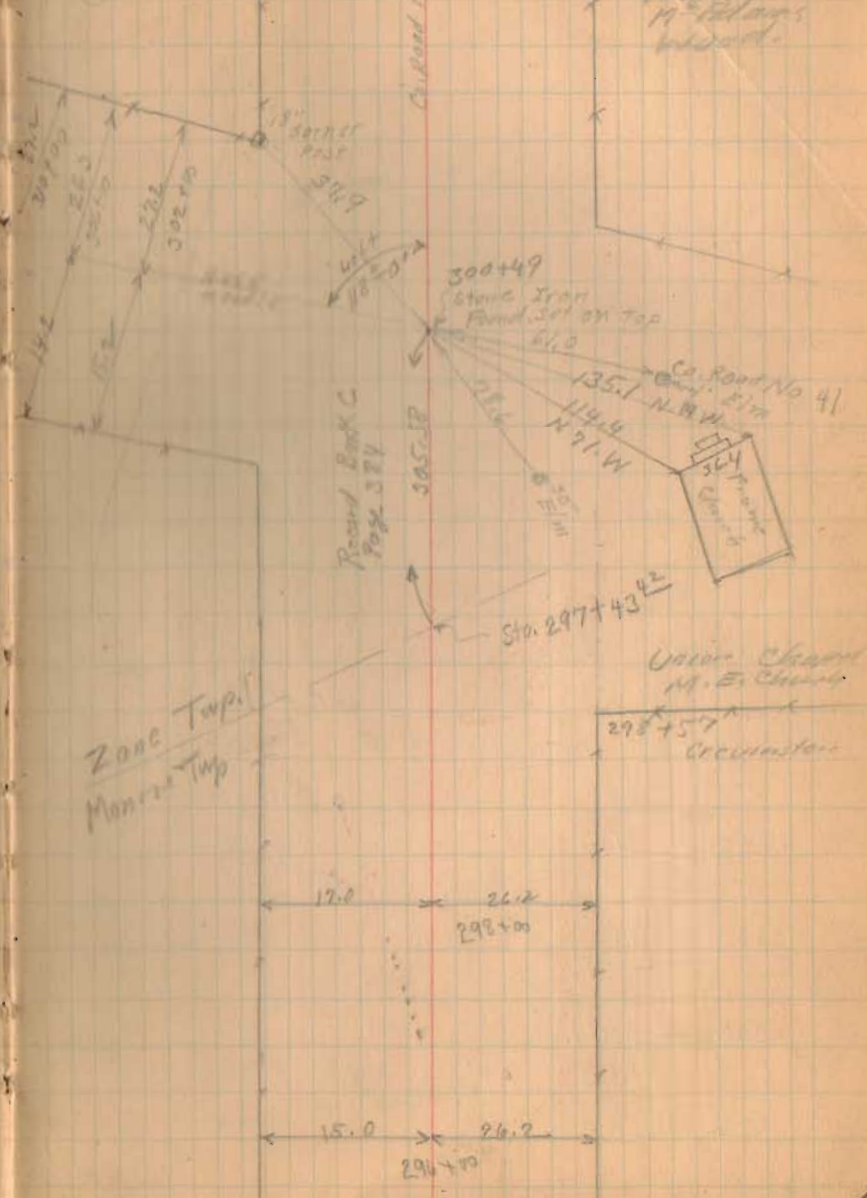
(1467)  
INDEXED ON MAP

Dec-18-1931

Dear

36

Wig  
W-probe  
M. Talays  
wood.



Zone Top  
Monroe Top

Union Church  
N. E. Church

298+57  
Circumference

S.H. 607

345+00 Man.

342+00 Man.

339+00 Man.

334+00 Man.

333+00 Man.

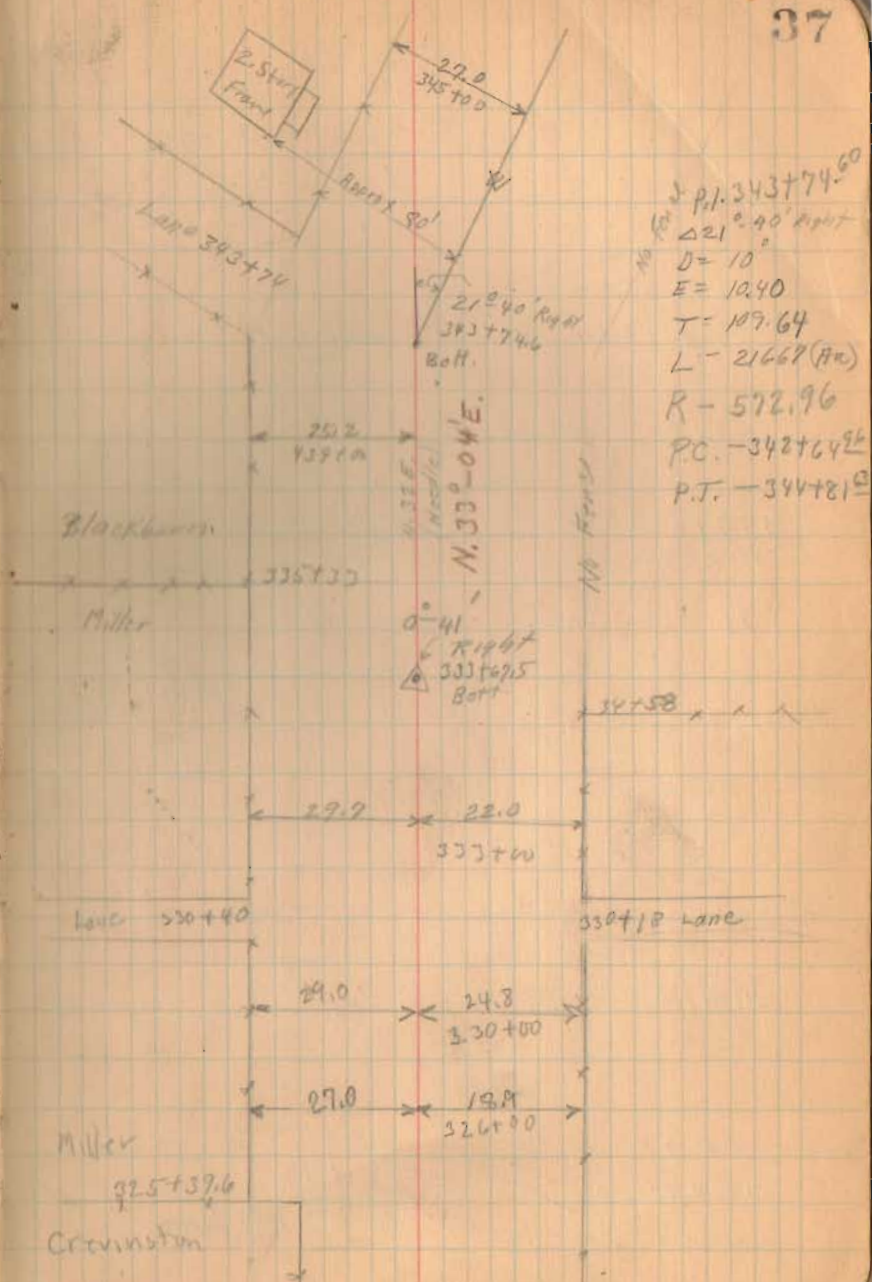
330+00 Man.

225+00 Man.

1867  
INDEXED ON MAP

12-18-31

37





S.H. 609

407+00 Man.

402+00 Man.

397+00 Man.

391+82.8 Man. ( $\frac{1}{2}$  of Angle)  
P.L. line.

387+00 Man.

382+00 Man.

INDEXED ON MAP  
1467

378+42.3 (90° from backsight)

374+00 Man.

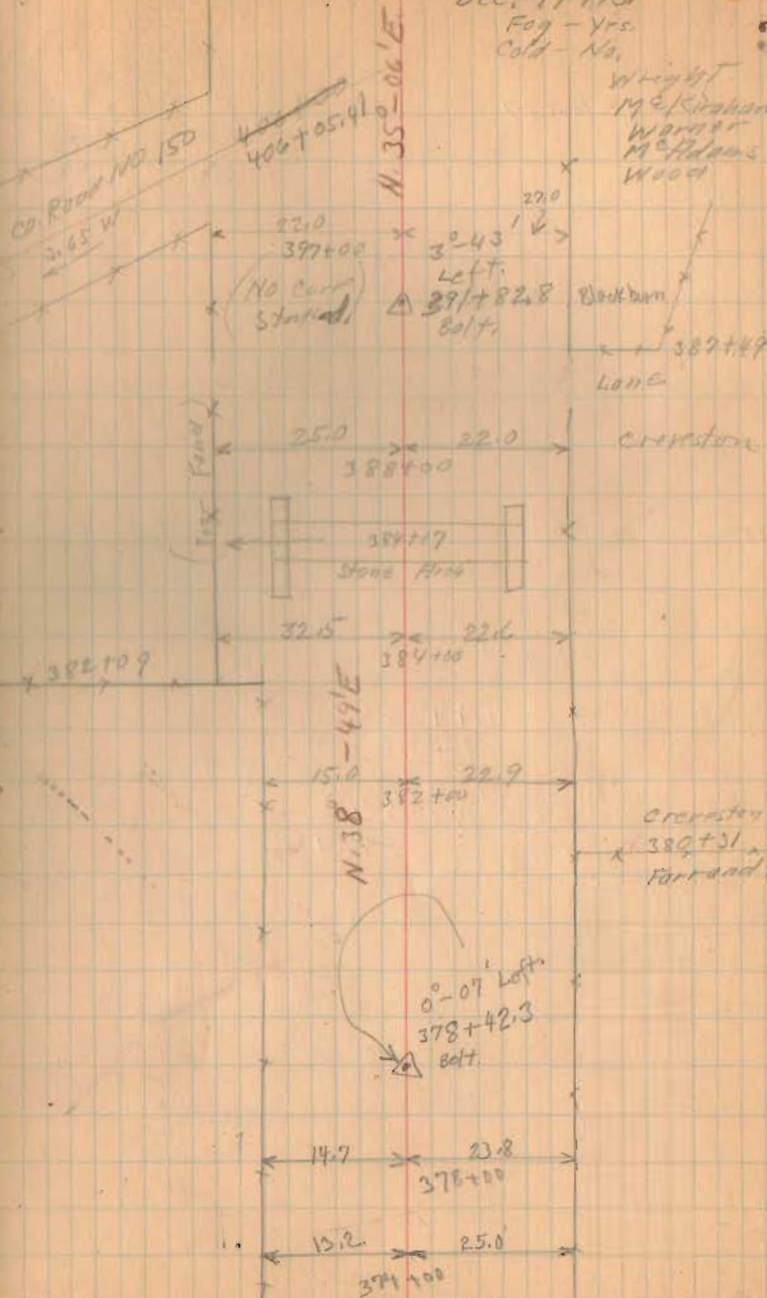
Dec. 19-1931

Fog - Yrs.

Cold - No.

39

Wright  
McGowan  
Warner  
McAdams  
Wood





S.H. 607

446+50 Mon.

443+00 Mon.

438+00 Mon.

434+00 Mon.

432+00 Mon.

1467  
INDEXED ON MAP

Pt. 444+93  
 $\Delta$ -43°20'  
D-22°  
E-19.80  
T-103.46  
L-196.87 (716)  
R-200.44  
P.C. 443+89.54  
P.T. 445+86.51

Vassar

444+35  
Dewitt

442+32

Dec. 21-1931

Cloudy - Some  
Cold - No.

41

Wing of  
McKinnon  
Wanner  
McAdams  
Wood

P. 447  
43°20'  
444+93  
H.H.

Blackburn

(S.R. No. 559)

Co. Road No. 157

442+37

(See Book 590 Page 39)

Collins

N. 14°-42' E.

22.6  
438+00 19.5

Pt. 436+02

$\Delta$ -8°30'

$\theta$ -3°

T-144.92

E-5.27

$\angle$ -283.33 (A70)

R-1909.86

P.C. 434+60.08

P.T. 437+43.41

Collins

Lockwood 229+22

Dewitt  
431+58

Collins

20.6  
434+00

21.4

65.4  
435+02

21.2

27.6  
428+00

9.70  
432+02  
Bolt

15.7  
433+02

15.7  
433+02

432+00

432+50

N. 23°-12' E.

N. 42° E.

N. 42° E.

N. 42° E.

N. 42° E.

S.M. 609

476+00 Mon.

473+00 Mon.

466+00 Mon.

460+00 Mon.

456+00 Mon.

451+00 Mon.

1467  
INDEXED ON MAP

P.L. 774+325  
D 12° 36'  
D-C  
T-105.42  
E-5.80  
L-210.00 (Arc)  
R-954.93  
P.C. 473+27.08  
P.T. 475+37.08

Pony Macra Tubs

Buller Ditch No. 510

Gibson

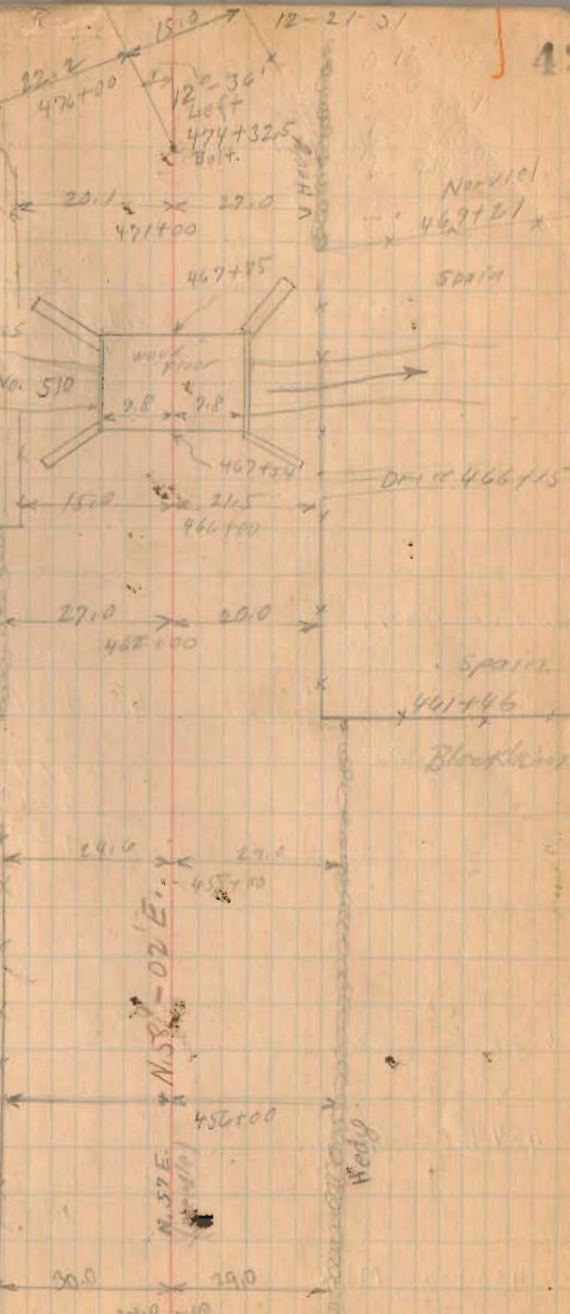
Vassar

Higo

Wedge

Co. Road No 157

461+15



S.H. 607

499+00 Mon.

472+00 Mon

488+00 Mon

484+00 Mon

480+00 Mon

1467  
INDEXED ON MAP

12-21-31

43

P.I. 498+54  
 Δ - 29° 52'  
 D - 20'  
 E - 10.06  
 T - 76.58  
 L - 149.67 (Arc)  
 R - 286.48  
 P.C. 497+77  
 P.T. 499+27

Dosny

Gibson

498+10

N. 25° - 16' E.

N. 55° - 12' E.

924' Right

486+01.7

Bolt

P.I. 486+01.7  
 Δ - 9° 46'  
 D - 4'  
 E - 5.22  
 T - 122.38  
 L - 244.17 (Arc)  
 R - 1432.39  
 P.C. 484+79  
 P.T. 487+23

292.50' Left. 498+54 Bolt

E 498+00 Co. Road No 158 S. 5° - E

17.4

16.6

92+00

481+24

2 1/2" x 1 1/2" Frame

482+56 D.M.C.

180+52 Approx 100

N. 45° - 26' E.

Very Poor Flood

17.1

490+80

499+10



S.H. 607

511+00 Man.

508+00 Man.

504+00 Man.

500+00 Man.

1467  
INDEXED ON MAP

PI. 512+72.7  
Δ - 28° 16'  
D - 15'  
E - 11.92  
T - 96.18  
L - 188.44 (Arc.)  
R - 381.97  
PC 511+97.52  
PI. 513+85.96

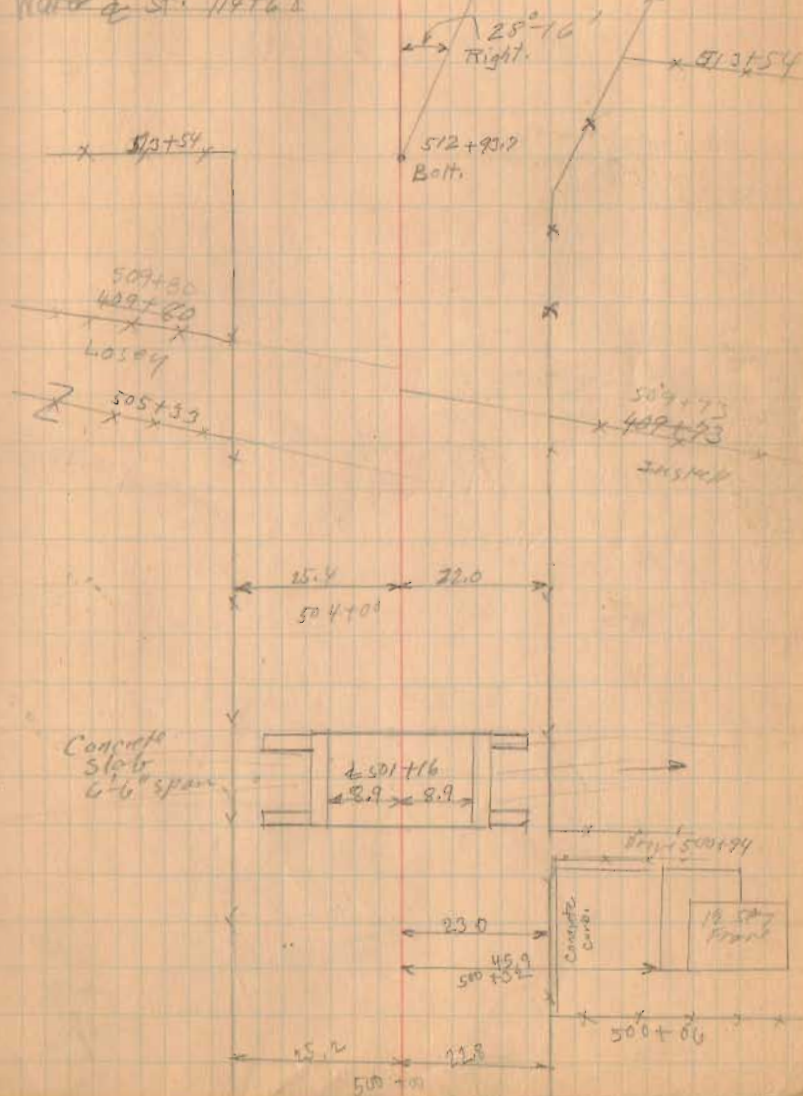
Dec-22-1931

Rain A.M.

Wright  
McExpiration  
Warren  
McPhillips  
Wood.

44

Water of St. 114+68



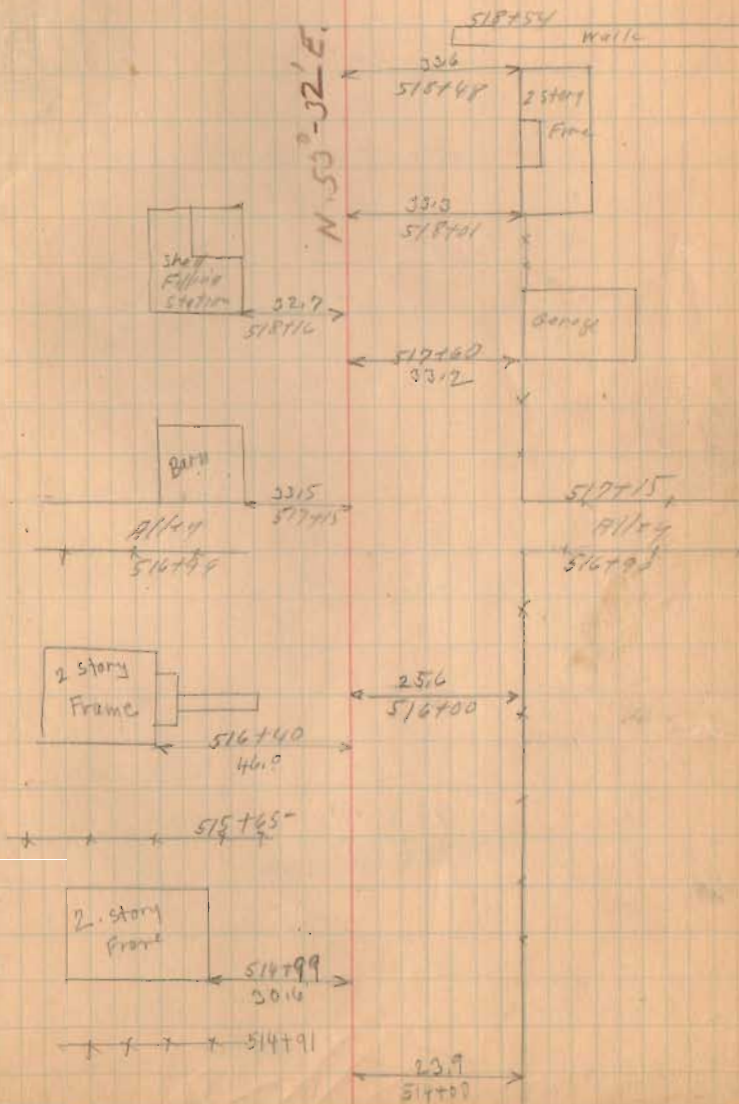
Sitt. 607

12-22-31

45

518782

Ca. Road 153  
Columbus St.



1467  
INDEXED ON MAP

S.H. 607

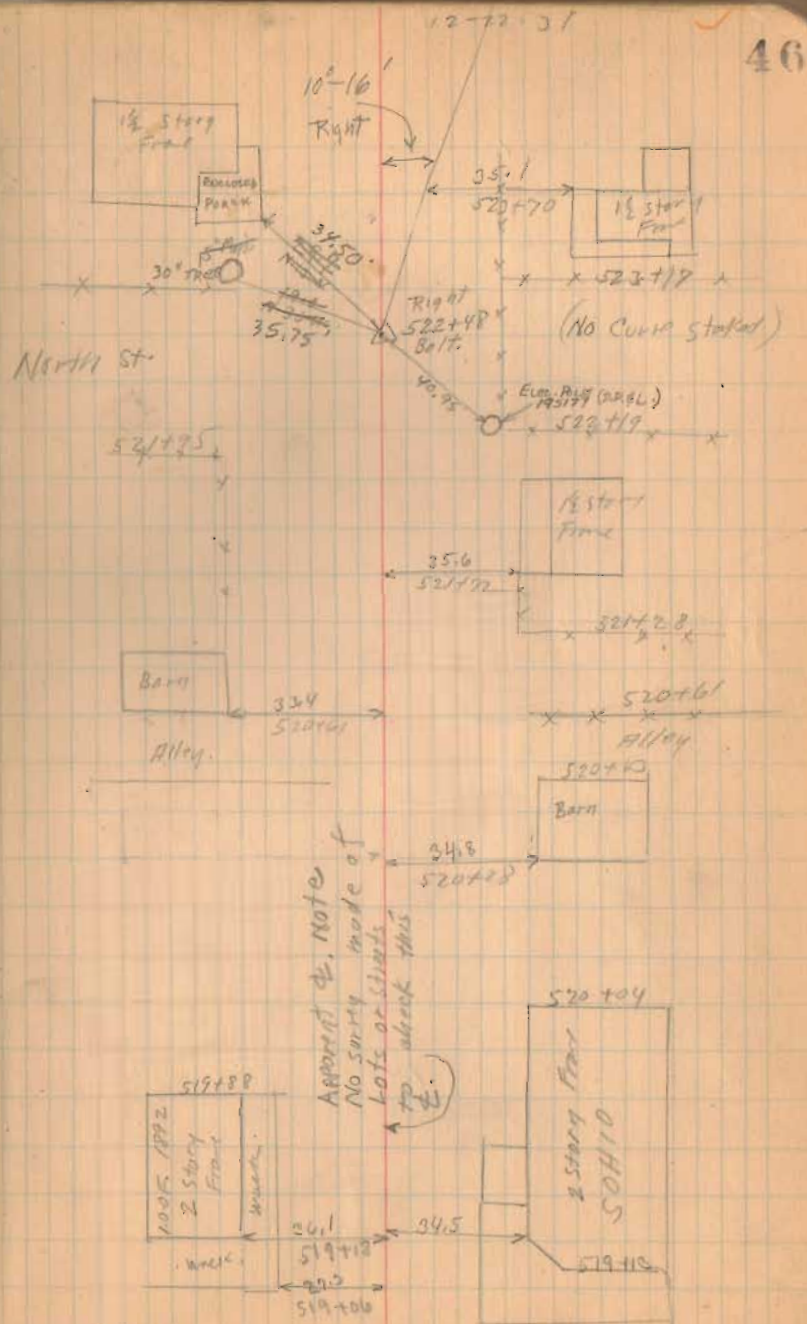
BOLT Fd. (12/5/70)

Sta. 522+48

New WITNESSES

DEG.

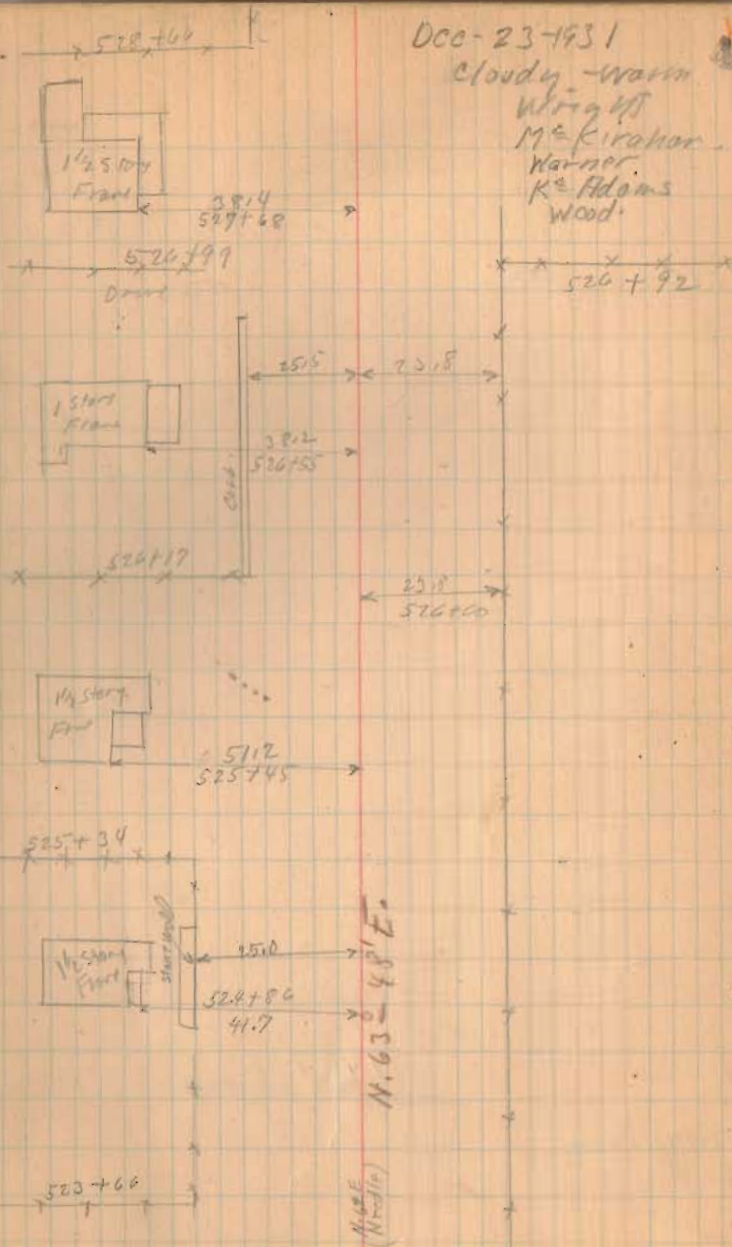
1467  
INDEXED ON MAP



S.H. 607,

526+00 Man.

1467  
INDEXED ON MAP



SH607

535+00 Mon.

(1467)  
INDEXED ON MAP

529+00 Mon.

12-23-31

534114

1/2 story  
Fwd

46.8  
535+66

Richard's

532+59

531132

1/2 story  
Fwd

47.6  
530+93

concrete Wall  
530+46

stone Arch

530+18

24.4  
530+00

530+00

24.6

22.0

529+00

S.H. 607

549700 Mon.

545700 Mon.

540700 Mon.

(1467)

 INDEXED ON MAP

P.I. 547+21

O-11°-22'

D-5°

E-5.66

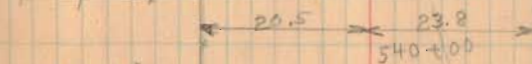
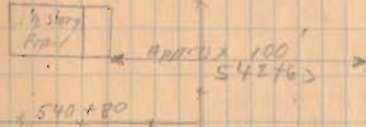
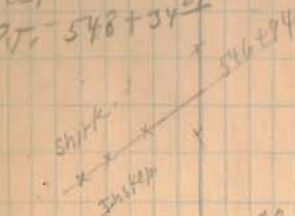
T-114.04

L-227.33

R<sub>i</sub>-1145.92

P.C. 546+00.26

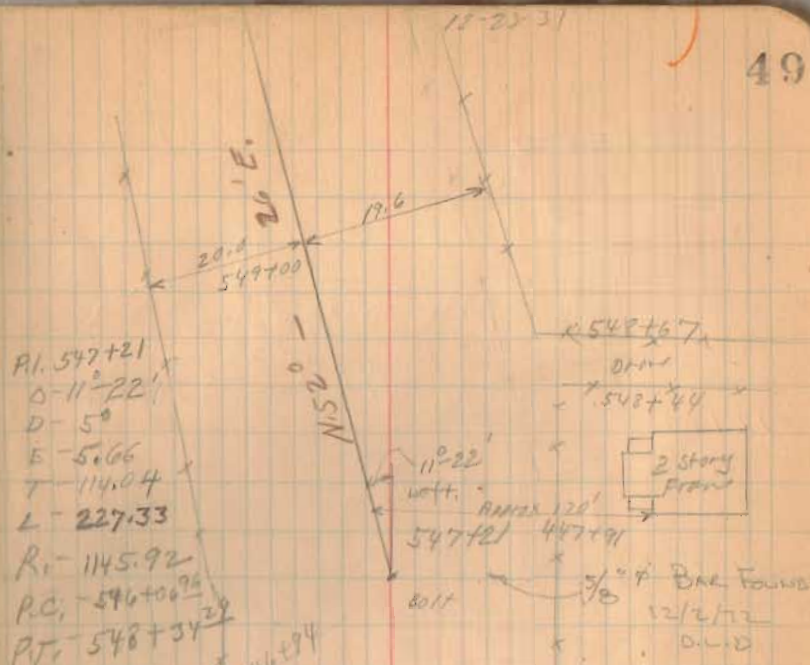
P.T. 548+34.28



536+38

Co. Road No. 22.7 536+24

536+10



Dredged

546+28

Lacey

S.H. 607

572+00

569+00 Man.

561+00 Man.

557+00 Man.

554+00 Man.

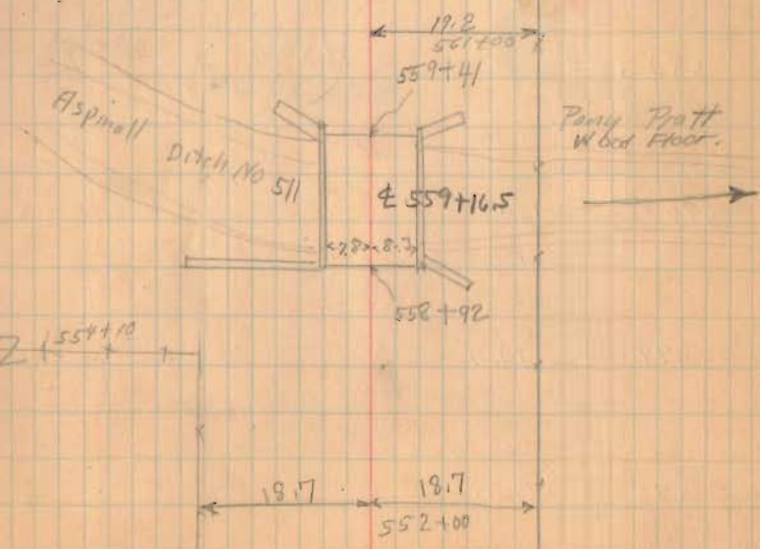
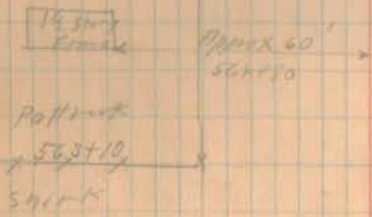
1467  
INDEXED ON MAP

12-23-31

50



PL 570+68.5  
 Δ - 33° 0'  
 D - 20'  
 E - 12.30  
 T - 84.86  
 (Arc) L - 165.00  
 R - 286.48  
 PC - 569+83.49  
 PT - 571+48.69



S.H. 607

Total Length 58,062.5 Feet  
 " " 10.9968 Miles  
 17 1/2 feet less than 11 Miles.

580+00

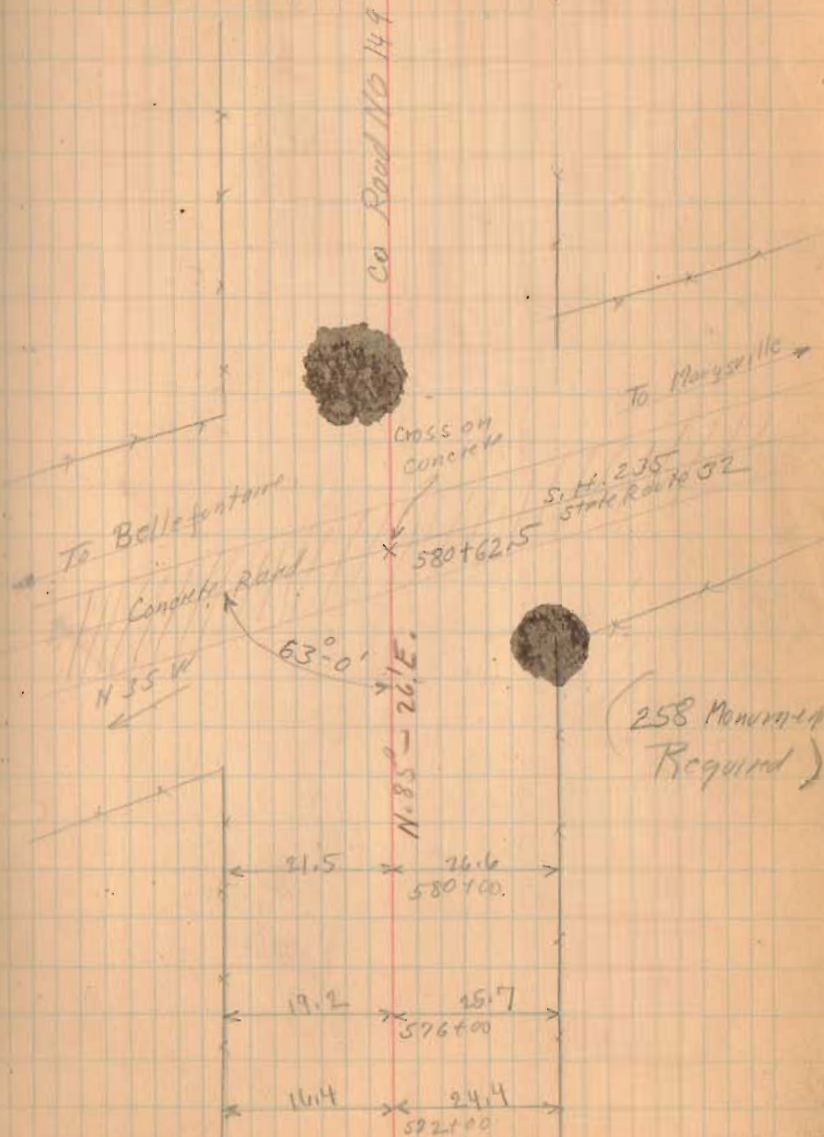
1467  
INDEXED ON MAP

576+00 Mon.

574+00 Mon.

12-20-31

51





Road 45 Union Twp.

See Book 511 Page 17 for  
Road 45 West of # 31

See Book 516 Page 72 To 75  
for Section Corner.

See Book C Page 56

40' Road 201 To 11 Road Record 1 Page 313-326

60' Road 201 To 18 Vol 6 - 47

33' Alterations { Vol 10 - 199  
Vol 10 - 221

see Road Record 2 Page 530 } Plats  
" " " 1 Page 318 }

See Book 560 for X-sections

40' - 0+00 To 66+85 Road Record # 2  
Plat Page 530  
40' Page 532

60' 66+85 To 107+24.2 Comm. Journal 6  
Page 47-48

33' 107+24.2 To 125+26.6 Comm.  
Journal 10  
Page 231

Road No. 45

staked 20' from  $\pm$

See BOOK 516 Page 72-75  
Drawing With Road. 45

1360  
INDEXED ON MAP

Sec. 19 T. 3 R. 14

Sec. 24 T. 4 R. 13

Feb 1<sup>st</sup> 1972  
7 July 1972  
C.N.

Iron

Road 31

Sec. 25 T. 3 R. 14

Brake 31-3.25

52.9

Brake 31-3.25

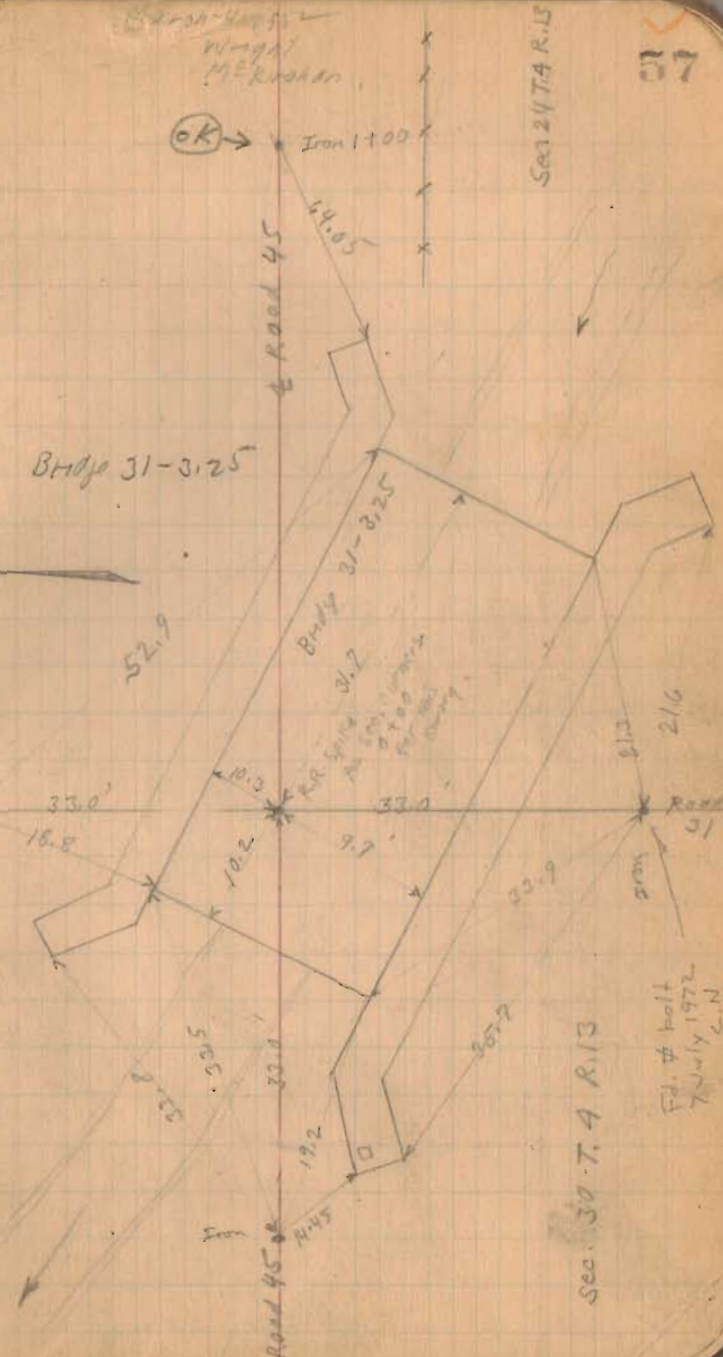
Br. 31.7  
A.C. 31.2  
31.0

Feb. 4 1972  
7 July 1972  
C.N.

2/16

Iron

Sec. 30 T. 4 R. 13

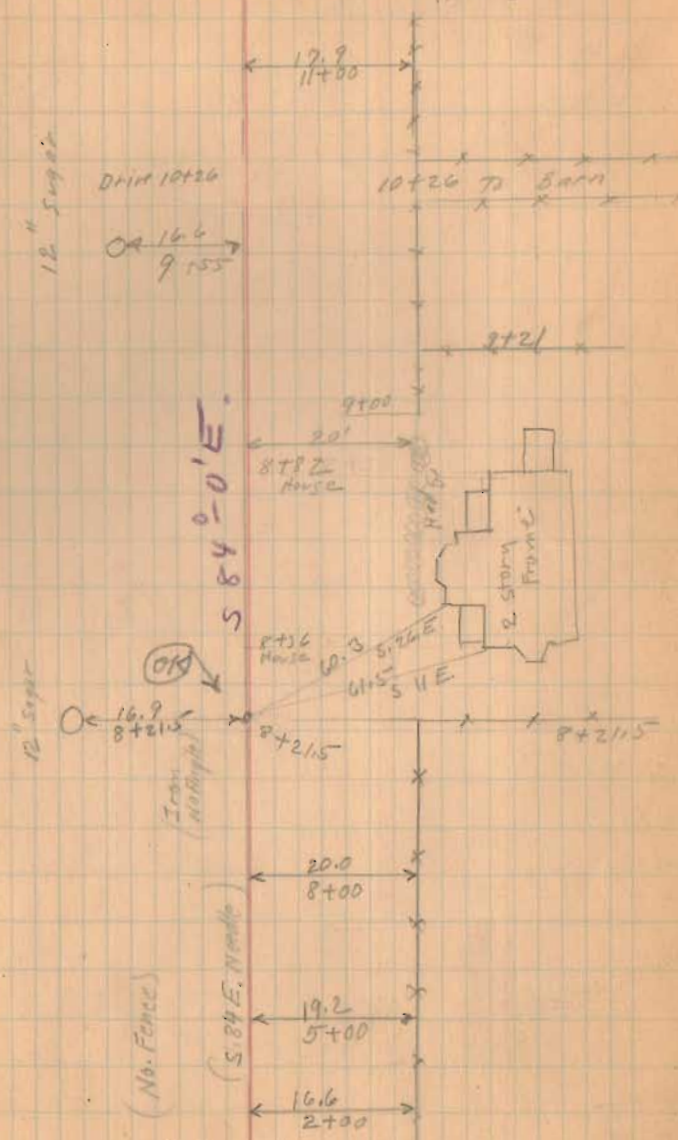


Road. 45  
Union Twp.

(1360)  
INDEXED ON MAP.

March-17-1932  
Cloudy - Cool  
Wright  
McKusick  
Watkins

54



Road No. 45

3-17-32

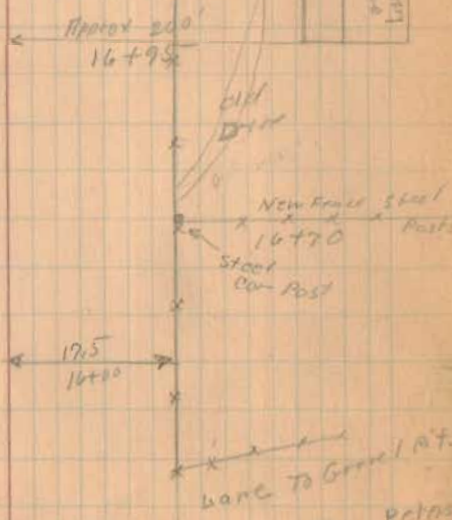
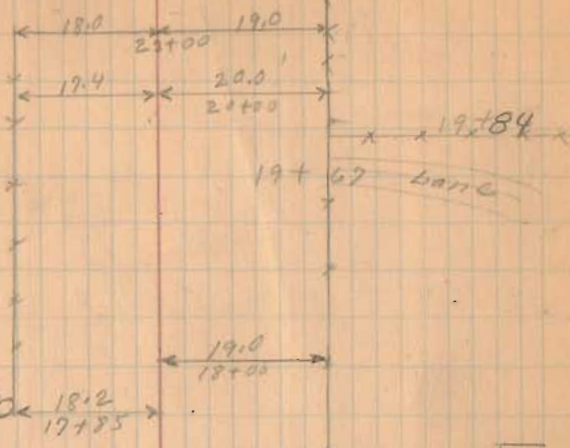
59

(Walnut Street)

Concrete Corner Post

(Land) Mohr

Moffet 17+60



P. Sugar

195

Concrete Post

Moffet

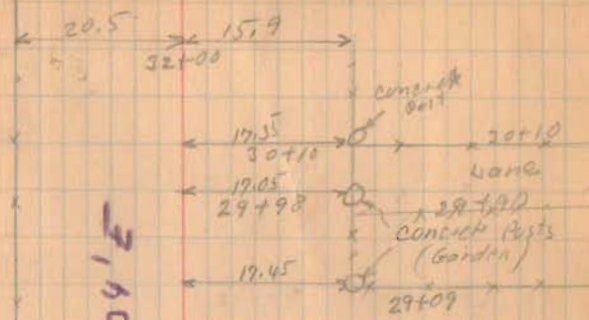
1360  
INDEXED ON MAP

Road 45

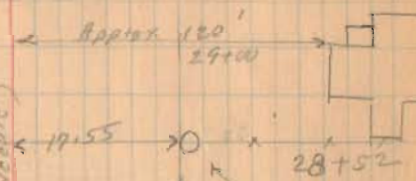
16.50  
1.0.50  
1.9.30

3-17-32

60

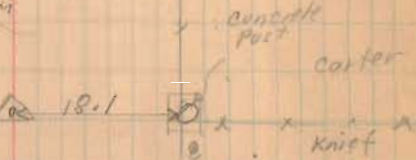


3140-34'E  
S 83° 0' 34" E



OK

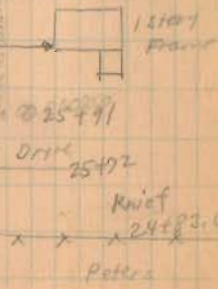
26+80  
26+74  
26+64  
26+54



Old Road  
W 22 W

Walnut  
Spout

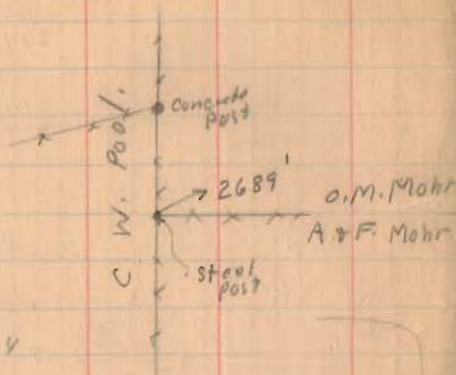
Iron  
Pencil  
247836  
No. 1  
Angle.  
20' x  
12" deep



1360

INDEXED ON MAP

Road 45



Dead. Vol. 117 Page 214

O.M. Mohr Dead.

Calls for 163 Rods 1" dia = 2690.2'

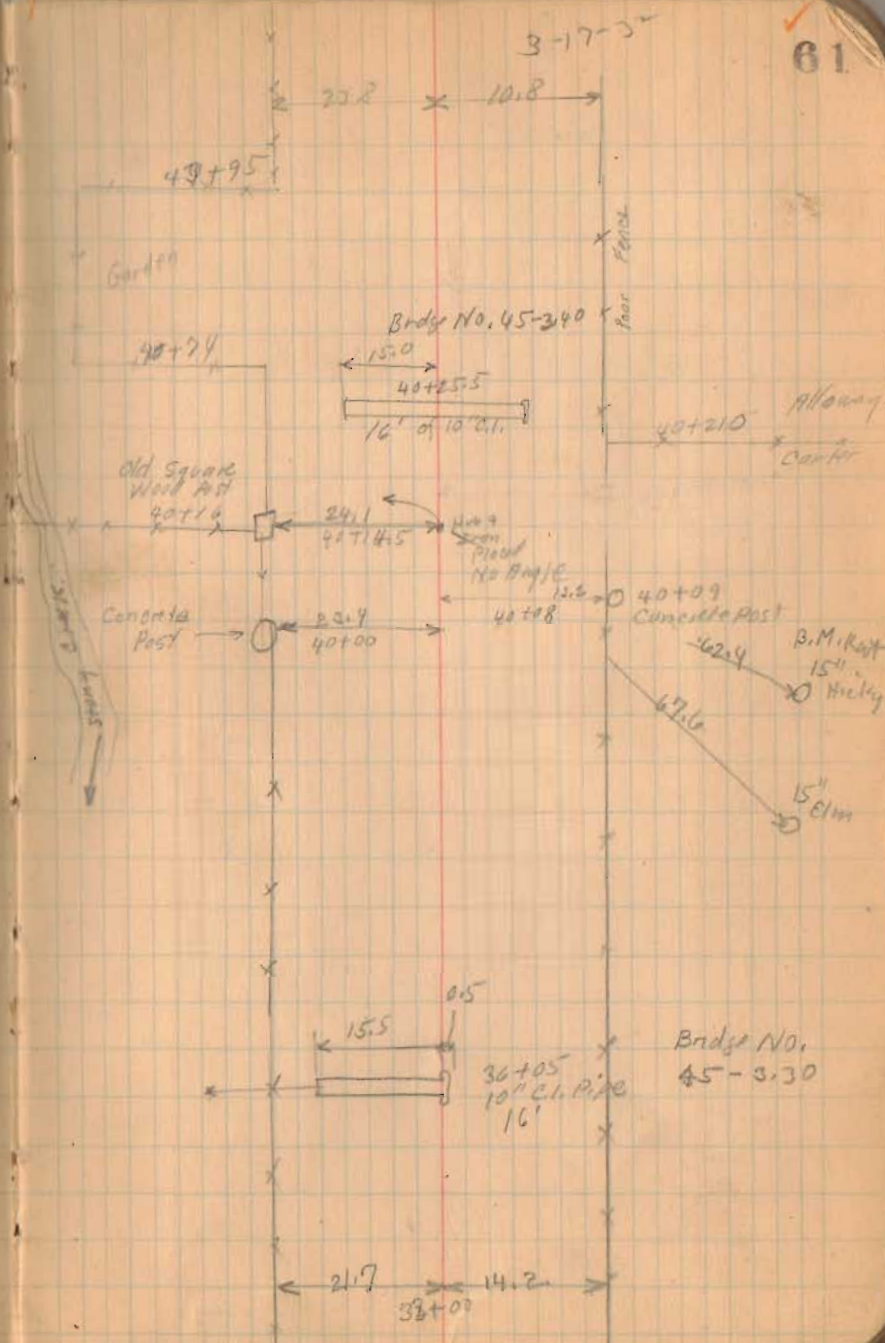
My measurement 2689'

Made straight wire 26780 To 53+28.2

INDEXED ON MAP

1360

61

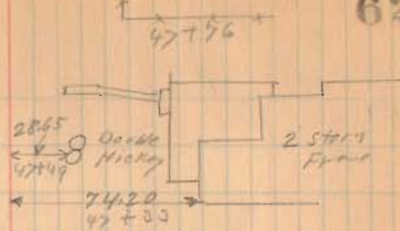


Bridge No. 45-330

Road 45

5-17-32

62



47+10 & Drive



1360

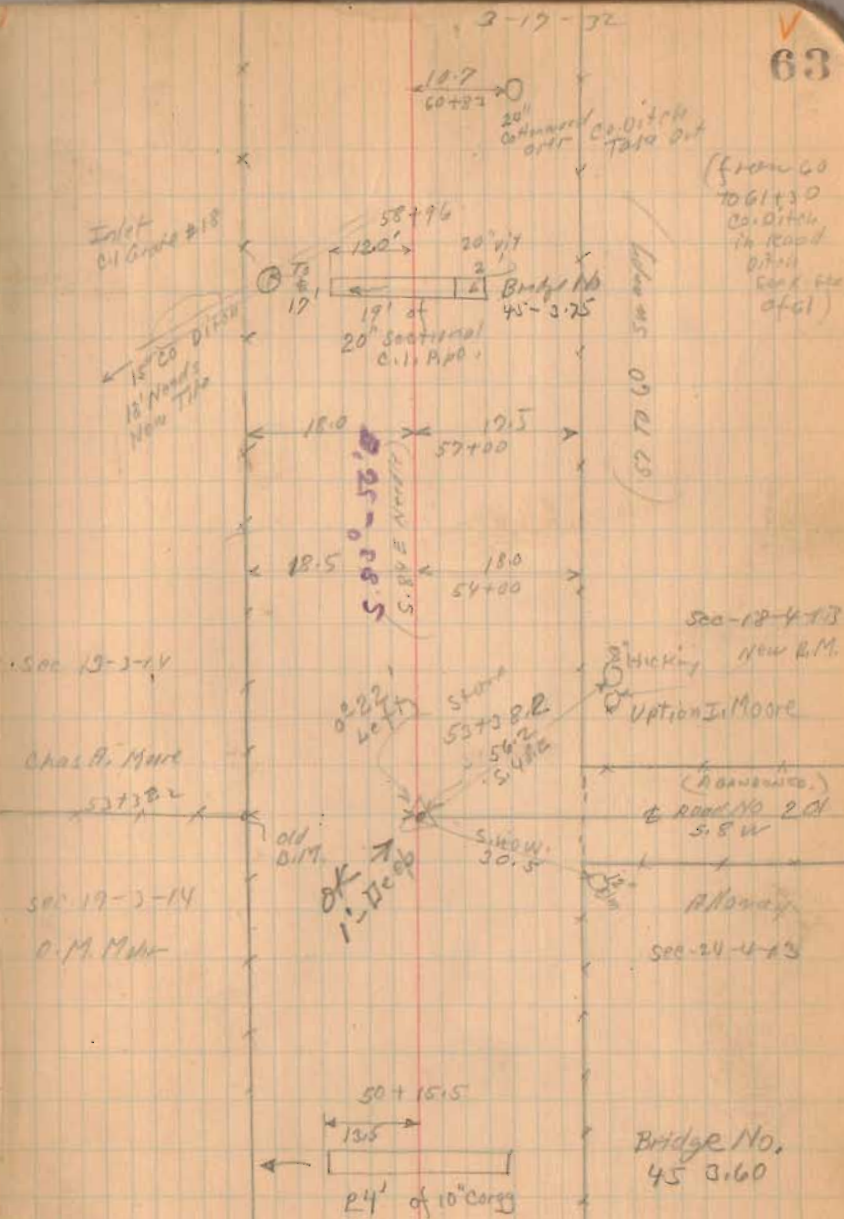
INDEXED ON MAP

Road 45

1068.62 Capex B.M. Nail Found Post Sta. 53+36.2

+ 6.59  
1070.21 H.I.  
- 1.99

1068.22 Cross Nails West side of 15" Elm.  
S.E. cor. of T Road.



1360

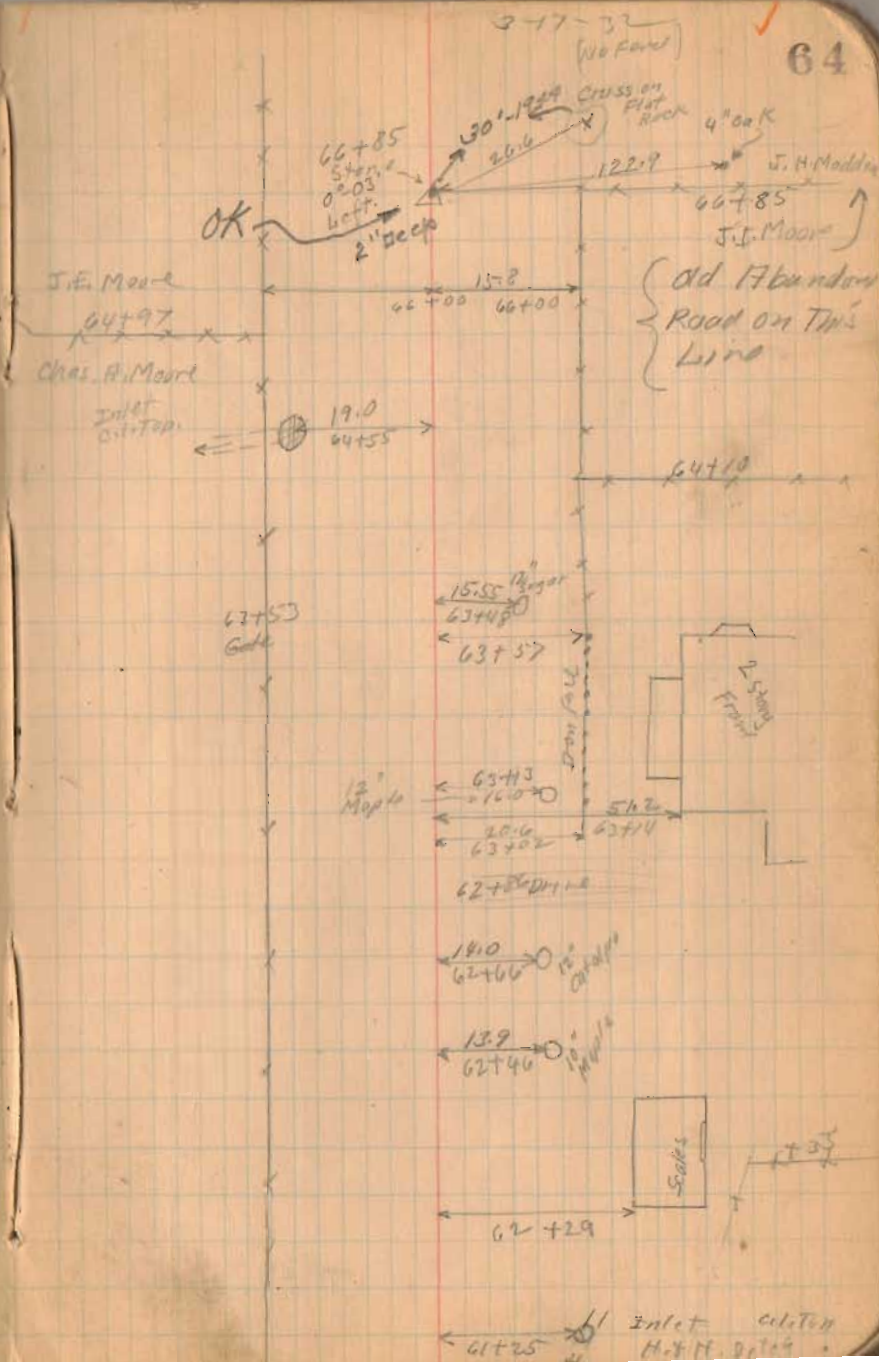
INDEXED ON MAP



Road 45

5200  
1220  
6000

1360  
INDEXED ON MAP



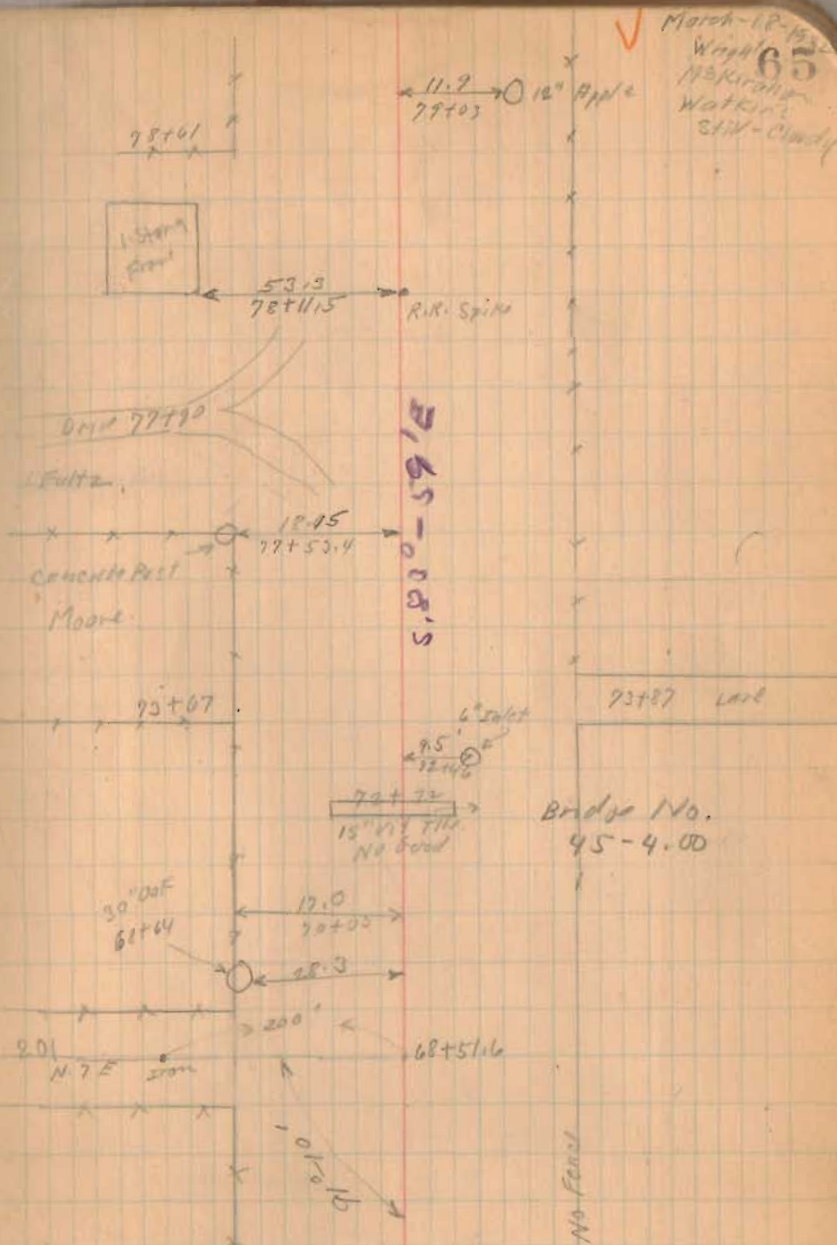
74

+ 0.31 Billion Corn. Post. Remains N.W. cor. Farley

4.70	50'	N. of	2 of 15	in Road 201
2.64	100'	"	"	"
1.26	150'	"	"	"
0.67	200'	"	"	"

58-176  
66-176  
66-176

1360  
INDEXED ON MAP



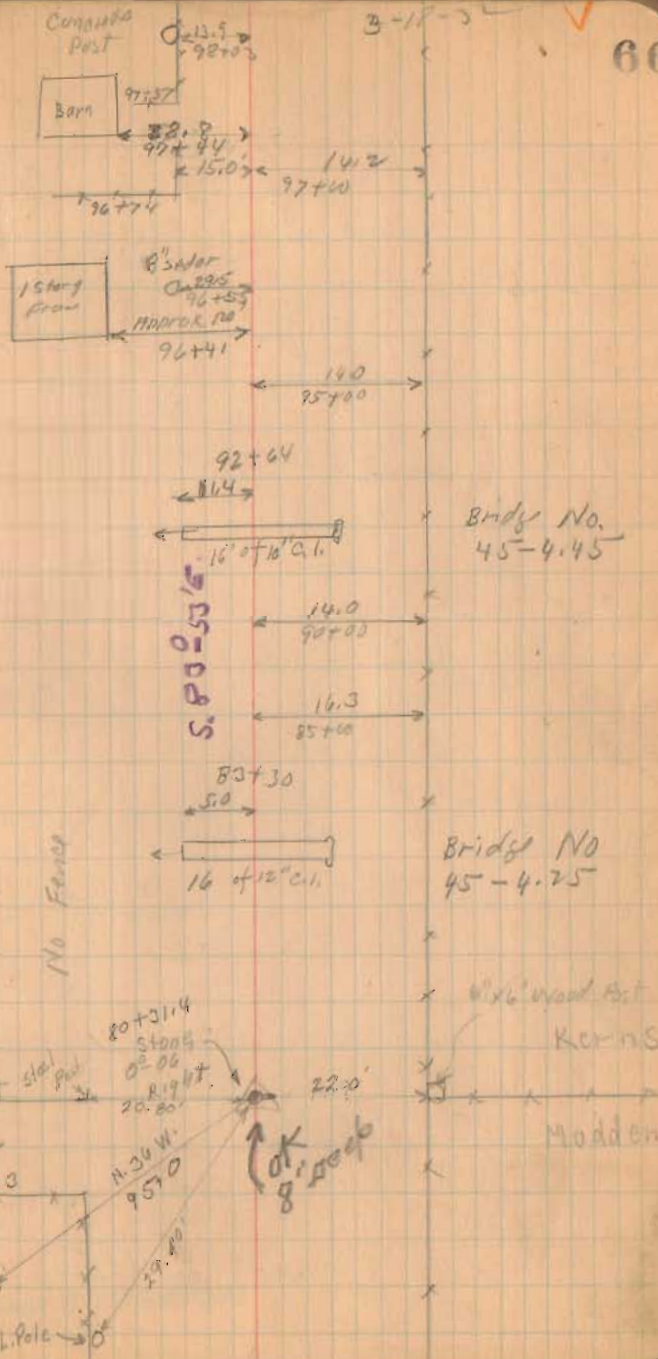
5280  
4425  
855  
2

Road 45

1300  
INDEXED ON MAP

66

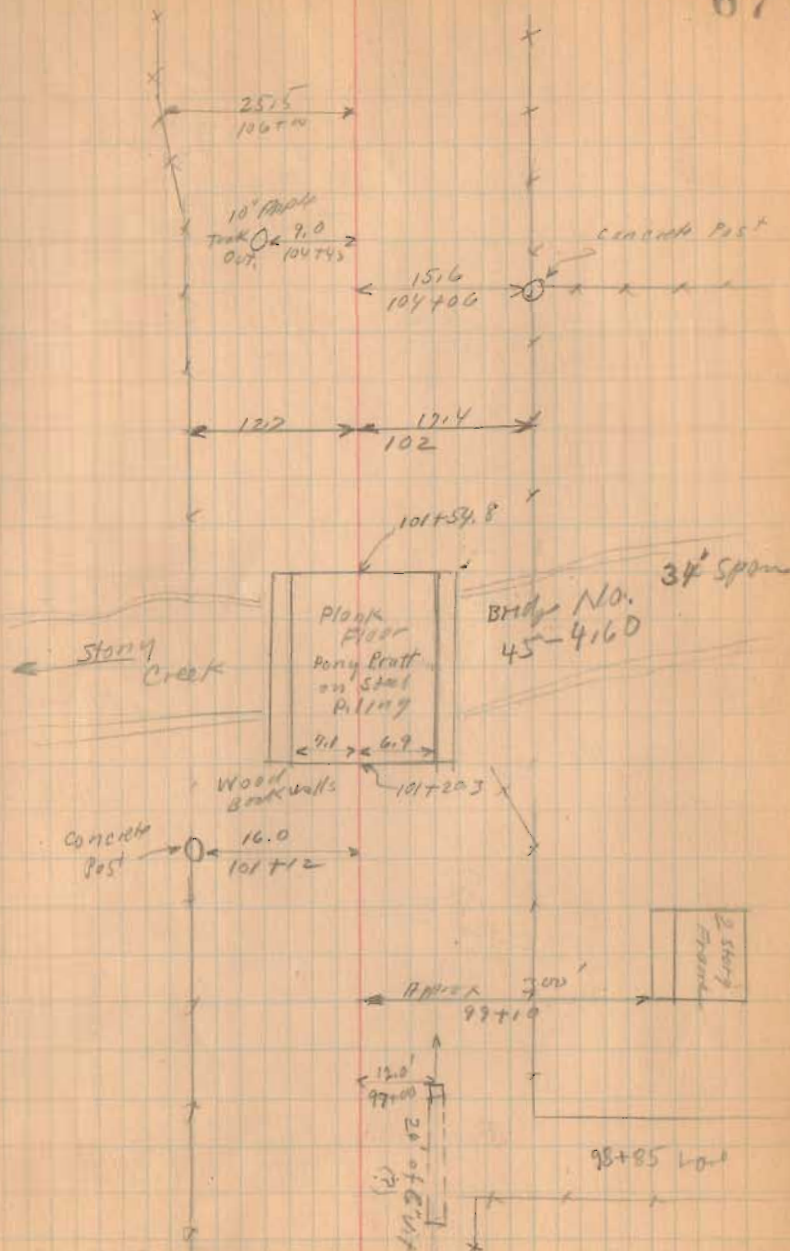
3-18-5



Road 45

3-18-32

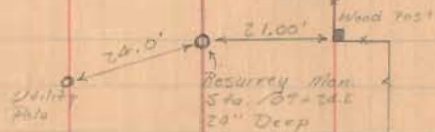
67



1360

INDEXED ON MAP

Road 45

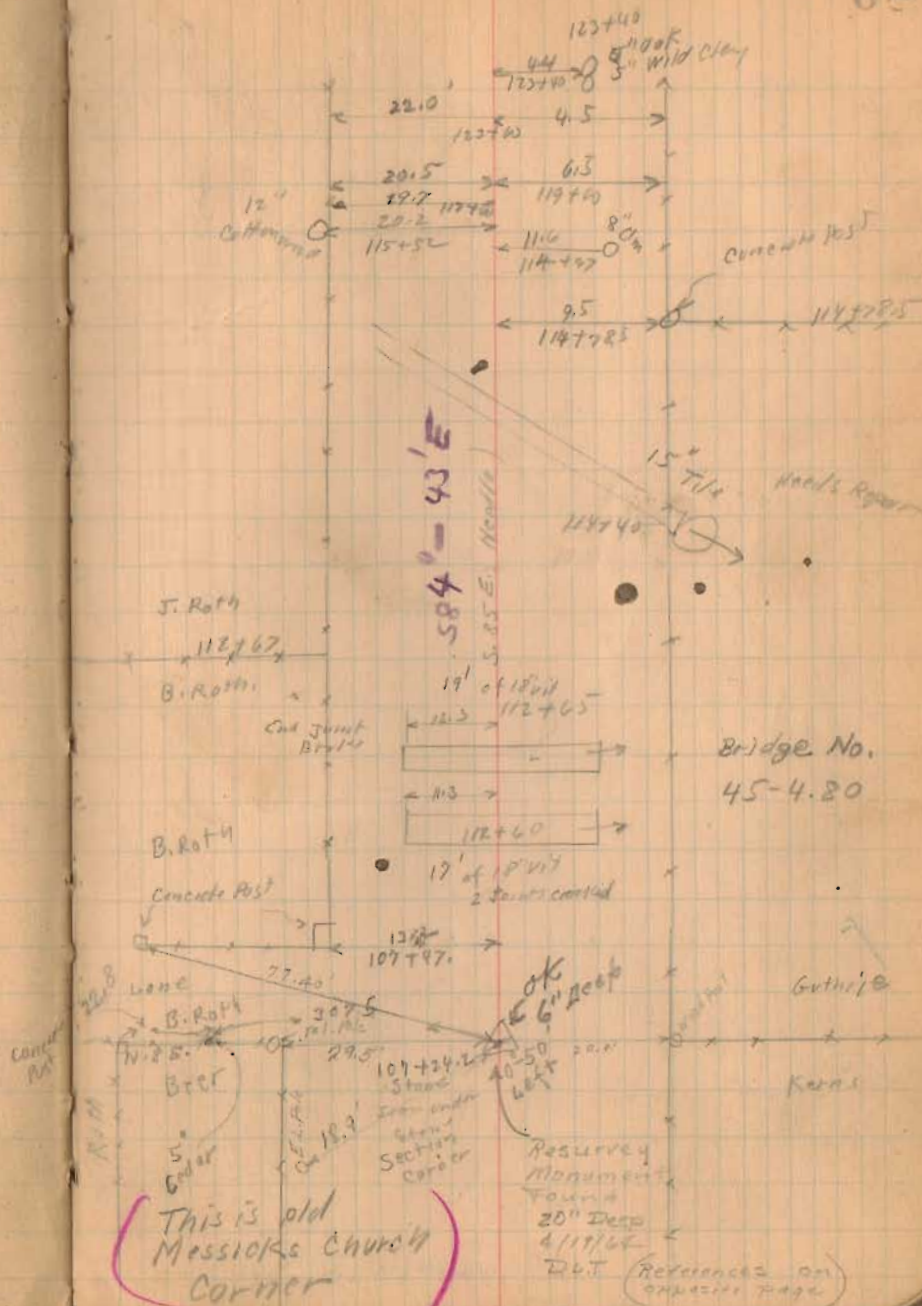


INDEXED ON MAP

1360

3-18-5

65



This is old Messloke Church Corner

Resurrey Monument Found 20\"/>

4/17/66  
D&T

(References on opposite page)

Road 45

INDEXED ON MAP

1360

69

