

Road 46
Harrison Twp.

40' Road. (11 To 234) Vol 10 Page 64
Vol 10 Page 131

40' Sta. 0+00 TO 80+19

50' Note 60' - Sta. 80+19 TO 161+40 Vol 5 - Page 11

Book C Page 260 (Jug 154 ch)
101.64'

Note - staked 40'
Vol. 5 found after this date

23+00

17+00

11+00

5+00

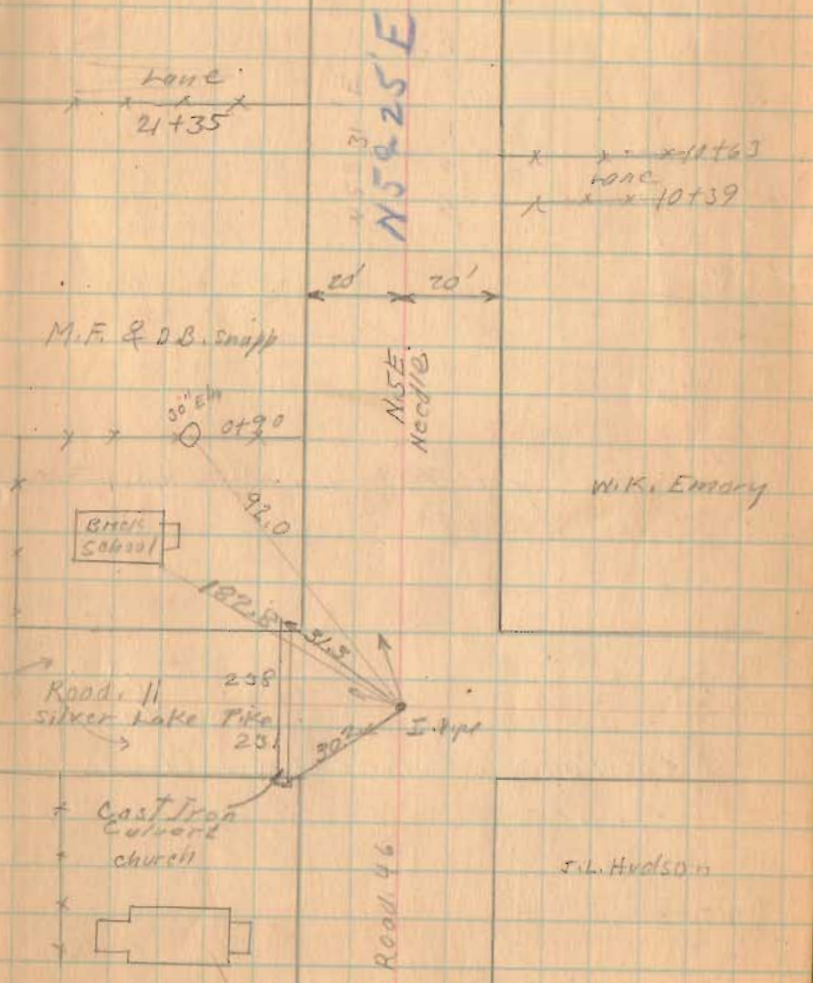
0+00

1602

INDEXED ON MAP

Aug. 29, 1934
dwd
F. Wright
Ed Cox
J. Montgomery
C. Knotts
W. Bremer

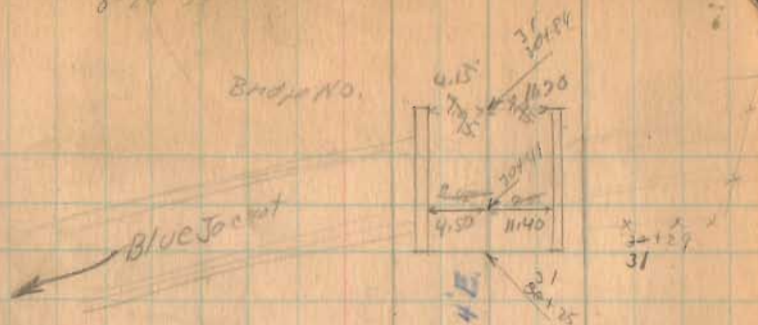
Aug. 17, 1939
Geo - Fair day
F. Wright
J. Montgomery
R. Bremer
C. Knotts.



Road 46

8-24-34

Bridge No.



H.J. Neer

C.C. ASTARR

Sec 22 - T. 3 R. 14

S.A. G.M.E.

Underneath

See pg 70 for change from 29+25

29+25

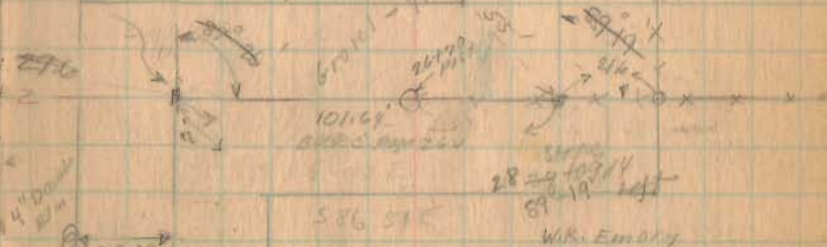
See Page 28 For change in this corner

25+00

1602

INDEXED ON MAP

87-32



Sec 21, T. 3 R. 14

90-01

8-24-34

Road 46

61+00

56+00

51+00

45+00

39+00

35+00

1602

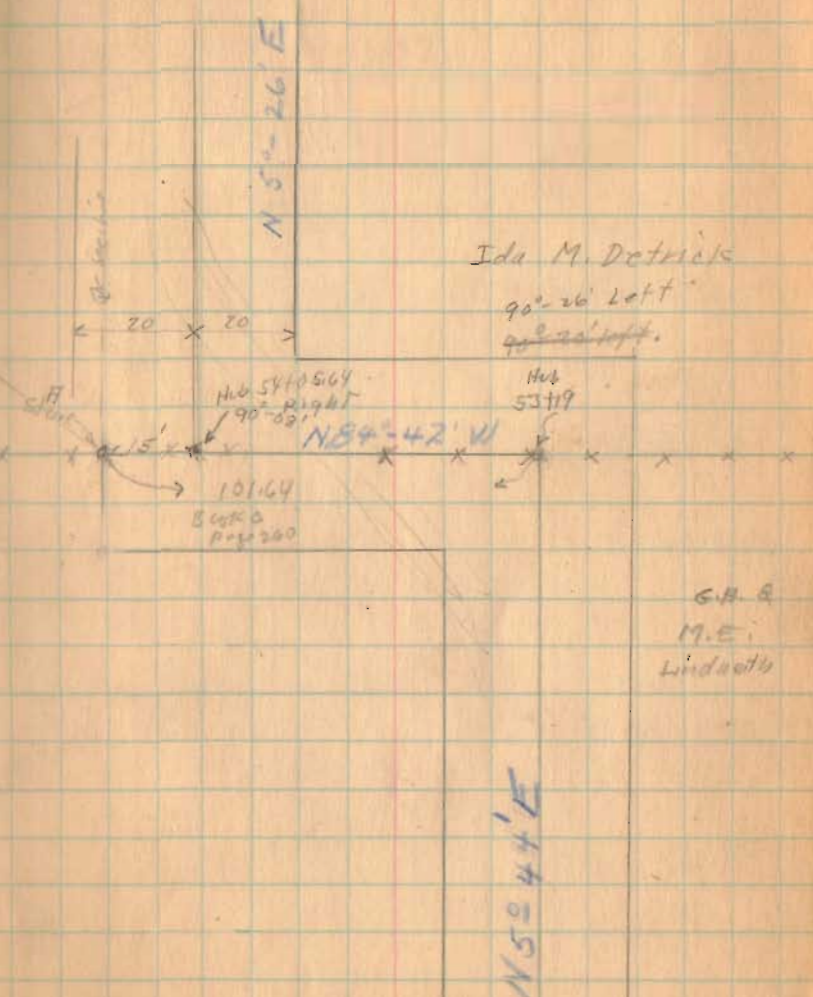
INDEXED ON MAP

D.B. Tanager

A.J. Neer

Long Sta
36 To 37 = 200

Large
Hole
On 73.00



Road 46

76+00

72+00

68+00.5

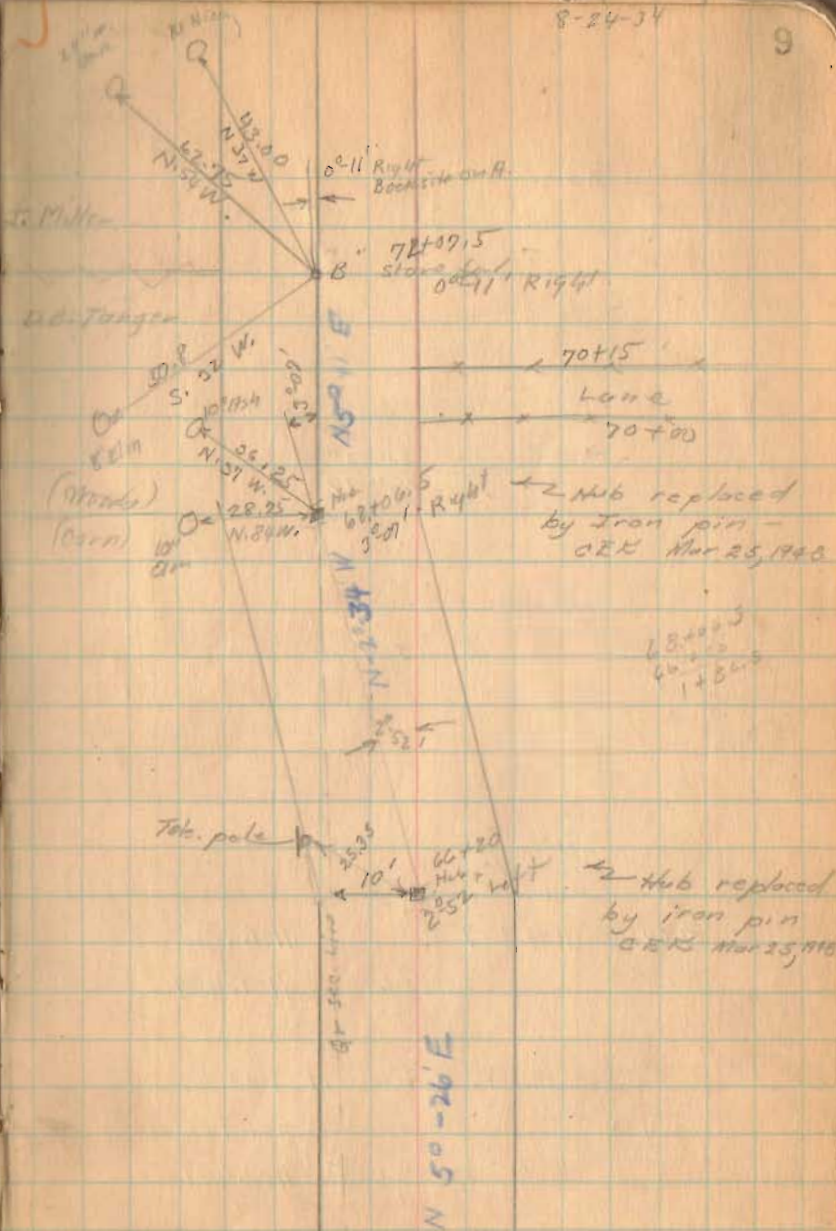
66+20

1602

INDEXED ON MAP

8-24-34

9



Road 46

TO
sidney
S.H. 234
Route 97

N.W. 1/4
480 to 0



J. Miller

79770

Levels for Mooring B.M.

TS	H.I.	S.	Elev.
3.041	1104.167		1101.126
		3.673	1100.494

check (New set up)

2.453			1101.126
	3.085		1100.494

1602

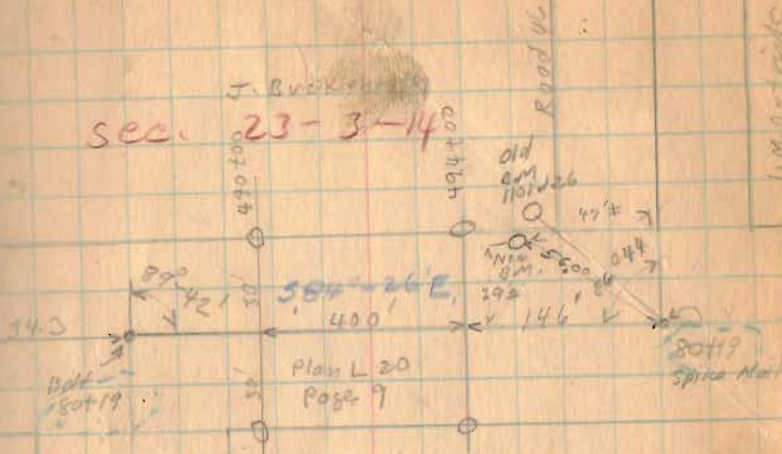
INDEXED ON MAP

W. & L. E. Gundry and
Tray M. V.

P-24-34

10

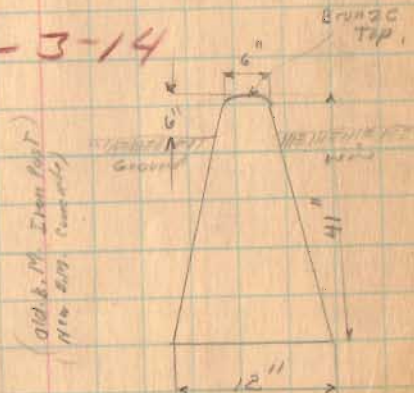
sec. 23-3-14



L.M. Detrick

Sec 22-3-14

N 5° 52' E



New B.M. Conc. Set
Nov. 19, 1934
W. & L. E. Gundry
& Tray M. V.

Road 4 L

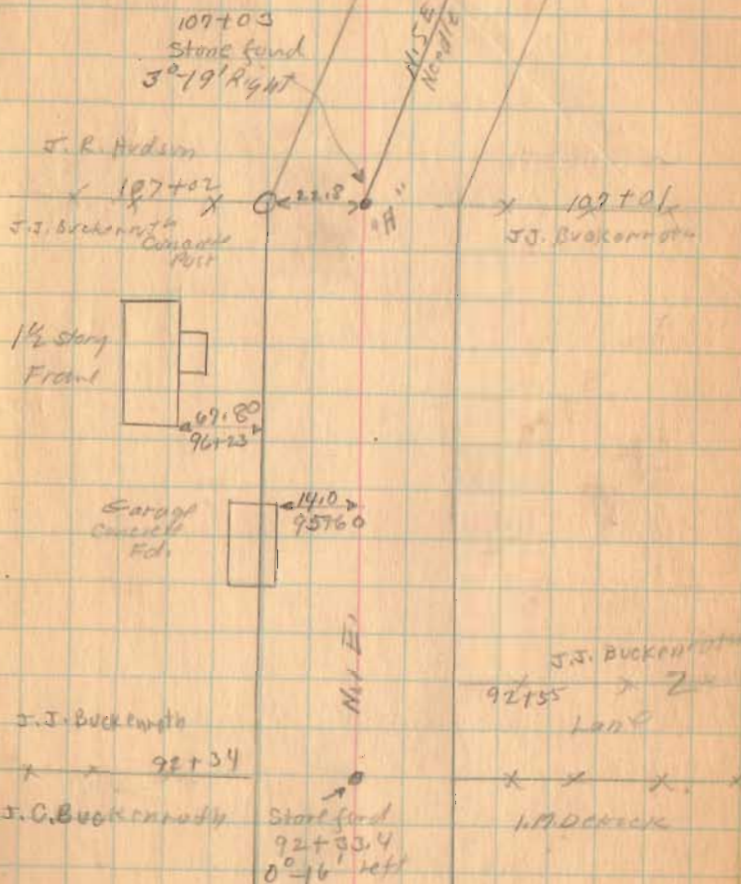
73
50
313
363

1602

INDEX MAP

8-24-34

11



Road 46

1602

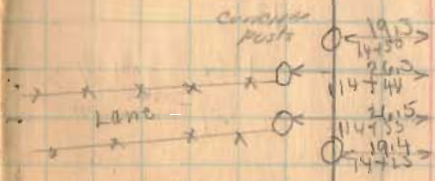
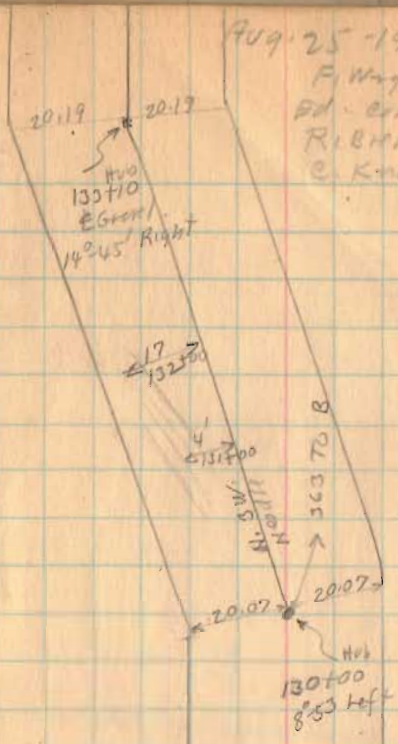
INDEXED ON MAP

✓

Aug. 25 1934

F. Wright
Ed. Eric
R. Brown
C. Knott

12

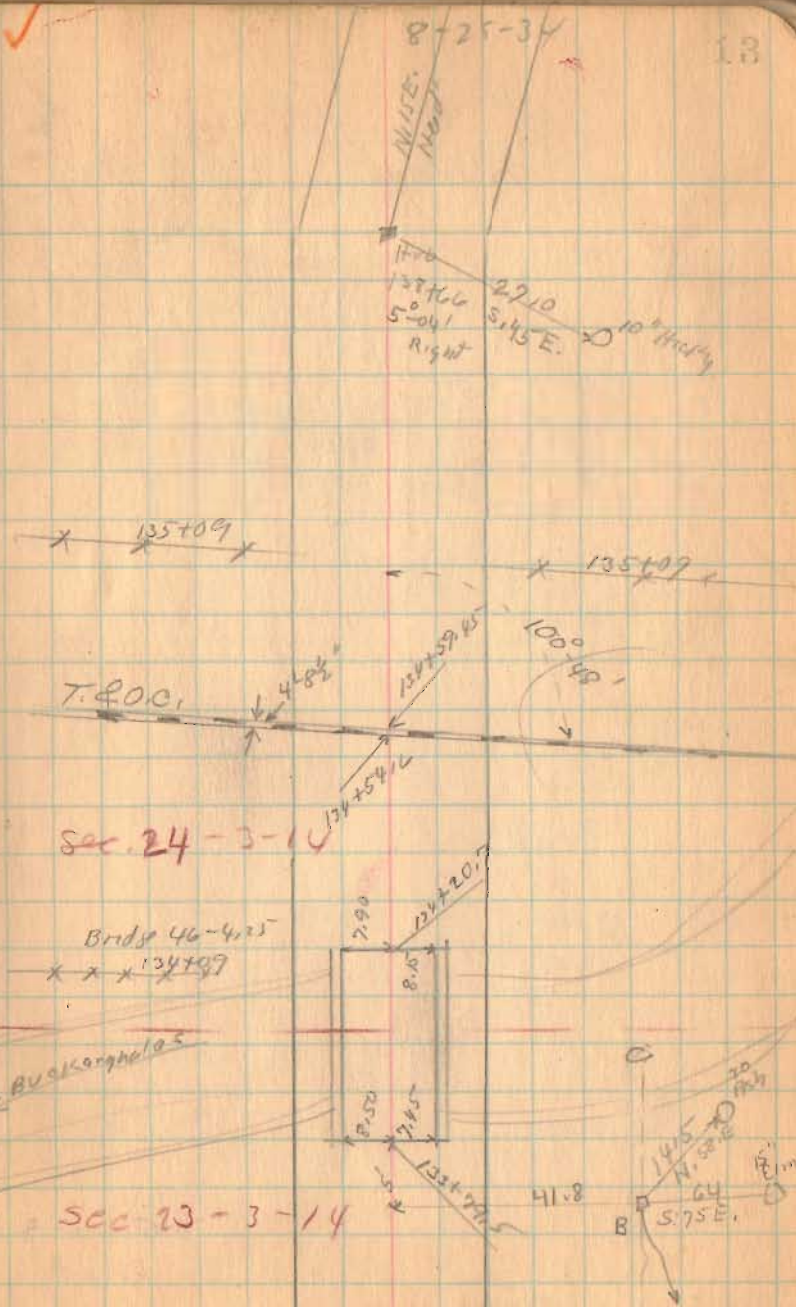


Road 46

A. (Page 11) To C (Page 13)
2694.78 feet Deed Vol. 116 Pg 459
B store gone (Replaced by
using Vitassies)

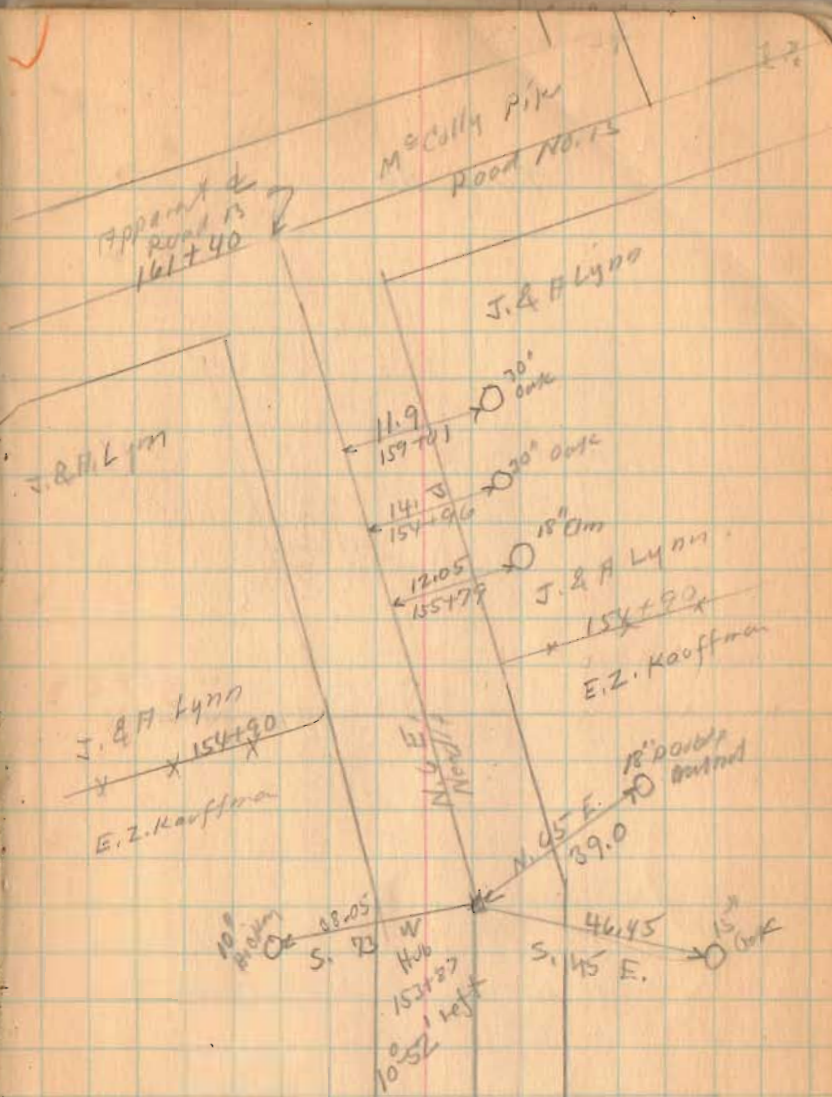
(1602)

INDEXED ON MAP



Road 46

SEC BOOK 598
Page 44



1607

Road 46

John Lynn

Road 46

16140

16140

F.O. Downing

Road 46

2240

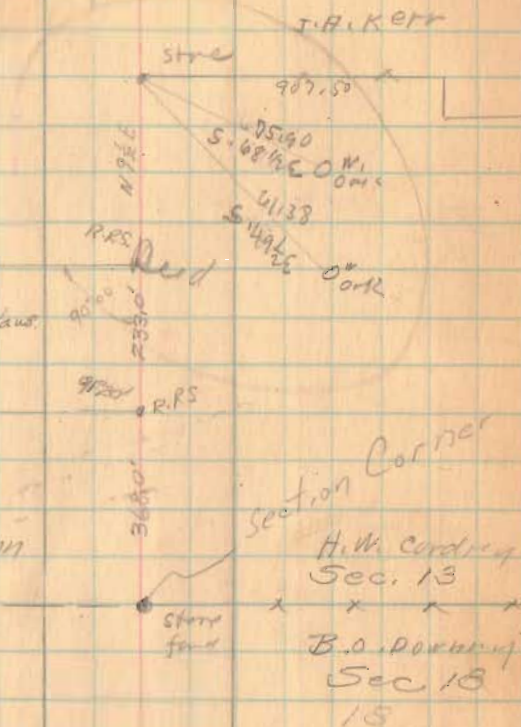
545.7

Grayd. w. Hawk
 Given by O.S. 2
 6-22-54
 545.7

Anna Lynn
 Sec. 19

Sec. 24

John Lynn

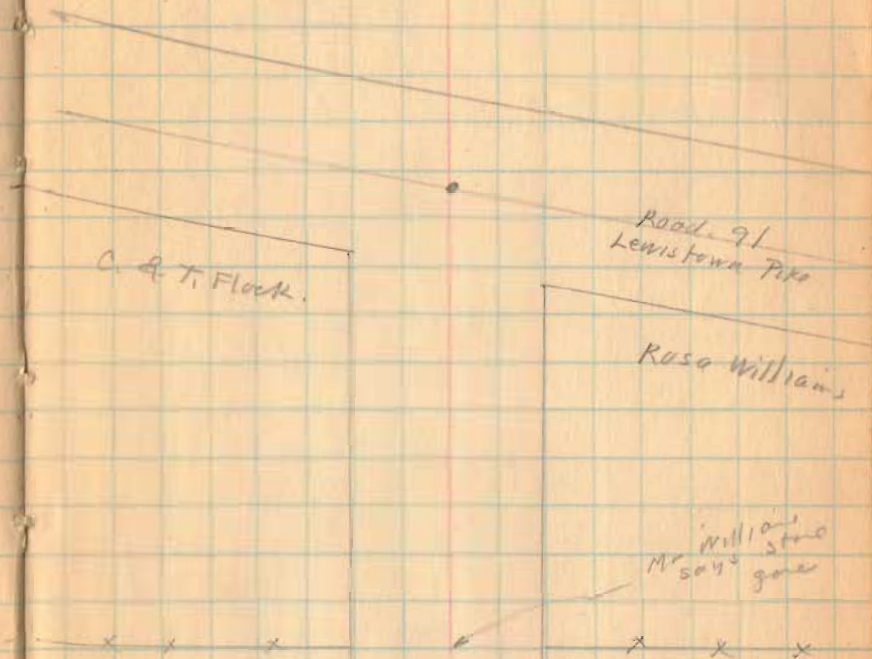


H.W. Cordrey
 Sec. 13

B.O. Downing
 Sec. 18
 18

Road 46

17

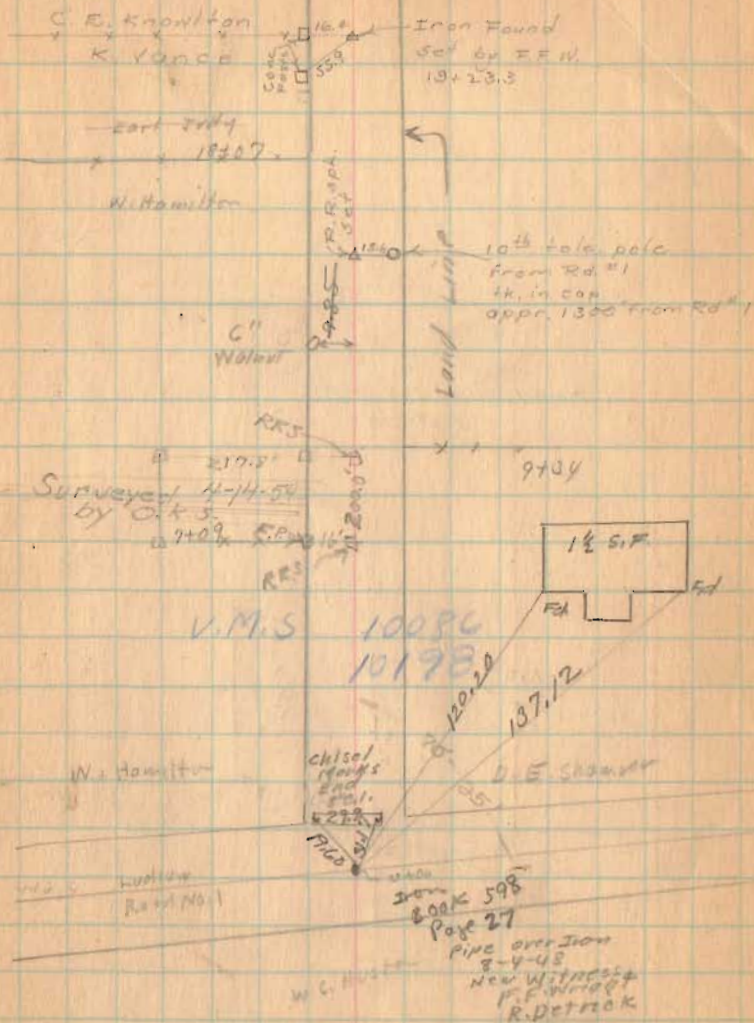


Road 185 Lake & Jefferson

Mr. Brennan says this is
a 32' Road. Granted by Trustees
fall of 1912

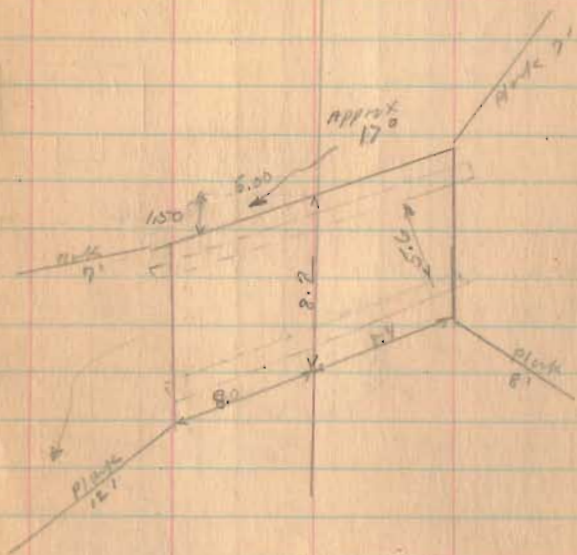
1620
INDEXED ON MAP

Oct. 27, 1939
Cool
F. Wright
J. Montgo



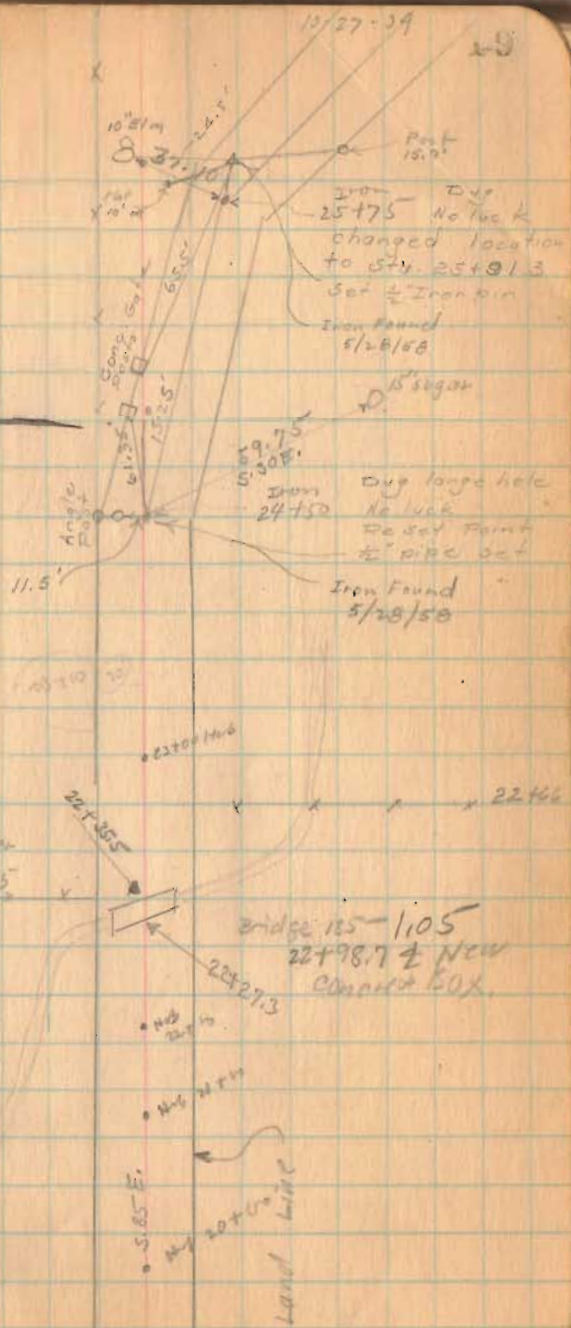
Road 185

Staked Oct. 24, 1933
F.W. & J.T.
E. Corn.



1620

INDEXED ON MAP



Road 185

Stakes set for Fence on
Knowlton Farm.

Stakes set 16' R & L. of R.
For 32' Road

Note ~

From Sta. 24+50 to 32+93.8
used center of existing metal
as C. line of Road

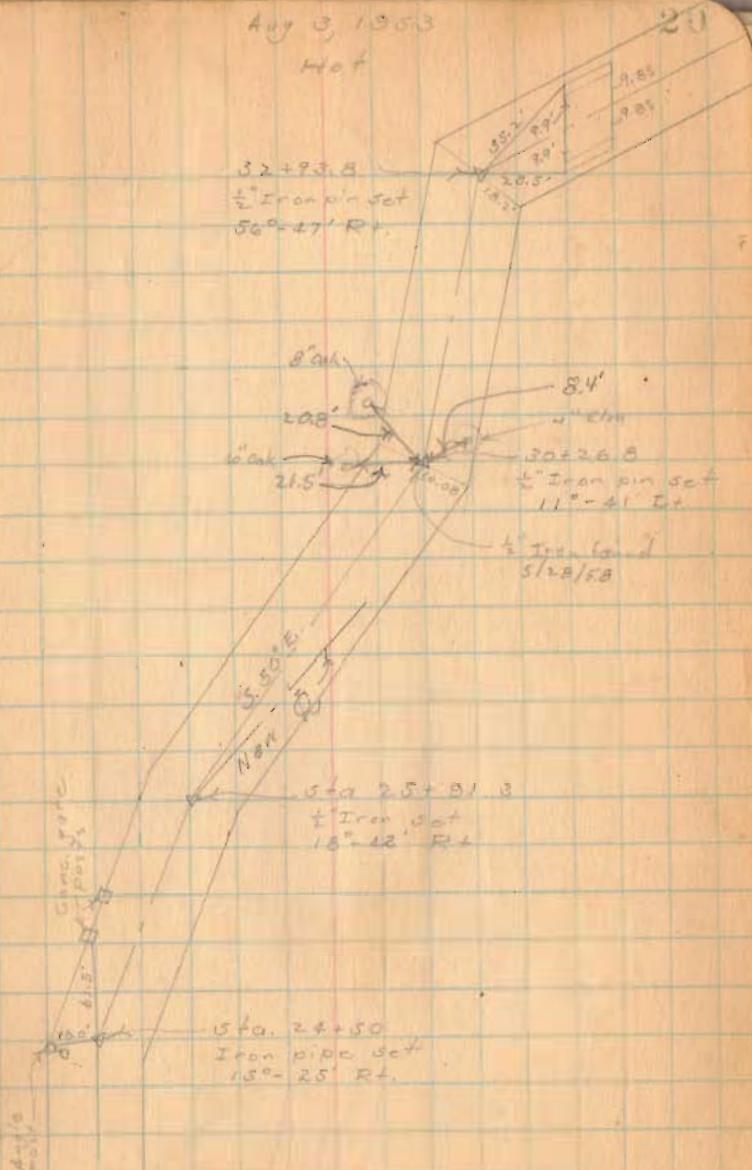
100.0
91.3

8.7

Aug 3, 1953

Hot

20



Road, 185

$\Delta = 35^{\circ}16'$
 $D = 20^{\circ}00'$
 $R = 286.48'$
 $T = 91.06'$
 $L = 176.33$

PI = 33+46.9
PC = 32+55.84
PT = 34+32.17

Relocated Center line

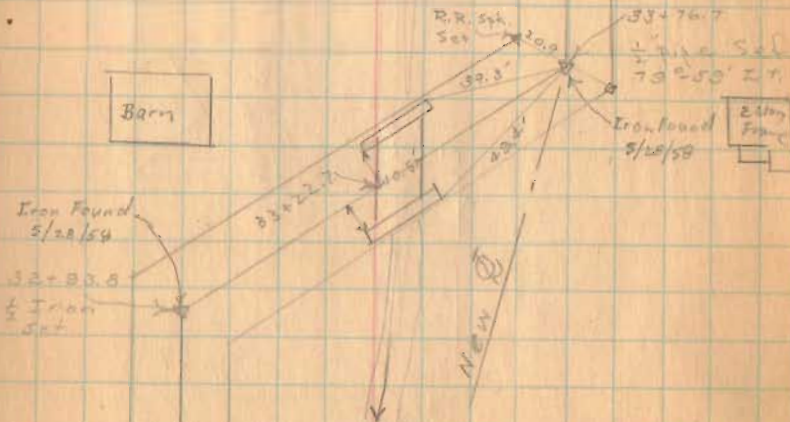
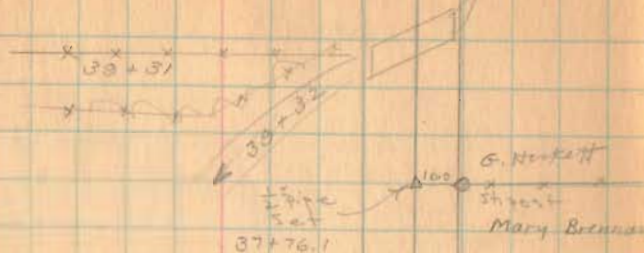
PI Iron
Sta. 33+46.9
Same as 33.76.7
352.16' Lt.

Iron
Sta. 25+91.3

✓ D. Dodson
V. Detrick
C. Nickolls

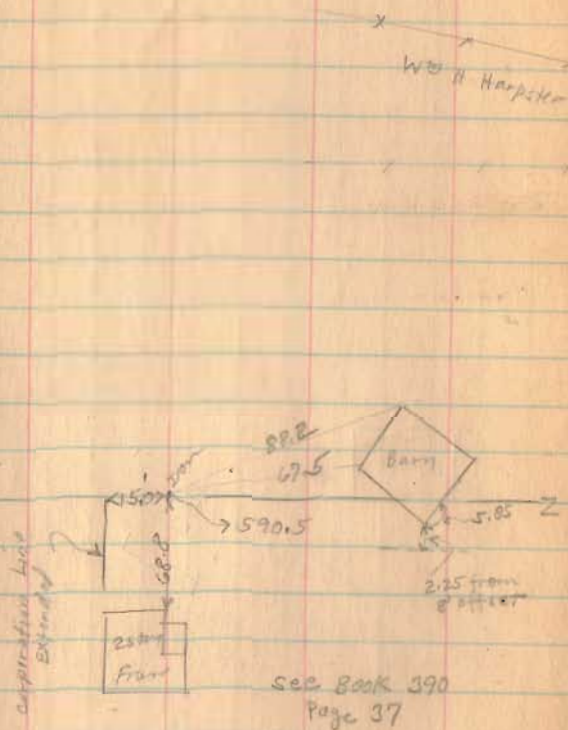
Aug. 5, 1953
Hot

21



(1620)

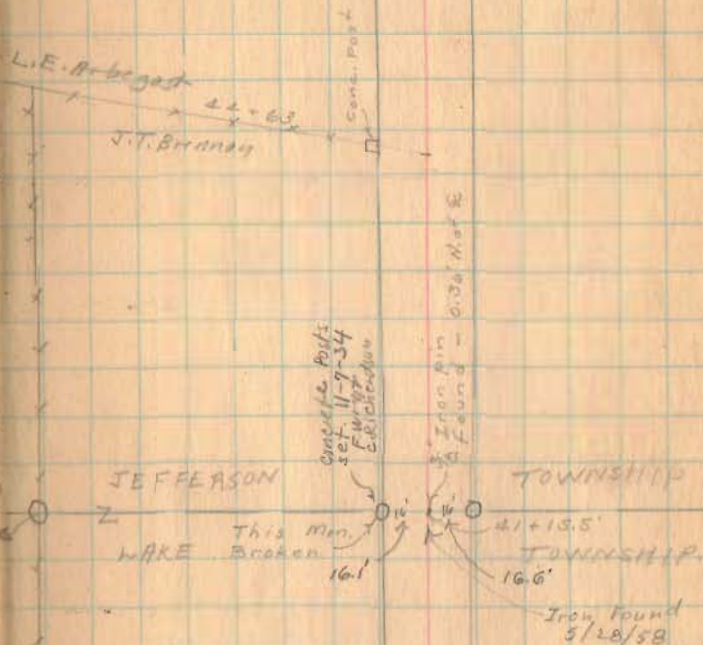
Road 185



1620

INDEXED ON MAP

22



Road 135

Road No. 179

L. E. Abegast

V.M.S.

3220

F. H. Hackett

Post

1/2" Iron Pin Found 7-31-53

22.00' elec. pole

concrete post

570.62 + 81.1

V.M.S. 4478

V.M.S.

4498

Pipe found
1.0' South of
R

58+40.5

Iron found
1.4' South of
R

58+26

52+18
FENCE



concrete posts

Harrow
tooth set
47+37.4

16.0'

Angle 0°-22 Rt.

1620

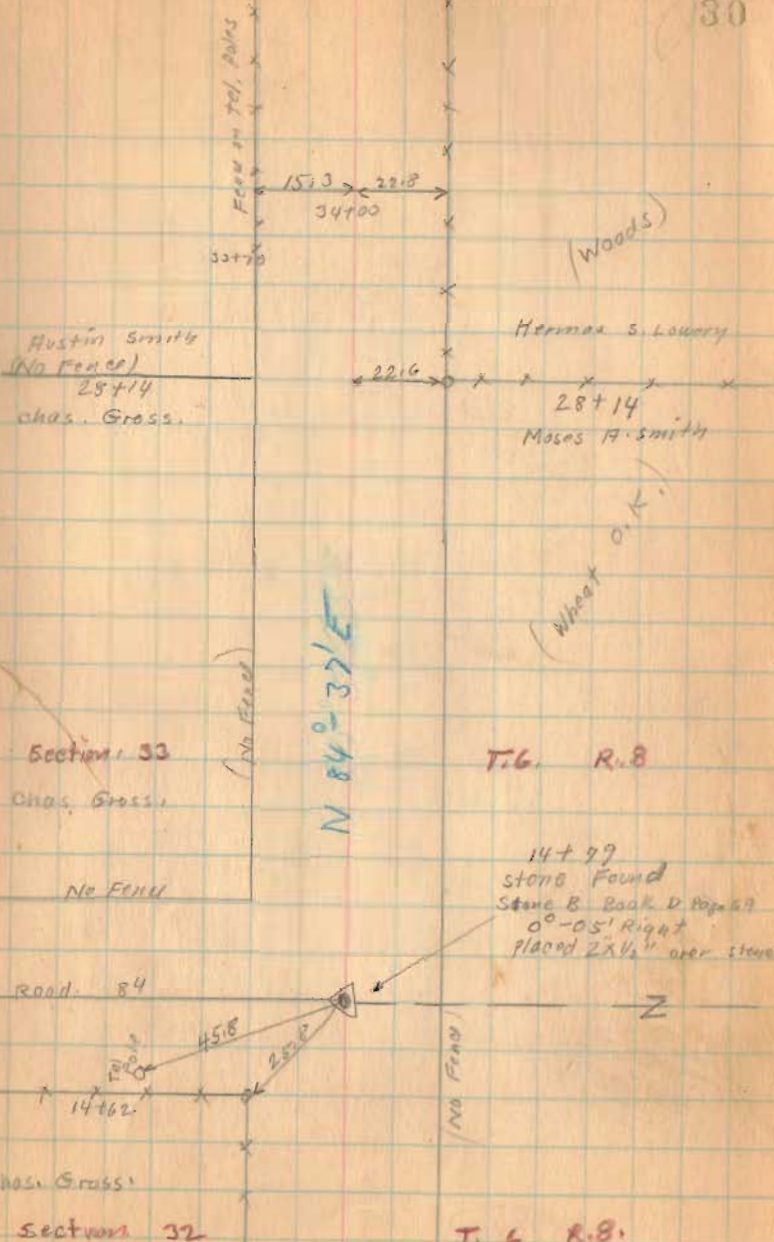
INDEXED ON MAP

0-LL

Road 81

30

6-17-36



1722

INDEXED ON MAP

Kood. 81

50+00

45+00

38+00

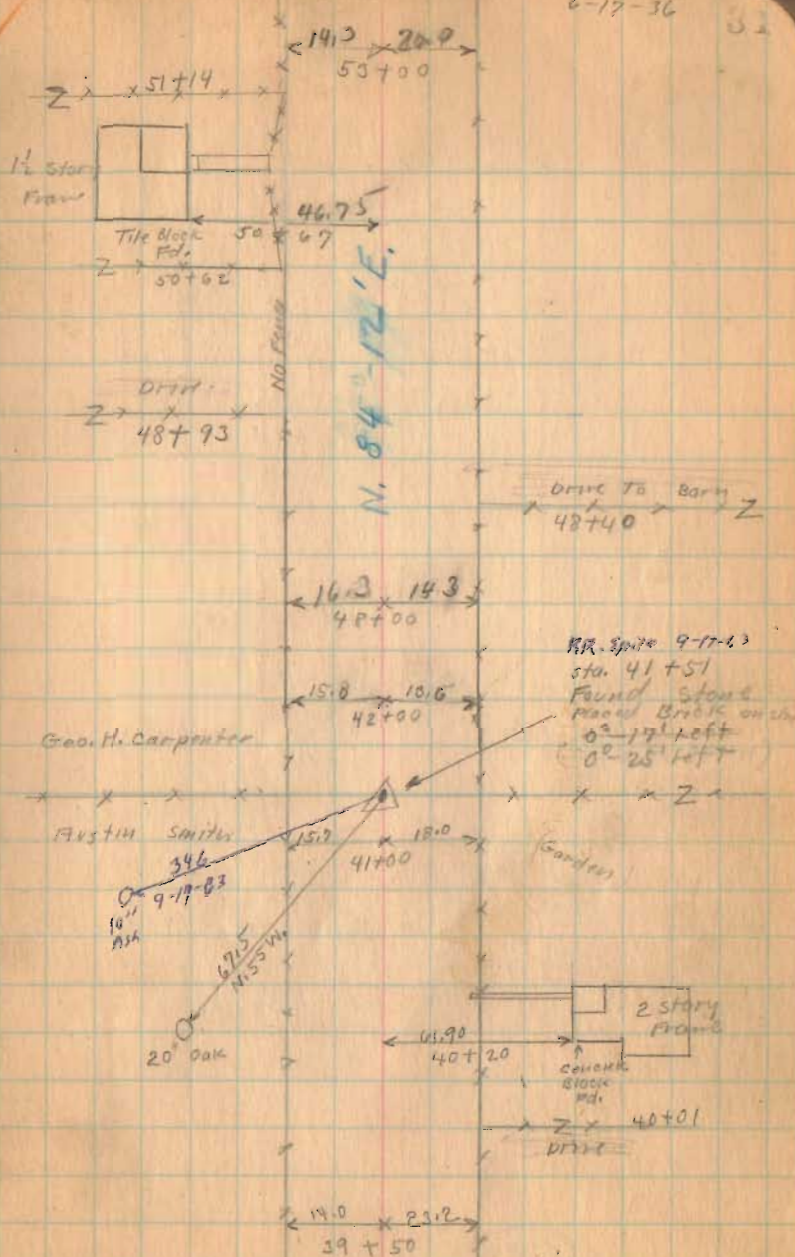
Man Found
9-17-63

1722

INDEXED ON MAP

6-17-36

32



Road 81

55+00

58+50 South City

54+00

near fence
9-17-63

lakeview - Muchimppi Hills

1722

INDEXED ON MAP

6-17-36

32

N. 84° - 22' E.

NO FENCE

15.0
55+00

14.5
50+00

RR Spike
9-17-63

FORMERS BANK
Co. LAKEVIEW

57+31
Herman Schourey

14.0
56+00

18.8

BR Spike
54+88
Stone Road
8' - 10' Right

Jack Leminger

8" Ash

10" Ash

20.30
N.H.E.

116.1
N.H.E.

Road 83

86.8
540.5

34.00

25

49.20

9-17-63

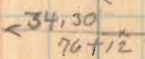
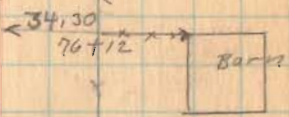
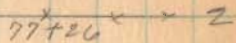
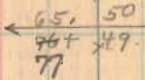
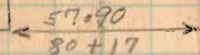
Geo. H. Carpenter

Road 81

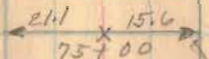
2 story
Frame



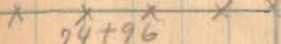
Tile Block
Fd.



J.G. Owen



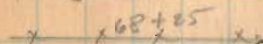
Henry Miller



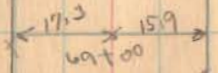
Section 34

T.6 R.8

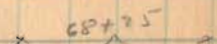
Henry Miller



Jacob Lininger



Thomas A. Fox



Bank Co. Lakem

section 53

T.6 R.8

Dug large
hole

No Luck

NO FORD

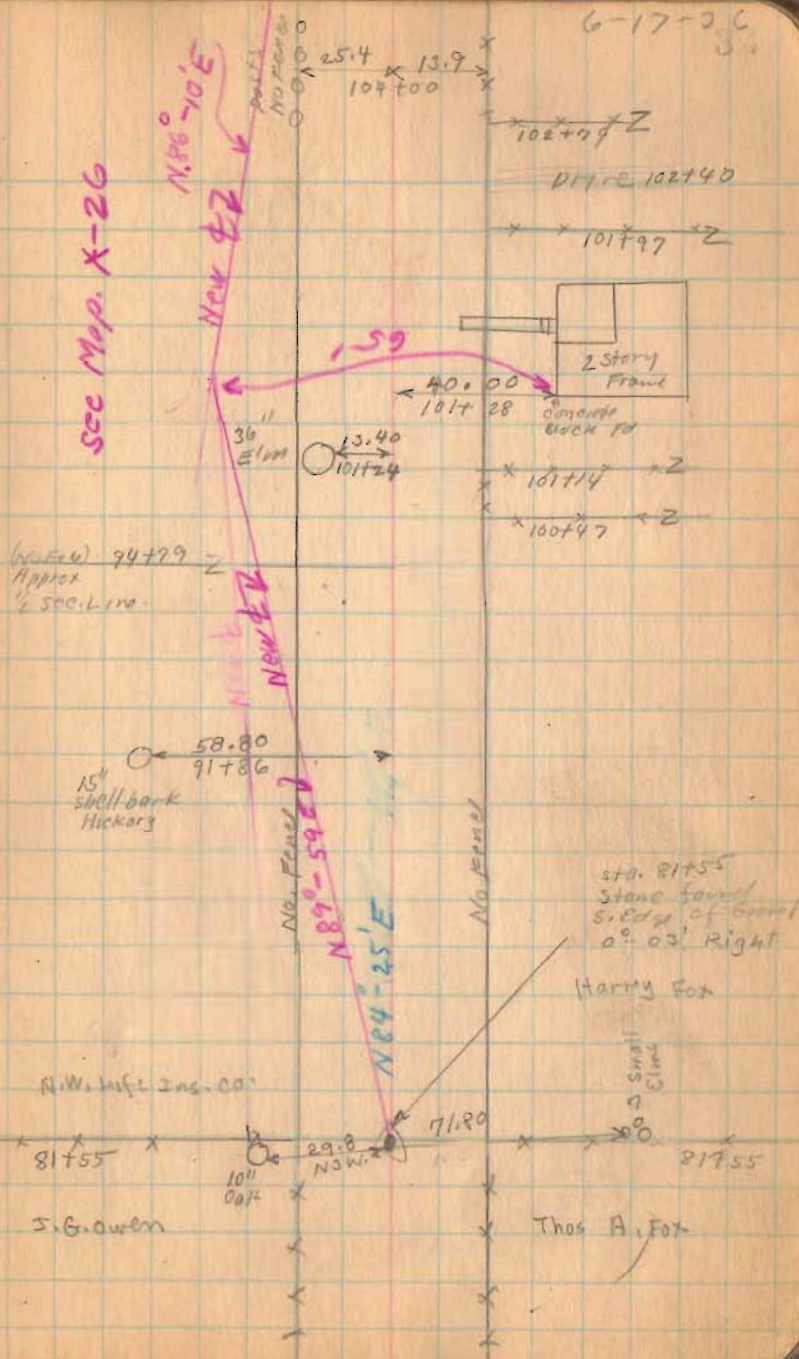
1722

INDEXED ON MAP

Road 81

1722

INDEXED ON MAP



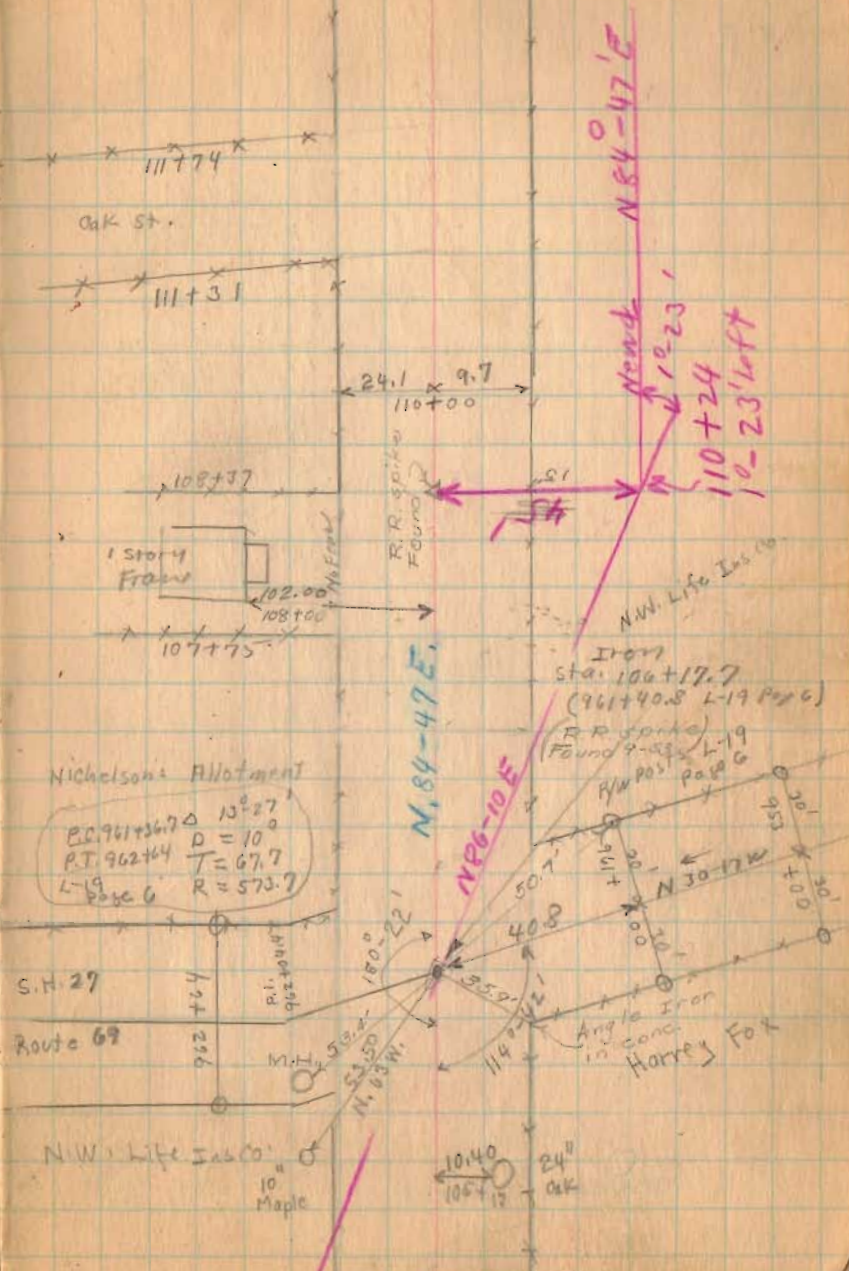
Road 81

64-55
(29 0)

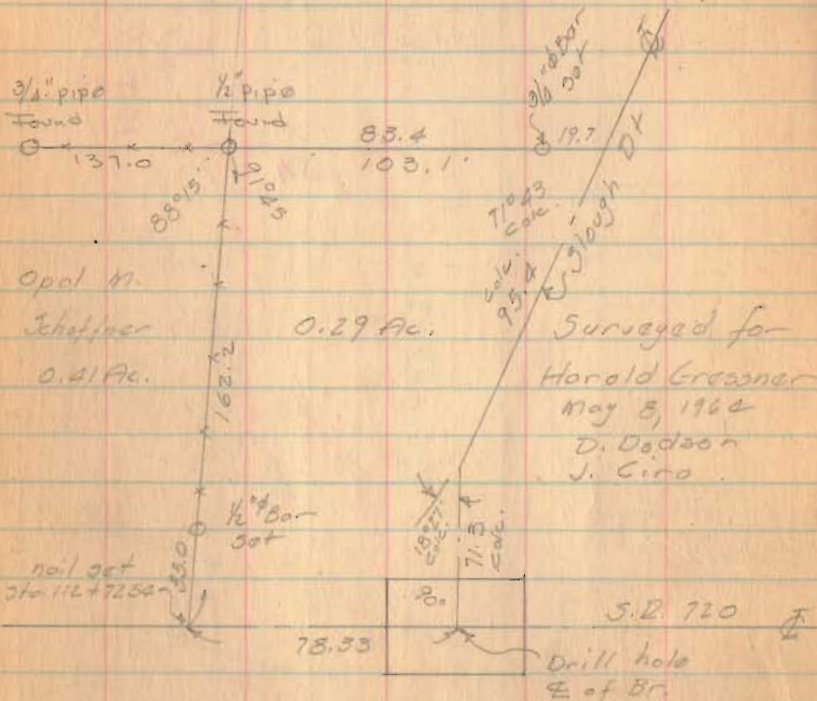
1722

INDEXED ON MAP

6-17-36



Road 81

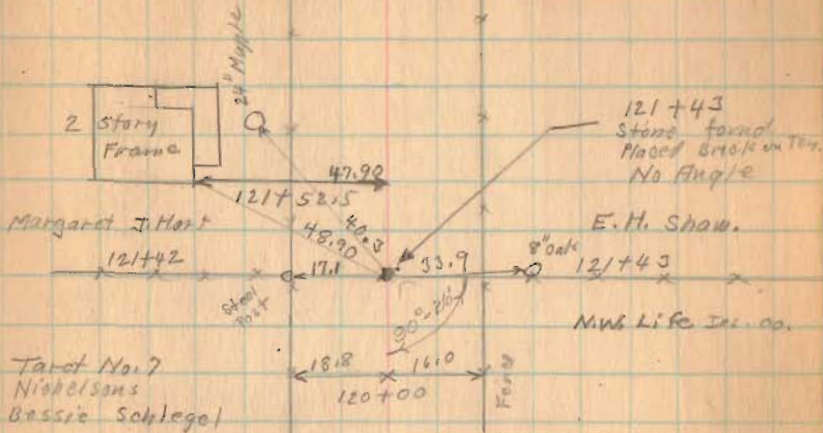


1722

INDEXED ON MAP

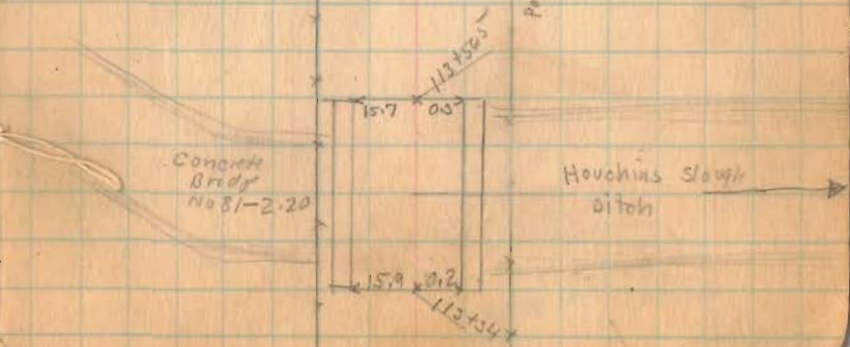
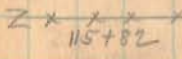
section 35

T.G R.B



Section 34

T.G R.B



Posts No Fence

Road. 81

3139

2771

368

'5

2771

2458

313

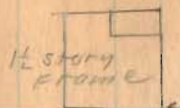
'10

1722

INDEXED ON MAP

6-17-36

37



1/2 story
Frame

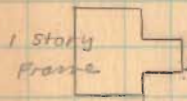
No. Feet

70.7

132+11

E.H. Shaw.

131+39
Grover M^o Geo



1 story
Frame

No. Feet

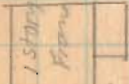
52.60

128+45

XXXXX
Grover M^o Geo

127+71.7

Frank E. Worth



1 story
Frame

No. Feet

51.60

126+57

Frank. E. Worth

D.H.V.

126+22

S.L. Horn

S.L. Horn

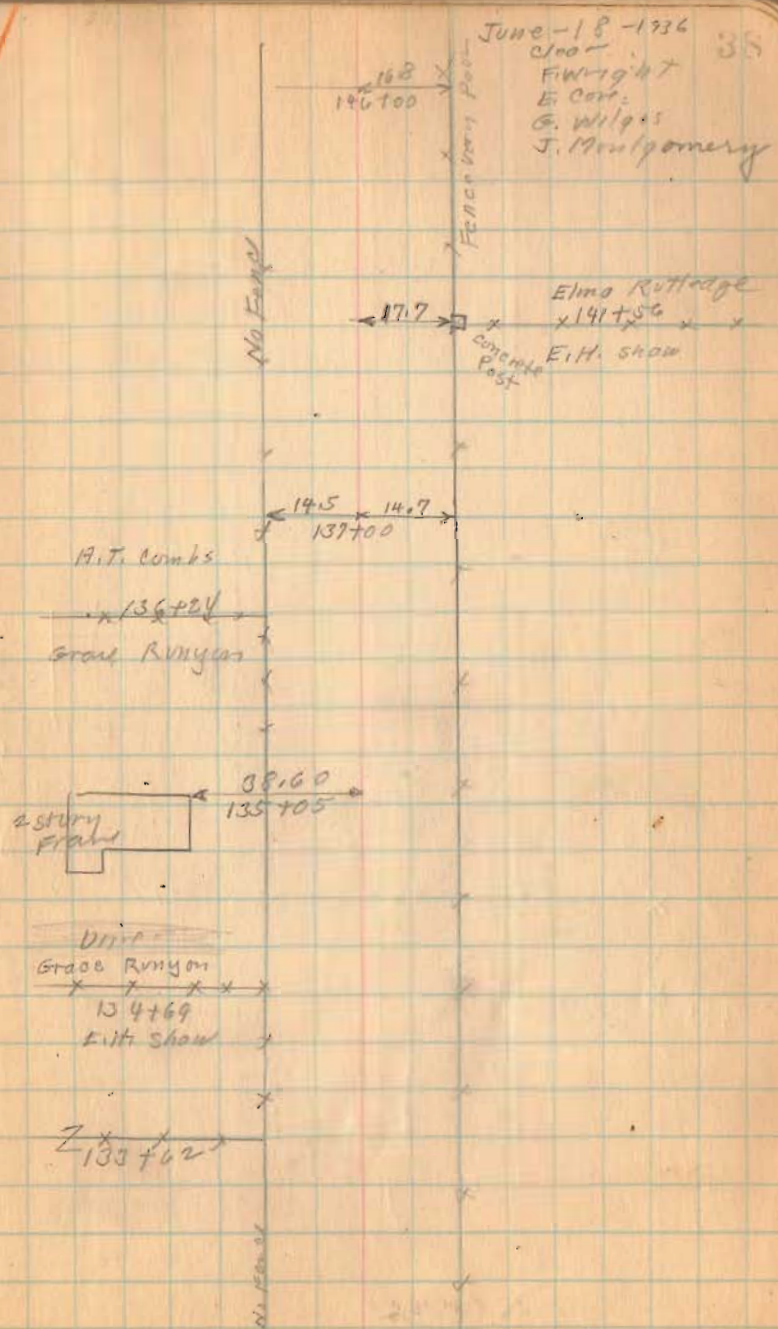
124+58

Margaret S. Hart

Road 81

1722

INDEXED ON MAP



June 18 1936
Joo -
F Wright
E. Carr.
G. Wilgus
J. Montgomery

No Fence

Fence Line Post

Elma Rutledge
x 141 + 56
E.H. Shaw
concrete Post

14.5 x 14.7
137 + 00

A.T. Combs

x 136 + 24

Grass Runyon

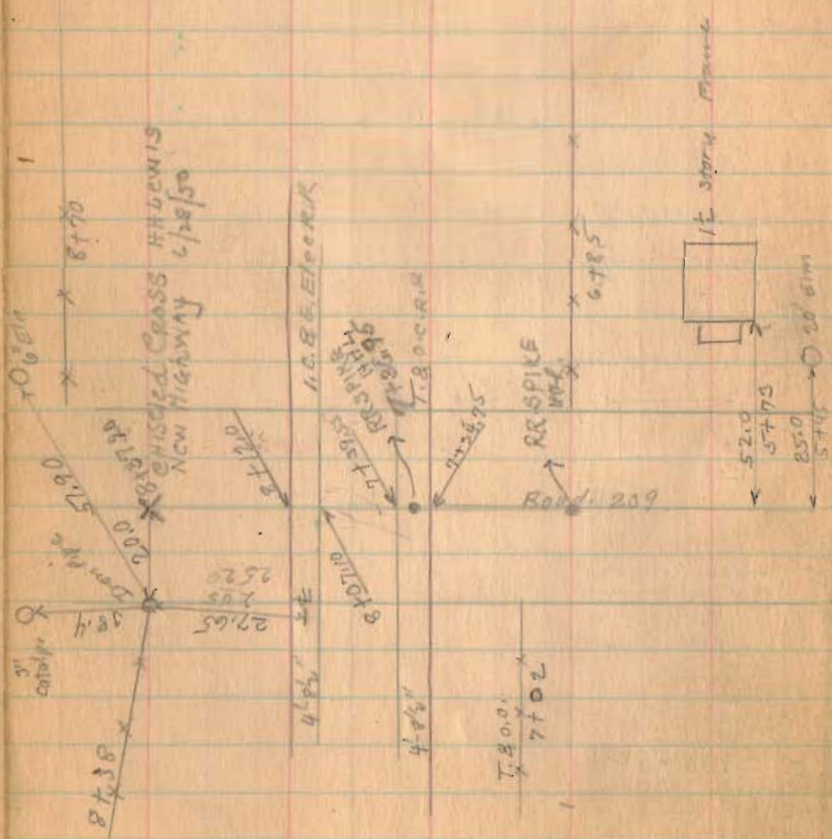
2 story Frame
38.60
135 + 05

Grass Runyon
134 + 69
E.H. Shaw

Z 133 + 62

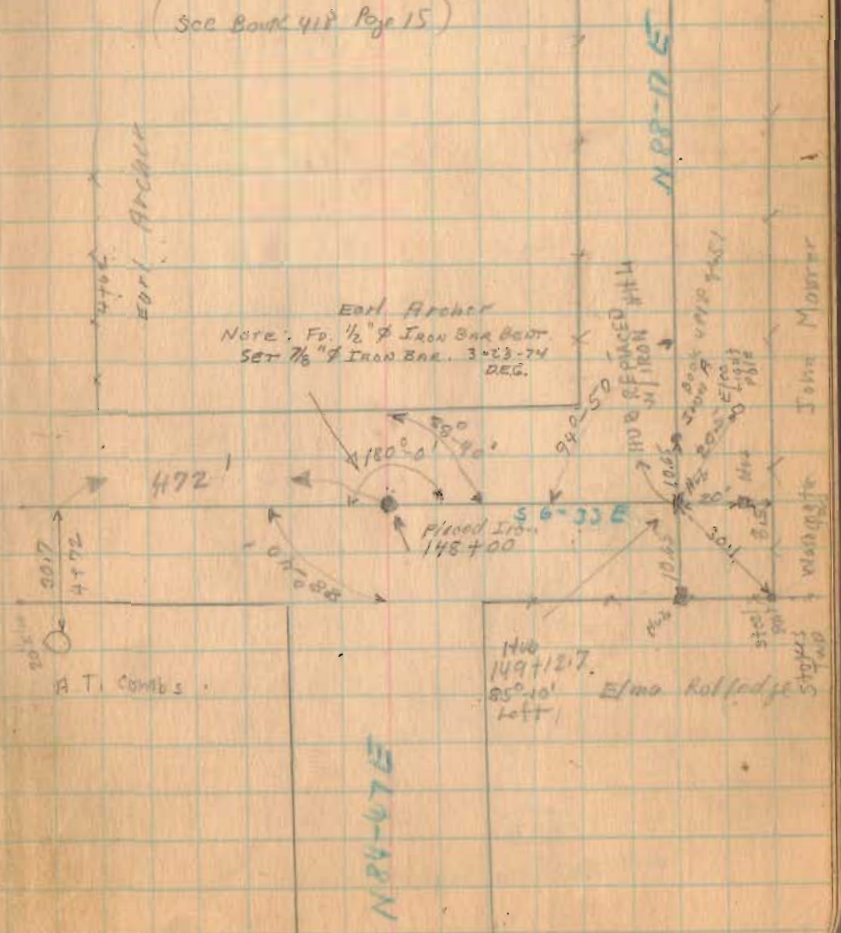
No Fence

Road 81



1722
INDEXED ON MAP

(See Book 403 Page 8)
 (See Book 418 Page 15 & 16)
 (See Book 400 Page 51)
 (See Book 418 Page 15)



N 84-67 E

Road 81

1722

INDEXED ON MAP

REFER W RR SPINE
ORIG NOT LOCATED

← Iron Pipe
found.
162+26
0° 24' RIGHT

30" corr Pipe

← 15.4 → 17.0

111+18

111+67

No Fence

L.D. Hetrick

162+36 P.W.P. Ditch

John Moore

← Flood
Bridge

155+92

Shoal
Post in concrete

← 17.65 →

← 15.6 →

152+62

Ditch 152+28

2 story
Frame
concrete block fd.

← 30.9 →

← 16.151 →

Shanty

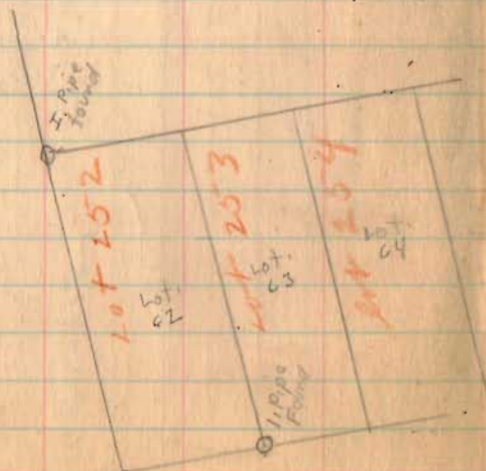
← 15.0 →

← 16.55 →

151+46

Shoal
Post

Road 21

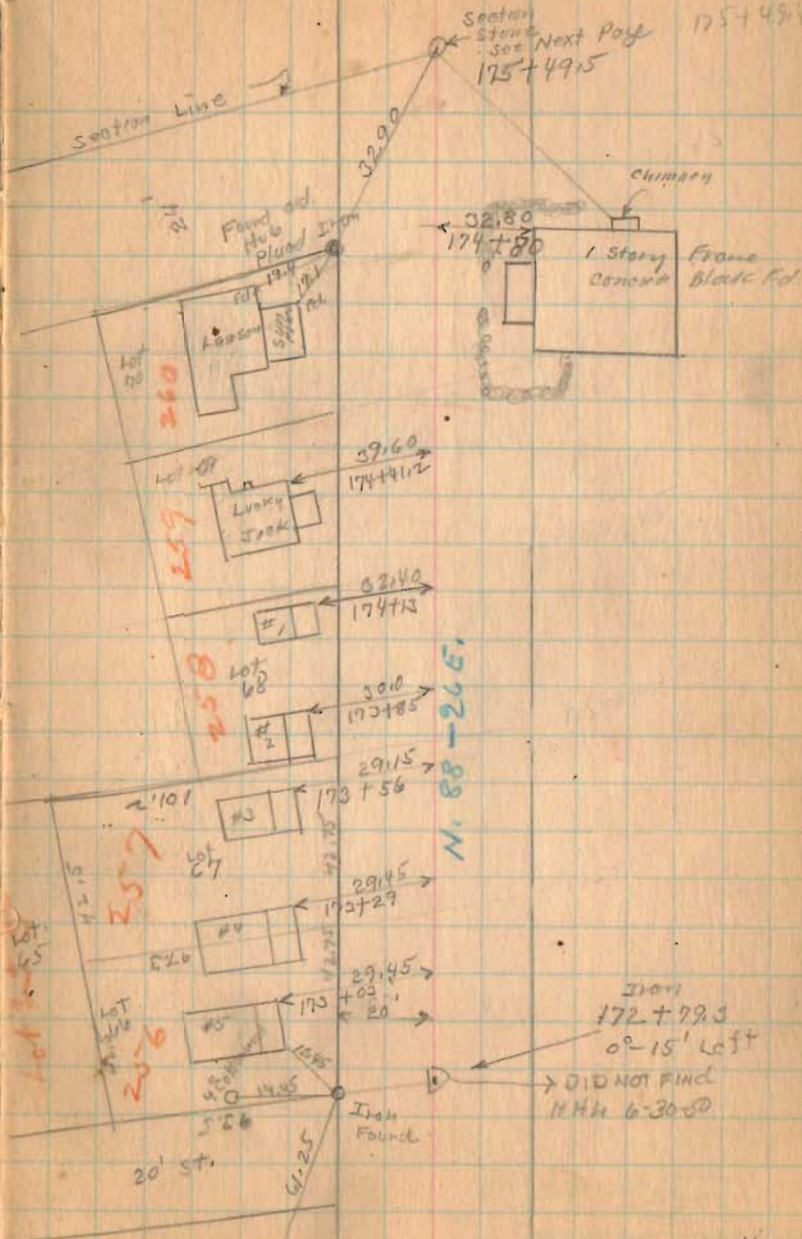


1722

INDEXED ON MAP

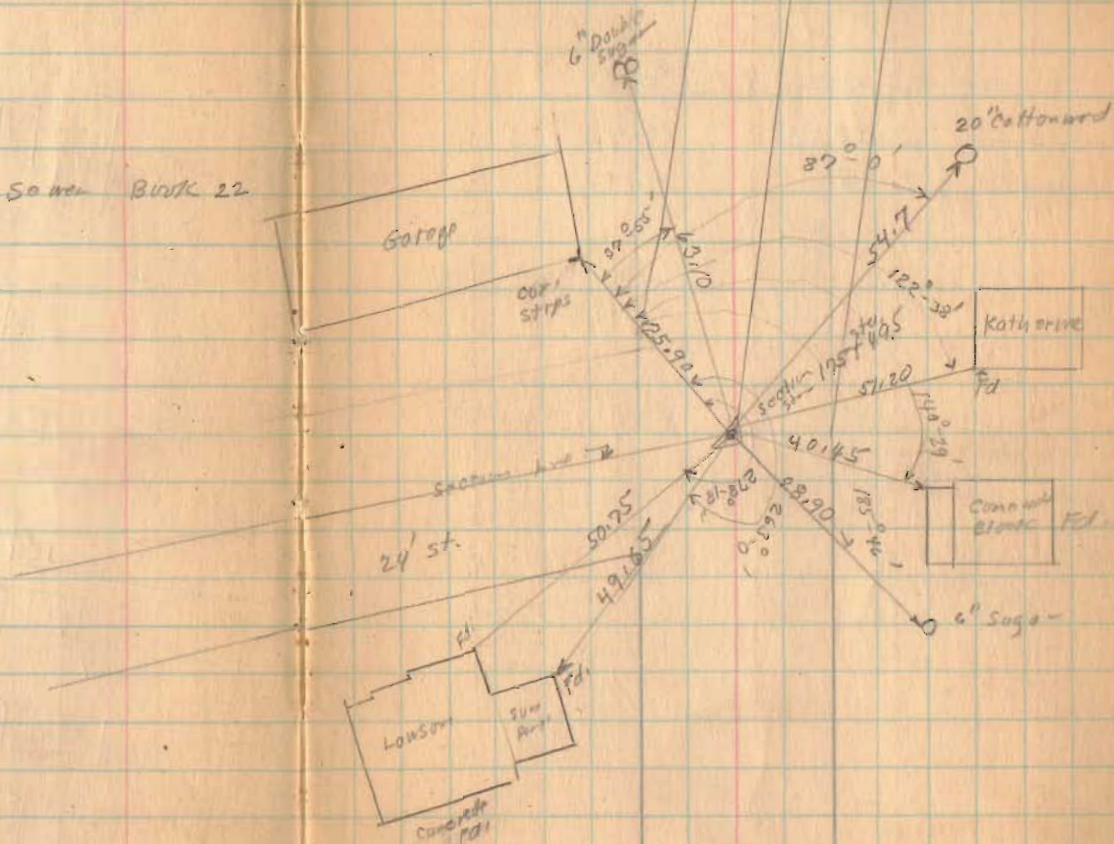
6-18-36

175+49.45



Road 81

See Sanitary Sewer Book 22
Page 38



1722

INDEXED ON MAP

Road 81

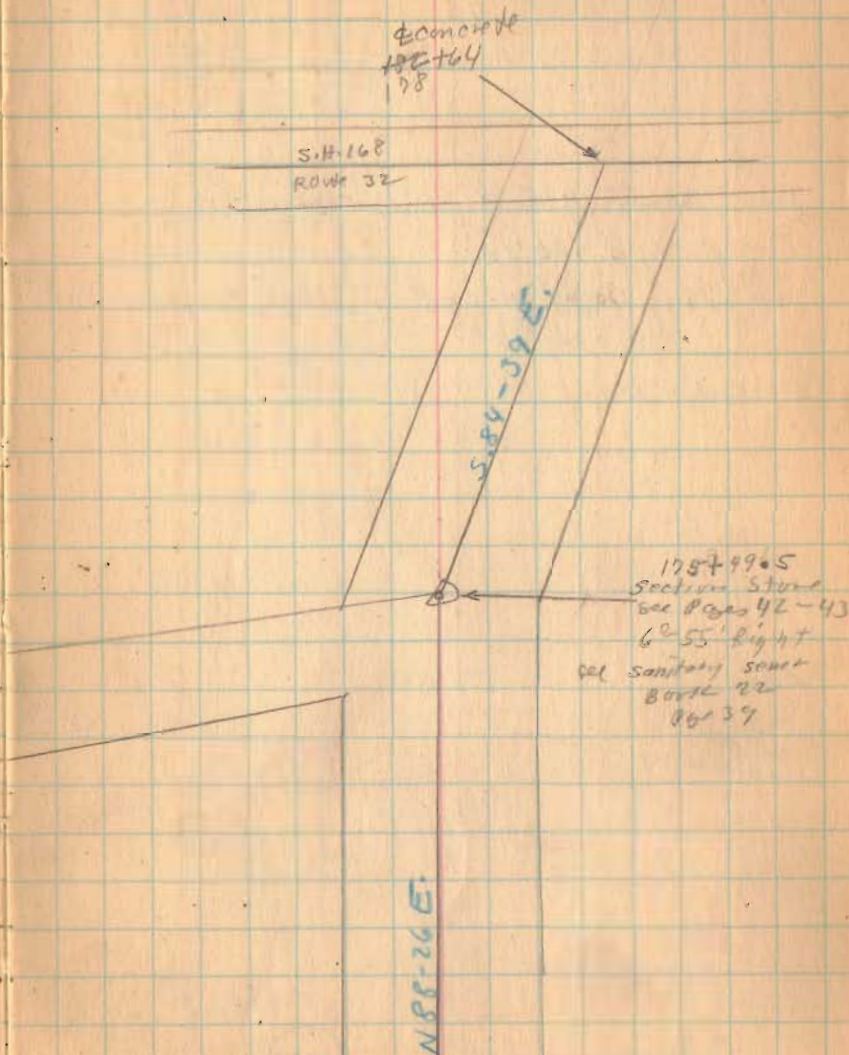
Length	178464	Feet
Length	3.38328	Miles
Length	3.38	Miles

1722

INDEXED ON MAP

6-18-34

56

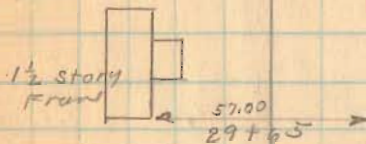


Road 75

7-21-36

46

M. Moore
x 33+52 x
E. C. Morgan



41+00

57+00

33+00

27+00

Concrete Open
Box

Concrete Slab
NO. 75-1.40



C. A. Young

N. W. Painter

24+26.5
stone found
0'-04' Left

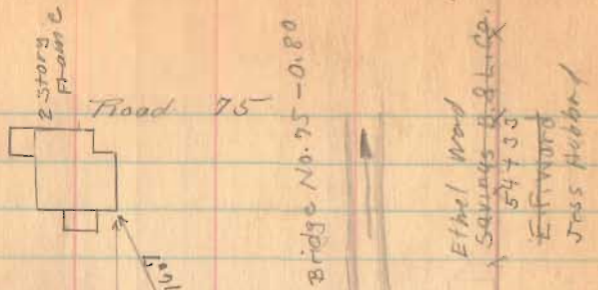
E. C. Morgan

x 23+15 x

Luther H. Paul

1729

INDEXED ON MAP



61+00

57+00

51+00

45+00

stone found. No Angle

W. Not estine
C.A. Young

Bridge No. 75 - 0.80

Ethel Wood Savings Bldg.
54733
E. Wood
Jess Hubberd

1729

INDEXED ON MAP



43+31
stone found
89+12' left

95
89

100.00

21.90
10" Ash

Ethel Wood Savings Bldg.
54733
E. Wood
Jess Hubberd
E.T. Stabler

M.M.
E.T. Stabler
x 42+67 x
M. Moore

Flood 95

81+00

95+00

69+00

Produced A.B. to C. Drive Hub at C

67+00

1729

INDEXED ON MAP

7-21-36

±8

Maria Lakin

80+84

D.R. Lakin

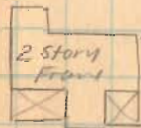
← 20.8
98+90 → 12" Walnut

70+99
Hub placed
0^e 23' left.

→ x x 2 x →

← 25.8
C H. 16W. x → 0^e Walnut
D.R. Lakin
x 70+99

Ethel Ward



← 77.45
66+02

Road 102
Richland Twp.
50' Bellecenter Pike
Free Turnpike Record 3 Page 122-

staked 25' from $\frac{1}{2}$ for 50' Road.

1794

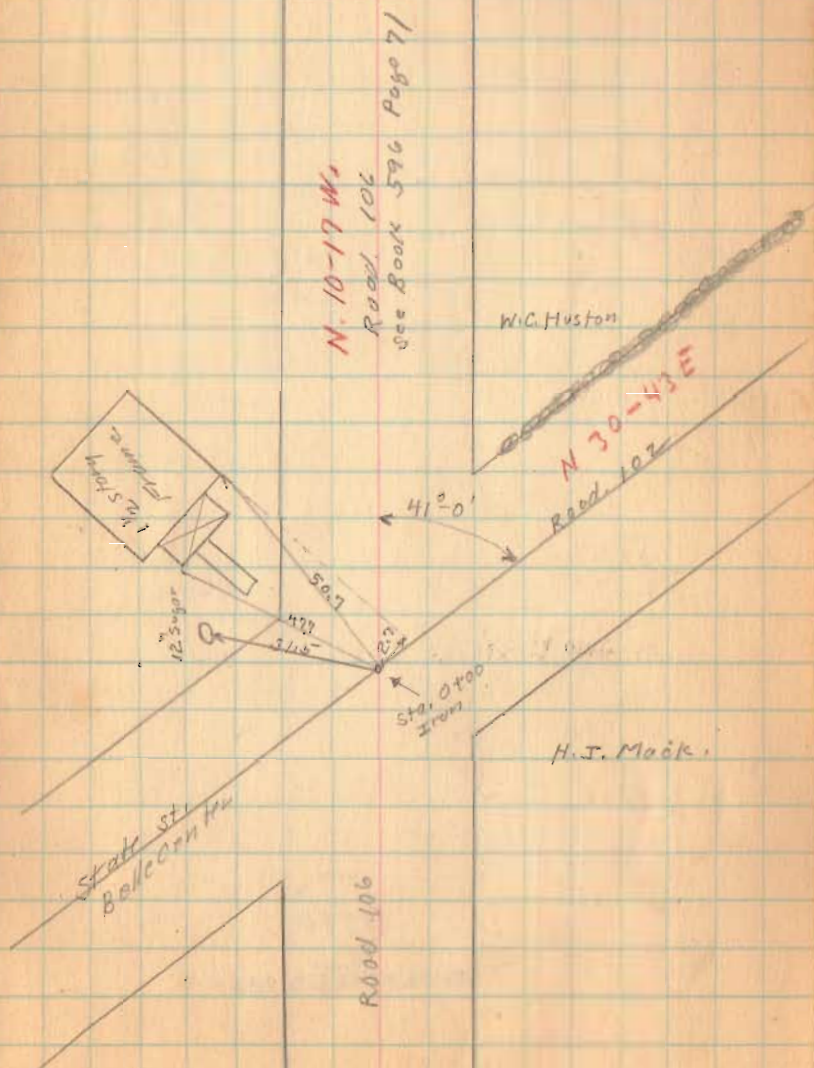
INDEXED ON MAP

5+00

1+50

R/W. Posts

✓
Aug. 26-1937 50
Cool-Cloudy
F. Wright
G. Wilgus
J. Montgomery



Road. 102

13750

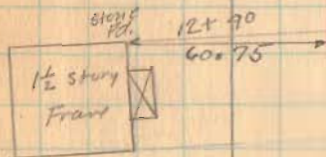
10700

1794

INDEXED ON MAP

8-26-37

51



M.C. Orr

x x 12x02 x x

H.C. Huston

x 2 x 11x17 x

11x23

Walter Lamb
Ch. Ramsey
11x34
H.C. Moore

Road 102

8-26-57

53

From
16+82
0°-00' Right
L.G. Wilmont

16+82
H.E. Dysert

N. 30-49E.

J. Wikamot
W. Leffer

Road 103
See Box 582
page 63

49°-14'

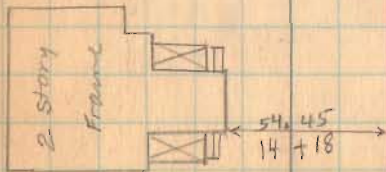
91.10

Erk. Pottery by
Walter Lamb

16+38.50
Iron
No. Angle

stone
23.95

N. 30-43E.



H.E. Dysert

13+89
M.G. Orr

17+25

15+75

1794

INDEXED ON MAP

Road 102

29786.5

25+00

20+00

1794

INDEXED ON MAP

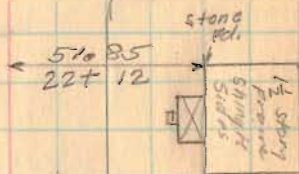
✓ B.M. Marahon
x x x 27+13
L.G. Wilmut.

8-26-37

58



50.85
26+57



L.G. Wilmut.

x x 19+54 x
Wilmut.

19156
stone
Level with Top
No. Angle

Road 102

40+00

35+00

34+10

1794

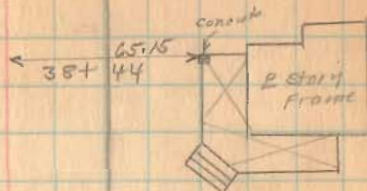
INDEXED ON MAP

8-26-37

W. Leffler

39+66

B.M. Monahan



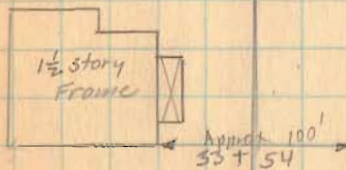
N 31° 11' E.
N. 36 E.
Headline

Helm Bloom

34+35.3

J.L. Monahan

Iron Pipe
34+35.3
0°-22' Right



Iron Pipe
29+86.50
No. Angle

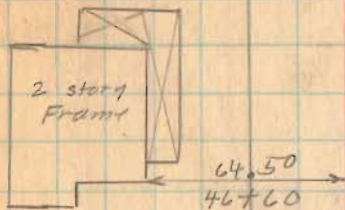
J.L. Monahan
29+86.50

J.A. Lam et.

8-26-37

50

Road 102

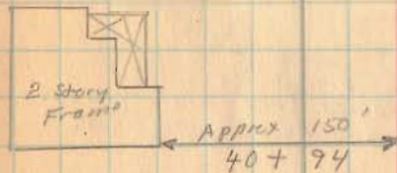


Harry Noble
48.64
Helen Bloom

47+25

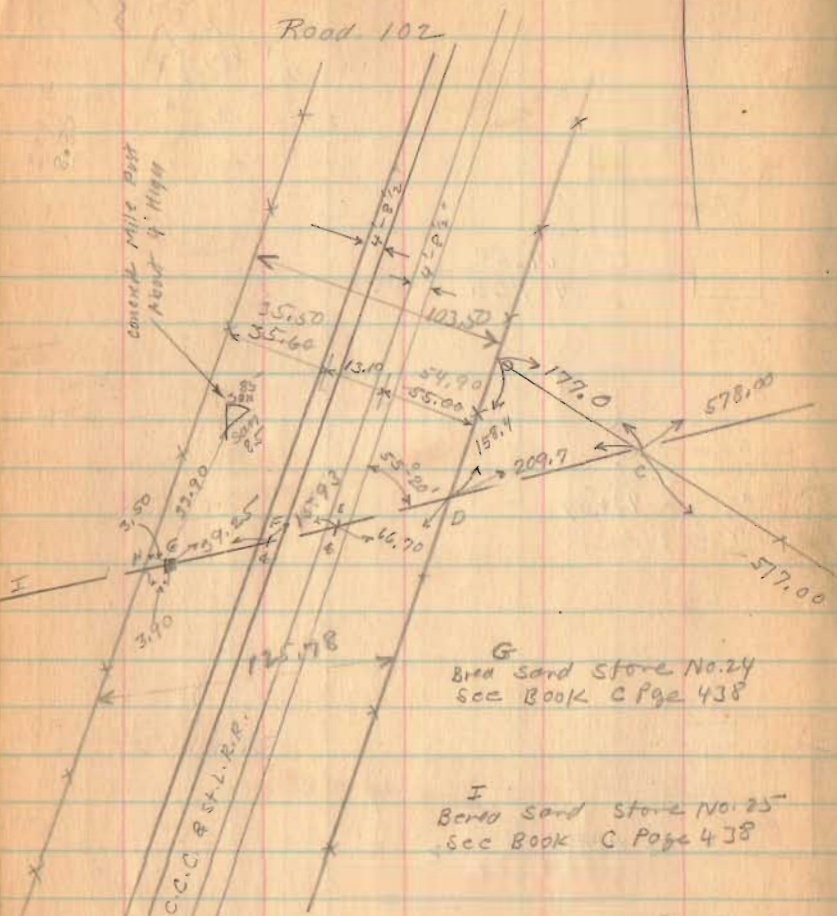
Sam Hall
John Irvine
43.09
Wilcoff/er

43+00



1794

INDEXED ON MAP



(See Page 58)

54+00

50+47.5

1794

INDEXED ON MAP

Aug. 27, 1937

Cloudy

F. Wright

G. Williams

N. W. Wren

J. Montgomery

Length 5488 Feet

Length 1.0394 Miles

Length 1.004 Miles

12" Hickory

135.60

"A"
Berea sand stone
Marked with

Hardin Co.
Wagon Co.

Iron
54+88

(See Page 57)

25.00
27.16
25.00
29.16

59°-08'

N 32-09 E.

93-51'

50+47.5 M. & P. Powder
Sam Hall

15' Elm

68.20

stone level
with top

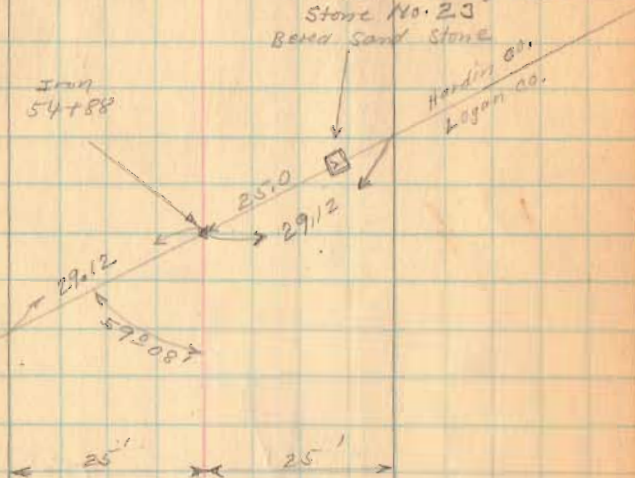
50+47.5

0°-58' Right

49+30 Lane To Have

Road 102

(see Page 56)

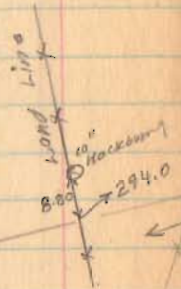
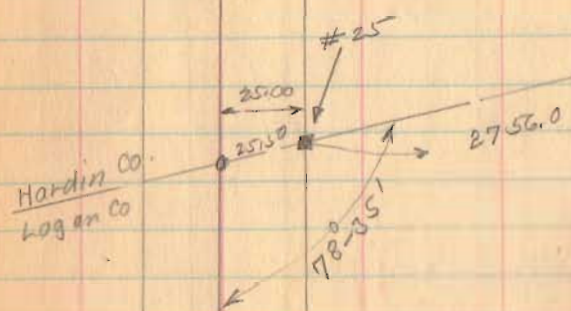
See Book C Page 438
Stone No. 23
Berea Sand StoneIron
54+88Hardin Co.
Logan Co.

1794

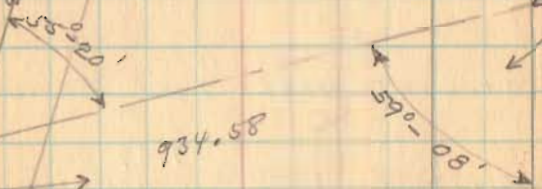
INDEXED ON MAP

Road 102

Road 106
See Book 596 Page 27



W. Trunk
C.C. & F. Trunk
C.C. & F. Trunk
R.R.



Road 102



(See Page 56)
(See Book C Page 438)

1794

INDEXED ON MAP

Road 23
Miami and Pleasant Twp

1892
60' sta. 0+00 TO 21+78 Road Record 3 Page 141

1899
60' sta. 21+78 TO 35+03 Commissioners
Journal 6 Page 117

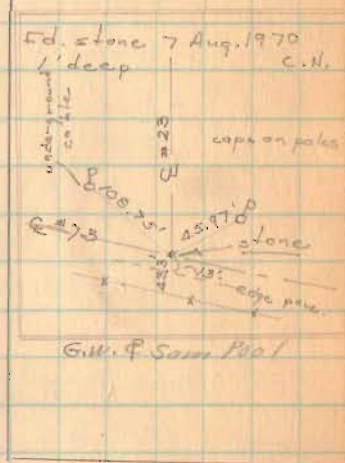
Staked 60' from 21+78 to 35+03

1795
INDEXED ON MAP

Sept. 4, 1937
Clear Warm
F. Wright
G. Wilgus
W. W. W.

55

G. W. & Sam Pool



G. W. & Sam Pool

Road 73
Miami Valley Pike

sta. 0+00

stone W. side Gravel
15' Ash 5 7/8" W 35'
8' Willow 6.75E .35'

Road 23

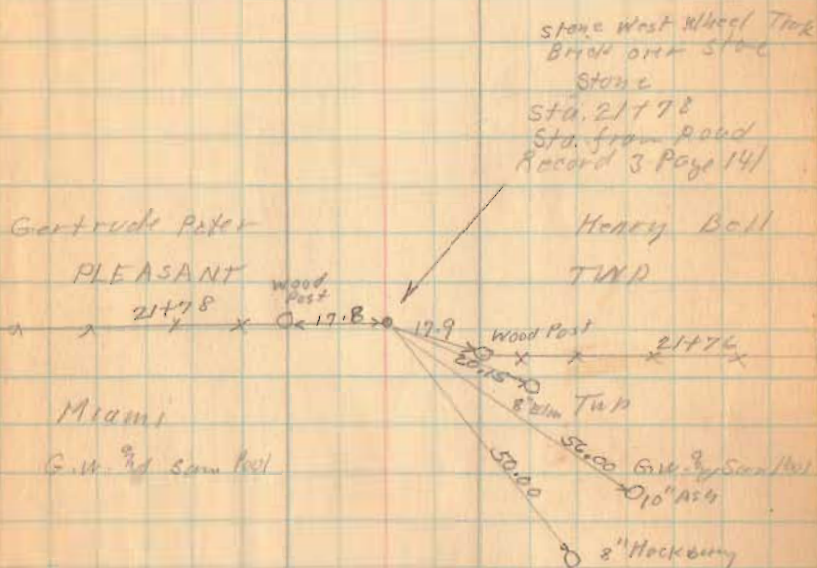


1795

INDEXED ON MAP

9-4-32

60



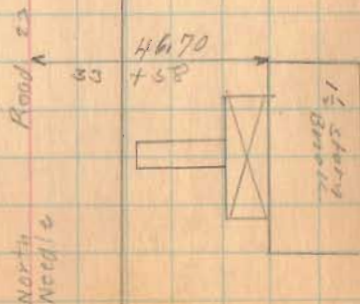
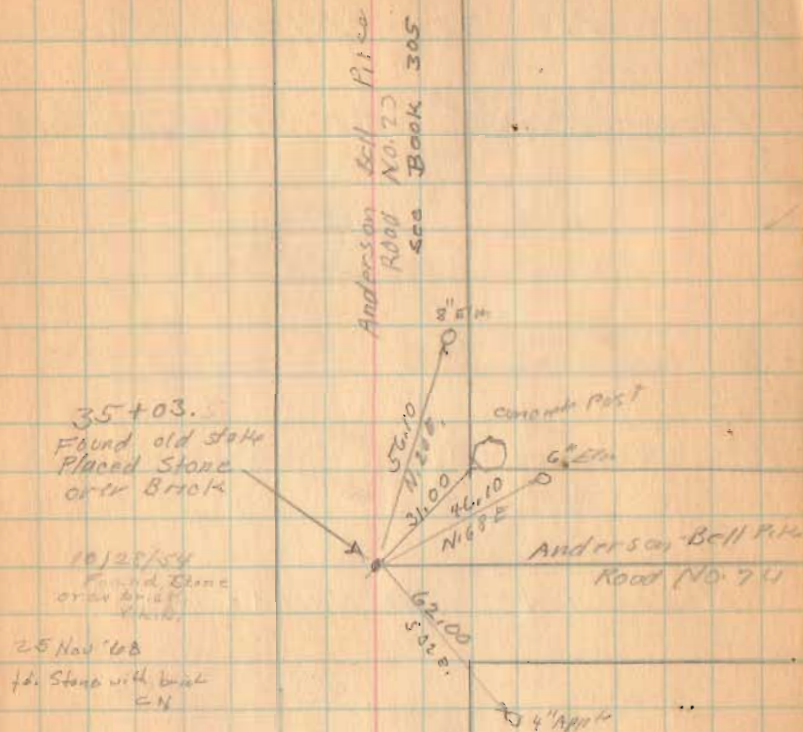
Road 23

1795

INDEXED ON MAP

9-4-37

61

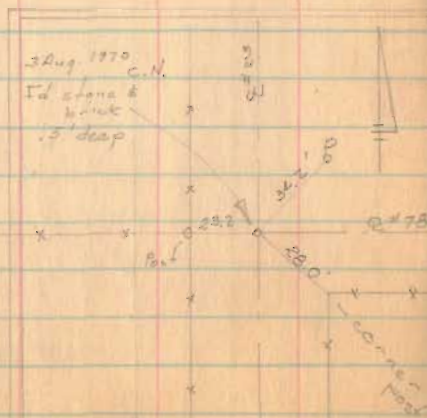


Road No 23 - Bloomfield Twp.
 from Road # 58 to Road # 59

Sta. 1+00 Monuments.

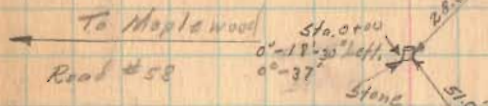
Monumented - 40' Road -

See



Section 29 T.2 R.8

Mary M. Claytor



Fannie F. Stewart

Sec. 32 T.2 R.8

August 17, 1959 88

E. Cox
 J. Montgomery
 M. Johns
 G. C. Inskeep

Sec. 28 - T.2 - R.8.

concrete corner

R.L. Cooke et al

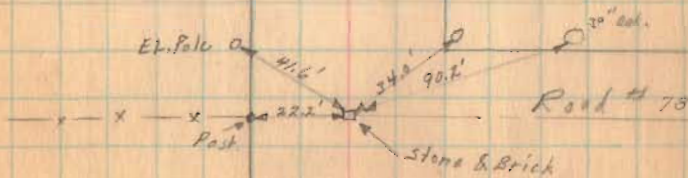
Id. stone Aug 1970 est.

.5' deep

Road # 58



Sec. 33 T.2 R.8



1817

Road # 23 Bloomfield Township

21+00 Monuments

16+00 Monuments

11+00 Monuments

6+00 Monuments

8-17-1939

63

Raymond Miller et al
19+8

No fence

Mary M. Clayton

18+58
13.3

Burr
48" Oak

Mary M. Clayton
10+95 x x

R. L. Burk et al

20" Elm. $\times \frac{6+18.5}{14.47}$

Dbl. Sycamore

18" Sycamore \circ

12" Sycamore $\times \frac{5+10.3}{14.3}$

1817

INDEXED ON MAP

Road # 23 Bloomfield Township

42+00 Monuments

37+00 Monuments

32+00 Monuments

27+00 Monuments

26+00 Monuments

Shelby County
Adair County



31+31
15.0 30° Elm

22+79
17.5' 30° Elm
22+05
17.0' 36° Elm
1817

INDEXED ON MAP

8-17-39
8-21-39
E. Gore
G. Wilgus
M. Jones
G. Inskeep

Road No. 23 - Bloomfield Township

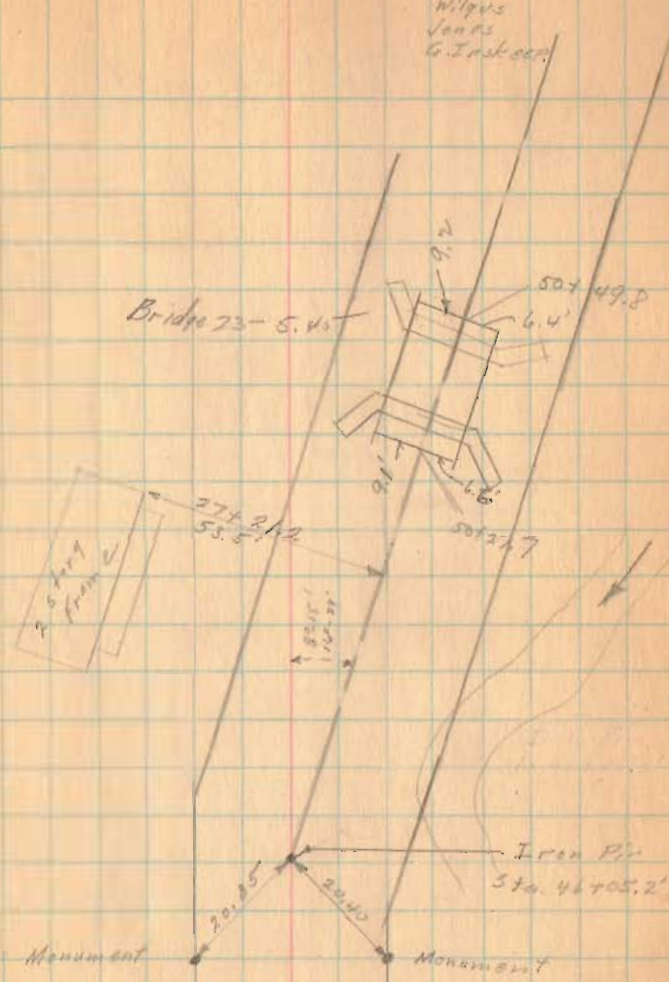
47400 Monument (West side only)

Ed mon. at 47400
 top six inches
 broken off.
 12" Locust
 "Y"
 12 B June 1872 CN.
 Ed. 1/2 ϕ rebar
 20" long
 top bent
 Straightened it.
 Made search
 for monuments
 did not find

46700 Monuments



8/21/39 65
 Cor
 Wilgus
 Jones
 G. Jackson



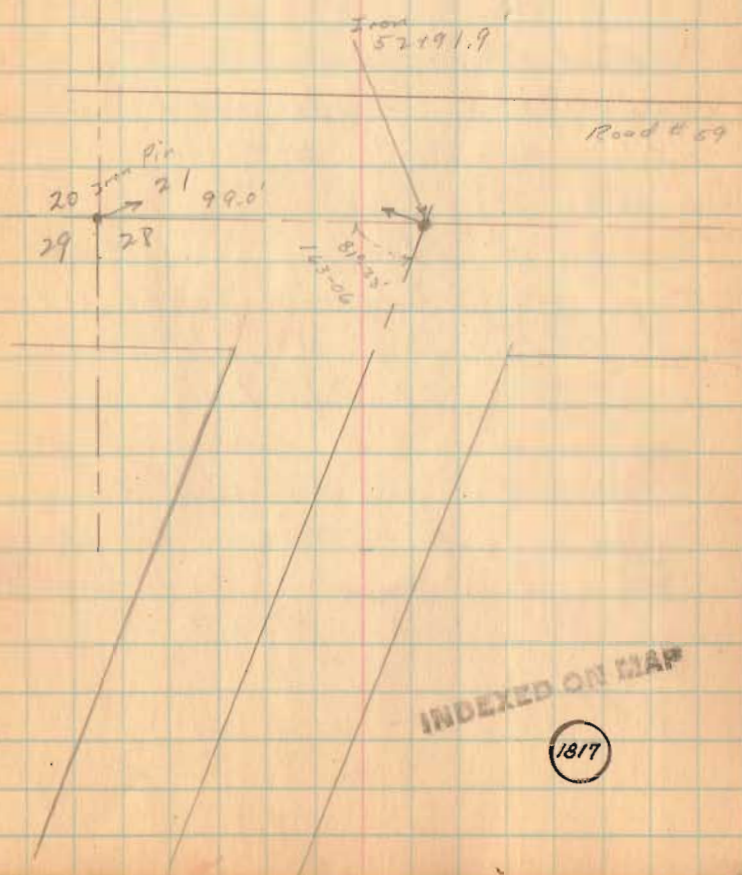
Sec 29-2-P

Sec 29-2-P

1817

INDEXED ON MAP

Rd # 23 (contd)



52700 Measurements

INDEXED ON MAP

1817

Road 153 Zane Twp.

Width 60' - Comm. Sr. # P.

Searched for stones at all land lines and X-Roads. No markers shown.

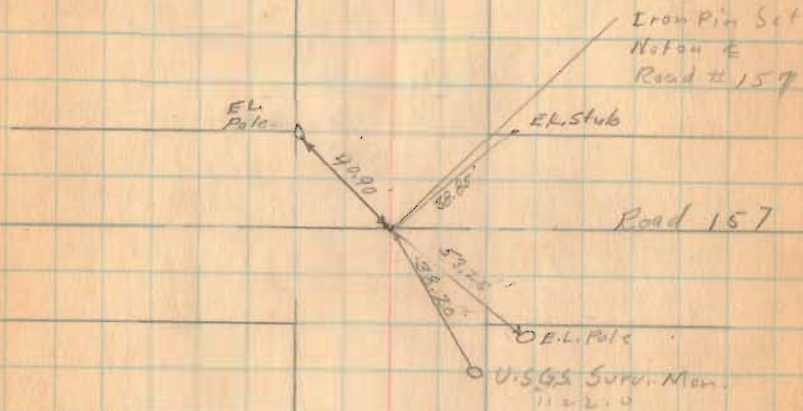
Road Record shows road on straight line from Middleburg to near Road 277.

Line of Street in Middleburg was produced South to set stakes along W. side Road 153 for E.L. Pole line.

Straight line produced from Middleburg puts 4 feet for south. Iron pin set at Cemetery E. line & angle made there to make line straight to X-Roads

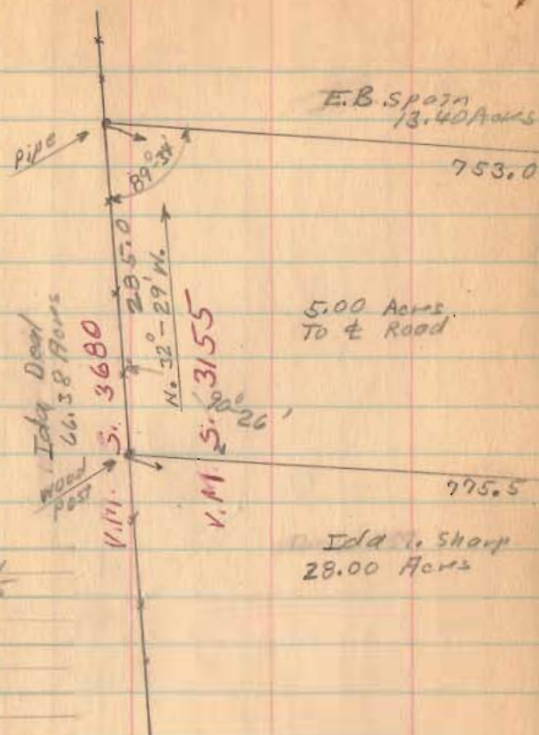
August 8, 1893
G. W. Gas
M. Jones
R. Reed
E. Love

67



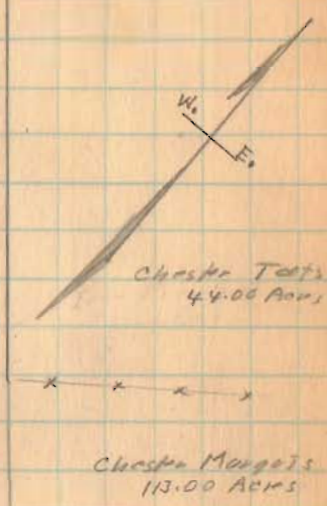
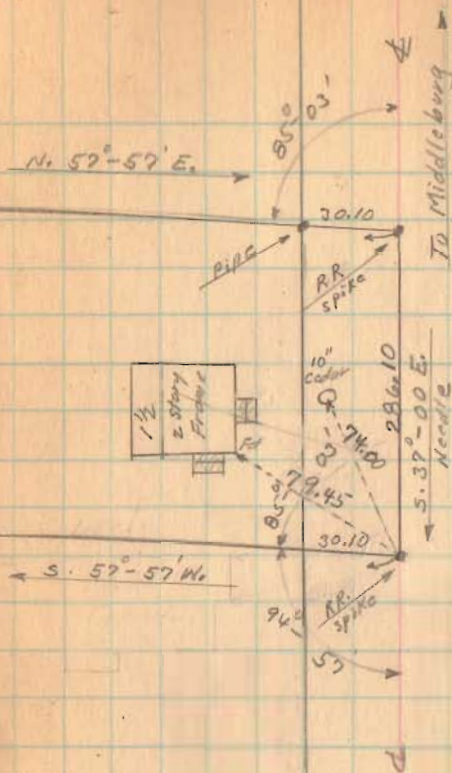
INDEXED ON MAP
1824

Rd 153



Spain survey
Nov. 12, 1955
Wagon
F. F. Wright
G. W. Wilgus

68



1829

INDEXED ON MAP

Survey Rd 46
Restaked 50' from
Sta 29+25 to 60+41.3

32+00 Hubs set

46+00 Hubs set

40+00 Hubs set

35+00 Hubs set

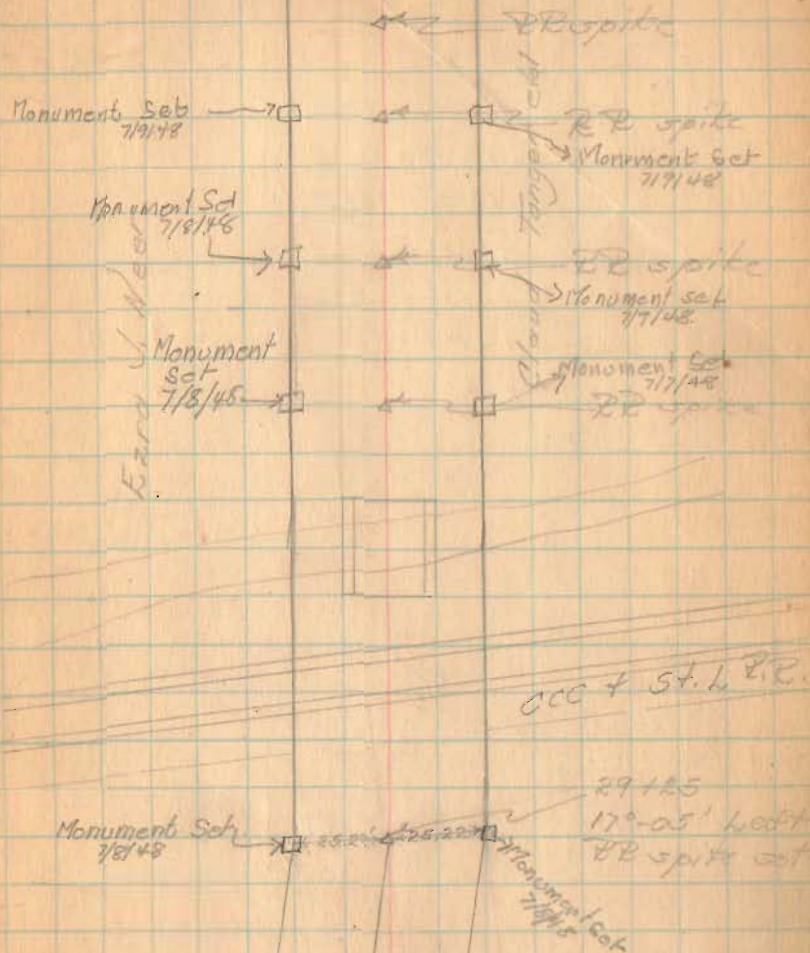
29+25 Hubs set

1308

See pg 7 for stationing
on RR, etc.

Party: O. Keyser
O. Shirk
D. Mitchell

19 July 1997
Monuments,
7/7/48
Cowman
Hemphinger



Pl 46 (cont'd) See pg 8
for existing angles.

PT 56+45.67	43.67	1°-02.2'	9°-55'	Hubs set for R/W
+25	25	1°-15 1/4'	8°-52 1/4'	
56+00	100	1°-15 1/4'	7°-37 1/2'	
+75	75	1°-13 1/4'	6°-22 1/4'	
+50	50	1°-15 1/4'	5°-07'	
+25	25	1°-15 1/4'	3°-51 1/4'	
55+00	52.0	1°-15 1/4'	2°-36 1/2'	
+75	27.0	1°-21 1/4'	1°-21 1/4'	

10.57+430

Hubs set for R/W Men

Dist. Defl. Total Defl.

PT 53+92.81	97.89	1°-10 1/2'	10°-09 1/2'	Hubs set for R/W Men
+75	75.0	1°-17'	8°-59'	
+50	50.0	1°-17'	7°-42'	
+25	25.0	1°-17'	6°-25'	
53+00	100.0	1°-17'	5°-08'	
+75	75.0	1°-17'	3°-51'	
+50	50.0	1°-17'	2°-34'	
+25	25.0	1°-17'	1°-17'	

20.52+00

Hubs set for R/W Men

Monument Set 7/12/48

Monument Set 7/12/48
PT 56+45.67

L = 19°-50'
D = 10°-02'
B = 571.99'
T = 100.00'
L = 197.67'
E = 8.68'

PT 53+30.12
Iron set

David B. Tanger

Monument Set 7/11/48

Extra J. Moor

Monument Set 7/12/48
Flush with Ground

53+97.89

DC 53+48.00
Monument Set 7/9/48

Robert G. Millroy

Hub

Clard Tanger

Mon. Set 7/12/48
Flush with Ground

L = 20°-19'

D = 10°-16'

B = 552.10'

T = 100.00'

L = 197.89'

E = 8.88'

Monument Set 7/9/48

DC 53+00.00

Monuments Cowman + Hammerly

April 2 1948
Warrent

71

Red 46 (cont'd)

50+100 Hubs set for R/W Mon.

72+100 Hubs set for R/W Mon.

72+273 Stake found. Hubs set for R/W Mon.

68+25.5

found 11 July '66
66+42.0 both 1" spires
both are bent at
top. SW

66+42.0 Iron set - Hubs set for R/W Mon.

61+00 Hubs set for R/W monuments

PT 56+49.67 Hubs set for R/W Mon.

S.H. 234

Route 47

80+11.5
RR spike set

72

Monument Set 7/12/48 → □ ← □ Mon. Set 7/12/48

RR spike

Monument Set 7/12/48 □ ← □ RR spike
Mon. Set

Monument Set 7/12/48 □ ← □ Monument Set 7/12/48

72+273

Stake found
0°-08 1/2' Right

8' Elm

66+28.5
Iron set
3°-06' Right

Monument Set 7/12/48

Monument Set 7/12/48

66+42.0
Iron set

2°-50' Left
(3°-40' Right)

Monument Set 7/12/48

Monument Set 7/12/48

RR spike set

Mon. Set 7/12/48

Mon. Set 7/12/48

David B. Taylor