

4-5-34
C.A. Inskip
J.H. Inskip
Carl Stonecker
Toby Tennant
Road 1 Ludlow.

Found stone with X 2.0' below
surface of road. Old stake at
N. side of stone

Set 1/2" corrugated on top 2"
below surface

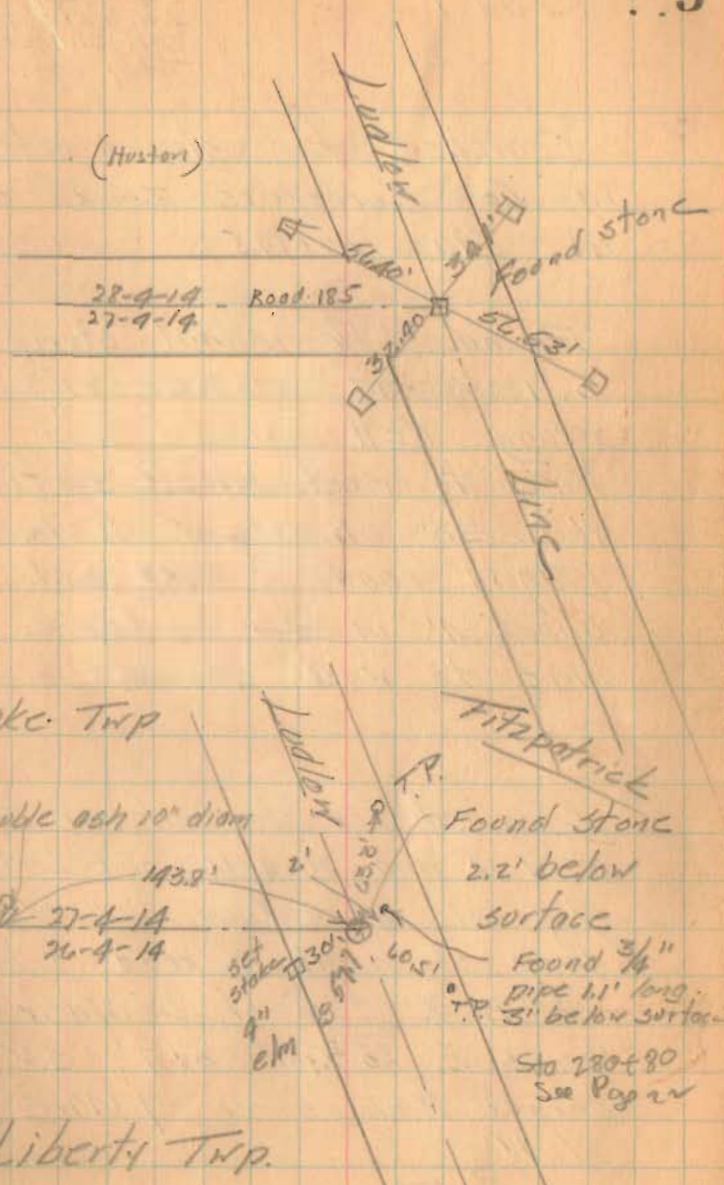
Telephone pole	N. 53E	25.7'
E. L. Stub	S. 58E	31.4'
T.P.	N. 69W.	64.8'

Set 5 stakes 30'
N of E on high points
between N.E. cor S. 27 and SE cor S. 27

Set 1" pipe directly over
stone - 2" below surface
Use stone for line

1520

INDEXED ON MAP



Liberty Twp.

Road 1

4/6/36
C. A. Inskeep
J. H. Inskeep
Carl Stojceker
Tobby Tennent

Searched for stone noted
in Co. Surveyors Book 313
at Sta. 140+14.5

Found blk walnut stamp
S. 1 W but distance 177(?)
wrong. Well marked land
line to west. Unable to find
W. D. 30" N. 48 1/2 W 102 1/2
Dug in road 2' deep and
about 4' in diam of fence
line to west. Found nothing

Searched for stone at cor to
25-4-14 and 26-4-14 and Ludlow
Dug hole 4' in diam and 2'
deep at point in road from
which X top of boulder
bears S. 86 3/4 W. 51.7'; S.V
corner Bishop's res 7.14 1/2 E
86.1'

(1520)

INDEXED ON MAP

6

Fence post west 240'
Found nothing. Said by
Bishop, adjacent land owner
that stone was removed at
time of construction of
road and not replaced.

Set 1/2" corrugated bar from
above witnesses for corner to
25 and 26-4-14 and Ludlow
Line

Road 1

Set 2' stakes 30' at Rt Ls
from $\frac{1}{2}$ on N. side from
SE, cor 5.26 to angle in
road (Record 3025.9')

1520

INDEXED ON MAP

6-6-36

Coffman

26-4-14

25-4-14

old corner
post

517'

Stone with X
(Sta 26 + 67)
(see Page 18)

Harris

CA Inskoop

6-8-36

J.H. Inskoop
Tubby Tennant
Carl Stonecker

Bishop
RES

Set $\frac{1}{2}$ " corrugated
bar

MIR. LAKIN

Found stone

Set $\frac{1}{2}$ " corrugated
on top
line

R. of W
Stake

2010

470

28

24" W.O.

Sta. 192780

see Page 16

H. Young

05-18'

Road 1

Found old witness stake in force line west 66' (Co. Surveyors Book 313) Mr. Look, who says he has resided on adjacent land 41 years, reports stake removed in construction of road and that surveyors in recent years have searched and found nothing. Did not dig here as surface showed evidence of having been recently replaced.

Set 2 stakes 30' at rt LS to Ludlow Line on W. side between previous 0'-18' angle and S.E. cor 19

Set 4 stakes 30' N of E of Ludlow on high points between N.E. cor 5.13 and 5 Points

(1520)

Found old stake

19-4-14
24-5-13

2nd W stake

66'

30'

4/10/36 Set

1/2" corrugated bar level with road surface

Sta 167+42.5
See Page 14

Ludlow Line

No digging here. Note

Book 313 (C.S.)

say nothing here

24-5-13
23-5-13

Road 30

Road 5

Found 7/8" bar.
Sta 109+19
See Page 10

6-9-36
C.A. Inskeep G.H. J.H.
C.S. - T.T.

Inskeep

Road 199

Monroe and Liberty Traps

Found old stake 15" below surface on $\frac{1}{2}$ Road 199 and 7.5' from Ludlow at Rt L's

30" W.O.	N. 56 W	36.6'
12" Hickory	S. V	61.6'
36 Cottonwood	SE.	97.0

Center of road 199 and center Route 42 in $\frac{1}{2}$ Pavement
3.7' S. of expansion joint.

S.V. cor McCulloch's barn
N. 60 $\frac{1}{2}$ E 99' (see Road Record 2 Page 125)

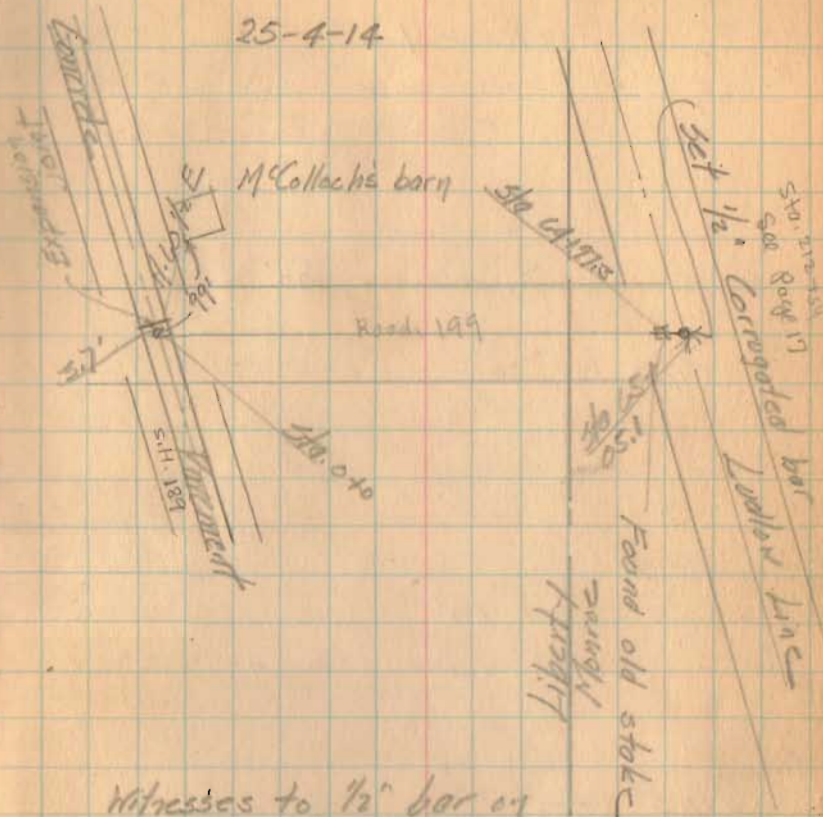
Set stakes at Stas 10-39 and 52 at 15' S. of $\frac{1}{2}$

1720

INDEXED ON MAP

9

25-4-14



Witnesses to $\frac{1}{2}$ bar on Ludlow Line and $\frac{1}{2}$ 99

30" W.O.	N. ⁶⁹ 59 W	44.8
12" Hickory	S. 34 W	65.4'
36" Cottonwood	S. 35 E	91.3'

Road 1

stakes for measurements 30' from E

110+00

Rivard 50'

Original Road 60' (1835)

Commissioner's 4-page 25

Ludlow Pike notes Book 313

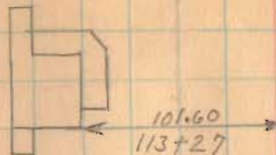
1520

INDEXED ON MAP

June 12-1936 - 10
Clear - Cool
F. Wright
E. Carl
G. Willgot
J. Montgomerie

Drill

2 story
Frame



Zx
112+99

Ch. Cross

30.6 x 263
112+00

Road No. 30

110+46

2815

2012

L.H. Smith

Road 5
Book 509
Page 66

L.H. Smith

Sta. 109+19
Book 582
Page 46

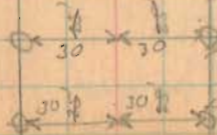
0+03 Left

Road 1
Book 582
Page 46

Minno S. Yoder

Road 5
Book 497
Page 65

Minno S. Yoder



Road No. 1

128+00

124+00

118+50

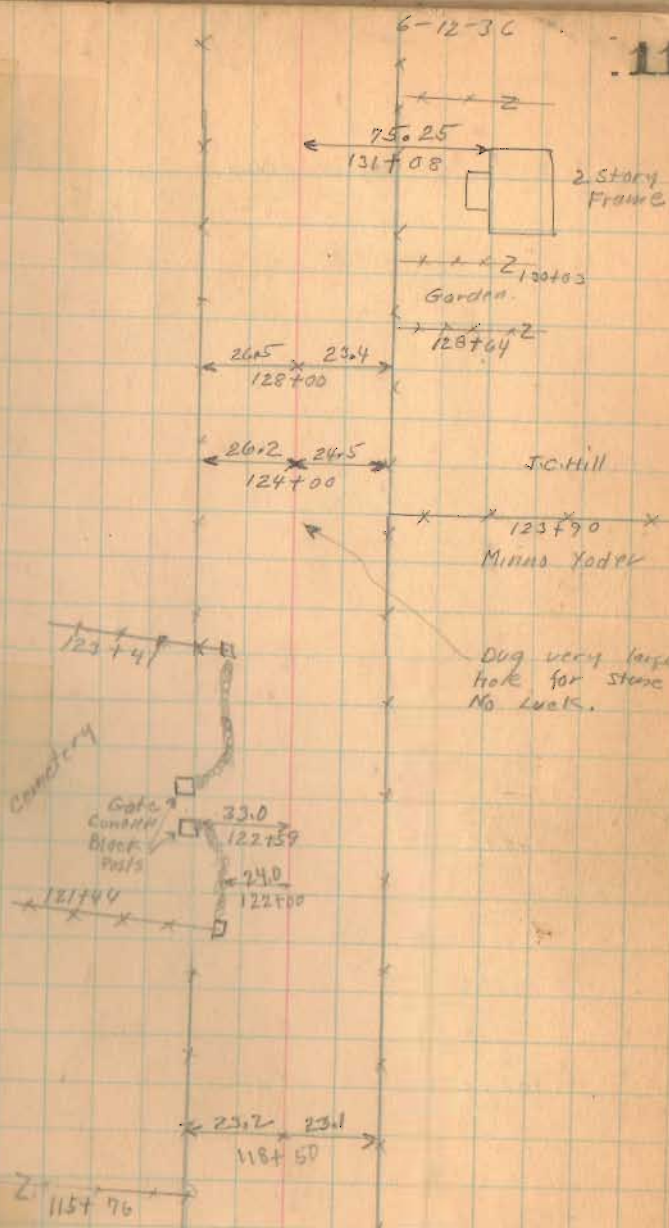
115+00

1520

INDEXED ON MAP

11

6-12-36



Road No 1

144+00

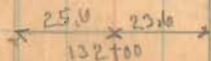
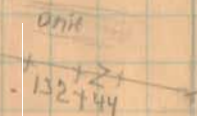
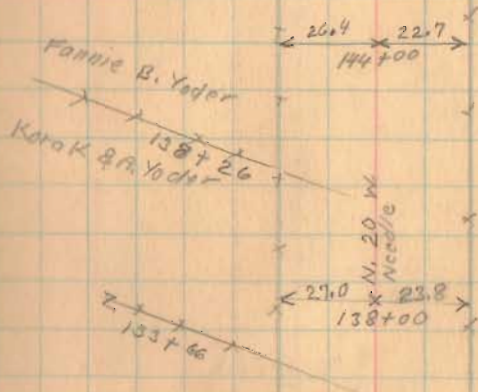
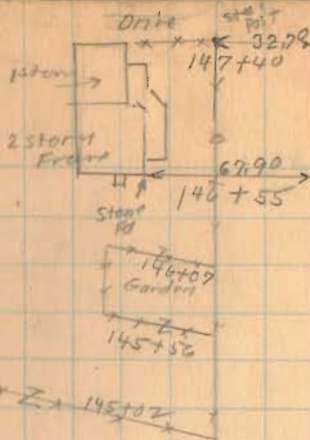
138+00

132+00

1520

INDEXED ON MAP

672-36... 12



Road No. 1

163+00

157+00

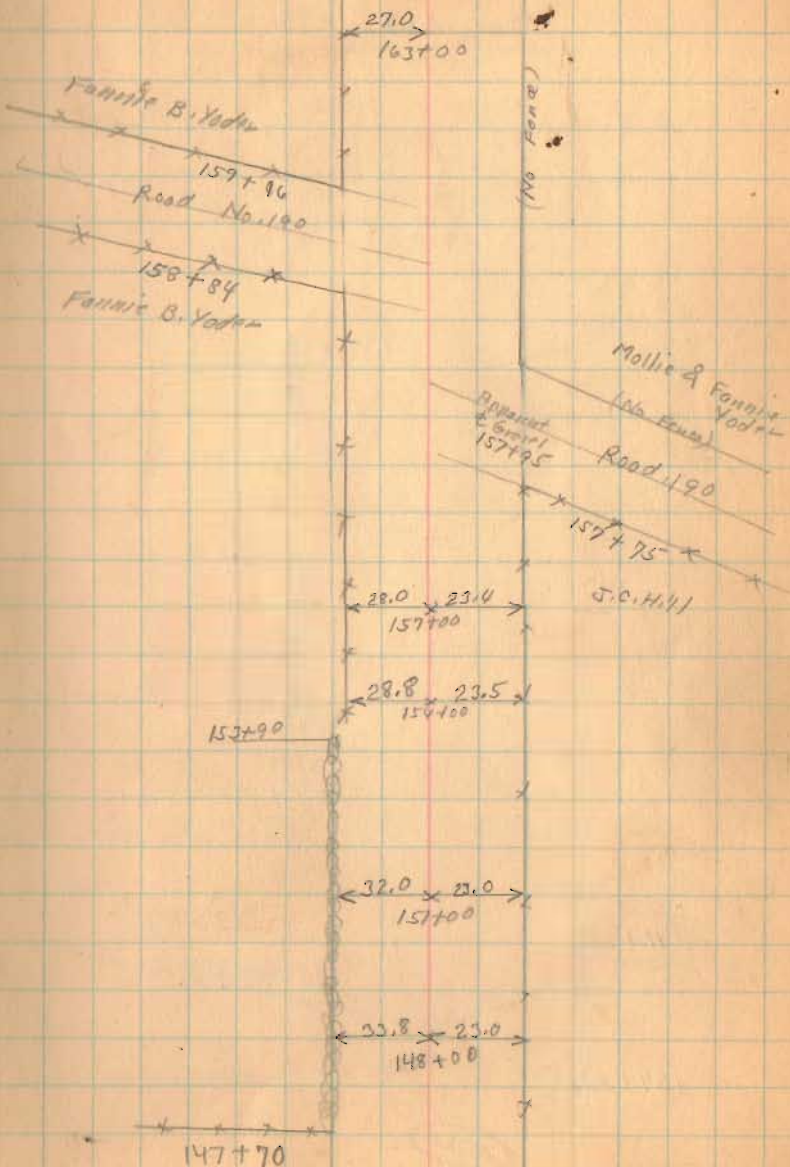
151+00

1520

INDEXED ON MAP

6-12-36

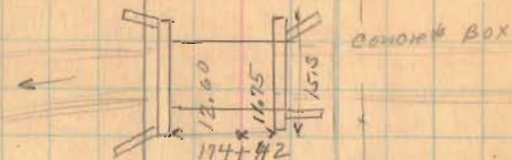
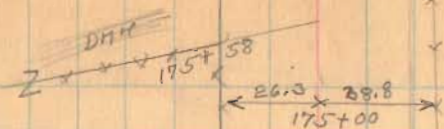
13



Road Nail

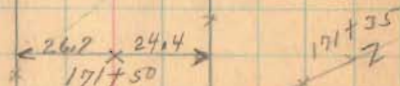
6-12-36

14



Concrete Box

A.D. Young
174+24
Mollie & Fannie
Yoder



Old Pit

Old Pit

(No Fence)

Section 19 T.4 R.14

Hed. Young

167+42.5

Fannie B. Yoder

Section 24 T. 5 R. 13

Iron
167+42.5
(See page 8)
0°-21' Right

171+50

167+42.5

1520

INDEXED ON MAP

Road, 1

1.69 Acres
Fitzpatrick Survey
Feb. 11, 1950
F.F. Wright
Gerrit Wilgus

195+00

190+00

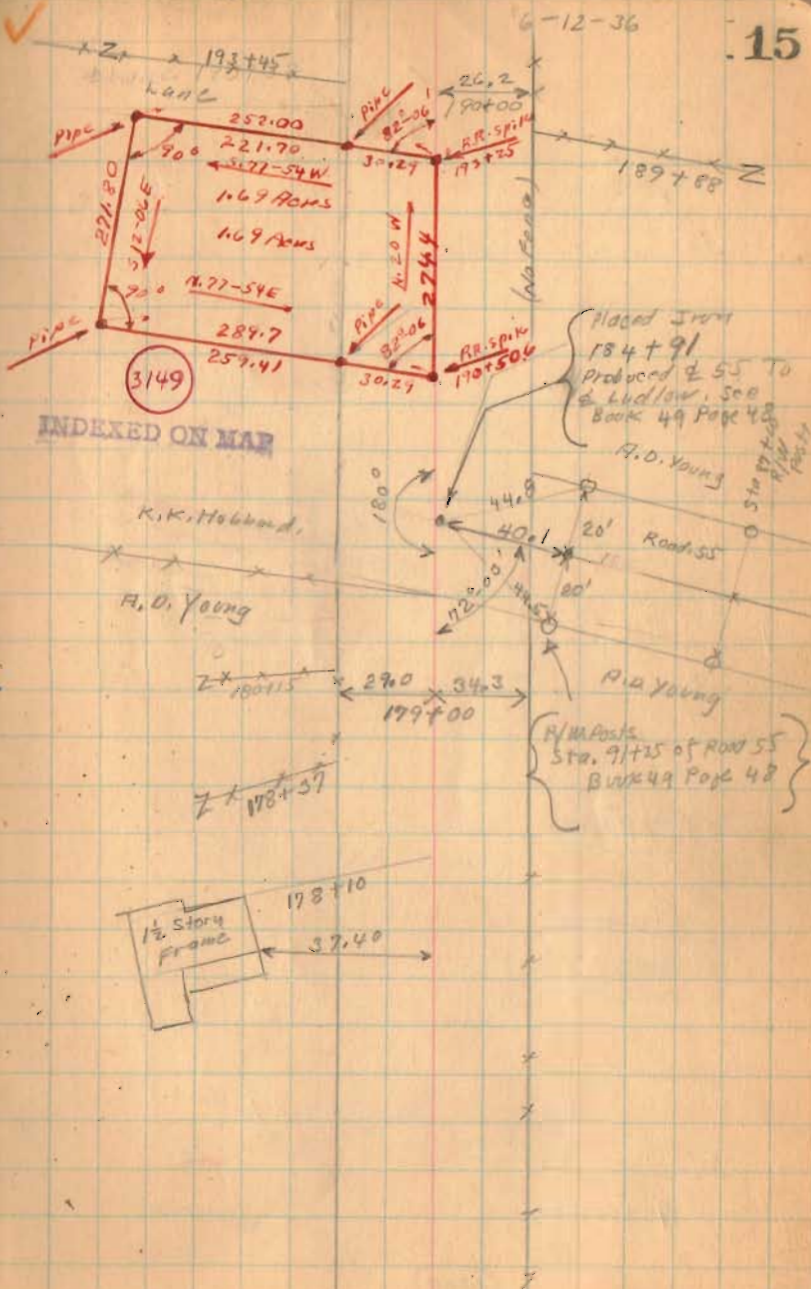
184+00

179+00

1520

INDEXED ON MAP

15



Road 1

208+00

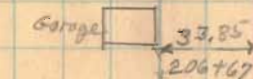
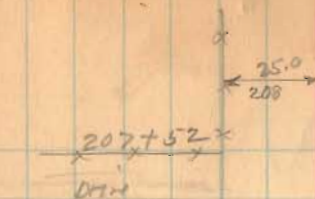
203+00

198+00

1520

INDEXED ON MAP

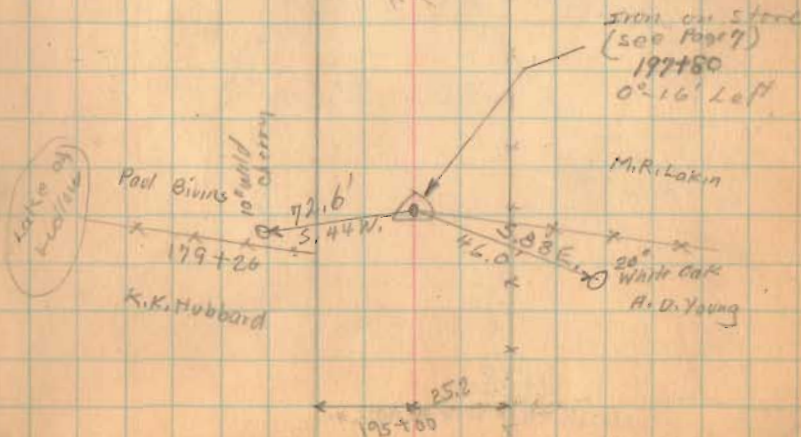
6-2-36
June-13-36. 16
clear - fine day
F. Wright
E. Clark
J. Masterson
G. Wilgus



205+32
+ + + +

(No. Fence)

N 2 1/2 W
N 2 1/2 W



Road 1



6-18-36
6-13-36 17

~~6-18-36~~
222+25

22.8 25.0
222+00

219+96 Z

98.6 l
219+94

1 1/2 story
struc.

219+21
Z

25.8 24.5
216+00

J.A. King

213+90

home

Wm. Harris

43+66

M.R. Lakin

50" wood

Iron

sec post

212+54

NO Aug 10

212+73

43.5

Road 199

222+00

212+37

64.7

Paul Burns

89.2

APPROX 350

2 story
frame

212+06

216+00

12" Hickory

25.5

24.5

36" cotton wood

212+00

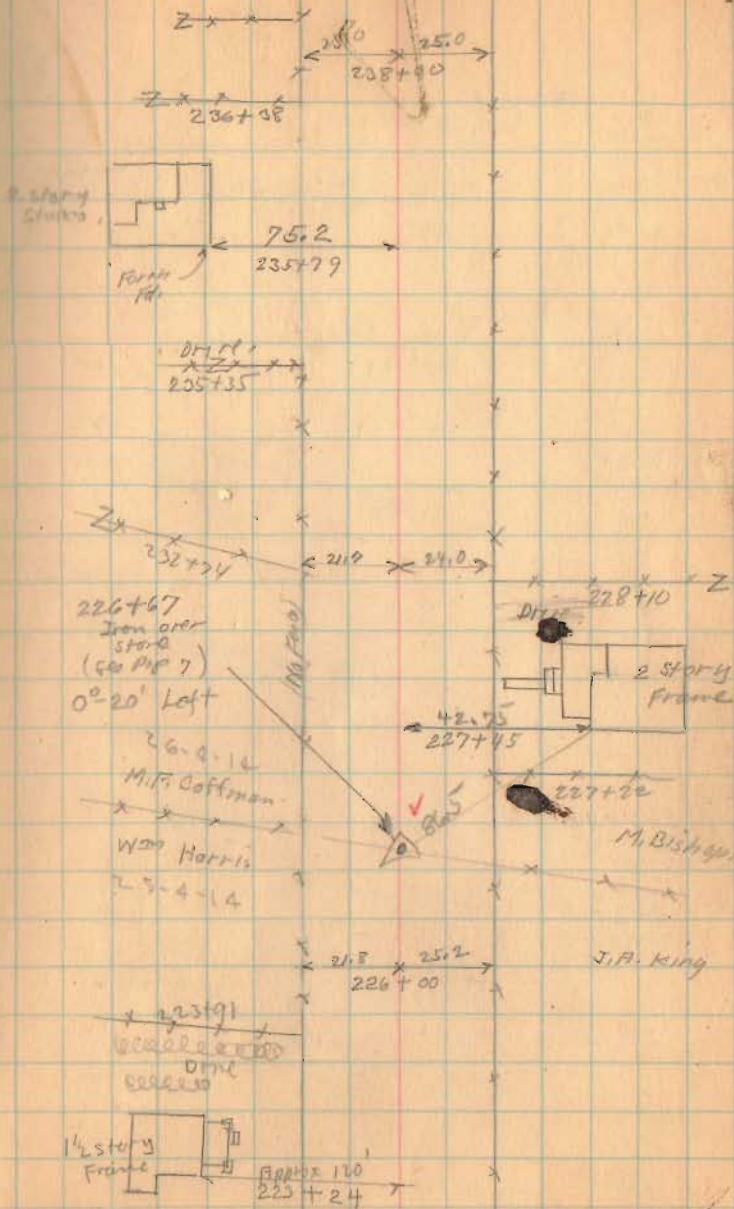
DRIVE 211+66

1520

INDEXED ON MAP

(NO ROAD)

Road 1



238+00

232+80

226+67

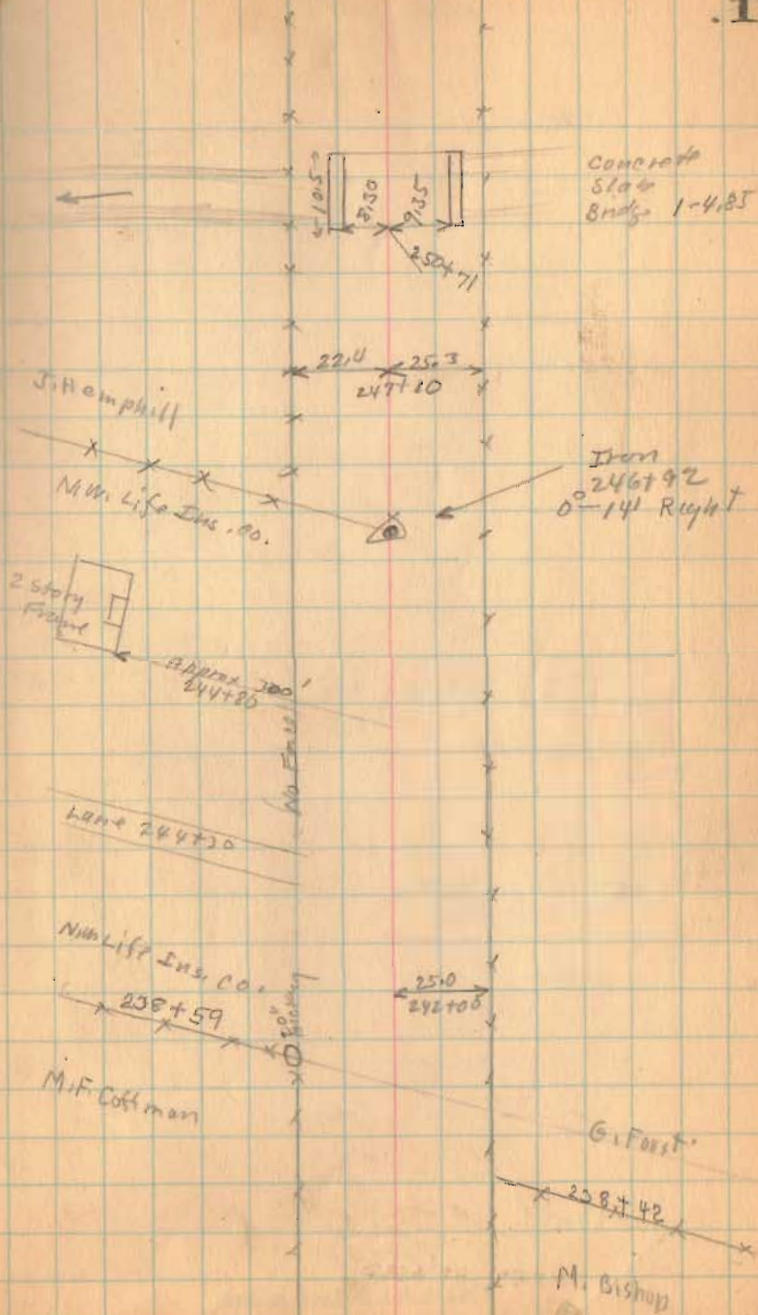
15-20

INDEXED ON MAP

Road 1

6-13-36

19



247+10

242+00

1520

INDEXED ON MAP

Road 1

270+00

264+00

258+00

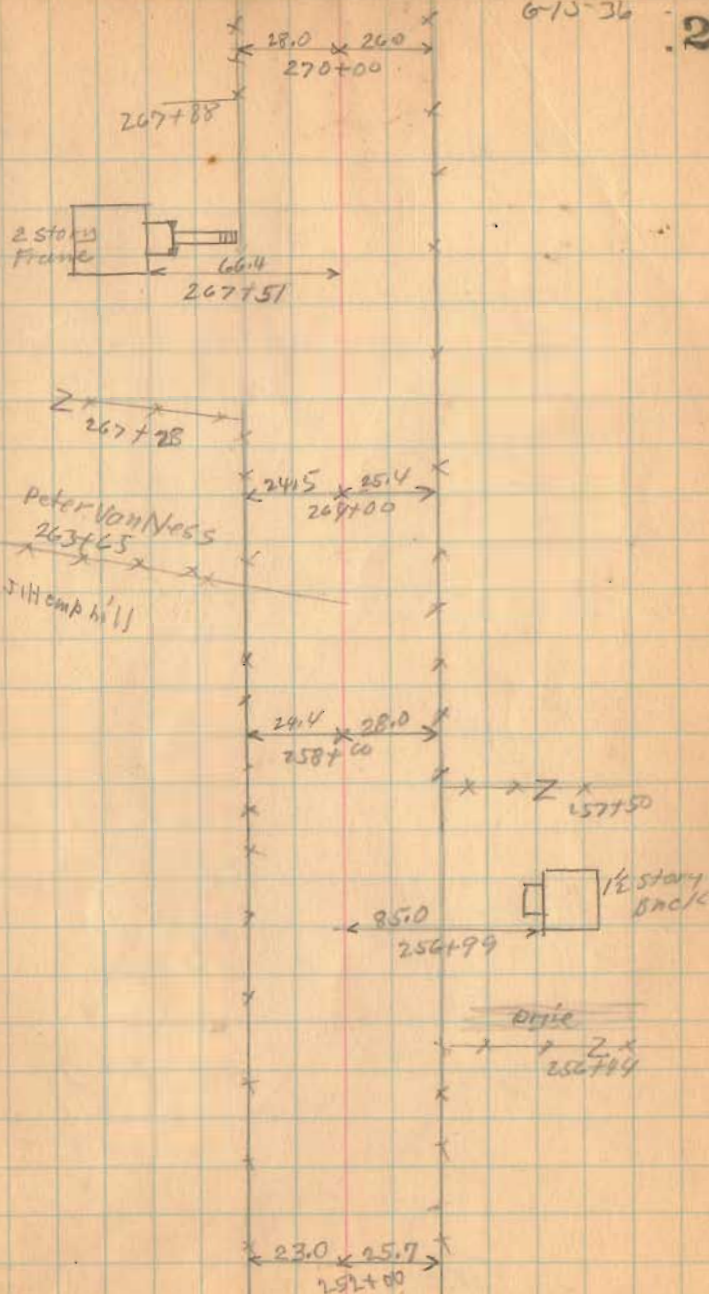
252+00

1520

INDEXED ON MAP

6-10-36

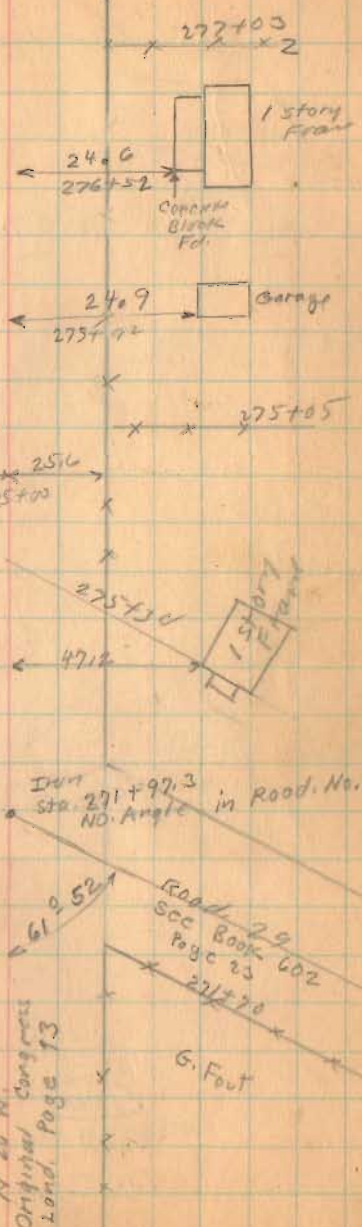
20



Road No. 1

6-13-36

21



275+00

1520

INDEXED ON MAP

Road 1

286+00

280+50

1520

INDEXED ON MAP

6-13-34

22

Zx 287+18

FRANK Insley

286+54

Lane

286+28

Patric

Fitzpatrick

20.0

26.6

286+00

Approx. 350'

285+77

2 story
Frame

Cellar for
New House

27-4-14

LAKE TOWNSHIP

Lottie Park

J.H. Grimes

LIBERTY TOWNSHIP

Pipe over Stone

280+80

(See Page 5)

0'-0" E. Right.

281+55

Patric
Fitzpatrick

25.4

24.5

280+50

277+93

26-4-14

25.5

24.7

280+50

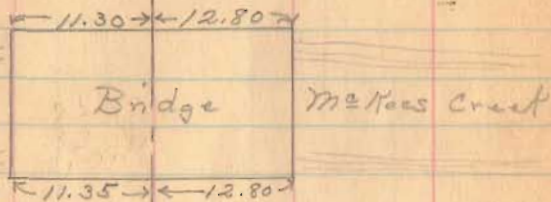
Road 1

Bridge Relocated

Distances By F. Wright 8/15/58

N.

E.



296+00

292+00

1520

INDEXED ON MAP

June 15-1936

Clear

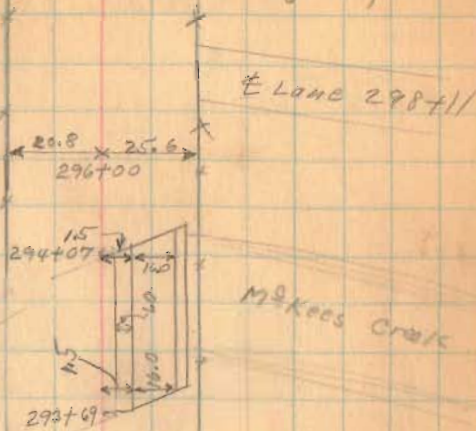
F. Wright

E. Core

G. Wilgus

J. Montgomery

23



Fence changed

X X X X

12 ft

2 291+99

21.5 25.0

292+00

110.7

291+87

1/2 start Brick

RR Spike

291+86

291+89

Lee Fitzpatrick

RR Spike

291+86

291+89

Lee Fitzpatrick

RR Spike

291+86

291+89

Lee Fitzpatrick

RR Spike

291+86

291+89

Lee Fitzpatrick

RR Spike

291+86

291+89

Lee Fitzpatrick

Road 1

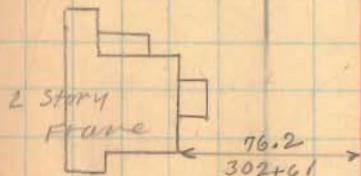
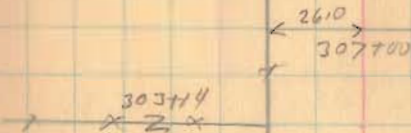
312+00

309+00

301+00

1520

INDEXED ON MAP



Robt. G. Park

No Fern

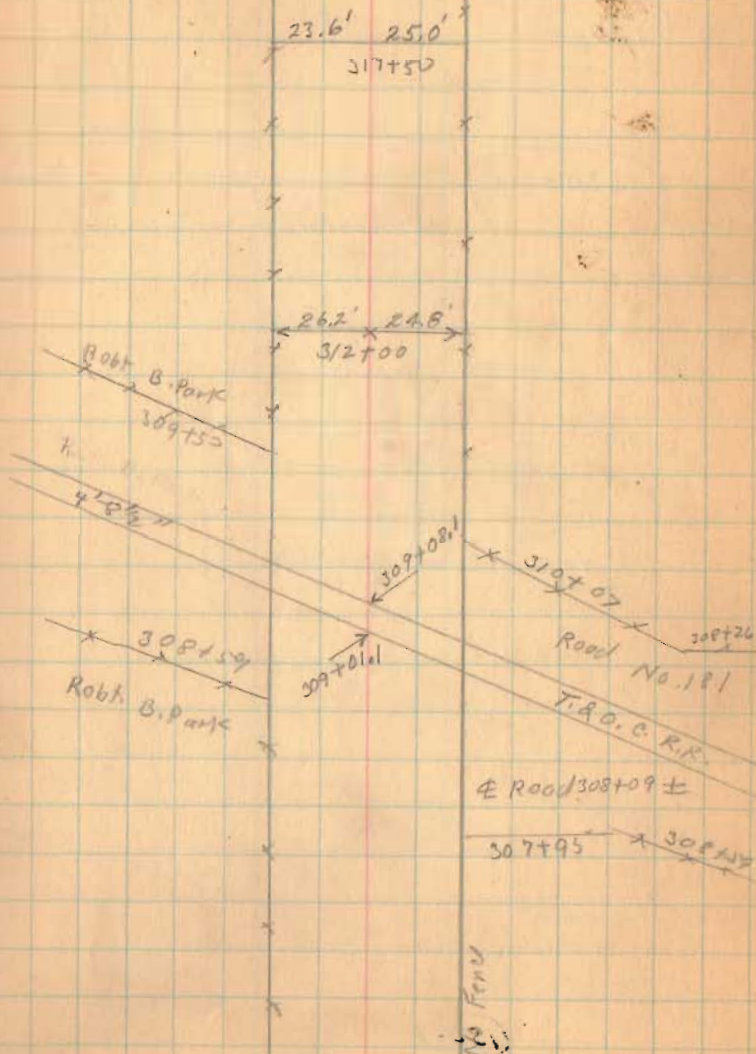
6/15/36 .25

Road 1

317+50

312+00

1520
INDEXED ON MAP



Road 1

337+00

330+00

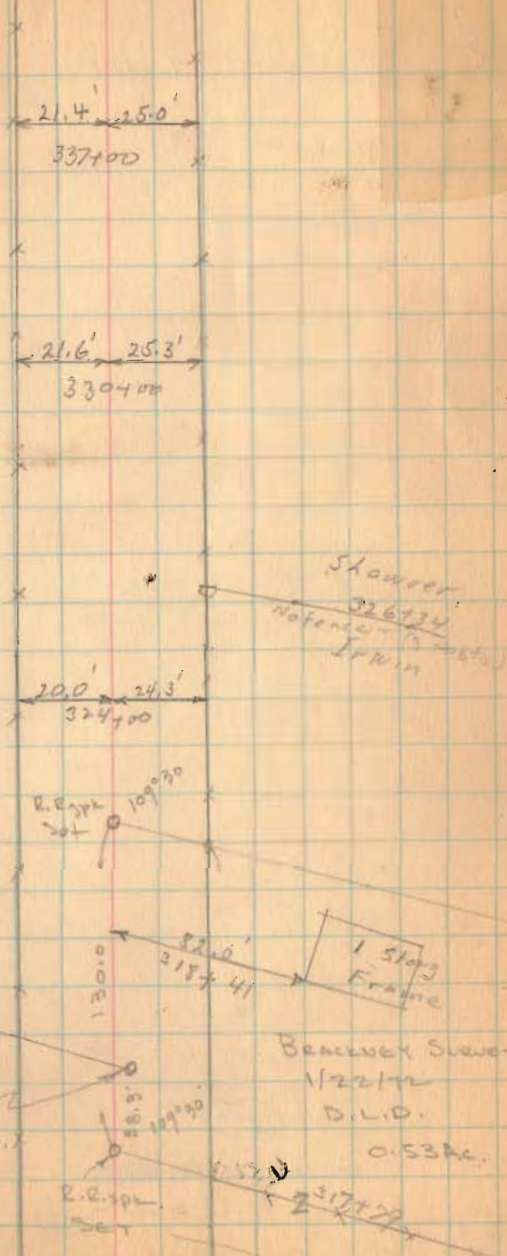
324+00

152.0

INDEXED ON MAP

6/5/36

26



Road 1

346+00

342+00

1520

INDEXED ON MAP

6/15/36 27

Sta. 347+20

Iron Pin

No Angle



25.4' 29.5'
342+00

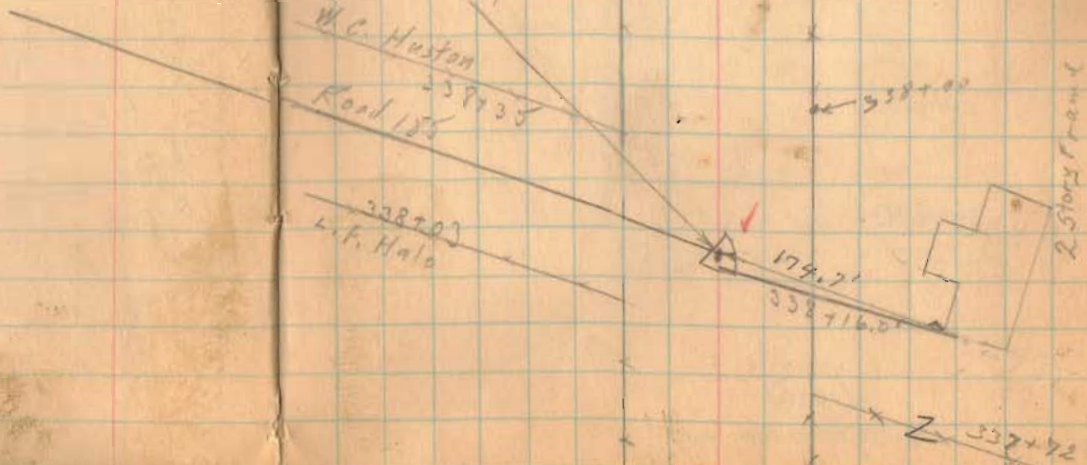
Iron Pin over Stone

Sta. 338+19

No Angle

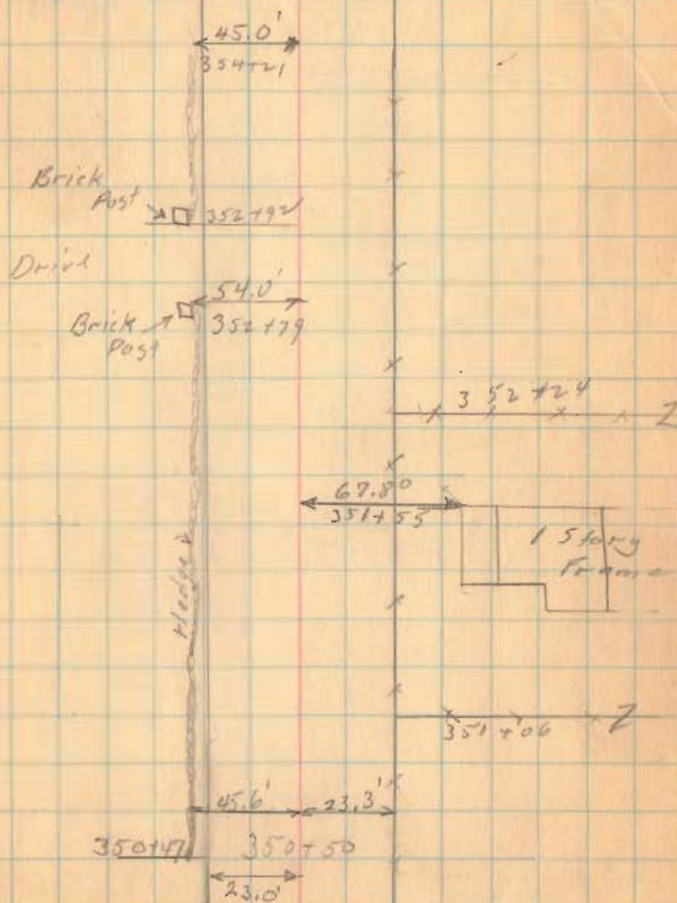
W.C. Huston
338+35
Road 18 1/2

338+03
L.F. Halo



6/15/36 28

Road 1



350+50

1520

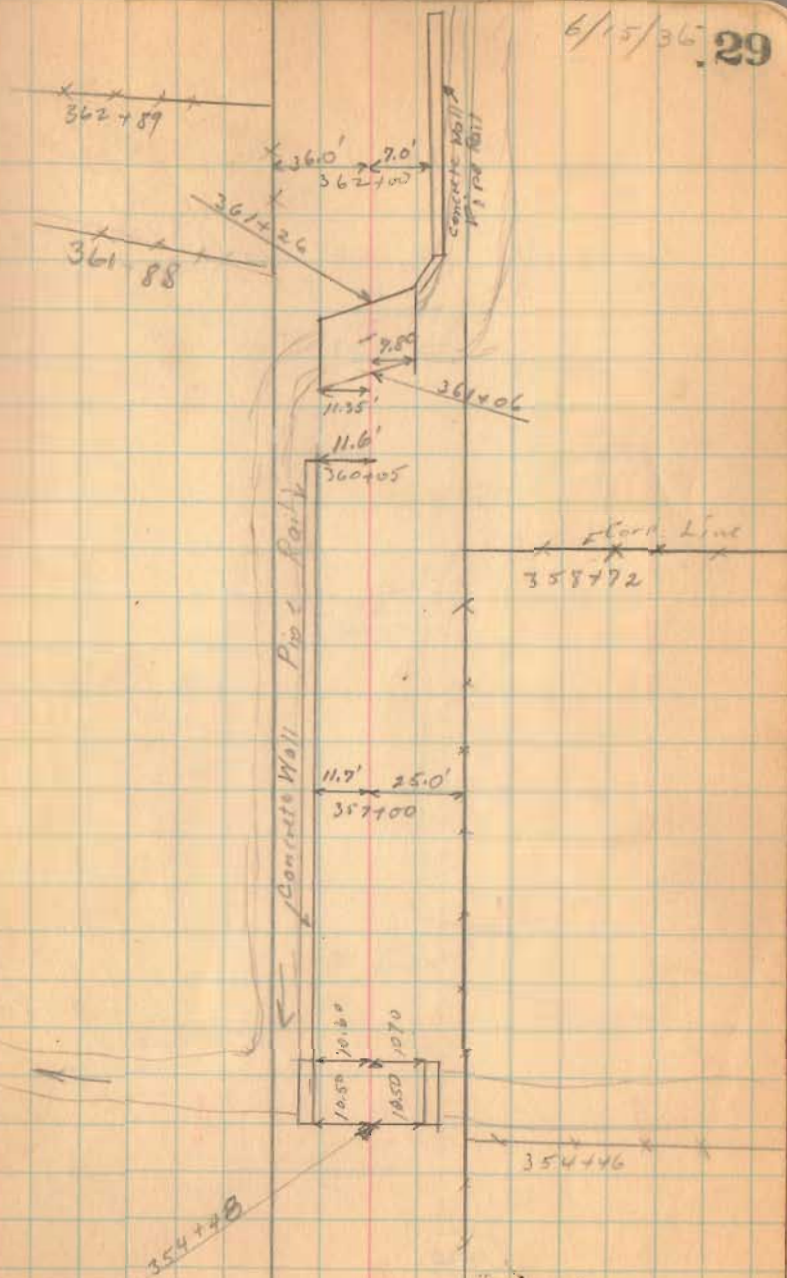
INDEXED ON MAP

Road 1

(1520)

INDEXED ON MAP

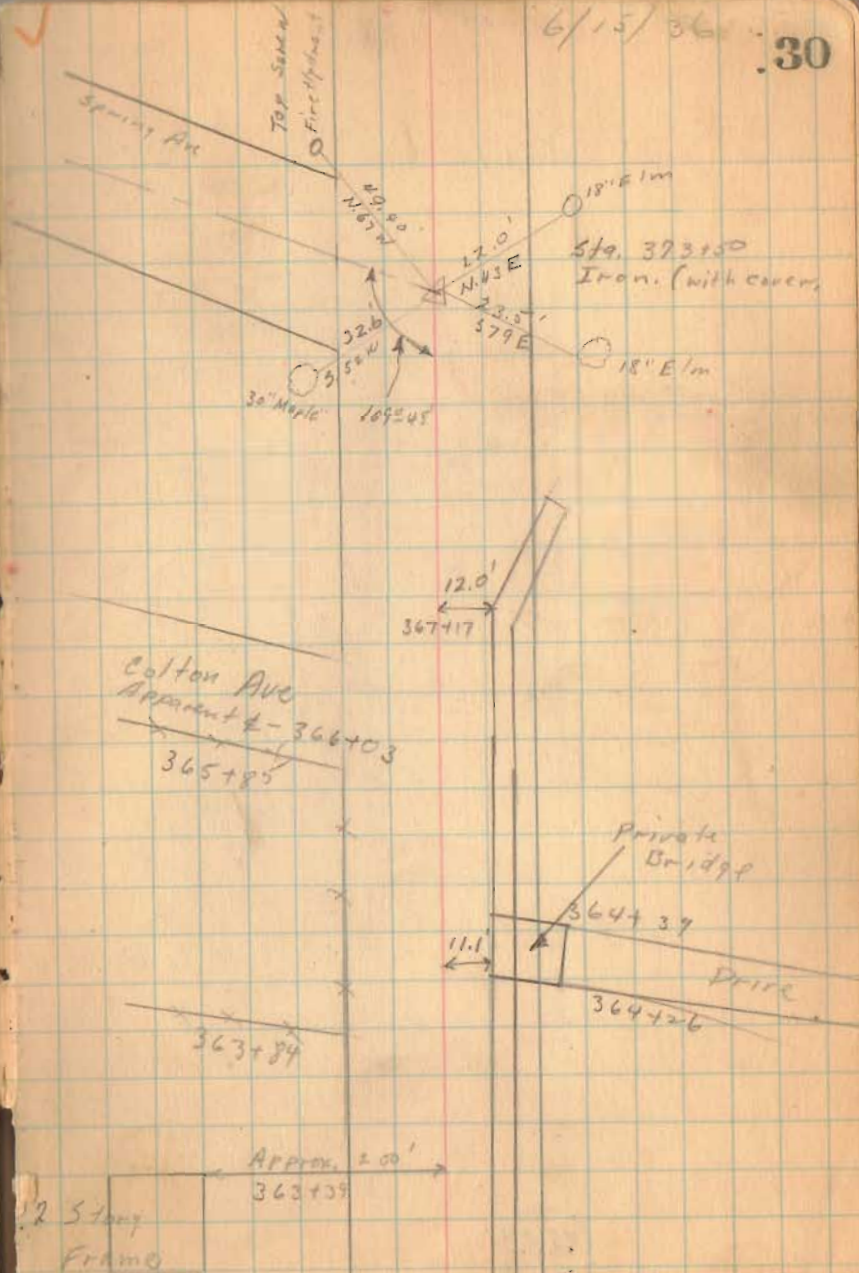
6/15/36 29



R. 200.1

(1520)
INDEXED ON MAP

6/15/36 30



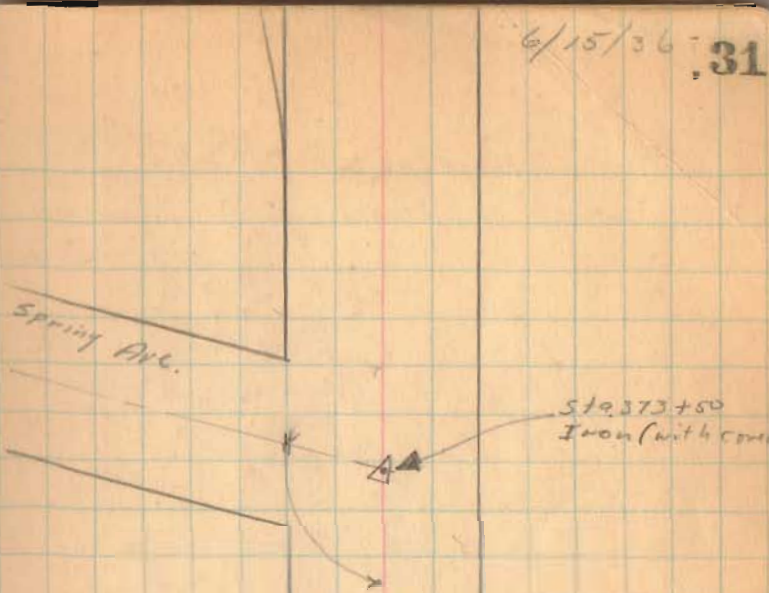
Road. 1

1520

INDEXED ON MAP

6/15/36 31

Spring Ave.



Sta. 373+50
Iron (with cover)

Road 22

S.H. 130 To Chevrolet

1721

INDEXED ON MAP

S.H. 130
Route 32

32

JUNE-19-1936
cloudy A.M.
F.W. Knight
E. Port
J. Montgomery

James Ryan
4+484

A.J. Knief

12
3792

20°
Oak O ← 17.40
3+30 →



Z
2+44

Five P. sugars
O
O
O
O
O
12.4
1+0

N 83° 29' E

R. J. Knief

14.5
17.00

William Weiser

259+00
Road 6-27
page 5

sta.
0+00
Oak 36.2
post 31
91.0'

N 6-37 W

8
Oak
Sugar

Large
Oak

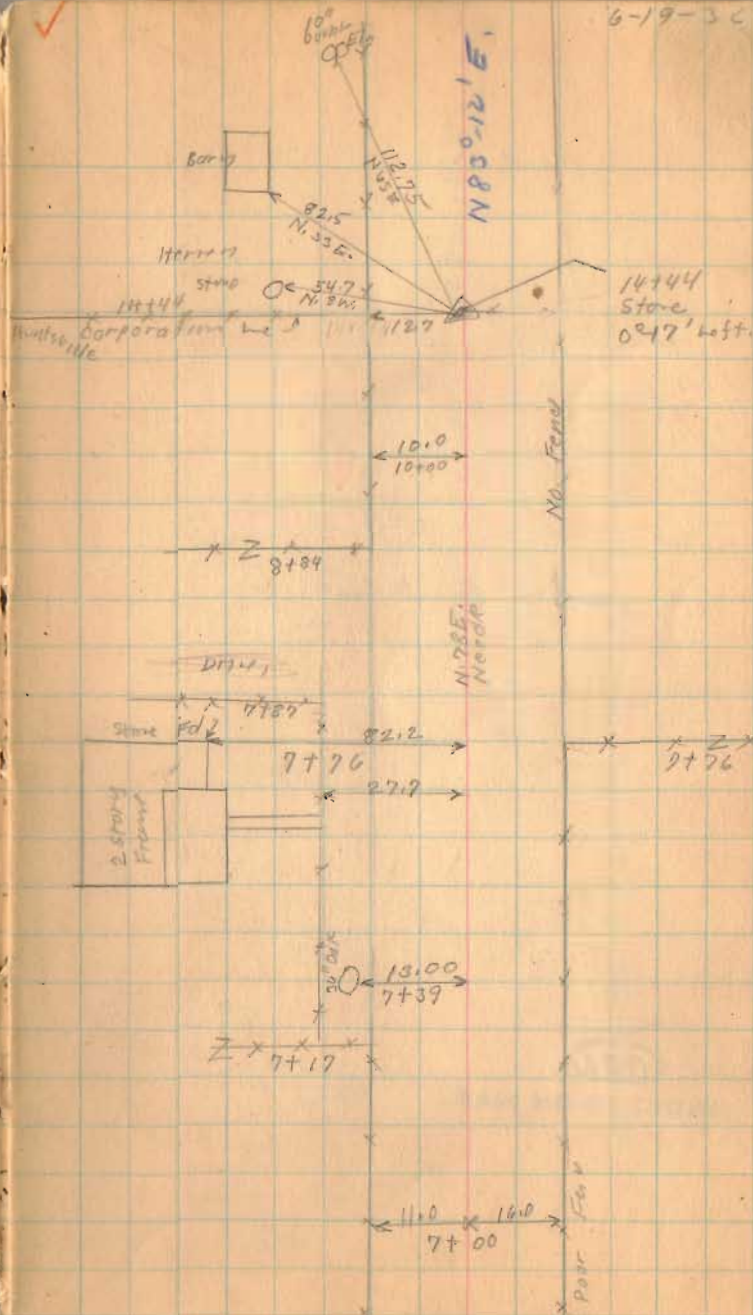
Small
Oak

Road, 22

1721
INDEXED ON MAP

6-19-30

33



Road 27

34

1163

N. 84-18 E.

Found
April 25, 1959
D.L.D.

stone found

19+80,
100' Right

Very Poor Farm

N. 84-18 E.
N. 84-18 E.
N. 84-18 E.

900
post
site

30'

18.0

C.H. Snapp

Had
30'
tree

William Waiser

Iq/a

x 17+76

Herren

x 21
15+53

1st
Front

93.55

16+45

x 2
16+25

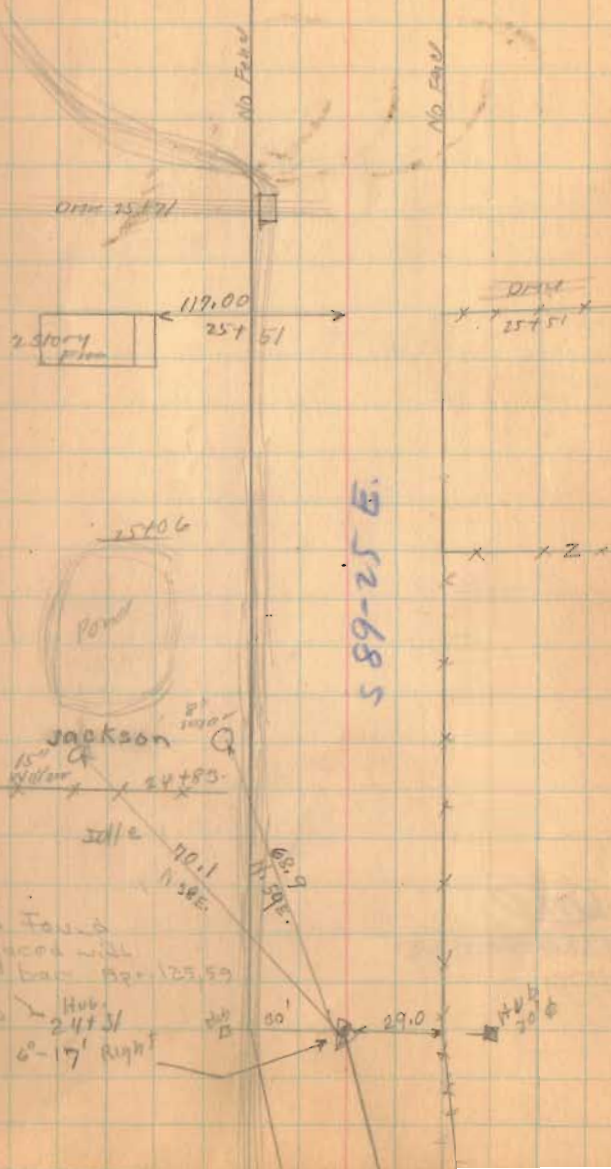
1721

INDEXED ON MAP

Road 22

679-36

35



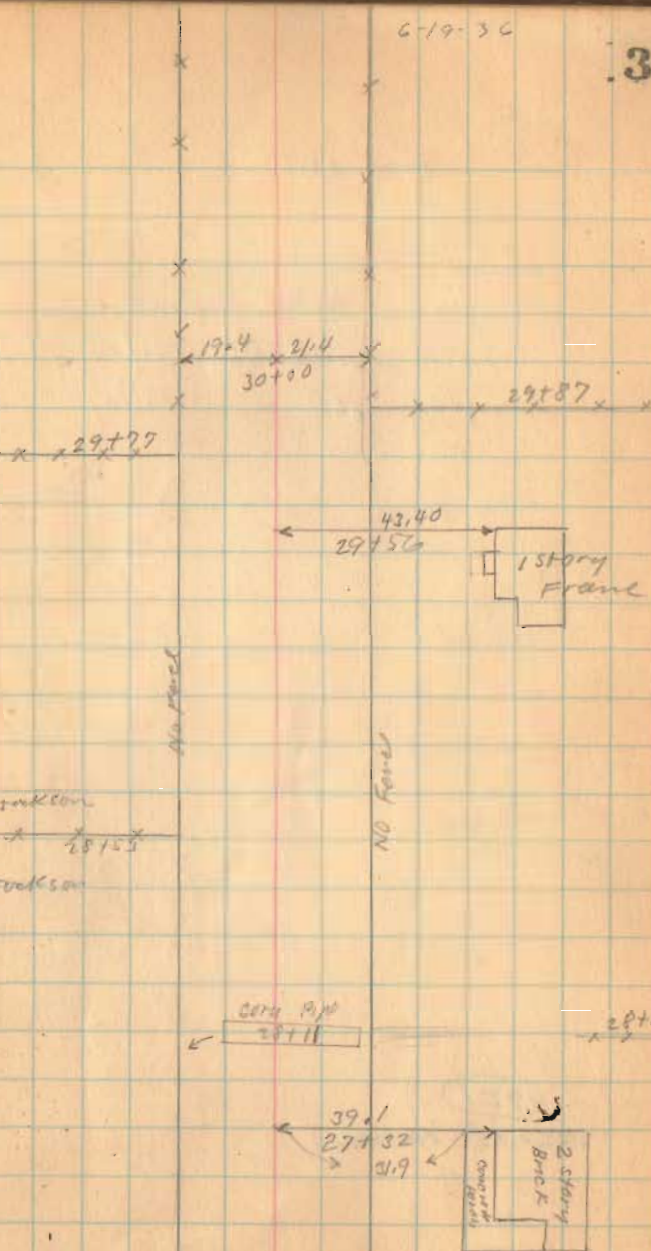
1721

INDEXED ON MAP

Road. 22

6-19-36

36



1721

INDEXED ON MAP

Road 22

Length 3192 Feet

Length 6.04545 Miles

Length 60 Miles

(1721)

INDEXED ON MAP

679-34

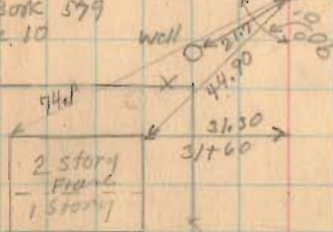
37

Road 22
see Book 539 Page 55

5/8" ϕ FD
REPLACED w/ 1" ϕ
8/17/72
Iron LMG
31+92

Road 39
see Book 599
Page 10

Road 39
see Book 358
Page 26



Road 22

Road. 13

50 & (75') McColly Pike

Free Pike record No 4 Page 152

1875

(75' - sta 48+98 To 51+62)

60' Sta. 444+13 To 483+99 Commissioners

Journal No. 5 Page 183 (1837)

staked for 60' R/W. - 11/7/39

stakes for 50' Road

(13+00) Monuments (Hubs set)

(10+00) Monuments - (Hubs set)

(6+00) Monuments (Hubs set)

(1+50) Monuments Hubs set

Em bankment 13+00 to 15+00

1727

INDEXED ON MAP

Re staked
11/7/39
E. Gore
G. W. Lyle
J. Buckner
M. V. Jones
R. Reed



July-8-1936
Clear-Dry-Warm
F. Wing 17
J.M.
T.3 R.14
J. Loc McCormick

38

Road 32
See Book 615 Page 62 A
54+20' W

C. R. Shaffer

sec. 6

Notes: Bearings
shown in Red
are established
True Bearings

store
12+63.5
0+14' Left

Road. 32

N 41-24' E

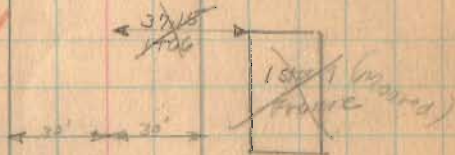
00-13' Left

00-26' Left

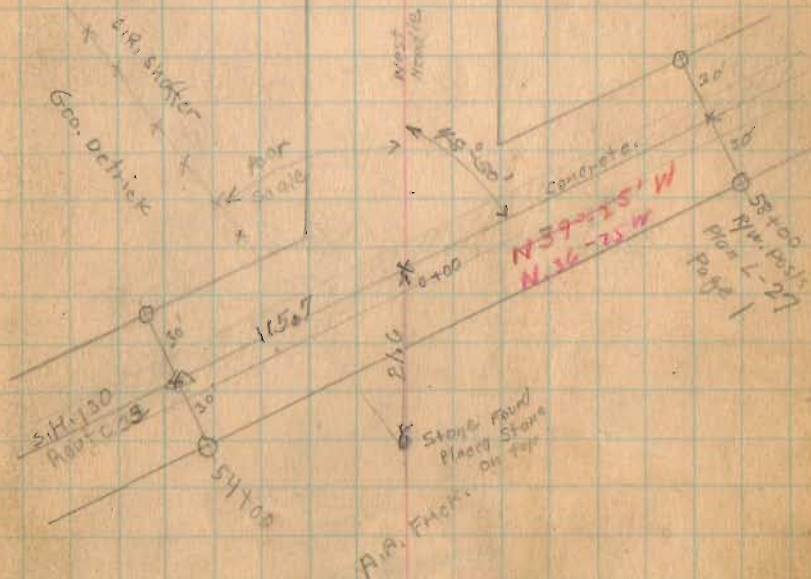
20' Oak

T.3 R.14

Major's Field



Bridge 40+33-16.9



11/7/39
Restaking

Road 13

(24+00) Monuments (Hubs Set)

(22+00) Monuments - (Hubs Set)

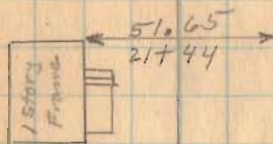
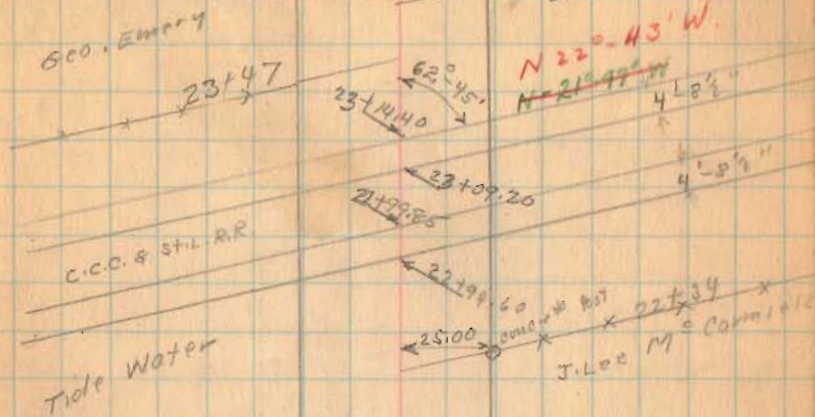
(1727)

(18+00)

INDEXED ON MAP
Monuments - (Hubs Set)

7-8-36

Harry Costin 39



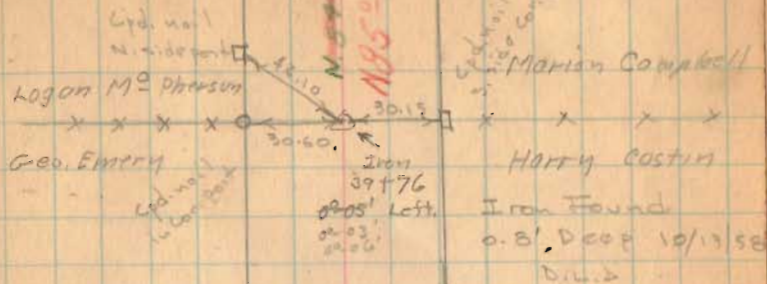
N 87° 55' W
X 65° 18' W

11/7/39
Restored

Road 13

40

7-8-34



(39+00) Monuments (Hubs set)

(53+00) Monuments (Hubs set)

(28+00) Monuments (Hubs set)

(127)

INDEXED ON MAP

Road 13

11/1/27
K. L. ...
G. ...
J. ...
M. ...
R. ...

67+00 Monuments (Hubs set)

66+00 Monuments (Hubs set)

61+00 Monuments (Hubs set)

56+00 Monuments (Hubs set)

51+62 25' To E 37 1/2' To E
Monuments at 30' from E (Hubs set)
" 37.5' " " " " " "

48+98 25' To E 37 1/2' To E
Monuments at 30' from E (Hubs set)
" 37.5' " " " " " "

46+00 Monuments (Hubs set)

41+00 Monuments (1727) (Hubs set)

INDEXED ON MAP

7-2-56

41

Sec. 18

A. Mar 1-1

Log on MR Pearson

Sec. 12

T. 3 R. 14

James Hill

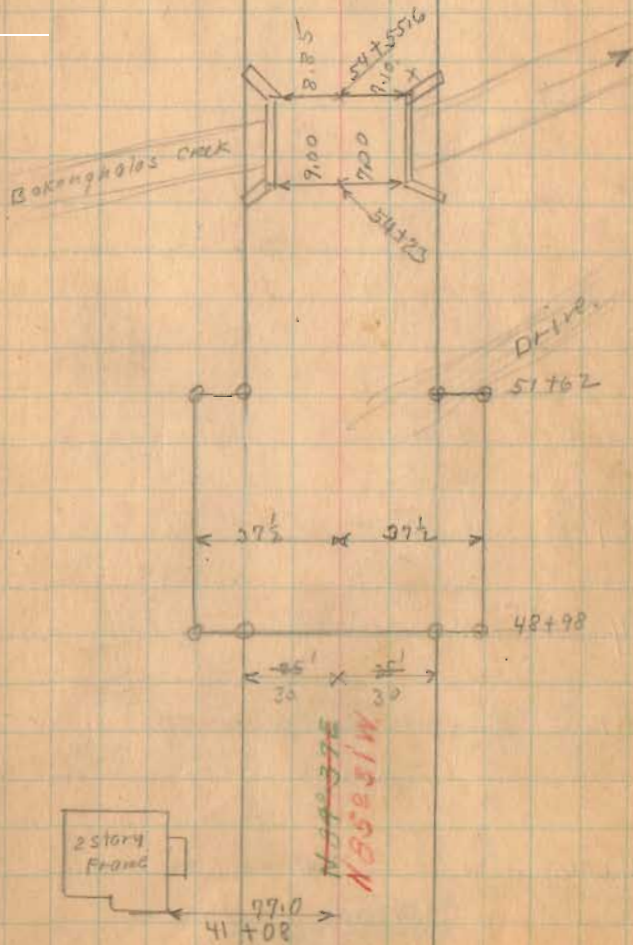
Stone Found - Monitor Campbell

66 + 66

of 34'

Right

T. 3 R. 14



11/8/39 Restaked

E. Cory
G. Wilkes
J. Inskeep
M. Jants
R. Reed

Road 13

60' wide

95+00 Monuments (Hubs set)

90+00 Monuments (Hubs set)

84+00 Monuments (Hubs set)

78+00 Monuments (Hubs set)

74+00 Monuments (Hubs set)

INDEXED MAP
INDEXED ON MAP
(1727)

July-9-1936
Warm Yes
Clear 42
F. Wright
G. Wilkes
J. Montgomery

E. Z. Kauffman
concrete
post
A. Mark

N. 99+00 W
N. 84+50 W

Stone Found. Lester Marshall
93+58
02+00
left

100.00
N 22 E

Brick
School

92+95

91+54

J.H. Hill

90+74.0
R.P. Spike
No angle

83+42.6

83+41

Line To Mark Bldgs.

83+16

N. 83+57 W
N. 83+57 W

70.00
82+88

2 story frame

80+42

Line To Road Hill

80+04

N. 80+00 W
N. 80+00 W

Road 13

11-9-39 Restaked

B. Wiggins
C. Kopper
B. Fiske
M. Jones
R. Reed

120+00 Monuments (Hub set)

115+00 Monuments (Hub set)

110+00 Monuments (Hub set)

106+00 Monuments (Hub set)

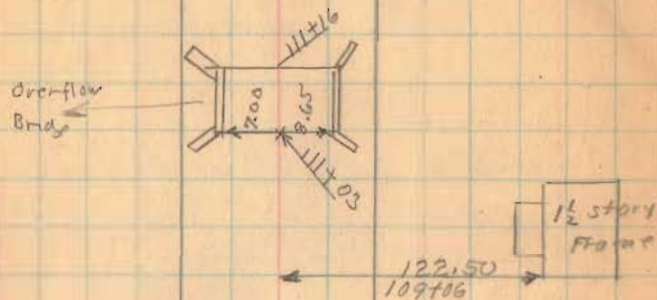
101+00 Monuments (Hub set)

1727

INDEXED ON MAP

7-9-36

43



~~N 84° 06' E~~
N 84° 55' W

B.O. Downing

191+88

Lester Harris



11-7-39 clear
not cold

Road 13

(131+50) Monuments (Hub set)

(126+00) Monuments (Hub set)

(121+00) Monuments (Hub set)

(1727)

INDEXED ON MAP

7-7-36 44

7
S 4°-20' W
S 20° W Road 46
see Book 587 Page 14
L
Road 235
Placed Iron
130+95
No. Angle
Fd 12/19/65

sec. 24

T. 3 R. 14

John Lynn
R
Huro

Iron
120+48
1° 10' 4" off
15' 27" W

John Lynn

E. Z. Kauffman

Road No. 46

30° Rod
5600
28130
S. 32° W. Fd 12/19/65
Cement
Post

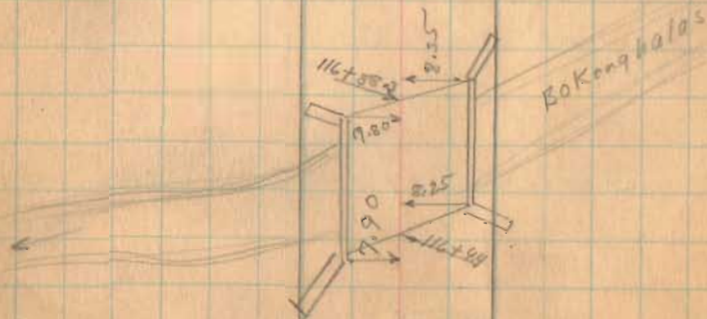
B. O. Downing

sec. 18

T. 3 R. 14

N 88°-06' W
N 89°-38' W

→ 2



11-9-39

Wilgus
Keyser
Restaked Inskip
Jones

Road 13

153+00 Monuments (Hubs set)

147+50 Monuments (Hubs set)

149+00 Monuments (Hubs set)

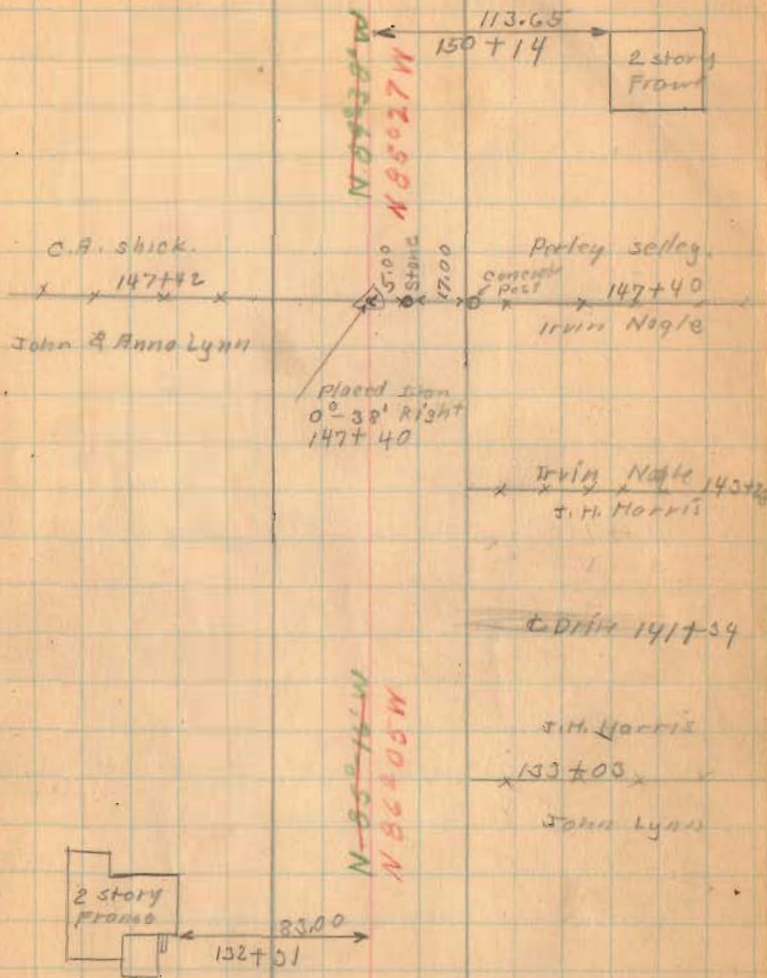
141+00 Monuments (Hubs set)

136+00 Monuments (Hubs set)

INDEXED ON MAP
1727

7-9-36

45



11-10-39
very Windy

G.W. Hubs
C. Keyser
J. Insteep
M. Jones

Road 13

7-9-36

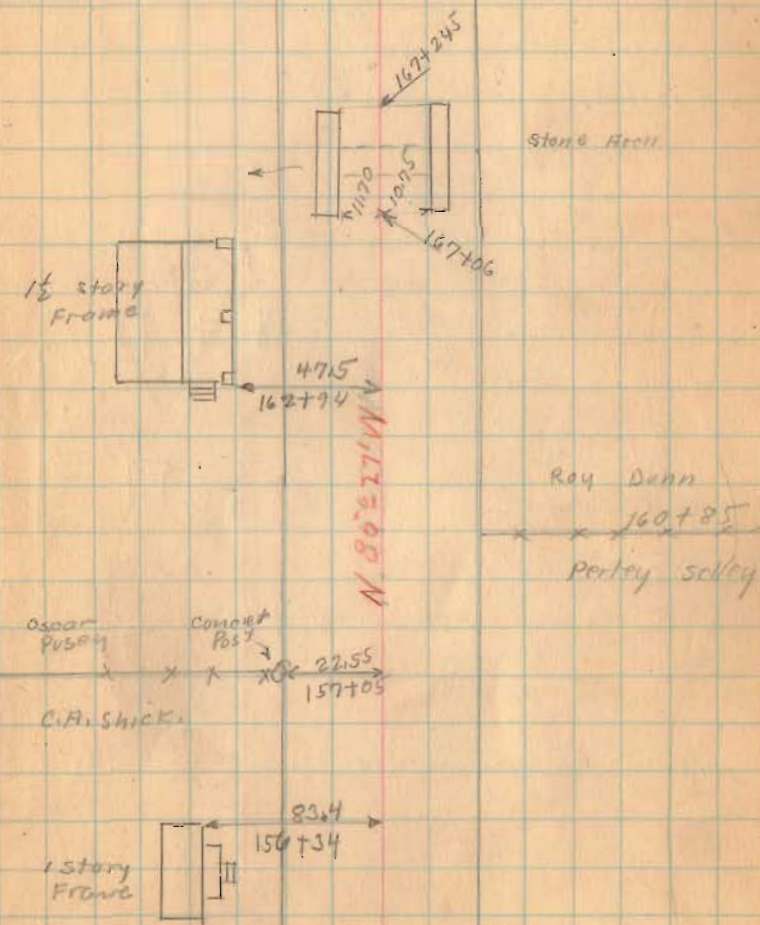
46

(167+00) Monuments (Hubs Set)

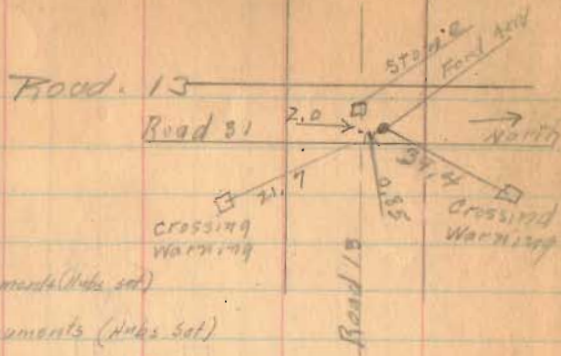
(162+00) Monuments (Hubs Set)

(157+00) Monuments (Hubs Set)

(1927)
INDEXED ON MAP

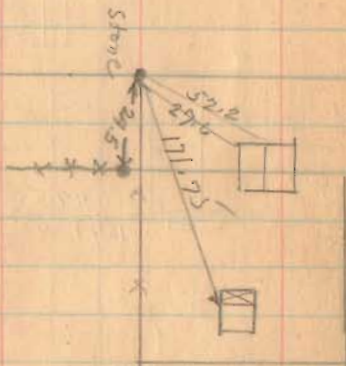


July - 10 - 1936
 Clark - Mot.
 F. Wright
 J. Montgomery
 G. Wilgus



186+00 Monuments (Hubb set)

180+00 Monuments (Hubb set)



175+00 Monuments (Hubb set)

Monument - N. side road at 90°
 set by eye.

173+00 Monuments (Hubb set)

Sargent
 Oscar Pusoy

1727

INDEXED ON MAP

Sec. 30

Robert Bradley

T. 3 R. 14

Mary E. Moore

174+48

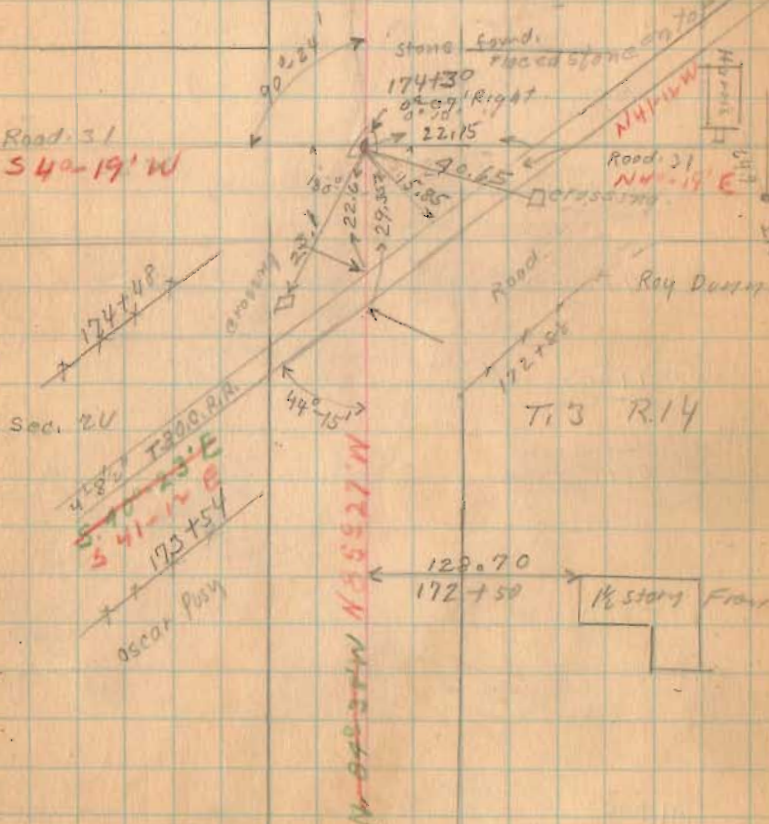
Road 31
 540-19' W

Sec. 20

482' T300.00
 570-23'E
 341-12'E
 170+54
 Oscar Pusoy

N 65 27 W

N 45 27 W



11/14/39
 Restored - 60'
 E.K. Corn
 G.W. Wilgus
 H.E. Jones
 C.B. Kesser
 R. Root

Trails 13

7-10-34

48

214+00 Monuments - (Hubs Set)

209+00 Found 5-9-53 Monuments (Hubs set)

204+00 Found 5-9-53 Monuments (Hubs set)

201+00 Found 5-9-53 Monument - (Hubs Set)

200+00 Monuments - (Hubs Set)

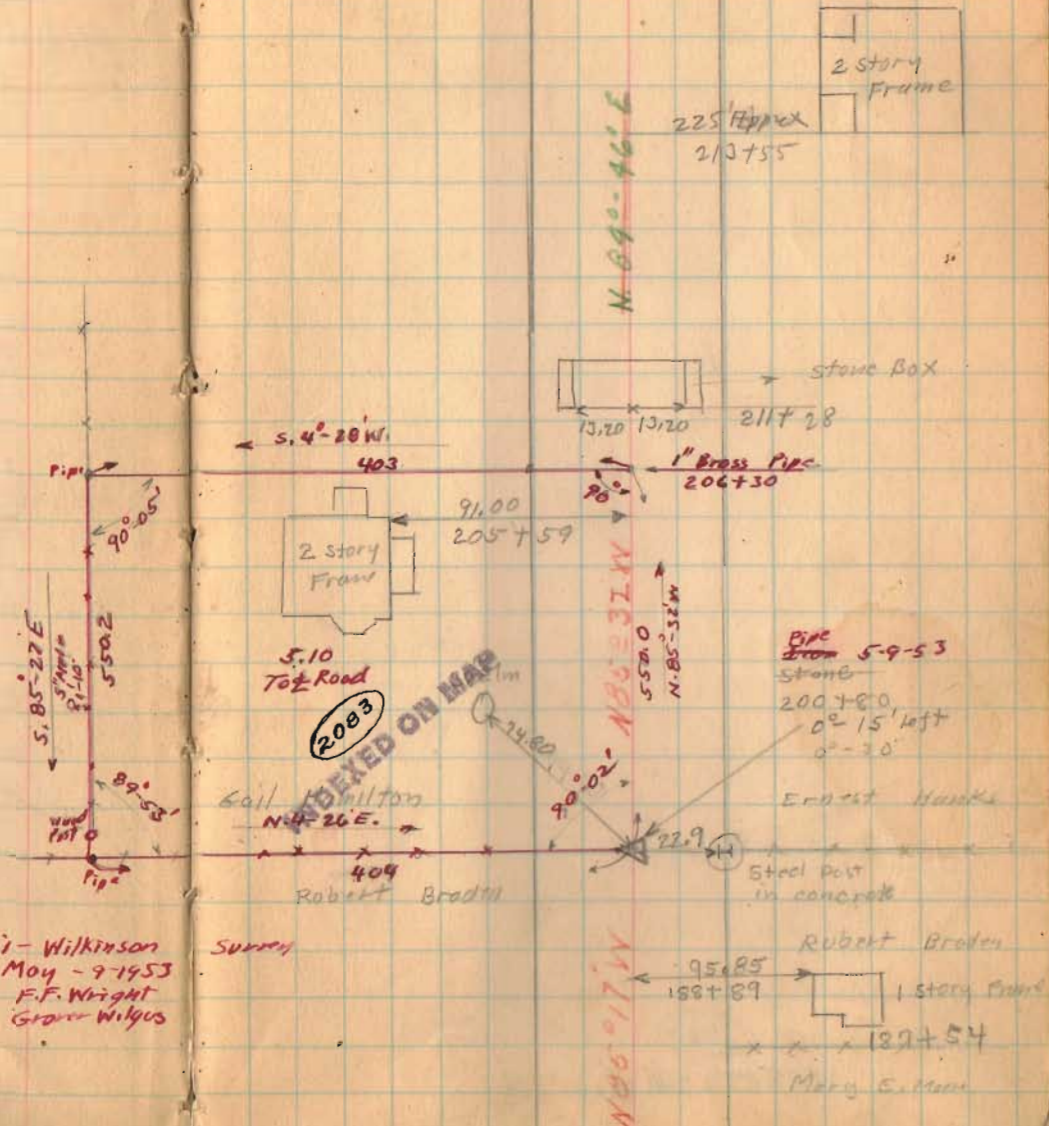
195+00 Monuments (Hubs Set)

191+00 Monuments (Hubs set)

INDEXED ON MAP

1727

Anni - Wilkinson
 May - 9-1953
 F.F. Wright
 Grace Wilgus

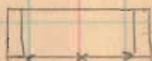


2 story
Frame

225 Appendix
2/3755

N 89°-46'E

stone Box



2117 28

S. 4°-28' W.
403

1" Brass Pipe
206+30



2083
INDEXED ON MAP

Pipe from 5-9-53
stone

200+80
0°-15' left
0°-30'

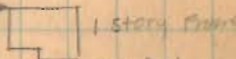
Ernest Hawks

Gail Wilton
N 4°-26'E

409
Robert Braden

Steel Post
in concrete

Robert Braden



Mary E. Mann

Road 13

(219+00) Monuments (Hubs Set)

(1722)

INDEXED ON MAP

9-10-36

49

✓
Z x 217+50 x
Lane
Z 217+34 x

N 77° 49' W
~~N 77° 49' W~~
N 85° 31' W

Lawrence Milligan

Lane

217+67

Ernest Hanks

11/14/39
 Restaked 60'
 Cox
 Wilgus
 Keyser
 Jones
 Reed.

Road. 13

246+00 Monuments (Hubs Set)

241+50 Monuments (Hubs Set)

240+75 Monuments (Hubs Set)

237+00 Monuments (Hubs Set)

233+00 Monuments (Hubs Set)

228+00 Monuments (Hubs Set)

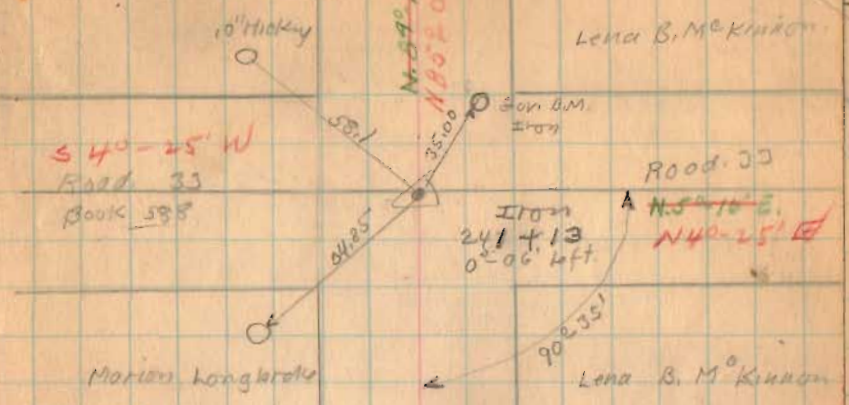
227+00 Monuments (Hubs Set)

224+00 Monuments (Hubs Set)

1927

INDEXED ON MAP

✓ Oscar B. Downs.



Washington
 sec. 30

Township 2
 T. 3 R. 14

Marion Longbrake

Iron 227+60
 0°-32' Right Lena B. McKinnon

x x x
 Gail Hamilton
 sec. 30

28.00
 N 85°
 56" Elm
 Lawrence Milligan
 T. 3 R. 14

Harrison

Township

N 85° 20' W
 N 85° 16' W
 N 85° 32' W

Food. 13

269+00 Monuments (Hubs Set)

265+00 Monuments (Hubs Set)

260+00 Monuments (Hubs Set)

255+00 Monuments (Hubs set)

250+00 Monuments (Hubs Set)

INDEXED ON MAP

INDEXED (1727) MAP

INDEXED ON MAP

✓ Everett Knowlton

268+30

Kreglow

7-10-36

E. B. Roock

51

268+30

268+20 q. Drive



Storage Box

263+00

Noah H. Coover

262+12

Leon B.M. Kinross



52.25

258+77

N 85° 26' W
N 85° 26' W

placed Iron

254+65

0°-20' to ft.

Kreglow.
Oscar B. Downs

Corner
Post

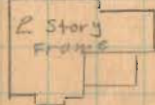
19.45

43.50 30" dia

N. 12 E.

44.90 24" dia

N. 40 E.



57.25

246+71

N 85° 26' W
N 85° 26' W

Road 13

11/15/39
Resfaked - 60'
Care
Wilbur
Keyser
Jones
Reed

292+00 Monuments (Hubs Set)

289+00 Monuments (Hubs Set)

281+50 Monuments (Hubs Set)

278+00 Monuments (Hubs Set)

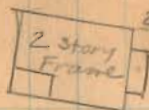
273+00 Monuments (Hubs Set)

1927

INDEXED ON MAP

7-10-36

52



292+34

N 88° 58' 00" N

← established bearing

Supt. Books

x x 289+79 x

Errett Knowlton

281+79
Ploand Iron
92-02' Lift

123.8

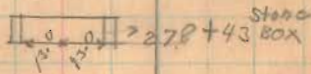
Starley Allen

20'

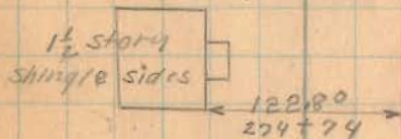
Road 214

N 4° 34' E

E. B. Rood



Stand
Box



1 1/2 story
shingle sides

122.80
274+74

N 92° 55' N
N 85° 26' W

272+79 D174

Road. 13

311+00 Monuments (Hubs Set)

308+00 Monuments (Hubs Set)

302+00 Monuments (Hubs Set)

296+00 Monuments (Hubs Set)

1727

INDEXED ON MAP

7-10-36

.53

Lawrence Milligan

Supt. Banks

Stone found.
308+38.5
No Angle

Mary C. Coover

E. & H.C. Shultz



92.00

306+96

2 story
Frame

N 85° 28' W

E. & H.C. Shultz

295+50

Starlay Alley

Road 13

330+00 Monuments (Hubs Set)

325+00 Monuments (Hubs Set)

321+00 Monuments (Hubs Set)

316+00 Monuments (Hubs Set)

1727

INDEXED ON MAP

July-13-1936

Clear - 106°

F. Wright

J. Montgomery

G. Wilgus

Joe Roberts

Max James

54

~~Dist 327+29~~



Law Margus

321+91

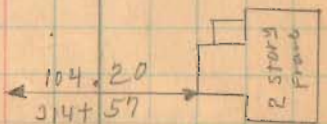
Lane

Emma S. Wilgus

Moz + 08 N

Emma S. Wilgus
316+55

Mary C. Coover



11/15/39
Restated .60'

Road 13

346+90

344+00 Monuments (Hubs Set)

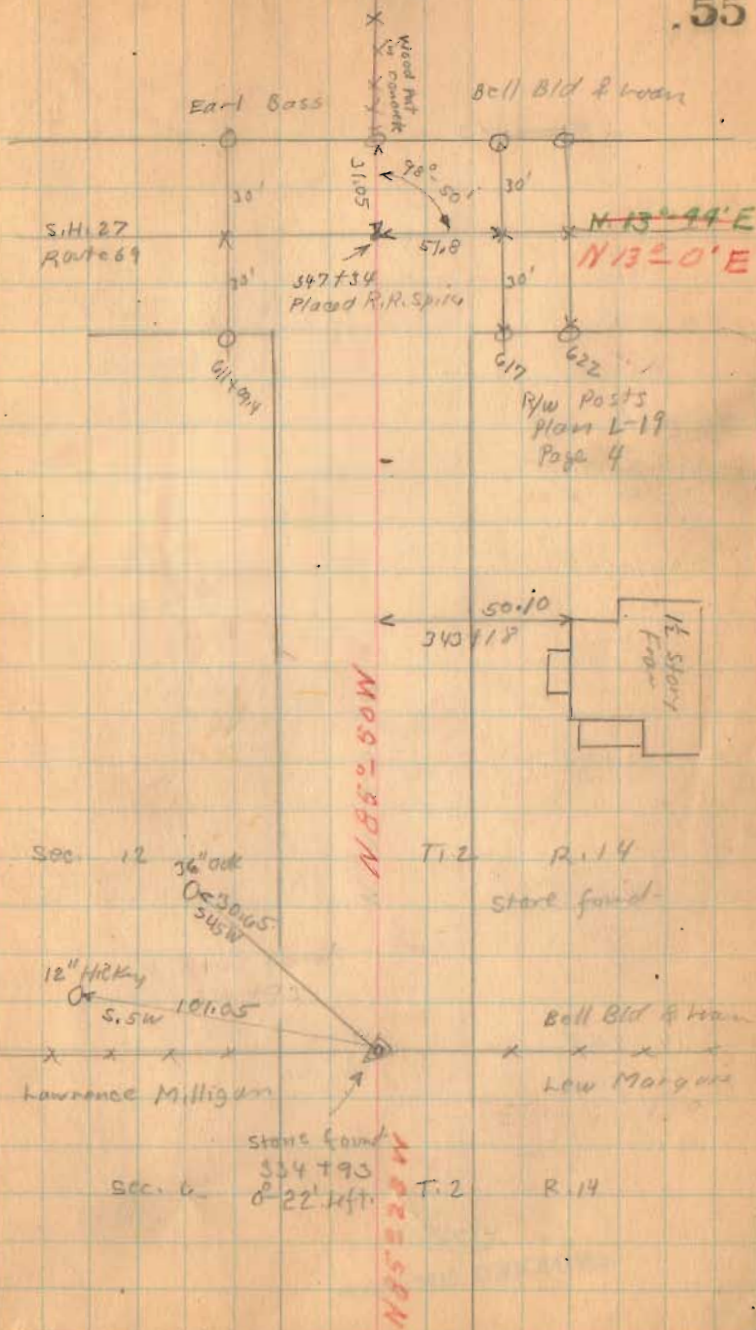
339+00 Monuments (Hubs set)

335+00 Monuments (Hubs Set)

INDEX 1722 MAP

7-15-34

55



Road 13

372+00

367+00

362+00

358+00

354+00

348+00

1727

INDEXED ON MAP

9-13-36

56

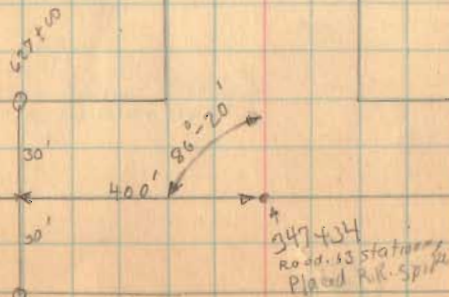
Milt McKinnon
x 360+93
Bell Bid & Loan

Milt McKinnon
x x x x
Bell Bid & Loan

12" Hickory 63.4
O ← 353+57
S.W. → H+6
No
Angle

Bell Bid & Loan

Bell Bid & Loan



Road 13

7-13-34

57

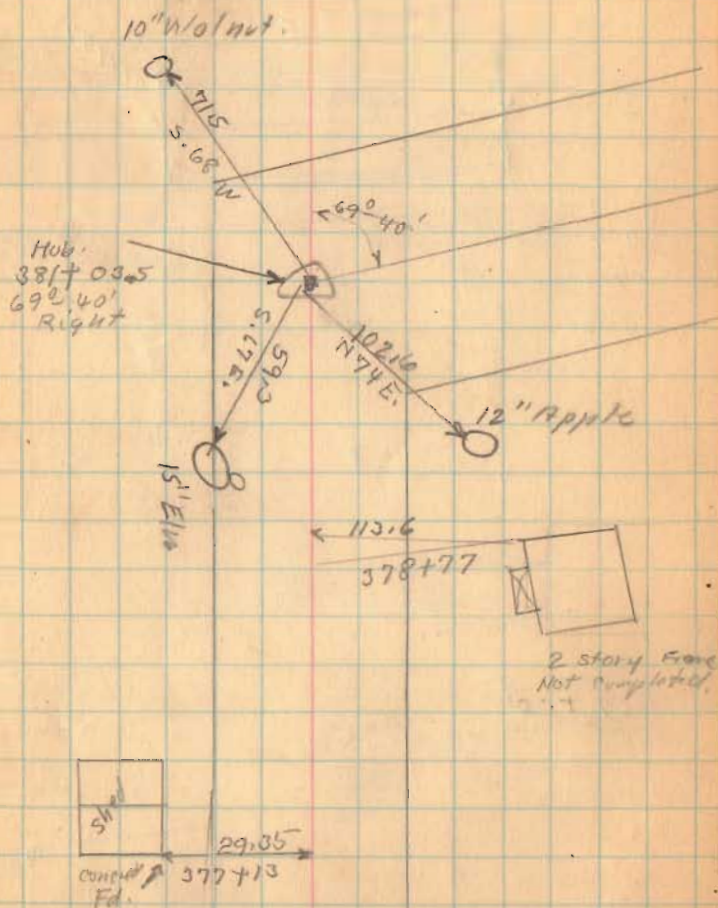
382+00

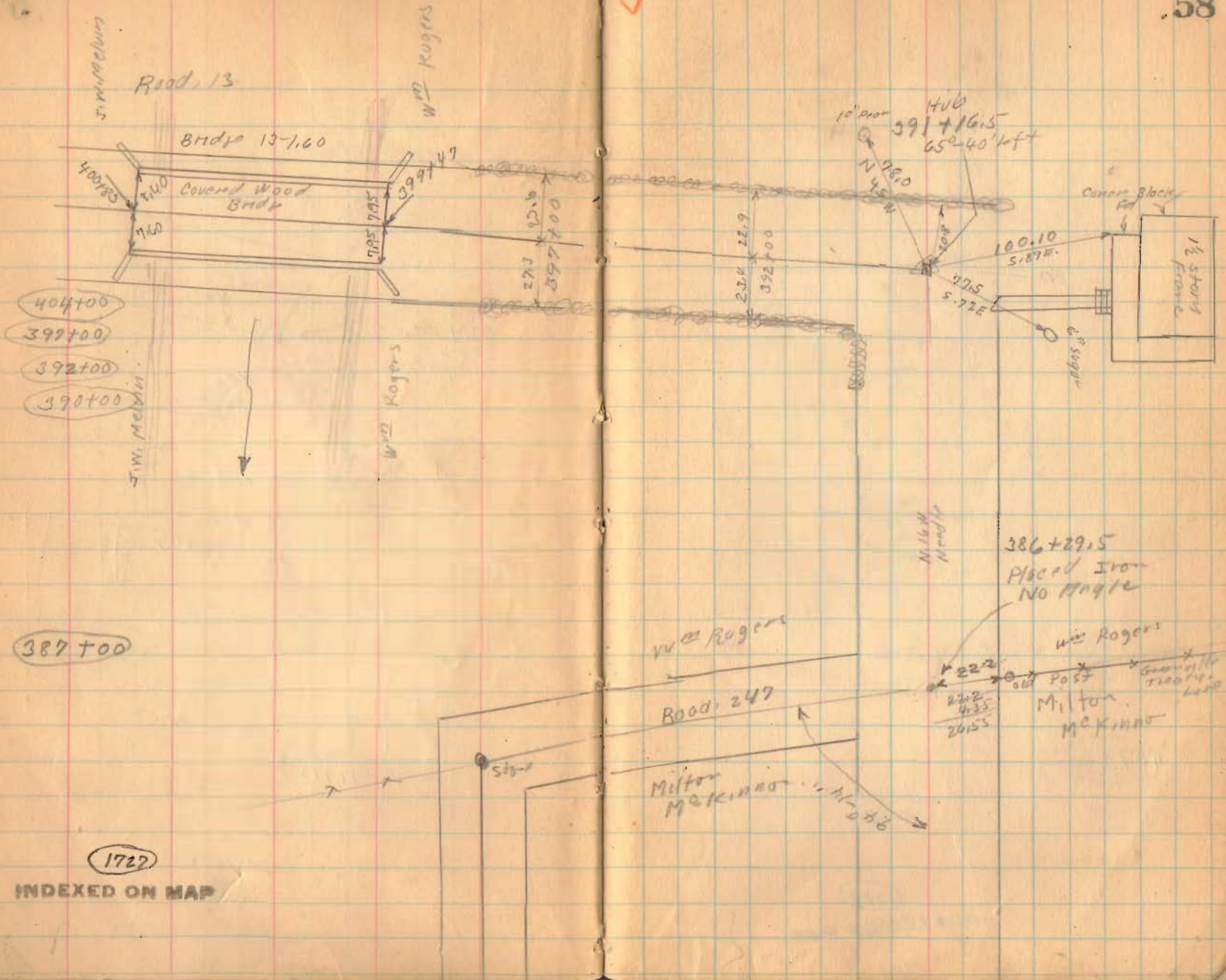
380+00

377+00

1727

INDEXED ON MAP





Road 13

Bridge 13-160

Covered Wood Bridge

Wm Rogers

Wm Rogers

Wm Melvin

Wm Melvin

Wm Rogers

Road 247

Milton McKinnon

Wm Rogers

Milton McKinnon

404+00

399+00

392+00

390+00

387+00

1722

INDEXED ON MAP

10' 2" 10' 2" 400
HUB
391+16.5
652-40' left

N 78.0
45 W

100.10
5.87E

47.5
5.72E

Cedar Block

1 1/2 story frame

386+29.5
Placed Iron
No Angle

Milton McKinnon

222
222
435
2455

Old Post

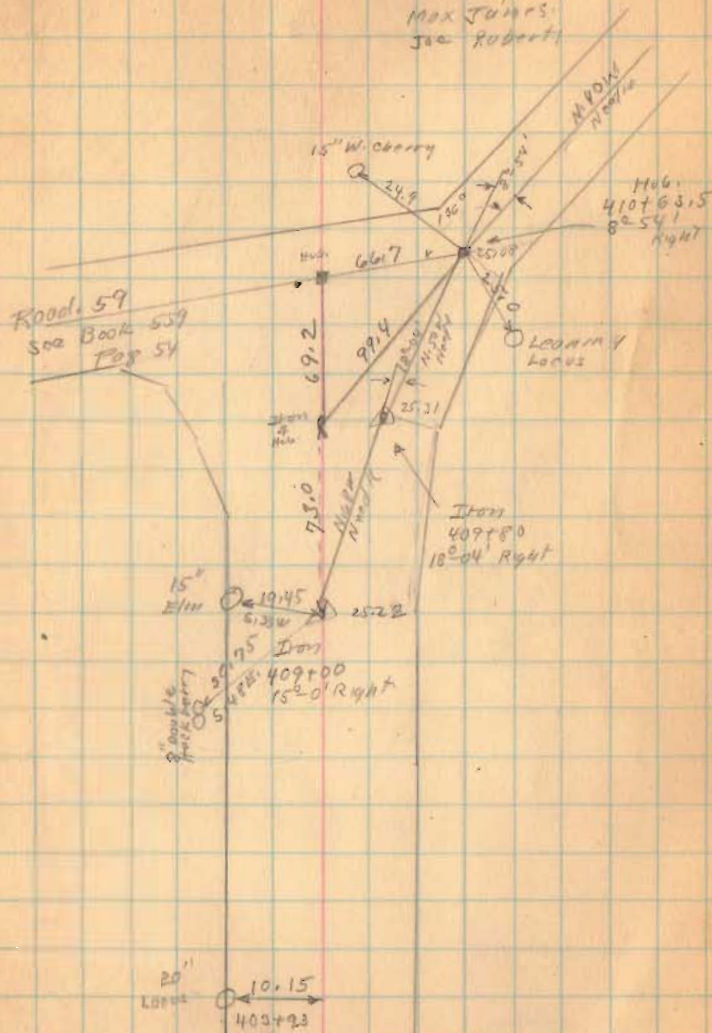
Survey to
Road 13
1936



Road. 13

July 15 - 1932
Clear - 25°
F. W. Wright
G. Wilgus
J. Montgomery
Max J. J. J.
Joe Roberts

59



410+63.5

409+80 Right only

409+100

(1727)

INDEXED ON MAP

Road, 13

420+50

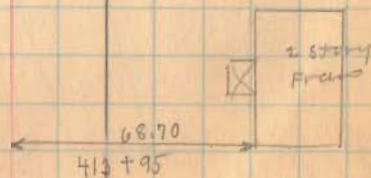
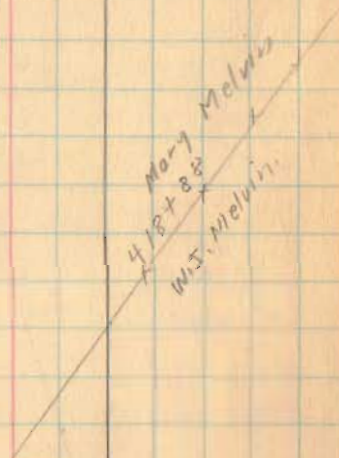
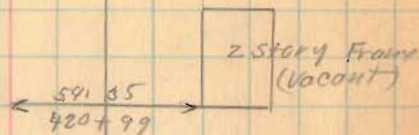
415+00

1727

INDEXED ON MAP

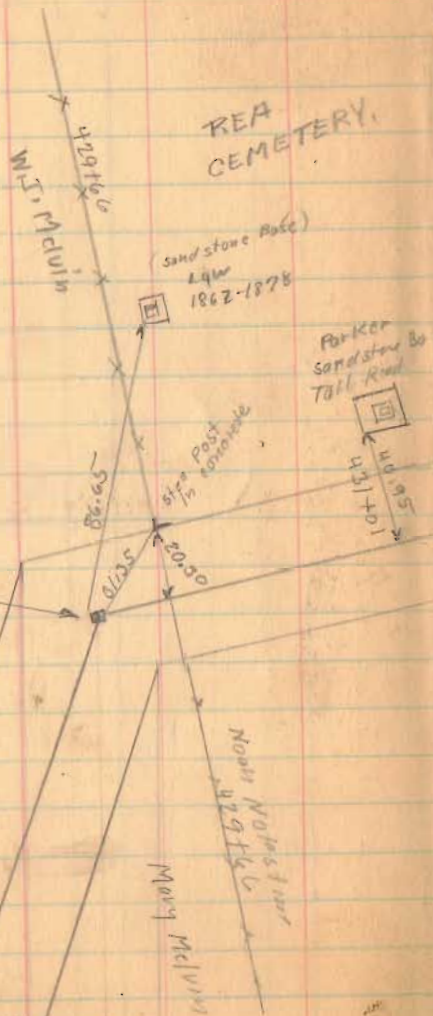
2-15-36

60



Road 13

REA CEMETERY.



436+65

Hub
429+40
34' 50'
Right.

430+00

429+00

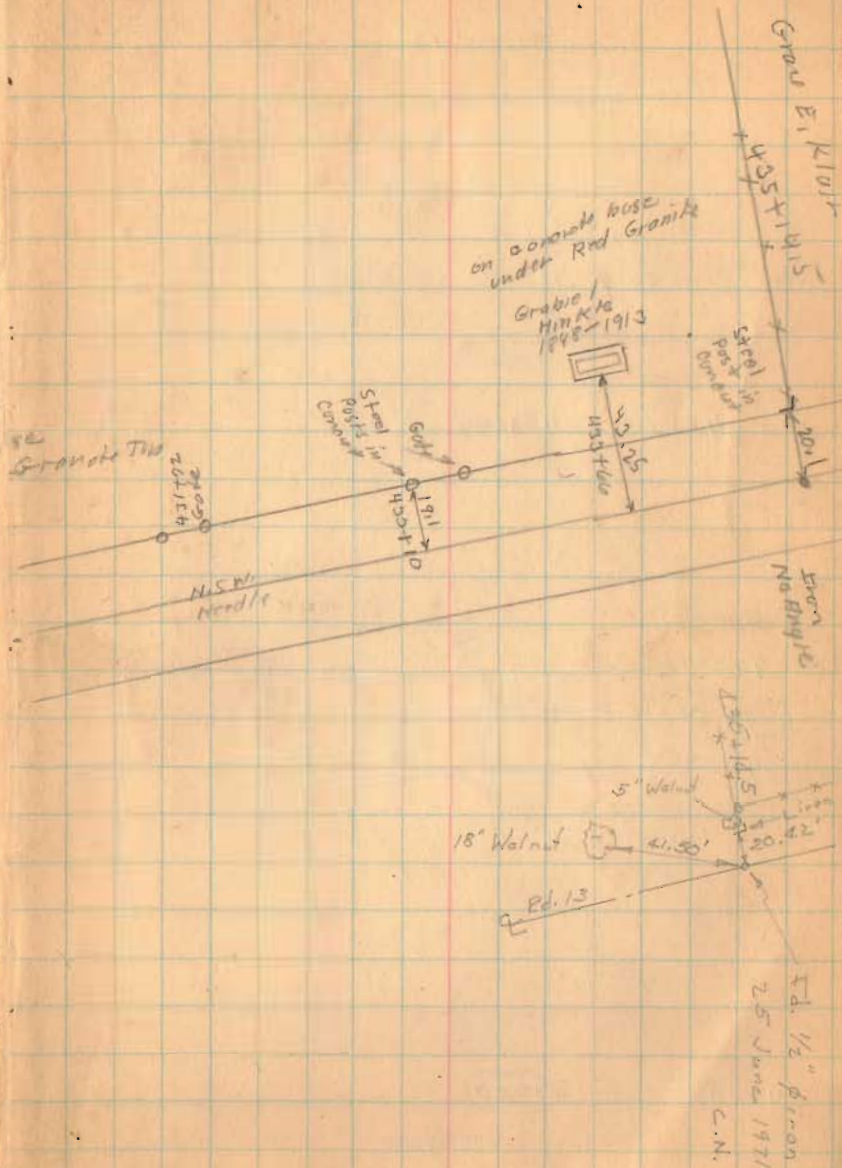
425+00

1722

INDEXED ON MAP

9-15-36

61



on compact base
under Red Granite
Gravel
Mink
1898-1913

Stump
Post
Corner
Cemetery

SE
Granite Top
421+50

NSW
Needle

5' Walnut
18' Walnut
41.50'

Rd. 13

Ed. 1/2" Piron
25 June 1971
C.N.

Road 13

sta. 0+00 To 444+13 = 50' Road.

sta. 444+13 To 483+99 60' Road.

450+00

446+00

444+13

441+00

Right only

Rea
Cemetery

Good E. Wall

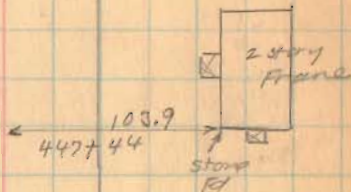
X
X
X

1727

INDEXED ON MAP

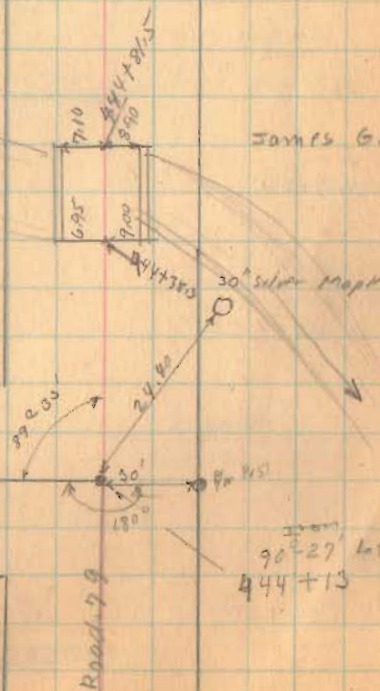
7-15-36

.62



Brandwine Creek.

James G. Ellis



Neah
Nostis

Road 13



469+00

461+00

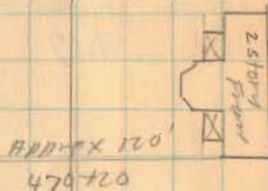
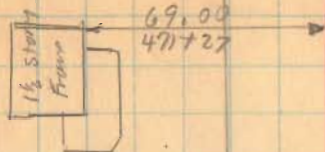
456+80

1727

INDEXED ON MAP

7-15-36

63



The Shelby Bid of Lot

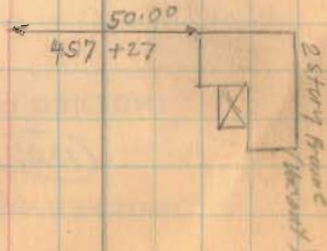
Gravel E. Klair

Z - Southern L.S.

460+91 Iron 0'-04" left

W.E. & G.H. Aikin

457+52 Found Not shown James O. Ellis



Road 13

Length 48399 Feet

Length 9.1665 Miles

9.17

483+50

473+00

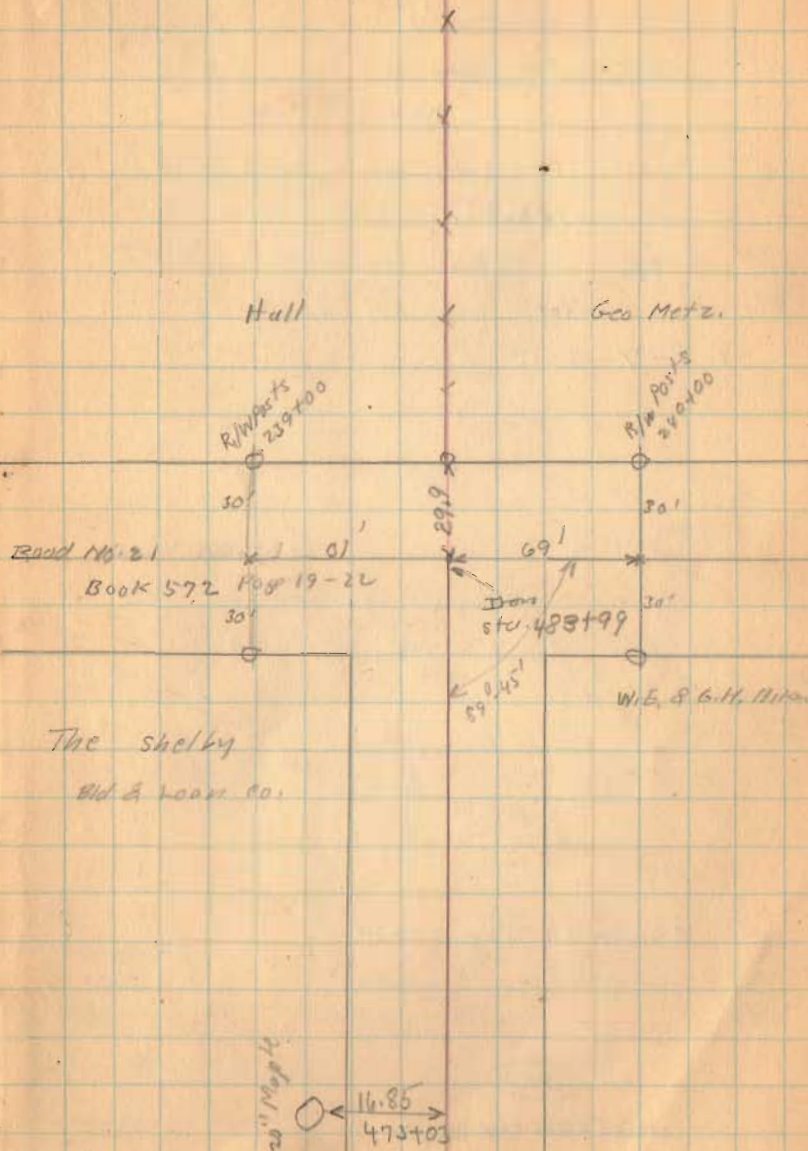
INDEXED ON MAP

1727

INDEXED ON MAP

7-15-36

64



Road 57

Harrison Twp - McArthur Twp

60' - Road. Commissioner's Journal 5 Page 4-5

(1836)

60' Road " " 6-79

Placed stakes for 50' road.

1-3-7-9-11 etc

Note: 1" # bar set on back tan

0+00 - 23+65 because of US 33

Relocation used 119.5 North of R/W Manos

on # Old US 33 to set up west end of tan.

See Book 479 Page 32-33

1726

INDEXED ON MAP

168+00

211.130

Concrete

Route 33

03

P.T. 162+96.92

July 16-1936

Clear - 95°

F. Wright

G. Wilgus

T. Montgomery

Rub Roberts

Max James

25.35

21+15
710/45

91.0
15" Hickory
15+25

18+15

1" # bar set

7/9/35

Twp.

No Fence

6+12

24.0

5+00

McArthur

Old. Harding

26.5
3+00

28.6
1+00

3.0

86

20'

26.3

98.0

134

7.35

119.5

119.5

1/2 APC

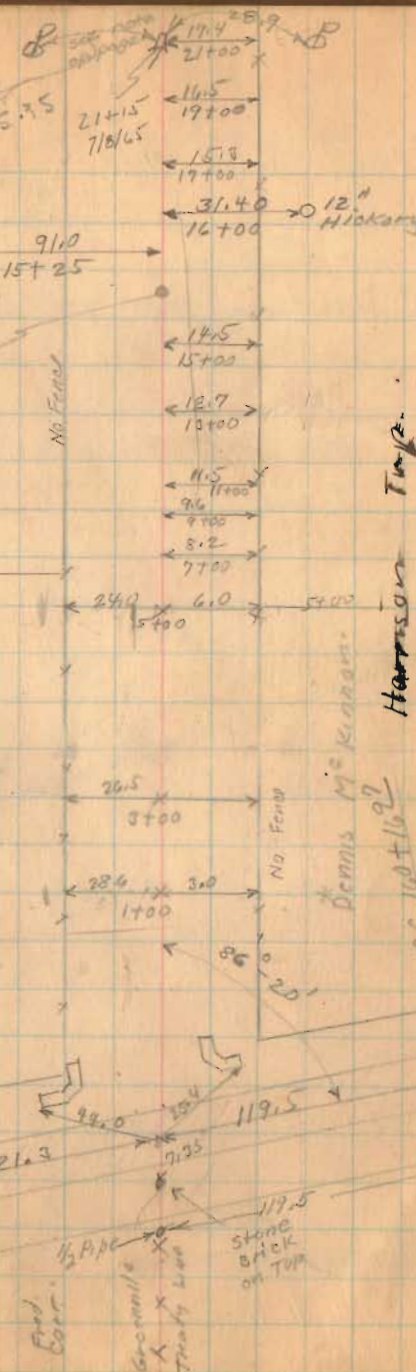
Greenile

Thurs line

Stone brick on top

End Conc.

2-22-48
T=140103
E. 1.71



Road 57



29+15 1" # bar set 7/8/65

Note: 1" # bar set on Fwd tan because of U.S. 33 Relocation

23+65

23+65 Stone Fd 7/8/65

$A = 0^{\circ} 36' \text{ Rt}$

1726

INDEXED ON MAP

21+15 1" # bar set 7/8/65
see pg 65

7-16-36 .66

Maggie Hellman

31+700

31+685

Alice Kelley

1" # bar set 7/8/65

29+700

12.4

27+00

16.0

25+00

No Fence

550.0

Alice Keller

24+

24+15.3

73.10

24+

24+10.2

45.8

18.0

23+07

26.9

55.1

23+65

0° 36' Right

Fd July 8, 1965

$L = 0^{\circ} 20' \text{ Rt}$

O.B. Austin

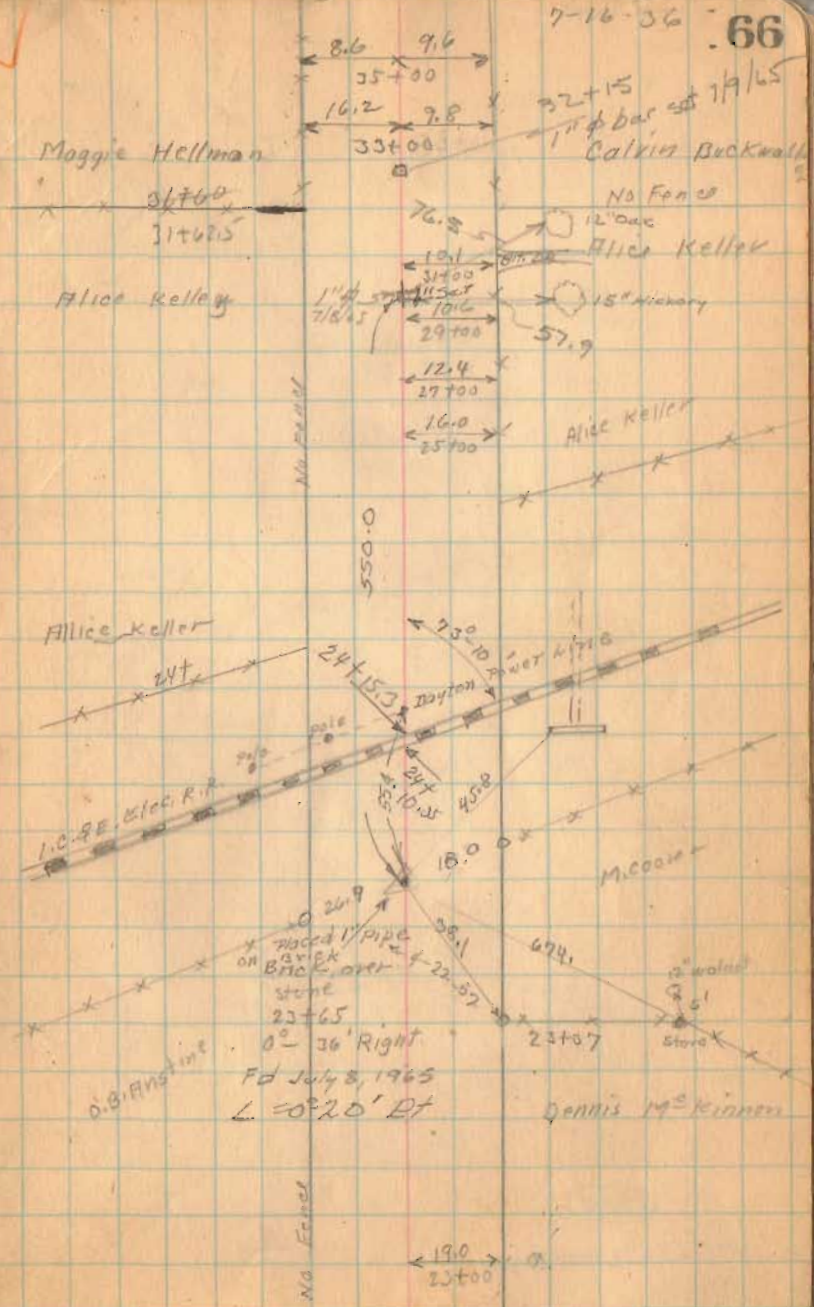
placed 1" pipe on brick over stone

Dennis M^{rs} Kinney

No Fence

19.0

23+00



Road 57

22+24.7
13+08.5
8+76.2

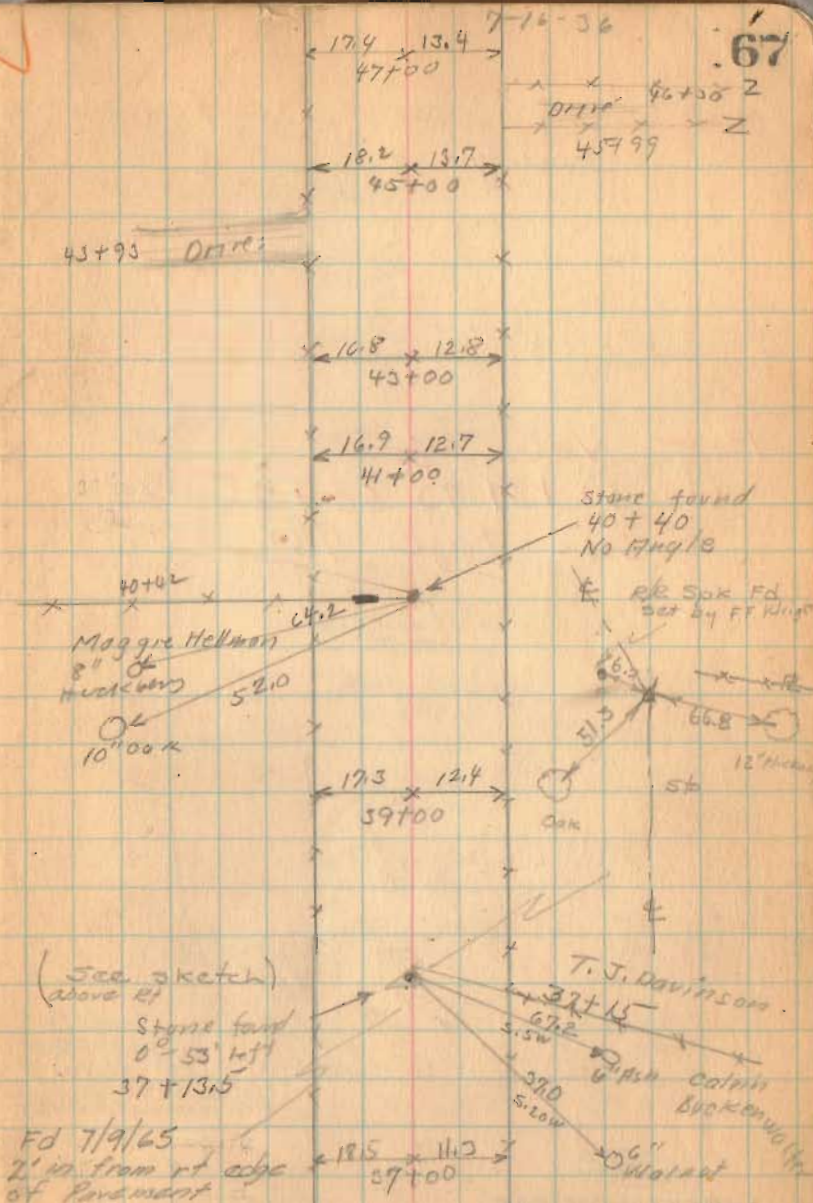
37+13.5
29+65
13 48.5

40 A. on East

1726

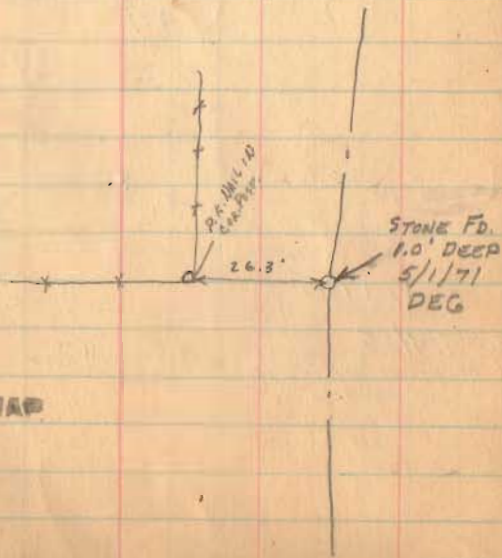
INDEXED ON MAP

67



Road 57

FOR NEW &
sta. 30+21 TO 68+25
see Page 76

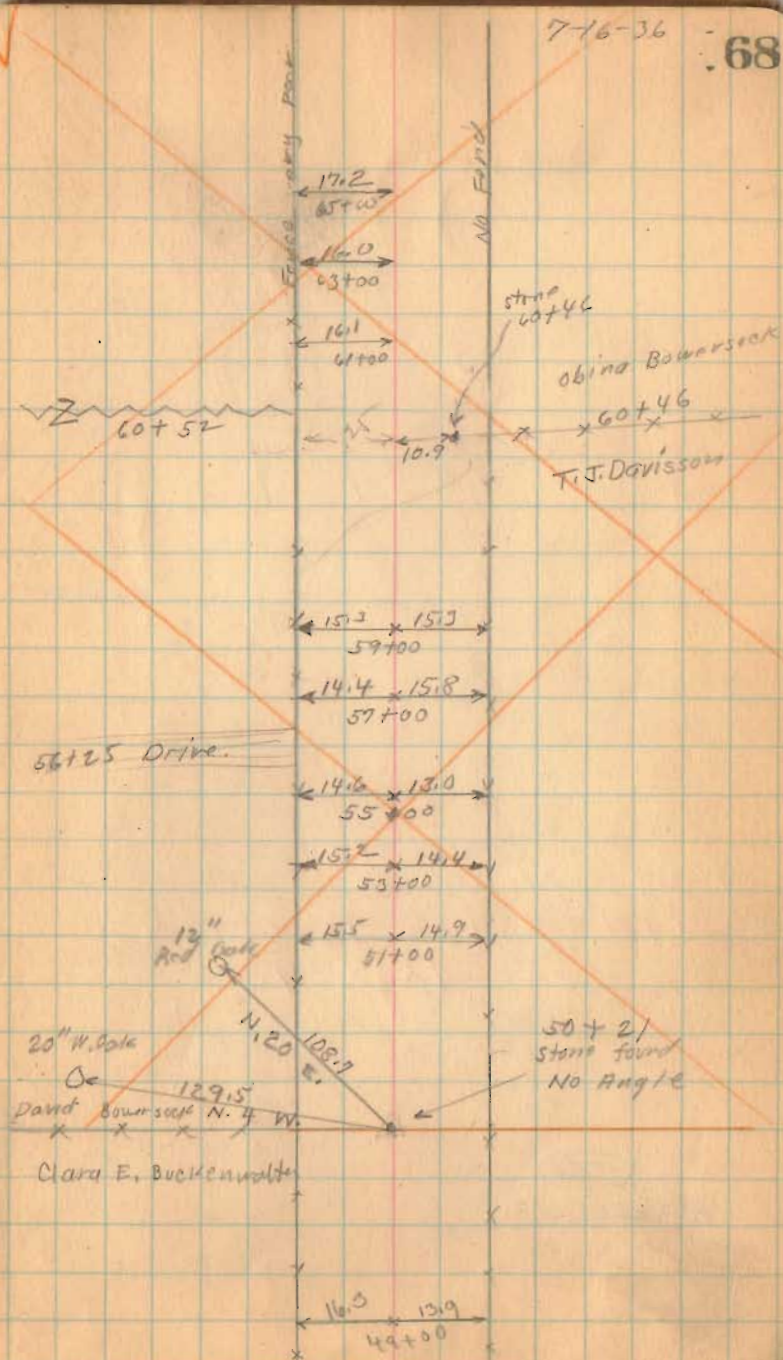


1726

INDEXED ON MAP

7-16-36

68



Road 57

(1726)

INDEXED ON MAP

71

July 17 1936

Clark

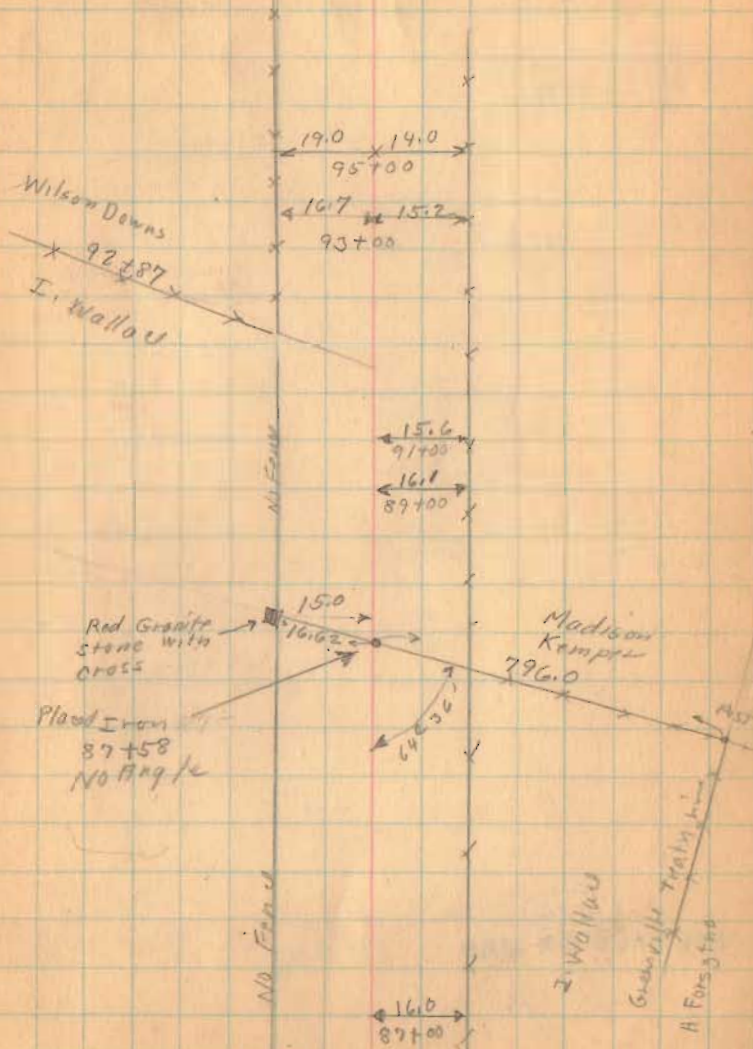
F. Wright

J. Montgomery

G. Wilgus

Max James

Joe Roberts

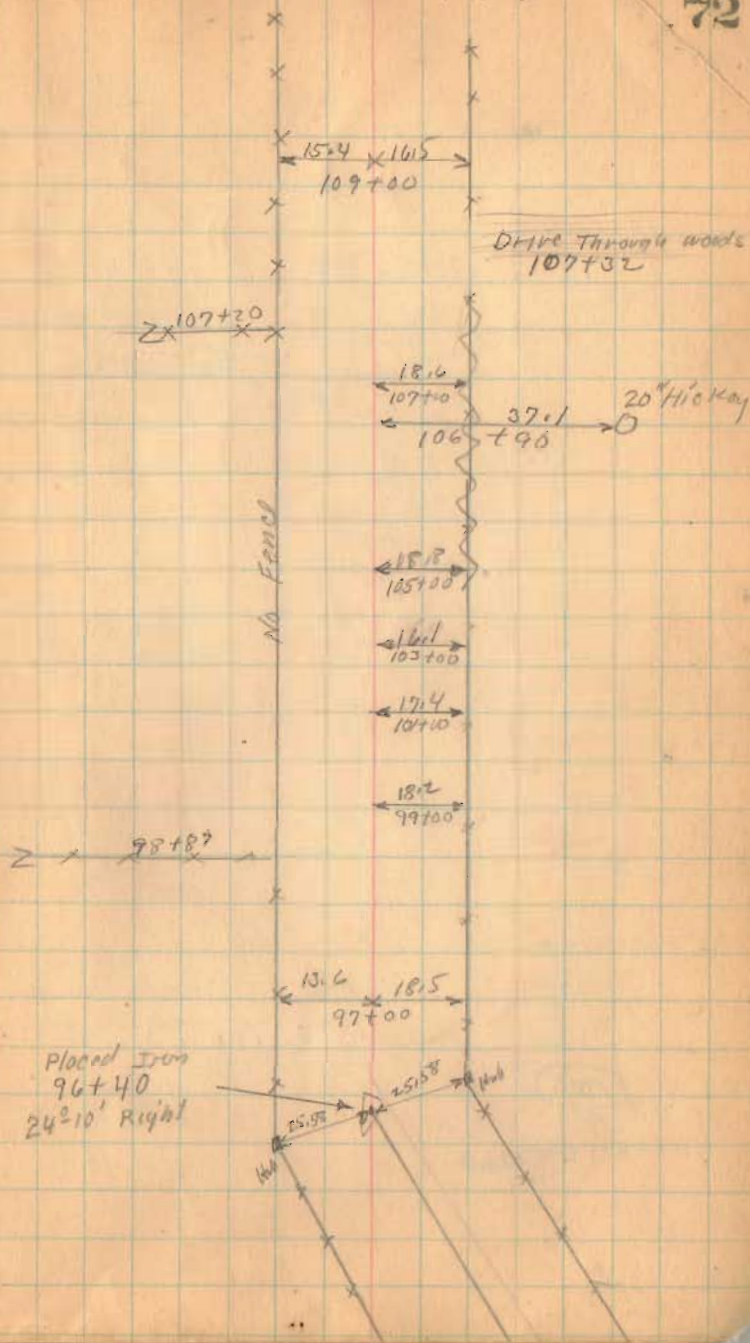


Band 157

(1726)
INDEXED ON MAP

7-17-36

72

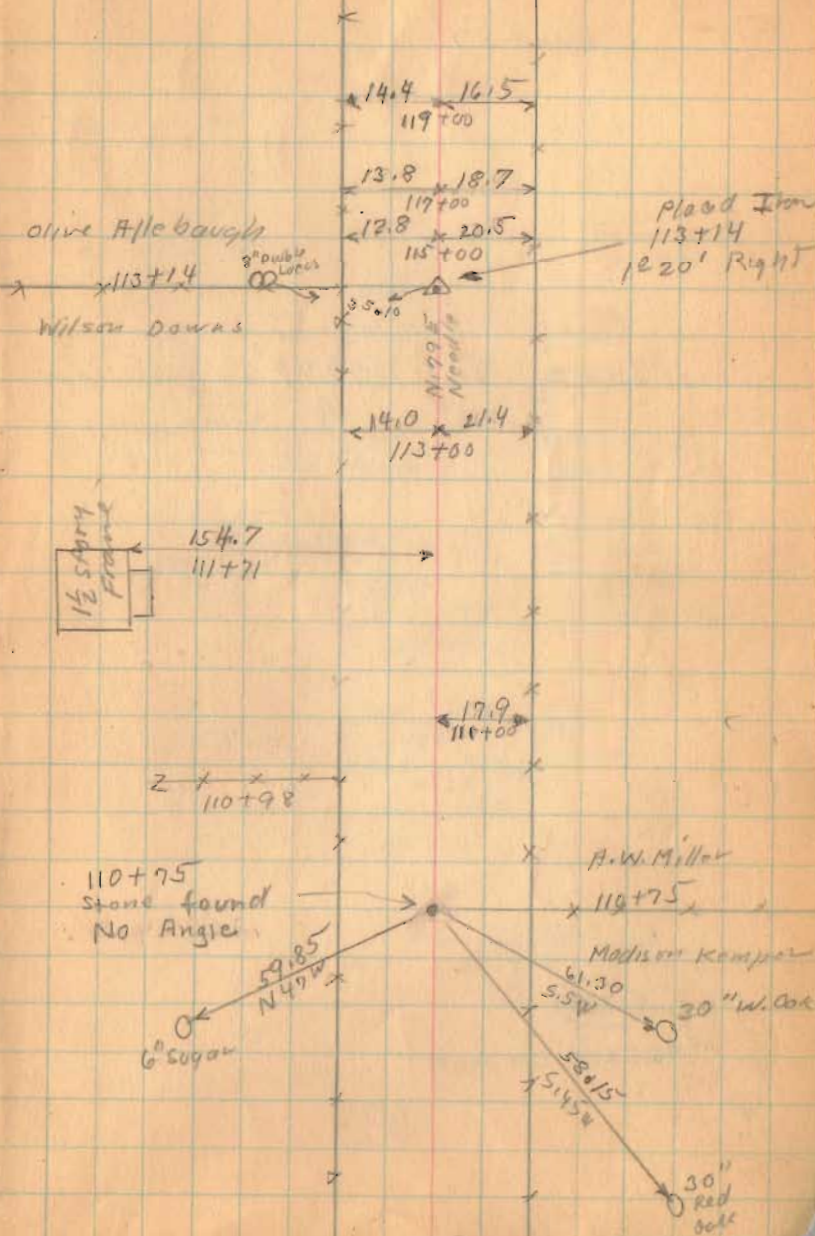


Flood 57

113+14
110+75
2+39
1 25
1 12

7-17-36

73



1726

INDEXED ON MAP

Road 57

No stakes placed
Sta 135+08 to Sta 167+47

INDEXED ON MAP

1726

7-17-36

74

W.M. Mitchell

Road 49
Patterson Pike

Placed Hub
135+08

Oliver Allebaugh

1/2 Store
Frame

Barn
Concrete
Ftd.

E. W. Troyer

Lot

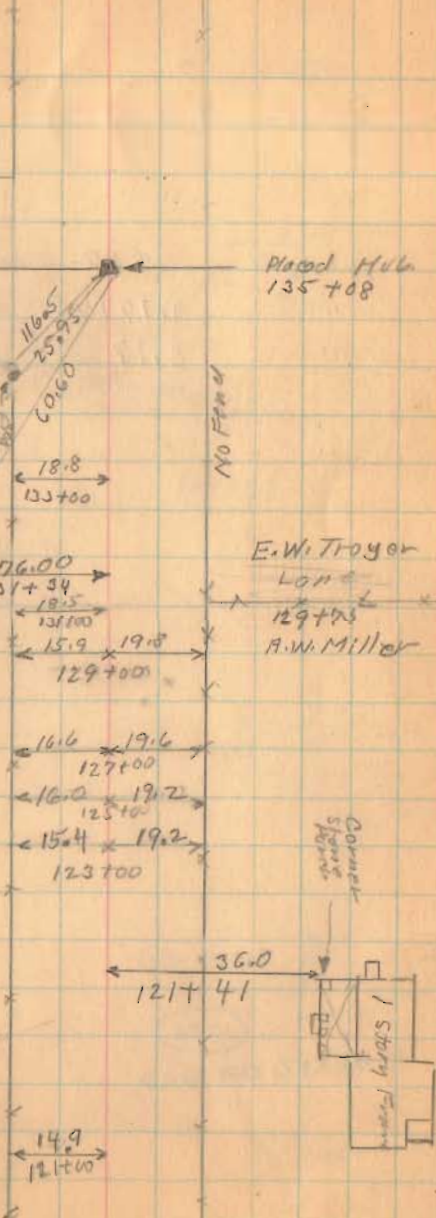
129+03

A. W. Miller

No Fnd

Corner
Stakes

1 Store
Frame

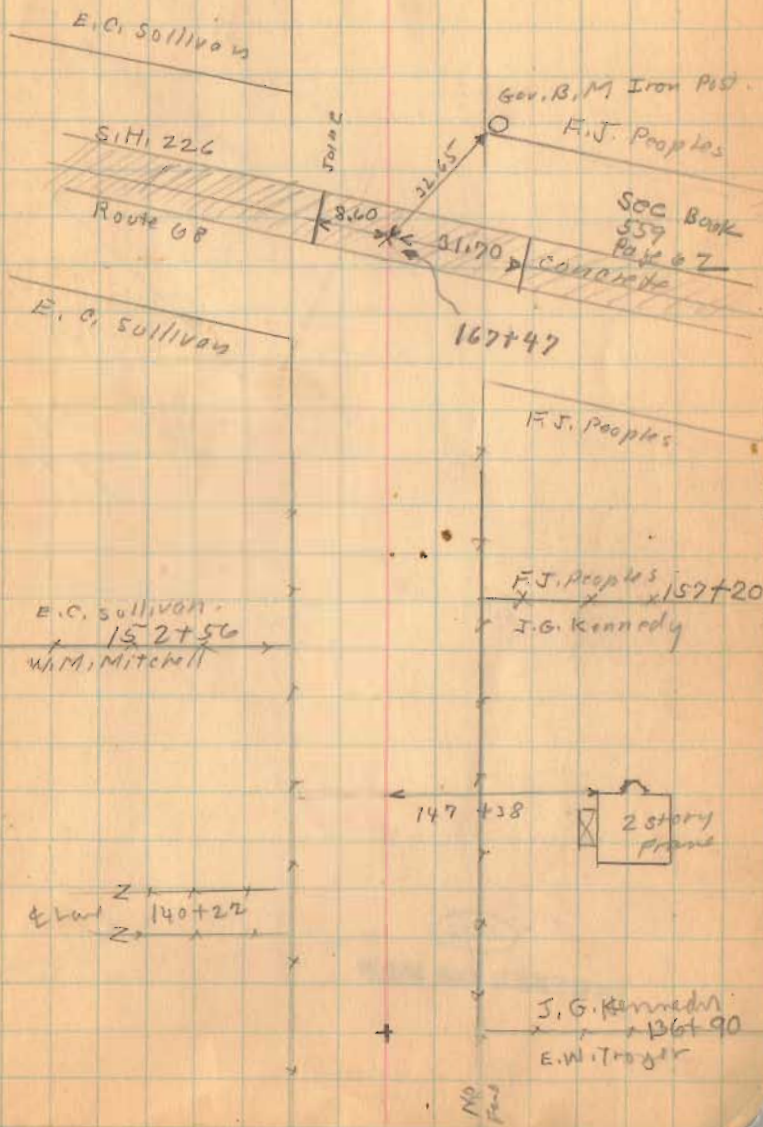


Road 57

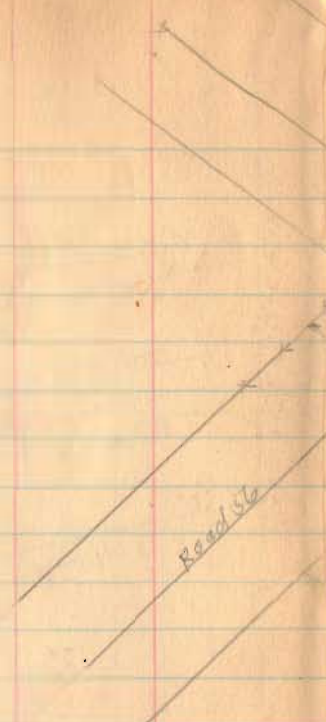
Length 16,747 Feet
 " 3.17177 Miles
 " 3.17 "

INDEXED ON MAP

1726

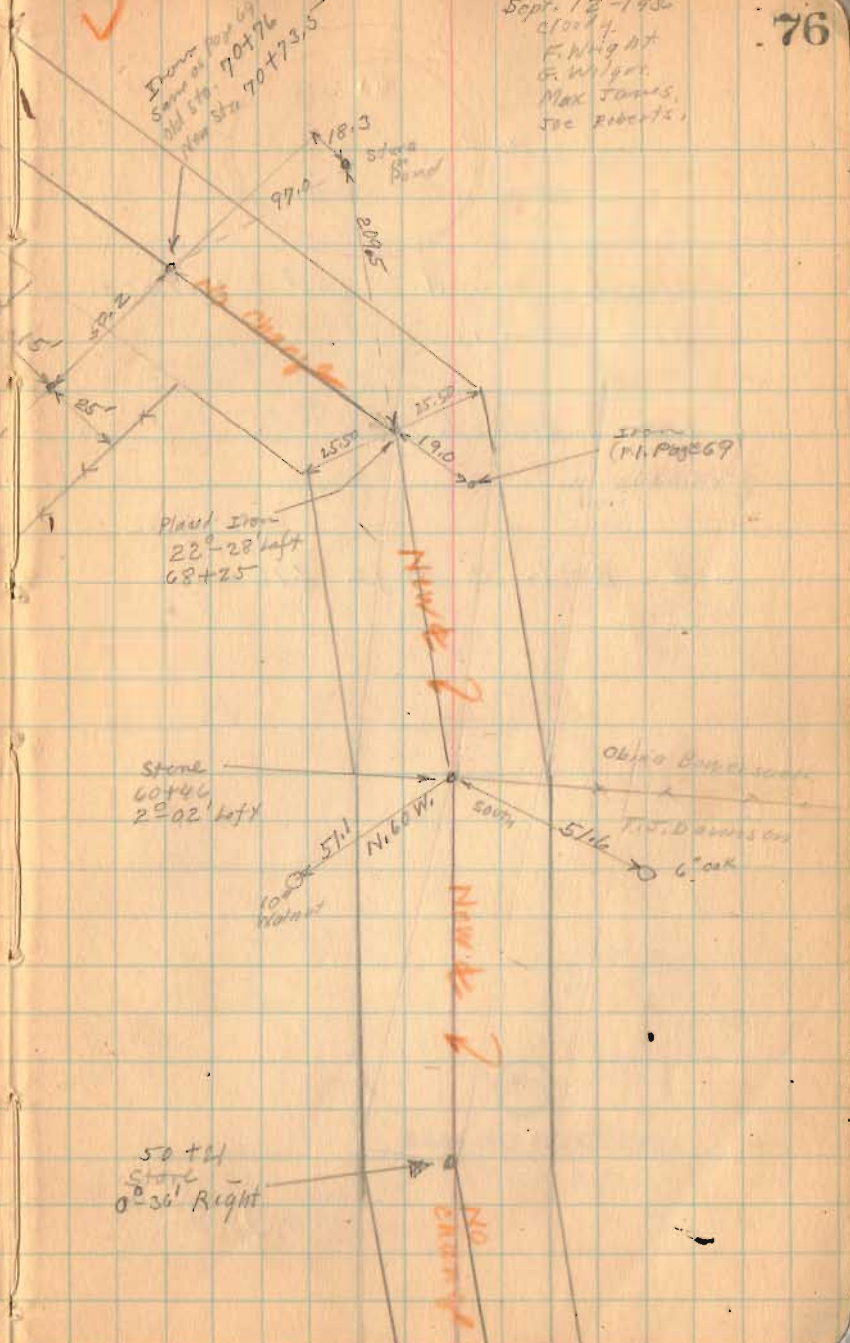


Road 57



✓
 Drive Post 69
 Stone at Sta 70+76
 New Sta 70+73.5

Sept. 12-1936
 cloudy
 F. Wright
 G. Wright
 Max James,
 Joe Roberts,



1726

INDEXED ON MAP

Road 80
Blomfield Tap.

Stones found and witnessed
as shown.

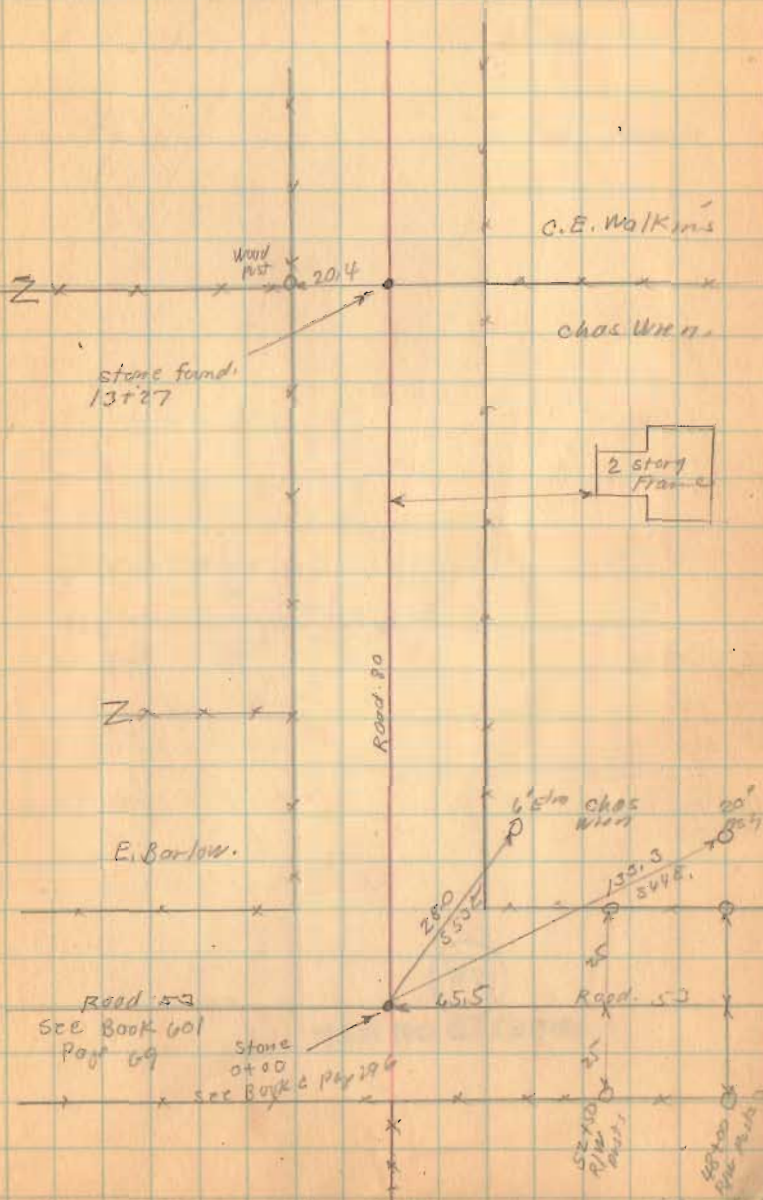
Not staked.

See Book C Page 296

(174)

INDEXED ON MAP

Sept. 12-1936
Clear
F. Wright
G. Wilges
Mar. Jones
Joe Roberts



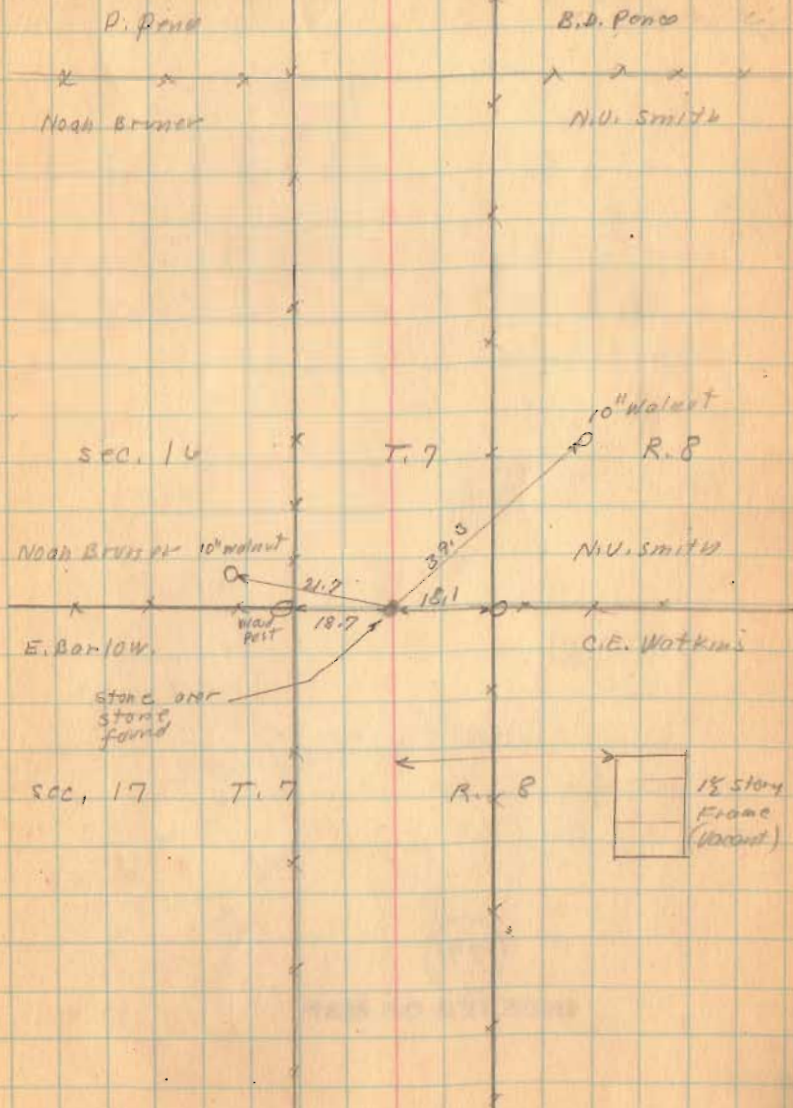
Road 80

174

INDEXED ON MAP

9-12-26

78



Road 80

1741

INDEXED ON MAP

79

