

Road 177  
Zane Tap

Staked 25' from & for 50' Road.

Stakes 1-3-5-7

60' - Zane Tap.

Commissioners Journal Vol. 6 Page 219  
" " " 6 " 260

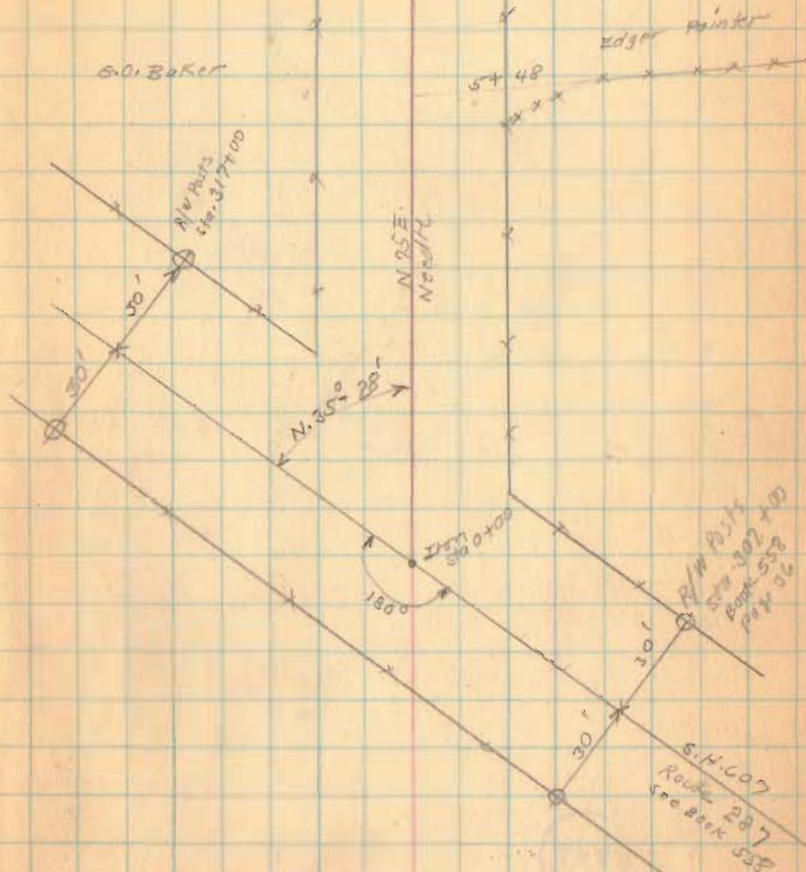
June. 9 - 1841

1749

INDEXED ON MAP

Oct. 1-1936  
C.C. /  
F. Wright  
G. P. 524

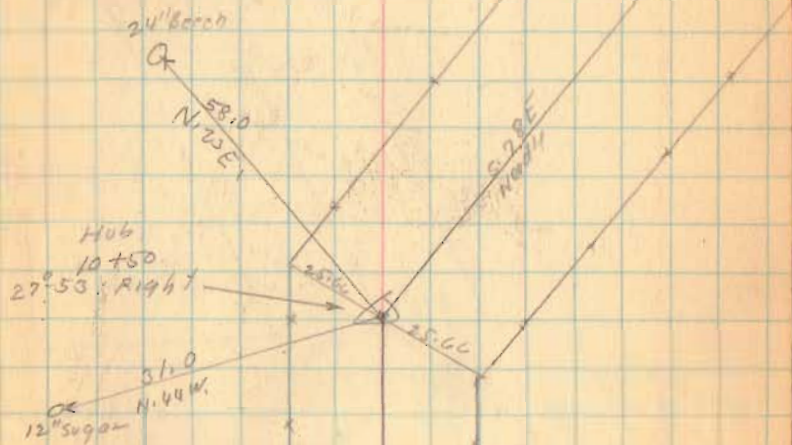
32



Road 177

10-1-36

33

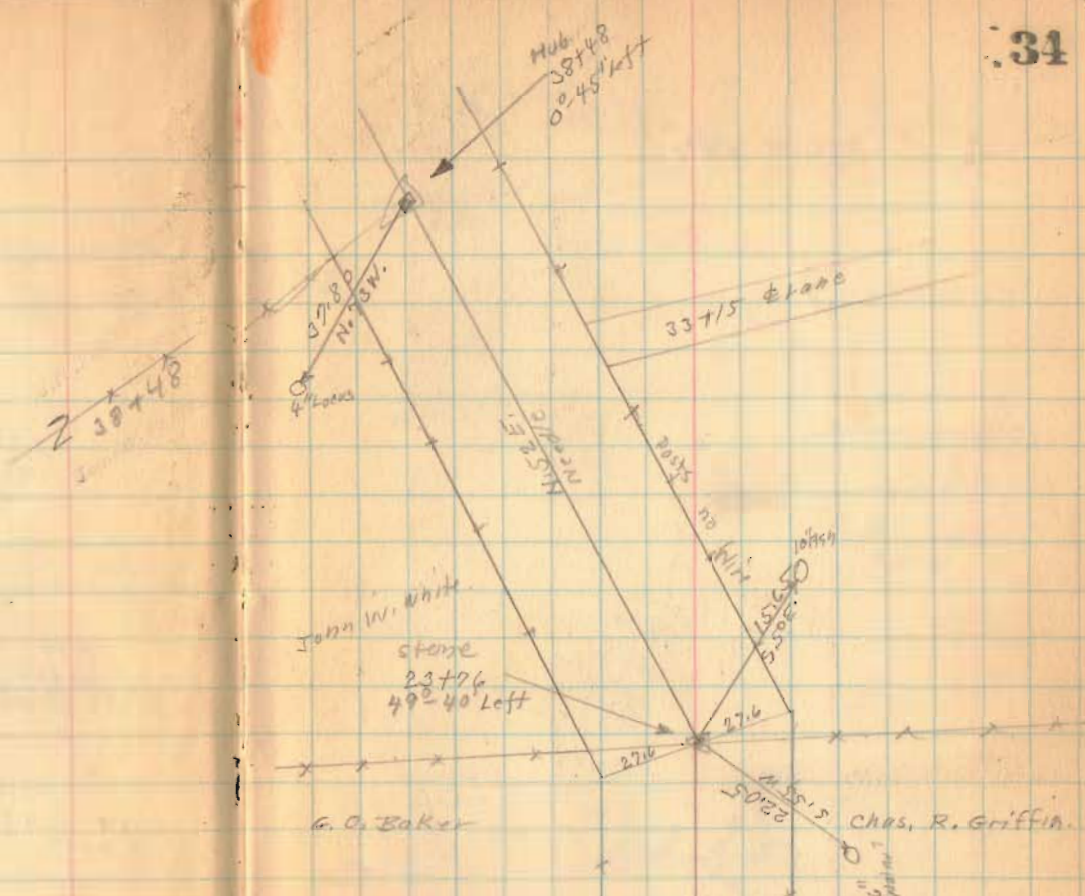


1749

INDEXED ON MAP

Road. 177

34



1749

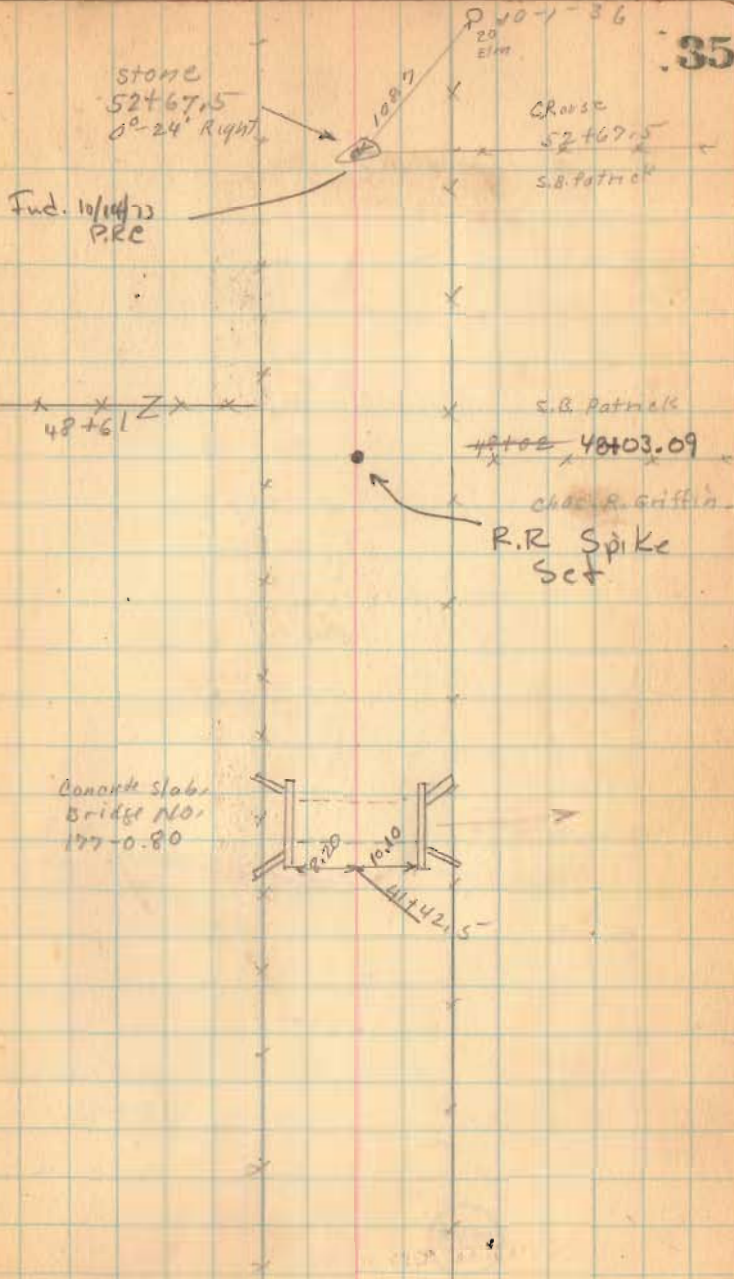
INDEXED ON MAP

Road 177

4802  
4142  
660

1749

INDEXED ON MAP



Oct. 7 - 1936  
cloudy  
F. Wright  
G. Pusoy

36

Road, 177

Gl + 11  
stone found ✓  
No. Angle

small  
Eyes  
J. J. McCoer

20 Gl + 11

C. Rouse

Sarah Patrick

CO + 29

J. W. White

1749

INDEXED ON MAP

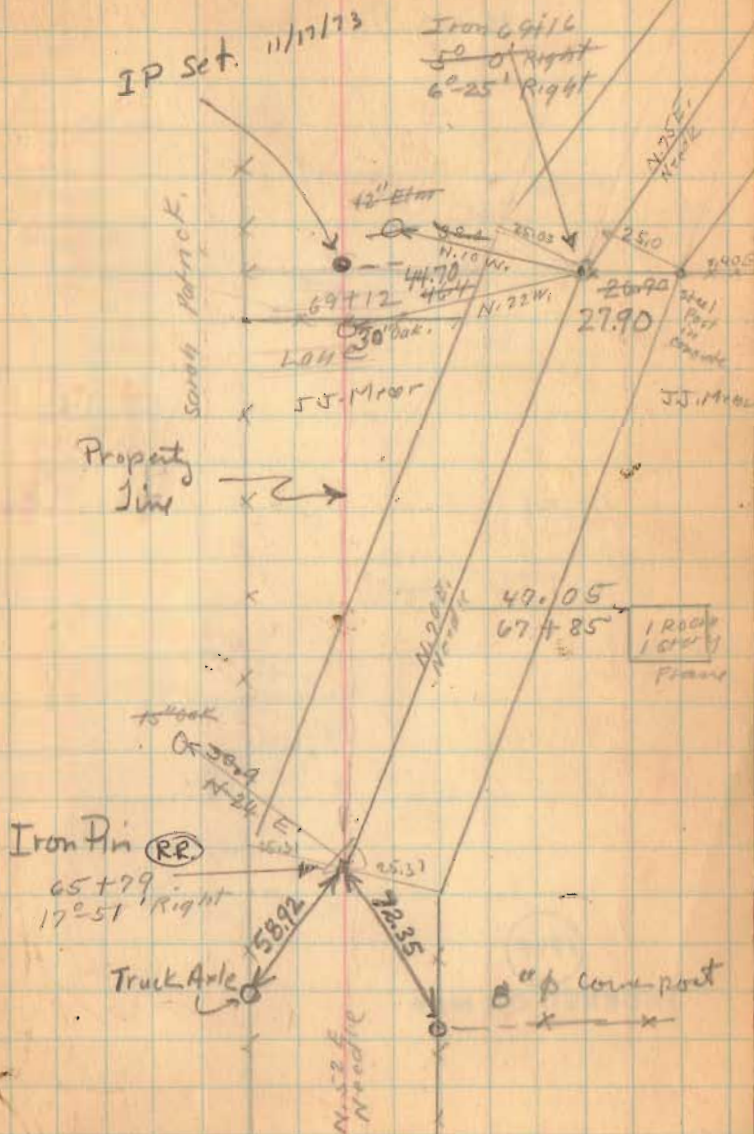
Road 177

Note: 11/17/73  
 A. 12" Elm ref. gone.  
 B. PK in side of 30" oak

65+79 I.P. just off  
 north edge of road  
 PRC. 11/17/73

37

Oct. 9-1936  
 F. Wright  
 & P. Perry



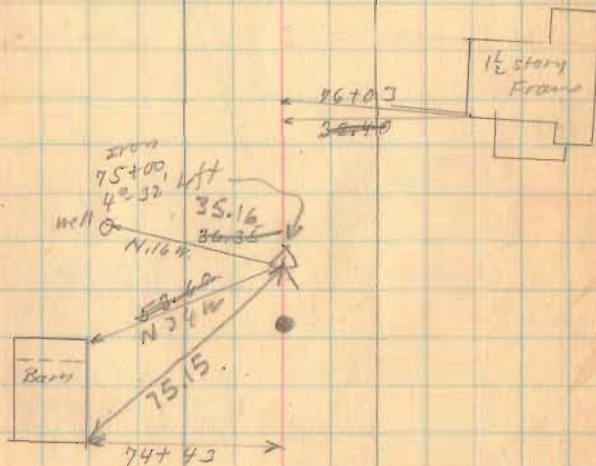
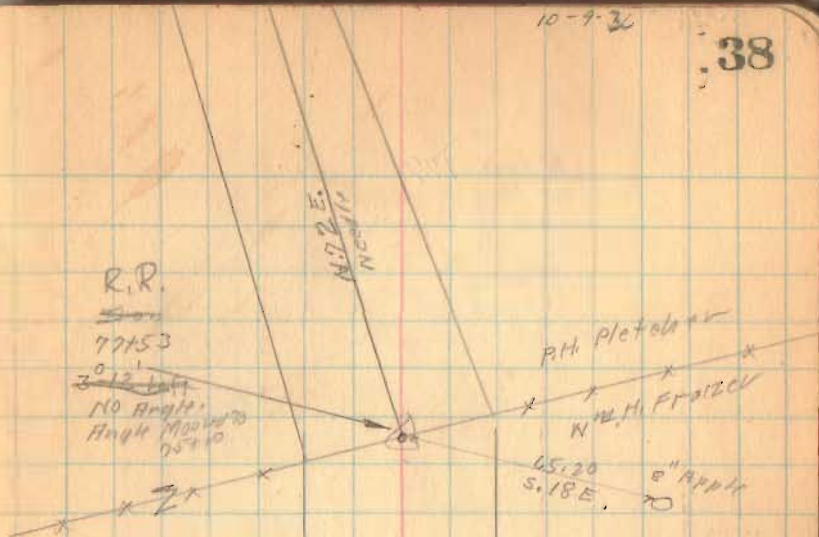
1749

INDEXED ON MAP

Flood 177

10-9-36

38



1749

INDEXED ON MAP

Road 197

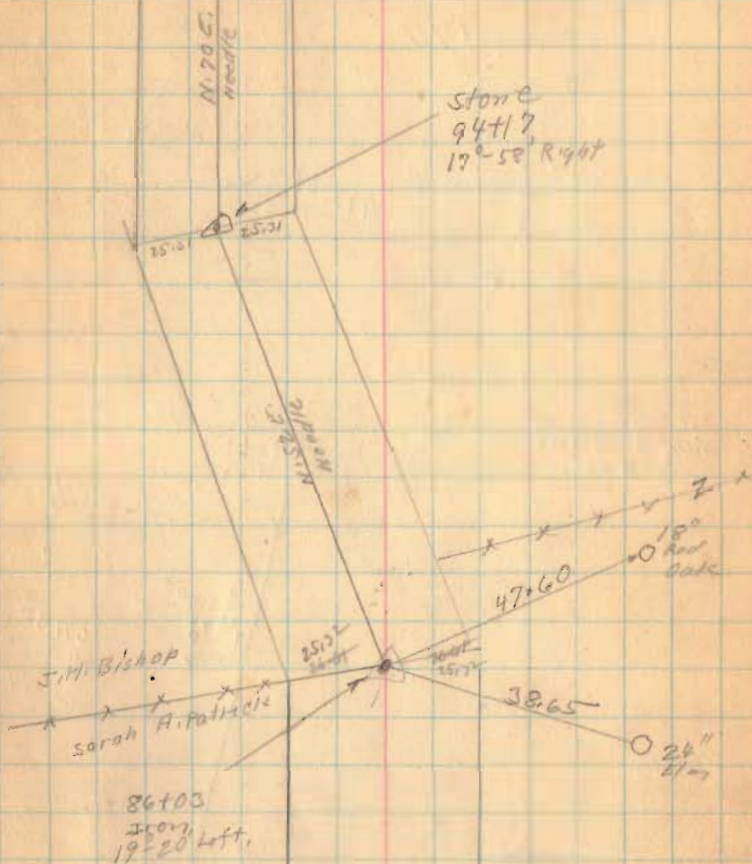
9417

8603

814

10-9-36

39

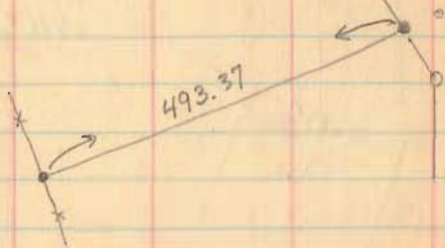


1749

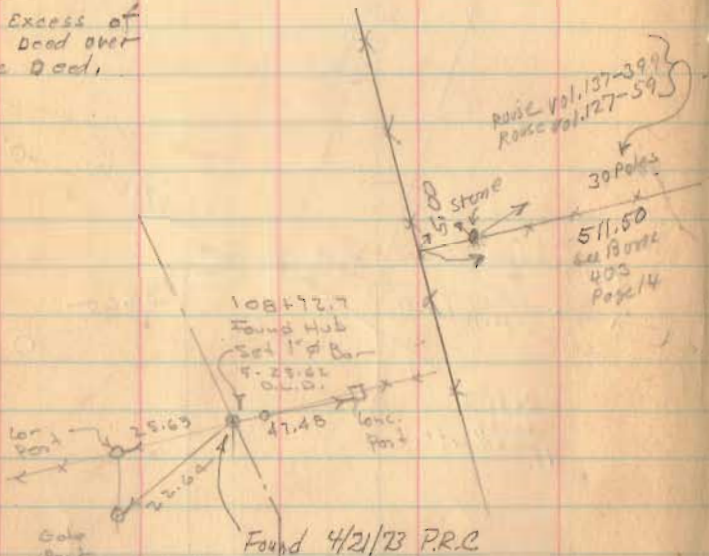
INDEXED ON MAP



Road 177

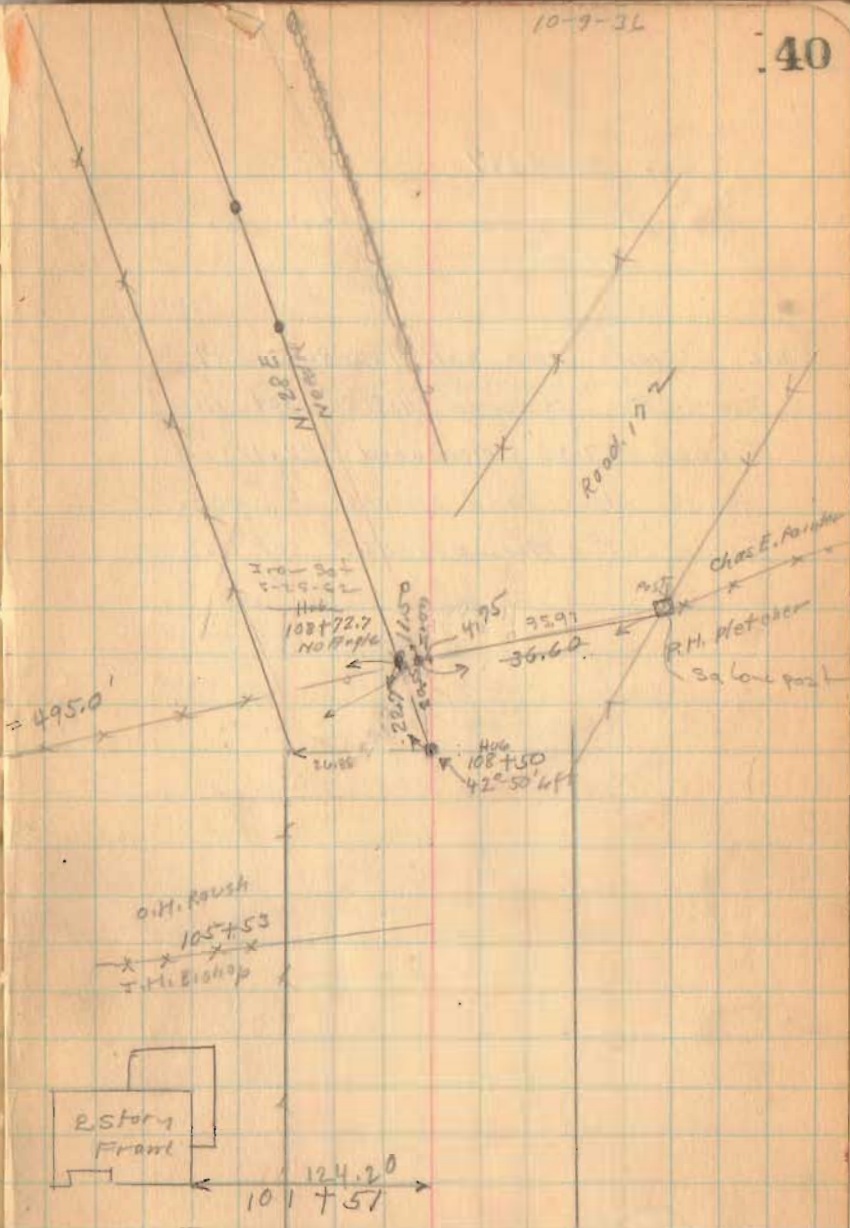


22.7 Excess of  
Smith Deed over  
Rouse Deed.



1749

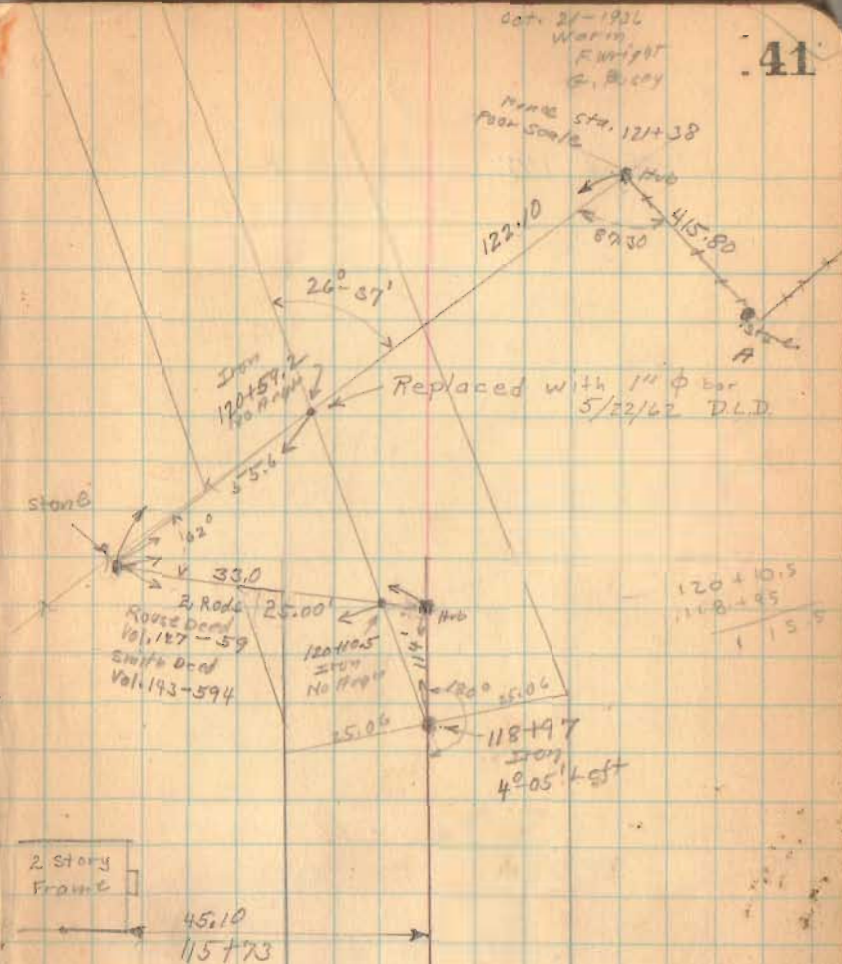
INDEXED ON MAP



Road 177

See Smith Road Vol. 143 Page 594  
Found A Measured 415.80 set Hub.  
Turned  $87^{\circ}30'$  Measured 122.10  
found stone and pieces of creek.  
Turned  $62^{\circ}$  Measured 33.0' set Hub

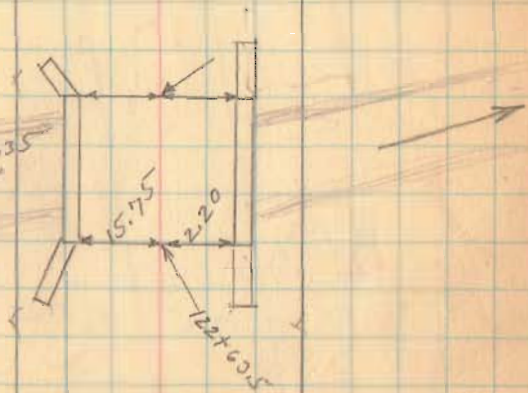
41



1749

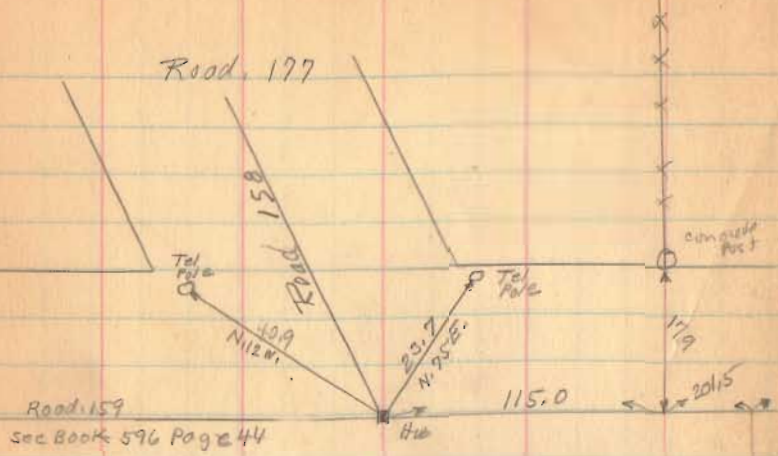
INDEXED ON MAP

Road 177

Bridg 177-235  
concrete stake

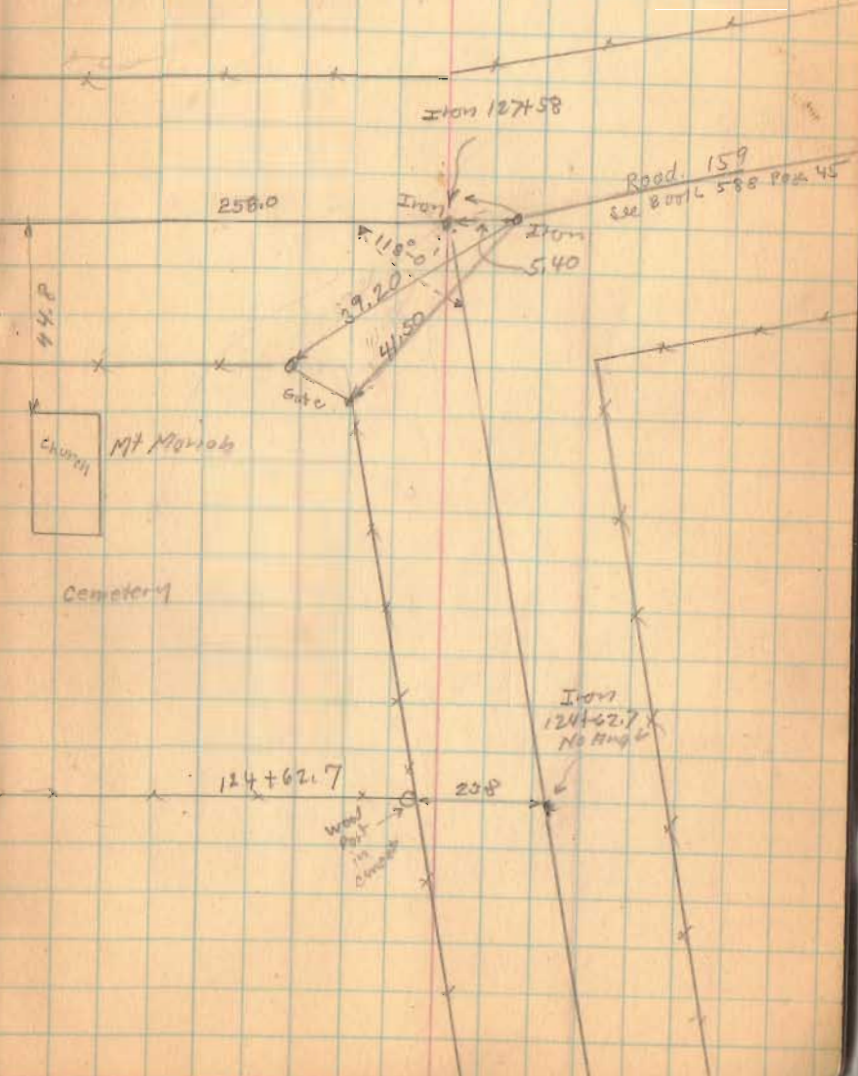
1749

INDEXED ON MAP



Length: 12758 Feet  
 Length 2.416287 Miles.  
 Length 2.42 Miles.

Road 159  
 Sec Book 596 Page 44



1749

INDEXED ON MAP

cloudy rain

4-26-39

G. Wiley  
Phillips  
Coble  
Tennant

Survey Road #44

surveyed according to Road

Record #4 Page 445 year 1896

0-0 Beginning at a stone

Cor to Surveys 479-3680

-3688 and 4953

stakes set For Kleemann

30' From E For Fence

zone top.

INDEXED ON MAP

4424

Angle  
02 6' Left

stone Found  
set 2 1/2 R/W  
Post on top  
22+59.9

W.B. Kleemann  
Lena Wiley

Angle  
12 48' Left

Found old  
Hub set  
500+1 1/2 R/W  
Sta 14+28.8

W.B. Kleemann  
Lena Wiley

Road 8722

Lena Wiley  
Glen Bishop

Lena Wiley

APP. Angle

Road 159

S.R. 559

Angle  
19 42.3'

STONE  
Found

10"  
Maple

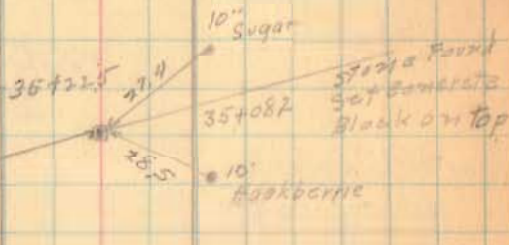
Found Hub  
set 2 1/2 R/W  
Post

10"  
wild cherry

Road 207

Levina Weller

W.B. Kleeman


 apple  
 7038  
 Left

Levi Shuffins Jr

26411

W.B. Kleeman

74+82

R/W stakes set from sta. 74+82 to  
 - sta. 60+00 & North side only  
 - stakes set for 60' R/W  
 Dodson - Gilbert 3/10/58

Road 277

E. B Spain

527 Hub  
 STA 80+00

A. B King

E. B Spain

Stake  
Found

Archie Mouser

74+82.4

22.8'  
 15"  
 Least

Arnold B. King

(Iron Found)  
on line of fence

63+161 x

22.2'

10"  
 10"  
 10"  
 10"  
 10"  
 10"

Lexina Snuffins

Archie Mouser

58+82

Leving Weller

Hub Found  
 Placed New  
 HUB WITH IRON  
 ON TOP  
 56+29.4

10"  
WATERWAY

25.8

20"  
Elev

G. Wilgus  
R. Phillips

# Road #5

0+0 Beginning at Road 20

Stakes set ever 200'

1-3-5-7-9 8

Non Hubs

19+00

11+00

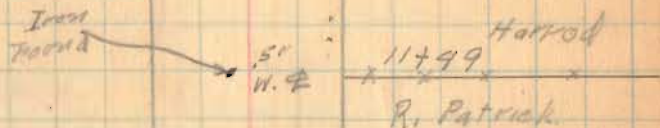
5+00

1+00

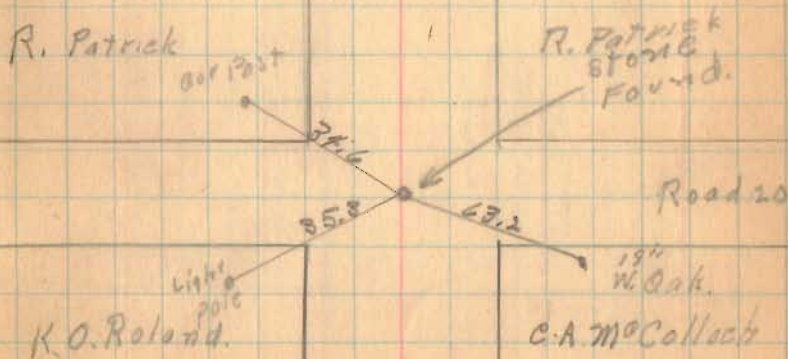
Hubs reset (6 July 46 OER)

4425

INDEXED ON MAP



W.M.S. 13709



W.M.S. 9888



Mont. Hubset

31+00

27+00 Right only

H.A. Spatzmaker  
32+54

C.A. McCulloch

31+37

H.A. Spatzmaker

X X  
C.A. McCulloch

Iron Set

16 1/2  
23.5

27+00

VMS 12536

C.A. McCulloch

R. Patrick

Iron Found

C.A. McCulloch

22+982

F. Harrod

VMS 13709

Mont Hubs

51+00

45+00

41+00

36+36.4 hubs set at 30.01'

John Kinney  
51+10

H Miller

John Kinney

HA Shoemaker

H Miller

X X 46+50  
HA Shoemaker

V.M.S. 6" center 106 31

Sec. Line 88.2

8" Apple Tree

V.M.S. 12536

Angle 22° 30'

Sec. Line

Dug for iron did not find it set 222 R/W Steel Post

Approved by HA Shoemaker

Mont Hess

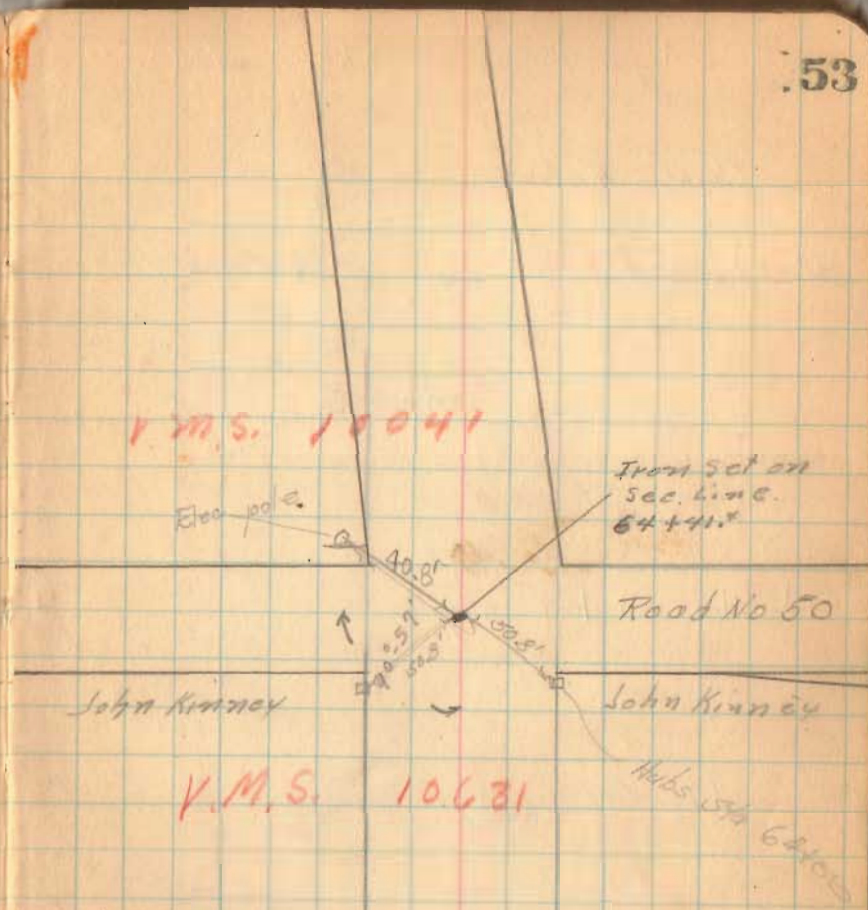
64+00

59+00

V.M.S. 10041

Elec. pole

Iron set on  
Sec. Line.  
64+41.2



Monuments checked (CEK 27 July 46)

County Highway No 5

Continued from Book 588 Page 70

cap. nail in elec. pole  
Pugh  
Stone & Brick found 3-20-61 Dodson - J. Ciro  
C. H. No. 118  
P. 20

88+50 Hubs Set for R/W. Man. s.  
Mon left only

85+00 Hubs Set for Man. s.  
Mon on left only.

80+00 Hubs Set for Monuments

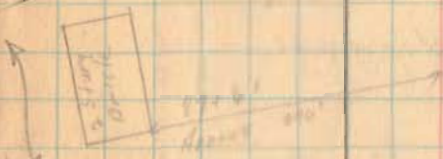
Sta. 75+00 Hubs Set for Monuments.

R/W Stakes Set. C.H. 118 West from C.H. #5  
to first curve - Southside only  
3-20-61 - D. Dodson - J. Ciro  
Stakes set 30' from C. - 60' R/W

EL. PK. Ch. 29.6' 424' O.E.L. Guy Rite

86.20' slope 1:100.15

34" x 11" Iron Pin Set  
87+05.30  
E.C.H. 118  
E.C.H. 118



stone  
Sta. 447.1  
see Book 314  
Page 4



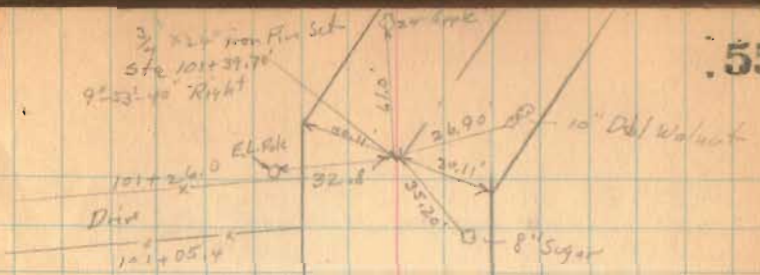
N. 27 W. Needle

73+12.5  
C.H. No. 122

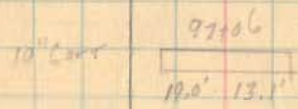
72+181.20

101+39.70 Hubs Set for Mon.

9-53-40  
112  
4-56-50



99+50 Hubs Set for Monuments.



97+00 - Hubs Set for Mon.

92+38  
Drive  
92+26

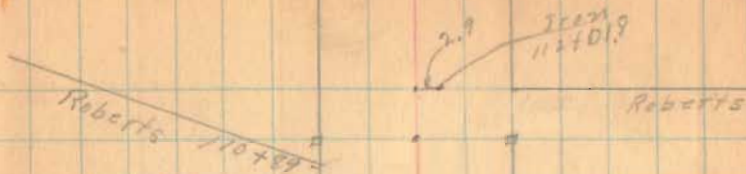


sta. 89+50 Hubs Set for Monuments.

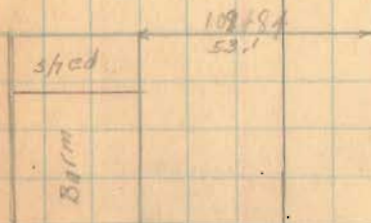
19.10  
80.50

112+00

set Hub for Monument



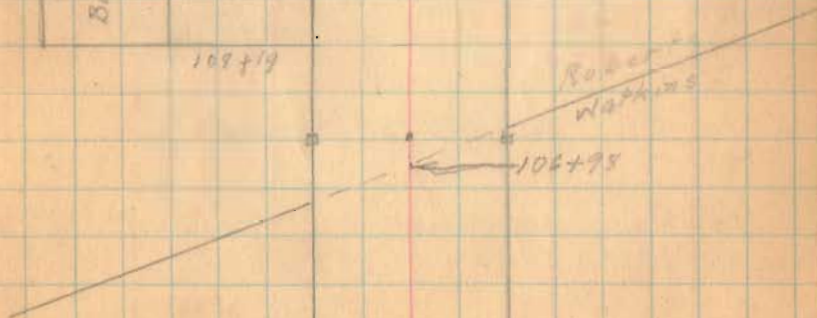
55.9  
108+94



109+19

107+00

Hub set for Monument



122+52.3

~~120+00~~ set Hubs for monuments

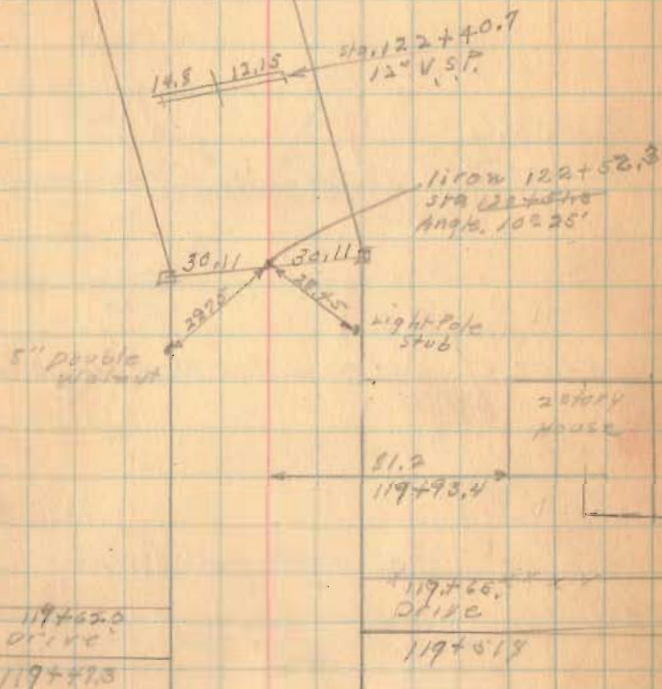
120+00

118+00

set Hub for monuments

116+00 set stakes

114+00 set stake for fence line



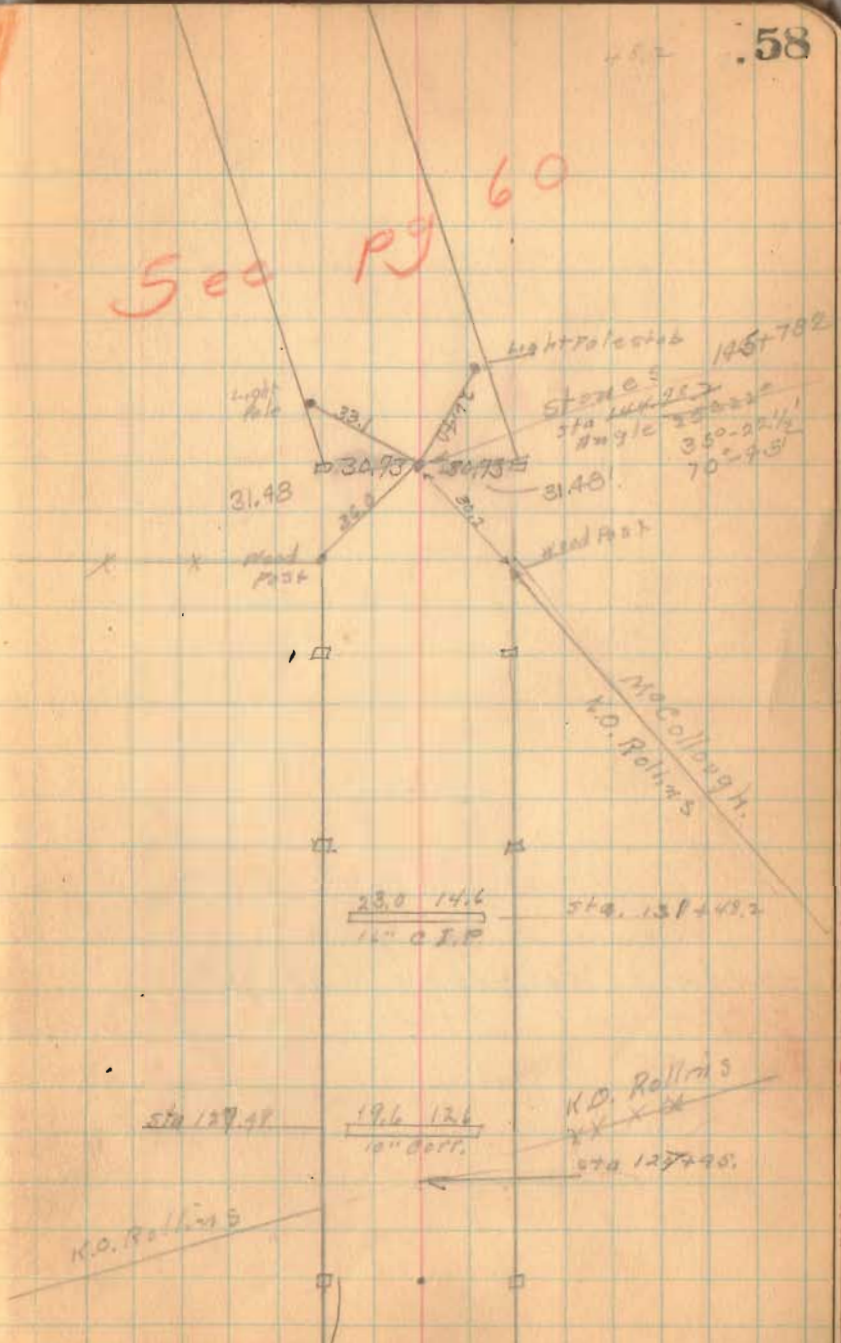
See pg 60

195 + 78.2  
144 + 78.2 Set Hub for Monuments

136 + 00 Set Hub for Monuments

130 + 00 Set Hub for Monuments

125 + 00 Set Hub for Monuments



Light Pole 145 + 78.2  
 Stone  
 Sta 144 + 95.2  
 Angle 35° - 02' 41"  
 70 - 48'

31.48  
 35.0  
 31.48  
 Wood Post

McCullough  
 K.D. Rollins

23.0 14.6  
 10" corr. Sta. 131 + 48.2

Sta 127.48  
 19.6 12.6  
 10" corr.

K.D. Rollins  
 Sta 127 + 98.

K.D. Rollins



See page 60

stone  
679151+38  
1521357

Rd #20

(50+60) set Hub for Movement.

Relocation of Rd 15  
at Sta 174+78.2

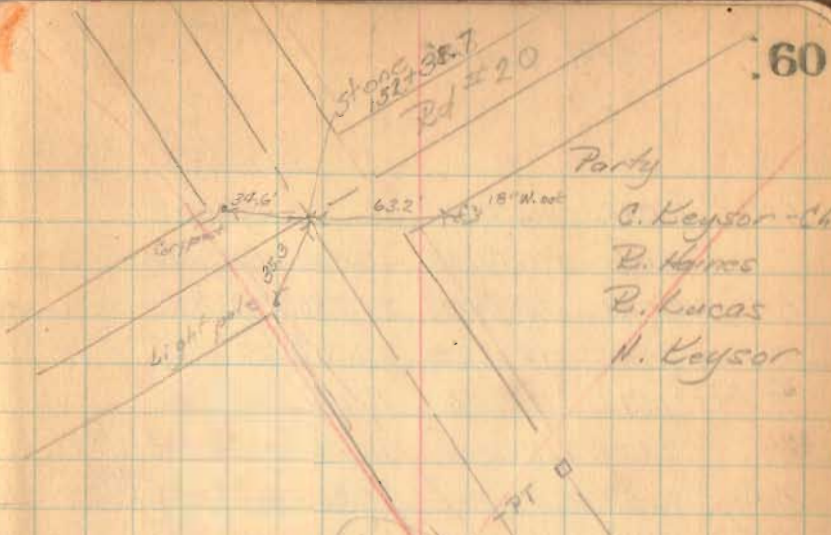
Sta Distance Deflection Total  
Deflection

Restated

Stationing  
174+78.2

174	175+63.275	63.275	1°-20'	17°-41'
	+50	50.00	2°-30'	16°-21' ✓
	+25	25.00	2°-30'	13°-51' ✓
176	175+00	100.00	2°-30'	11°-21' ✓
	+75	75.00	2°-30'	8°-51' ✓
	+50	50.00	2°-30'	6°-21' ✓
	+25	25.00	2°-30'	3°-51' ✓
175	174+00	13.60	1°-21'	1°-21' ✓
PC	173+06.90			
174				

Stakes set at 60' for  
H.O. Rollins fence.



Party  
C. Keysor - Ch  
B. Holmes  
B. Lucas  
H. Keysor

Curve Data

$\Delta = 35^\circ 22\frac{1}{2}'$   
 $D = 20'$   
 $R = 287.94'$   
 $T = 91.80$   
 $L = 176.875'$   
 $E = 14.62$   
 PC 173+06.90  
 PT 175+63.275

□ - Hubs