

Road 178

(No Road Record Found)

Sta. 0+00 TO 26+63 stakes 30' from &

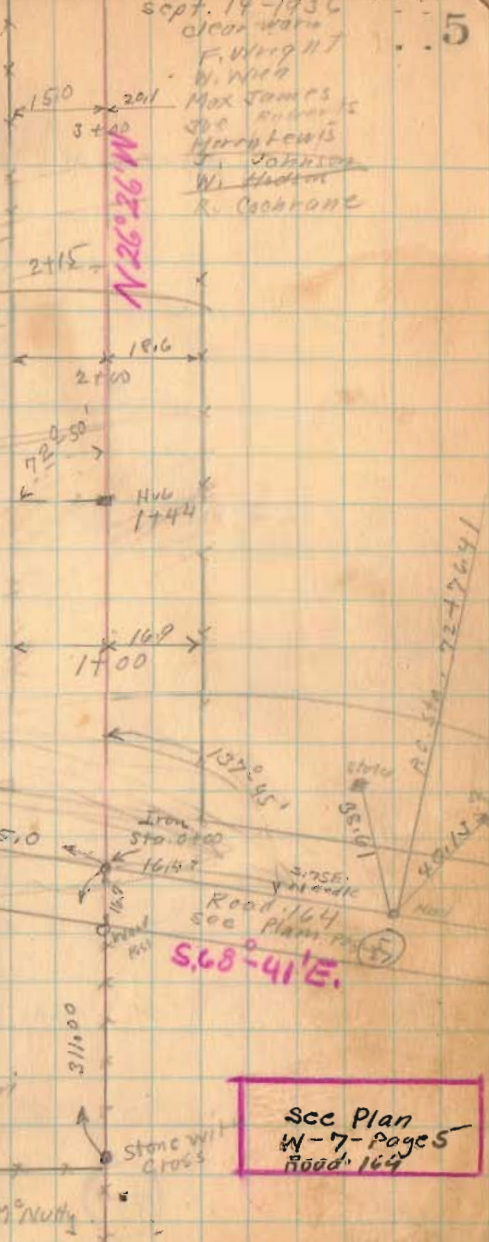
Sta. 26+63 TO 46+27 stakes 25' from &

See Book 17 for Randall Pike (1905),  
Randall Pike Dismissed

Poor Stake

See New Line  
Sta. 26+63

Sept. 19-1936  
Clear water  
F. Wright  
W. Webb  
Max James  
J. H. Lewis  
J. Johnson  
W. H. Hadden  
R. Cockrone



Road 164

P.A. 187-59  
D.C. 0

A = 82° 10'  
B = 62°  
C = 276.70  
E = 39.28  
L = 538.61  
R = 959.93

20' Post  
N. Side  
20° Elev  
Road 164  
Sta. 62+50  
Sta. 1319.75

AT Road 164 Sta. 70+409

John Thomas

John M. M. Nutty

5.68° 41' E.

See Plan  
N-7-Page 5  
Road 164

1743

INDEXED ON MAP

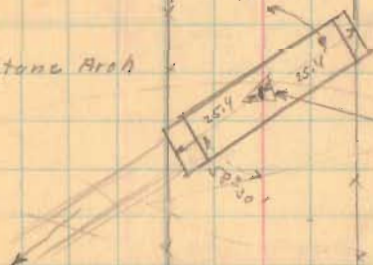
Road 123

9-19-56

6

N 24° 50' W

Stone Arch



Small Hub  
11+35  
12+36 Right  
Bridge  
178-1.00

23.6 M<sup>24.1</sup>  
13+00

13.2 M<sup>25.8</sup>  
12+00

9.8 M<sup>25.9</sup>  
11+00

9.3 M<sup>25.8</sup>  
10+00

10.5 M<sup>25.0</sup>  
9+00

11.0 M<sup>24.2</sup>  
8+00

12.3 M<sup>23.2</sup>  
7+00

13.4 M<sup>22.8</sup>  
6+00

12.6 M<sup>22.2</sup>  
5+00

14.9 M<sup>21.6</sup>  
4+00

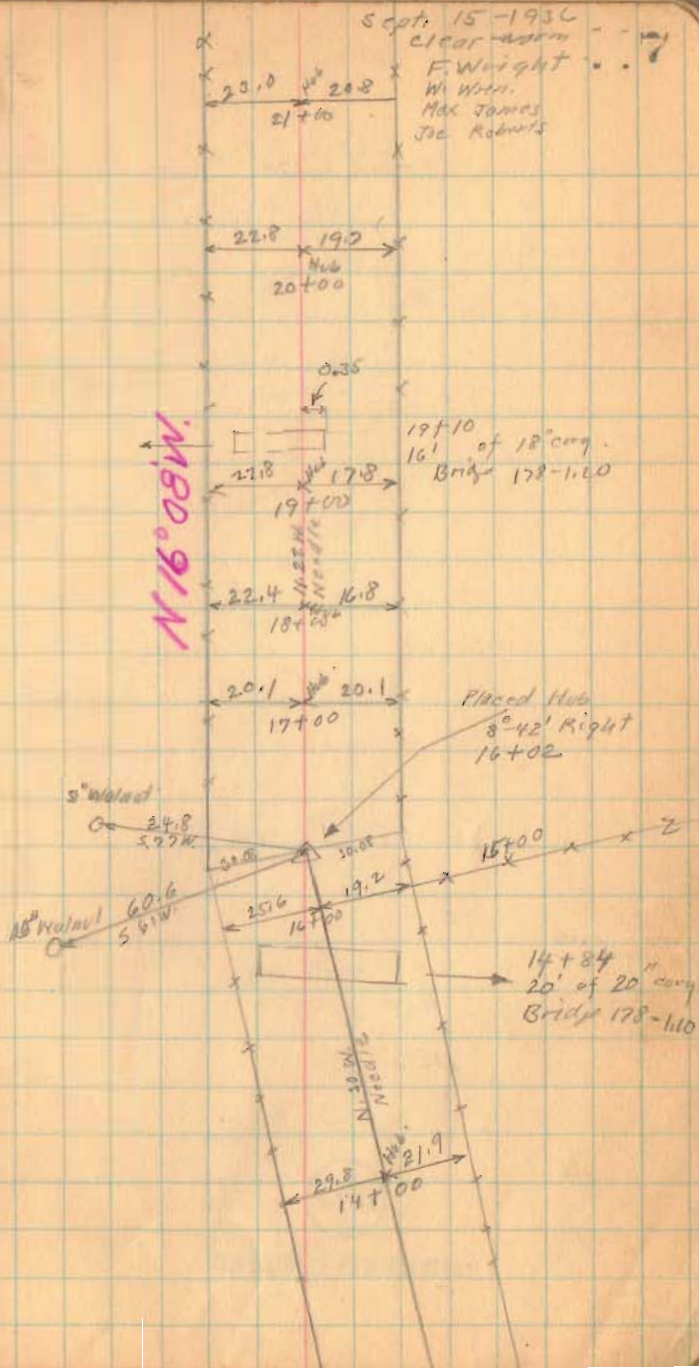
1743

INDEXED ON MAP

Road 178

1743

INDEXED ON MAP



Road. 128

1743

INDEXED ON MAP

M10:91X

16.4 13.0 9-15-36

31+00 17.9 12.2

30+00 18.9 14.0

29+00 19.3 14.2

28+00 19.9 13.7

27+00 18.2

26+00 19.7 20.0

25+00 20.6 20.4

24+00 21.0 25.2

23+00 22.2 23.9

22+00 22.8 22.3

26+6.3 Hub  
0° 07' Right

V.B. Hartzler  
Road Post  
Oscar Valley

8

Road 178

N. 10-91N

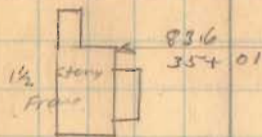
Rosa Willets

36+77

W. F. Lyle

12.2  
36+00

2 35+21



NO FENCE

LAND 30442

2 33+16

14.2  
33+00Shed  
32+6515.0  
32+00

1740

INDEXED ON MAP

Road 178

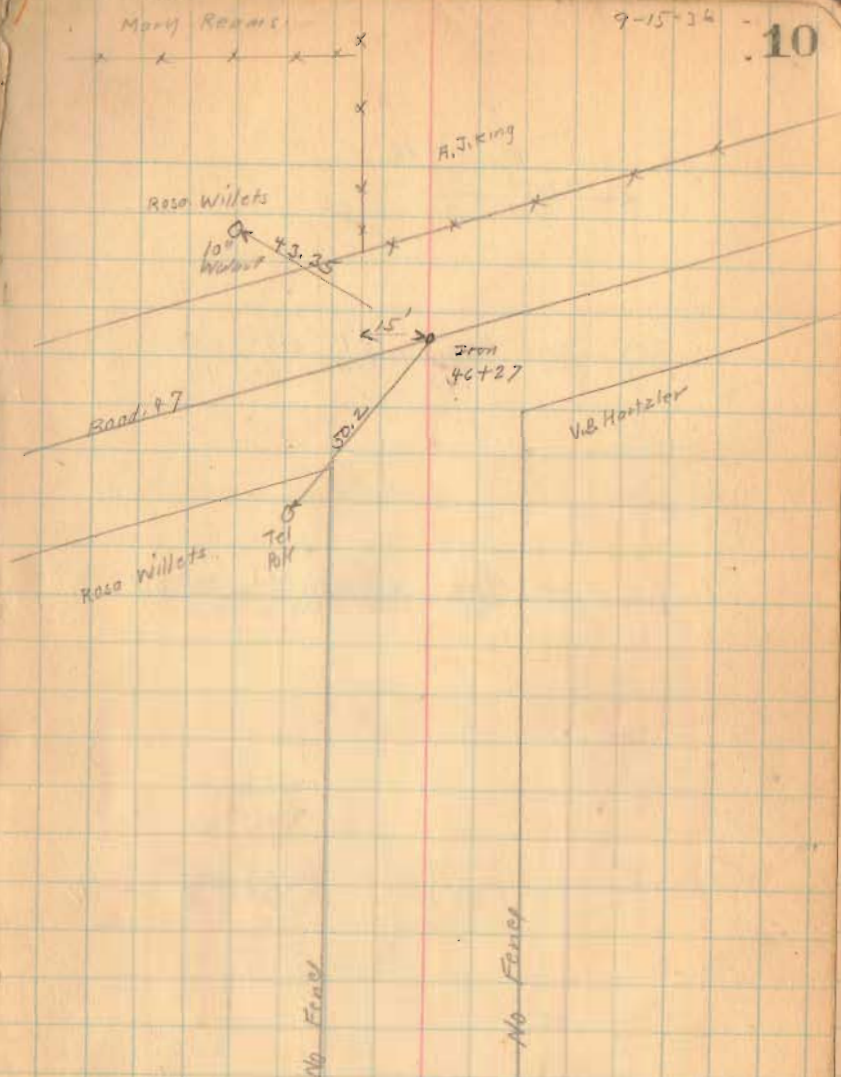
length 4538 Feet  
length ~~4629~~ 0.8594695 Miles  
length 0.86 Miles

1743

INDEXED ON MAP

9-15-36

10



Road. 55

30' - Road. 29 To <sup>Sta. 38+78</sup> Road 182 1870

Road Record 1 Page 366  
 " " 1 " 382  
 " " 1 " 386  
 sta. 38+78 384 (MUP)

60' Road ~~182~~ TO Road 10  
 commission's Journal 4 Page 187 - 1835

Corr survey (635) Book 584 Page 31-33

see BOOK 605 for Levels <sup>9</sup> X-sec,

staked 30' from ~~to~~ for 60' Road Feb. 1934

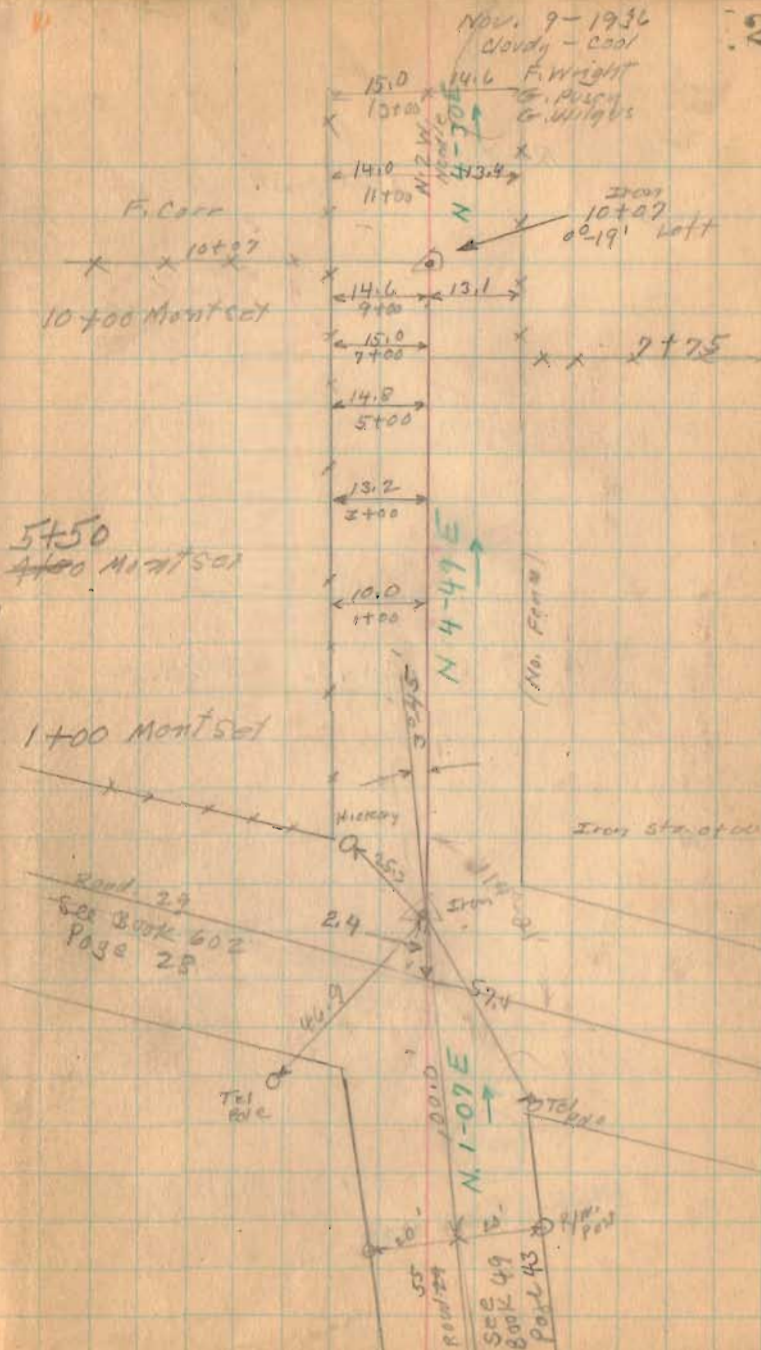
~~staked~~ 25' from ~~to~~ for 50' Road.

sta. 1-3-5-7-9-11. etc.

Trustees to get extra width where needed.

1760

INDEXED ON MAP



Road 55  
25+00 Mont Set

20+00 Mont Set

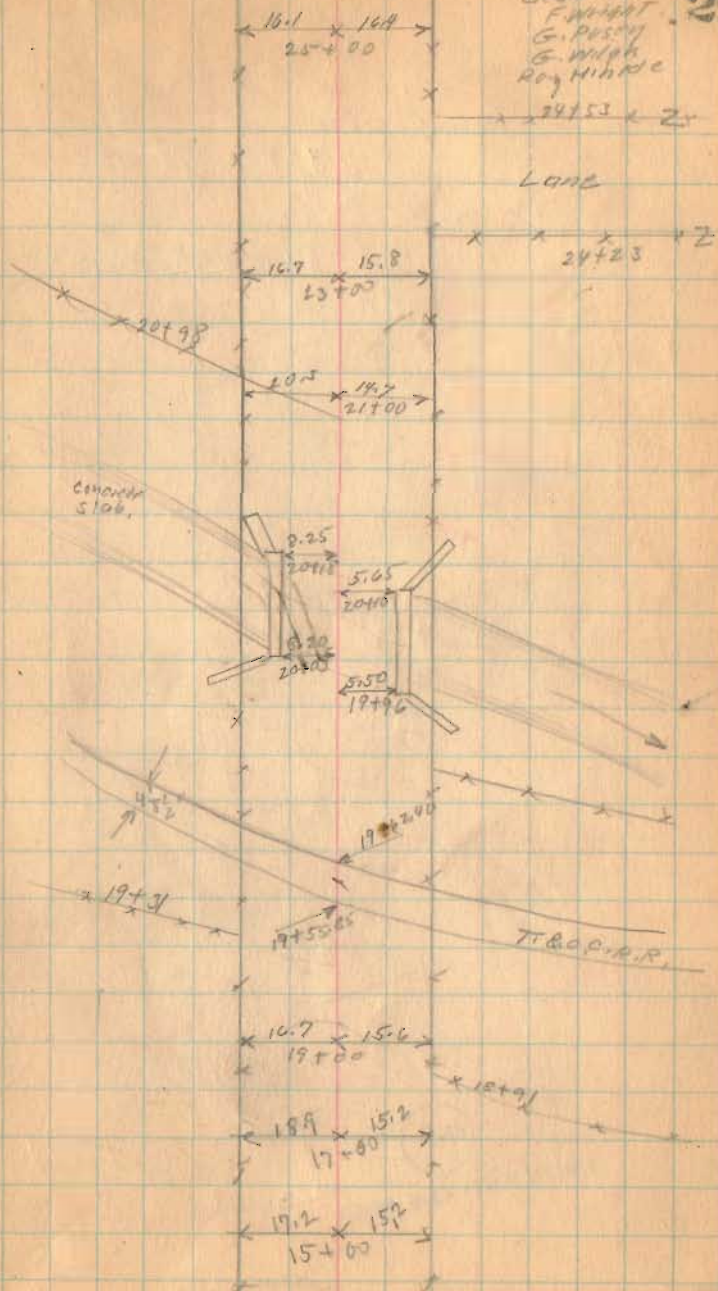
1760

INDEXED ON MAP

15+00 Mont Set

Nov. 10-1936  
Clear-Cut  
F. W. HUNT  
G. P. SMITH  
G. W. WILSON  
Ray Hillside

29





Road 155

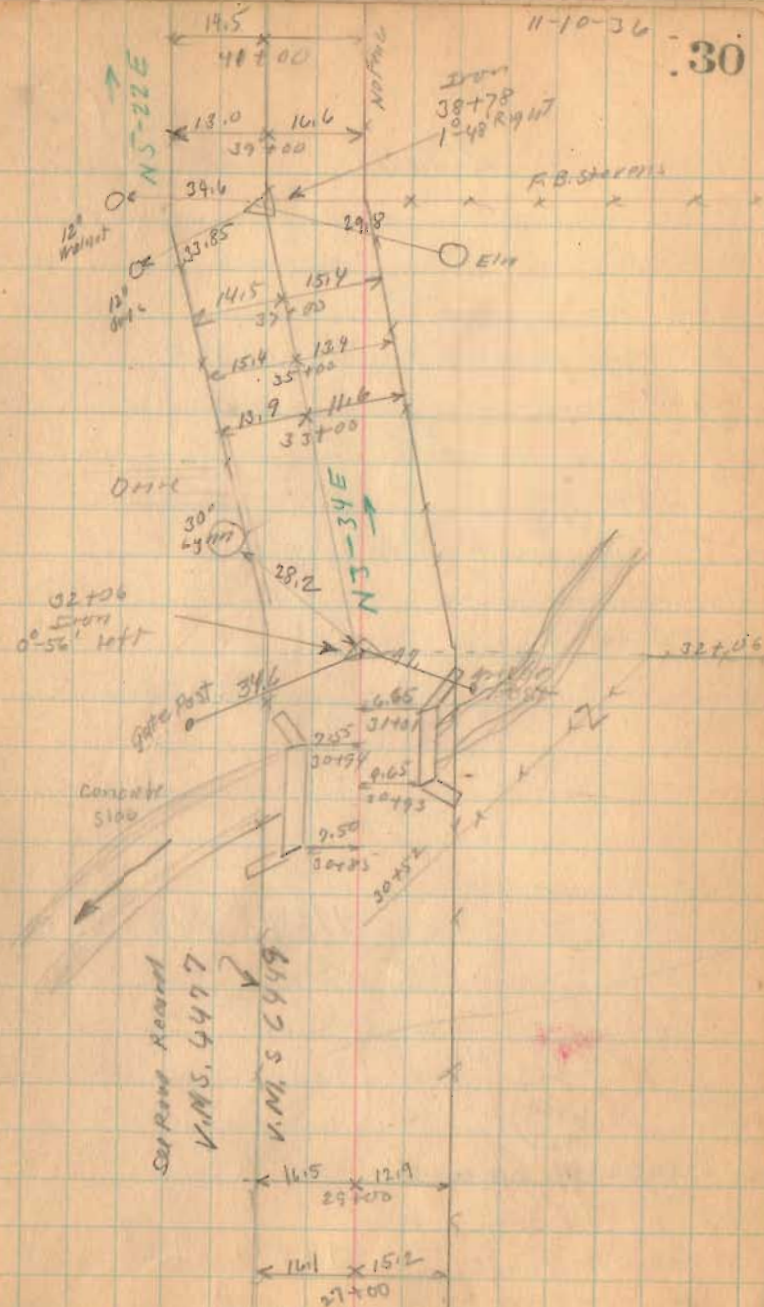
38+00 Mont

37+00 Mont Set

32+06 Mont Set

1760

INDEXED ON MAP



Road 55

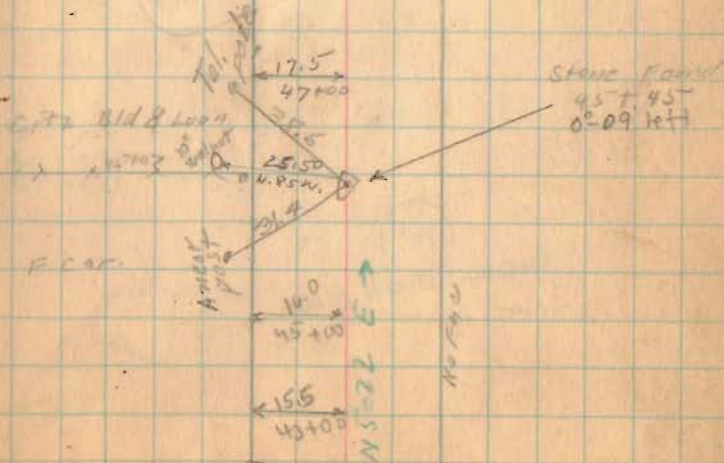
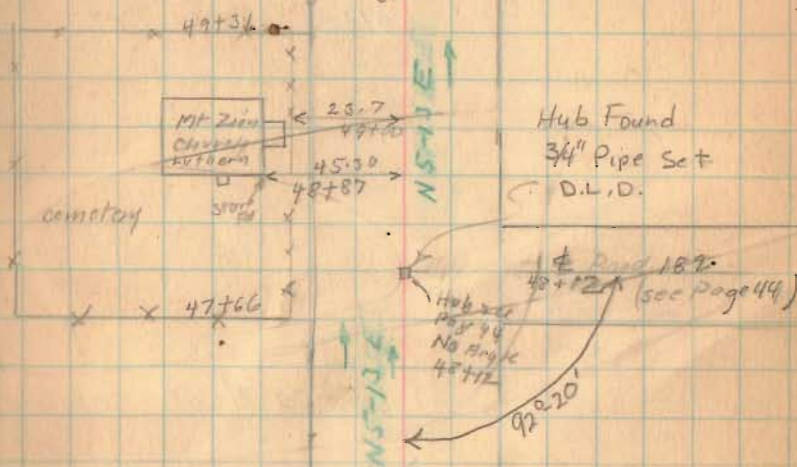
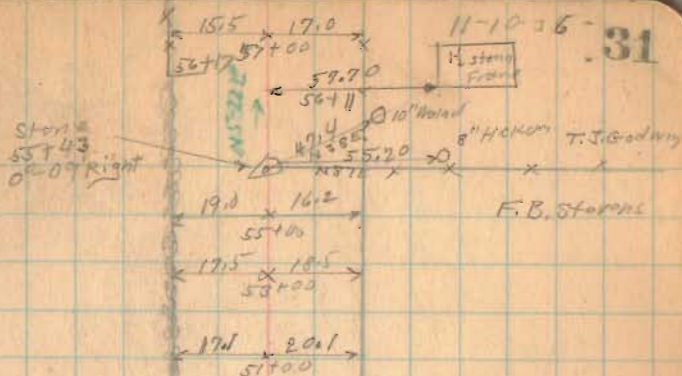
55+00 Mast Set

47+00 Mast Set

1760

INDEXED ON MAP

44+00 Mast Set



Road 55

71+00 Mont. Set

65+00 Mont. set.

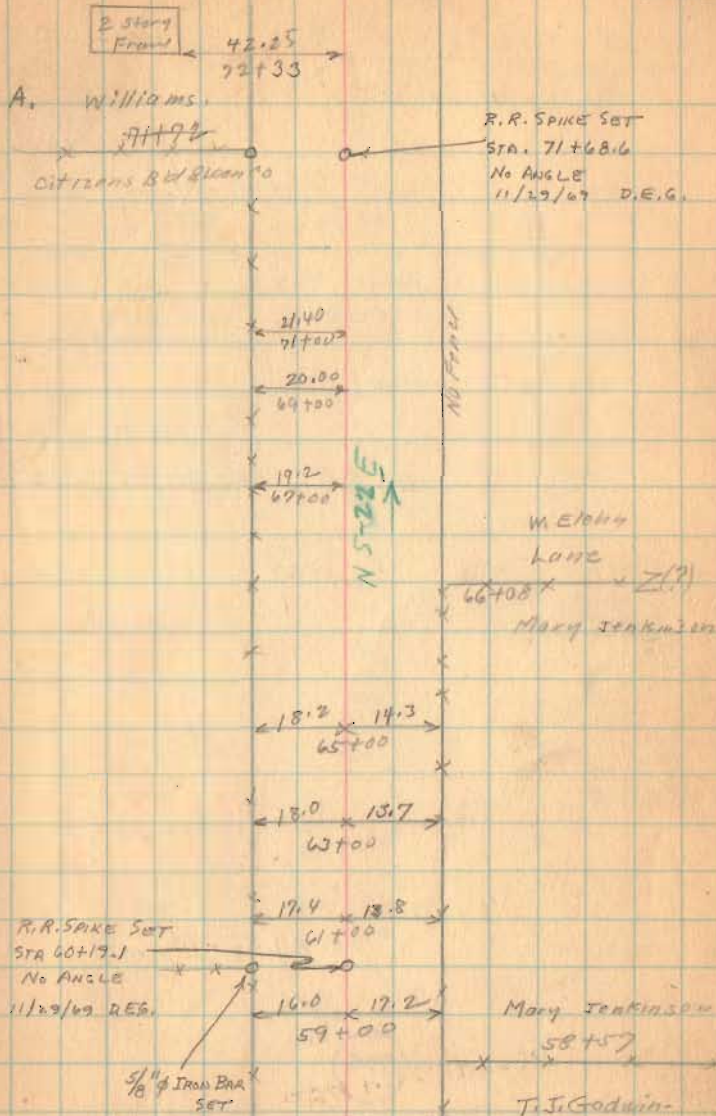
1760

INDEXED ON MAP

Z 72+93

11-10-36

32



Road 155

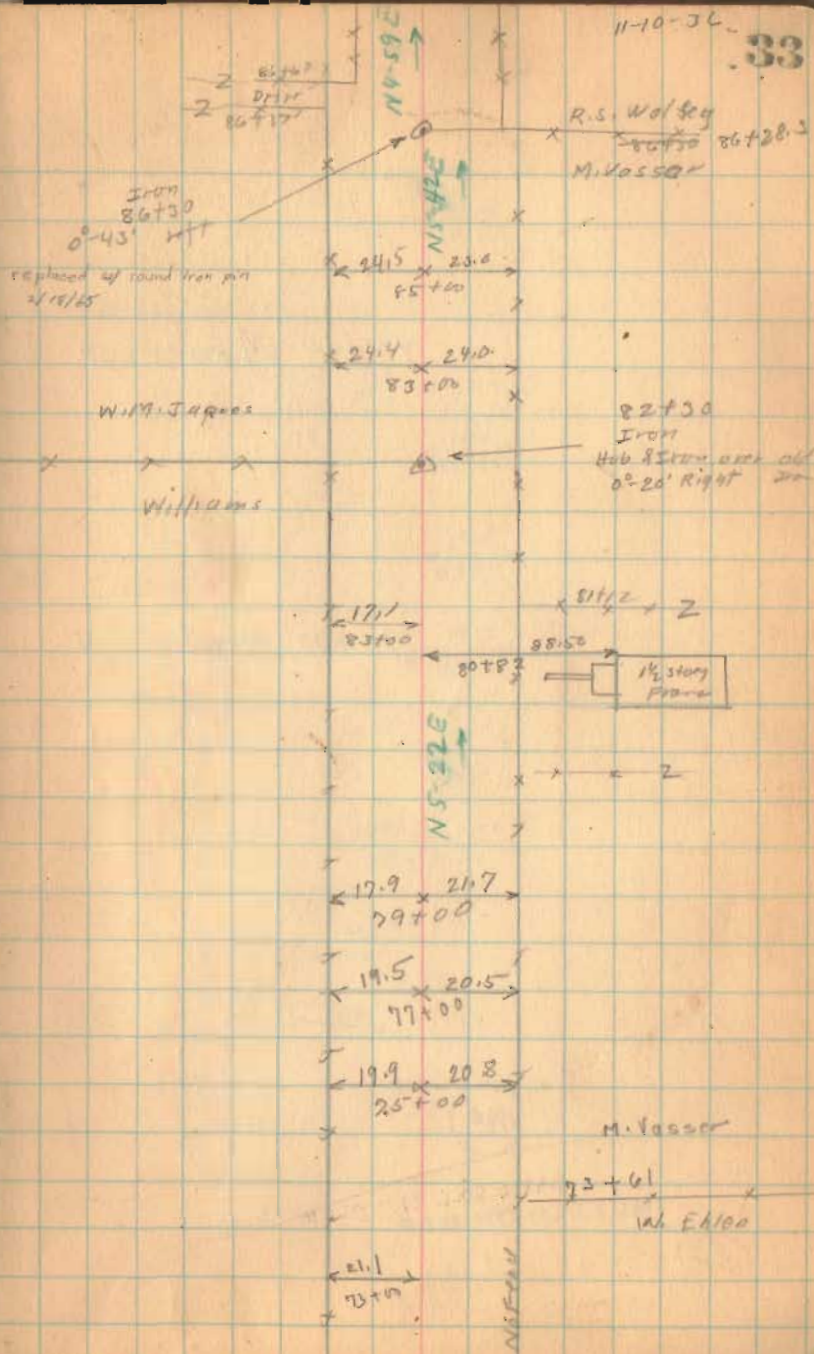
86+00 Mont set

82+00 Mont set

76+00 Mont set

1760

INDEXED ON MAP



Road 55

95+00 Mast set

90+00 Mast set

1760

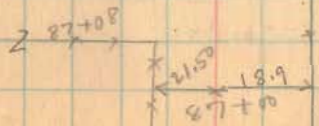
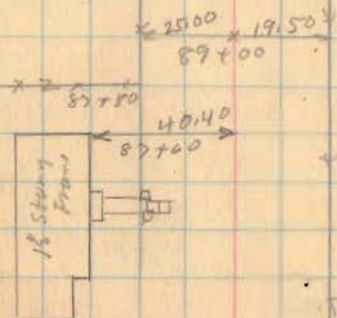
INDEXED ON MAP

Sarah Jones  
(No. 100) 95+07

R.O. George

R.O. George

89+74  
W.M. Jagoe



19.4  
97+10

19.1  
95+10

19.1  
93+00

19.9  
91+00

No. 100

Road 55

Length 10118 Feet.

Length 1.916287 Miles

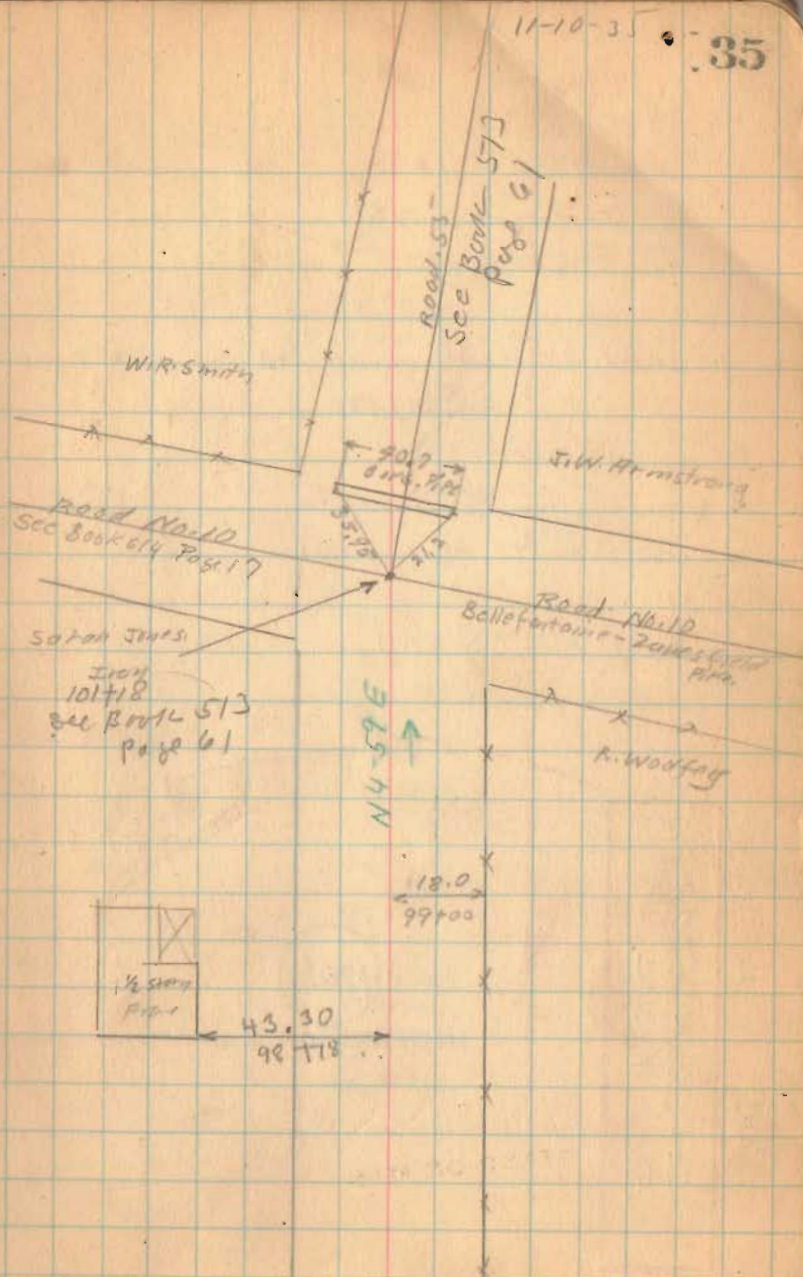
Length 1.92 Miles

100+00 Mont. Set

1760

INDEXED ON MAP

35



Road 182  
Jefferson Twp.

40' Road, Commissioners Journal No. 8, Page 32  
June 1845

staked for 50' Road,  
Trustees To Obtain extra width.

X-182 => 60' R/W

See Book 609  
For X-sec.

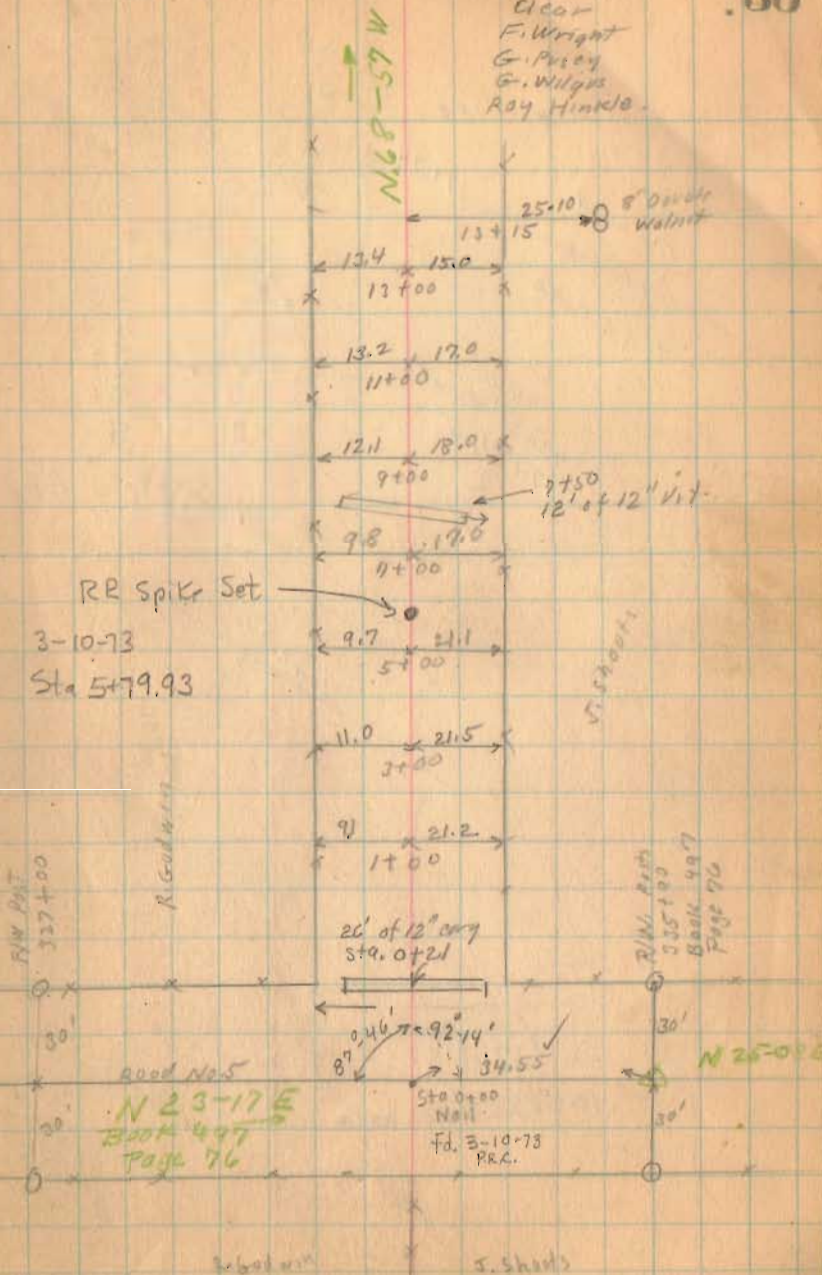
1761

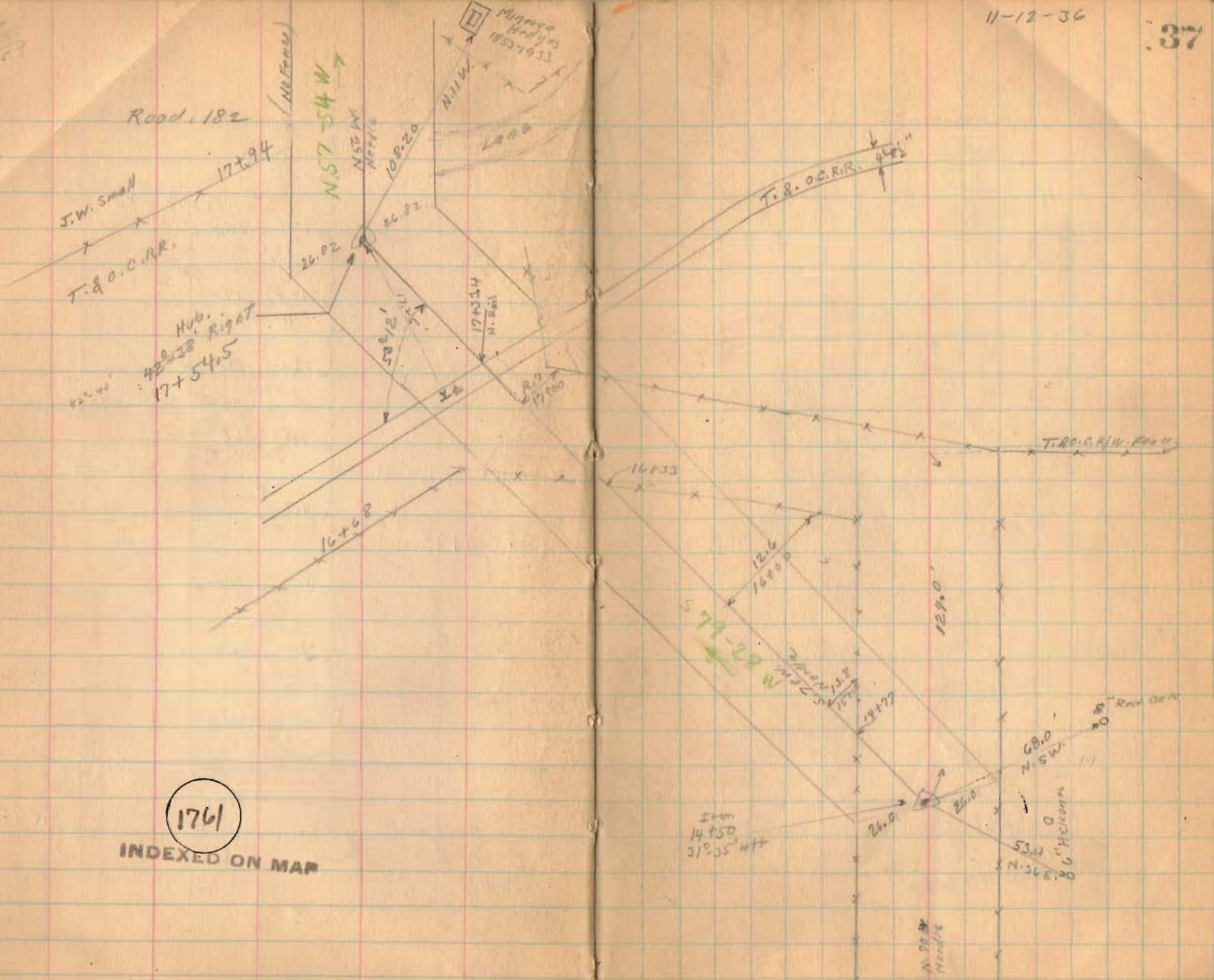
INDEXED ON MAP

36

Nov. 12-1936

Clear  
F. Wright  
G. Pacey  
G. Willgo  
Roy Hinkle.







37  
20  
17

Road 182

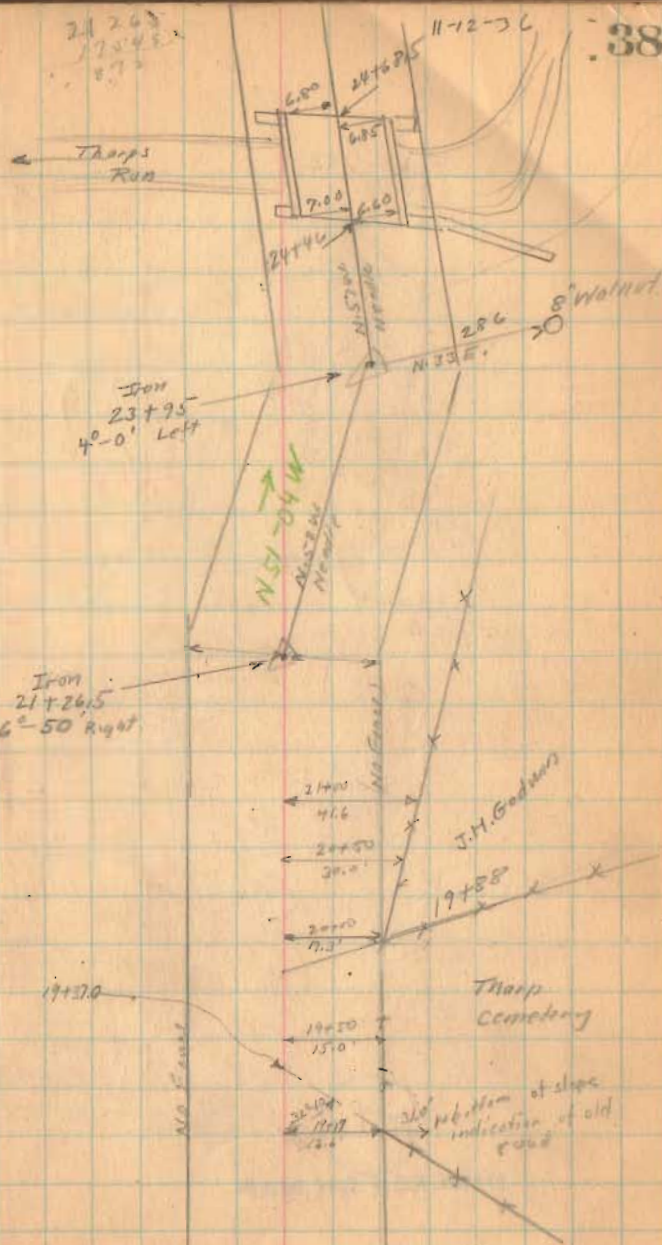
23 95  
21 200  
21 480

21 265  
19 54  
1 380

1761

INDEXED ON MAP

38



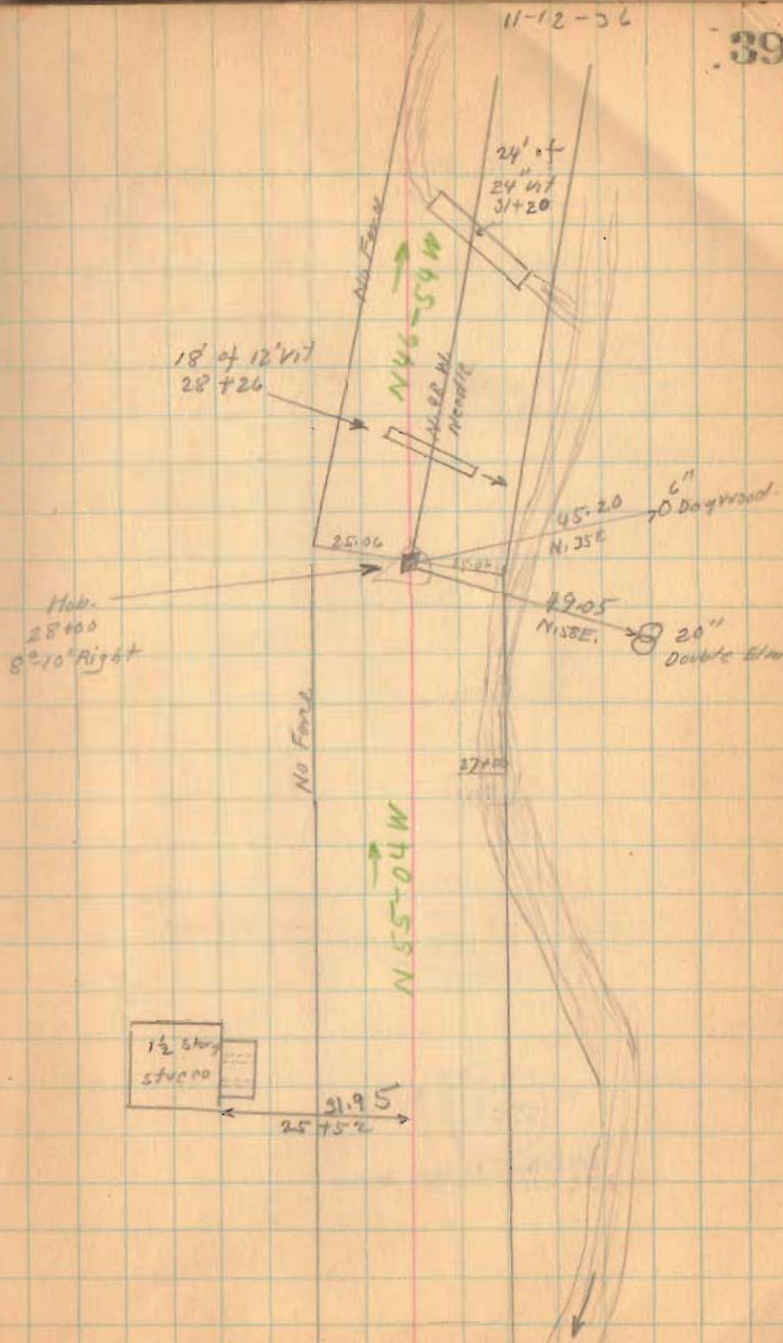
Road 182

1761

INDEXED ON MAP

11-12-36

39



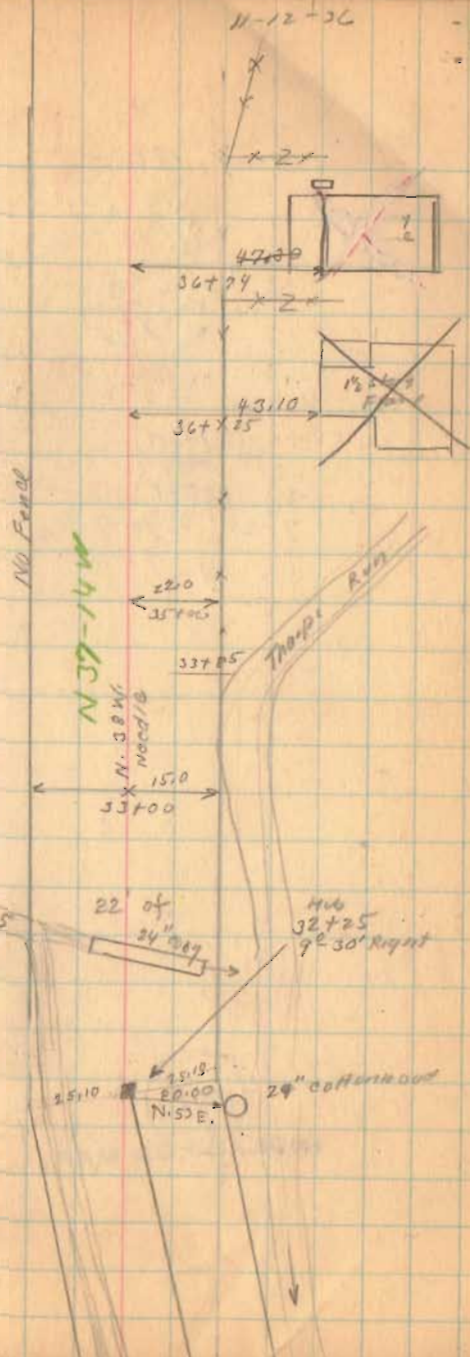
Road 182

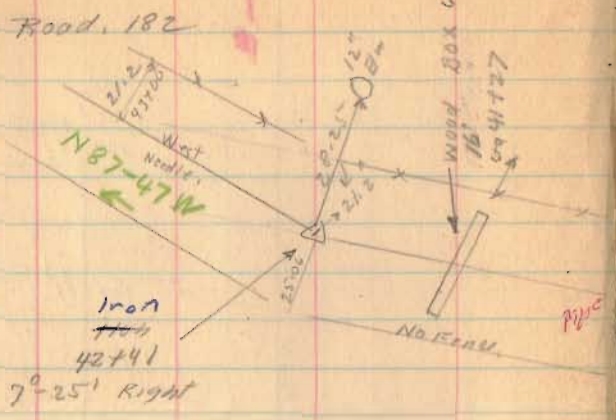
1761

INDEXED ON MAP

40

11-12-36



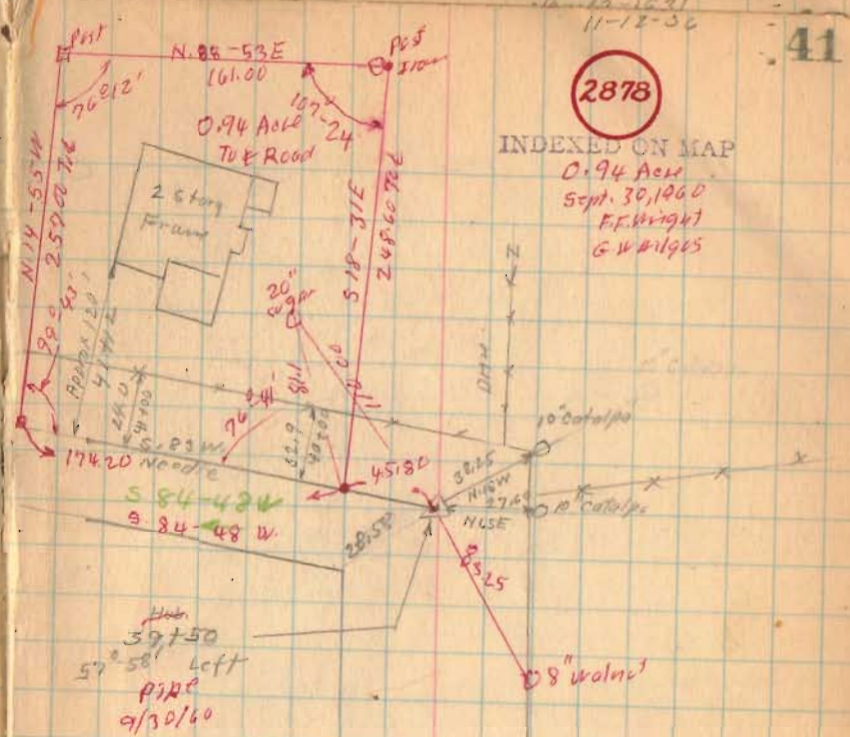


1761

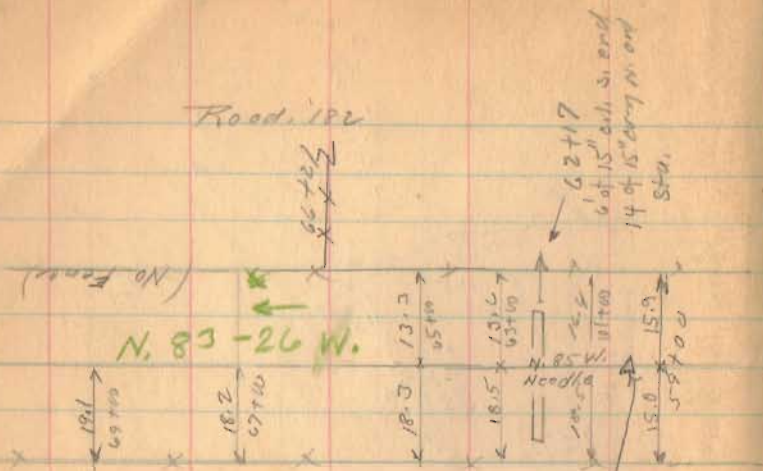
INDEXED ON MAP

2878

INDEXED ON MAP  
 0.94 Acre  
 Sept. 30, 1960  
 F.F. Wright  
 G.W. Wilges



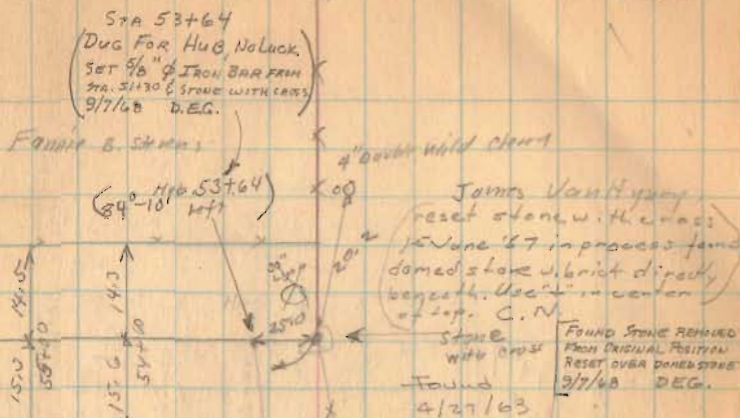




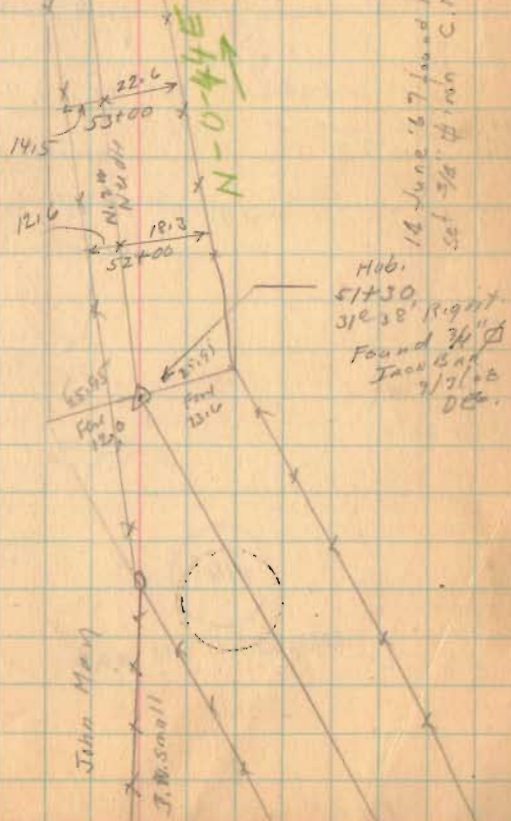
STA. 59+09  
SET  $\frac{3}{8}$ "  $\phi$  IRON BAR  
9/7/68 D.E.G.  
NO ANGLE  
PROPERTY LINE  
BETWEEN EDE &  
BLACKLIDGE

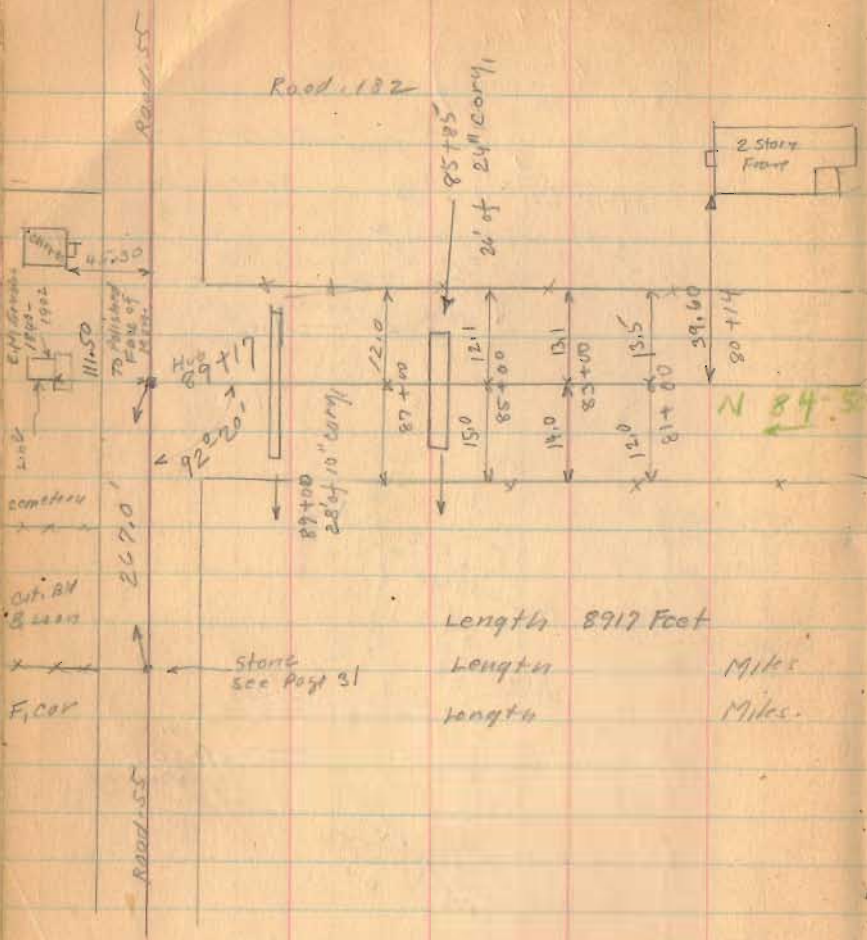
1761

INDEXED ON MAP



John May

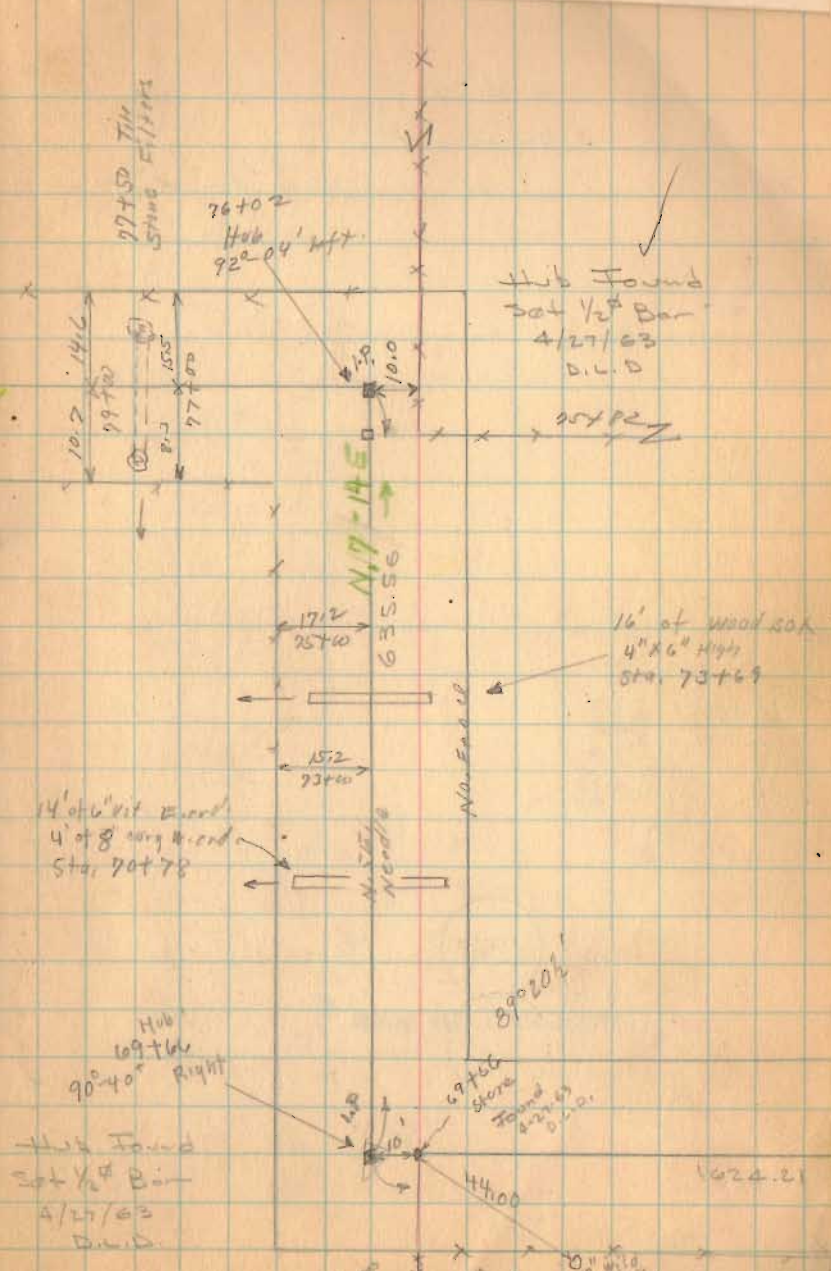




Lengths 8917 Foot  
 Lengths Miles  
 Lengths Miles

1761

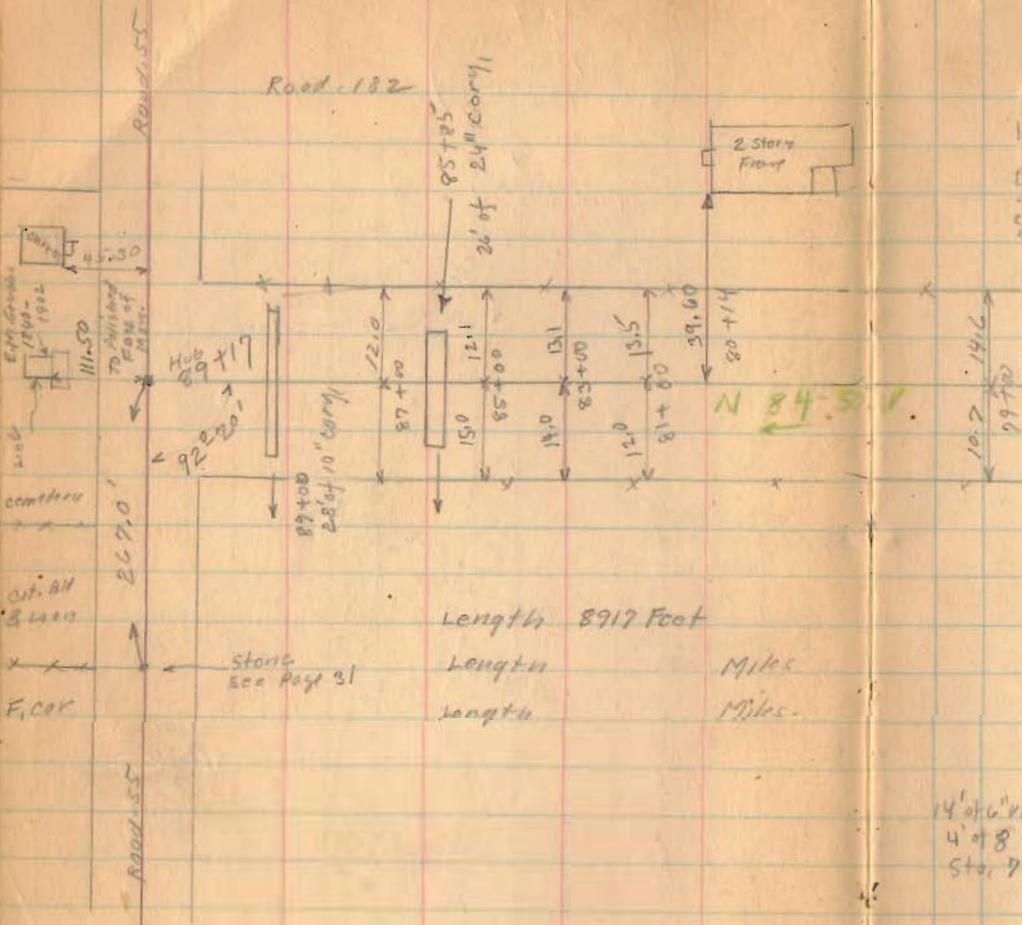
INDEXED ON MAP



14' of 6\"/>

Hub Found  
 Set 1/2\"/>

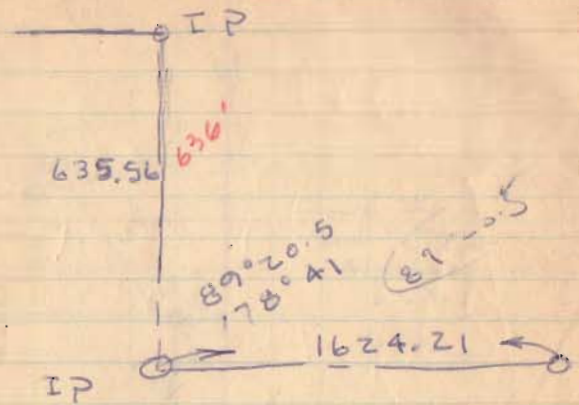
1624.21



Length 8917 Foot  
 Length Miles  
 Length Miles

INDEXED ON MAP

1761



stone with  
 x mark

June 25, 1963

~~2~~  
 Gaslin  
 Tevis  
 2 Hrs.

14' x 6" x  
 4' x 8"  
 Sta. 7

90° 40'

Hwy 89  
 Sta 7  
 4/27/63  
 D.D.



Nov 16-1936  
Elev. 200'  
F. W. 1937  
G. Pusy  
G. Wilgus

Road 179

Jefferson Tap

40' - Commissioners Journal 9 Page 305 - 1850

Staked 20' from 40' Road  
Sta. 1-3-5-7-9, etc.

9+00

5+00

1+25

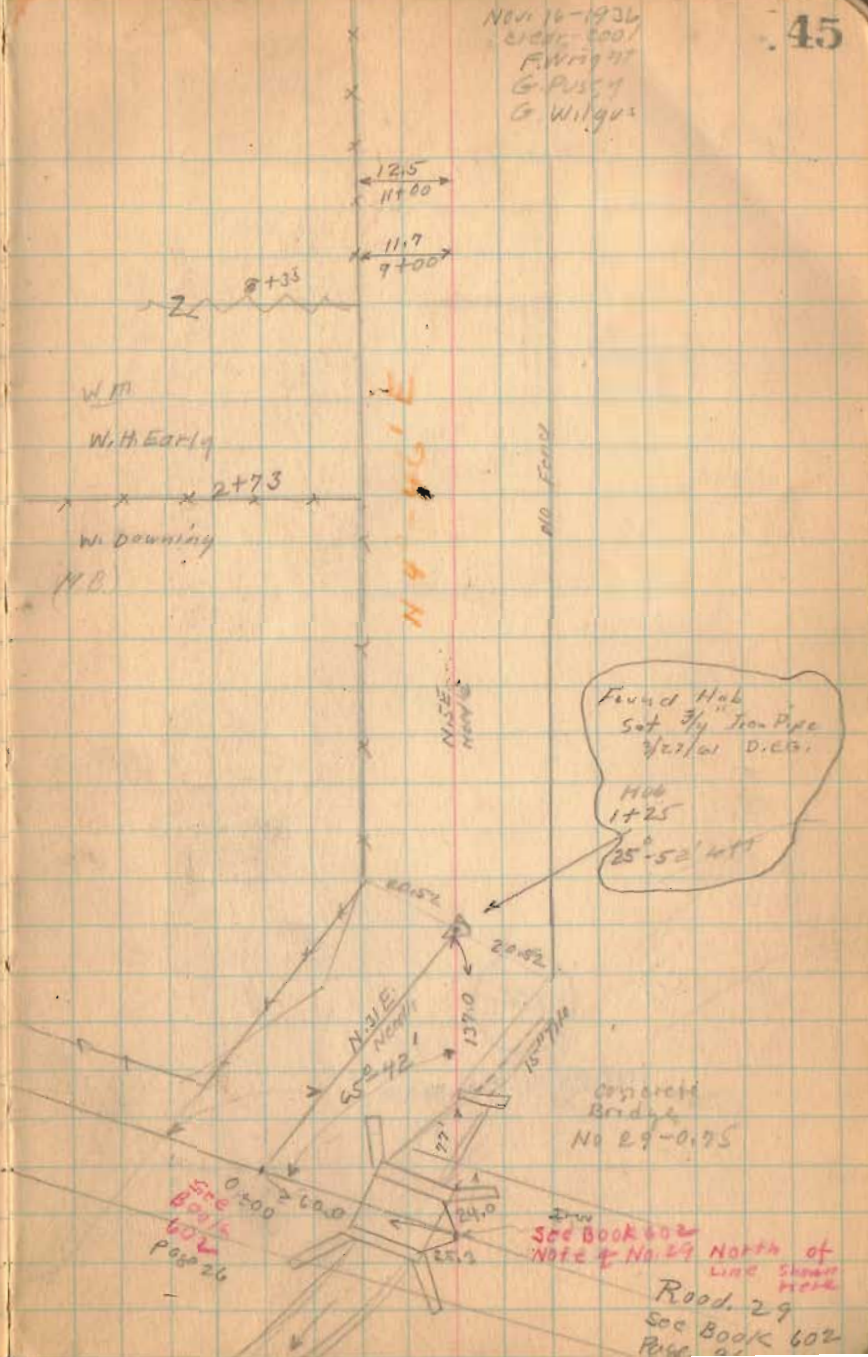
Alw. Pusy  
set Dec. 2-1936  
G. Wilgus  
G. Pusy

1762

INDEXED ON MAP

Sta 0+00 set 3/4" Iron  
Pipe over bank 1/2" Re-  
inforcing rod.

3/27/41 D. E. G.



Road 179

21+00

17+00

13+00

1762

INDEXED ON MAP

11-16-36

46

J.E. McPherson

19+96

20+04

7.00

19+92

4.05

T. & O. C. R. 1

19+15

RR Plat 19452

original Wood Strip

7.80

2.55

19+13.8

16.7

19+00

19.5  
17+00

J.E. McPherson

16+42

W.H. Early

15.5

15+00

14.4

15+00

North

Land 11+93

Road 179

Tom  
26+14  
19+92  
26+22  
622 1800  
left

79+00

25+00

1762

INDEXED ON MAP

47

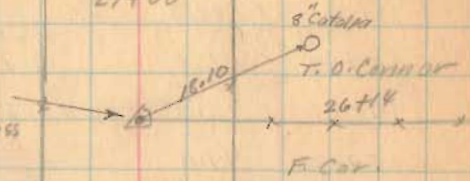
Nov. 17 - 1936  
Cool  
F. Wright  
G. Wilgert  
G. Puscy  
Ray Hinkle

16.3 x 18.6  
31+00

16.1 x 14.7  
29+00

16.4 x 14.2  
27+00

26+14  
Large stone  
X on top  
2.8 MCK on cross



16.0 x 11.7  
25+00

15.1 x 13.0  
23+00

1 1/2 story  
Frame

62.5  
22+30

14.8 x 12.6  
21+00

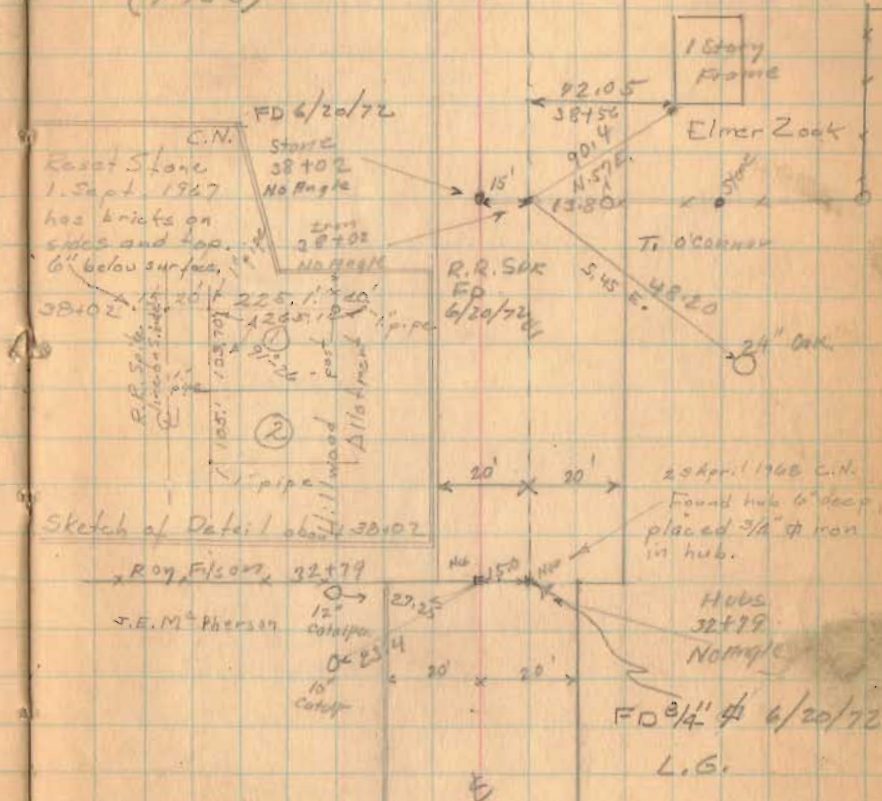
Road 179  
Fence front

Sta.	West	East
33+00	19.3	
35+00	16.8	12.7
37+00	16.5	13.3
38+02	17.0	
39+00	16.0	No Yard Fence
41+00	17.1	12.8
43+00	16.8	No Fence
45+00	30.4	No Fence
46+00	12.2	No Fence
47+00	12.5	No Fence
49+00	12.5	12.7
51+00	14.0	11.2
53+00	15.5	10.0
55+00	13.1	
57+00	11.8	12.2
59+00	10.7	18.0

1762

INDEXED ON MAP

55' from Sta 26+48.50 To 32+78.50  
See Plat K-98 - Hillwood Allotment  
(1956)



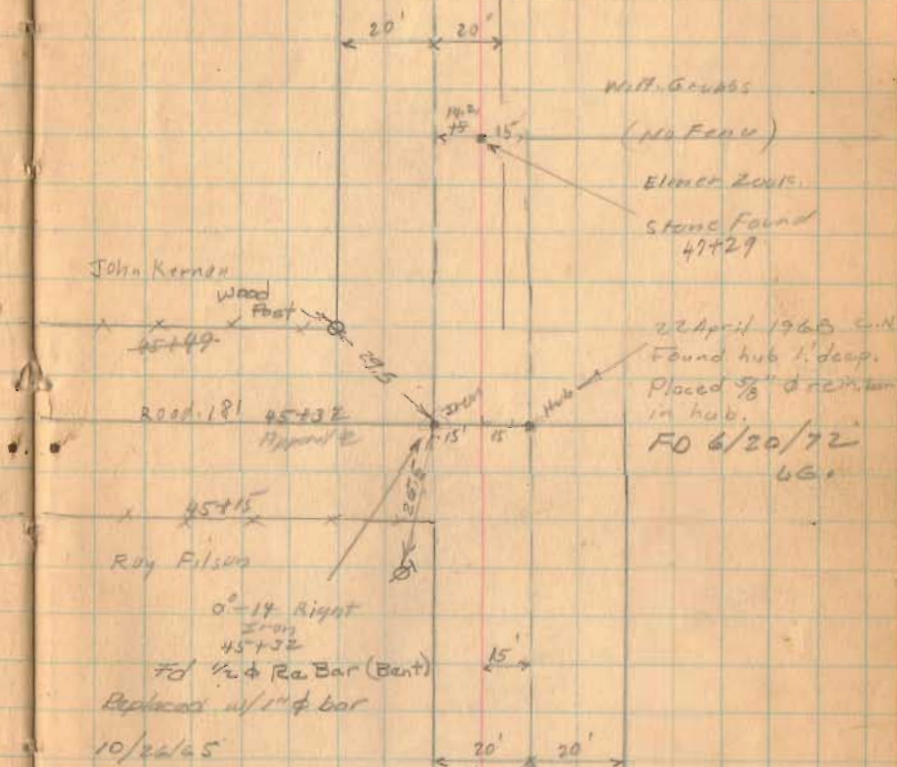
Road 179

51+00

47+00

1762

INDEXED ON MAP





Road 179

73+00

67+00

1762

INDEXED ON MAP

51

11-17-36

← 15.3 × 13.7  
97+00

← 16.0 × 13.7  
97+00

← 15.8 × 13.3  
95+00

← 16.4 × 11.3  
93+00

← 16.8 × 13.3  
91+00

x x x z

← 37.90  
90+70

1 1/2 story  
Frame

Curr  
Crib

Shed

← 14.3  
69+05 69+

Barn

← 17.2 × 14.0  
69+00

← 17.1 × 12.0  
67+00

← 17.2 × 12.7  
65+00

0.42

Iron  
64+10

J.P. Painter

64+10

E.V. Patterson

Road 179

91+00

83+00

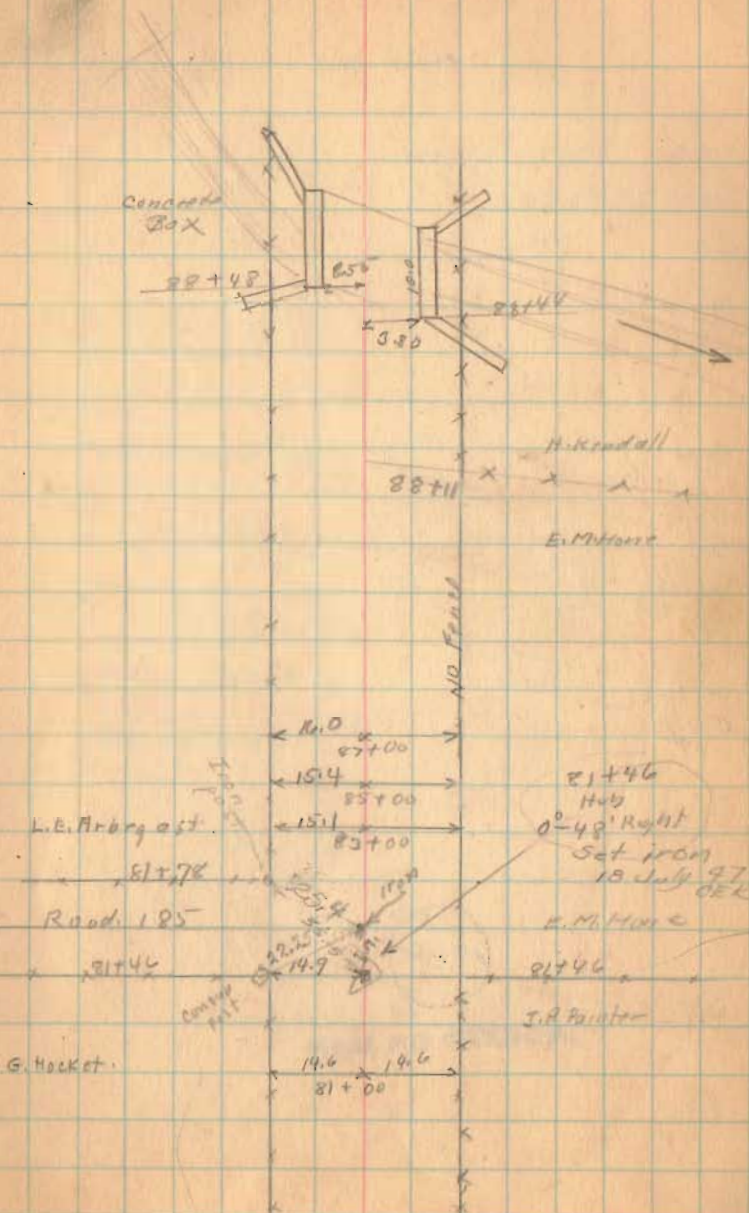
1762

79+00

INDEXED ON MAP

11-17-35

52





Road 179

1762

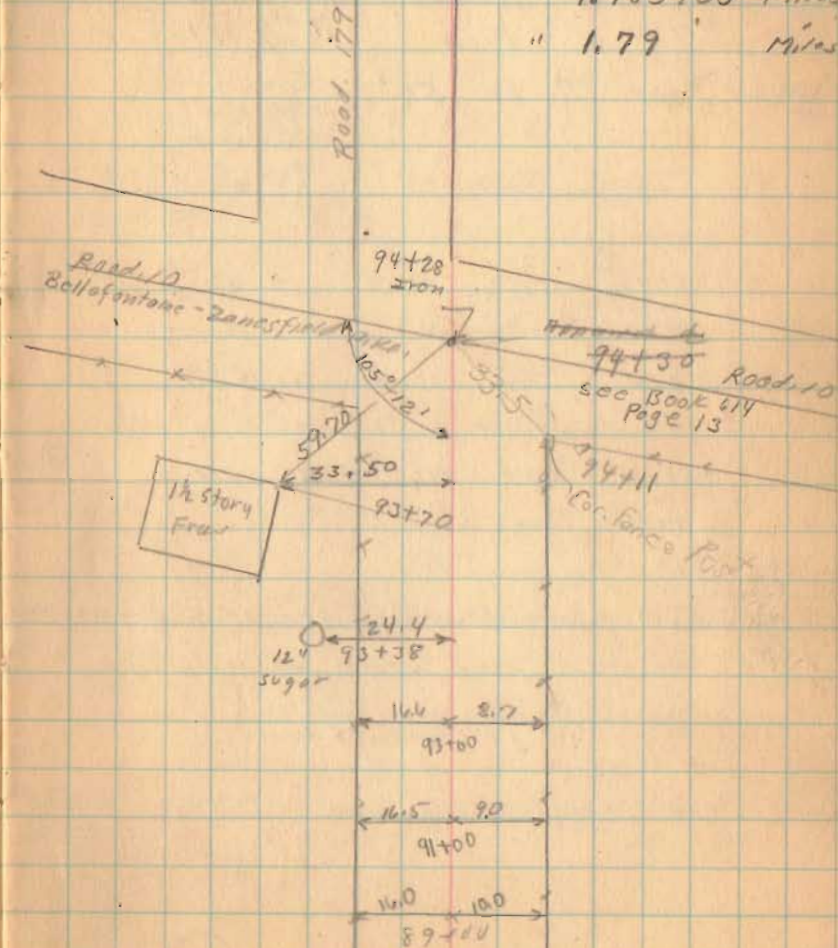
INDEXED ON MAP

9425  
9370  
55

11-17-30

53

Length 9430 Feet  
" 1.785985 Miles  
" 1.79 Miles



Long Island Road #268

This is now a private Road

Commissioners Hearing Dec. 5 1936 } TO Make  
 " " View " 7 1936 } a public  
 Road.

New Road To be 50'

- Hub. 6 1+00 stakes 33' L 33' R.
- Hub 6 3+00
- Hub 6 5+60 stakes 33' L 33' R
- Hub 6 8+00 stakes 33' L 33' R
- Hub 6 9+50 stakes 25' L 33' R
- Hub 6 15+00 stakes 25' L 33' R
- Hub 6 20+00 stakes 25' left 33' Right.
- Hub 6 21+08.85 stake 25' left
- Hub. 6 22+21 (on tangent)

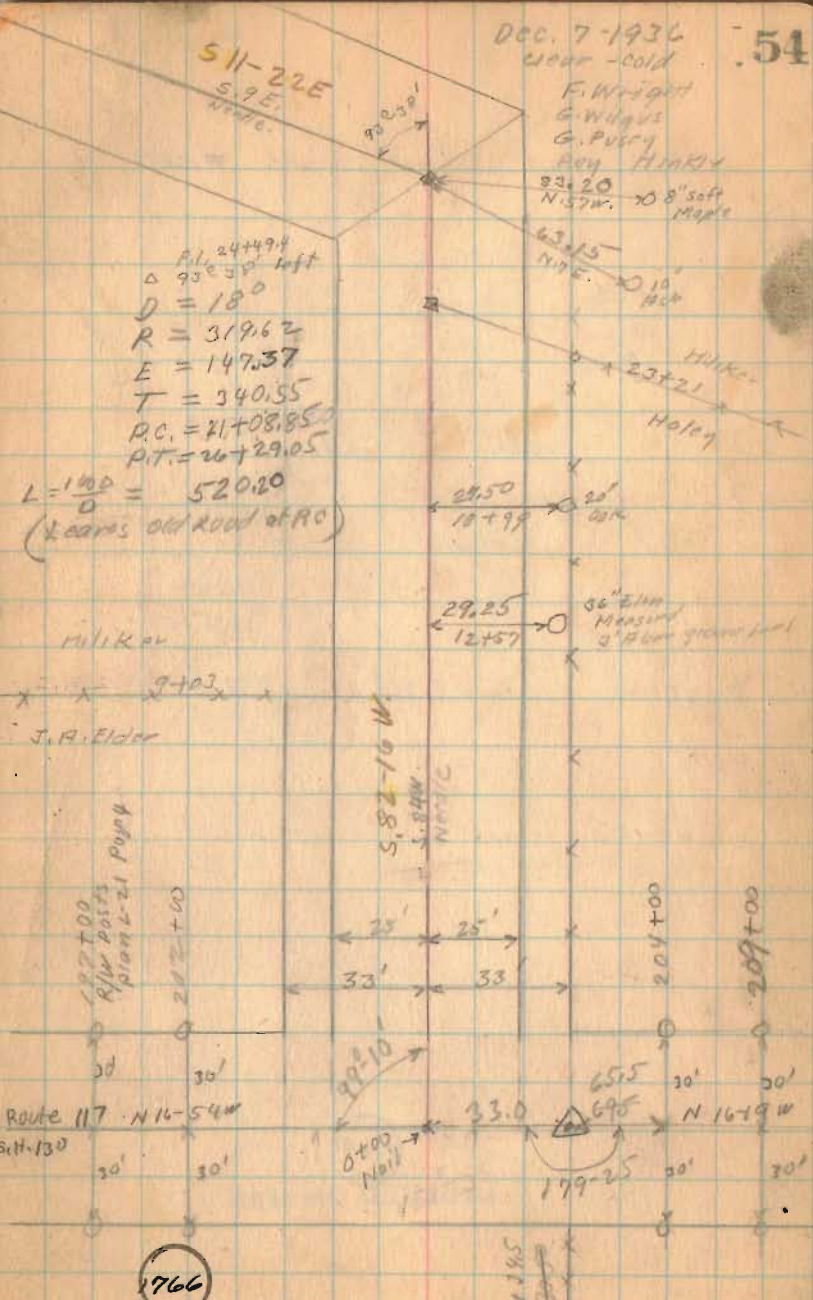
Present Right-of-Way Sta. 0+00 to 9+03 = 33'

- Hub 6 23+68.95 stake 25' left stake 25' Right (on tangent)
- Hub 6 at. 26+29.05 stake 25' L stake 35' R.  
 12" Elm 26.05 Right.
- Hub 6 28+00 stake 25' left stake 25' Right.

Dec. 7 1936

Clear - cold

F. Wright  
 G. Wilgus  
 G. Pusey  
 Roy Hinkley  
 23+20  
 N. 57W. 20 8" soft  
 Mine



766

INDEXED ON MAP

Long Island Road #263

Hub E (P.C.) 28194.58      station 25' L   25' R.  
 Hub E (E.C.M.) 30184.61      "      "      "  
 Hub E P.T. 32174.64      "      "      "

Hub E 35+00      station 25' L   25' R

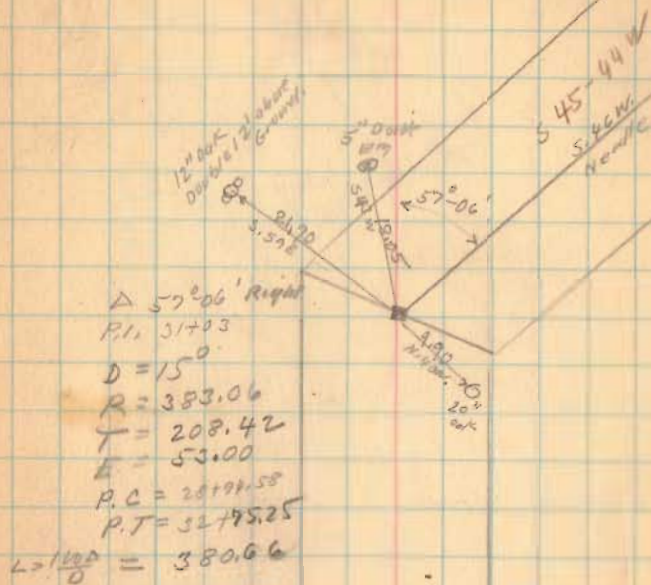
Hub E 40+00      station 25' L   25' R

1766

INDEXED ON MAP

12-7-36

55



Long Island Road.

#268

Hub. @ 44000 station. 25' L 25' R.

Hub @ 47+22.6 station 25.04 L 25.04 R.

1700

INDEXED ON MAP

12-7-30

56



Long Island Road # 26P

Dec. 8 1936  
 Proj. 4-24 - 3-11  
 F. Wright  
 E. Wilson  
 G. P. Smith  
 Roy Hunter

$$E = 15.58$$

$$T = 134.23$$

$$R = 573.69$$

$$D = 10^\circ$$

$$\Delta = 26^\circ 26' \text{ Right}$$

$$P.I. = 53+82.6$$

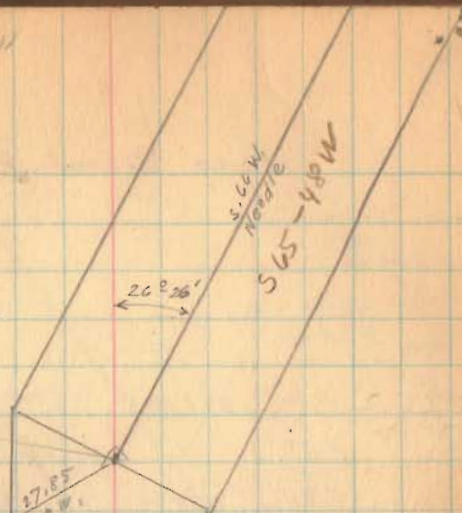
OK 44.95  
 20' dia. S.C.S.P.  
 Double 20' Alum Braced.

$$P.C. = 52+47.87$$

$$P.T. = 55+12.20$$

$$L = \frac{1000}{D} = 264.23$$

10' soft  
 M.O.P.P.



Hub @ 50+00 Stake 25' L 25' R.

Hub @ P.C. 52+47.90 Stake 25' L 25' R.

Hub @ P.I. Stake Center of curve Sta. 53+80.06 Stake 25' L 25' R.


Hub @ P.T. 55+12.20 Stake 25' L 25' R.

1760

INDEXED ON MAP

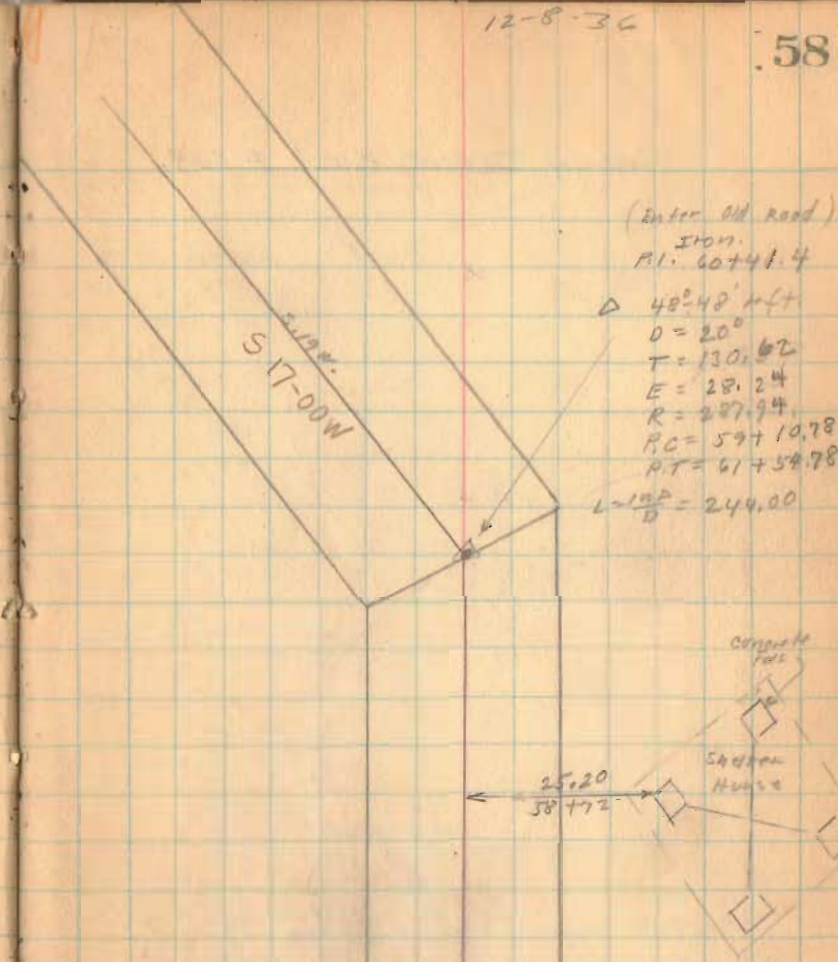
Long Island Road # 262

H.V.L. P.O. 59+10.81 station 75' left station 25' right  
 Iron P.I. station 75' left station 25' right  
 P.T. station 25' Left 25' Right

  
 INDEXED ON MAP

12-8-36

58





Long Island Road #268

P.C. 52 SR  
 P.T. 51 SR

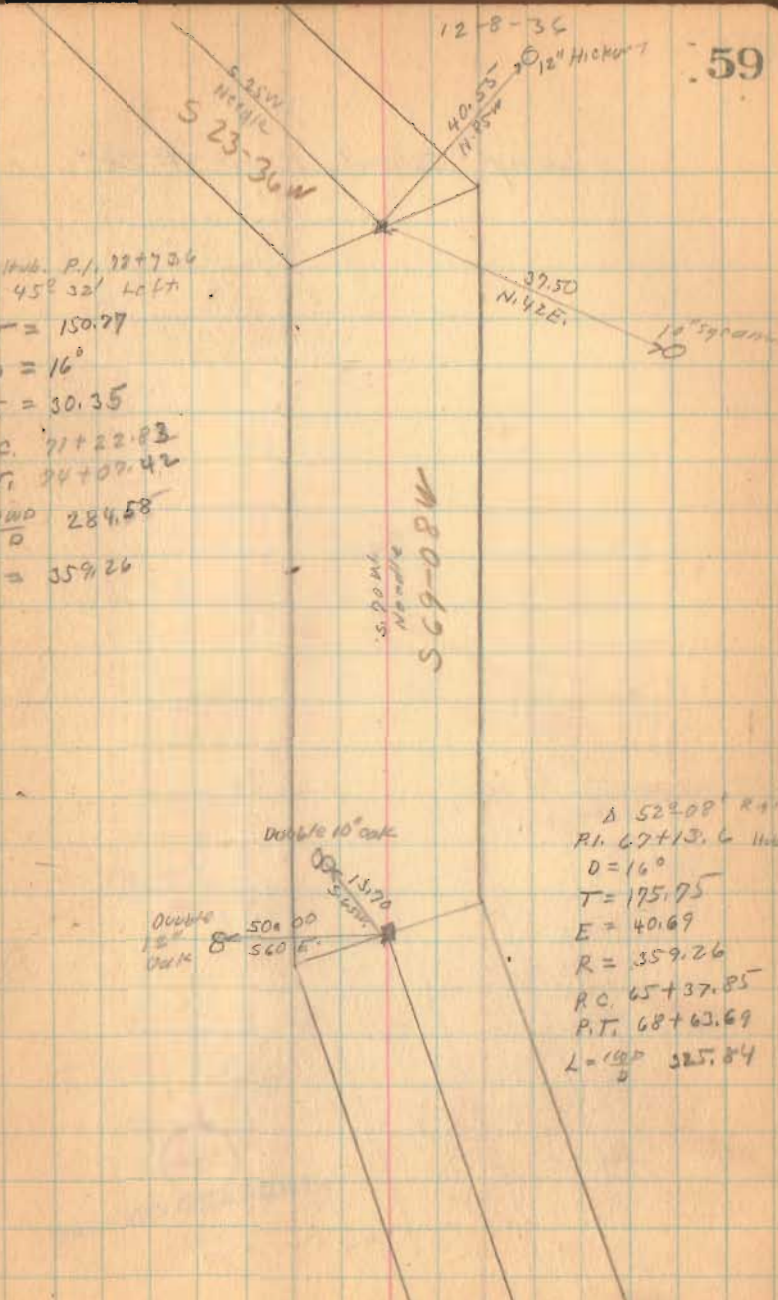
1766

INDEXED ON MAP

1146 P.I. 22+73.4  
 Δ 45° 32' Left  
 $T = 150.77$   
 $D = 16^\circ$   
 $E = 30.35$   
 P.C. 71+22.83  
 P.T. 94+07.42  
 $L = \frac{1000}{D} = 284.58$   
 $R = 359.26$

Double 10° curve  
 50.00  
 560 ft

Δ 52° 00' Right  
 P.I. 67+13.6 Hub  
 $D = 16^\circ$   
 $T = 175.75$   
 $E = 40.69$   
 $R = 359.26$   
 P.C. 65+37.85  
 P.T. 68+63.69  
 $L = \frac{1000}{D} = 325.84$



Long Island Road #268



Pl. No. 80+54.8  
 $\Delta 47^{\circ} 40' 14''$   
 $D = 15^{\circ}$   
 $R = 383.07$   
 $T = 169.48$   
 $E = 35.82$   
 $P.C. = 78 + 85.32$   
 $P.T. = 82 + 03.54$   
 $L = \frac{180}{D} = 318.22$

1766

INDEXED ON MAP



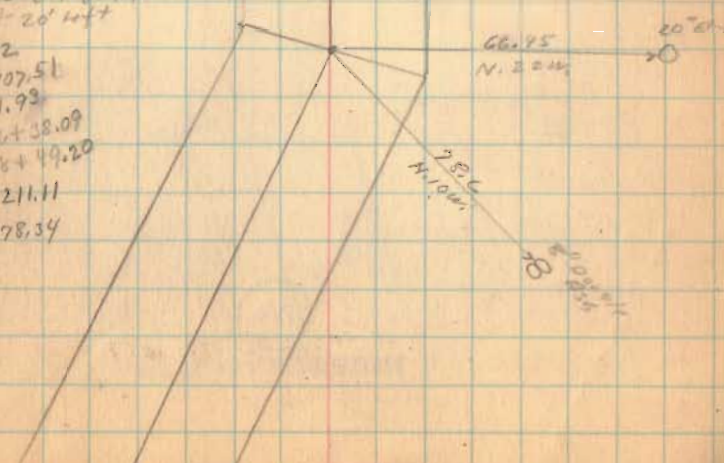
Long Island Road No 268

12-8-20

61

Sub  
N 46-00 W  
S

R/L From 87+45.00  
D 25'-20" left  
D = 12  
T = 107.51  
E = 11.99  
P.C. 86+38.09  
P.T. 88+49.20  
 $L = \frac{100A}{D} = 211.11$   
R = 478.34



1766

INDEXED ON MAP

Long Island Road #268

1766

INDEXED ON MAP

Dec. 9-1936  
Clear - 1936  
E. Wright  
G. Wright  
G. Post  
Roy Hinkley

12° Double  
111  
46.40  
5150

4 Hickory  
58.20  
5131.6

N 20° W  
N 73° 00' W

Bl. 5000 96435.4  
D-20° 06' Right  
D=10°  
T=101.66  
E=8.93  
R=573.69  
A.C. 921+2071-95+3322  
P.T. 971+6274.97+134 22  
L=150° 251.00

N 86° 54' W  
1188.8

8° Double  
111  
52.00  
5130.8

8° Double Hickory  
55.30  
5130.8

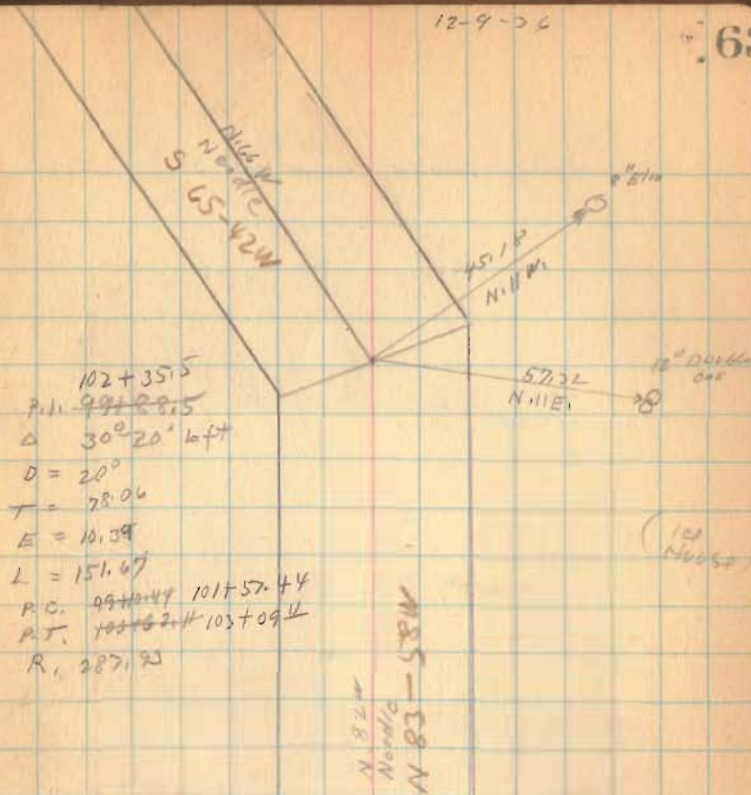
Bl. H. 92158.4  
D 40°-54'  
D=16°  
R=359.26  
T. 133.97  
E=24.16  
A.C. 921+24.93  
P.T. 94+20.06  
L=120° 255.63

(Camp site)

Long Island Road # 268

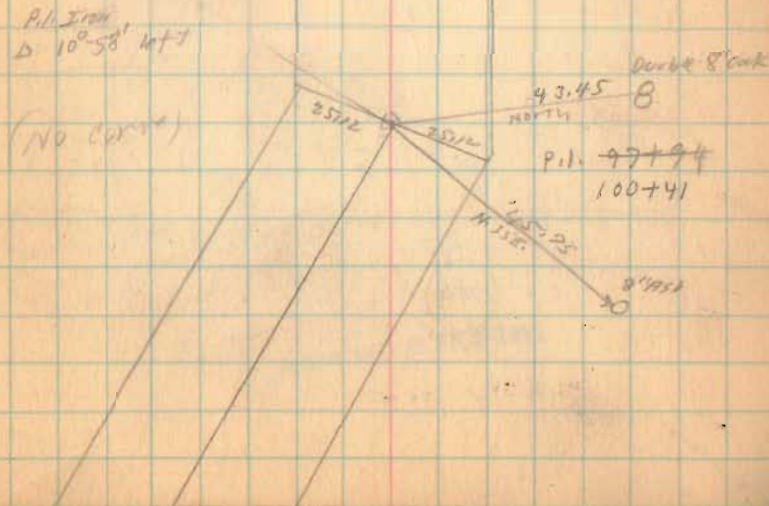
12-9-56

63



102+35.5  
P.I. 99+88.5  
 $\Delta$  30° 20' left  
D = 20°  
T = 78.06  
E = 10.39  
L = 151.67  
P.C. 99+10.44 101+57.44  
P.T. 102+22.44 103+09.44  
R. 2871.93

129



P.I. Iron  
 $\Delta$  10° 58' left  
(No Curve)  
43.45 NORTH  
P.I. 97+94  
100+41

1766

INDEXED ON MAP

Long Island Road # 26P

12-9-36

64

From 105+62  
 P.I. 103+15  
 21° 24' left

S 5-42 E  
 N 83 W  
 17.0

12' side

22' P.I.

S 15-42 W  
 S 15-42 W

Long Bridge

60.0'

From 104+36  
 P.I. 101+89.5  
 50' 0' offset  
 D = 30°  
 T = 89.12  
 E = 19.96  
 R = 191.11  
 P.C. 101+80.38 103+47.28  
 P.T. 102+67.05 103+14.05  
 L = 120° 166.67

41.0

29° P.C.

22.0

N 15 E

10' double out

31.0

N 40 E

8' double out

1766

INDEXED ON MAP

Long Island Road No. 268

Length 10597 Feet  
Length 2.00698 Miles  
Length 2.01 Miles

1766

INDEXED ON MAP

