

Road. 11
Miami and Pleasant Twp.

Free Pike Record 2 Page 145

DeGraff - Bellefontaine Pike 1870

Begin stake S.W. Cor., Sec. 1-3-14

50' Except 60' stake ^{920'} 5½ To ^{990'} 7½ = 16 Rods = 264'
Station = 8 Rods.

Road 43 { There are Two 60' stretches
stake 192¾ To 193¾ 16 Rods
stake 251 To 253½ 20 Rods

50' Sta 0+00 To 32+49 Pike Record.
(60 at Hill 264)

60' Sta 32+49 To
Commissioners Journal 5 - Page 167
1837

1798

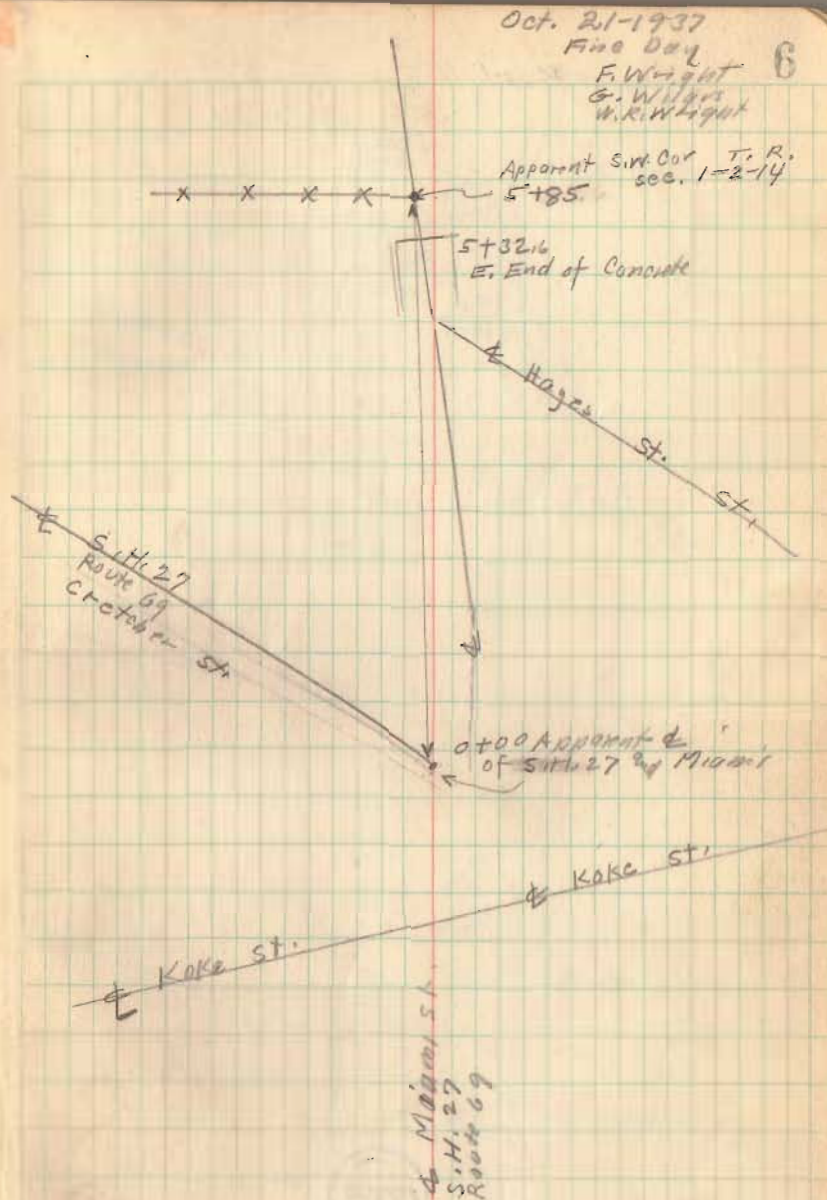
INDEXED ON MAP.

Road 11

Station 0+00 to 5+85
Accurate & Not established
Houses and Buildings not noted

1798

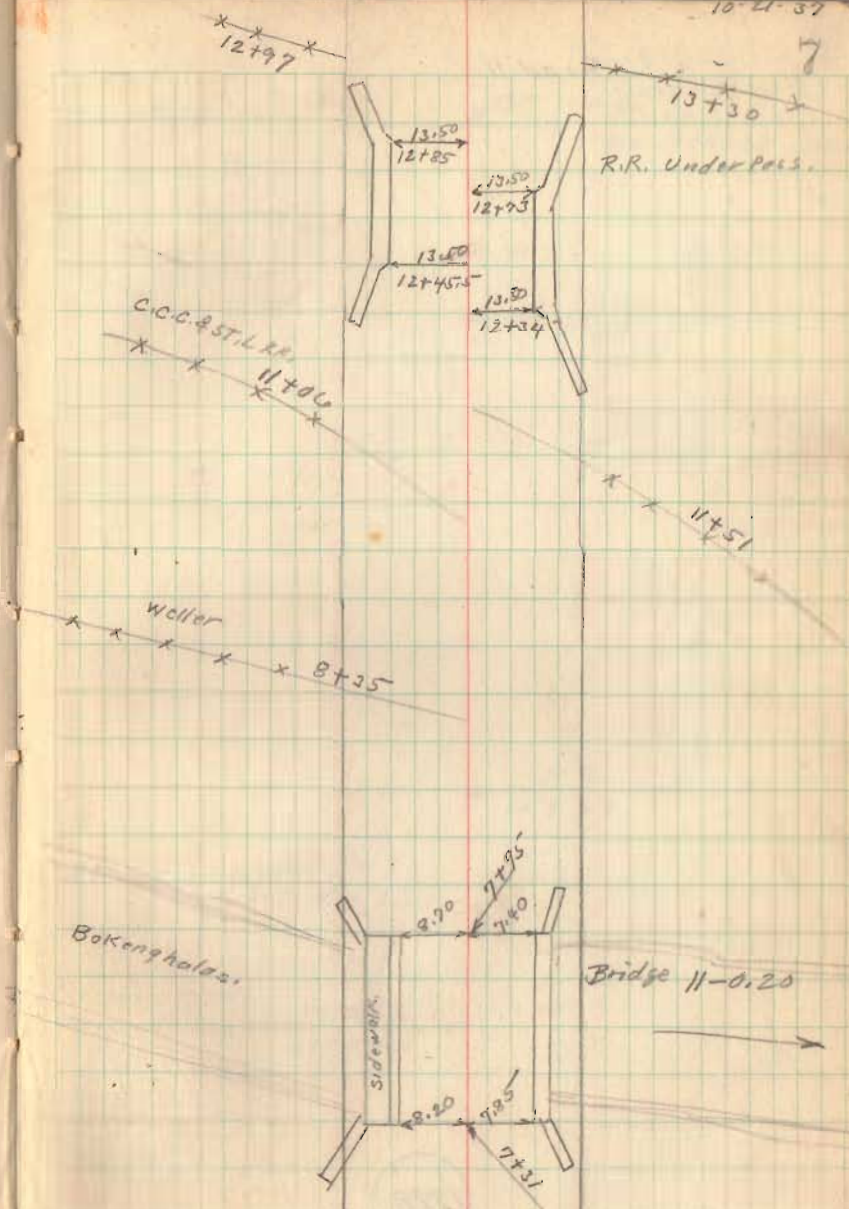
INDEXED ON MAP



Road 11

10-21-37

7

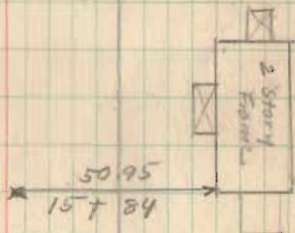
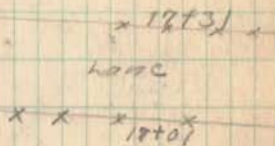
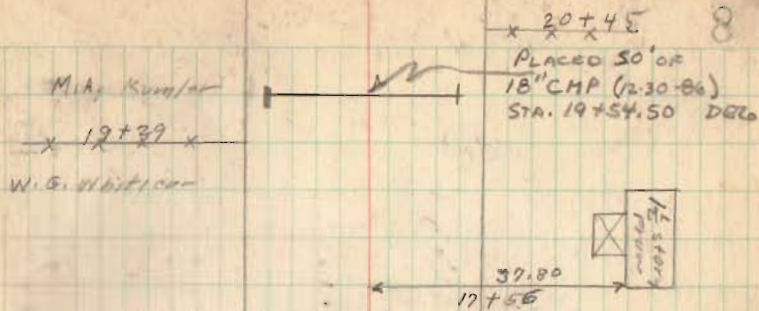


1798

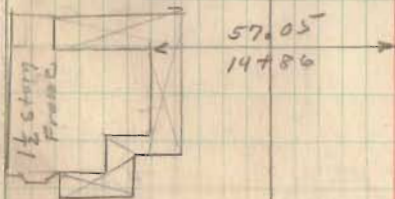
INDEXED ON MAP

Road 11

10-21-37



15+20
APPROX CORP. LINE



1798

INDEXED ON MAP

Road 11

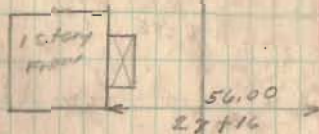
10-21-37

32481

Missie Miller

29789

J.A. SHAW



Geo. Mohr

25772

M.A. Kuntz

1798

INDEXED ON MAP

Road 11

58+00

52+00

48+00

46+02.94

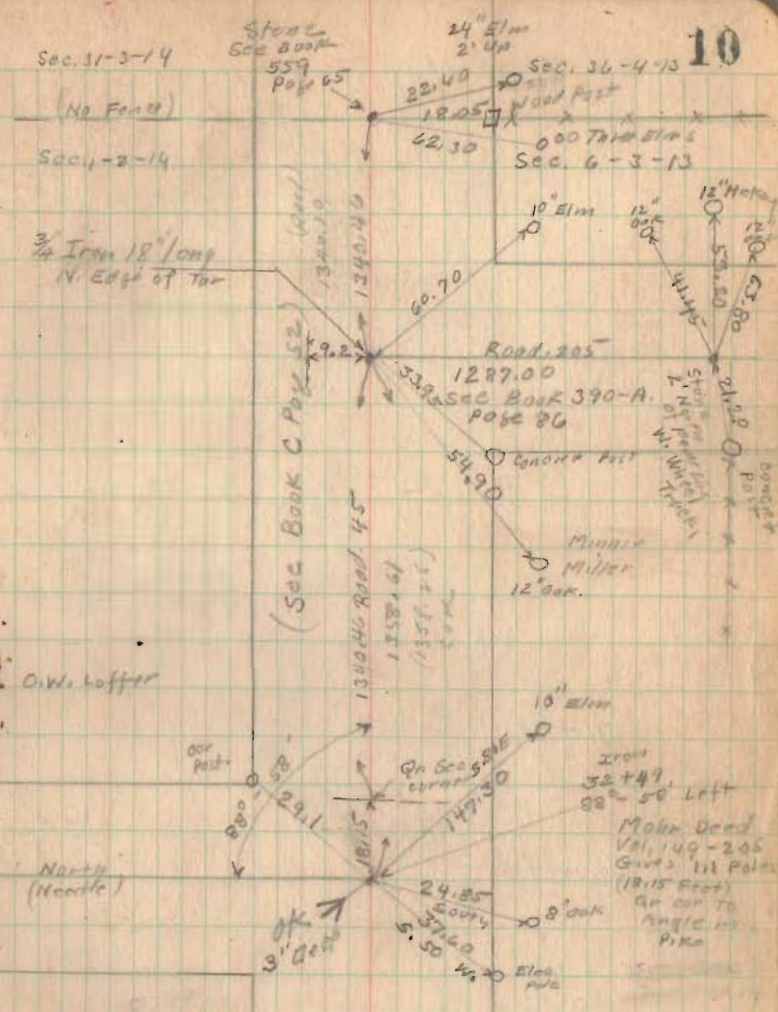
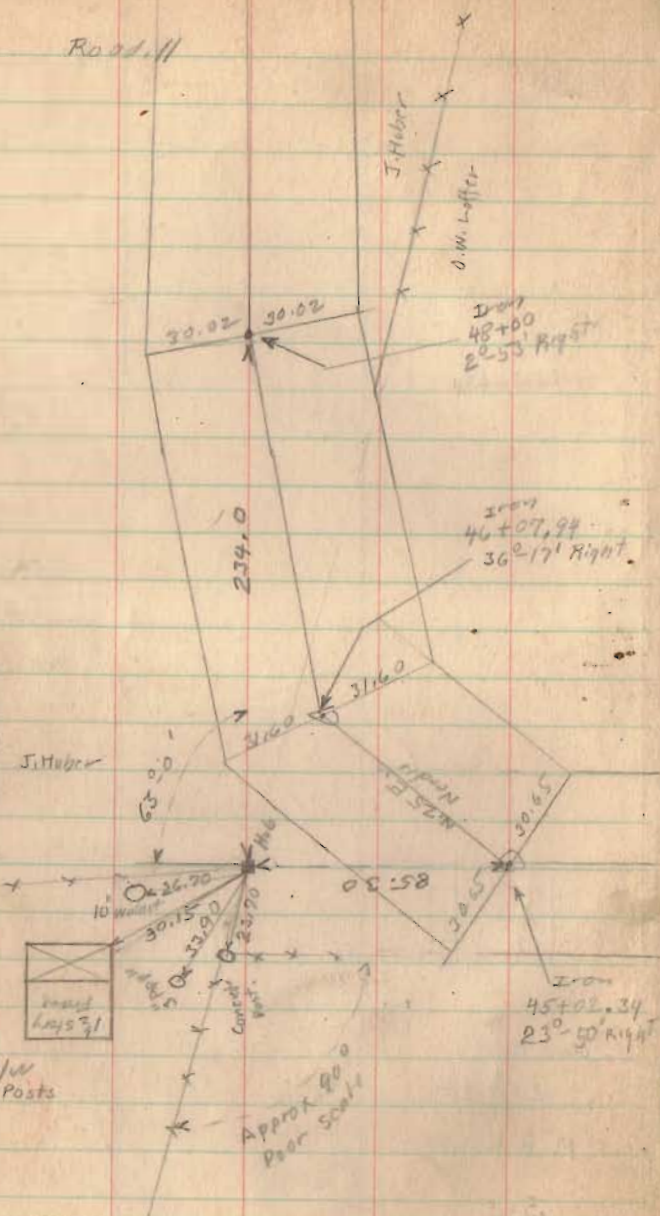
45+02.34

44+02.34

42+00

39+00

34+00



Iron Sta. 52+49
 on line from
 @ Bridge near Sta.
 8 To Iron
 N. end of
 Road 205

1798

Road 11

71+91

68+00

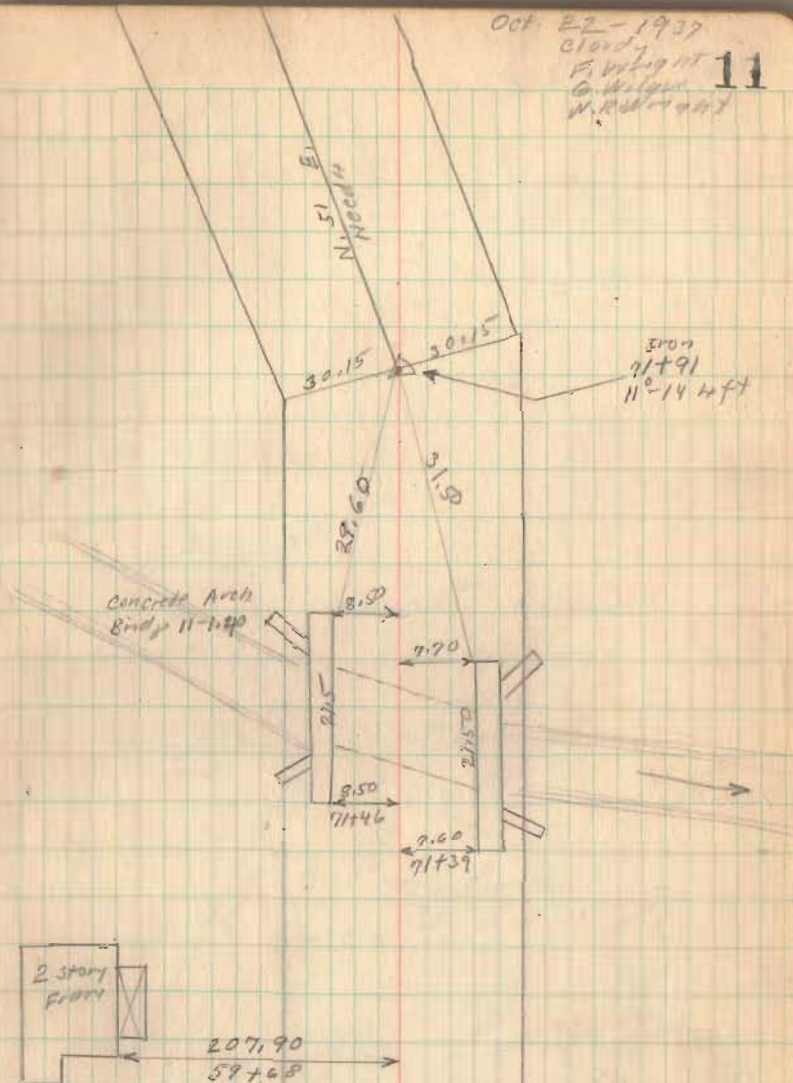
63+00

1798

INDEXED ON MAP

Oct. 22 - 1937
Cloudy
E. Wright
G. Wilson
W. R. ...

11



Road 11

Cooke Survey

Jan. 13, 1965

D. Dodson

L. Georlin

82+50

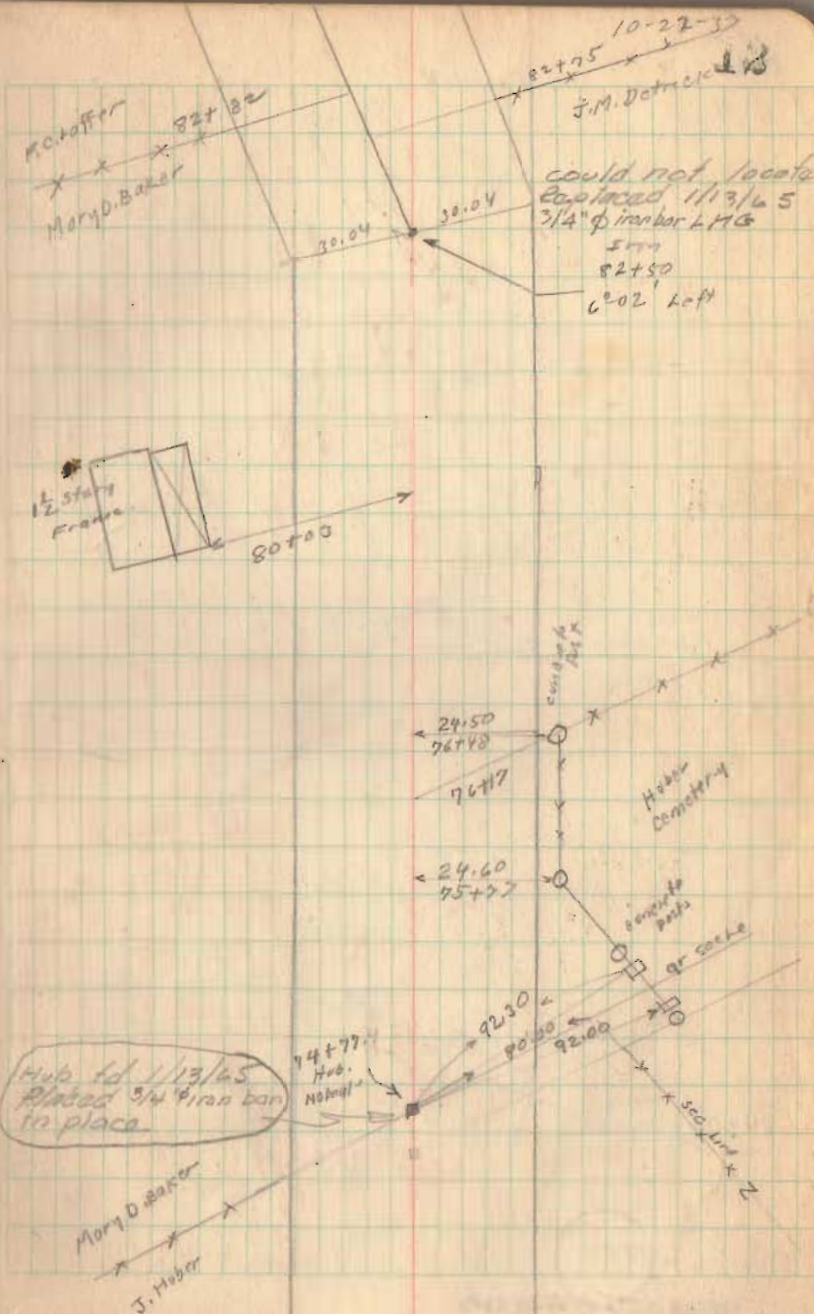
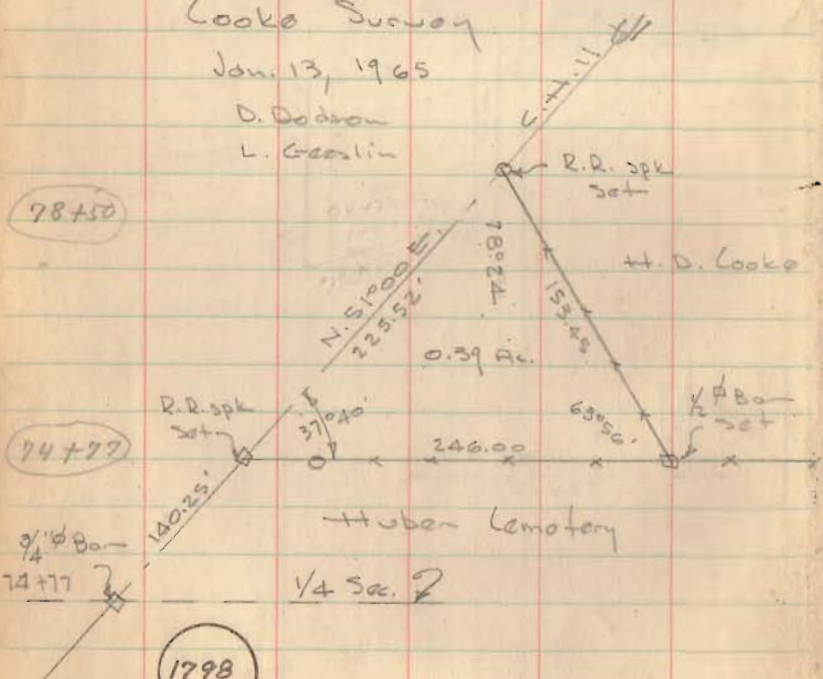
78+50

74+77

74+77

1798

INDEXED ON MAP



Hub rd 11/13/65
Placed 3/4\"/>

Mary D Baker
J. Huber

Road 11

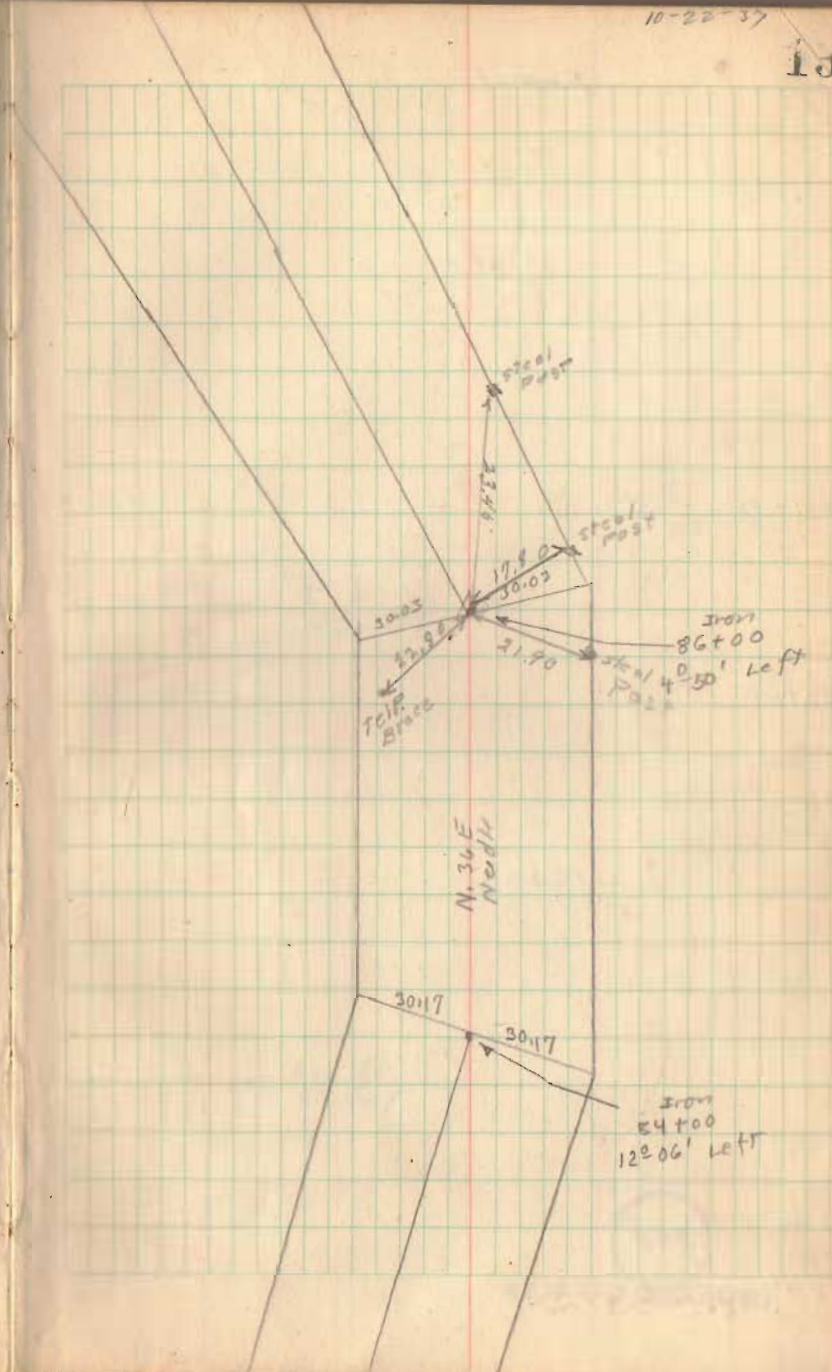
10-22-37

13

84+00

1798

INDEXED ON MAP



Road 11

101+00

101+00

96+00

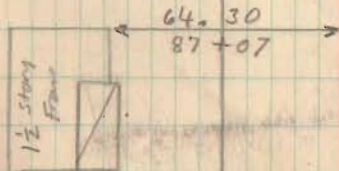
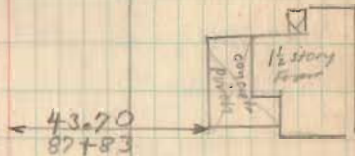
91+00

1798

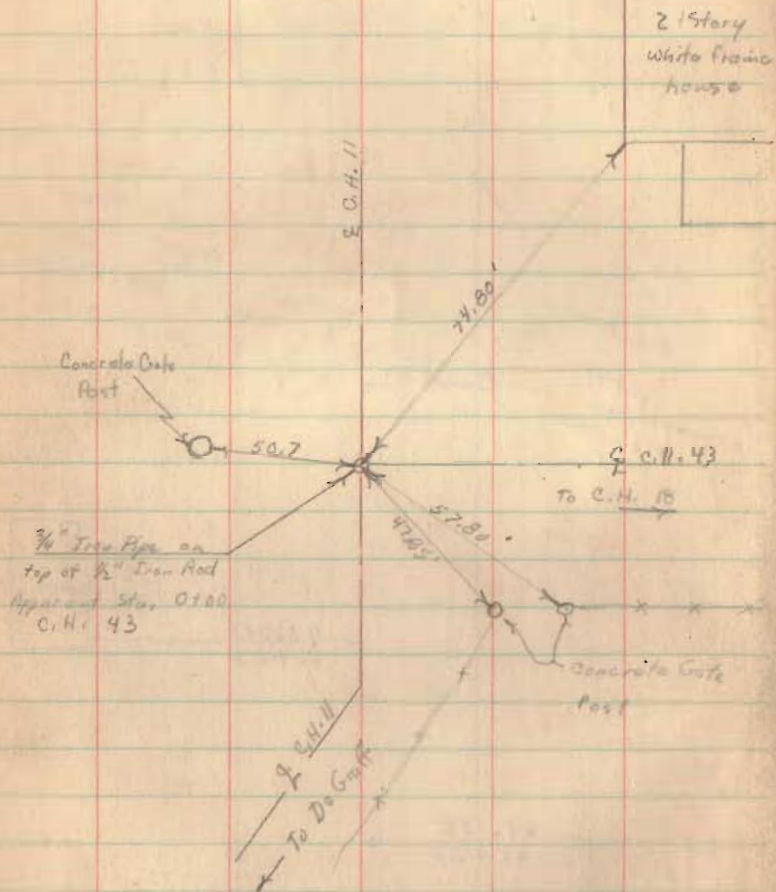
INDEXED ON MAP

10-22-57

14



Road 11

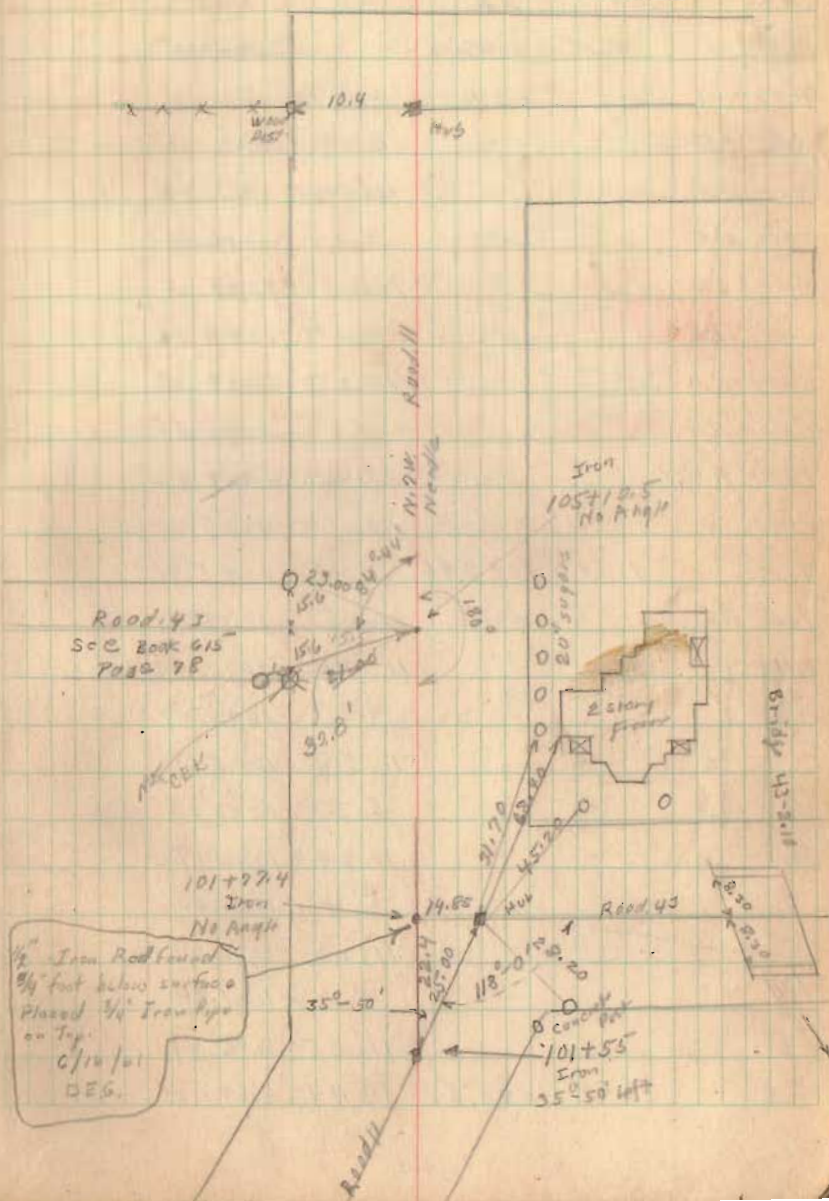


179B

INDEXED ON MAP

10-22-37

15



Road 139

Bokescreek Twp.

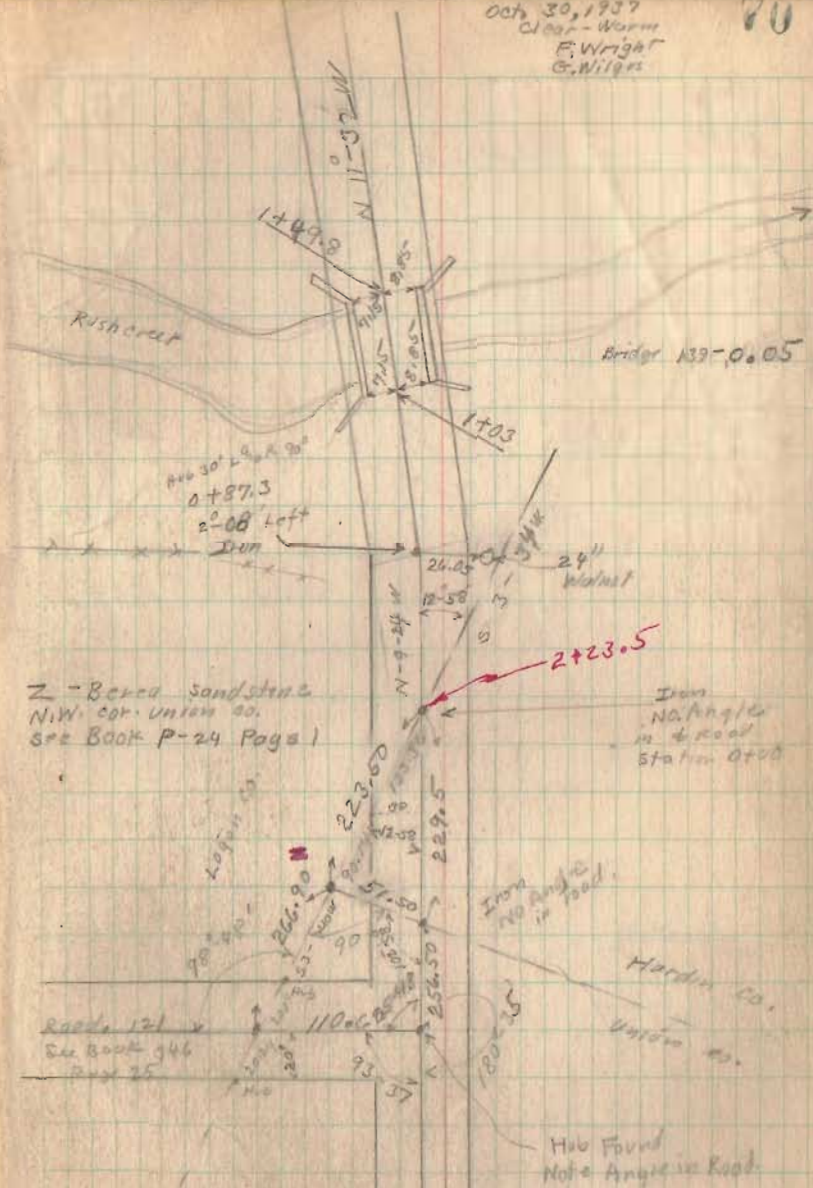
see Road 139 Plan X-139

1800

INDEXED ON MAP

Oct 30, 1937
Clear - Warm
F. Wright
G. Wilson

70

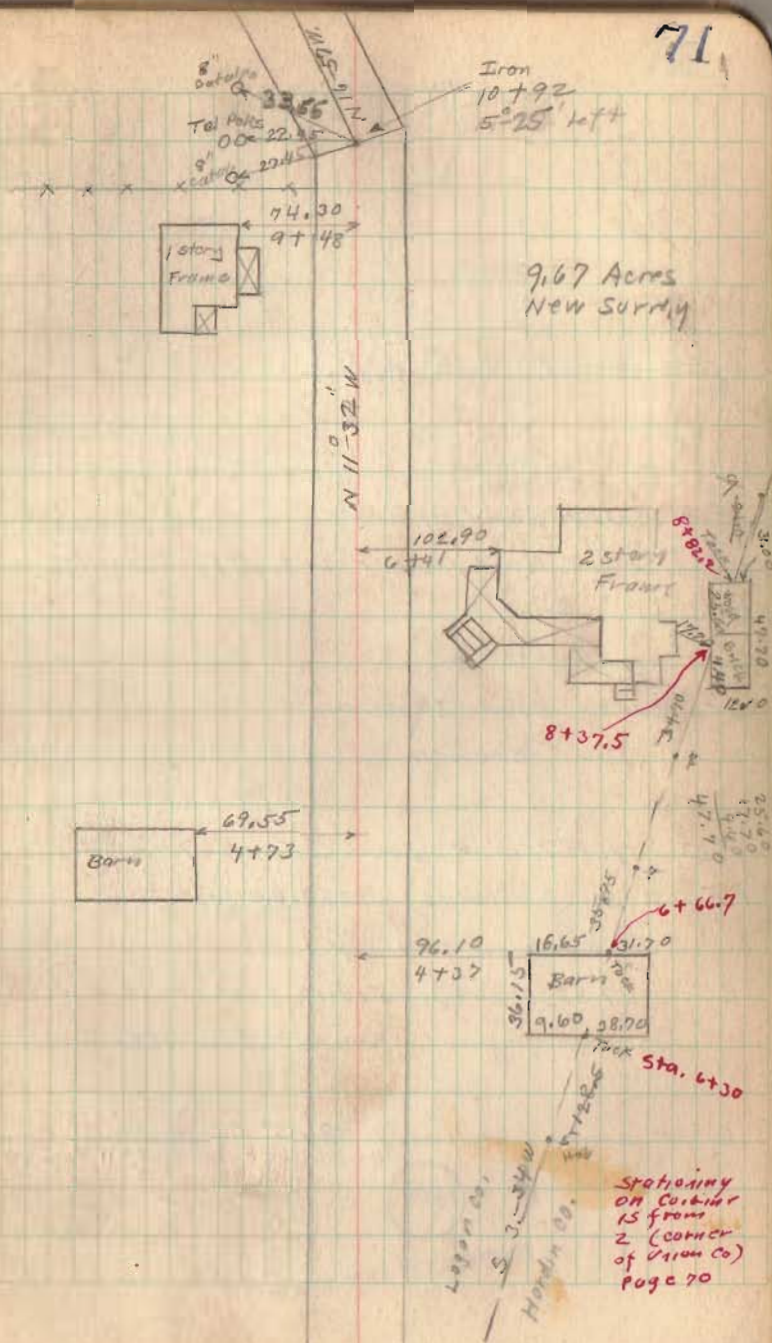


Road 139

1800

INDEXED ON MAP

71



Road 139

see Book C Page 426

F - Berea sand stone +

Stone No. 2 Book P-24 Page 1

C - Berea sand stone

Top Broken

FE N 87° 10' W Book C Page 427

FE = (31.20 chains) 2059.20 feet

Book P-24 Page 1

GE (7.85 chains) 518.10 feet Hardin Co Record

Original Record Page 133

B - Iron (Station 78 + 81.35 By Hardin Co Road)
Hardin Co. Field Book 411 Page 58

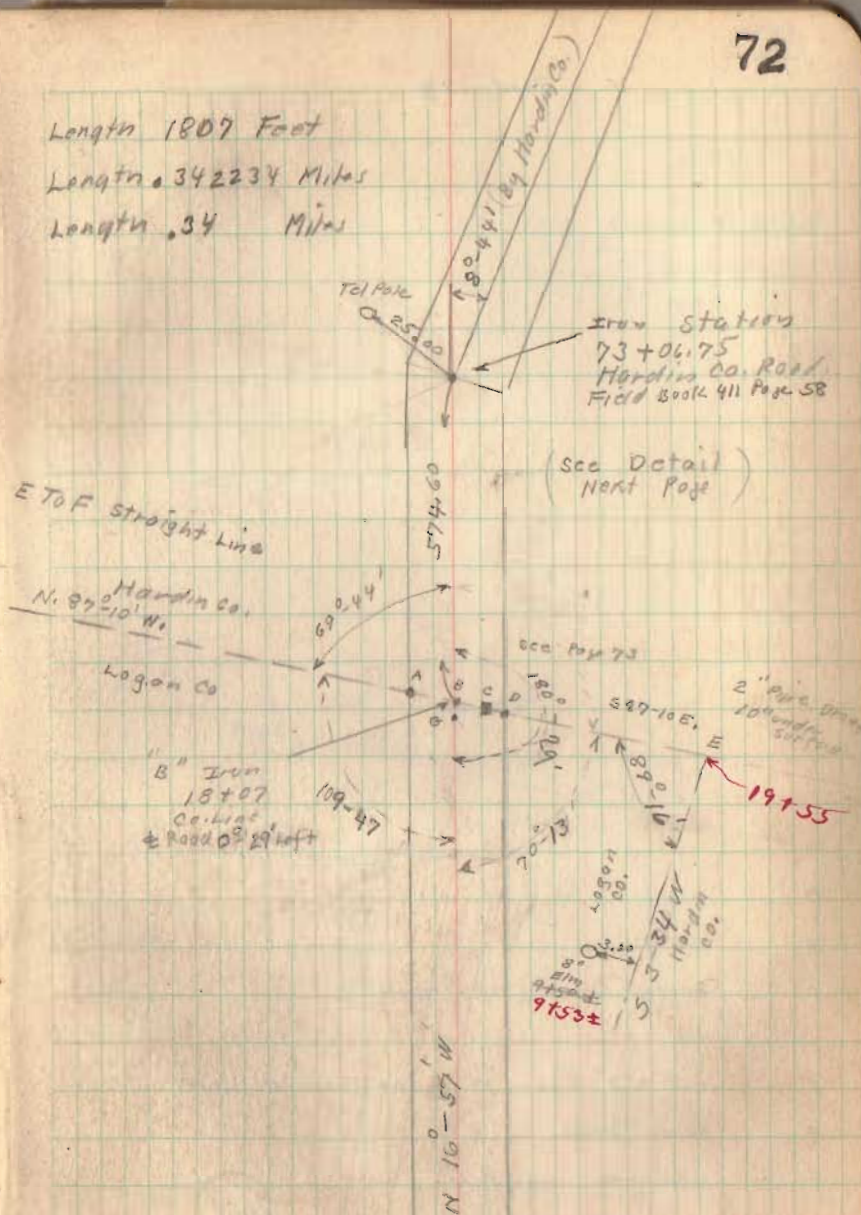
1800

INDEXED ON MAP

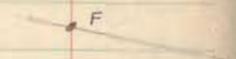
Length 1807 Feet

Length .342234 Miles

Length .34 Miles



Road 139



- A Hvb
- B Iron
- C Berca Stone (TOP Broken)
- D Hvb
- F ~~the~~ 2" Pipe 10" Under Ground Level
- F Berca Stone
- G R.R. spike By Hardin Co.
5.95 feet Too for South.

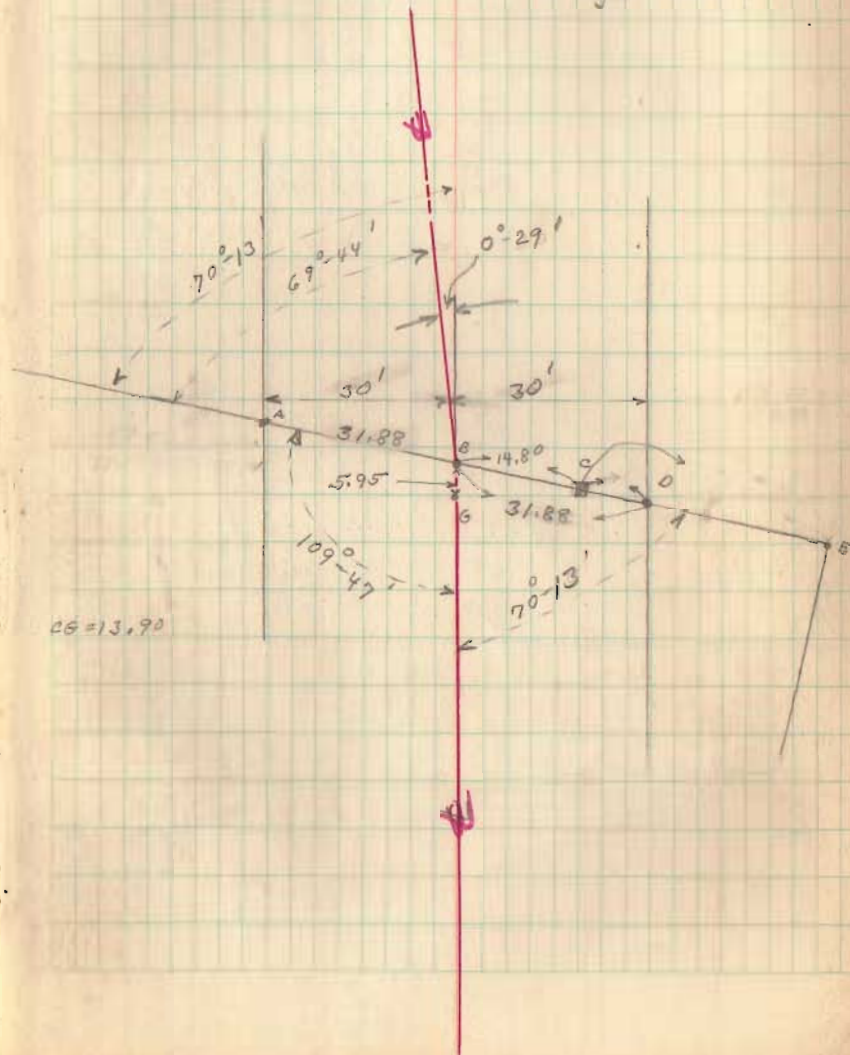
1800

INDEXED ON MAP

10-30-37

73

Note Angle E Road
at B,
County Line FE is
a straight line



CS = 13.90

Road 7
Liberty Township

TO
Spring Hills

35' sta. 0+00 To 11+21.5

See Blue Print with Road 7

40' sta. 11+21.5 To 26+99.2

See Blue Print with Road 7

40' sta. 26+99.2 To

1850 See Commissioners Journal
Vol. 9 Page 228

60' sta. To

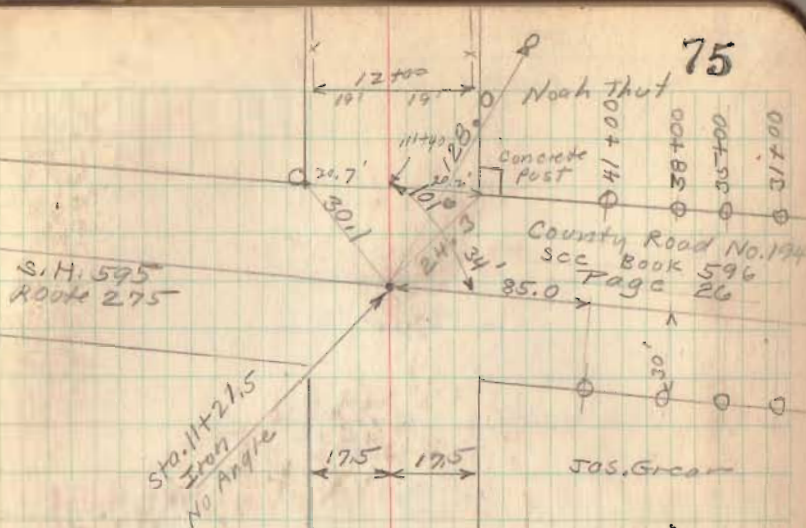
1841 See Commissioners Journal
Vol. 6 Page 240

(No stakes placed)

1803

INDEXED ON MAP

75

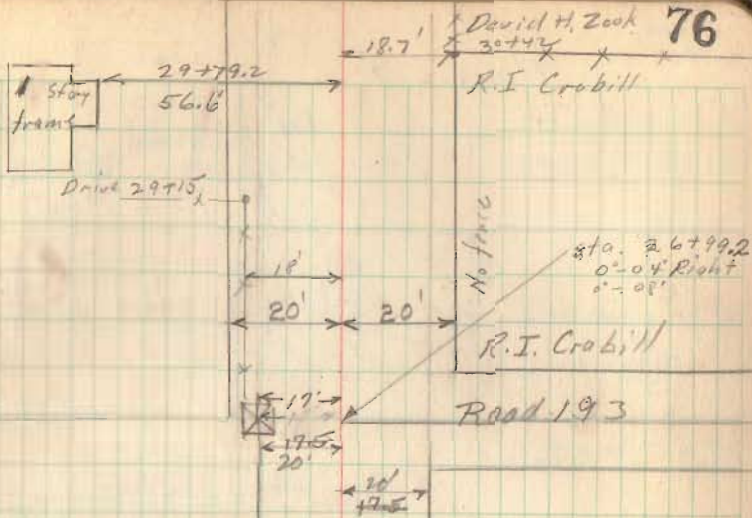


Liberty
Logan

Champaign
saern

Township
County
James Grear
County
Township

Road 7

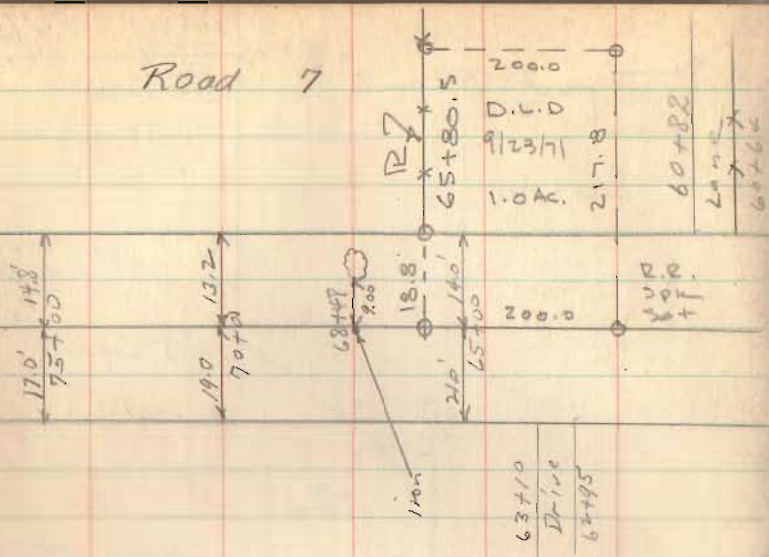


Noah Trout

1803

INDEXED ON MAP

Road 7



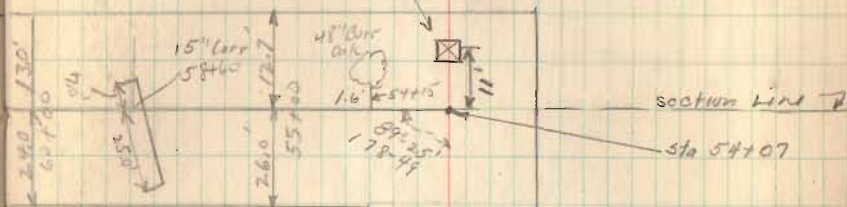
NOTE: FOUND STONE STA 65+80.5
 R Alcott & Bureau - Angle 10
 E - Sept. 23, 1971 D.L.D.
 MEAS. 1504.5 from Stone at 80+85

1803
 INDEXED ON MAP

77

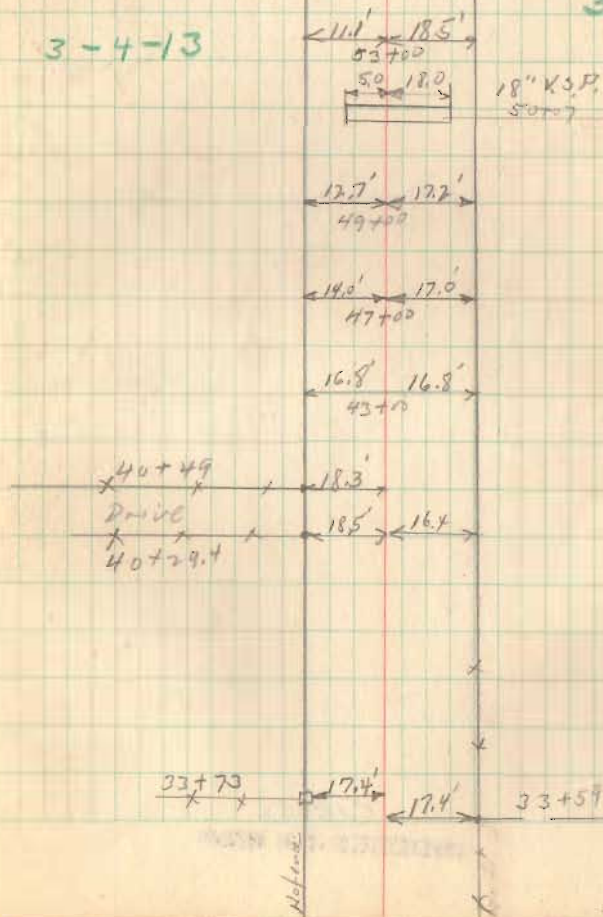
4-4-73
 Co. Lind Store
 see Book D
 Page 7

34-5-13



3-4-13

33-5-13



Road. 7

stone
st#80786

Co. Line stone
See Book D Page 7 **78**

