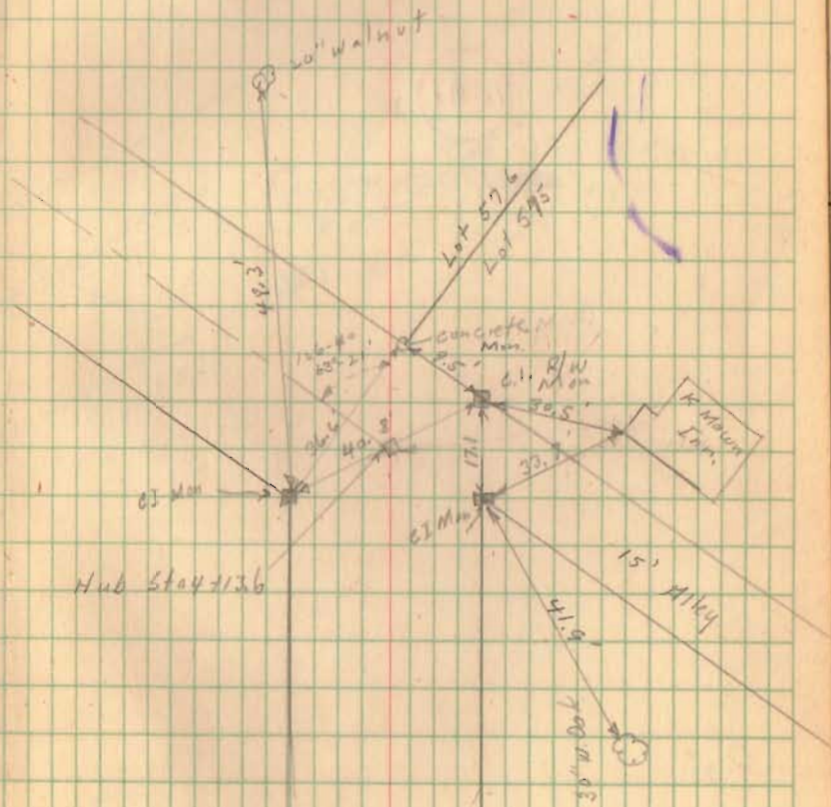


1691

INDEXED ON MAP

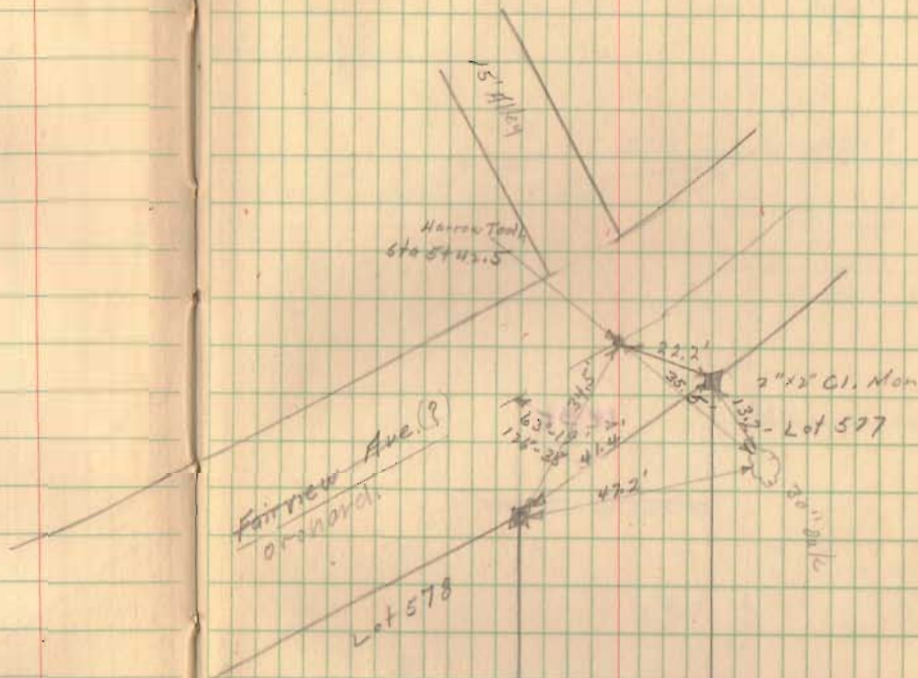


Center Street- Orchard Island

35' wide

1691

INDEXED ON MAP



177.5
175
175.0

Chestnut Street Orchard Island

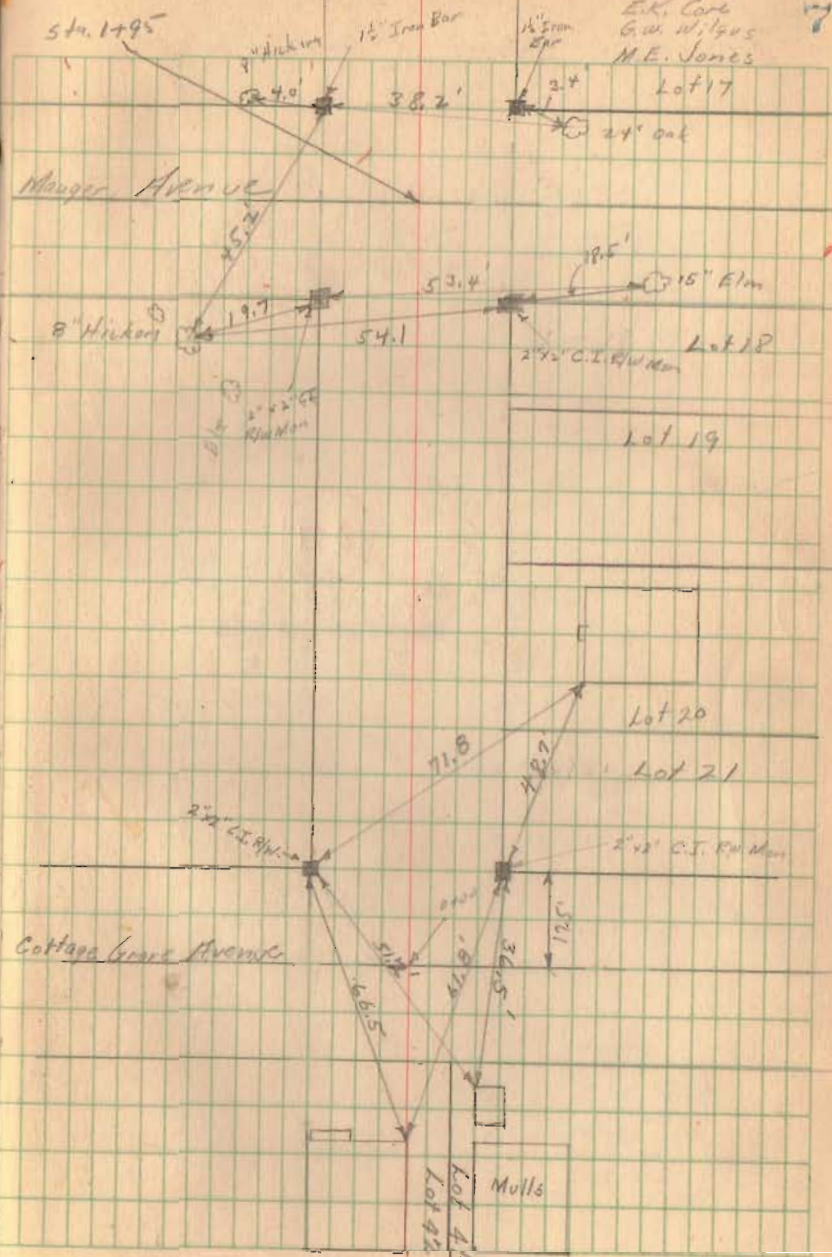
35' Wide



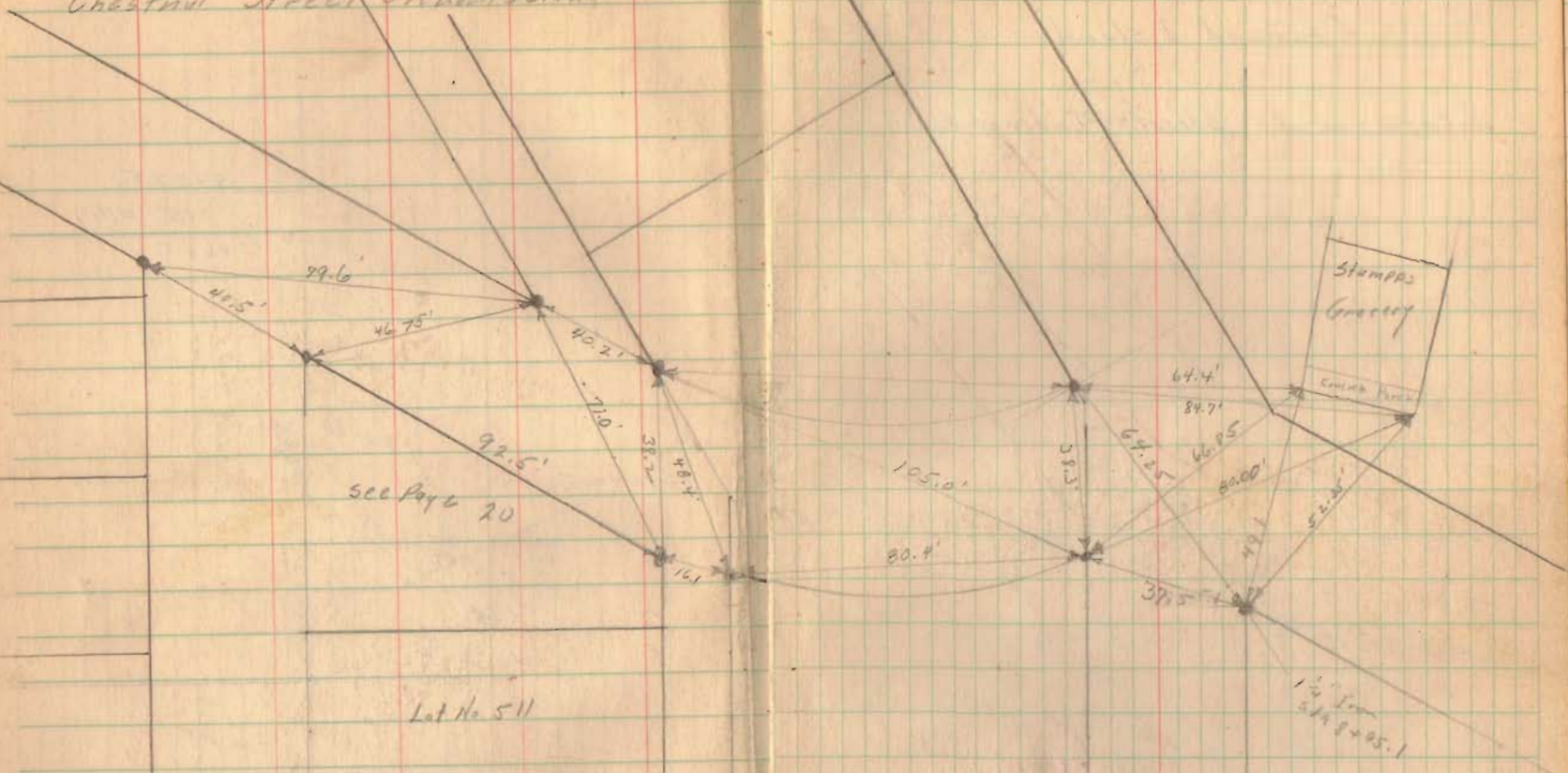
1691

INDEXED ON MAP

7/16/40
E.K. Cole
G.W. Wilgus
M.E. Jones



Chestnut Street-Orchard Island



see page 20

Lot No 511

1691

INDEXED ON MAP

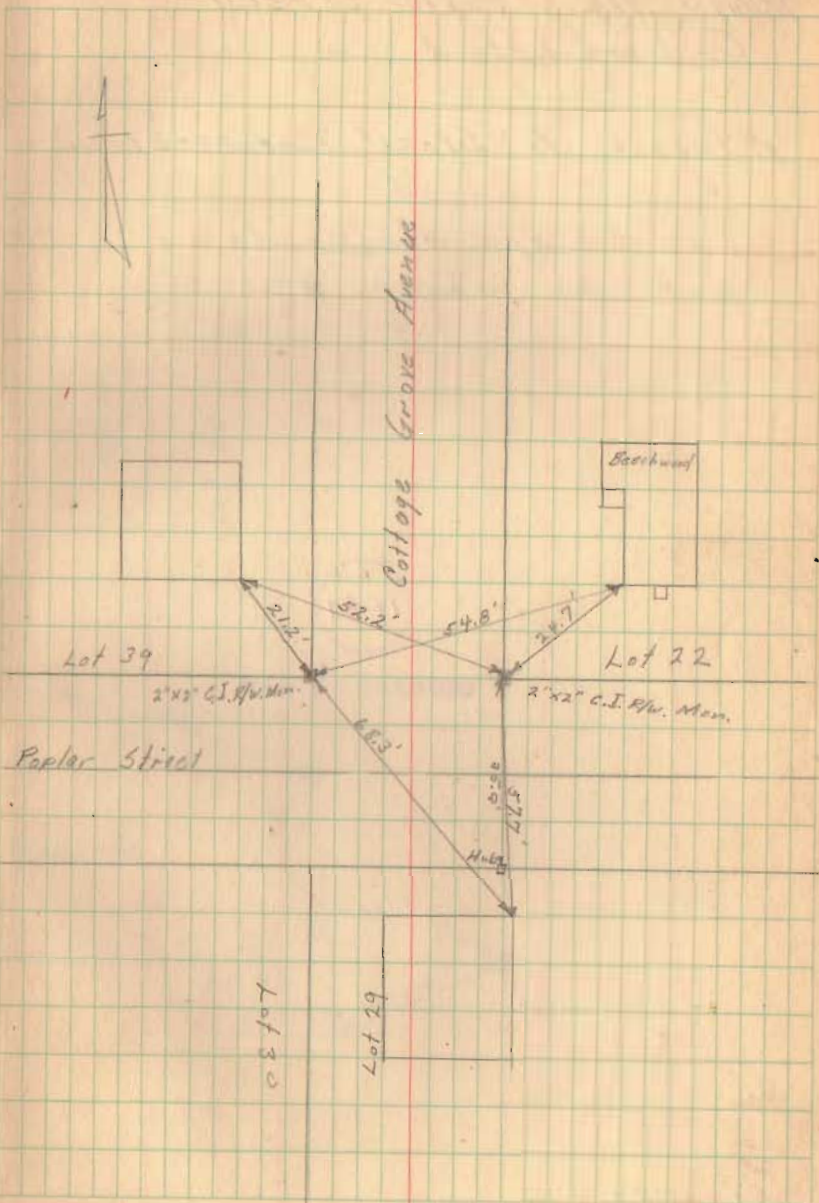
Cottage Grove Avenue & Poplar St.
Orchard Island

Witnesses to Street Intersections

1691

INDEXED ON MAP

10



Mauger Ave & Poplar Street
Orchard Island

Witnesses to Street Intersections

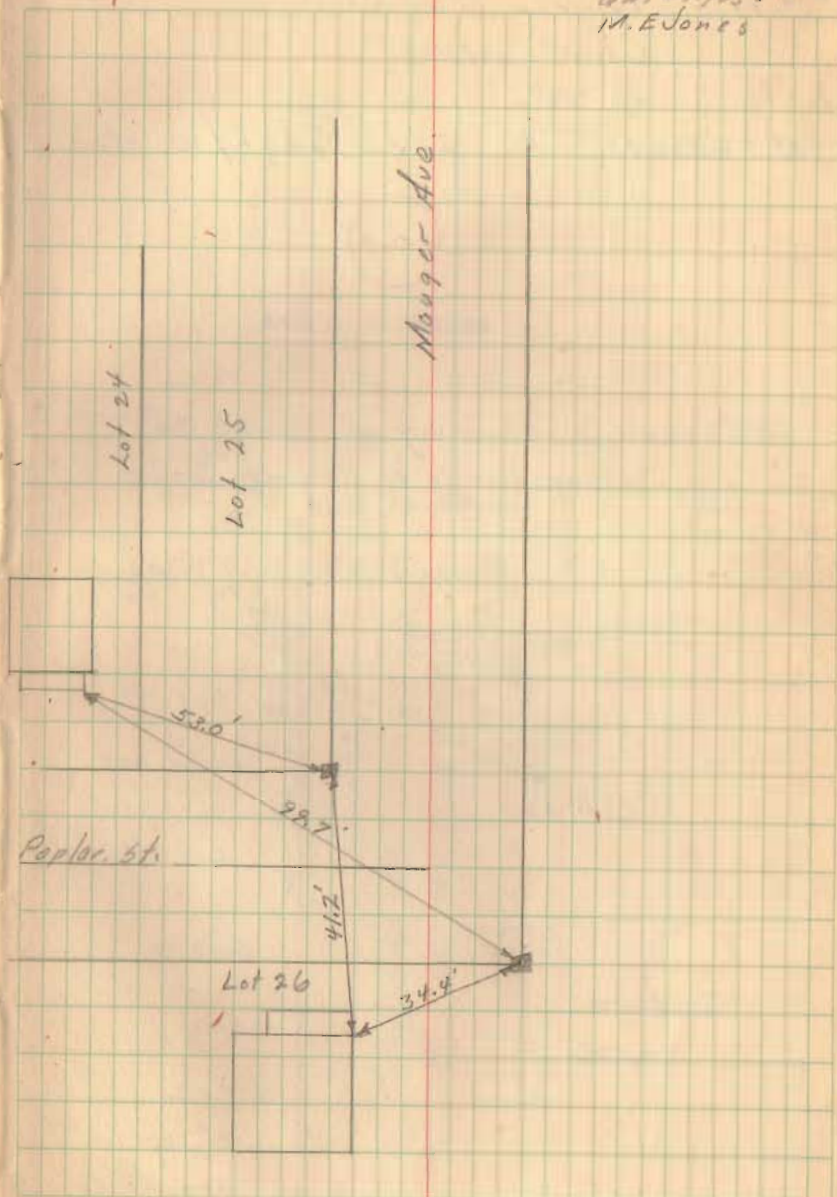
2" x 2" C.I. R/W. Monuments
set as shown

1691

INDEXED ON MAP

7/17/40
EX 602
G.W. Wilgus.
M. E. Jones

11



Cottage Grove Avenue &
Court Street

Witnesses to 2" x 2" C.I. R/W Markers

2062

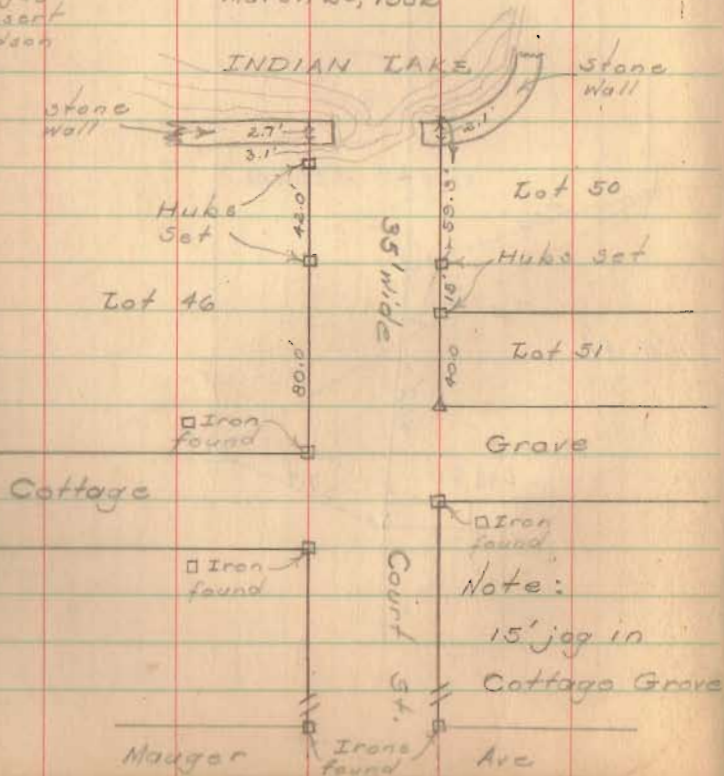
INDEXED ON MAP

Proposed Reopening of Court St.

Party: Cottage Grove to Indian Lake

G. Wittig
H. Dyserf
D. Dodson

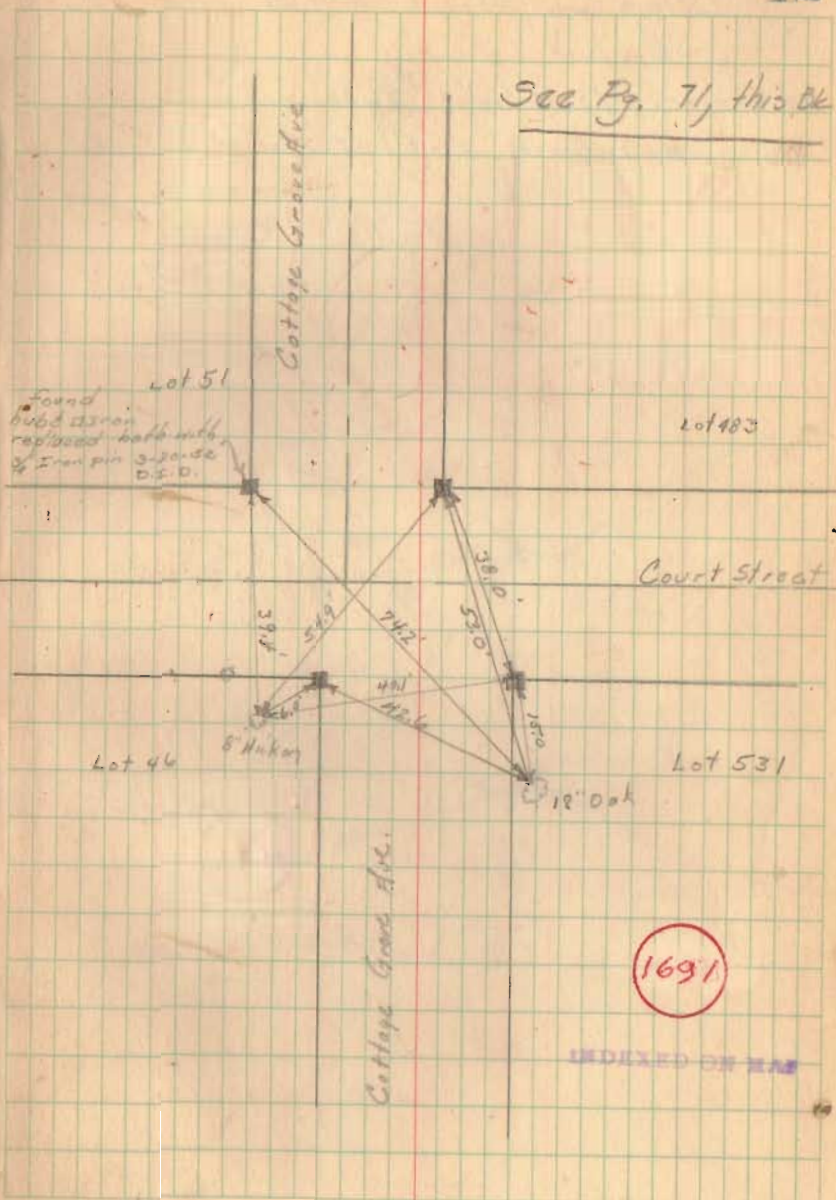
March 20, 1952



7/17/40

12

See Pg. 71, this bk.



1691

INDEXED ON MAP

College Green Ave & Park St.

Orchard Island.

Witnesses to Street Intersections

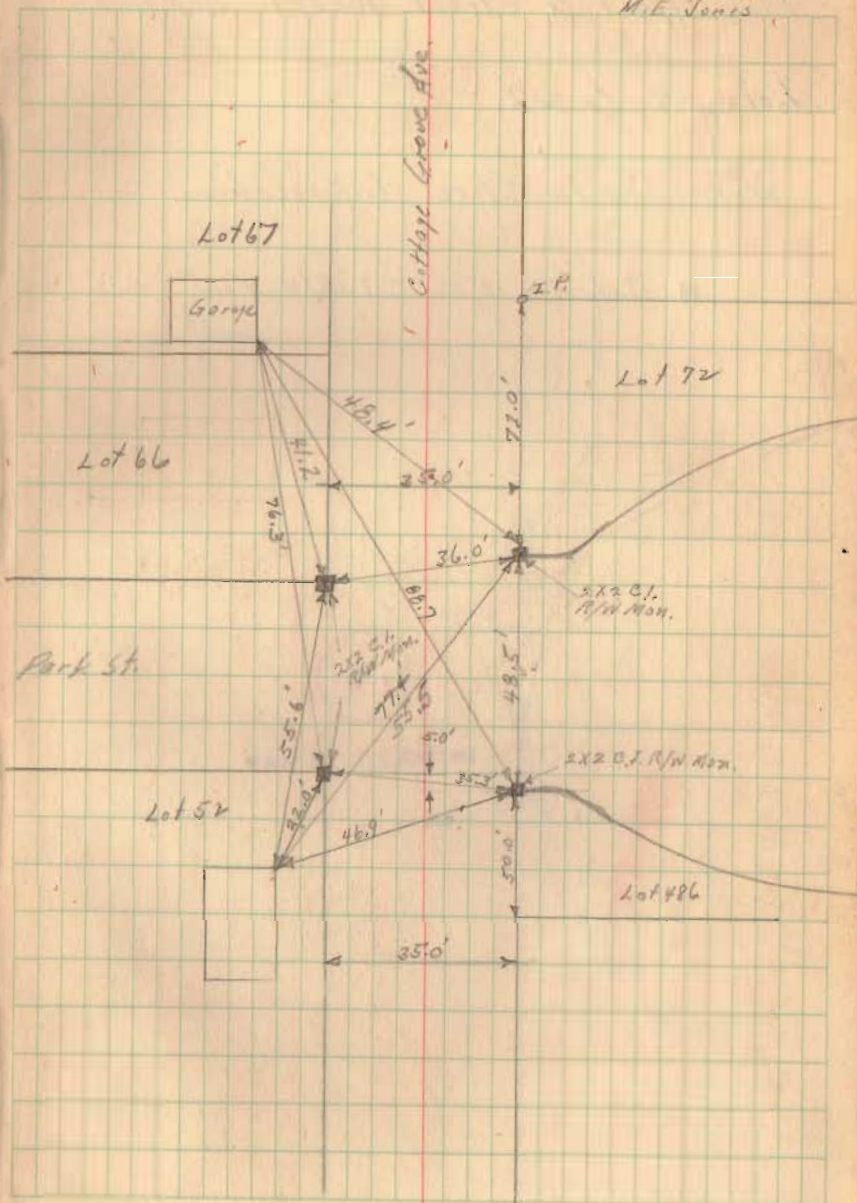
■ Indicates 2"x2" C.I. R/W Monuments

7/18/40
E.K. Carr
G.W. Wilgus
M.F. Jones

13

1691

INDEXED ON MAP



Park Street & Street North between

Lots 59 & 62.

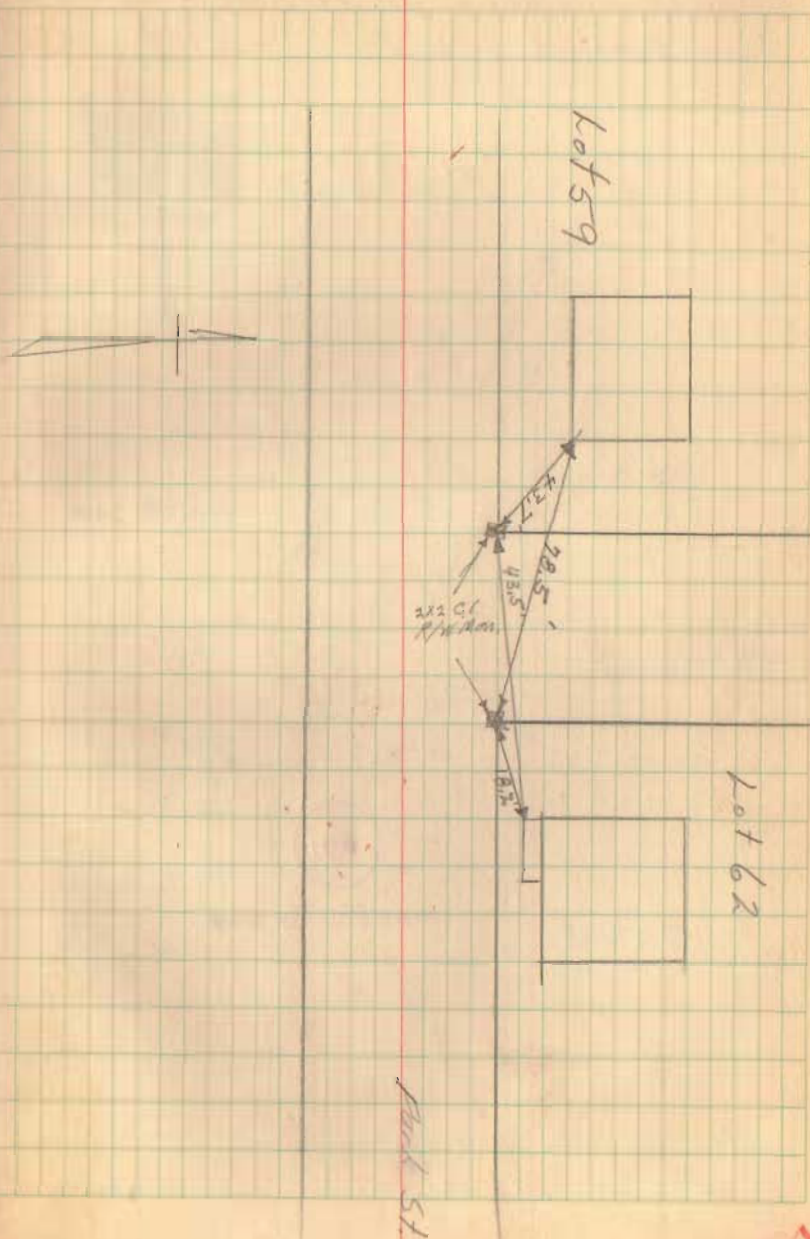
Witnesses to Street Intersections

■ Indicates 2"x2" C.I. R/W. Mors.

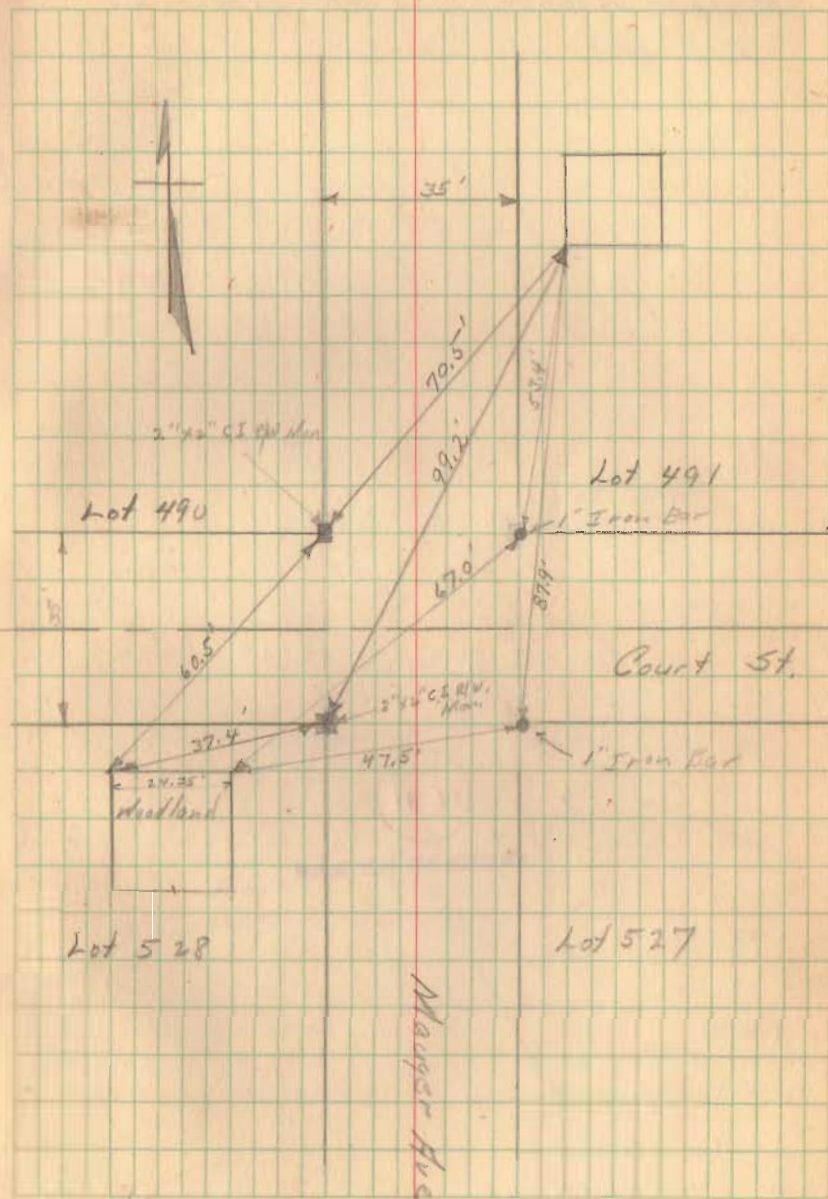
1694

INDEXED ON MAP

14



Mauger Ave & Court Street
Orchard Island



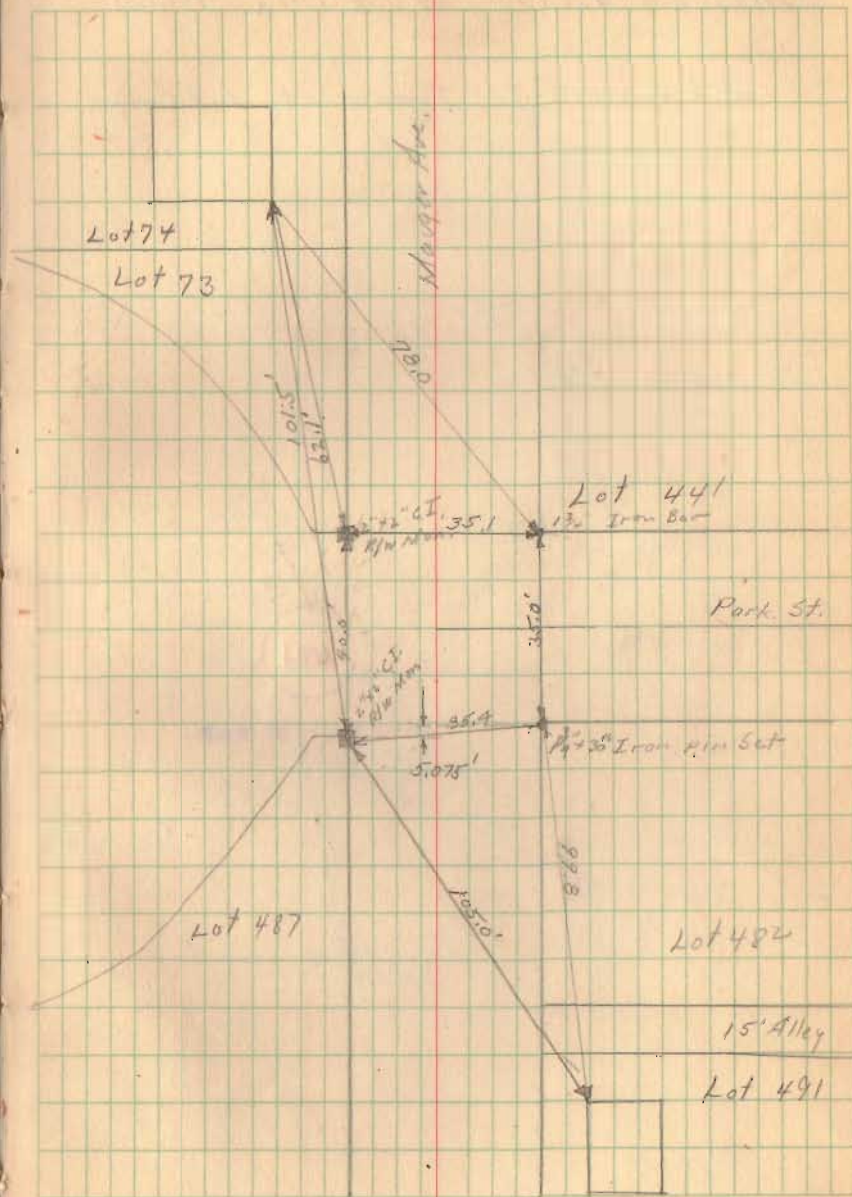
1691

INDEXED ON MAP

Mauger Avenue & Park Street
Witnesses to Irons.

1691

INDEXED ON MAP



Mauger Avenue at Elm & Maple

Witnesses To Irons at Lot Corners

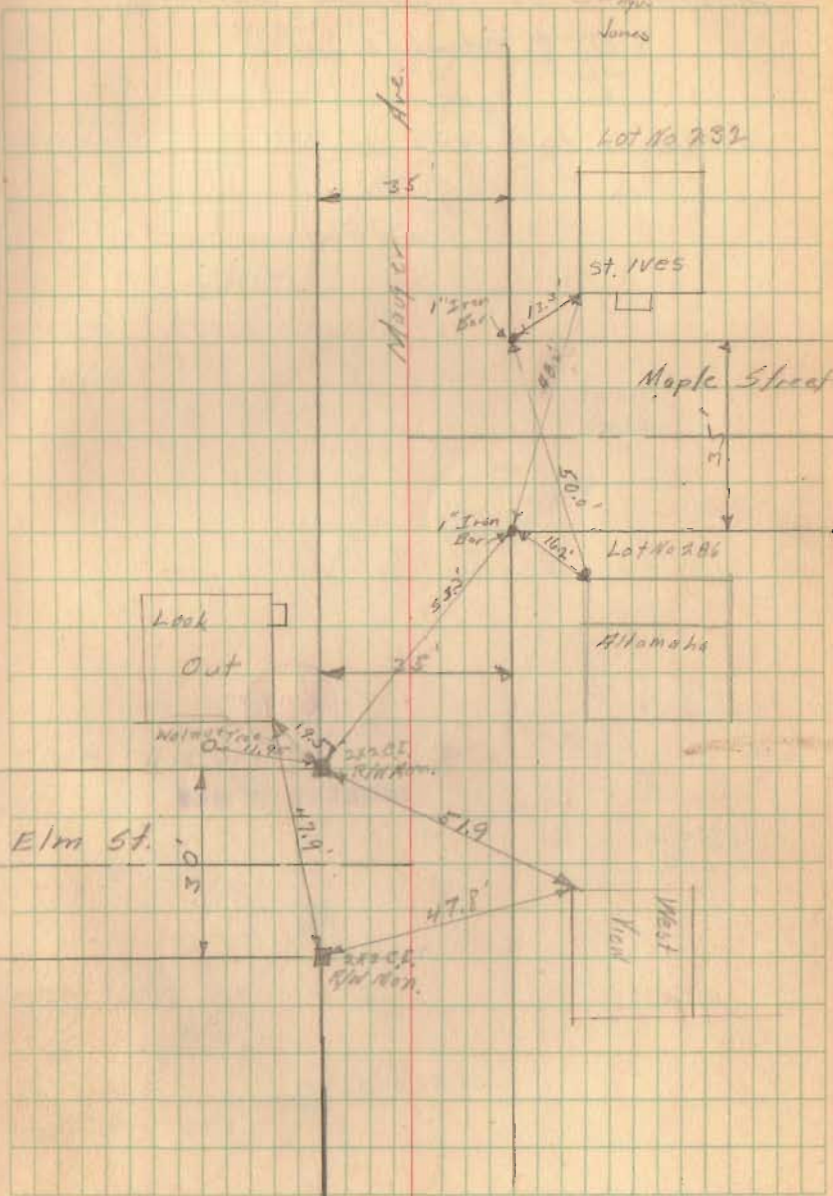
1691

INDEXED ON MAP

10/29/40

Carl
Wilgus
James

17



Mauger Ave at Sycamore, Walnut &
Oak Streets

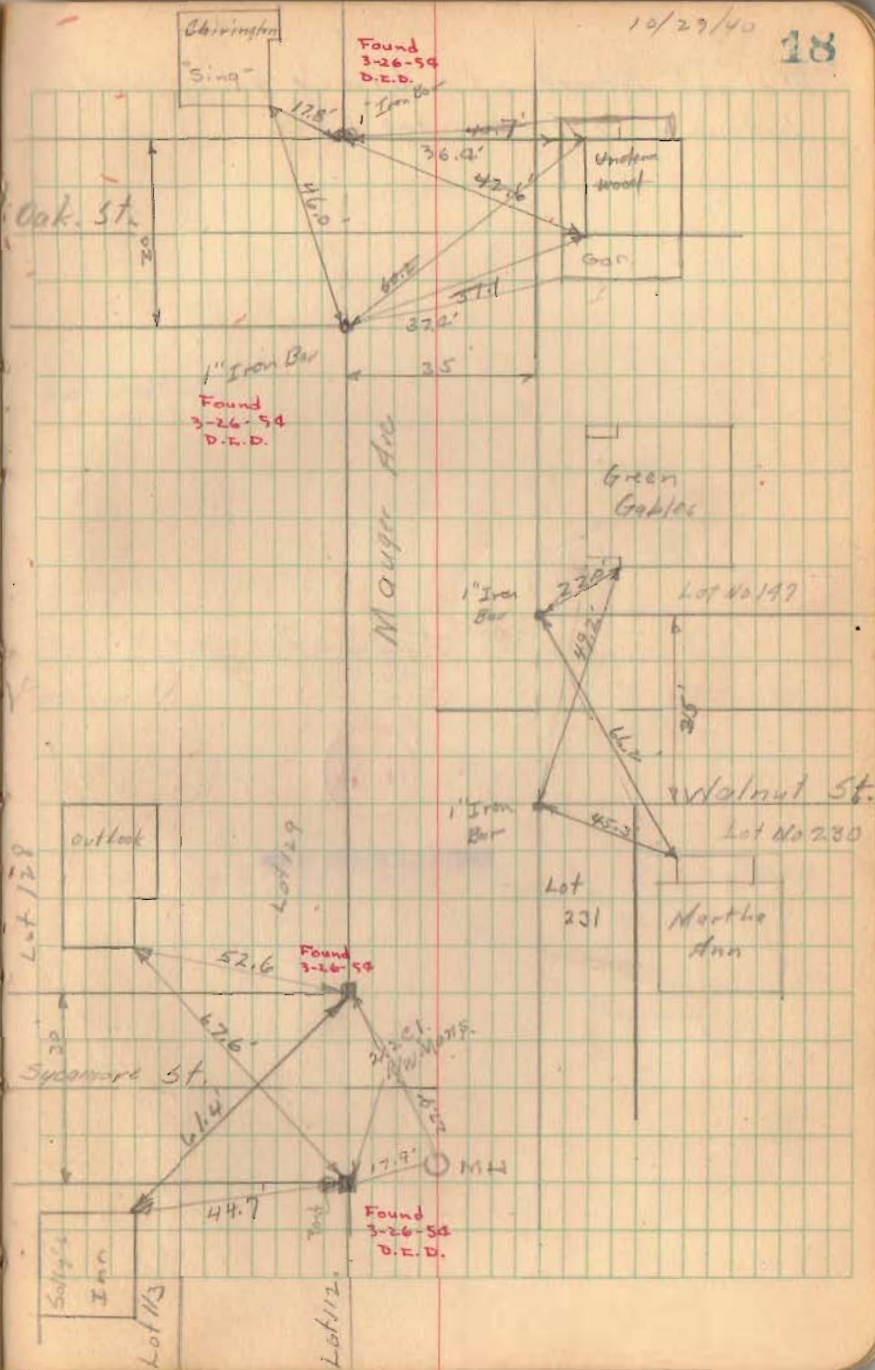
Witnesses to Irons

16913

INDEXED ON MAP

10/29/40

18

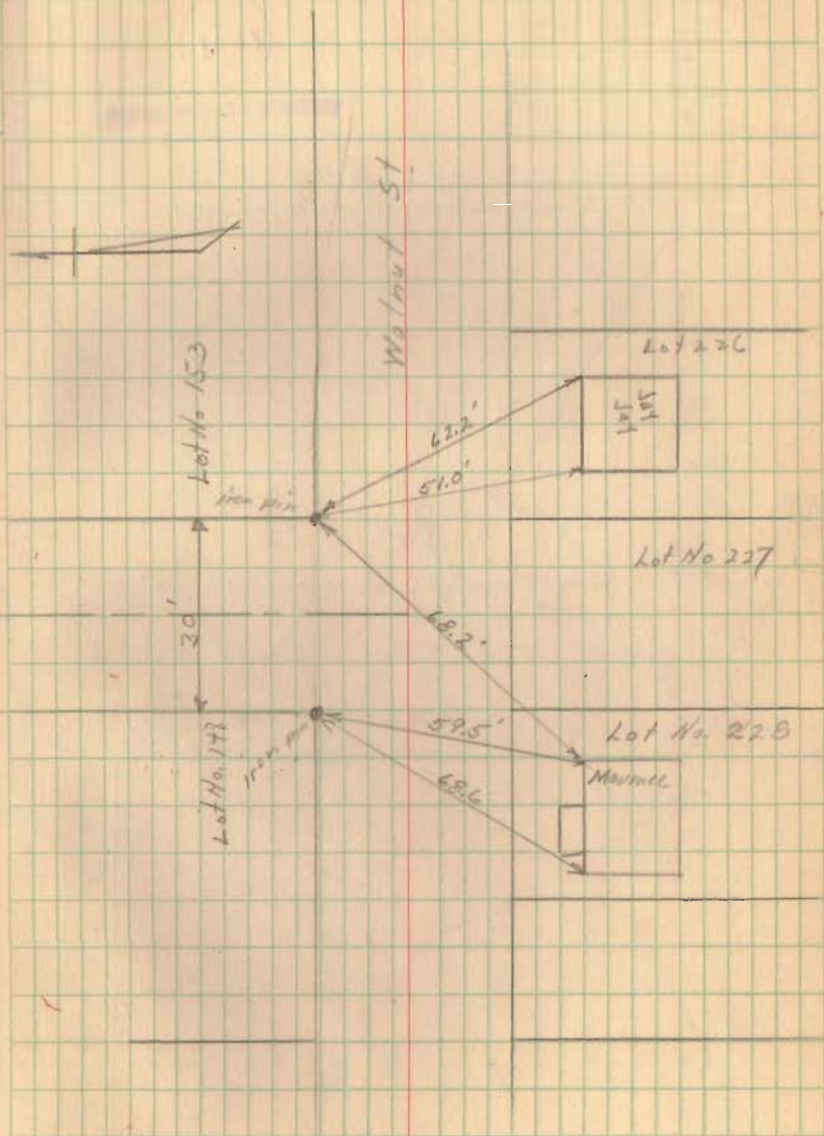


Walnut Street at Street going North
between Lots No. 148 & 153

1691

INDEXED ON MAP

19



Lot No. 470

Avenue

Lot No. 469

1634

INDEXED ON MAP

15' Alley

Lot No. 504

Wood Lane



Lot No. 463

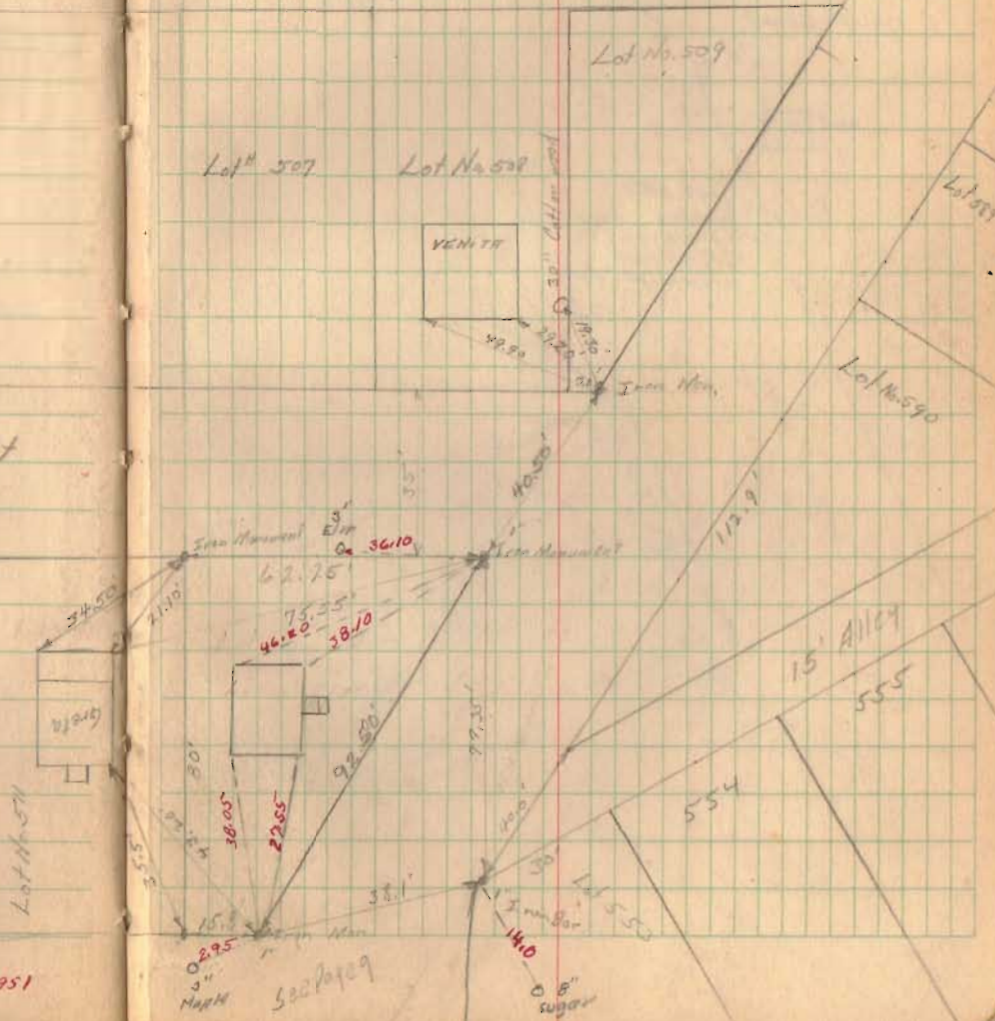
Lot No. 507

Lot No. 508

Lot No. 509

Lot No. 508

Lot No. 509

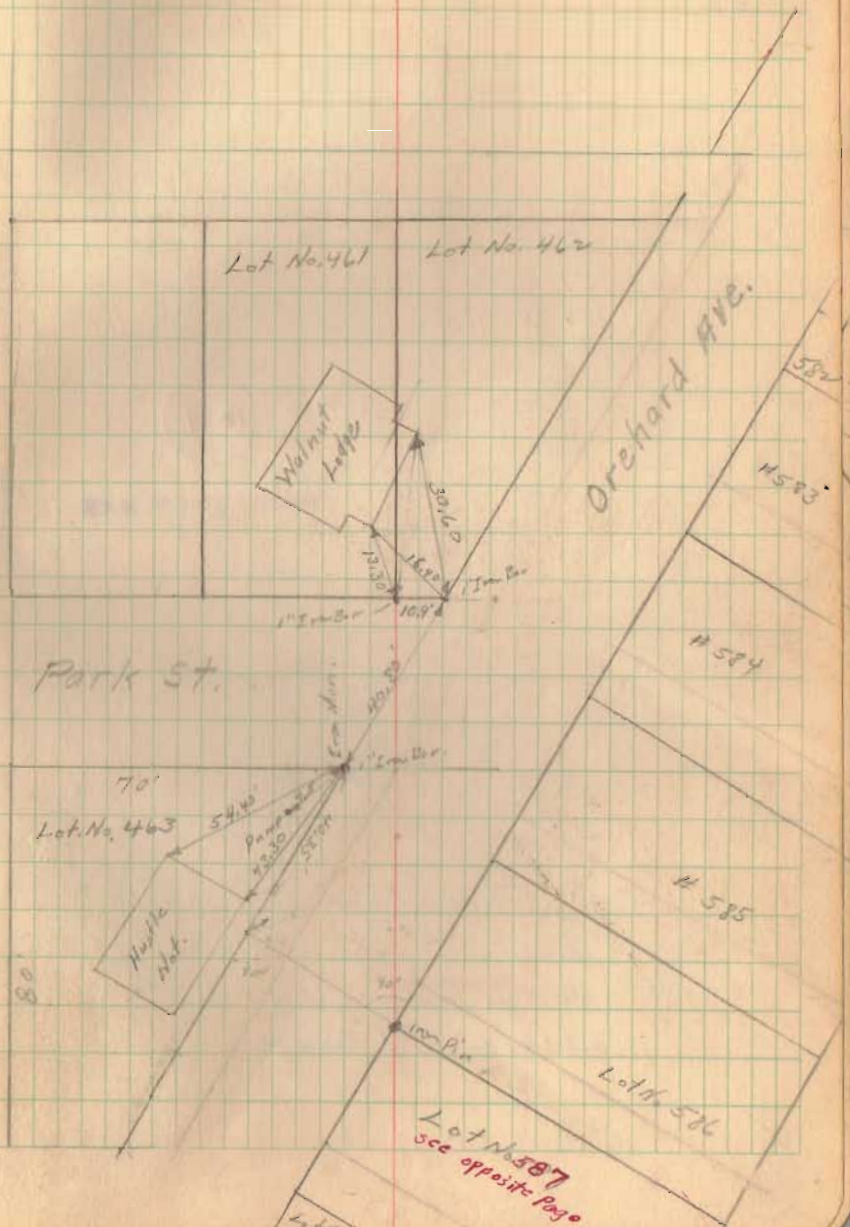
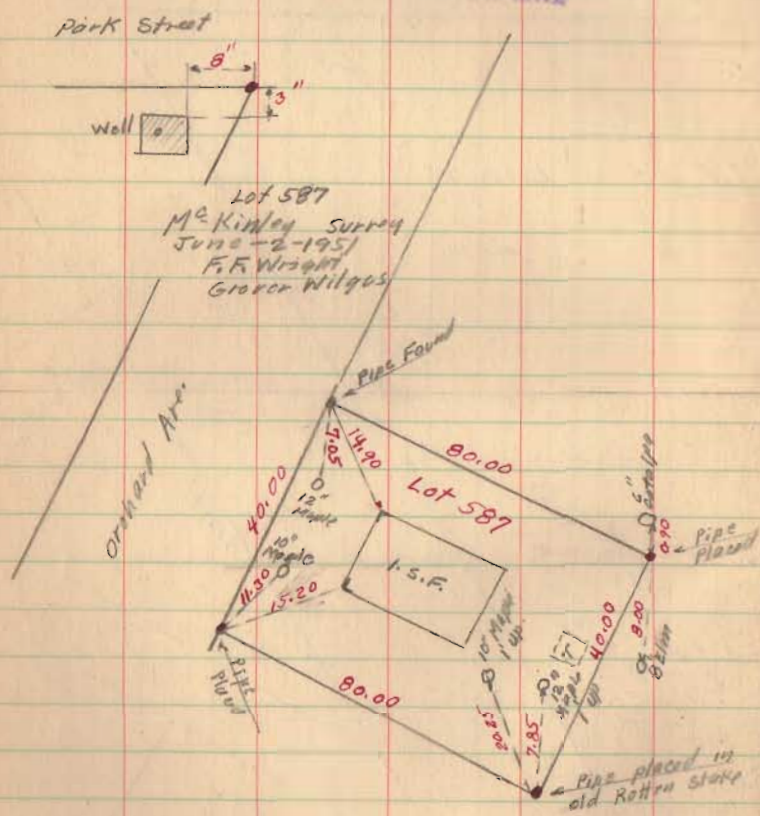


New Witnesses 6-2-1951

See Page 9

320

INDEXED ON MAP

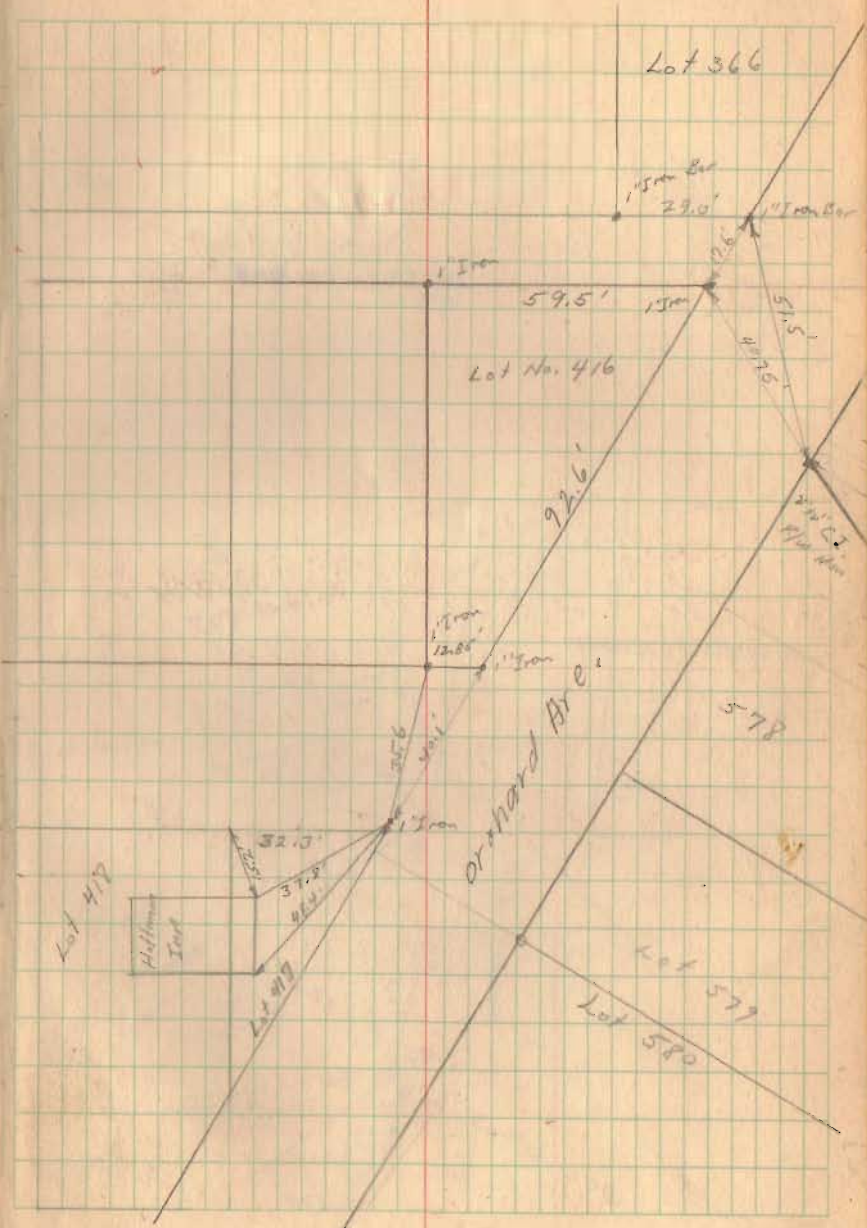


16910

INDEXED ON MAP

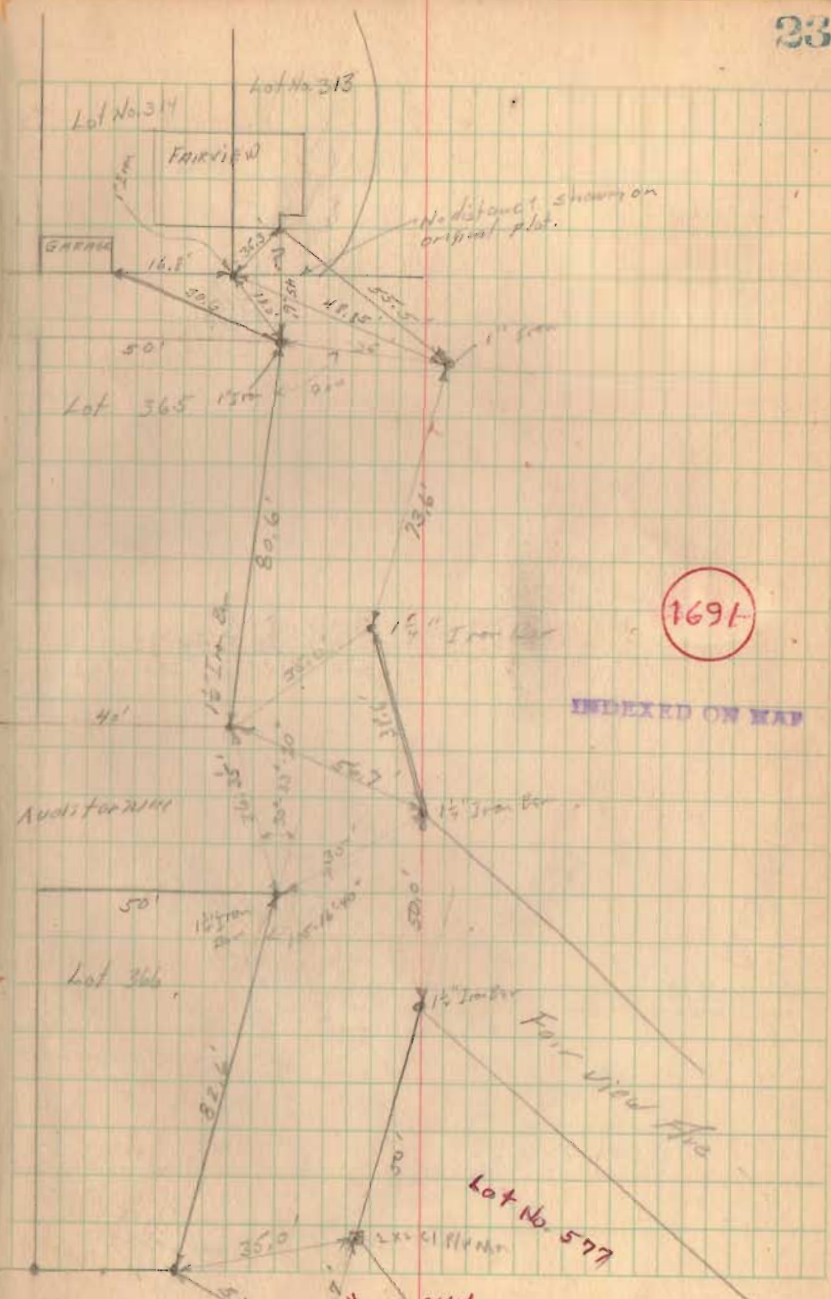
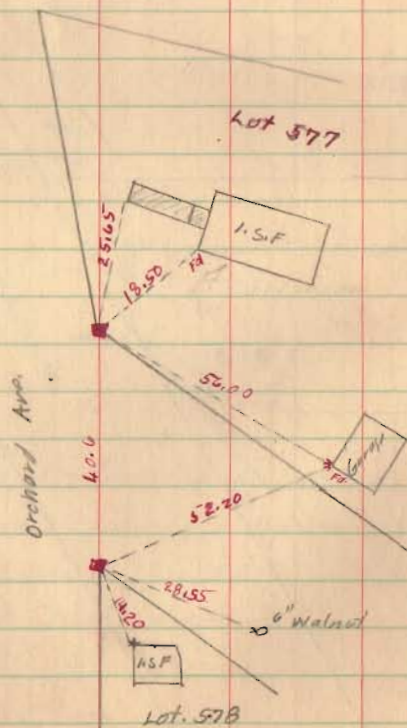
Crescent Street

Note:- Corner of Lot No. 417
 same as in 6" History - Monument
 placed on line of Street &
 0.80 feet N. of Corner.



1691

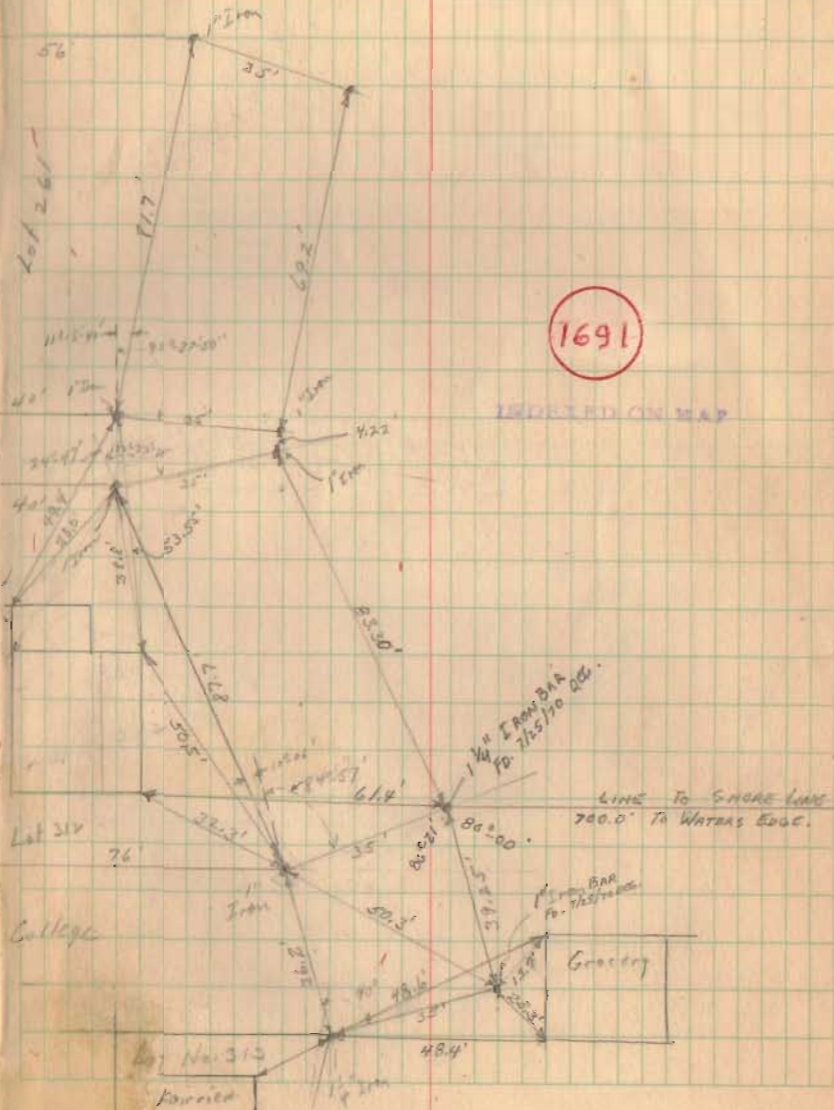
INDEXED ON MAP



10-22-20

(See Page 25)

15' Alley



1691

REPROD ON MAP

19-59-60

4-11
81.84.20

8-15-12

11-07-5

20-00 2.9

10-02 2.0

10-00 2.0

10-00 2.0

95 100 1.5

104-06

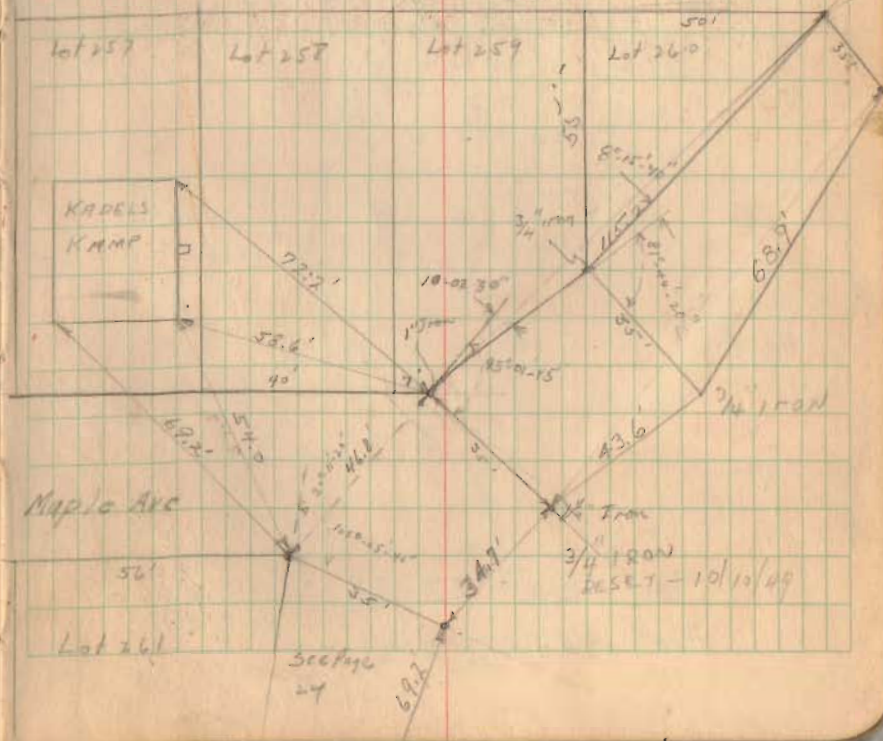
103-06

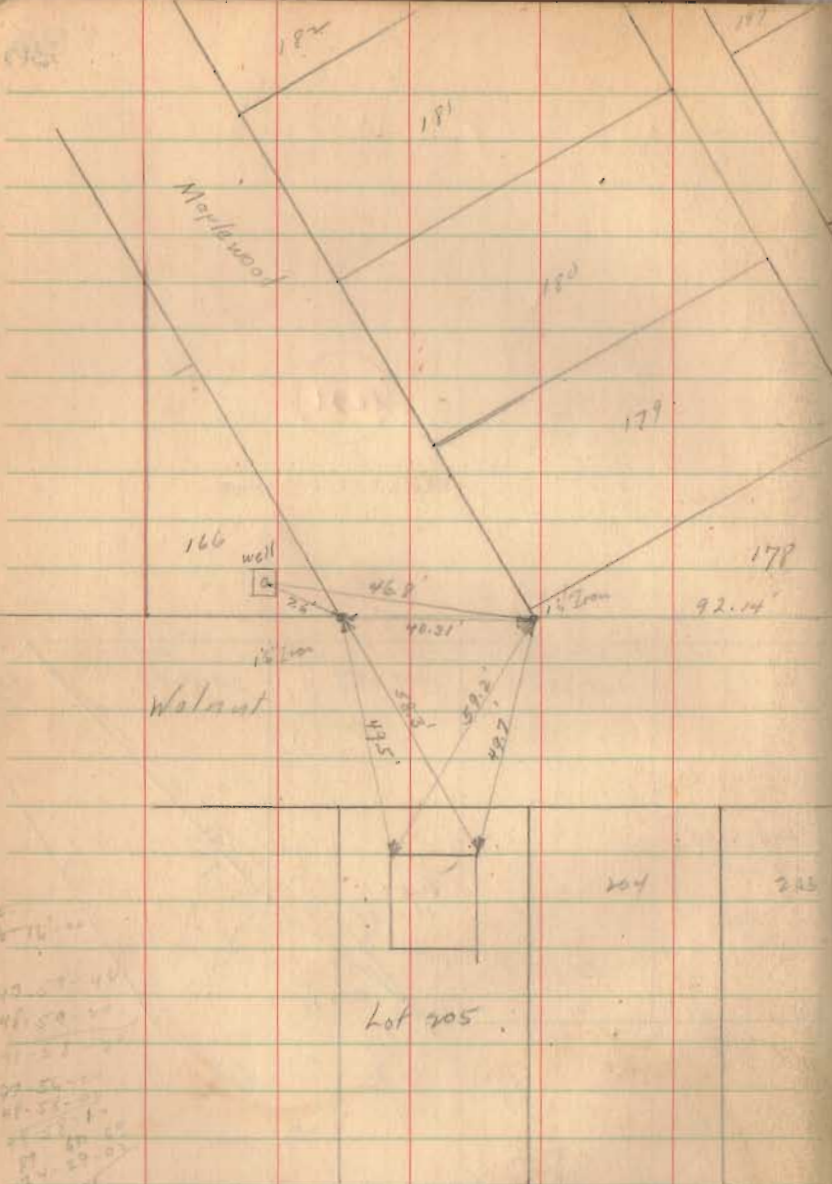
20-11

74-55

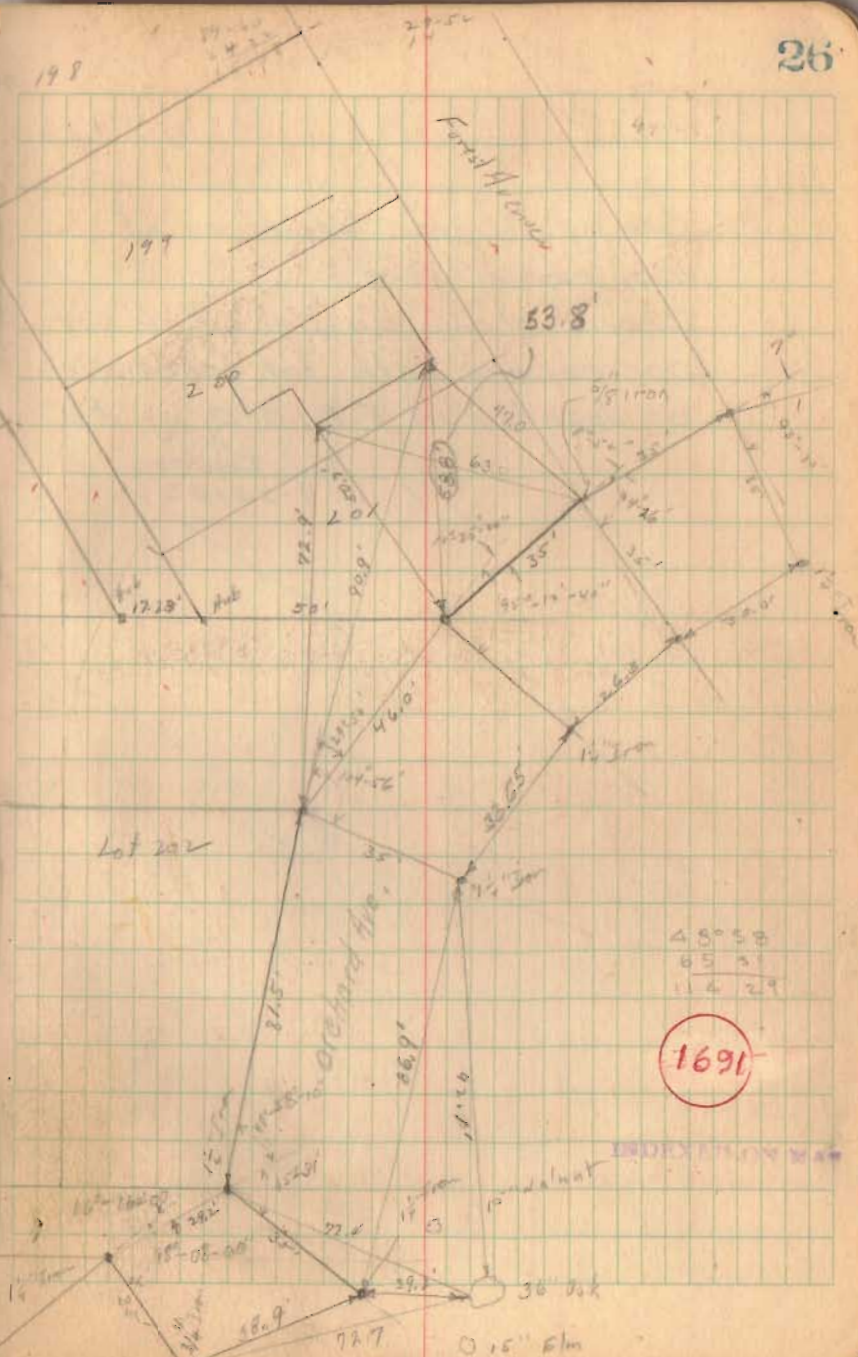
1691

INDEXED ON MAP





See Page 72-73, this book
For Resurvey.

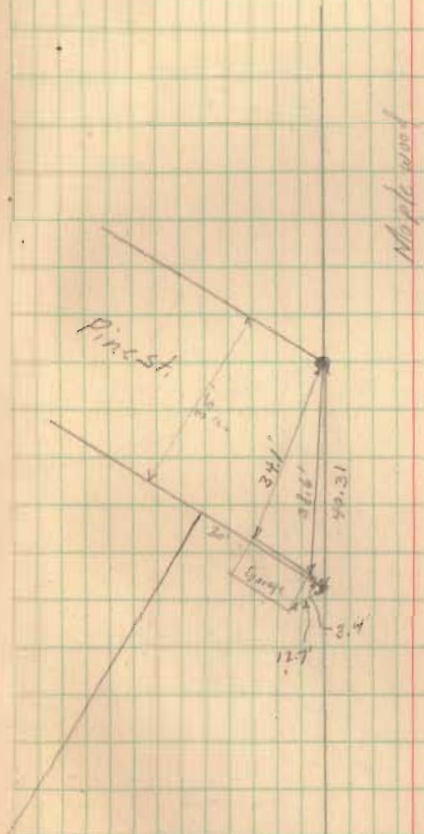


1691

See pg. 72, for Resurvey of
Maplewood Ave.

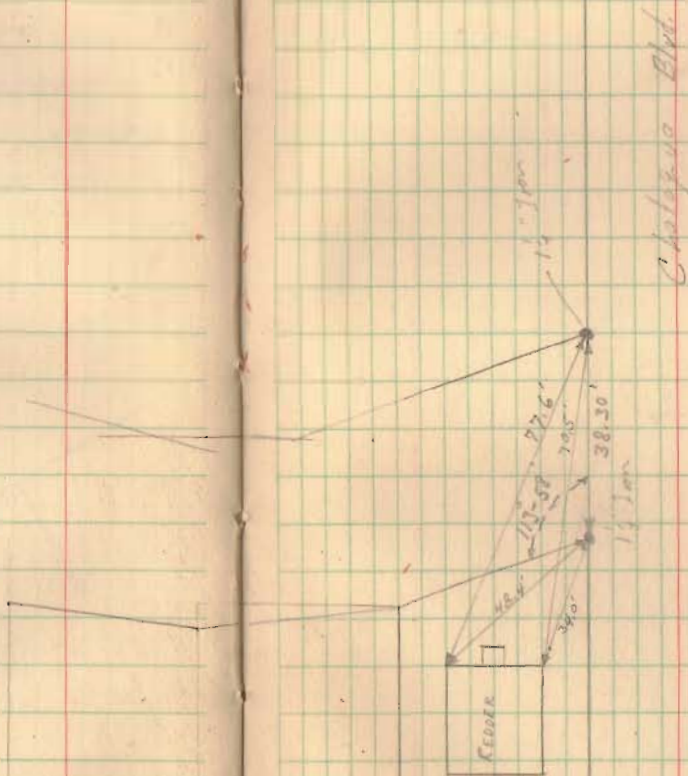
Irons shown on pg. 27 do not
correspond with lot corners
as located in F.B. 590, pg. 36

D.L. Dodson
9-24-63



1691

INDEXED ON MAP

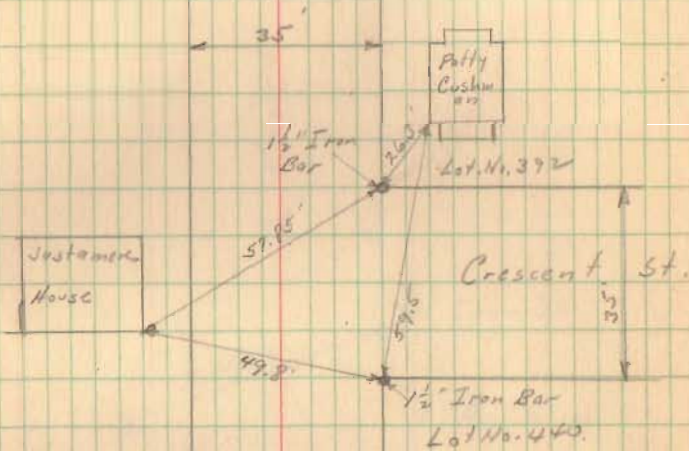


1691

Mauger Avenue & Crescent St.
Witnesses to Irons

10/29/40
Cork
w/1905
Jones

30



Mauger Ave.

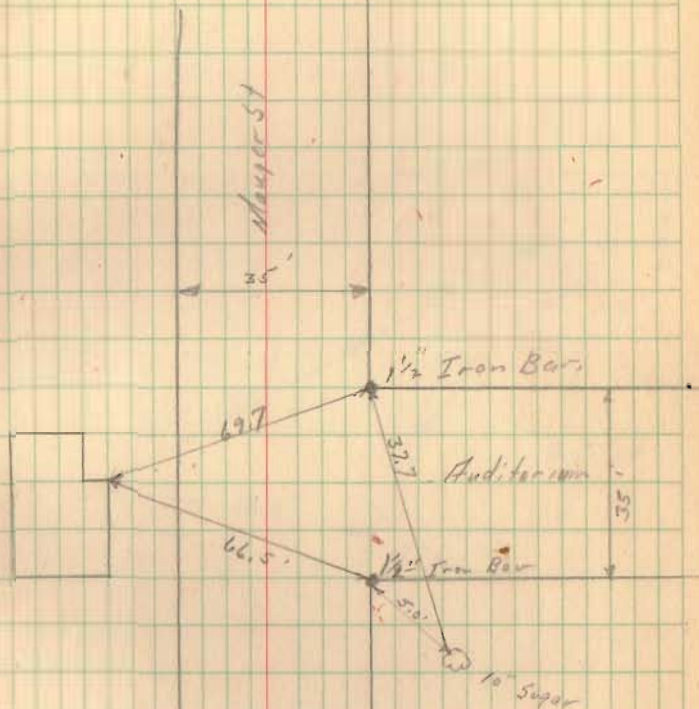
1691

REPRODUCED ON MAP

Mauger Street & Auditorium Ave.
Witnesses at Intersection

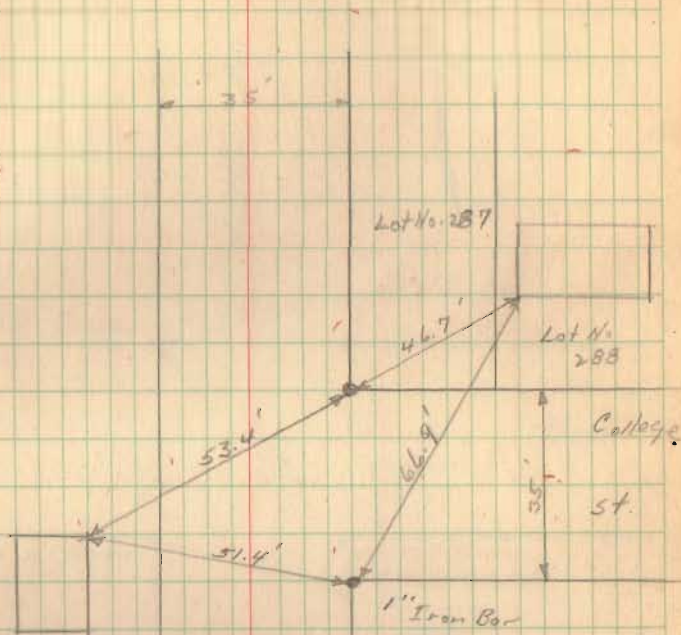
10/29/43
Core
Wilqui
Jonte

31



Both irons found 7/12/54 W.H.L.

1691

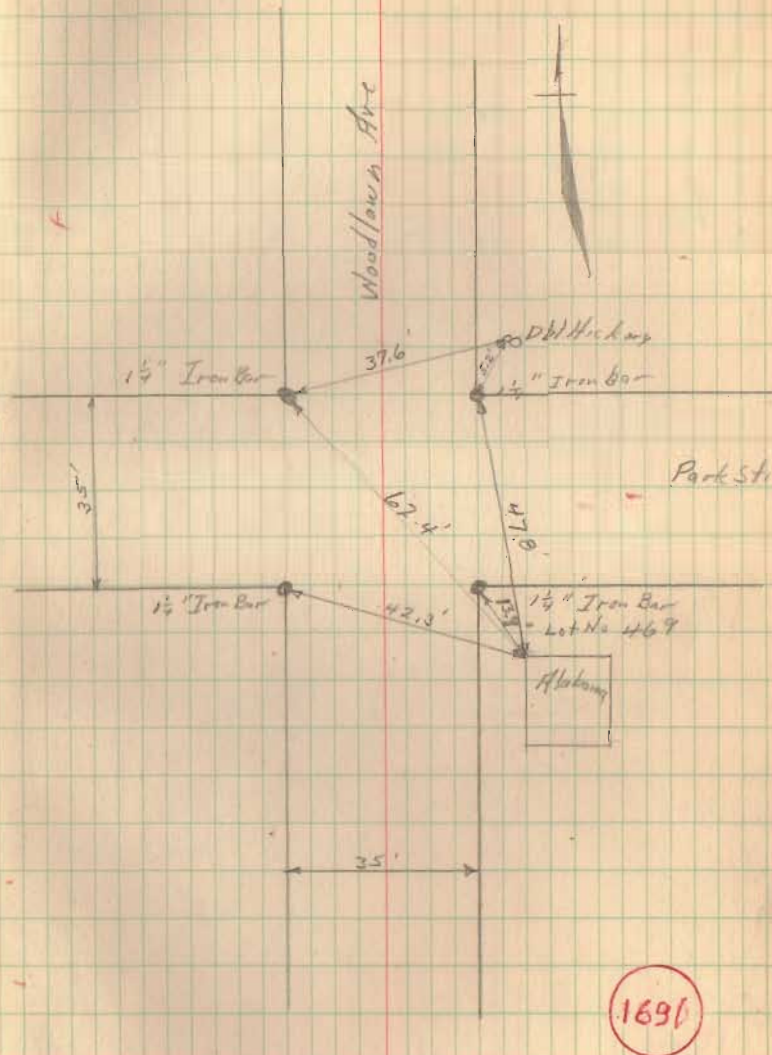


Maple Ave.

169L

INDEXED OR MAY

Woodlawn Ave at Park St.



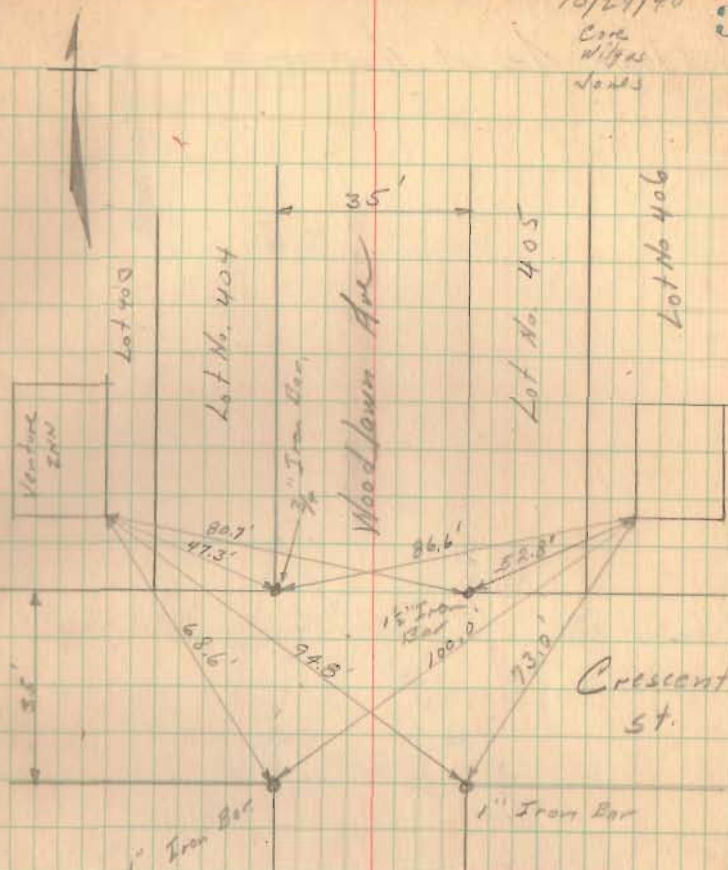
INDEXED ON MAP

Woodlawn Ave at Crescent St

10/29/40

Care
with
Nods

34



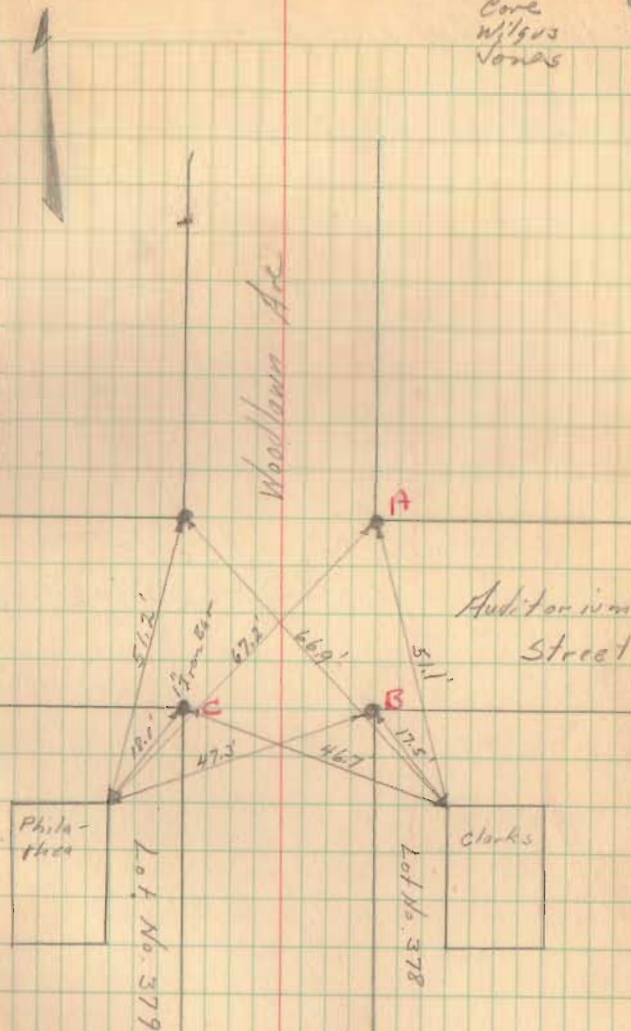
1691

INDEXED ON MAP

Woodlawn Ave at Auditorium St.

10/29/40
Core
Wilgus
Jones

35



A, B, C found 7/12/59 W.H.H.

1691

212

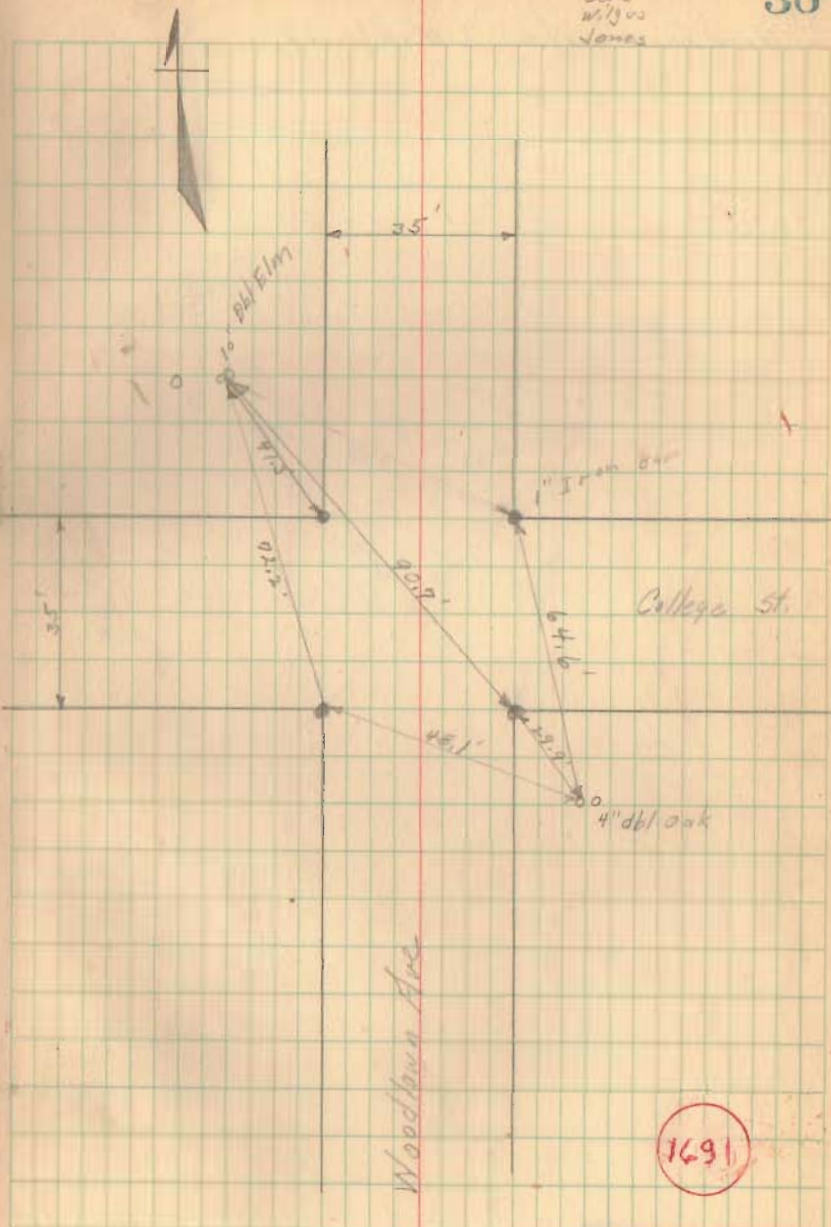
Woodlawn Ave & College St.

Witnesses at Intersection

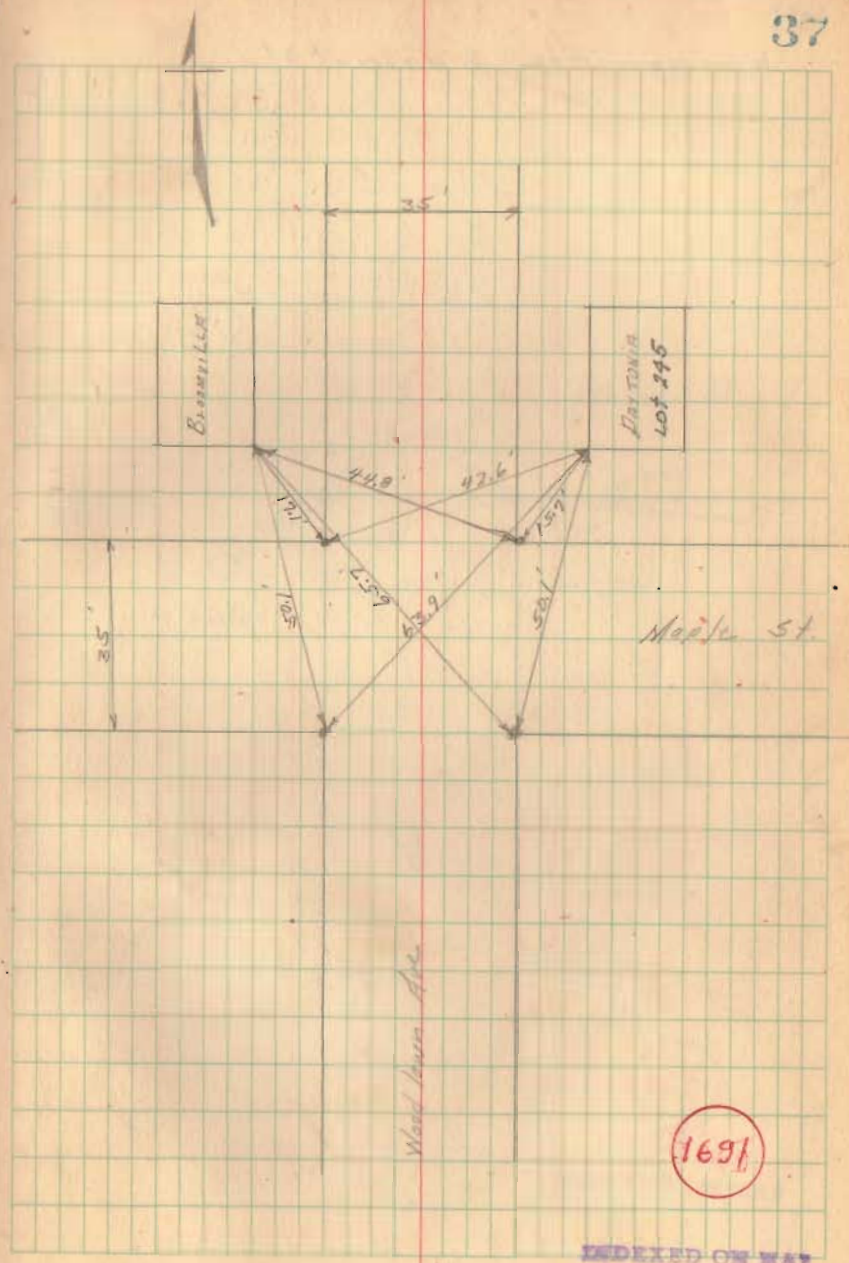
October 30, 1940

Cope
Wiggins
Jones

36



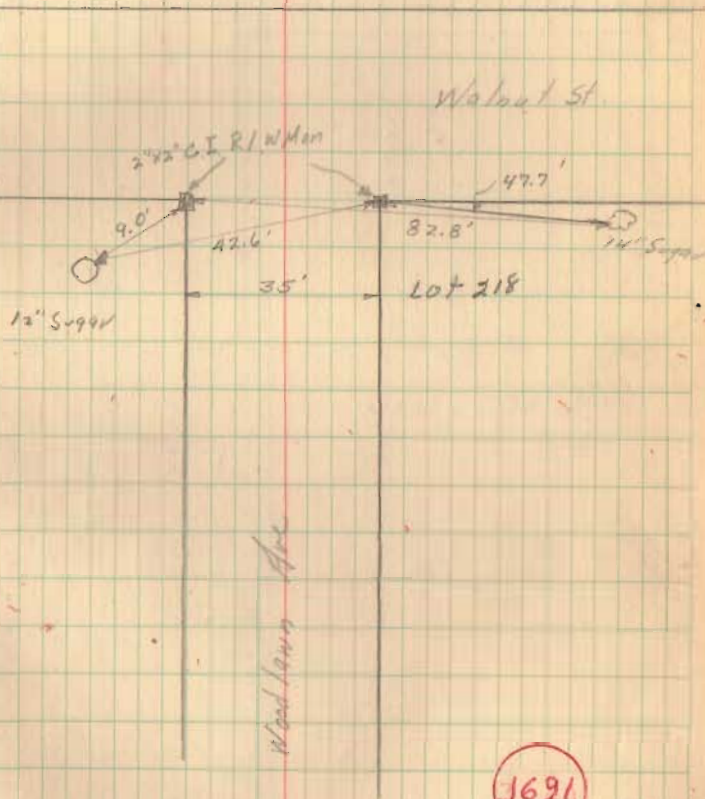
Wood lawn Ave & Maple St.



1691

Woodlawn Ave & Walnut St.

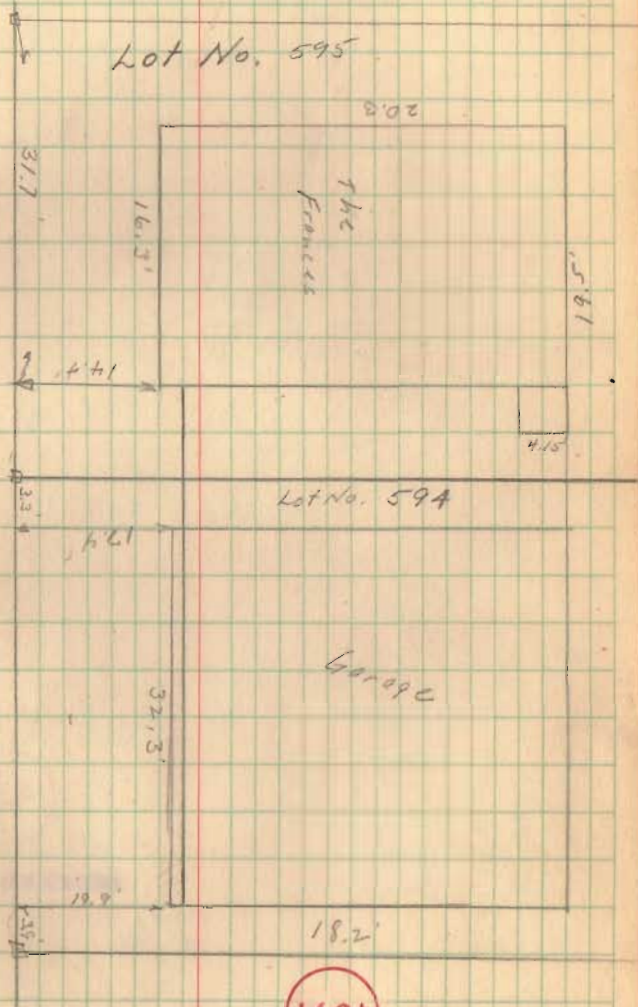
38



1691

INDEXED ON MAP

Center St

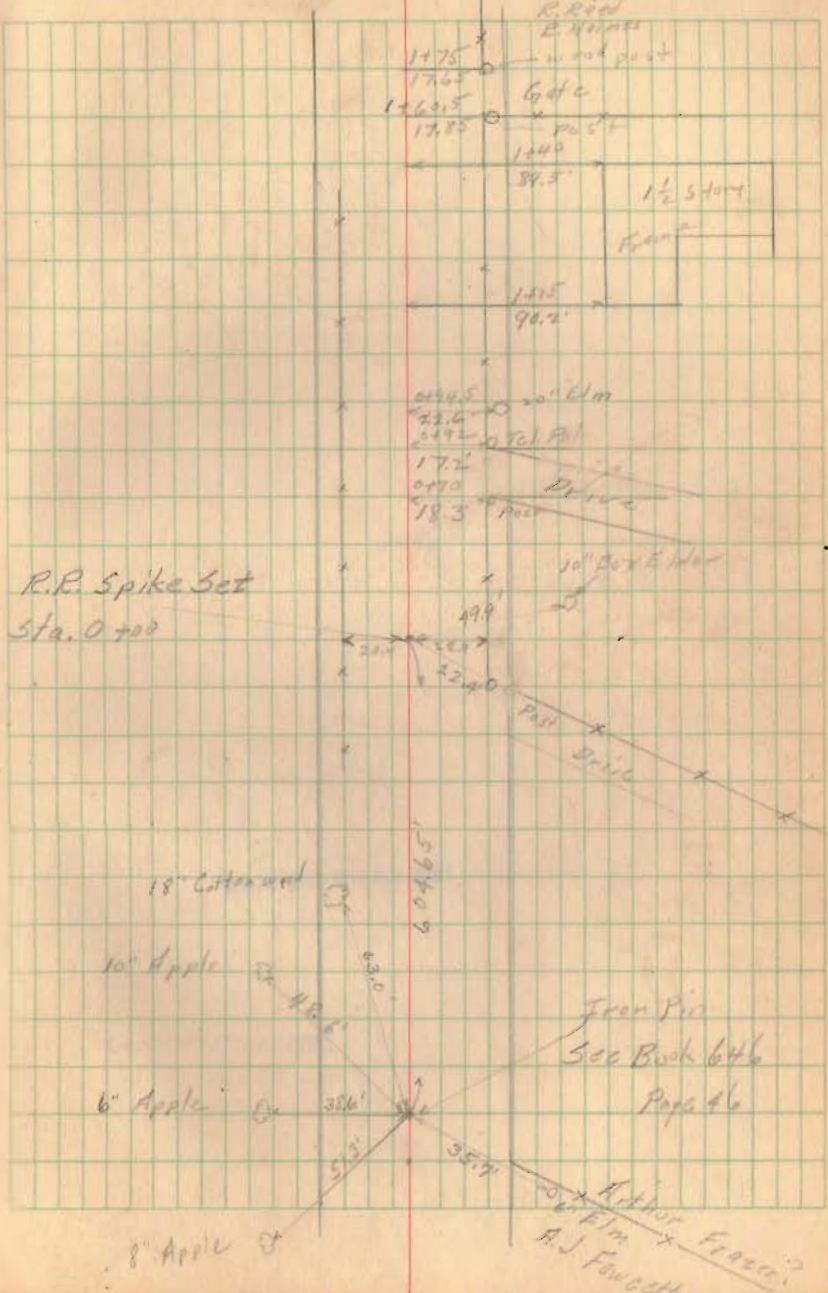


Bridge No. 12-6.65 - Preliminary Survey

February 11, 1942

40

E. Carr
G. Wilson
R. Reed
E. Barnes



60465'

R.R. Spike Set
Sta. 0+00

1831

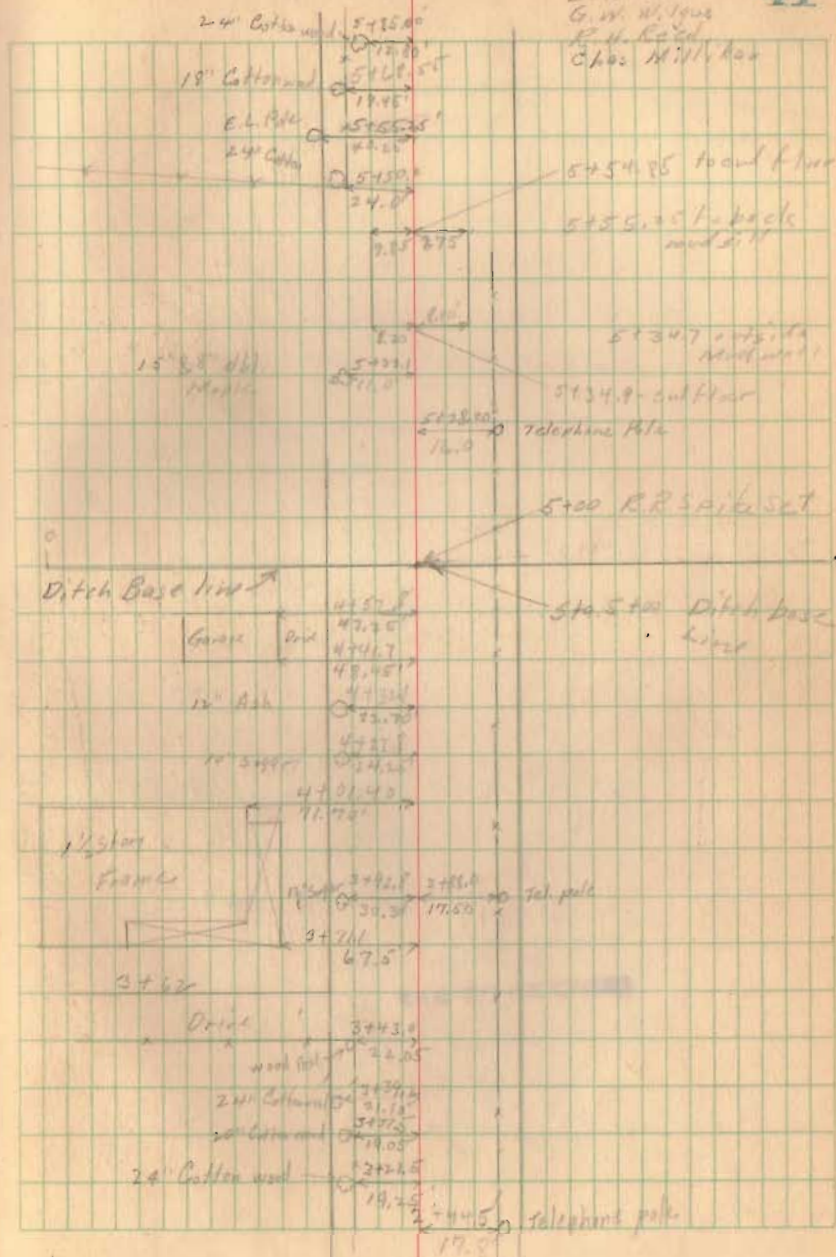
INDEXED ON MAP

1831

March 6, 1942

41

E. W. Lane
G. W. W. Jones
R. H. Reed
Chas. Miller, Ass



1831

INDEXED ON MAP

PROPOSED ROAD TO WATERBURY RESORT.

STAKES SET 15' R&L FROM ϵ

2093

INDEXED ON MAP

61

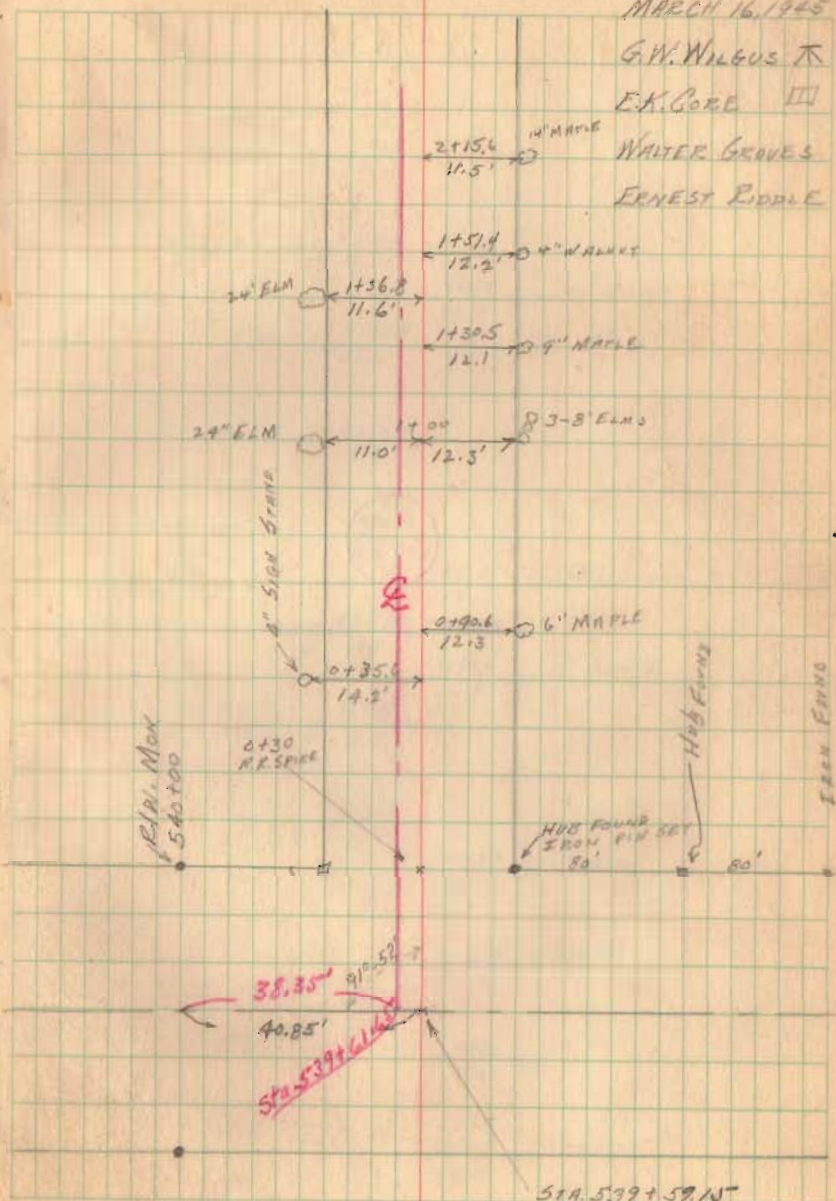
MARCH 16, 1945

G.W. WILGUS π

E.K. GORE \square

WALTER GROVES

ERNEST RIDDLE



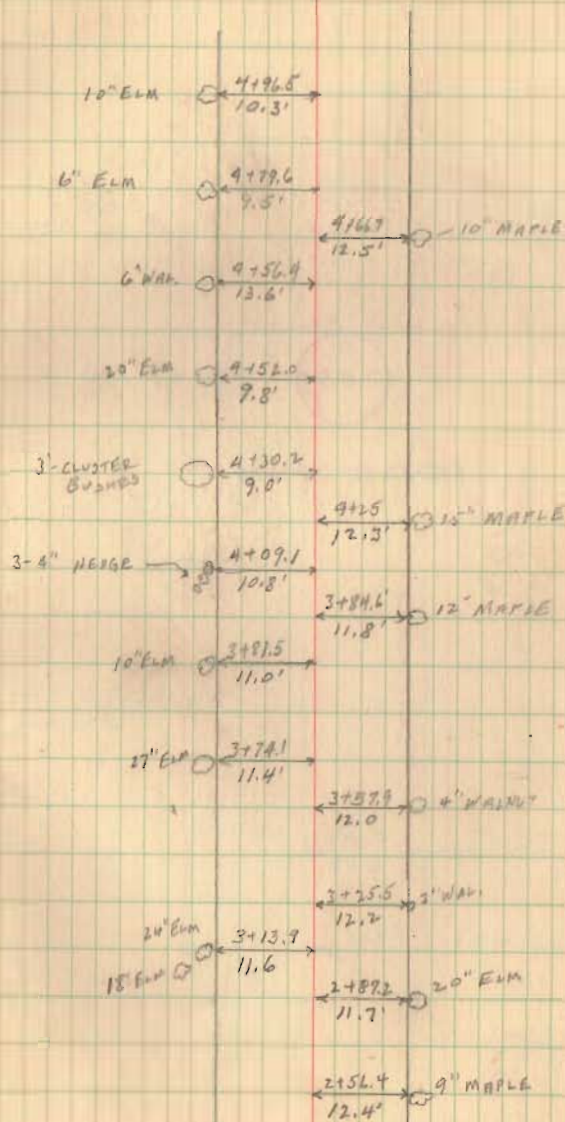
STA. 539 + 591 N

S.M. 168

SEE PLAN L-11

2093

INDEXED ON MAP



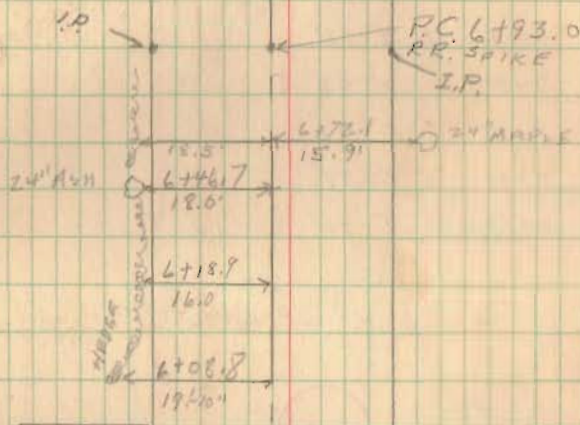
$$\Delta = 28^{\circ} - 22'$$

$$T = 53.6'$$

2093

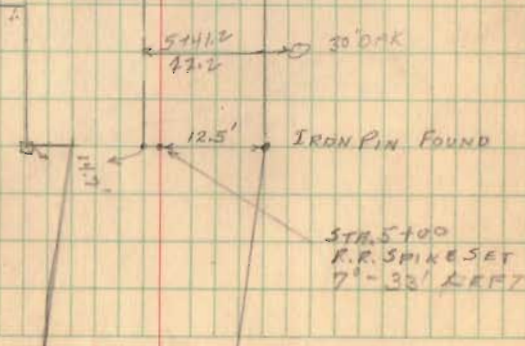
INDEXED ON MAP

63



APPARENT & DEVI LEFT

L+00



$$\Delta = 14^{\circ} 42'$$

$$T = 66.6$$

$$\Delta = 14^{\circ} 42'$$

$$T = 56.6'$$

$$R = 439.8'$$

$$D = 13^{\circ} 04'$$

$$L = 112.4$$

DEFLECTIONS.

P.C.

6+93.0

7+00 0°-29'

7+25 2°-05'

7+50 3°-43'

7+75 5°-21'

8+00 6°-59'

P.T.

8+05.4 7°-20'

2093

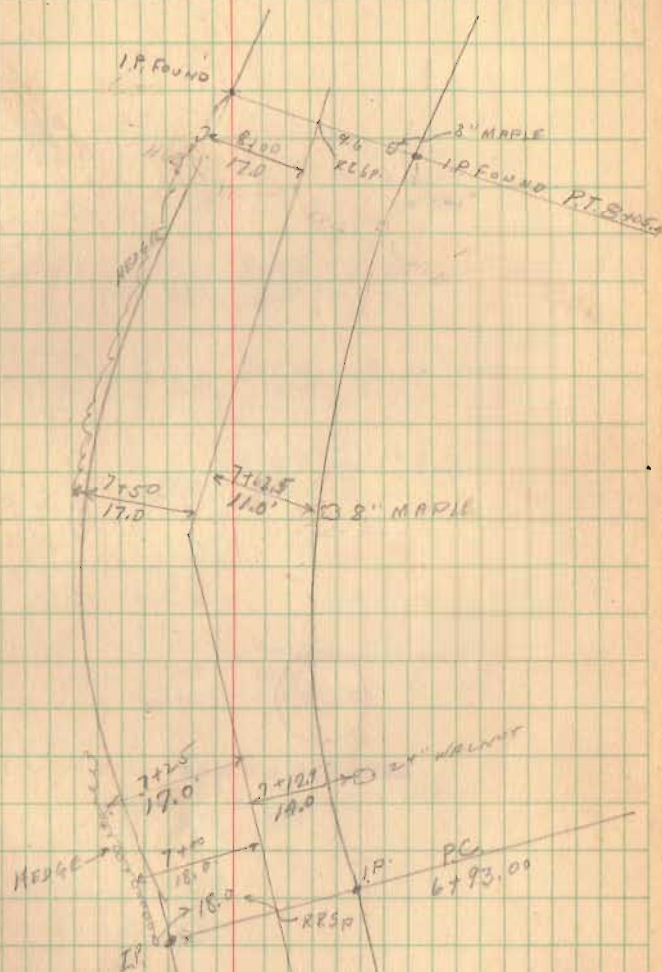
INDEXED ON MAP

29-25
12
12
43

1985
E254

64

16 03.9



P.C. 9+44.2

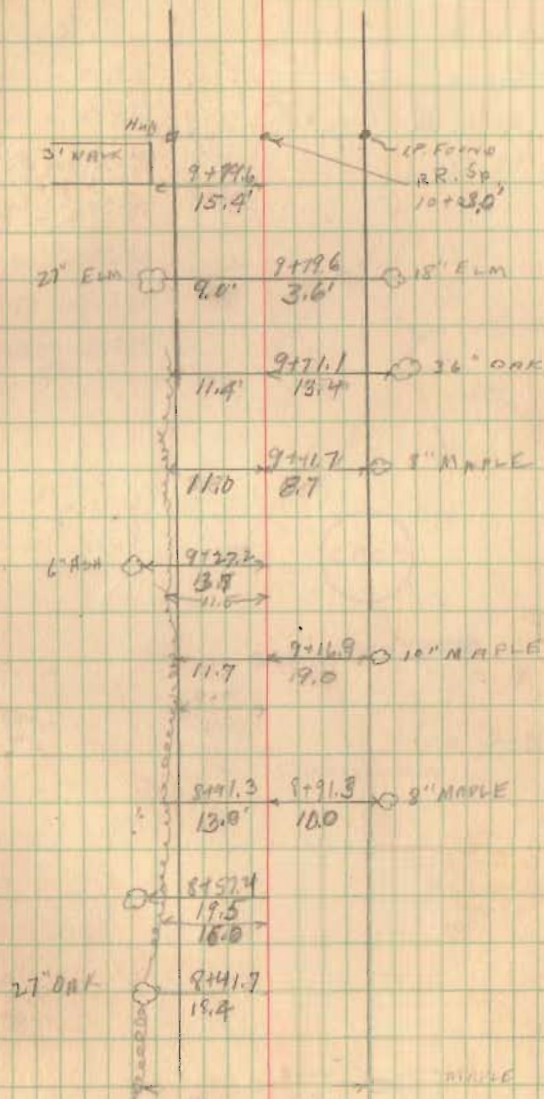
$$\begin{array}{r} 10708.0 \\ 79.6 \\ \hline 23.4 \end{array}$$

$$\begin{array}{r} 9+99.2 \\ 79.6 \\ \hline 19.6 \end{array}$$

7

2093

INDEXED ON MAP



Deflections

P.C. 9+99.2

10+00 - 0° 22'

+10 - 5° 02'

+20 - 9° 42'

+30 - 14° 22'

+40 - 19° 02'

+50 - 23° 41'

P.T. +53.77 - 29° 57'

Δ 49° 58'

T 32.05'

R 68.78'

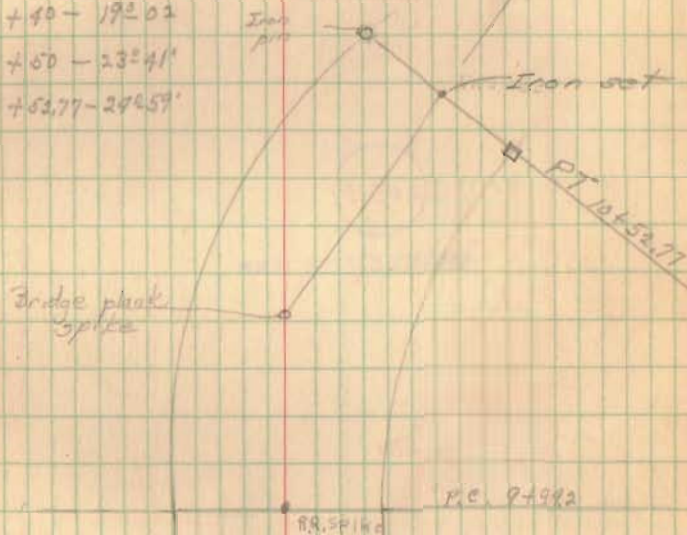
D 93° 16'

L 53.57'

P.C. 9+99.2
32.05
P.T. 10+53.77

2093

INDEXED ON MAP



Rd 269 contd
through Waterbury

15+61.6 Iron set

2093

INDEXED ON MAP

11+45.9 Iron set 6°59' B Nubs set

10+52.77 Iron set

Party: 8 Nov 1946

Chilly-rain 67

E. Core
G. Nilgas
C. Keyser
D. Lyons
W. Keyser



Rd 269 contd.
Through Waterbury.

2093

INDEXED ON MAP

11+45.9 Iron set 6259'B

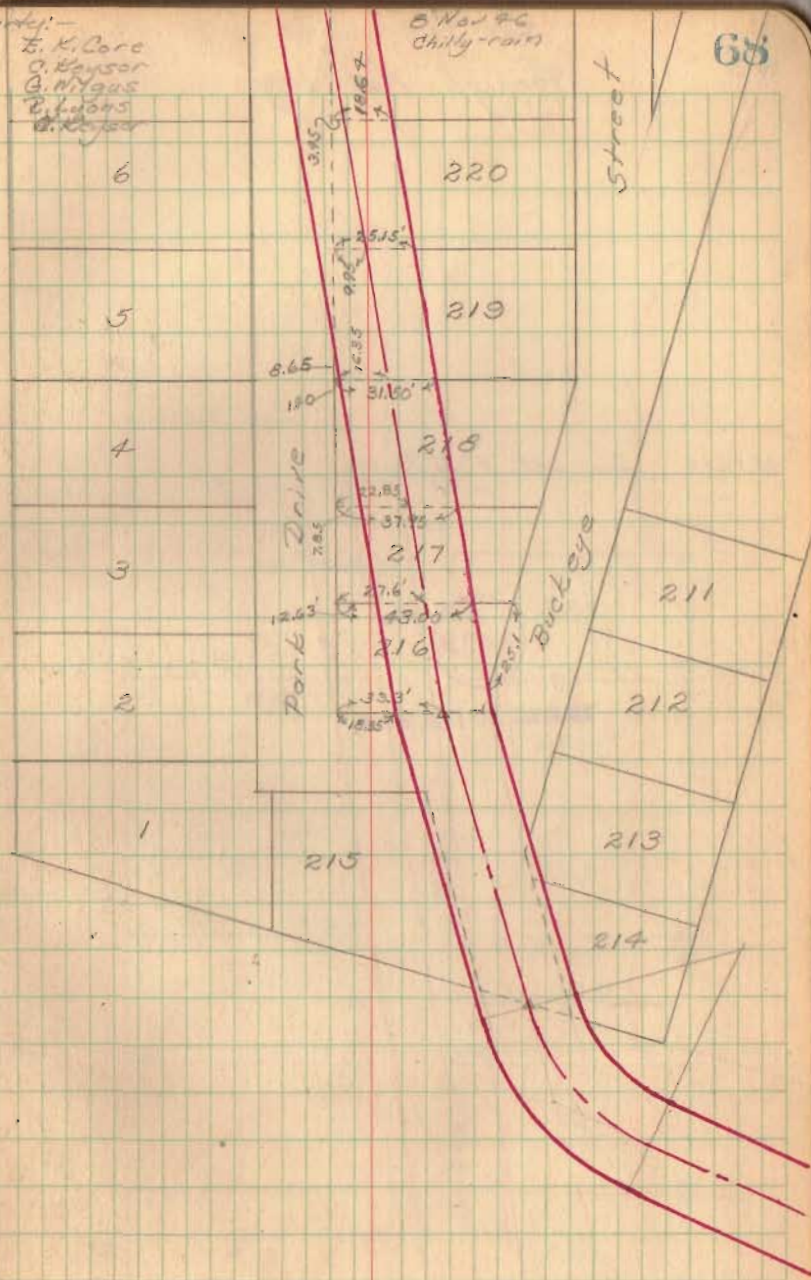
PT 10+52.77 Iron set

Parties:-

E. K. Core
O. Keyser
G. Nygas
B. Lyons
G. Keyser

8 Nov 76
Chilly rain

68



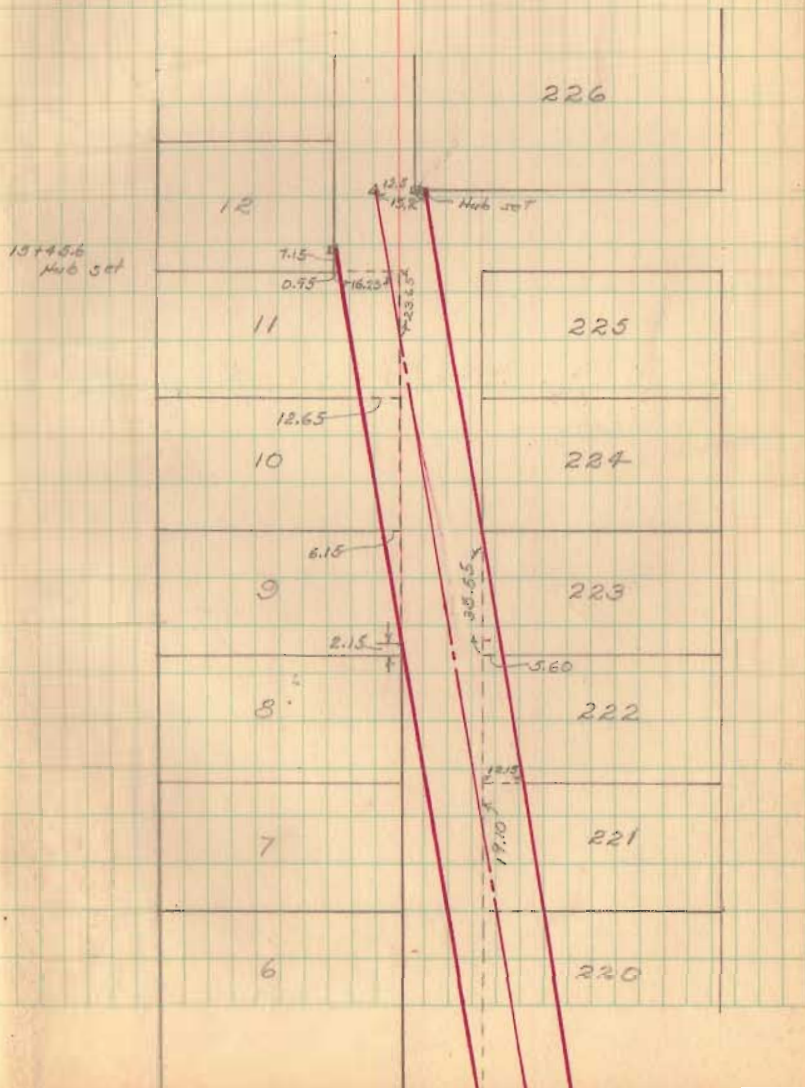
Rd 269 cont'd
through Waterbury

15+61.6 Iron set 9°-12' B

2093

INDEXED ON MAP

69



COURT STREET
ORCHARD ISL.

COURT ST STAKED 35' wide.

- A = 2"x2" C.I. Mon. Found
 B = " " " "
 C = " " " " Not on line A-B
 "C" is 1.50 N of line "A-B"
 D = 3/4" ϕ Bar Found
 E = 1" ϕ Bar Set on line "D-F", 35.0' from "D"
 F = 2"x2" C.I. Mon. Found
 G = "T" Iron found N.E. cor. lot 535
 H = 2"x2" C.I. Mon. Found @ N.W. cor. Manger & Chestnut

π @ "B" sight 2"x2" Mon. @ N.E. cor. poplar of Cottage Grove
 L89°56'20" to "A" - Mon. @ N.E. cor. Chestnut &
 Cottage Grove "or" for line.

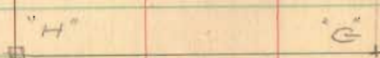
Dist. Mon. @ poplar to Mon. N.E. cor. Chestnut on
 Cottage Grove = 203.08'

Dist. Mon. @ Chestnut to "B" = 175.08'

Meas. from 2"x2" Mon. @ N.W. cor. poplar of Cottage Grove
 to "C" = 381.70, plot 380.0'

NOTE: Mon. @ "C", 1.50'

N. of correct position 535

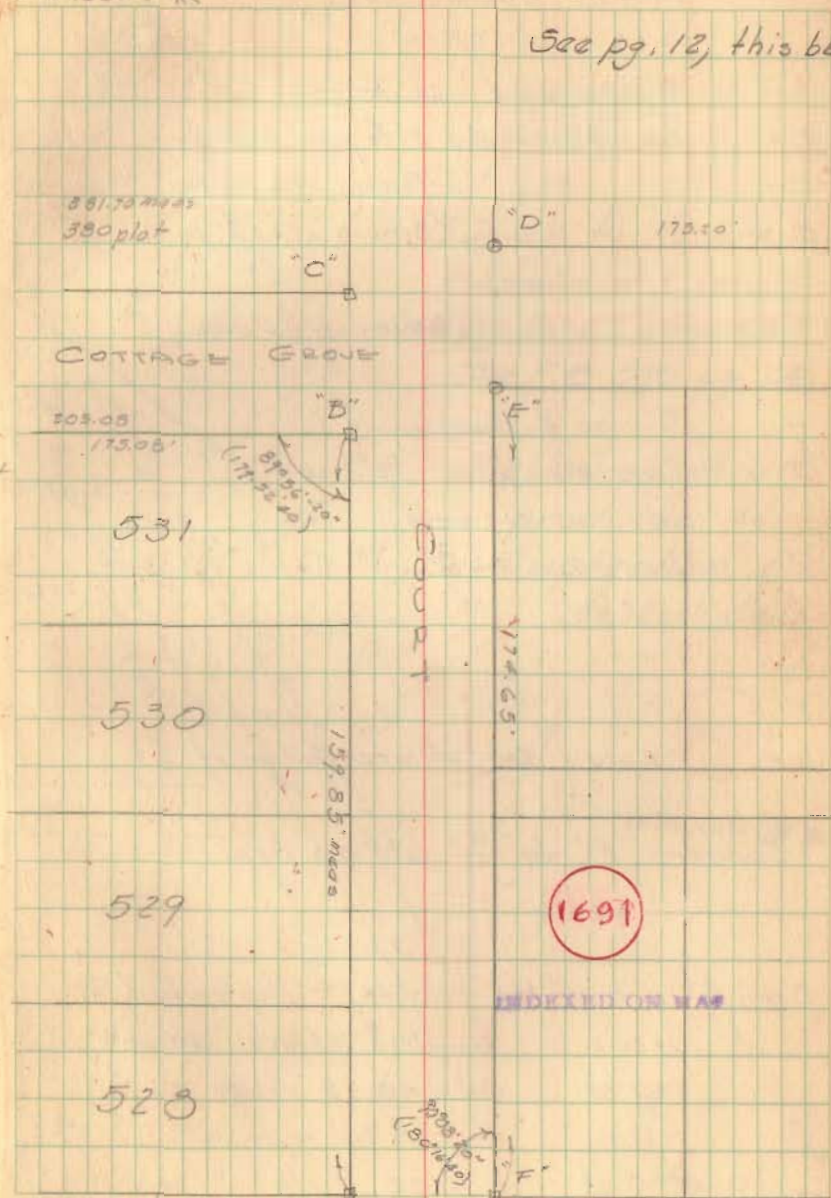


Dodson
Tav's
Geolia π

9-24-63
60°

71

See pg. 12, this bk.



MAUGER

MAPLEWOOD AVE.

- A = 1/2" pipe found ok for line
- B = Conc. Man. Found & 3/4" pipe, used Man.
- C = " " " (Broken off - 6" deep)
- D = " " " (Broken off - 1' deep)
- E = " " "
- F = " " " (Broken off - 6" deep)
- G = " " "
- H = 3/4" pipe & stake found ?
- I = Conc. Man. found - 12" broken off - reset top.
- J = Conc. Man. Found
- K = " " "
- L = " " "
- M = " " "
- N = P-k nail set at intersection of Q's.

Corners "A" to "G" all on line.

- Begin @ "N" - set the hubs on & Maplewood @
- 0+20.21 - N. line of Walnut
- 1+12.09 S. line 15' Alley
- 1+29.91 N. " " "
- 1+22.29 S. line Pine St.
- 2+62.70 N. line " "

(Cont'd)

Dodson
Tavis
Greenlin X

9-24-63
65°

72

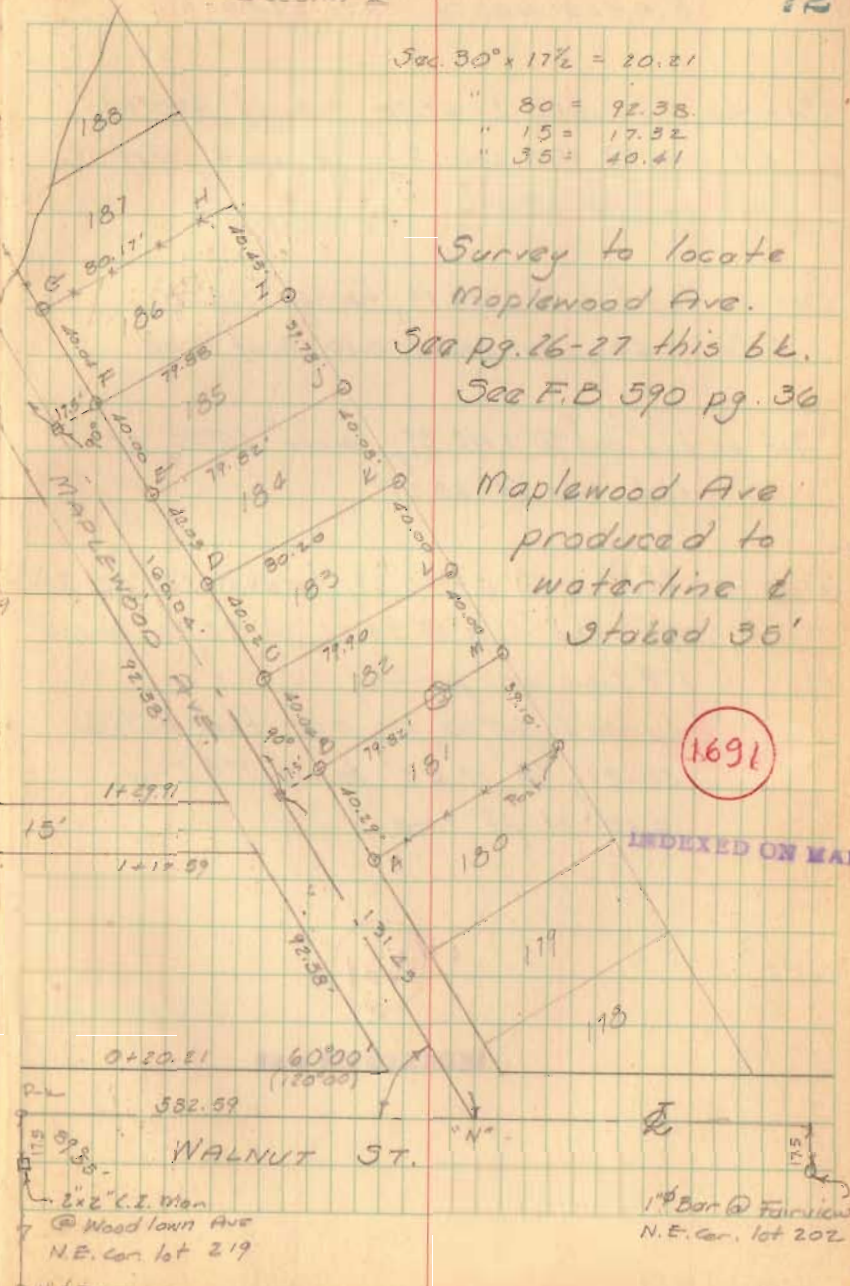
Sec. 30° x 17 1/2 = 20.21
 " 80 = 92.38.
 " 15 = 17.52
 " 35 = 40.41

Survey to locate
Maplewood Ave.
See pg. 26-27 this b.L.
See F.B 590 pg. 36

Maplewood Ave
produced to
waterline &
staked 35'

1691

INDEXED ON MAP



1" Bar @ Fairview
N.E. Cor. lot 202

MAPLEWOOD ST. (Cont'd)

Set on tld hub @ 2+62.70, turned 120°00
hit iron @ N.W. cor. Pine @ 16.41, set
tld hub @ 20.21

Set on tld hub @ 2+22.27, turned 120°00;
@ 16.65, iron found 0.10' S. of line.

Set on tld hub @ 1+12.59, turned 60°00, set
tld hub @ 20.21'

Set on tld hub @ 0+20.21, turned 180°00' Rt.
set tld hub @ 20.21, @ 22.76 found
1" ϕ Iron ok for line.
turned 60°00' Lt, set tld hub @
20.21; @ 17.63' found 1" ϕ Iron
0.10' N. of line

1691

INDEXED ON MAP

9-25-63

73