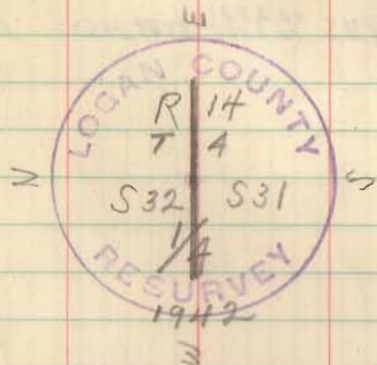


1/4 CORNER West of Rail Road
Road 199

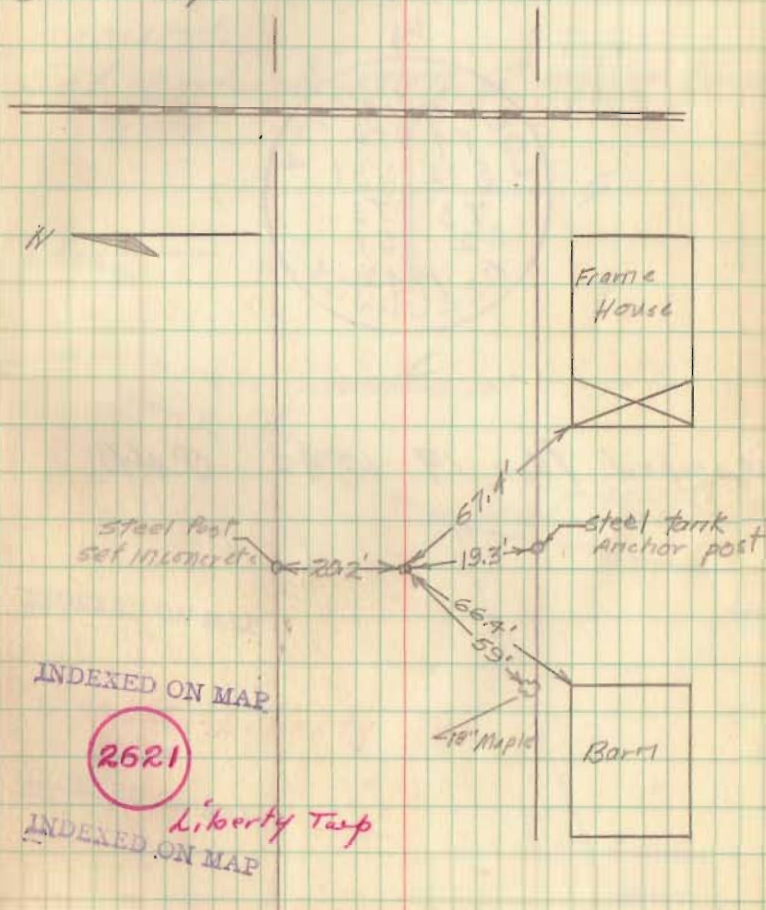


Stamped, Nov. 19 1942

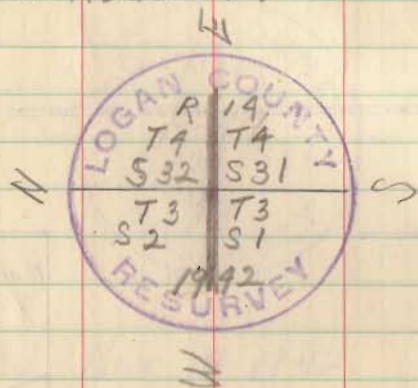
R.H.R.

G.L. Inkeep
F. Hunt
R. M. Barry
9-14-42

Rd 199 - N 1/4 Cor S31 T4 R14
Found stone 8" below surface
with broken brick around
Set concrete mon. 6" below
brick top.



Section corner of Heater-King line
on Road 199



Stamped Nov 19 1942 R.M.P.

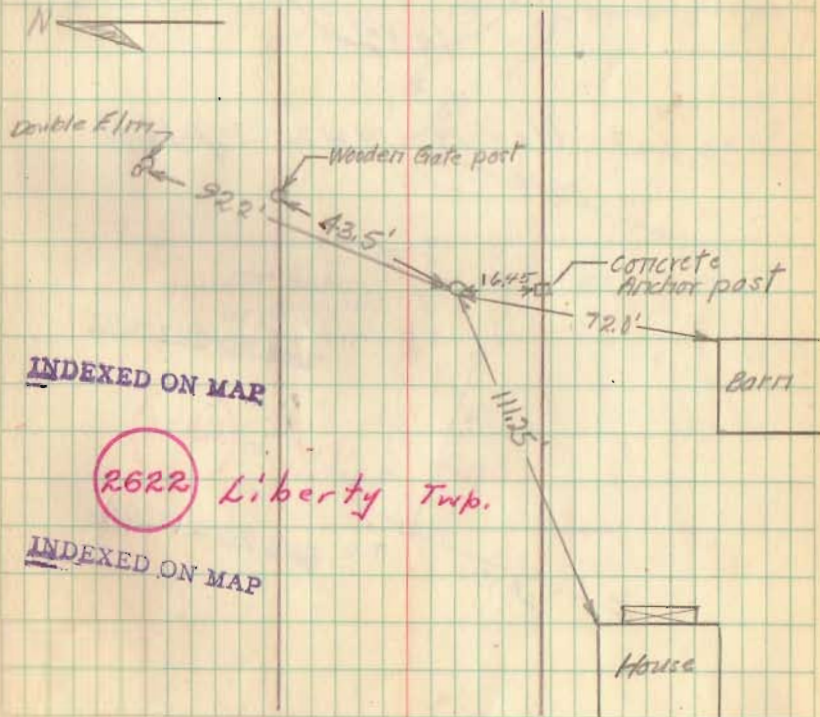
G.C. McKeep
F. Hurst
R.M. Garvey
9-14-42

6

Rd 199 - Cor 31-32 T4R14
1-2 T3R14

Found one stone on top of
larger pointed stone (covered by piece
of strap iron) with broken brick
around.

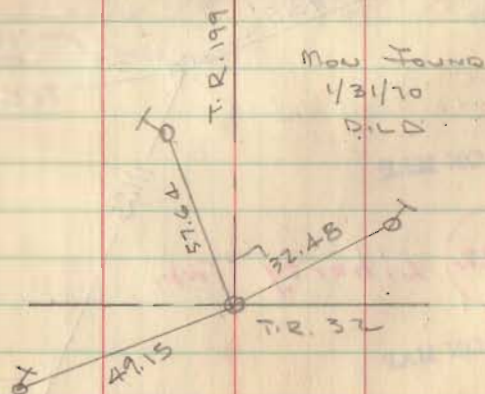
Set concrete marker 6" below surface



West end Road 199 at road 32



Stamped Nov 19 1942 R.H.R.



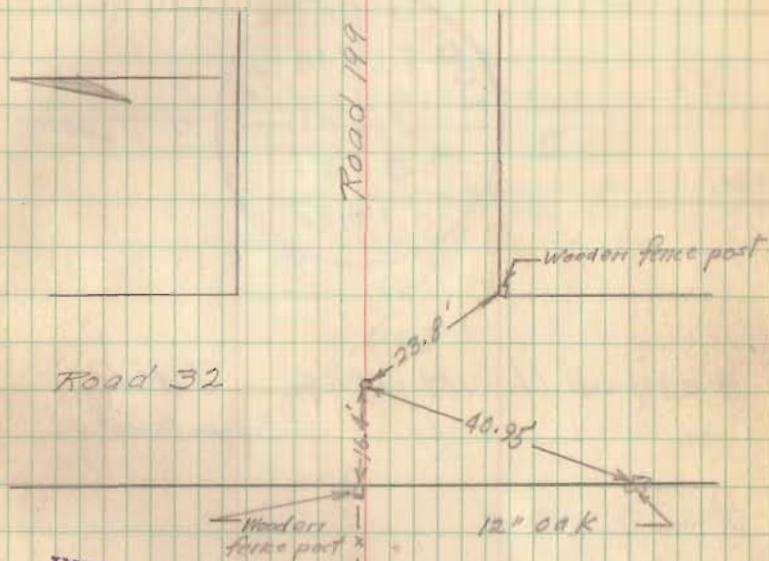
Gl. Inskoop
F. Hurst
R. McSweeney
9-14-42

7

Rd 199 - $\frac{1}{4}$ Cor 142 T3 R14

Found large boulder

Set concrete Mort 6" below surface



INDEXED ON MAP

2623

Liberty
&
Union Twp's.

INDEXED ON MAP

Section Corner at Nellie Bigley Spark's
Drive

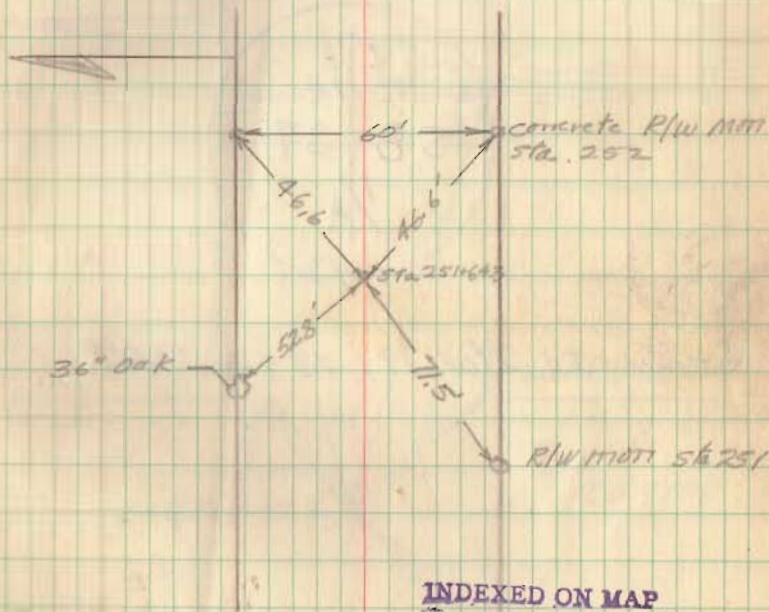


Stamped Nov. 19 1942 RMR

Gilmkeop
F. Hurst
R. McGarvey
9-15-42

8

Rd 43 - Cor 12, 7, 8 T3 R14
Found large boulder with white
stakes beside
Set concrete 11001 4" below surface



Elevation: 1134.60

INDEXED ON MAP

2624 Union Trip.

INDEXED ON MAP

INTERSECTION of ROAD 43 - ROAD 198

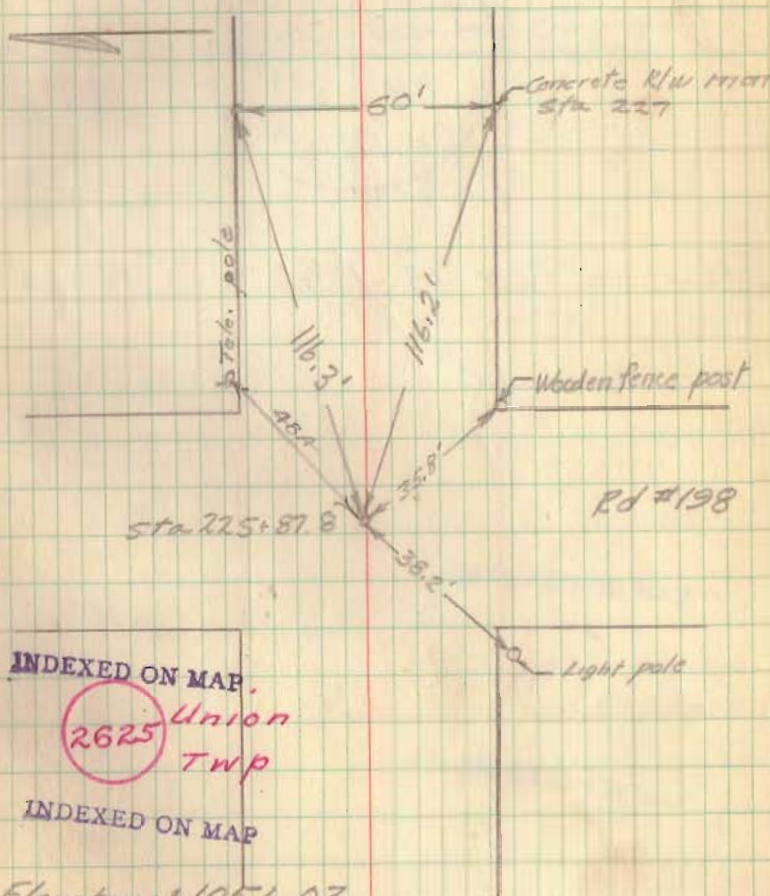


STAMPED Nov. 19 1942 R.H.R.

Scimakeep
F. Hurst
R. H. Garvey
9-15-42

9

Rd 43 - $\frac{1}{4}$ Cor 7, 8 T3 R14
Found stone on top of large
boulder with broken brick around
Set concrete 11mm 4" below surface



INDEXED ON MAP.

2625 Union
Twp

INDEXED ON MAP

Elevation: 1056.03

SECTION CORNER at SEBART - EWING LINE

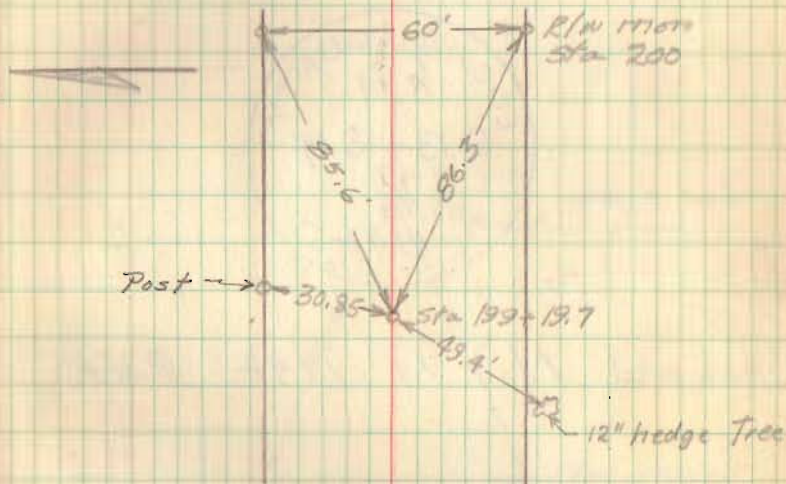


Stamped Nov 19 1942 R.H.R.

Glinskup
F. Hurst
R. McGarvey
9-16-42

10

Rd 43 Cor 7, 8, 13, 14 T3 R14
Found stone on top of large
boulder with broken brick around
Set concrete mark 5" below surface



Elevation: 1139.57

INDEXED ON MAP

2526 Union
Twp

INDEXED ON MAP

1/4 CORNER at Smith - AVERY LINE



Stamped Nov 19 1942 R.H.R.

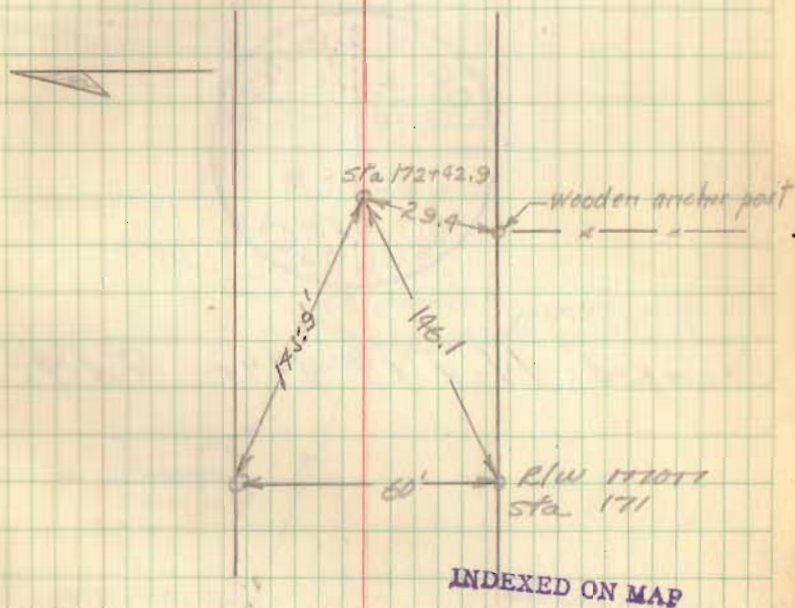
G. H. Skoop
F. Hurst
R. McGarvey
9-16-42

11

Rd 93 & Cor. 13, 14 T3 R14

Found stone on top of large
boulder with broken brick around.

Set concrete 171 on 4" below surface



Elevation: 1116.95

2627 Union
Twp.

INDEXED ON MAP

End of Road 201 at 43



Stamped. Nov 19 1942 RMR.

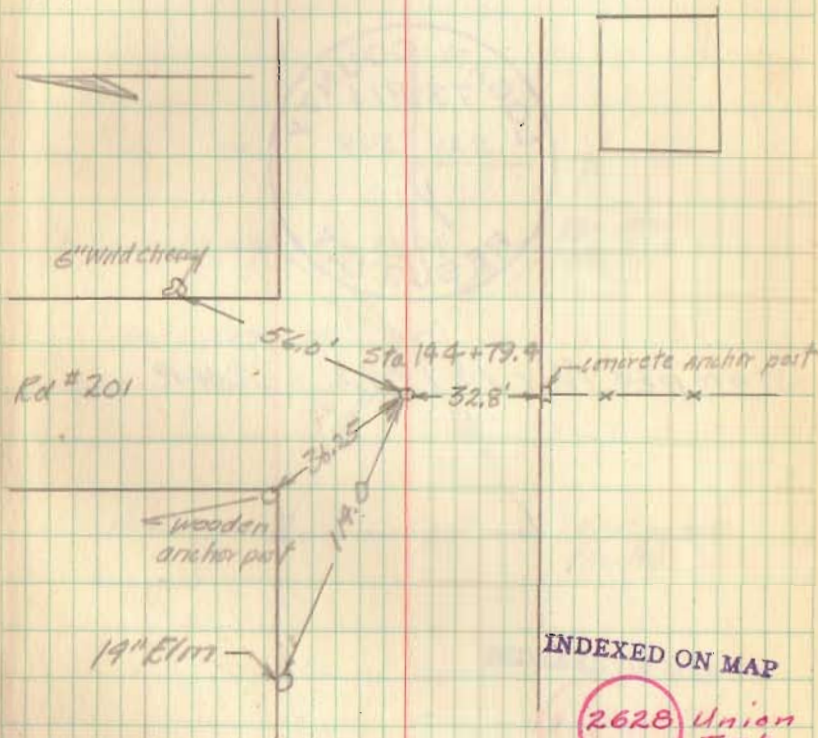
GC Inskeep
FHurst
R.M. Garvey
9-17-42

12

Rd 43 - Cor 13, 14, 19, 20 T3R14

Found stone on top of another
(neither large) also broken brick

Set concrete 1700 8" below surface



Elevation: 1071.84

INDEXED ON MAP

2628 Union
Twp

INDEXED ON MAP

Intersection Road 43 - Road 46



Stamped Nov 18 1942 RHR.

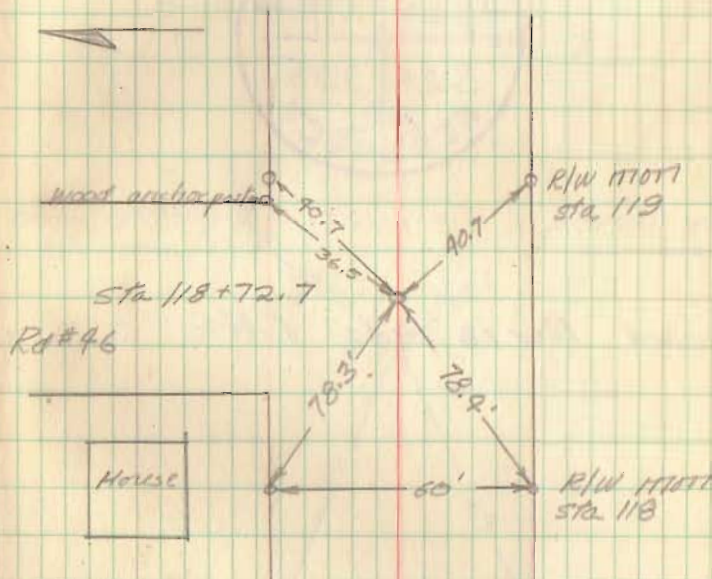
G. M. Stoop
F. Hurst
R. M. Garvey
9-17-42

13

Rd 43 $\frac{1}{4}$ Cor 19, 20 T3 R14

Found iron rod (set last week) NO
other evidence

Set concrete Mon 3" below surface



Rd #46

House

R/W 11007
Sta 118

INDEXED ON MAP

2629

Union
Twp.

Elevation: 1073.19

INDEXED ON MAP

Intersection of Road 43 - Road 31

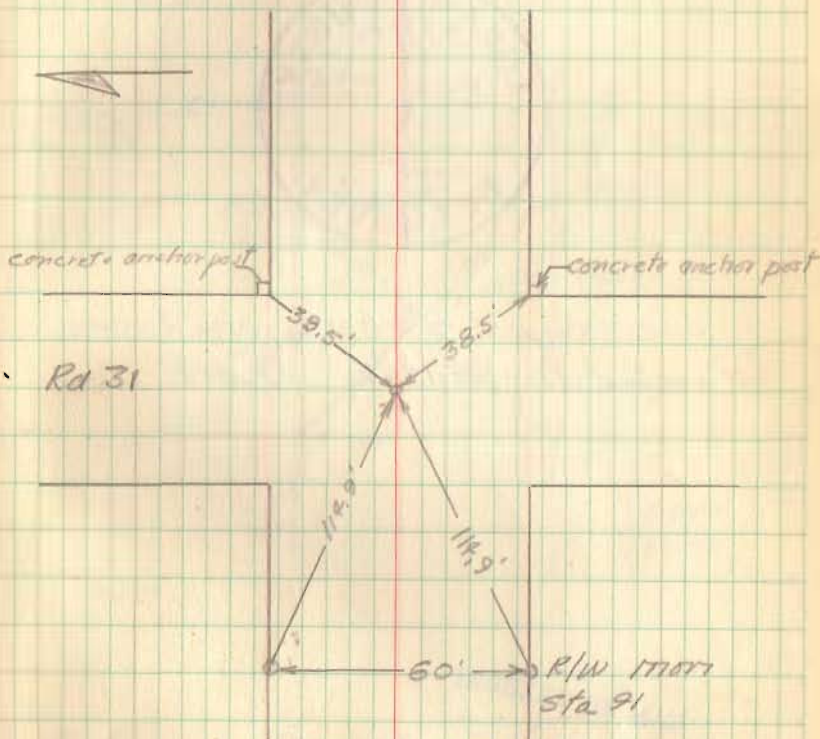


Stamped Nov 18 1942 RHR

G. W. Skeep
F. Hurst
R. McGivney
9-18-47

14

Rd 43 - Cor 19, 20, 25, 26 T3 R14
Found wooden hub on top of
large stone - broken brick
Set concrete man 4" below surface



Elevation: 1076.12

INDEXED ON MAP

2630

Union
Twp.

INDEXED ON MAP

1/4 corner at Horn + Golladay line

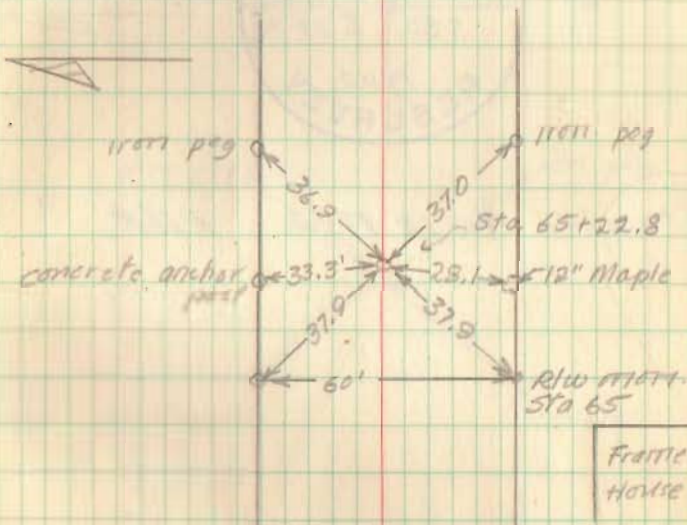


Stamped Nov. 13 1942 RMR

GC/MSKcap
FHurst
R. M. Garvey 15
9-18-42

Rd 43 - $\frac{1}{4}$ cor 25, 1/4 T3 R14

Found 4 iron peg on RLW line
and set iron by intersection -170
other evidence found. Mon 4" below
surface.



Elevation: 1034.64

INDEXED ON MAP

2631

Union
Twp.

INDEXED ON MAP

Intersection of Road 43 - Road 33

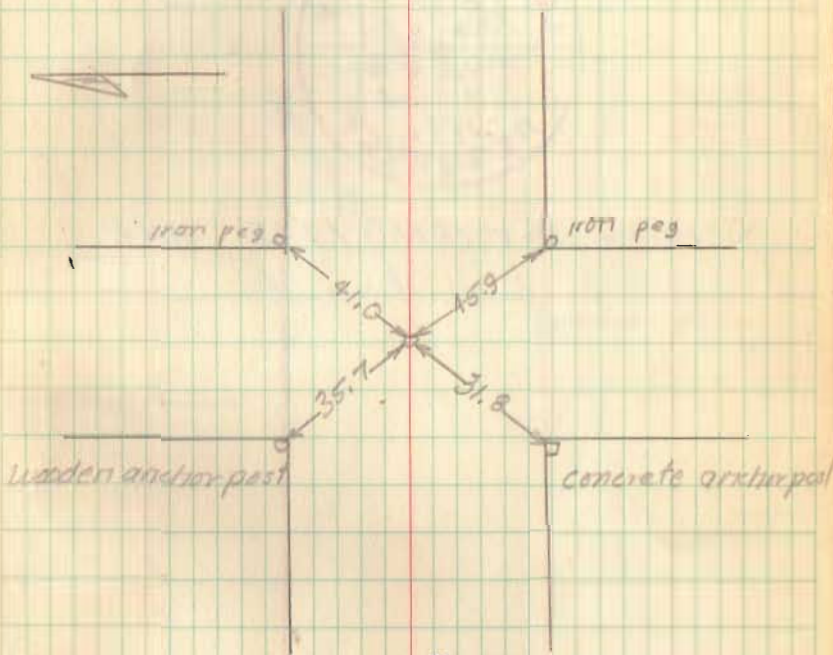


Stamped Nov 12 1942 RMR.

G. C. M. Skeep
F. Hurst
R. McGarvey
9-18-42

16

Rd 43 Cor 25, 26, 31, 32 T3 R14
Found wooden hub, two large stones
below and brick around
Set concrete man 4" below surface



Elevation: 1009.27

INDEXED ON MAP

2632 Union &
Pleasant

INDEXED ON MAP

Boundary Monument

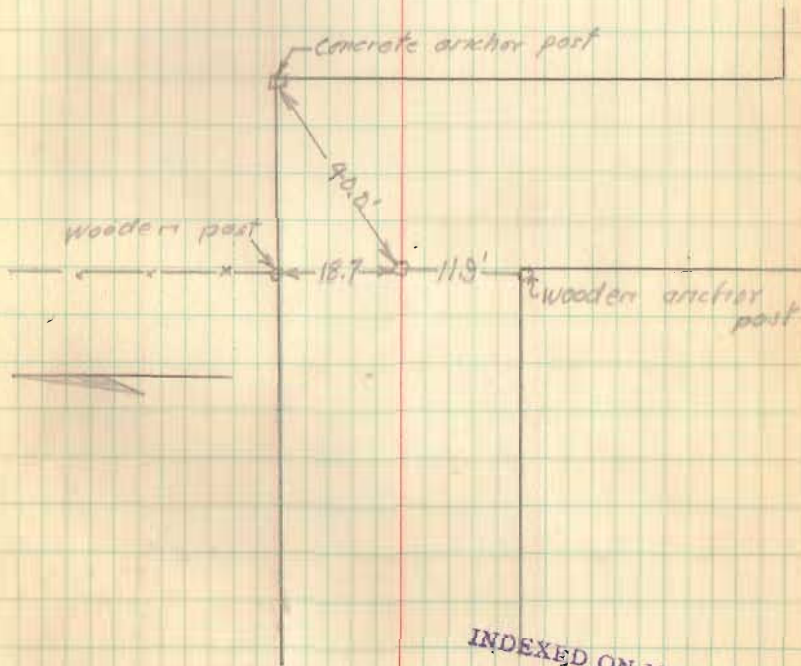


Stamped Nov 18th 1942 RMR

GC/inskeep
F. Hurst
R. McGarvey
9-19-42

17

sec. 31-32-T3-R14
Rd 43 - sec. 1-2-T2-R14
Found two boulders with broken
brick around
Set concrete mon 6" below surface



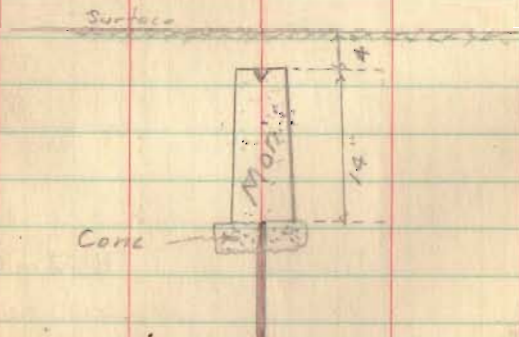
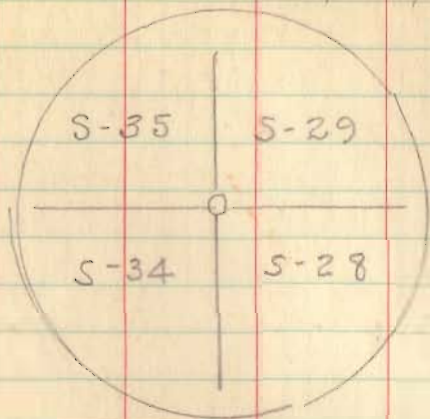
INDEXED ON MAP

2633 Pleasant
Twp.

INDEXED ON MAP

Sept. 22/43

Daily
Dyert
Burket
Kneif



Drove iron bar straight down until it
struck a big rock - would go no further
Cut off man. to 14" len. placed directly over
bar, set in conc. 4" below surface

35 | 29
34 | 28
T4R14

E. Columbus - Bellefontaine

20

Henning

Maxwell



E. Columbus

Found Bar - Sec. Cor. - $27\frac{1}{2}$ " N. of sidewalk
Set man directly over Bar

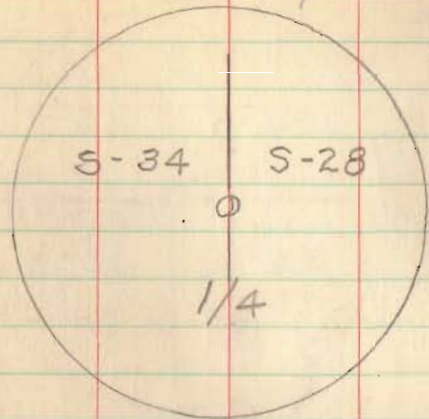
INDEXED ON MAP

2634 Bellefontaine

INDEXED ON MAP

Sept 22/42

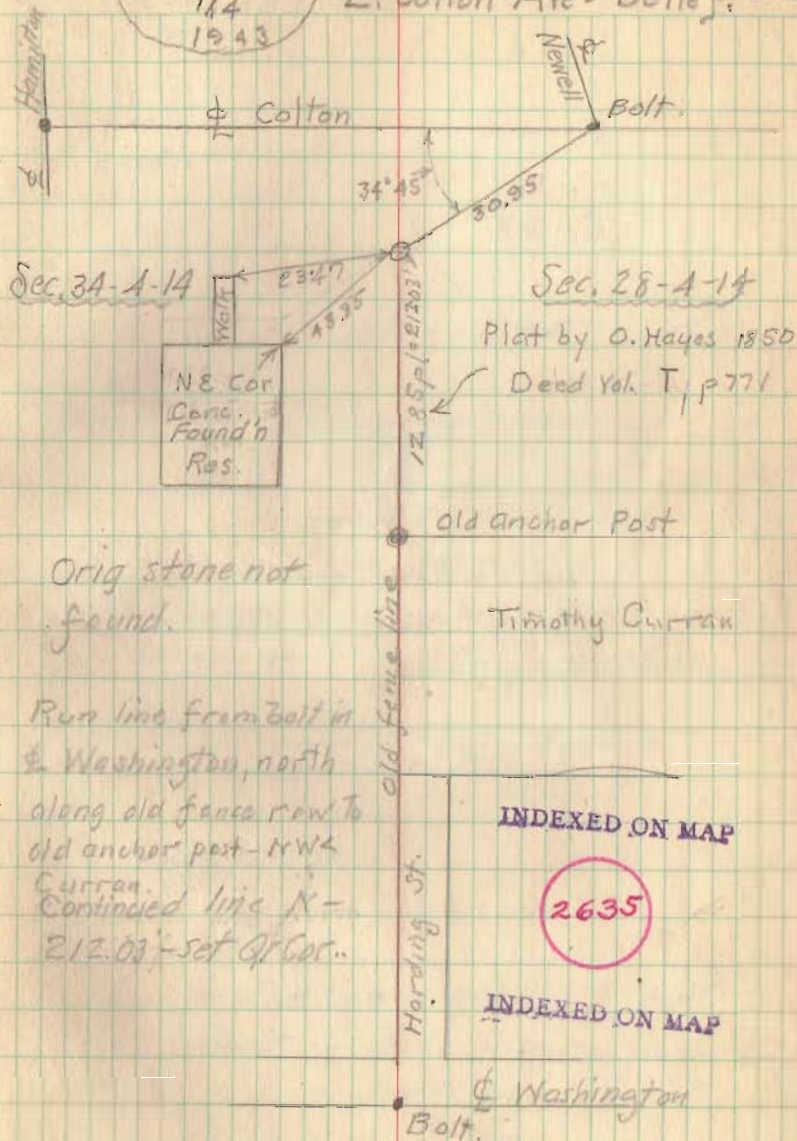
Dalley
Dyset
Burket
Krief



Set mon - full length
9" Below surface

T4 R14
S-34 S-28
1/4
1943

E. Colton Ave - Bellef. 2 1/2



Sec. 34-A-14

Sec. 28-A-14

Plot by O. Hayes 1850
Deed Vol. T, p771

NE Cor.
Care.
Found'n
Res.

old anchor Post

Orig stone not
found.

Timothy Curran

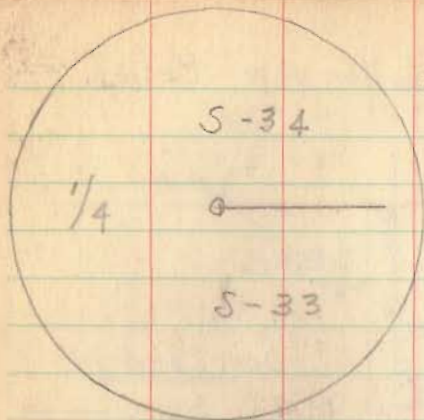
Run line from Bolt in
E. Washington, north
along old fence row to
old anchor post - RW
Curran.
Continued line N -
212.03 - set of Cor.

INDEXED ON MAP

2635

INDEXED ON MAP

Washington
Bolt.



Sept-22-1943

Dailey
Dyert
Burket
Knief

Conc. Pavement

Drilled $\frac{3}{4}$ " hole -
Countersunk brass marker in
conc. pavement - cemented - $\frac{1}{4}$ " below
surface

This Mon Removed by City when
they placed storm sewer on
E of Lake Ave.

(S-34)
 $\frac{1}{4}$ S-34
S-33

Silver Lake Pile at NYC-RR

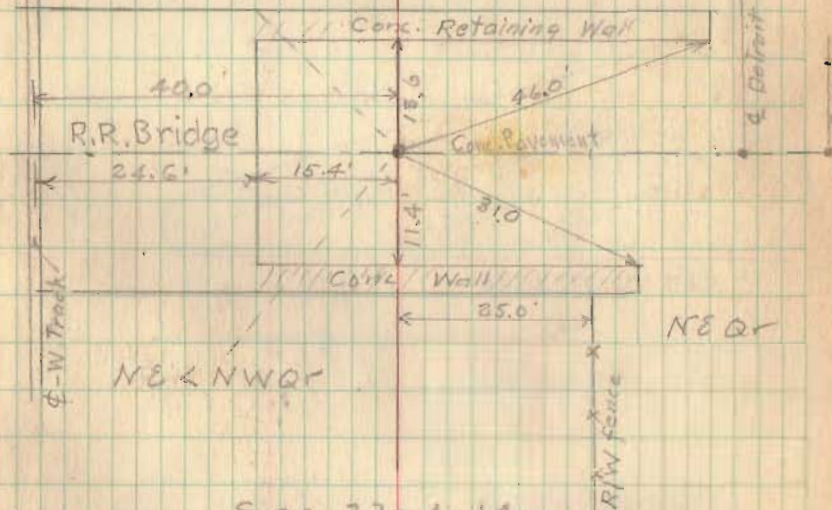
22

N

SEC. 34-4-14

SE < NW Q

SE-Q

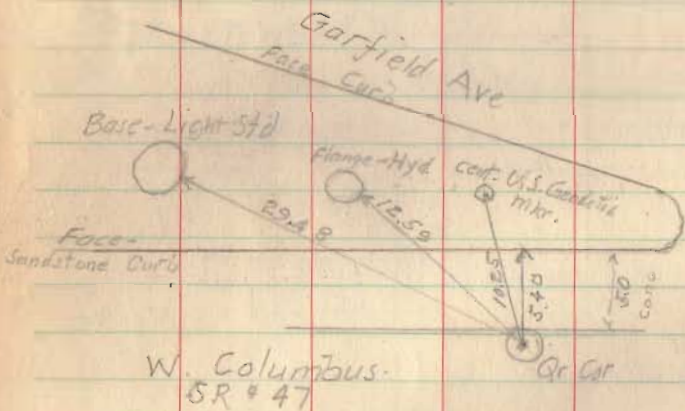
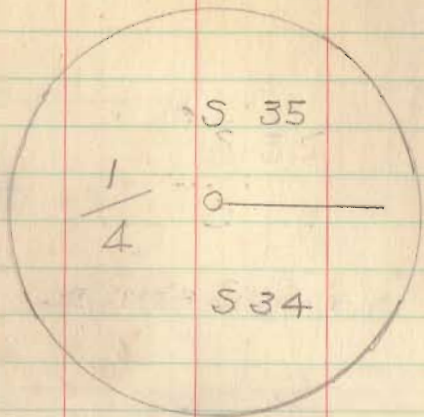


SEC. 33-4-14

2636

INDEXED ON MAP

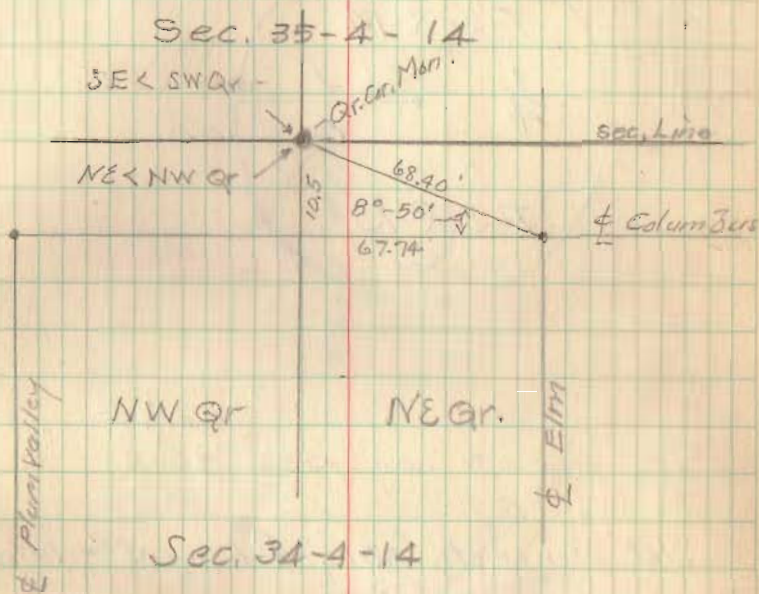
Sept 22/43 - Dailey
Dyess
Burnell
Kraig



T4R14
S-35
1/4 S-34

Elm and Columbus - Bellef.

23

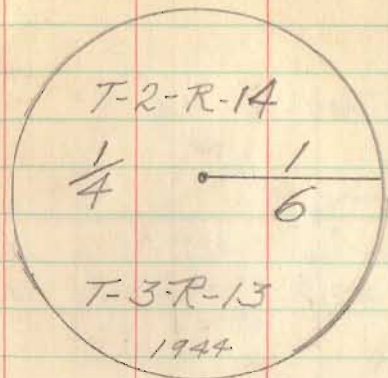
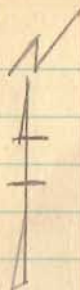


INDEXED ON MAP

2637

INDEXED ON MAP

(1)



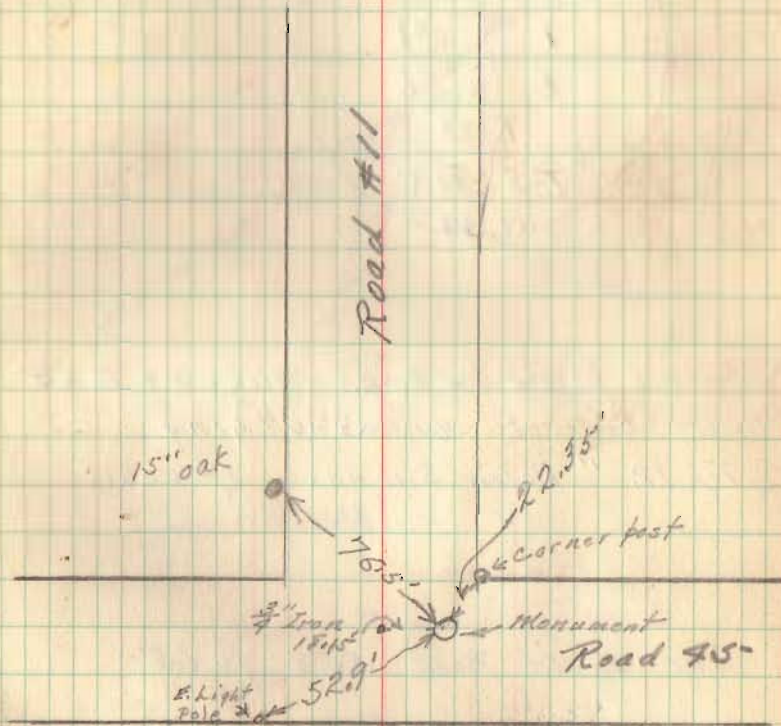
Oct. 9-1944

Dyset
Robbins
M^s. Adams

Set Concrete Mon. 4' long 5" below
Surface of road 45.
Stamped as above.

See Field Book 619 p-10

2638



INDEXED ON MAP

2638

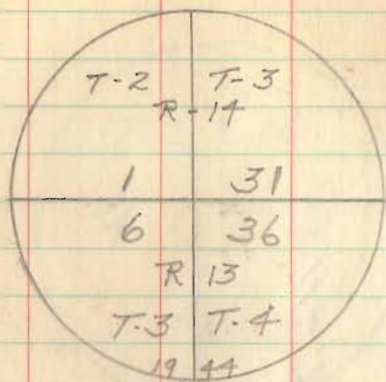
Measaut &
Miami Trps.

INDEXED ON MAP ✓

(2)

Rd. 45

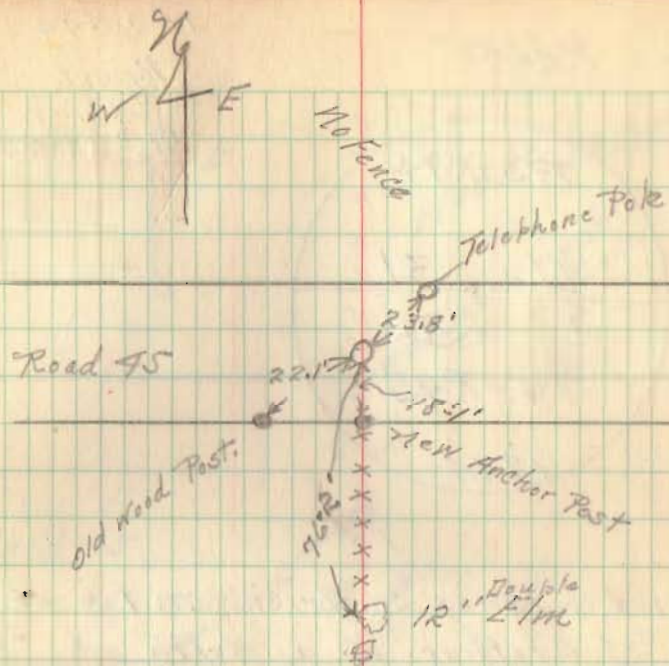
10-9-99
 Lysert
 Robbins
 Mr. Adams



Found Stone ^{and} Brick - Book 559 P. 65
 Set Concrete Mon. 3'-6" long
 Top 12" Below Surface of road

See Field Book 559 p. 65

25



INDEXED ON MAP

2639

Pleasant &
 Miami Turps.

INDEXED ON MAP

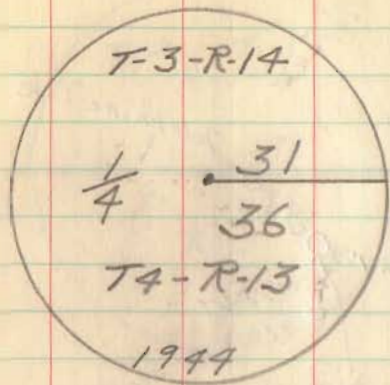
Found 31 Dec. 1968
 C.N.

(3)

Rd. 45

10-10-44

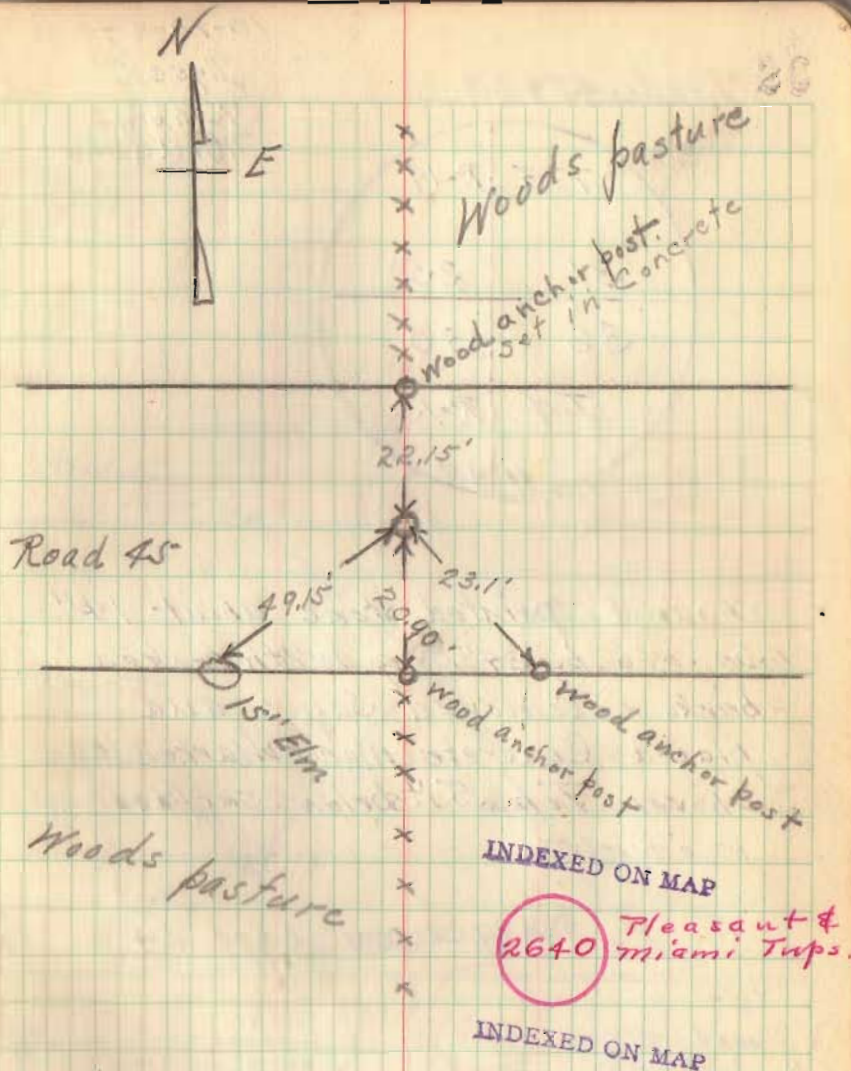
Insert
Robbins
W. Adams



Found Stones and Bricks on top of one ~~of~~ another to a depth of about 4'

Removed same and placed Concrete Mon. ^{4' Long} Stamped as above 6" Below Surface of road

See Field Book 559 p. 64

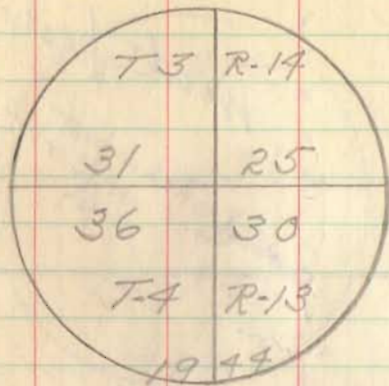


INDEXED ON MAP
2640 Pleasant & Miami Taps.

INDEXED ON MAP

Found 31 Dec '68
C.N.

Roads 45 & 33

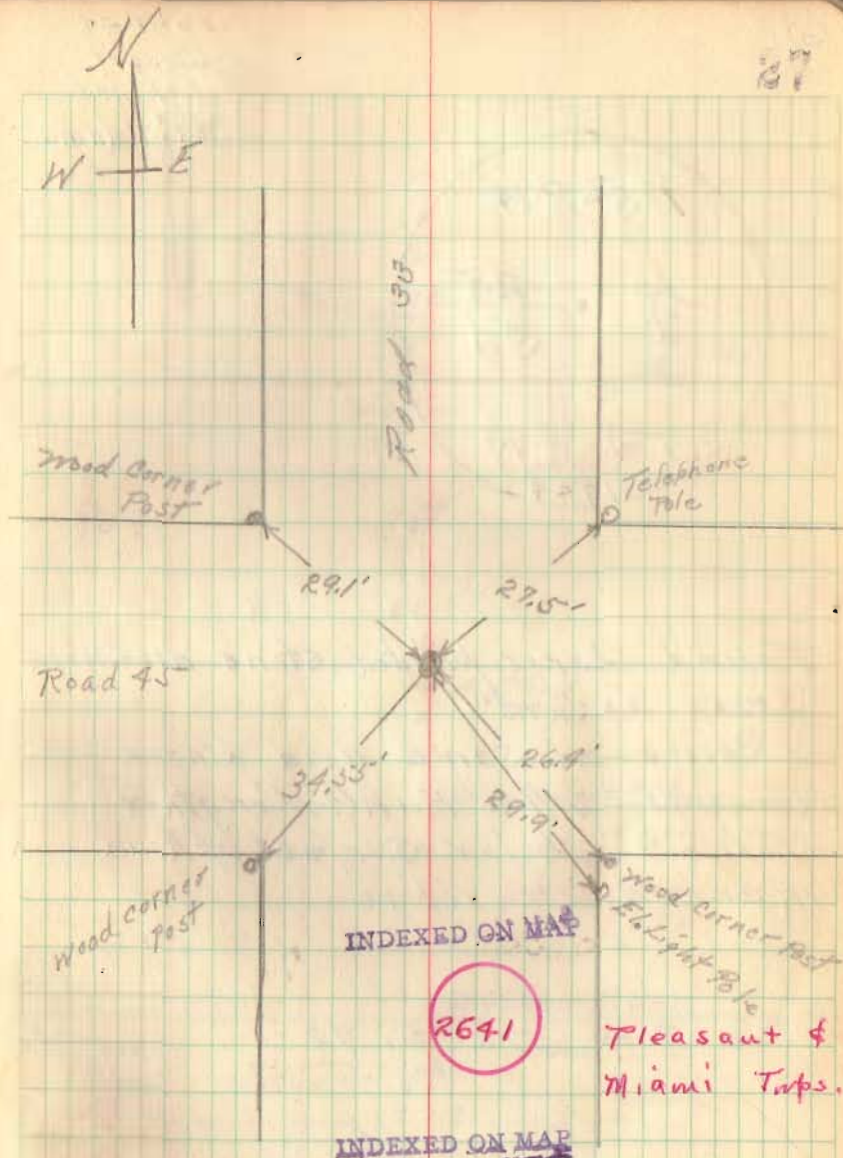
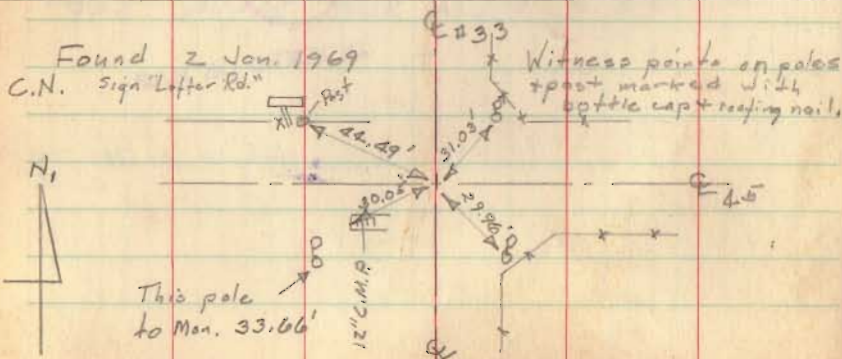


10-10-44
 Dyser
 Robbins
 Mr. Adams

Found pointed stone about 14" square by 34" long with broken bricks - removed same and placed concrete men. ^{4" long} Marked as above. Top 5" below surface of road 45

See Field Book 559 page 64

Found 2 Jan. 1969
 C.N. sign "Laffer Rd."



(6)

10-11-99
Dyset
Irkinson
B. Wilgus

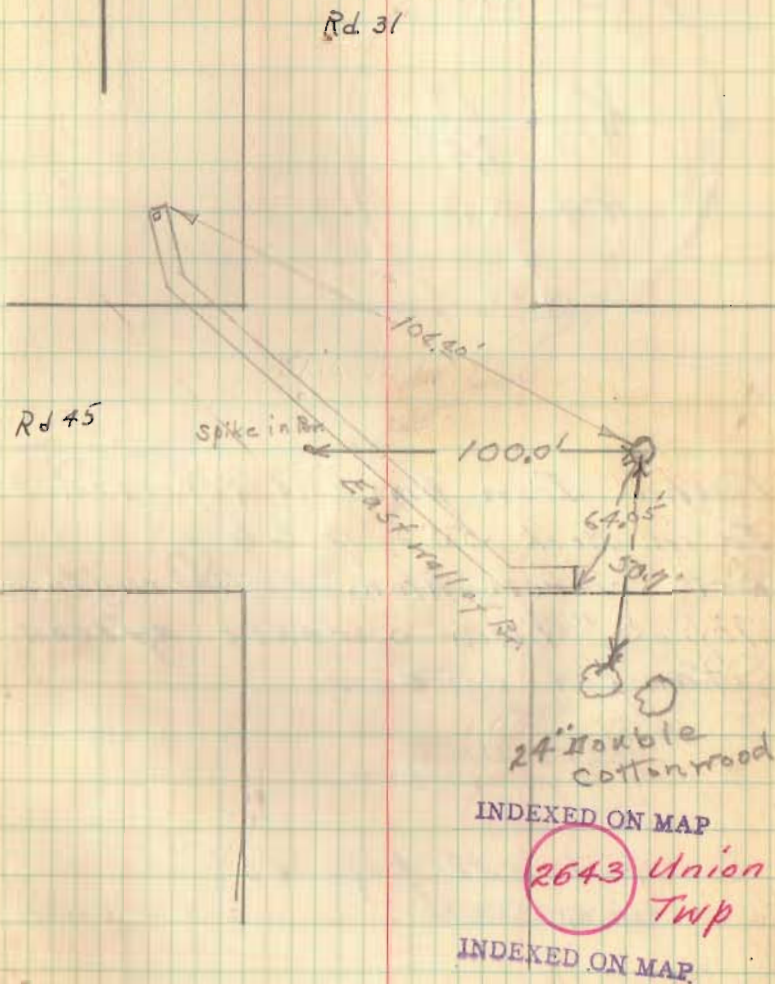


Found Iron bar referred to in
Book 558 page 57
Removed same and placed Concrete
Mon. Full length
Top 8" below surface of Road 45
Marked as above

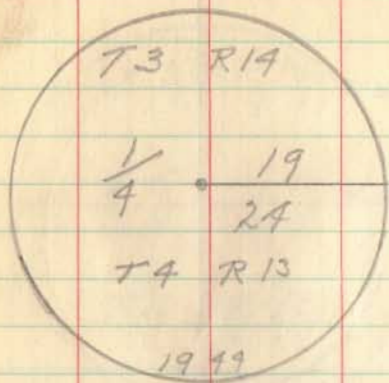
Mon. Set 100 Feet East of Sec.
Corner. on Sec. line

See Books 516 p. 72 - Book 558 p. 57

29

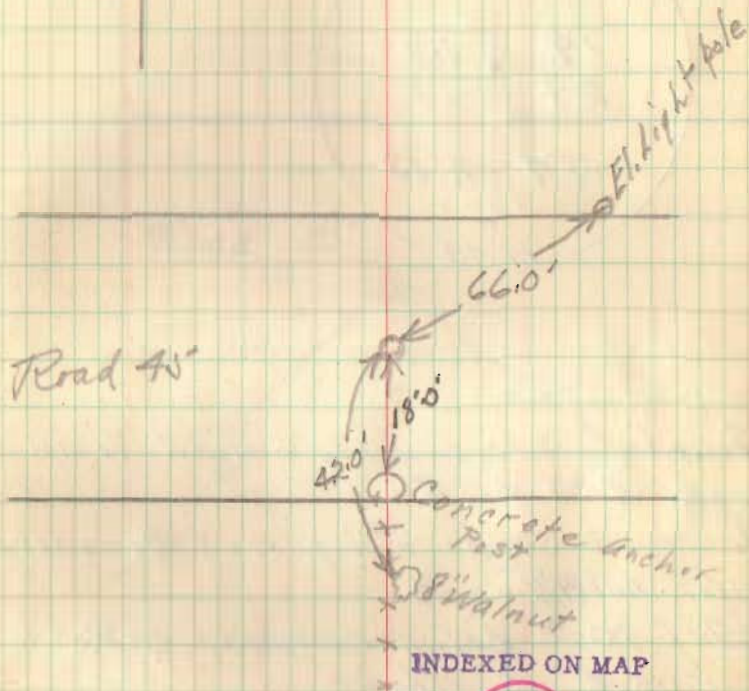


10-11-44
Dyset
Dickinson
B. Wilgus



Found Iron pin as referred
to in Book 558 p. 60 (4)
Set Concrete Mon. Full Length
Top 8" below surface of road
Stamped as above

See Book 558 page 60



2644 Union
Twp.

INDEXED ON MAP

(8)

10-11-44
Dyert
Robbins
M. Adams

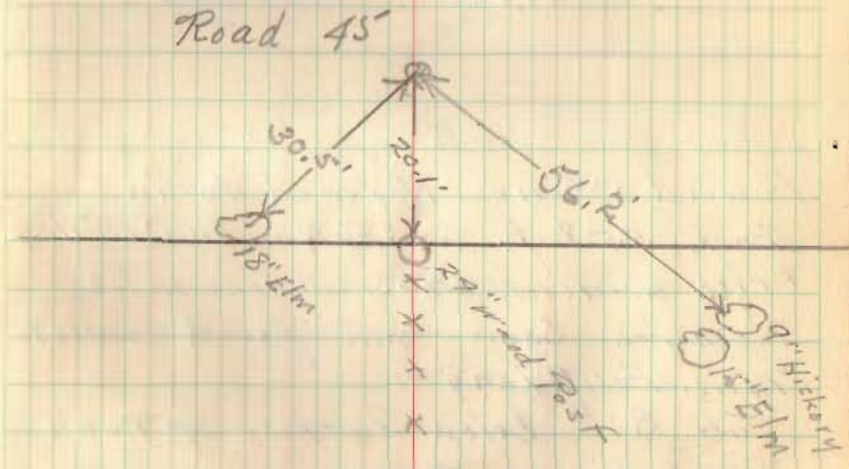


Found Stone. Referred To in
Book 558 p. 63
Removed same and placed Concrete
Mfr. Full (4') length
Top 10" below surface of Road
marked as above

See Book 558 page 63

3

Ed. 10 July 1972 c.N.



INDEXED ON MAP

2645 Union
Twp.

INDEXED ON MAP

(9)

10-12-44
Dyset
Robbins
M. Adams

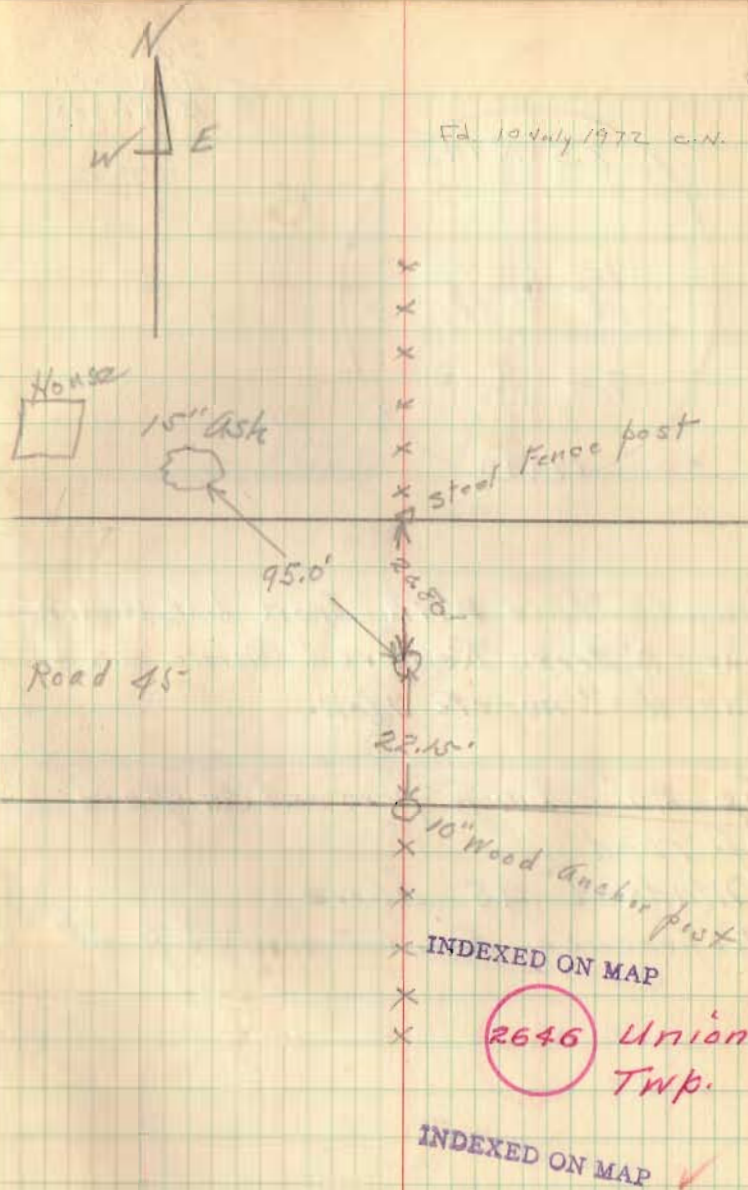


Found Stone Referred to in
Book 558 p. 66. Flat on end: 18" Deep
Brick under Weath. Small Stone on Top
Removed Same and placed Concrete
Mar. Full Length
Top 8" below surface of road
Marked as above

See Book 558 page 66

32

Ed. 10 July 1972 C.N.



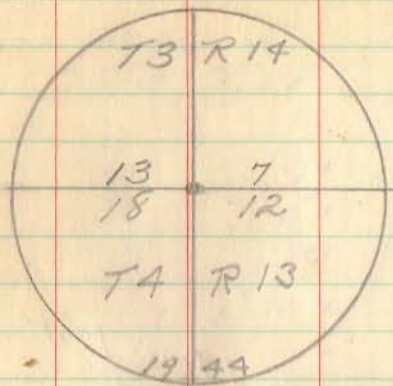
INDEXED ON MAP

2646 Union Twp.

INDEXED ON MAP ✓

(10)

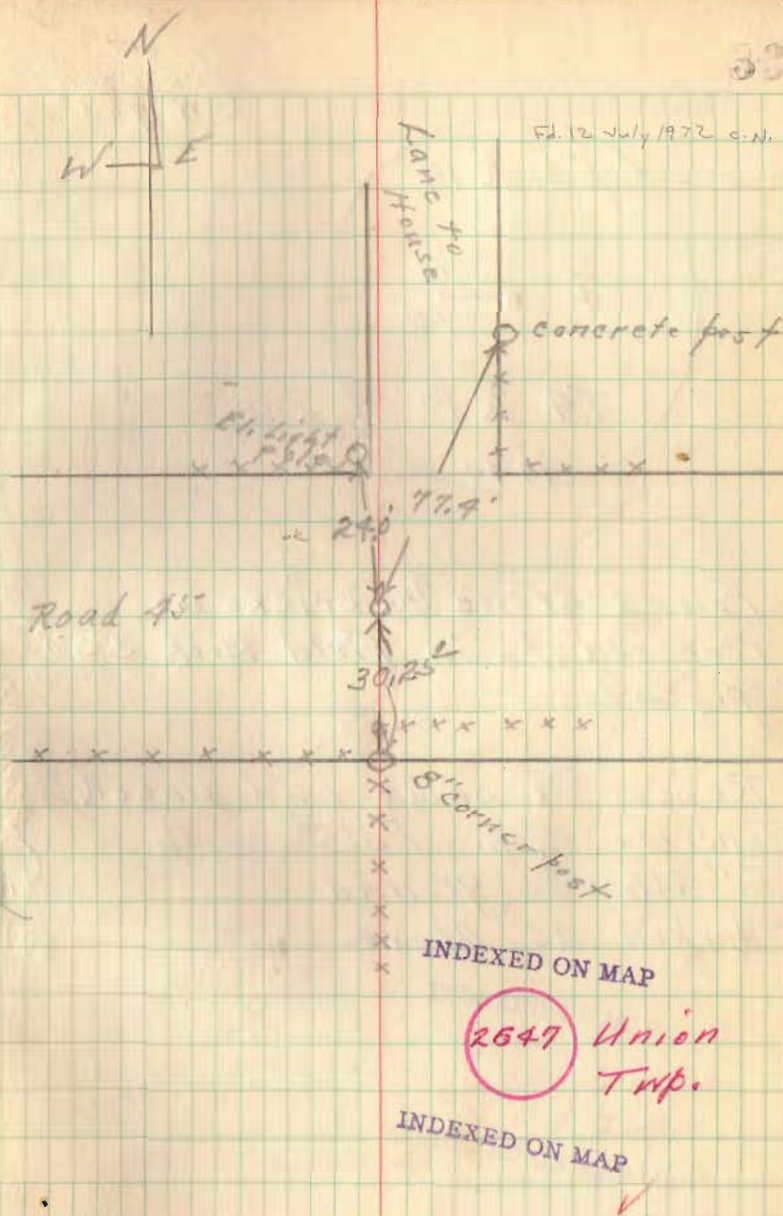
10-12-44
Dybert
Dickinson
B. Wilgus



Found Stone With Iron bar under
stone 2' deep. Removed same and
placed concrete Mon.

Top 20" below present surface
of road
Marked as above
Reference Field Book 558 p 68

33



Ed. 12 July 1972 c.n.

INDEXED ON MAP

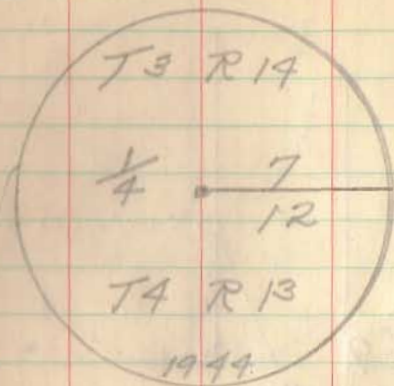
2647 Union
Twp.

INDEXED ON MAP

(11)

10-12-44

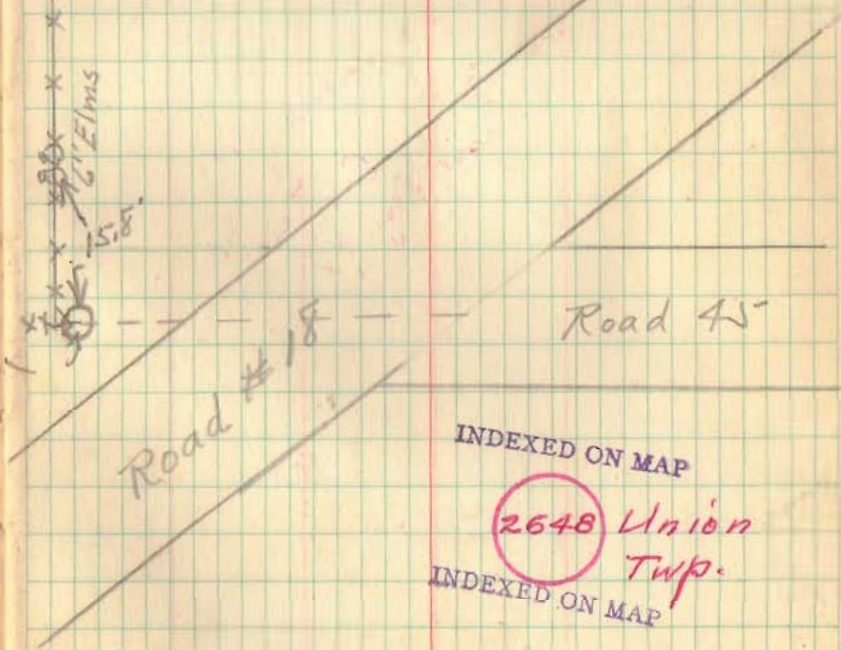
Insert
Dickinson
B. Wilgus



Found stone and Bricks as referred to in Field Book 558 p. 69

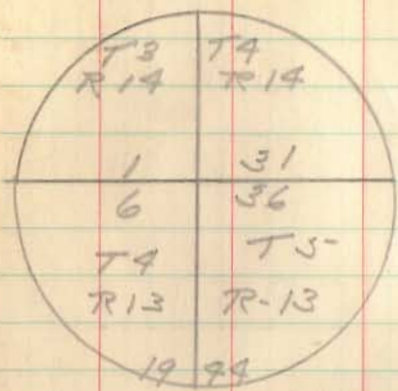
Removed same and placed Concrete Mon. Full length 6" above ground Marked as above

39412
 8' mid (height)



(14)

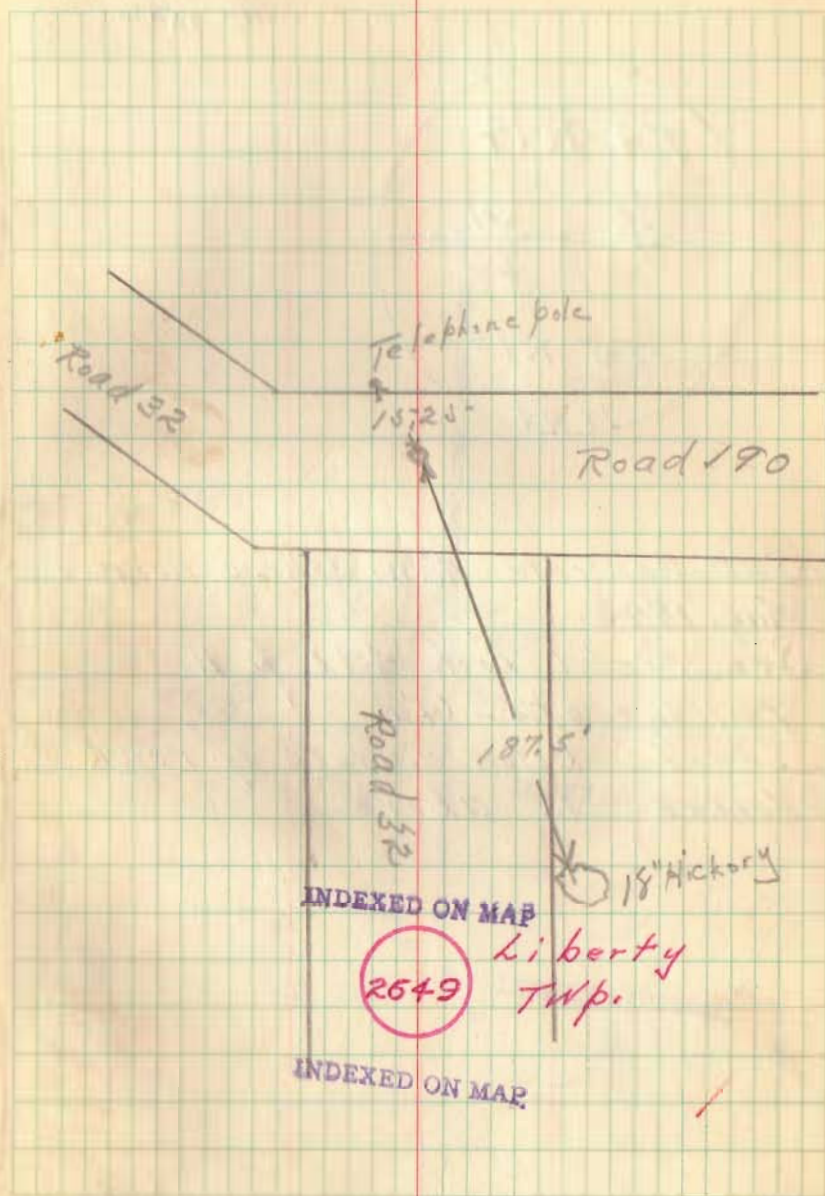
10-12-79 Desert
Robbins
M. Adams



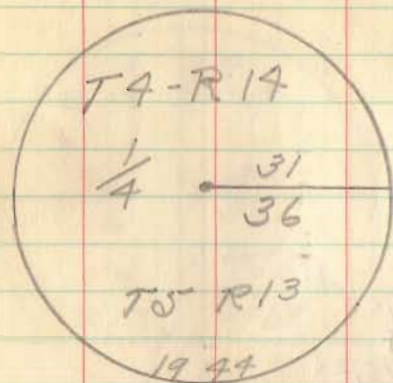
Found Stone & Brick
Removed same and placed
Con. Mon. Full length - 6" below
Surface
Marked as above

See Book 448 p. 11

87



10-13-44
 Insert
 Robbins
 Mr. Adams



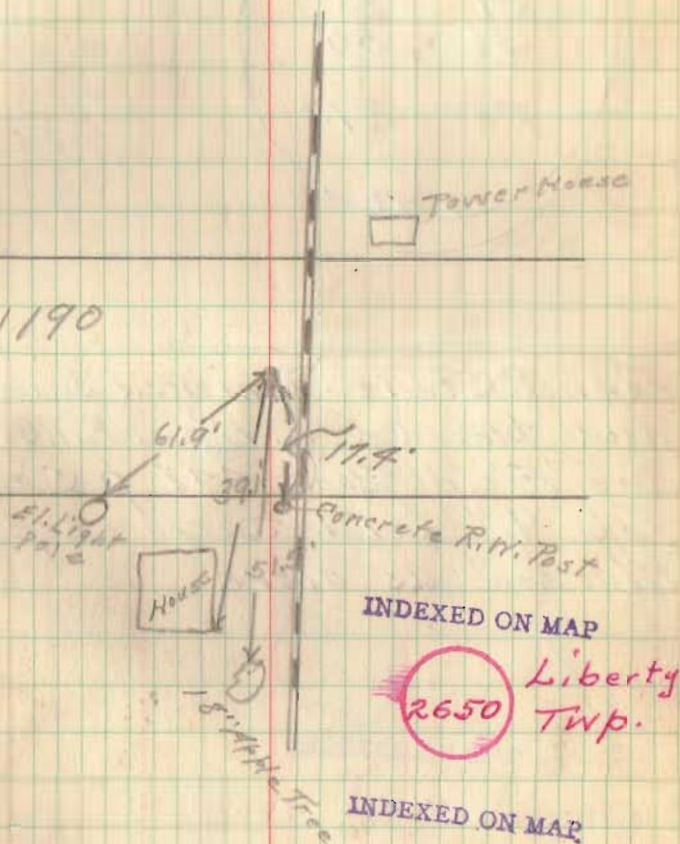
Set Concrete Mon. Where Located
 Aug. 1943.

See Field Book 448 p 11

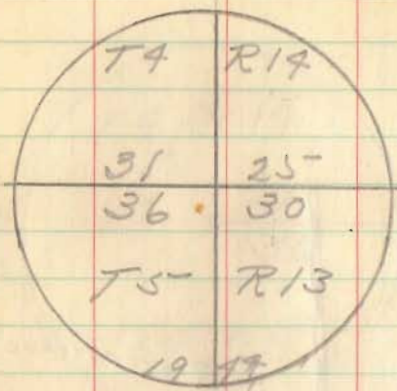
Full Length - (4')

Top 7" below surface of road
 Marked as above

Road 190



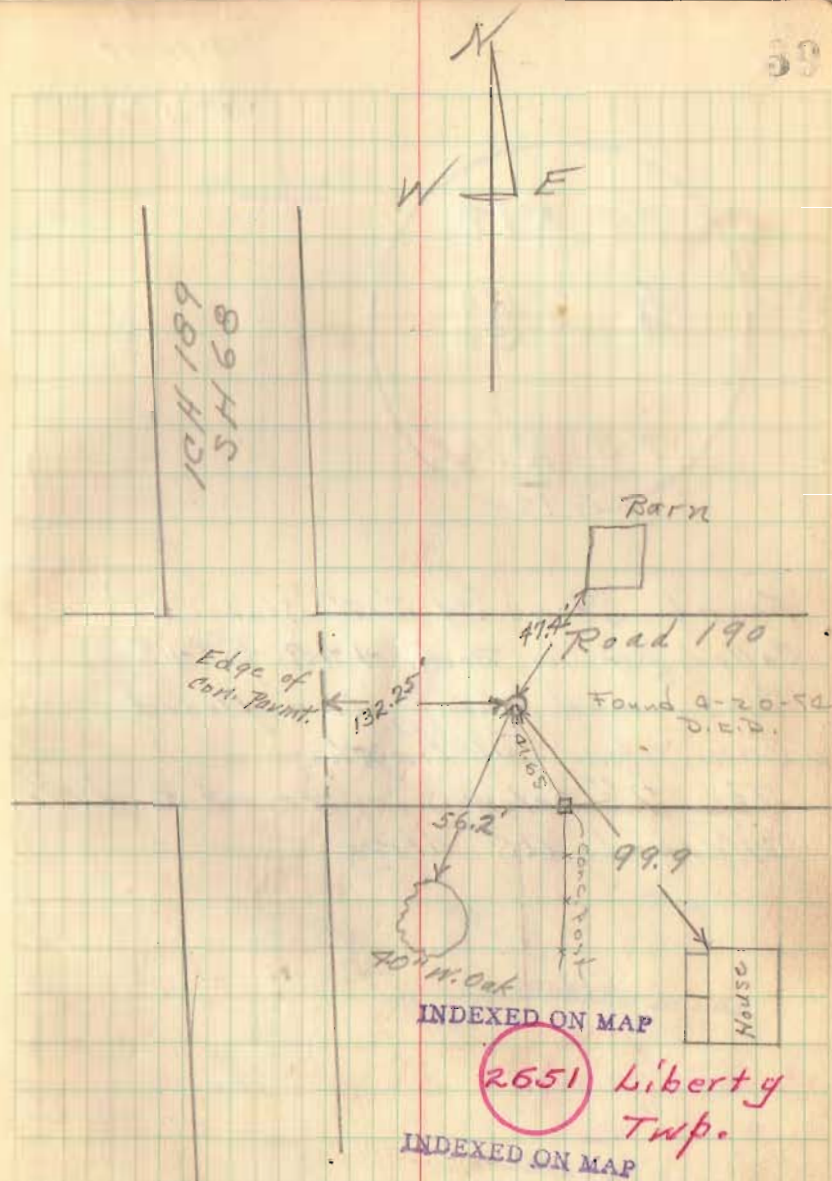
(16)



10-13-44
 Dyserf
 Dickinson
 B. Wilgus

Found Stone. Removed same
 and placed Corn Man. Full length
 See Field Book 498 p 5 & 11
 Top 9" below surface of road
 Marked as above

39



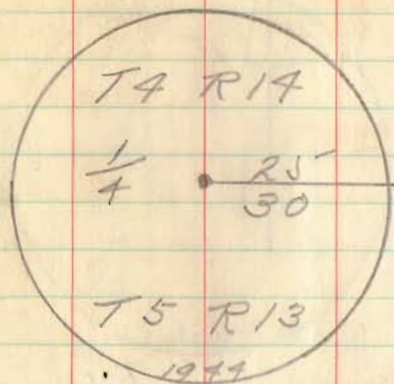
INDEXED ON MAP

2651 Liberty
 Twp.

INDEXED ON MAP

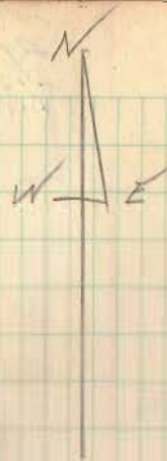
(19)

10-13-99
Ilyert
Robbins
M. Adams

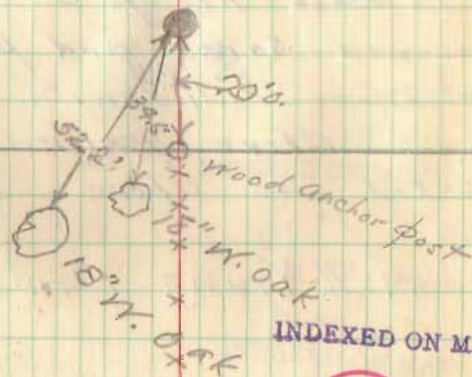


Found Stone and 2x2" Stake as
called for in Book 448 p. 48
Removed same and placed
Com. Mon. Full Length
Top 7" below surface of Road 190
Marked as above

40



Rd 190

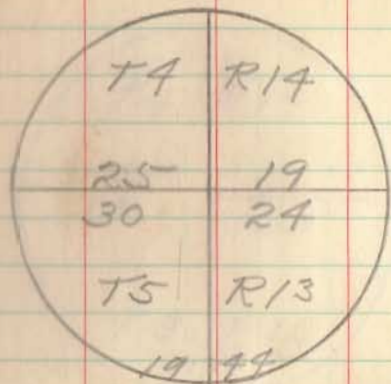


INDEXED ON MAP

2652 Liberty
Twp.

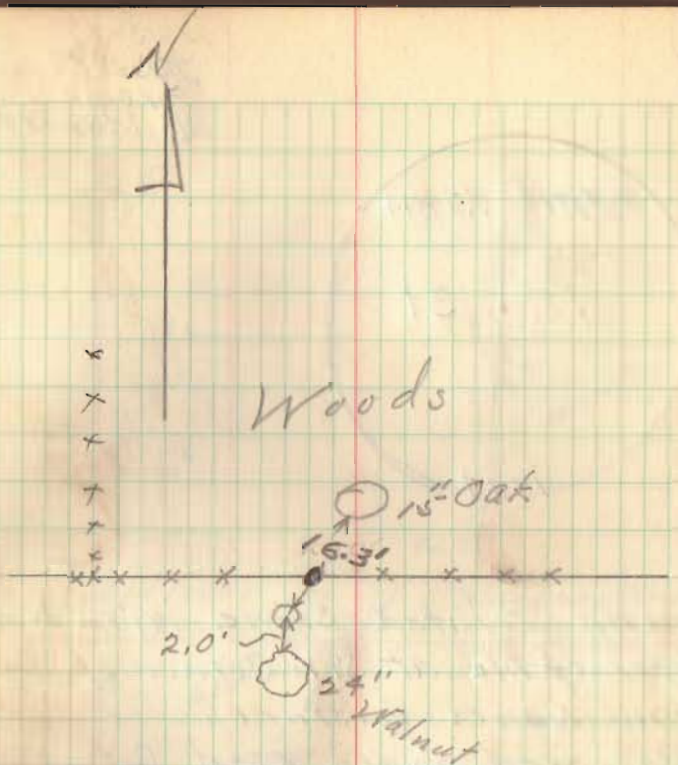
INDEXED ON MAP

10-13-99
Zybert
Dickinson
B. Wilgus



Found 2"x2"x24" Bar as called
for in Book 498 p. 52
Removed same and placed
Con. Mon. Full Length
Top 6" above ground
Marked as above

A. J. Young Farm



INDEXED ON MAP

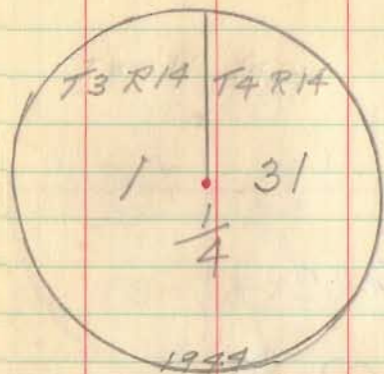
Liberty &
Monroe Twp.
2653

INDEXED ON MAP

✓

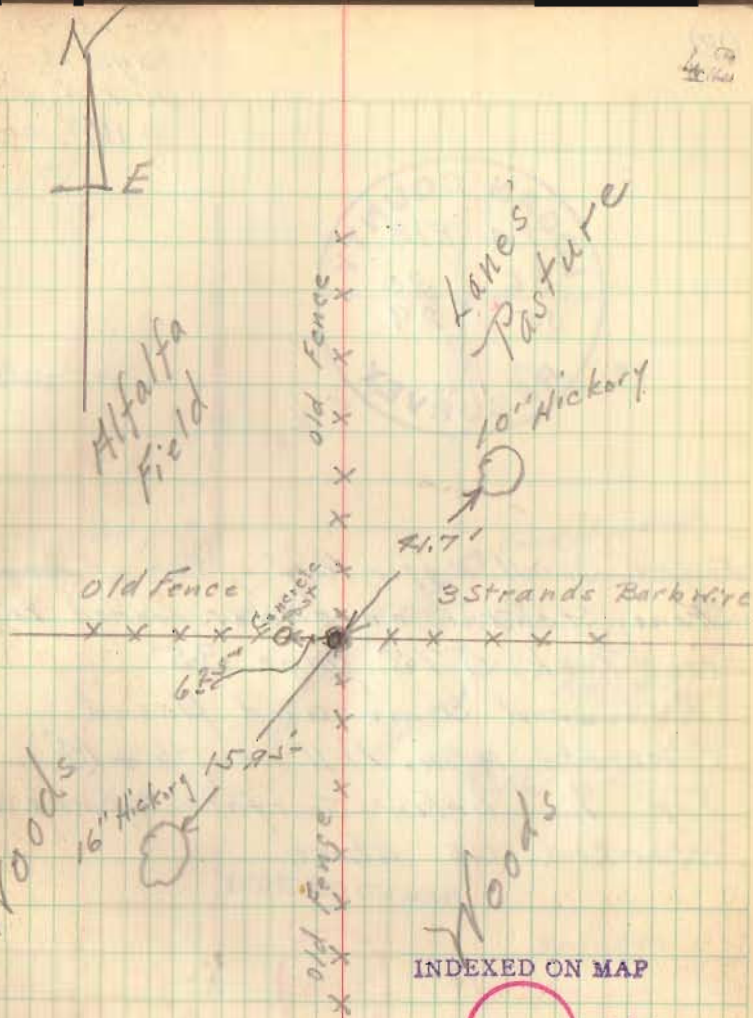
(19)

10-13-77
Insert
Robbins
Mr. Adams



Found Pointed Stone with broken pieces of tile at S.W. Corner of Frank Lanes pasture.

Removed same and set Con. Men. Full length ⁽⁴⁾ 6" above ground
Marked as above



INDEXED ON MAP

2654 Liberty
Twp.

INDEXED ON MAP

(20)

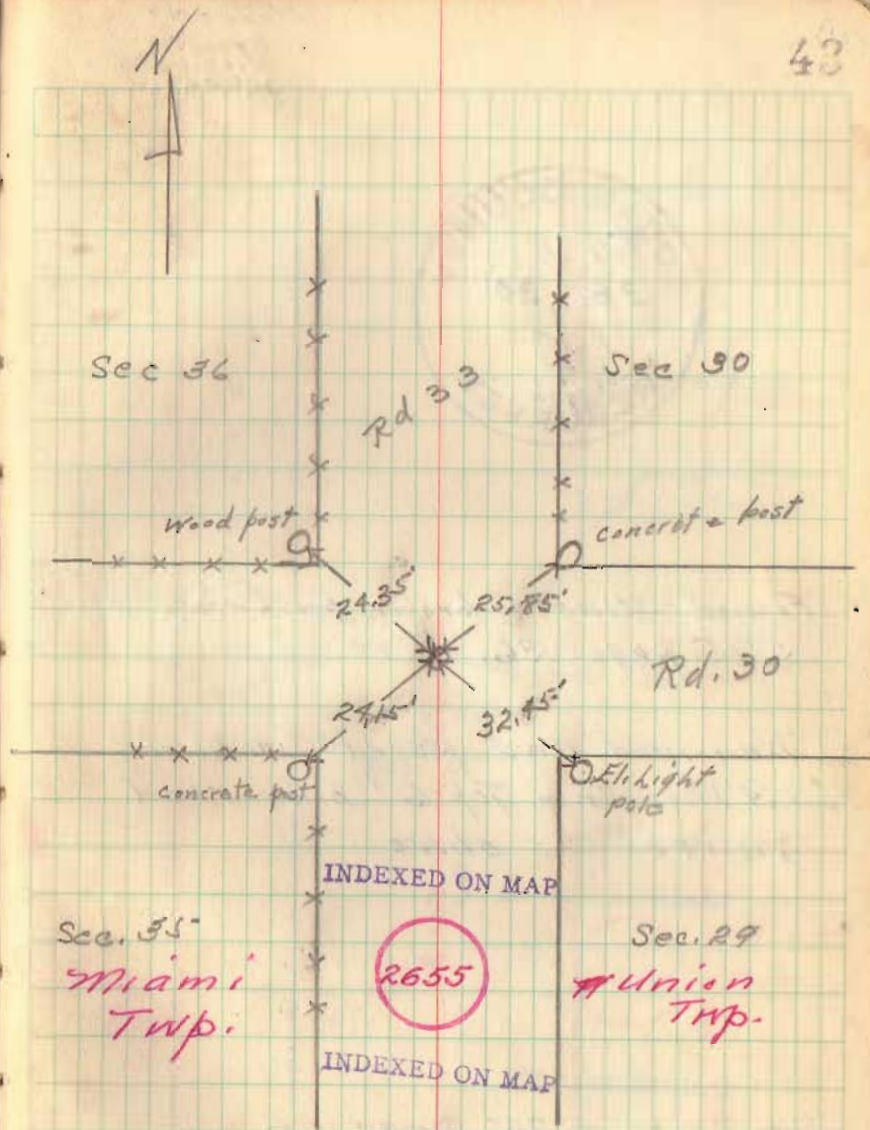
10-18-44
Dyert
Dickinson
B. Wilgas



Found Small Nigger Head on top of large
Stone standing on end. referred to
in Book 575 page 35
Removed same and placed
Concrete upon. Full length - (4')
Top 7" below surface of roads
Marked as above

See Book 575 page 36

43



(21)

10-18-47
Dysart
Robbins
Mrs. Adams

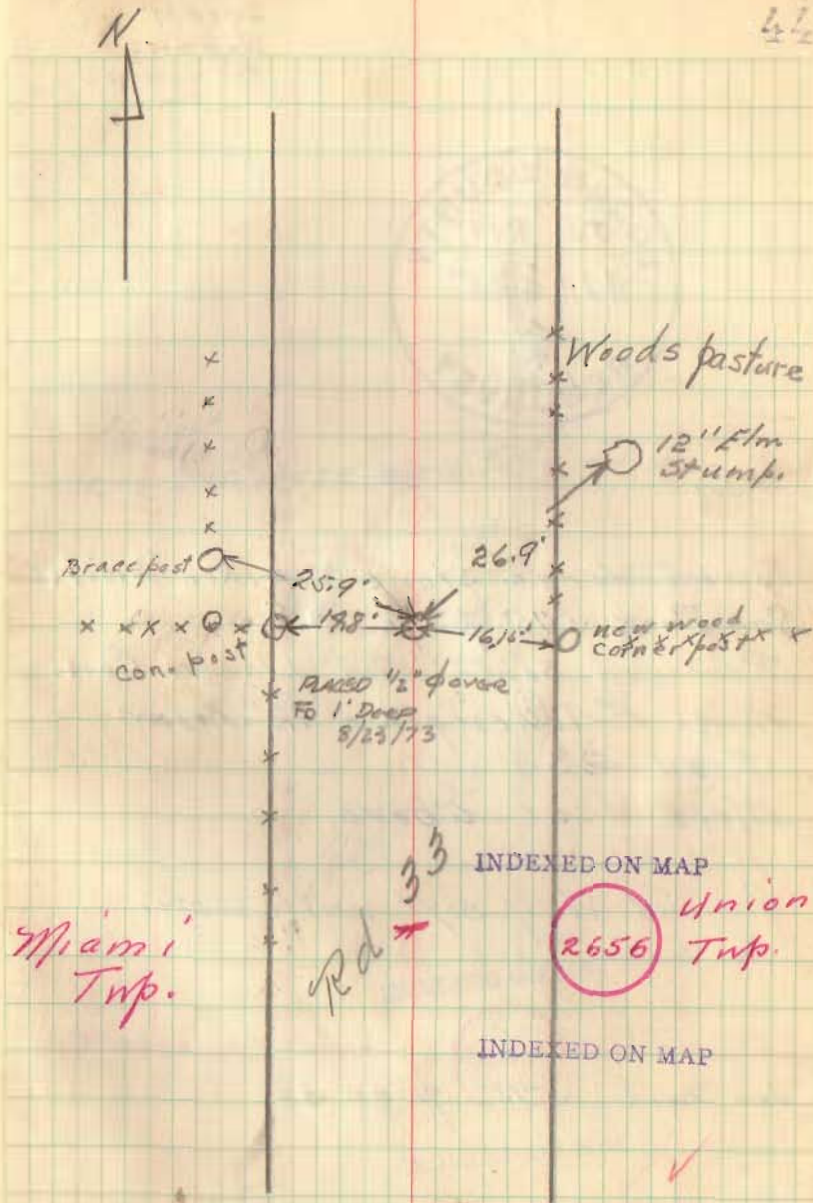


Found Stone ^{and} broken brick. See Book
575 page 36.

Removed and placed Con. Man.
Full (4') Length - Top 6" below road
marked as above

See Book 575 page 36

44



(22)

10-18-44
Dysoff
Robbins
H.L. Adams



Found large stone & broken bricks
See Book 575 page 38

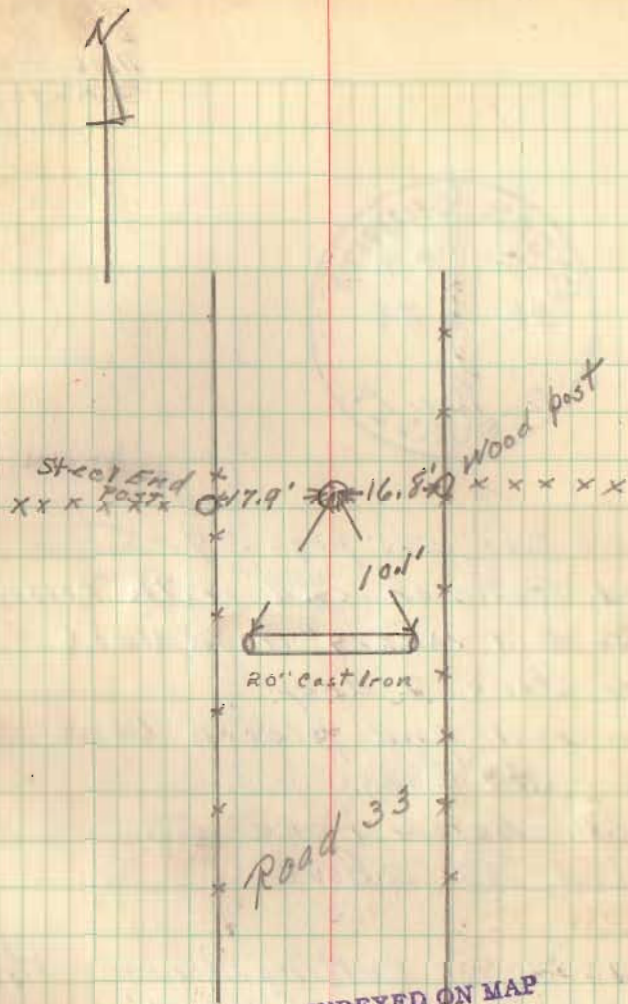
Removed same and placed Con.
Mon. Full length - 12' Below
Road 33.

Marked as above

Ground Very soft with water
in hole.

See Book 575 page 38

45



INDEXED ON MAP

Pleasant Twp.

2657 Union Twp.

INDEXED ON MAP

10-18-49
Dyser
Dickinson
R. Wilgus



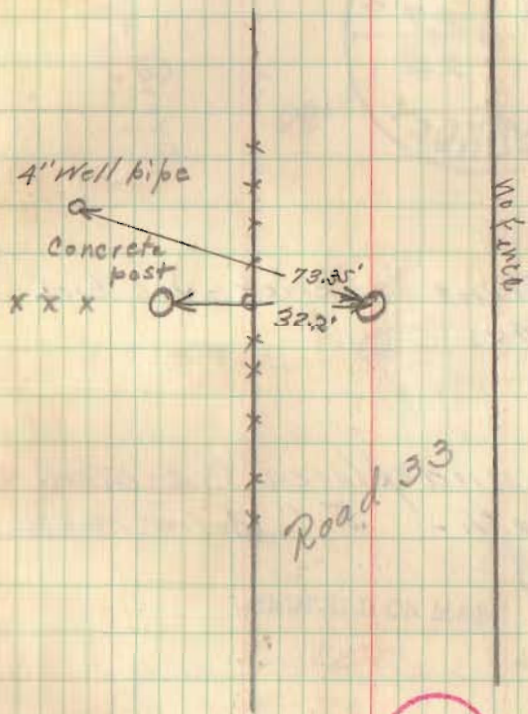
See Book 575 page 39

Found stone on end with broken bricks and $1\frac{1}{2} \times 2 \times 29$ " wood stake under stone 2' deep.

Removed and placed Concrete Mon. 3×2 " Long.

Top 10" below road 33 marked as above

"Reason for Cutting Monument,"
20" to 24" tile ditch 4' below surface of road under North Edge of Monument. Running E. by West



Pleasant Twp. 2658 Union Twp

✓

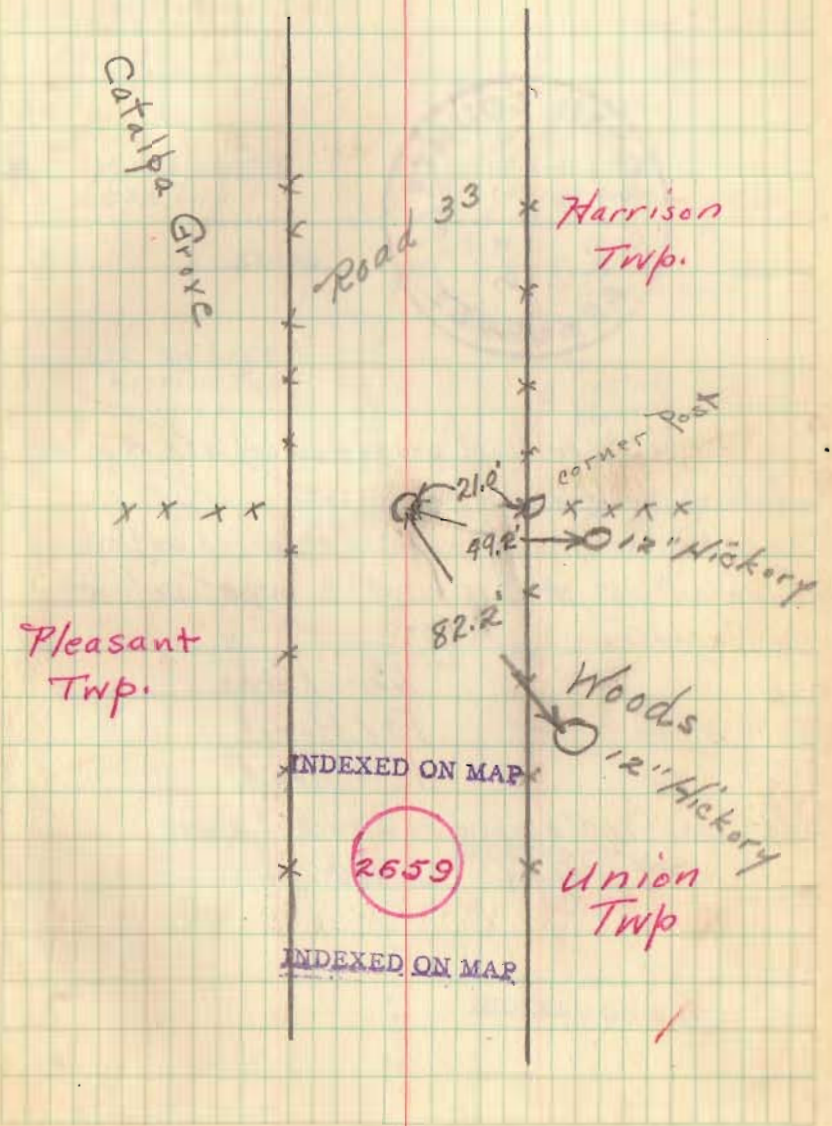
(24)

10-18-44
Dyert
Robbins
Mc Adams



Found Stone ^{Eng} Brick - See Book
575 p. 40.

Removed and placed Con. Mon.
Full length - 5" below road.

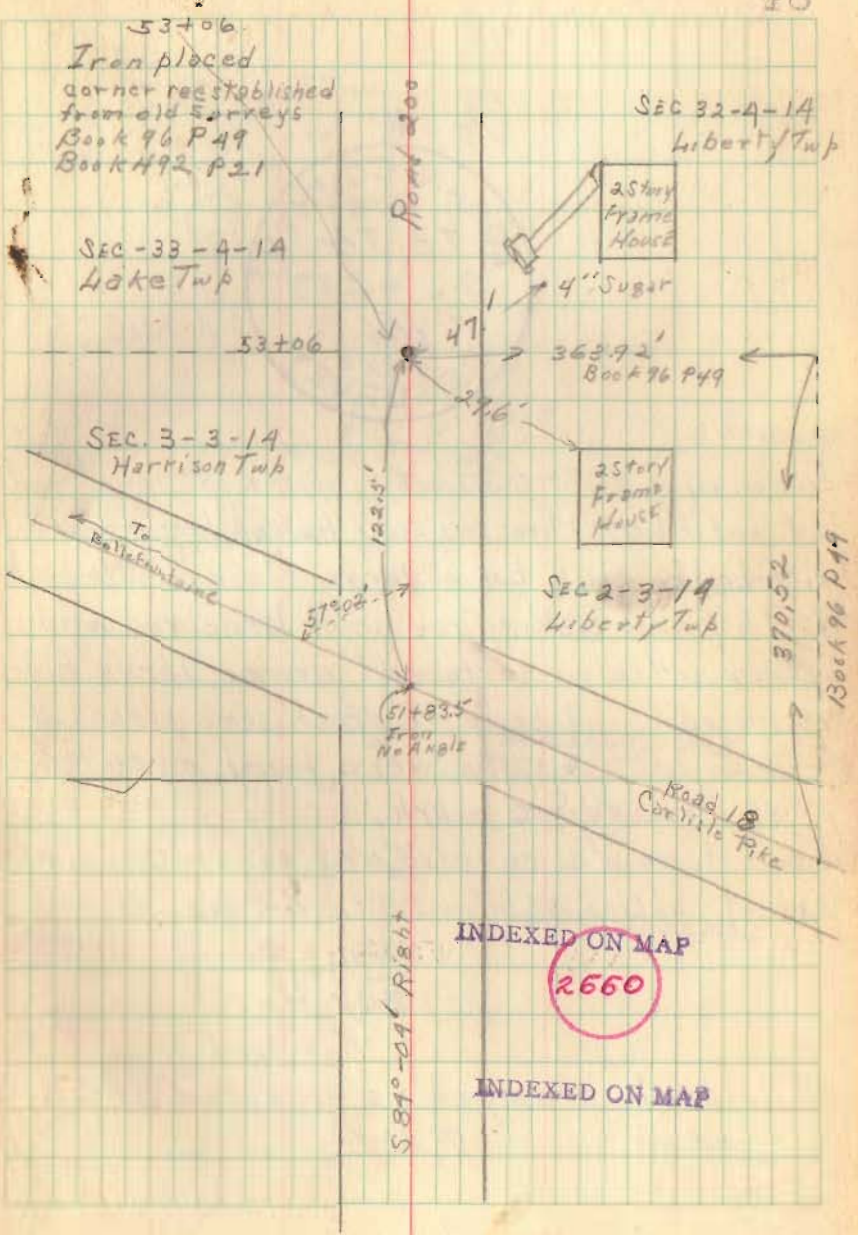




3-16-43 Iron bar found and recognized as corner
reestablished from old surveys.
The above mentioned iron was removed and concrete
monument set at this point 3 inches below
road surface

Hane Kerns
Fay Hurst
R. H. Reed

MONUMENT stamped as directed above
3/20/43 R.H.R.



INDEXED ON MAP
2660

INDEXED ON MAP



3-16-43

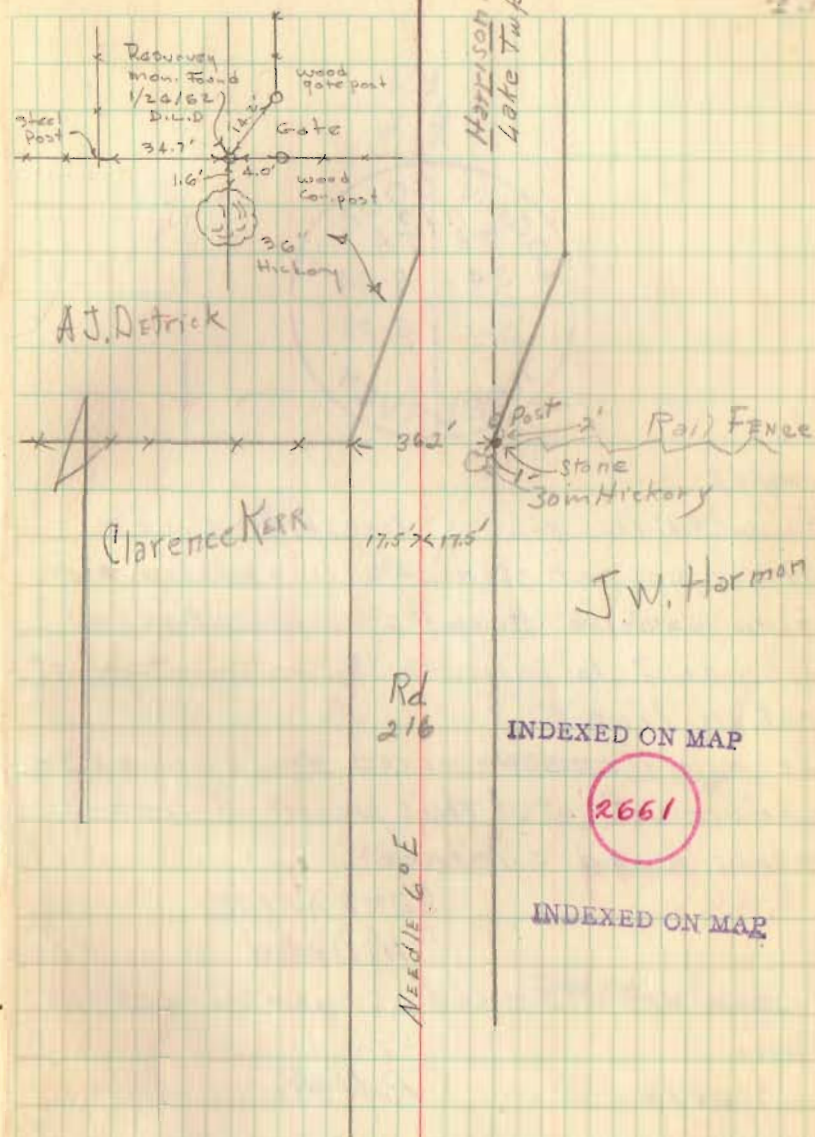
Pointed stone about 6" diameter approx 15" long found just east of hickory tree, said stone having been marked with broken bricks, but no large stone found beneath. North of said hickory tree under large root and approx. 30" below surface of ground, large blue stone was found beneath which some pieces of broken glass & stone were found, an evidence of the true 1/4 Sec mark.

Said stone was removed and concrete monument was set approx. 3" below surface of ground

Hane Kerns 2-17-43
Fay Hurst
R. H. Reed

Monument stamped as directed above
3/20/43 R.H.R.

Copied from
Field Book 588 p27





3/20/43

Found $\frac{3}{4}$ " iron pipe 15" long placed over section corner stone 22" long approx. 8" diam. Stone was blue stone placed on end with point to indicate the intersection of section line.

Iron + stone removed and concrete monument set at this point 5 inches below road surface

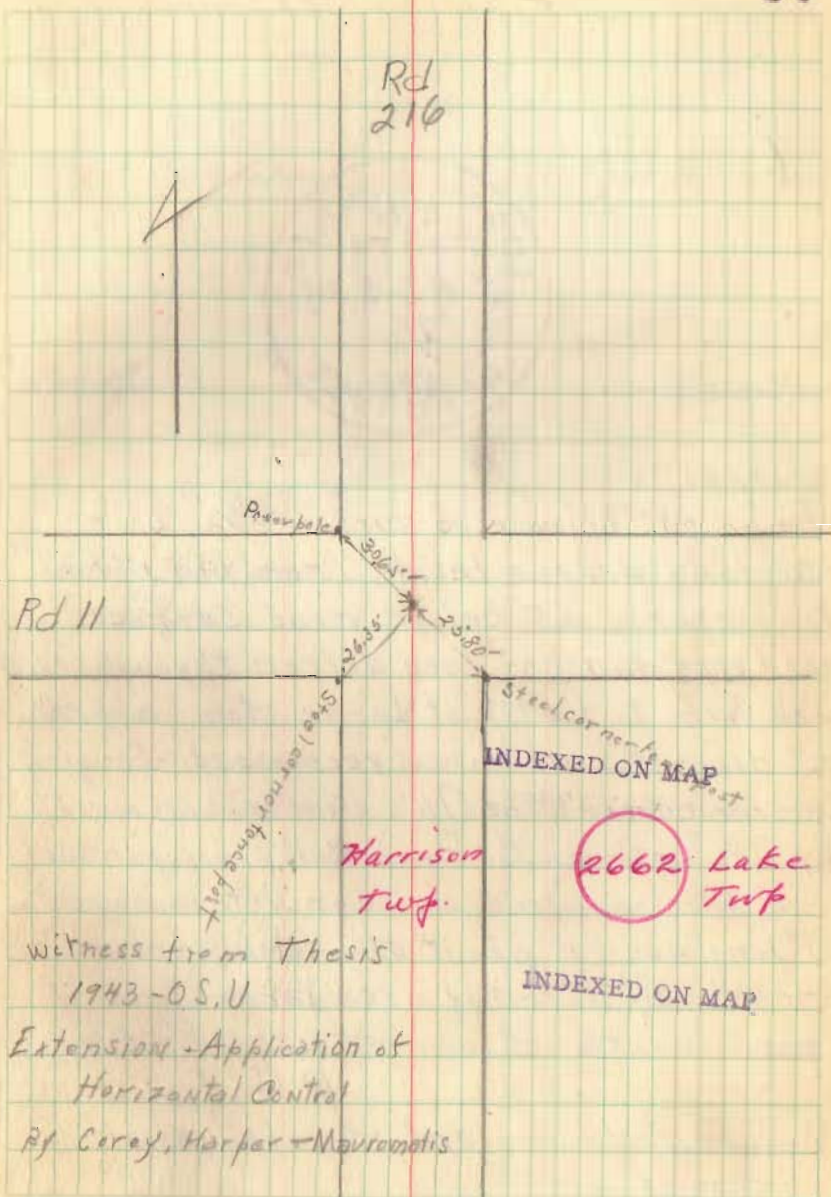
L. H. Kerns
R. H. Reed

Monument stamped as per directions above

3/20/43

R.H.R.

50





3/22/43

Found 0.1' below road surface - $\frac{5}{8}$ " bolt
 15" long driven beside iron pin - 1" x 36"
 long approx. 0.5' below road surface.
 Said iron pin had been driven through 2' x 2' x 12"
 oak hub to the top of large stone approx.
 12" diameter, which was recognized a original
 section corner stone (This stone was approved
 by C.A. Inskeep, Co Eng.). Bolt, iron pin and
 hub, were removed and concrete monument
 37" long was set about 0.4' below surface
 of roadway directly over large stone
 above mentioned.

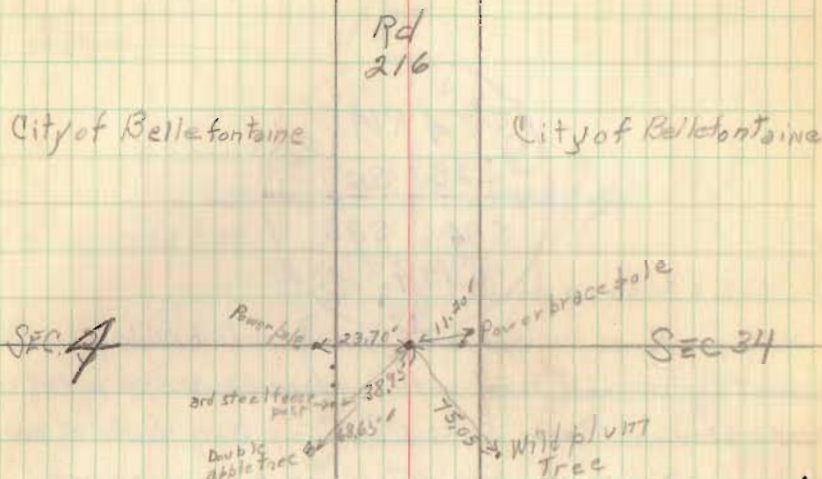
HANE KERNS

R. H. REED

MONUMENT drilled and stamped as above

3/22/43

R.M.P.



Sewage treatment
Plant

Harrison
Twp.

INDEXED ON MAP

Witness from Thesis

O.S.V 1943

Extension - Application of

Horizontal Control

By Corey, Harper, Morromatis

2663

Lake
Twp

INDEXED ON MAP

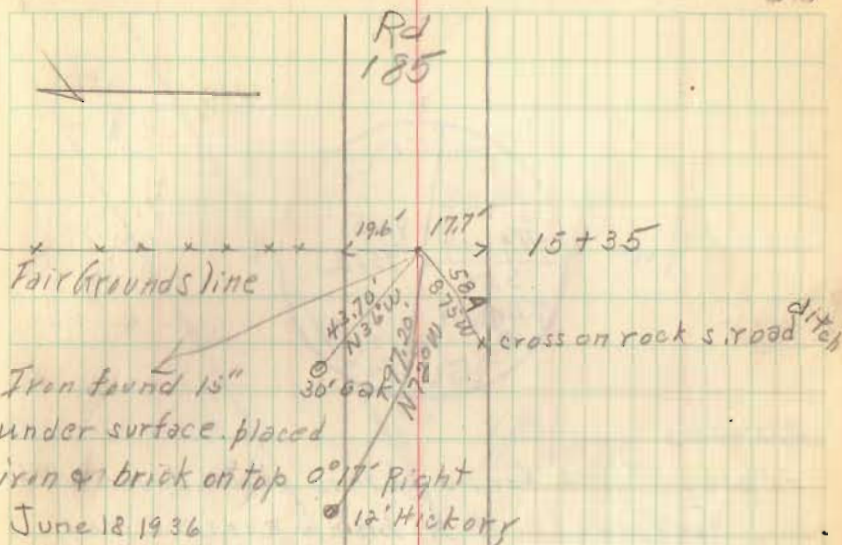


3/22/43 Found harrow tooth, with broken brick placed about it, driven level with surface of road, at point indicated in Book 511-23. Immediately North of and approx. 0.8' below surface of road, re-encasing rod $\frac{1}{2}$ " x 15" was found. Some pieces of broken rock about 3" dia. irregular shape was found near said rod but not considered in any way as identifying marks. Approx. 0.9' North of the above mentioned marks an iron bar $1\frac{1}{4}$ " x 15" was found about 22" below surface of road, having been driven directly over a large pointed rock 12" dia.

This man was removed when sewer was placed on Lake Ave

copied from
Field Book 511 D23

52



June 18 1936
F. Wright
E. Core
G. W. Tavis
J. Montgomery
Iron 1' East of
Fair Ground Fence line

INDEXED ON MAP

Lake

2664

Twp.

INDEXED ON MAP

S, H 189

Rt 68



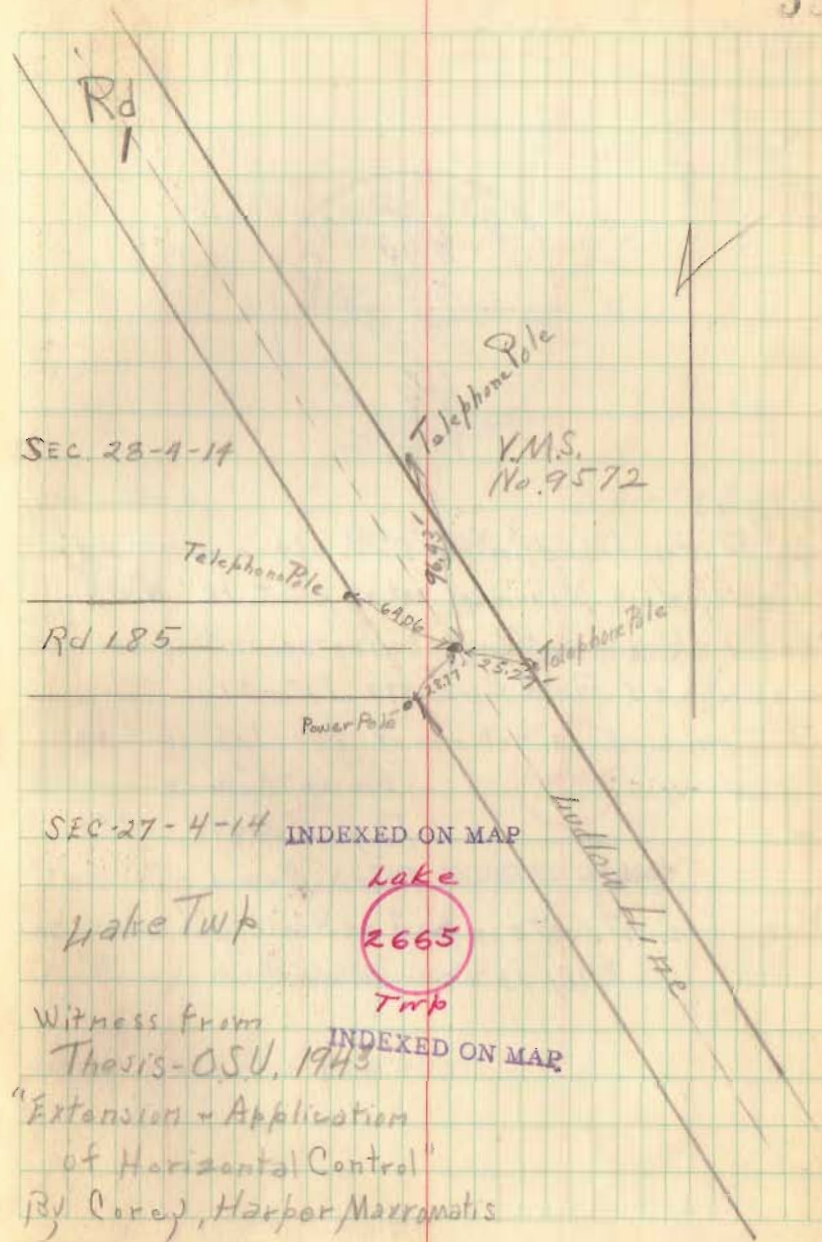
3/20/43

Harrowtooth found at this place flush with road surface, about 3" below surface and approx. 0.2 south of harrowtooth re-enforcing iron $\frac{1}{2}$ " x 18" was found which was directly over Sect. Cor. stone buried 3'-0" below surface.

Section stone found was a chiseled stone 7" x 12" x 25". Directly north of stone a oak hub 12" long was found driven to level of stone. Iron, stone, & hub, were removed and concrete Monument was set in place of stone approx. 0.4 below surface.

Lane Kerns
R. H. Reed

Monument drilled and stamped as directed above 3/20/43 R.H.R.





3/18/43

3/4" \square iron found in road. No other mark of identification. Monument set at point 18" North of iron above mentioned, being the section corner mentioned Field Book 492 P15-21

Monument is set about 8" below surface of roadway

Wano Kerns

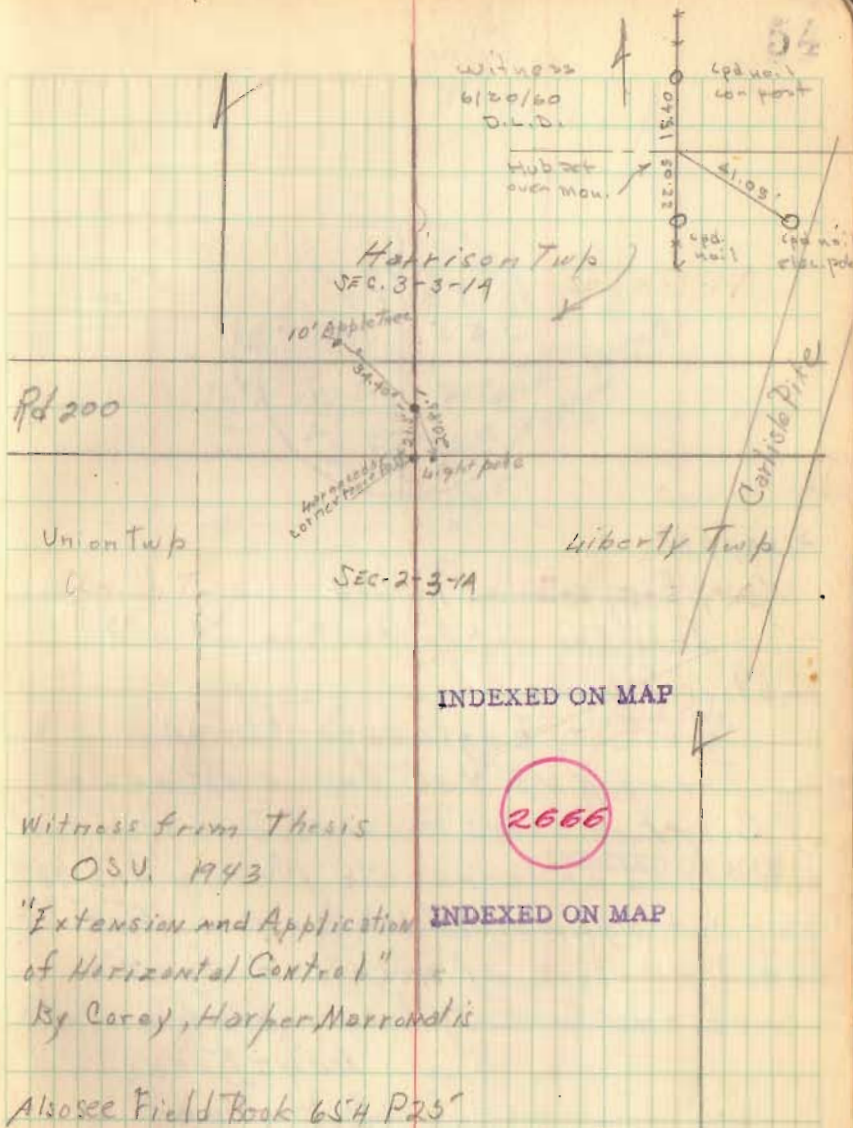
Fay Hurst

R.H. Reed

Monument stamped as directed above

3/18/43

RHR



Witness from Thesis

OSU, 1943

"Extension and Application of Horizontal Control"

By Carey, Harper, Marrantis

Also see Field Book 654 P25



2/23/43

City Engineers Record

Iron bar set in position of old section stone.

See City Engineer's Record

Iron pin $1\frac{1}{8}$ " x 30" found witnessed by City Engineer's Records. Said iron bar removed and concrete Monument 48" long set approx. 0.3' below road surface at exact position of iron bar mentioned above and in City Engineer's Record.

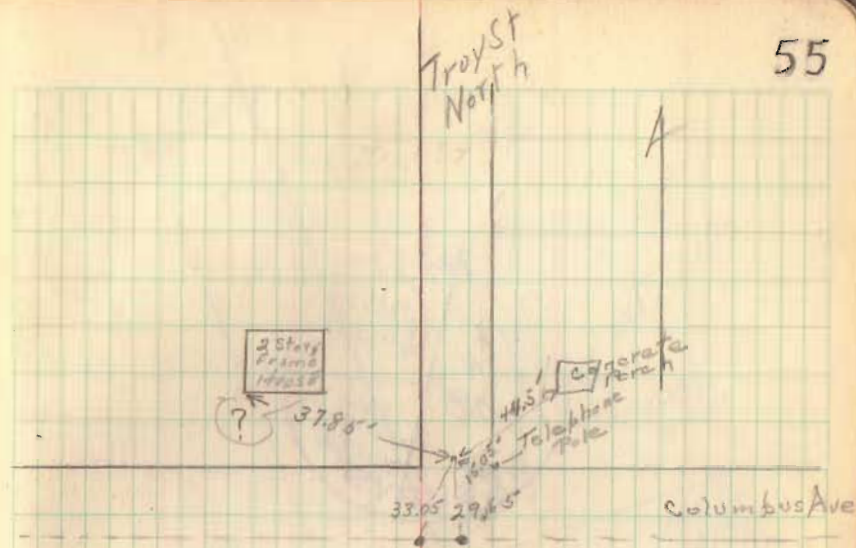
Lawrence KERN

R. H. Reed

Monument drilled and stamped as directed above

RHR

3-23-43



Harrison

Lake

2667

Witness from Thesis

O.S.U. 1943

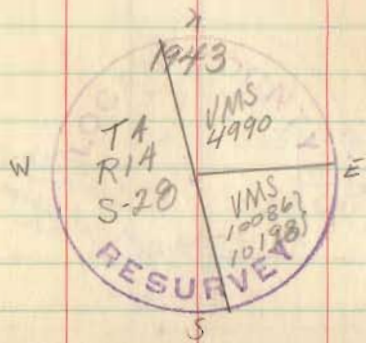
INDEXED ON MAP

"Extension and Application of Horizontal Control
By Coray, Harper & Mavromatis

SEE Field Book

654-P28

Troy St
South



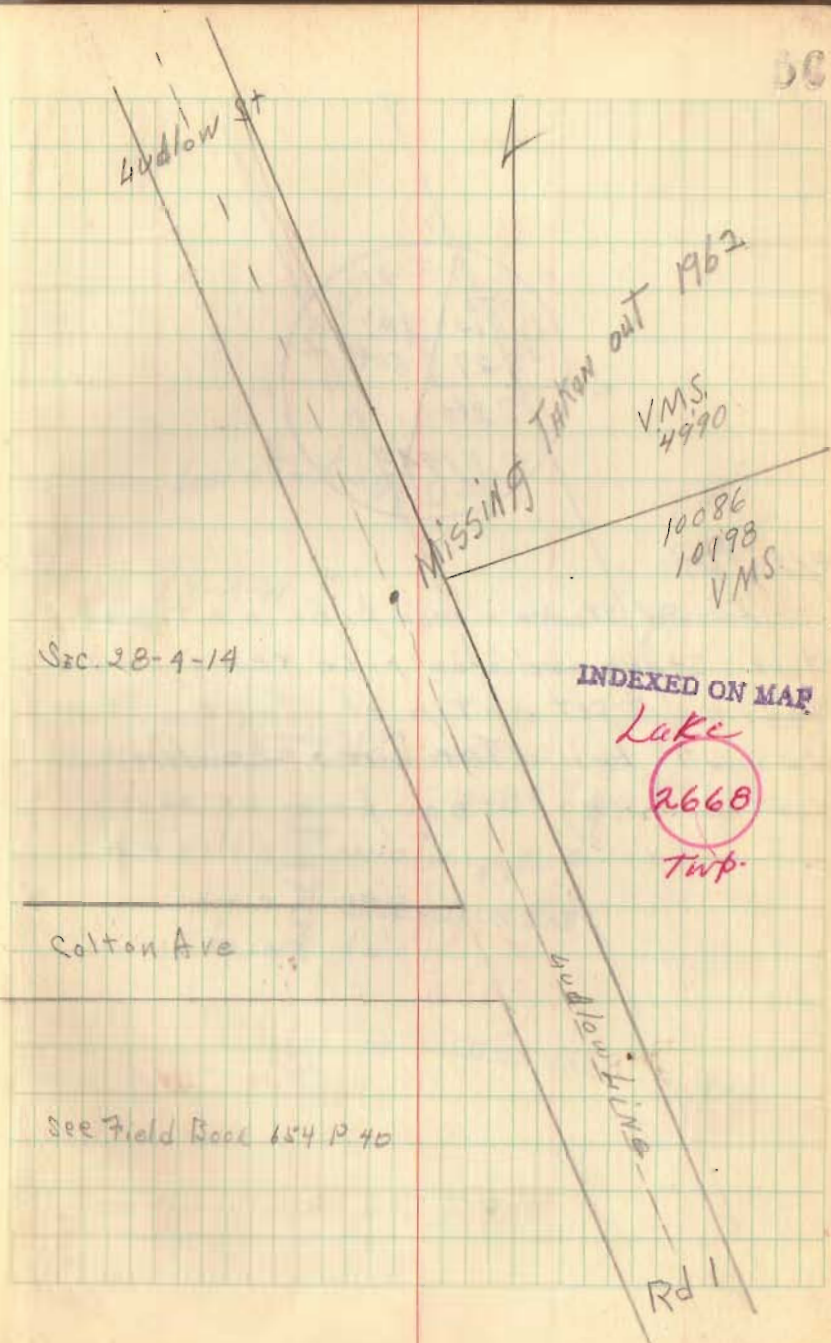
4/27/43

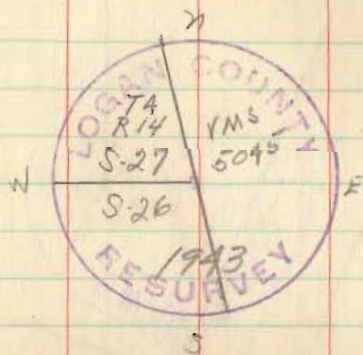
Set Monument 601.7' south of
 E of Spring St on Hudlow line. This
 position checked old fence line S.E. Angle 79°41'
 Monument approx. 1" below tar surface
 stamped as shown above

Ret 4-27-33

John Inskoop
 Lane Kerns
 Paul Fout

This Mon was removed when city placed
 sewer on Hudlow in 1962

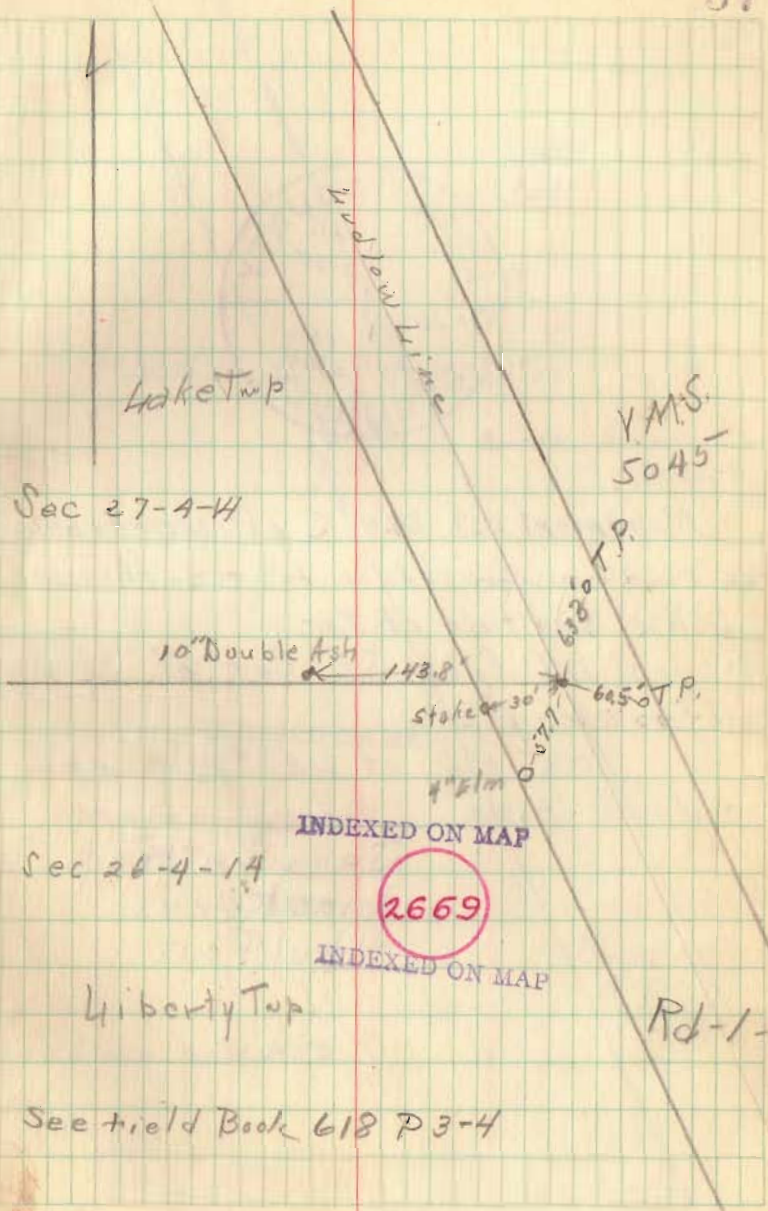




4/27/43

Found stake + iron pipe on top of stone. Stake and iron pipe removed and Monument set on top of stone. Stone was 27" below Top Surface. Mon. cut 23" long. Stamped as shown

John Inskeep
Jane Kerns
Paul Fout.





4-27-43

Monument set 69.4' S of corner between
Sec 26, 27 on Ludlow line. Mon. set
3" below surface of tar.

Witness 17.1' from S.E. Cor of SE wing
wall for corr pipe.

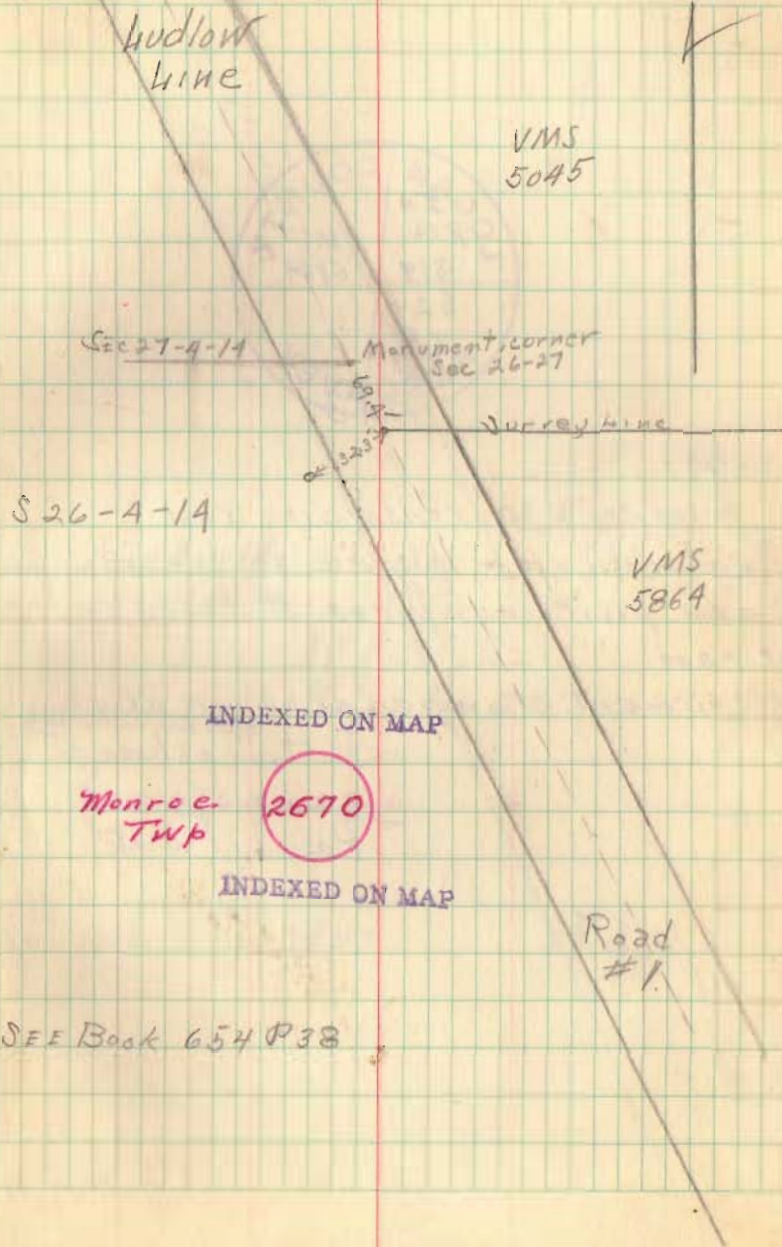
32.3' N.E. of light pole, west
side of road.

John Insteep

Hane Kerns

Paul Fout

53



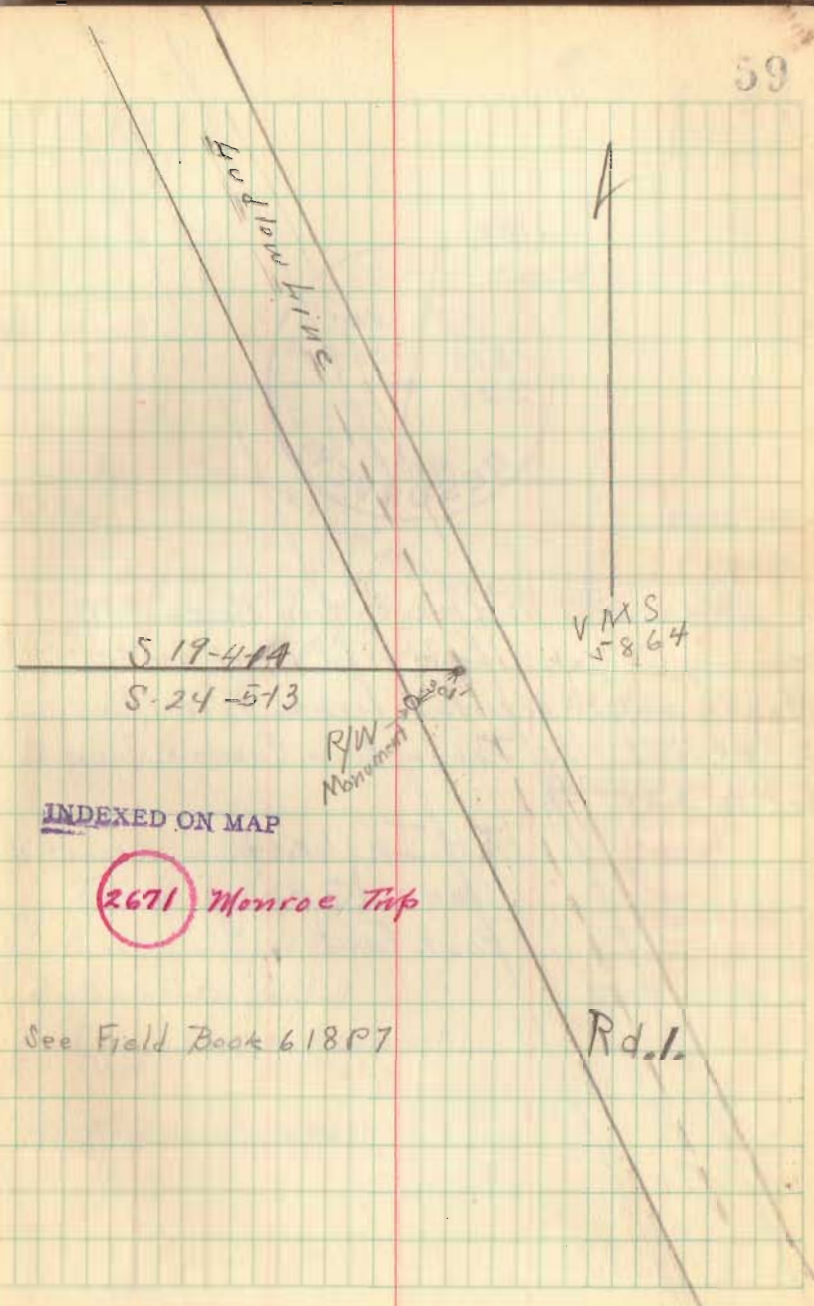


4/28/43

Found 3/8" x 30" re-inforcing rod
 Removed rod + placed monument in
 same position. Approx. 5" below surface
 of road.

Monument stamped as shown above.

J. H. Inskeep
 Lane Kerns
 Paul Fout



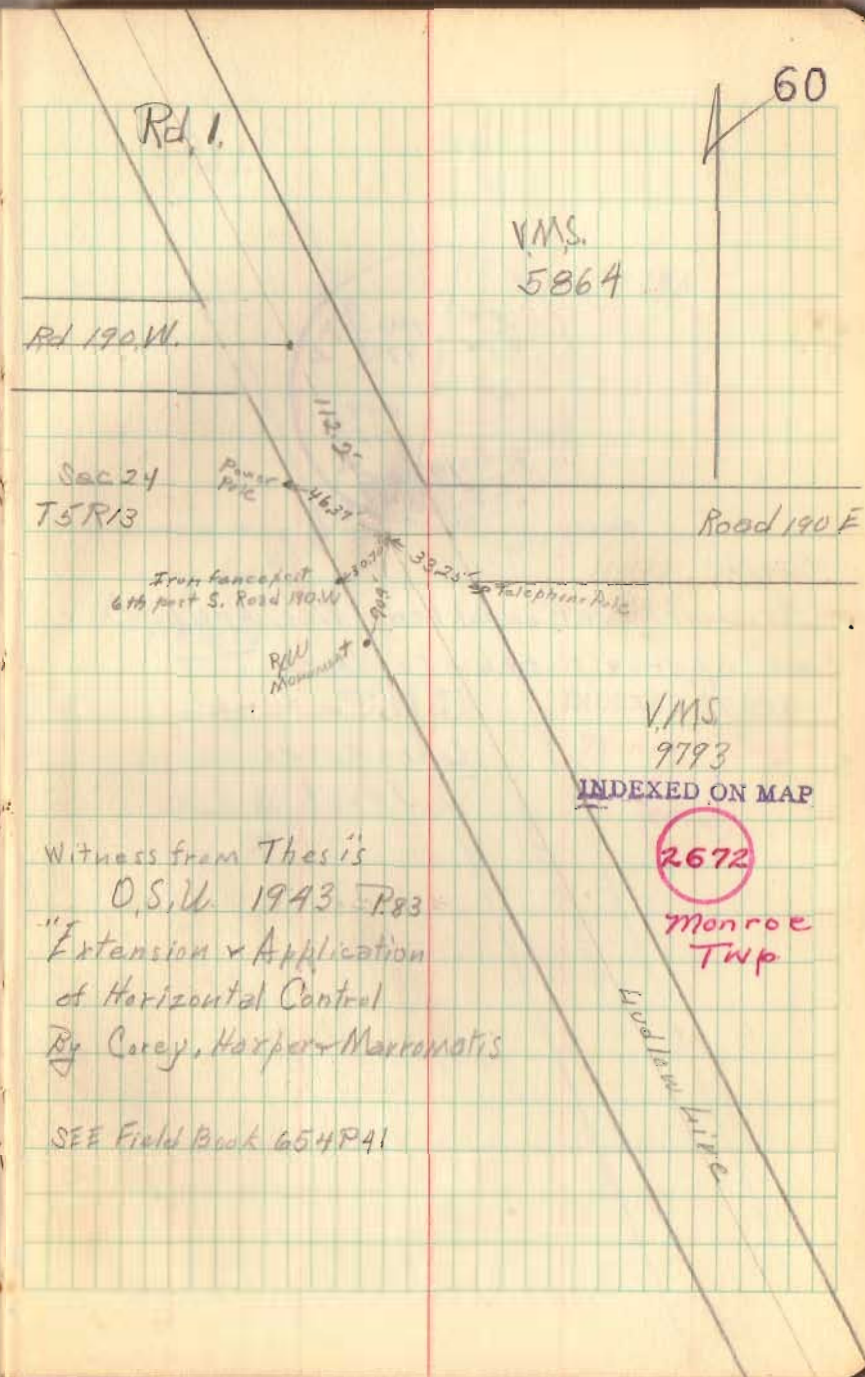
See Field Book 618P7



4/29/43

Measured 112.2' south from barren tooth marking center line of road 190 W, and set Monument on Hudlow Line 4" below surface. 112.2 Taken from Comm. Journal Vol. 10 p83

J. H. Inskeep
 Lane Kerns
 Paul Fout



Witness from Thesis
 O.S.W. 1943 P83
 "Extension & Application
 of Horizontal Control
 By Corey, Harper & Marmoratis

SEE Field Book 654 P41

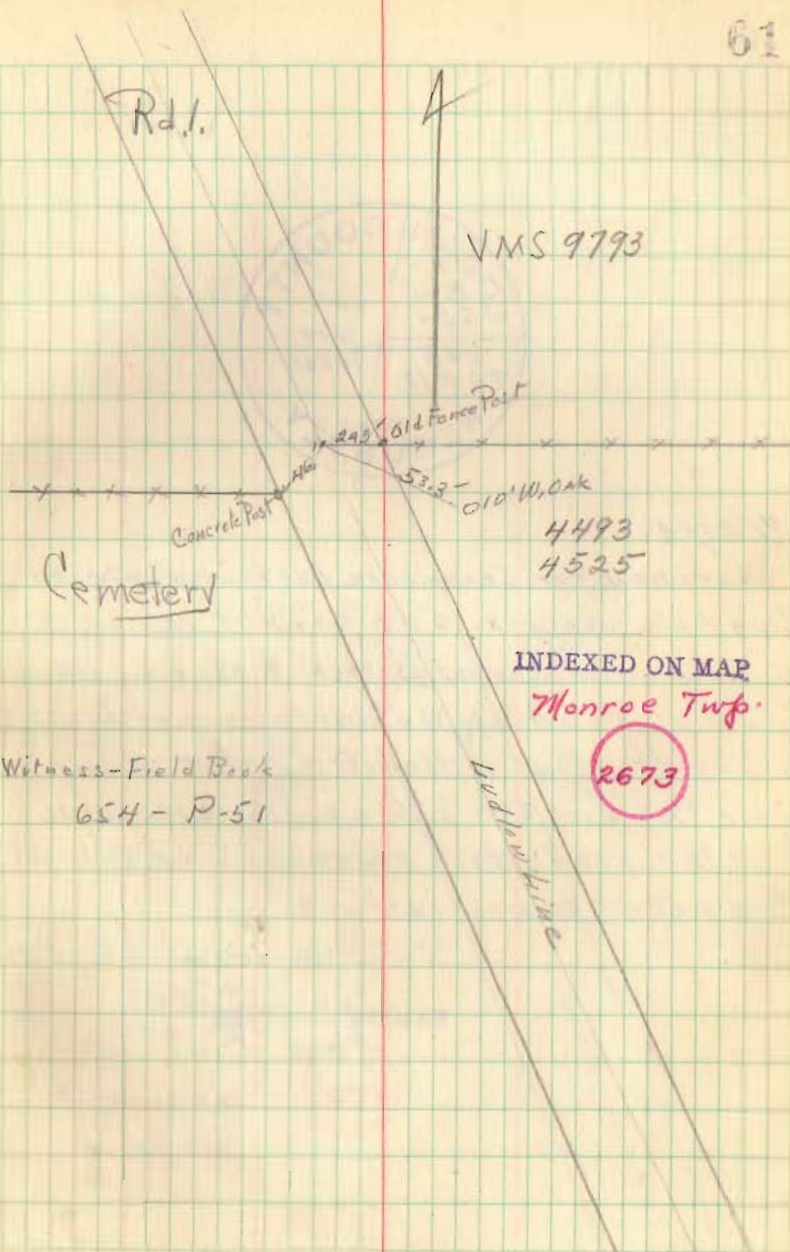


4/29/43

Monument set on old fence line and bud low
line approx. 3' below surface

J.H. Tuskeop
Lane Kerns
Paul Faust

61

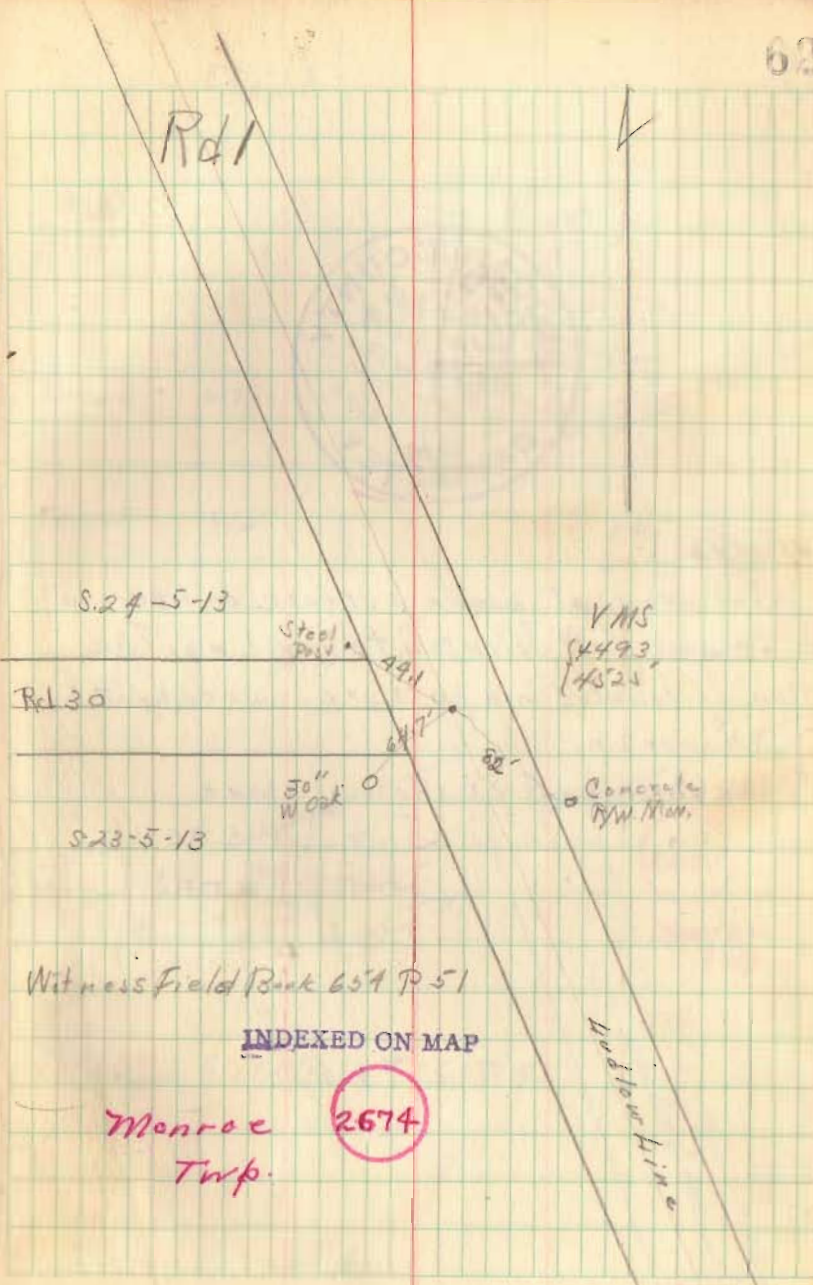




4/29/43

Searched for Stone here but found nothing
 Dug hole approx. 6'x6'x3'. Set monument
 on wvd low line and apparent $\frac{1}{2}$ of Road 30
 The $\frac{1}{2}$ of road 30 was determined by
 using the stone at the liberty - Monroe Twp
 line (See Book 648 P 80) and the apparent
 $\frac{1}{2}$ of the road which appeared to be straight
 Mon. set 4" below surface.

J H In sheep
 Lane Kerns
 Paul Fout



Witness Field Book 654 P 51

INDEXED ON MAP

Monroe
 Twp.

2674



4/30/43

Set mon 2" above surface on Ludlow
line and F.N. Johnson fence line. The
mon. is located in a pasture owned by G.F.
Duckworth.

Mon. stamped as shown above

J.H. Inskip
Lane Kerns
Paul out

75
R13

SEC 23

SEC 22

Road 1

S17

S16

VMS.
4493
4525

Now
4476 iron
4516 iron

VMS.
6516

Survey line

INDEXED ON MAP

2675

Monroe
Twp.

Rd 47.

Witness Field Book # 654 P 42

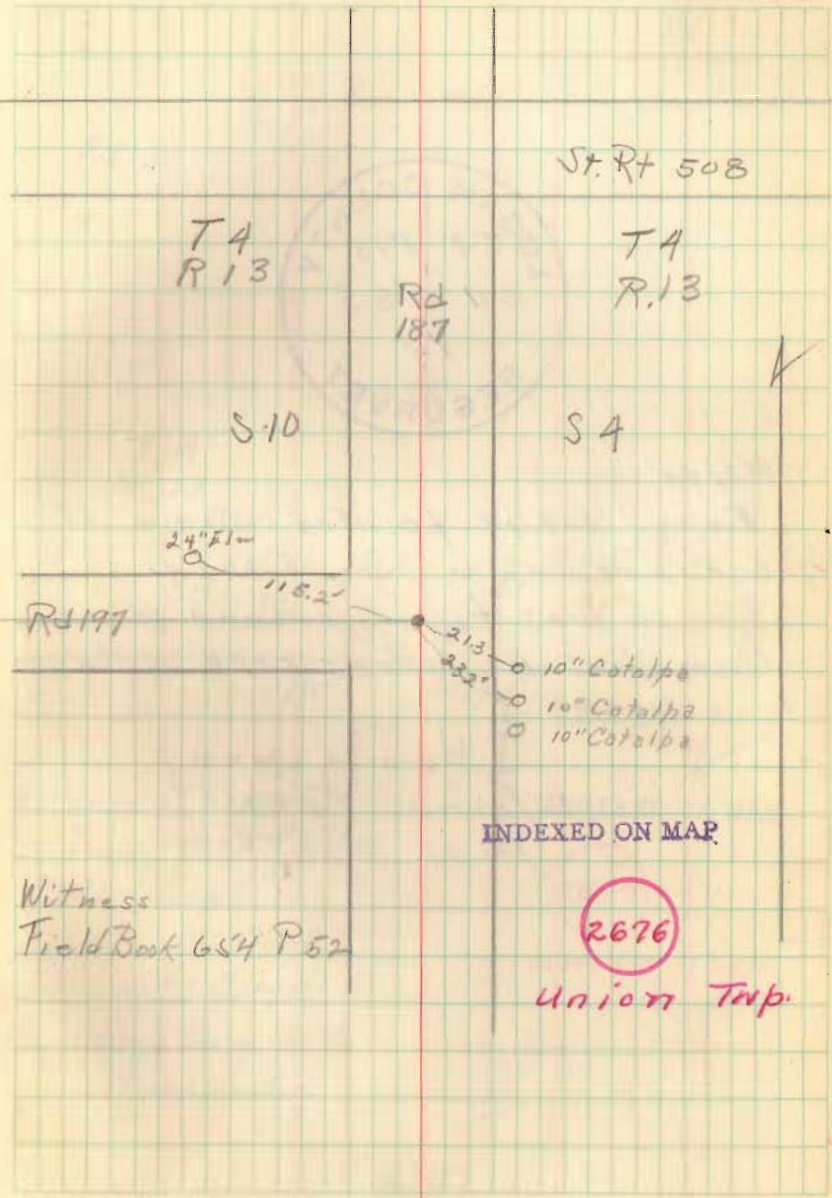
Ludlow line



4/30/43

Found blue stone 6" x 10" x 15" resting on top of large boulder. The blue stone was removed and the monument 11" from the top. The mon. rests on the boulder and is in approx. 9 in. of concrete.

J. H. Inskeep
Lane Kerns
Paul Fout



INDEXED ON MAP

Witness
Field Book 654 P 52

2676

Union Twp.



5/3/43

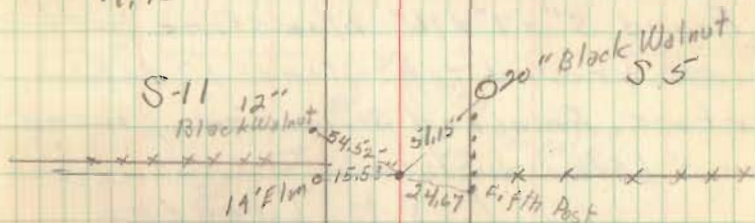
Found large pointed stone at
 1/4 cor between Sec 5 and 11.
 Brick was found around stone.
 Mon. Set 4" below road surface
 Stone Removed.

J. H. Inskip
 Lane MERAS
 Paul Faust

Rd
187

Rd 30

T. A
R. 13



Witness Thesis
 OSU. 1943 P 66
 Extension
 Application of
 Horizontal Control
 By Corey Harper
 Mammochis

INDEXED ON MAP

2677

Union Twp.

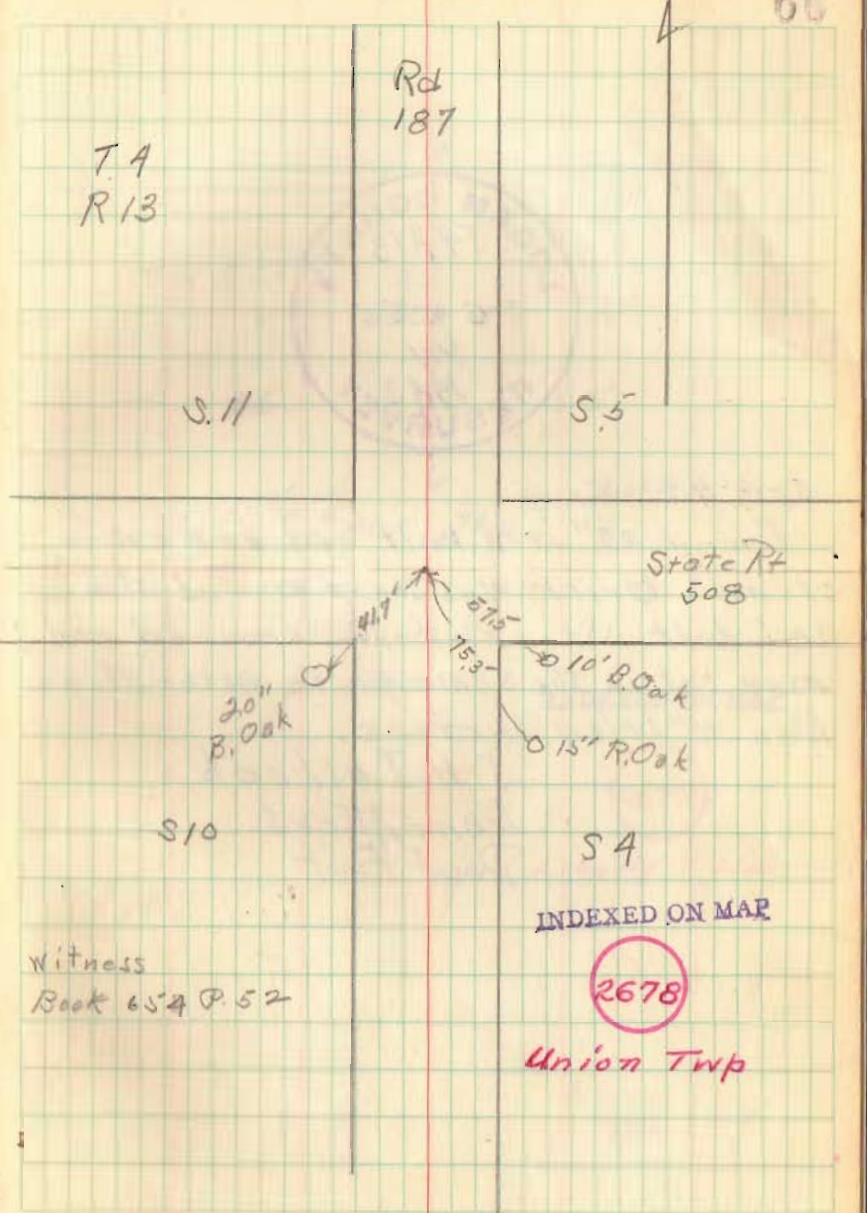
Rd 187

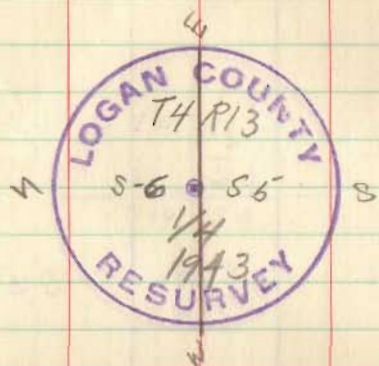


4/30/43

Found 5" x 7" x 16" blue stone with brick & gravel top. Stone 2" below surface. Removed stone and placed Mon. 3" below surface.

J. H. Inskeep
Lane Kerns
Paul Fout

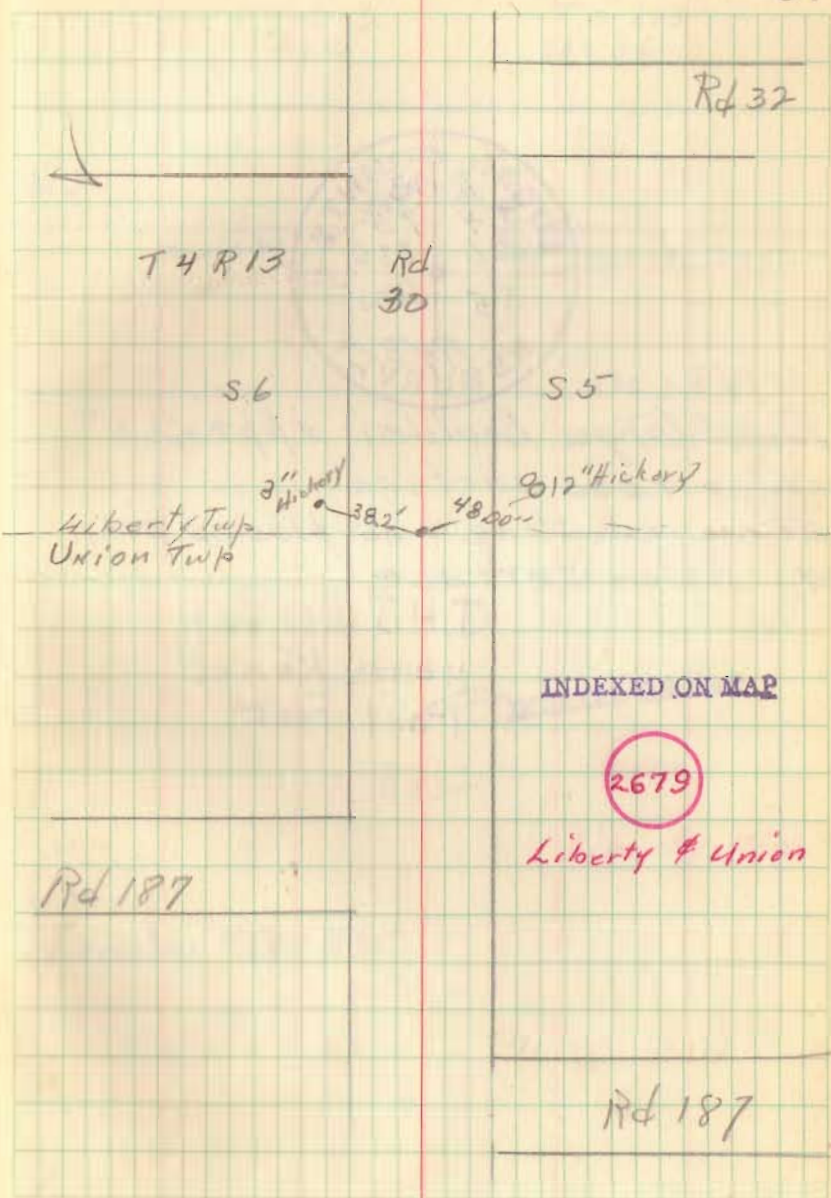




5-4-43

Found 27" iron bolt and 8" x 8" x 18" stone. Brick was found around stone and bolt. Stone + bolt removed and Mon. set in the same place as the stone. Mon. 4" below surface.

J. H. Inskeep
 LANE & ERNS
 PAUL FOUT



INDEXED ON MAP

2679

Liberty & Union

Rd 187

Rd 187



5/4/43

Found large boulder approx 6"
under road surface
Rammed stone and placed mon
4" below surface

J. H. Inskeep
Lane Kerns
Paul Fout

68

T4 R13
SEC 6

T5 R13
SEC 36

Rd 30

Fence post
with concrete top

36.3'

33.7'

2 oak stumps

SEC 5
T4 R13

SEC 35
T5 R13

INDEXED ON MAP

Rd 32

2680

Liberty Twp.

Witness

Field Book #654 P55



5/4/33

Found $\frac{1}{2}$ " x $\frac{1}{2}$ " x 24" iron bar.
 Removed bar and placed mon. 4"
 below surface.

J. H. Inskeep
 Hane Kerns
 Paul Fout

Rd
32

T4 R 13
S. 5

T4 R 13

SA

Liberty Twp
Union Twp

R/W
Monument

30'

30'

R/W
Monument

Field Book 654 P 56

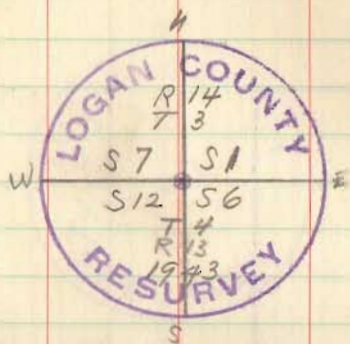
INDEXED ON MAP

2681

Liberty & Union
Twp.

St Route
508

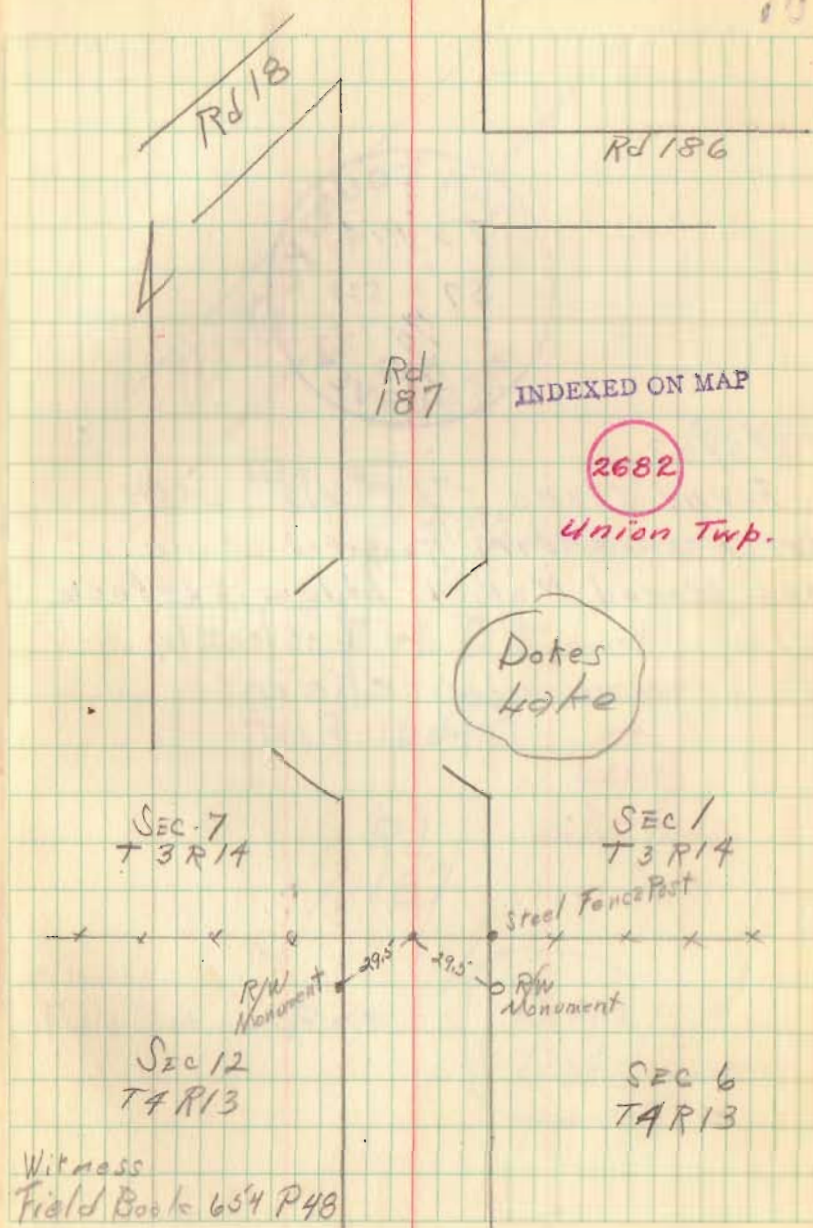
Rd
187



5/3/43

Found flat stone 2"x8"x12" on top of
stone 5"x5"x19". Brick around both
stones and placed mon. 8" below
surface

J.H. Tuskeep
Lane Kerns
Paul Foot



Witness
Field Book 654 P48

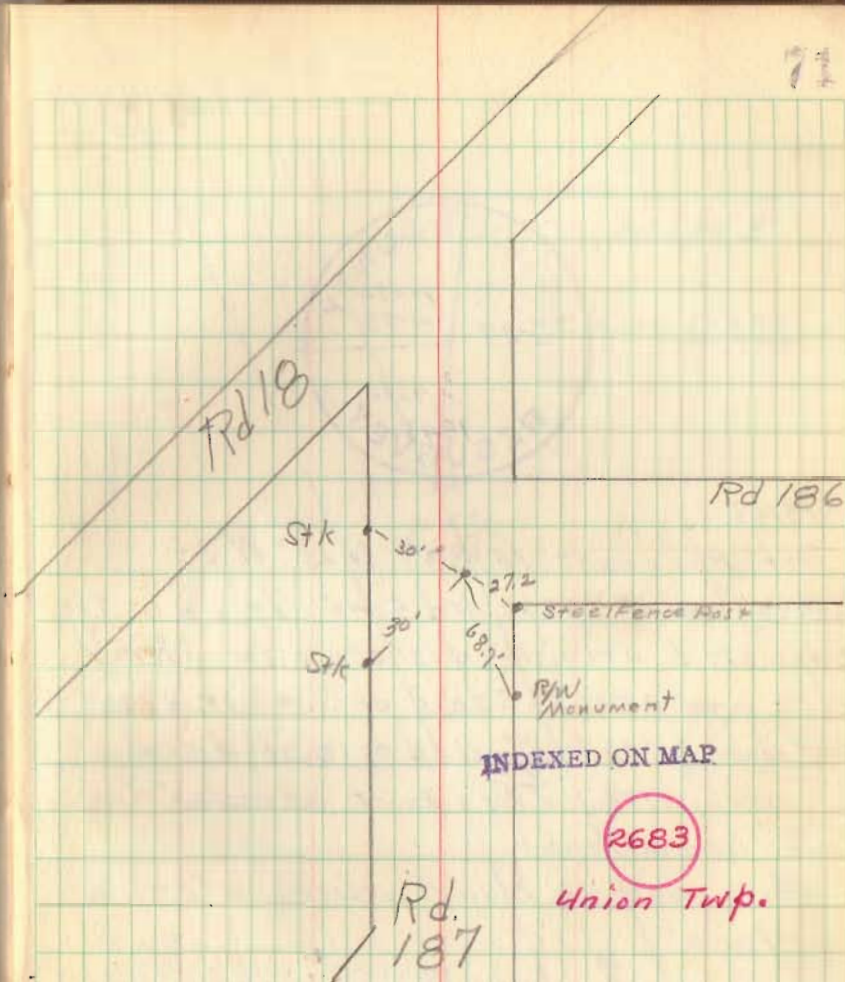


5/3/43

Found stone 5" x 5" x 12" with
brick around it. Removed stone
and placed Mon. 4" below surface.

J H Inskeep
Lane Kerns
Paul Fout

71



Witness
Field Book 654 P 48

Dakes
Lake

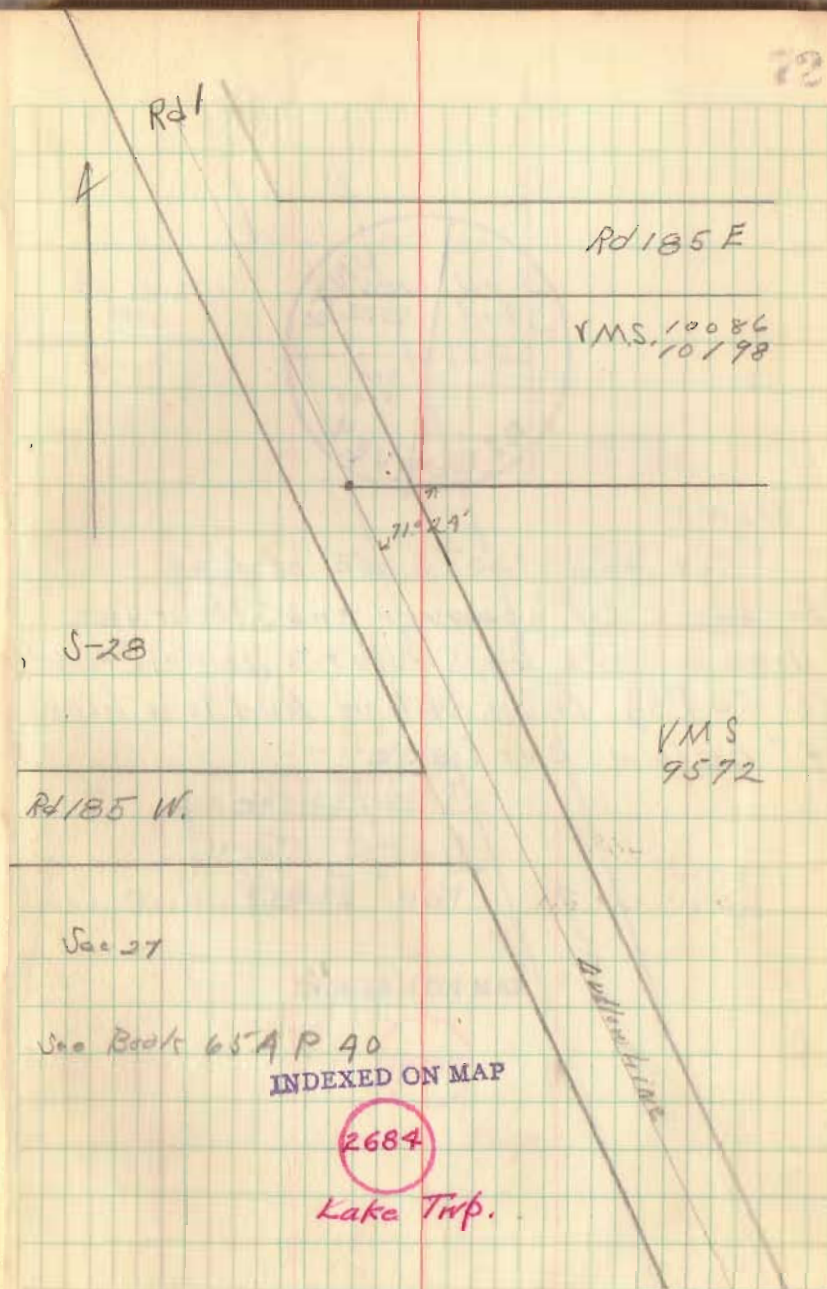


5/5/43

Set Monument 1697.8' N 20° W of
Survey Corner 9572 and 5045. This was the
adjusted original distance for Survey
9572 and 2590.5' S 20° E of Sur. cor. 4990
and 10086, 10198, adjusted original distance
for 10086, 10198. This point checked the
fence line all right.

Mon. set on Ludlow Line 4" below
surface.

J H Innskeep
Lane KERMS
Paul Fout





5/6/43

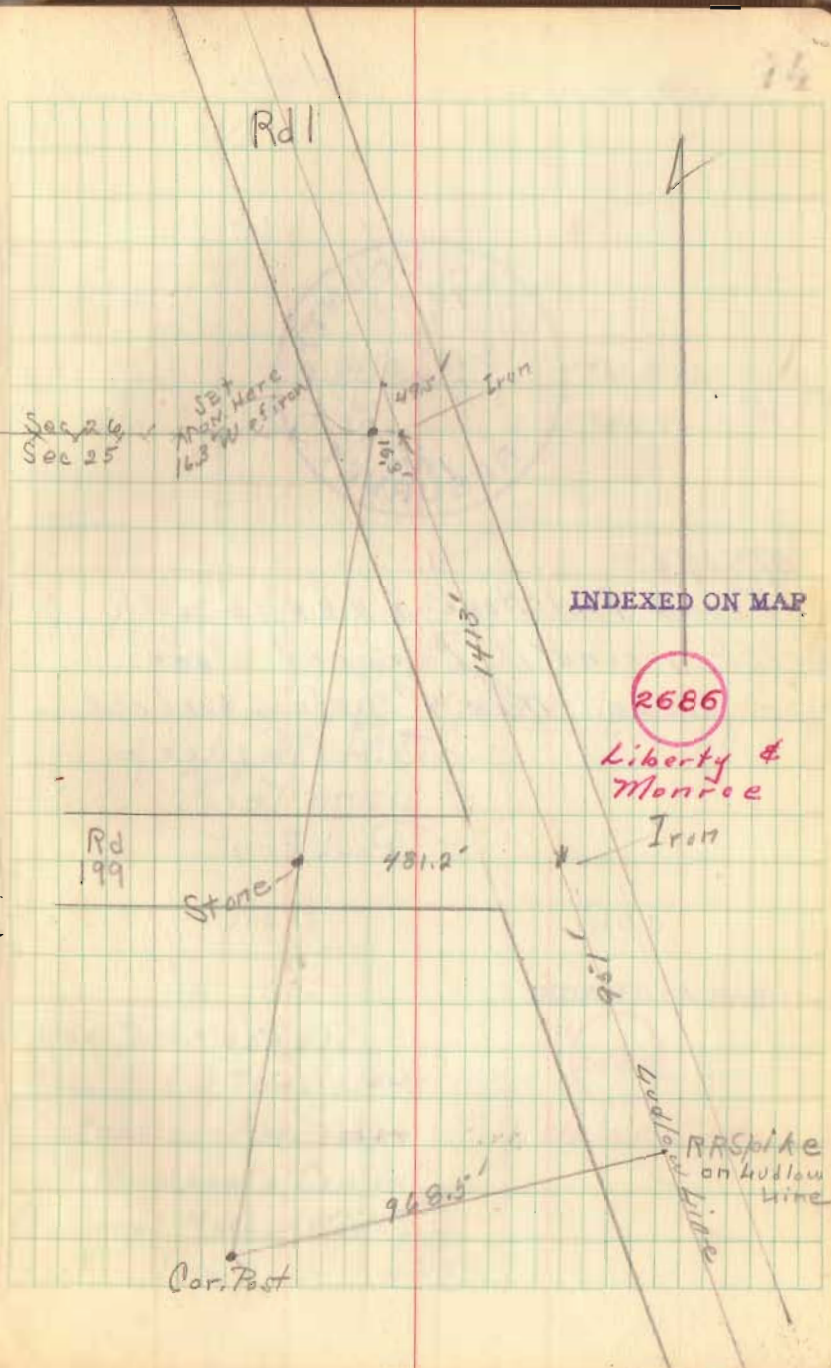
Mon. set 16.3' East, on fence line
of iron bar in center of huddle
pike, Mon set 12" below ground
surface. See Book 654-P 39

J. H. Inskeep
Lane Kerns
Paul Fout

SEE - Thesis OSU, 1943 - P. 84

"Extension & Application
of Horizontal Control"

By, Corey, Harper, Moxcomatis

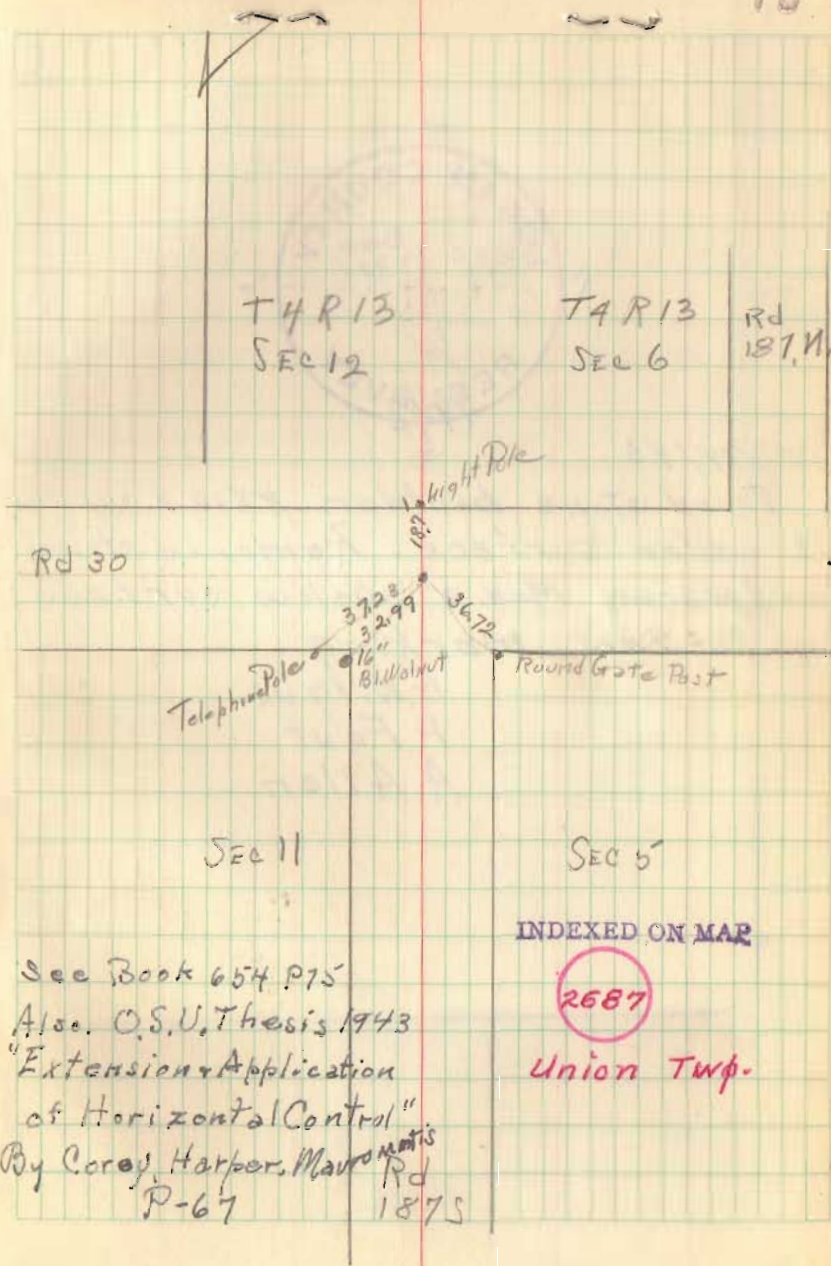




5/3/43

Found flat stone 2" x 8" x 13" with
brick around it. Removed stone
and placed mon. 4" below surface

J. H. Tuskeep
Lane Kerns
Paul Fout

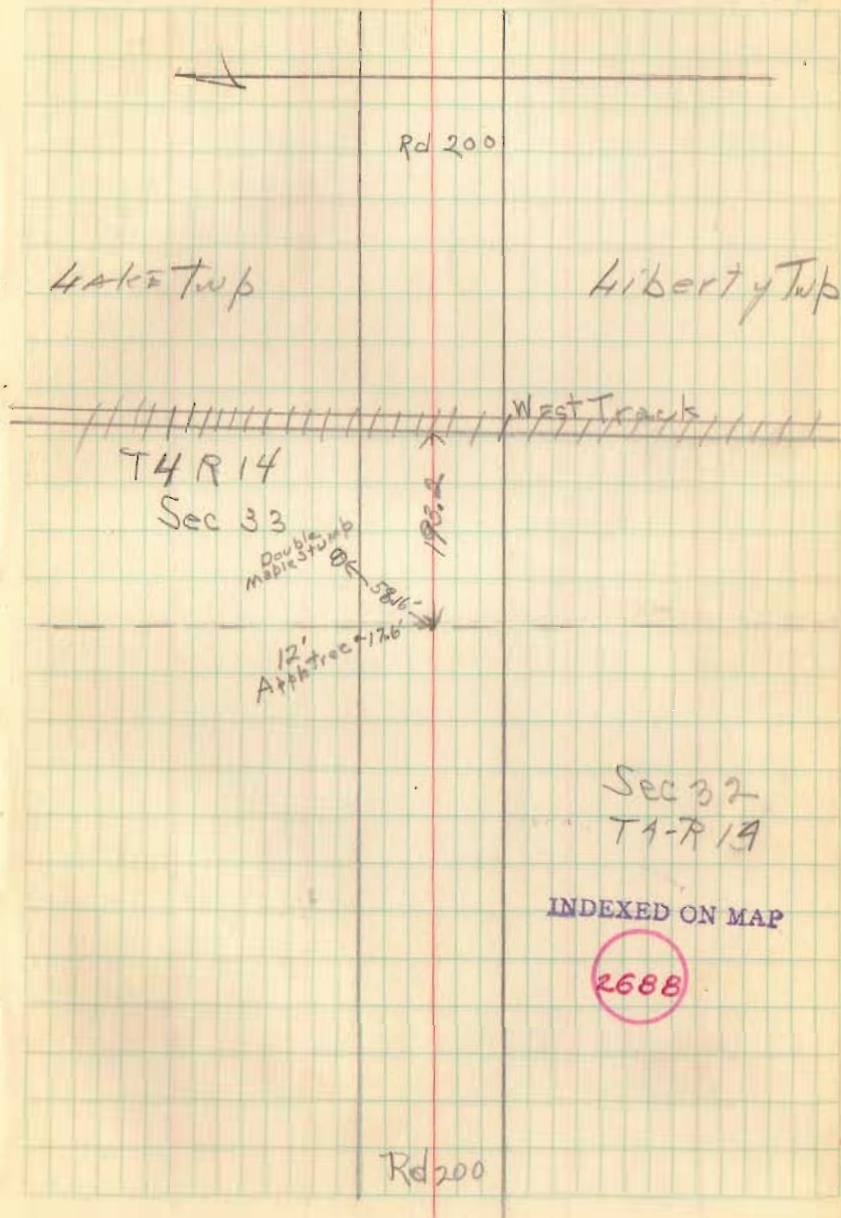




7/14/43

Found stone boulder 8x12x24
3' under surface. Removed stone
and placed Mon. 3" below surface
with this marking.

G. Wilgus
R. Fout
A. Allen



T4 R 14

Sec 33

Double maple stump

DE 58 1/2"

12' App. tree 126'

West Tracks

Sec 32

T4-R 14

INDEXED ON MAP

2688

Rd 200



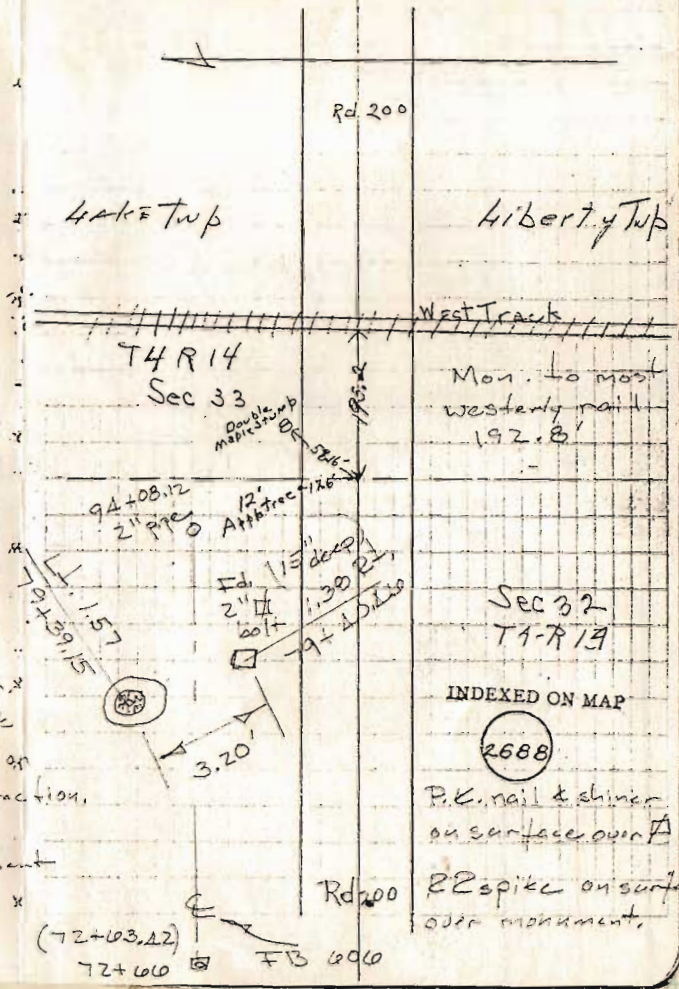
7/14/43

Found stone boulder 8x12x24
 3' under surface. Removed stone
 and placed Mon. 3" below surface
 with this marking.

G. Wilgus
 P. Fout
 A. Allen

Fd. 10 June, 1987 p.m.
 10" deep. - put 1/2 brick
 & steel plate 3"x5" x 90" on
 west side for mag. attraction.

Chamberlain, Dill, & Gilbert
 Nicholas



Liberty Twp

West Tracks

Mon. to most
 westerly nail
 192.8

Sec 32
 T4-R 19

INDEXED ON MAP

2688

P.K. nail & shiner
 on surface over A

22 spike on surface
 over monument.

INDEXED ON MAP

2688

Rd 200

Road # 38

10-19-44
Dysert
Dickinson
R. Wilgus

To locate Corners of

V.M.S. ^{12278²}_{12311⁵} - 10503 to 9969

Found 2- 2x2" Hubs in Fence line
on S. side of road #38. See Field Book
642 page 23 (By Scott)

Set sight stakes 15' N. of R.W. Mon.
at Sta. 2400 and 3200 and checked
line as found by measurements
from 2x2" Hubs - O.K.

From R.W. Mon. at Sta. 2400 to point
248'

From Sta. 3200 to point 562'

From Wickersham Fence to point 140.2'
Could Not Find old stone.

Place concrete R.W. Mon. in place of
old stone 4" below berm with broken
pieces of tile

Replaced 2x2" Hubs with $\frac{3}{4}$ " x 24" Φ Irons

