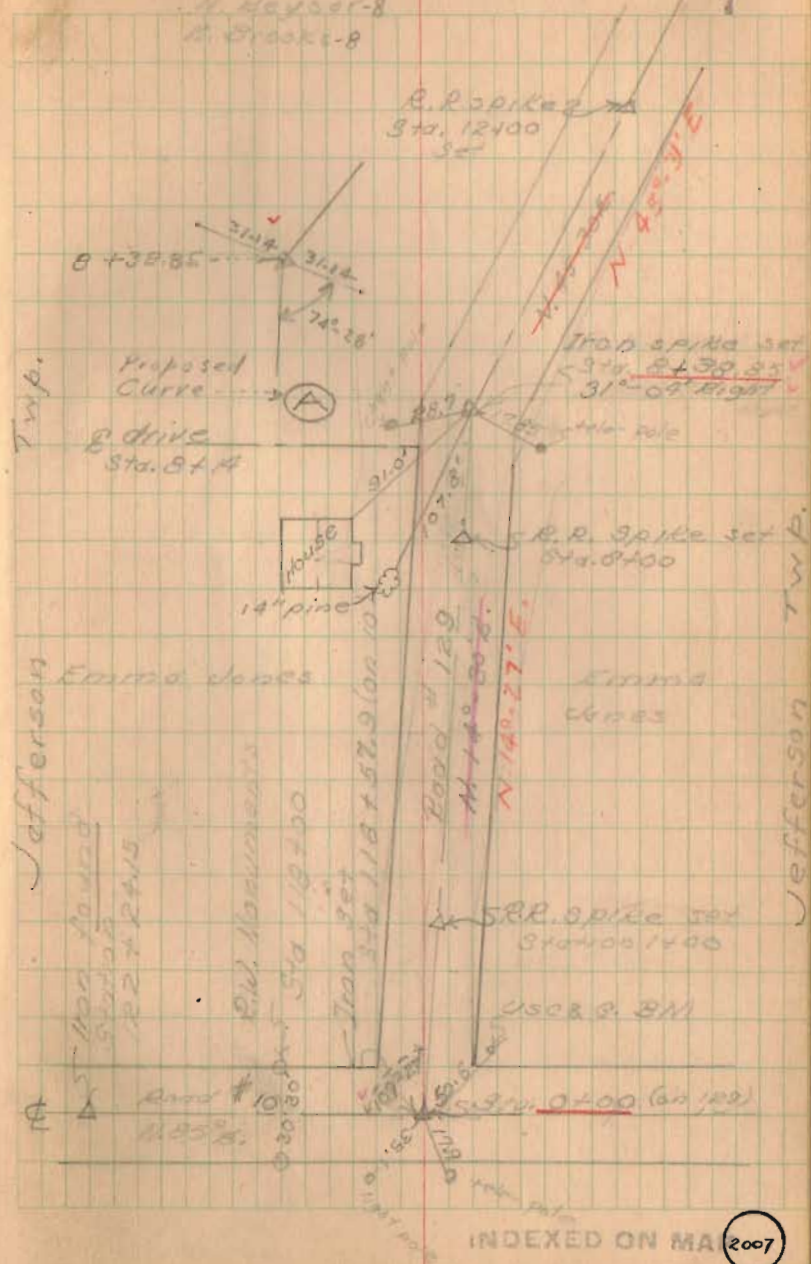


Road No. 129 - ~~E~~ Survey
 Jefferson Twp. and
 Perry Twp.

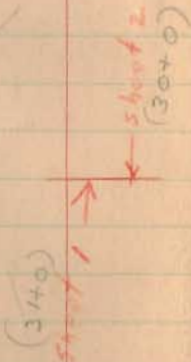
Party: M. Hand ∇
 D. Dodson \square
 H. Meyer-8
 B. Brooke-8

Jan. 20, 1949
 Cold -



Road No. 129

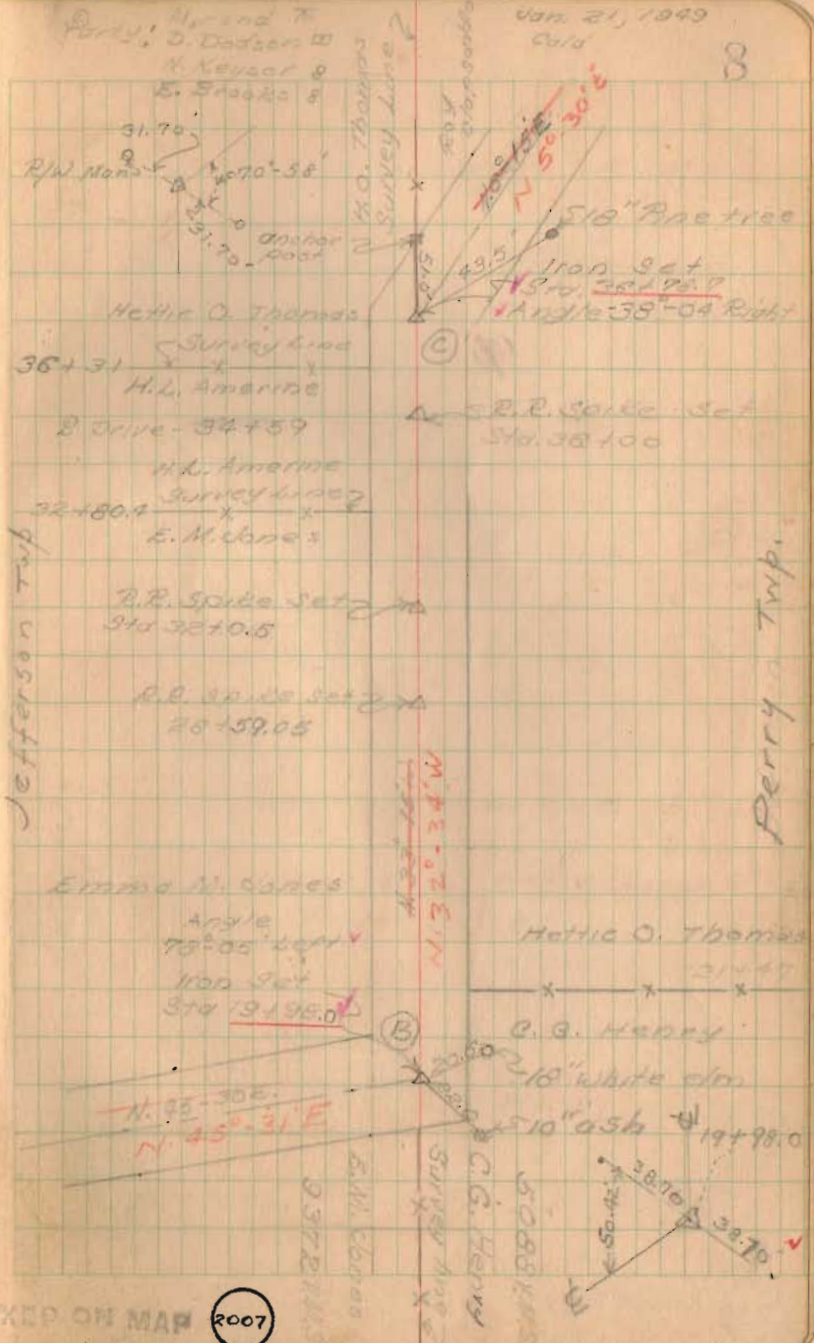
(Cont'd.)



Party: Harold T.
D. Dodson
H. Keyser
E. Sprock

Jan 21, 1949
Cold

8



INDEXED ON MAP 2007

Road 129

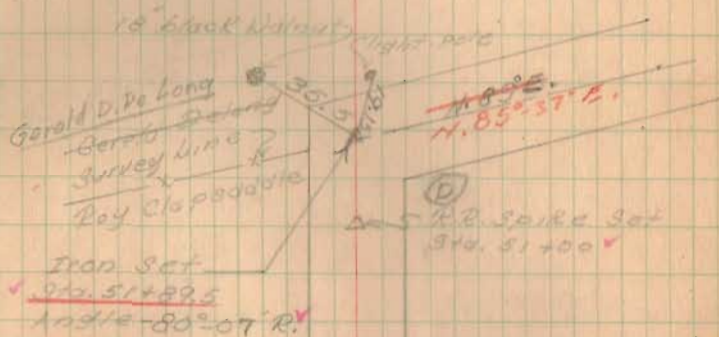
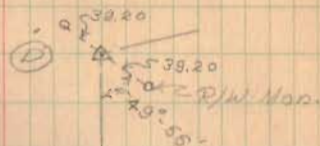
Party: M. Hand
D. Dodson
N. Keyser

Jun. 25, 1949
Cold

9

N
↑

V.M.S. 2574



V.M.S. 5088

V.M.S. 5088

Roy Clapradle

Roy Clapradle
Herbie O. Thomas

N. 5° 30' E.

INDEXED ON MAP

2007

Rd # 129

Party: Williams
D. Dodson
W. Weaver

Jan. 25, 1949
Cold 10

Roy Clapsaddle
K.M.S. 5091

~~N 4° 45' W~~
N 4° 45' W

K.M.S. 2674

12" stump

D.
Gerald, DeLong

Roy Clapsaddle



Survey line
X
X

gate post

Iron Set

Sta. 80+82.1

Angle

90°-19' Left

Stone post

N 85° 37' E
135.15 ft

R.R. Spike Set
Sta. 58+00

Sta. 59+96.2

75'

Sta. 59+61.2

75'



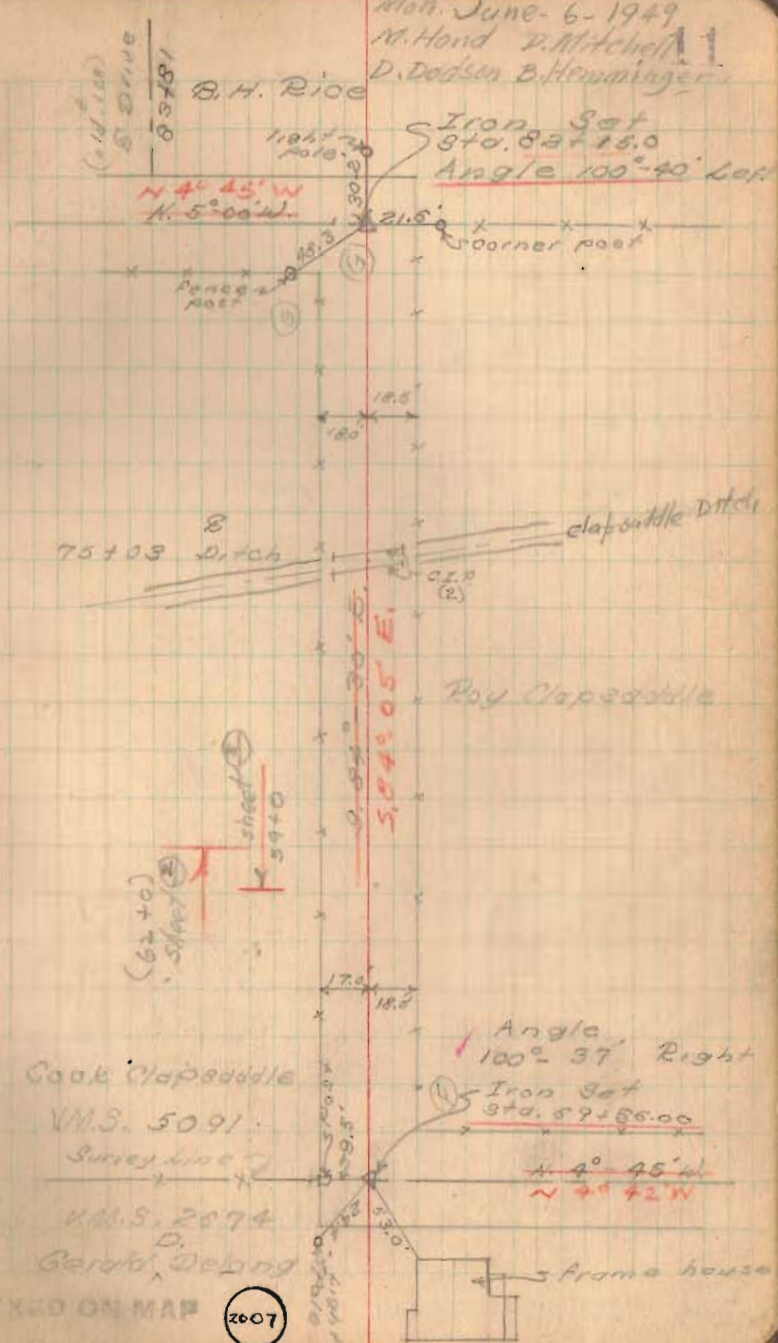
Two story frame house

INDEXED ON MAP

2007

Rd # 129

Mon. June 6-1949
 M. Hand D. Mitchell
 D. Dodson B. Hemminger



INDEXED ON MAP

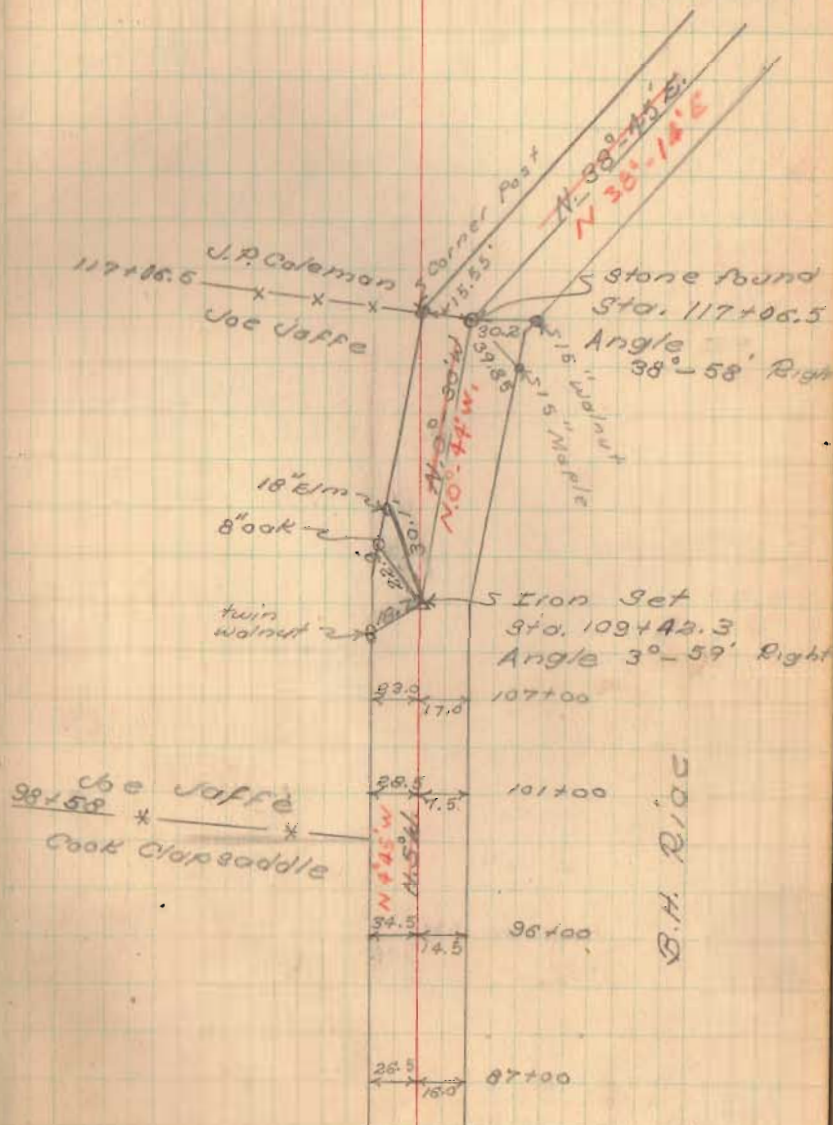
2007

Rd # 120

Party - M. Hand
D. Mitchell
D. Dodson
B. Hemminger

6/7/49
Warm

12



INDEXED ON MAP

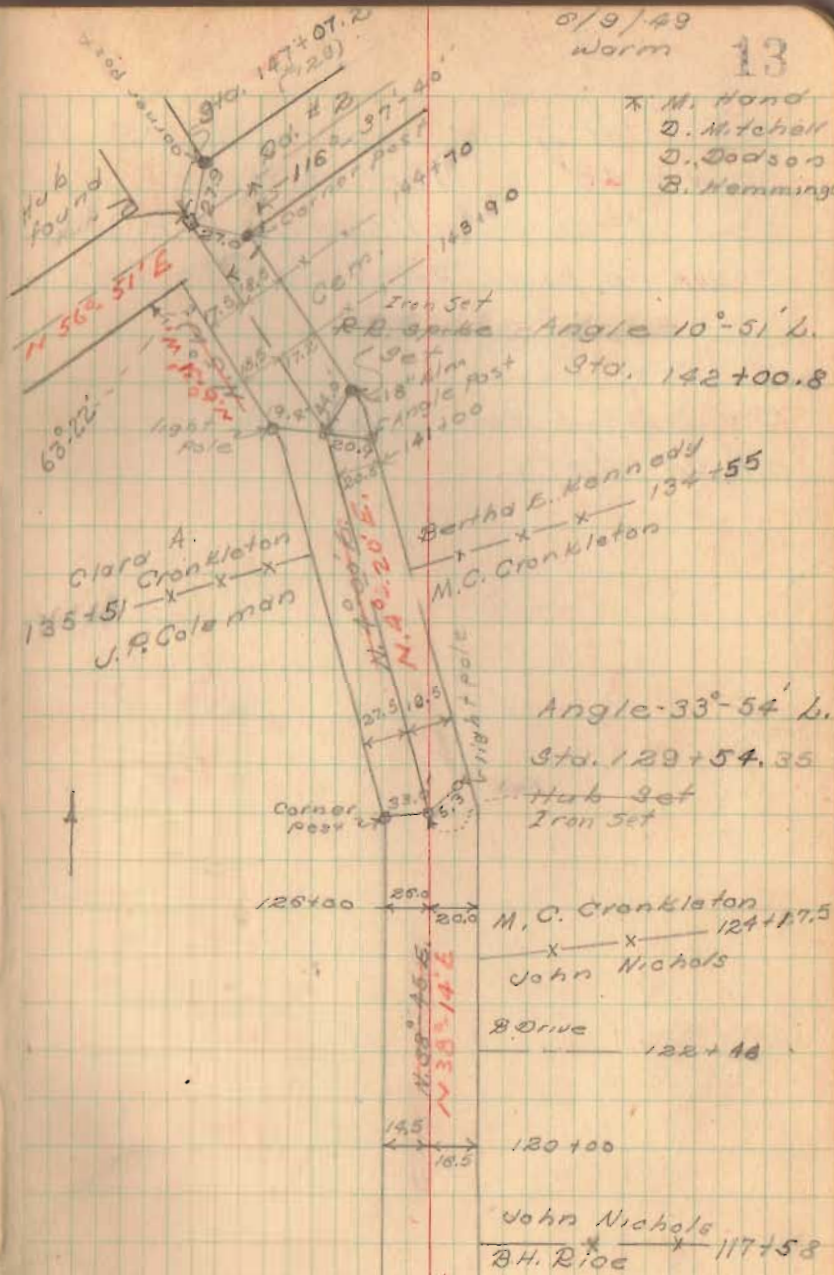
2007

Rd. # 129

5/9/49

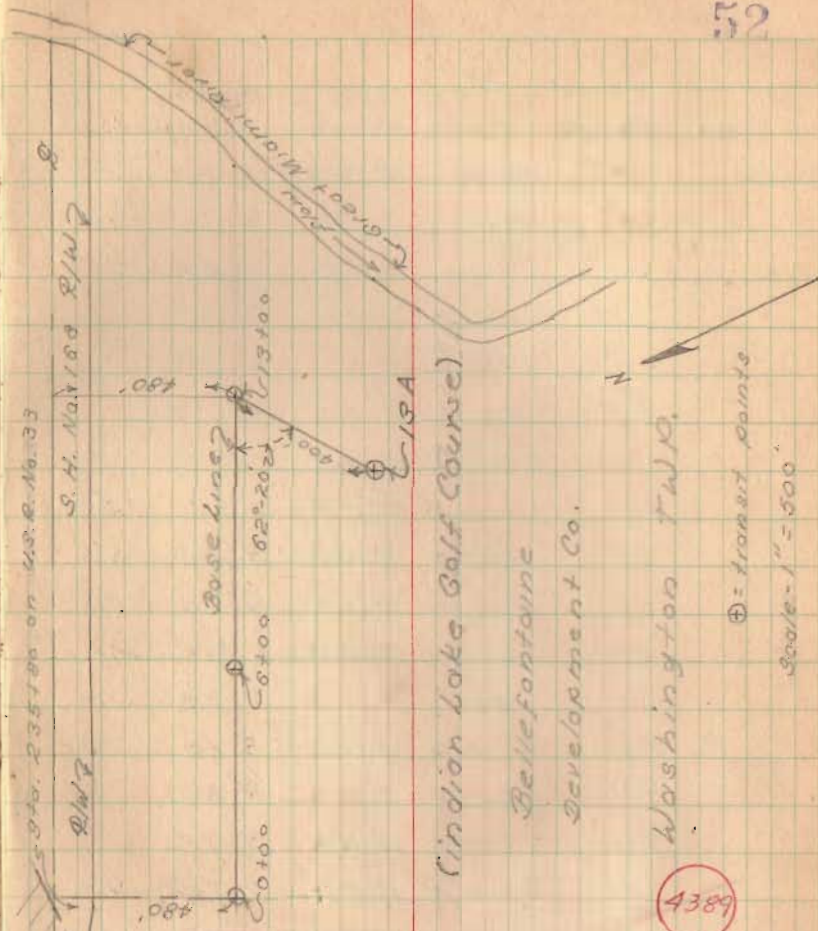
Warm

13



INDEXED ON MAP

2007



Indian Lake Golf Course

Bellevontaine
Development Co.

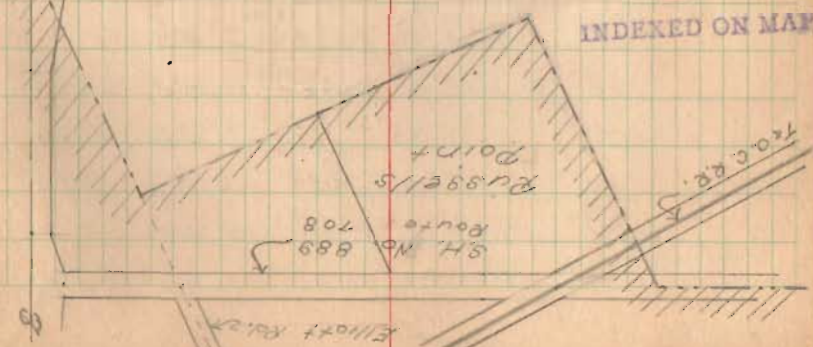
Washington Twp.

⊕ = Transit Points

Scale - 1" = 500'

4389

INDEXED ON MAP



S. H. No. 1188 R/W

S. 370. 235780 on U.S.R. No. 33

R/W

Base Line

450'

600'

62° 20' 24"

113100

C 13A

480'

60100

S

S

N

Elliott Point

S.H. No. 889
Route 708

Russells
Point

K.O.C.R.P.

Russells
Point

Jefferson-Perry Twp. Line

7-13-49 Sunny-
Hend Mitchell
Dobson 71

INDEXED ON MAP

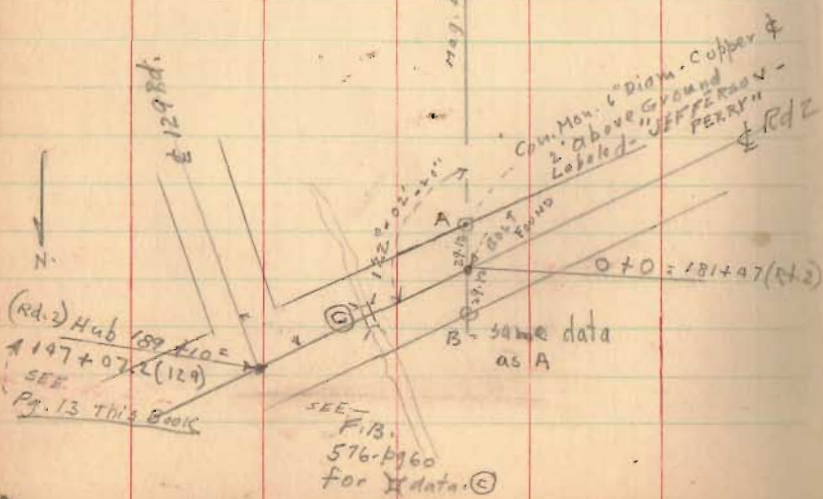
2006

Transit Line (Hub) run to vicinity
of State Route 33

7-21-49

Jefferson Twp.

Perry Twp.



A - B - Mag = NORTH 7/13/49

SURVEY LOT 260 ORCHARD ISLAND

Survey - fixing R/W Lines

- (1) Fairview
- (2) Maple

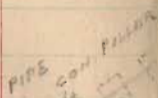
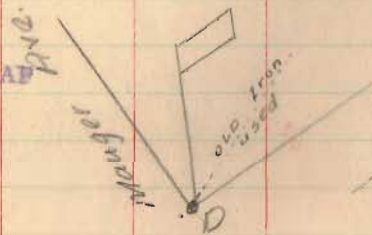
also featuring "travelled way" (red), encroachment of "traffic" on LOT 260

Engr's Note:-

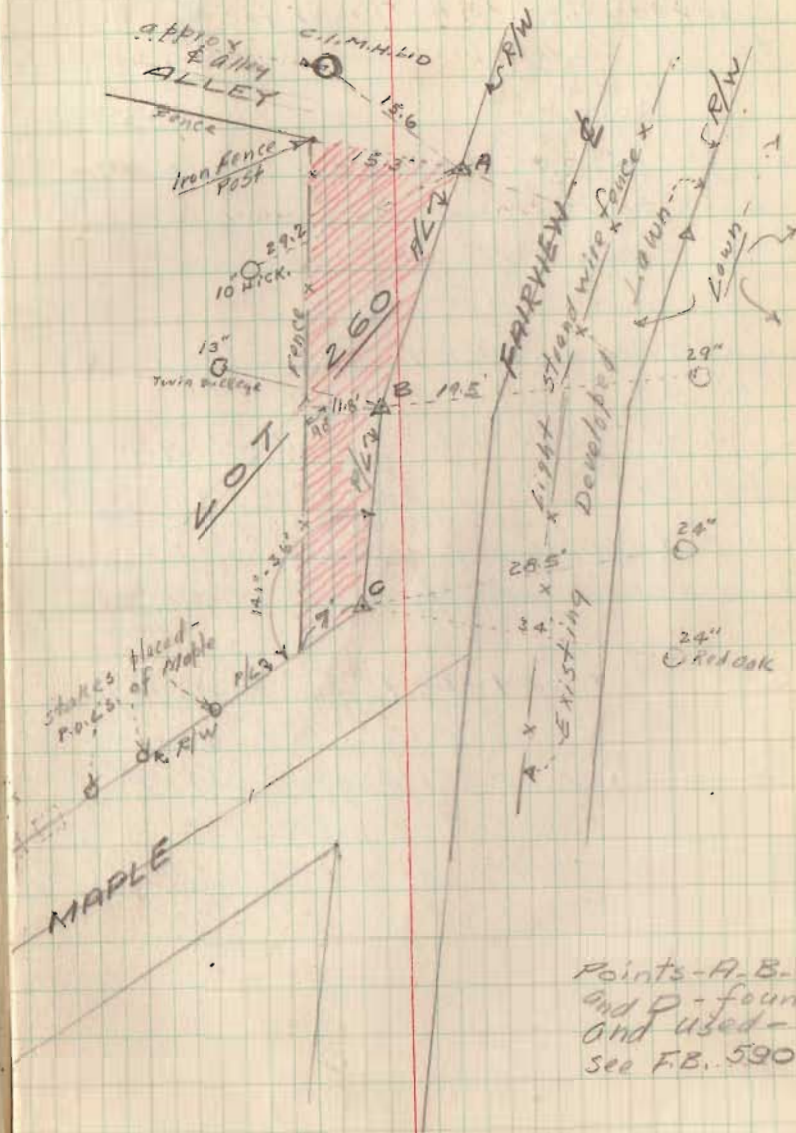
A is approx. $\frac{1}{2}$ of travel this date.

INDEXED ON MAP

4390



Feb. 1949
M. Hand
D. Dodson
N. Keyser '79



Points - A, B, C,
and D - found
and used -
see FB. 590.

copy above to
L.R. Core 2/15/49.

START OF
JEFFERSON-PERRY TWP SURVEY

South-end Jefferson Twp.-Perry Twp.

Survey - M. P. 2. - starting @ for Northerly run
to "Rush Ck. - Jefferson - Perry Twp. Cor." etc.

Note

Line between #twp Mon.
and Iron pipe 0.11' East of
Iron of Rd #153

JEFF.-PERRY TWP SURVEY

NOTE:

A "South-North" survey - alignment,
being $\textcircled{A-P}$ $\textcircled{A-D}$ $\textcircled{A-F}$
----- 1200' -----
red line on opp. page - only random line data
found and accordingly used as such.

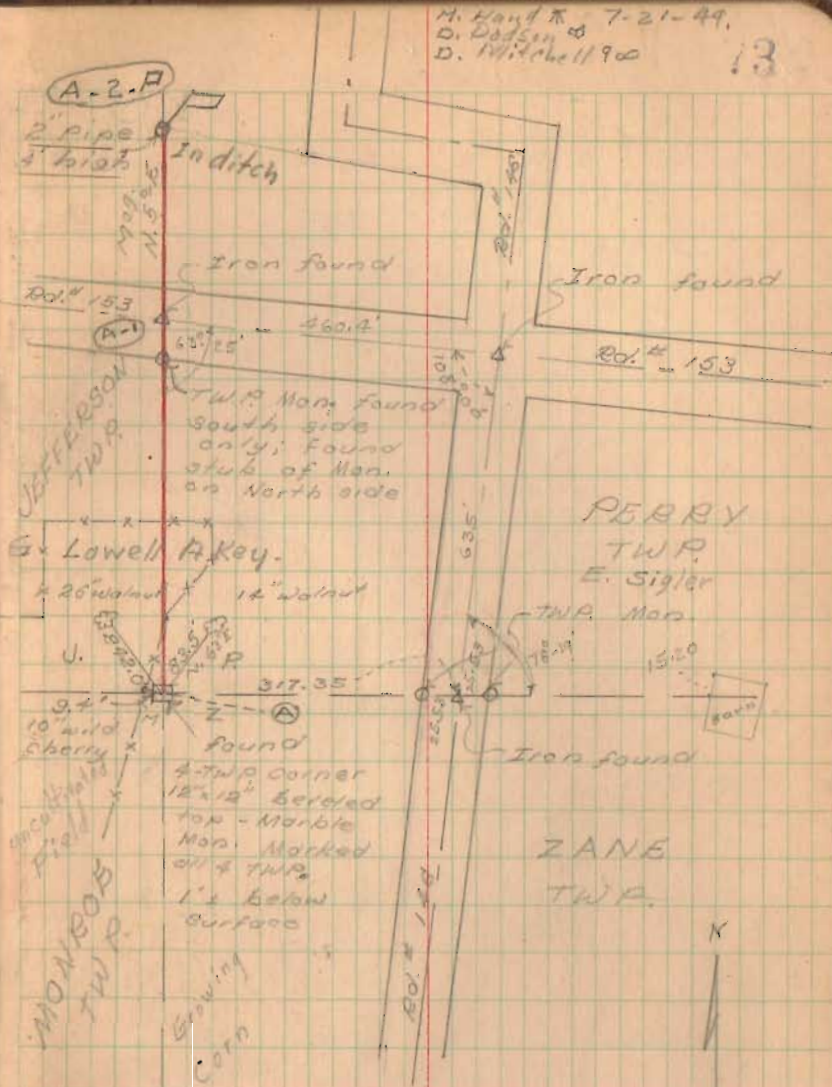
SEE - F.B. 689 - pg. 9 for Key Map
of Jefferson-Perry 1949 Survey and
its relation to meagre old twp.
points, N. of (A-2-P) 2" pipe - Iron in Rd #2
only (1934) recorded @ and no history of estab. cited.

4391

INDEXED ON MAP

M. Land R. 7-21-49.
D. Dodson
D. Mitchell 1900

13

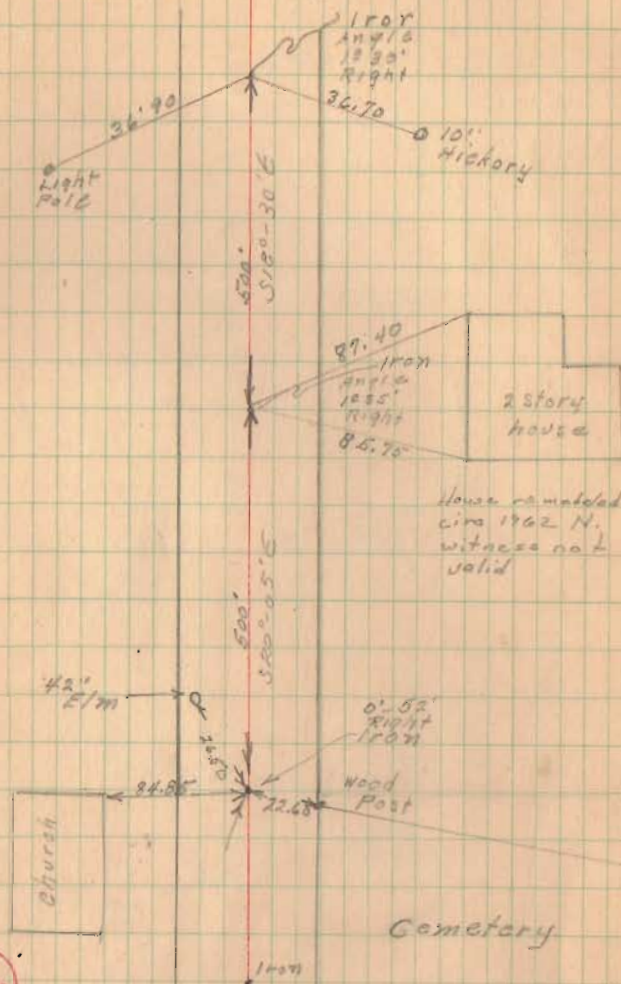


April 22-1944
clear & cool.

Wilgus
Dadson
Kaysor
Detrick

Road No 28 South of Riekrelltown

74



House completed
circa 1962 N.
witness not
valid

D. N. [unclear]

4392

INDEXED ON MAP



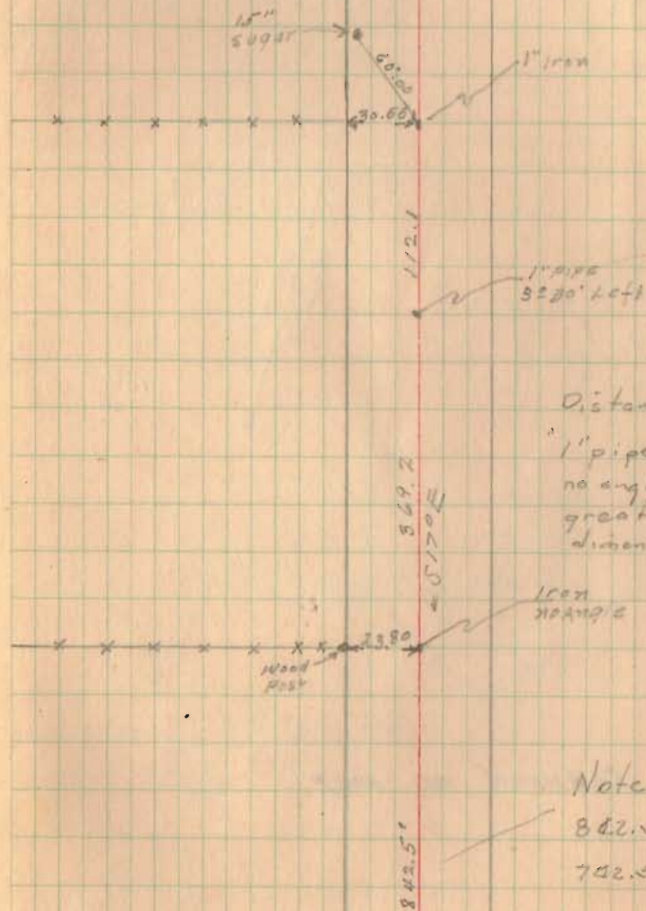
Rd 28 (Contd)

75

Road No 28



Monument Road No 28



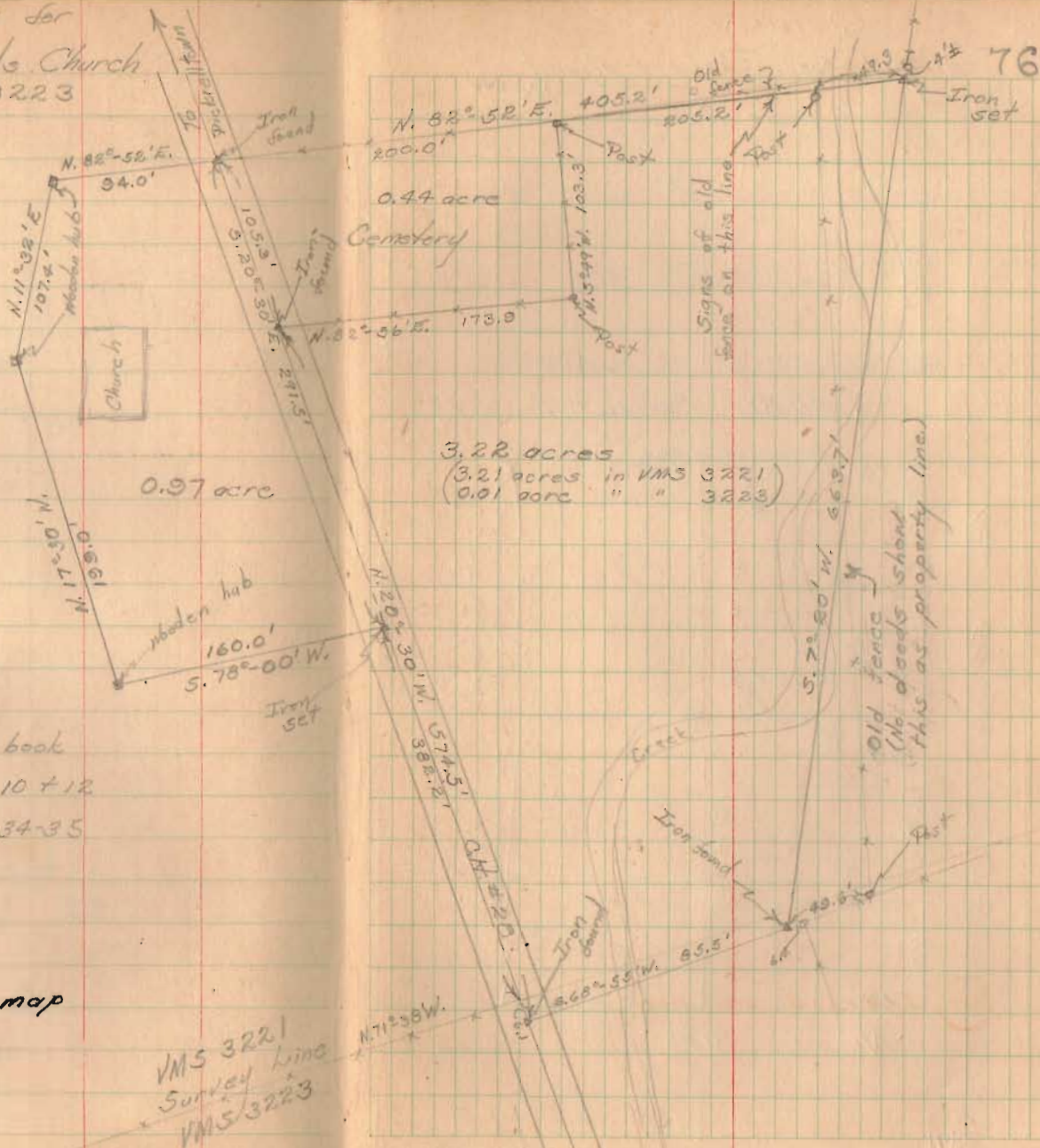
Distance between
"1" pipe" + "1" iron
no angle is 100'
greater than
dimension shown.
4 June '68
C.N.

Note

842.5' measures

742.5' 4 June '68
C.N.

Survey for
Westland Friends Church
VMS 3221 + 3223
Monroe Twp.



See pg 74 this book
See FB 390 pg 10 + 12
See FB 492 pg 34-35

2029 Indexed on map

VMS 3221
Survey line
VMS 3223

Quincy
Alley between Conby + Miami

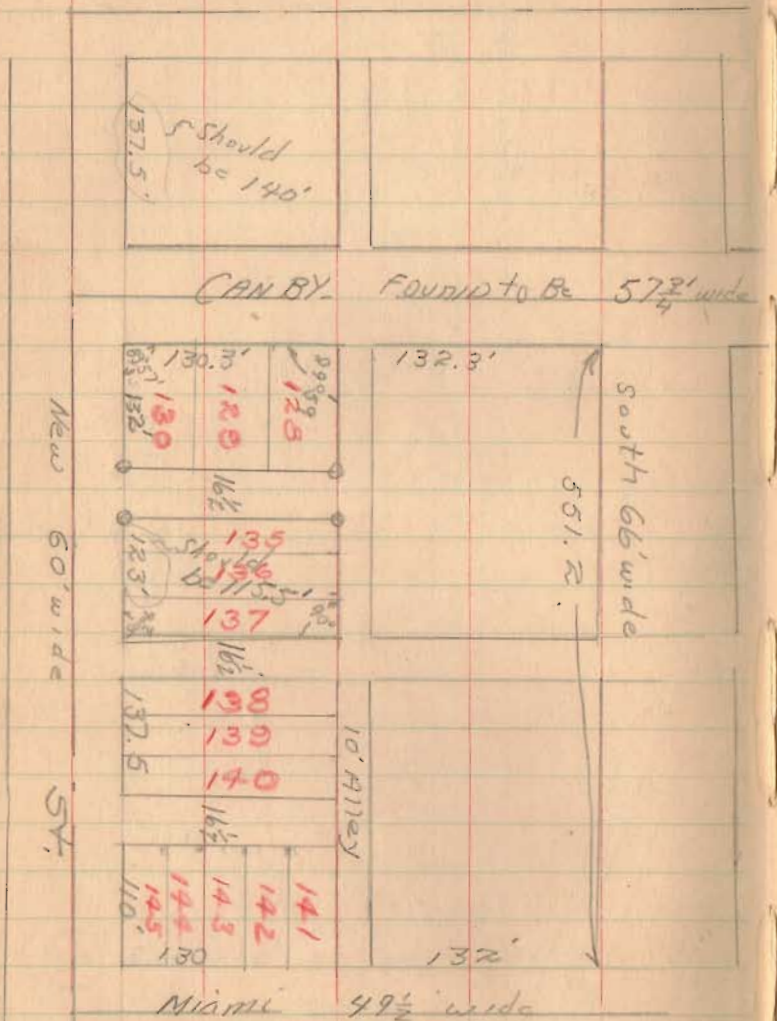
July 13, 51

O. Shirk
v. Detrick 77
G. Ricketts

Note: - See Blackley's Addition
to Quincy

See FB 492, pg 59

Over-run in lots 135, 136 + 137;
original plot shows 115.5' frontage
on New St, measured 123.0'
in this survey.



1989

INDEXED ON MAP

o - irons placed