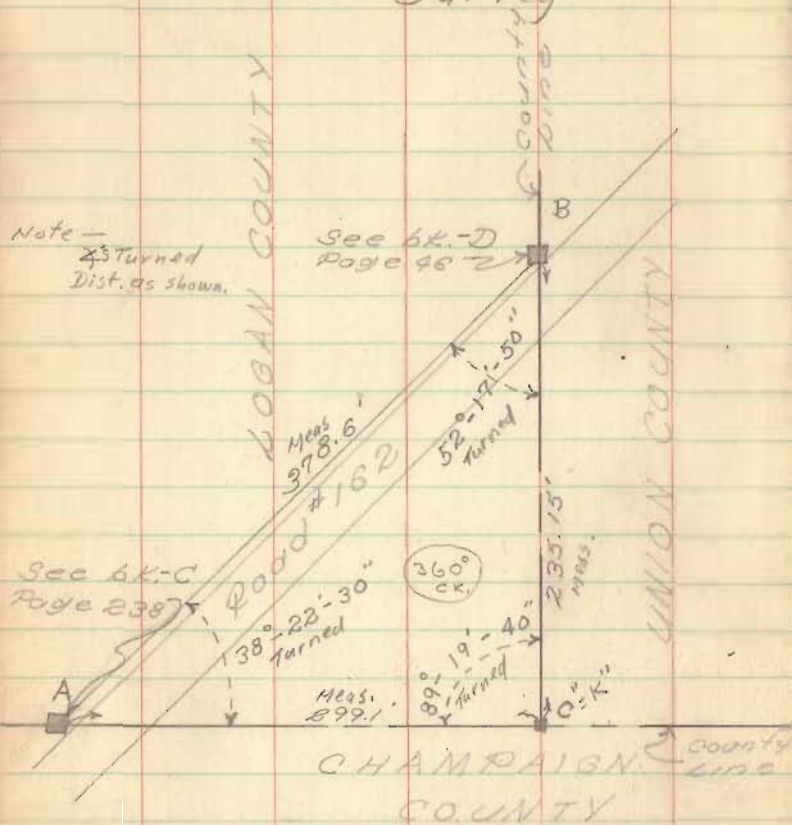


Logan and Union Co. Line  
and Logan, Union and Champaign County  
Survey



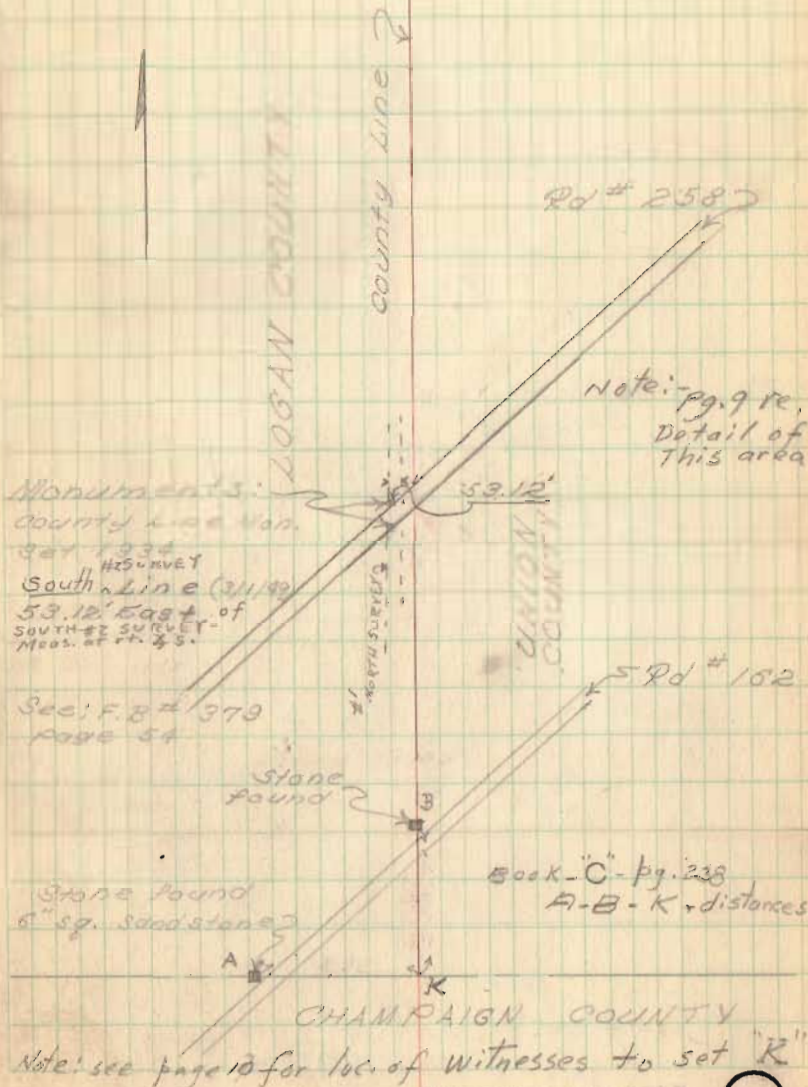
Monuments:

- A - Logan & Champaign  
6" sq. sandstone (6" above ground)
- B - Logan & Union 6" sq. sandstone
- C - tri-county stone (to be set)

Party: M. Hand  
N. Keyser  
B. Carlson

March 1, 1949  
0601

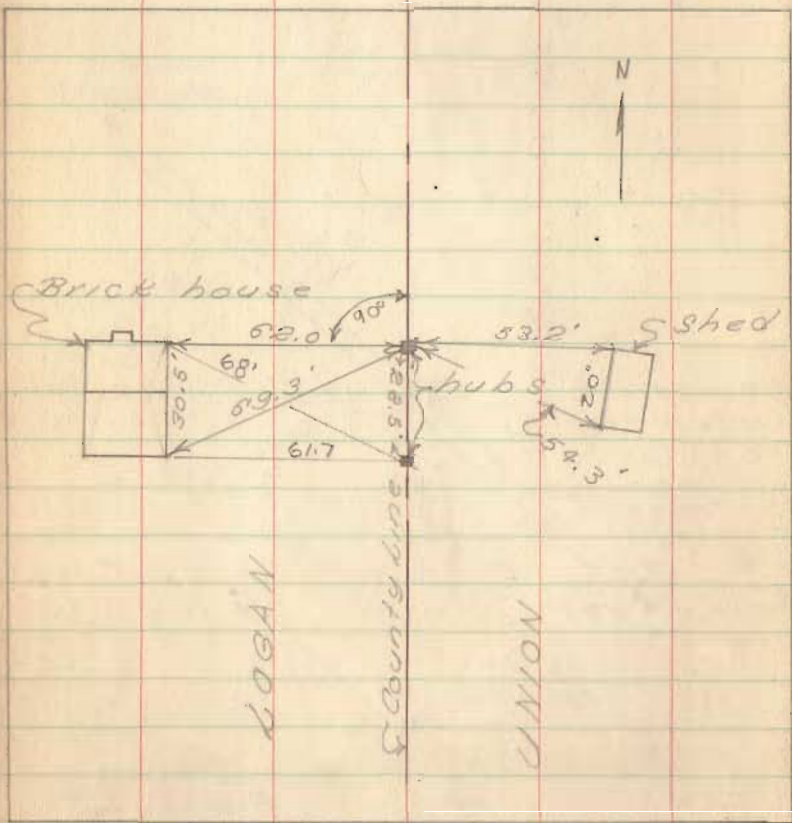
7



INDEXED ON MAP

2008

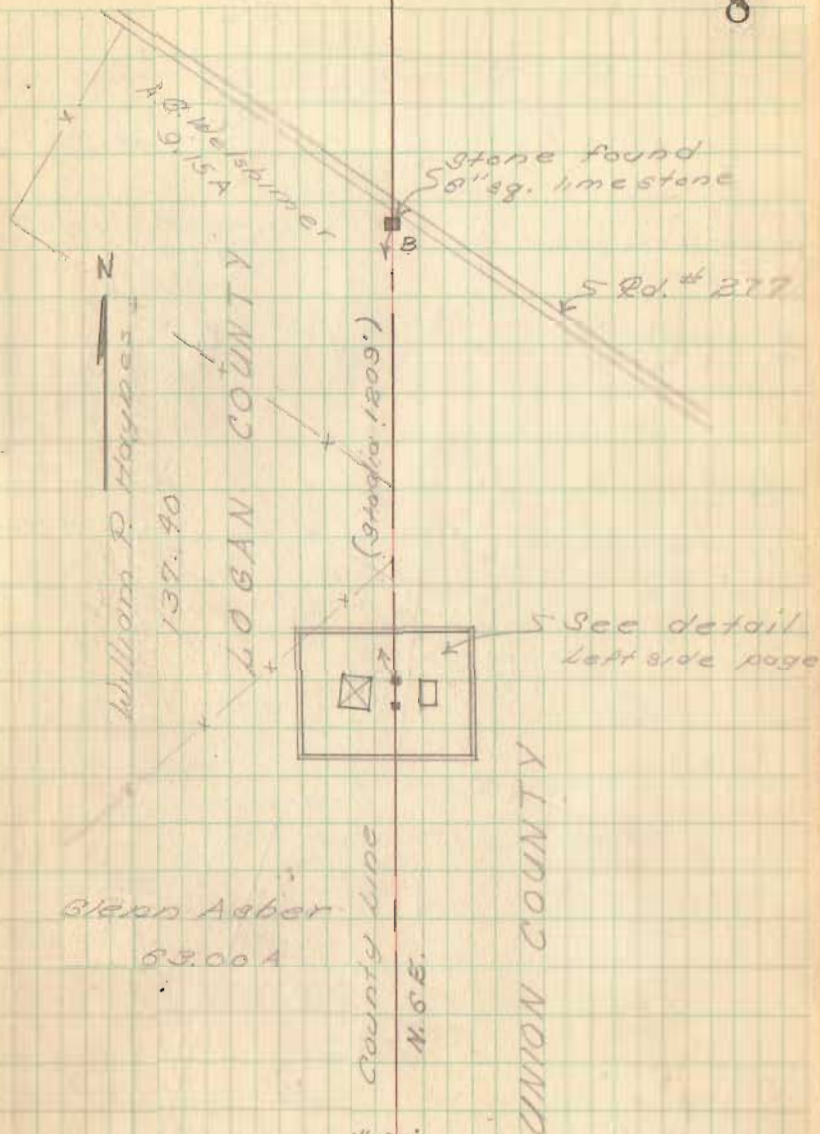
Logan & Union County line Survey



Party: M. Hand  
N. Saylor  
D. Suddon

March 2, 1949

8



Note: - scaled drawing, made of above-see SURVEY - 1997 INDEXED ON MAP

County Line Survey  
Logan & Union

A = N. end #1 survey, as established  
S. side of Road #277 for computations  
to run S. from B

$$a = c \sin A$$

$$\sin A = .6454577$$

$$a = .6454577 \times 338.5$$

$$a = 218.427'$$

$$b = c \cos A$$

$$\cos A = .7637960$$

$$b = .7637960 \times 338.5$$

$$b = 258.54'$$

$$49^\circ 48' - X$$

$$58^\circ 45' - Y$$

$$137^\circ - Z$$

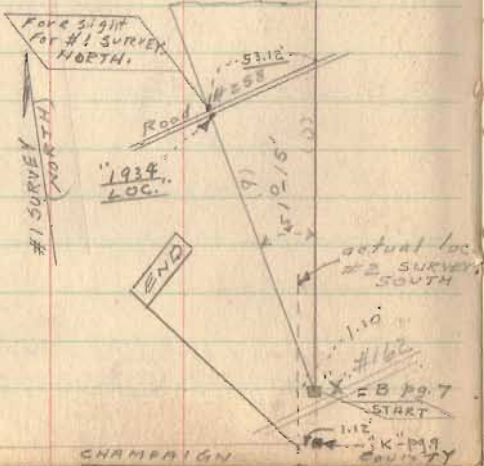
$138^\circ - 33'$  \* Computed (using  $\sin$  as scaled)

(\*#2) SURVEY SOUTH run (2 inc only)

(his #2) went 110' W. of Mon. X  
Road 162 - pg. 7. Proposed TRI-  
COUNTY MON. X. pg. 9 to be set  
112' W. of (#2 SURVEY LINE) at "K".

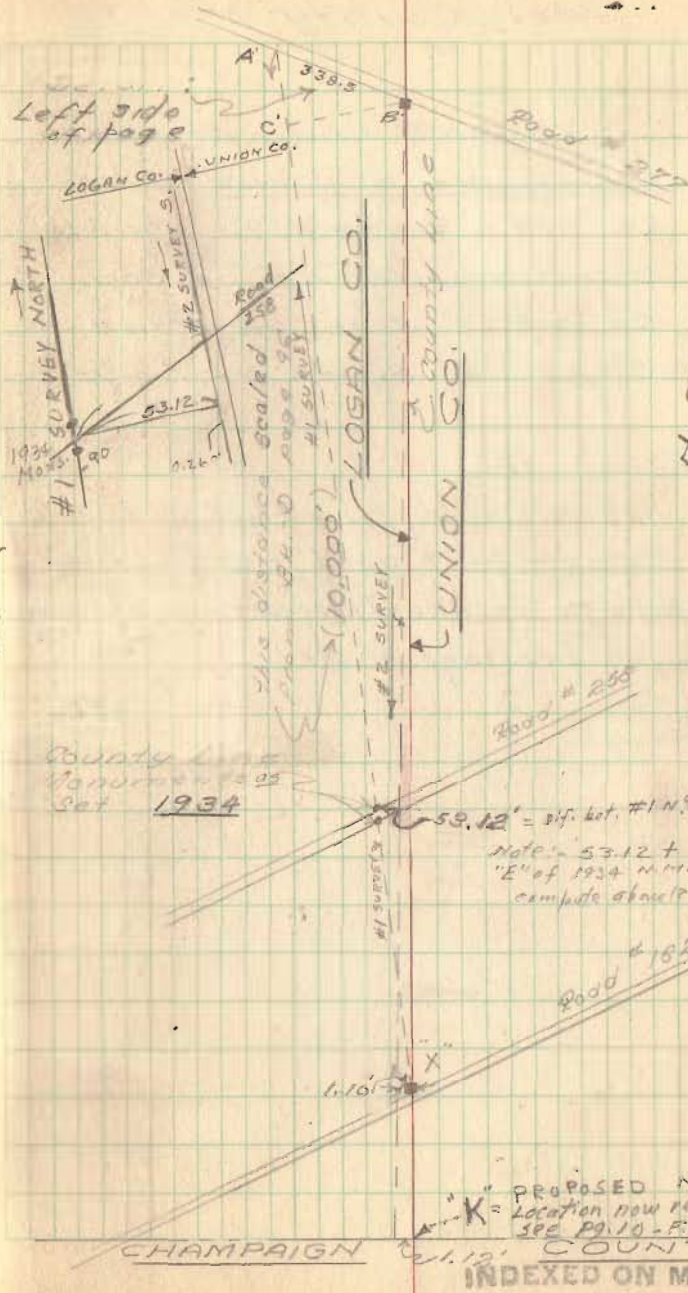


BROKEN DWG.



March 1949

9



"K" PROPOSED MONUMENT -  
Location now referenced  
see pg. 10 - P.B. 685  
INDEXED ON MAP 2008

Witnesses to Set  
tri-County Stone

Note: Logan & Champaign  
County Line Stone, on  
SH. 778 - Route 559 found  
covered with 1.0" of sod.  
on west side of Road  
appr. 2' south of light pole

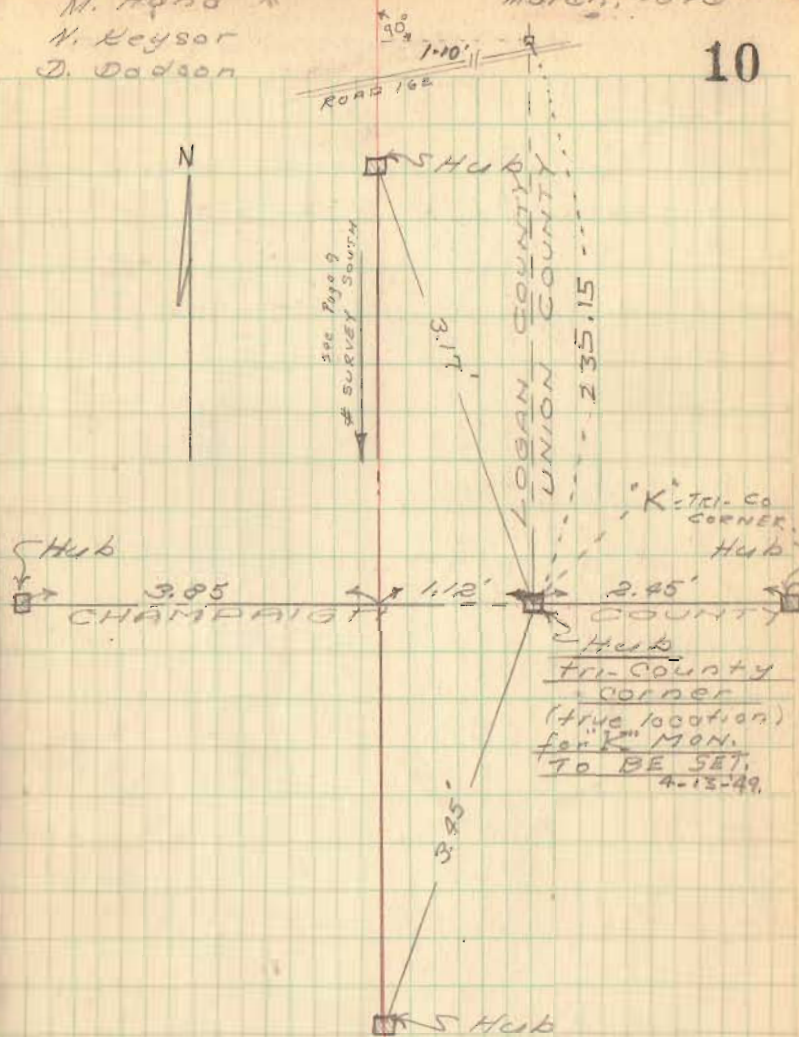
2nd Note:-

above "County Line Stone" and  
Stone A - pg. 7 used as Logan-  
Champaign Co. line. Intersection obtained  
for "K", as per page 10 etc.

M. Hand  
N. Keysor  
D. Dodson

March, 1949

10



Middleburg Recreational Field

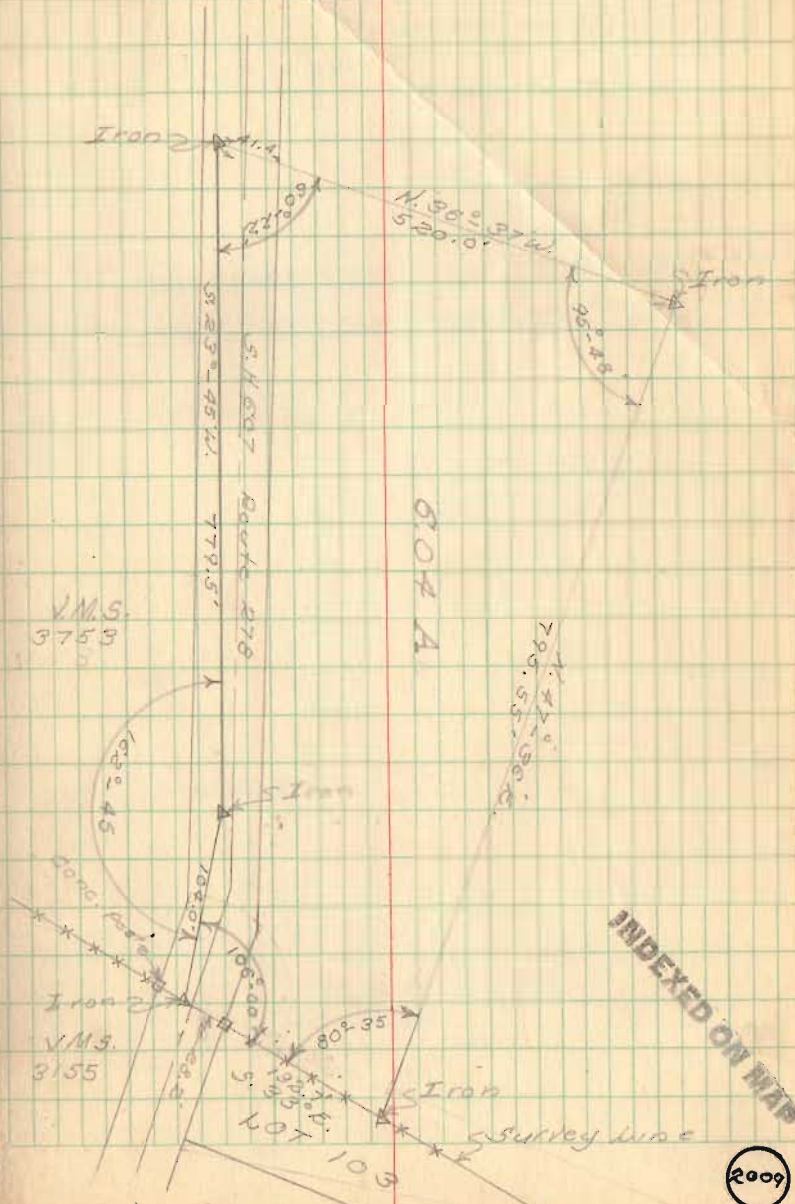
See F.B. 558 page 44 for E  
of SH 607 Route 278

See Drawer E for tracing

Party  
M. Hand  
N. Keyser  
D. Dodson

March 1949

11

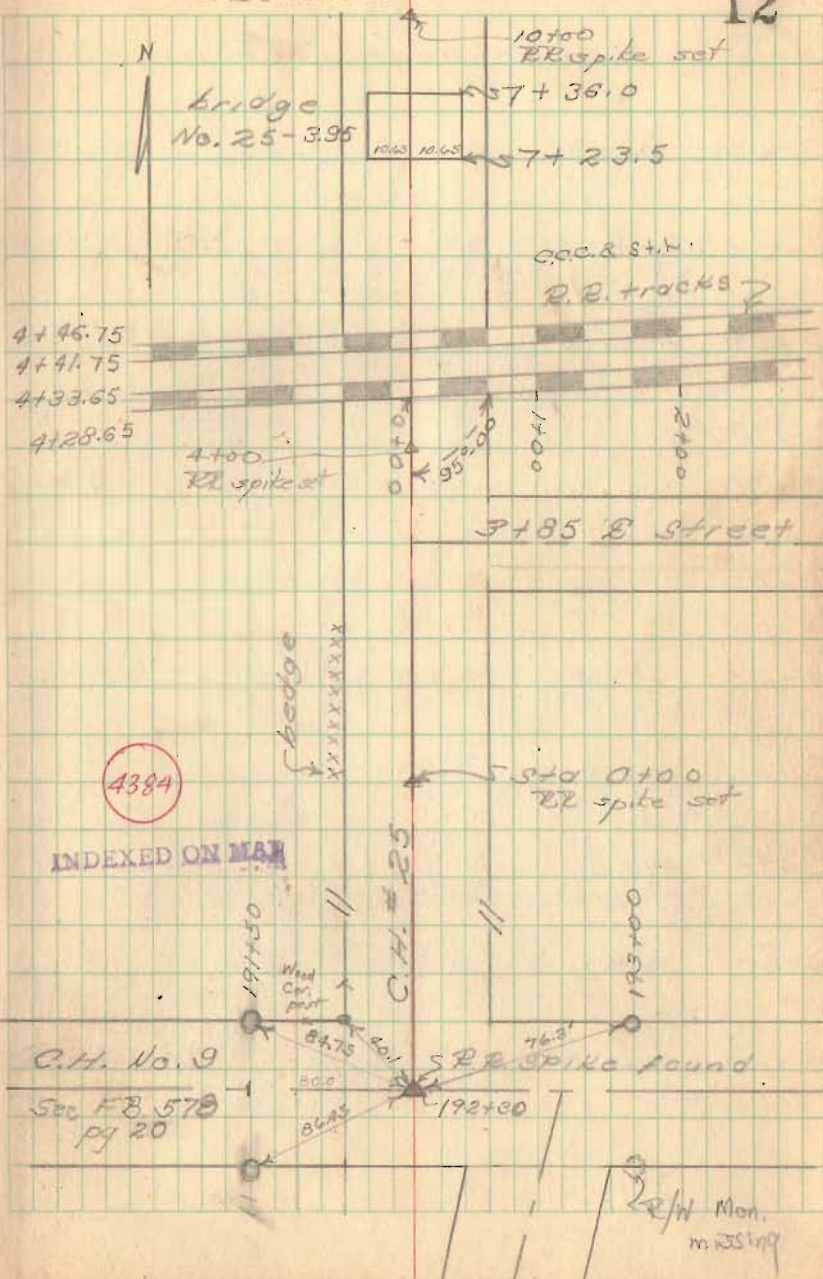


X-section R.R. Crossing  
"Rd # 25 of Harper

Party: M. Hand &  
N. Haysor &  
D. Dodson

April 1, 1929  
Cold.  
Snow - rain

12



Survey C.H. #65 - Miami Twp.

- (36+00) Hubs set
- (34+00) Hubs set
- (31+00) Hubs set
- (27+33.65) Hubs set
- (26+29.0) Hubs set

- o - Wood post
- - Stone
- o - Hub
- △ - RR spike

Curve Staked to fit existing gravel

PI 27+02.0  
 PC 26+29.0  
 PT 27+33.65  
 T = 73.0'  
 Δ = 89°-28'-40"  
 R = 73.66  
 D = 85°-30'  
 L = 109.65'

- (20+00) Hubs set
- (16+00) Hubs set

Note: - R/W Monuments set - August 1950.

- (10+00) Hubs set
- (6+50) Hubs set

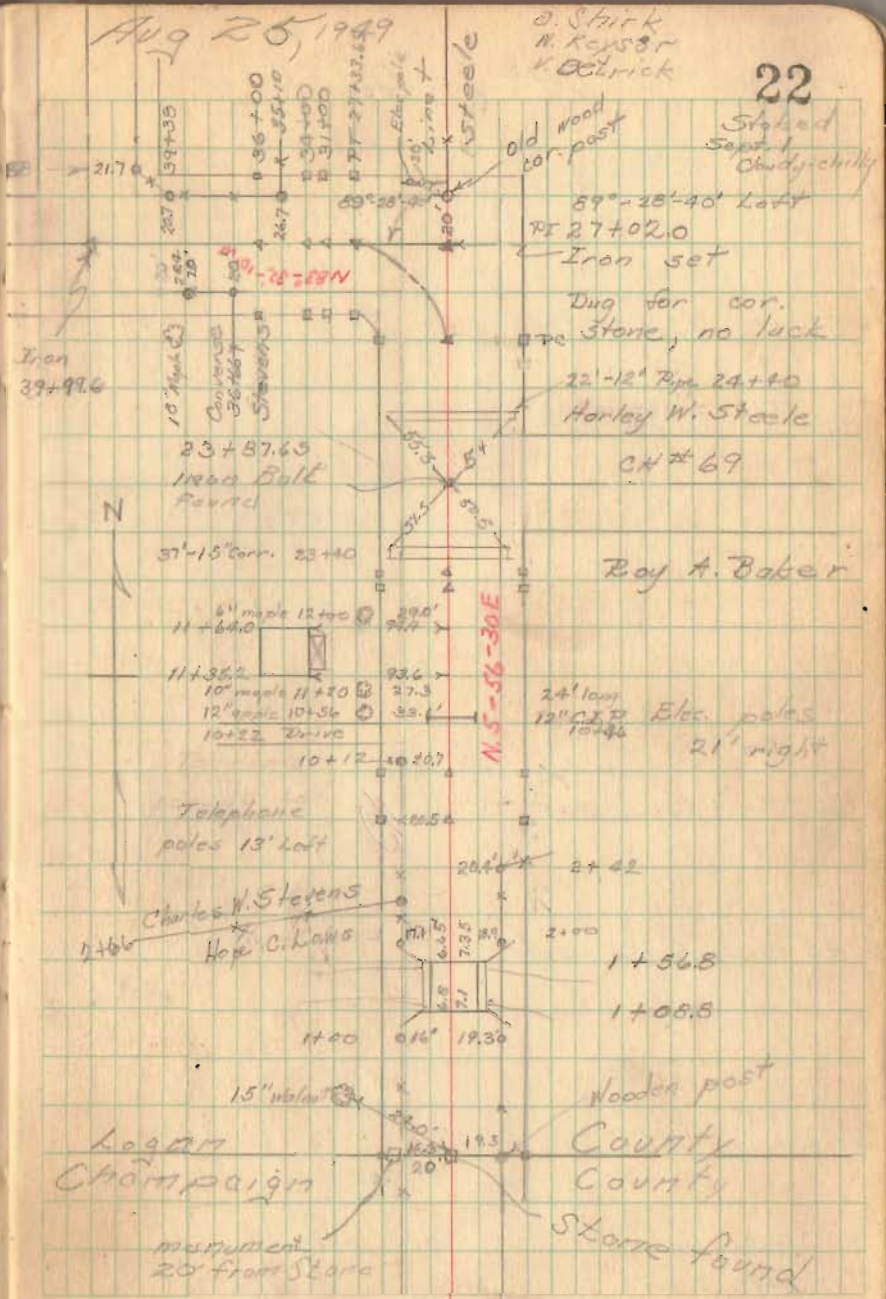
(4385)

- (0+00) Hubs set for 50' R/W Monuments

Aug 25, 1949

D. Strick  
 N. Kaysor  
 K. Delrick

22



Staked Sept. 1 Chudy-chiky

89°-28'-40" Left

PI 27+02.0

Iron set

Dug for cor. Stone, no luck

22'-12" Pipe 24+10

Harley W. Steele

CH #69

Ray A. Baker

24' long 12" C.P.P. Etc. poles 21' right

1+56.8

1+08.8

Wooden post

County

County

Stone found

Charles W. Stevens

Hop C. Laws

Logan Champaign

monument 20' from Stone

CH# 65 (cont'd)

61+00 Hubs set

55+00 Hubs set

50+00 Hubs set

45+00 Hubs set

PT 40+31.2 Hubs set

PC 39+26.5 Hub set on right only

PI 39+99.6 Inon

Sept. 2, 1949

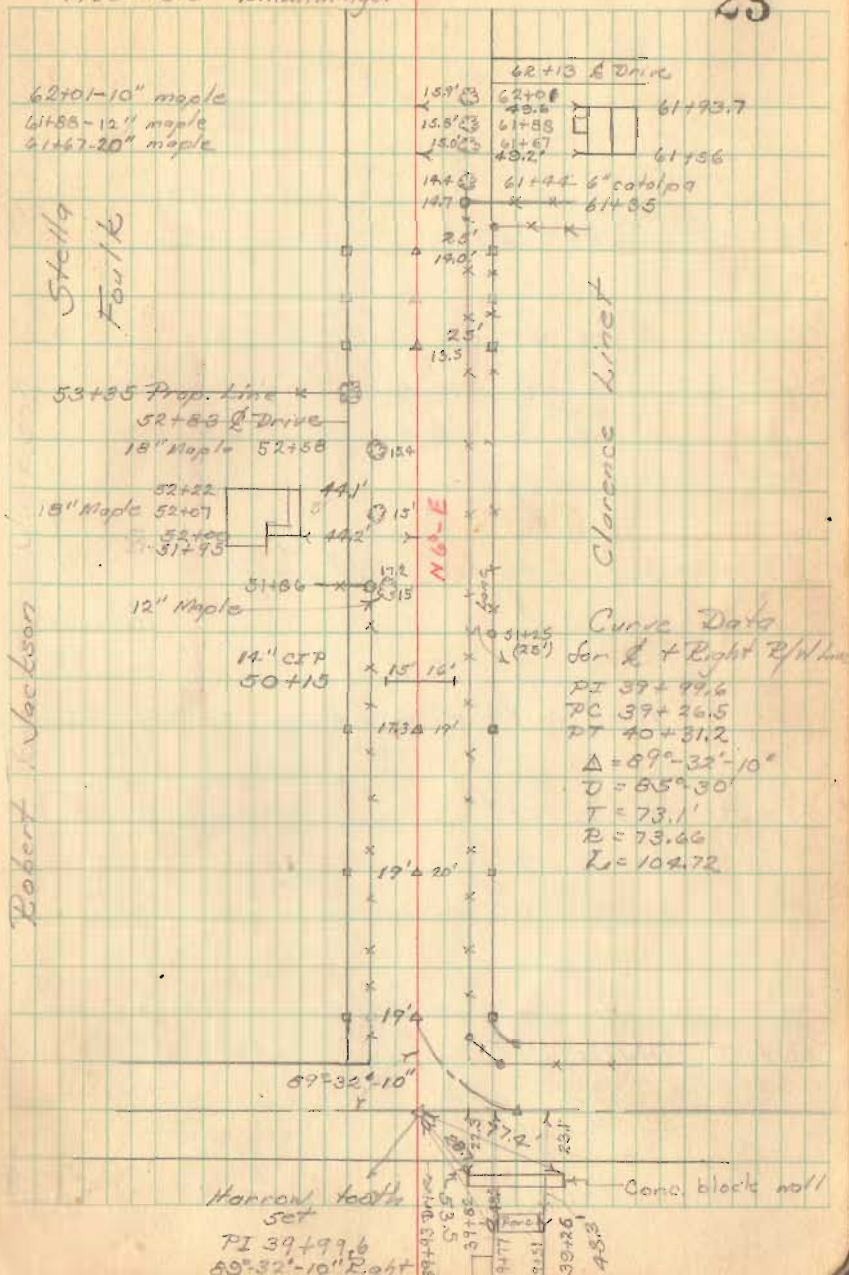
O. Keyson

D. Dodson D. Mitchell

V. Detrick R. Hemminger

Fair-Warning

23





CH #65 (contd)

90+00 Hubs set

85+00 Hubs set

80+00 Hub set on right only

76+00 to 84+00 stakes set 35' left h.

75+00 Hubs set

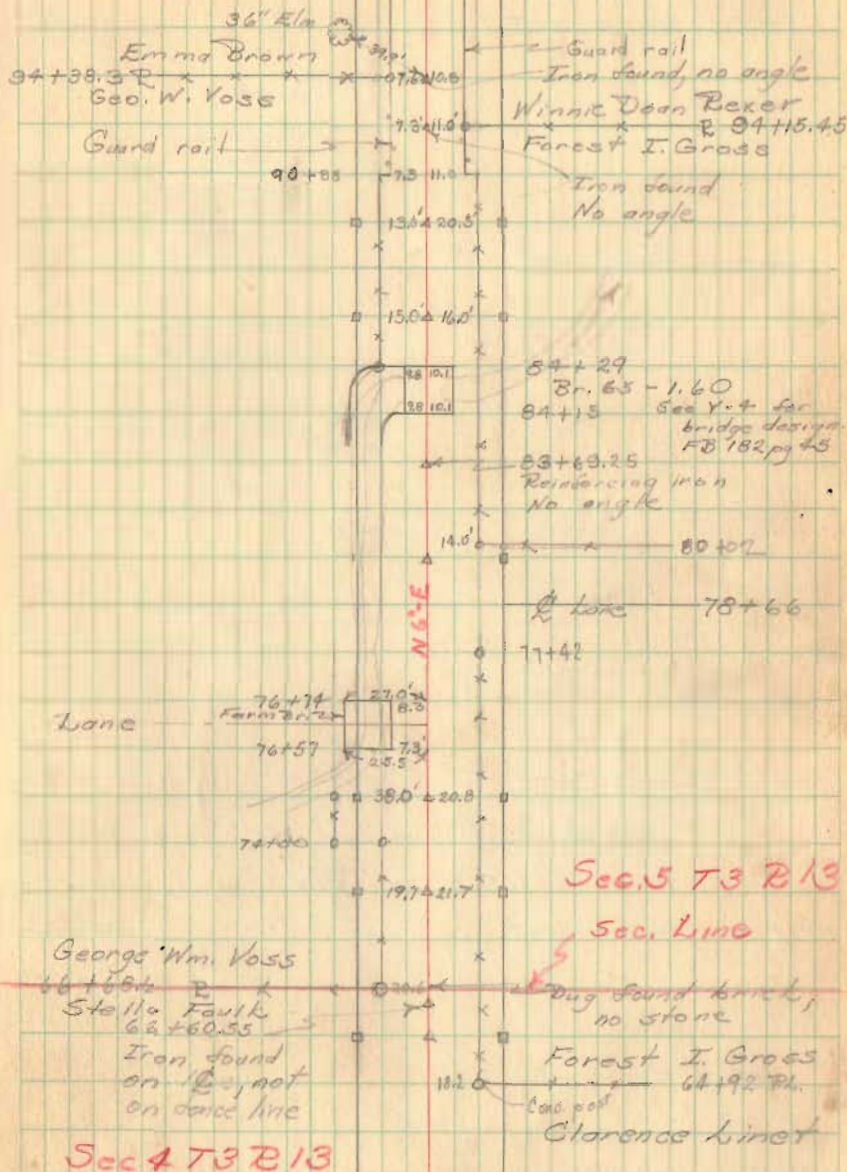
70+00 Hubs set

70+00

66+00 Hubs set

Sept. 13, 1949  
Baird

24



115+00 Hubs set

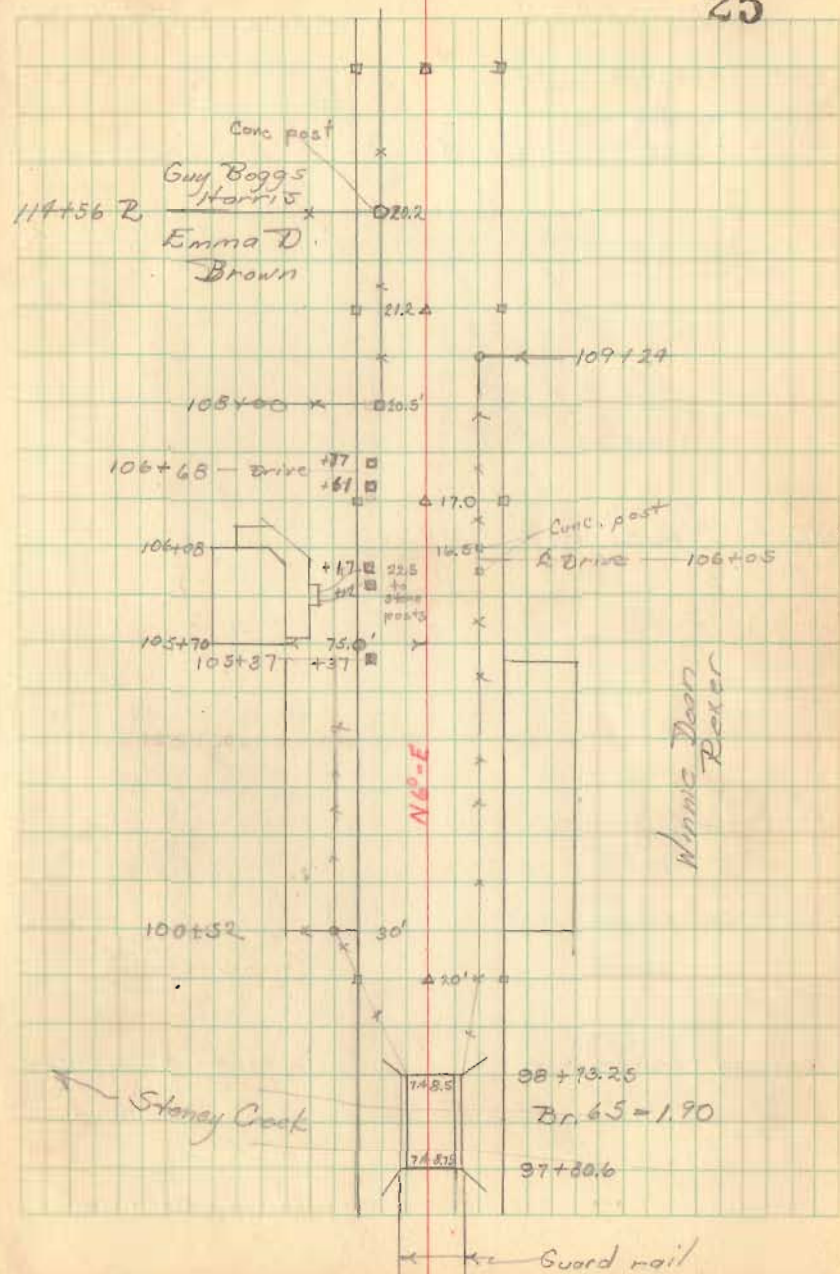
110+00 Hubs set

106+50 Hubs set

102 to 105 staked 40' but 100' R/W

101 to 105 ± 100' R/W around 2'

100+00 Hubs set



CH #65 (contd)

125+00 Hubs set

122+00 Hubs set

121+00 Hubs set

Sec 12 T3R13

Paul D. Smith  
Guy Baygs  
Harris

Sec 6 T3R13

Section  
Stone Land

Sec 5 T3R13

49-21  
24-50-30

26

See FB 582 pg 12+13  
for data on  
SH 726

Iron found  
127+0645

24-50-30  
127+0645

Route 508

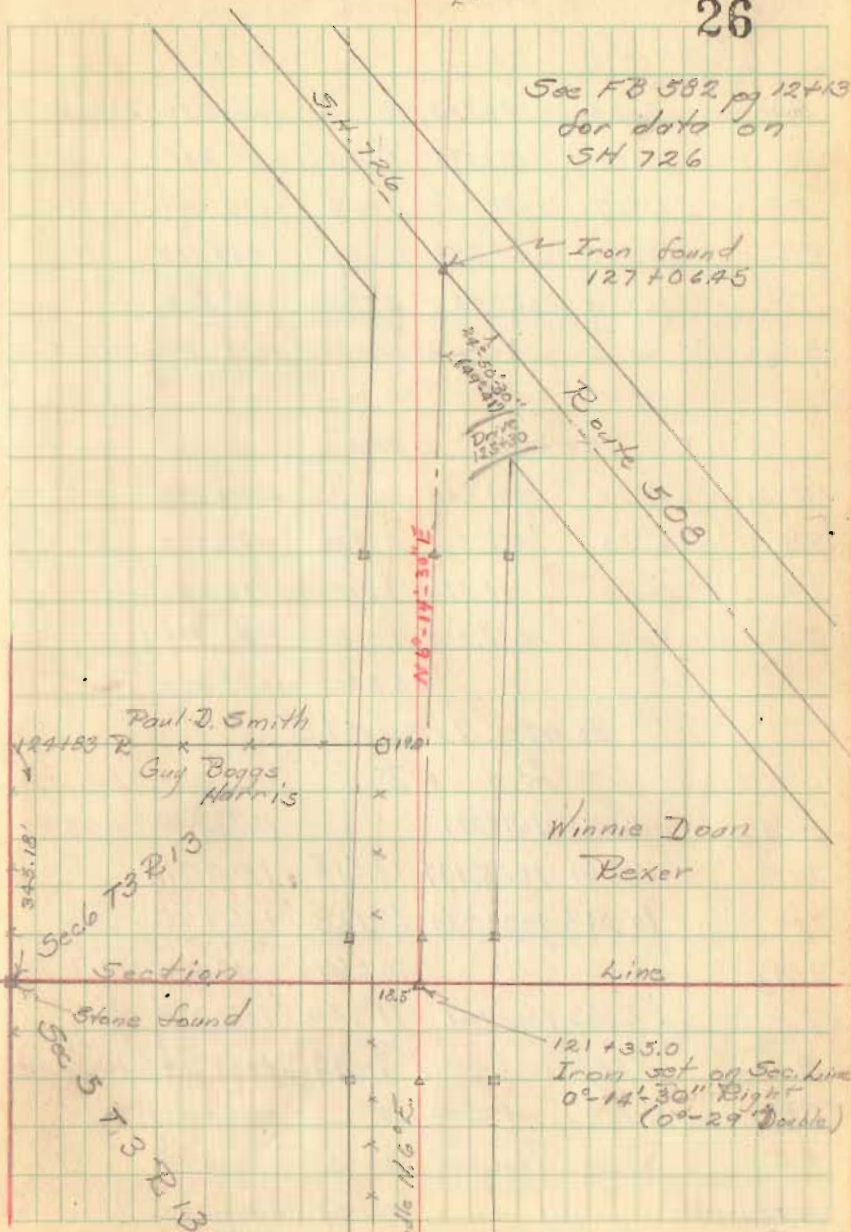
N. 6°-14'-30"E

Winnie Dean  
Bexer

Line

121+35.0  
Iron set on Sec. line  
0°-14'-30" Right  
(0°-29" Double)

Handle N.G. E.



ROAD #5  
 (RUSH CREEK TWP)  
 From Rd #51 N. to HARDIN CO. line.

Staked 60' R/W

19+00 Hubs set for R/W Mon.

18+00 Hubs set for R/W Mon.

14+00 Hubs set R/W Mon.

8+00 Hubs set for R/W Mon.

Note:

This & Spike Record - Vol. 3, Pg. 77 = 4°-10' (L) (1873)

7+00 Hubs set for R/W Mon.

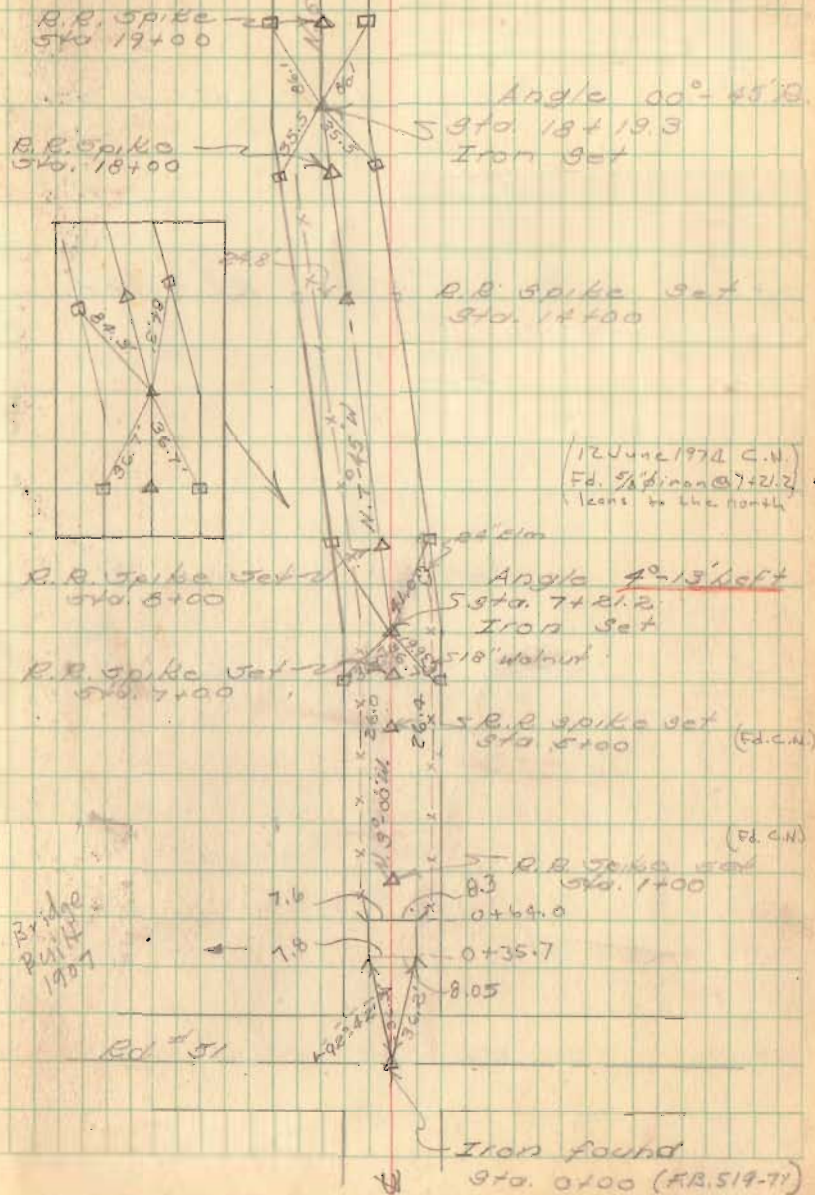
**Note:- Monuments set  
 Sept. 1950.**

1+00 Hubs set for R/W Mon.

4386

INDEXED ON MAP

12/12/49 cloudy  
 M. Hand & Rain  
 D. Dodson  
 V. Patrick 46



Road No 5 (contd.)

47+00 Hubs Set R/W Mon

43+00 Hubs Set R/W Mon.

39+00 Hubs Set for R/W Mon.

35+00 Hubs Set R/W Mon

33+00 Hubs Set for R/W Mon.

31+00 Hubs Set for R/W Mon.

25+00 Hubs Set R/W Mon

20+00 Hubs Set R/W Mon

Party  
M. Hand \*  
D. Dodson 10.00  
V. Detrick 9.00

12/14/49

Cold  
12°

47

R.R. spike 47+00

R.R. spike 43+00

Guard Rail 41+49.2

Conc. Culvert 539+93

R.R. Spike  
Sta. 39+00

R.R. spike 35+00

R.R. Spike Sta  
57A 33+93.65

S.H. # 593

Route # 273

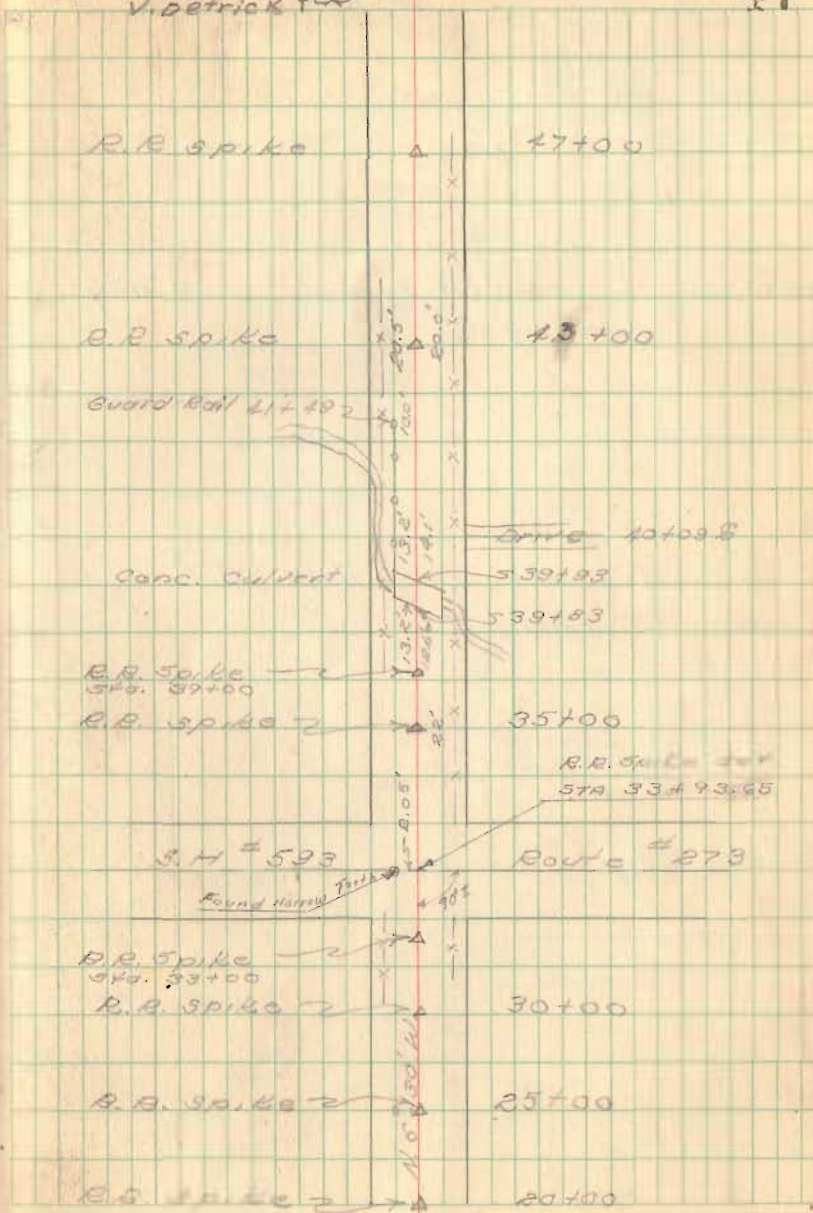
Found Harry

R.R. Spike  
Sta. 33+00

R.R. spike 30+00

R.R. spike 25+00

R.R. spike 20+00



Road No. 5 (cont'd)

67400 RR spike set Hubs set

Hub - 3' from line 30' E/W

Hub - 1' from line

Hub - 30' from line ? S-E

65434.35 Hub set (set by hand) No angles

61400 RR spike set Hubs set

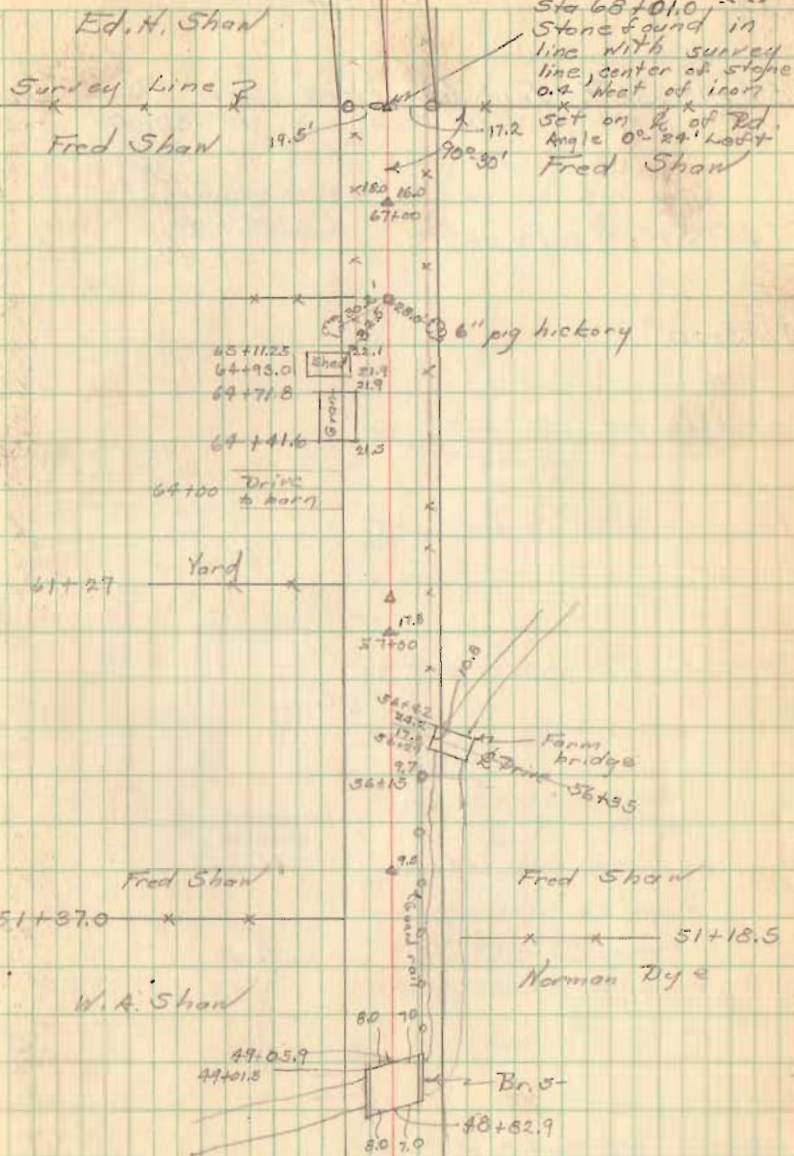
57400 RR spike set

52400 RR spike set

Party: C. Keyser  
D. Dodson  
P. Squith  
E. Humminger

Sep. 7, 1950

Ed. H. Shaw 48



Rd #5 (contd)

85+73.55 5/8" Iron bar set on County Line  
 R/W Mon. set at 30.00'

Iron bar replaced with Resurvey  
 Monument 8" below surface

PT 84+55.9 RR spike set May 23, 1951

PI 83+00

PC 81+44.6 RR spike set

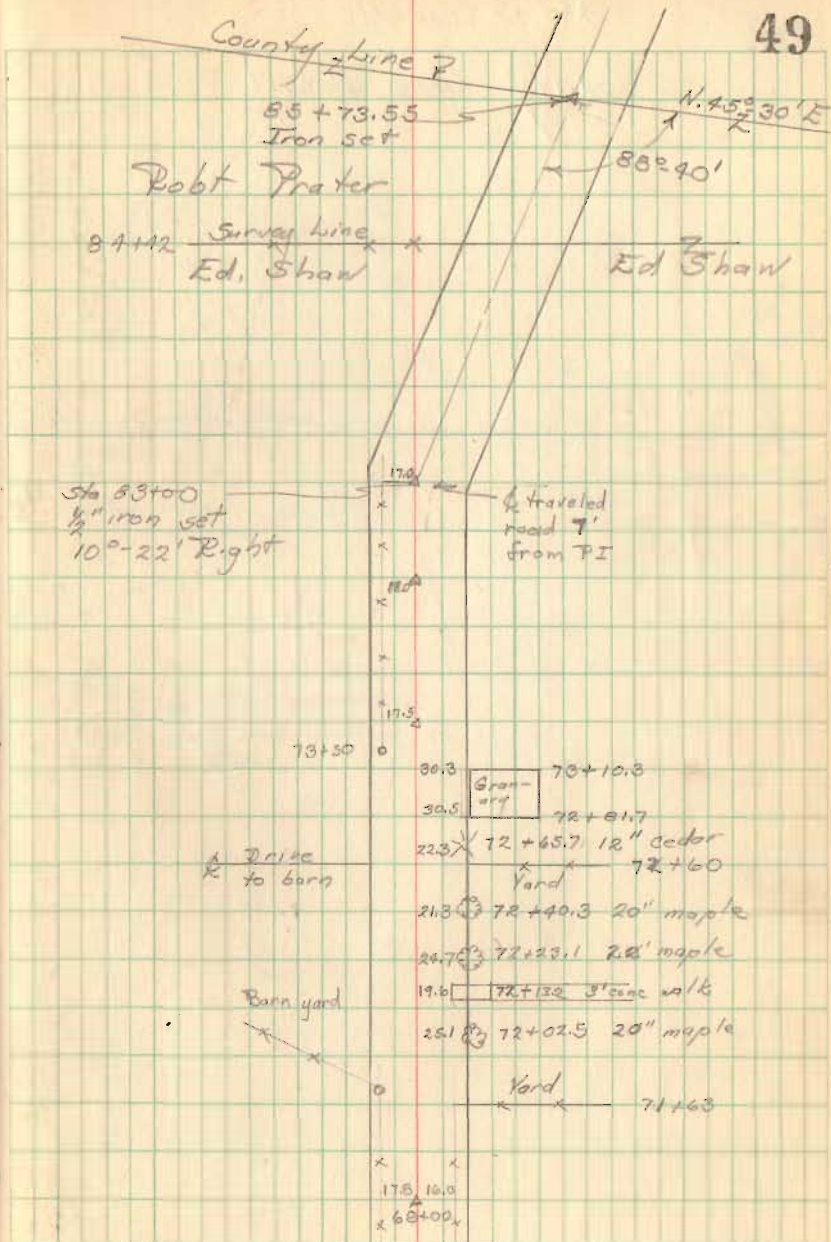
78+00 RR spike set

74+00 RR spike set

69+00 RR spike set

Sep. 7, 1950

49

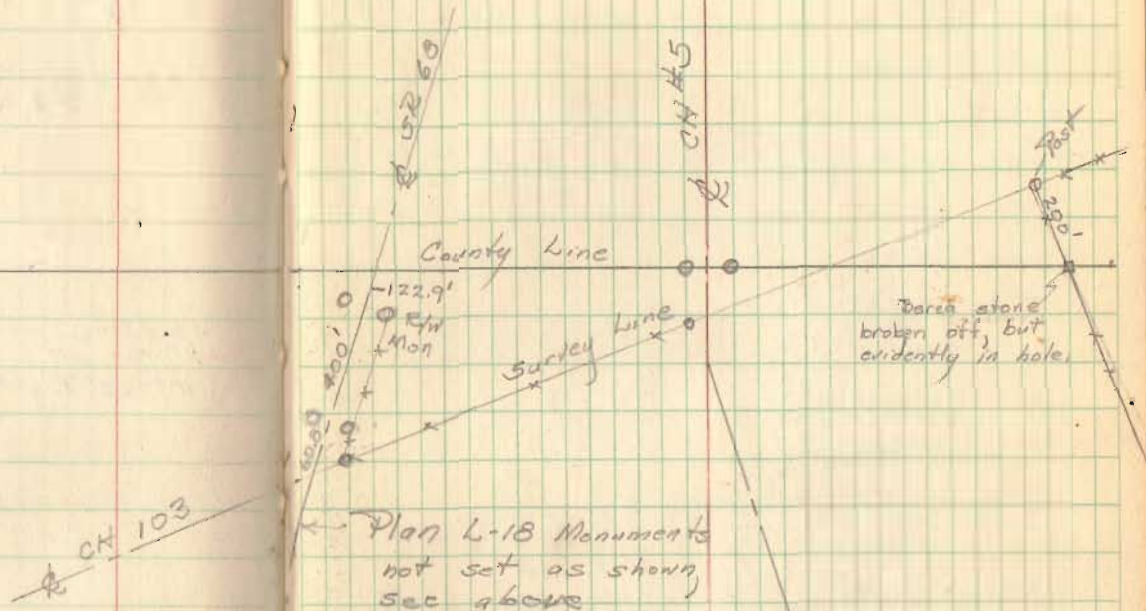


Dd #5 (contd)

County Line Detail

85+73.52

50





Road 92

2196

1700 Hub Set

0+00 Sta 516+44.8 & S.H. 33

June 6, 50

O. K. Shirk  
M. Keysor  
R. South

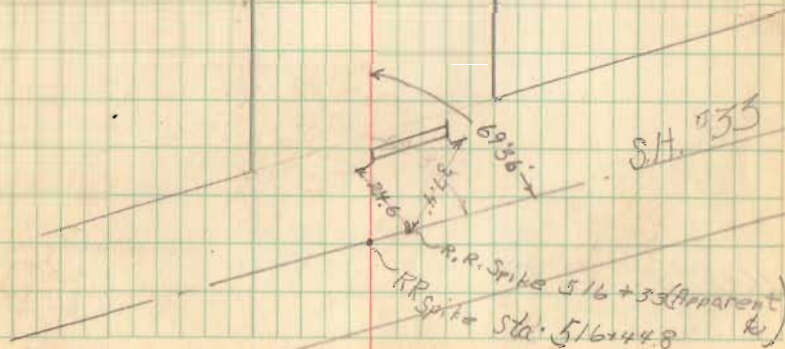
56

N 89° 50' E (Calc.)

4387

INDEXED ON MAP

Blanchard  
Ward  
1630' to E



Rd 92  
Bridge 92-0.50

29+67.5

27+00 RR spike

25+00 R.R. Spike

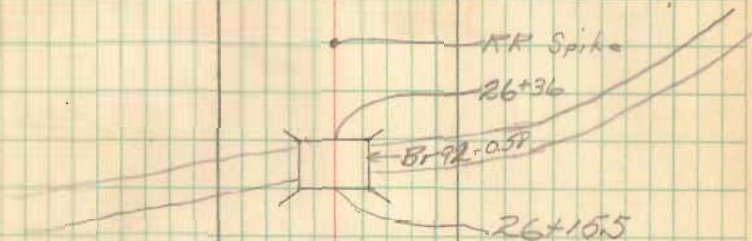
16+32.5 HUD

57

Jason L.  
Dudgen

X 1632.5 to E X

1632.5 to R



S 88° 30' E (Mag)

Karl E. Kent  
Edna Kent

X 1635 to E X

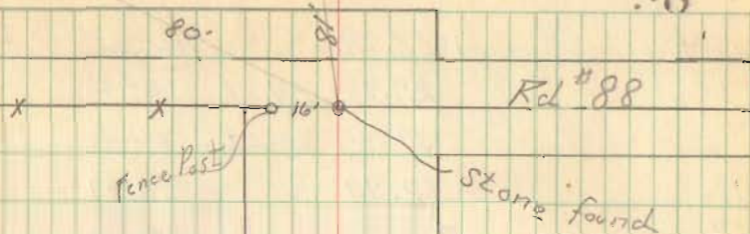
Hubert Sta 16+32.5  
Hallen Taylor  
X 1635 to R

Rd. 92

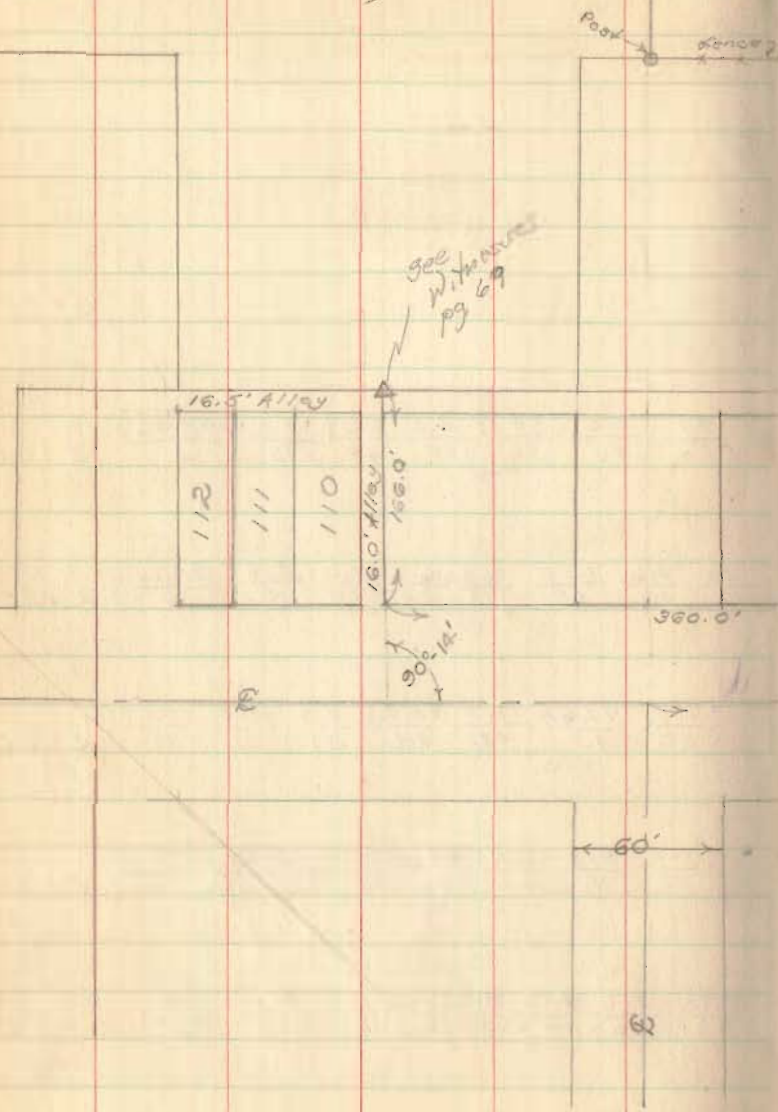
Hickory

House

8



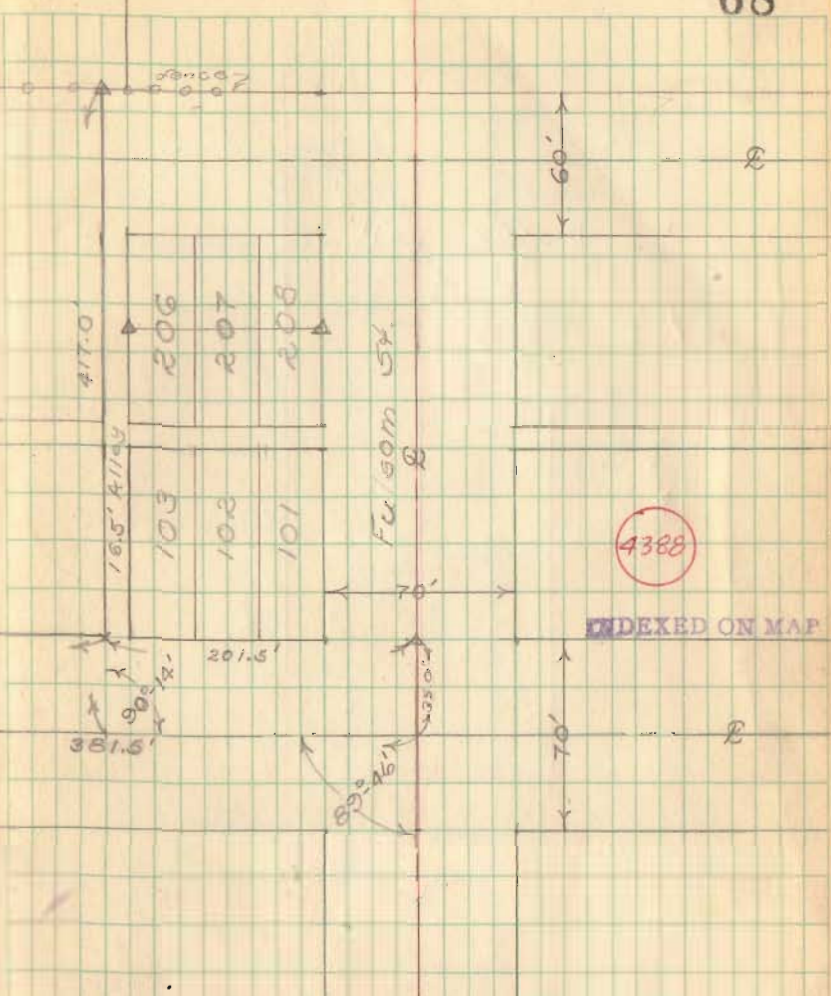
West Liberty School  
Survey



C. Mayson  
V. Detrick  
D. Dodson

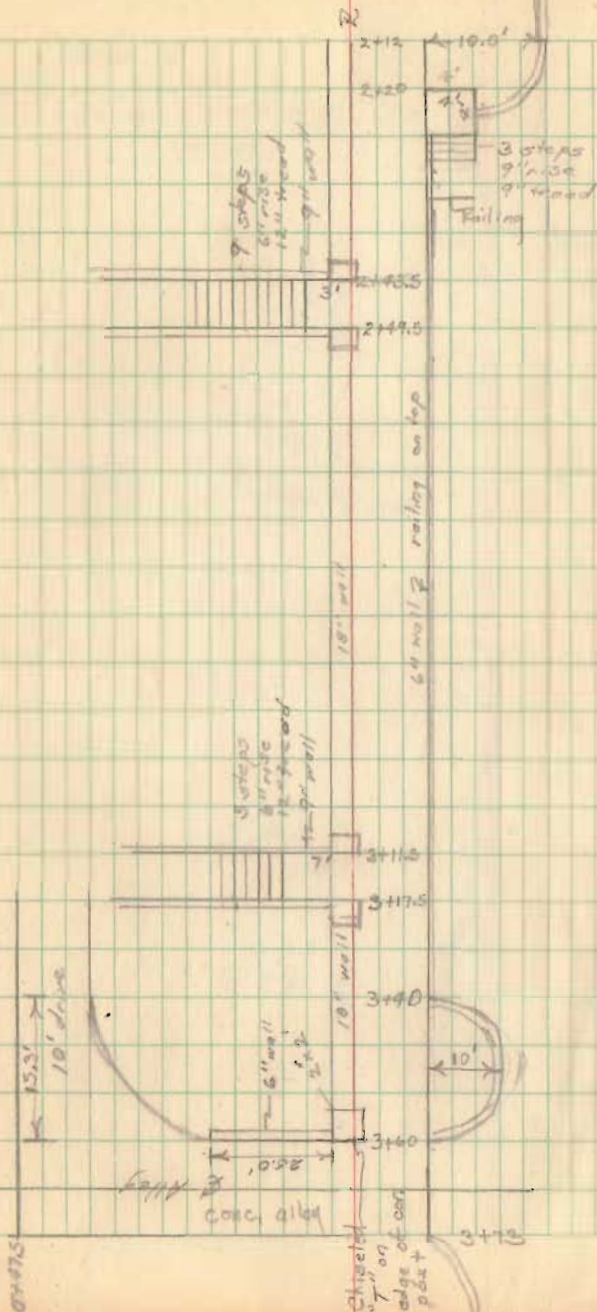
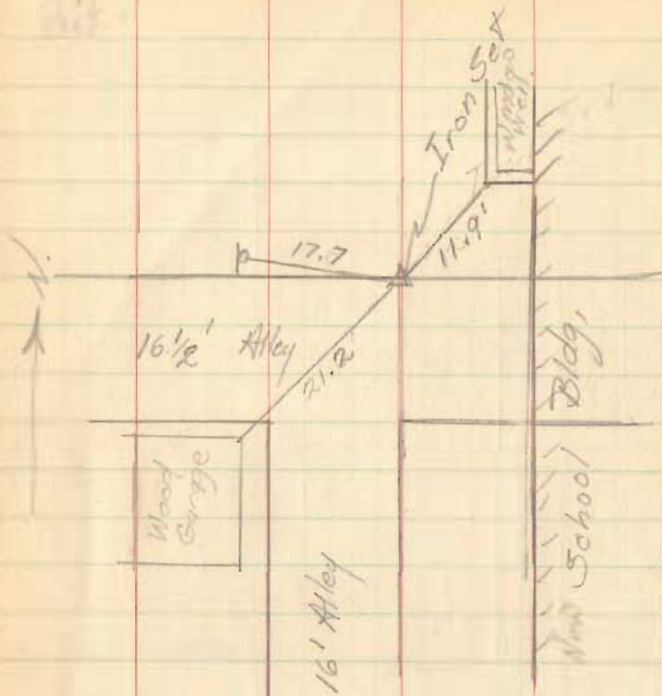
Dec. 6, 1950

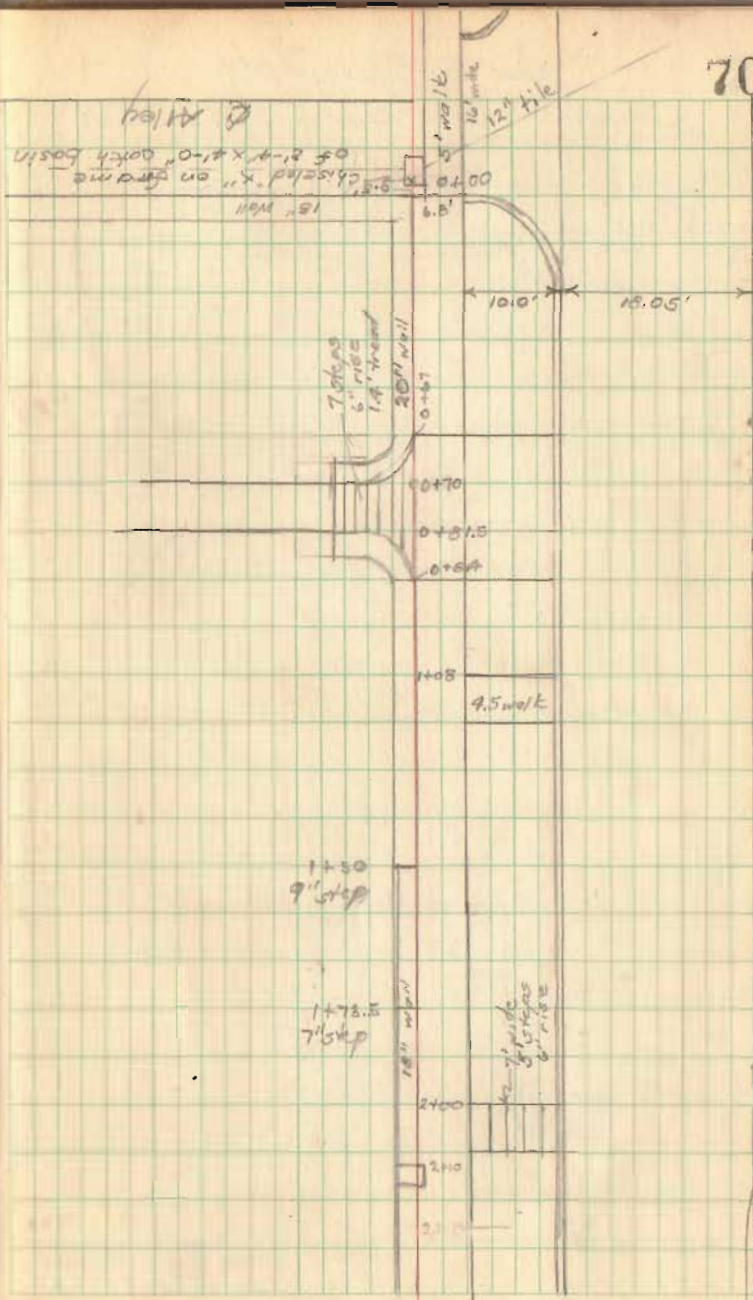
68



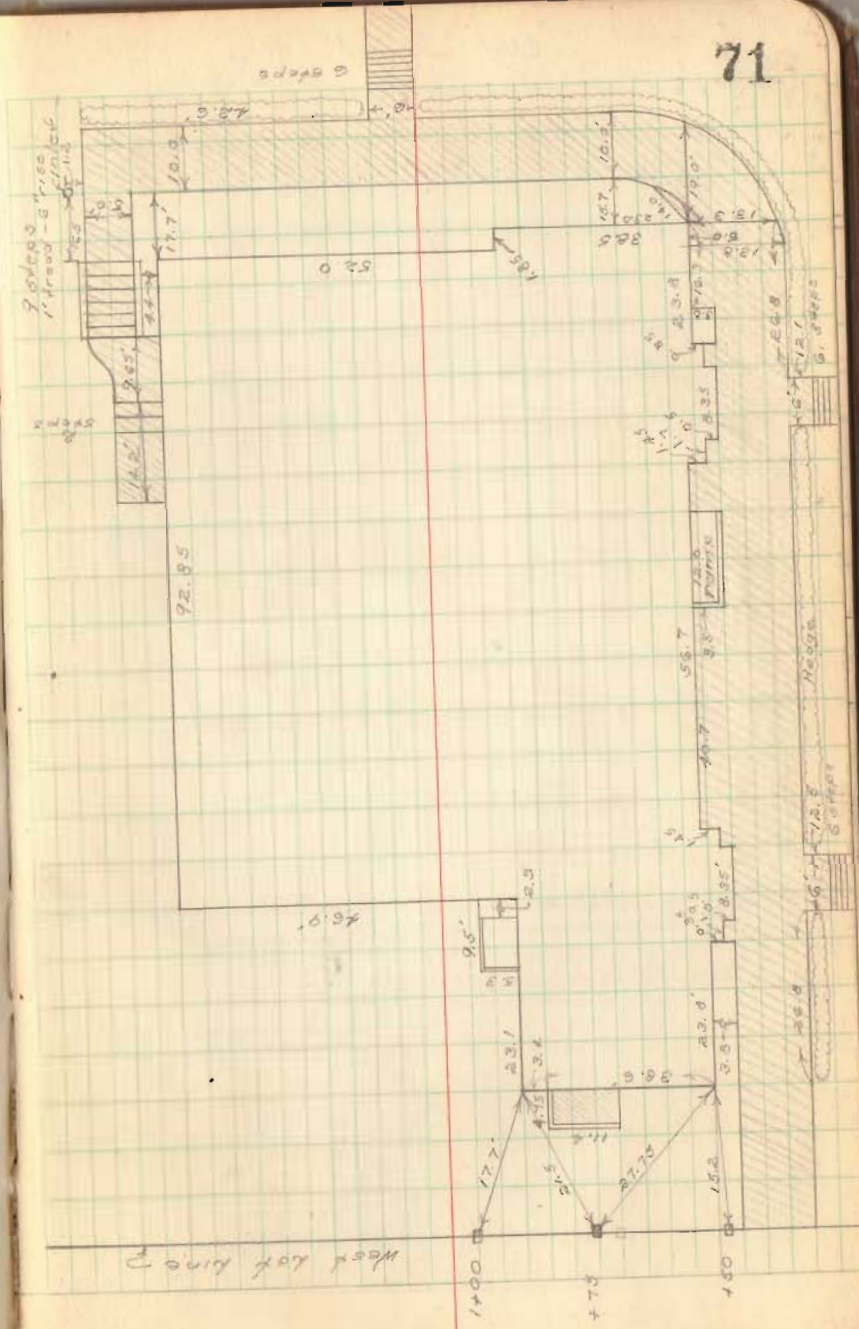
INDEXED ON MAP

See FB 480 pg 34-6 for survey  
of Lots 206-7-8



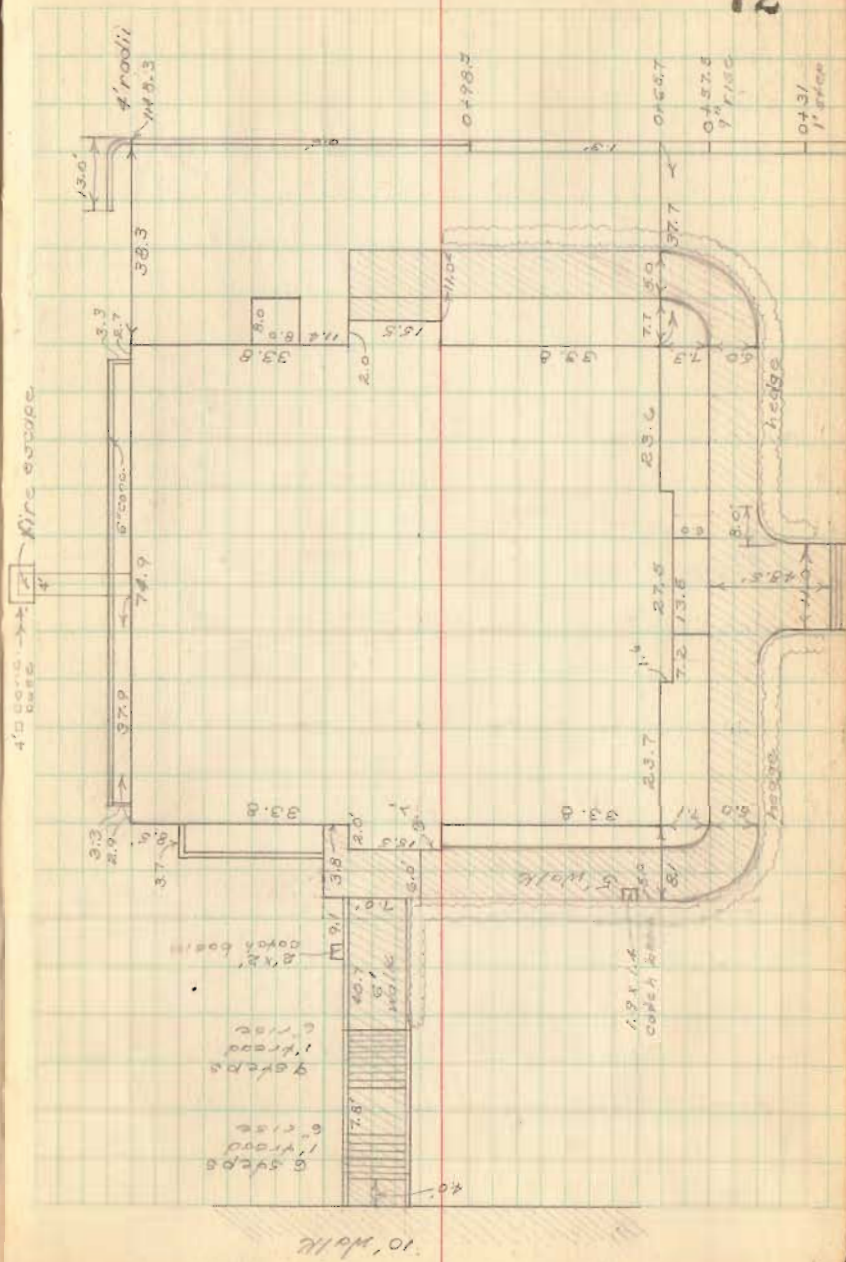


New School Bldg



Old School Bldg

72

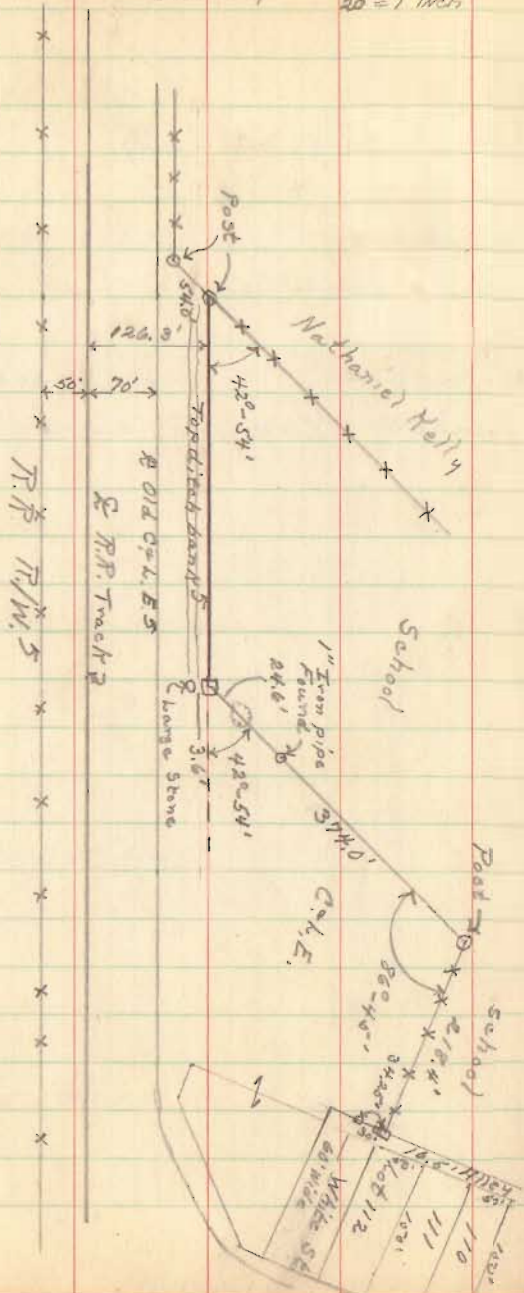




West Liberty School

Survey

20' = 1 inch



Also see pages 68-72

Oct. 19, 1955

C. Meyser  
Y. Dedrick  
T. Richardson

Leach Survey  
Harrison Twp.  
Sec. 18, T-3, R-14

Surveyed Nov. 11, 1953 Temp 50°F.  
D.E. Dodson & Chas Nichols

See F.B.# 598 pp. 44 for  
survey of C.H.# 13

Note:

Projected South line of 7.09 A.  
tract East to intersect existing  
fence

2106

INDEXED ON MAP

C.H.# 46

80

